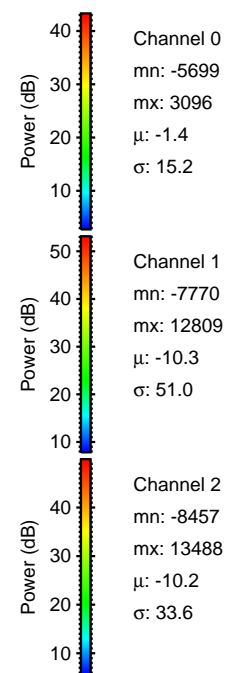
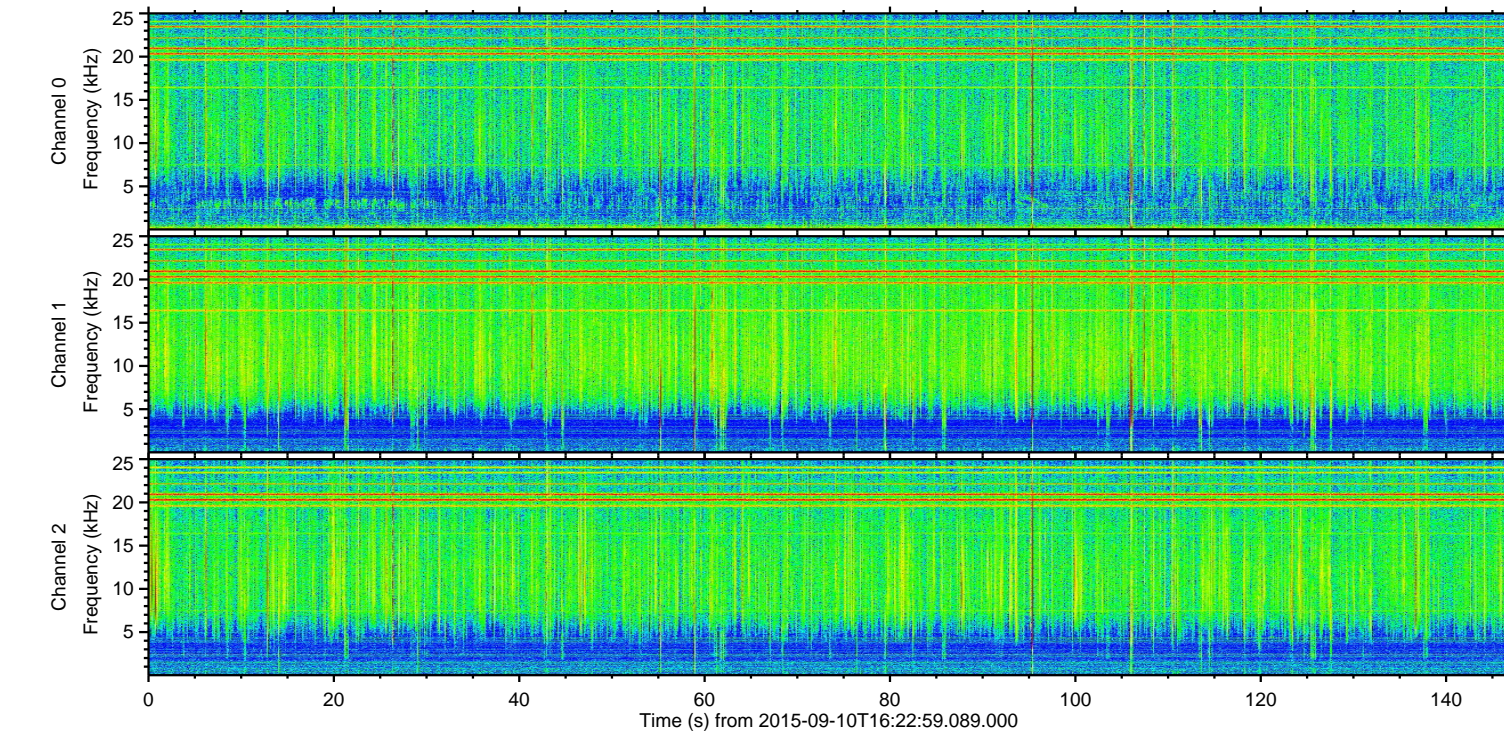
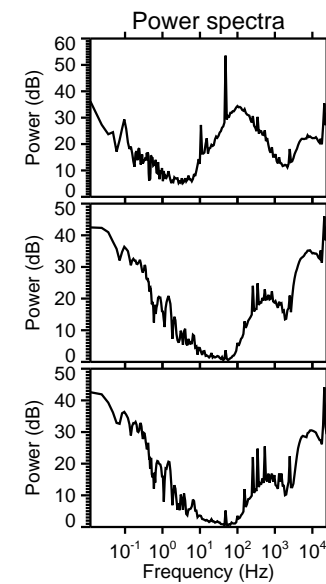
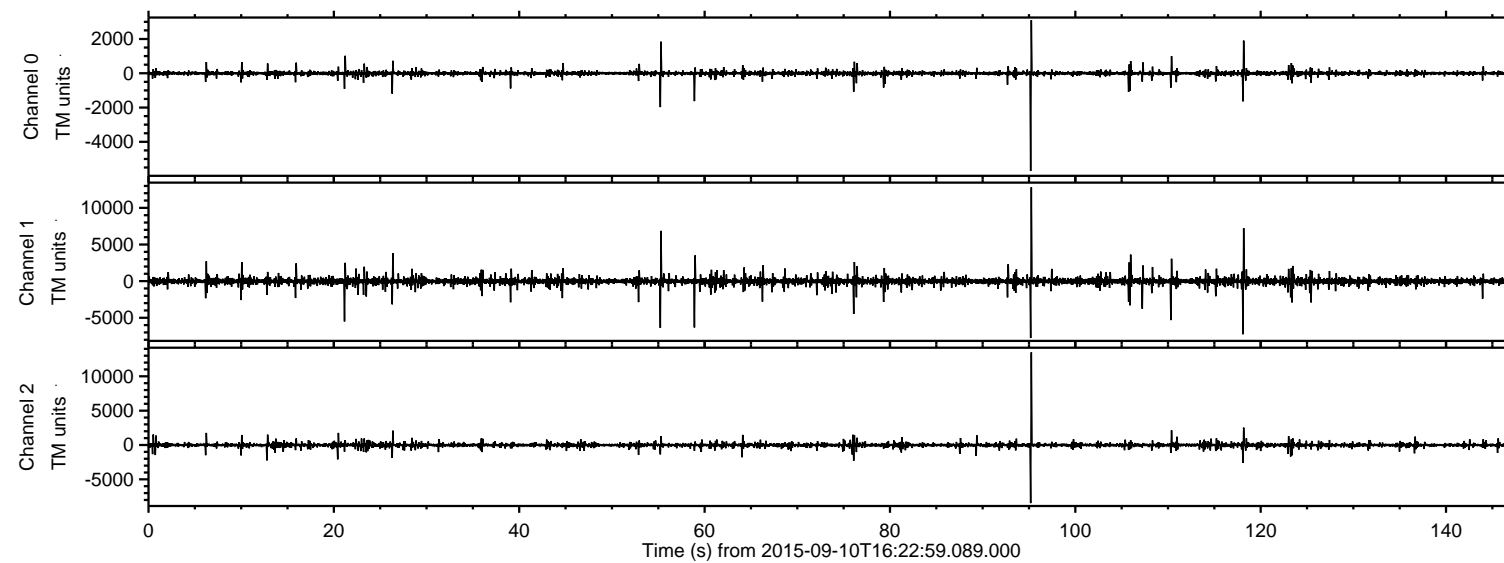


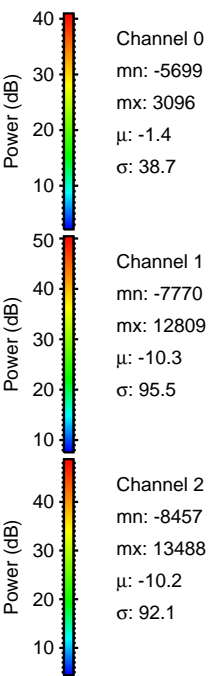
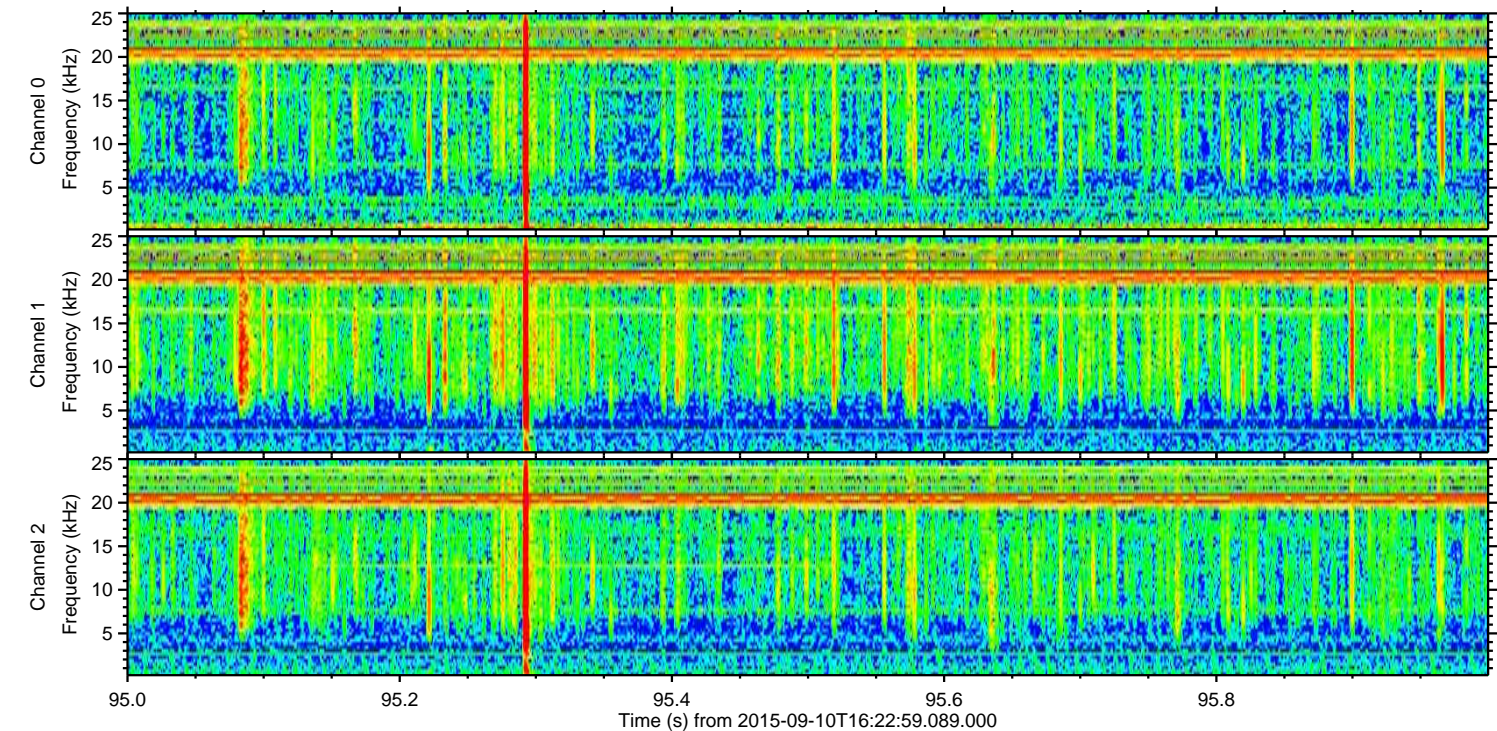
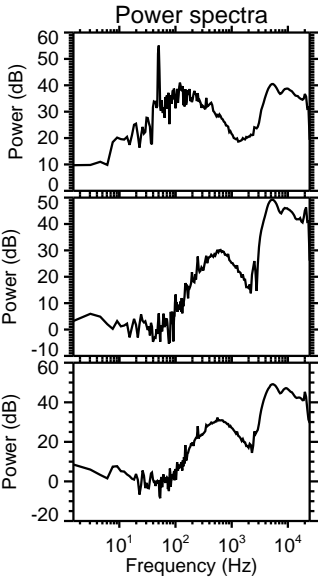
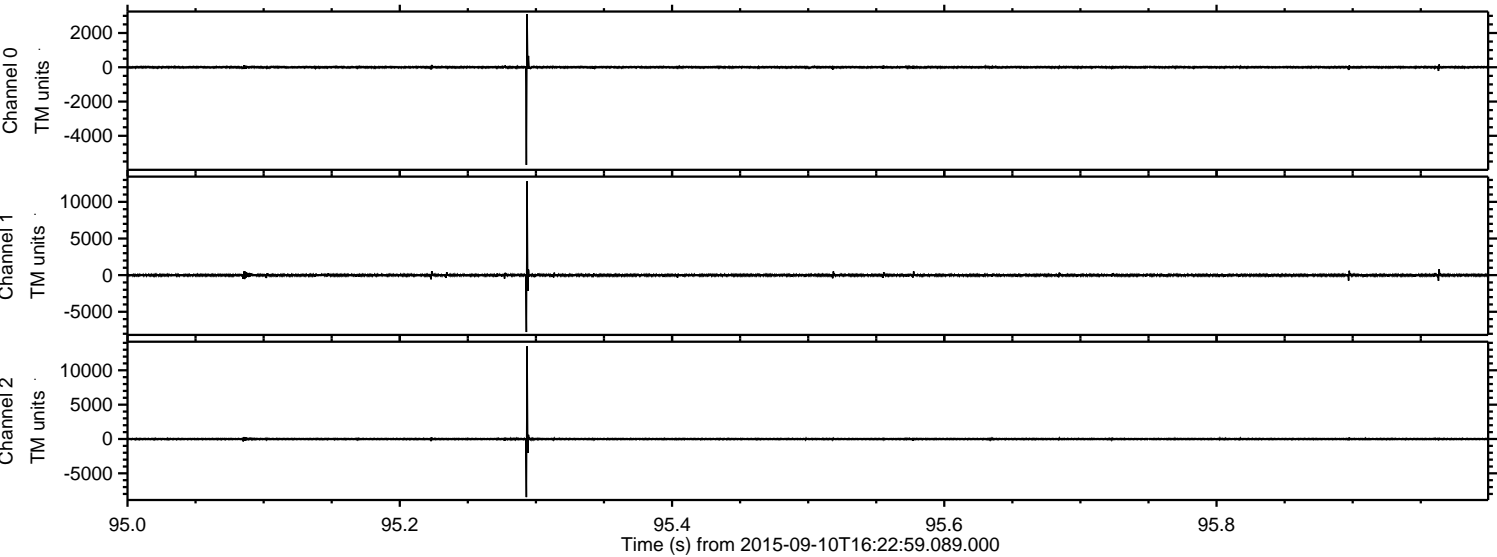
ELMAVAN 3D WAVEFORMS (Measured data sampled at 50 kHz) 51000 packets of 144 samples from 2015-09-10T16:22:59.089.000.

Processed Sun Oct 11 09:18:05 2015 by ELM ver.2012-10-06 from 001\_\_elm20150910\_162258\_\_dat00.bin





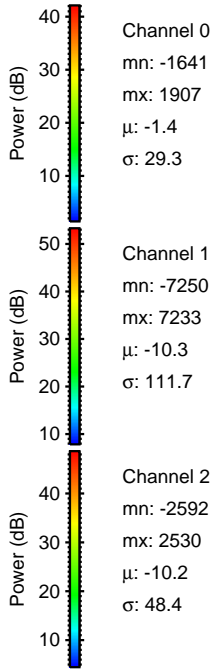
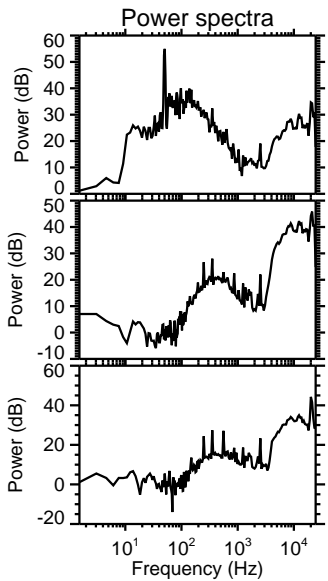
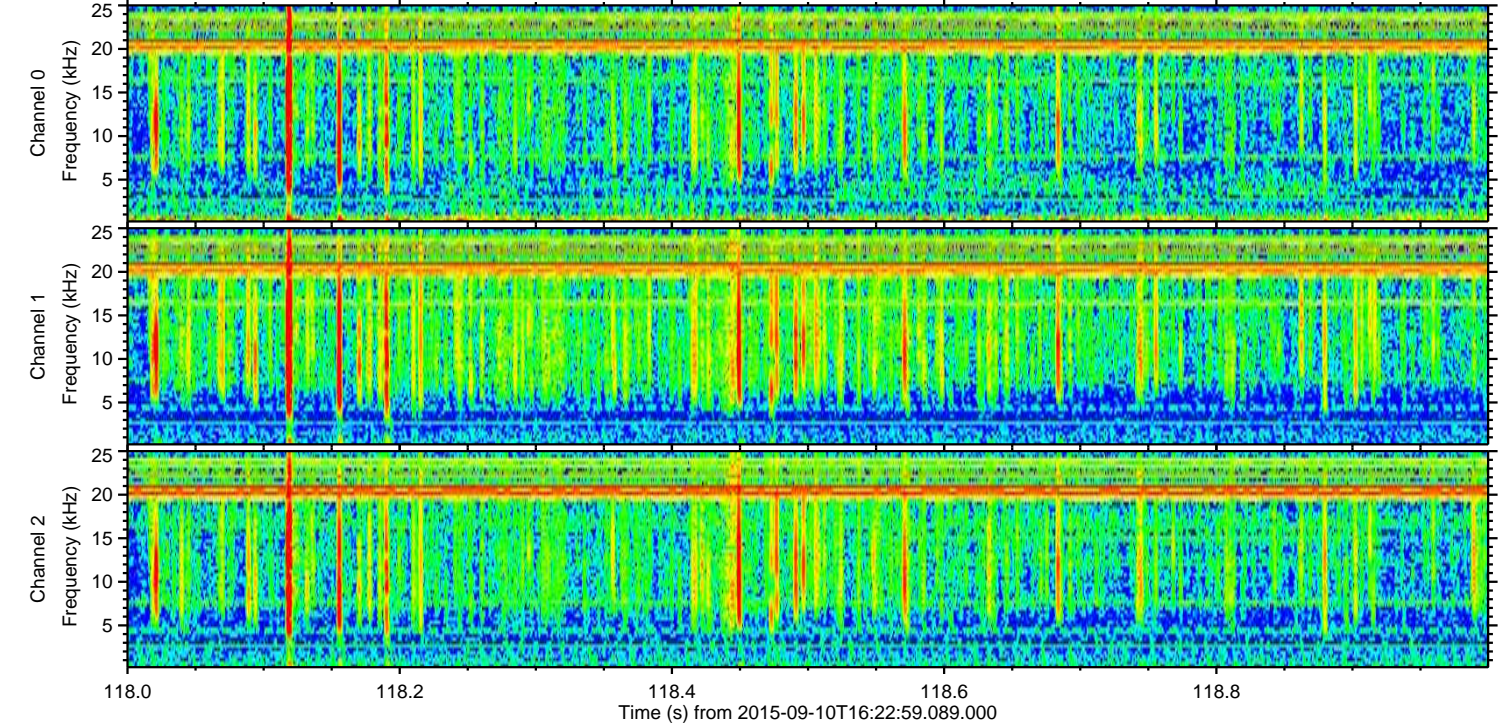
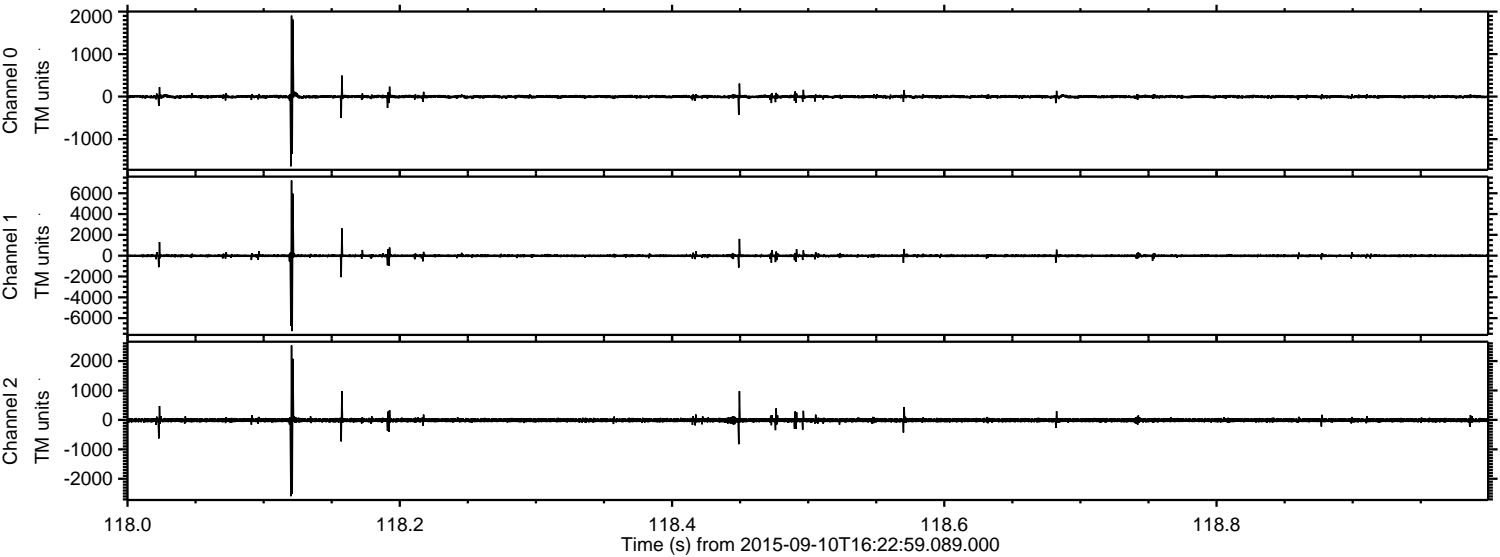
Processed Sun Oct 11 09:18:21 2015 by ELM ver.2012-10-06 from 001\_\_elm20150910\_162258\_\_dat00.bin





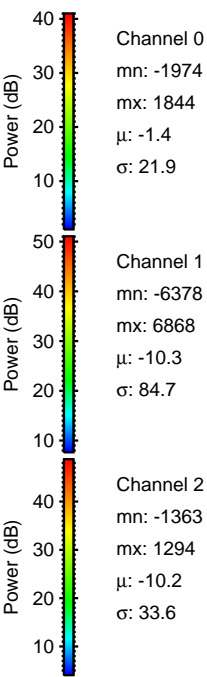
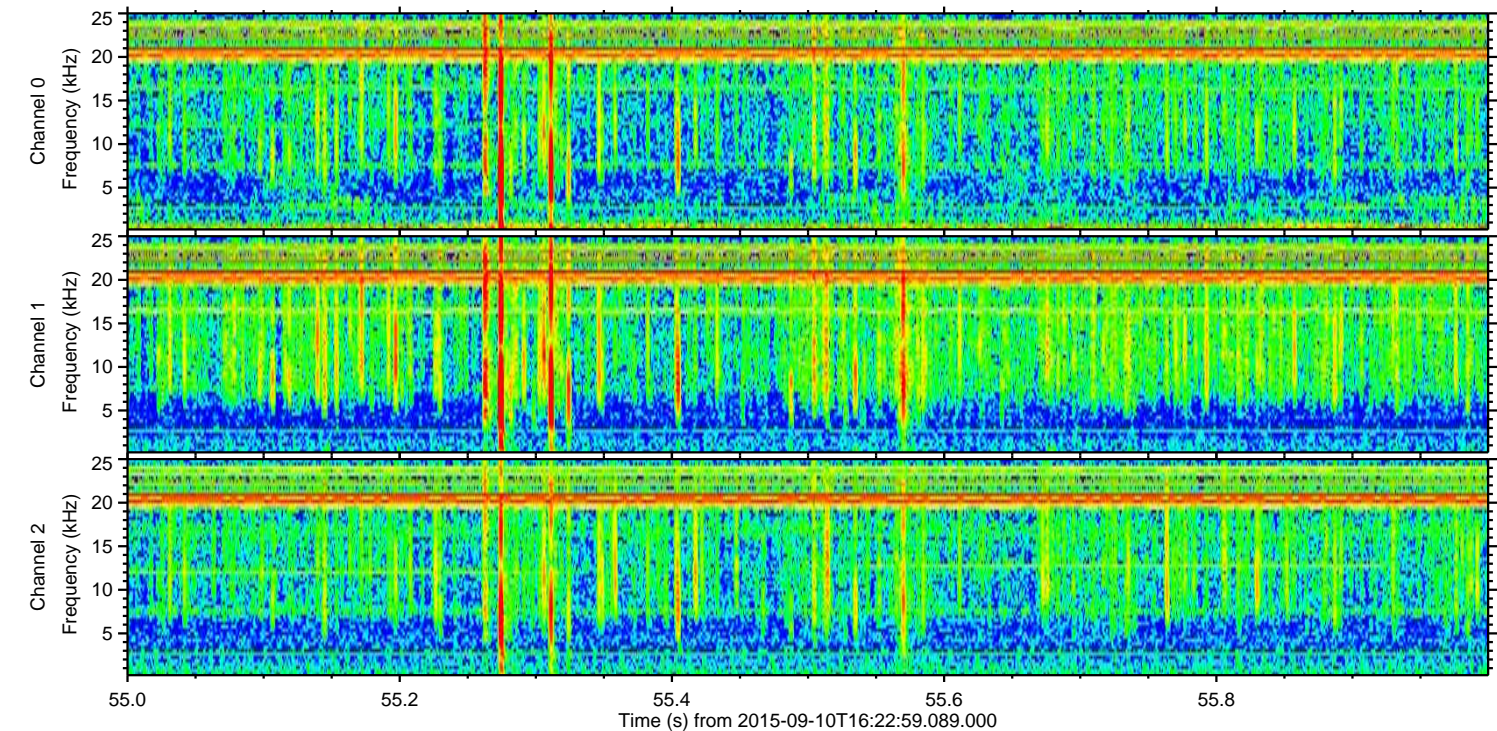
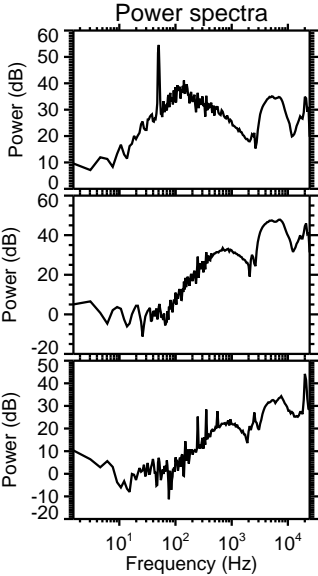
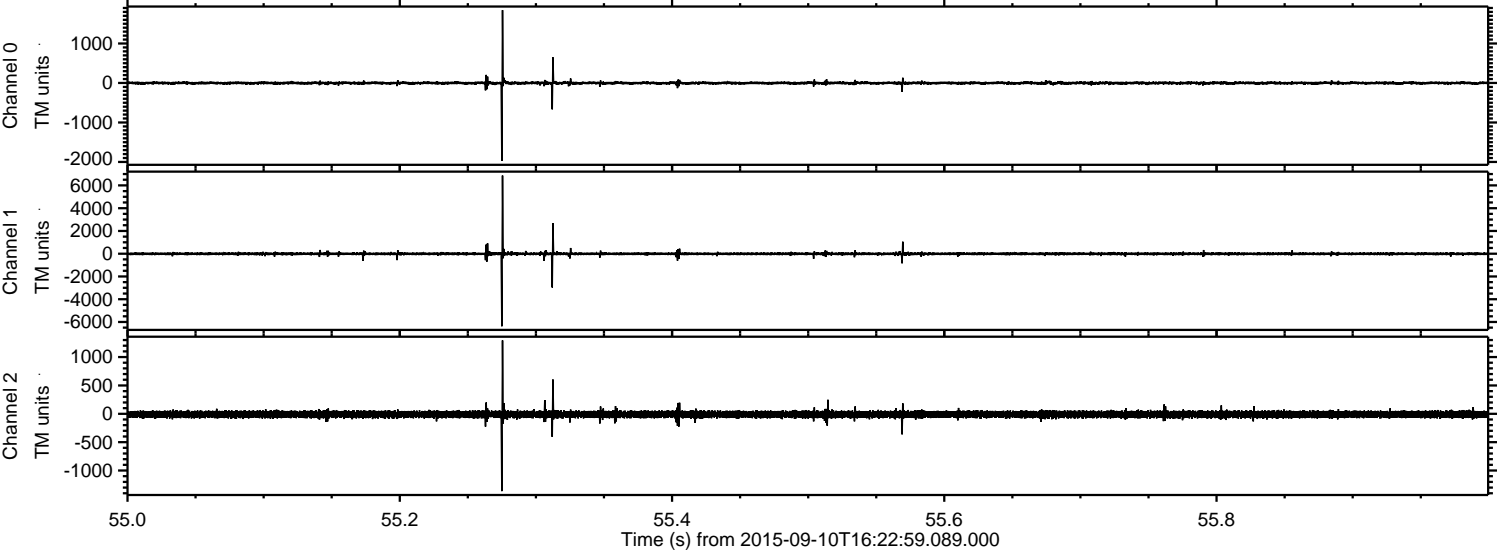
ELMAVAN 3D WAVEFORMS (Measured data sampled at 50 kHz) 51000 packets of 144 samples from 2015-09-10T16:22:59.089.000. Part 119/147

Processed Sun Oct 11 09:18:22 2015 by ELM ver.2012-10-06 from 001\_\_elm20150910\_162258\_\_dat00.bin





Processed Sun Oct 11 09:18:23 2015 by ELM ver.2012-10-06 from 001\_\_elm20150910\_162258\_\_dat00.bin



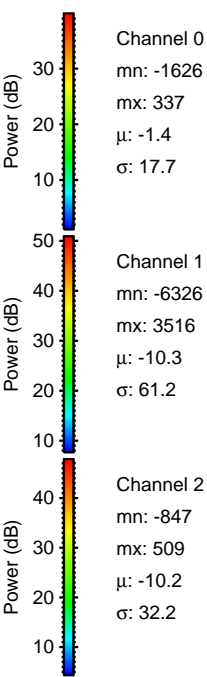
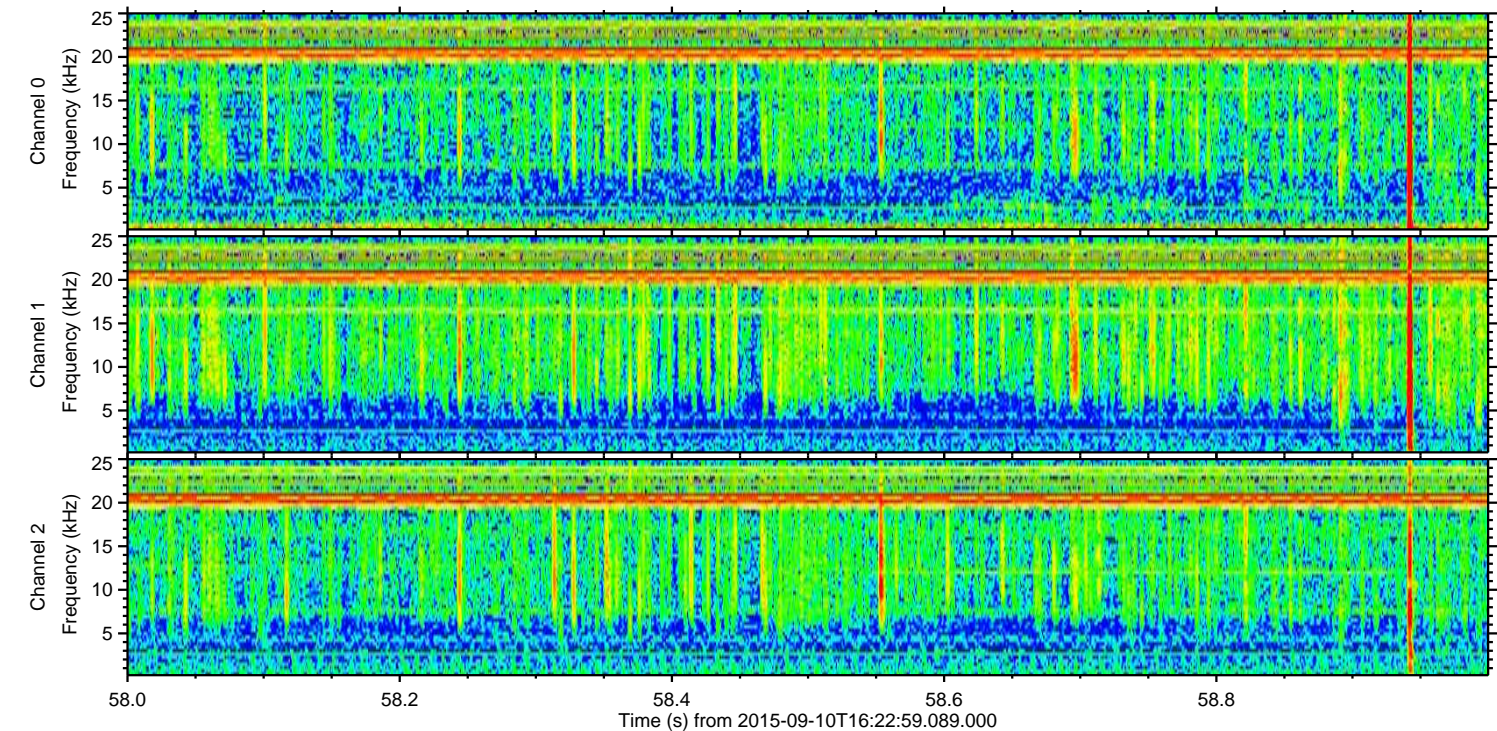
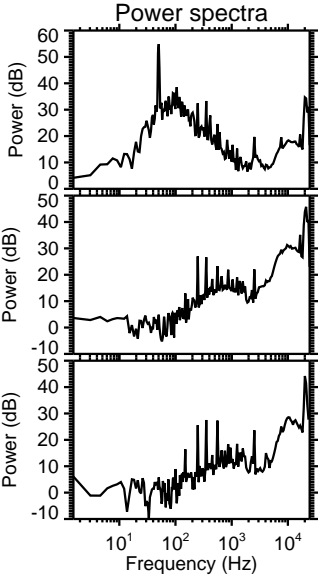
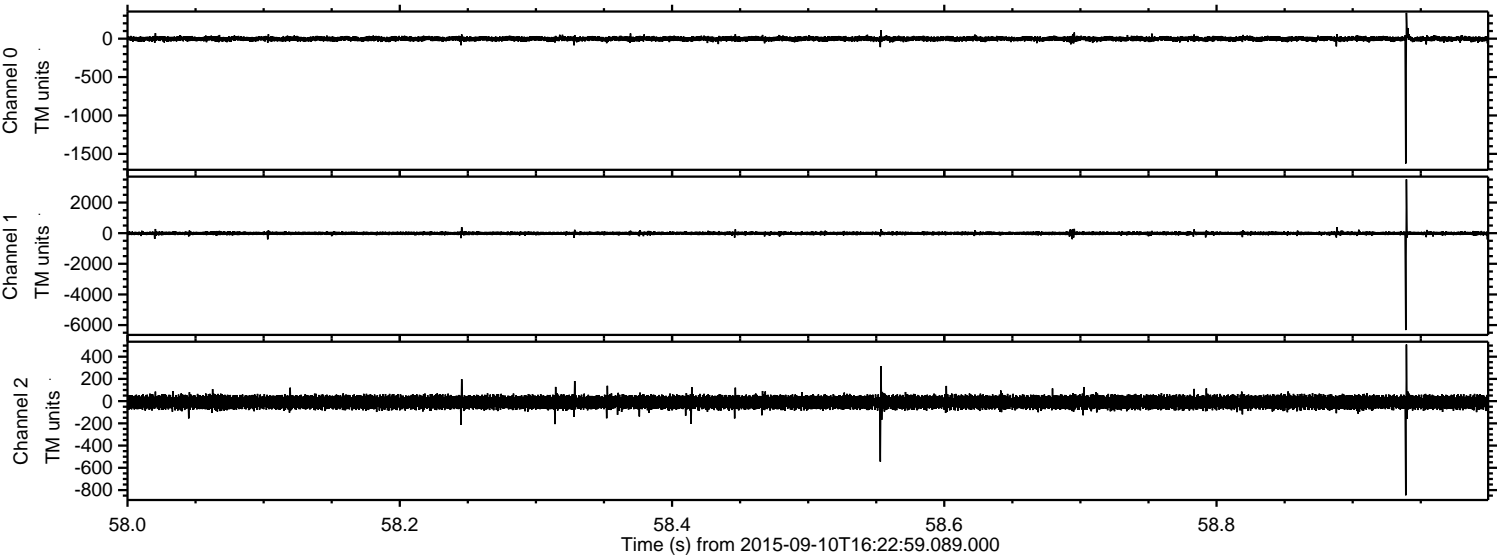
Channel 0  
mn: -1974  
mx: 1844  
 $\mu$ : -1.4  
 $\sigma$ : 21.9

Channel 1  
mn: -6378  
mx: 6868  
 $\mu$ : -10.3  
 $\sigma$ : 84.7

Channel 2  
mn: -1363  
mx: 1294  
 $\mu$ : -10.2  
 $\sigma$ : 33.6



Processed Sun Oct 11 09:18:24 2015 by ELM ver.2012-10-06 from 001\_\_elm20150910\_162258\_\_dat00.bin



Channel 0  
mn: -1626  
mx: 337  
 $\mu$ : -1.4  
 $\sigma$ : 17.7

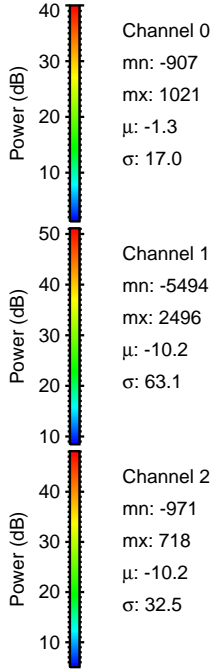
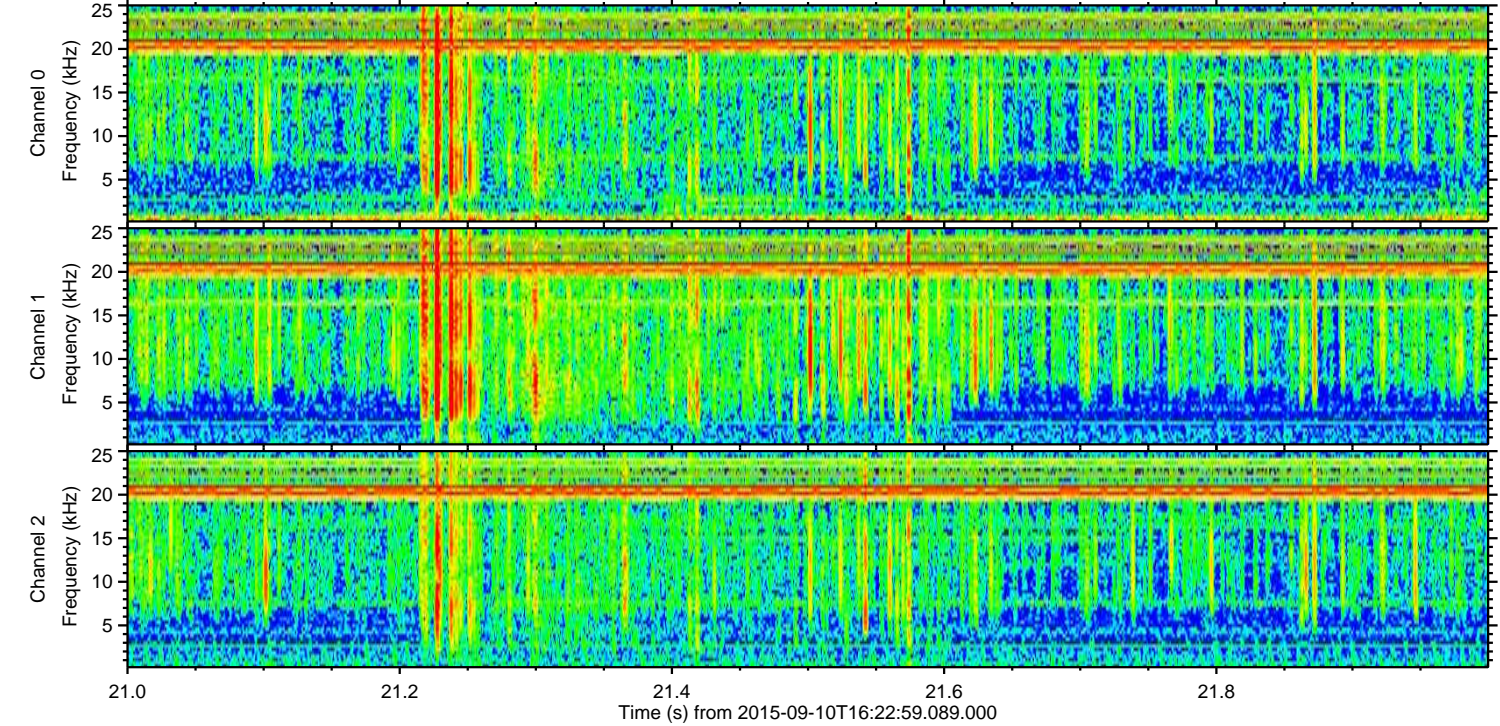
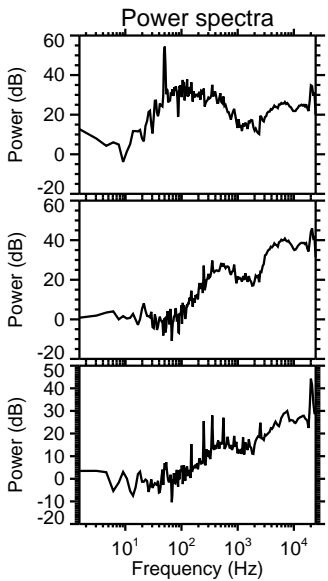
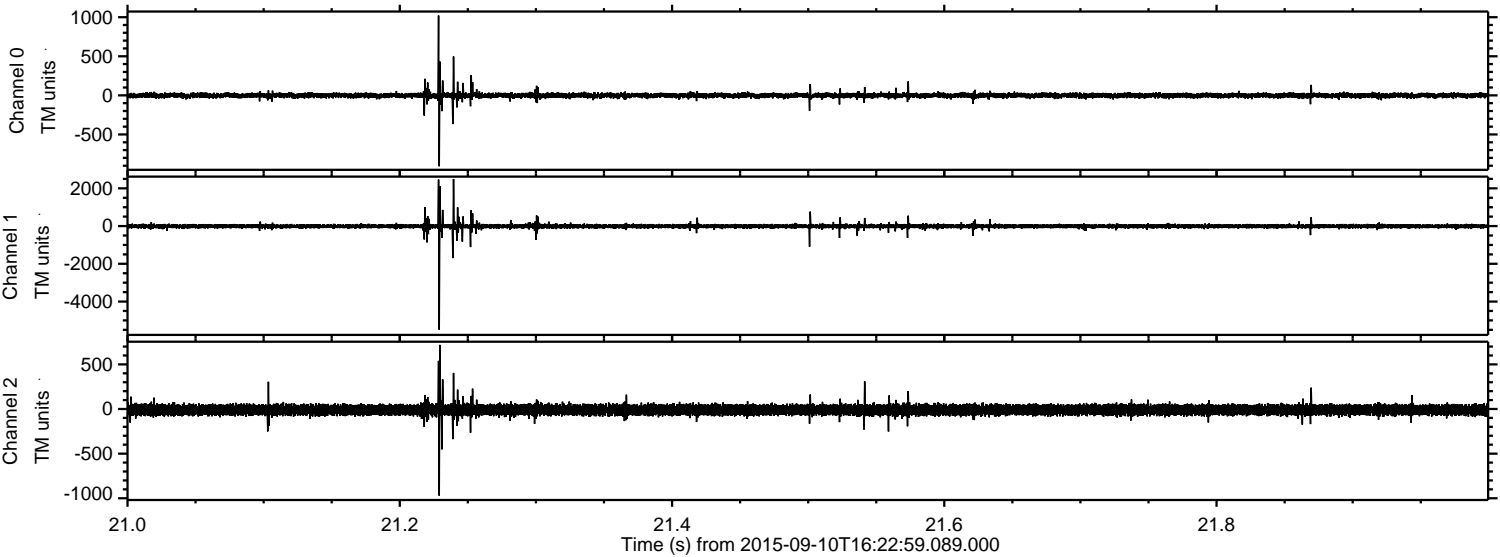
Channel 1  
mn: -6326  
mx: 3516  
 $\mu$ : -10.3  
 $\sigma$ : 61.2

Channel 2  
mn: -847  
mx: 509  
 $\mu$ : -10.2  
 $\sigma$ : 32.2



ELMAVAN 3D WAVEFORMS (Measured data sampled at 50 kHz) 51000 packets of 144 samples from 2015-09-10T16:22:59.089.000. Part 22/147

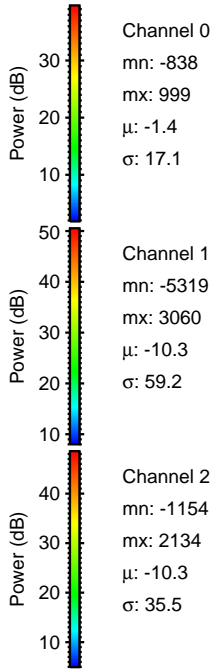
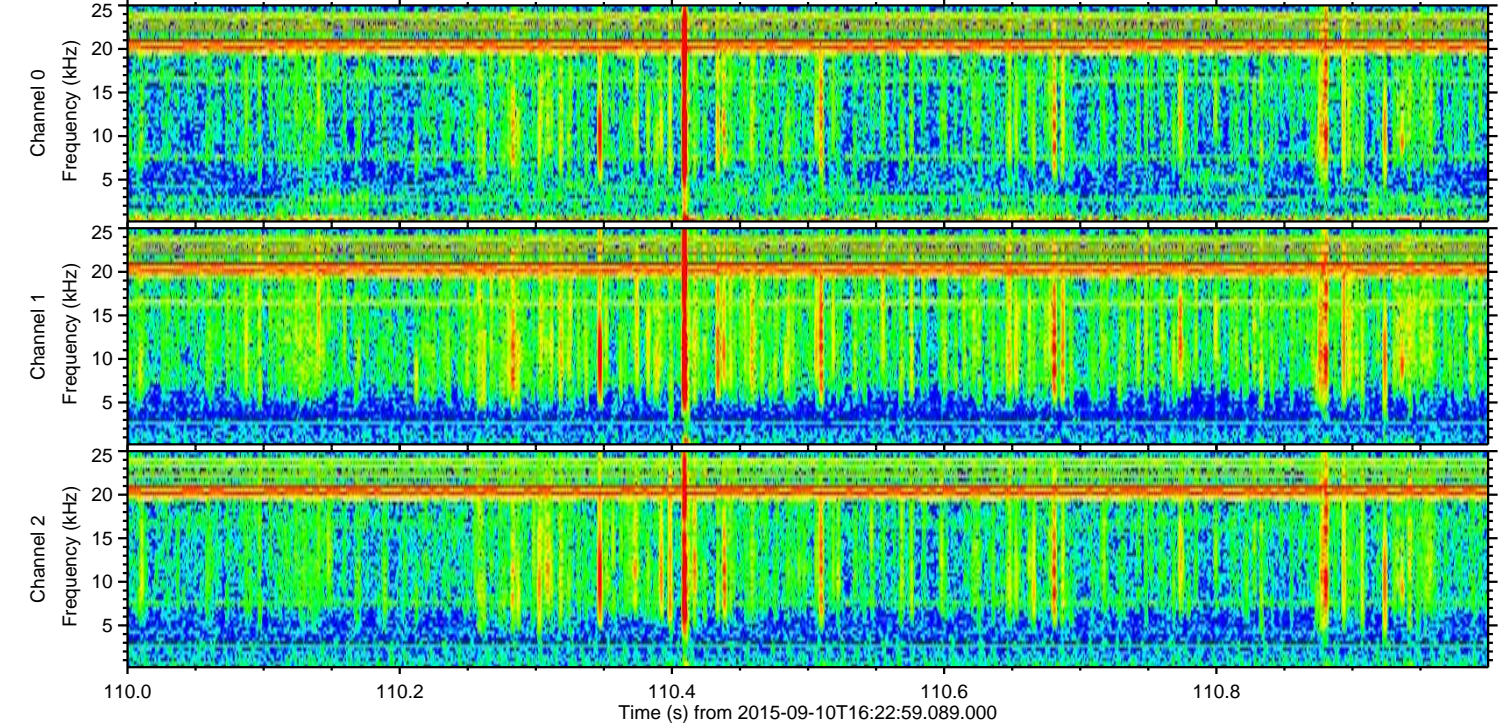
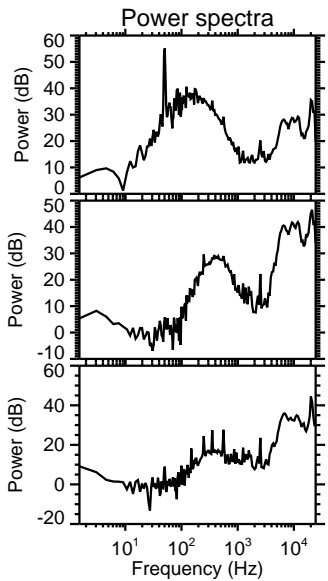
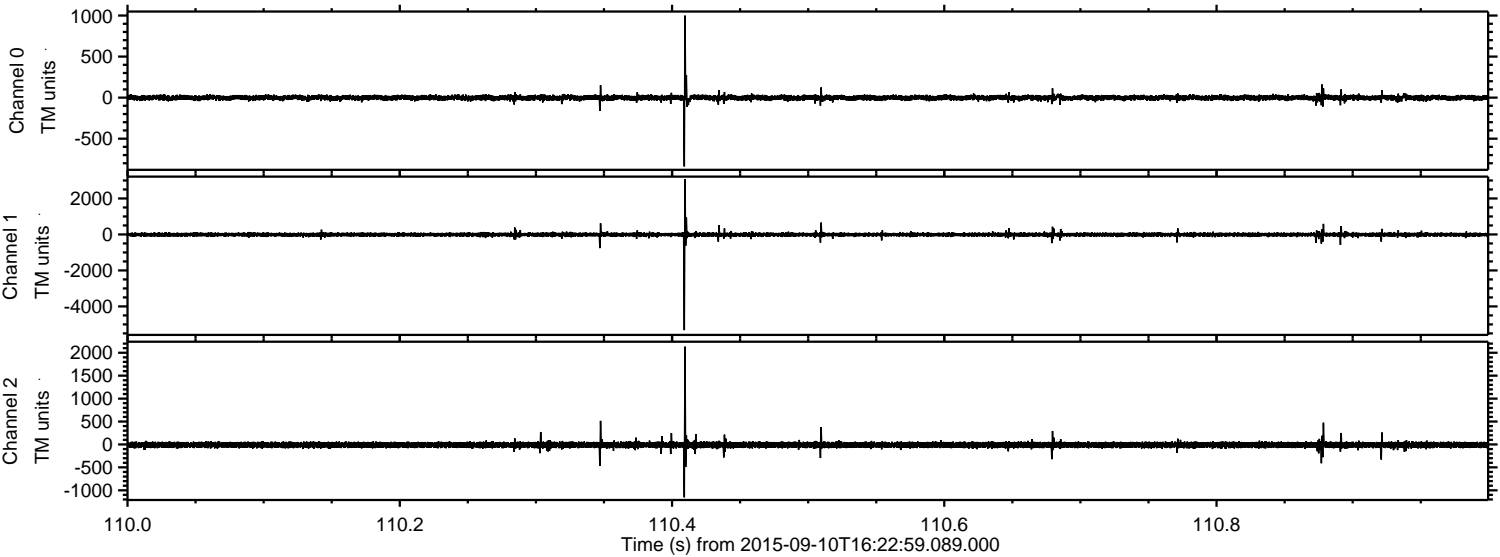
Processed Sun Oct 11 09:18:25 2015 by ELM ver.2012-10-06 from 001\_\_elm20150910\_162258\_\_dat00.bin





ELMAVAN 3D WAVEFORMS (Measured data sampled at 50 kHz) 51000 packets of 144 samples from 2015-09-10T16:22:59.089.000. Part 111/147

Processed Sun Oct 11 09:18:26 2015 by ELM ver.2012-10-06 from 001\_\_elm20150910\_162258\_\_dat00.bin



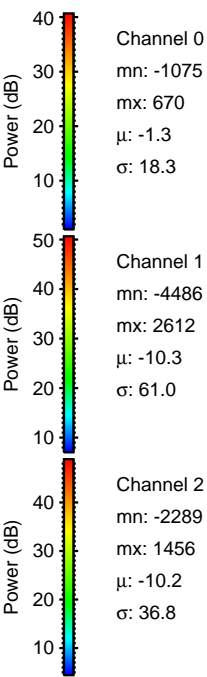
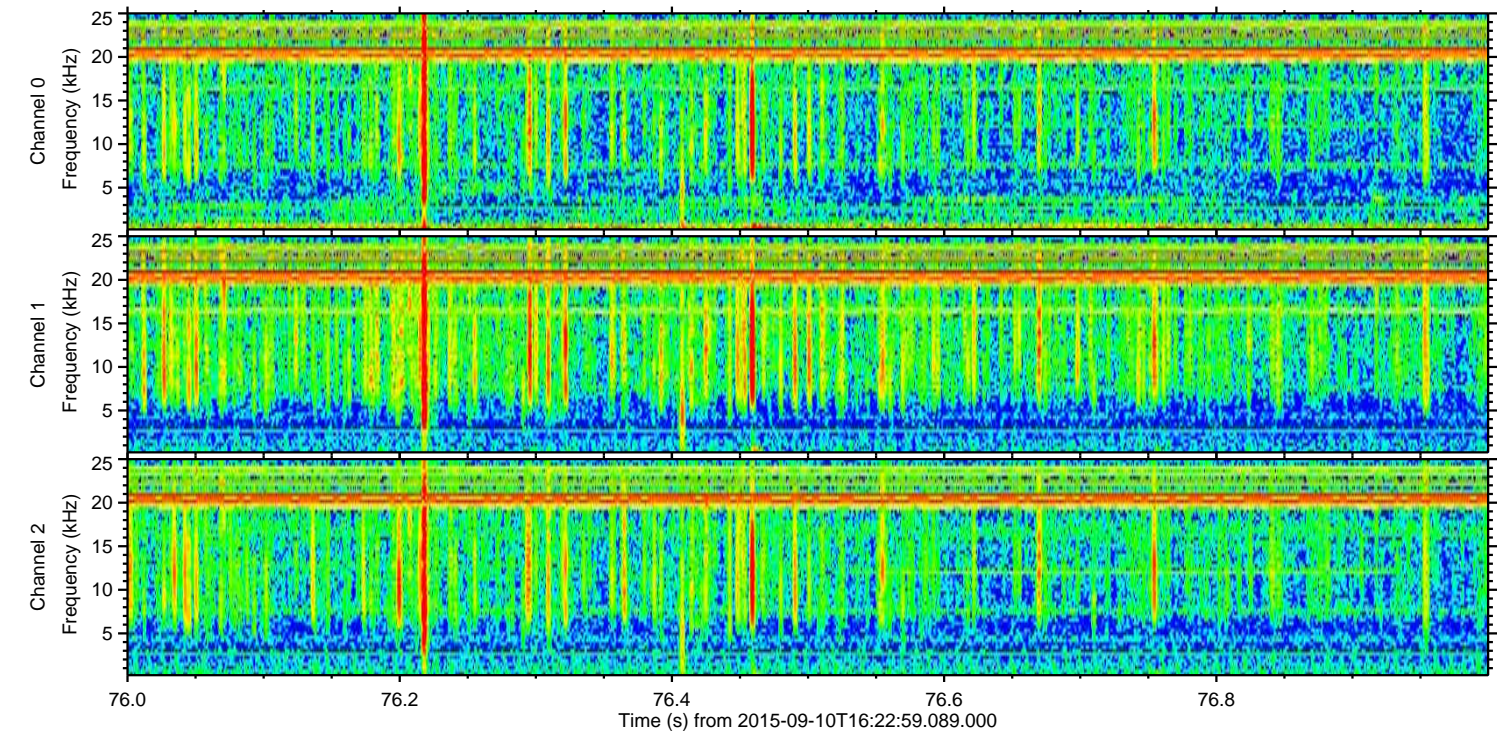
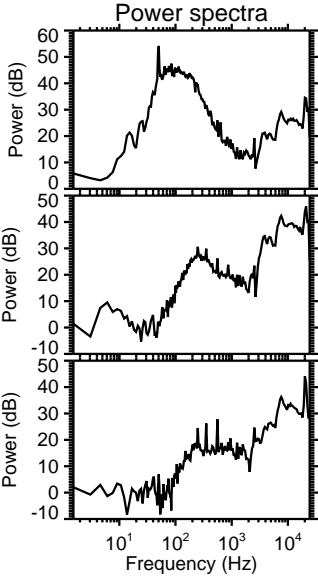
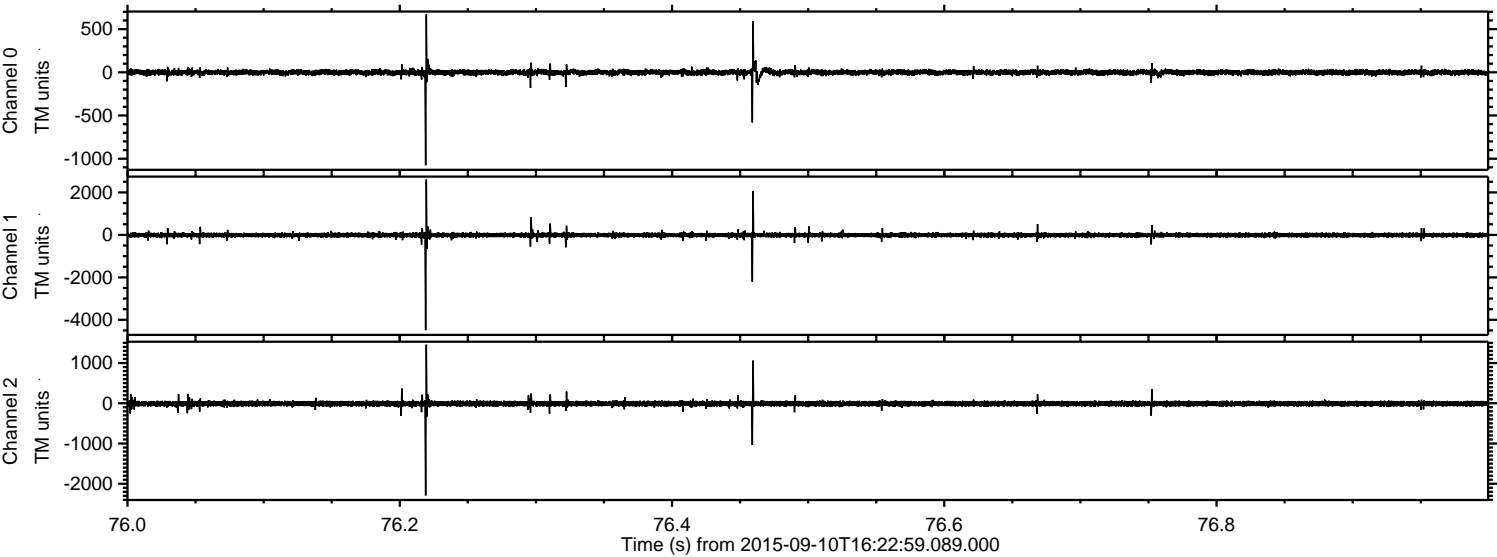
Channel 0  
mn: -838  
mx: 999  
 $\mu$ : -1.4  
 $\sigma$ : 17.1

Channel 1  
mn: -5319  
mx: 3060  
 $\mu$ : -10.3  
 $\sigma$ : 59.2

Channel 2  
mn: -1154  
mx: 2134  
 $\mu$ : -10.3  
 $\sigma$ : 35.5



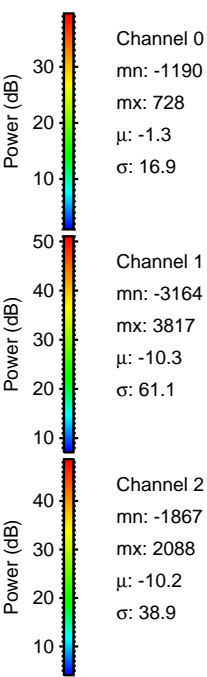
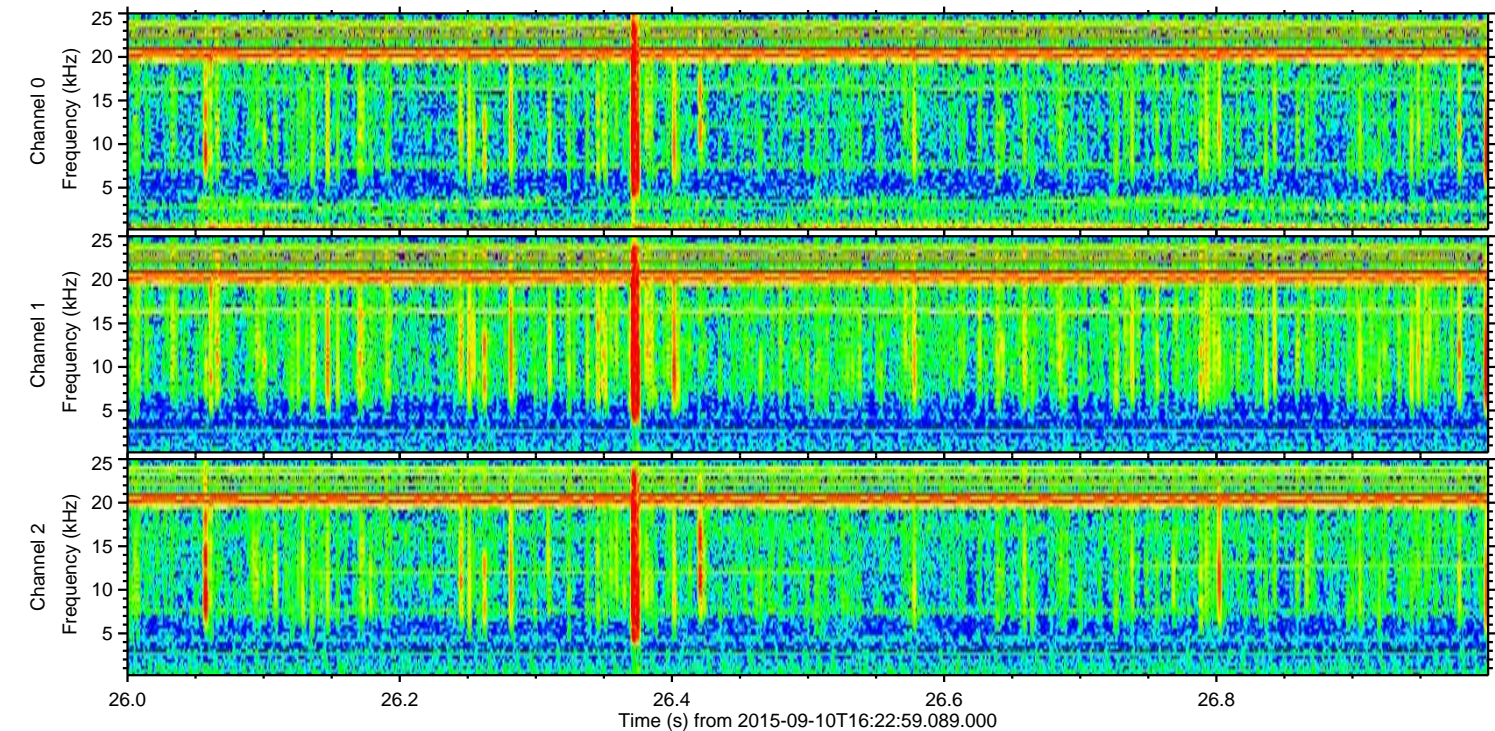
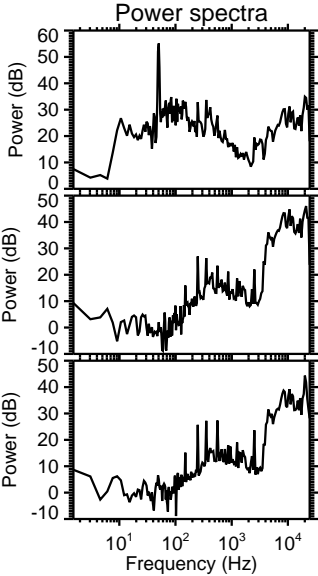
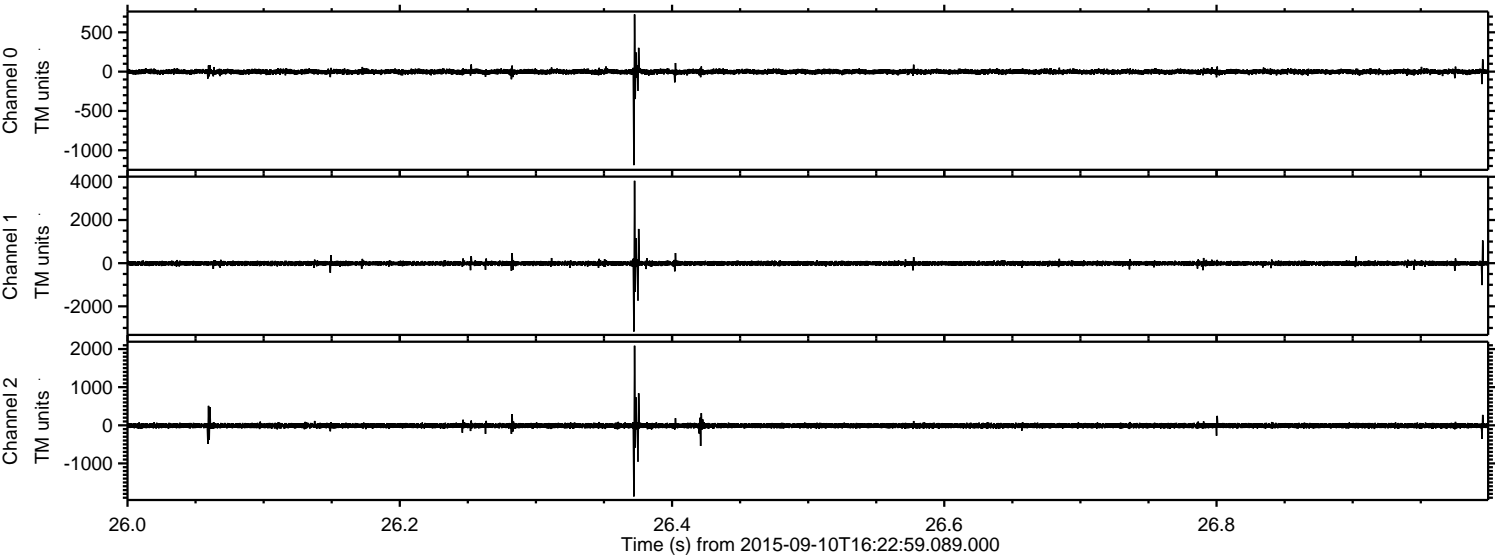
Processed Sun Oct 11 09:18:27 2015 by ELM ver.2012-10-06 from 001\_\_elm20150910\_162258\_\_dat00.bin





ELMAVAN 3D WAVEFORMS (Measured data sampled at 50 kHz) 51000 packets of 144 samples from 2015-09-10T16:22:59.089.000. Part 27/147

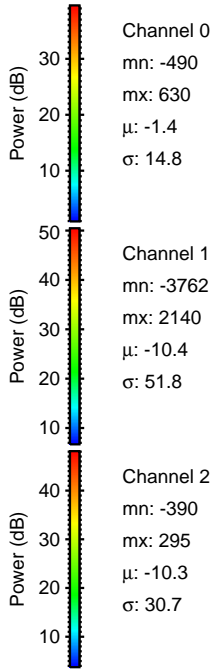
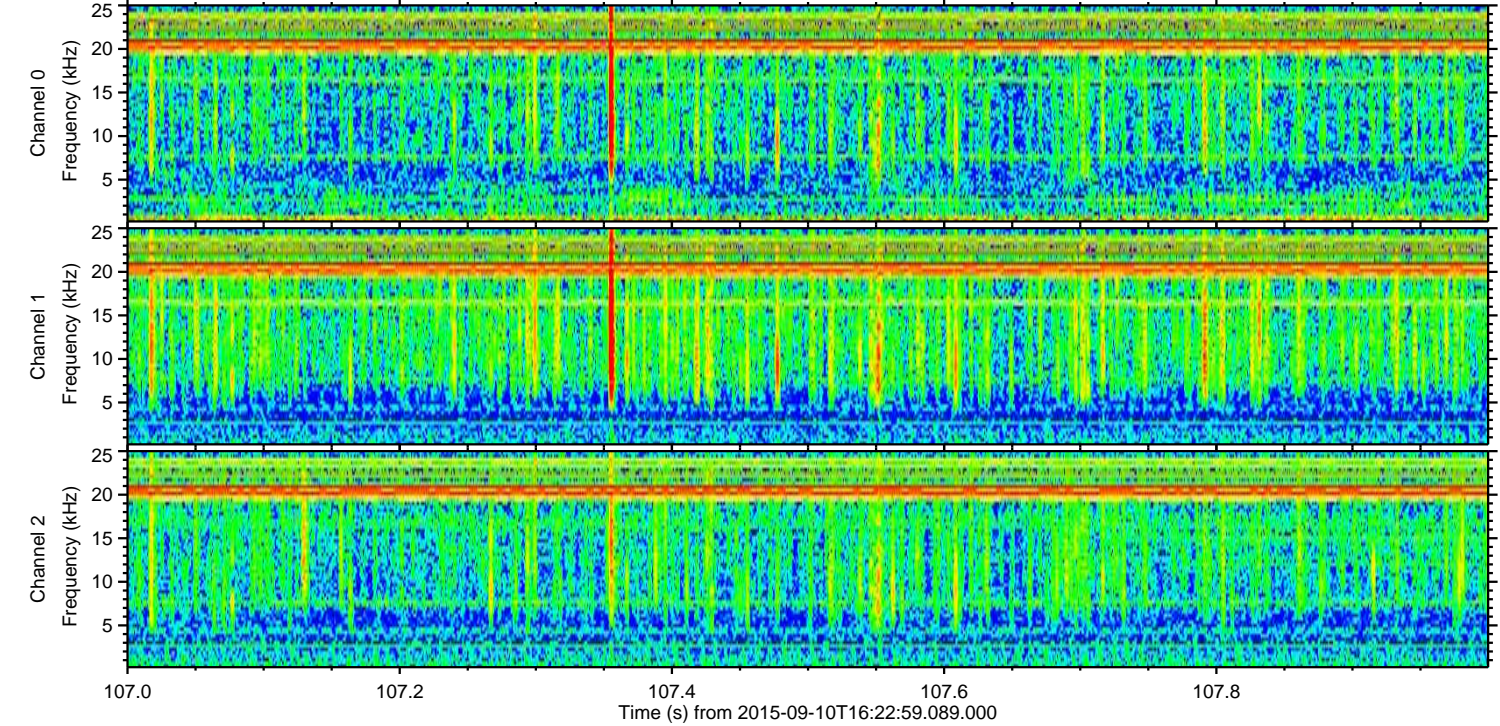
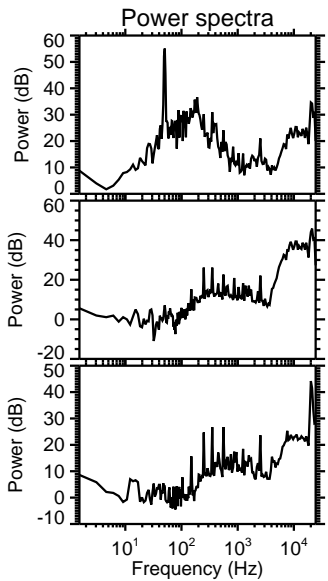
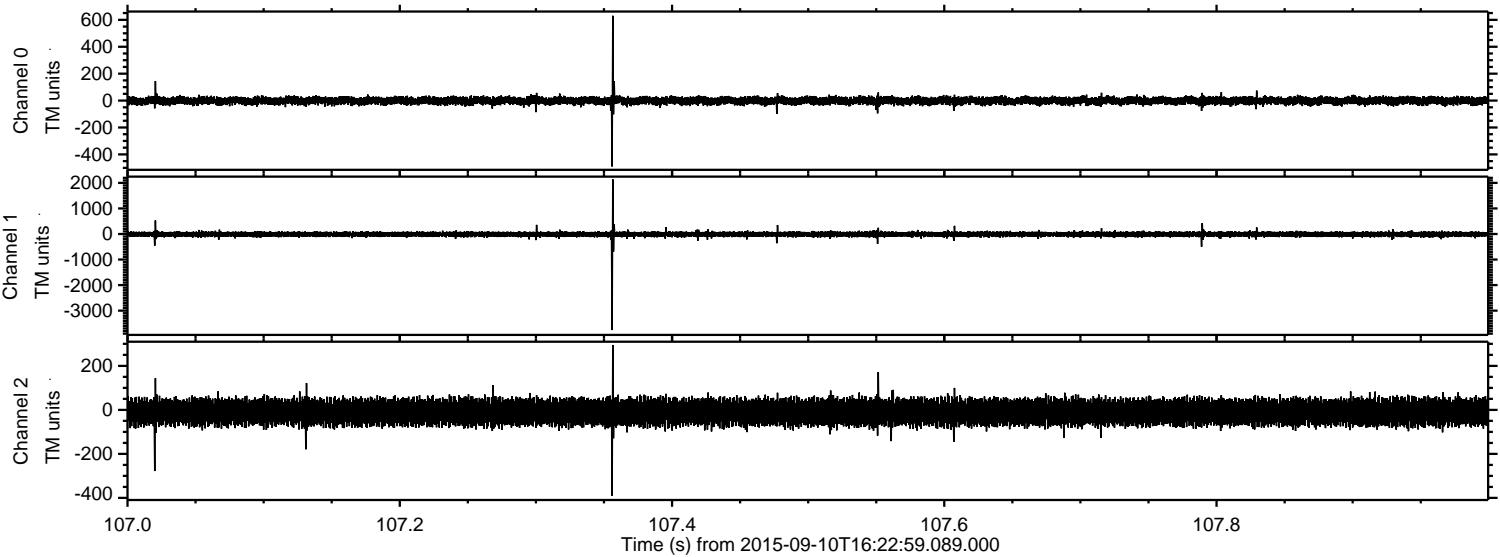
Processed Sun Oct 11 09:18:28 2015 by ELM ver.2012-10-06 from 001\_\_elm20150910\_162258\_\_dat00.bin





ELMAVAN 3D WAVEFORMS (Measured data sampled at 50 kHz) 51000 packets of 144 samples from 2015-09-10T16:22:59.089.000. Part 108/147

Processed Sun Oct 11 09:18:29 2015 by ELM ver.2012-10-06 from 001\_\_elm20150910\_162258\_\_dat00.bin





ELMAVAN 3D WAVEFORMS (Measured data sampled at 50 kHz) 51000 packets of 144 samples from 2015-09-10T16:22:59.089.000. Part 113/147

Processed Sun Oct 11 09:18:30 2015 by ELM ver.2012-10-06 from 001\_\_elm20150910\_162258\_\_dat00.bin

