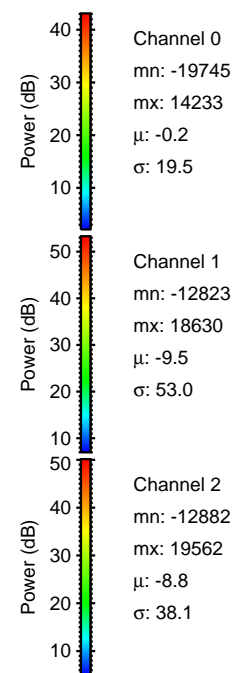
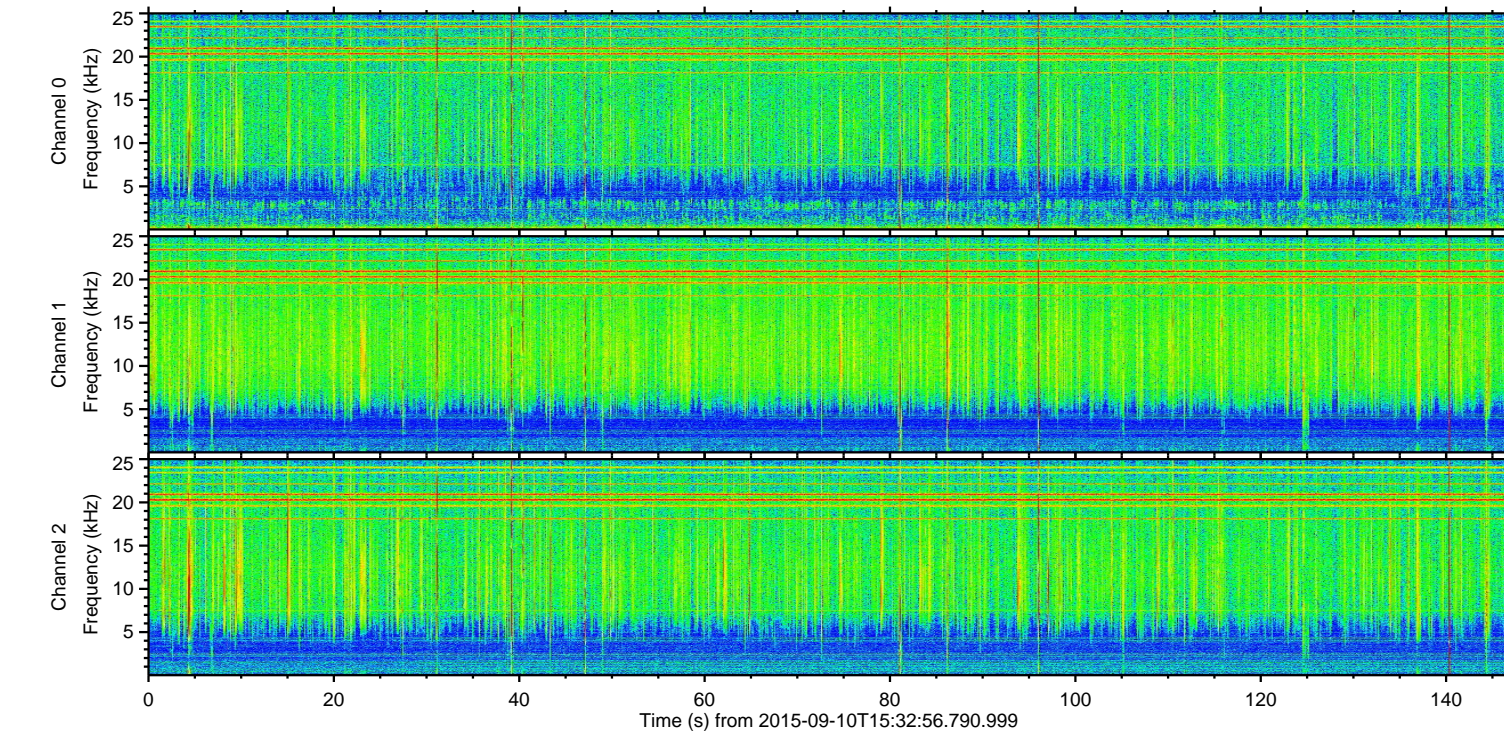
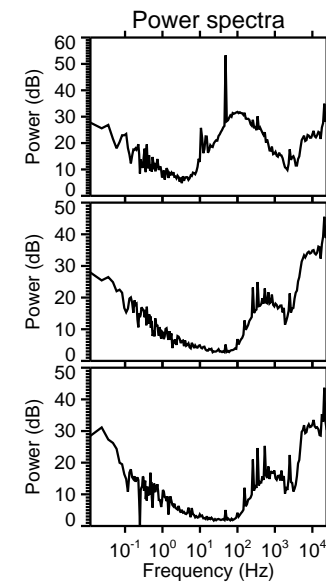
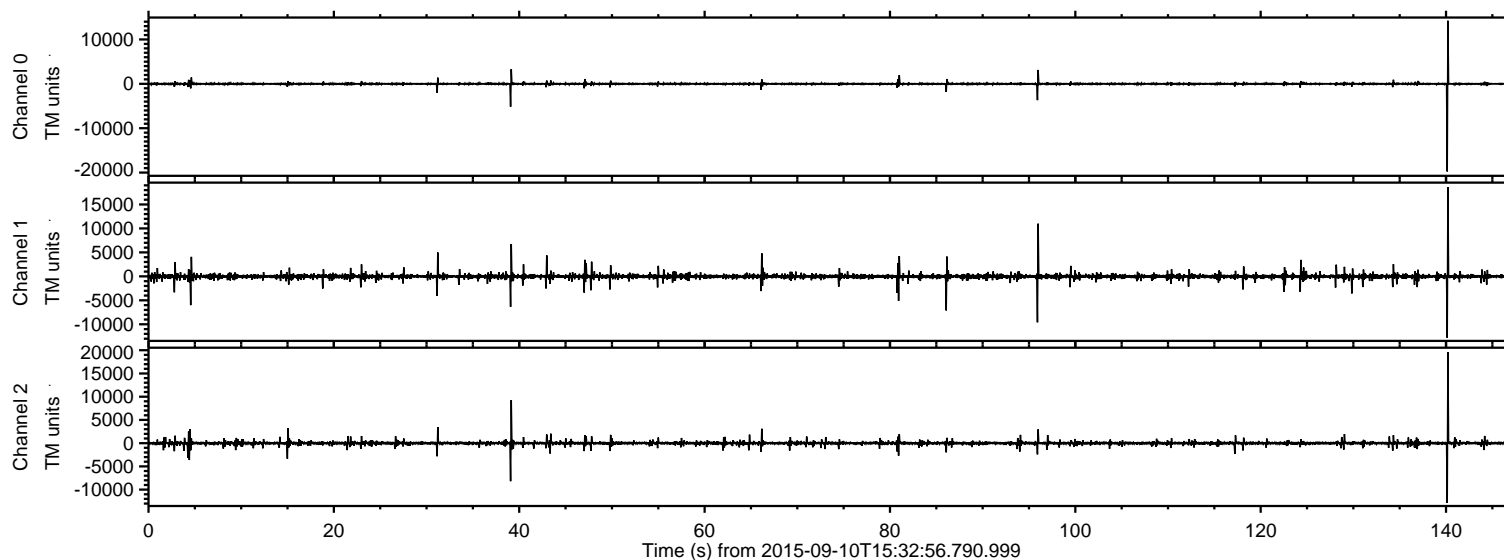


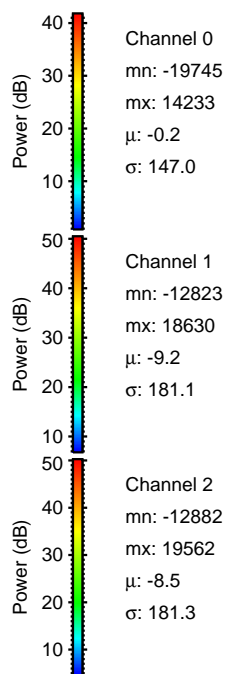
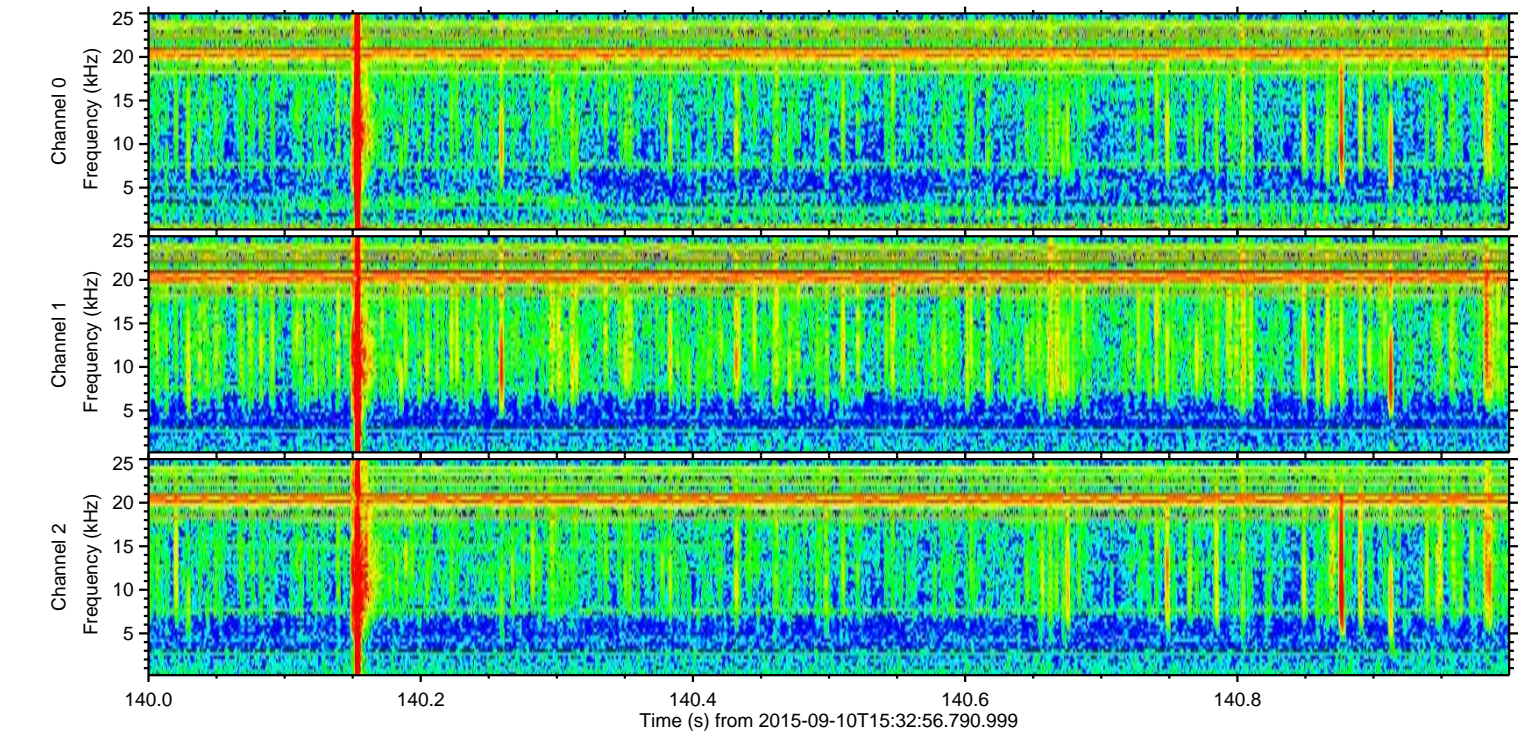
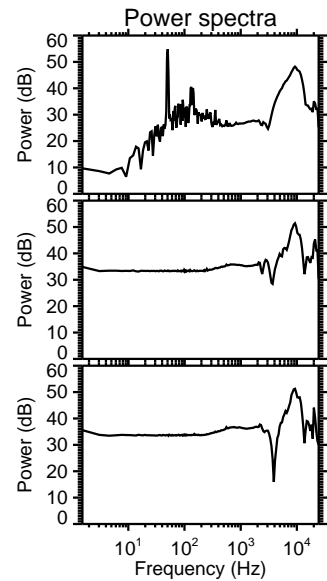
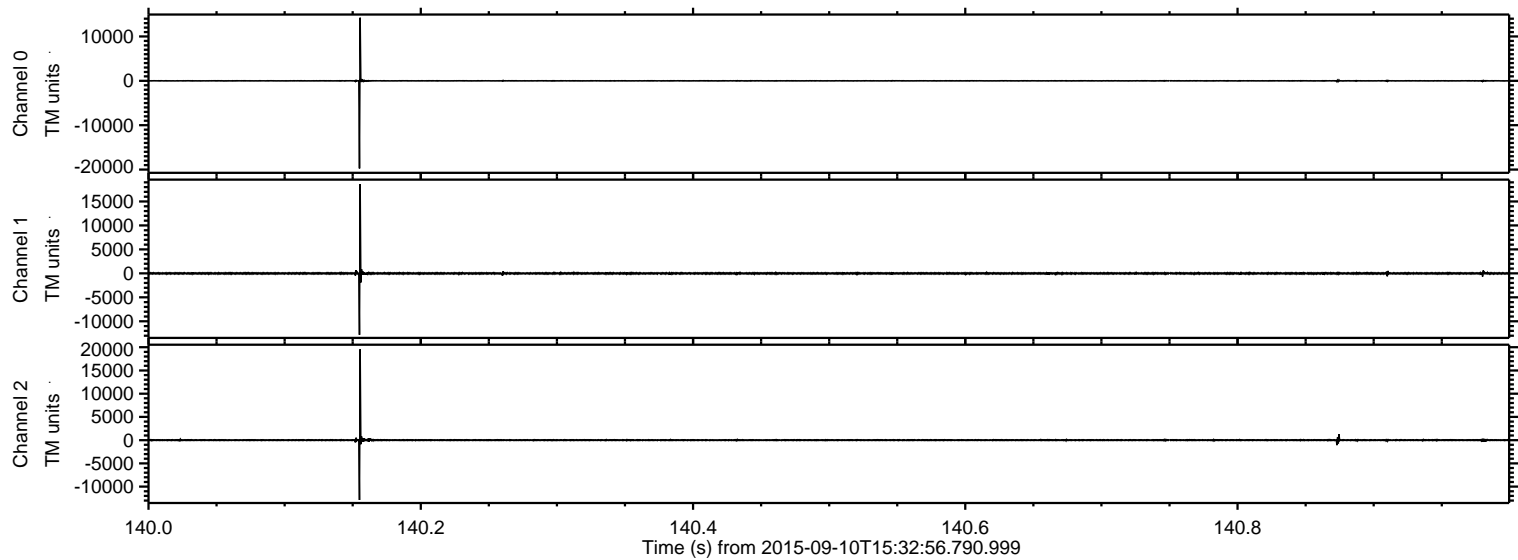
ELMAVAN 3D WAVEFORMS (Measured data sampled at 50 kHz) 51000 packets of 144 samples from 2015-09-10T15:32:56.790.999.

Processed Sun Oct 11 09:04:18 2015 by ELM ver.2012-10-06 from 001__elm20150910_153255__dat00.bin

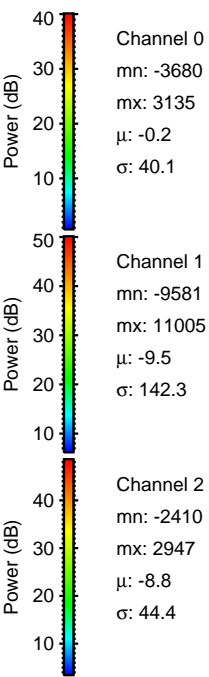
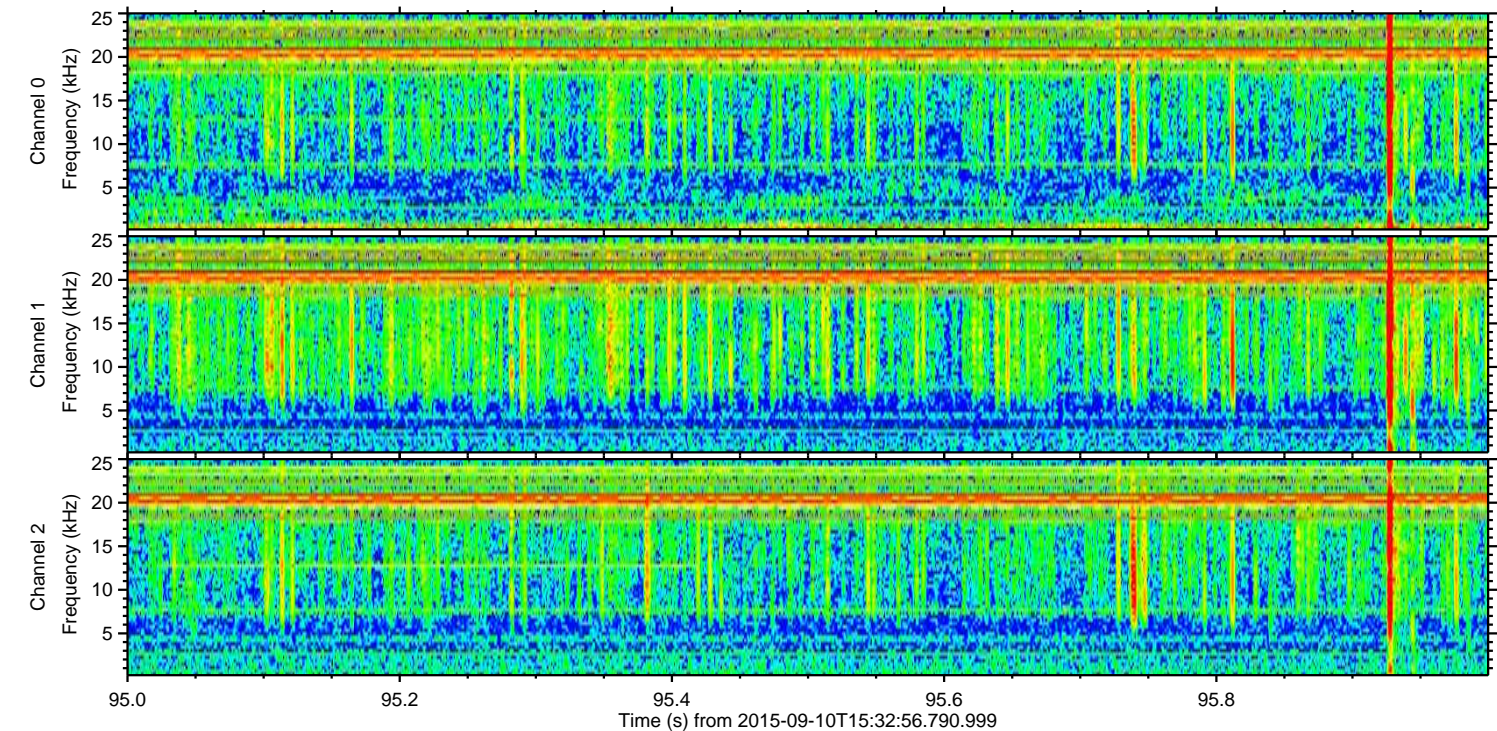
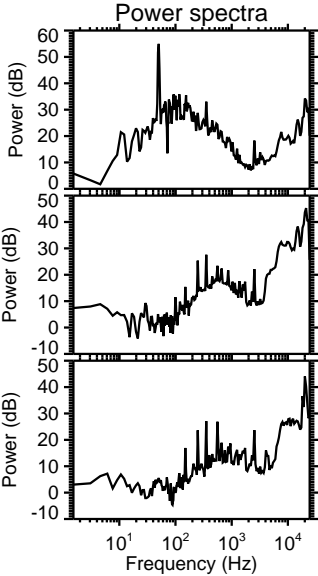
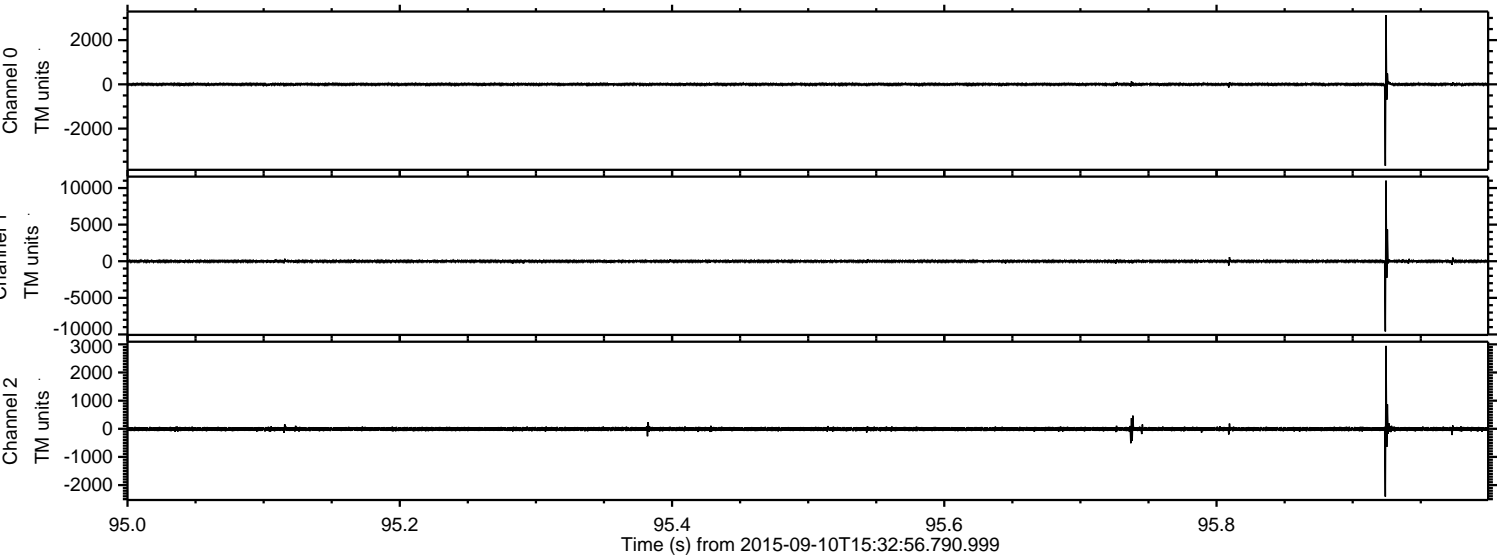


ELMAVAN 3D WAVEFORMS (Measured data sampled at 50 kHz) 51000 packets of 144 samples from 2015-09-10T15:32:56.790.999. Part 141/147

Processed Sun Oct 11 09:04:33 2015 by ELM ver.2012-10-06 from 001__elm20150910_153255__dat00.bin

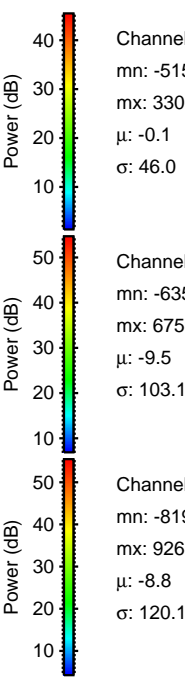
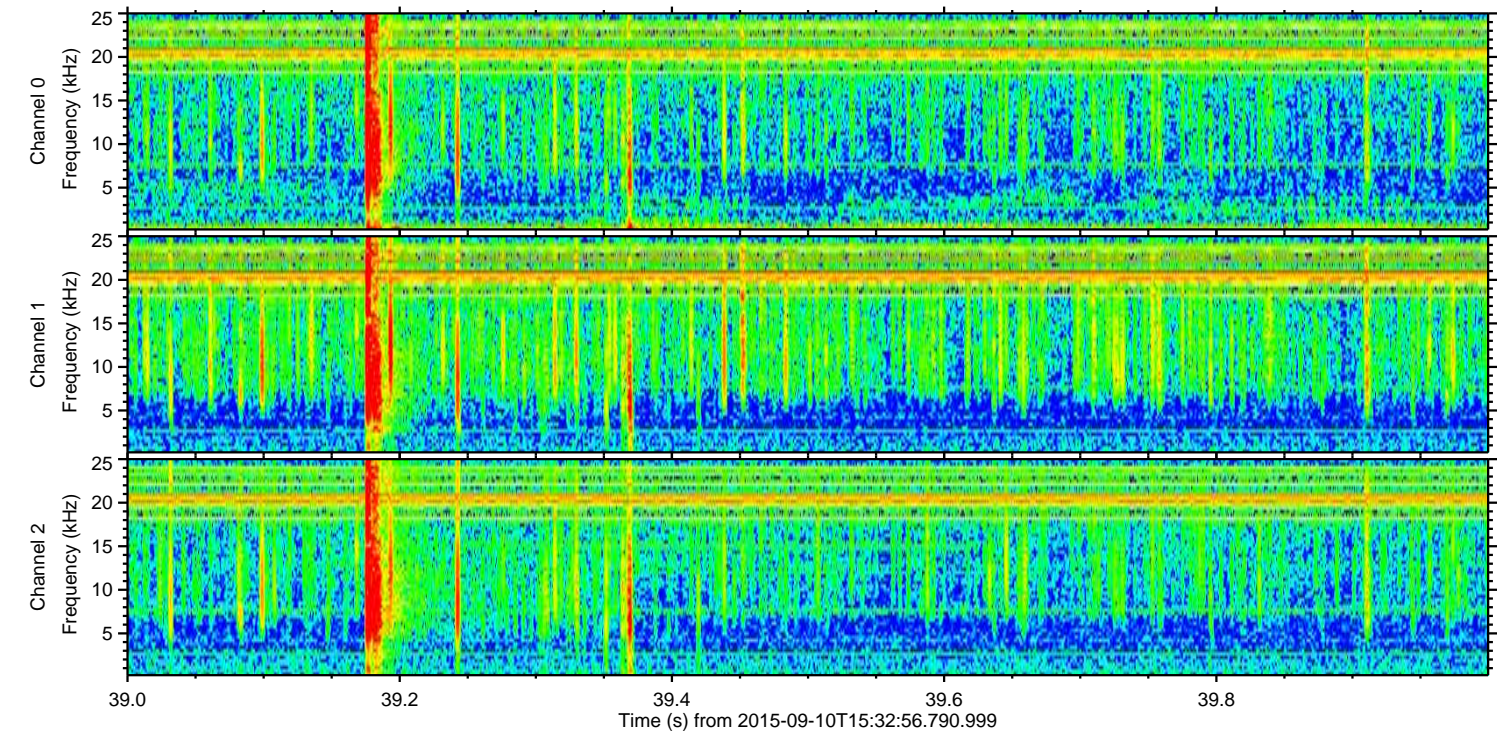
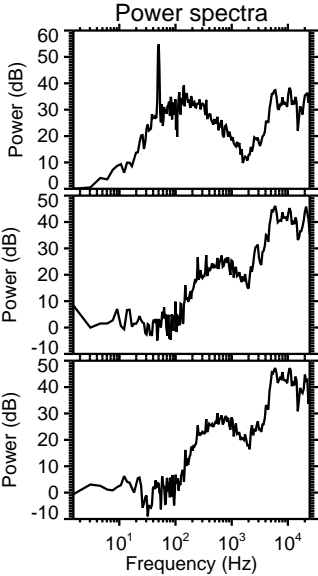
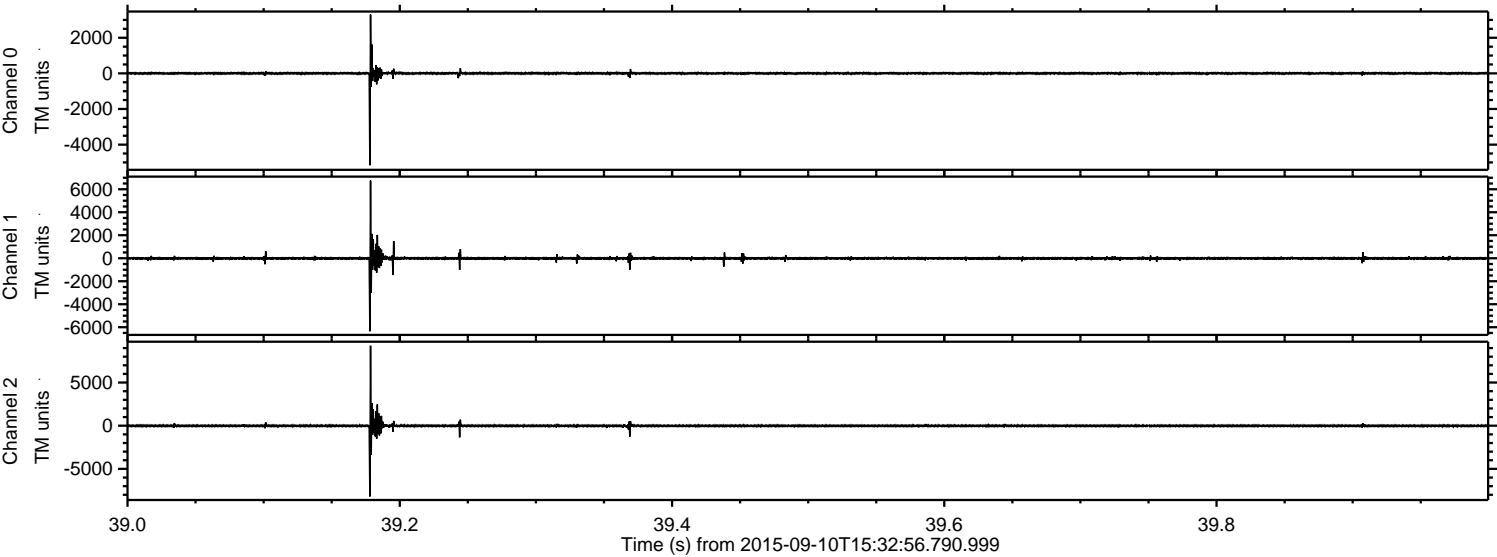


Processed Sun Oct 11 09:04:35 2015 by ELM ver.2012-10-06 from 001__elm20150910_153255__dat00.bin



ELMAVAN 3D WAVEFORMS (Measured data sampled at 50 kHz) 51000 packets of 144 samples from 2015-09-10T15:32:56.790.999. Part 40/147

Processed Sun Oct 11 09:04:36 2015 by ELM ver.2012-10-06 from 001__elm20150910_153255__dat00.bin

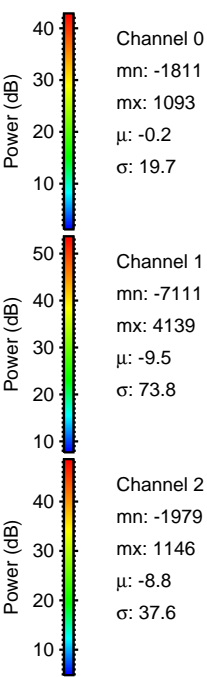
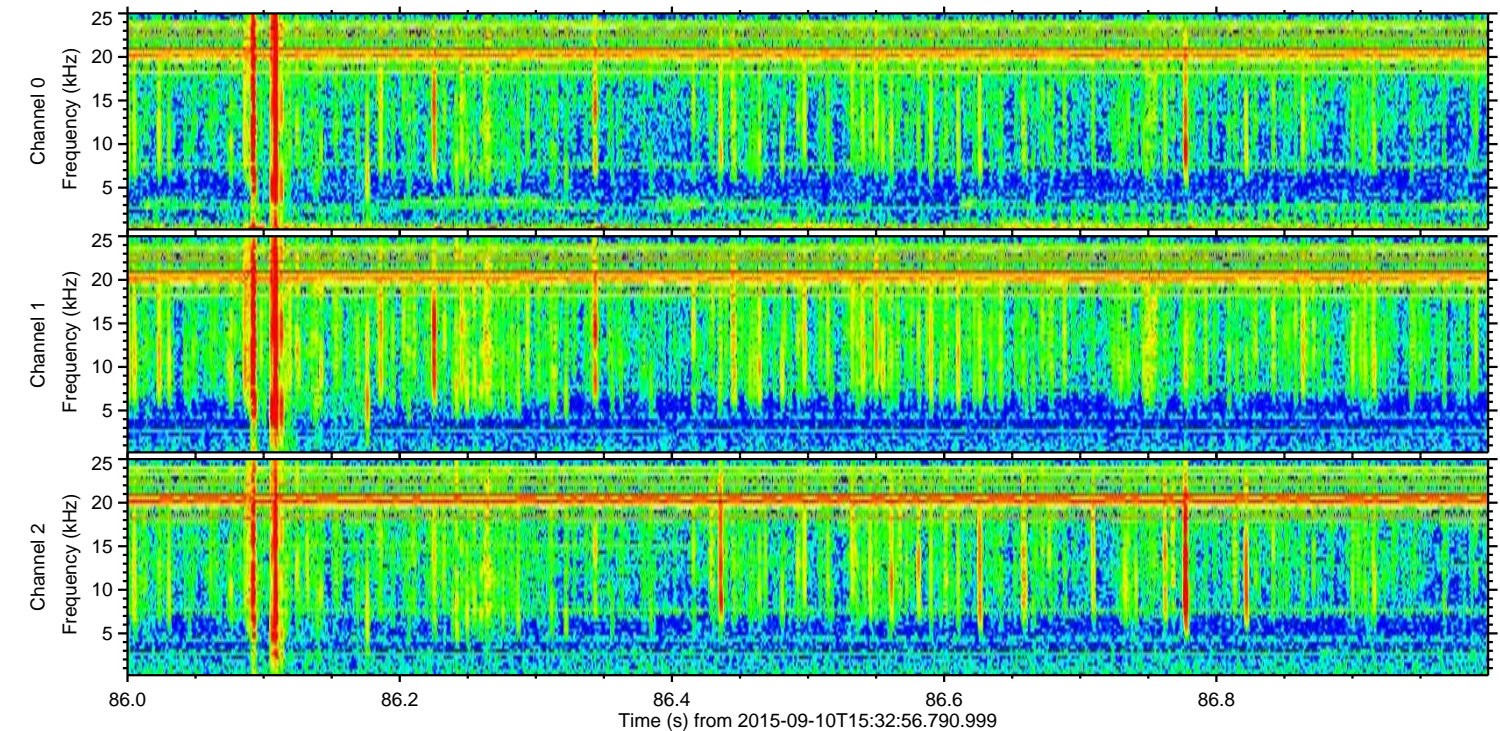
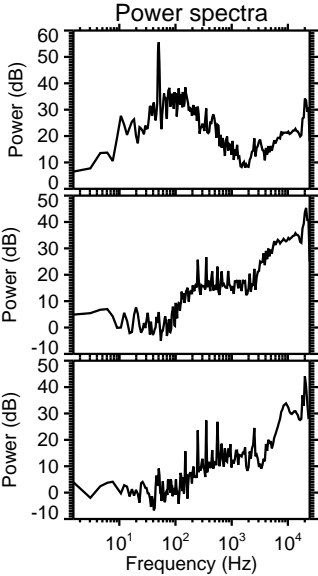
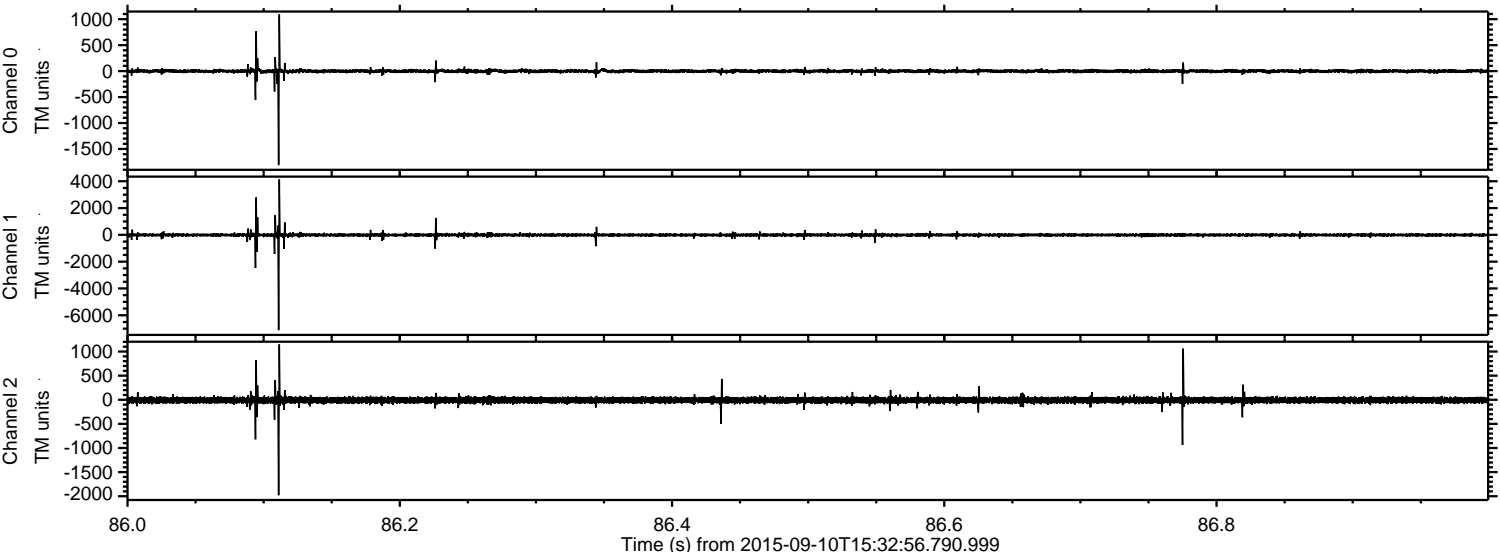


Channel 0
mn: -5157
mx: 3306
 μ : -0.1
 σ : 46.0

Channel 1
mn: -6352
mx: 6759
 μ : -9.5
 σ : 103.1

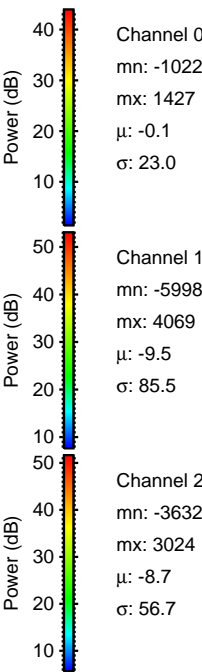
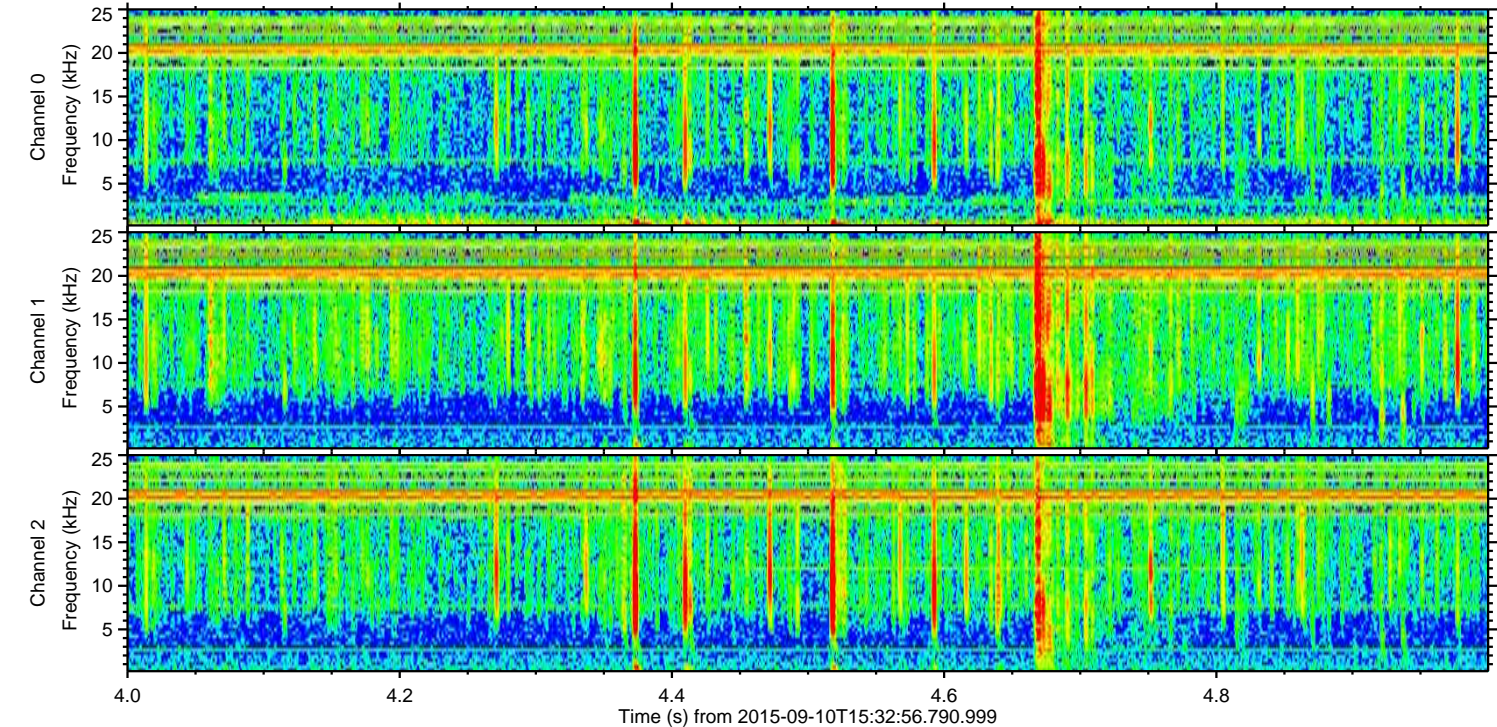
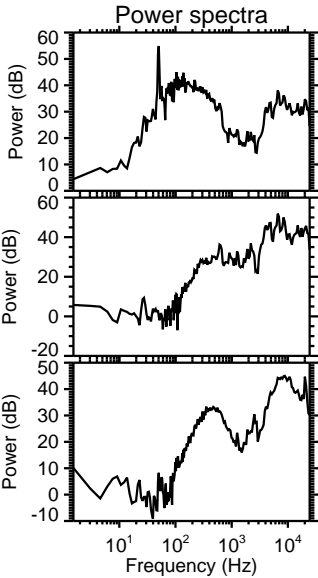
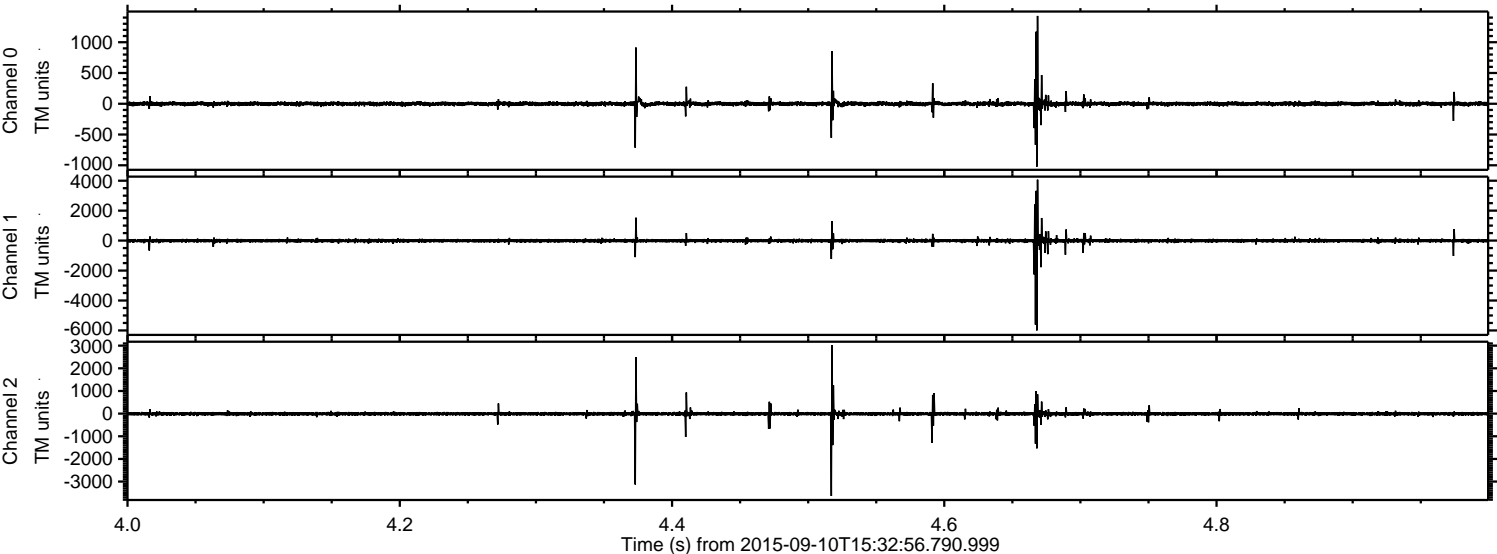
Channel 2
mn: -8195
mx: 9268
 μ : -8.8
 σ : 120.1

Processed Sun Oct 11 09:04:37 2015 by ELM ver.2012-10-06 from 001__elm20150910_153255__dat00.bin

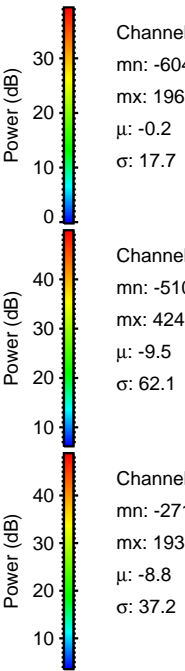
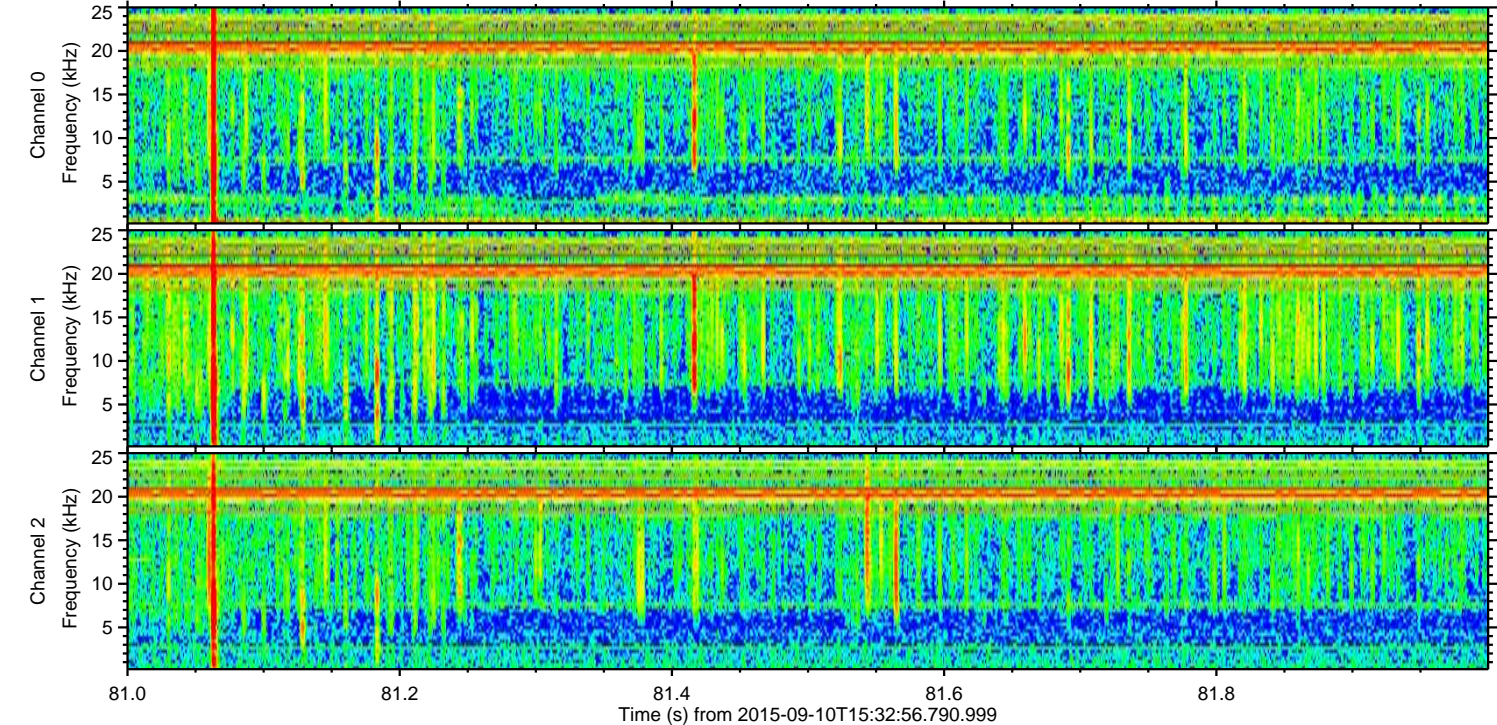
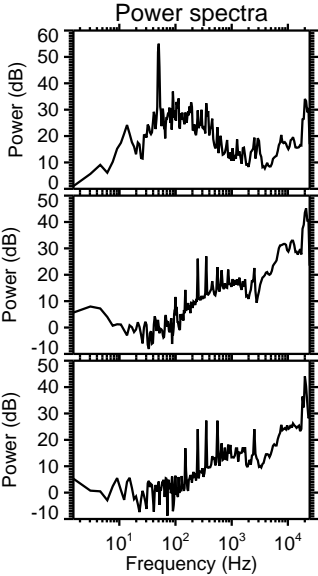
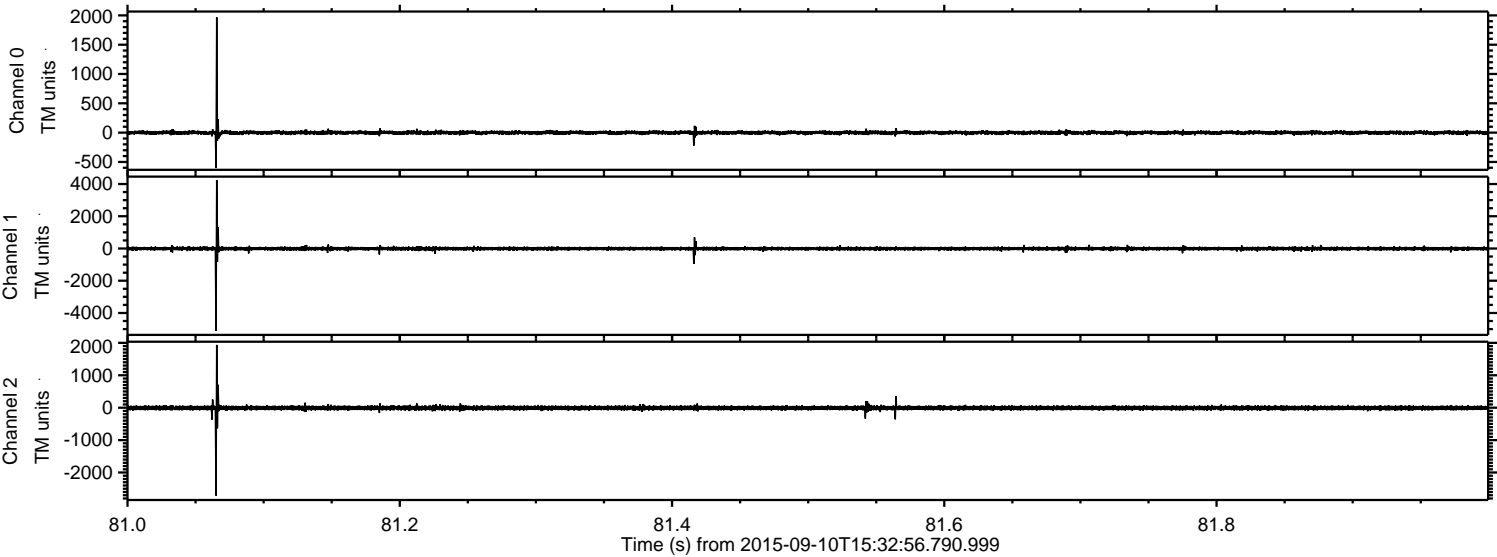


ELMAVAN 3D WAVEFORMS (Measured data sampled at 50 kHz) 51000 packets of 144 samples from 2015-09-10T15:32:56.790.999. Part 5/147

Processed Sun Oct 11 09:04:38 2015 by ELM ver.2012-10-06 from 001__elm20150910_153255__dat00.bin

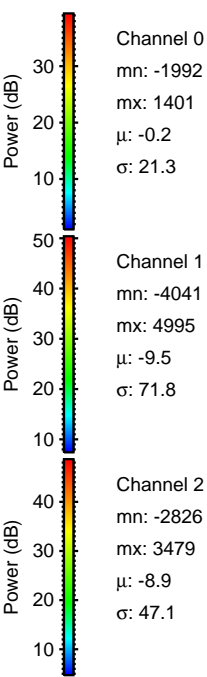
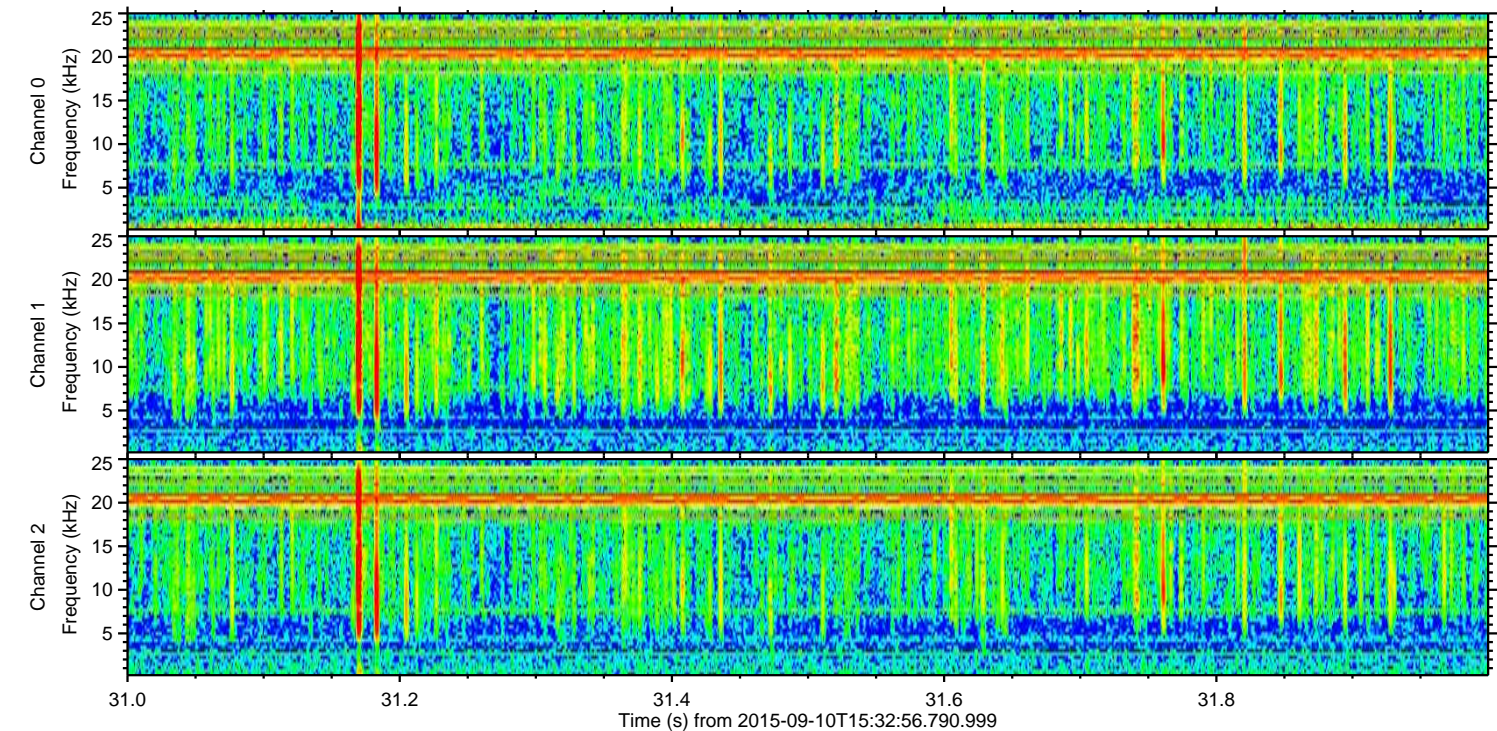
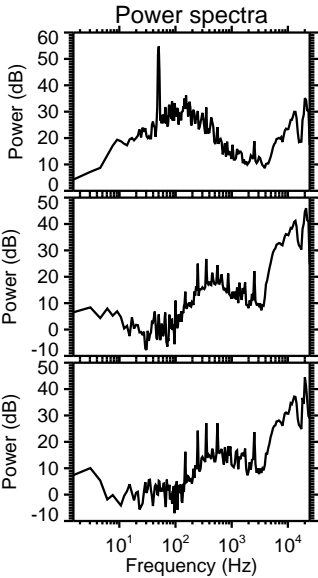
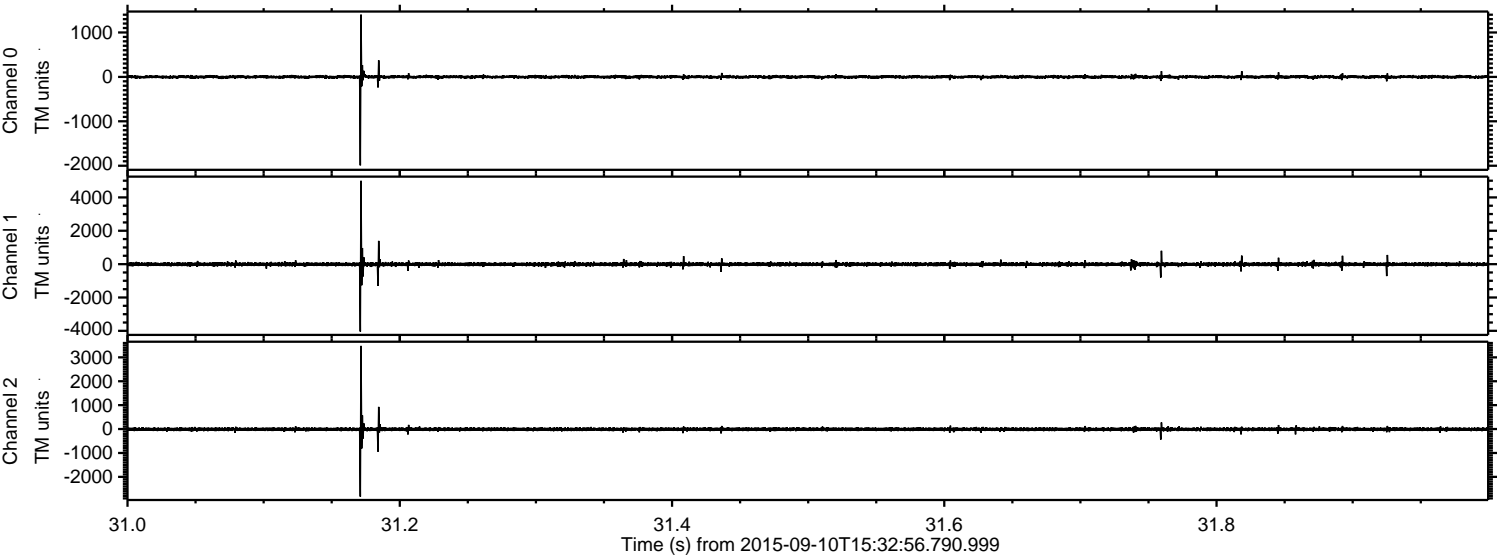


Processed Sun Oct 11 09:04:39 2015 by ELM ver.2012-10-06 from 001__elm20150910_153255__dat00.bin



ELMAVAN 3D WAVEFORMS (Measured data sampled at 50 kHz) 51000 packets of 144 samples from 2015-09-10T15:32:56.790.999. Part 32/147

Processed Sun Oct 11 09:04:40 2015 by ELM ver.2012-10-06 from 001__elm20150910_153255__dat00.bin

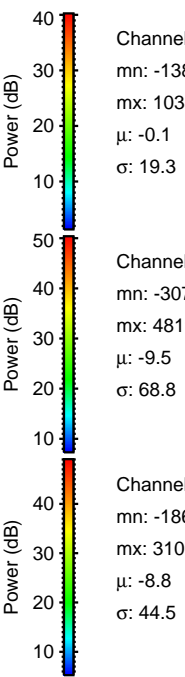
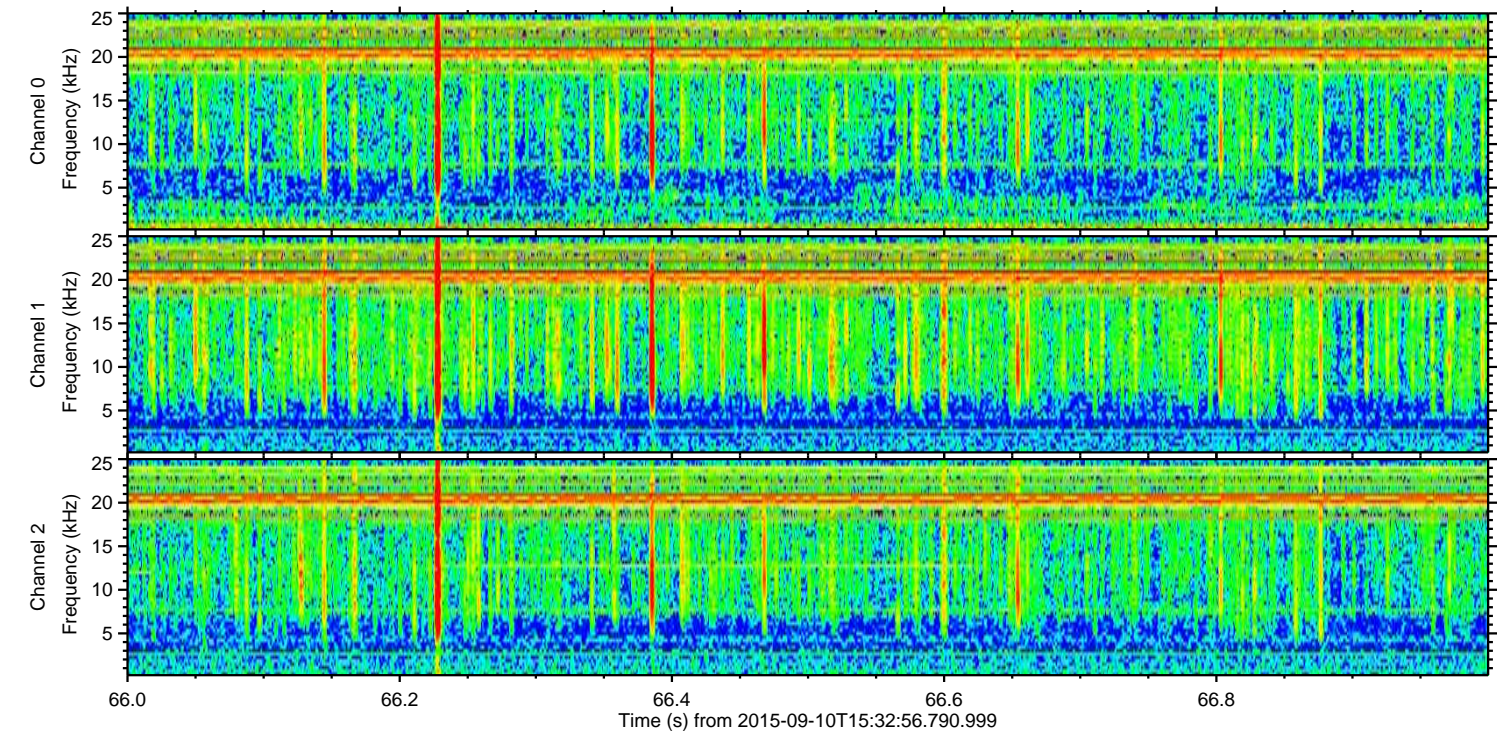
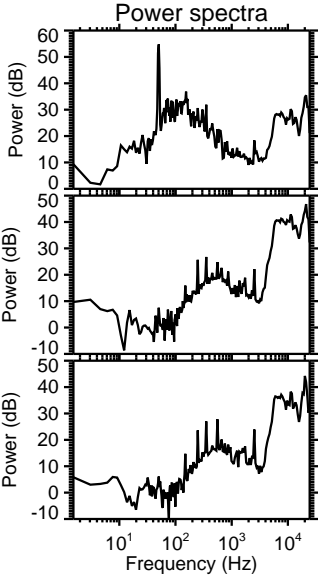
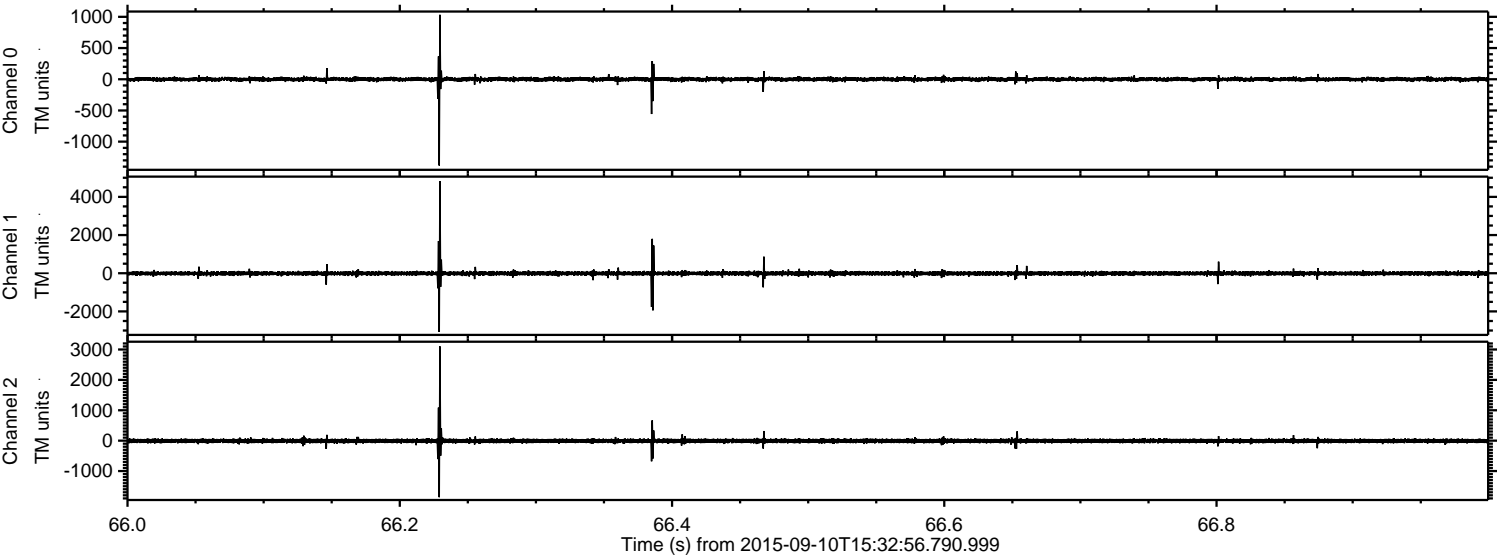


Channel 0
mn: -1992
mx: 1401
 μ : -0.2
 σ : 21.3

Channel 1
mn: -4041
mx: 4995
 μ : -9.5
 σ : 71.8

Channel 2
mn: -2826
mx: 3479
 μ : -8.9
 σ : 47.1

Processed Sun Oct 11 09:04:41 2015 by ELM ver.2012-10-06 from 001__elm20150910_153255__dat00.bin

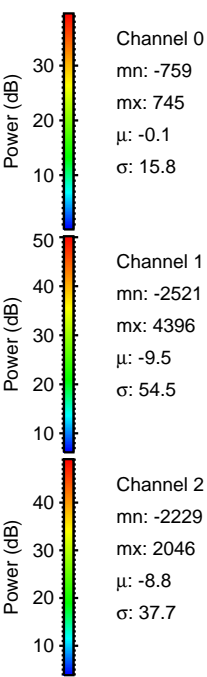
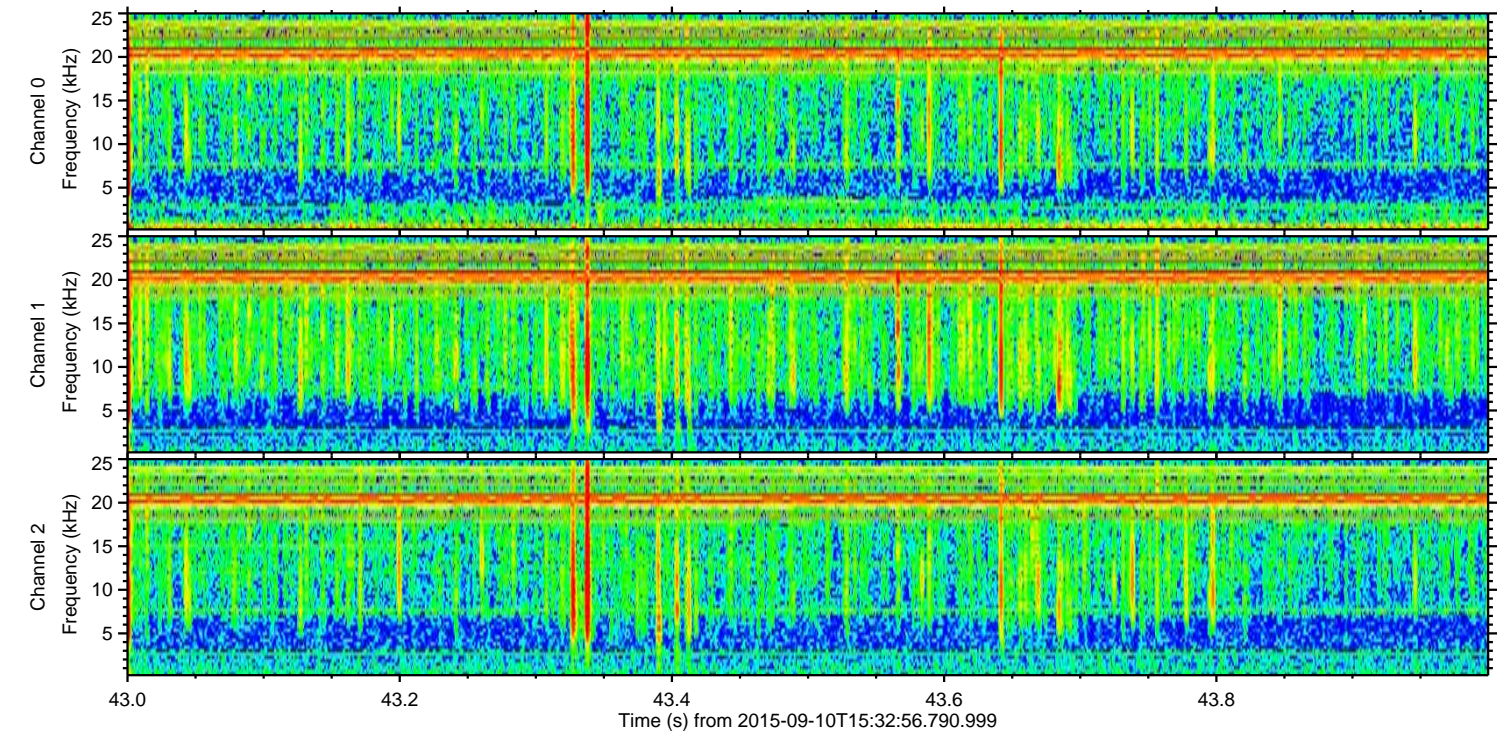
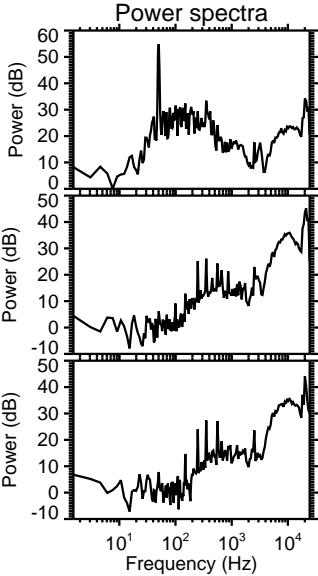
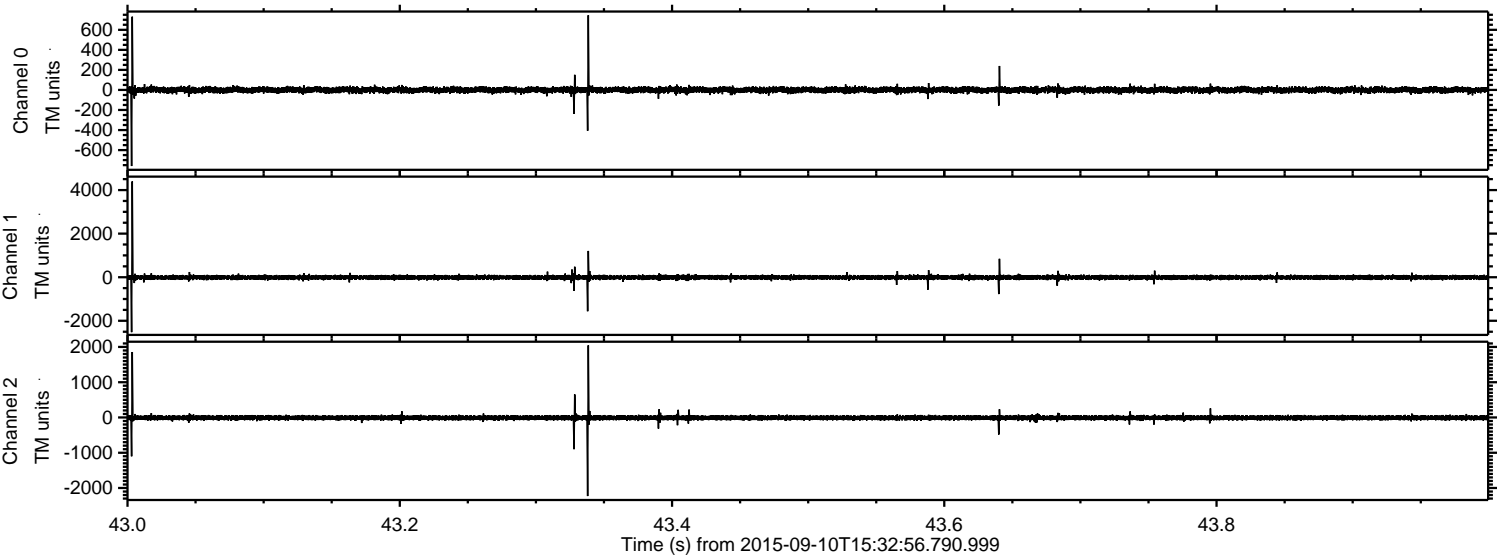


Channel 0
mn: -1382
mx: 1033
 μ : -0.1
 σ : 19.3

Channel 1
mn: -3076
mx: 4819
 μ : -9.5
 σ : 68.8

Channel 2
mn: -1860
mx: 3101
 μ : -8.8
 σ : 44.5

Processed Sun Oct 11 09:04:42 2015 by ELM ver.2012-10-06 from 001__elm20150910_153255__dat00.bin



Processed Sun Oct 11 09:04:43 2015 by ELM ver.2012-10-06 from 001__elm20150910_153255__dat00.bin

