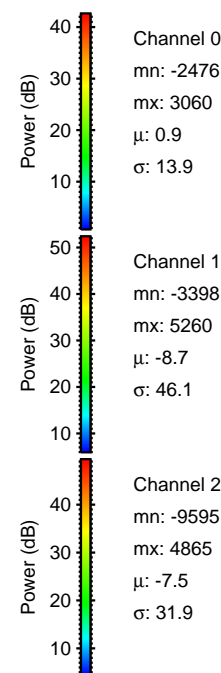
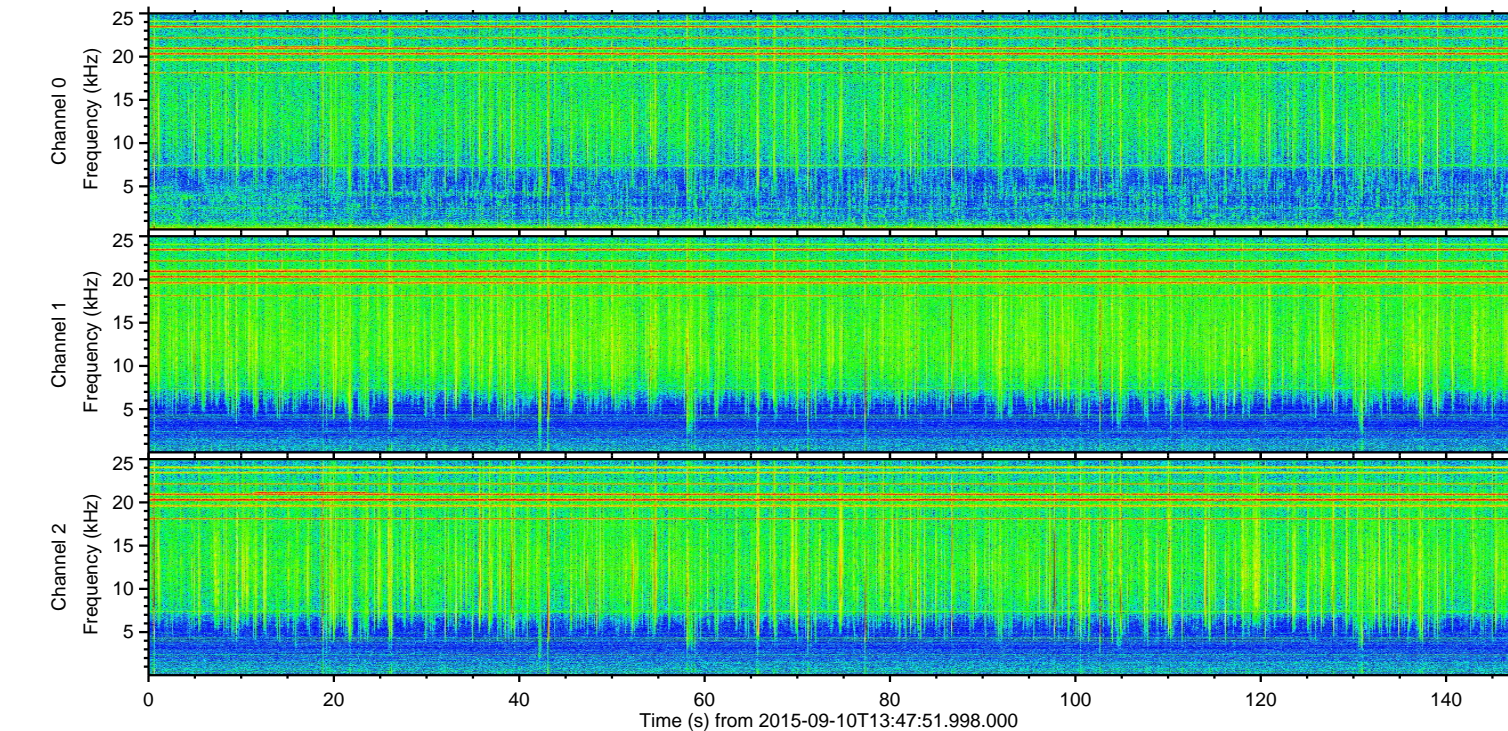
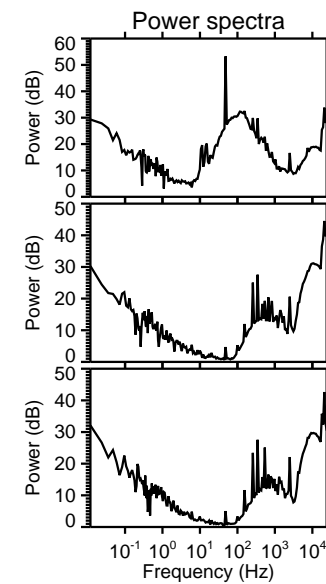
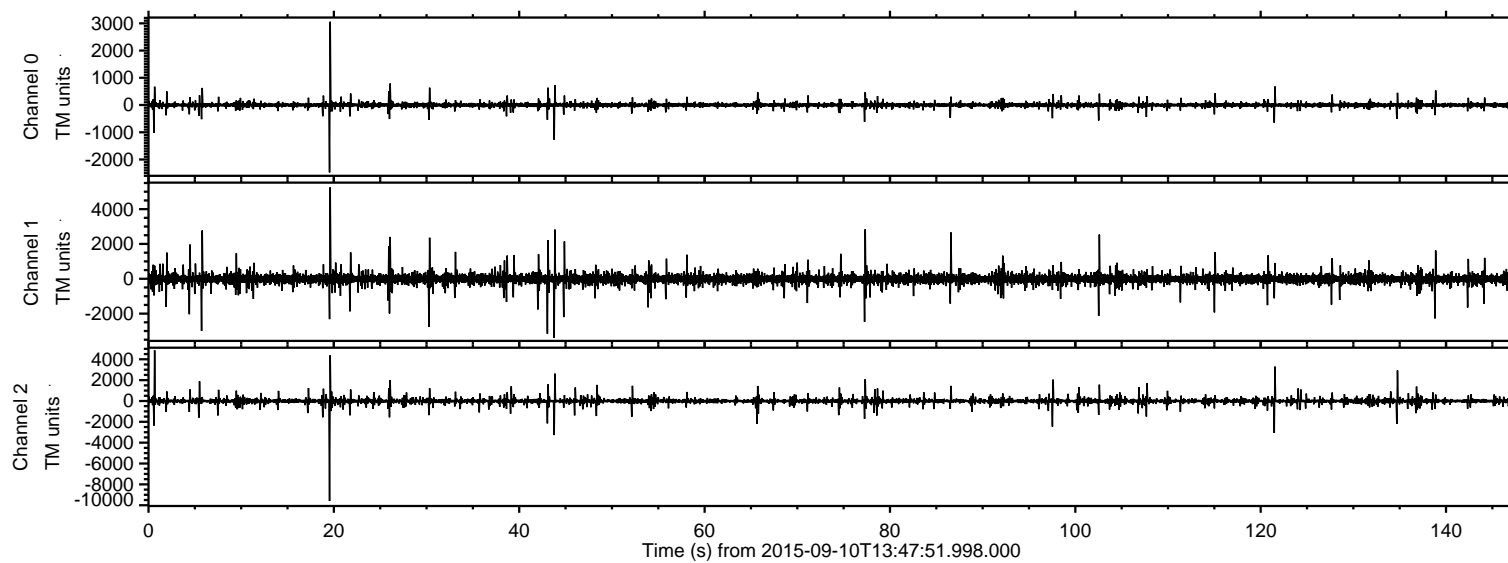
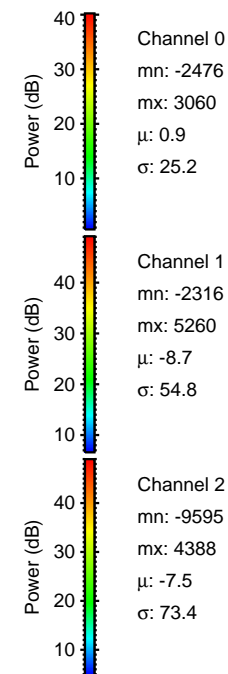
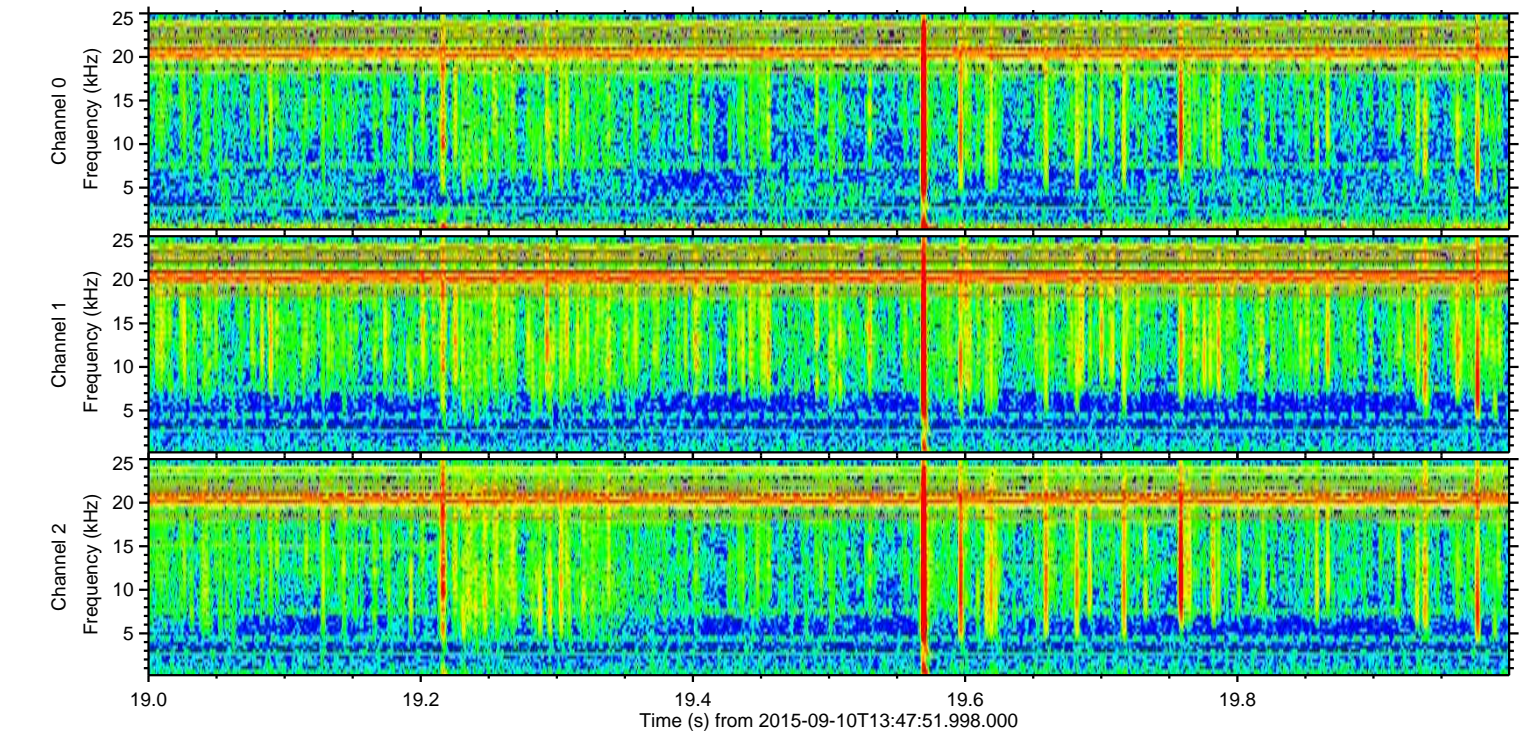
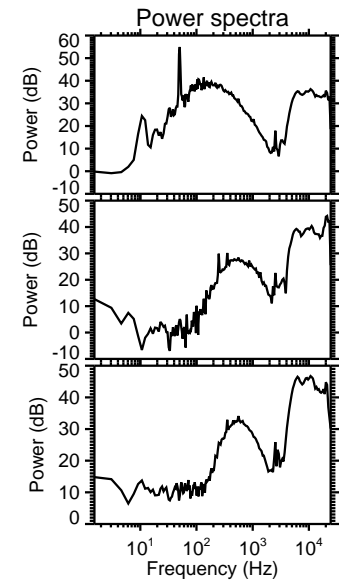
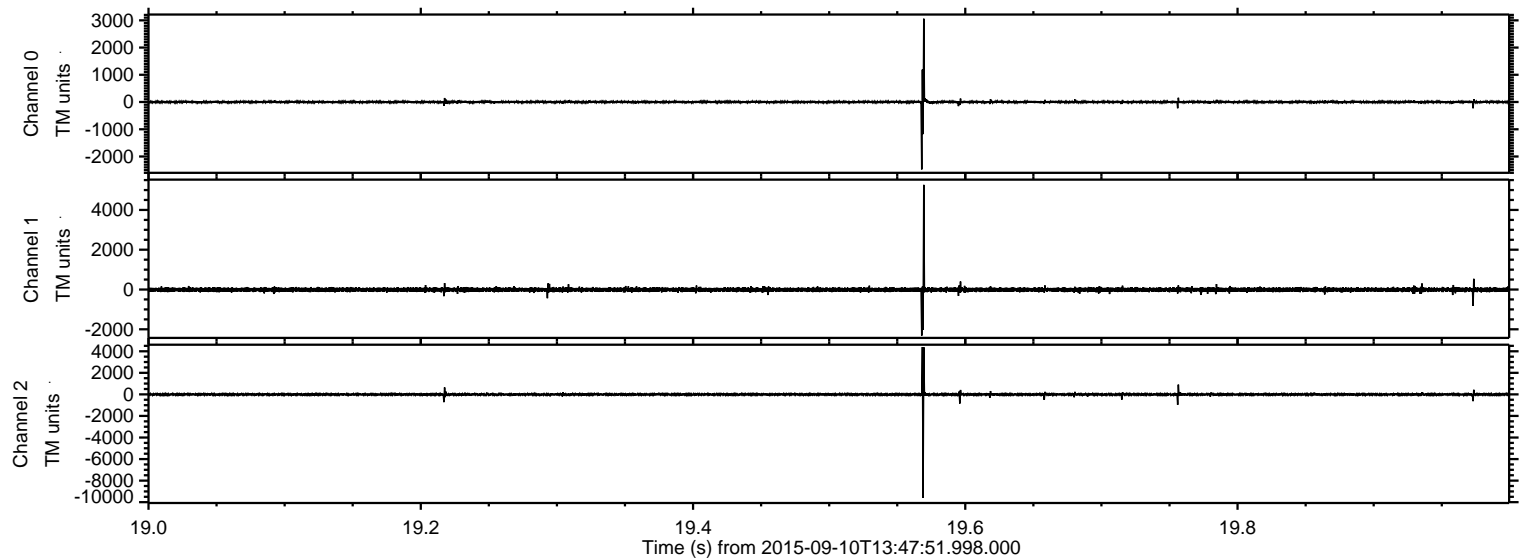


ELMAVAN 3D WAVEFORMS (Measured data sampled at 50 kHz) 51000 packets of 144 samples from 2015-09-10T13:47:51.998.000.

Processed Sun Oct 11 08:35:30 2015 by ELM ver.2012-10-06 from 001__elm20150910_134750__dat00.bin

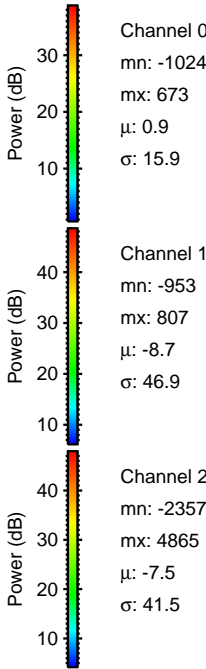
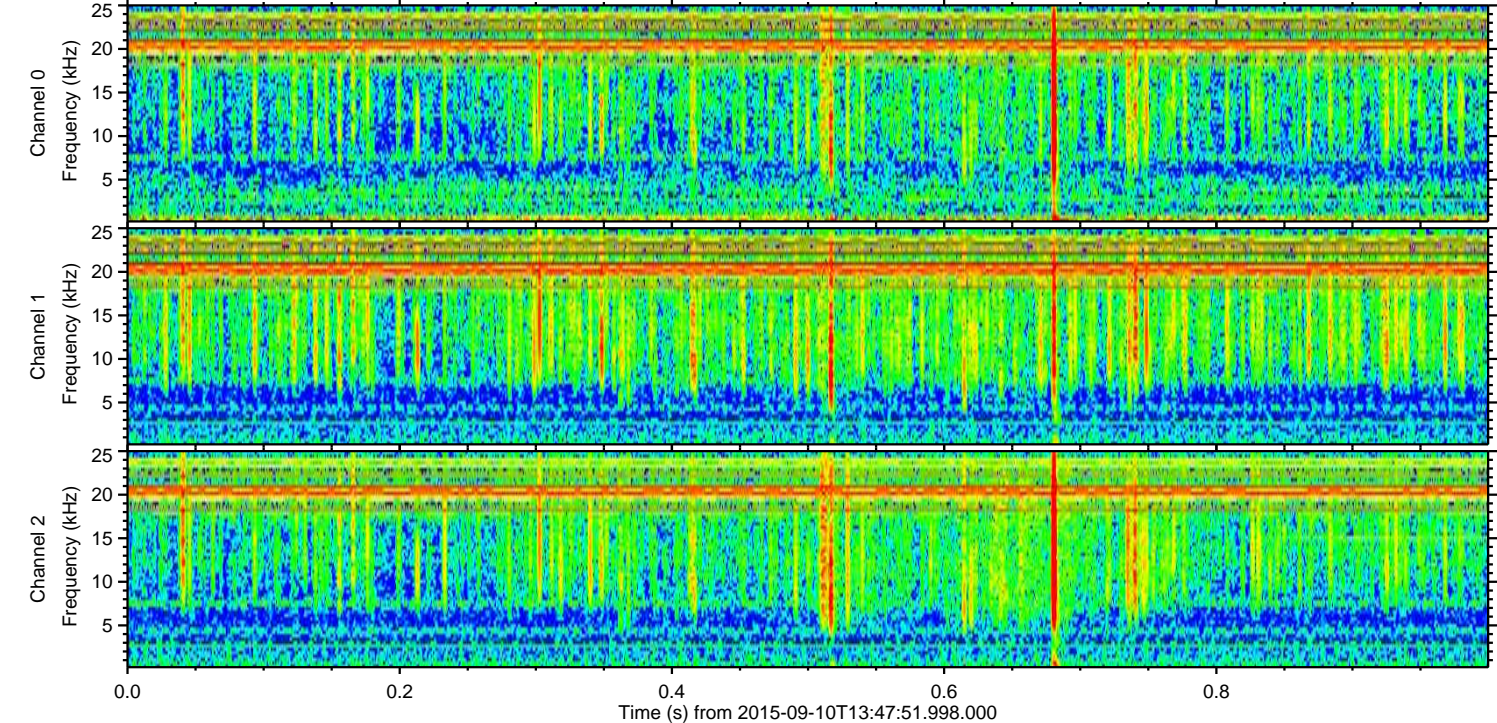
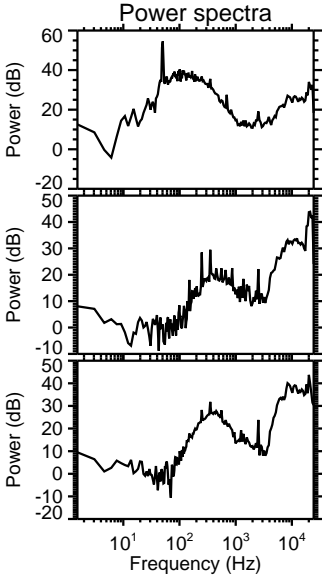
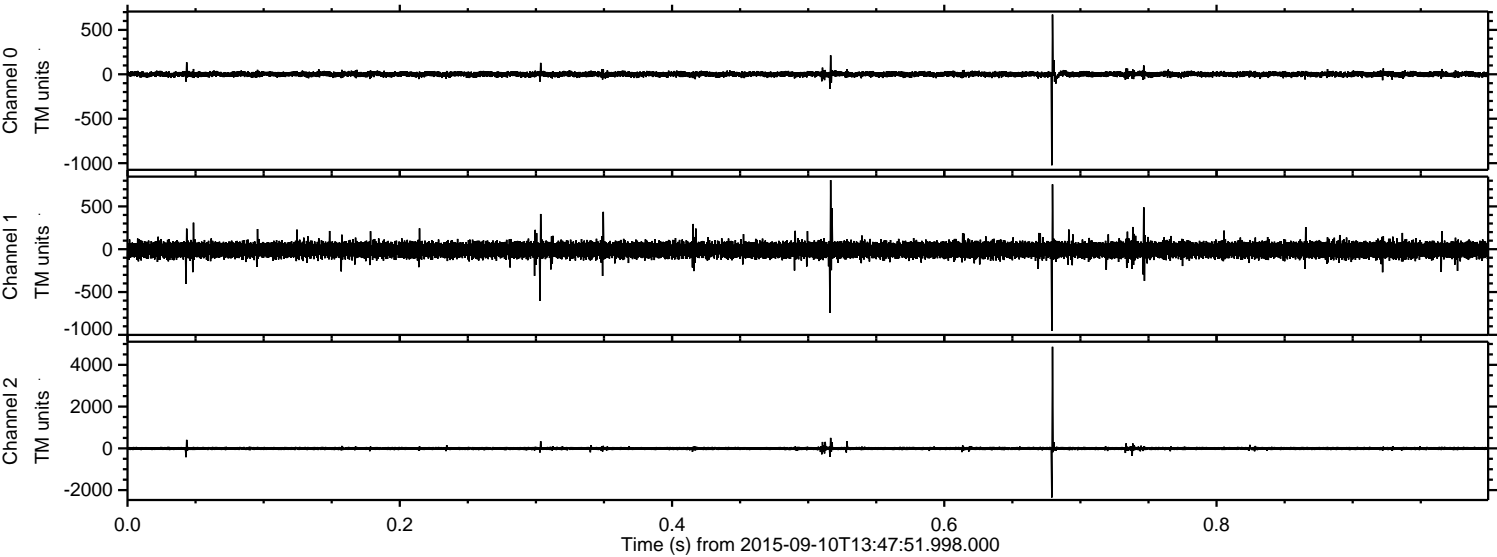


Processed Sun Oct 11 08:35:45 2015 by ELM ver.2012-10-06 from 001__elm20150910_134750__dat00.bin

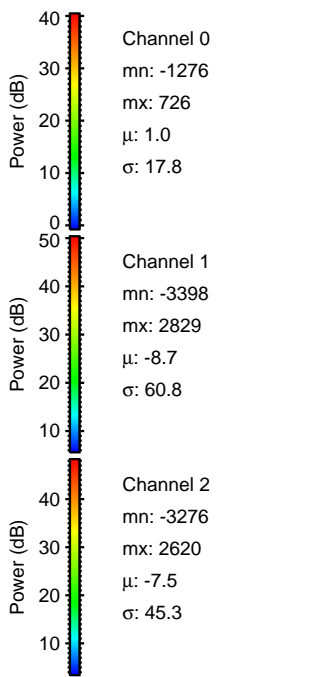
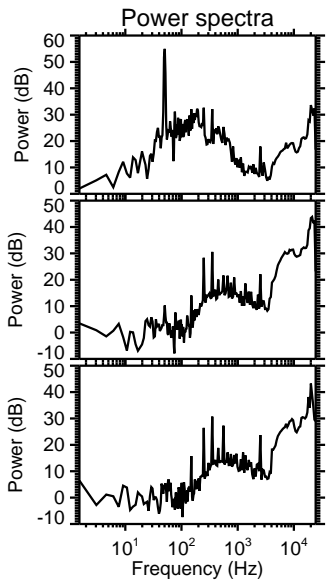
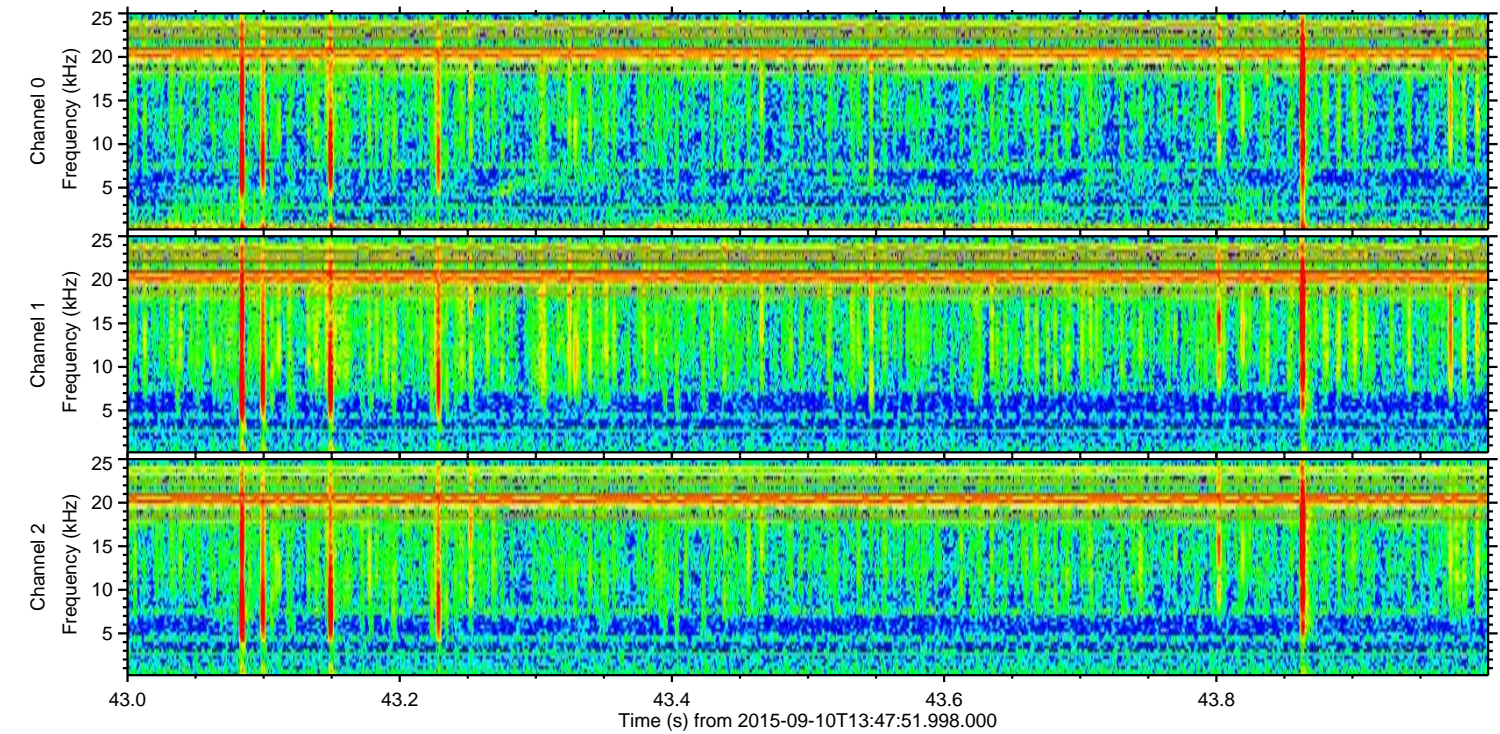
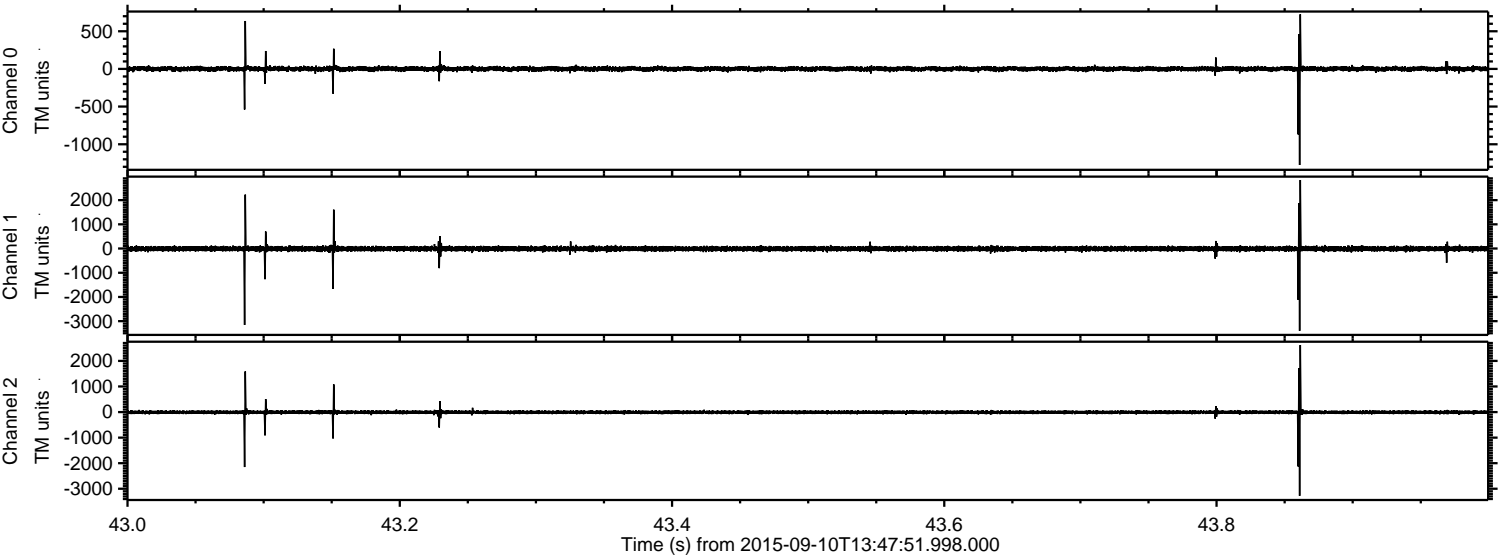


ELMAVAN 3D WAVEFORMS (Measured data sampled at 50 kHz) 51000 packets of 144 samples from 2015-09-10T13:47:51.998.000. Part 1/147

Processed Sun Oct 11 08:35:46 2015 by ELM ver.2012-10-06 from 001__elm20150910_134750__dat00.bin

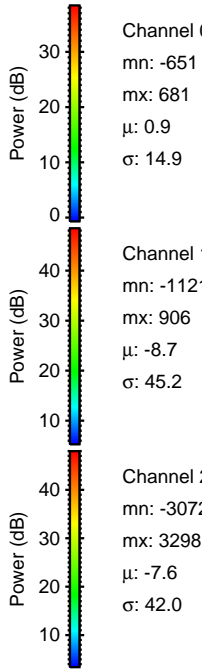
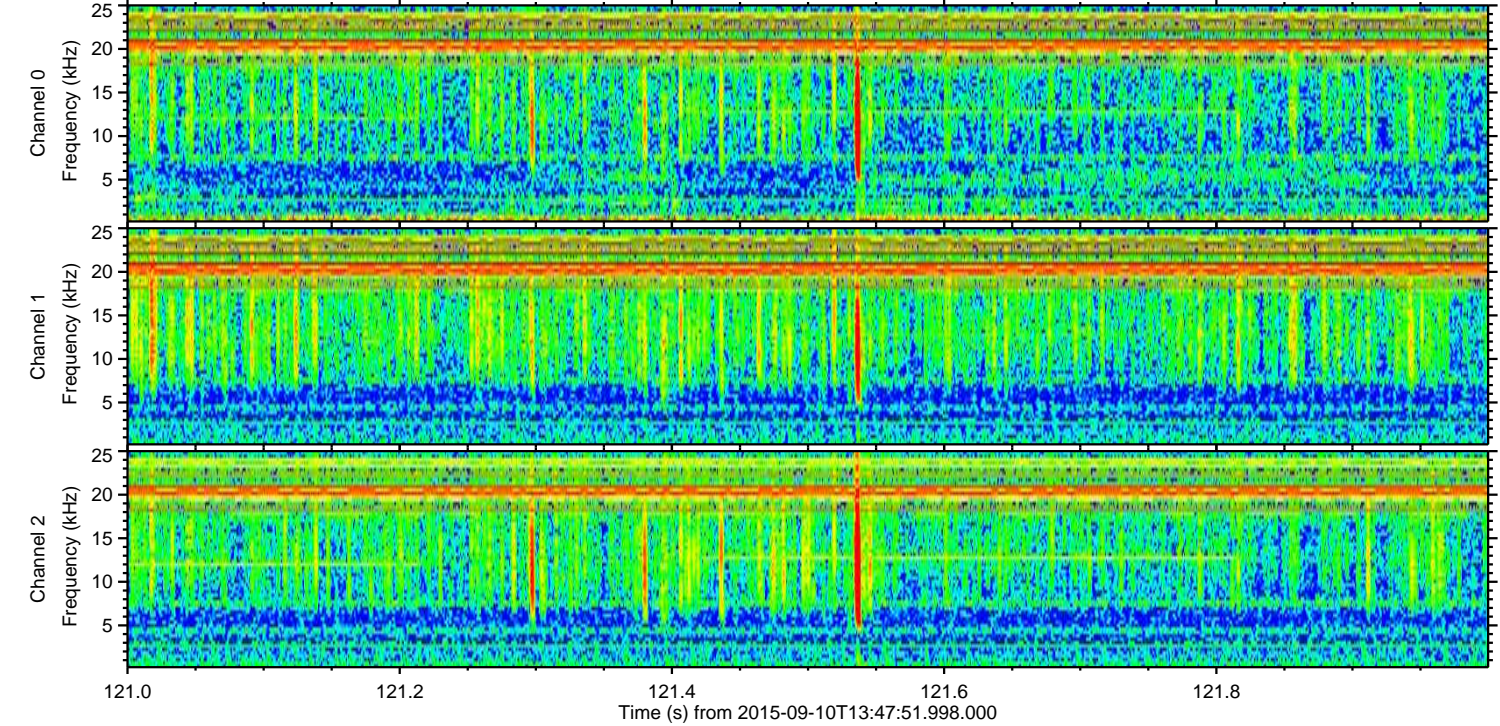
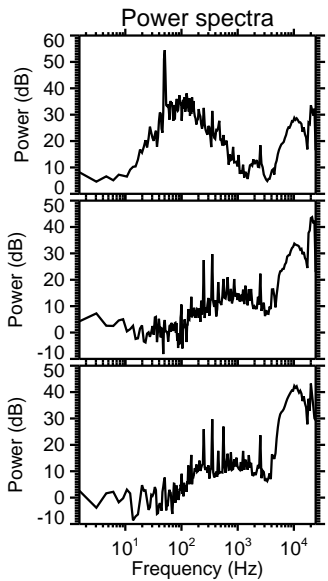
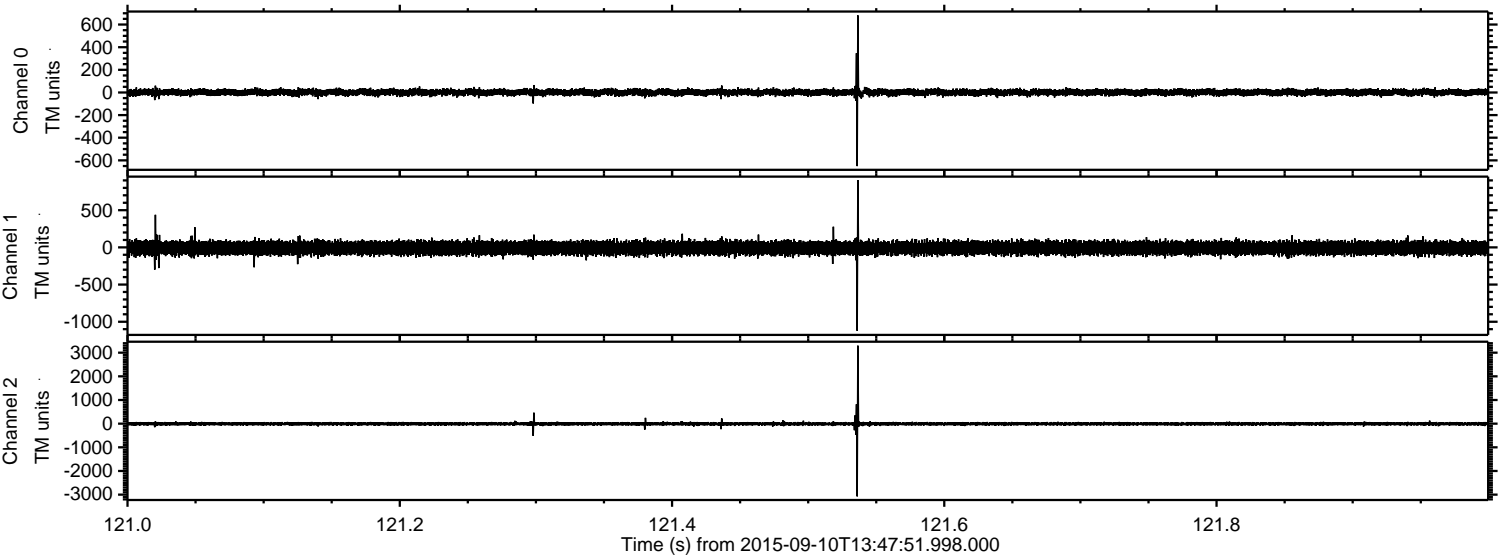


Processed Sun Oct 11 08:35:47 2015 by ELM ver.2012-10-06 from 001__elm20150910_134750__dat00.bin



ELMAVAN 3D WAVEFORMS (Measured data sampled at 50 kHz) 51000 packets of 144 samples from 2015-09-10T13:47:51.998.000. Part 122/147

Processed Sun Oct 11 08:35:48 2015 by ELM ver.2012-10-06 from 001__elm20150910_134750__dat00.bin



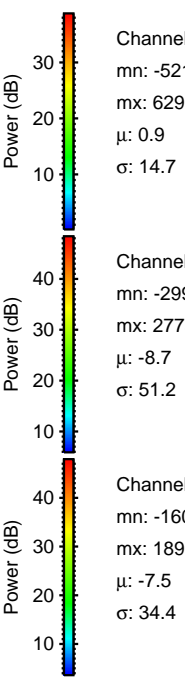
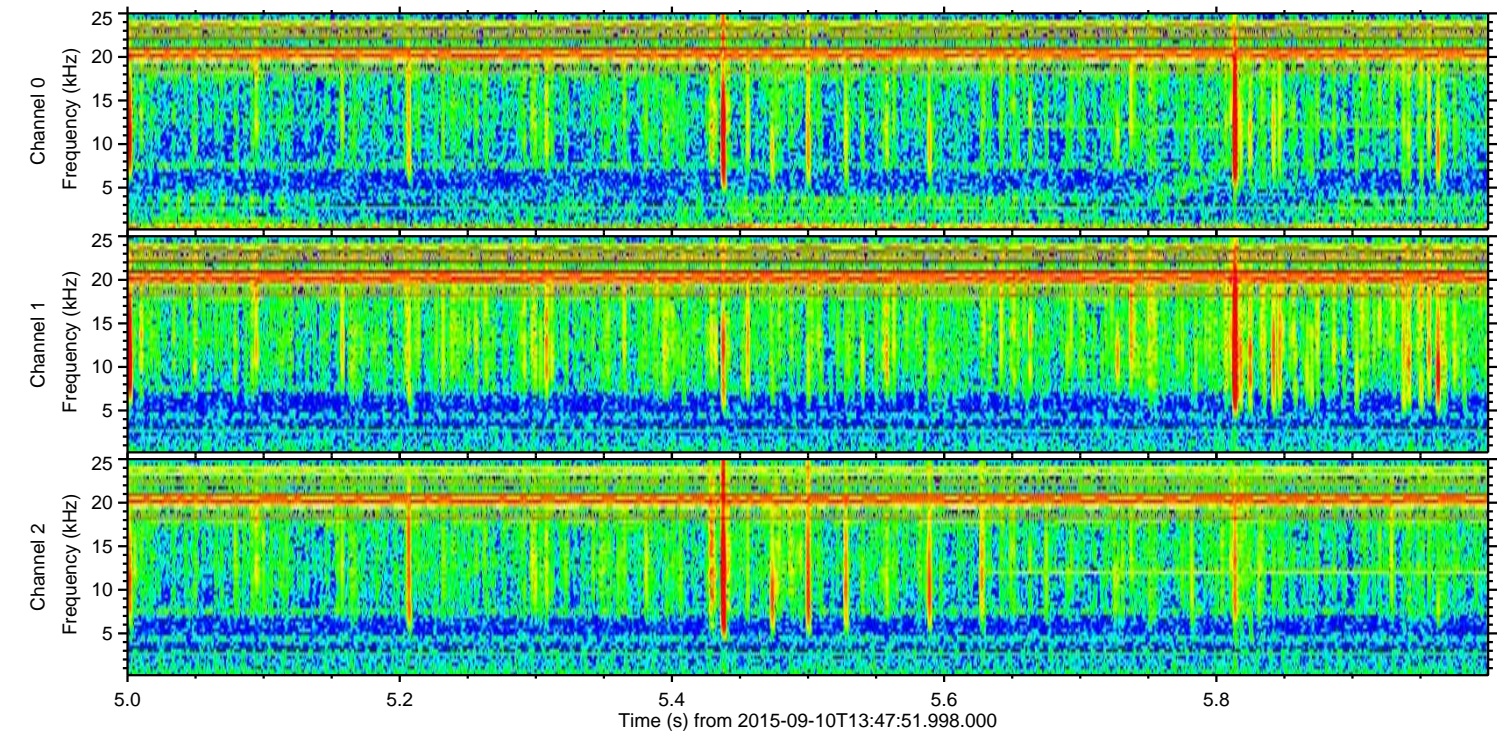
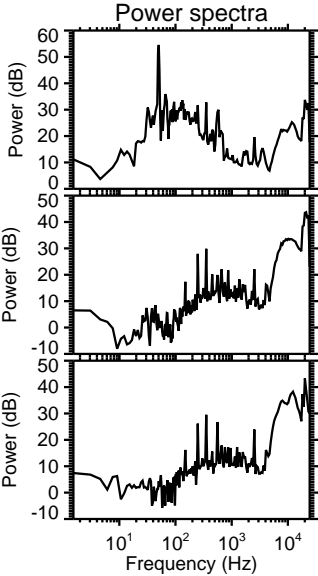
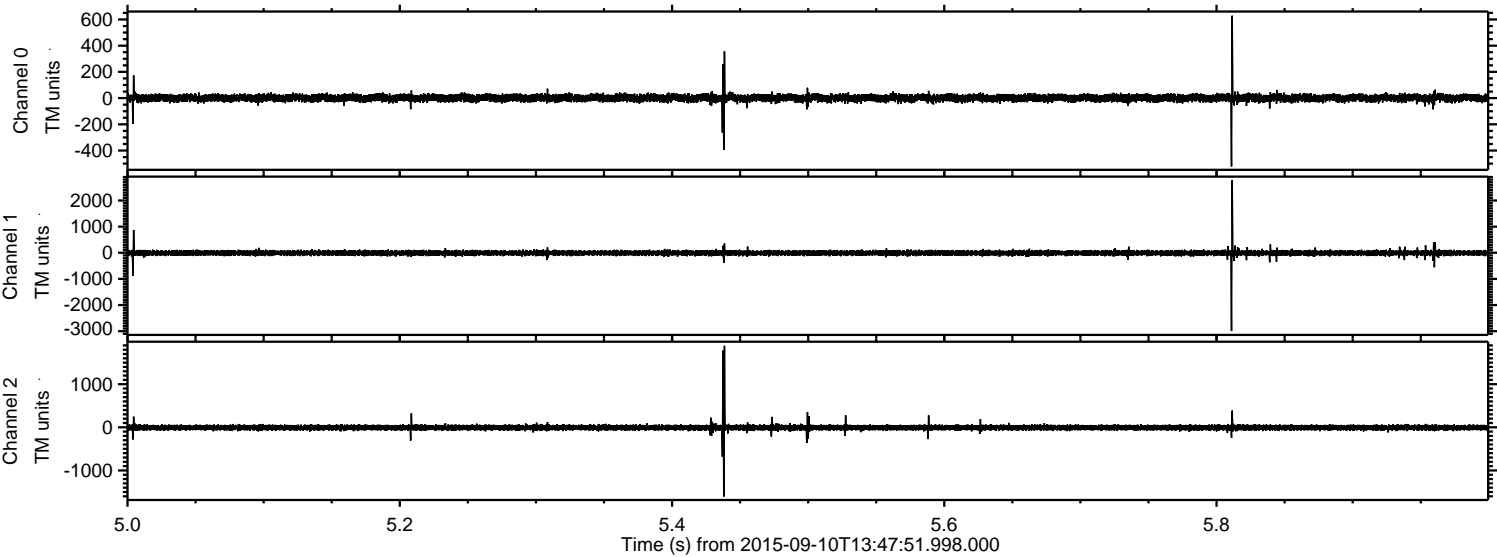
Channel 0
mn: -651
mx: 681
 μ : 0.9
 σ : 14.9

Channel 1
mn: -1121
mx: 906
 μ : -8.7
 σ : 45.2

Channel 2
mn: -3072
mx: 3298
 μ : -7.6
 σ : 42.0

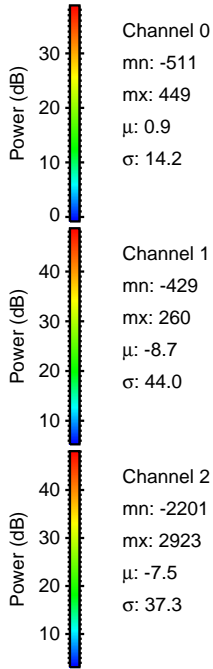
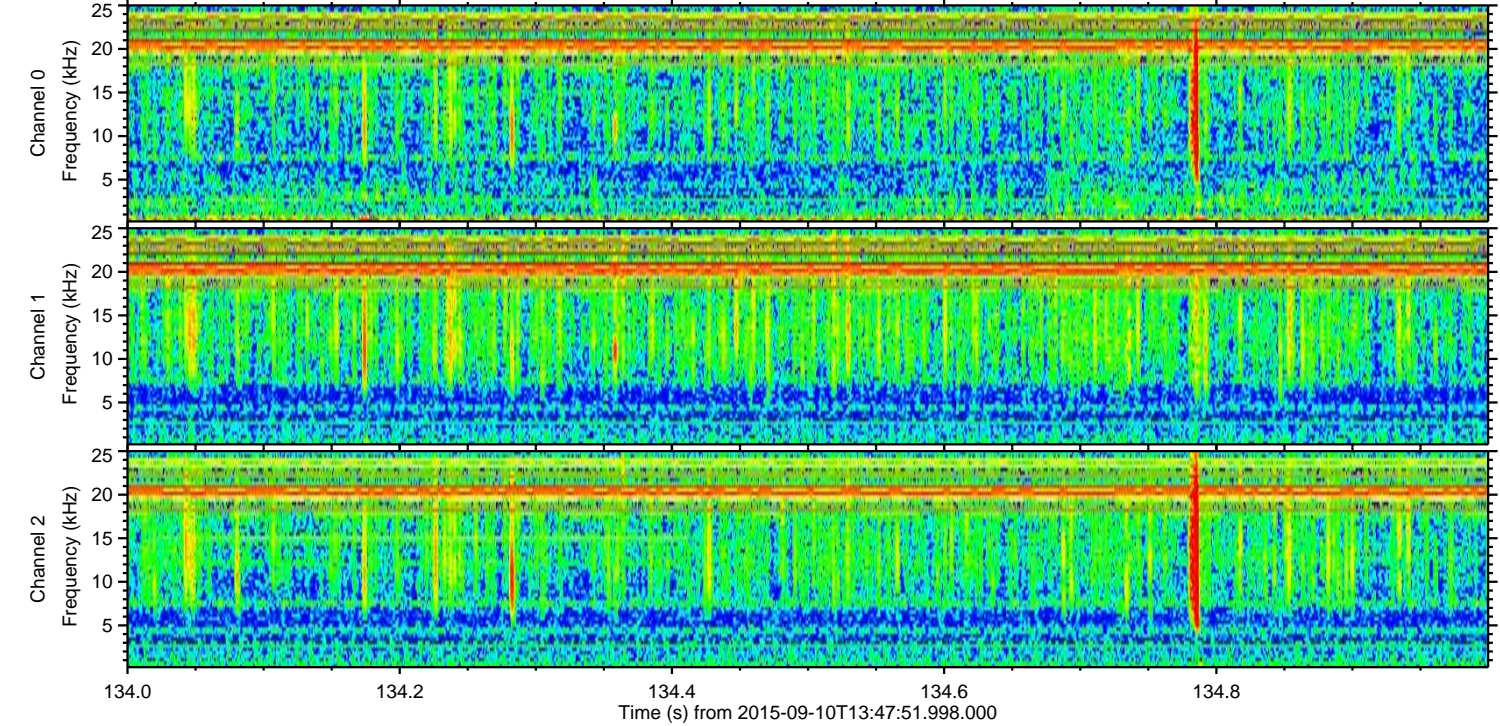
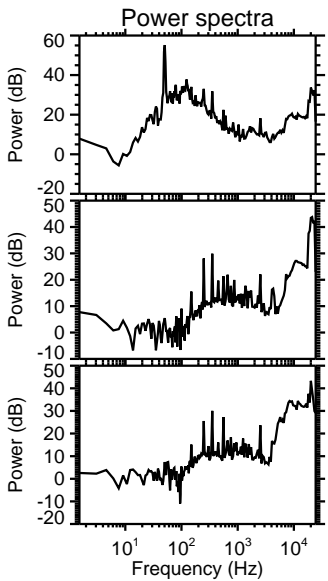
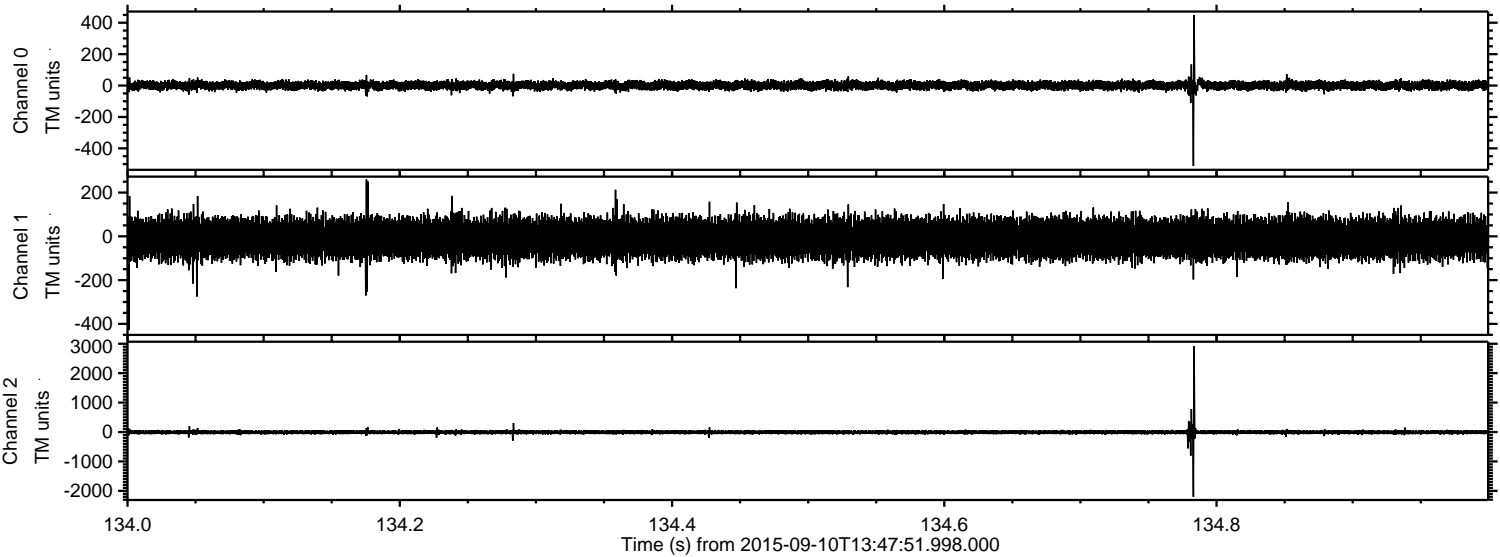
ELMAVAN 3D WAVEFORMS (Measured data sampled at 50 kHz) 51000 packets of 144 samples from 2015-09-10T13:47:51.998.000. Part 6/147

Processed Sun Oct 11 08:35:49 2015 by ELM ver.2012-10-06 from 001__elm20150910_134750__dat00.bin

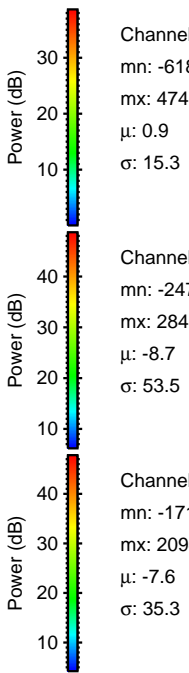
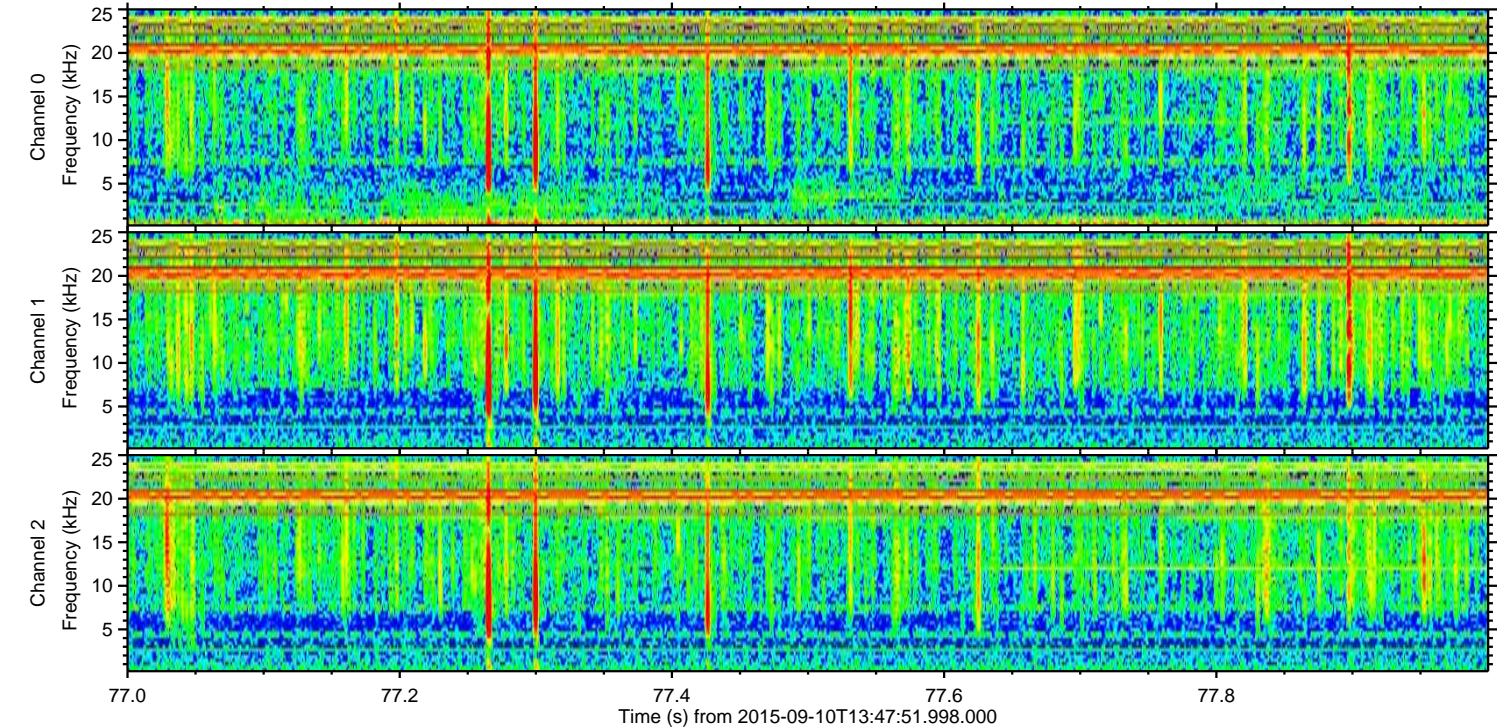
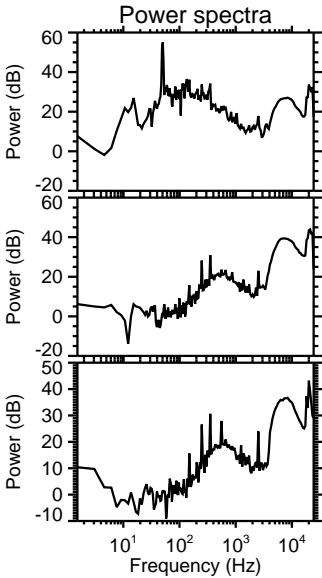
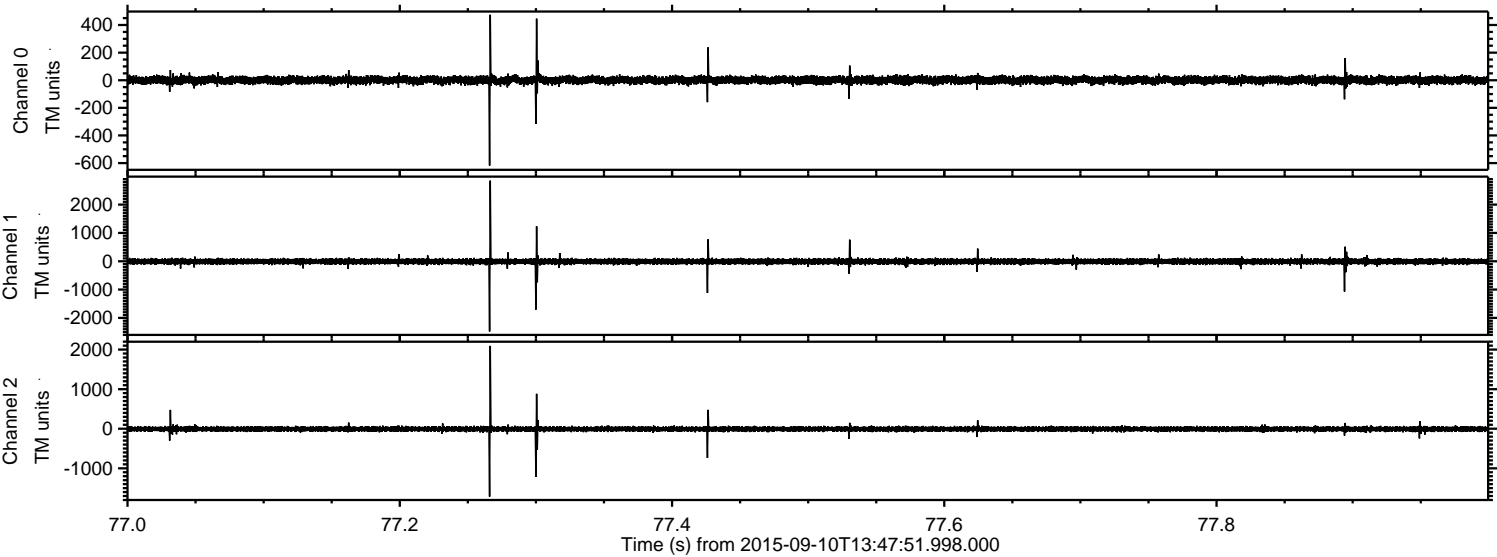


ELMAVAN 3D WAVEFORMS (Measured data sampled at 50 kHz) 51000 packets of 144 samples from 2015-09-10T13:47:51.998.000. Part 135/147

Processed Sun Oct 11 08:35:50 2015 by ELM ver.2012-10-06 from 001__elm20150910_134750__dat00.bin



Processed Sun Oct 11 08:35:51 2015 by ELM ver.2012-10-06 from 001__elm20150910_134750__dat00.bin

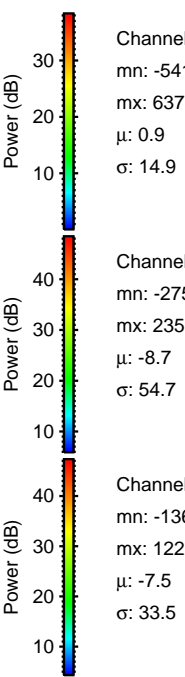
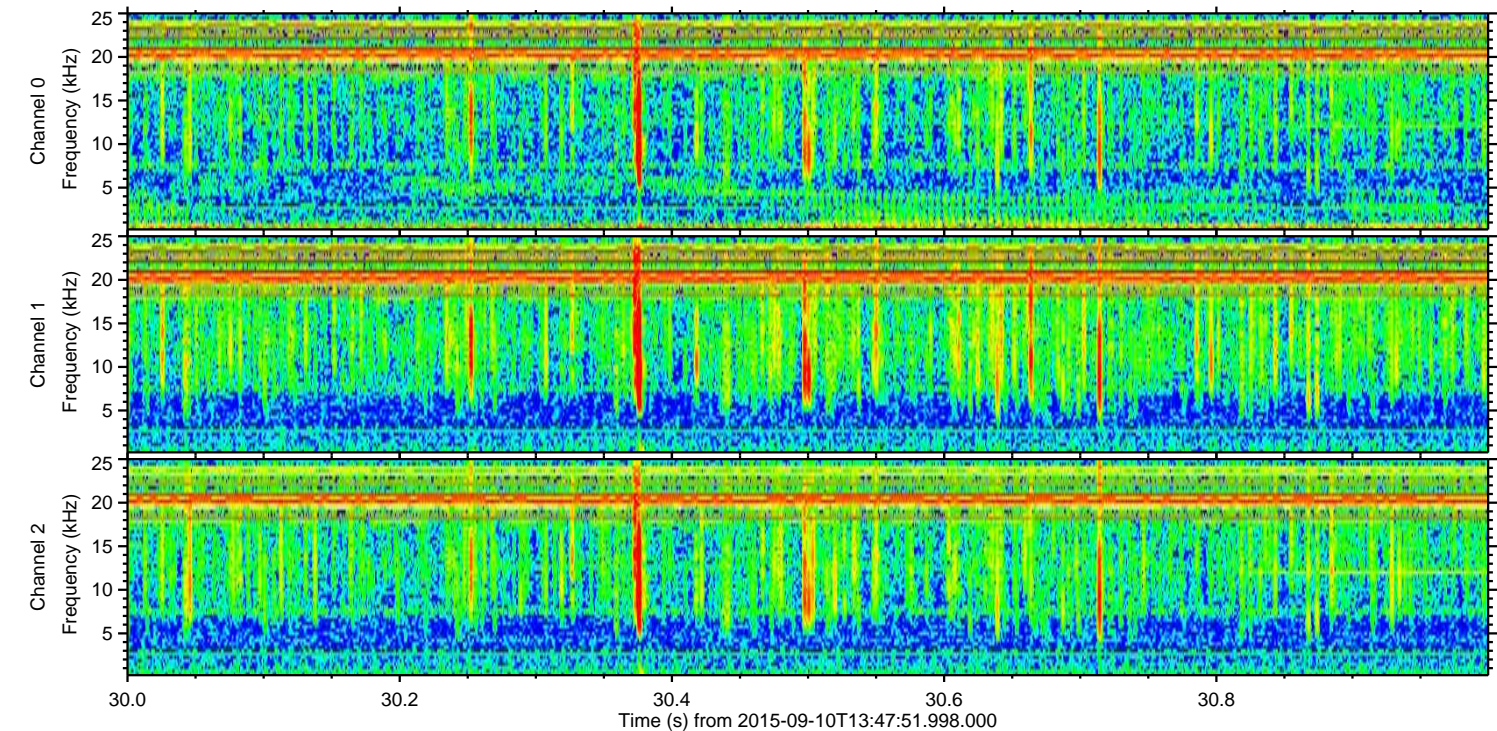
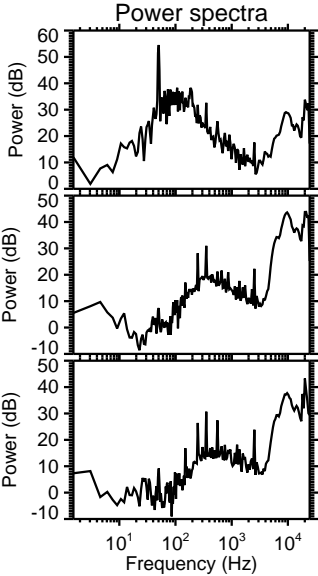
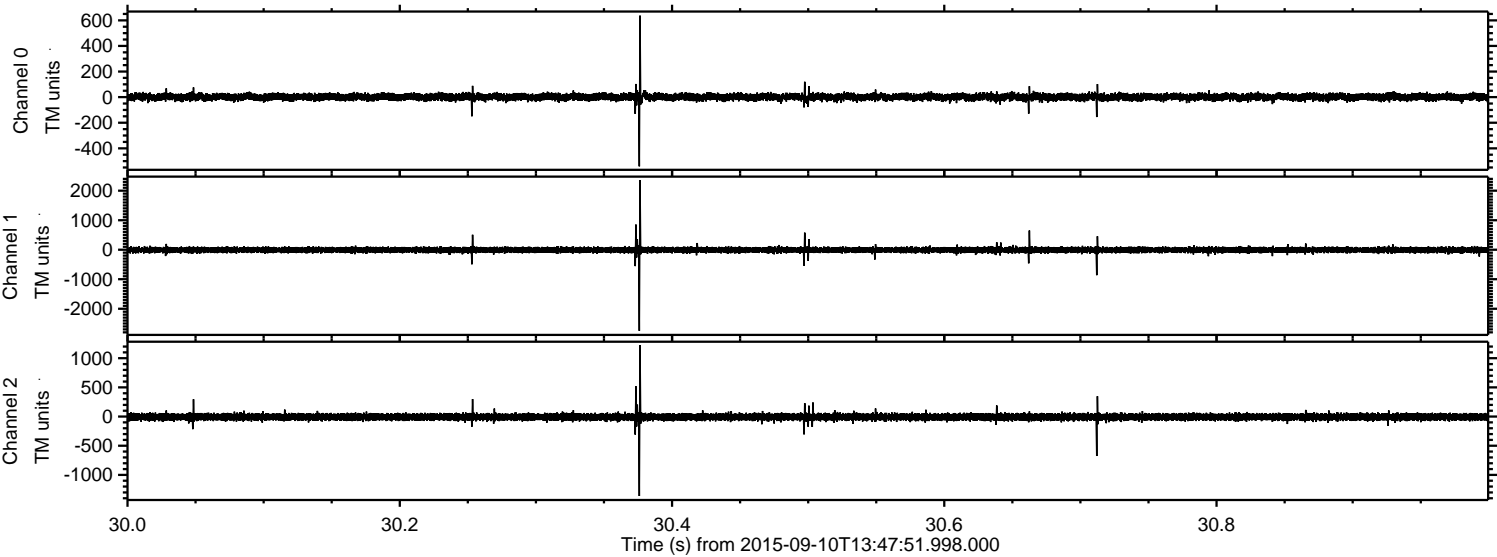


Channel 0
mn: -618
mx: 474
 μ : 0.9
 σ : 15.3

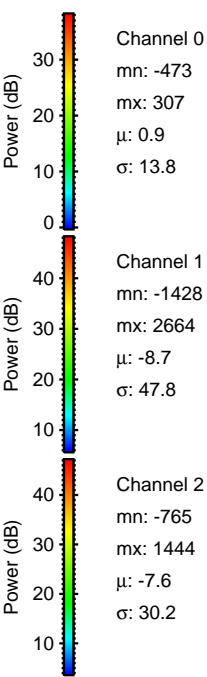
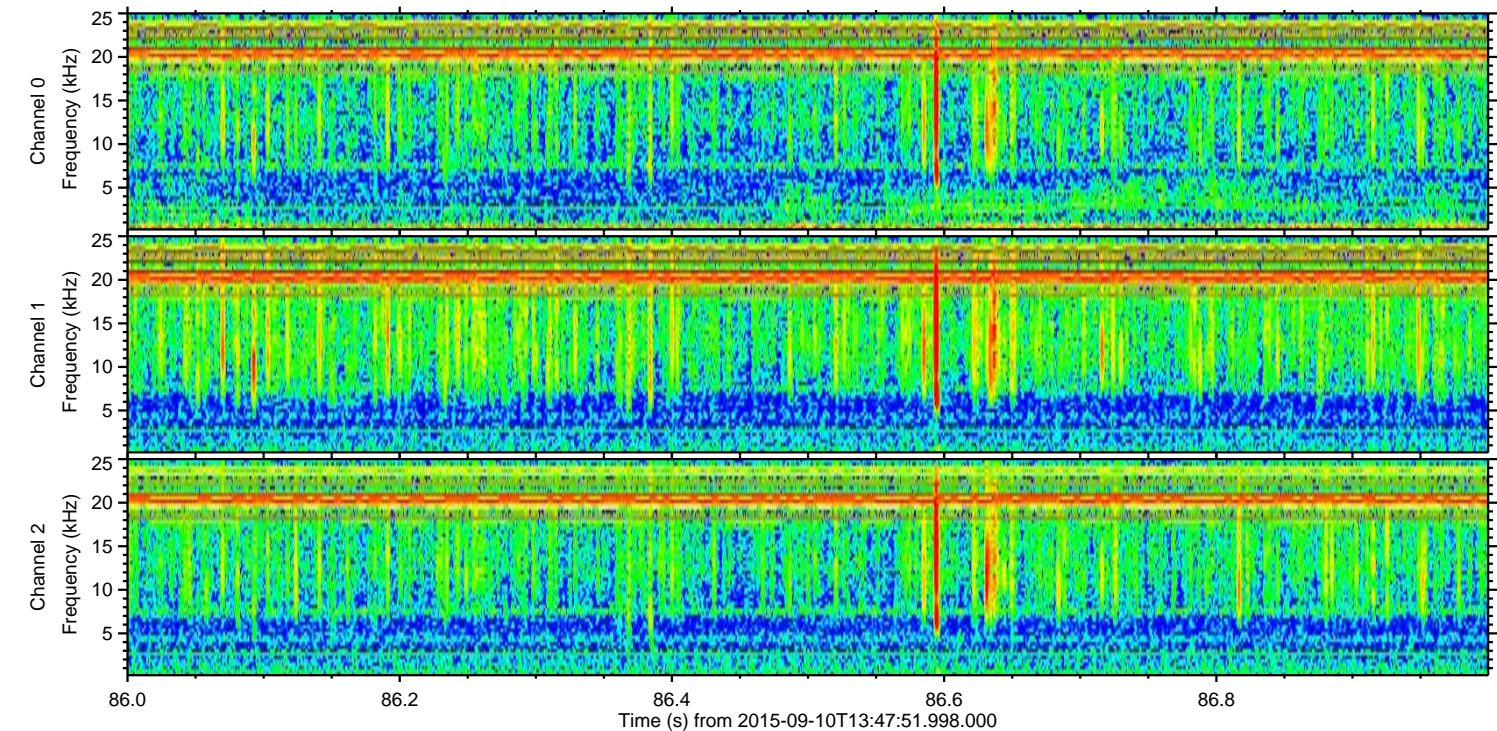
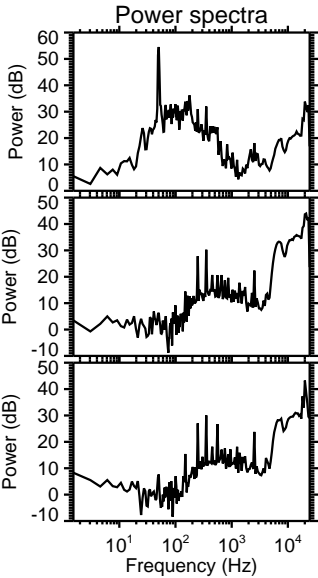
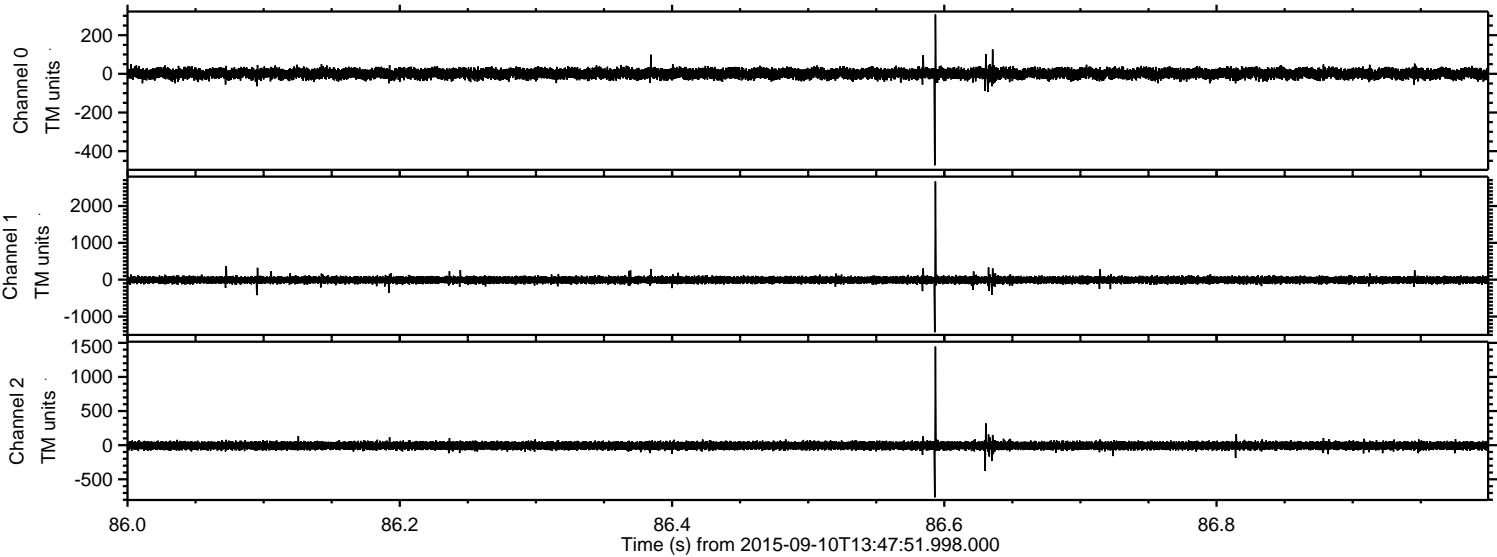
Channel 1
mn: -2476
mx: 2845
 μ : -8.7
 σ : 53.5

Channel 2
mn: -1715
mx: 2094
 μ : -7.6
 σ : 35.3

Processed Sun Oct 11 08:35:52 2015 by ELM ver.2012-10-06 from 001__elm20150910_134750__dat00.bin



Processed Sun Oct 11 08:35:53 2015 by ELM ver.2012-10-06 from 001__elm20150910_134750__dat00.bin



Channel 0
mn: -473
mx: 307
 μ : 0.9
 σ : 13.8

Channel 1
mn: -1428
mx: 2664
 μ : -8.7
 σ : 47.8

Channel 2
mn: -765
mx: 1444
 μ : -7.6
 σ : 30.2

Processed Sun Oct 11 08:35:54 2015 by ELM ver.2012-10-06 from 001__elm20150910_134750__dat00.bin

