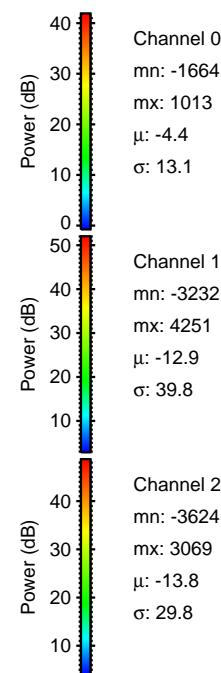
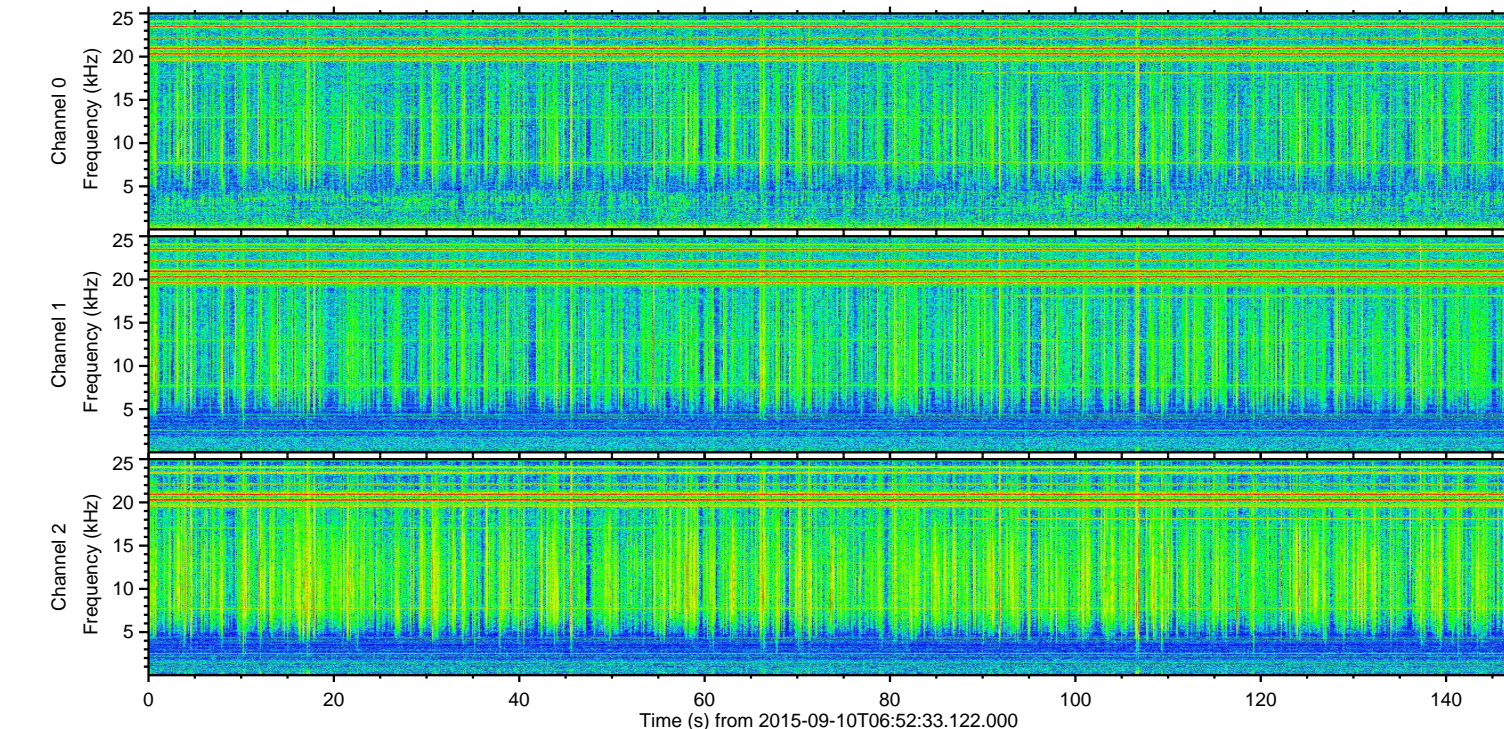
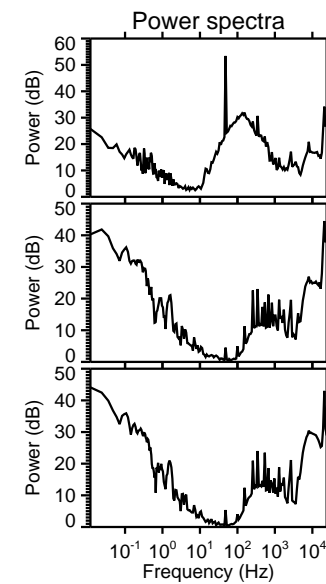
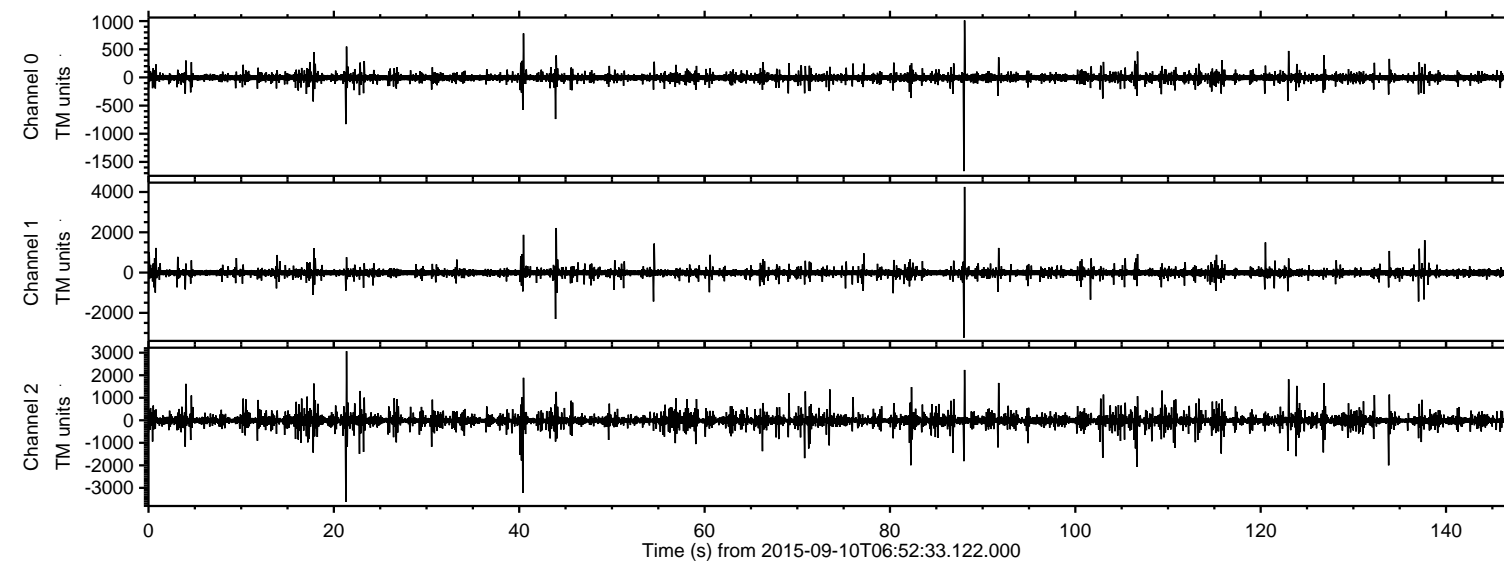
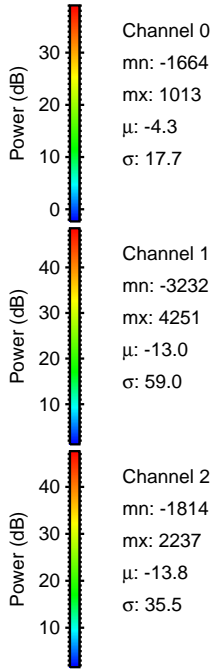
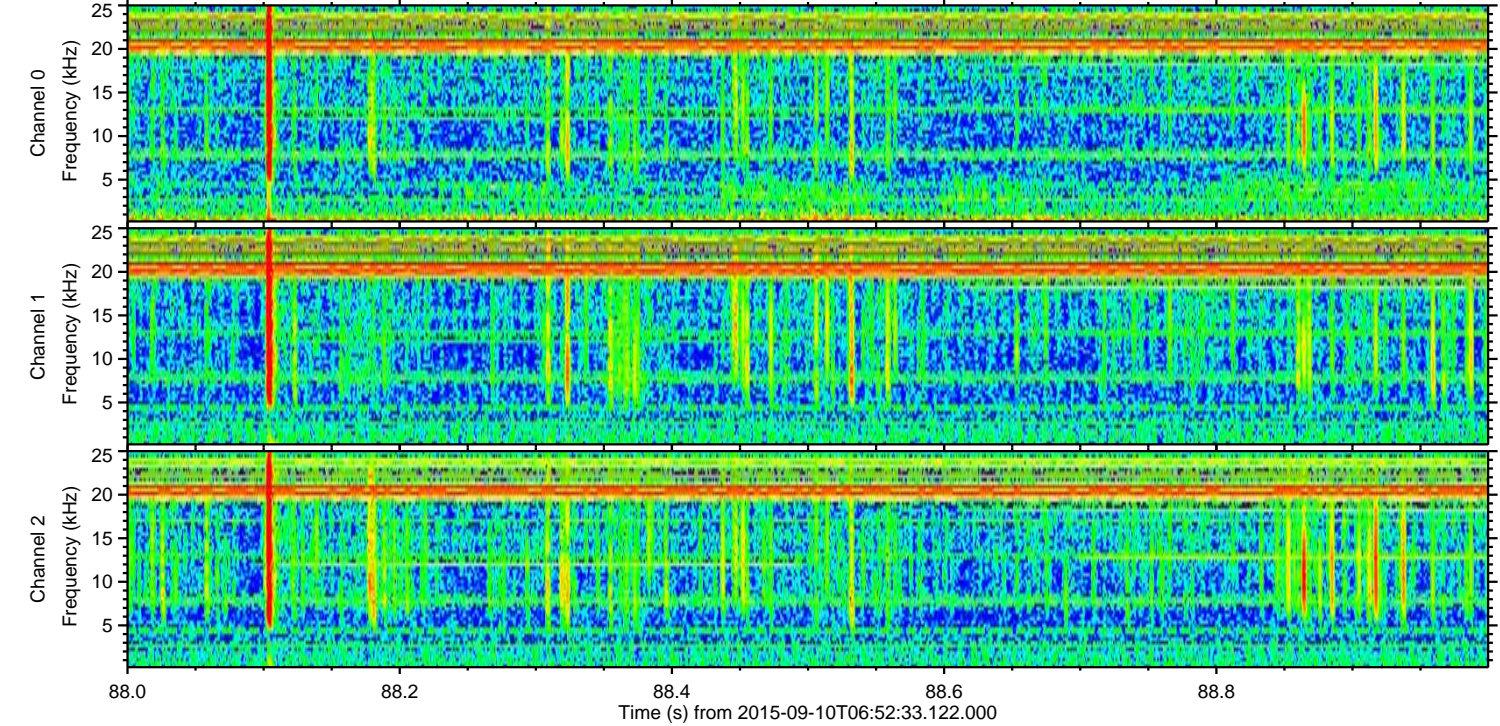
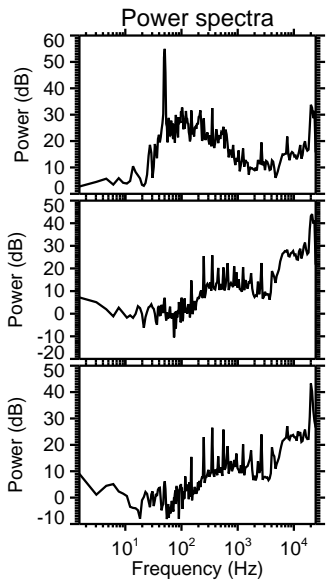
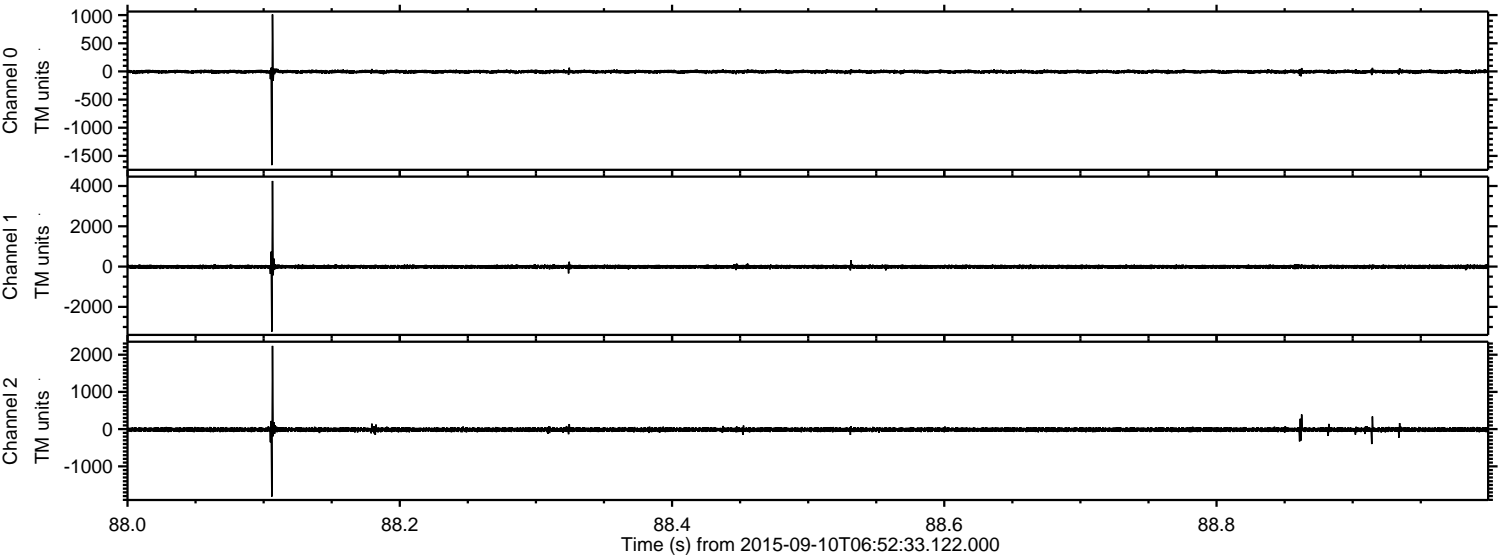


ELMAVAN 3D WAVEFORMS (Measured data sampled at 50 kHz) 51000 packets of 144 samples from 2015-09-10T06:52:33.122.000.

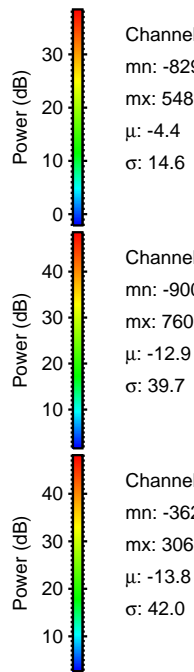
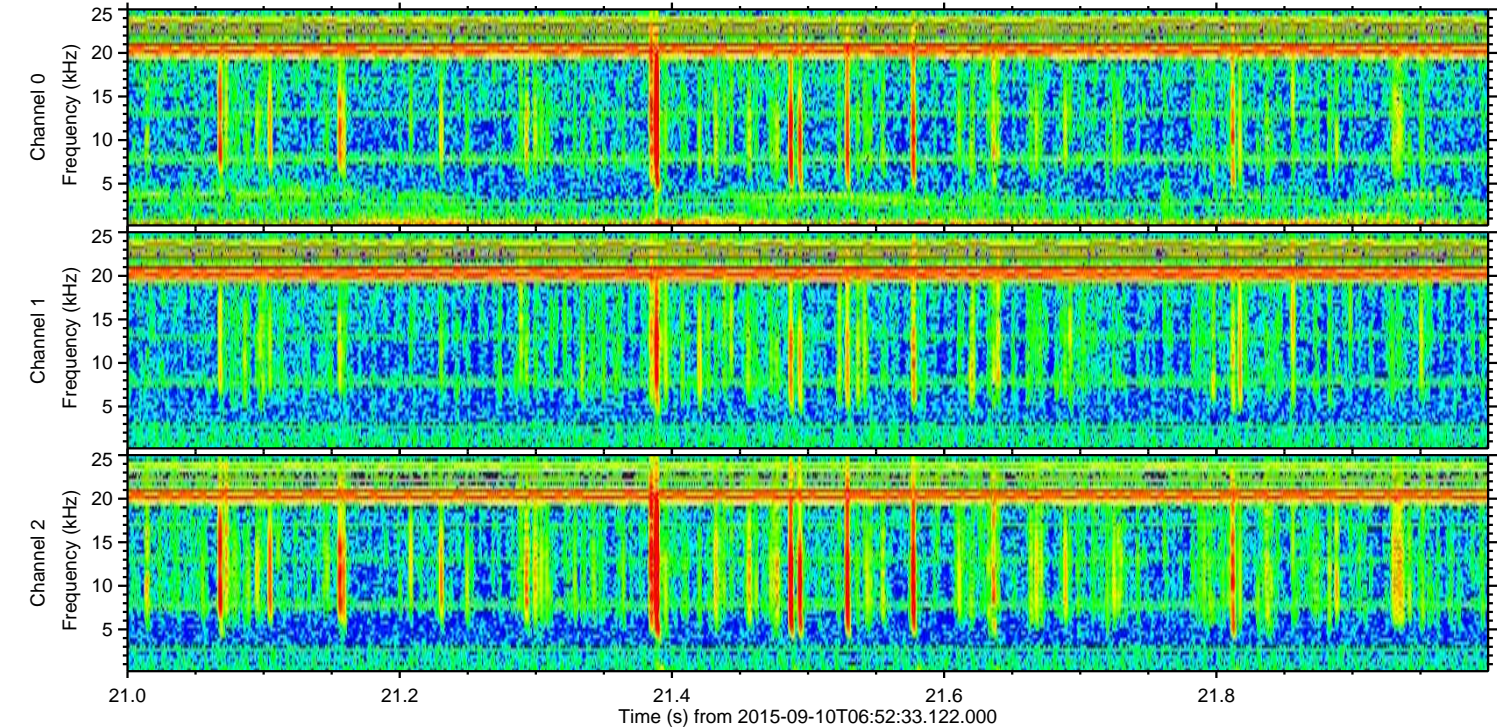
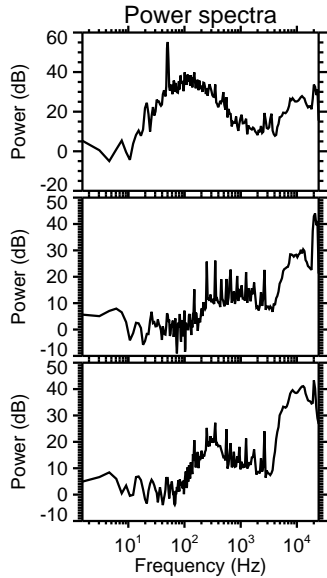
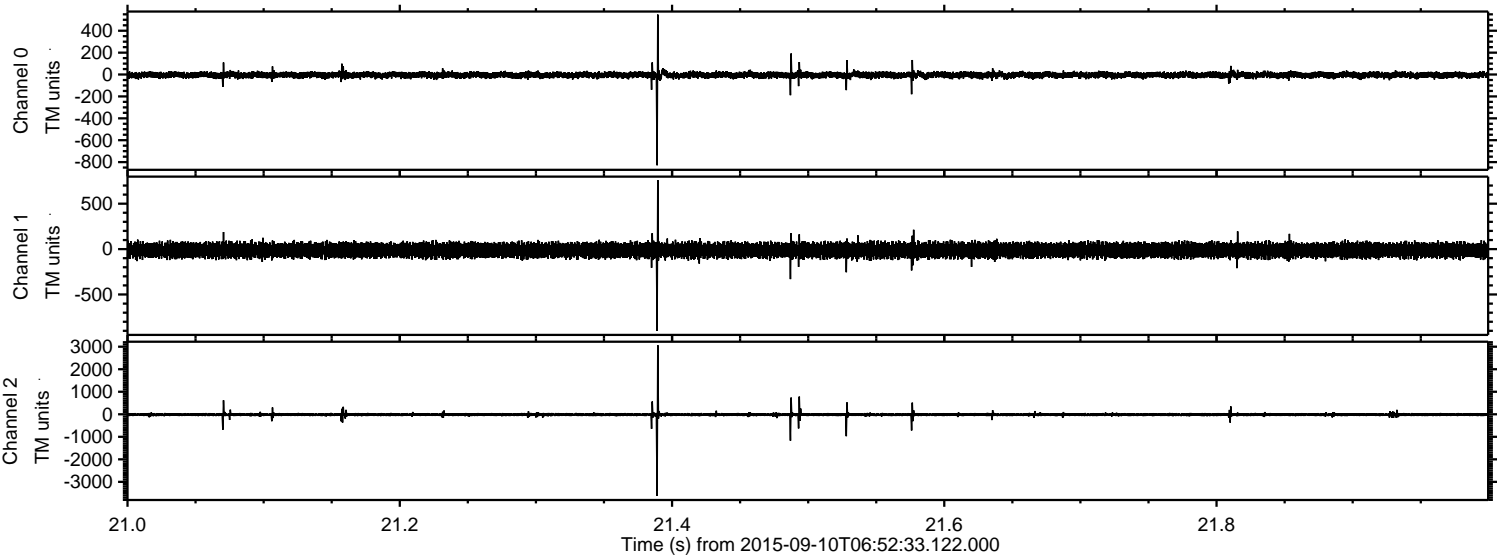
Processed Sun Oct 11 06:40:44 2015 by ELM ver.2012-10-06 from 001__elm20150910_065232__dat00.bin



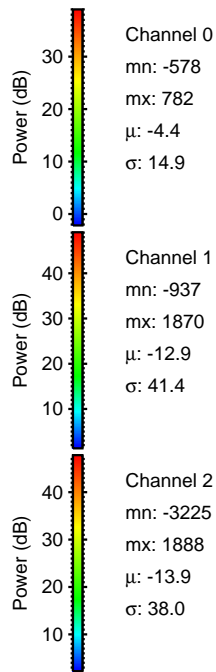
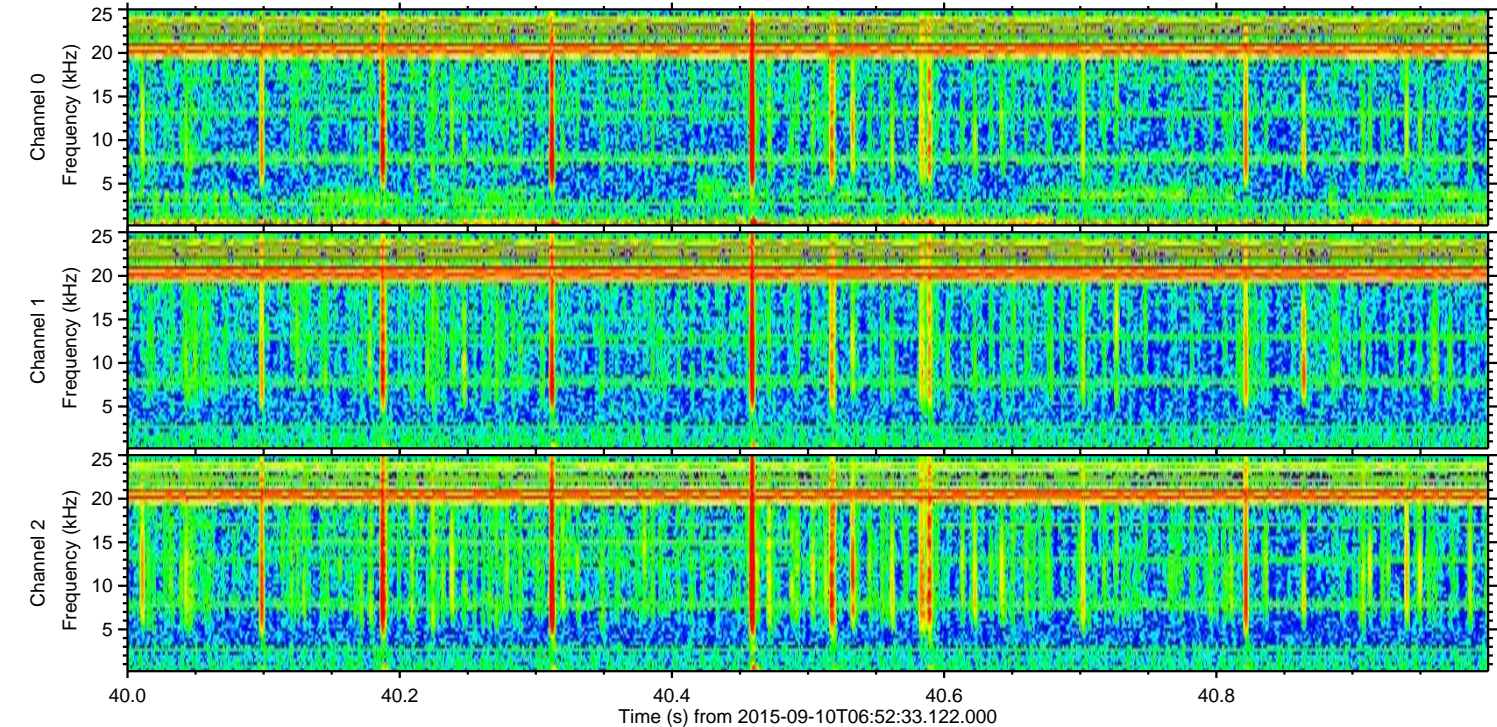
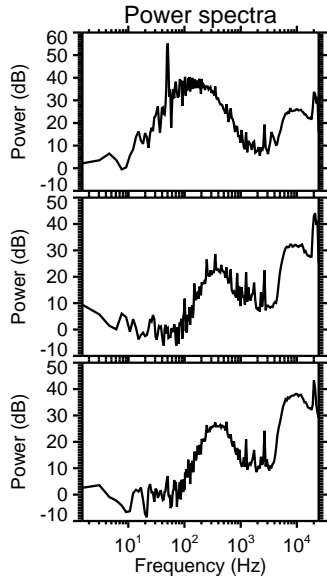
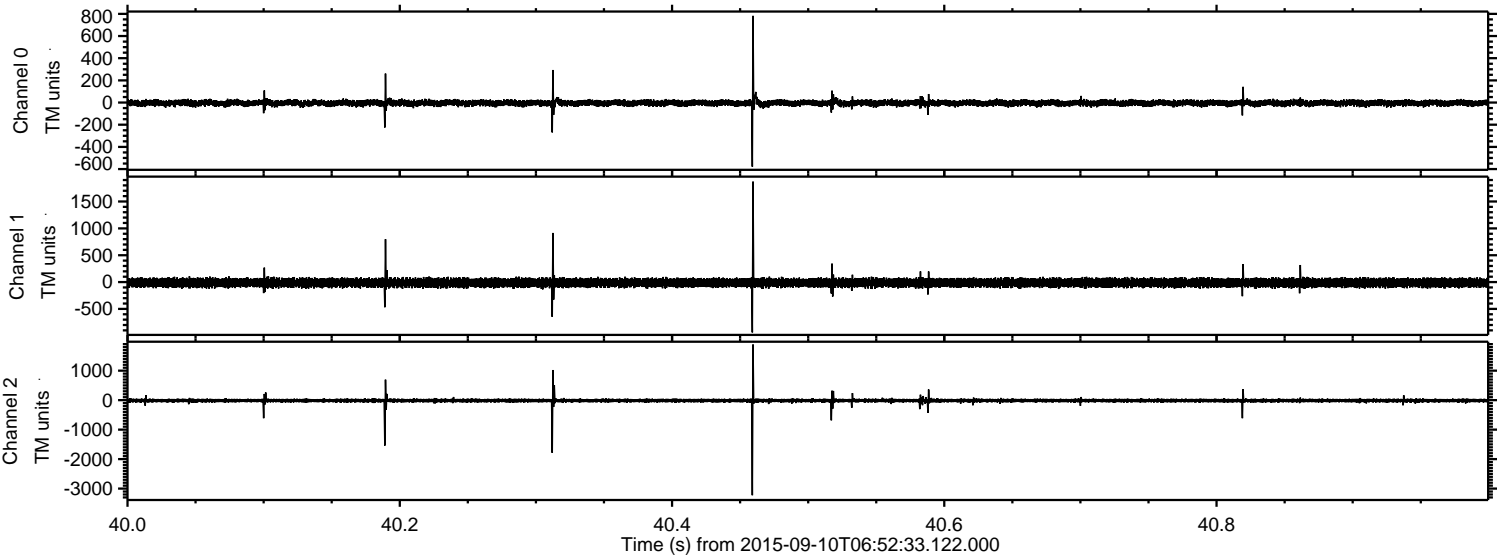
Processed Sun Oct 11 06:41:01 2015 by ELM ver.2012-10-06 from 001__elm20150910_065232__dat00.bin



Processed Sun Oct 11 06:41:02 2015 by ELM ver.2012-10-06 from 001__elm20150910_065232__dat00.bin

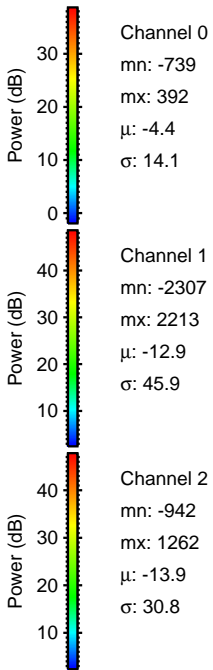
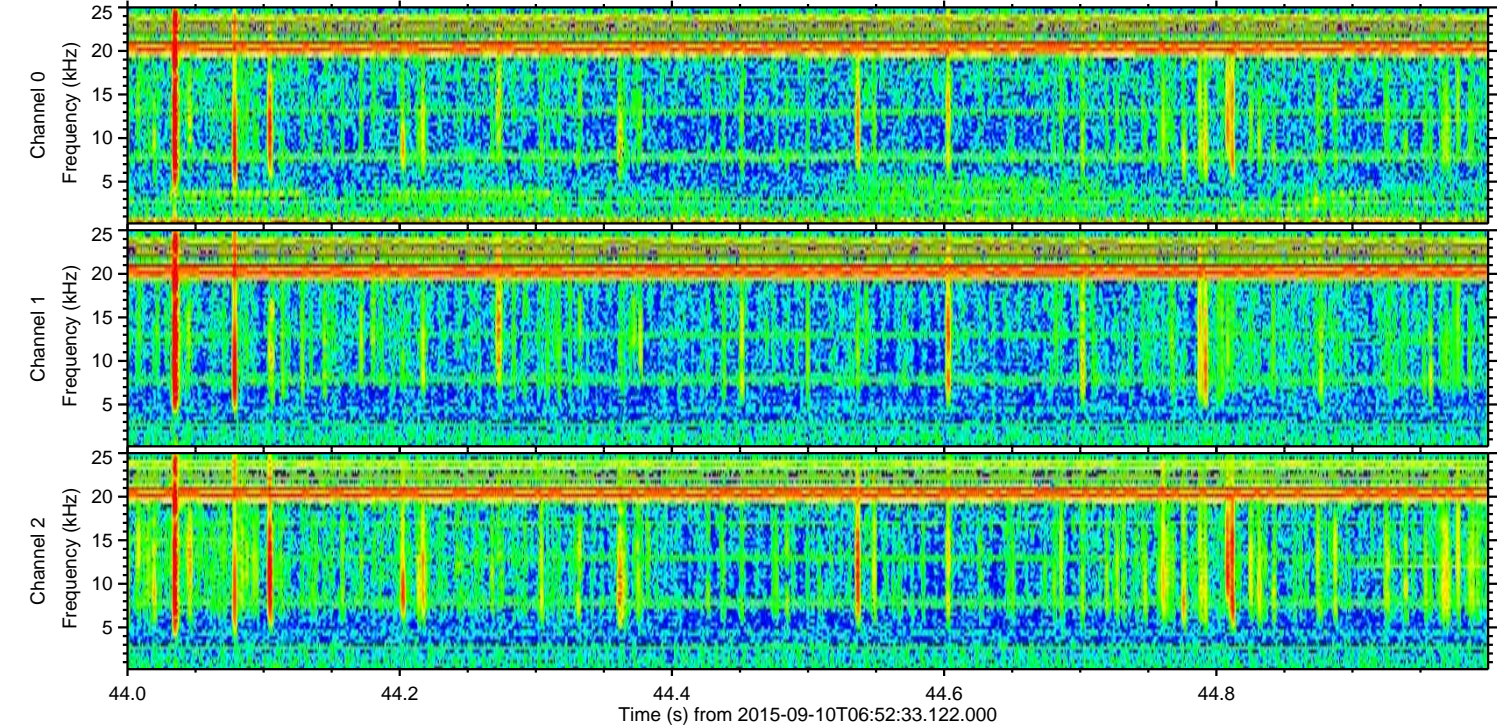
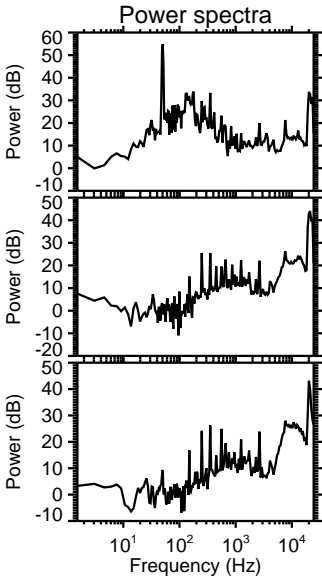
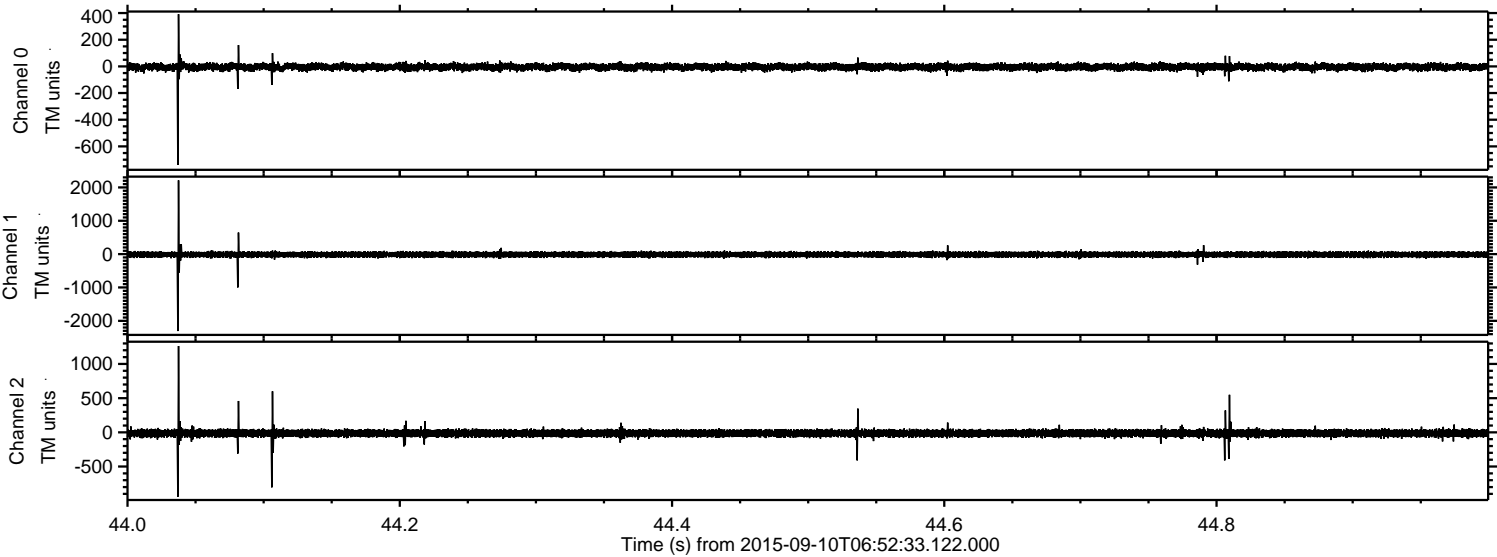


Processed Sun Oct 11 06:41:03 2015 by ELM ver.2012-10-06 from 001__elm20150910_065232__dat00.bin



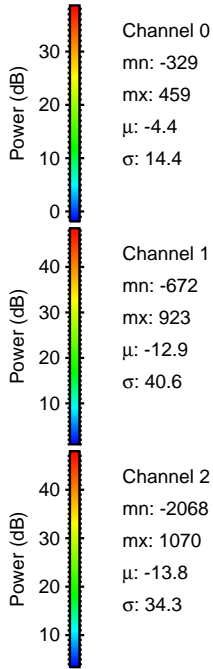
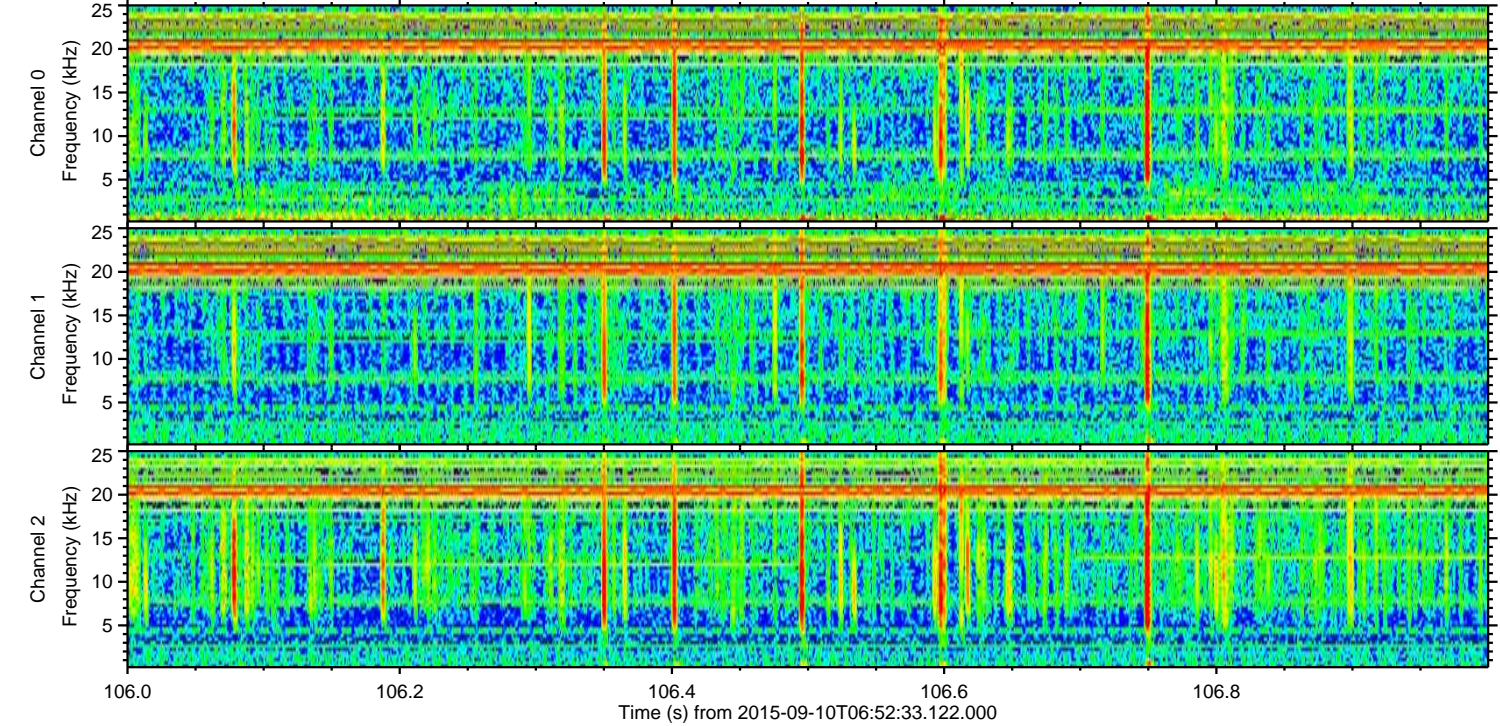
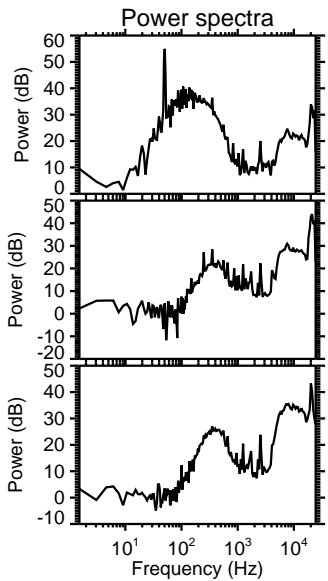
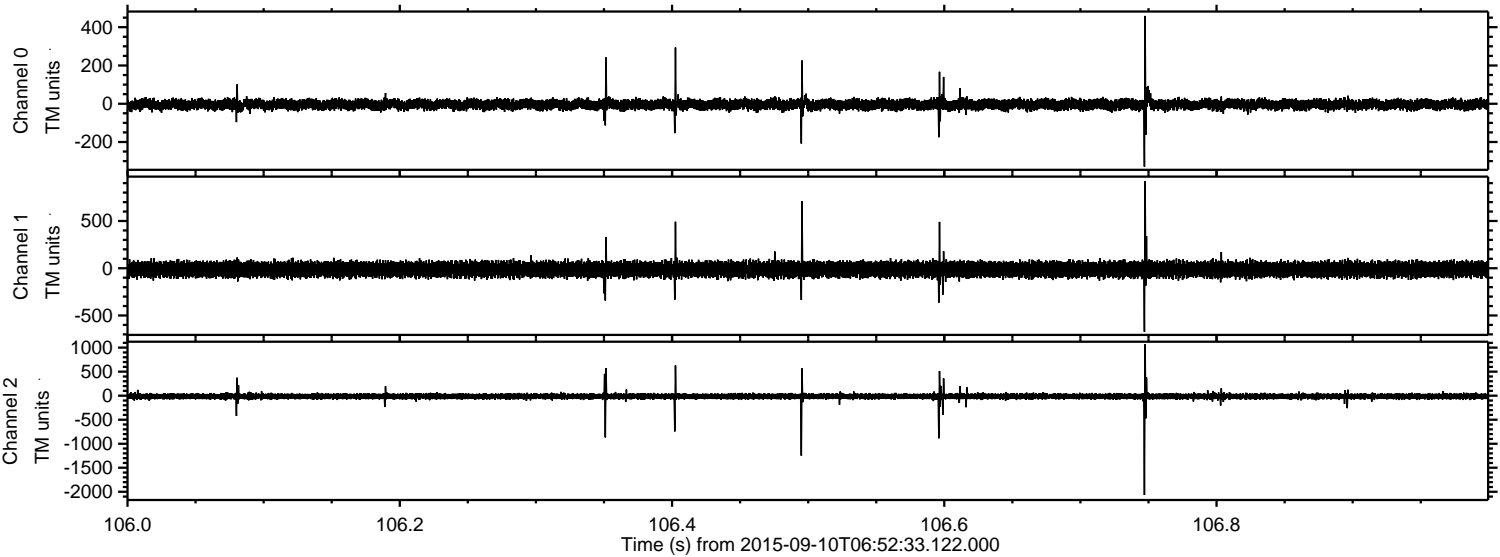
ELMAVAN 3D WAVEFORMS (Measured data sampled at 50 kHz) 51000 packets of 144 samples from 2015-09-10T06:52:33.122.000. Part 45/147

Processed Sun Oct 11 06:41:04 2015 by ELM ver.2012-10-06 from 001__elm20150910_065232__dat00.bin



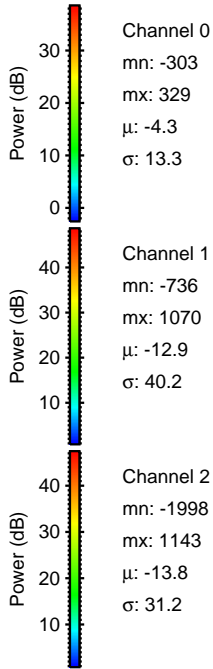
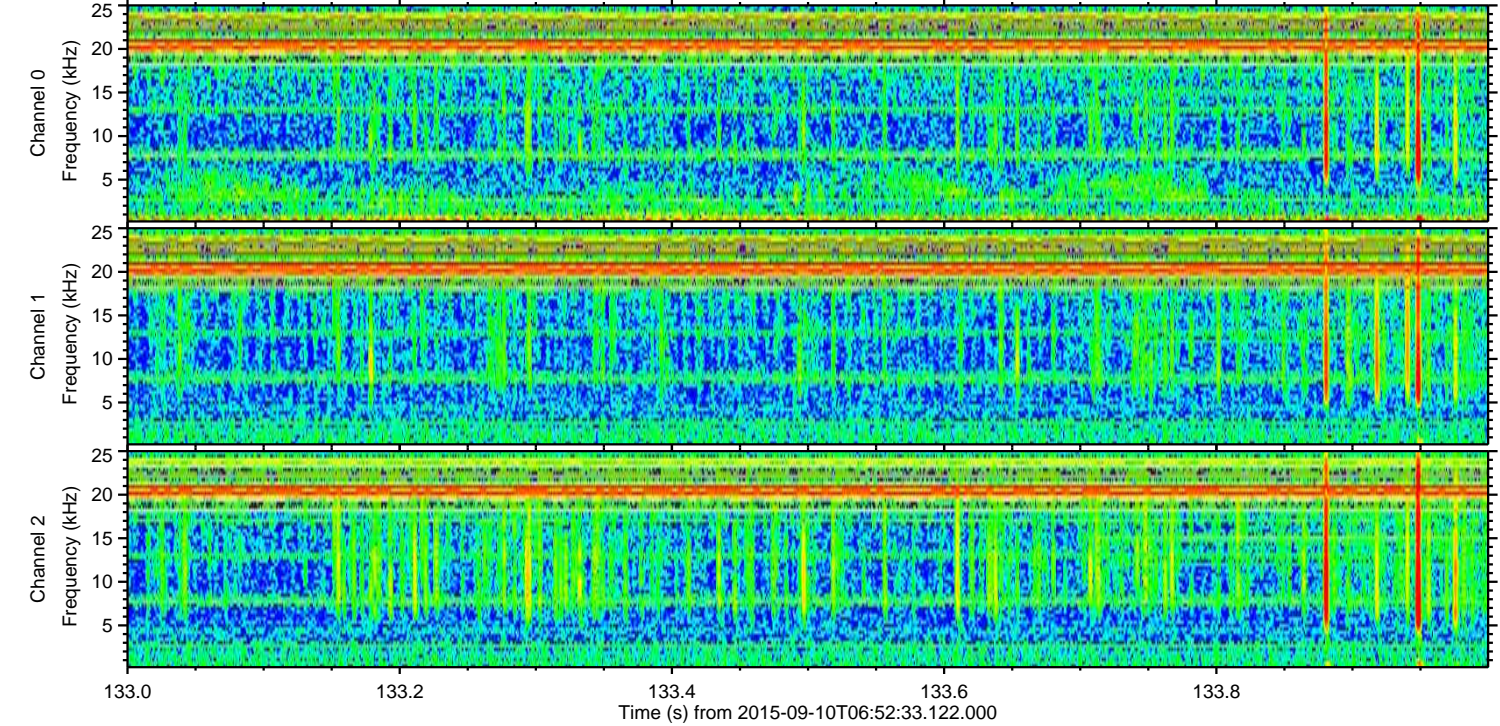
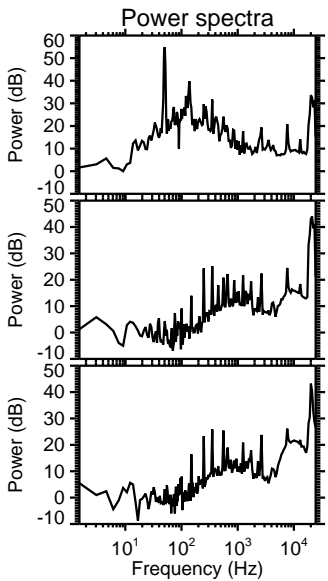
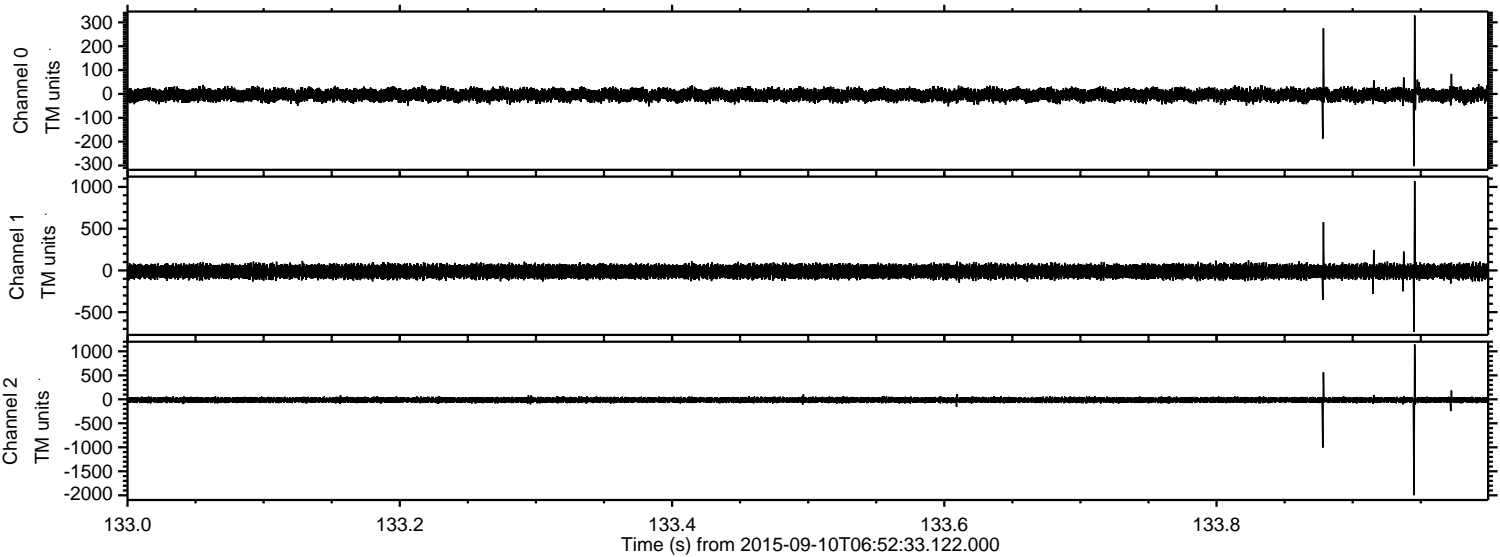
ELMAVAN 3D WAVEFORMS (Measured data sampled at 50 kHz) 51000 packets of 144 samples from 2015-09-10T06:52:33.122.000. Part 107/147

Processed Sun Oct 11 06:41:05 2015 by ELM ver.2012-10-06 from 001__elm20150910_065232__dat00.bin

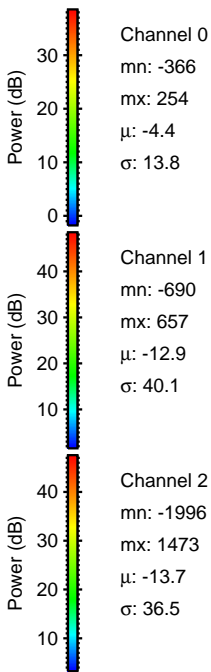
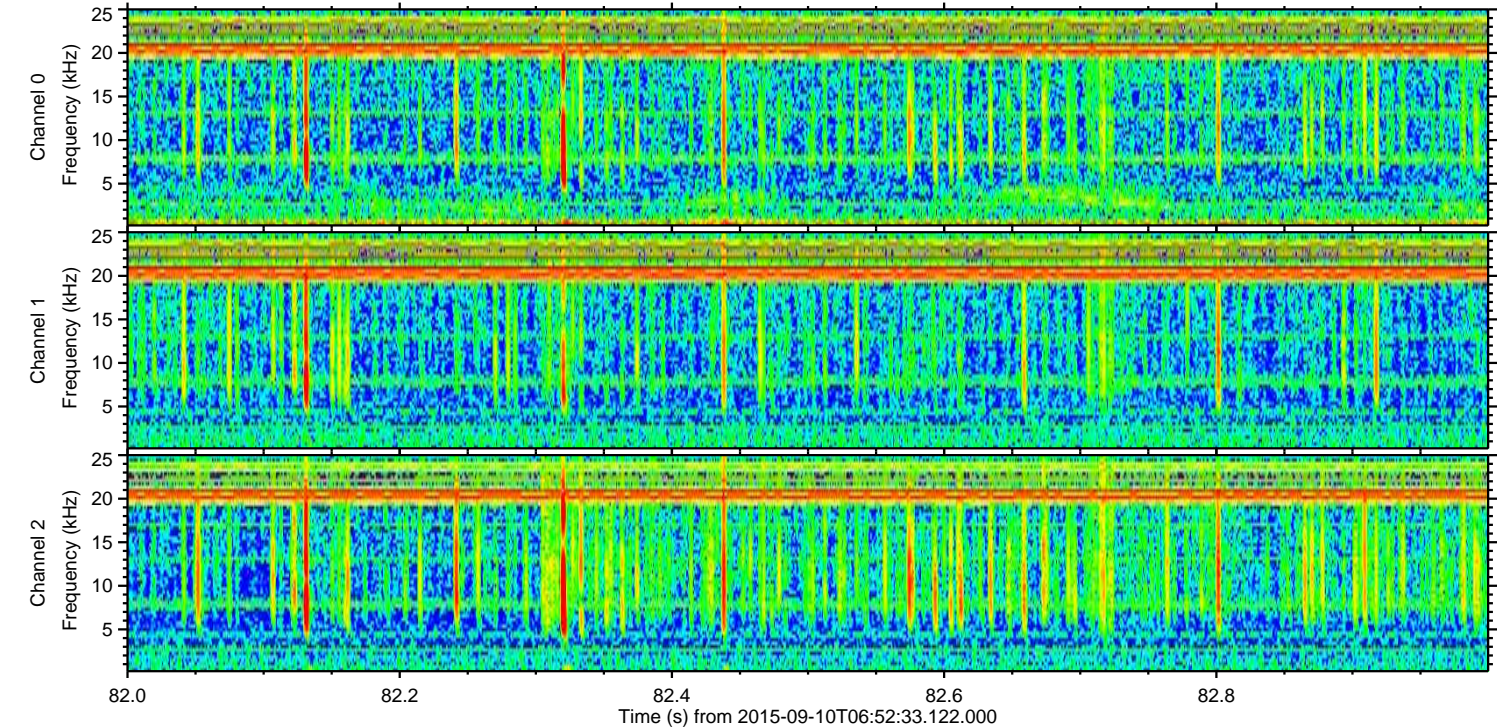
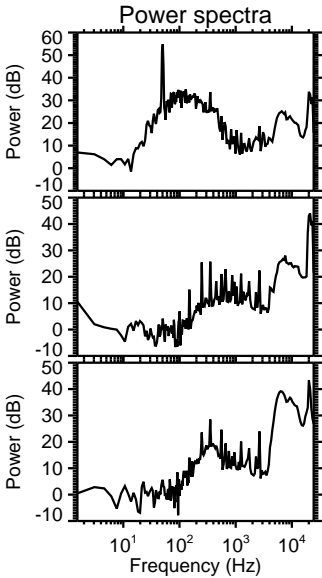
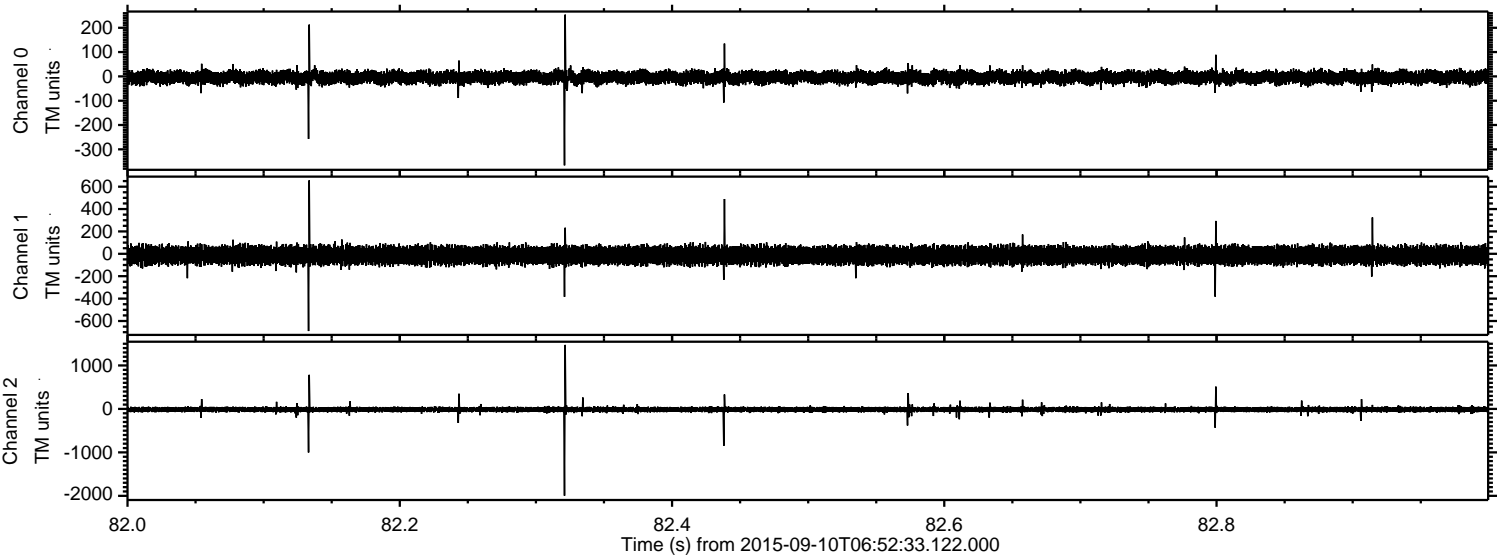


ELMAVAN 3D WAVEFORMS (Measured data sampled at 50 kHz) 51000 packets of 144 samples from 2015-09-10T06:52:33.122.000. Part 134/147

Processed Sun Oct 11 06:41:06 2015 by ELM ver.2012-10-06 from 001__elm20150910_065232__dat00.bin

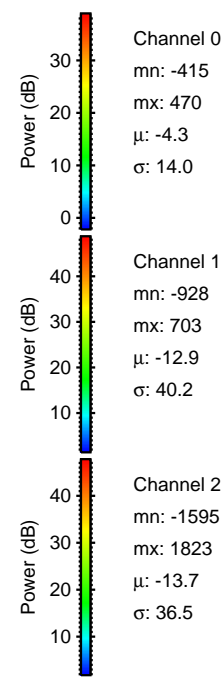
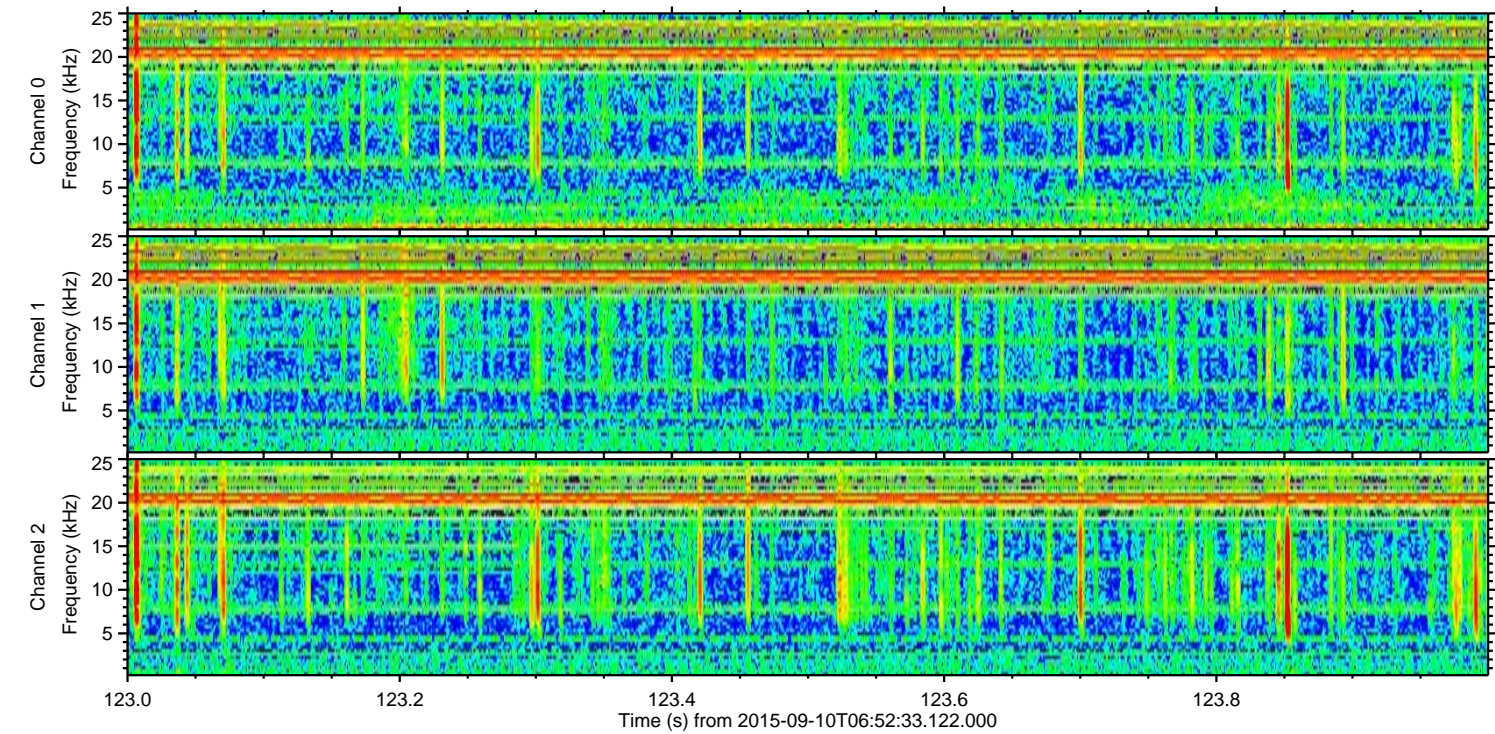
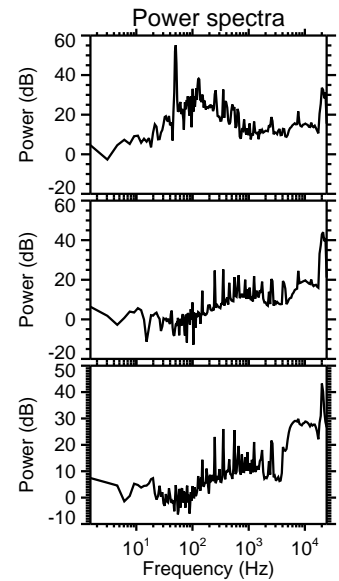
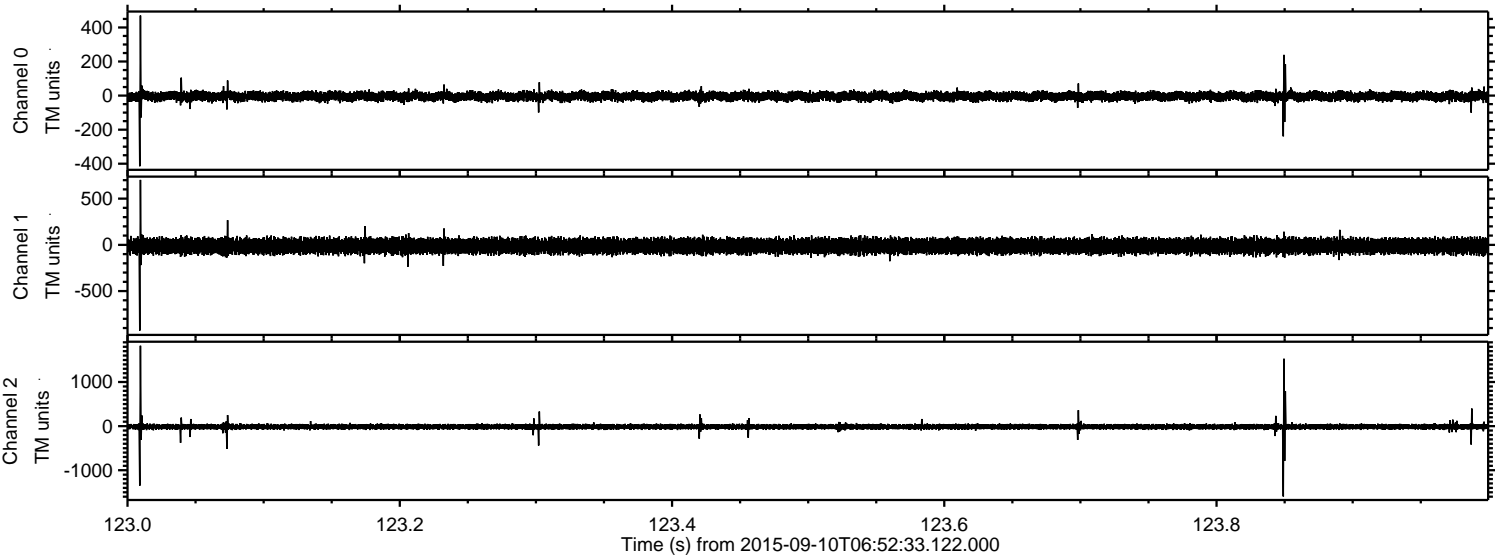


Processed Sun Oct 11 06:41:07 2015 by ELM ver.2012-10-06 from 001__elm20150910_065232__dat00.bin



ELMAVAN 3D WAVEFORMS (Measured data sampled at 50 kHz) 51000 packets of 144 samples from 2015-09-10T06:52:33.122.000. Part 124/147

Processed Sun Oct 11 06:41:08 2015 by ELM ver.2012-10-06 from 001__elm20150910_065232__dat00.bin

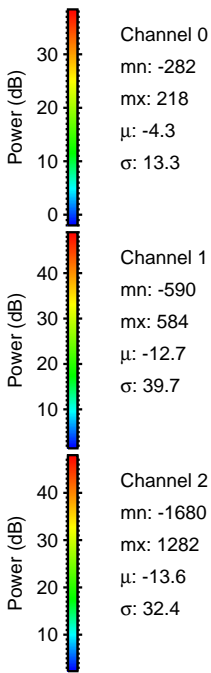
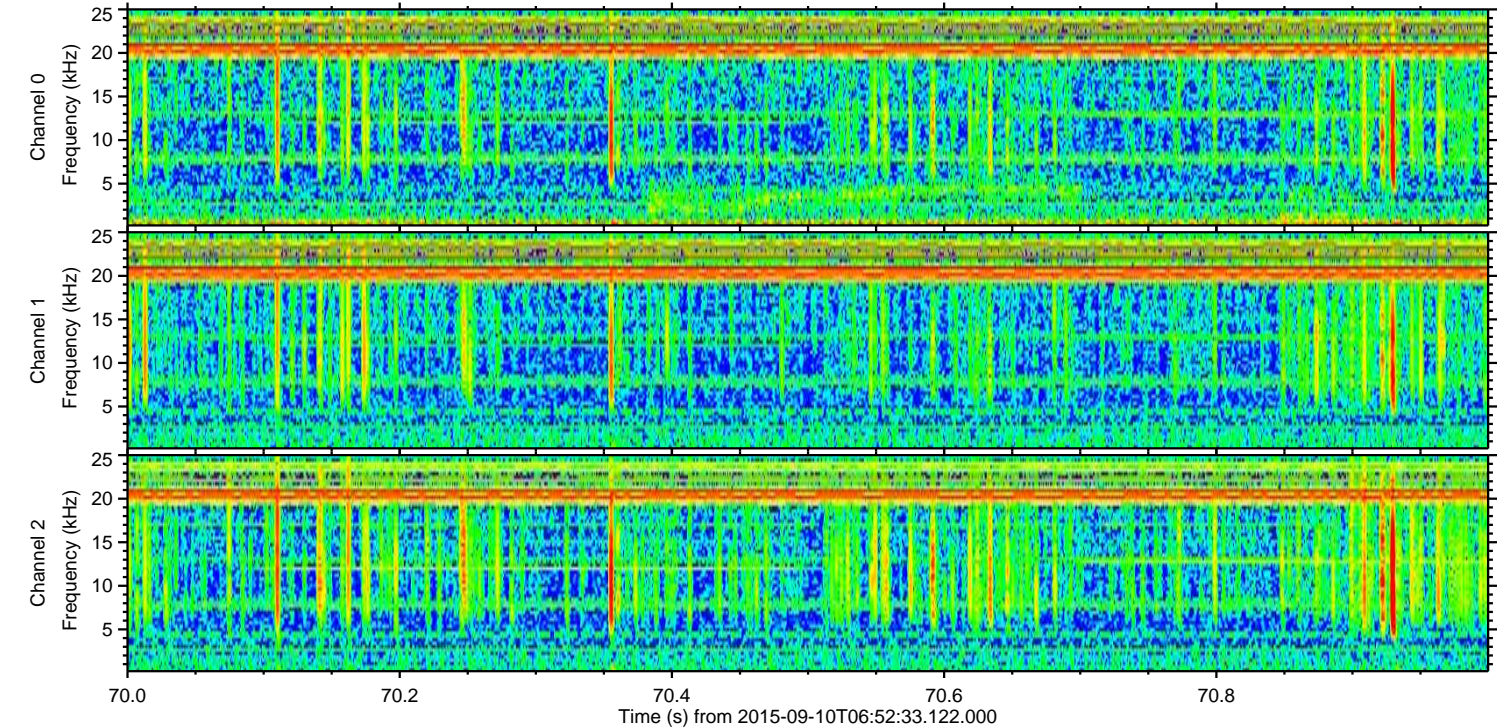
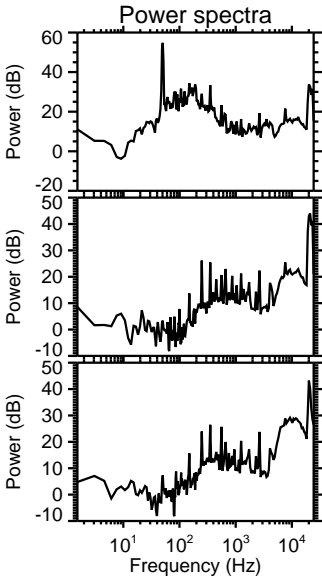
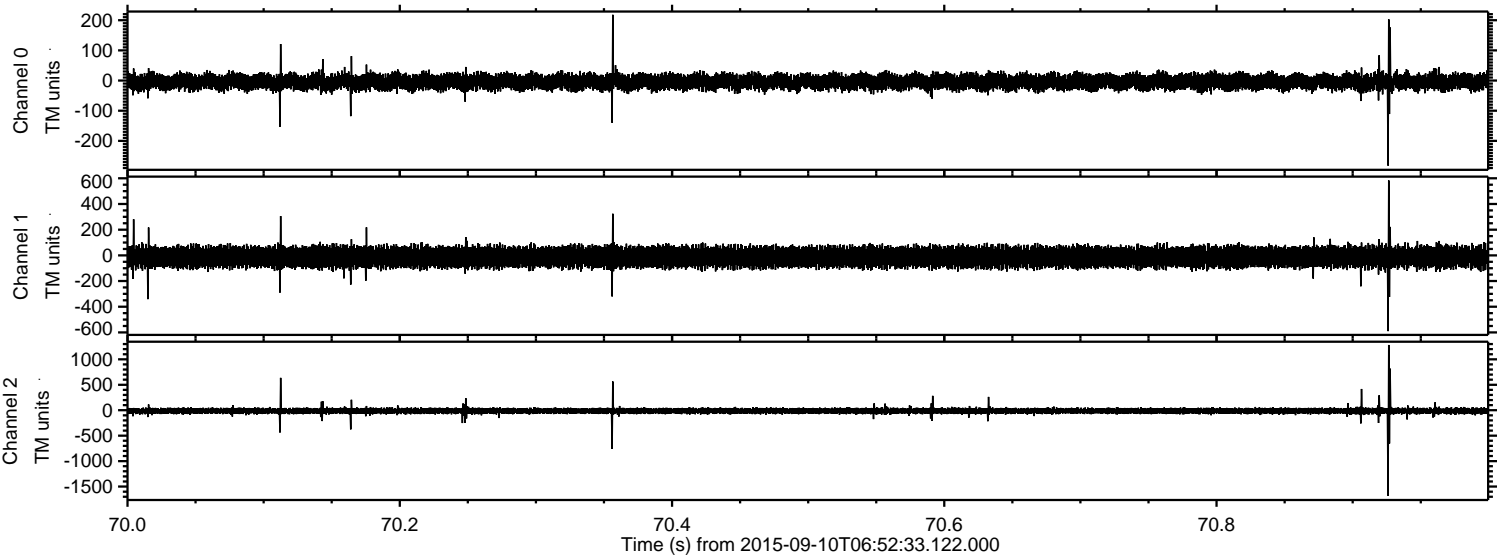


Channel 0
mn: -415
mx: 470
 μ : -4.3
 σ : 14.0

Channel 1
mn: -928
mx: 703
 μ : -12.9
 σ : 40.2

Channel 2
mn: -1595
mx: 1823
 μ : -13.7
 σ : 36.5

Processed Sun Oct 11 06:41:09 2015 by ELM ver.2012-10-06 from 001__elm20150910_065232__dat00.bin



Processed Sun Oct 11 06:41:10 2015 by ELM ver.2012-10-06 from 001__elm20150910_065232__dat00.bin

