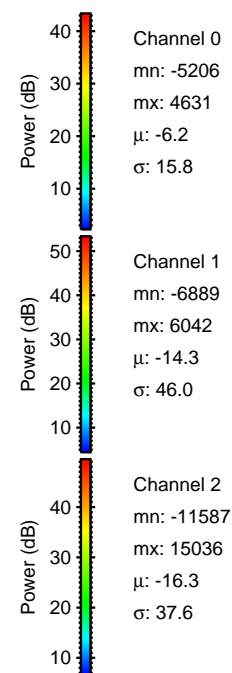
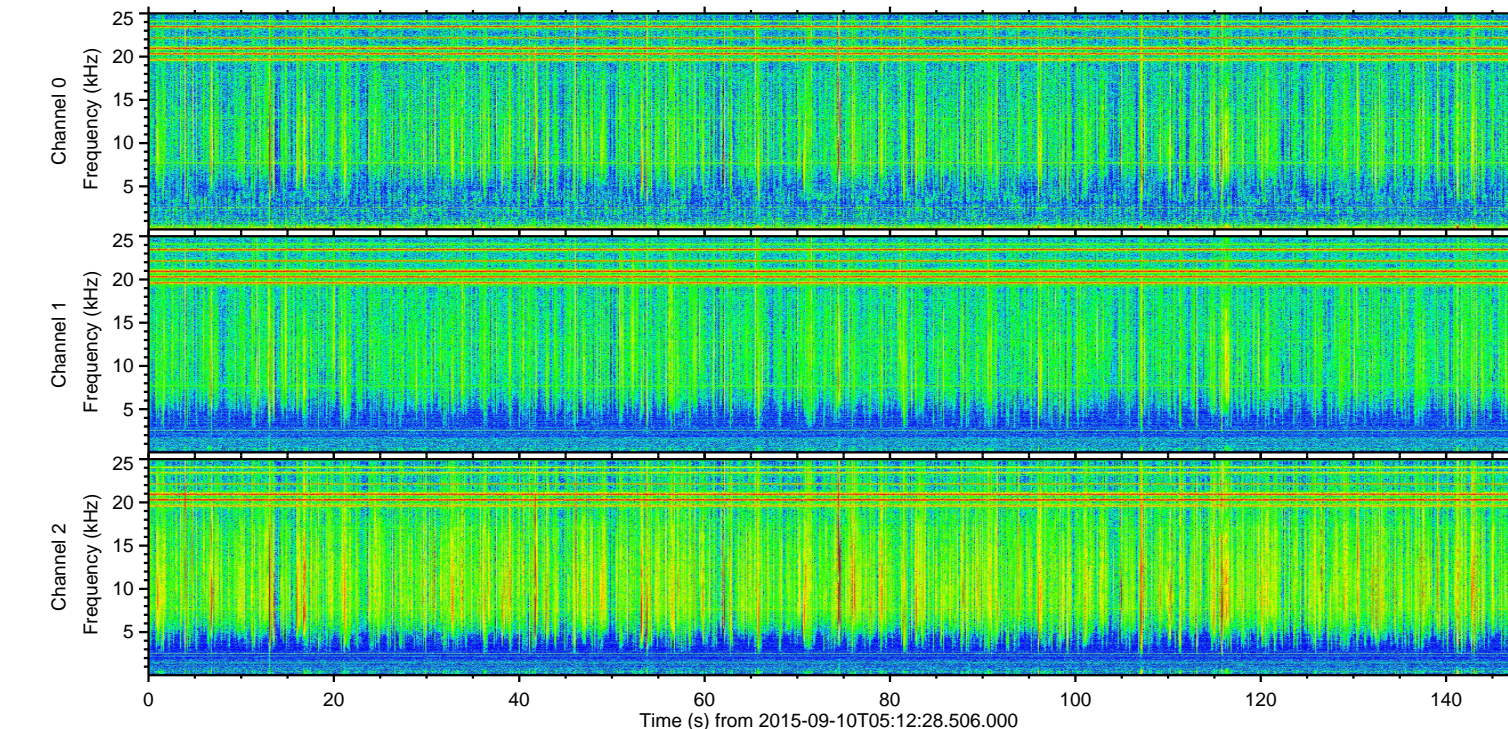
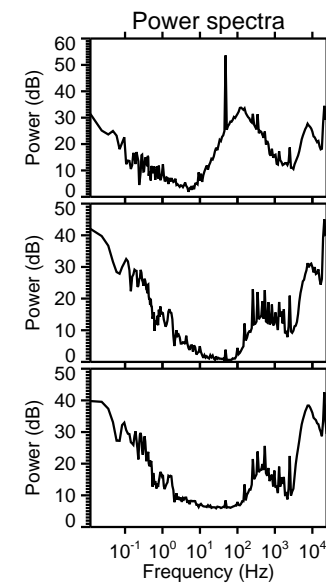
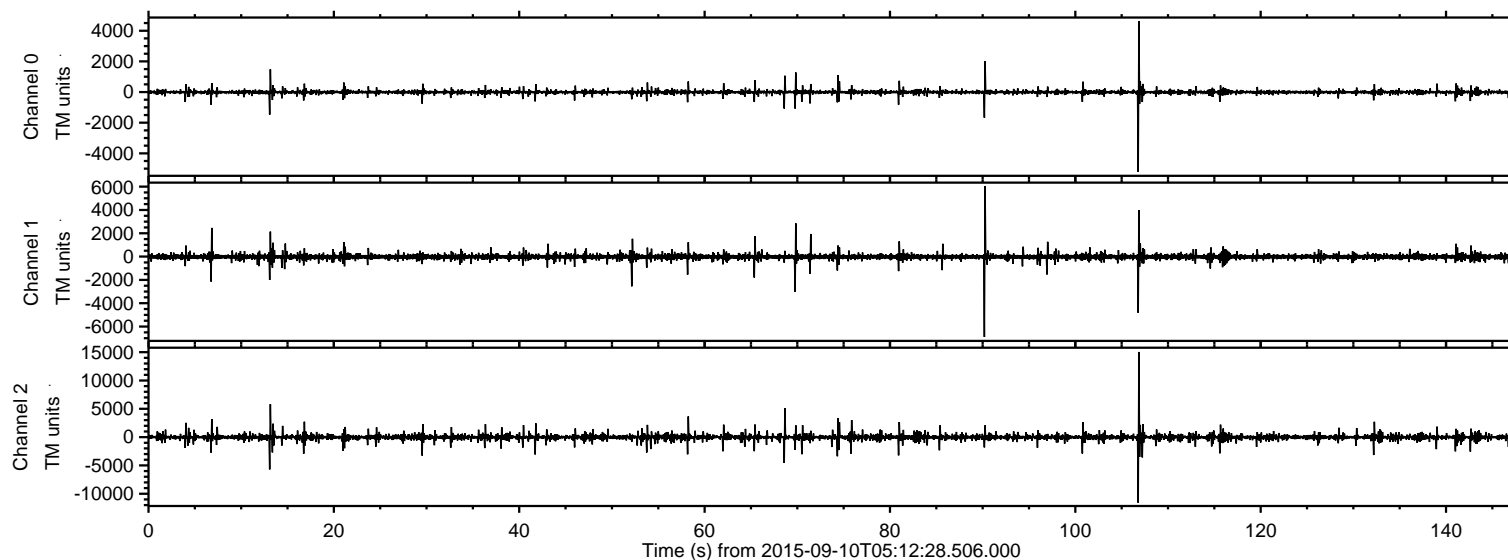


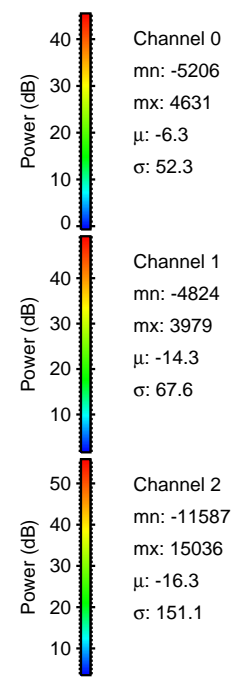
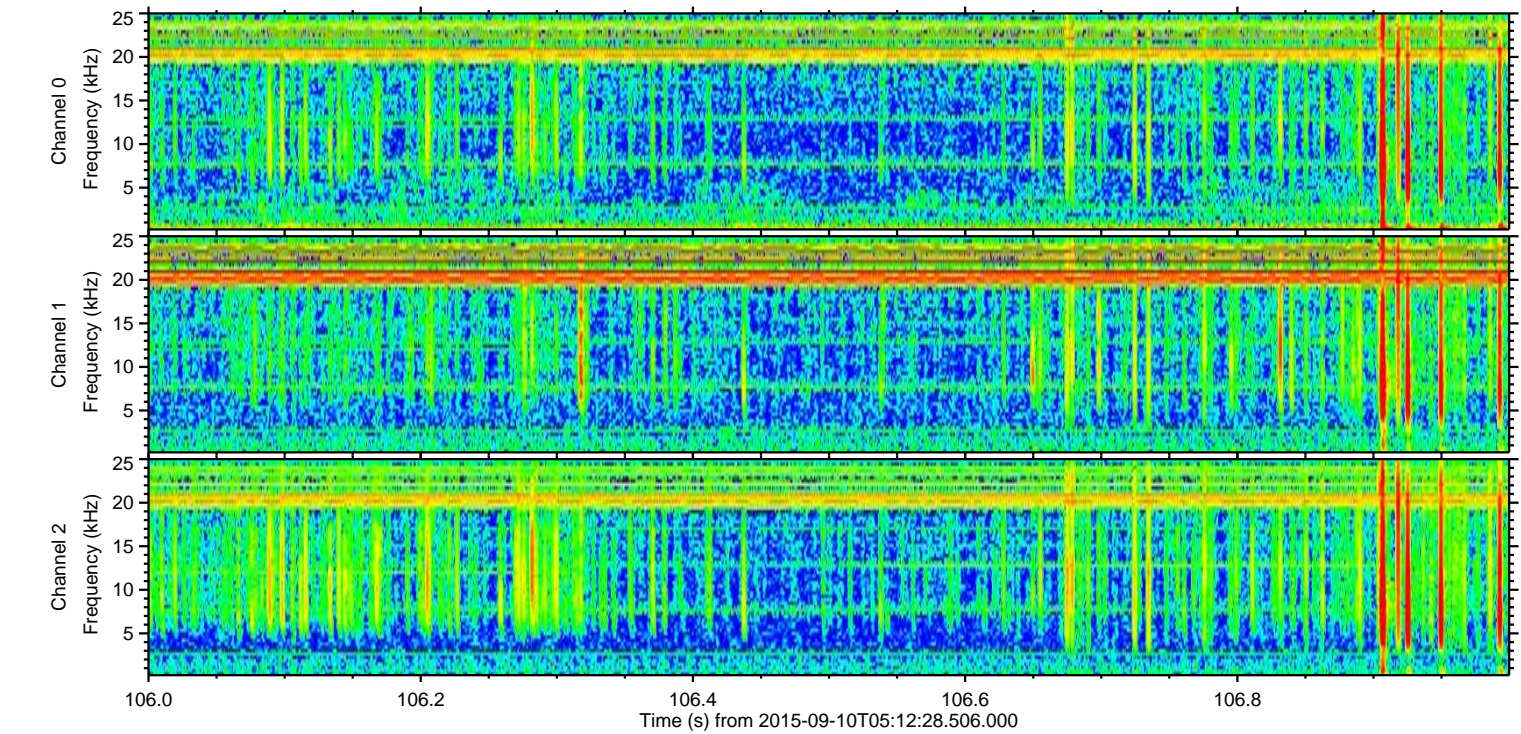
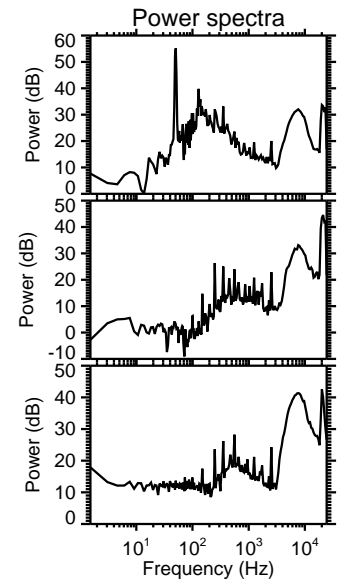
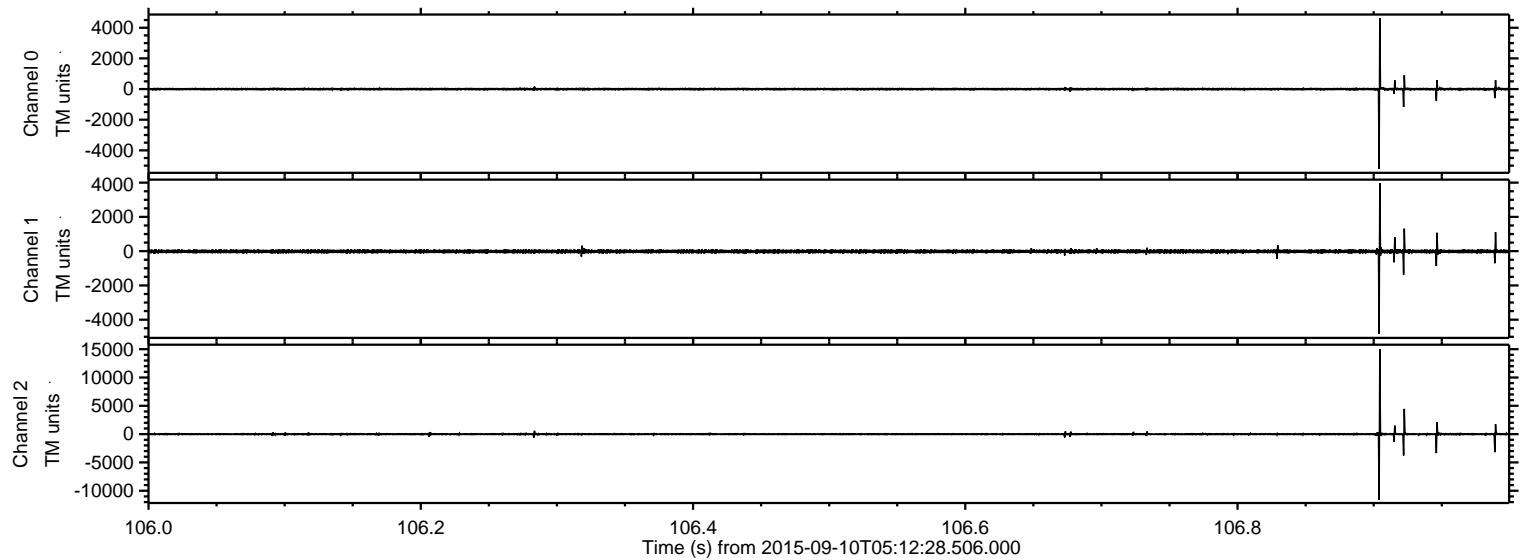
ELMAVAN 3D WAVEFORMS (Measured data sampled at 50 kHz) 51000 packets of 144 samples from 2015-09-10T05:12:28.506.000.

Processed Sun Oct 11 06:12:59 2015 by ELM ver.2012-10-06 from 001__elm20150910_051227__dat00.bin



ELMAVAN 3D WAVEFORMS (Measured data sampled at 50 kHz) 51000 packets of 144 samples from 2015-09-10T05:12:28.506.000. Part 107/147

Processed Sun Oct 11 06:13:15 2015 by ELM ver.2012-10-06 from 001__elm20150910_051227__dat00.bin

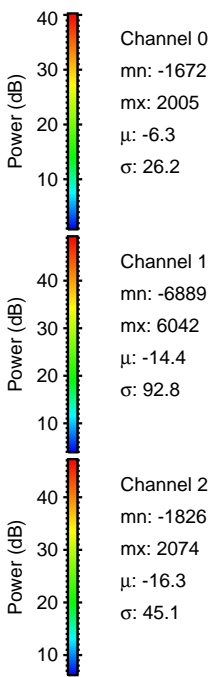
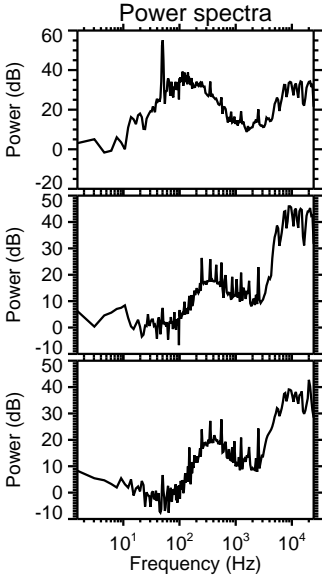
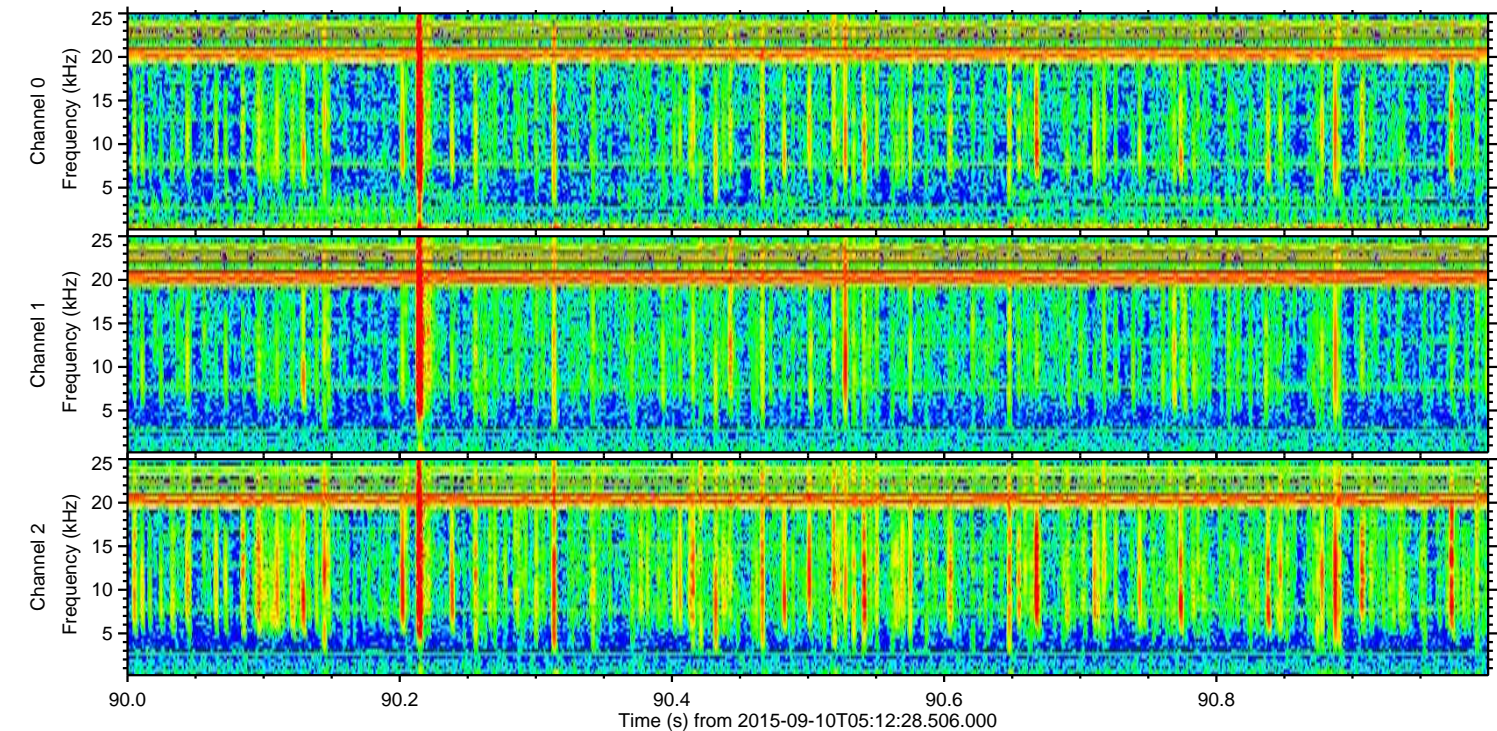
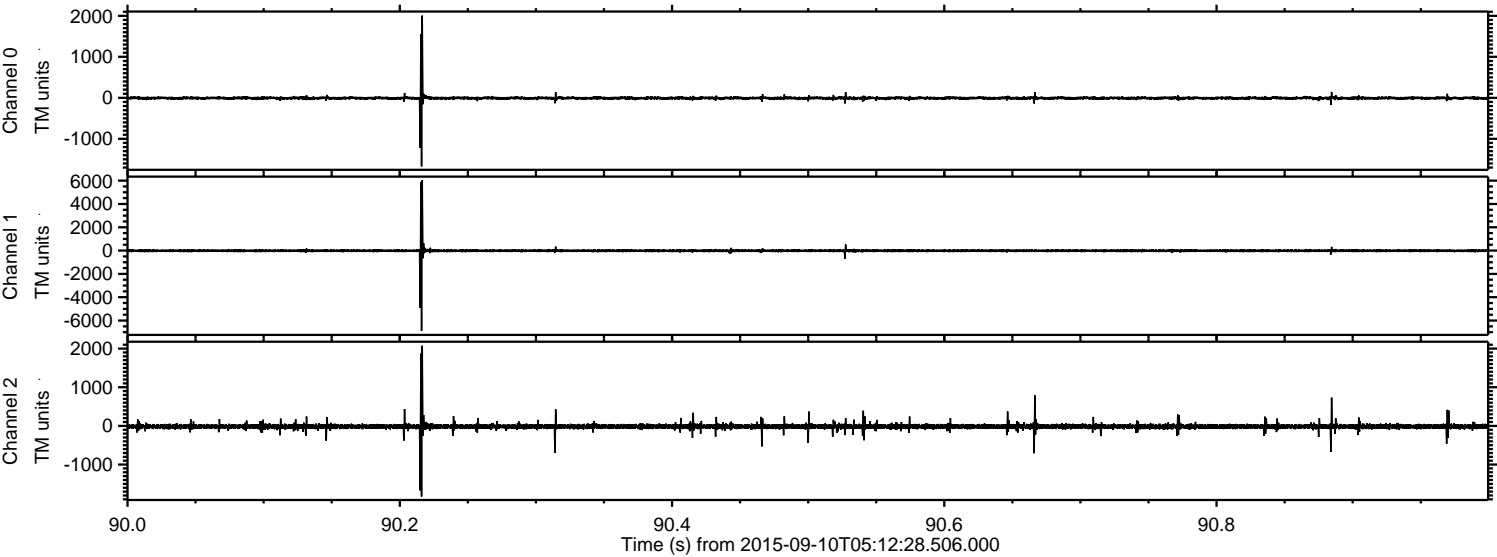


Channel 0
mn: -5206
mx: 4631
 μ : -6.3
 σ : 52.3

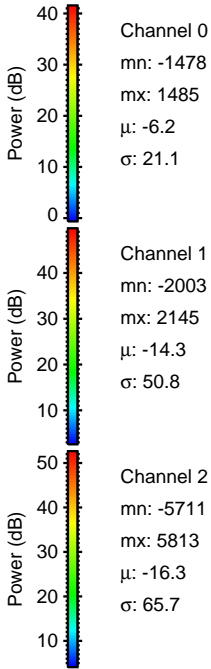
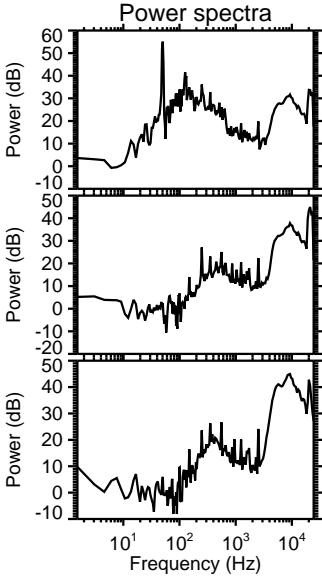
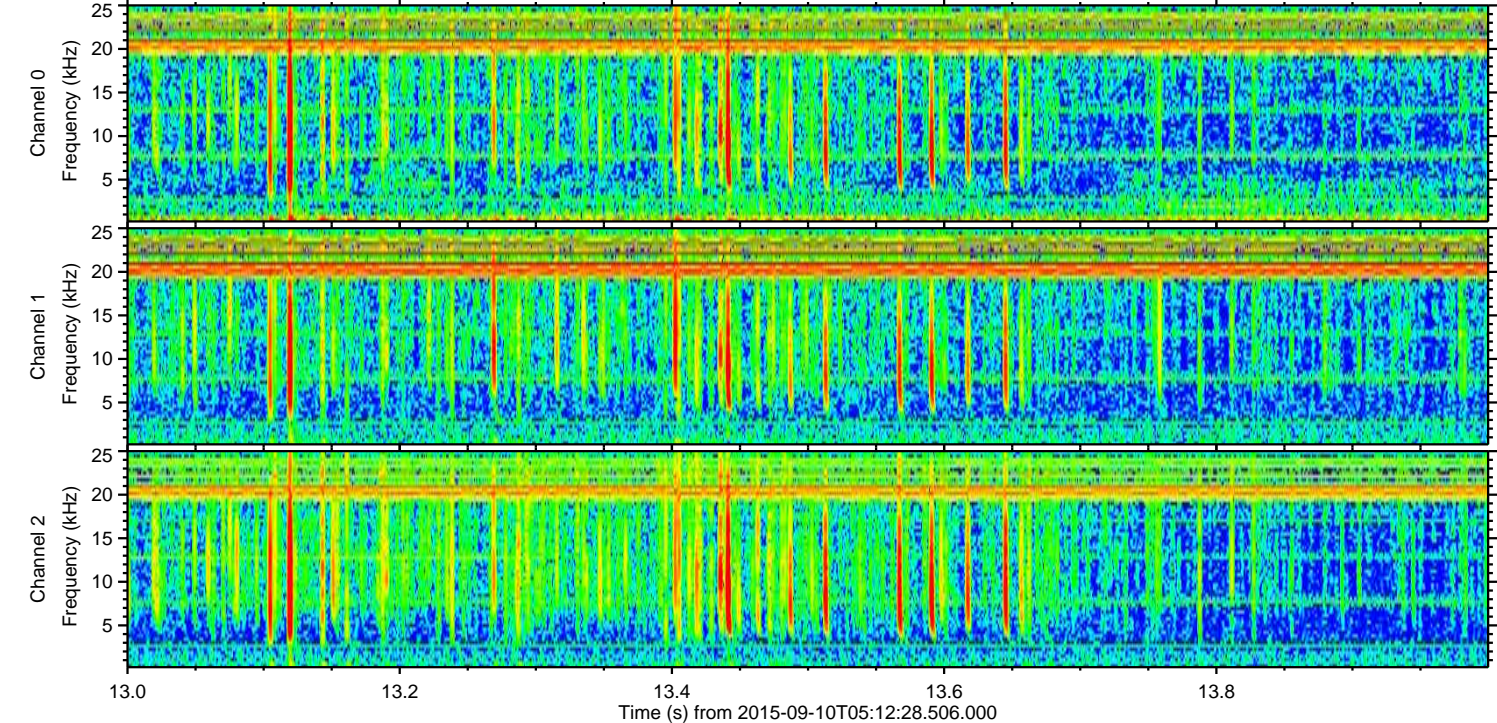
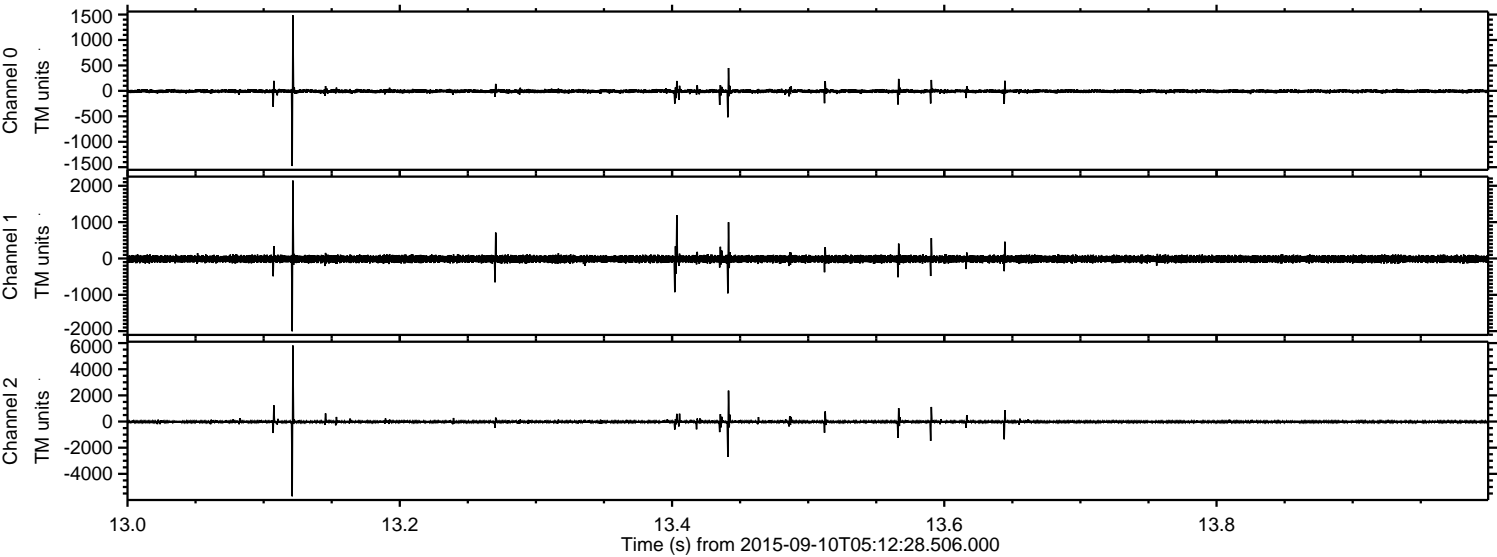
Channel 1
mn: -4824
mx: 3979
 μ : -14.3
 σ : 67.6

Channel 2
mn: -11587
mx: 15036
 μ : -16.3
 σ : 151.1

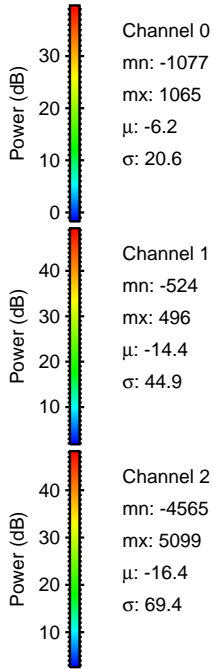
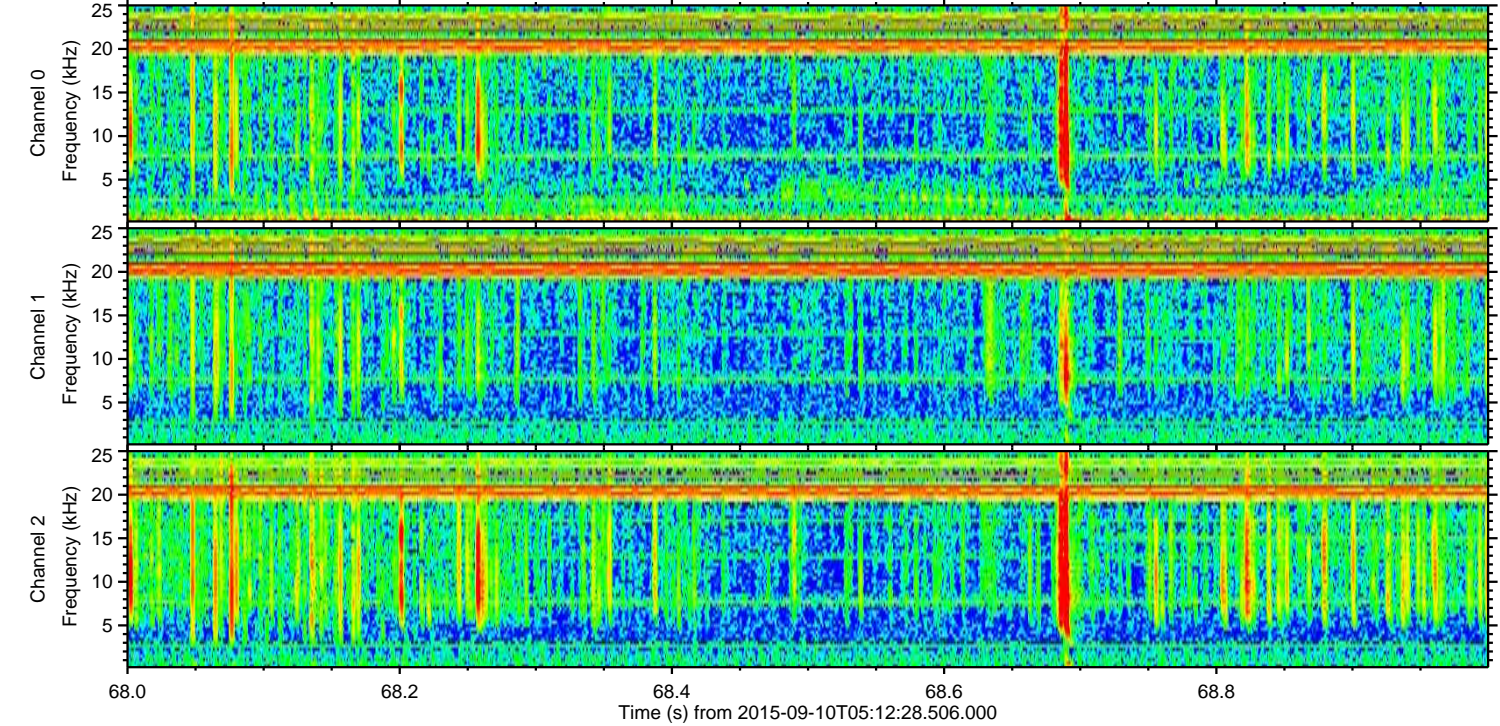
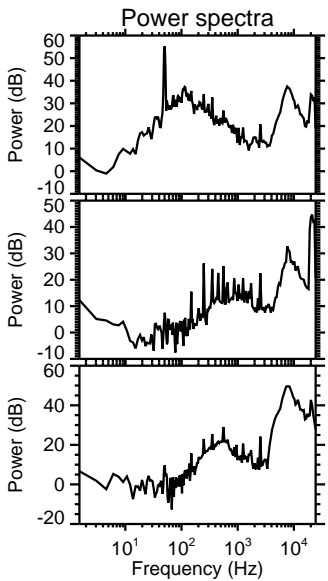
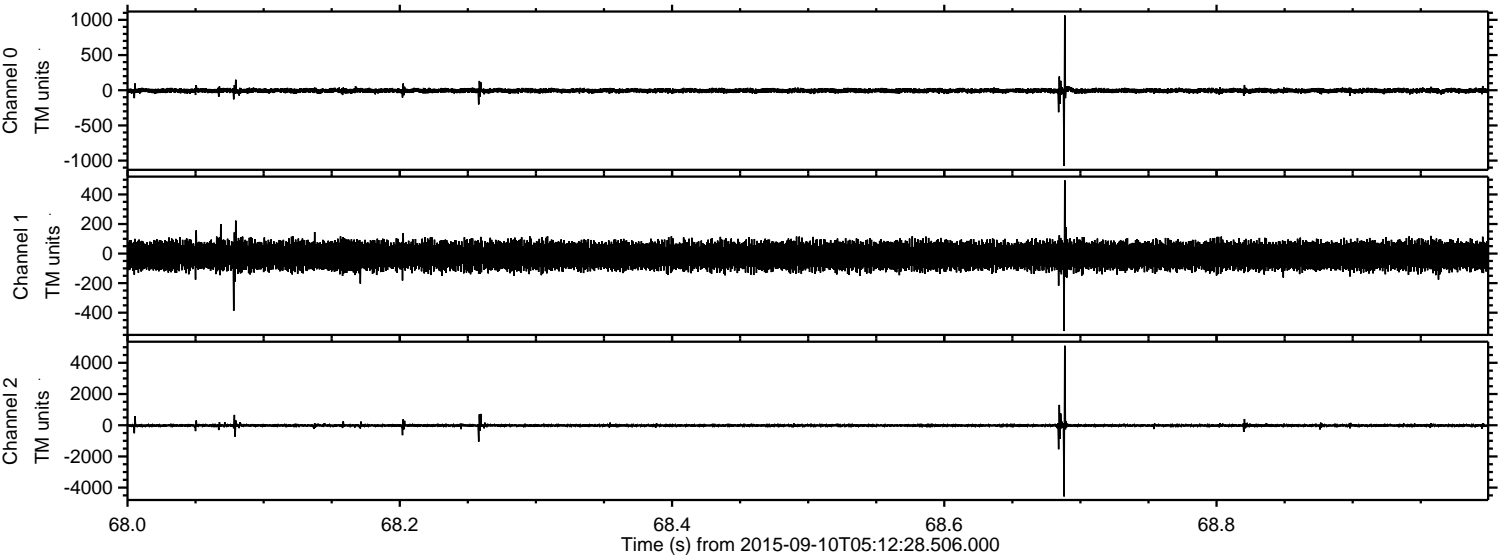
Processed Sun Oct 11 06:13:16 2015 by ELM ver.2012-10-06 from 001__elm20150910_051227__dat00.bin



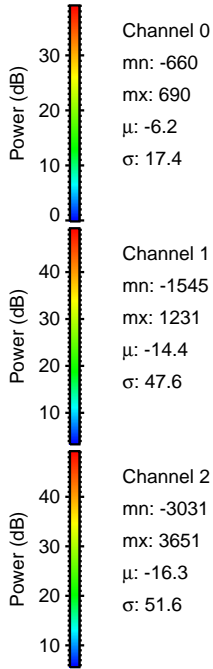
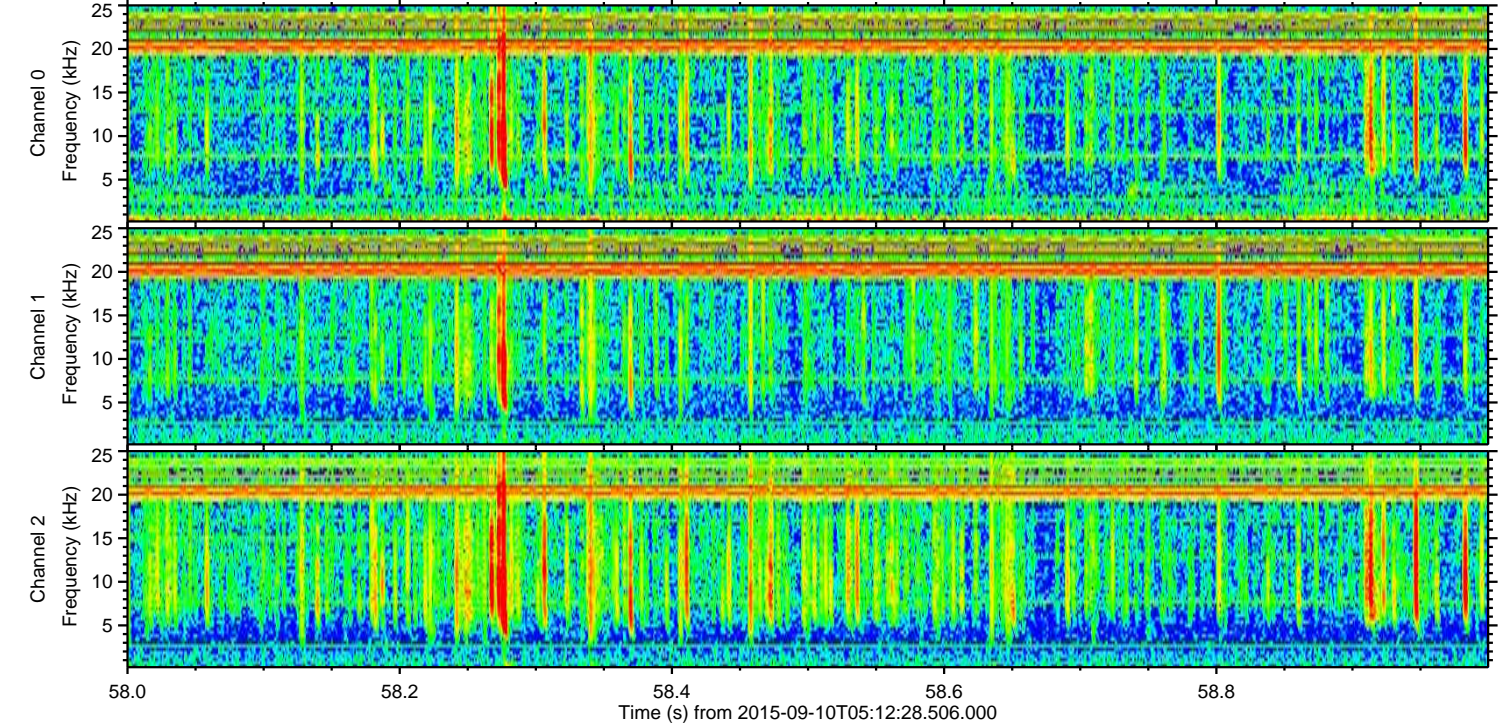
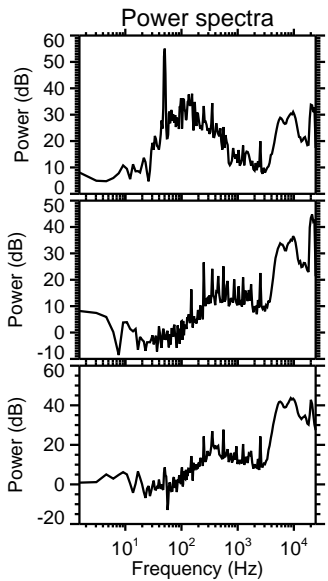
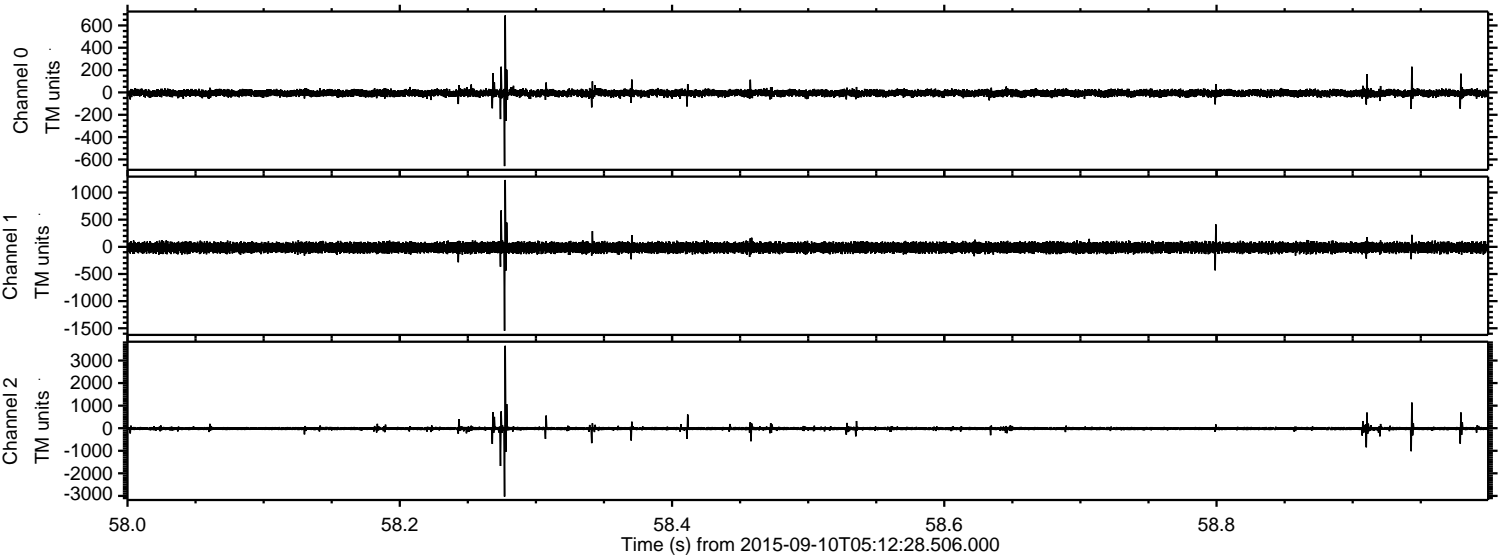
Processed Sun Oct 11 06:13:18 2015 by ELM ver.2012-10-06 from 001__elm20150910_051227__dat00.bin



Processed Sun Oct 11 06:13:19 2015 by ELM ver.2012-10-06 from 001__elm20150910_051227__dat00.bin

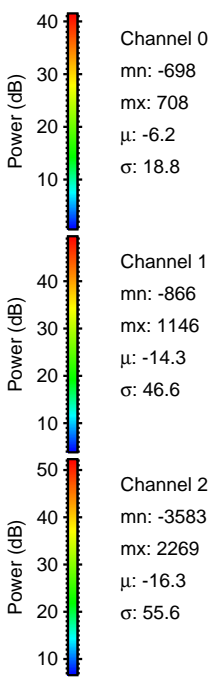
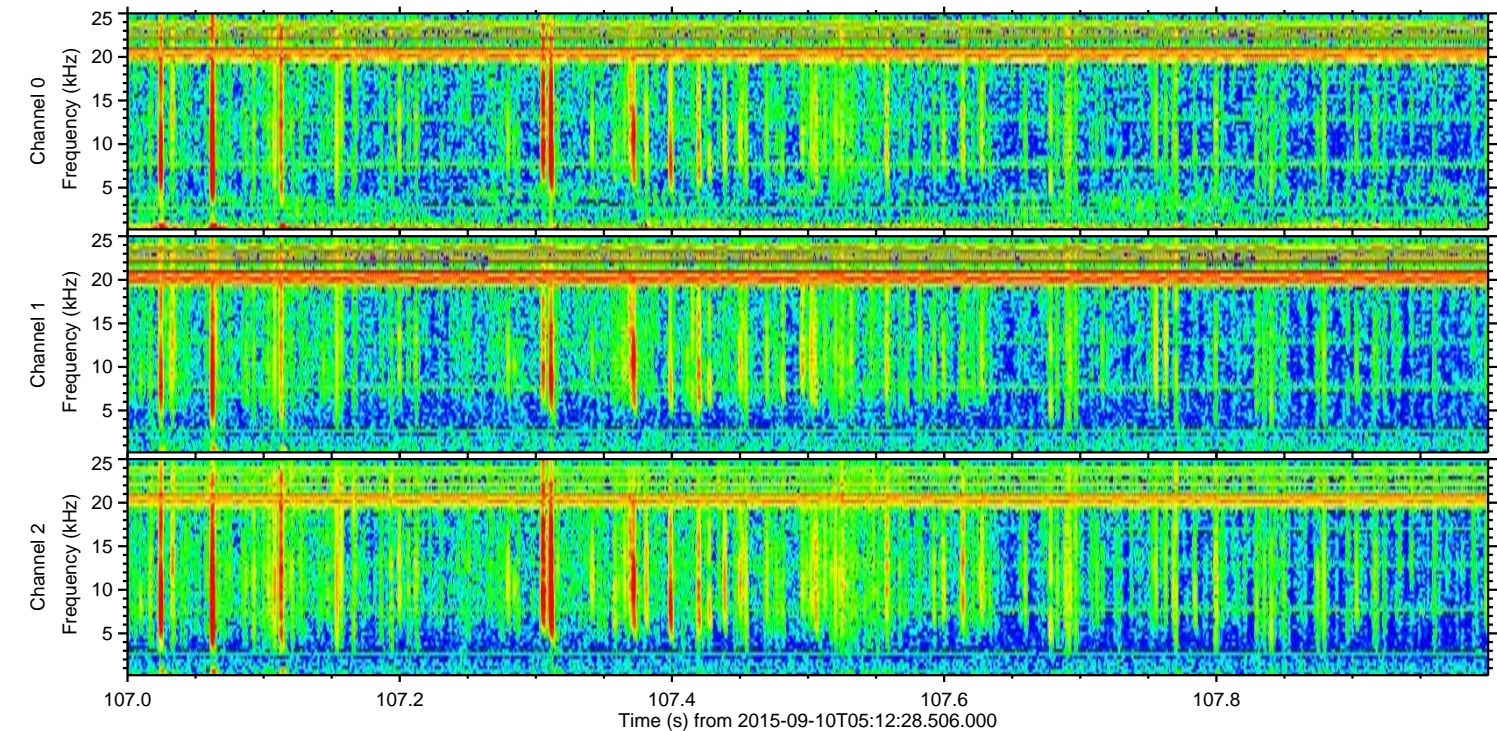
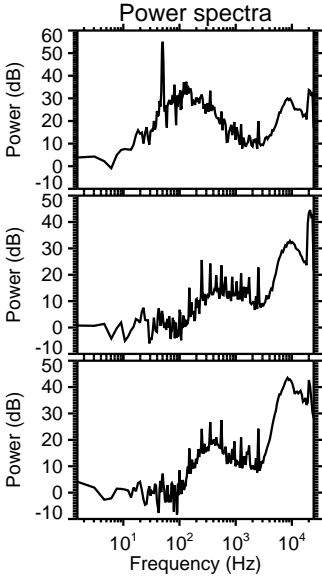
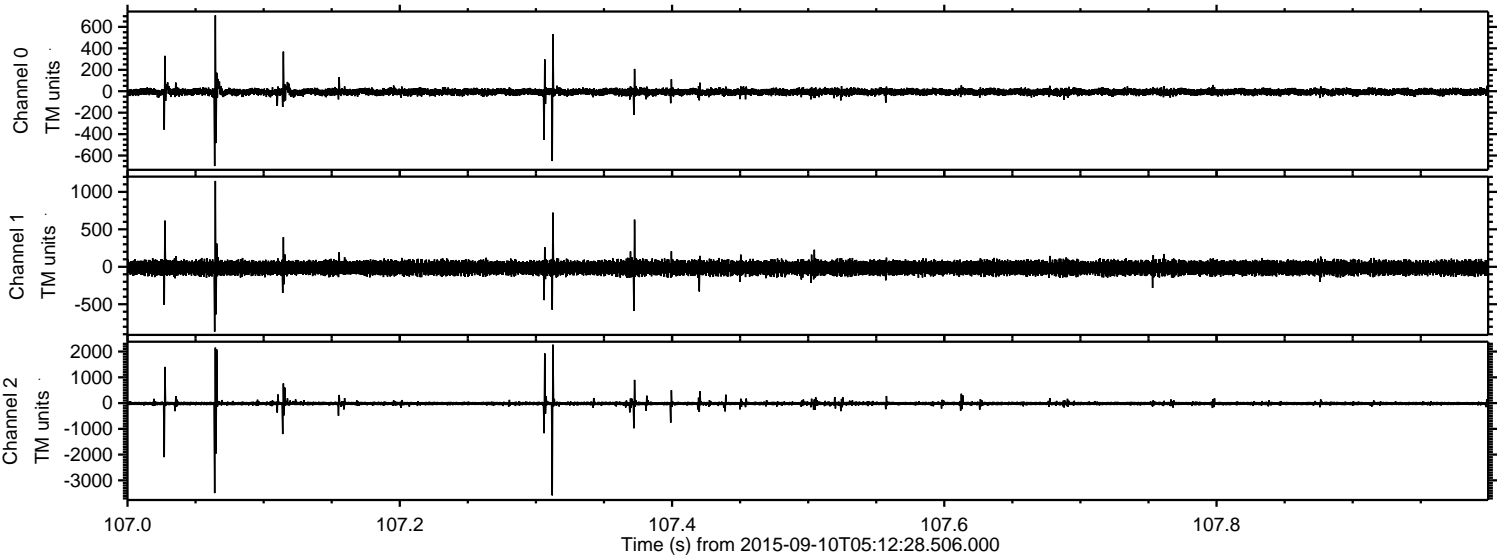


Processed Sun Oct 11 06:13:20 2015 by ELM ver.2012-10-06 from 001__elm20150910_051227__dat00.bin

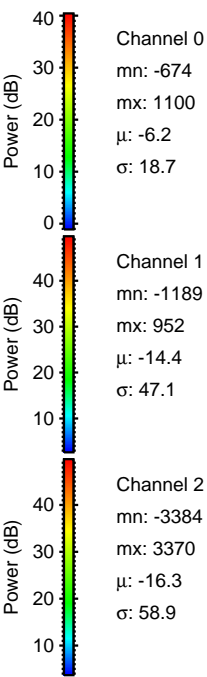
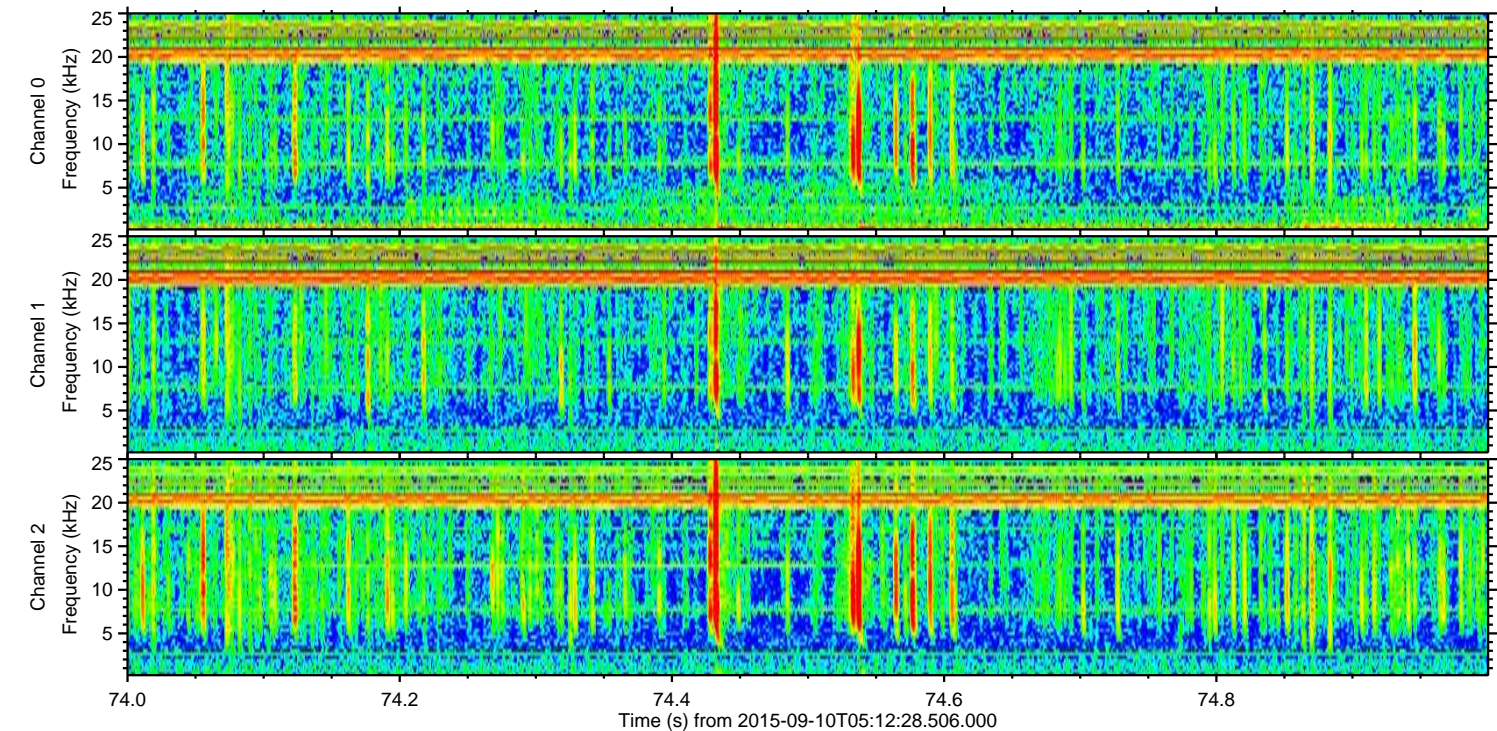
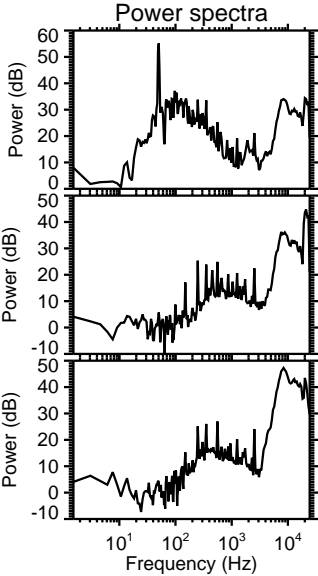
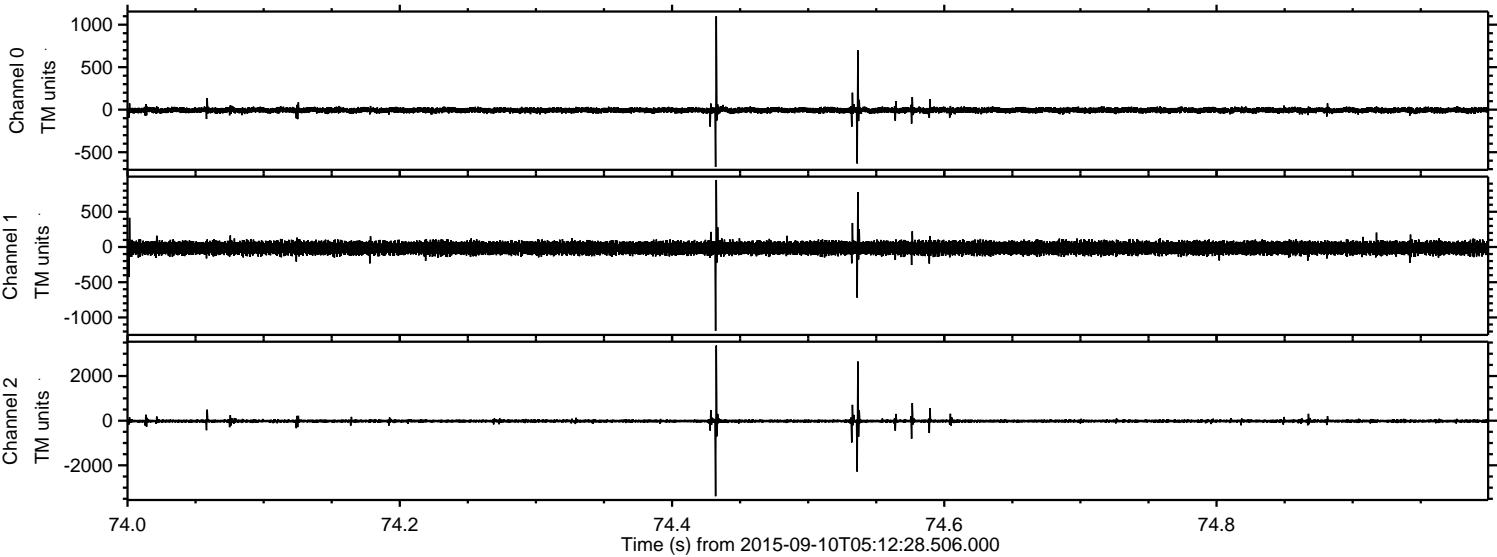


ELMAVAN 3D WAVEFORMS (Measured data sampled at 50 kHz) 51000 packets of 144 samples from 2015-09-10T05:12:28.506.000. Part 108/147

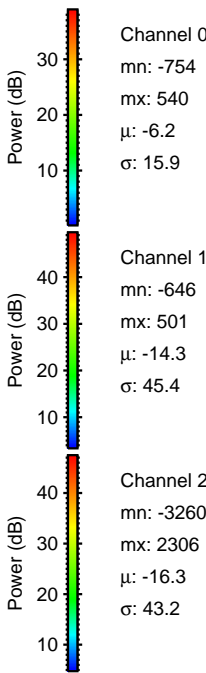
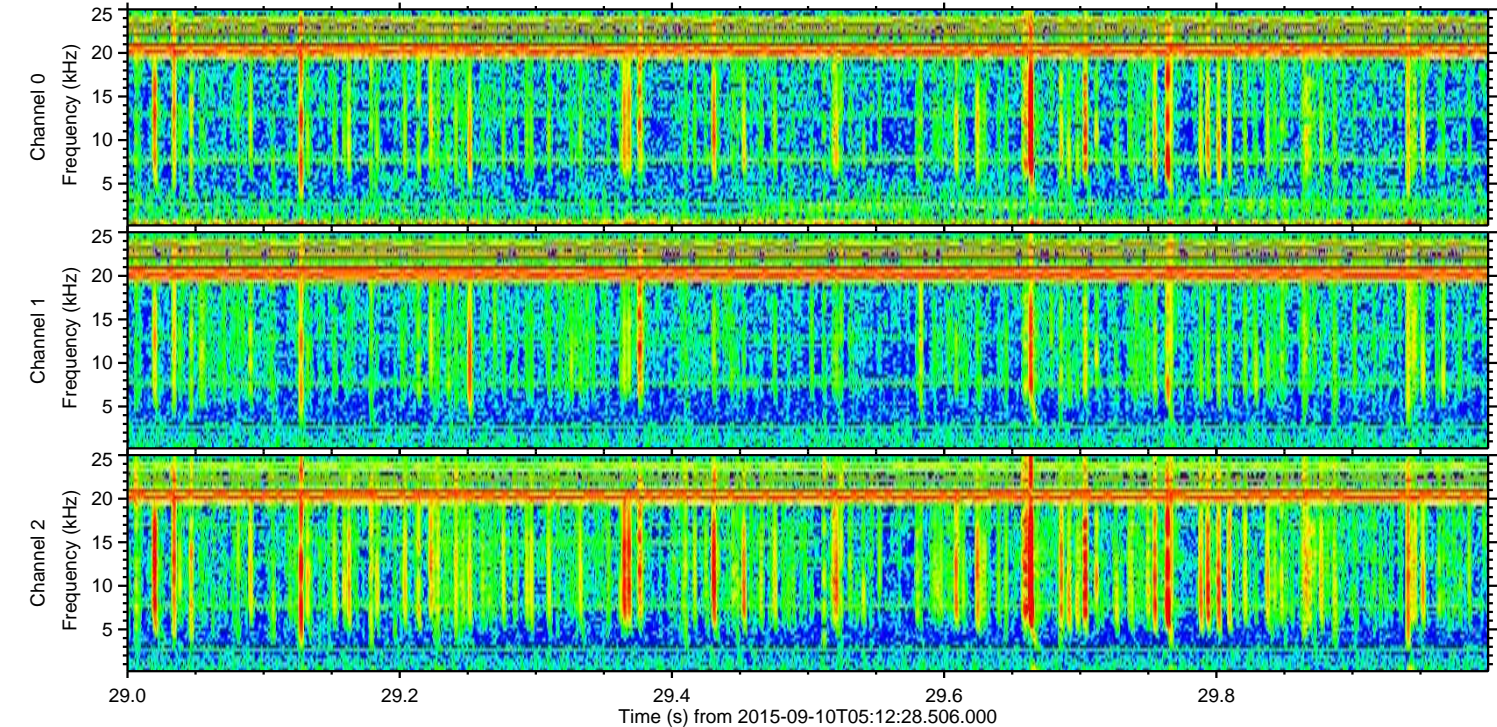
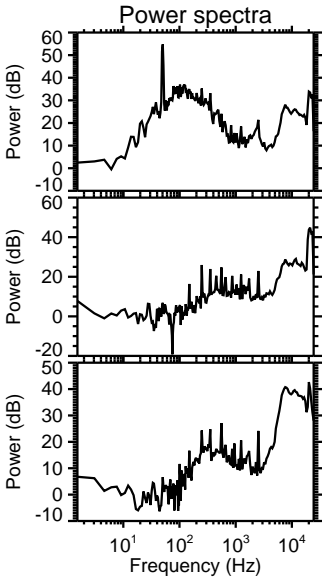
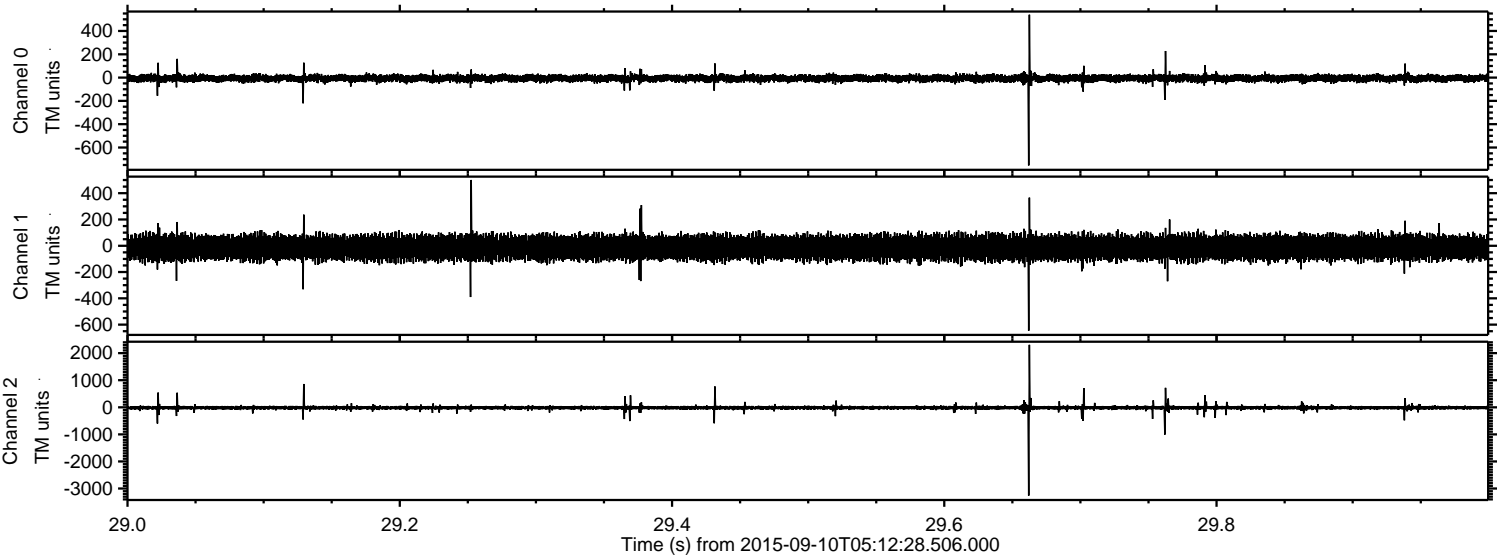
Processed Sun Oct 11 06:13:21 2015 by ELM ver.2012-10-06 from 001__elm20150910_051227__dat00.bin



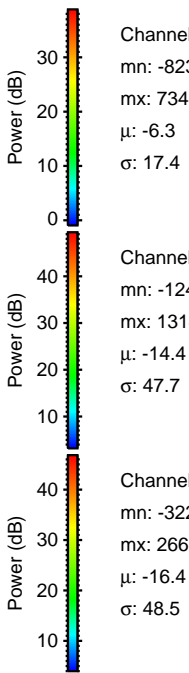
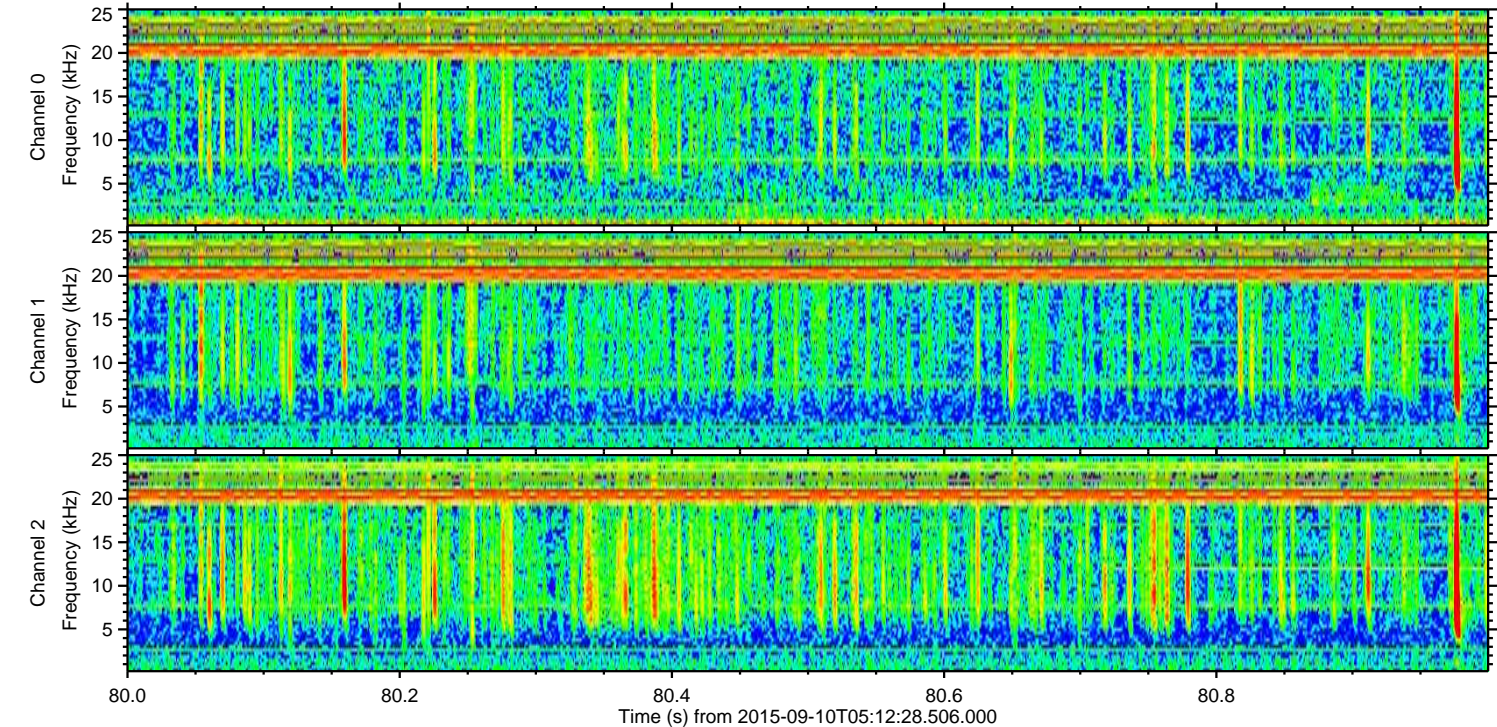
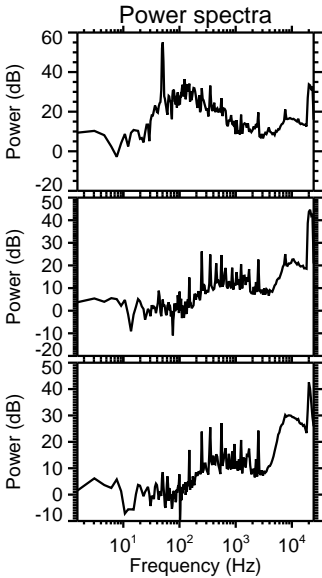
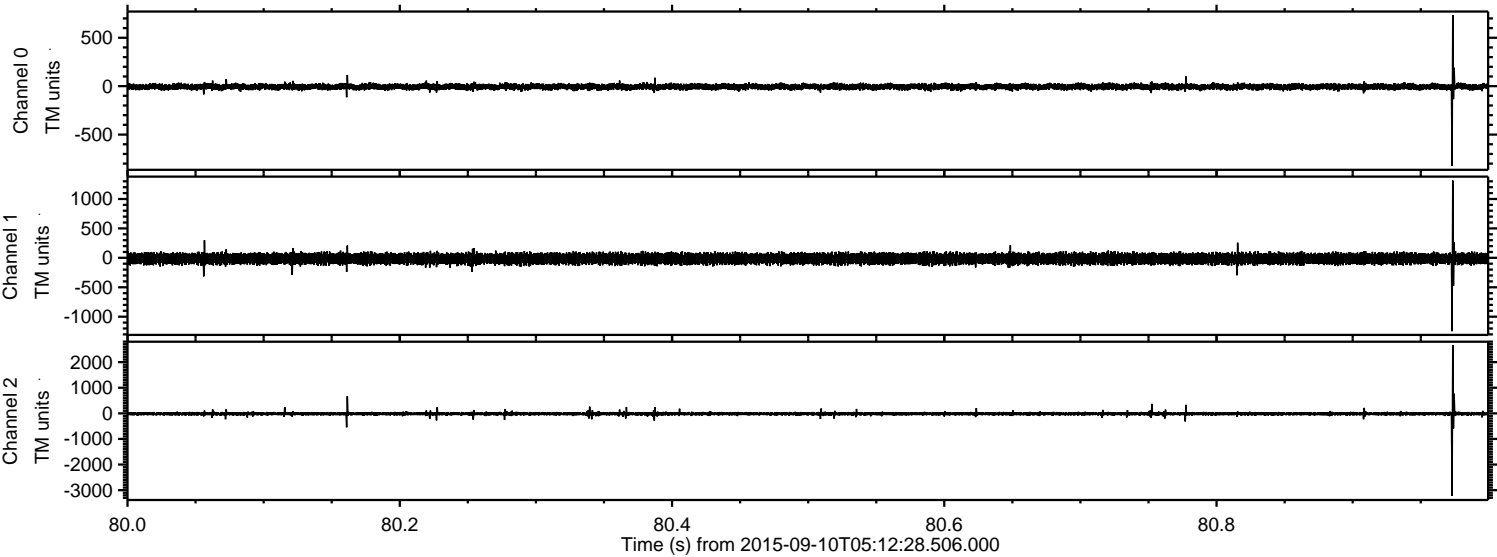
Processed Sun Oct 11 06:13:22 2015 by ELM ver.2012-10-06 from 001__elm20150910_051227__dat00.bin



Processed Sun Oct 11 06:13:23 2015 by ELM ver.2012-10-06 from 001__elm20150910_051227__dat00.bin



Processed Sun Oct 11 06:13:24 2015 by ELM ver.2012-10-06 from 001__elm20150910_051227__dat00.bin



Channel 0
mn: -823
mx: 734
 μ : -6.3
 σ : 17.4

Channel 1
mn: -1247
mx: 1314
 μ : -14.4
 σ : 47.7

Channel 2
mn: -3223
mx: 2665
 μ : -16.4
 σ : 48.5

Processed Sun Oct 11 06:13:25 2015 by ELM ver.2012-10-06 from 001__elm20150910_051227__dat00.bin

