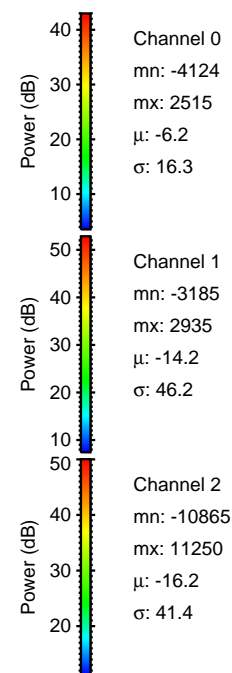
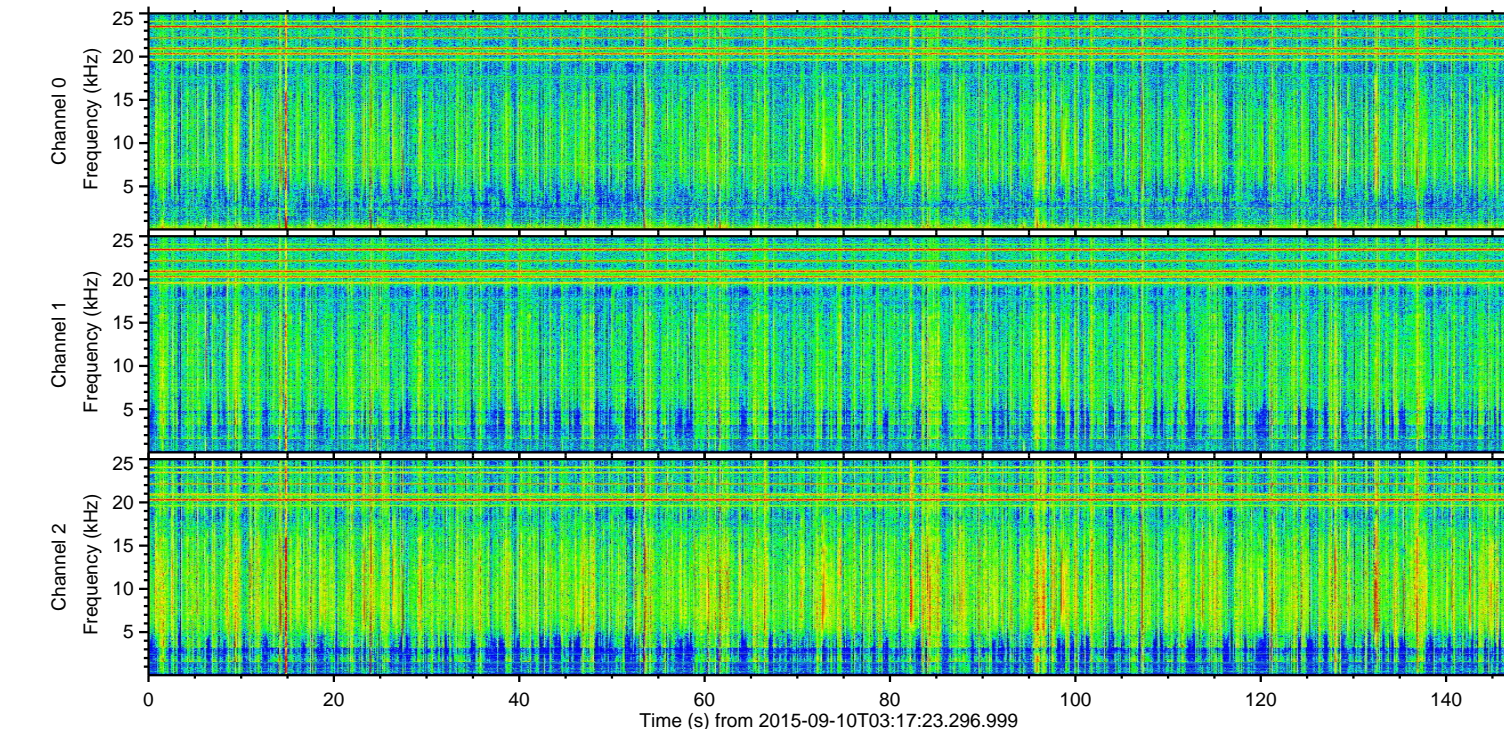
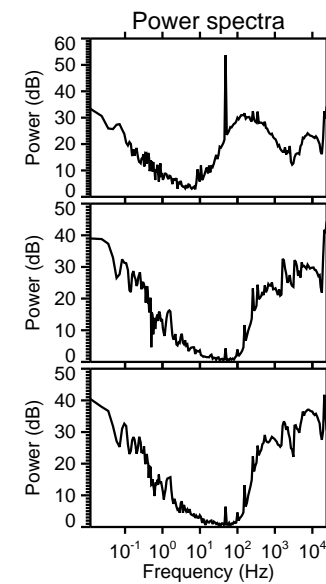
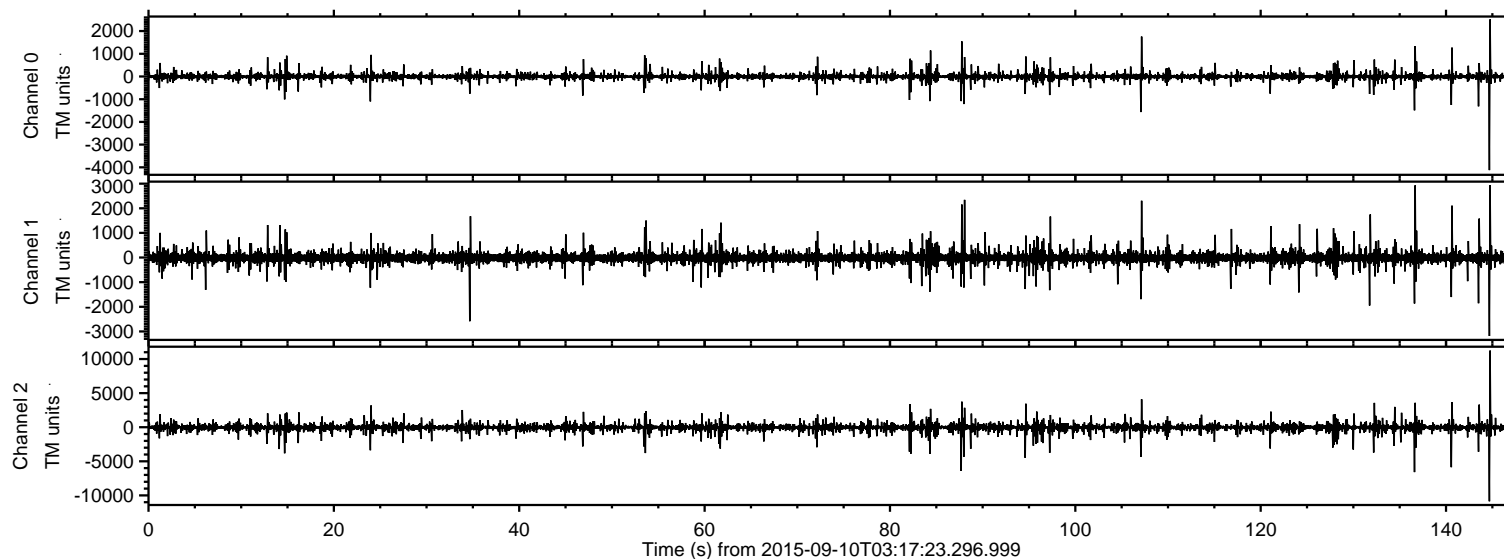


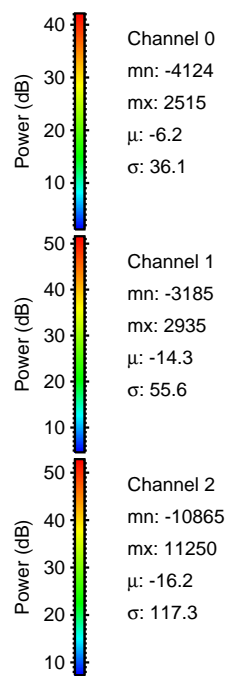
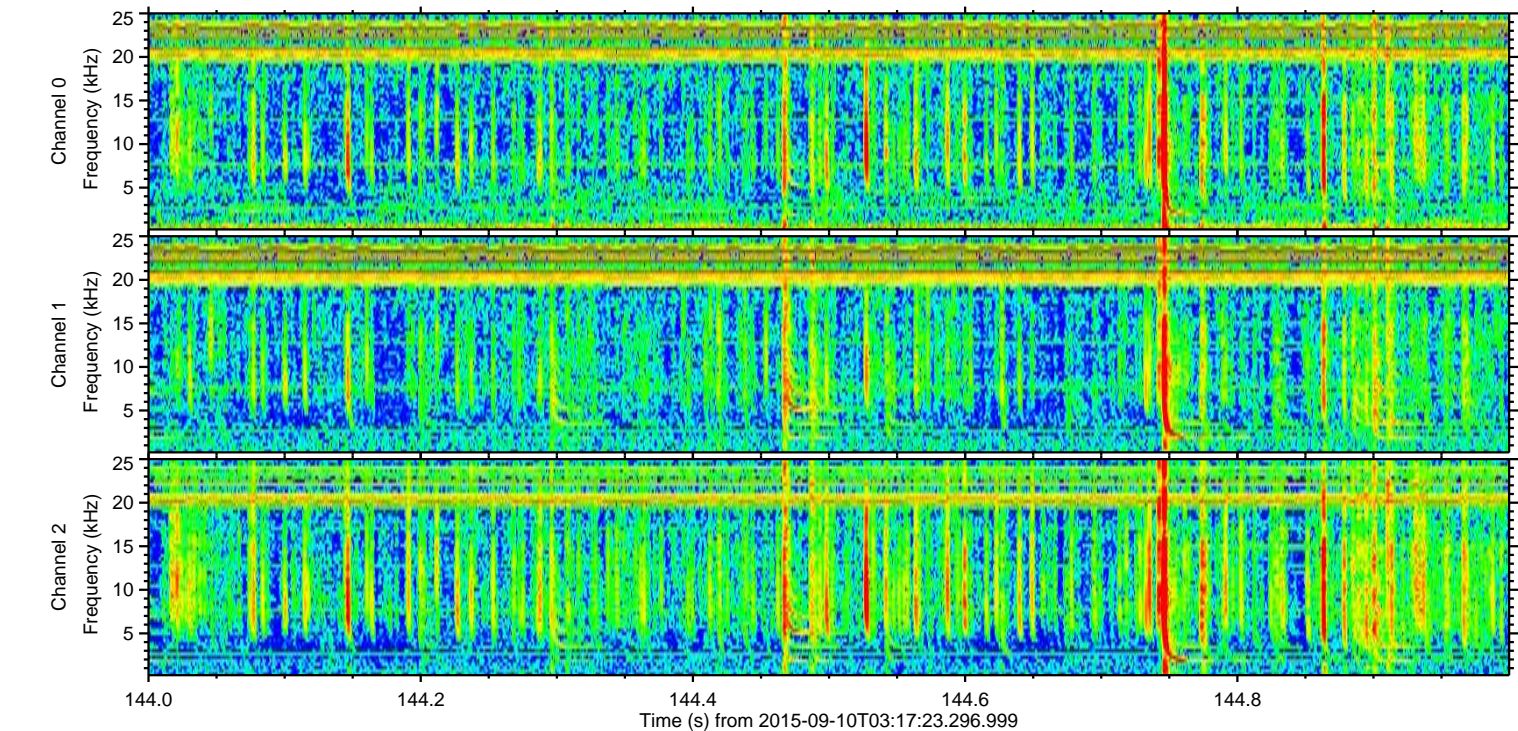
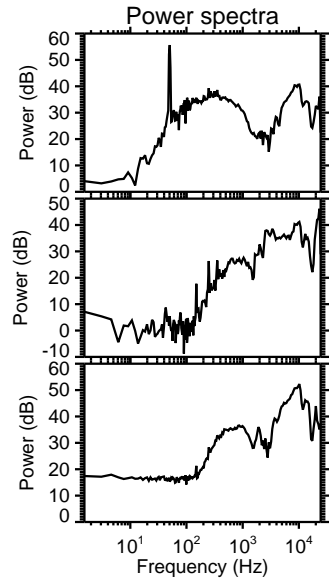
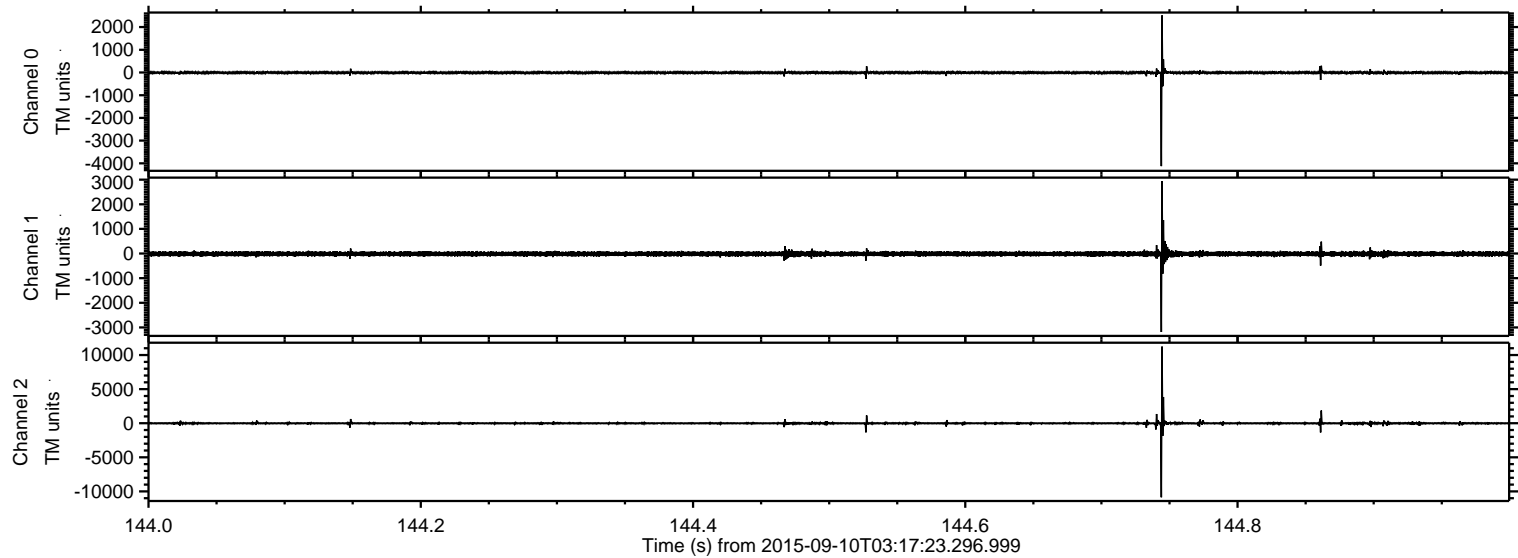
# ELMAVAN 3D WAVEFORMS (Measured data sampled at 50 kHz) 51000 packets of 144 samples from 2015-09-10T03:17:23.296.999.

Processed Sun Oct 11 05:40:57 2015 by ELM ver.2012-10-06 from 001\_\_elm20150910\_031722\_\_dat00.bin



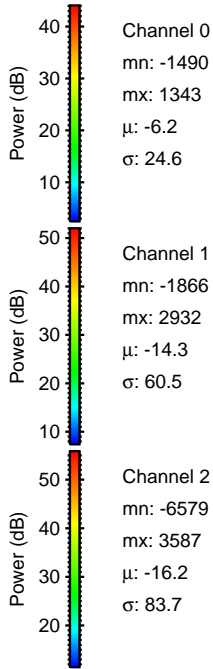
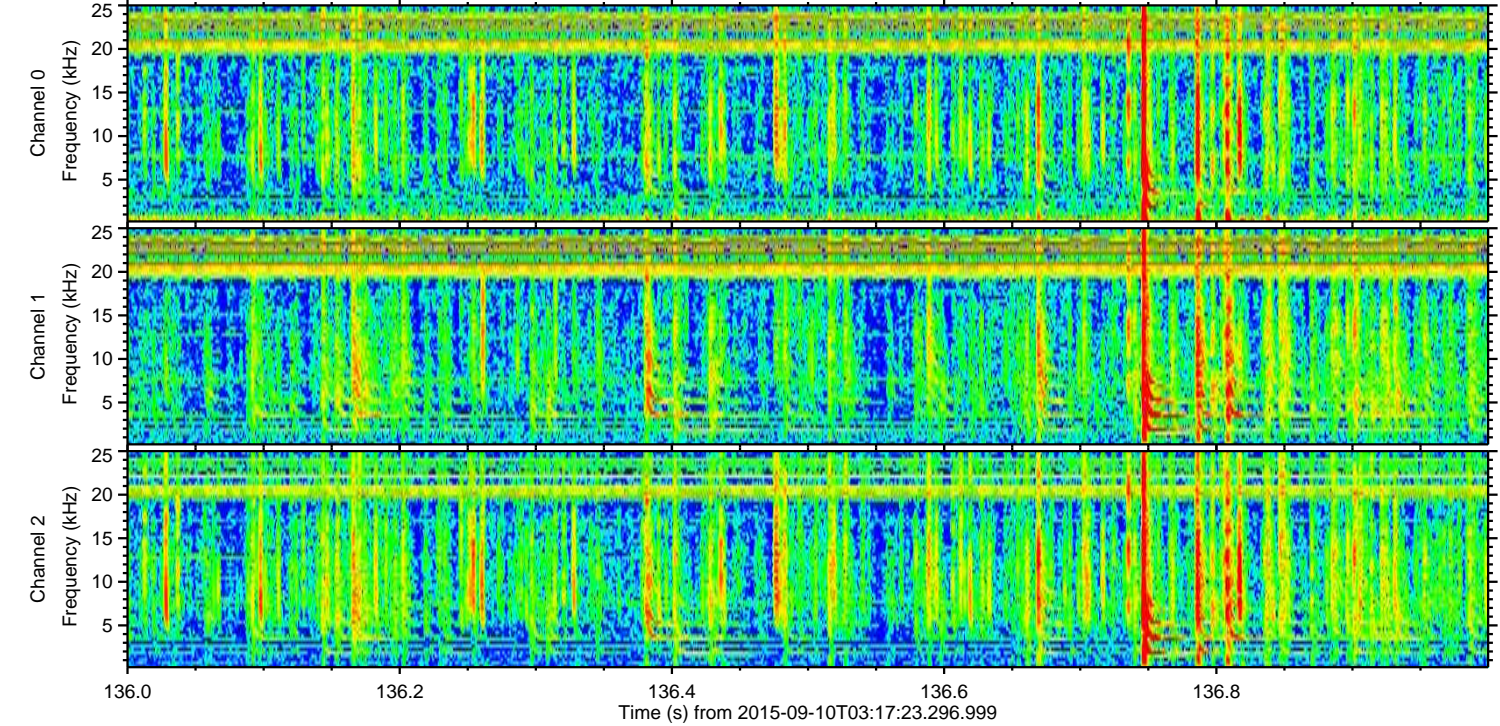
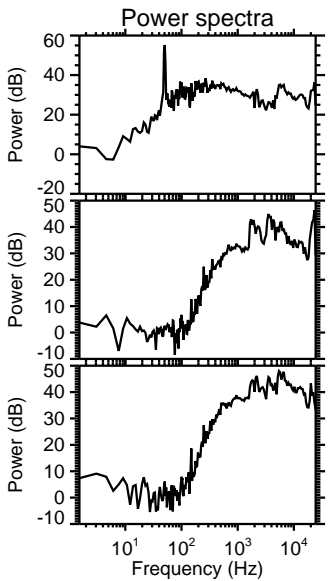
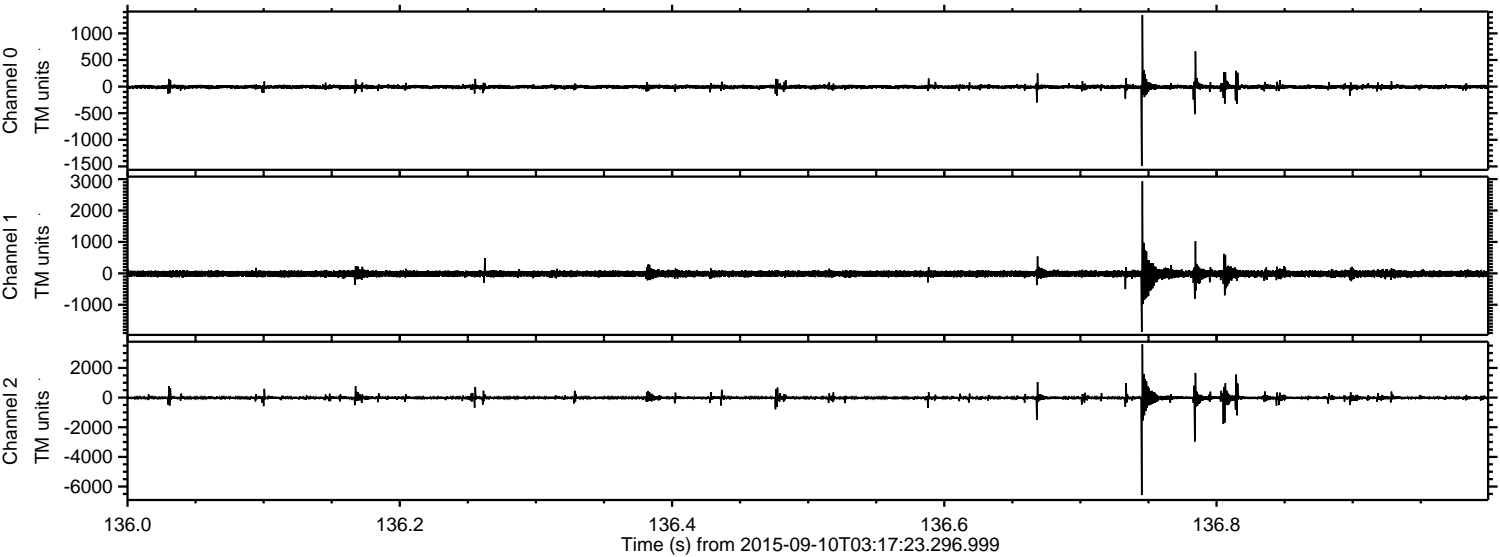
ELMAVAN 3D WAVEFORMS (Measured data sampled at 50 kHz) 51000 packets of 144 samples from 2015-09-10T03:17:23.296.999. Part 145/147

Processed Sun Oct 11 05:41:12 2015 by ELM ver.2012-10-06 from 001\_\_elm20150910\_031722\_\_dat00.bin

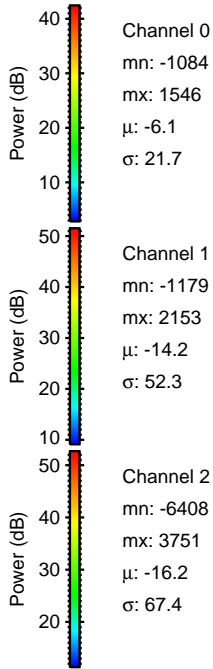
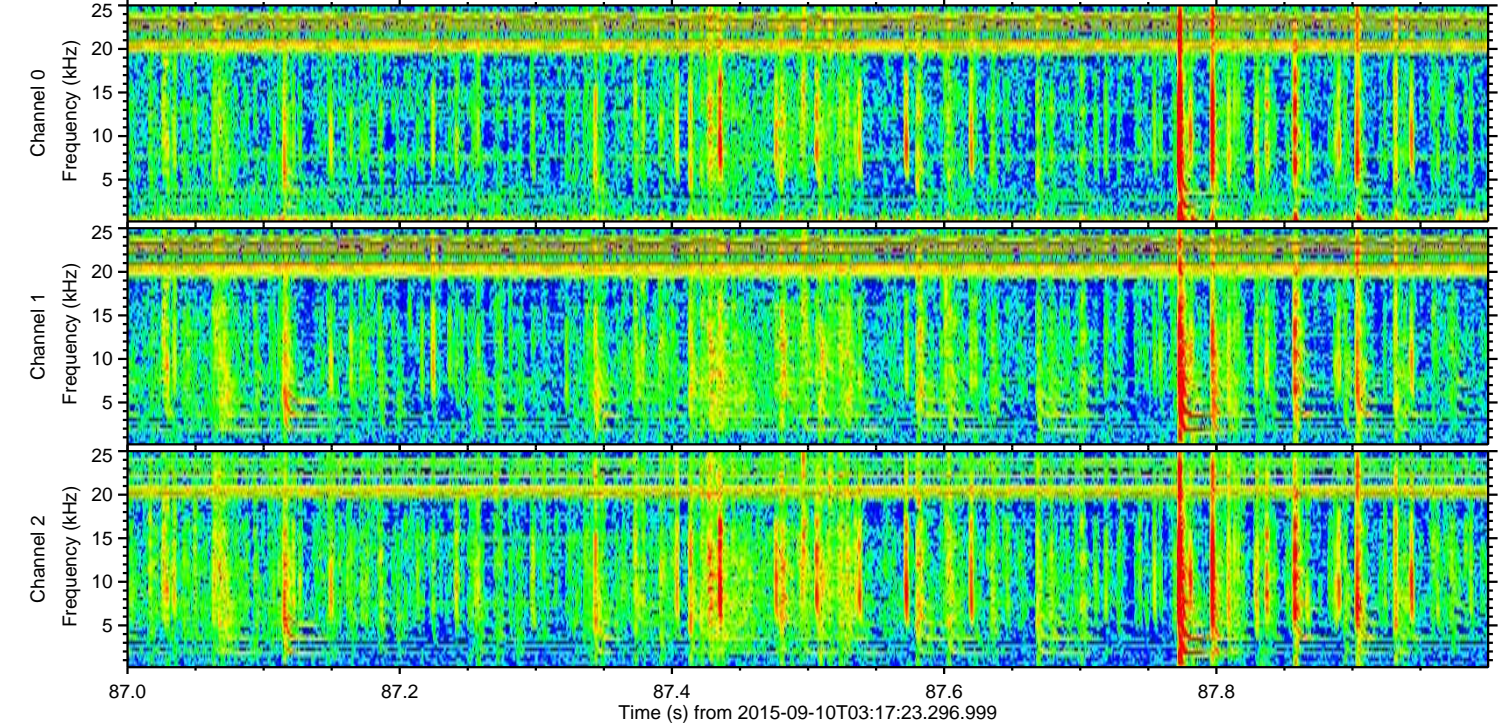
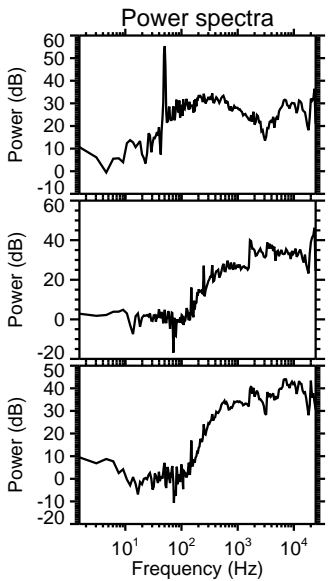
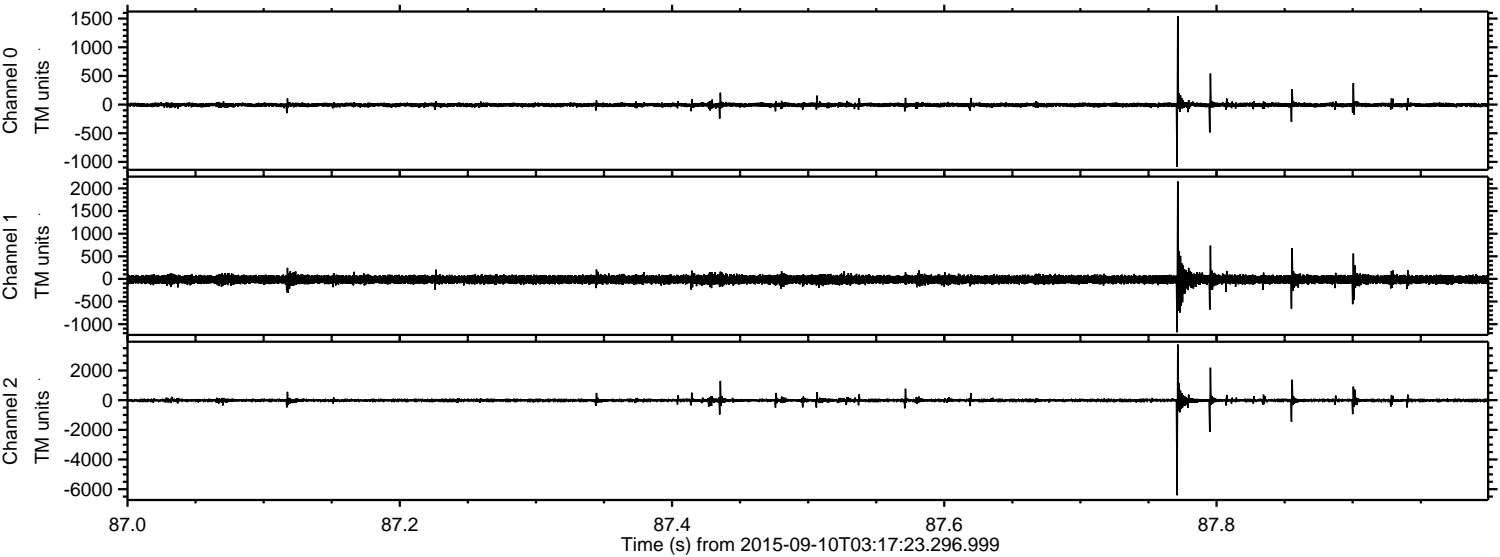


ELMAVAN 3D WAVEFORMS (Measured data sampled at 50 kHz) 51000 packets of 144 samples from 2015-09-10T03:17:23.296.999. Part 137/147

Processed Sun Oct 11 05:41:13 2015 by ELM ver.2012-10-06 from 001\_\_elm20150910\_031722\_\_dat00.bin

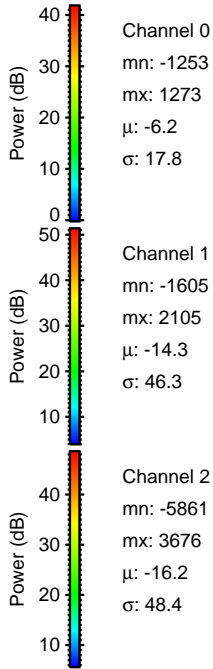
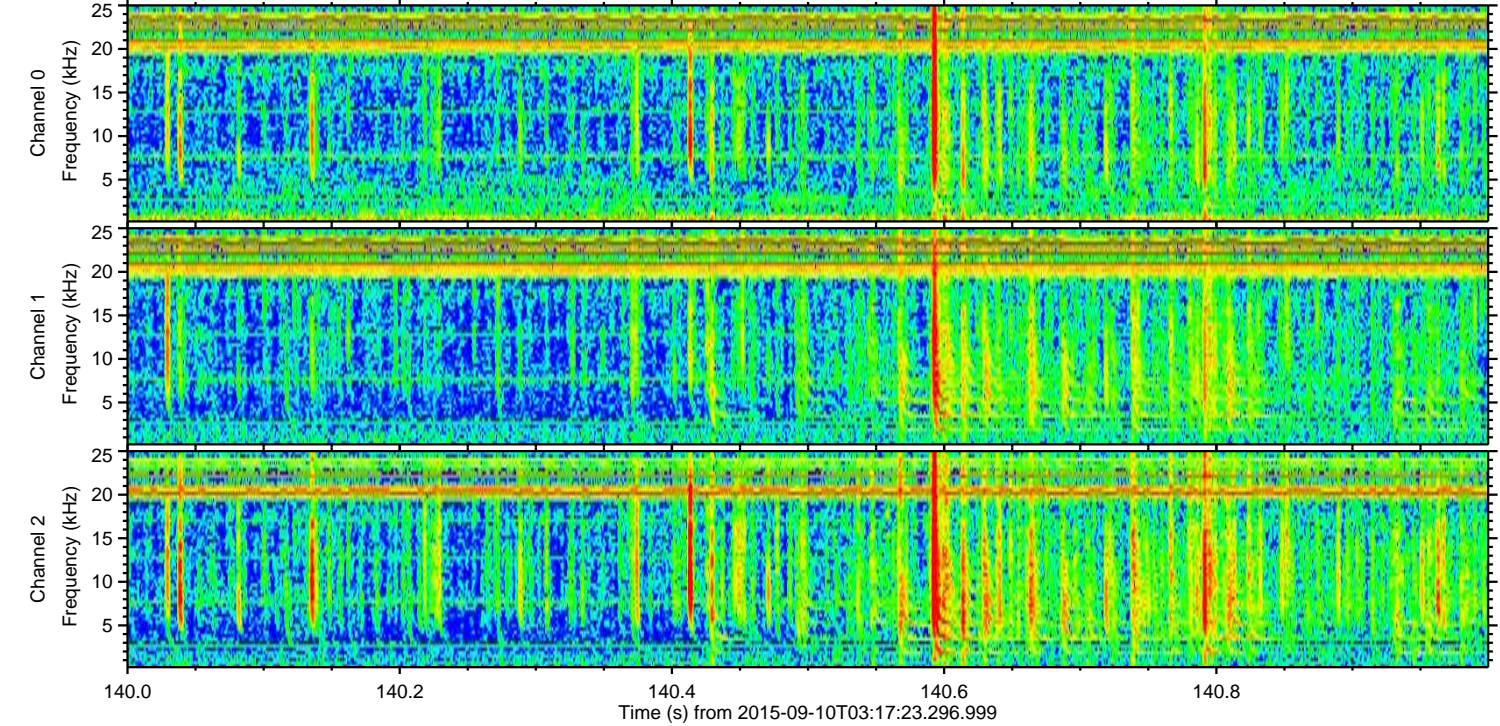
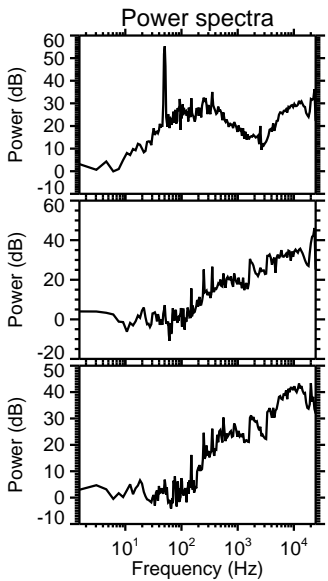
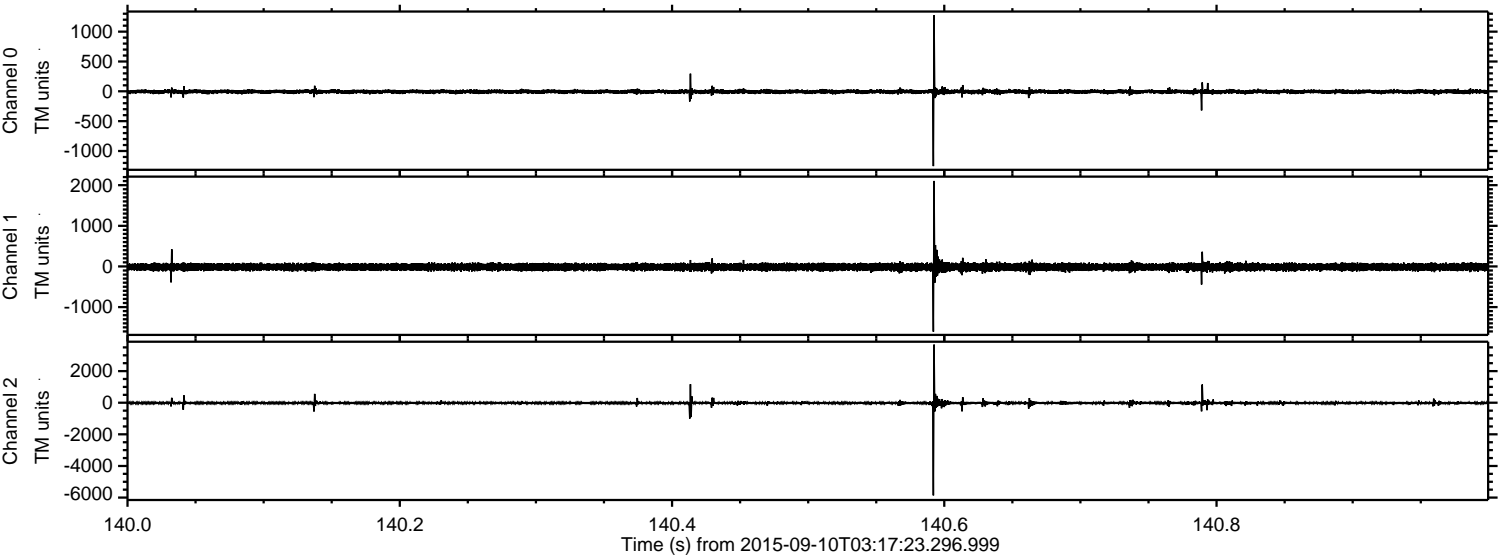


Processed Sun Oct 11 05:41:14 2015 by ELM ver.2012-10-06 from 001\_\_elm20150910\_031722\_\_dat00.bin

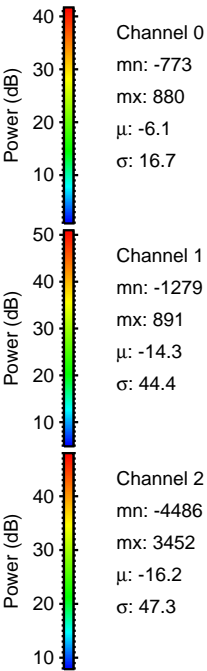
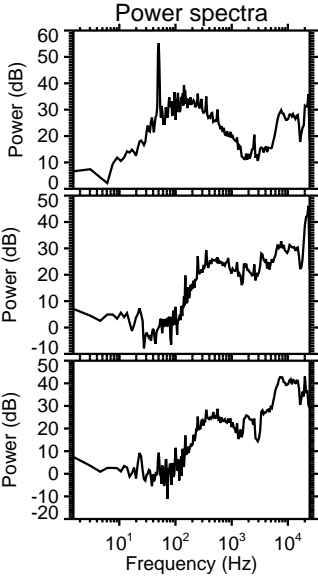
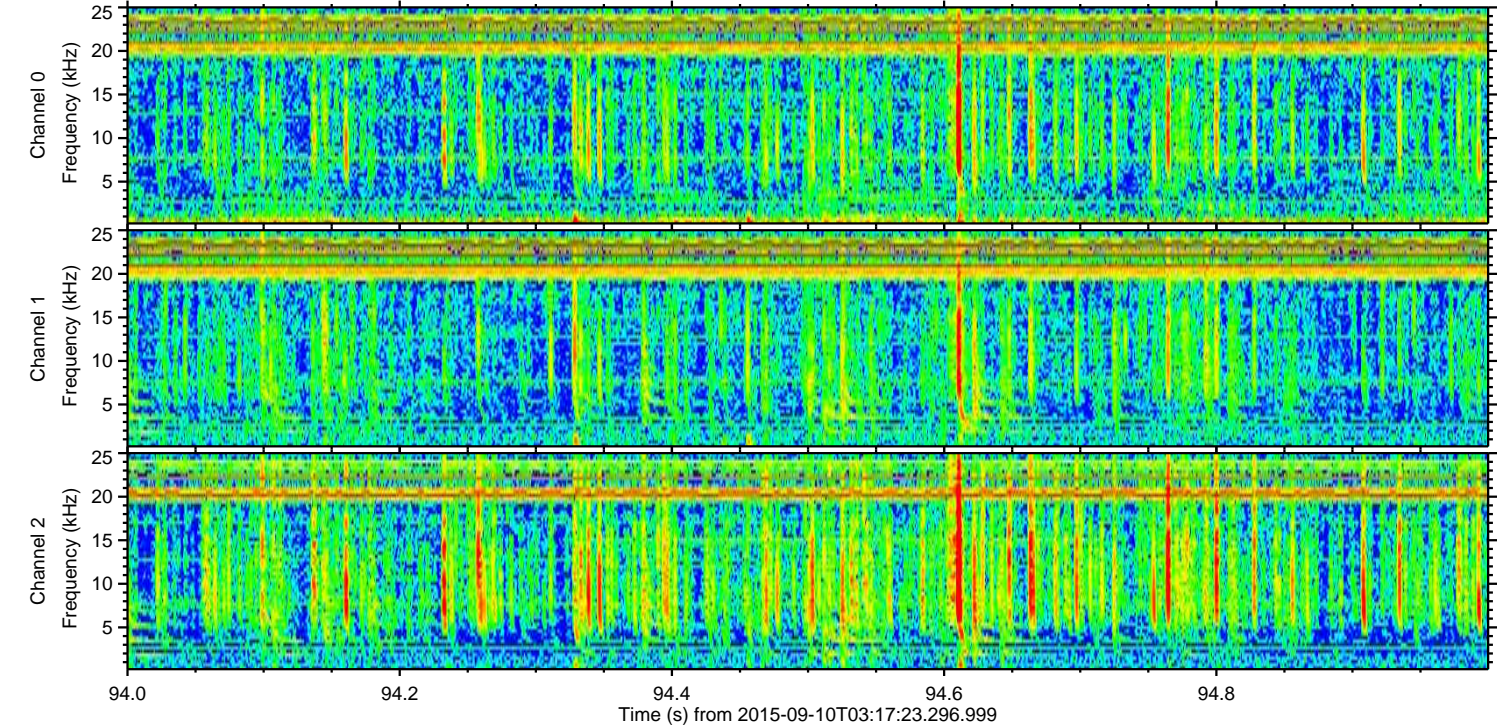
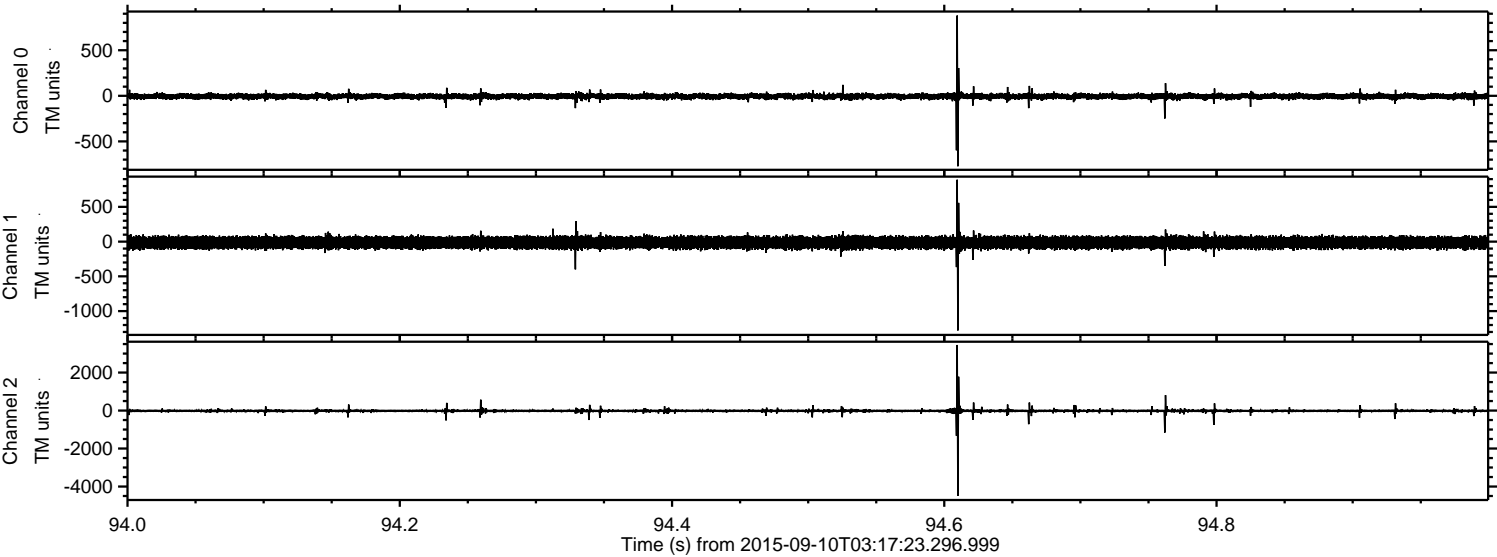


ELMAVAN 3D WAVEFORMS (Measured data sampled at 50 kHz) 51000 packets of 144 samples from 2015-09-10T03:17:23.296.999. Part 141/147

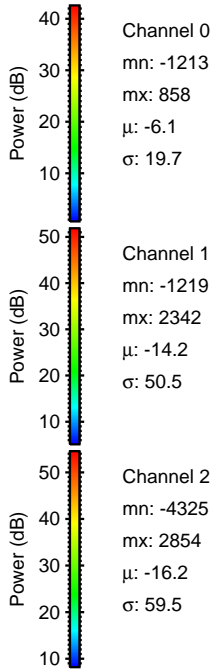
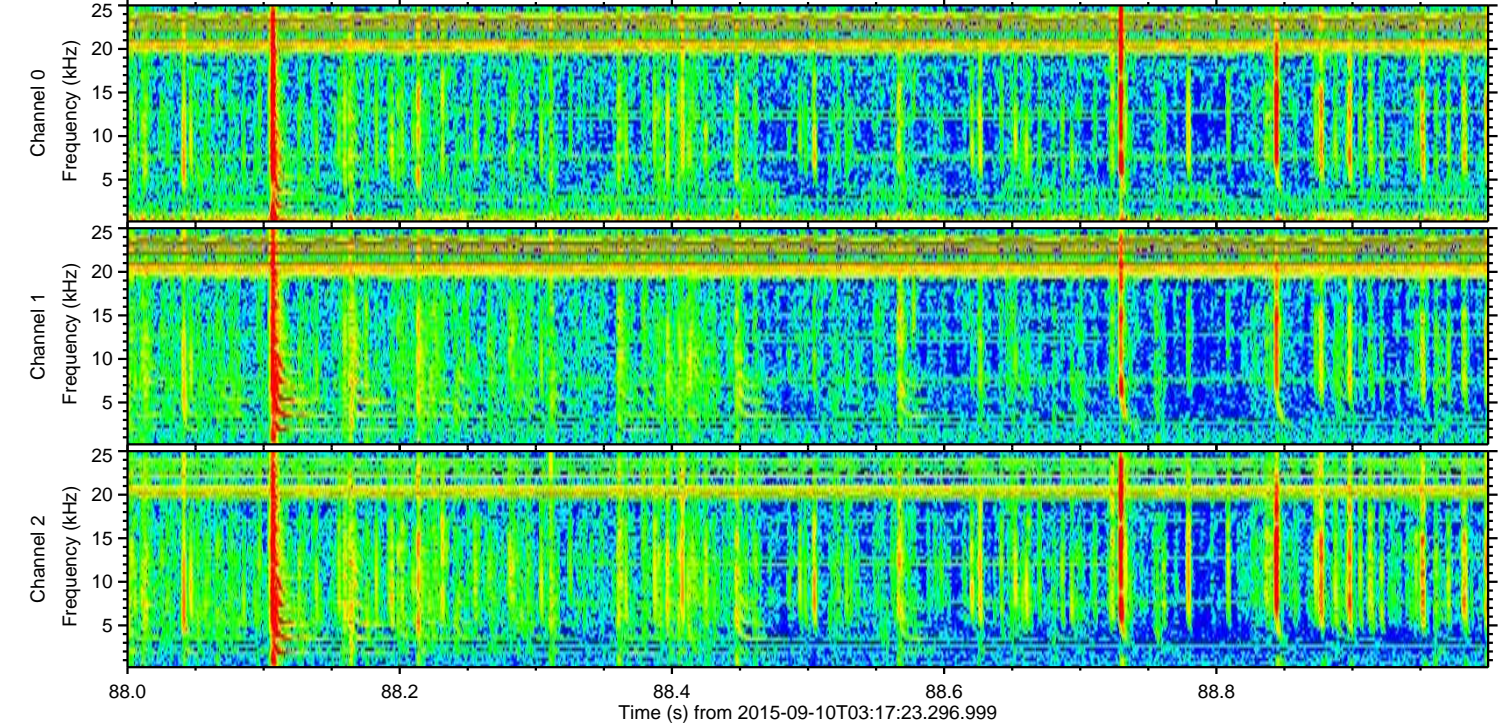
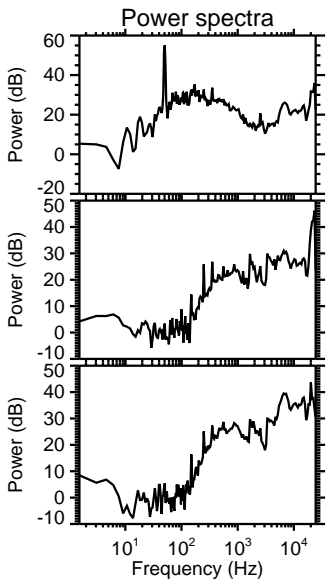
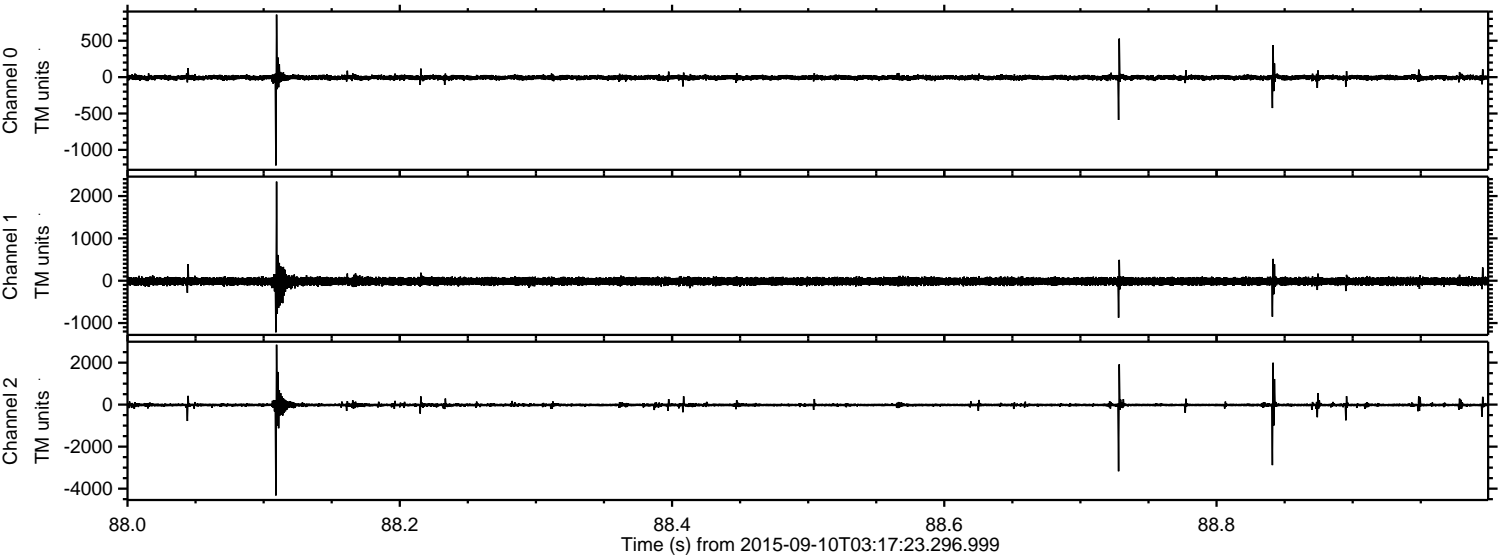
Processed Sun Oct 11 05:41:15 2015 by ELM ver.2012-10-06 from 001\_\_elm20150910\_031722\_\_dat00.bin



Processed Sun Oct 11 05:41:16 2015 by ELM ver.2012-10-06 from 001\_\_elm20150910\_031722\_\_dat00.bin



Processed Sun Oct 11 05:41:17 2015 by ELM ver.2012-10-06 from 001\_\_elm20150910\_031722\_\_dat00.bin



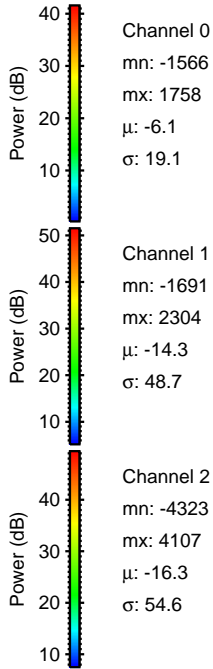
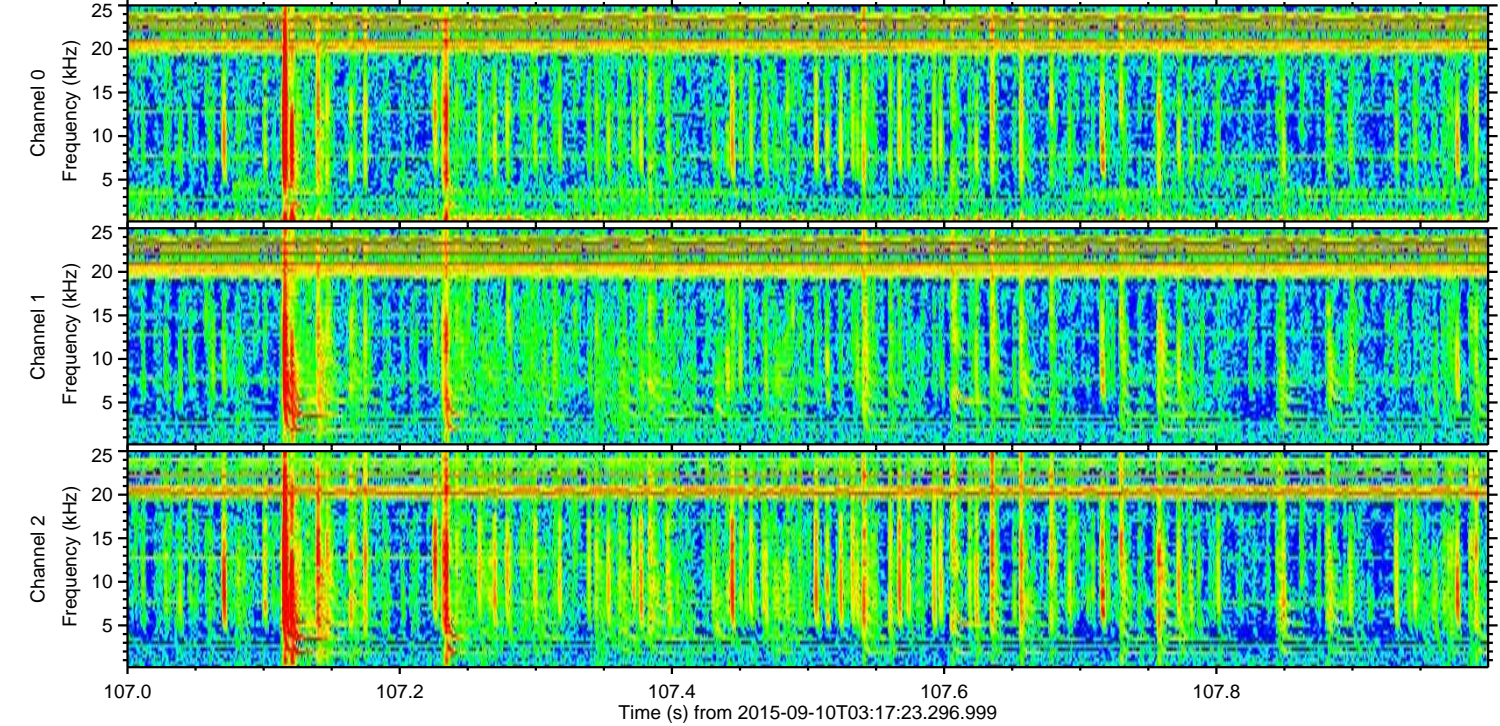
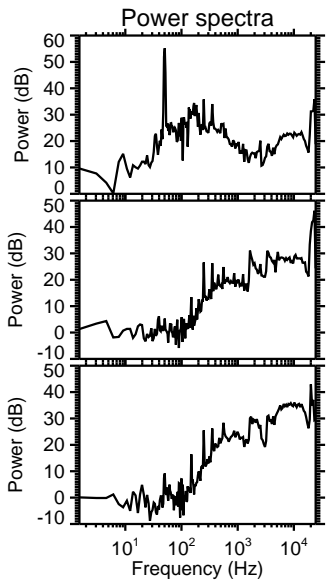
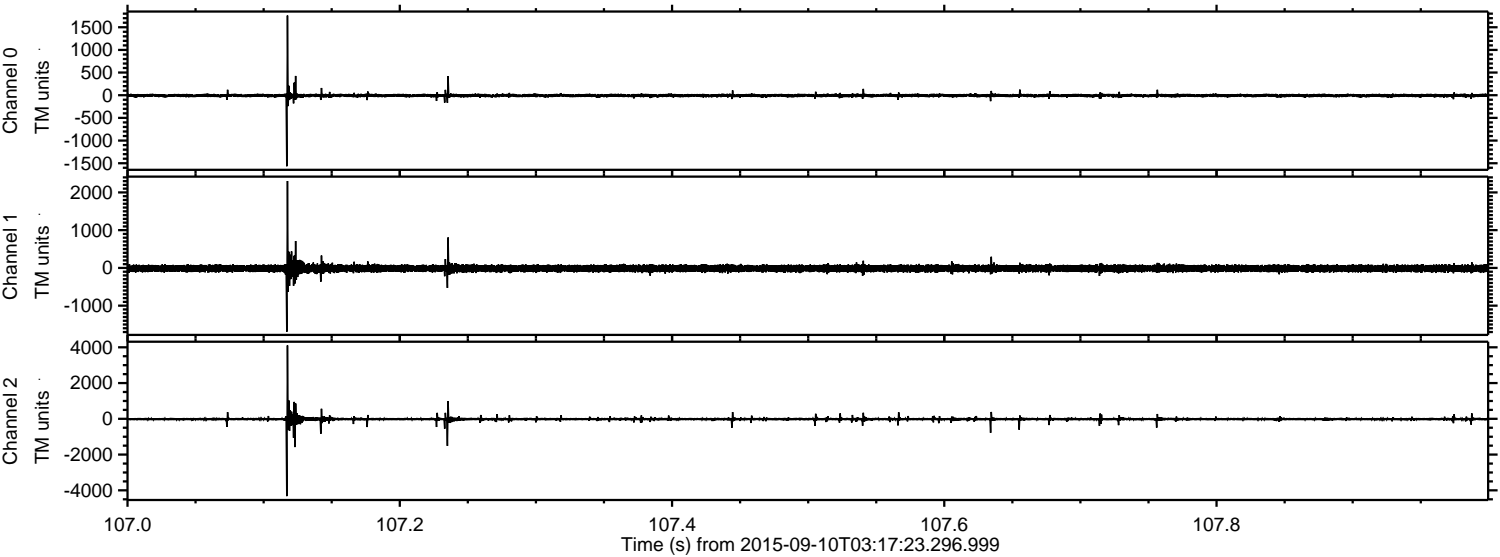
Channel 0  
mn: -1213  
mx: 858  
 $\mu$ : -6.1  
 $\sigma$ : 19.7

Channel 1  
mn: -1219  
mx: 2342  
 $\mu$ : -14.2  
 $\sigma$ : 50.5

Channel 2  
mn: -4325  
mx: 2854  
 $\mu$ : -16.2  
 $\sigma$ : 59.5

ELMAVAN 3D WAVEFORMS (Measured data sampled at 50 kHz) 51000 packets of 144 samples from 2015-09-10T03:17:23.296.999. Part 108/147

Processed Sun Oct 11 05:41:18 2015 by ELM ver.2012-10-06 from 001\_\_elm20150910\_031722\_\_dat00.bin

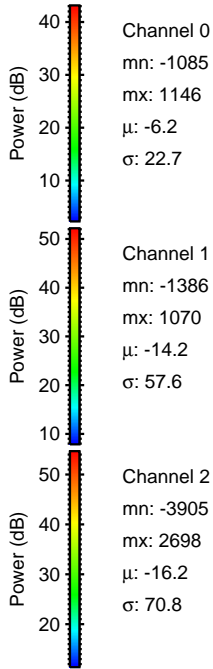
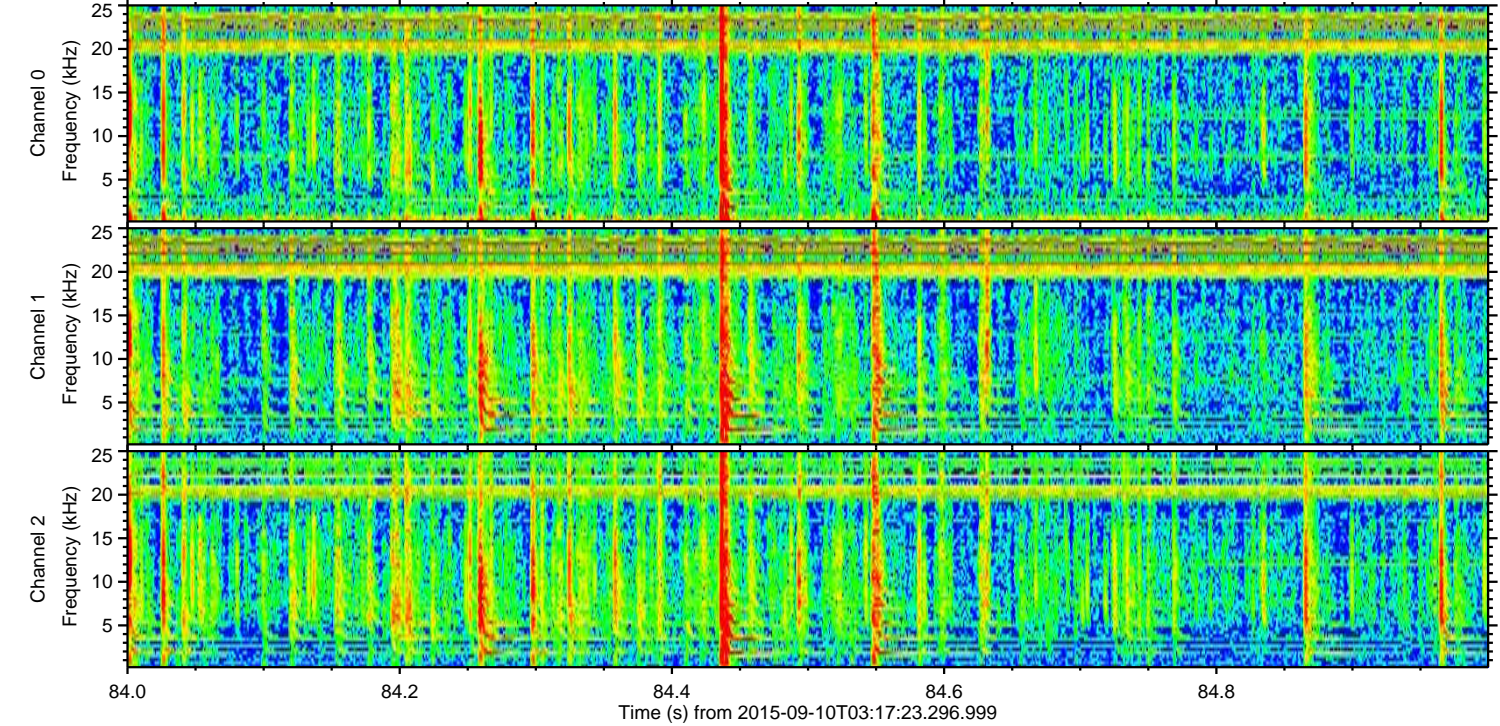
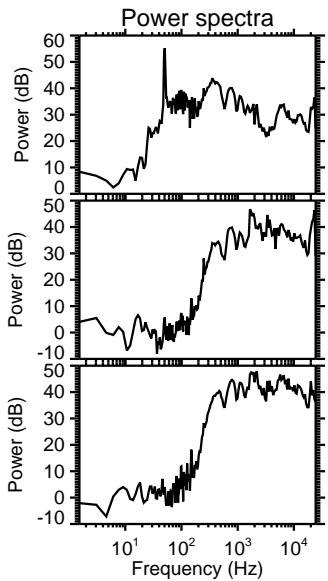
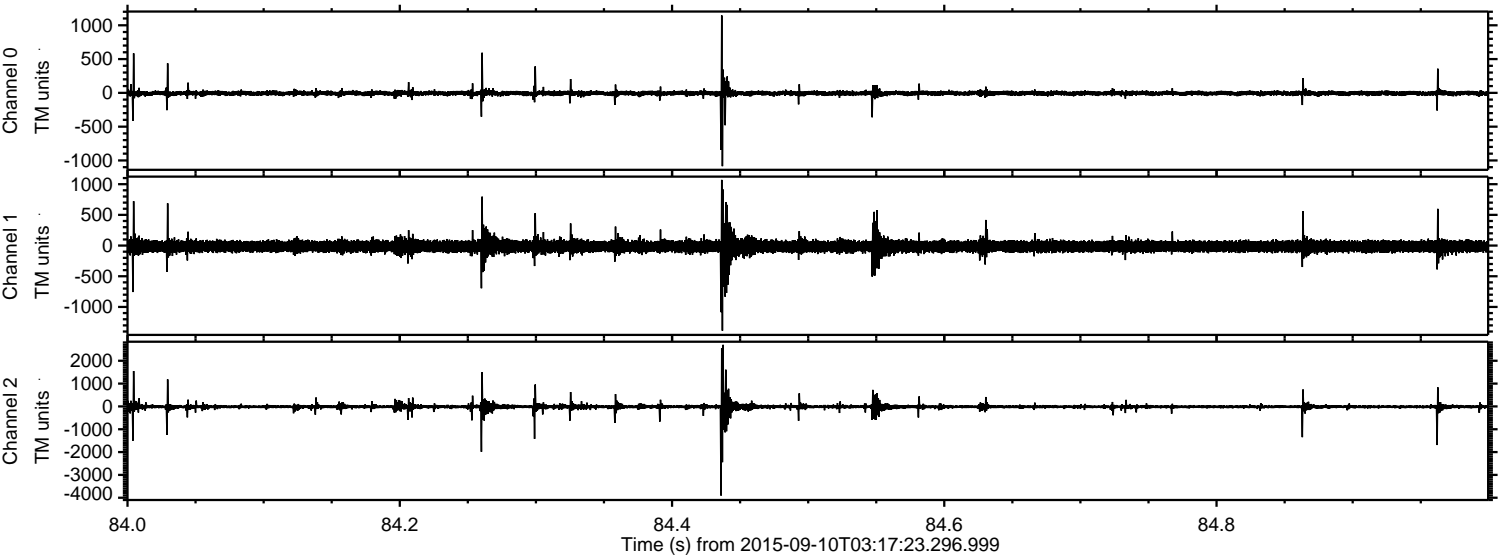


Channel 0  
mn: -1566  
mx: 1758  
 $\mu$ : -6.1  
 $\sigma$ : 19.1

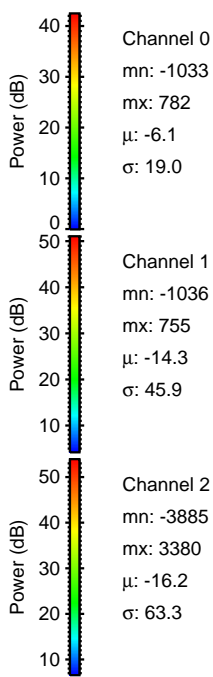
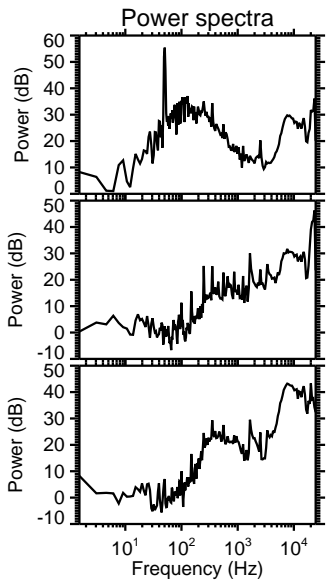
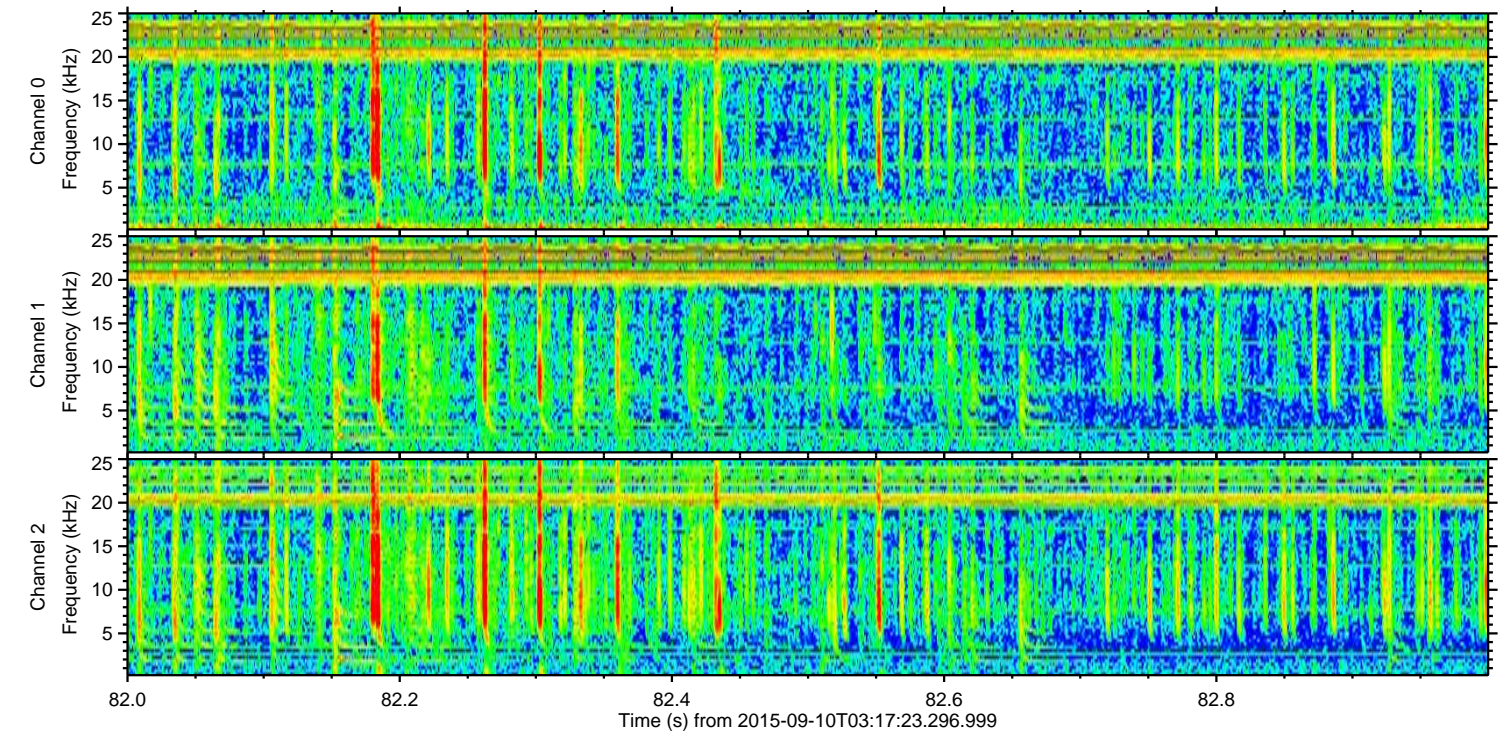
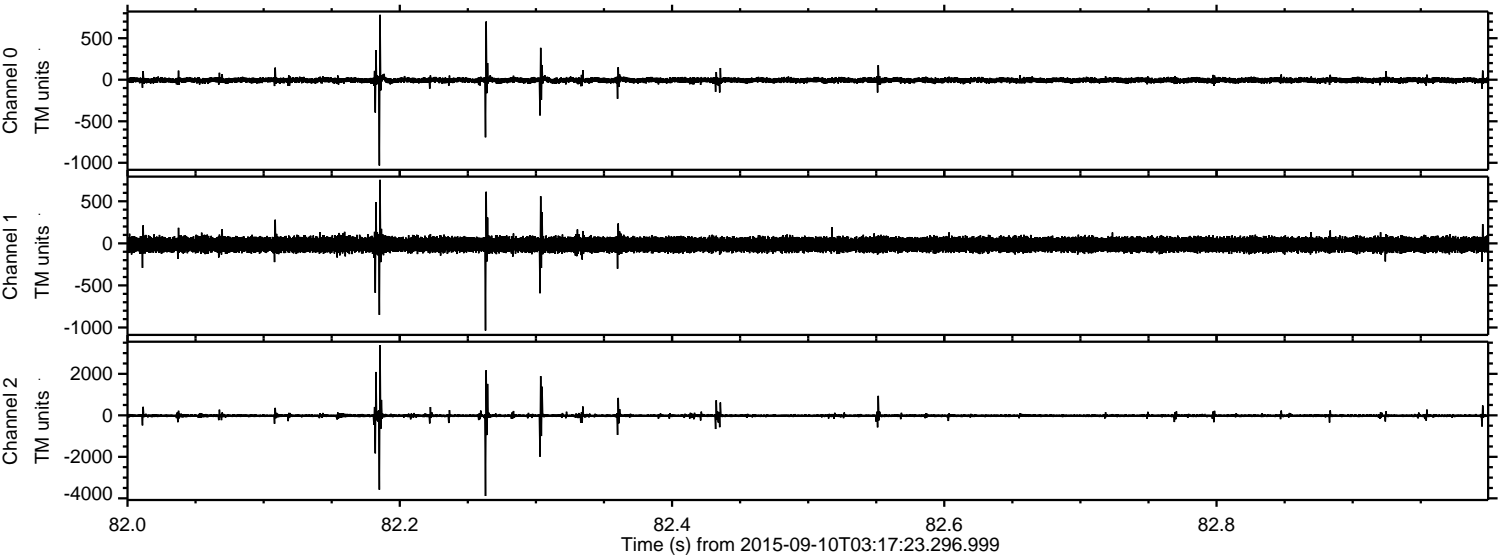
Channel 1  
mn: -1691  
mx: 2304  
 $\mu$ : -14.3  
 $\sigma$ : 48.7

Channel 2  
mn: -4323  
mx: 4107  
 $\mu$ : -16.3  
 $\sigma$ : 54.6

Processed Sun Oct 11 05:41:19 2015 by ELM ver.2012-10-06 from 001\_\_elm20150910\_031722\_\_dat00.bin



Processed Sun Oct 11 05:41:20 2015 by ELM ver.2012-10-06 from 001\_\_elm20150910\_031722\_\_dat00.bin



Channel 0  
mn: -1033  
mx: 782  
 $\mu$ : -6.1  
 $\sigma$ : 19.0

Channel 1  
mn: -1036  
mx: 755  
 $\mu$ : -14.3  
 $\sigma$ : 45.9

Channel 2  
mn: -3885  
mx: 3380  
 $\mu$ : -16.2  
 $\sigma$ : 63.3

Processed Sun Oct 11 05:41:21 2015 by ELM ver.2012-10-06 from 001\_\_elm20150910\_031722\_\_dat00.bin

