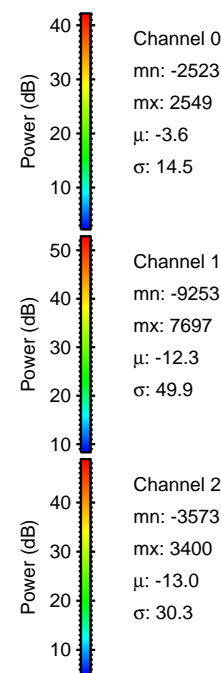
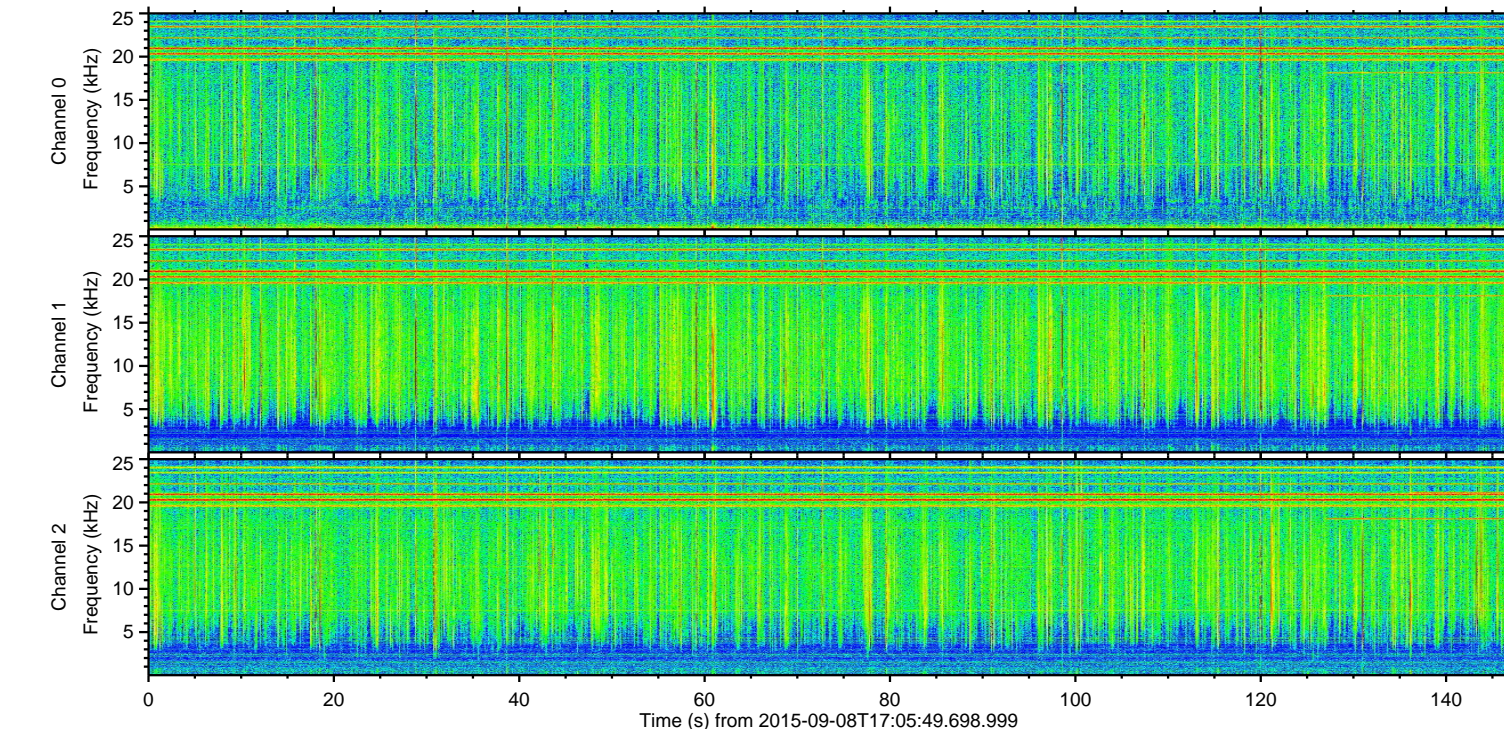
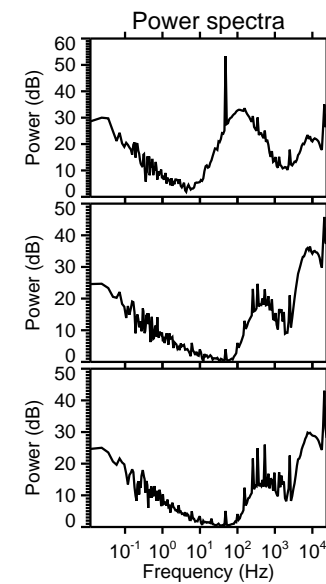
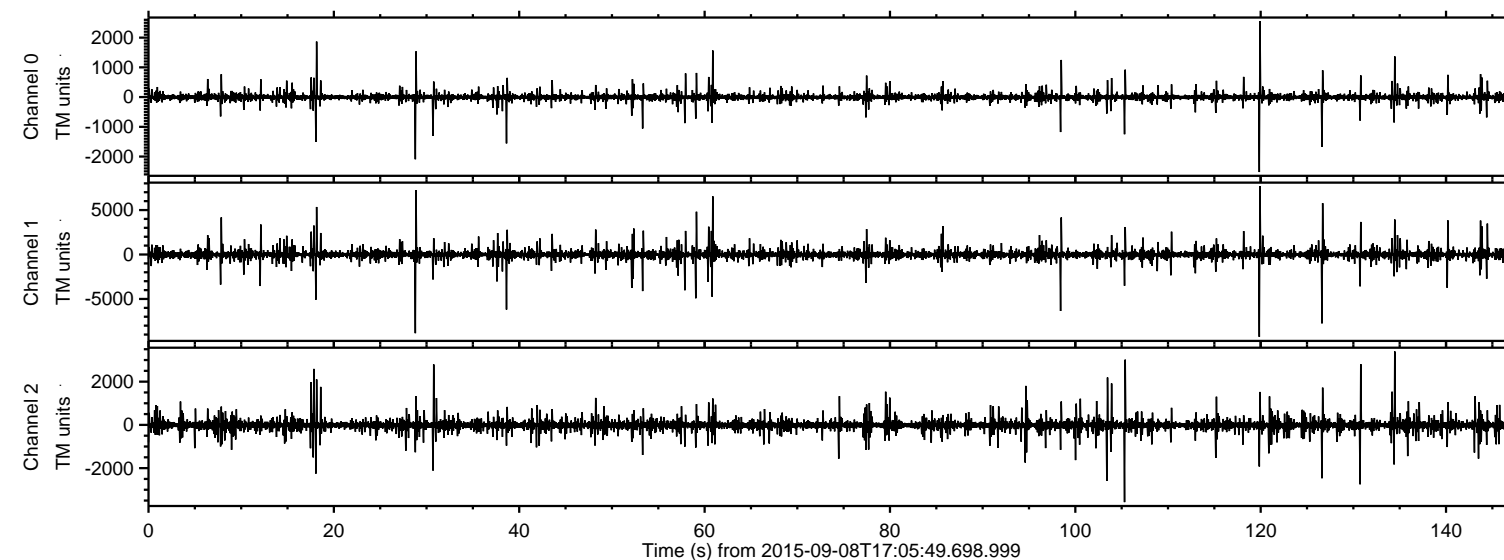


# ELMAVAN 3D WAVEFORMS (Measured data sampled at 50 kHz) 51000 packets of 144 samples from 2015-09-08T17:05:49.698.999.

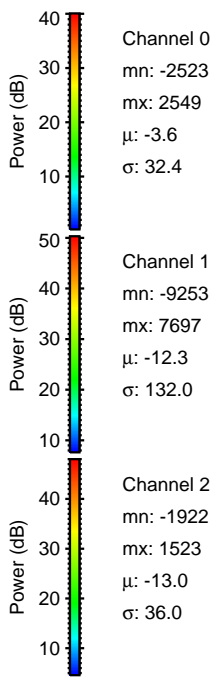
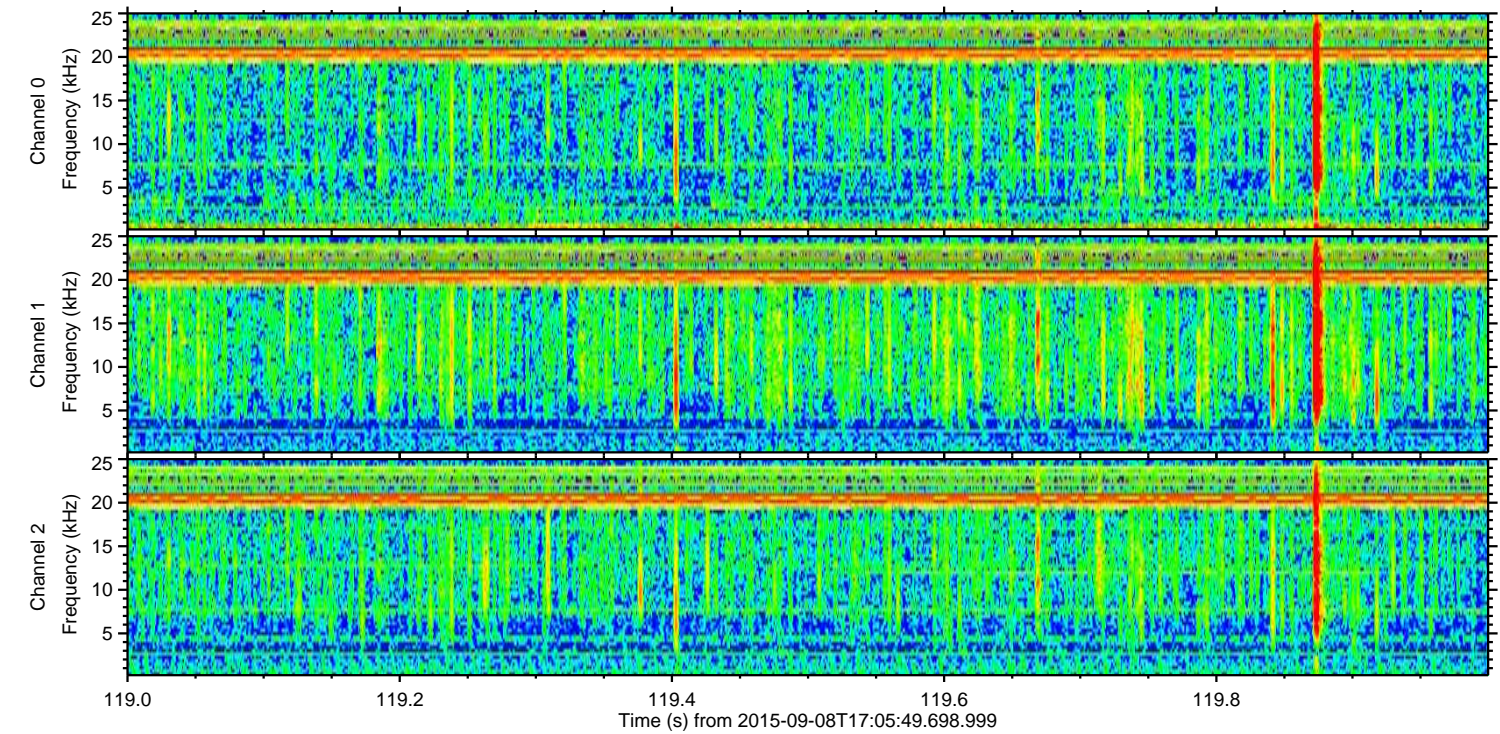
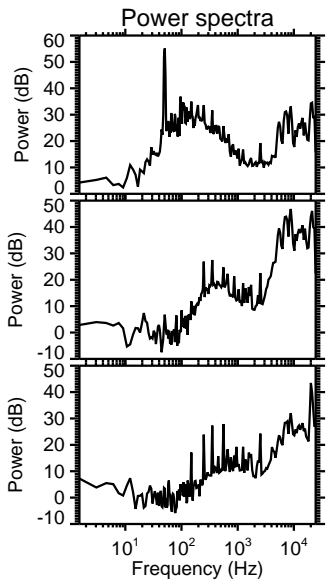
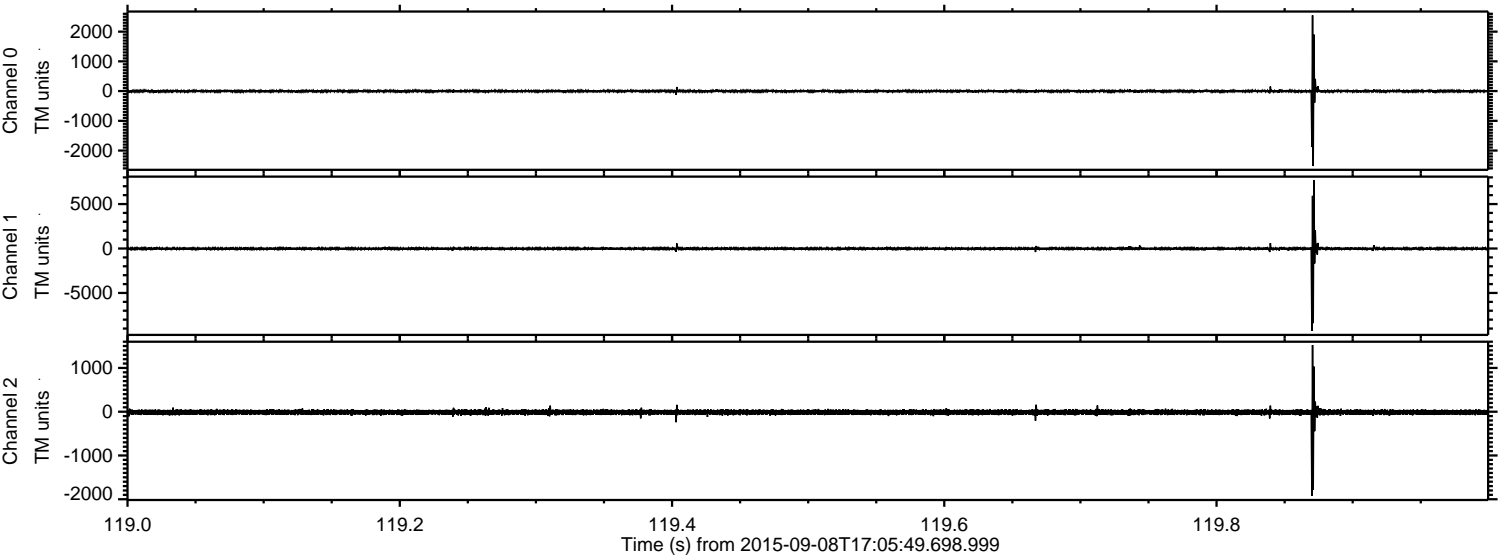
Processed Sat Oct 10 20:08:53 2015 by ELM ver.2012-10-06 from 001\_\_elm20150908\_170548\_\_dat00.bin





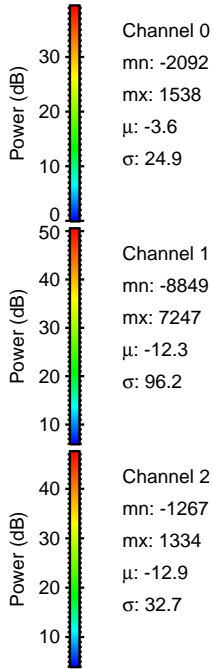
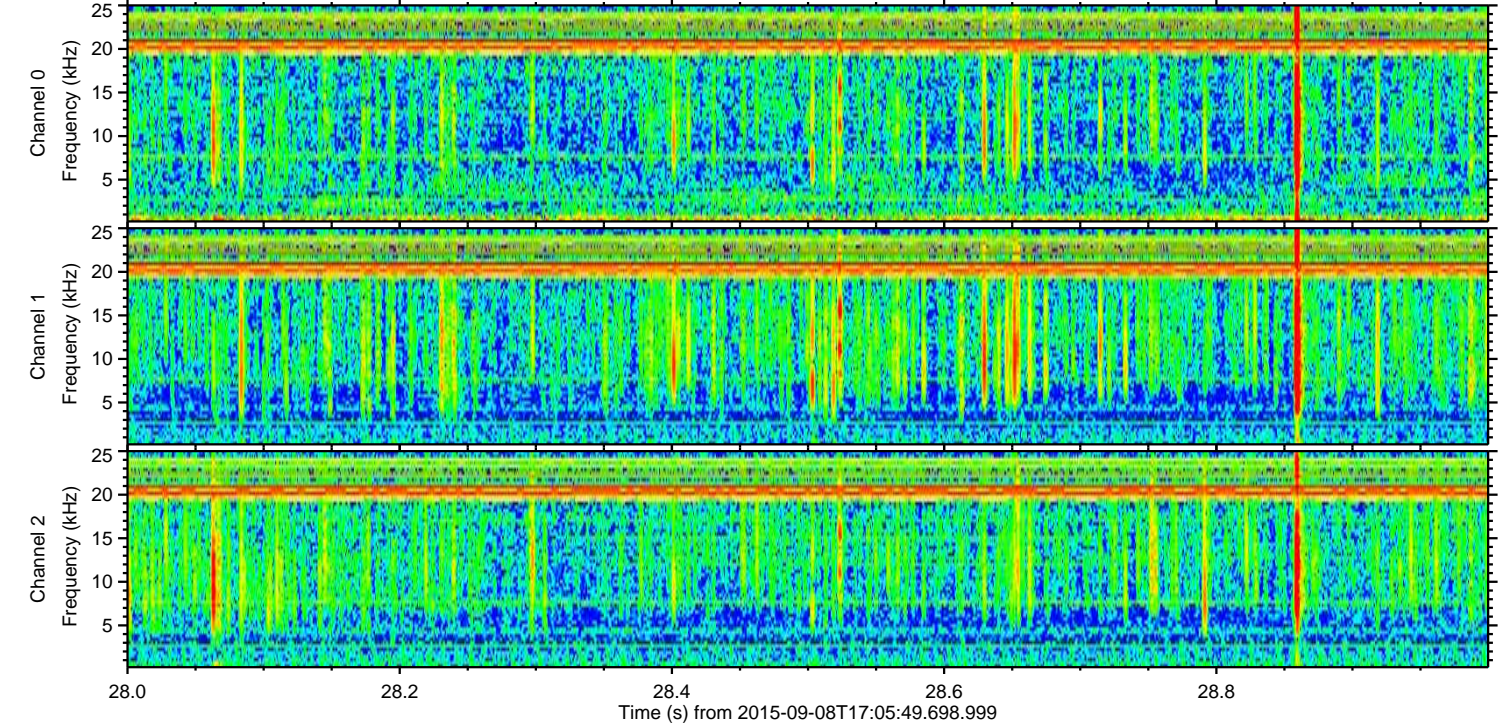
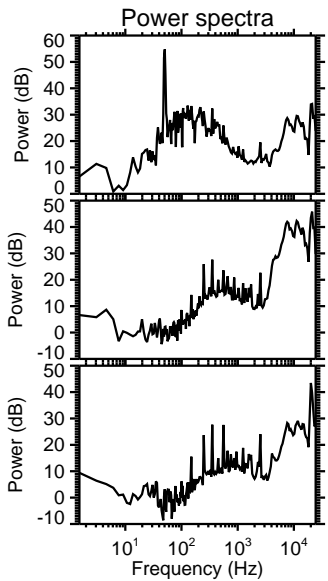
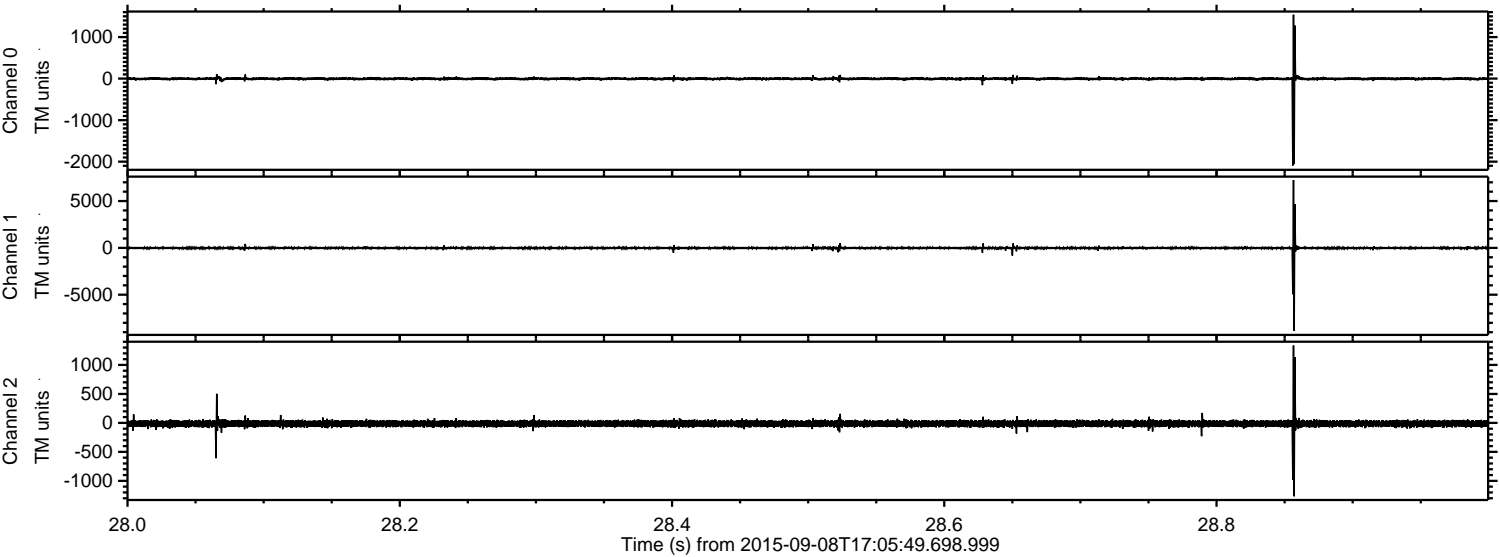
ELMAVAN 3D WAVEFORMS (Measured data sampled at 50 kHz) 51000 packets of 144 samples from 2015-09-08T17:05:49.698.999. Part 120/147

Processed Sat Oct 10 20:09:09 2015 by ELM ver.2012-10-06 from 001\_\_elm20150908\_170548\_\_dat00.bin





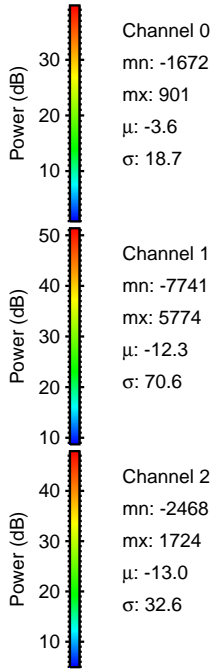
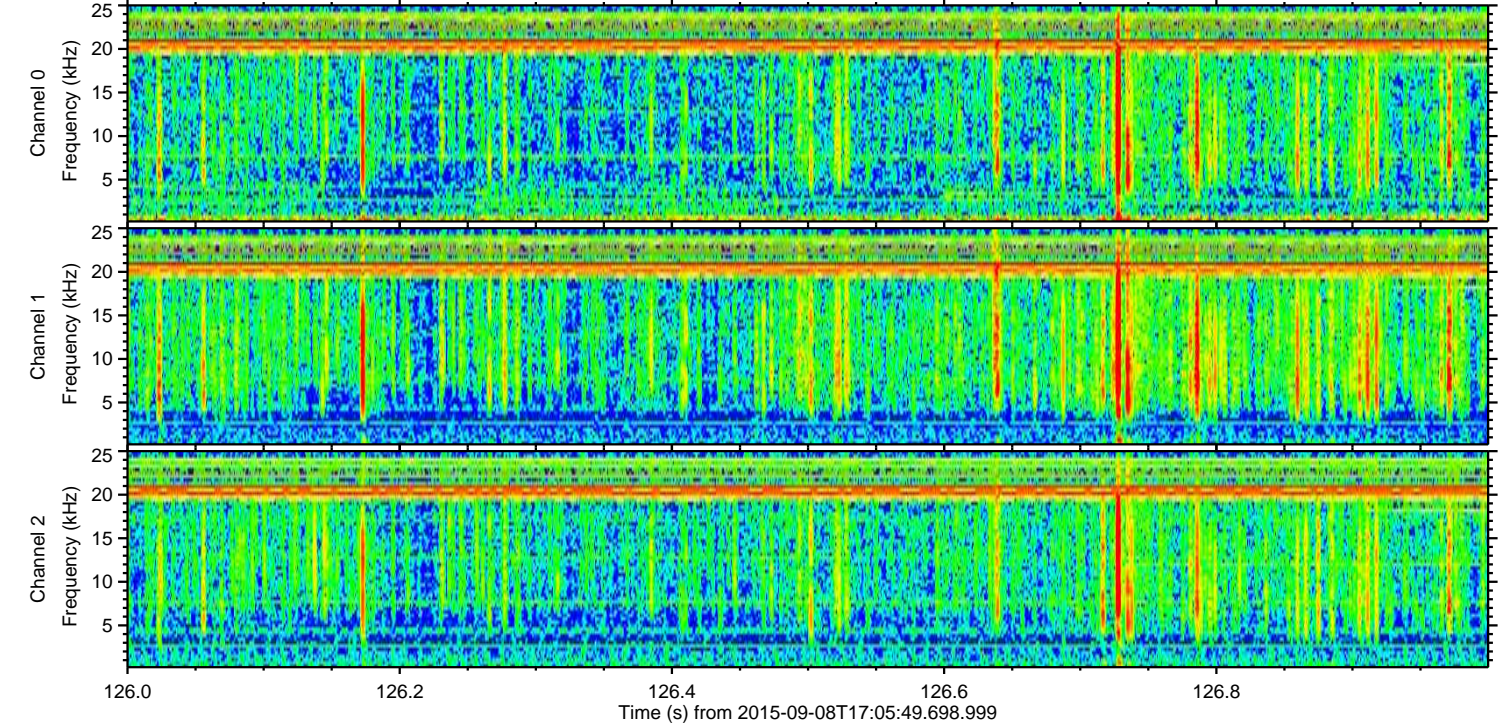
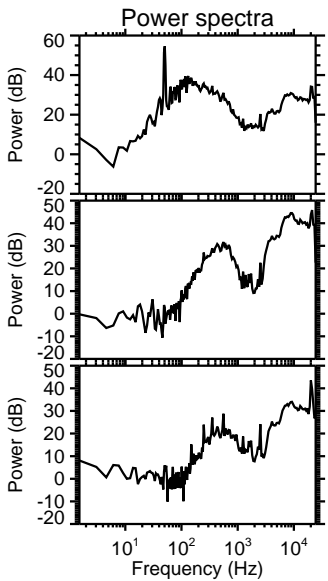
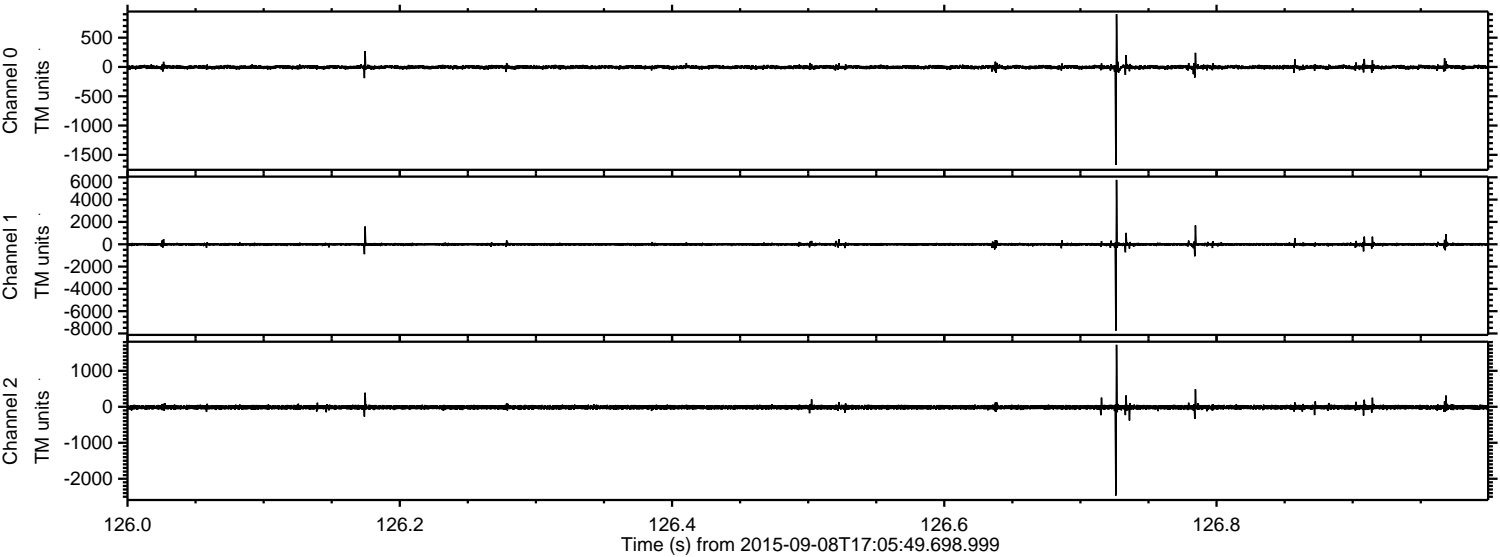
Processed Sat Oct 10 20:09:10 2015 by ELM ver.2012-10-06 from 001\_\_elm20150908\_170548\_\_dat00.bin





ELMAVAN 3D WAVEFORMS (Measured data sampled at 50 kHz) 51000 packets of 144 samples from 2015-09-08T17:05:49.698.999. Part 127/147

Processed Sat Oct 10 20:09:11 2015 by ELM ver.2012-10-06 from 001\_\_elm20150908\_170548\_\_dat00.bin



Channel 0  
mn: -1672  
mx: 901  
 $\mu$ : -3.6  
 $\sigma$ : 18.7

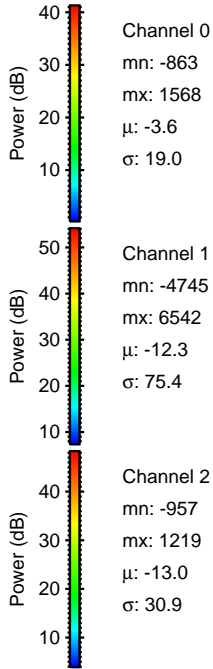
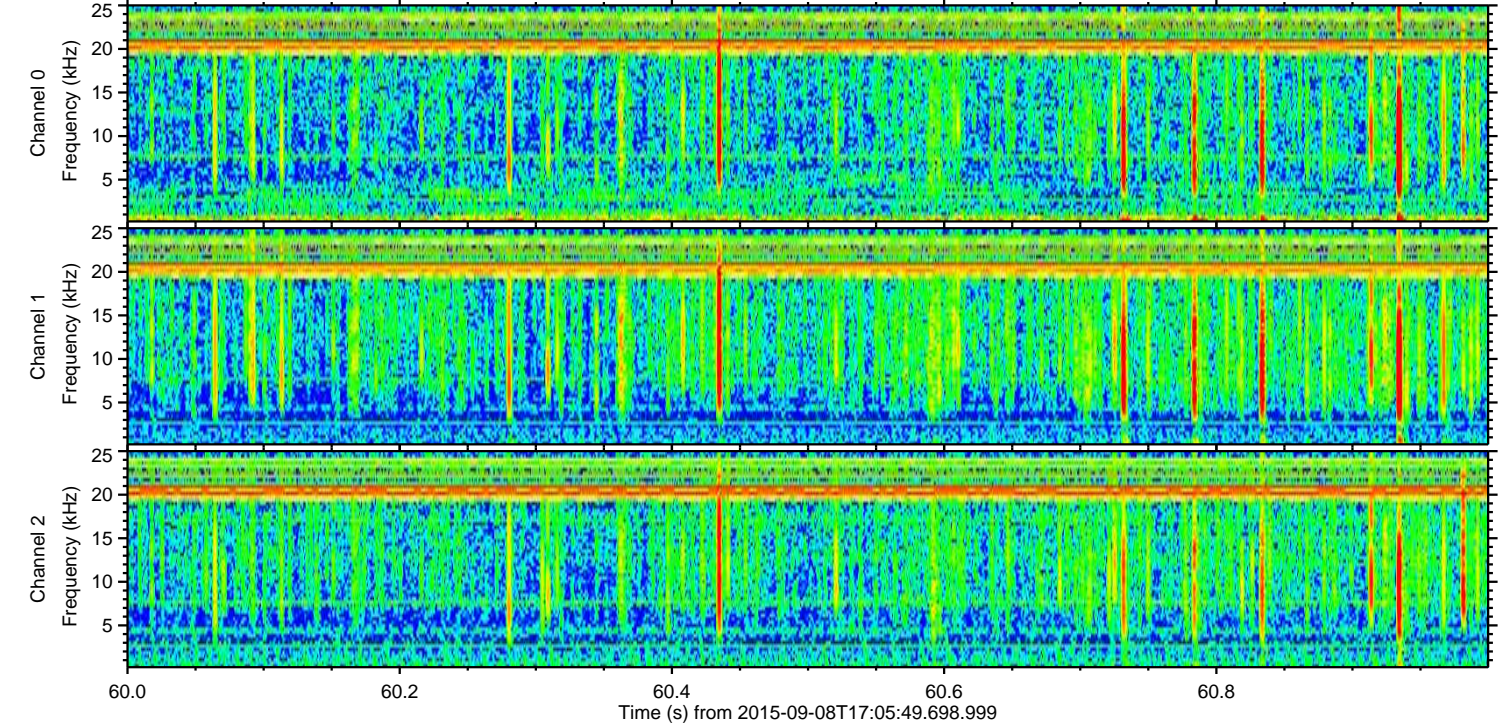
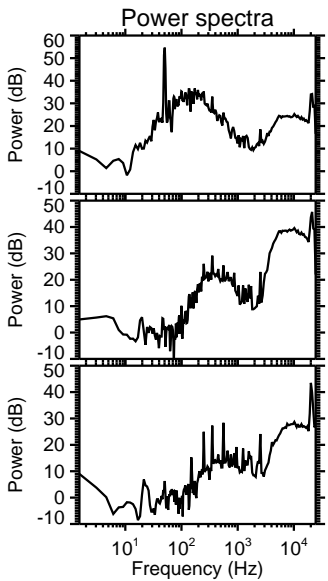
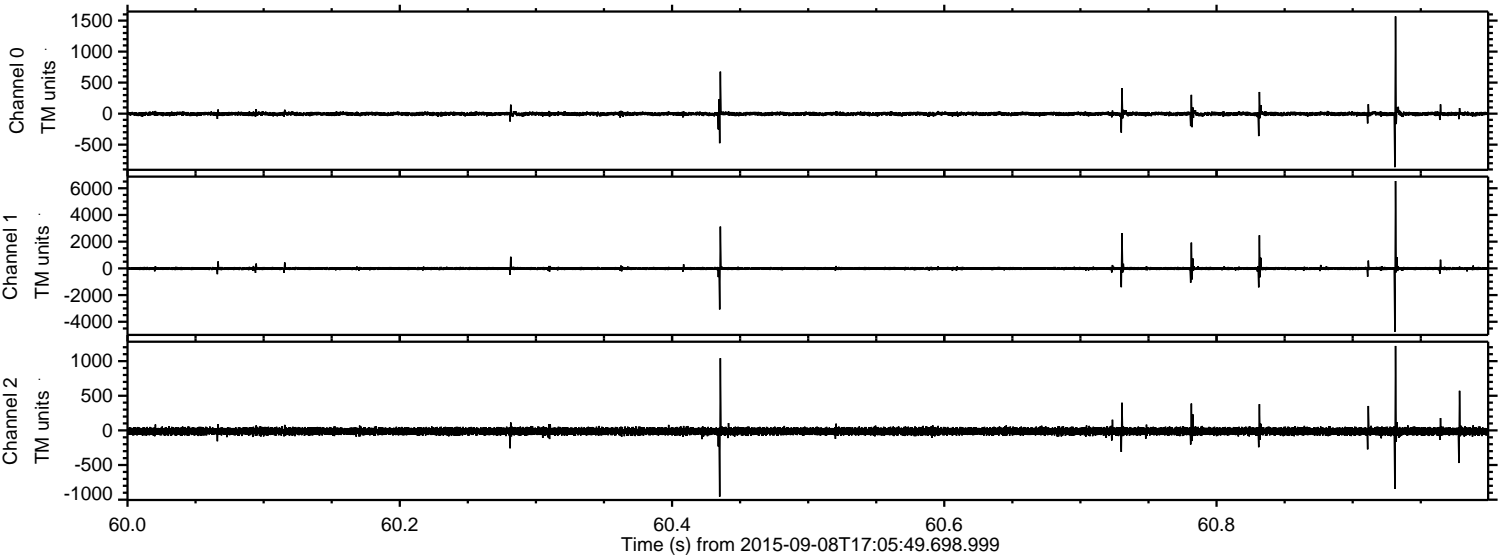
Channel 1  
mn: -7741  
mx: 5774  
 $\mu$ : -12.3  
 $\sigma$ : 70.6

Channel 2  
mn: -2468  
mx: 1724  
 $\mu$ : -13.0  
 $\sigma$ : 32.6



ELMAVAN 3D WAVEFORMS (Measured data sampled at 50 kHz) 51000 packets of 144 samples from 2015-09-08T17:05:49.698.999. Part 61/147

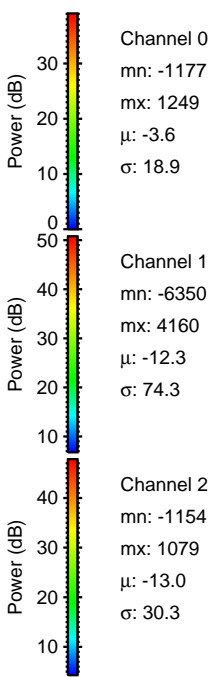
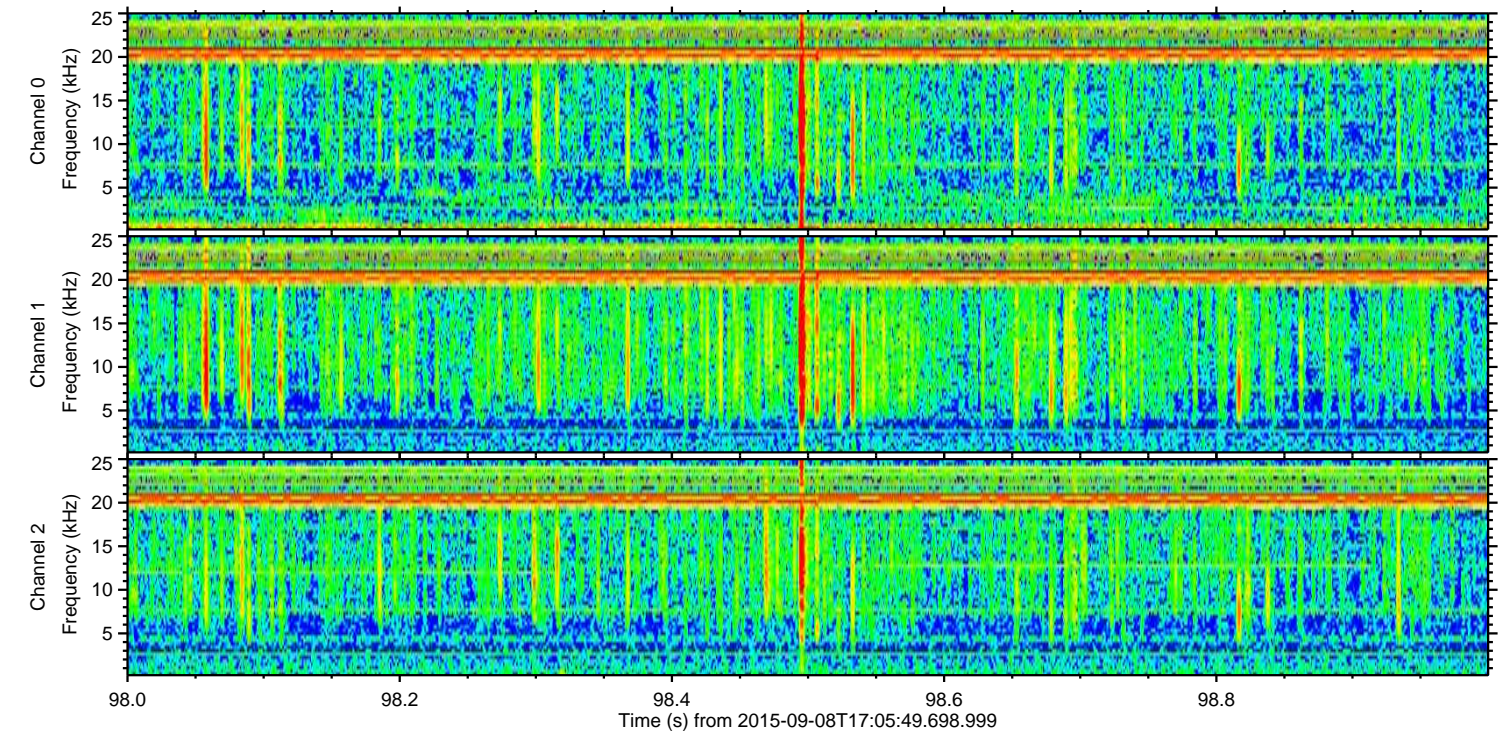
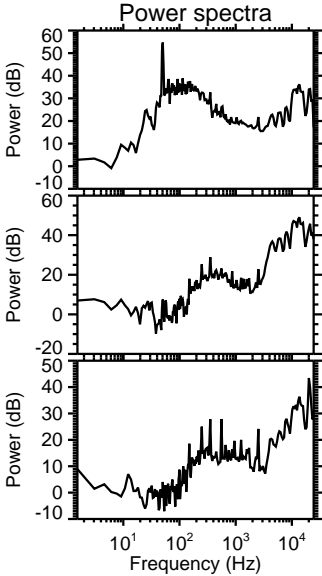
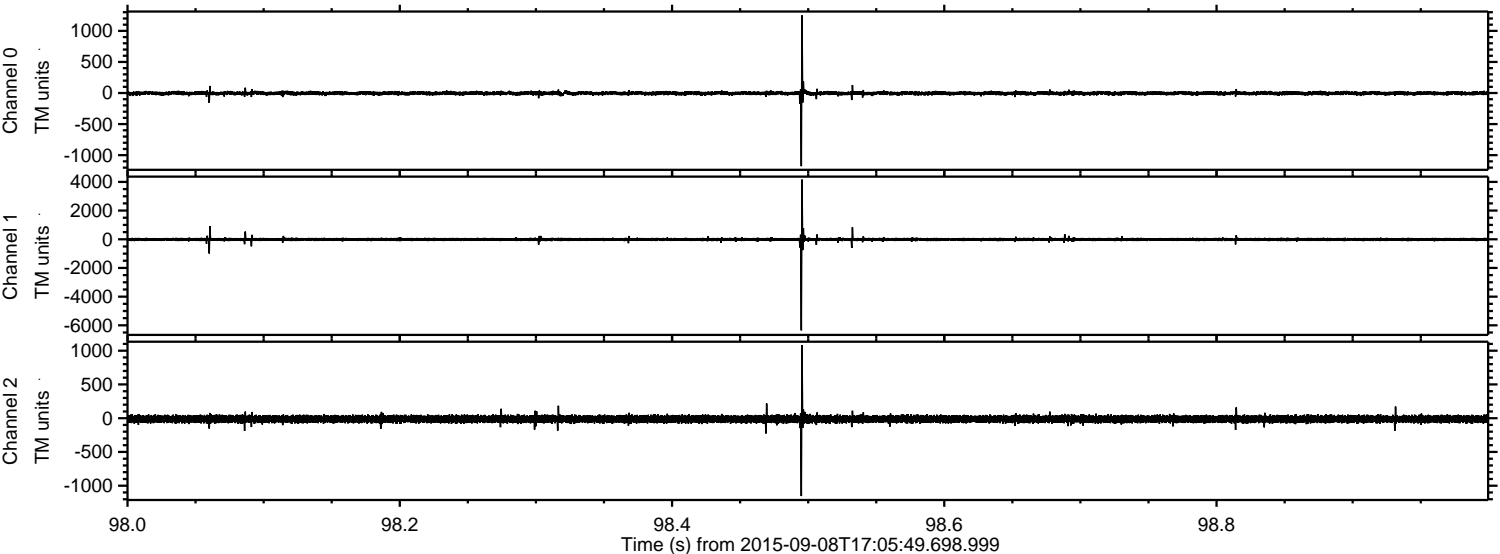
Processed Sat Oct 10 20:09:12 2015 by ELM ver.2012-10-06 from 001\_\_elm20150908\_170548\_\_dat00.bin





ELMAVAN 3D WAVEFORMS (Measured data sampled at 50 kHz) 51000 packets of 144 samples from 2015-09-08T17:05:49.698.999. Part 99/147

Processed Sat Oct 10 20:09:13 2015 by ELM ver.2012-10-06 from 001\_\_elm20150908\_170548\_\_dat00.bin



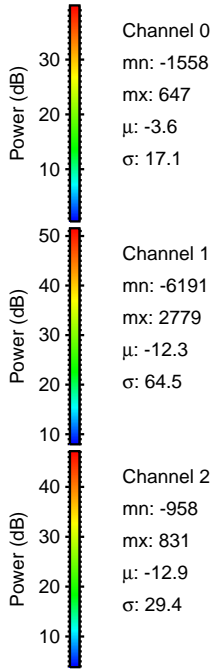
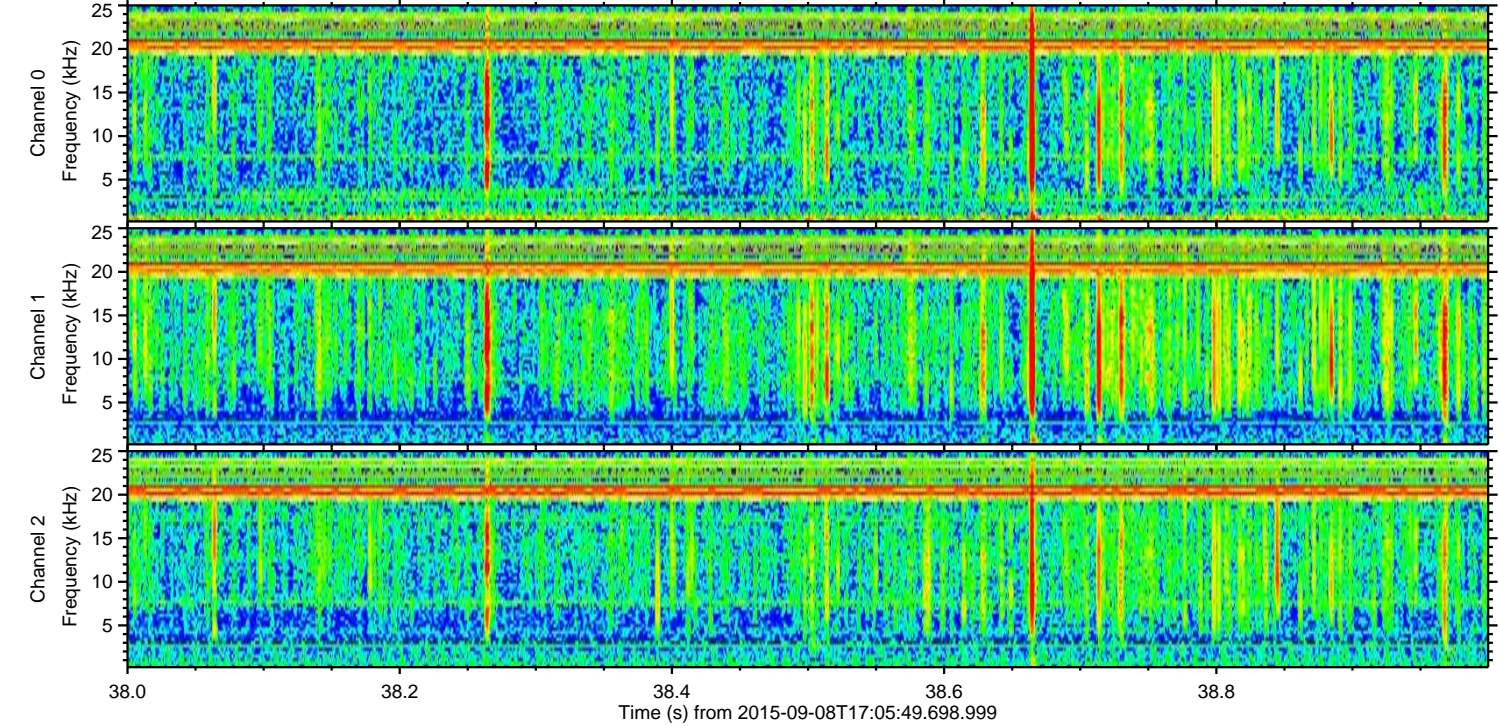
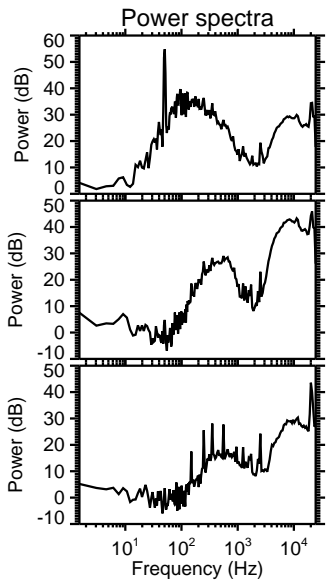
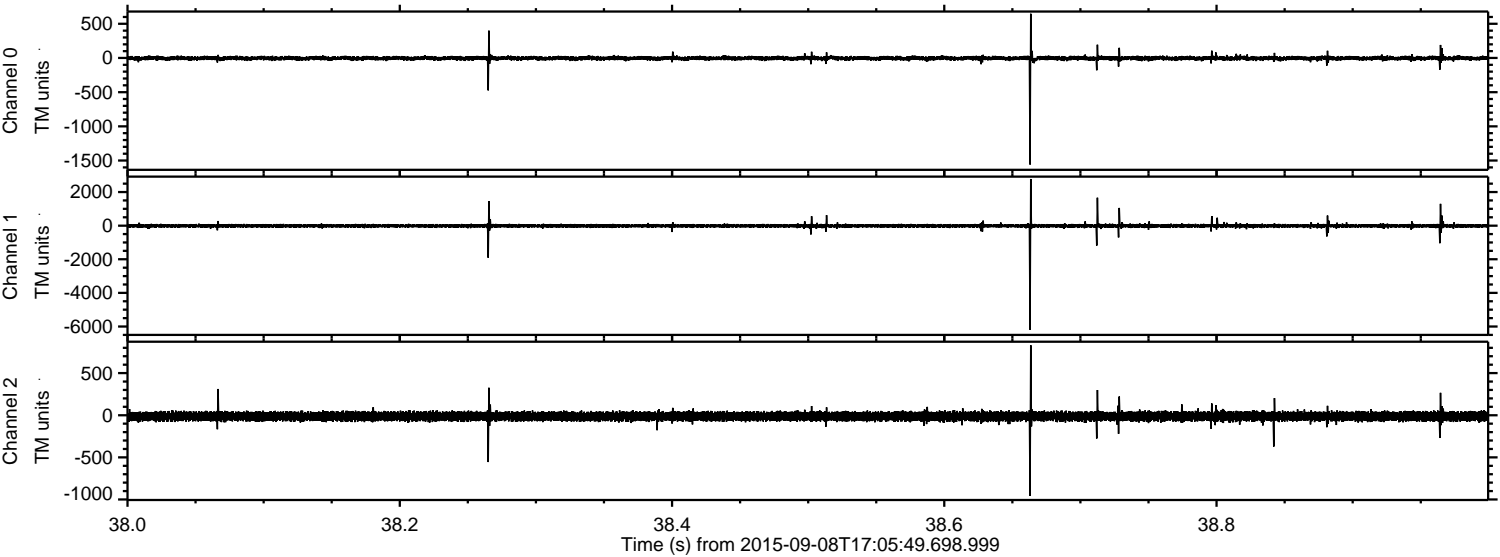
Channel 0  
mn: -1177  
mx: 1249  
 $\mu$ : -3.6  
 $\sigma$ : 18.9

Channel 1  
mn: -6350  
mx: 4160  
 $\mu$ : -12.3  
 $\sigma$ : 74.3

Channel 2  
mn: -1154  
mx: 1079  
 $\mu$ : -13.0  
 $\sigma$ : 30.3



Processed Sat Oct 10 20:09:14 2015 by ELM ver.2012-10-06 from 001\_\_elm20150908\_170548\_\_dat00.bin



Channel 0  
mn: -1558  
mx: 647  
 $\mu$ : -3.6  
 $\sigma$ : 17.1

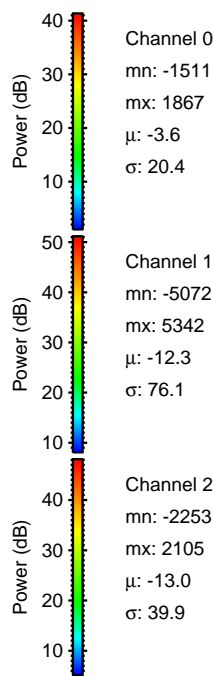
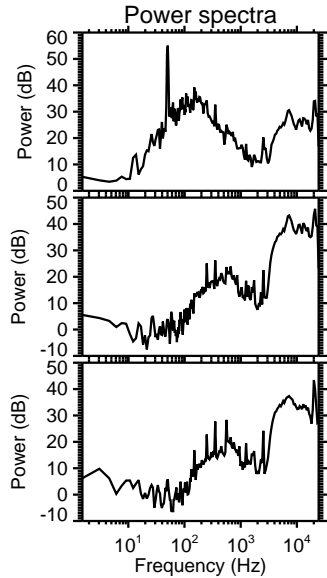
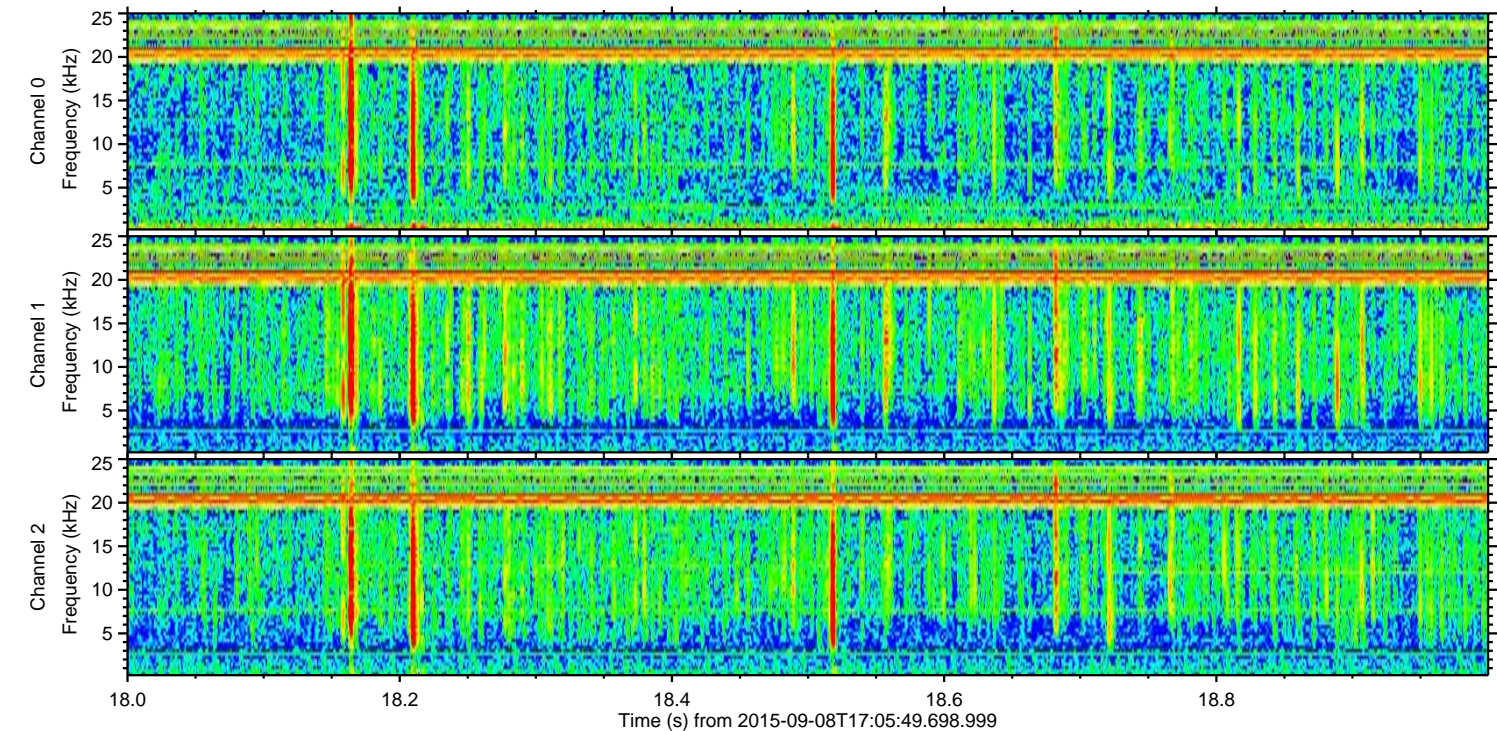
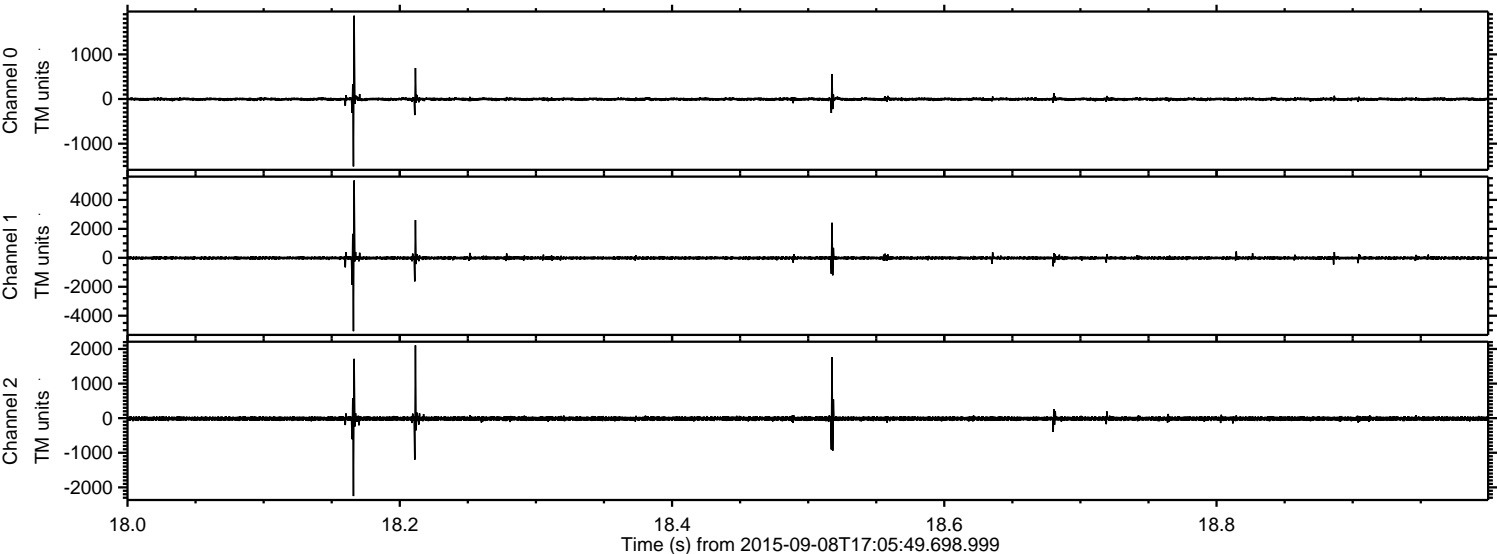
Channel 1  
mn: -6191  
mx: 2779  
 $\mu$ : -12.3  
 $\sigma$ : 64.5

Channel 2  
mn: -958  
mx: 831  
 $\mu$ : -12.9  
 $\sigma$ : 29.4



ELMAVAN 3D WAVEFORMS (Measured data sampled at 50 kHz) 51000 packets of 144 samples from 2015-09-08T17:05:49.698.999. Part 19/147

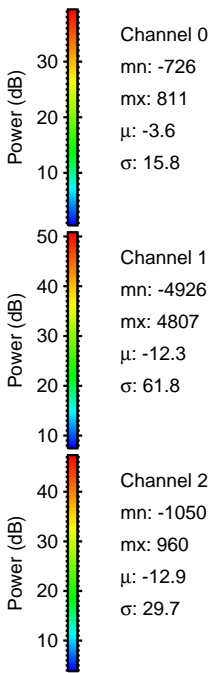
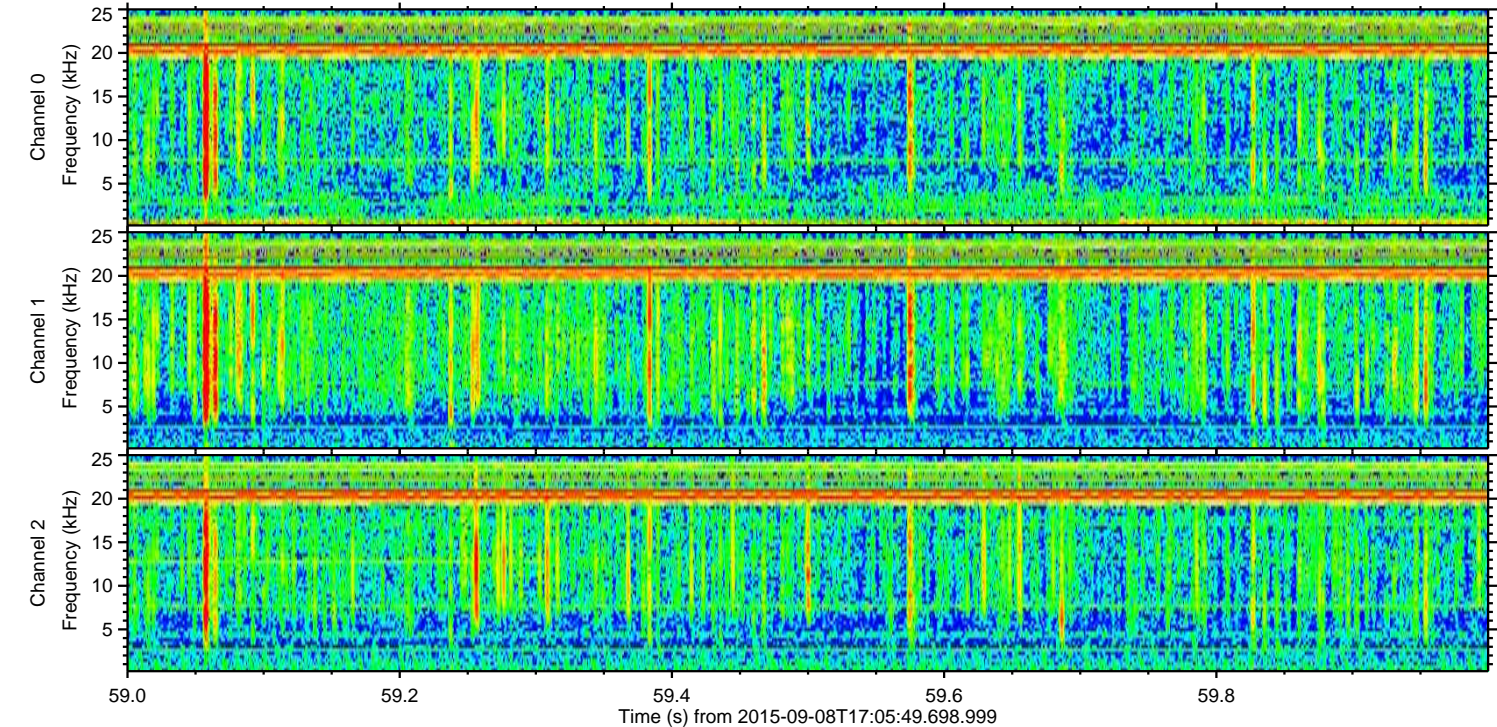
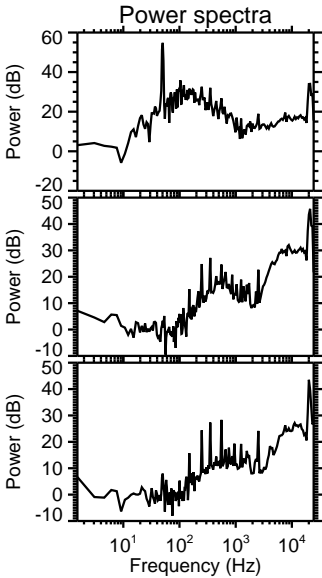
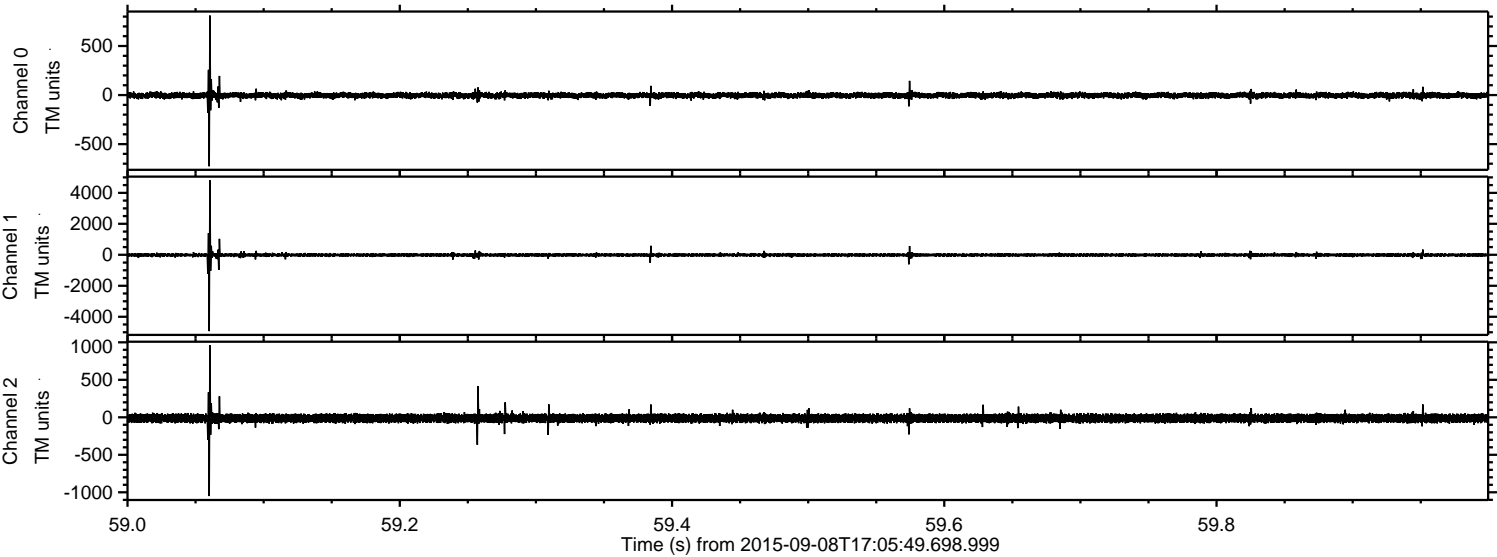
Processed Sat Oct 10 20:09:15 2015 by ELM ver.2012-10-06 from 001\_\_elm20150908\_170548\_\_dat00.bin





ELMAVAN 3D WAVEFORMS (Measured data sampled at 50 kHz) 51000 packets of 144 samples from 2015-09-08T17:05:49.698.999. Part 60/147

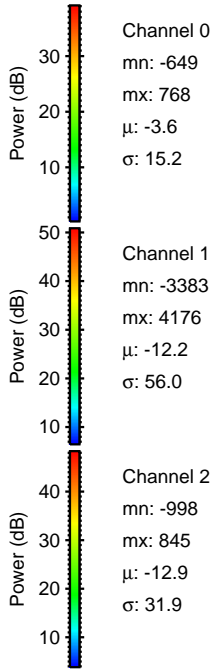
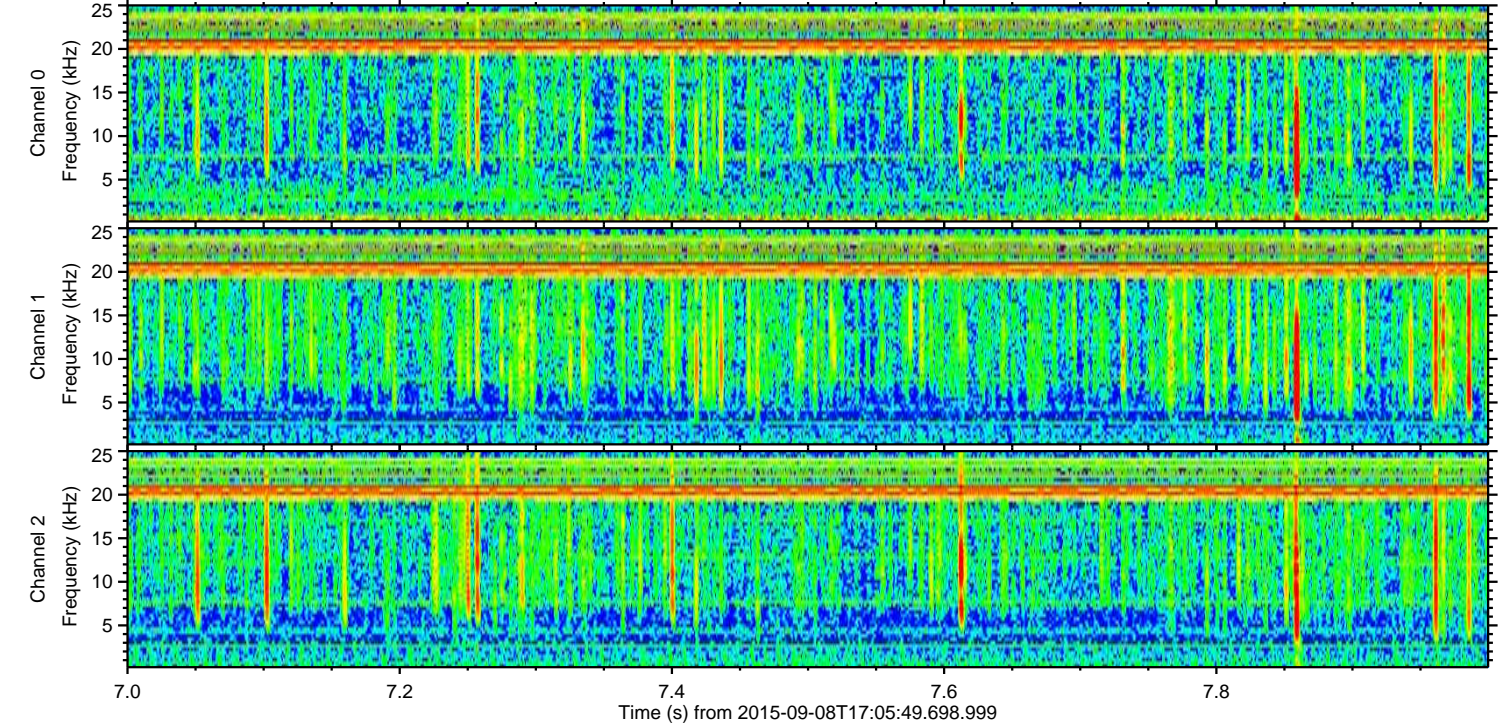
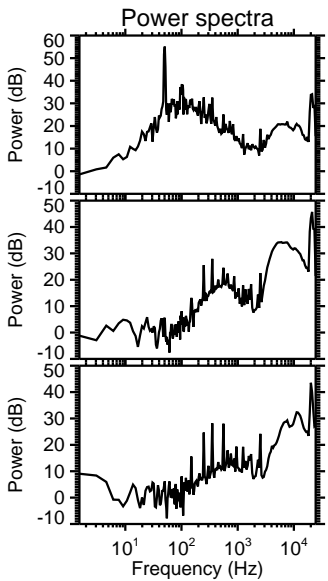
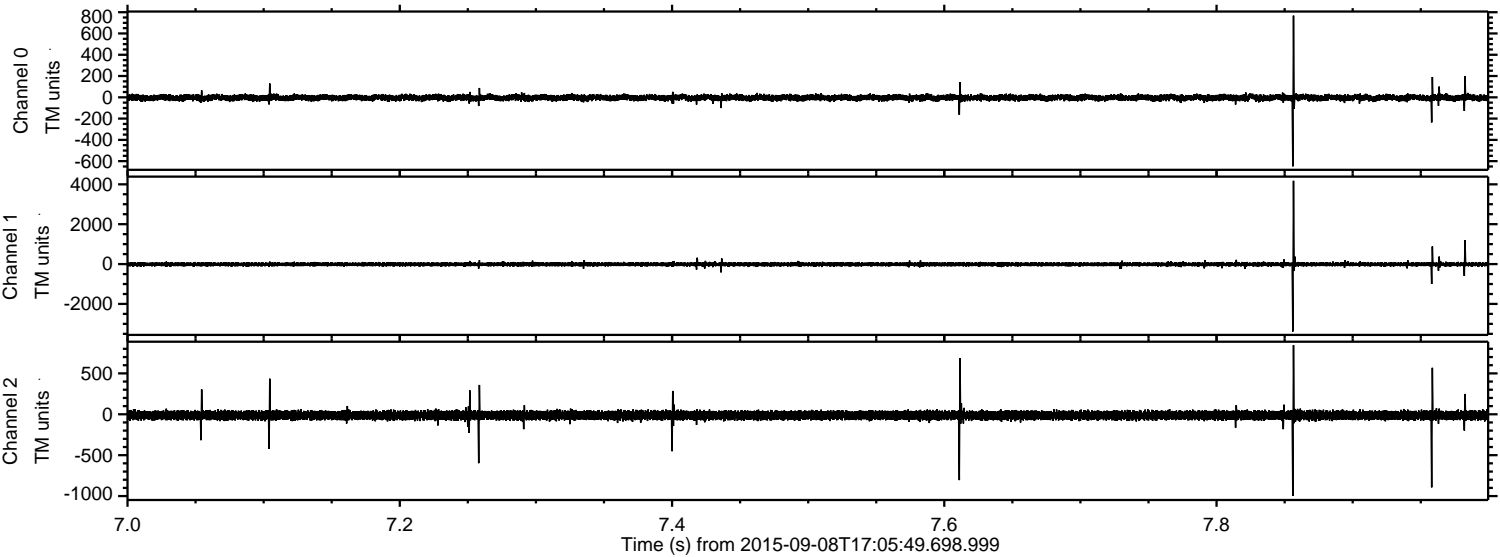
Processed Sat Oct 10 20:09:16 2015 by ELM ver.2012-10-06 from 001\_\_elm20150908\_170548\_\_dat00.bin





ELMAVAN 3D WAVEFORMS (Measured data sampled at 50 kHz) 51000 packets of 144 samples from 2015-09-08T17:05:49.698.999. Part 8/147

Processed Sat Oct 10 20:09:17 2015 by ELM ver.2012-10-06 from 001\_\_elm20150908\_170548\_\_dat00.bin





Processed Sat Oct 10 20:09:18 2015 by ELM ver.2012-10-06 from 001\_\_elm20150908\_170548\_\_dat00.bin

