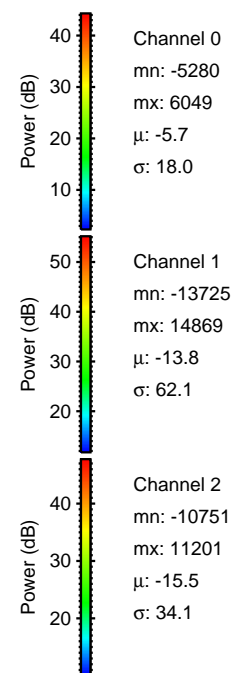
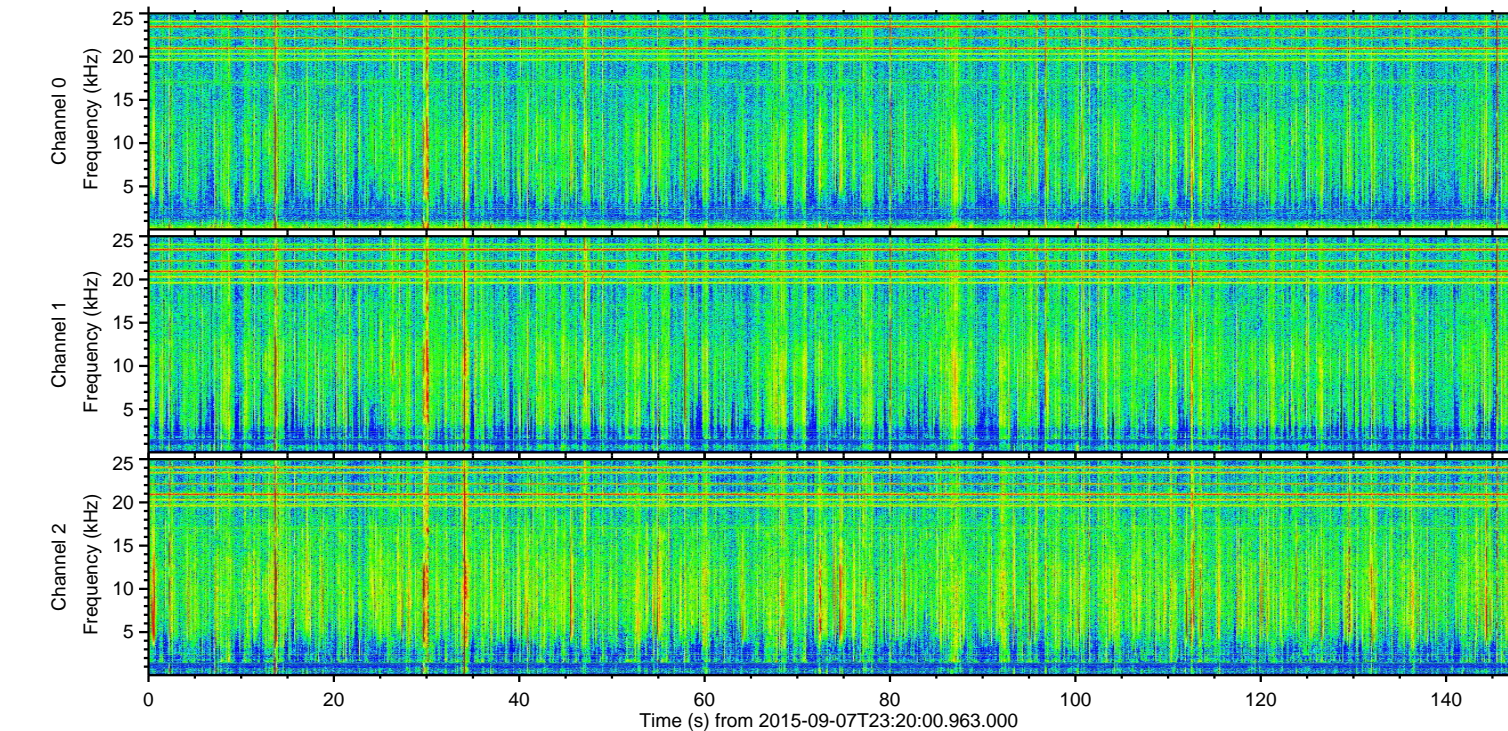
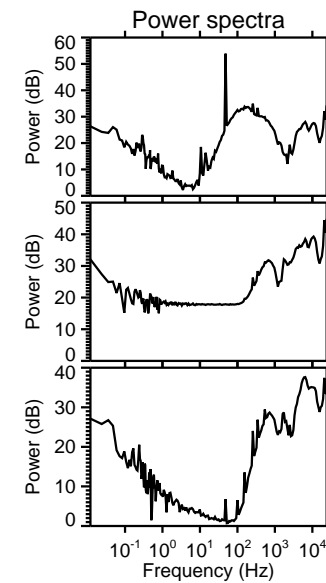
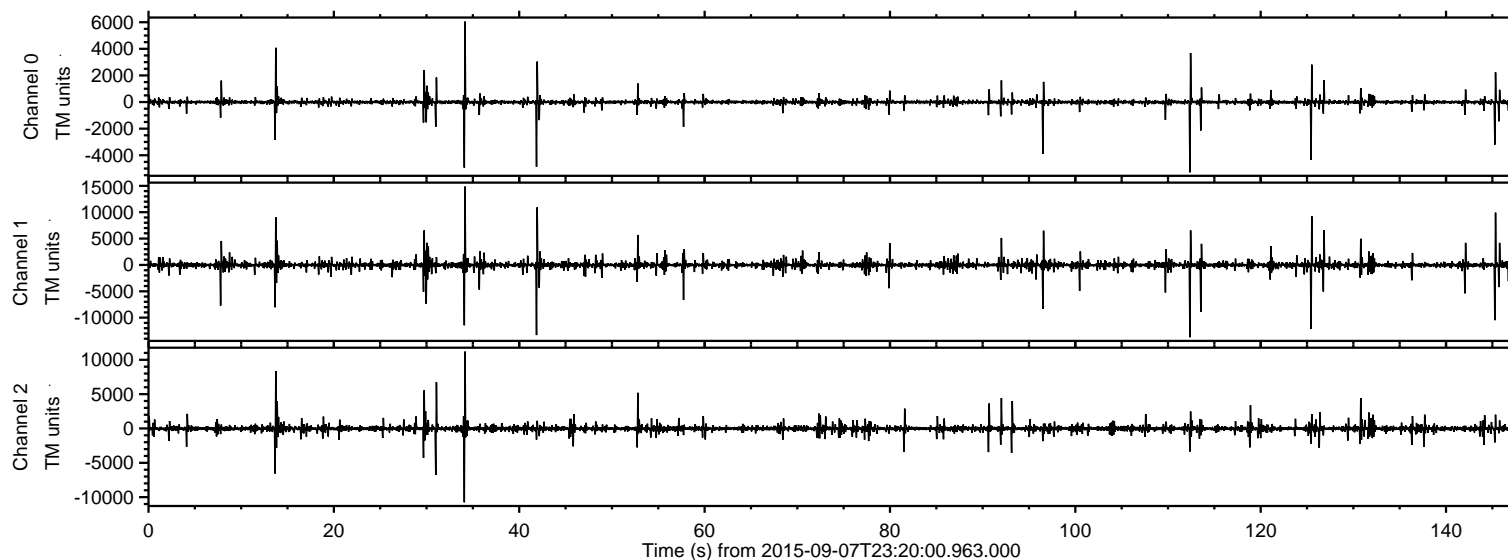


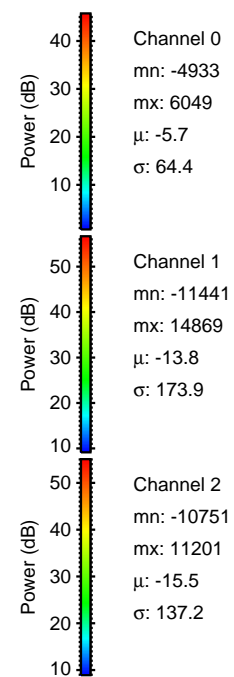
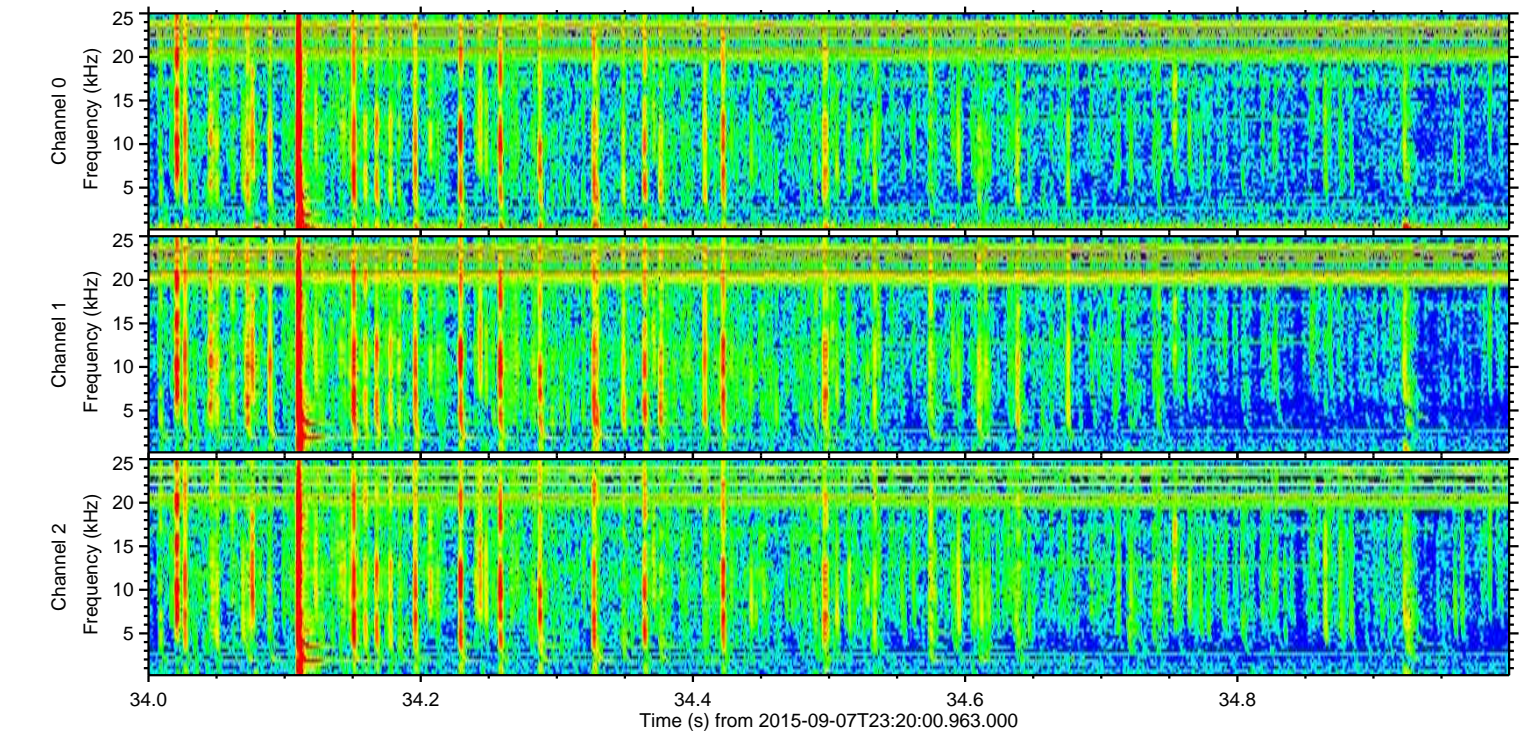
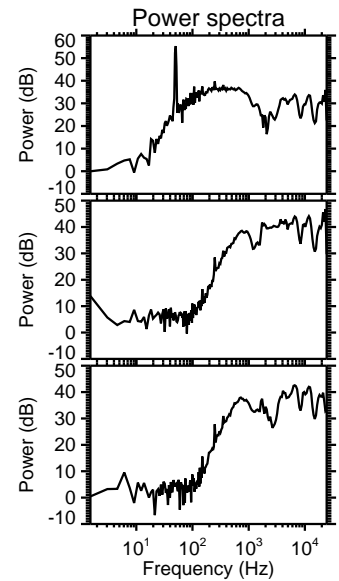
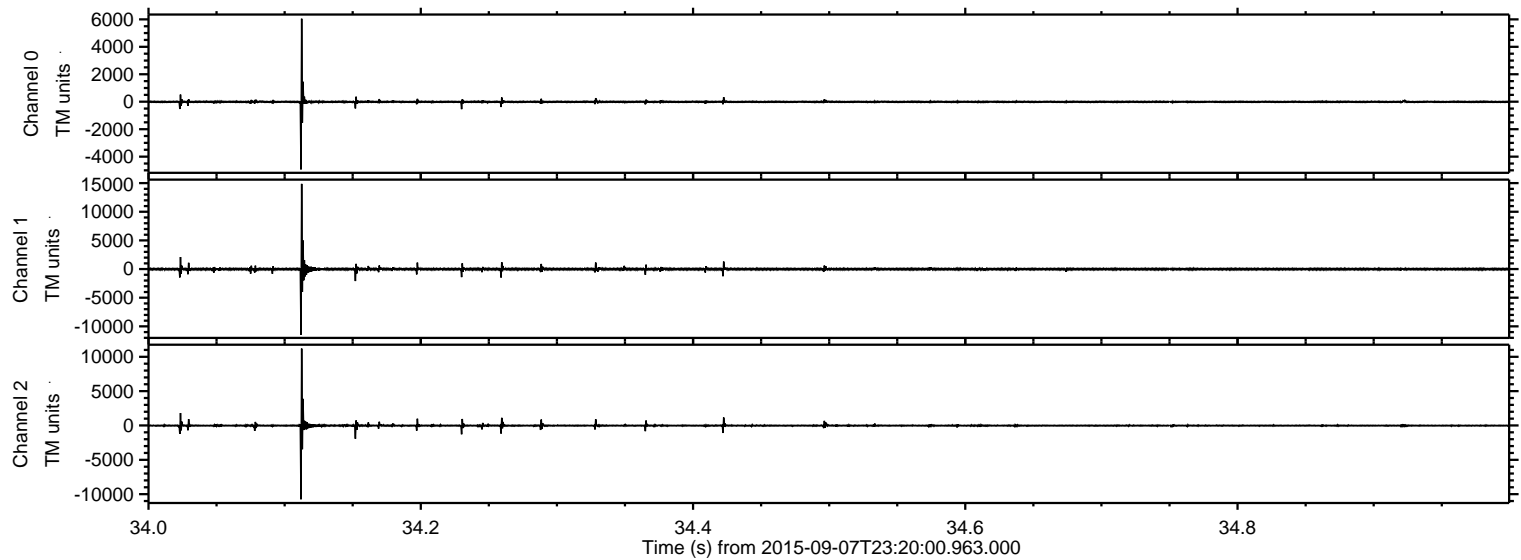
# ELMAVAN 3D WAVEFORMS (Measured data sampled at 50 kHz) 51000 packets of 144 samples from 2015-09-07T23:20:00.963.000.

Processed Sat Oct 10 15:03:17 2015 by ELM ver.2012-10-06 from 001\_\_elm20150907\_231959\_\_dat00.bin





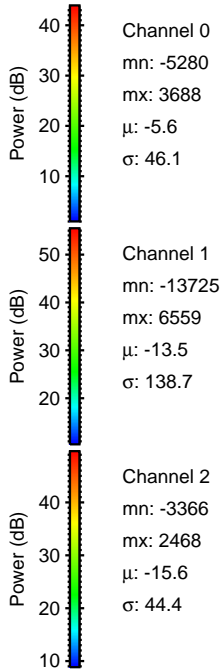
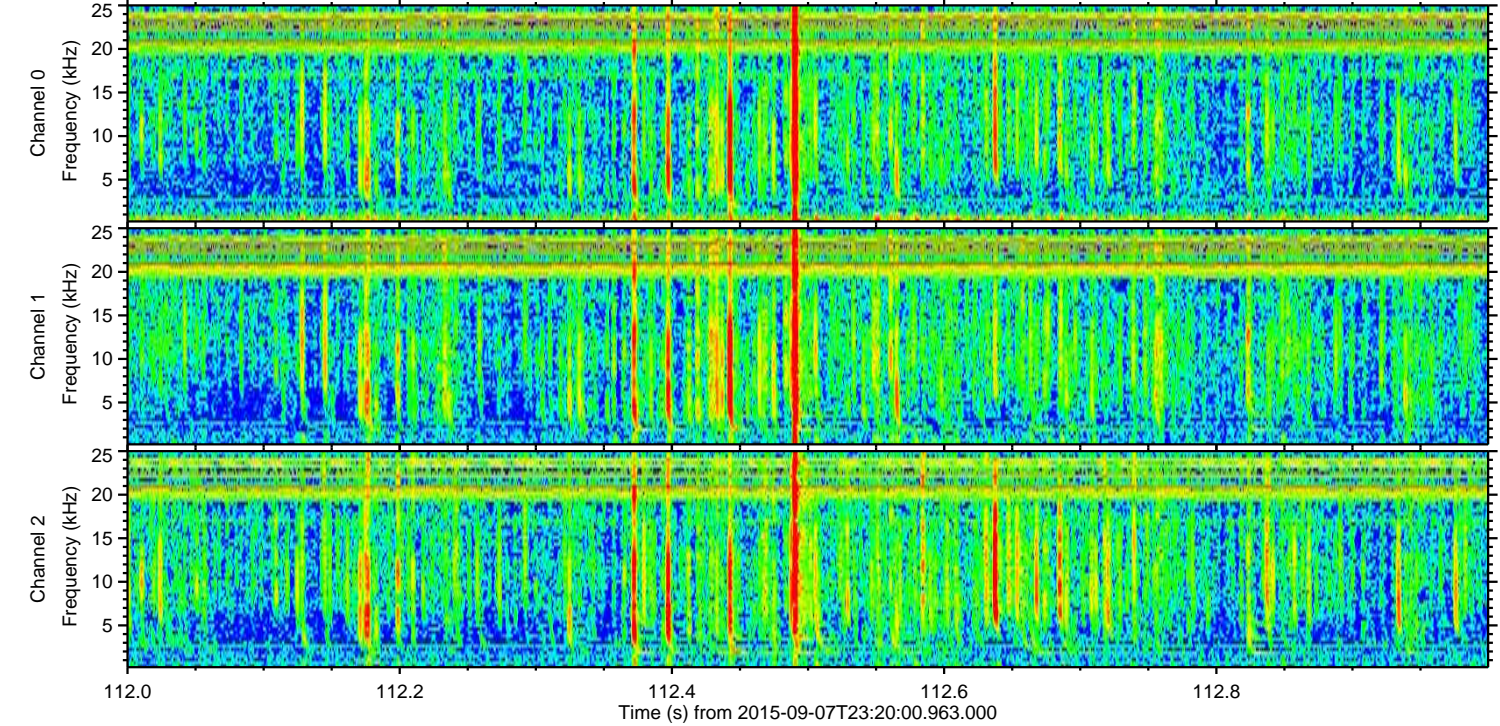
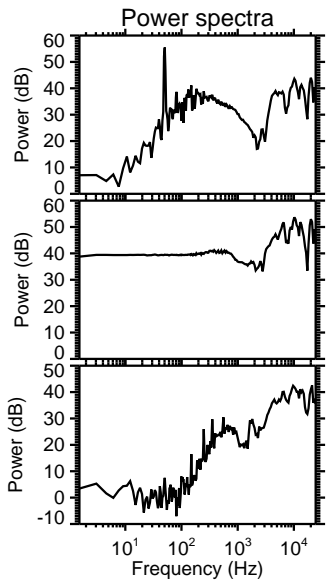
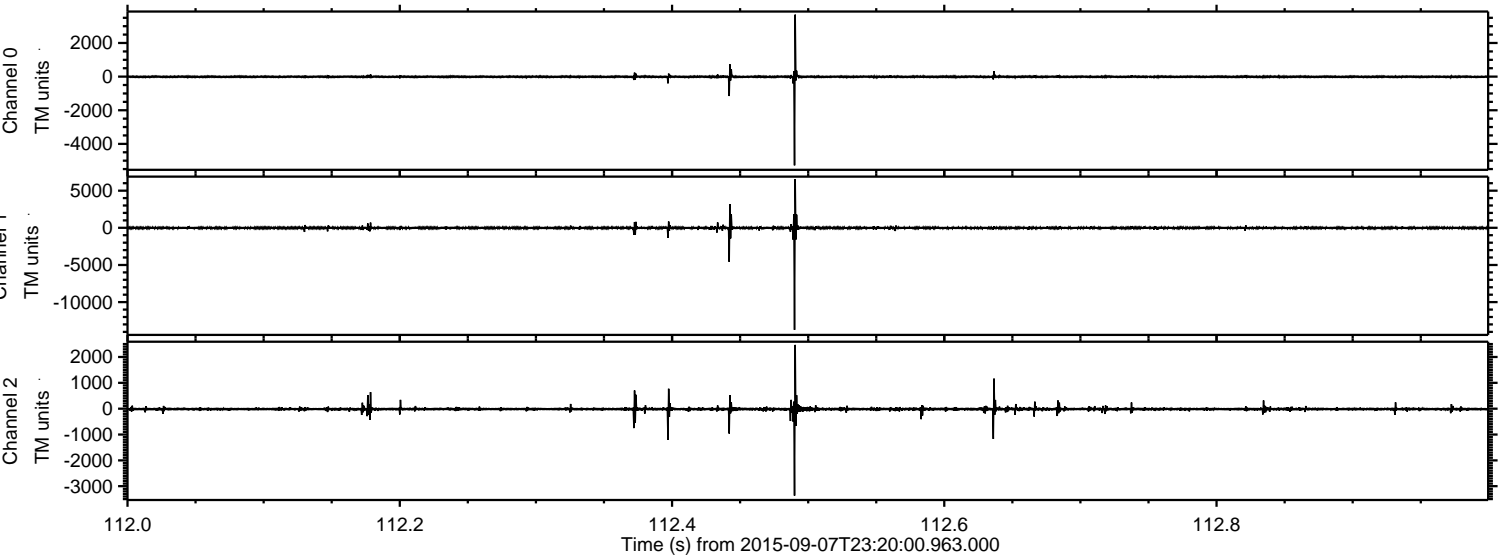
Processed Sat Oct 10 15:03:34 2015 by ELM ver.2012-10-06 from 001\_\_elm20150907\_231959\_\_dat00.bin





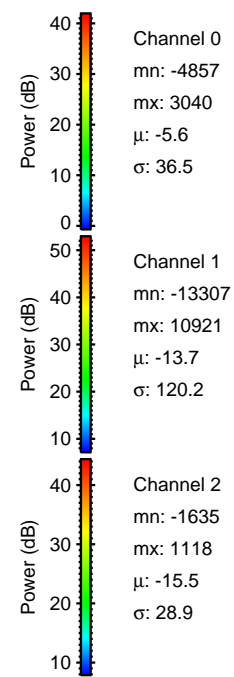
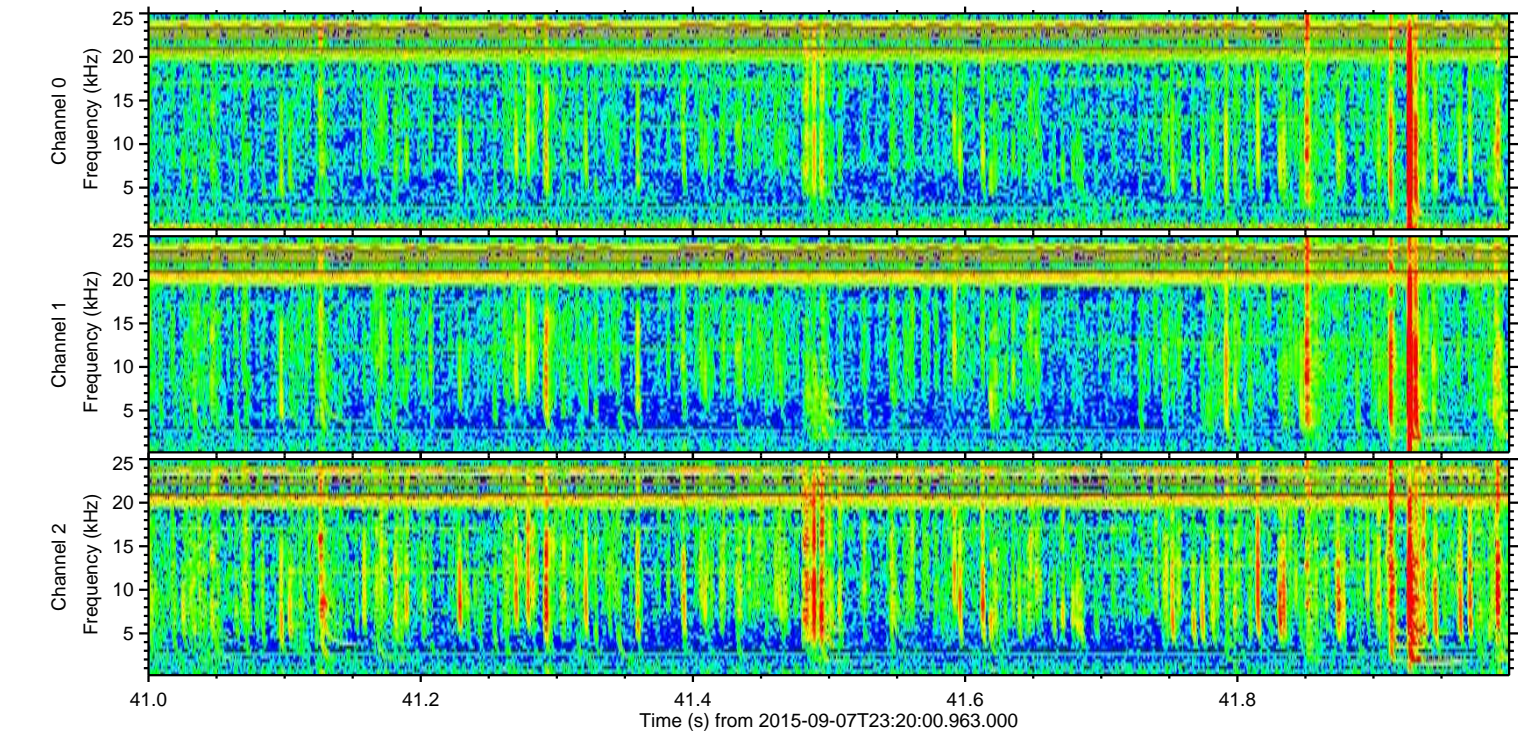
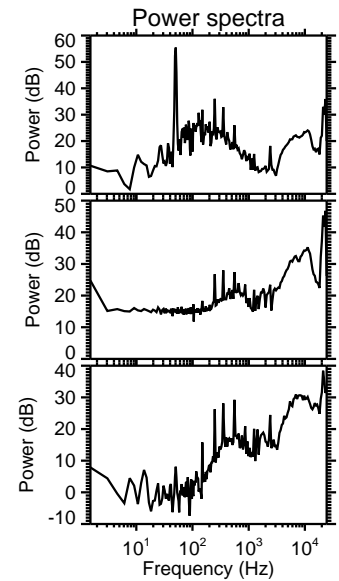
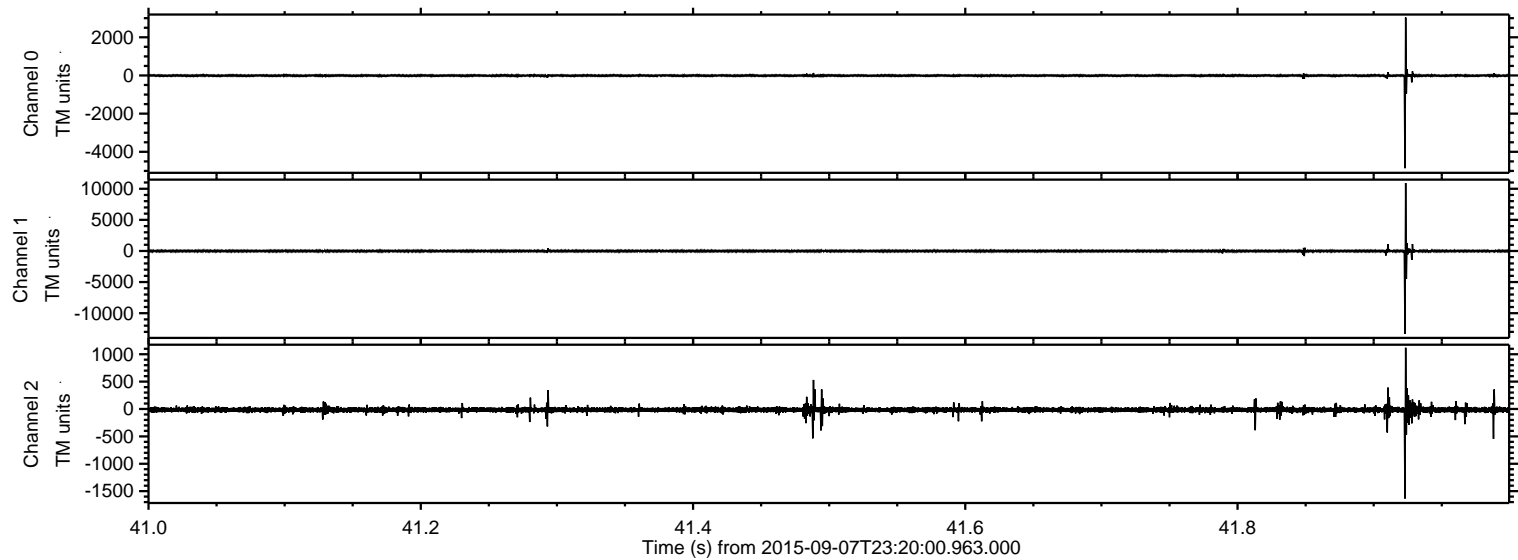
ELMAVAN 3D WAVEFORMS (Measured data sampled at 50 kHz) 51000 packets of 144 samples from 2015-09-07T23:20:00.963.000. Part 113/147

Processed Sat Oct 10 15:03:35 2015 by ELM ver.2012-10-06 from 001\_\_elm20150907\_231959\_\_dat00.bin





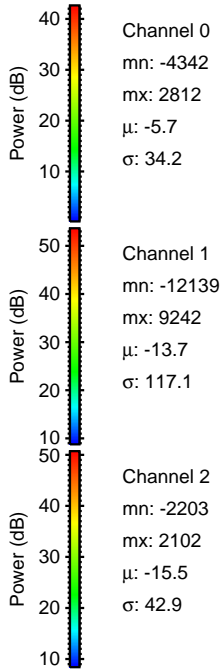
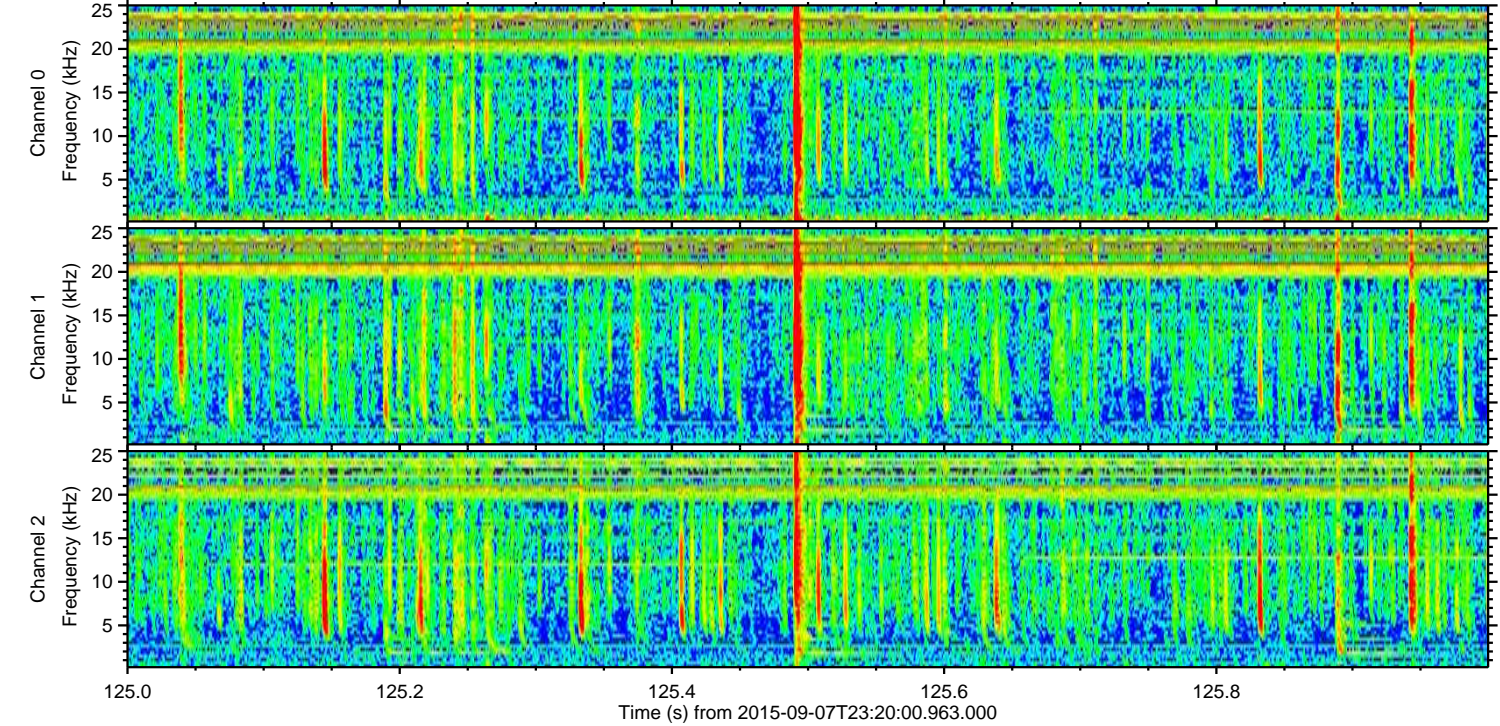
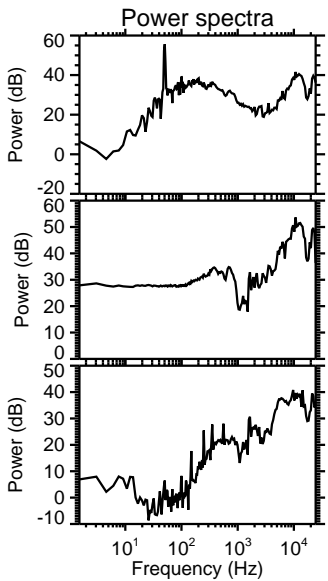
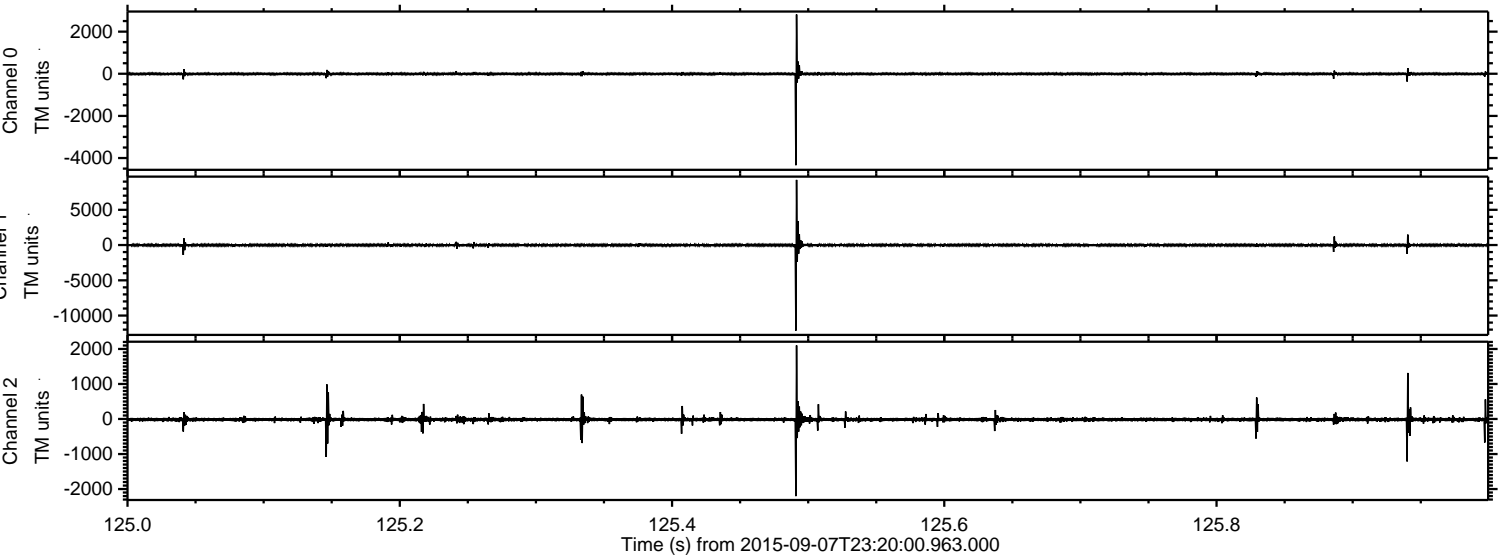
Processed Sat Oct 10 15:03:36 2015 by ELM ver.2012-10-06 from 001\_\_elm20150907\_231959\_\_dat00.bin





ELMAVAN 3D WAVEFORMS (Measured data sampled at 50 kHz) 51000 packets of 144 samples from 2015-09-07T23:20:00.963.000. Part 126/147

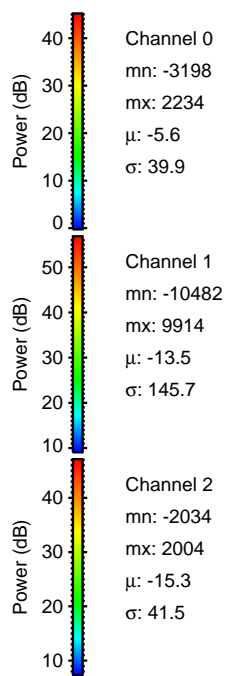
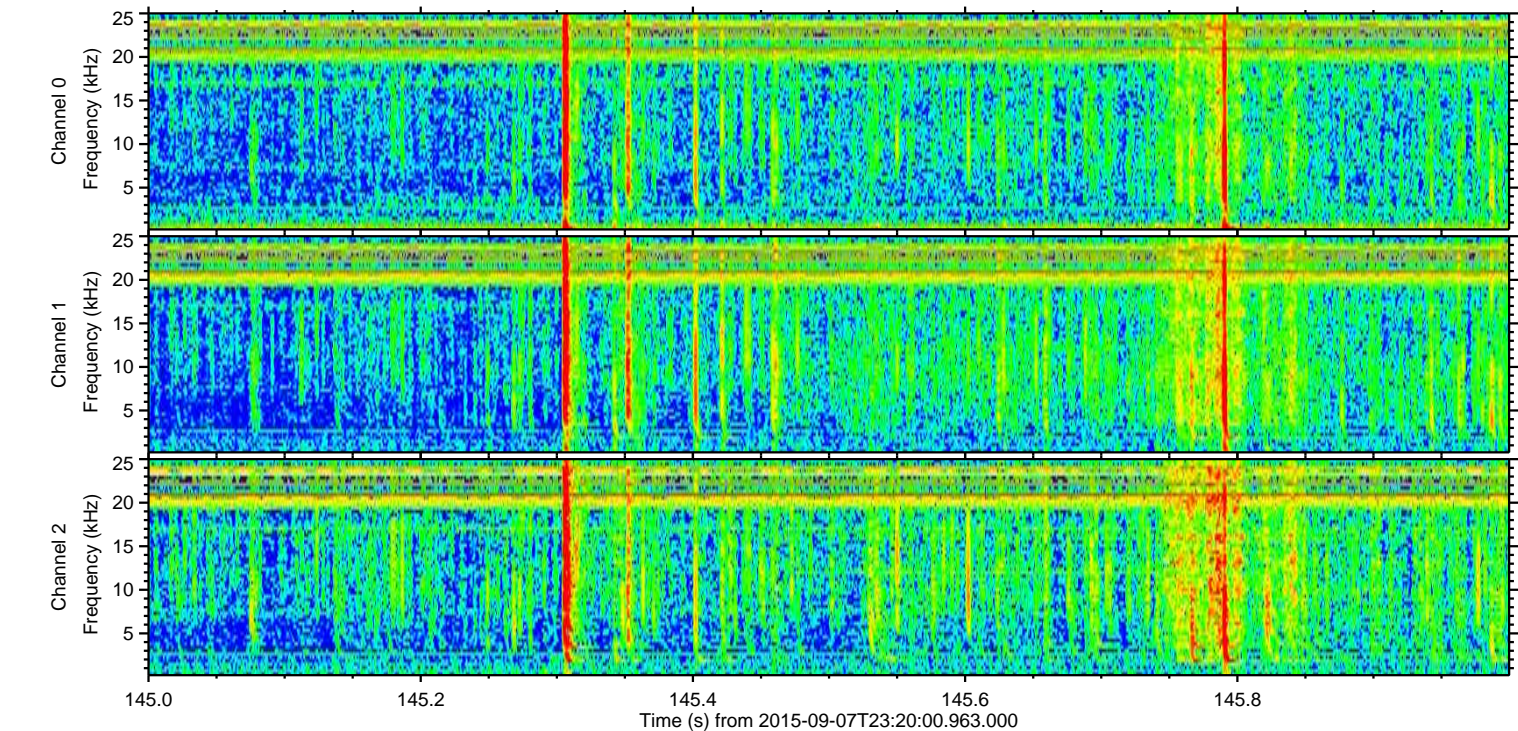
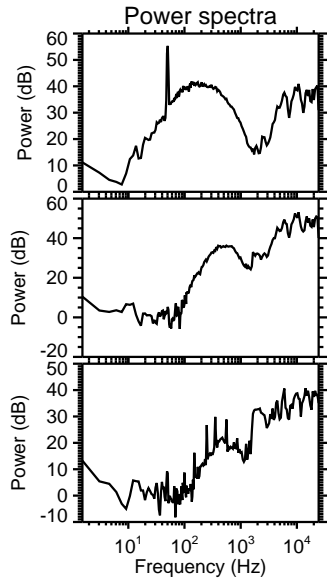
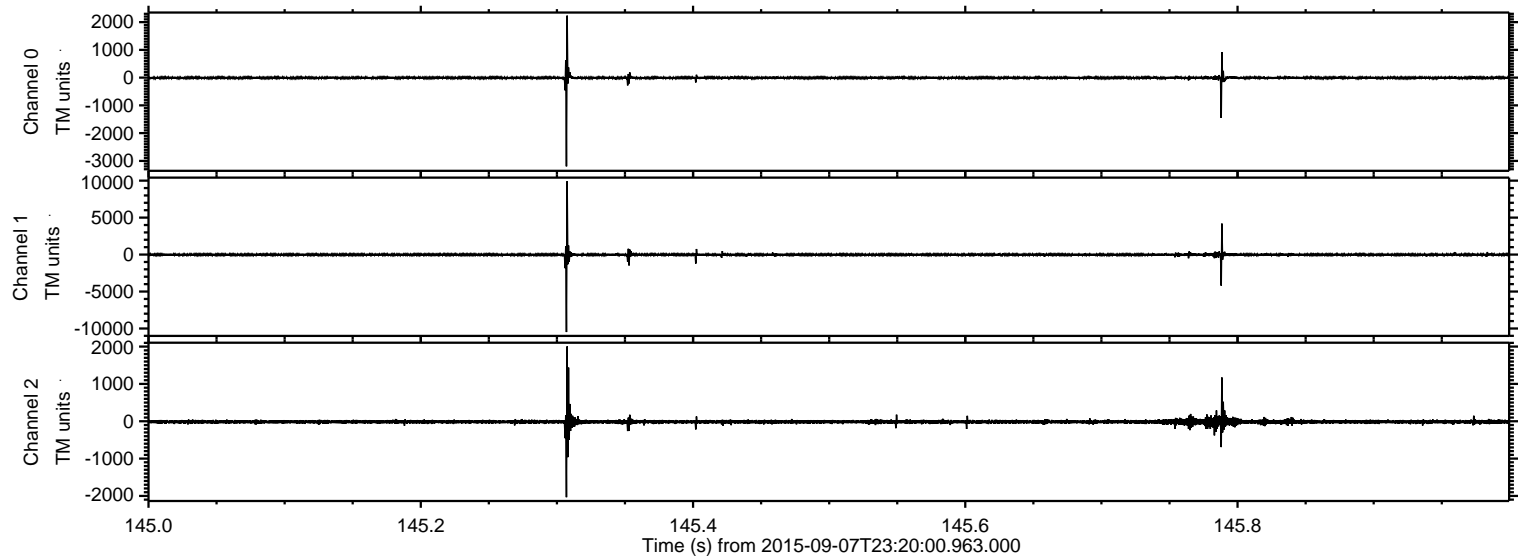
Processed Sat Oct 10 15:03:37 2015 by ELM ver.2012-10-06 from 001\_\_elm20150907\_231959\_\_dat00.bin





ELMAVAN 3D WAVEFORMS (Measured data sampled at 50 kHz) 51000 packets of 144 samples from 2015-09-07T23:20:00.963.000. Part 146/147

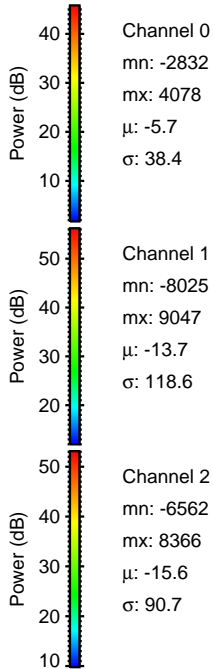
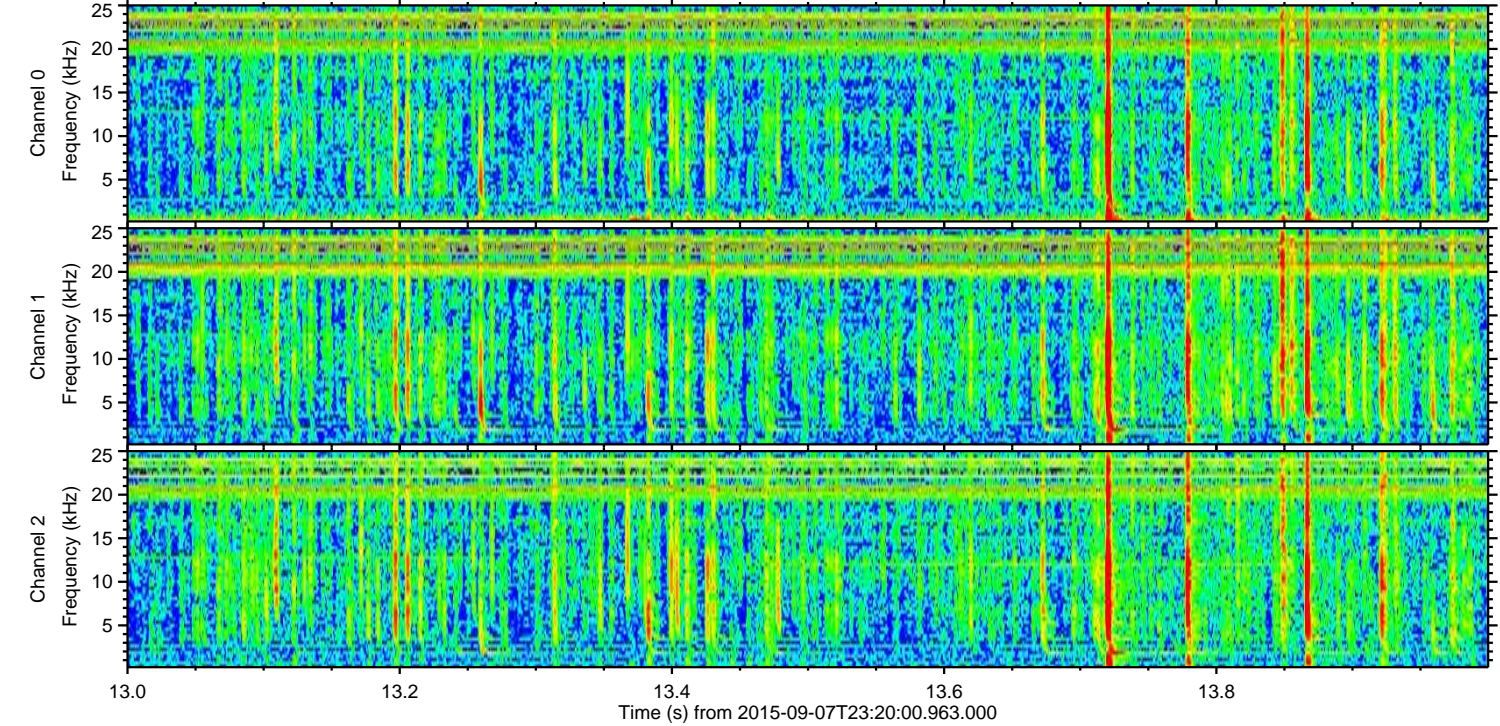
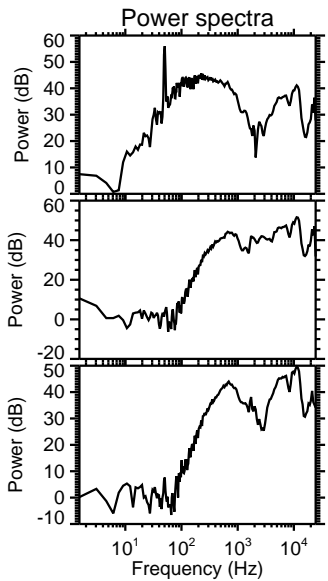
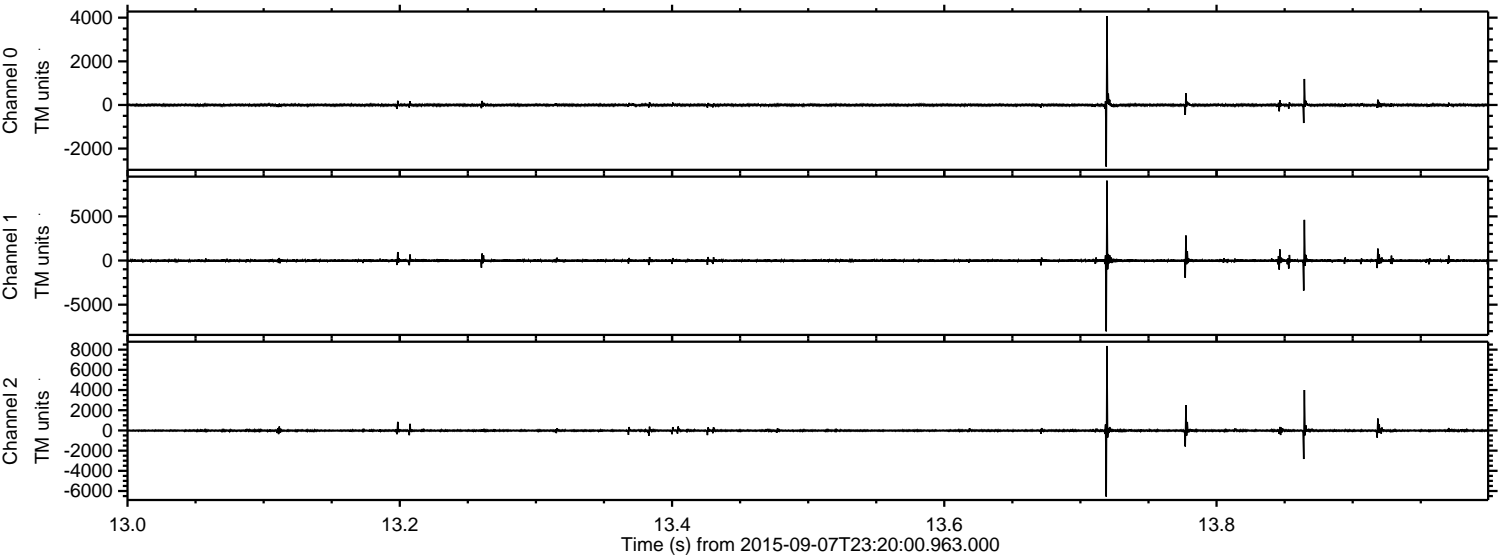
Processed Sat Oct 10 15:03:38 2015 by ELM ver.2012-10-06 from 001\_\_elm20150907\_231959\_\_dat00.bin





ELMAVAN 3D WAVEFORMS (Measured data sampled at 50 kHz) 51000 packets of 144 samples from 2015-09-07T23:20:00.963.000. Part 14/147

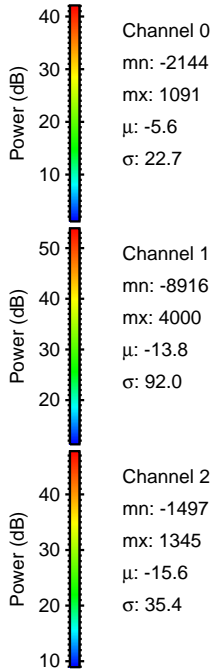
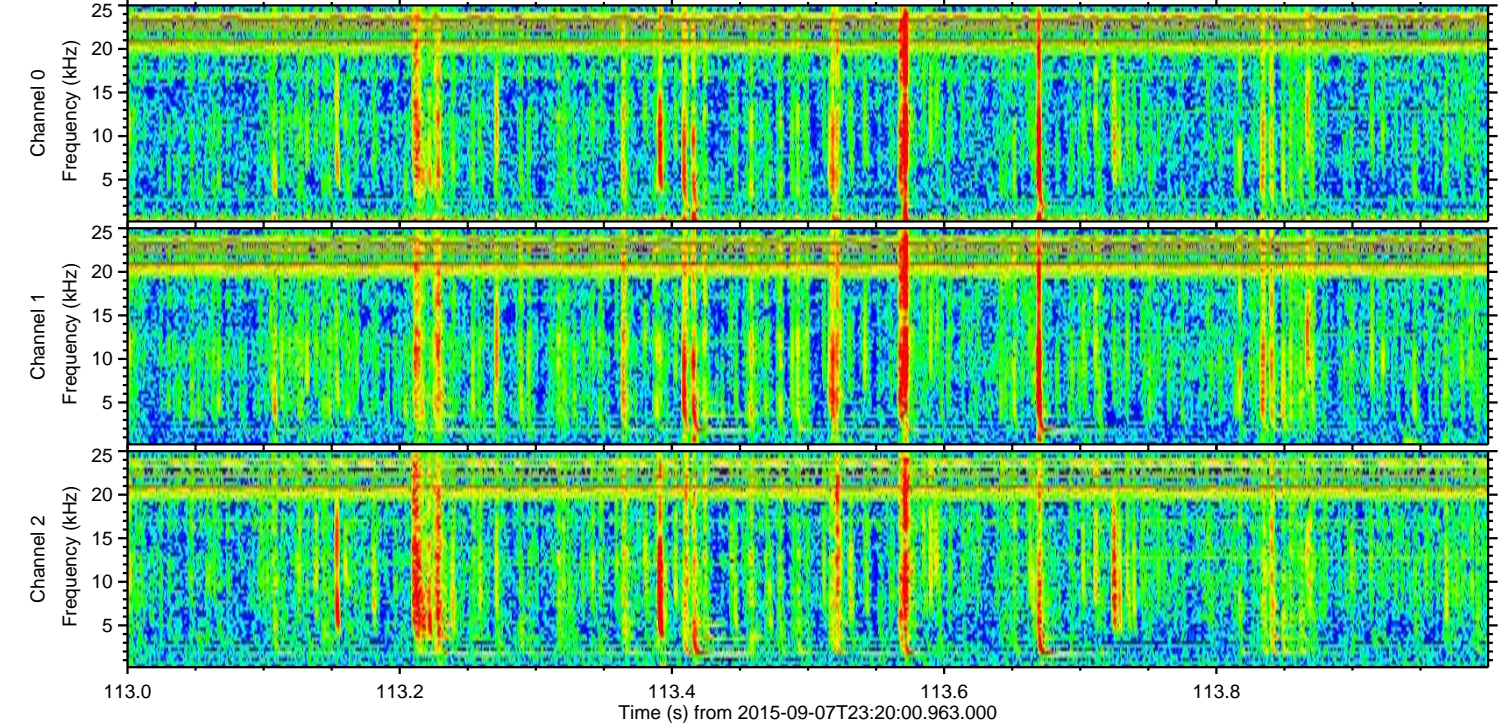
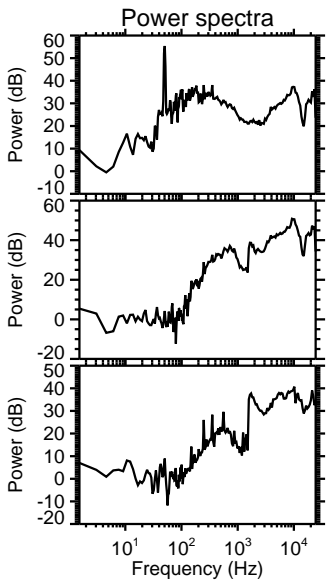
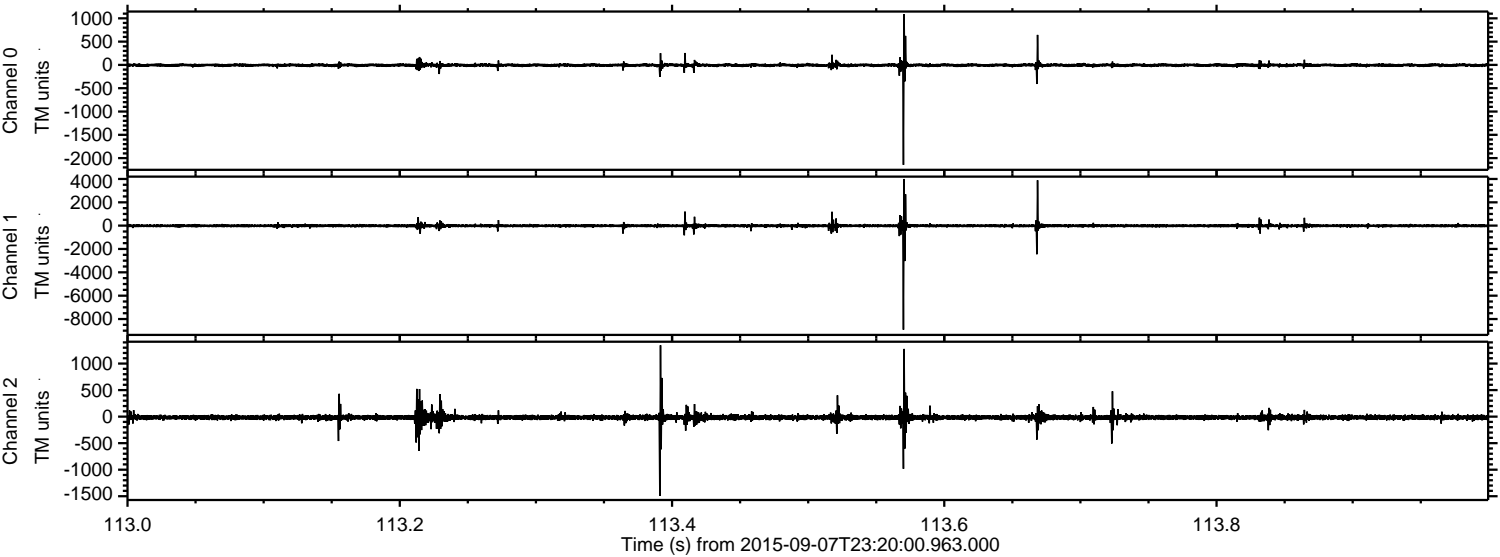
Processed Sat Oct 10 15:03:39 2015 by ELM ver.2012-10-06 from 001\_\_elm20150907\_231959\_\_dat00.bin





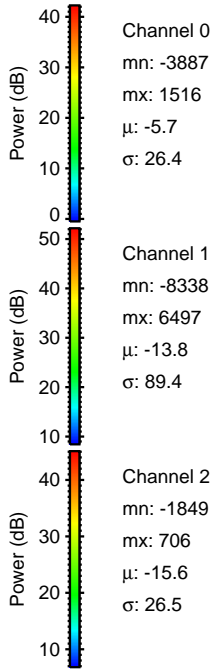
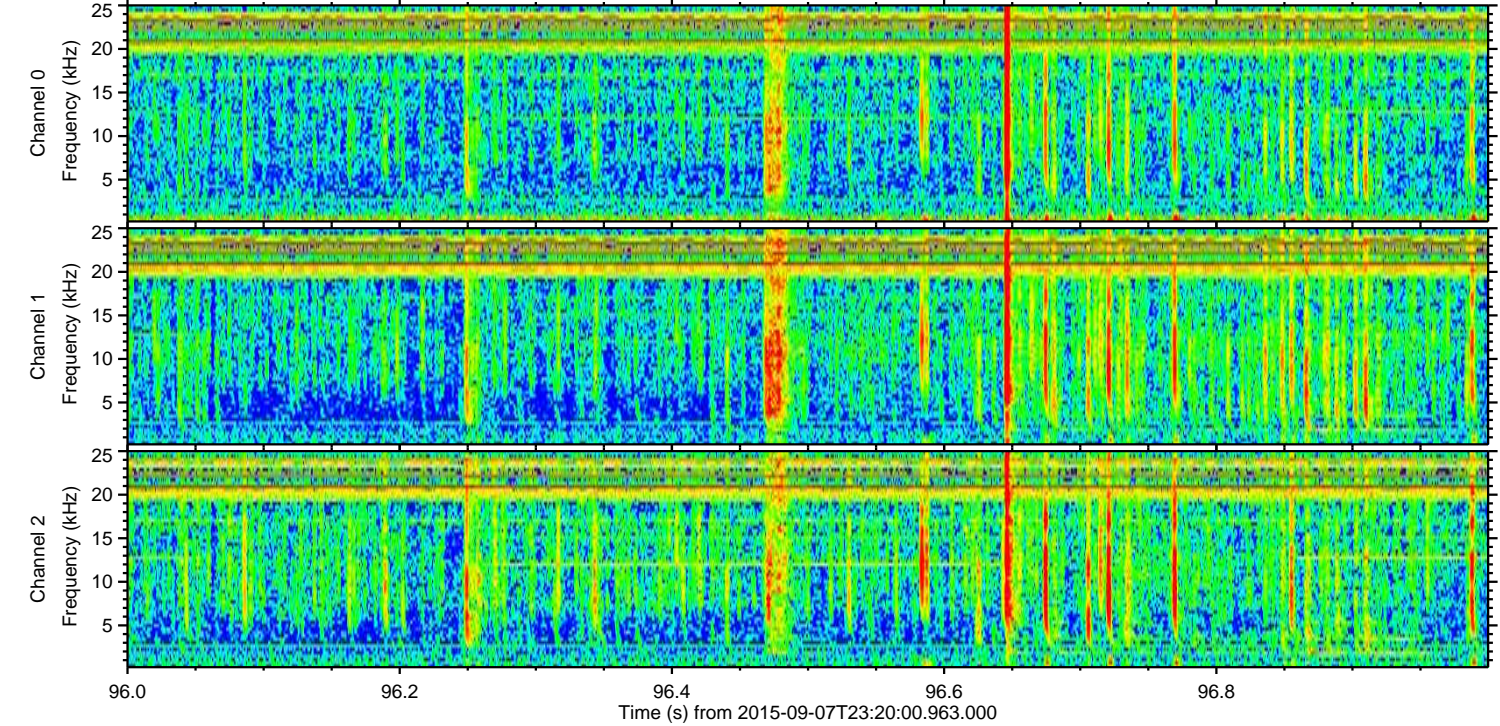
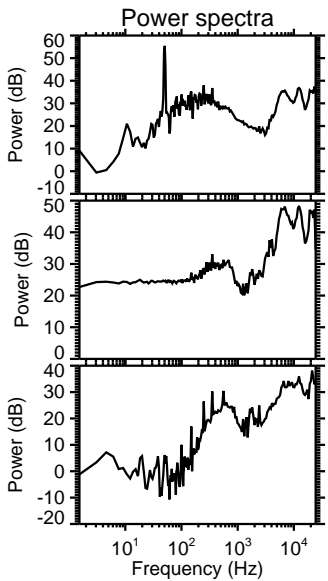
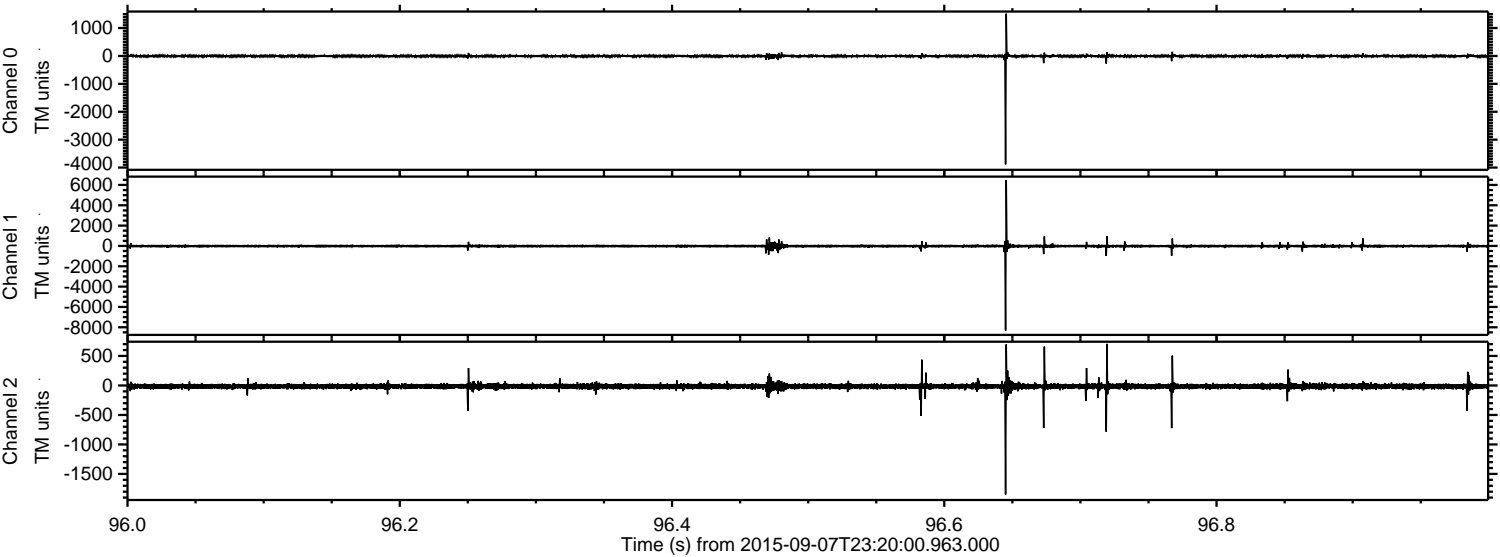
ELMAVAN 3D WAVEFORMS (Measured data sampled at 50 kHz) 51000 packets of 144 samples from 2015-09-07T23:20:00.963.000. Part 114/147

Processed Sat Oct 10 15:03:40 2015 by ELM ver.2012-10-06 from 001\_\_elm20150907\_231959\_\_dat00.bin



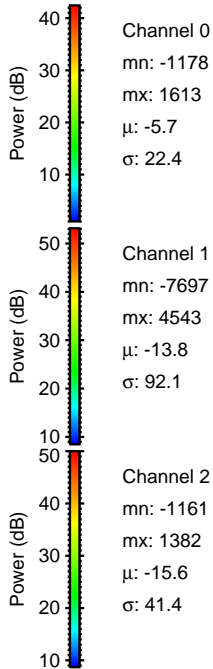
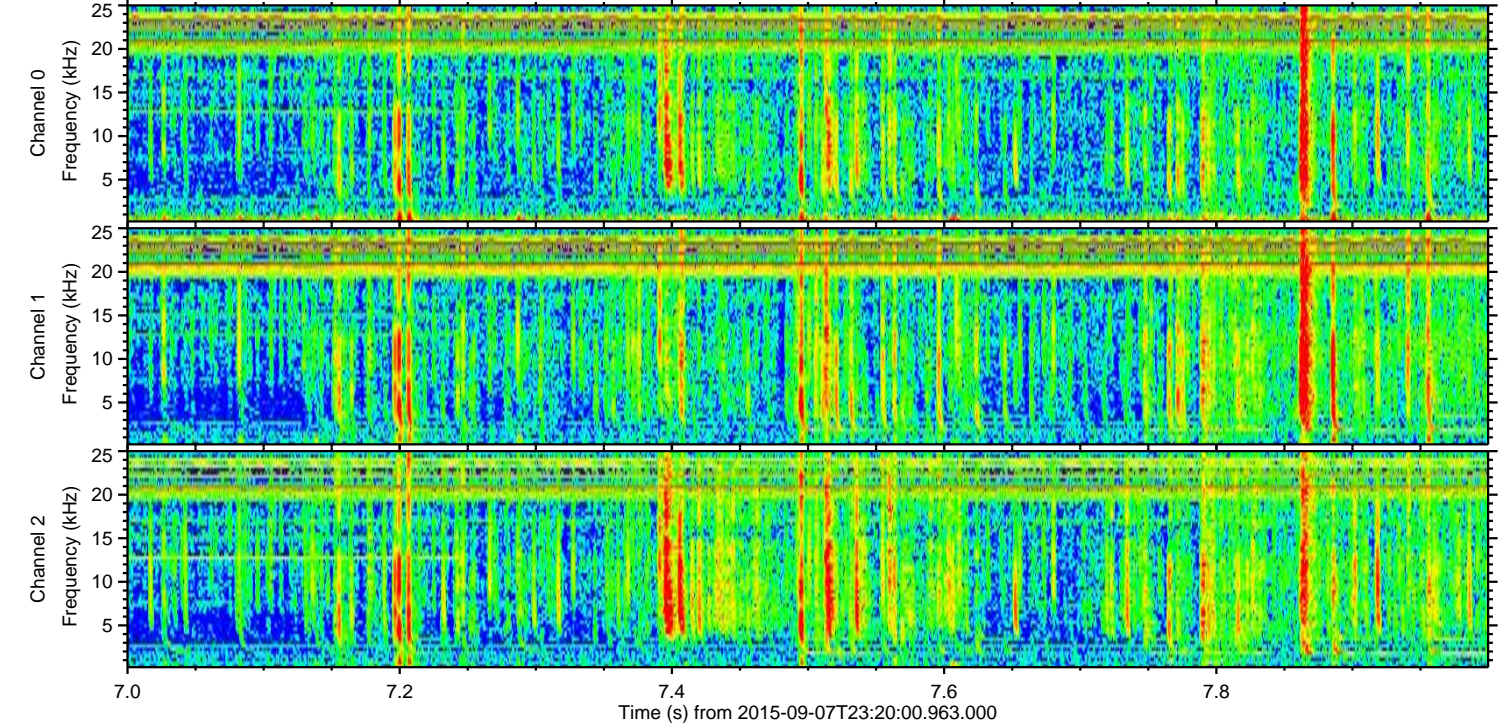
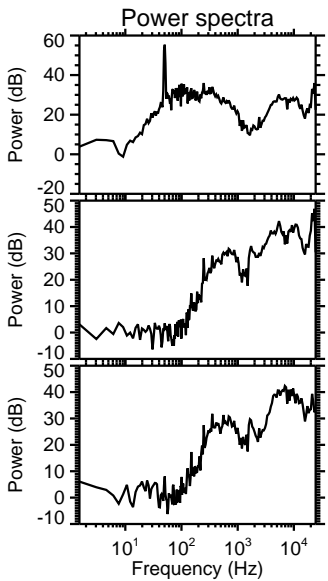
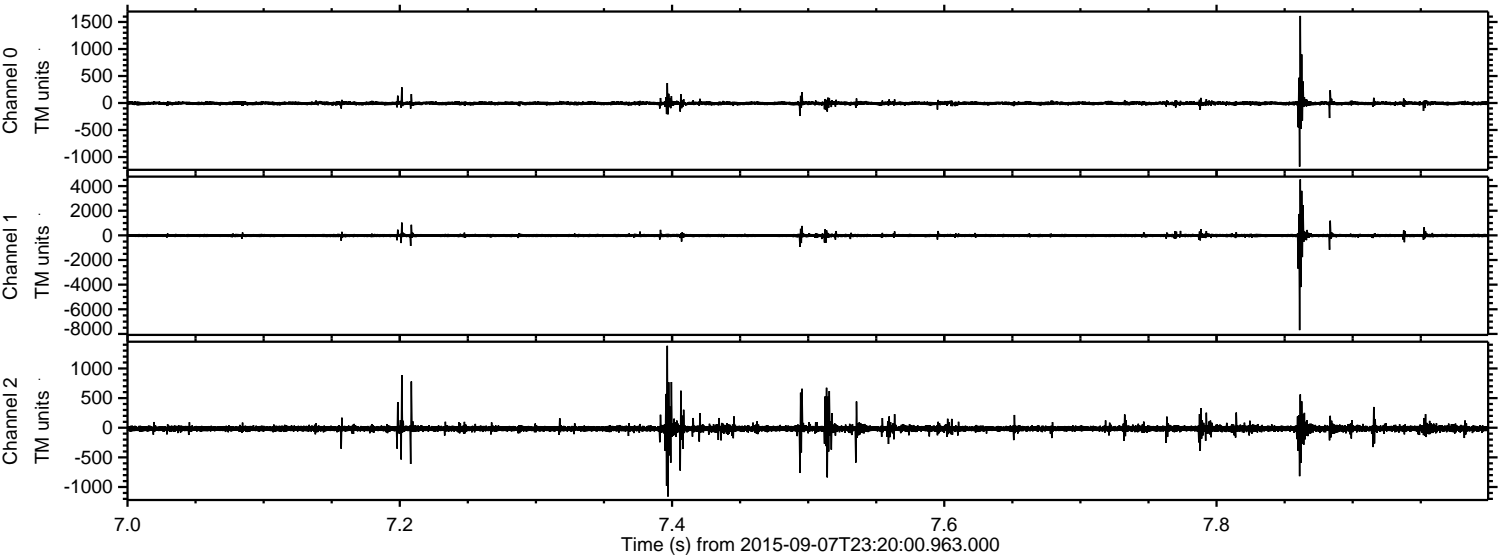


Processed Sat Oct 10 15:03:41 2015 by ELM ver.2012-10-06 from 001\_\_elm20150907\_231959\_\_dat00.bin



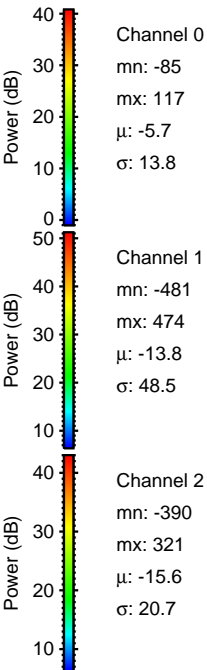
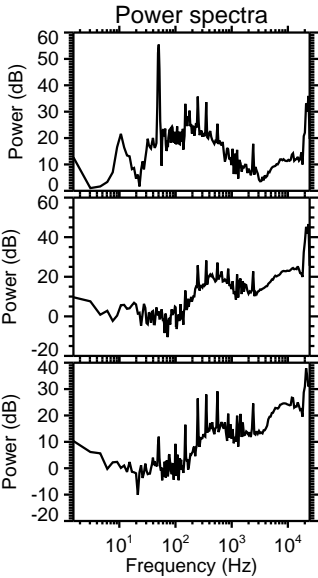
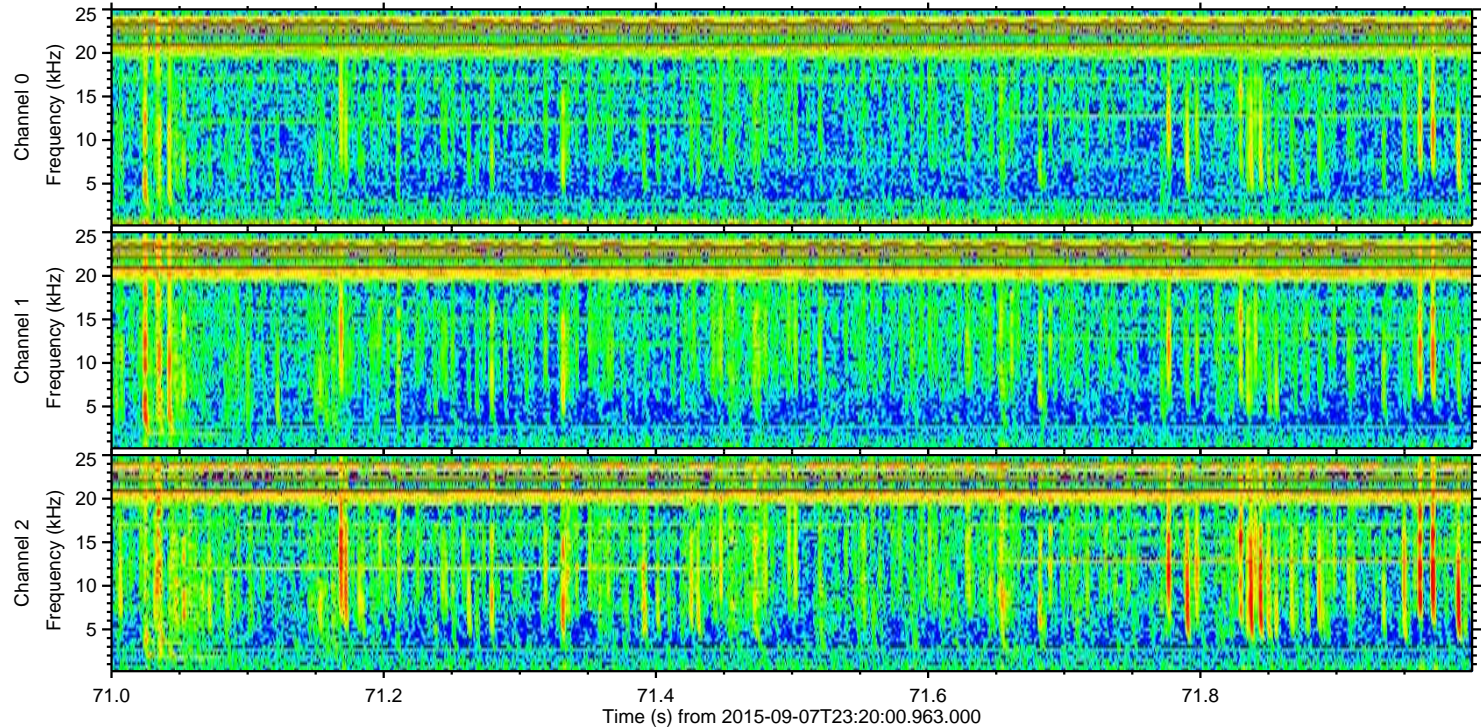
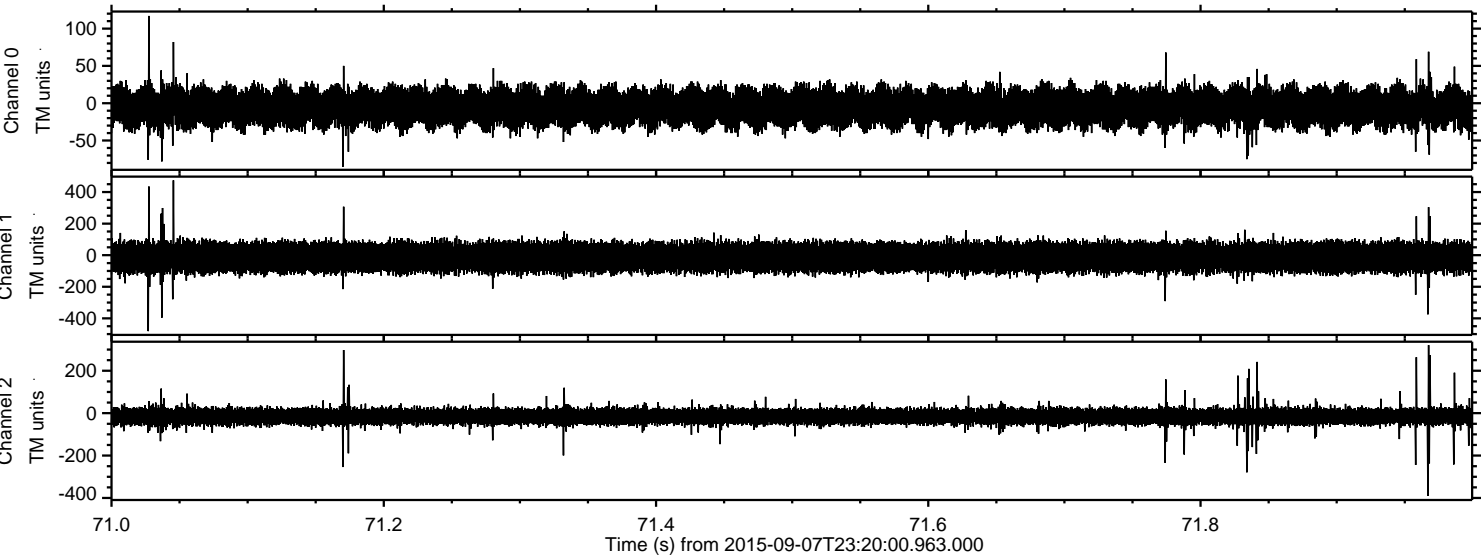


Processed Sat Oct 10 15:03:42 2015 by ELM ver.2012-10-06 from 001\_\_elm20150907\_231959\_\_dat00.bin





Processed Sat Oct 10 15:03:43 2015 by ELM ver.2012-10-06 from 001\_\_elm20150907\_231959\_\_dat00.bin



Channel 0  
mn: -85  
mx: 117  
 $\mu$ : -5.7  
 $\sigma$ : 13.8

Channel 1  
mn: -481  
mx: 474  
 $\mu$ : -13.8  
 $\sigma$ : 48.5

Channel 2  
mn: -390  
mx: 321  
 $\mu$ : -15.6  
 $\sigma$ : 20.7