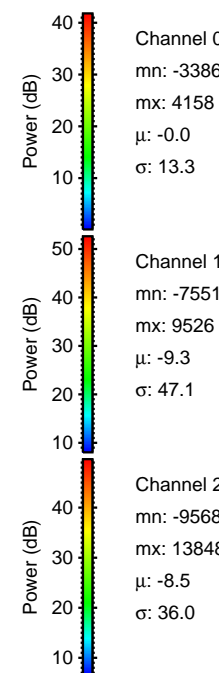
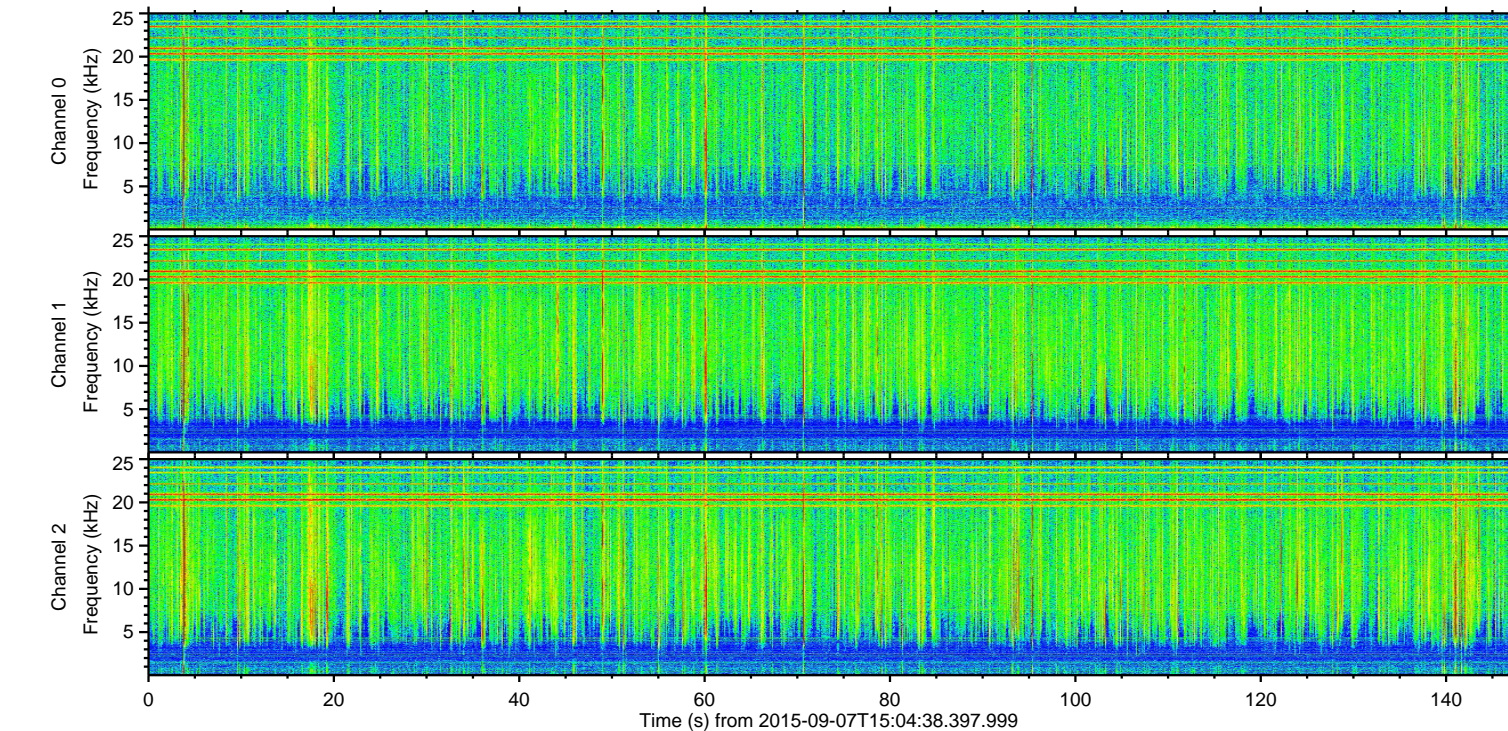
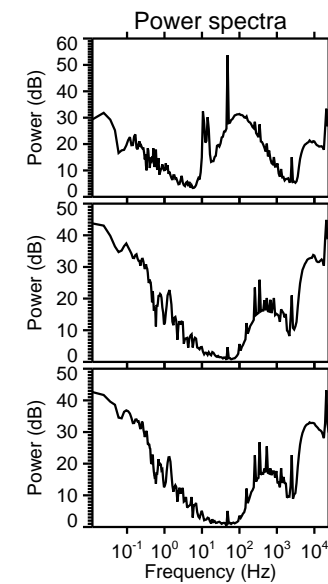
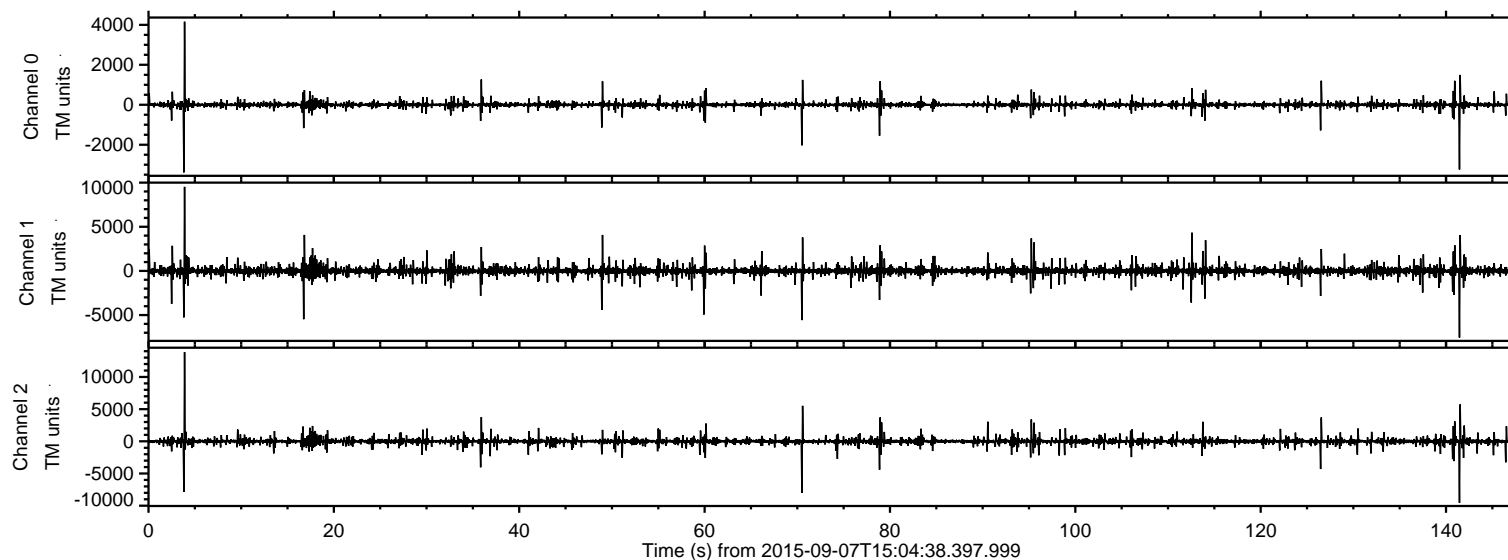


# ELMAVAN 3D WAVEFORMS (Measured data sampled at 50 kHz) 51000 packets of 144 samples from 2015-09-07T15:04:38.397.999.

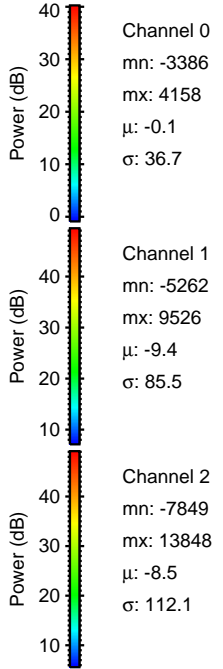
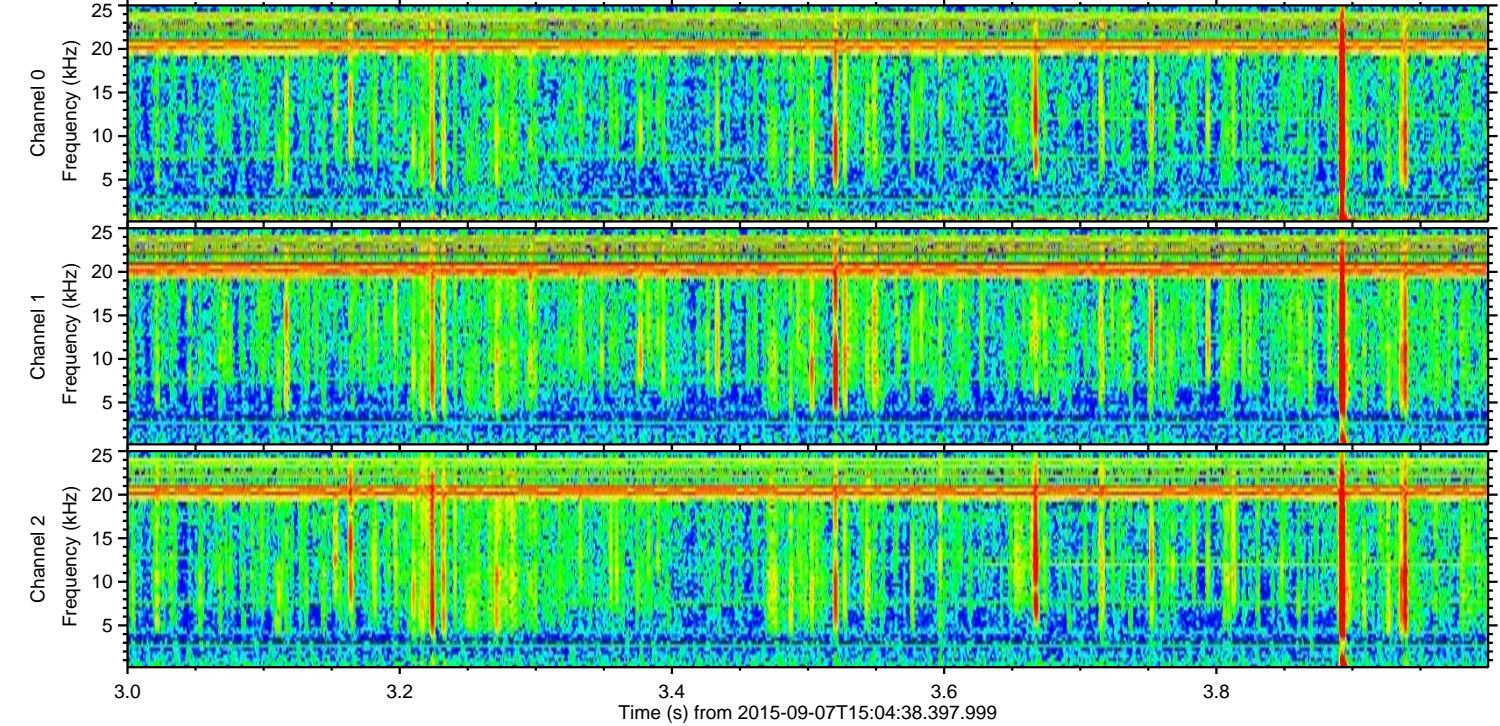
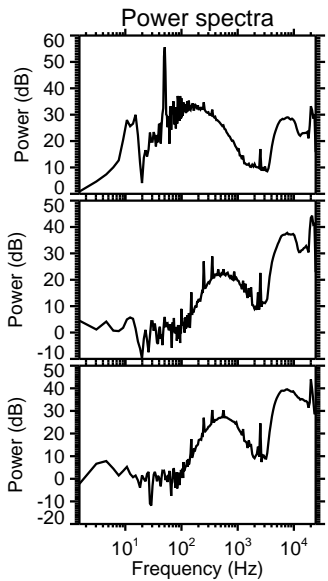
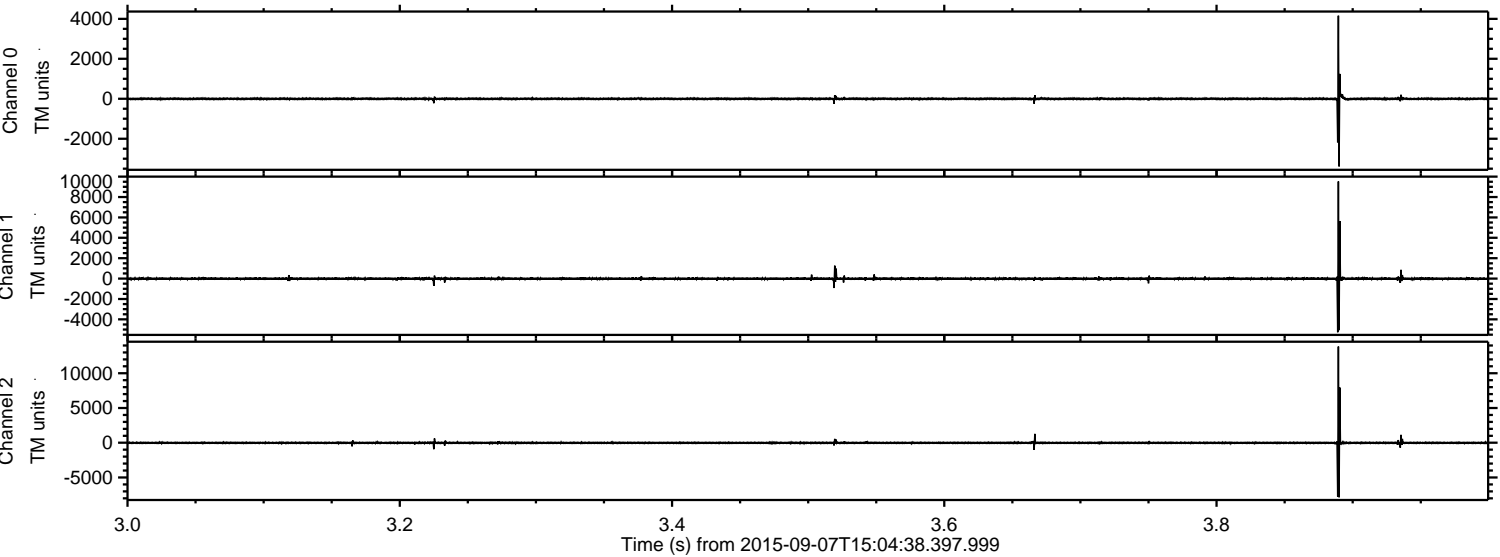
Processed Sat Oct 10 12:42:40 2015 by ELM ver.2012-10-06 from 001\_\_elm20150907\_150437\_\_dat00.bin





ELMAVAN 3D WAVEFORMS (Measured data sampled at 50 kHz) 51000 packets of 144 samples from 2015-09-07T15:04:38.397.999. Part 4/147

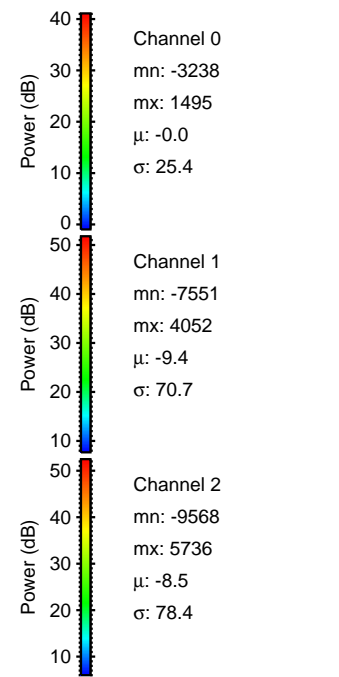
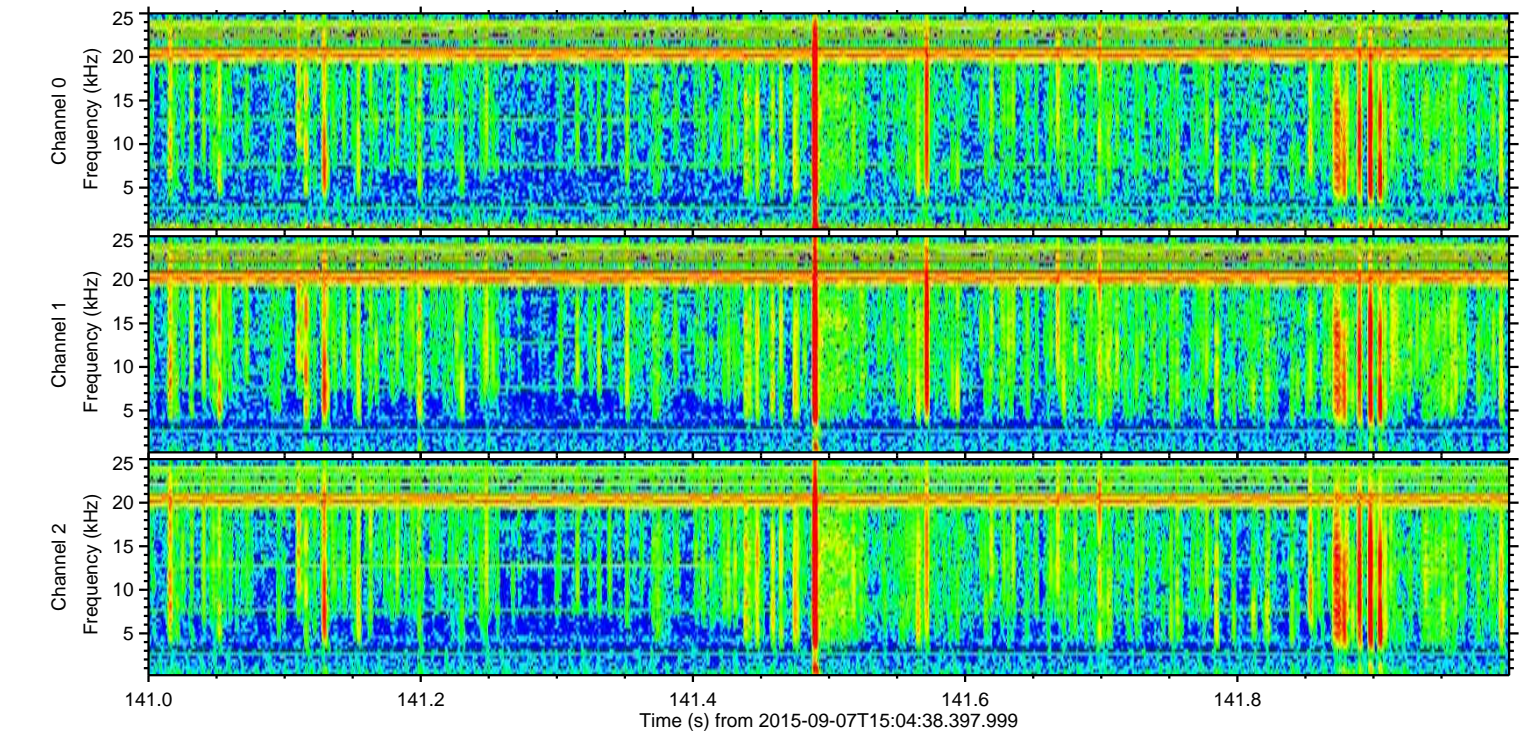
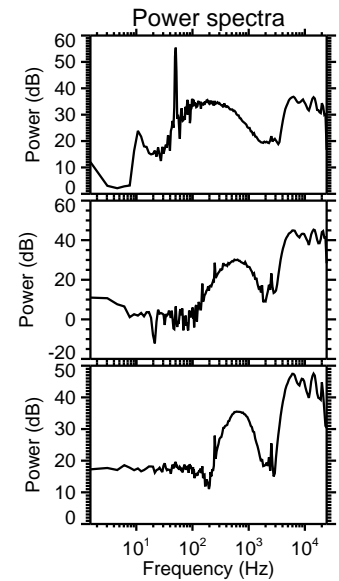
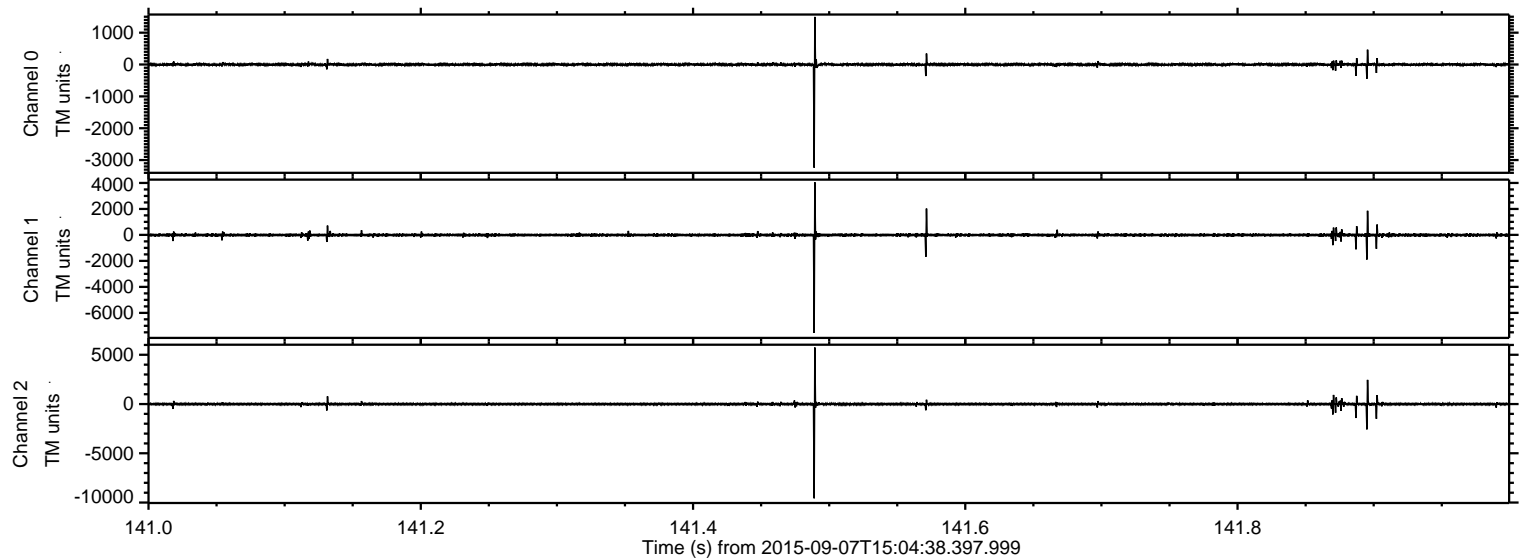
Processed Sat Oct 10 12:42:56 2015 by ELM ver.2012-10-06 from 001\_\_elm20150907\_150437\_\_dat00.bin





ELMAVAN 3D WAVEFORMS (Measured data sampled at 50 kHz) 51000 packets of 144 samples from 2015-09-07T15:04:38.397.999. Part 142/147

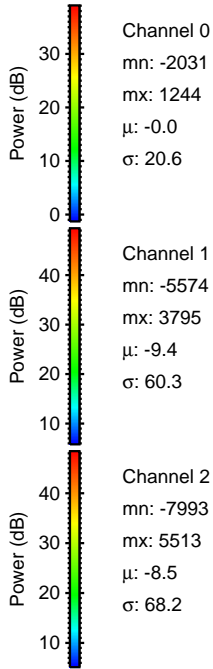
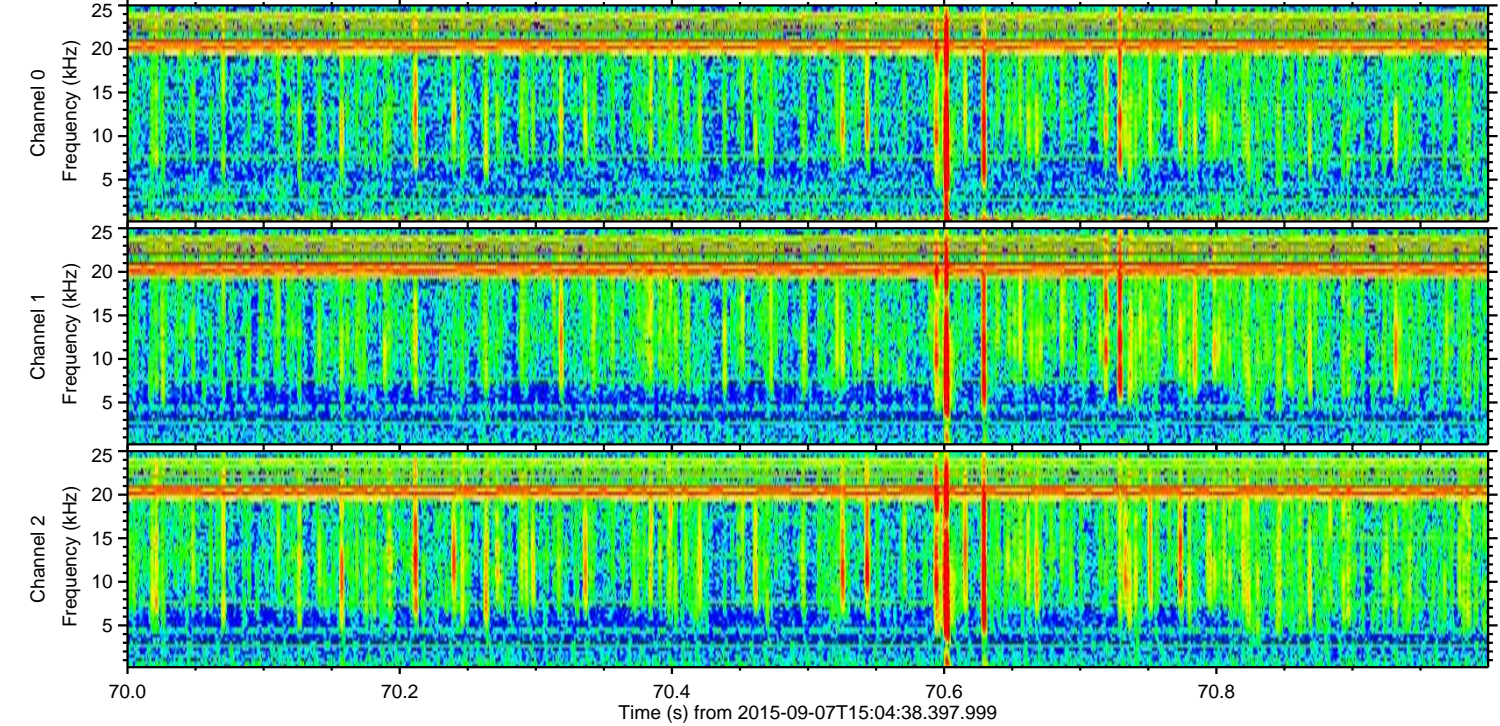
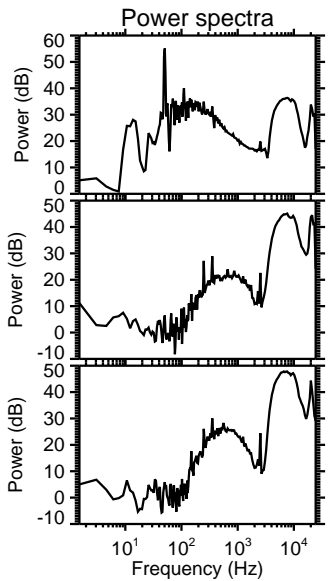
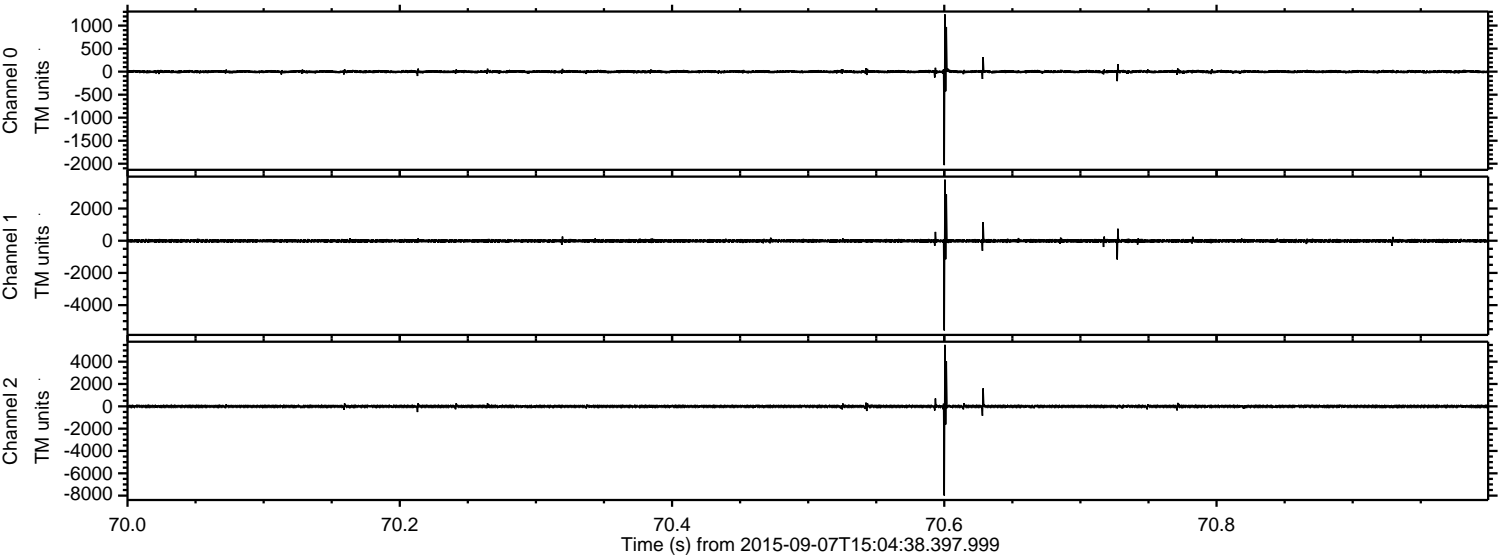
Processed Sat Oct 10 12:42:57 2015 by ELM ver.2012-10-06 from 001\_\_elm20150907\_150437\_\_dat00.bin





ELMAVAN 3D WAVEFORMS (Measured data sampled at 50 kHz) 51000 packets of 144 samples from 2015-09-07T15:04:38.397.999. Part 71/147

Processed Sat Oct 10 12:42:58 2015 by ELM ver.2012-10-06 from 001\_\_elm20150907\_150437\_\_dat00.bin



Channel 0  
mn: -2031  
mx: 1244  
 $\mu$ : -0.0  
 $\sigma$ : 20.6

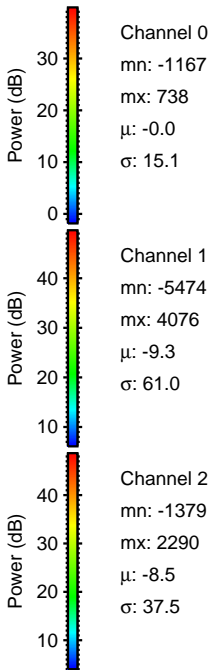
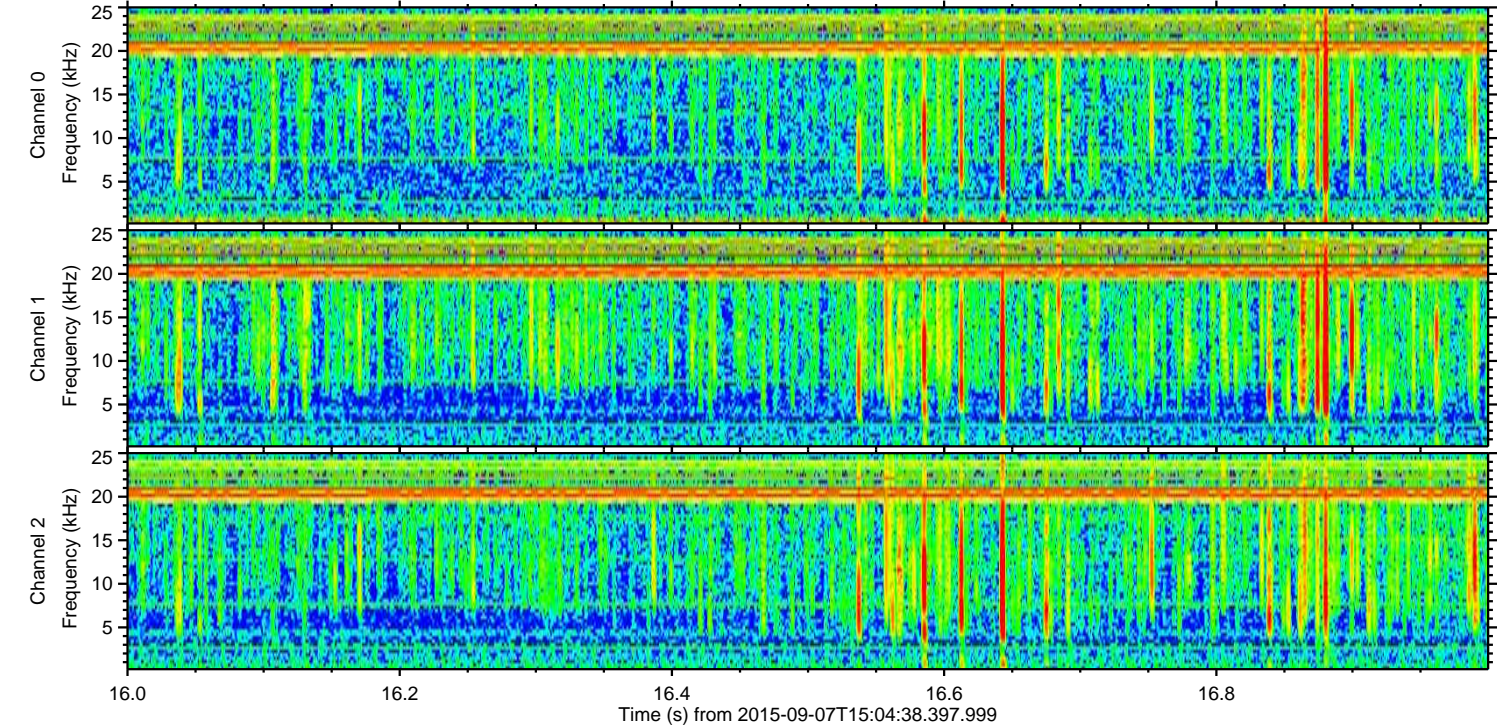
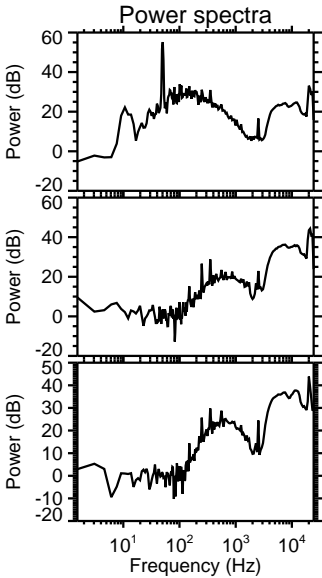
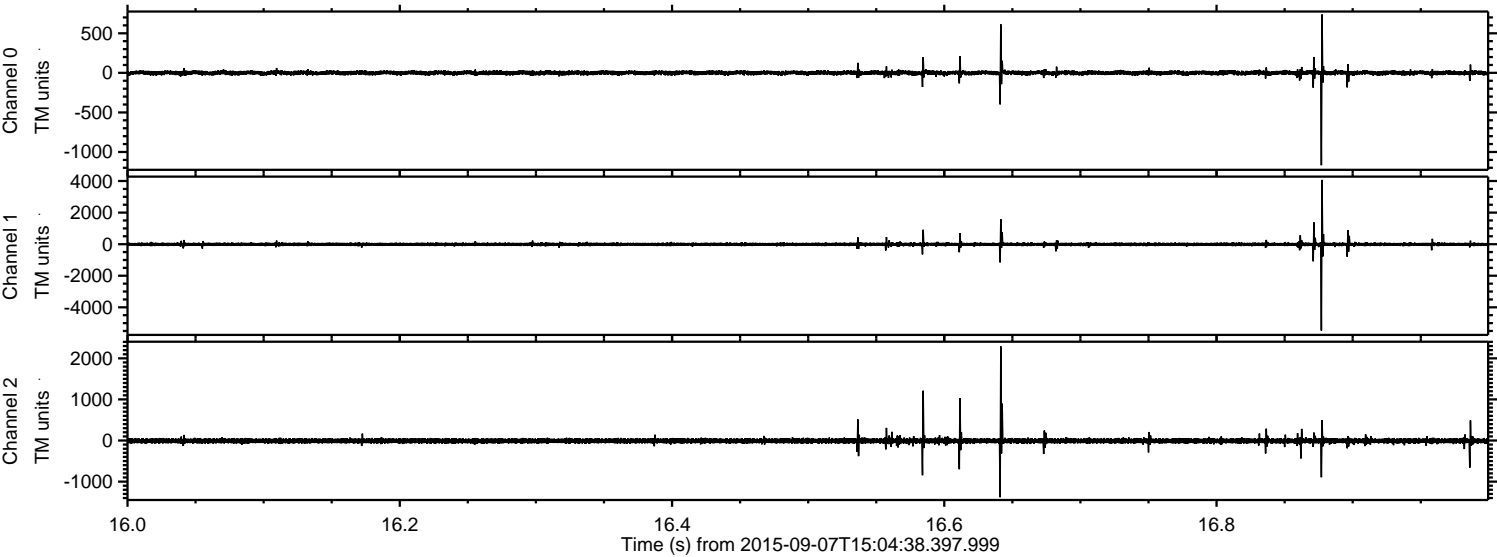
Channel 1  
mn: -5574  
mx: 3795  
 $\mu$ : -9.4  
 $\sigma$ : 60.3

Channel 2  
mn: -7993  
mx: 5513  
 $\mu$ : -8.5  
 $\sigma$ : 68.2



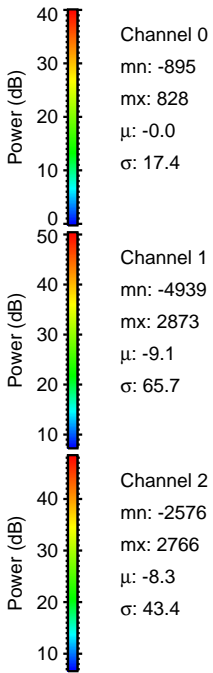
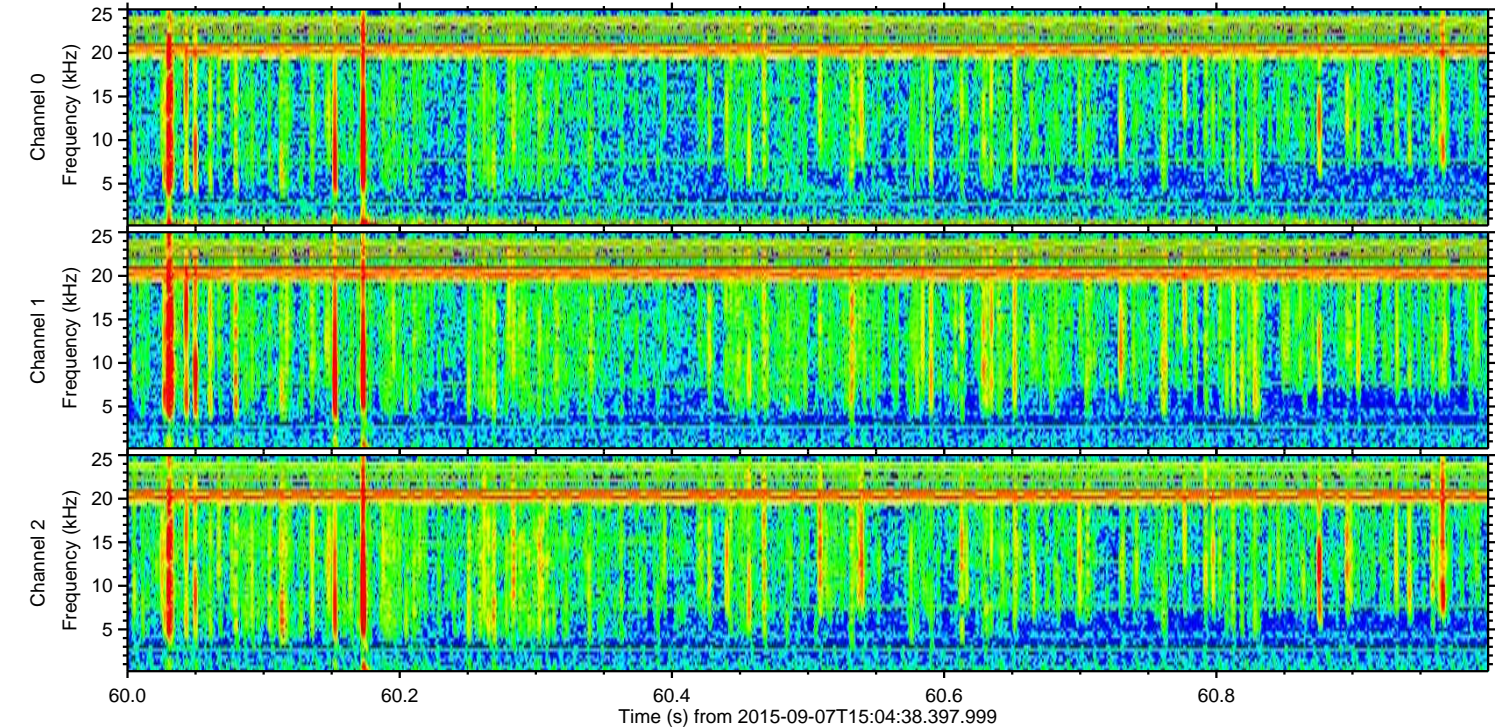
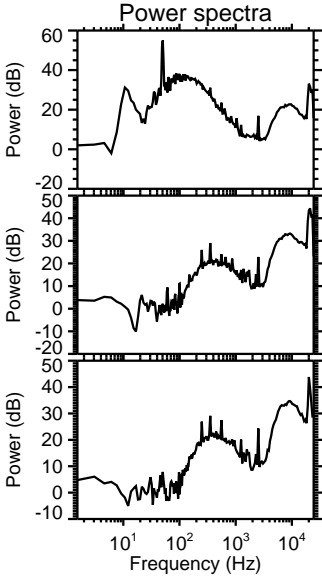
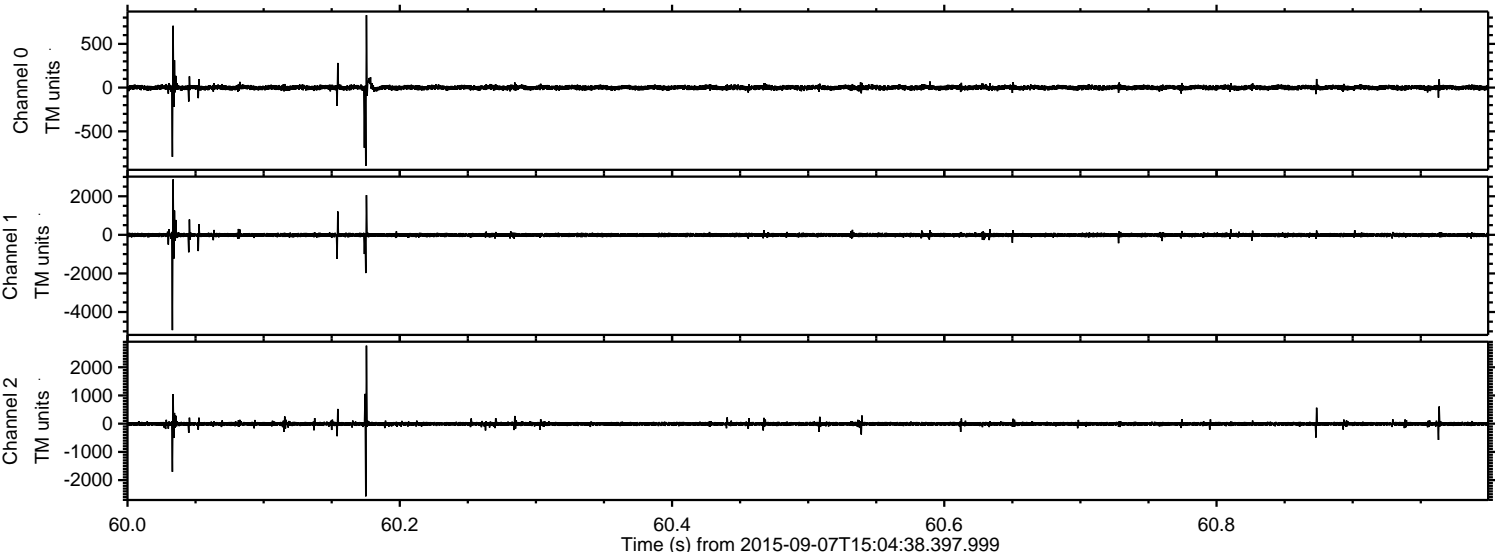
ELMAVAN 3D WAVEFORMS (Measured data sampled at 50 kHz) 51000 packets of 144 samples from 2015-09-07T15:04:38.397.999. Part 17/147

Processed Sat Oct 10 12:42:59 2015 by ELM ver.2012-10-06 from 001\_\_elm20150907\_150437\_\_dat00.bin





Processed Sat Oct 10 12:43:00 2015 by ELM ver.2012-10-06 from 001\_\_elm20150907\_150437\_\_dat00.bin



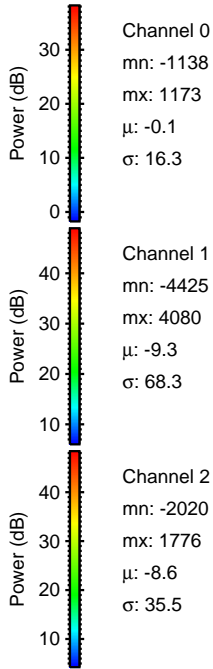
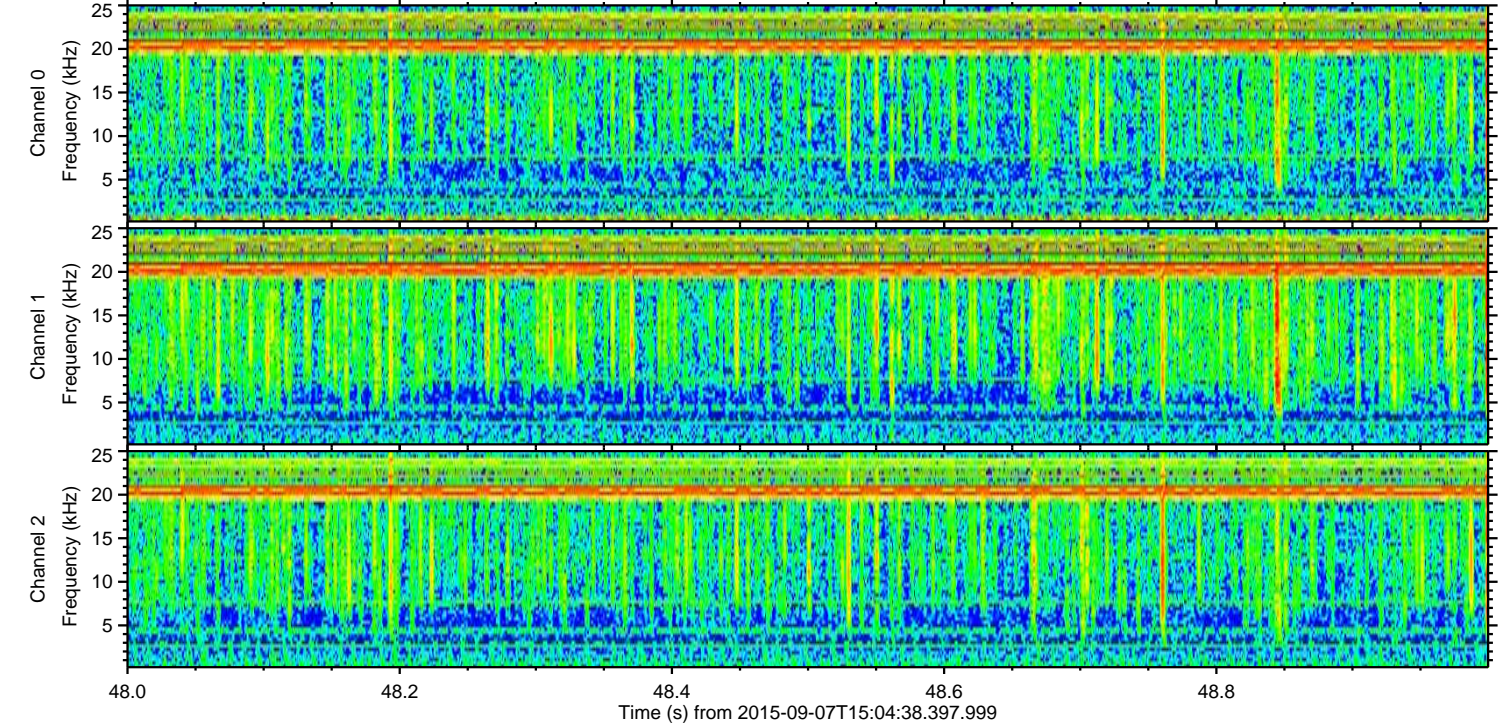
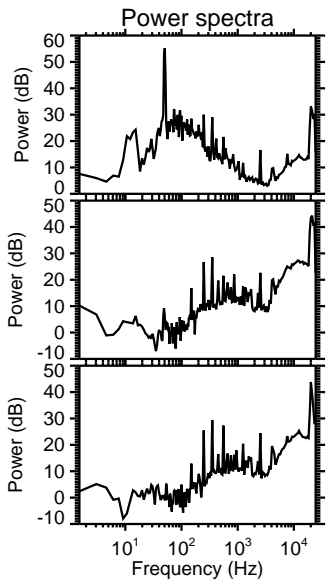
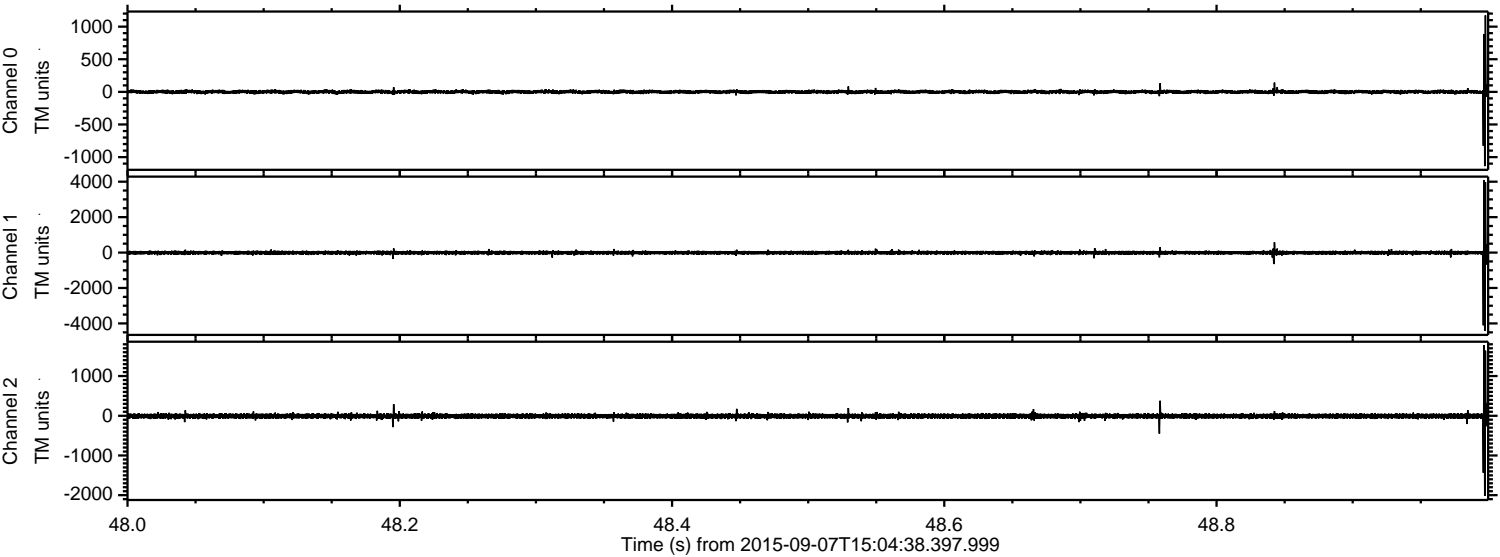
Channel 0  
mn: -895  
mx: 828  
 $\mu$ : -0.0  
 $\sigma$ : 17.4

Channel 1  
mn: -4939  
mx: 2873  
 $\mu$ : -9.1  
 $\sigma$ : 65.7

Channel 2  
mn: -2576  
mx: 2766  
 $\mu$ : -8.3  
 $\sigma$ : 43.4

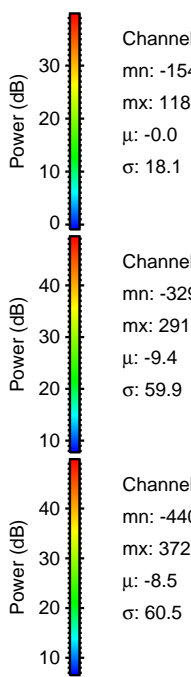
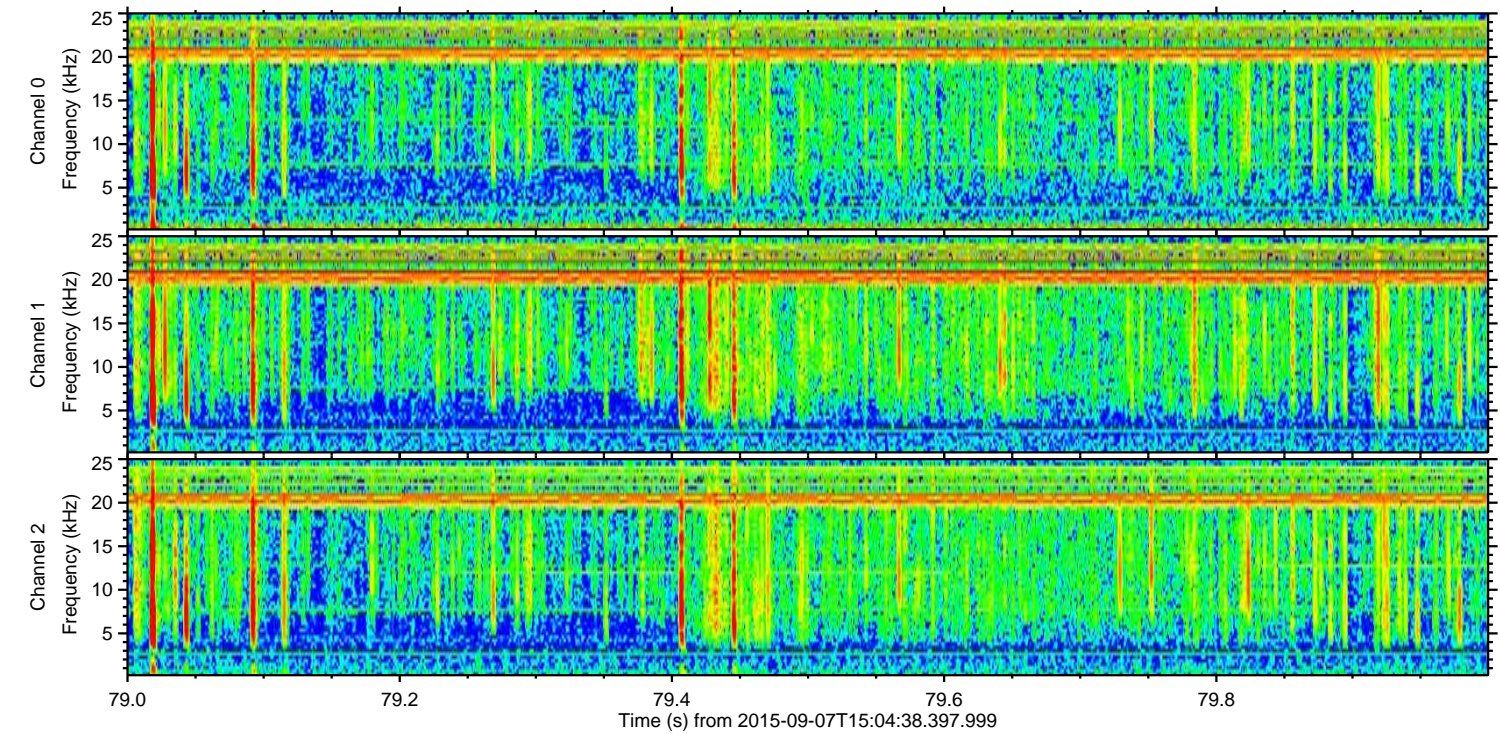
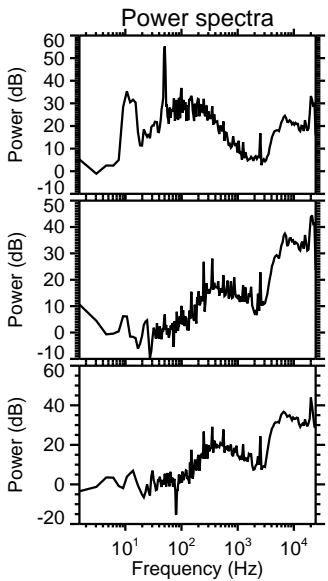
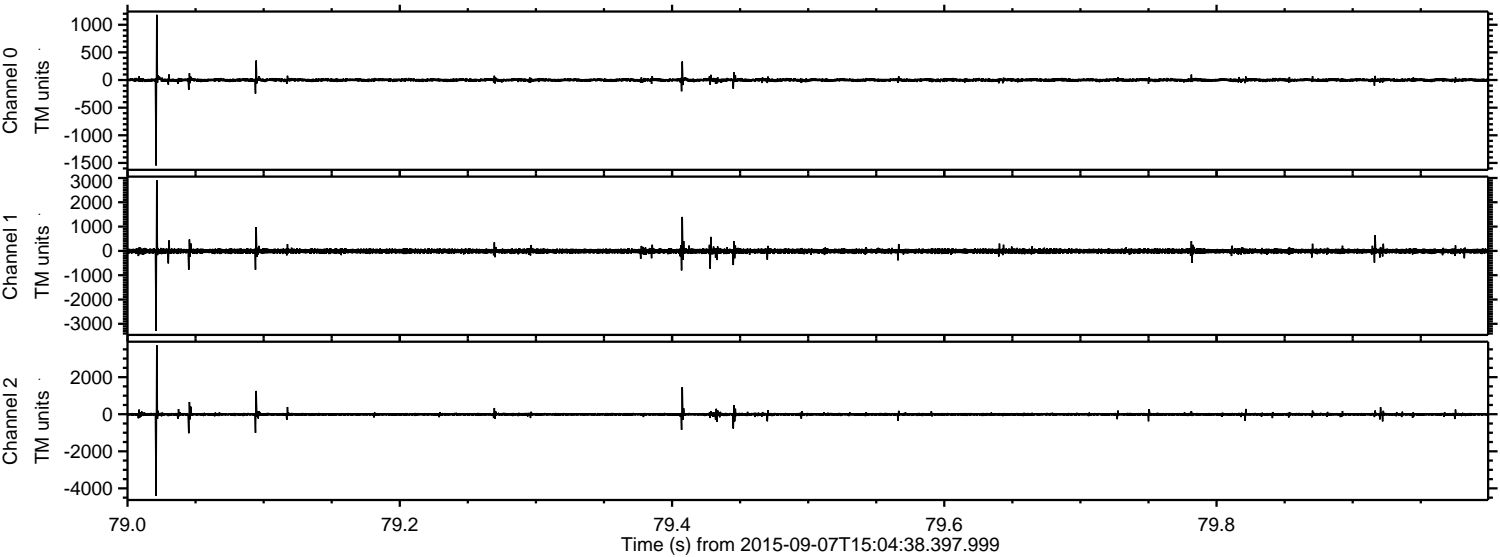


Processed Sat Oct 10 12:43:01 2015 by ELM ver.2012-10-06 from 001\_\_elm20150907\_150437\_\_dat00.bin





Processed Sat Oct 10 12:43:02 2015 by ELM ver.2012-10-06 from 001\_\_elm20150907\_150437\_\_dat00.bin



Channel 0  
mn: -1547  
mx: 1180  
 $\mu$ : -0.0  
 $\sigma$ : 18.1

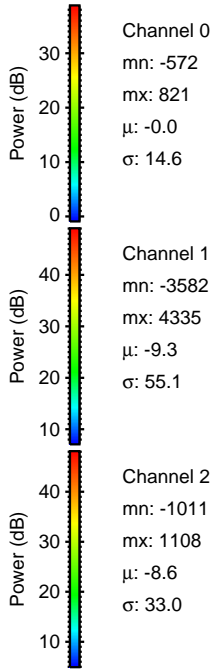
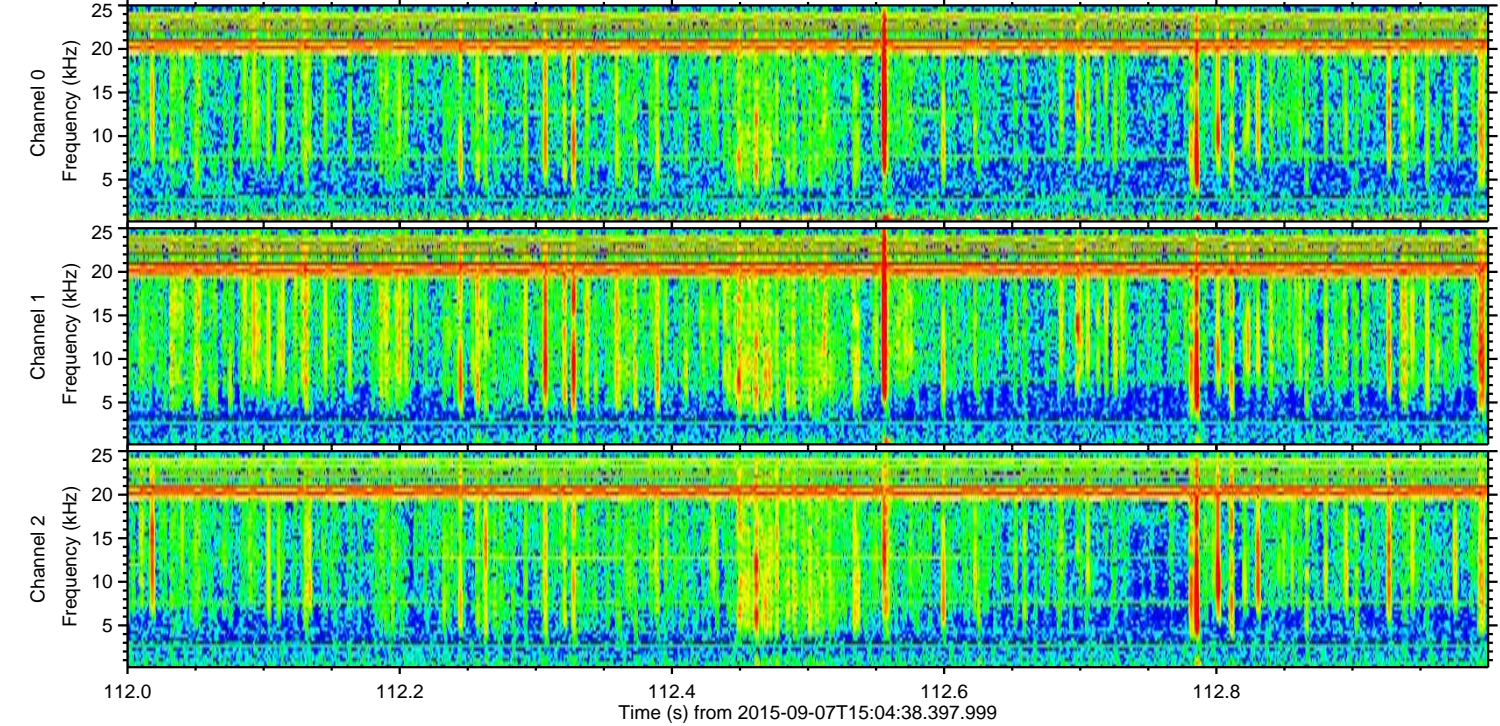
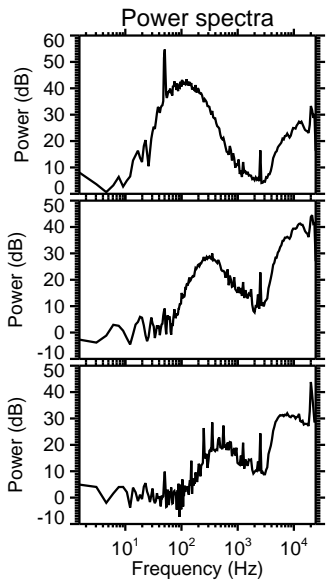
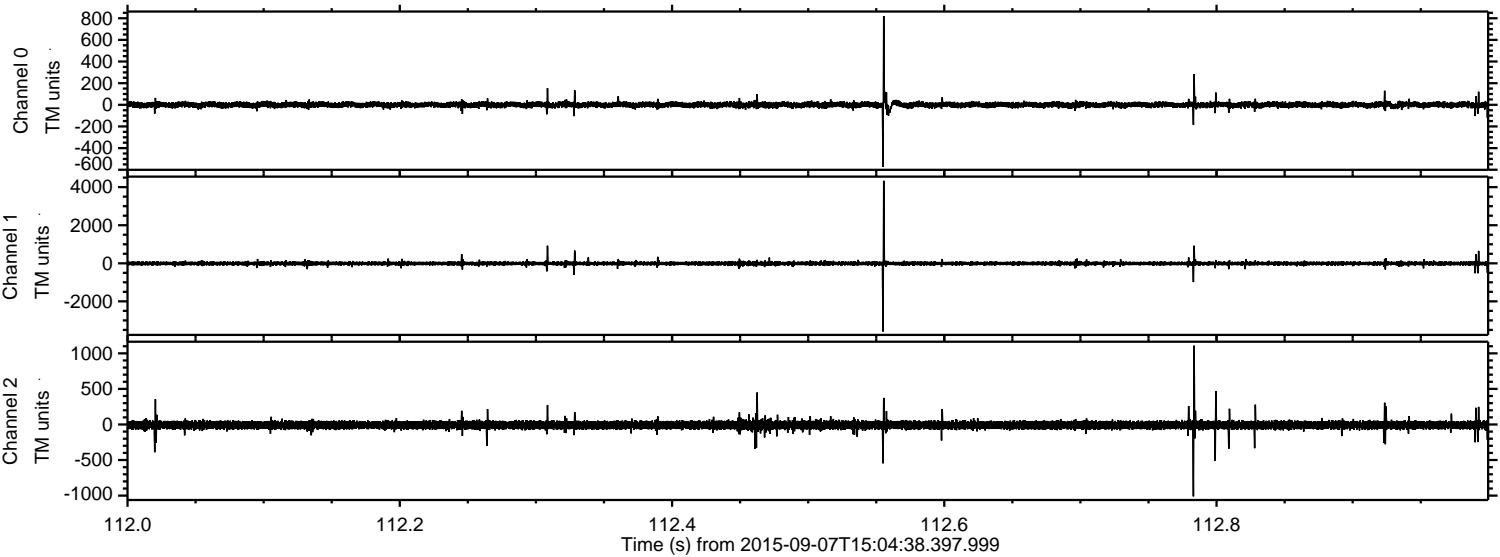
Channel 1  
mn: -3291  
mx: 2910  
 $\mu$ : -9.4  
 $\sigma$ : 59.9

Channel 2  
mn: -4407  
mx: 3725  
 $\mu$ : -8.5  
 $\sigma$ : 60.5



ELMAVAN 3D WAVEFORMS (Measured data sampled at 50 kHz) 51000 packets of 144 samples from 2015-09-07T15:04:38.397.999. Part 113/147

Processed Sat Oct 10 12:43:03 2015 by ELM ver.2012-10-06 from 001\_\_elm20150907\_150437\_\_dat00.bin





ELMAVAN 3D WAVEFORMS (Measured data sampled at 50 kHz) 51000 packets of 144 samples from 2015-09-07T15:04:38.397.999. Part 127/147

Processed Sat Oct 10 12:43:04 2015 by ELM ver.2012-10-06 from 001\_\_elm20150907\_150437\_\_dat00.bin

