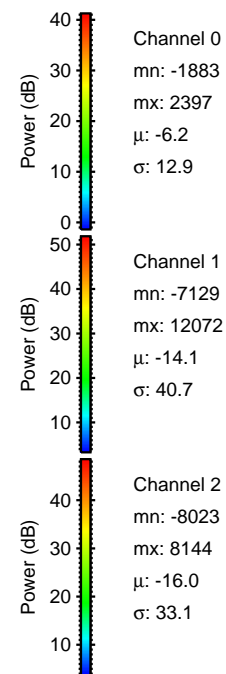
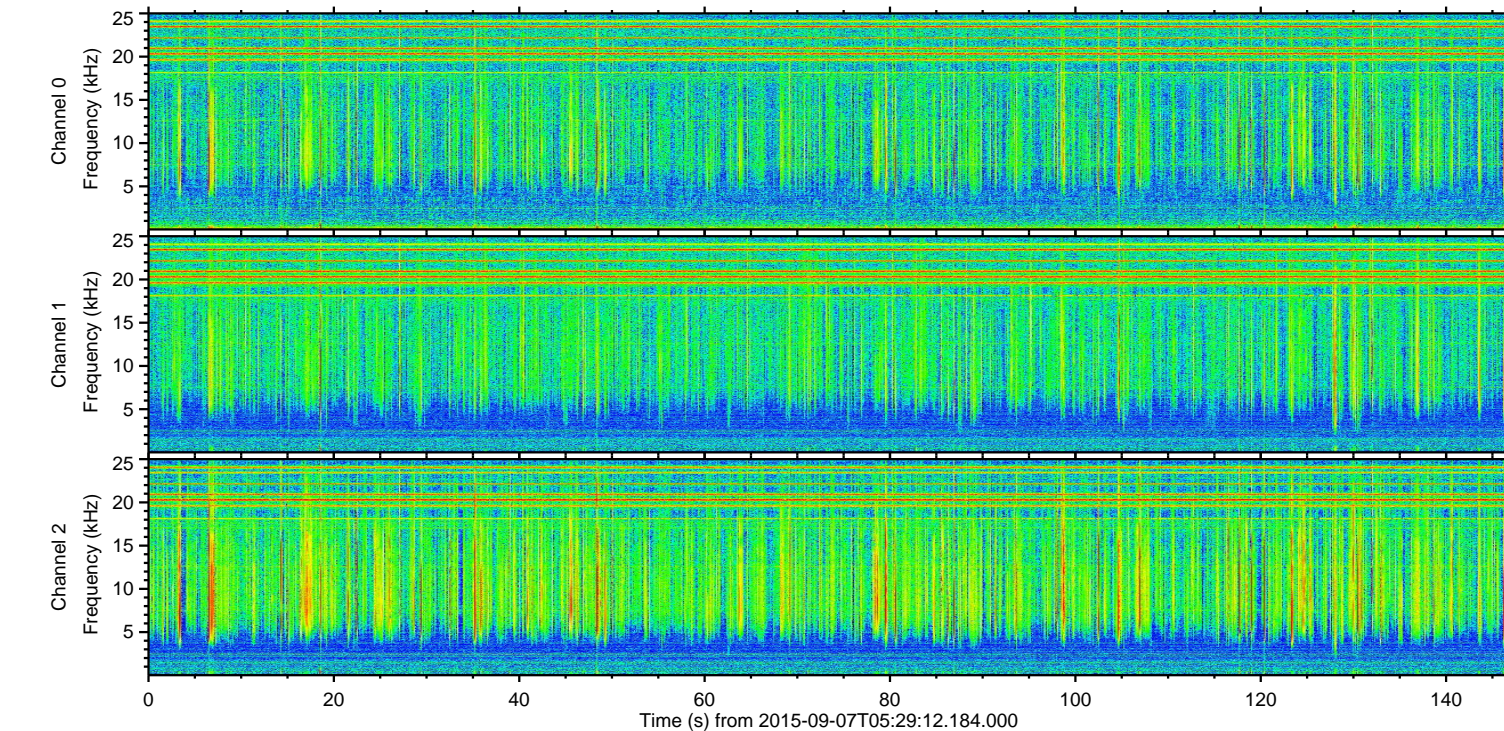
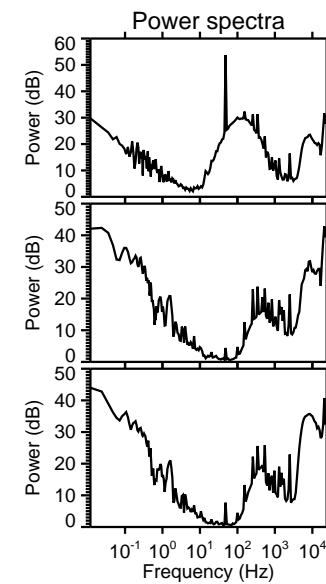
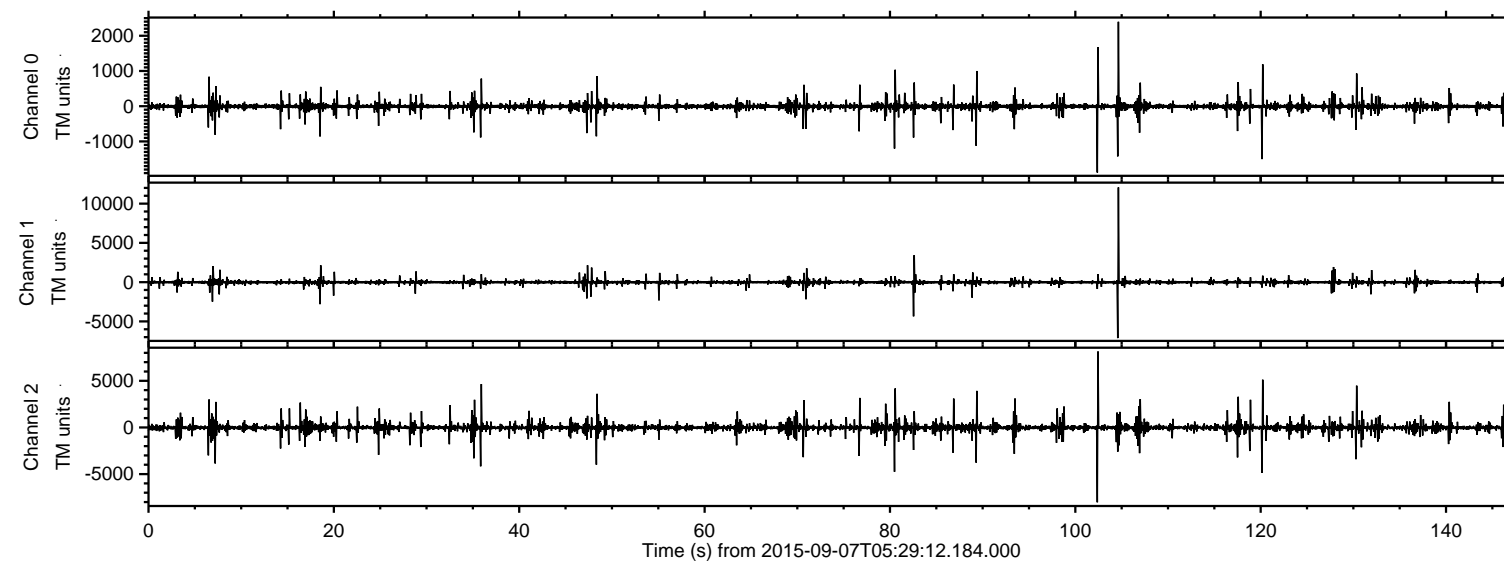


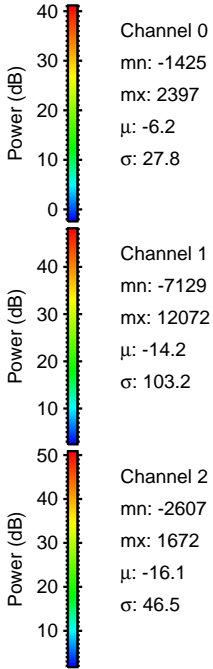
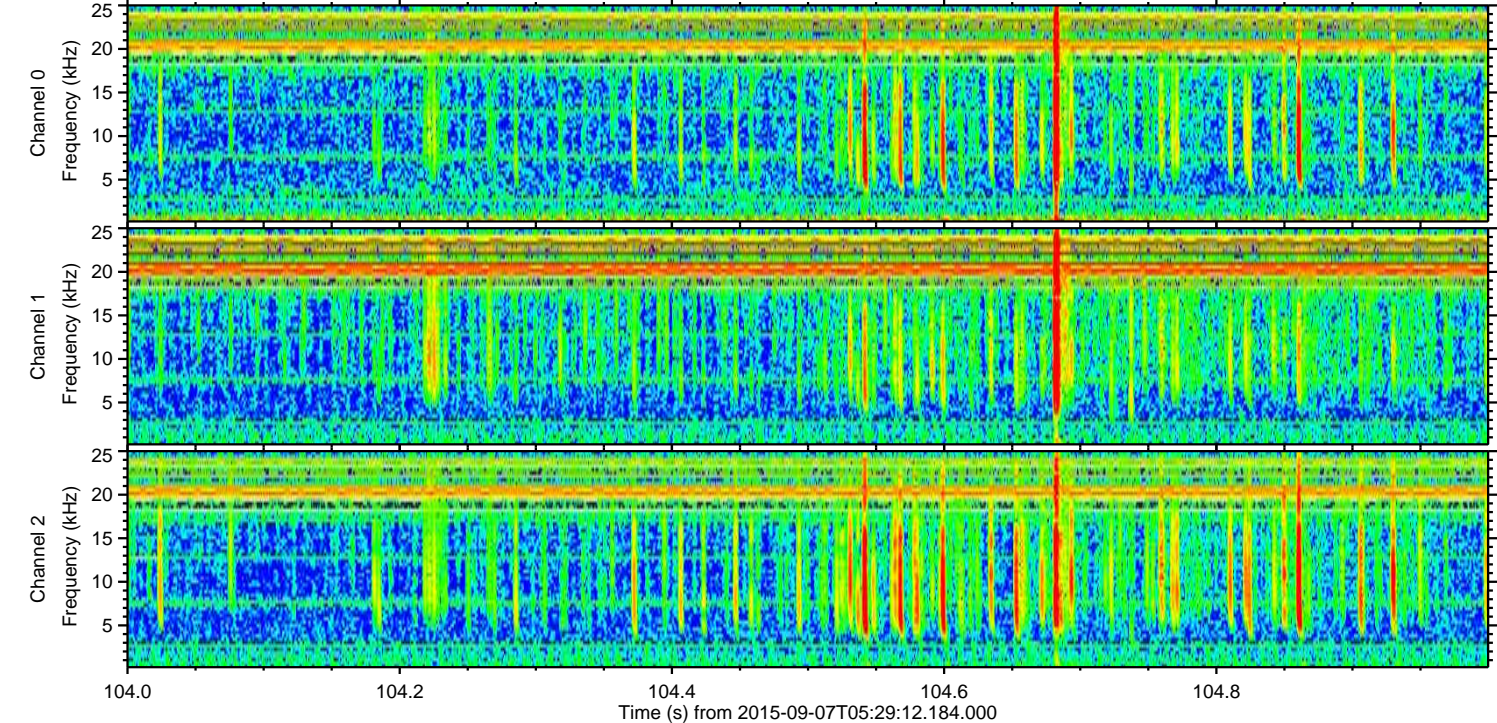
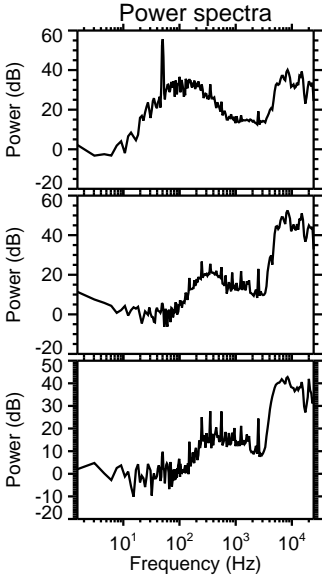
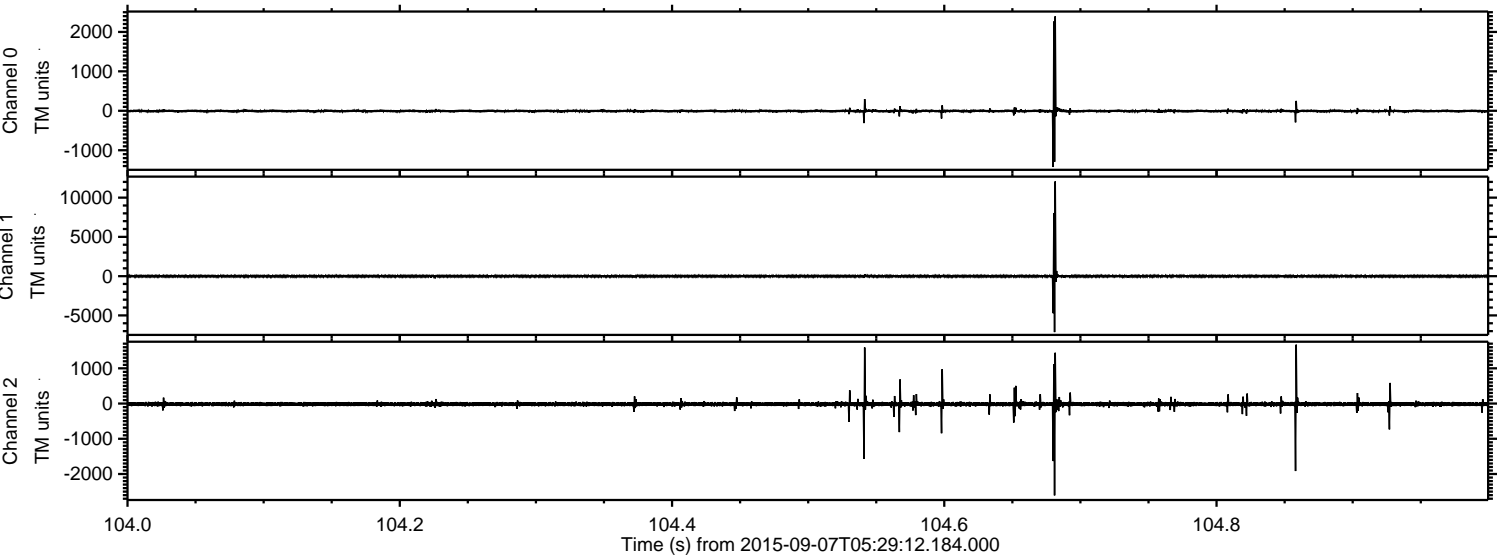
ELMAVAN 3D WAVEFORMS (Measured data sampled at 50 kHz) 51000 packets of 144 samples from 2015-09-07T05:29:12.184.000.

Processed Sat Oct 10 10:04:08 2015 by ELM ver.2012-10-06 from 001__elm20150907_052911__dat00.bin



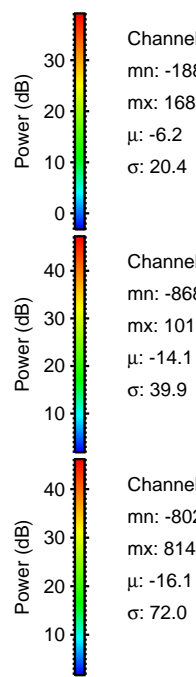
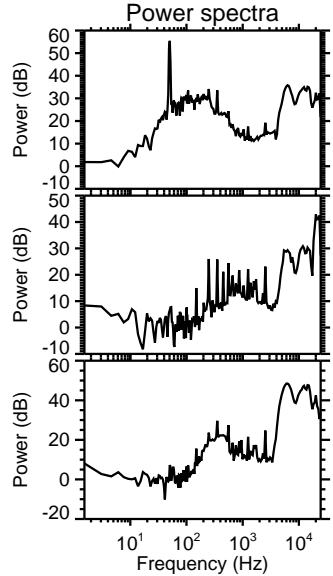
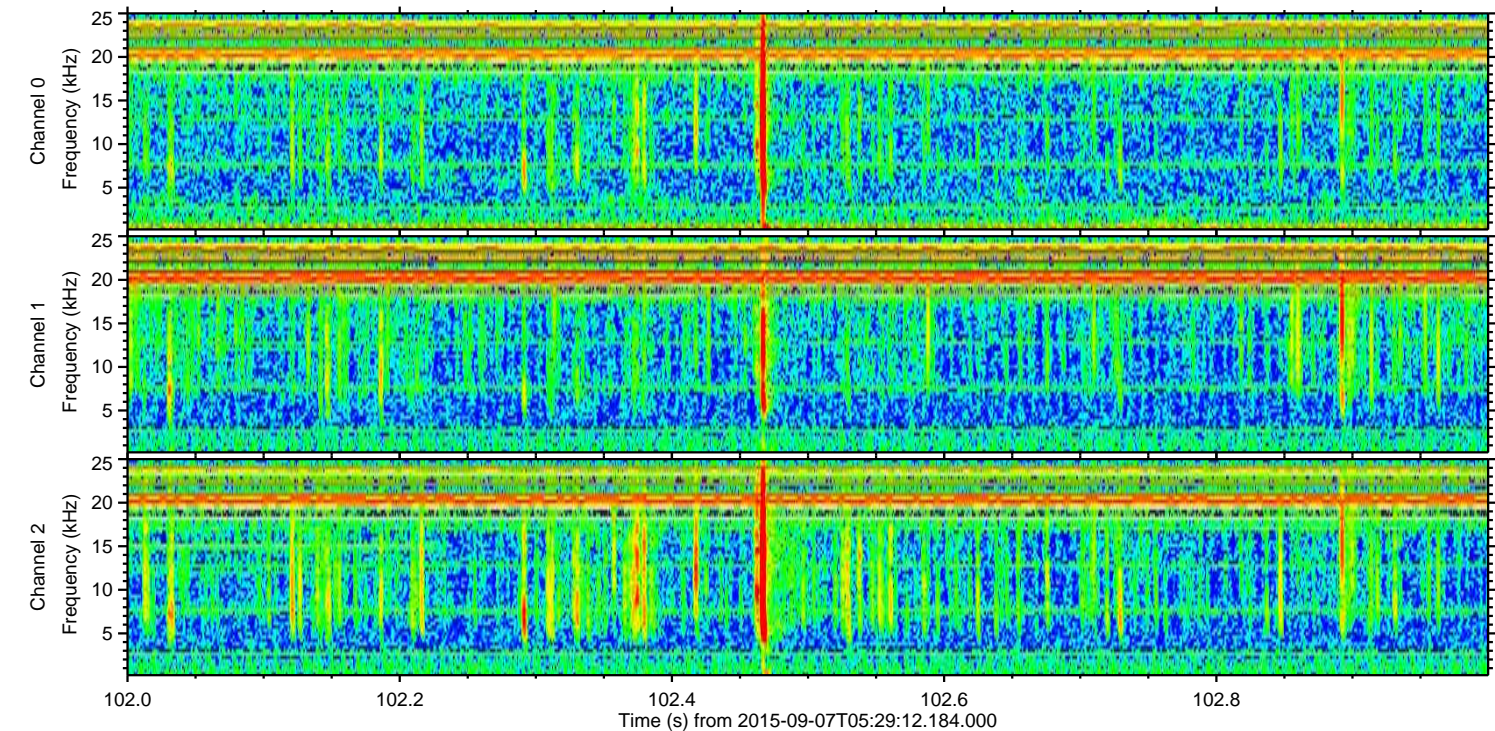
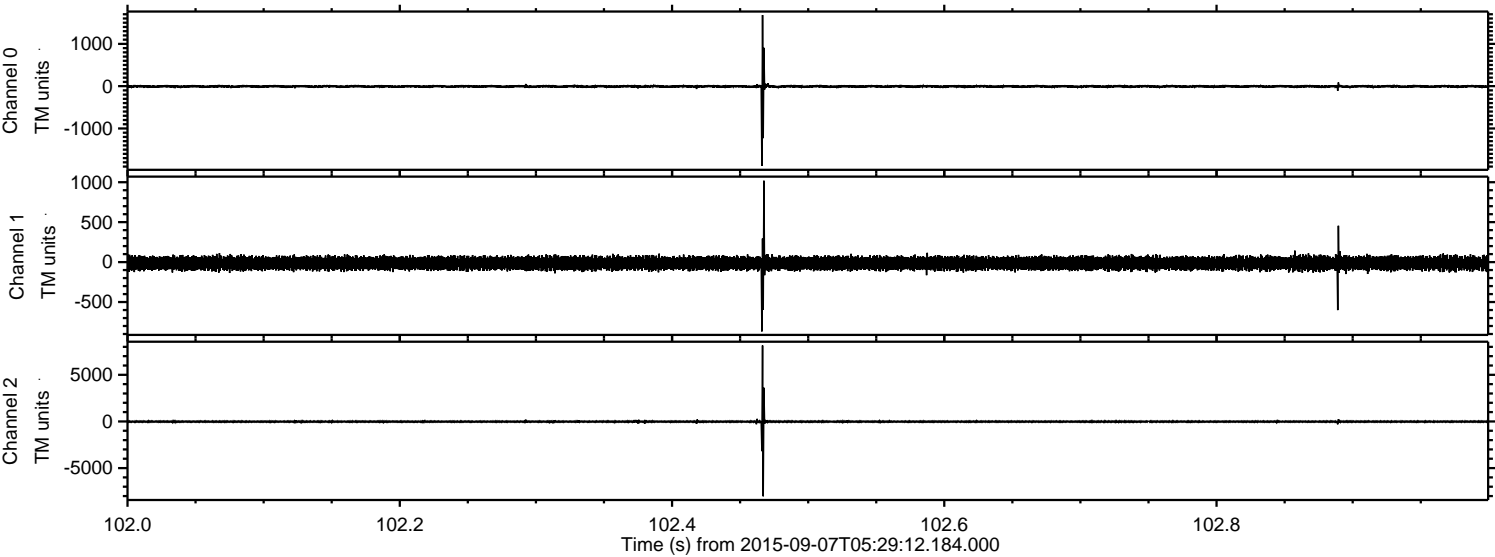
ELMAVAN 3D WAVEFORMS (Measured data sampled at 50 kHz) 51000 packets of 144 samples from 2015-09-07T05:29:12.184.000. Part 105/147

Processed Sat Oct 10 10:04:23 2015 by ELM ver.2012-10-06 from 001__elm20150907_052911__dat00.bin



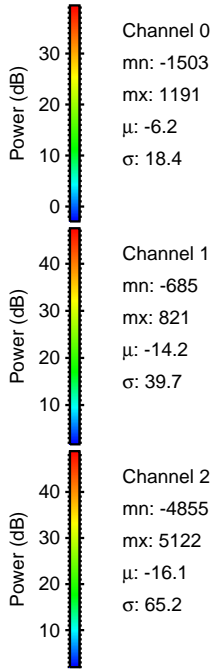
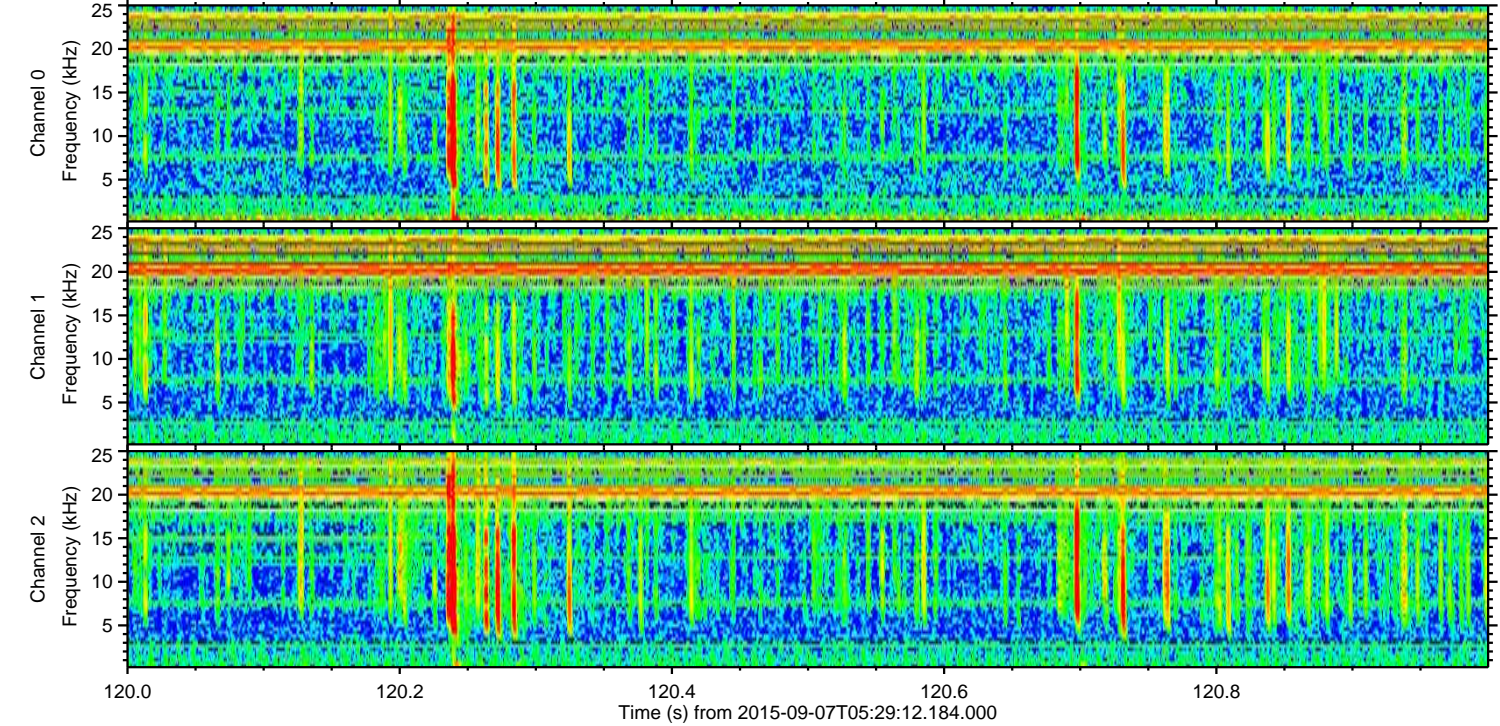
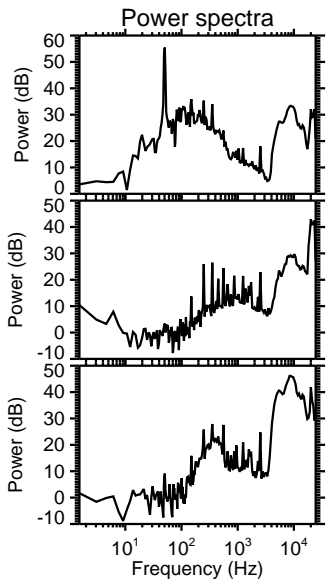
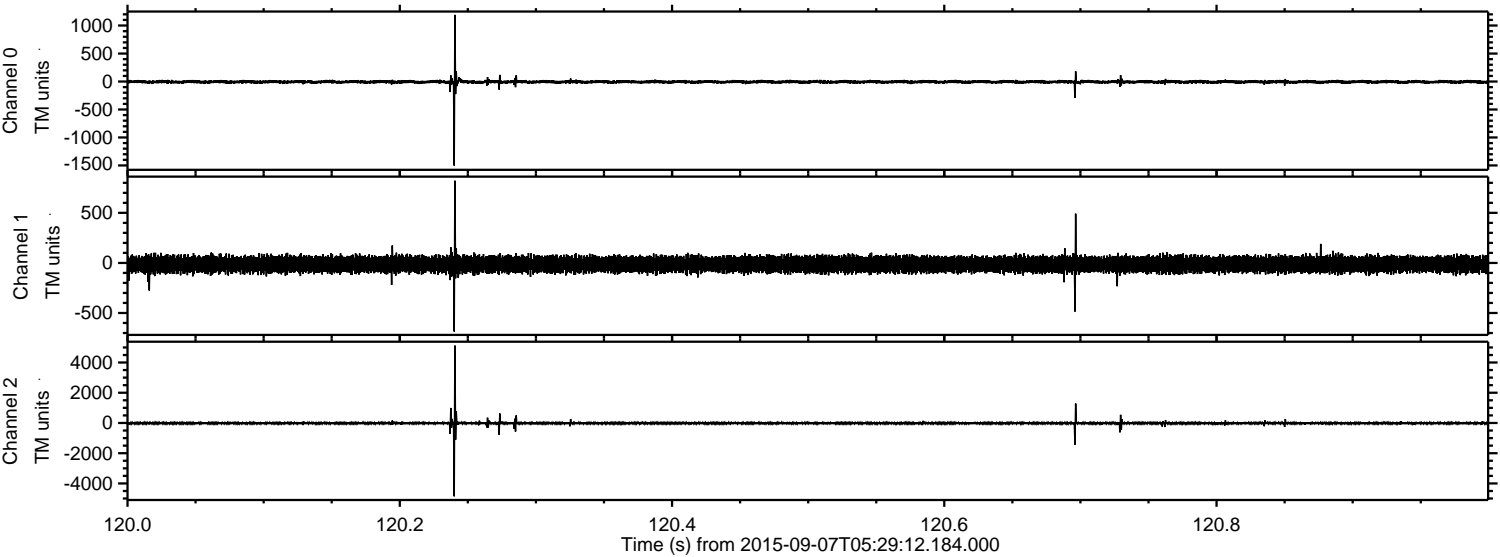
ELMAVAN 3D WAVEFORMS (Measured data sampled at 50 kHz) 51000 packets of 144 samples from 2015-09-07T05:29:12.184.000. Part 103/147

Processed Sat Oct 10 10:04:25 2015 by ELM ver.2012-10-06 from 001__elm20150907_052911__dat00.bin



ELMAVAN 3D WAVEFORMS (Measured data sampled at 50 kHz) 51000 packets of 144 samples from 2015-09-07T05:29:12.184.000. Part 121/147

Processed Sat Oct 10 10:04:26 2015 by ELM ver.2012-10-06 from 001__elm20150907_052911__dat00.bin



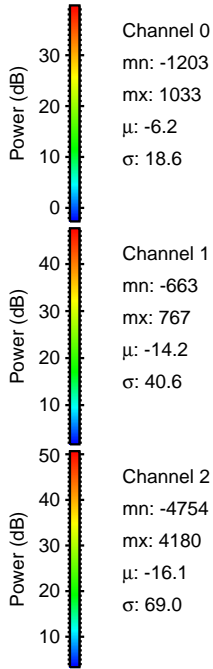
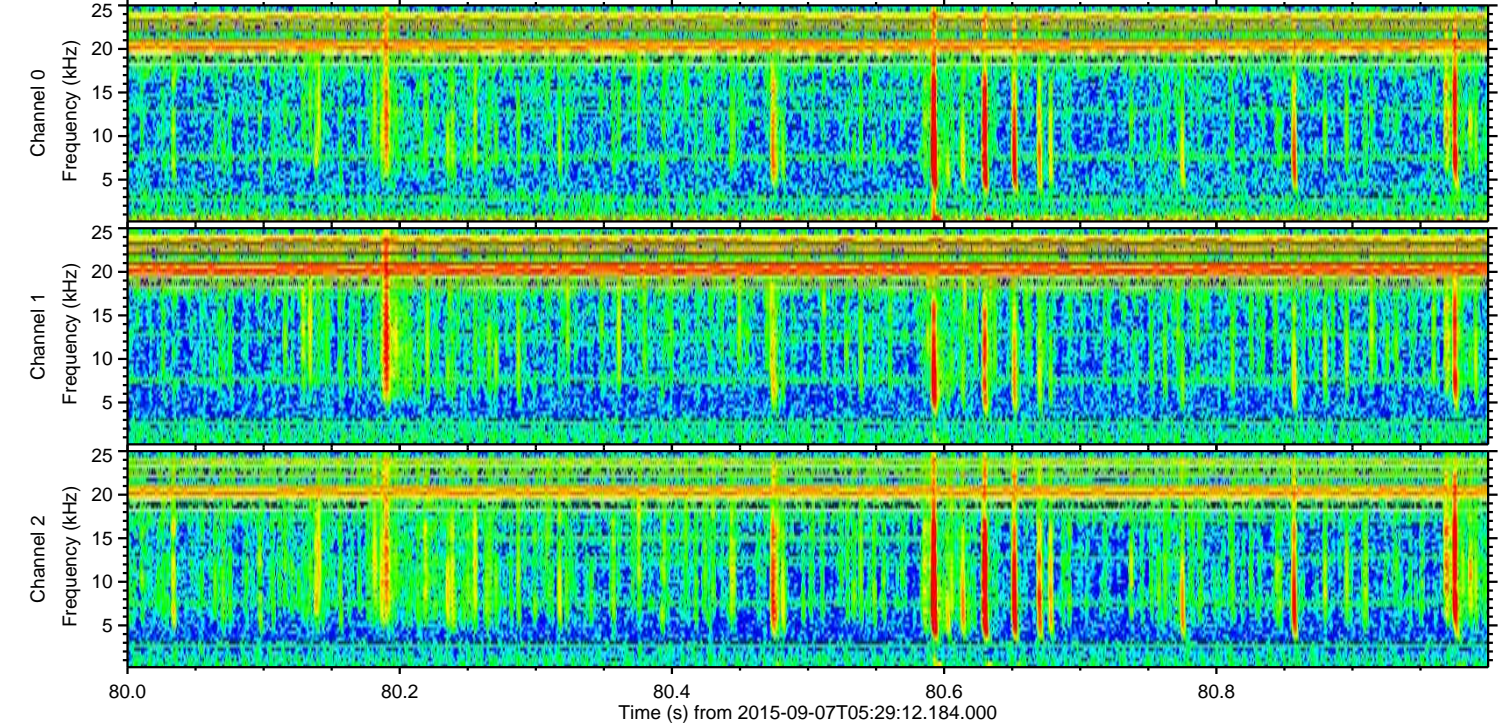
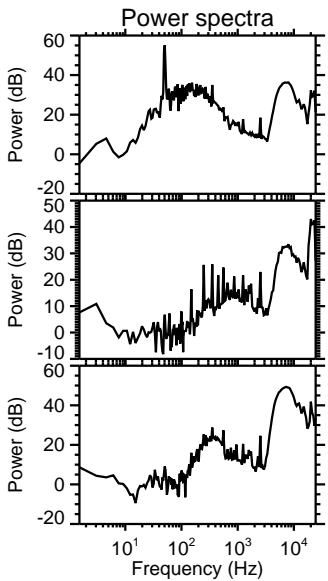
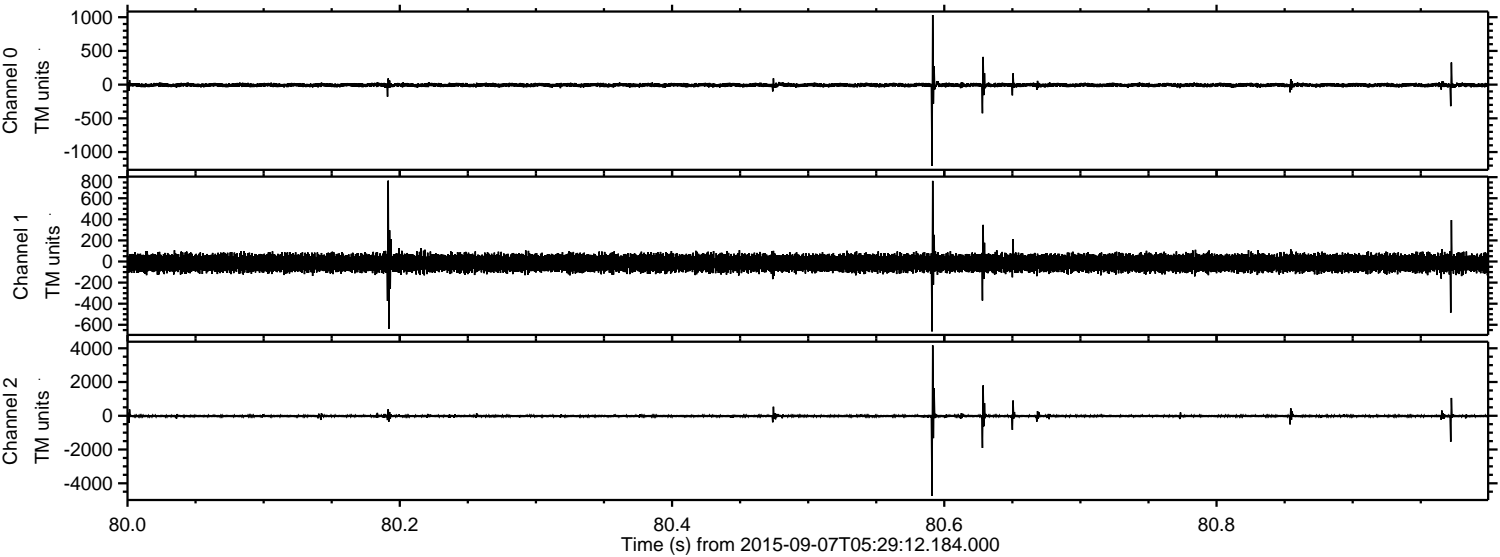
Channel 0
mn: -1503
mx: 1191
 μ : -6.2
 σ : 18.4

Channel 1
mn: -685
mx: 821
 μ : -14.2
 σ : 39.7

Channel 2
mn: -4855
mx: 5122
 μ : -16.1
 σ : 65.2

ELMAVAN 3D WAVEFORMS (Measured data sampled at 50 kHz) 51000 packets of 144 samples from 2015-09-07T05:29:12.184.000. Part 81/147

Processed Sat Oct 10 10:04:27 2015 by ELM ver.2012-10-06 from 001__elm20150907_052911__dat00.bin



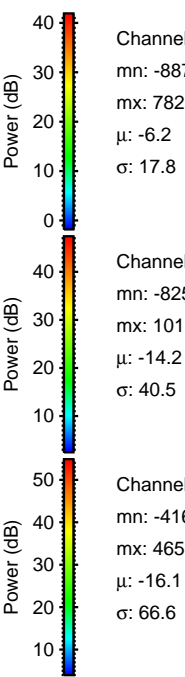
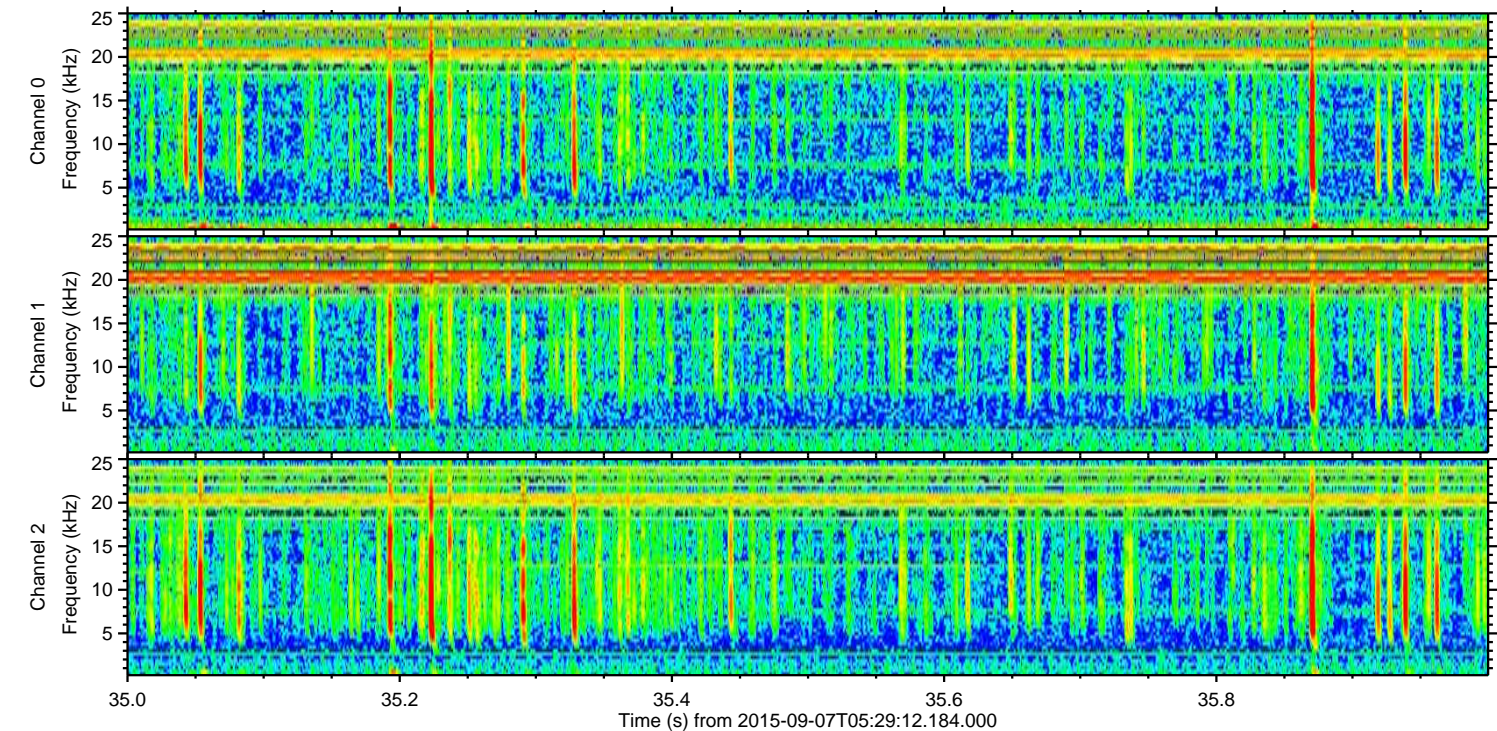
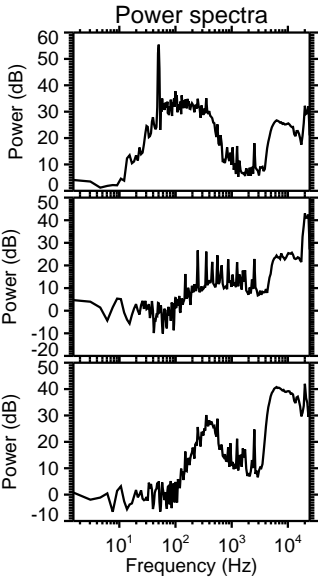
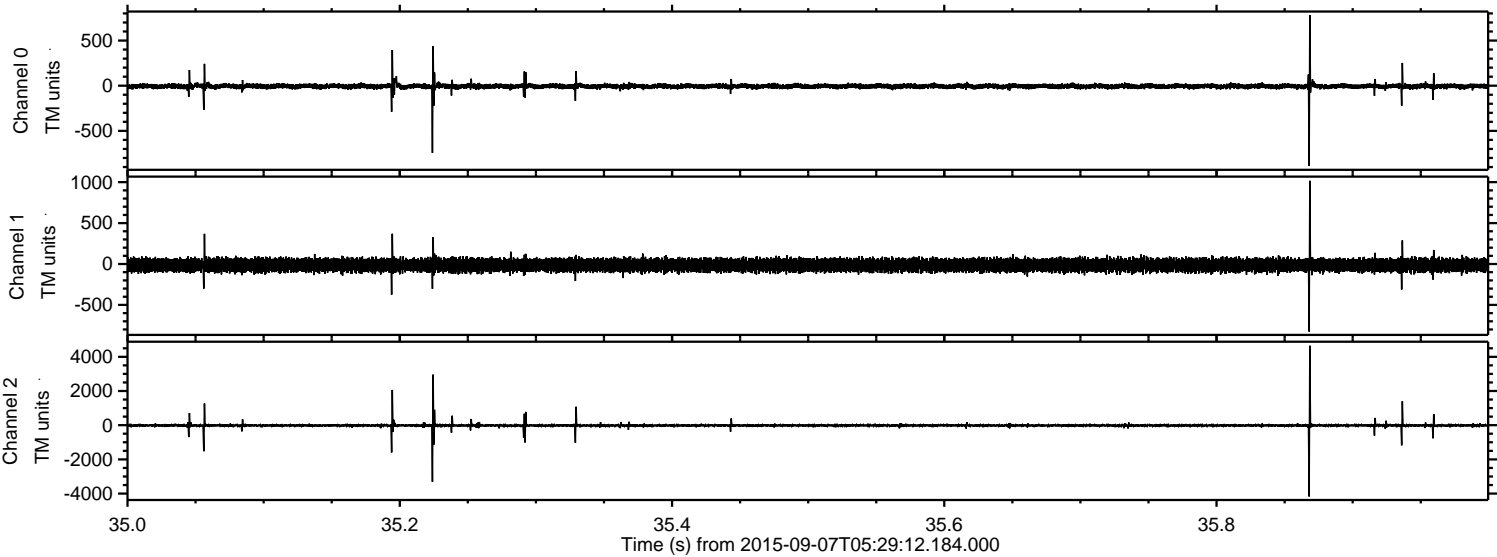
Channel 0
mn: -1203
mx: 1033
 μ : -6.2
 σ : 18.6

Channel 1
mn: -663
mx: 767
 μ : -14.2
 σ : 40.6

Channel 2
mn: -4754
mx: 4180
 μ : -16.1
 σ : 69.0

ELMAVAN 3D WAVEFORMS (Measured data sampled at 50 kHz) 51000 packets of 144 samples from 2015-09-07T05:29:12.184.000. Part 36/147

Processed Sat Oct 10 10:04:28 2015 by ELM ver.2012-10-06 from 001__elm20150907_052911__dat00.bin



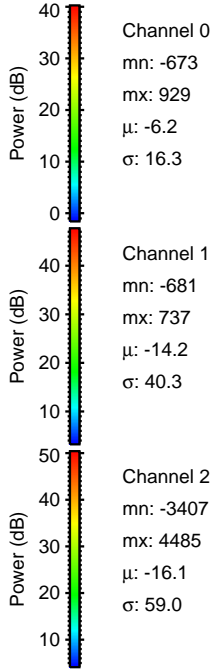
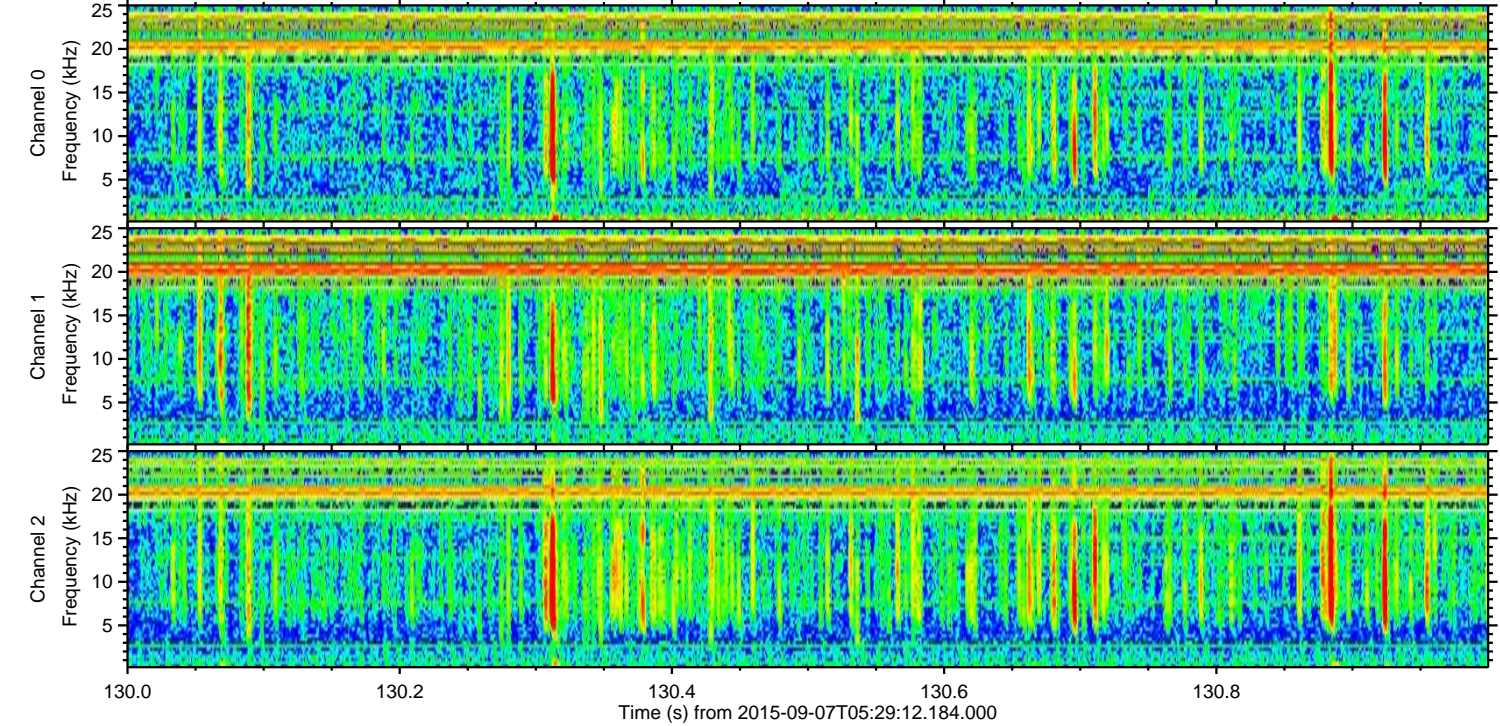
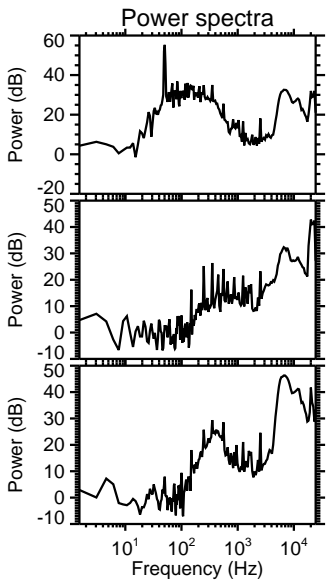
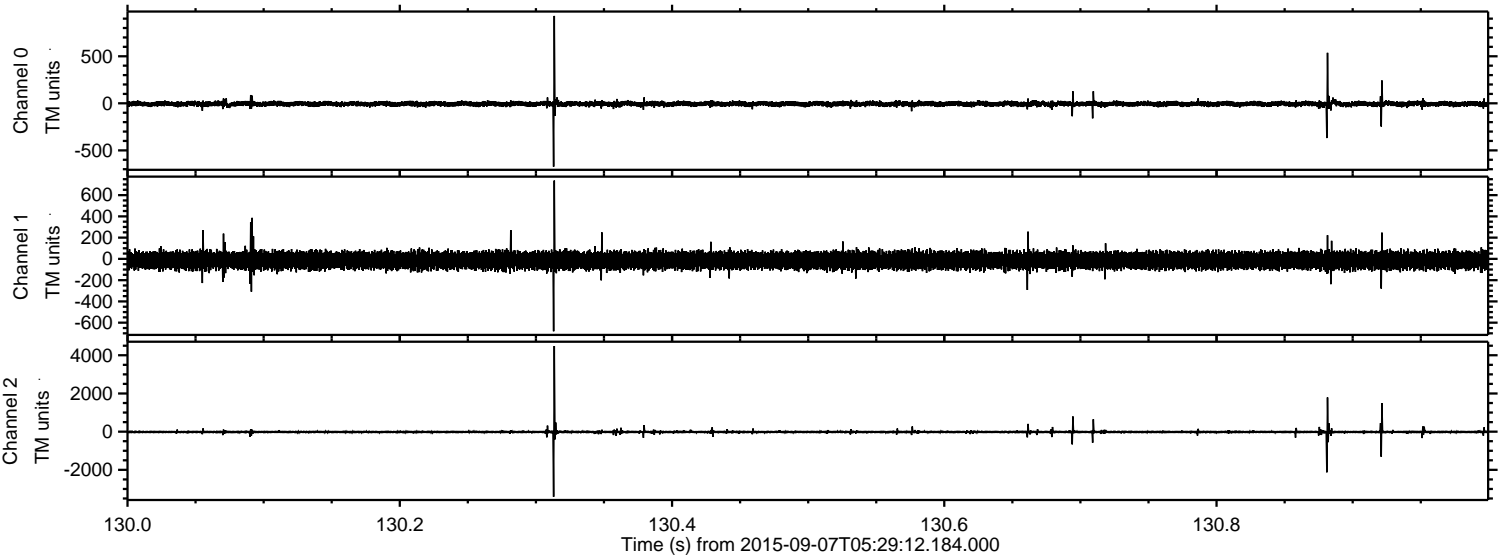
Channel 0
mn: -887
mx: 782
 μ : -6.2
 σ : 17.8

Channel 1
mn: -825
mx: 1017
 μ : -14.2
 σ : 40.5

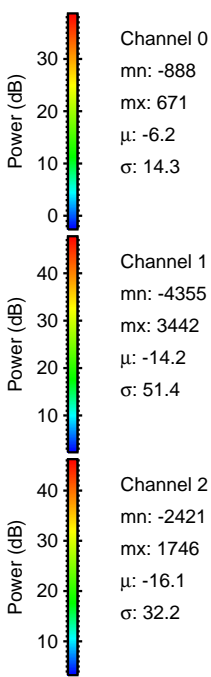
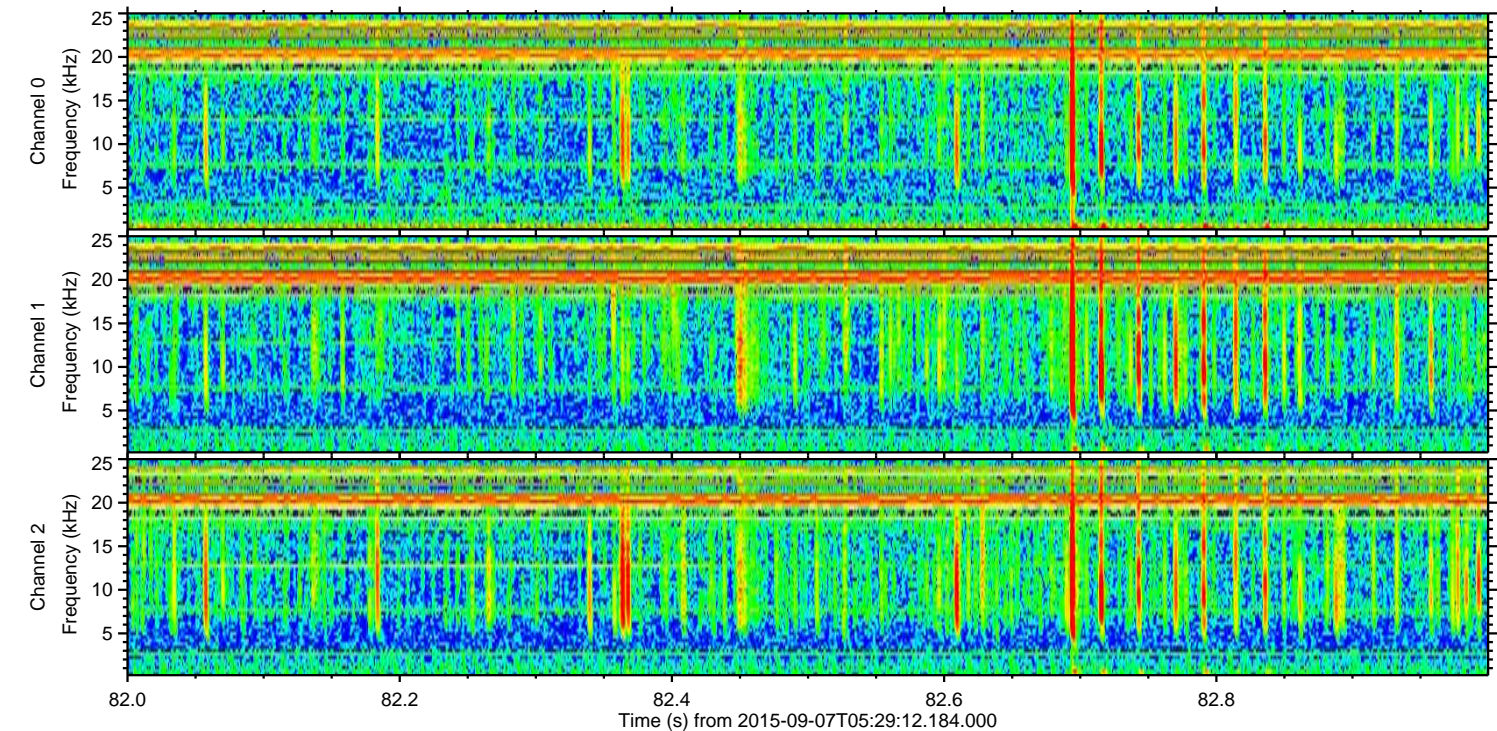
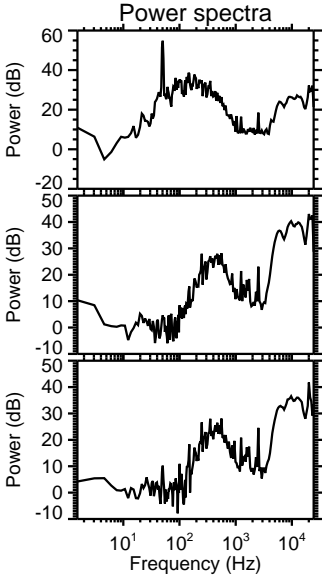
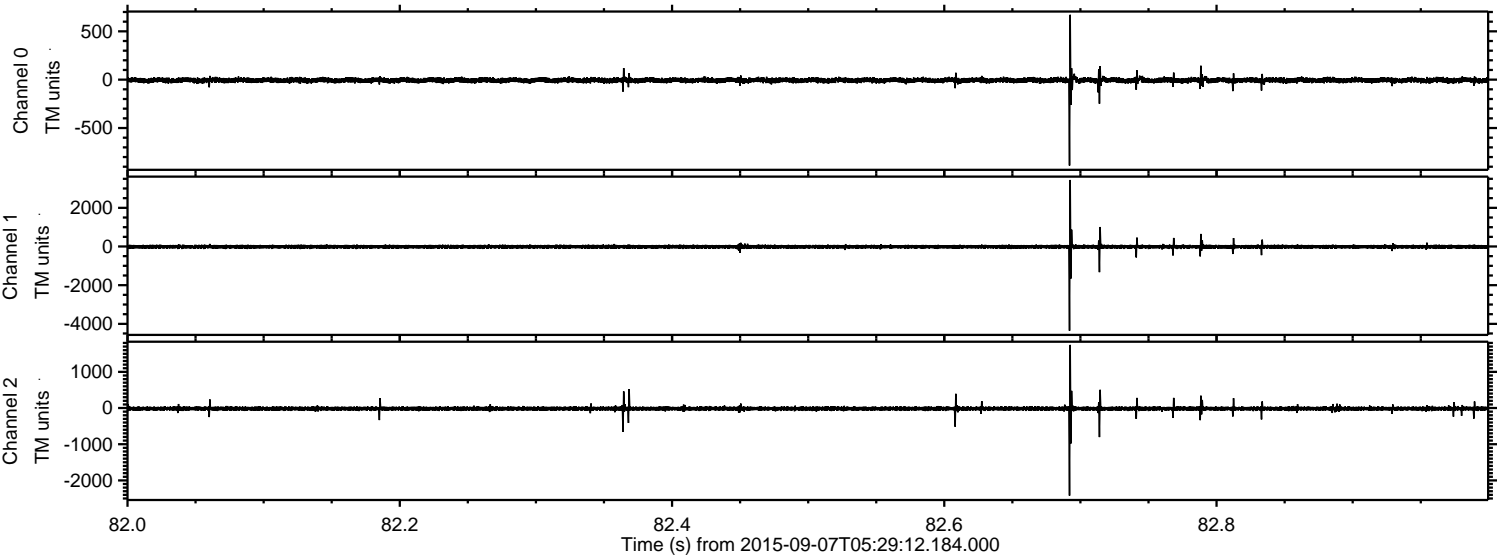
Channel 2
mn: -4169
mx: 4653
 μ : -16.1
 σ : 66.6

ELMAVAN 3D WAVEFORMS (Measured data sampled at 50 kHz) 51000 packets of 144 samples from 2015-09-07T05:29:12.184.000. Part 131/147

Processed Sat Oct 10 10:04:29 2015 by ELM ver.2012-10-06 from 001__elm20150907_052911__dat00.bin



Processed Sat Oct 10 10:04:30 2015 by ELM ver.2012-10-06 from 001__elm20150907_052911__dat00.bin



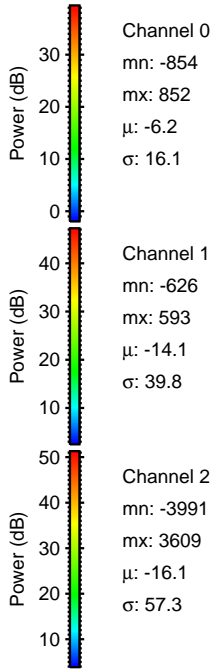
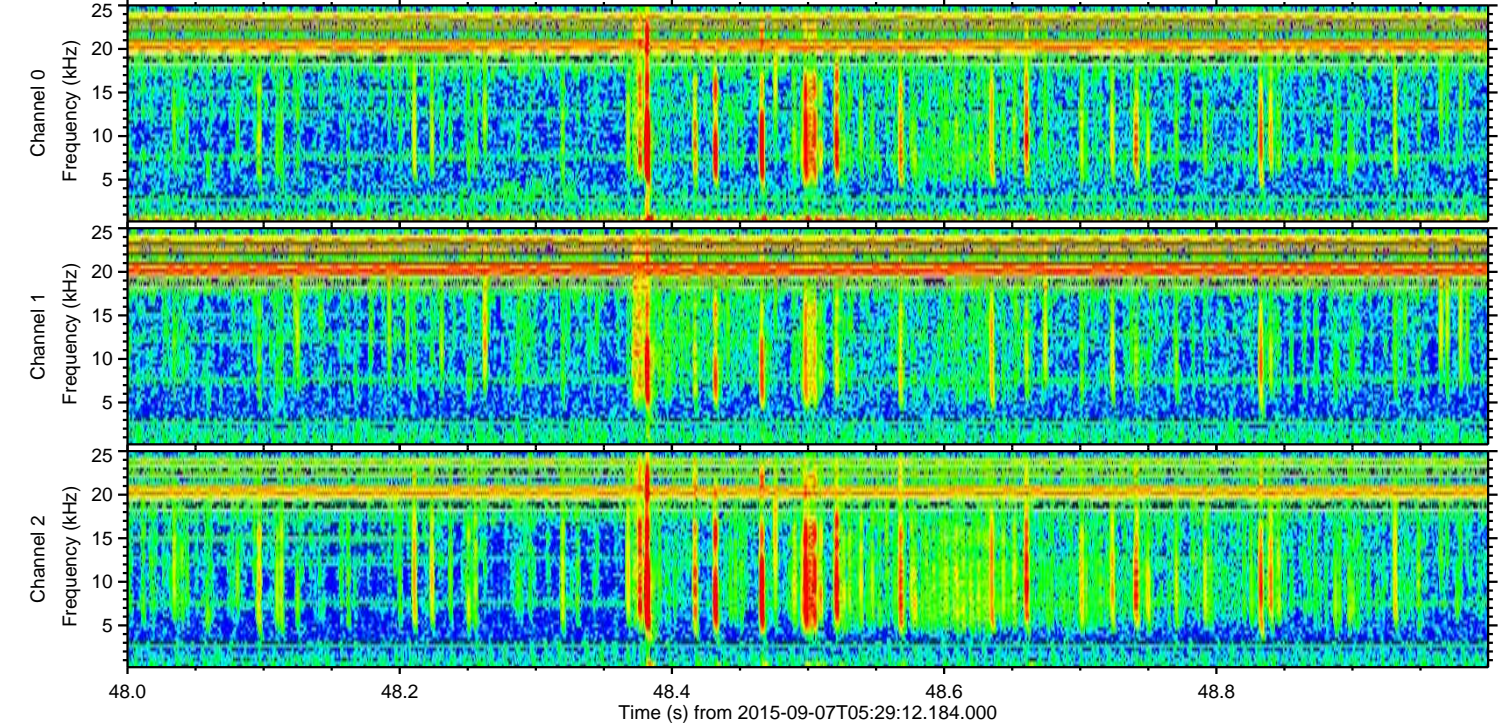
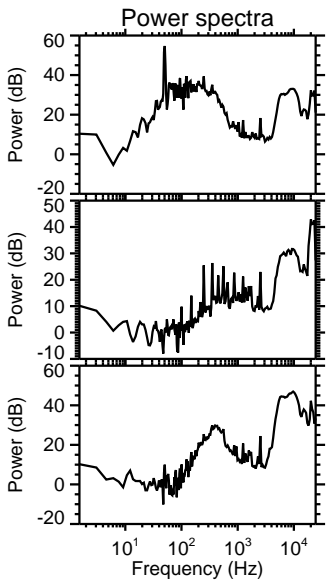
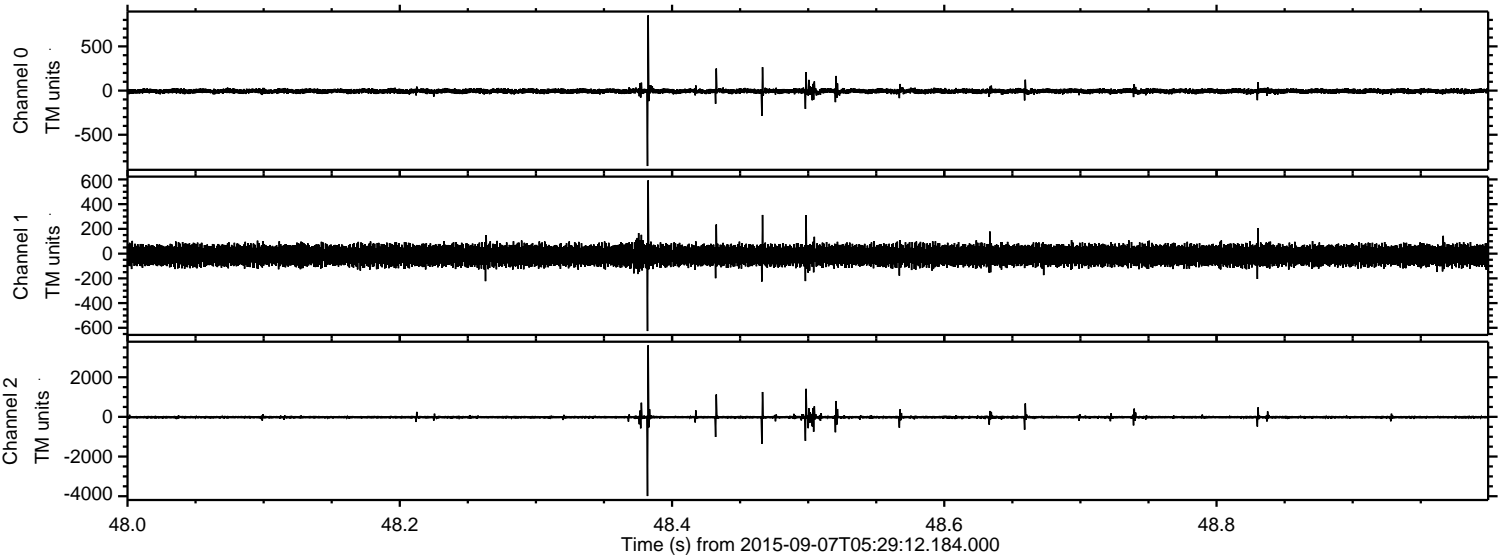
Channel 0
mn: -888
mx: 671
 μ : -6.2
 σ : 14.3

Channel 1
mn: -4355
mx: 3442
 μ : -14.2
 σ : 51.4

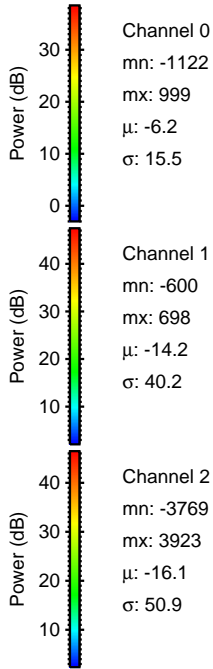
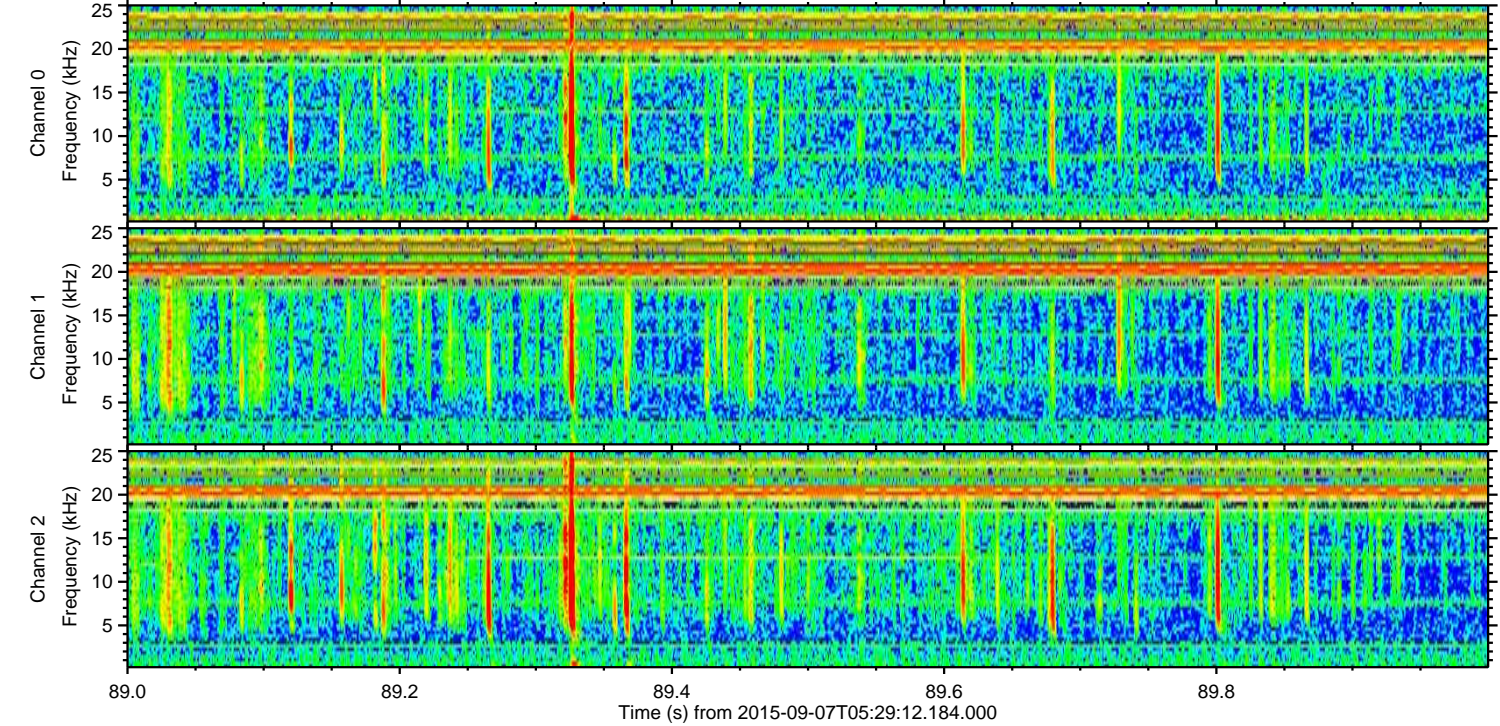
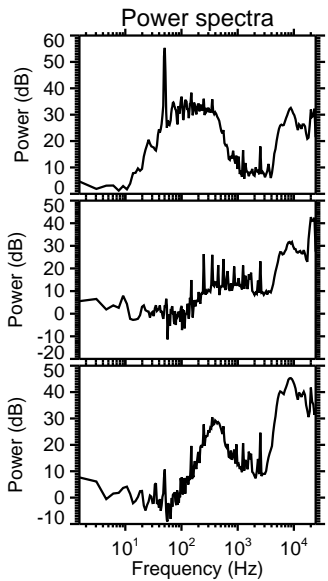
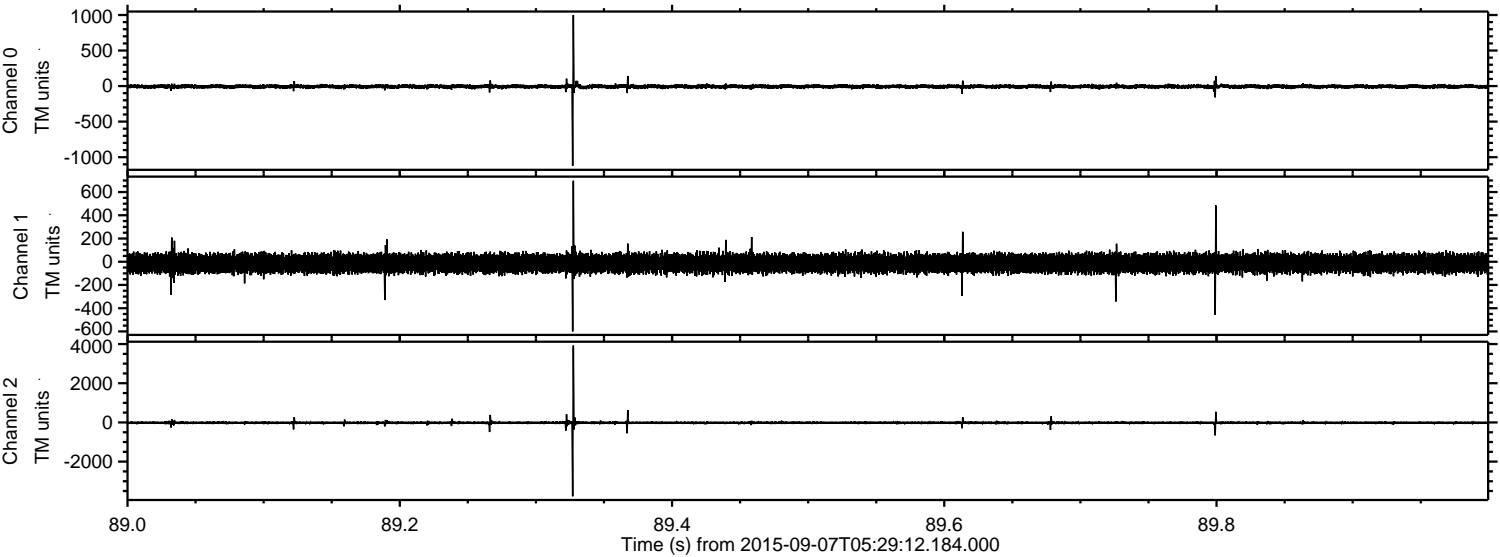
Channel 2
mn: -2421
mx: 1746
 μ : -16.1
 σ : 32.2

ELMAVAN 3D WAVEFORMS (Measured data sampled at 50 kHz) 51000 packets of 144 samples from 2015-09-07T05:29:12.184.000. Part 49/147

Processed Sat Oct 10 10:04:31 2015 by ELM ver.2012-10-06 from 001__elm20150907_052911__dat00.bin



Processed Sat Oct 10 10:04:32 2015 by ELM ver.2012-10-06 from 001__elm20150907_052911__dat00.bin



Channel 0
mn: -1122
mx: 999
 μ : -6.2
 σ : 15.5

Channel 1
mn: -600
mx: 698
 μ : -14.2
 σ : 40.2

Channel 2
mn: -3769
mx: 3923
 μ : -16.1
 σ : 50.9

Processed Sat Oct 10 10:04:34 2015 by ELM ver.2012-10-06 from 001__elm20150907_052911__dat00.bin

