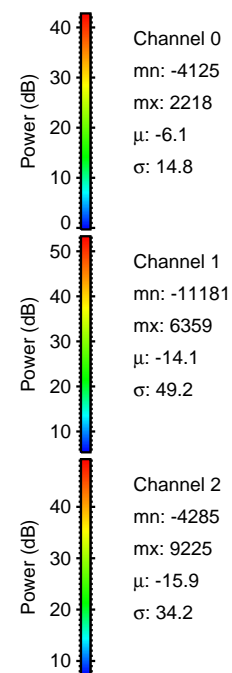
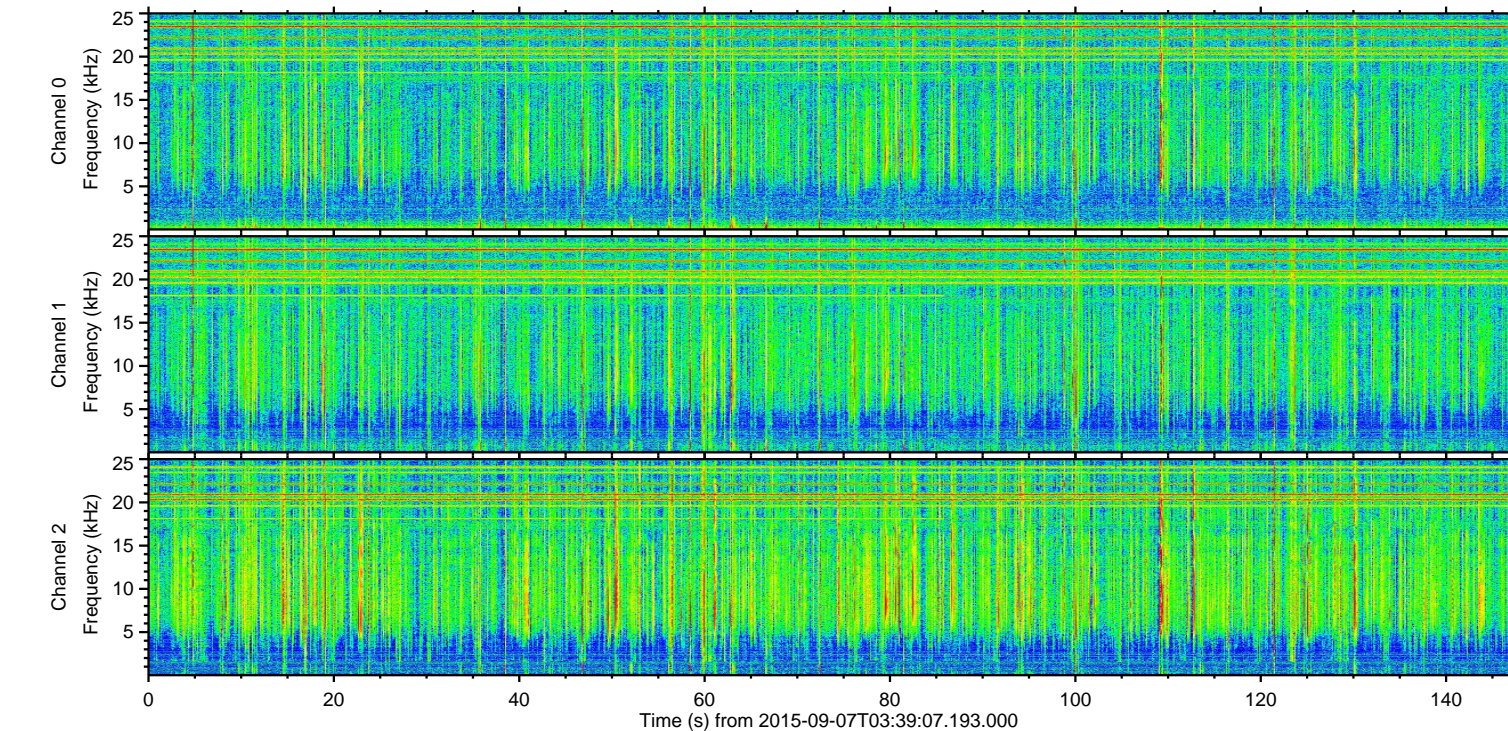
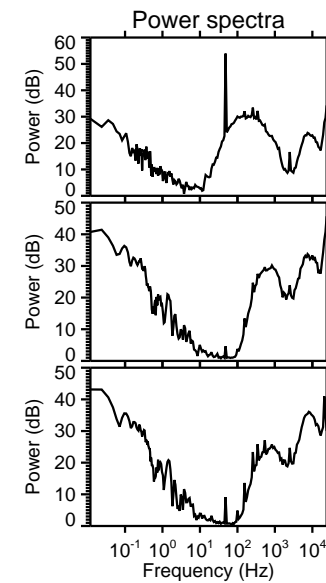
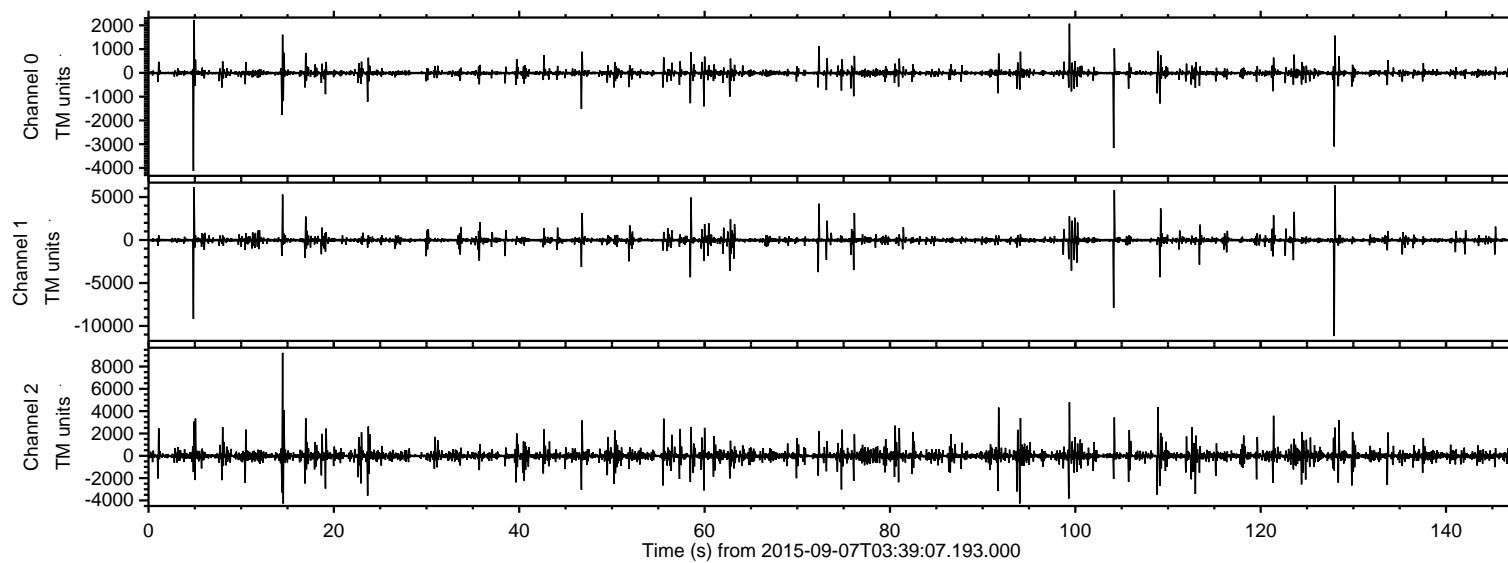


# ELMAVAN 3D WAVEFORMS (Measured data sampled at 50 kHz) 51000 packets of 144 samples from 2015-09-07T03:39:07.193.000.

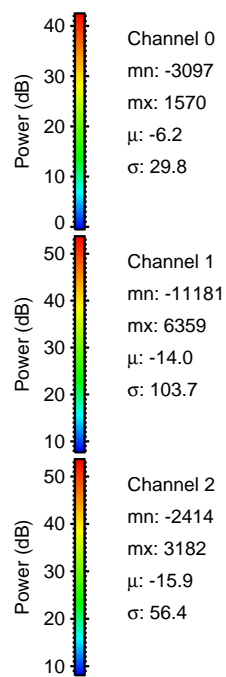
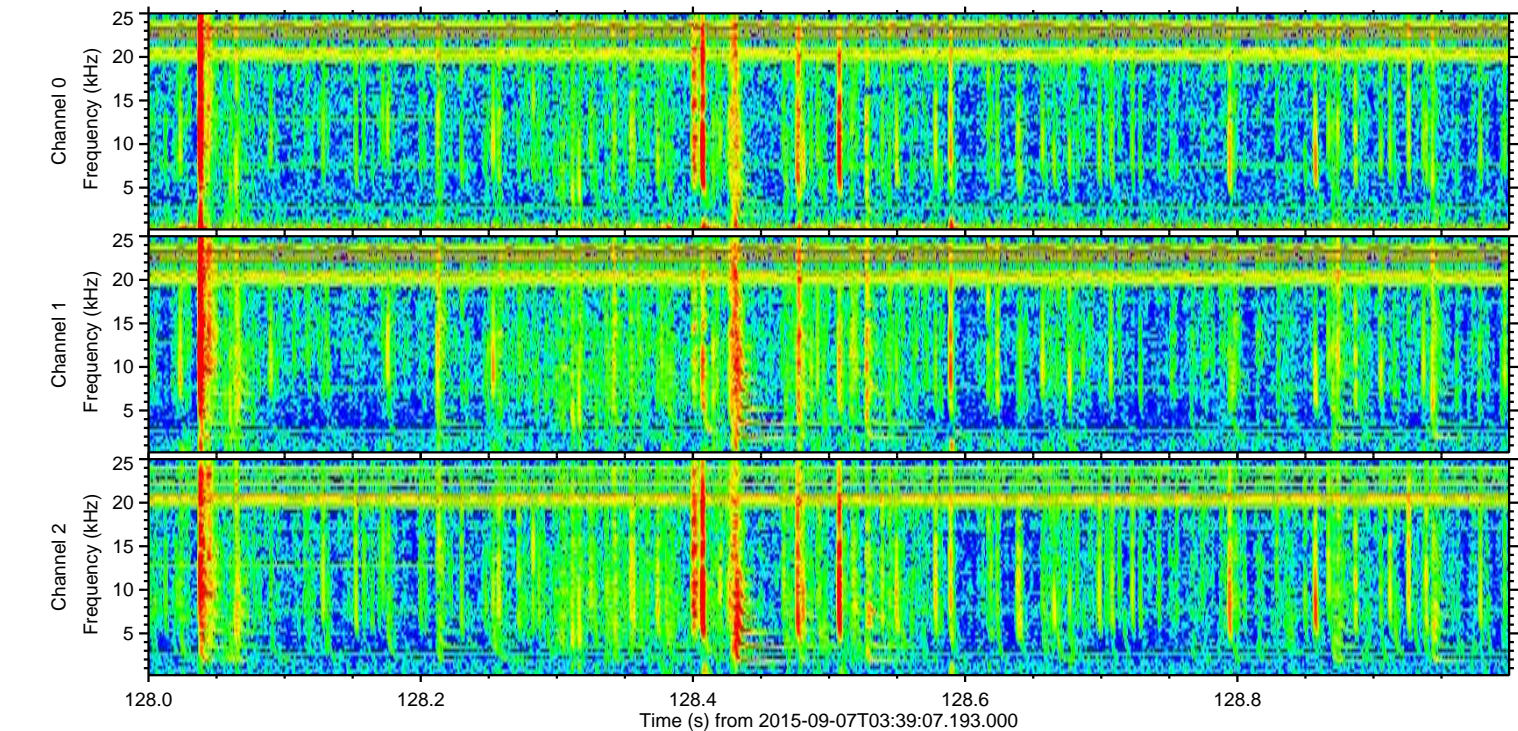
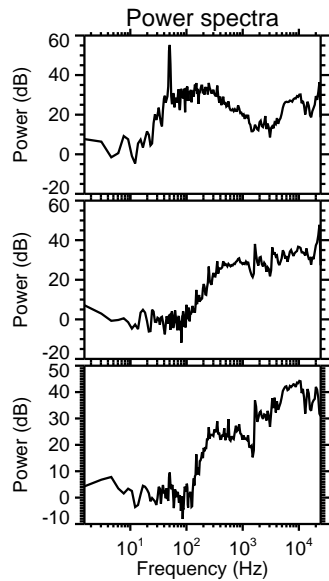
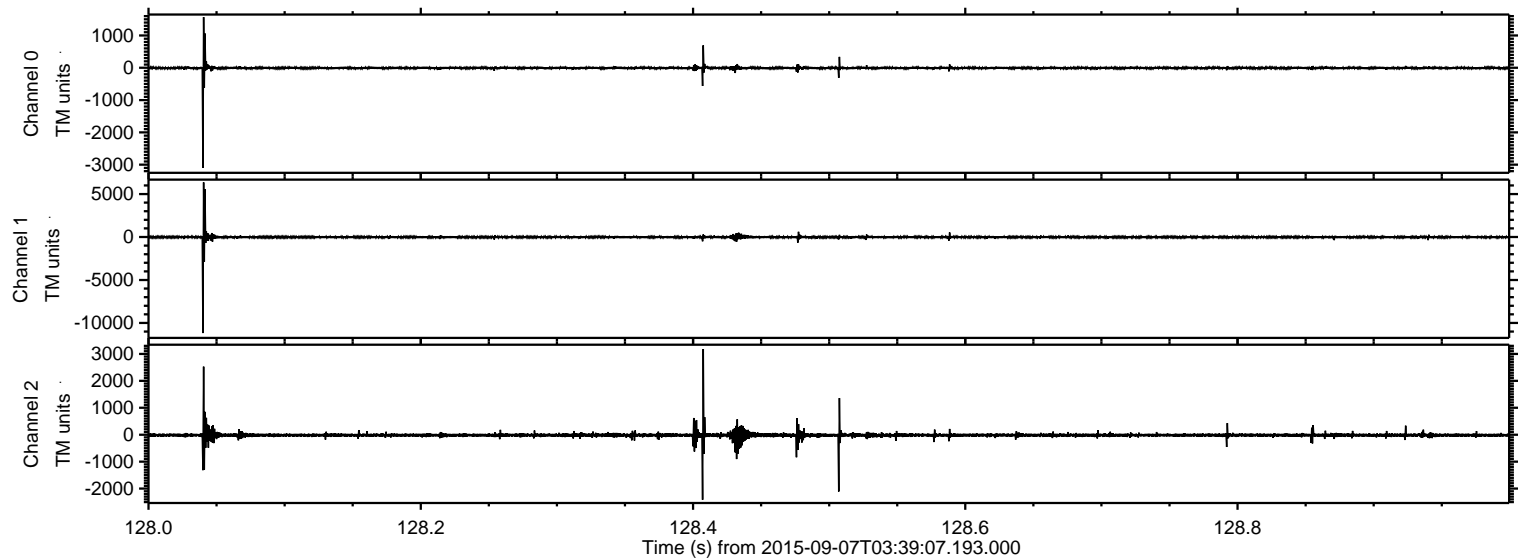
Processed Sat Oct 10 09:33:58 2015 by ELM ver.2012-10-06 from 001\_\_elm20150907\_033906\_\_dat00.bin





ELMAVAN 3D WAVEFORMS (Measured data sampled at 50 kHz) 51000 packets of 144 samples from 2015-09-07T03:39:07.193.000. Part 129/147

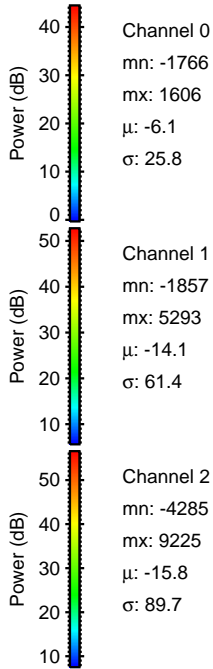
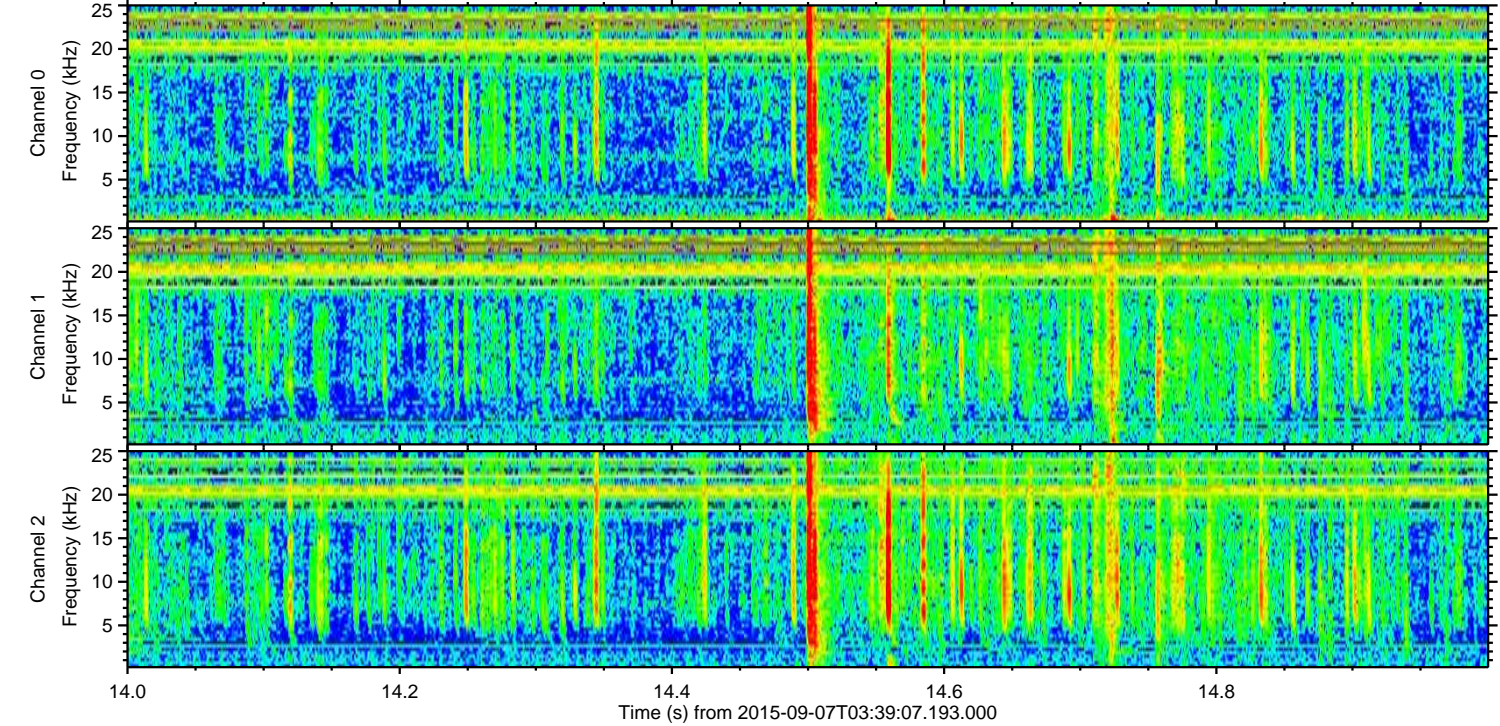
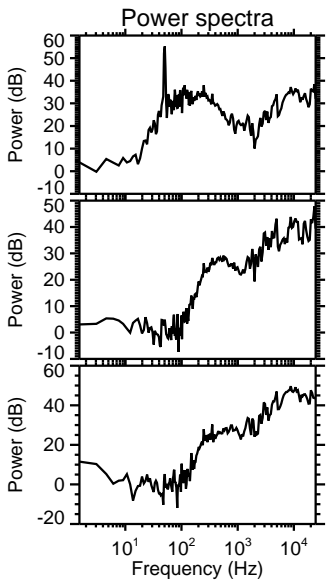
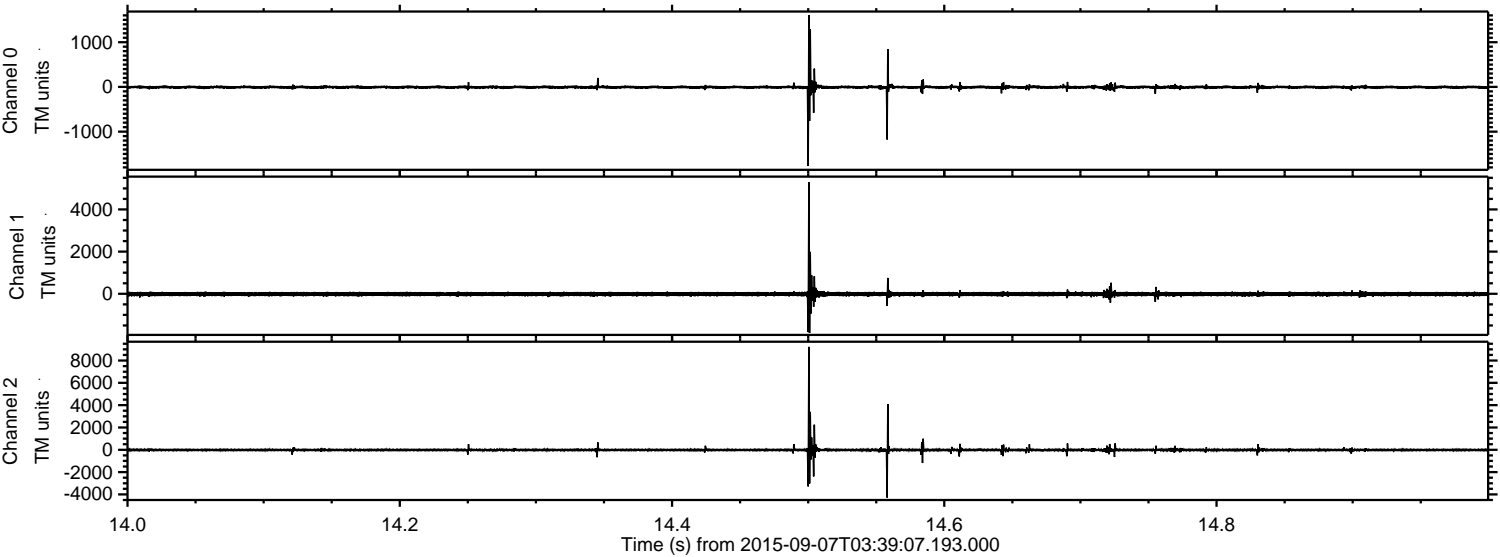
Processed Sat Oct 10 09:34:14 2015 by ELM ver.2012-10-06 from 001\_\_elm20150907\_033906\_\_dat00.bin





ELMAVAN 3D WAVEFORMS (Measured data sampled at 50 kHz) 51000 packets of 144 samples from 2015-09-07T03:39:07.193.000. Part 15/147

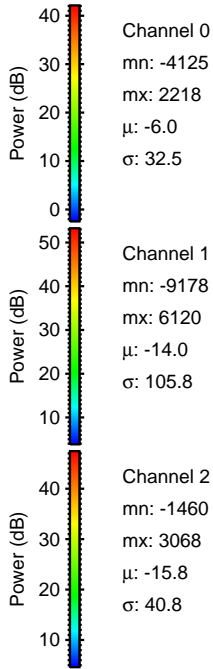
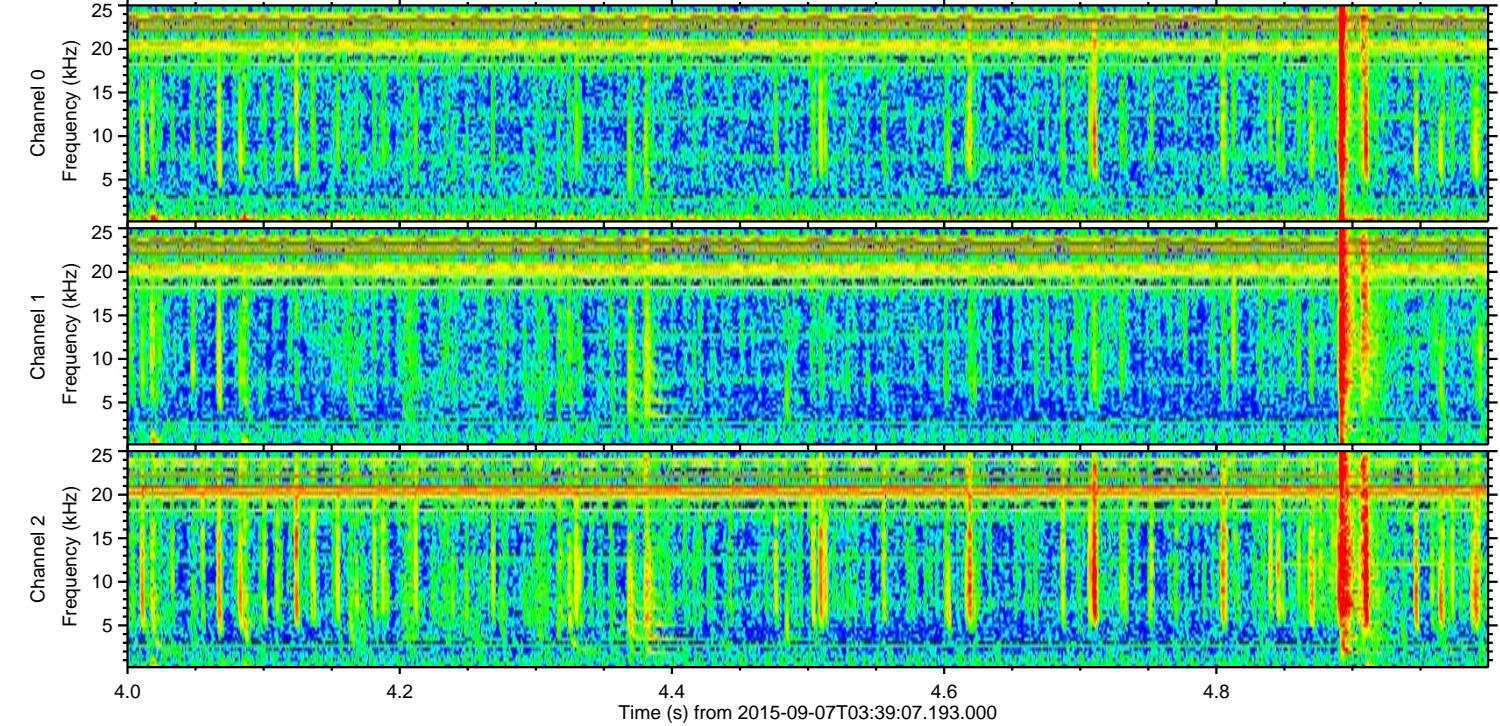
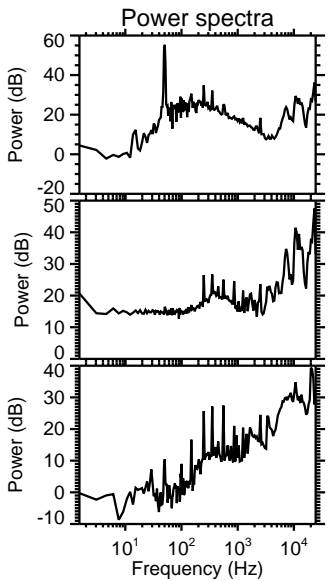
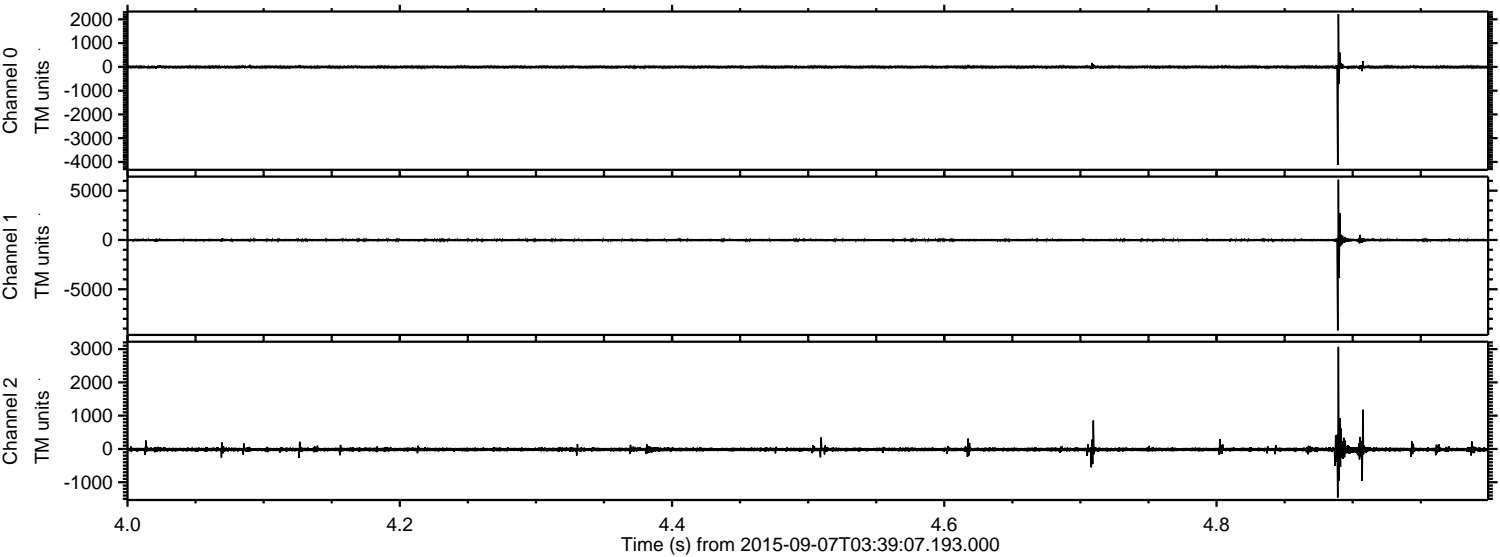
Processed Sat Oct 10 09:34:15 2015 by ELM ver.2012-10-06 from 001\_\_elm20150907\_033906\_\_dat00.bin





ELMAVAN 3D WAVEFORMS (Measured data sampled at 50 kHz) 51000 packets of 144 samples from 2015-09-07T03:39:07.193.000. Part 5/147

Processed Sat Oct 10 09:34:16 2015 by ELM ver.2012-10-06 from 001\_\_elm20150907\_033906\_\_dat00.bin



Channel 0  
mn: -4125  
mx: 2218  
 $\mu$ : -6.0  
 $\sigma$ : 32.5

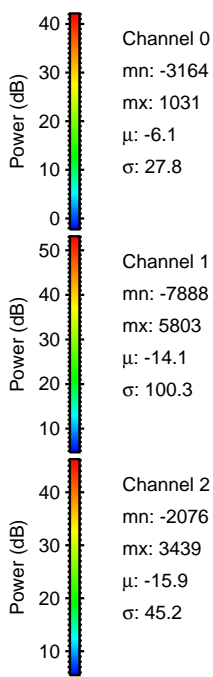
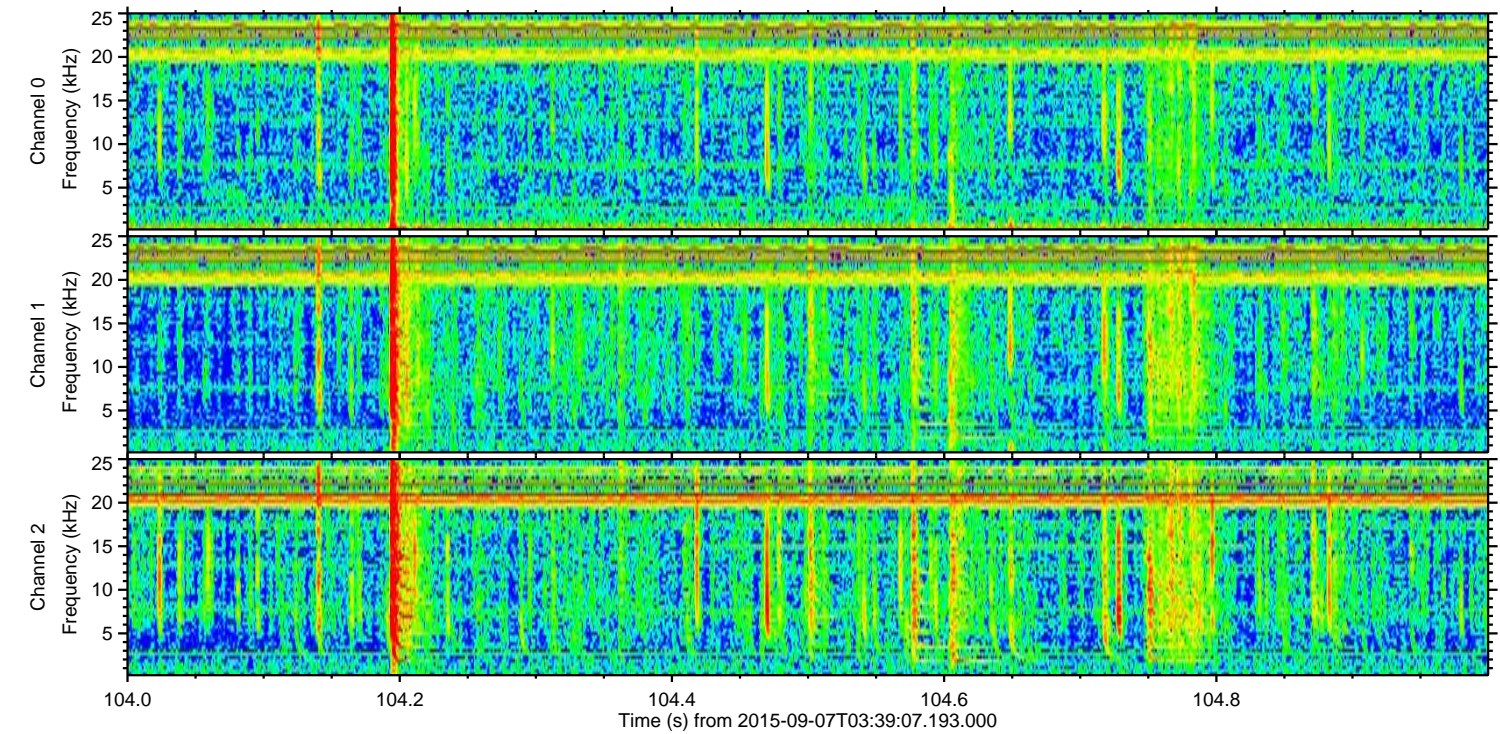
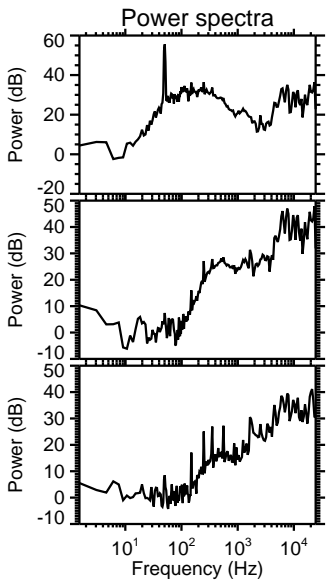
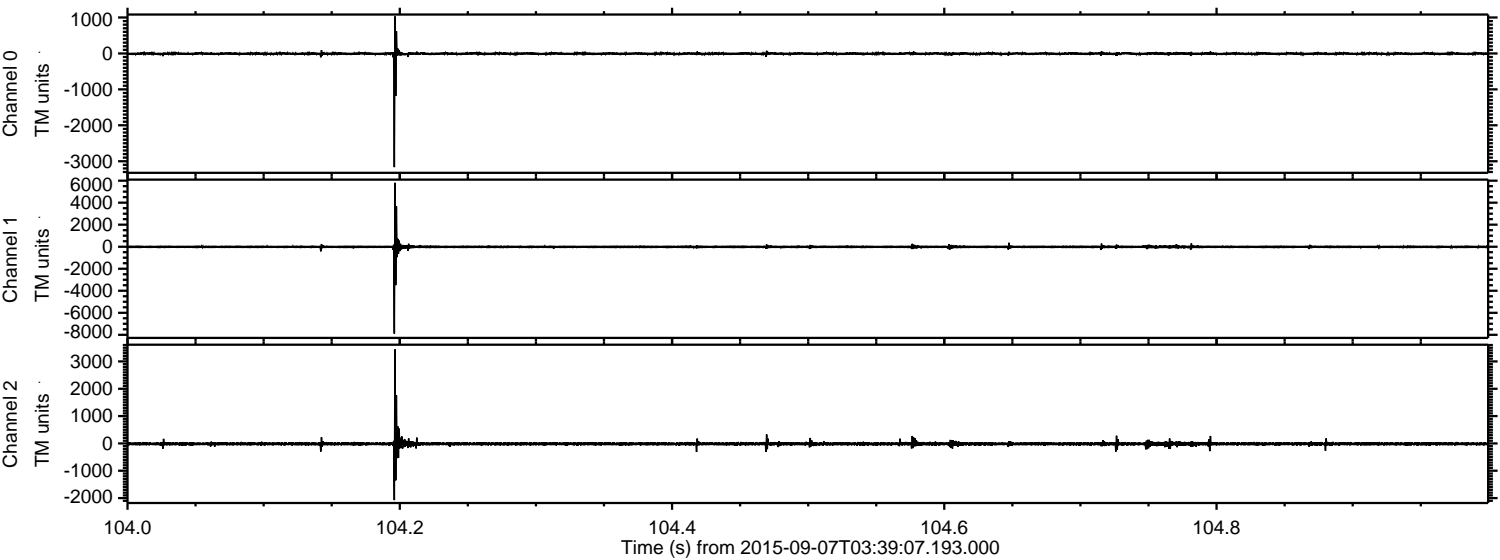
Channel 1  
mn: -9178  
mx: 6120  
 $\mu$ : -14.0  
 $\sigma$ : 105.8

Channel 2  
mn: -1460  
mx: 3068  
 $\mu$ : -15.8  
 $\sigma$ : 40.8



ELMAVAN 3D WAVEFORMS (Measured data sampled at 50 kHz) 51000 packets of 144 samples from 2015-09-07T03:39:07.193.000. Part 105/147

Processed Sat Oct 10 09:34:17 2015 by ELM ver.2012-10-06 from 001\_\_elm20150907\_033906\_\_dat00.bin



Channel 0  
mn: -3164  
mx: 1031  
 $\mu$ : -6.1  
 $\sigma$ : 27.8

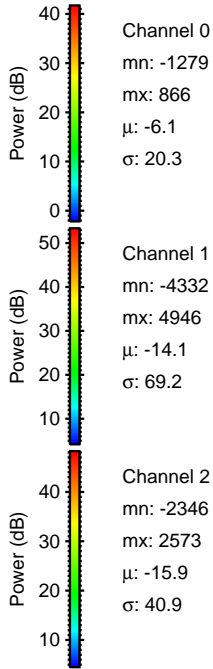
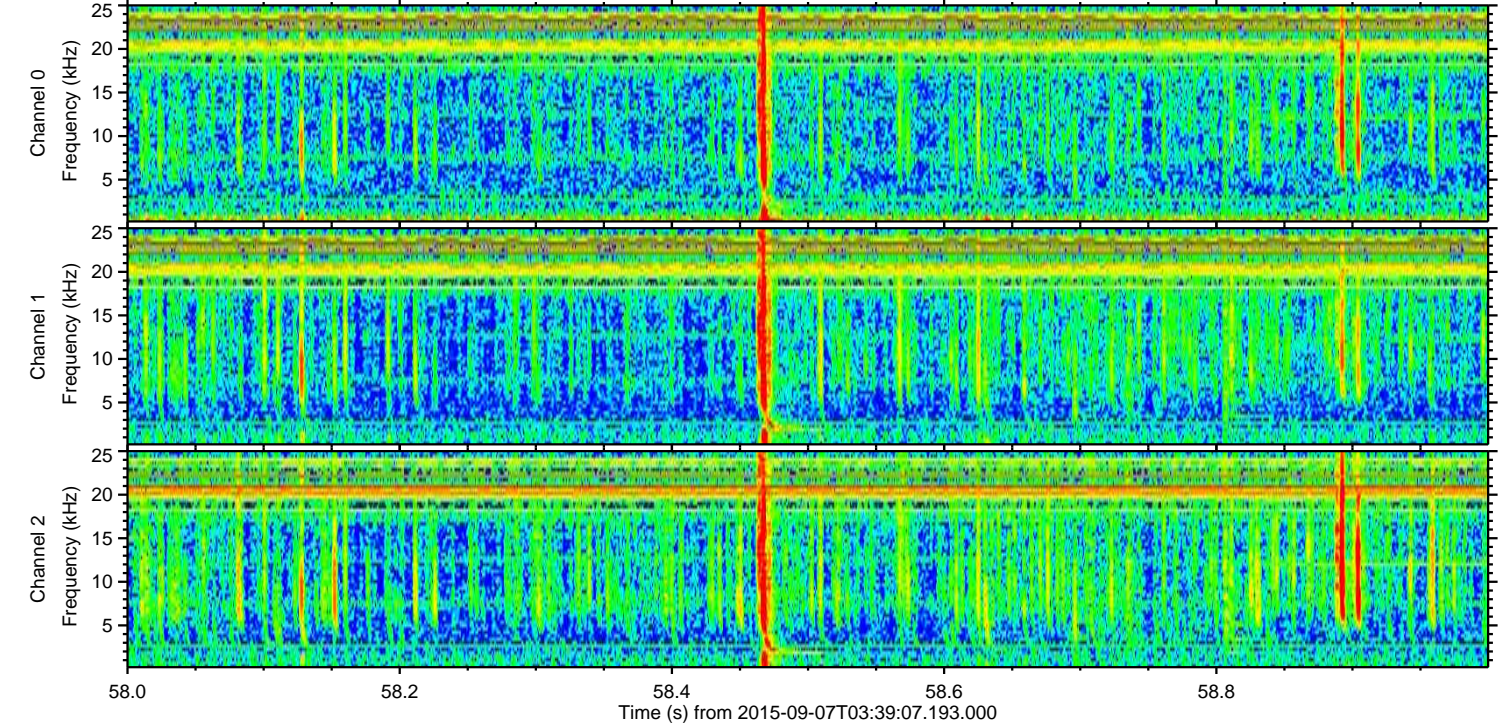
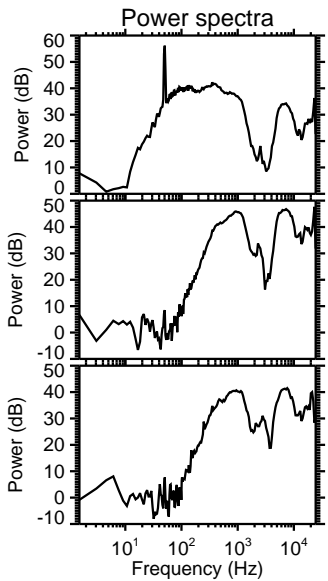
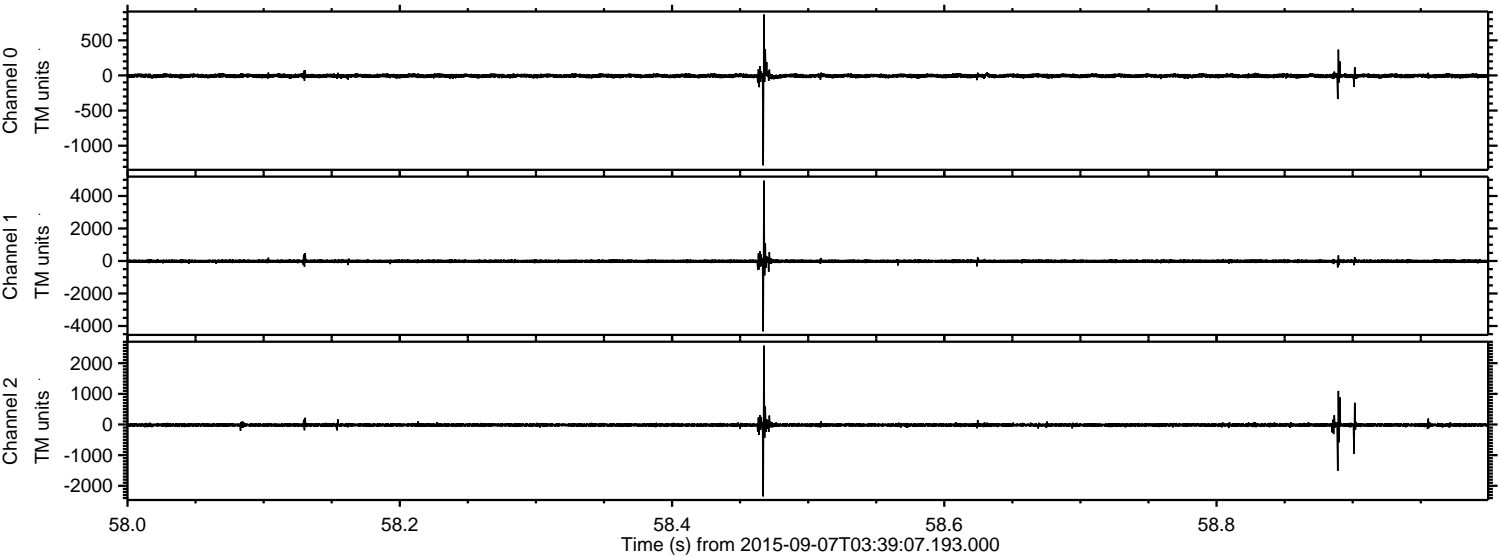
Channel 1  
mn: -7888  
mx: 5803  
 $\mu$ : -14.1  
 $\sigma$ : 100.3

Channel 2  
mn: -2076  
mx: 3439  
 $\mu$ : -15.9  
 $\sigma$ : 45.2



ELMAVAN 3D WAVEFORMS (Measured data sampled at 50 kHz) 51000 packets of 144 samples from 2015-09-07T03:39:07.193.000. Part 59/147

Processed Sat Oct 10 09:34:18 2015 by ELM ver.2012-10-06 from 001\_\_elm20150907\_033906\_\_dat00.bin



Channel 0  
mn: -1279  
mx: 866  
 $\mu$ : -6.1  
 $\sigma$ : 20.3

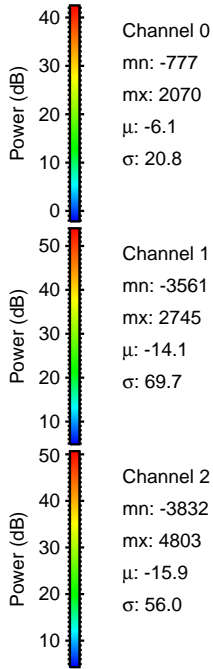
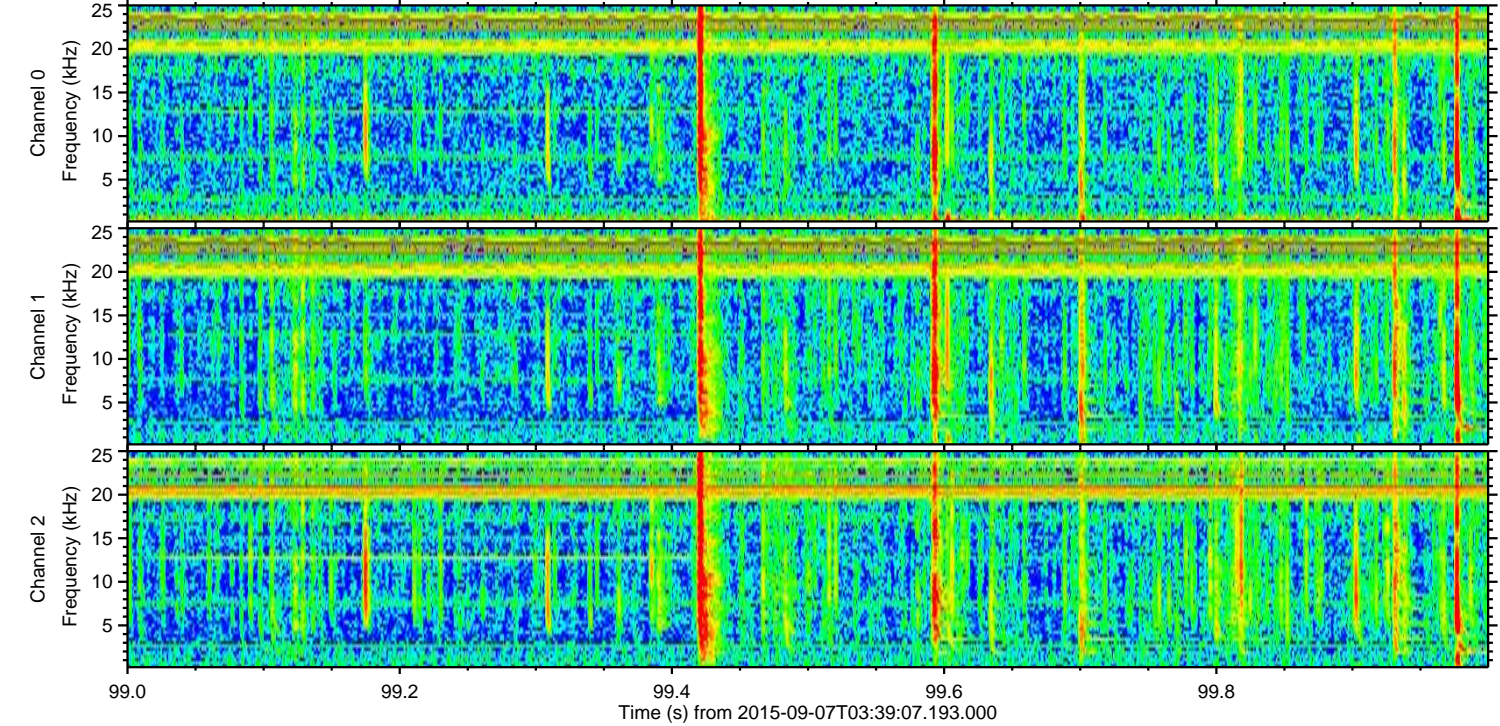
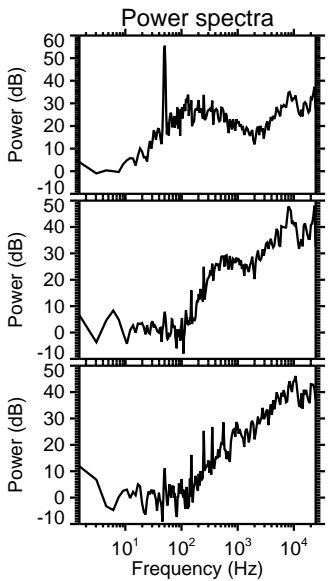
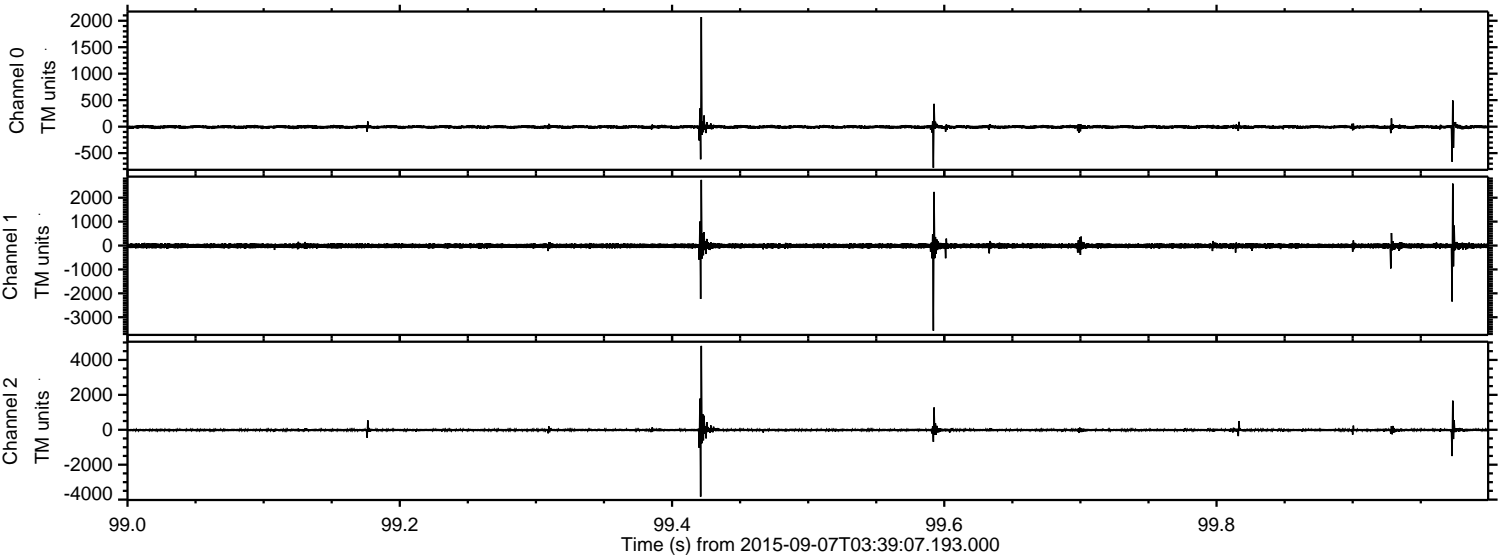
Channel 1  
mn: -4332  
mx: 4946  
 $\mu$ : -14.1  
 $\sigma$ : 69.2

Channel 2  
mn: -2346  
mx: 2573  
 $\mu$ : -15.9  
 $\sigma$ : 40.9



ELMAVAN 3D WAVEFORMS (Measured data sampled at 50 kHz) 51000 packets of 144 samples from 2015-09-07T03:39:07.193.000. Part 100/147

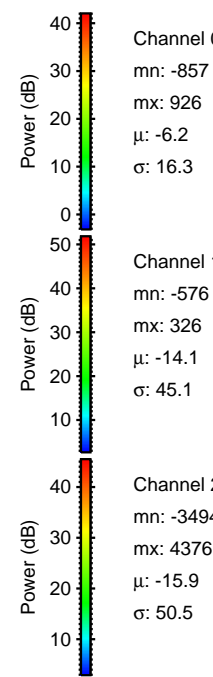
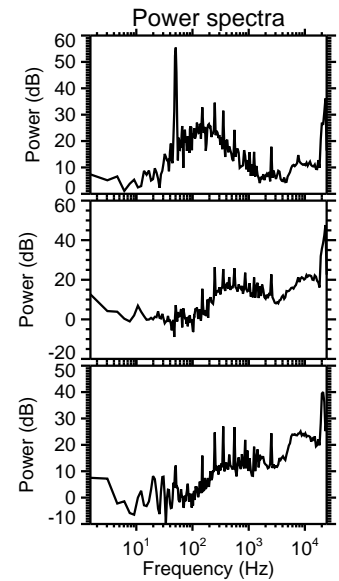
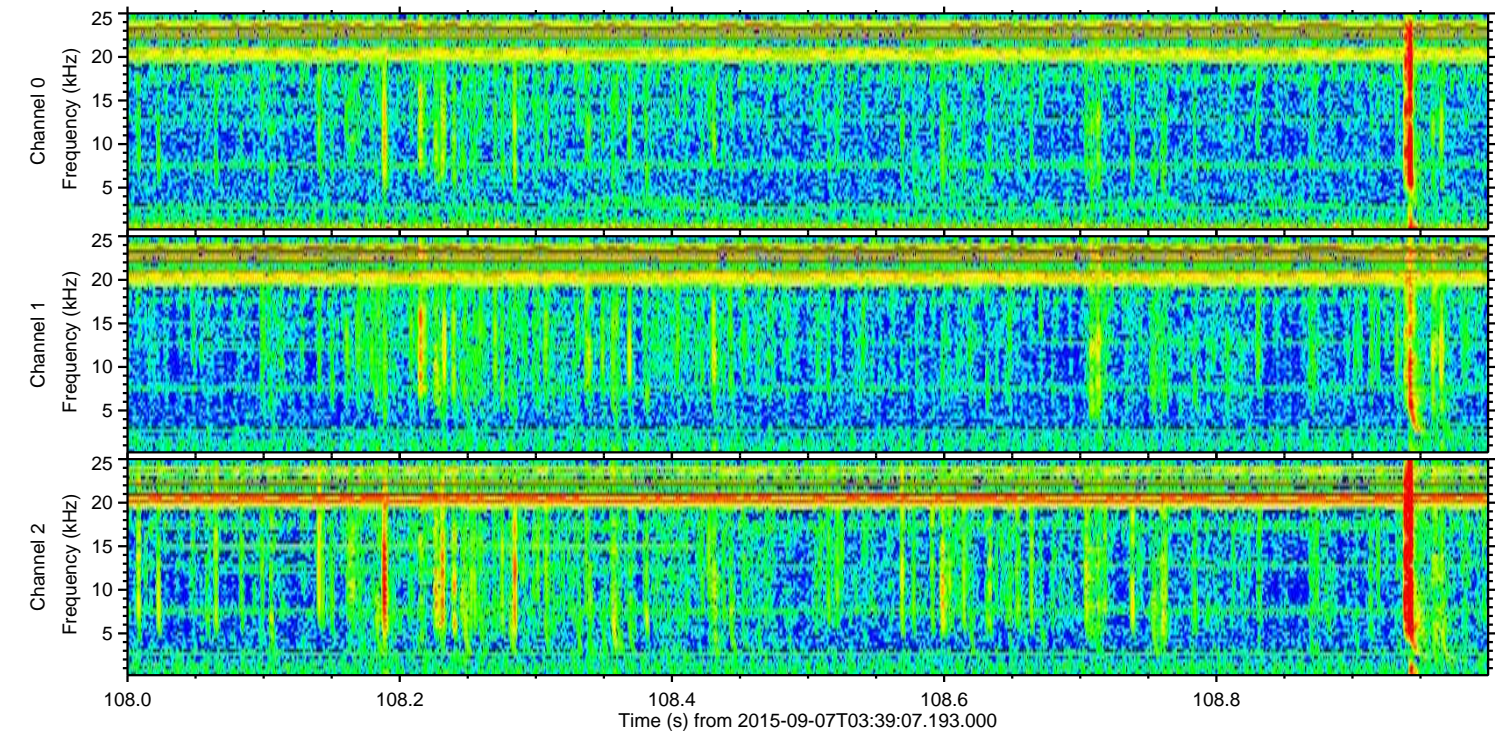
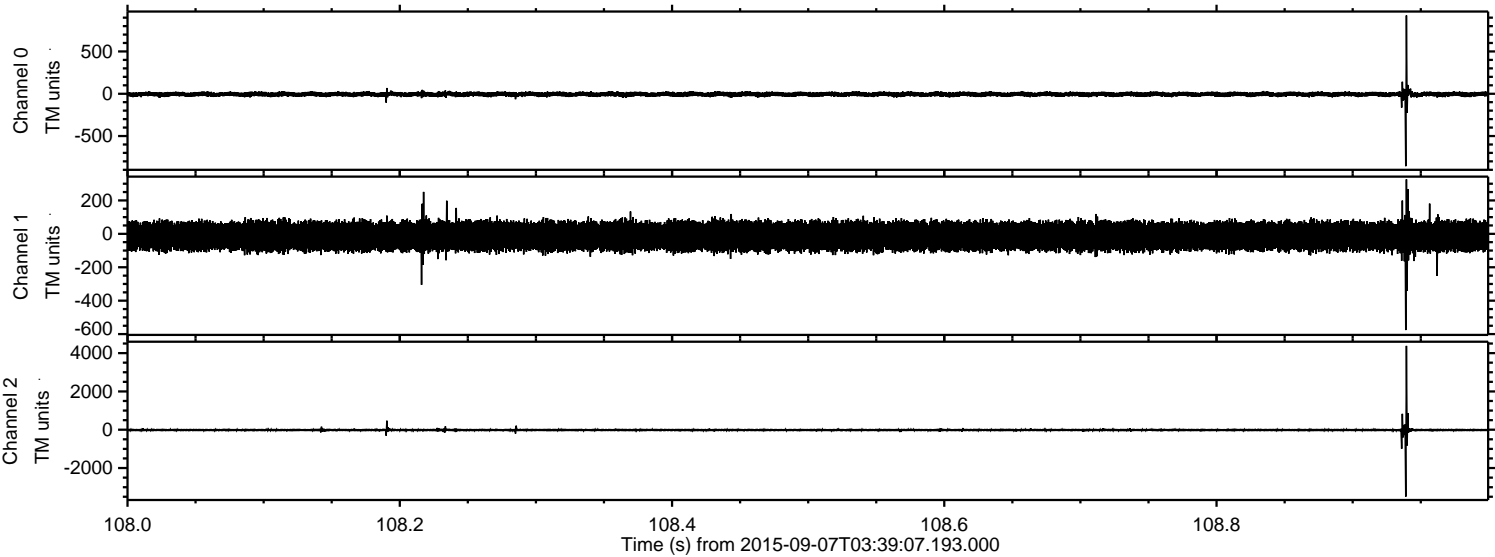
Processed Sat Oct 10 09:34:19 2015 by ELM ver.2012-10-06 from 001\_\_elm20150907\_033906\_\_dat00.bin





ELMAVAN 3D WAVEFORMS (Measured data sampled at 50 kHz) 51000 packets of 144 samples from 2015-09-07T03:39:07.193.000. Part 109/147

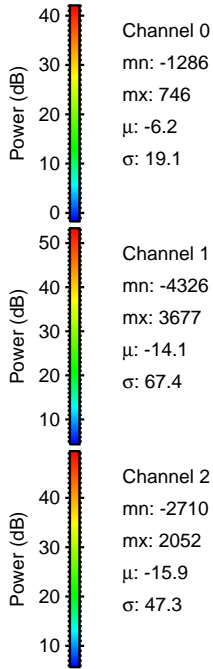
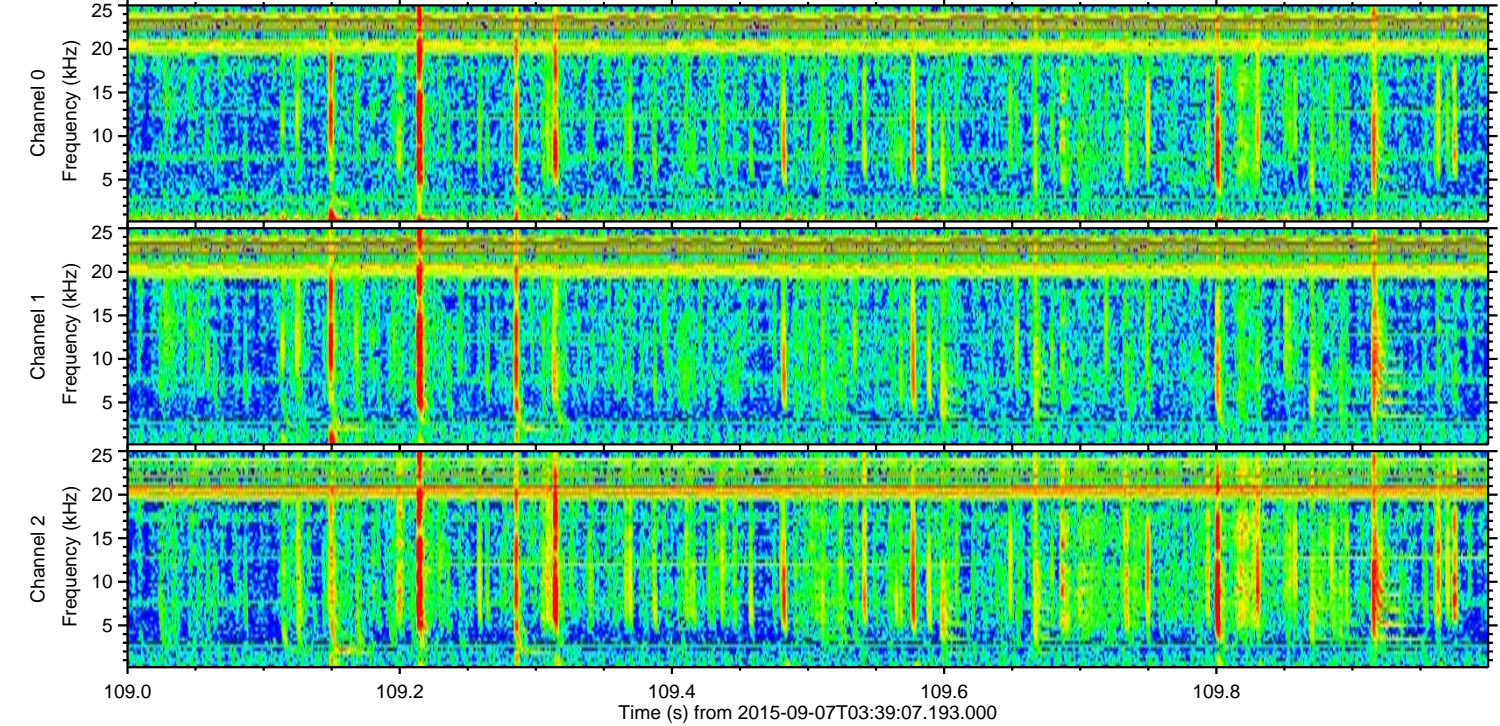
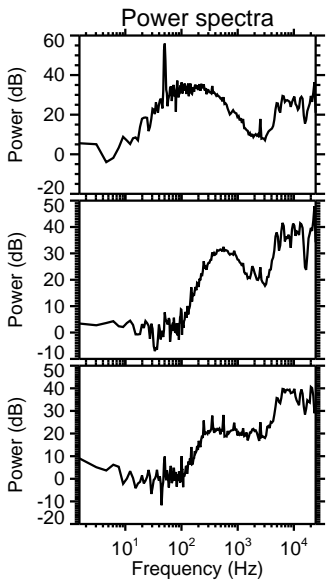
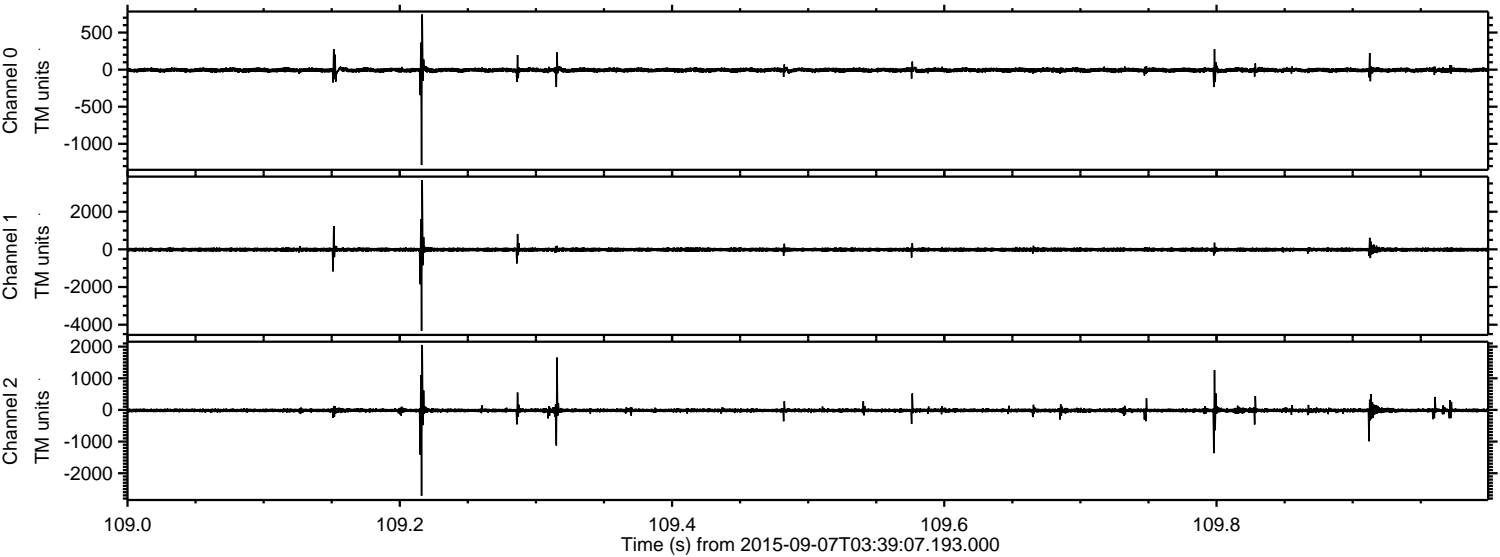
Processed Sat Oct 10 09:34:20 2015 by ELM ver.2012-10-06 from 001\_\_elm20150907\_033906\_\_dat00.bin





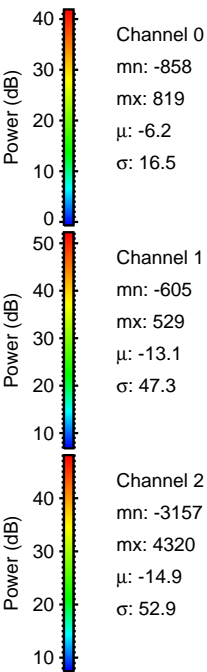
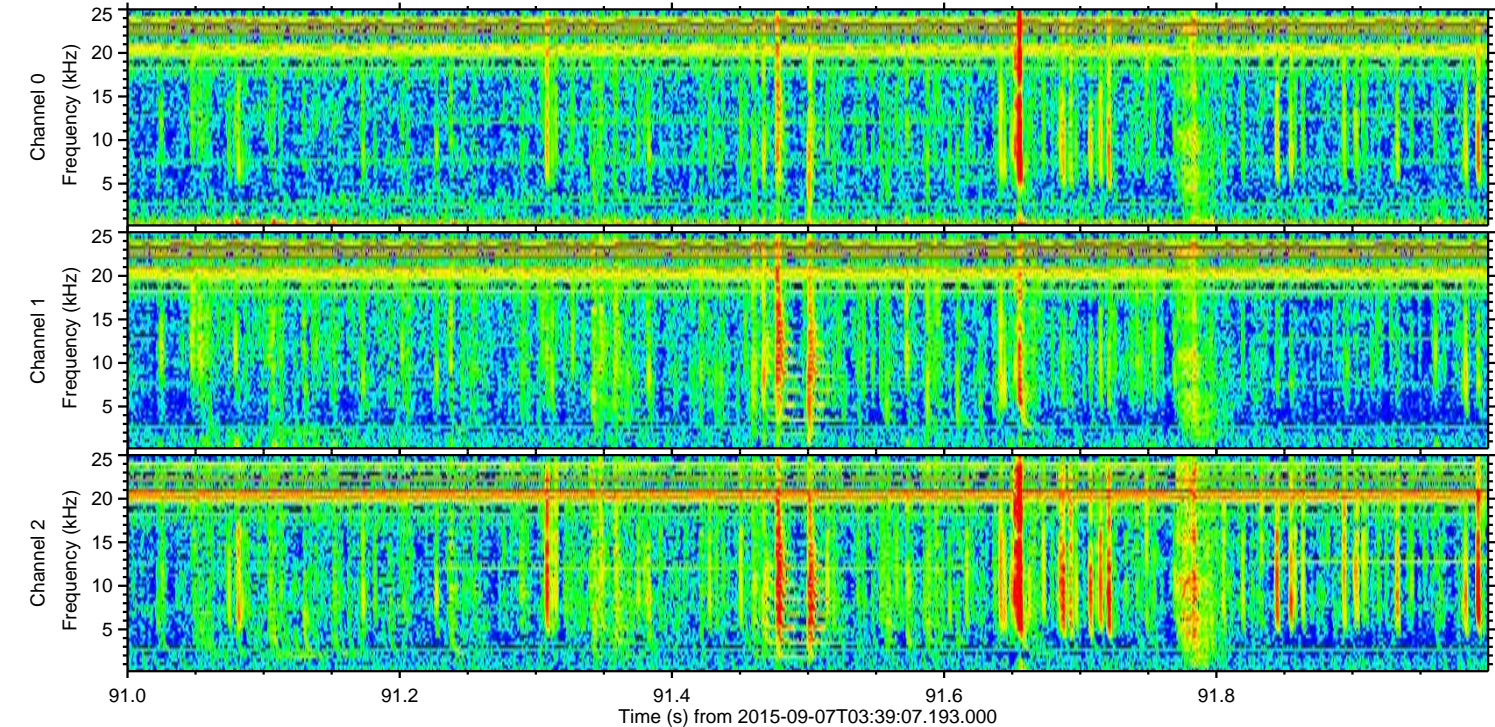
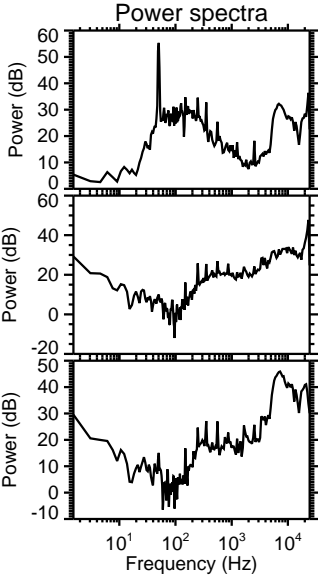
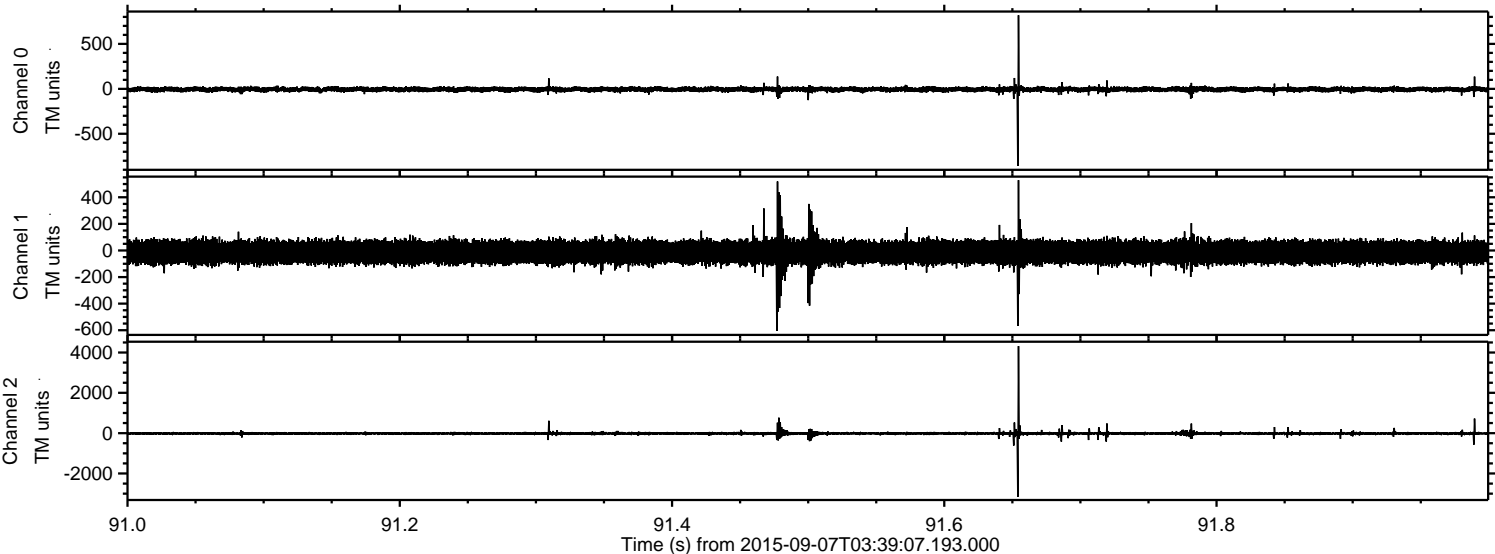
ELMAVAN 3D WAVEFORMS (Measured data sampled at 50 kHz) 51000 packets of 144 samples from 2015-09-07T03:39:07.193.000. Part 110/147

Processed Sat Oct 10 09:34:21 2015 by ELM ver.2012-10-06 from 001\_\_elm20150907\_033906\_\_dat00.bin





Processed Sat Oct 10 09:34:23 2015 by ELM ver.2012-10-06 from 001\_\_elm20150907\_033906\_\_dat00.bin





ELMAVAN 3D WAVEFORMS (Measured data sampled at 50 kHz) 51000 packets of 144 samples from 2015-09-07T03:39:07.193.000. Part 104/147

