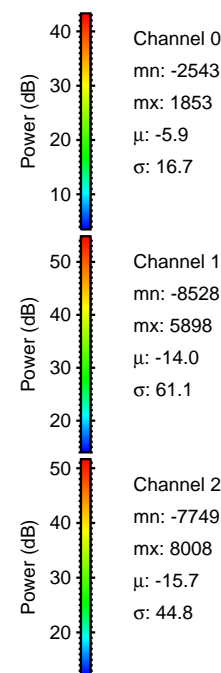
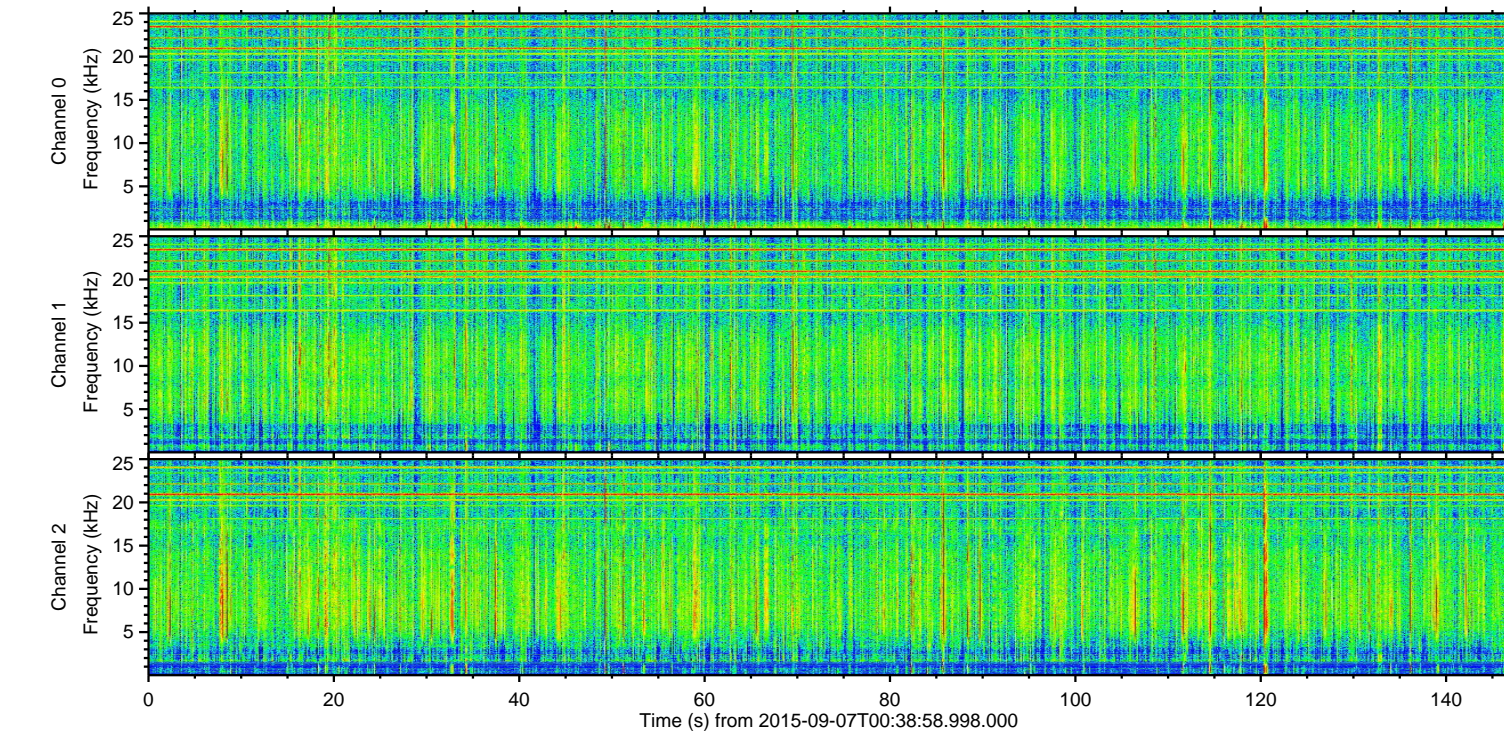
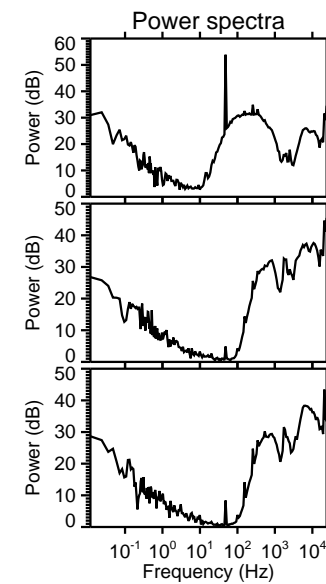
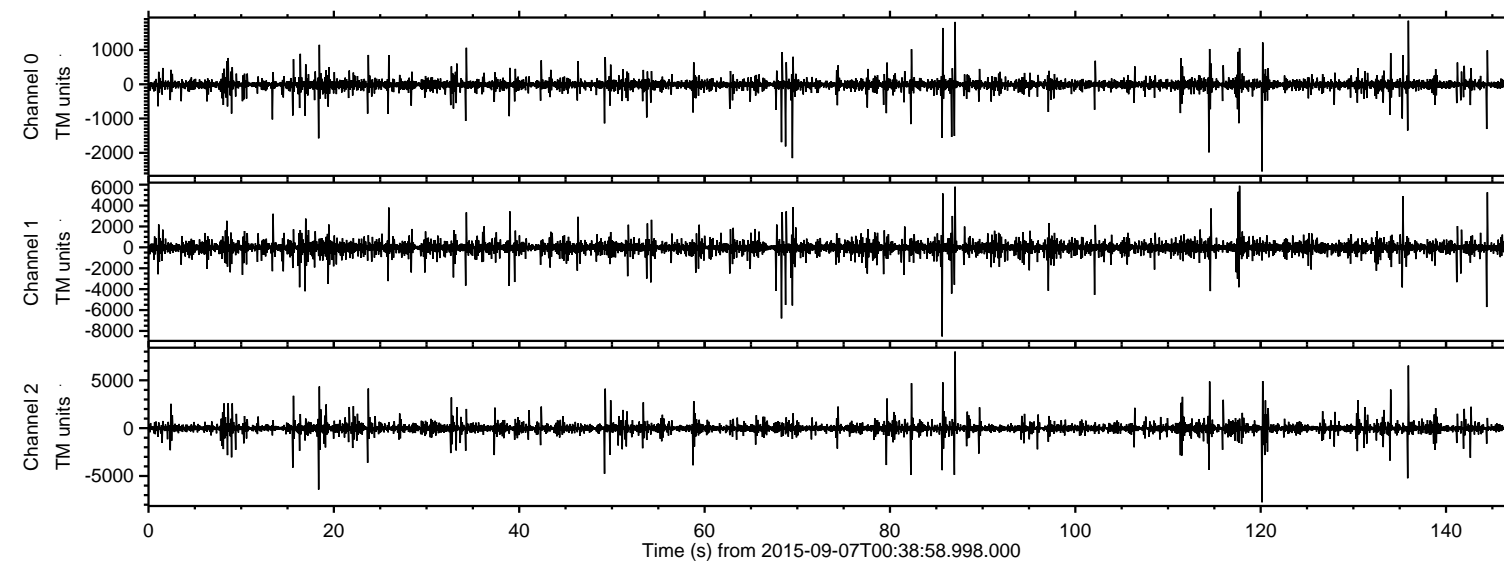


ELMAVAN 3D WAVEFORMS (Measured data sampled at 50 kHz) 51000 packets of 144 samples from 2015-09-07T00:38:58.998.000.

Processed Sat Oct 10 08:44:08 2015 by ELM ver.2012-10-06 from 001__elm20150907_003857__dat00.bin



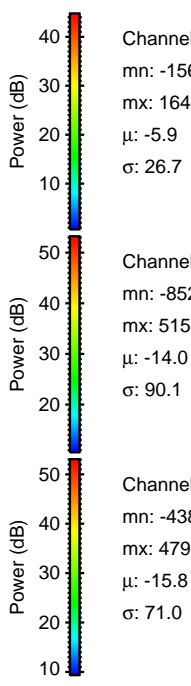
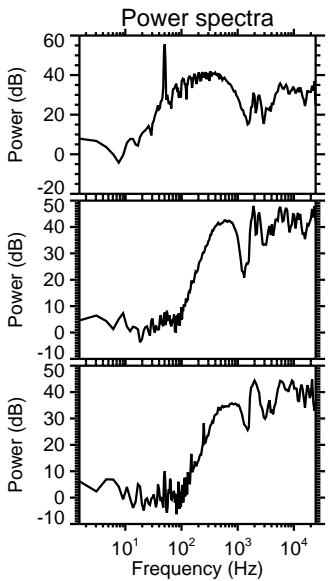
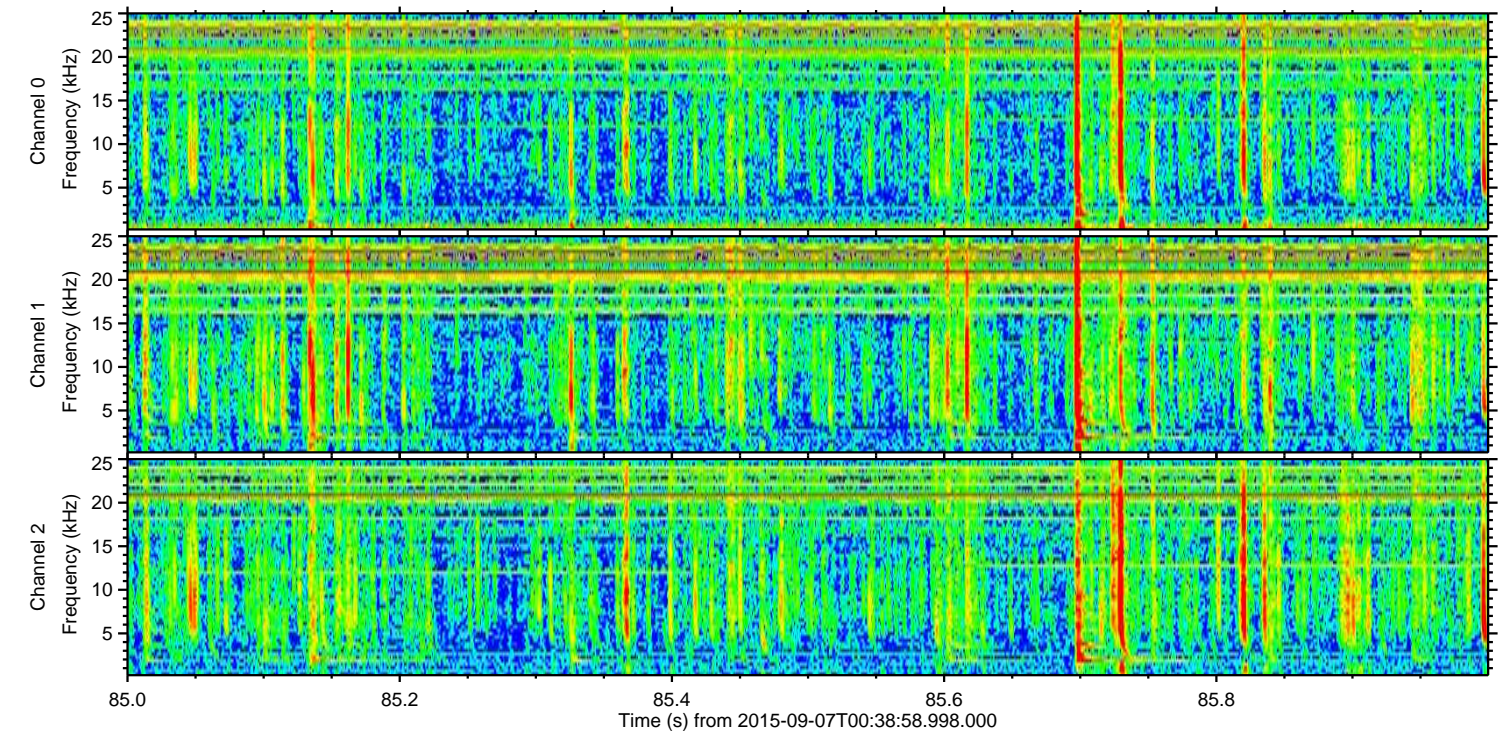
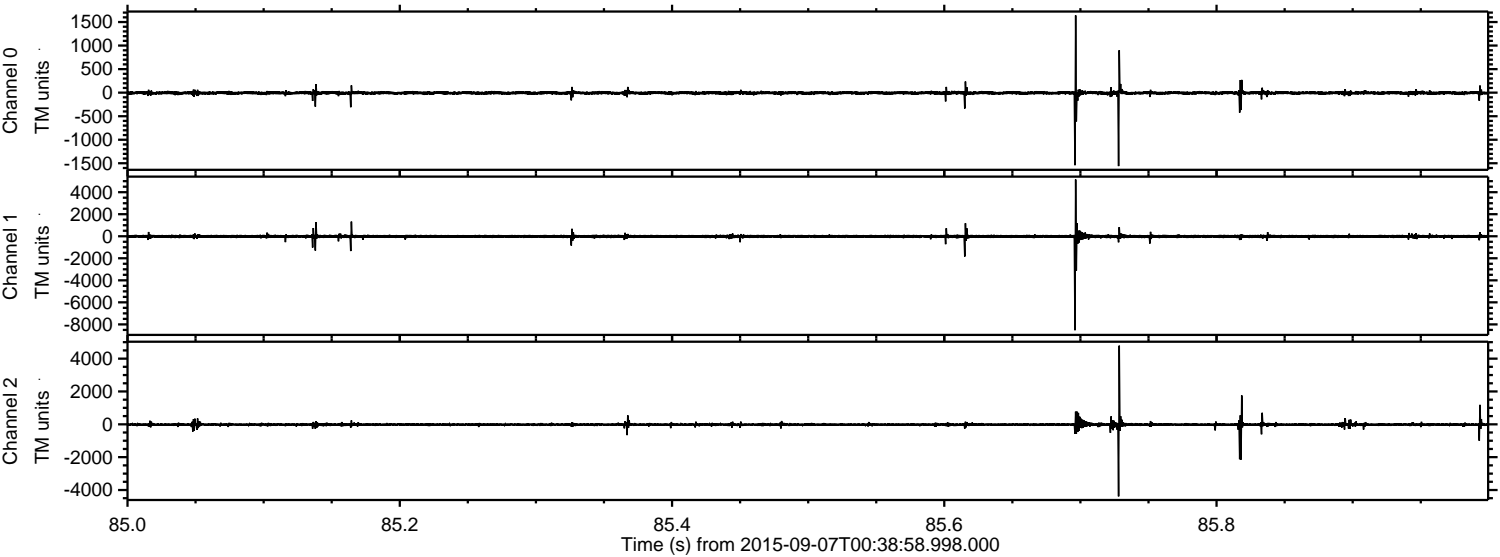
Channel 0
mn: -2543
mx: 1853
 μ : -5.9
 σ : 16.7

Channel 1
mn: -8528
mx: 5898
 μ : -14.0
 σ : 61.1

Channel 2
mn: -7749
mx: 8008
 μ : -15.7
 σ : 44.8

ELMAVAN 3D WAVEFORMS (Measured data sampled at 50 kHz) 51000 packets of 144 samples from 2015-09-07T00:38:58.998.000. Part 86/147

Processed Sat Oct 10 08:44:24 2015 by ELM ver.2012-10-06 from 001__elm20150907_003857__dat00.bin



Channel 0

Channel 1

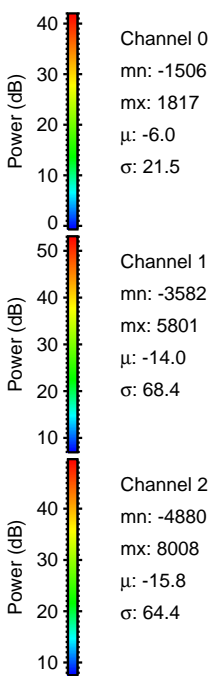
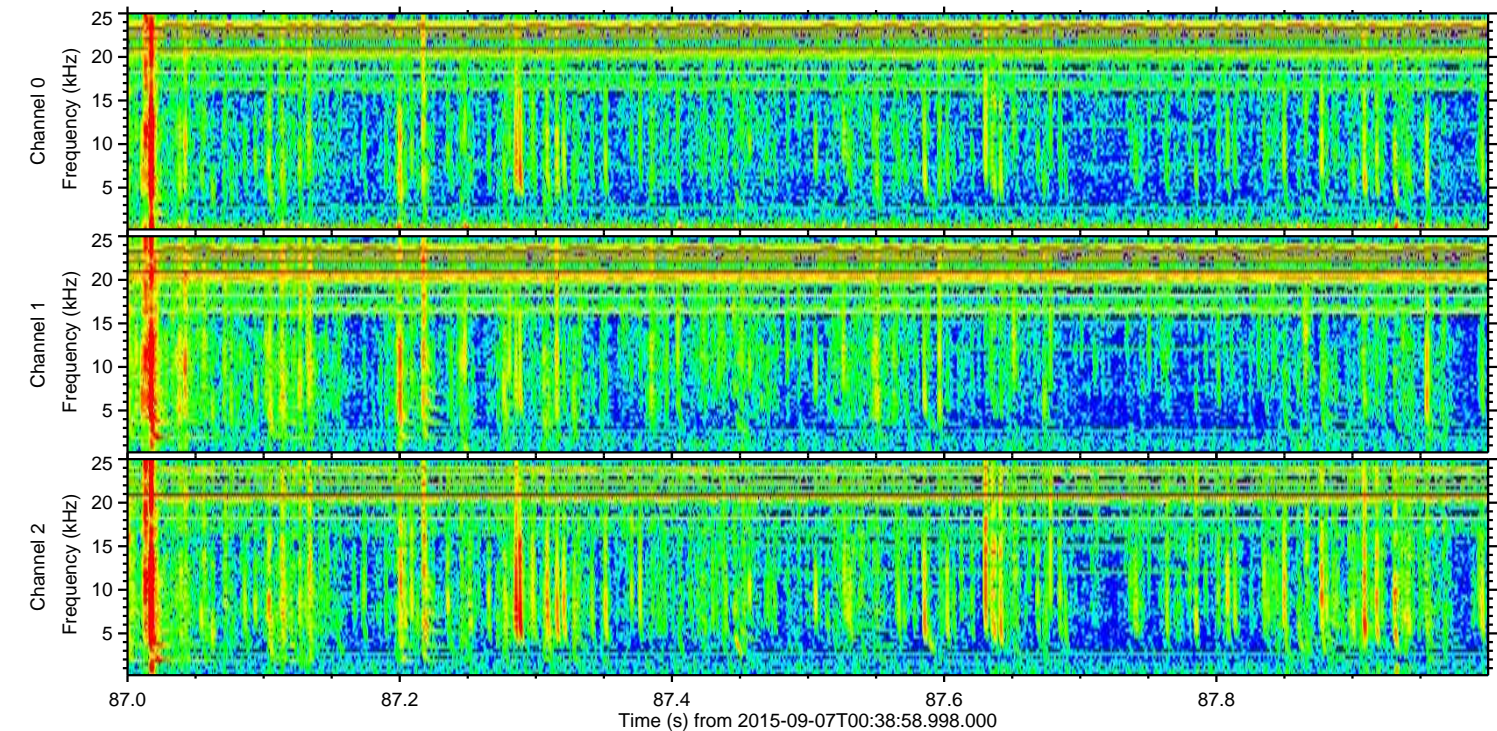
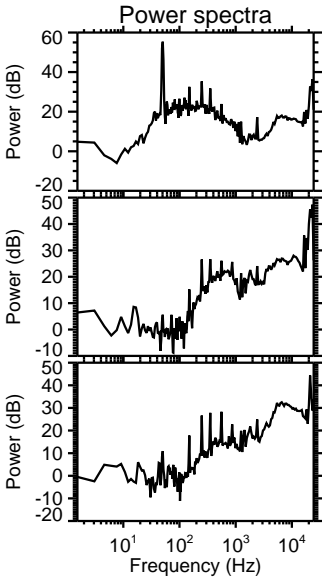
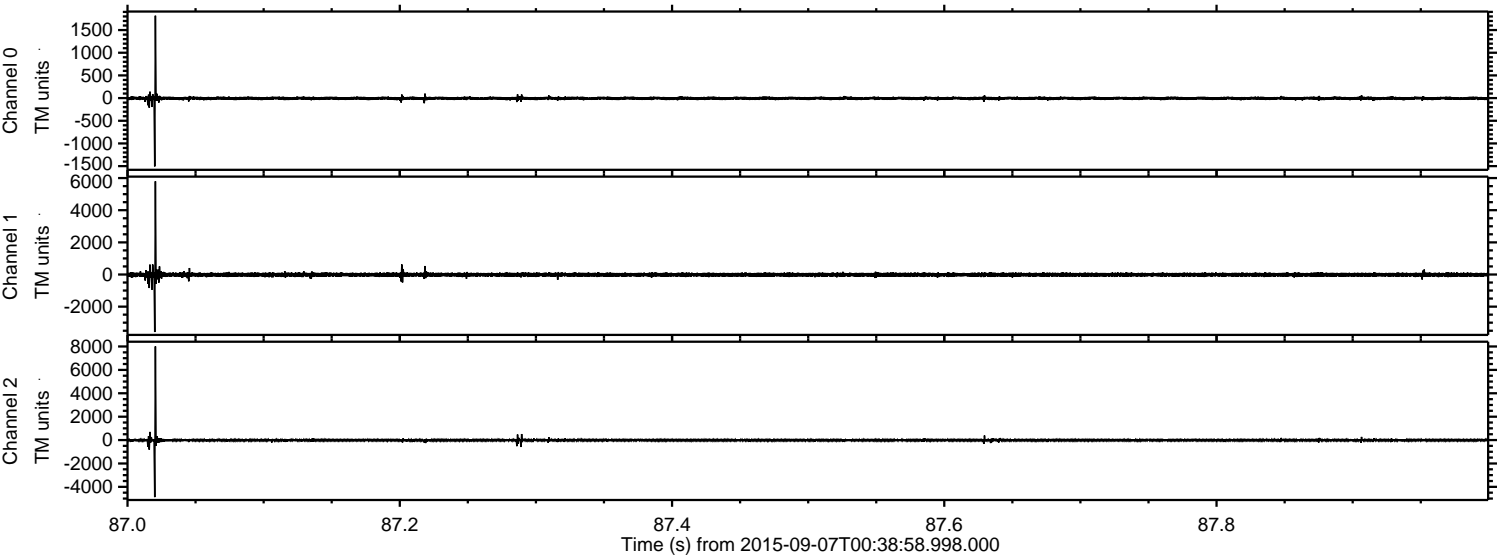
Channel 2

mn: -1561
mx: 1641
 μ : -5.9
 σ : 26.7

mn: -8528
mx: 5155
 μ : -14.0
 σ : 90.1

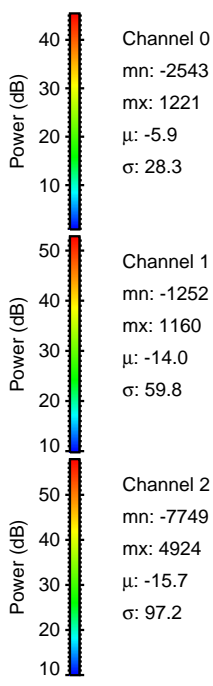
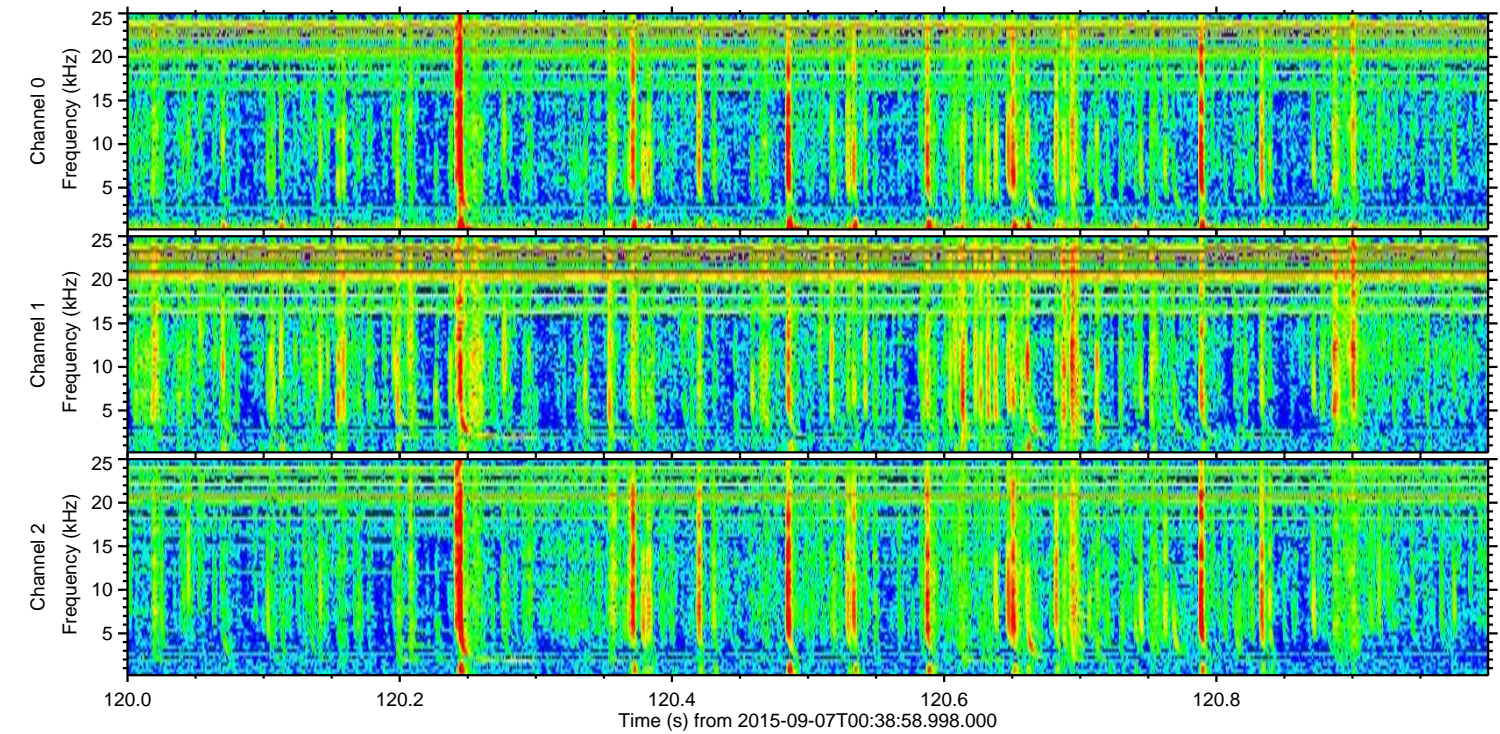
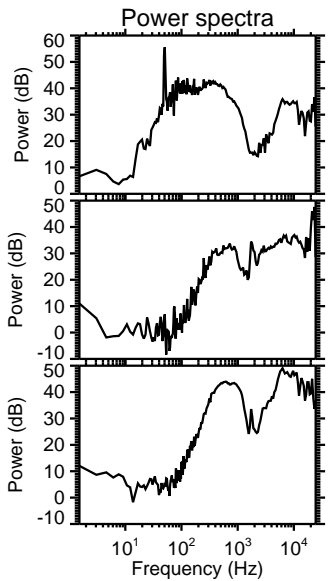
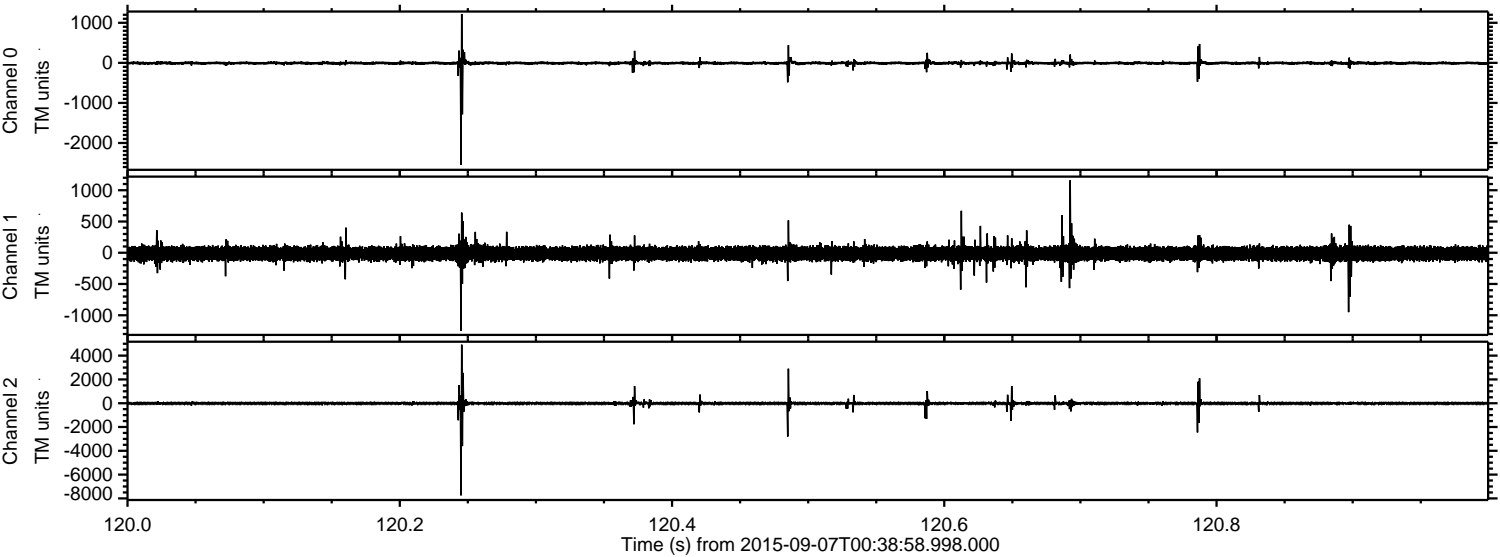
mn: -4389
mx: 4790
 μ : -15.8
 σ : 71.0

Processed Sat Oct 10 08:44:26 2015 by ELM ver.2012-10-06 from 001__elm20150907_003857__dat00.bin

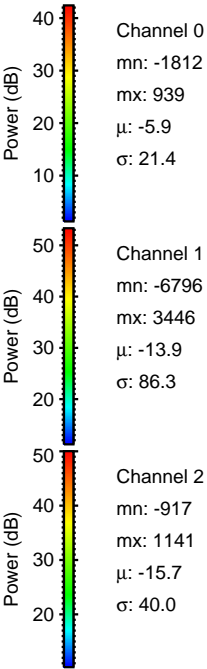
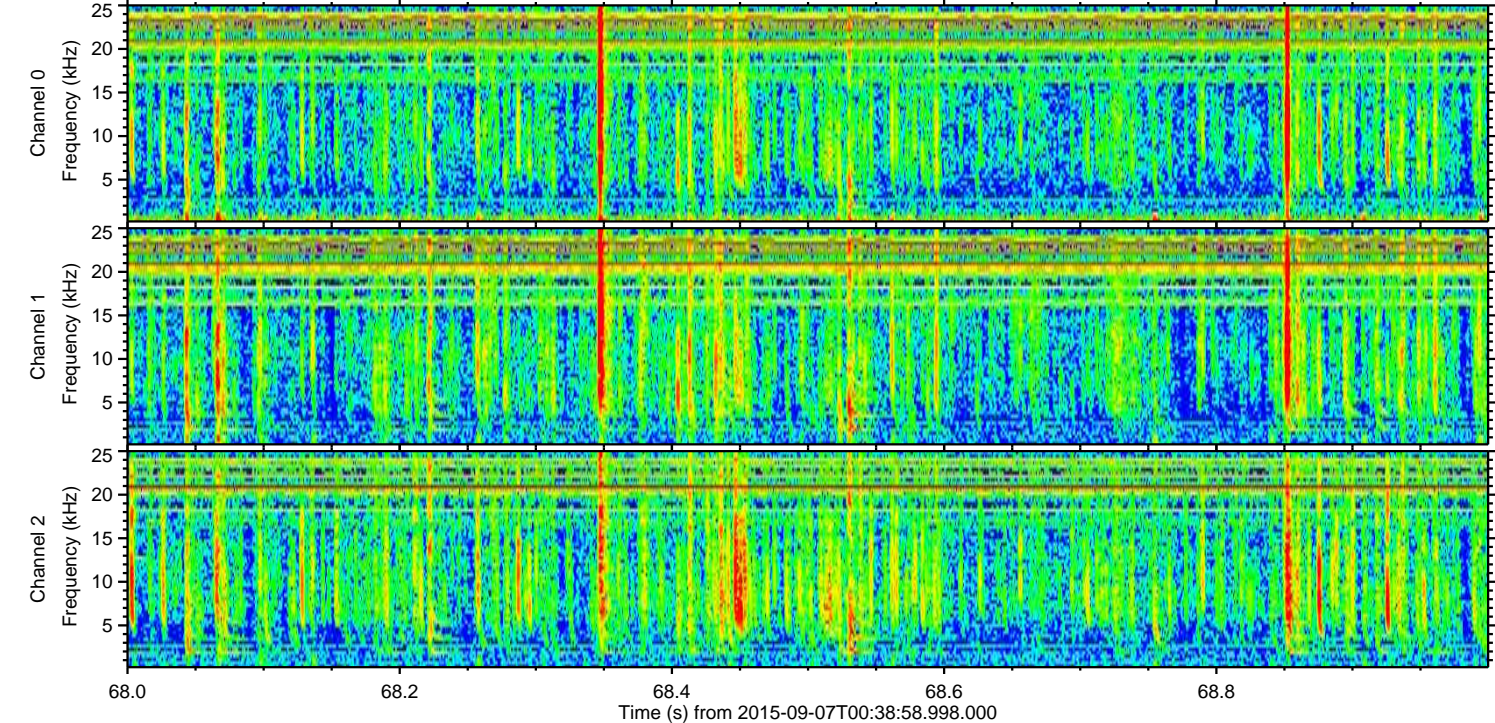
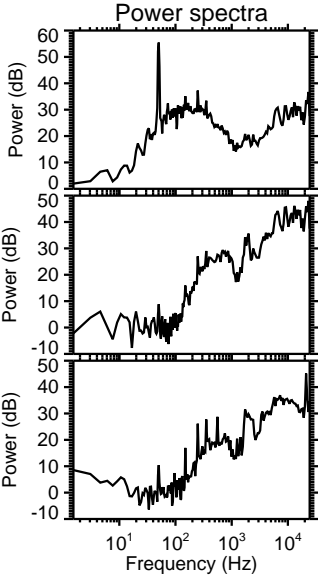
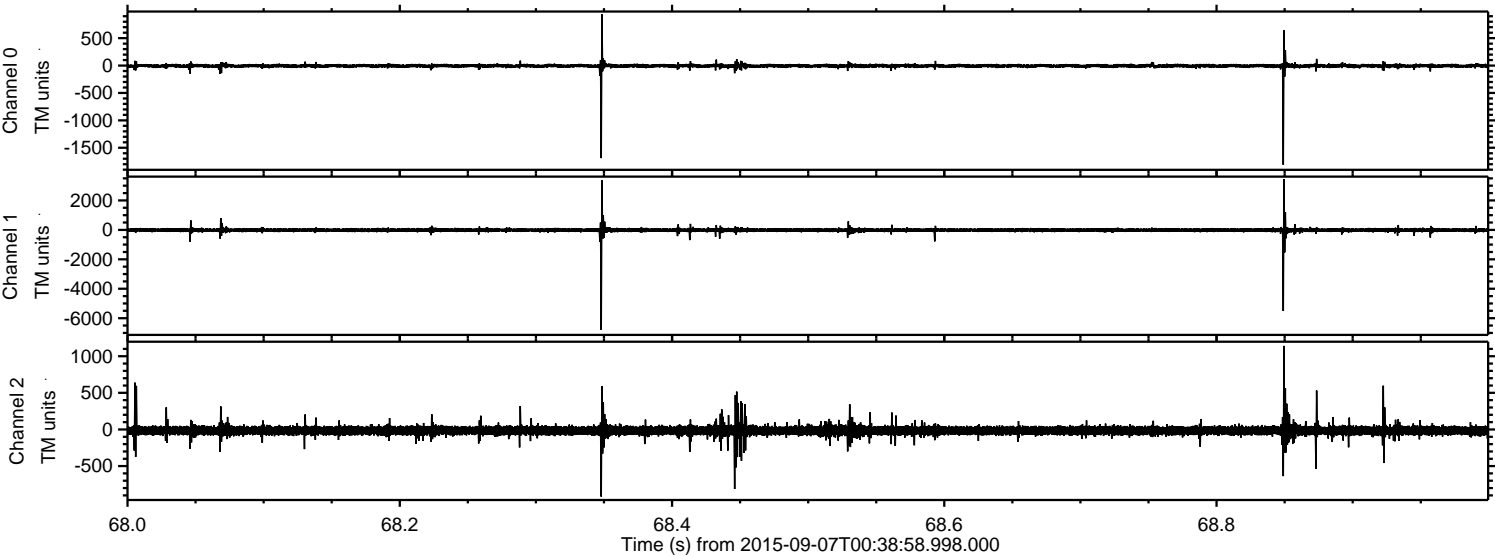


ELMAVAN 3D WAVEFORMS (Measured data sampled at 50 kHz) 51000 packets of 144 samples from 2015-09-07T00:38:58.998.000. Part 121/147

Processed Sat Oct 10 08:44:27 2015 by ELM ver.2012-10-06 from 001__elm20150907_003857__dat00.bin

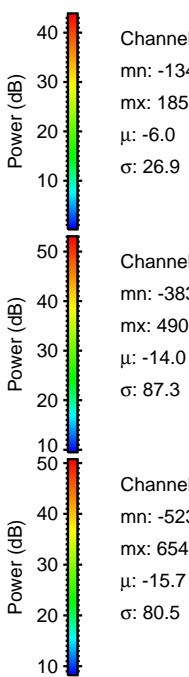
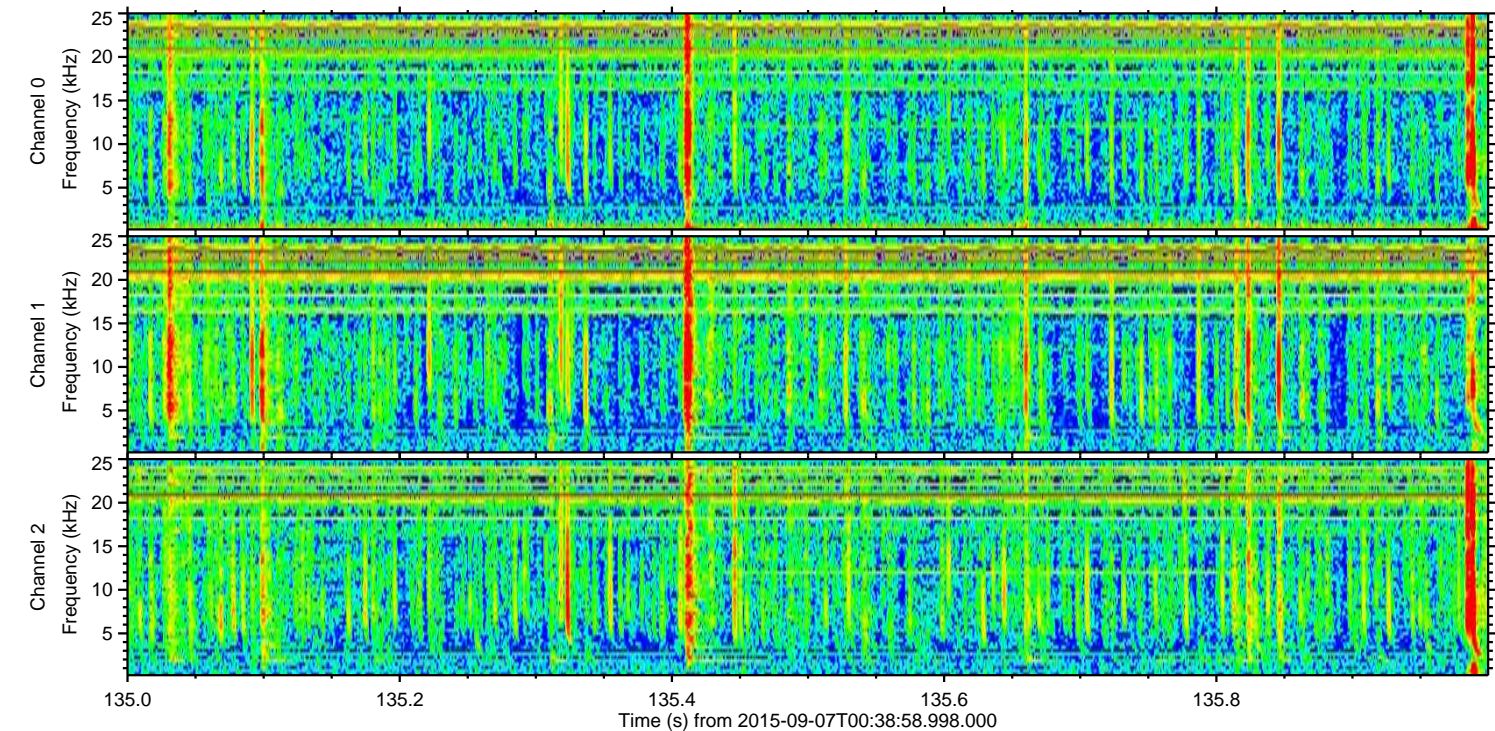
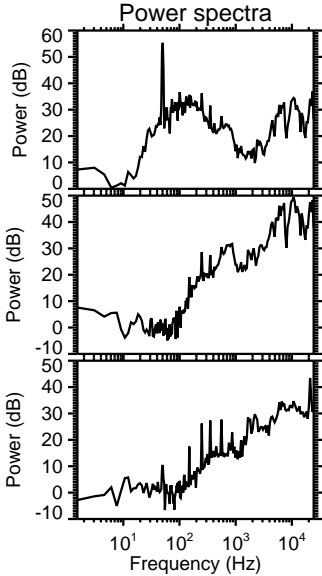
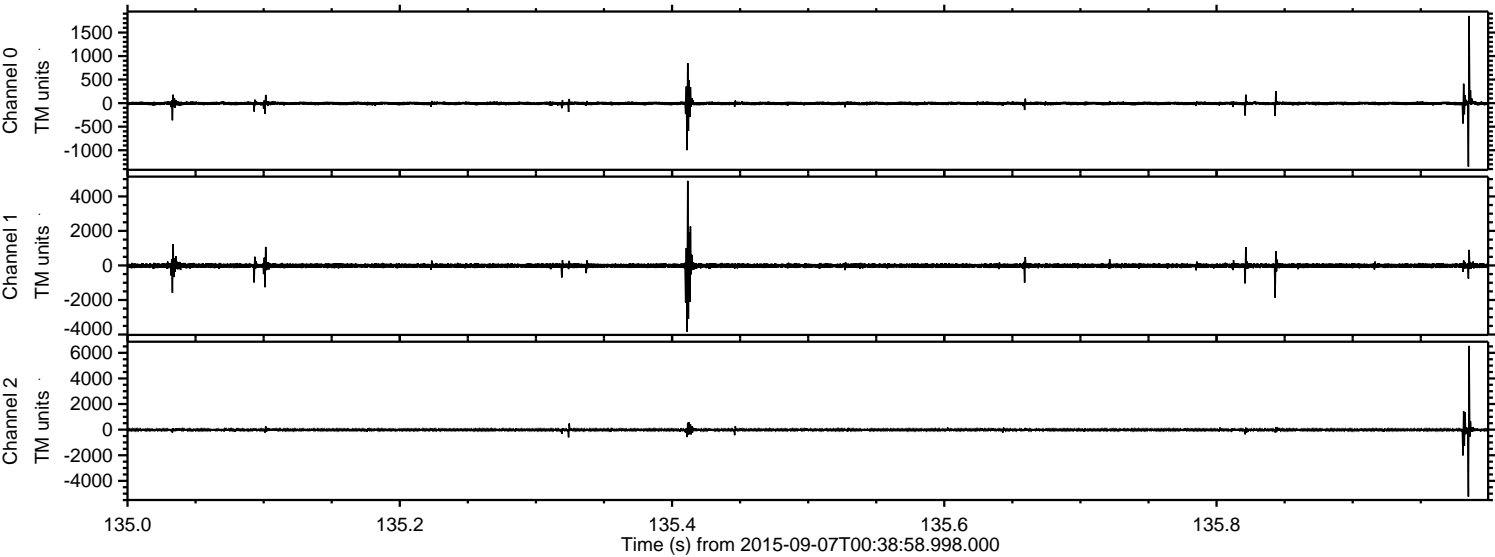


Processed Sat Oct 10 08:44:28 2015 by ELM ver.2012-10-06 from 001__elm20150907_003857__dat00.bin



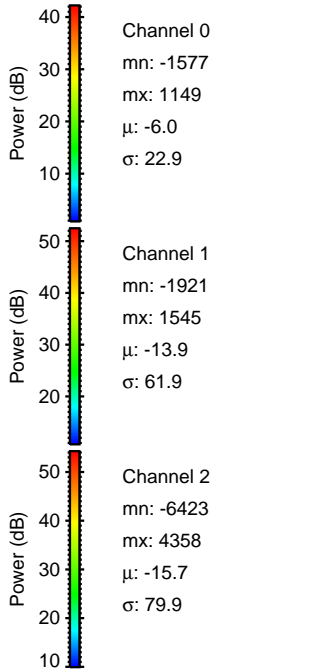
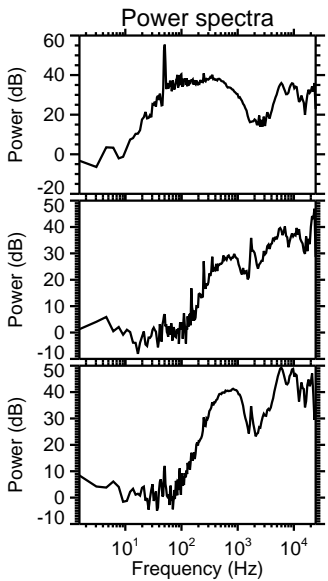
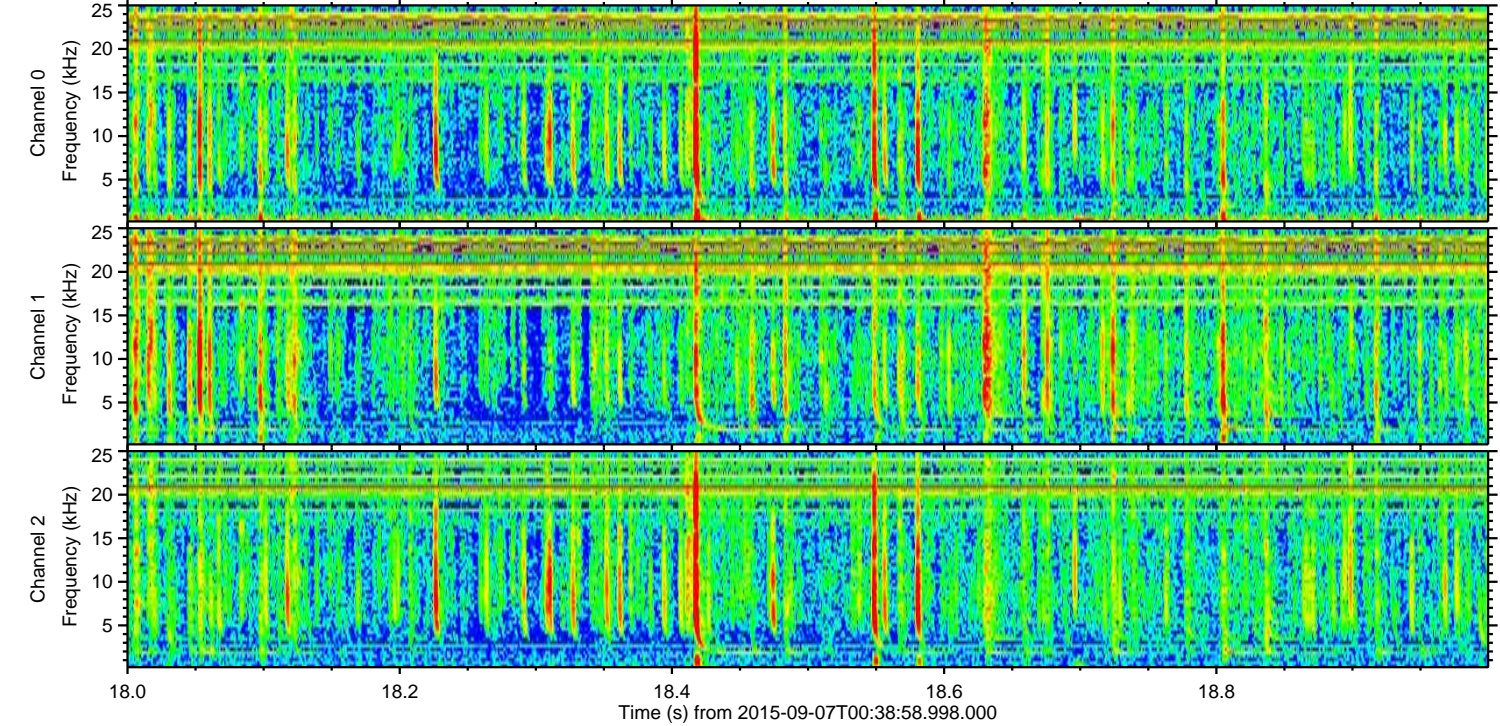
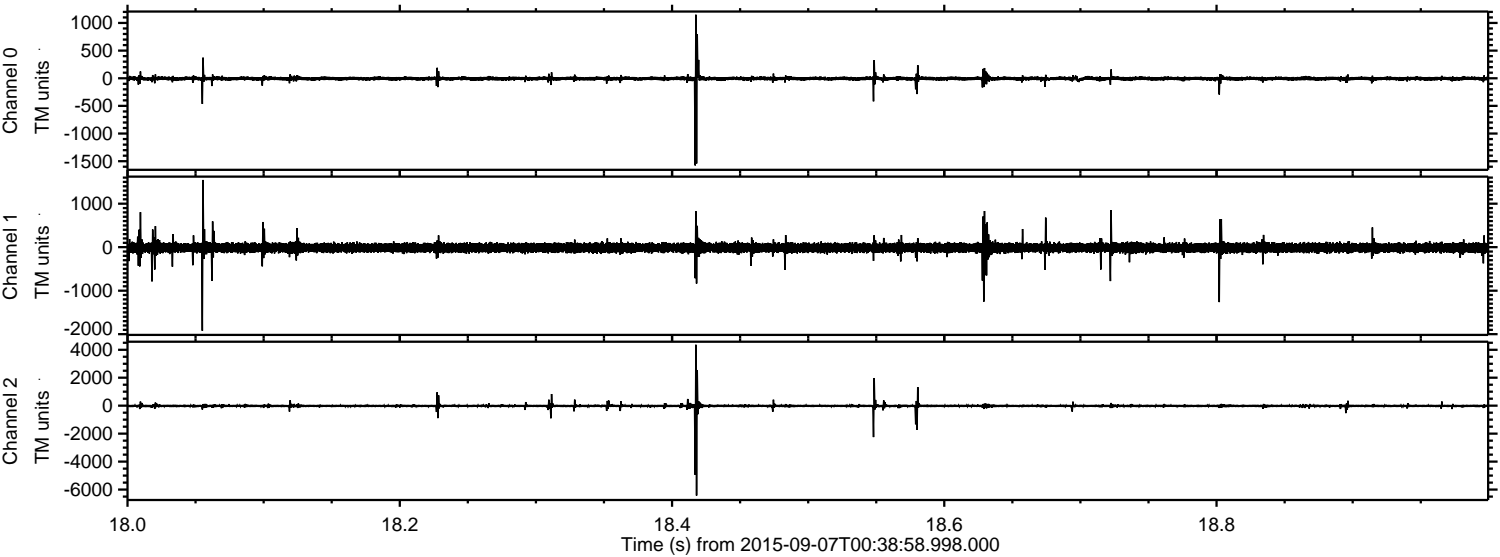
ELMAVAN 3D WAVEFORMS (Measured data sampled at 50 kHz) 51000 packets of 144 samples from 2015-09-07T00:38:58.998.000. Part 136/147

Processed Sat Oct 10 08:44:29 2015 by ELM ver.2012-10-06 from 001__elm20150907_003857__dat00.bin



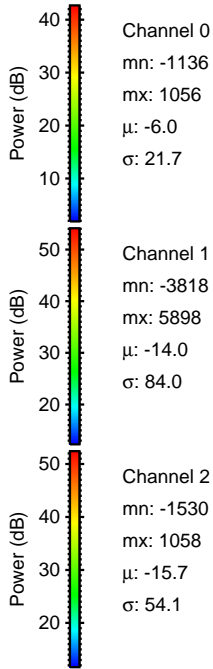
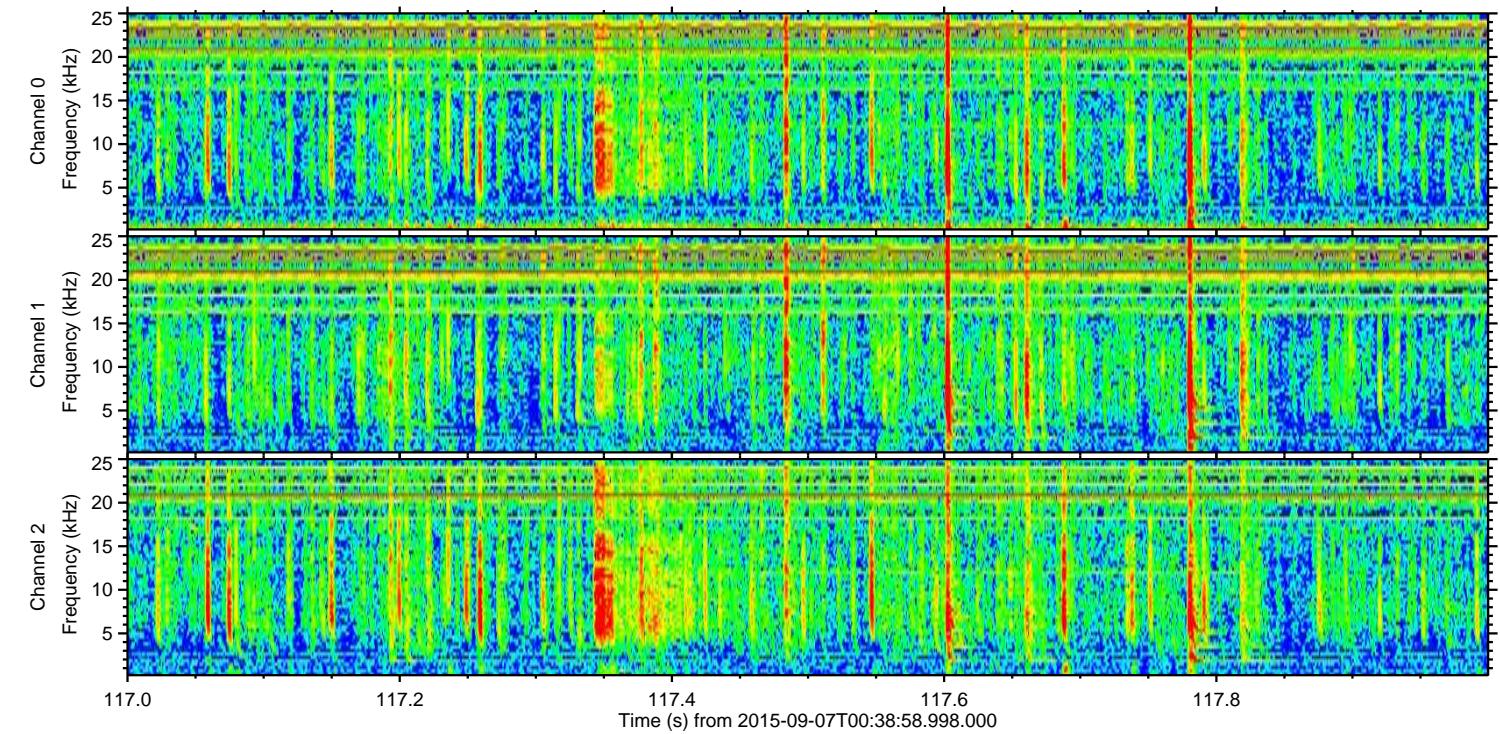
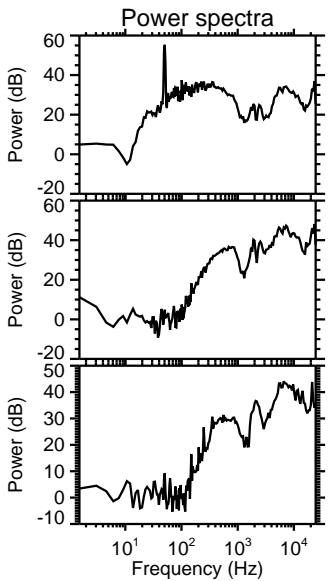
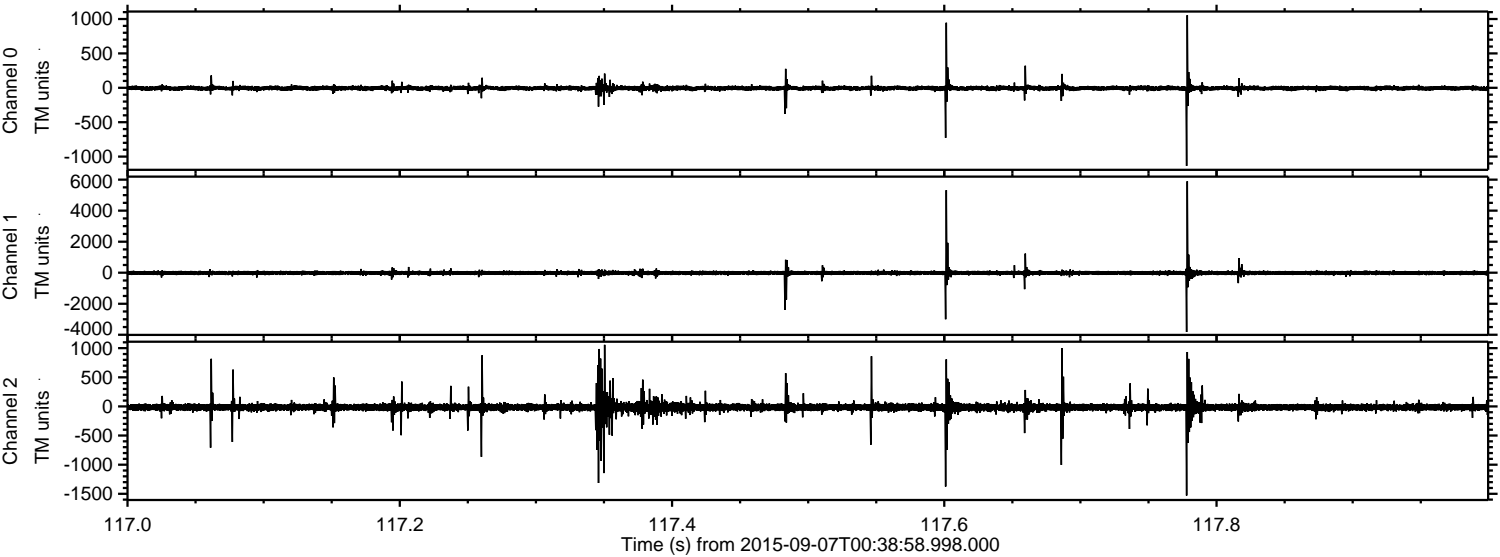
ELMAVAN 3D WAVEFORMS (Measured data sampled at 50 kHz) 51000 packets of 144 samples from 2015-09-07T00:38:58.998.000. Part 19/147

Processed Sat Oct 10 08:44:30 2015 by ELM ver.2012-10-06 from 001__elm20150907_003857__dat00.bin



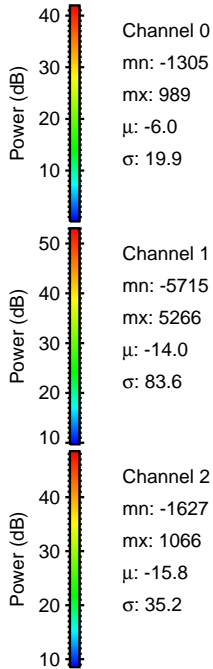
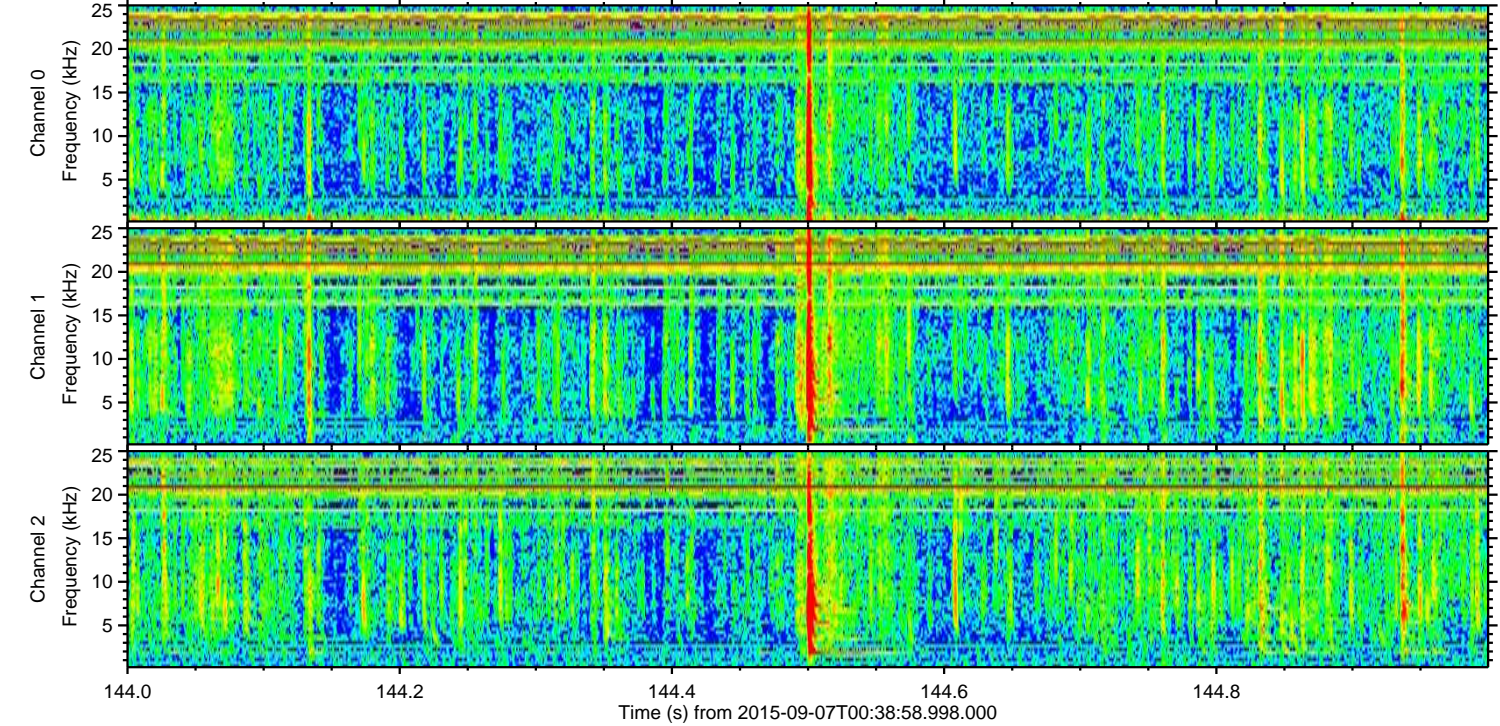
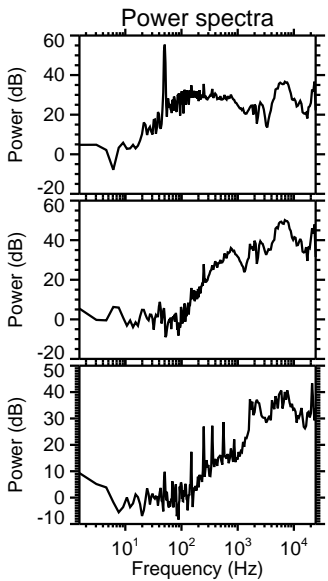
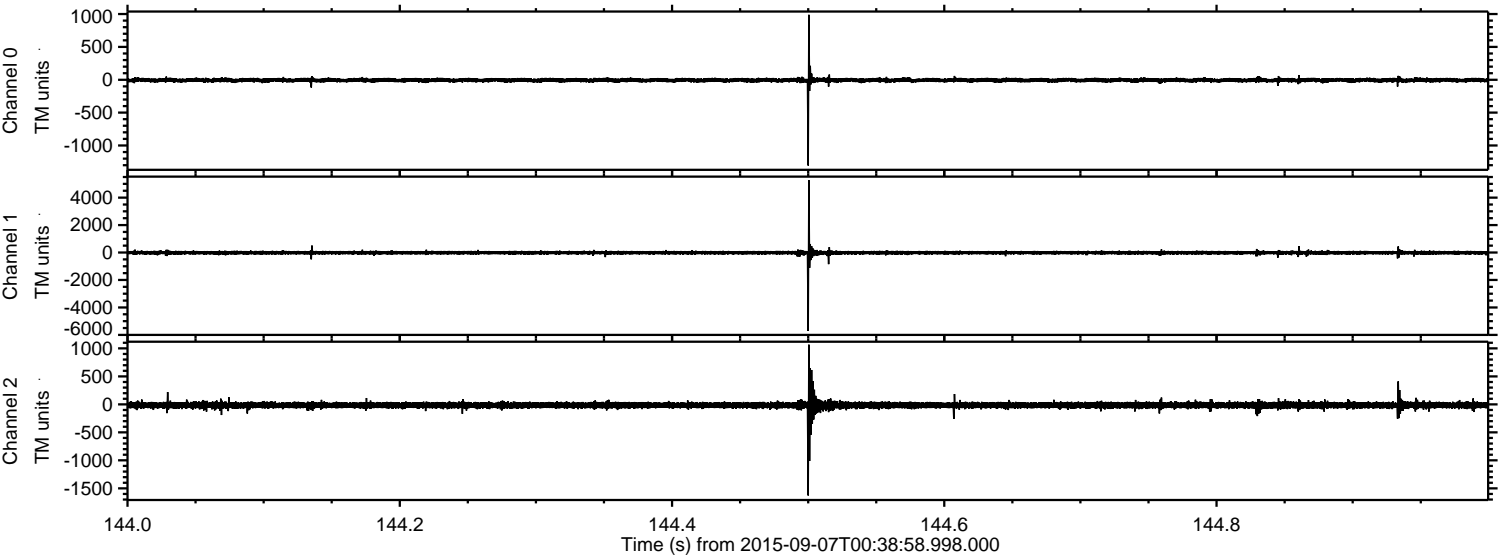
ELMAVAN 3D WAVEFORMS (Measured data sampled at 50 kHz) 51000 packets of 144 samples from 2015-09-07T00:38:58.998.000. Part 118/147

Processed Sat Oct 10 08:44:31 2015 by ELM ver.2012-10-06 from 001__elm20150907_003857__dat00.bin



ELMAVAN 3D WAVEFORMS (Measured data sampled at 50 kHz) 51000 packets of 144 samples from 2015-09-07T00:38:58.998.000. Part 145/147

Processed Sat Oct 10 08:44:32 2015 by ELM ver.2012-10-06 from 001__elm20150907_003857__dat00.bin



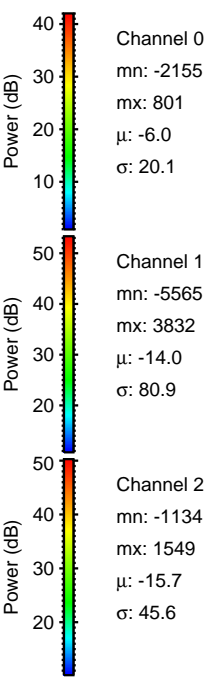
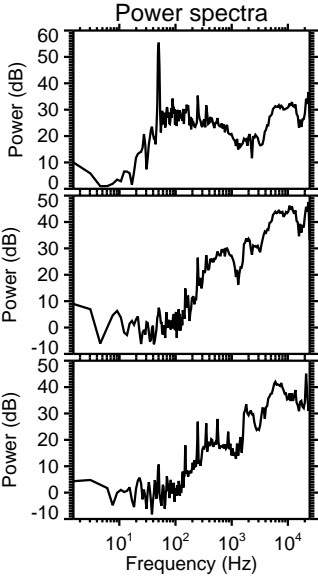
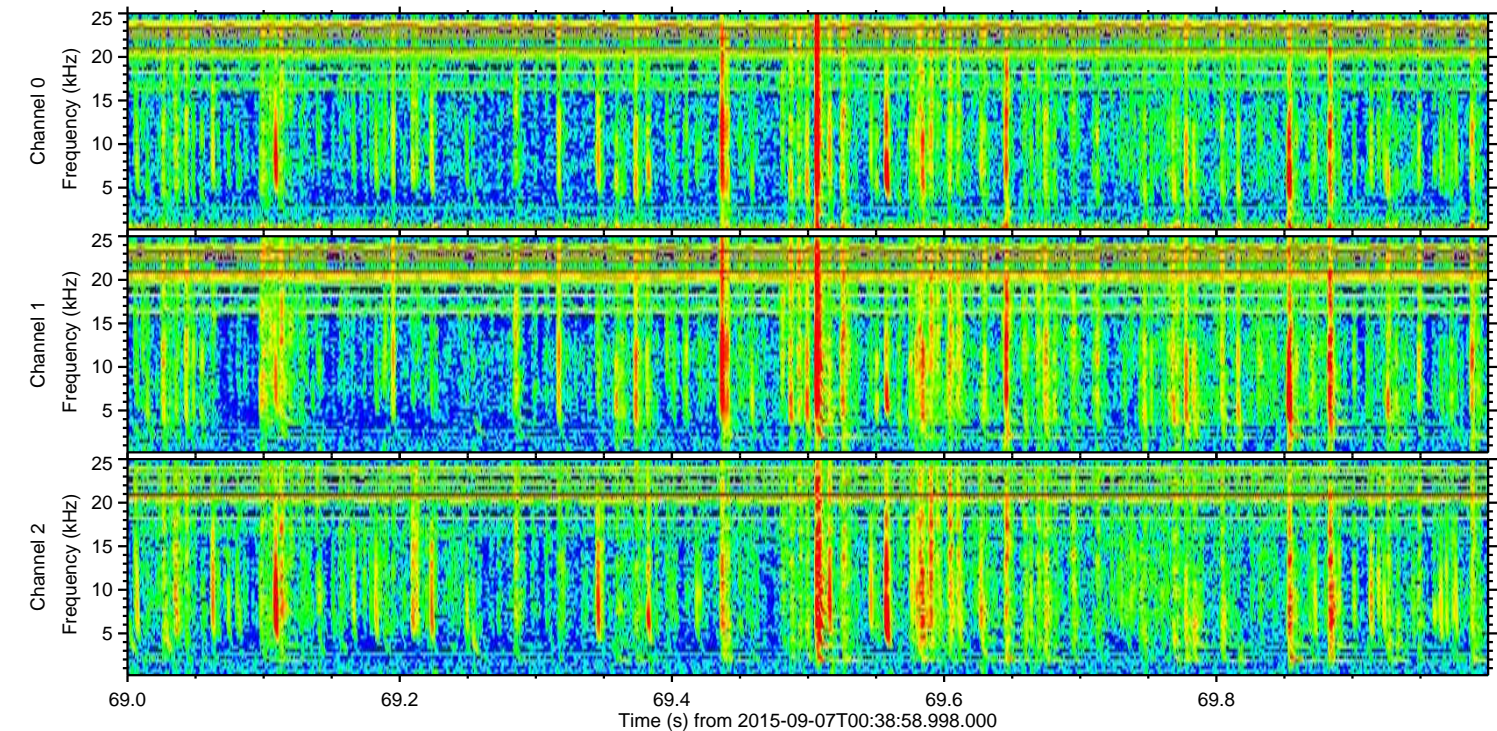
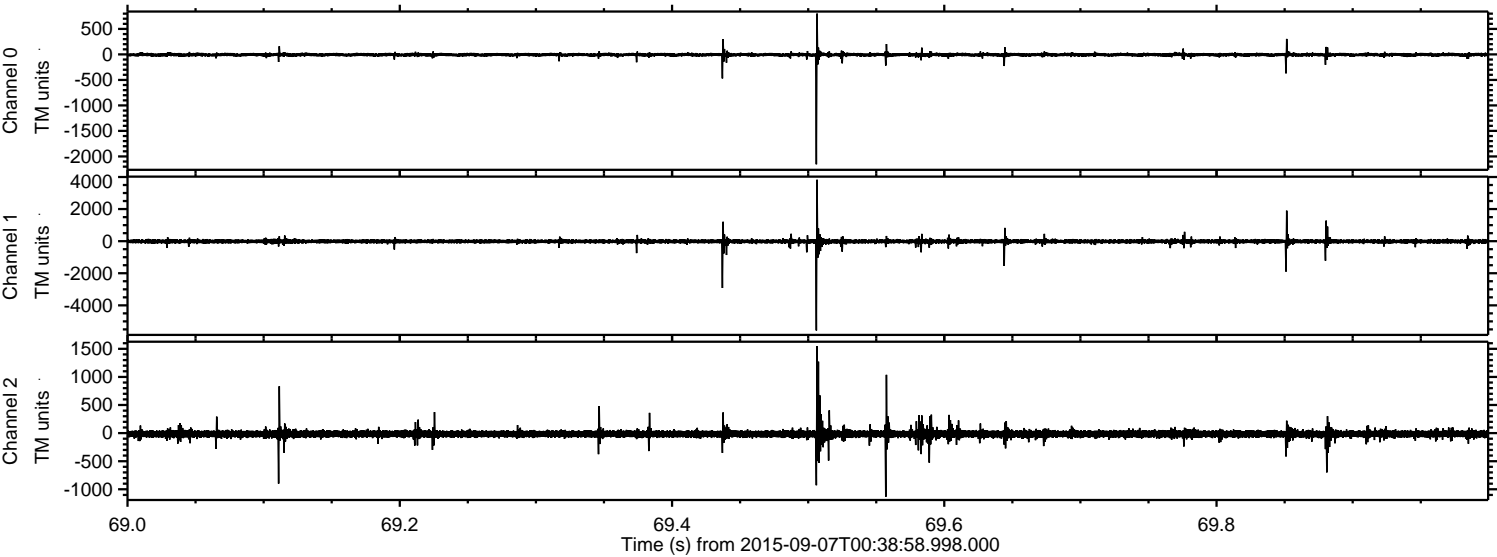
Channel 0
mn: -1305
mx: 989
 μ : -6.0
 σ : 19.9

Channel 1
mn: -5715
mx: 5266
 μ : -14.0
 σ : 83.6

Channel 2
mn: -1627
mx: 1066
 μ : -15.8
 σ : 35.2

ELMAVAN 3D WAVEFORMS (Measured data sampled at 50 kHz) 51000 packets of 144 samples from 2015-09-07T00:38:58.998.000. Part 70/147

Processed Sat Oct 10 08:44:33 2015 by ELM ver.2012-10-06 from 001__elm20150907_003857__dat00.bin



Channel 0
mn: -2155
mx: 801
 μ : -6.0
 σ : 20.1

Channel 1
mn: -5565
mx: 3832
 μ : -14.0
 σ : 80.9

Channel 2
mn: -1134
mx: 1549
 μ : -15.7
 σ : 45.6

ELMAVAN 3D WAVEFORMS (Measured data sampled at 50 kHz) 51000 packets of 144 samples from 2015-09-07T00:38:58.998.000. Part 74/147

Processed Sat Oct 10 08:44:34 2015 by ELM ver.2012-10-06 from 001__elm20150907_003857__dat00.bin

