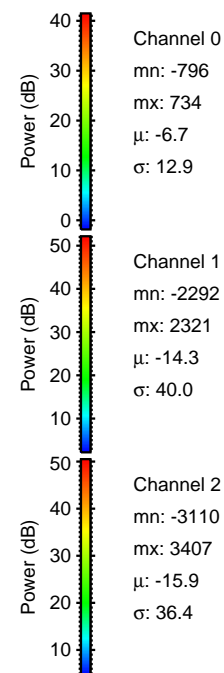
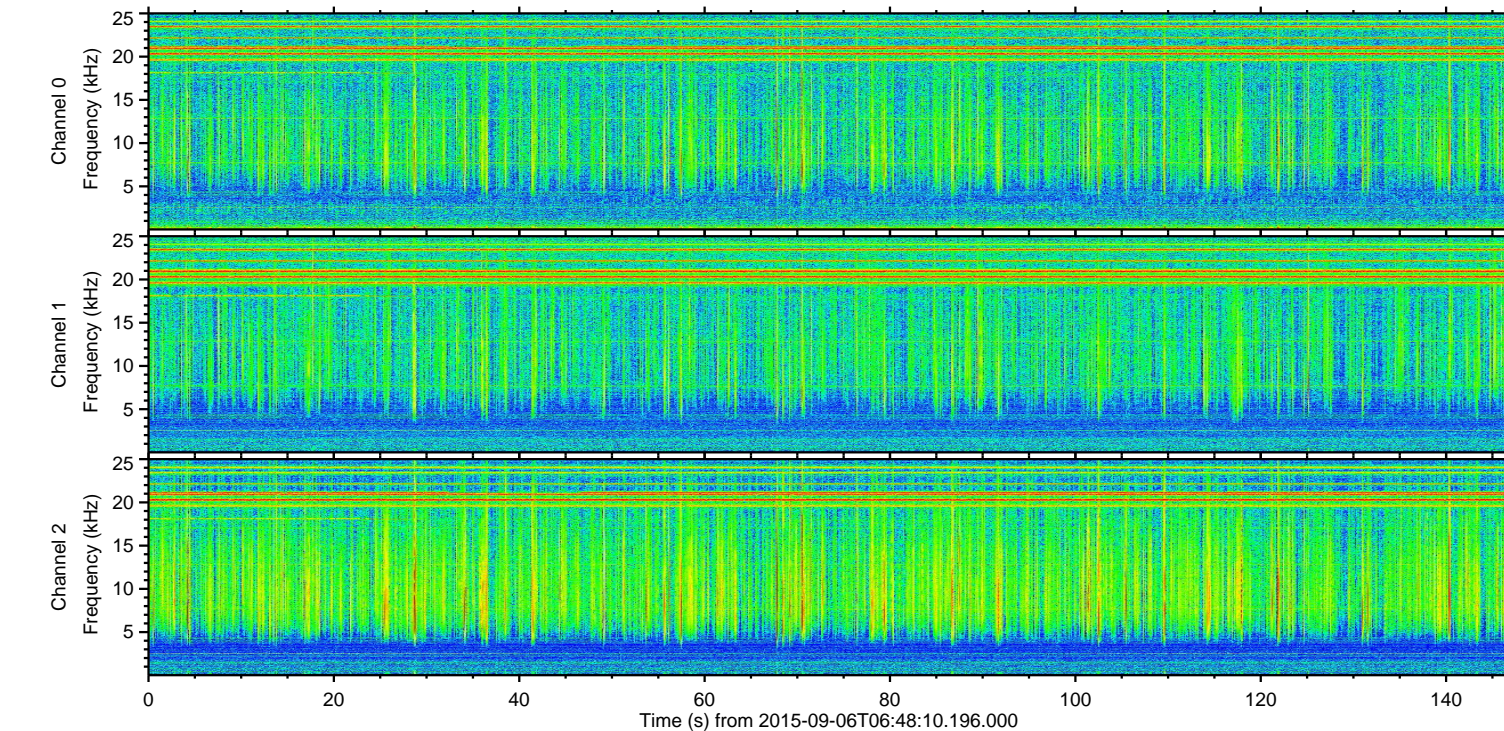
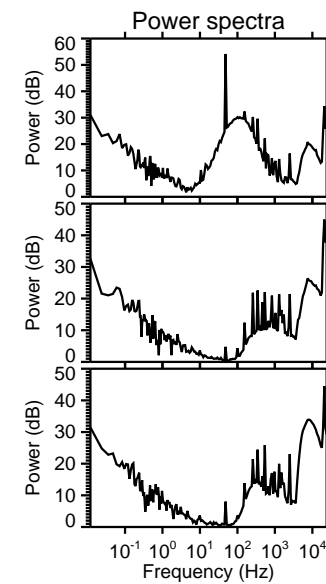
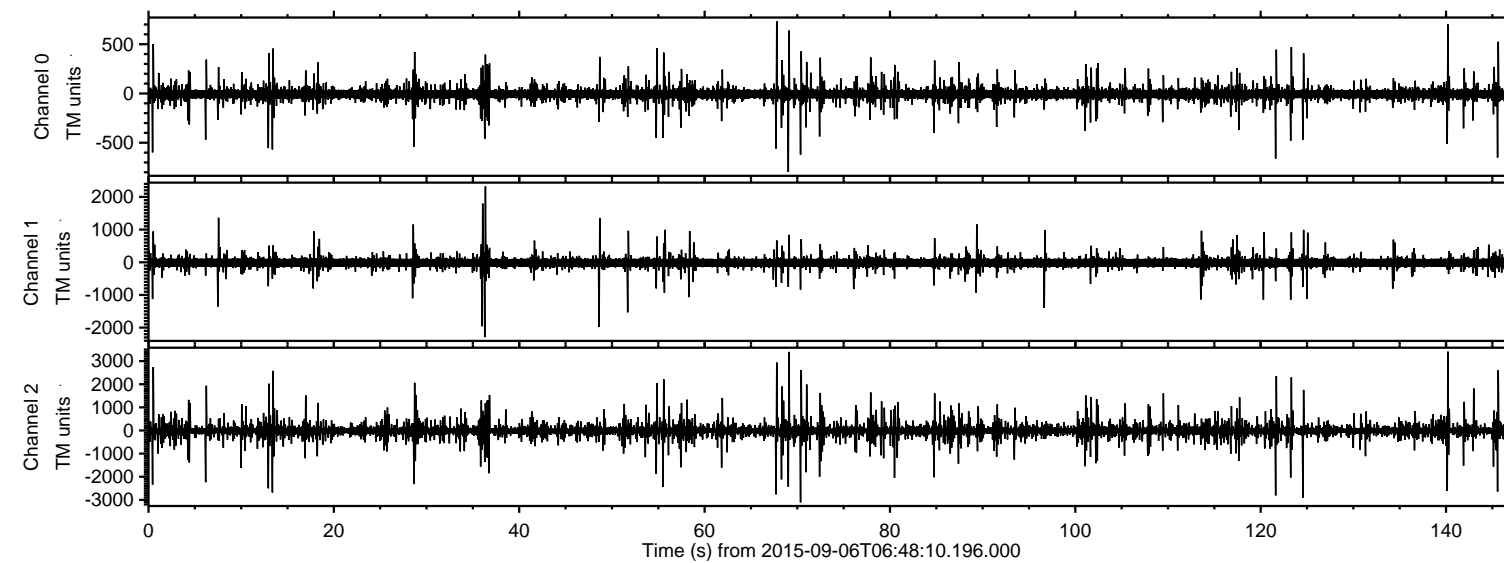


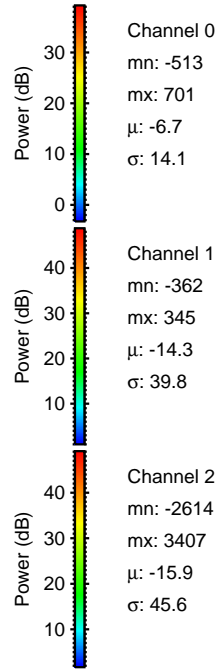
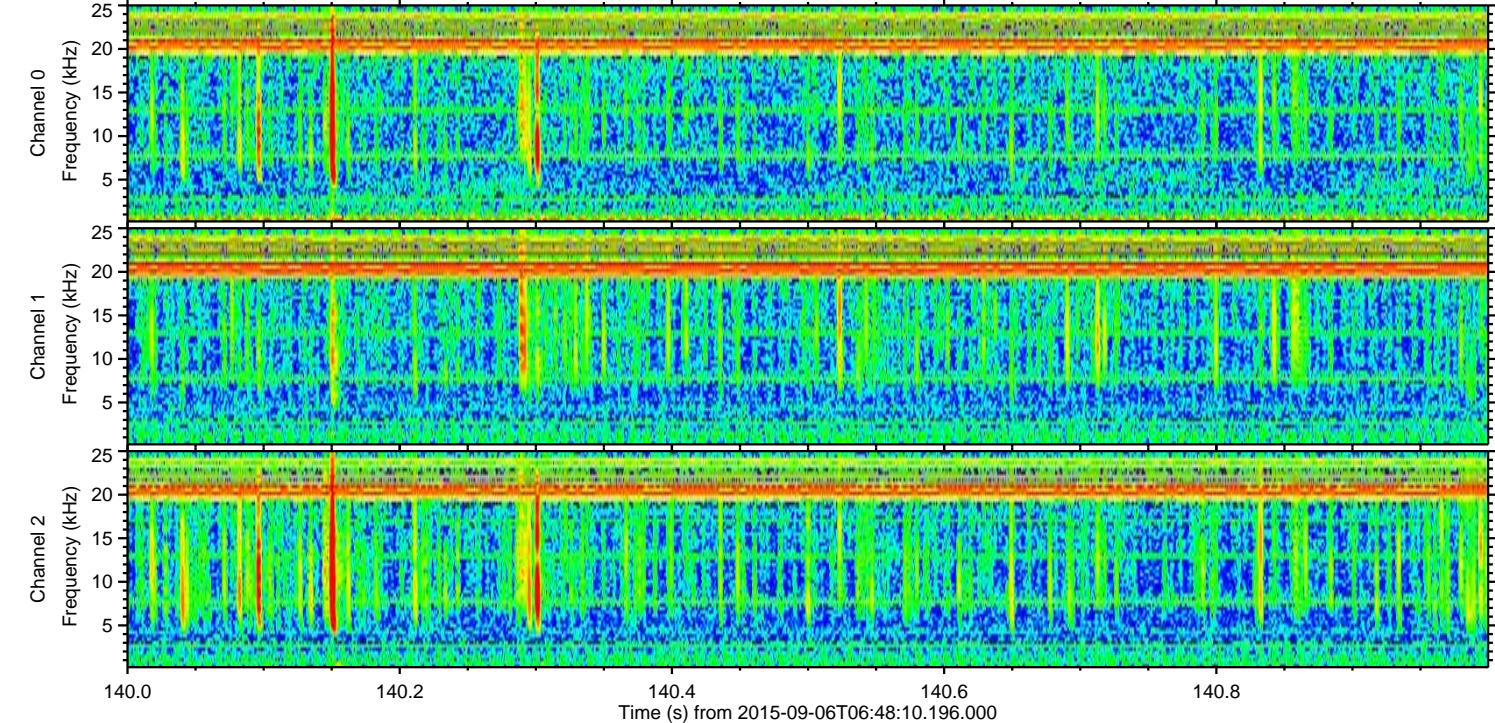
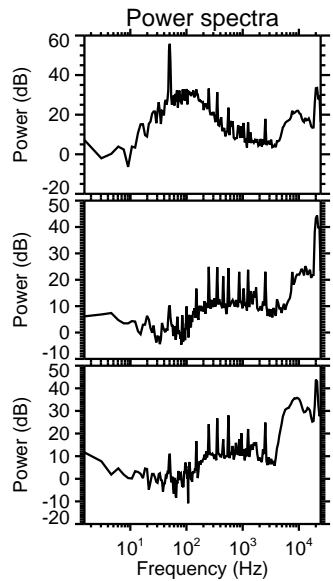
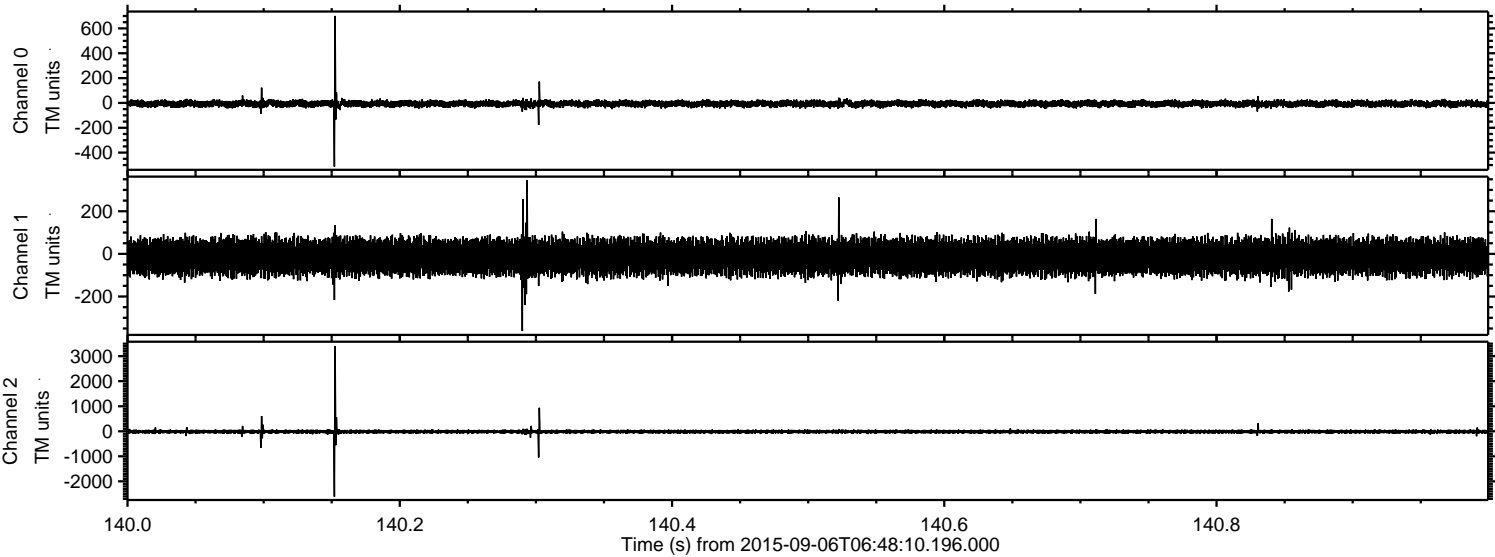
ELMAVAN 3D WAVEFORMS (Measured data sampled at 50 kHz) 51000 packets of 144 samples from 2015-09-06T06:48:10.196.000.

Processed Sat Oct 10 03:47:59 2015 by ELM ver.2012-10-06 from 001__elm20150906_064809__dat00.bin



ELMAVAN 3D WAVEFORMS (Measured data sampled at 50 kHz) 51000 packets of 144 samples from 2015-09-06T06:48:10.196.000. Part 141/147

Processed Sat Oct 10 03:48:13 2015 by ELM ver.2012-10-06 from 001__elm20150906_064809__dat00.bin



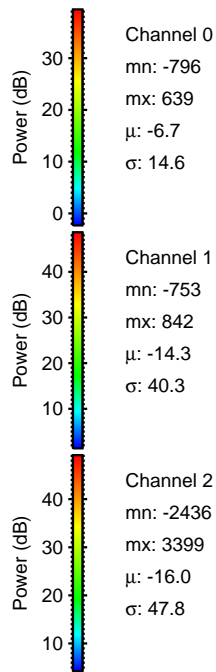
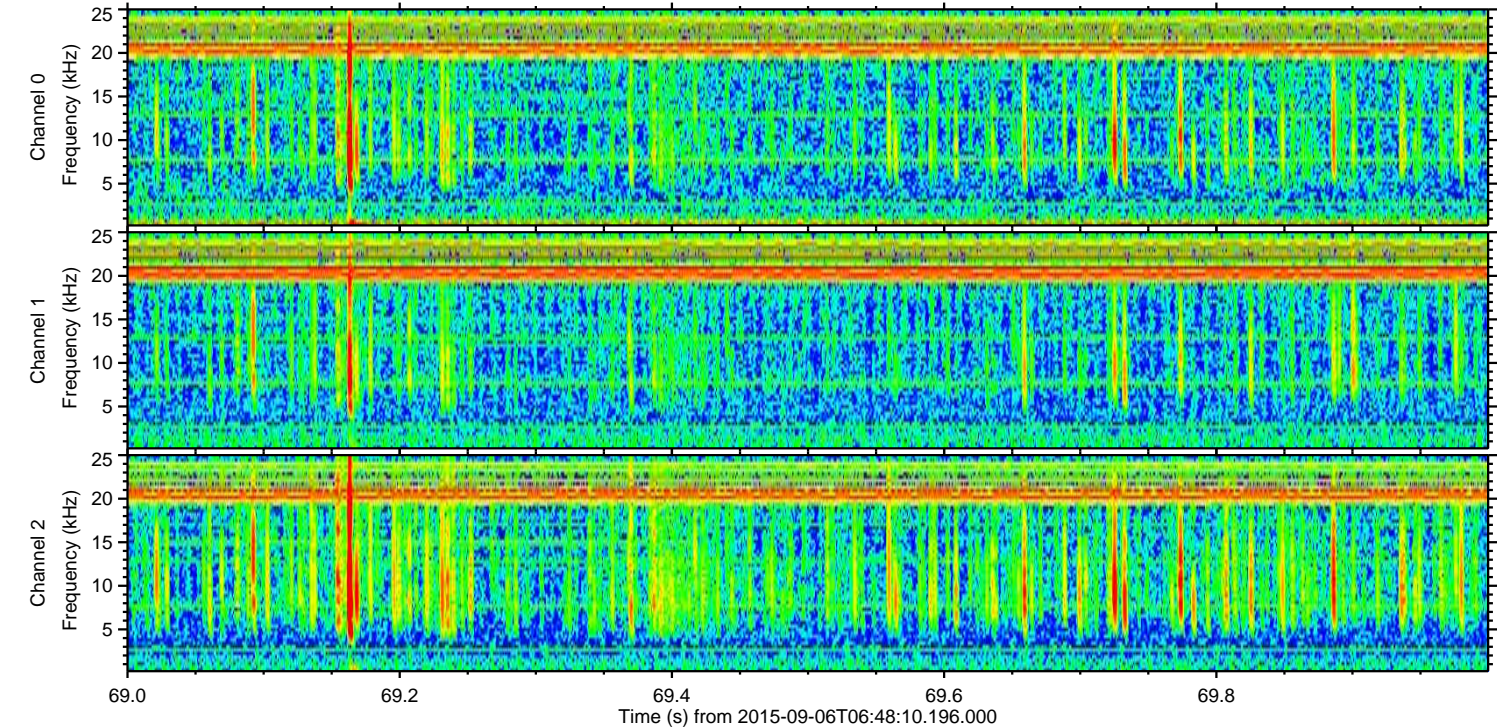
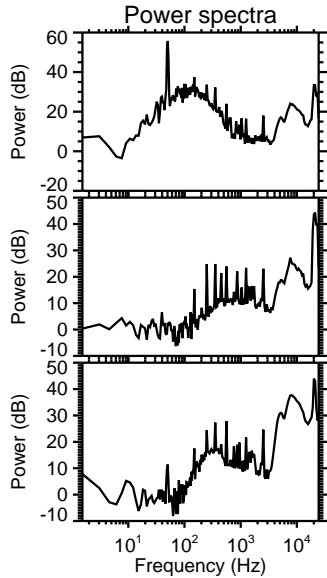
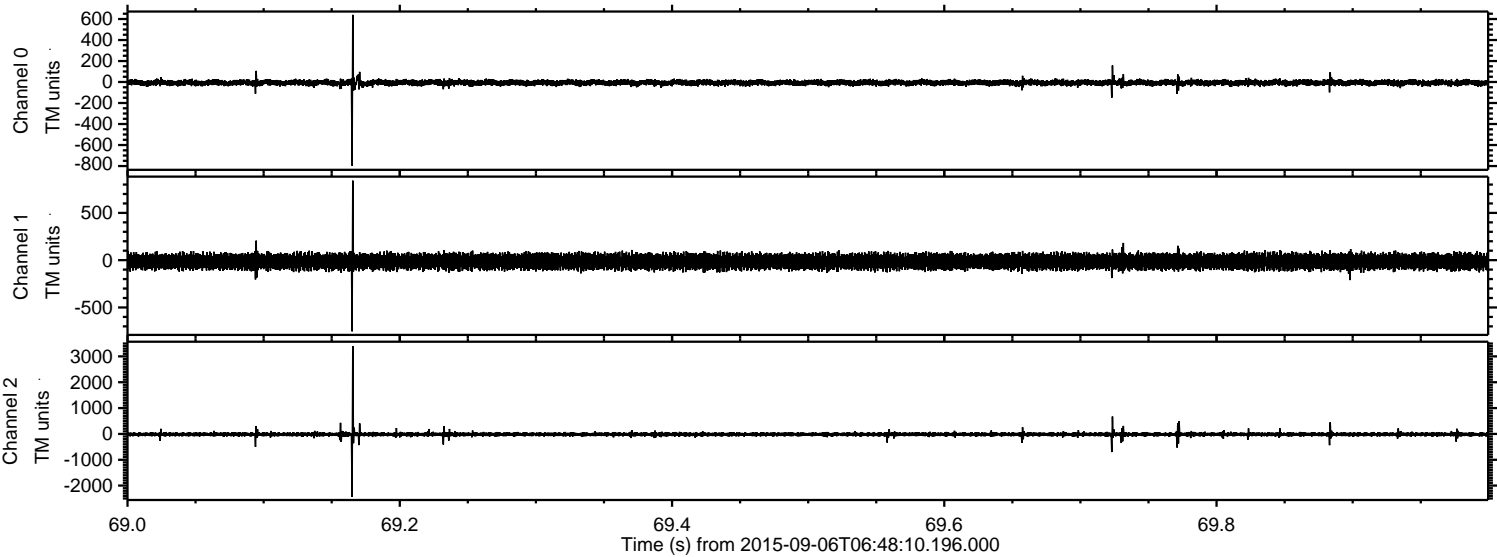
Channel 0
mn: -513
mx: 701
 μ : -6.7
 σ : 14.1

Channel 1
mn: -362
mx: 345
 μ : -14.3
 σ : 39.8

Channel 2
mn: -2614
mx: 3407
 μ : -15.9
 σ : 45.6

ELMAVAN 3D WAVEFORMS (Measured data sampled at 50 kHz) 51000 packets of 144 samples from 2015-09-06T06:48:10.196.000. Part 70/147

Processed Sat Oct 10 03:48:14 2015 by ELM ver.2012-10-06 from 001__elm20150906_064809__dat00.bin

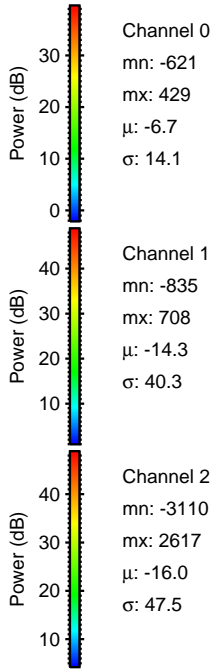
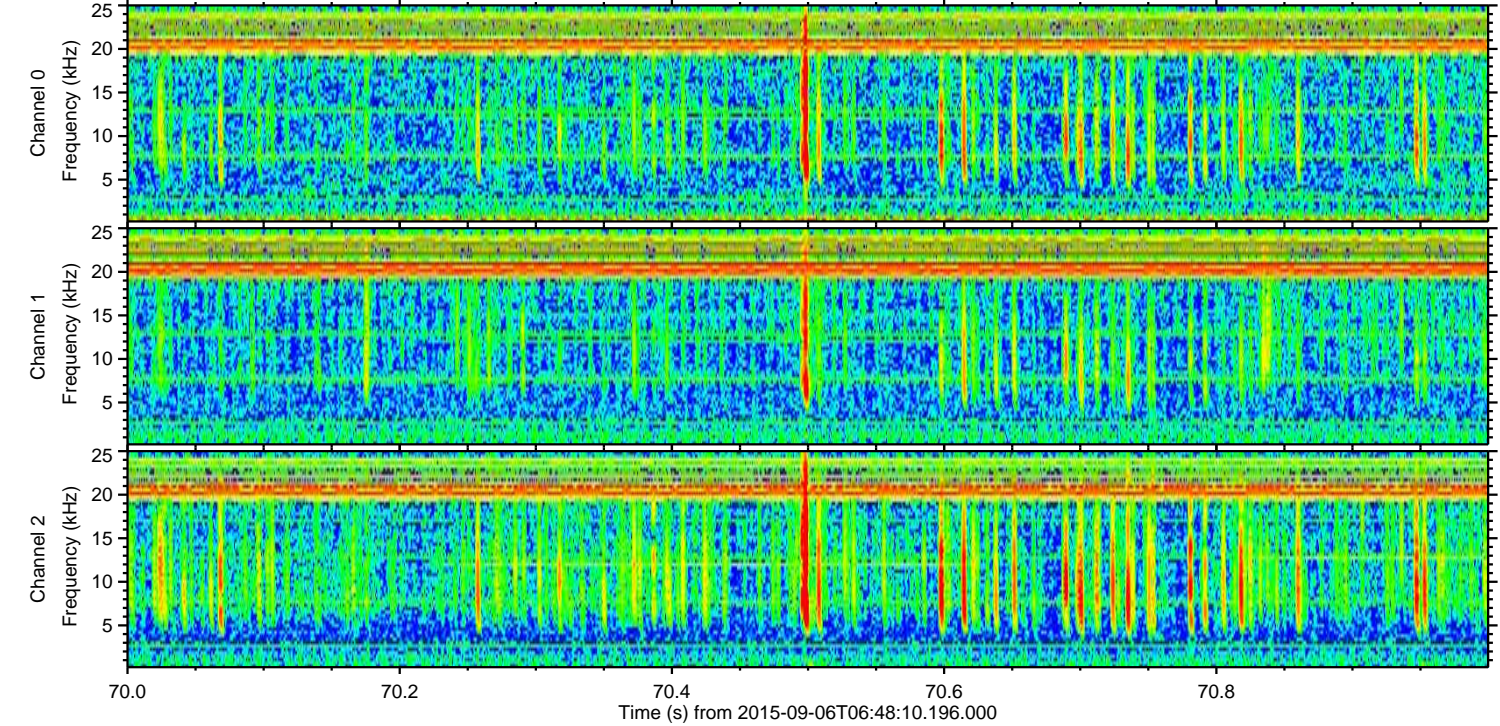
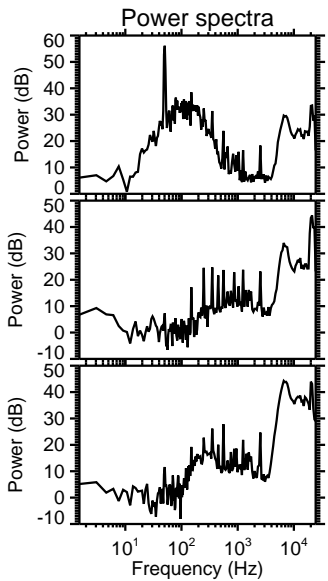
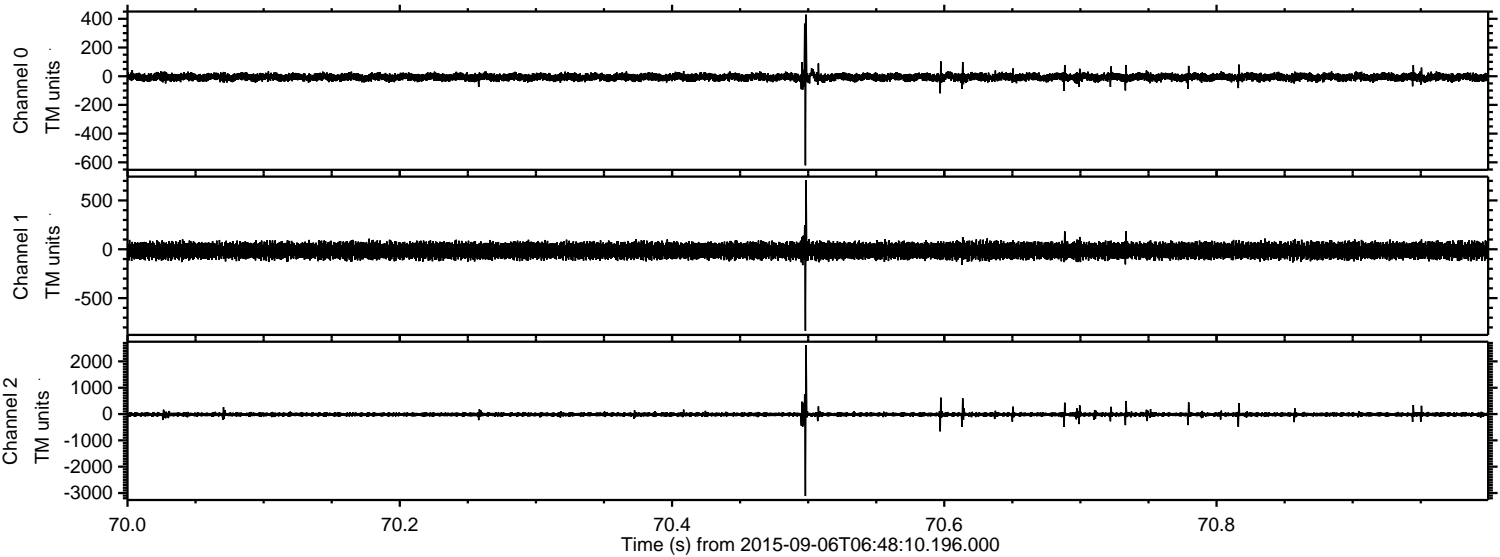


Channel 0
mn: -796
mx: 639
 μ : -6.7
 σ : 14.6

Channel 1
mn: -753
mx: 842
 μ : -14.3
 σ : 40.3

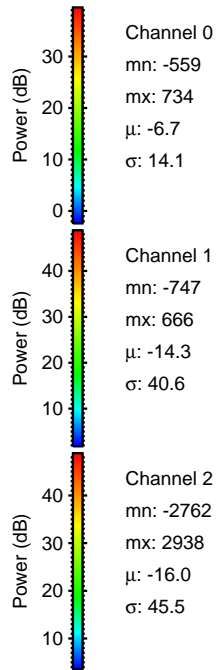
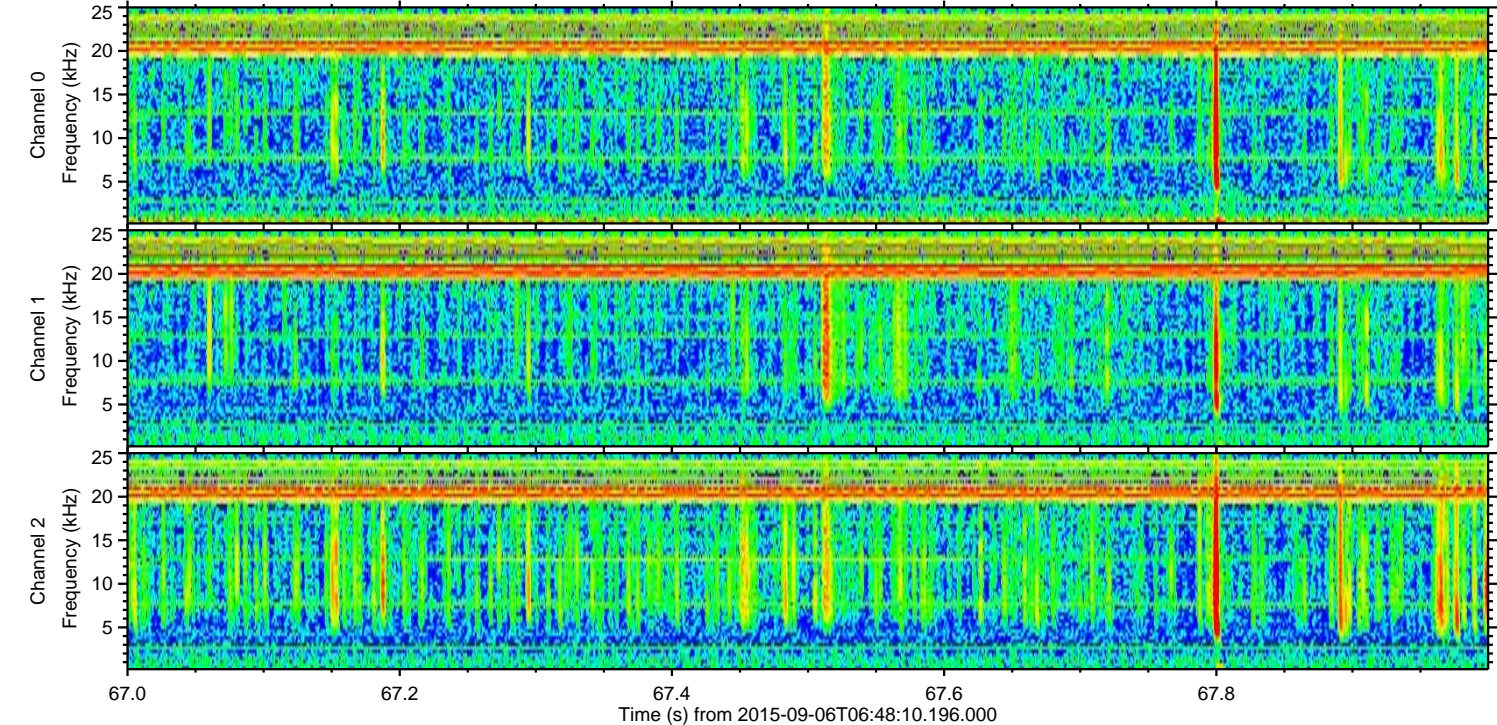
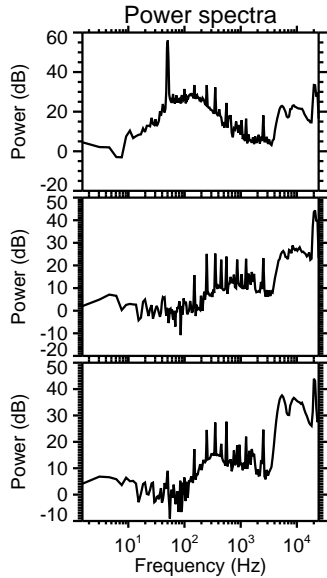
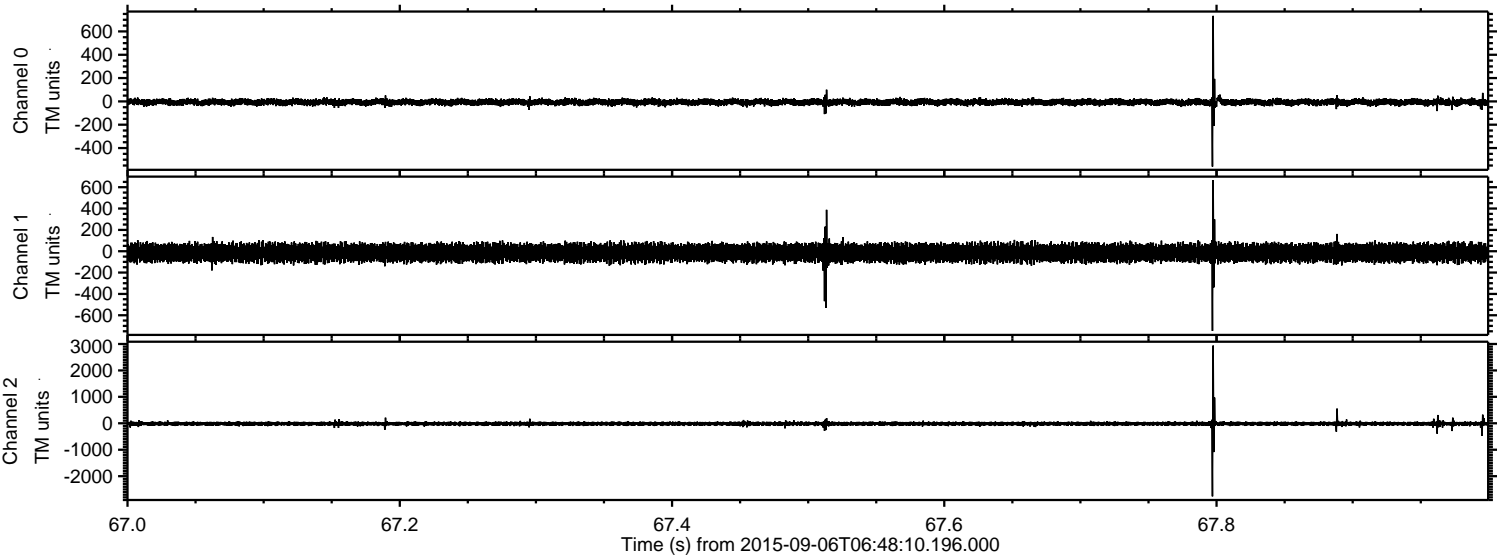
Channel 2
mn: -2436
mx: 3399
 μ : -16.0
 σ : 47.8

Processed Sat Oct 10 03:48:16 2015 by ELM ver.2012-10-06 from 001__elm20150906_064809__dat00.bin



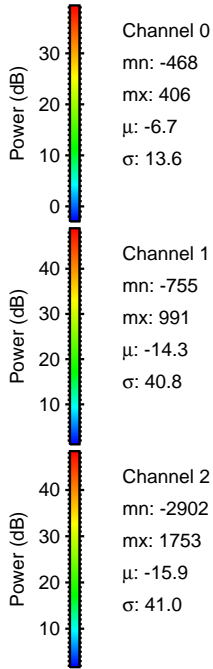
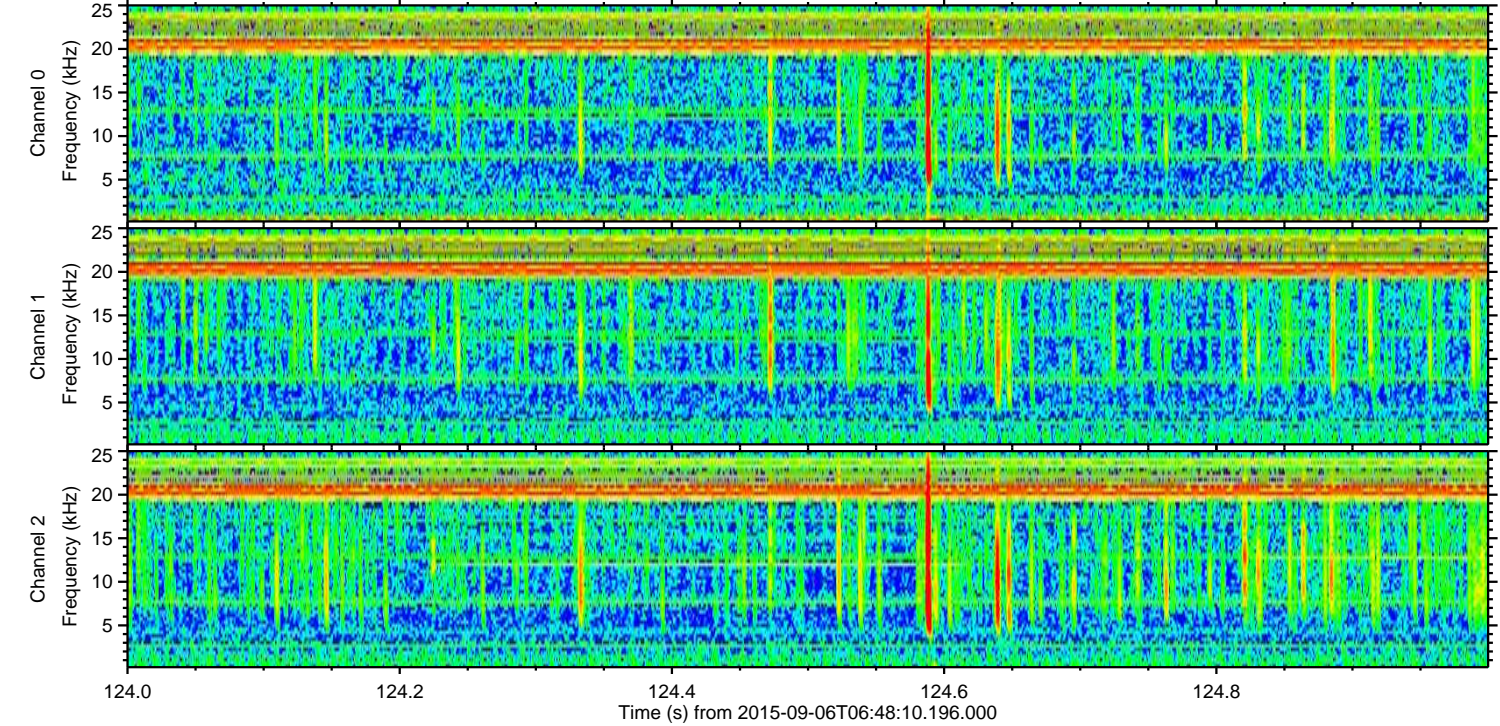
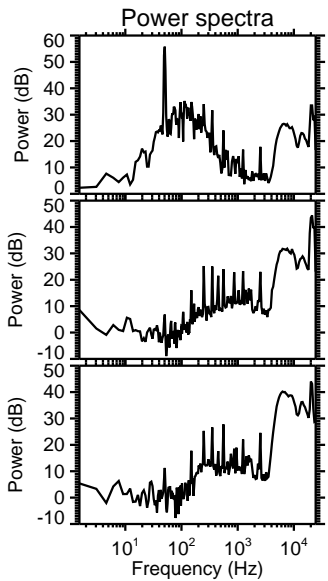
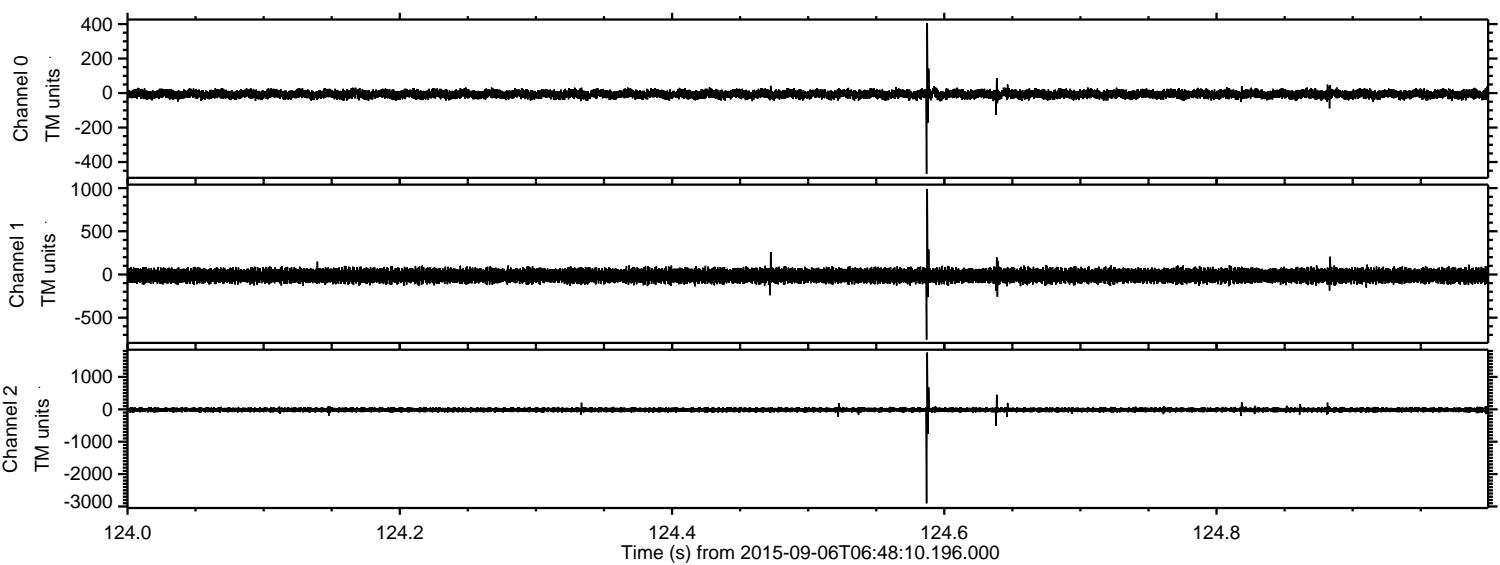
ELMAVAN 3D WAVEFORMS (Measured data sampled at 50 kHz) 51000 packets of 144 samples from 2015-09-06T06:48:10.196.000. Part 68/147

Processed Sat Oct 10 03:48:17 2015 by ELM ver.2012-10-06 from 001__elm20150906_064809__dat00.bin



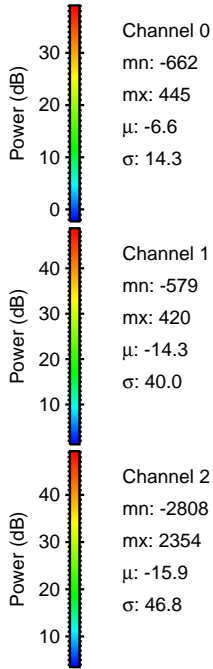
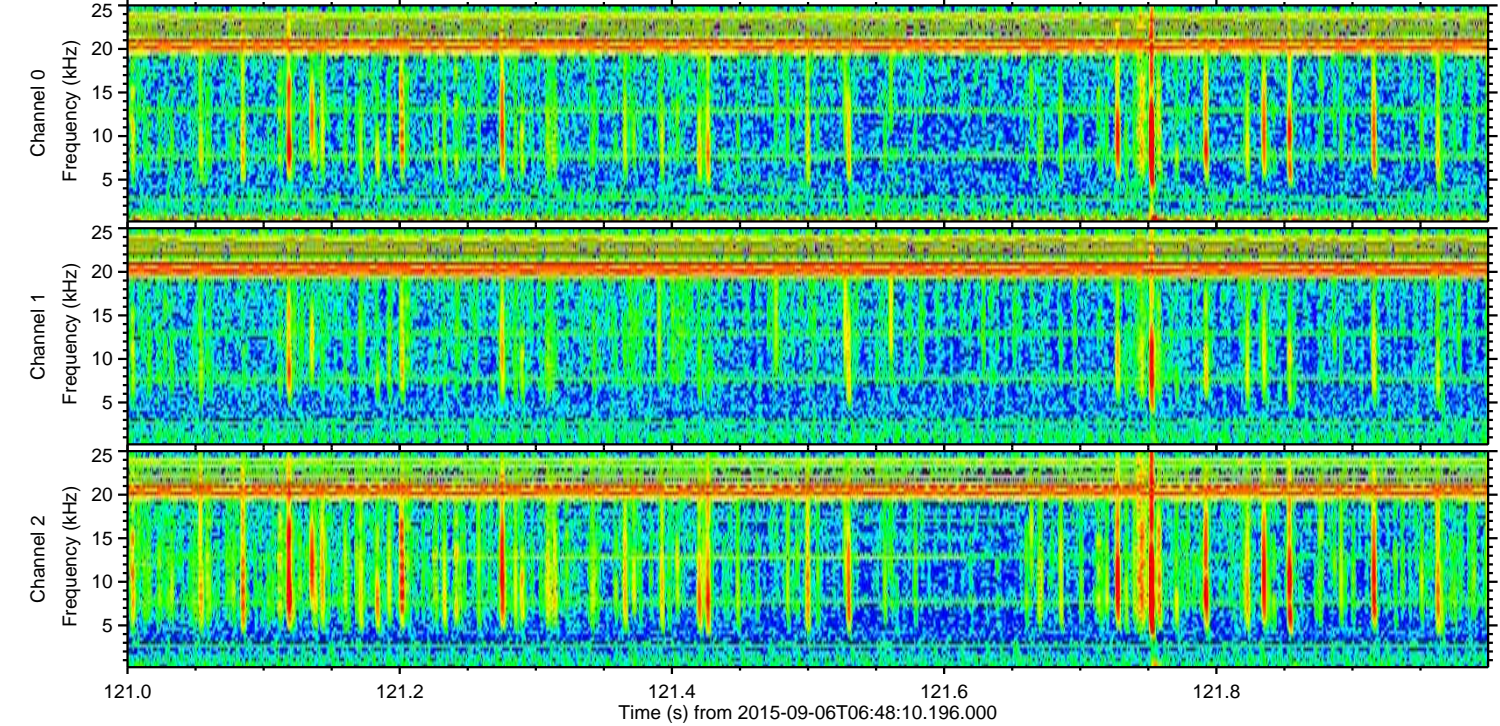
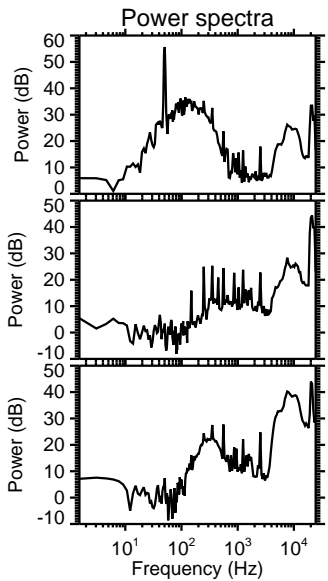
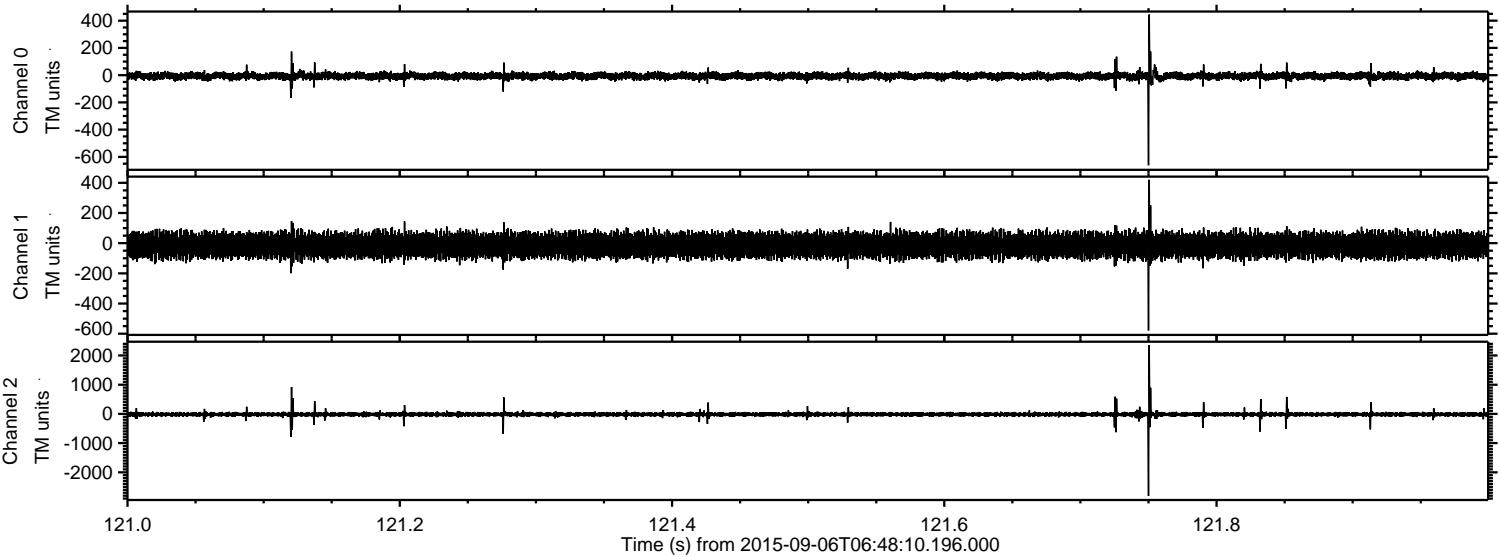
ELMAVAN 3D WAVEFORMS (Measured data sampled at 50 kHz) 51000 packets of 144 samples from 2015-09-06T06:48:10.196.000. Part 125/147

Processed Sat Oct 10 03:48:18 2015 by ELM ver.2012-10-06 from 001__elm20150906_064809__dat00.bin



ELMAVAN 3D WAVEFORMS (Measured data sampled at 50 kHz) 51000 packets of 144 samples from 2015-09-06T06:48:10.196.000. Part 122/147

Processed Sat Oct 10 03:48:19 2015 by ELM ver.2012-10-06 from 001__elm20150906_064809__dat00.bin



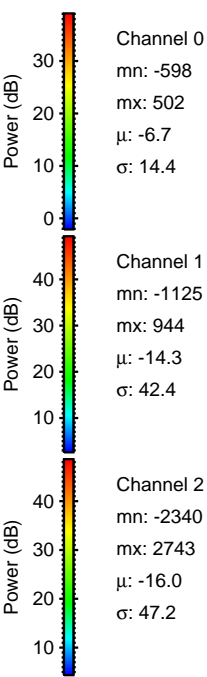
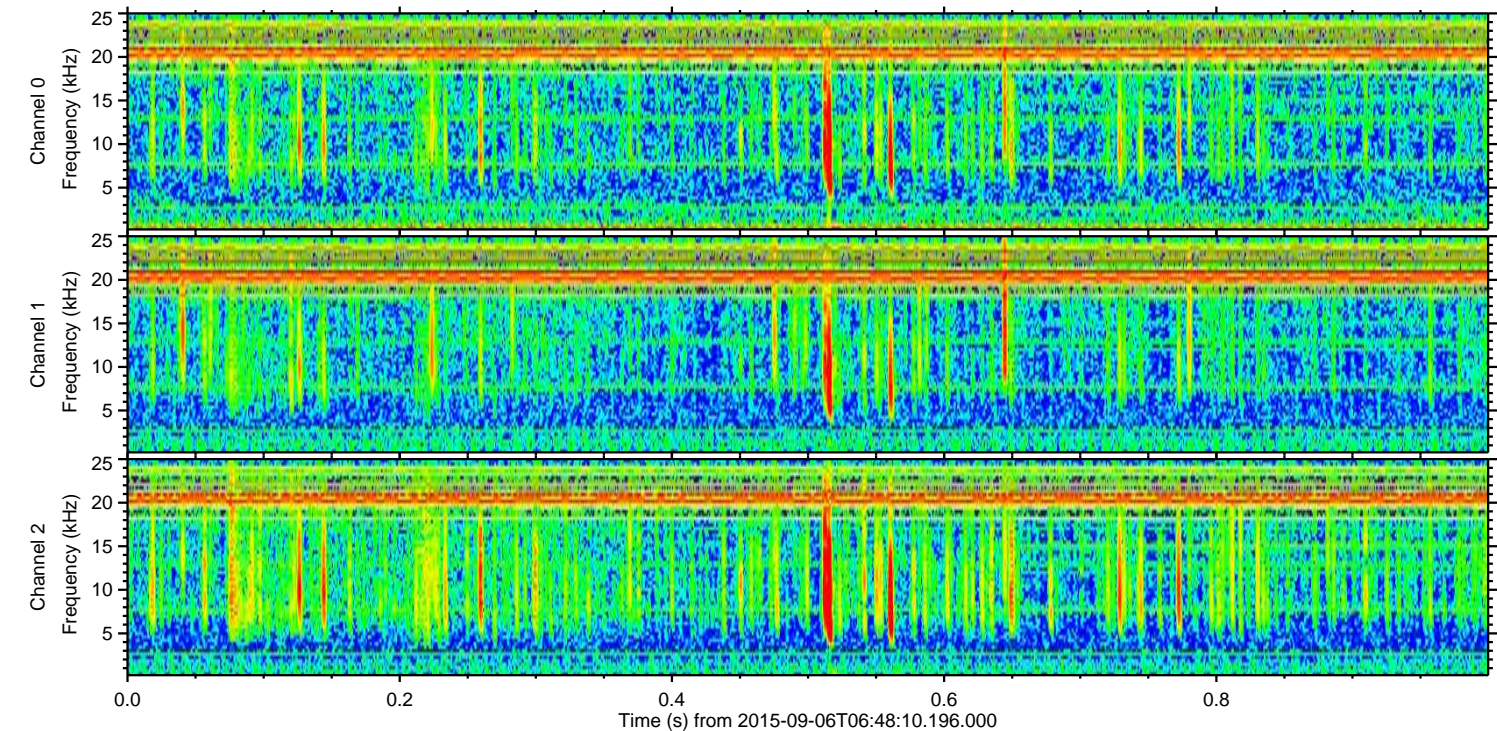
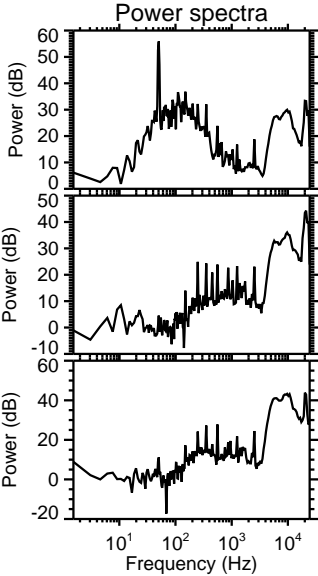
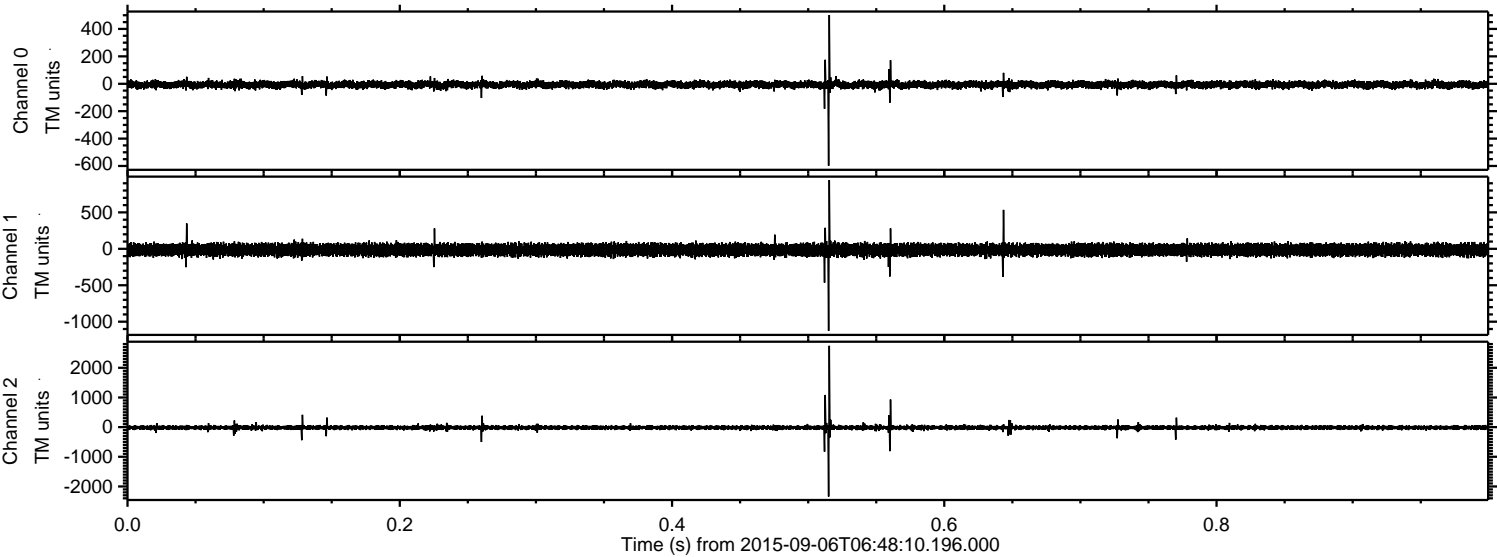
Channel 0
mn: -662
mx: 445
 μ : -6.6
 σ : 14.3

Channel 1
mn: -579
mx: 420
 μ : -14.3
 σ : 40.0

Channel 2
mn: -2808
mx: 2354
 μ : -15.9
 σ : 46.8

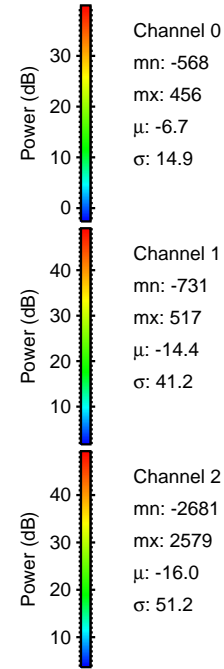
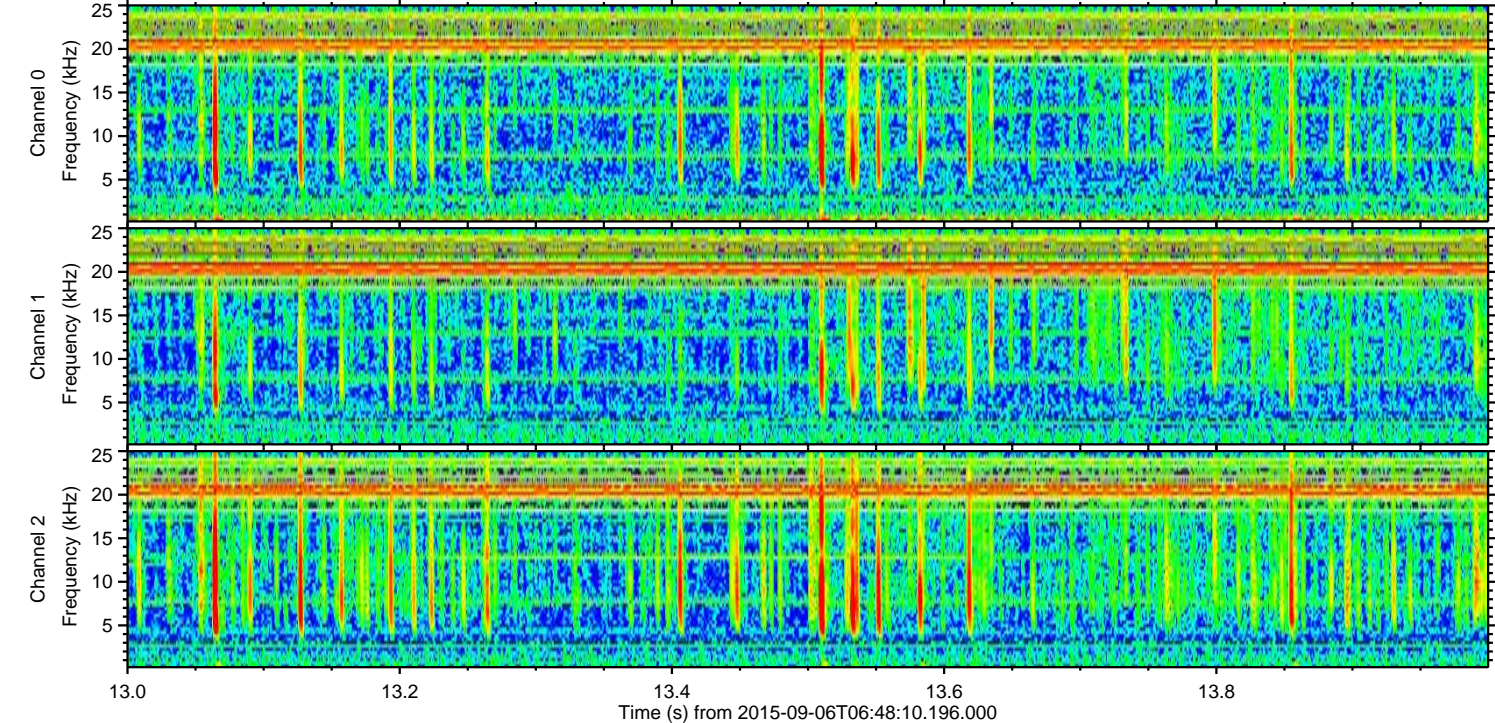
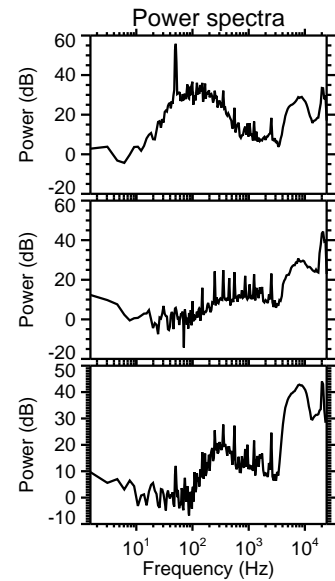
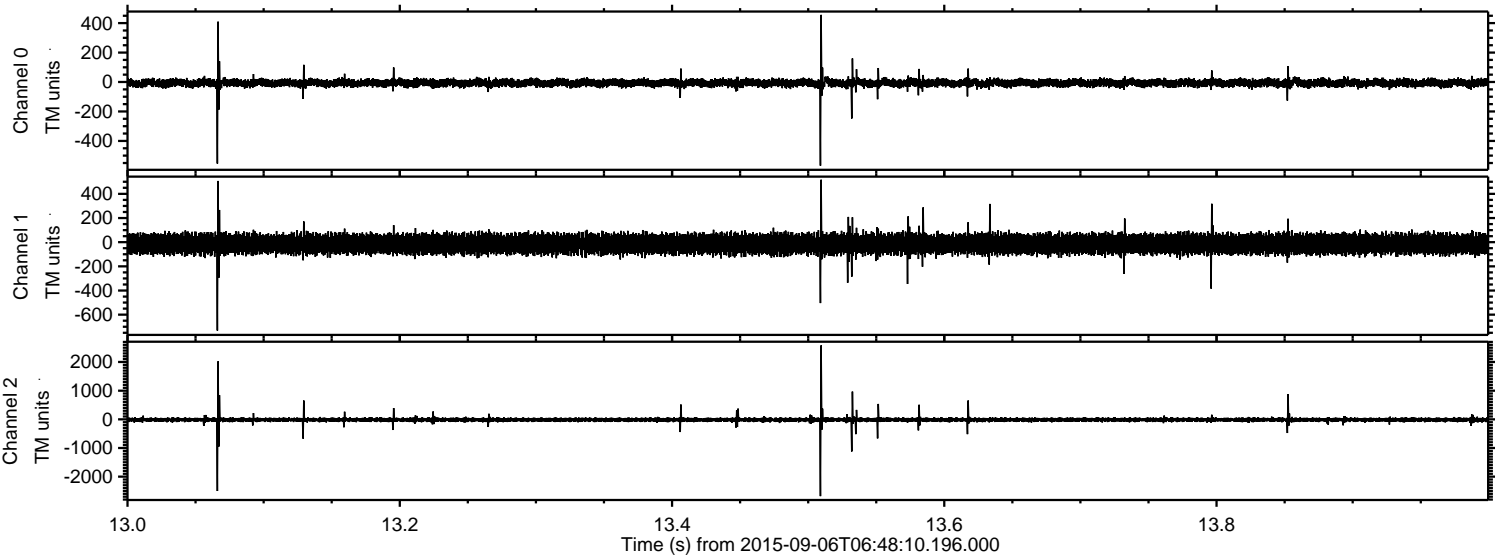
ELMAVAN 3D WAVEFORMS (Measured data sampled at 50 kHz) 51000 packets of 144 samples from 2015-09-06T06:48:10.196.000. Part 1/147

Processed Sat Oct 10 03:48:20 2015 by ELM ver.2012-10-06 from 001__elm20150906_064809__dat00.bin



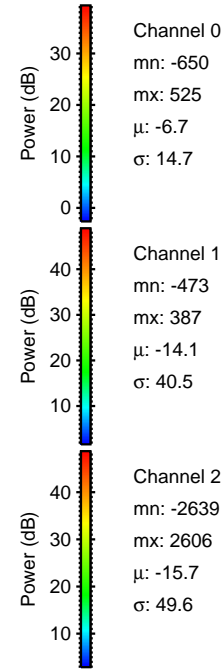
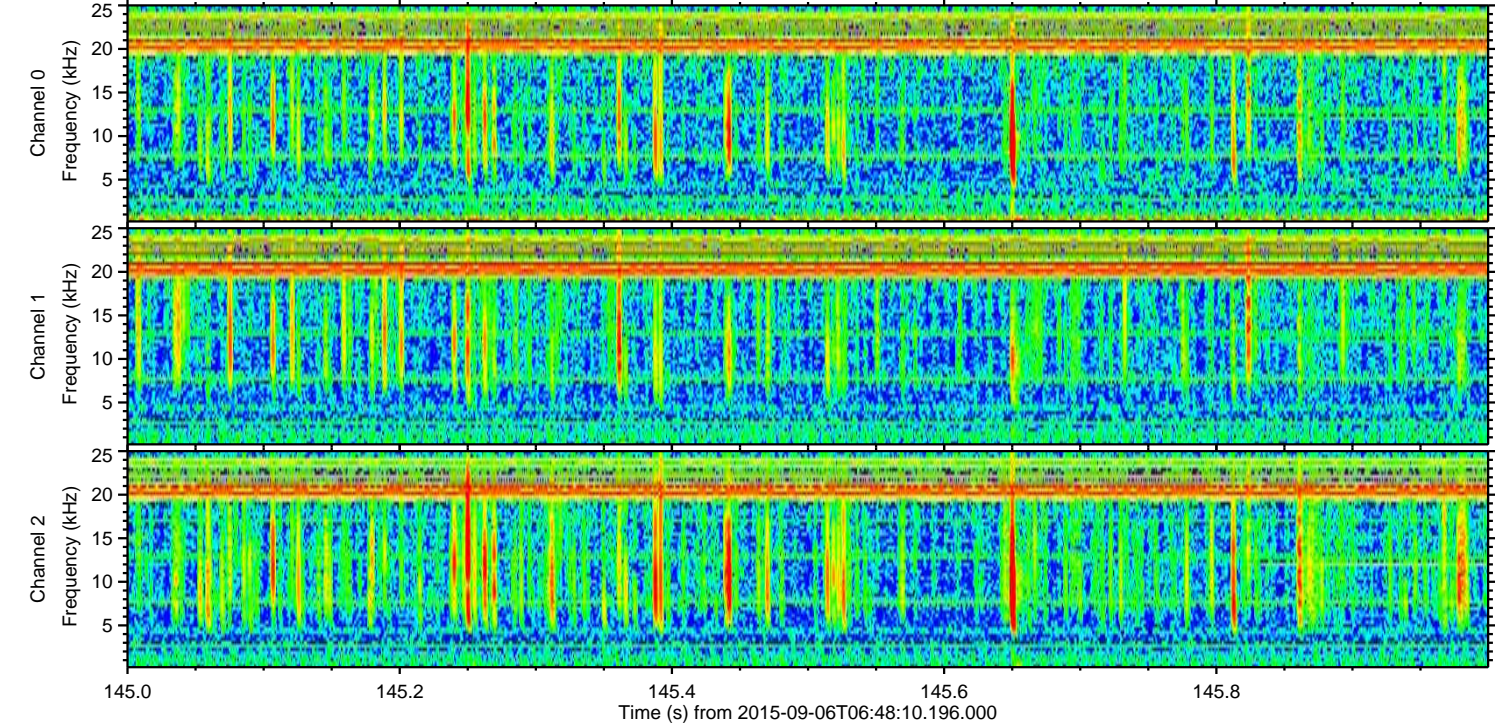
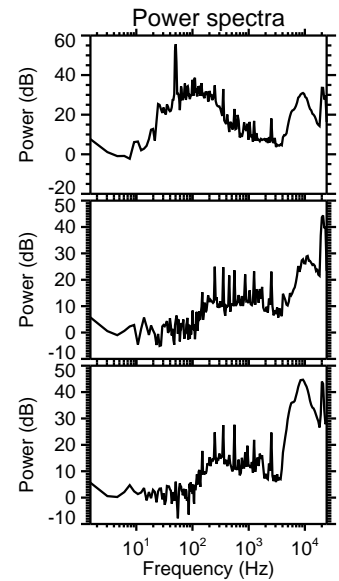
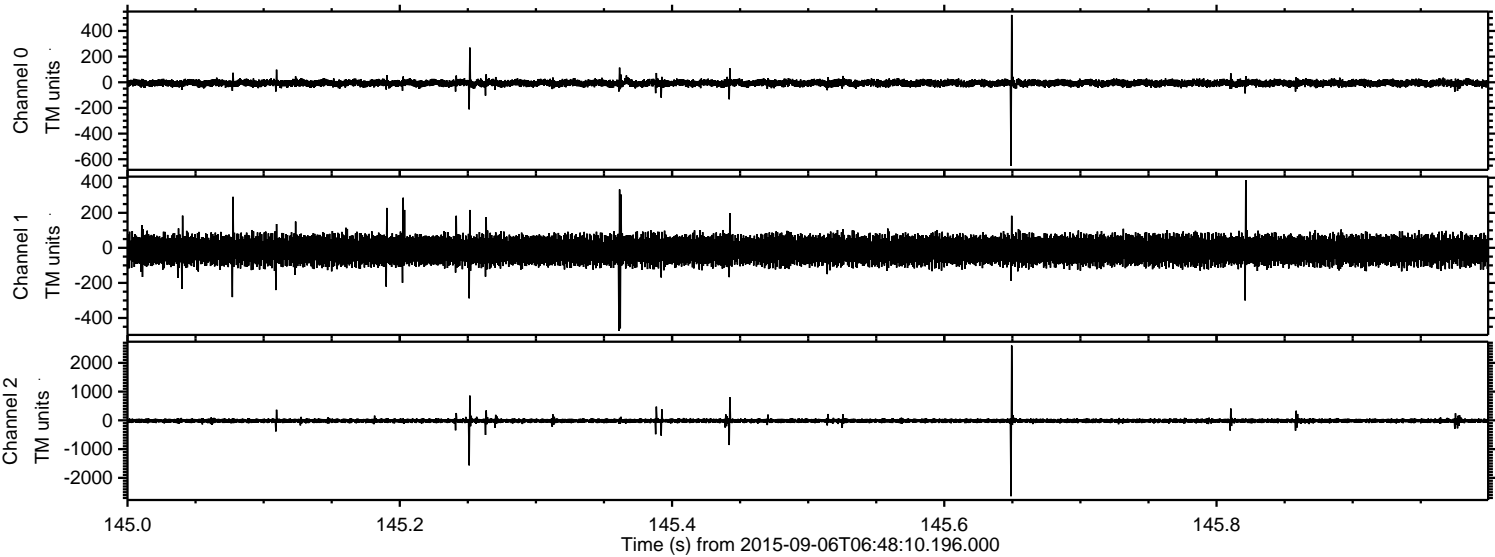
ELMAVAN 3D WAVEFORMS (Measured data sampled at 50 kHz) 51000 packets of 144 samples from 2015-09-06T06:48:10.196.000. Part 14/147

Processed Sat Oct 10 03:48:21 2015 by ELM ver.2012-10-06 from 001__elm20150906_064809__dat00.bin



ELMAVAN 3D WAVEFORMS (Measured data sampled at 50 kHz) 51000 packets of 144 samples from 2015-09-06T06:48:10.196.000. Part 146/147

Processed Sat Oct 10 03:48:22 2015 by ELM ver.2012-10-06 from 001__elm20150906_064809__dat00.bin



ELMAVAN 3D WAVEFORMS (Measured data sampled at 50 kHz) 51000 packets of 144 samples from 2015-09-06T06:48:10.196.000. Part 100/147

