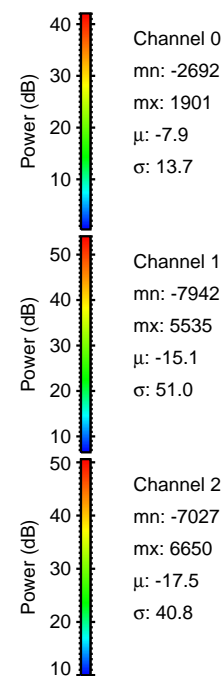
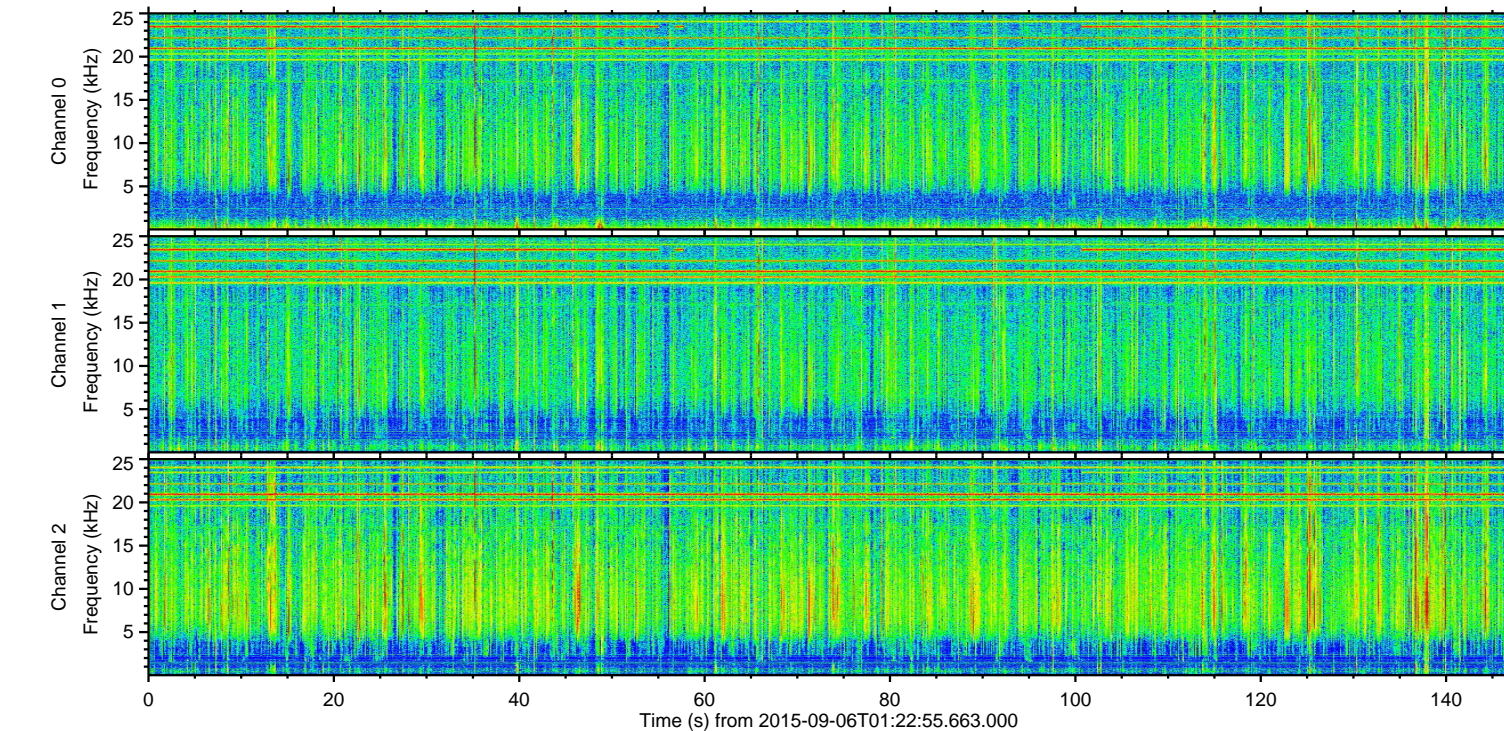
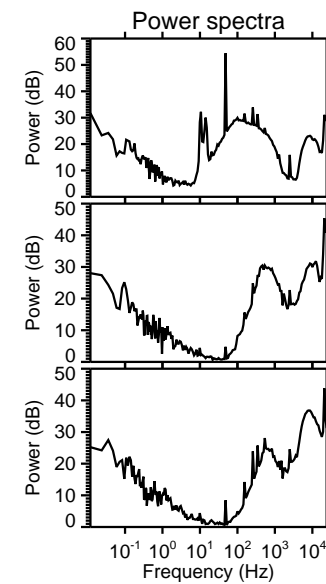
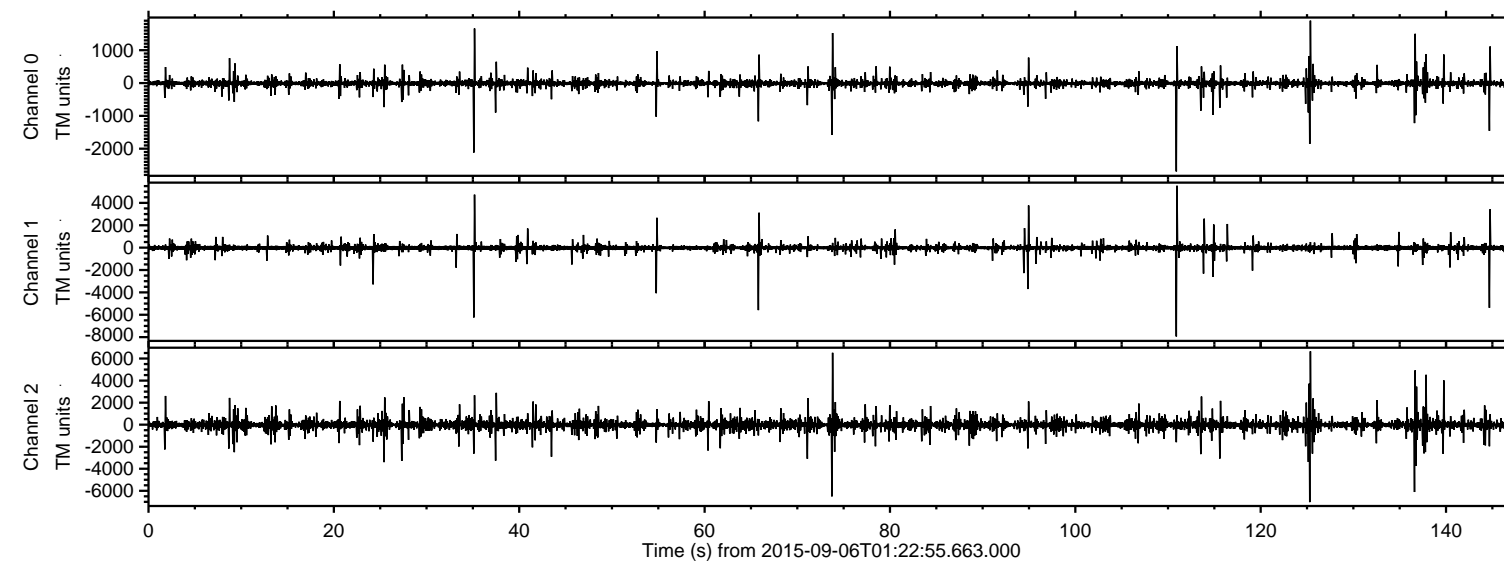


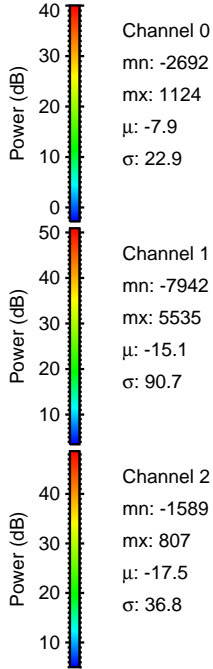
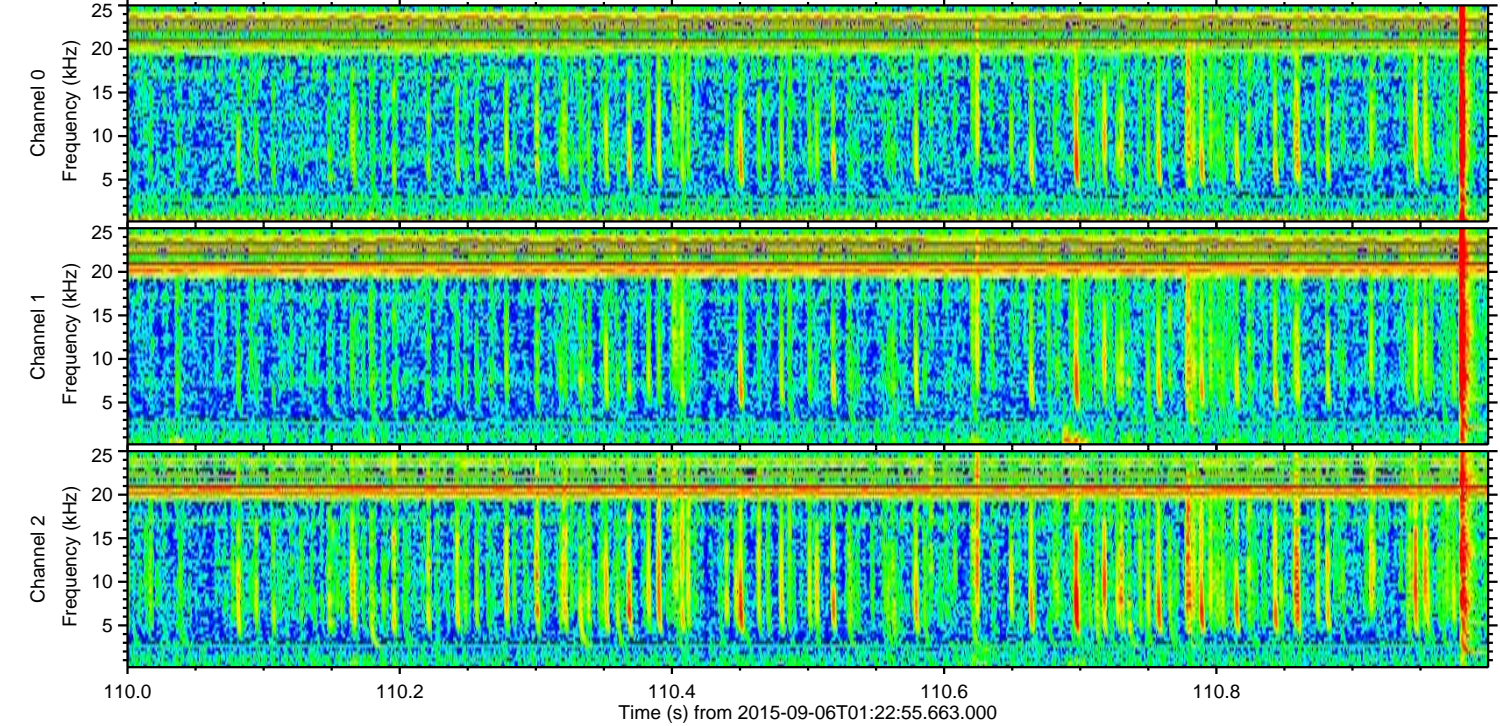
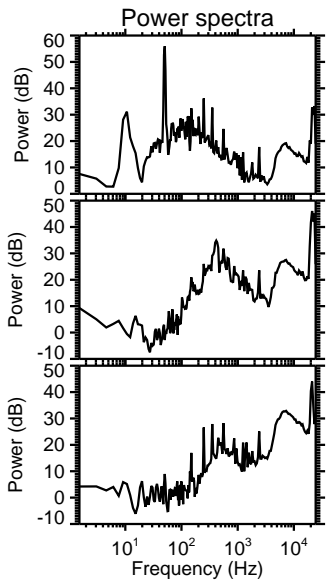
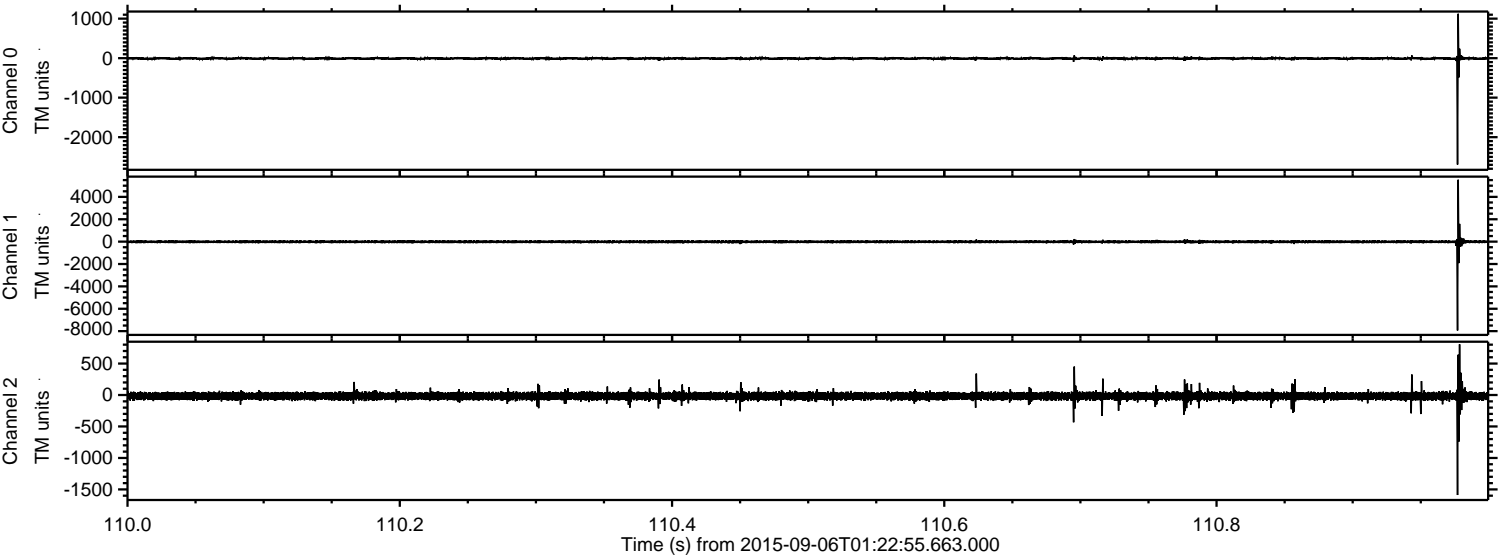
ELMAVAN 3D WAVEFORMS (Measured data sampled at 50 kHz) 51000 packets of 144 samples from 2015-09-06T01:22:55.663.000.

Processed Sat Oct 10 02:17:29 2015 by ELM ver.2012-10-06 from 001__elm20150906_012254__dat00.bin



ELMAVAN 3D WAVEFORMS (Measured data sampled at 50 kHz) 51000 packets of 144 samples from 2015-09-06T01:22:55.663.000. Part 111/147

Processed Sat Oct 10 02:17:45 2015 by ELM ver.2012-10-06 from 001__elm20150906_012254__dat00.bin



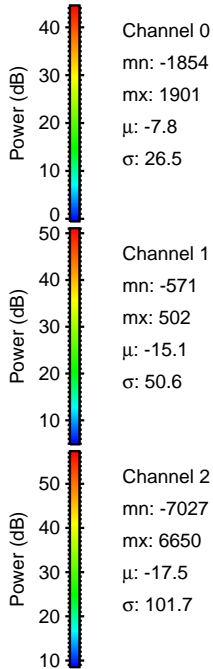
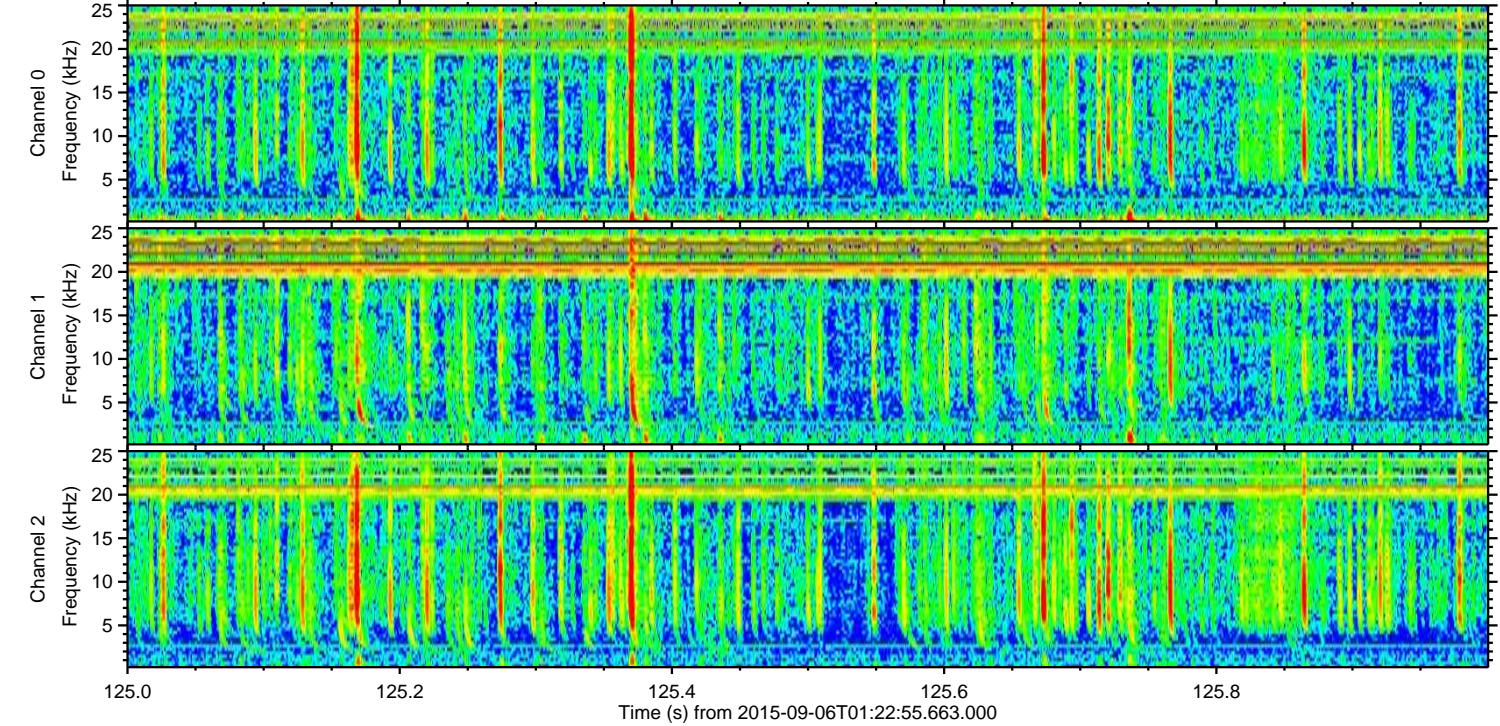
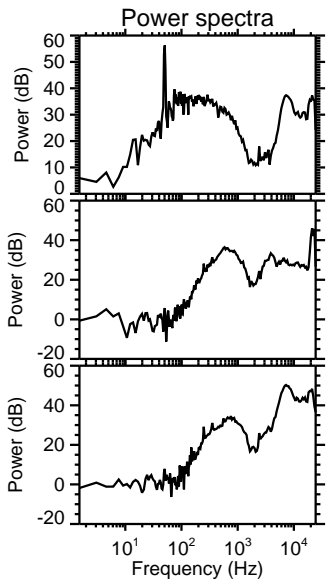
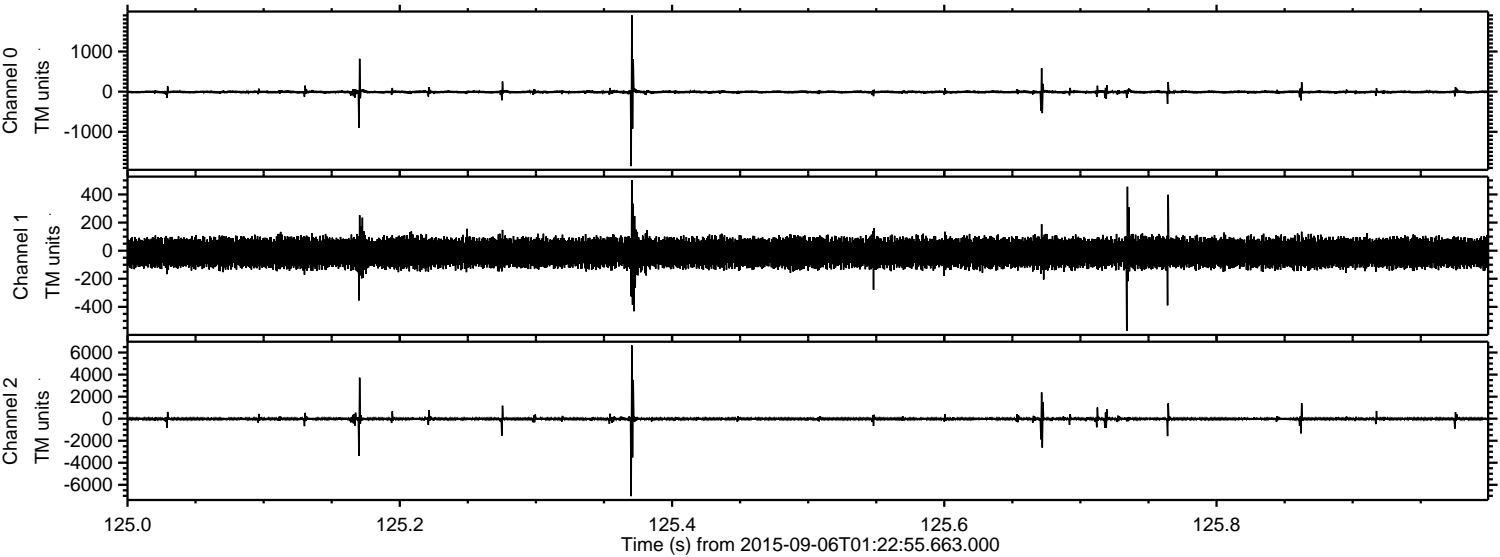
Channel 0
mn: -2692
mx: 1124
 μ : -7.9
 σ : 22.9

Channel 1
mn: -7942
mx: 5535
 μ : -15.1
 σ : 90.7

Channel 2
mn: -1589
mx: 807
 μ : -17.5
 σ : 36.8

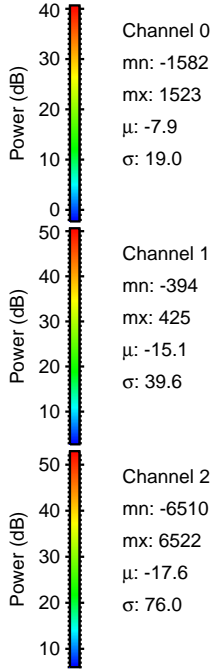
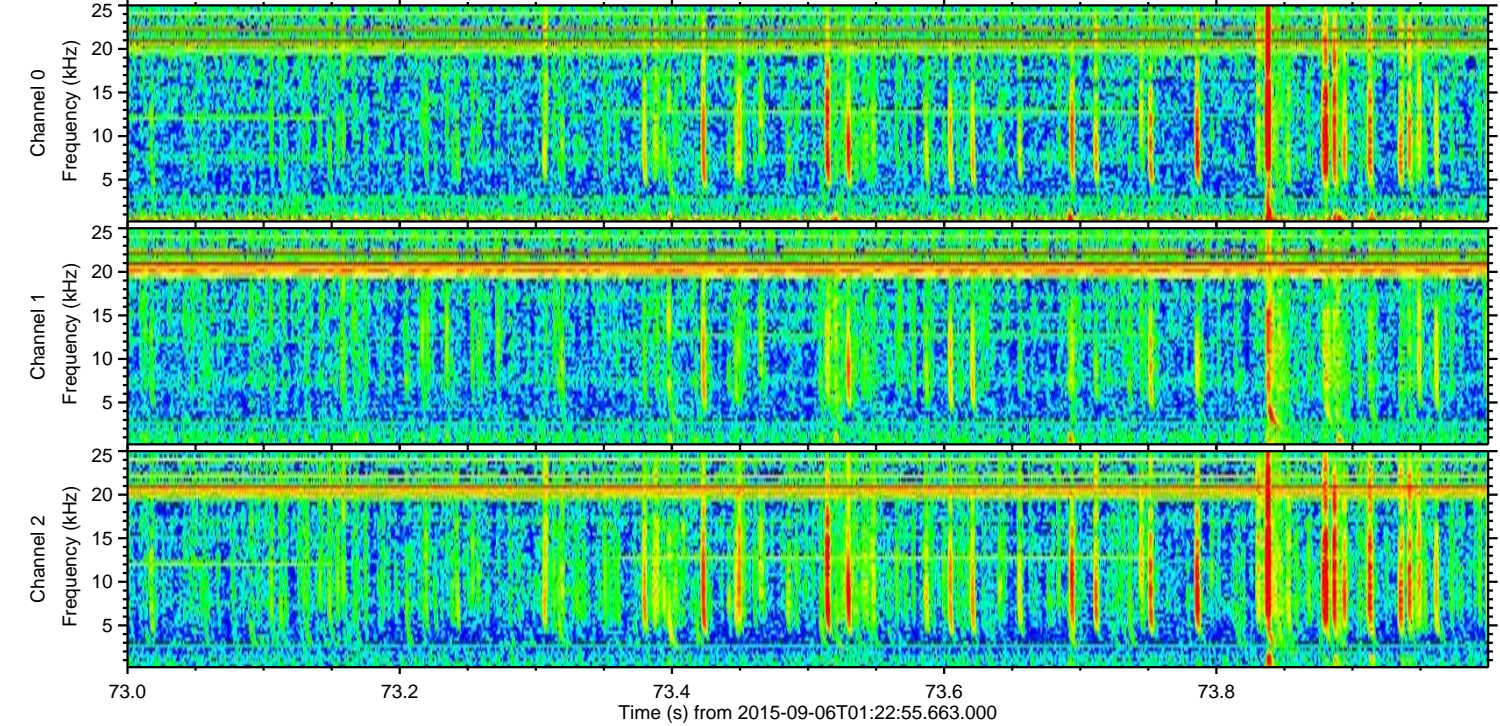
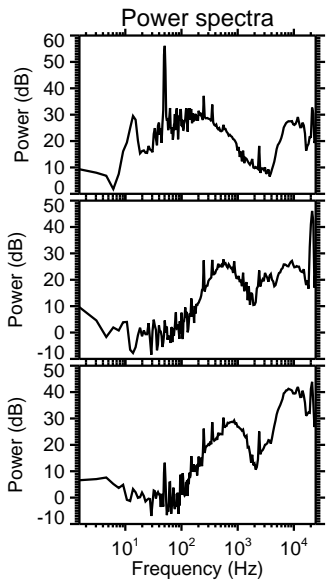
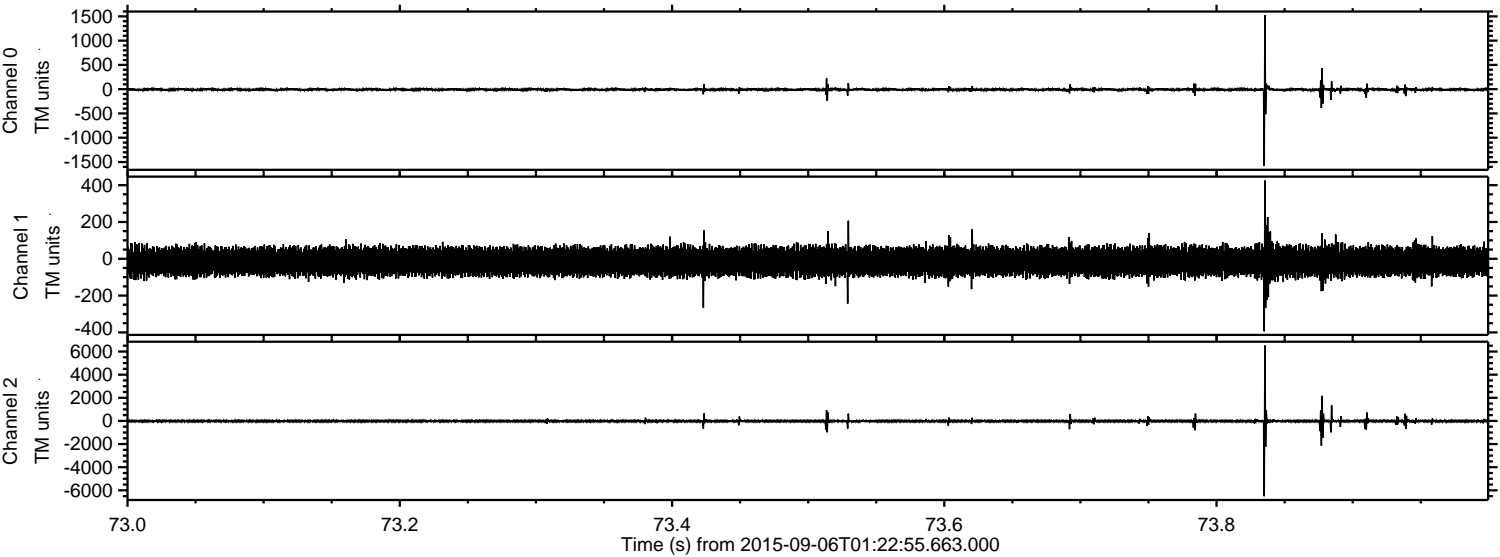
ELMAVAN 3D WAVEFORMS (Measured data sampled at 50 kHz) 51000 packets of 144 samples from 2015-09-06T01:22:55.663.000. Part 126/147

Processed Sat Oct 10 02:17:46 2015 by ELM ver.2012-10-06 from 001__elm20150906_012254__dat00.bin



ELMAVAN 3D WAVEFORMS (Measured data sampled at 50 kHz) 51000 packets of 144 samples from 2015-09-06T01:22:55.663.000. Part 74/147

Processed Sat Oct 10 02:17:47 2015 by ELM ver.2012-10-06 from 001__elm20150906_012254__dat00.bin

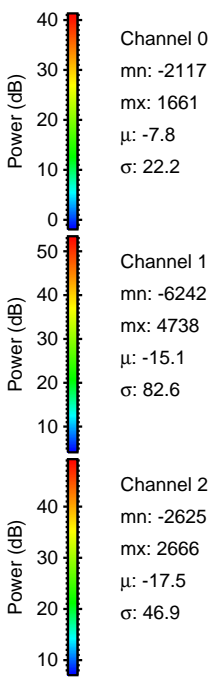
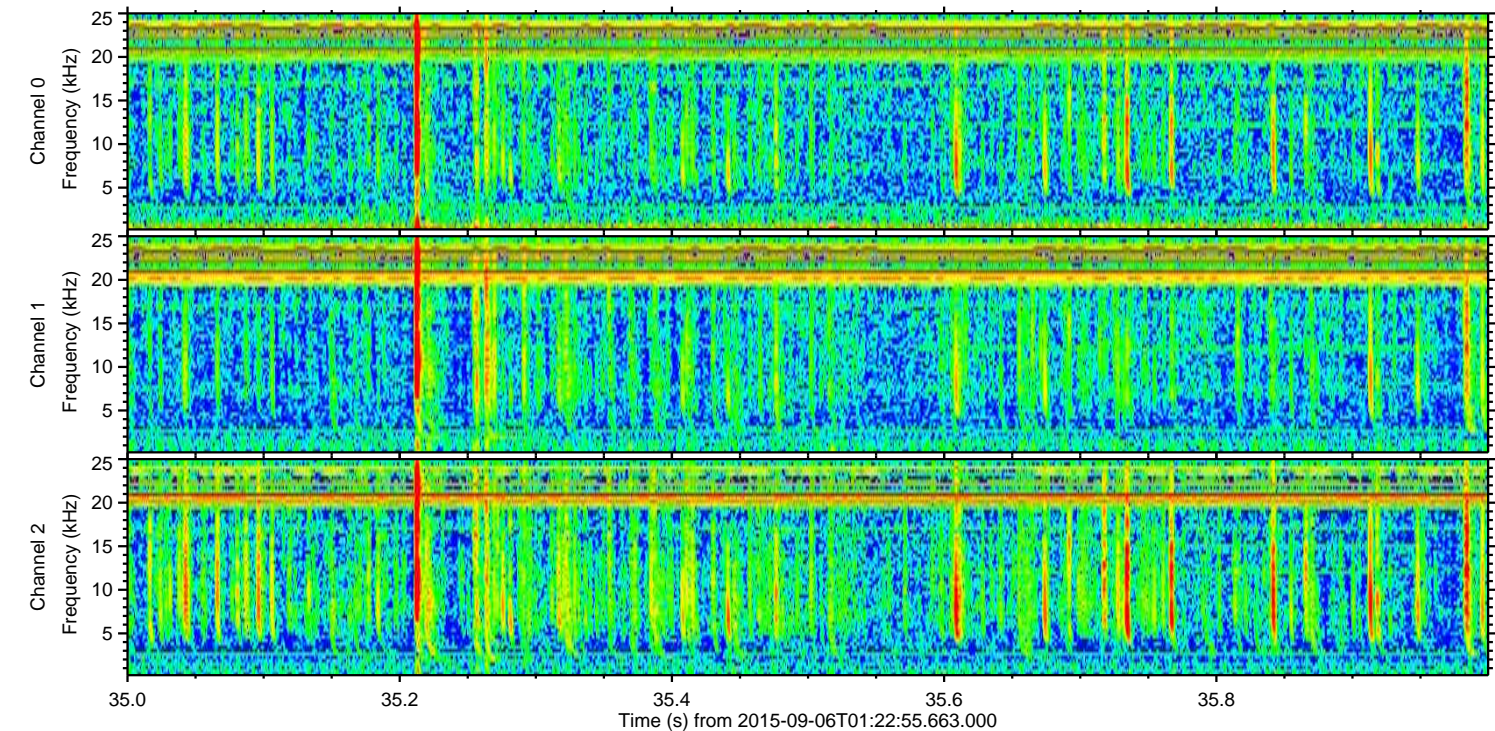
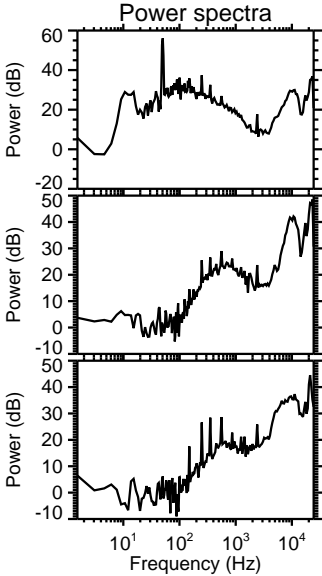
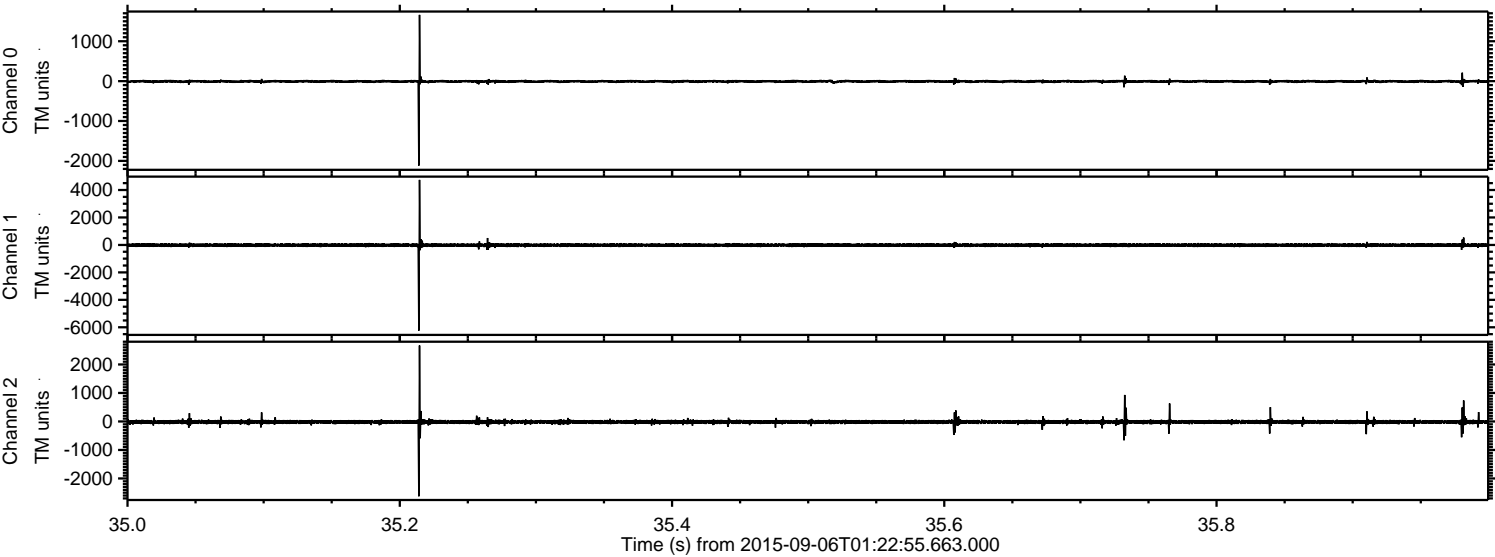


Channel 0
mn: -1582
mx: 1523
 μ : -7.9
 σ : 19.0

Channel 1
mn: -394
mx: 425
 μ : -15.1
 σ : 39.6

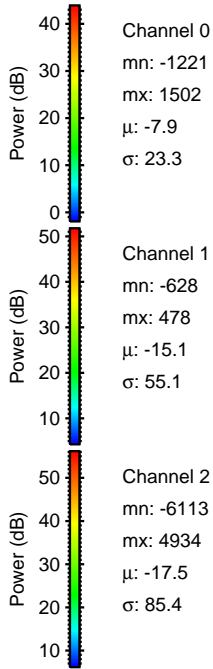
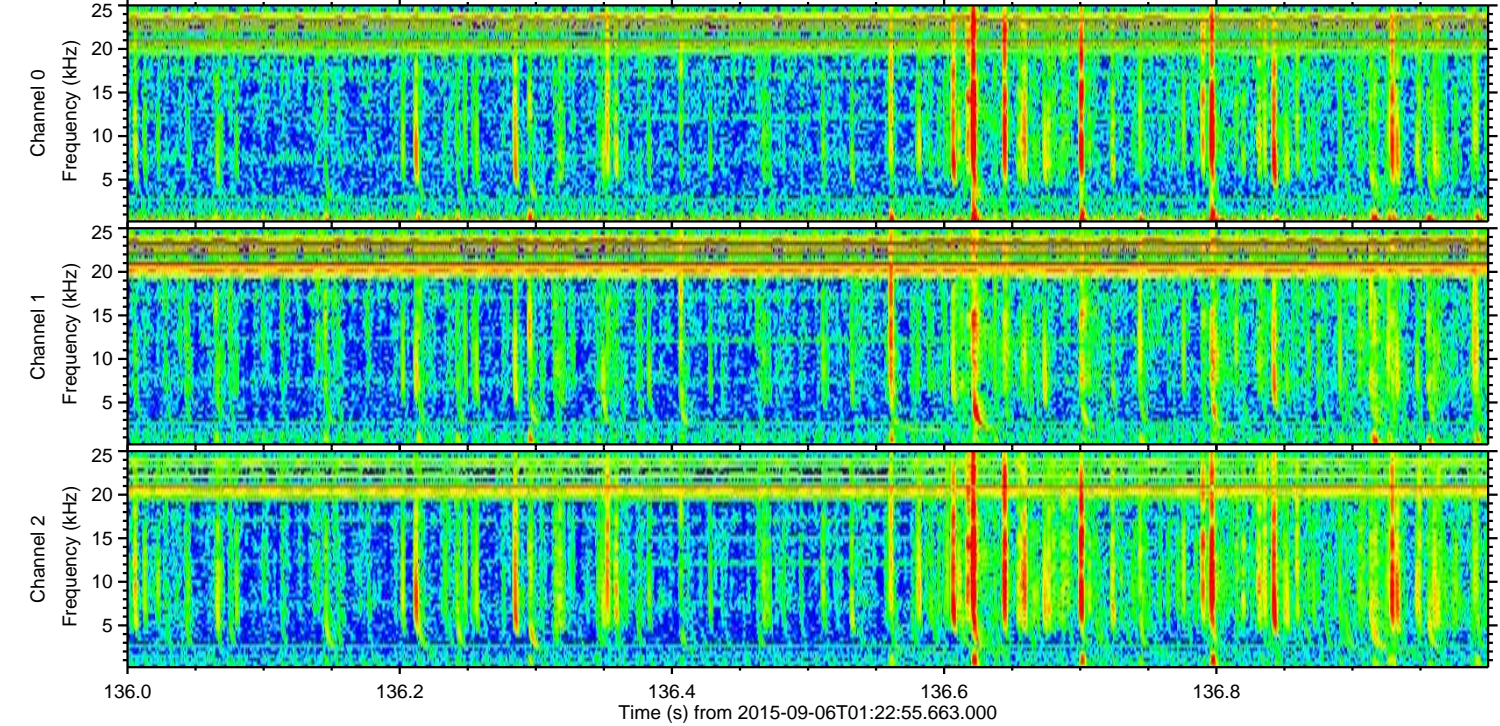
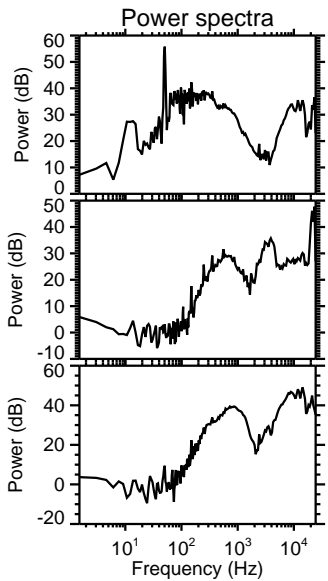
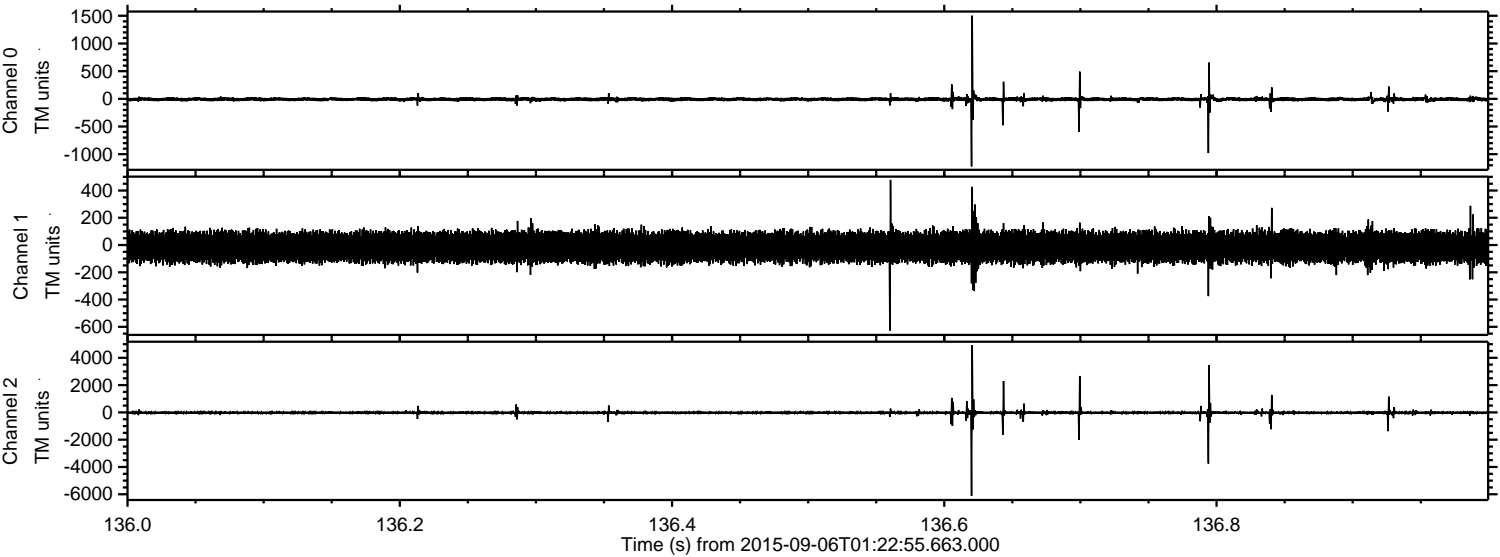
Channel 2
mn: -6510
mx: 6522
 μ : -17.6
 σ : 76.0

Processed Sat Oct 10 02:17:48 2015 by ELM ver.2012-10-06 from 001__elm20150906_012254__dat00.bin



ELMAVAN 3D WAVEFORMS (Measured data sampled at 50 kHz) 51000 packets of 144 samples from 2015-09-06T01:22:55.663.000. Part 137/147

Processed Sat Oct 10 02:17:50 2015 by ELM ver.2012-10-06 from 001__elm20150906_012254__dat00.bin

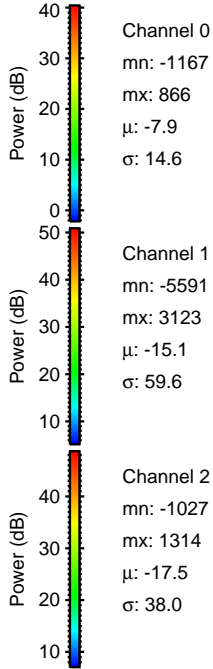
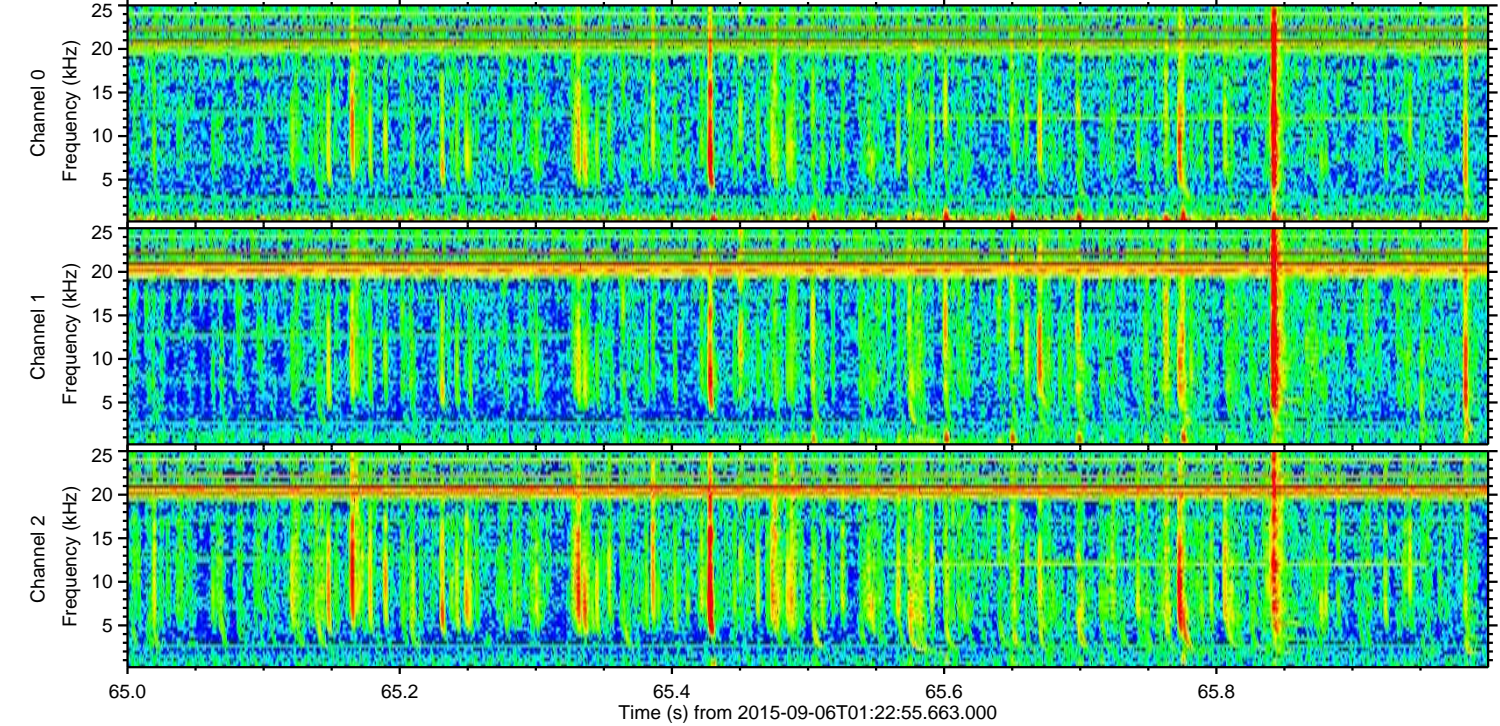
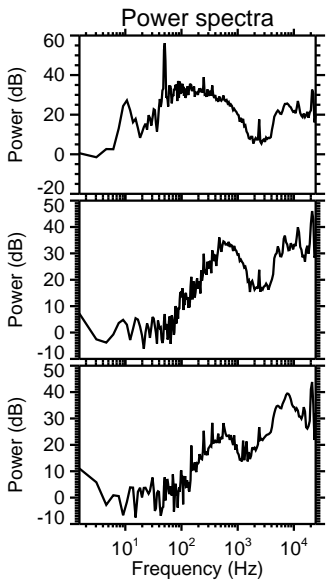
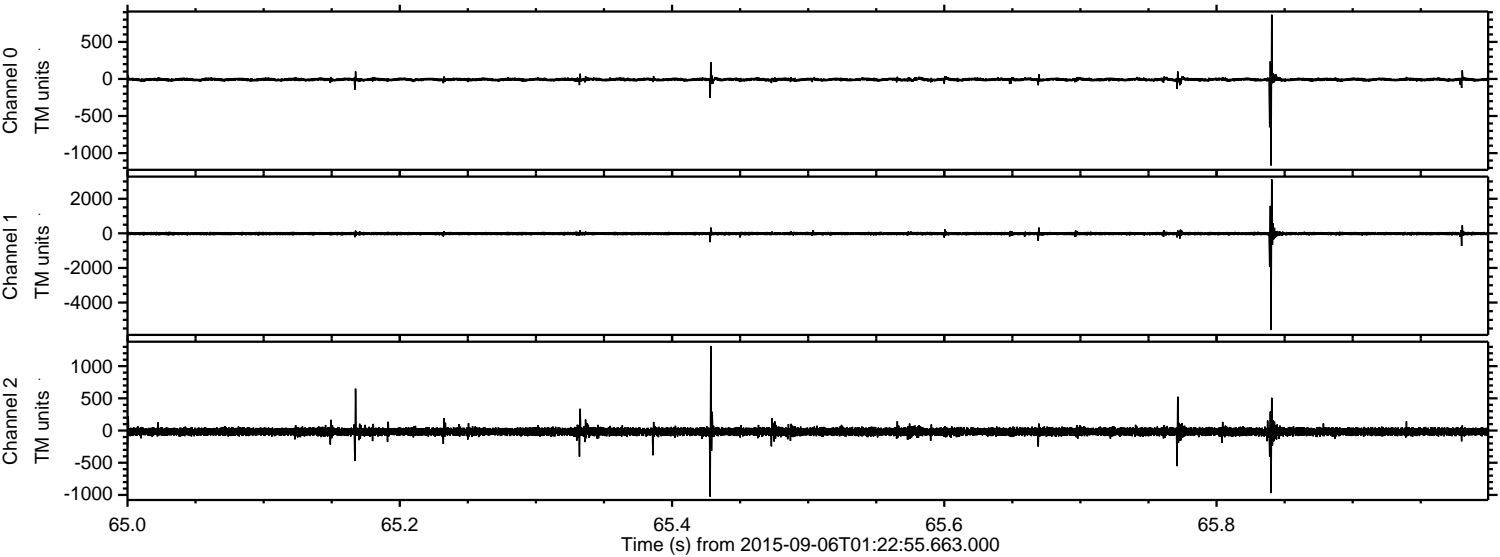


Channel 0
mn: -1221
mx: 1502
 μ : -7.9
 σ : 23.3

Channel 1
mn: -628
mx: 478
 μ : -15.1
 σ : 55.1

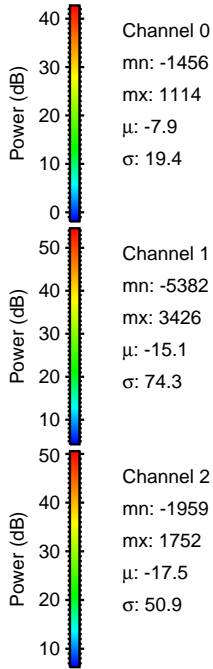
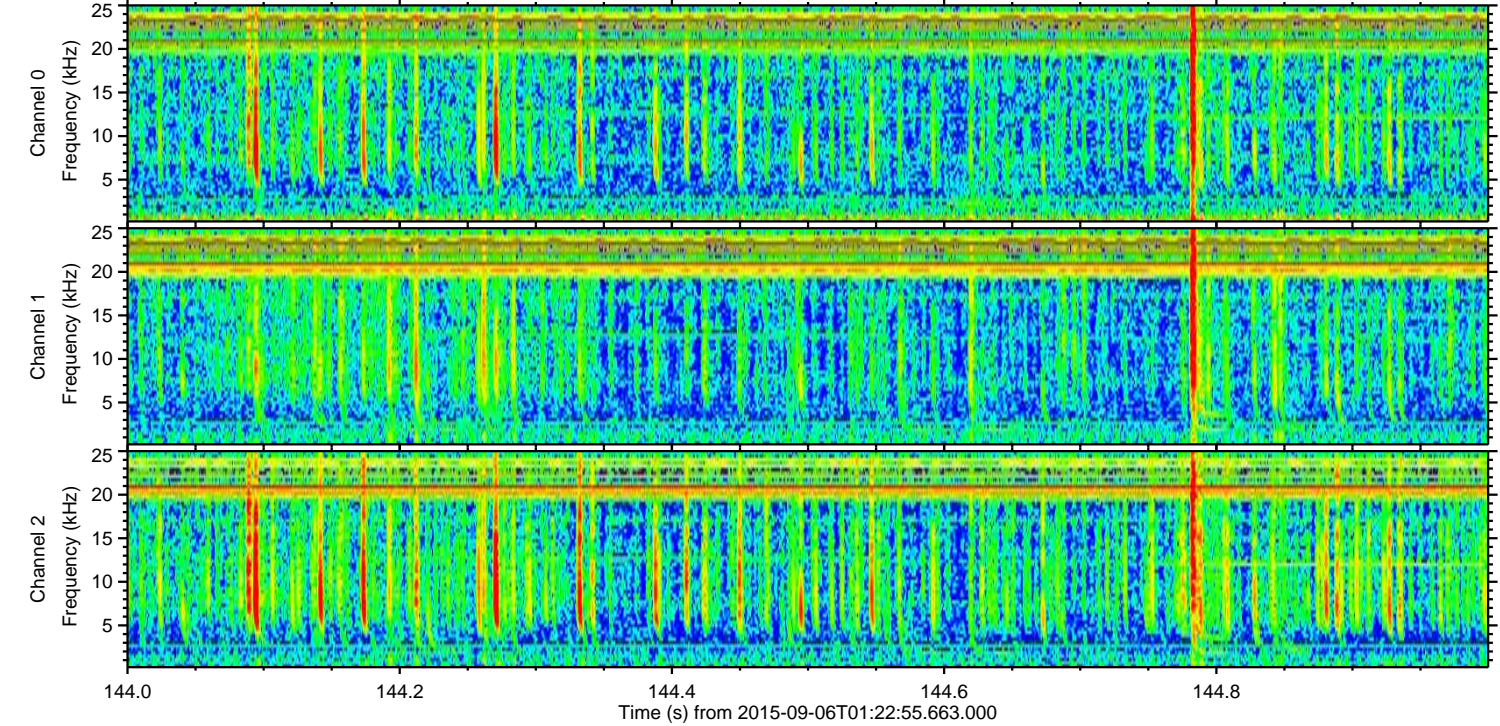
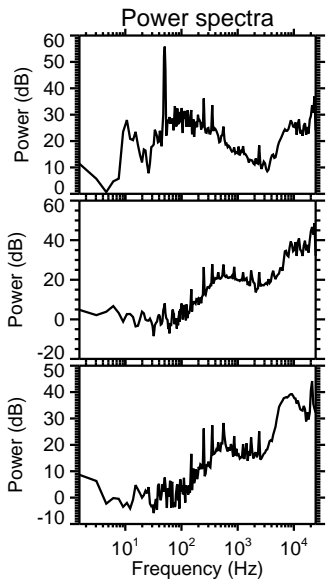
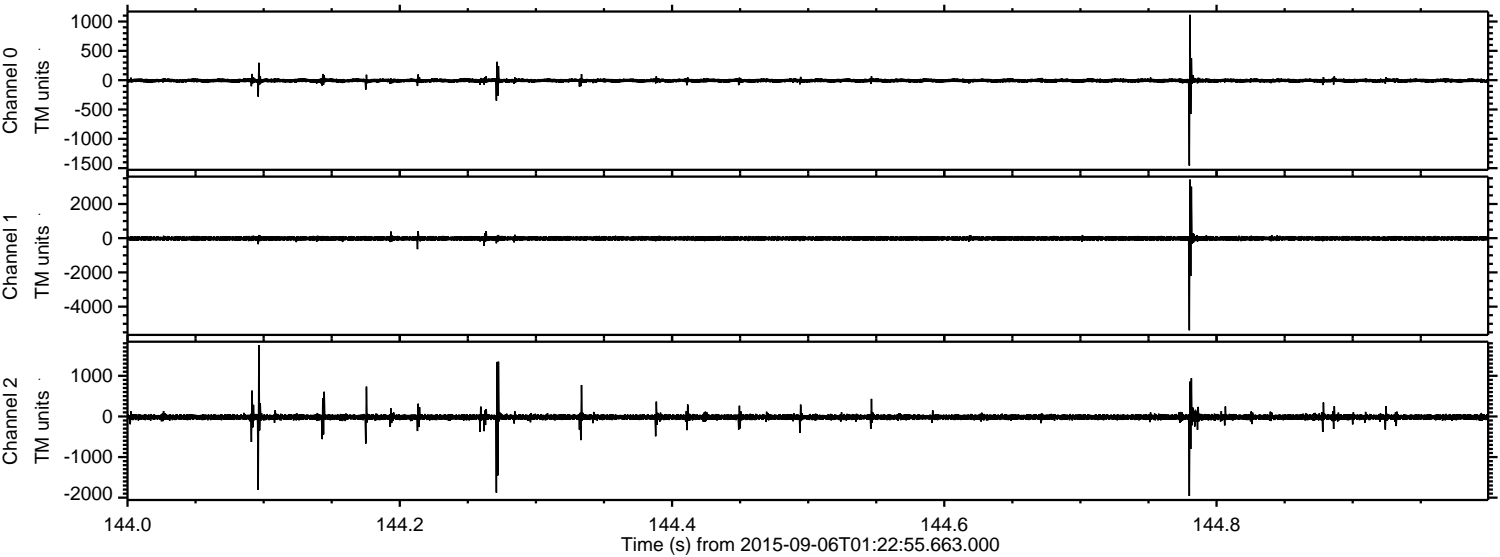
Channel 2
mn: -6113
mx: 4934
 μ : -17.5
 σ : 85.4

Processed Sat Oct 10 02:17:51 2015 by ELM ver.2012-10-06 from 001__elm20150906_012254__dat00.bin



ELMAVAN 3D WAVEFORMS (Measured data sampled at 50 kHz) 51000 packets of 144 samples from 2015-09-06T01:22:55.663.000. Part 145/147

Processed Sat Oct 10 02:17:52 2015 by ELM ver.2012-10-06 from 001__elm20150906_012254__dat00.bin



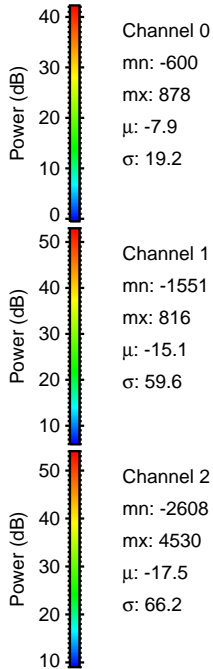
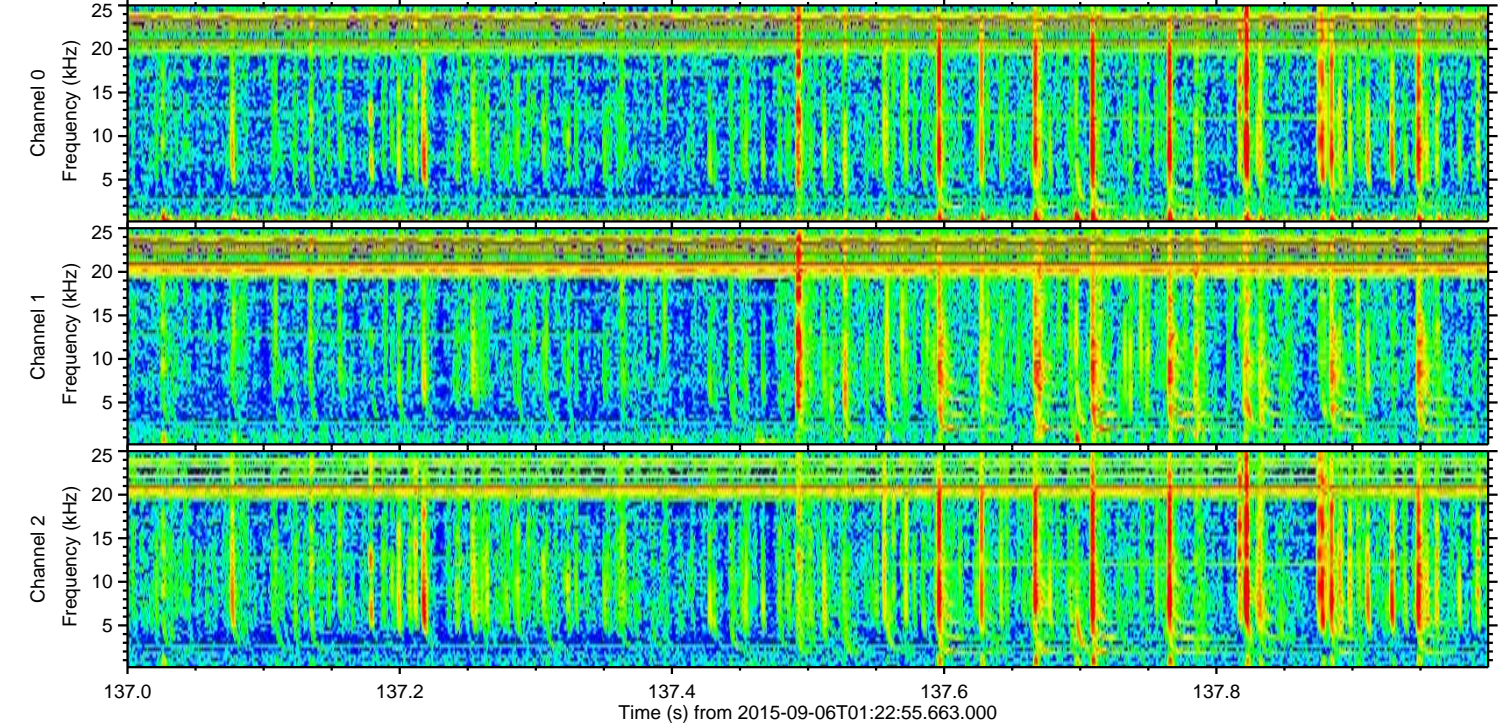
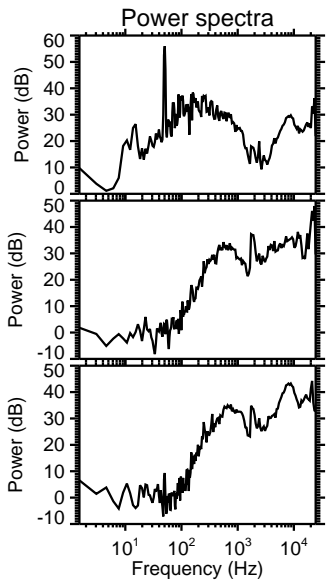
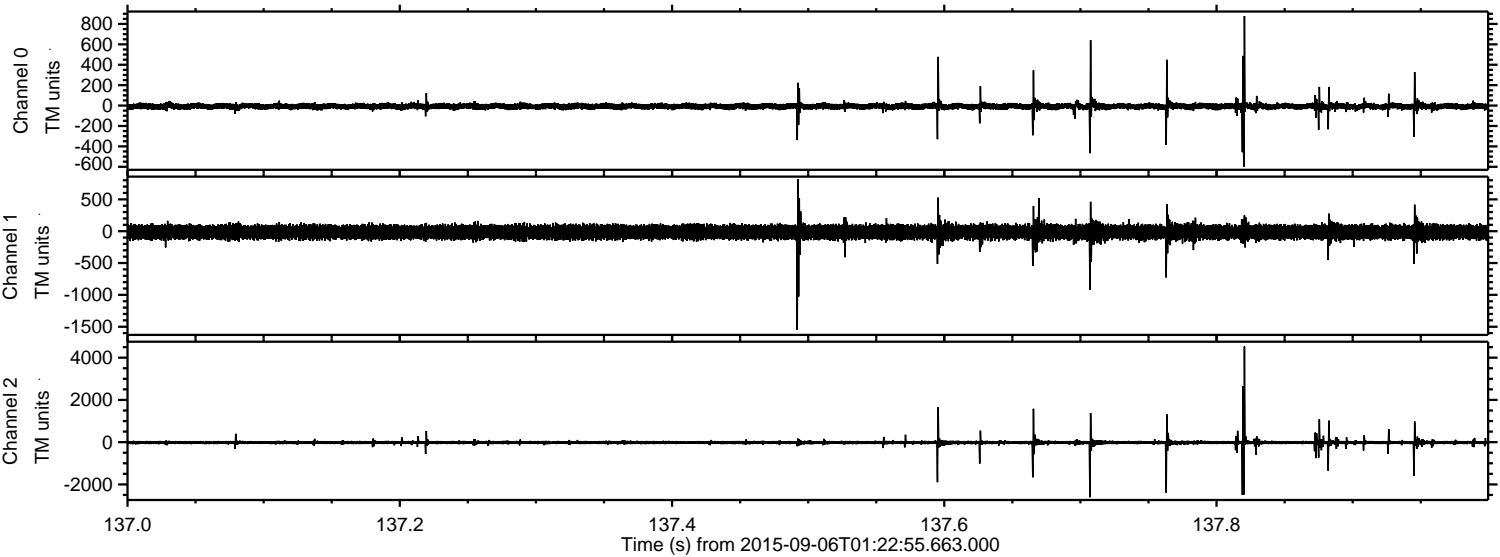
Channel 0
mn: -1456
mx: 1114
 μ : -7.9
 σ : 19.4

Channel 1
mn: -5382
mx: 3426
 μ : -15.1
 σ : 74.3

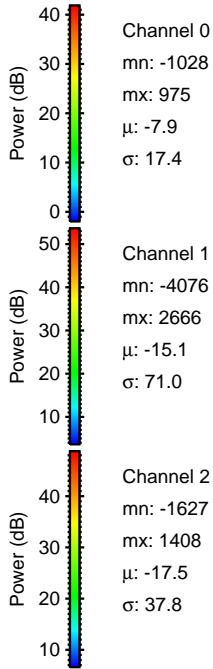
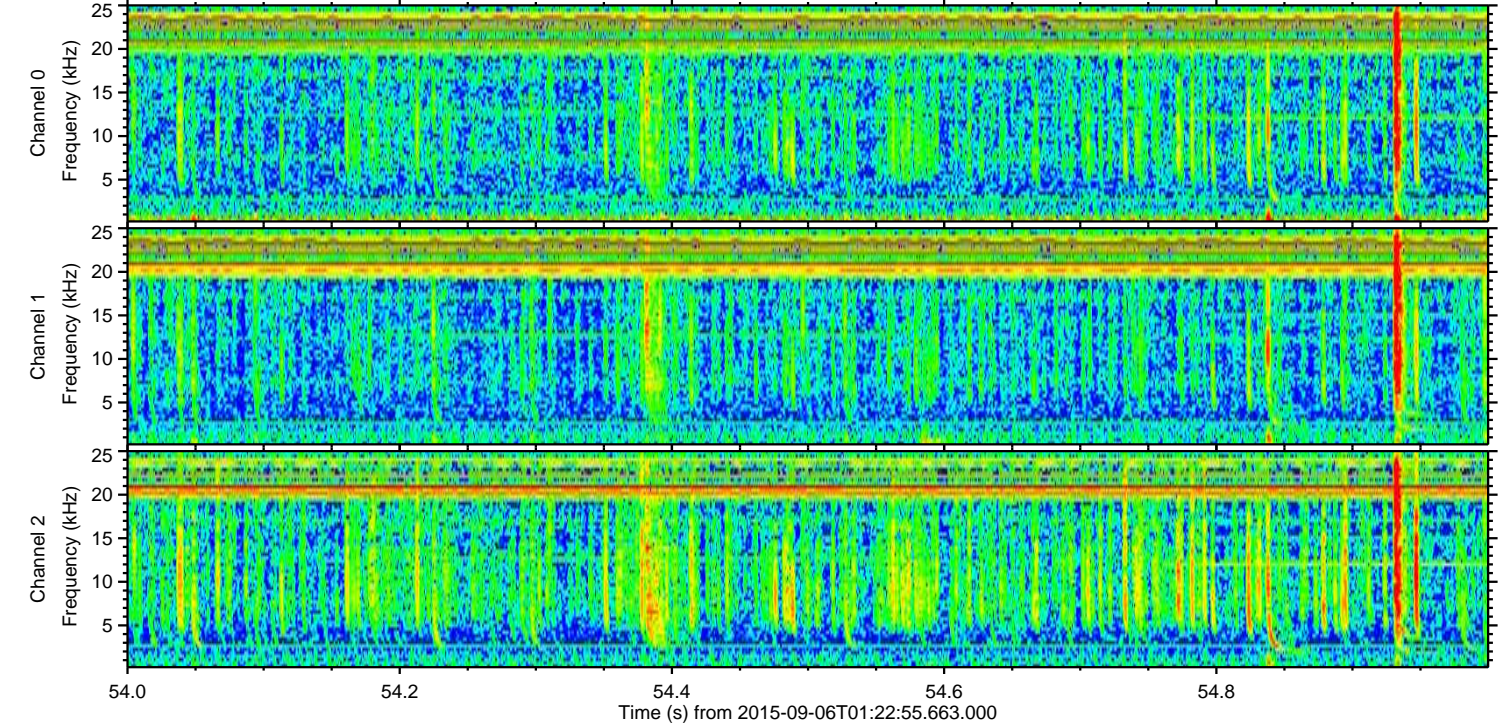
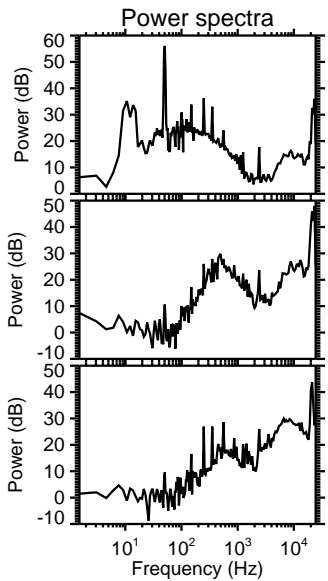
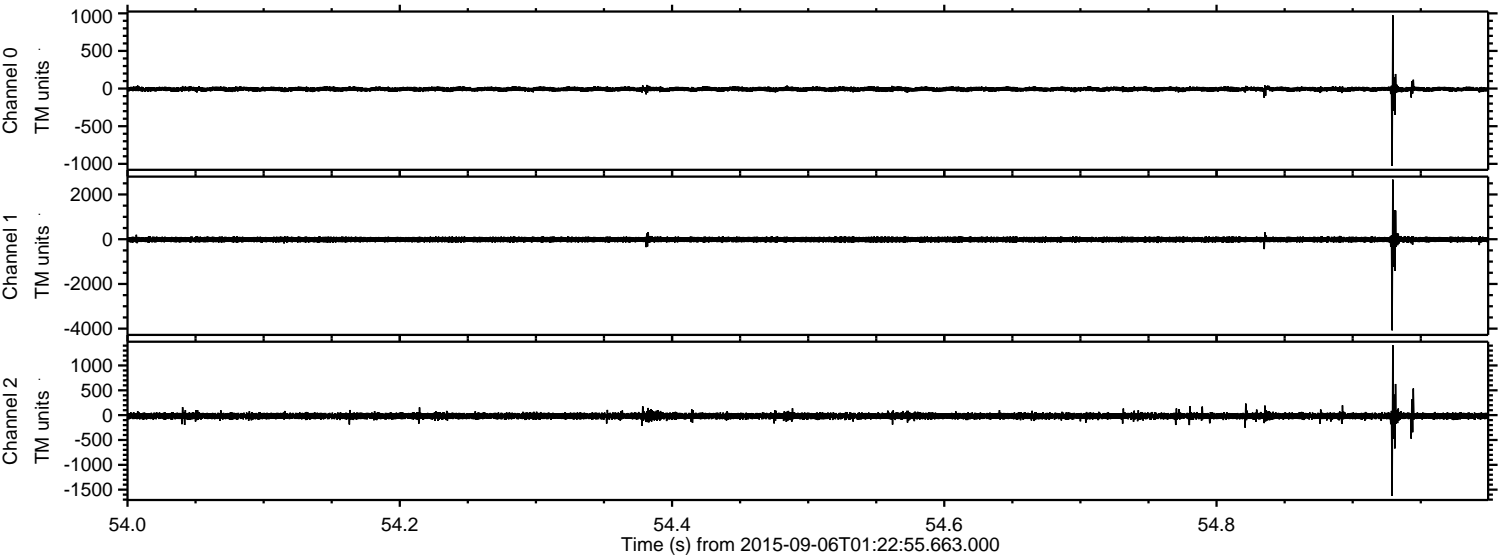
Channel 2
mn: -1959
mx: 1752
 μ : -17.5
 σ : 50.9

ELMAVAN 3D WAVEFORMS (Measured data sampled at 50 kHz) 51000 packets of 144 samples from 2015-09-06T01:22:55.663.000. Part 138/147

Processed Sat Oct 10 02:17:53 2015 by ELM ver.2012-10-06 from 001__elm20150906_012254__dat00.bin



Processed Sat Oct 10 02:17:54 2015 by ELM ver.2012-10-06 from 001__elm20150906_012254__dat00.bin



ELMAVAN 3D WAVEFORMS (Measured data sampled at 50 kHz) 51000 packets of 144 samples from 2015-09-06T01:22:55.663.000. Part 134/147

