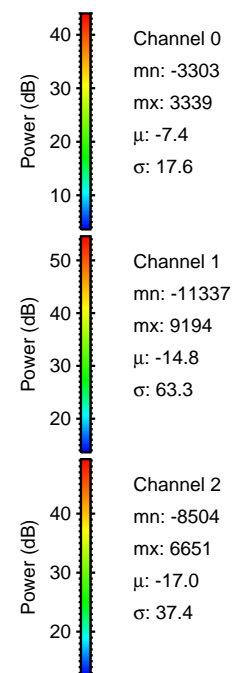
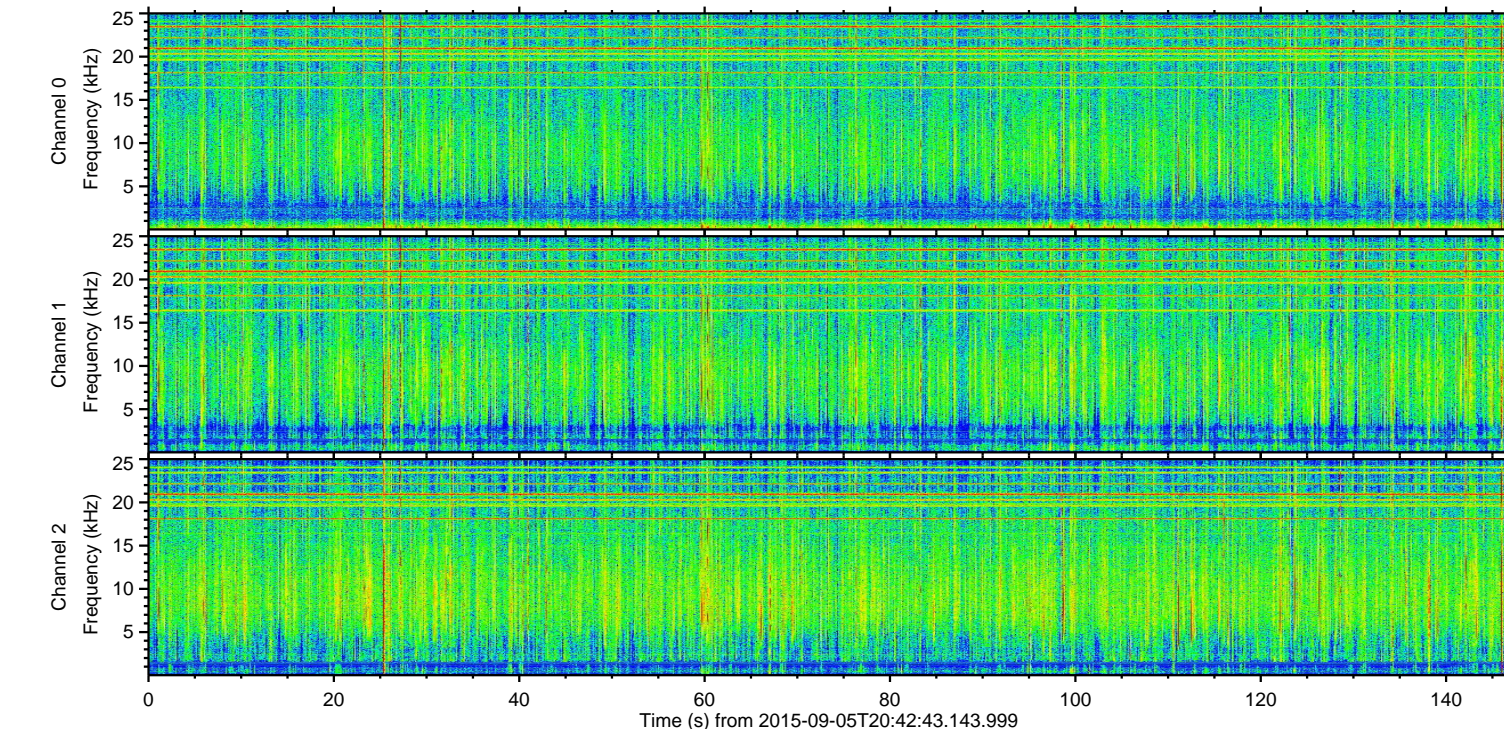
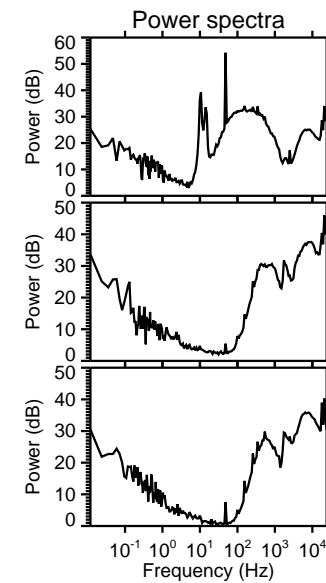
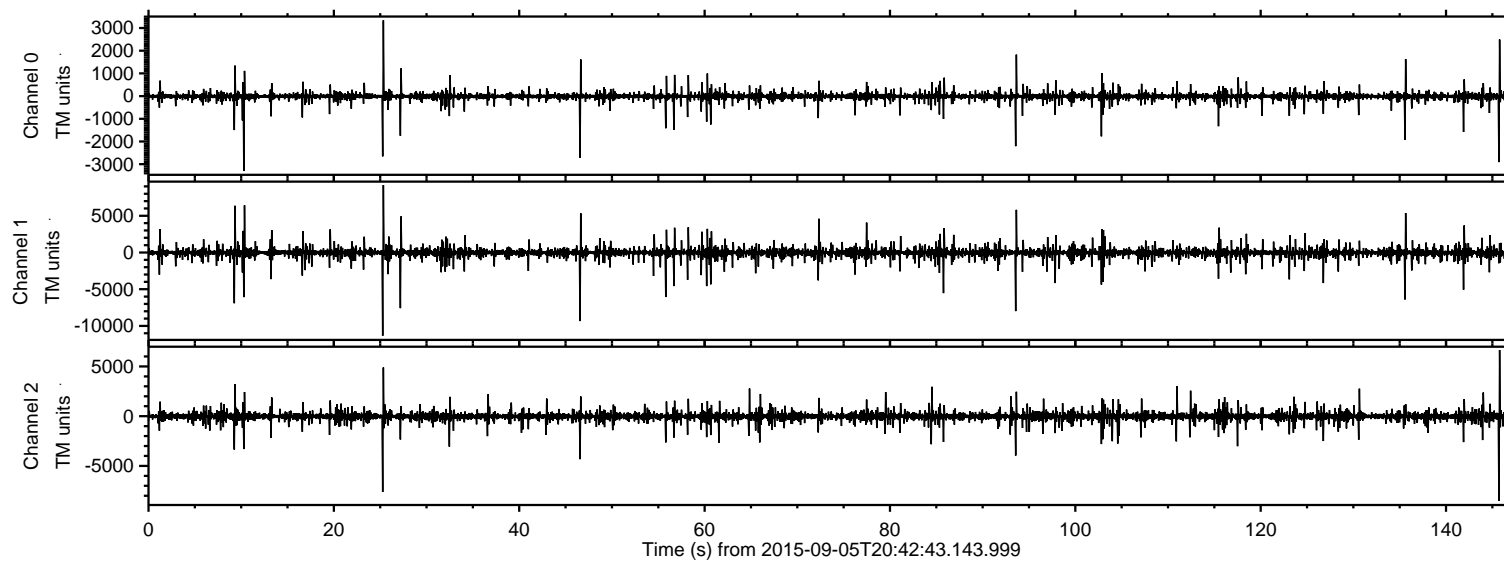


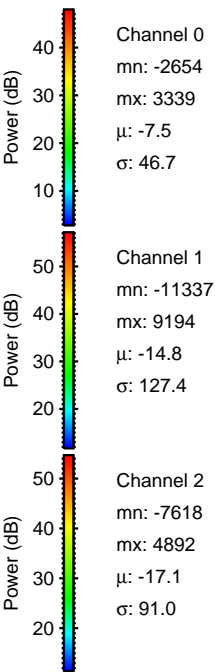
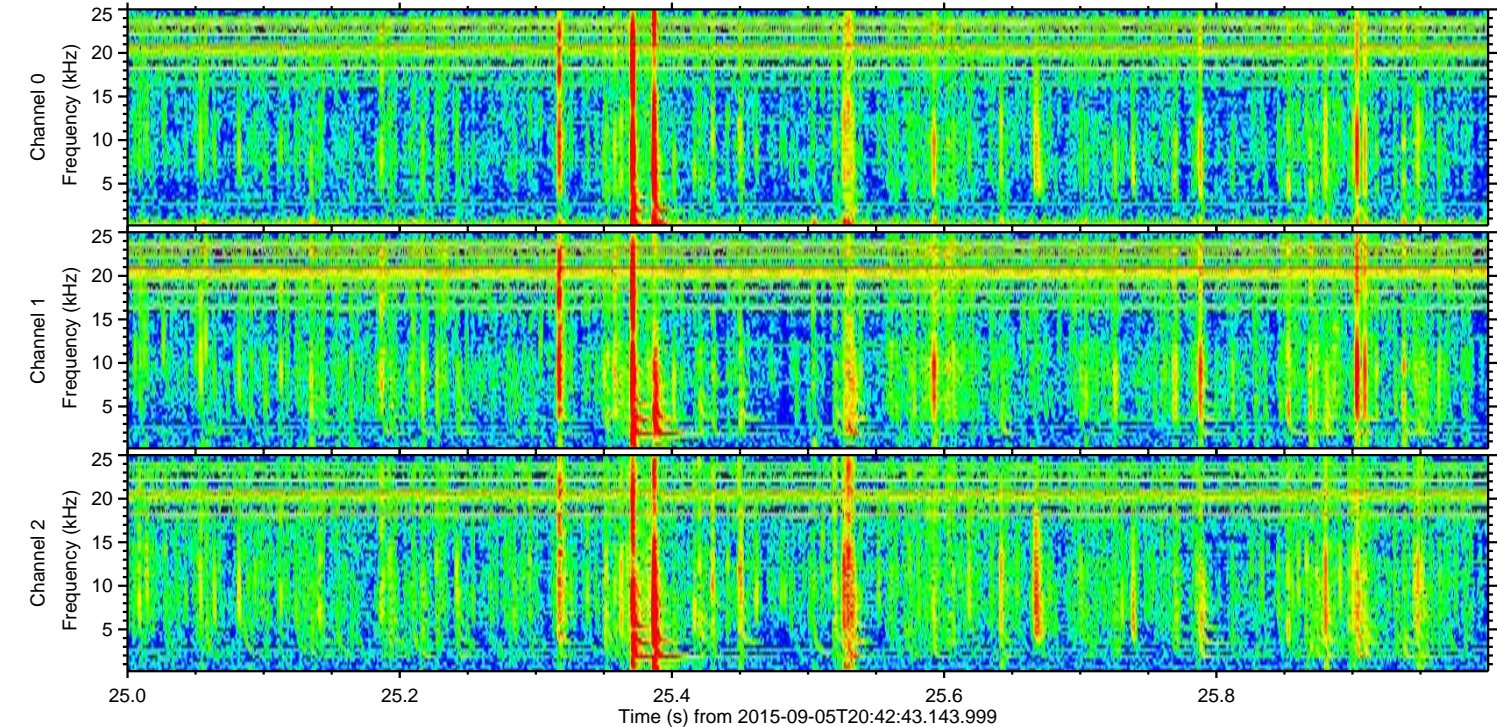
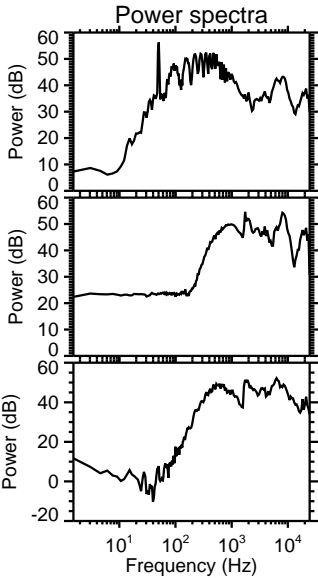
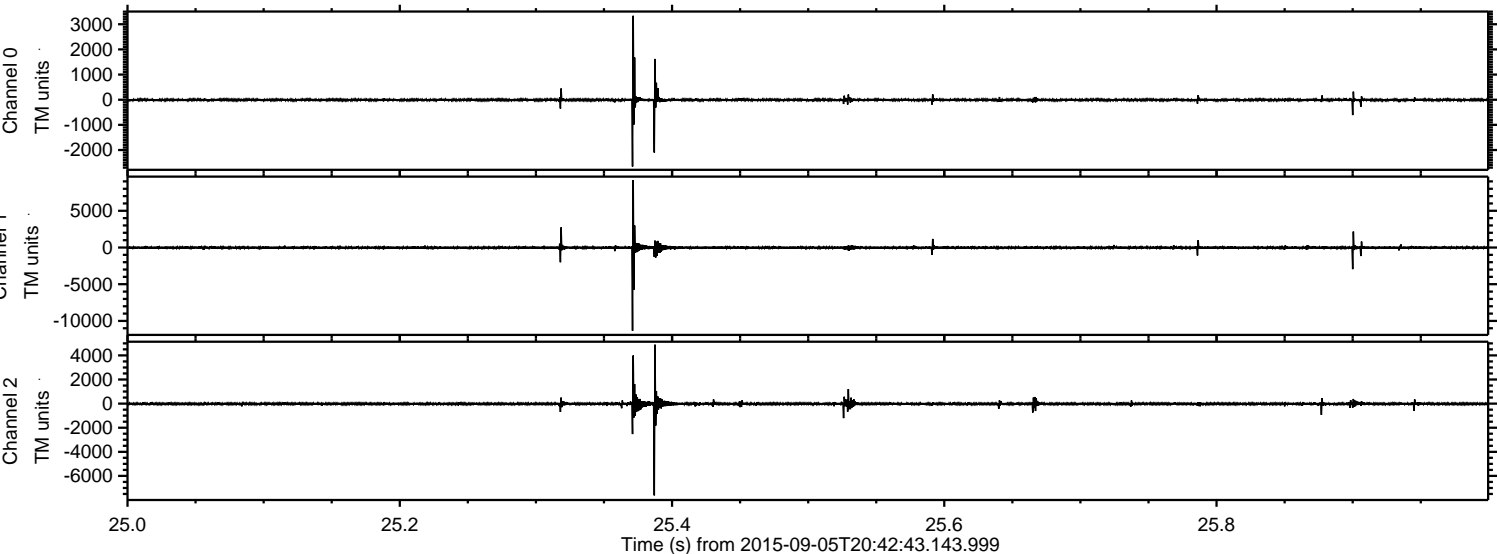
ELMAVAN 3D WAVEFORMS (Measured data sampled at 50 kHz) 51000 packets of 144 samples from 2015-09-05T20:42:43.143.999.

Processed Sat Oct 10 00:59:04 2015 by ELM ver.2012-10-06 from 001__elm20150905_204242__dat00.bin

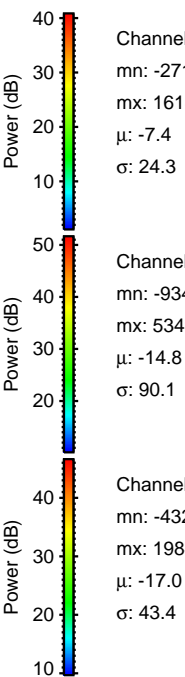
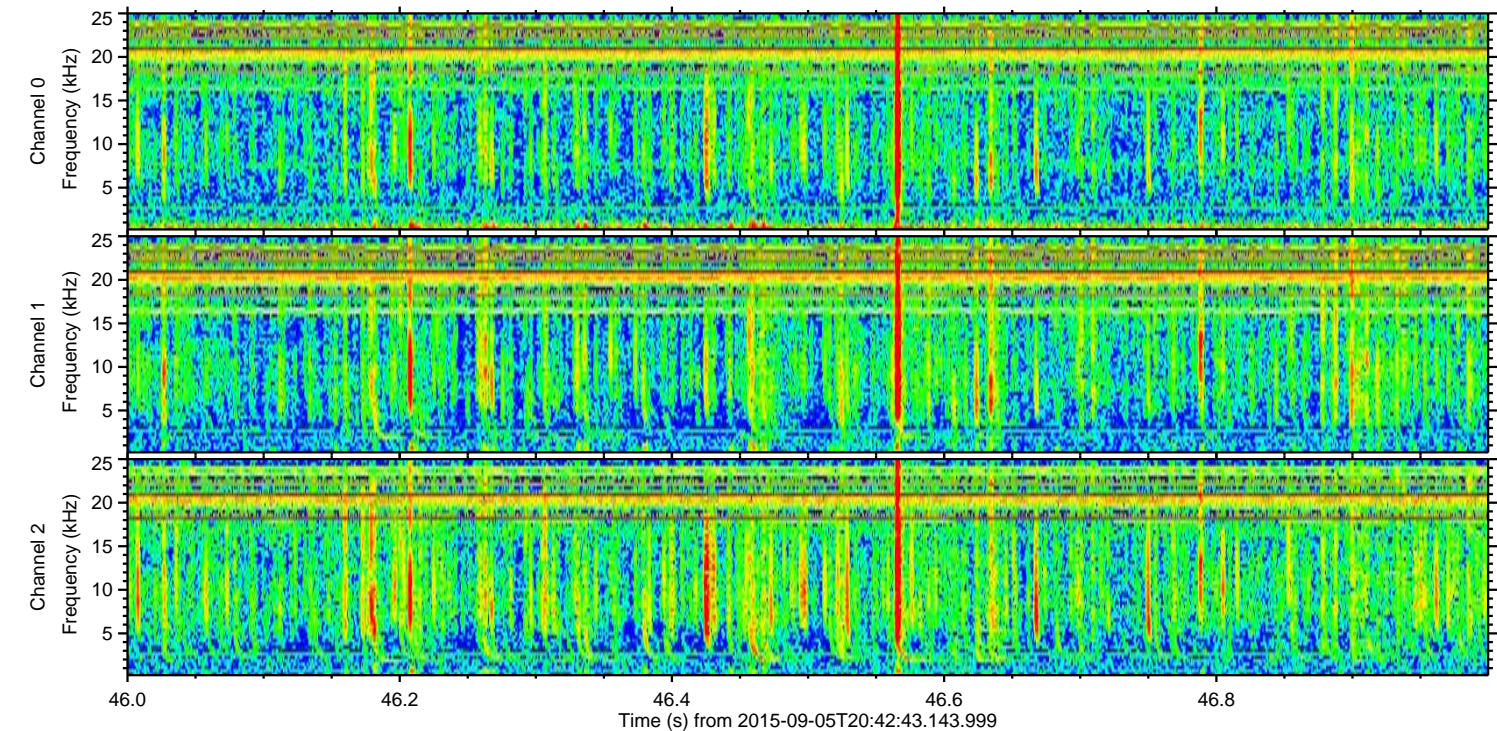
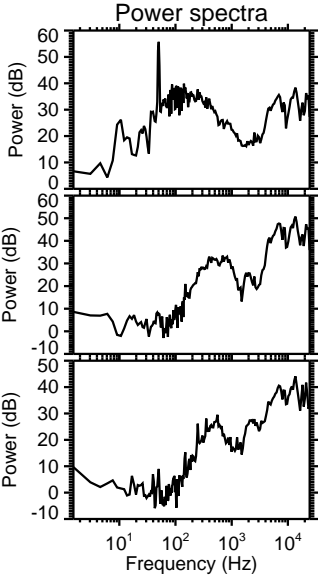
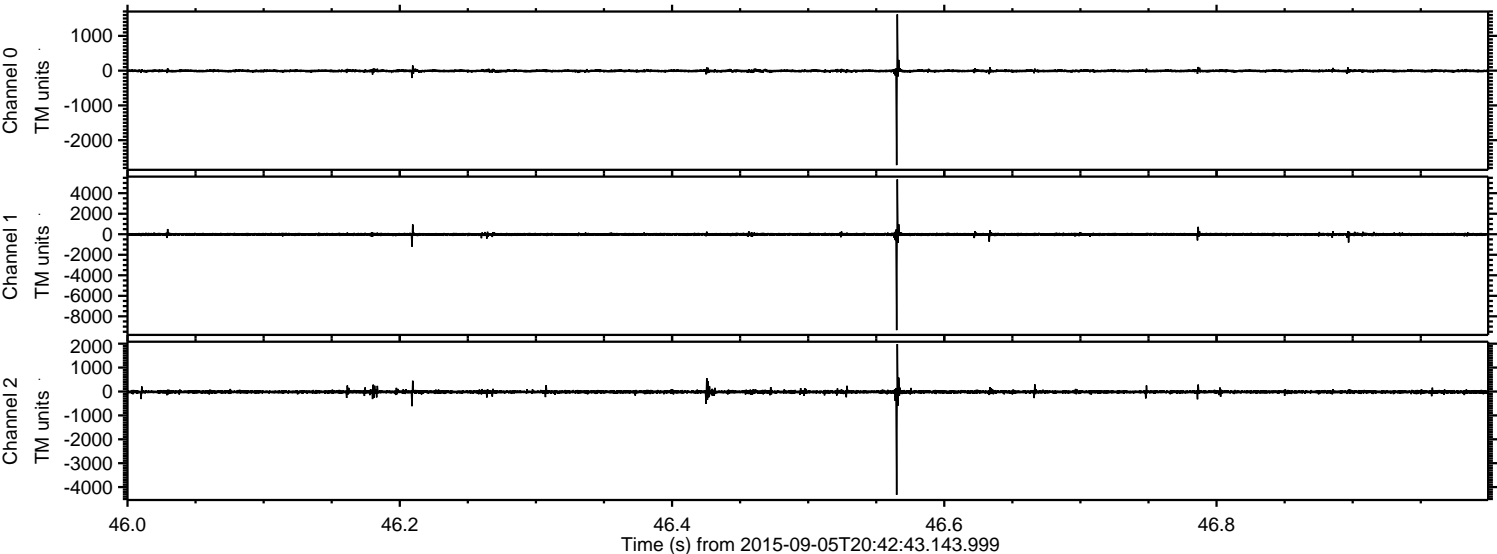


ELMAVAN 3D WAVEFORMS (Measured data sampled at 50 kHz) 51000 packets of 144 samples from 2015-09-05T20:42:43.143.999. Part 26/147

Processed Sat Oct 10 00:59:19 2015 by ELM ver.2012-10-06 from 001__elm20150905_204242__dat00.bin

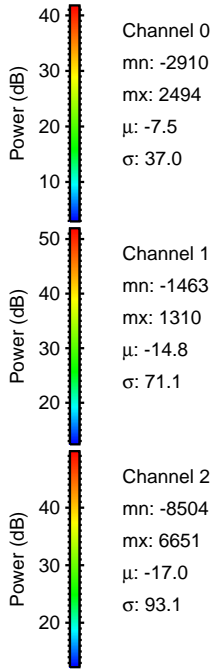
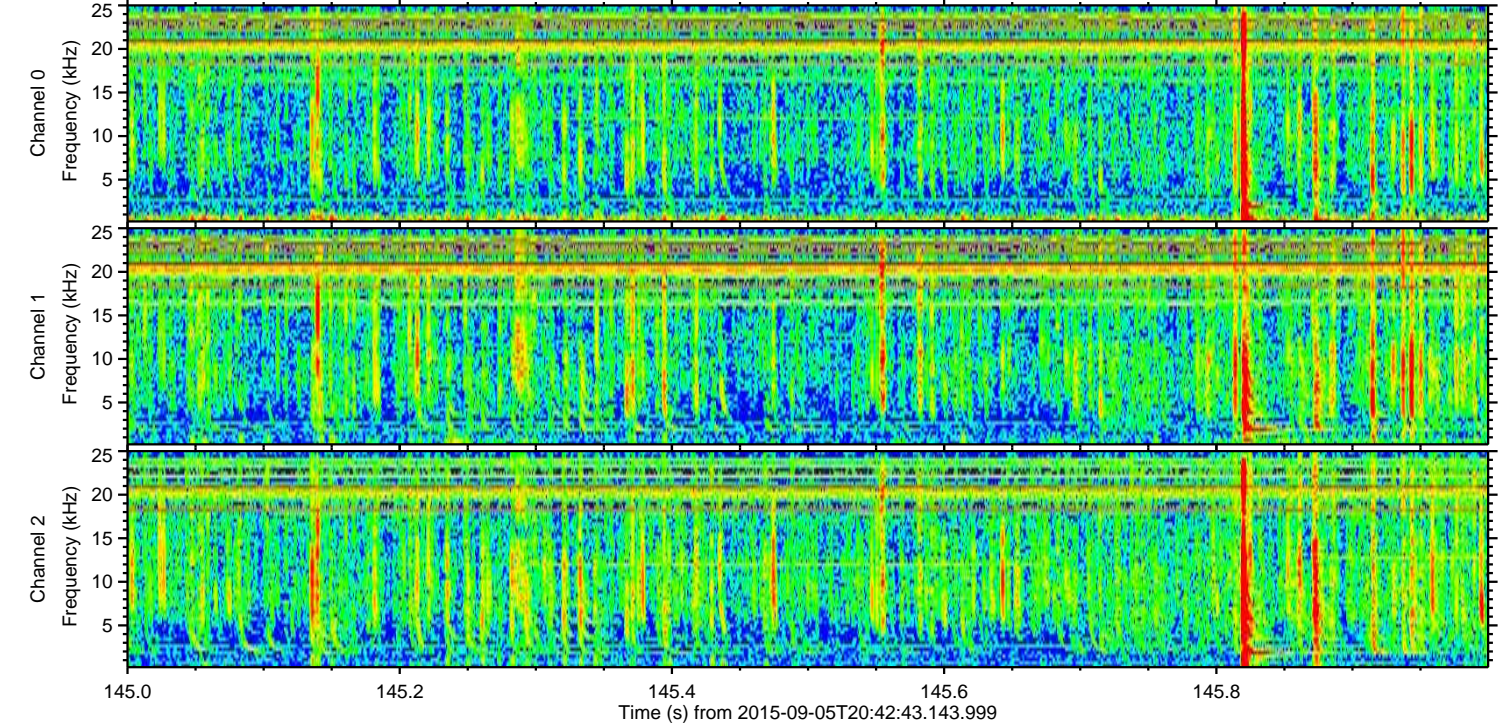
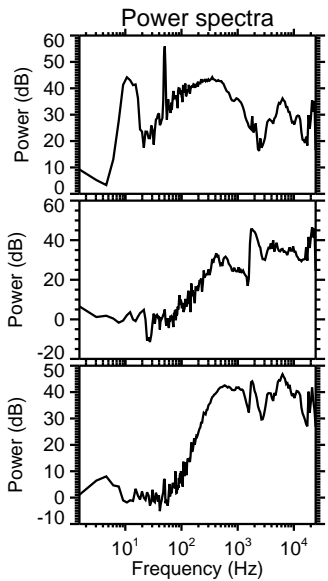
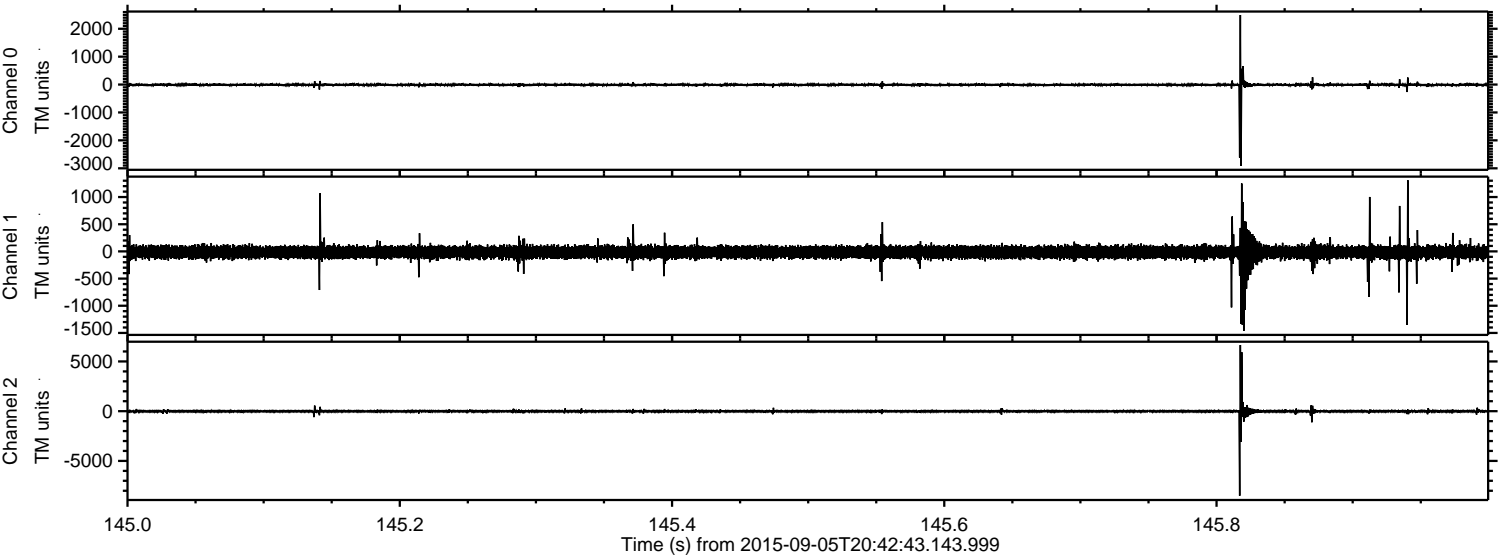


Processed Sat Oct 10 00:59:20 2015 by ELM ver.2012-10-06 from 001__elm20150905_204242__dat00.bin



ELMAVAN 3D WAVEFORMS (Measured data sampled at 50 kHz) 51000 packets of 144 samples from 2015-09-05T20:42:43.143.999. Part 146/147

Processed Sat Oct 10 00:59:21 2015 by ELM ver.2012-10-06 from 001__elm20150905_204242__dat00.bin

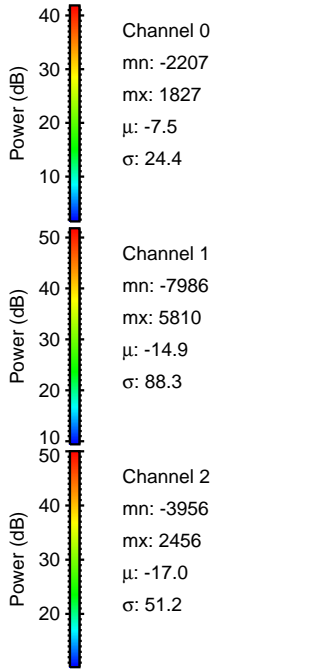
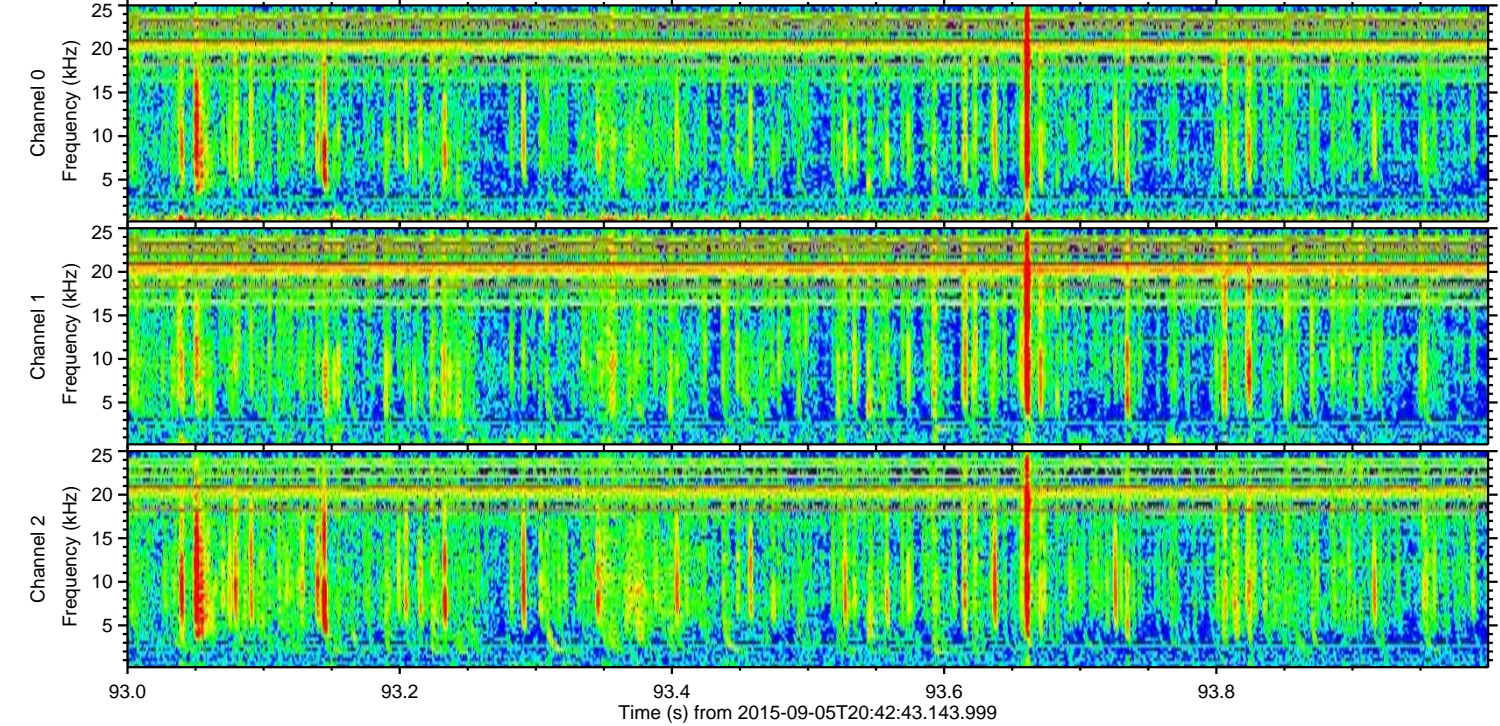
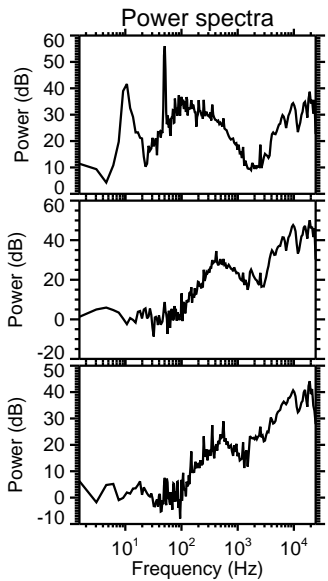
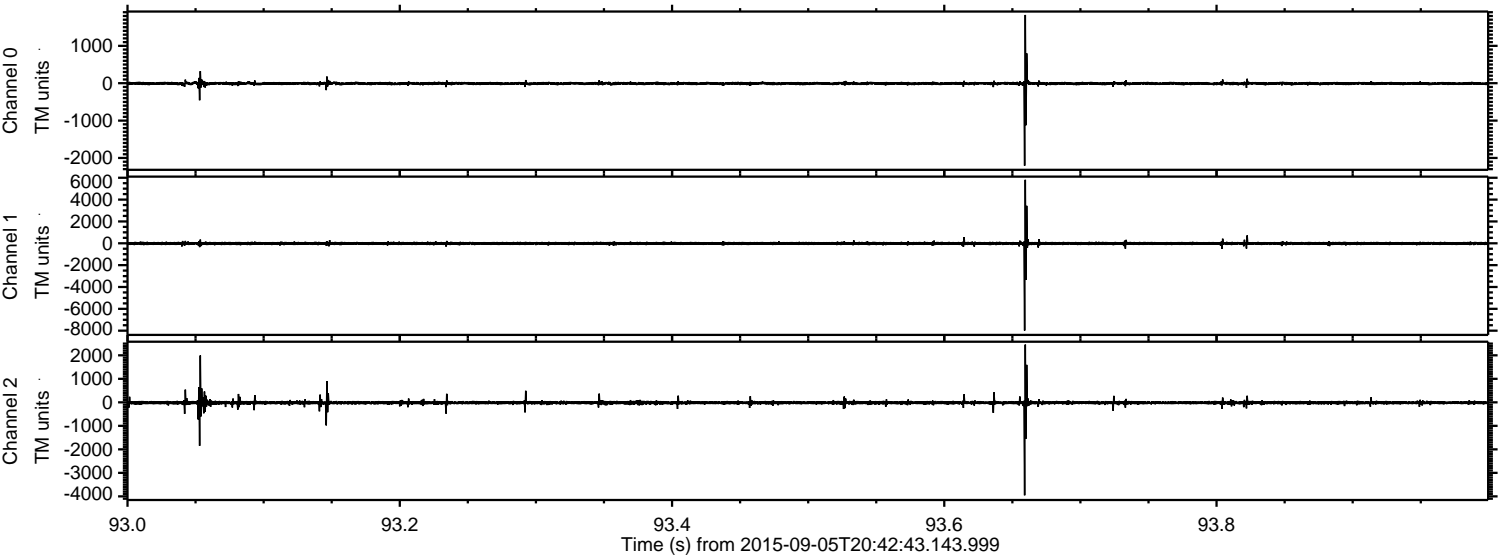


Channel 0
mn: -2910
mx: 2494
 μ : -7.5
 σ : 37.0

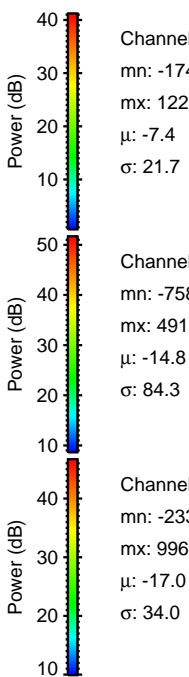
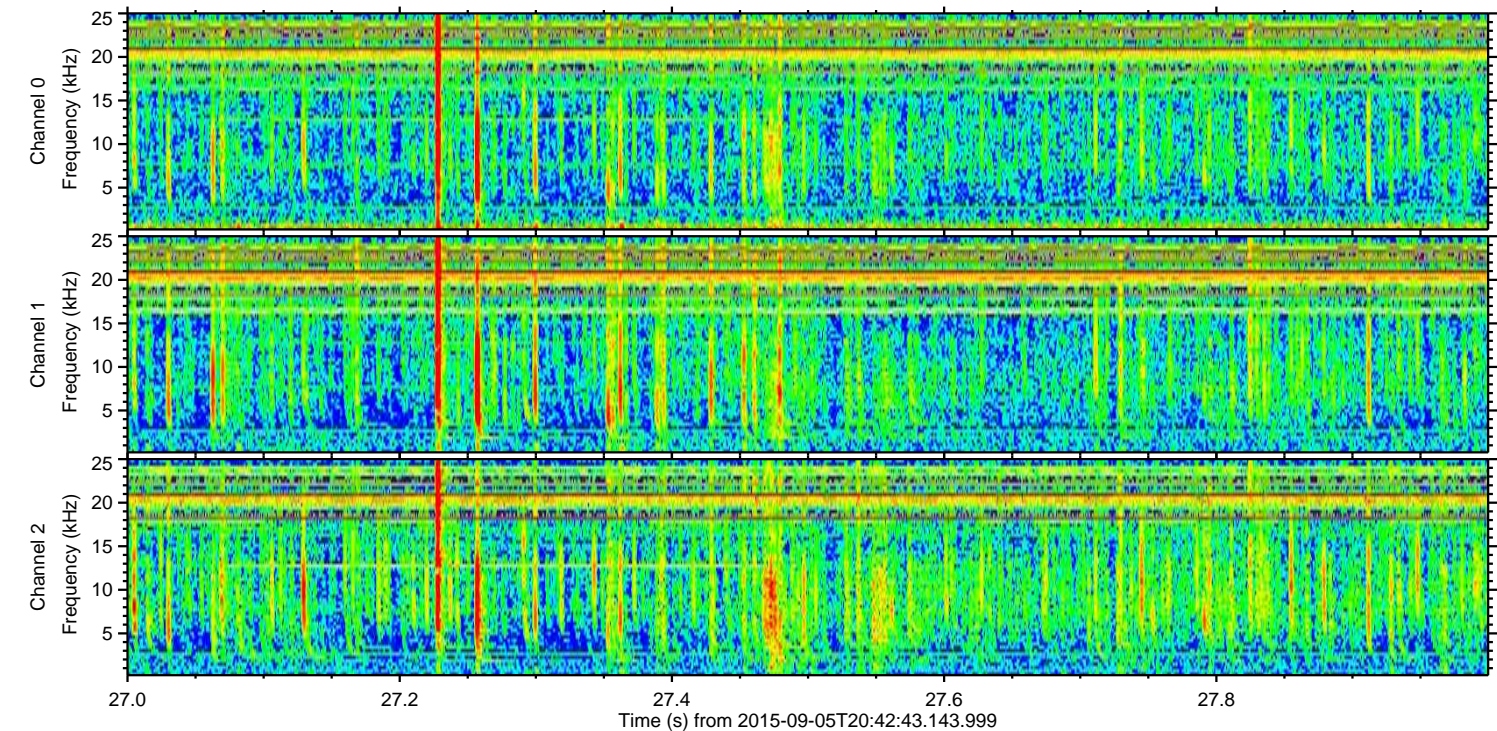
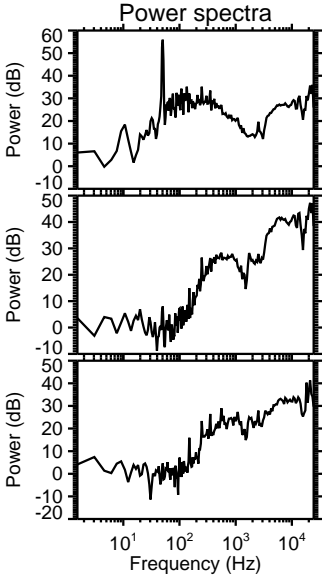
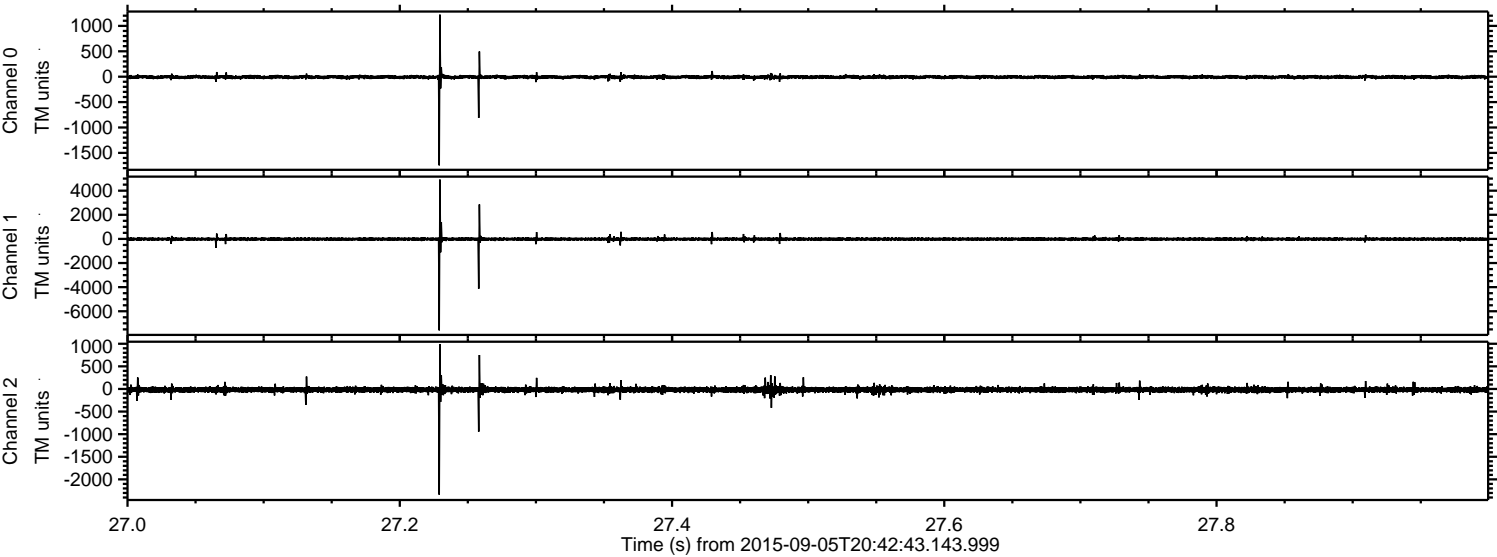
Channel 1
mn: -1463
mx: 1310
 μ : -14.8
 σ : 71.1

Channel 2
mn: -8504
mx: 6651
 μ : -17.0
 σ : 93.1

Processed Sat Oct 10 00:59:22 2015 by ELM ver.2012-10-06 from 001__elm20150905_204242__dat00.bin



Processed Sat Oct 10 00:59:23 2015 by ELM ver.2012-10-06 from 001__elm20150905_204242__dat00.bin

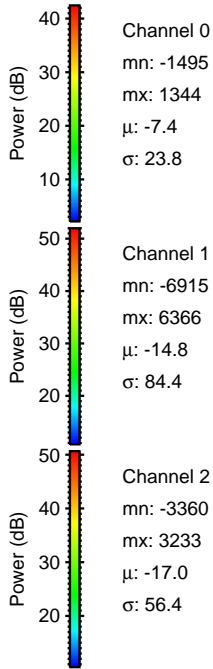
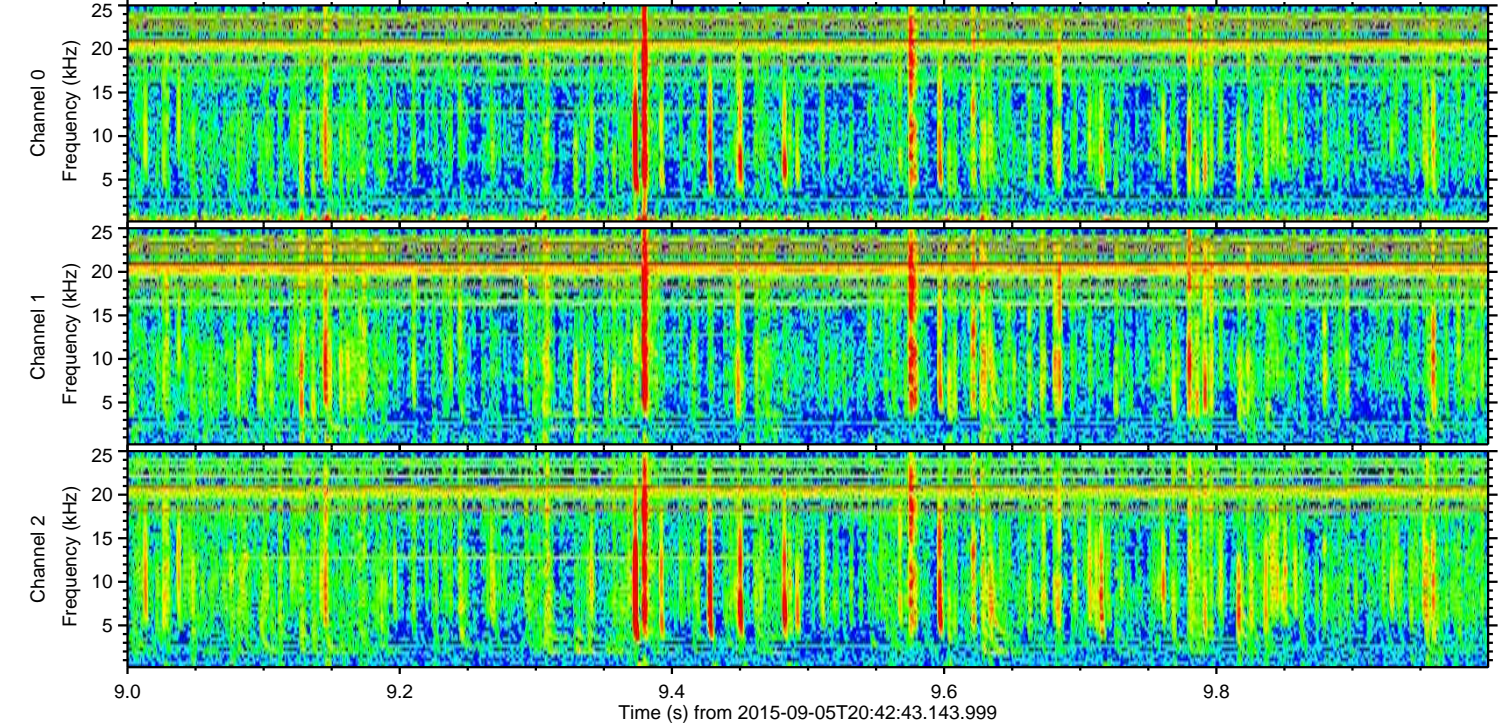
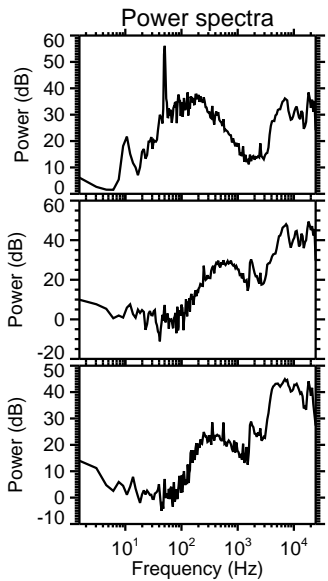
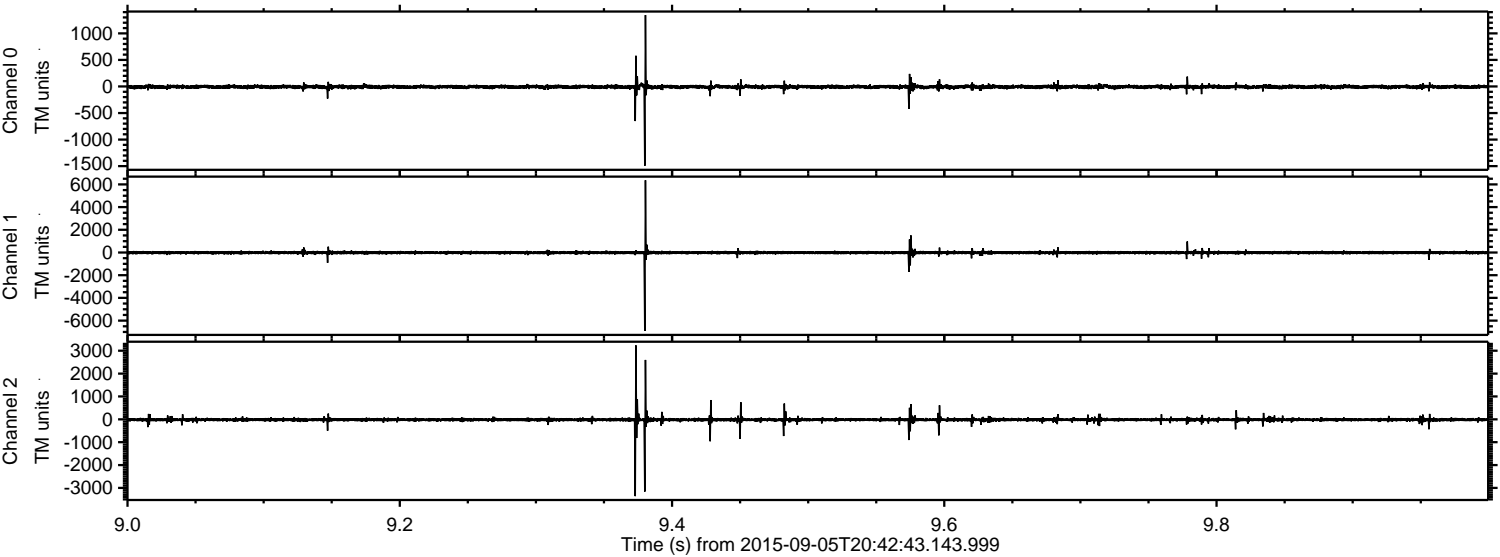


Channel 0
mn: -1746
mx: 1221
 μ : -7.4
 σ : 21.7

Channel 1
mn: -7580
mx: 4917
 μ : -14.8
 σ : 84.3

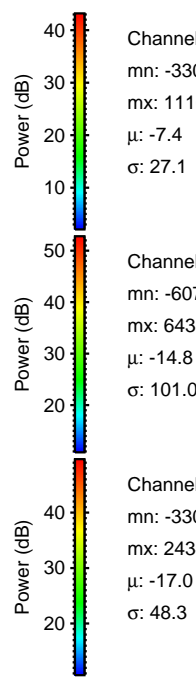
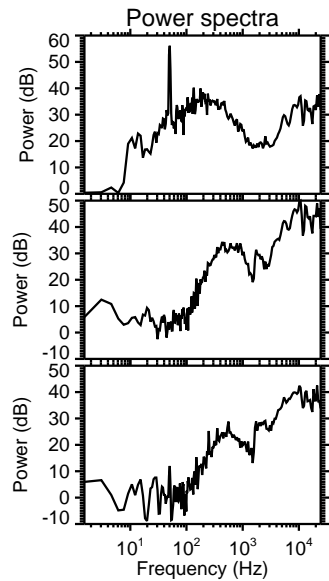
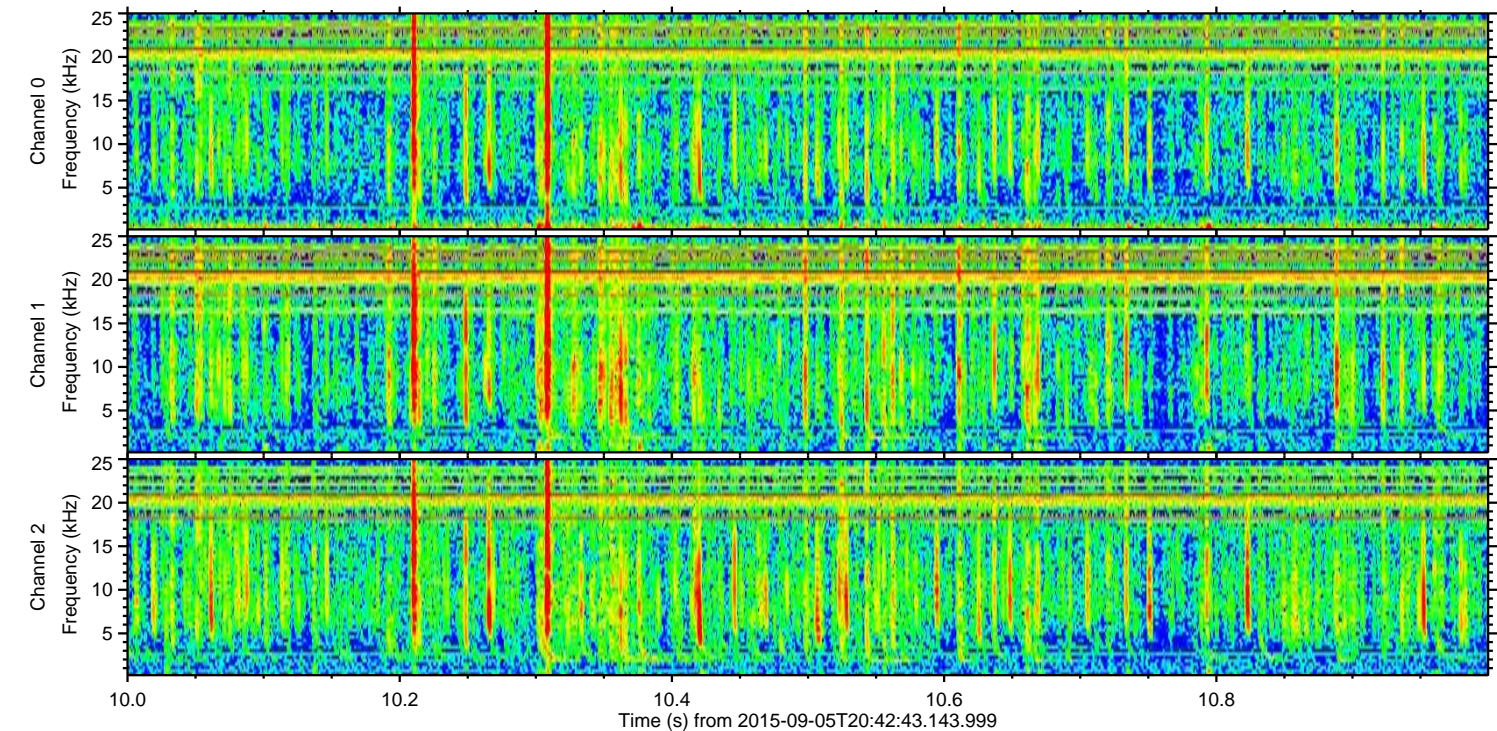
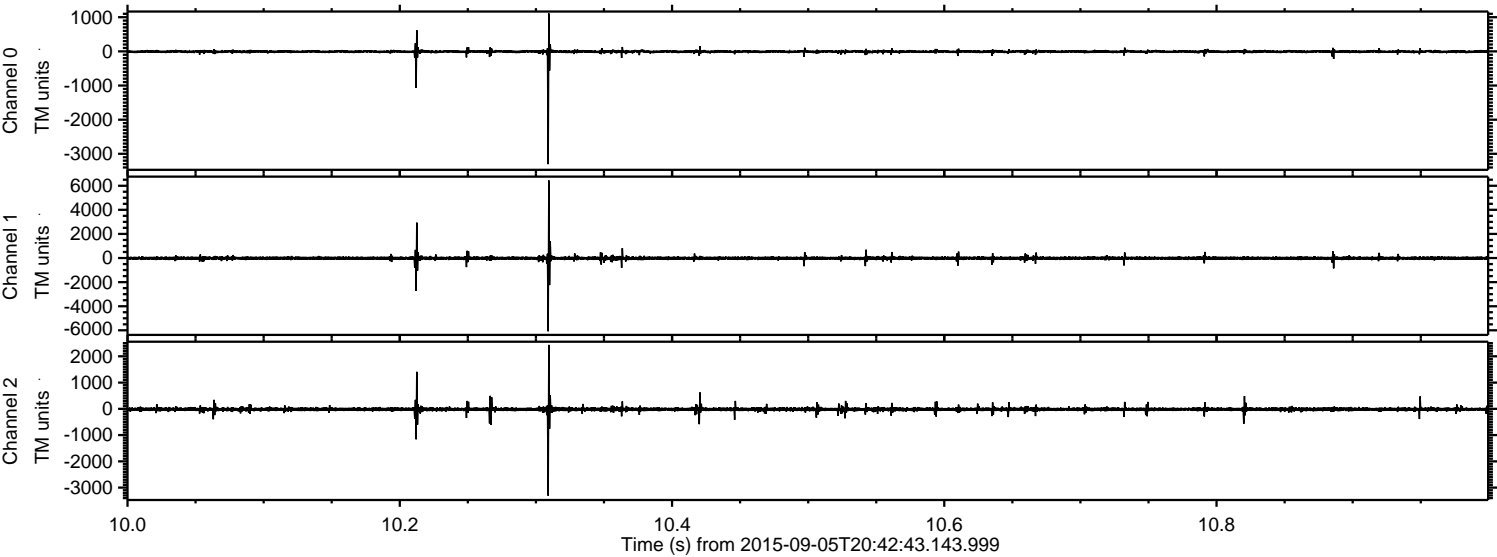
Channel 2
mn: -2339
mx: 996
 μ : -17.0
 σ : 34.0

Processed Sat Oct 10 00:59:24 2015 by ELM ver.2012-10-06 from 001__elm20150905_204242__dat00.bin



ELMAVAN 3D WAVEFORMS (Measured data sampled at 50 kHz) 51000 packets of 144 samples from 2015-09-05T20:42:43.143.999. Part 11/147

Processed Sat Oct 10 00:59:25 2015 by ELM ver.2012-10-06 from 001__elm20150905_204242__dat00.bin



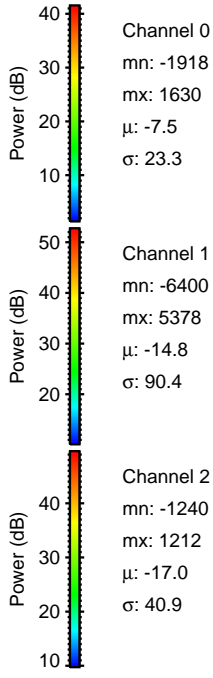
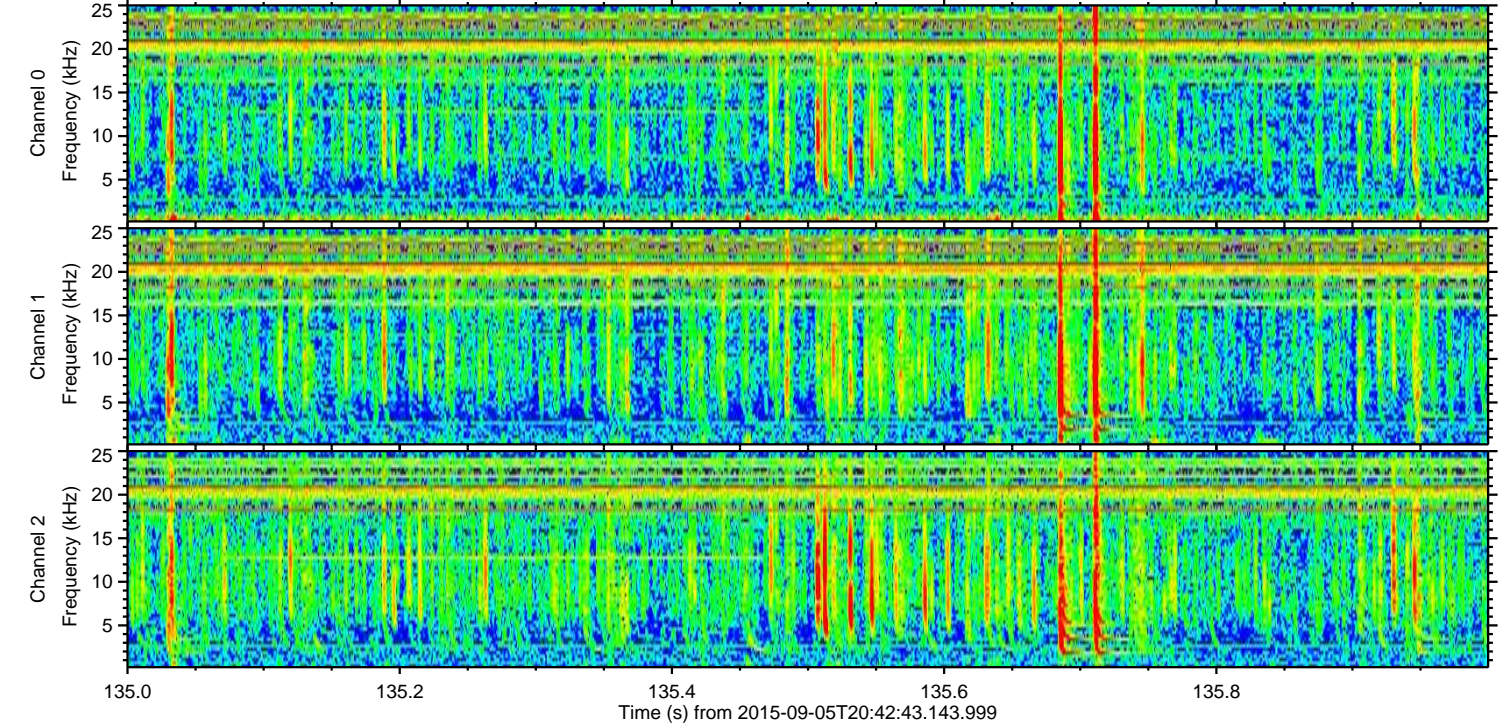
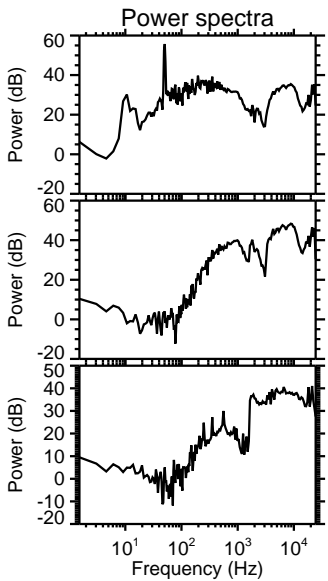
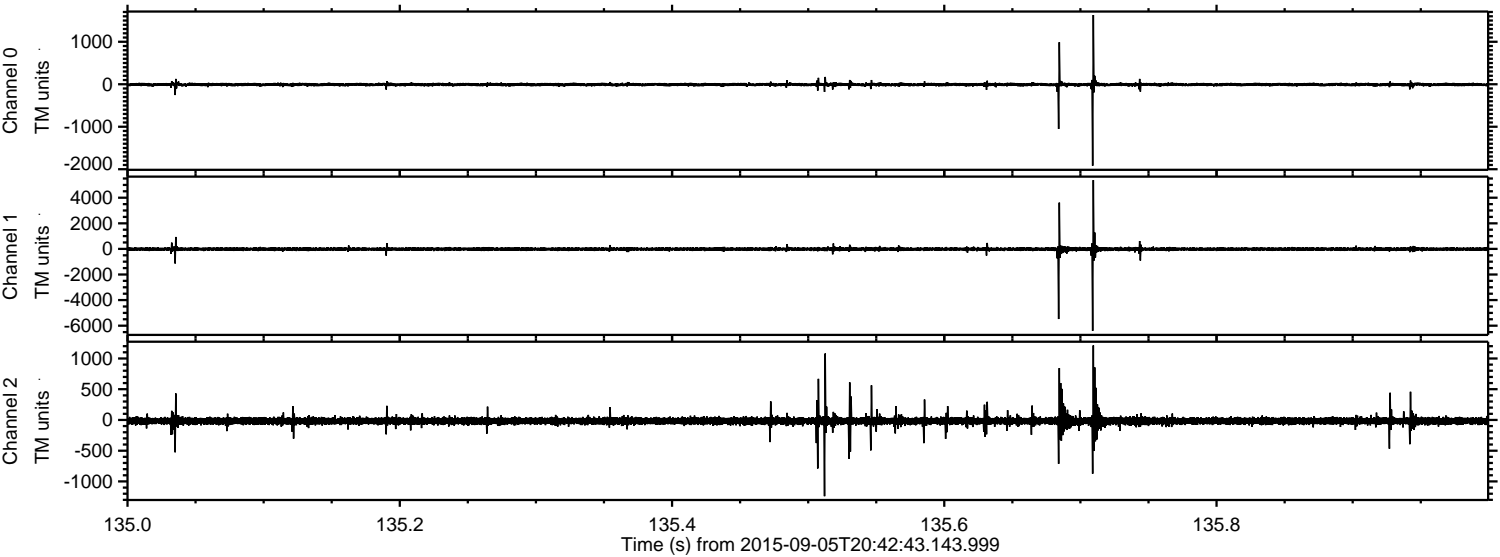
Channel 0
mn: -3303
mx: 1110
 μ : -7.4
 σ : 27.1

Channel 1
mn: -6077
mx: 6435
 μ : -14.8
 σ : 101.0

Channel 2
mn: -3306
mx: 2434
 μ : -17.0
 σ : 48.3

ELMAVAN 3D WAVEFORMS (Measured data sampled at 50 kHz) 51000 packets of 144 samples from 2015-09-05T20:42:43.143.999. Part 136/147

Processed Sat Oct 10 00:59:26 2015 by ELM ver.2012-10-06 from 001__elm20150905_204242__dat00.bin

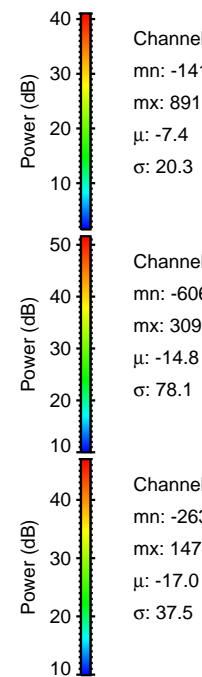
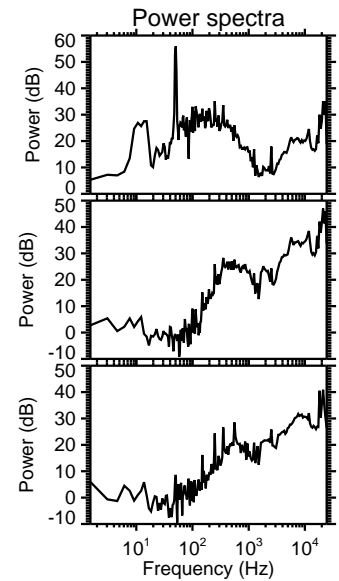
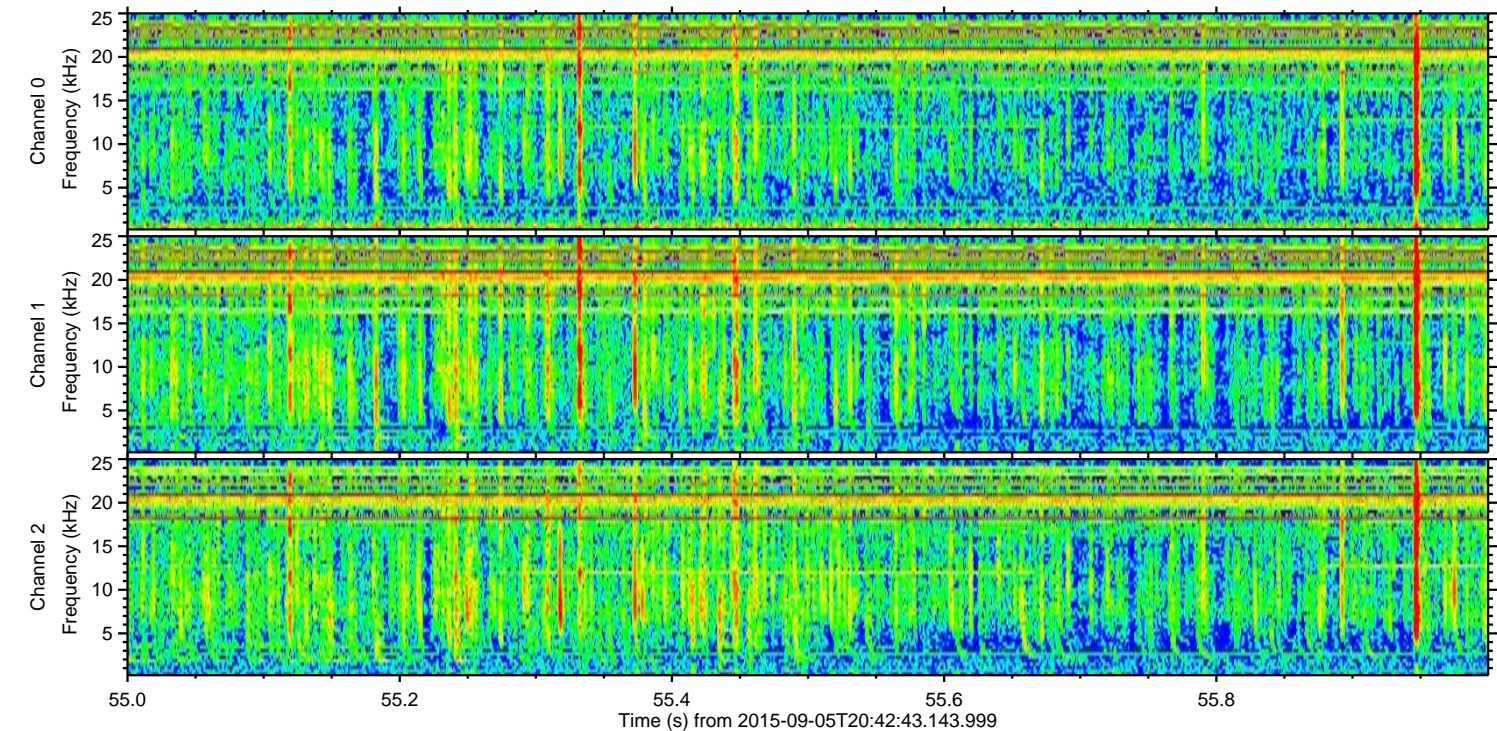
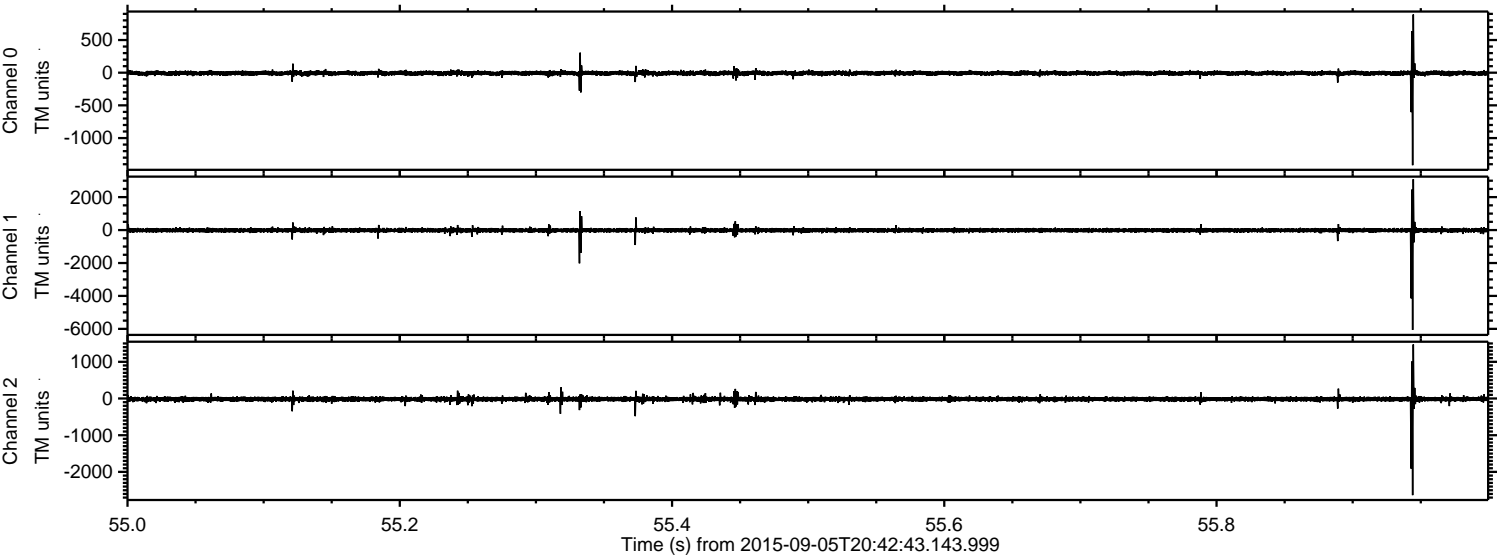


Channel 0
mn: -1918
mx: 1630
 μ : -7.5
 σ : 23.3

Channel 1
mn: -6400
mx: 5378
 μ : -14.8
 σ : 90.4

Channel 2
mn: -1240
mx: 1212
 μ : -17.0
 σ : 40.9

Processed Sat Oct 10 00:59:28 2015 by ELM ver.2012-10-06 from 001__elm20150905_204242__dat00.bin



ELMAVAN 3D WAVEFORMS (Measured data sampled at 50 kHz) 51000 packets of 144 samples from 2015-09-05T20:42:43.143.999. Part 3/147

Processed Sat Oct 10 00:59:29 2015 by ELM ver.2012-10-06 from 001__elm20150905_204242__dat00.bin

