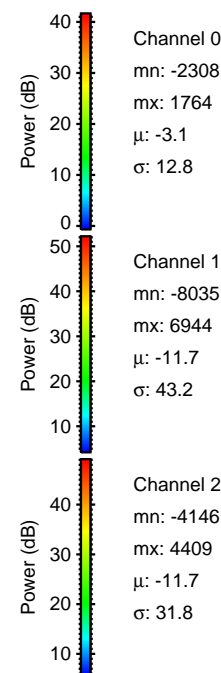
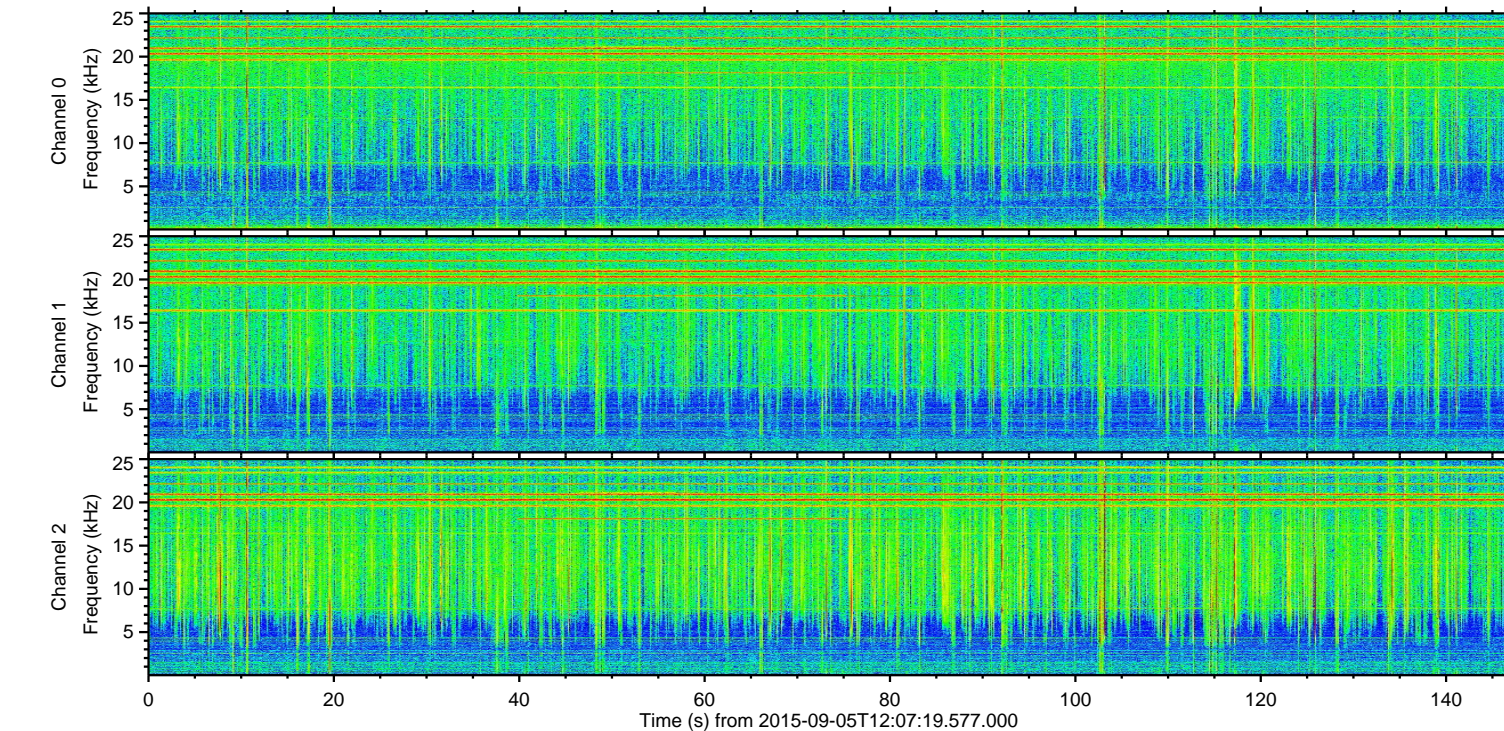
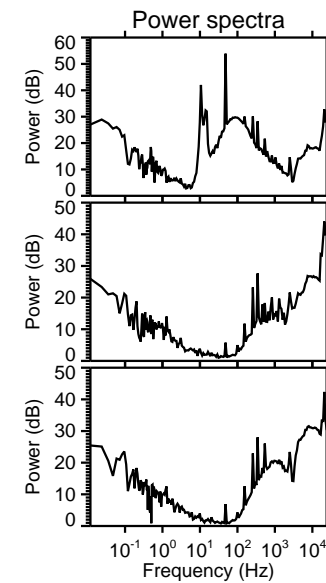
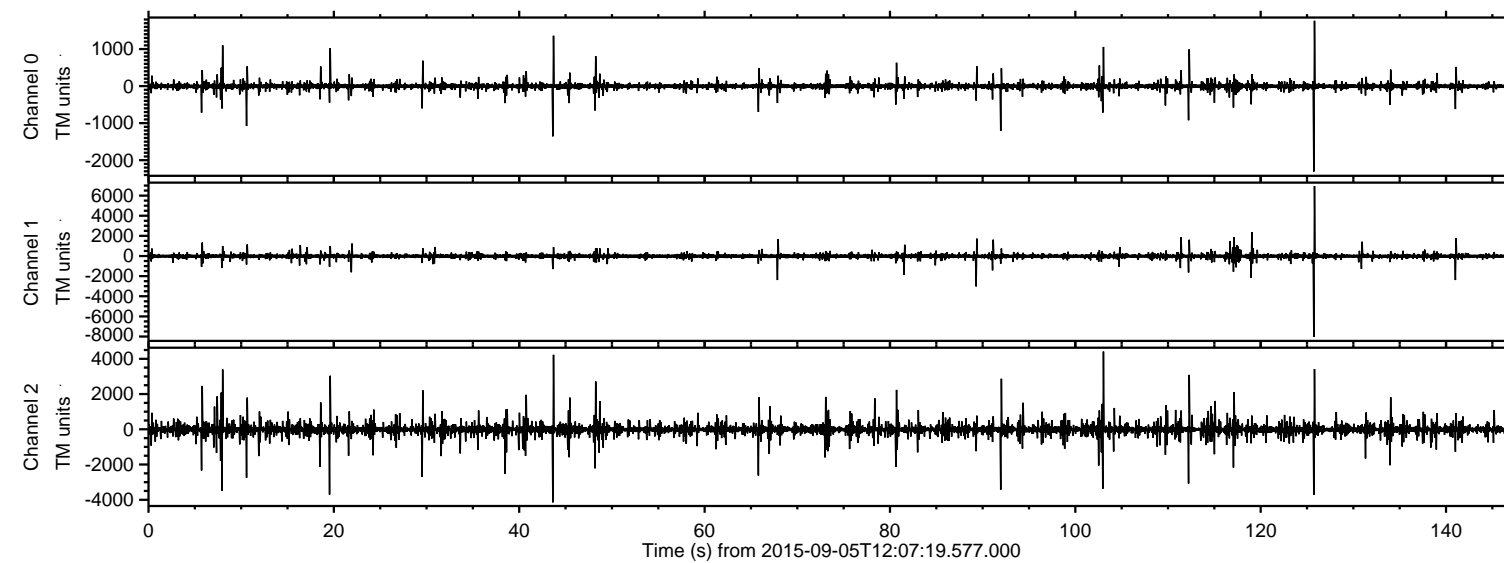


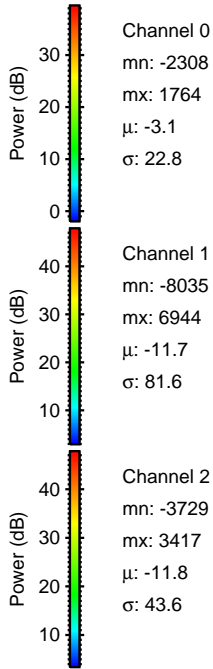
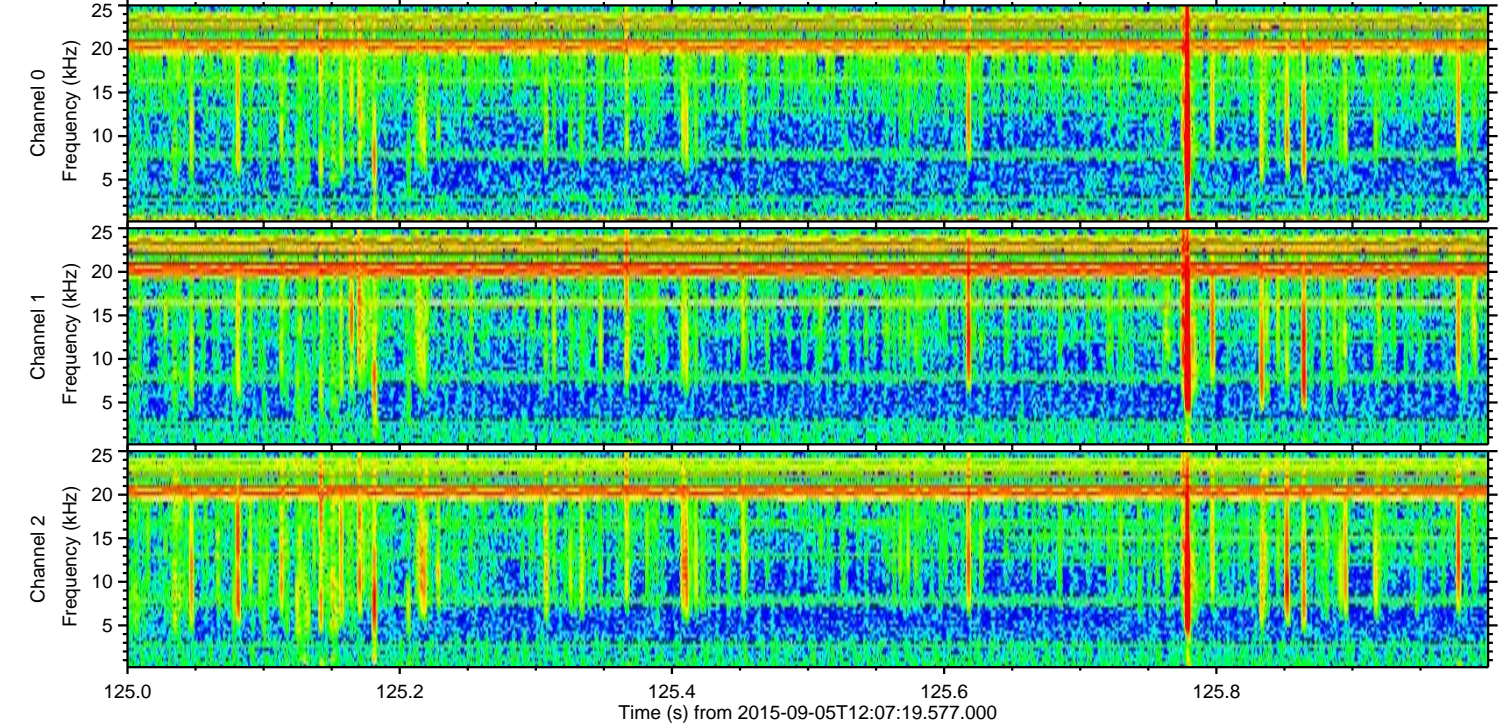
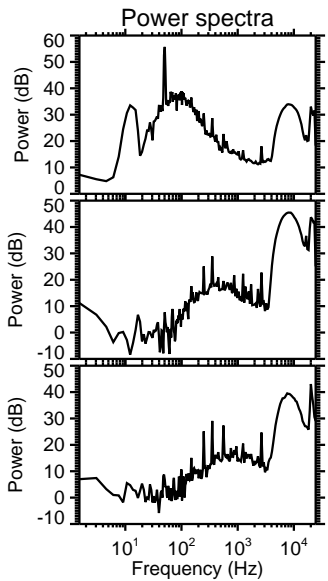
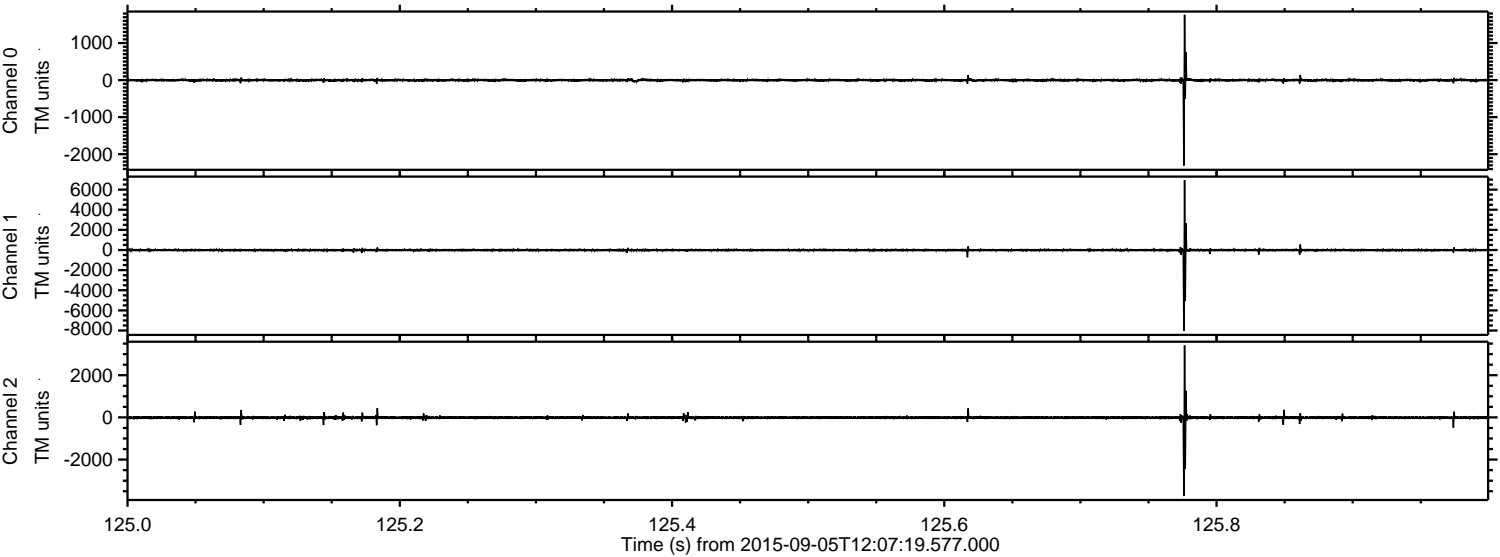
ELMAVAN 3D WAVEFORMS (Measured data sampled at 50 kHz) 51000 packets of 144 samples from 2015-09-05T12:07:19.577.000.

Processed Fri Oct 9 22:32:09 2015 by ELM ver.2012-10-06 from 001__elm20150905_120718__dat00.bin



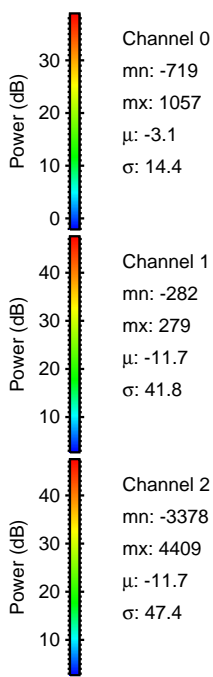
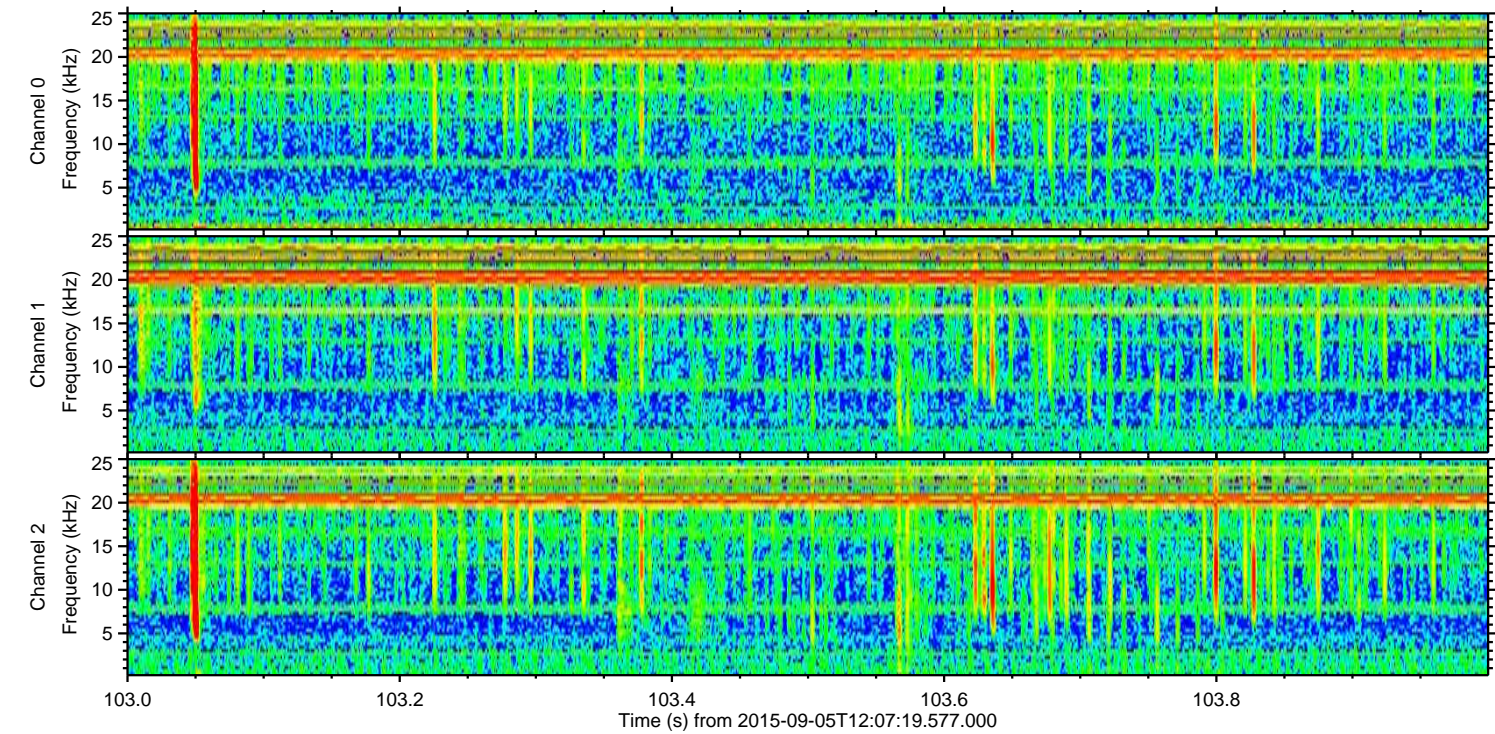
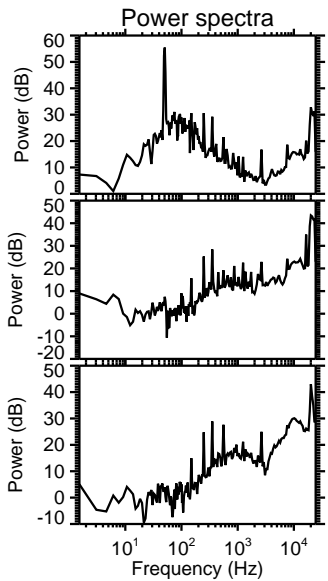
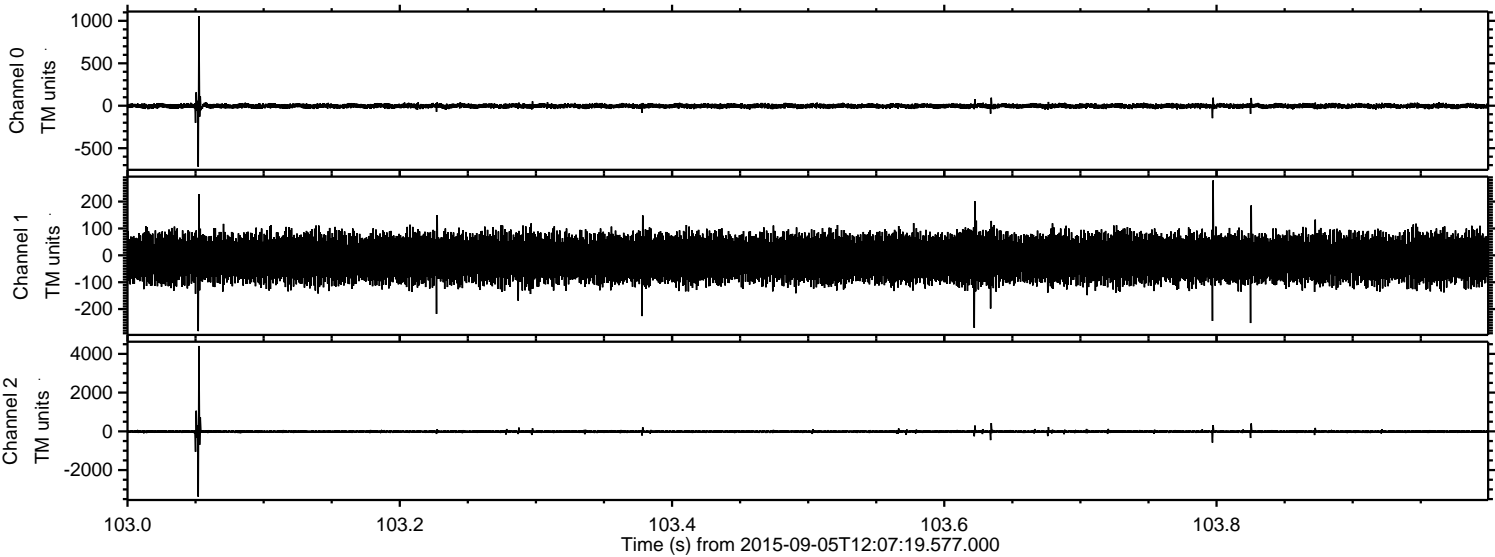
ELMAVAN 3D WAVEFORMS (Measured data sampled at 50 kHz) 51000 packets of 144 samples from 2015-09-05T12:07:19.577.000. Part 126/147

Processed Fri Oct 9 22:32:26 2015 by ELM ver.2012-10-06 from 001__elm20150905_120718__dat00.bin



ELMAVAN 3D WAVEFORMS (Measured data sampled at 50 kHz) 51000 packets of 144 samples from 2015-09-05T12:07:19.577.000. Part 104/147

Processed Fri Oct 9 22:32:27 2015 by ELM ver.2012-10-06 from 001__elm20150905_120718__dat00.bin

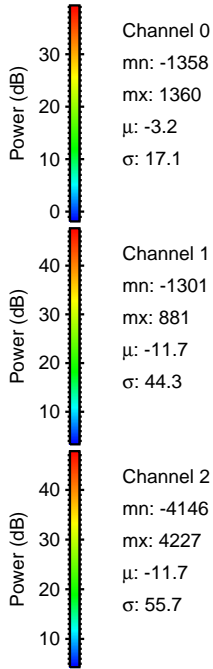
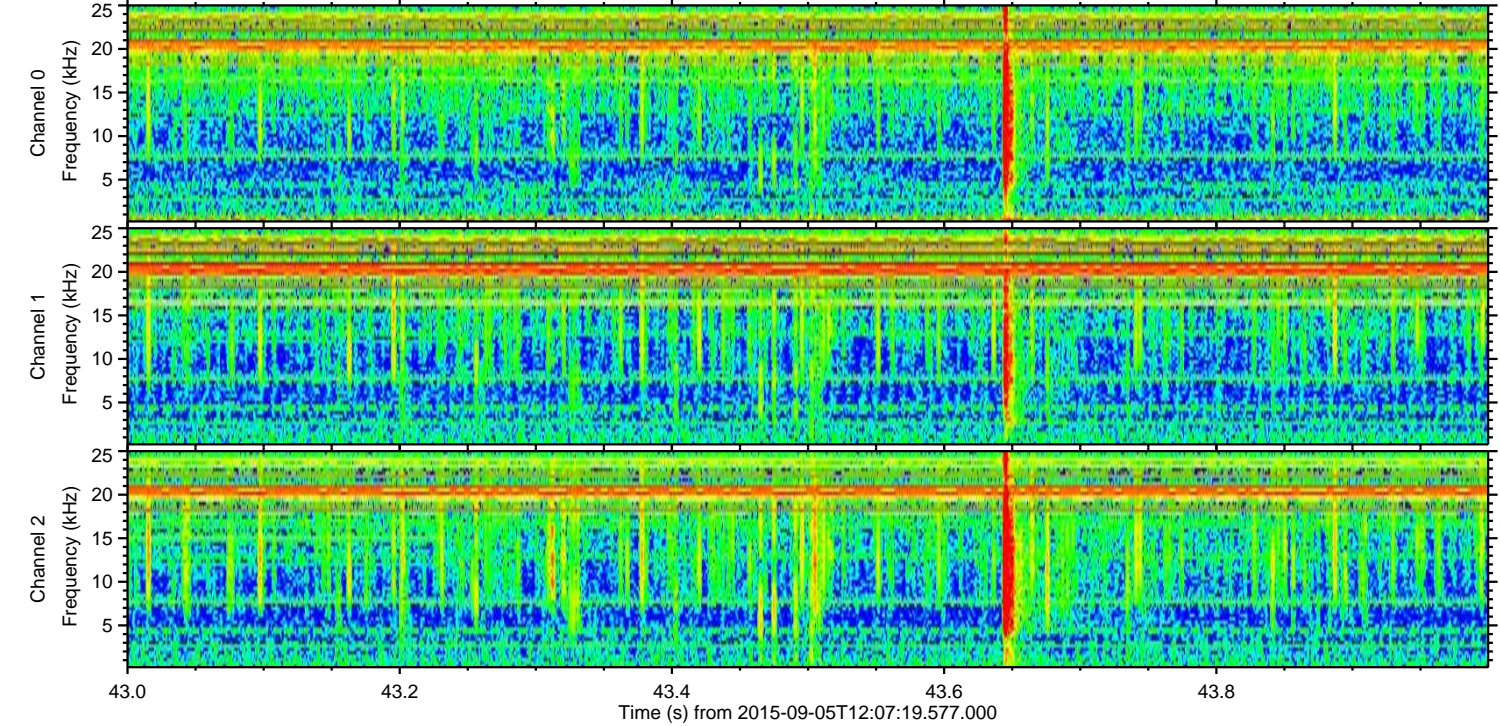
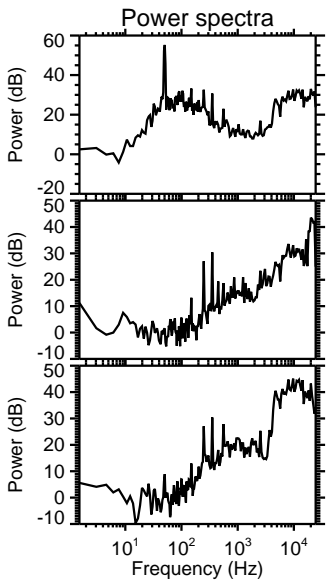
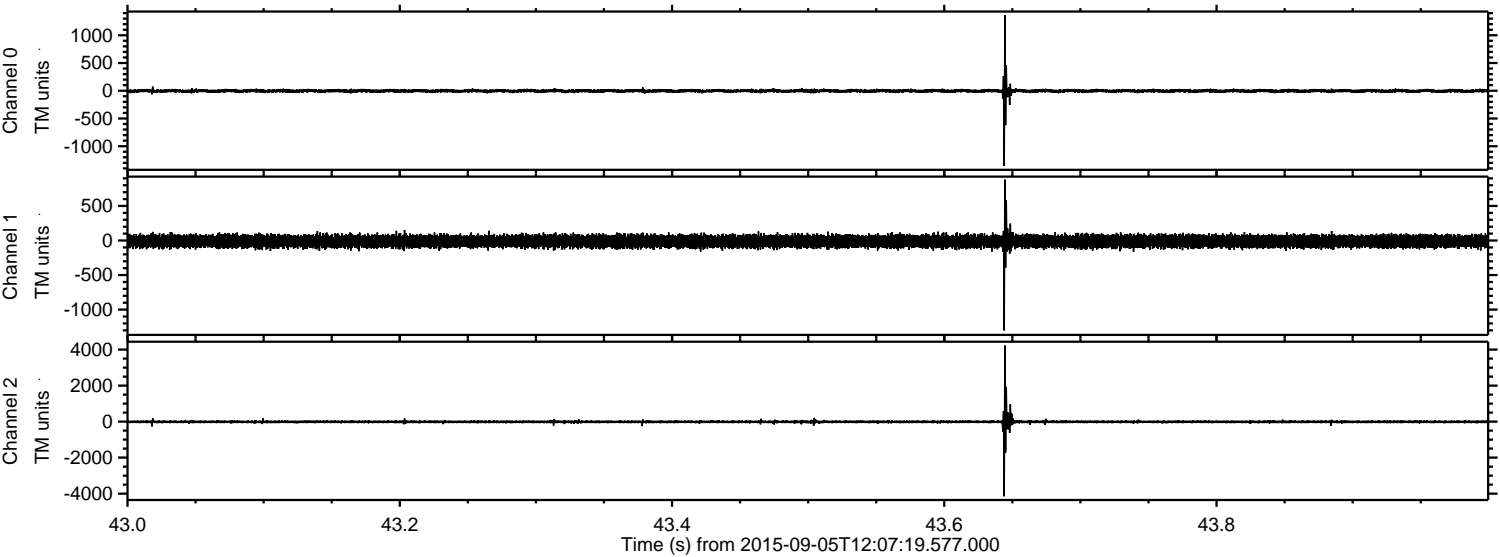


Channel 0
mn: -719
mx: 1057
 μ : -3.1
 σ : 14.4

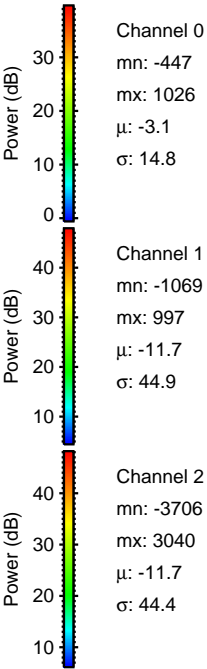
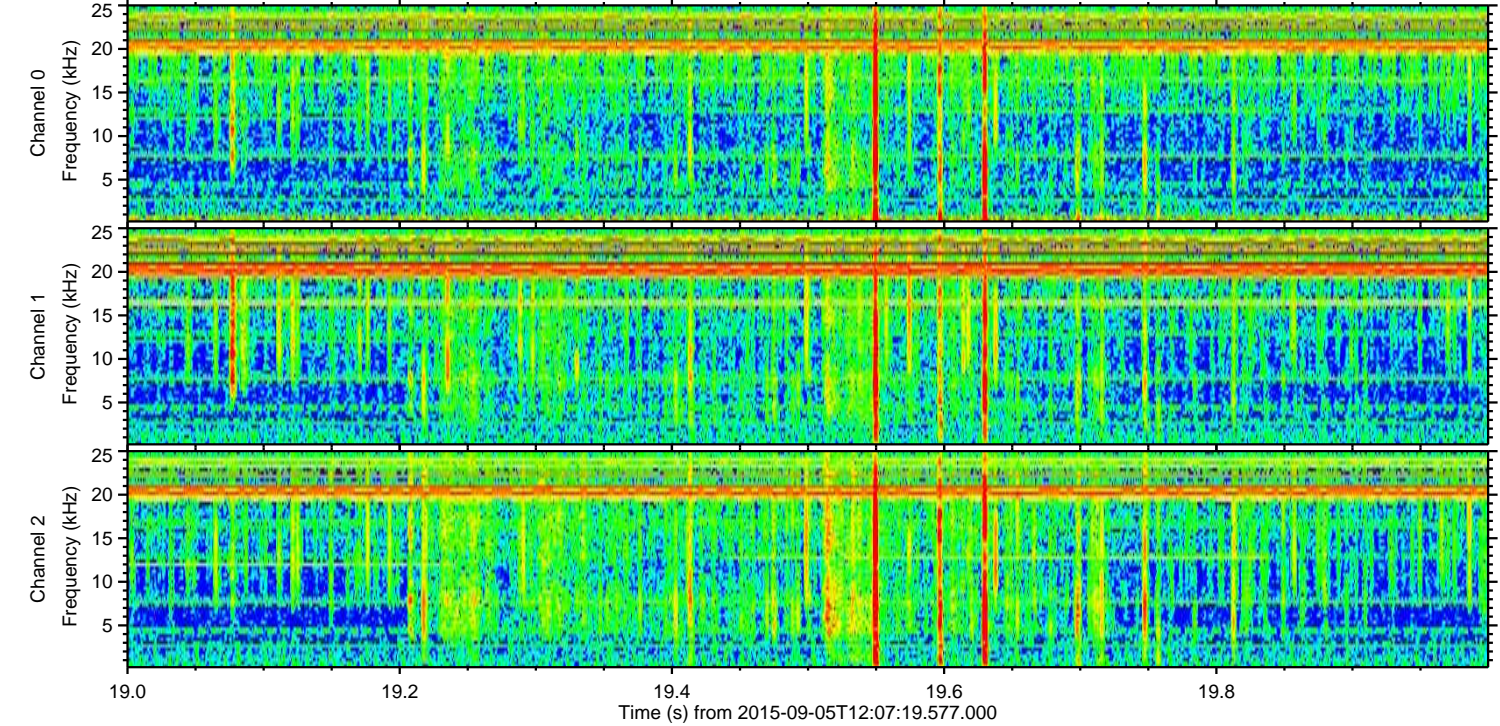
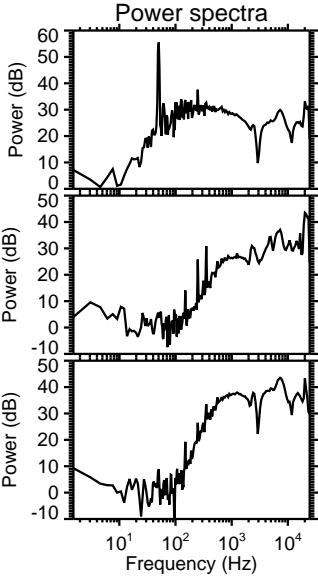
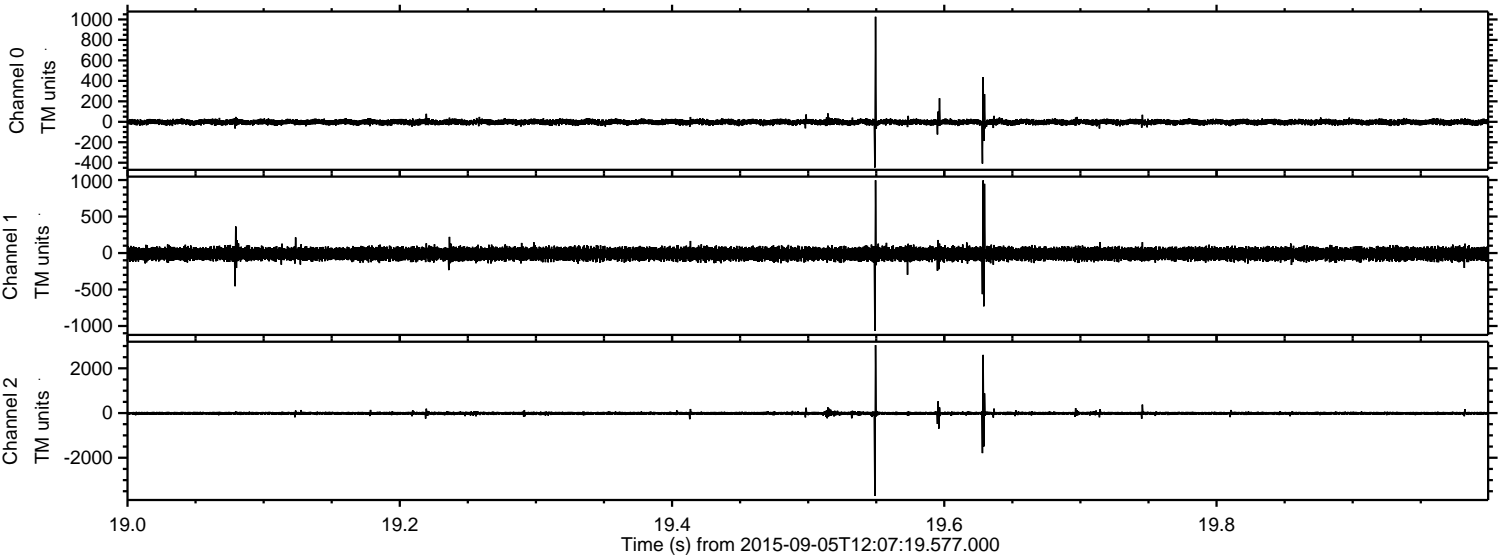
Channel 1
mn: -282
mx: 279
 μ : -11.7
 σ : 41.8

Channel 2
mn: -3378
mx: 4409
 μ : -11.7
 σ : 47.4

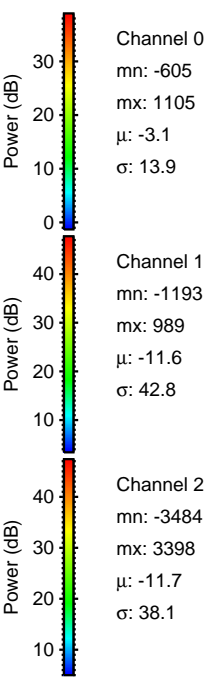
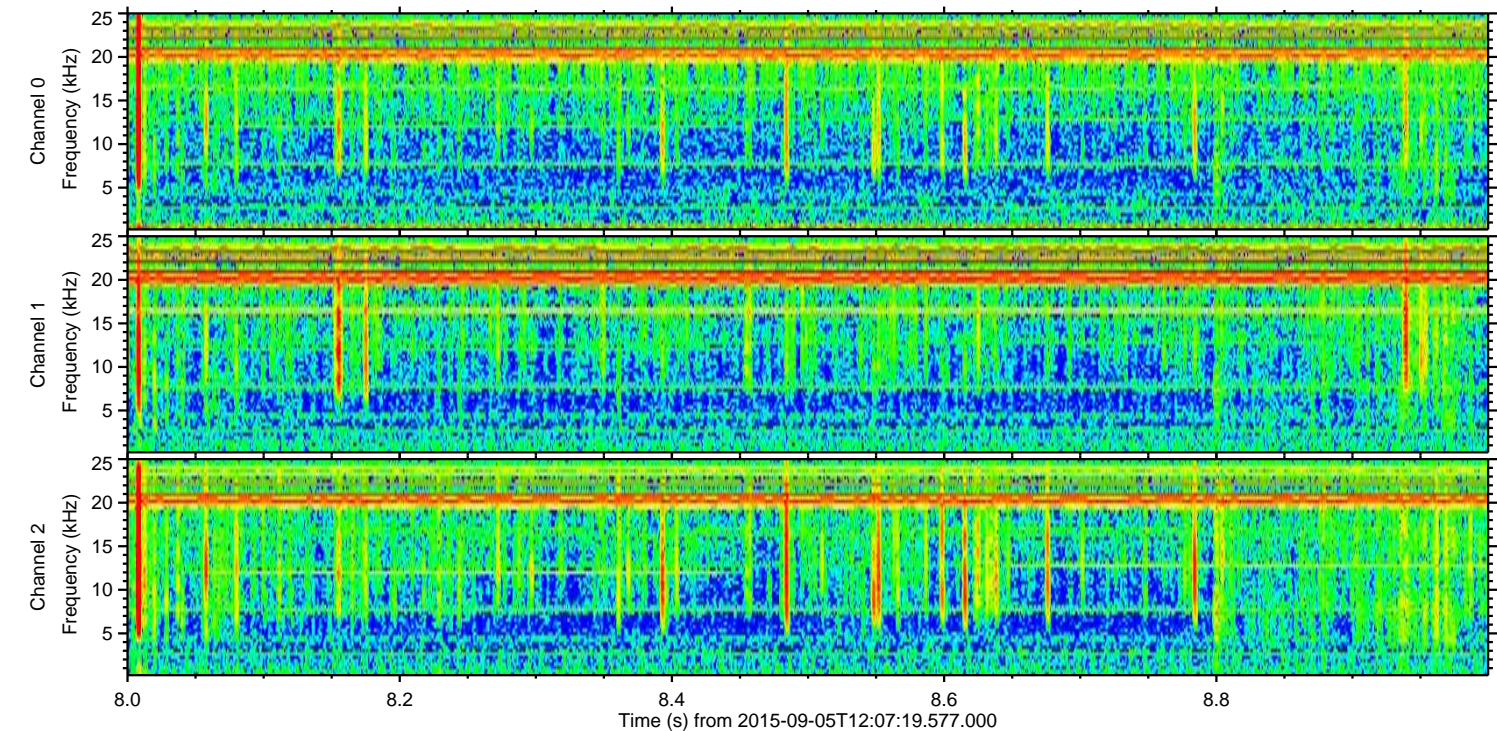
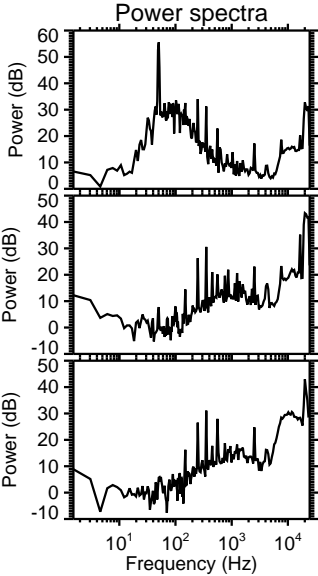
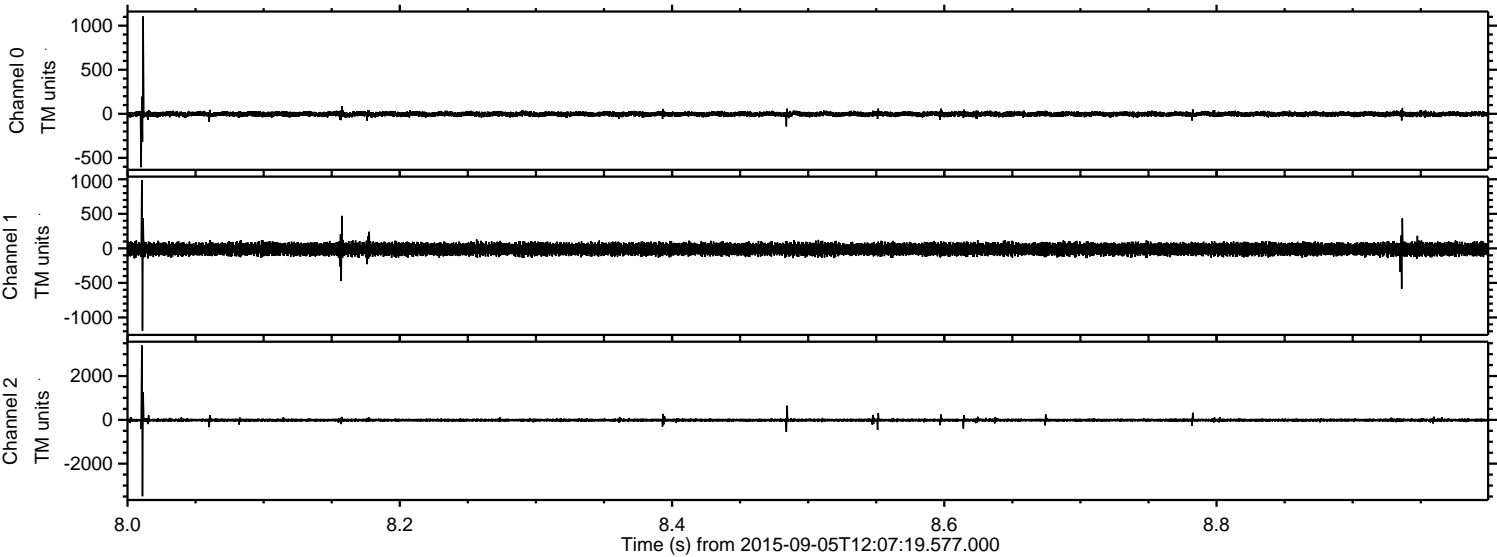
Processed Fri Oct 9 22:32:28 2015 by ELM ver.2012-10-06 from 001__elm20150905_120718__dat00.bin



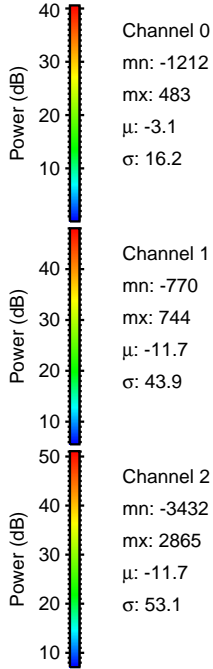
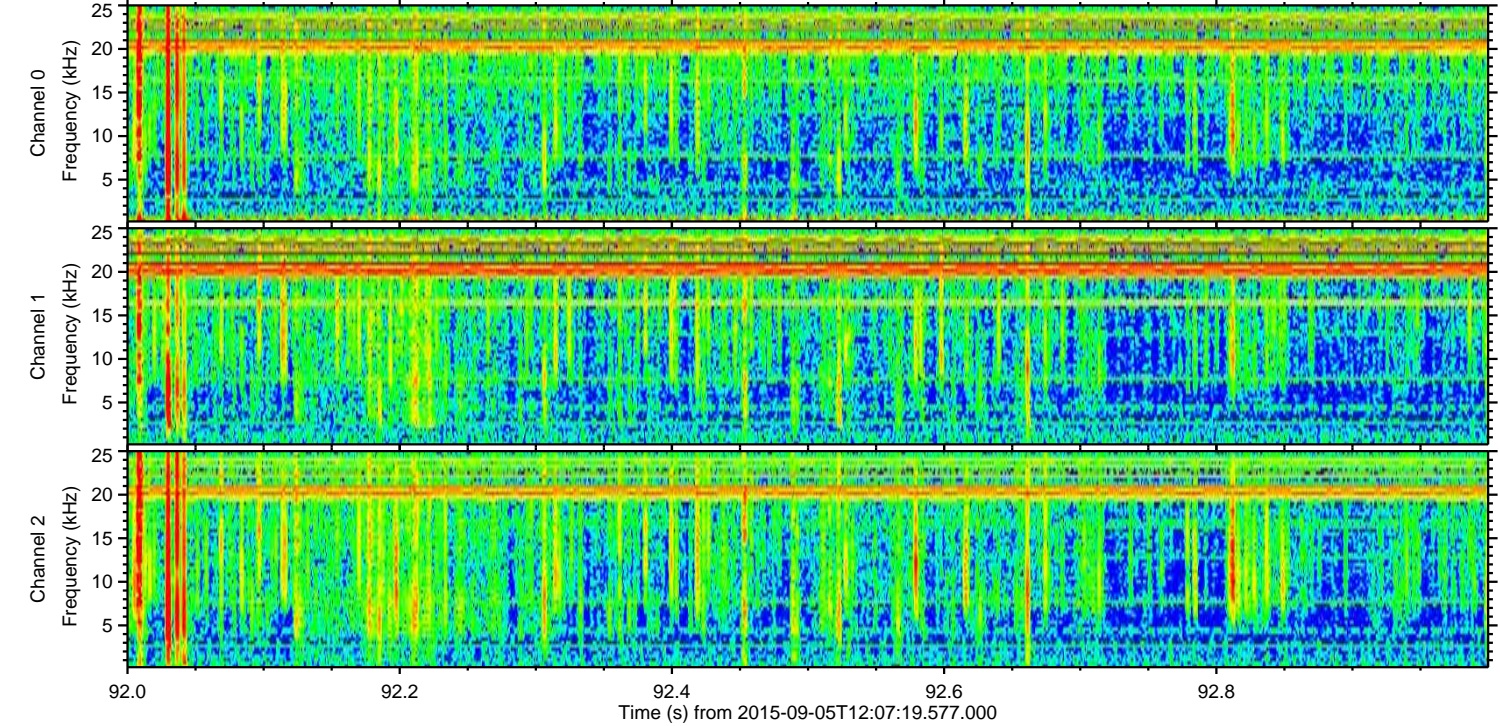
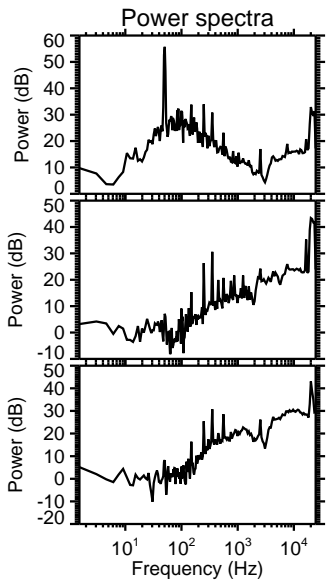
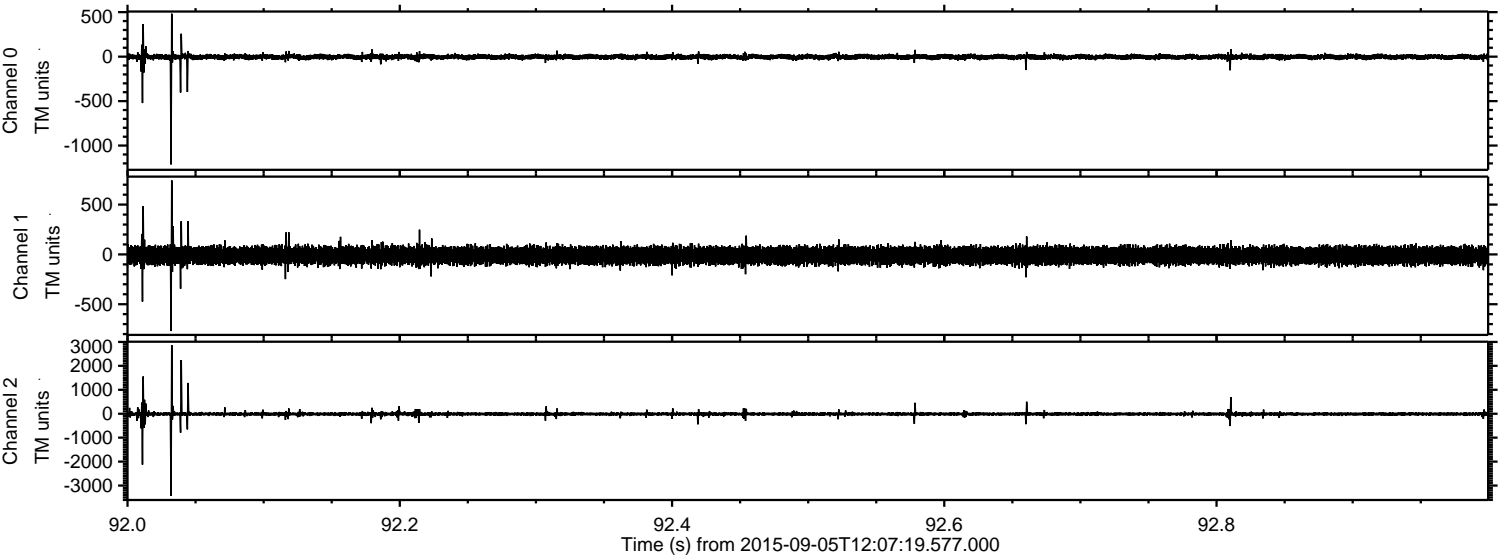
Processed Fri Oct 9 22:32:29 2015 by ELM ver.2012-10-06 from 001__elm20150905_120718__dat00.bin



Processed Fri Oct 9 22:32:30 2015 by ELM ver.2012-10-06 from 001__elm20150905_120718__dat00.bin

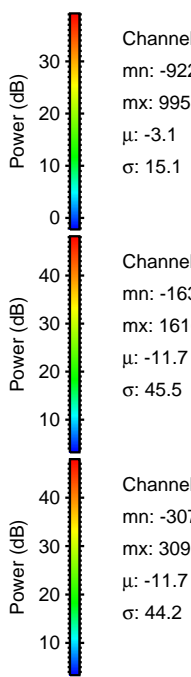
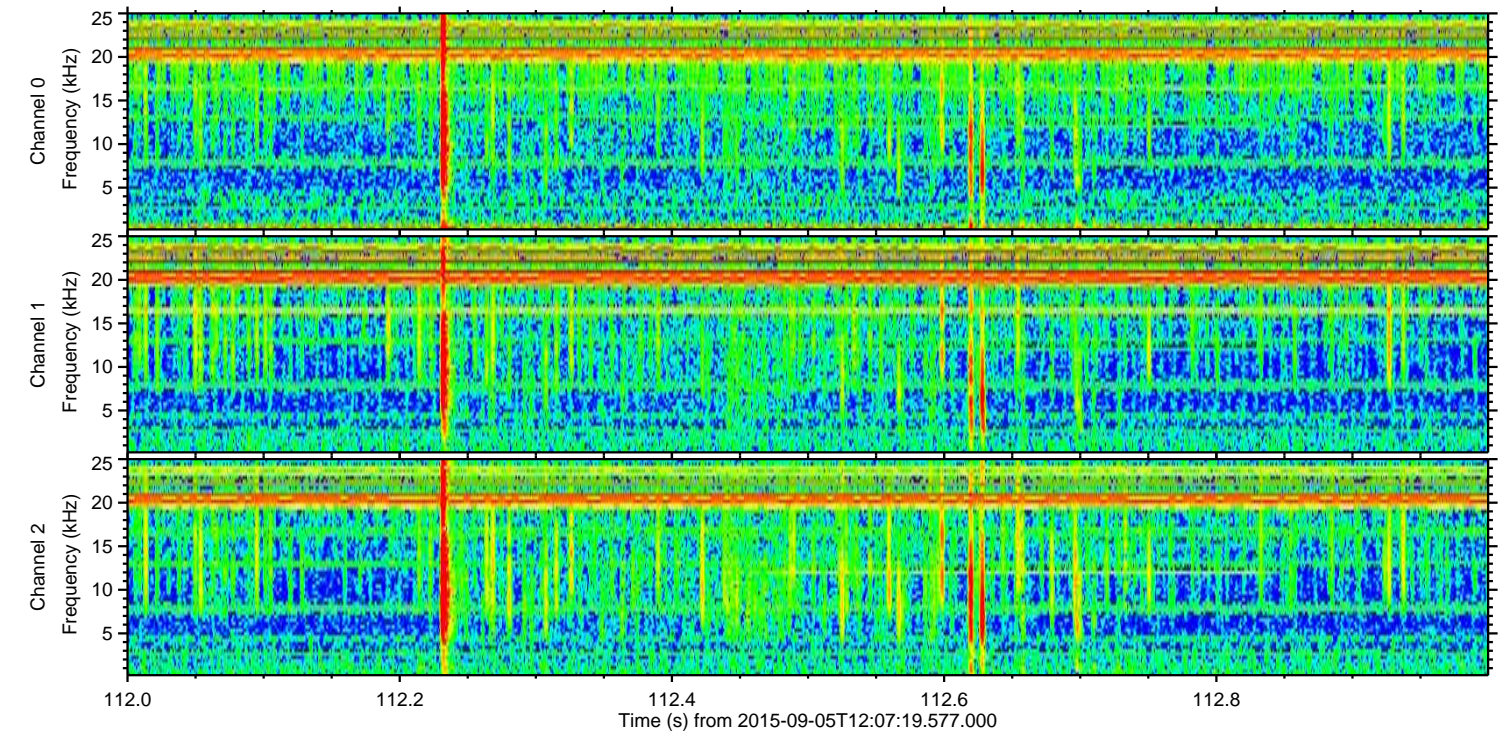
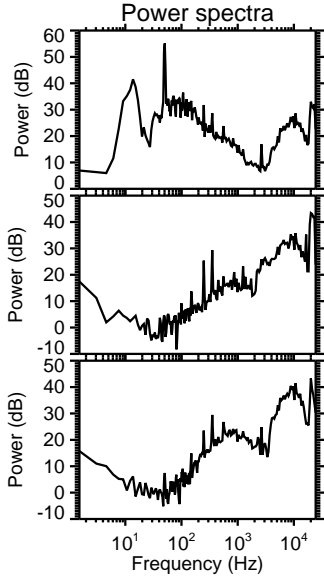
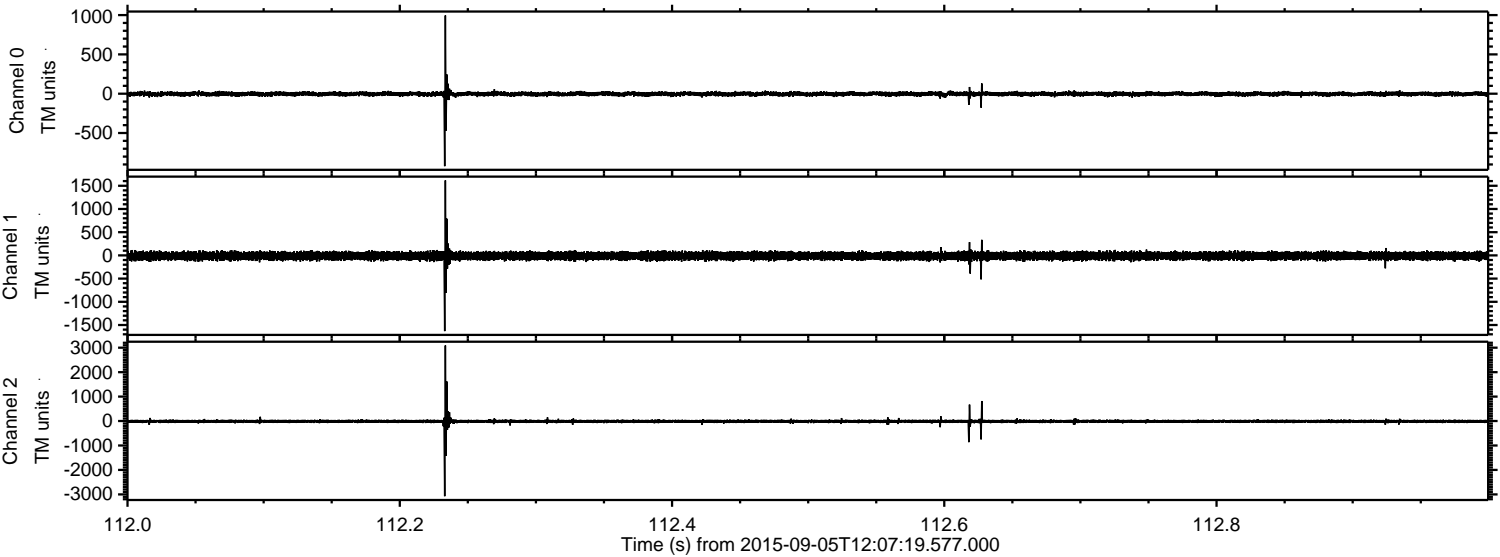


Processed Fri Oct 9 22:32:31 2015 by ELM ver.2012-10-06 from 001__elm20150905_120718__dat00.bin



ELMAVAN 3D WAVEFORMS (Measured data sampled at 50 kHz) 51000 packets of 144 samples from 2015-09-05T12:07:19.577.000. Part 113/147

Processed Fri Oct 9 22:32:32 2015 by ELM ver.2012-10-06 from 001__elm20150905_120718__dat00.bin

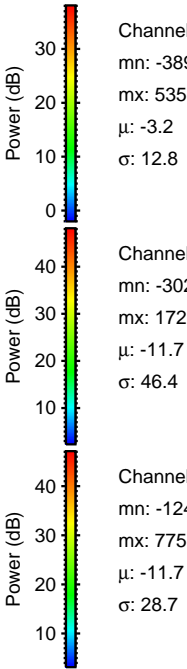
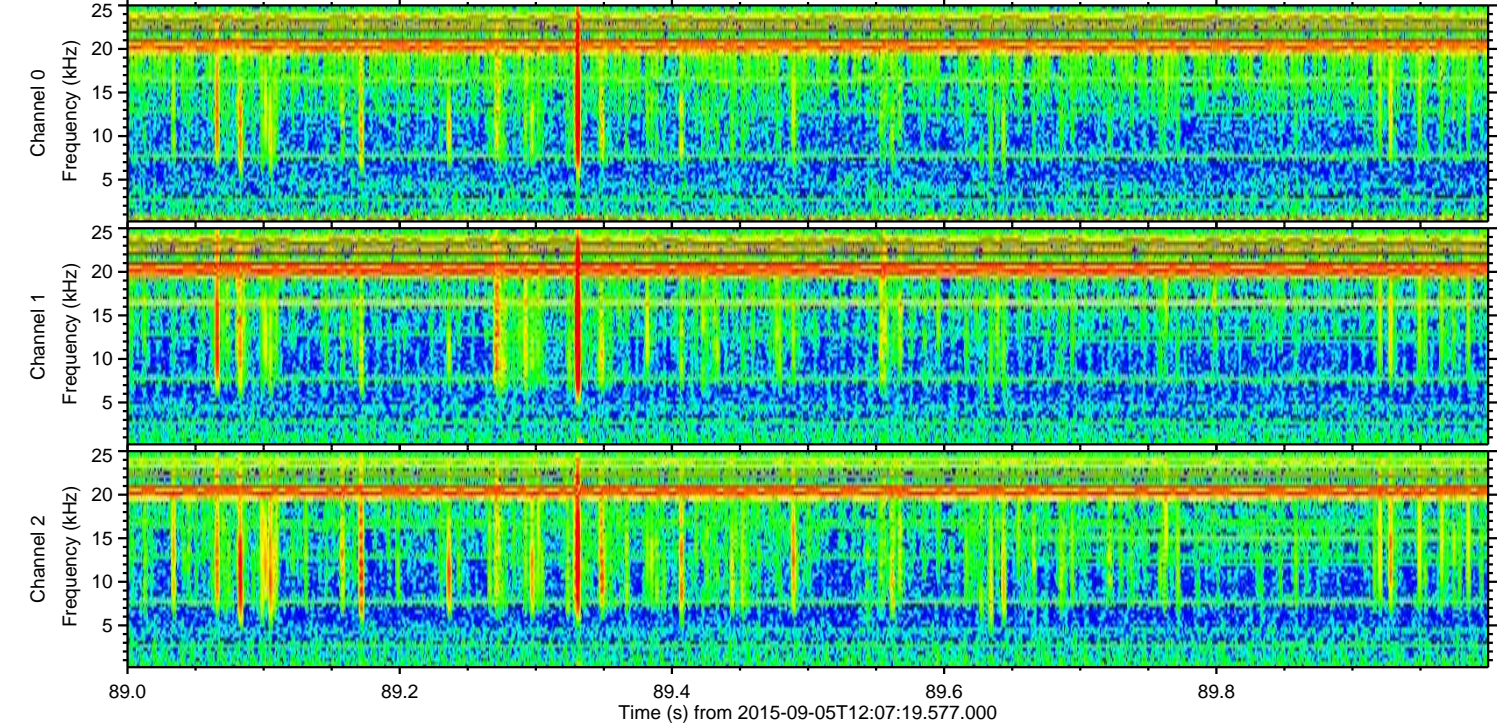
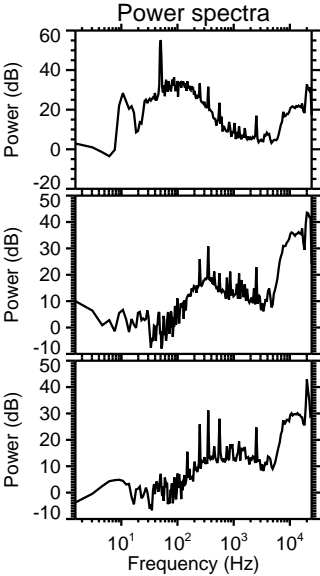
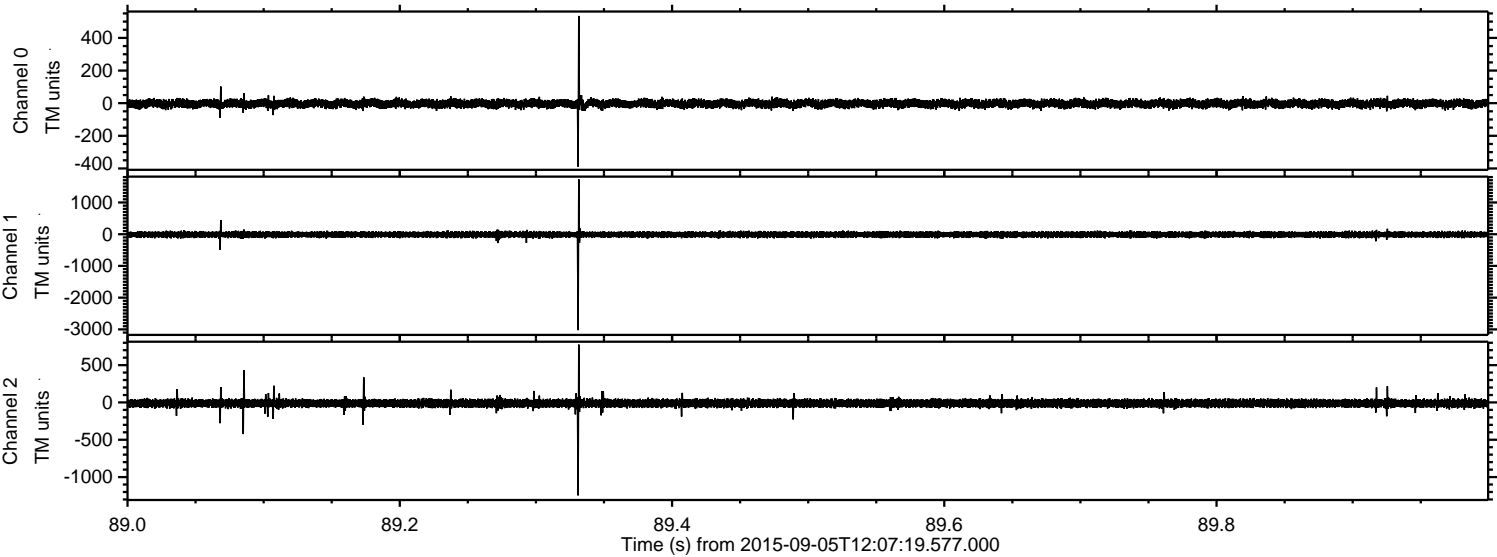


Channel 0
mn: -922
mx: 995
 μ : -3.1
 σ : 15.1

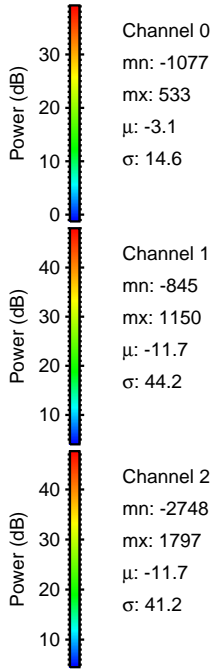
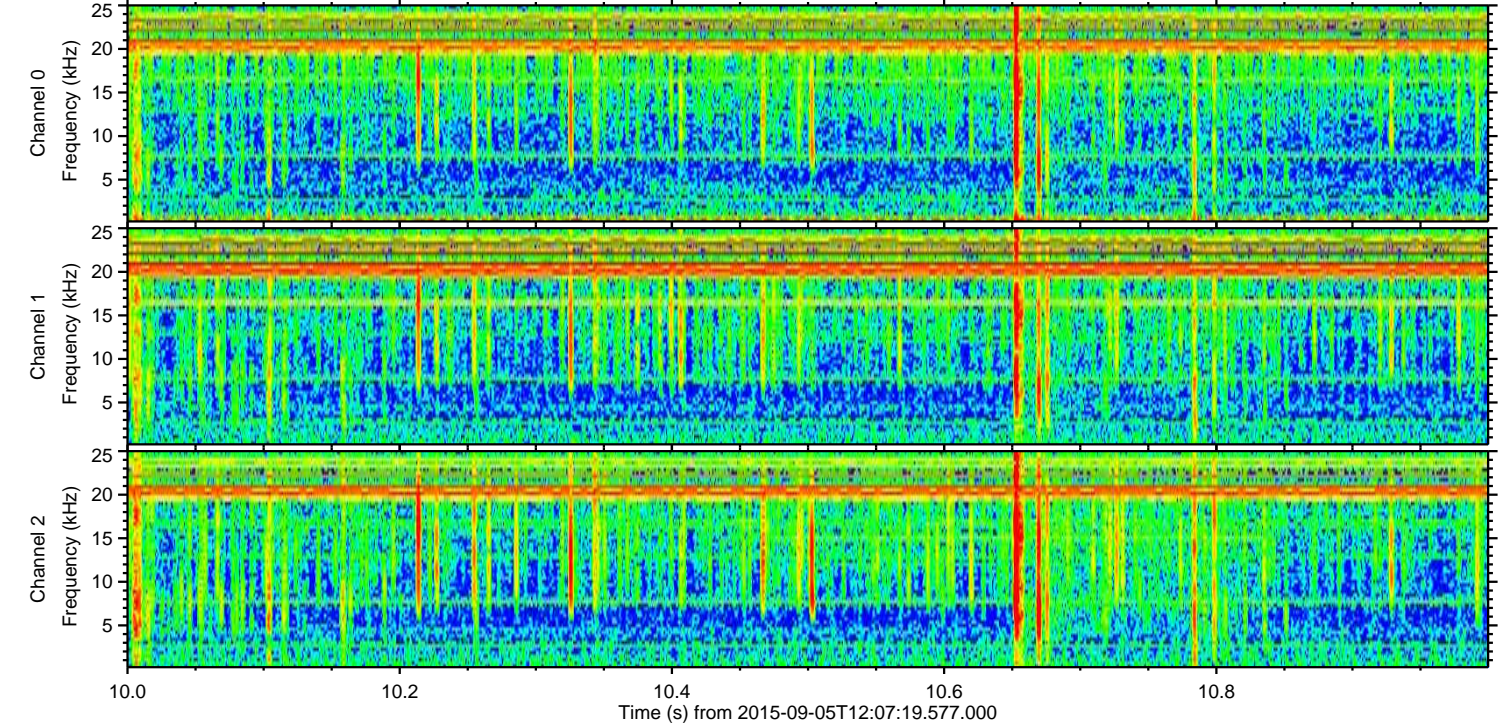
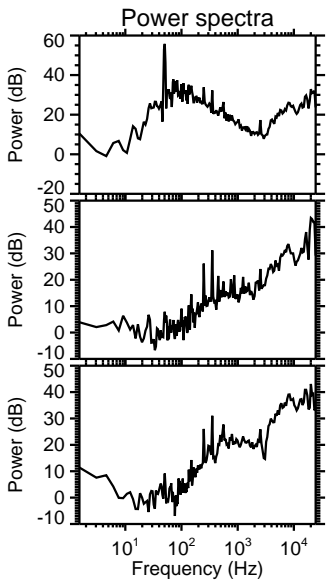
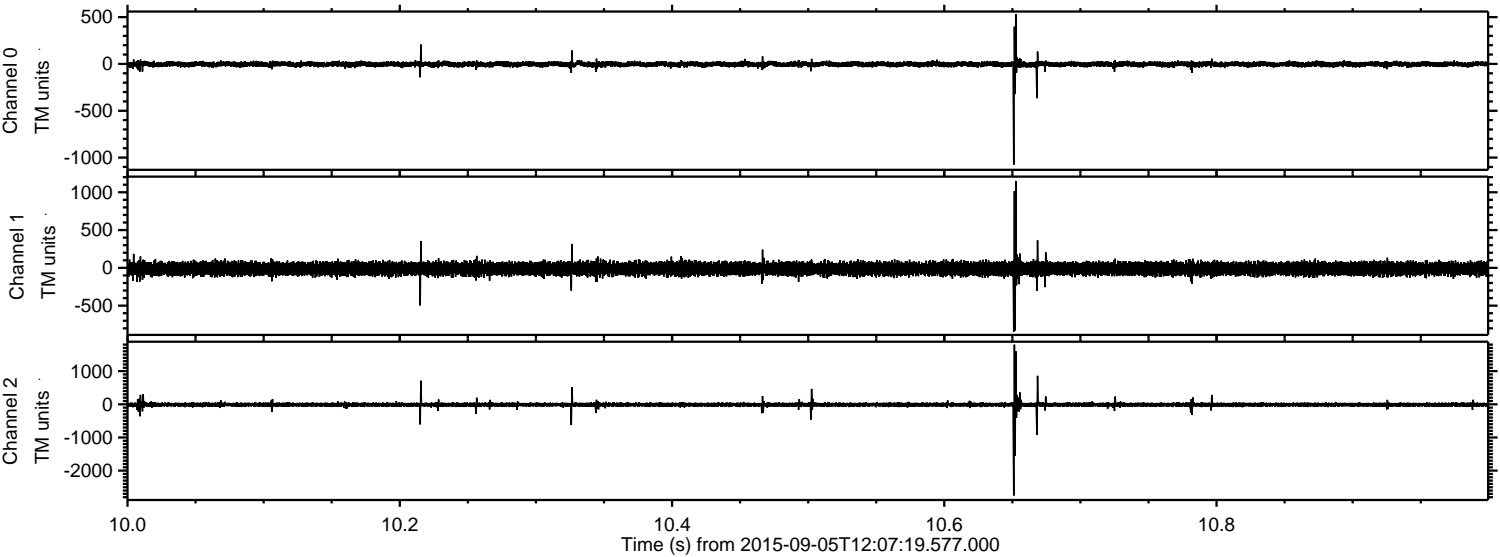
Channel 1
mn: -1632
mx: 1616
 μ : -11.7
 σ : 45.5

Channel 2
mn: -3076
mx: 3090
 μ : -11.7
 σ : 44.2

Processed Fri Oct 9 22:32:33 2015 by ELM ver.2012-10-06 from 001__elm20150905_120718__dat00.bin



Processed Fri Oct 9 22:32:34 2015 by ELM ver.2012-10-06 from 001__elm20150905_120718__dat00.bin



Processed Fri Oct 9 22:32:35 2015 by ELM ver.2012-10-06 from 001__elm20150905_120718__dat00.bin

