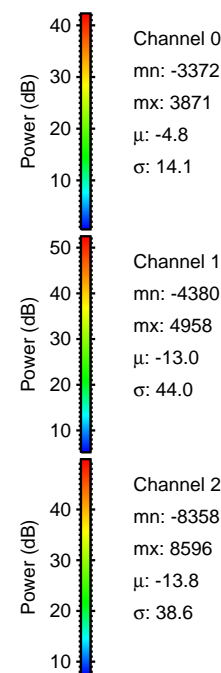
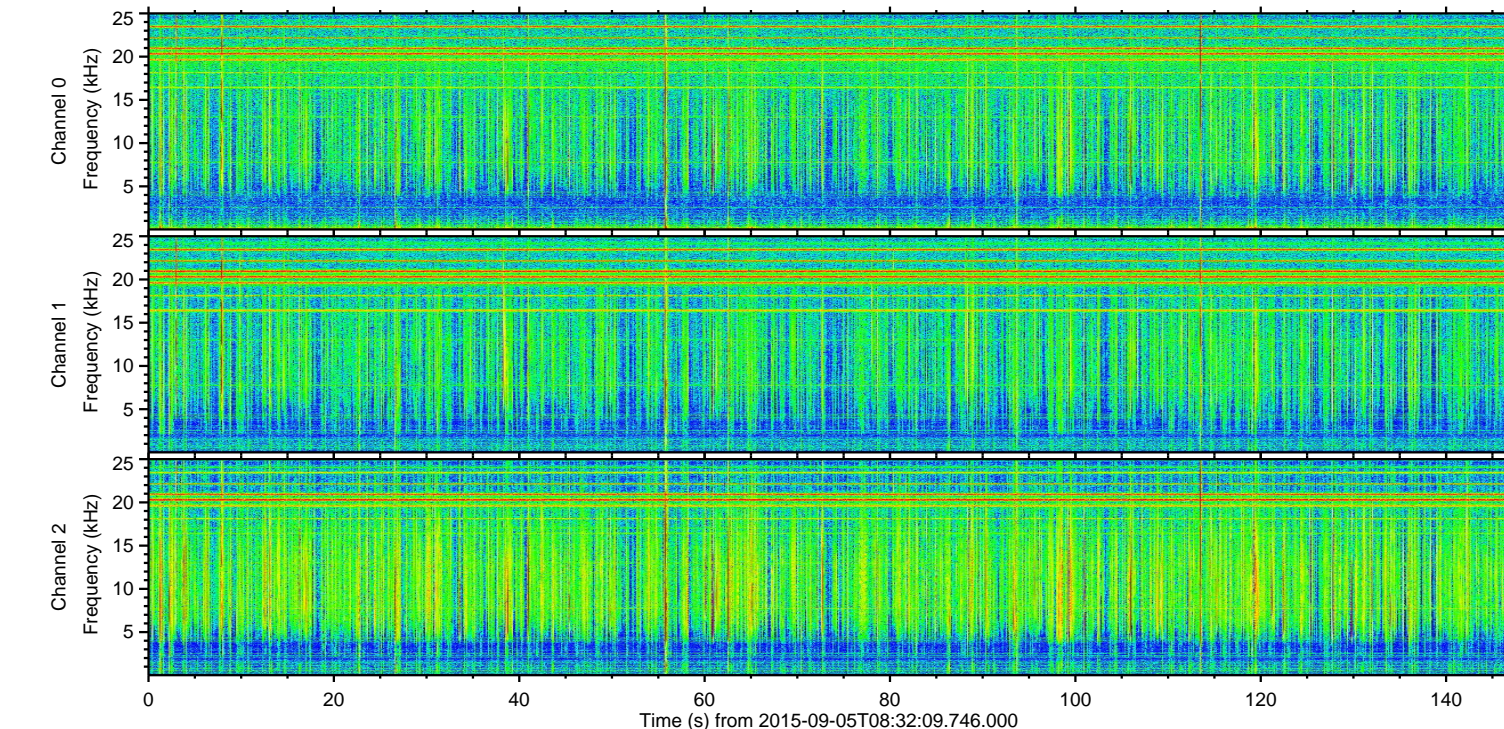
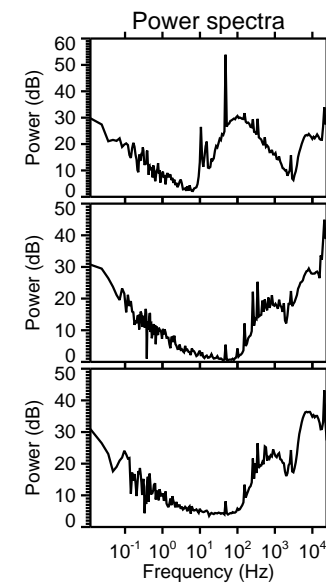
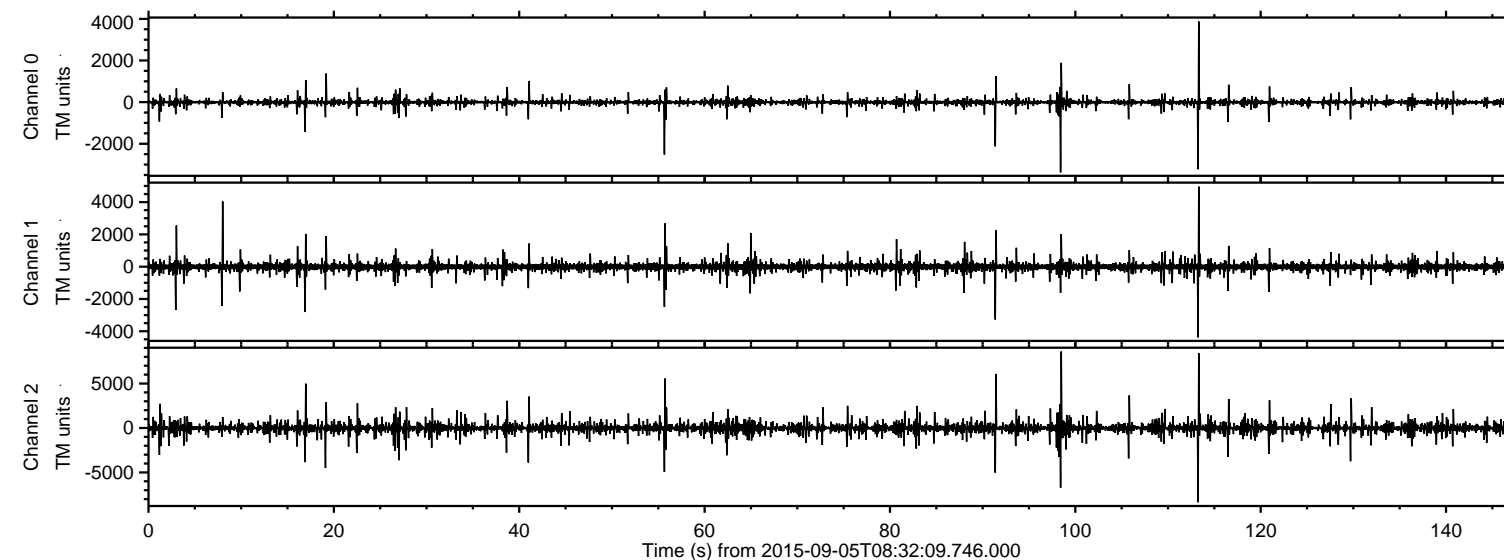


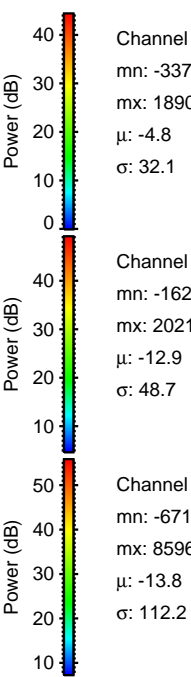
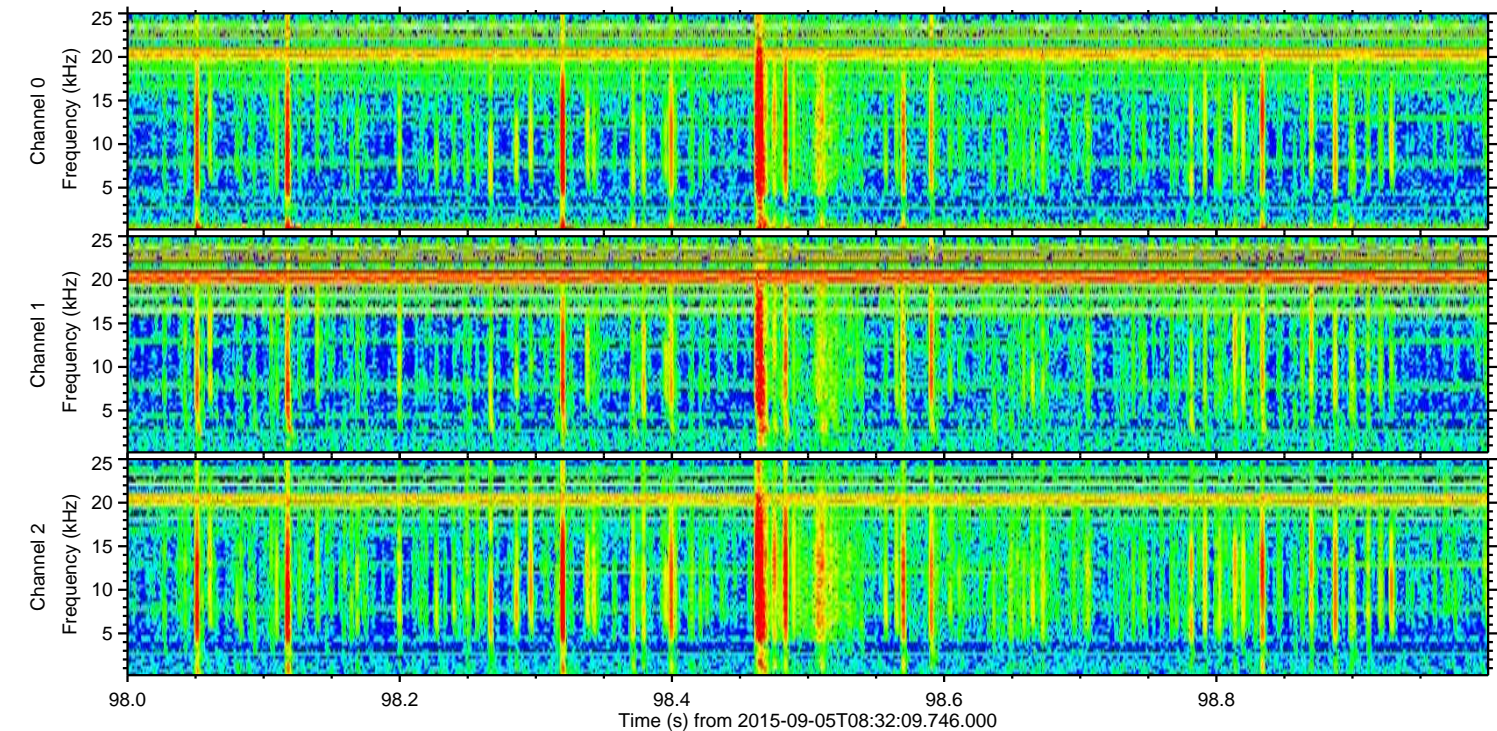
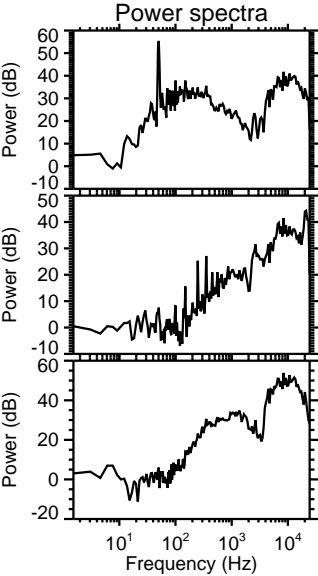
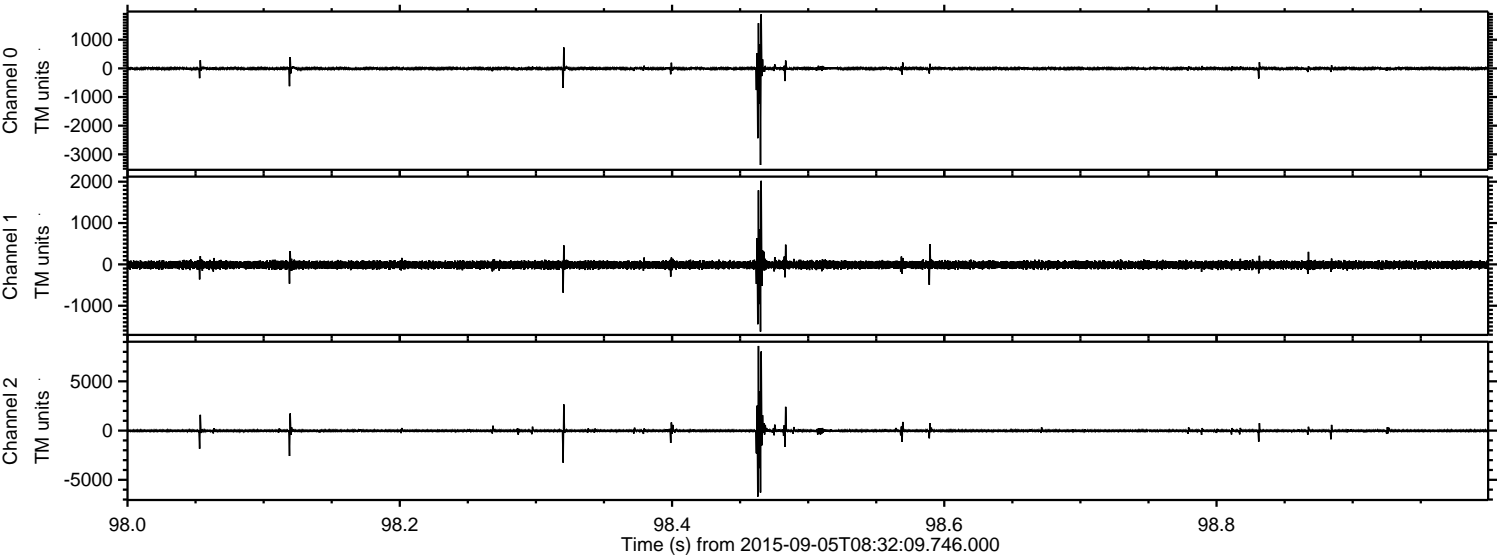
# ELMAVAN 3D WAVEFORMS (Measured data sampled at 50 kHz) 51000 packets of 144 samples from 2015-09-05T08:32:09.746.000.

Processed Fri Oct 9 21:28:19 2015 by ELM ver.2012-10-06 from 001\_\_elm20150905\_083208\_\_dat00.bin





Processed Fri Oct 9 21:28:34 2015 by ELM ver.2012-10-06 from 001\_\_elm20150905\_083208\_\_dat00.bin



Channel 0  
mn: -3372  
mx: 1890  
 $\mu$ : -4.8  
 $\sigma$ : 32.1

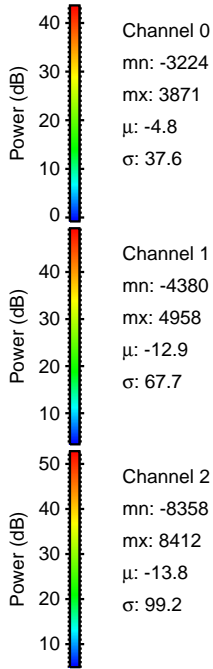
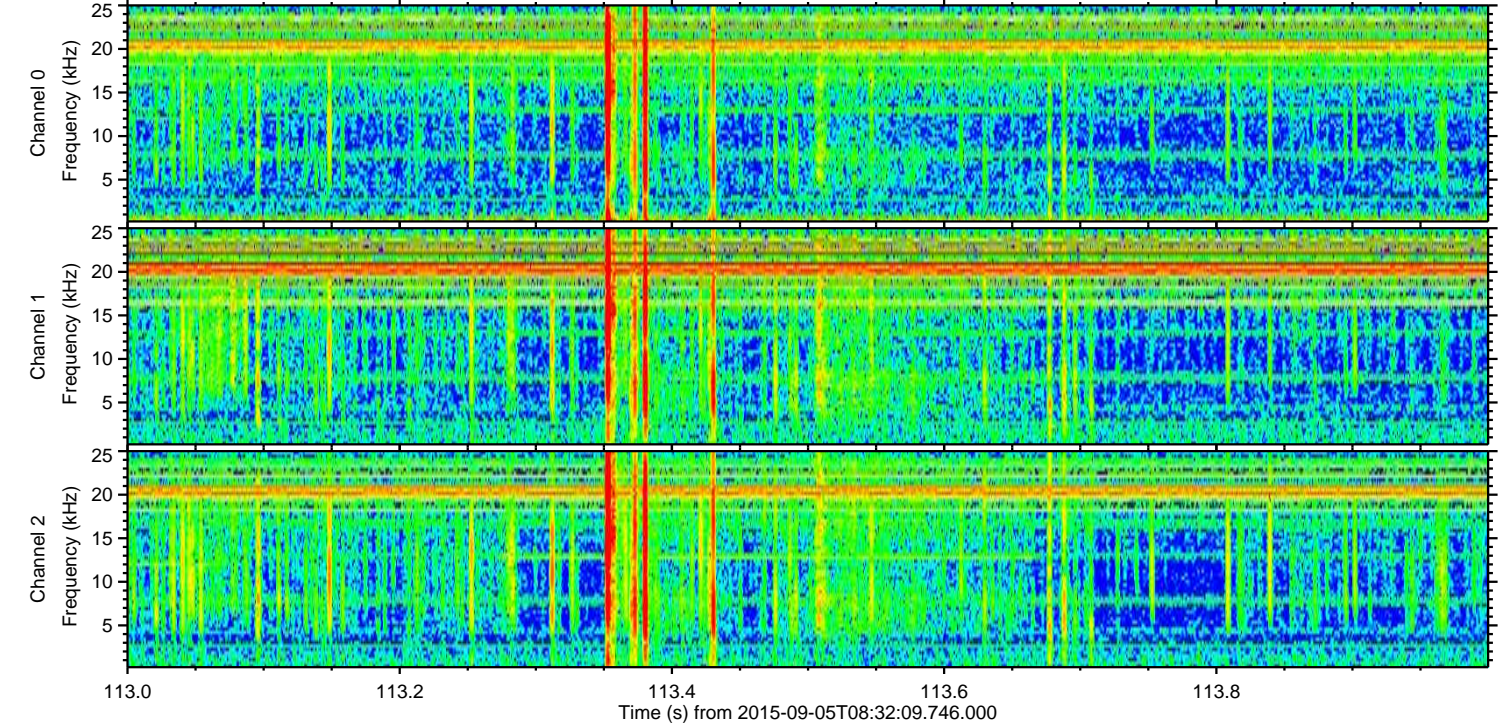
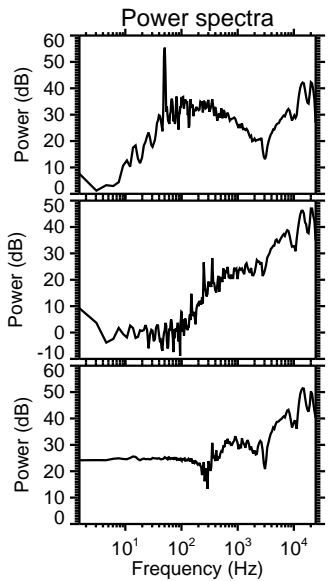
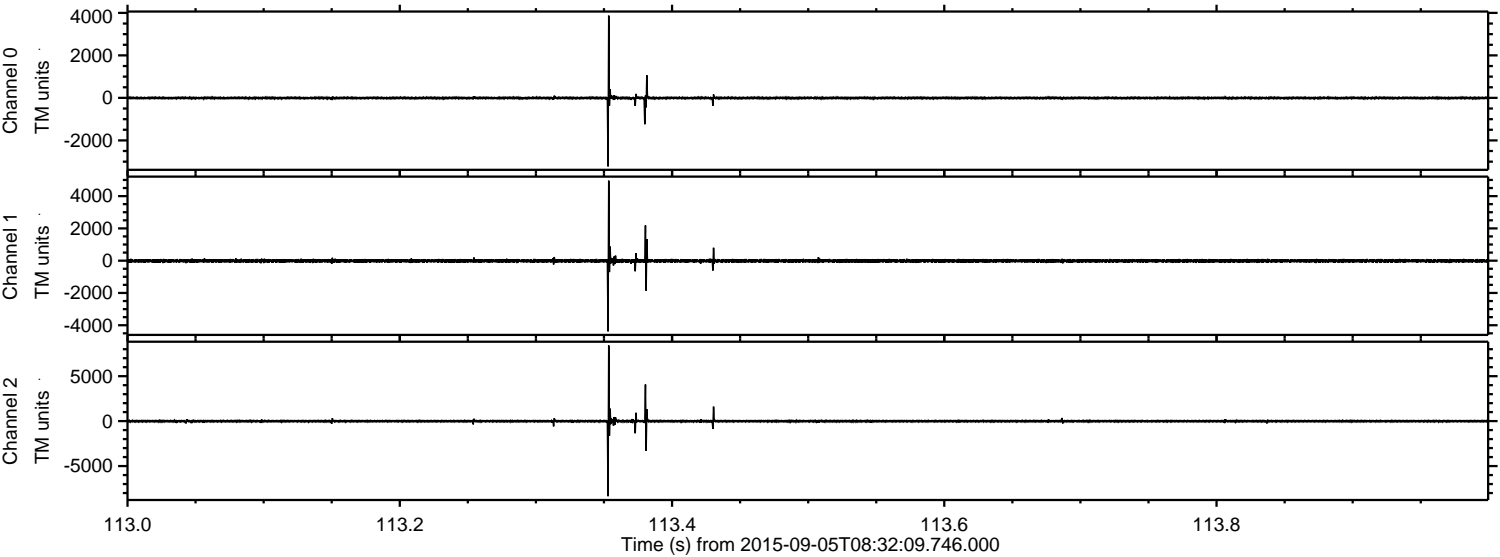
Channel 1  
mn: -1624  
mx: 2021  
 $\mu$ : -12.9  
 $\sigma$ : 48.7

Channel 2  
mn: -6713  
mx: 8596  
 $\mu$ : -13.8  
 $\sigma$ : 112.2



ELMAVAN 3D WAVEFORMS (Measured data sampled at 50 kHz) 51000 packets of 144 samples from 2015-09-05T08:32:09.746.000. Part 114/147

Processed Fri Oct 9 21:28:35 2015 by ELM ver.2012-10-06 from 001\_\_elm20150905\_083208\_\_dat00.bin



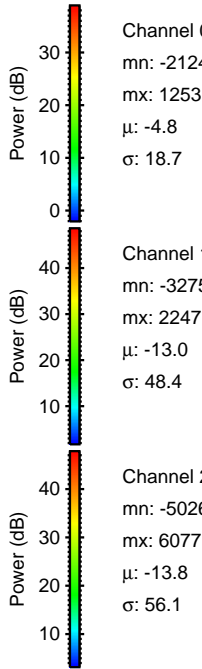
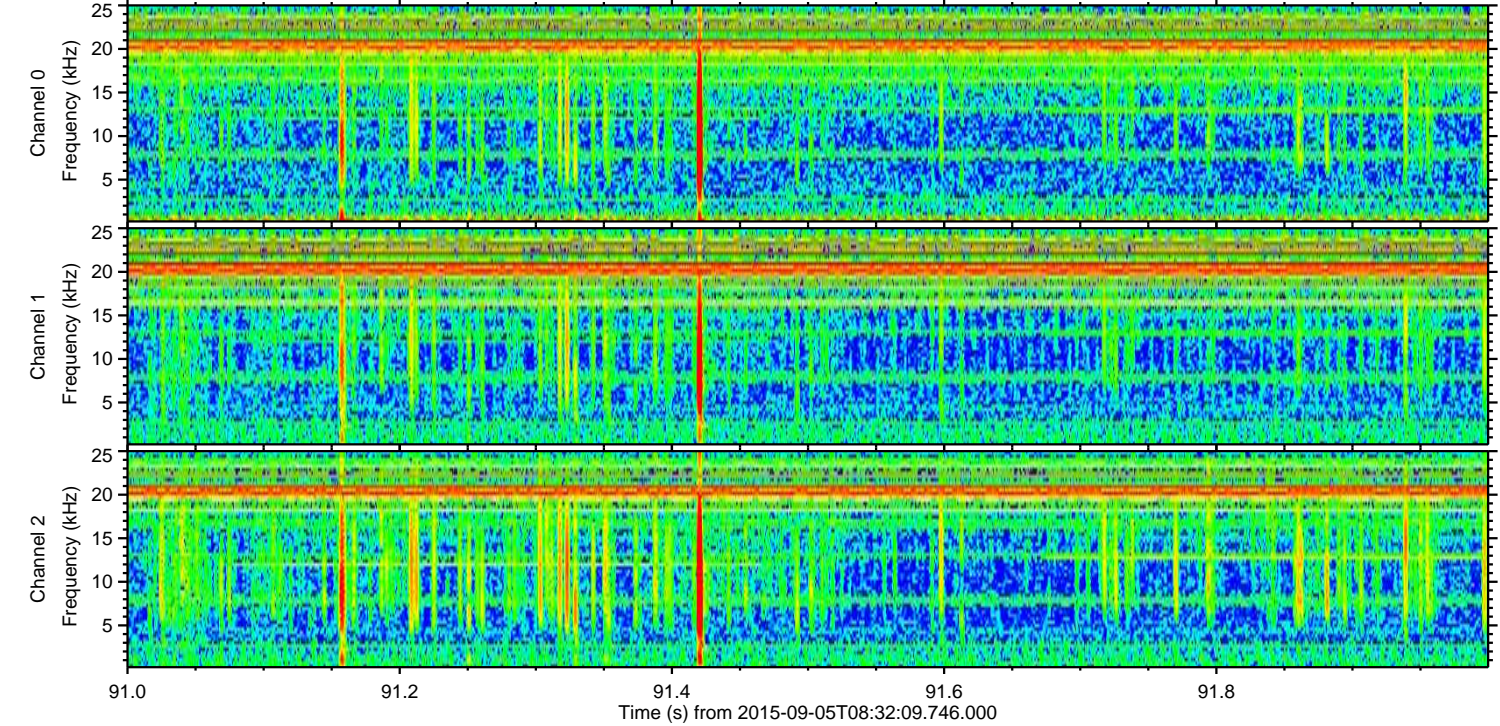
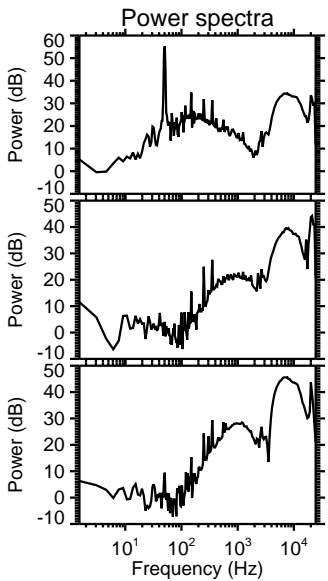
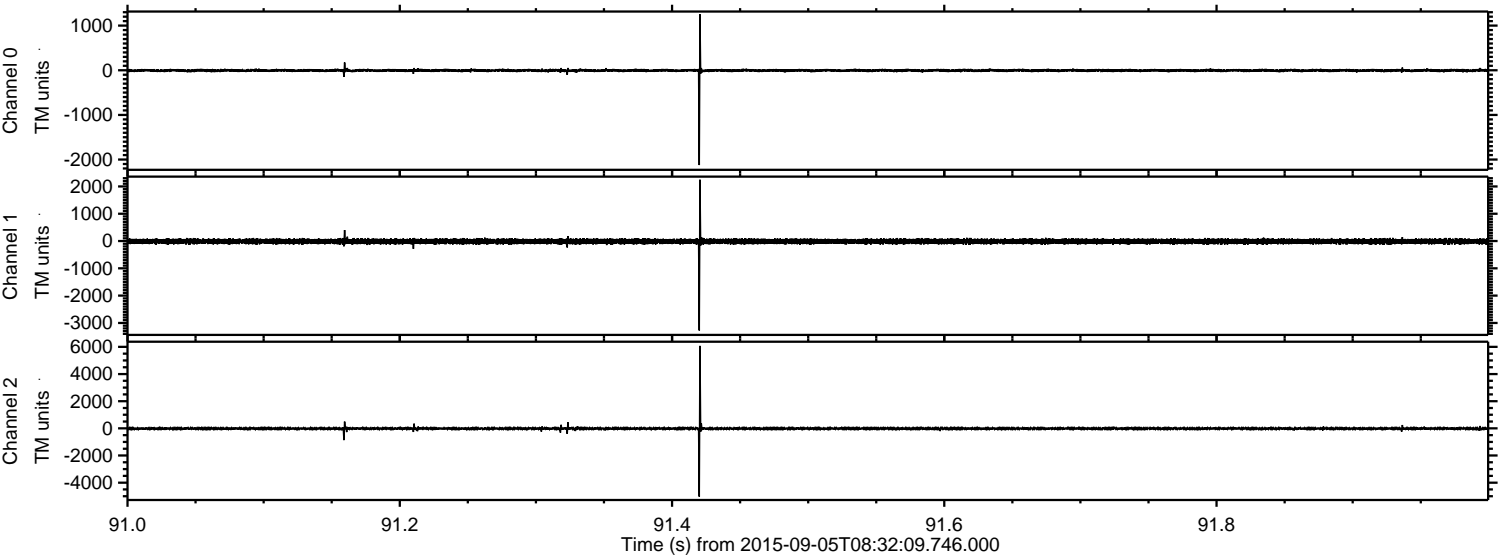
Channel 0  
mn: -3224  
mx: 3871  
 $\mu$ : -4.8  
 $\sigma$ : 37.6

Channel 1  
mn: -4380  
mx: 4958  
 $\mu$ : -12.9  
 $\sigma$ : 67.7

Channel 2  
mn: -8358  
mx: 8412  
 $\mu$ : -13.8  
 $\sigma$ : 99.2

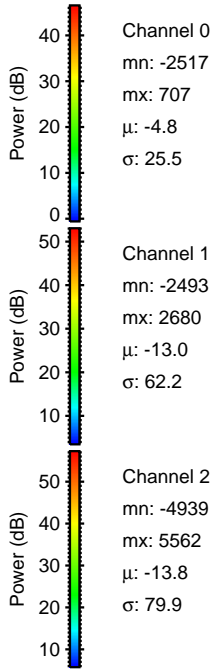
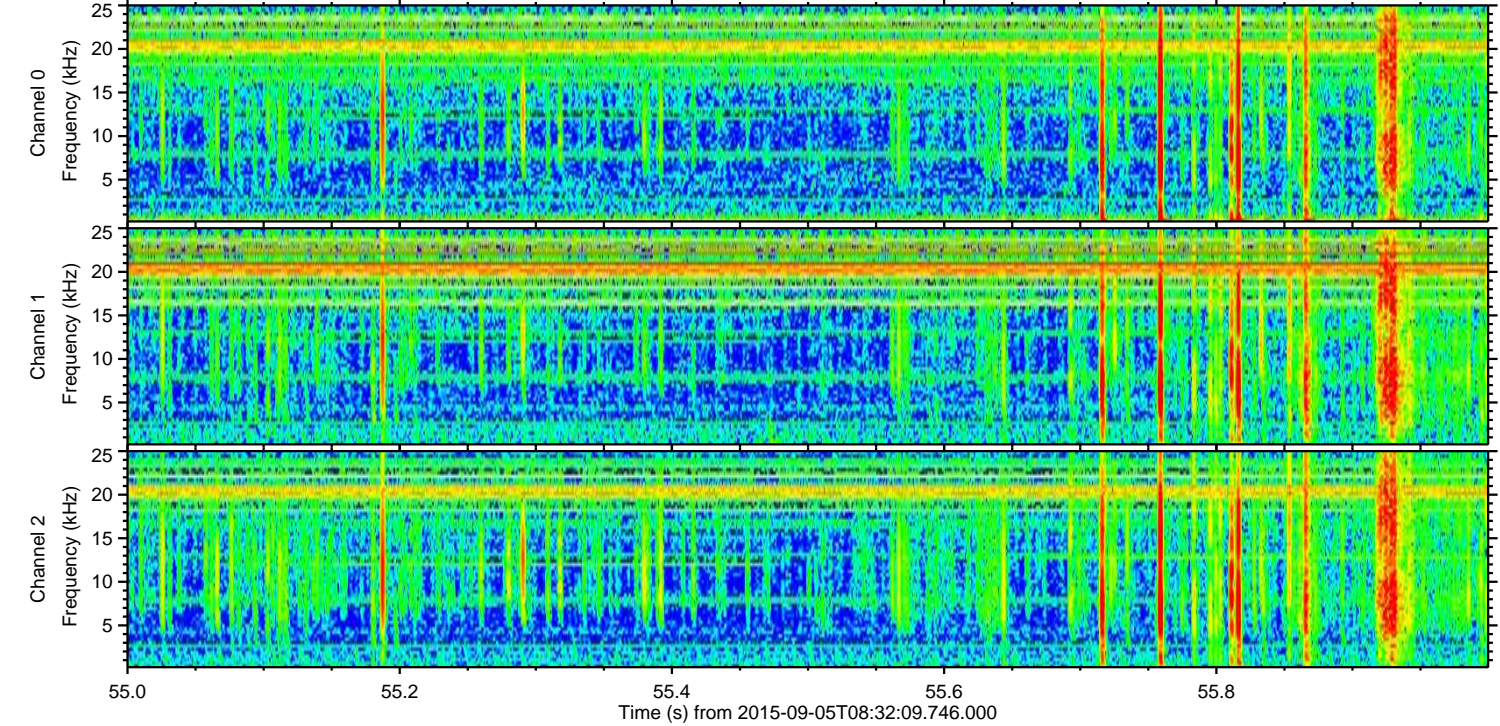
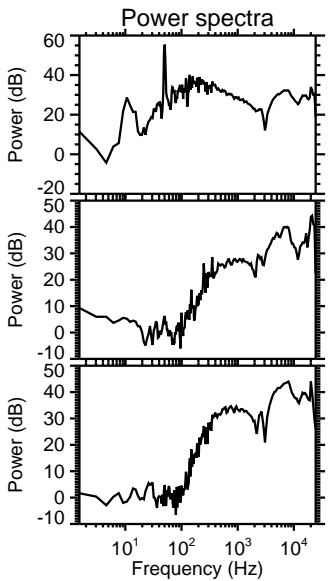
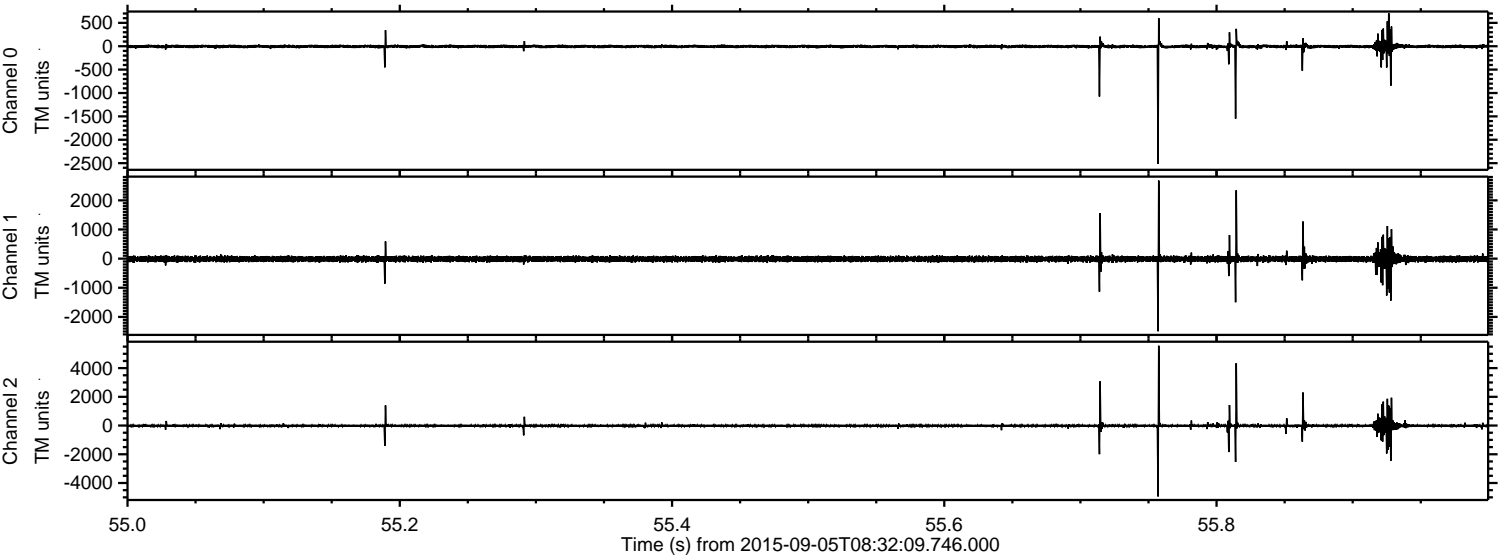


Processed Fri Oct 9 21:28:36 2015 by ELM ver.2012-10-06 from 001\_\_elm20150905\_083208\_\_dat00.bin





Processed Fri Oct 9 21:28:37 2015 by ELM ver.2012-10-06 from 001\_\_elm20150905\_083208\_\_dat00.bin



Channel 0  
mn: -2517  
mx: 707  
 $\mu$ : -4.8  
 $\sigma$ : 25.5

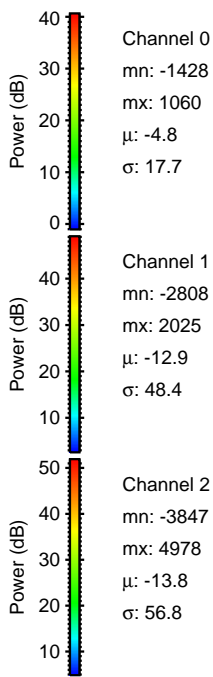
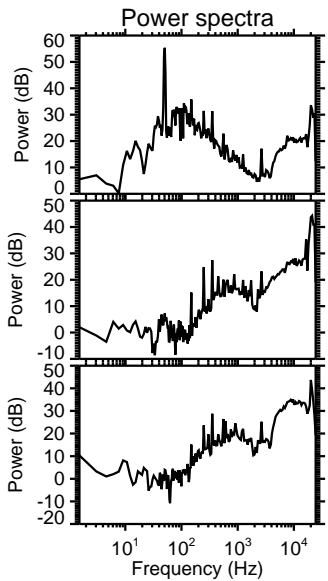
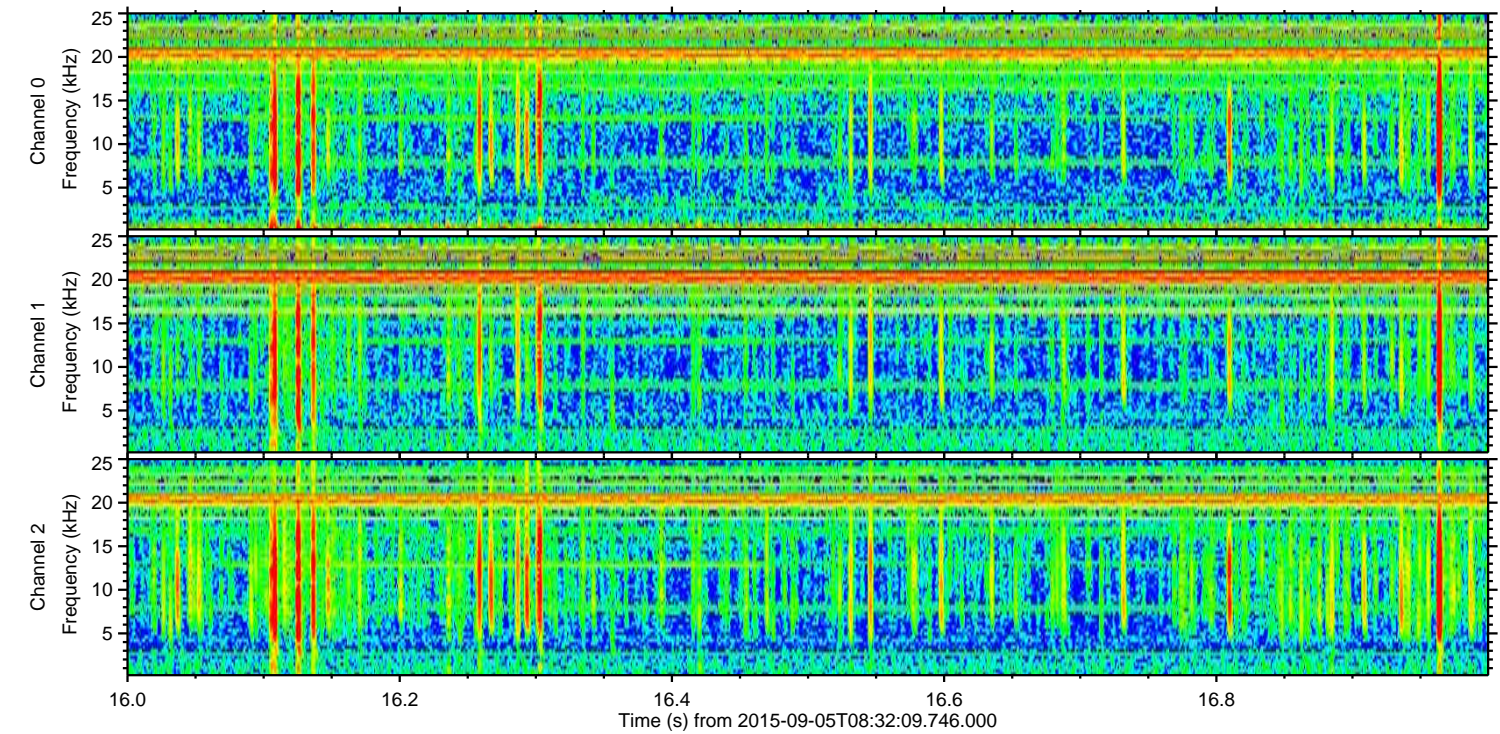
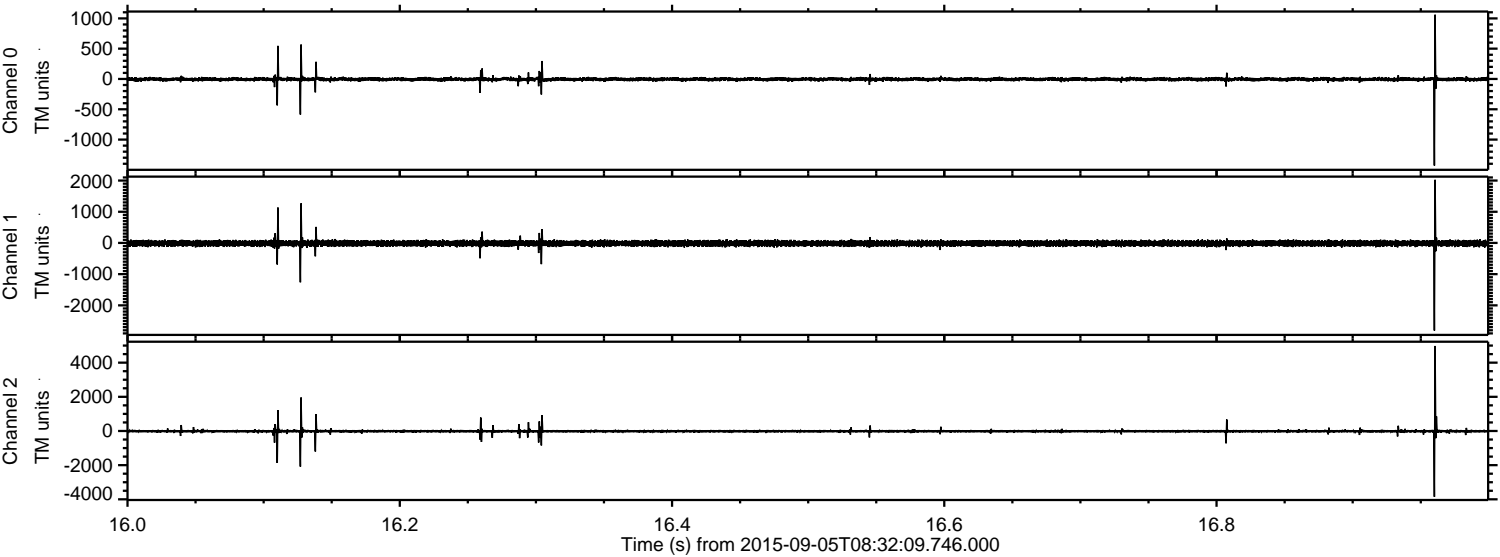
Channel 1  
mn: -2493  
mx: 2680  
 $\mu$ : -13.0  
 $\sigma$ : 62.2

Channel 2  
mn: -4939  
mx: 5562  
 $\mu$ : -13.8  
 $\sigma$ : 79.9



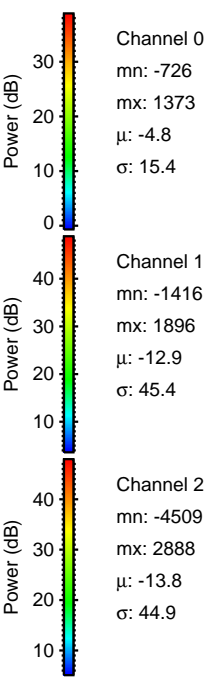
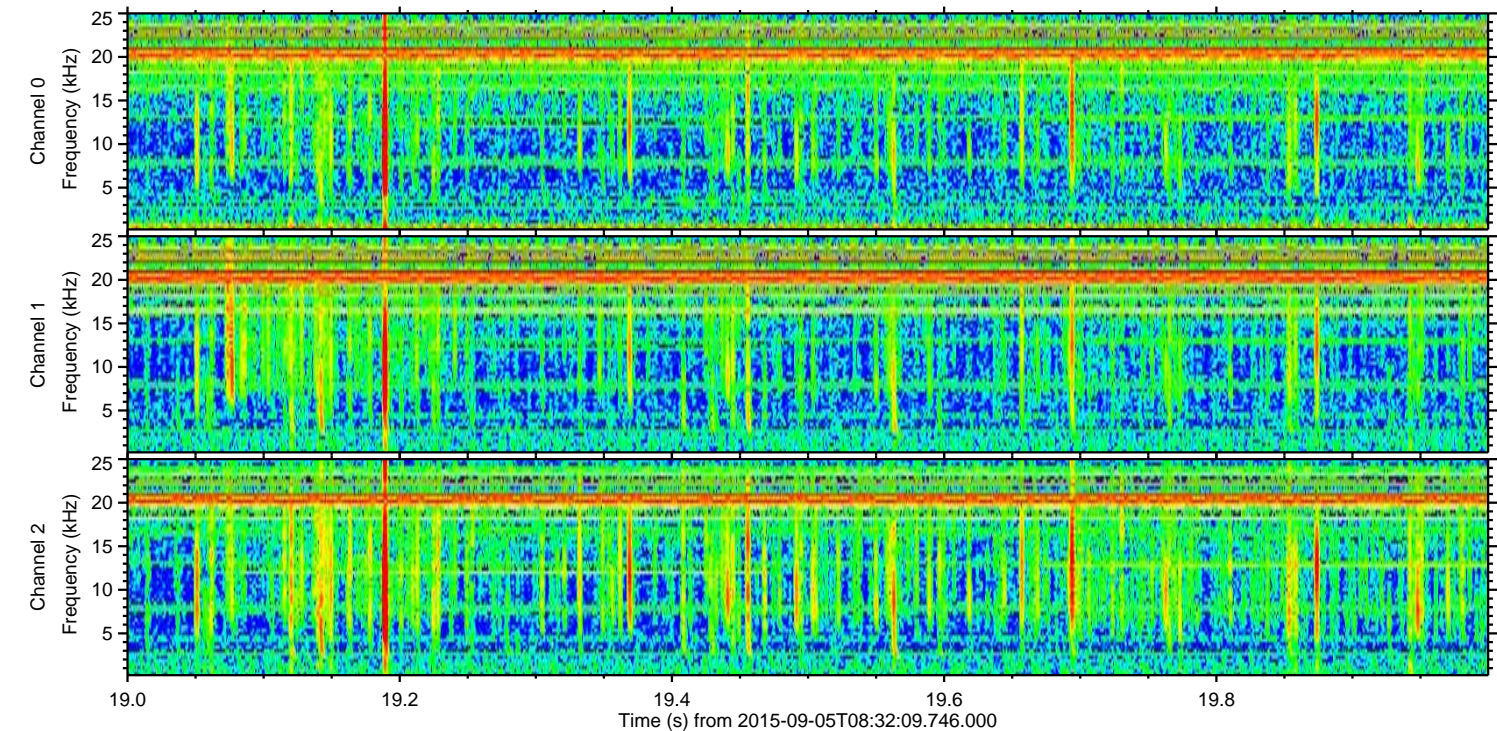
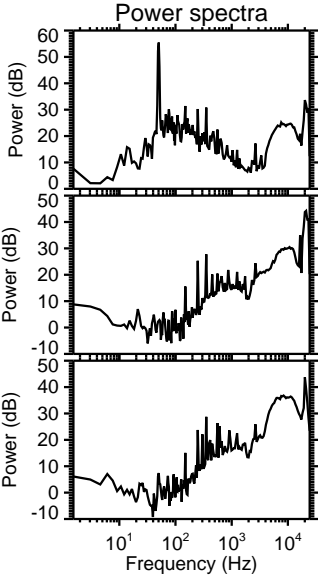
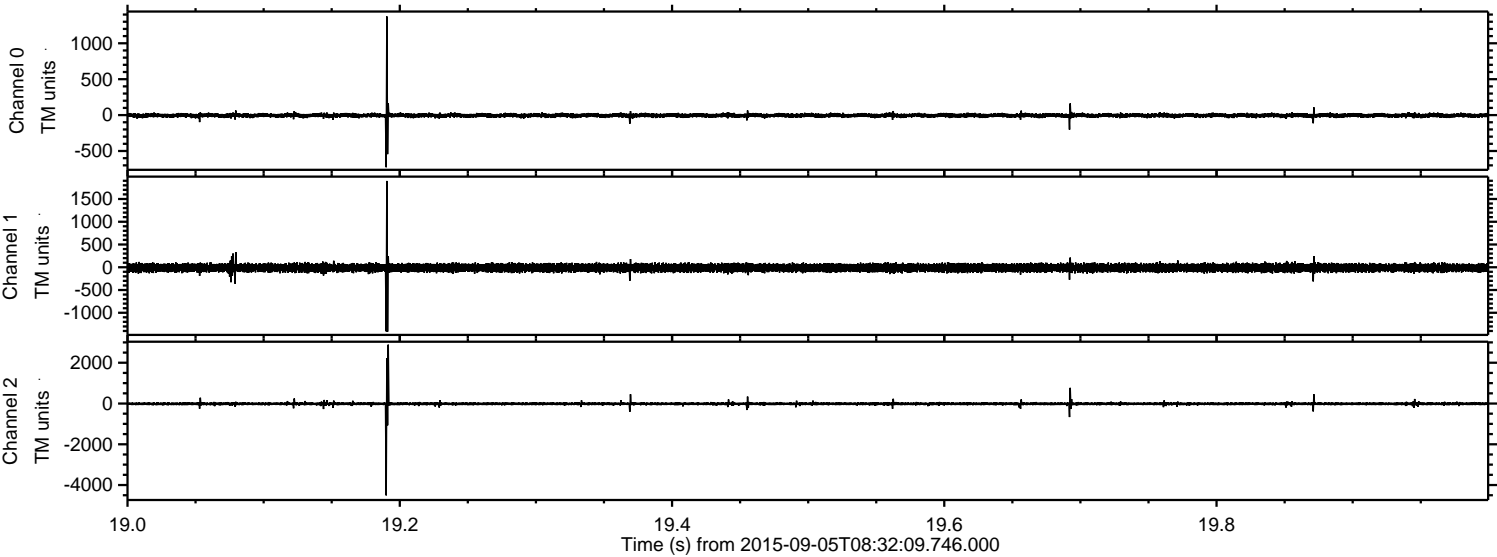
ELMAVAN 3D WAVEFORMS (Measured data sampled at 50 kHz) 51000 packets of 144 samples from 2015-09-05T08:32:09.746.000. Part 17/147

Processed Fri Oct 9 21:28:39 2015 by ELM ver.2012-10-06 from 001\_\_elm20150905\_083208\_\_dat00.bin



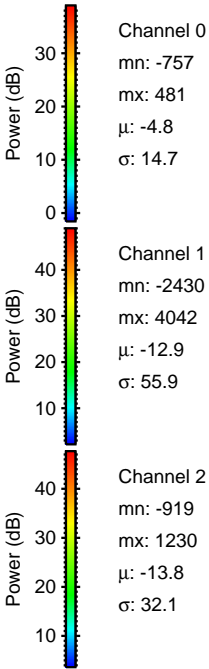
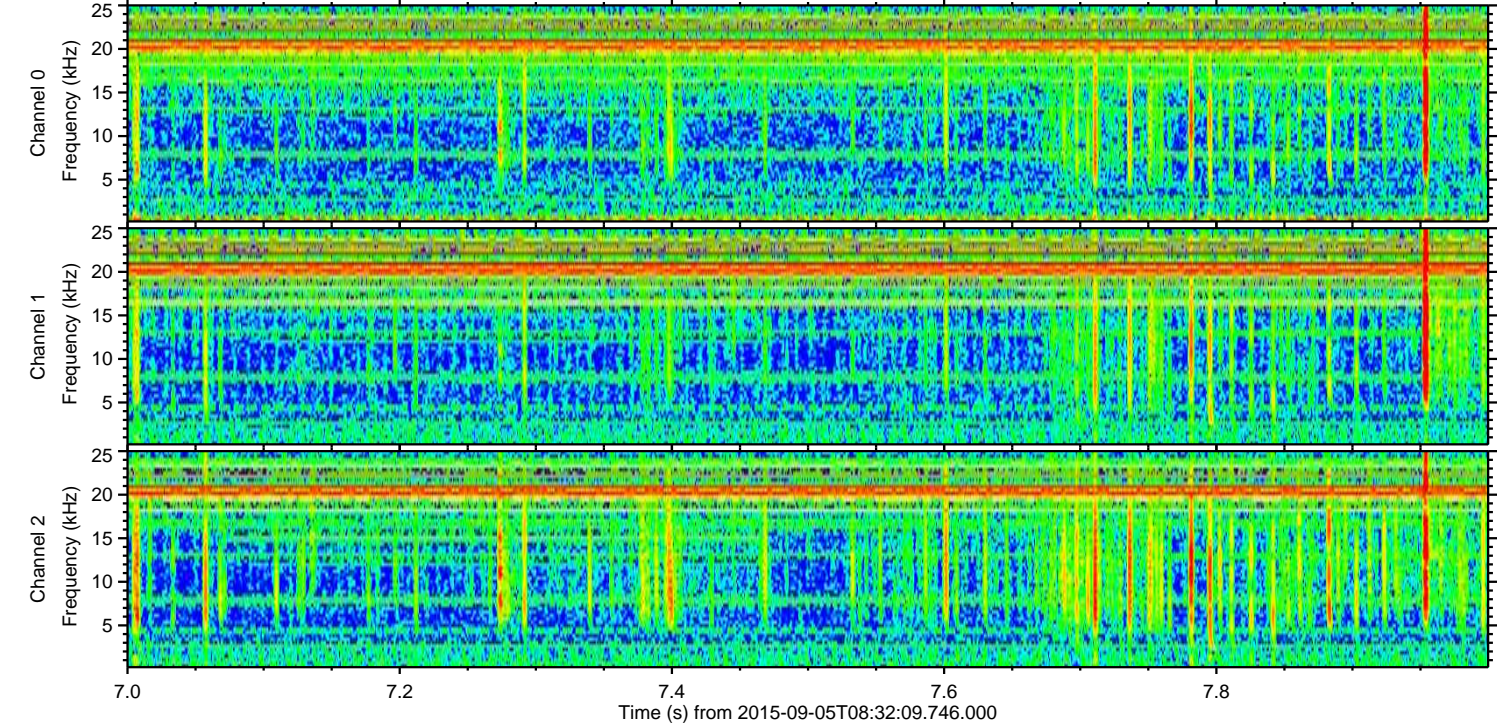
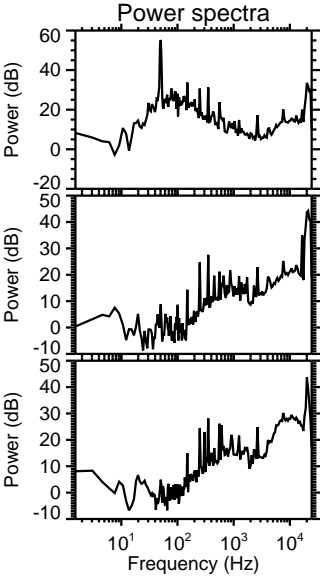
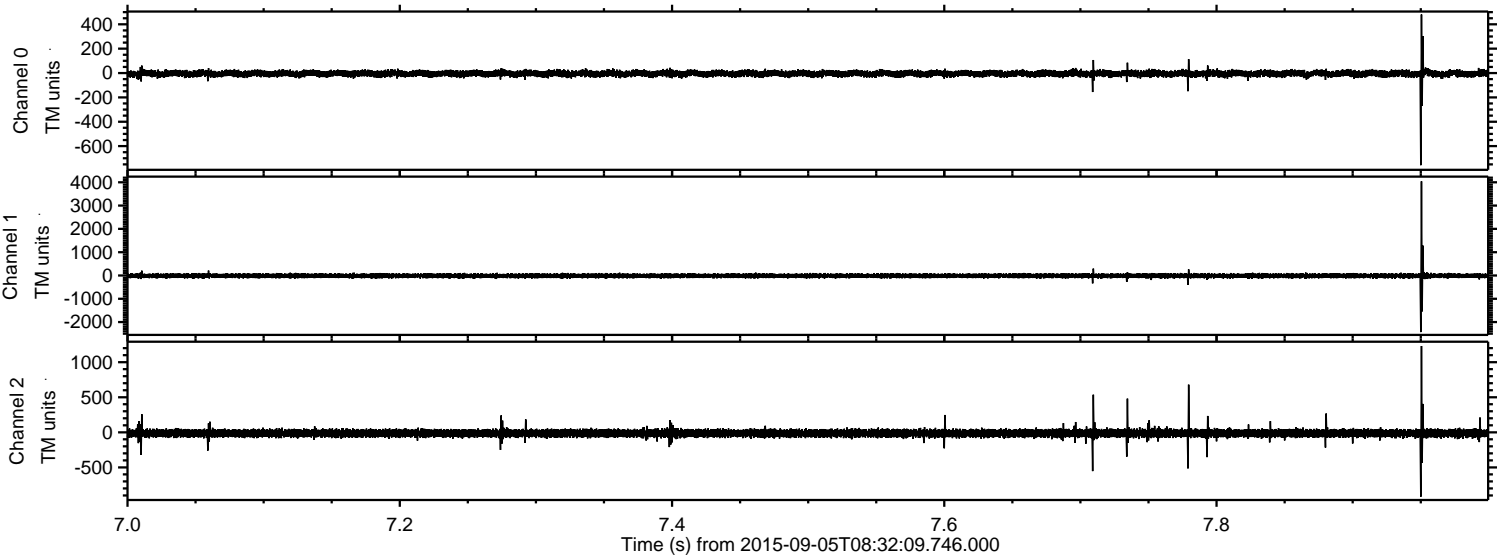


Processed Fri Oct 9 21:28:40 2015 by ELM ver.2012-10-06 from 001\_\_elm20150905\_083208\_\_dat00.bin





Processed Fri Oct 9 21:28:41 2015 by ELM ver.2012-10-06 from 001\_\_elm20150905\_083208\_\_dat00.bin



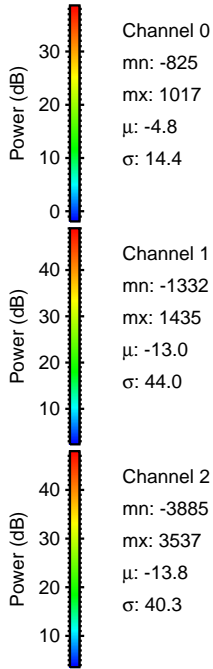
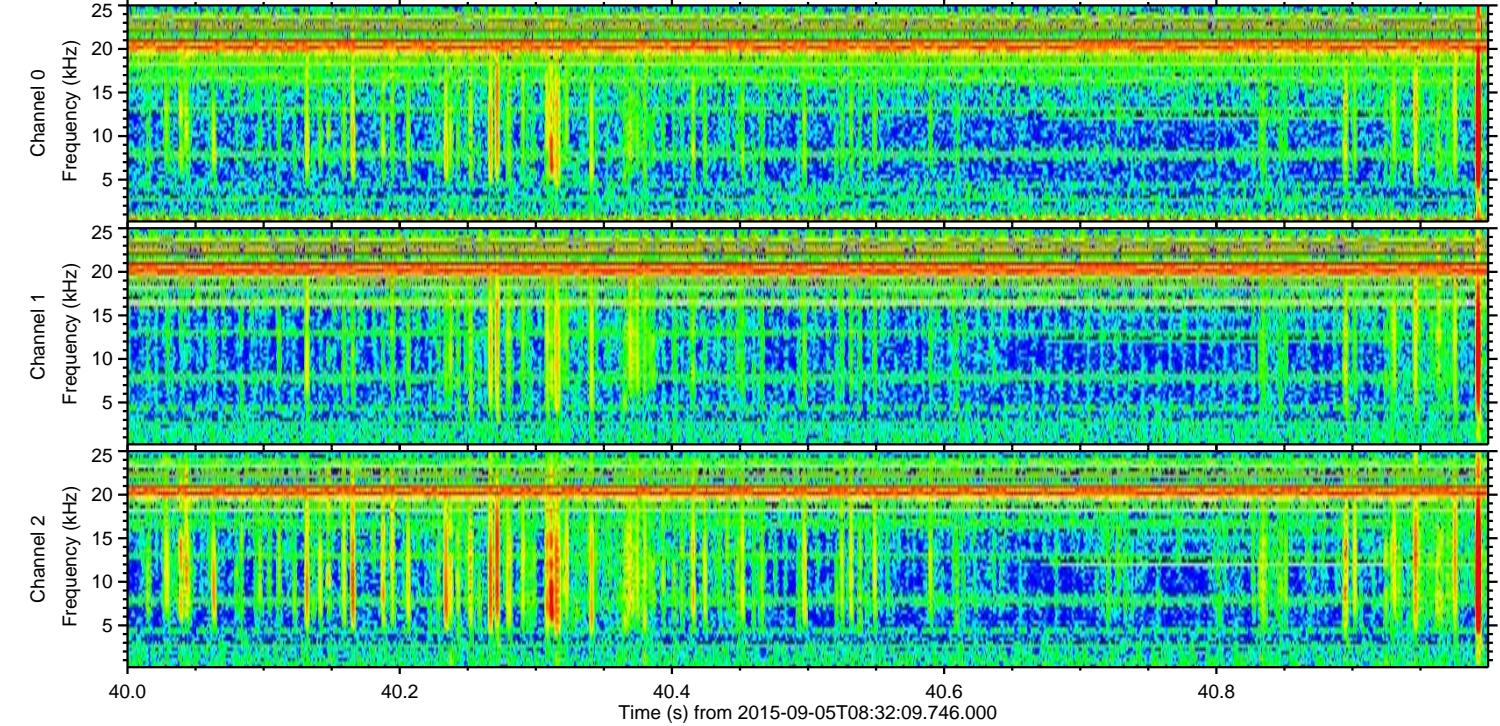
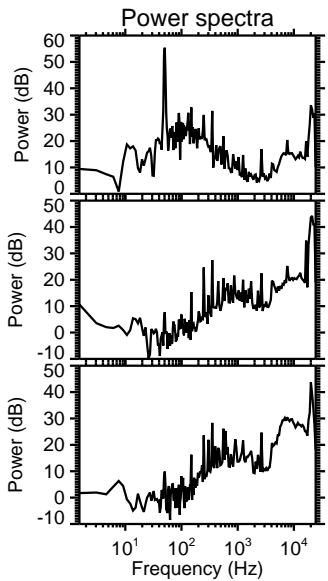
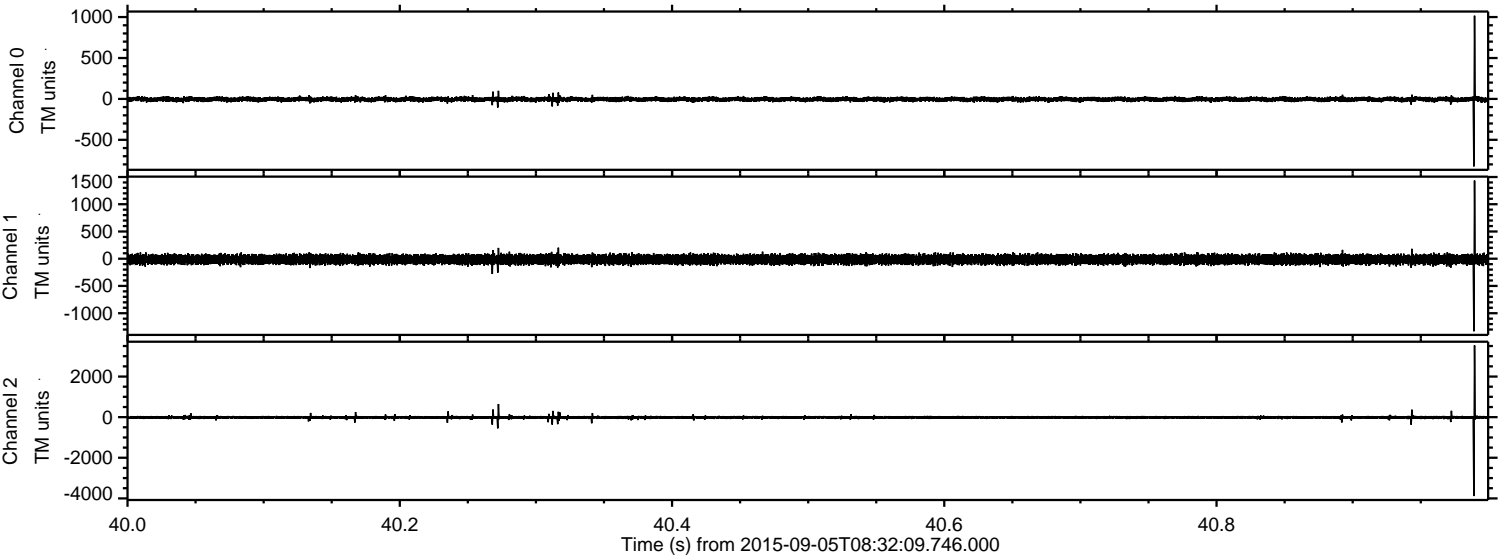
Channel 0  
mn: -757  
mx: 481  
 $\mu$ : -4.8  
 $\sigma$ : 14.7

Channel 1  
mn: -2430  
mx: 4042  
 $\mu$ : -12.9  
 $\sigma$ : 55.9

Channel 2  
mn: -919  
mx: 1230  
 $\mu$ : -13.8  
 $\sigma$ : 32.1



Processed Fri Oct 9 21:28:42 2015 by ELM ver.2012-10-06 from 001\_\_elm20150905\_083208\_\_dat00.bin



Channel 0  
mn: -825  
mx: 1017  
 $\mu$ : -4.8  
 $\sigma$ : 14.4

Channel 1  
mn: -1332  
mx: 1435  
 $\mu$ : -13.0  
 $\sigma$ : 44.0

Channel 2  
mn: -3885  
mx: 3537  
 $\mu$ : -13.8  
 $\sigma$ : 40.3



Processed Fri Oct 9 21:28:43 2015 by ELM ver.2012-10-06 from 001\_\_elm20150905\_083208\_\_dat00.bin

