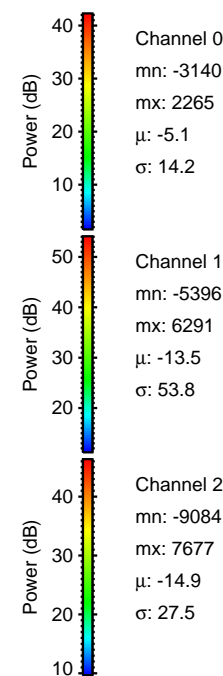
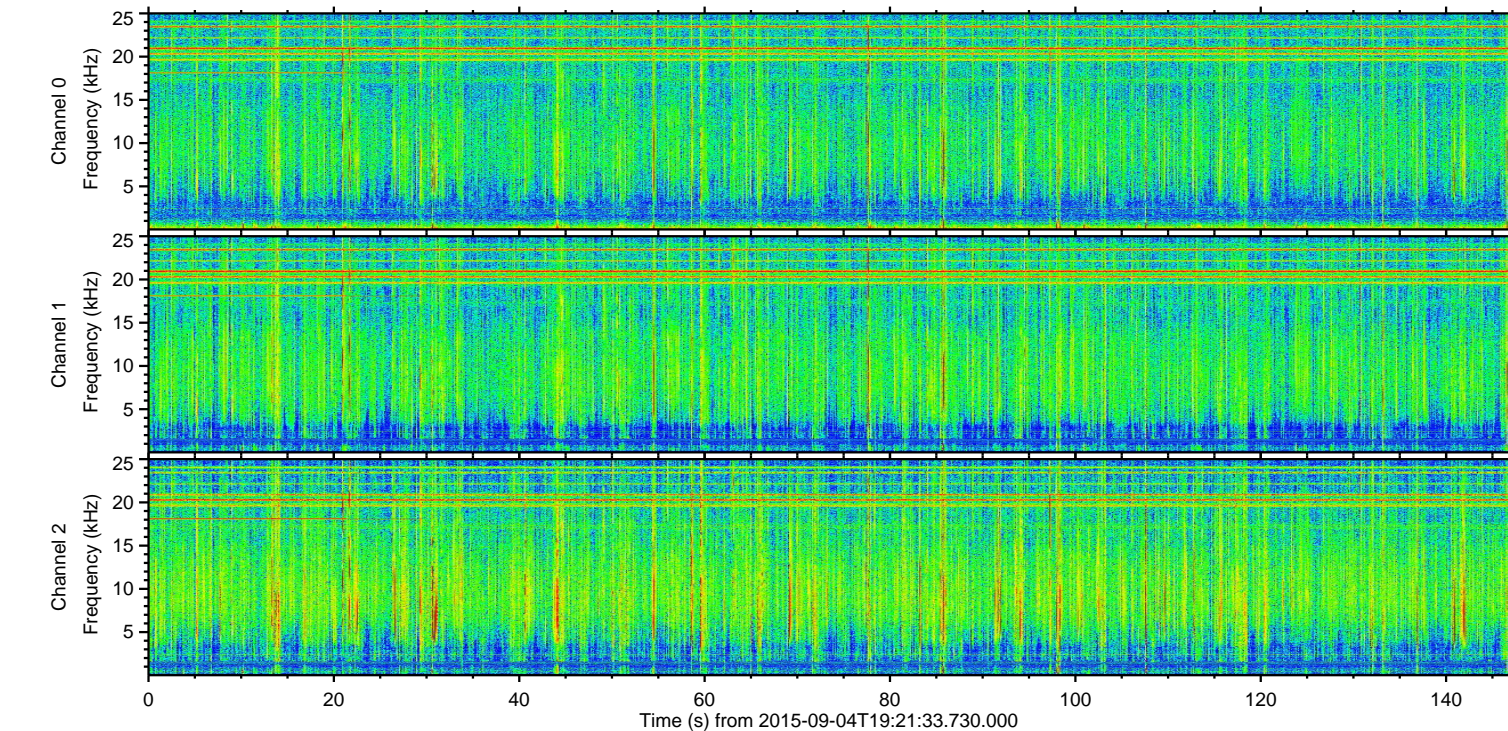
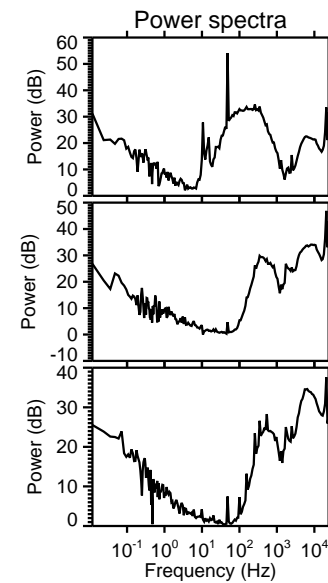
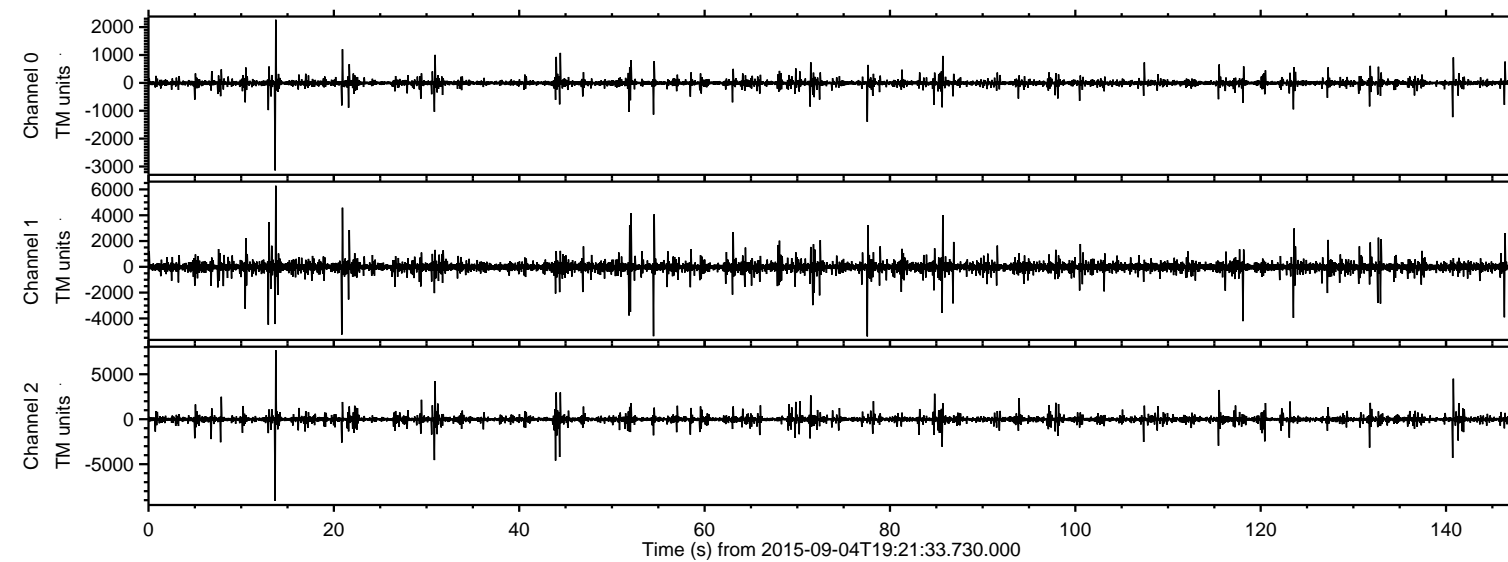


# ELMAVAN 3D WAVEFORMS (Measured data sampled at 50 kHz) 51000 packets of 144 samples from 2015-09-04T19:21:33.730.000.

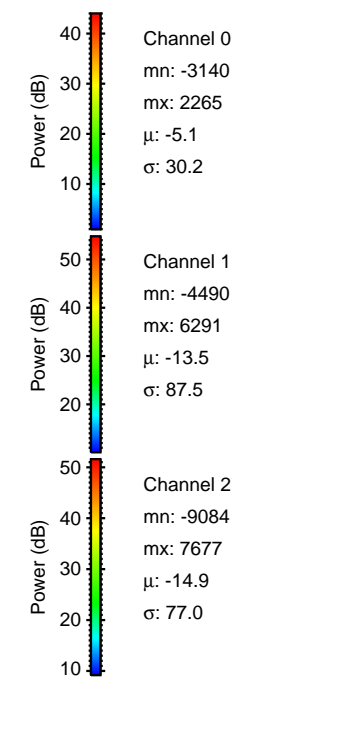
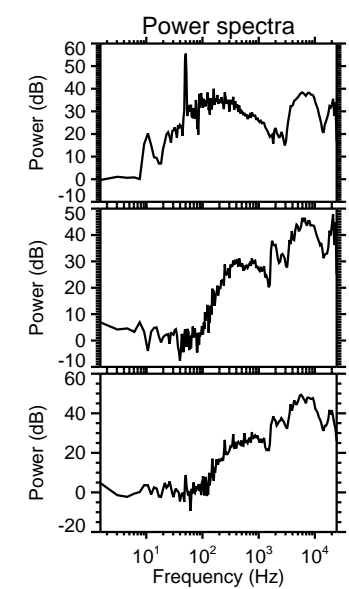
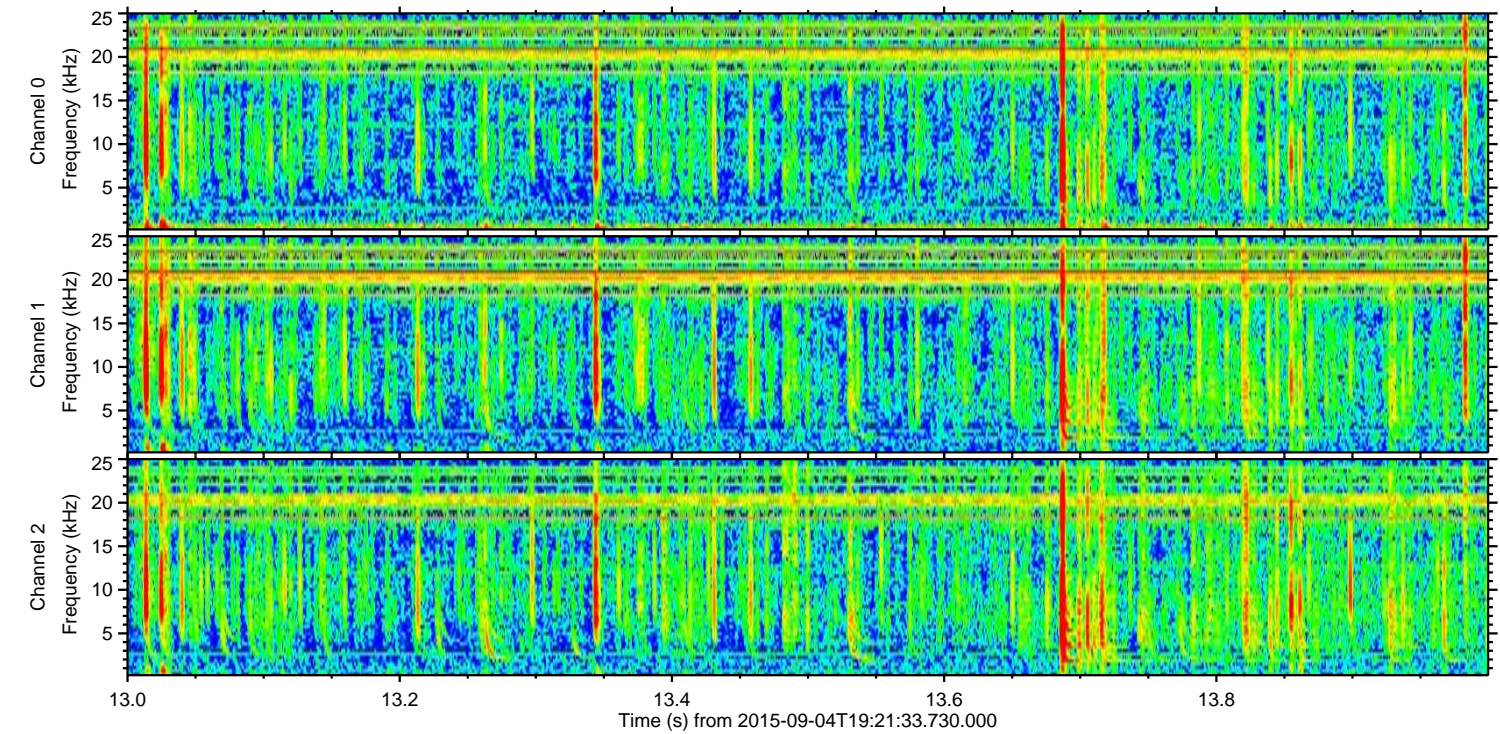
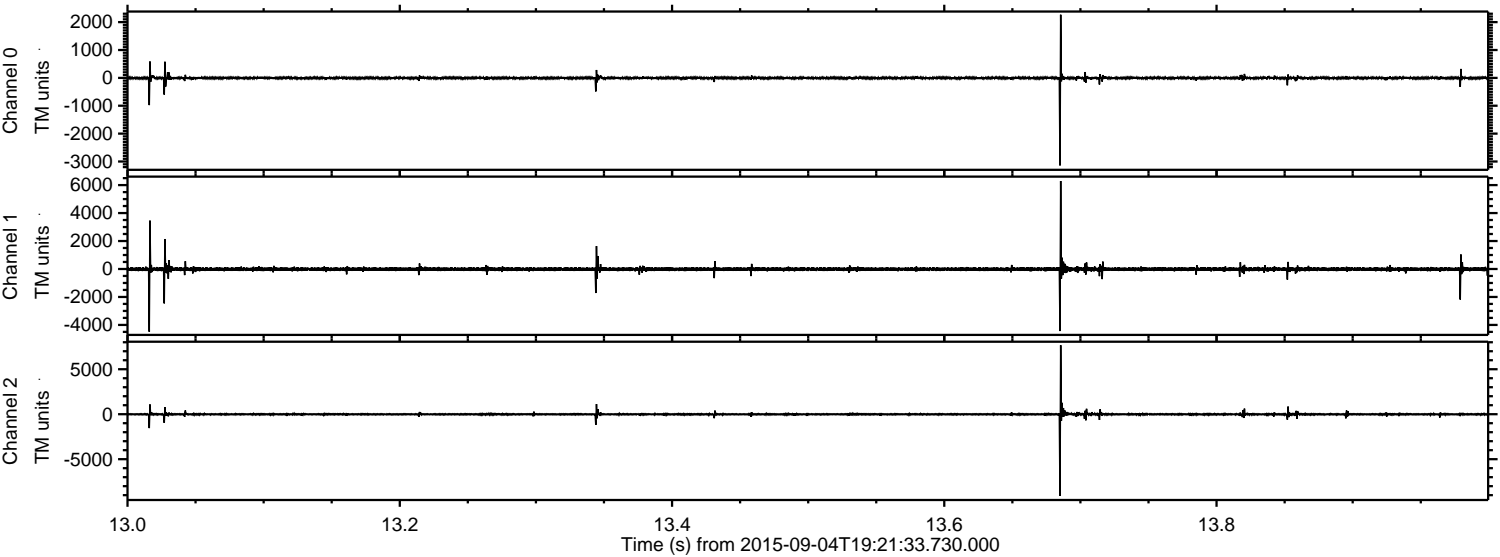
Processed Fri Oct 9 17:46:45 2015 by ELM ver.2012-10-06 from 001\_\_elm20150904\_192132\_\_dat00.bin





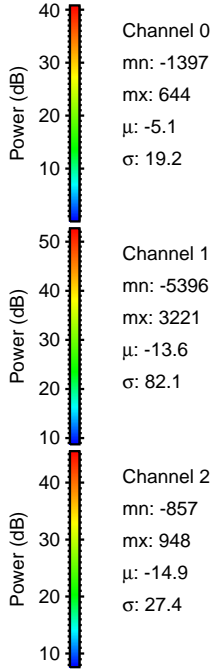
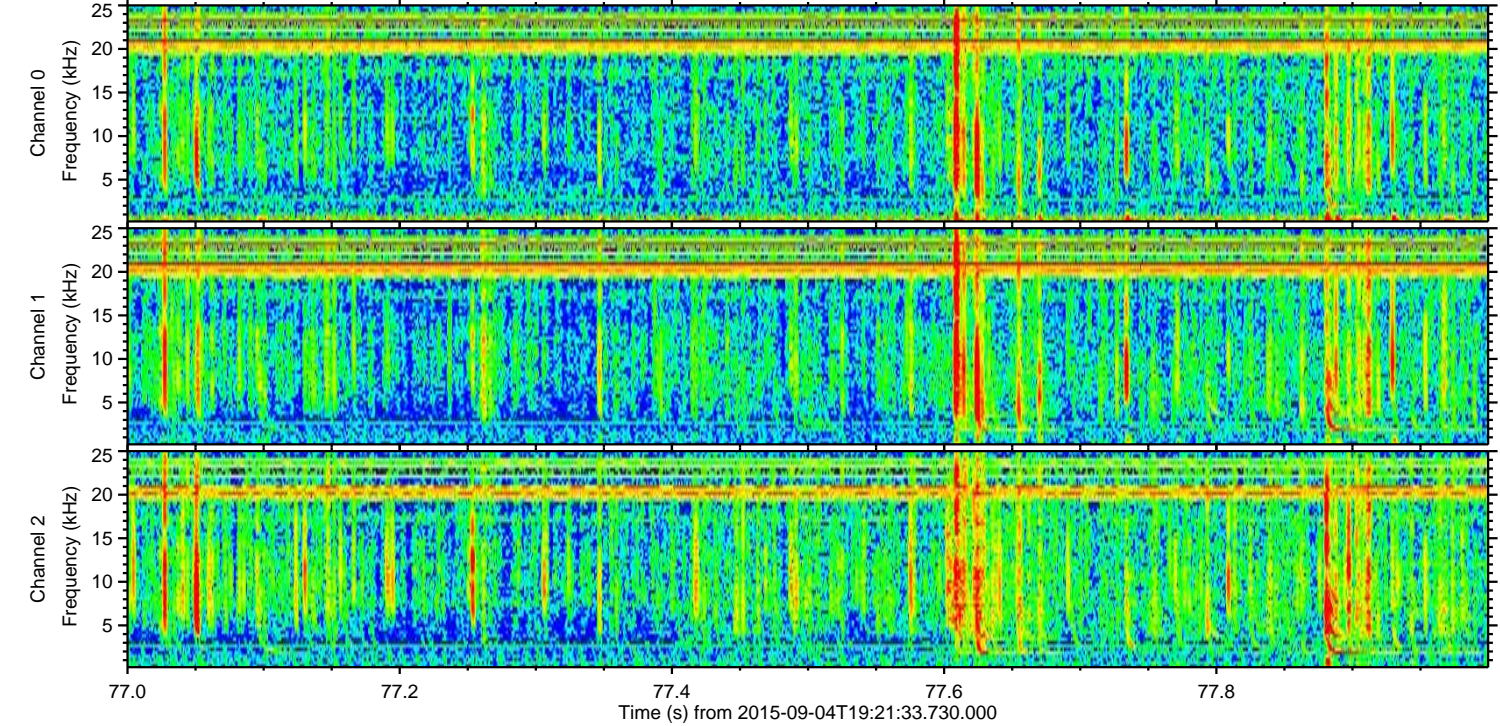
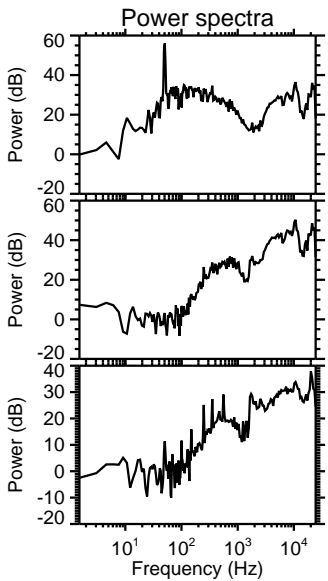
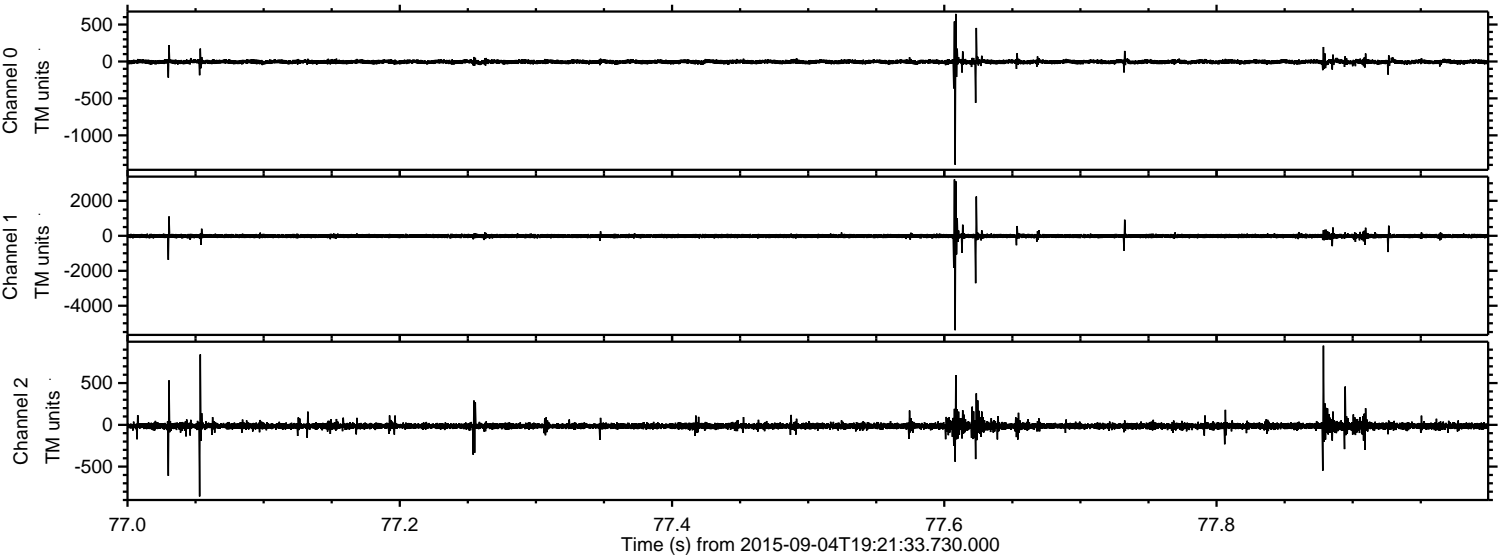
ELMAVAN 3D WAVEFORMS (Measured data sampled at 50 kHz) 51000 packets of 144 samples from 2015-09-04T19:21:33.730.000. Part 14/147

Processed Fri Oct 9 17:47:02 2015 by ELM ver.2012-10-06 from 001\_\_elm20150904\_192132\_\_dat00.bin





Processed Fri Oct 9 17:47:03 2015 by ELM ver.2012-10-06 from 001\_\_elm20150904\_192132\_\_dat00.bin



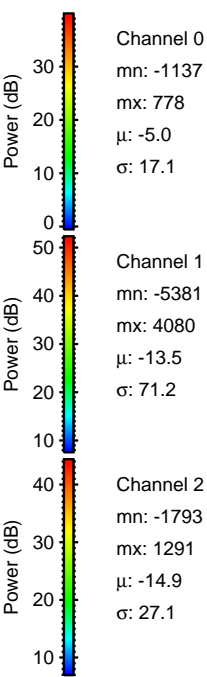
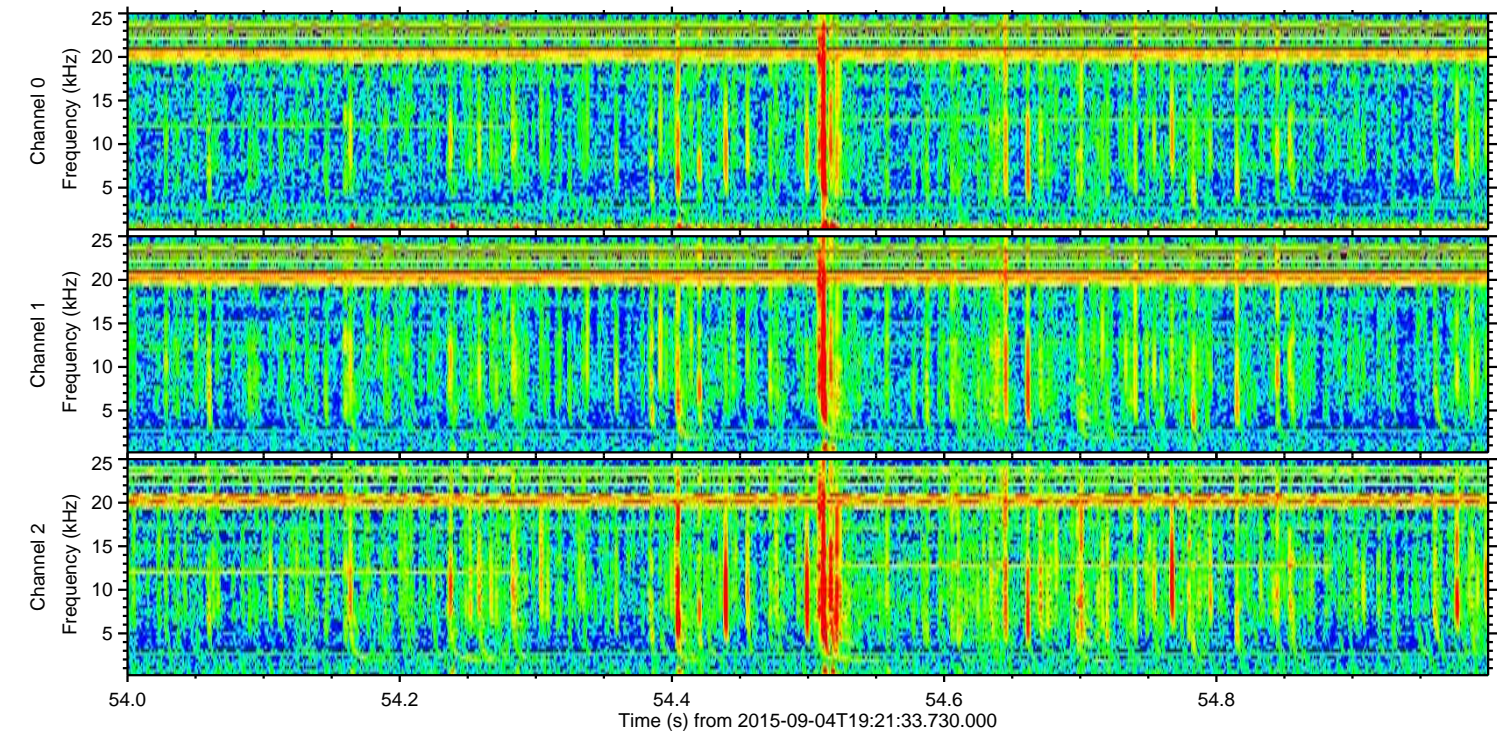
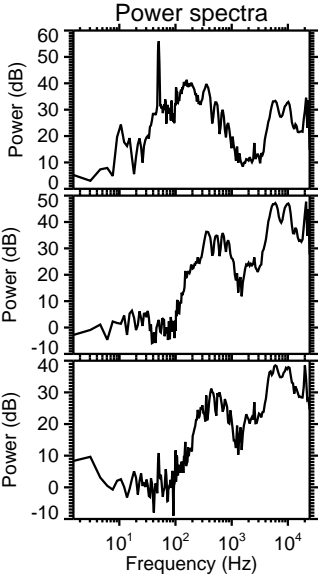
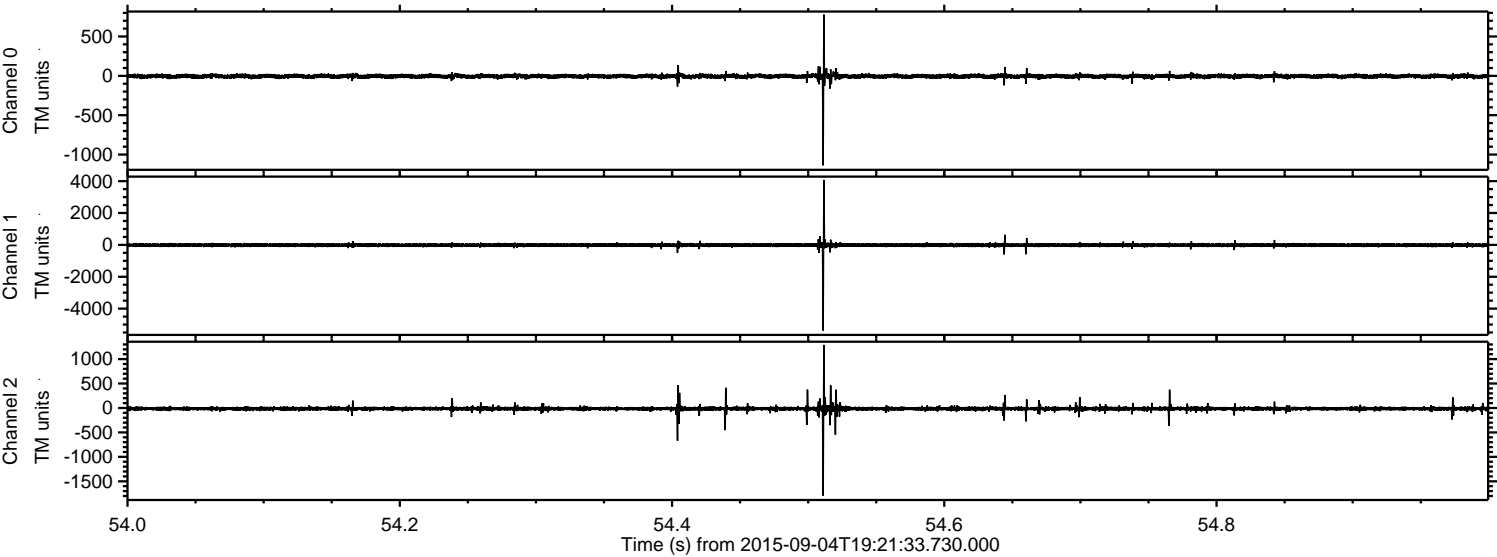
Channel 0  
mn: -1397  
mx: 644  
 $\mu$ : -5.1  
 $\sigma$ : 19.2

Channel 1  
mn: -5396  
mx: 3221  
 $\mu$ : -13.6  
 $\sigma$ : 82.1

Channel 2  
mn: -857  
mx: 948  
 $\mu$ : -14.9  
 $\sigma$ : 27.4



Processed Fri Oct 9 17:47:04 2015 by ELM ver.2012-10-06 from 001\_\_elm20150904\_192132\_\_dat00.bin



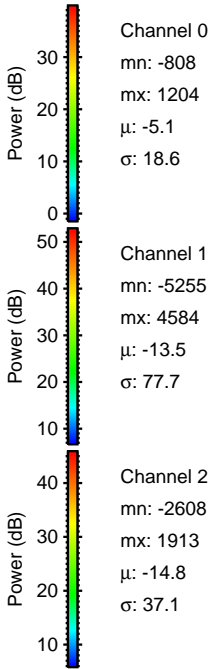
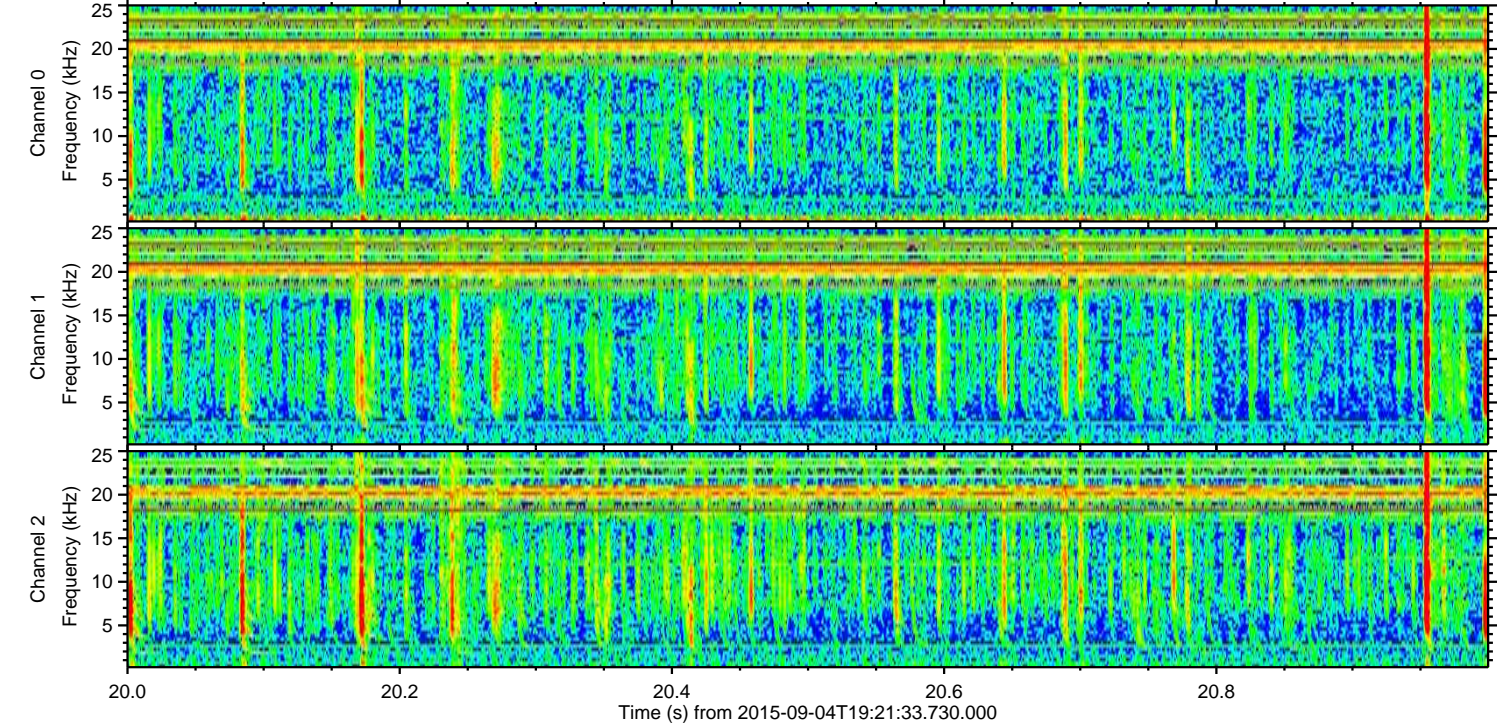
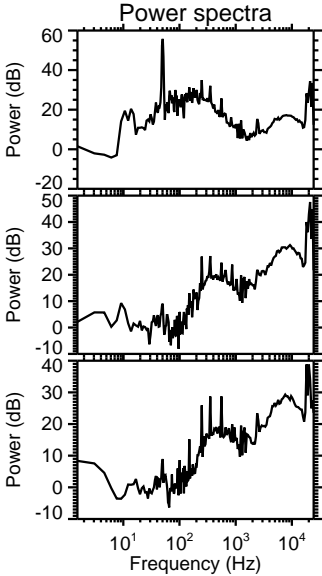
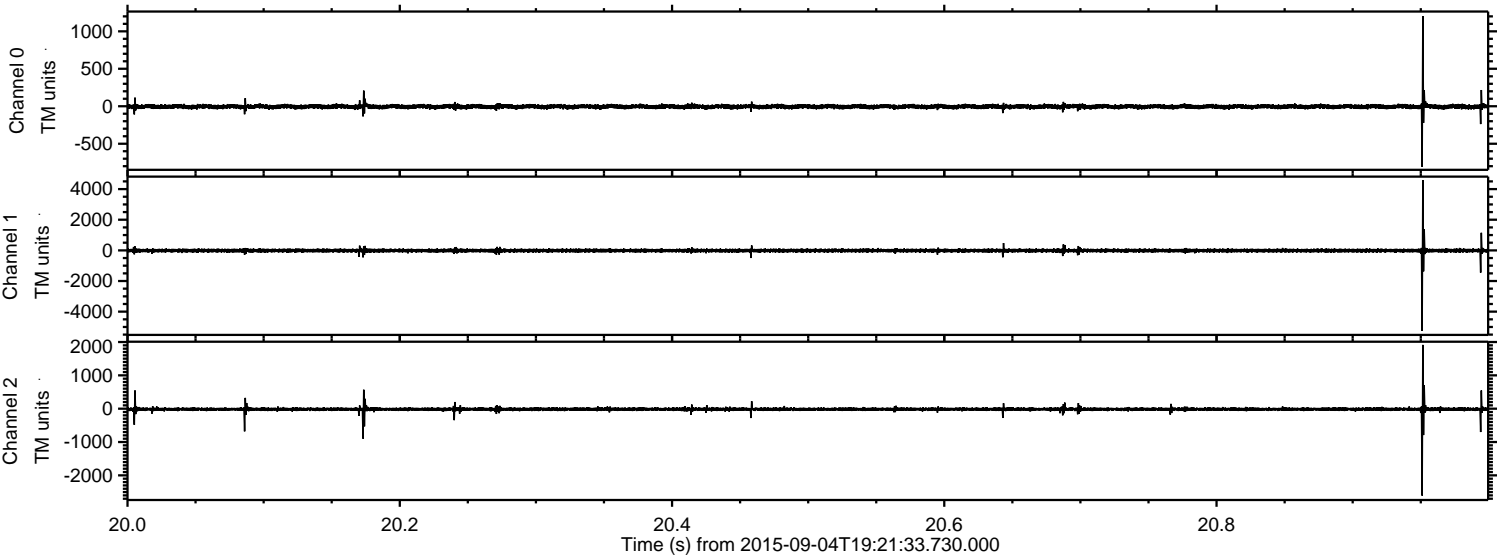
Channel 0  
mn: -1137  
mx: 778  
 $\mu$ : -5.0  
 $\sigma$ : 17.1

Channel 1  
mn: -5381  
mx: 4080  
 $\mu$ : -13.5  
 $\sigma$ : 71.2

Channel 2  
mn: -1793  
mx: 1291  
 $\mu$ : -14.9  
 $\sigma$ : 27.1

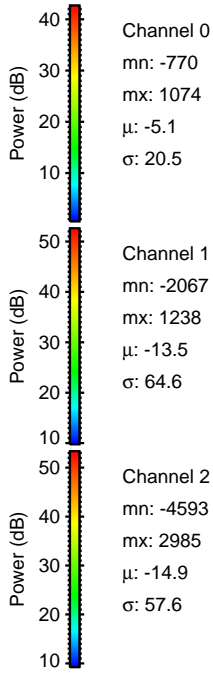
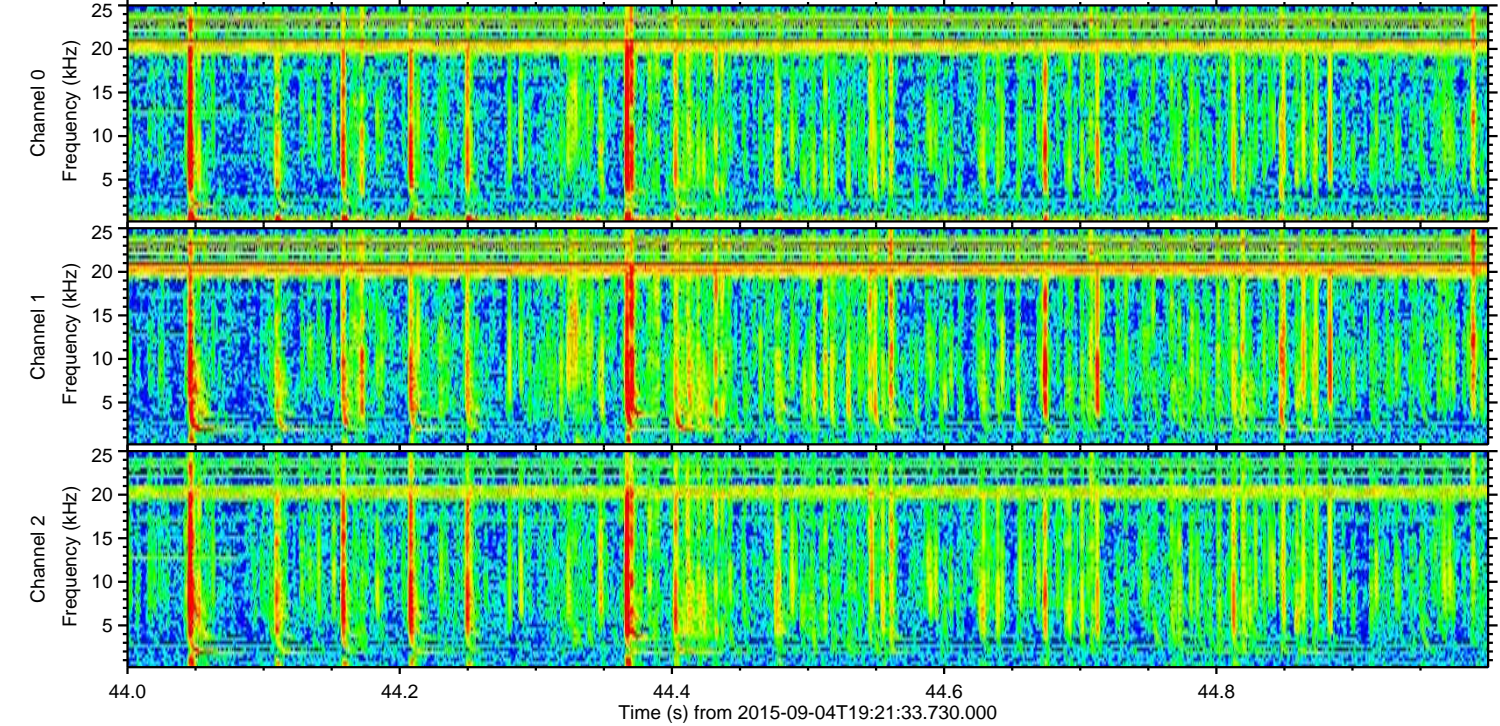
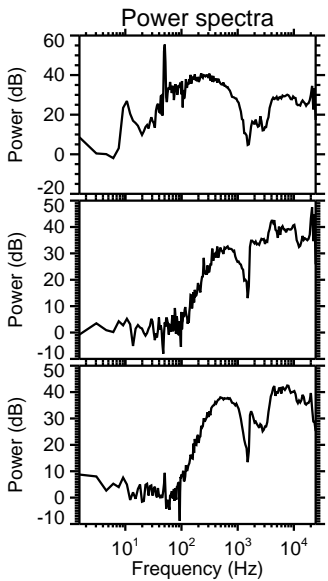
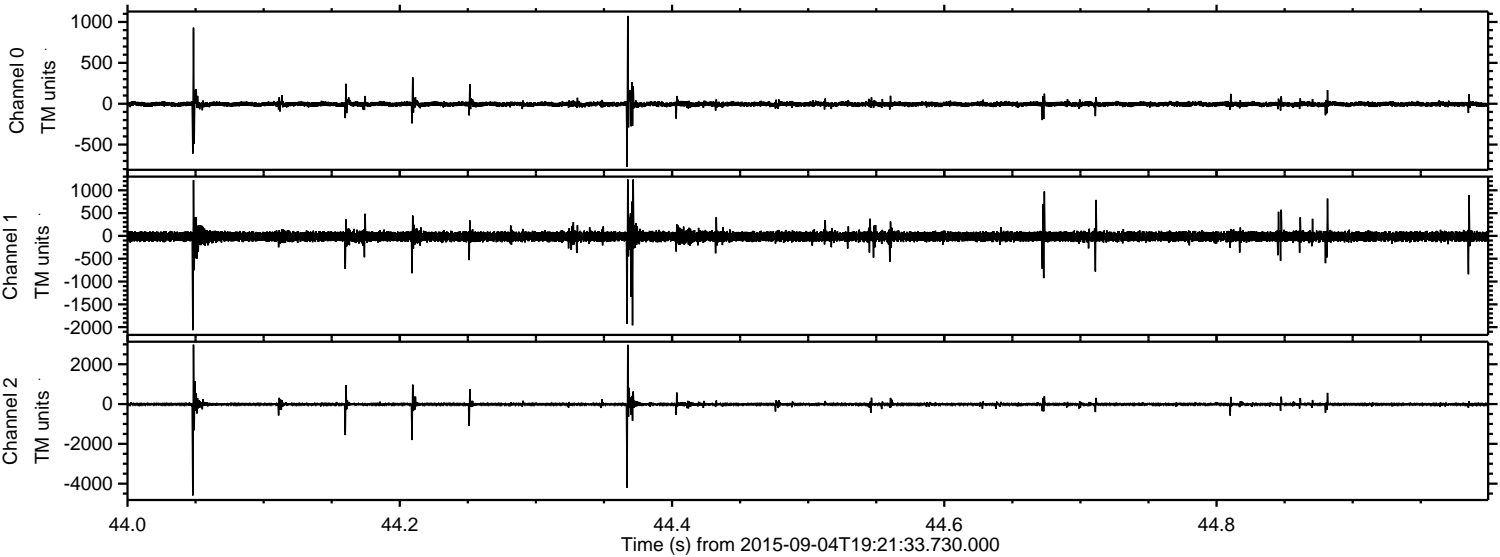


Processed Fri Oct 9 17:47:05 2015 by ELM ver.2012-10-06 from 001\_\_elm20150904\_192132\_\_dat00.bin





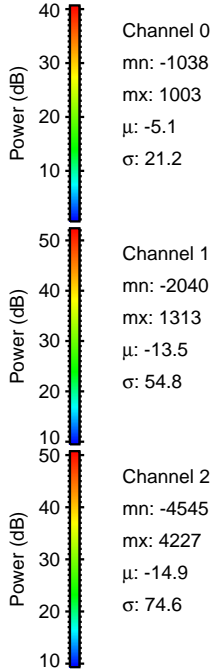
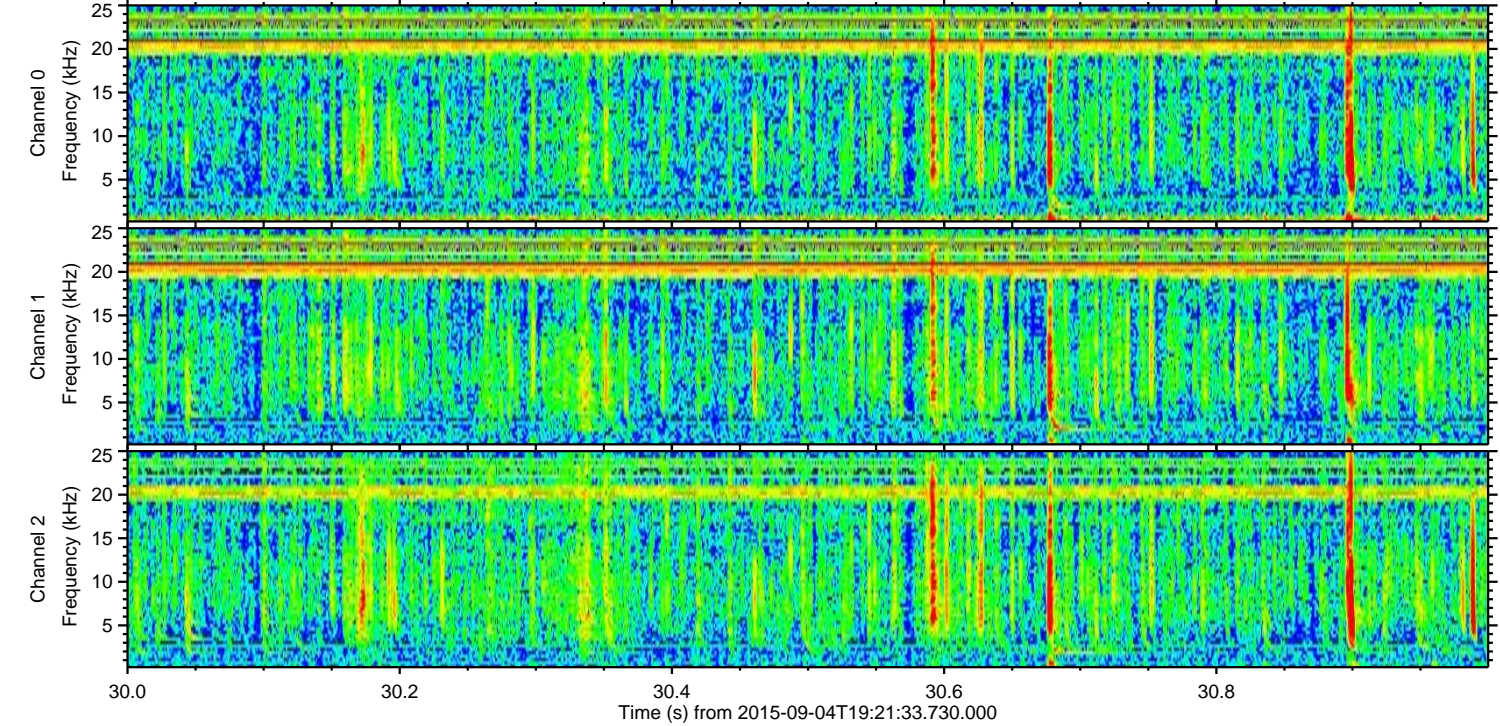
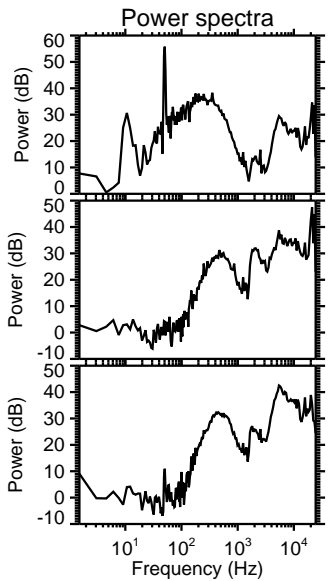
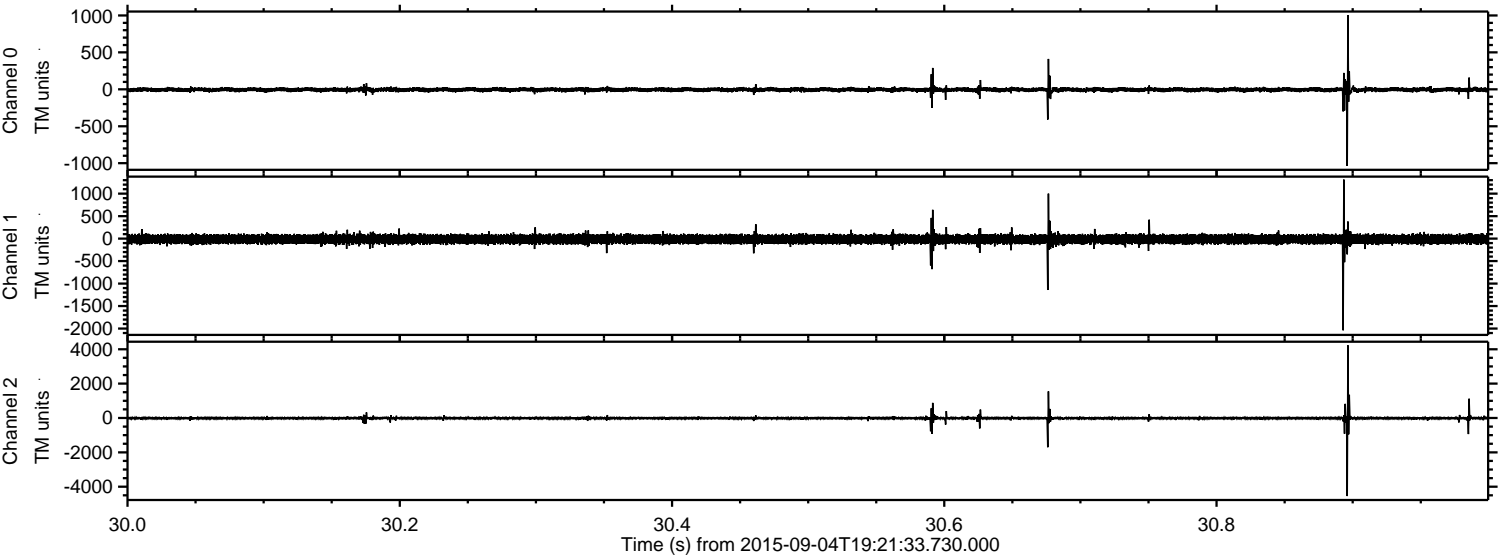
Processed Fri Oct 9 17:47:06 2015 by ELM ver.2012-10-06 from 001\_\_elm20150904\_192132\_\_dat00.bin





ELMAVAN 3D WAVEFORMS (Measured data sampled at 50 kHz) 51000 packets of 144 samples from 2015-09-04T19:21:33.730.000. Part 31/147

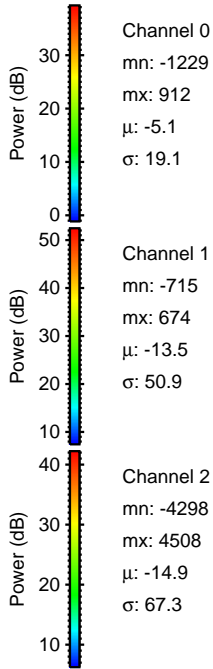
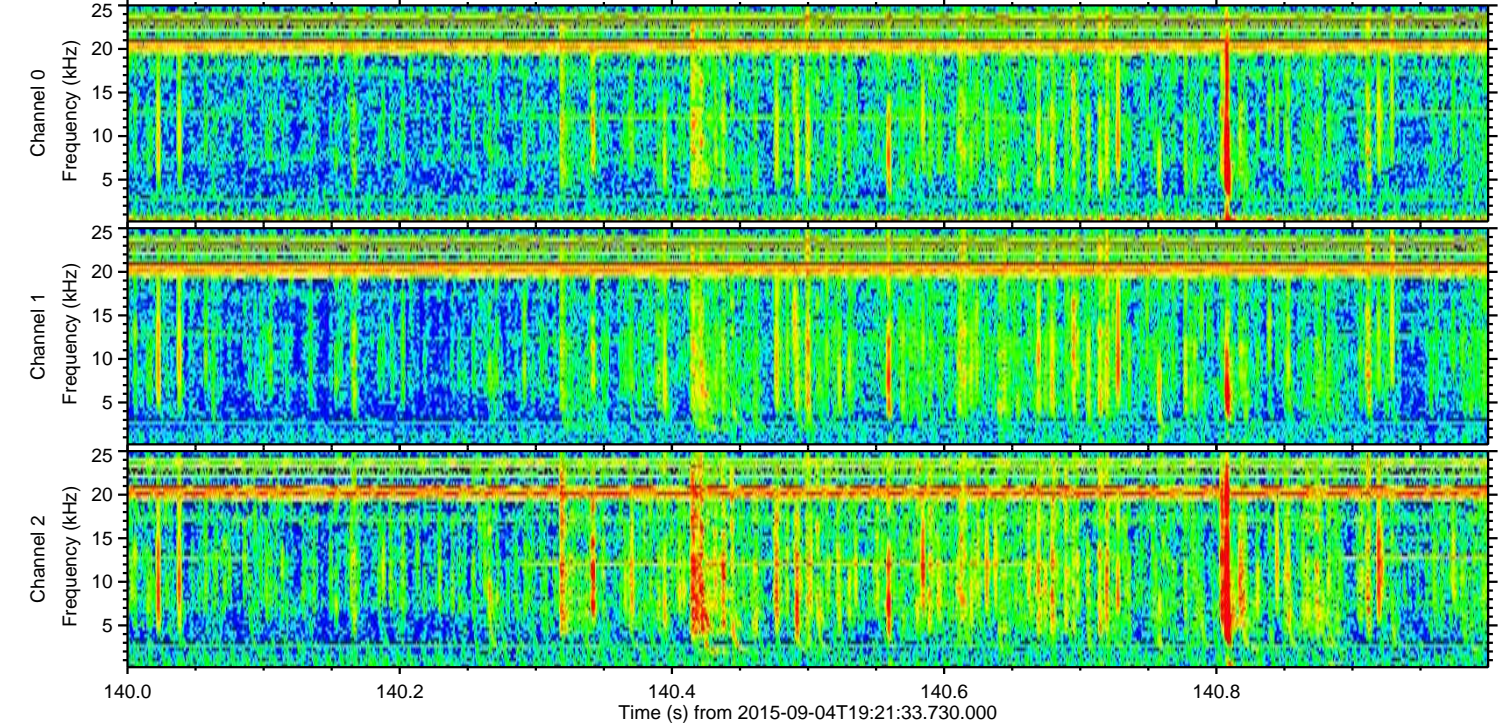
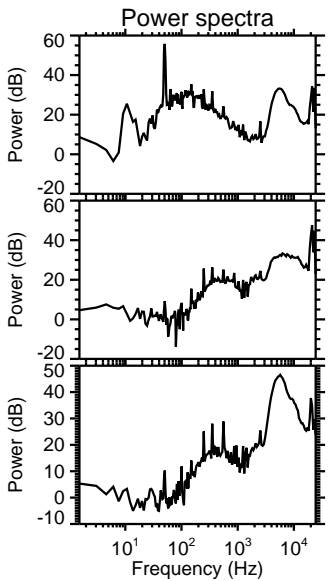
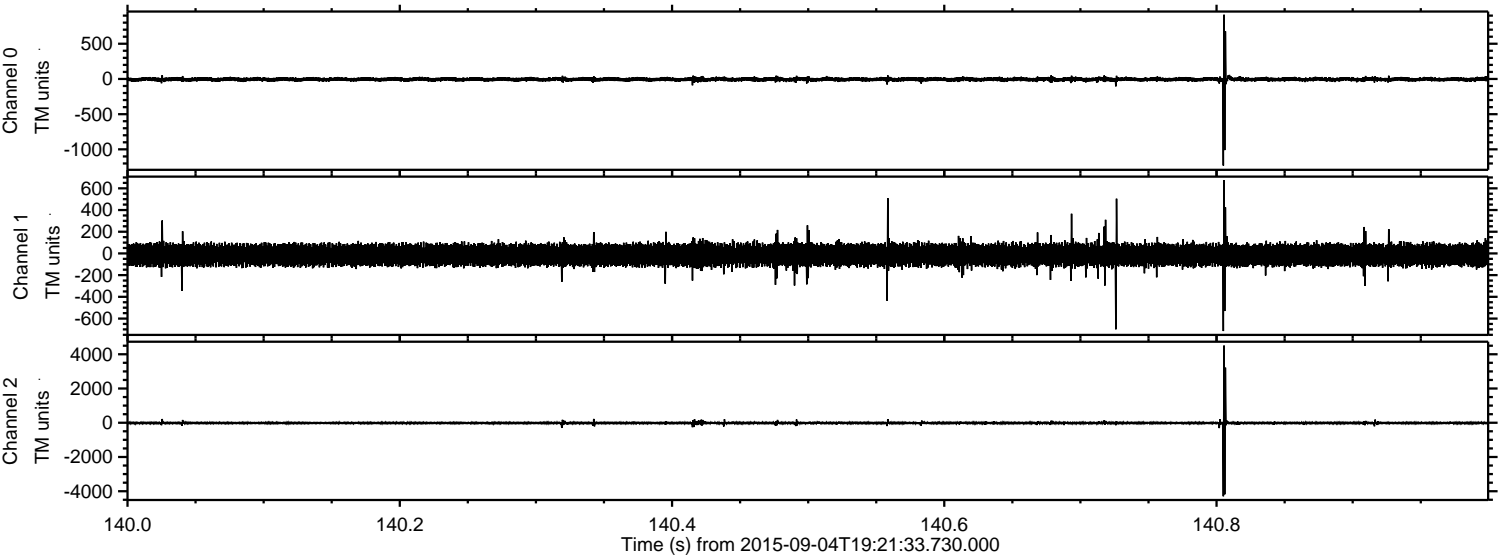
Processed Fri Oct 9 17:47:07 2015 by ELM ver.2012-10-06 from 001\_\_elm20150904\_192132\_\_dat00.bin





ELMAVAN 3D WAVEFORMS (Measured data sampled at 50 kHz) 51000 packets of 144 samples from 2015-09-04T19:21:33.730.000. Part 141/147

Processed Fri Oct 9 17:47:09 2015 by ELM ver.2012-10-06 from 001\_\_elm20150904\_192132\_\_dat00.bin



Channel 0  
mn: -1229  
mx: 912  
 $\mu$ : -5.1  
 $\sigma$ : 19.1

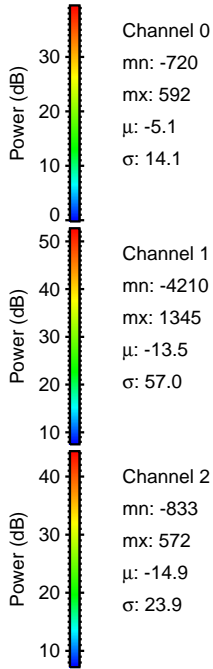
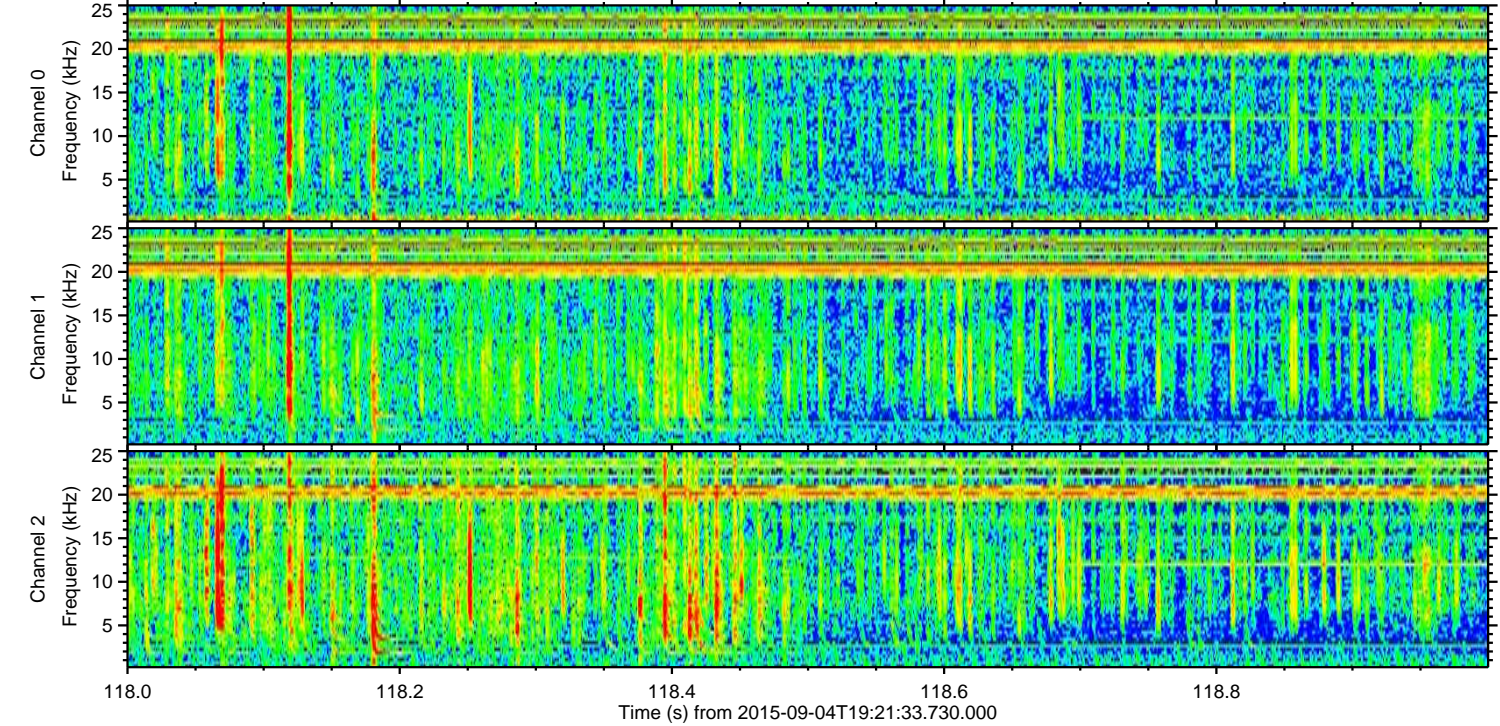
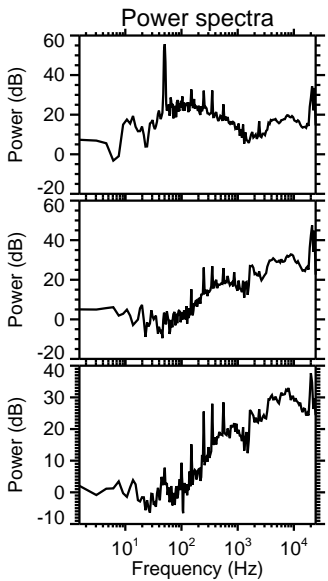
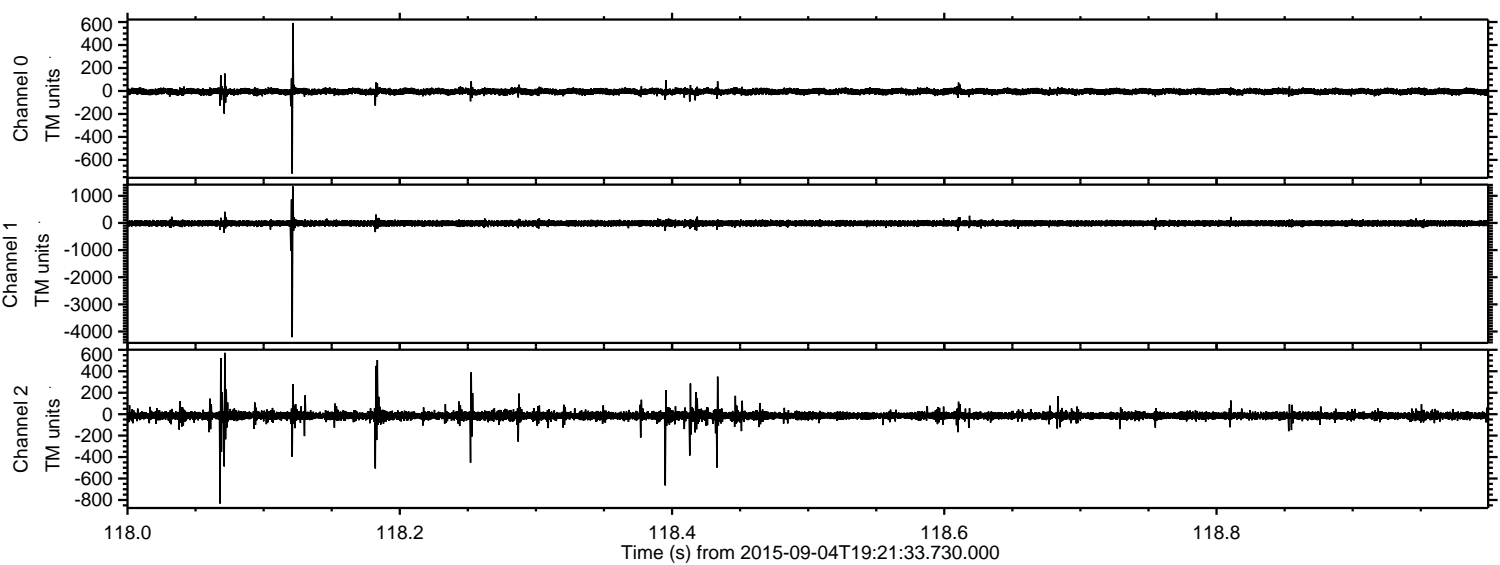
Channel 1  
mn: -715  
mx: 674  
 $\mu$ : -13.5  
 $\sigma$ : 50.9

Channel 2  
mn: -4298  
mx: 4508  
 $\mu$ : -14.9  
 $\sigma$ : 67.3



ELMAVAN 3D WAVEFORMS (Measured data sampled at 50 kHz) 51000 packets of 144 samples from 2015-09-04T19:21:33.730.000. Part 119/147

Processed Fri Oct 9 17:47:10 2015 by ELM ver.2012-10-06 from 001\_\_elm20150904\_192132\_\_dat00.bin



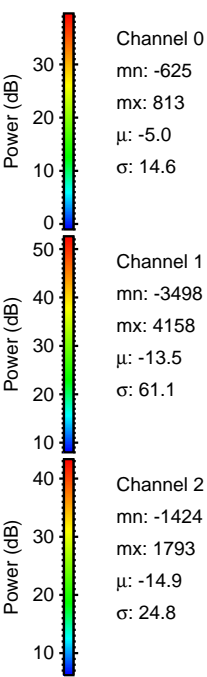
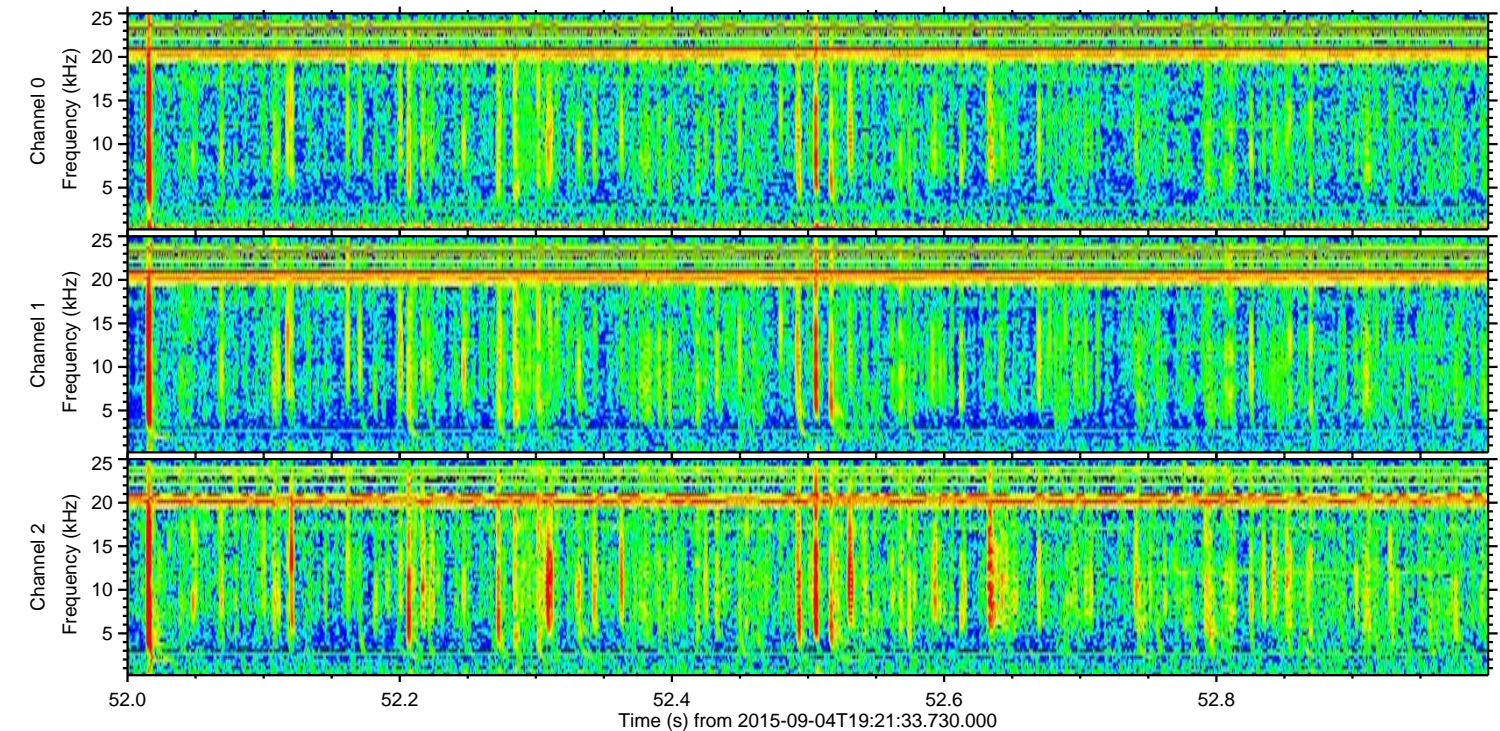
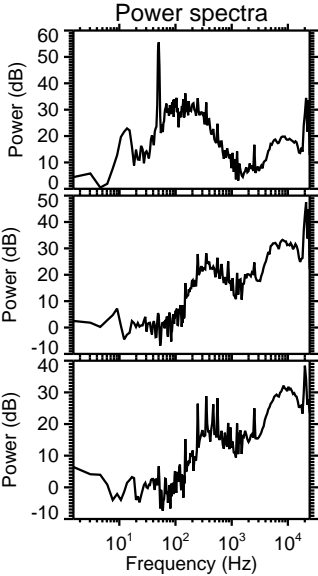
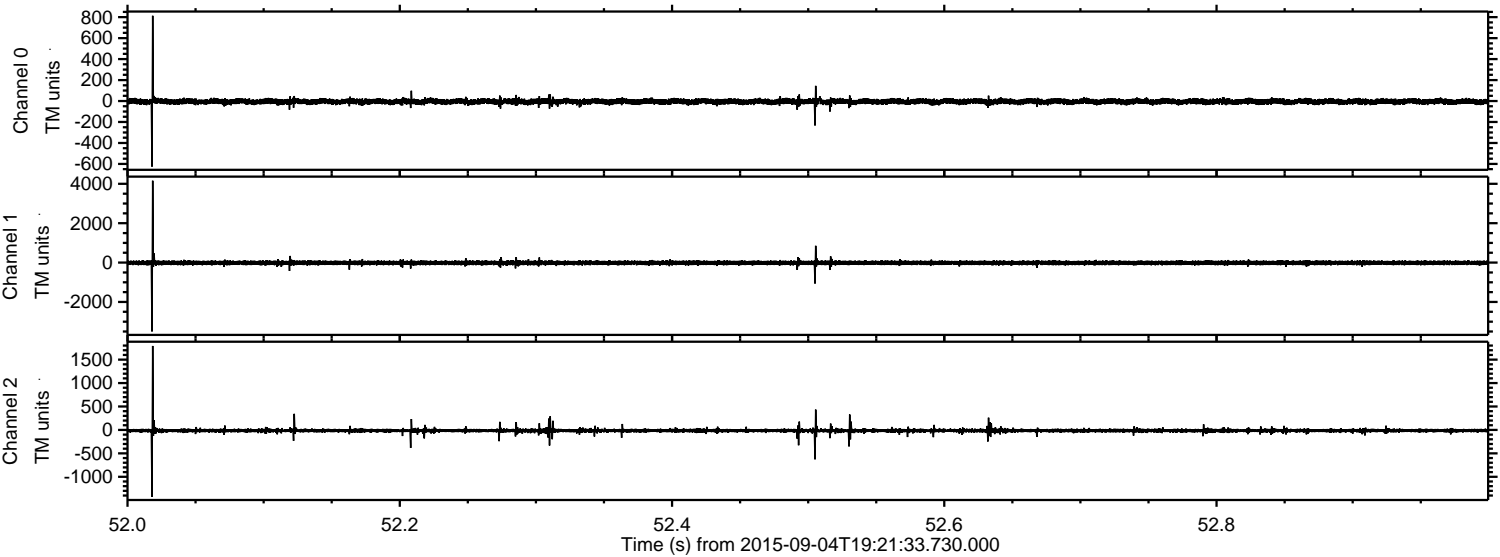
Channel 0  
mn: -720  
mx: 592  
 $\mu$ : -5.1  
 $\sigma$ : 14.1

Channel 1  
mn: -4210  
mx: 1345  
 $\mu$ : -13.5  
 $\sigma$ : 57.0

Channel 2  
mn: -833  
mx: 572  
 $\mu$ : -14.9  
 $\sigma$ : 23.9



Processed Fri Oct 9 17:47:11 2015 by ELM ver.2012-10-06 from 001\_\_elm20150904\_192132\_\_dat00.bin



Channel 0  
mn: -625  
mx: 813  
 $\mu$ : -5.0  
 $\sigma$ : 14.6

Channel 1  
mn: -3498  
mx: 4158  
 $\mu$ : -13.5  
 $\sigma$ : 61.1

Channel 2  
mn: -1424  
mx: 1793  
 $\mu$ : -14.9  
 $\sigma$ : 24.8



Processed Fri Oct 9 17:47:12 2015 by ELM ver.2012-10-06 from 001\_\_elm20150904\_192132\_\_dat00.bin

