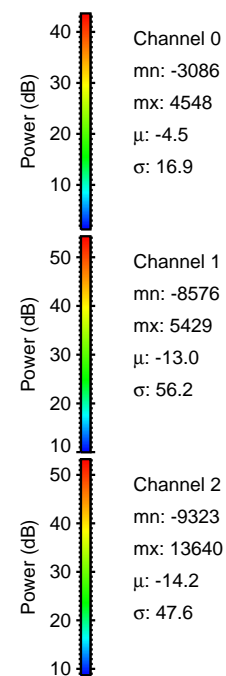
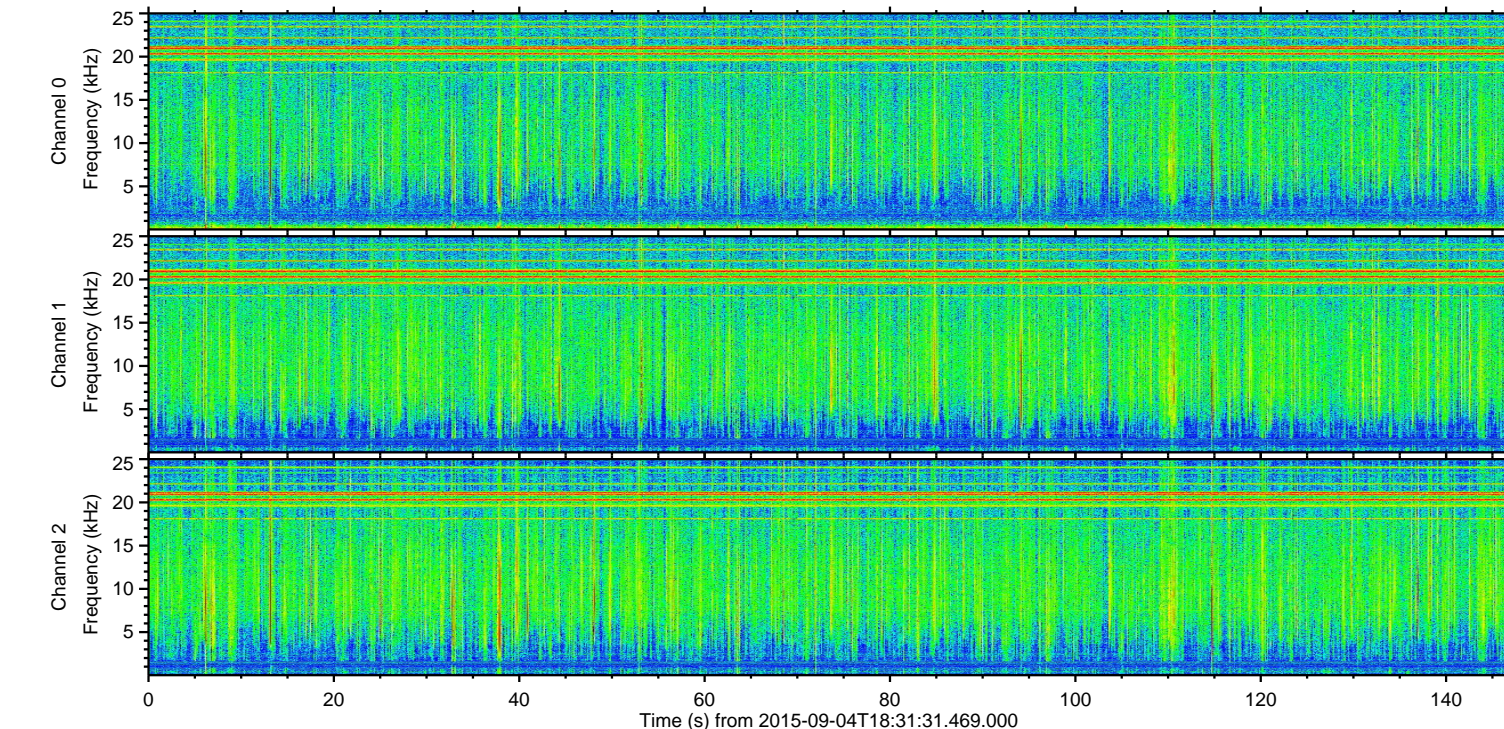
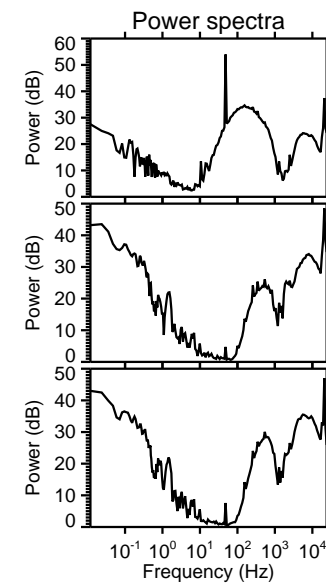
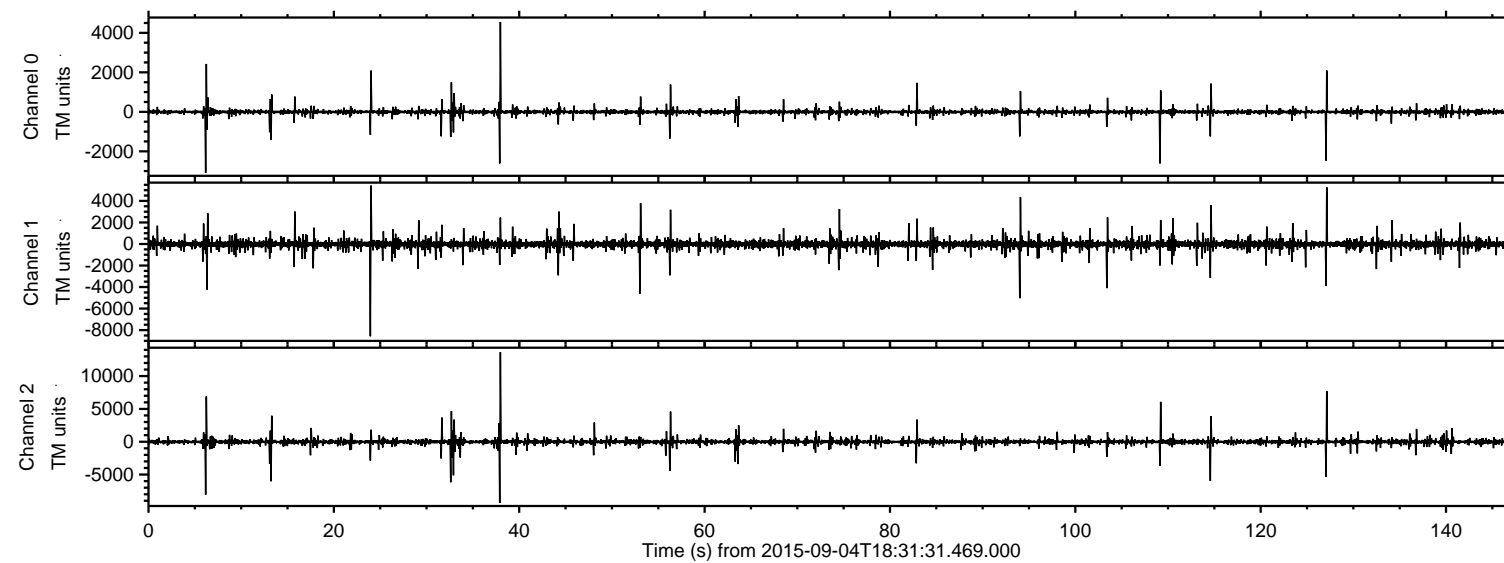
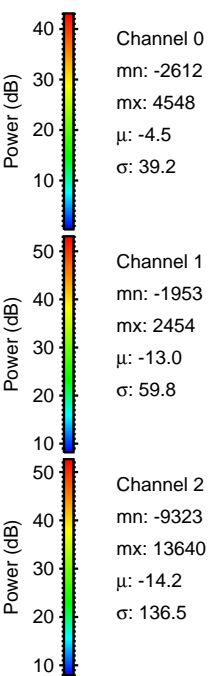
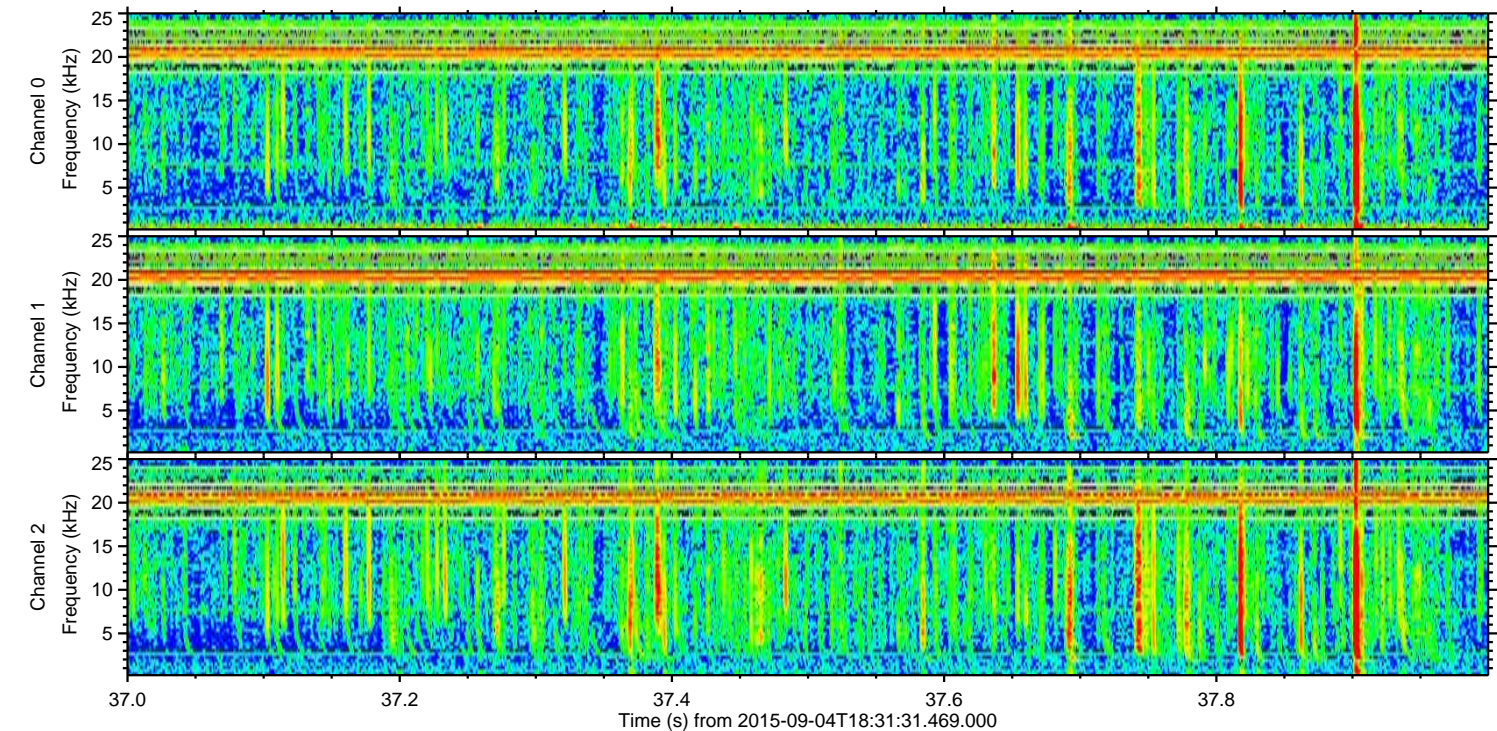
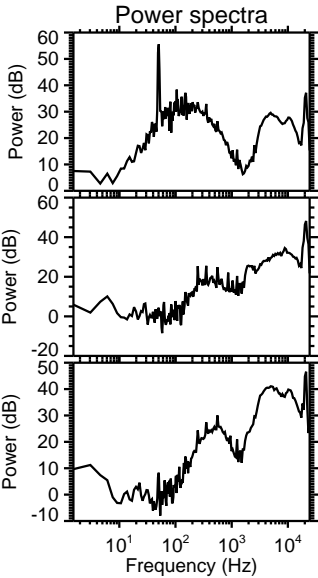
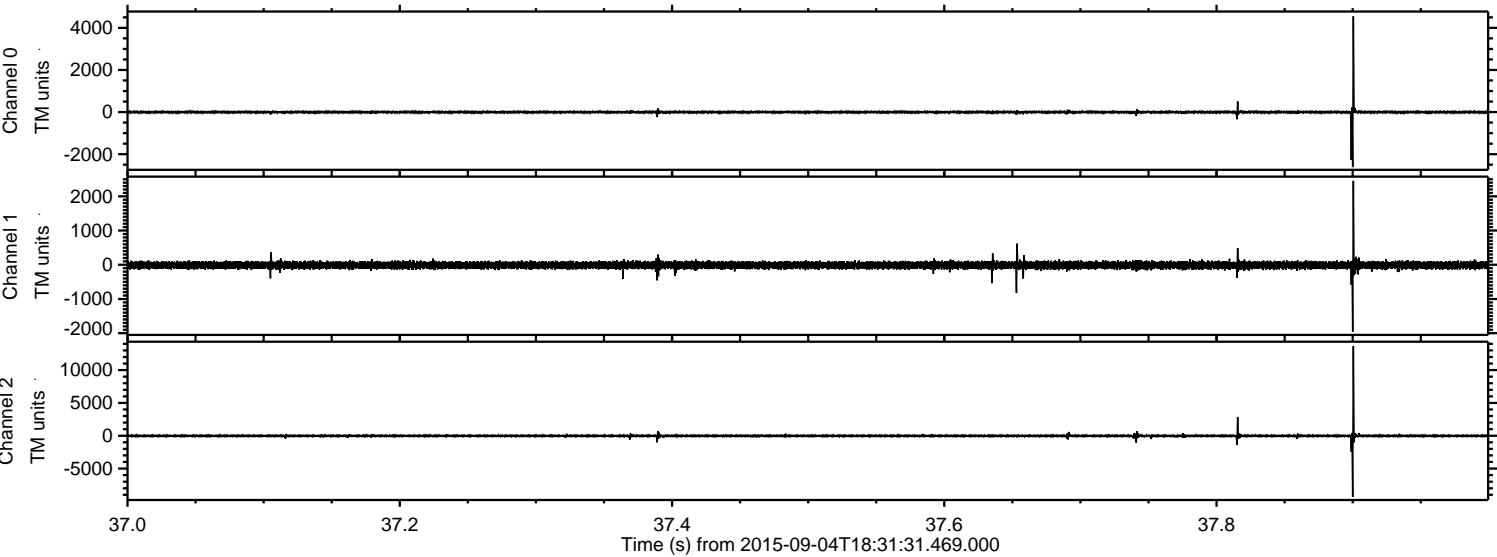


ELMAVAN 3D WAVEFORMS (Measured data sampled at 50 kHz) 51000 packets of 144 samples from 2015-09-04T18:31:31.469.000.

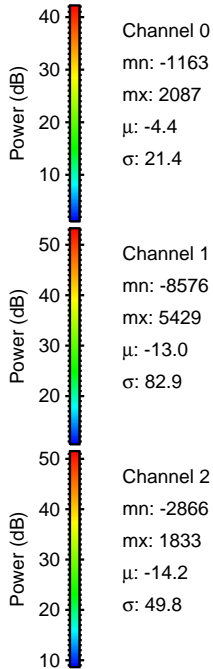
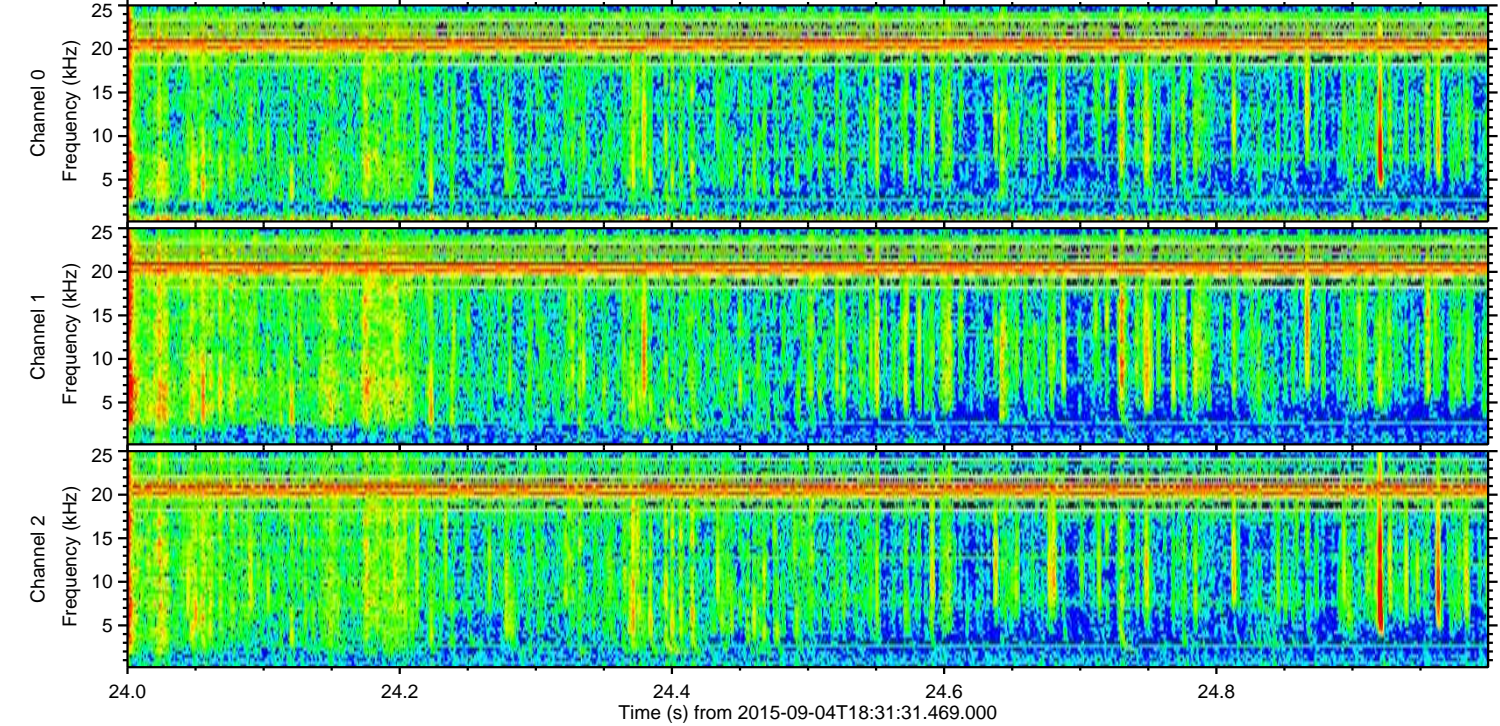
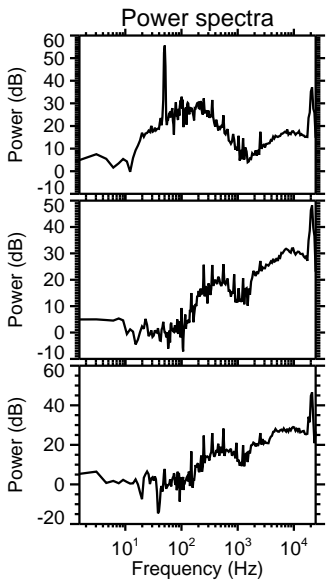
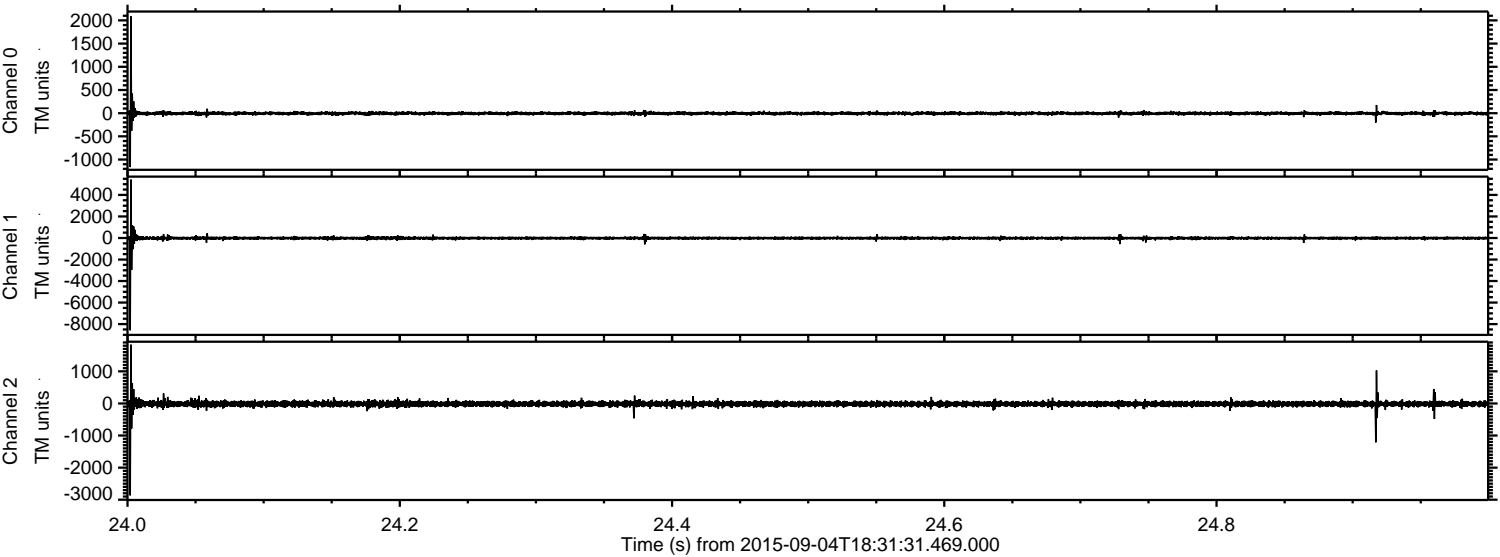
Processed Fri Oct 9 17:32:39 2015 by ELM ver.2012-10-06 from 001__elm20150904_183130__dat00.bin



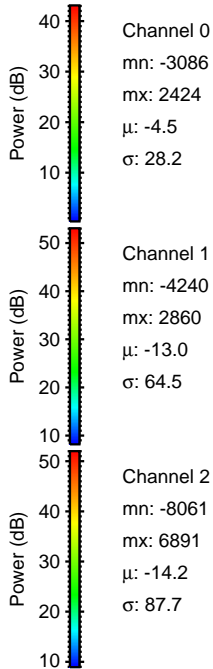
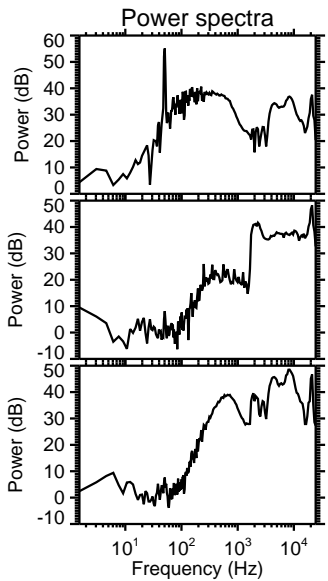
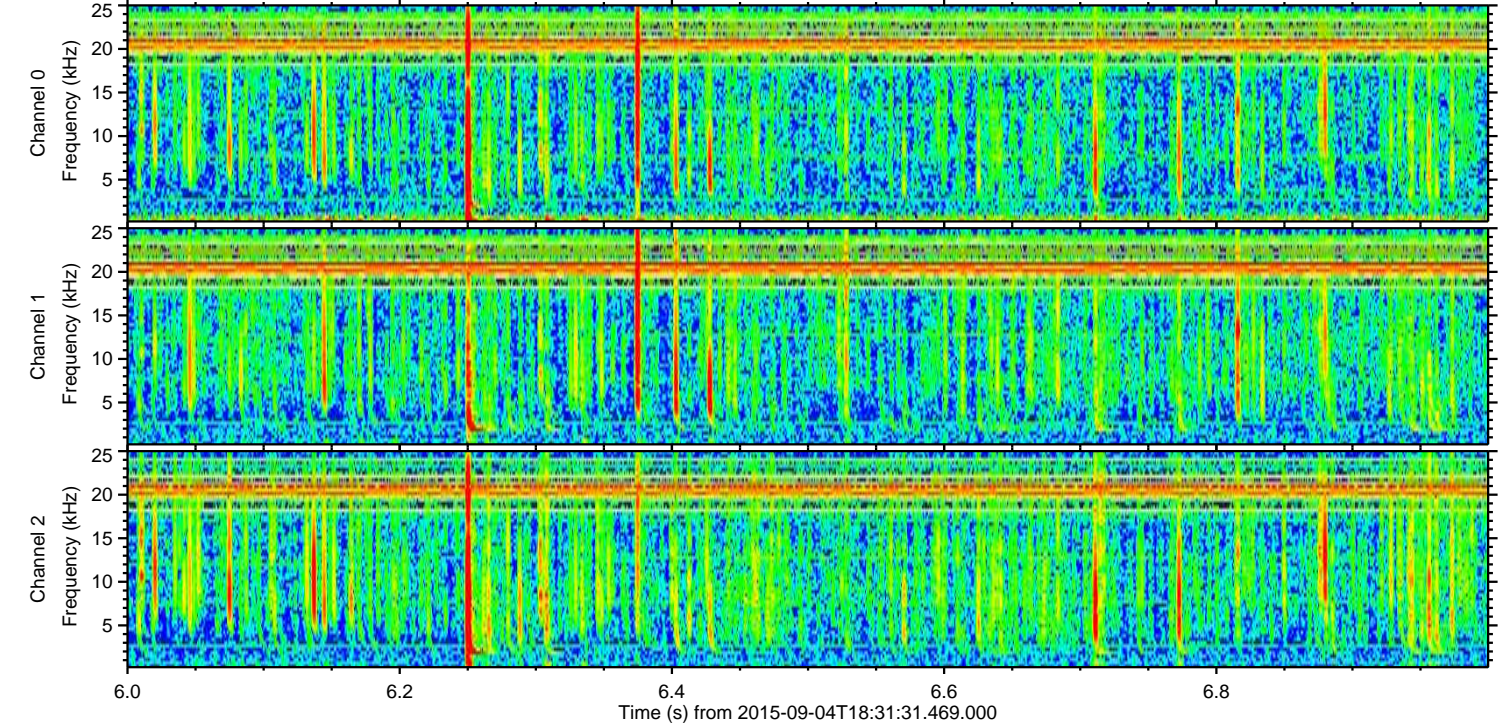
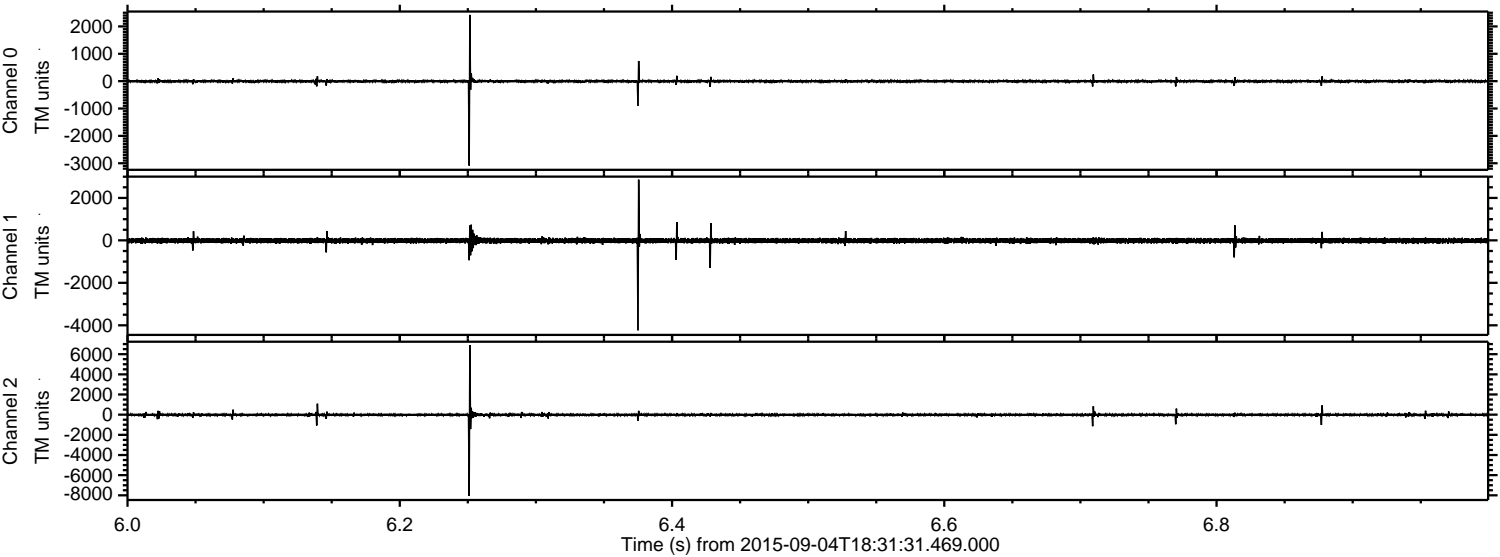
Processed Fri Oct 9 17:32:56 2015 by ELM ver.2012-10-06 from 001__elm20150904_183130__dat00.bin



Processed Fri Oct 9 17:32:57 2015 by ELM ver.2012-10-06 from 001__elm20150904_183130__dat00.bin

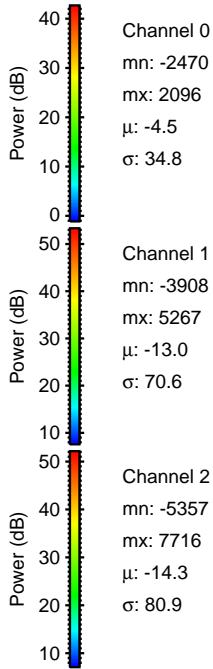
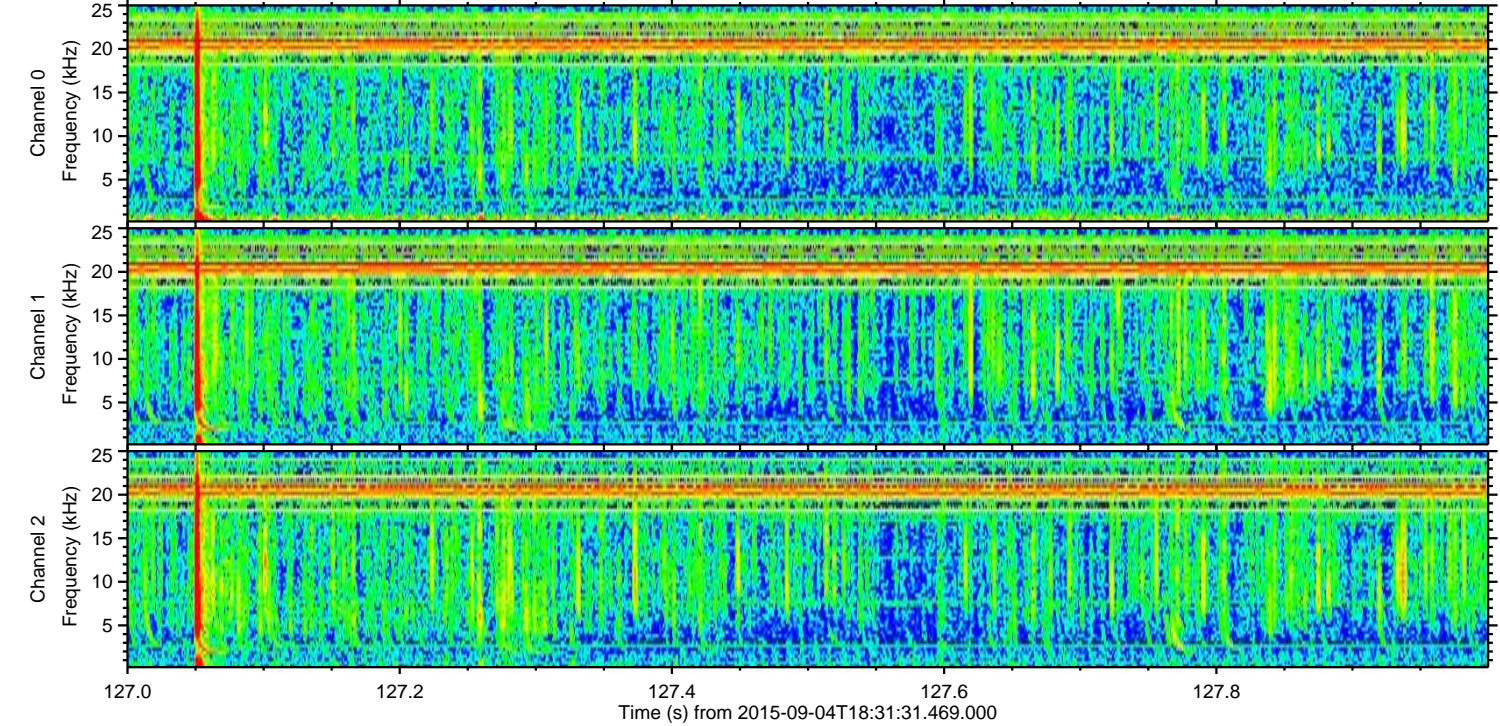
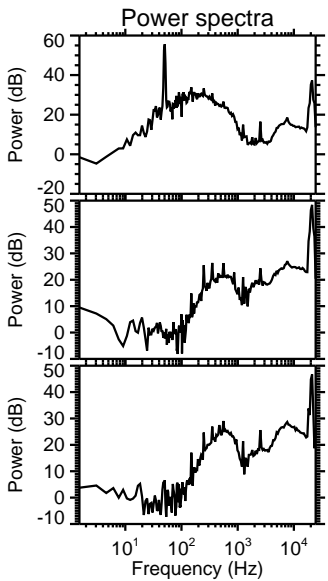
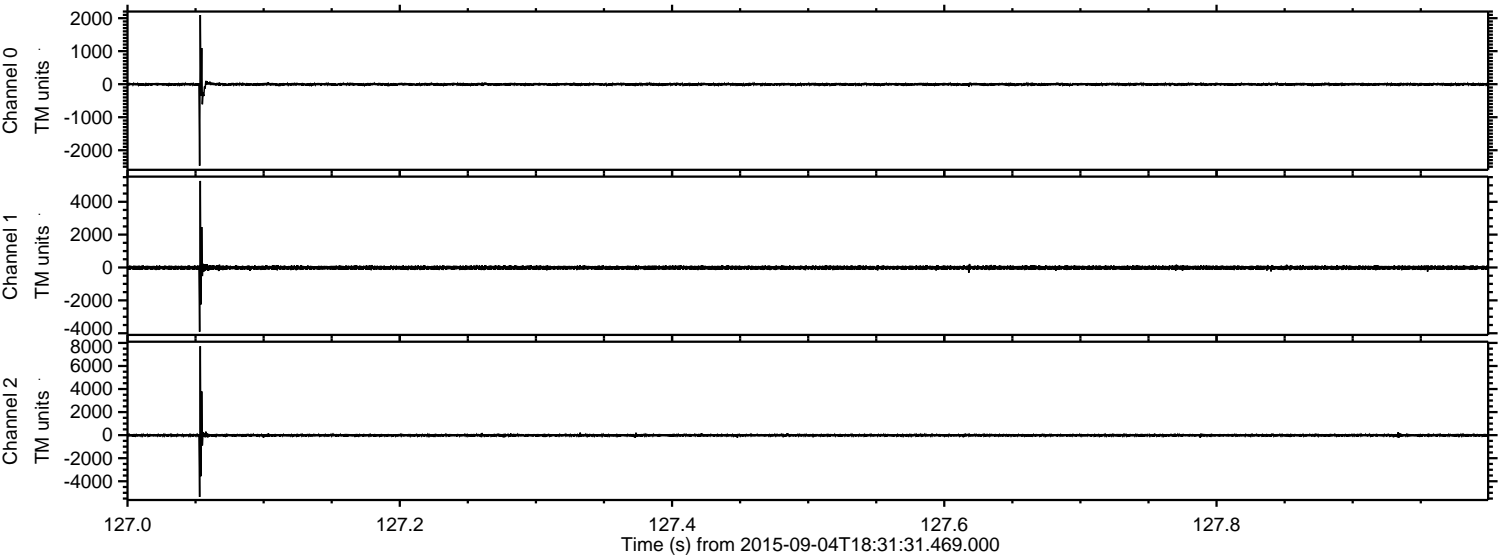


Processed Fri Oct 9 17:32:59 2015 by ELM ver.2012-10-06 from 001__elm20150904_183130__dat00.bin

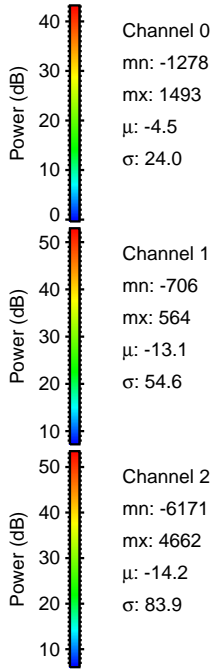
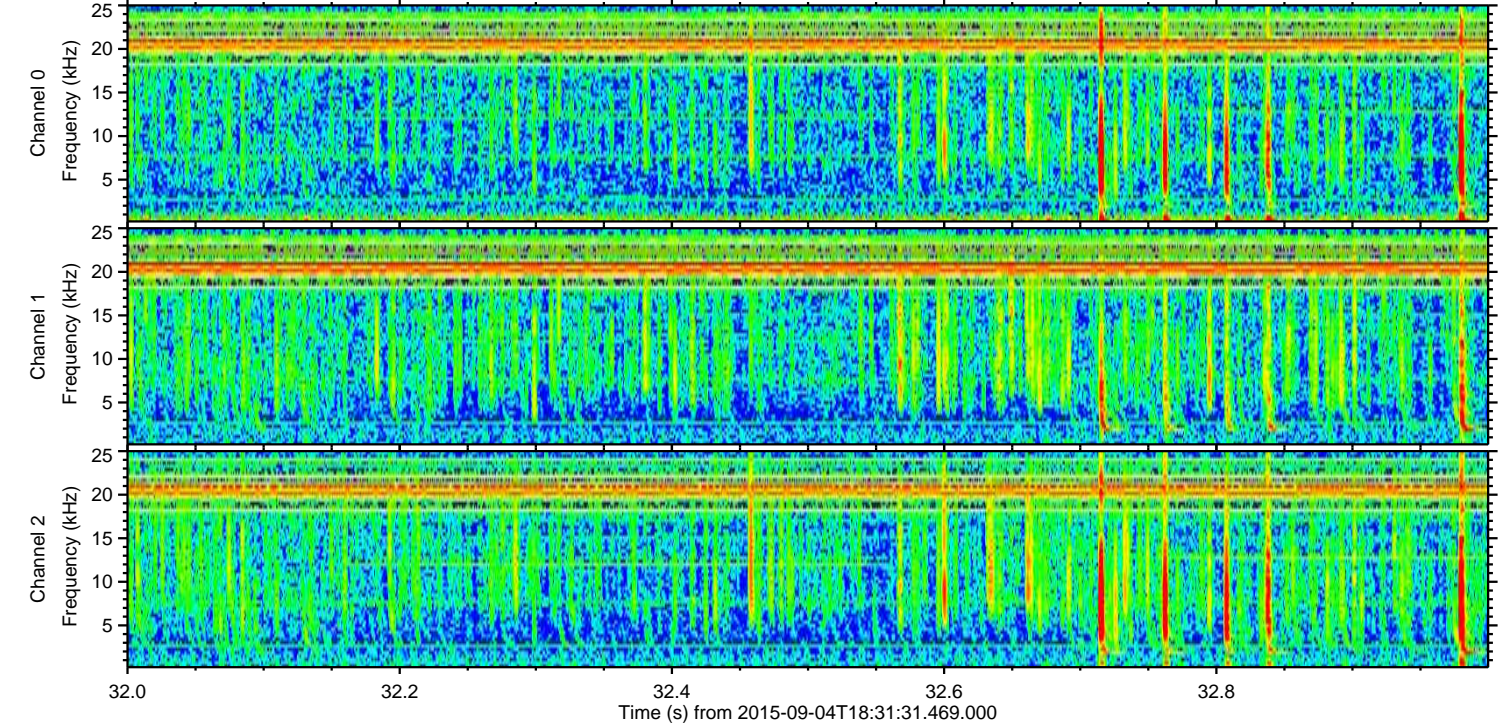
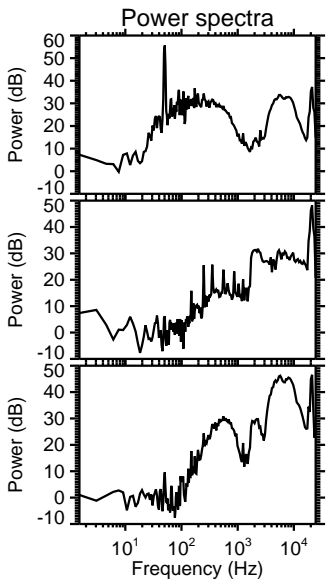
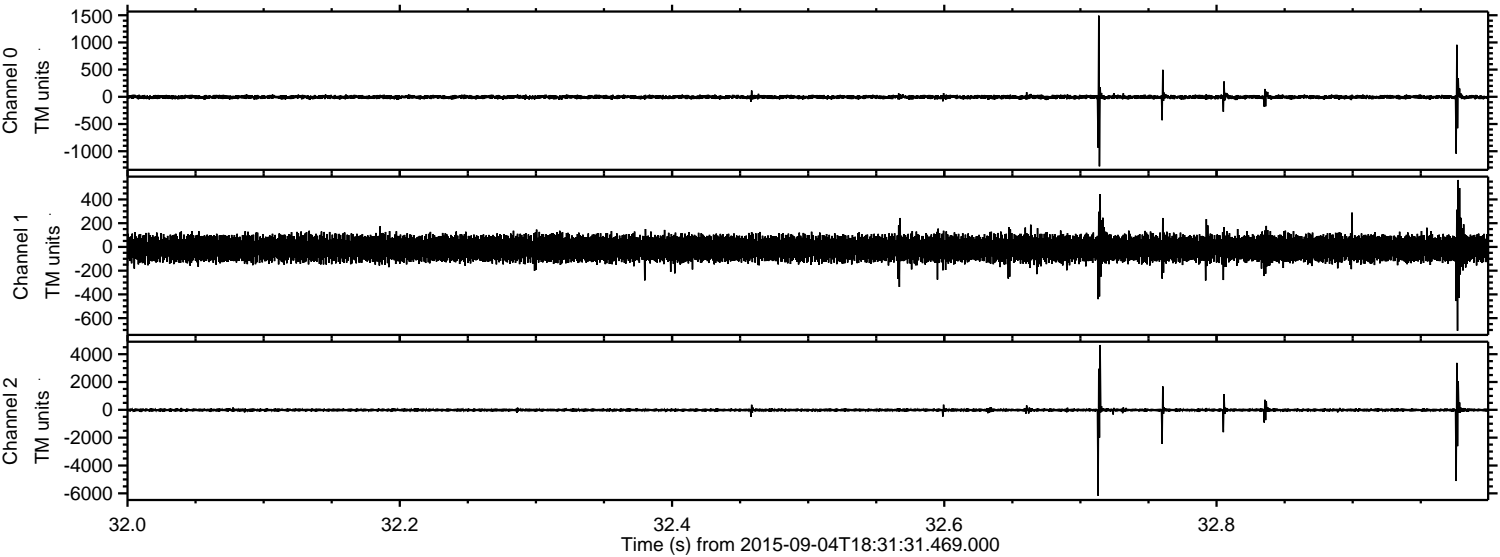


ELMAVAN 3D WAVEFORMS (Measured data sampled at 50 kHz) 51000 packets of 144 samples from 2015-09-04T18:31:31.469.000. Part 128/147

Processed Fri Oct 9 17:33:00 2015 by ELM ver.2012-10-06 from 001__elm20150904_183130__dat00.bin

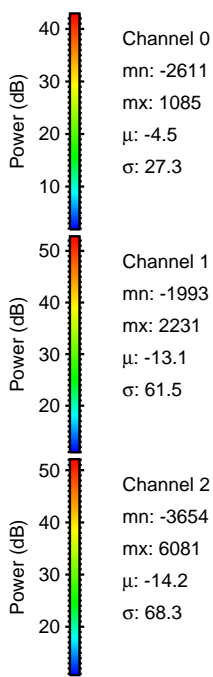
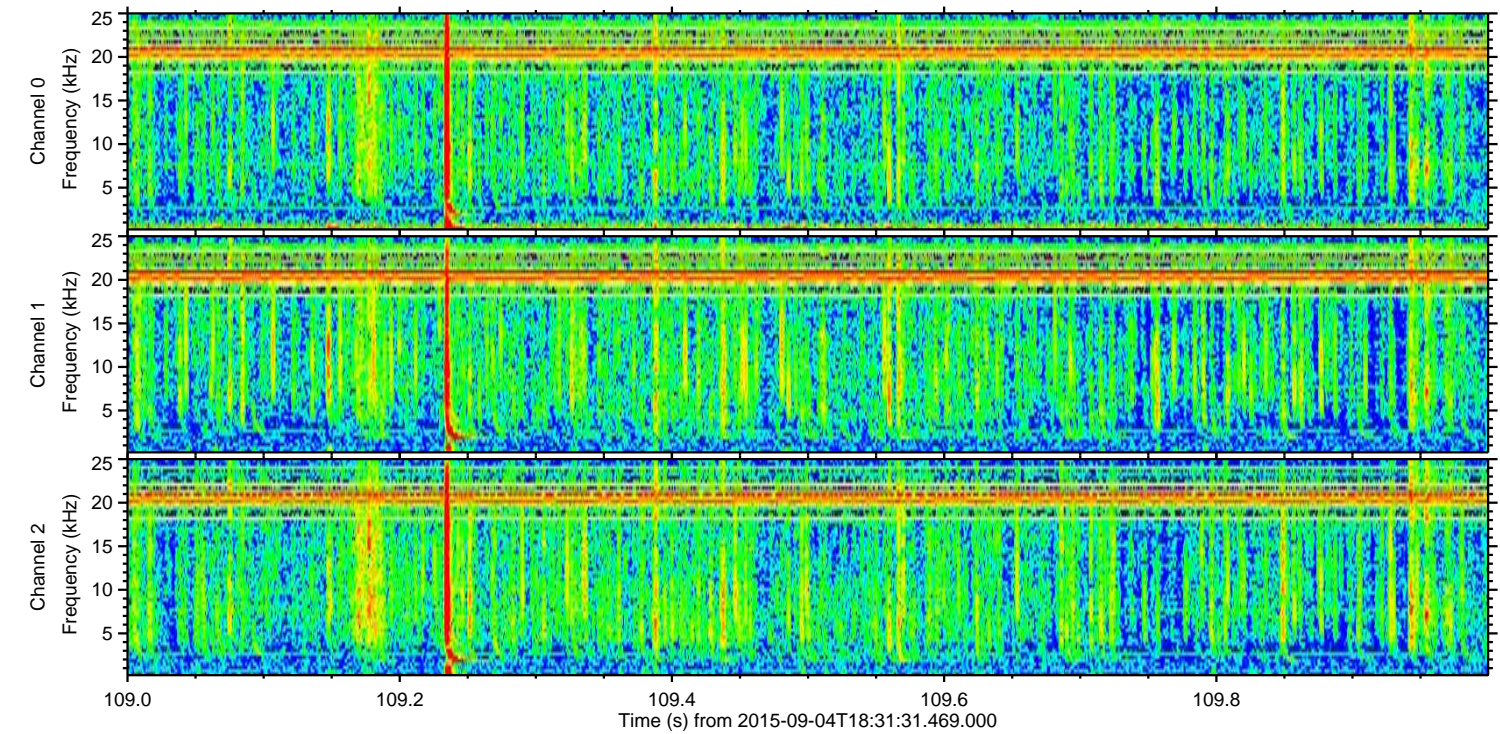
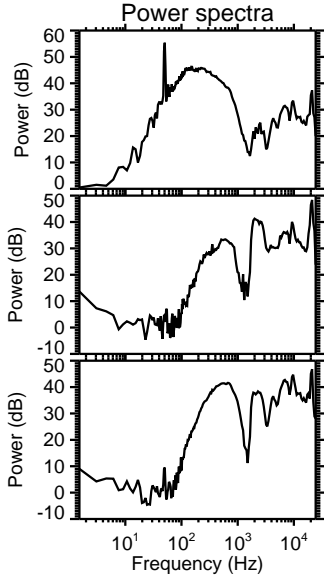
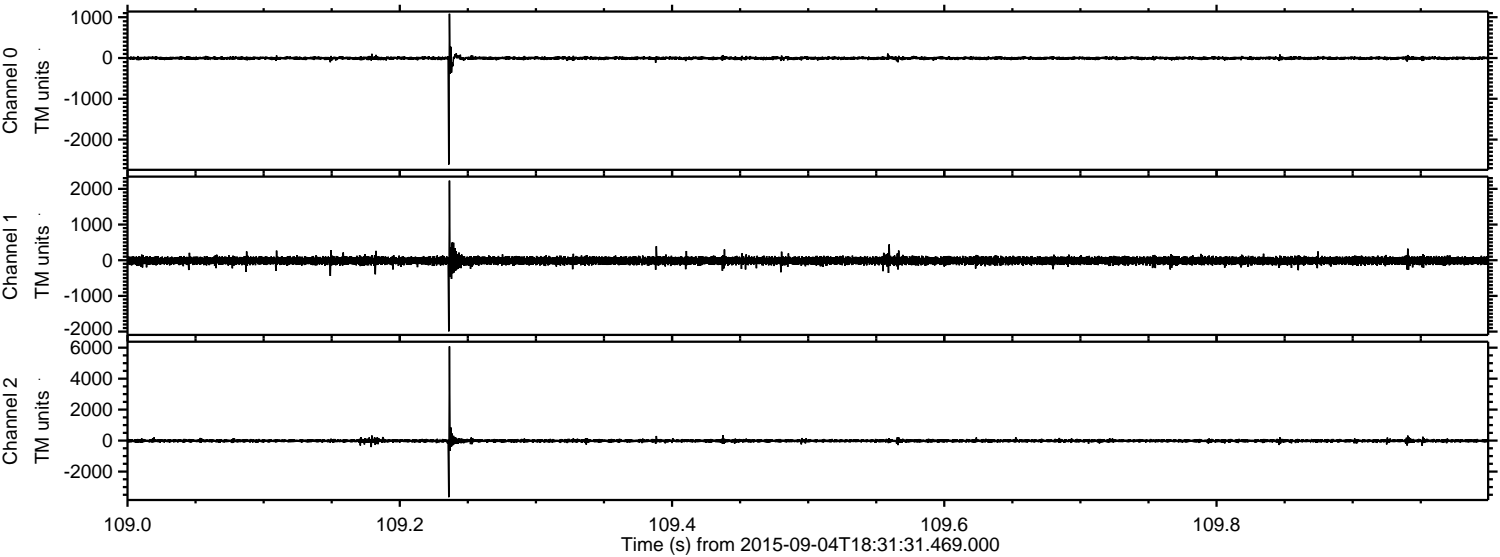


Processed Fri Oct 9 17:33:01 2015 by ELM ver.2012-10-06 from 001__elm20150904_183130__dat00.bin

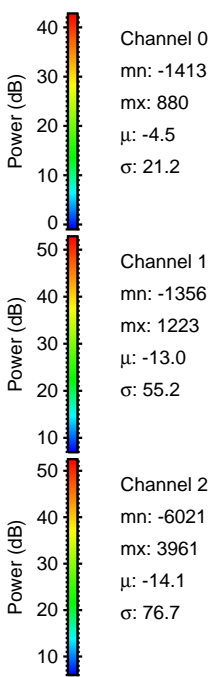
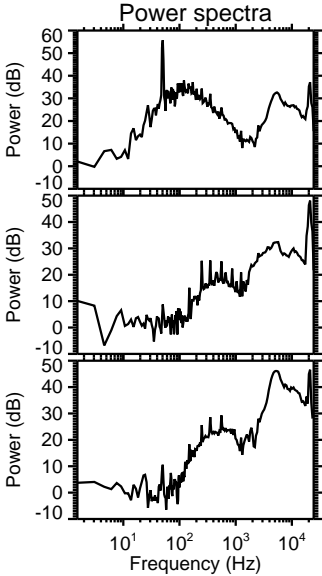
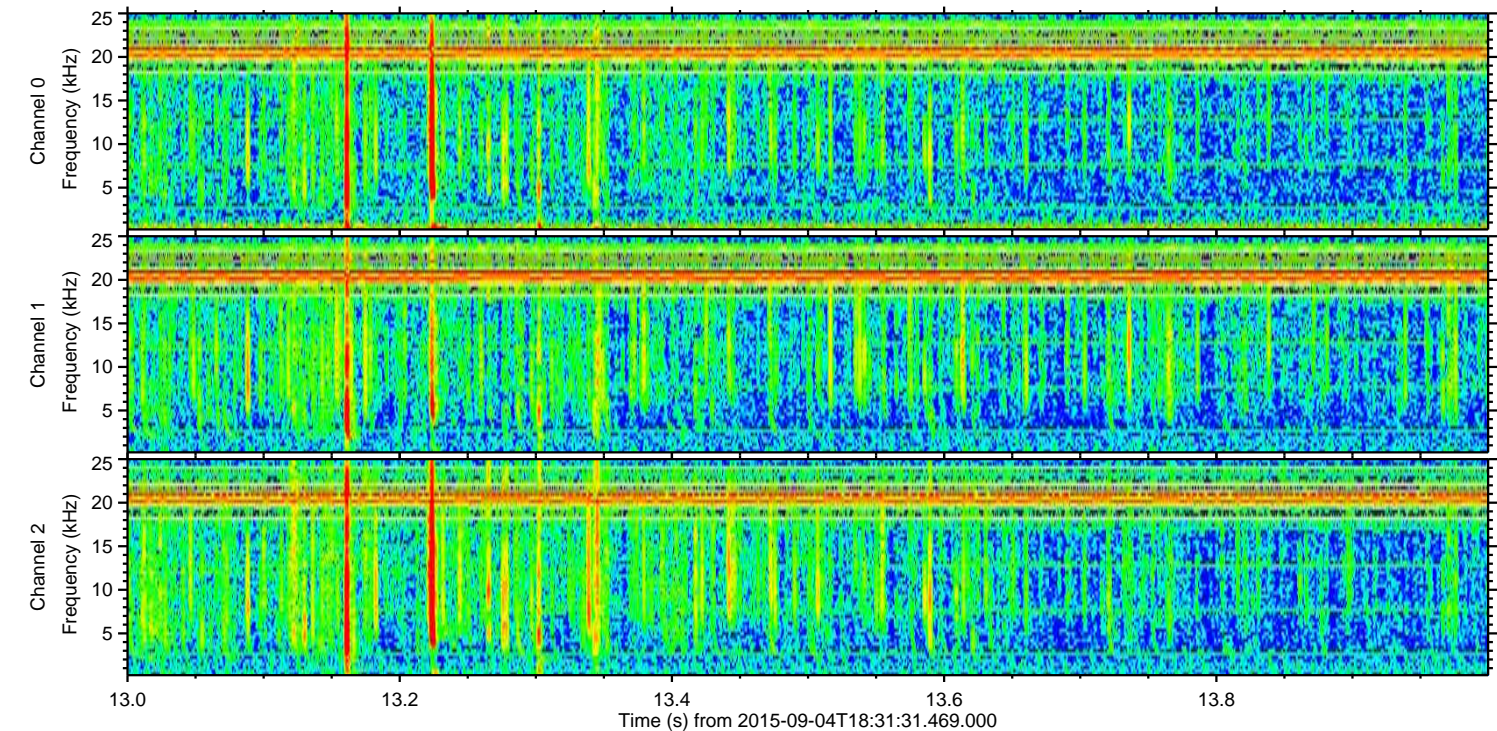
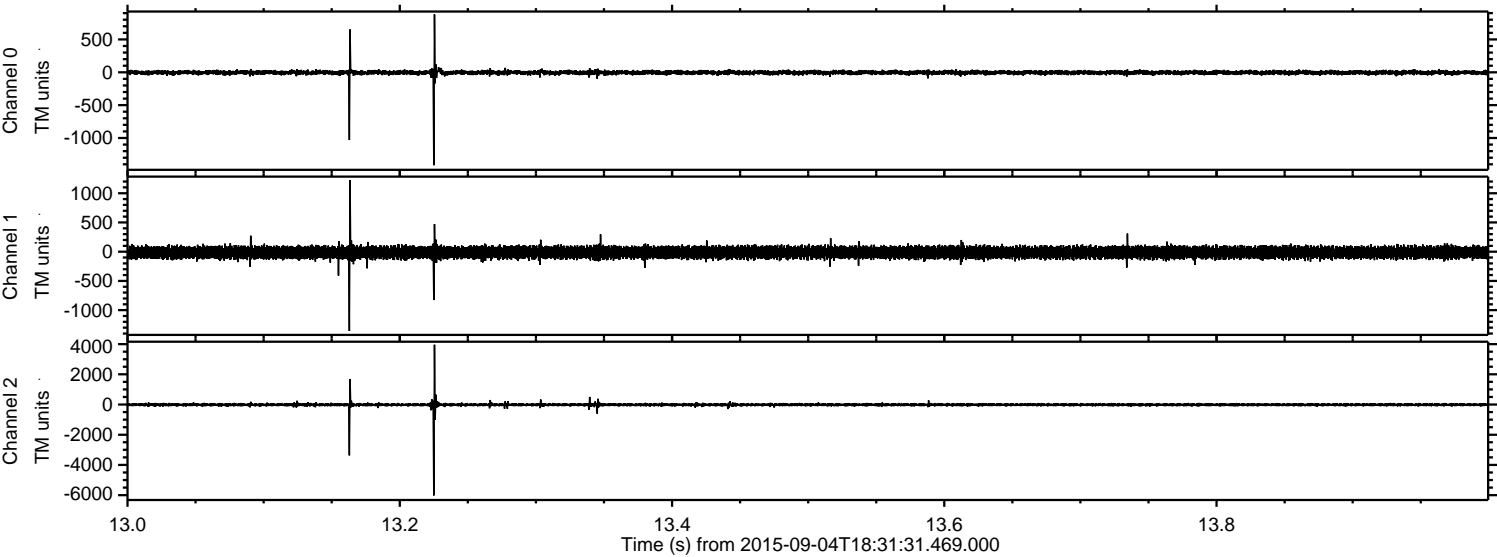


ELMAVAN 3D WAVEFORMS (Measured data sampled at 50 kHz) 51000 packets of 144 samples from 2015-09-04T18:31:31.469.000. Part 110/147

Processed Fri Oct 9 17:33:02 2015 by ELM ver.2012-10-06 from 001__elm20150904_183130__dat00.bin

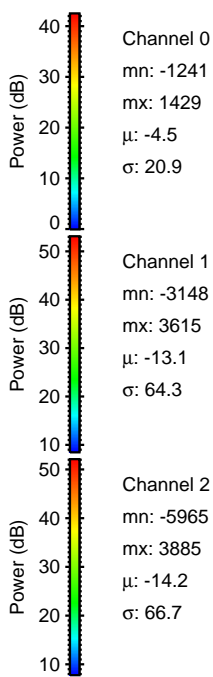
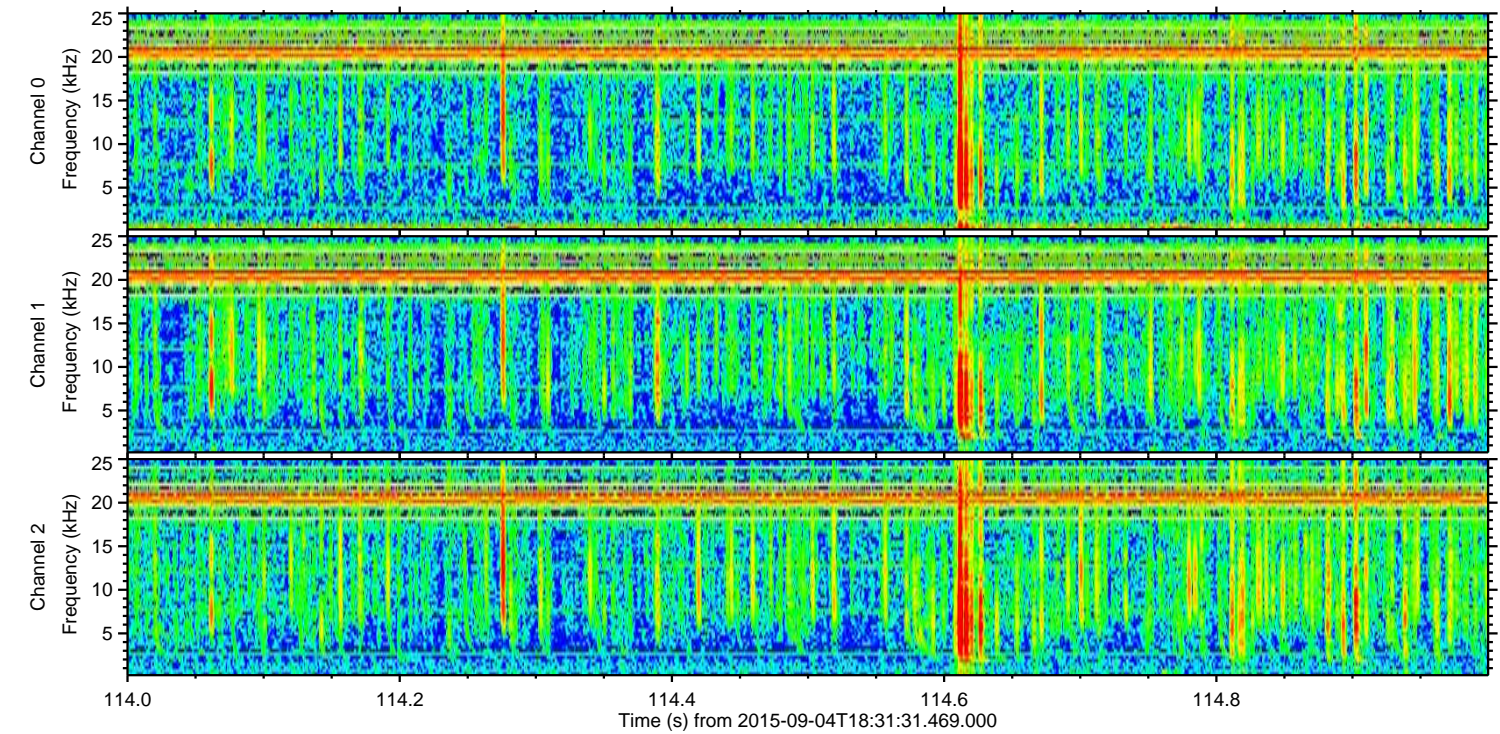
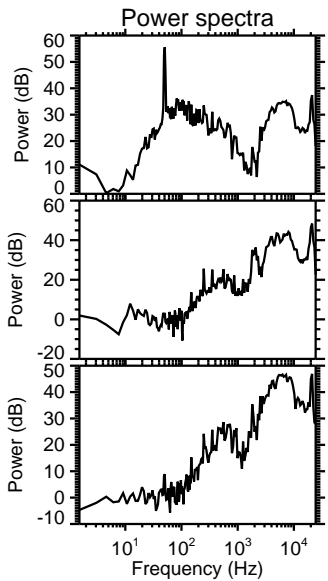
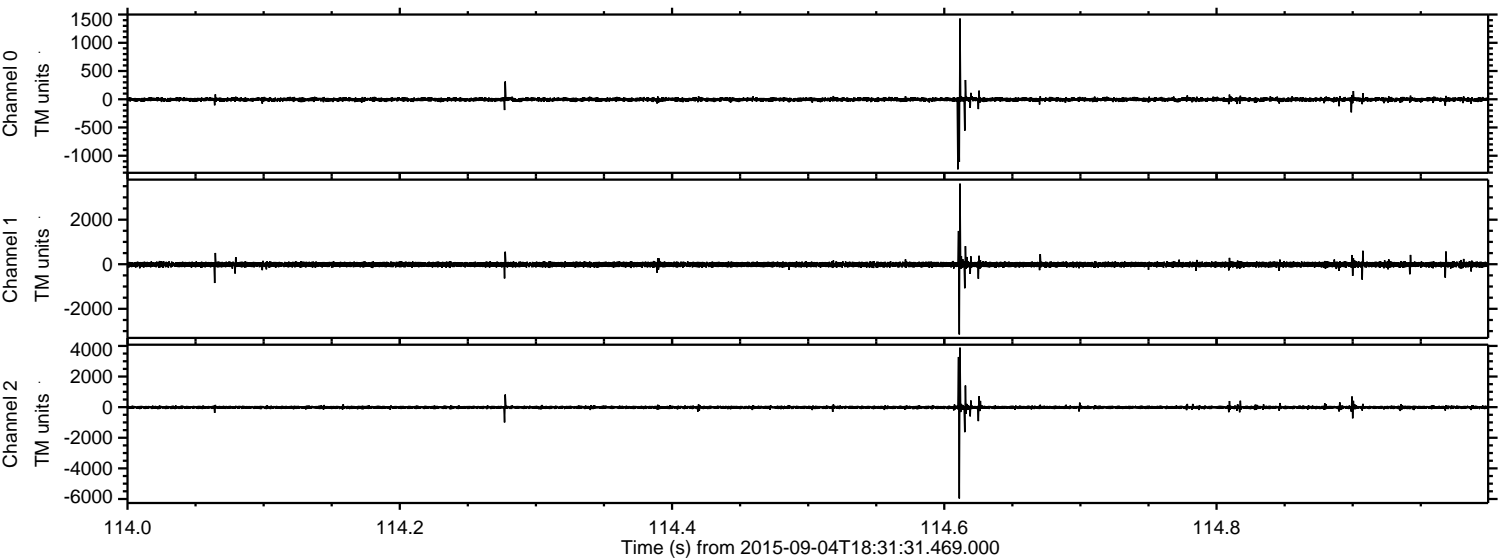


Processed Fri Oct 9 17:33:03 2015 by ELM ver.2012-10-06 from 001__elm20150904_183130__dat00.bin



ELMAVAN 3D WAVEFORMS (Measured data sampled at 50 kHz) 51000 packets of 144 samples from 2015-09-04T18:31:31.469.000. Part 115/147

Processed Fri Oct 9 17:33:04 2015 by ELM ver.2012-10-06 from 001__elm20150904_183130__dat00.bin



Channel 0
mn: -1241
mx: 1429
 μ : -4.5
 σ : 20.9

Channel 1
mn: -3148
mx: 3615
 μ : -13.1
 σ : 64.3

Channel 2
mn: -5965
mx: 3885
 μ : -14.2
 σ : 66.7

Processed Fri Oct 9 17:33:05 2015 by ELM ver.2012-10-06 from 001__elm20150904_183130__dat00.bin

