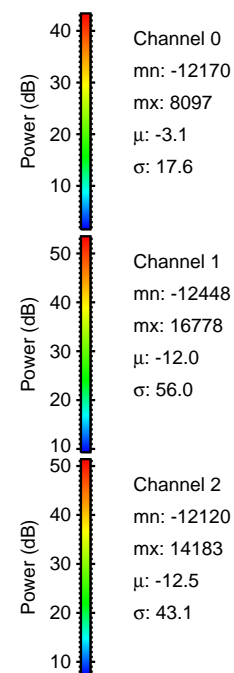
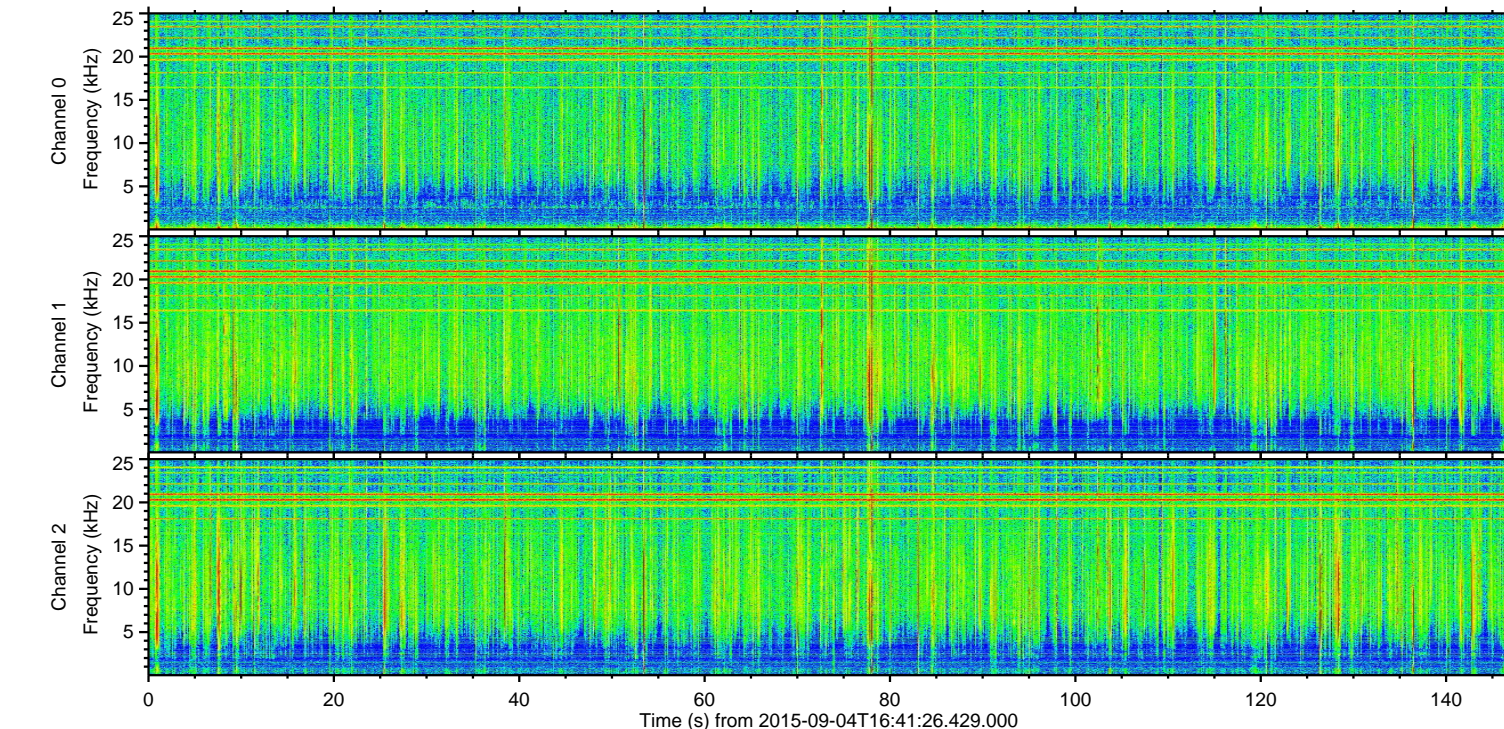
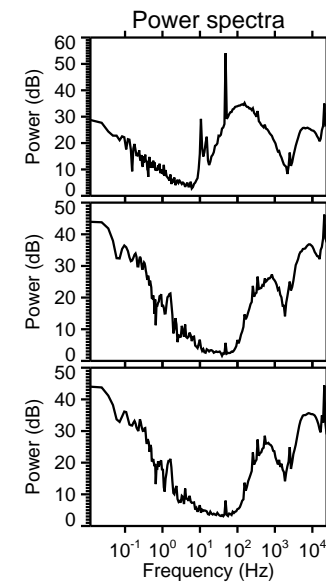
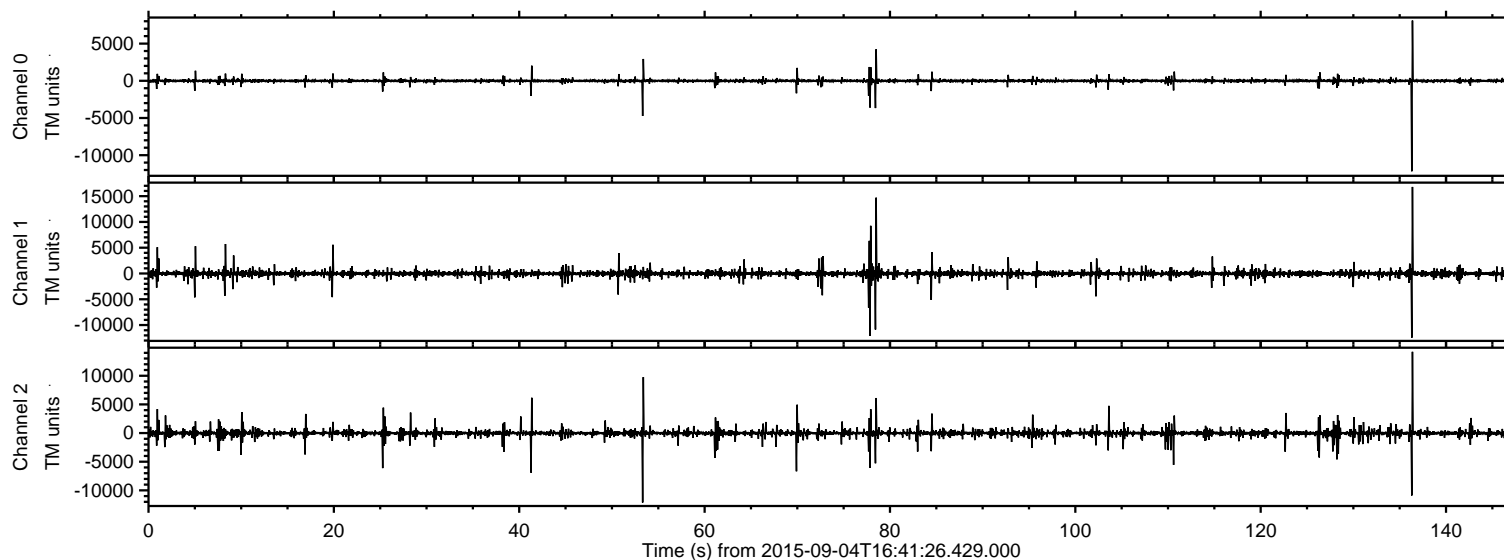


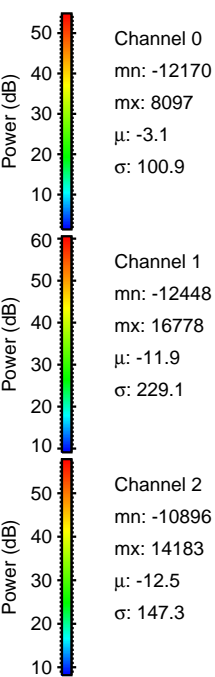
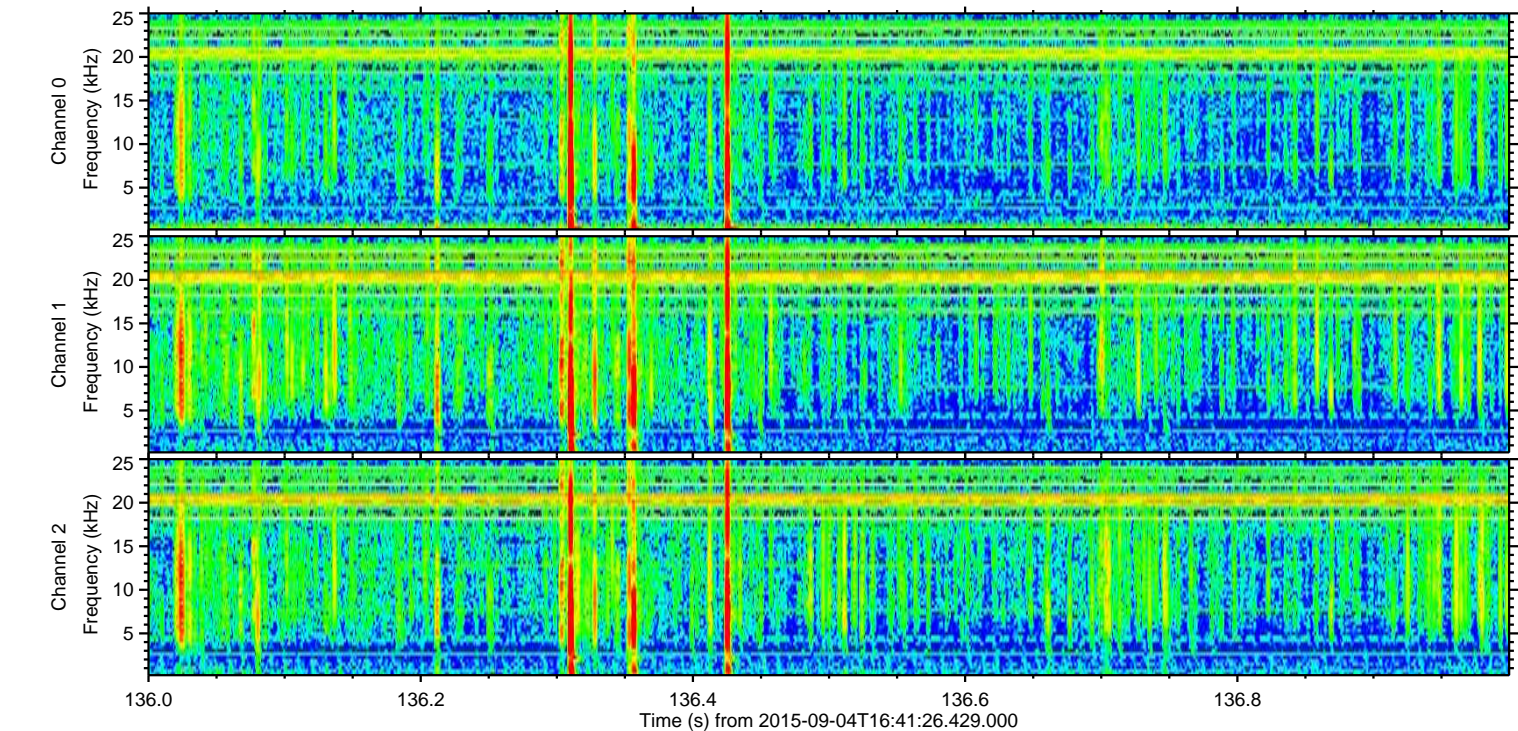
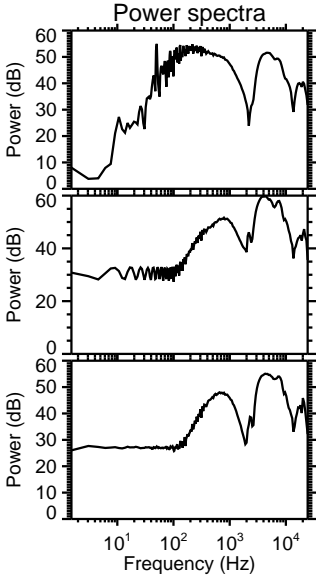
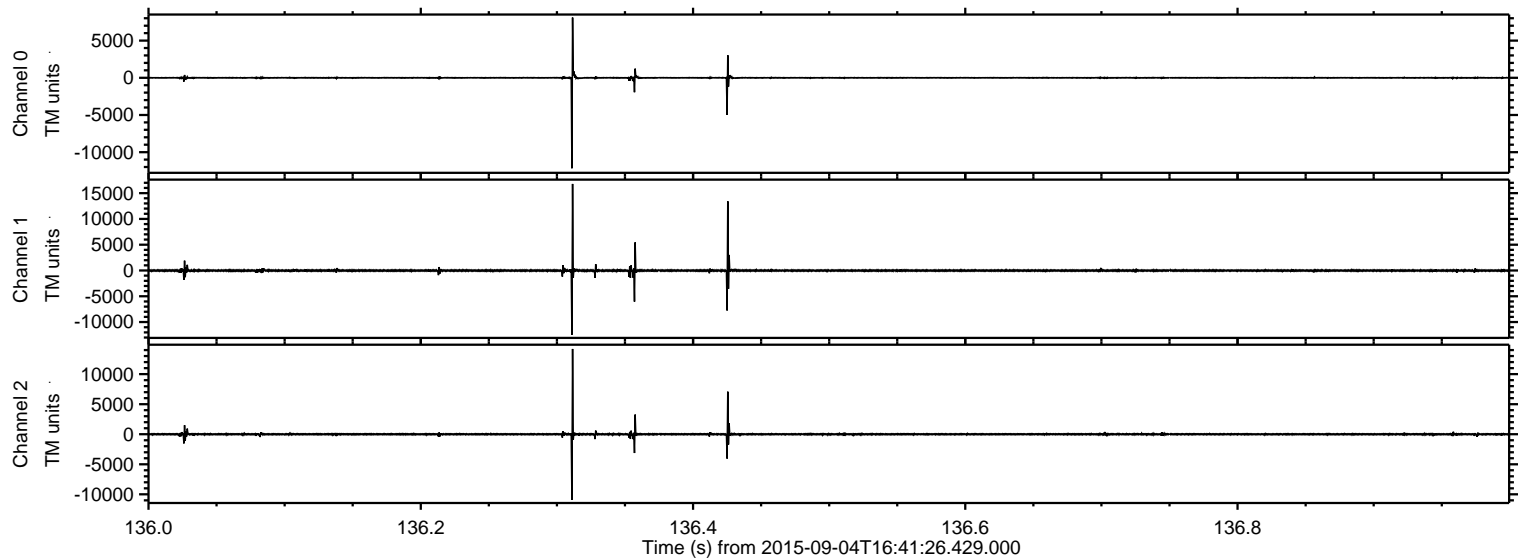
ELMAVAN 3D WAVEFORMS (Measured data sampled at 50 kHz) 51000 packets of 144 samples from 2015-09-04T16:41:26.429.000.

Processed Fri Oct 9 17:02:01 2015 by ELM ver.2012-10-06 from 001__elm20150904_164125__dat00.bin

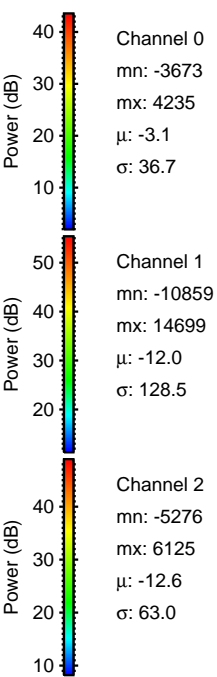
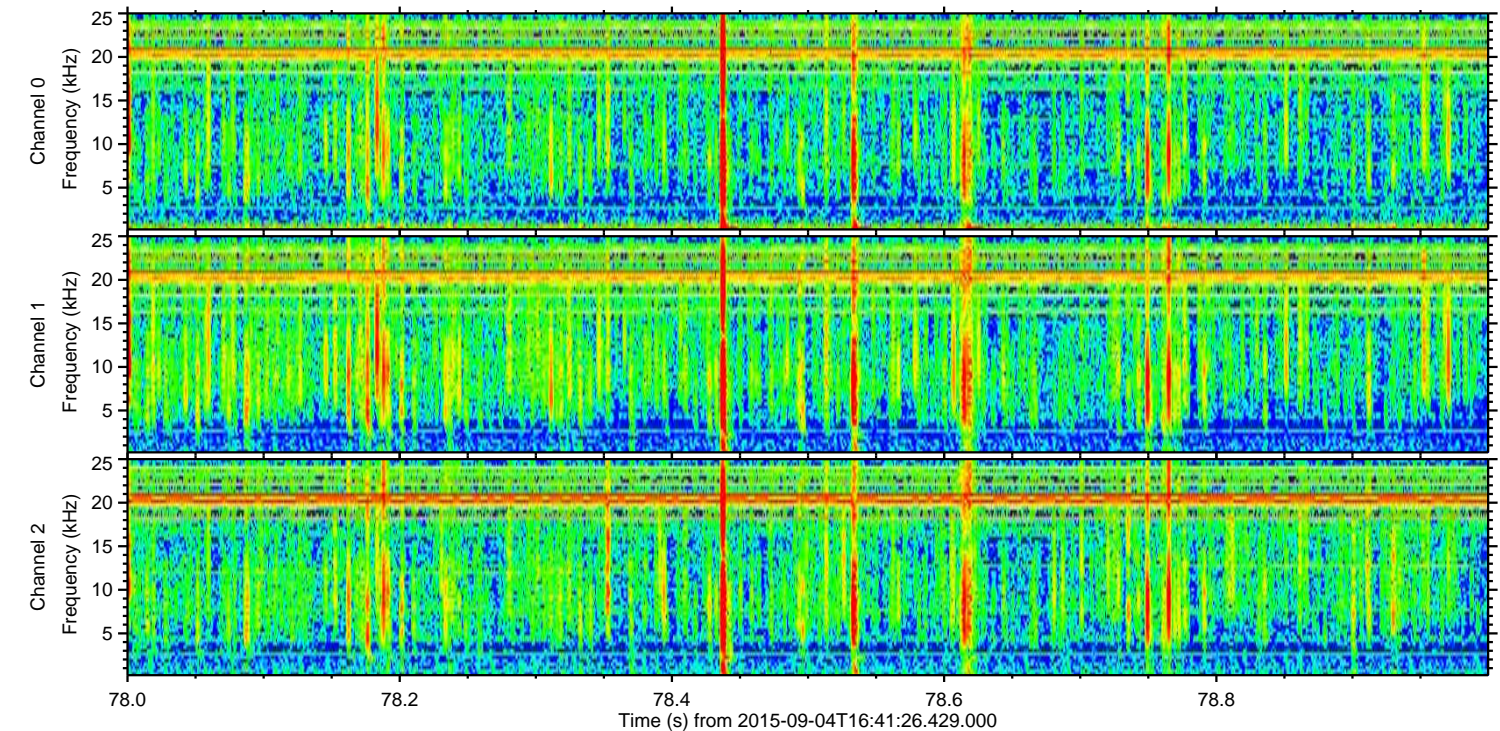
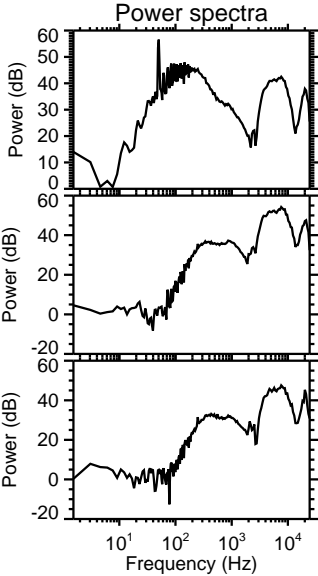
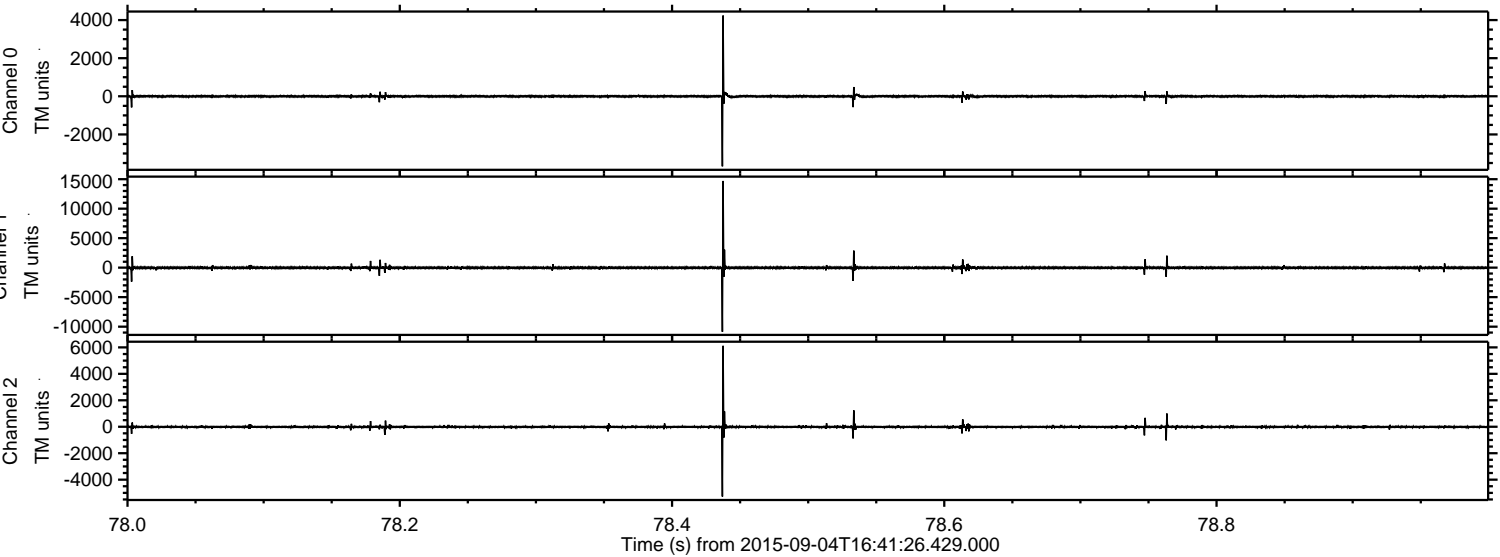


ELMAVAN 3D WAVEFORMS (Measured data sampled at 50 kHz) 51000 packets of 144 samples from 2015-09-04T16:41:26.429.000. Part 137/147

Processed Fri Oct 9 17:02:18 2015 by ELM ver.2012-10-06 from 001__elm20150904_164125__dat00.bin

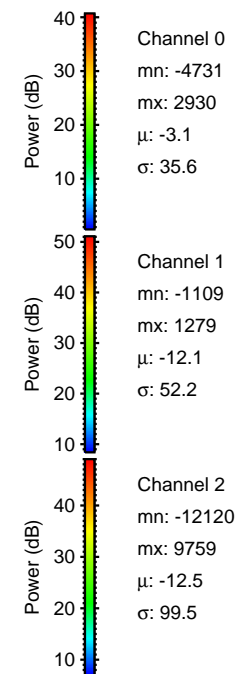
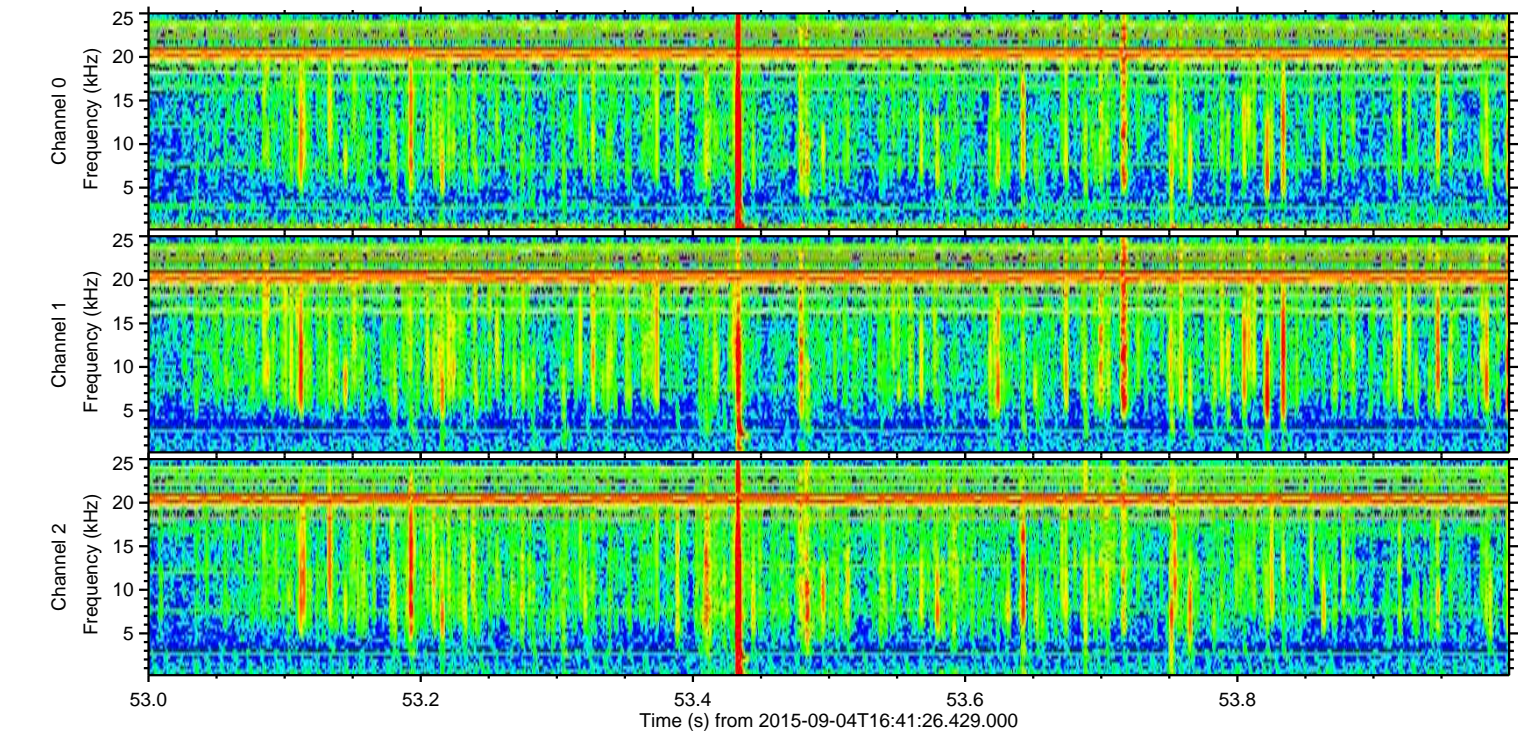
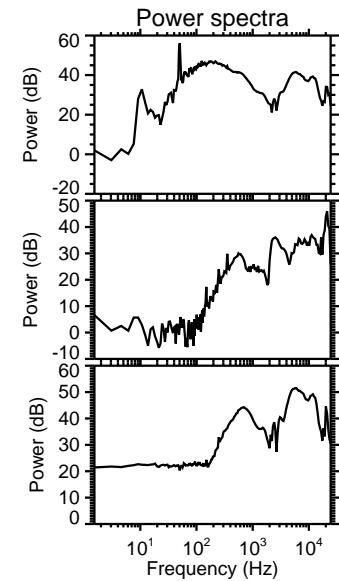
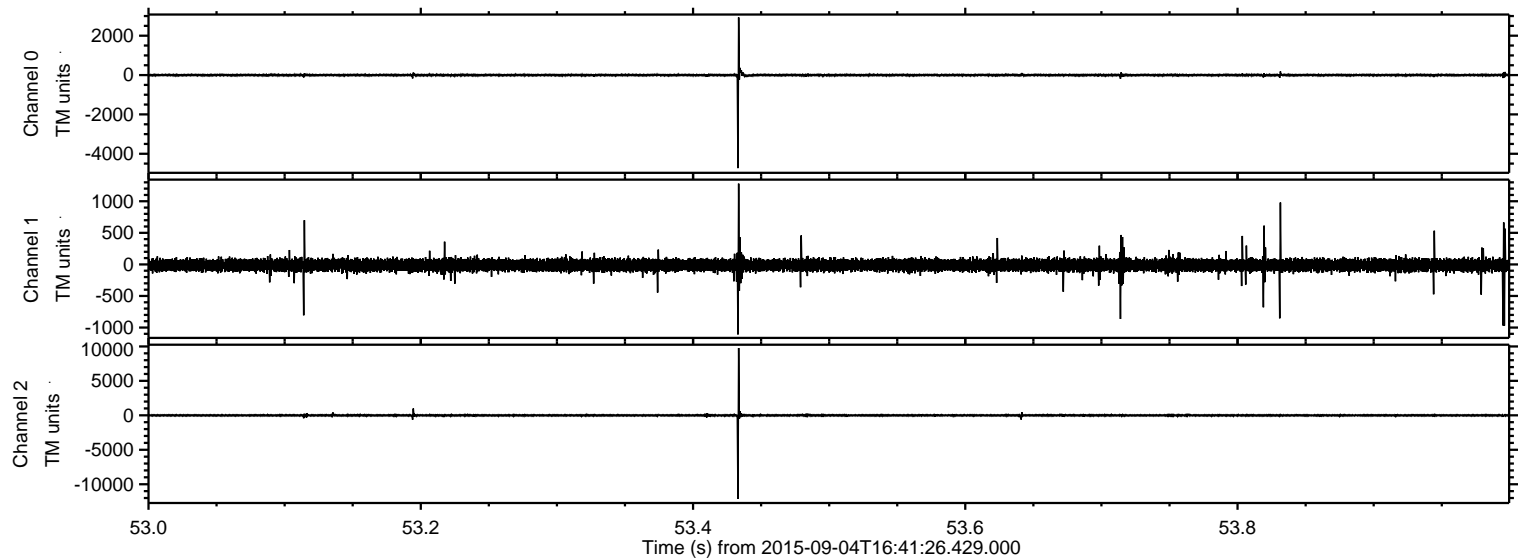


Processed Fri Oct 9 17:02:19 2015 by ELM ver.2012-10-06 from 001__elm20150904_164125__dat00.bin

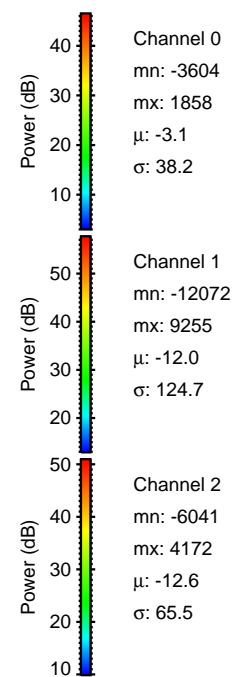
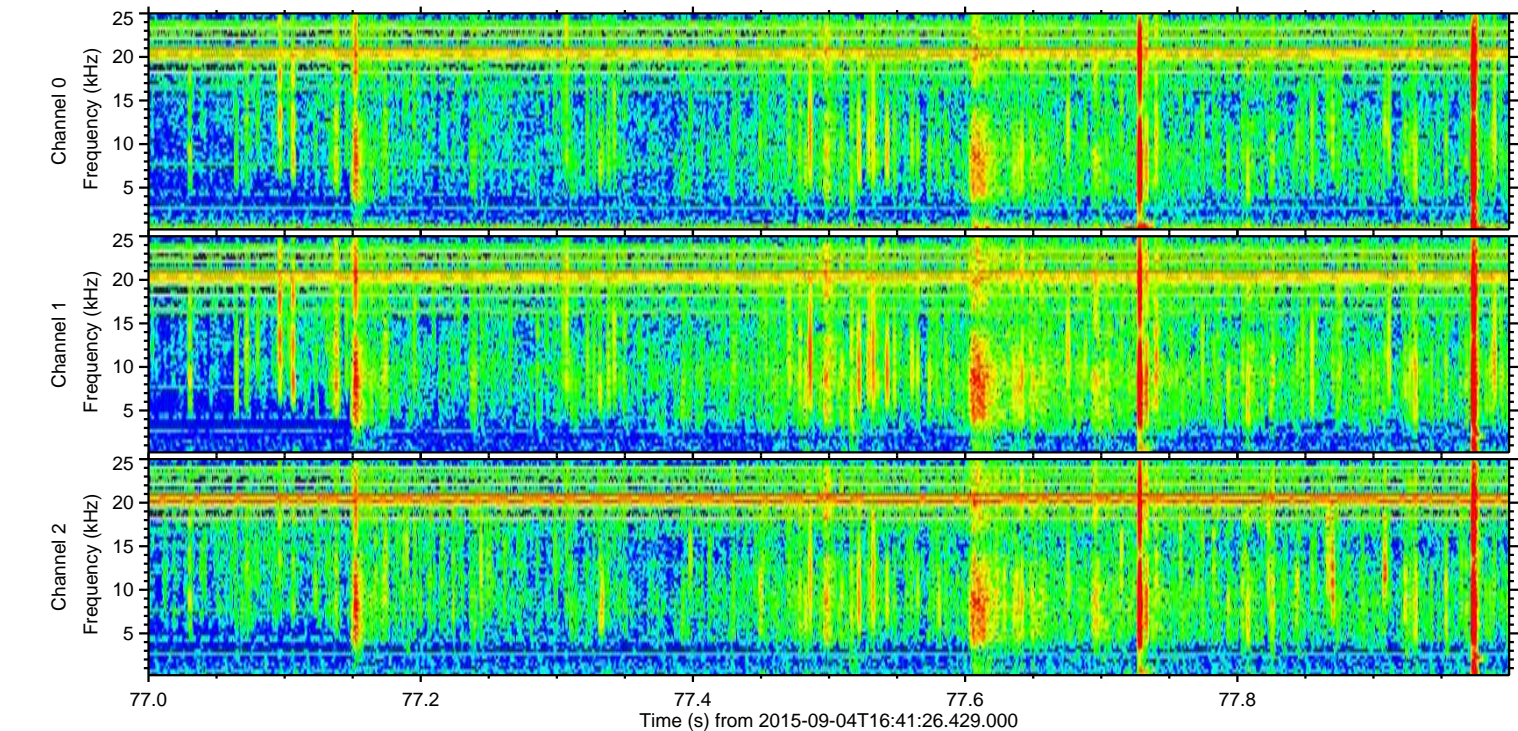
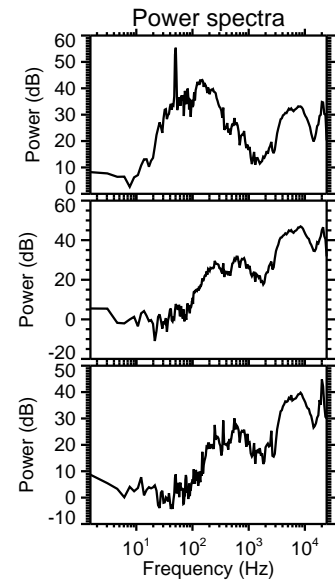
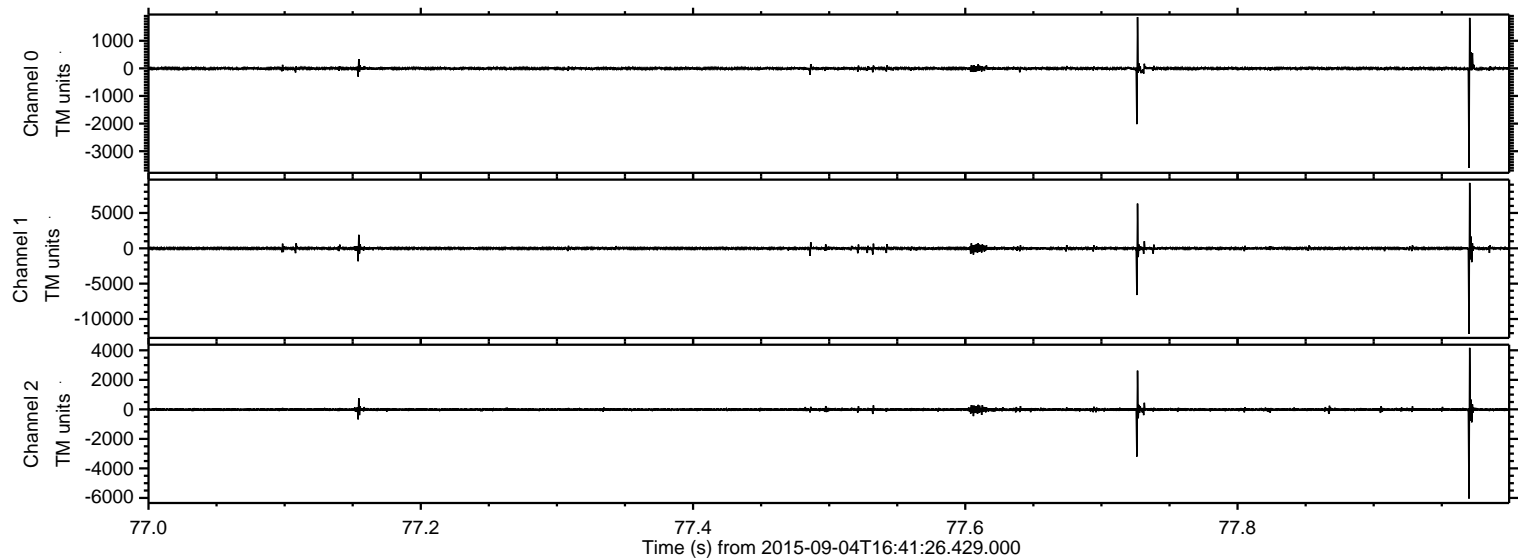


ELMAVAN 3D WAVEFORMS (Measured data sampled at 50 kHz) 51000 packets of 144 samples from 2015-09-04T16:41:26.429.000. Part 54/147

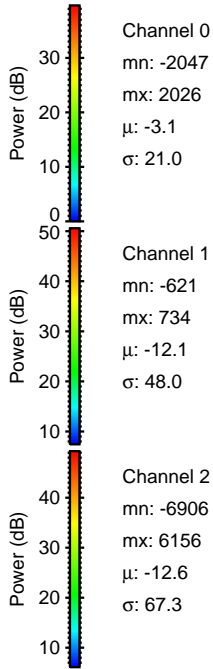
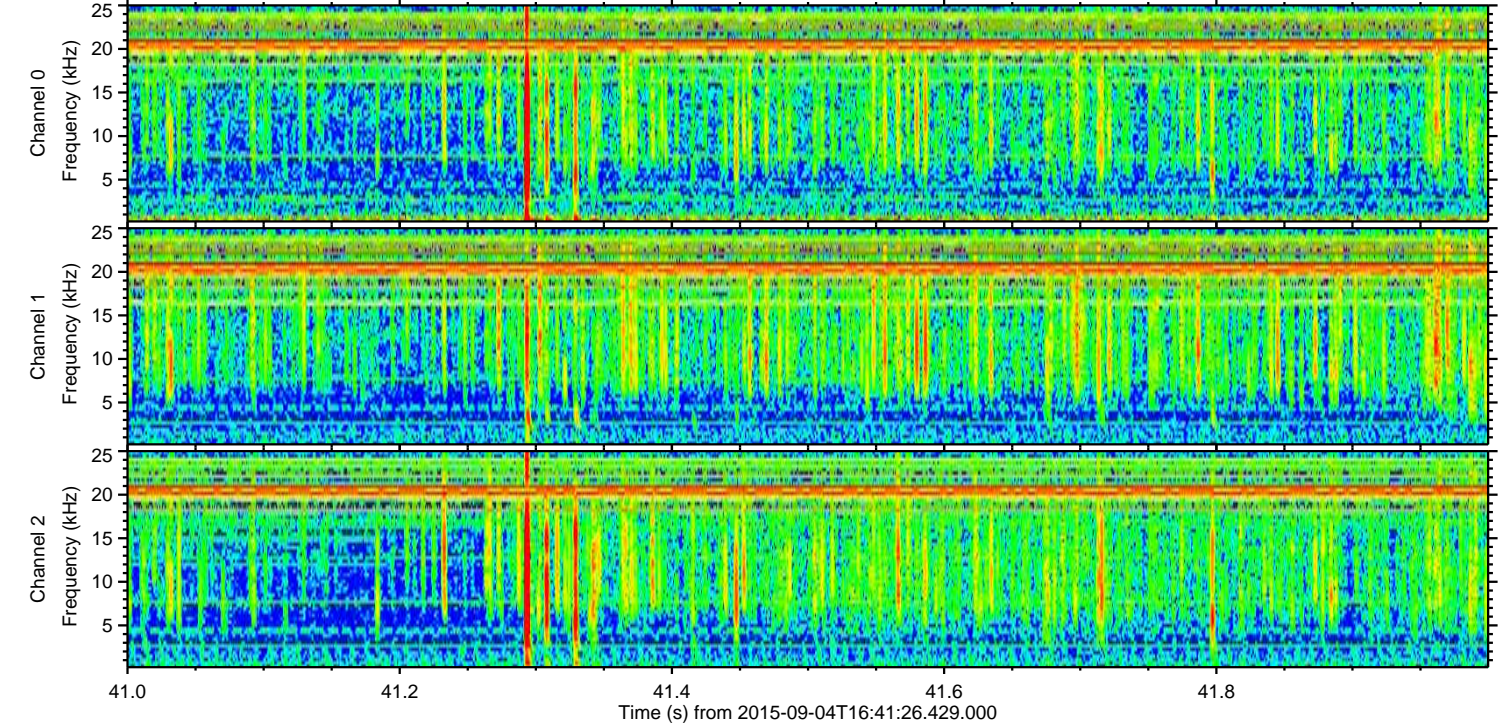
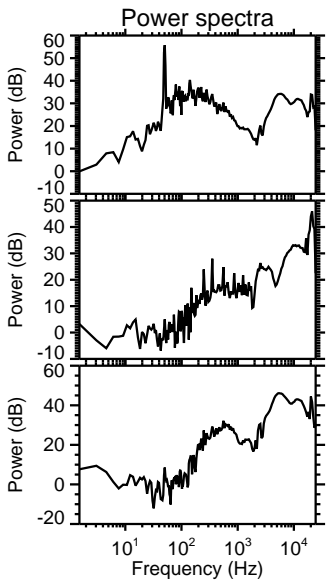
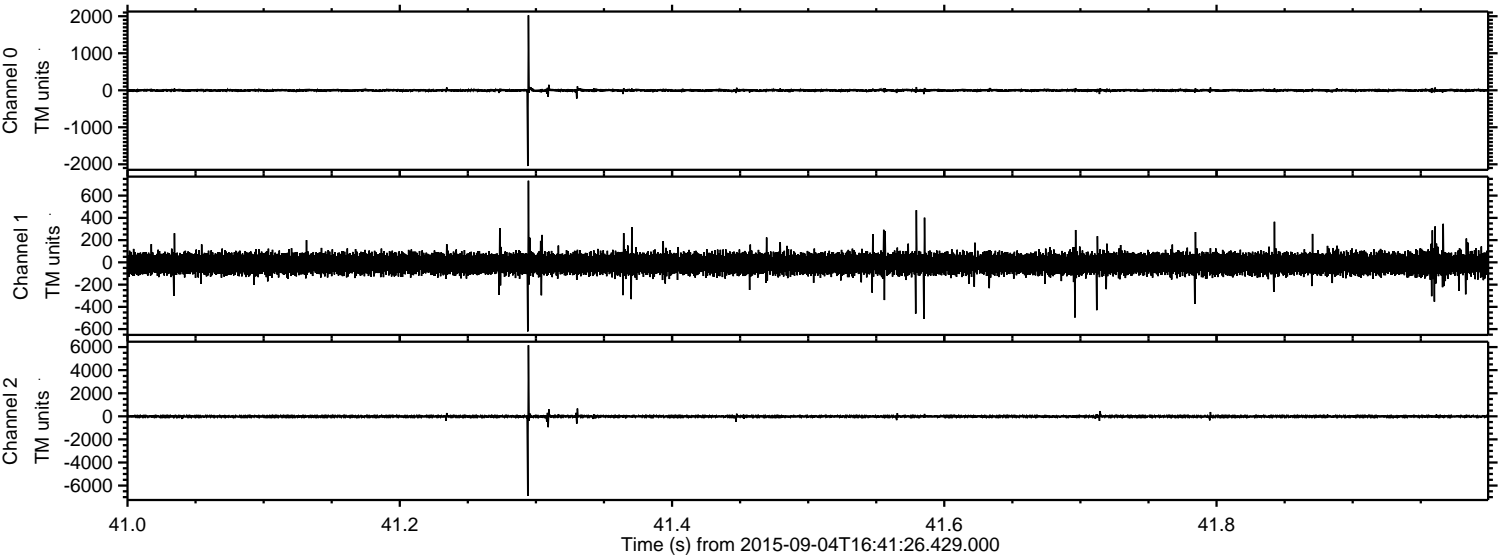
Processed Fri Oct 9 17:02:20 2015 by ELM ver.2012-10-06 from 001__elm20150904_164125__dat00.bin



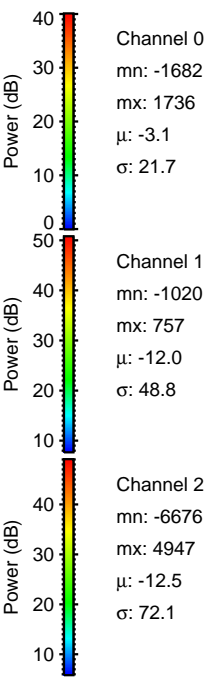
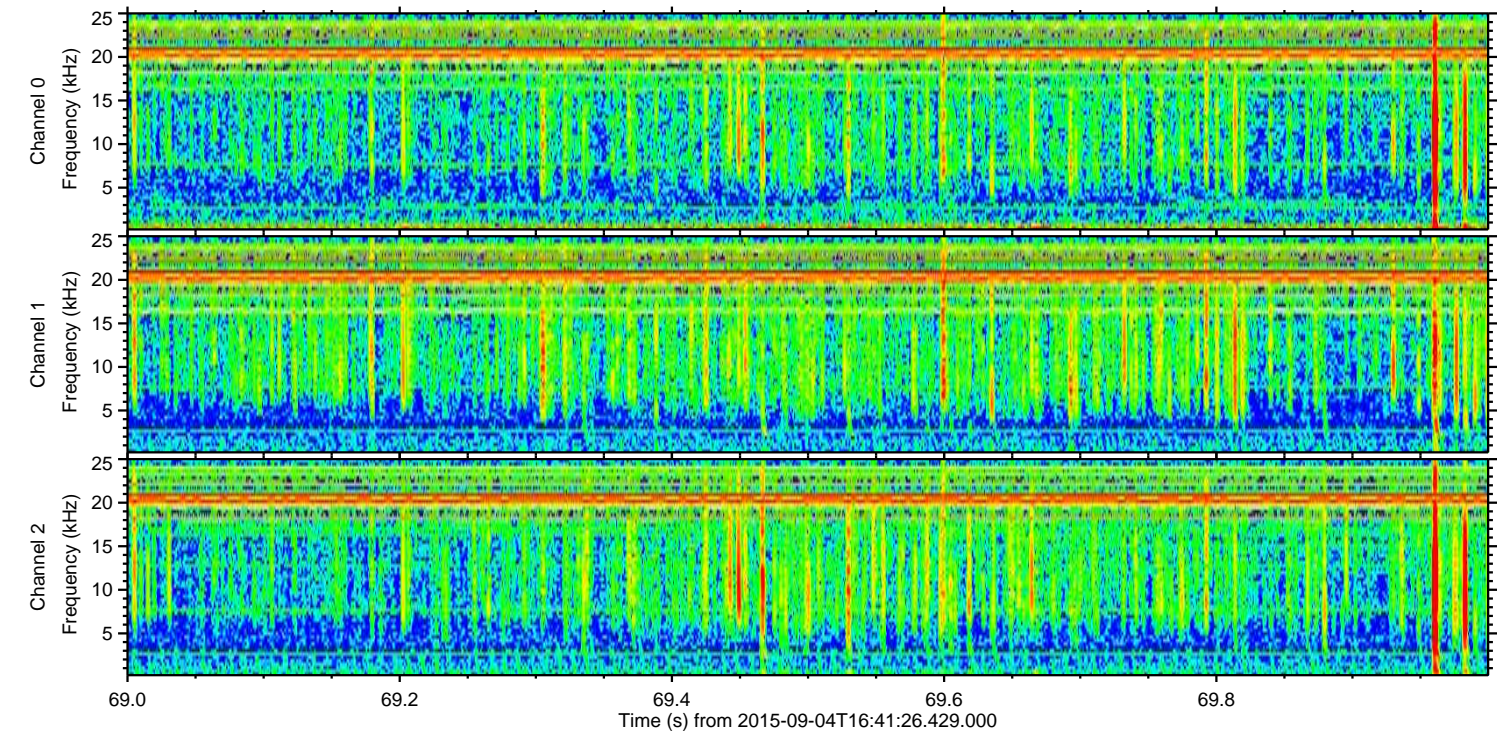
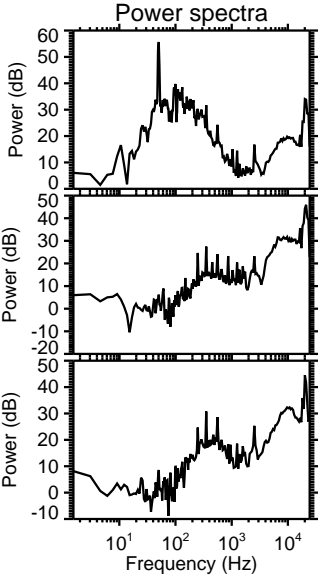
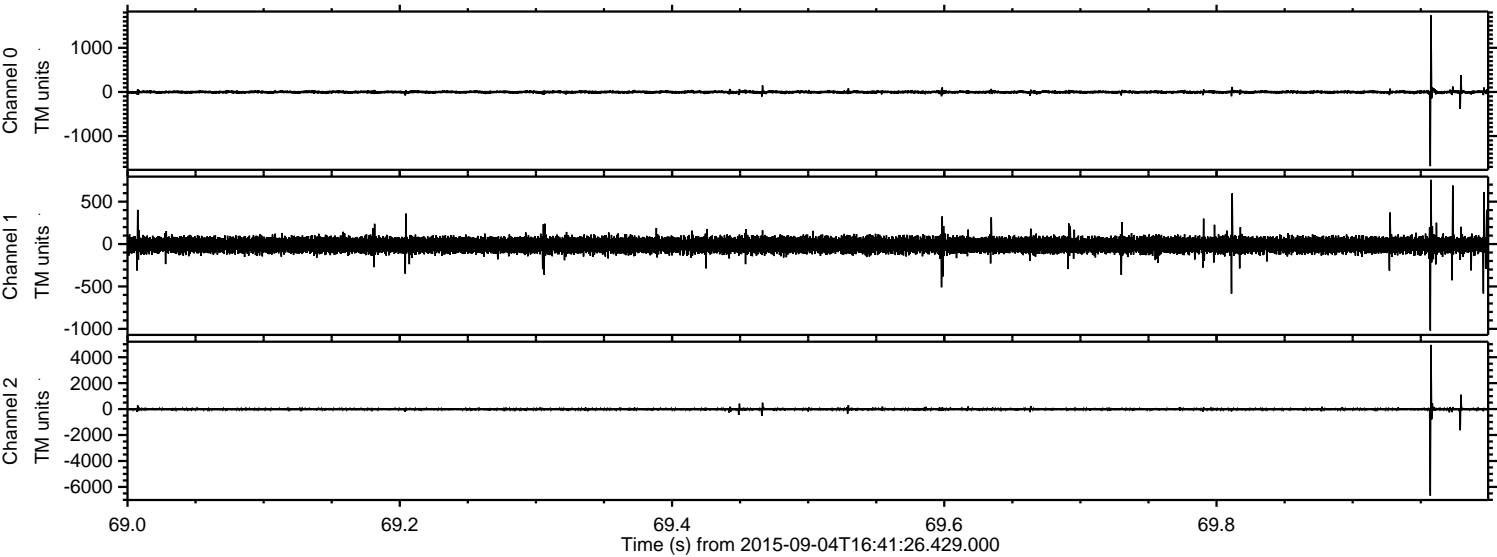
Processed Fri Oct 9 17:02:21 2015 by ELM ver.2012-10-06 from 001__elm20150904_164125__dat00.bin



Processed Fri Oct 9 17:02:22 2015 by ELM ver.2012-10-06 from 001__elm20150904_164125__dat00.bin



Processed Fri Oct 9 17:02:23 2015 by ELM ver.2012-10-06 from 001__elm20150904_164125__dat00.bin

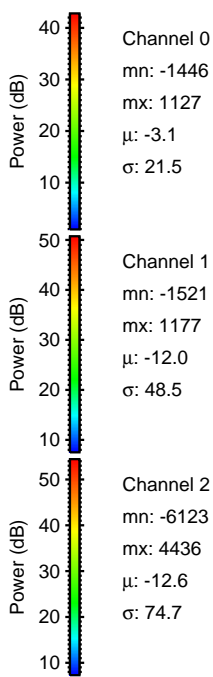
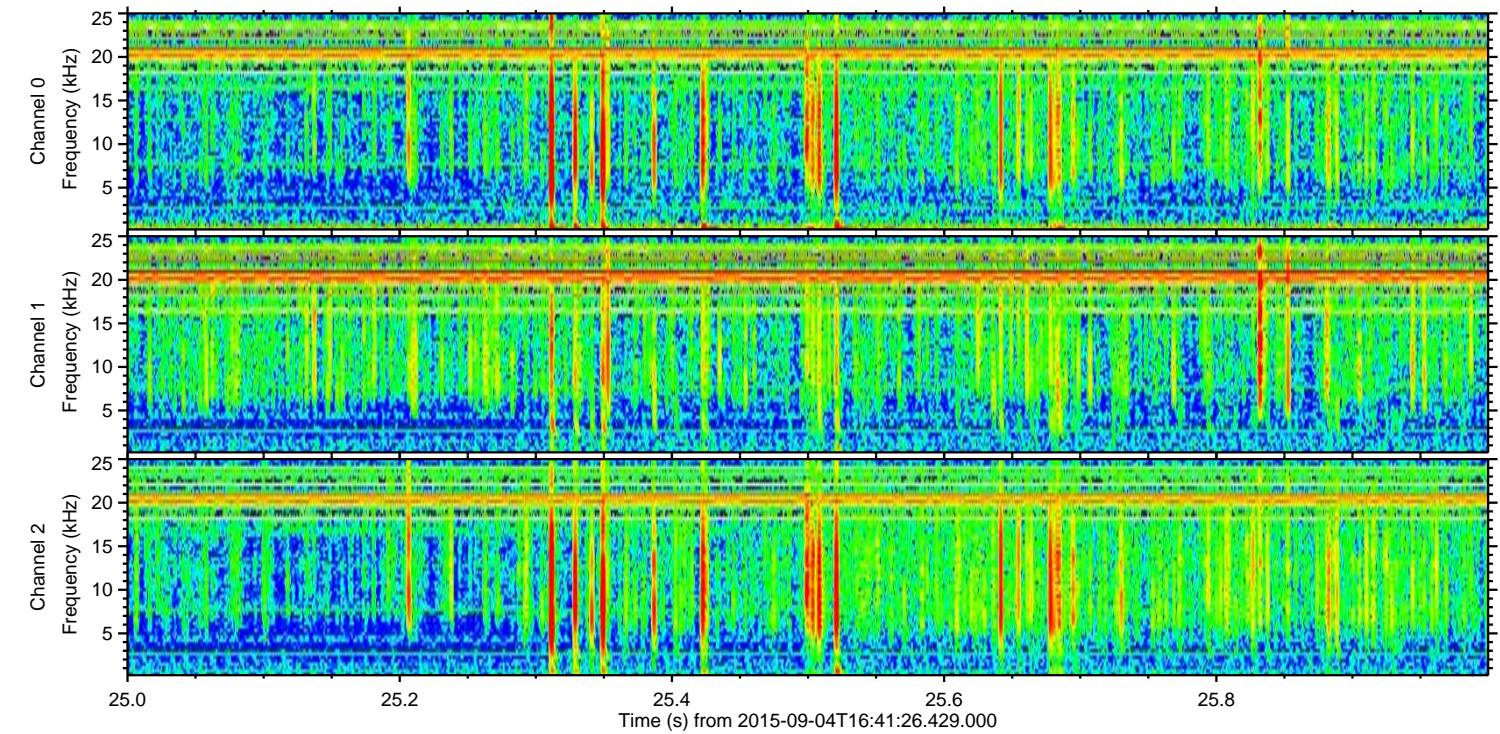
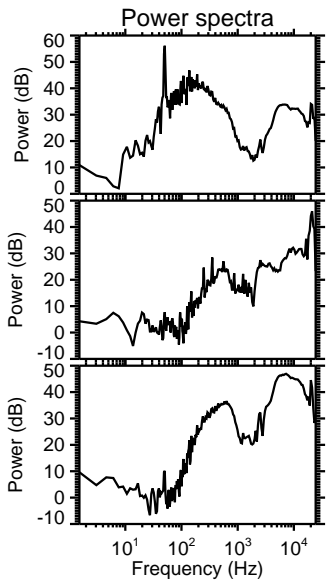
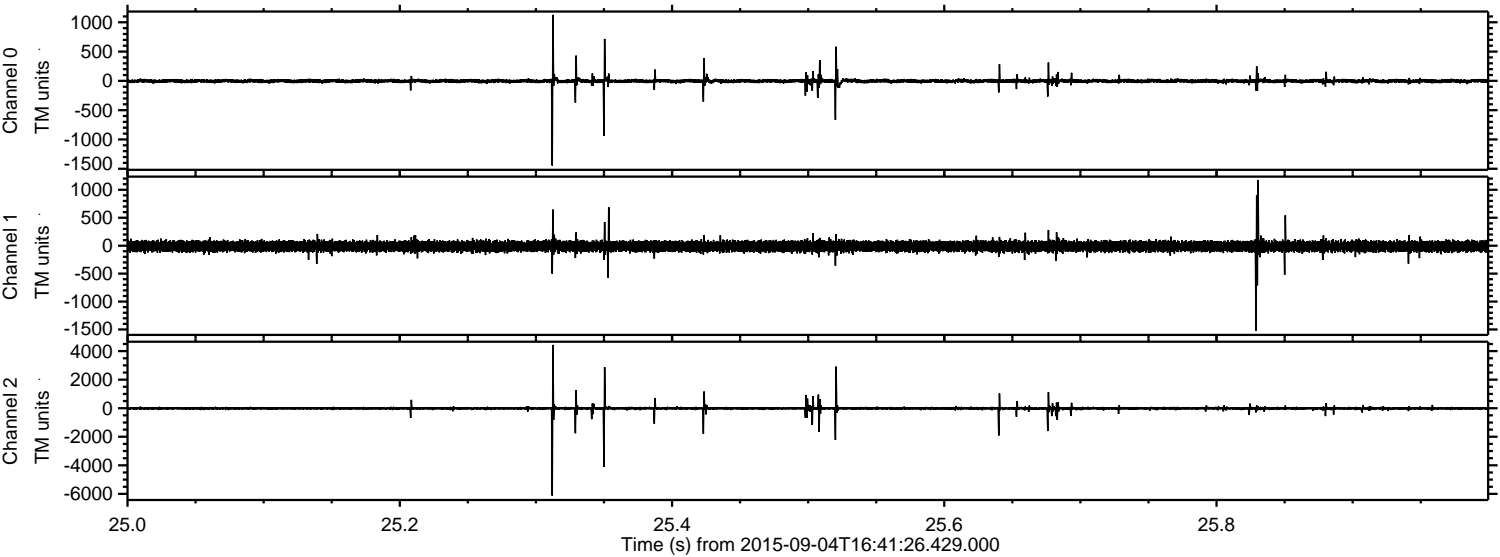


Channel 0
mn: -1682
mx: 1736
 μ : -3.1
 σ : 21.7

Channel 1
mn: -1020
mx: 757
 μ : -12.0
 σ : 48.8

Channel 2
mn: -6676
mx: 4947
 μ : -12.5
 σ : 72.1

Processed Fri Oct 9 17:02:24 2015 by ELM ver.2012-10-06 from 001__elm20150904_164125__dat00.bin

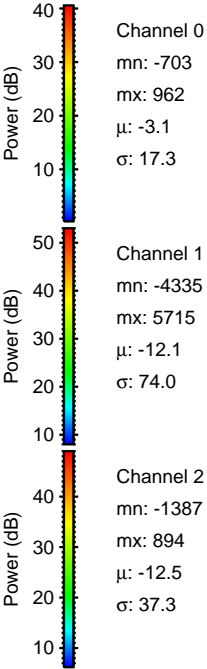
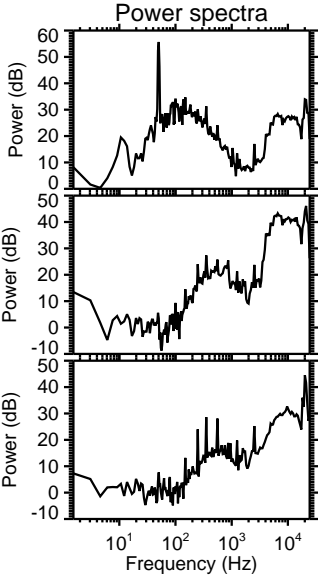
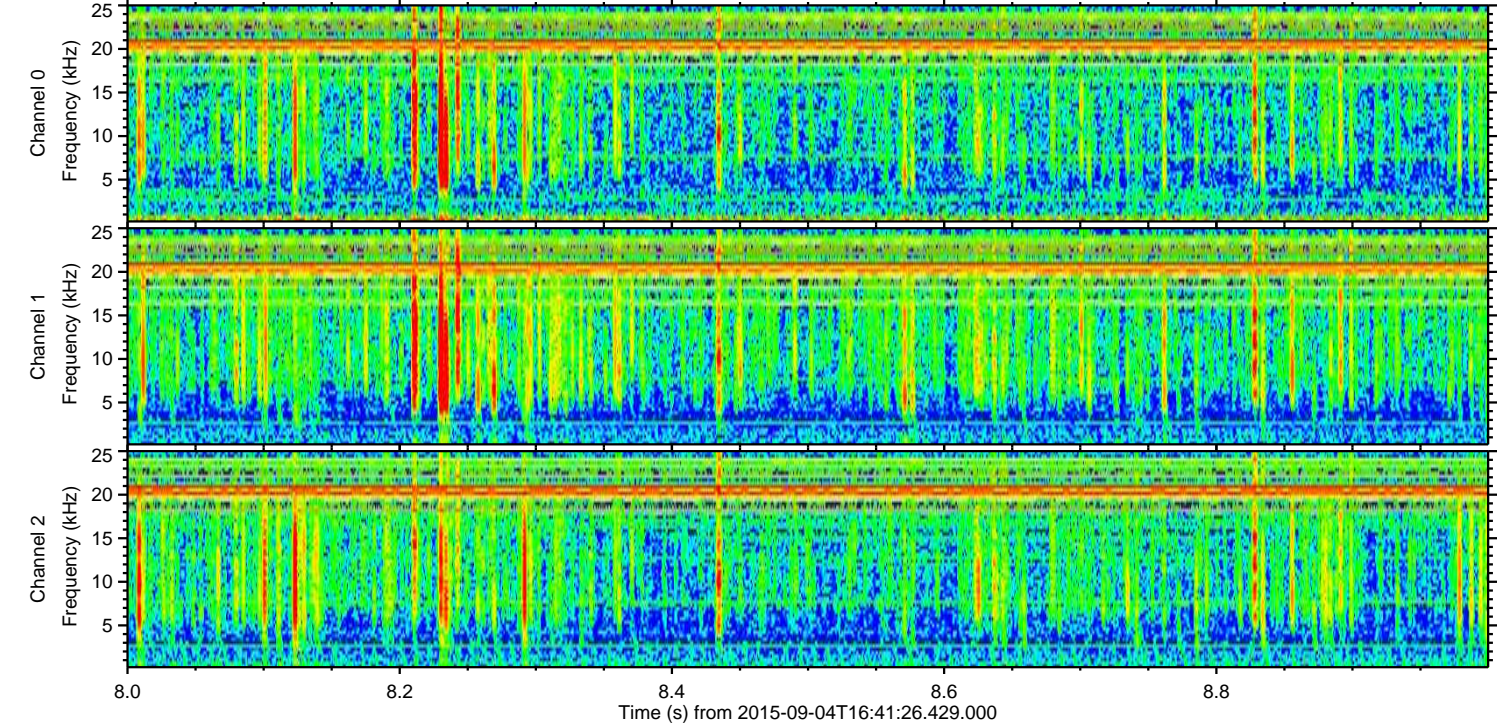
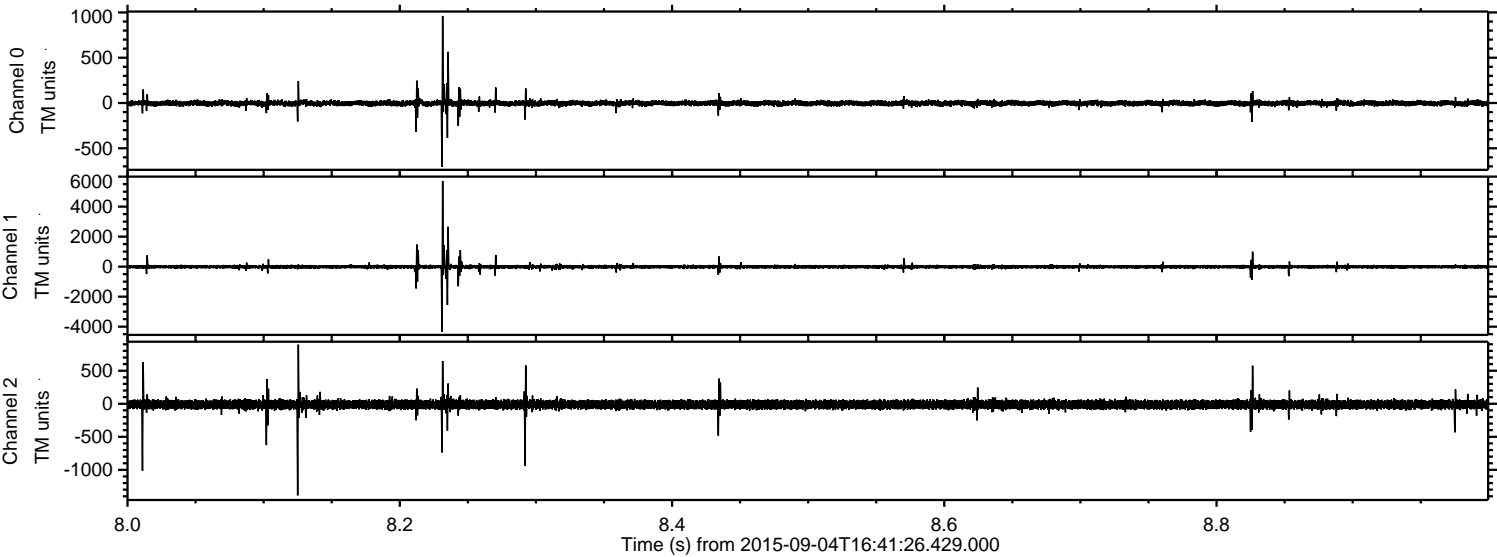


Channel 0
mn: -1446
mx: 1127
 μ : -3.1
 σ : 21.5

Channel 1
mn: -1521
mx: 1177
 μ : -12.0
 σ : 48.5

Channel 2
mn: -6123
mx: 4436
 μ : -12.6
 σ : 74.7

Processed Fri Oct 9 17:02:25 2015 by ELM ver.2012-10-06 from 001__elm20150904_164125__dat00.bin

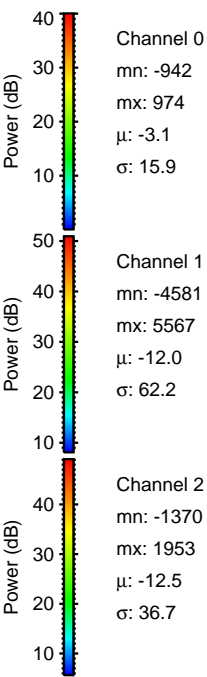
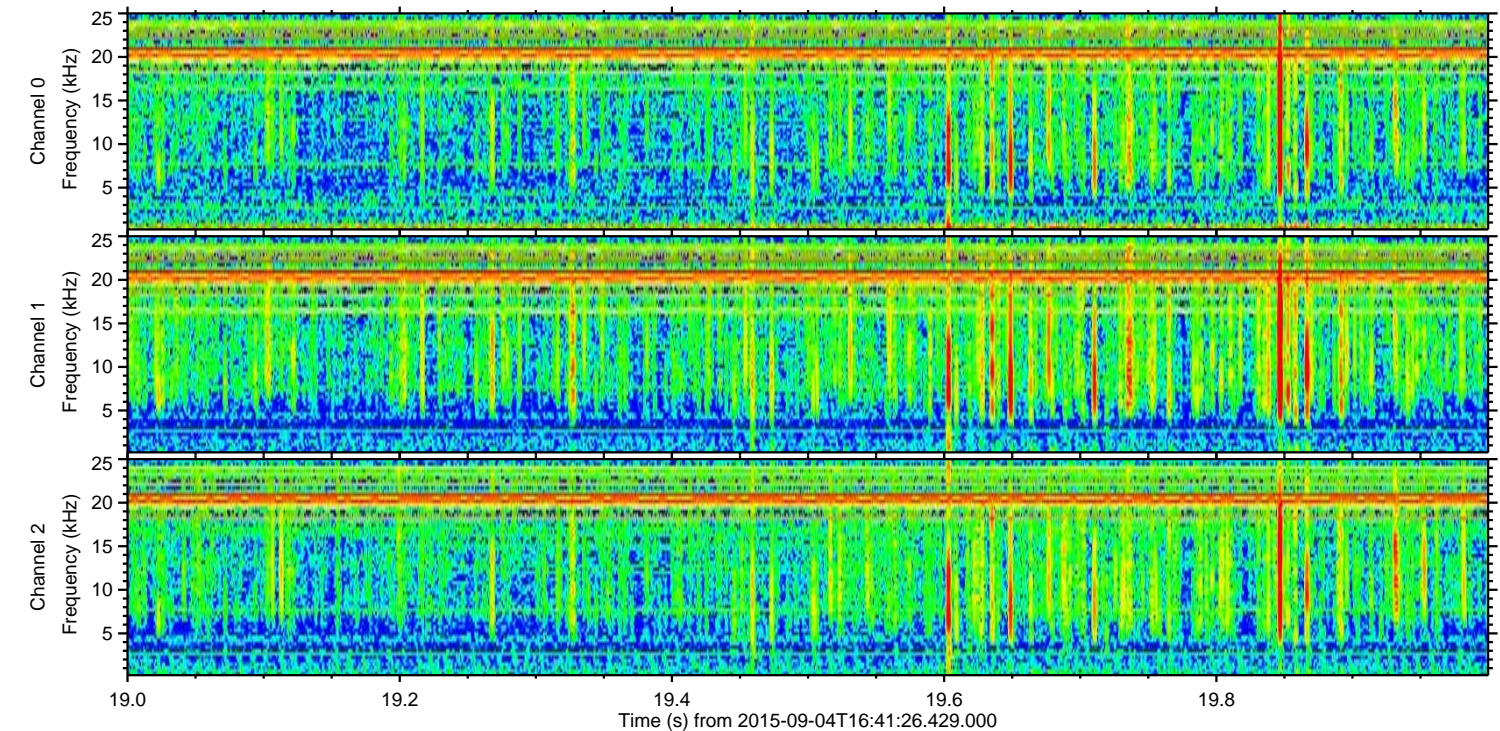
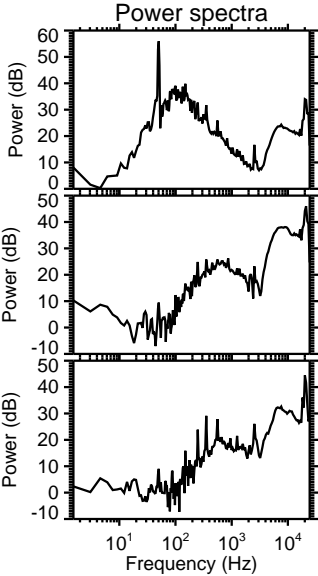
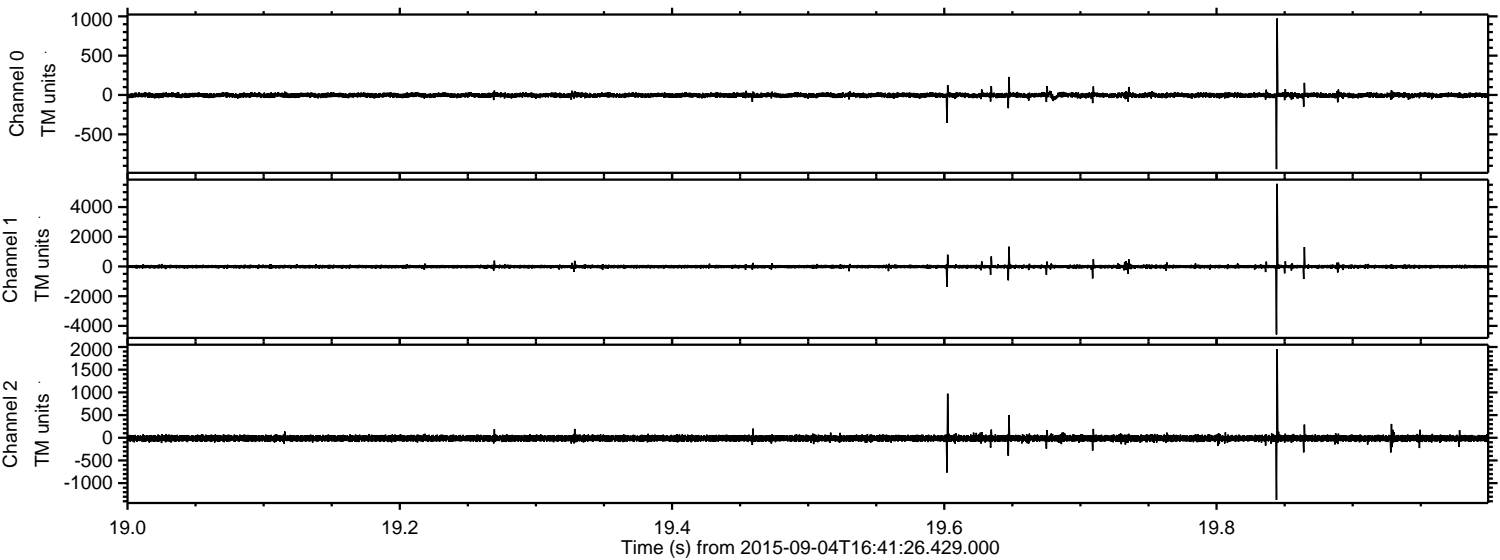


Channel 0
mn: -703
mx: 962
 μ : -3.1
 σ : 17.3

Channel 1
mn: -4335
mx: 5715
 μ : -12.1
 σ : 74.0

Channel 2
mn: -1387
mx: 894
 μ : -12.5
 σ : 37.3

Processed Fri Oct 9 17:02:26 2015 by ELM ver.2012-10-06 from 001__elm20150904_164125__dat00.bin



Processed Fri Oct 9 17:02:27 2015 by ELM ver.2012-10-06 from 001__elm20150904_164125__dat00.bin

