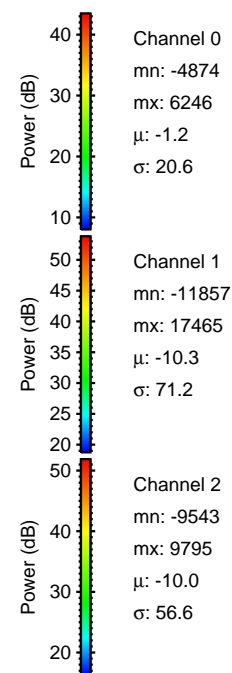
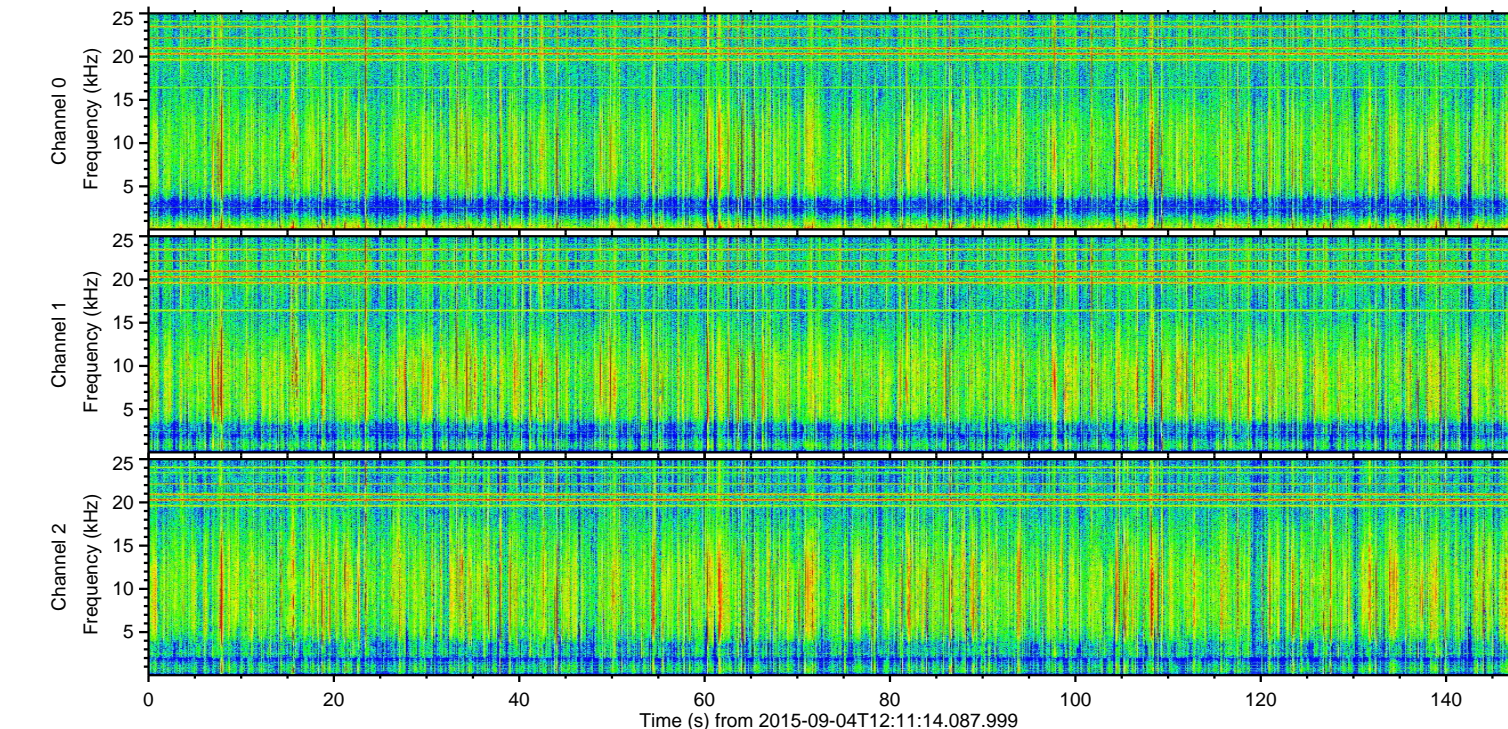
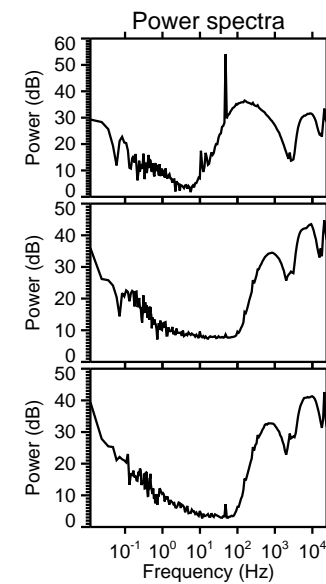
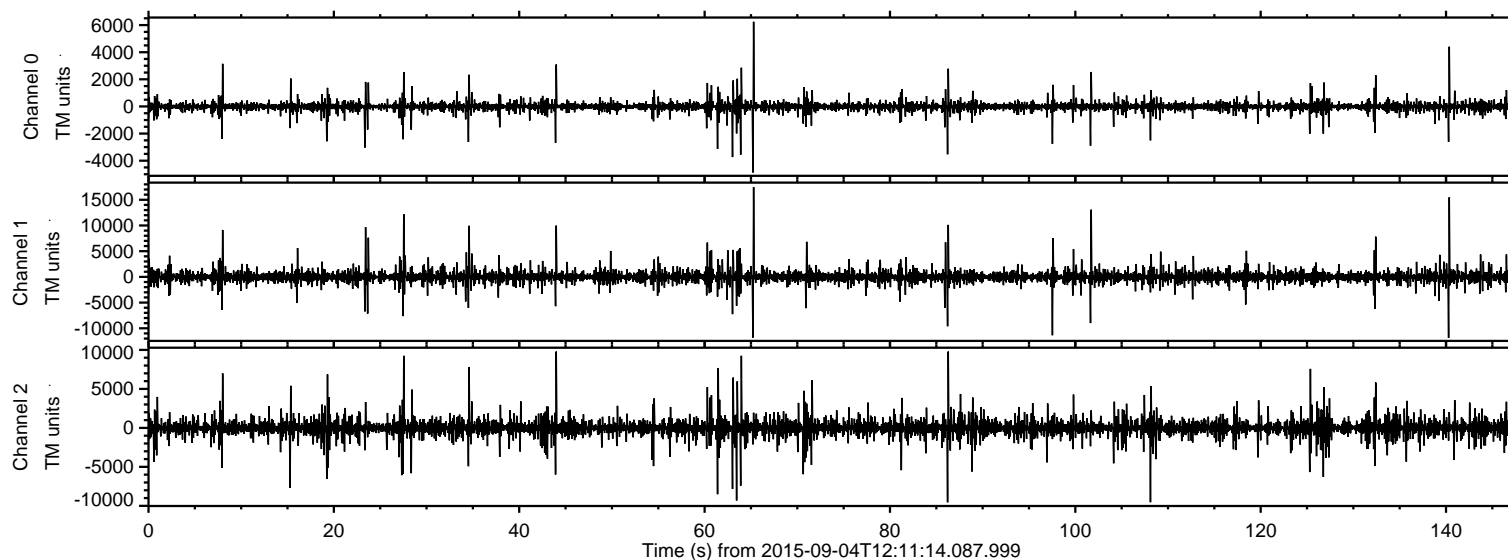
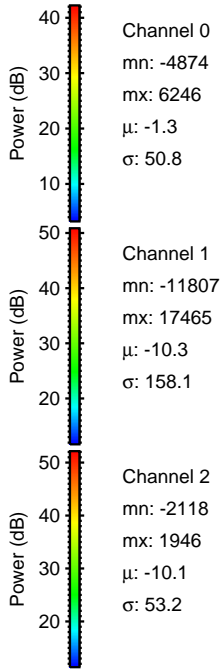
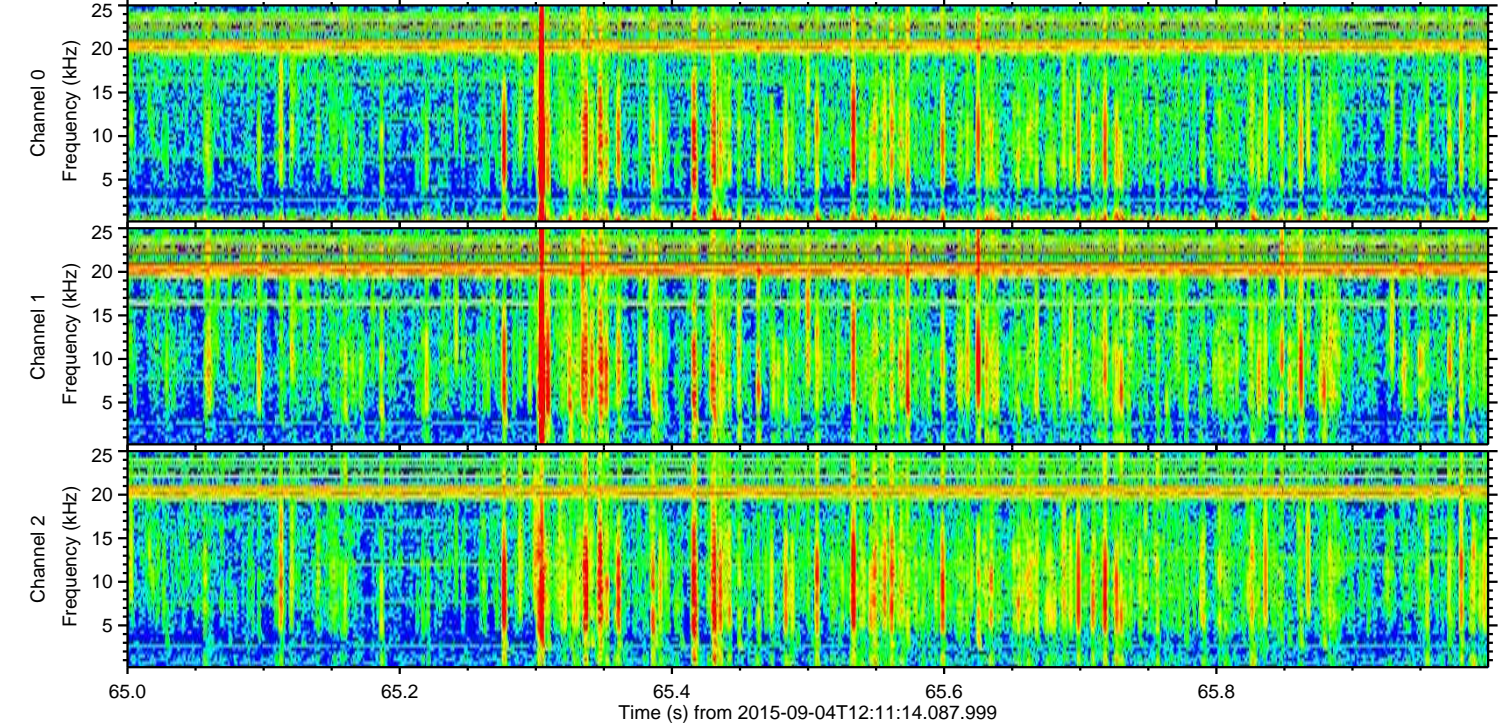
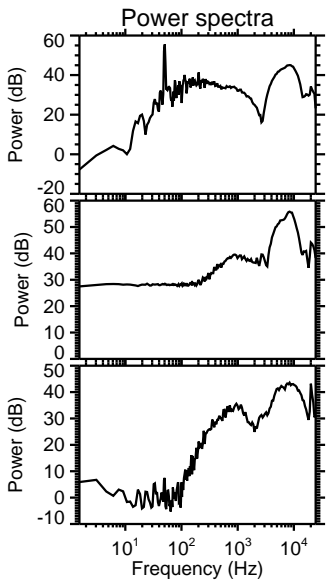
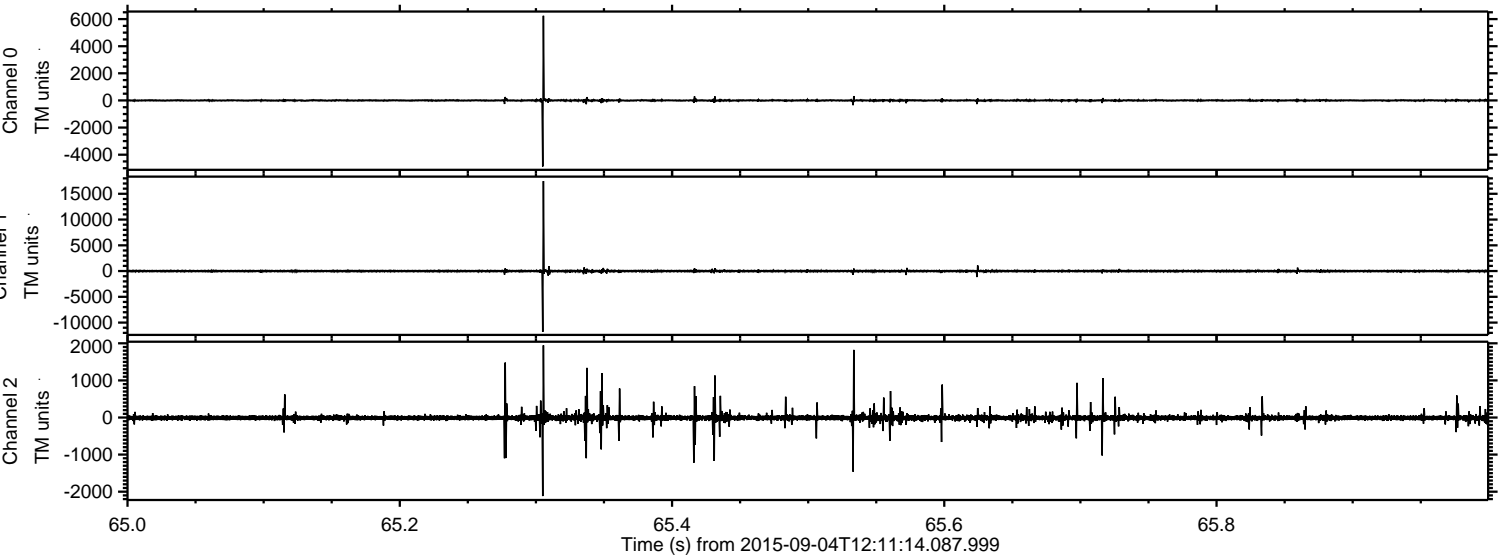


ELMAVAN 3D WAVEFORMS (Measured data sampled at 50 kHz) 51000 packets of 144 samples from 2015-09-04T12:11:14.087.999.

Processed Fri Oct 9 15:46:23 2015 by ELM ver.2012-10-06 from 001__elm20150904_121113__dat00.bin

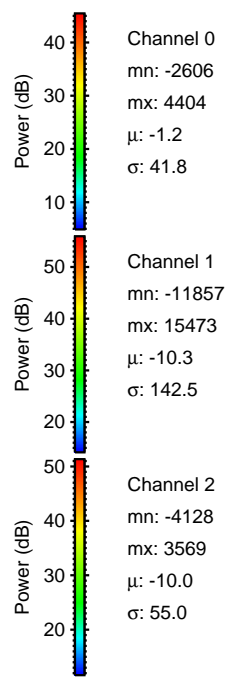
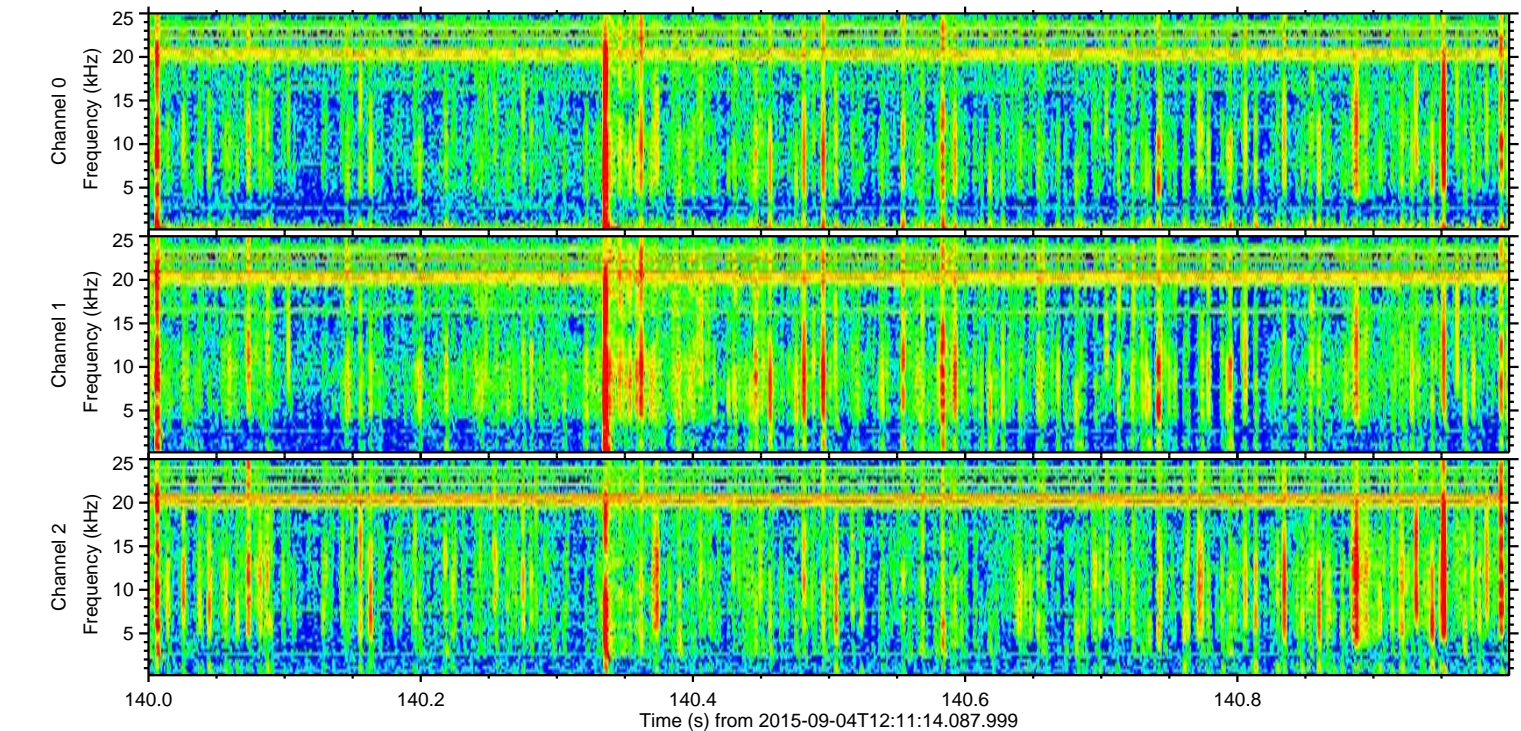
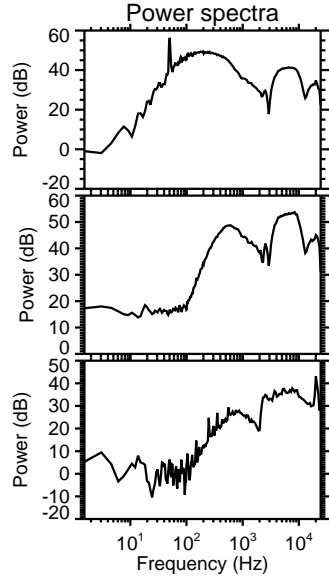
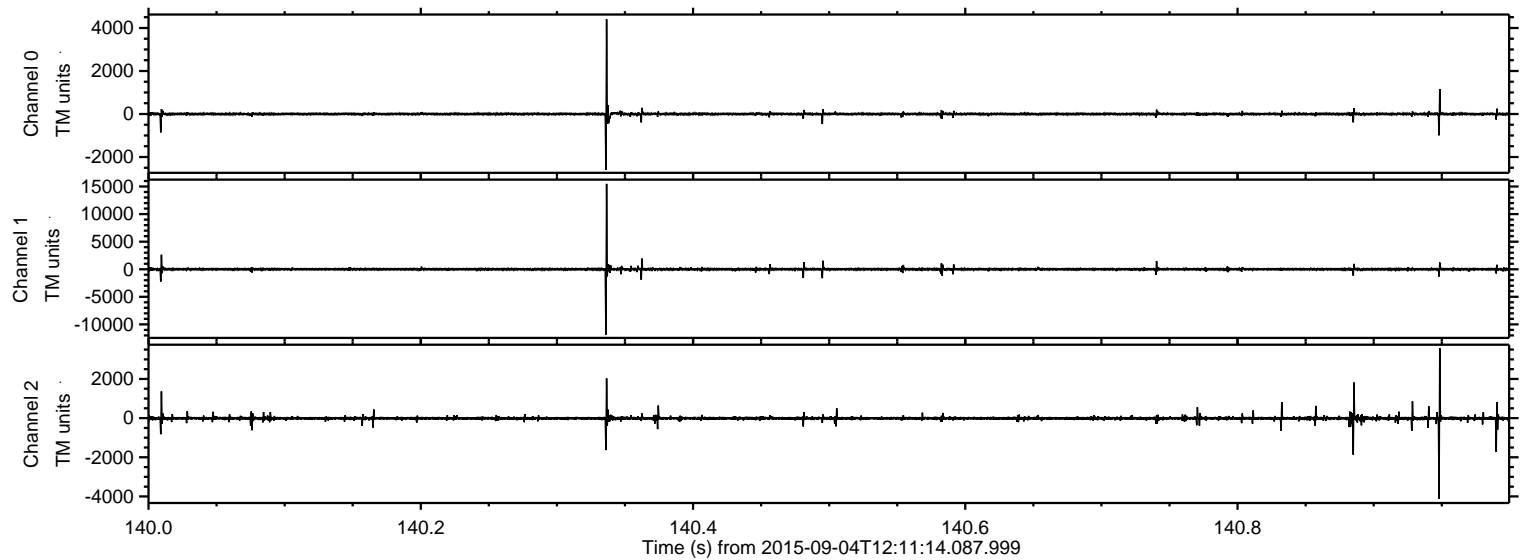


Processed Fri Oct 9 15:46:40 2015 by ELM ver.2012-10-06 from 001__elm20150904_121113__dat00.bin



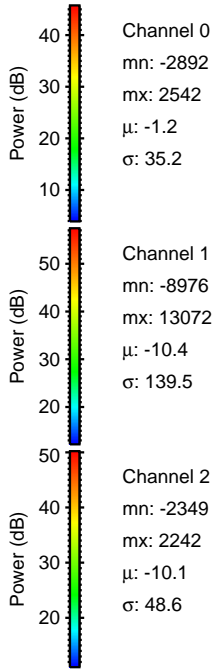
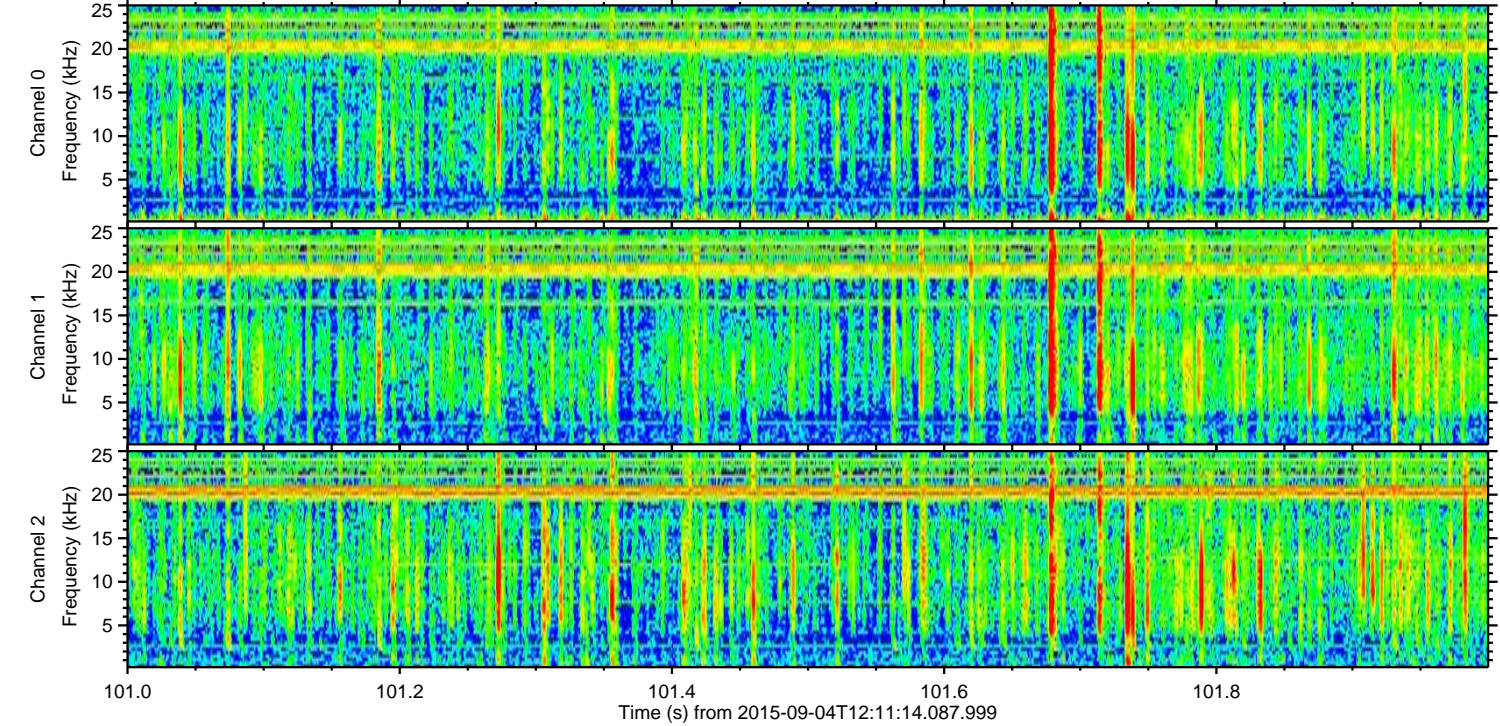
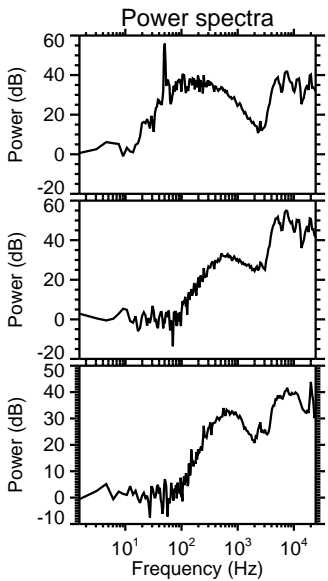
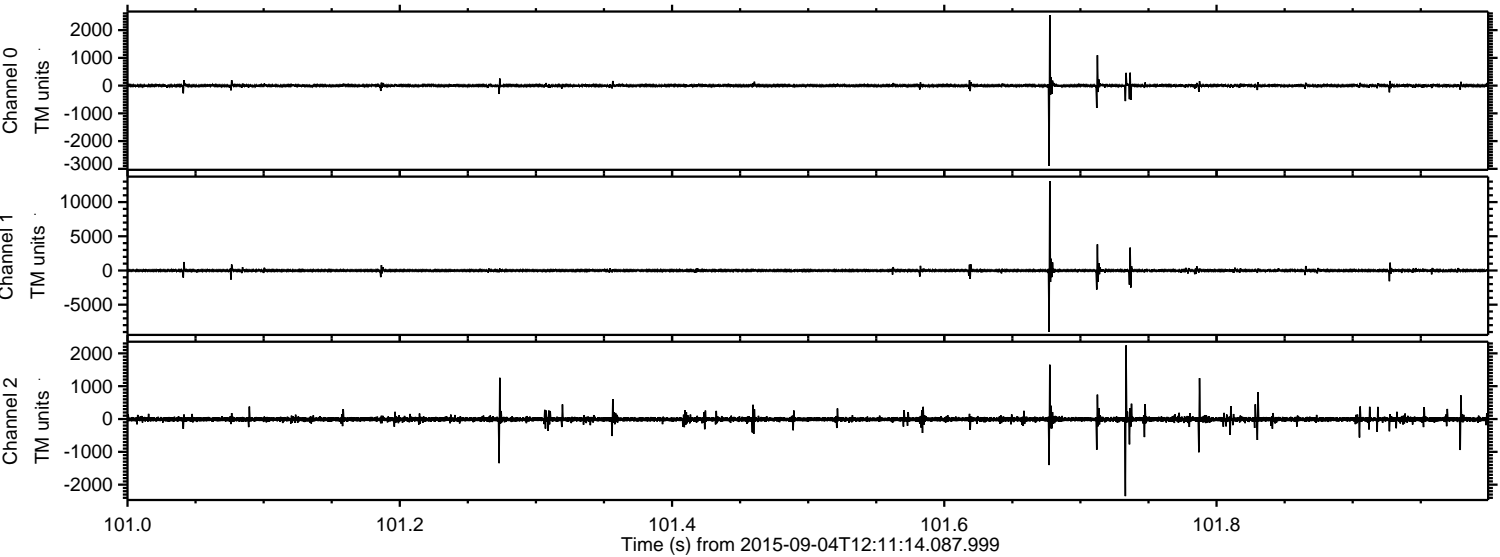
ELMAVAN 3D WAVEFORMS (Measured data sampled at 50 kHz) 51000 packets of 144 samples from 2015-09-04T12:11:14.087.999. Part 141/147

Processed Fri Oct 9 15:46:41 2015 by ELM ver.2012-10-06 from 001__elm20150904_121113__dat00.bin

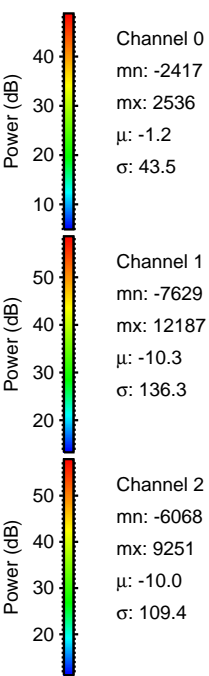
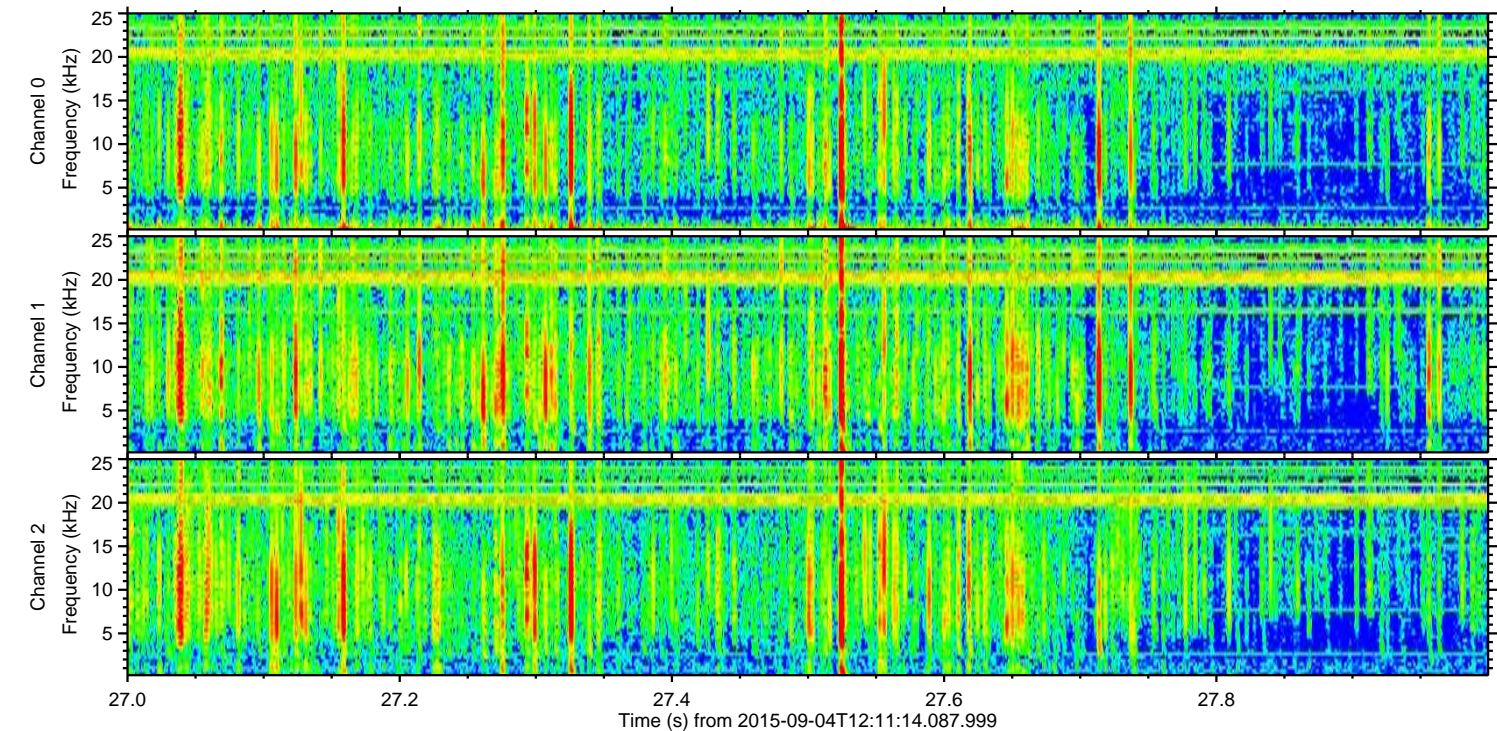
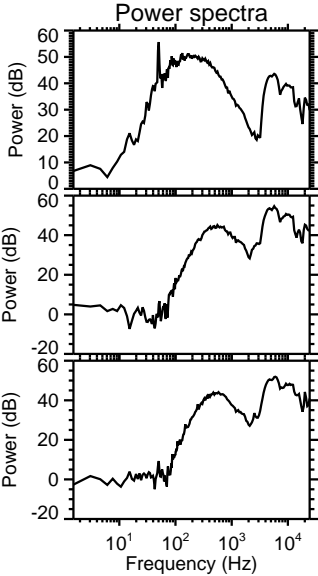
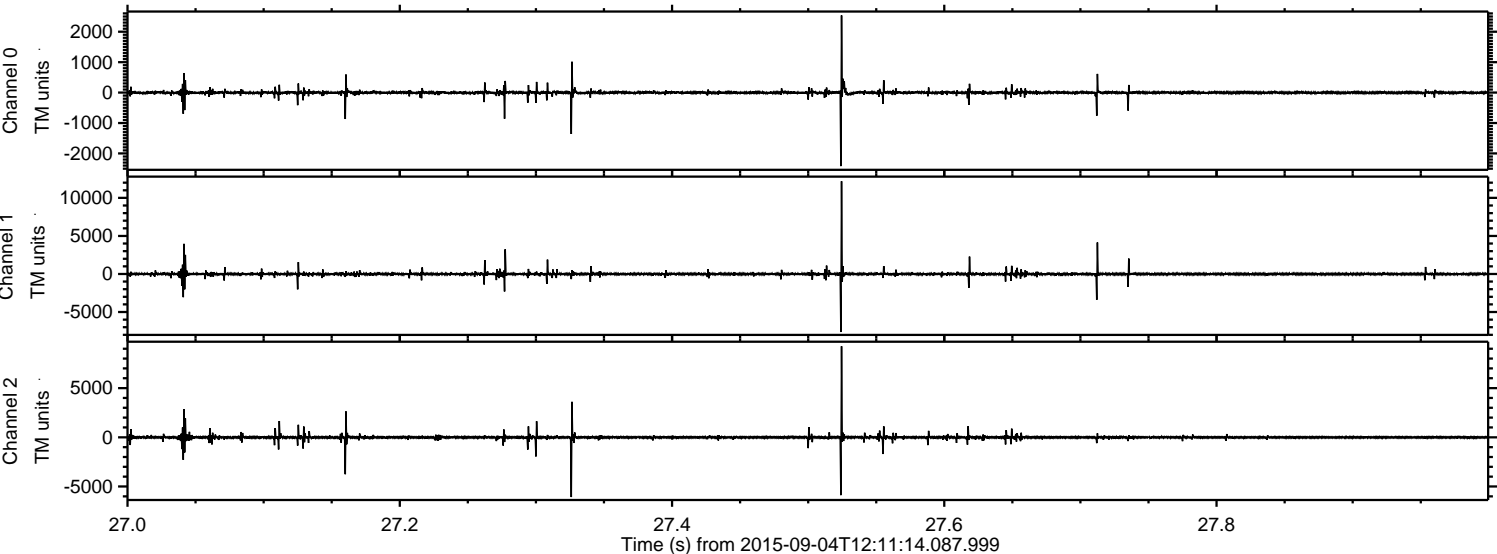


ELMAVAN 3D WAVEFORMS (Measured data sampled at 50 kHz) 51000 packets of 144 samples from 2015-09-04T12:11:14.087.999. Part 102/147

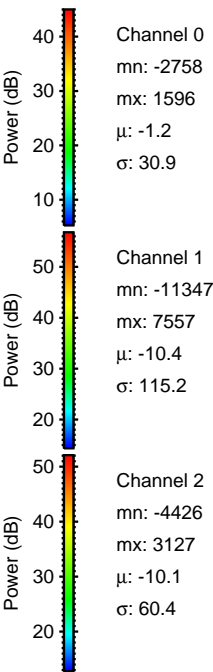
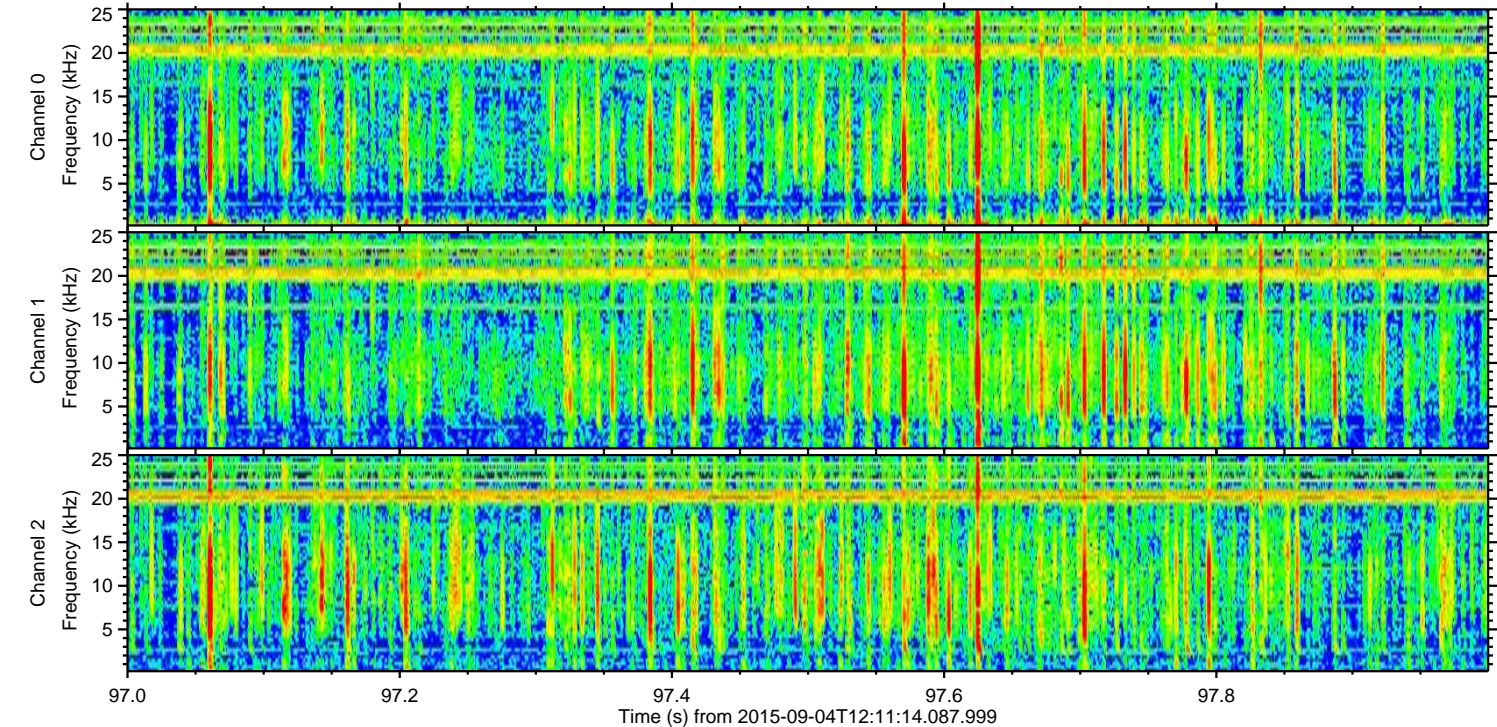
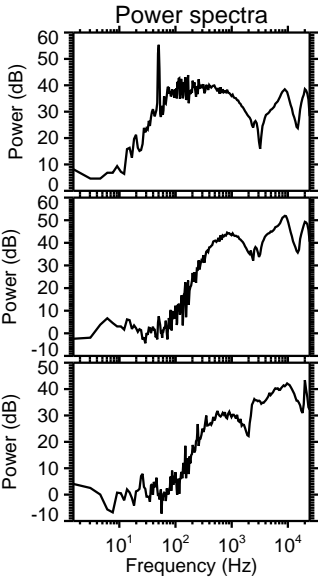
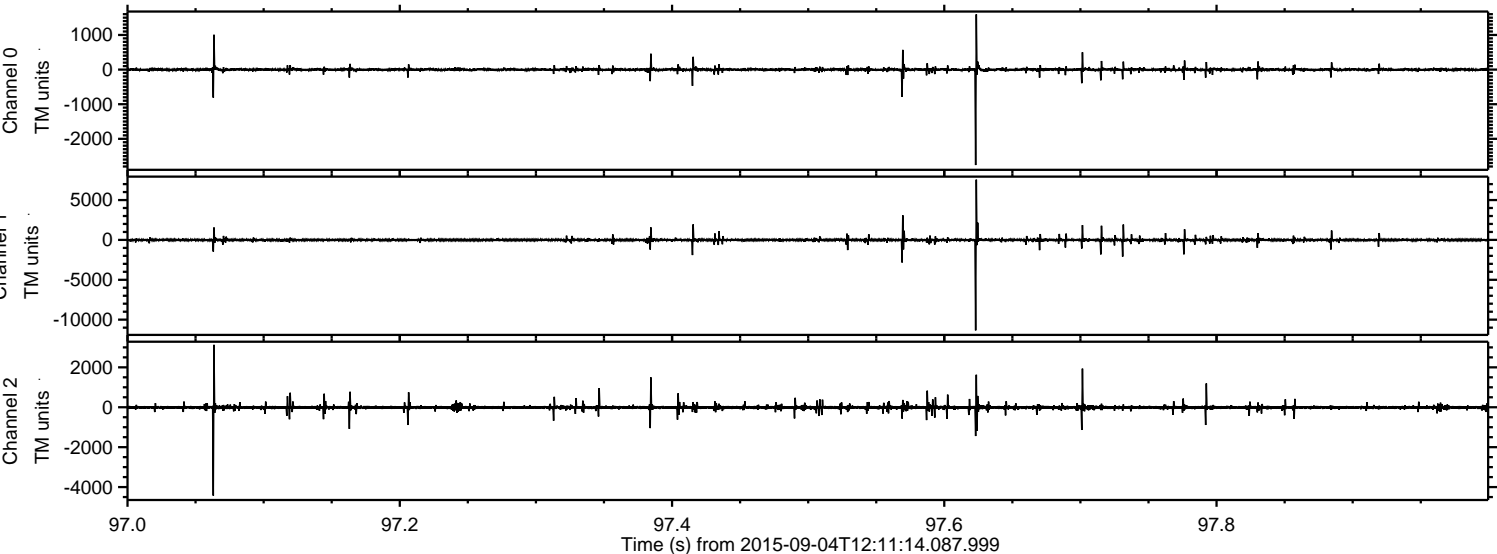
Processed Fri Oct 9 15:46:42 2015 by ELM ver.2012-10-06 from 001__elm20150904_121113__dat00.bin



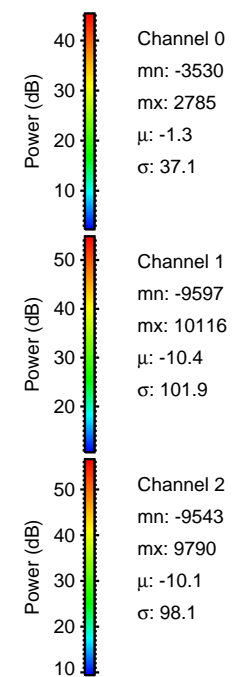
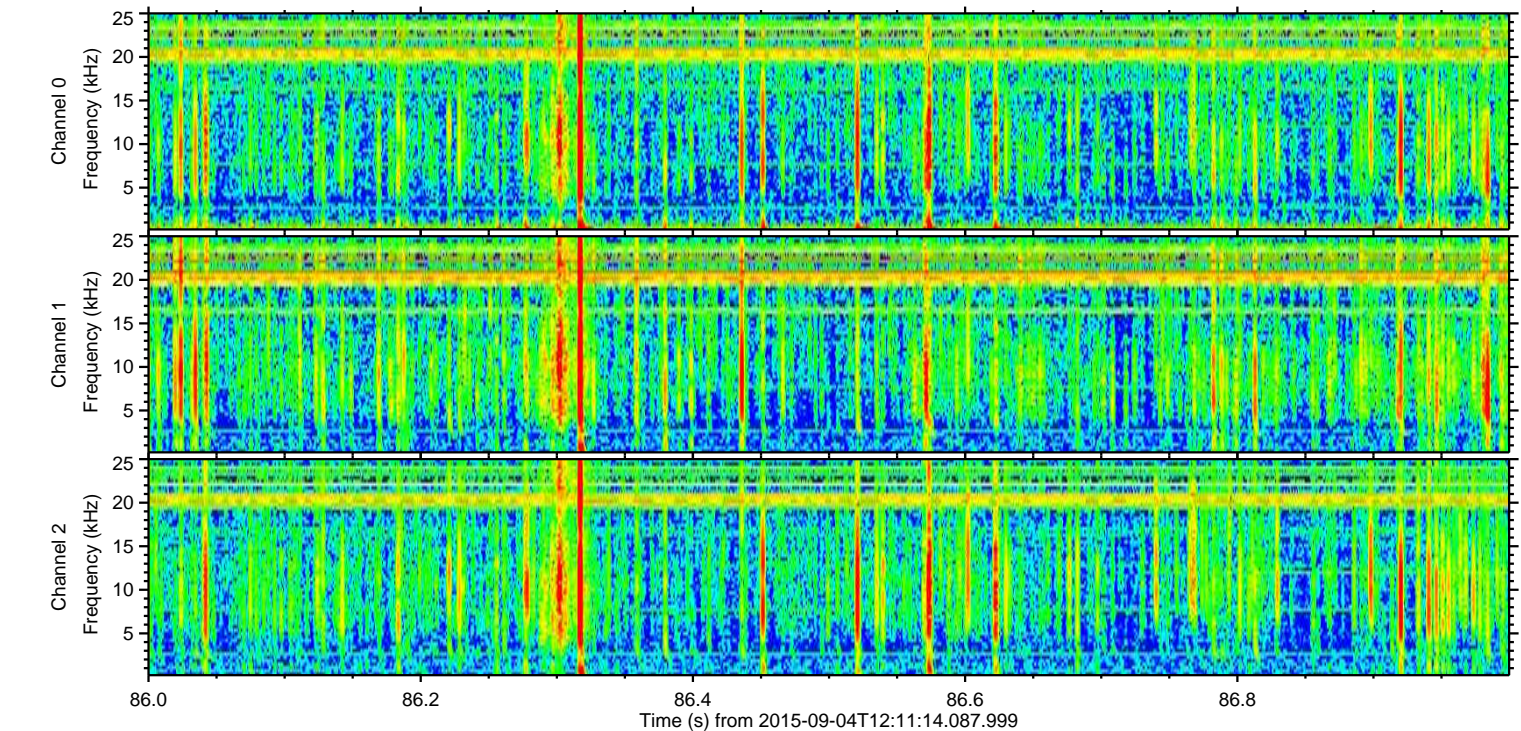
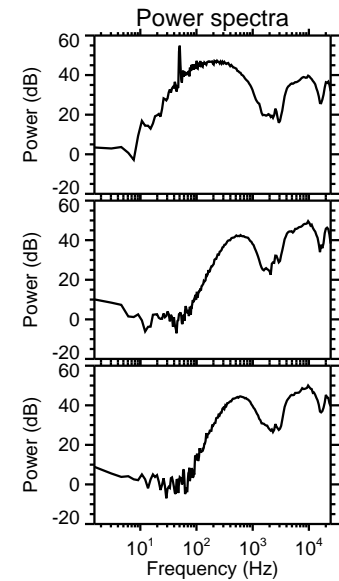
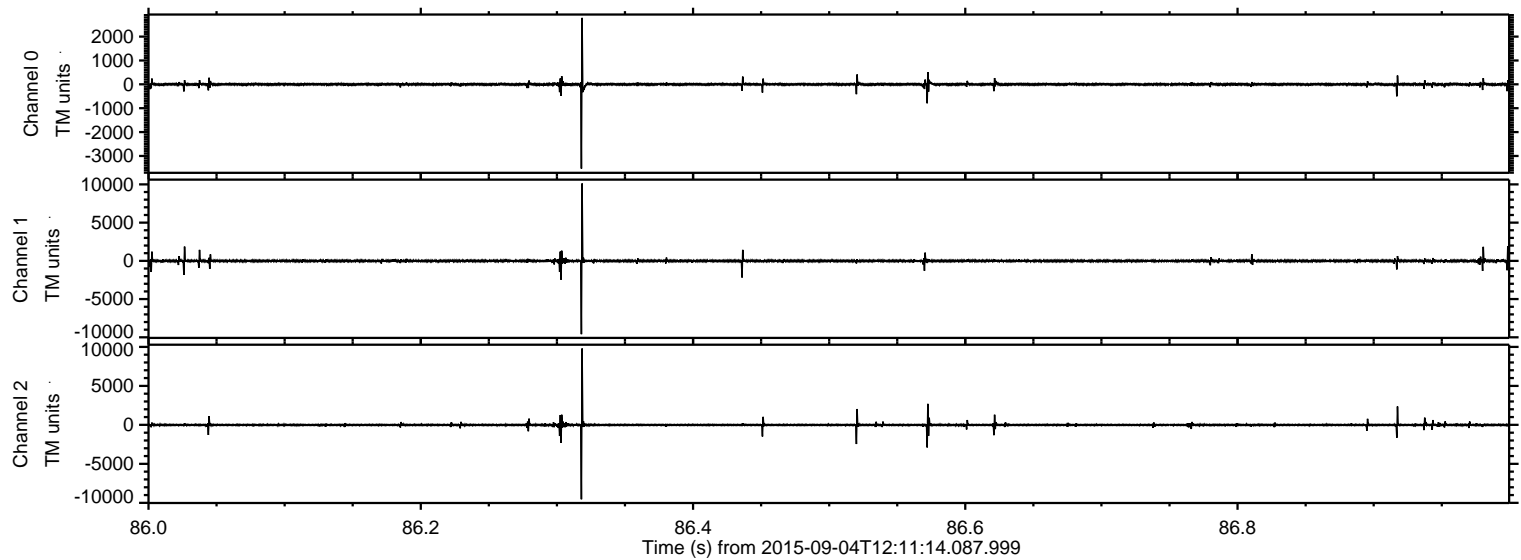
Processed Fri Oct 9 15:46:43 2015 by ELM ver.2012-10-06 from 001__elm20150904_121113__dat00.bin



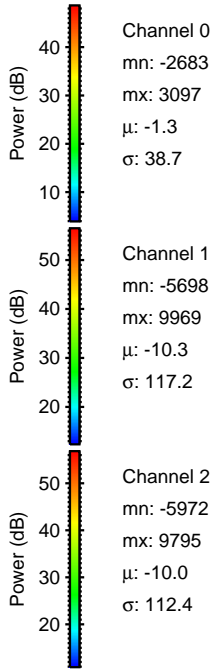
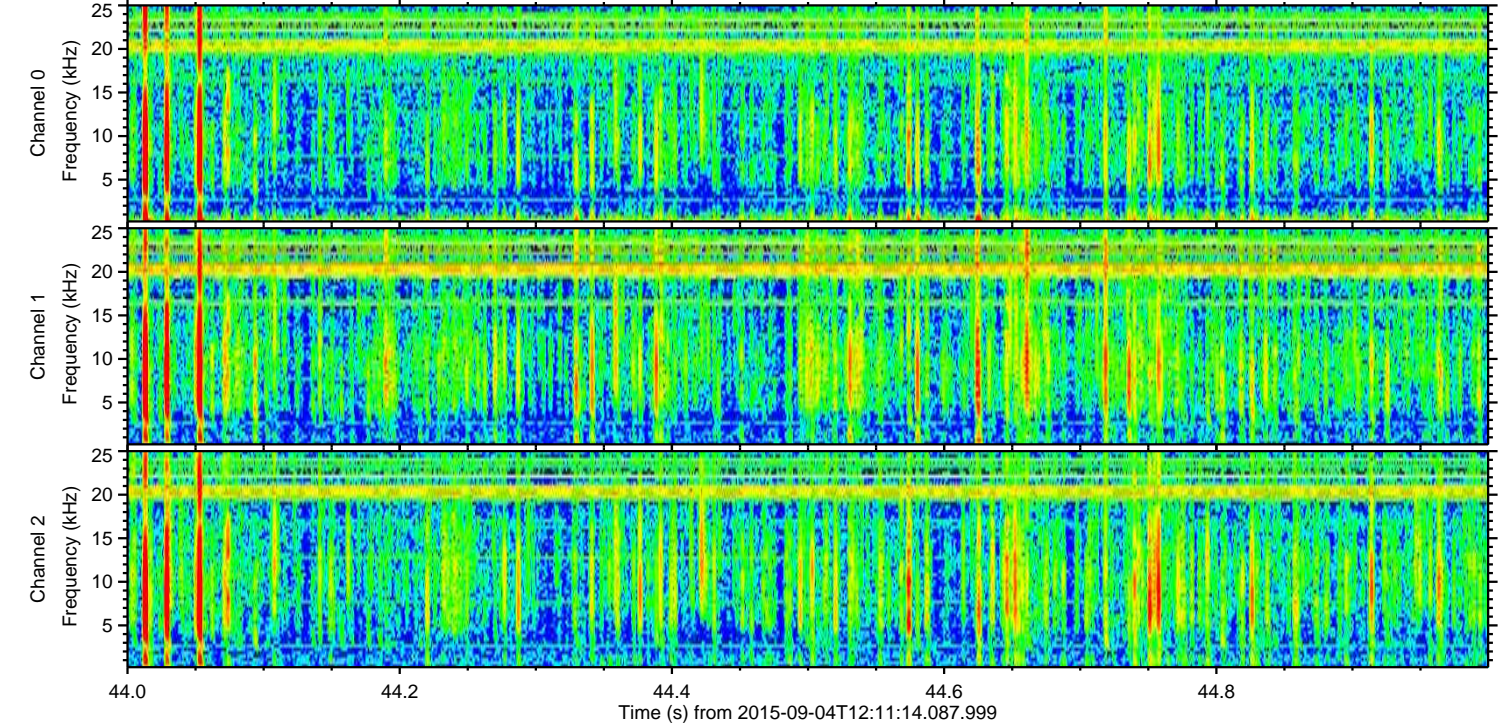
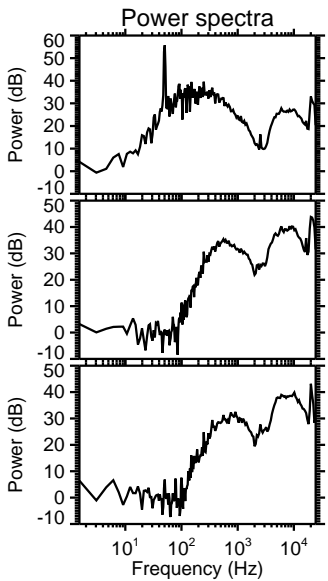
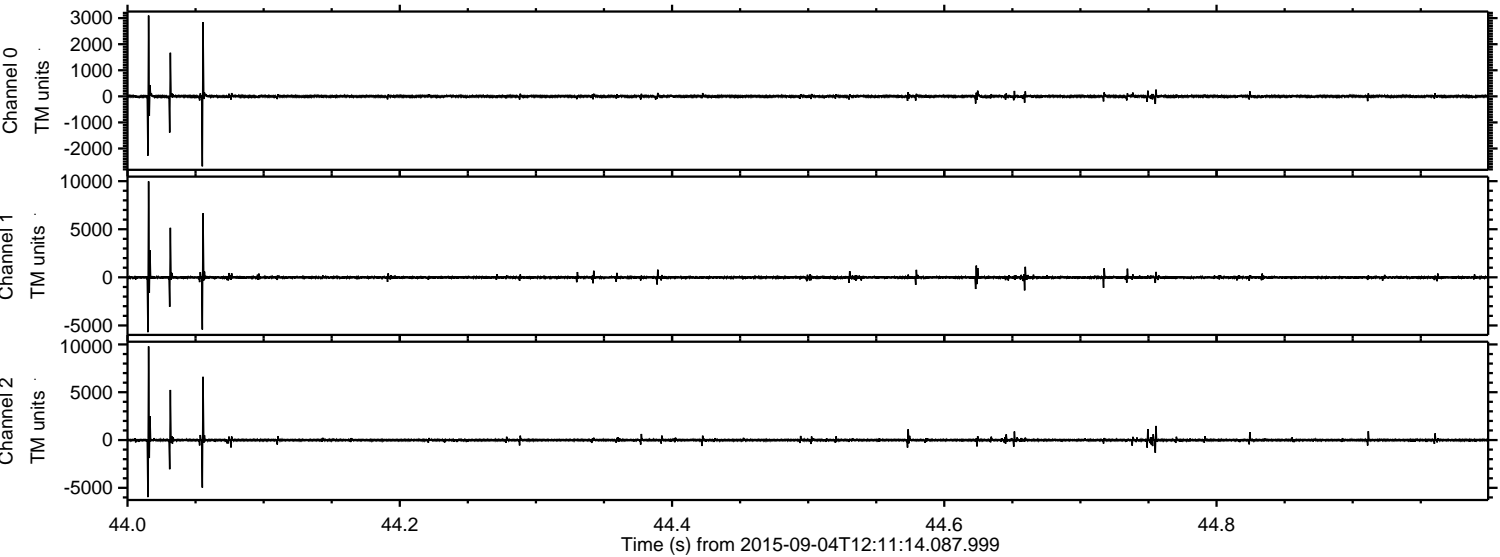
Processed Fri Oct 9 15:46:44 2015 by ELM ver.2012-10-06 from 001__elm20150904_121113__dat00.bin



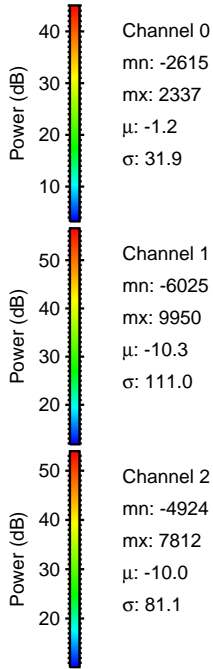
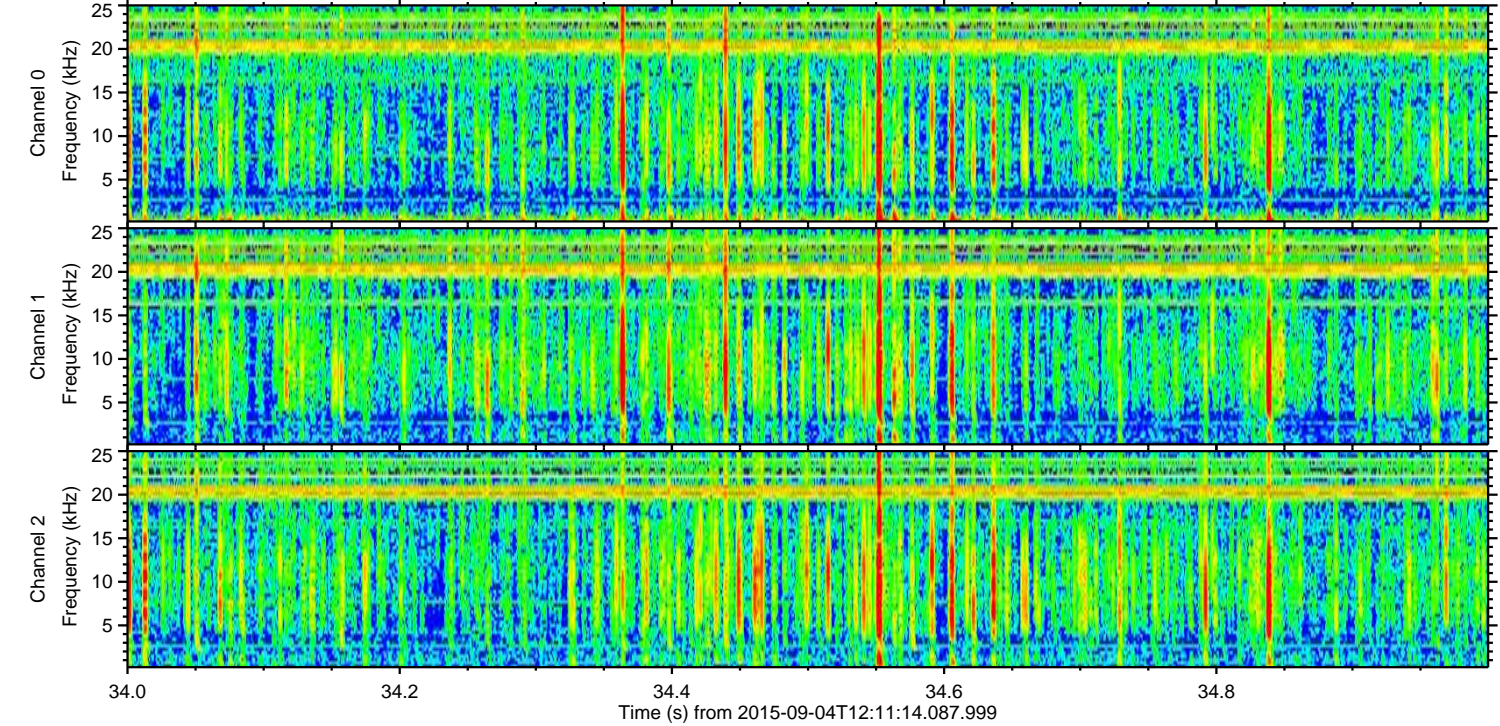
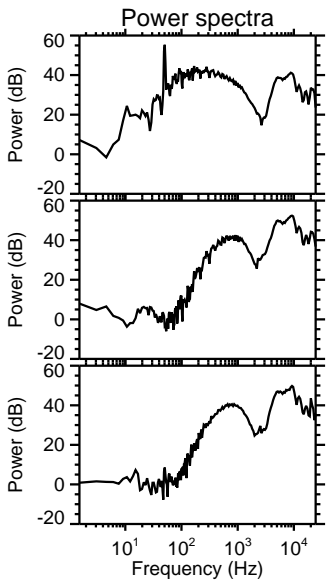
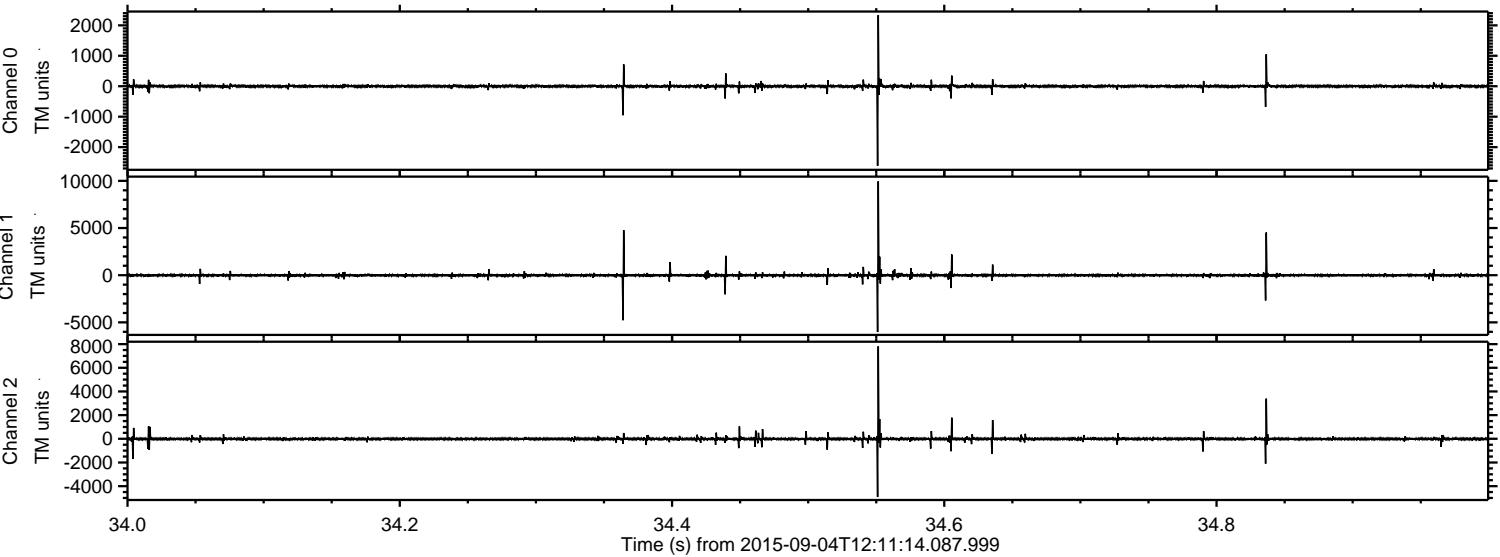
Processed Fri Oct 9 15:46:45 2015 by ELM ver.2012-10-06 from 001__elm20150904_121113__dat00.bin



Processed Fri Oct 9 15:46:46 2015 by ELM ver.2012-10-06 from 001__elm20150904_121113__dat00.bin

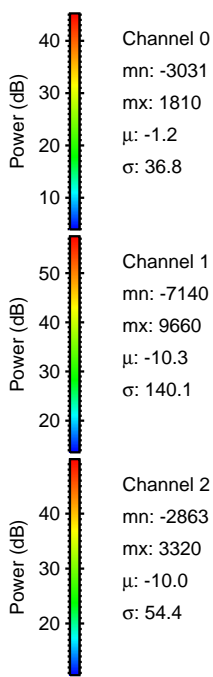
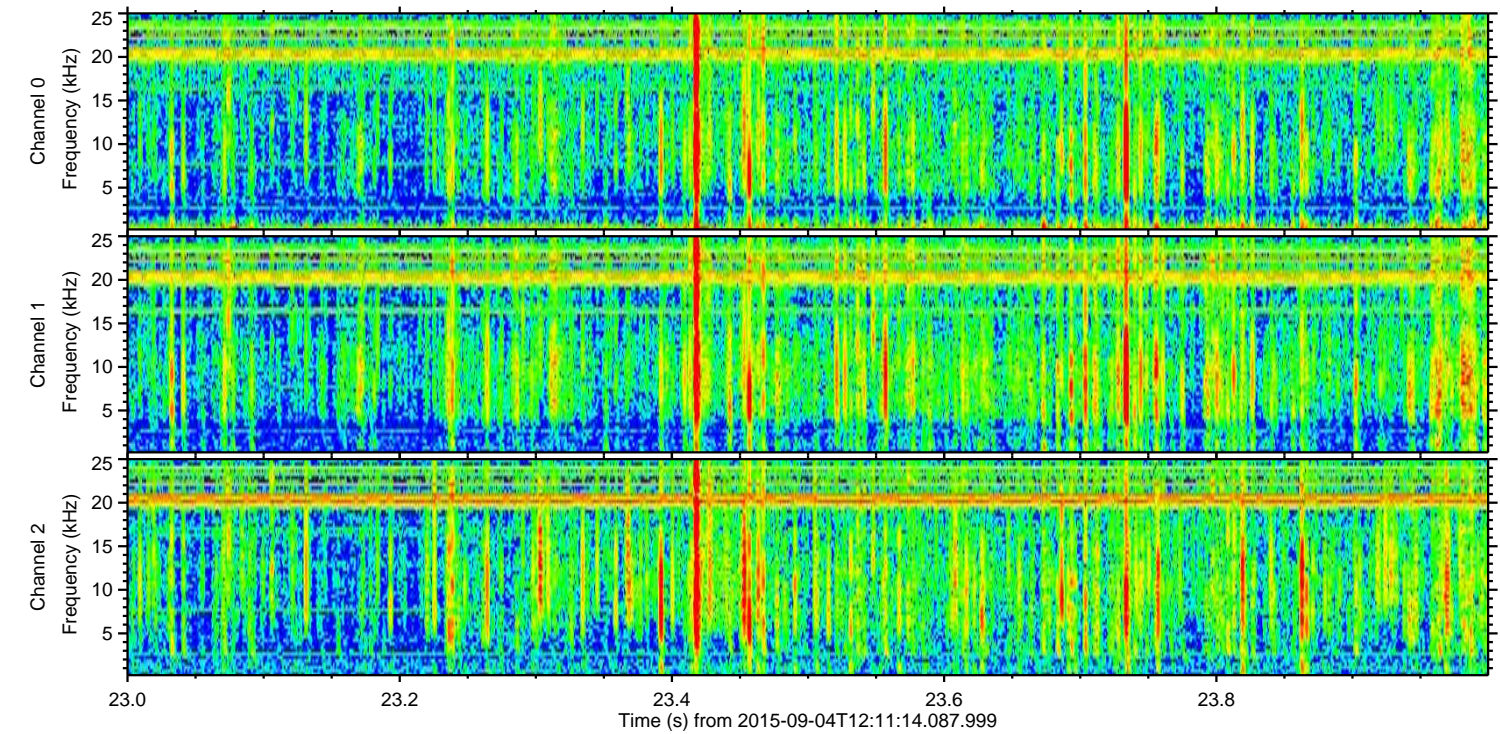
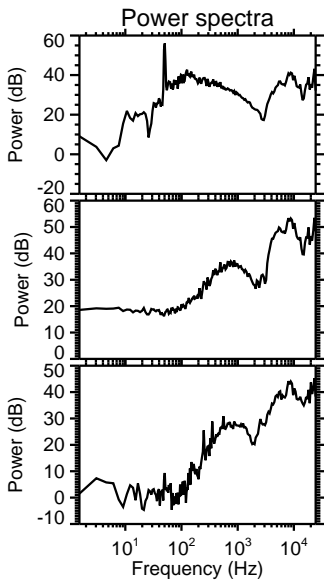
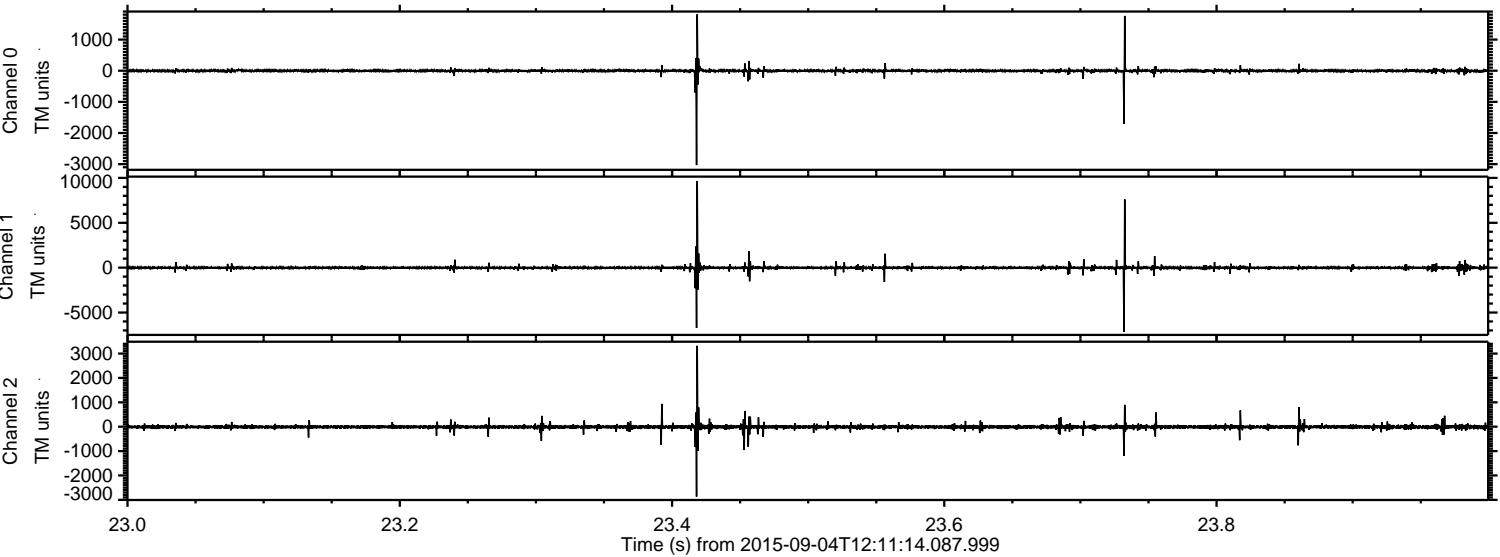


Processed Fri Oct 9 15:46:47 2015 by ELM ver.2012-10-06 from 001__elm20150904_121113__dat00.bin



ELMAVAN 3D WAVEFORMS (Measured data sampled at 50 kHz) 51000 packets of 144 samples from 2015-09-04T12:11:14.087.999. Part 24/147

Processed Fri Oct 9 15:46:48 2015 by ELM ver.2012-10-06 from 001__elm20150904_121113__dat00.bin



Channel 0
mn: -3031
mx: 1810
 μ : -1.2
 σ : 36.8

Channel 1
mn: -7140
mx: 9660
 μ : -10.3
 σ : 140.1

Channel 2
mn: -2863
mx: 3320
 μ : -10.0
 σ : 54.4

Processed Fri Oct 9 15:46:49 2015 by ELM ver.2012-10-06 from 001__elm20150904_121113__dat00.bin

