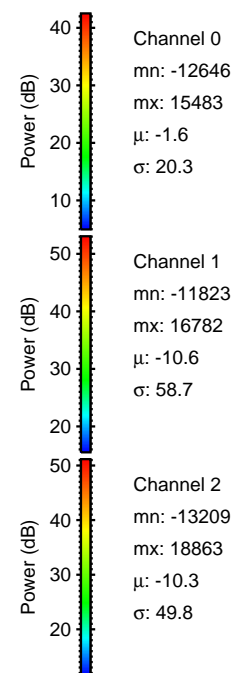
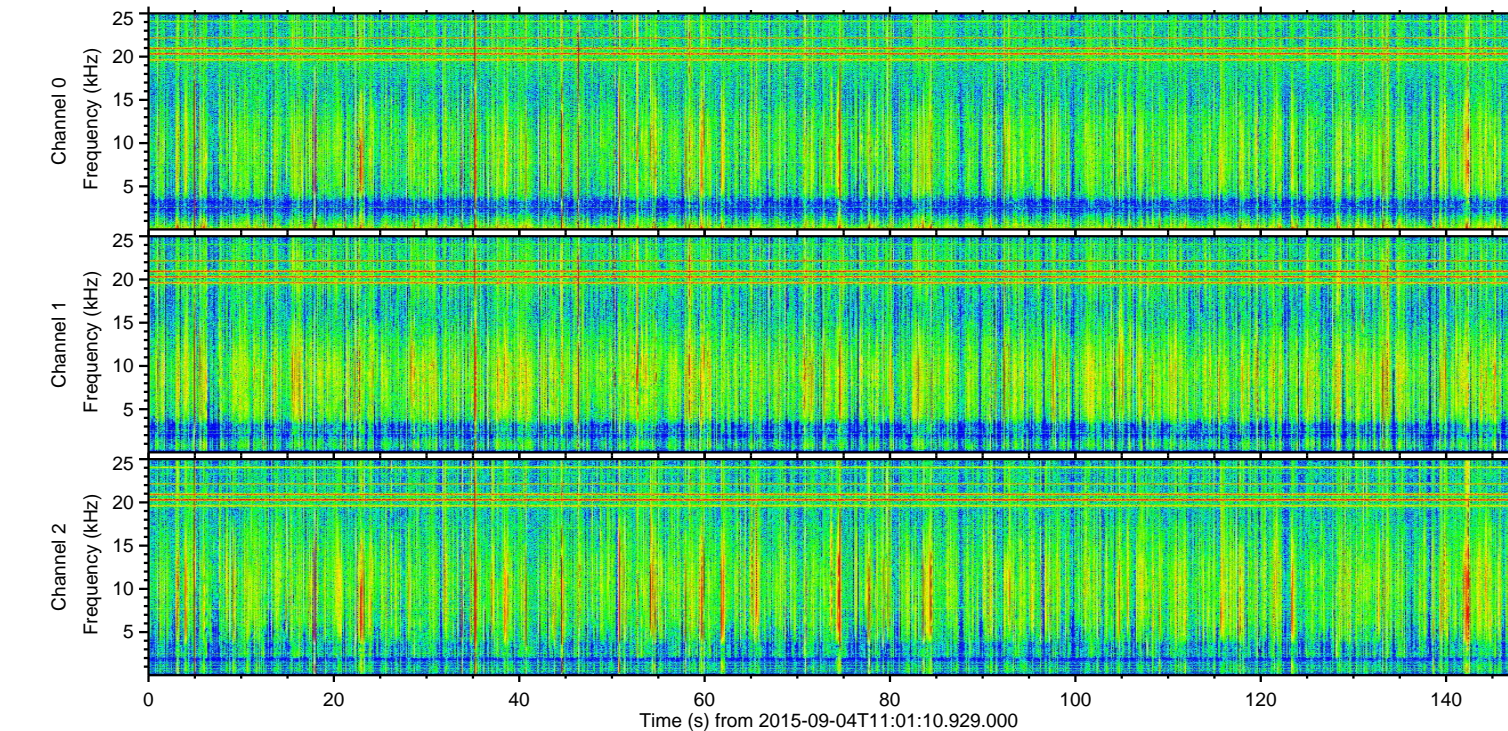
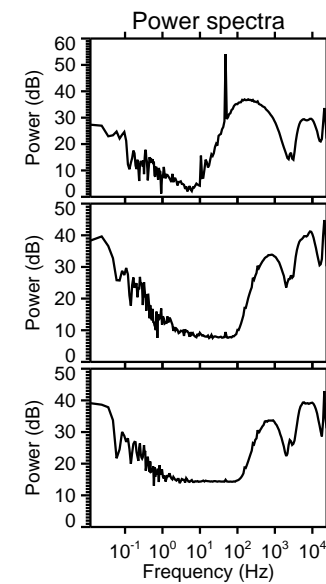
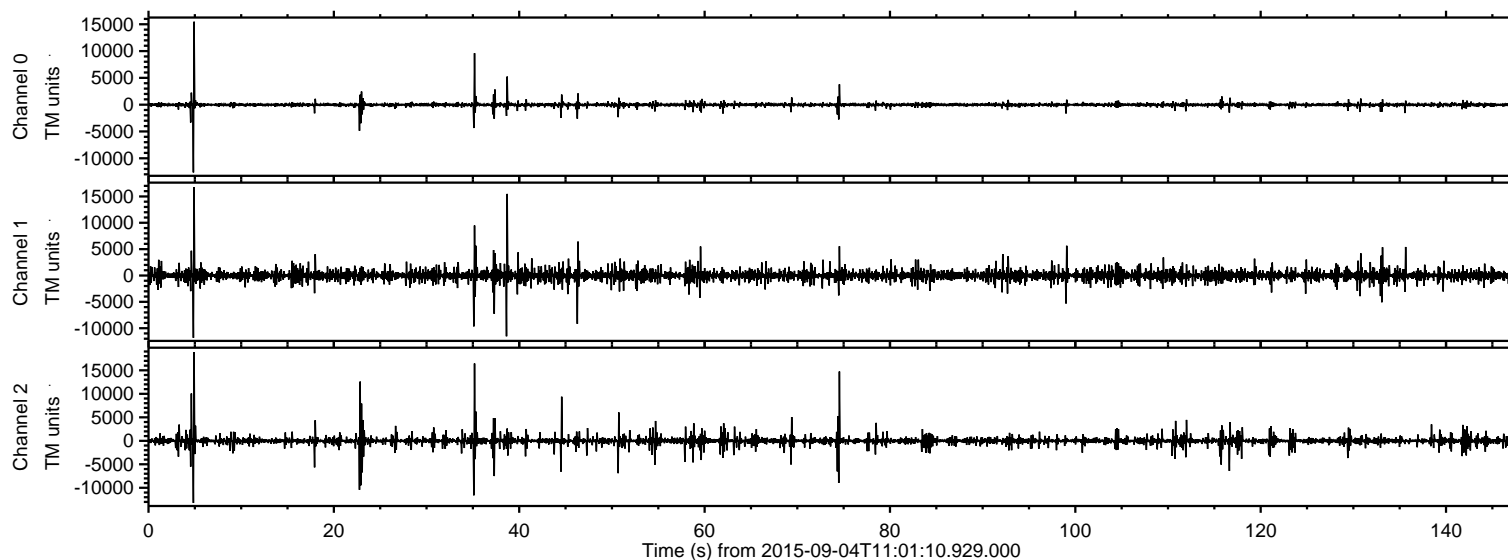


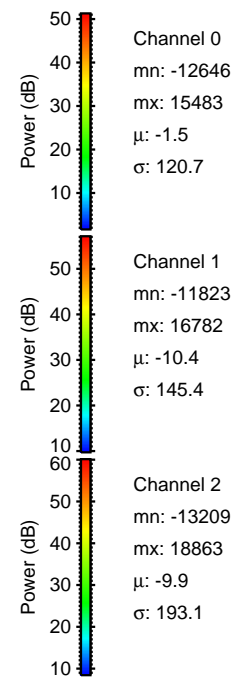
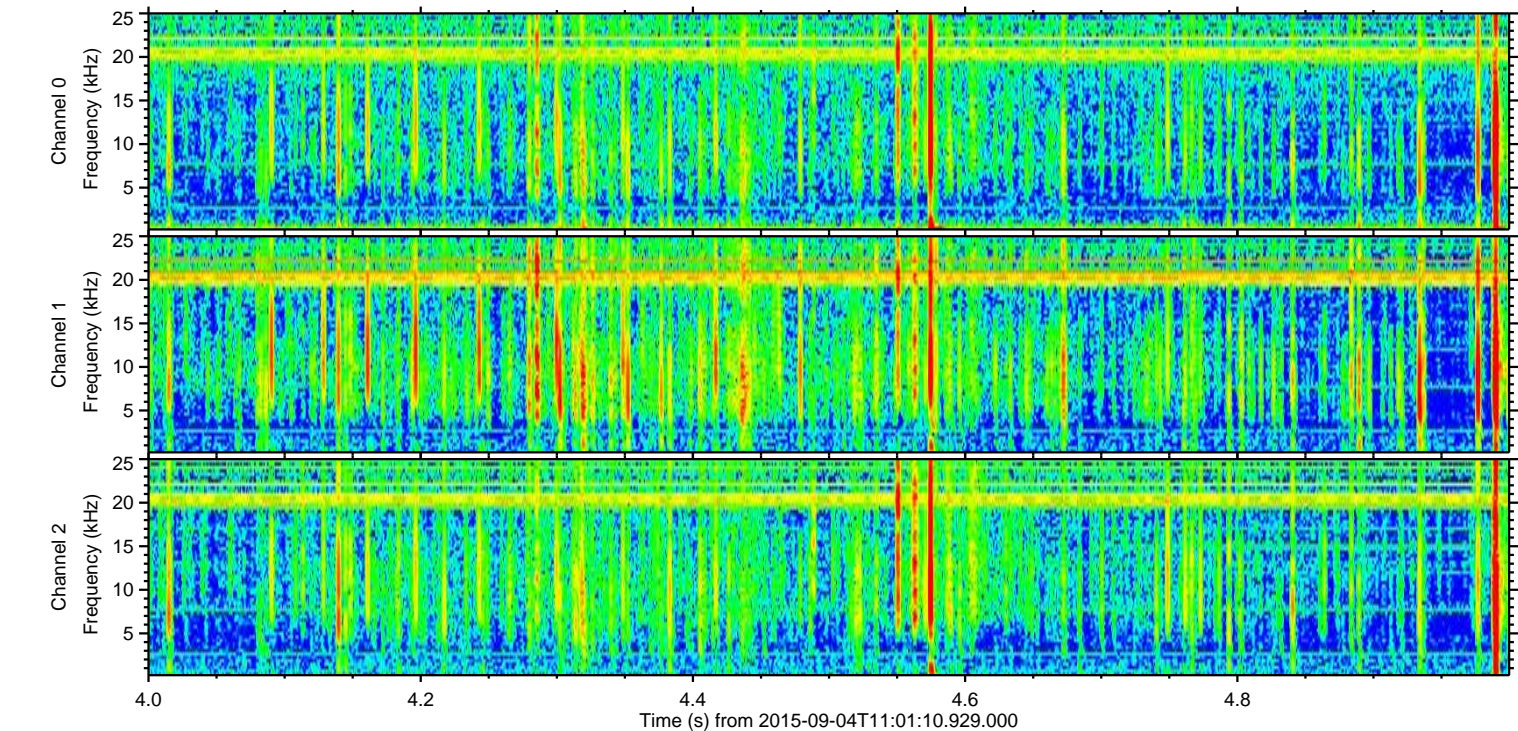
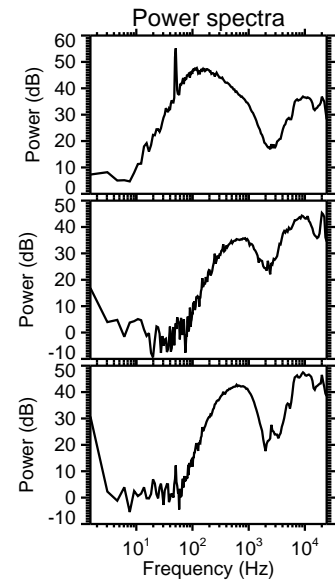
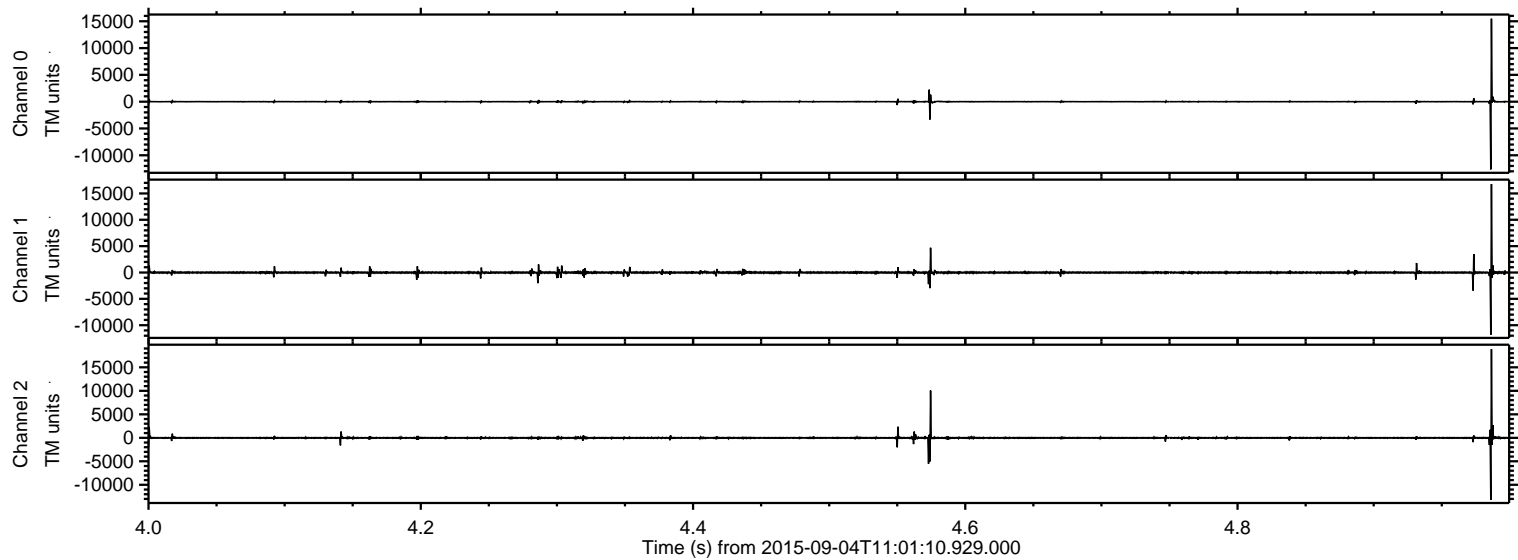
ELMAVAN 3D WAVEFORMS (Measured data sampled at 50 kHz) 51000 packets of 144 samples from 2015-09-04T11:01:10.929.000.

Processed Fri Oct 9 15:26:56 2015 by ELM ver.2012-10-06 from 001__elm20150904_110109__dat00.bin



ELMAVAN 3D WAVEFORMS (Measured data sampled at 50 kHz) 51000 packets of 144 samples from 2015-09-04T11:01:10.929.000. Part 5/147

Processed Fri Oct 9 15:27:13 2015 by ELM ver.2012-10-06 from 001__elm20150904_110109__dat00.bin



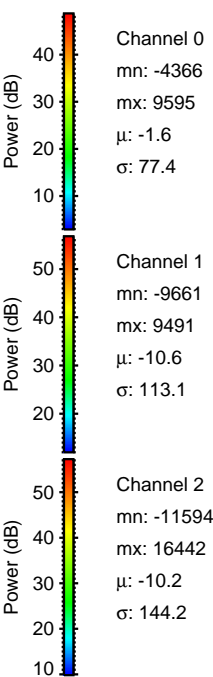
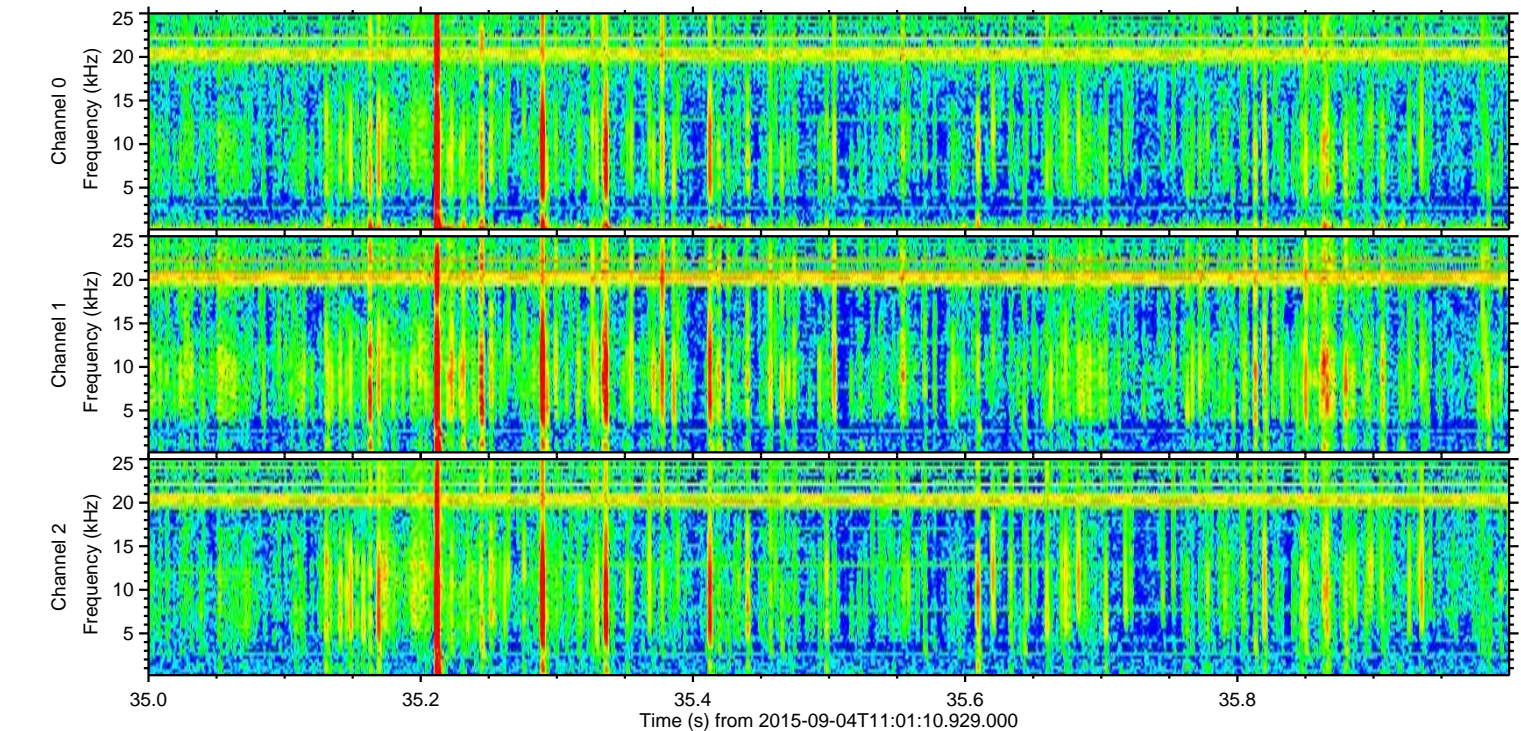
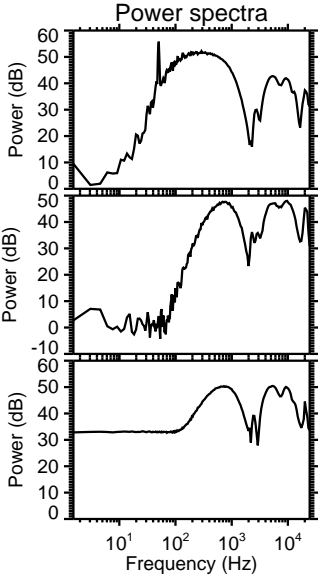
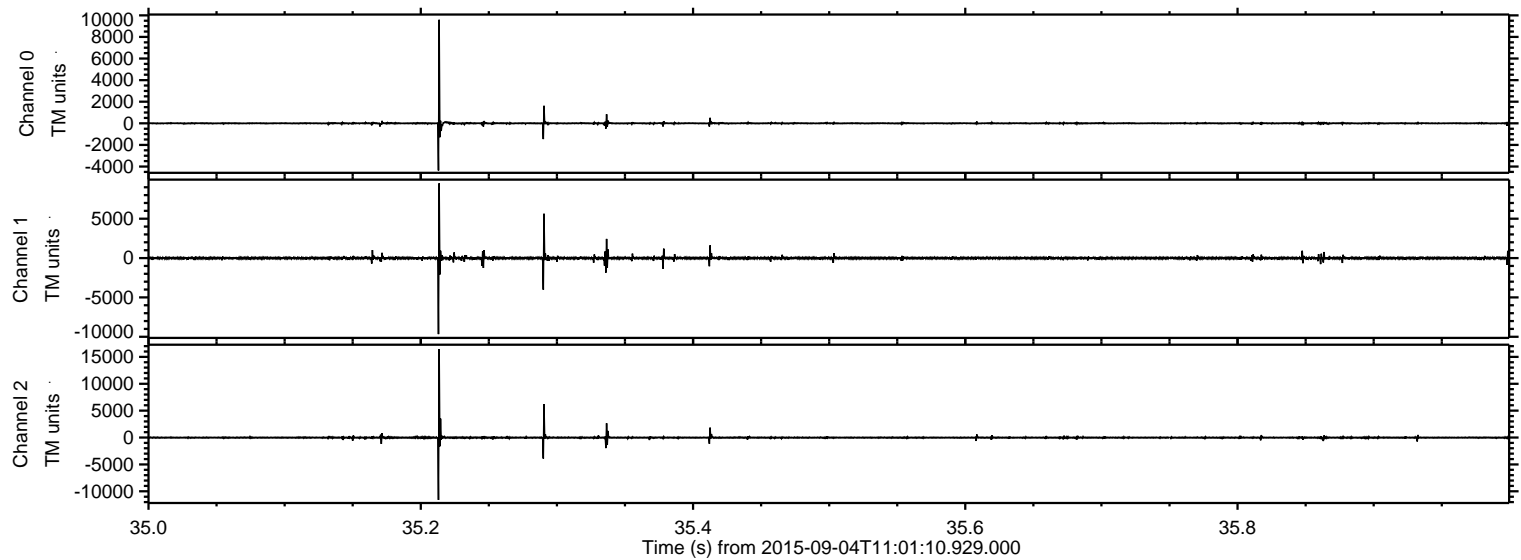
Channel 0
mn: -12646
mx: 15483
 μ : -1.5
 σ : 120.7

Channel 1
mn: -11823
mx: 16782
 μ : -10.4
 σ : 145.4

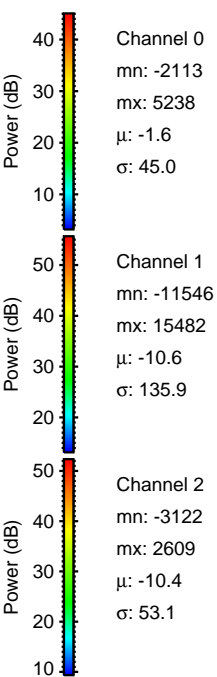
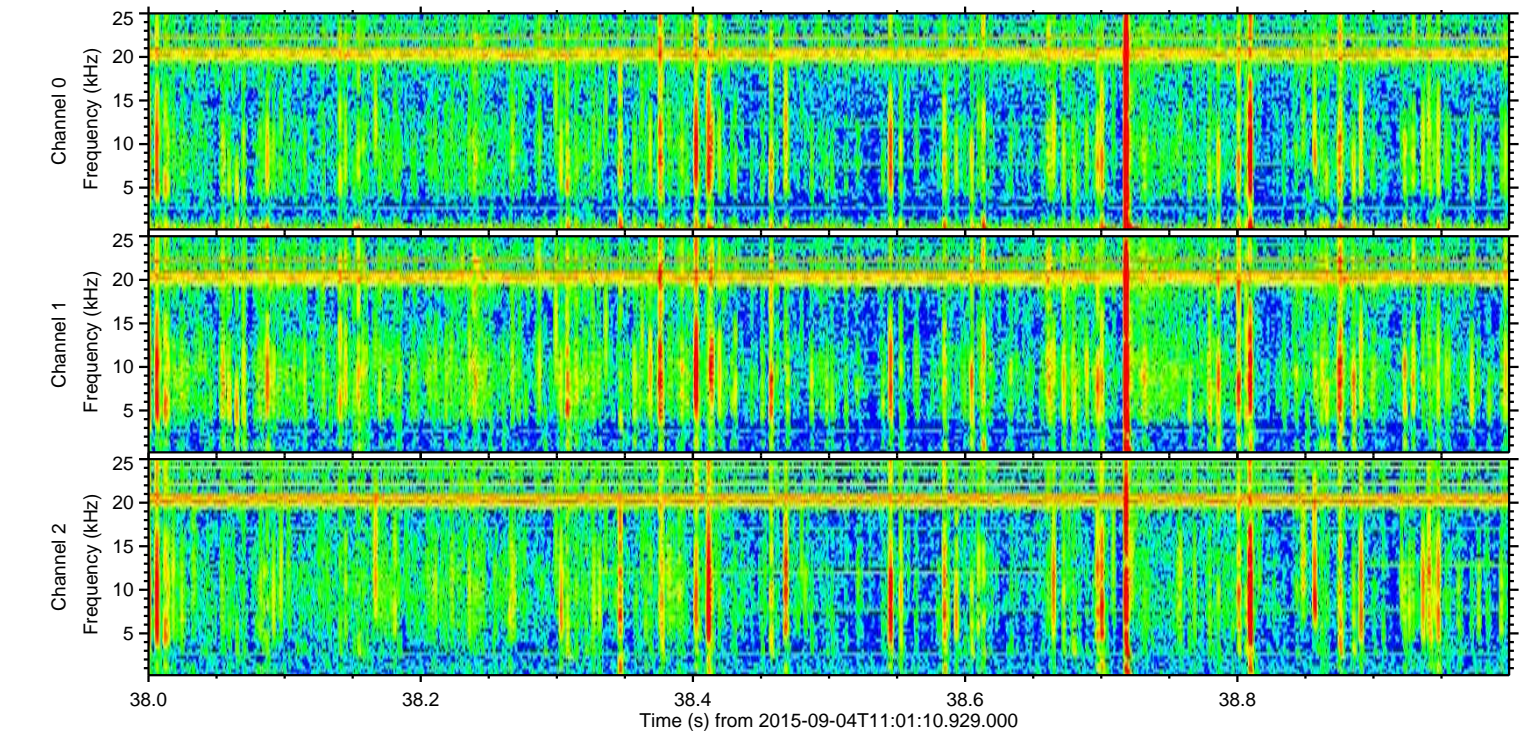
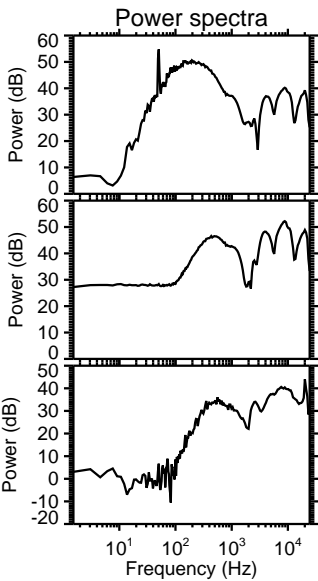
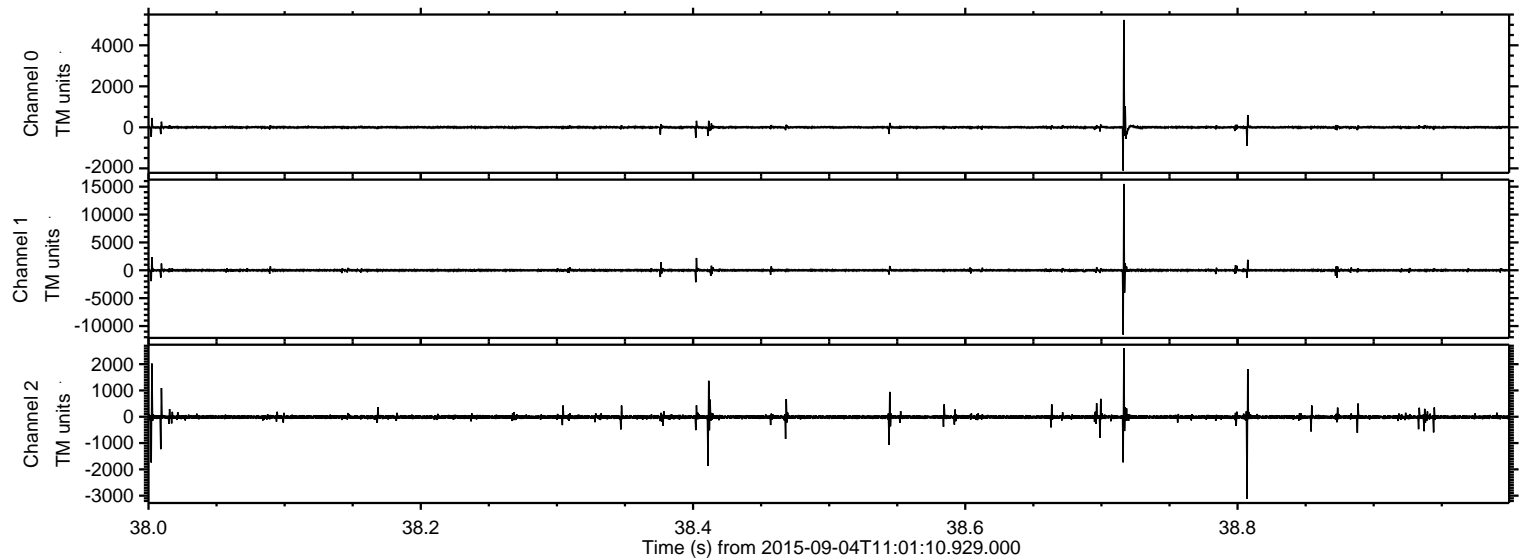
Channel 2
mn: -13209
mx: 18863
 μ : -9.9
 σ : 193.1

ELMAVAN 3D WAVEFORMS (Measured data sampled at 50 kHz) 51000 packets of 144 samples from 2015-09-04T11:01:10.929.000. Part 36/147

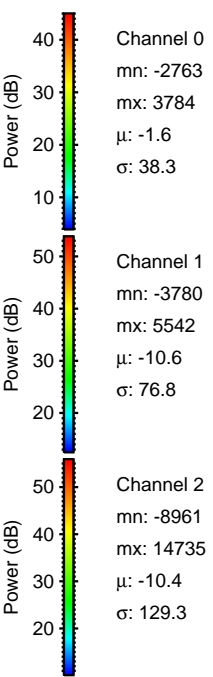
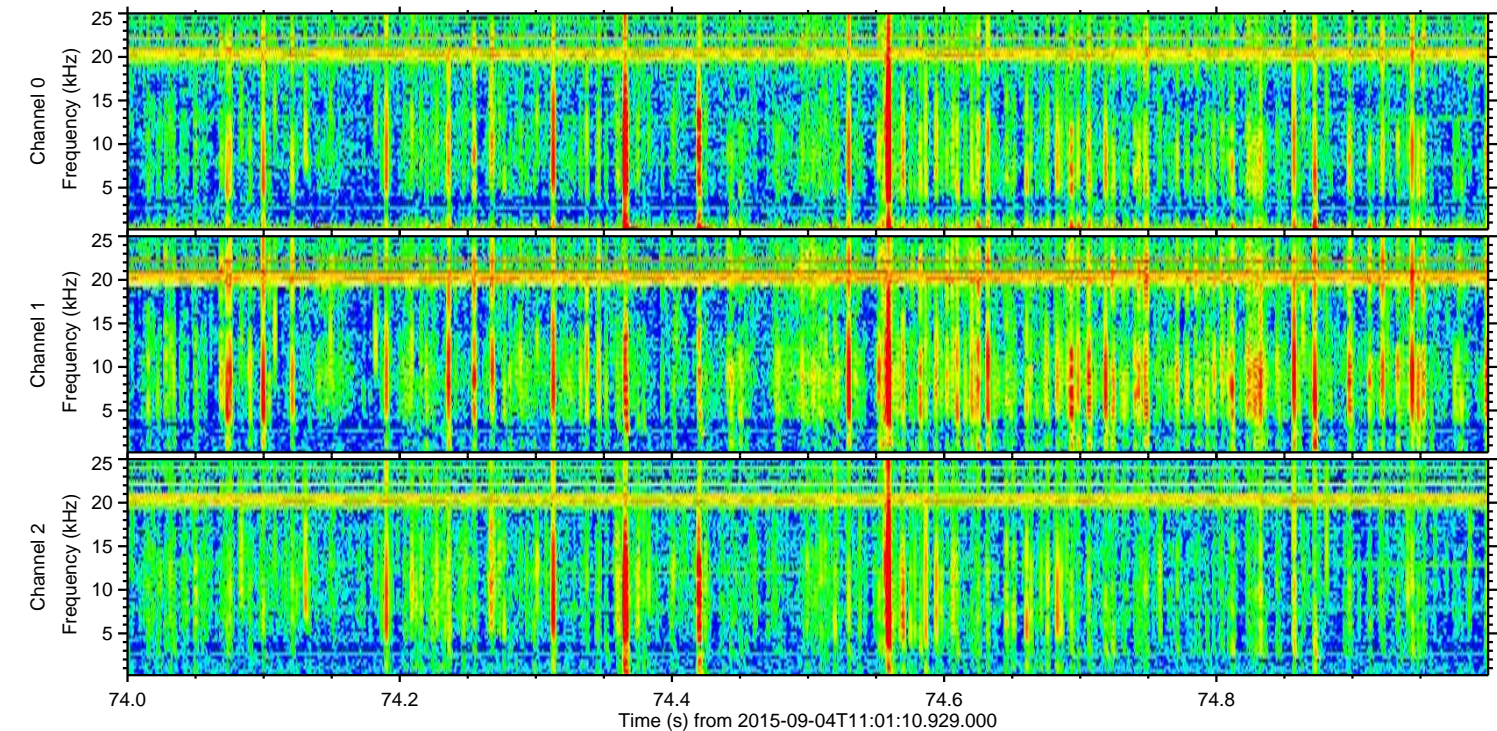
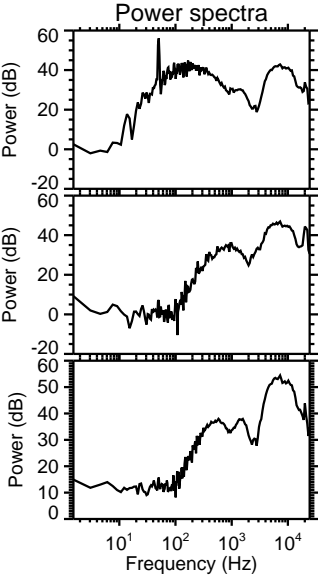
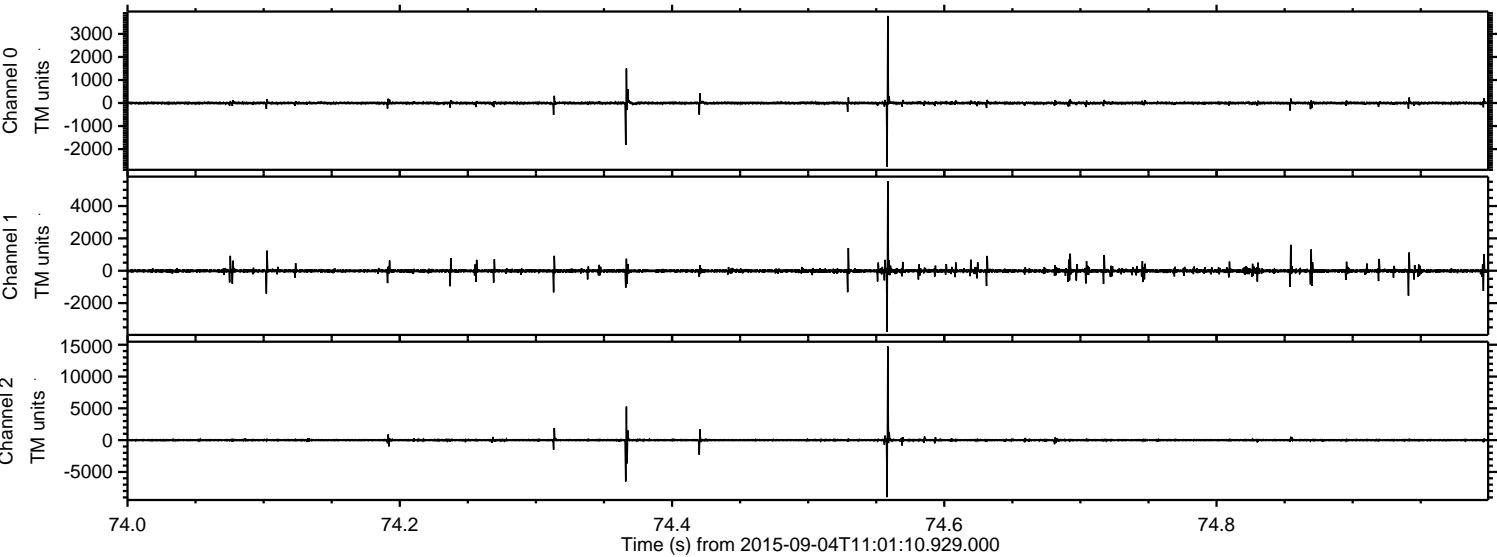
Processed Fri Oct 9 15:27:14 2015 by ELM ver.2012-10-06 from 001__elm20150904_110109__dat00.bin



Processed Fri Oct 9 15:27:15 2015 by ELM ver.2012-10-06 from 001__elm20150904_110109__dat00.bin

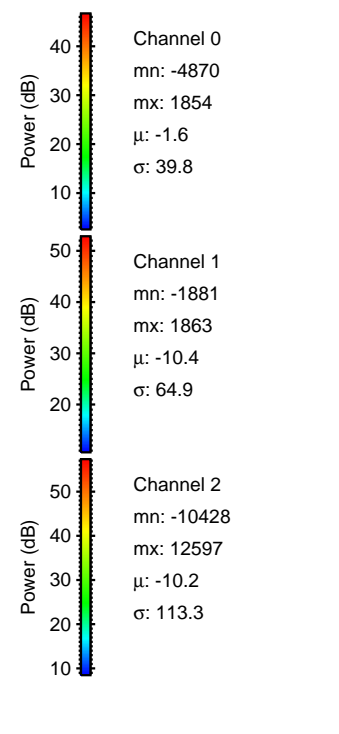
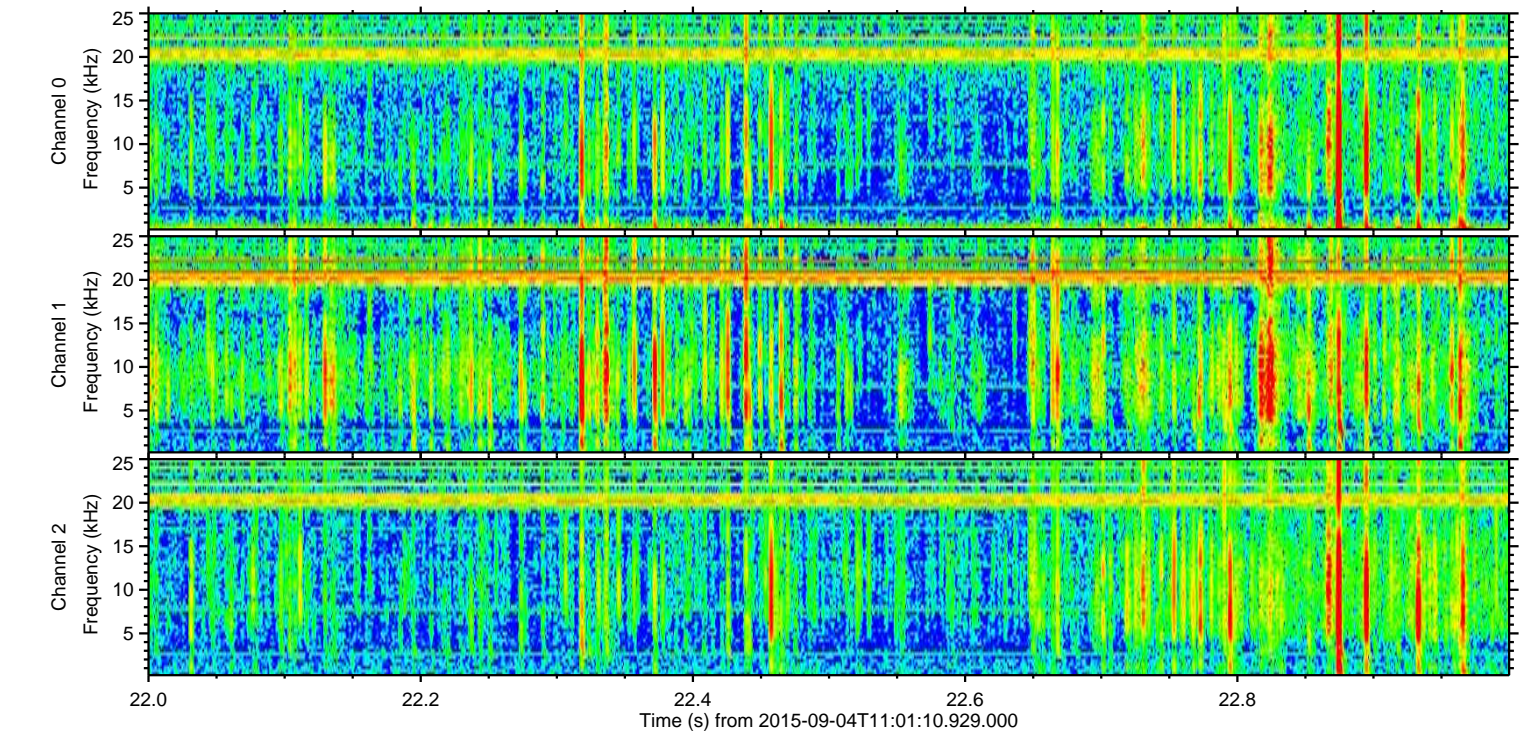
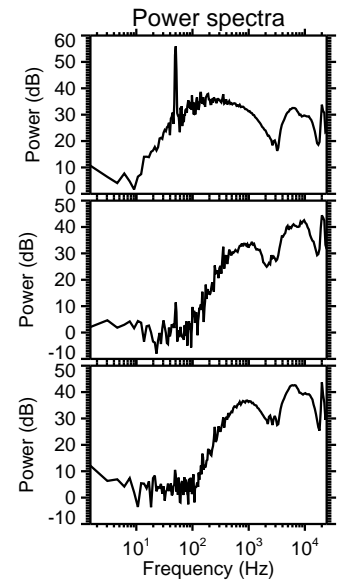
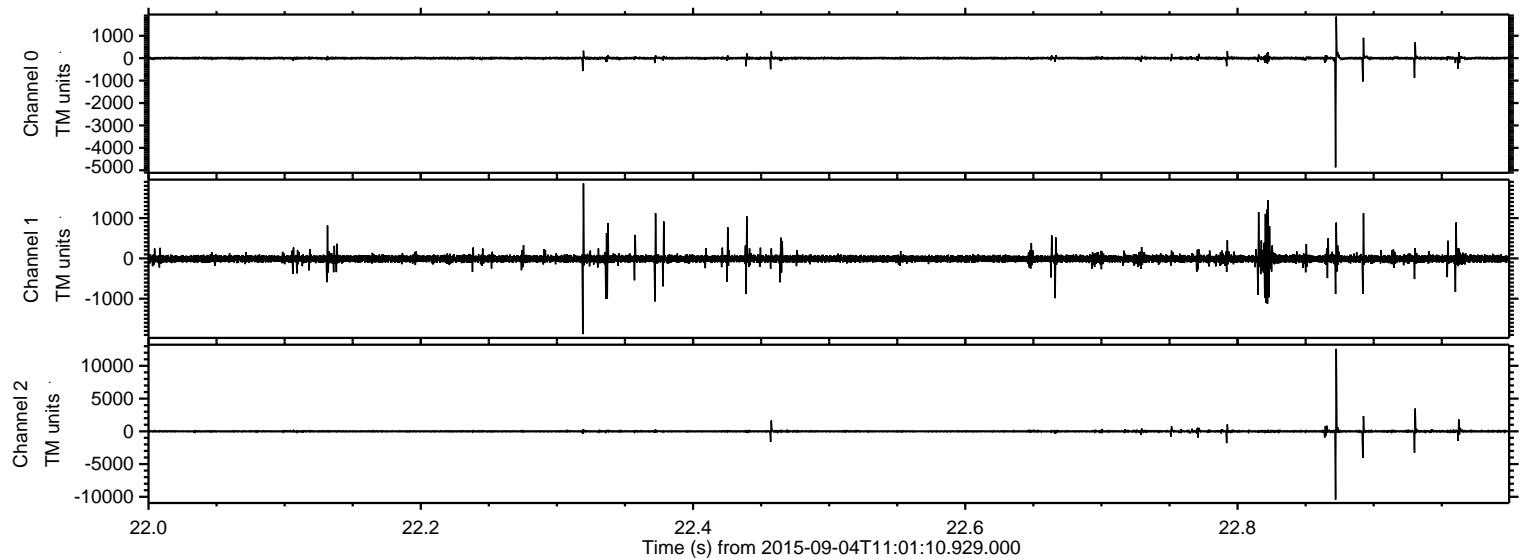


Processed Fri Oct 9 15:27:16 2015 by ELM ver.2012-10-06 from 001__elm20150904_110109__dat00.bin

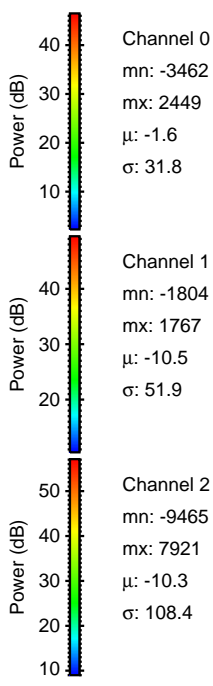
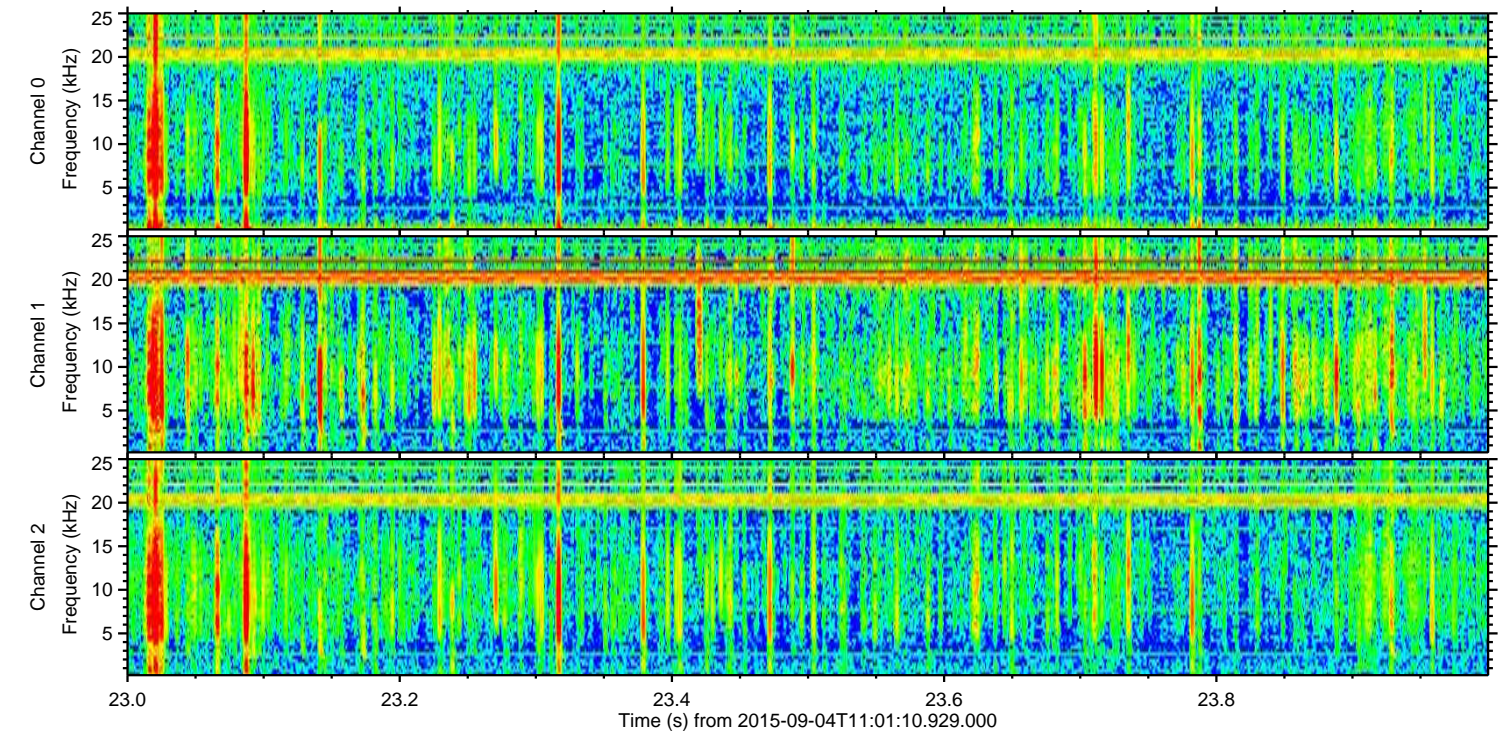
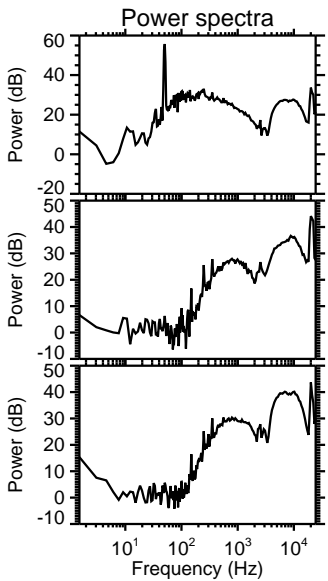
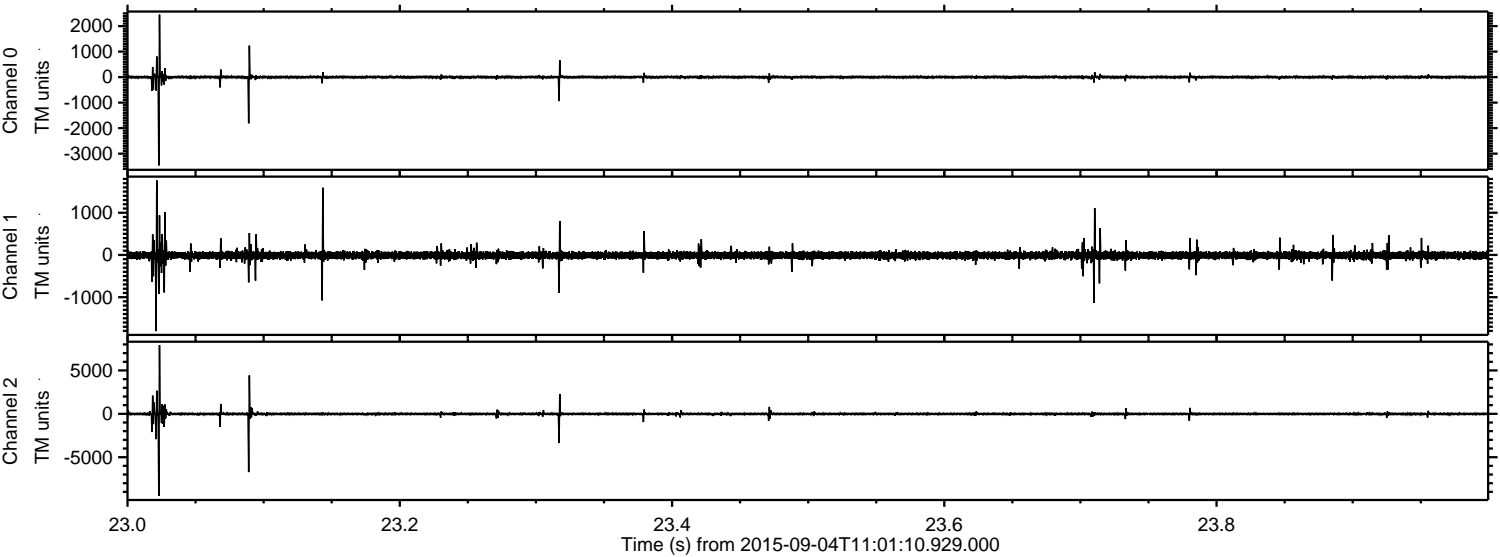


ELMAVAN 3D WAVEFORMS (Measured data sampled at 50 kHz) 51000 packets of 144 samples from 2015-09-04T11:01:10.929.000. Part 23/147

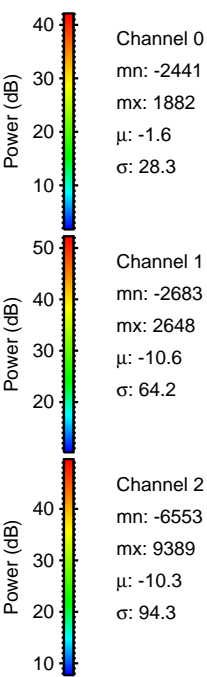
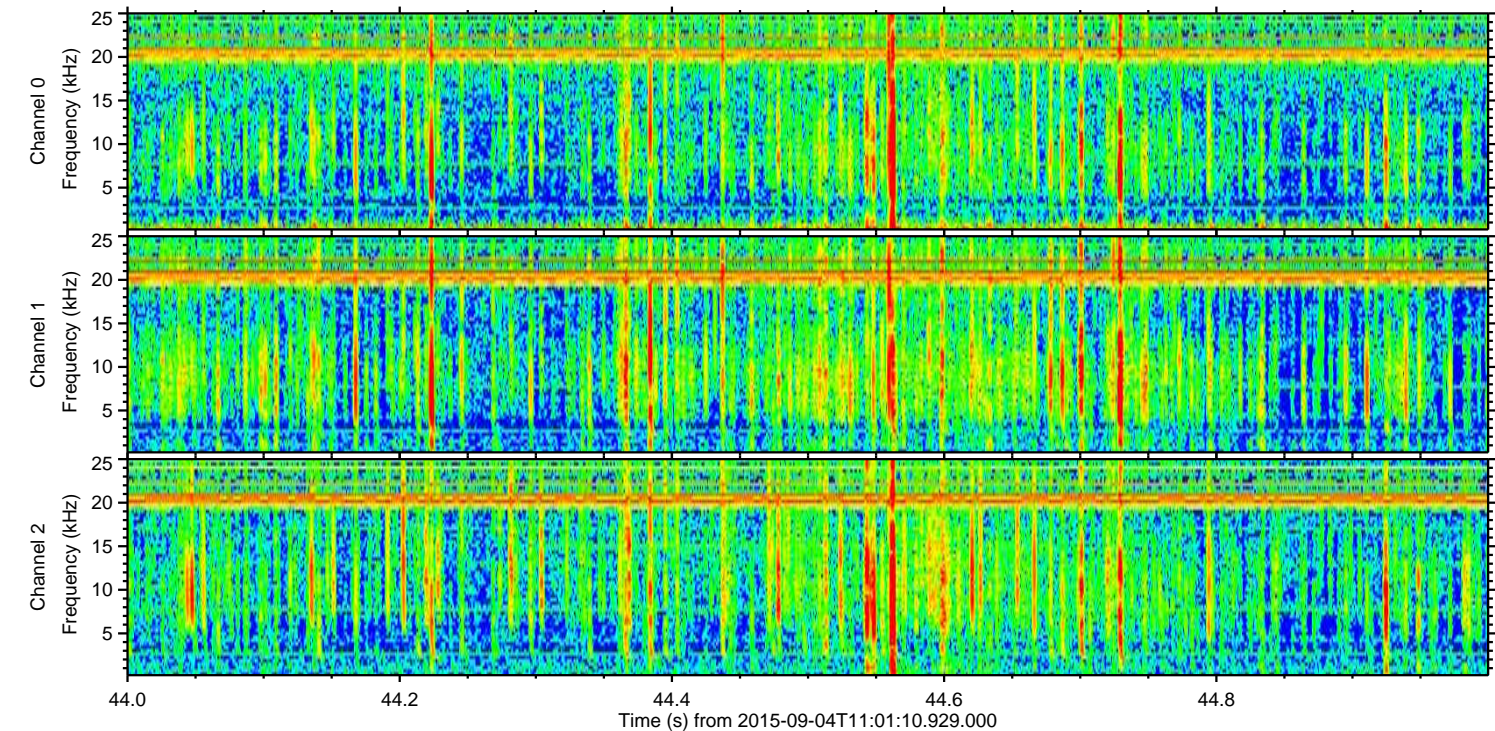
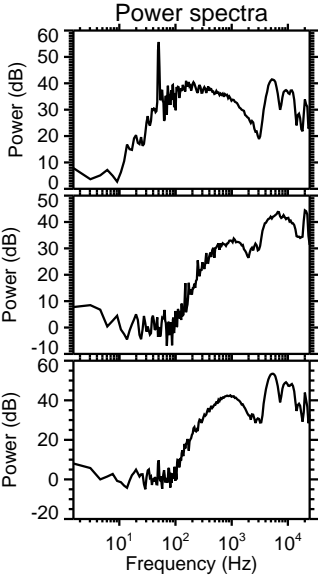
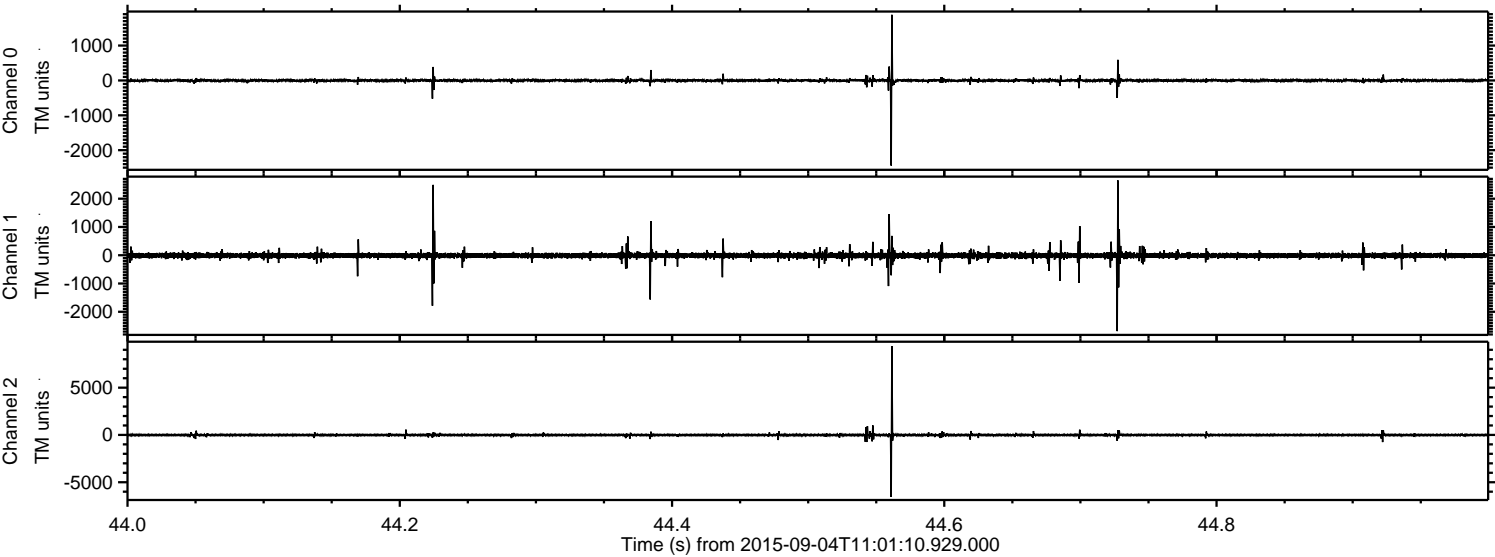
Processed Fri Oct 9 15:27:17 2015 by ELM ver.2012-10-06 from 001__elm20150904_110109__dat00.bin



Processed Fri Oct 9 15:27:19 2015 by ELM ver.2012-10-06 from 001__elm20150904_110109__dat00.bin



Processed Fri Oct 9 15:27:20 2015 by ELM ver.2012-10-06 from 001__elm20150904_110109__dat00.bin

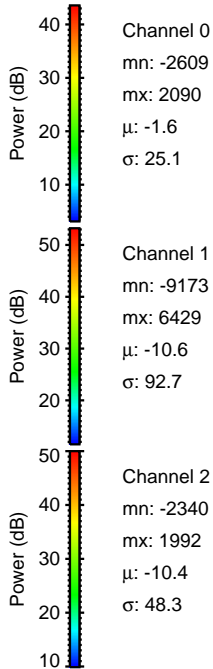
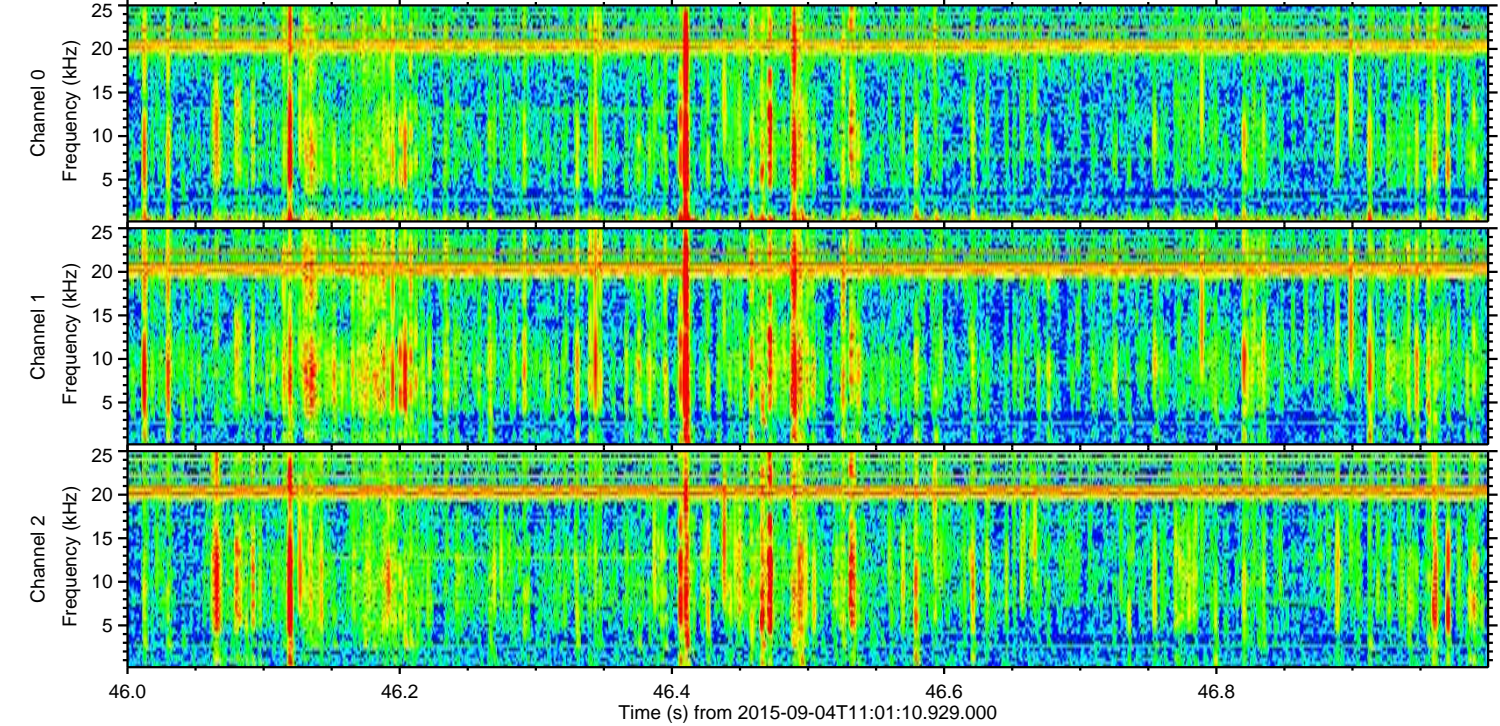
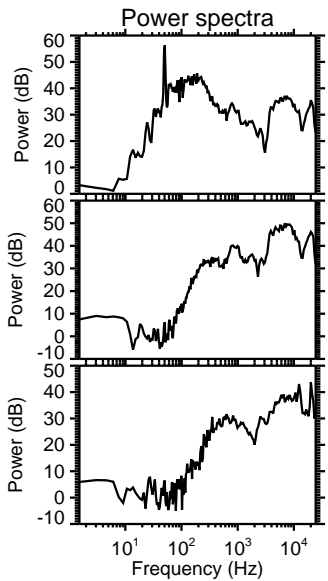
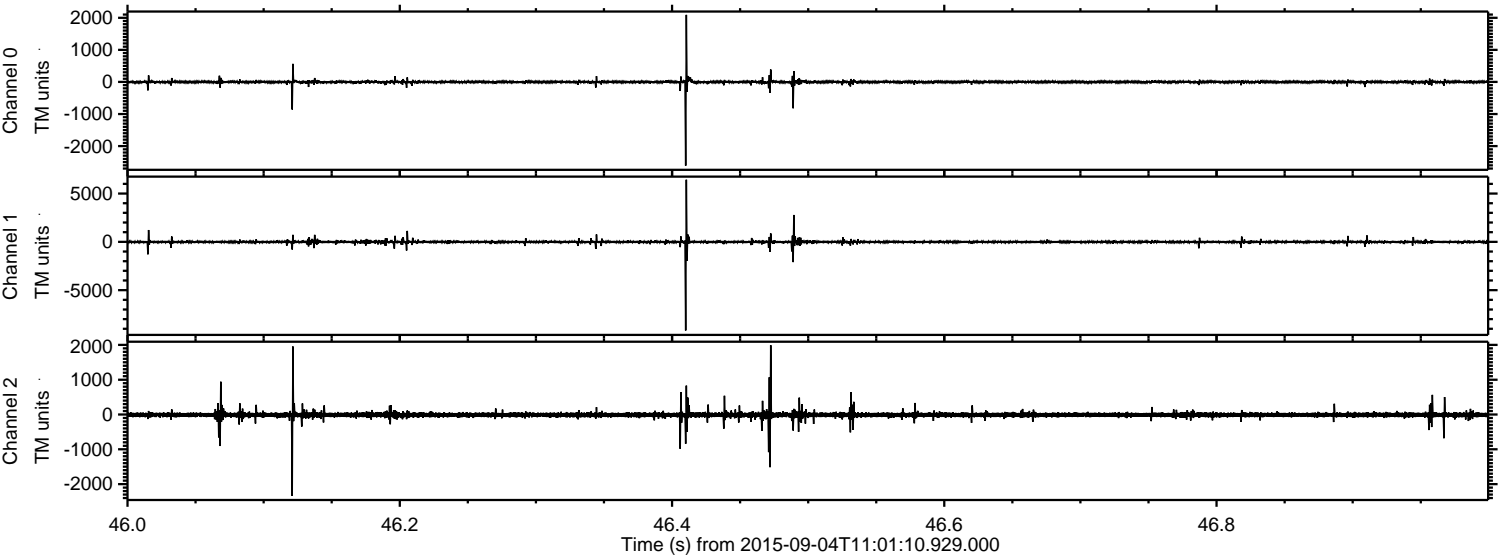


Channel 0
mn: -2441
mx: 1882
 μ : -1.6
 σ : 28.3

Channel 1
mn: -2683
mx: 2648
 μ : -10.6
 σ : 64.2

Channel 2
mn: -6553
mx: 9389
 μ : -10.3
 σ : 94.3

Processed Fri Oct 9 15:27:21 2015 by ELM ver.2012-10-06 from 001__elm20150904_110109__dat00.bin

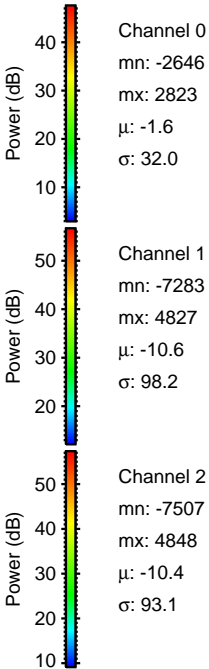
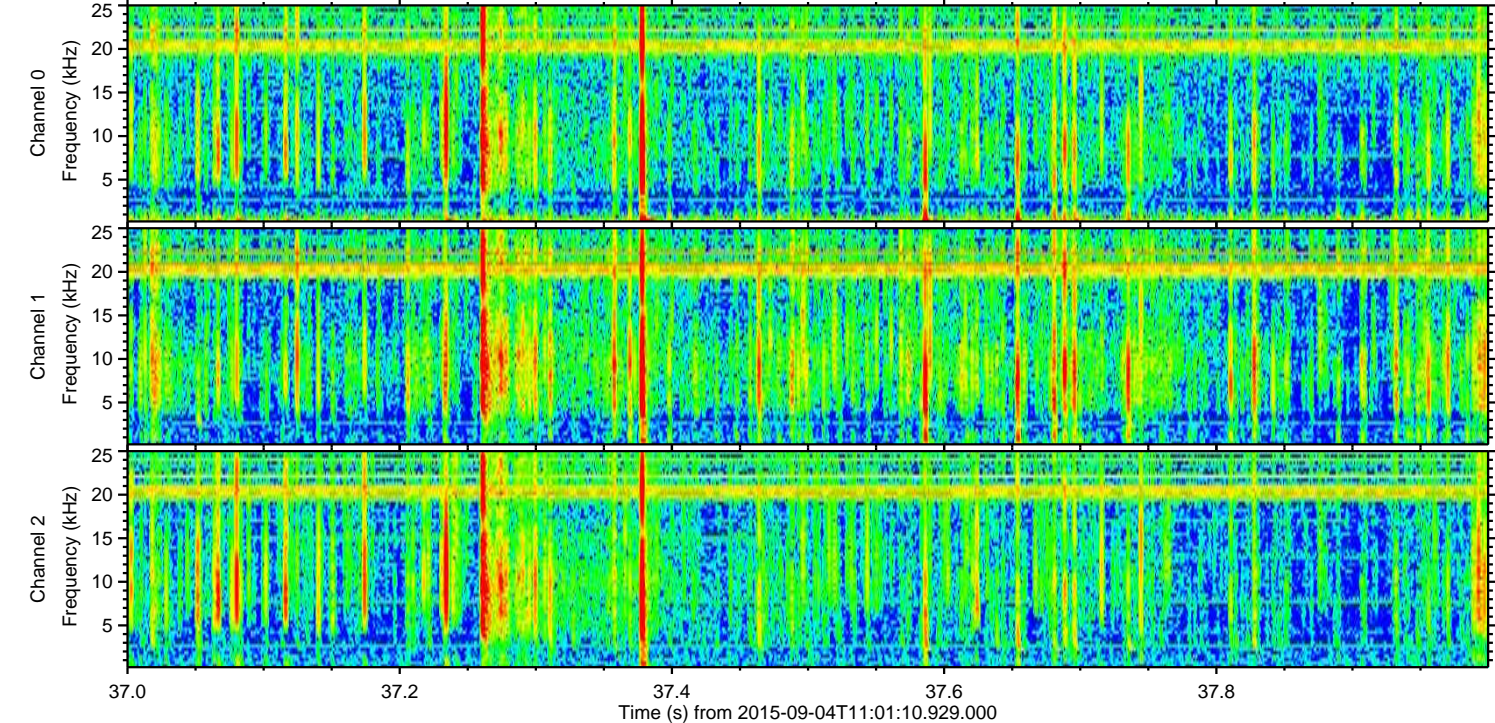
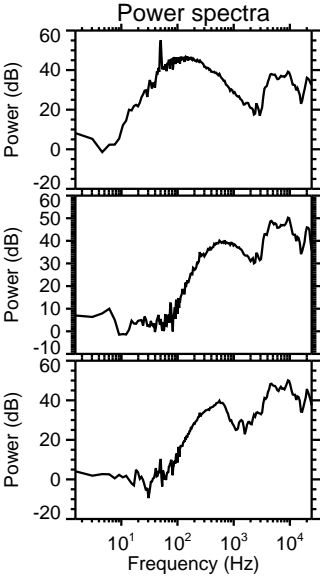
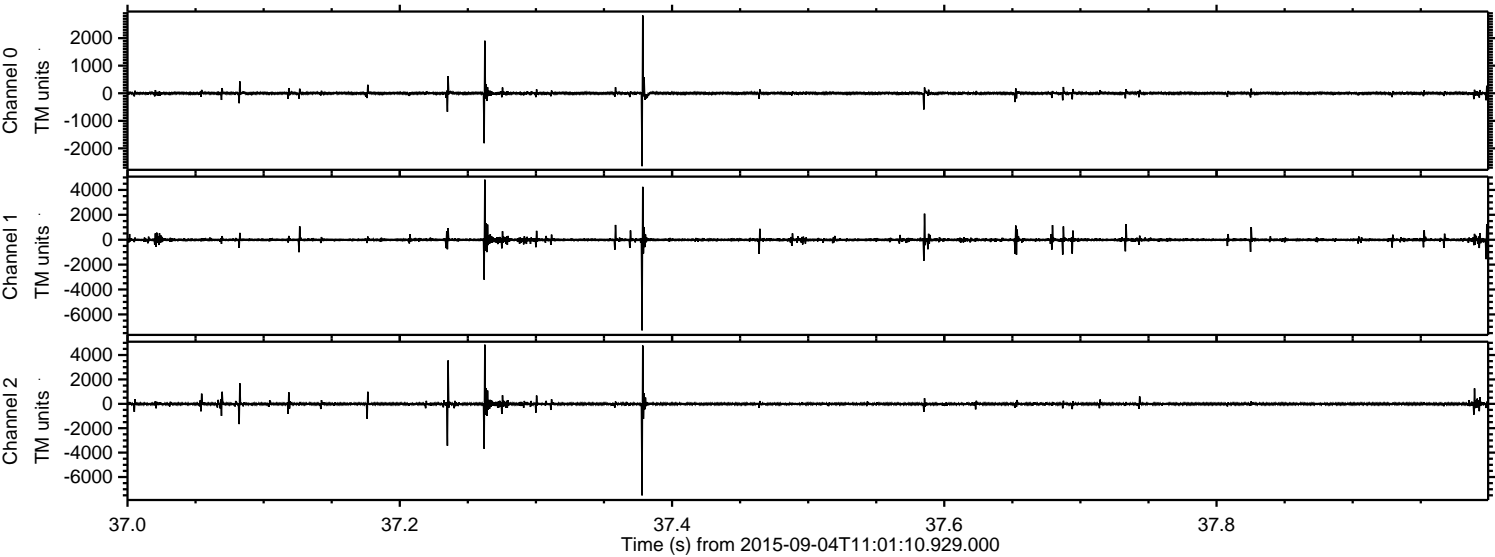


Channel 0
mn: -2609
mx: 2090
 μ : -1.6
 σ : 25.1

Channel 1
mn: -9173
mx: 6429
 μ : -10.6
 σ : 92.7

Channel 2
mn: -2340
mx: 1992
 μ : -10.4
 σ : 48.3

Processed Fri Oct 9 15:27:22 2015 by ELM ver.2012-10-06 from 001__elm20150904_110109__dat00.bin



Processed Fri Oct 9 15:27:23 2015 by ELM ver.2012-10-06 from 001__elm20150904_110109__dat00.bin

