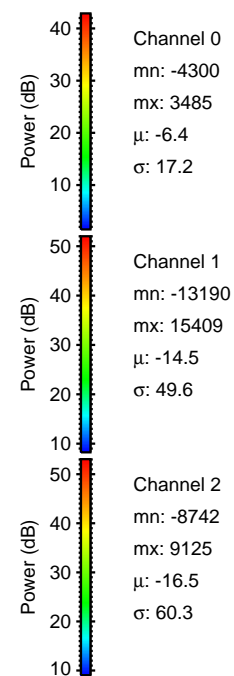
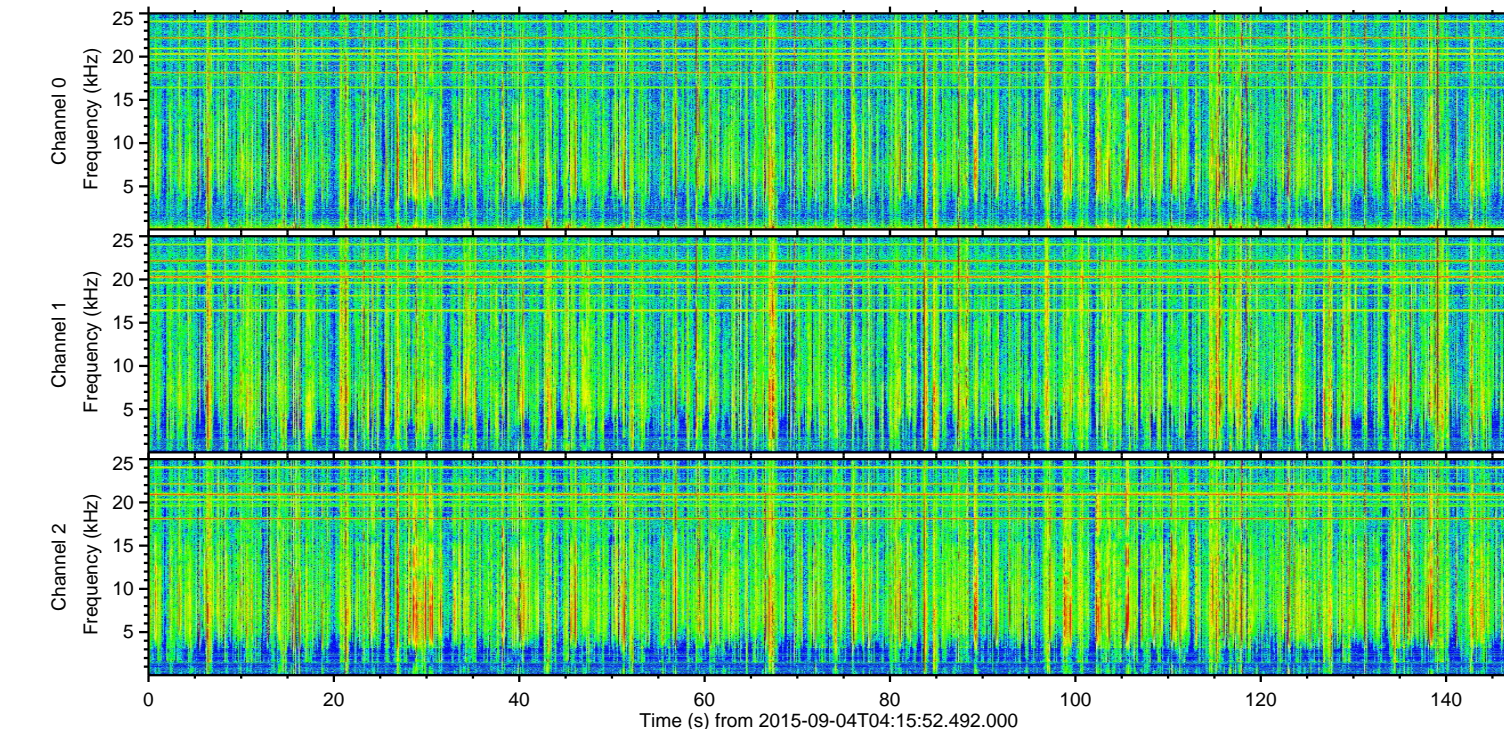
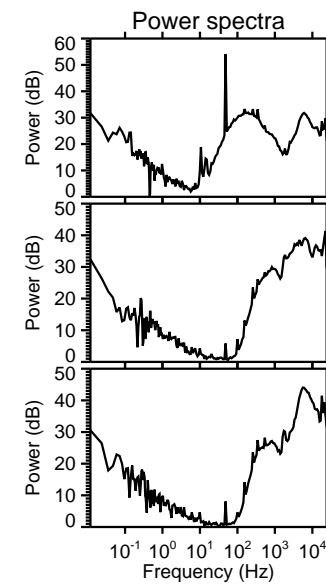
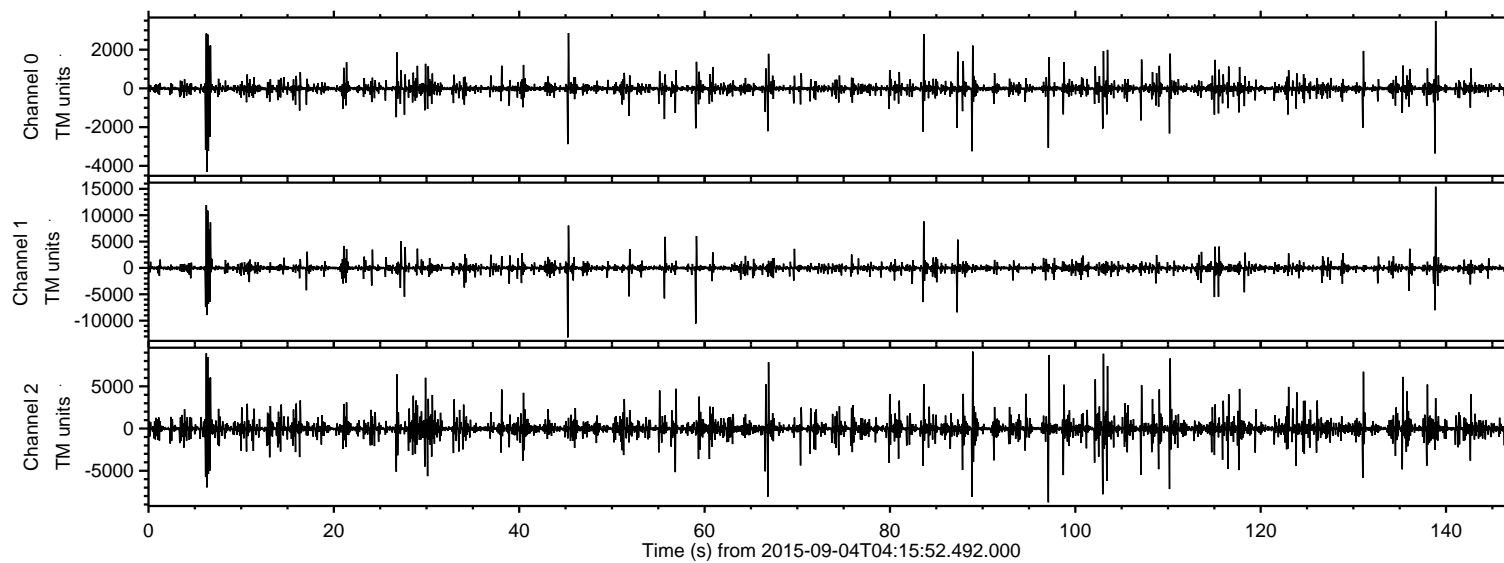


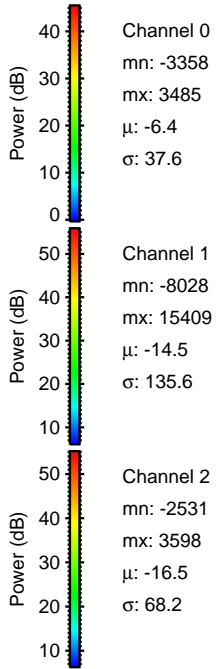
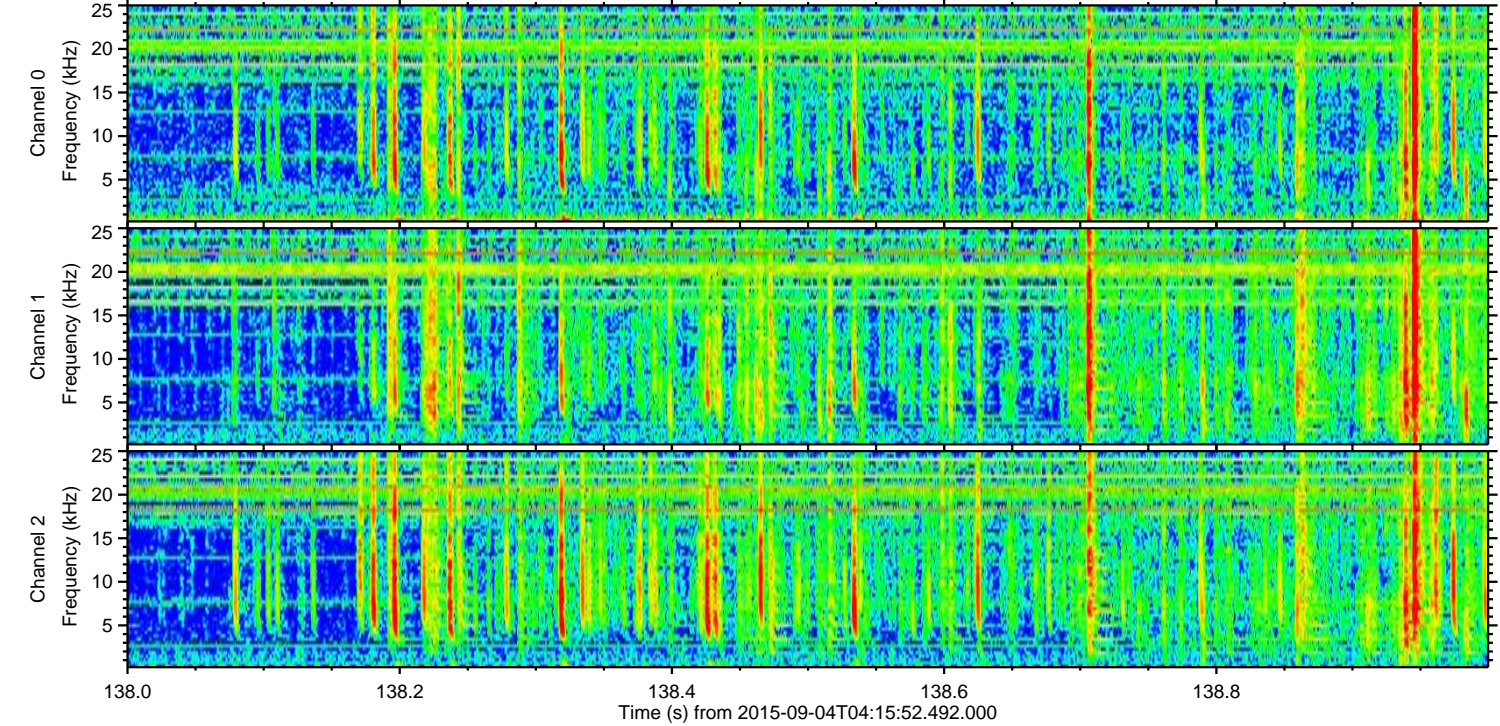
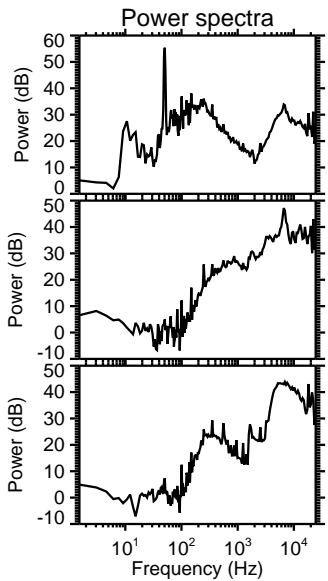
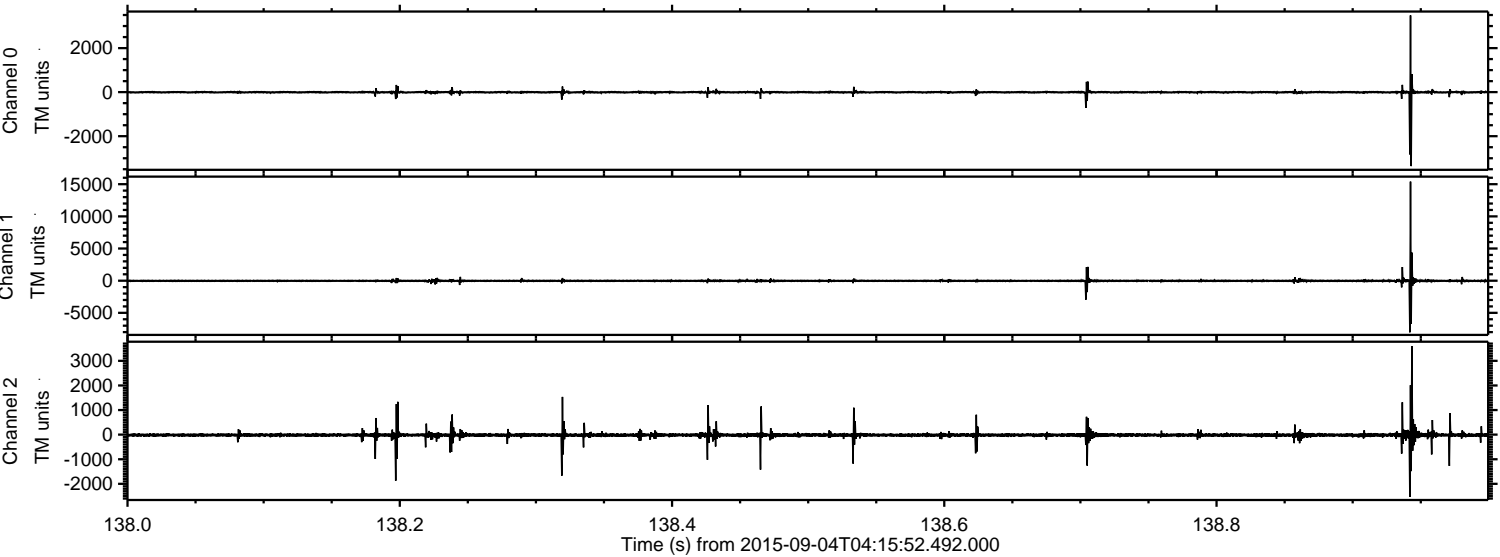
ELMAVAN 3D WAVEFORMS (Measured data sampled at 50 kHz) 51000 packets of 144 samples from 2015-09-04T04:15:52.492.000.

Processed Fri Oct 9 13:33:22 2015 by ELM ver.2012-10-06 from 001__elm20150904_041551__dat00.bin

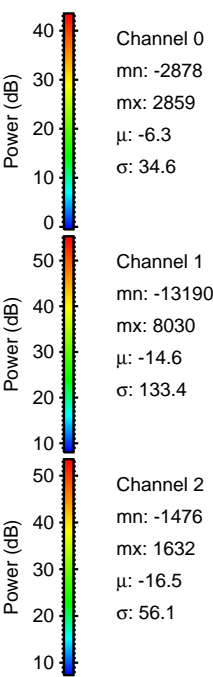
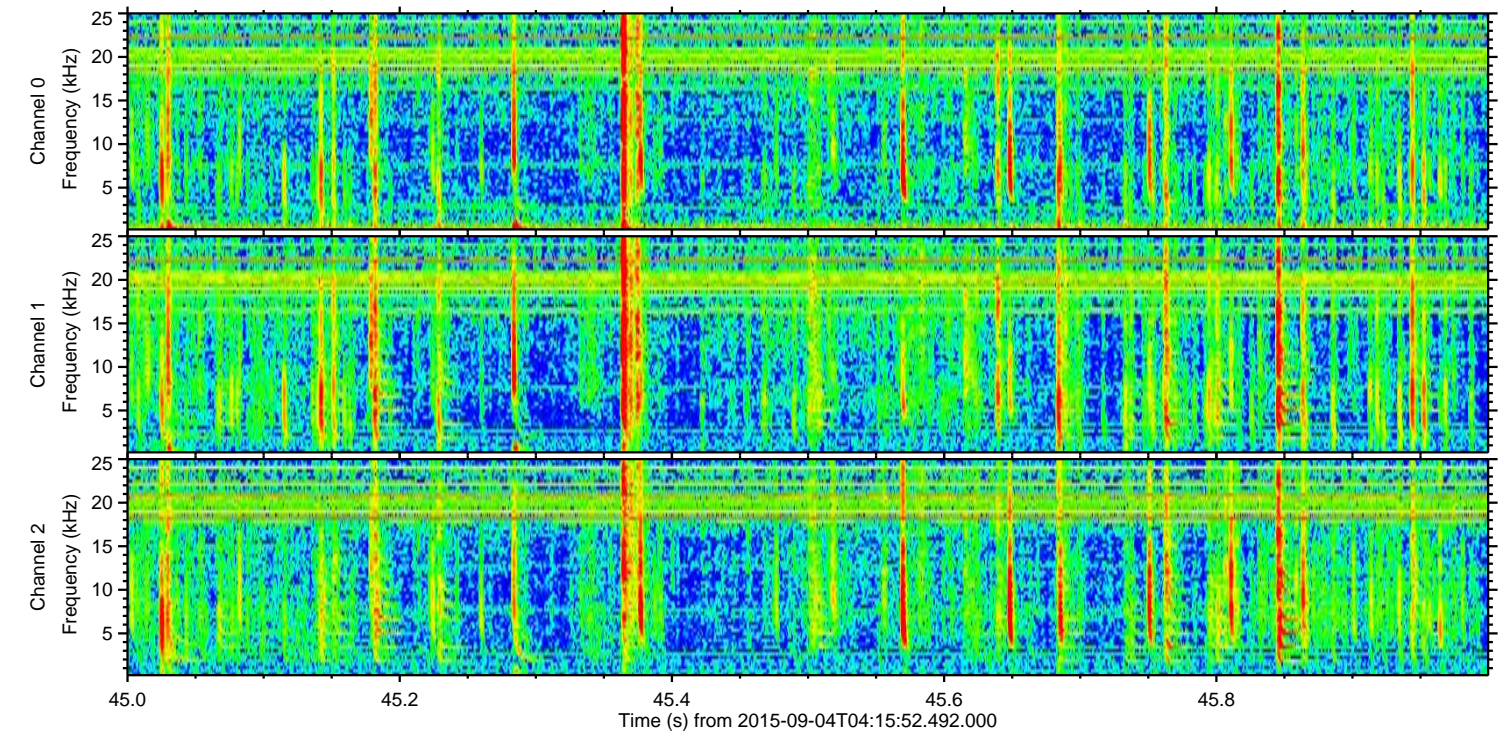
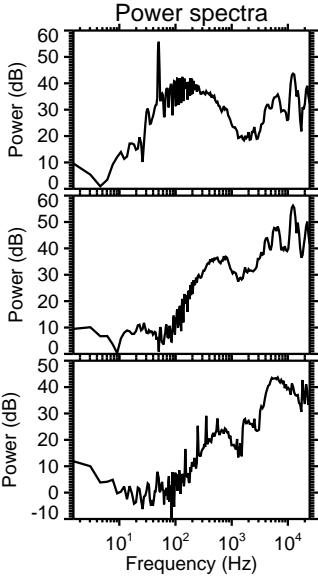
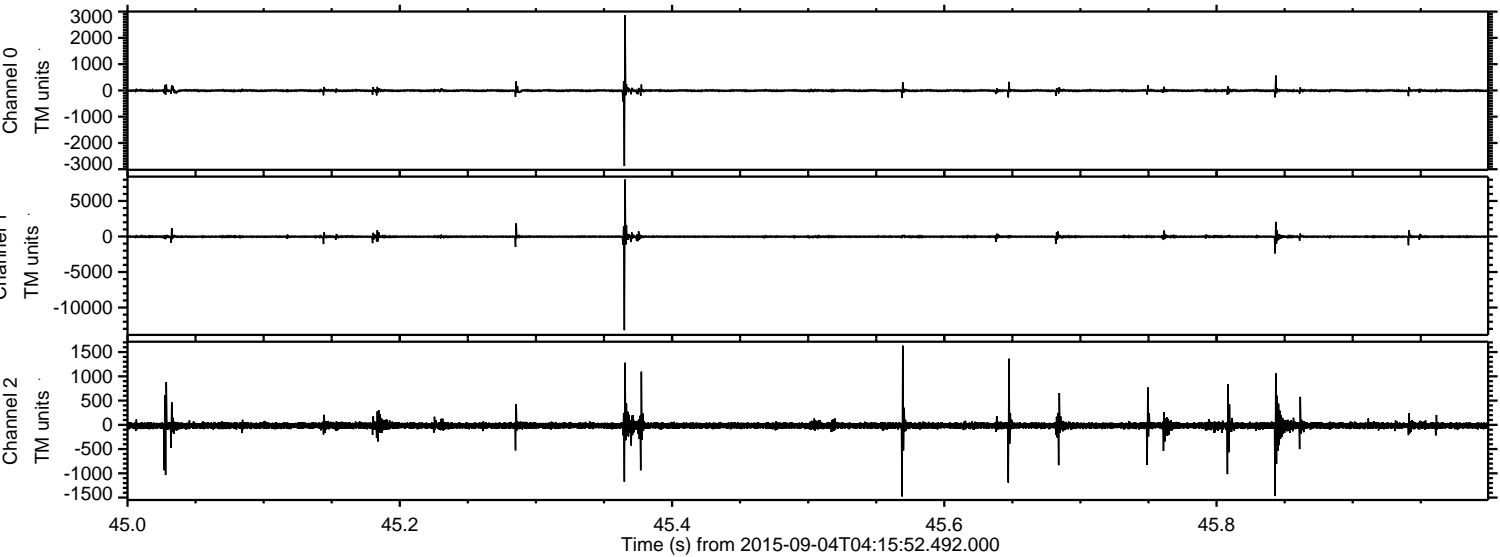


ELMAVAN 3D WAVEFORMS (Measured data sampled at 50 kHz) 51000 packets of 144 samples from 2015-09-04T04:15:52.492.000. Part 139/147

Processed Fri Oct 9 13:33:37 2015 by ELM ver.2012-10-06 from 001__elm20150904_041551__dat00.bin

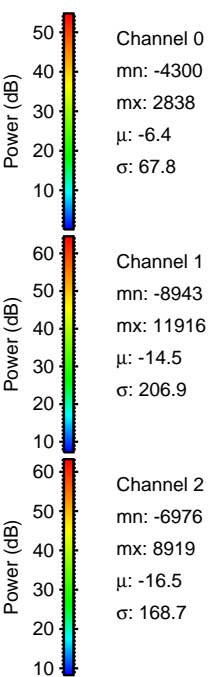
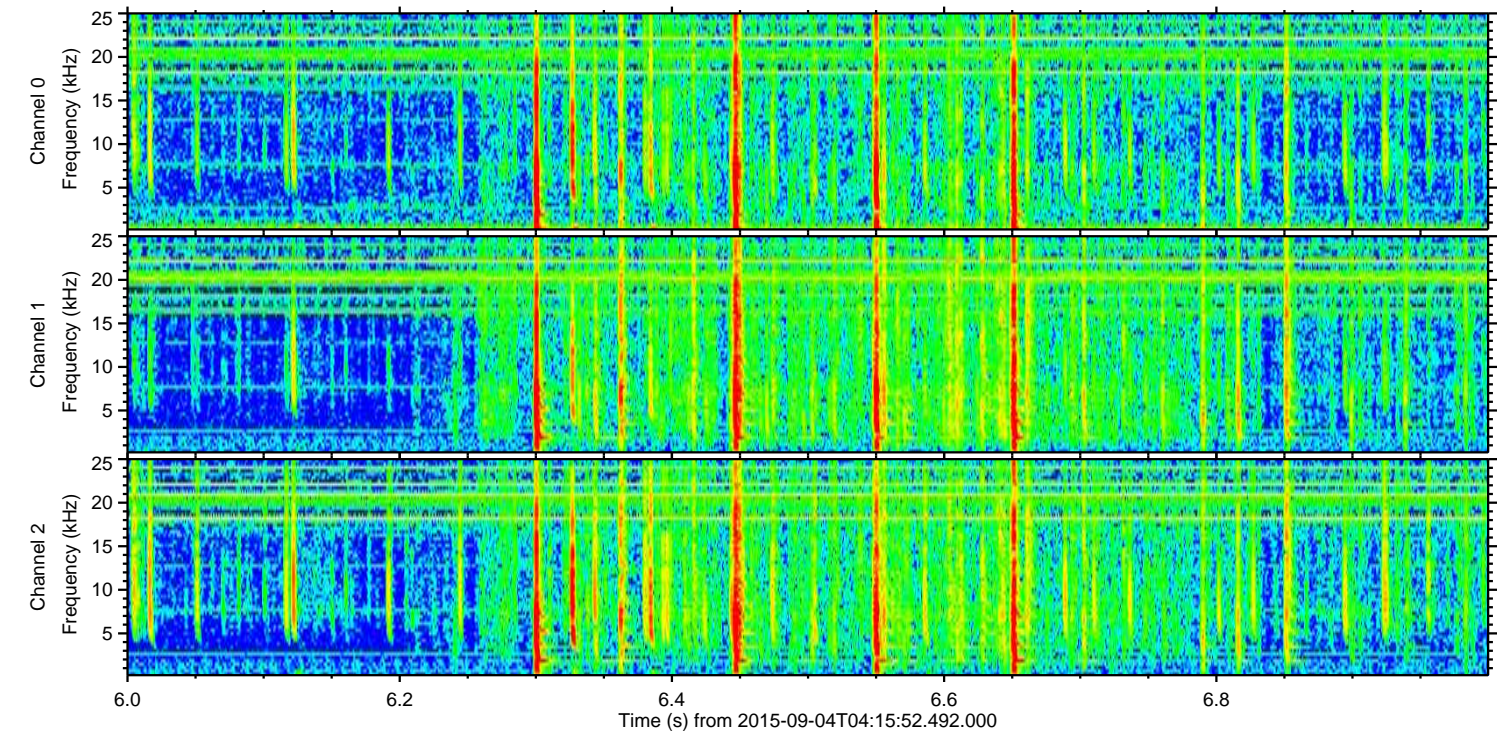
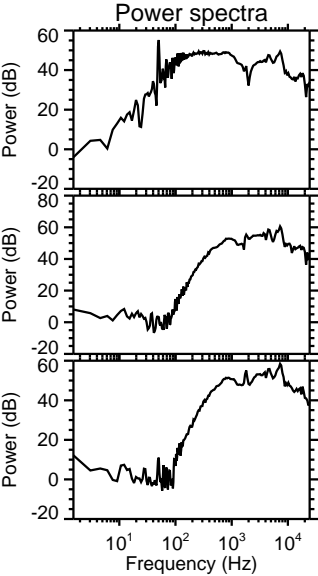
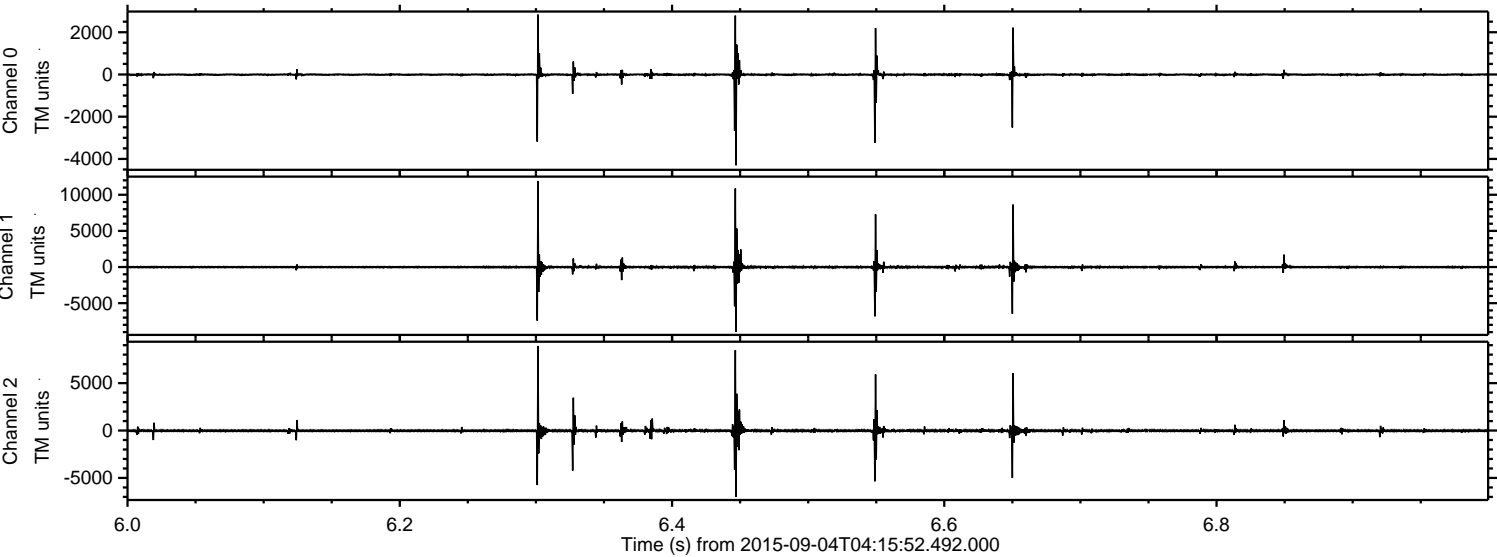


Processed Fri Oct 9 13:33:38 2015 by ELM ver.2012-10-06 from 001__elm20150904_041551__dat00.bin

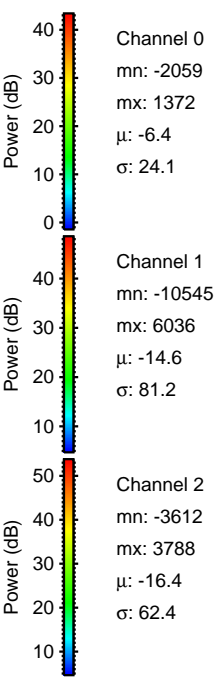
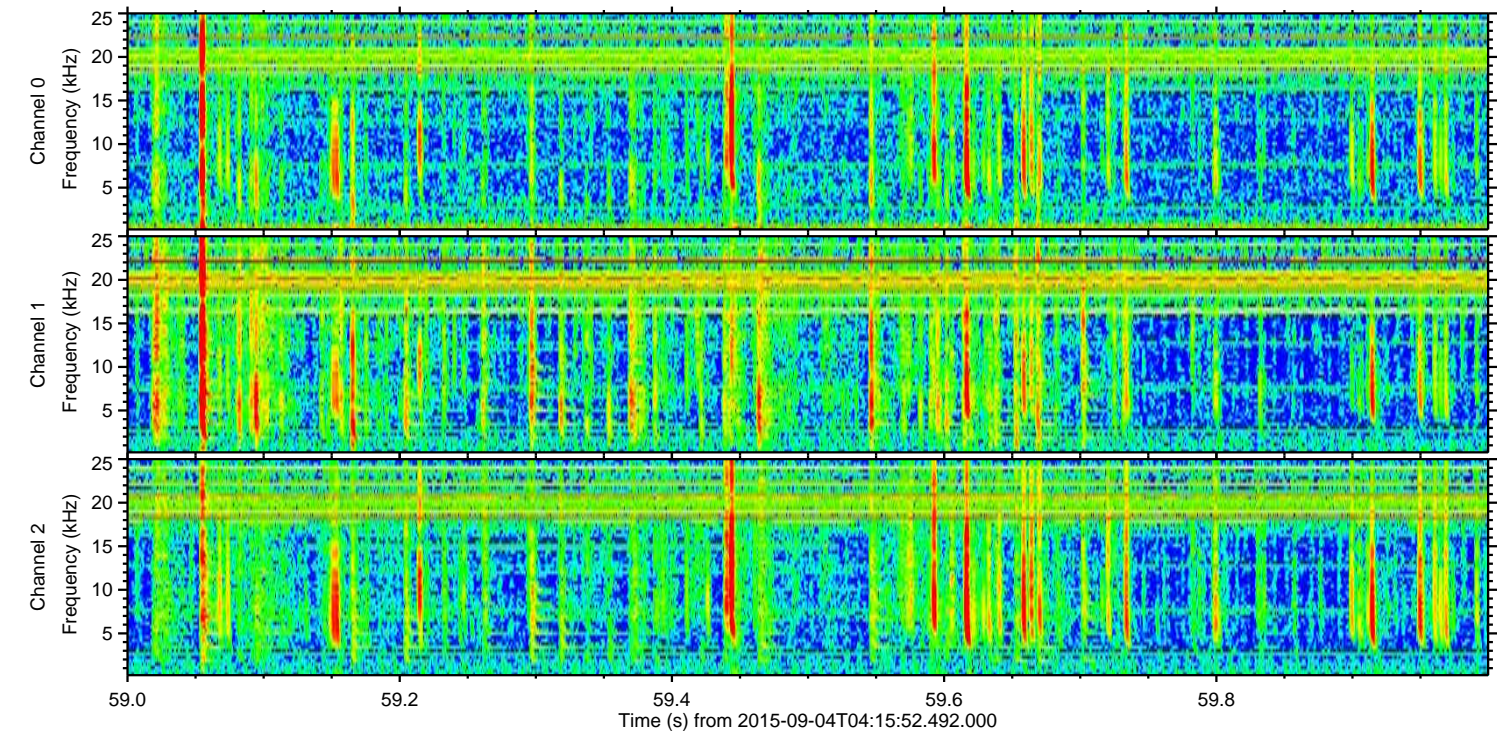
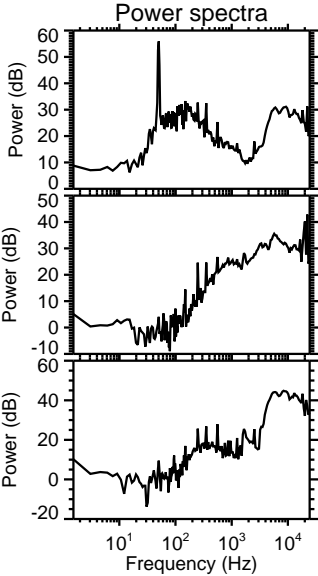
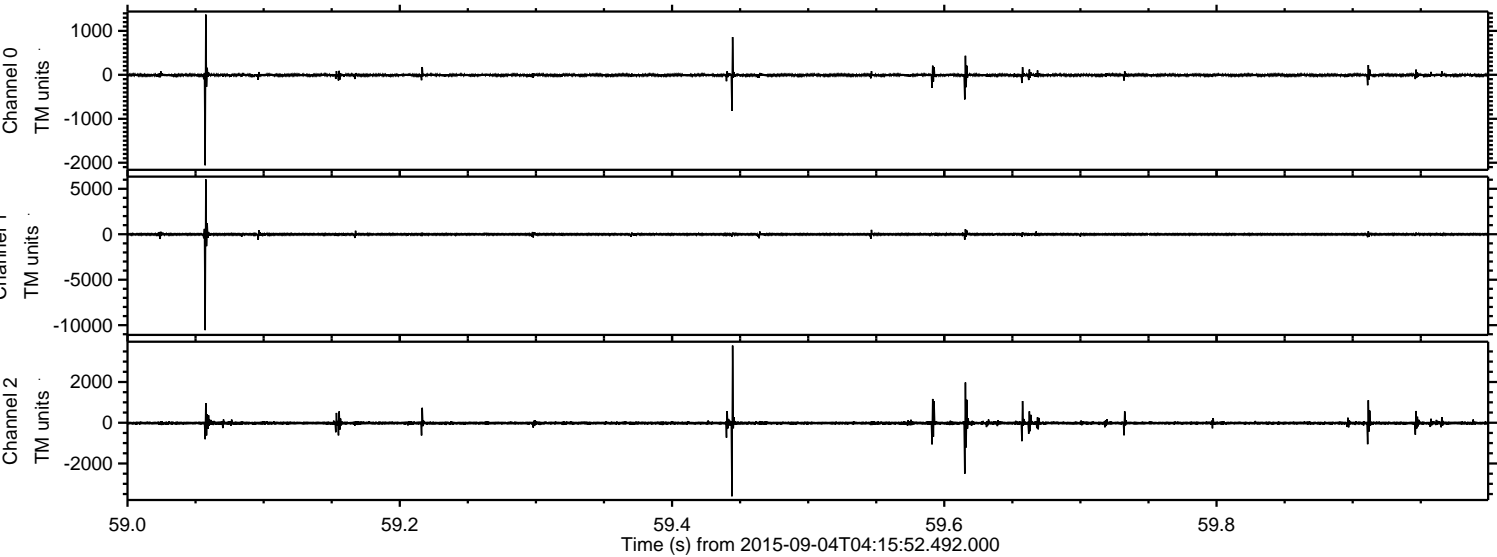


ELMAVAN 3D WAVEFORMS (Measured data sampled at 50 kHz) 51000 packets of 144 samples from 2015-09-04T04:15:52.492.000. Part 7/147

Processed Fri Oct 9 13:33:39 2015 by ELM ver.2012-10-06 from 001__elm20150904_041551__dat00.bin

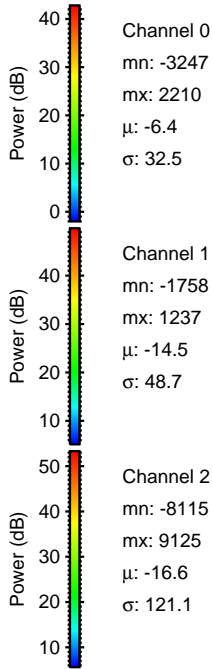
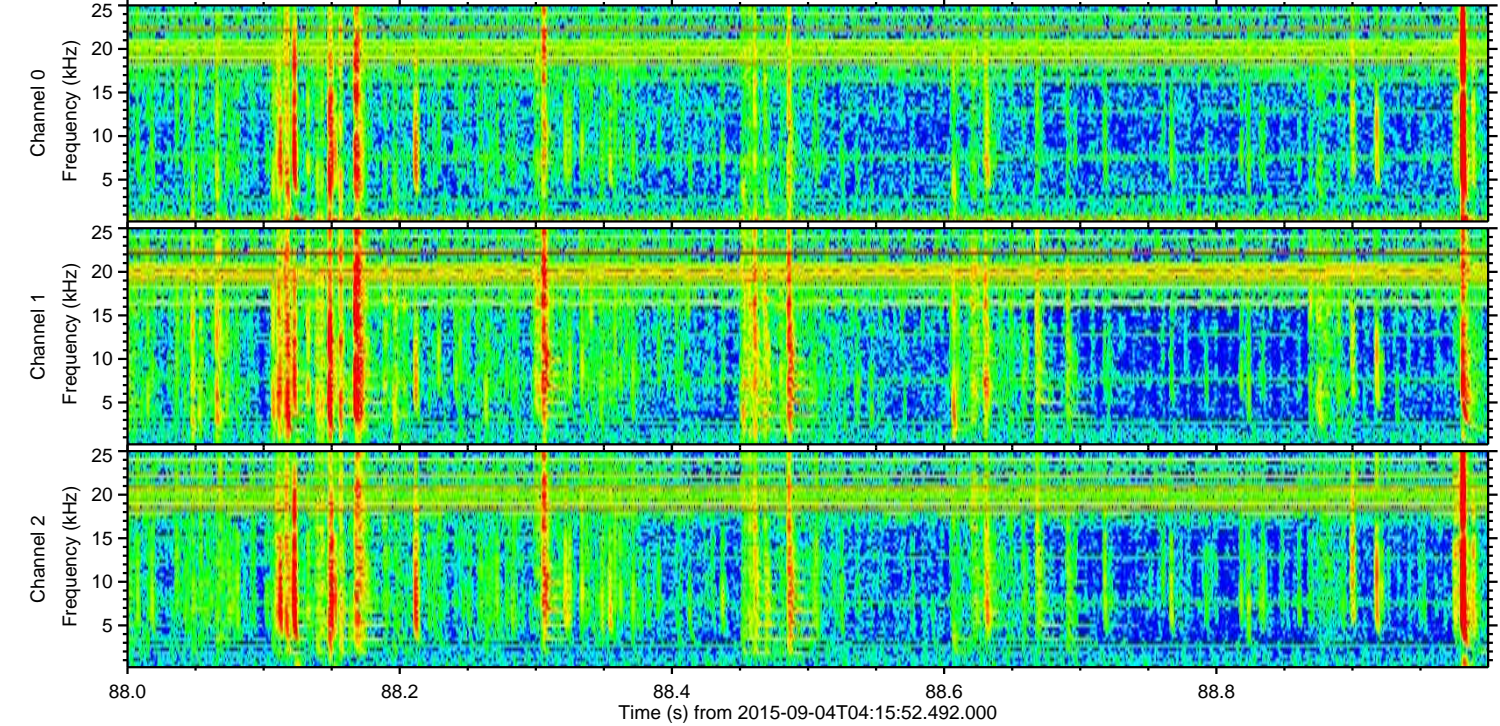
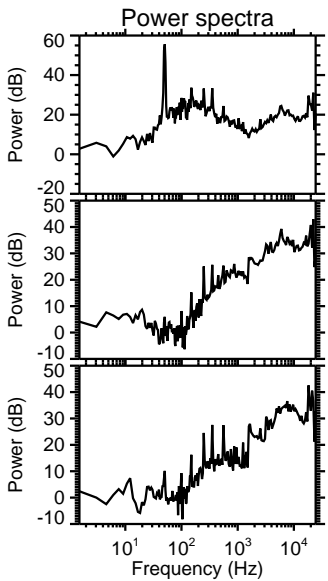
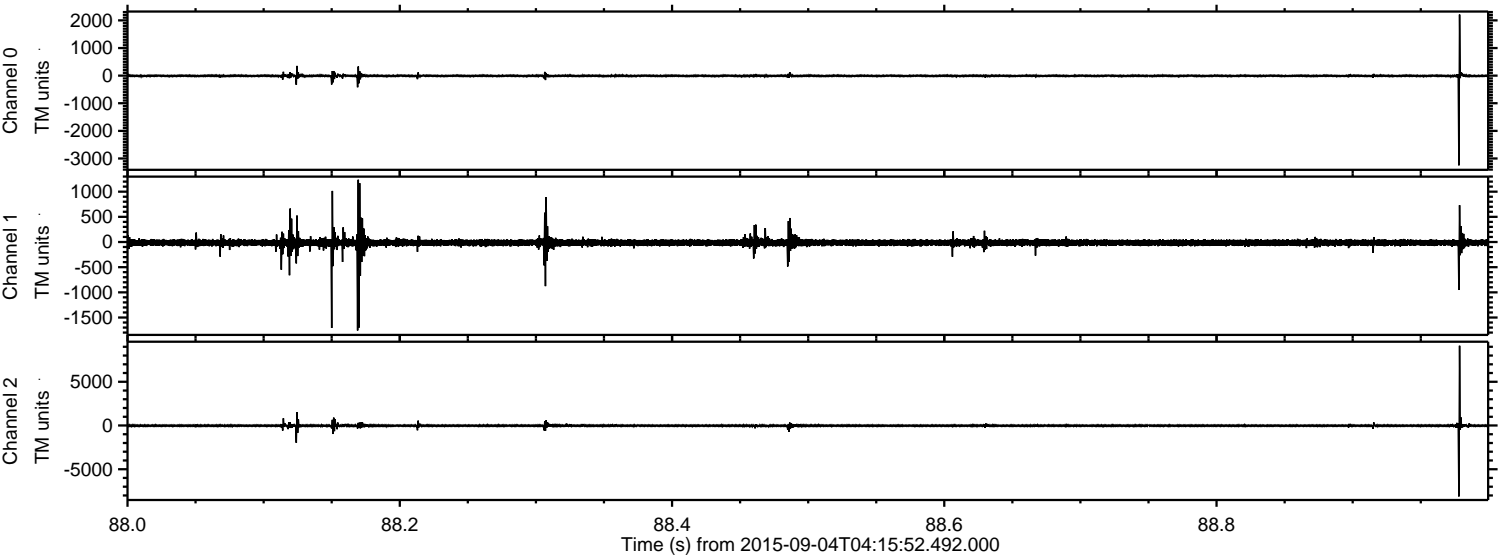


Processed Fri Oct 9 13:33:40 2015 by ELM ver.2012-10-06 from 001__elm20150904_041551__dat00.bin



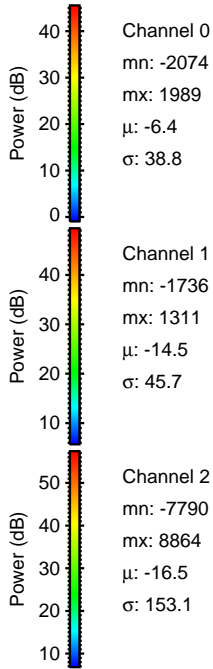
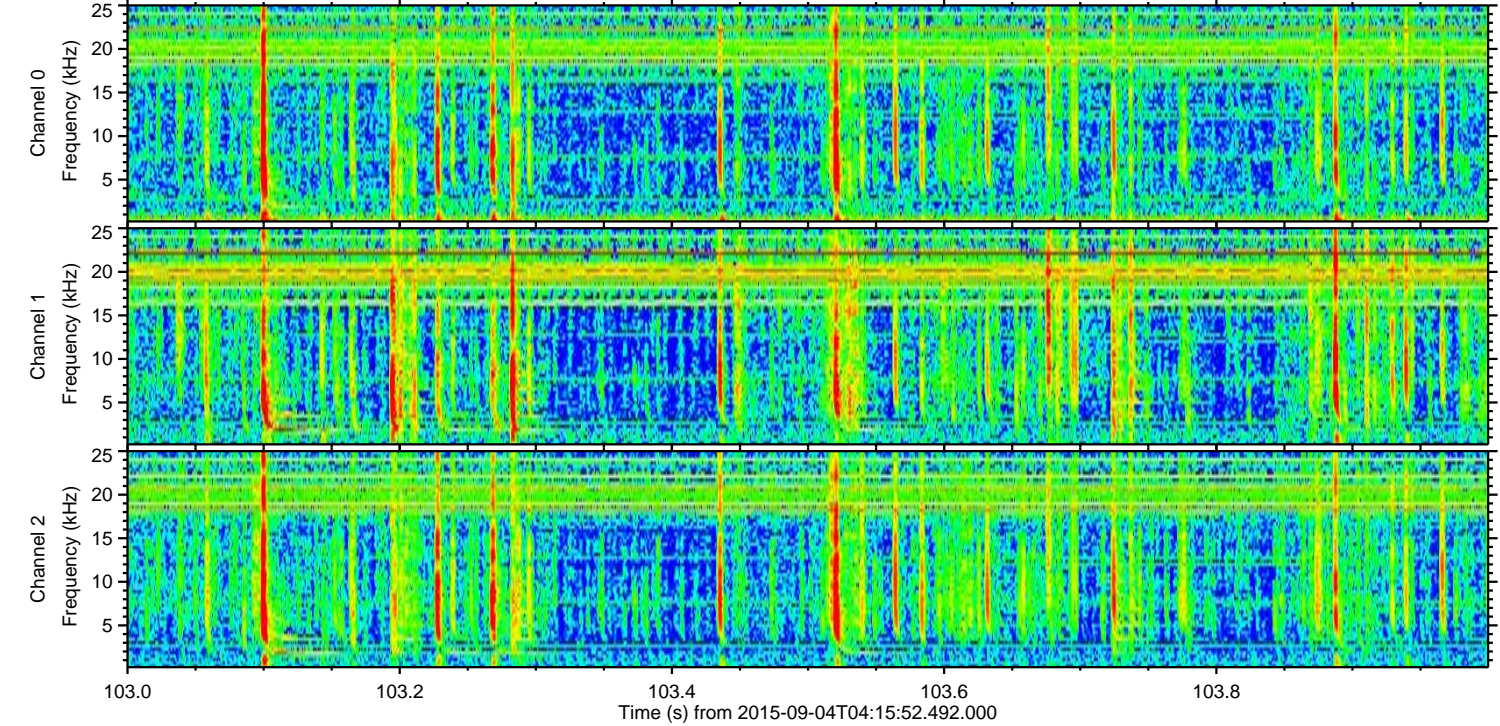
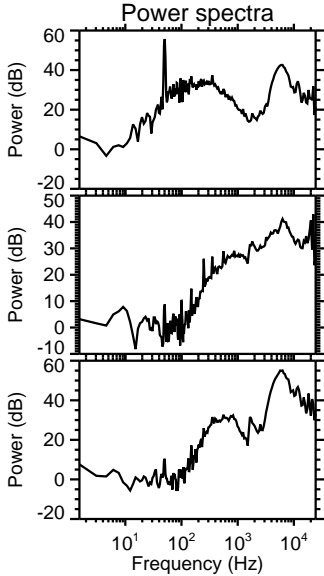
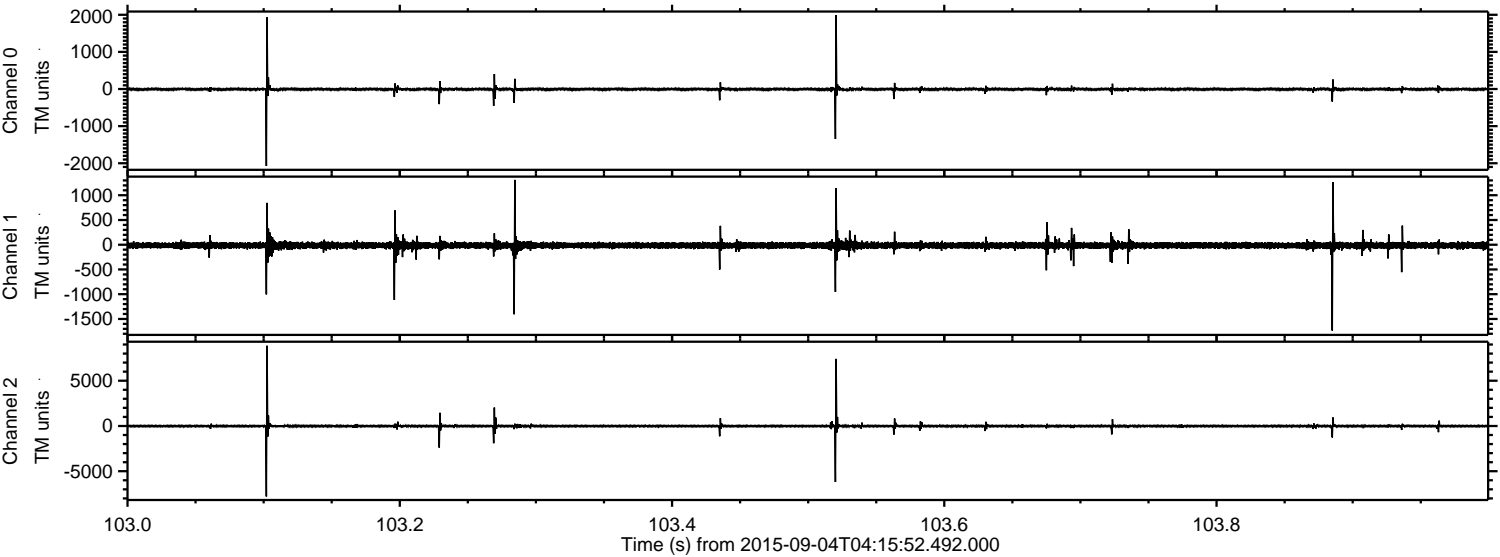
ELMAVAN 3D WAVEFORMS (Measured data sampled at 50 kHz) 51000 packets of 144 samples from 2015-09-04T04:15:52.492.000. Part 89/147

Processed Fri Oct 9 13:33:41 2015 by ELM ver.2012-10-06 from 001__elm20150904_041551__dat00.bin



ELMAVAN 3D WAVEFORMS (Measured data sampled at 50 kHz) 51000 packets of 144 samples from 2015-09-04T04:15:52.492.000. Part 104/147

Processed Fri Oct 9 13:33:42 2015 by ELM ver.2012-10-06 from 001__elm20150904_041551__dat00.bin

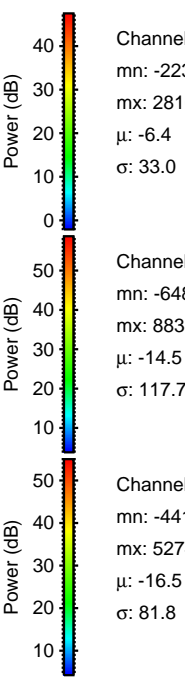
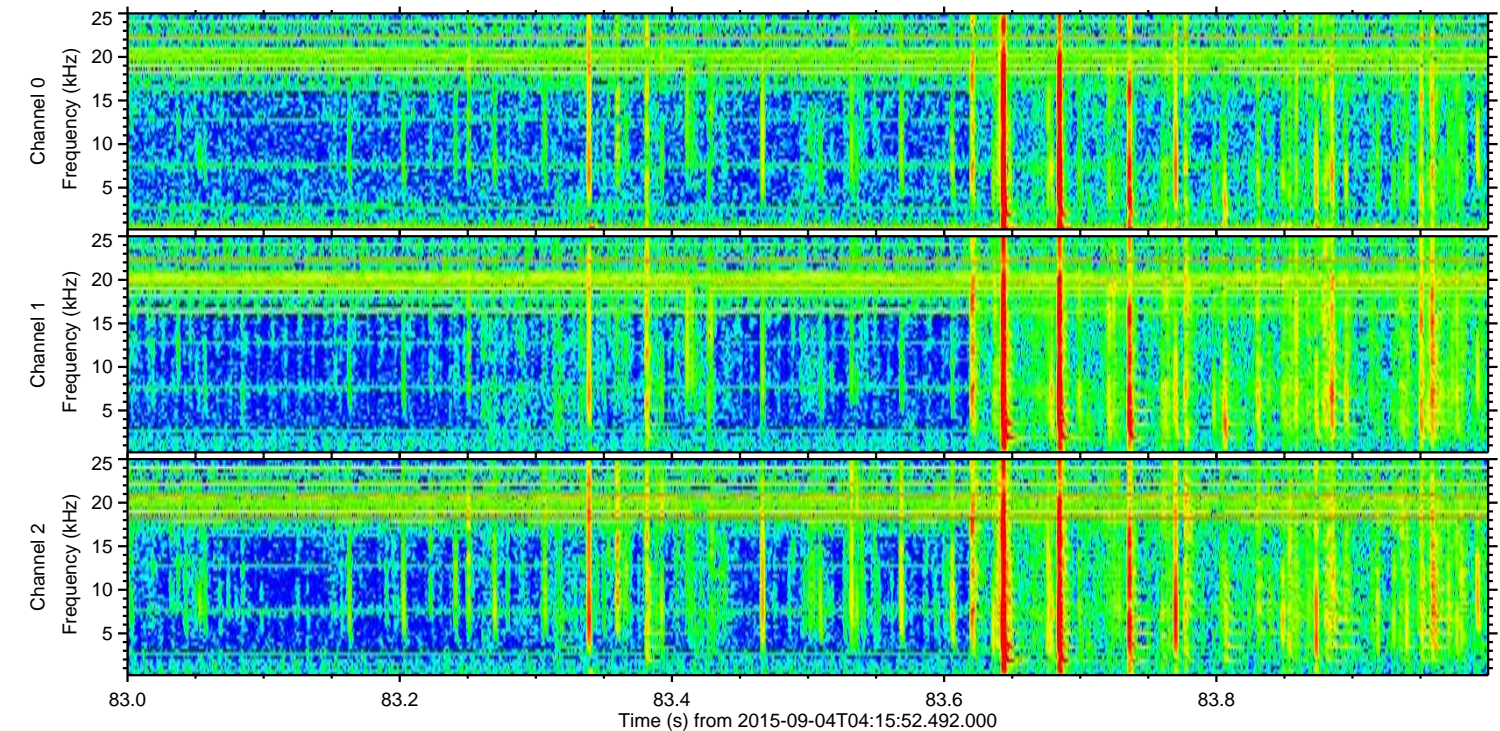
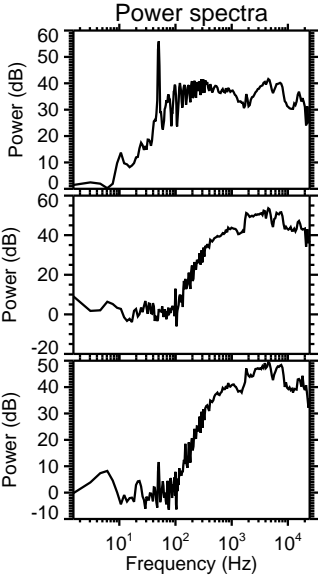
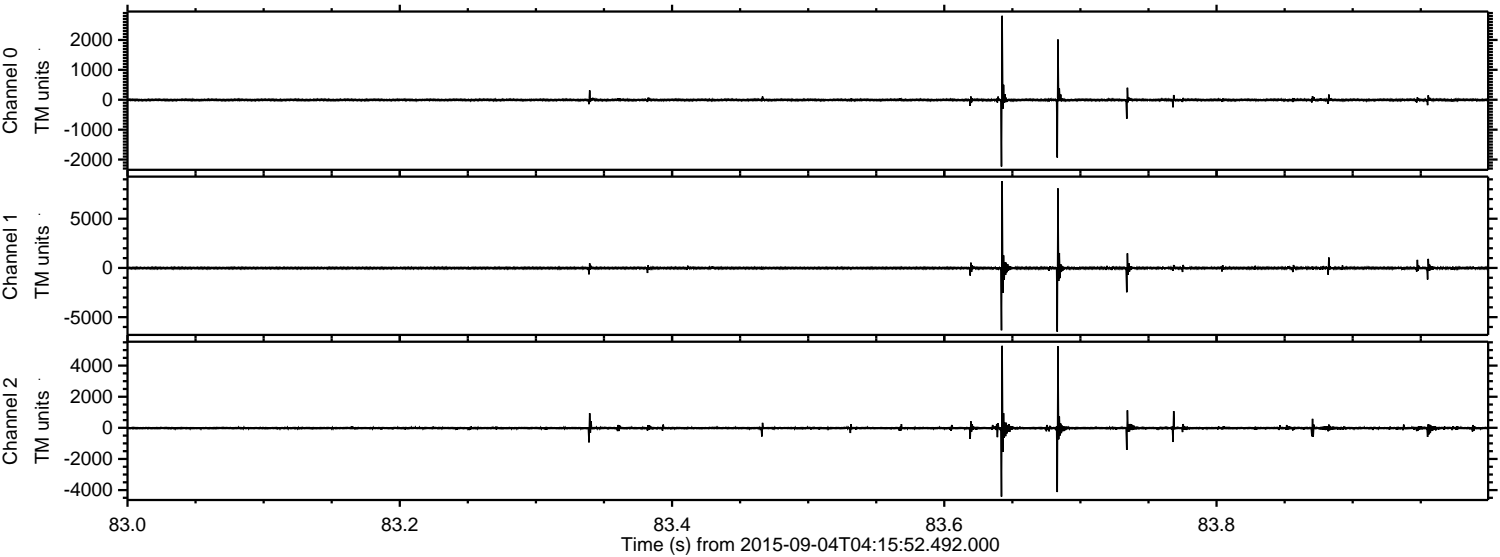


Channel 0
mn: -2074
mx: 1989
 μ : -6.4
 σ : 38.8

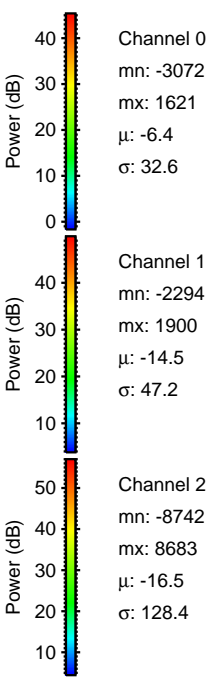
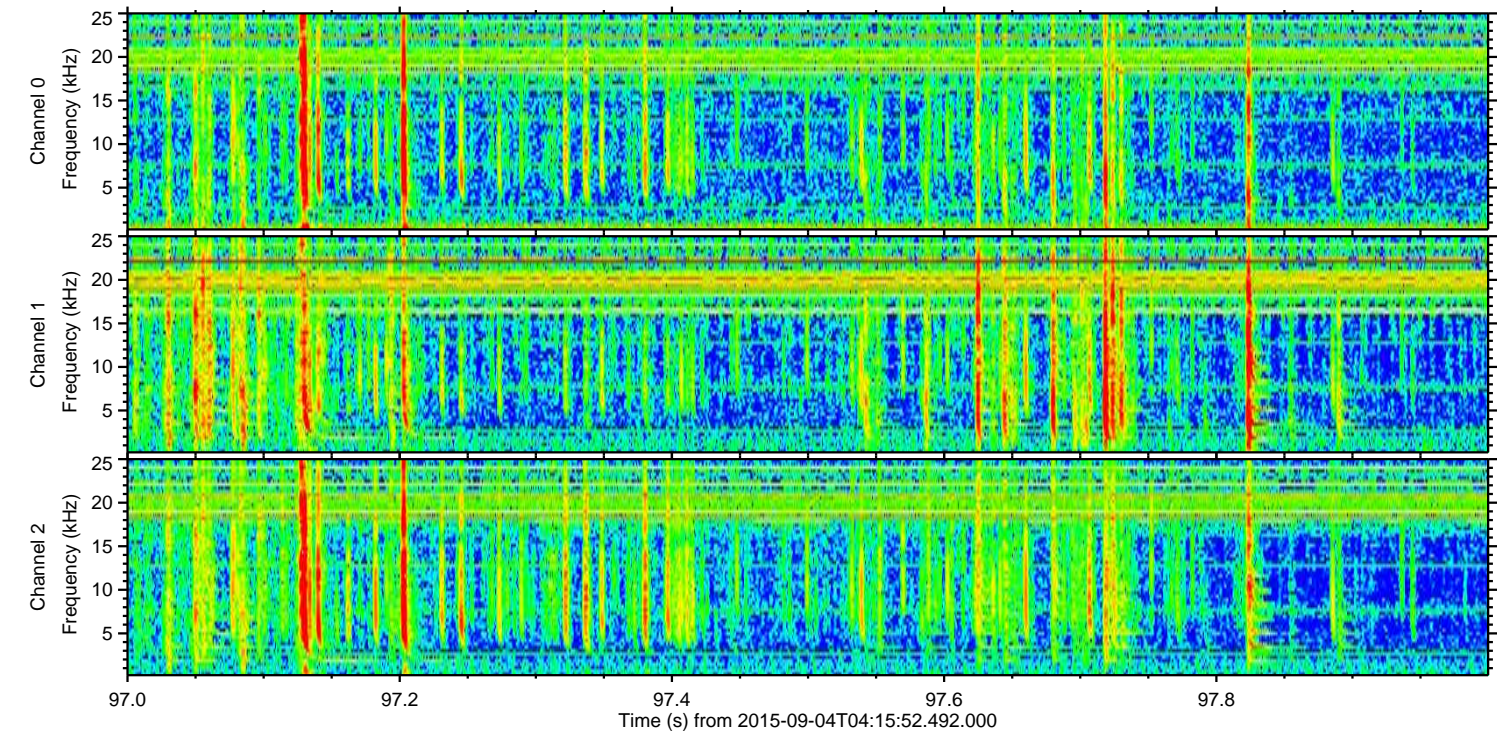
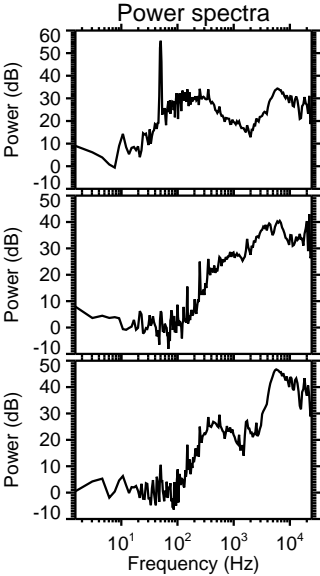
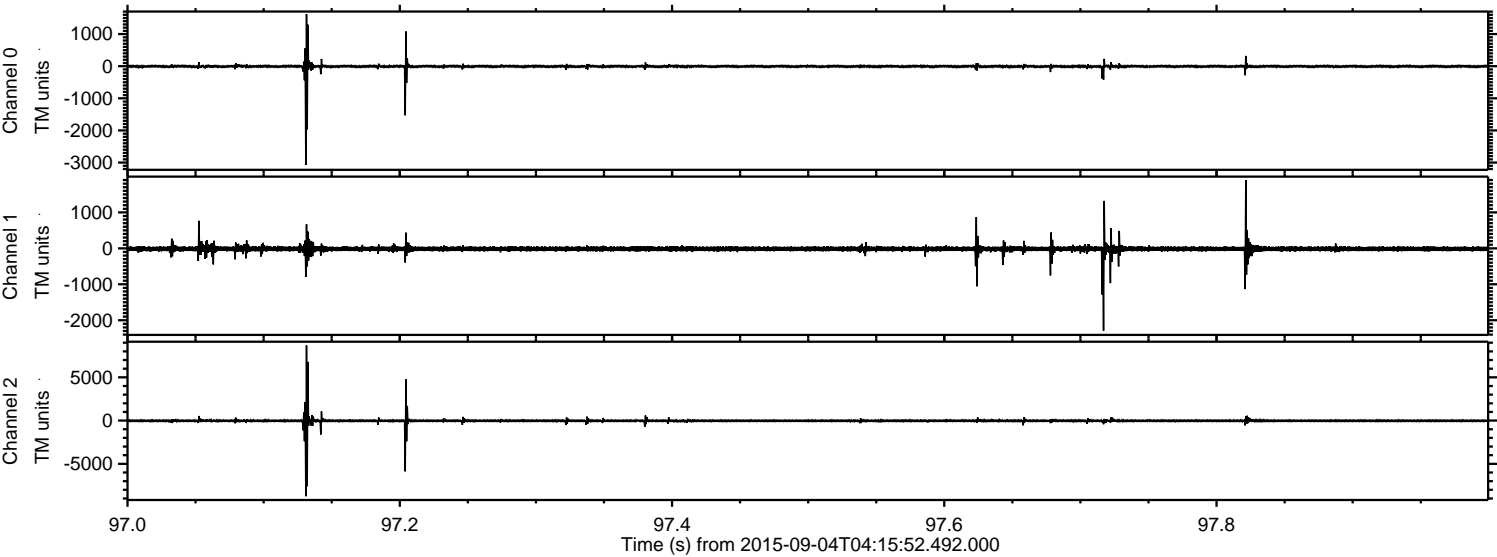
Channel 1
mn: -1736
mx: 1311
 μ : -14.5
 σ : 45.7

Channel 2
mn: -7790
mx: 8864
 μ : -16.5
 σ : 153.1

Processed Fri Oct 9 13:33:44 2015 by ELM ver.2012-10-06 from 001__elm20150904_041551__dat00.bin



Processed Fri Oct 9 13:33:45 2015 by ELM ver.2012-10-06 from 001__elm20150904_041551__dat00.bin

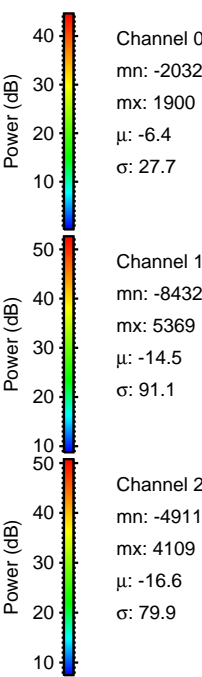
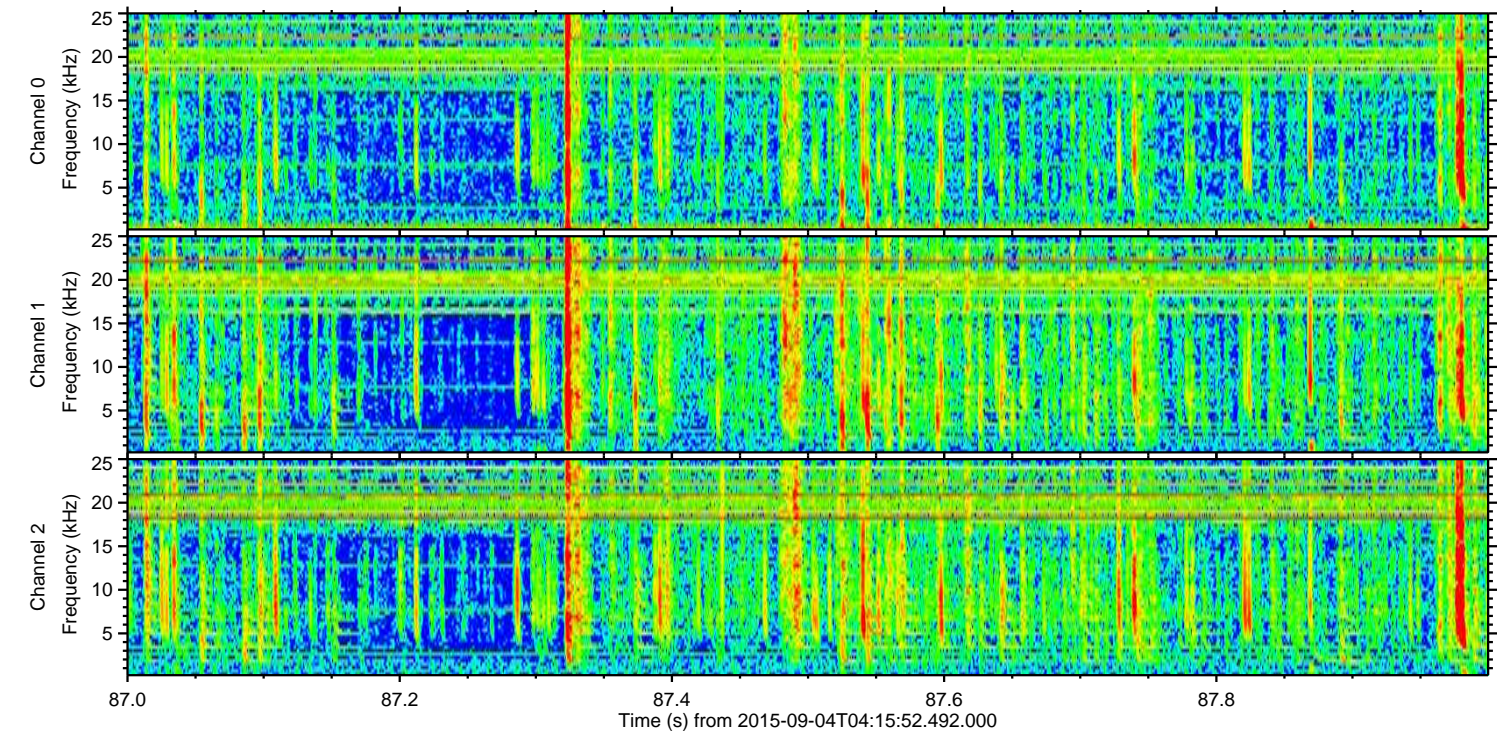
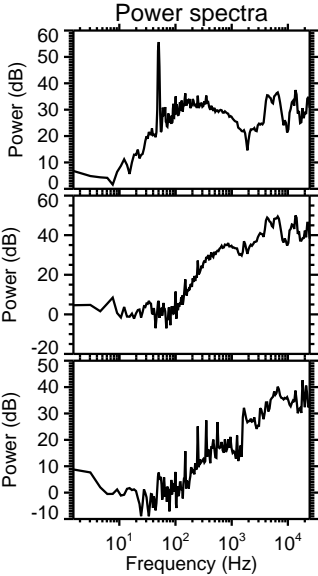
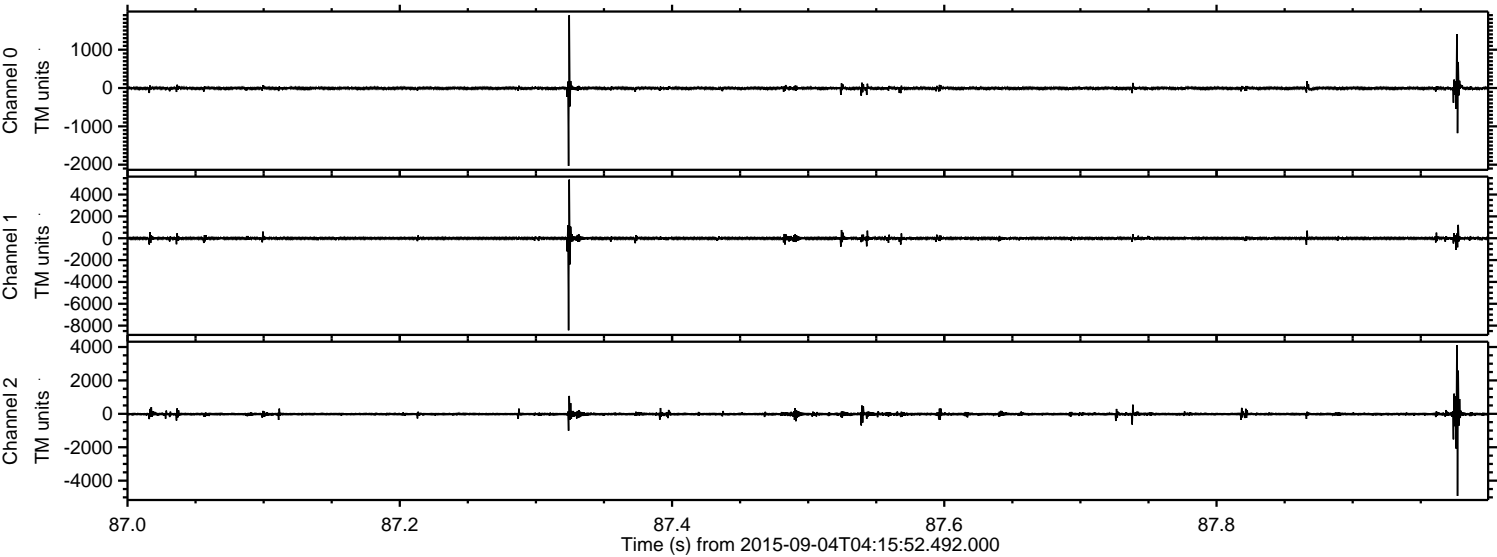


Channel 0
mn: -3072
mx: 1621
 μ : -6.4
 σ : 32.6

Channel 1
mn: -2294
mx: 1900
 μ : -14.5
 σ : 47.2

Channel 2
mn: -8742
mx: 8683
 μ : -16.5
 σ : 128.4

Processed Fri Oct 9 13:33:46 2015 by ELM ver.2012-10-06 from 001__elm20150904_041551__dat00.bin



Processed Fri Oct 9 13:33:47 2015 by ELM ver.2012-10-06 from 001__elm20150904_041551__dat00.bin

