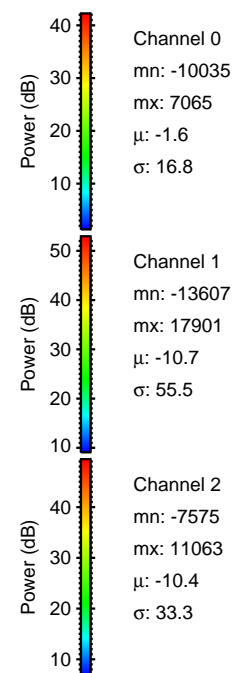
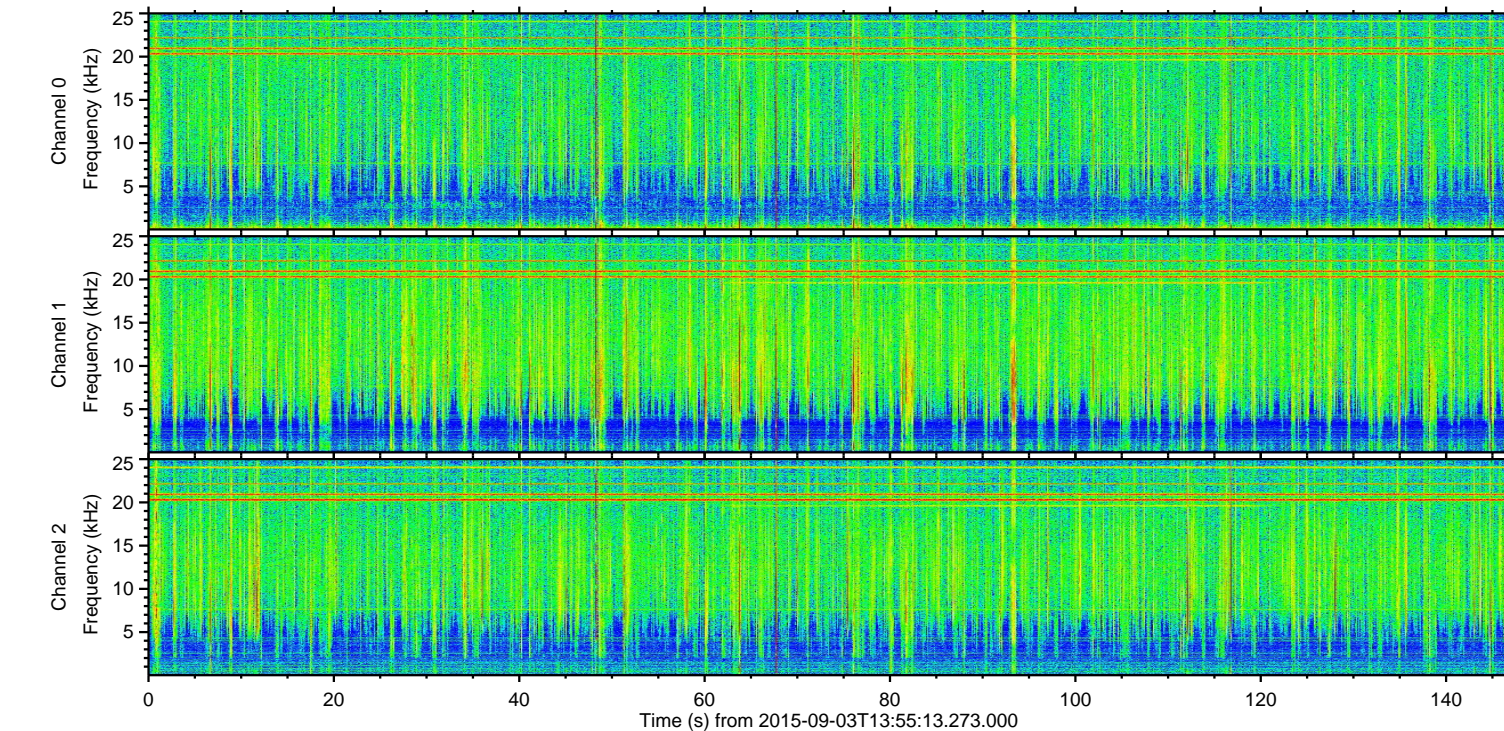
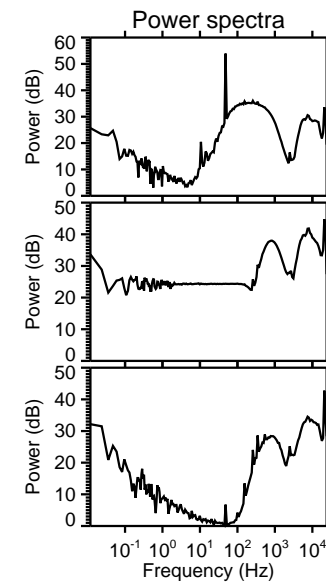
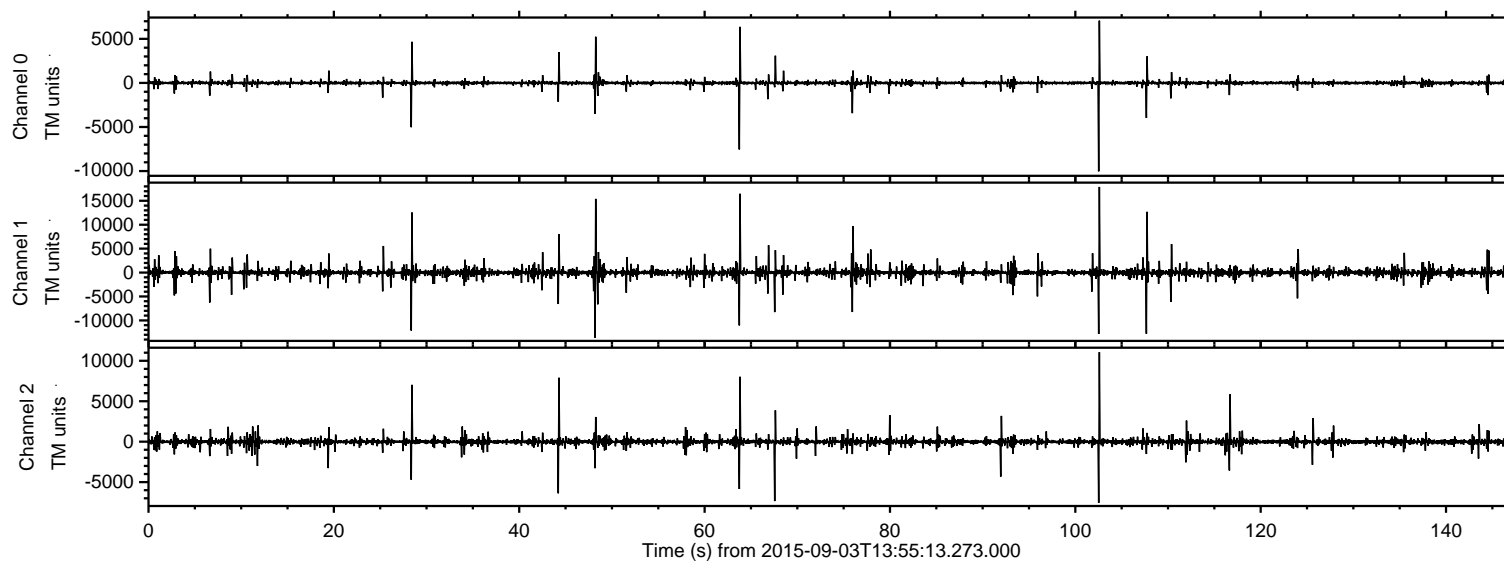


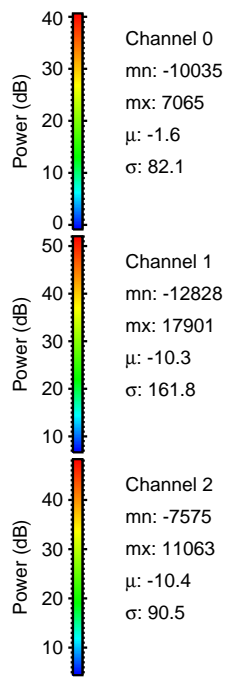
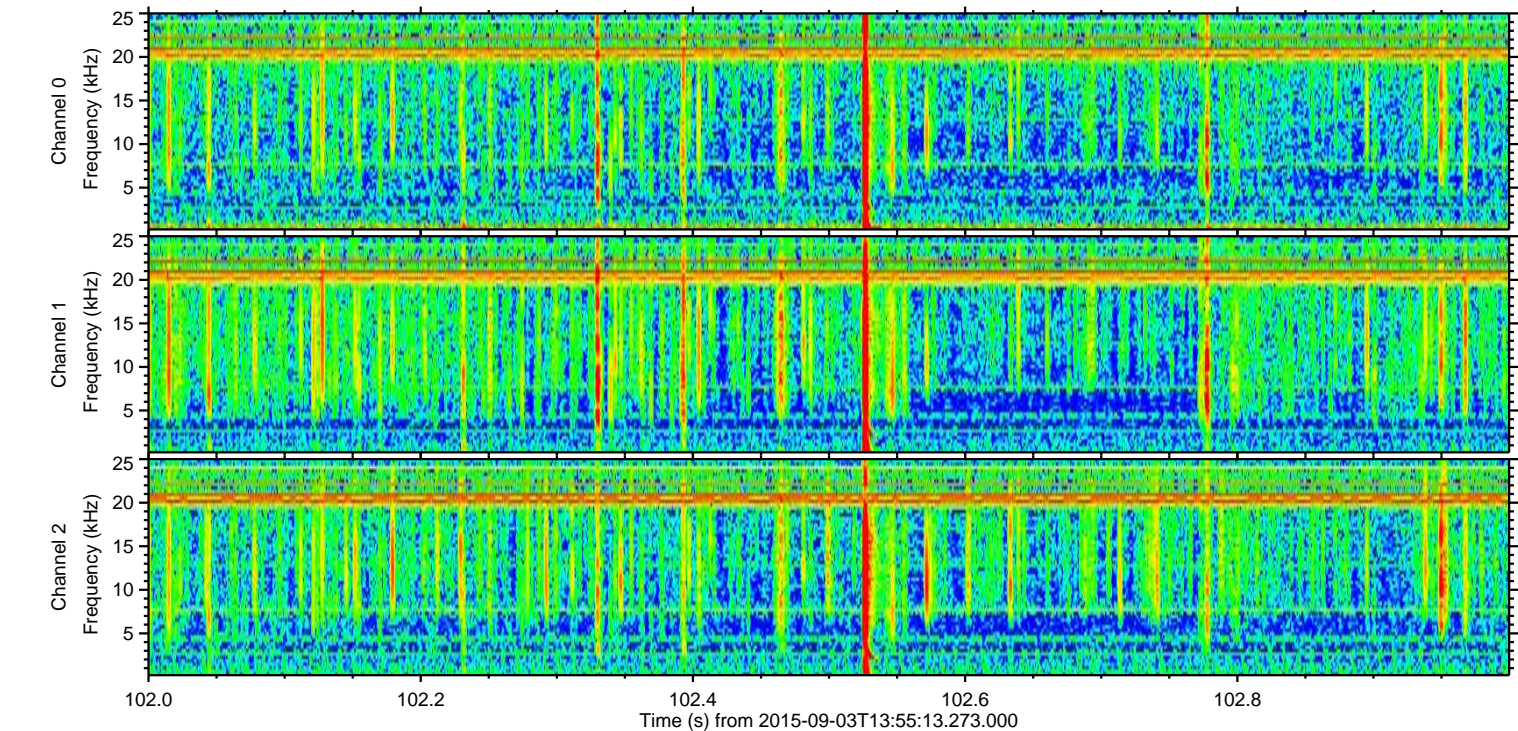
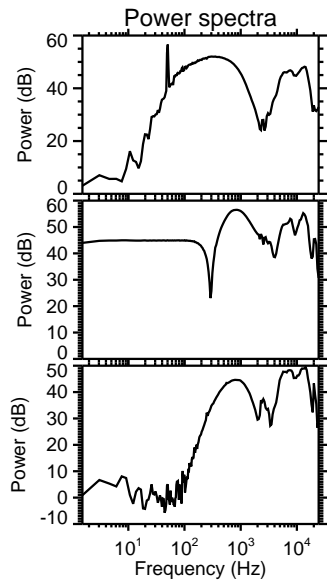
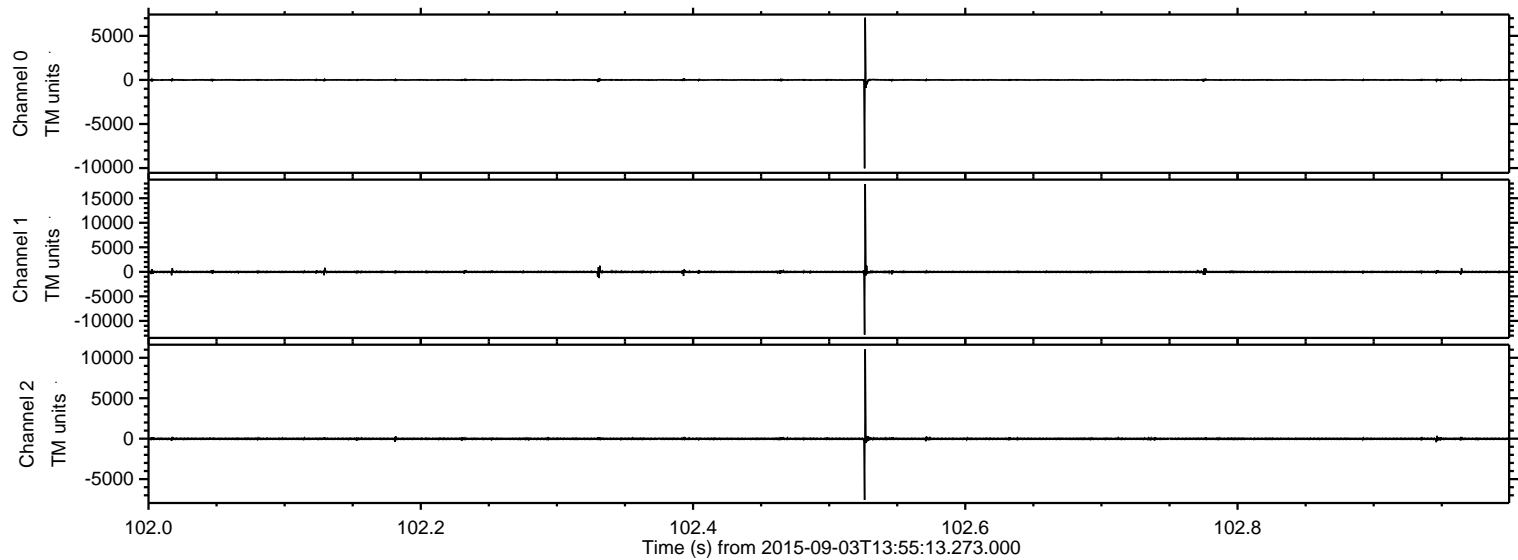
ELMAVAN 3D WAVEFORMS (Measured data sampled at 50 kHz) 51000 packets of 144 samples from 2015-09-03T13:55:13.273.000.

Processed Fri Oct 9 09:34:05 2015 by ELM ver.2012-10-06 from 001__elm20150903_135512__dat00.bin

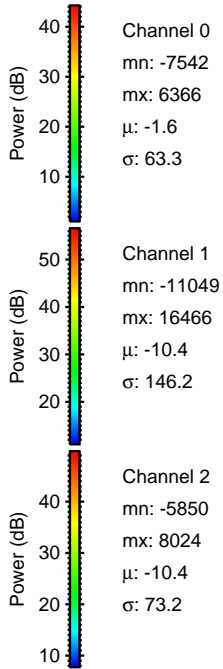
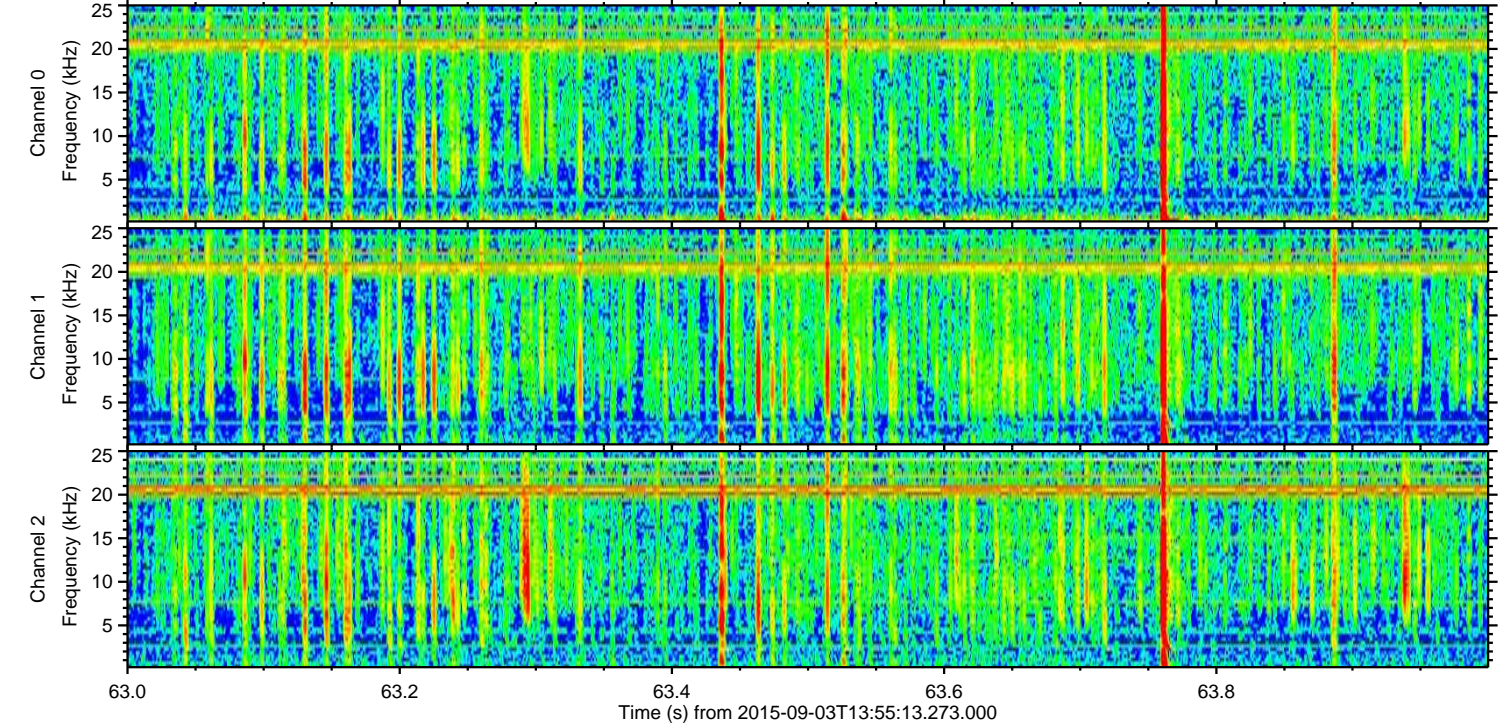
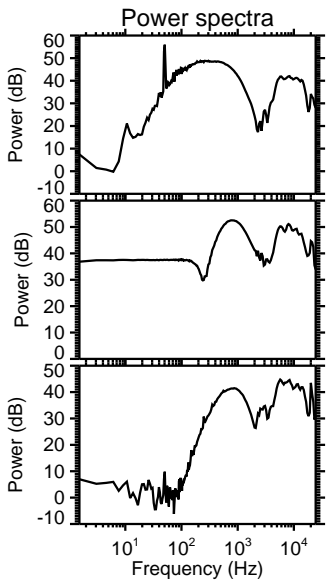
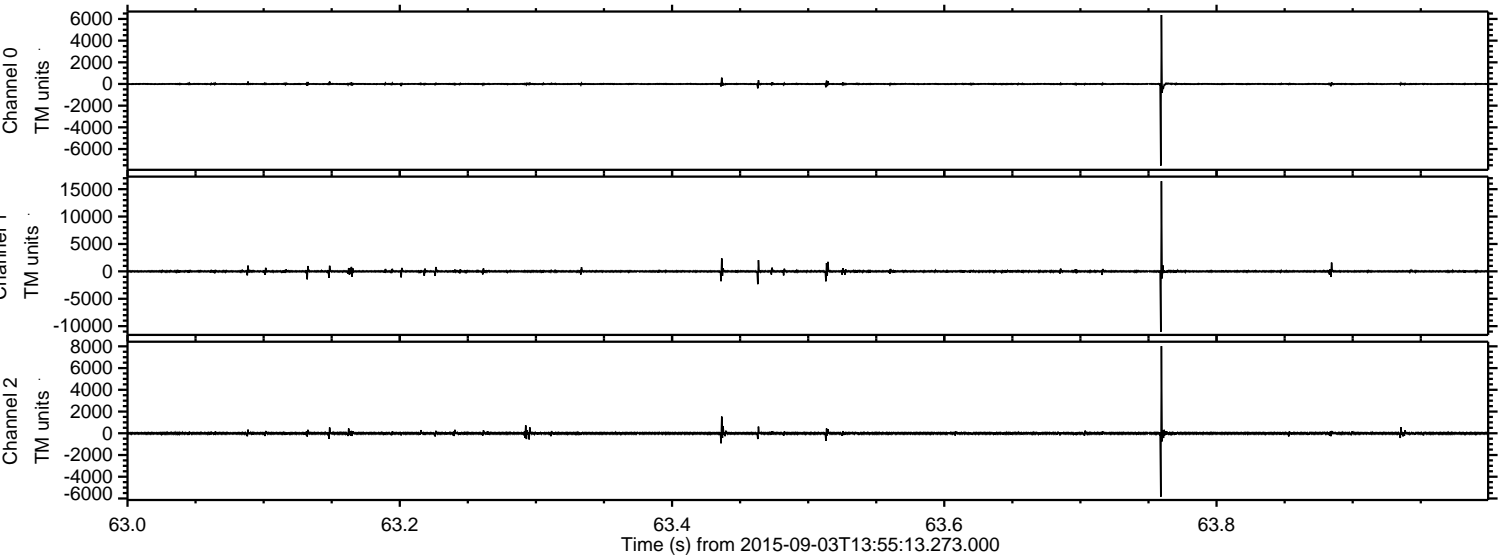


ELMAVAN 3D WAVEFORMS (Measured data sampled at 50 kHz) 51000 packets of 144 samples from 2015-09-03T13:55:13.273.000. Part 103/147

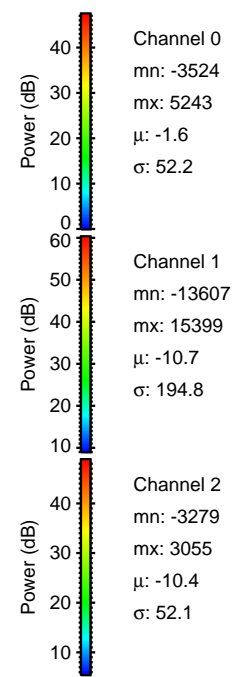
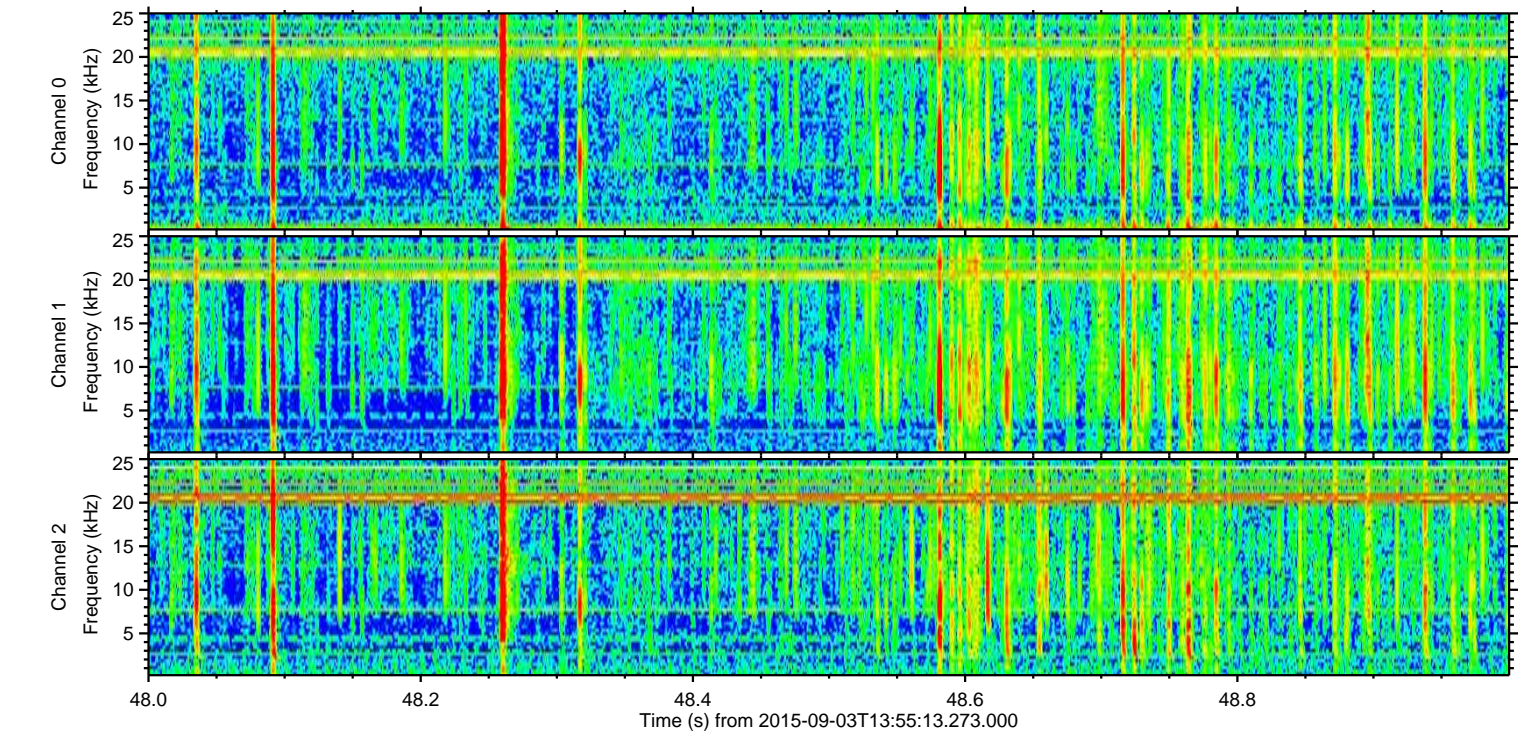
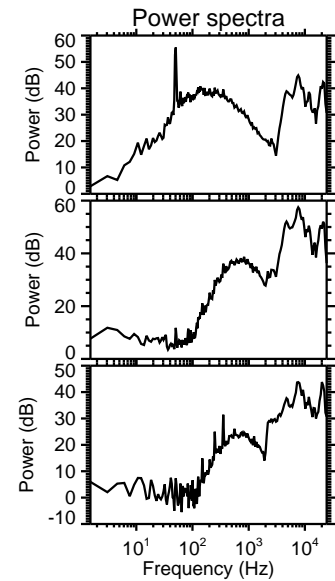
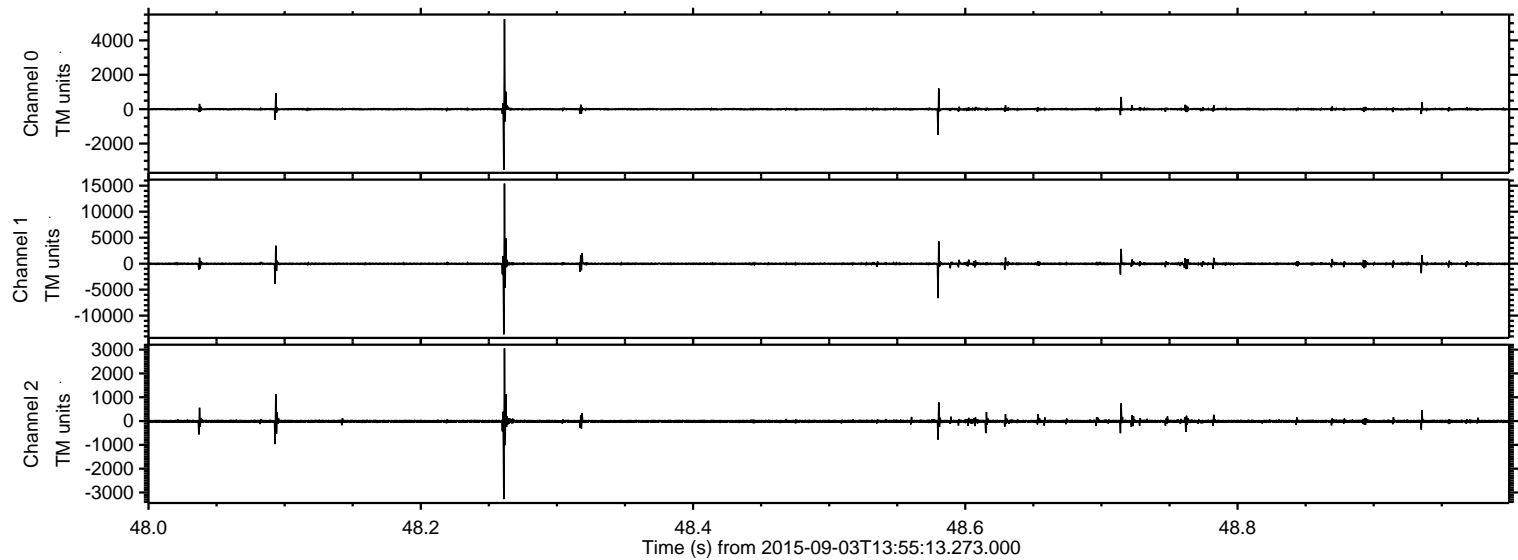
Processed Fri Oct 9 09:34:21 2015 by ELM ver.2012-10-06 from 001__elm20150903_135512__dat00.bin



Processed Fri Oct 9 09:34:22 2015 by ELM ver.2012-10-06 from 001__elm20150903_135512__dat00.bin

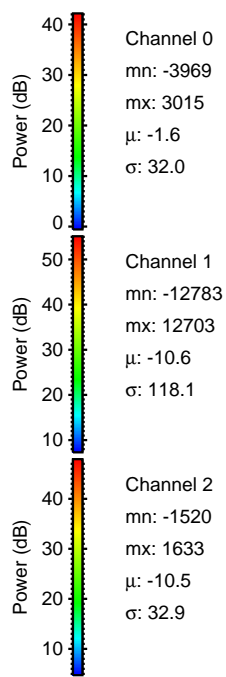
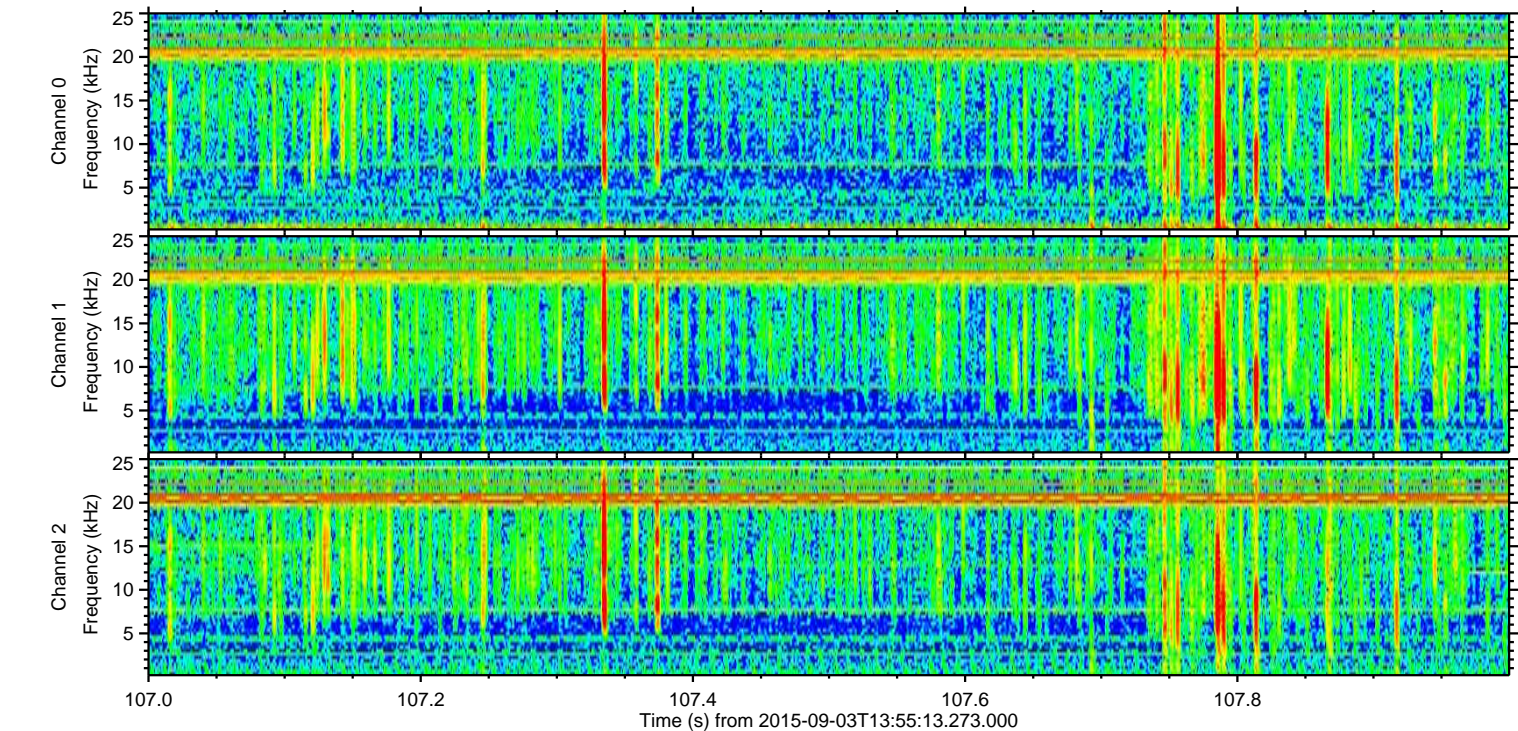
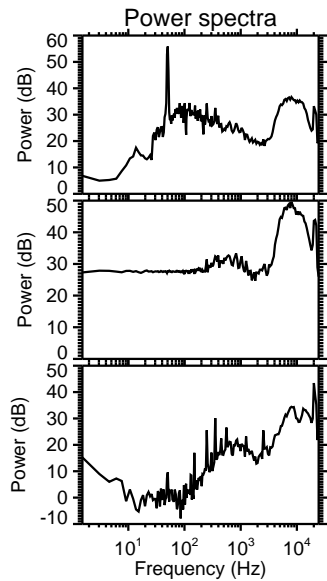
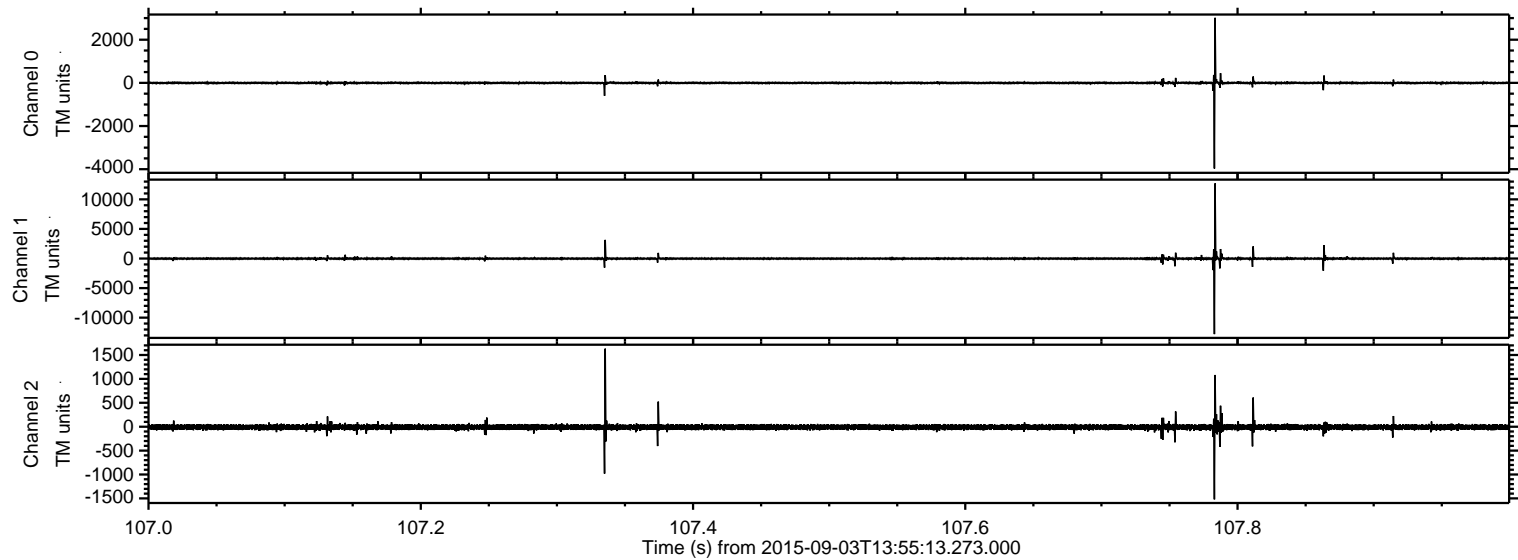


Processed Fri Oct 9 09:34:23 2015 by ELM ver.2012-10-06 from 001__elm20150903_135512__dat00.bin

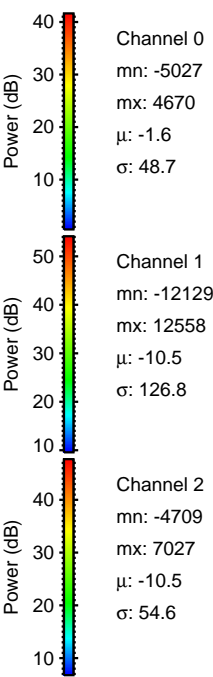
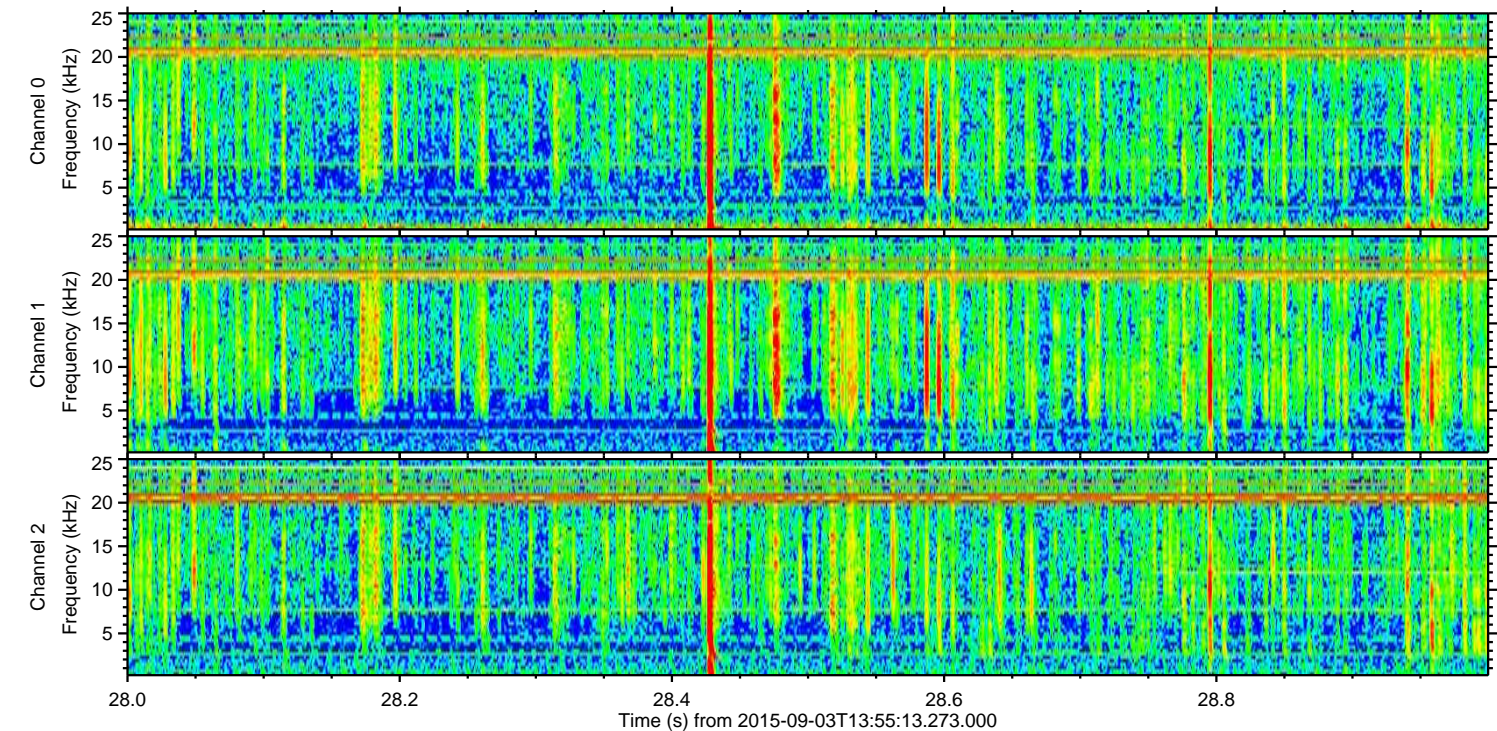
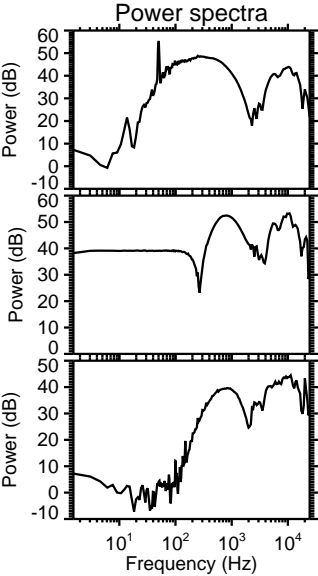
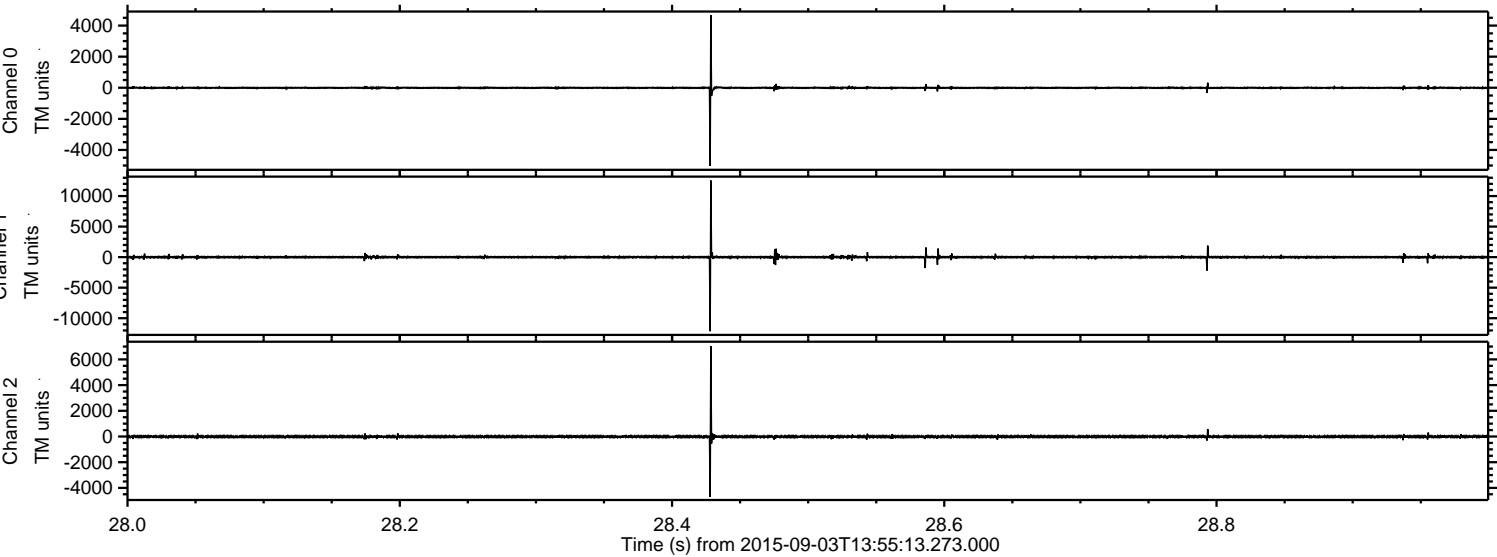


ELMAVAN 3D WAVEFORMS (Measured data sampled at 50 kHz) 51000 packets of 144 samples from 2015-09-03T13:55:13.273.000. Part 108/147

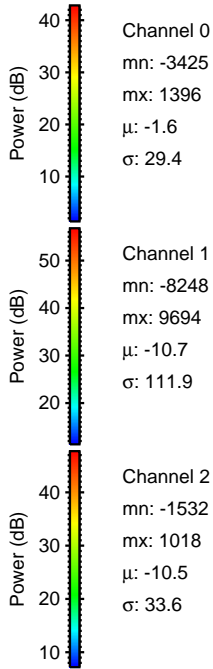
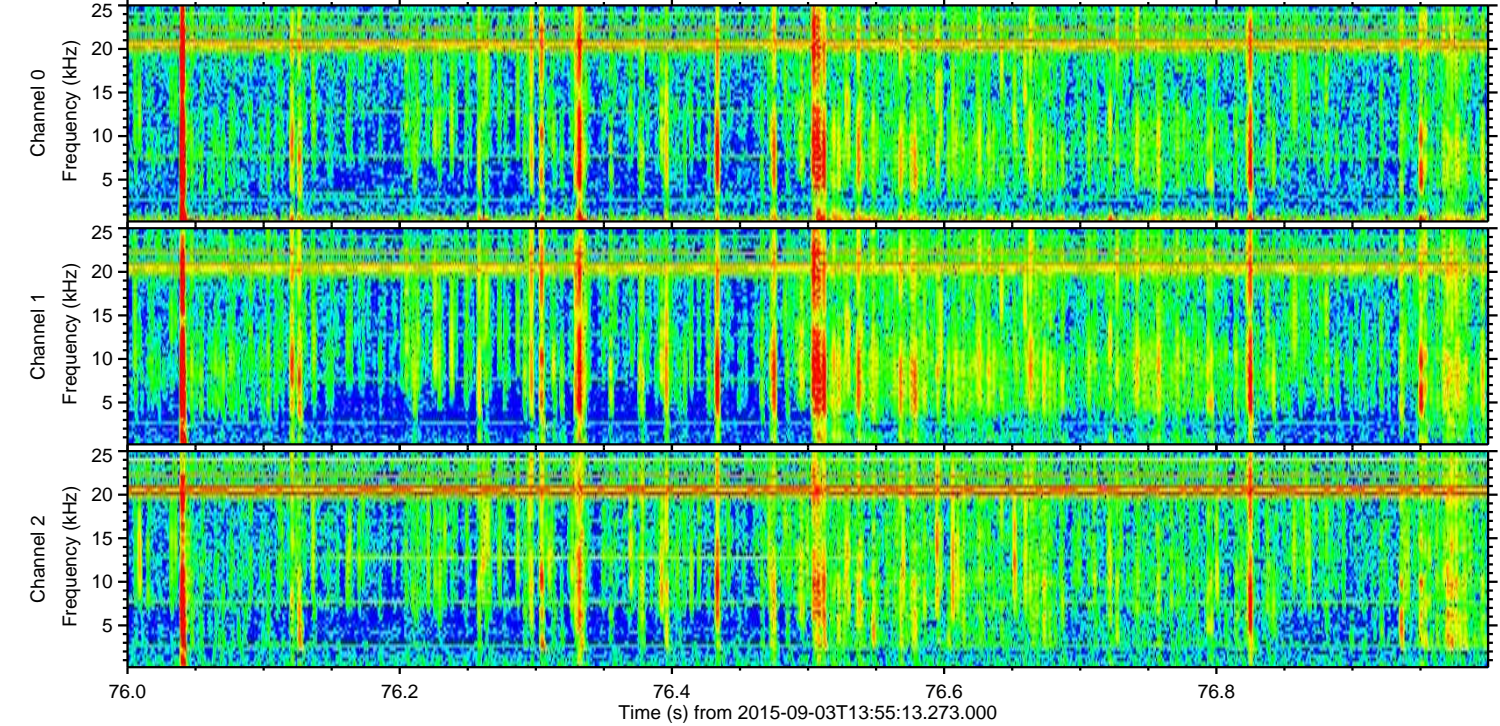
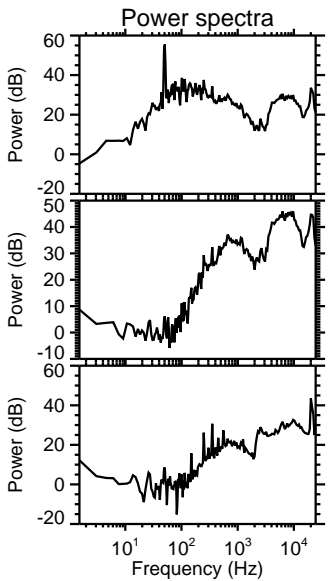
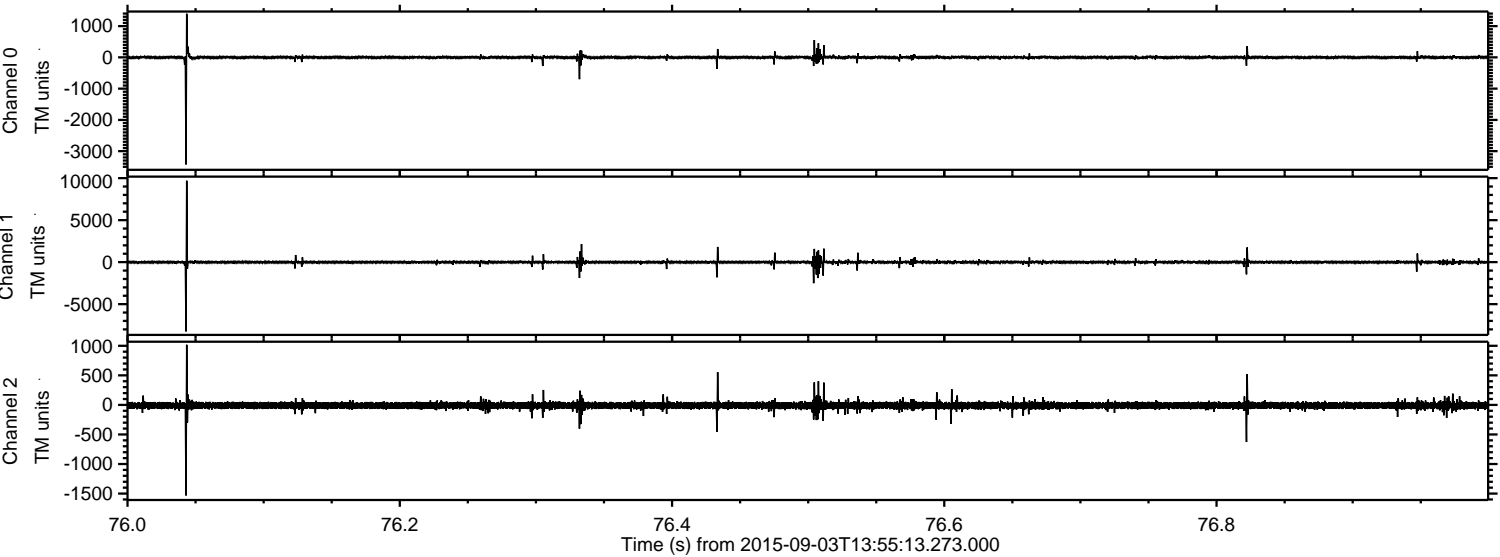
Processed Fri Oct 9 09:34:24 2015 by ELM ver.2012-10-06 from 001__elm20150903_135512__dat00.bin



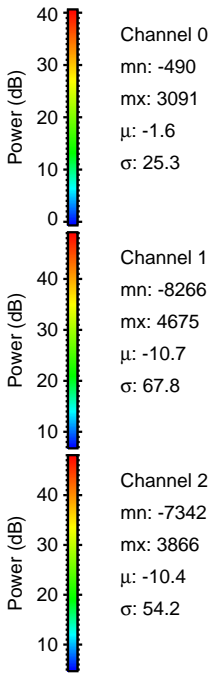
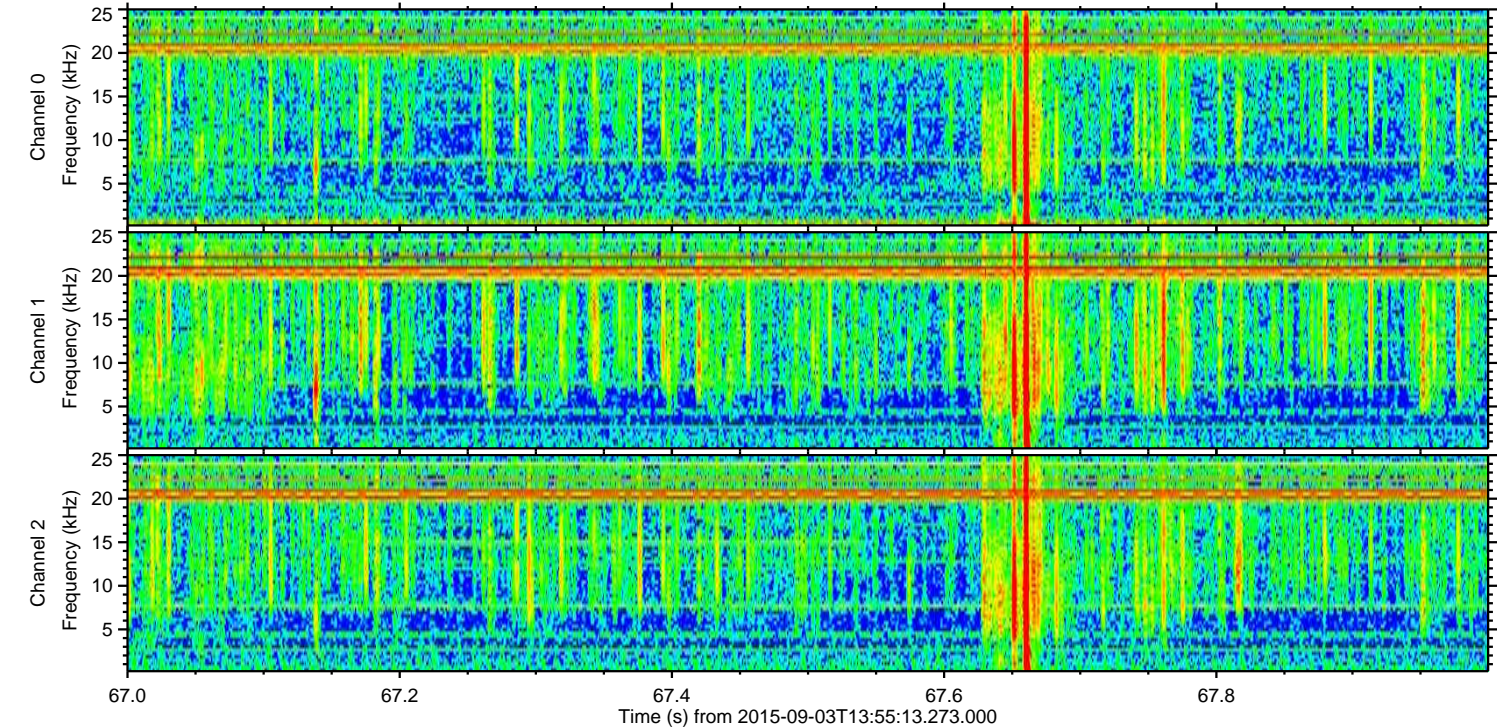
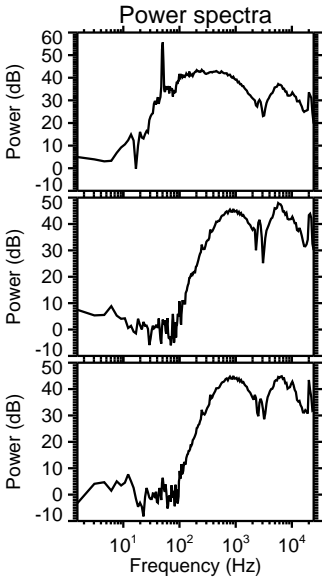
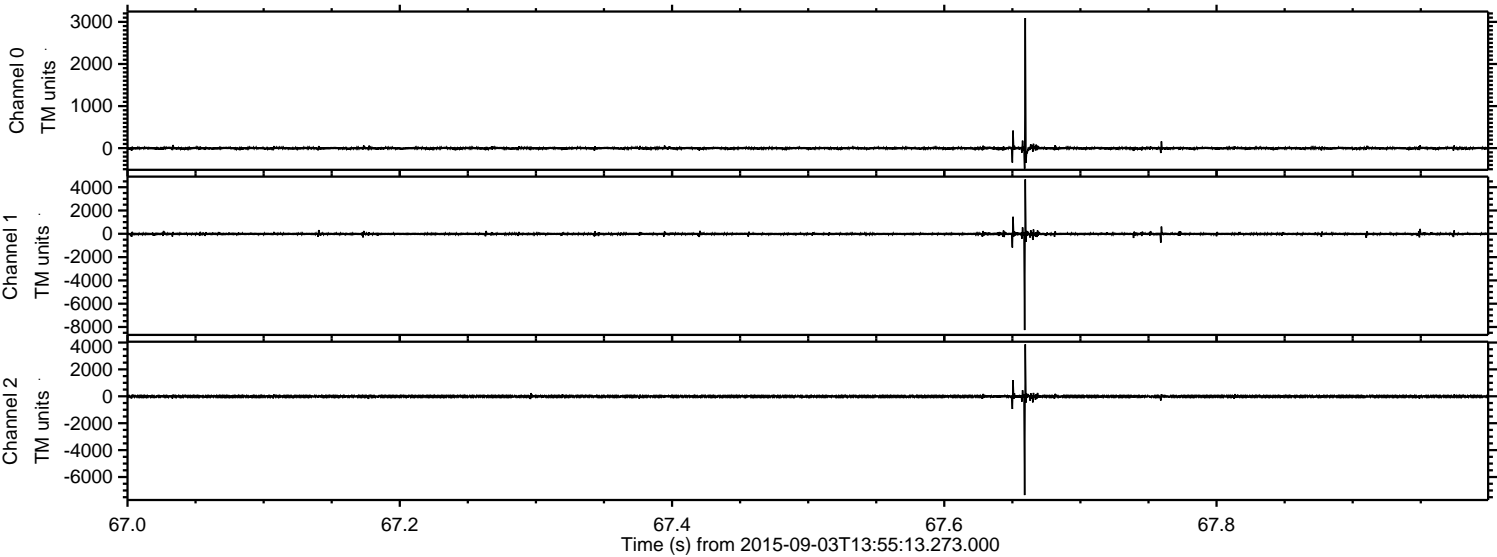
Processed Fri Oct 9 09:34:25 2015 by ELM ver.2012-10-06 from 001__elm20150903_135512__dat00.bin



Processed Fri Oct 9 09:34:26 2015 by ELM ver.2012-10-06 from 001__elm20150903_135512__dat00.bin



Processed Fri Oct 9 09:34:27 2015 by ELM ver.2012-10-06 from 001__elm20150903_135512__dat00.bin

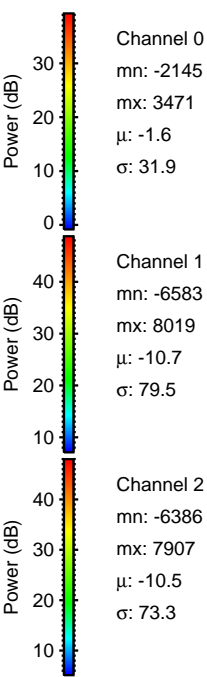
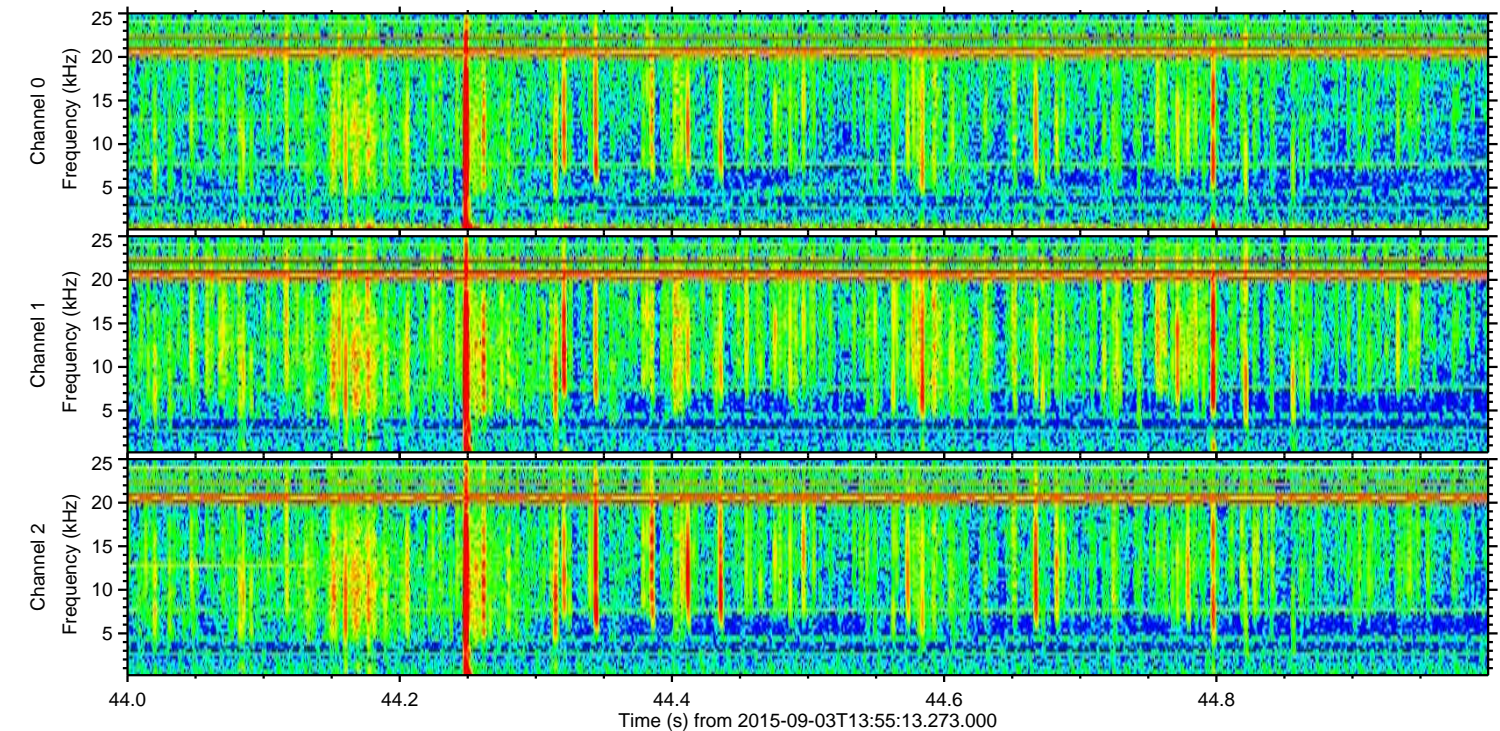
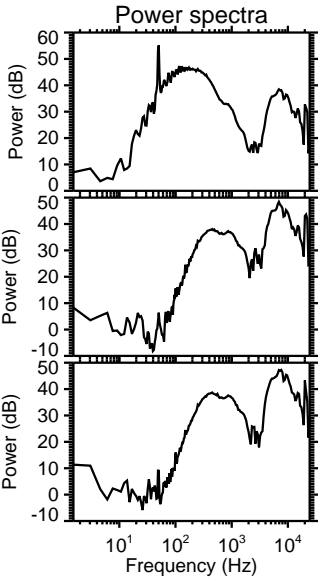
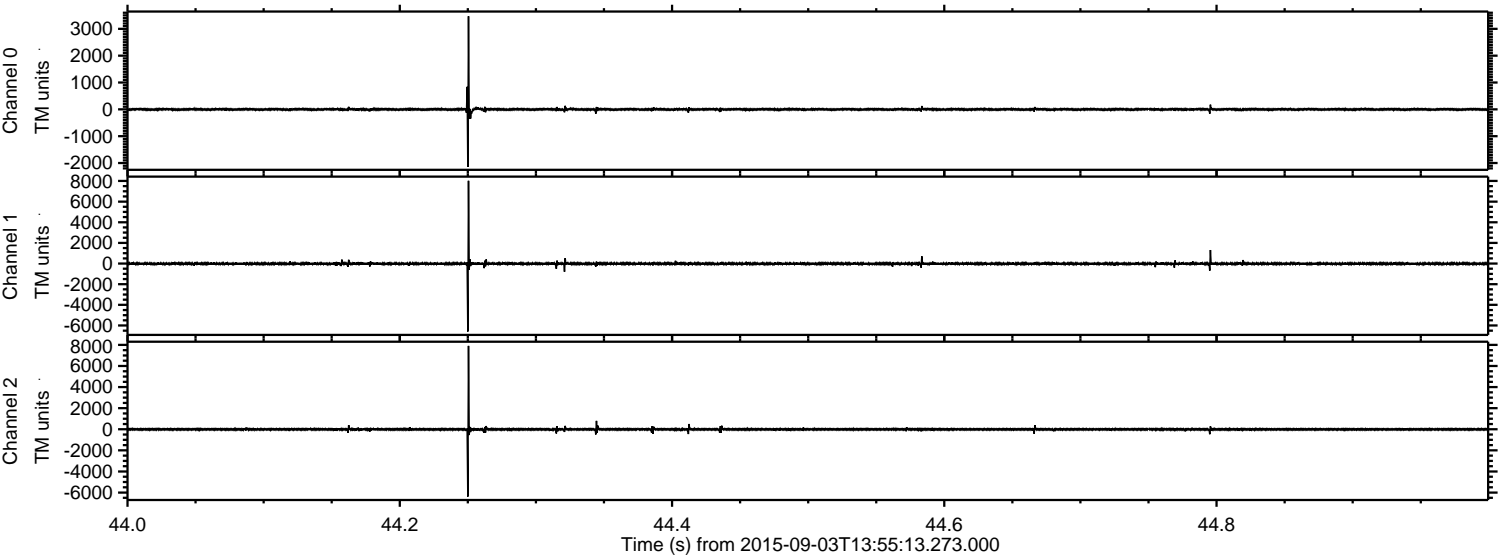


Channel 0
mn: -490
mx: 3091
 μ : -1.6
 σ : 25.3

Channel 1
mn: -8266
mx: 4675
 μ : -10.7
 σ : 67.8

Channel 2
mn: -7342
mx: 3866
 μ : -10.4
 σ : 54.2

Processed Fri Oct 9 09:34:28 2015 by ELM ver.2012-10-06 from 001__elm20150903_135512__dat00.bin

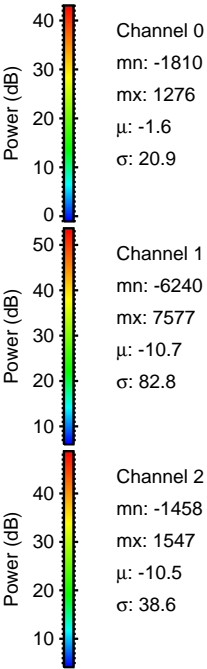
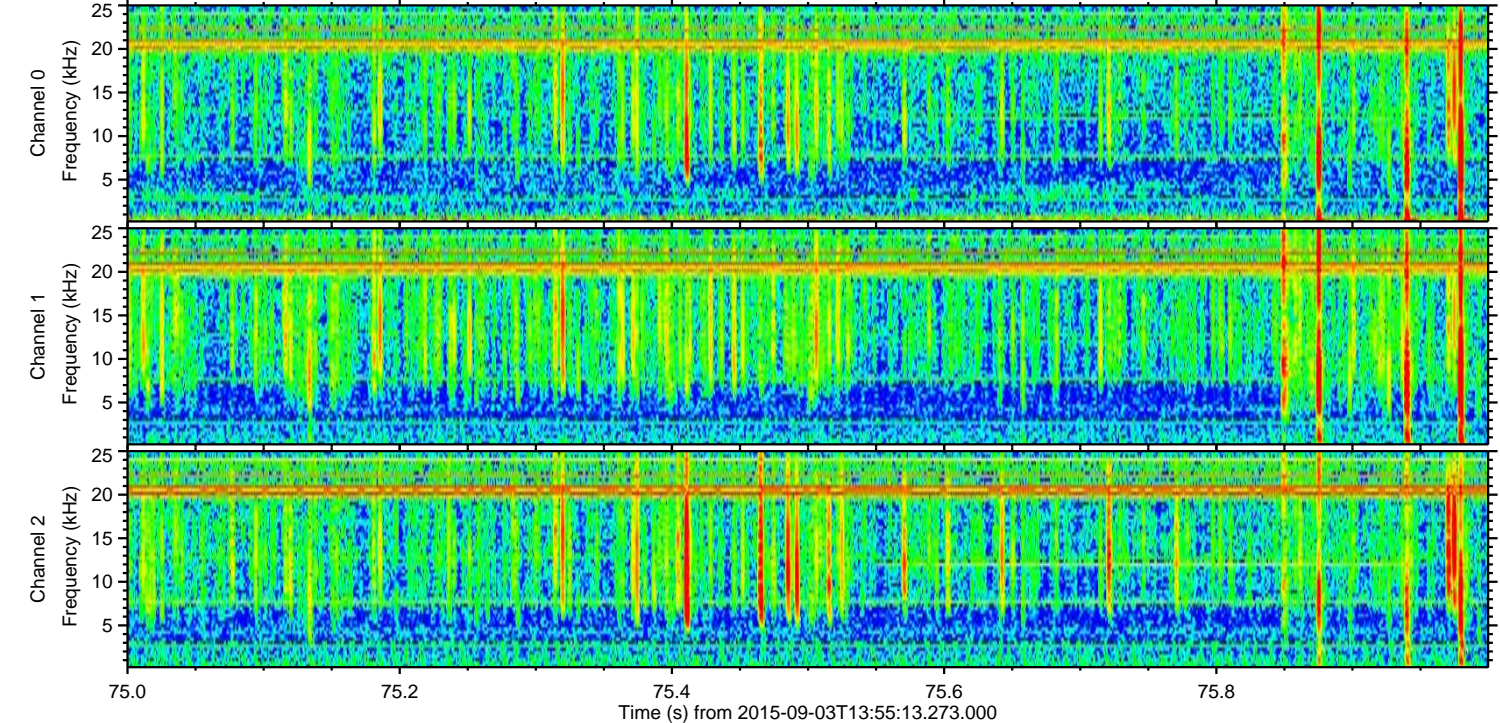
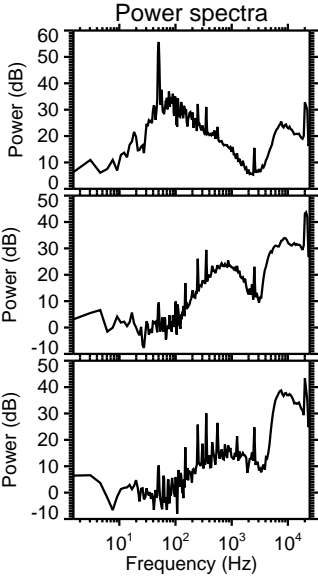
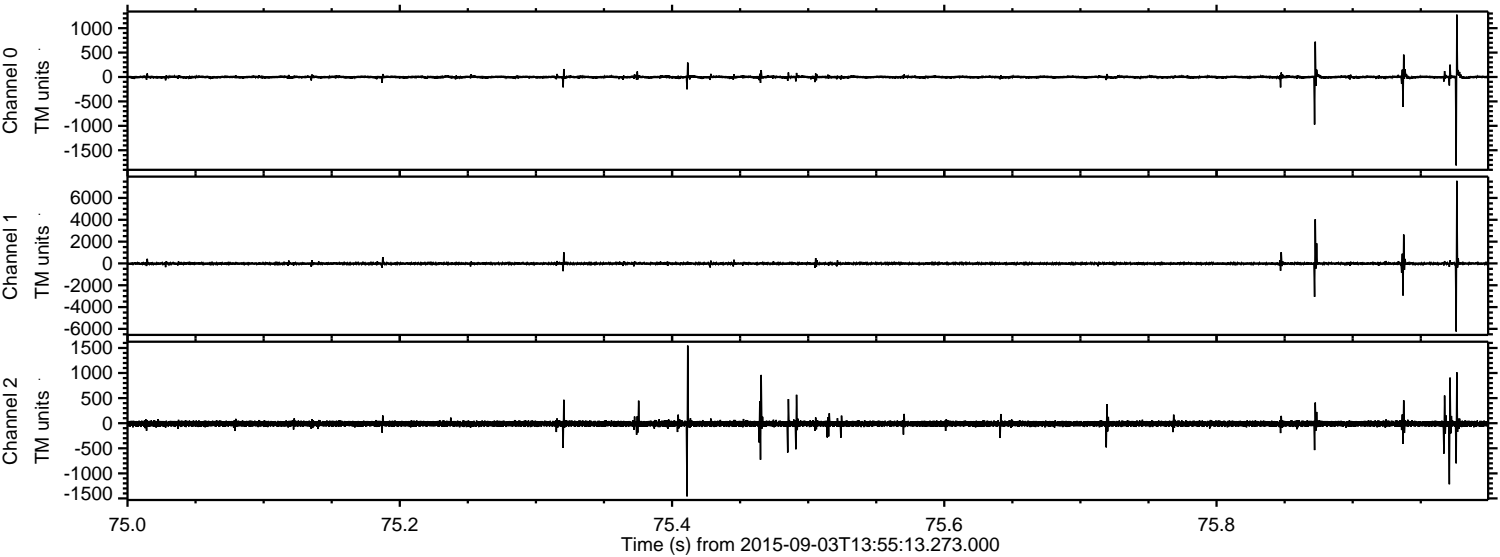


Channel 0
mn: -2145
mx: 3471
 μ : -1.6
 σ : 31.9

Channel 1
mn: -6583
mx: 8019
 μ : -10.7
 σ : 79.5

Channel 2
mn: -6386
mx: 7907
 μ : -10.5
 σ : 73.3

Processed Fri Oct 9 09:34:29 2015 by ELM ver.2012-10-06 from 001__elm20150903_135512__dat00.bin



Channel 0
mn: -1810
mx: 1276
 μ : -1.6
 σ : 20.9

Channel 1
mn: -6240
mx: 7577
 μ : -10.7
 σ : 82.8

Channel 2
mn: -1458
mx: 1547
 μ : -10.5
 σ : 38.6

Processed Fri Oct 9 09:34:30 2015 by ELM ver.2012-10-06 from 001__elm20150903_135512__dat00.bin

