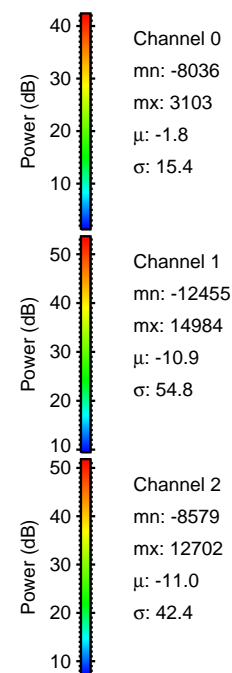
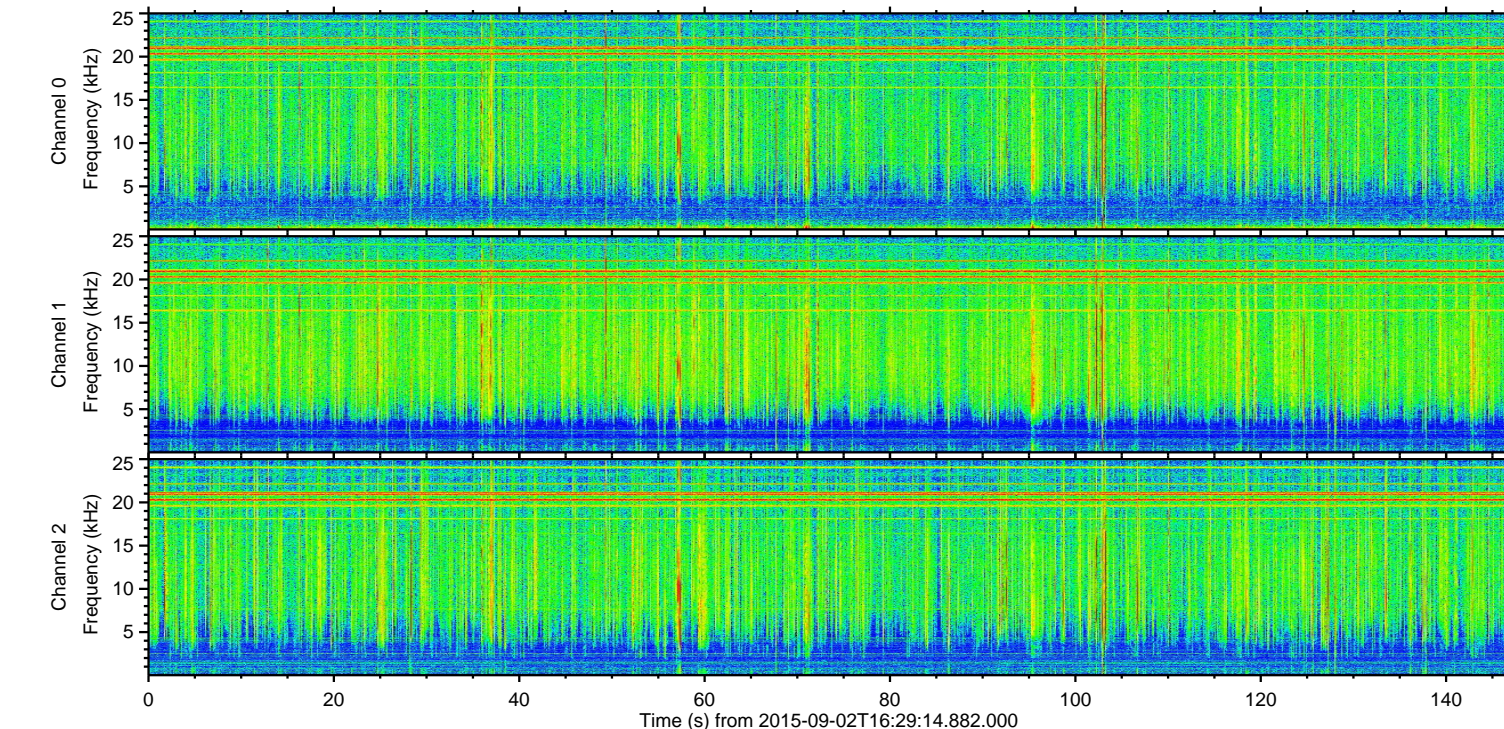
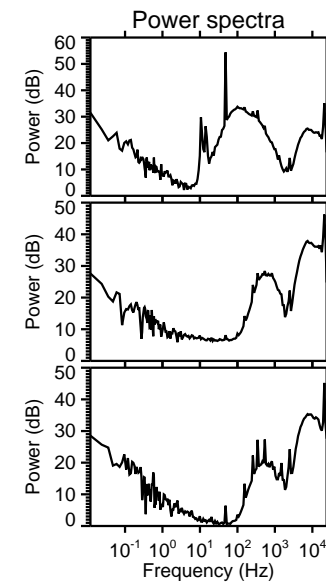
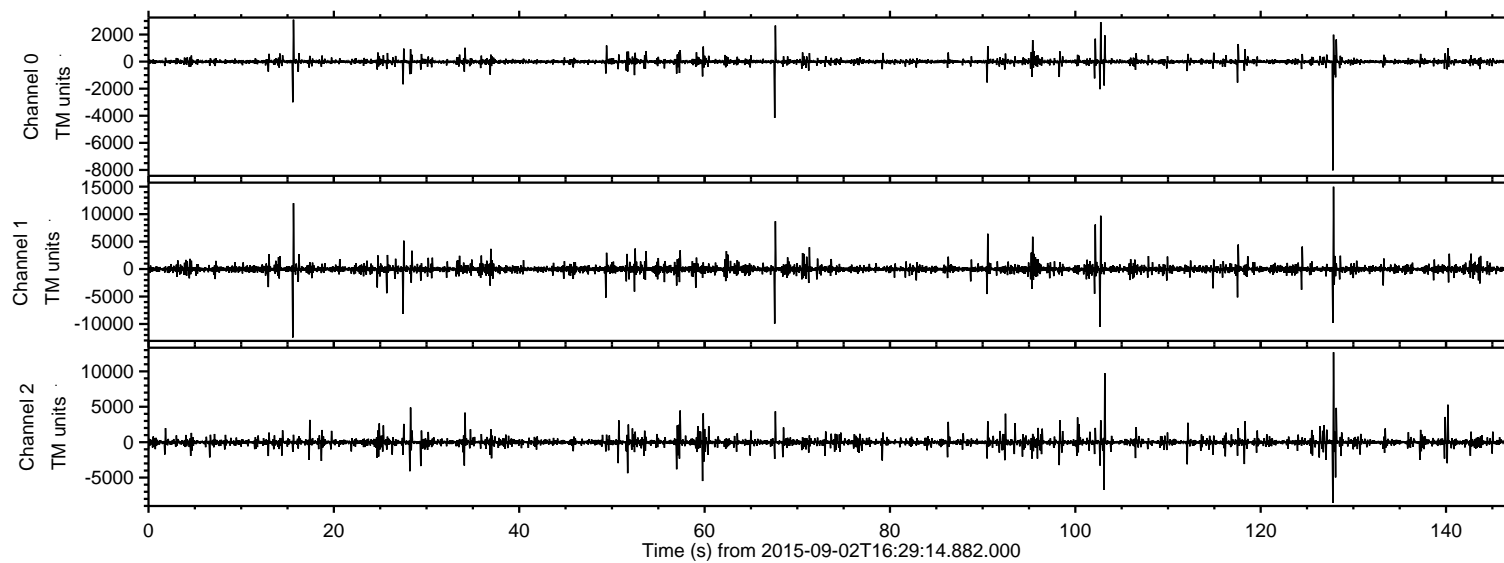


# ELMAVAN 3D WAVEFORMS (Measured data sampled at 50 kHz) 51000 packets of 144 samples from 2015-09-02T16:29:14.882.000.

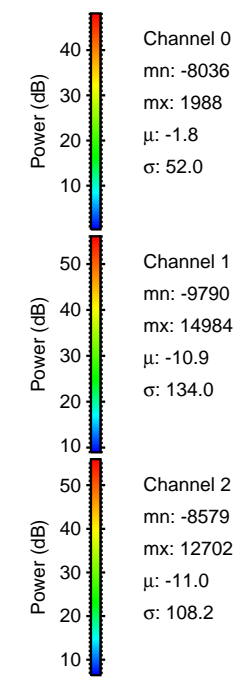
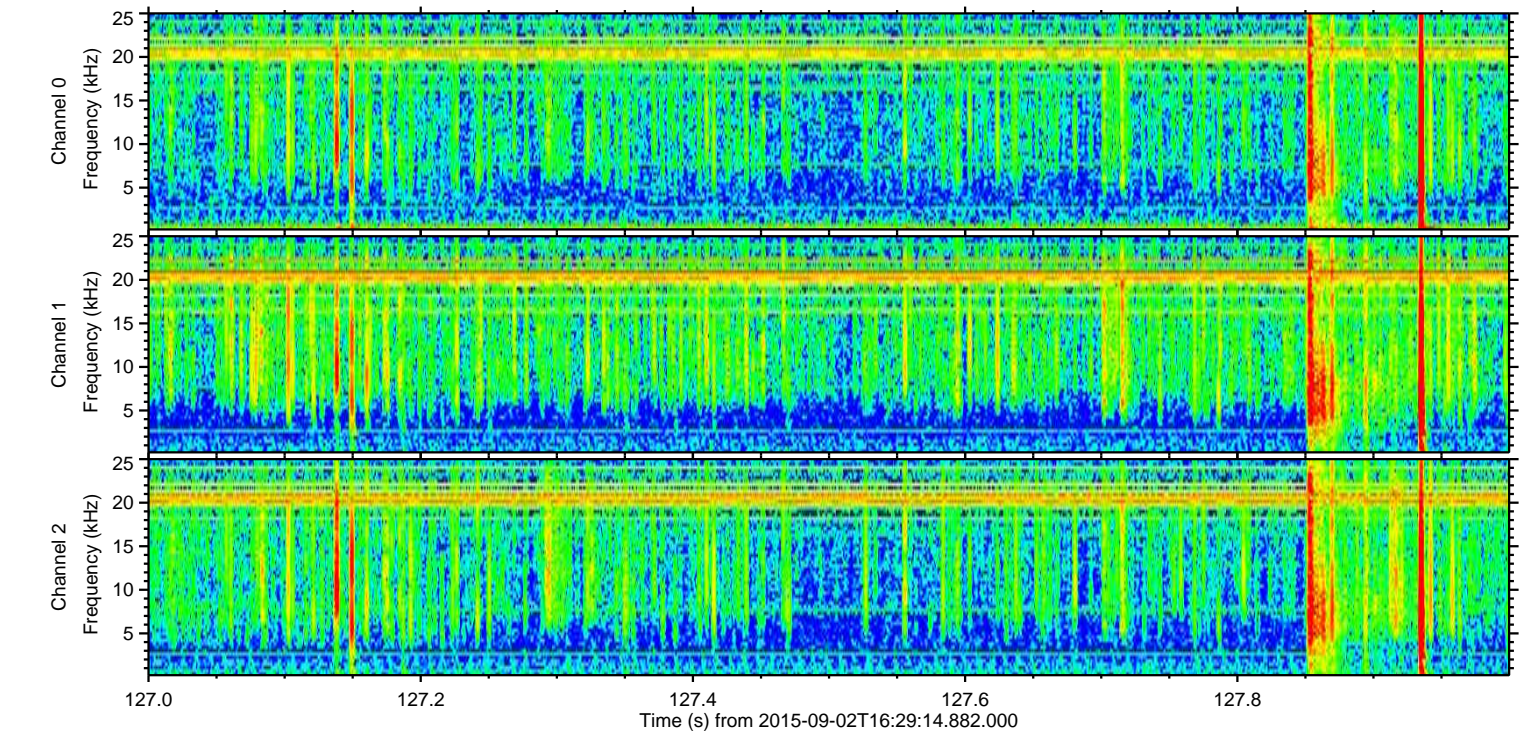
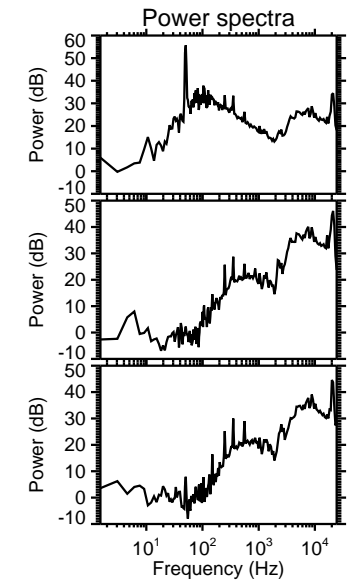
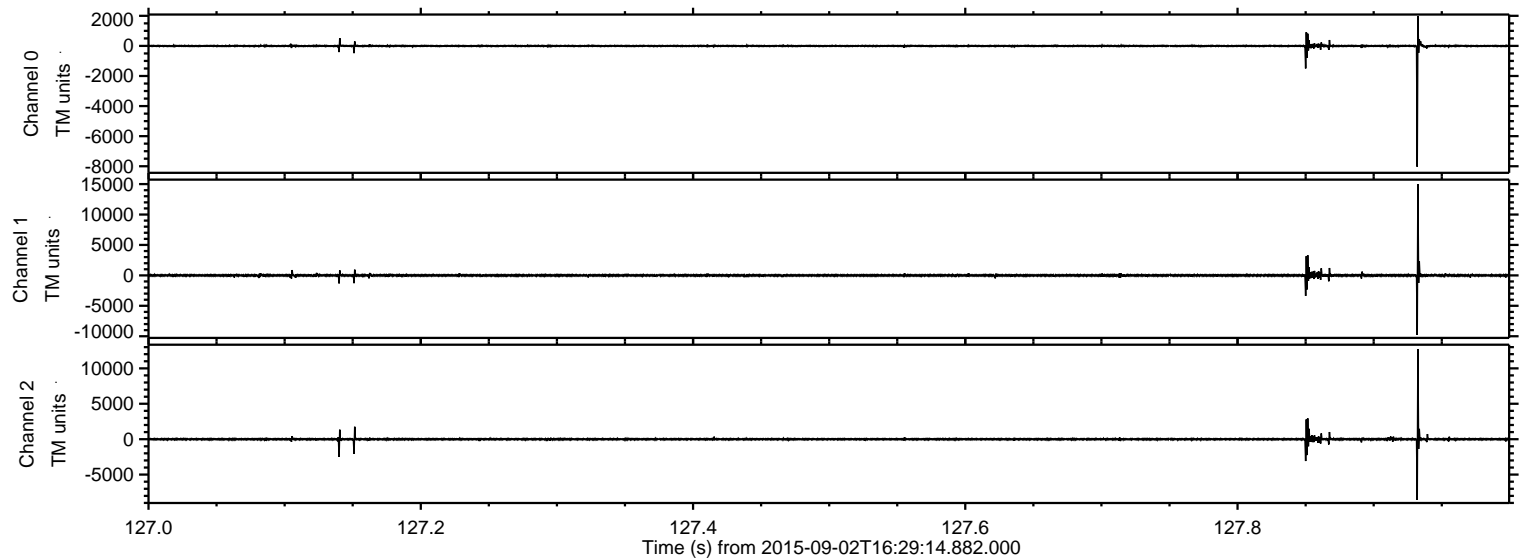
Processed Fri Oct 9 03:35:39 2015 by ELM ver.2012-10-06 from 001\_\_elm20150902\_162913\_\_dat00.bin





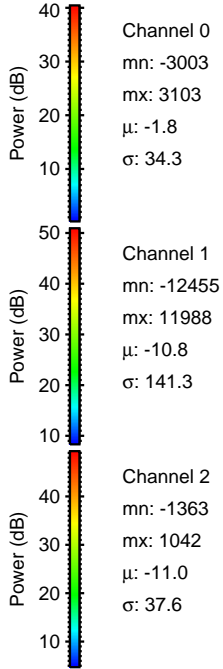
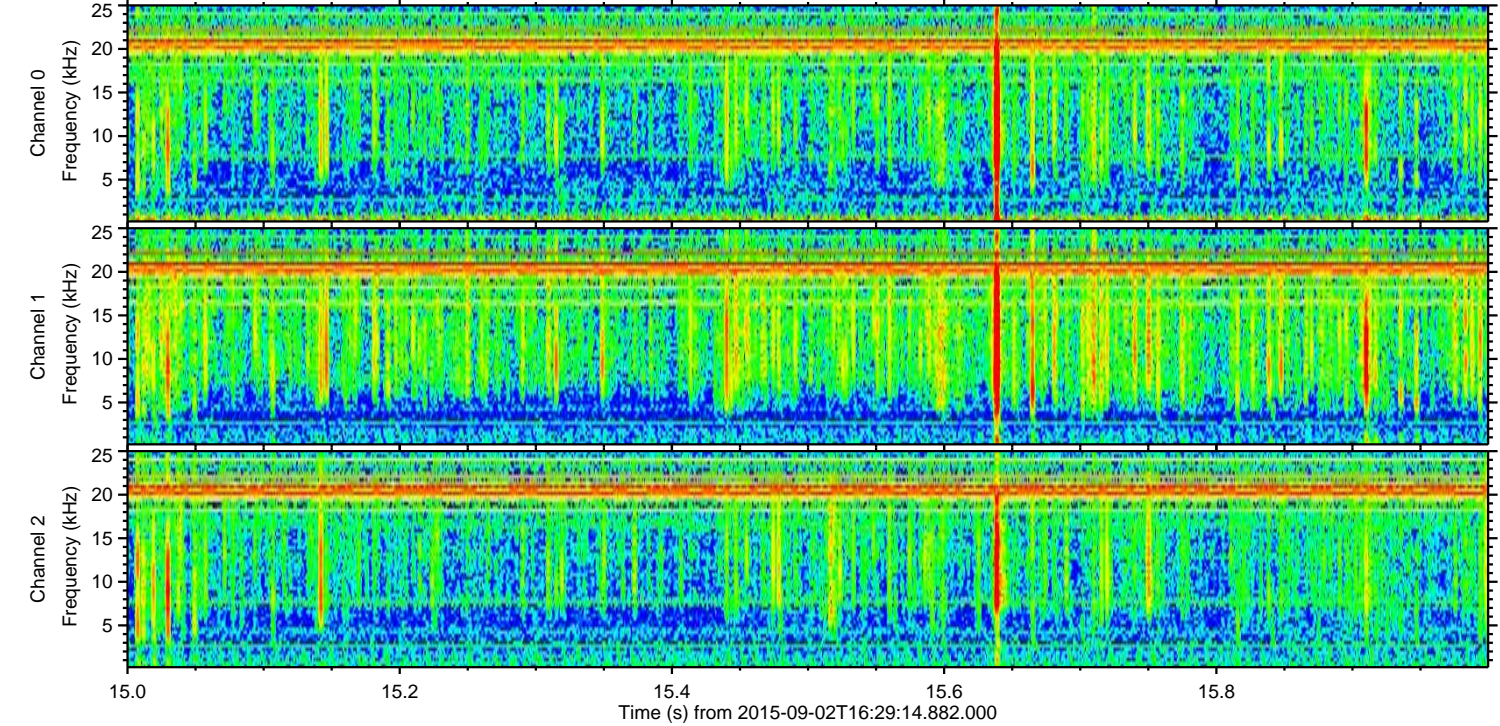
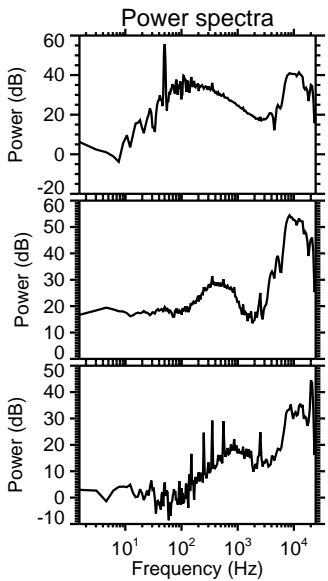
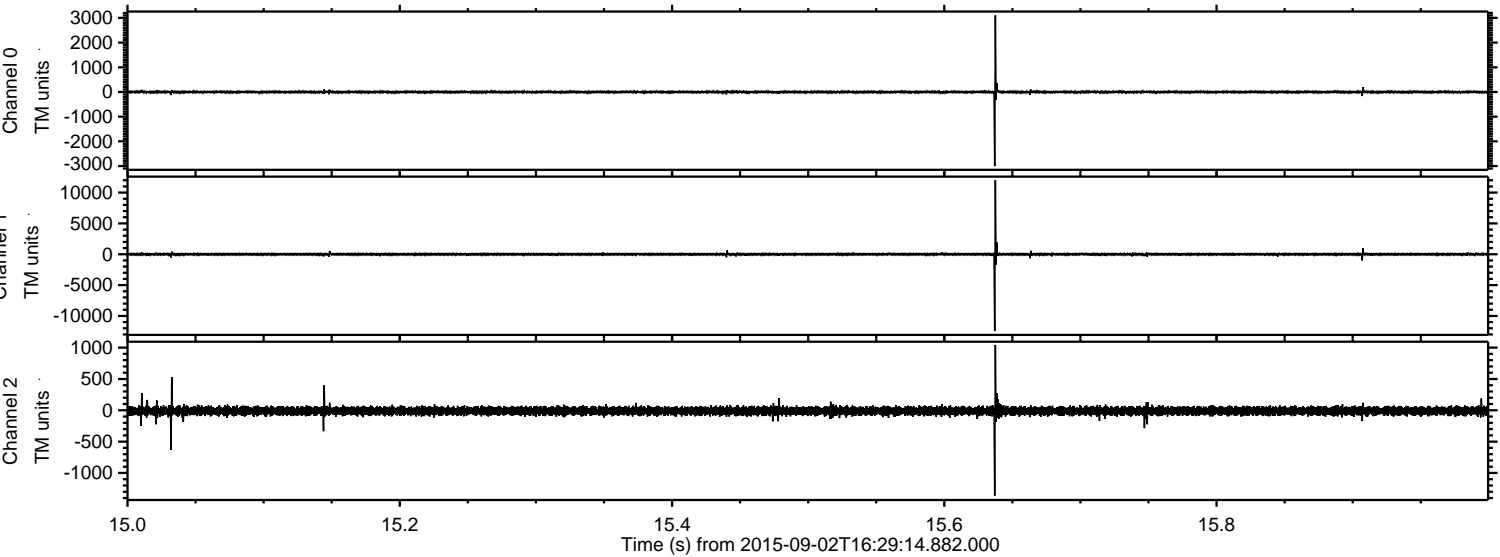
ELMAVAN 3D WAVEFORMS (Measured data sampled at 50 kHz) 51000 packets of 144 samples from 2015-09-02T16:29:14.882.000. Part 128/147

Processed Fri Oct 9 03:35:54 2015 by ELM ver.2012-10-06 from 001\_\_elm20150902\_162913\_\_dat00.bin





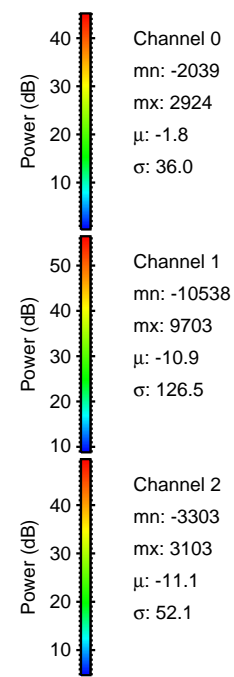
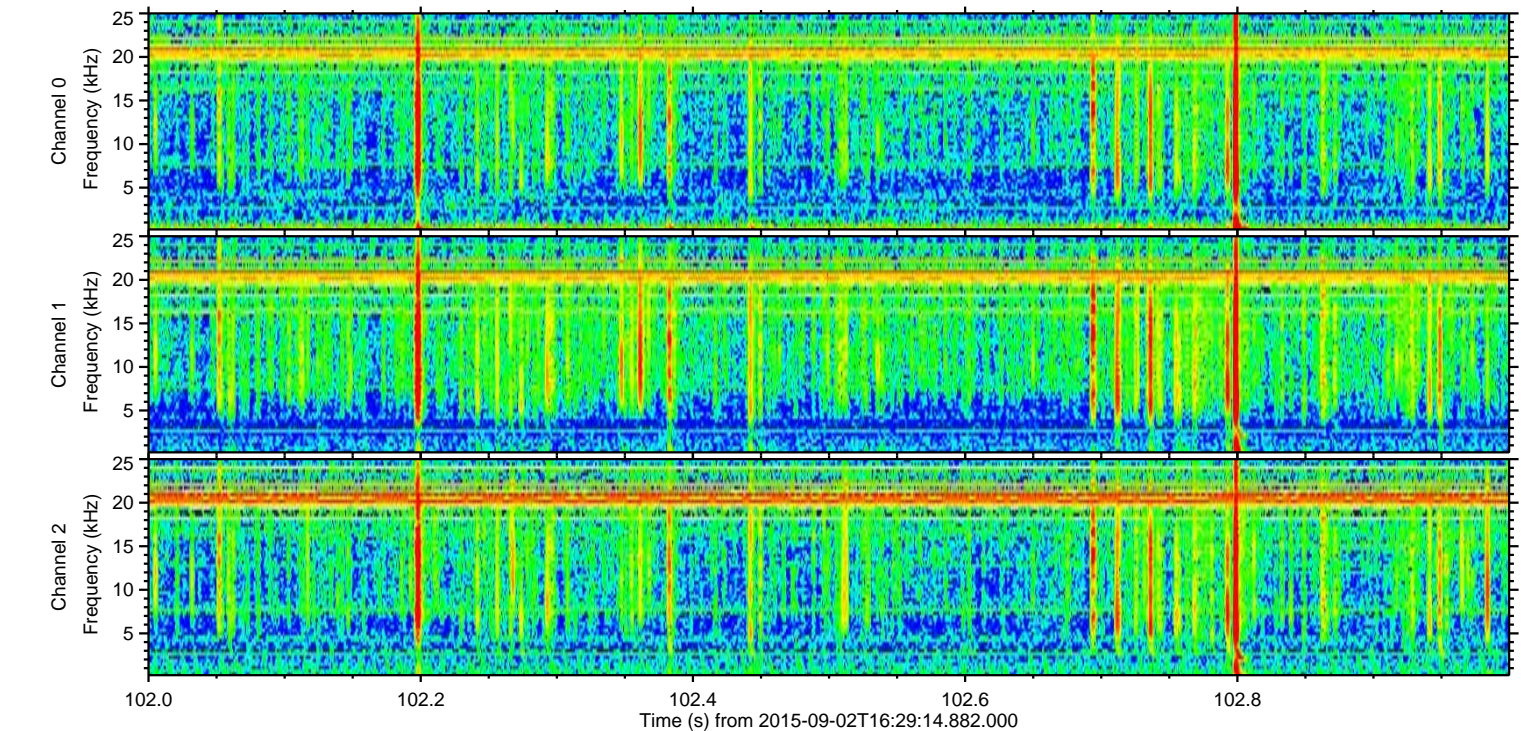
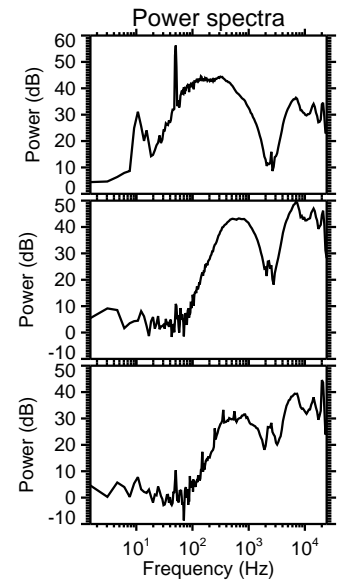
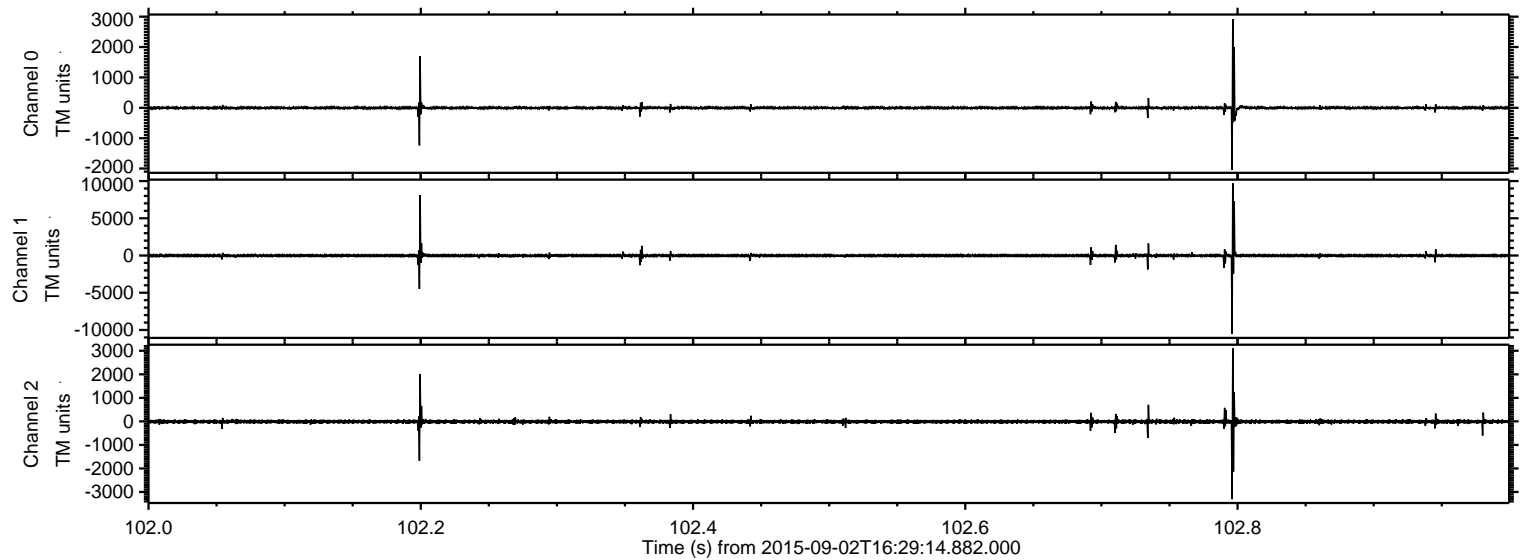
Processed Fri Oct 9 03:35:55 2015 by ELM ver.2012-10-06 from 001\_\_elm20150902\_162913\_\_dat00.bin





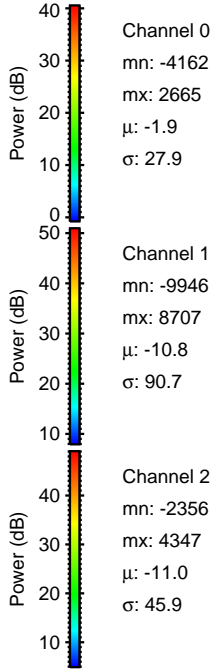
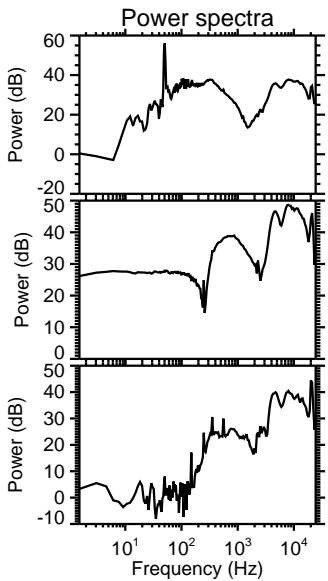
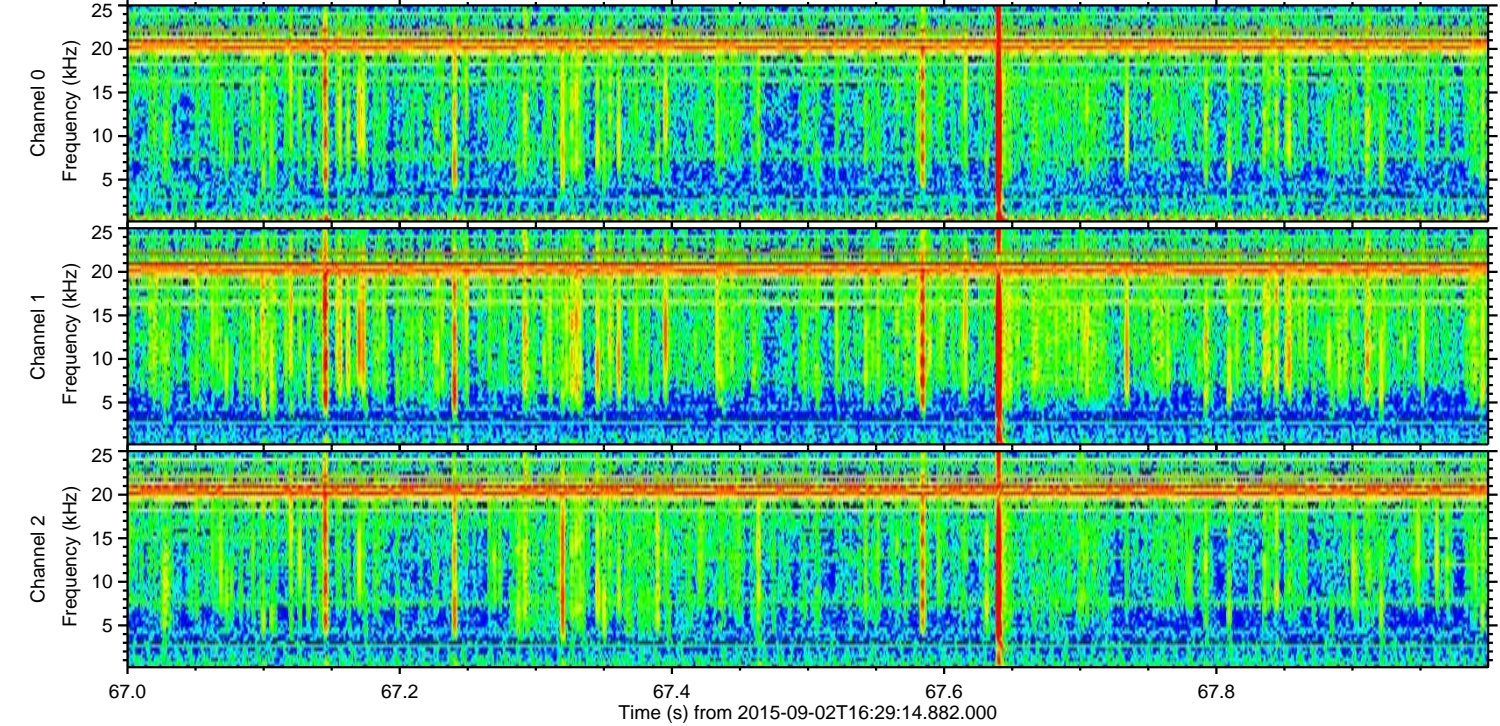
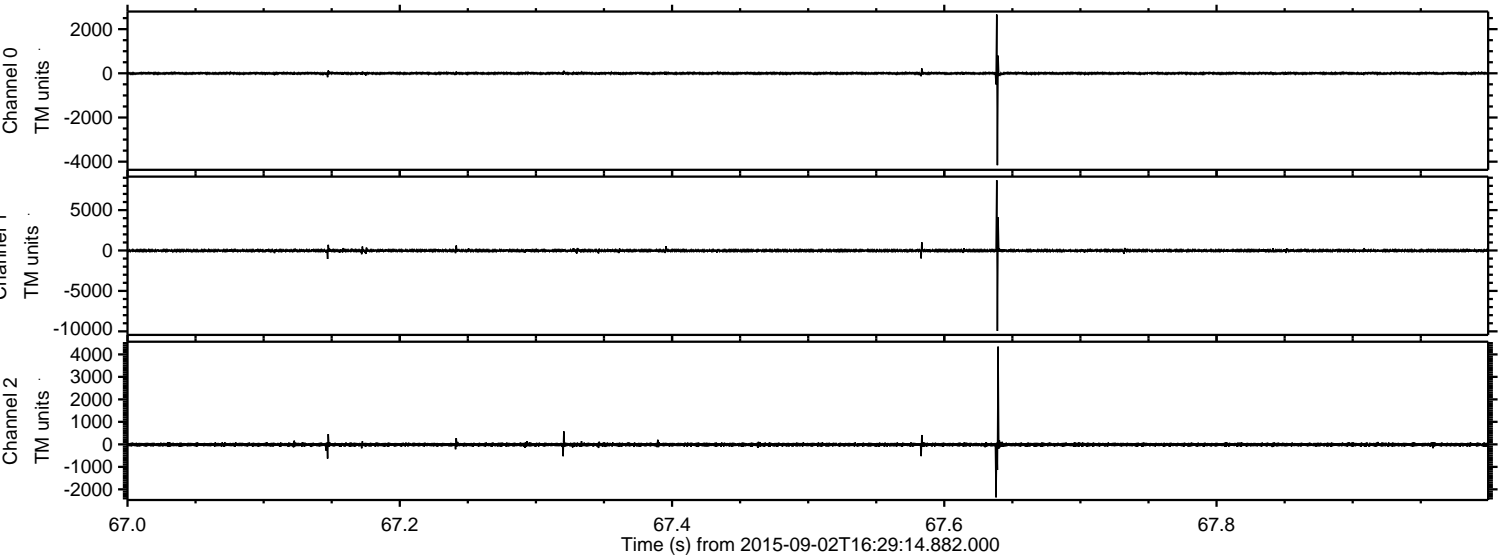
ELMAVAN 3D WAVEFORMS (Measured data sampled at 50 kHz) 51000 packets of 144 samples from 2015-09-02T16:29:14.882.000. Part 103/147

Processed Fri Oct 9 03:35:57 2015 by ELM ver.2012-10-06 from 001\_\_elm20150902\_162913\_\_dat00.bin





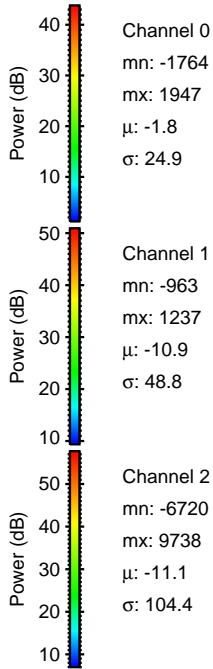
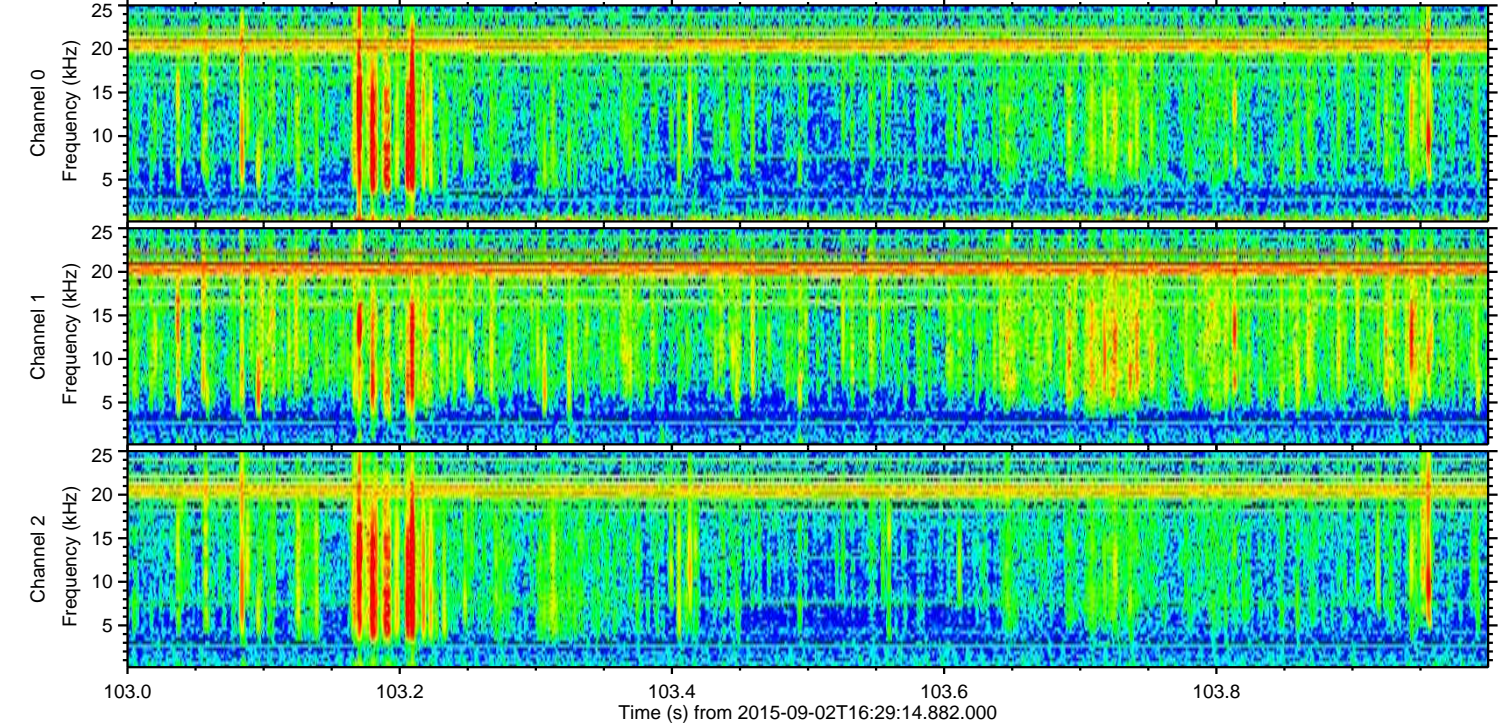
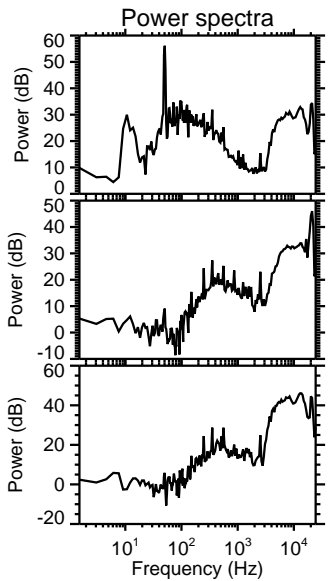
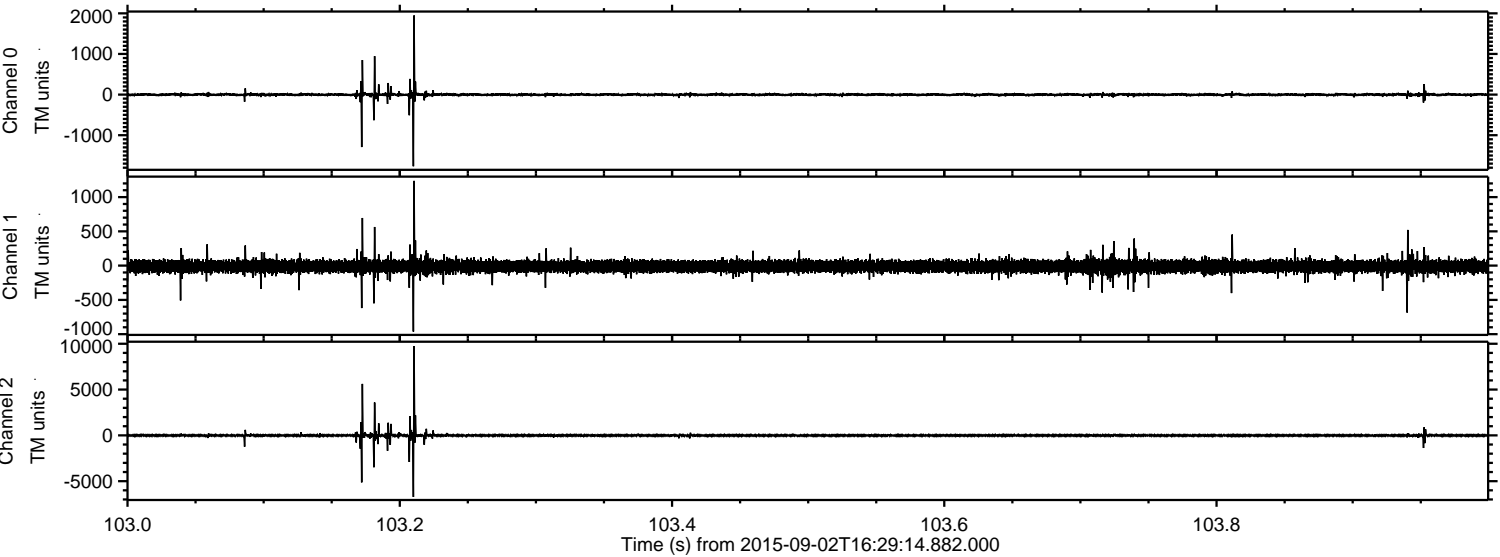
Processed Fri Oct 9 03:35:58 2015 by ELM ver.2012-10-06 from 001\_\_elm20150902\_162913\_\_dat00.bin





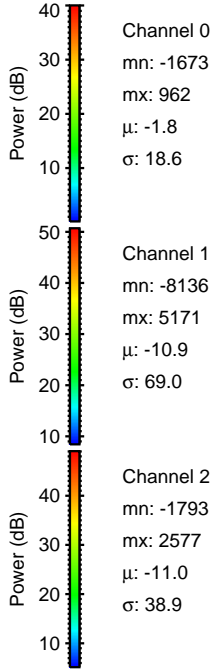
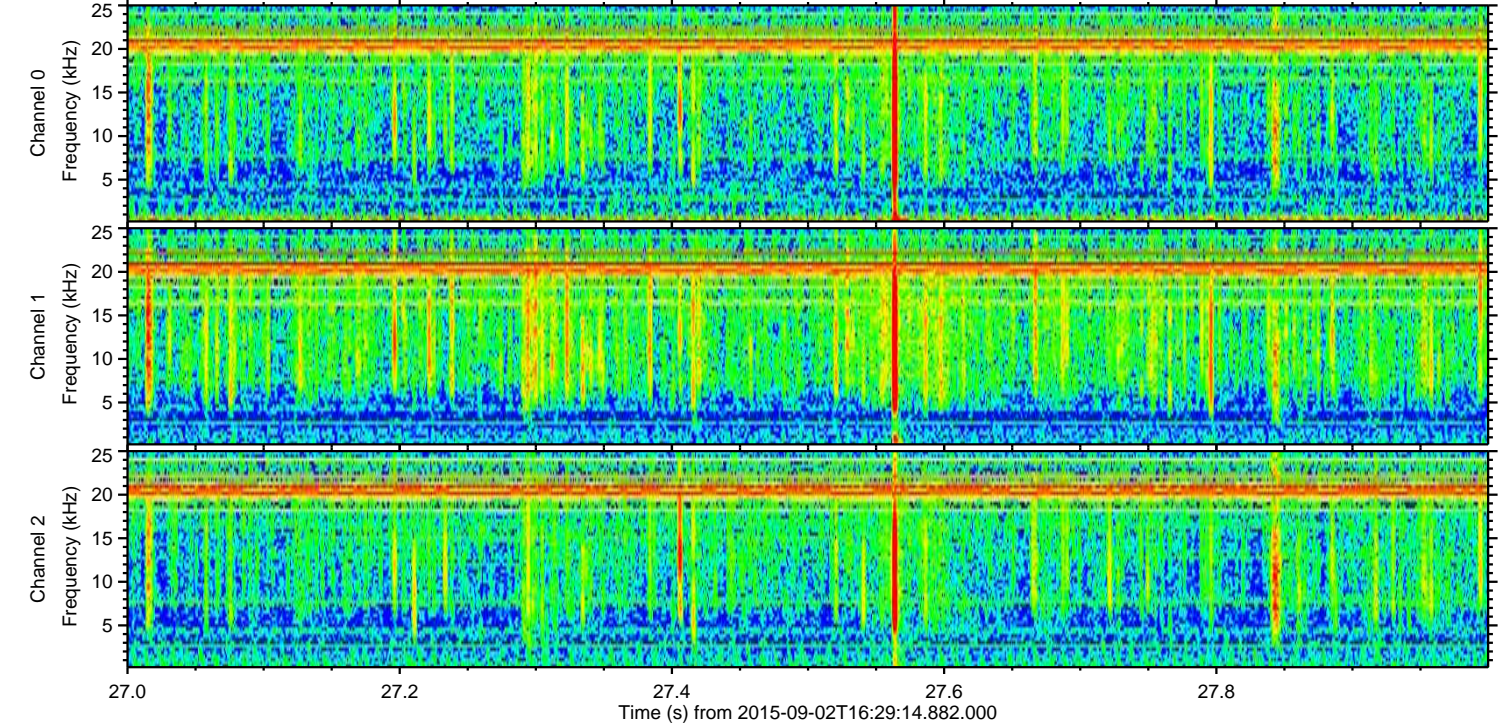
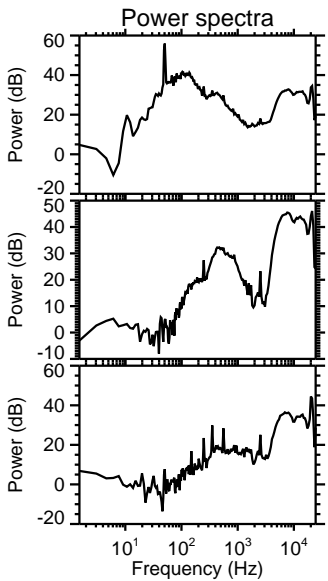
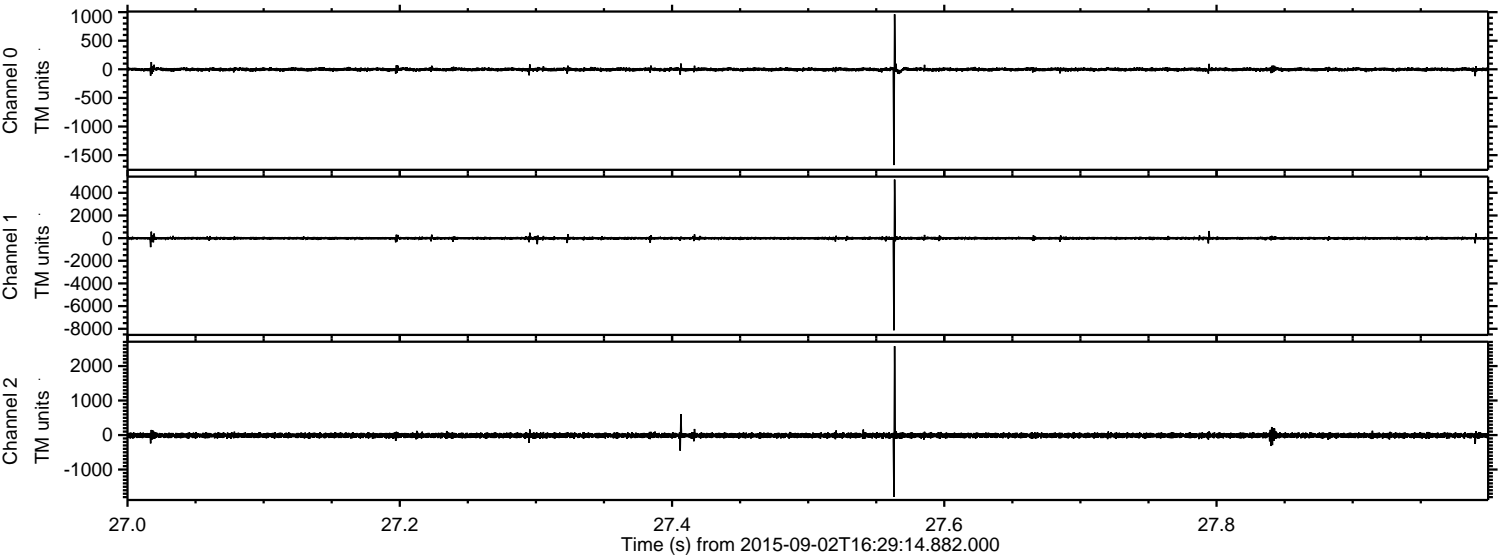
ELMAVAN 3D WAVEFORMS (Measured data sampled at 50 kHz) 51000 packets of 144 samples from 2015-09-02T16:29:14.882.000. Part 104/147

Processed Fri Oct 9 03:35:59 2015 by ELM ver.2012-10-06 from 001\_\_elm20150902\_162913\_\_dat00.bin



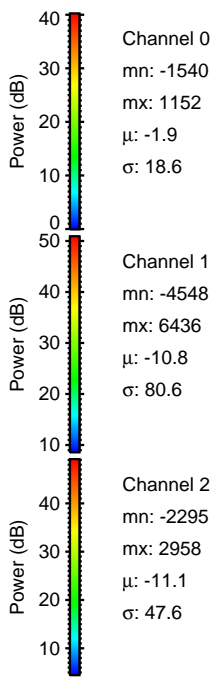
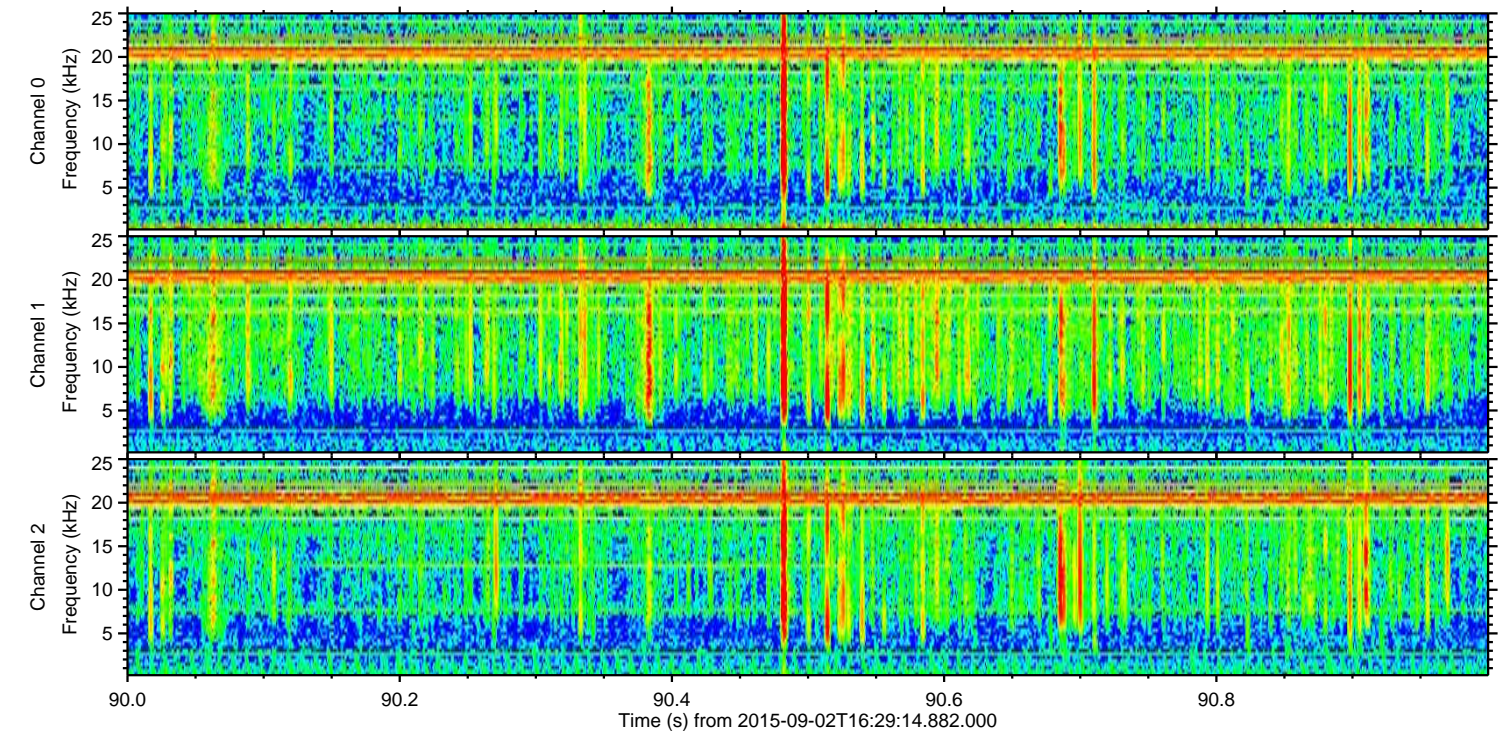
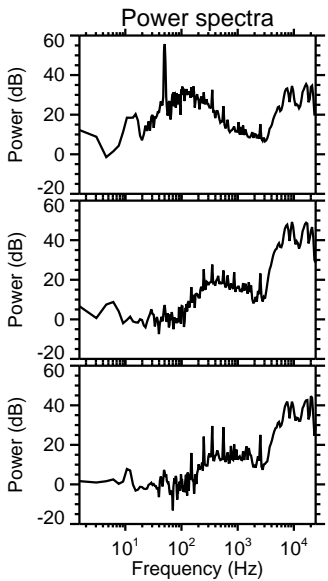
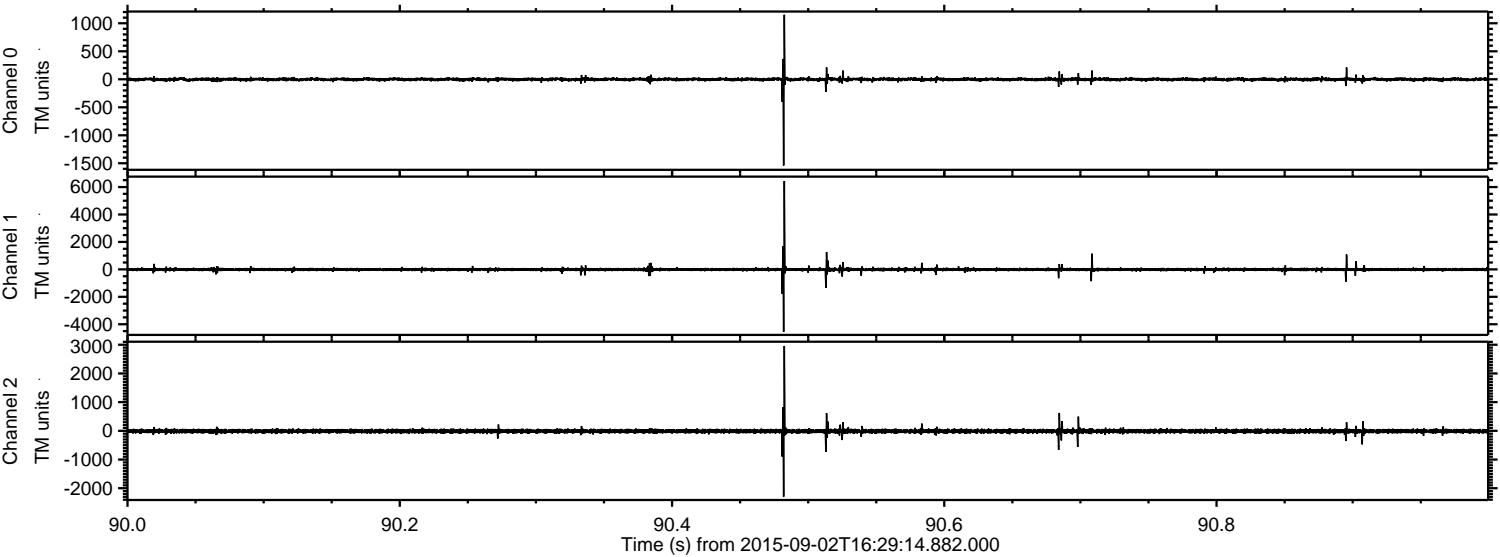


Processed Fri Oct 9 03:36:00 2015 by ELM ver.2012-10-06 from 001\_\_elm20150902\_162913\_\_dat00.bin





Processed Fri Oct 9 03:36:01 2015 by ELM ver.2012-10-06 from 001\_\_elm20150902\_162913\_\_dat00.bin



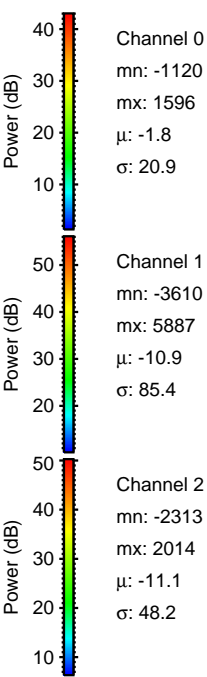
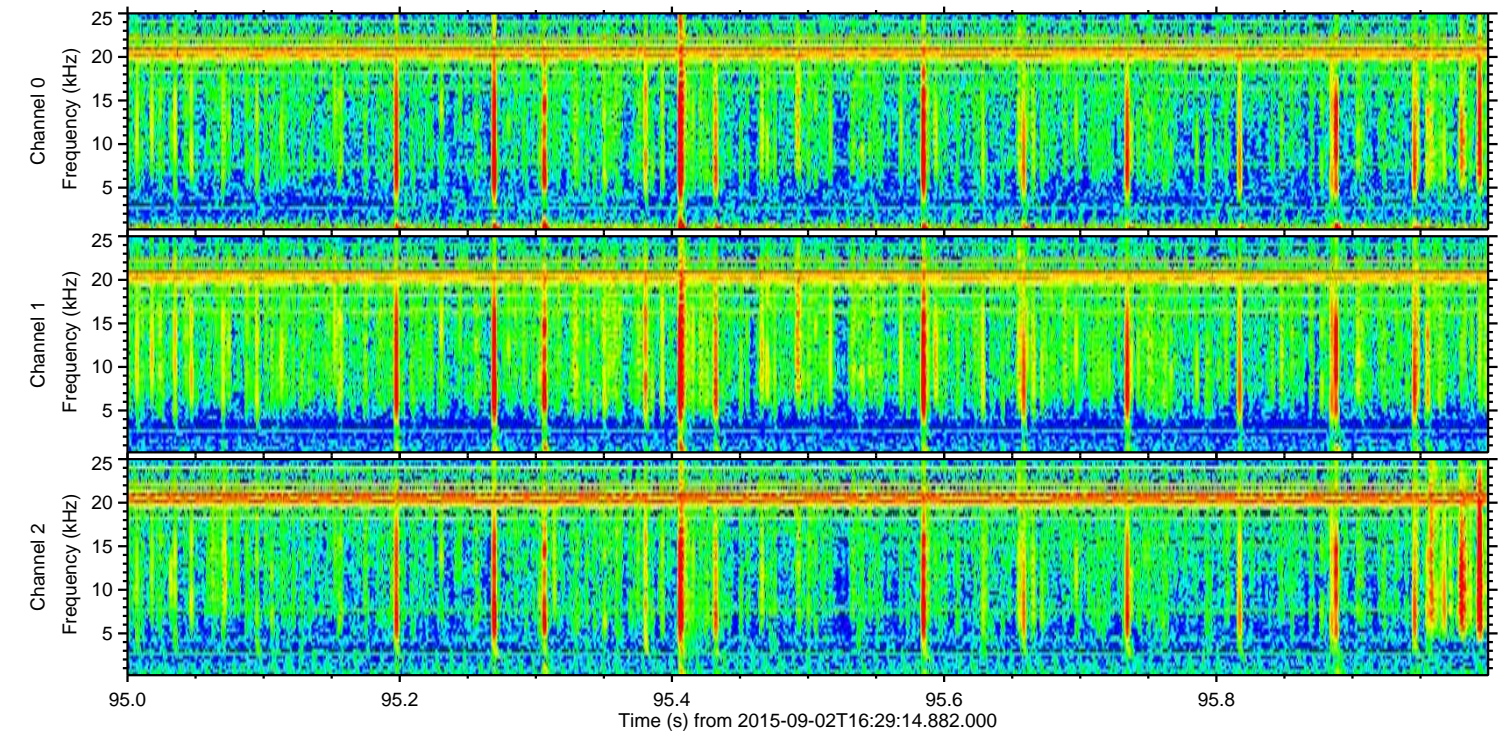
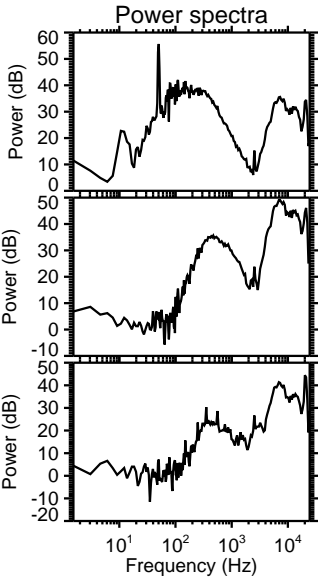
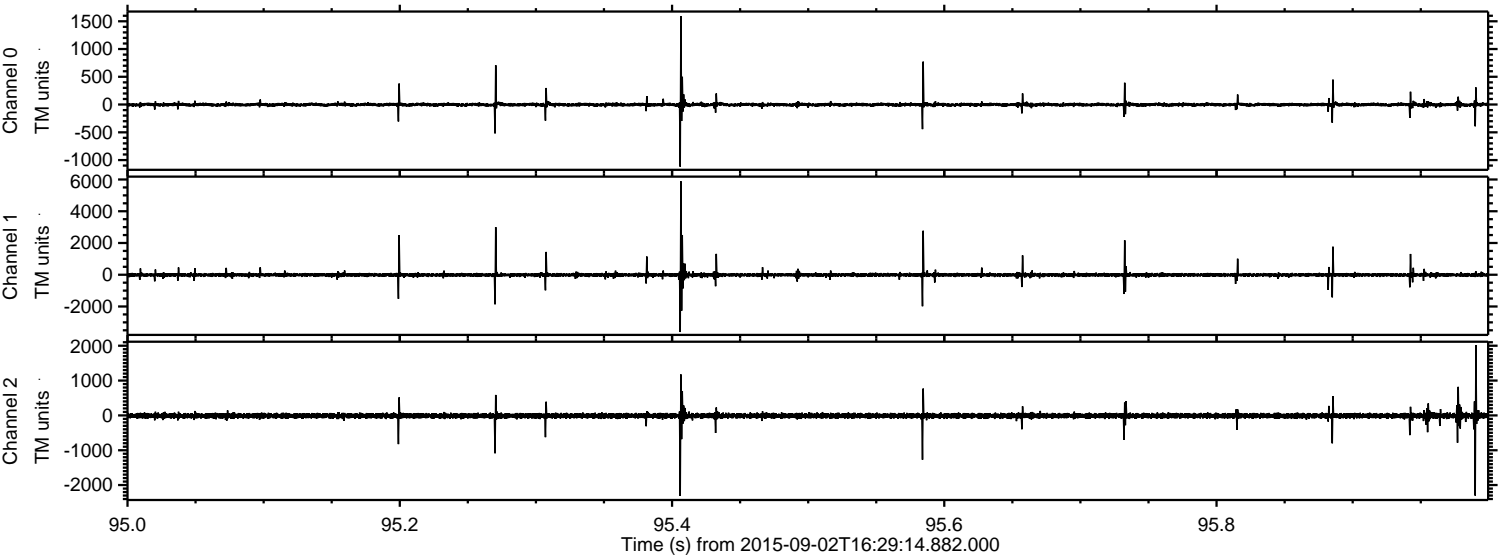
|                 |
|-----------------|
| Channel 0       |
| mn: -1540       |
| mx: 1152        |
| $\mu$ : -1.9    |
| $\sigma$ : 18.6 |

|                 |
|-----------------|
| Channel 1       |
| mn: -4548       |
| mx: 6436        |
| $\mu$ : -10.8   |
| $\sigma$ : 80.6 |

|                 |
|-----------------|
| Channel 2       |
| mn: -2295       |
| mx: 2958        |
| $\mu$ : -11.1   |
| $\sigma$ : 47.6 |

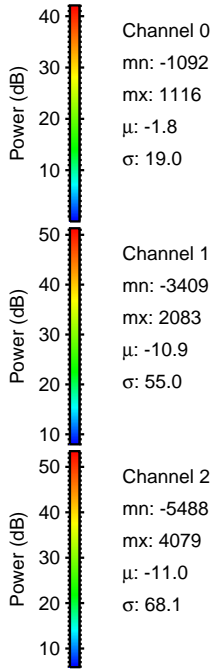
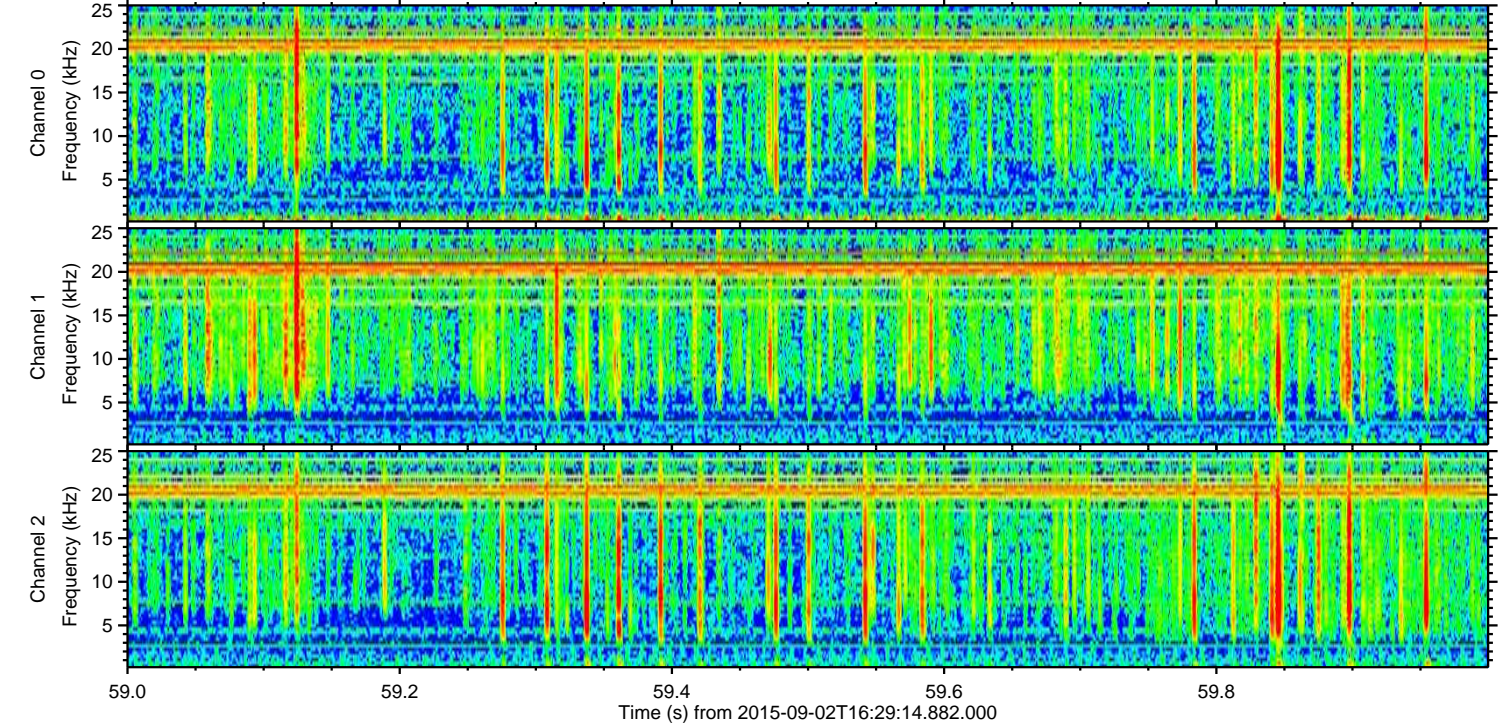
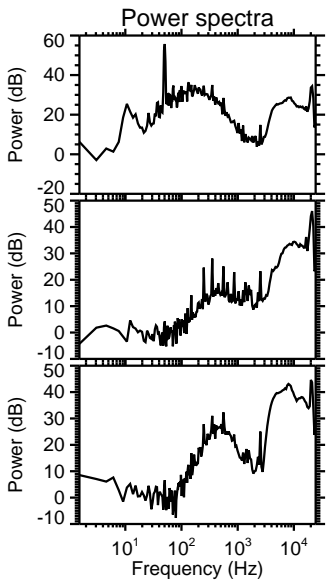
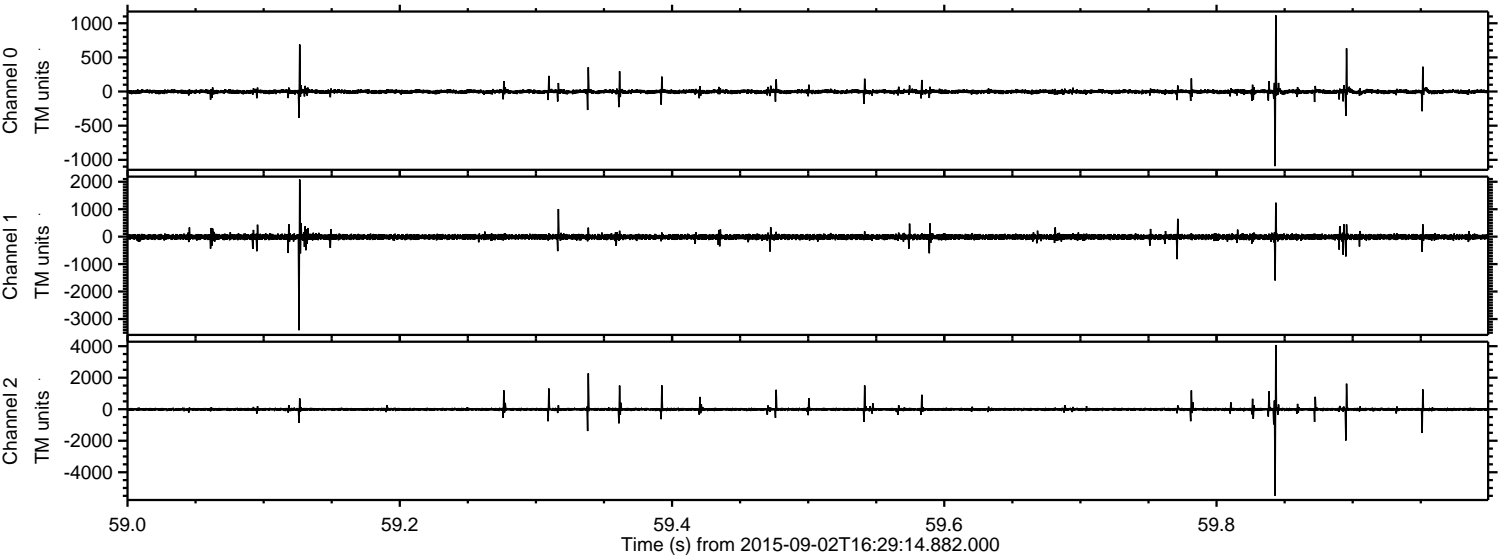


Processed Fri Oct 9 03:36:02 2015 by ELM ver.2012-10-06 from 001\_\_elm20150902\_162913\_\_dat00.bin





Processed Fri Oct 9 03:36:03 2015 by ELM ver.2012-10-06 from 001\_\_elm20150902\_162913\_\_dat00.bin



Channel 0  
mn: -1092  
mx: 1116  
 $\mu$ : -1.8  
 $\sigma$ : 19.0

Channel 1  
mn: -3409  
mx: 2083  
 $\mu$ : -10.9  
 $\sigma$ : 55.0

Channel 2  
mn: -5488  
mx: 4079  
 $\mu$ : -11.0  
 $\sigma$ : 68.1



