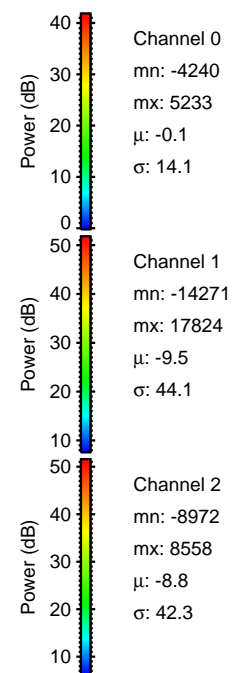
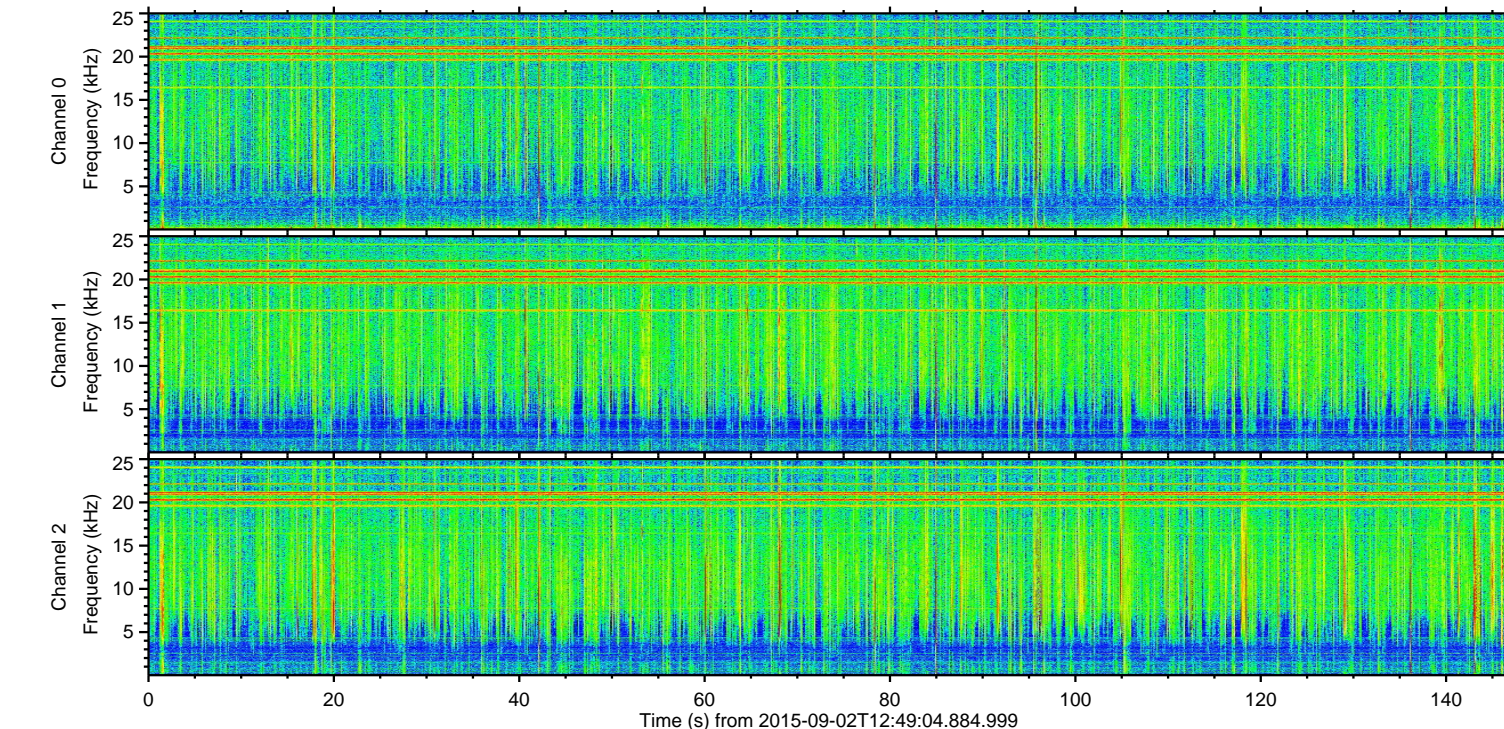
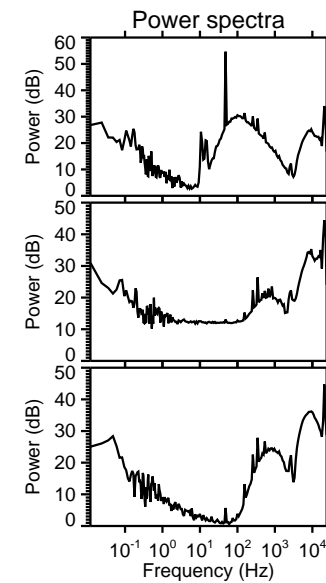
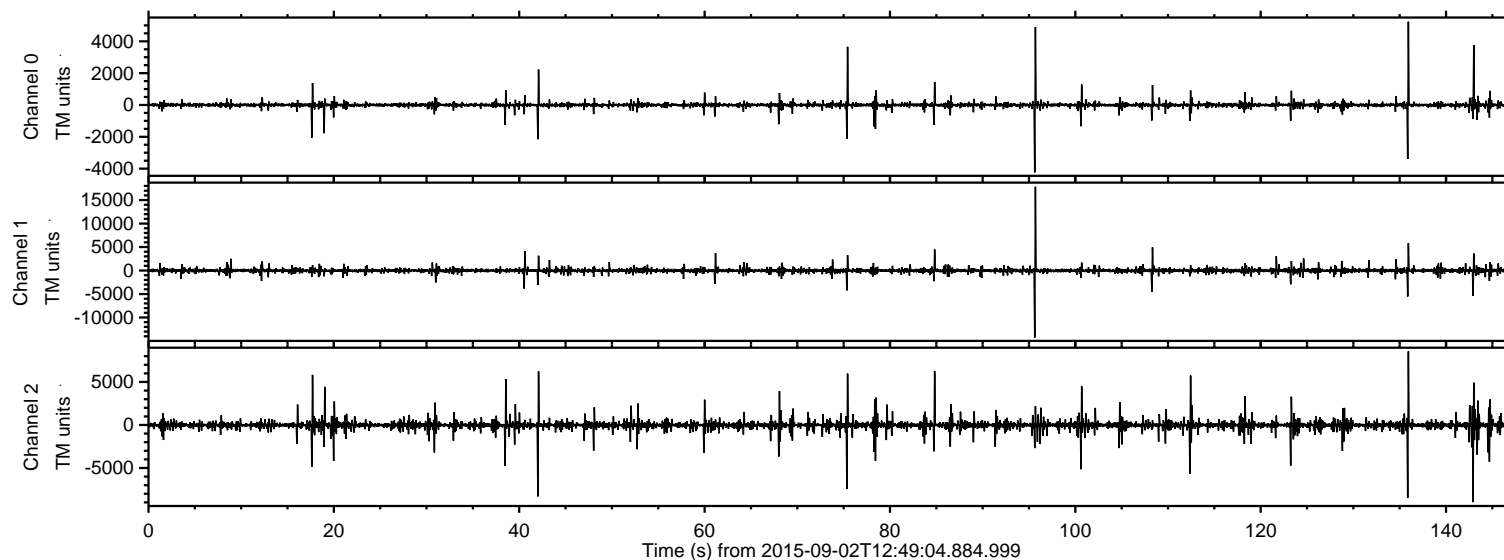
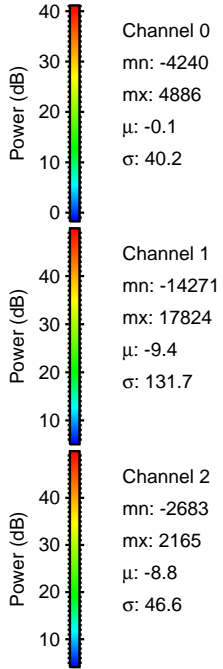
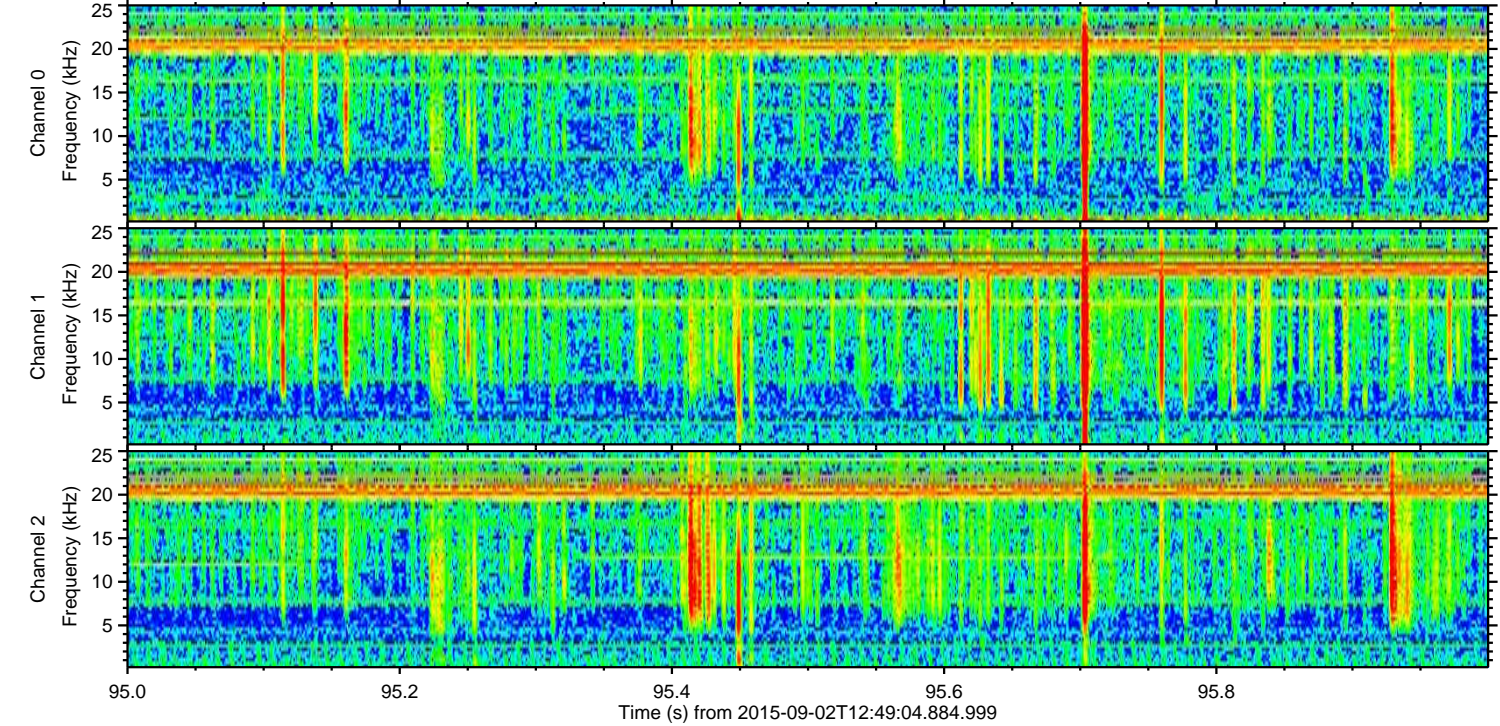
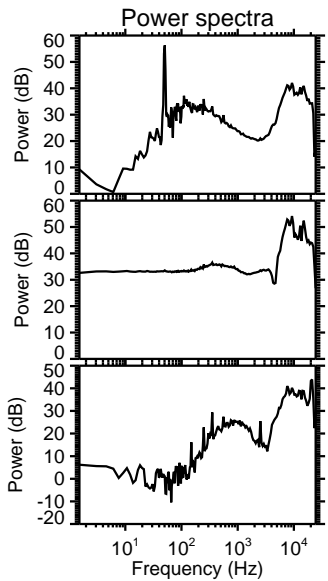
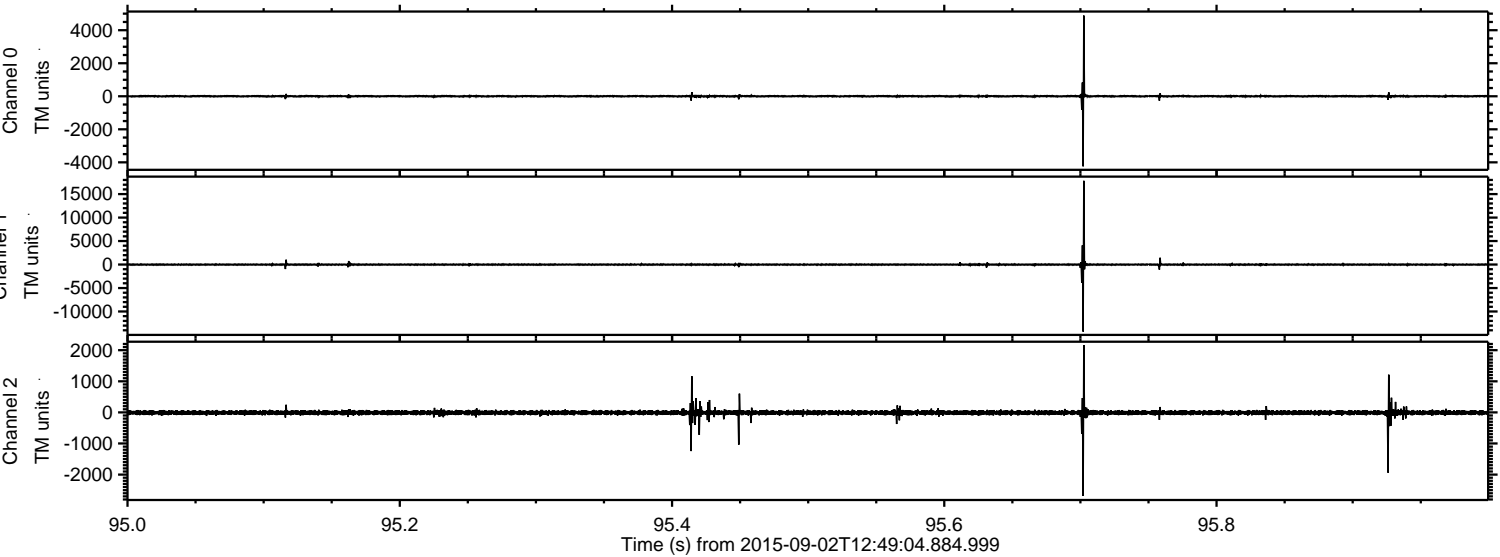


ELMAVAN 3D WAVEFORMS (Measured data sampled at 50 kHz) 51000 packets of 144 samples from 2015-09-02T12:49:04.884.999.

Processed Fri Oct 9 02:34:26 2015 by ELM ver.2012-10-06 from 001__elm20150902_124903__dat00.bin

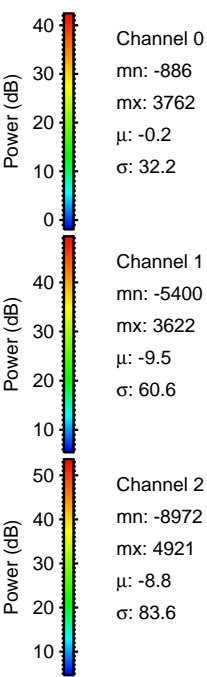
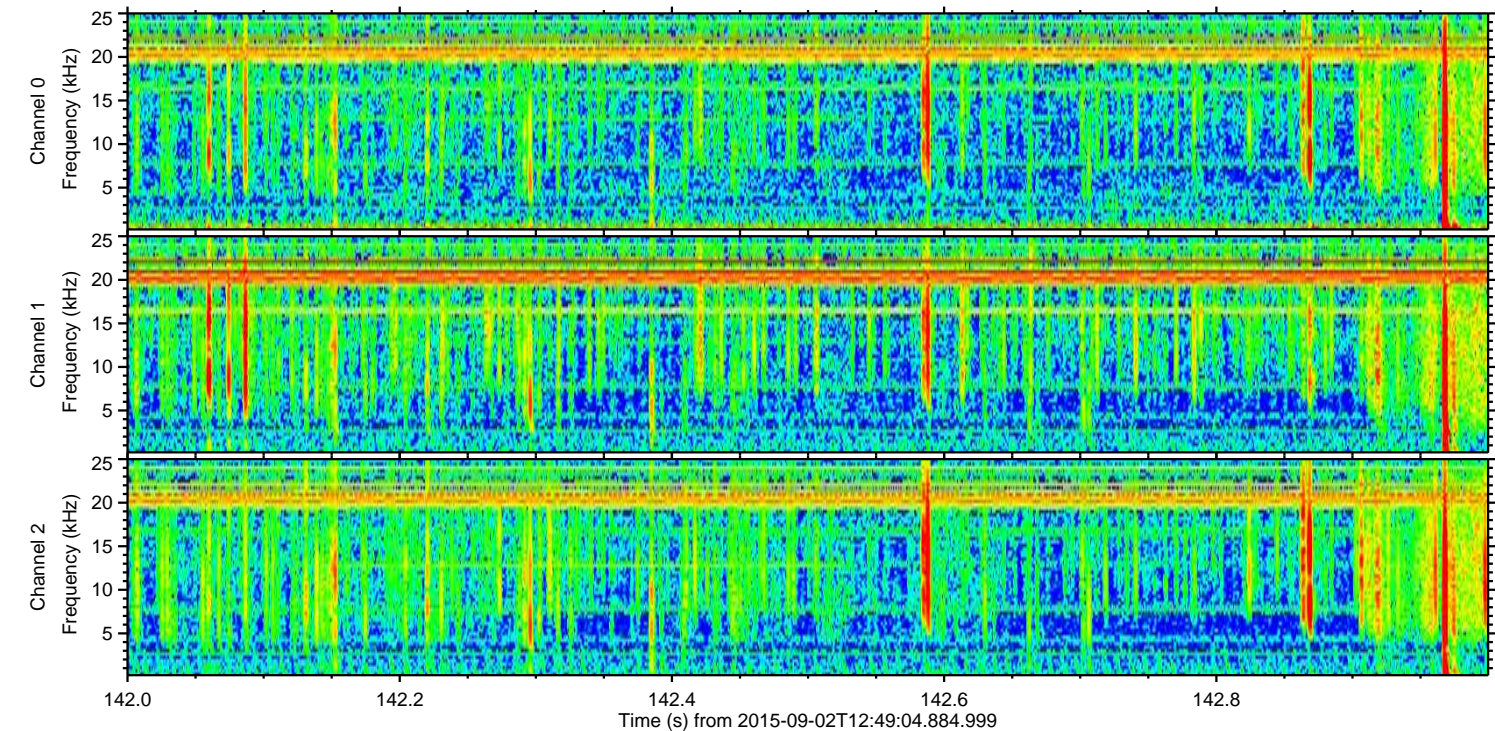
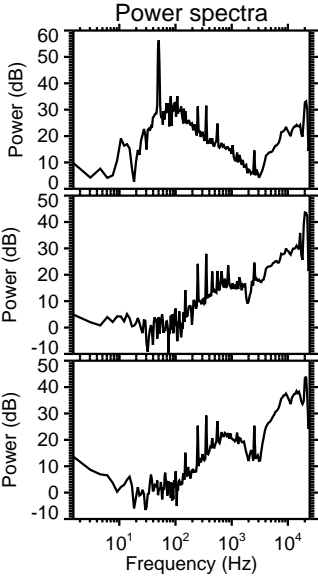
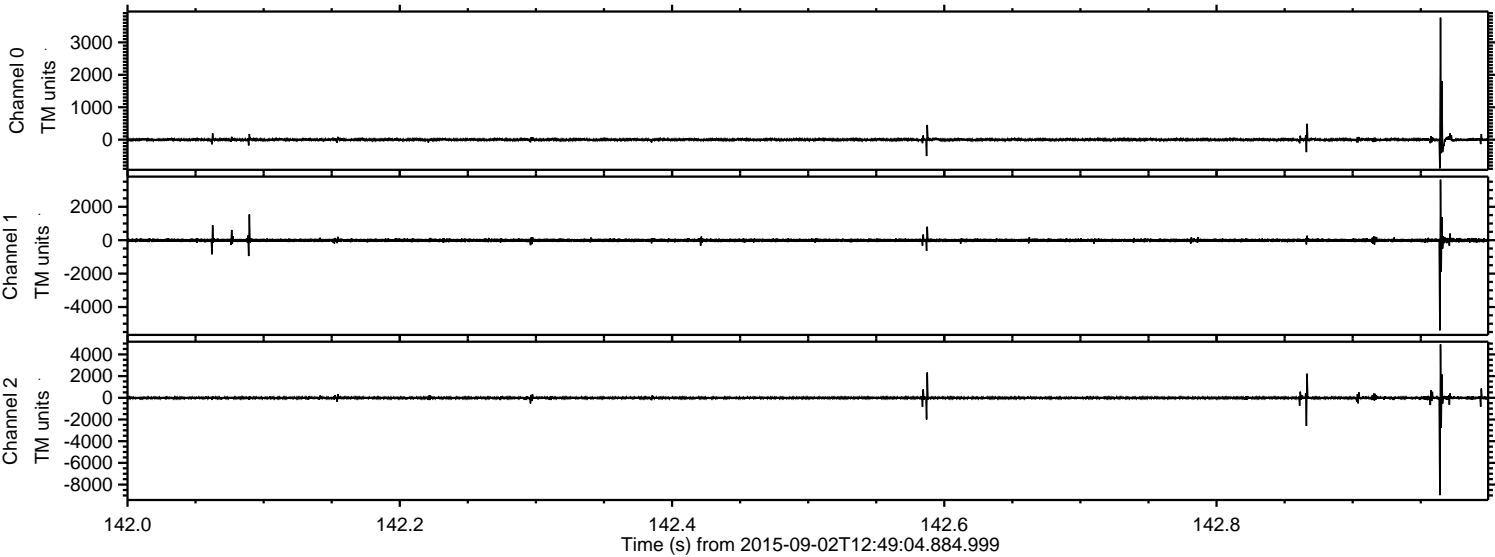


Processed Fri Oct 9 02:34:43 2015 by ELM ver.2012-10-06 from 001__elm20150902_124903__dat00.bin



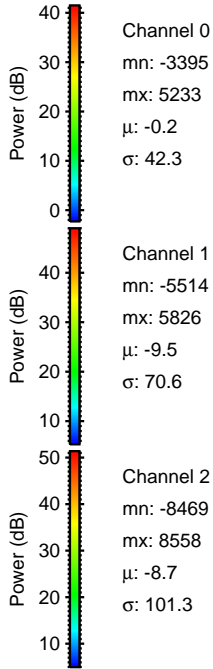
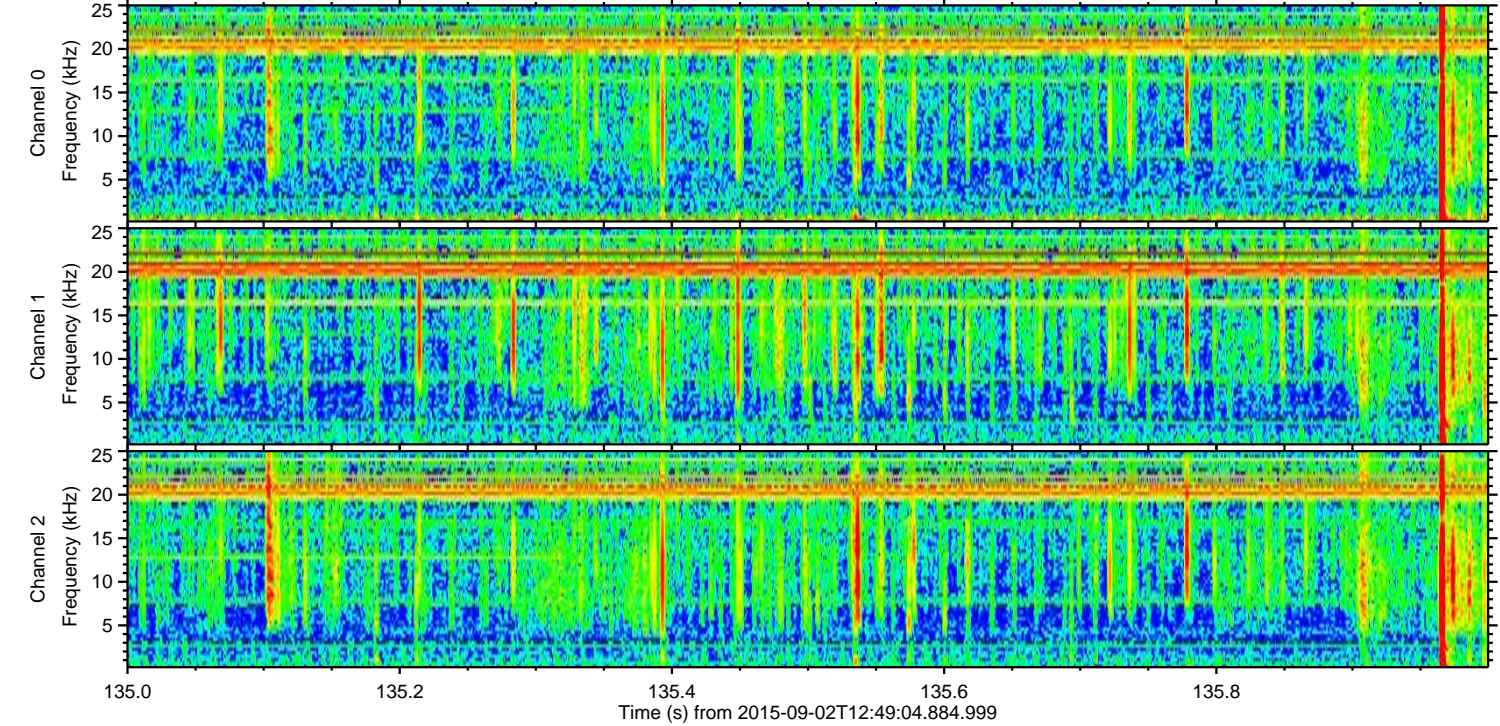
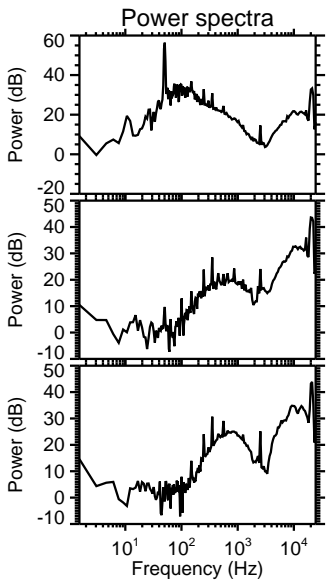
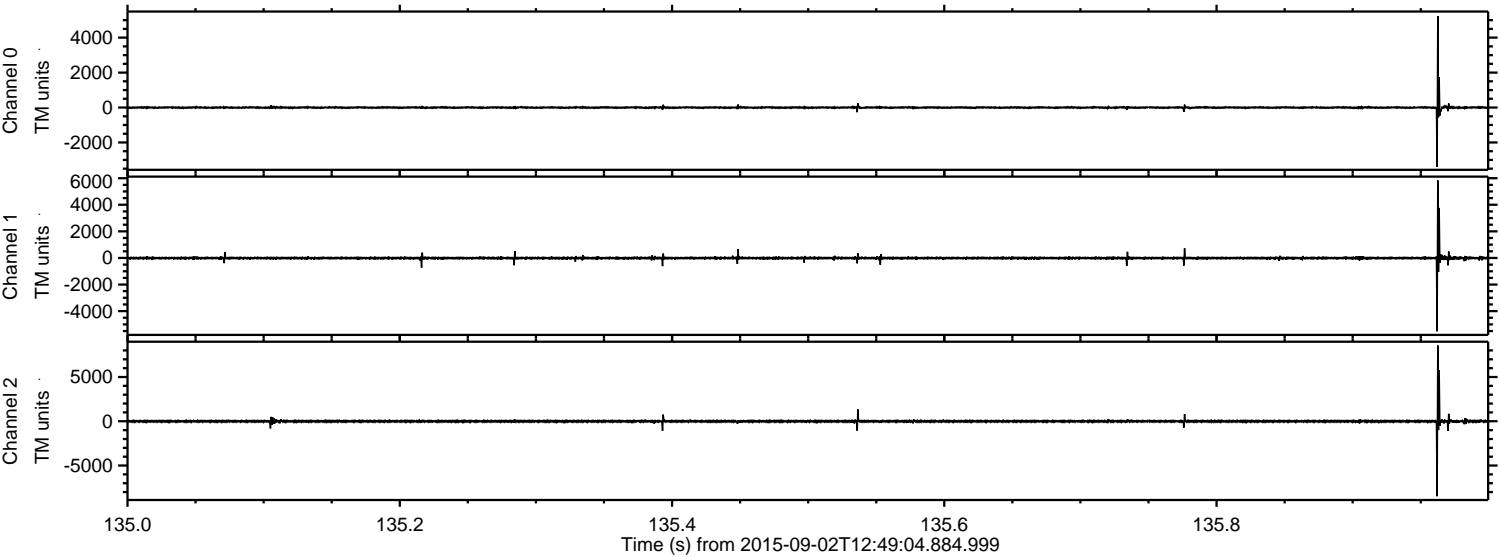
ELMAVAN 3D WAVEFORMS (Measured data sampled at 50 kHz) 51000 packets of 144 samples from 2015-09-02T12:49:04.884.999. Part 143/147

Processed Fri Oct 9 02:34:44 2015 by ELM ver.2012-10-06 from 001__elm20150902_124903__dat00.bin

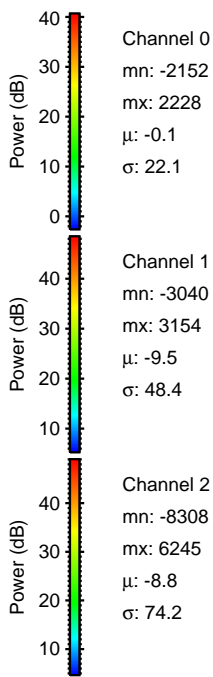
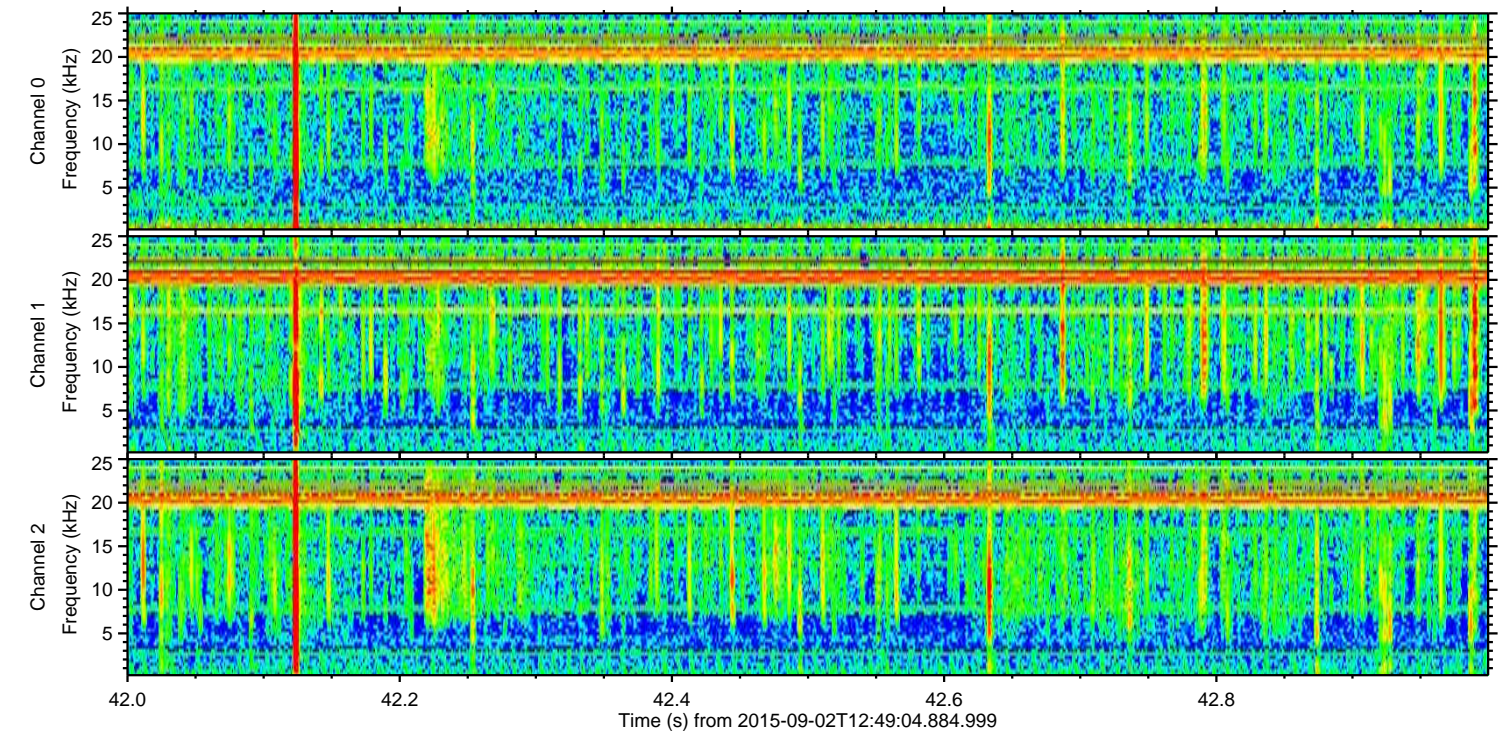
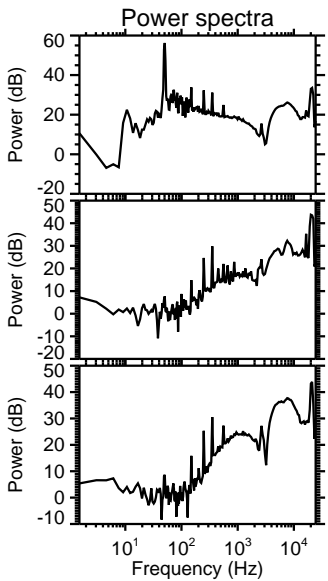
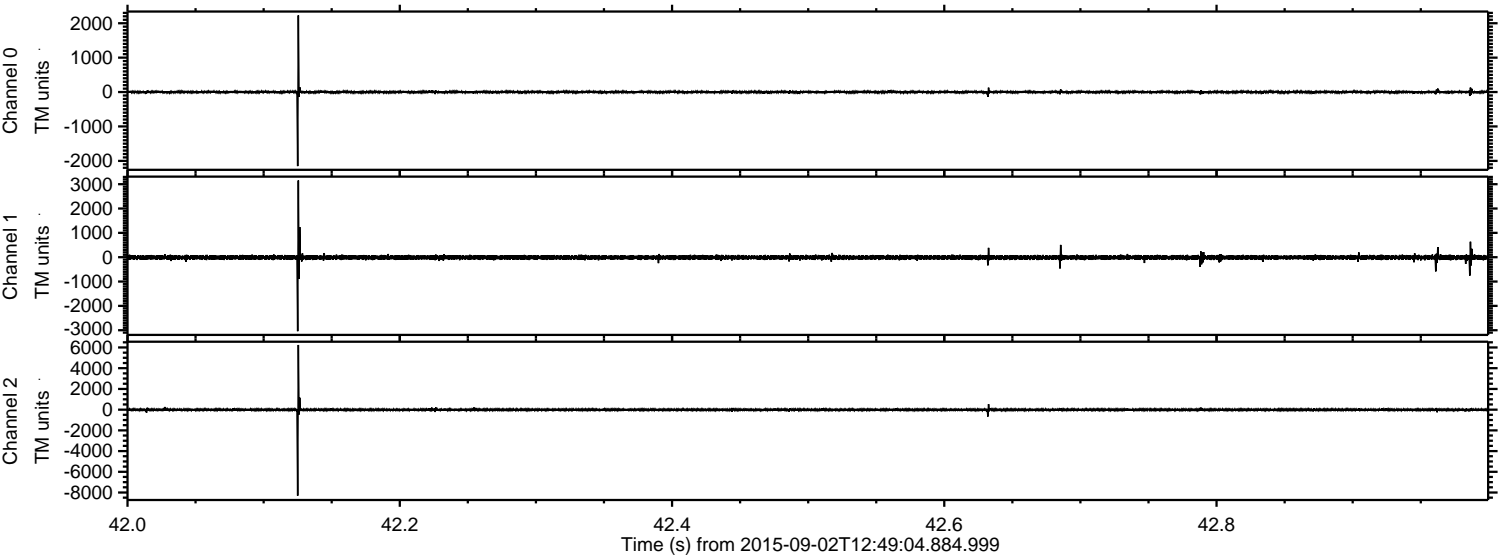


ELMAVAN 3D WAVEFORMS (Measured data sampled at 50 kHz) 51000 packets of 144 samples from 2015-09-02T12:49:04.884.999. Part 136/147

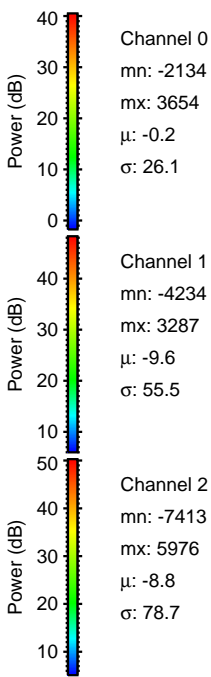
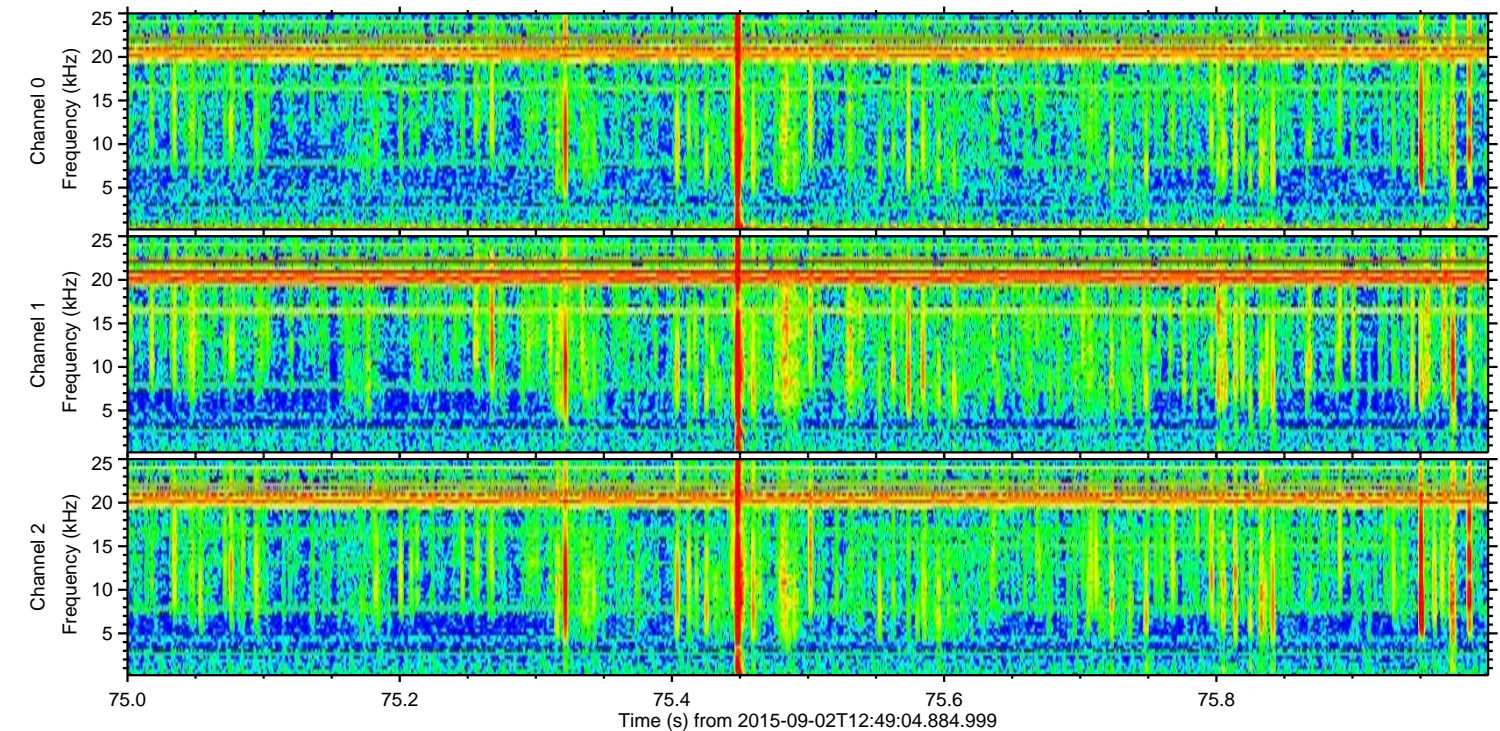
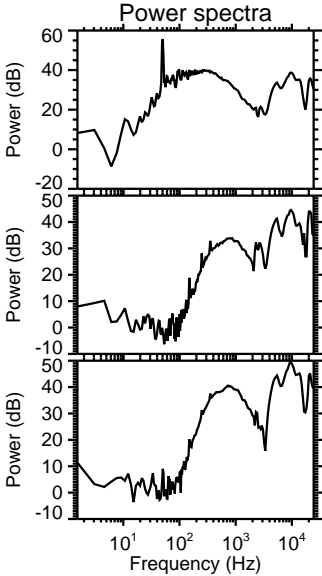
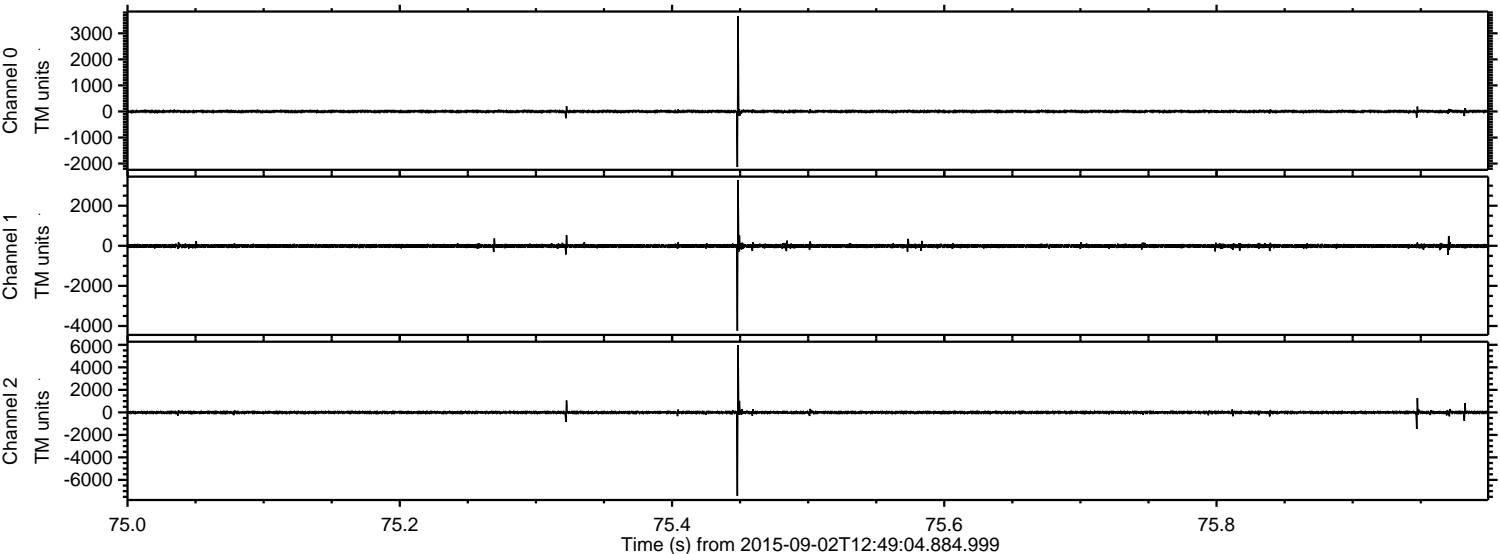
Processed Fri Oct 9 02:34:45 2015 by ELM ver.2012-10-06 from 001__elm20150902_124903__dat00.bin



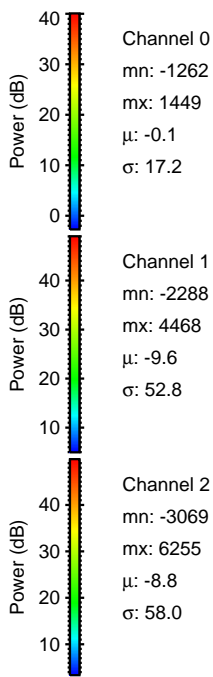
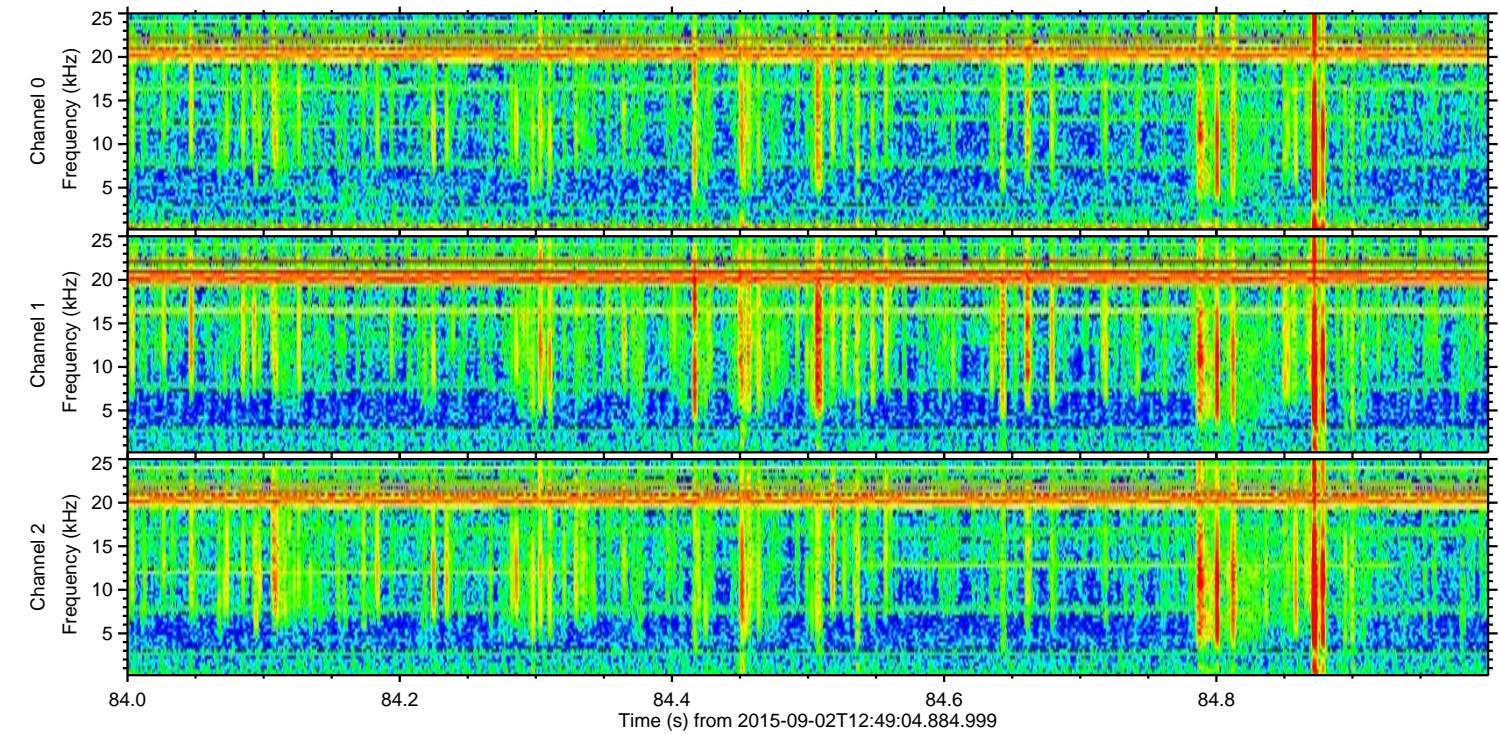
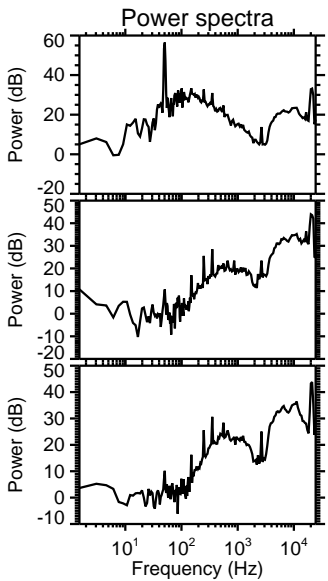
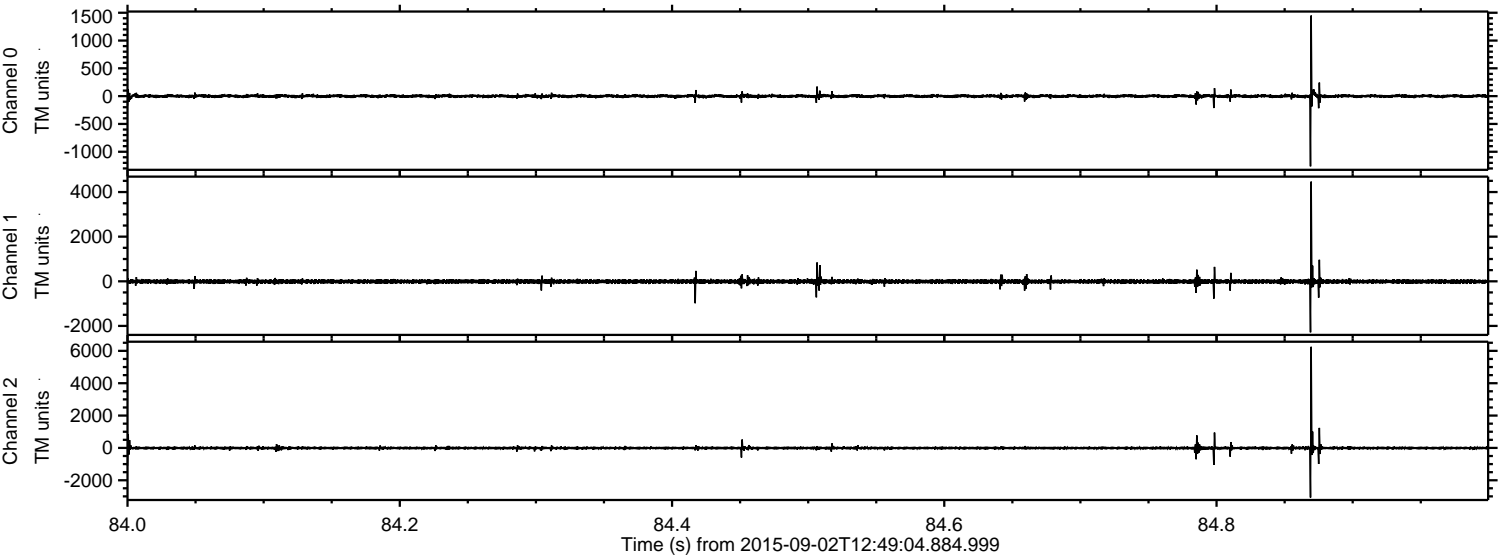
Processed Fri Oct 9 02:34:46 2015 by ELM ver.2012-10-06 from 001__elm20150902_124903__dat00.bin



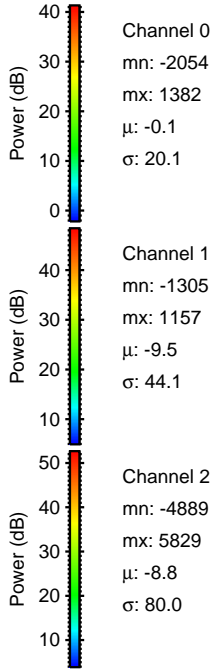
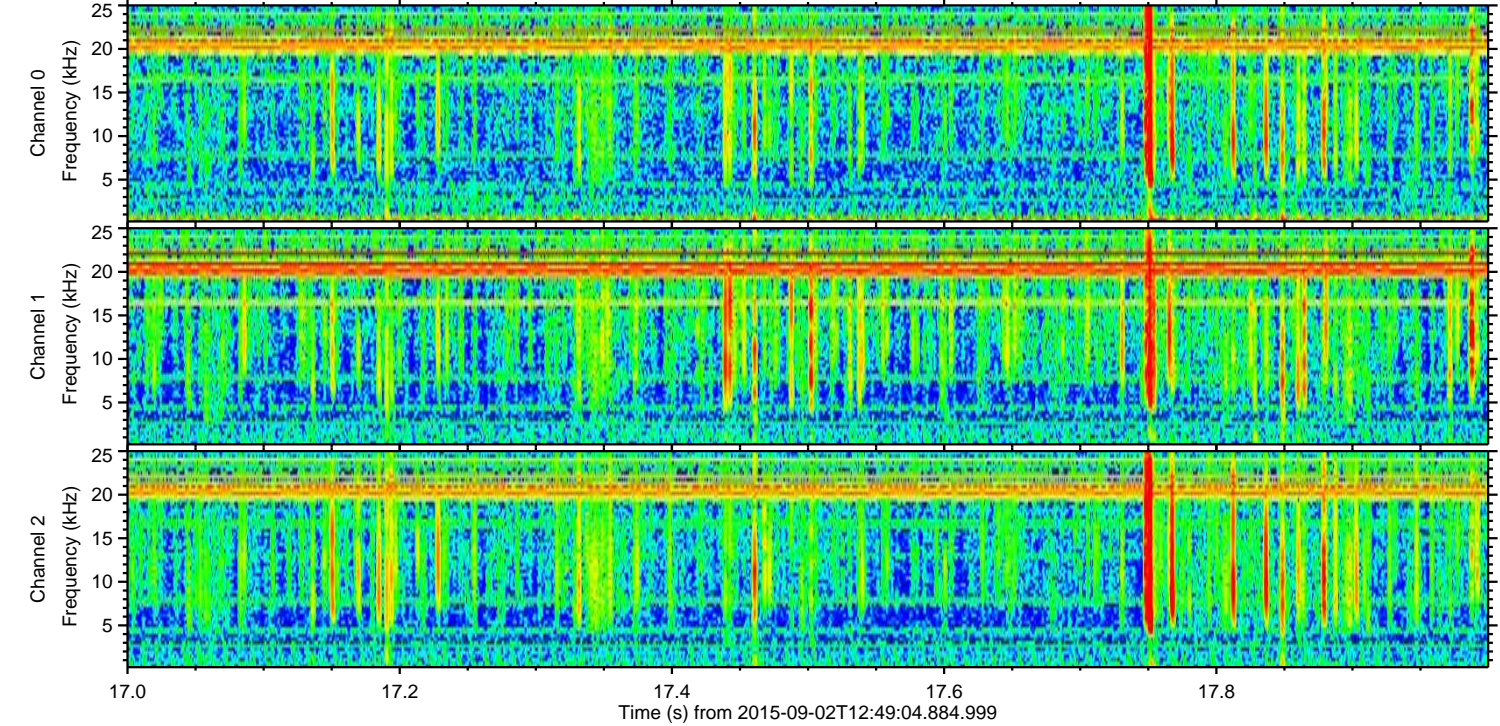
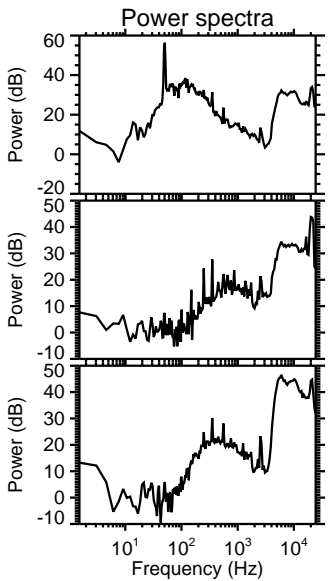
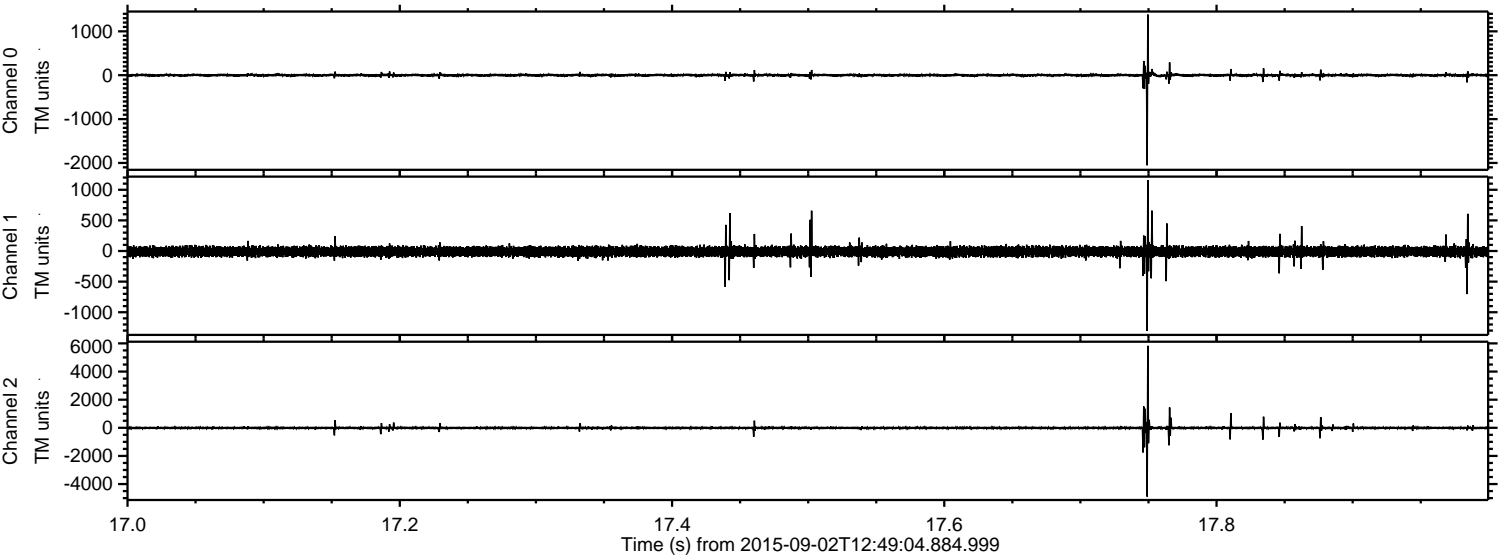
Processed Fri Oct 9 02:34:48 2015 by ELM ver.2012-10-06 from 001__elm20150902_124903__dat00.bin



Processed Fri Oct 9 02:34:49 2015 by ELM ver.2012-10-06 from 001__elm20150902_124903__dat00.bin

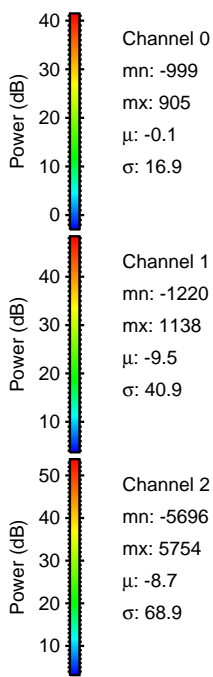
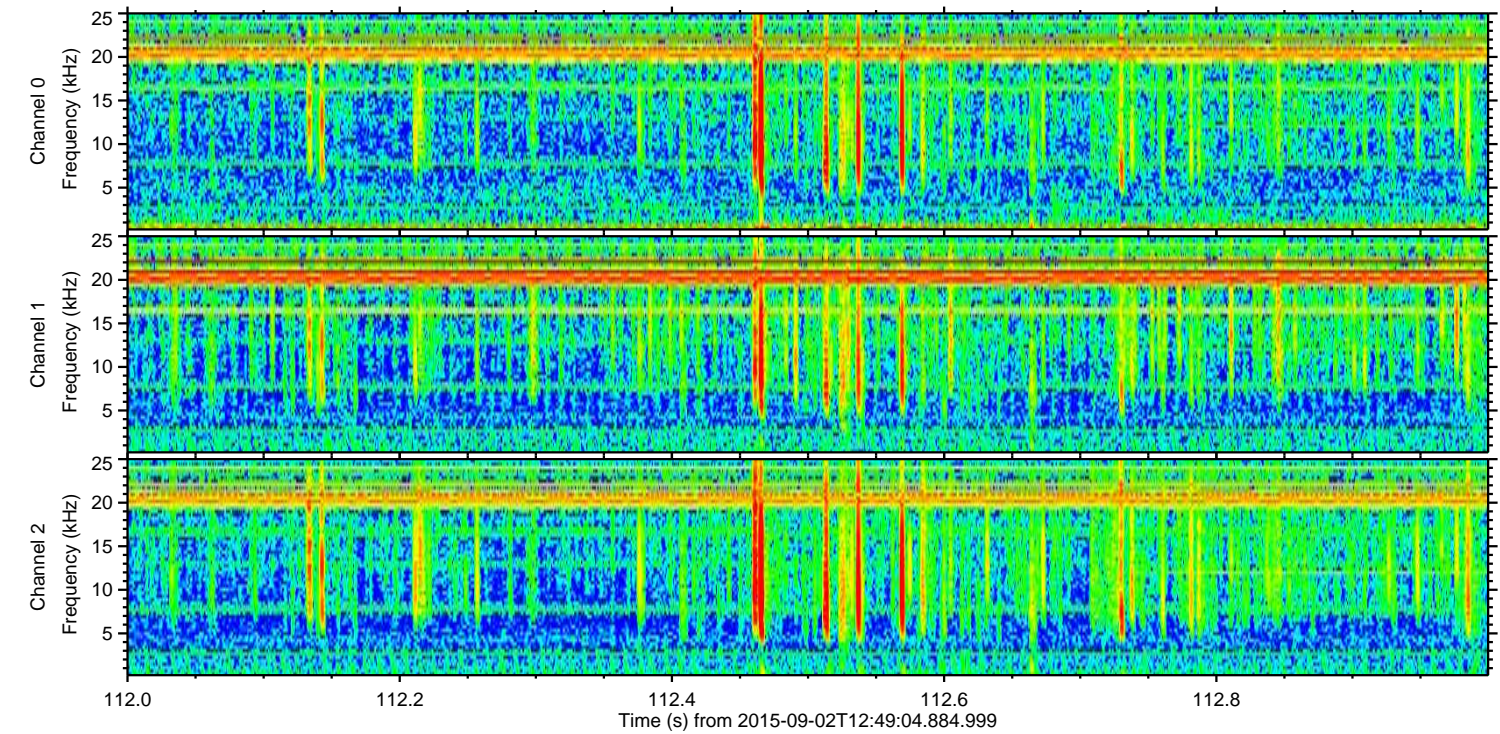
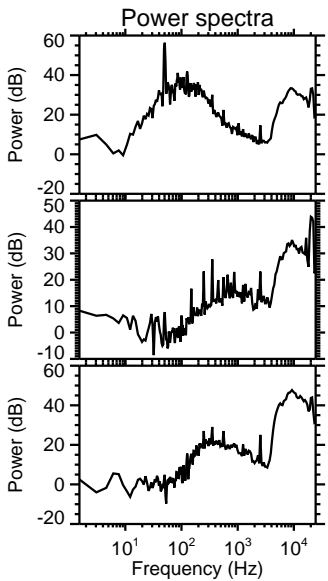
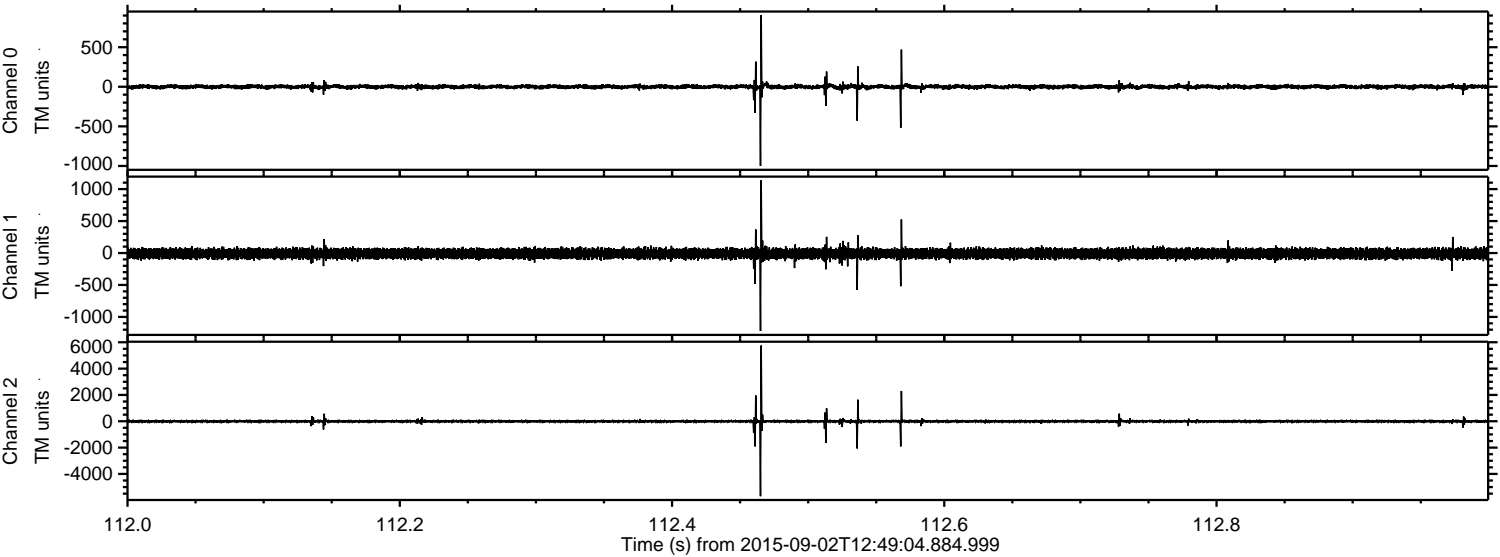


Processed Fri Oct 9 02:34:50 2015 by ELM ver.2012-10-06 from 001__elm20150902_124903__dat00.bin



ELMAVAN 3D WAVEFORMS (Measured data sampled at 50 kHz) 51000 packets of 144 samples from 2015-09-02T12:49:04.884.999. Part 113/147

Processed Fri Oct 9 02:34:51 2015 by ELM ver.2012-10-06 from 001__elm20150902_124903__dat00.bin



Channel 0
mn: -999
mx: 905
 μ : -0.1
 σ : 16.9

Channel 1
mn: -1220
mx: 1138
 μ : -9.5
 σ : 40.9

Channel 2
mn: -5696
mx: 5754
 μ : -8.7
 σ : 68.9

Processed Fri Oct 9 02:34:52 2015 by ELM ver.2012-10-06 from 001__elm20150902_124903__dat00.bin

