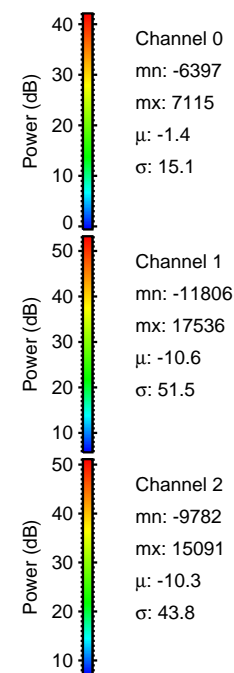
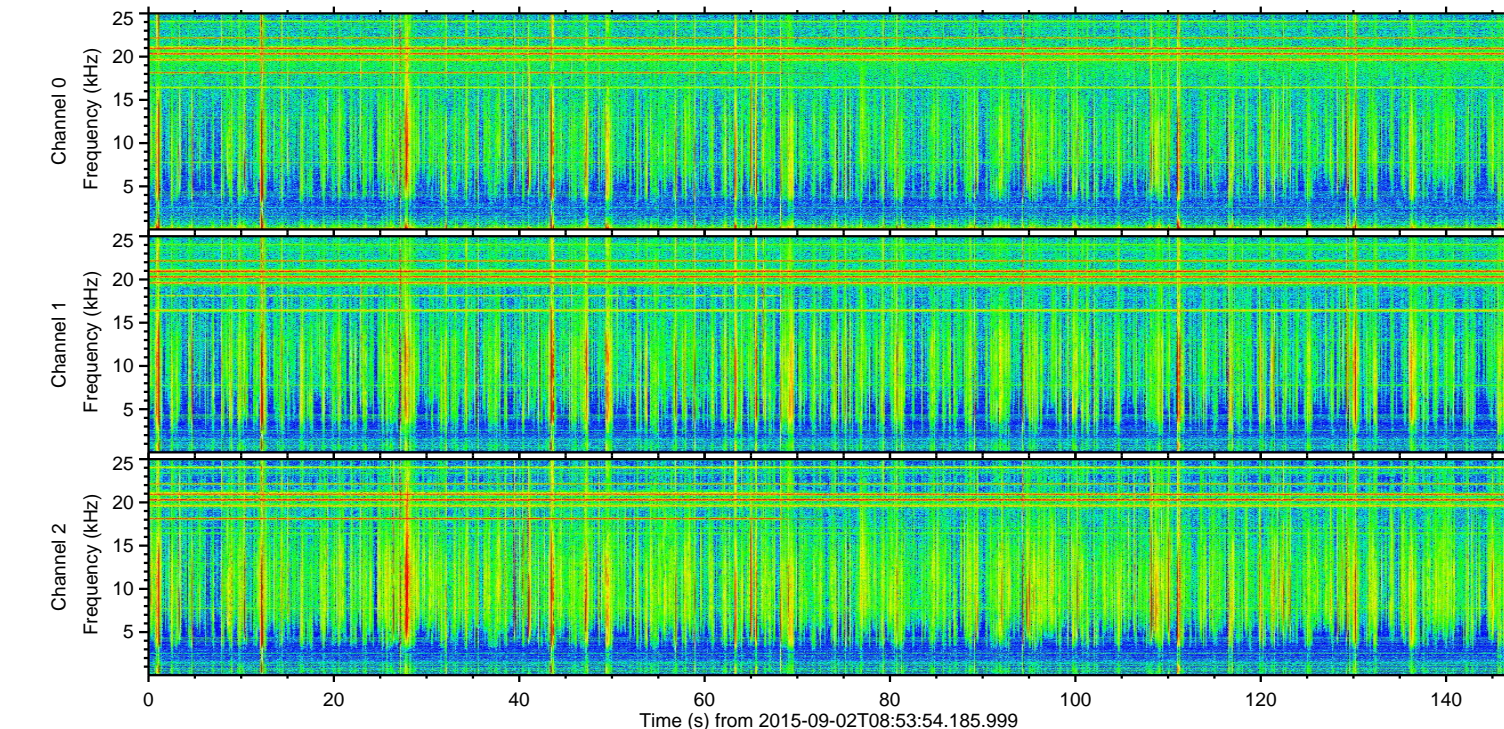
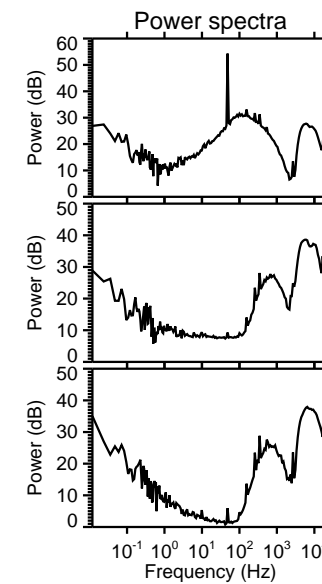
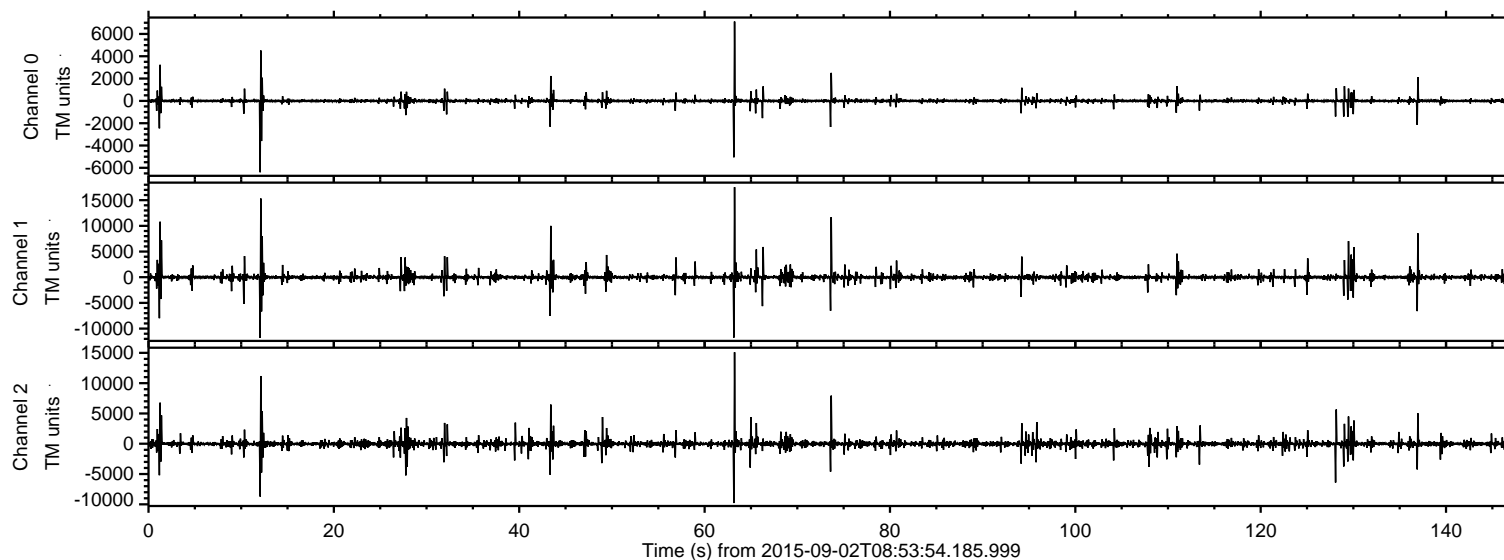


# ELMAVAN 3D WAVEFORMS (Measured data sampled at 50 kHz) 51000 packets of 144 samples from 2015-09-02T08:53:54.185.999.

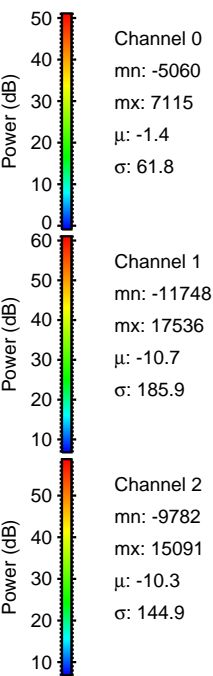
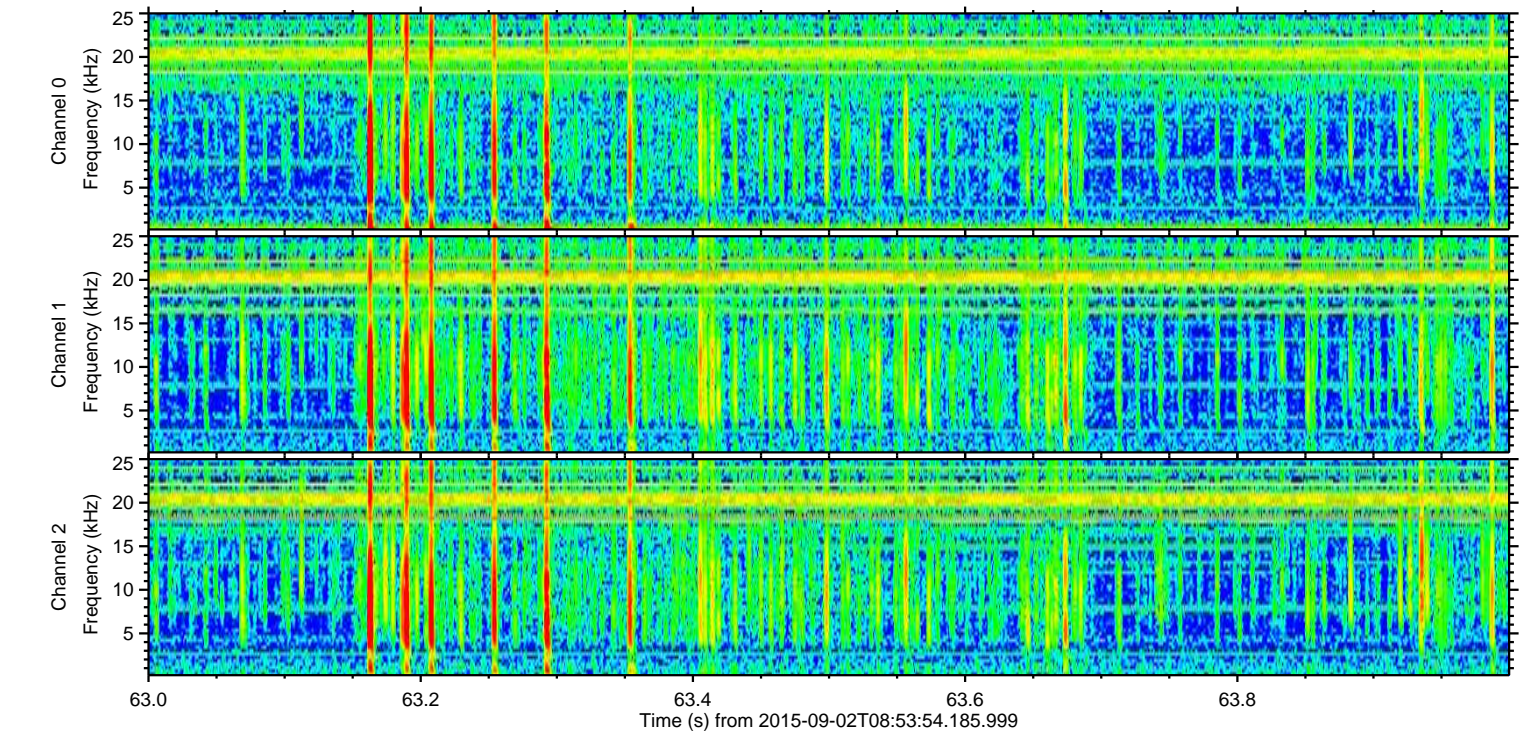
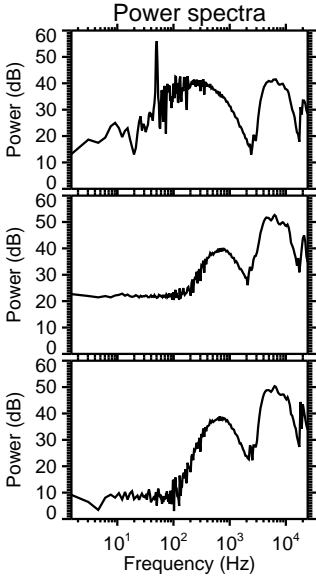
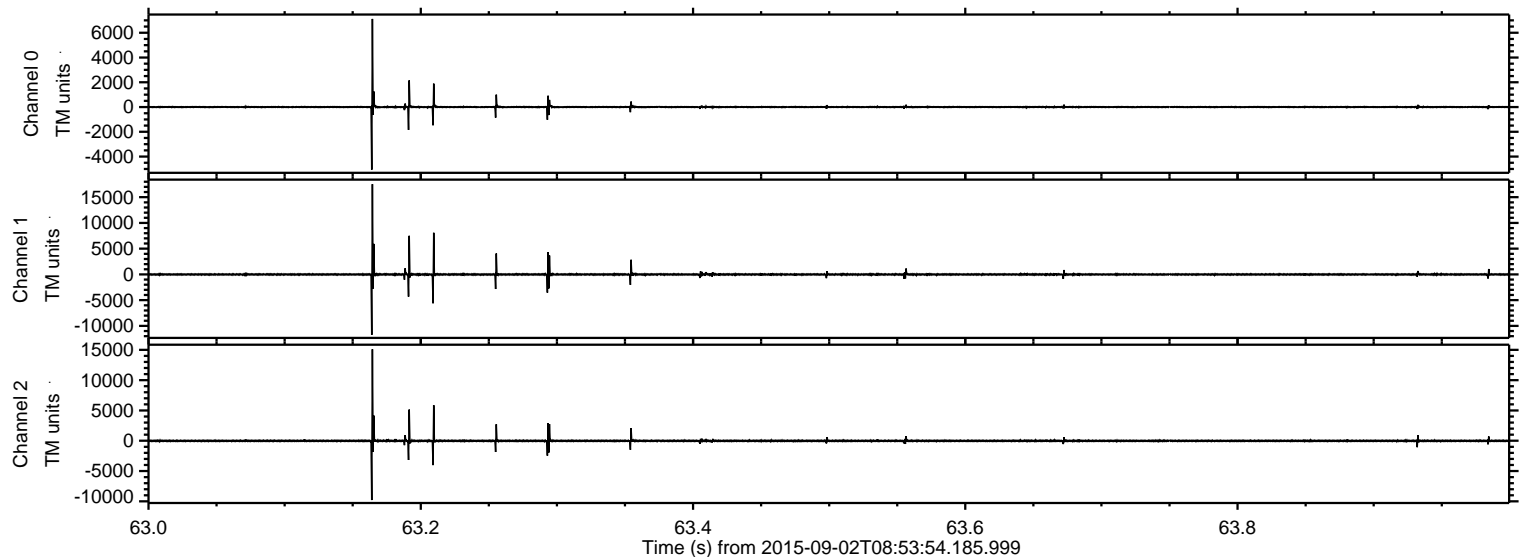
Processed Fri Oct 9 01:28:47 2015 by ELM ver.2012-10-06 from 001\_\_elm20150902\_085353\_\_dat00.bin





ELMAVAN 3D WAVEFORMS (Measured data sampled at 50 kHz) 51000 packets of 144 samples from 2015-09-02T08:53:54.185.999. Part 64/147

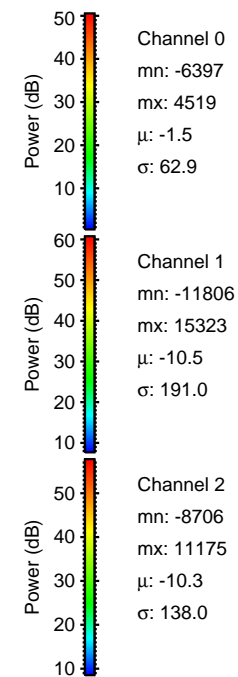
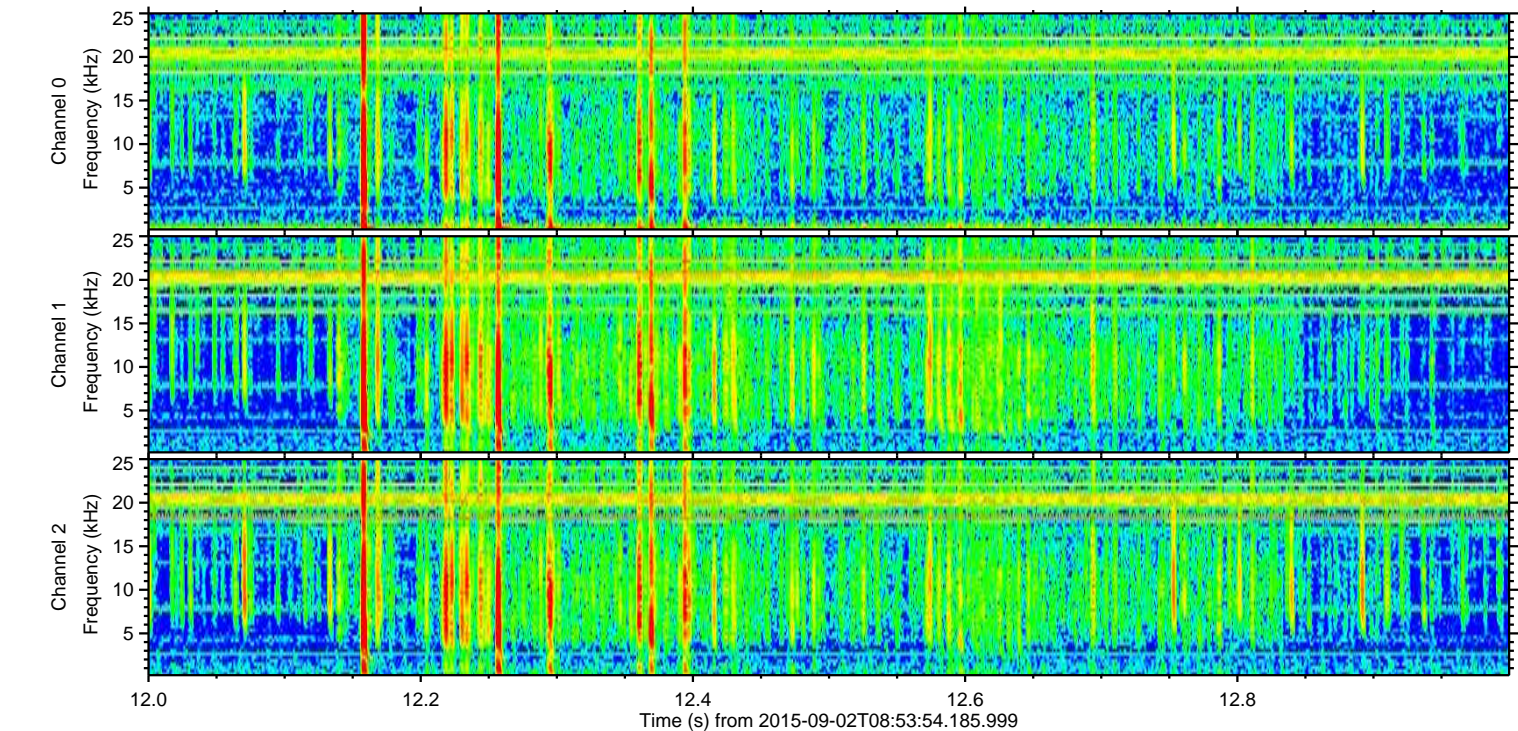
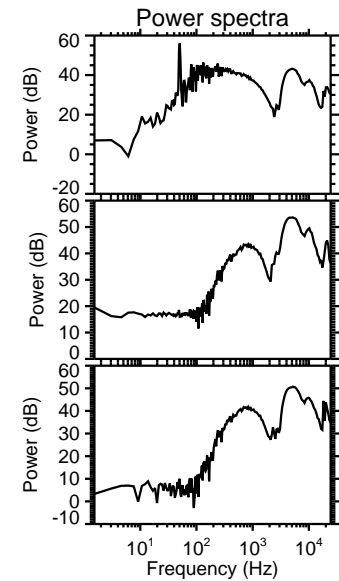
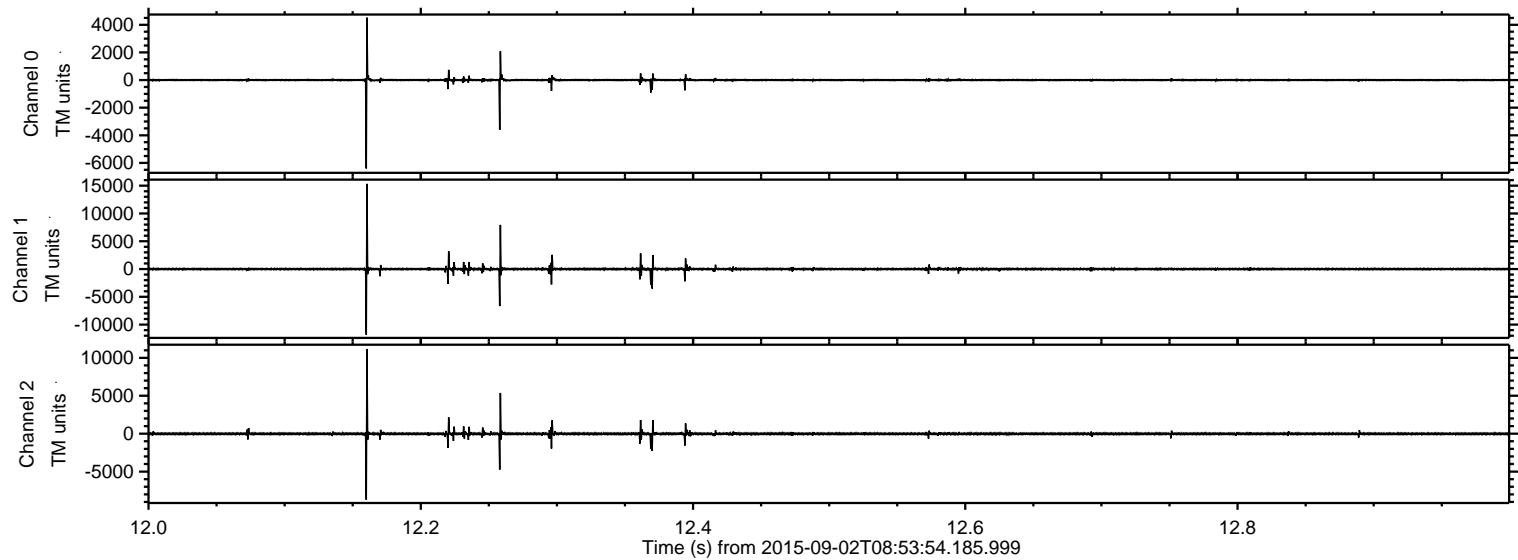
Processed Fri Oct 9 01:29:03 2015 by ELM ver.2012-10-06 from 001\_\_elm20150902\_085353\_\_dat00.bin





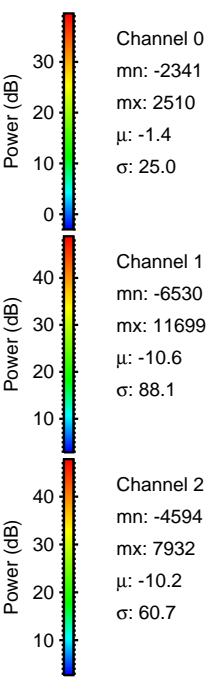
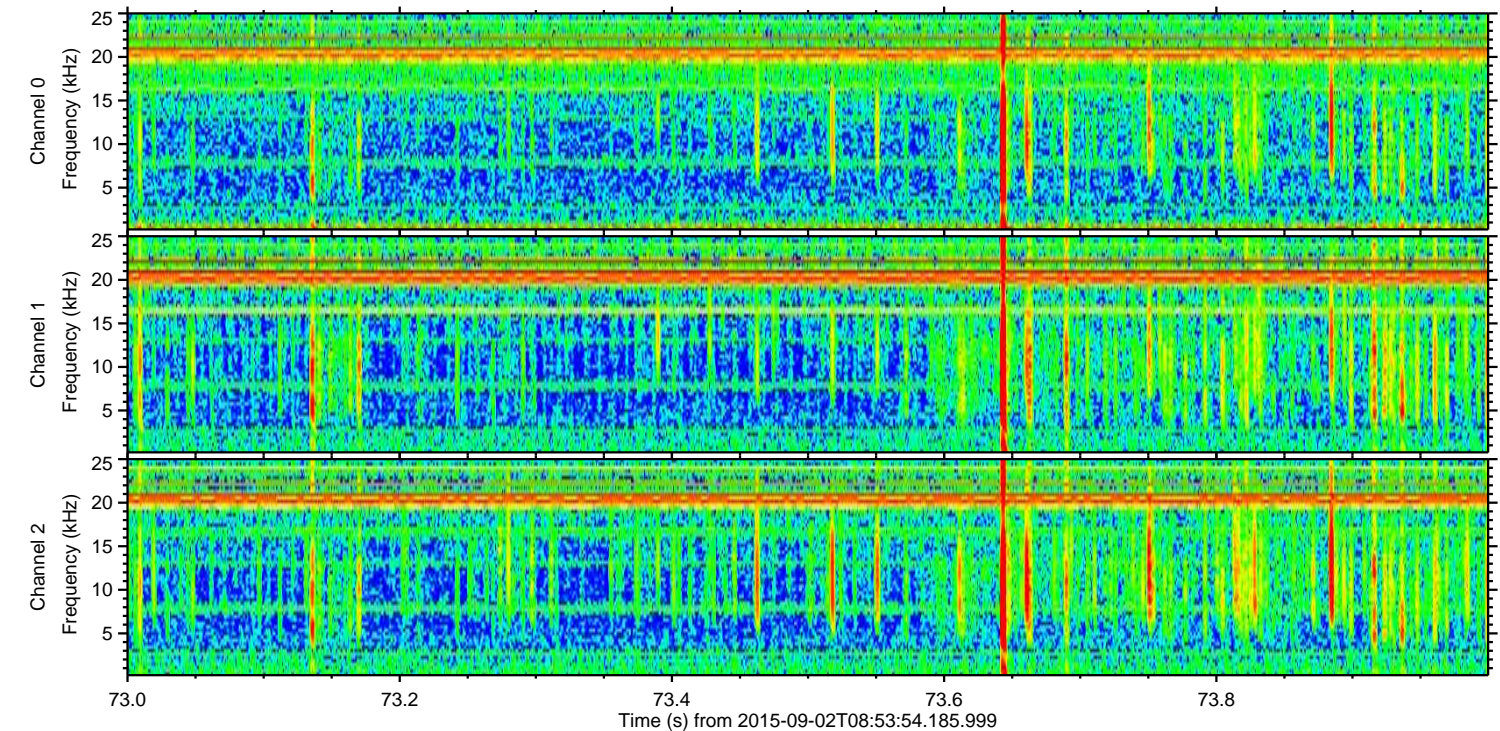
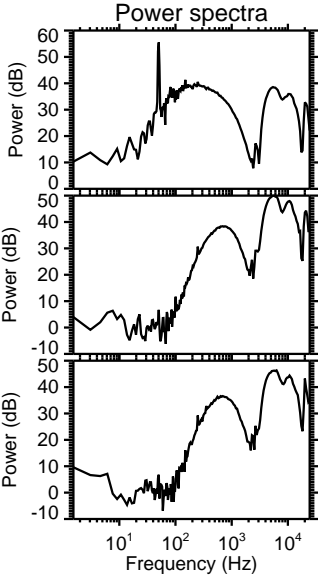
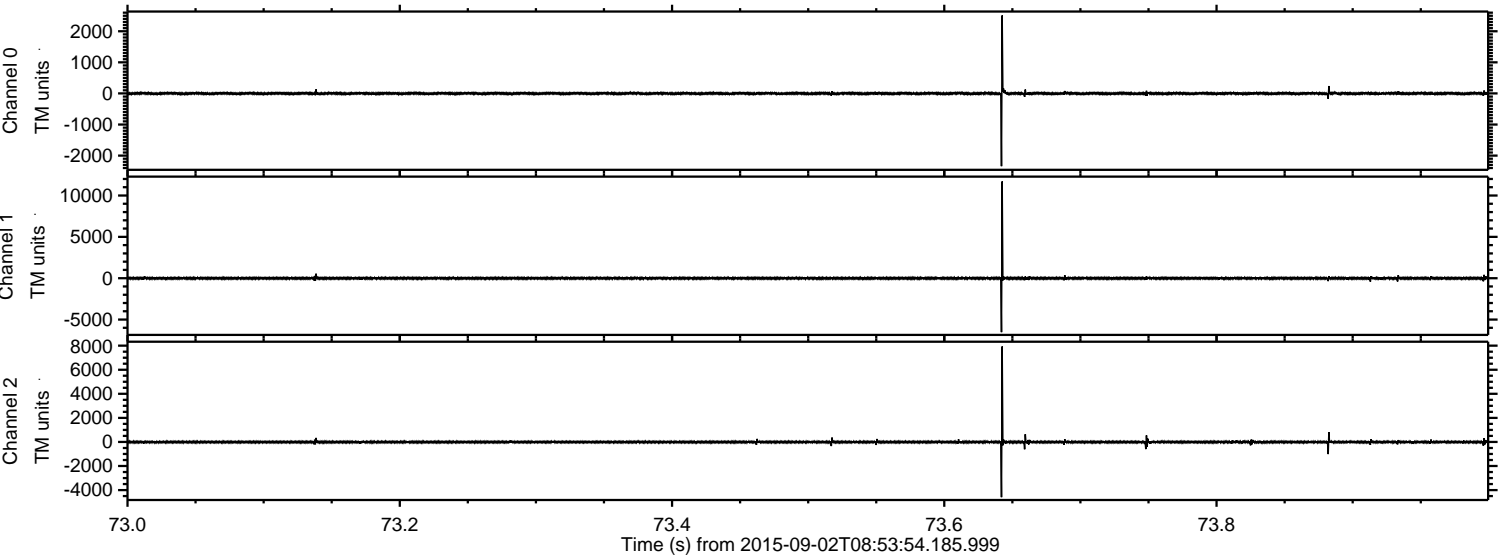
ELMAVAN 3D WAVEFORMS (Measured data sampled at 50 kHz) 51000 packets of 144 samples from 2015-09-02T08:53:54.185.999. Part 13/147

Processed Fri Oct 9 01:29:04 2015 by ELM ver.2012-10-06 from 001\_\_elm20150902\_085353\_\_dat00.bin



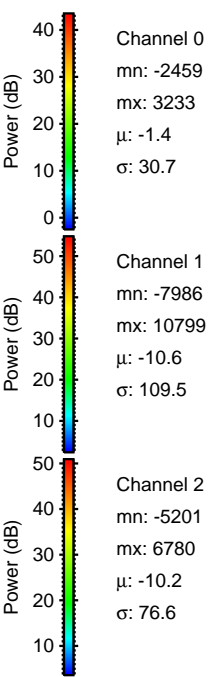
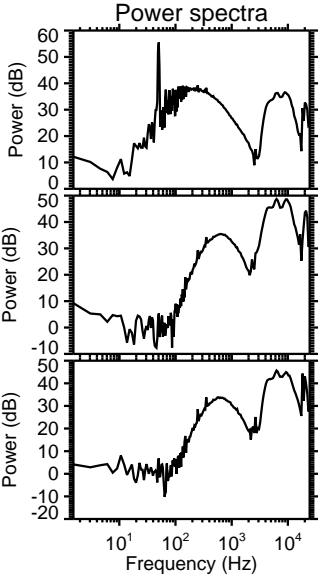
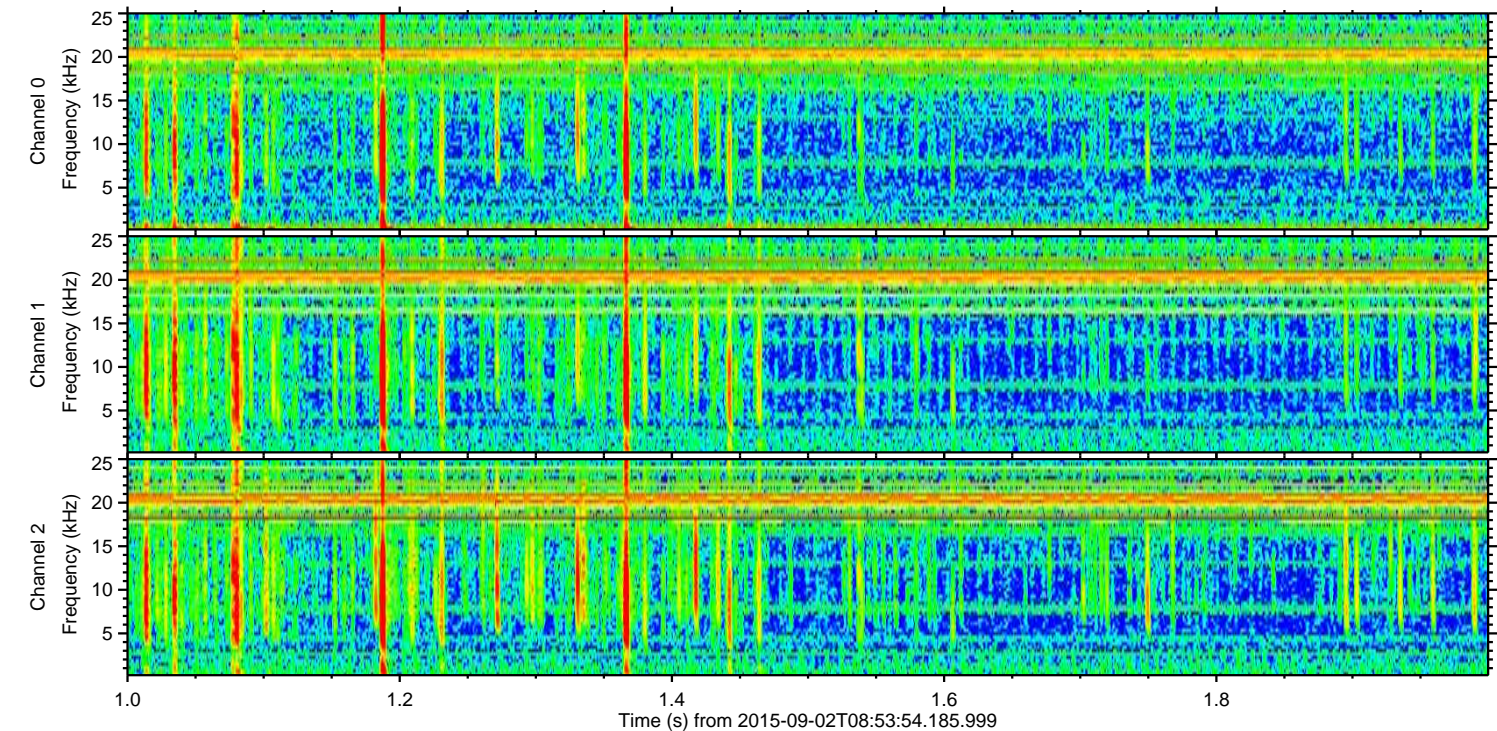
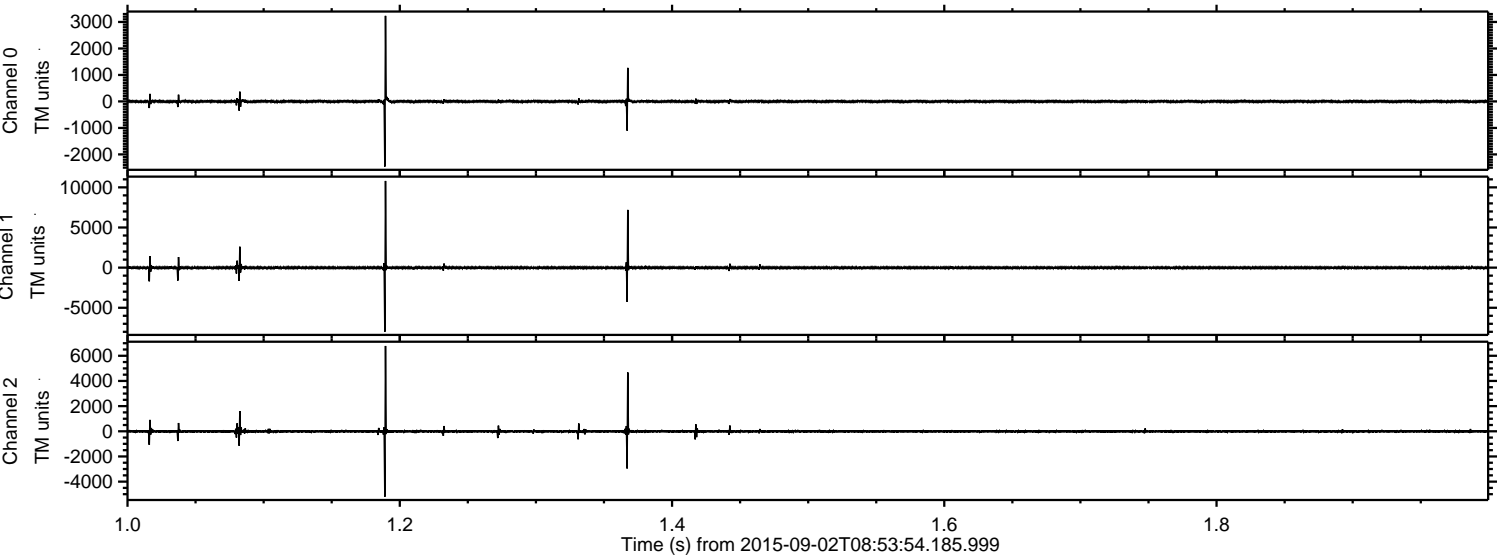


Processed Fri Oct 9 01:29:05 2015 by ELM ver.2012-10-06 from 001\_\_elm20150902\_085353\_\_dat00.bin





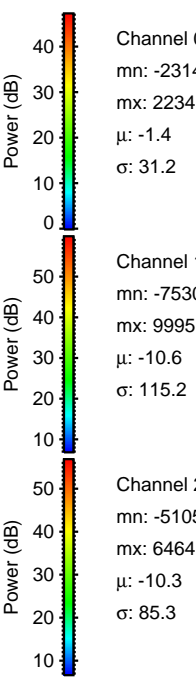
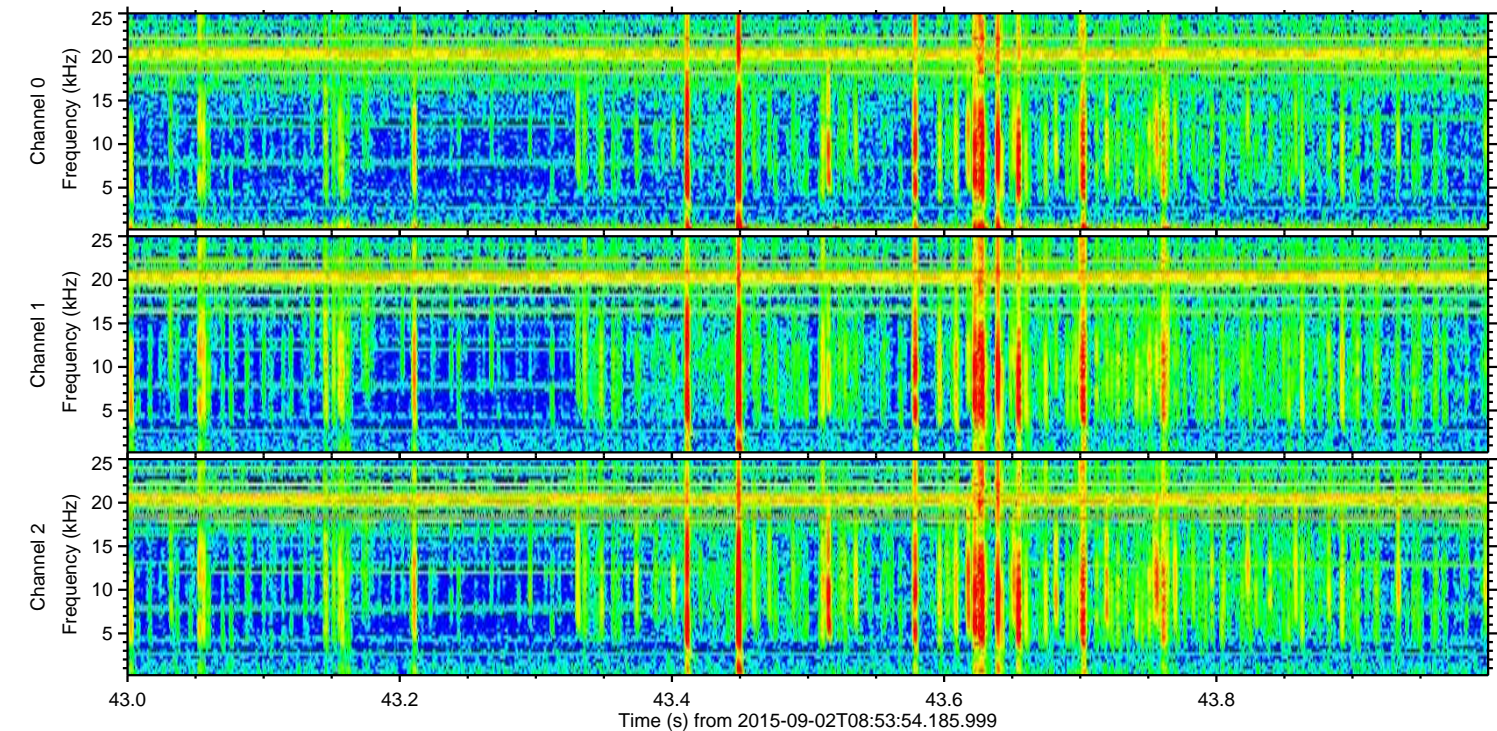
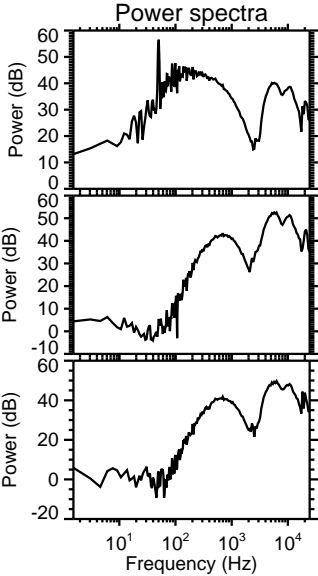
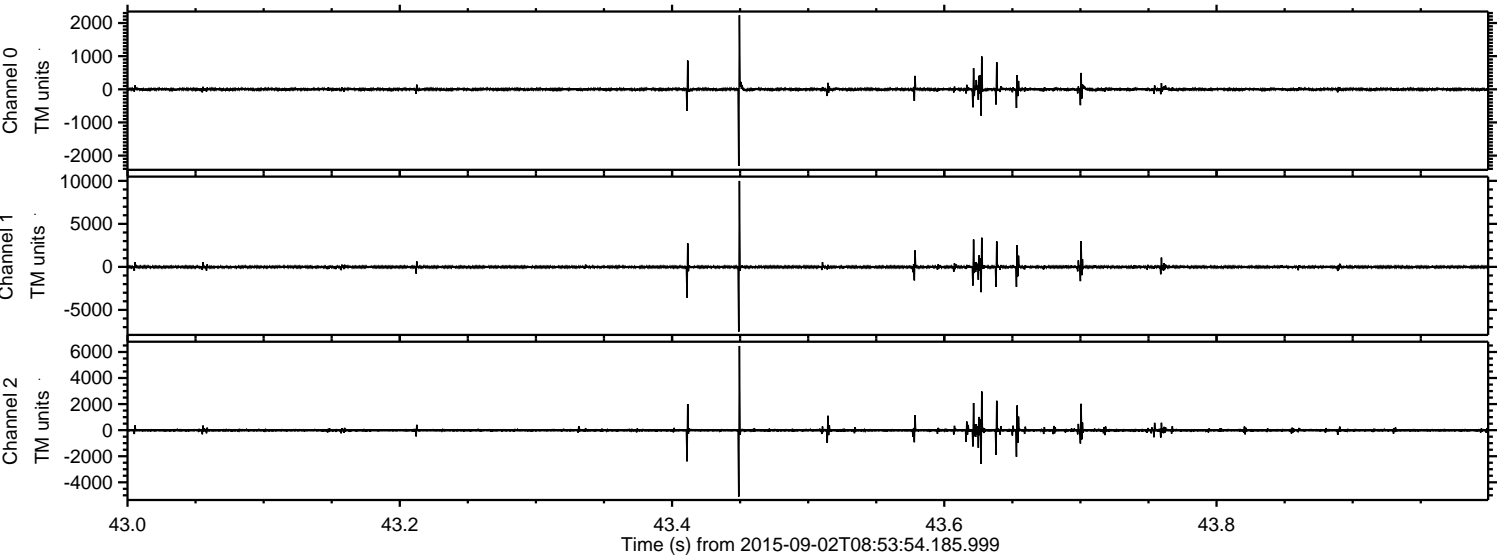
Processed Fri Oct 9 01:29:06 2015 by ELM ver.2012-10-06 from 001\_\_elm20150902\_085353\_\_dat00.bin





ELMAVAN 3D WAVEFORMS (Measured data sampled at 50 kHz) 51000 packets of 144 samples from 2015-09-02T08:53:54.185.999. Part 44/147

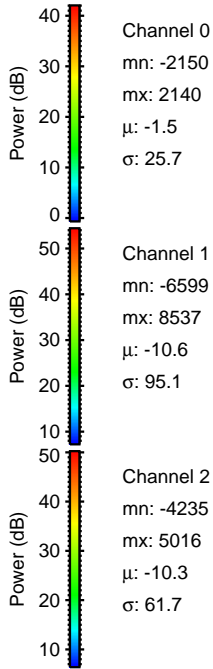
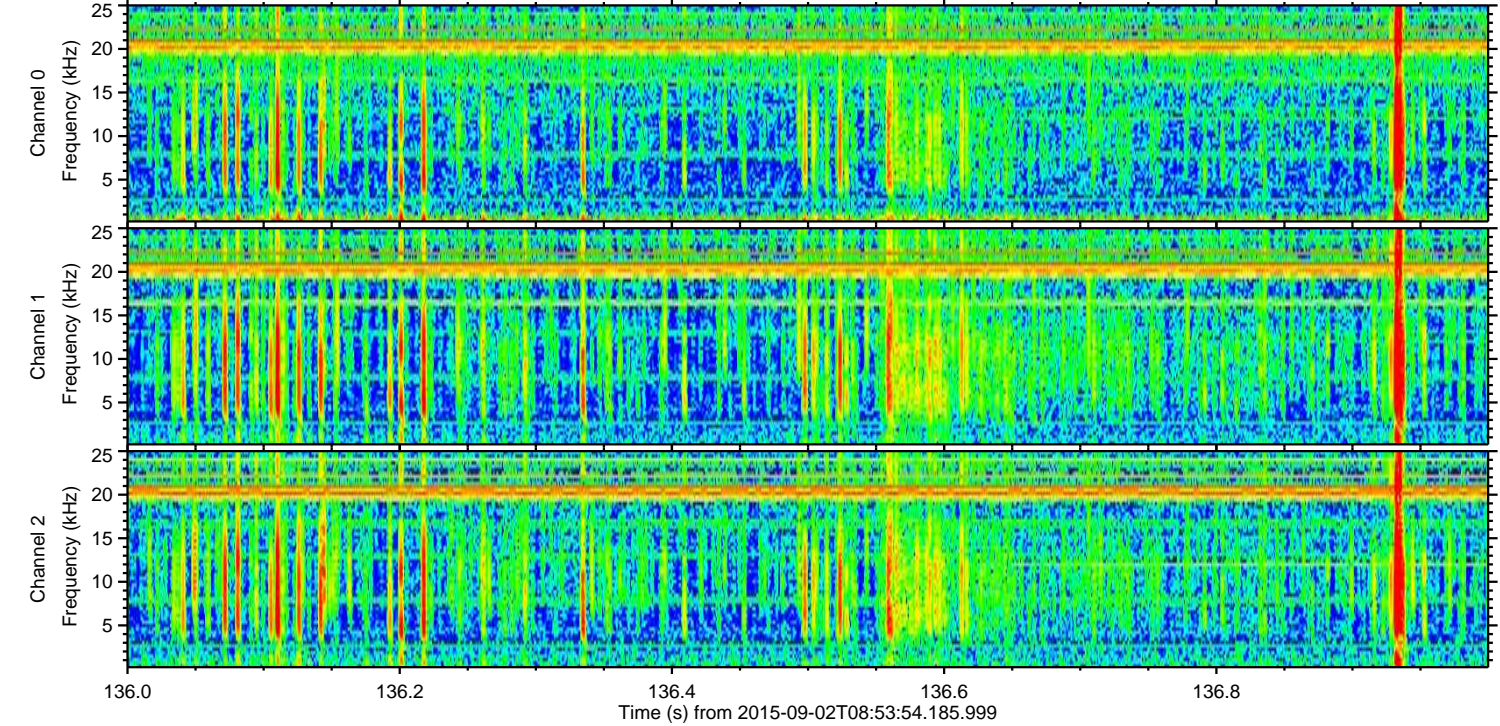
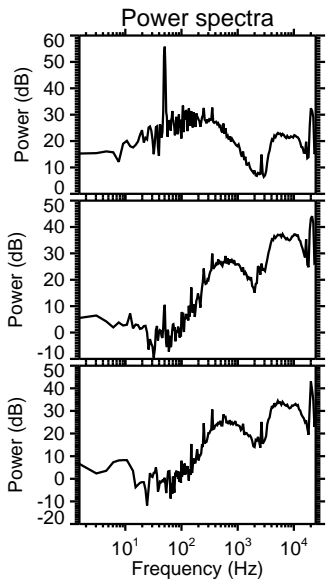
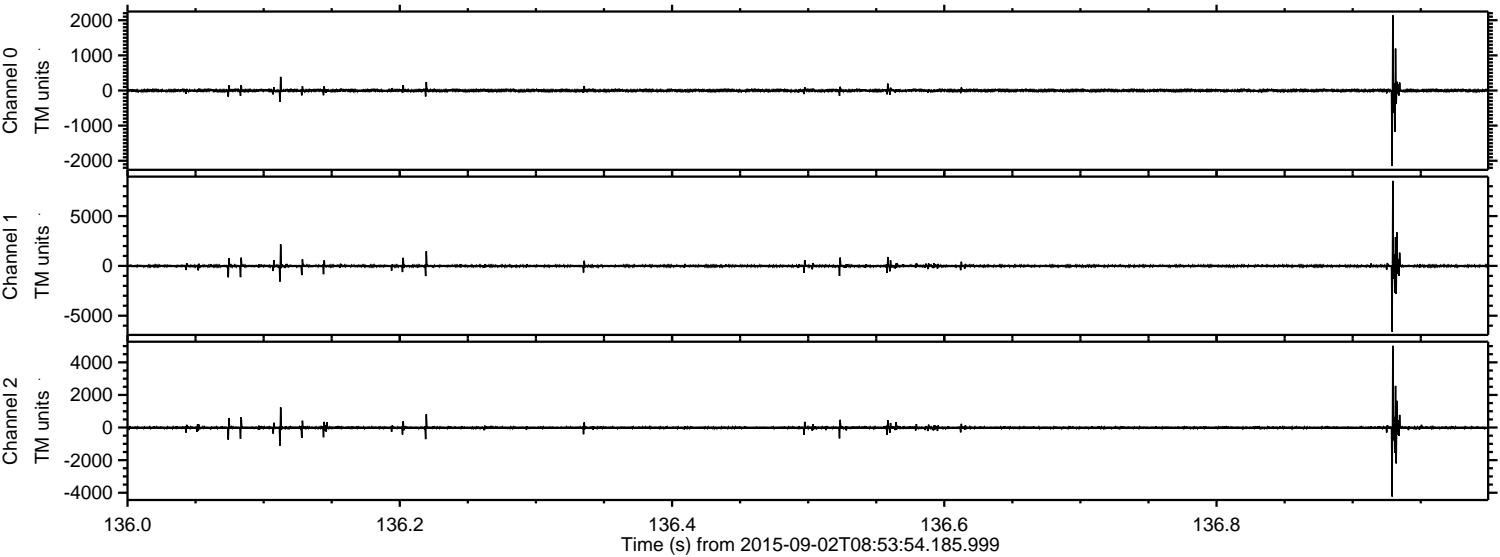
Processed Fri Oct 9 01:29:08 2015 by ELM ver.2012-10-06 from 001\_\_elm20150902\_085353\_\_dat00.bin





ELMAVAN 3D WAVEFORMS (Measured data sampled at 50 kHz) 51000 packets of 144 samples from 2015-09-02T08:53:54.185.999. Part 137/147

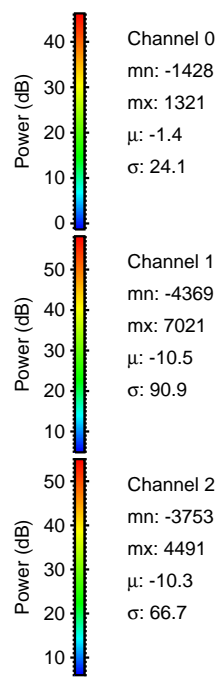
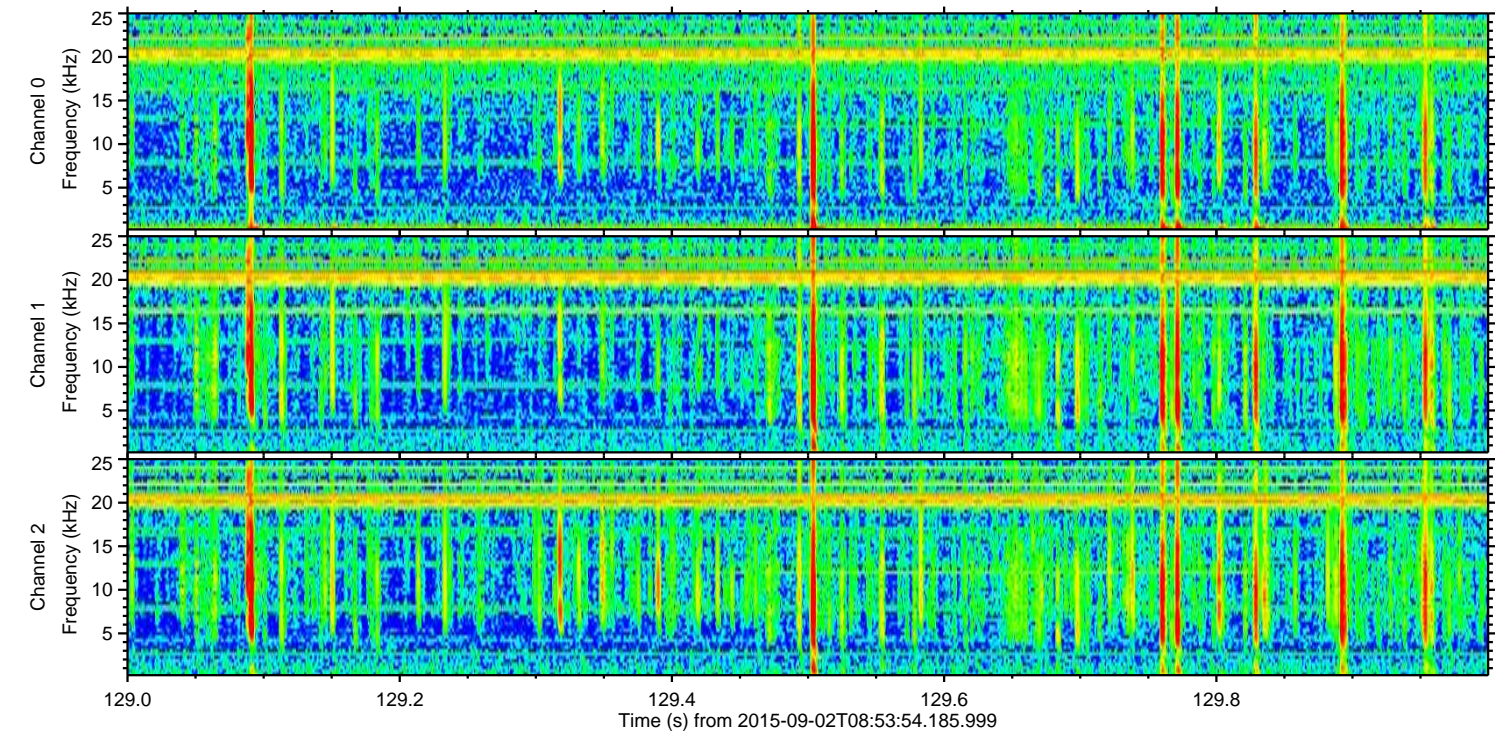
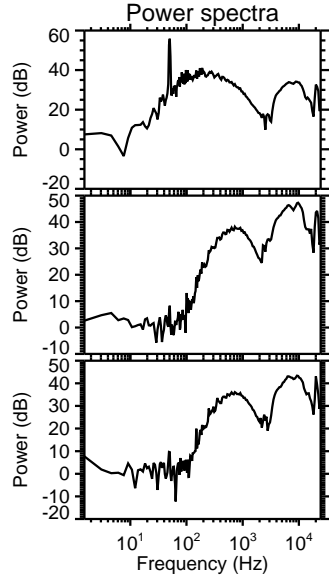
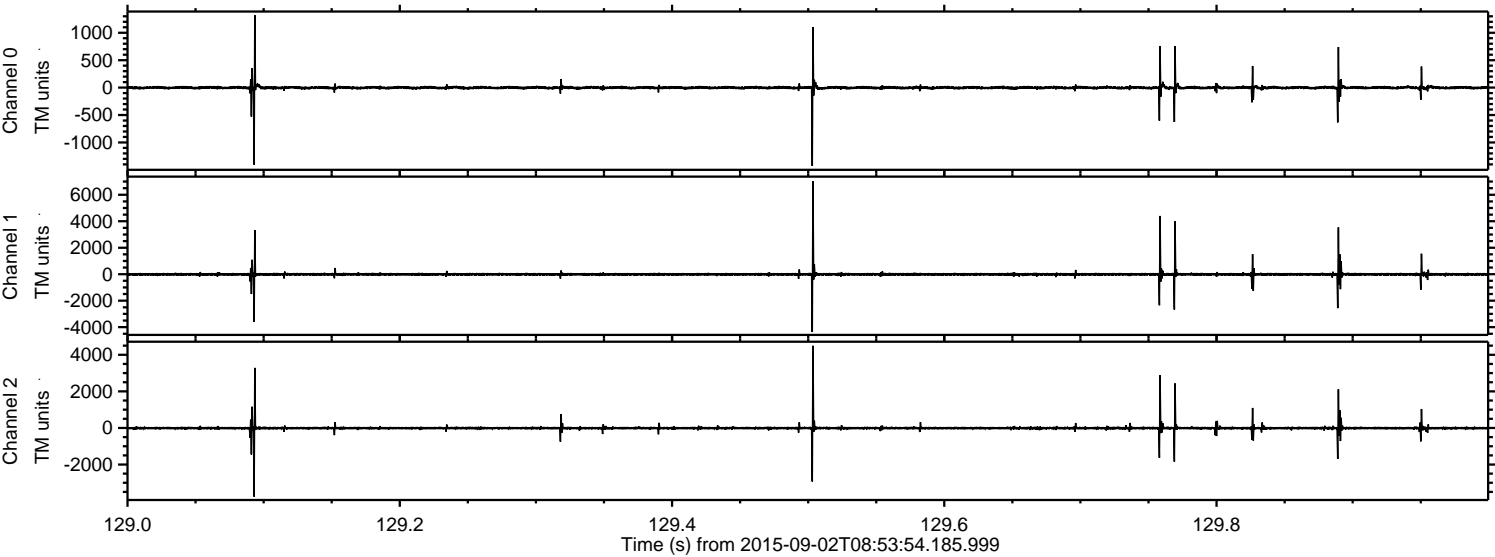
Processed Fri Oct 9 01:29:09 2015 by ELM ver.2012-10-06 from 001\_\_elm20150902\_085353\_\_dat00.bin





ELMAVAN 3D WAVEFORMS (Measured data sampled at 50 kHz) 51000 packets of 144 samples from 2015-09-02T08:53:54.185.999. Part 130/147

Processed Fri Oct 9 01:29:10 2015 by ELM ver.2012-10-06 from 001\_\_elm20150902\_085353\_\_dat00.bin



Channel 0  
mn: -1428  
mx: 1321  
 $\mu$ : -1.4  
 $\sigma$ : 24.1

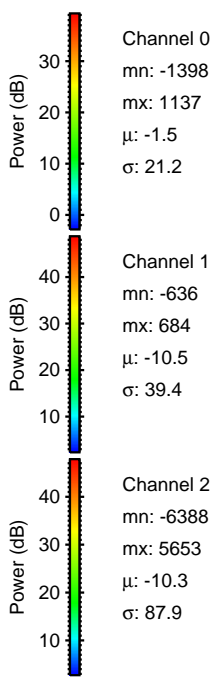
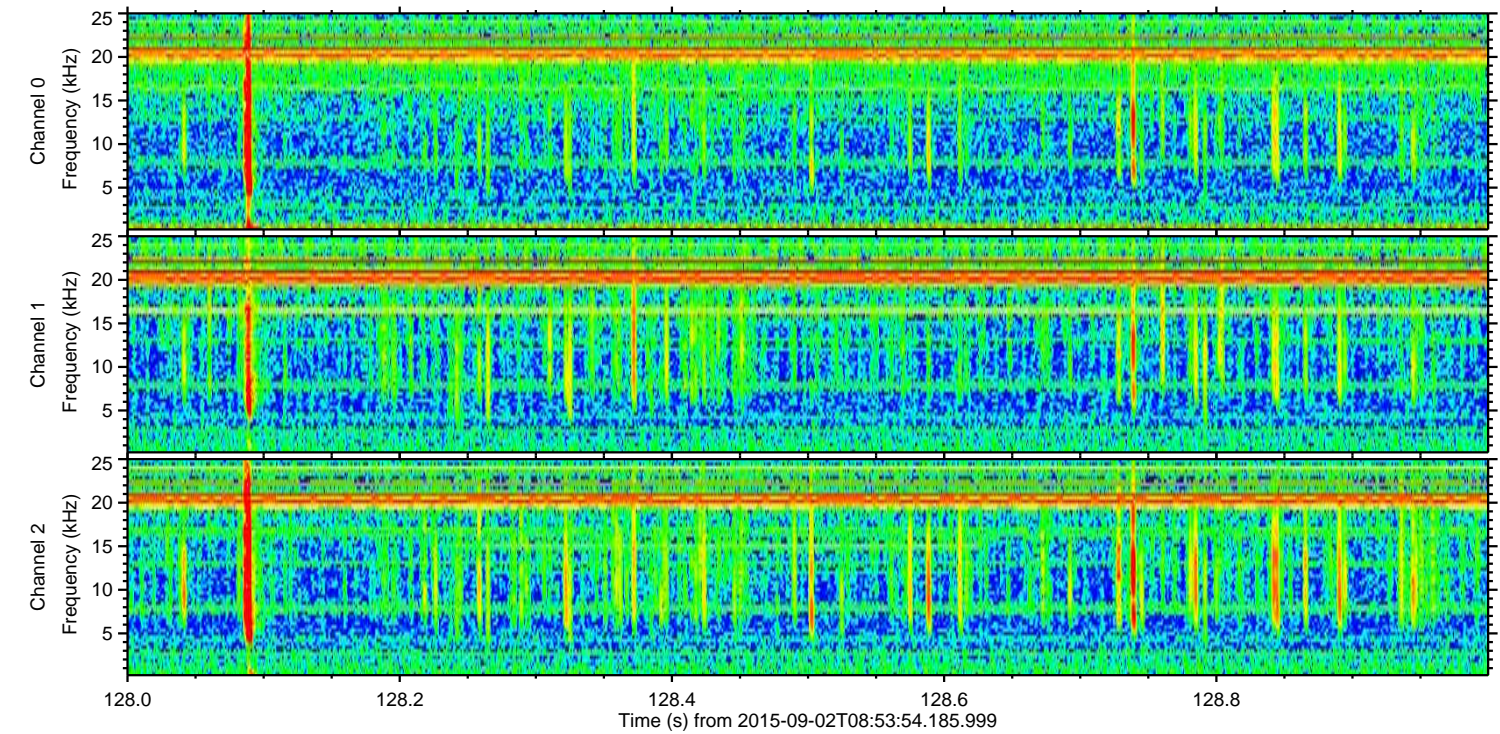
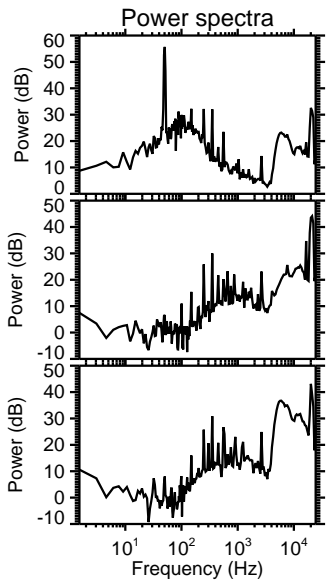
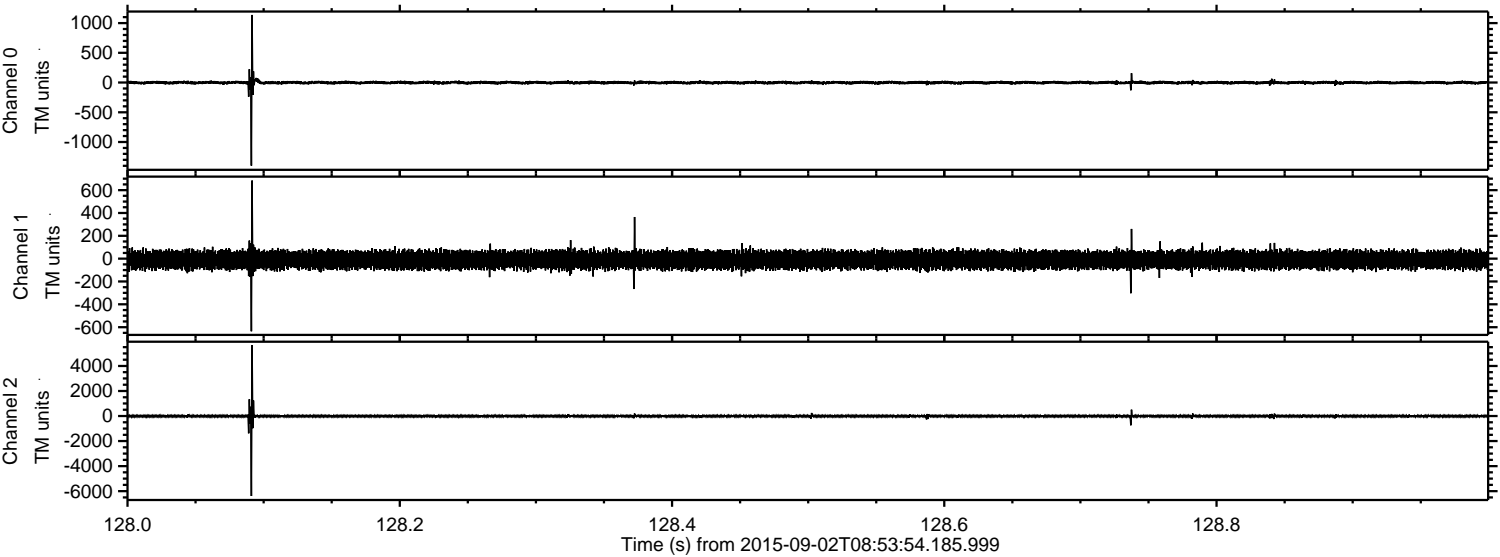
Channel 1  
mn: -4369  
mx: 7021  
 $\mu$ : -10.5  
 $\sigma$ : 90.9

Channel 2  
mn: -3753  
mx: 4491  
 $\mu$ : -10.3  
 $\sigma$ : 66.7



ELMAVAN 3D WAVEFORMS (Measured data sampled at 50 kHz) 51000 packets of 144 samples from 2015-09-02T08:53:54.185.999. Part 129/147

Processed Fri Oct 9 01:29:11 2015 by ELM ver.2012-10-06 from 001\_\_elm20150902\_085353\_\_dat00.bin



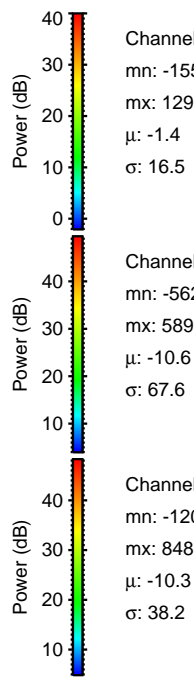
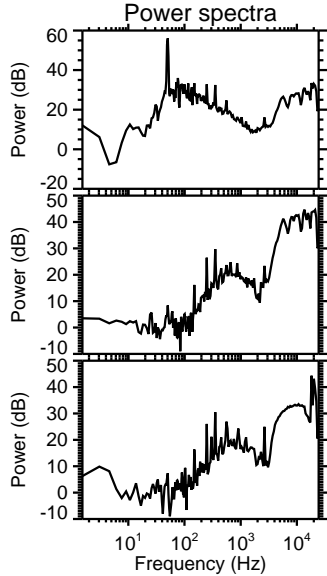
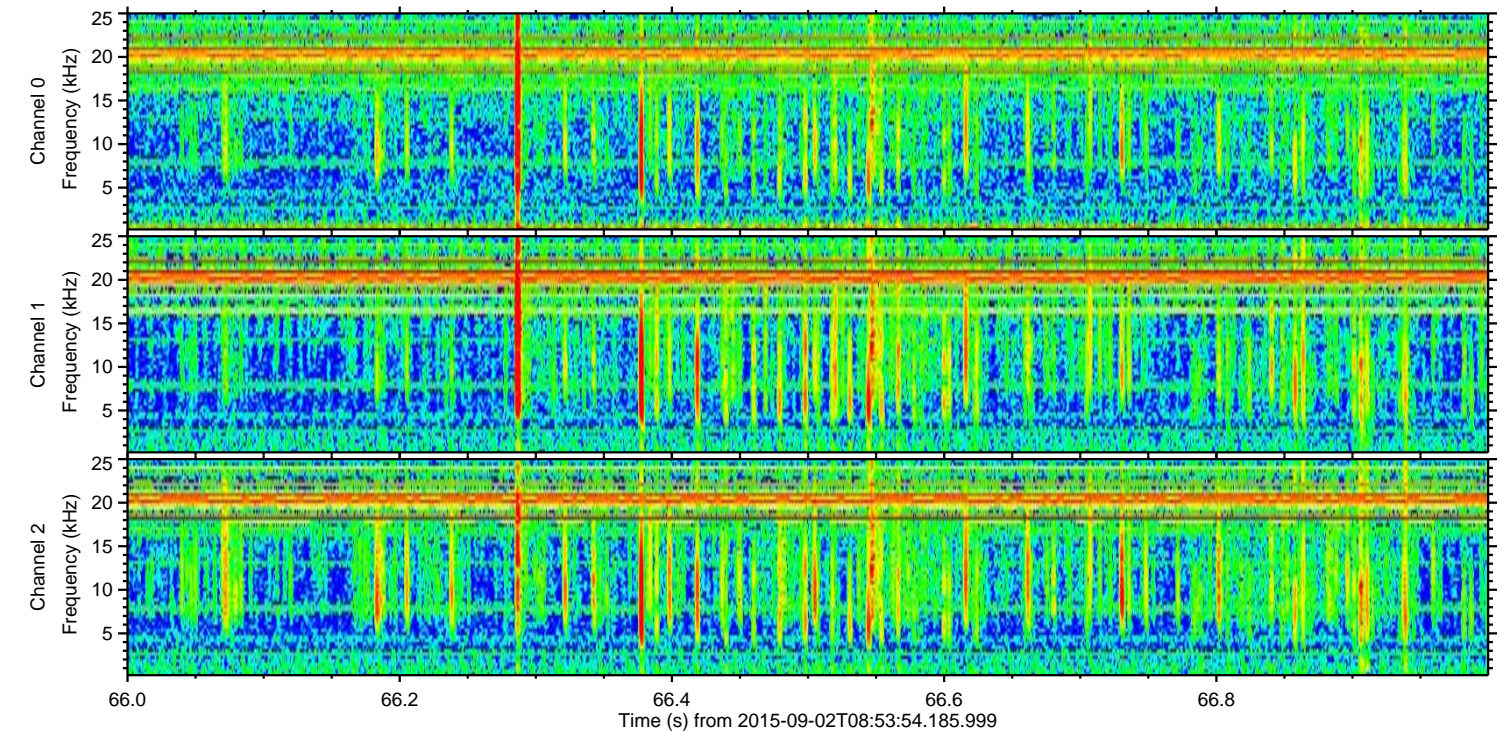
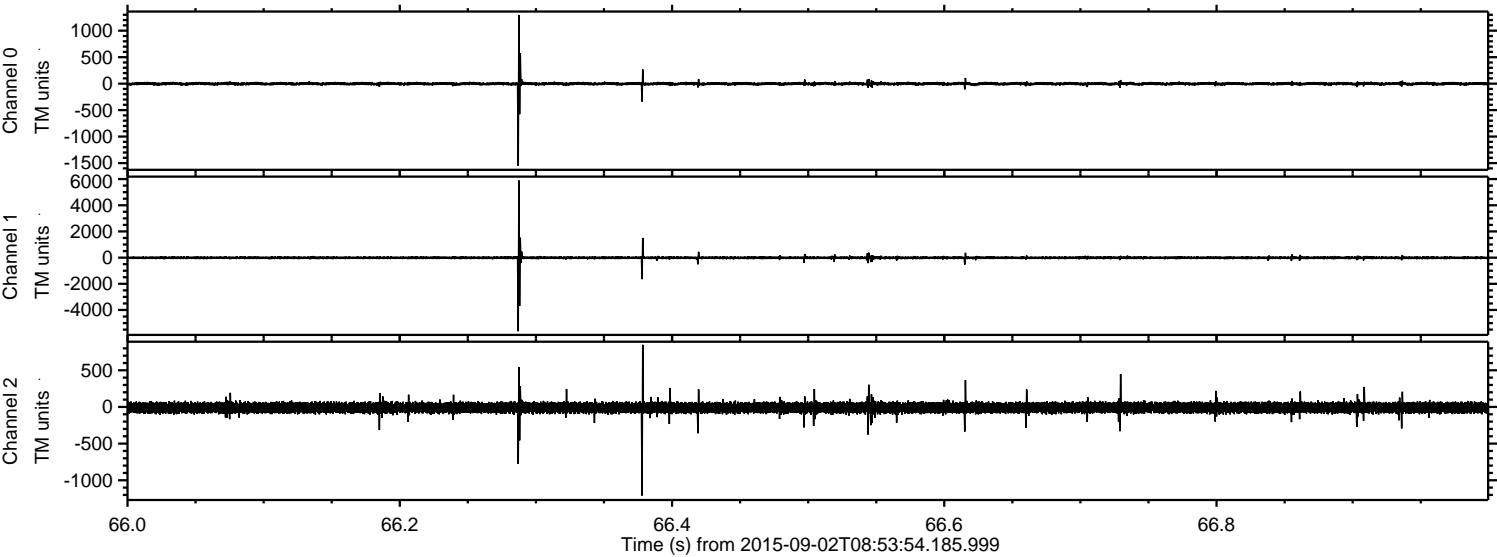
Channel 0  
mn: -1398  
mx: 1137  
 $\mu$ : -1.5  
 $\sigma$ : 21.2

Channel 1  
mn: -636  
mx: 684  
 $\mu$ : -10.5  
 $\sigma$ : 39.4

Channel 2  
mn: -6388  
mx: 5653  
 $\mu$ : -10.3  
 $\sigma$ : 87.9



Processed Fri Oct 9 01:29:12 2015 by ELM ver.2012-10-06 from 001\_\_elm20150902\_085353\_\_dat00.bin



Channel 0

mn: -1550

mx: 1297

$\mu$ : -1.4

$\sigma$ : 16.5

Channel 1

mn: -5622

mx: 5893

$\mu$ : -10.6

$\sigma$ : 67.6

Channel 2

mn: -1209

mx: 848

$\mu$ : -10.3

$\sigma$ : 38.2



Processed Fri Oct 9 01:29:13 2015 by ELM ver.2012-10-06 from 001\_\_elm20150902\_085353\_\_dat00.bin

