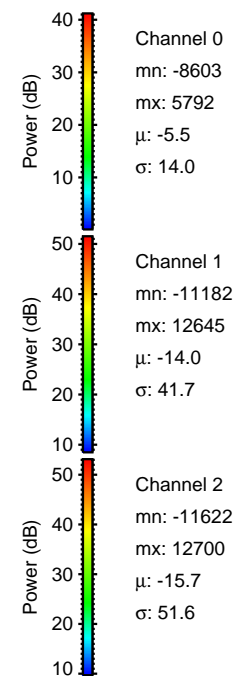
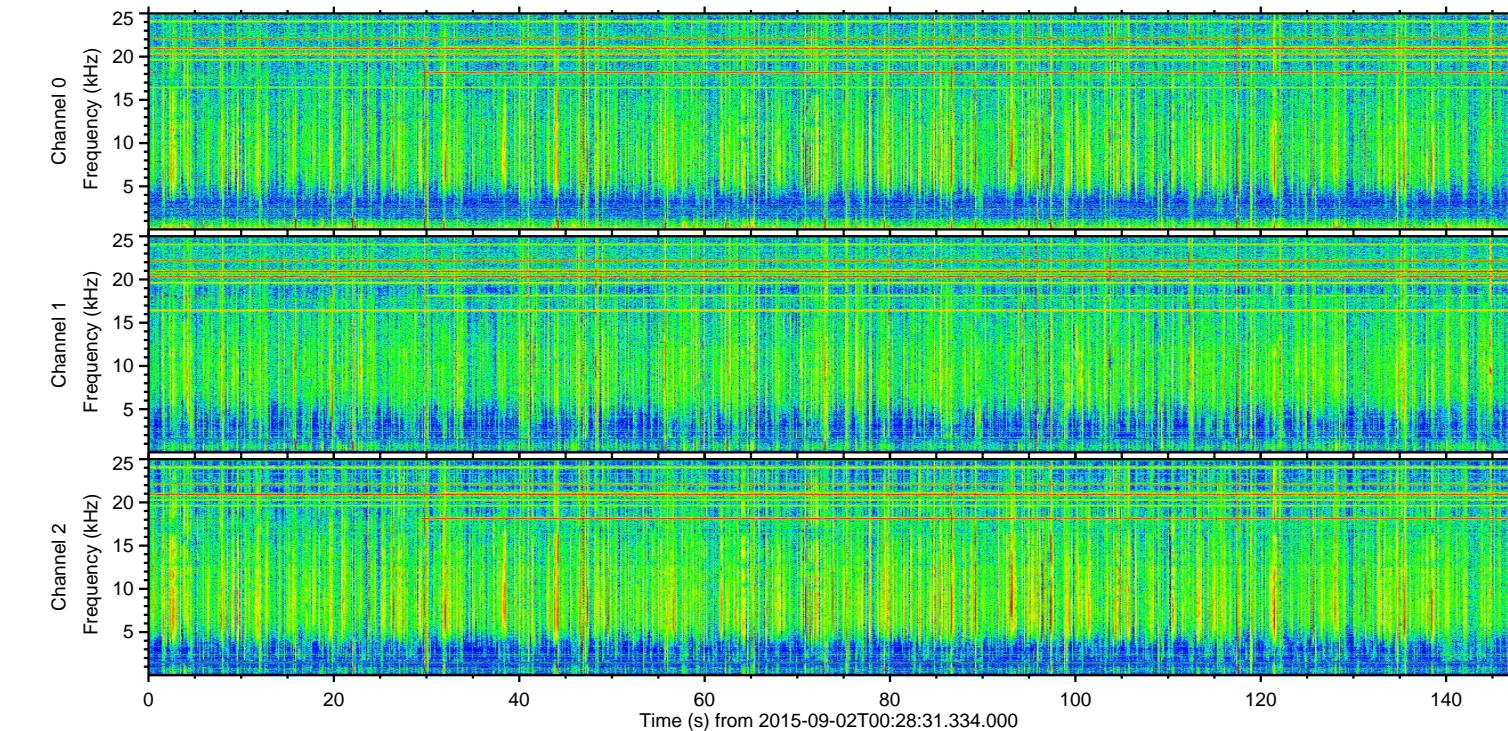
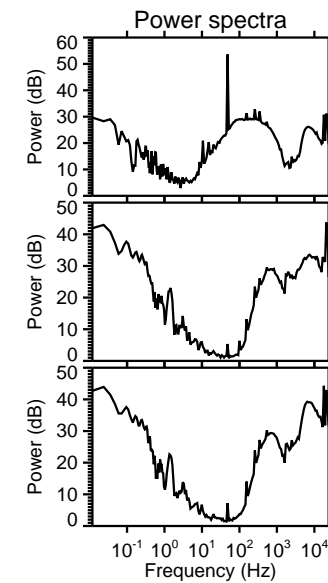
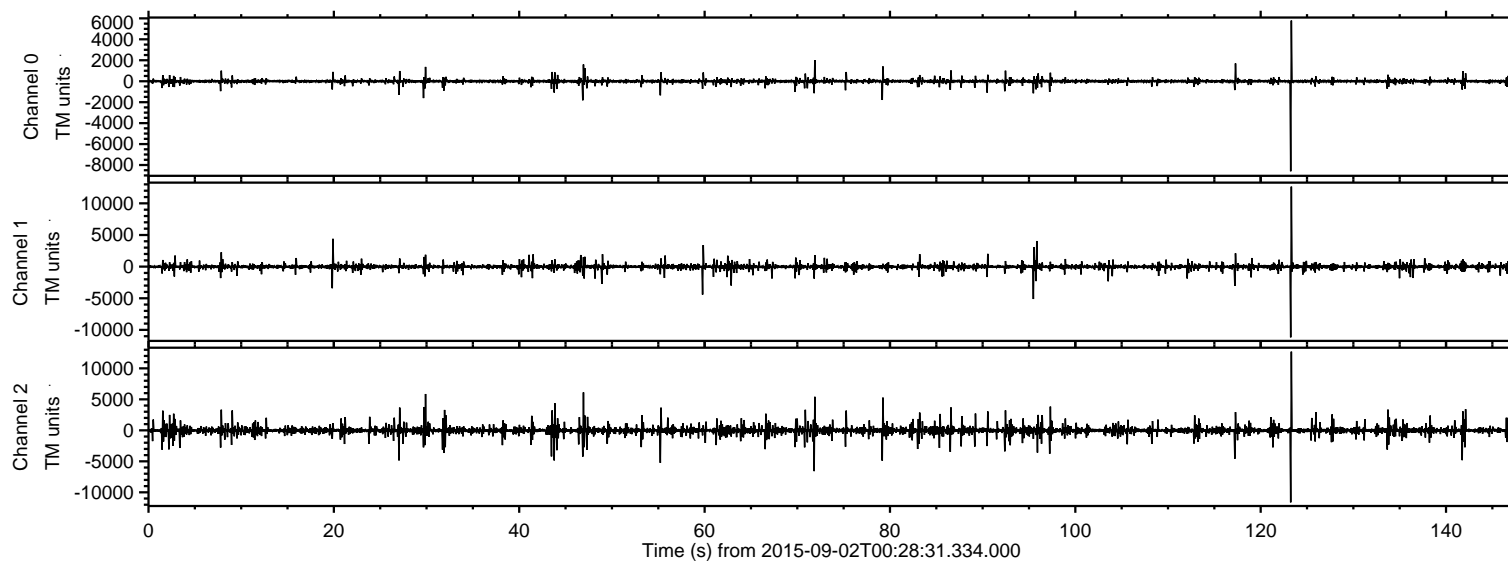


# ELMAVAN 3D WAVEFORMS (Measured data sampled at 50 kHz) 51000 packets of 144 samples from 2015-09-02T00:28:31.334.000.

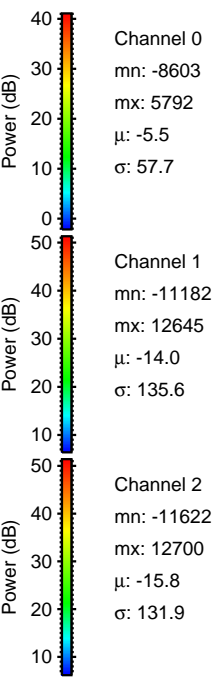
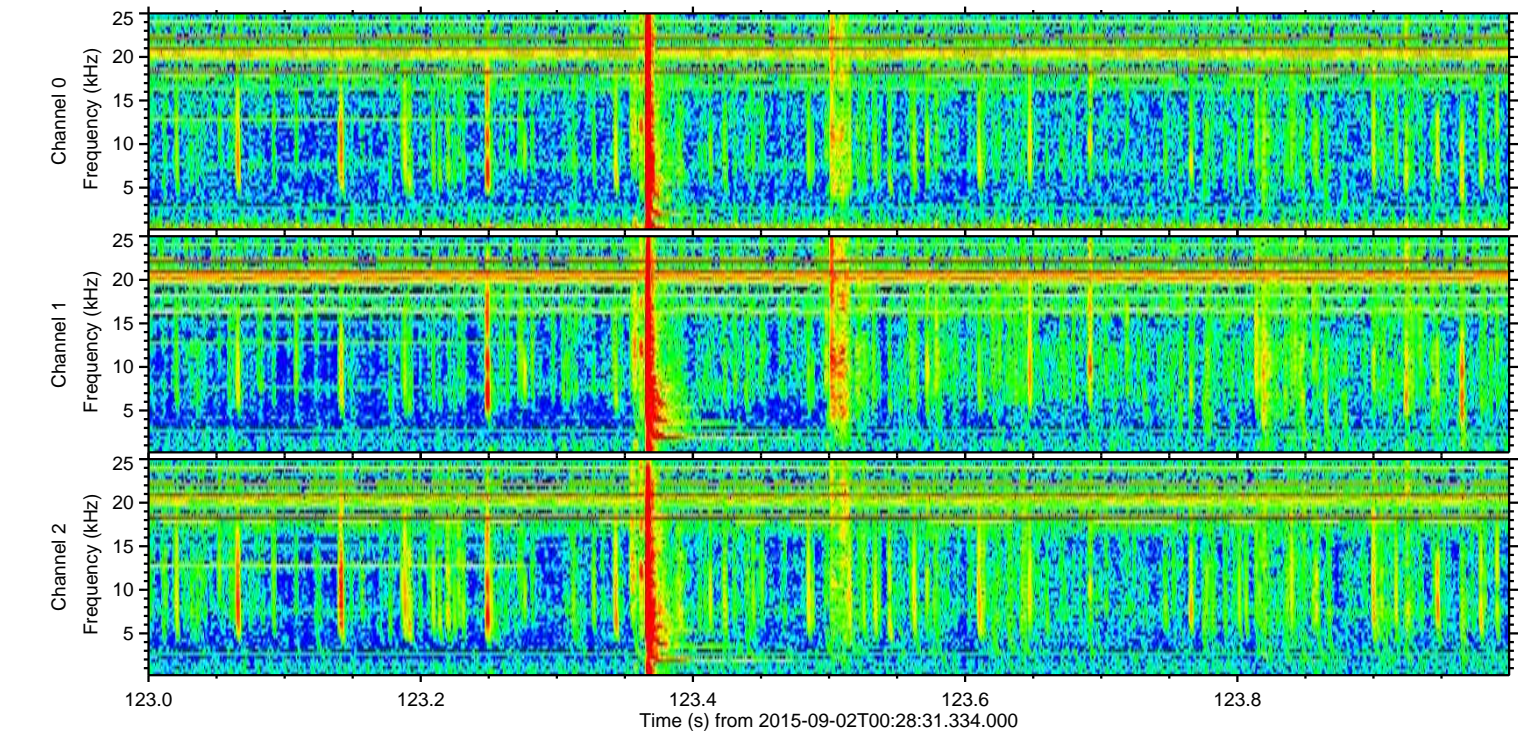
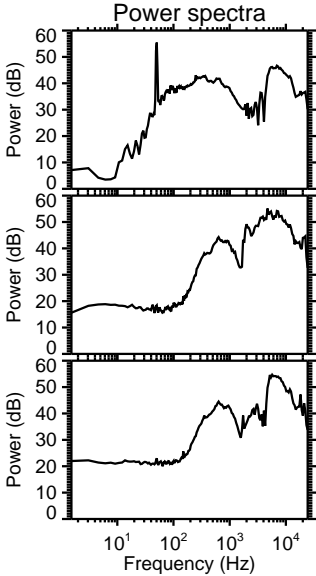
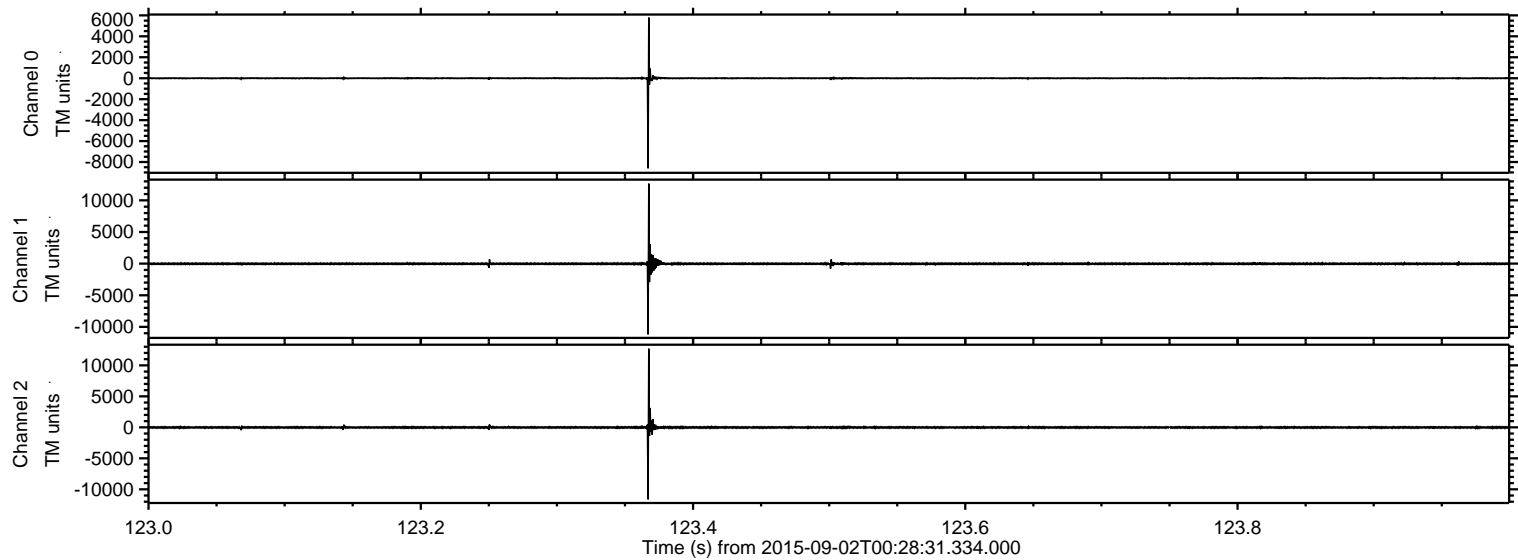
Processed Thu Oct 8 23:08:16 2015 by ELM ver.2012-10-06 from 001\_\_elm20150902\_002830\_\_dat00.bin





ELMAVAN 3D WAVEFORMS (Measured data sampled at 50 kHz) 51000 packets of 144 samples from 2015-09-02T00:28:31.334.000. Part 124/147

Processed Thu Oct 8 23:08:32 2015 by ELM ver.2012-10-06 from 001\_\_elm20150902\_002830\_\_dat00.bin



Channel 0  
mn: -8603  
mx: 5792  
 $\mu$ : -5.5  
 $\sigma$ : 57.7

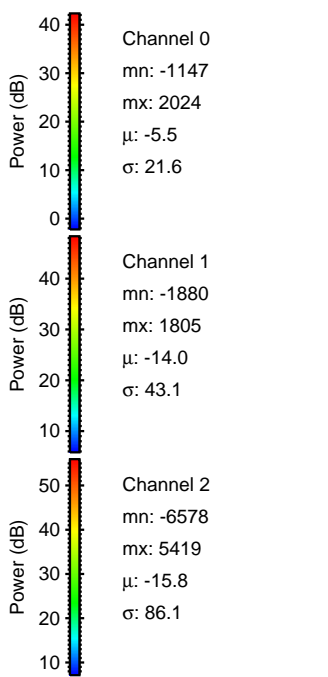
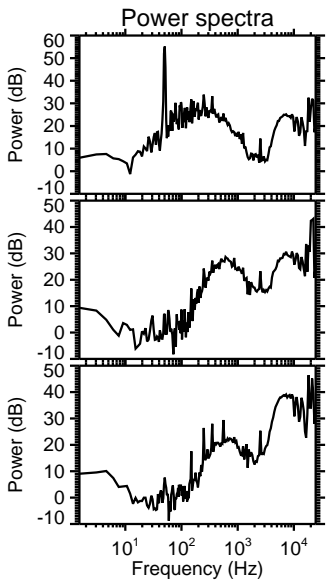
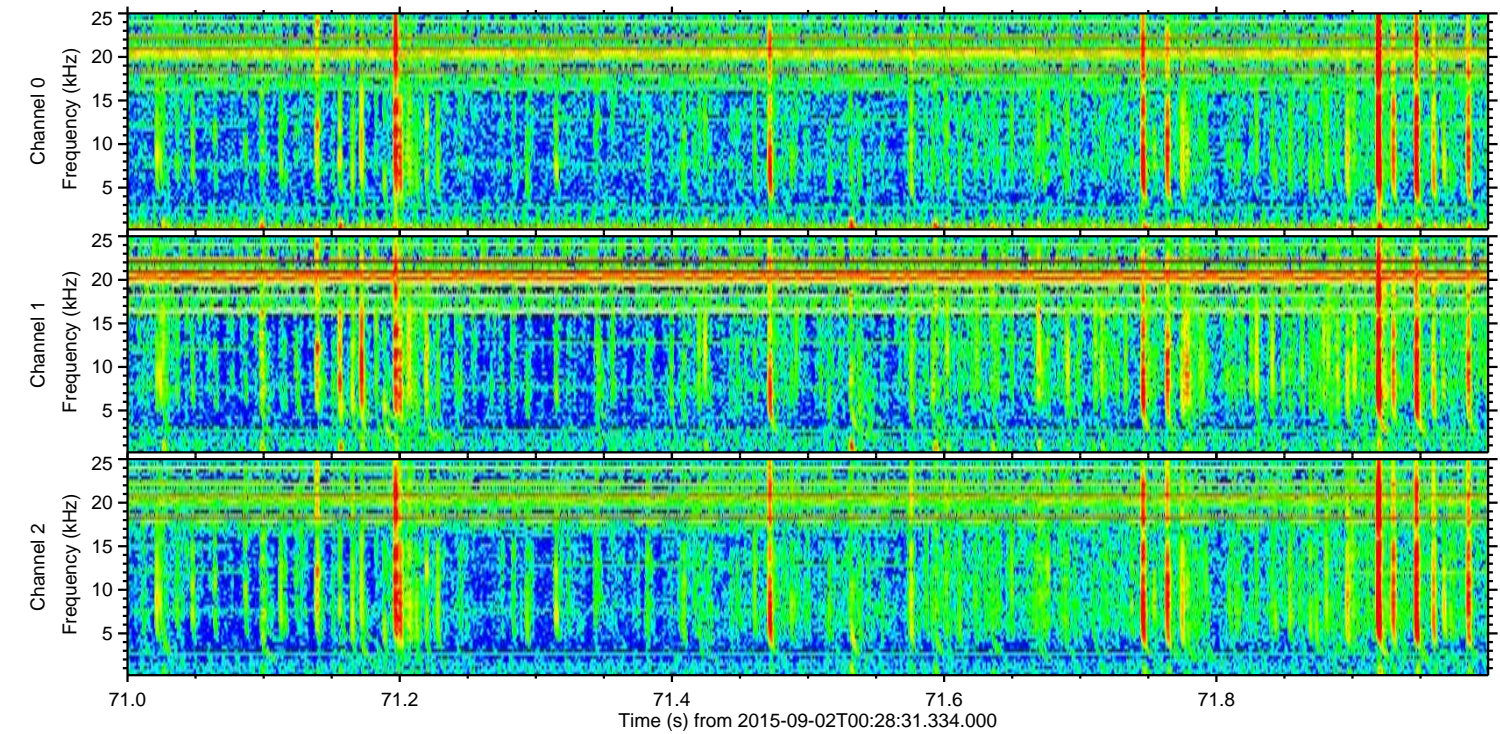
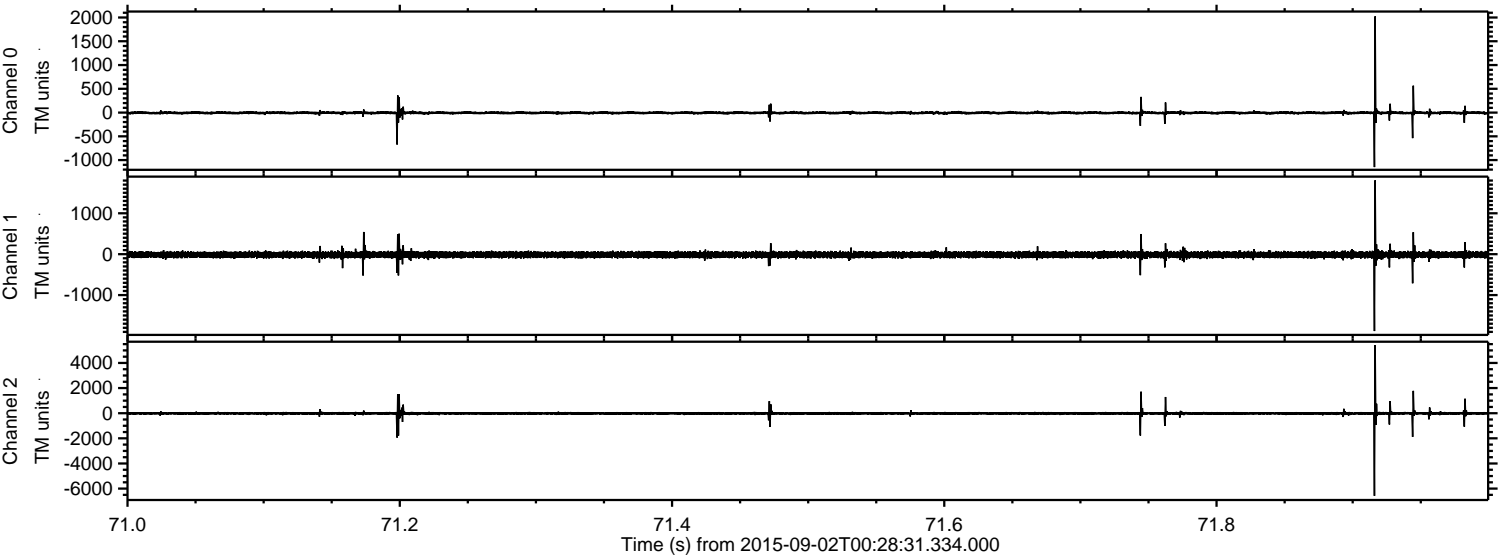
Channel 1  
mn: -11182  
mx: 12645  
 $\mu$ : -14.0  
 $\sigma$ : 135.6

Channel 2  
mn: -11622  
mx: 12700  
 $\mu$ : -15.8  
 $\sigma$ : 131.9



ELMAVAN 3D WAVEFORMS (Measured data sampled at 50 kHz) 51000 packets of 144 samples from 2015-09-02T00:28:31.334.000. Part 72/147

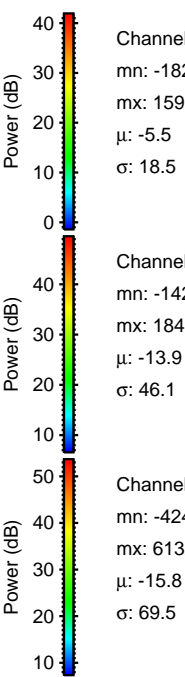
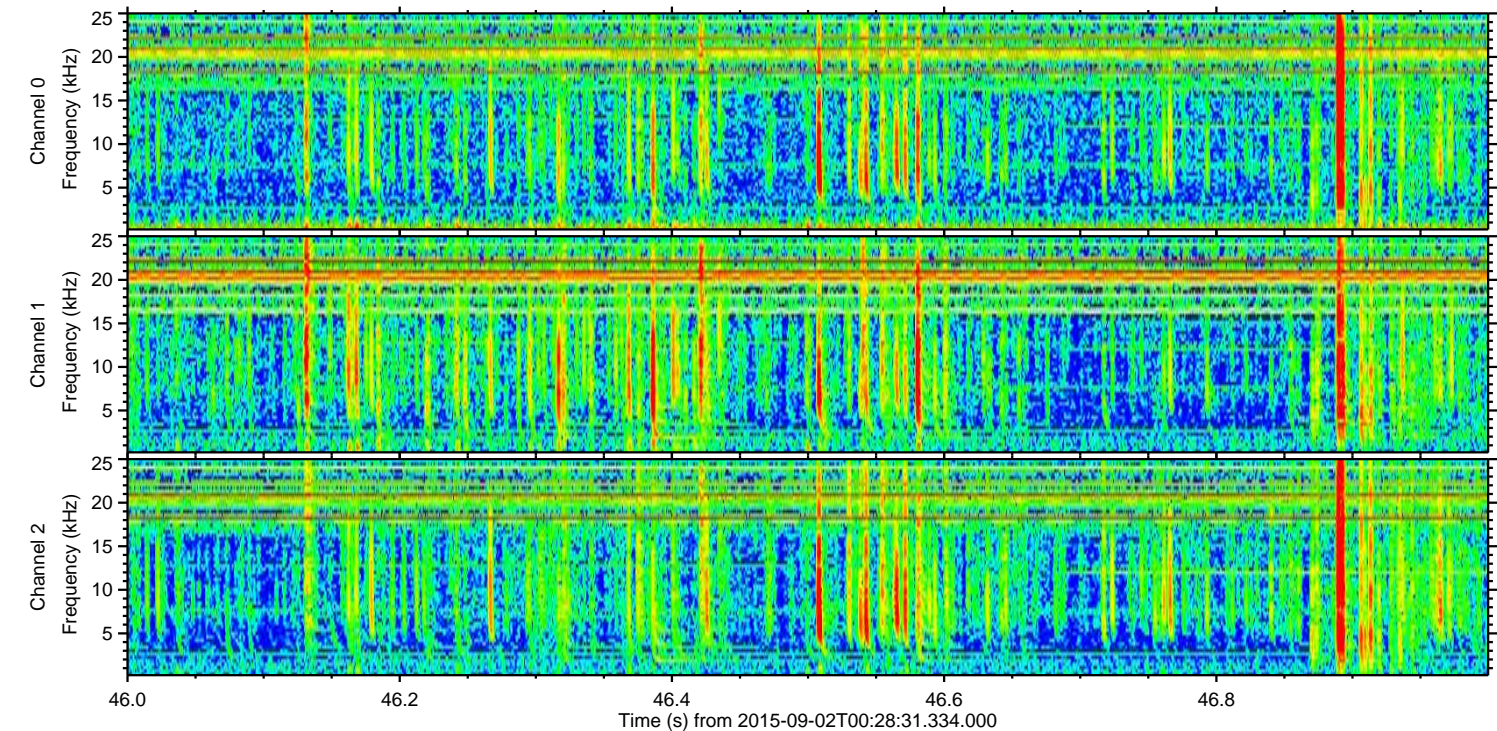
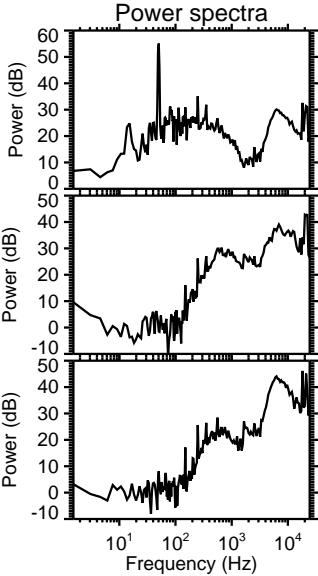
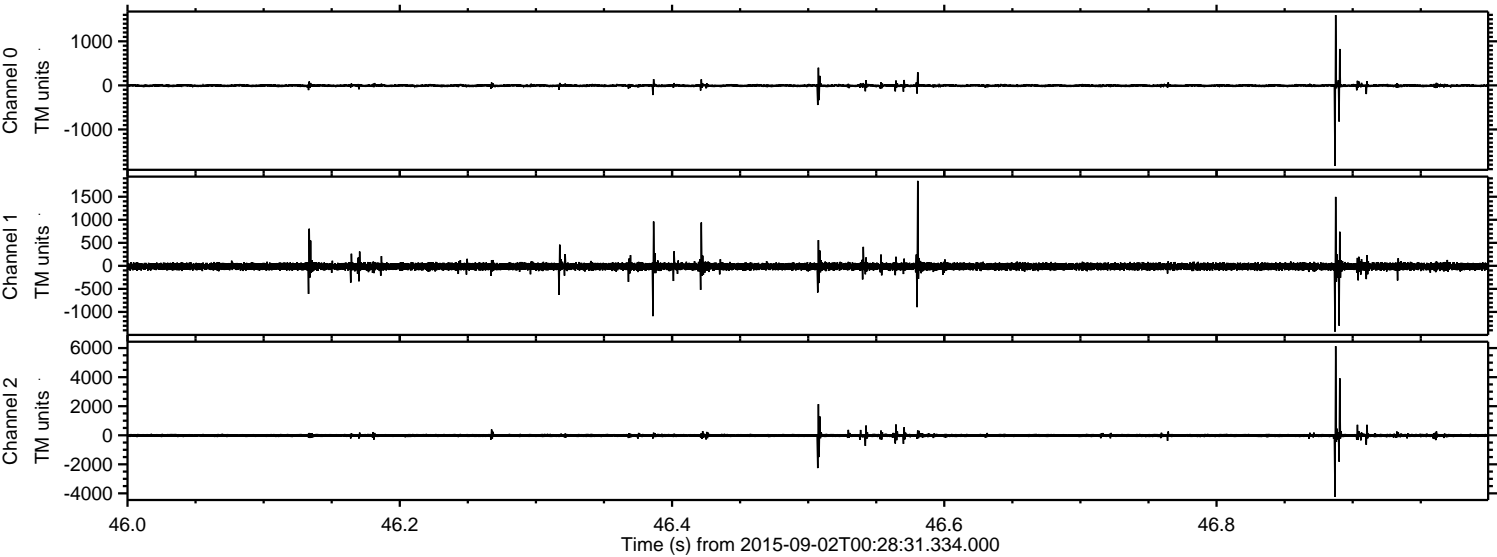
Processed Thu Oct 8 23:08:33 2015 by ELM ver.2012-10-06 from 001\_\_elm20150902\_002830\_\_dat00.bin





ELMAVAN 3D WAVEFORMS (Measured data sampled at 50 kHz) 51000 packets of 144 samples from 2015-09-02T00:28:31.334.000. Part 47/147

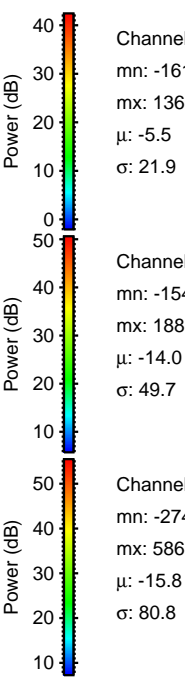
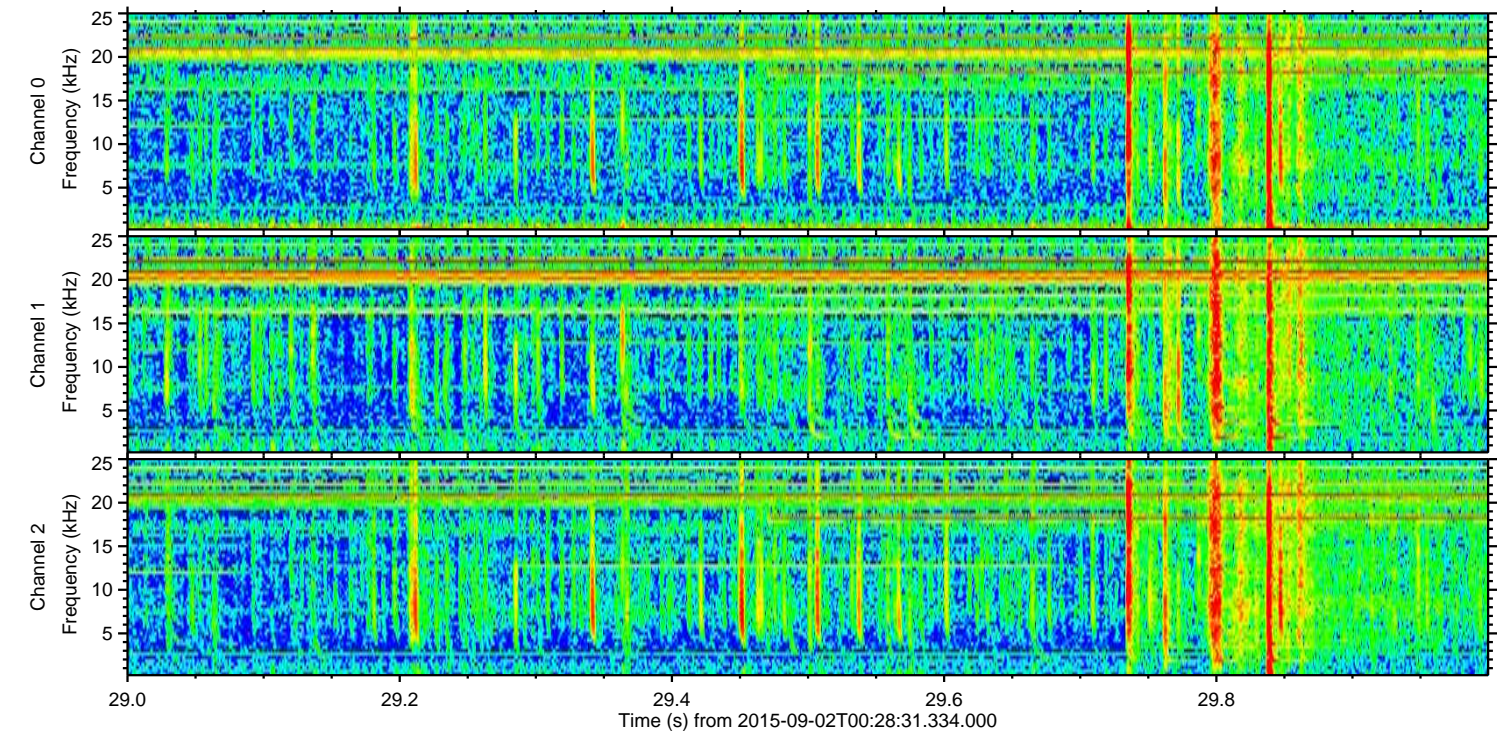
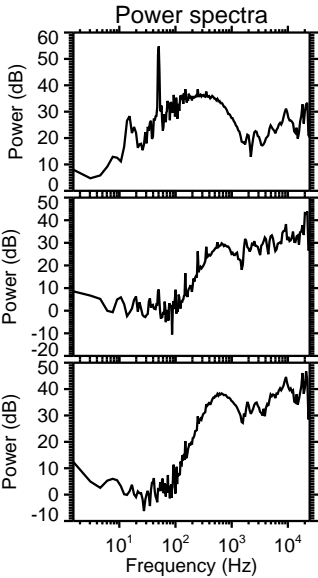
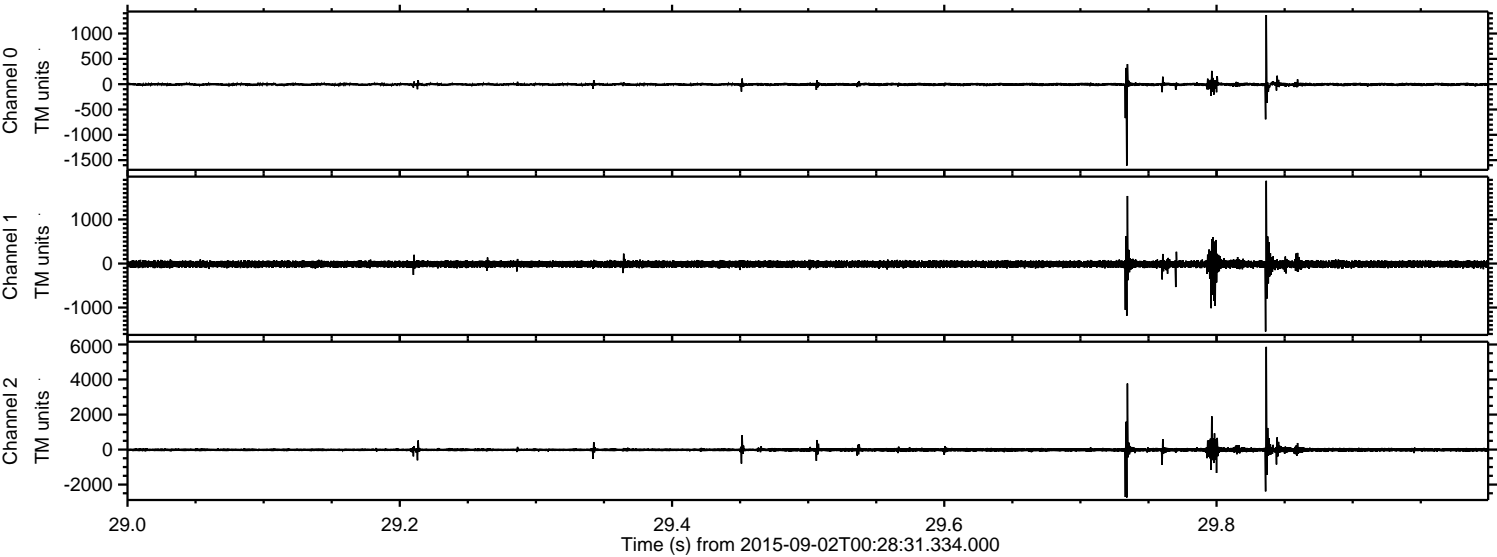
Processed Thu Oct 8 23:08:34 2015 by ELM ver.2012-10-06 from 001\_\_elm20150902\_002830\_\_dat00.bin





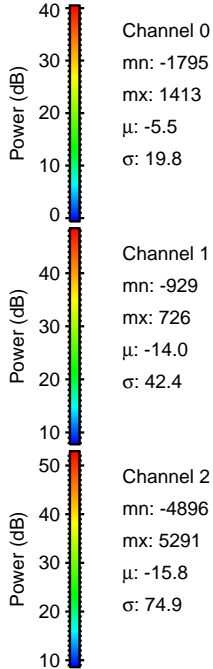
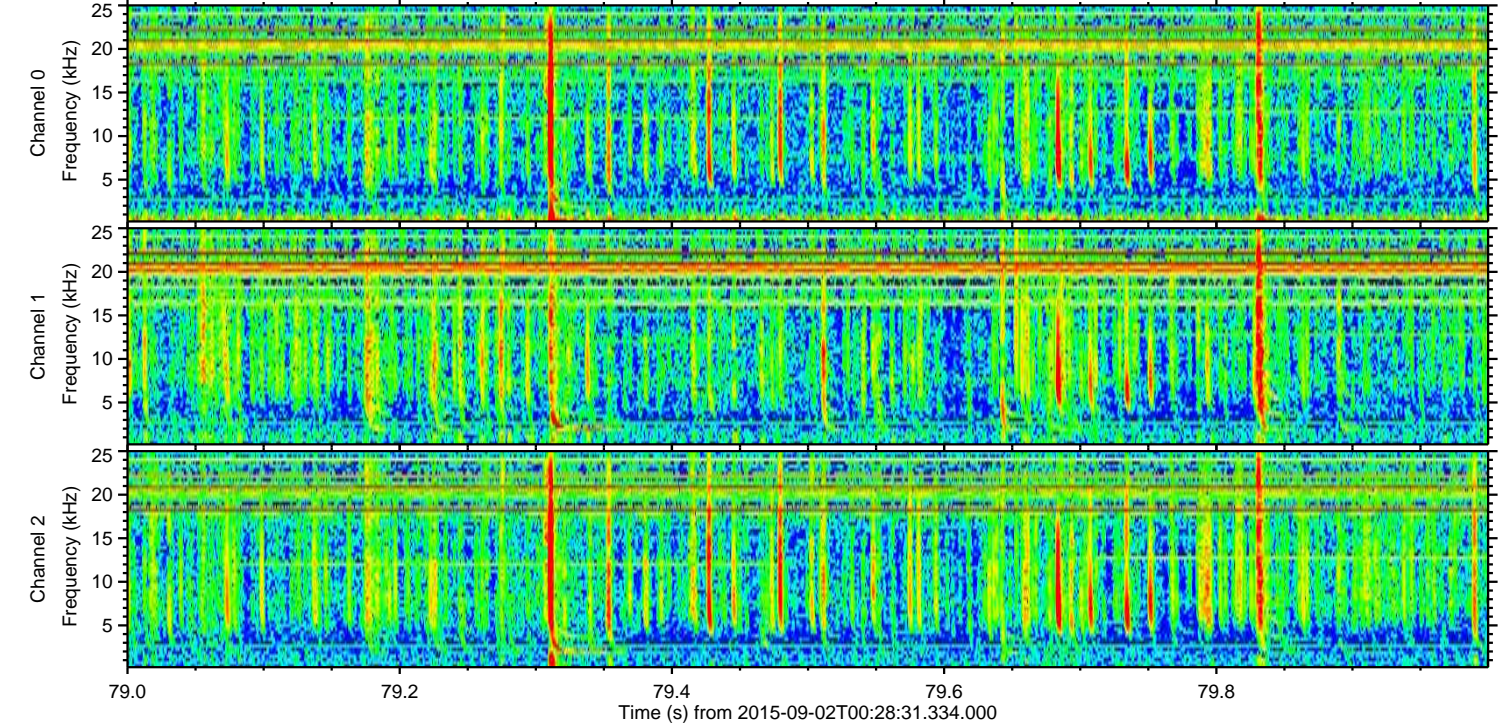
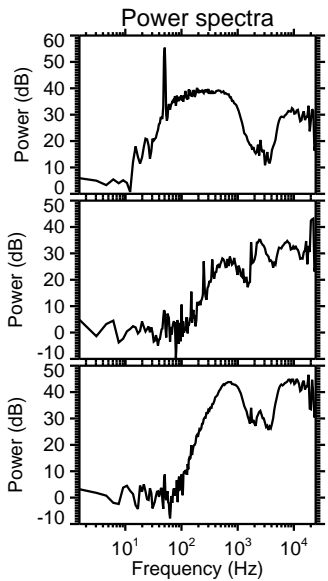
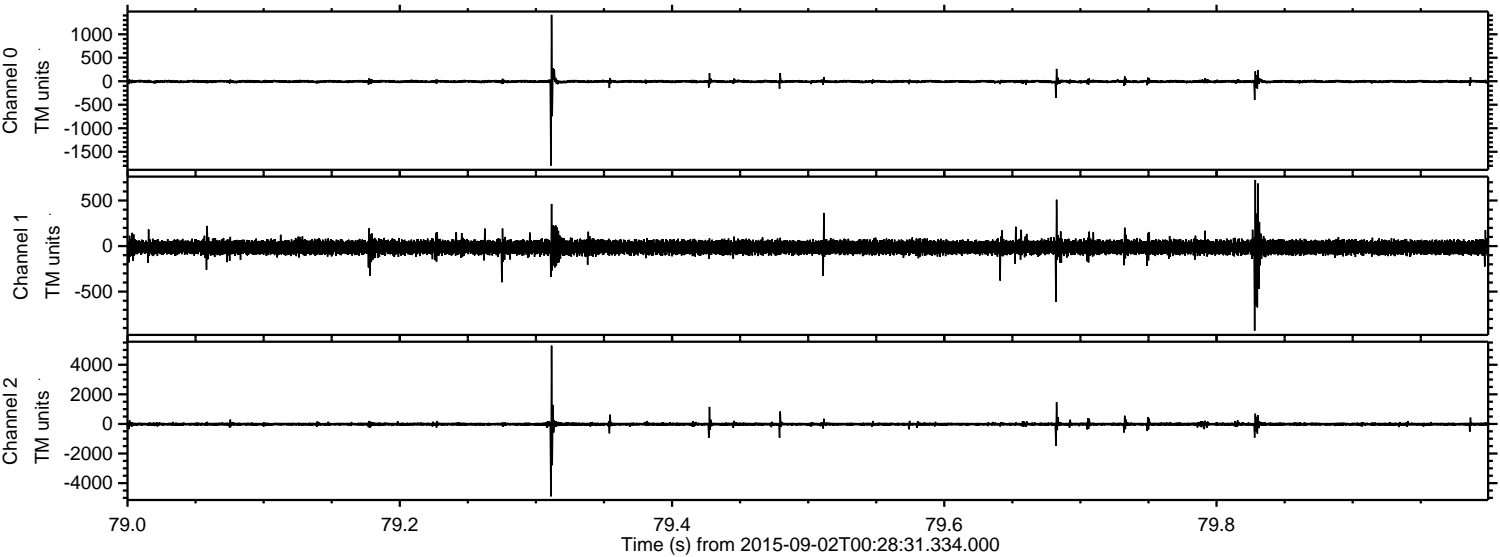
ELMAVAN 3D WAVEFORMS (Measured data sampled at 50 kHz) 51000 packets of 144 samples from 2015-09-02T00:28:31.334.000. Part 30/147

Processed Thu Oct 8 23:08:35 2015 by ELM ver.2012-10-06 from 001\_\_elm20150902\_002830\_\_dat00.bin





Processed Thu Oct 8 23:08:36 2015 by ELM ver.2012-10-06 from 001\_\_elm20150902\_002830\_\_dat00.bin



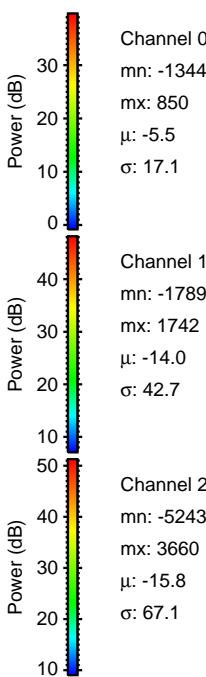
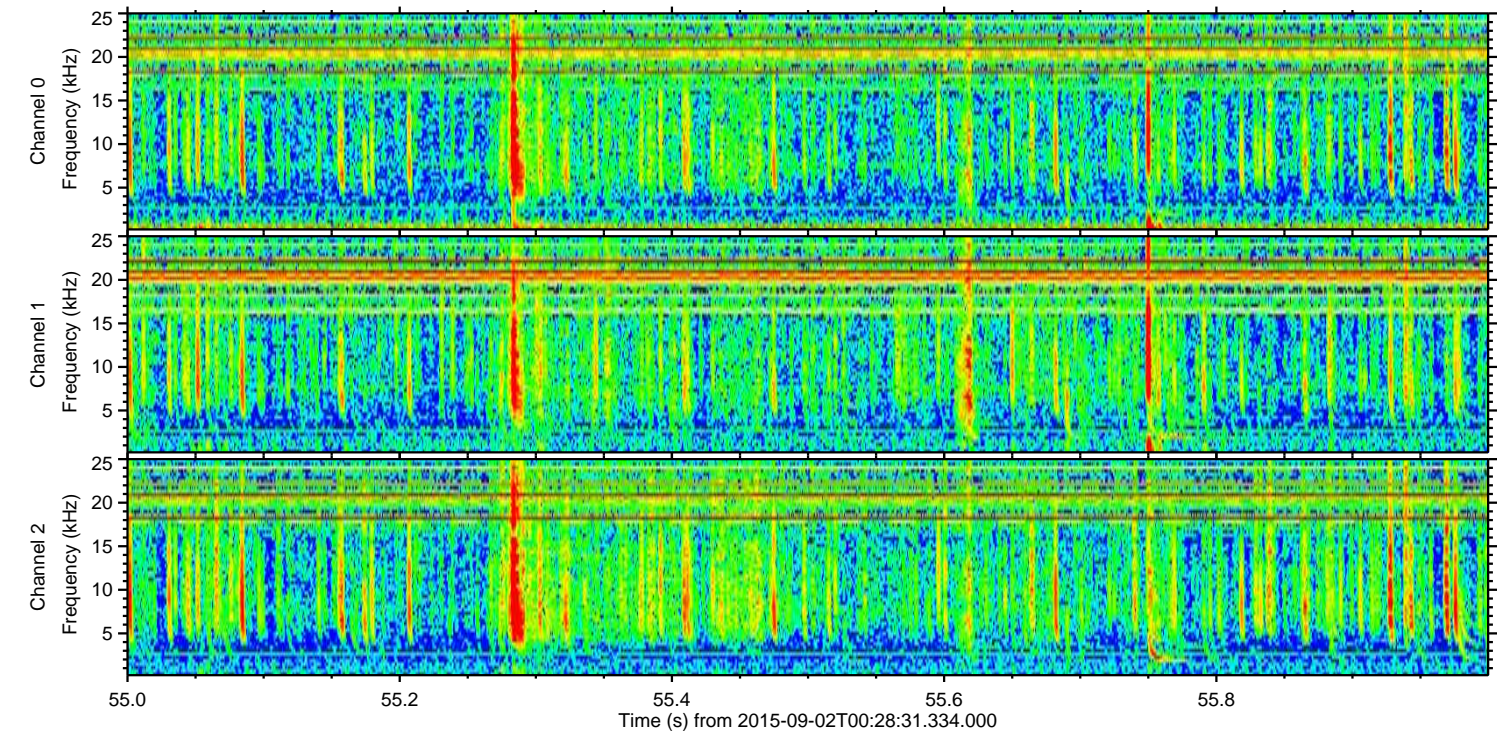
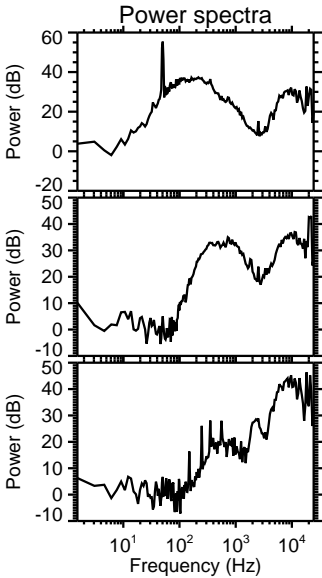
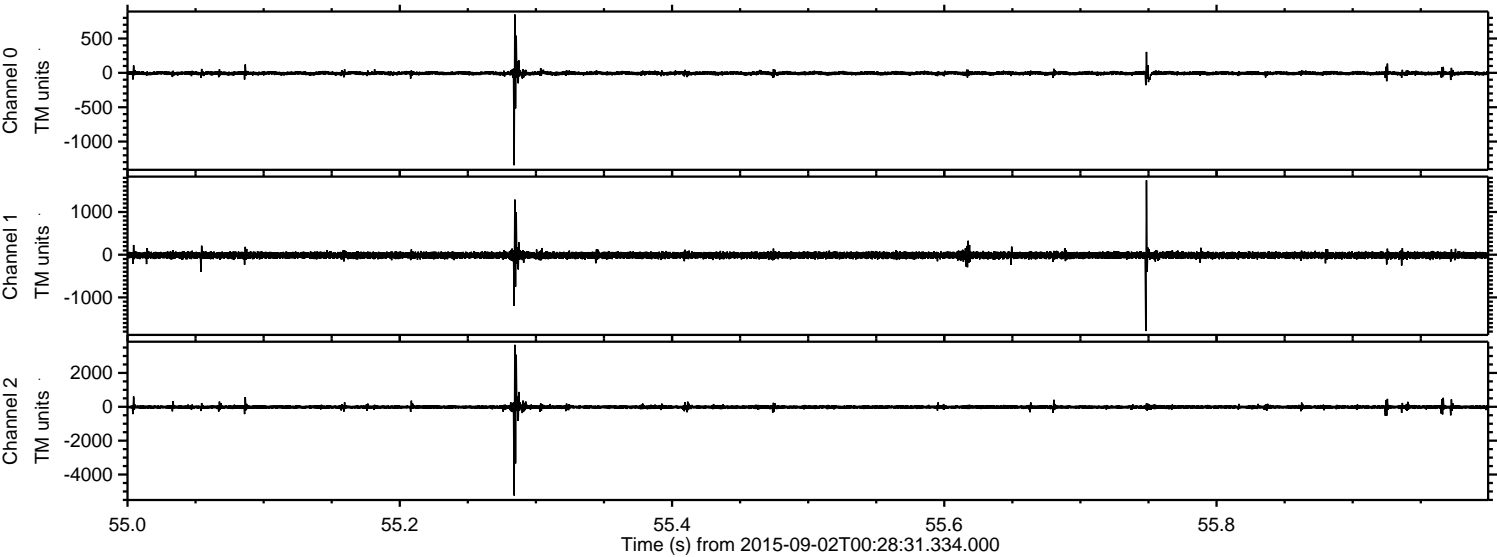
Channel 0  
mn: -1795  
mx: 1413  
 $\mu$ : -5.5  
 $\sigma$ : 19.8

Channel 1  
mn: -929  
mx: 726  
 $\mu$ : -14.0  
 $\sigma$ : 42.4

Channel 2  
mn: -4896  
mx: 5291  
 $\mu$ : -15.8  
 $\sigma$ : 74.9

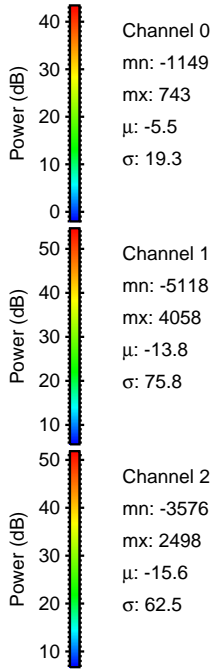
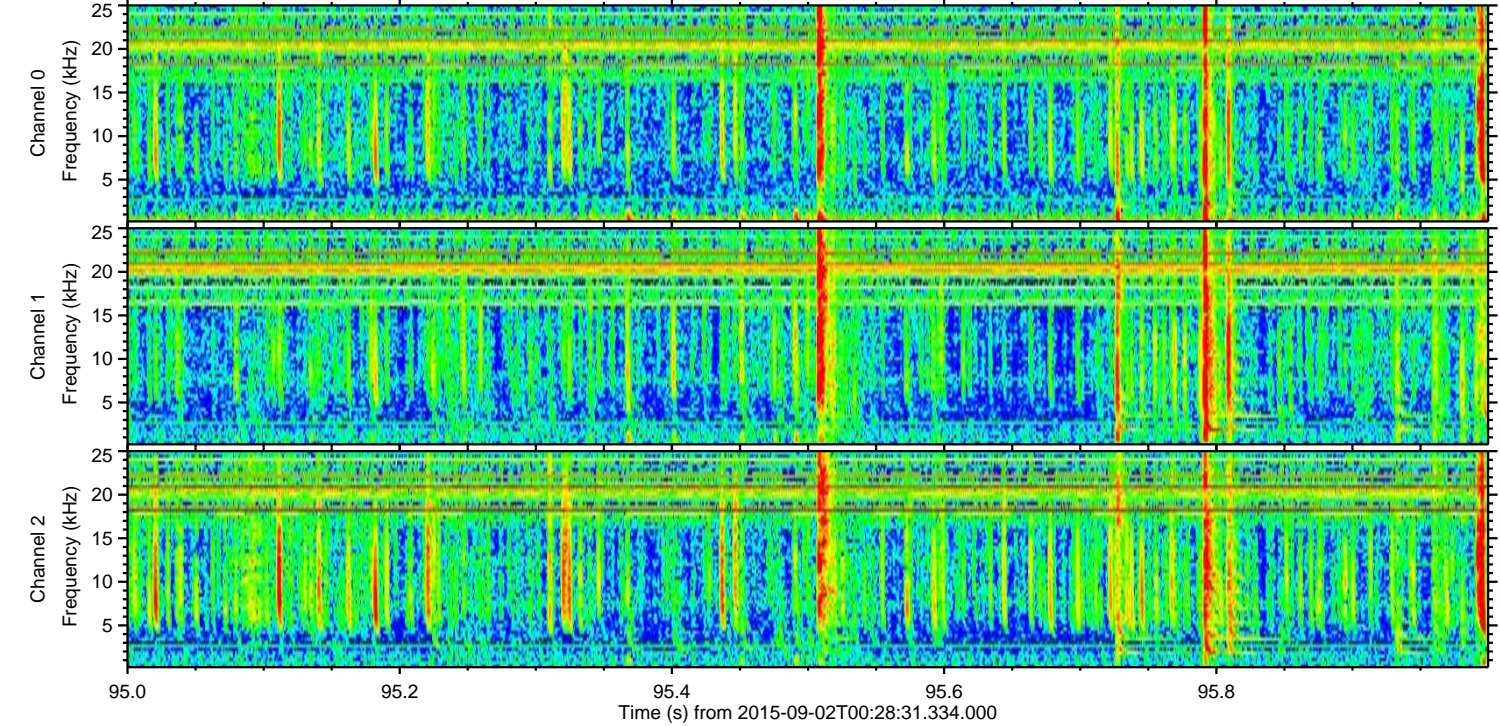
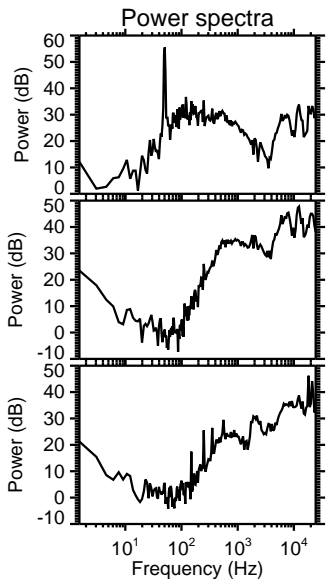
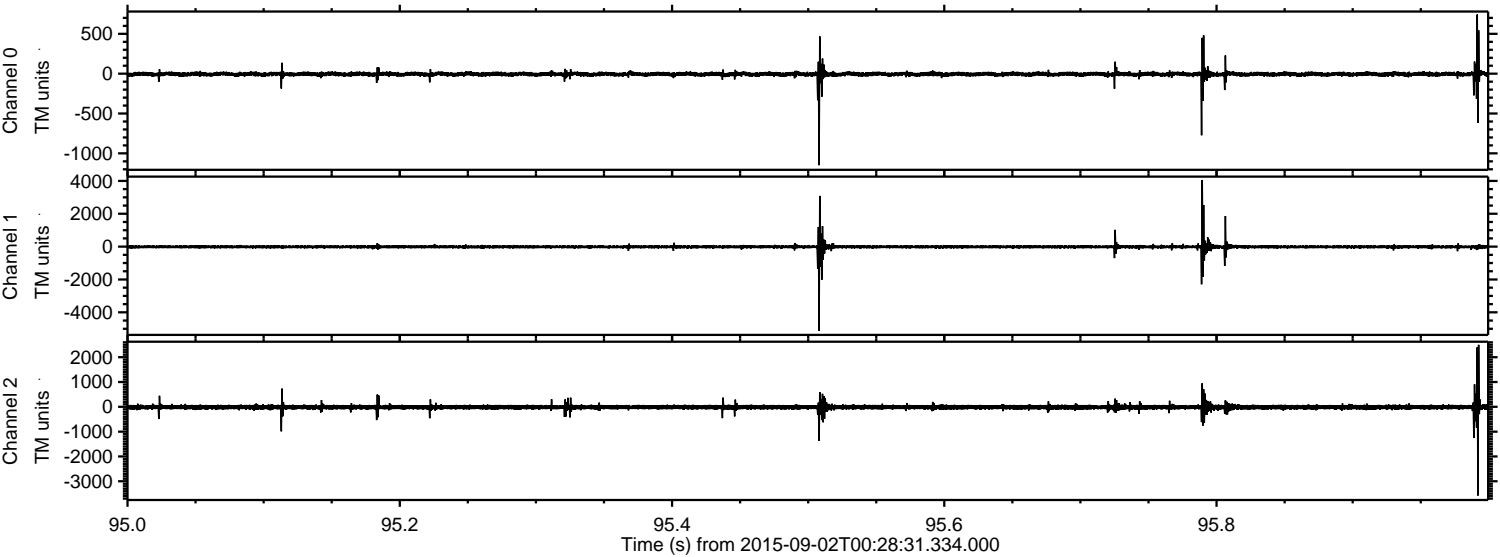


Processed Thu Oct 8 23:08:38 2015 by ELM ver.2012-10-06 from 001\_\_elm20150902\_002830\_\_dat00.bin



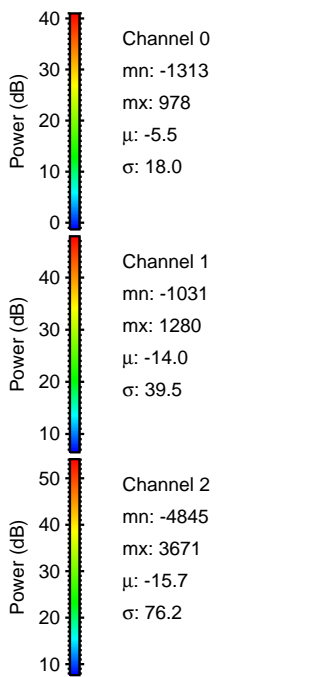
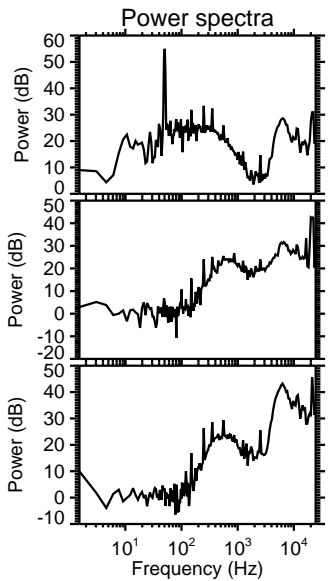
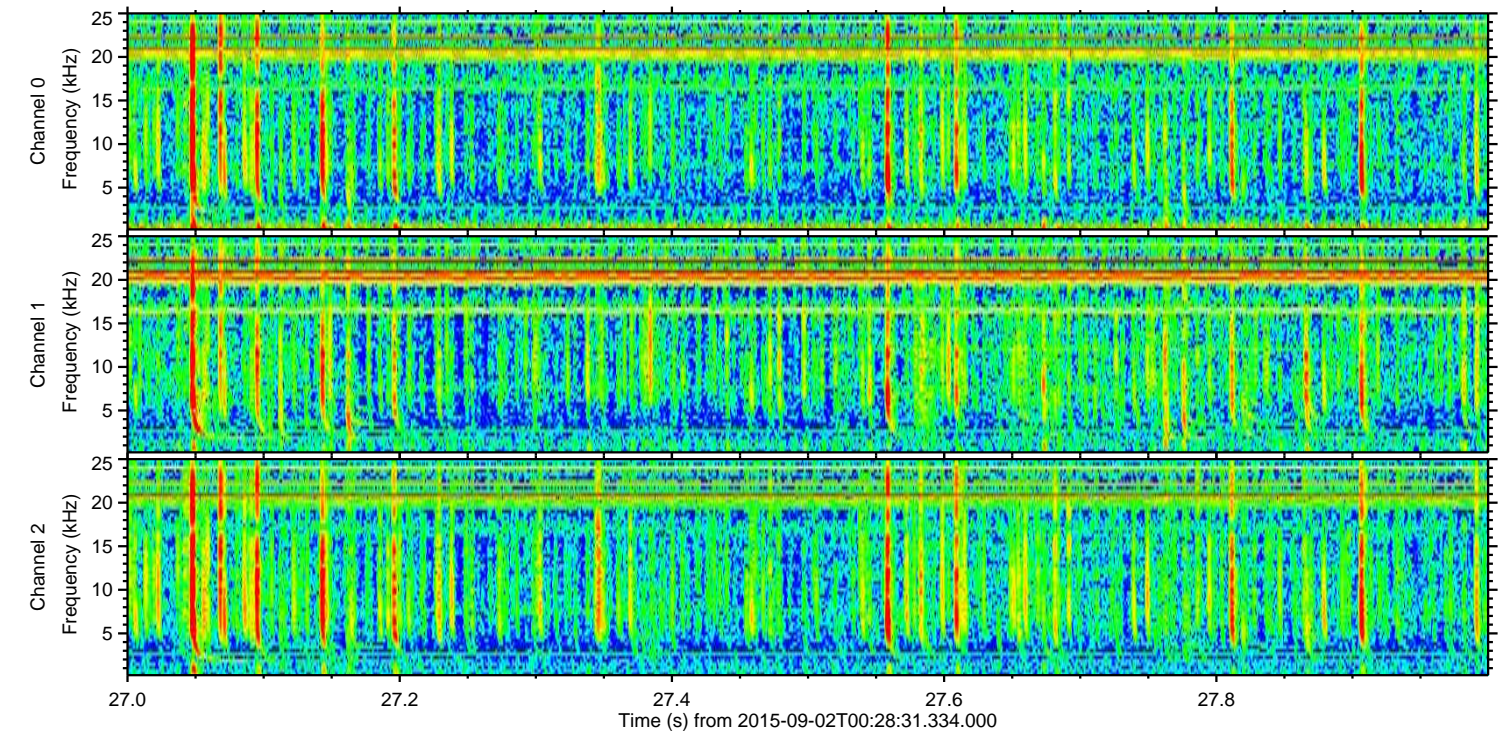
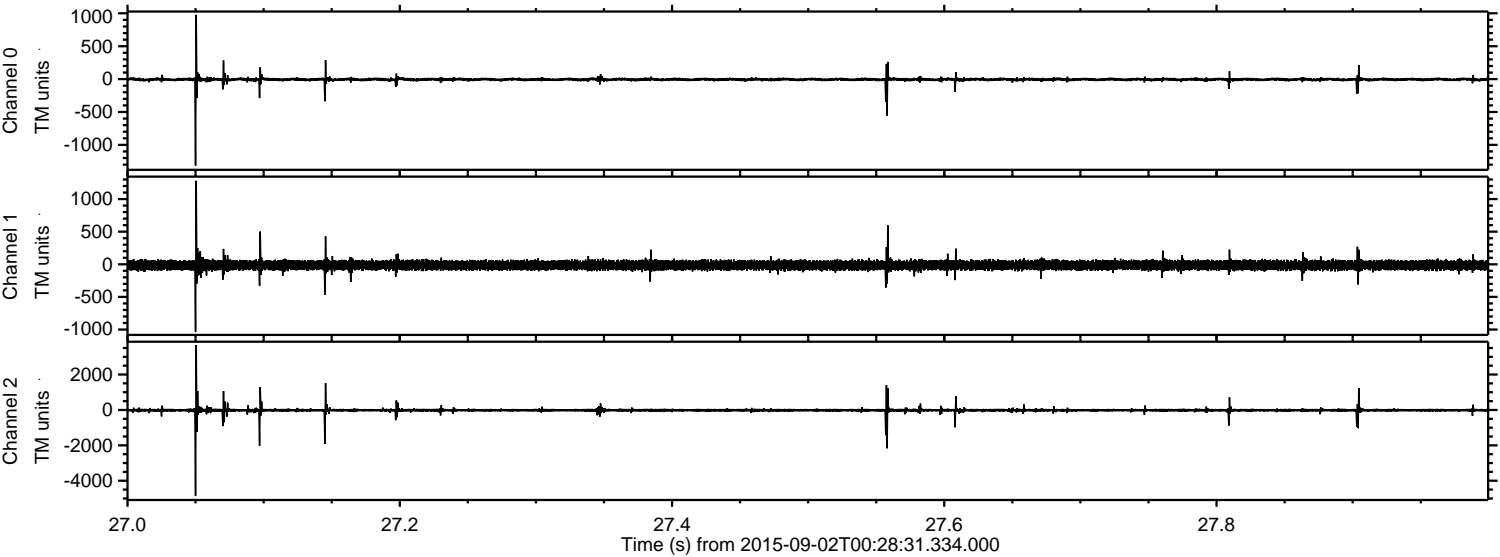


Processed Thu Oct 8 23:08:39 2015 by ELM ver.2012-10-06 from 001\_\_elm20150902\_002830\_\_dat00.bin



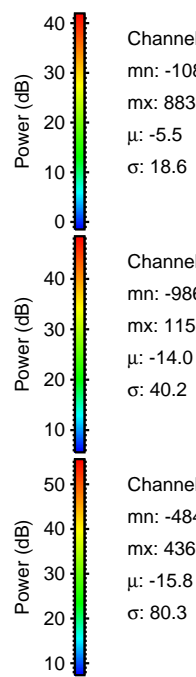
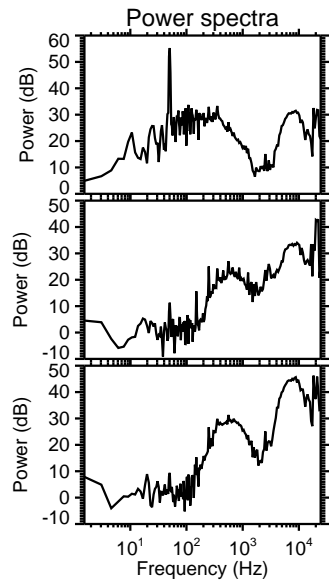
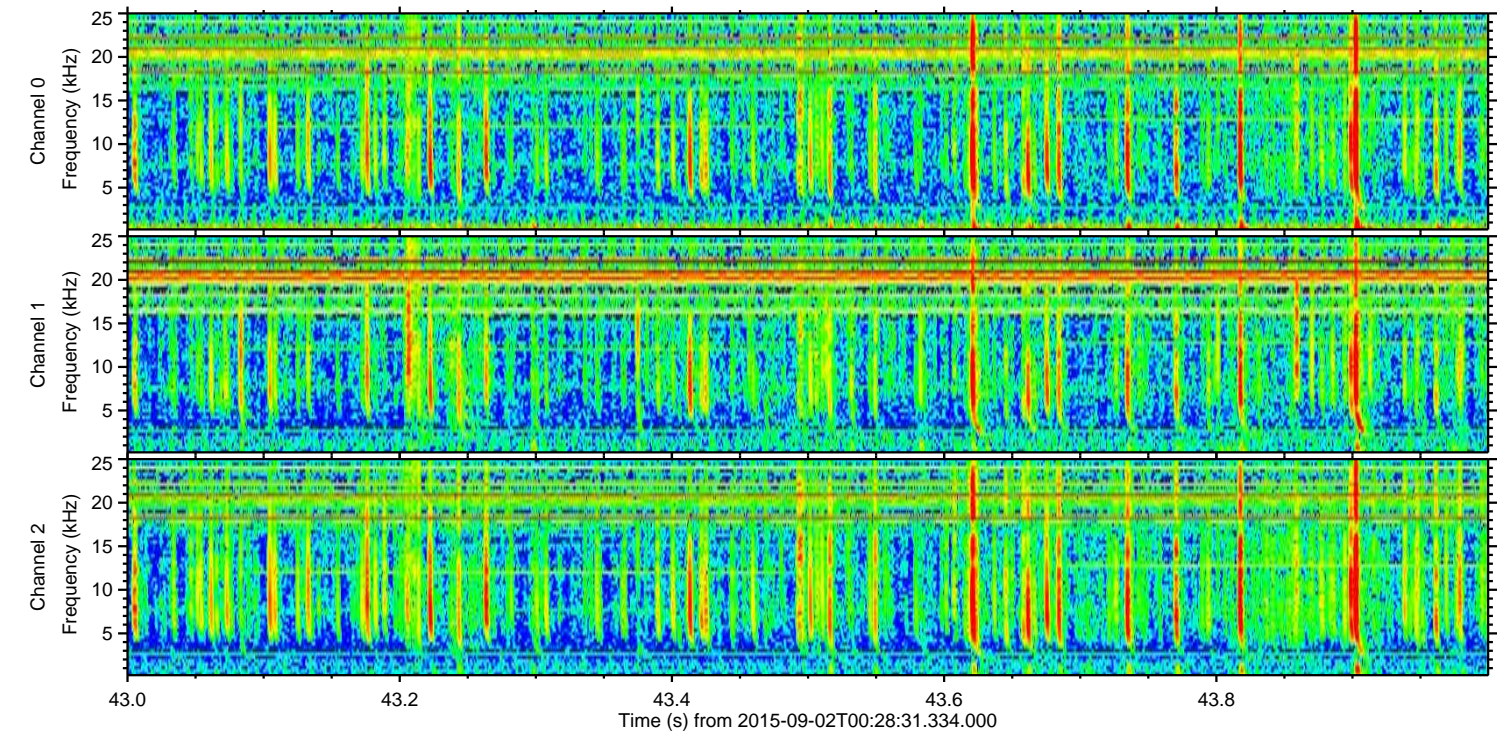
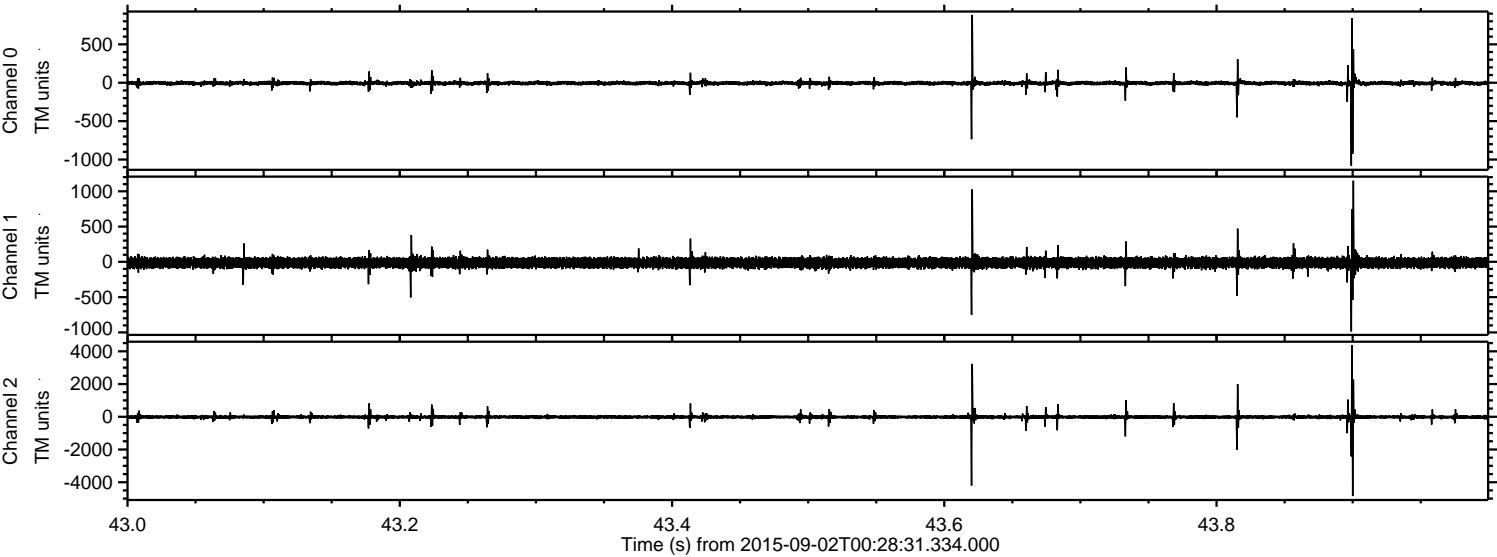


Processed Thu Oct 8 23:08:40 2015 by ELM ver.2012-10-06 from 001\_\_elm20150902\_002830\_\_dat00.bin



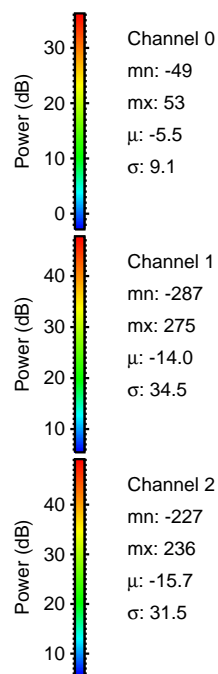
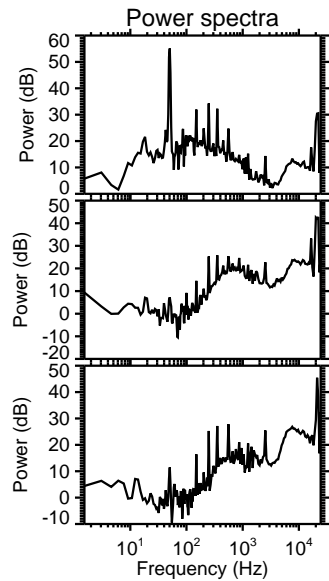
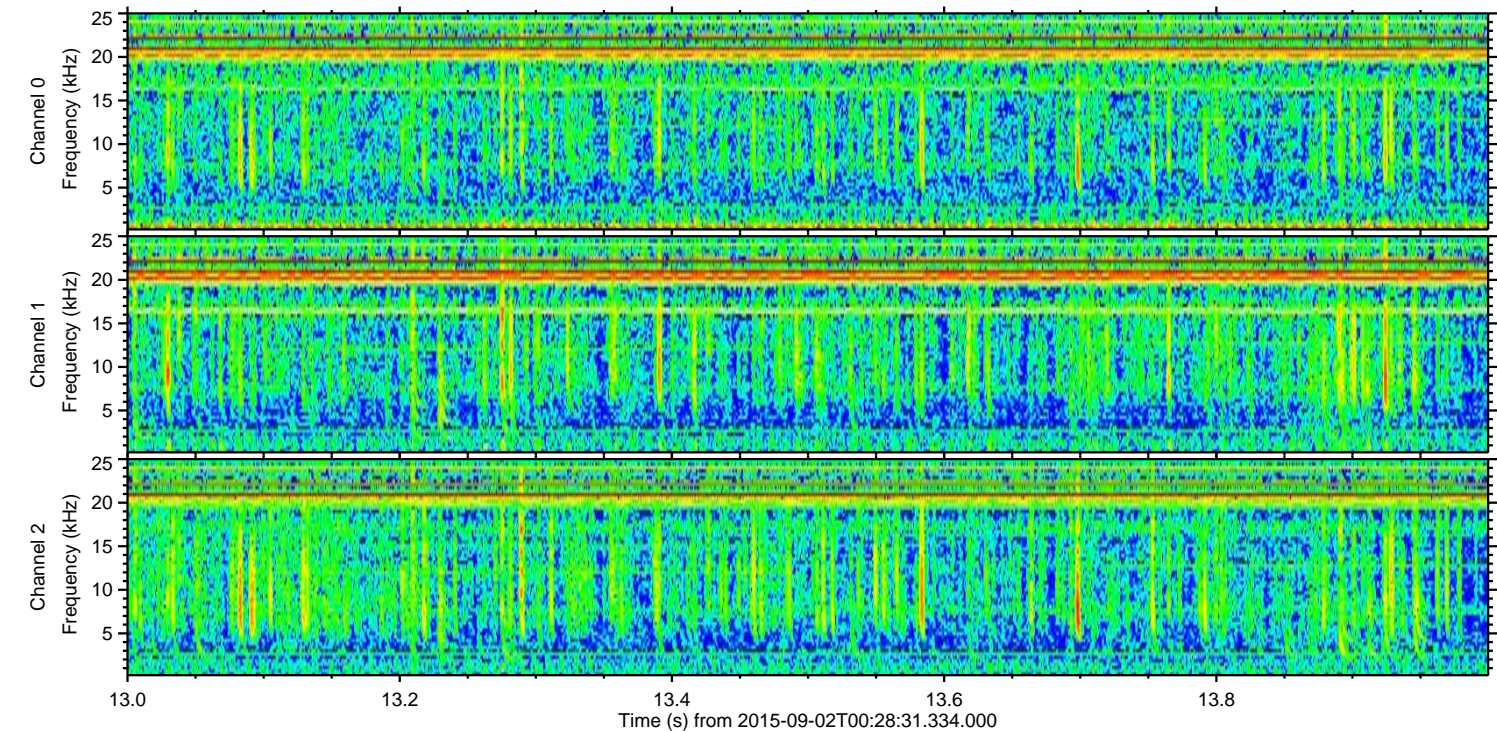
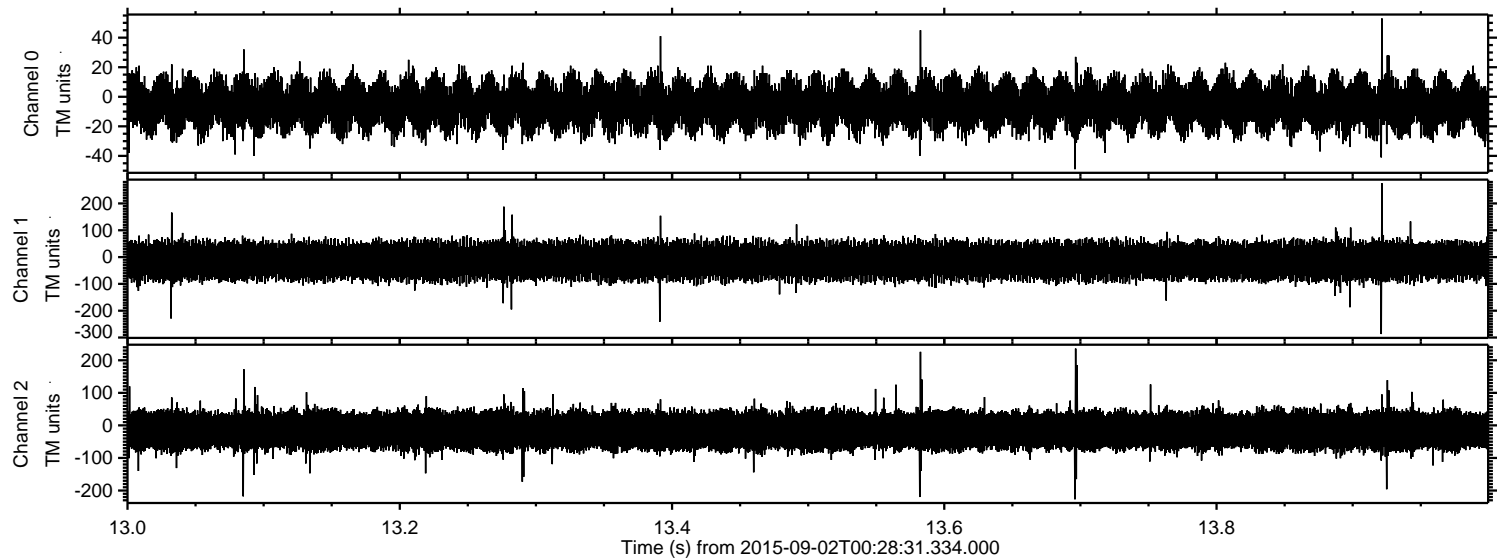


Processed Thu Oct 8 23:08:41 2015 by ELM ver.2012-10-06 from 001\_\_elm20150902\_002830\_\_dat00.bin





Processed Thu Oct 8 23:08:42 2015 by ELM ver.2012-10-06 from 001\_\_elm20150902\_002830\_\_dat00.bin



Power spectra

Channel 0  
mn: -49  
mx: 53  
 $\mu$ : -5.5  
 $\sigma$ : 9.1

Channel 1  
mn: -287  
mx: 275  
 $\mu$ : -14.0  
 $\sigma$ : 34.5

Channel 2  
mn: -227  
mx: 236  
 $\mu$ : -15.7  
 $\sigma$ : 31.5