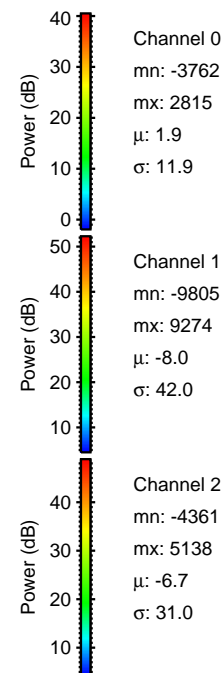
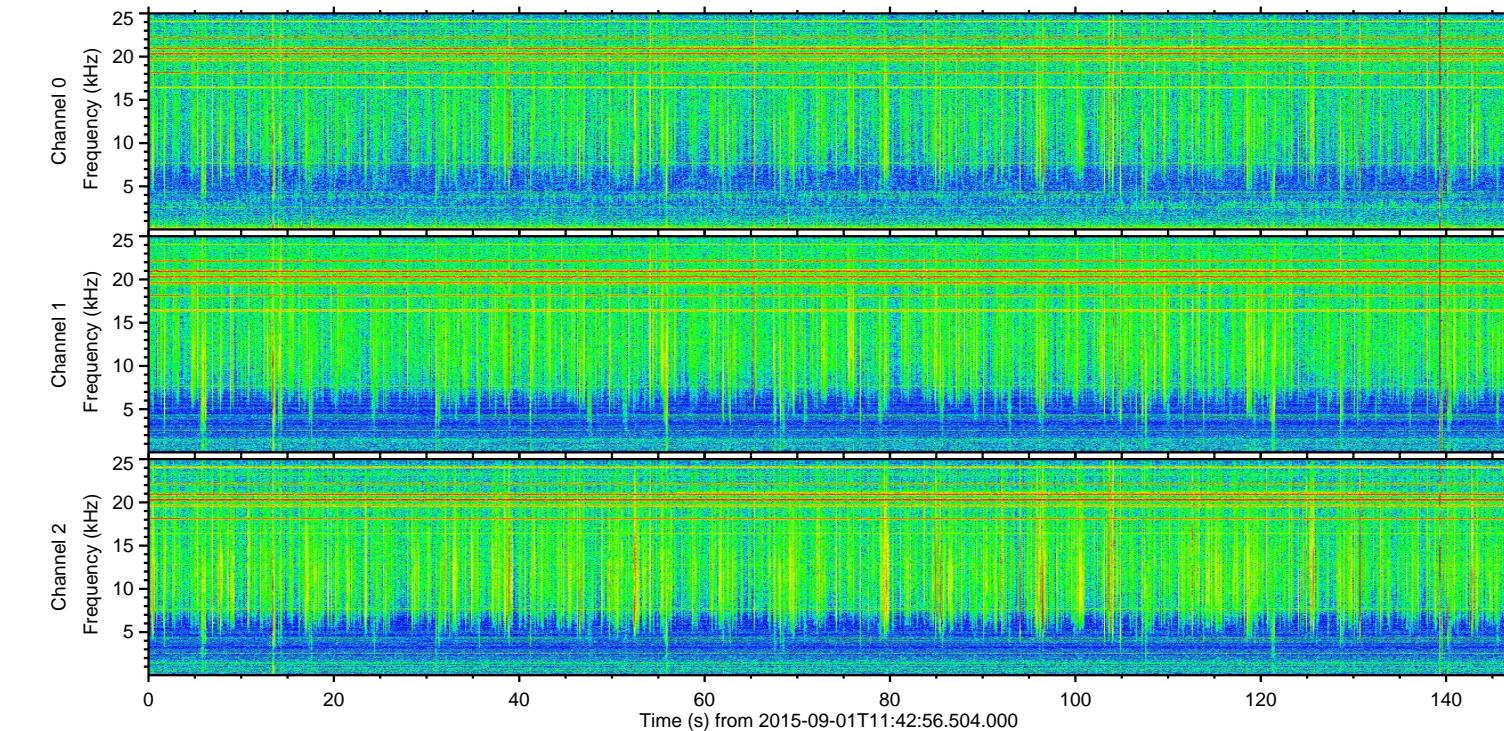
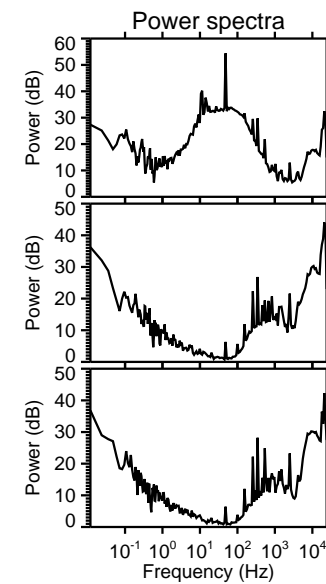
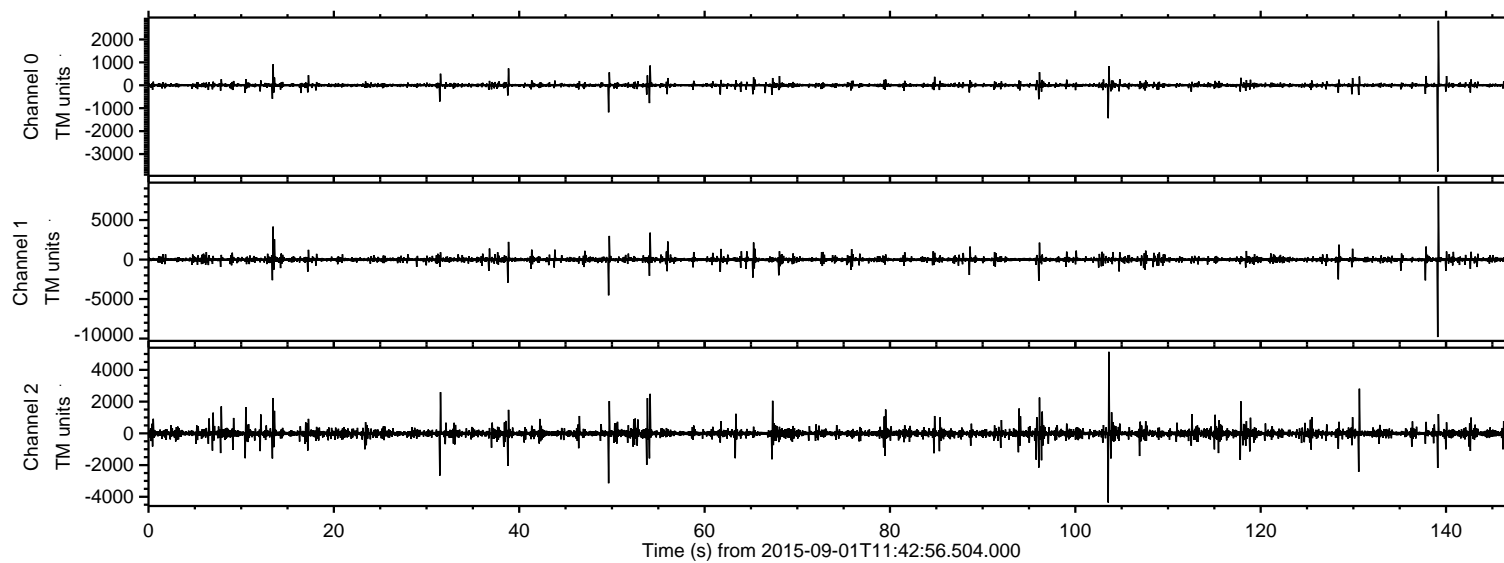


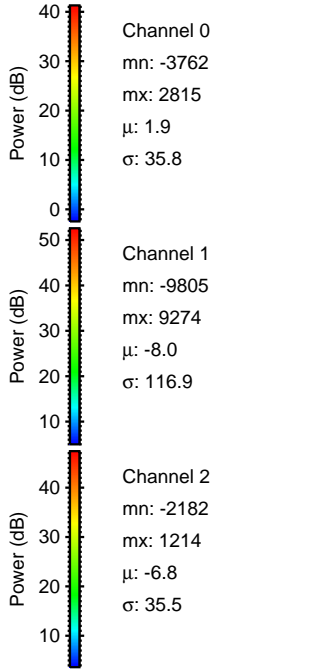
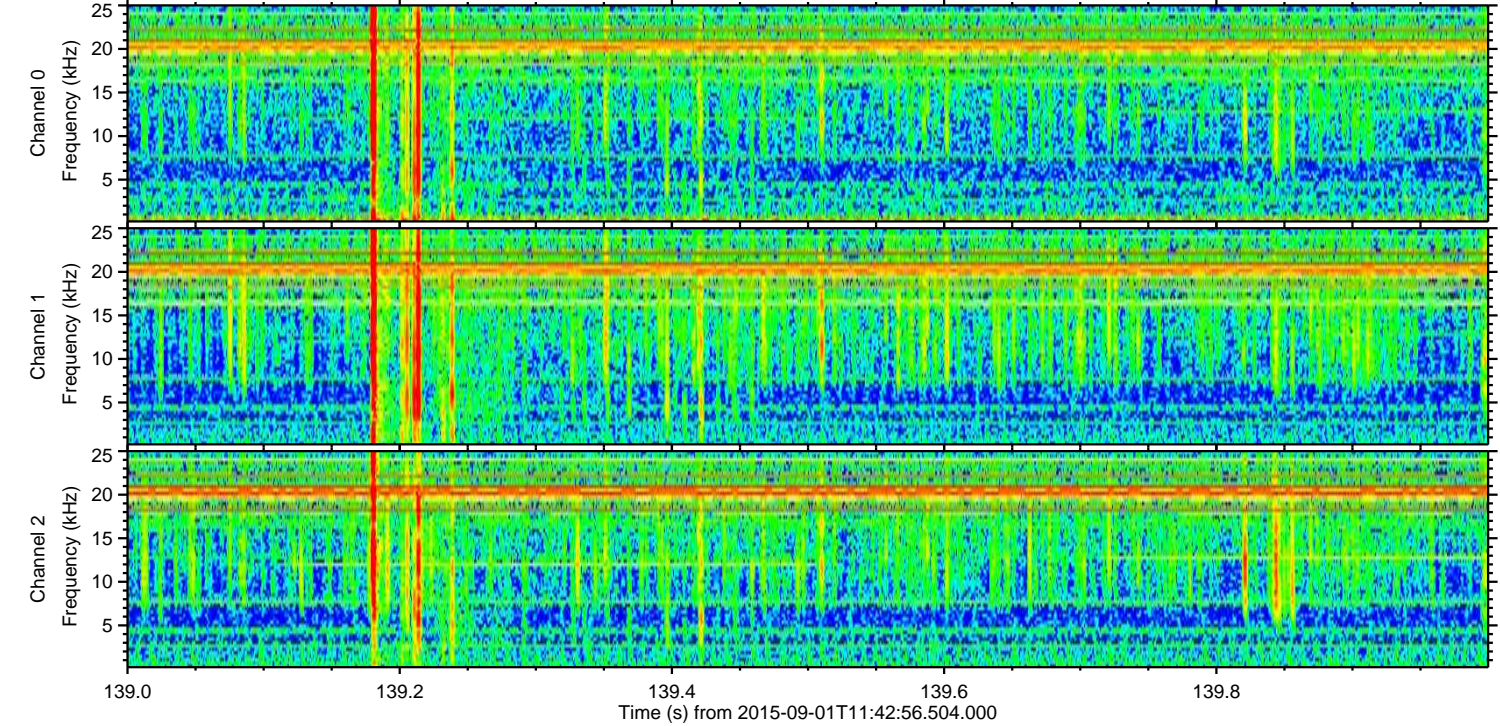
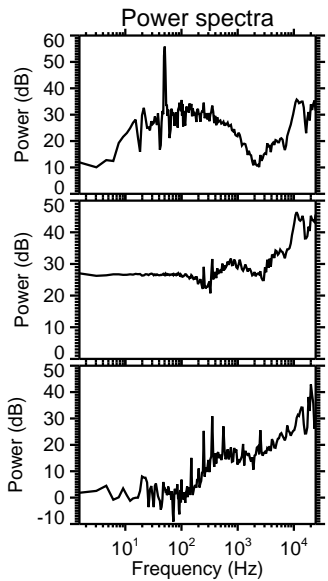
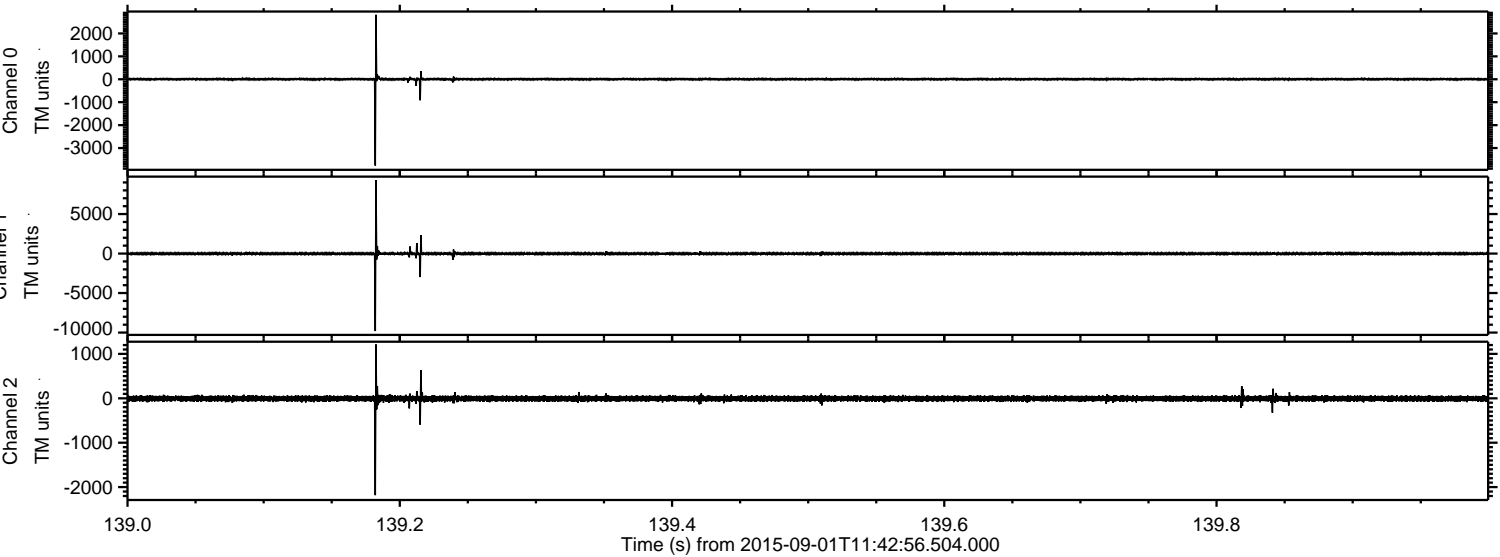
ELMAVAN 3D WAVEFORMS (Measured data sampled at 50 kHz) 51000 packets of 144 samples from 2015-09-01T11:42:56.504.000.

Processed Thu Oct 8 19:34:31 2015 by ELM ver.2012-10-06 from 001__elm20150901_114255__dat00.bin



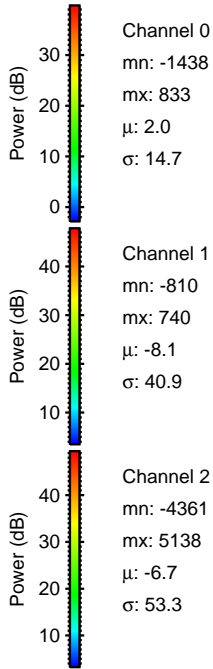
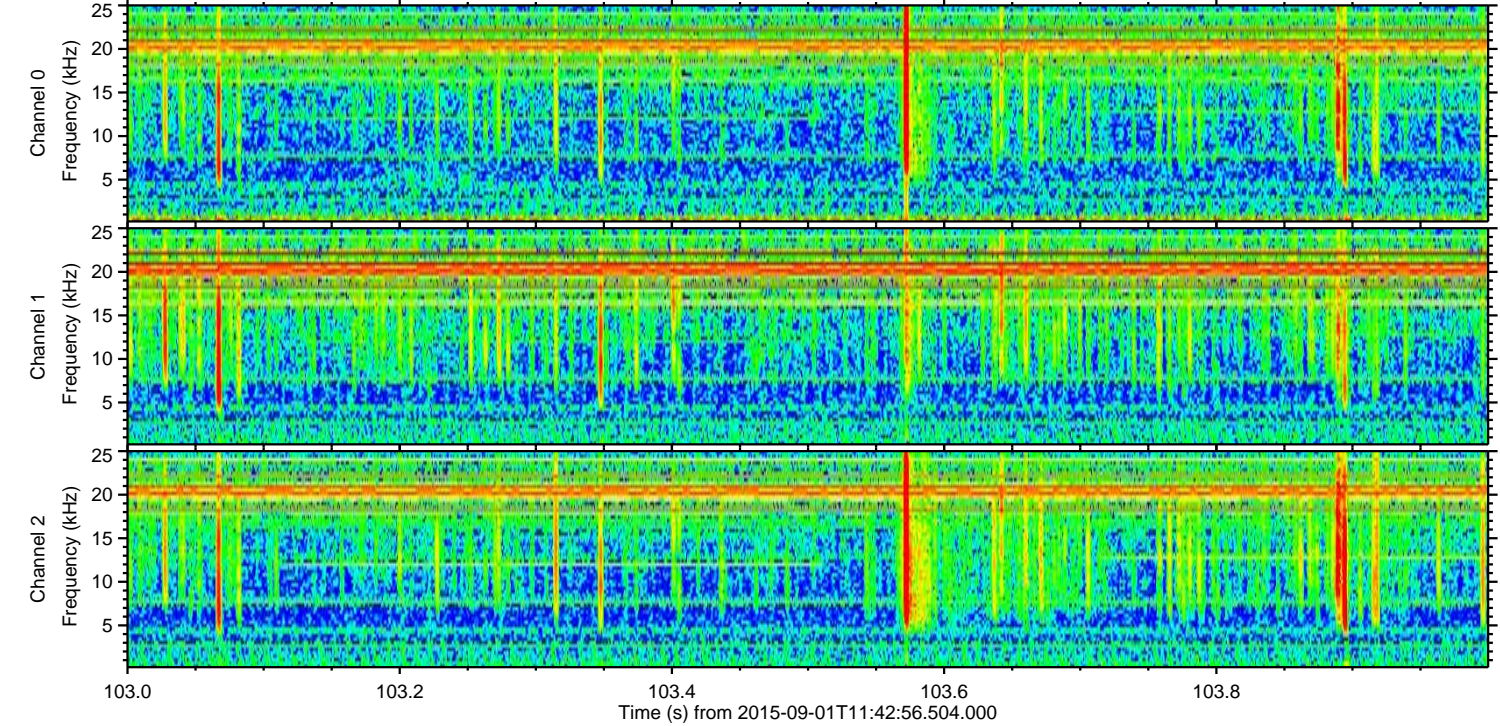
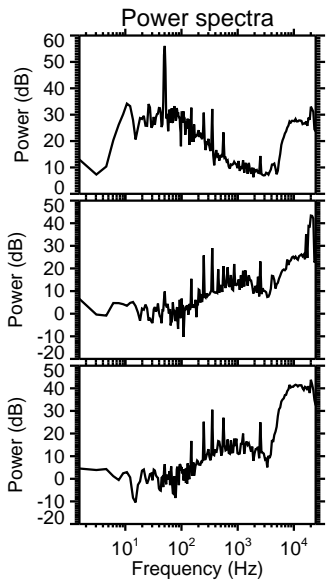
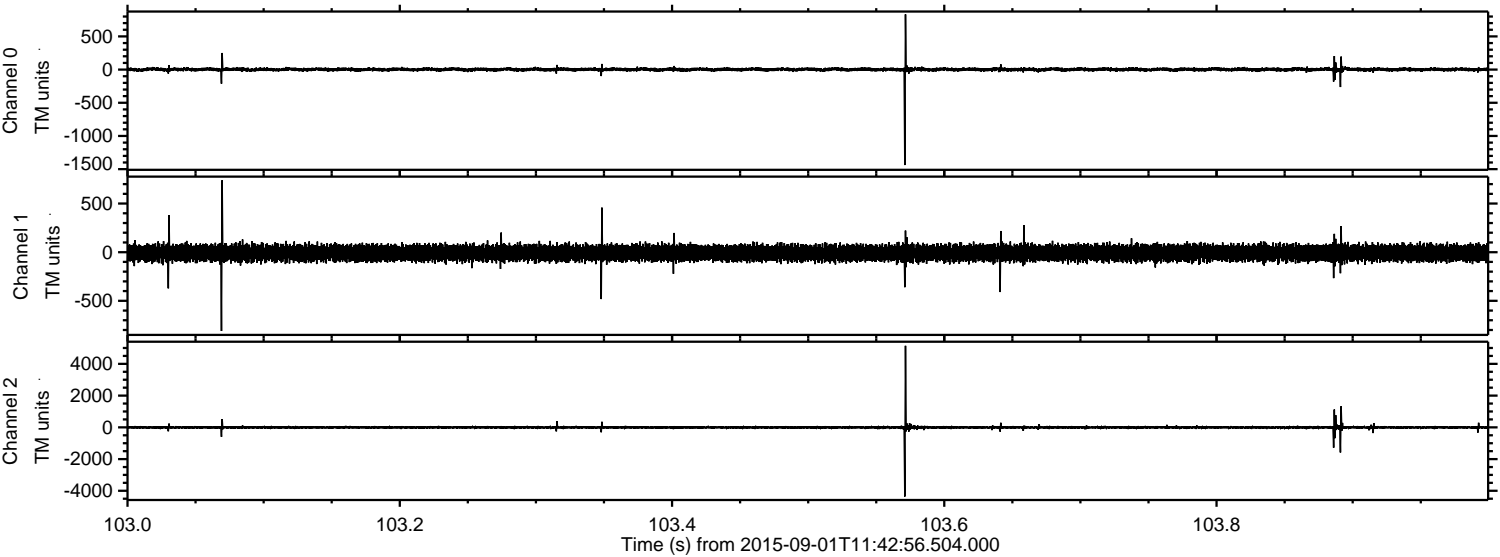
ELMAVAN 3D WAVEFORMS (Measured data sampled at 50 kHz) 51000 packets of 144 samples from 2015-09-01T11:42:56.504.000. Part 140/147

Processed Thu Oct 8 19:34:47 2015 by ELM ver.2012-10-06 from 001__elm20150901_114255__dat00.bin

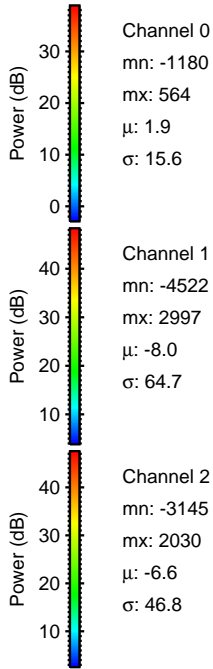
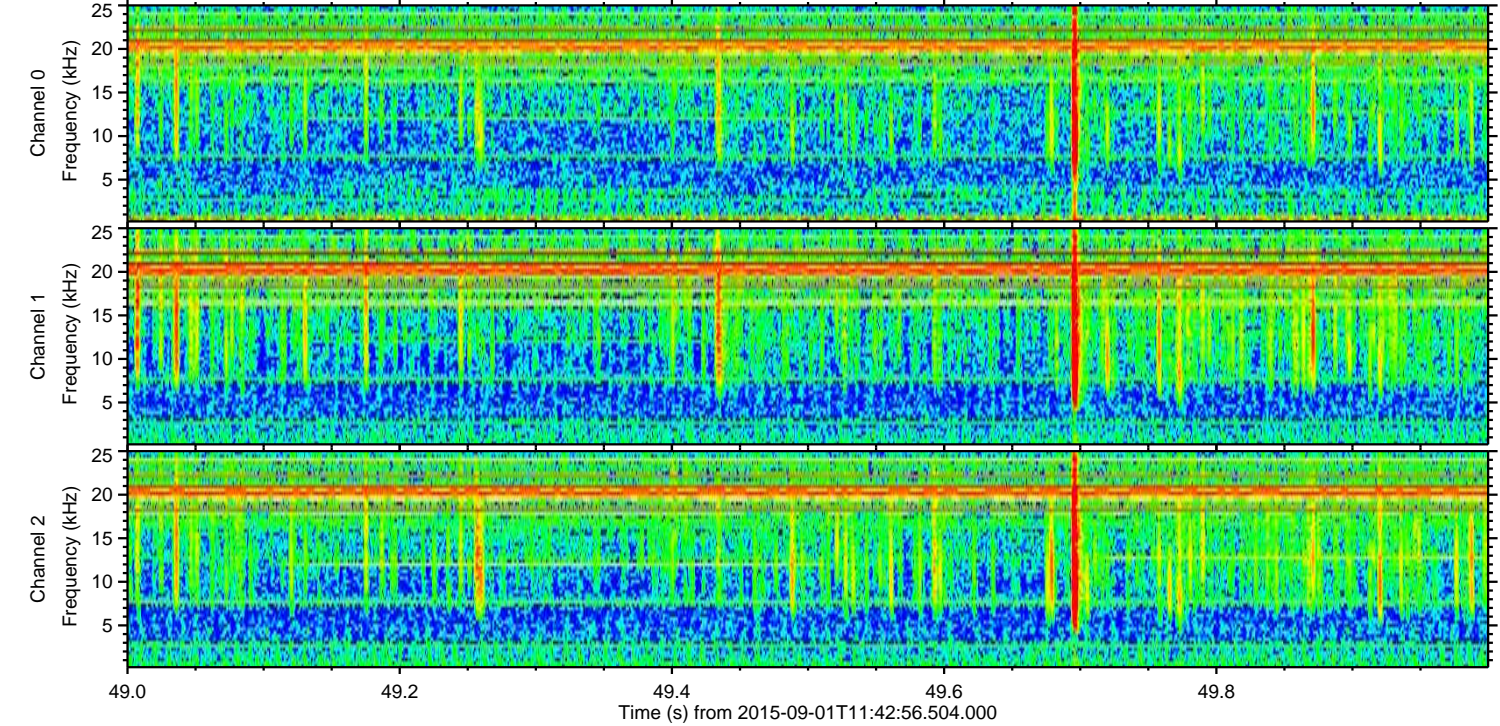
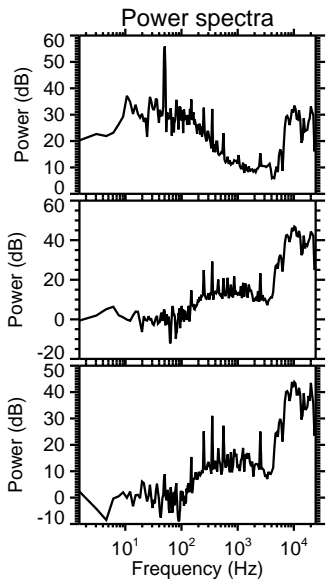
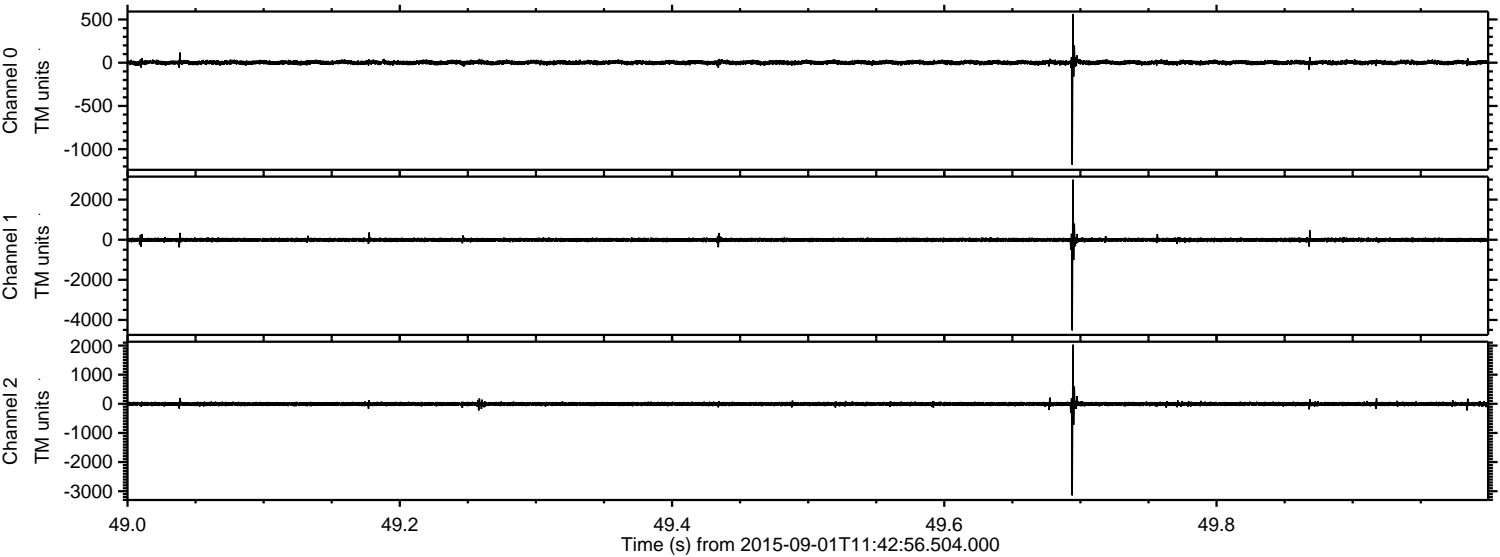


ELMAVAN 3D WAVEFORMS (Measured data sampled at 50 kHz) 51000 packets of 144 samples from 2015-09-01T11:42:56.504.000. Part 104/147

Processed Thu Oct 8 19:34:48 2015 by ELM ver.2012-10-06 from 001__elm20150901_114255__dat00.bin

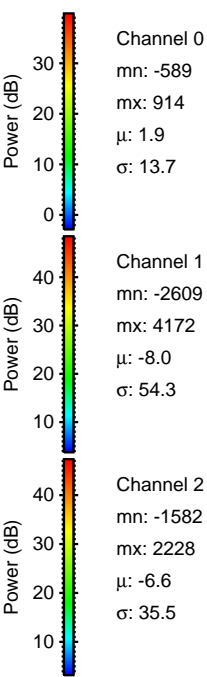
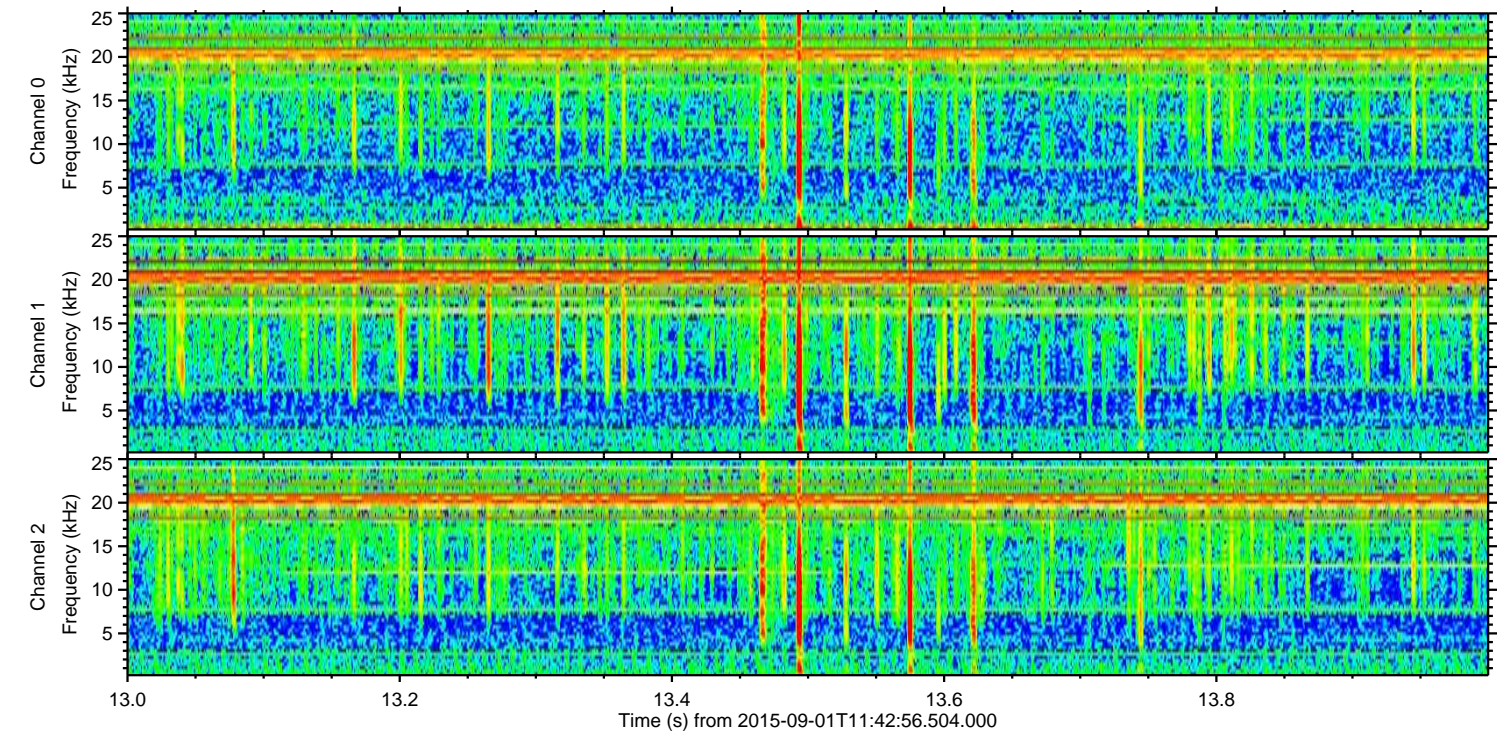
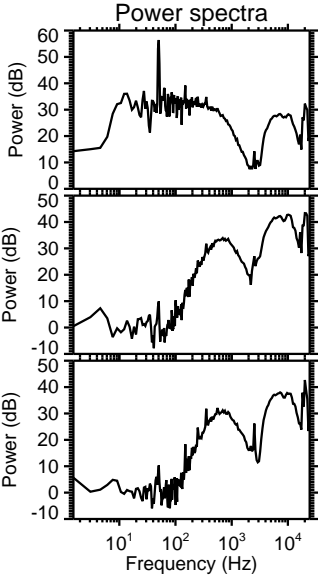
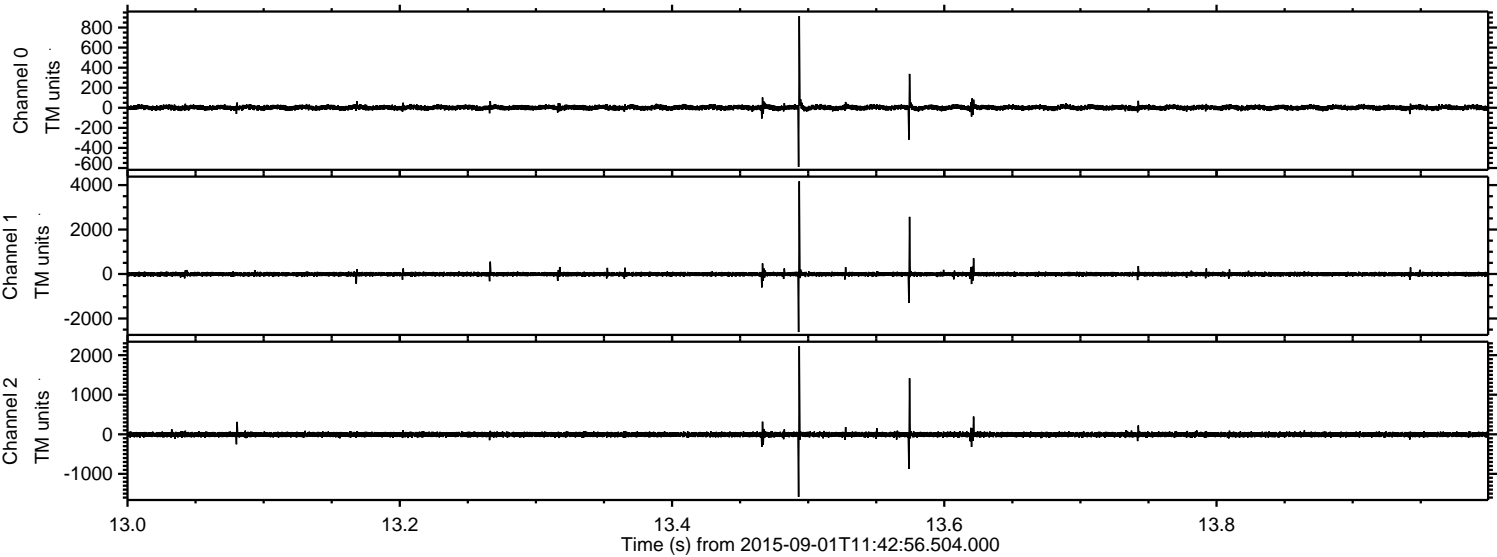


Processed Thu Oct 8 19:34:50 2015 by ELM ver.2012-10-06 from 001__elm20150901_114255__dat00.bin

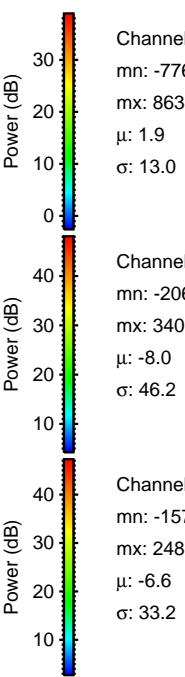
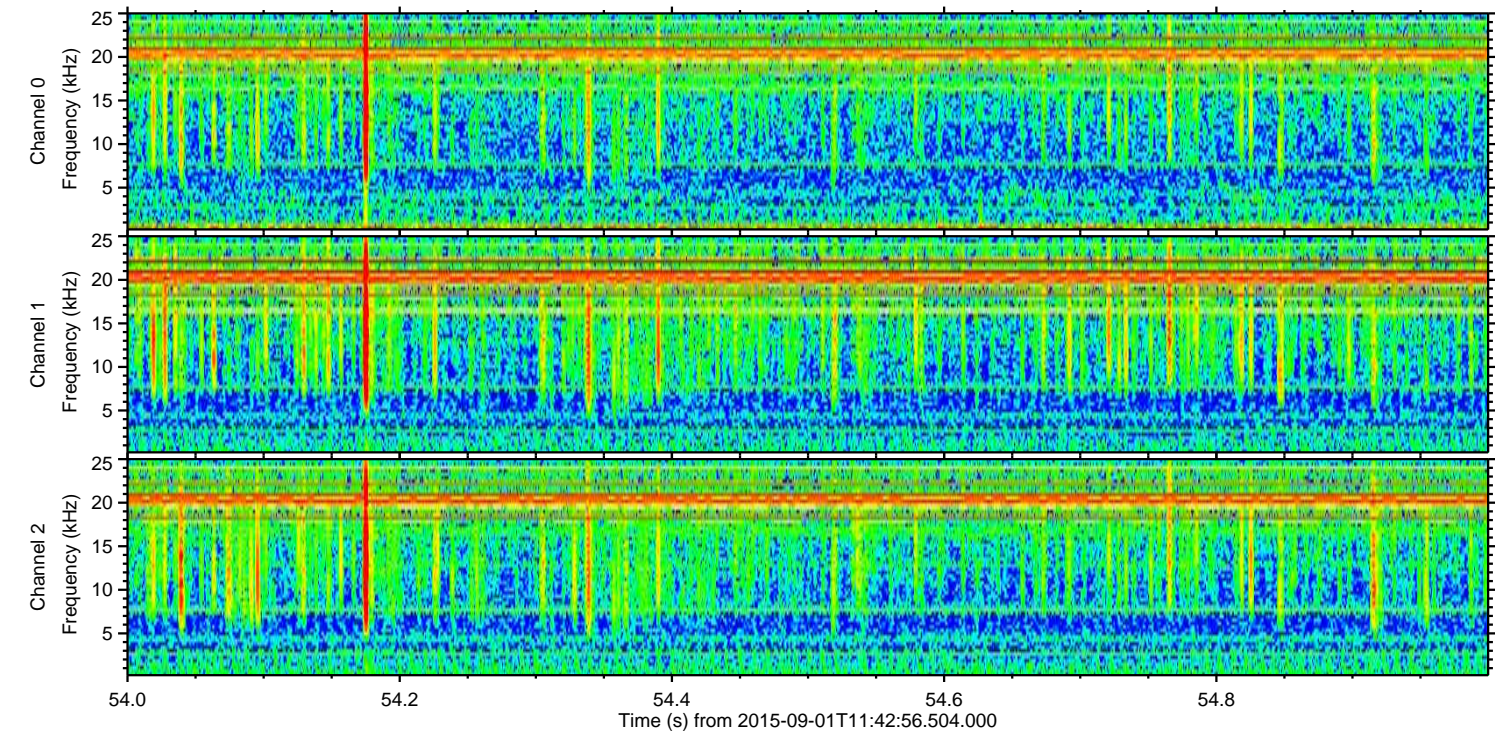
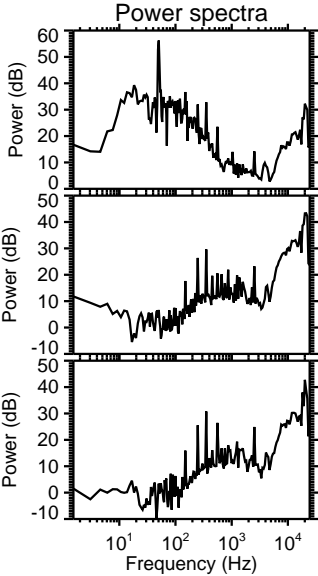
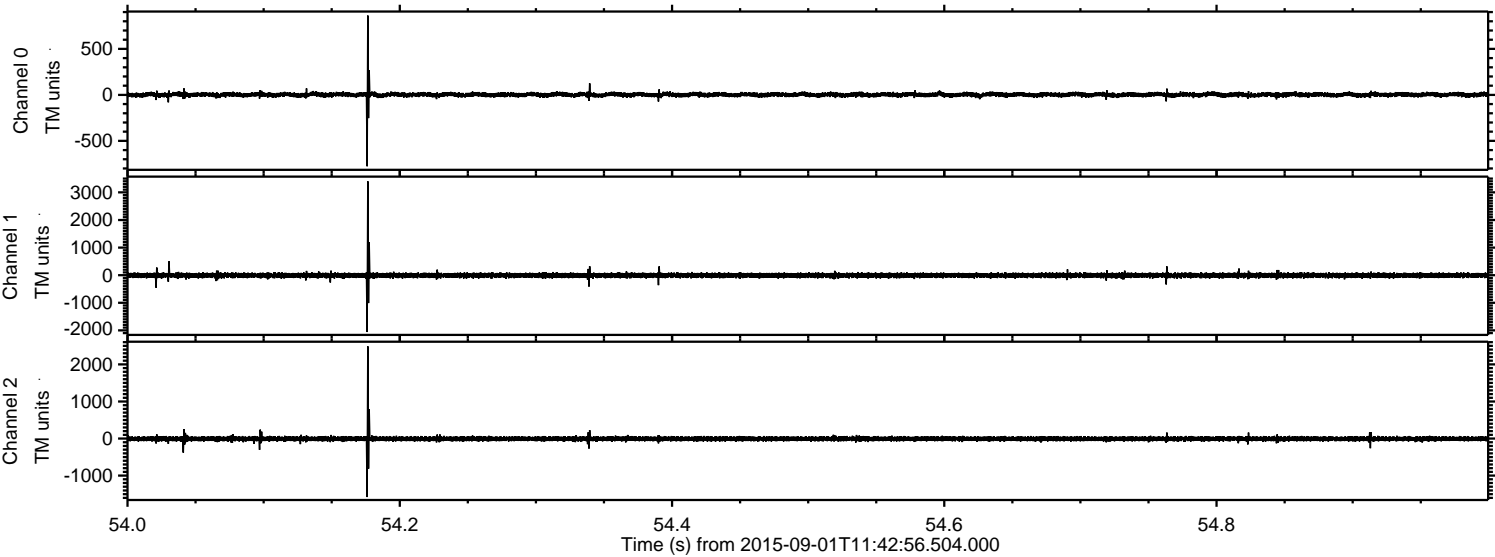


ELMAVAN 3D WAVEFORMS (Measured data sampled at 50 kHz) 51000 packets of 144 samples from 2015-09-01T11:42:56.504.000. Part 14/147

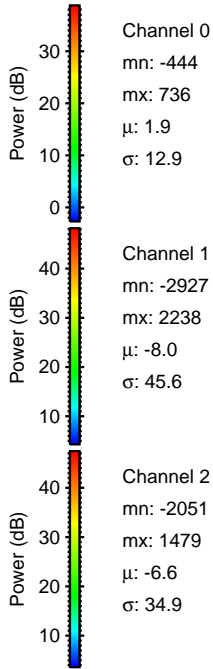
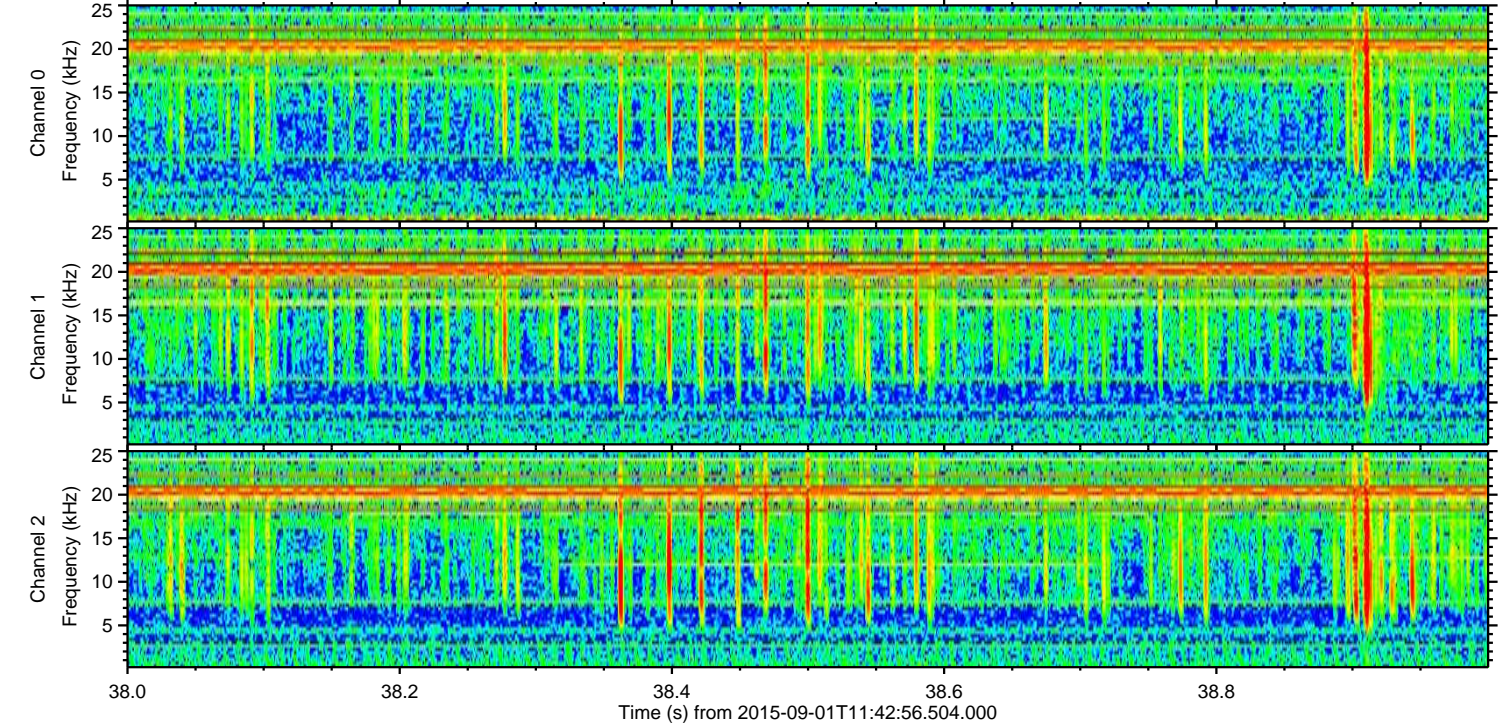
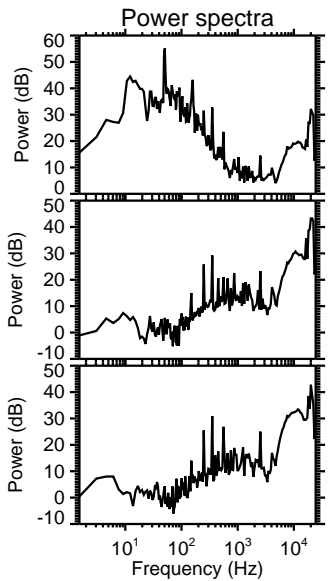
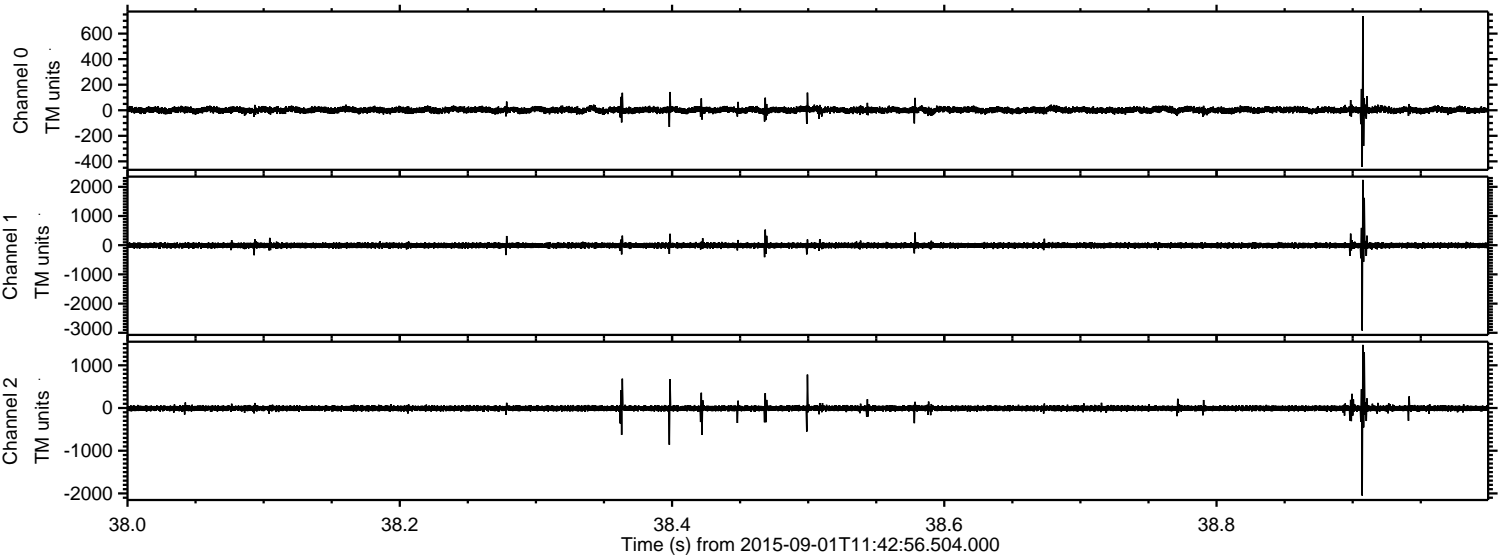
Processed Thu Oct 8 19:34:51 2015 by ELM ver.2012-10-06 from 001__elm20150901_114255__dat00.bin



Processed Thu Oct 8 19:34:52 2015 by ELM ver.2012-10-06 from 001__elm20150901_114255__dat00.bin

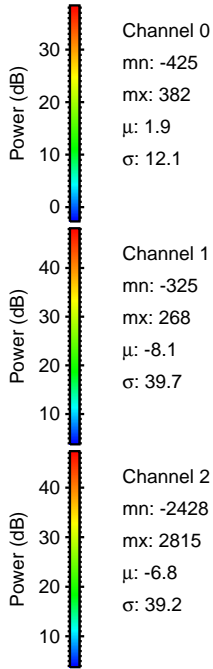
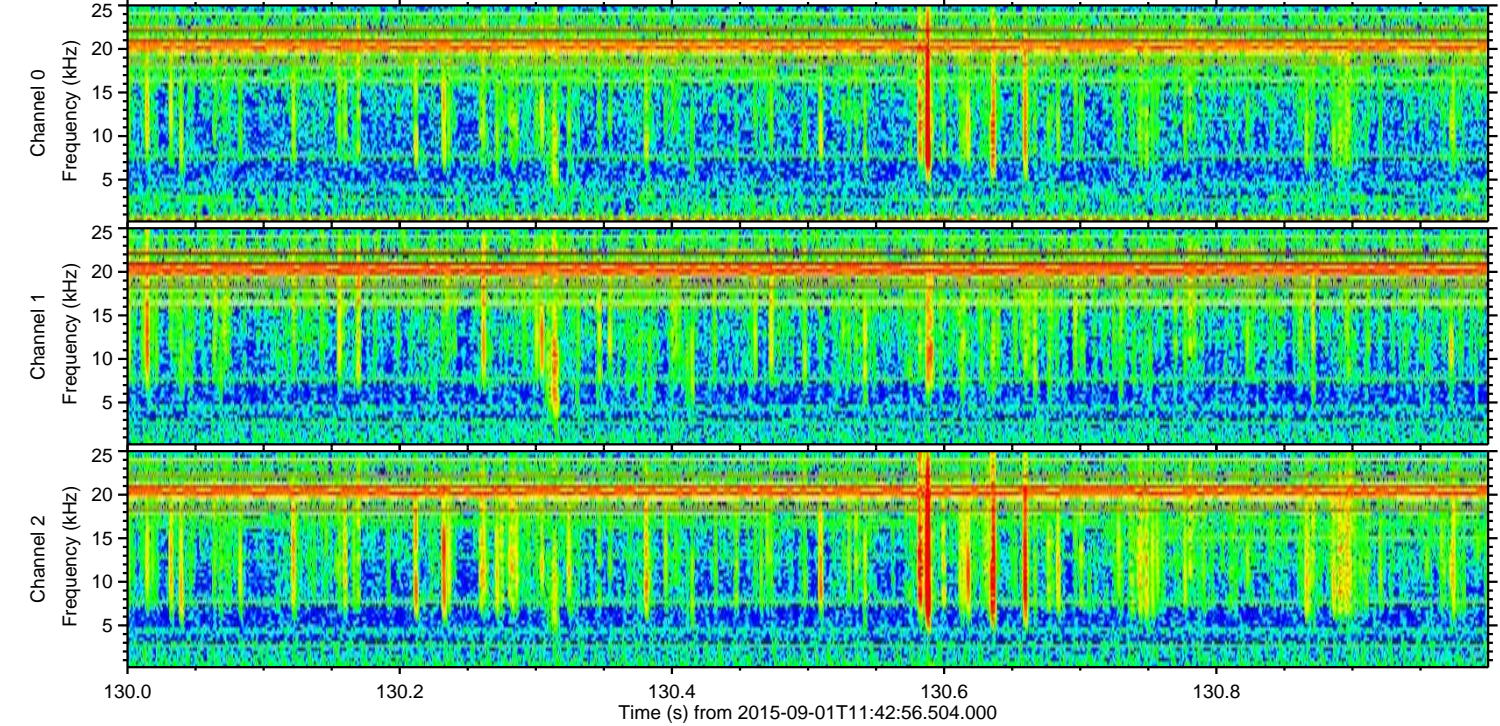
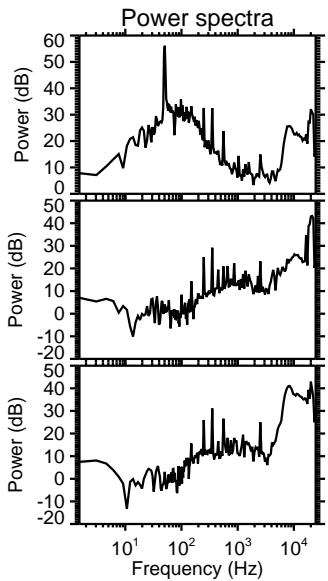
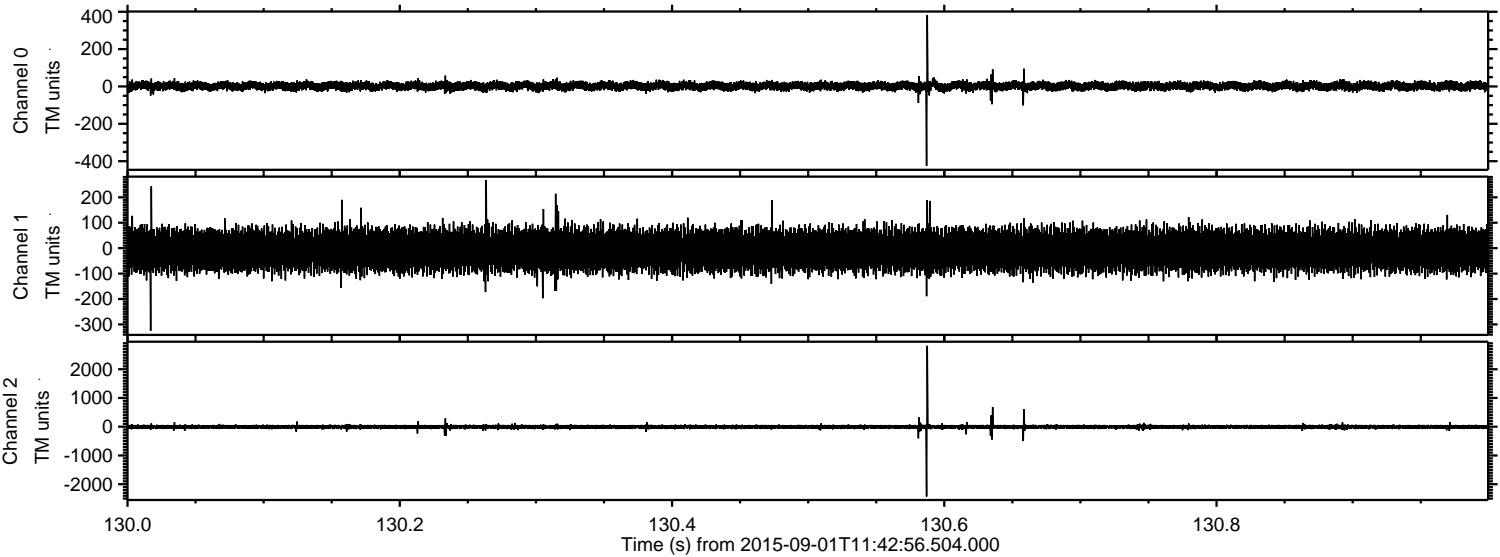


Processed Thu Oct 8 19:34:53 2015 by ELM ver.2012-10-06 from 001__elm20150901_114255__dat00.bin



ELMAVAN 3D WAVEFORMS (Measured data sampled at 50 kHz) 51000 packets of 144 samples from 2015-09-01T11:42:56.504.000. Part 131/147

Processed Thu Oct 8 19:34:54 2015 by ELM ver.2012-10-06 from 001__elm20150901_114255__dat00.bin

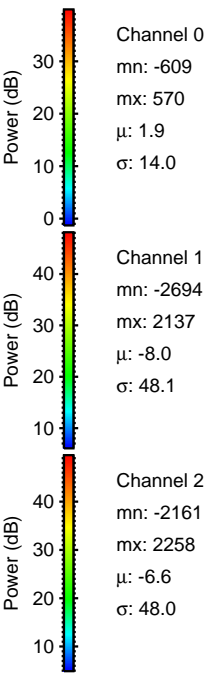
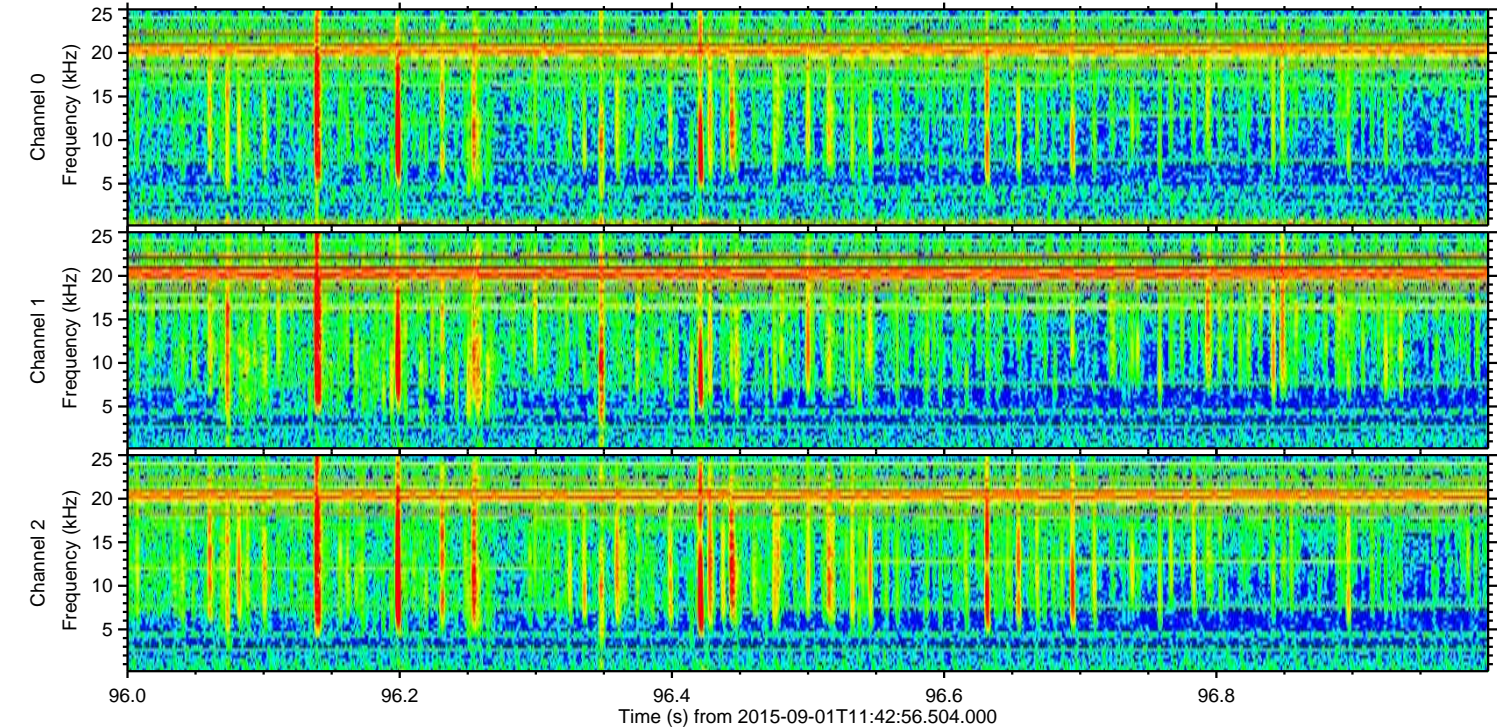
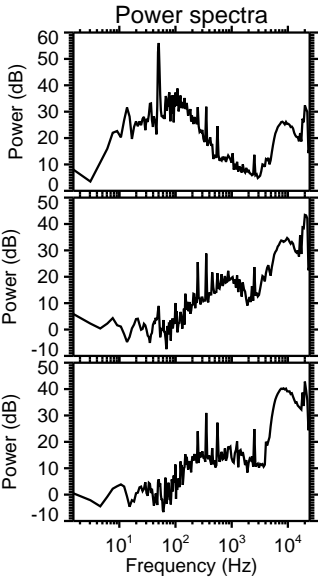
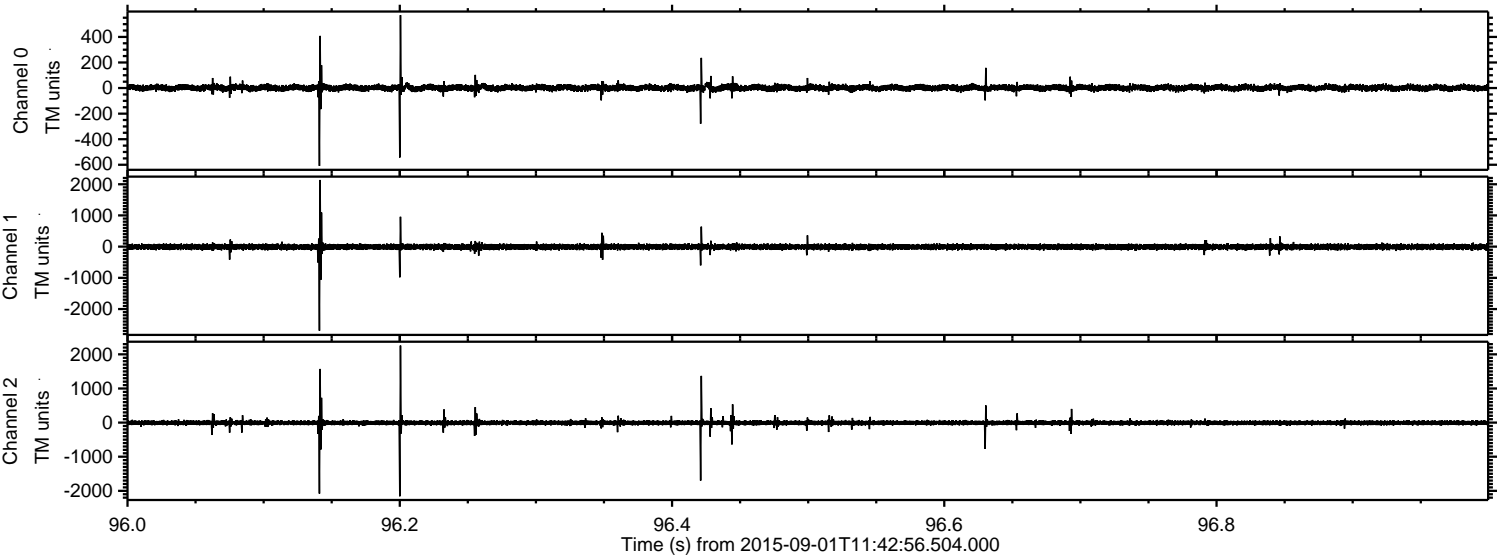


Channel 0
mn: -425
mx: 382
 μ : 1.9
 σ : 12.1

Channel 1
mn: -325
mx: 268
 μ : -8.1
 σ : 39.7

Channel 2
mn: -2428
mx: 2815
 μ : -6.8
 σ : 39.2

Processed Thu Oct 8 19:34:55 2015 by ELM ver.2012-10-06 from 001__elm20150901_114255__dat00.bin



Processed Thu Oct 8 19:34:56 2015 by ELM ver.2012-10-06 from 001__elm20150901_114255__dat00.bin

