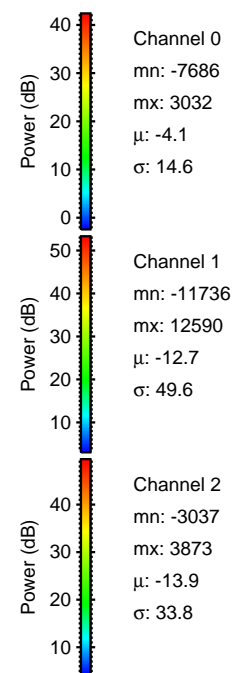
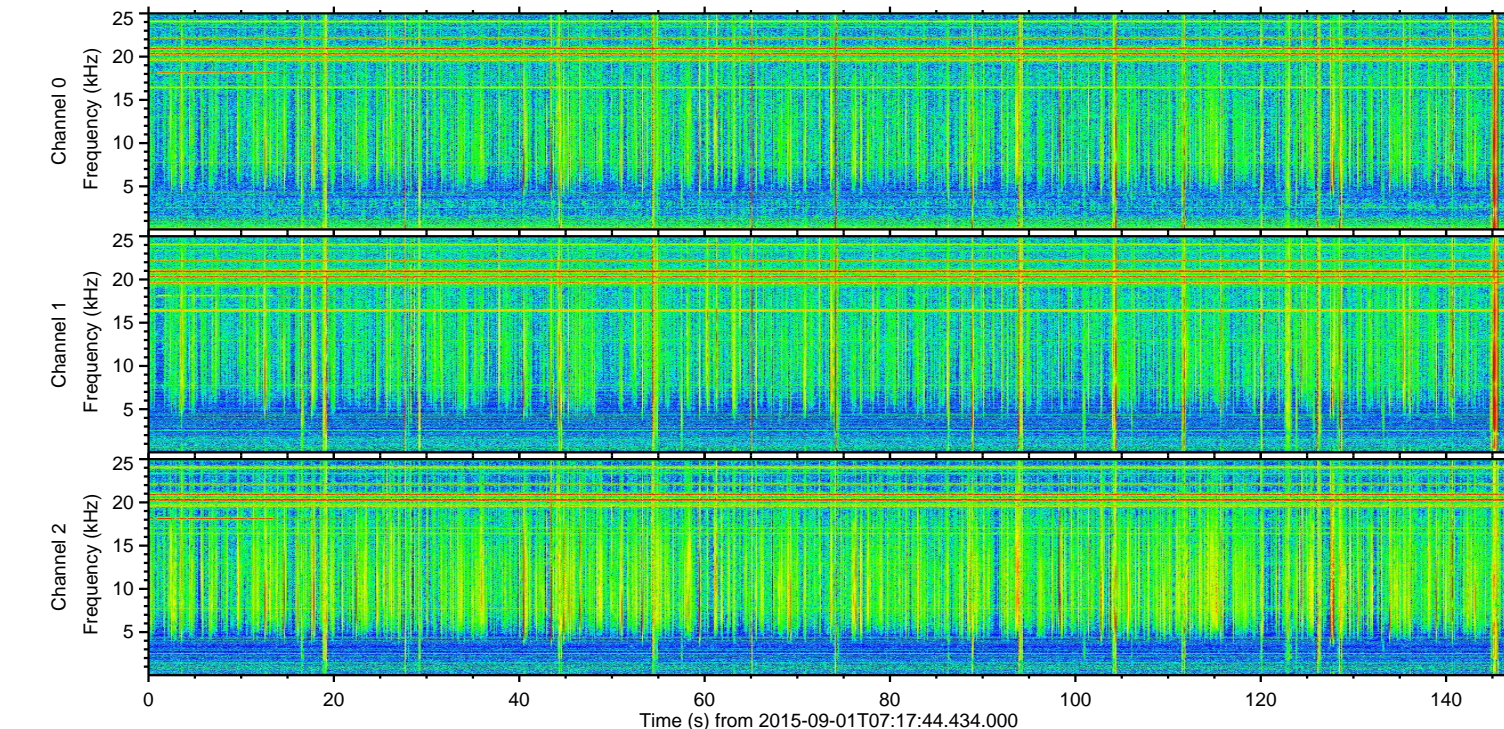
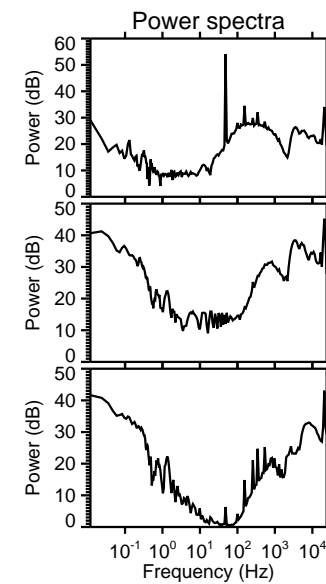
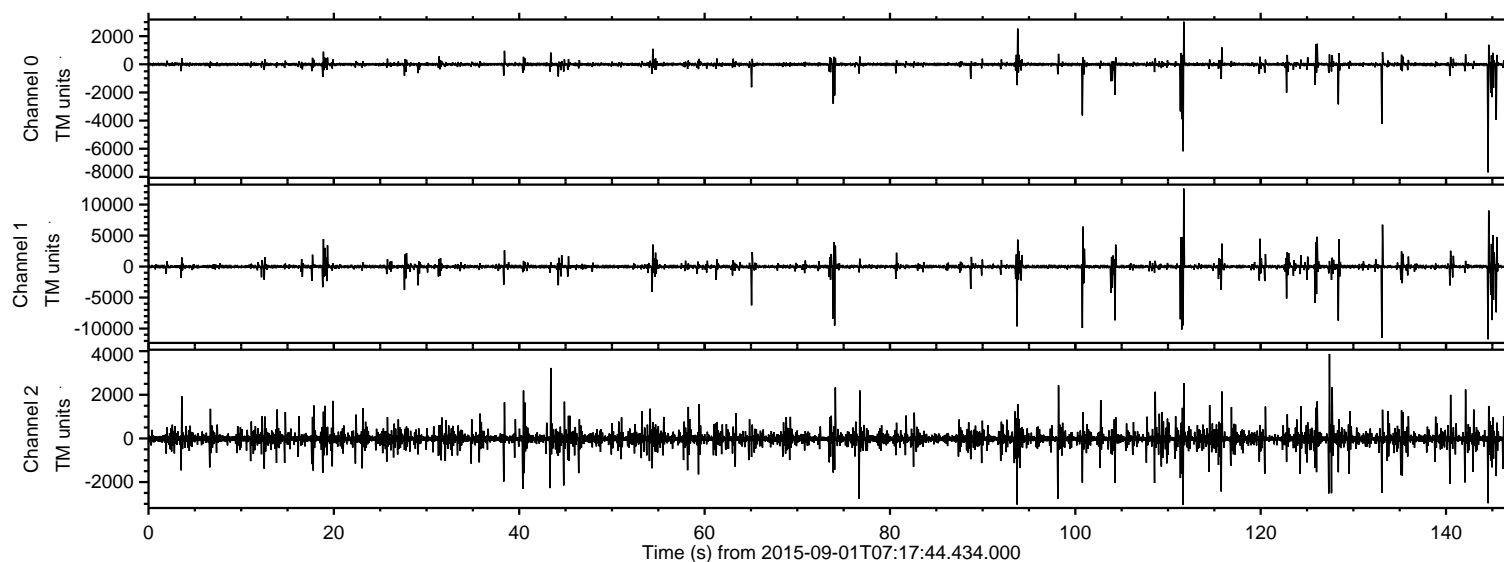


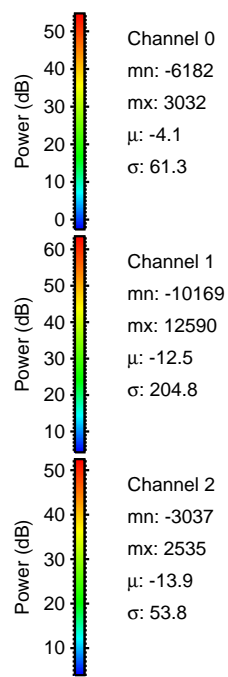
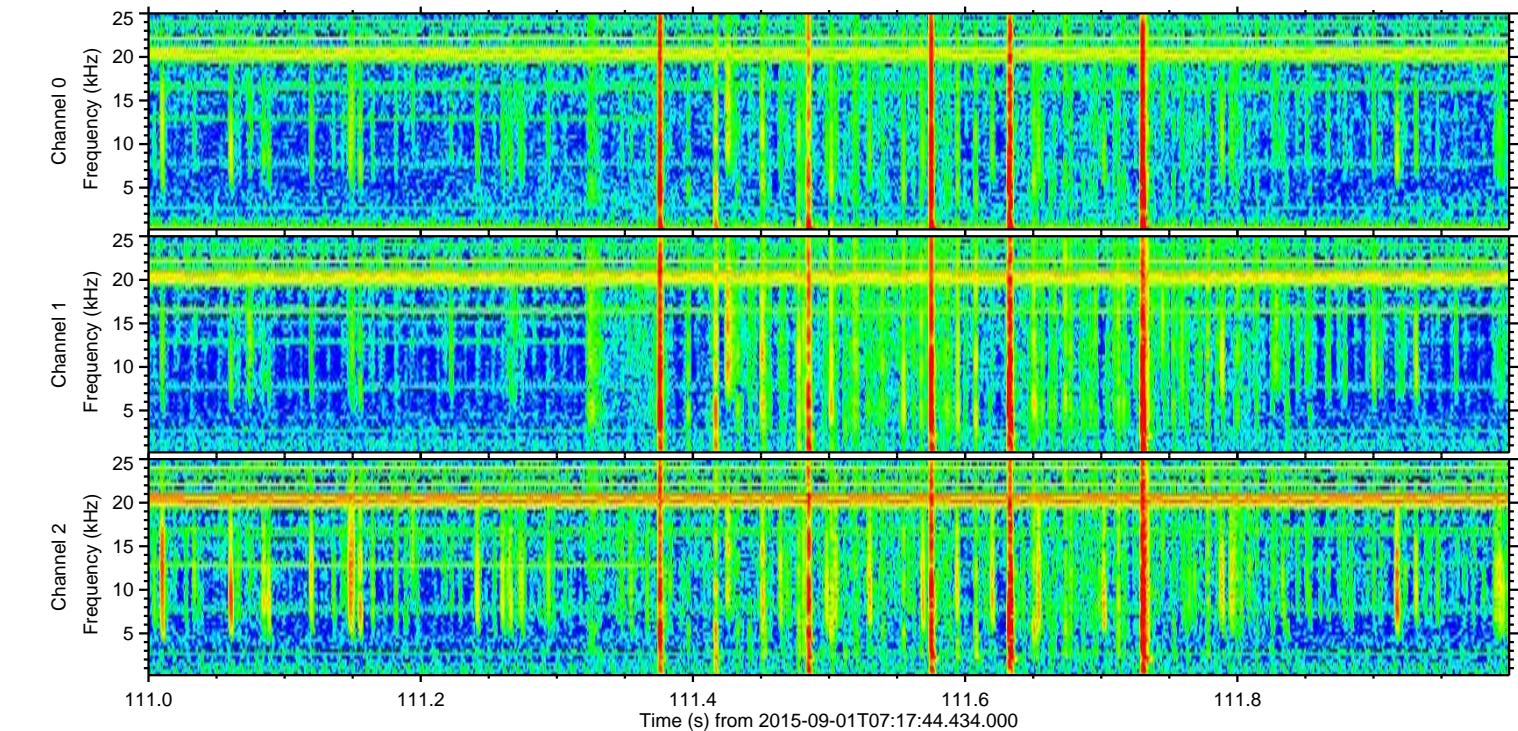
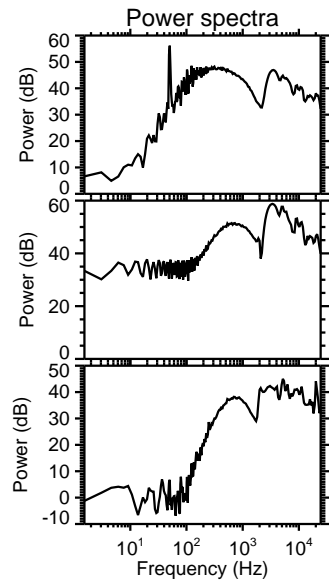
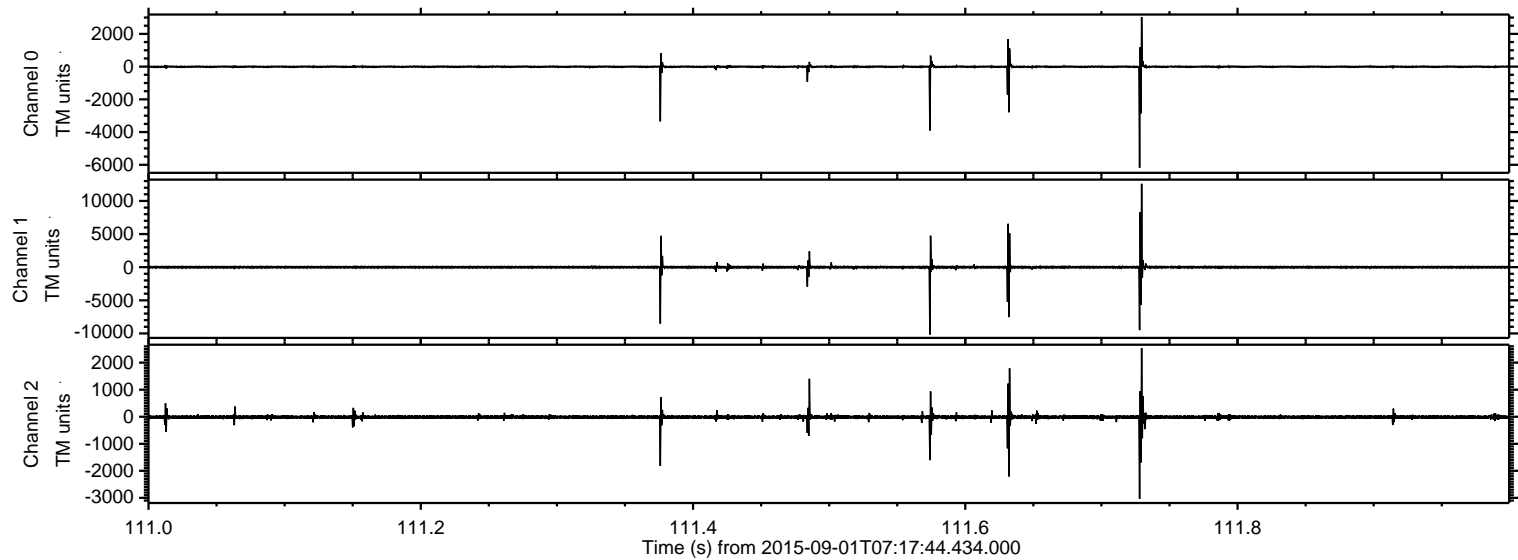
ELMAVAN 3D WAVEFORMS (Measured data sampled at 50 kHz) 51000 packets of 144 samples from 2015-09-01T07:17:44.434.000.

Processed Thu Oct 8 18:20:53 2015 by ELM ver.2012-10-06 from 001__elm20150901_071743__dat00.bin



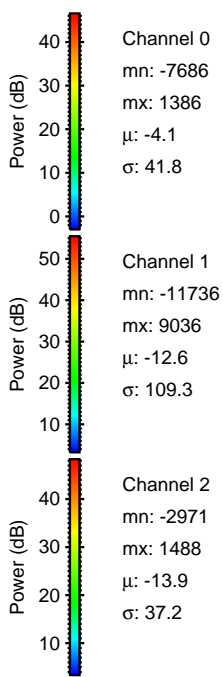
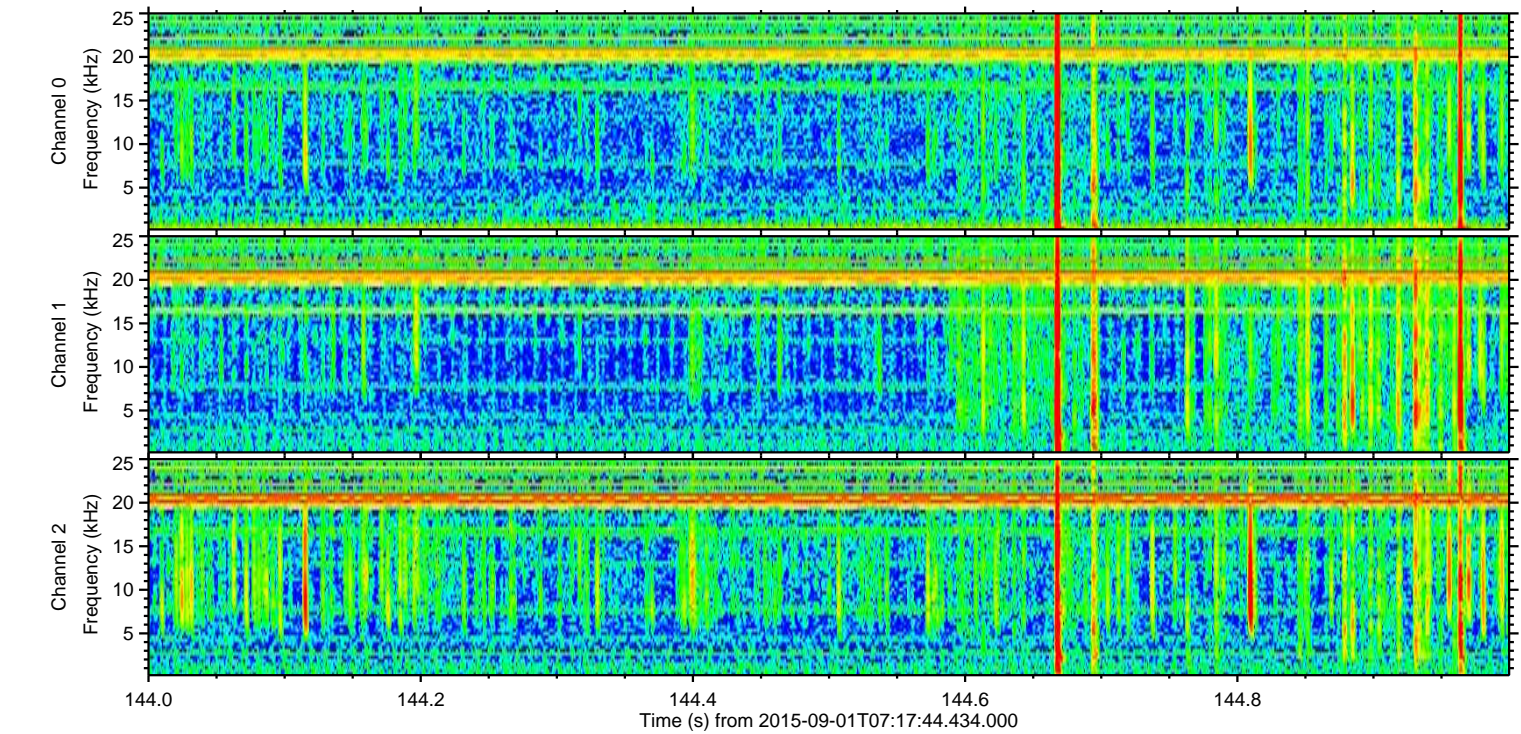
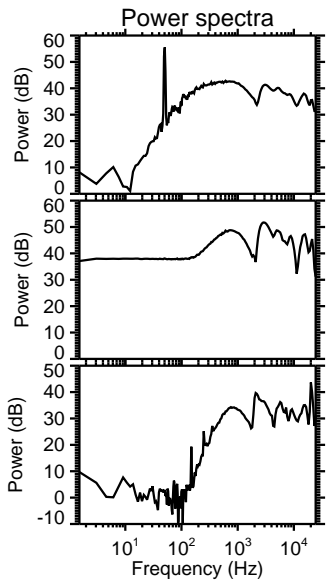
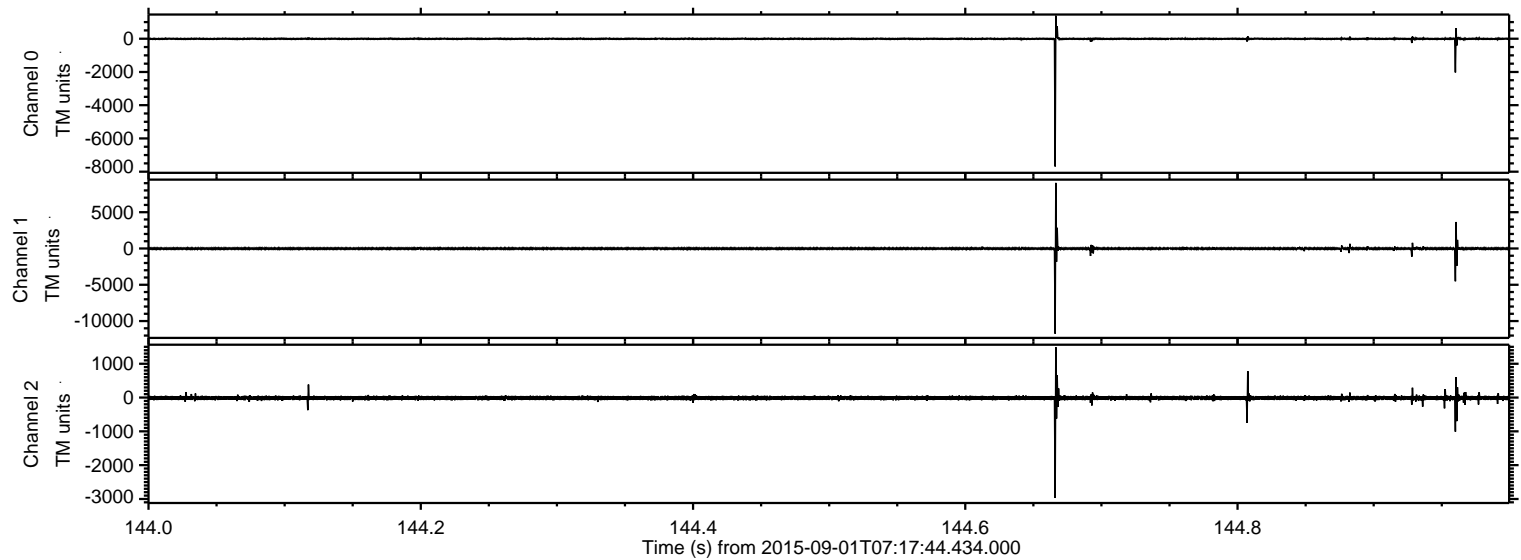
ELMAVAN 3D WAVEFORMS (Measured data sampled at 50 kHz) 51000 packets of 144 samples from 2015-09-01T07:17:44.434.000. Part 112/147

Processed Thu Oct 8 18:21:07 2015 by ELM ver.2012-10-06 from 001__elm20150901_071743__dat00.bin



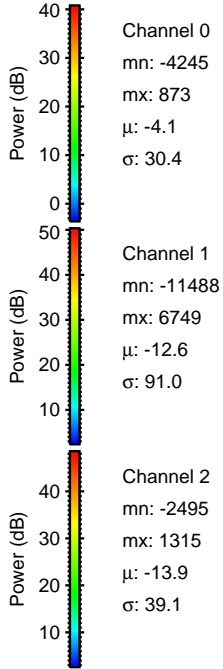
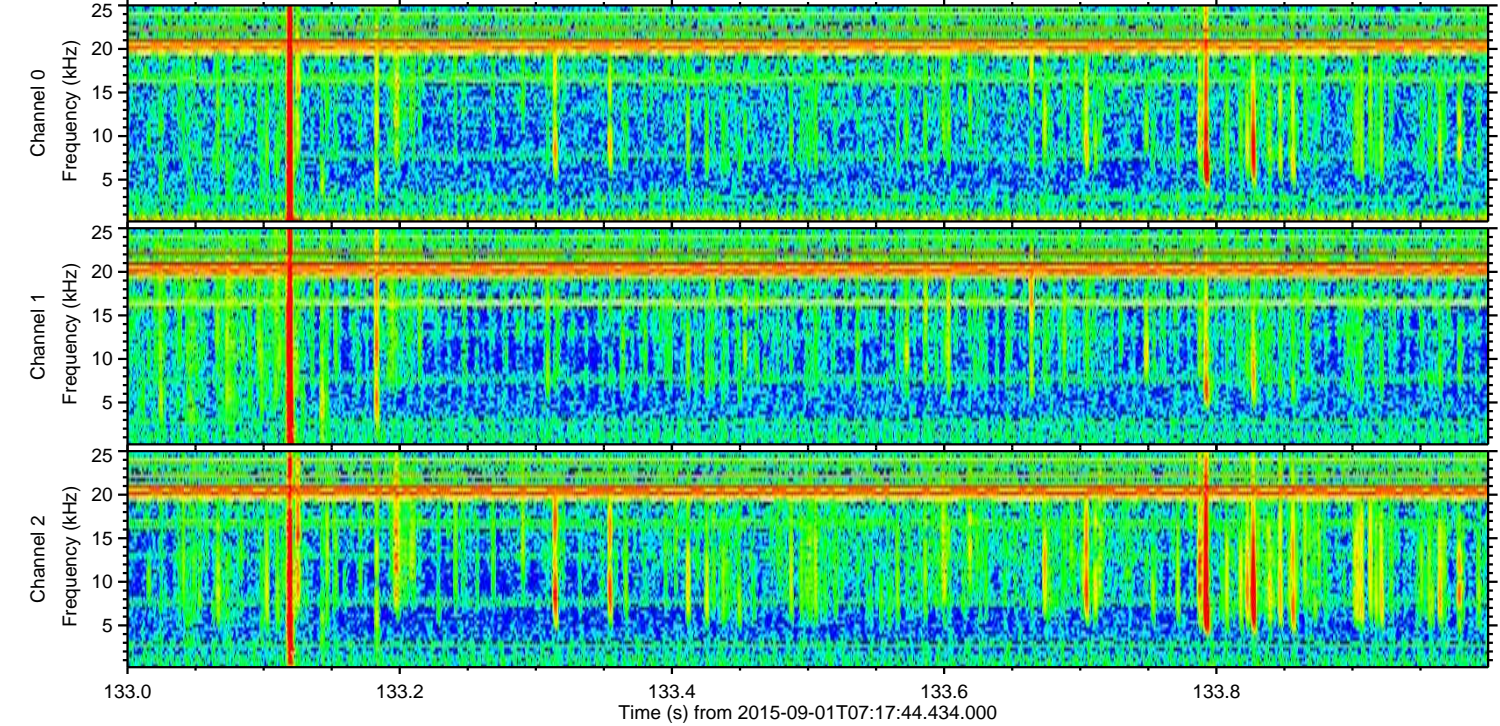
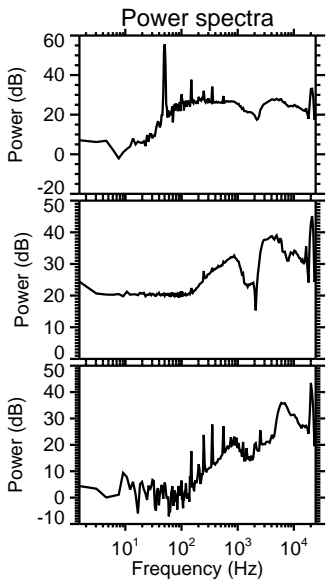
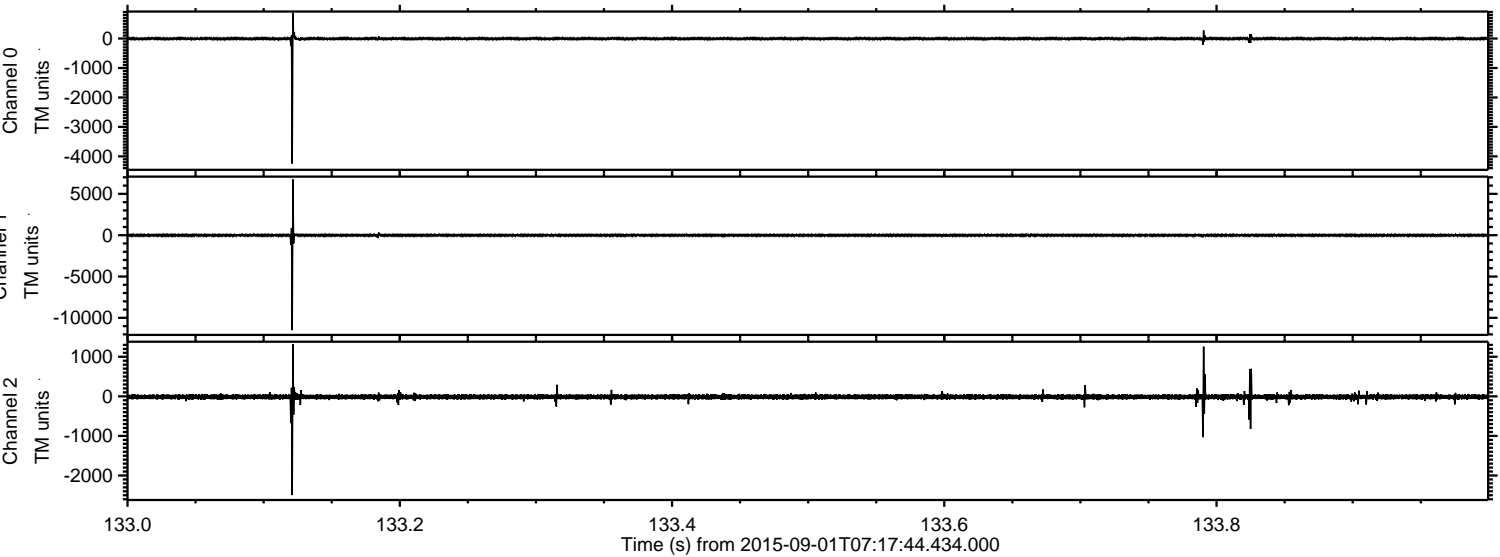
ELMAVAN 3D WAVEFORMS (Measured data sampled at 50 kHz) 51000 packets of 144 samples from 2015-09-01T07:17:44.434.000. Part 145/147

Processed Thu Oct 8 18:21:08 2015 by ELM ver.2012-10-06 from 001__elm20150901_071743__dat00.bin



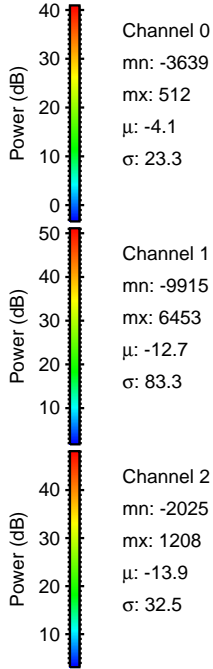
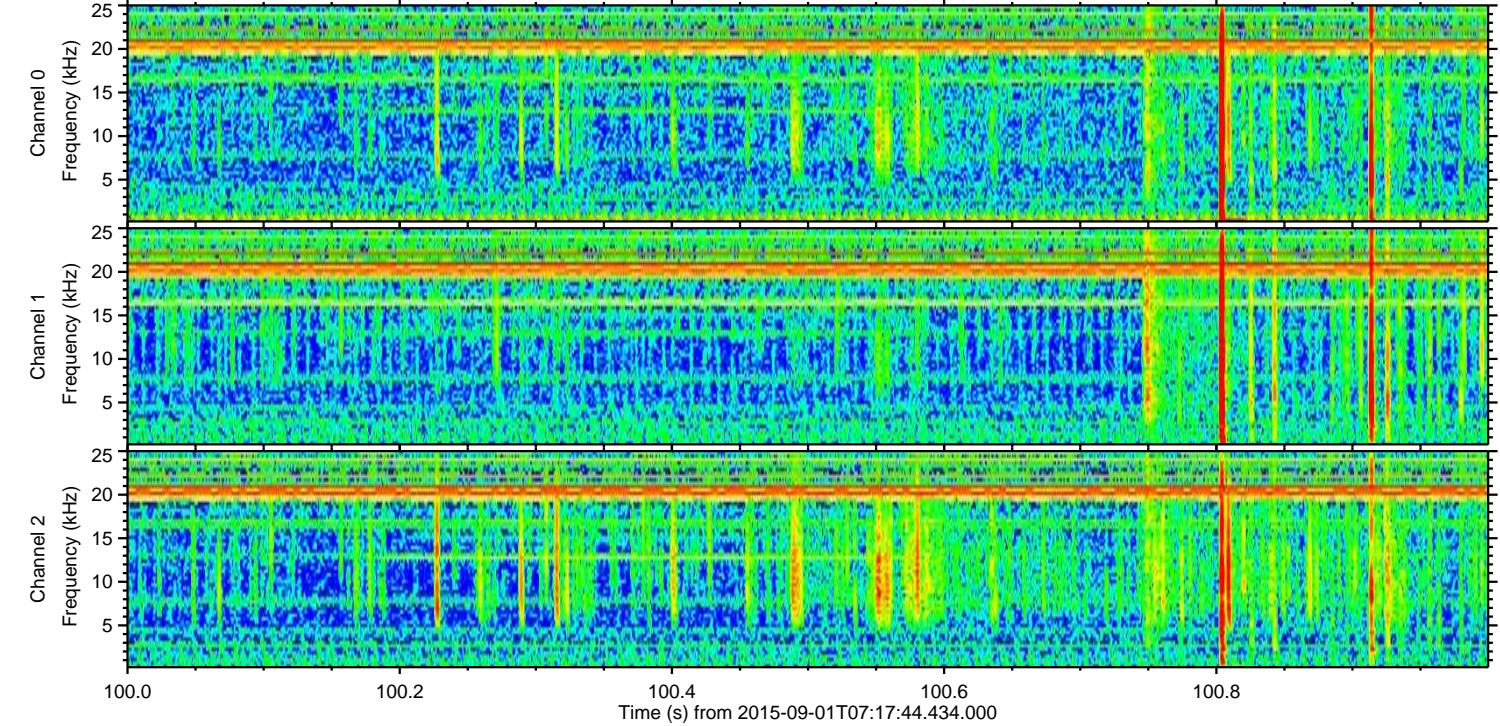
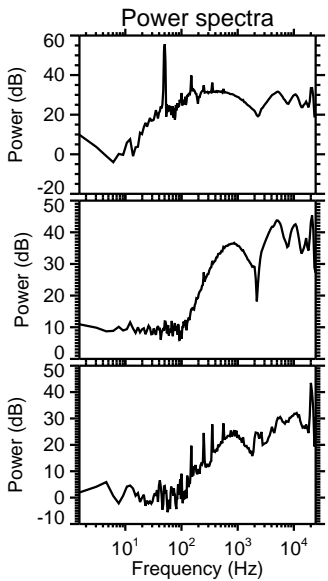
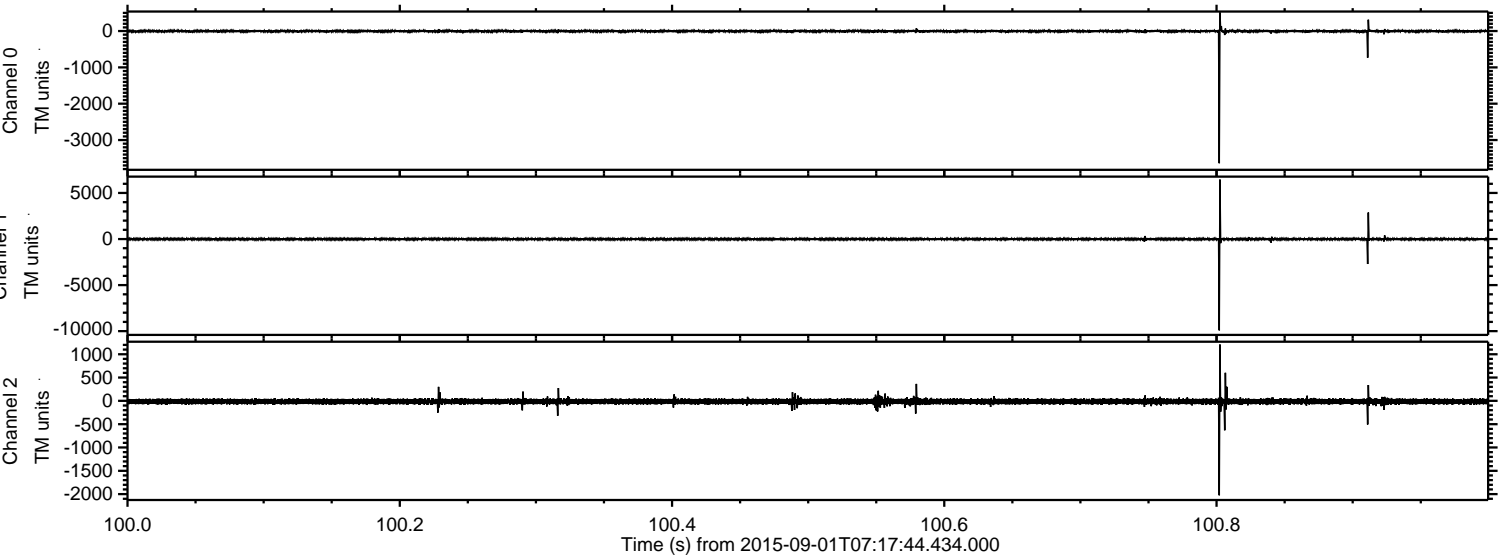
ELMAVAN 3D WAVEFORMS (Measured data sampled at 50 kHz) 51000 packets of 144 samples from 2015-09-01T07:17:44.434.000. Part 134/147

Processed Thu Oct 8 18:21:09 2015 by ELM ver.2012-10-06 from 001__elm20150901_071743__dat00.bin



ELMAVAN 3D WAVEFORMS (Measured data sampled at 50 kHz) 51000 packets of 144 samples from 2015-09-01T07:17:44.434.000. Part 101/147

Processed Thu Oct 8 18:21:10 2015 by ELM ver.2012-10-06 from 001__elm20150901_071743__dat00.bin



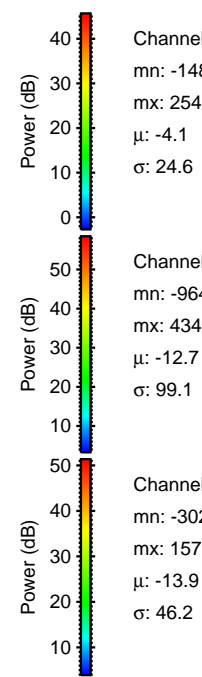
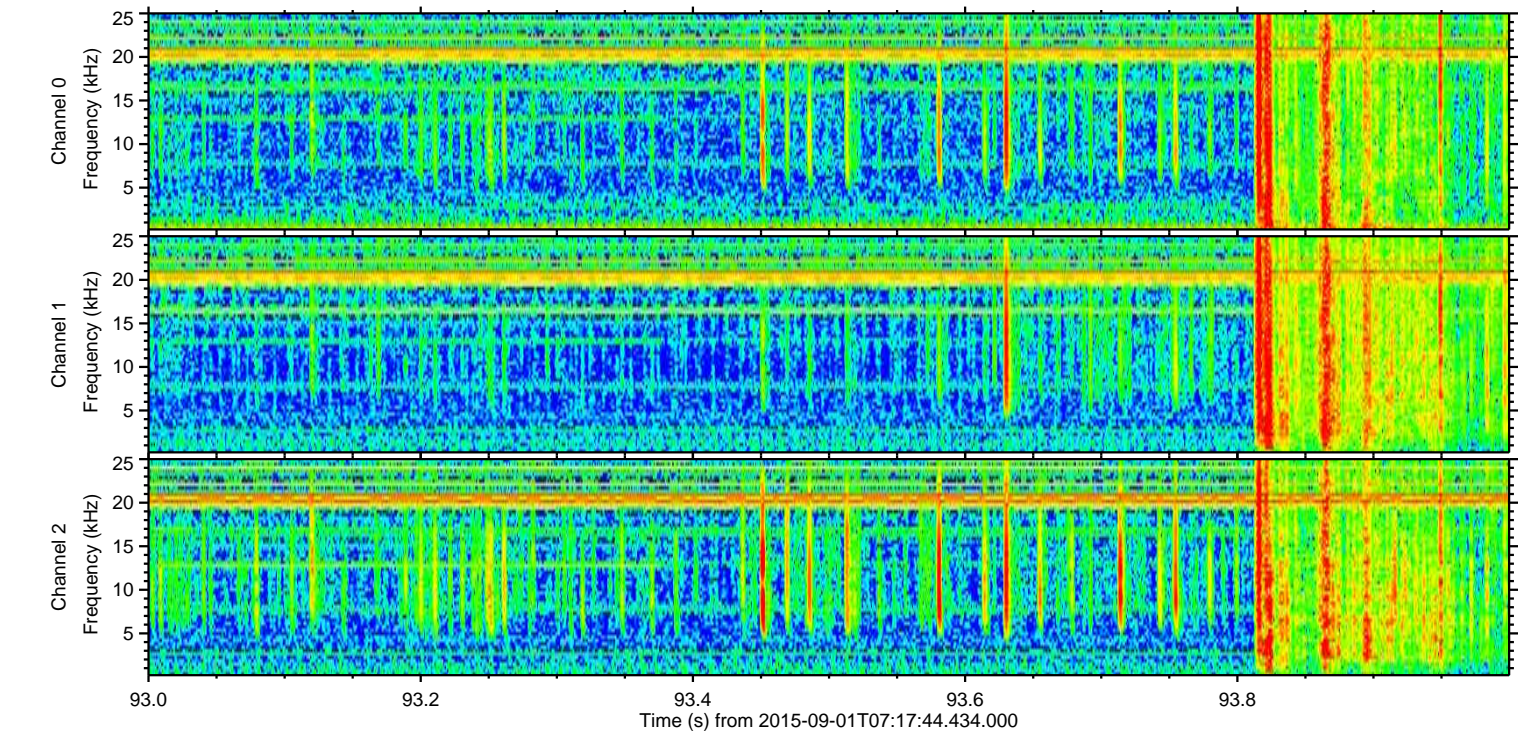
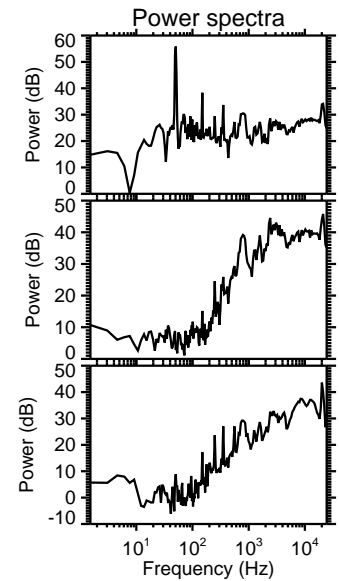
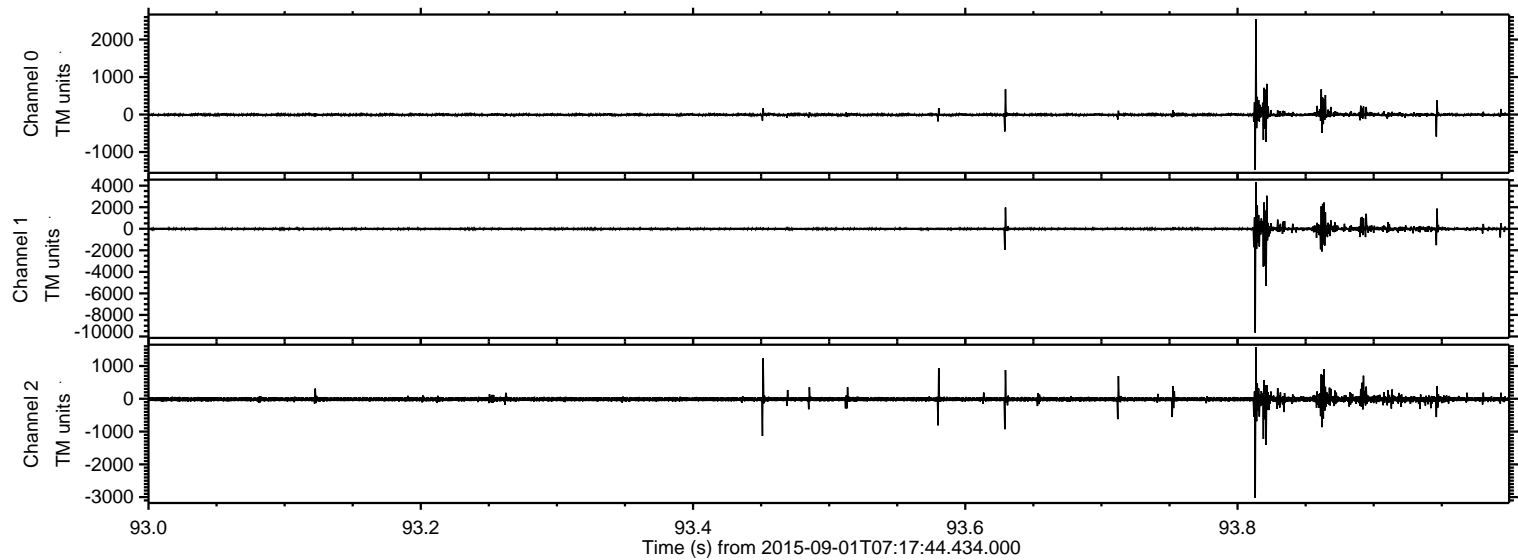
Channel 0
mn: -3639
mx: 512
 μ : -4.1
 σ : 23.3

Channel 1
mn: -9915
mx: 6453
 μ : -12.7
 σ : 83.3

Channel 2
mn: -2025
mx: 1208
 μ : -13.9
 σ : 32.5

ELMAVAN 3D WAVEFORMS (Measured data sampled at 50 kHz) 51000 packets of 144 samples from 2015-09-01T07:17:44.434.000. Part 94/147

Processed Thu Oct 8 18:21:11 2015 by ELM ver.2012-10-06 from 001__elm20150901_071743__dat00.bin

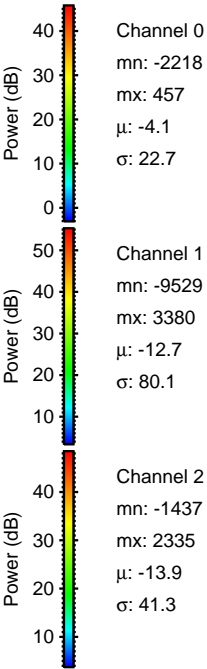
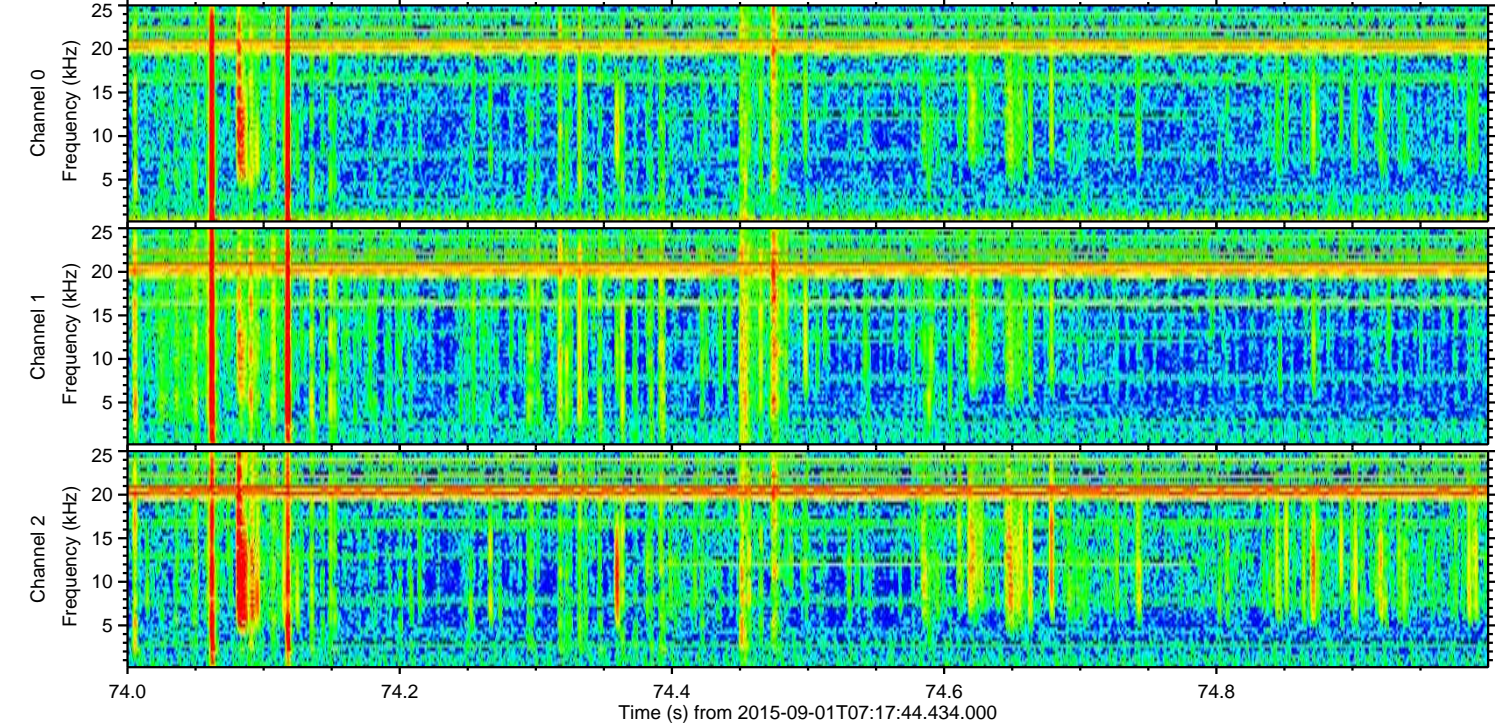
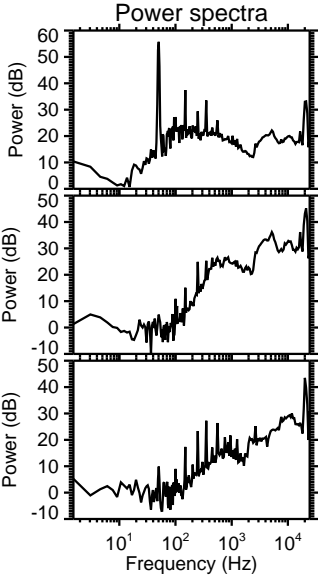
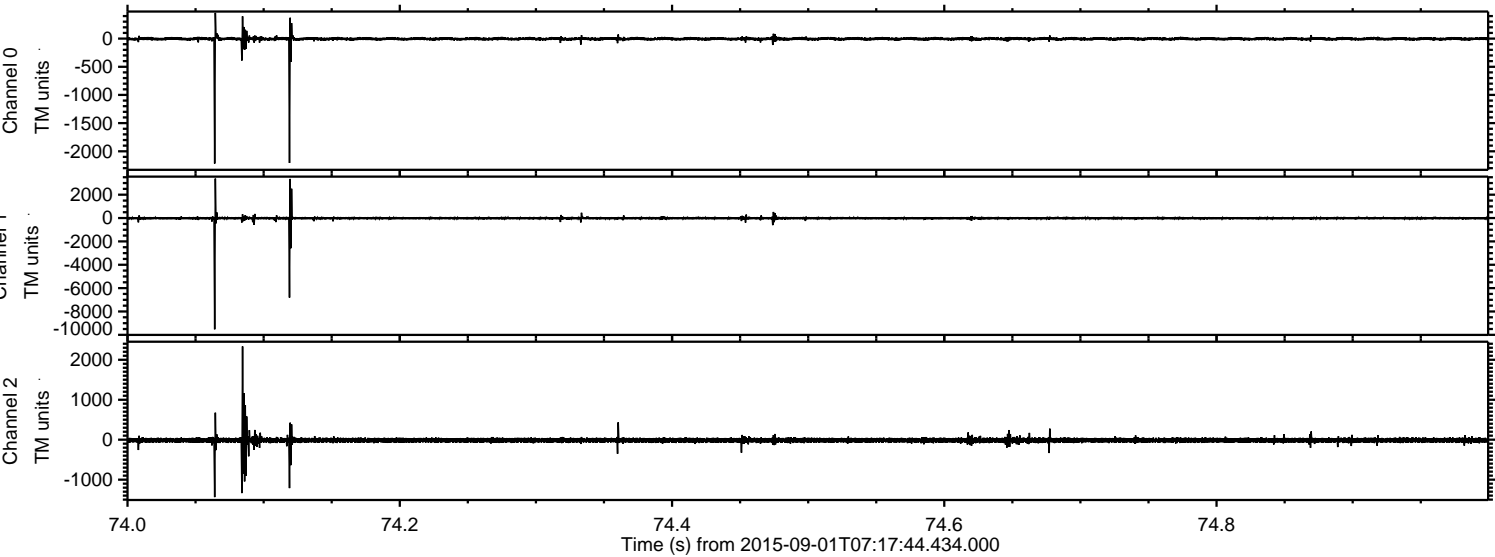


Channel 0
mn: -1480
mx: 2541
 μ : -4.1
 σ : 24.6

Channel 1
mn: -9649
mx: 4342
 μ : -12.7
 σ : 99.1

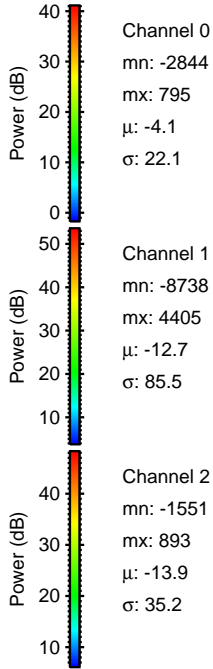
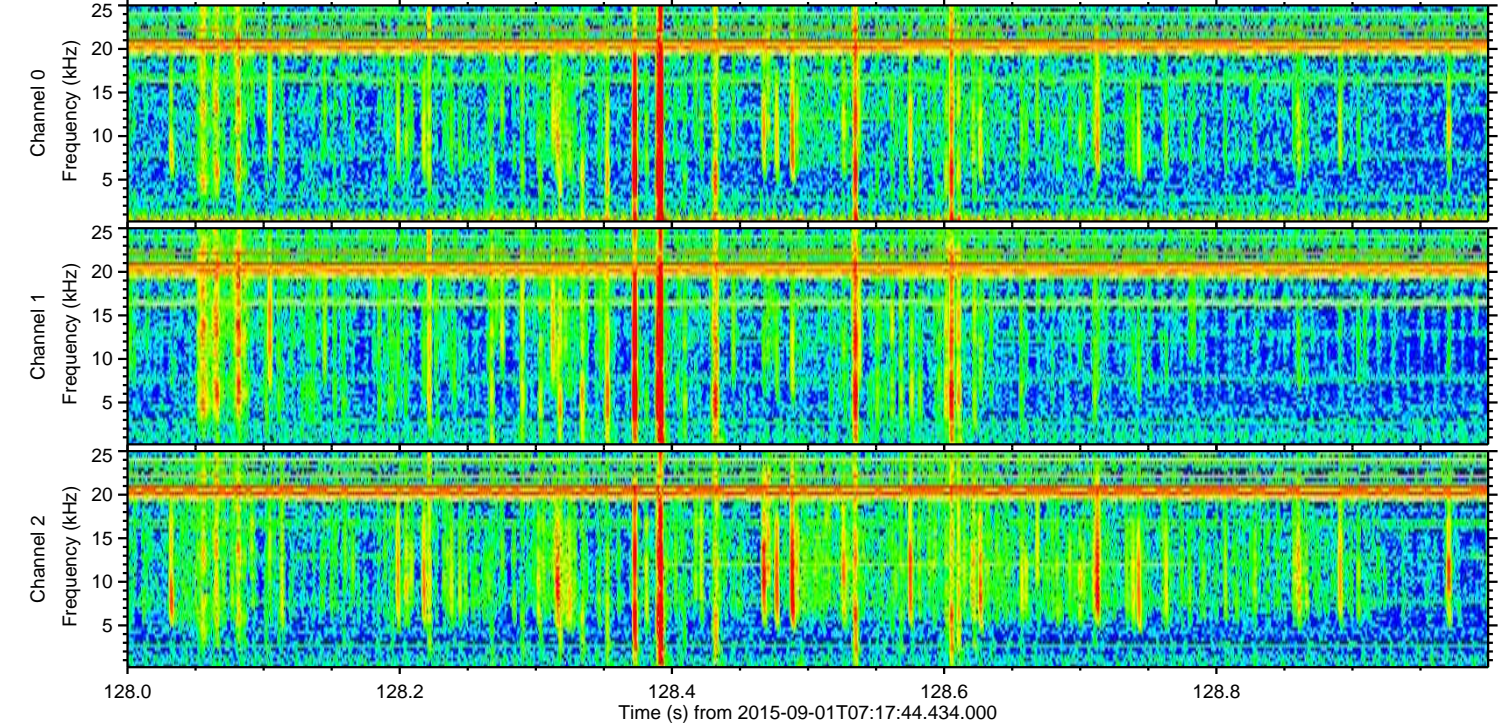
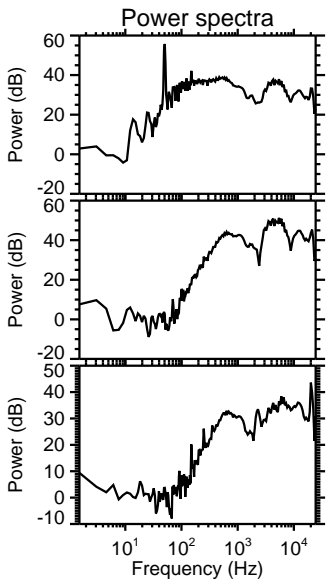
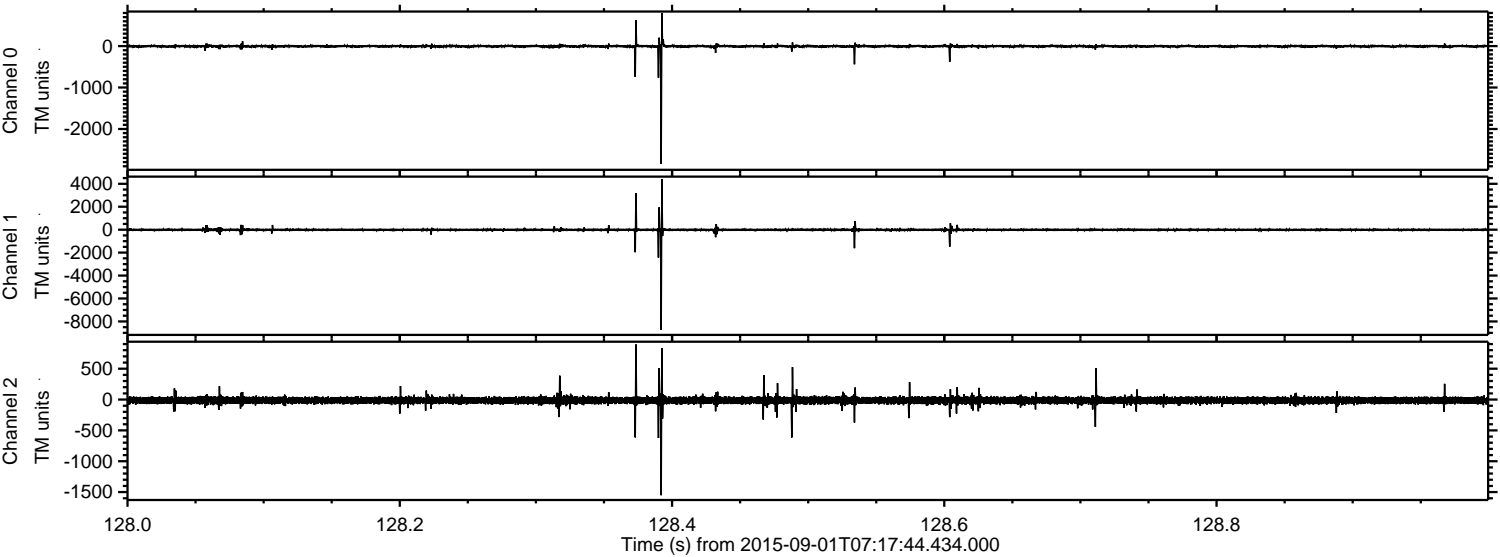
Channel 2
mn: -3028
mx: 1571
 μ : -13.9
 σ : 46.2

Processed Thu Oct 8 18:21:12 2015 by ELM ver.2012-10-06 from 001__elm20150901_071743__dat00.bin



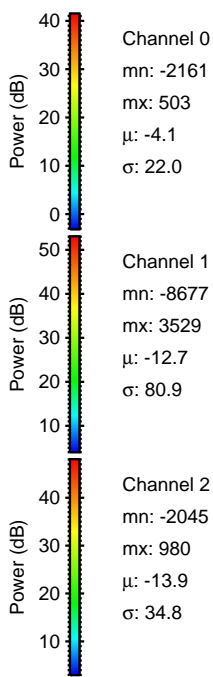
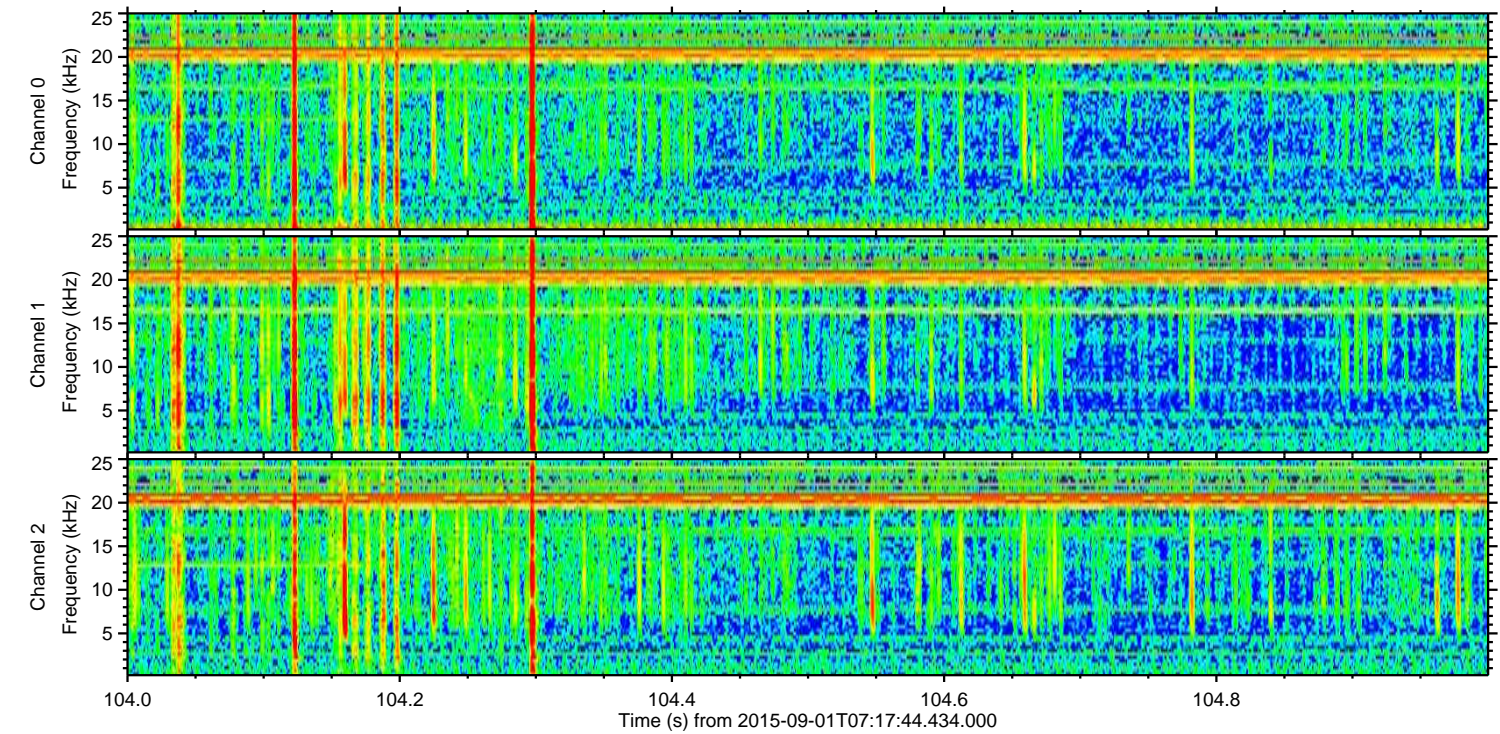
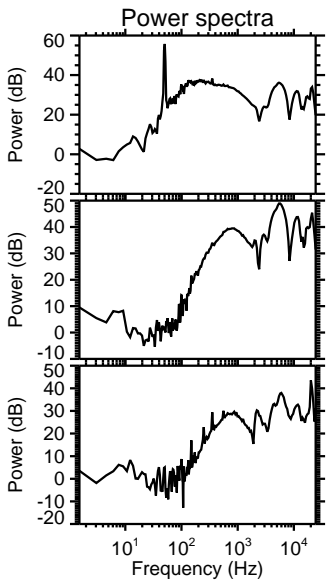
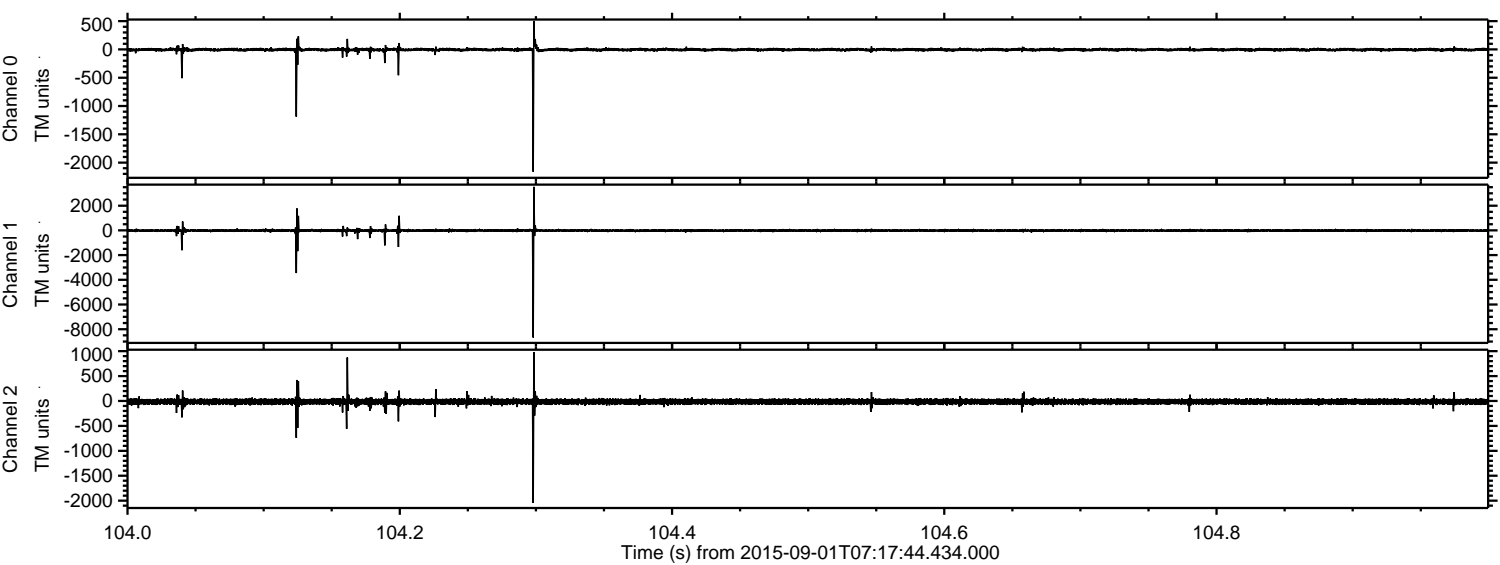
ELMAVAN 3D WAVEFORMS (Measured data sampled at 50 kHz) 51000 packets of 144 samples from 2015-09-01T07:17:44.434.000. Part 129/147

Processed Thu Oct 8 18:21:13 2015 by ELM ver.2012-10-06 from 001__elm20150901_071743__dat00.bin



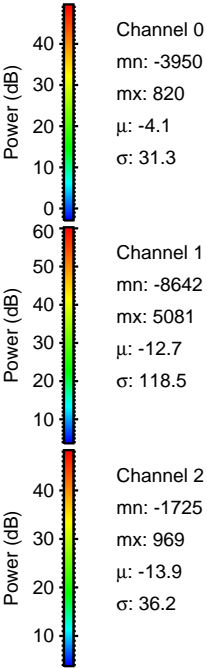
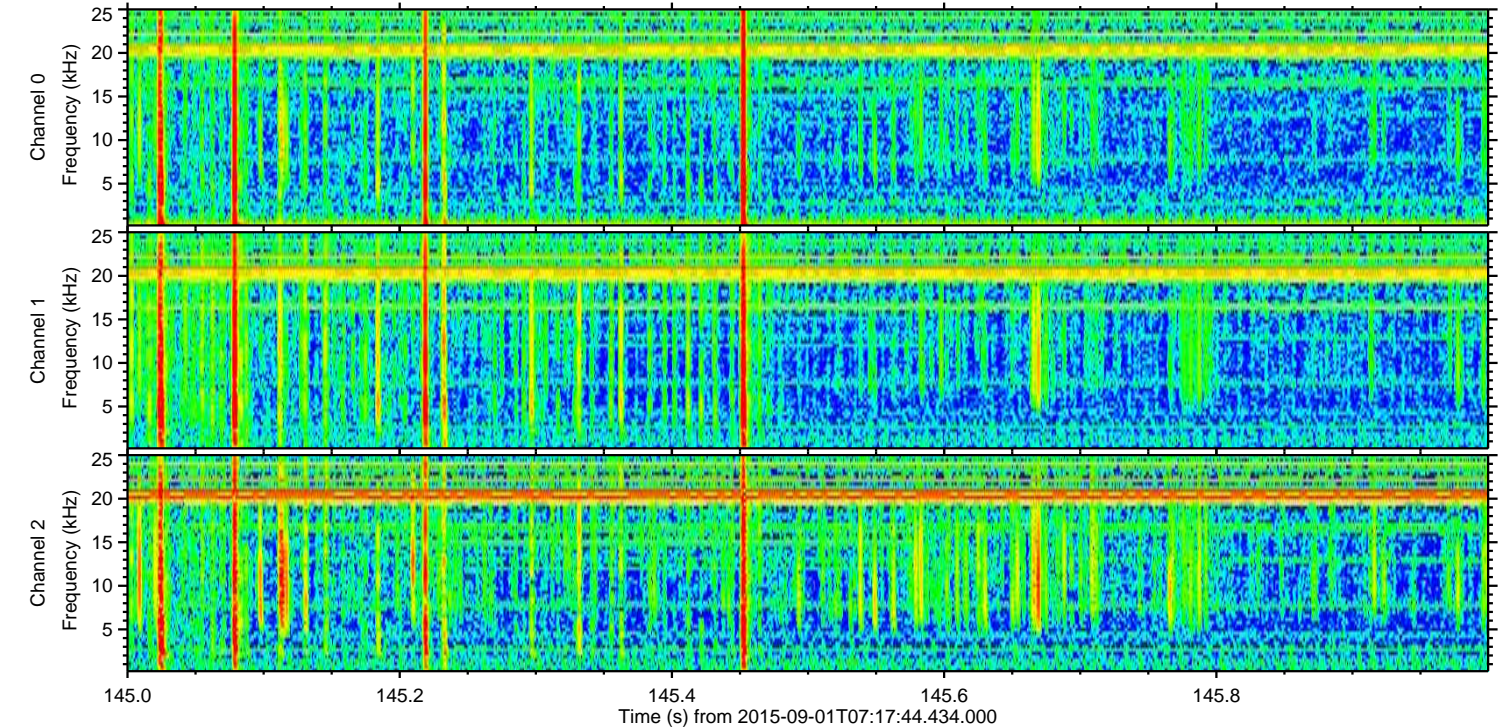
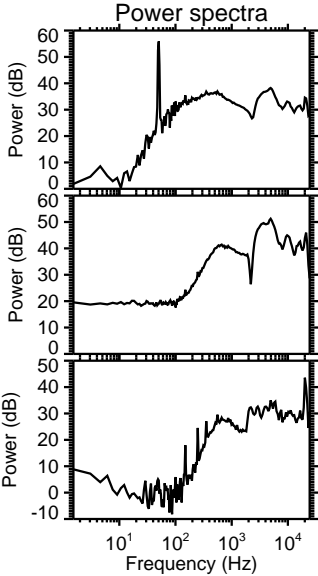
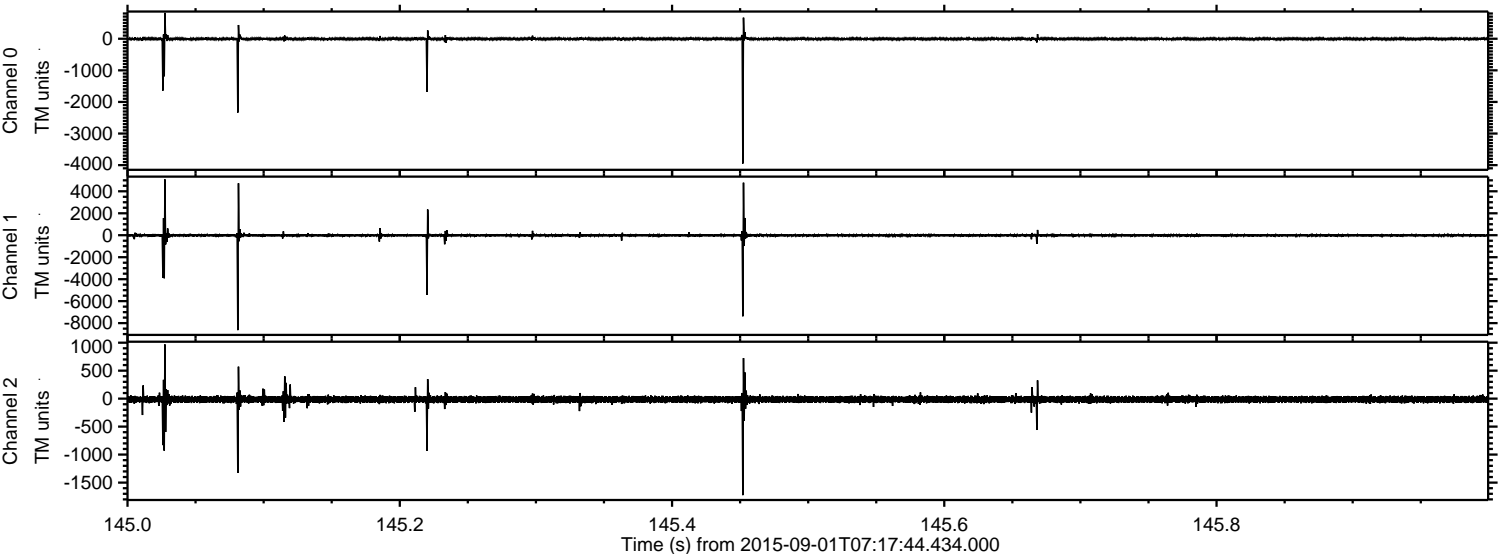
ELMAVAN 3D WAVEFORMS (Measured data sampled at 50 kHz) 51000 packets of 144 samples from 2015-09-01T07:17:44.434.000. Part 105/147

Processed Thu Oct 8 18:21:14 2015 by ELM ver.2012-10-06 from 001__elm20150901_071743__dat00.bin



ELMAVAN 3D WAVEFORMS (Measured data sampled at 50 kHz) 51000 packets of 144 samples from 2015-09-01T07:17:44.434.000. Part 146/147

Processed Thu Oct 8 18:21:15 2015 by ELM ver.2012-10-06 from 001__elm20150901_071743__dat00.bin



Processed Thu Oct 8 18:21:16 2015 by ELM ver.2012-10-06 from 001__elm20150901_071743__dat00.bin

