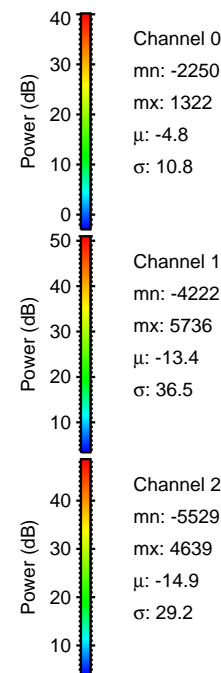
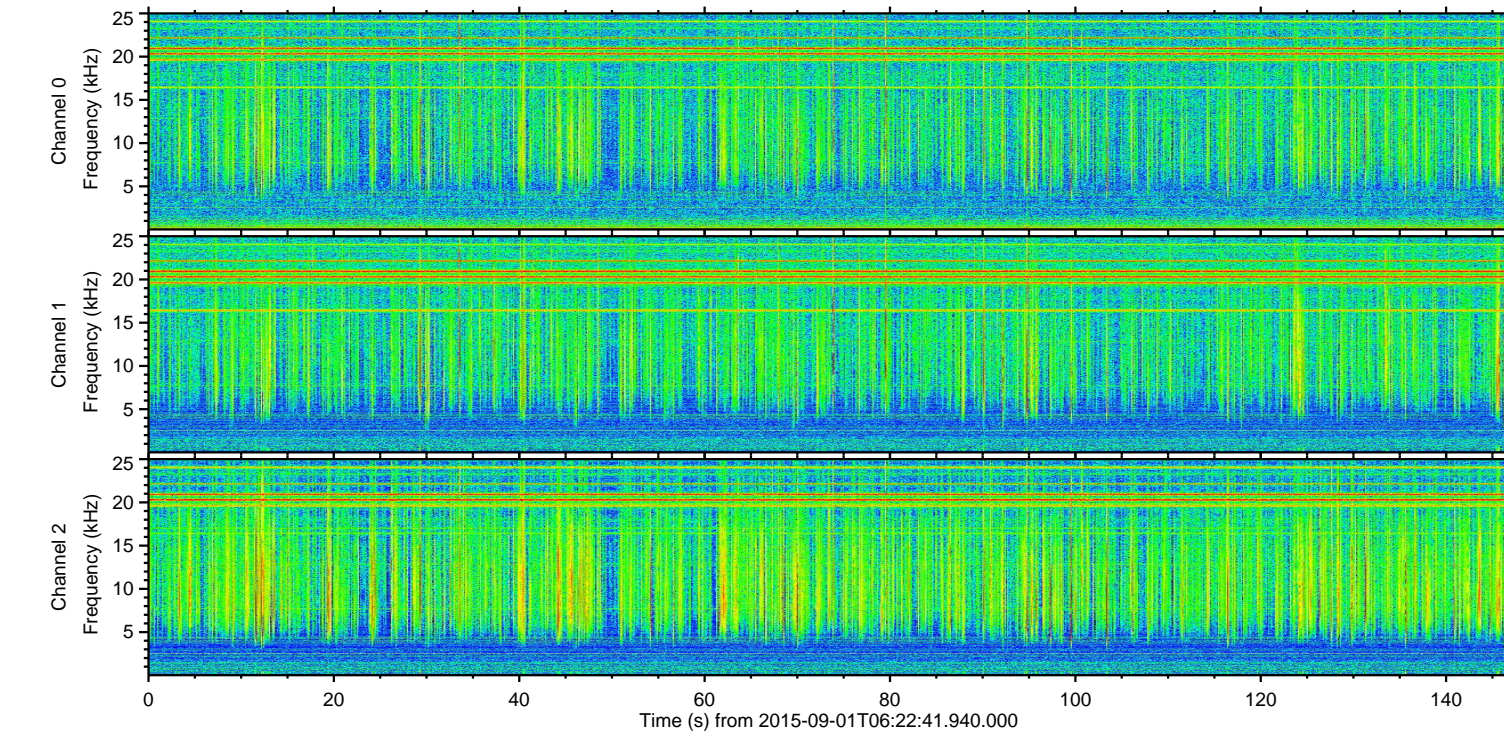
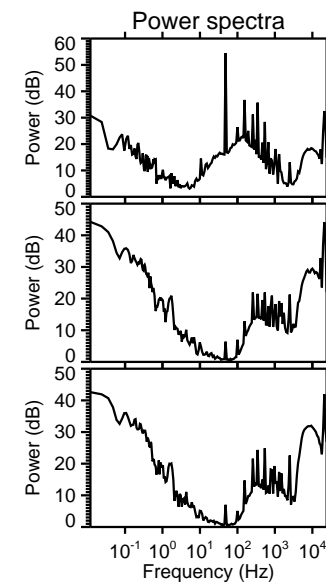
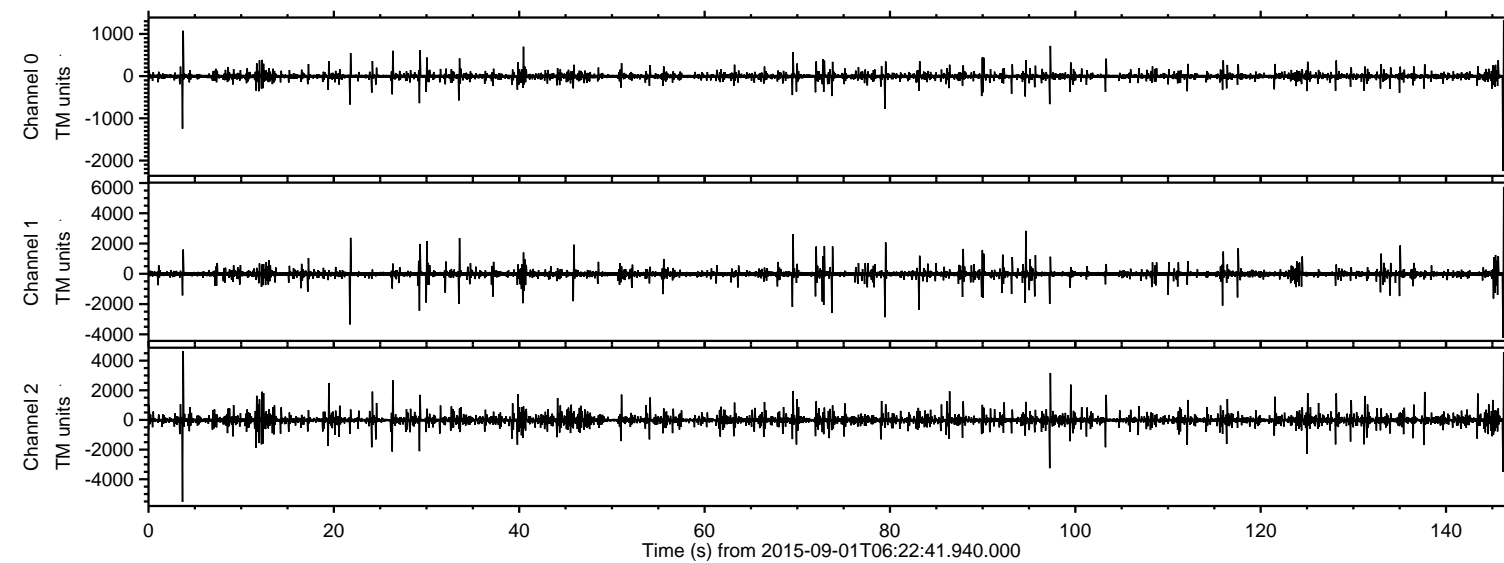


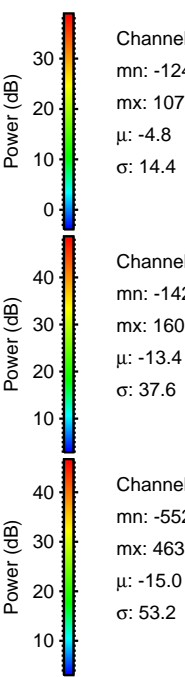
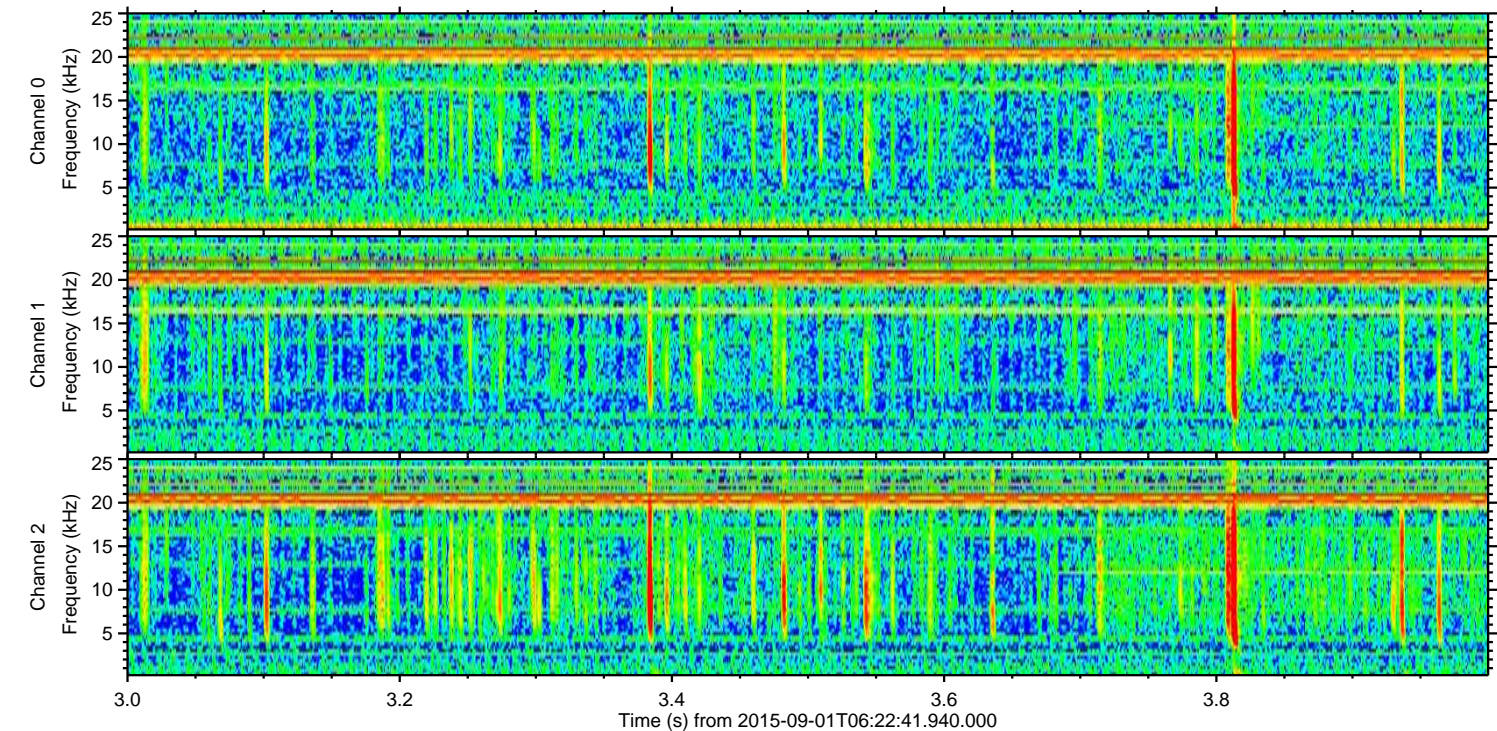
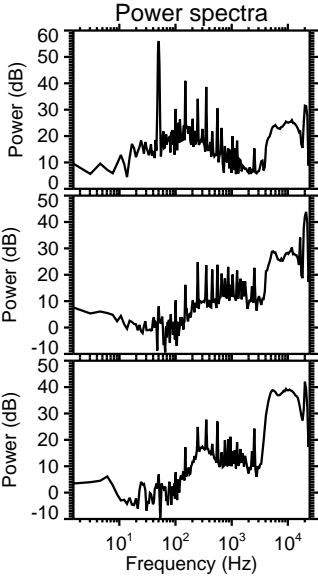
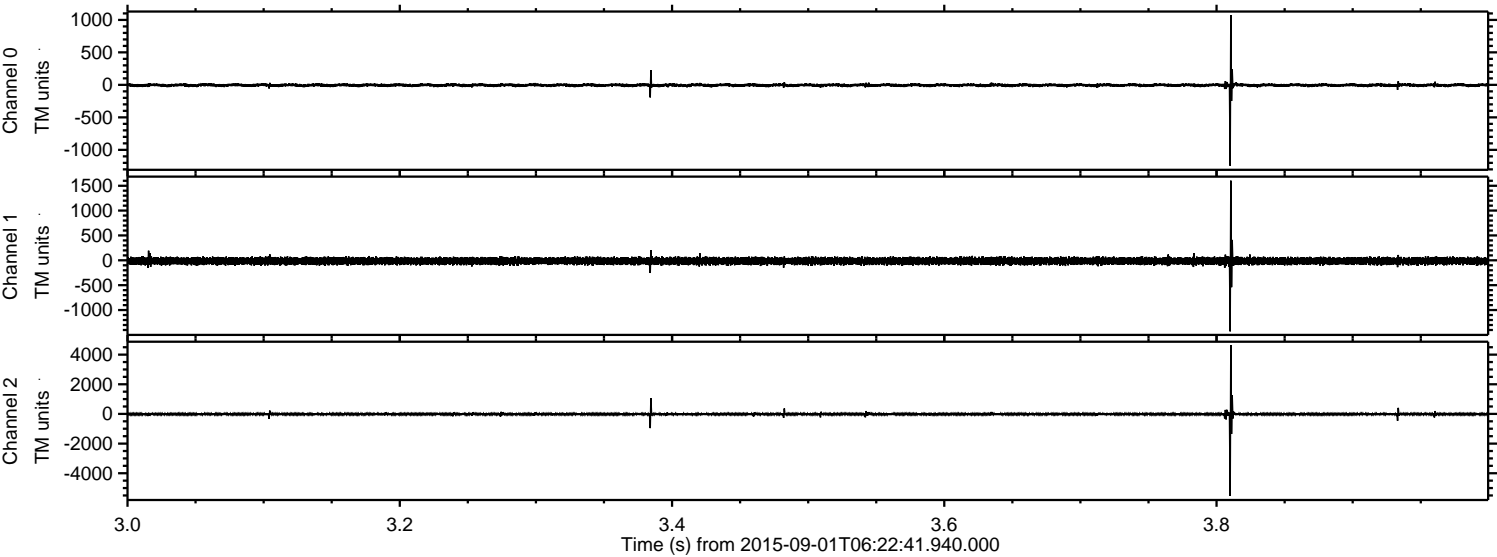
# ELMAVAN 3D WAVEFORMS (Measured data sampled at 50 kHz) 51000 packets of 144 samples from 2015-09-01T06:22:41.940.000.

Processed Thu Oct 8 18:05:39 2015 by ELM ver.2012-10-06 from 001\_\_elm20150901\_062240\_\_dat00.bin



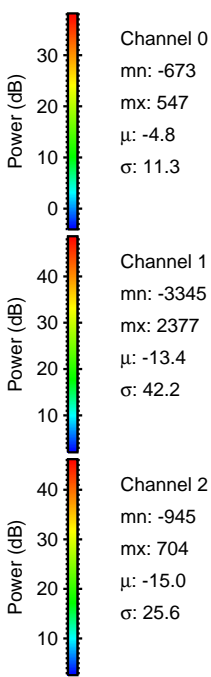
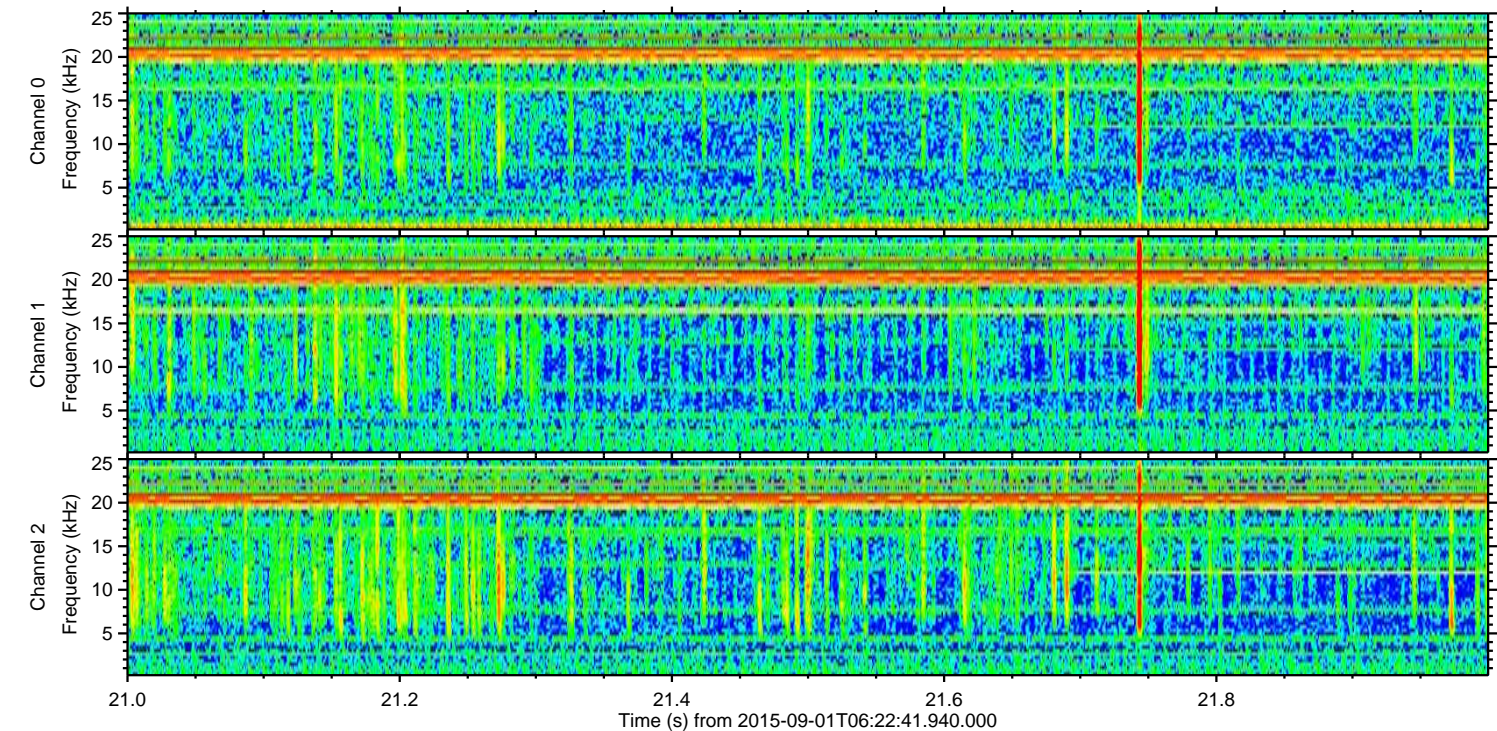
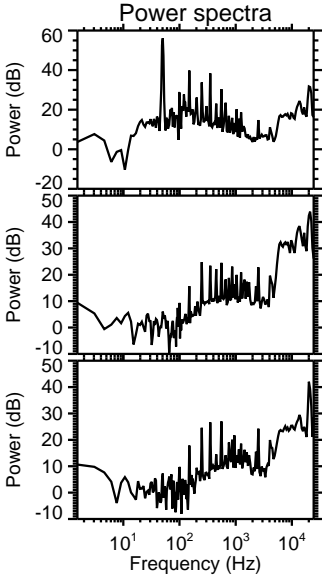
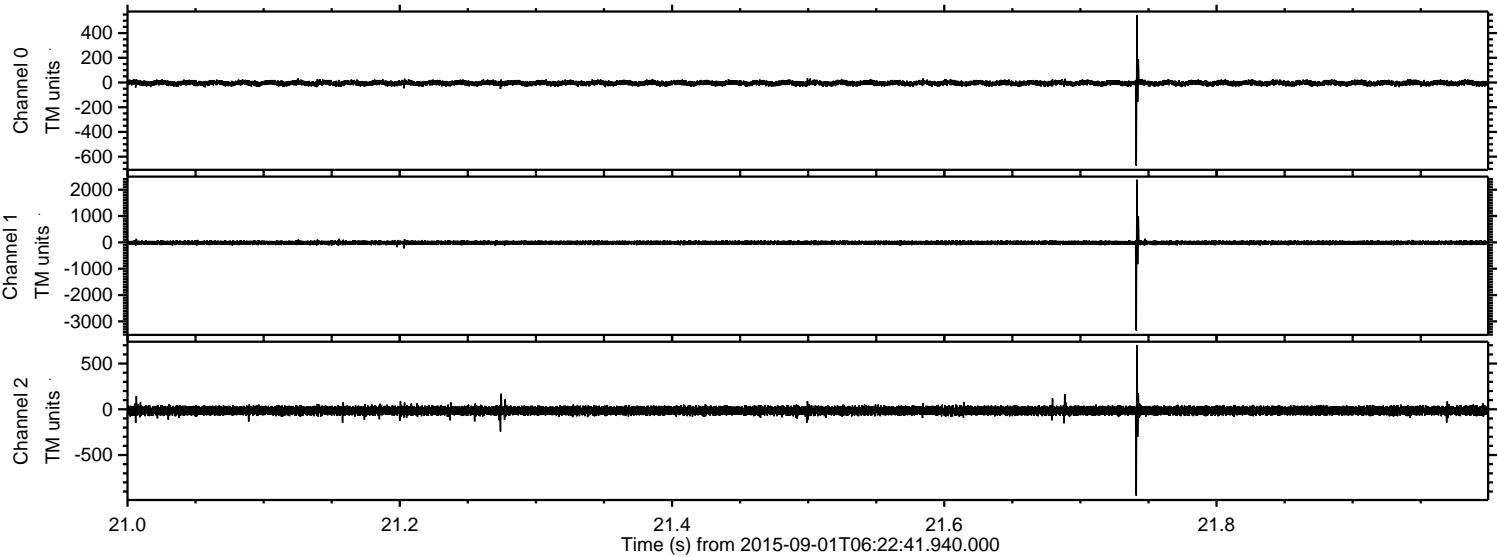


Processed Thu Oct 8 18:05:54 2015 by ELM ver.2012-10-06 from 001\_\_elm20150901\_062240\_\_dat00.bin



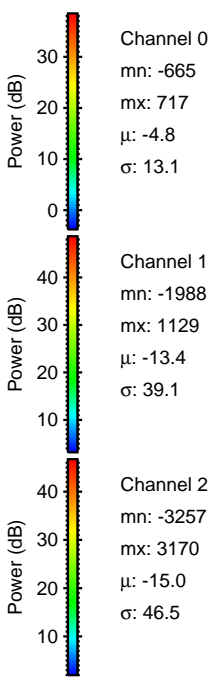
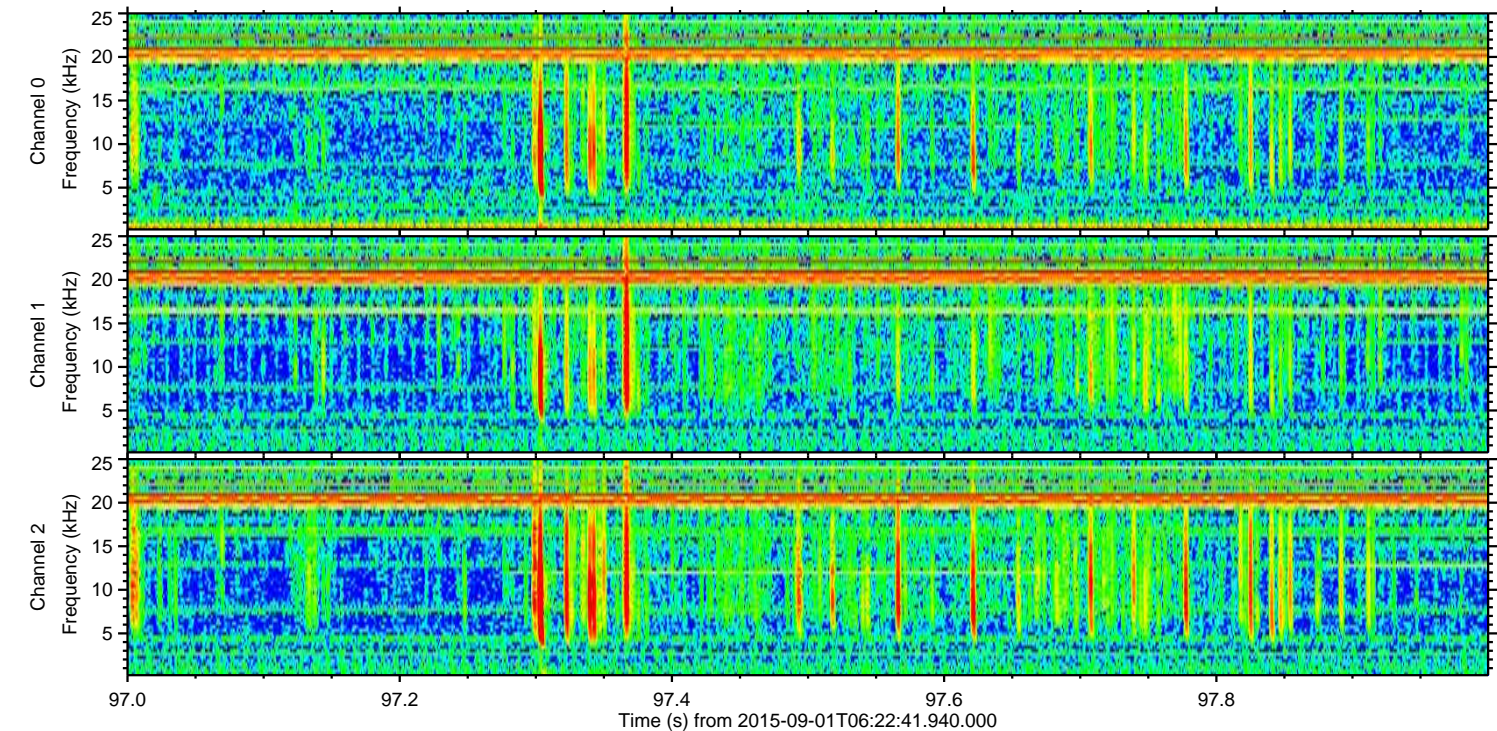
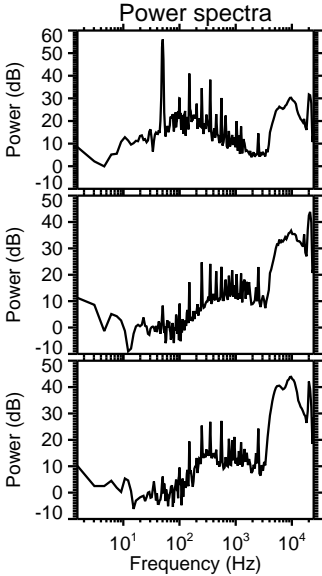
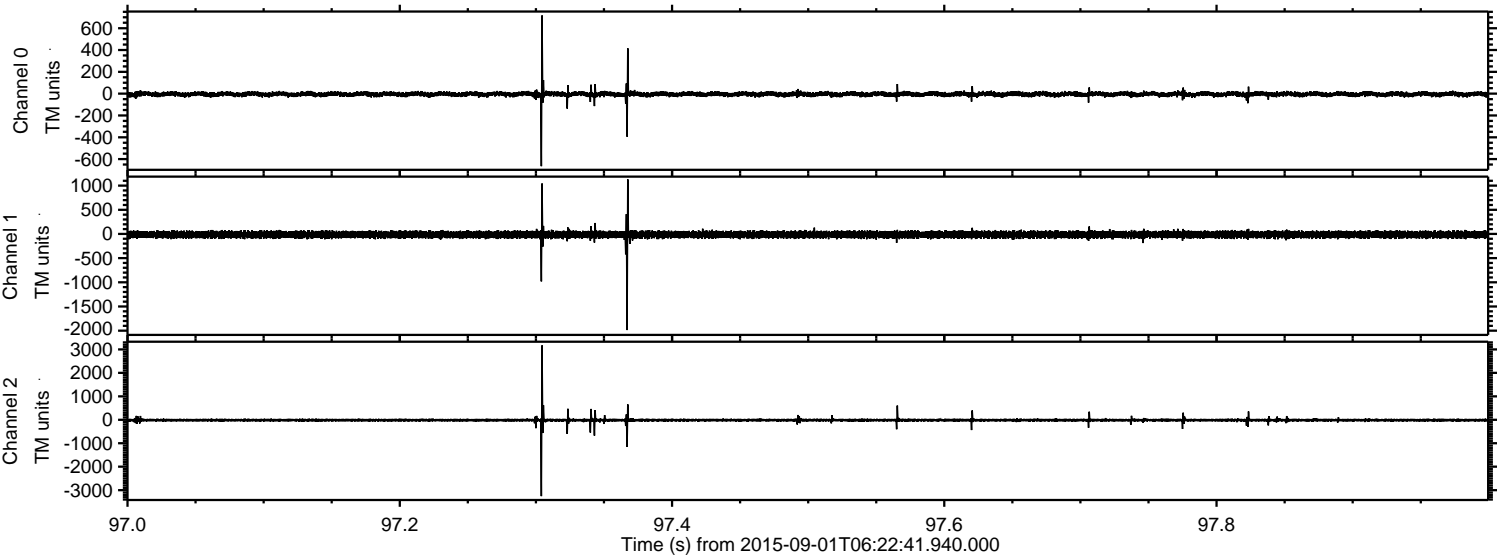


Processed Thu Oct 8 18:05:55 2015 by ELM ver.2012-10-06 from 001\_\_elm20150901\_062240\_\_dat00.bin



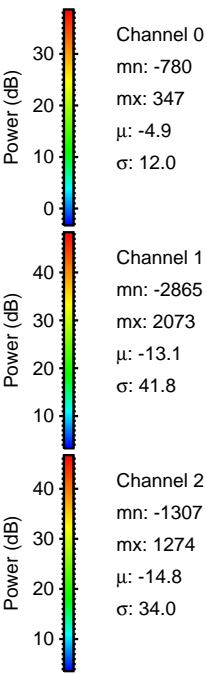
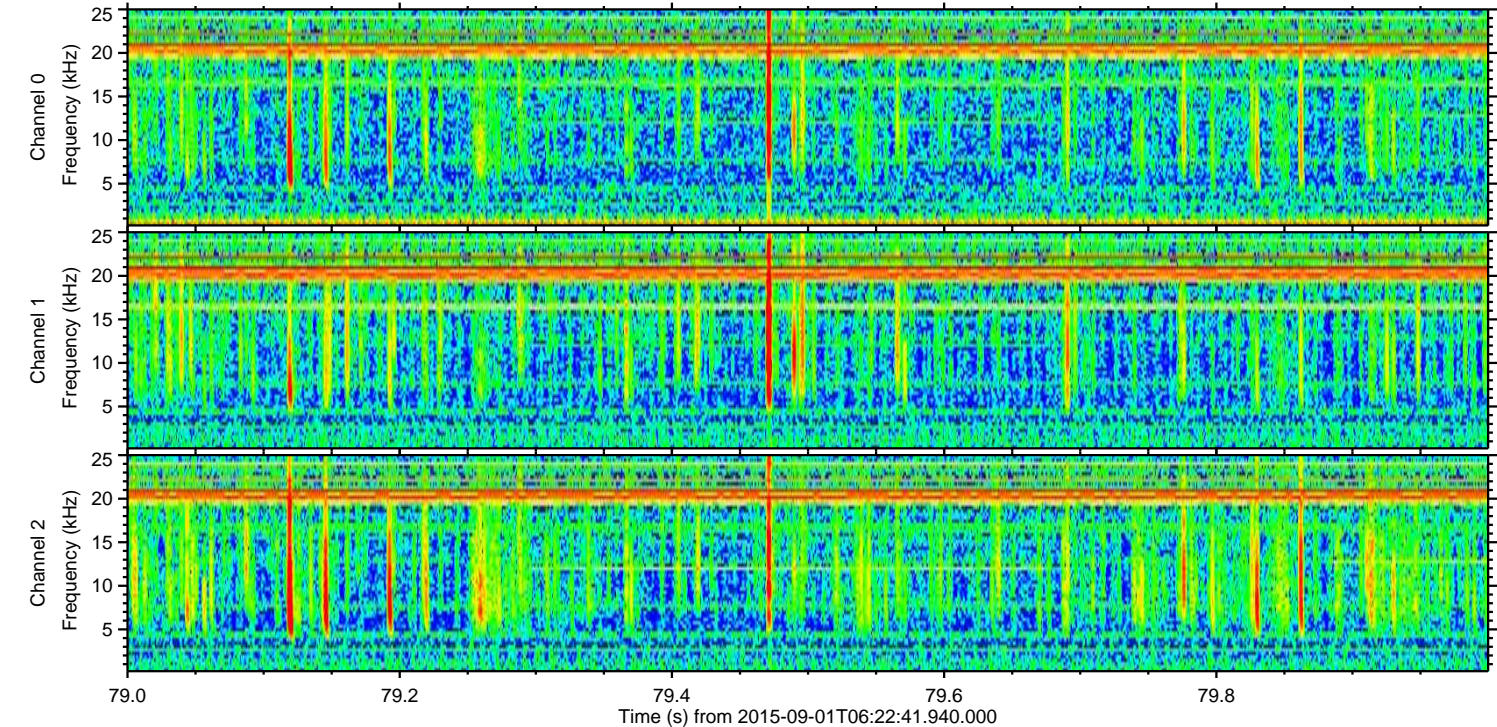
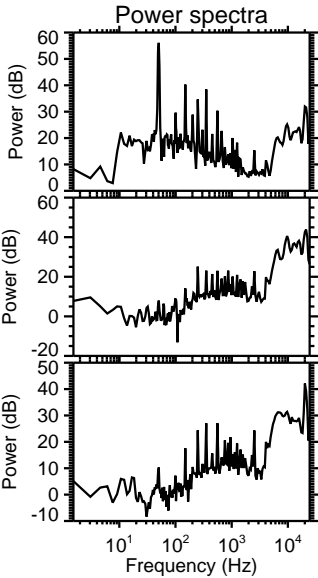
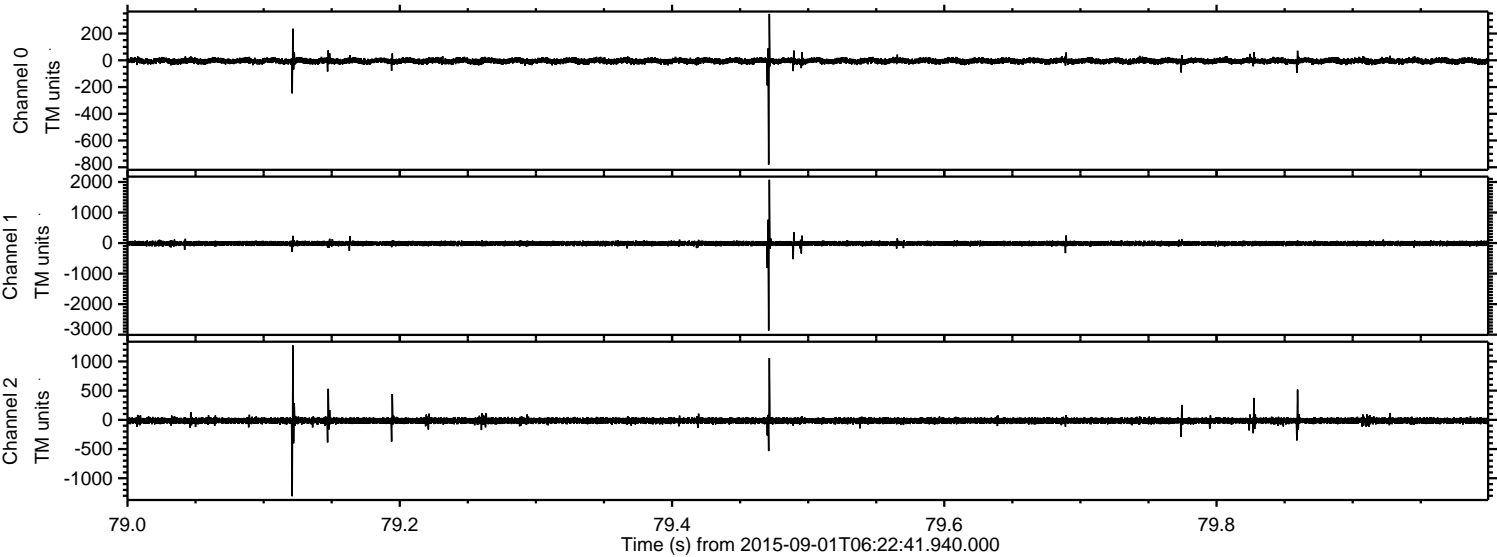


Processed Thu Oct 8 18:05:56 2015 by ELM ver.2012-10-06 from 001\_\_elm20150901\_062240\_\_dat00.bin



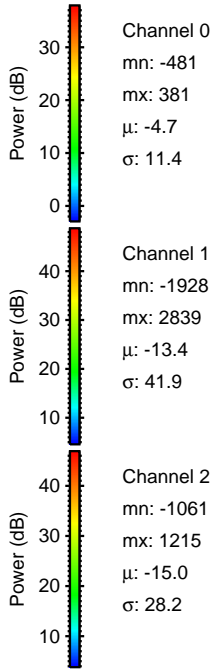
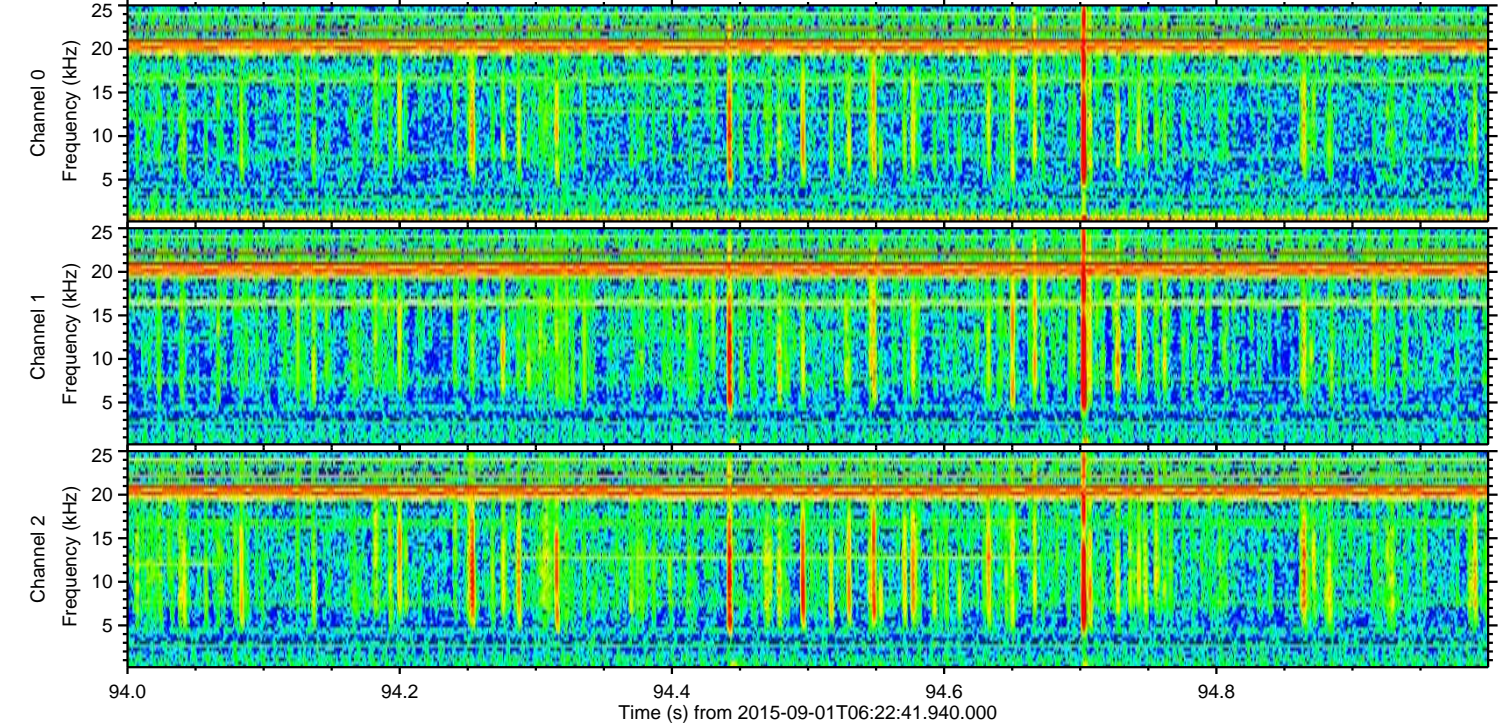
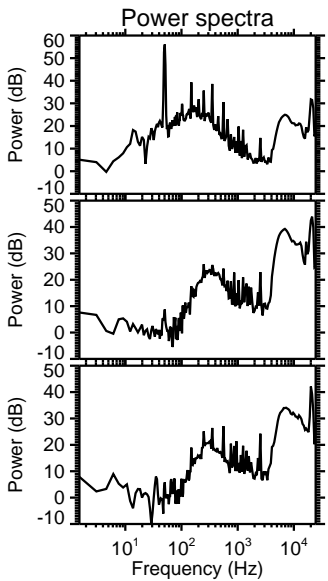
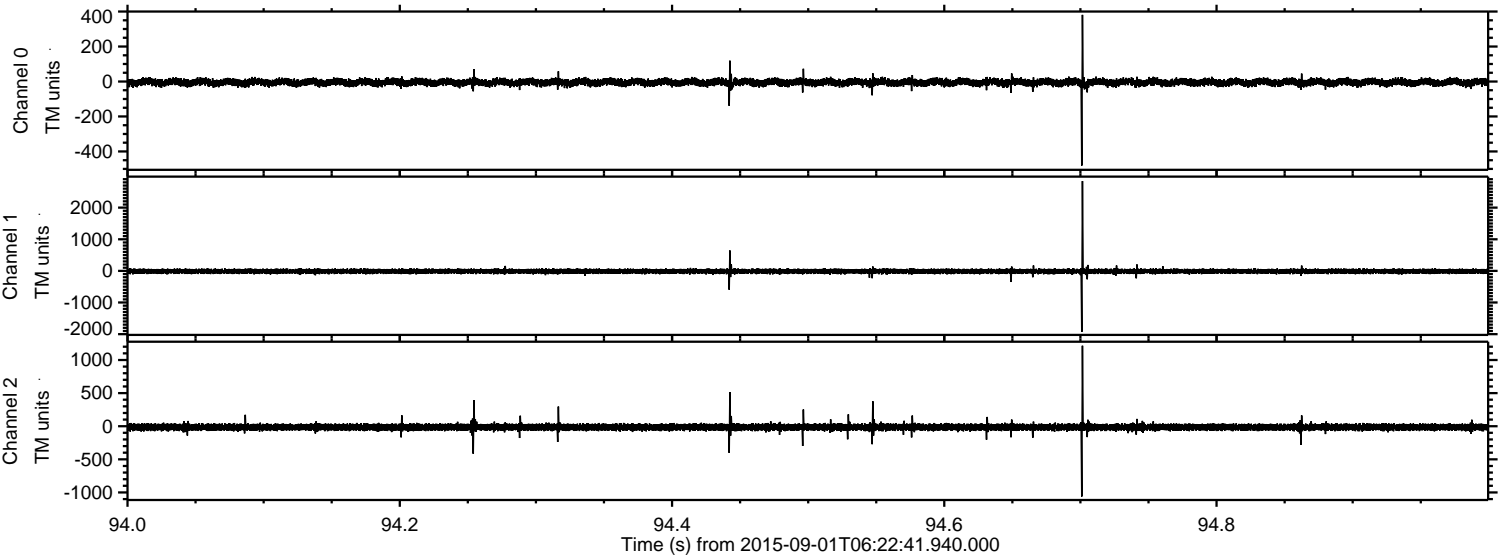


Processed Thu Oct 8 18:05:57 2015 by ELM ver.2012-10-06 from 001\_\_elm20150901\_062240\_\_dat00.bin



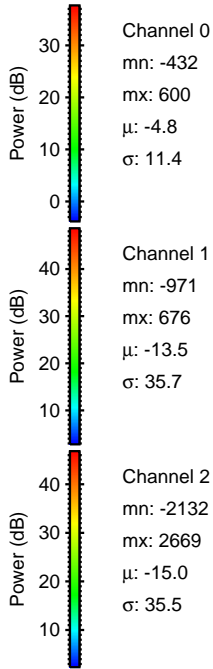
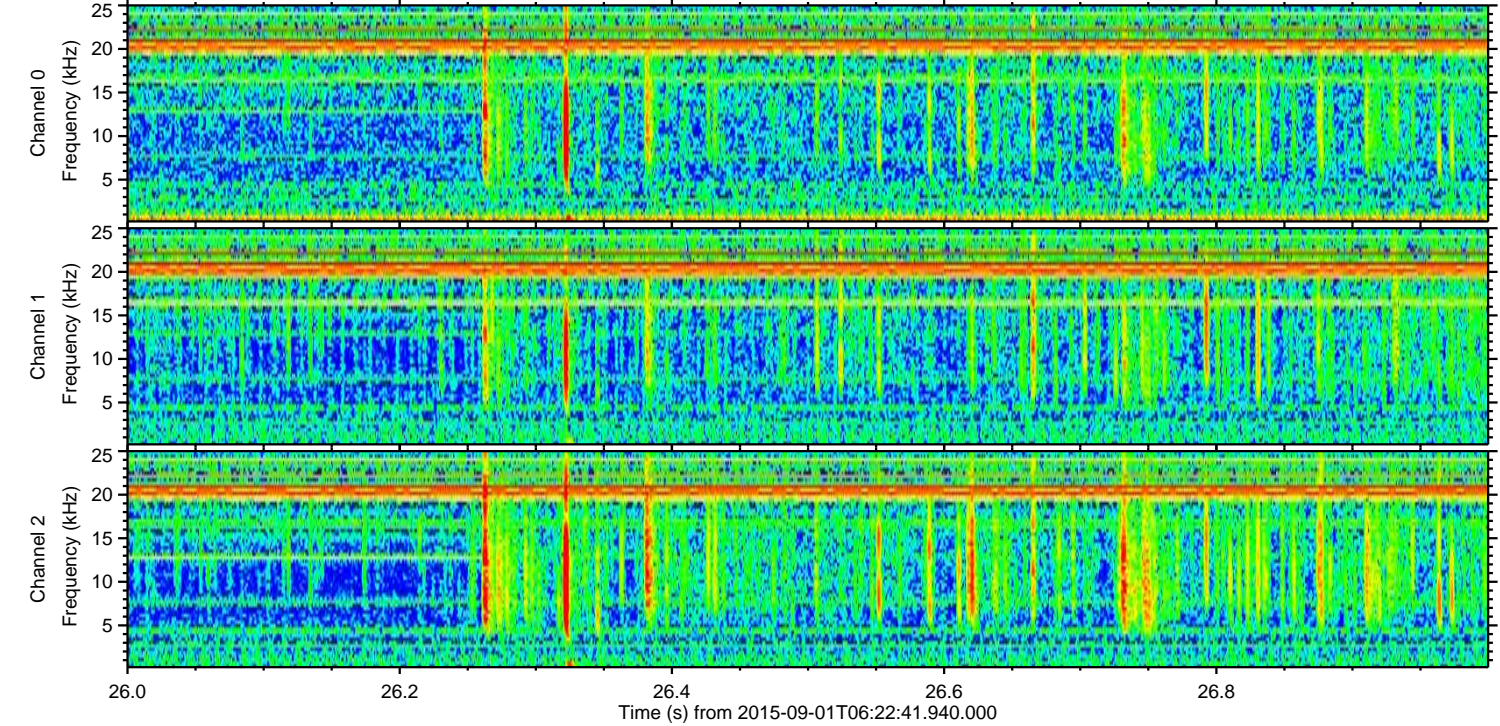
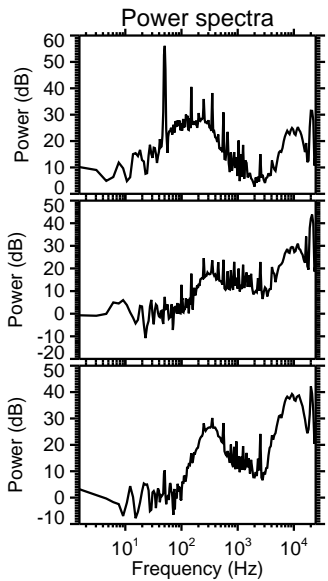
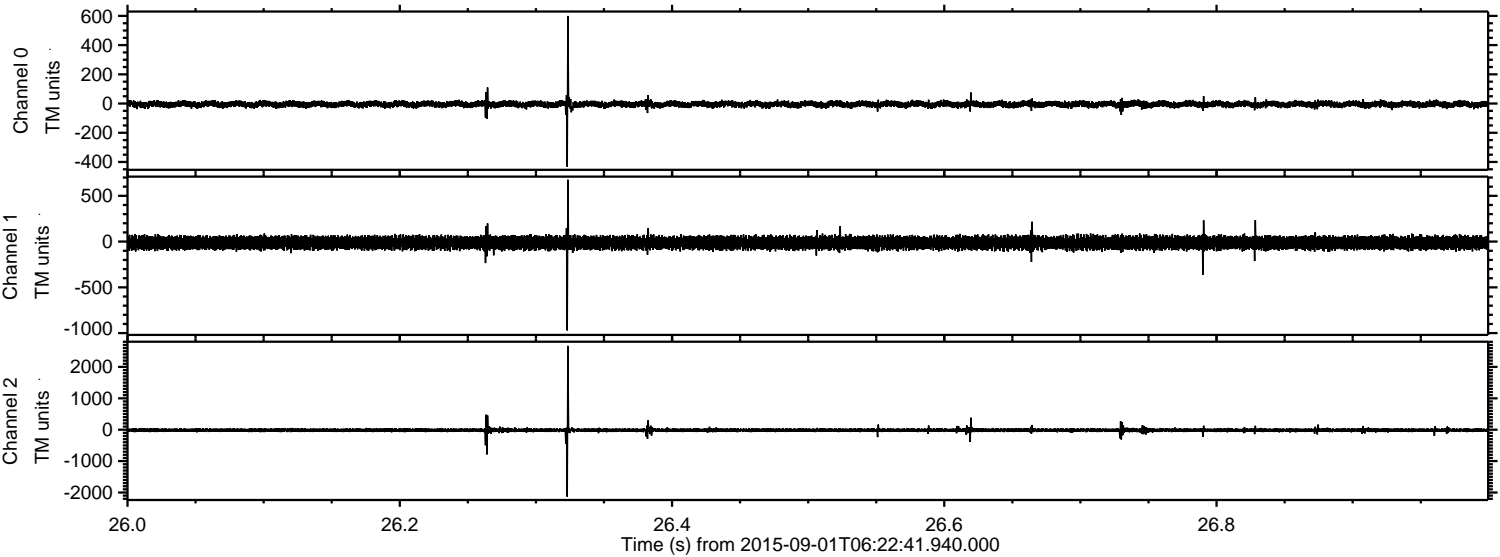


Processed Thu Oct 8 18:05:58 2015 by ELM ver.2012-10-06 from 001\_\_elm20150901\_062240\_\_dat00.bin



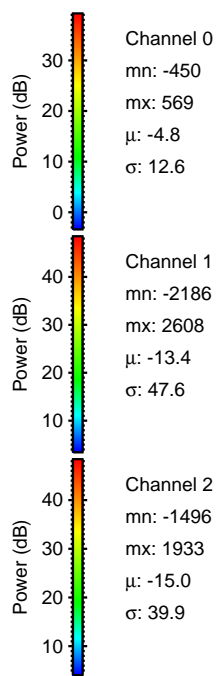
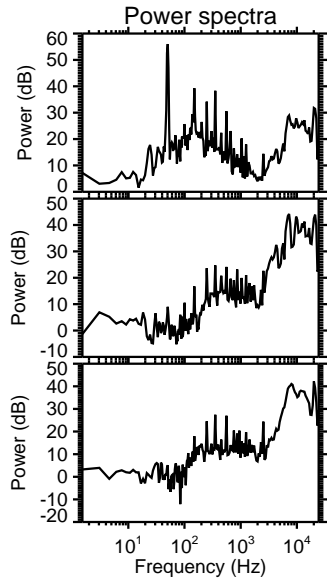
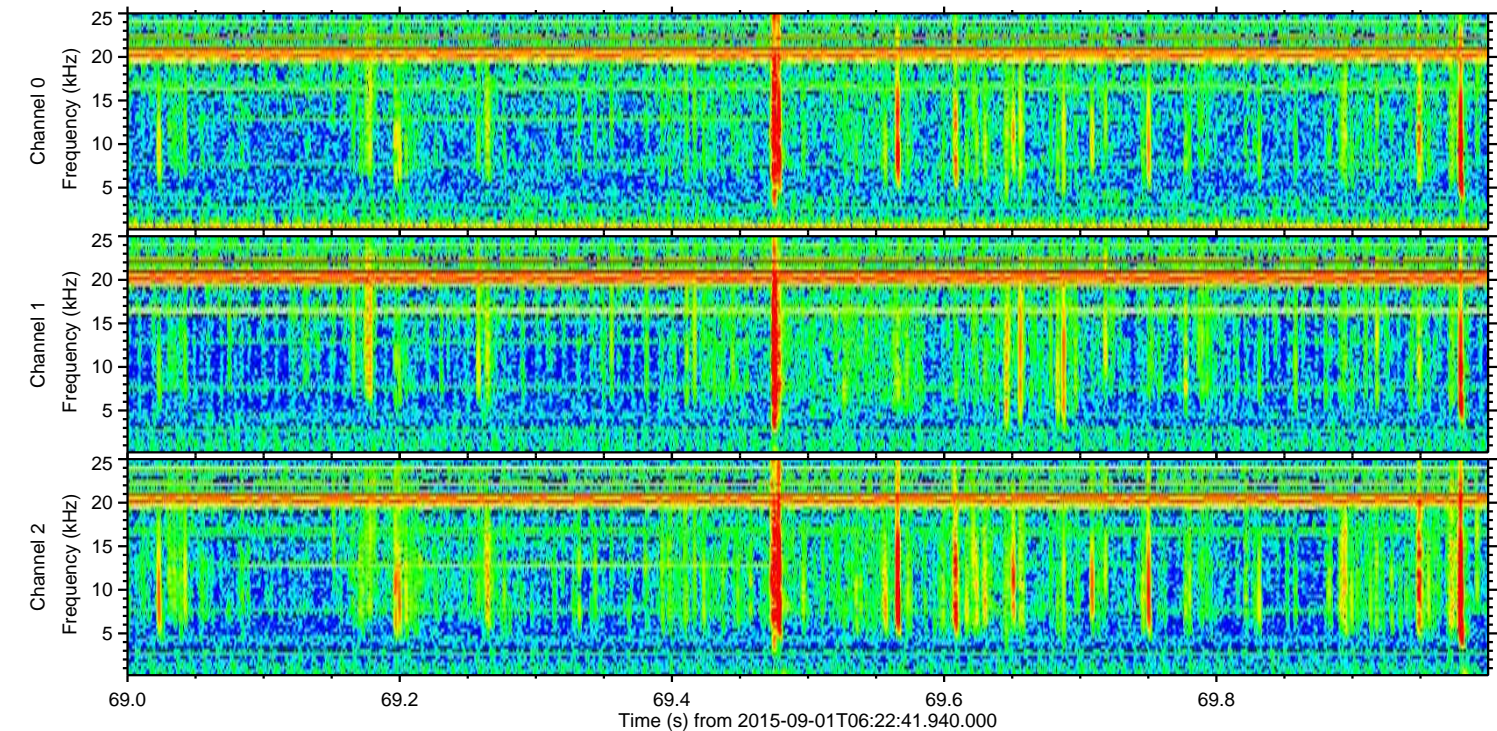
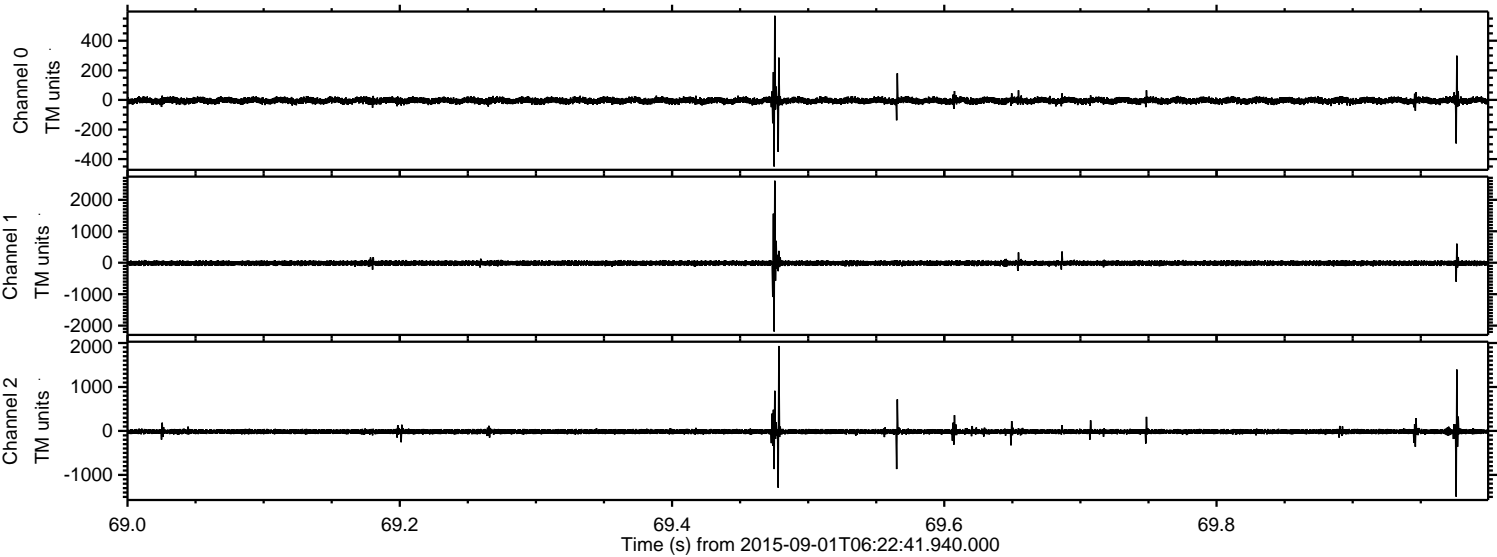


Processed Thu Oct 8 18:05:59 2015 by ELM ver.2012-10-06 from 001\_\_elm20150901\_062240\_\_dat00.bin



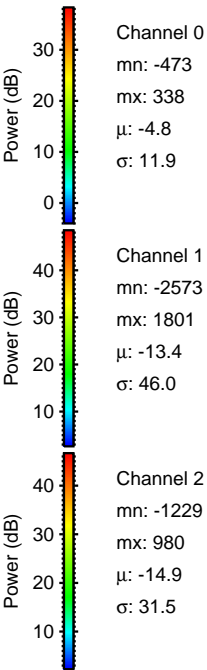
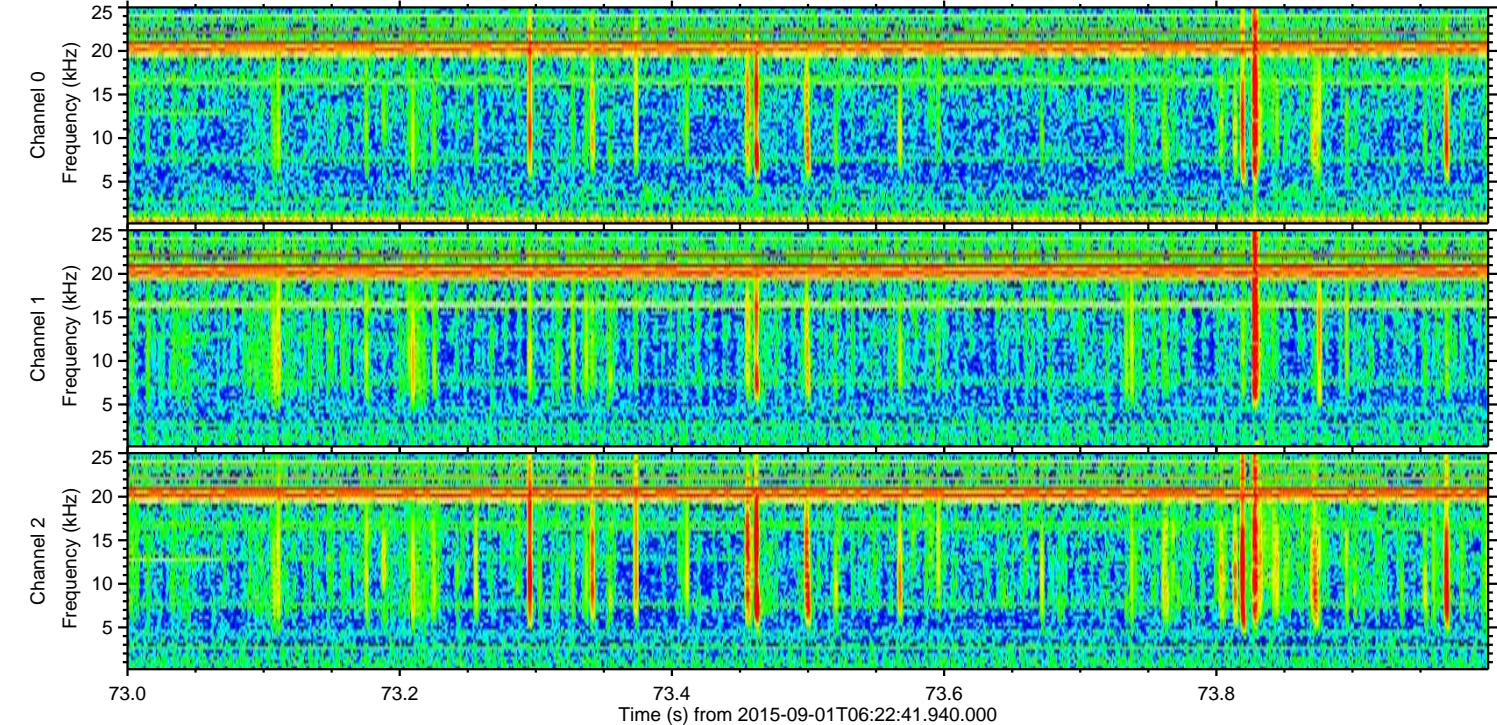
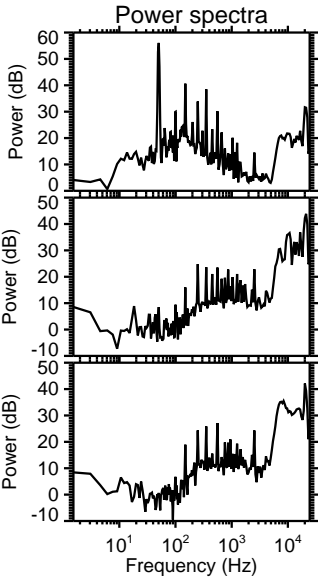
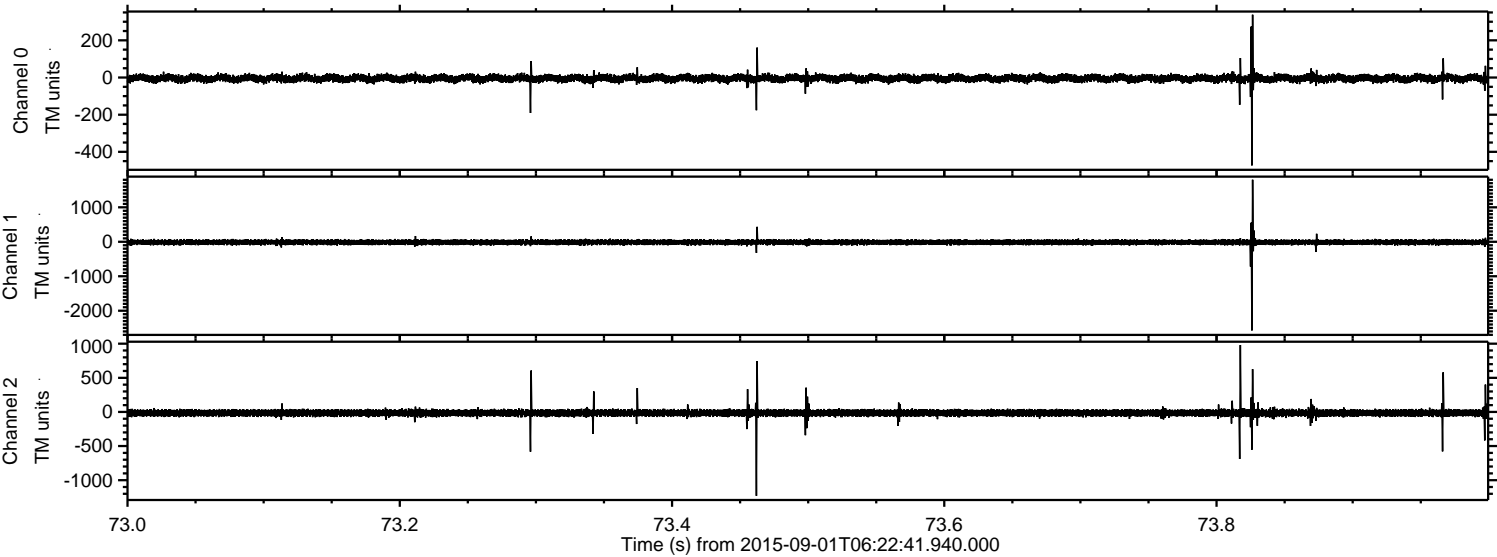


Processed Thu Oct 8 18:06:00 2015 by ELM ver.2012-10-06 from 001\_\_elm20150901\_062240\_\_dat00.bin



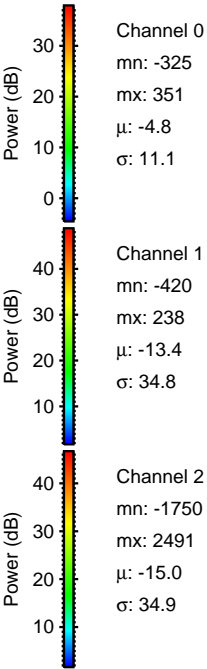
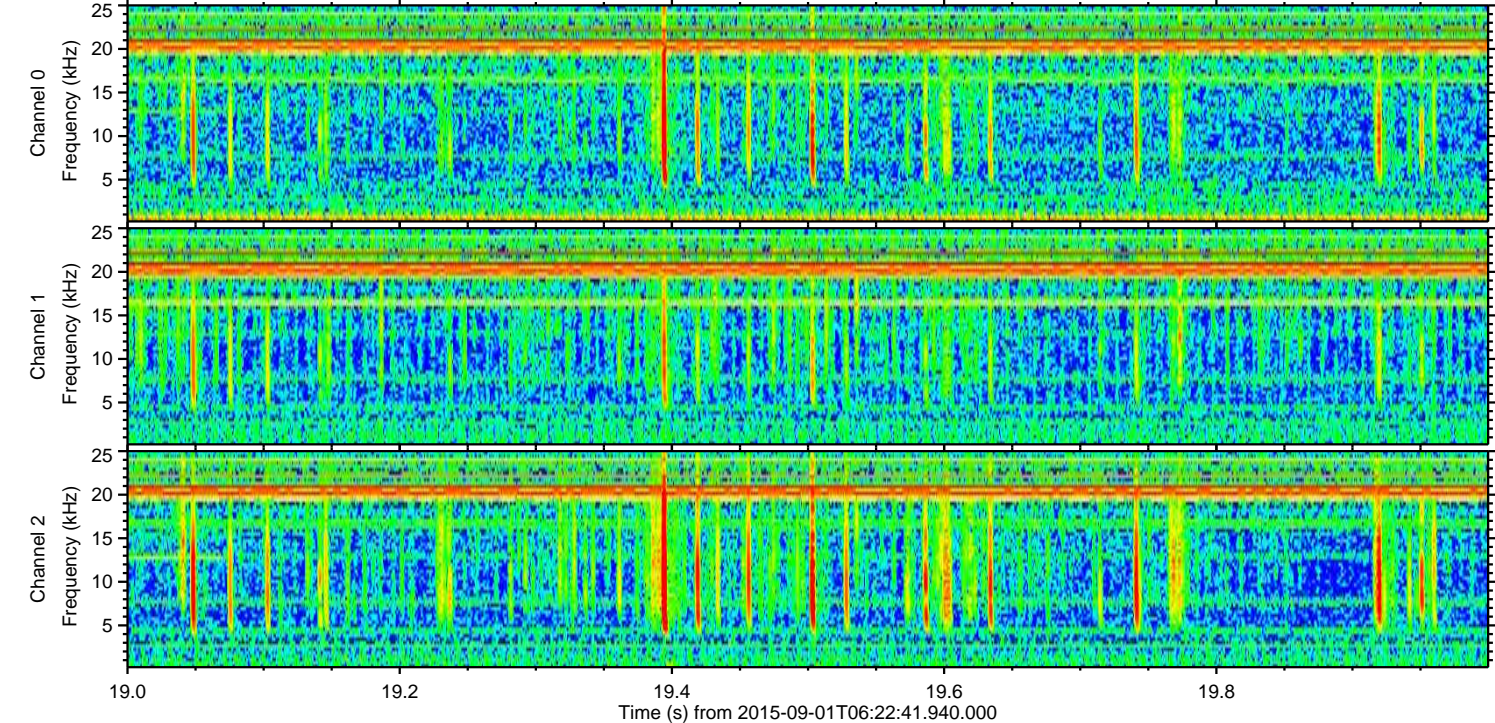
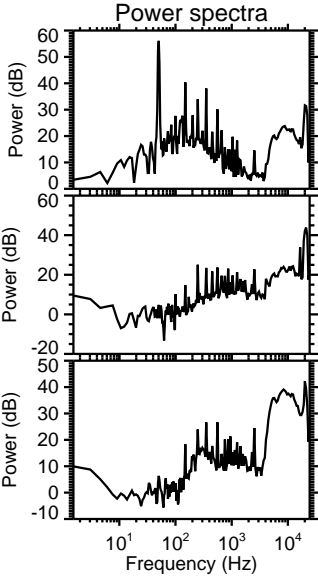
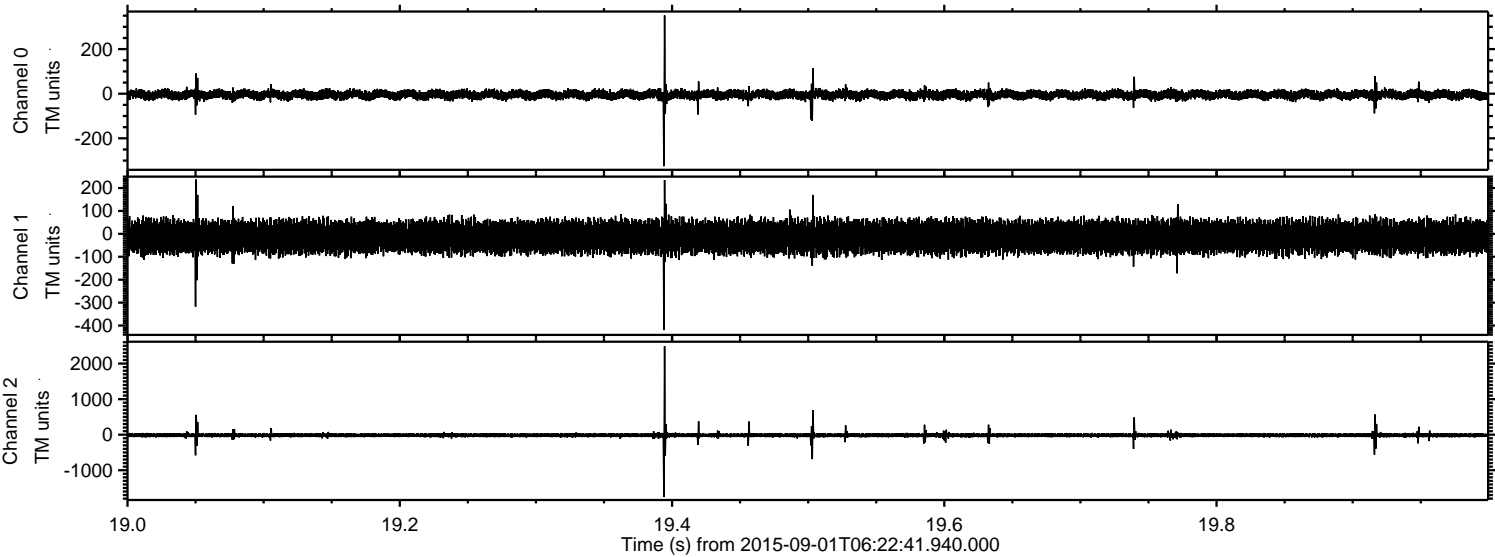


Processed Thu Oct 8 18:06:01 2015 by ELM ver.2012-10-06 from 001\_\_elm20150901\_062240\_\_dat00.bin





Processed Thu Oct 8 18:06:02 2015 by ELM ver.2012-10-06 from 001\_\_elm20150901\_062240\_\_dat00.bin



Channel 0  
mn: -325  
mx: 351  
 $\mu$ : -4.8  
 $\sigma$ : 11.1

Channel 1  
mn: -420  
mx: 238  
 $\mu$ : -13.4  
 $\sigma$ : 34.8

Channel 2  
mn: -1750  
mx: 2491  
 $\mu$ : -15.0  
 $\sigma$ : 34.9



