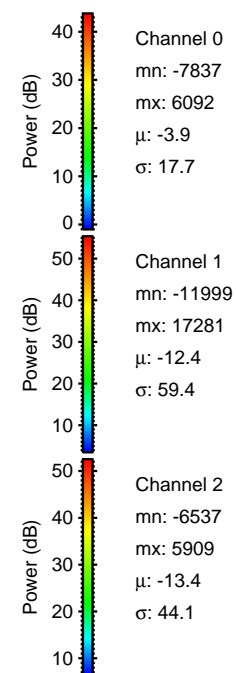
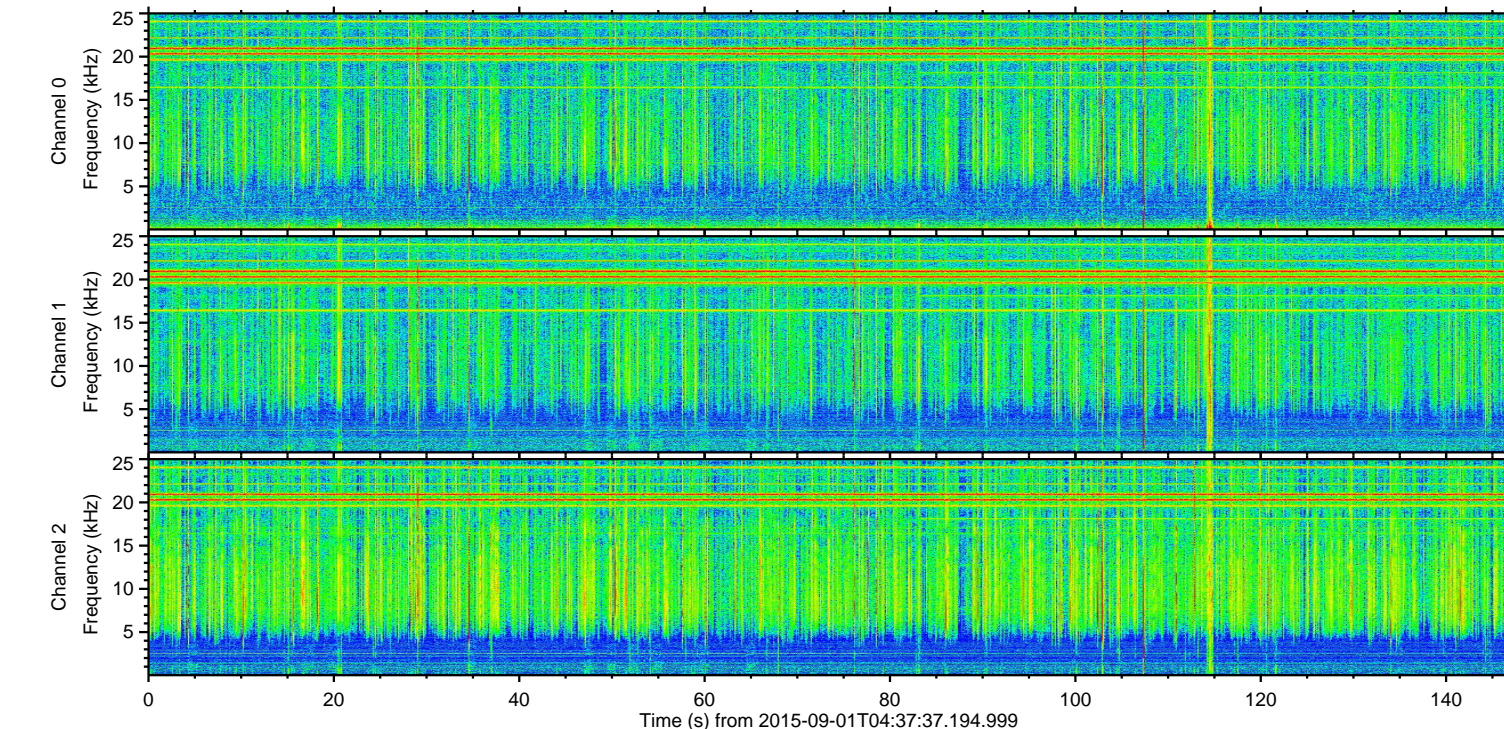
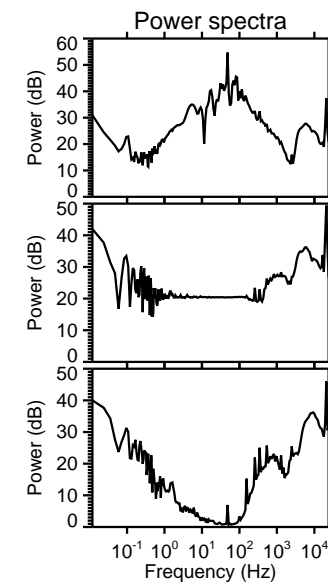
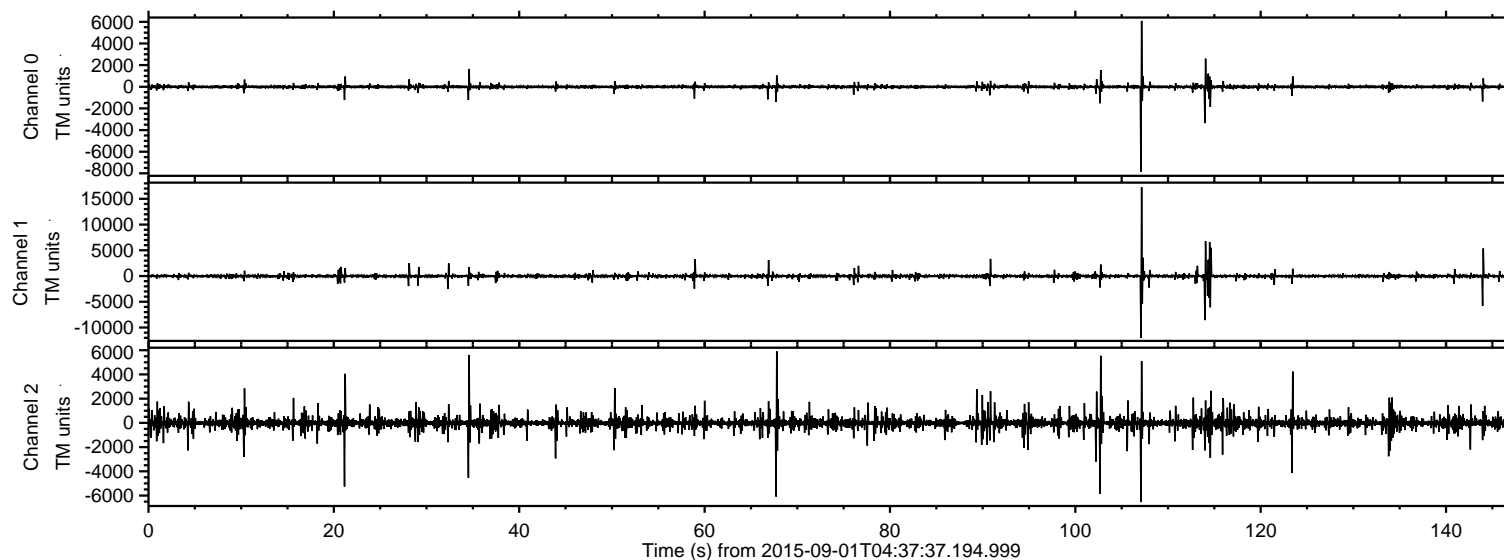


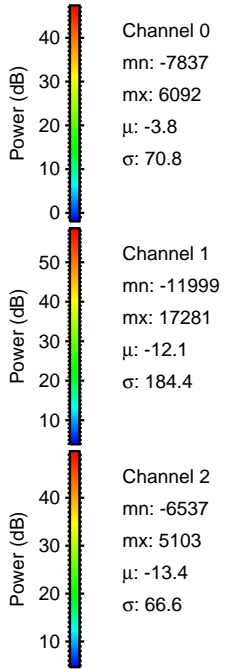
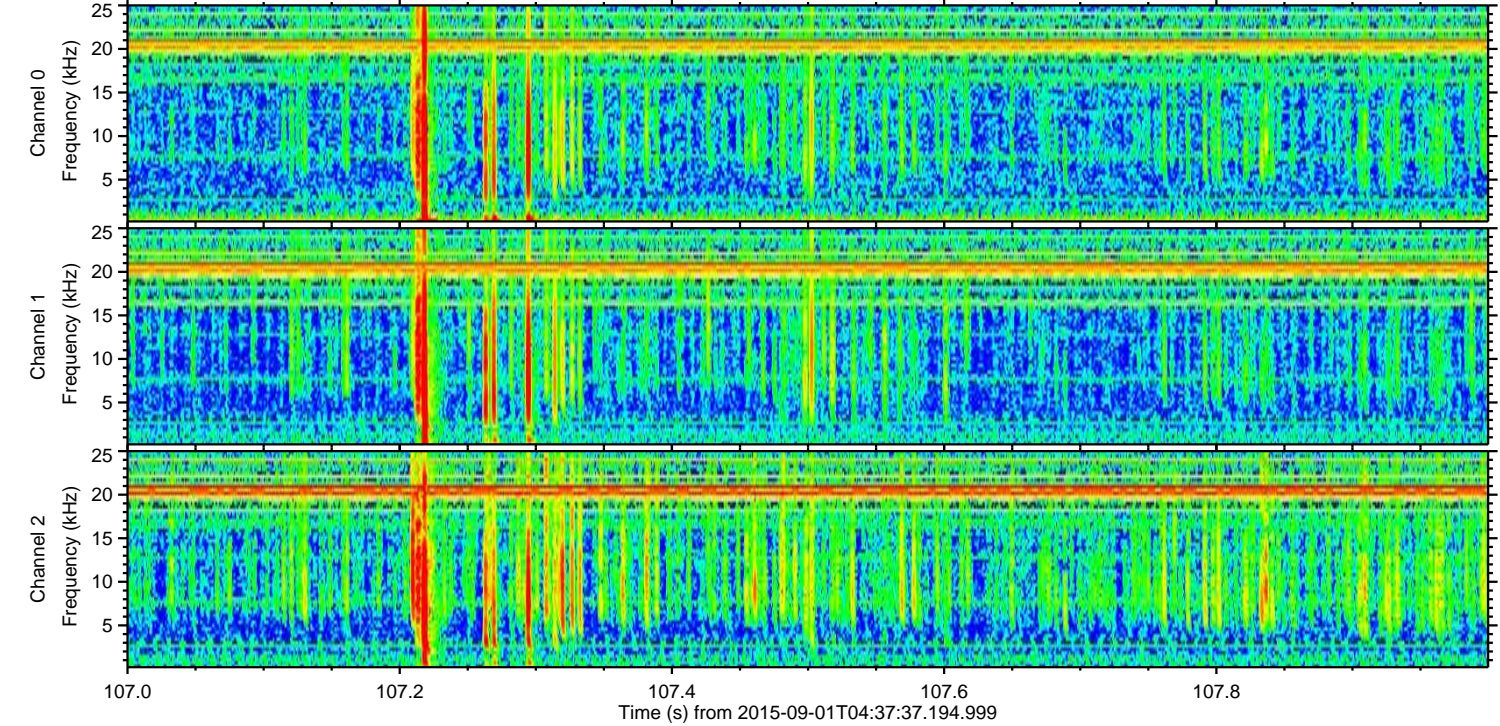
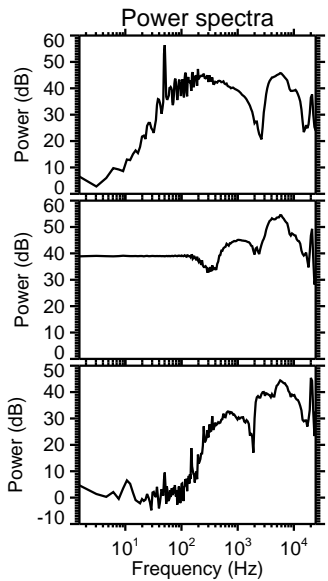
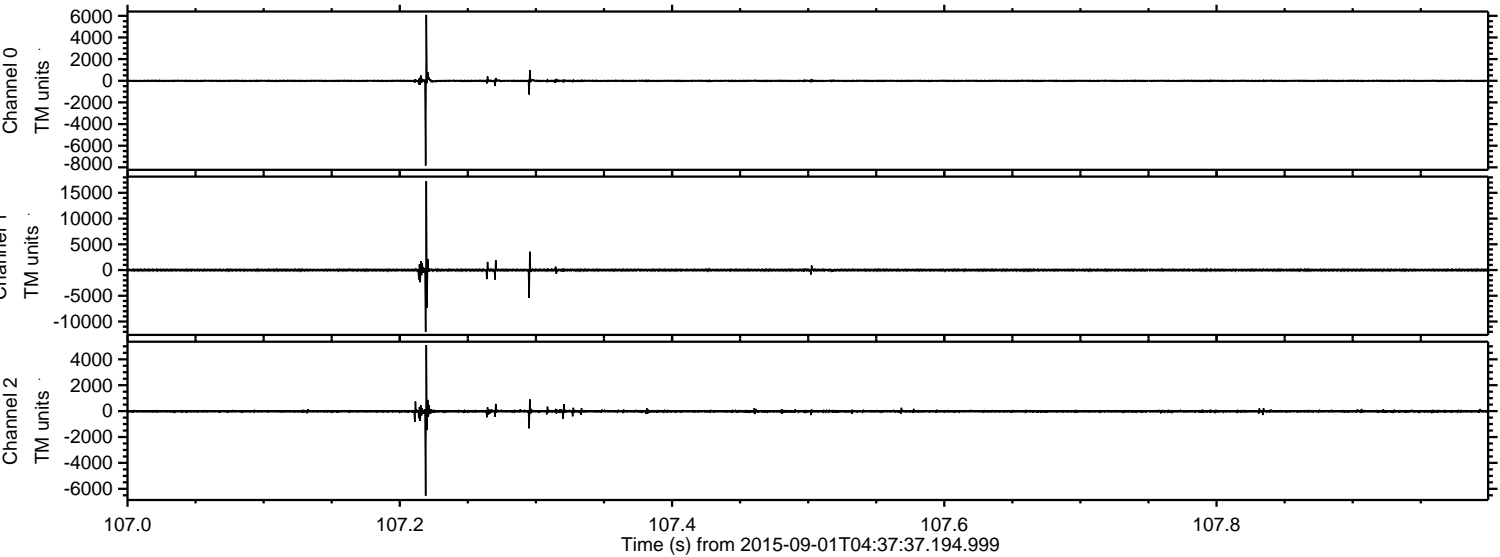
ELMAVAN 3D WAVEFORMS (Measured data sampled at 50 kHz) 51000 packets of 144 samples from 2015-09-01T04:37:37.194.999.

Processed Thu Oct 8 17:36:35 2015 by ELM ver.2012-10-06 from 001__elm20150901_043736__dat00.bin



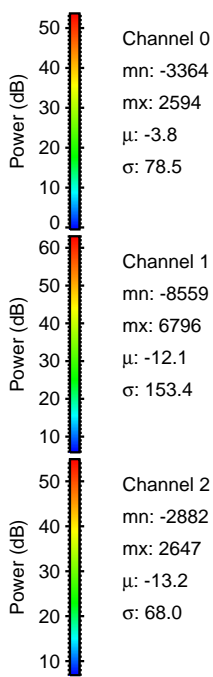
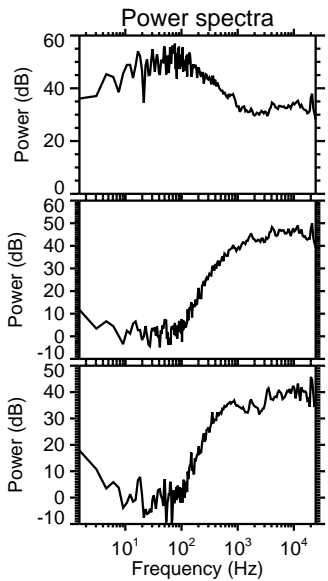
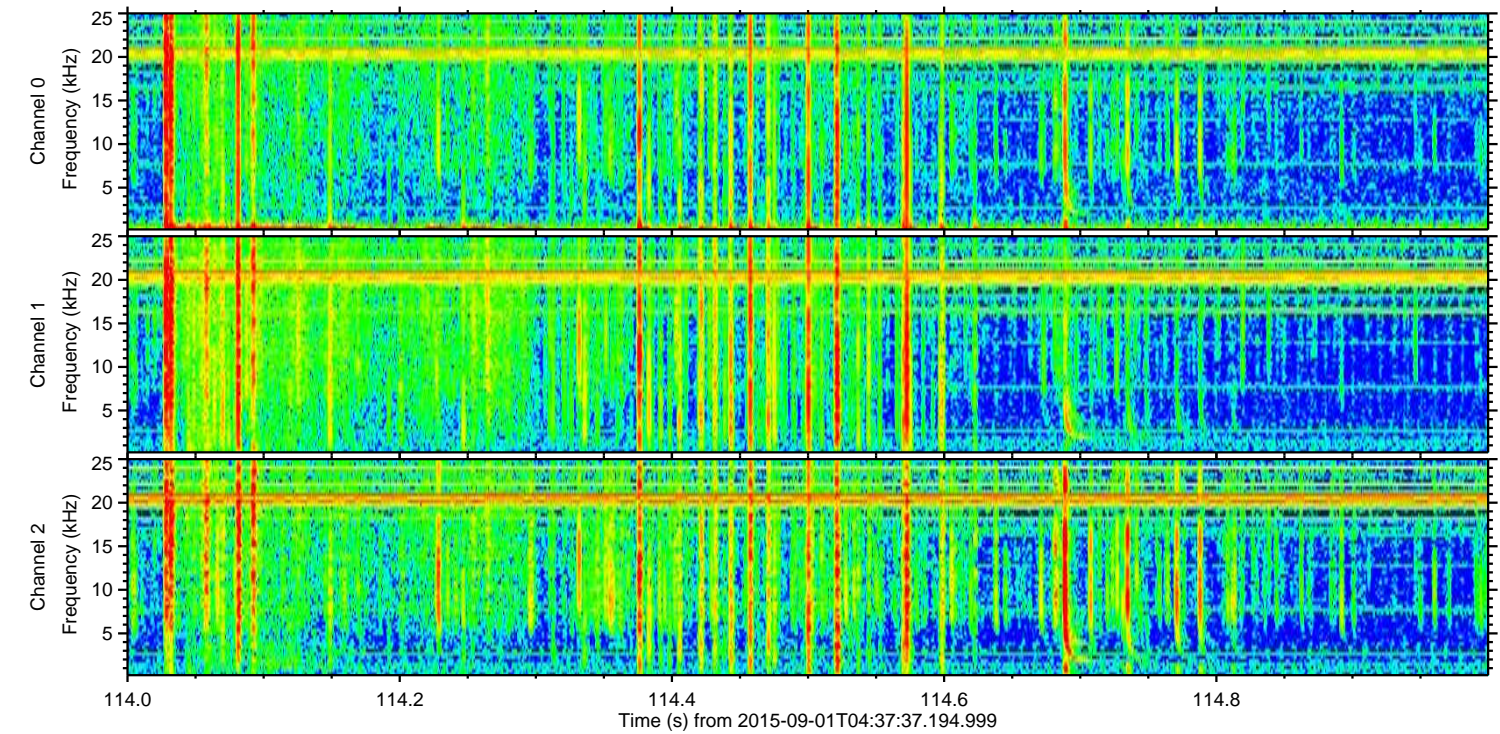
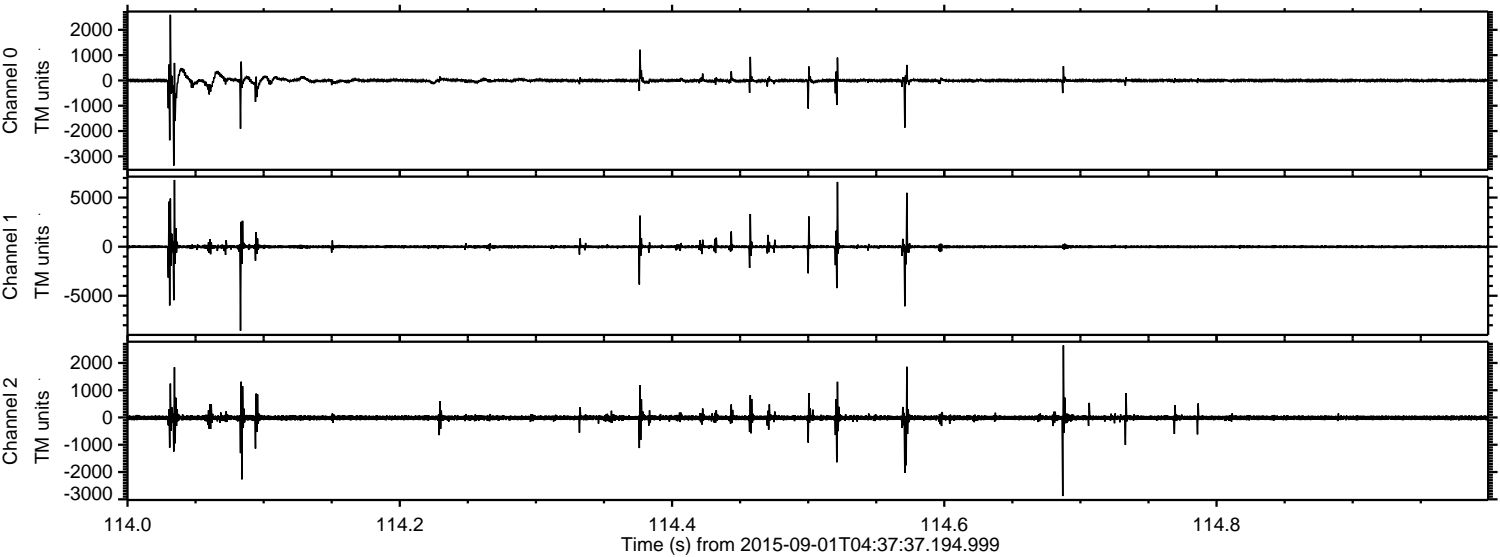
ELMAVAN 3D WAVEFORMS (Measured data sampled at 50 kHz) 51000 packets of 144 samples from 2015-09-01T04:37:37.194.999. Part 108/147

Processed Thu Oct 8 17:36:52 2015 by ELM ver.2012-10-06 from 001__elm20150901_043736__dat00.bin



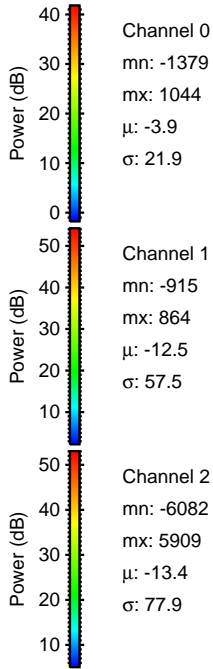
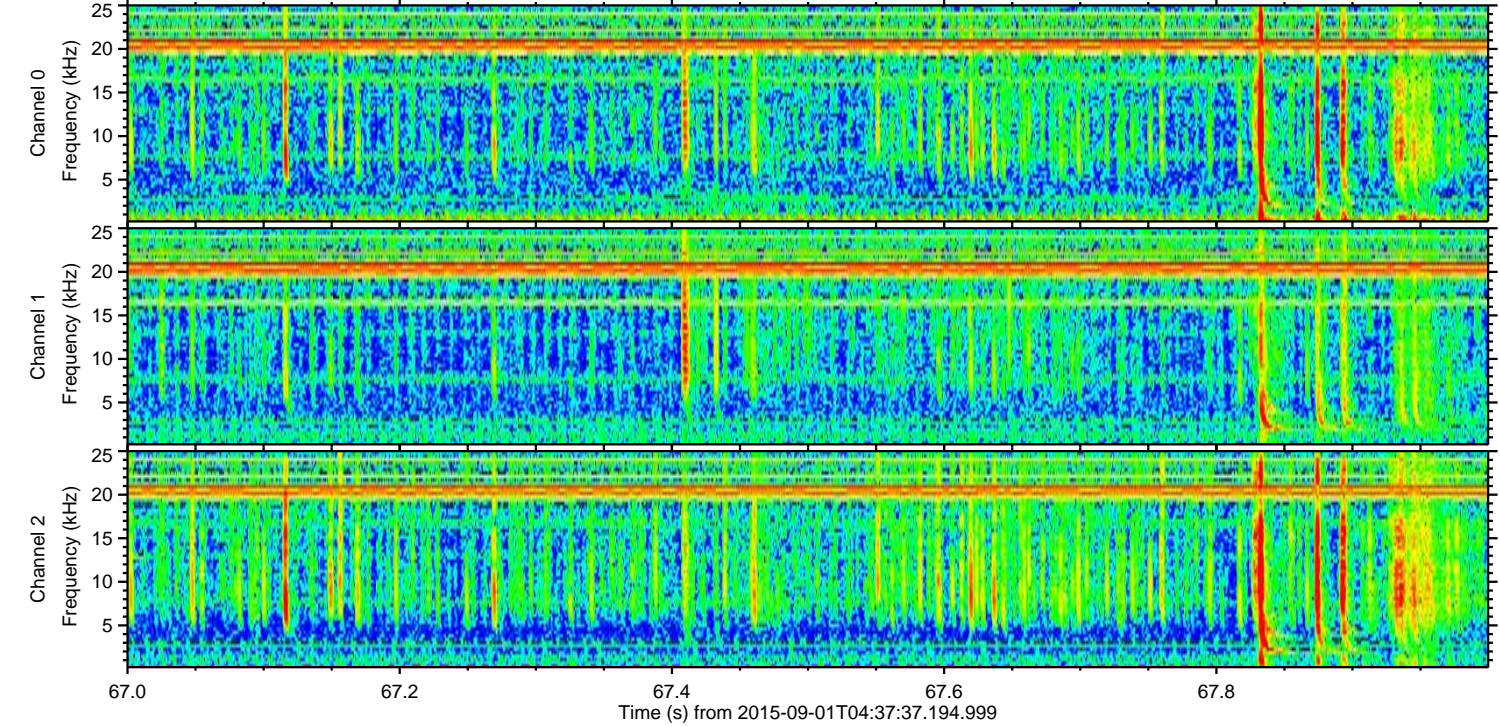
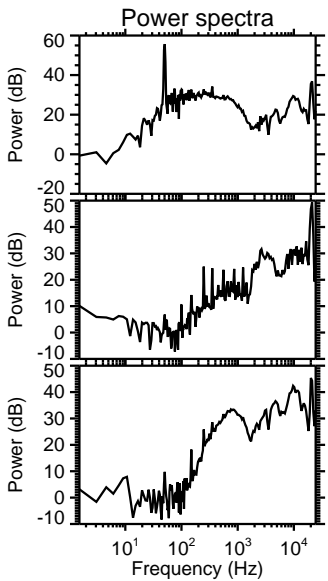
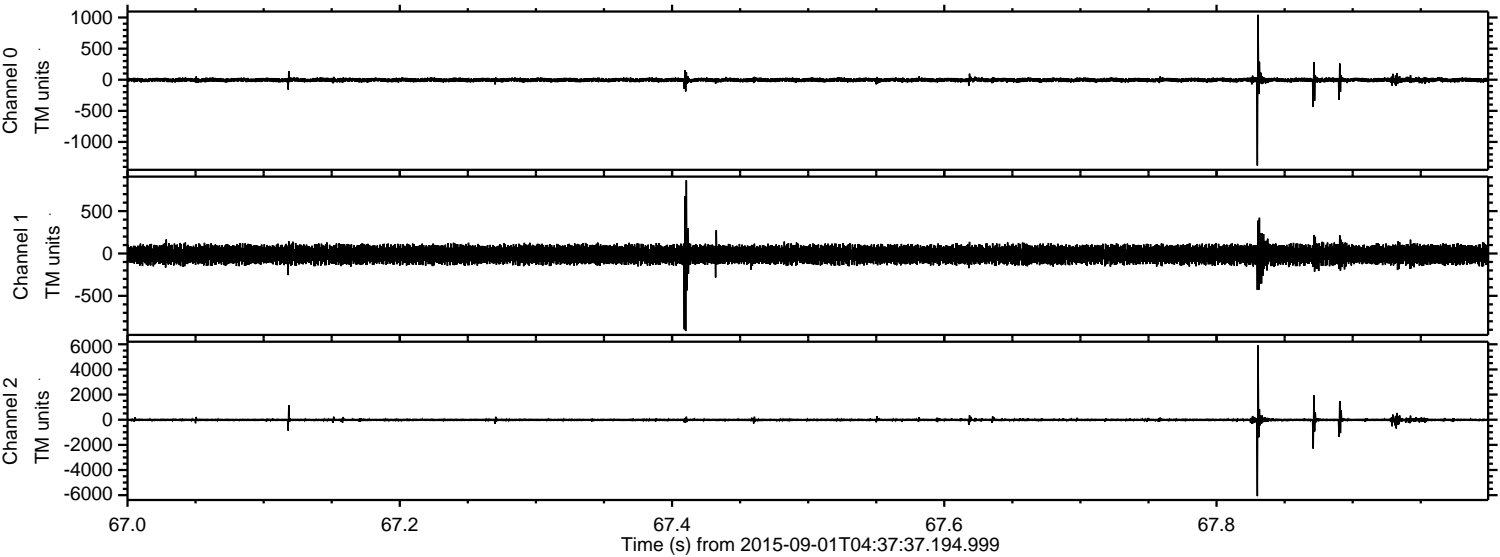
ELMAVAN 3D WAVEFORMS (Measured data sampled at 50 kHz) 51000 packets of 144 samples from 2015-09-01T04:37:37.194.999. Part 115/147

Processed Thu Oct 8 17:36:53 2015 by ELM ver.2012-10-06 from 001__elm20150901_043736__dat00.bin



ELMAVAN 3D WAVEFORMS (Measured data sampled at 50 kHz) 51000 packets of 144 samples from 2015-09-01T04:37:37.194.999. Part 68/147

Processed Thu Oct 8 17:36:54 2015 by ELM ver.2012-10-06 from 001__elm20150901_043736__dat00.bin



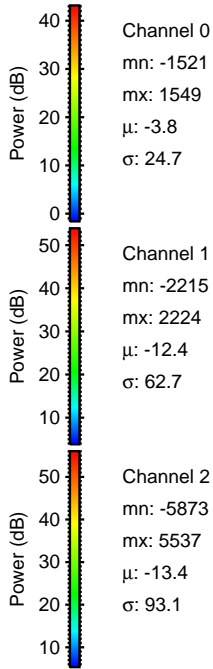
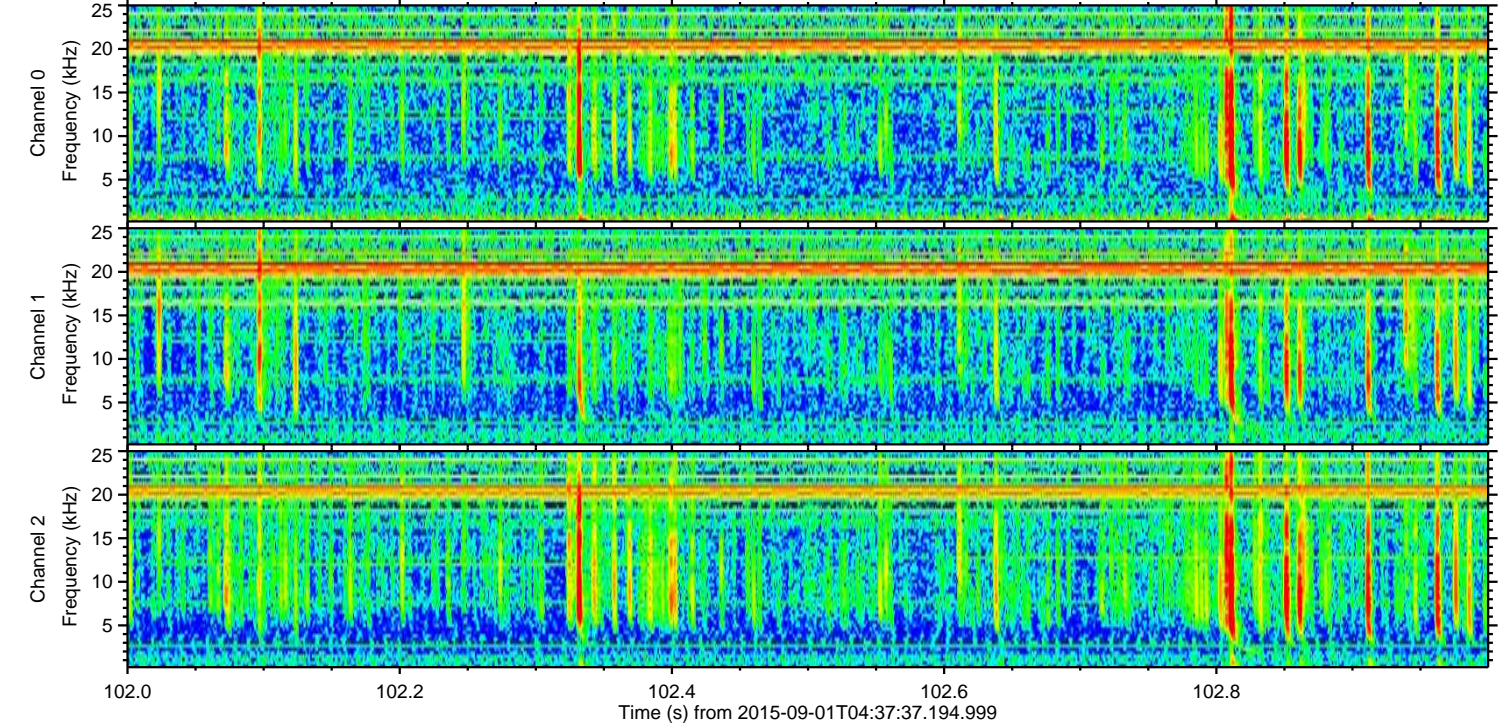
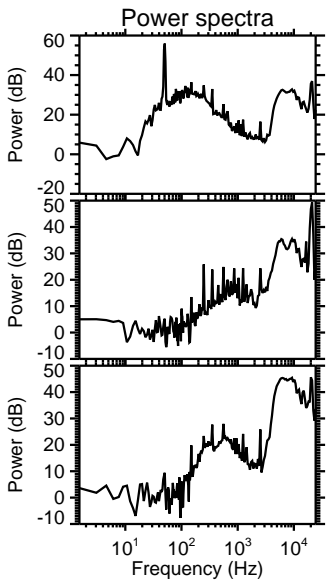
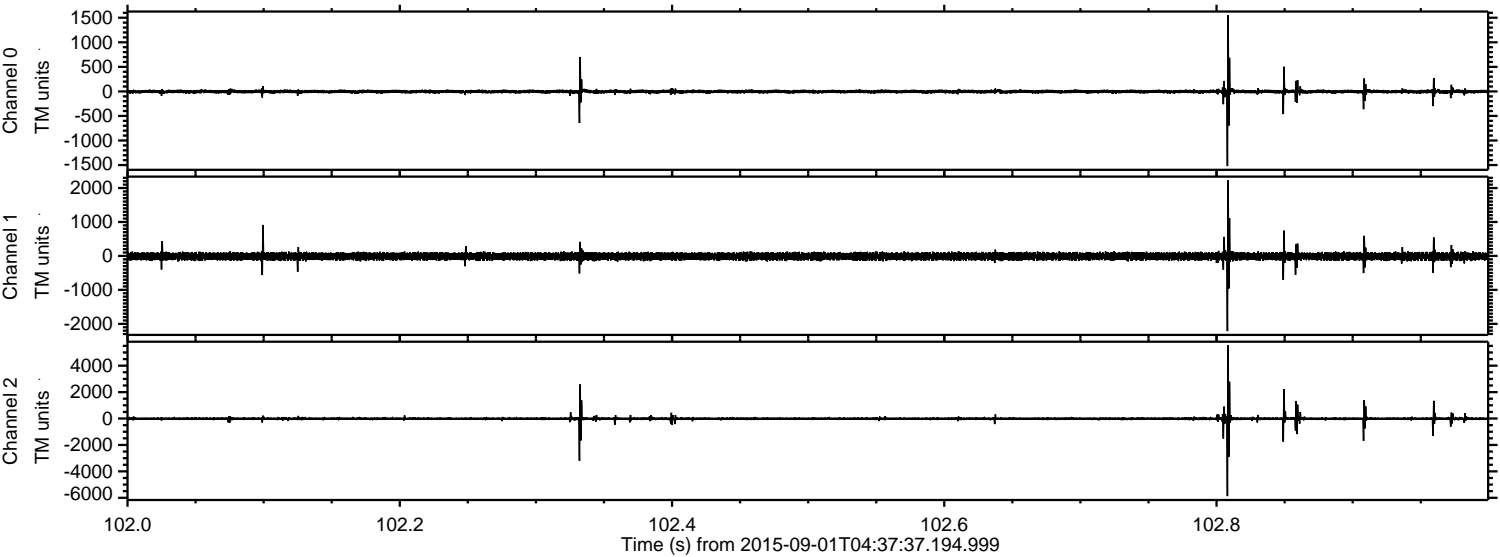
Channel 0
mn: -1379
mx: 1044
 μ : -3.9
 σ : 21.9

Channel 1
mn: -915
mx: 864
 μ : -12.5
 σ : 57.5

Channel 2
mn: -6082
mx: 5909
 μ : -13.4
 σ : 77.9

ELMAVAN 3D WAVEFORMS (Measured data sampled at 50 kHz) 51000 packets of 144 samples from 2015-09-01T04:37:37.194.999. Part 103/147

Processed Thu Oct 8 17:36:55 2015 by ELM ver.2012-10-06 from 001__elm20150901_043736__dat00.bin



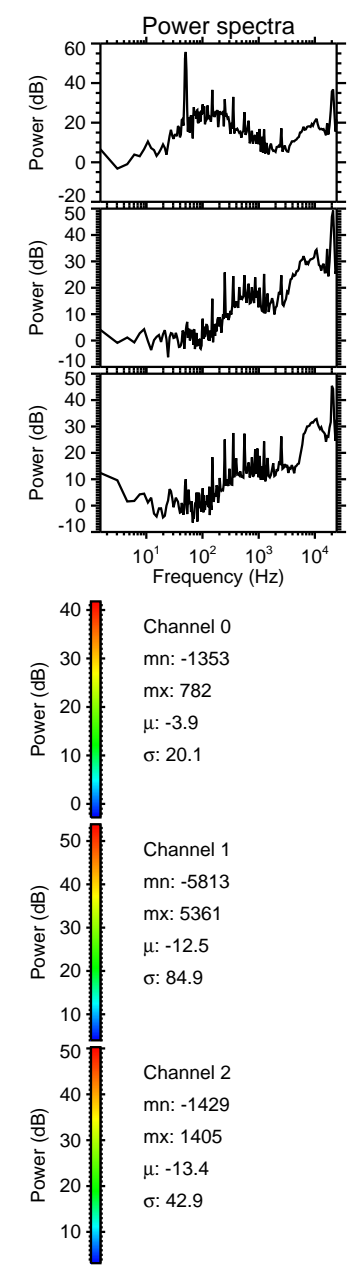
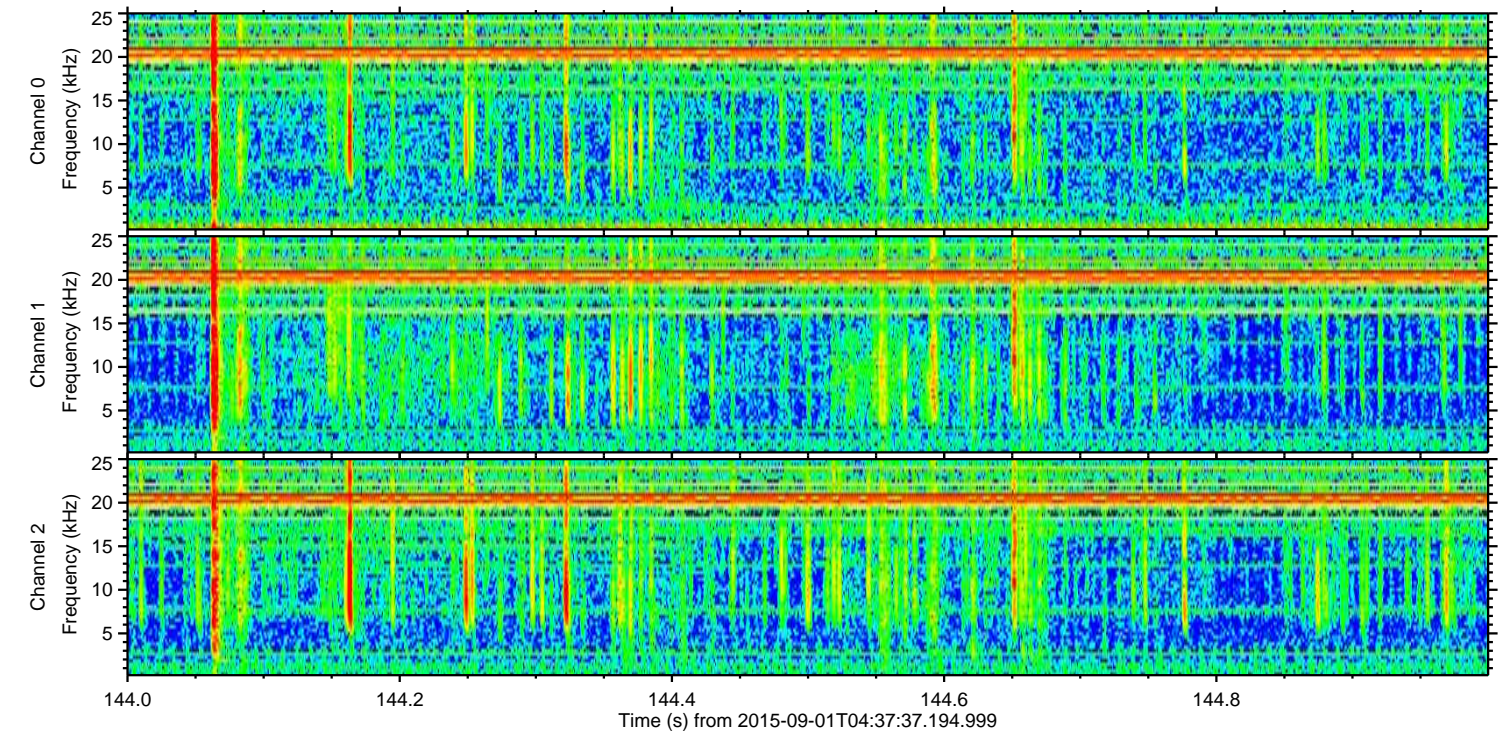
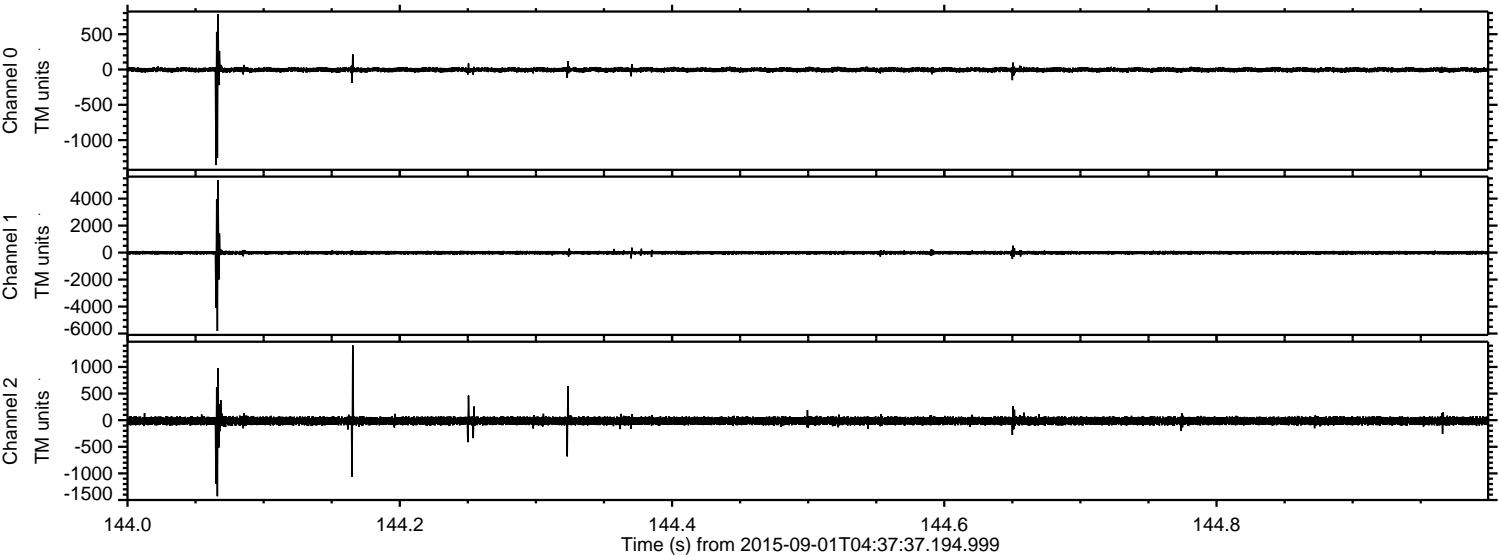
Channel 0
mn: -1521
mx: 1549
 μ : -3.8
 σ : 24.7

Channel 1
mn: -2215
mx: 2224
 μ : -12.4
 σ : 62.7

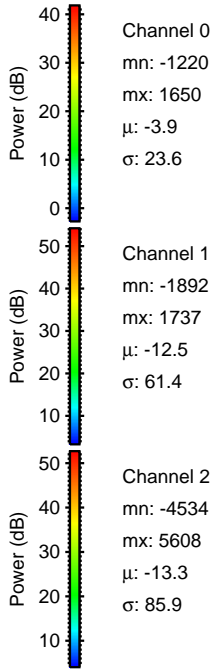
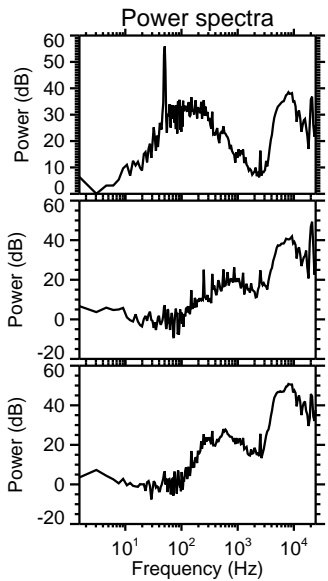
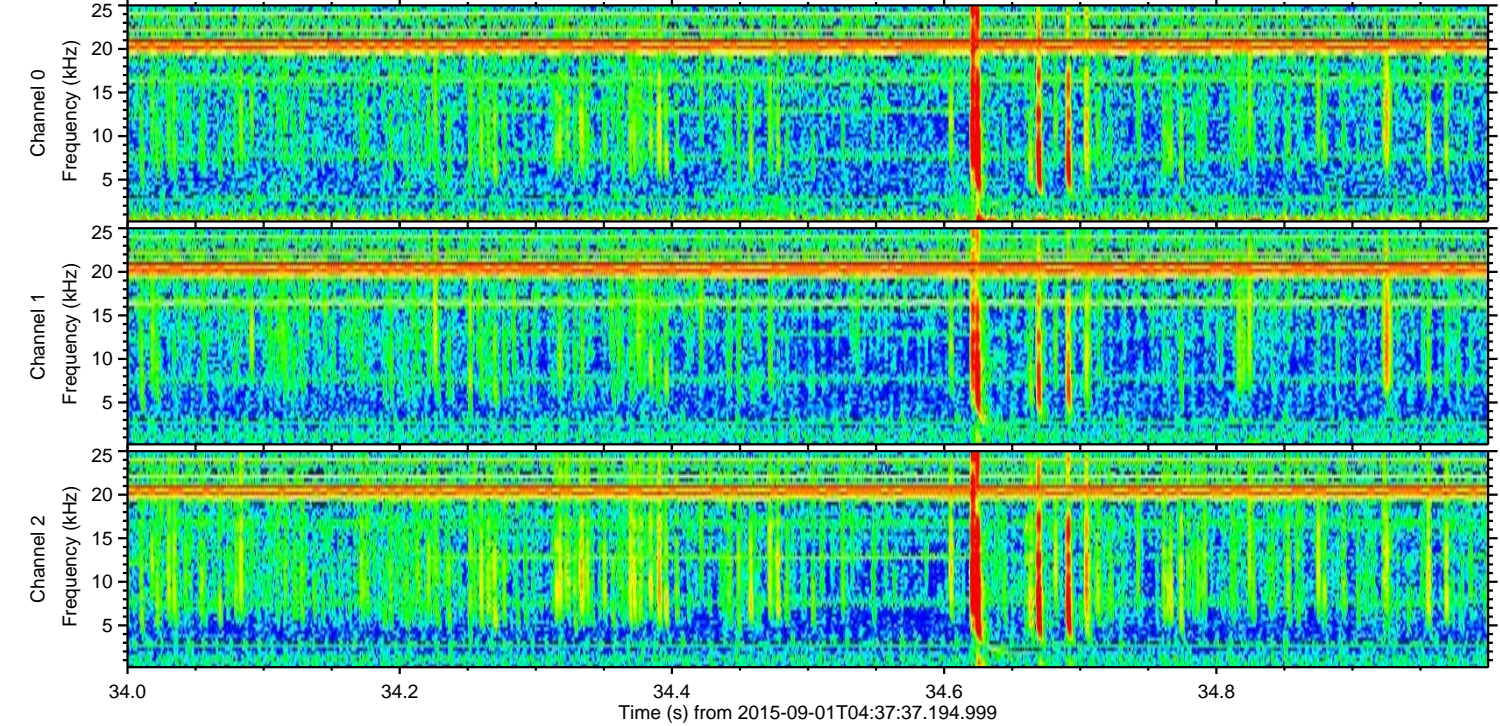
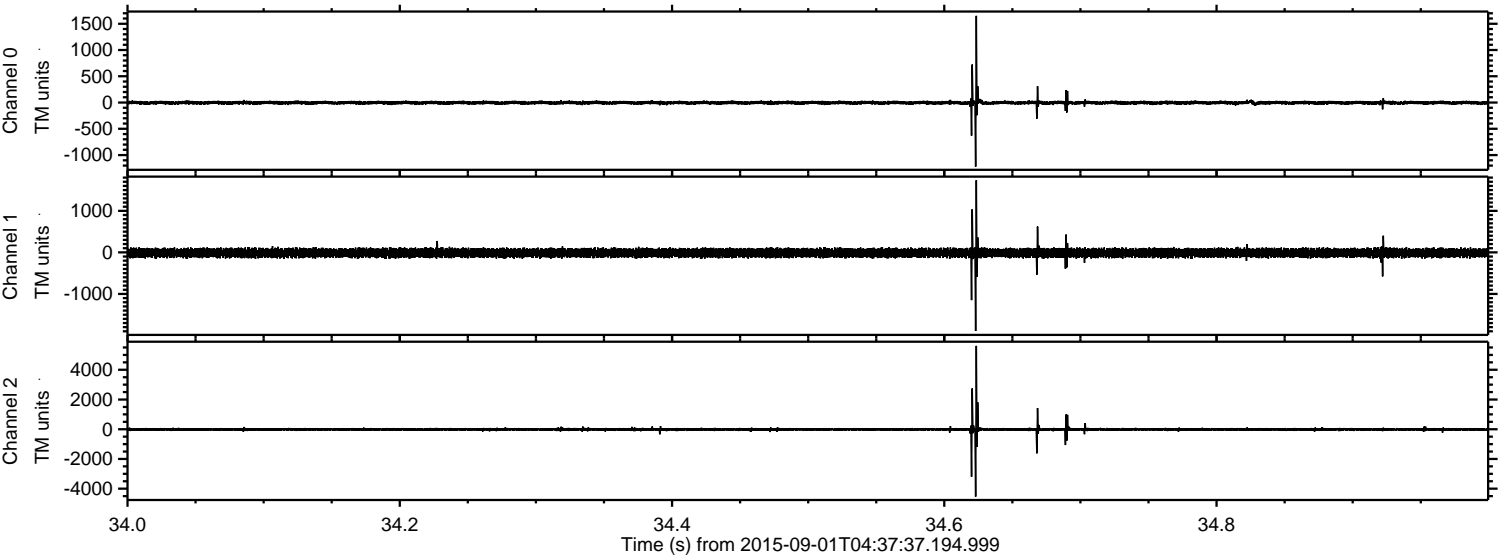
Channel 2
mn: -5873
mx: 5537
 μ : -13.4
 σ : 93.1

ELMAVAN 3D WAVEFORMS (Measured data sampled at 50 kHz) 51000 packets of 144 samples from 2015-09-01T04:37:37.194.999. Part 145/147

Processed Thu Oct 8 17:36:56 2015 by ELM ver.2012-10-06 from 001__elm20150901_043736__dat00.bin

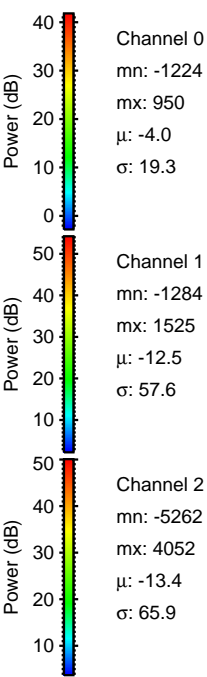
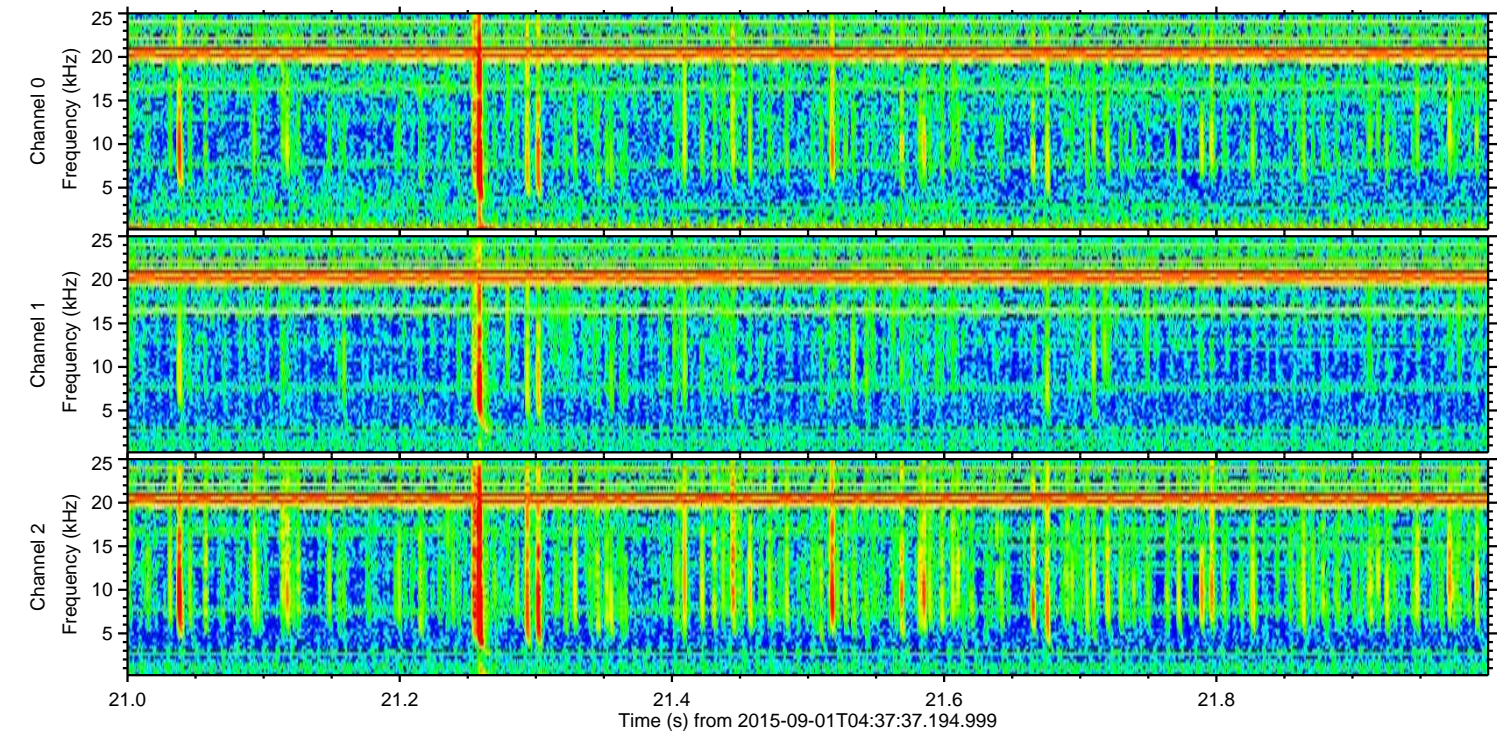
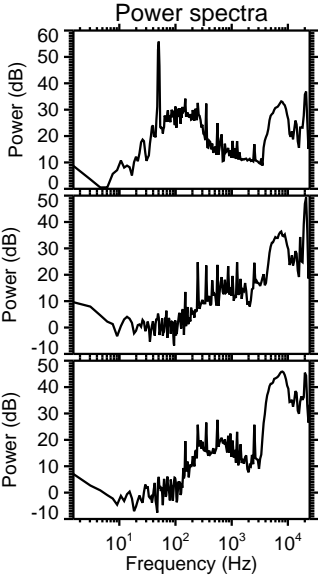
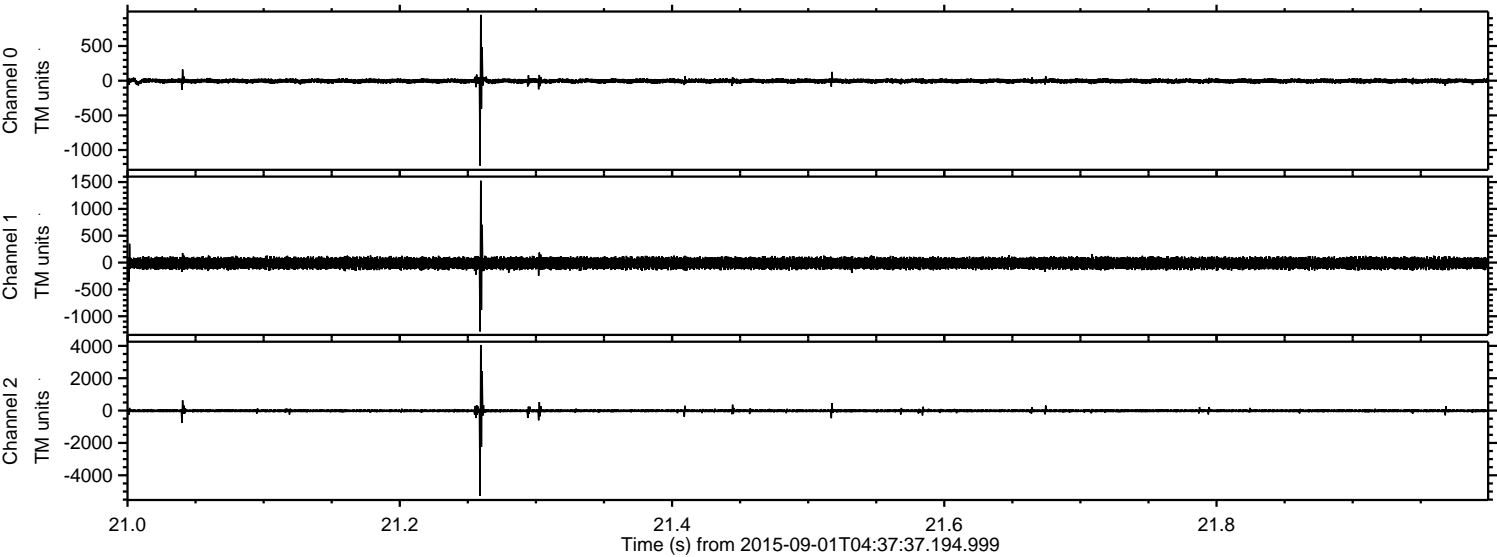


Processed Thu Oct 8 17:36:57 2015 by ELM ver.2012-10-06 from 001__elm20150901_043736__dat00.bin



ELMAVAN 3D WAVEFORMS (Measured data sampled at 50 kHz) 51000 packets of 144 samples from 2015-09-01T04:37:37.194.999. Part 22/147

Processed Thu Oct 8 17:36:59 2015 by ELM ver.2012-10-06 from 001__elm20150901_043736__dat00.bin



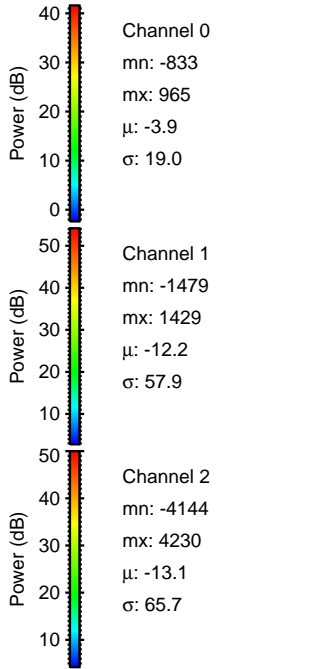
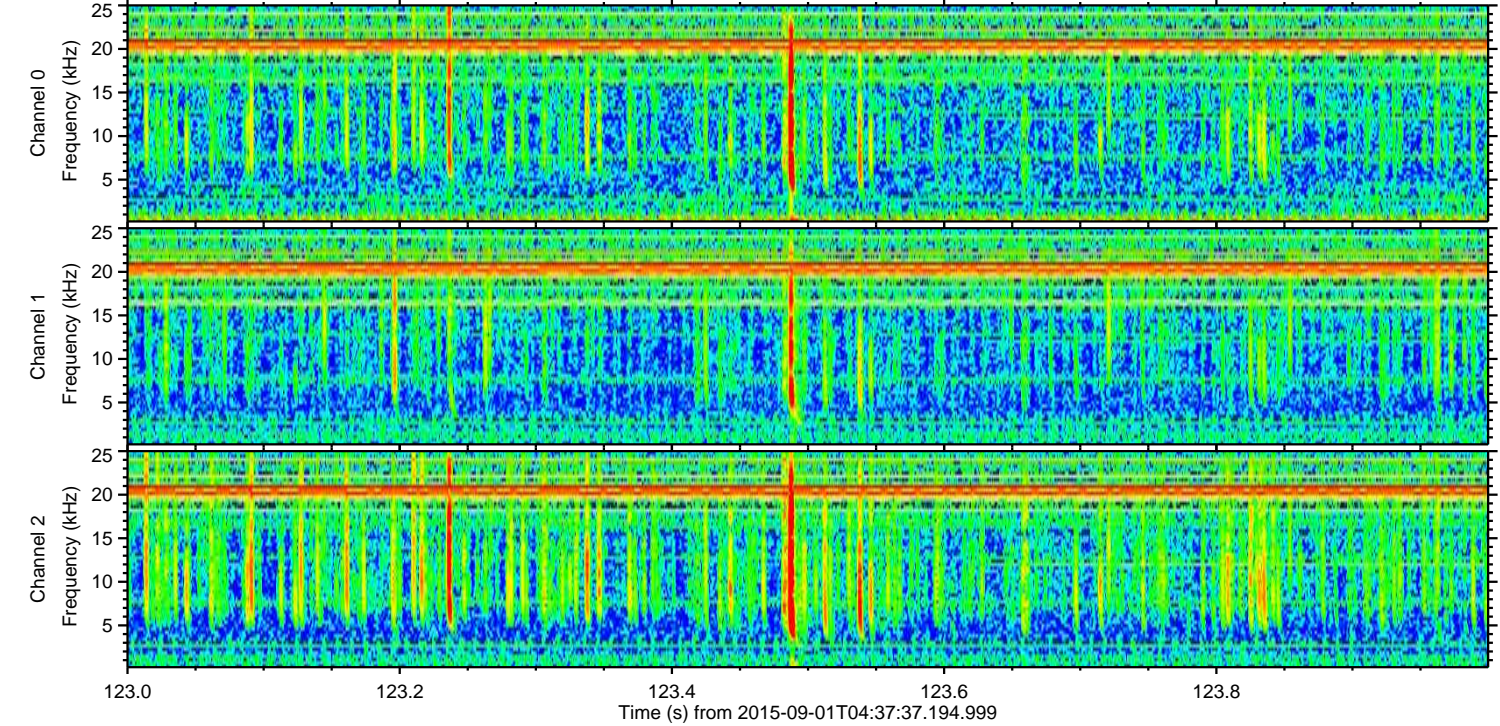
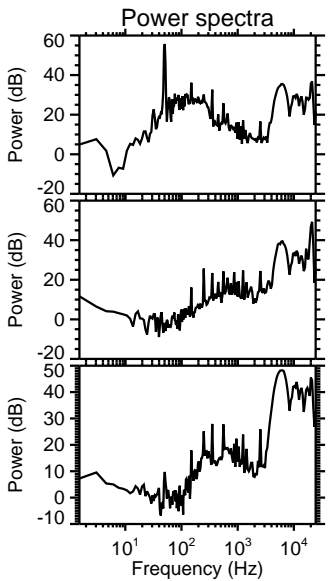
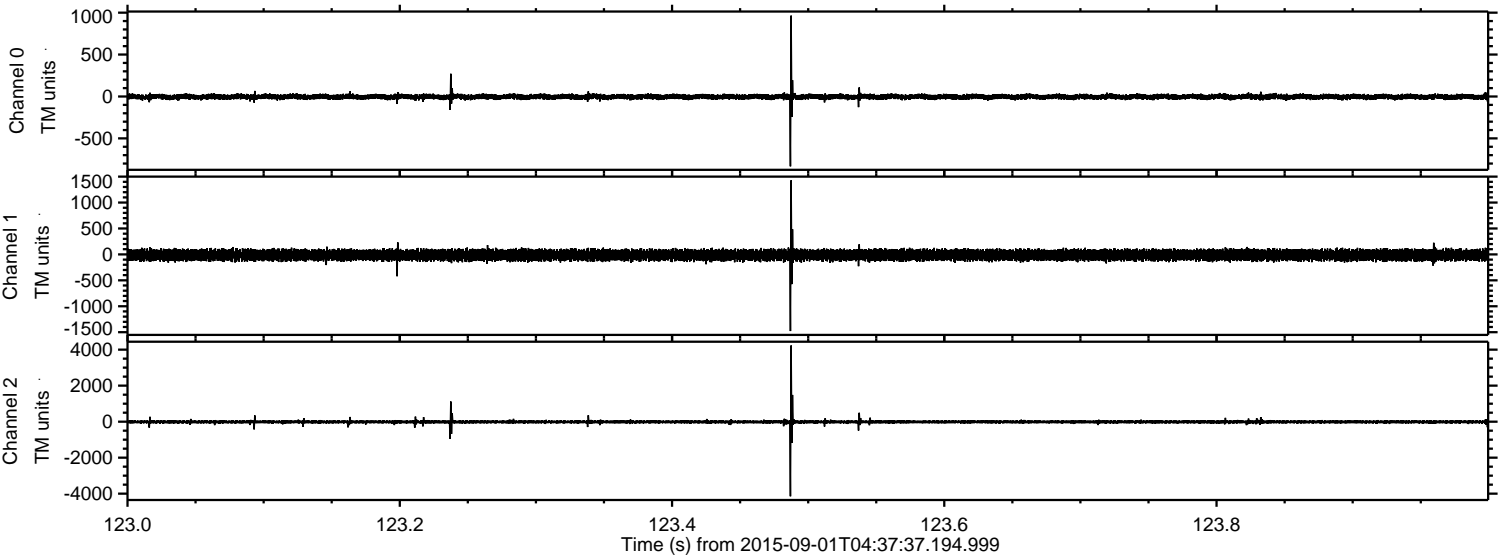
Channel 0
mn: -1224
mx: 950
 μ : -4.0
 σ : 19.3

Channel 1
mn: -1284
mx: 1525
 μ : -12.5
 σ : 57.6

Channel 2
mn: -5262
mx: 4052
 μ : -13.4
 σ : 65.9

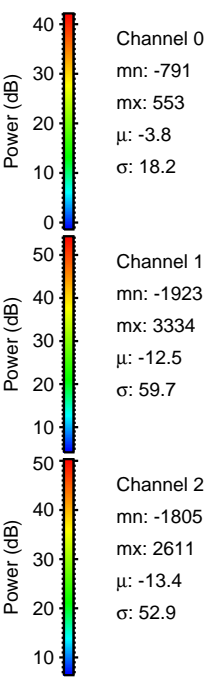
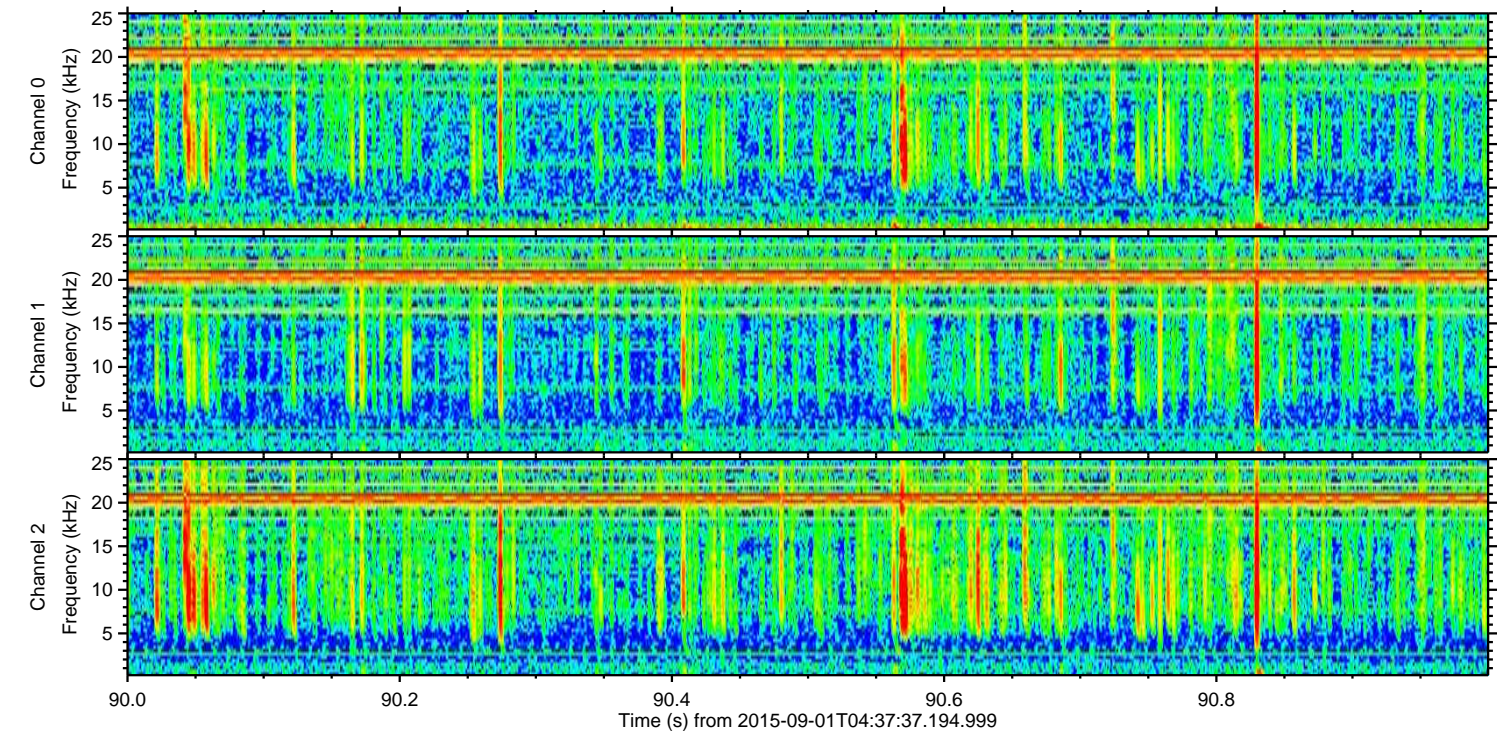
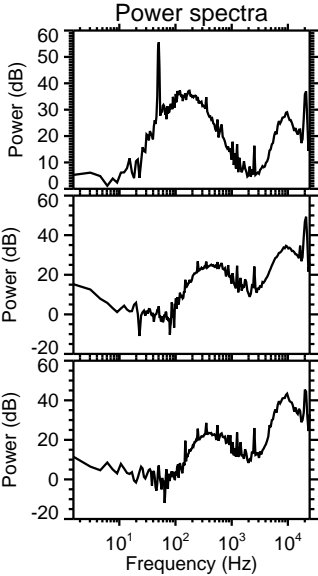
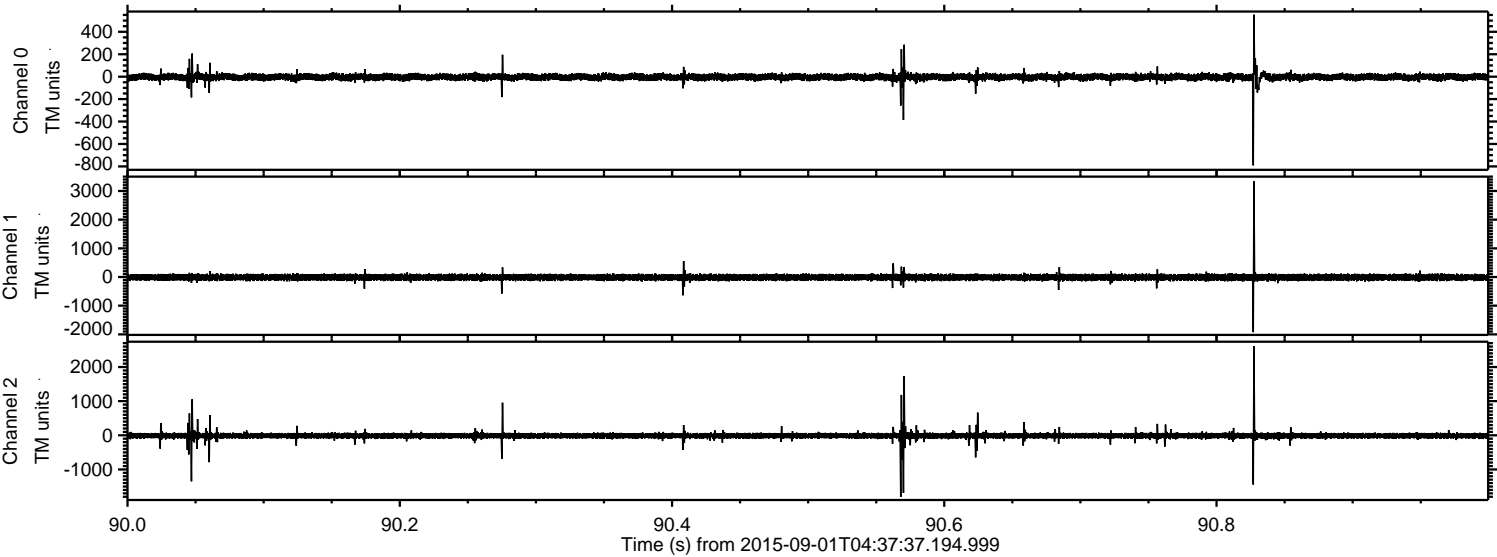
ELMAVAN 3D WAVEFORMS (Measured data sampled at 50 kHz) 51000 packets of 144 samples from 2015-09-01T04:37:37.194.999. Part 124/147

Processed Thu Oct 8 17:37:00 2015 by ELM ver.2012-10-06 from 001__elm20150901_043736__dat00.bin



ELMAVAN 3D WAVEFORMS (Measured data sampled at 50 kHz) 51000 packets of 144 samples from 2015-09-01T04:37:37.194.999. Part 91/147

Processed Thu Oct 8 17:37:01 2015 by ELM ver.2012-10-06 from 001__elm20150901_043736__dat00.bin



ELMAVAN 3D WAVEFORMS (Measured data sampled at 50 kHz) 51000 packets of 144 samples from 2015-09-01T04:37:37.194.999. Part 110/147

