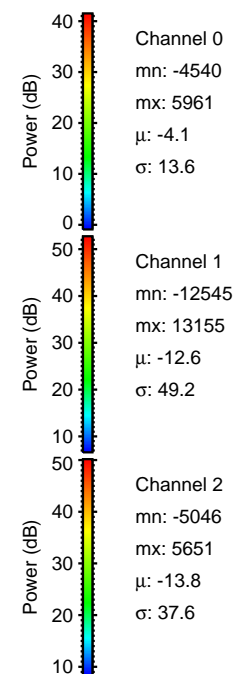
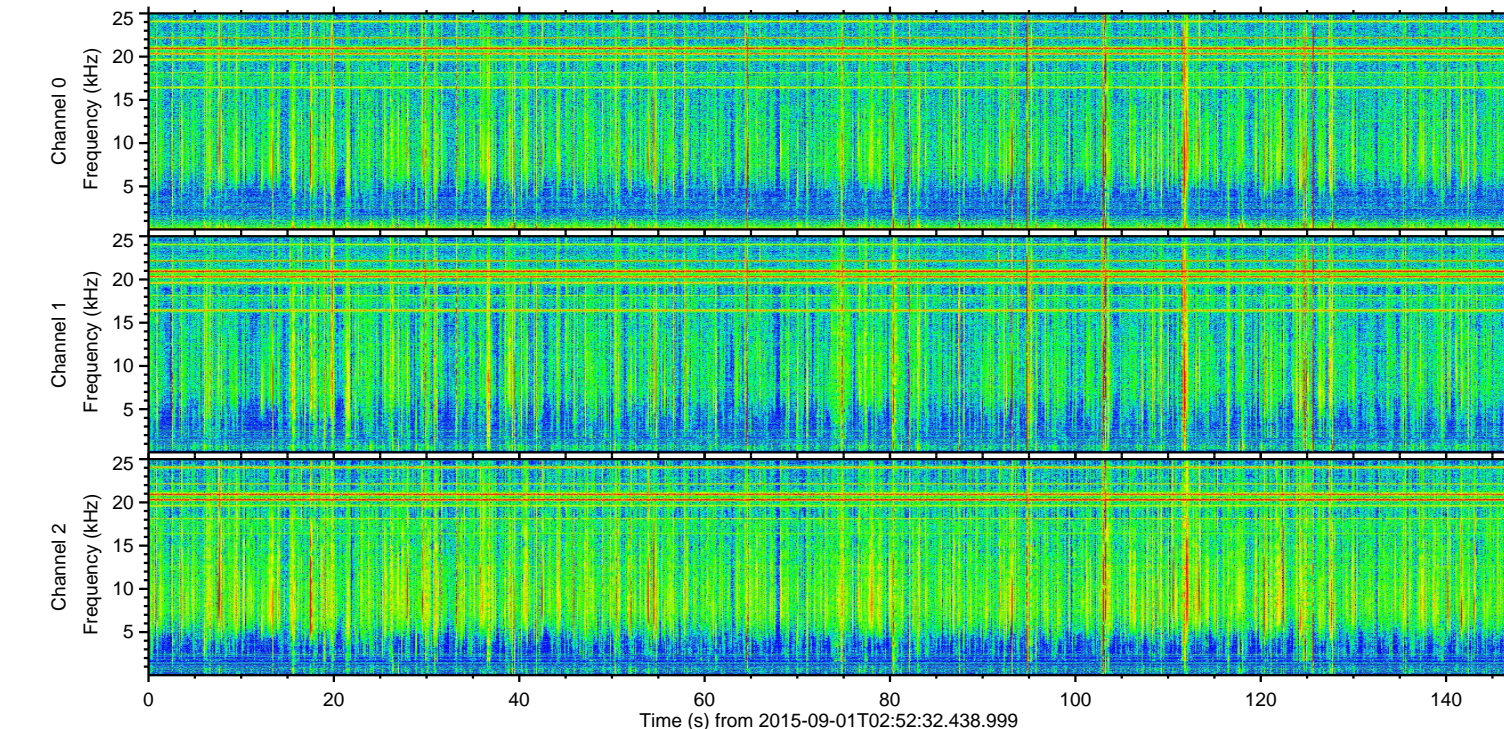
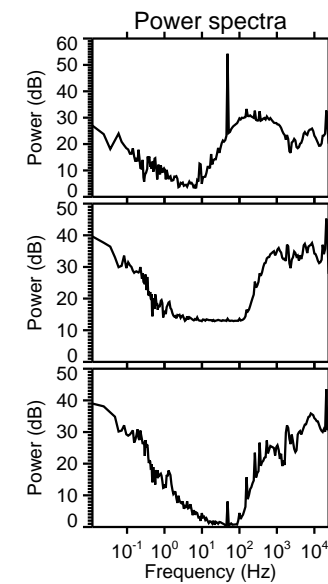
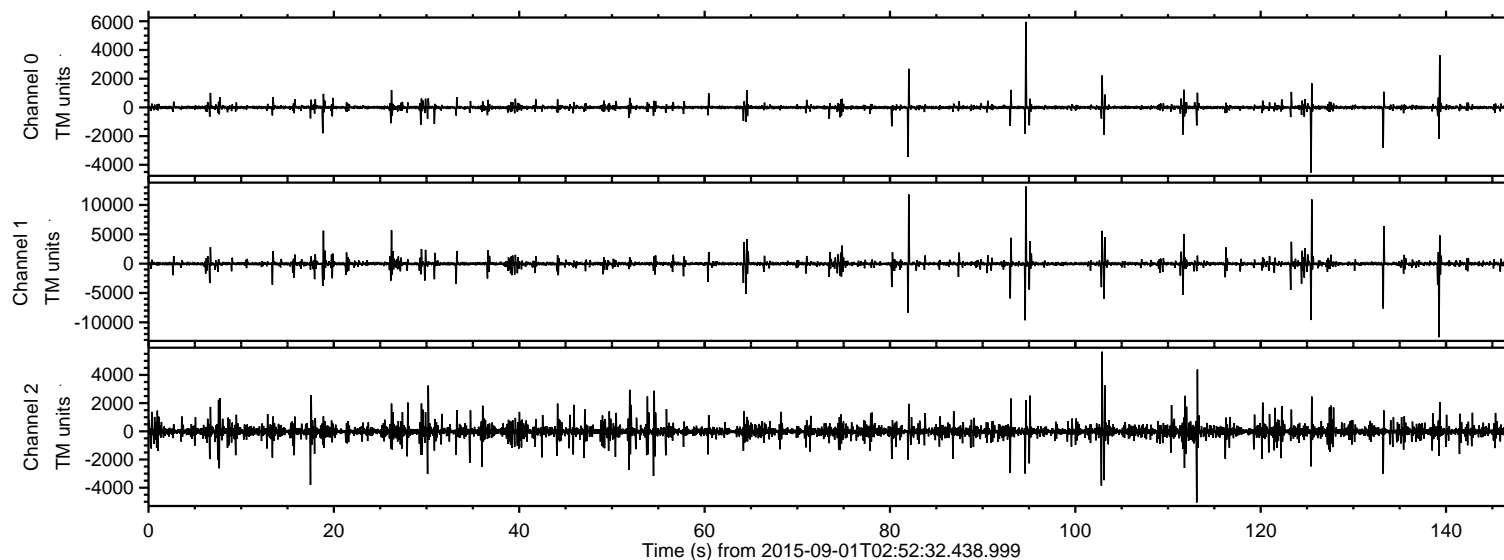
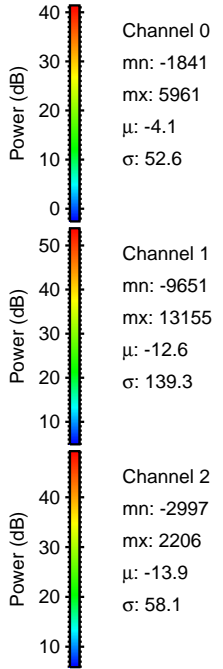
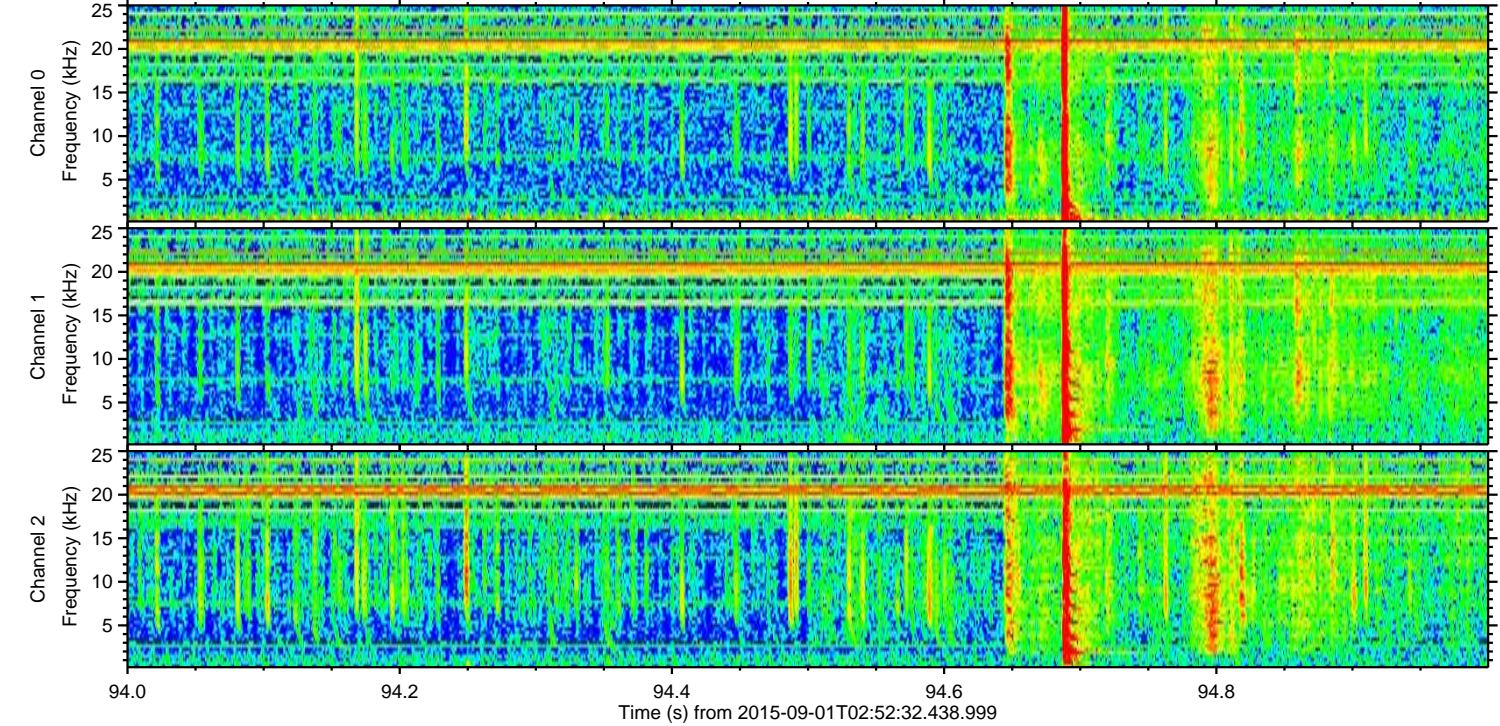
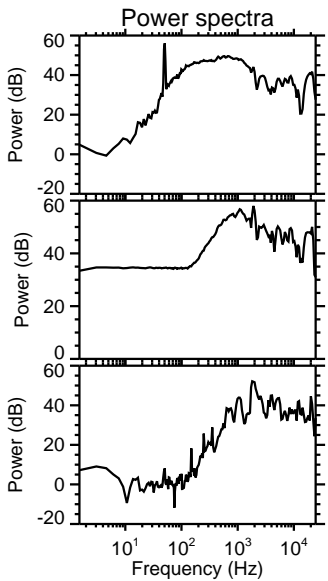
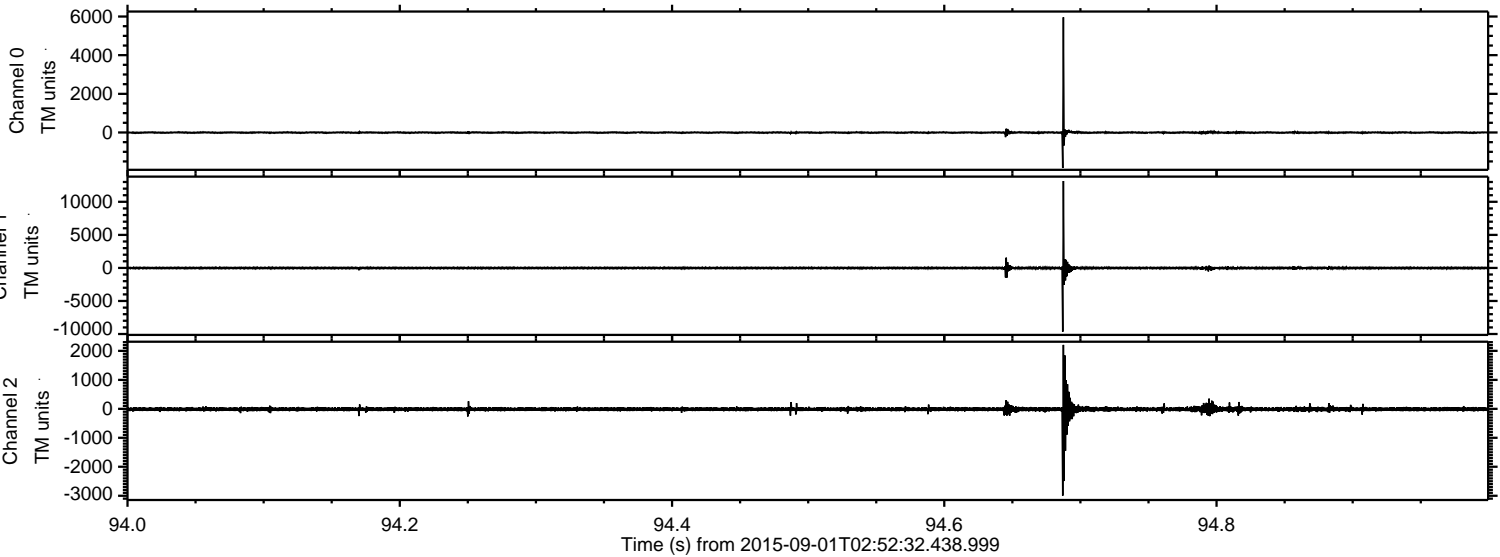


# ELMAVAN 3D WAVEFORMS (Measured data sampled at 50 kHz) 51000 packets of 144 samples from 2015-09-01T02:52:32.438.999.

Processed Thu Oct 8 17:07:41 2015 by ELM ver.2012-10-06 from 001\_\_elm20150901\_025231\_\_dat00.bin

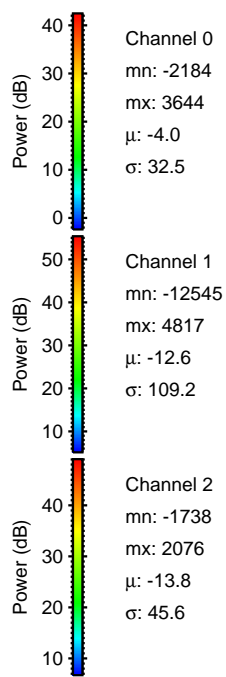
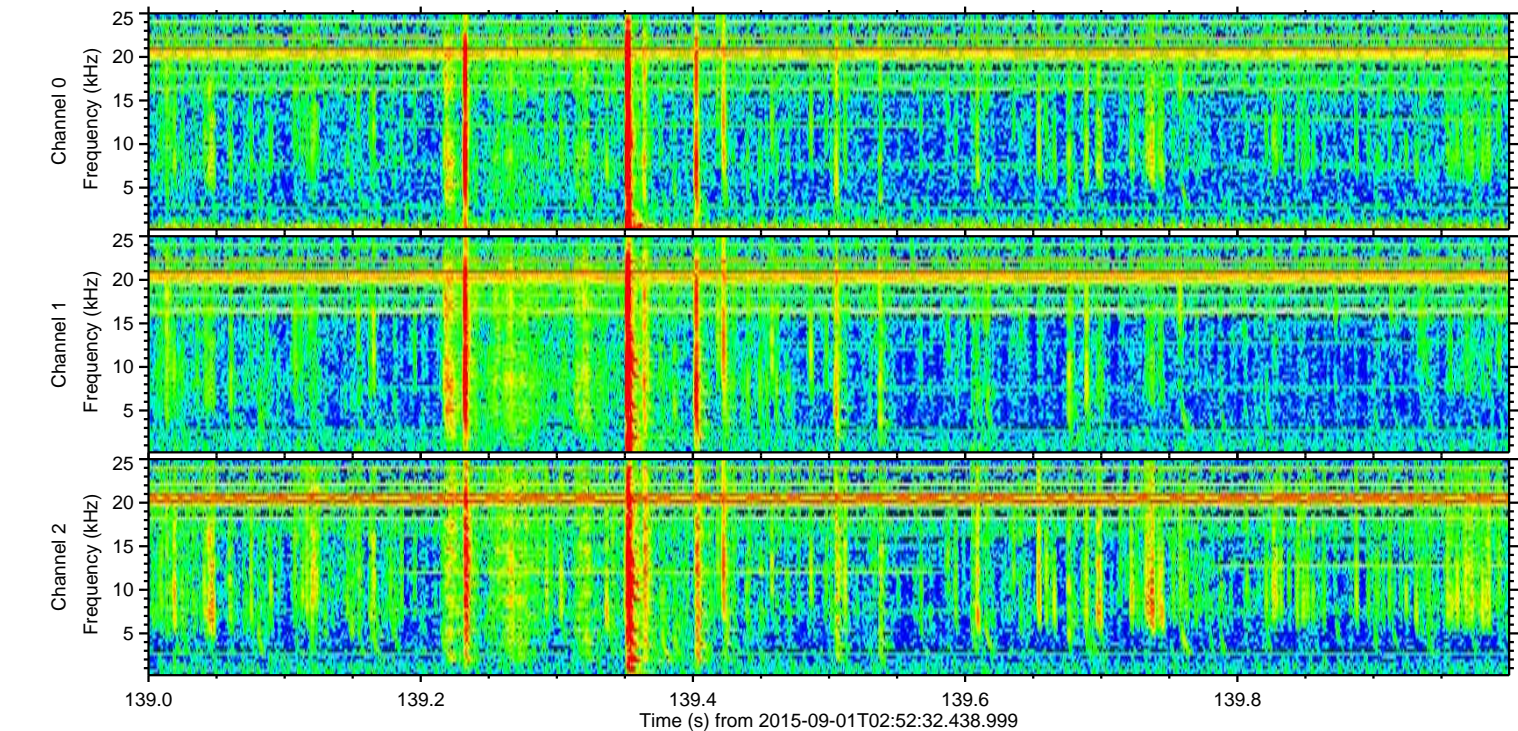
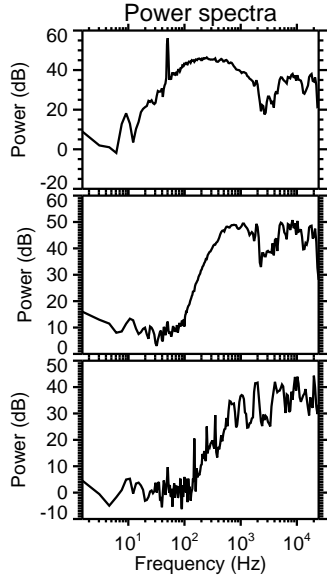
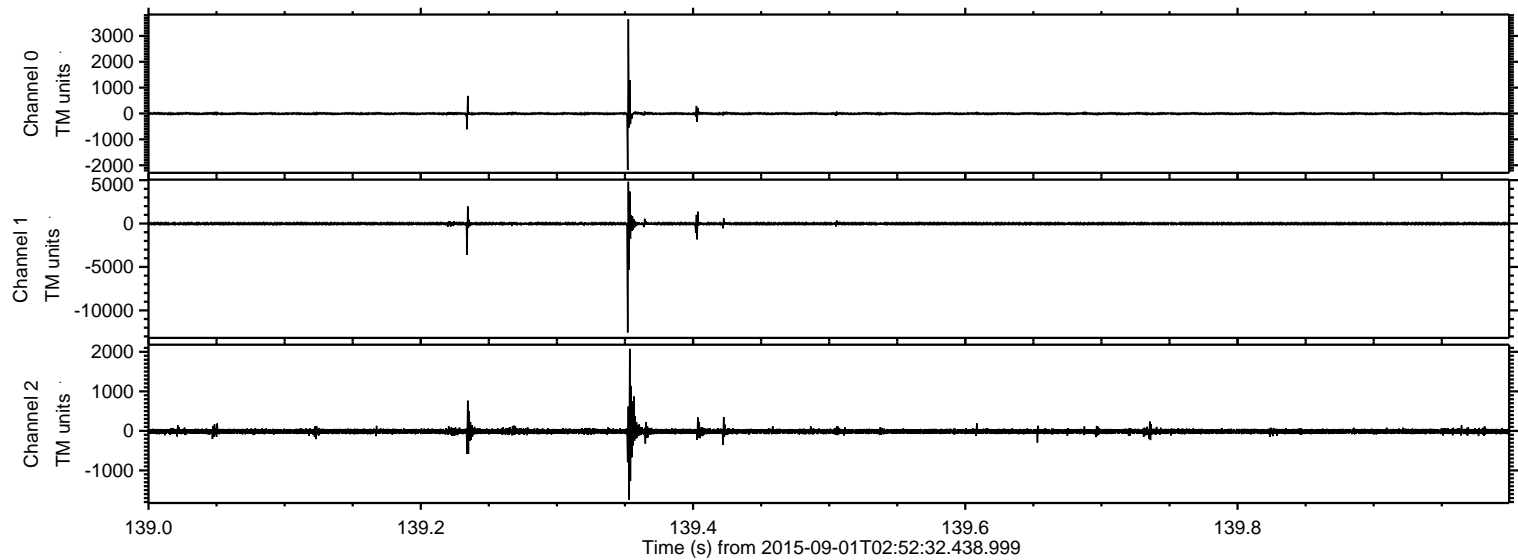


Processed Thu Oct 8 17:07:56 2015 by ELM ver.2012-10-06 from 001\_\_elm20150901\_025231\_\_dat00.bin



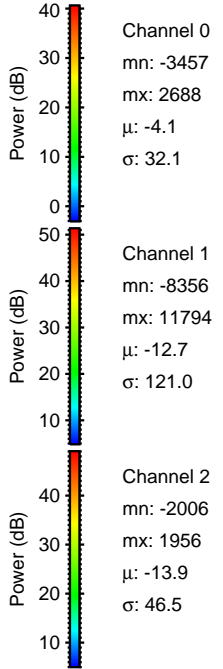
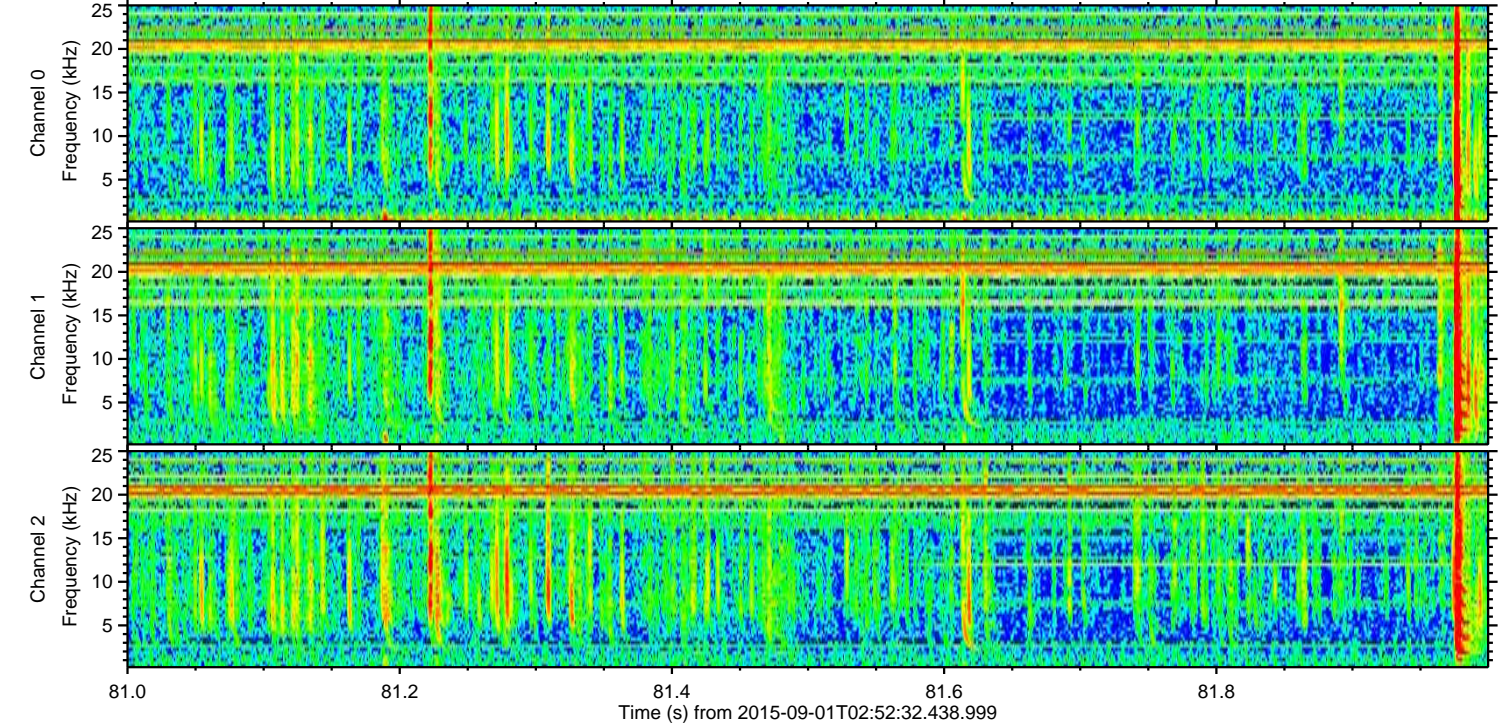
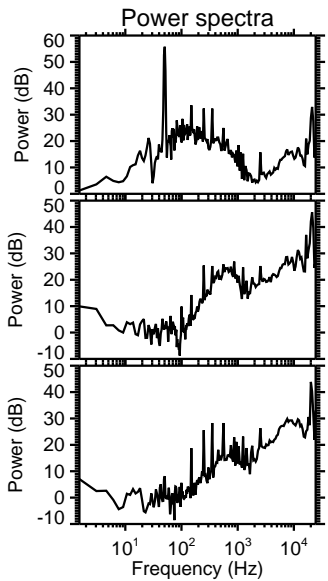
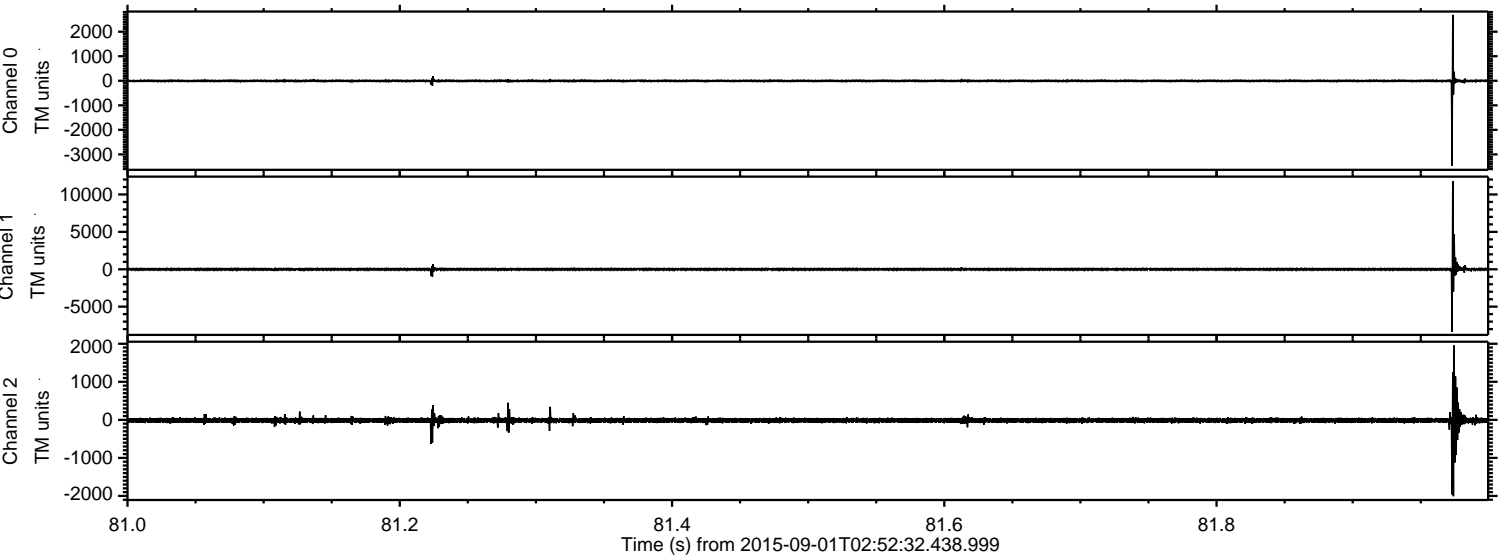
ELMAVAN 3D WAVEFORMS (Measured data sampled at 50 kHz) 51000 packets of 144 samples from 2015-09-01T02:52:32.438.999. Part 140/147

Processed Thu Oct 8 17:07:57 2015 by ELM ver.2012-10-06 from 001\_\_elm20150901\_025231\_\_dat00.bin



ELMAVAN 3D WAVEFORMS (Measured data sampled at 50 kHz) 51000 packets of 144 samples from 2015-09-01T02:52:32.438.999. Part 82/147

Processed Thu Oct 8 17:07:58 2015 by ELM ver.2012-10-06 from 001\_\_elm20150901\_025231\_\_dat00.bin



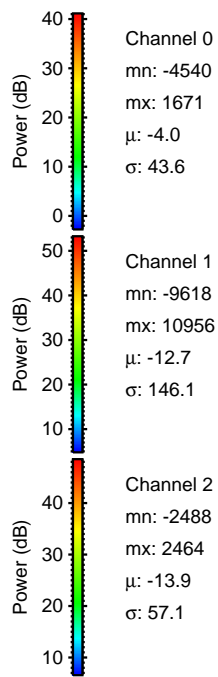
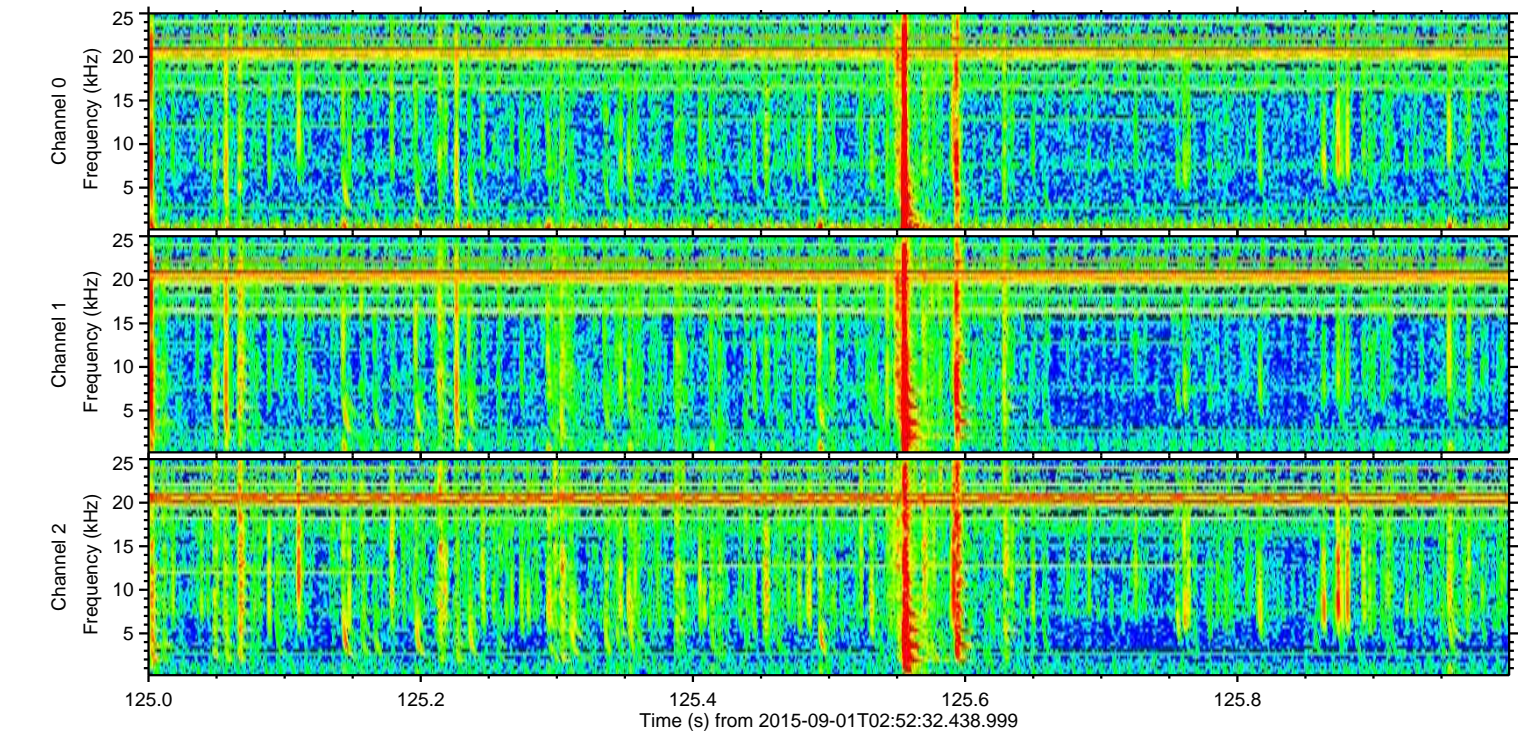
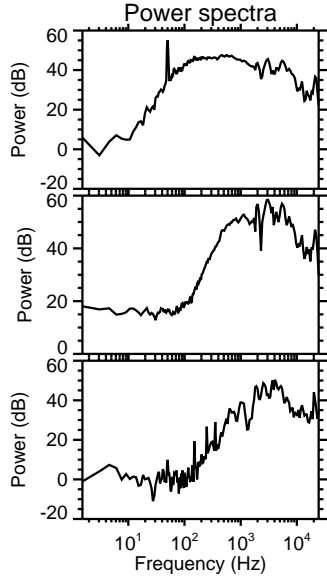
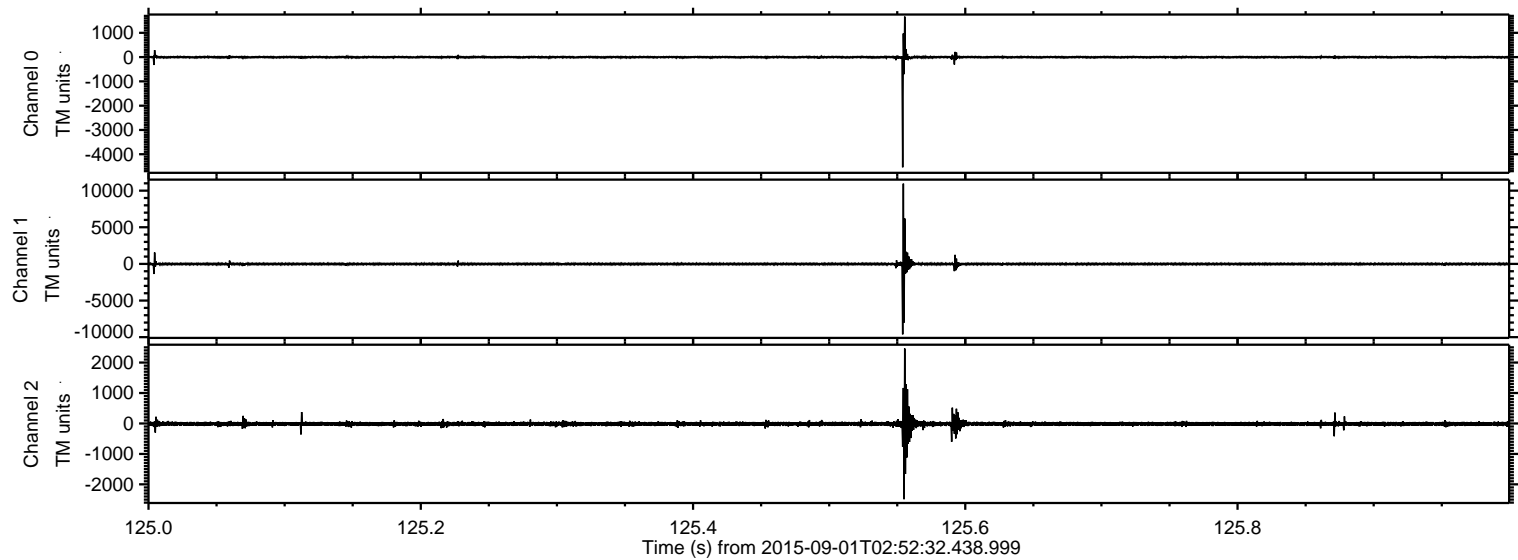
Channel 0  
mn: -3457  
mx: 2688  
 $\mu$ : -4.1  
 $\sigma$ : 32.1

Channel 1  
mn: -8356  
mx: 11794  
 $\mu$ : -12.7  
 $\sigma$ : 121.0

Channel 2  
mn: -2006  
mx: 1956  
 $\mu$ : -13.9  
 $\sigma$ : 46.5

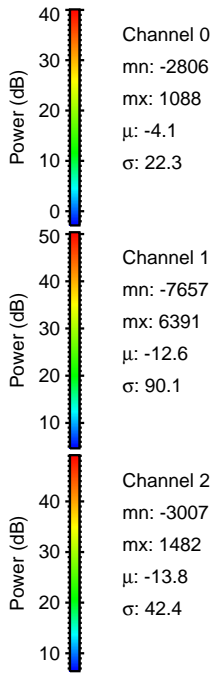
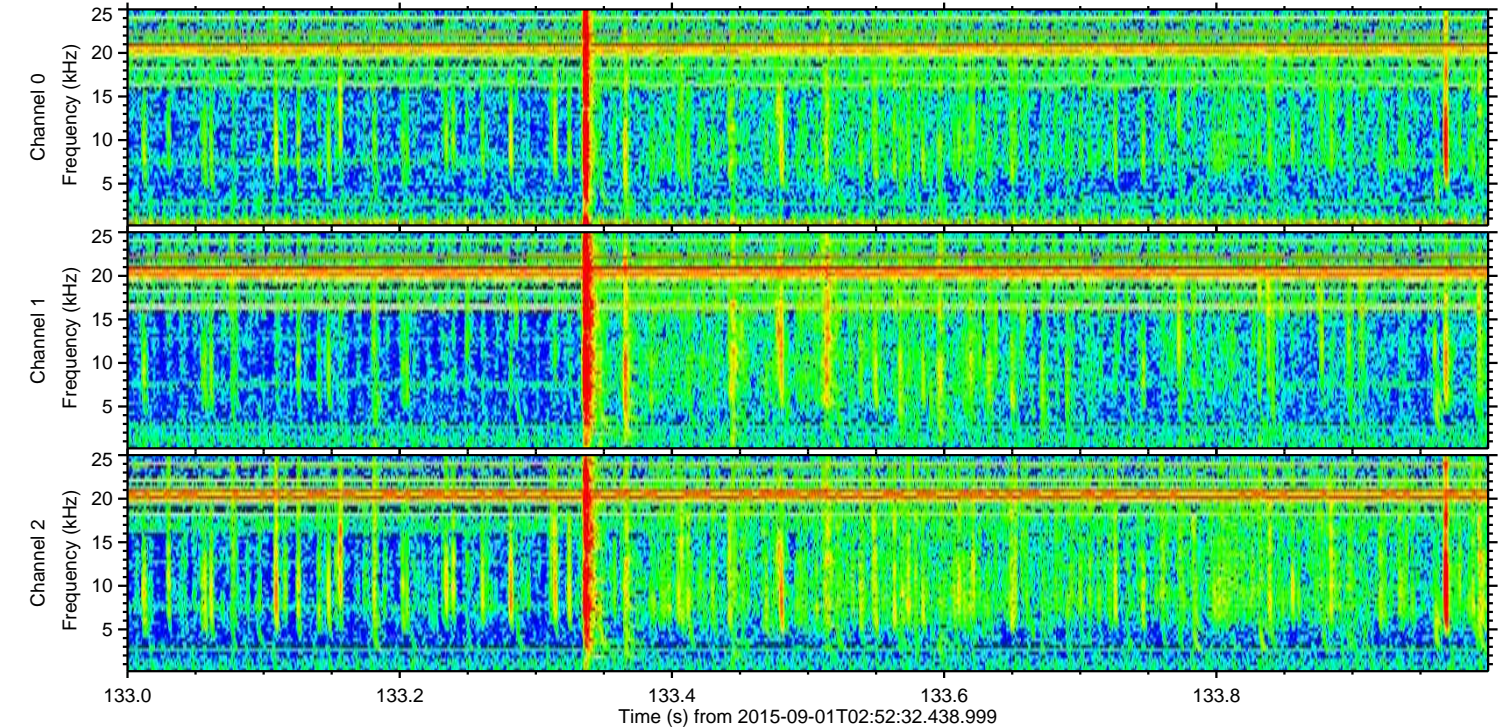
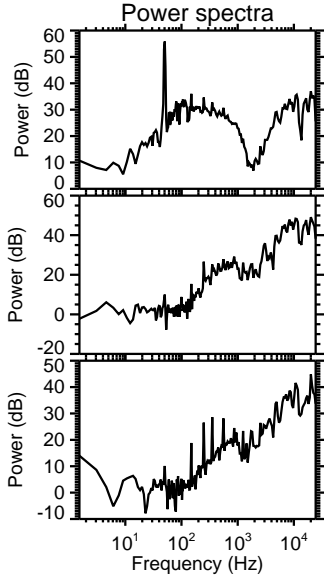
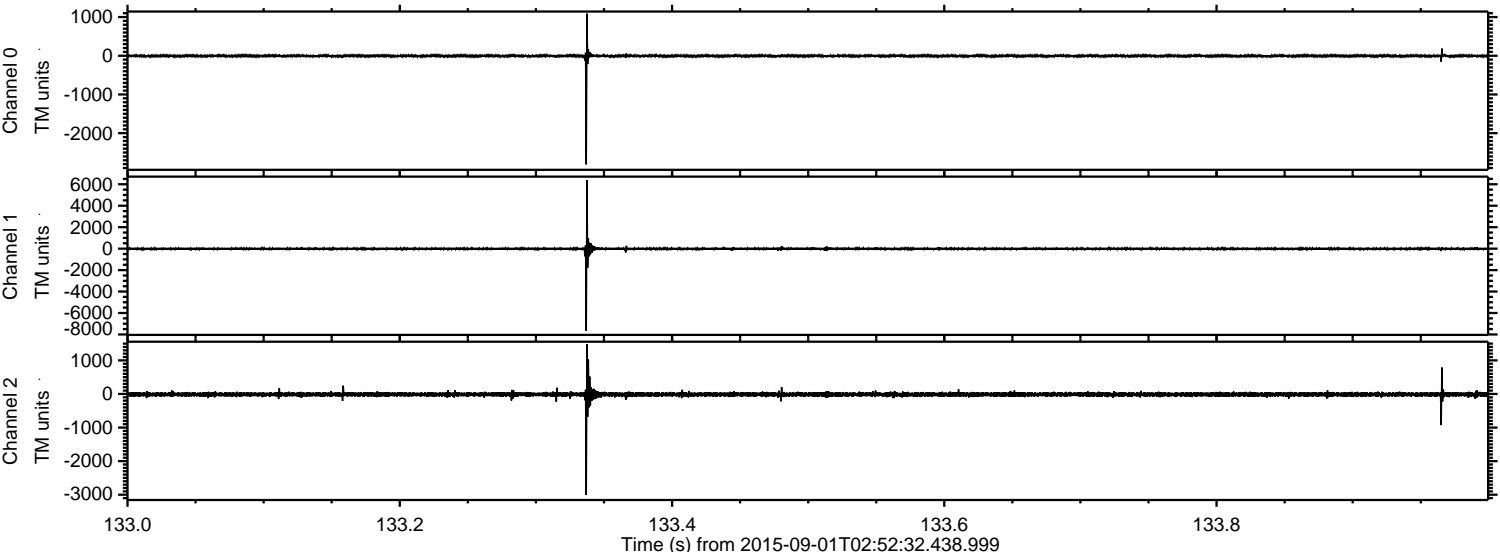
ELMAVAN 3D WAVEFORMS (Measured data sampled at 50 kHz) 51000 packets of 144 samples from 2015-09-01T02:52:32.438.999. Part 126/147

Processed Thu Oct 8 17:07:59 2015 by ELM ver.2012-10-06 from 001\_\_elm20150901\_025231\_\_dat00.bin



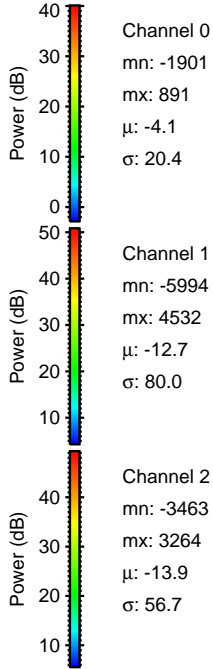
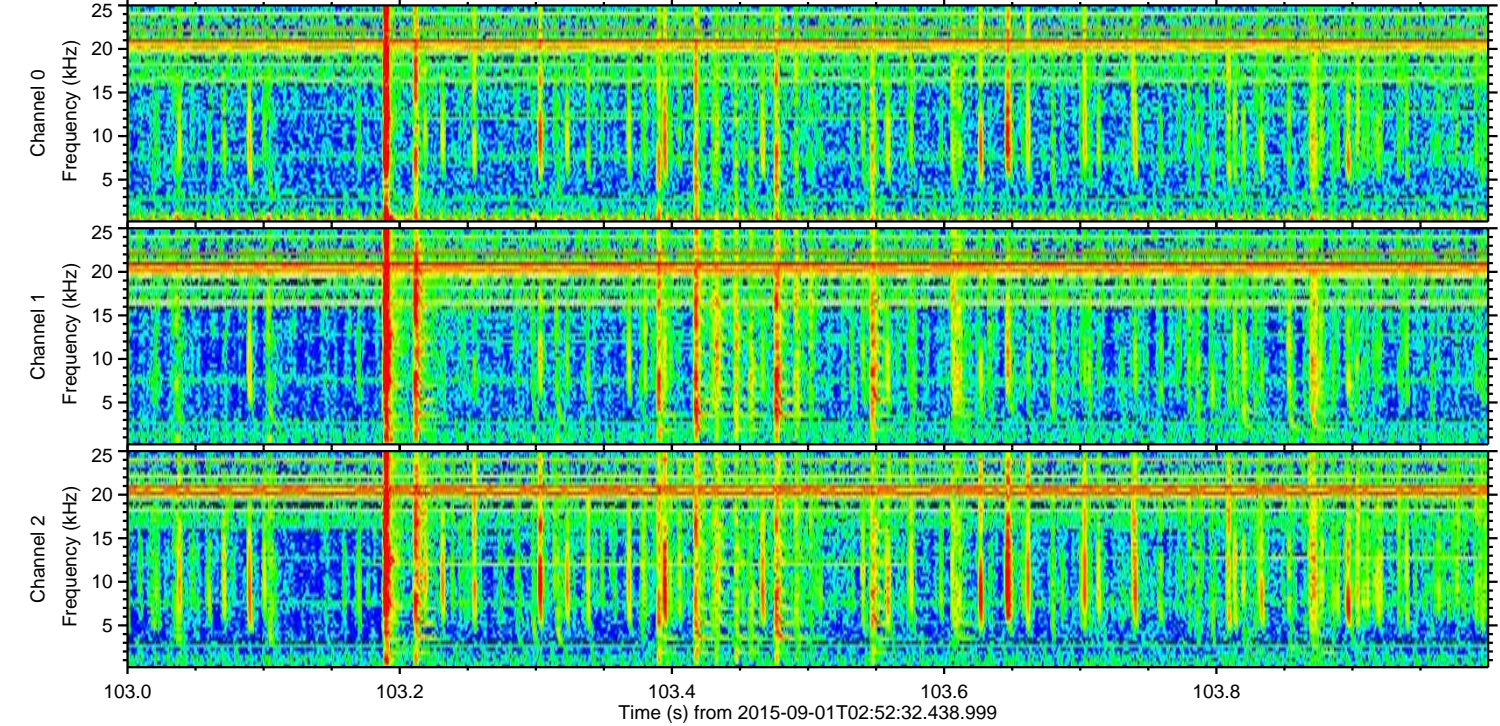
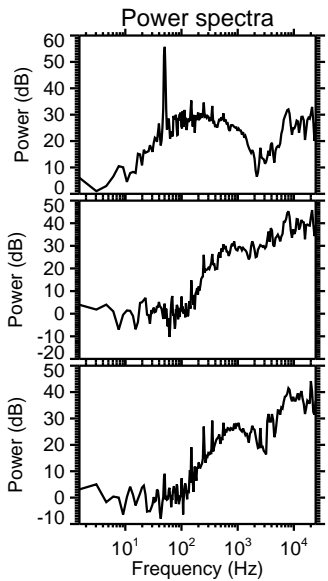
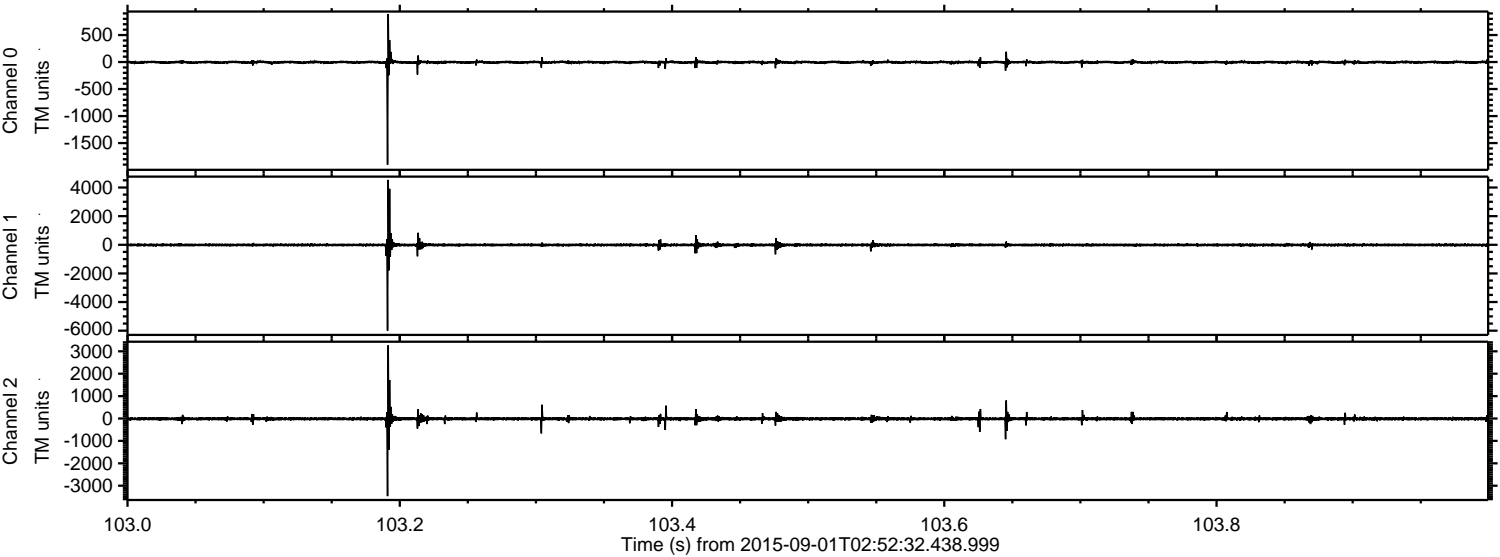
ELMAVAN 3D WAVEFORMS (Measured data sampled at 50 kHz) 51000 packets of 144 samples from 2015-09-01T02:52:32.438.999. Part 134/147

Processed Thu Oct 8 17:08:00 2015 by ELM ver.2012-10-06 from 001\_\_elm20150901\_025231\_\_dat00.bin



ELMAVAN 3D WAVEFORMS (Measured data sampled at 50 kHz) 51000 packets of 144 samples from 2015-09-01T02:52:32.438.999. Part 104/147

Processed Thu Oct 8 17:08:01 2015 by ELM ver.2012-10-06 from 001\_\_elm20150901\_025231\_\_dat00.bin

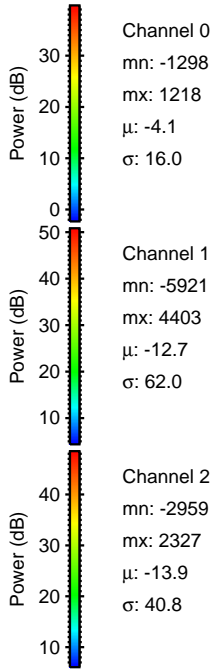
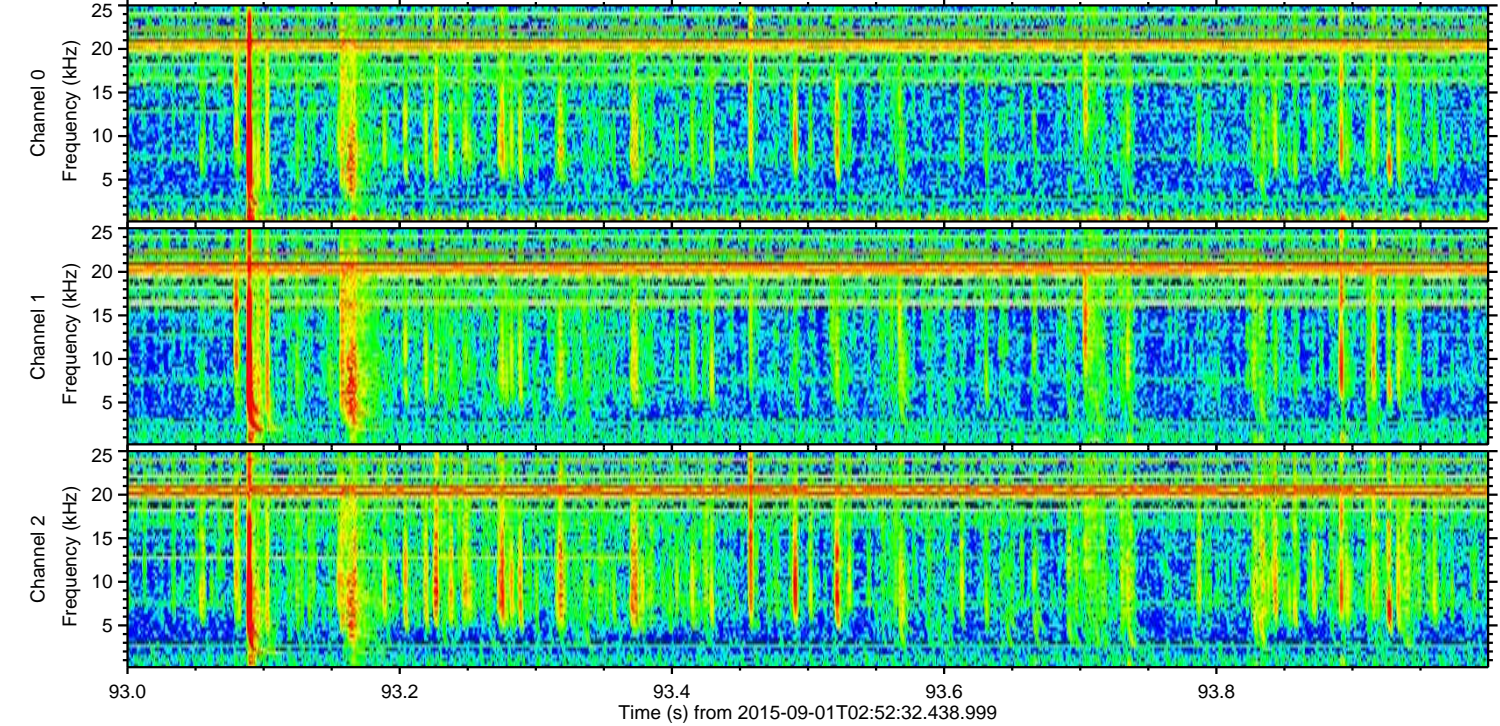
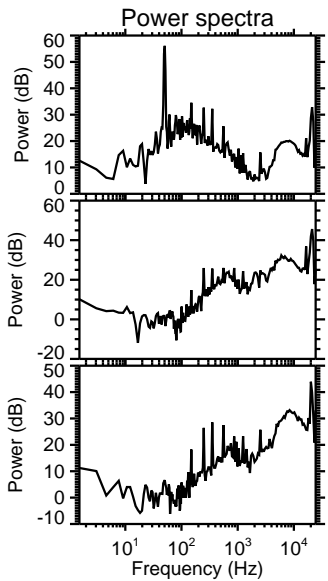
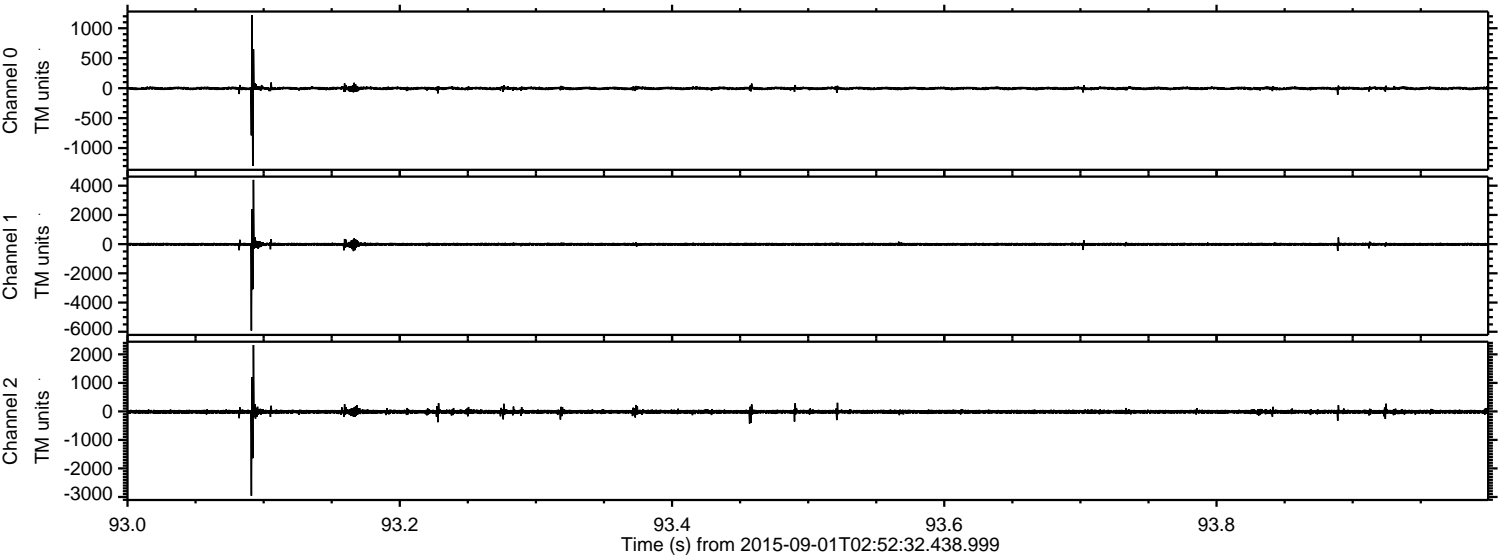


Channel 0  
mn: -1901  
mx: 891  
 $\mu$ : -4.1  
 $\sigma$ : 20.4

Channel 1  
mn: -5994  
mx: 4532  
 $\mu$ : -12.7  
 $\sigma$ : 80.0

Channel 2  
mn: -3463  
mx: 3264  
 $\mu$ : -13.9  
 $\sigma$ : 56.7

Processed Thu Oct 8 17:08:02 2015 by ELM ver.2012-10-06 from 001\_\_elm20150901\_025231\_\_dat00.bin

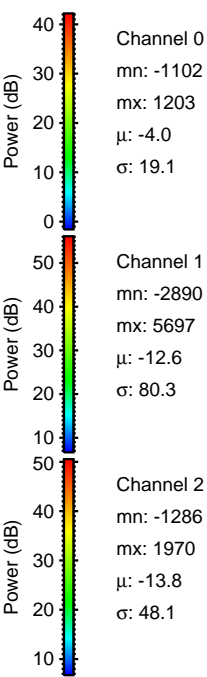
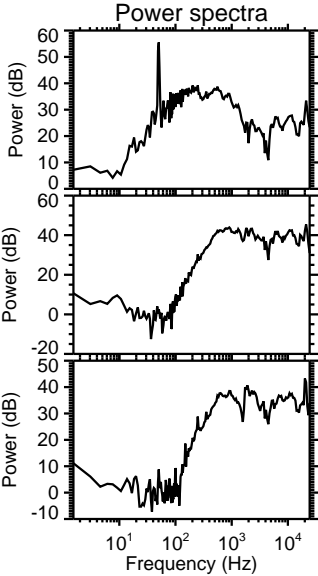
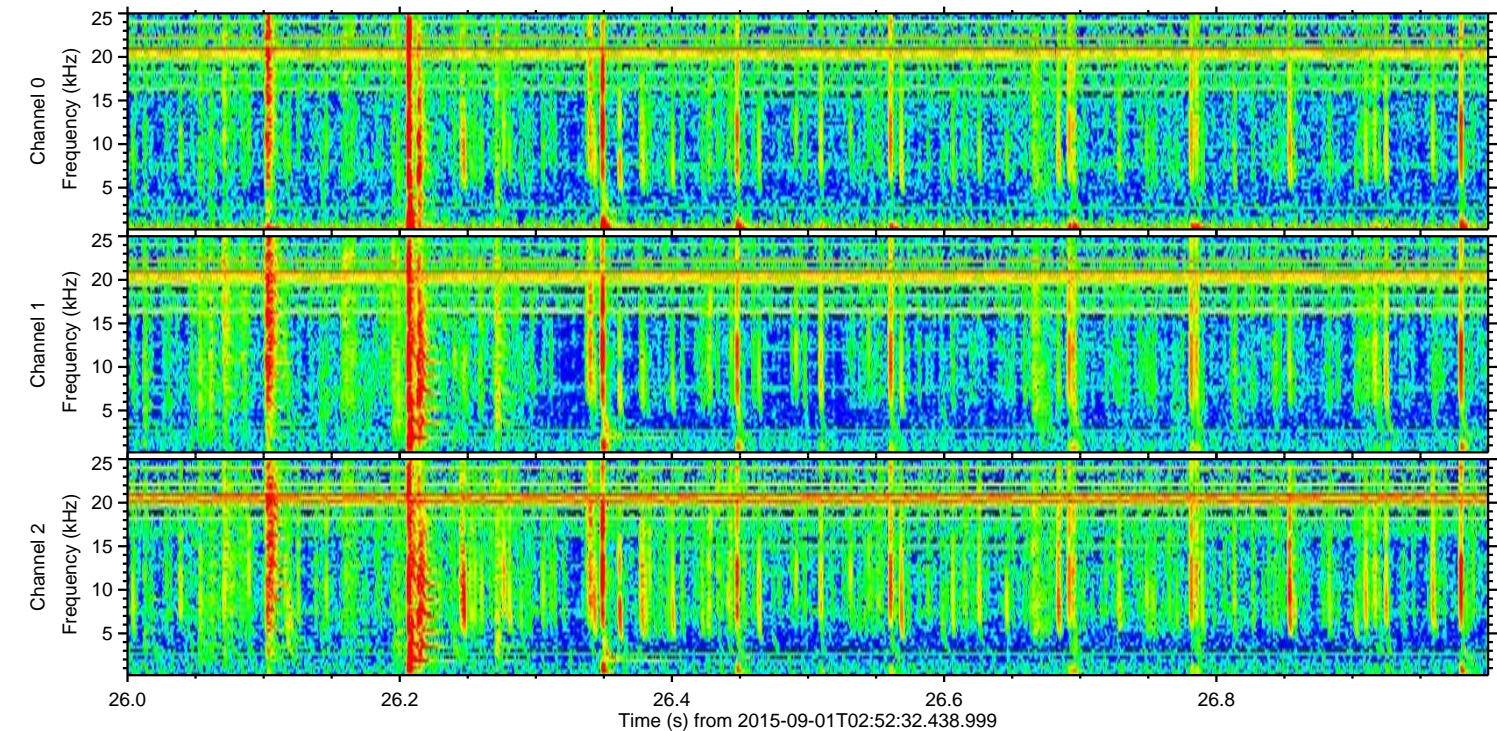
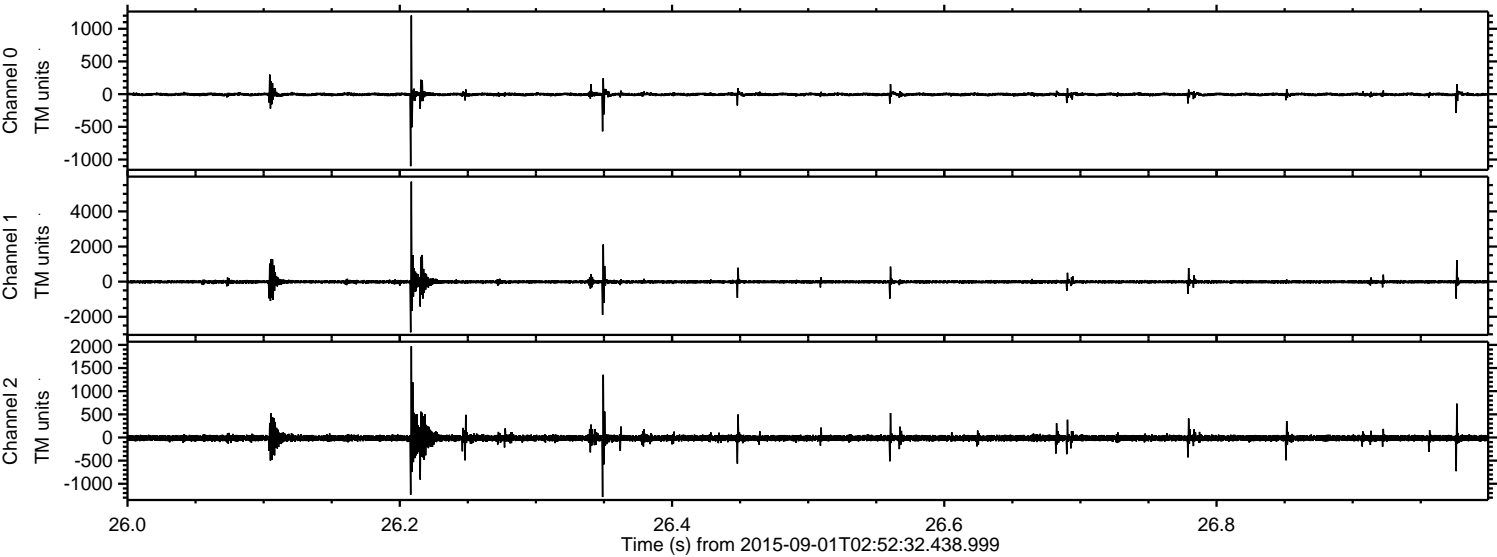


Channel 0  
mn: -1298  
mx: 1218  
 $\mu$ : -4.1  
 $\sigma$ : 16.0

Channel 1  
mn: -5921  
mx: 4403  
 $\mu$ : -12.7  
 $\sigma$ : 62.0

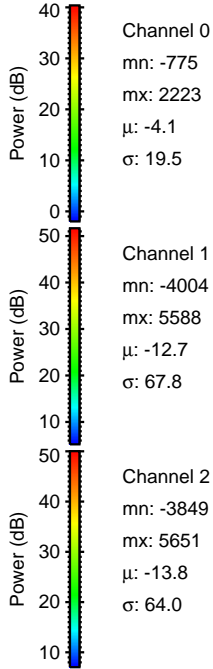
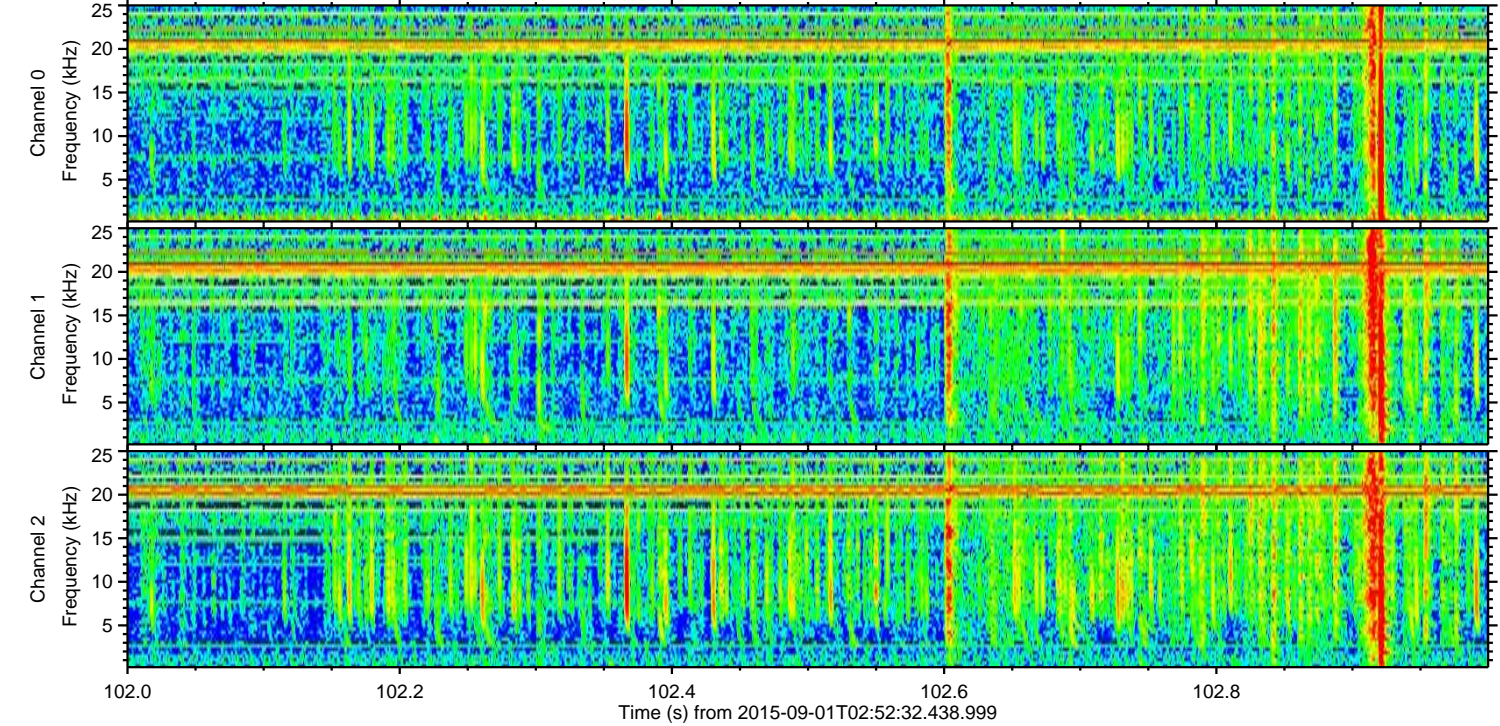
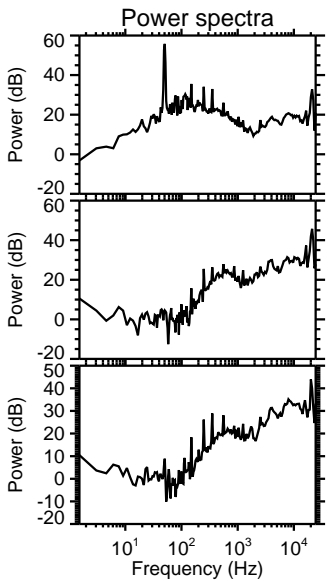
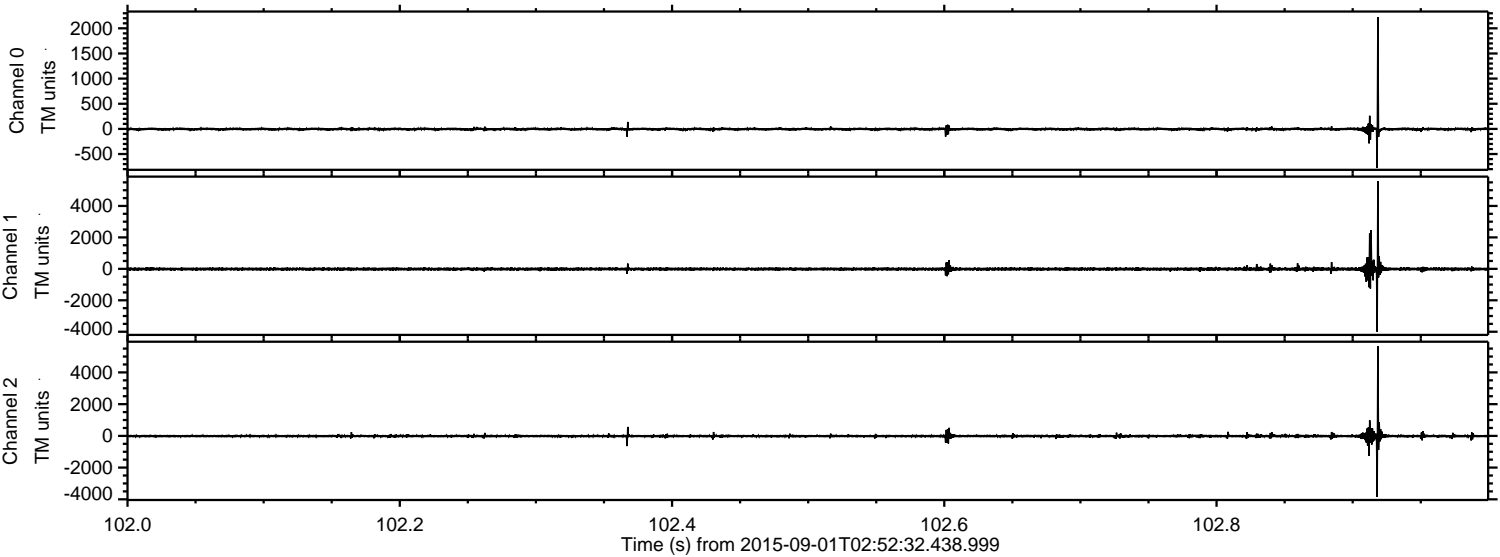
Channel 2  
mn: -2959  
mx: 2327  
 $\mu$ : -13.9  
 $\sigma$ : 40.8

Processed Thu Oct 8 17:08:03 2015 by ELM ver.2012-10-06 from 001\_\_elm20150901\_025231\_\_dat00.bin



ELMAVAN 3D WAVEFORMS (Measured data sampled at 50 kHz) 51000 packets of 144 samples from 2015-09-01T02:52:32.438.999. Part 103/147

Processed Thu Oct 8 17:08:04 2015 by ELM ver.2012-10-06 from 001\_\_elm20150901\_025231\_\_dat00.bin



Processed Thu Oct 8 17:08:05 2015 by ELM ver.2012-10-06 from 001\_\_elm20150901\_025231\_\_dat00.bin

