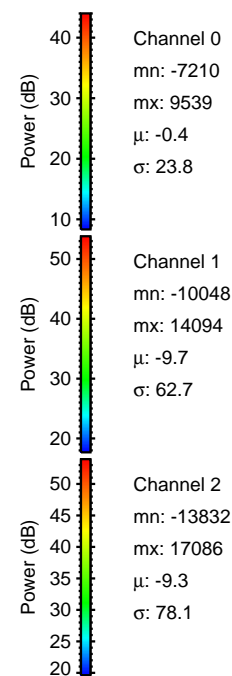
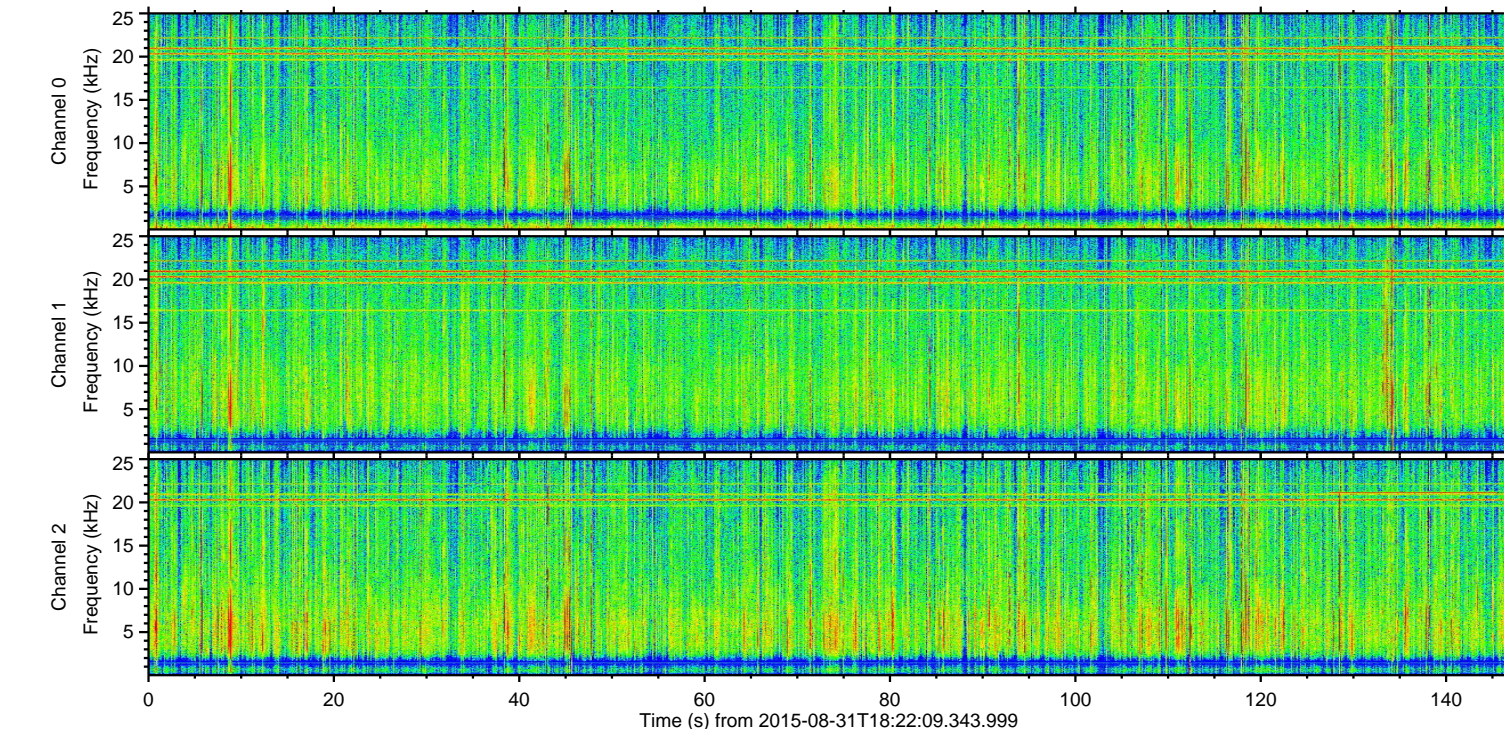
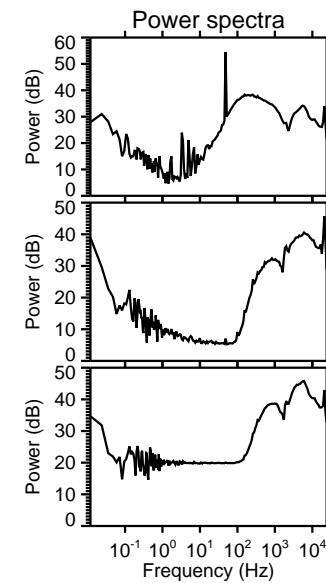
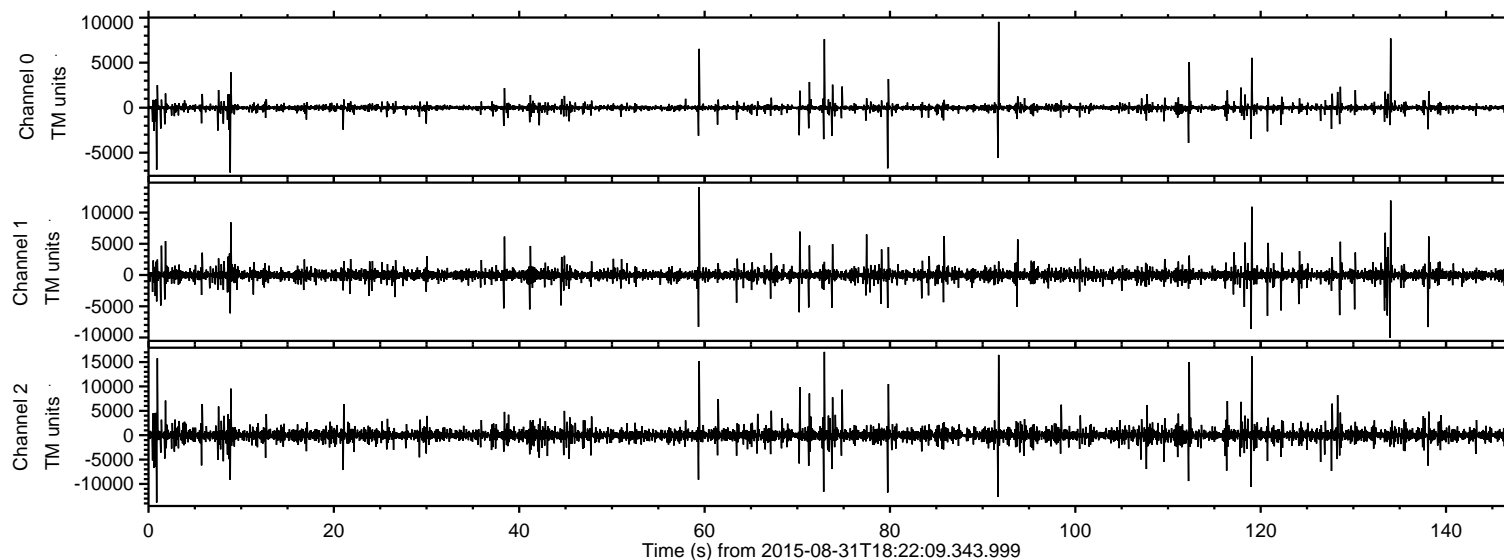


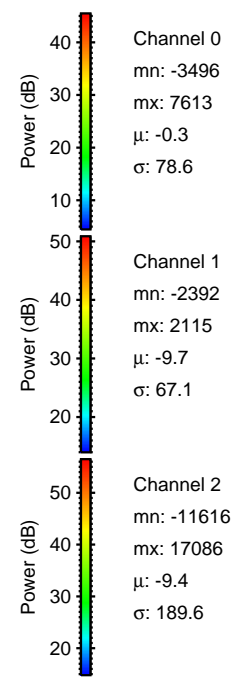
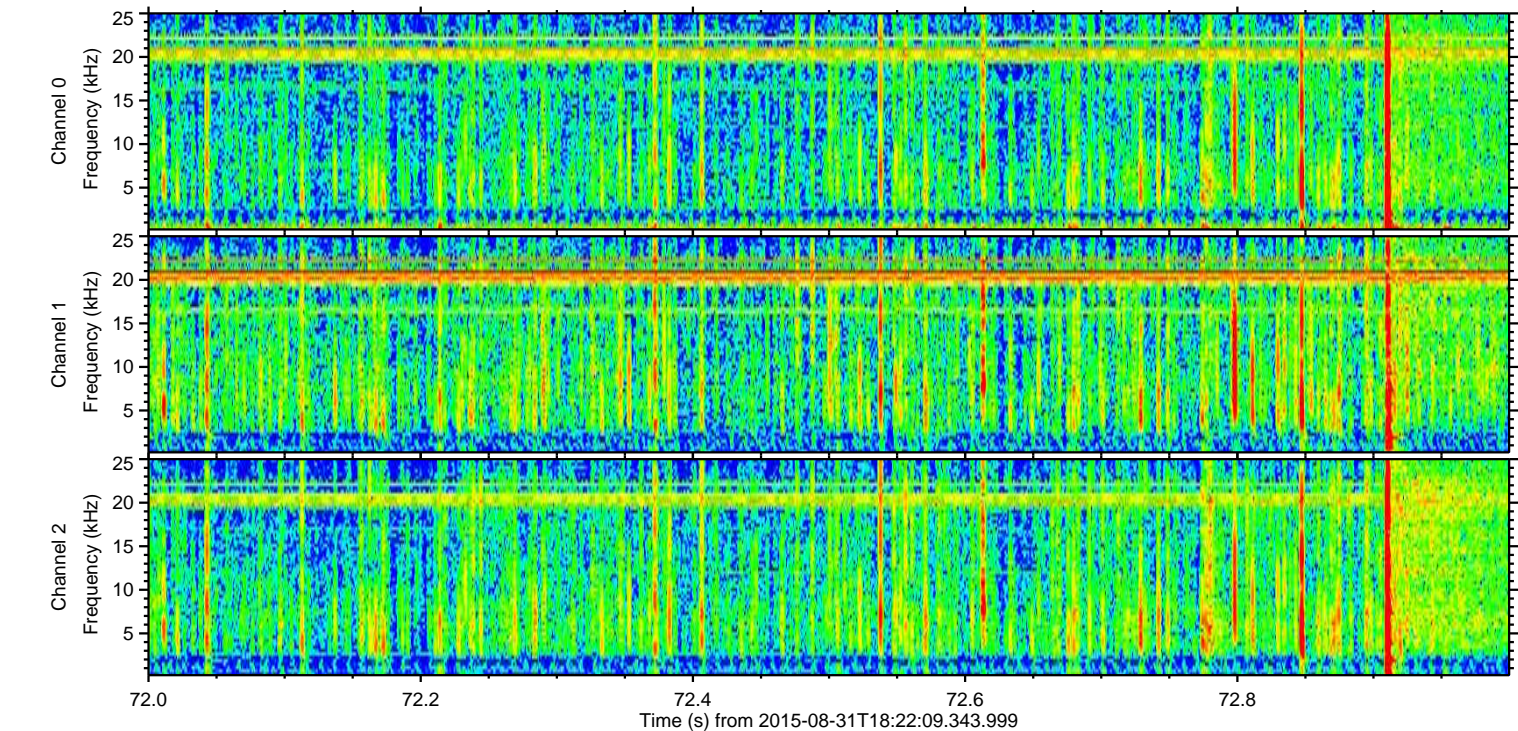
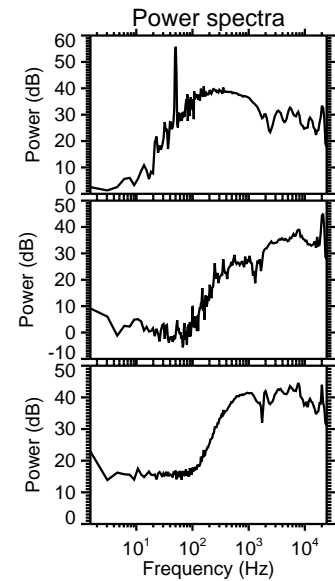
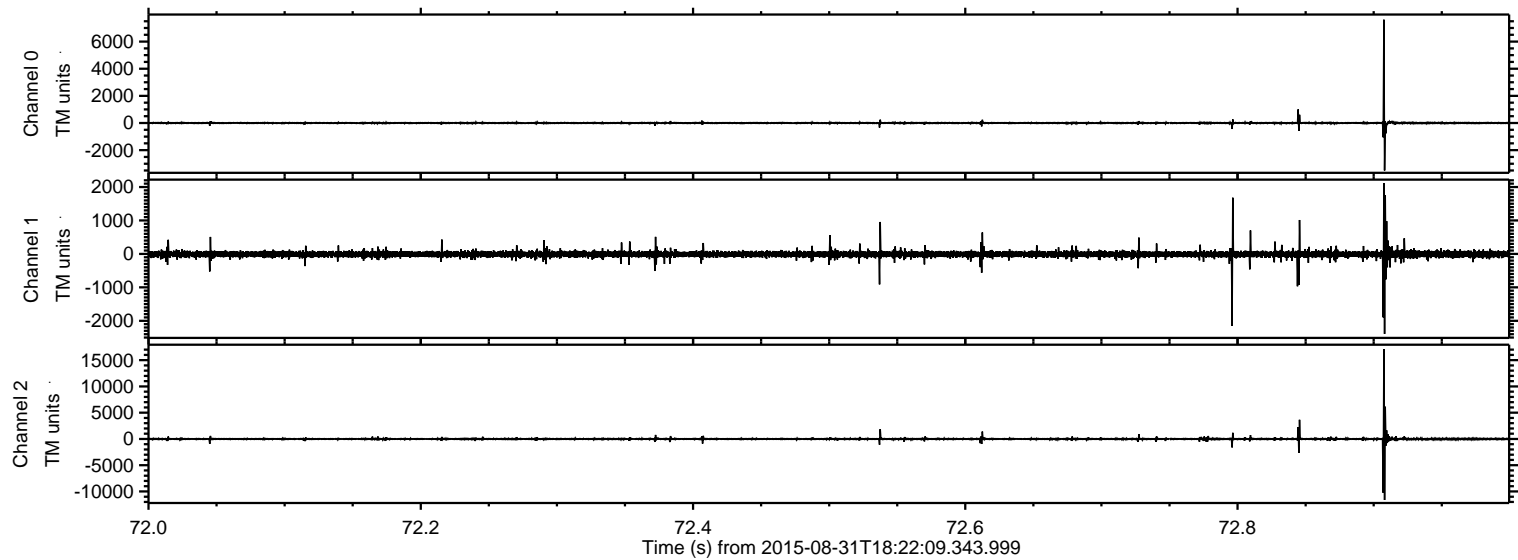
# ELMAVAN 3D WAVEFORMS (Measured data sampled at 50 kHz) 51000 packets of 144 samples from 2015-08-31T18:22:09.343.999.

Processed Thu Oct 8 14:45:06 2015 by ELM ver.2012-10-06 from 001\_\_elm20150831\_182208\_\_dat00.bin



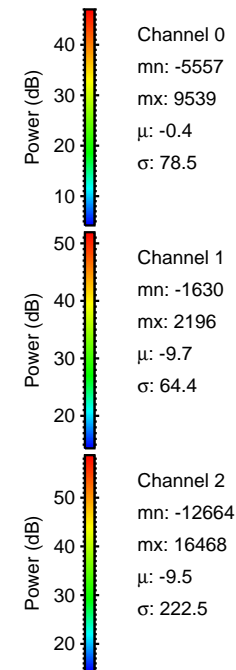
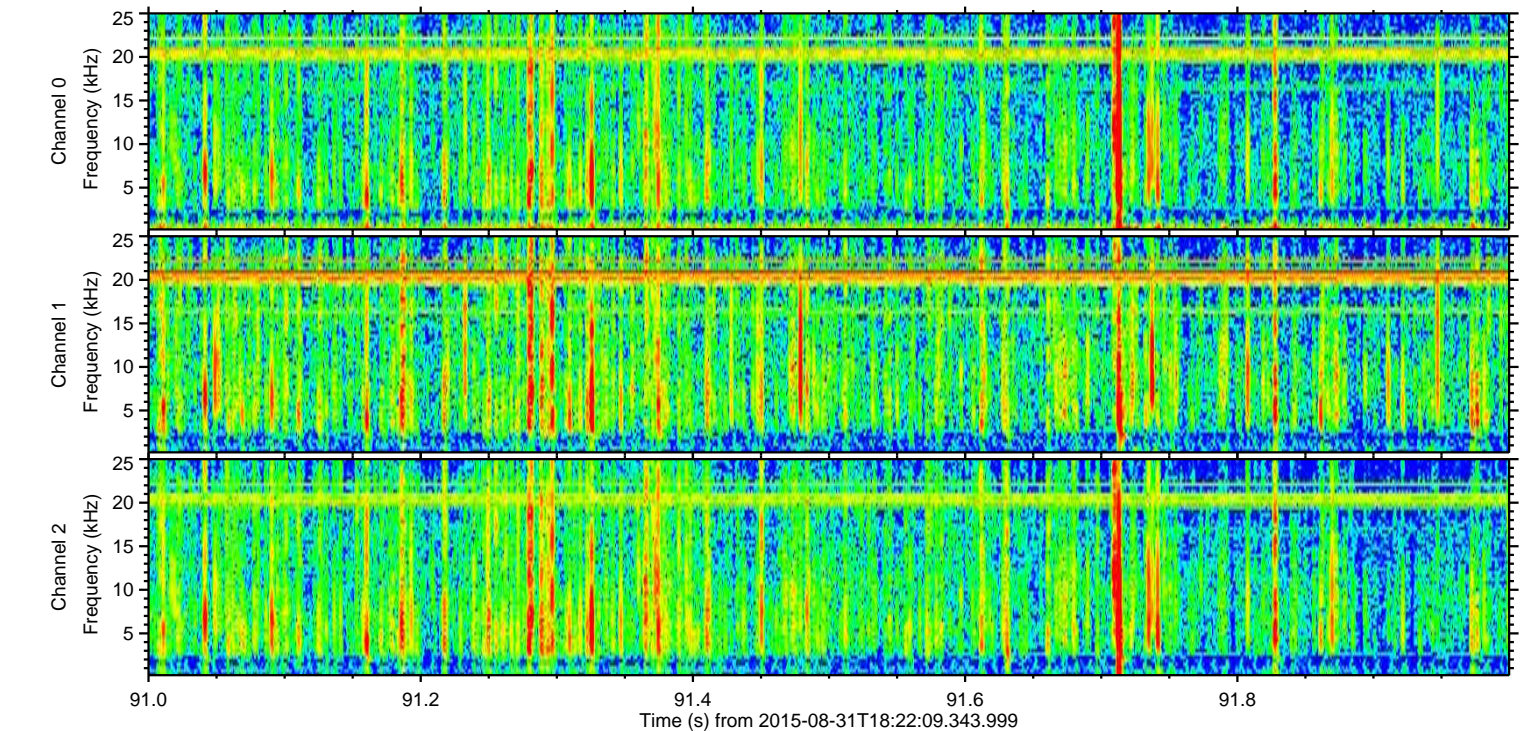
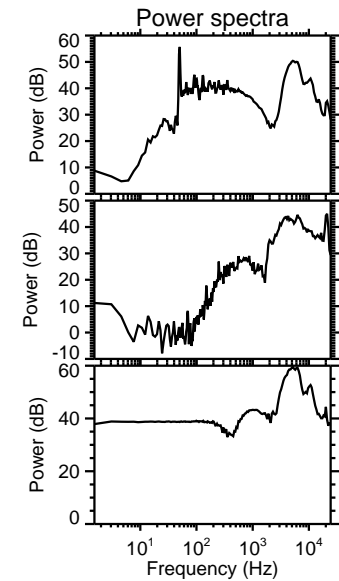
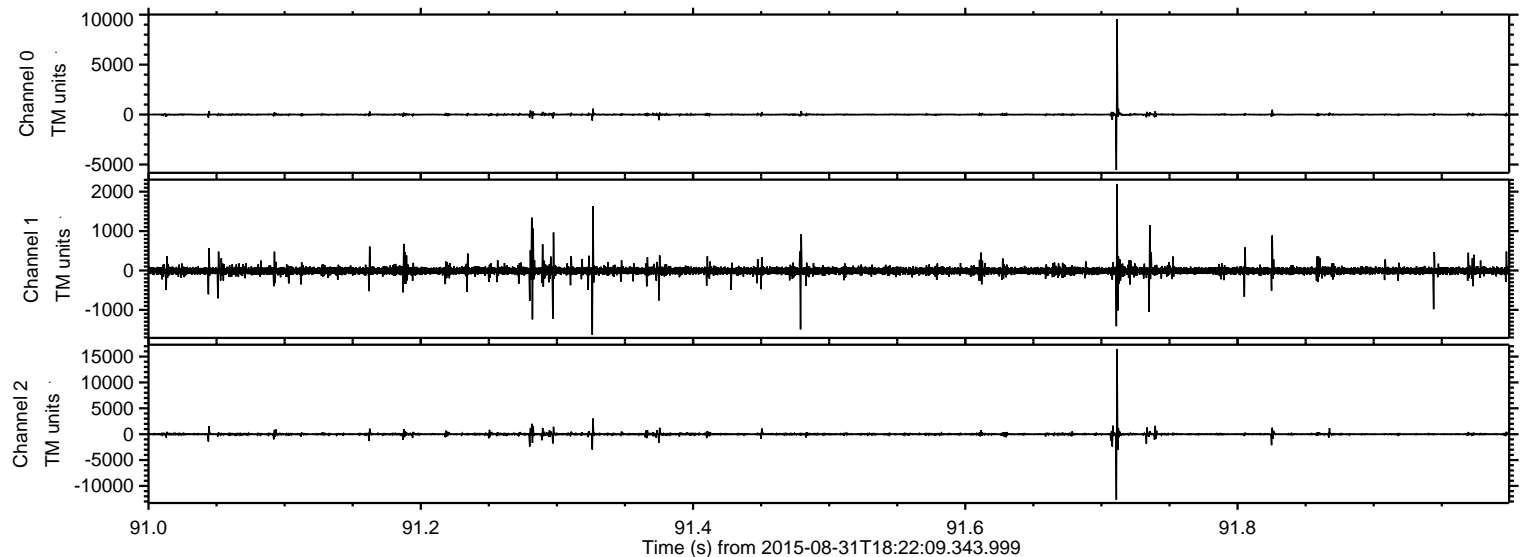


Processed Thu Oct 8 14:45:20 2015 by ELM ver.2012-10-06 from 001\_\_elm20150831\_182208\_\_dat00.bin





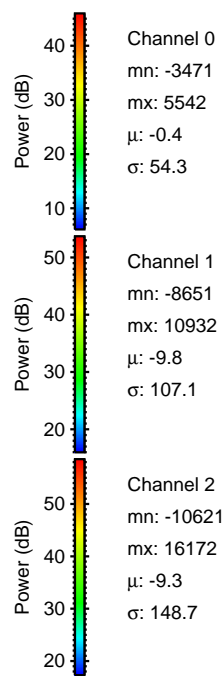
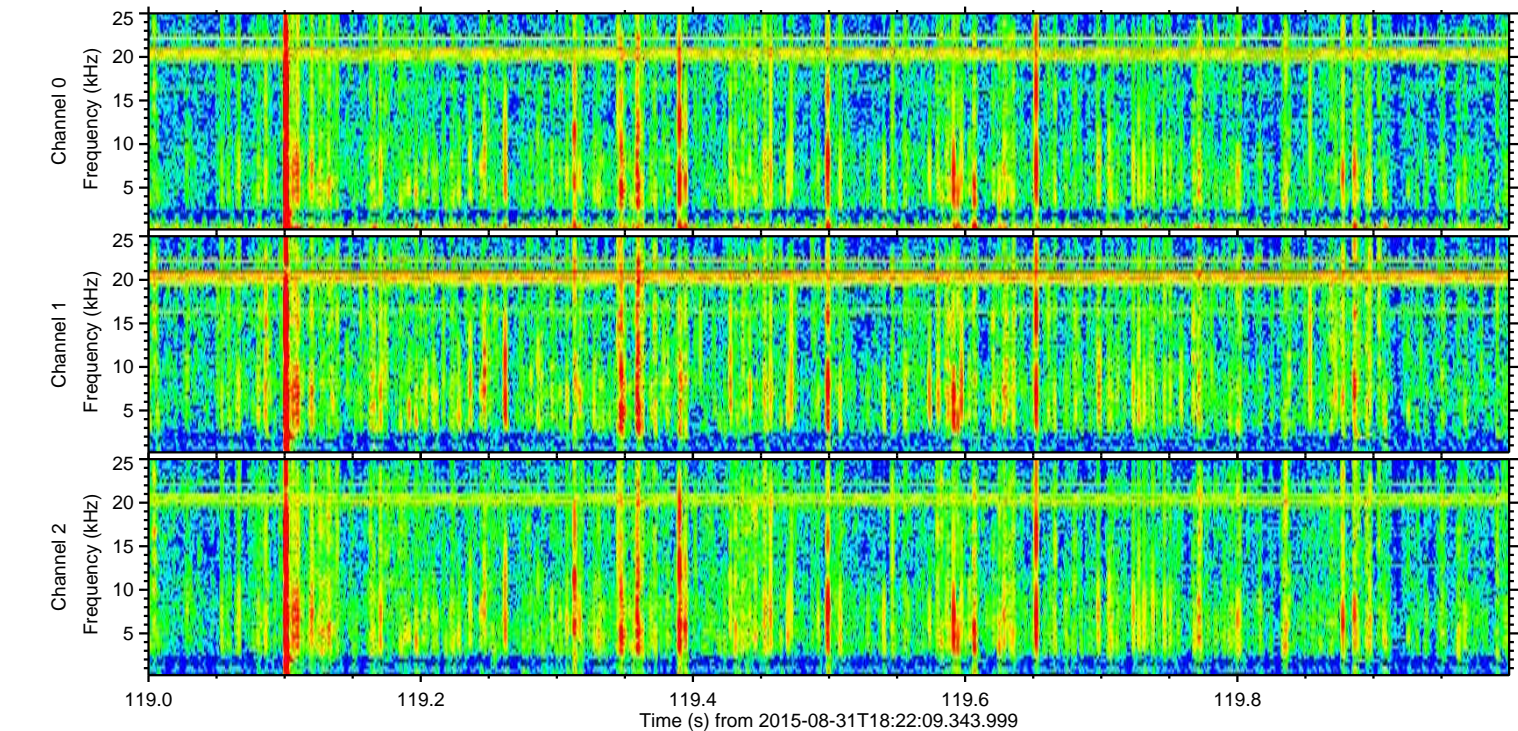
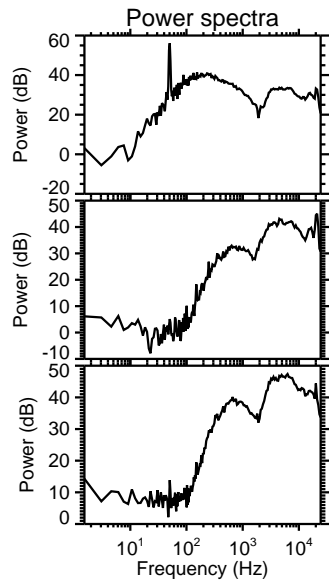
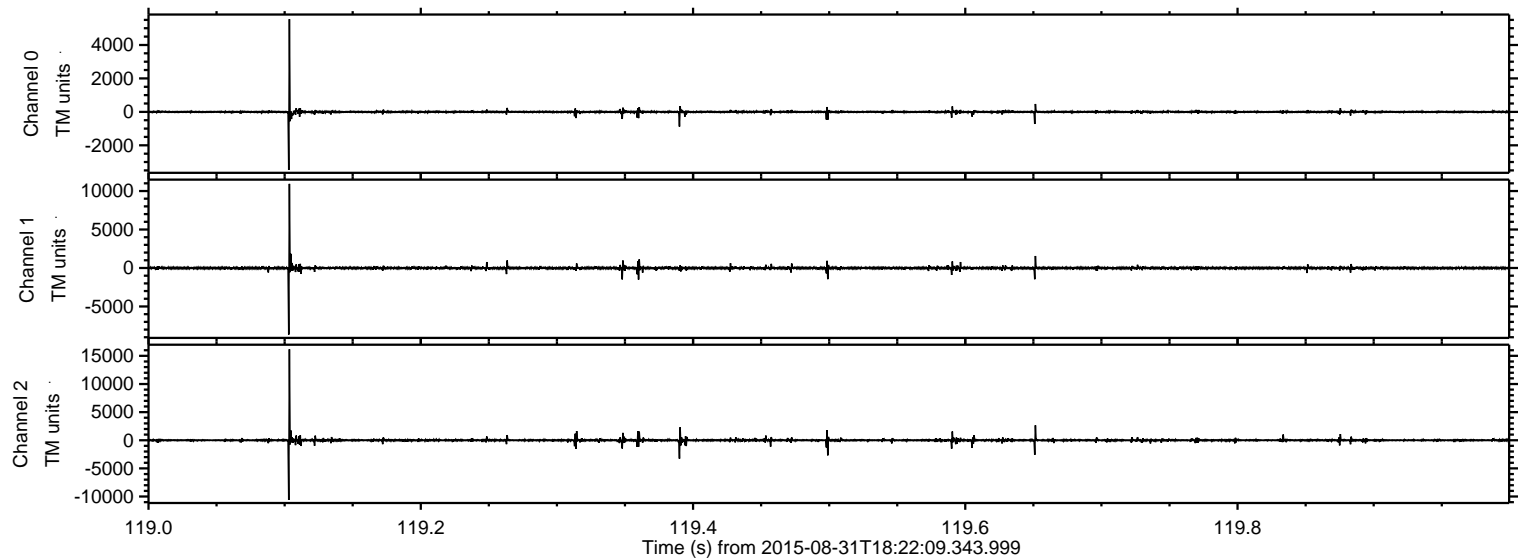
Processed Thu Oct 8 14:45:21 2015 by ELM ver.2012-10-06 from 001\_\_elm20150831\_182208\_\_dat00.bin





ELMAVAN 3D WAVEFORMS (Measured data sampled at 50 kHz) 51000 packets of 144 samples from 2015-08-31T18:22:09.343.999. Part 120/147

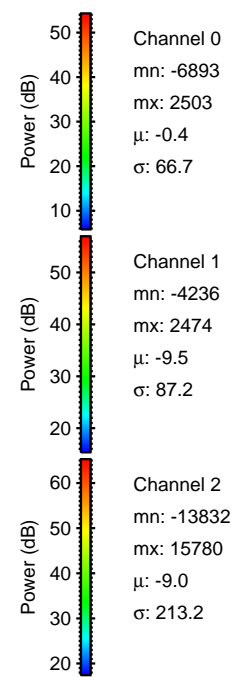
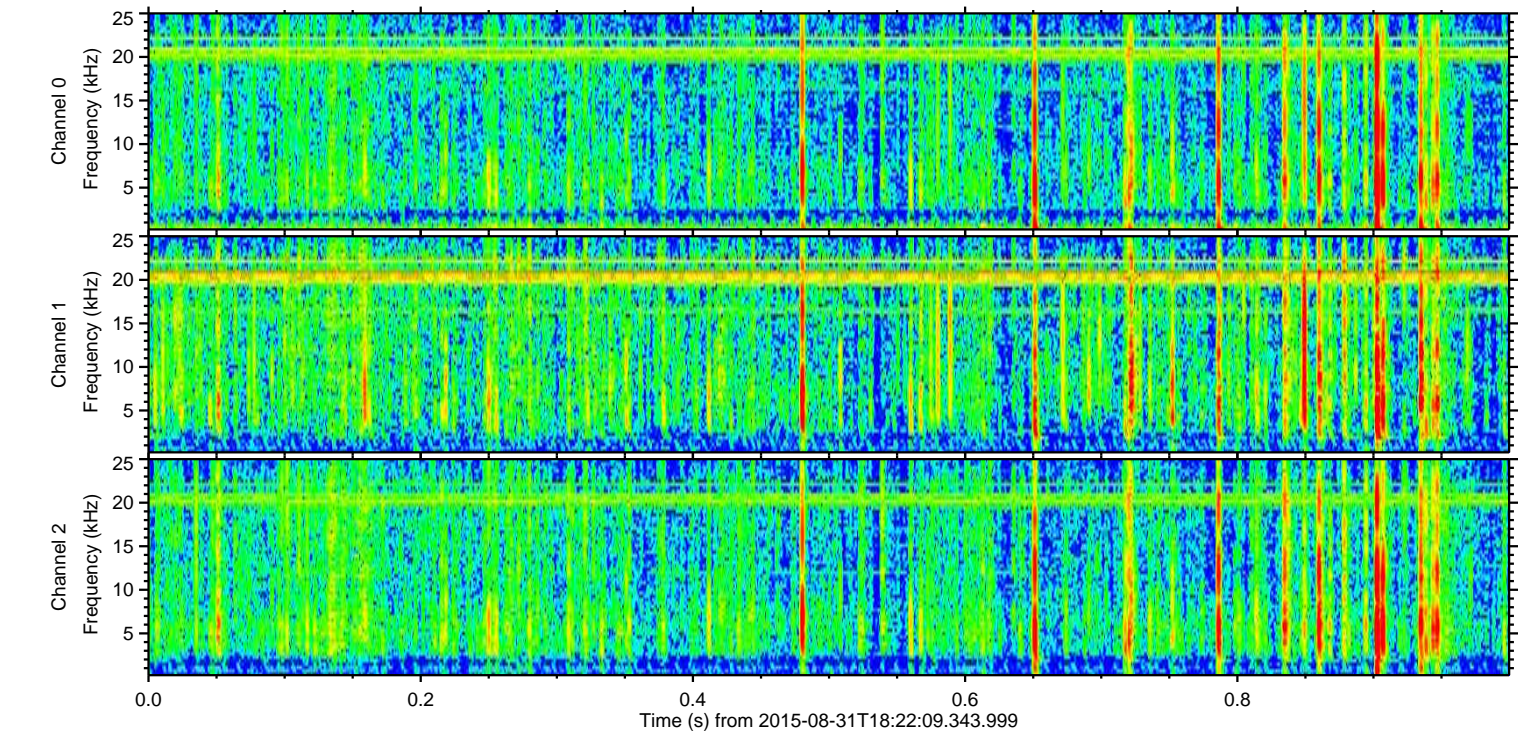
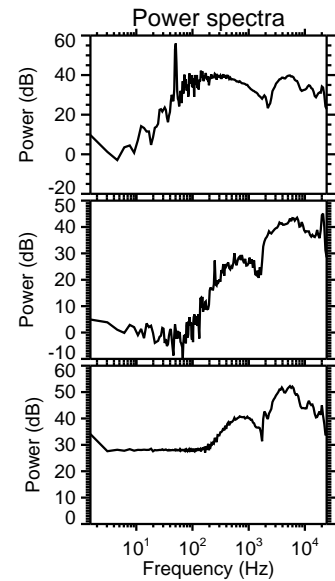
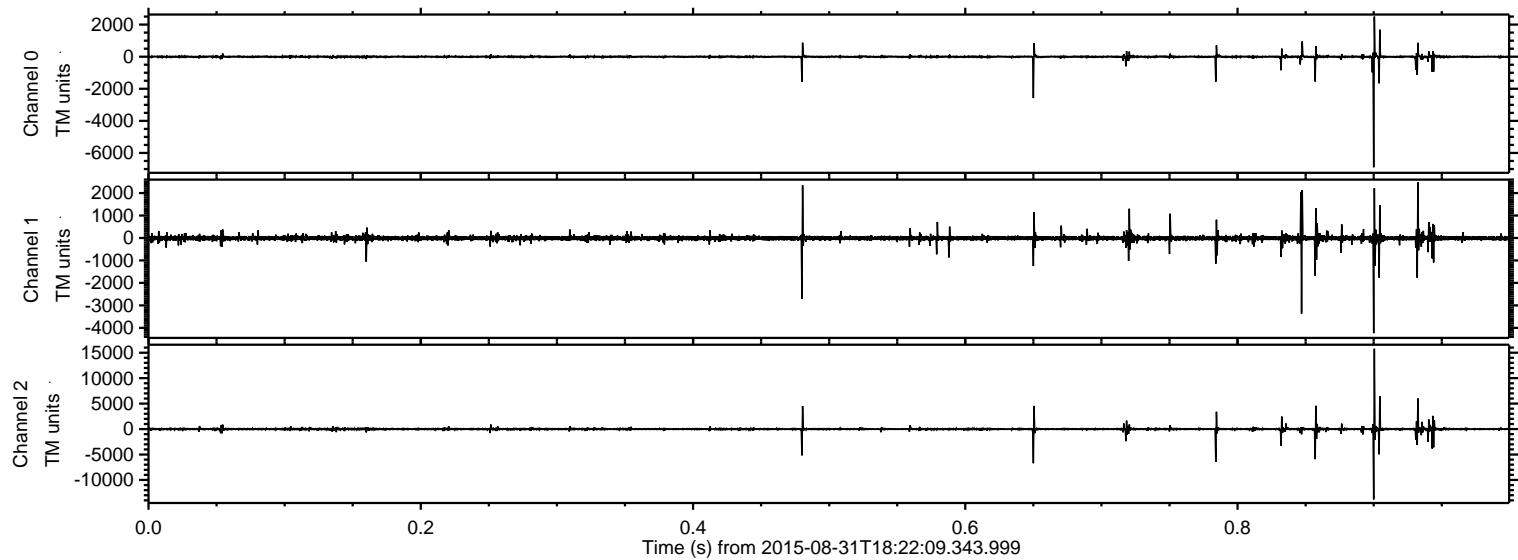
Processed Thu Oct 8 14:45:22 2015 by ELM ver.2012-10-06 from 001\_\_elm20150831\_182208\_\_dat00.bin





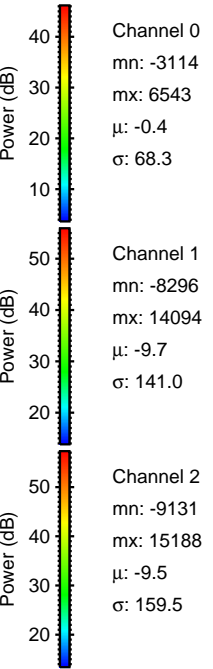
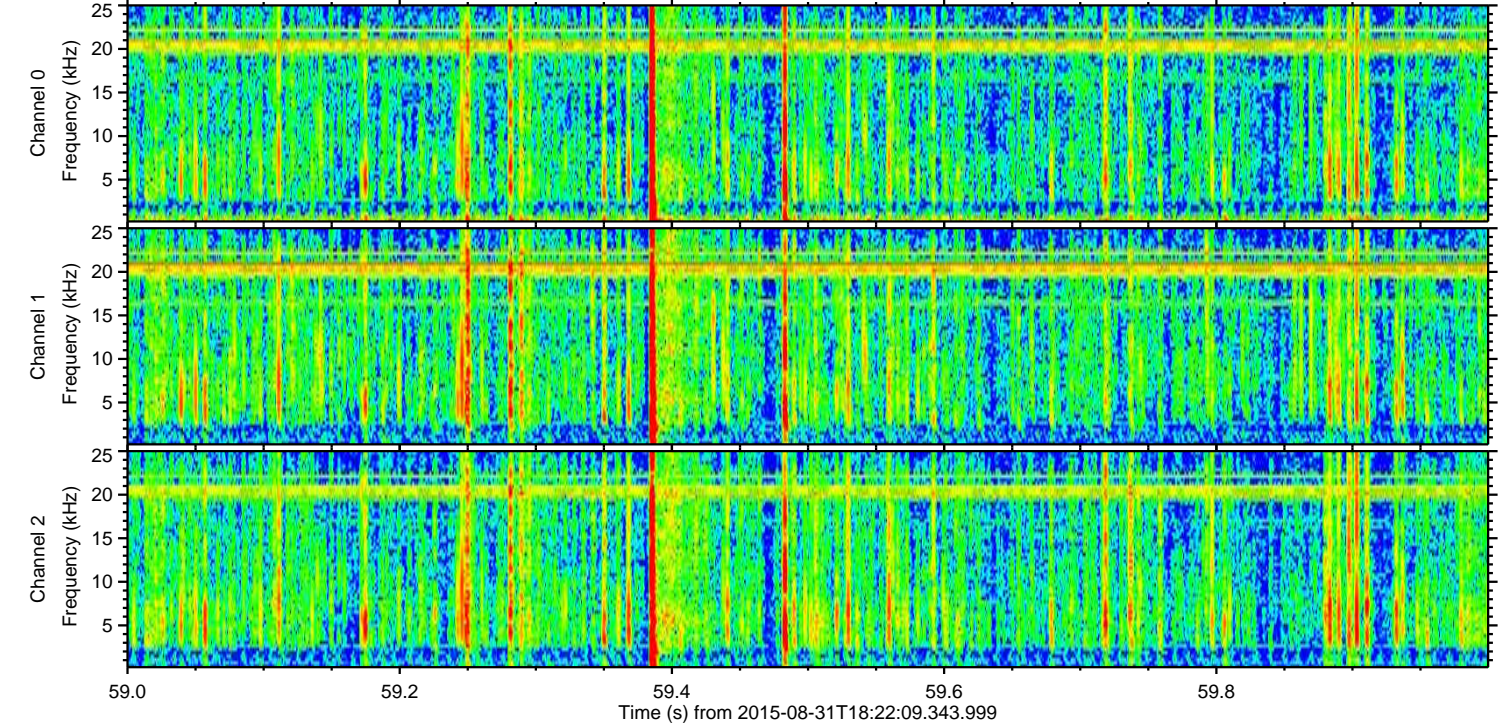
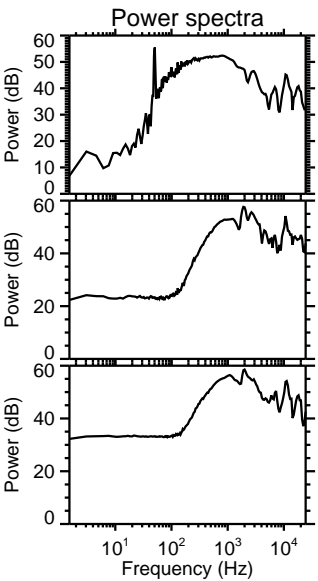
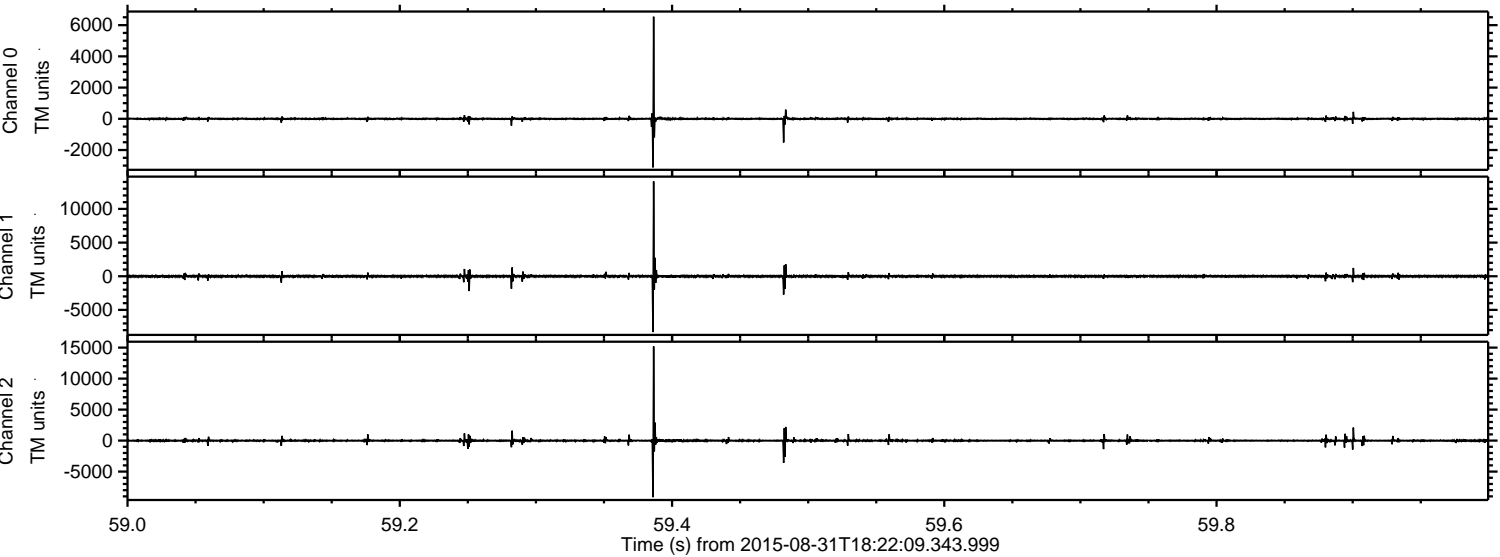
ELMAVAN 3D WAVEFORMS (Measured data sampled at 50 kHz) 51000 packets of 144 samples from 2015-08-31T18:22:09.343.999. Part 1/147

Processed Thu Oct 8 14:45:23 2015 by ELM ver.2012-10-06 from 001\_\_elm20150831\_182208\_\_dat00.bin





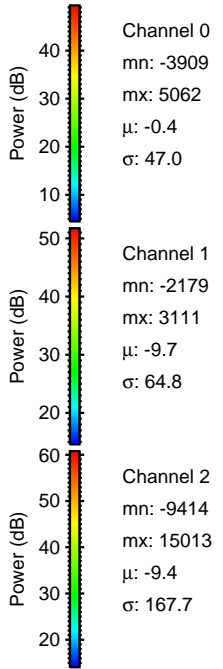
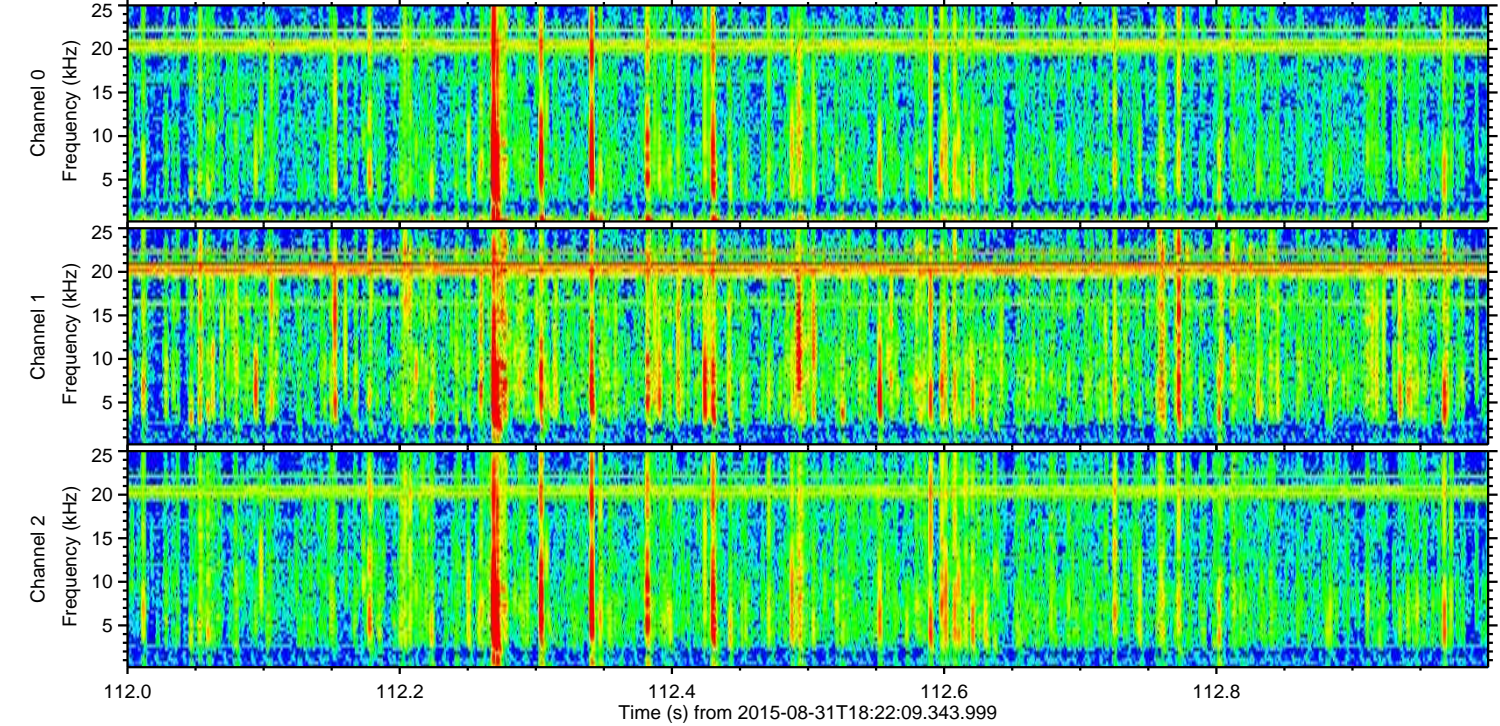
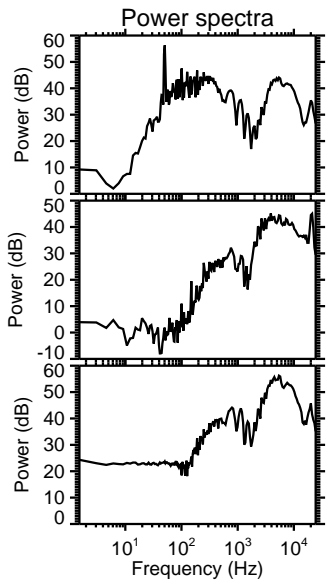
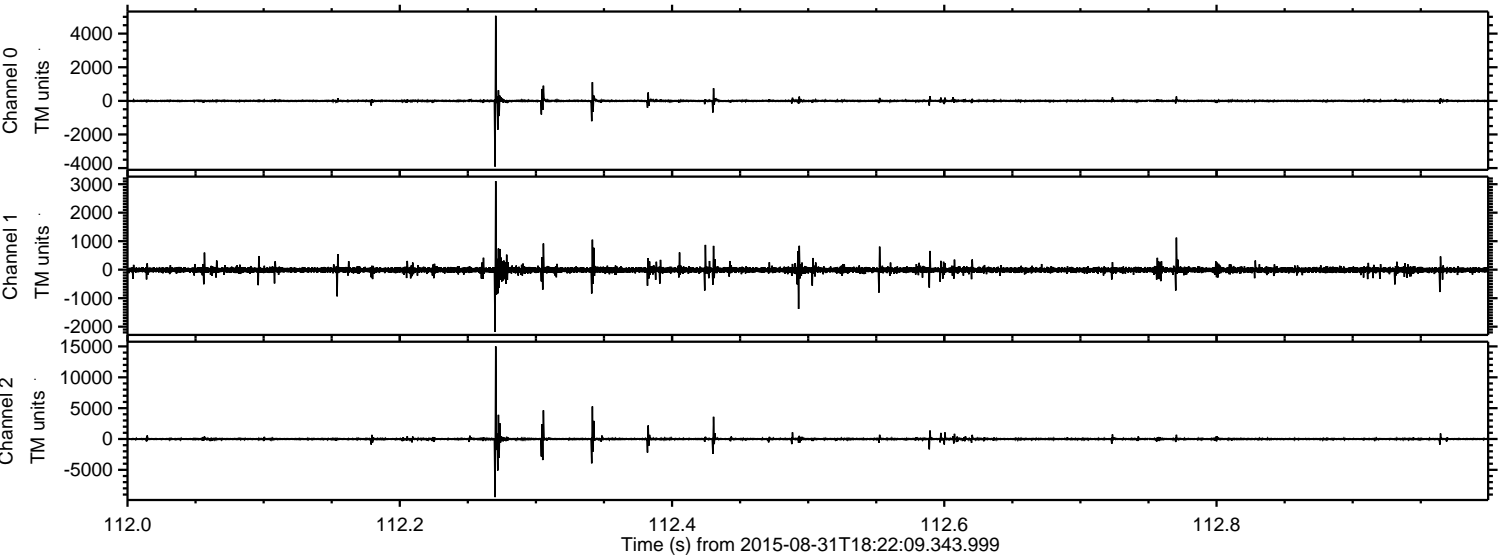
Processed Thu Oct 8 14:45:24 2015 by ELM ver.2012-10-06 from 001\_\_elm20150831\_182208\_\_dat00.bin





ELMAVAN 3D WAVEFORMS (Measured data sampled at 50 kHz) 51000 packets of 144 samples from 2015-08-31T18:22:09.343.999. Part 113/147

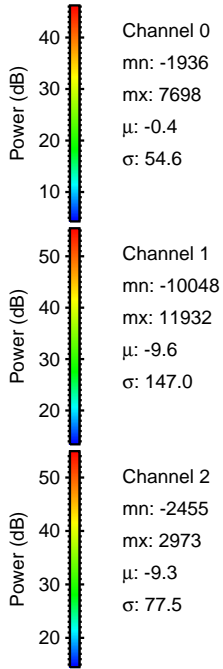
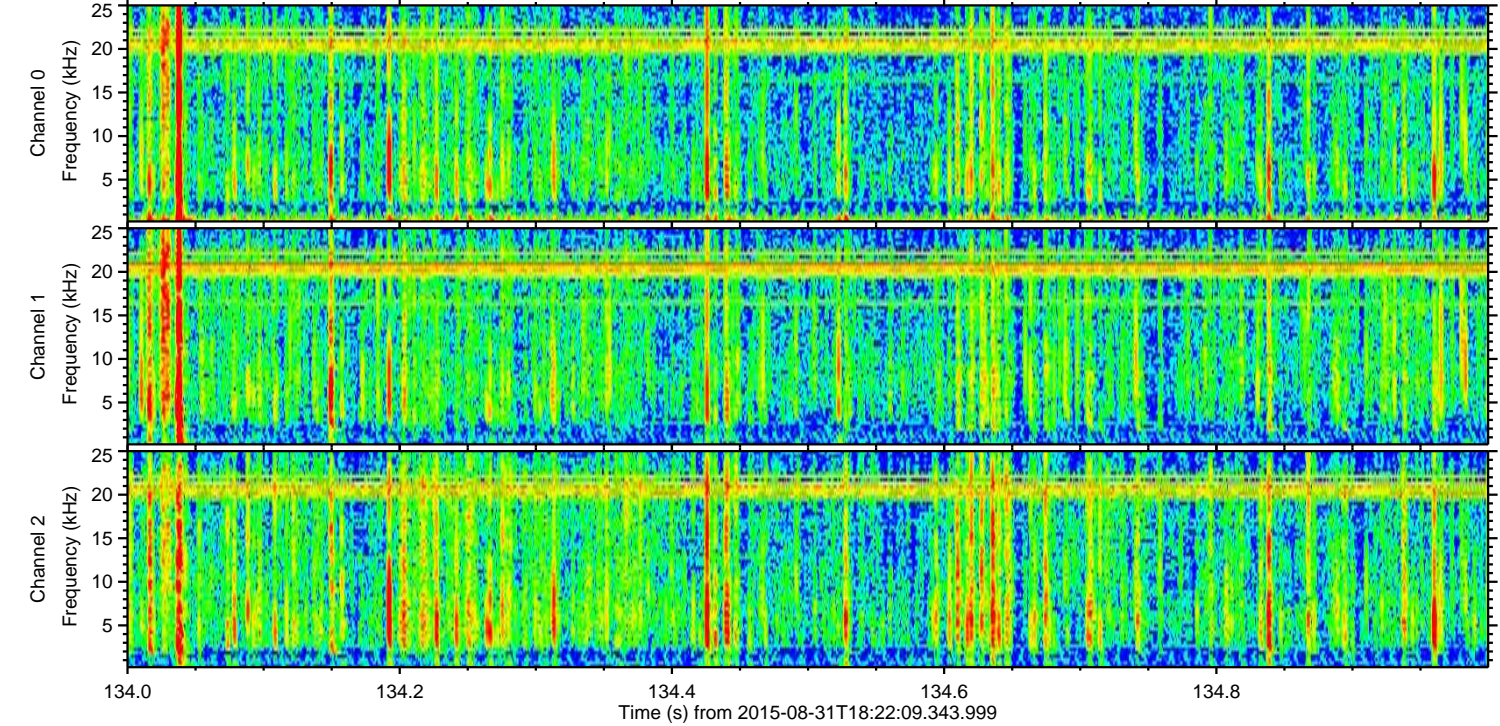
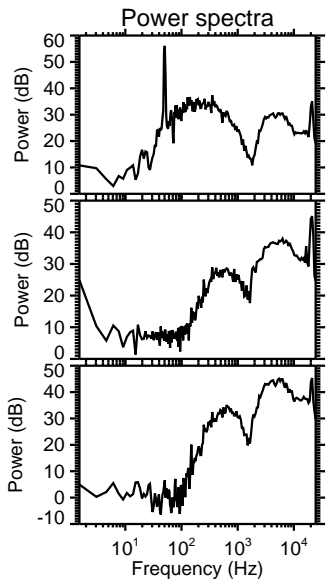
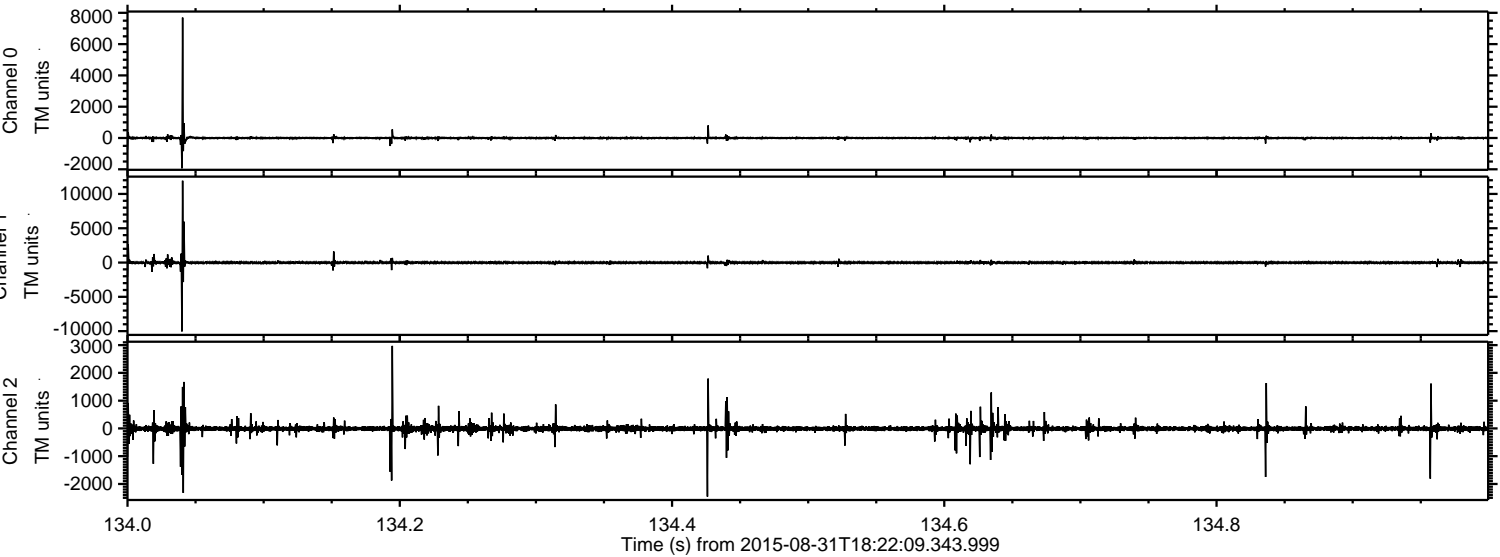
Processed Thu Oct 8 14:45:25 2015 by ELM ver.2012-10-06 from 001\_\_elm20150831\_182208\_\_dat00.bin





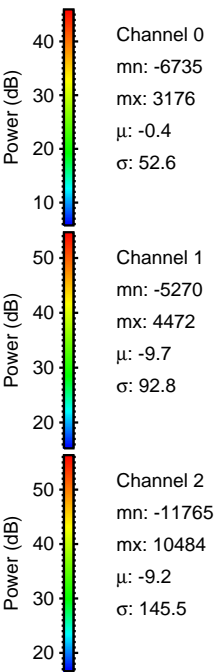
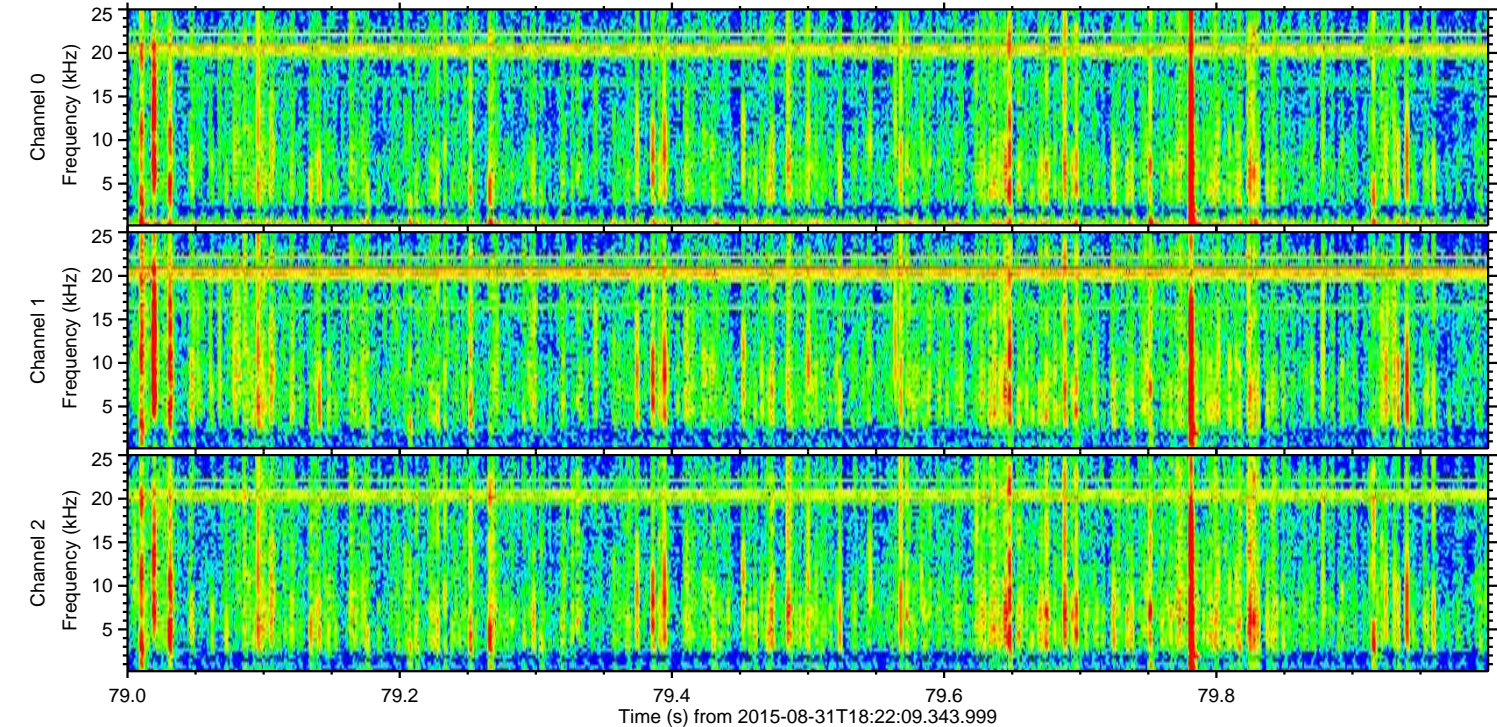
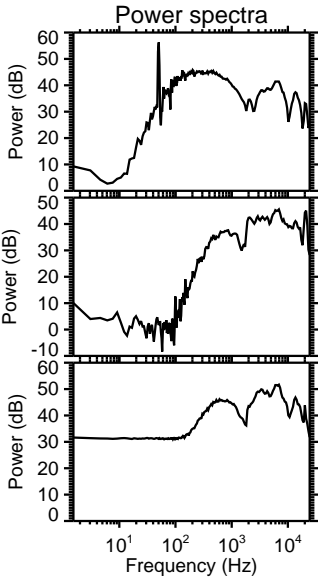
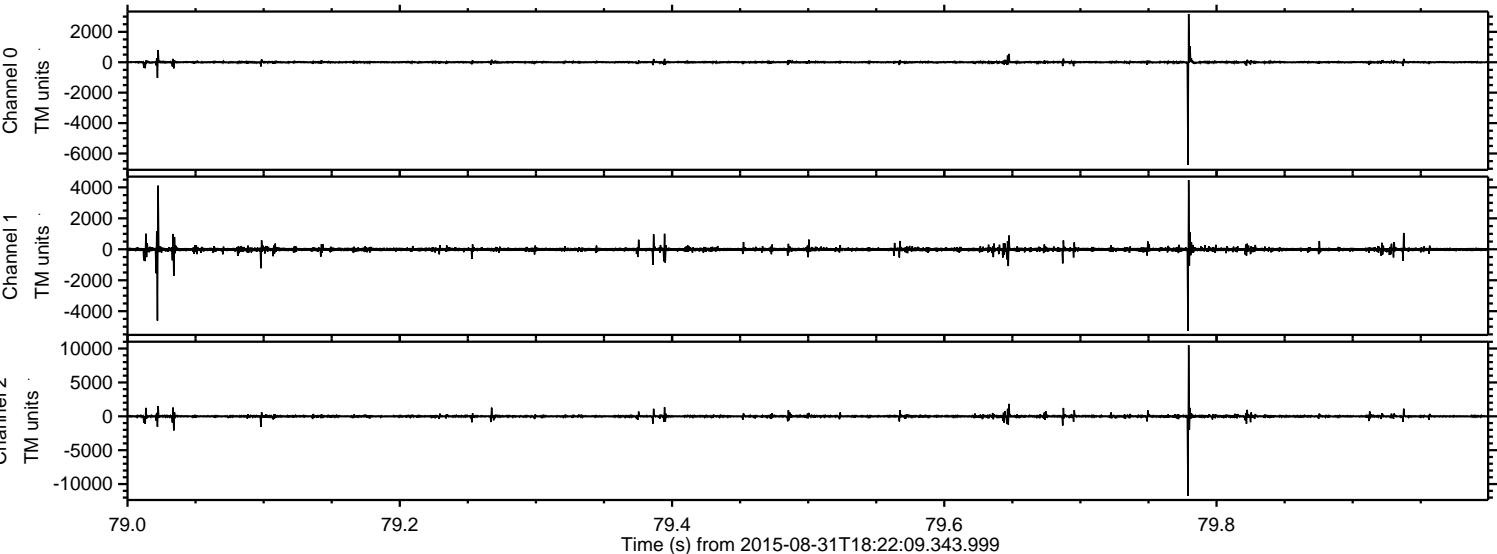
ELMAVAN 3D WAVEFORMS (Measured data sampled at 50 kHz) 51000 packets of 144 samples from 2015-08-31T18:22:09.343.999. Part 135/147

Processed Thu Oct 8 14:45:26 2015 by ELM ver.2012-10-06 from 001\_\_elm20150831\_182208\_\_dat00.bin



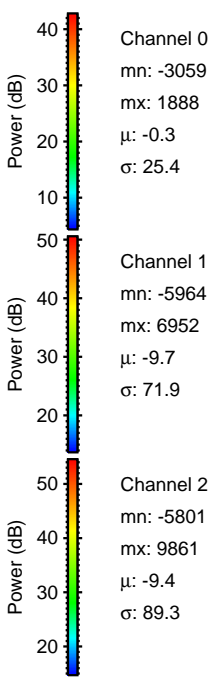
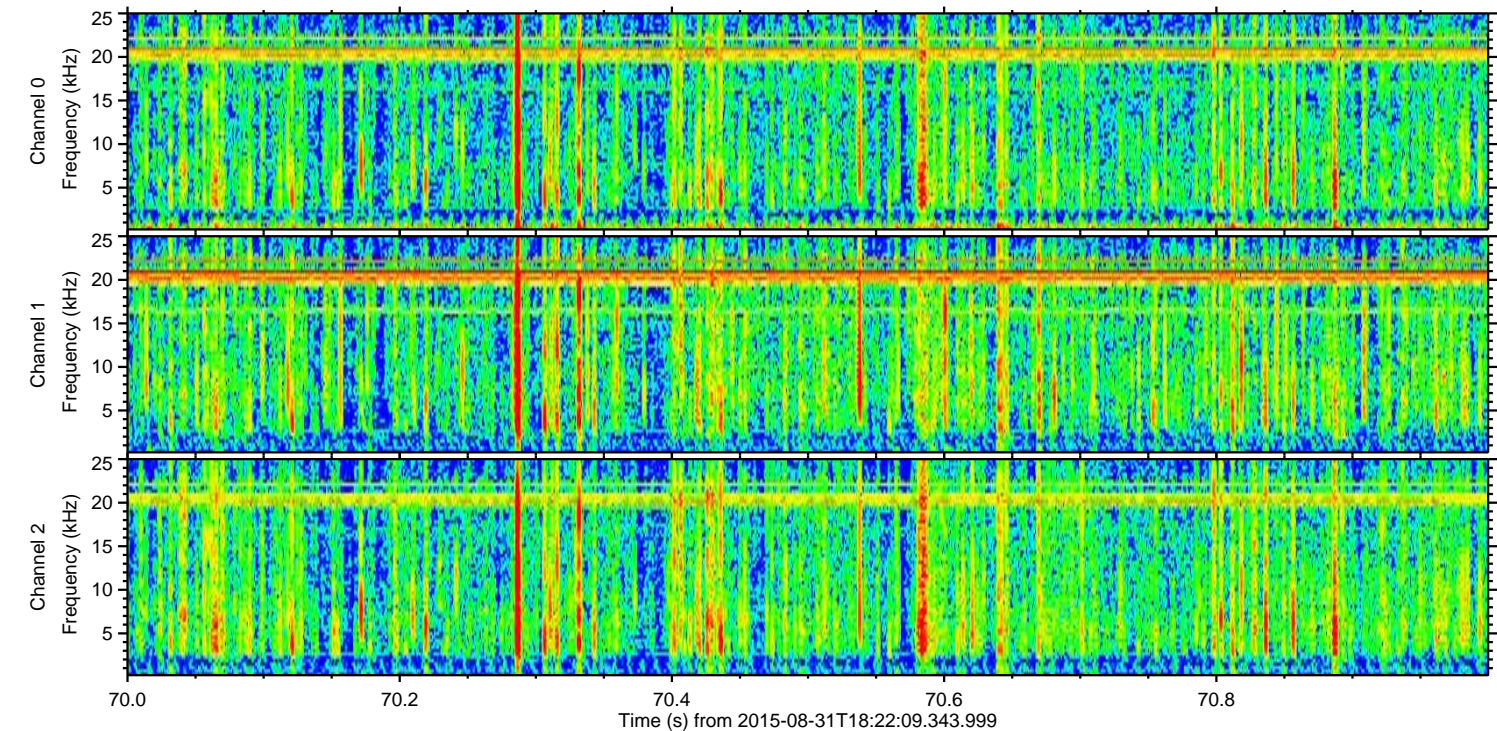
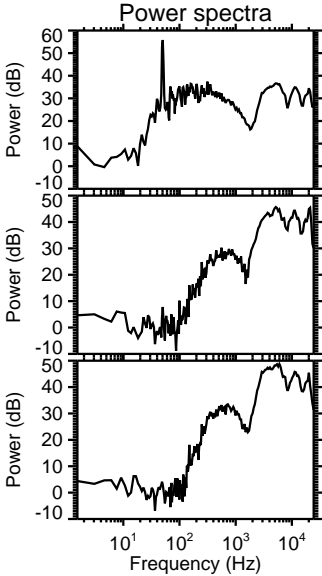
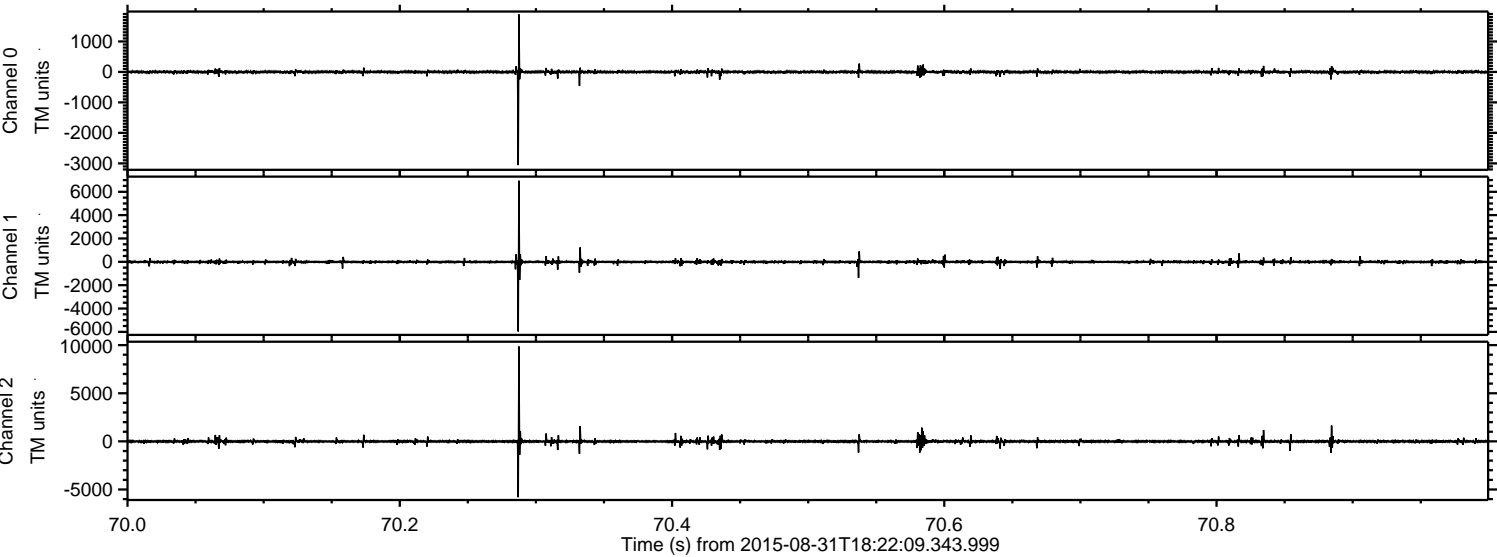


Processed Thu Oct 8 14:45:27 2015 by ELM ver.2012-10-06 from 001\_\_elm20150831\_182208\_\_dat00.bin





Processed Thu Oct 8 14:45:28 2015 by ELM ver.2012-10-06 from 001\_\_elm20150831\_182208\_\_dat00.bin



Channel 0  
mn: -3059  
mx: 1888  
 $\mu$ : -0.3  
 $\sigma$ : 25.4

Channel 1  
mn: -5964  
mx: 6952  
 $\mu$ : -9.7  
 $\sigma$ : 71.9

Channel 2  
mn: -5801  
mx: 9861  
 $\mu$ : -9.4  
 $\sigma$ : 89.3



Processed Thu Oct 8 14:45:30 2015 by ELM ver.2012-10-06 from 001\_\_elm20150831\_182208\_\_dat00.bin

