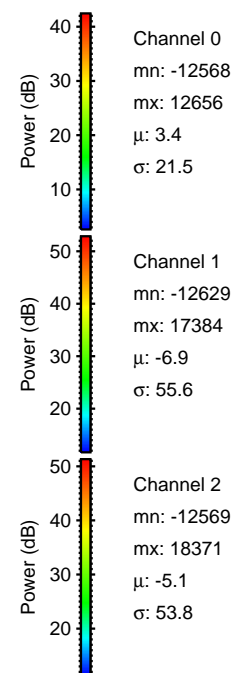
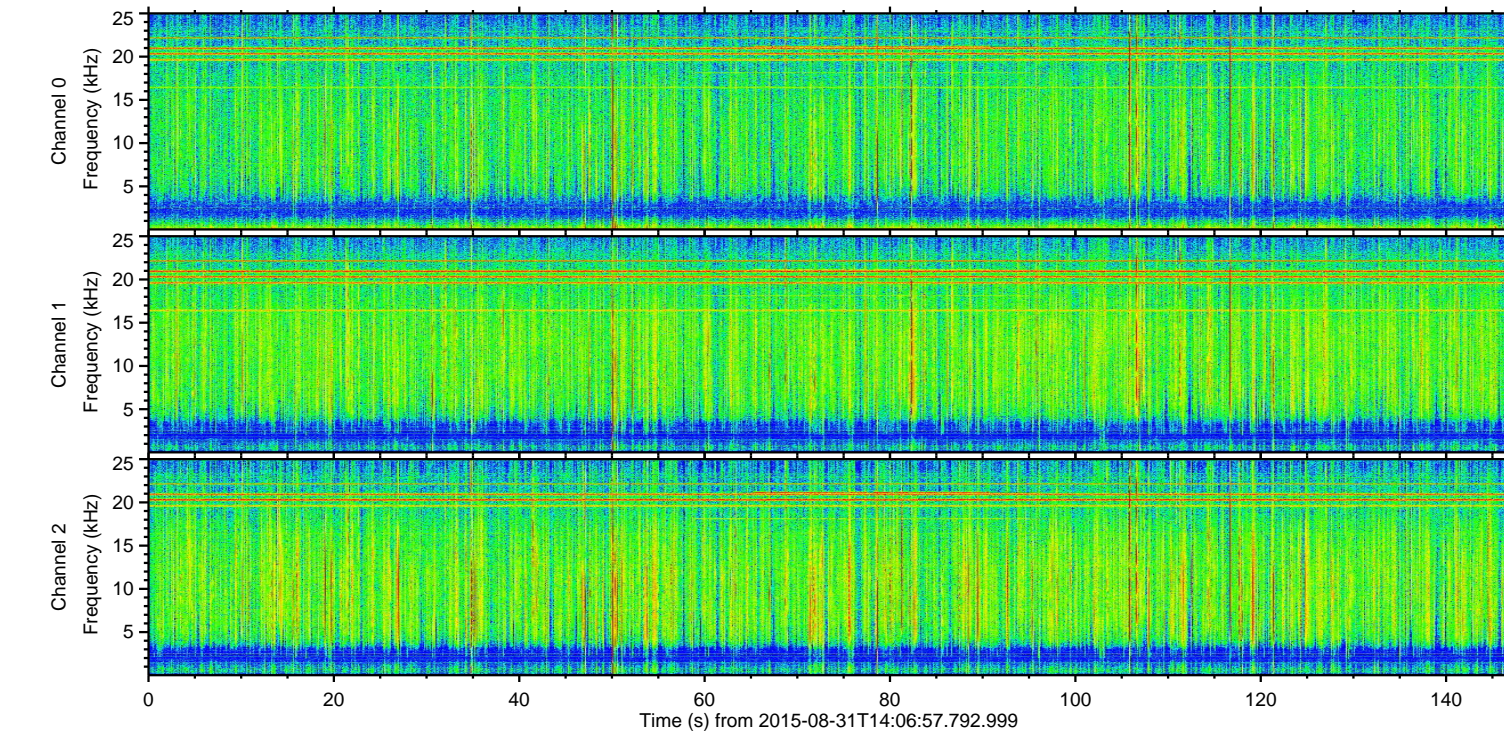
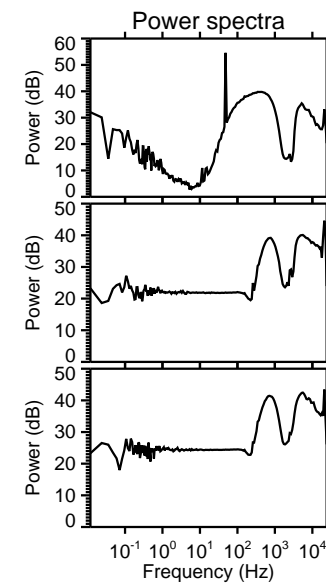
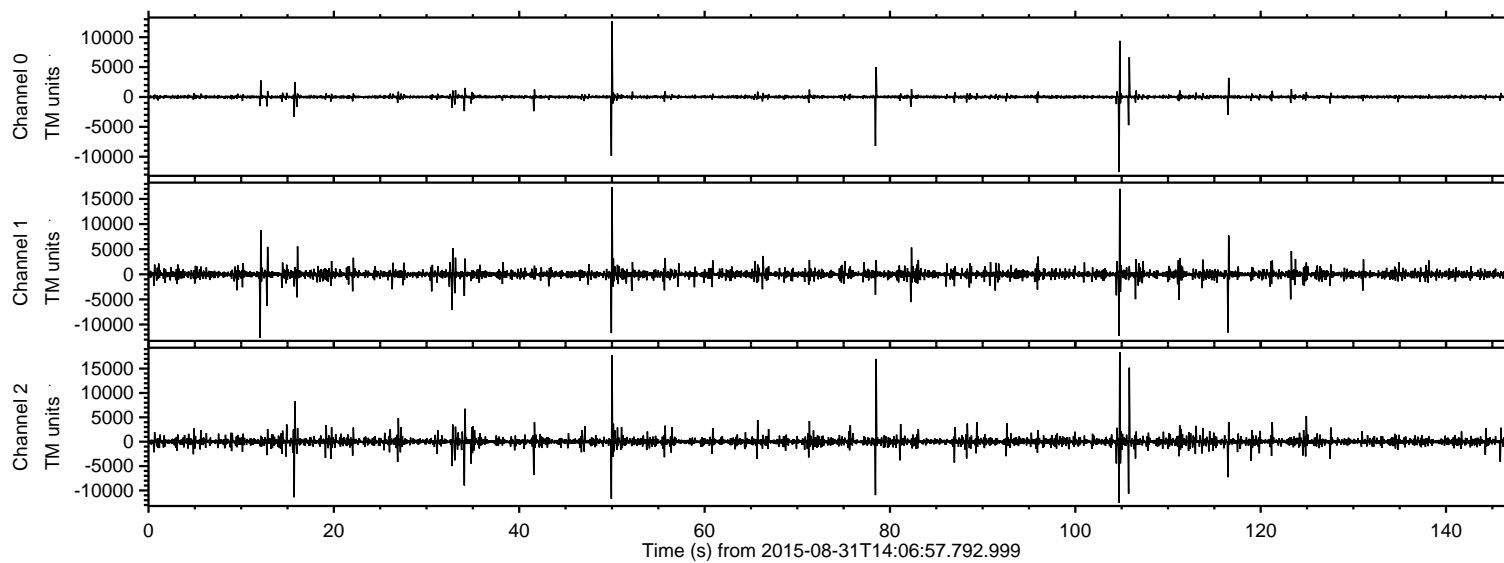


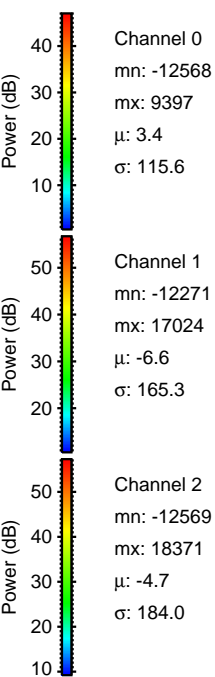
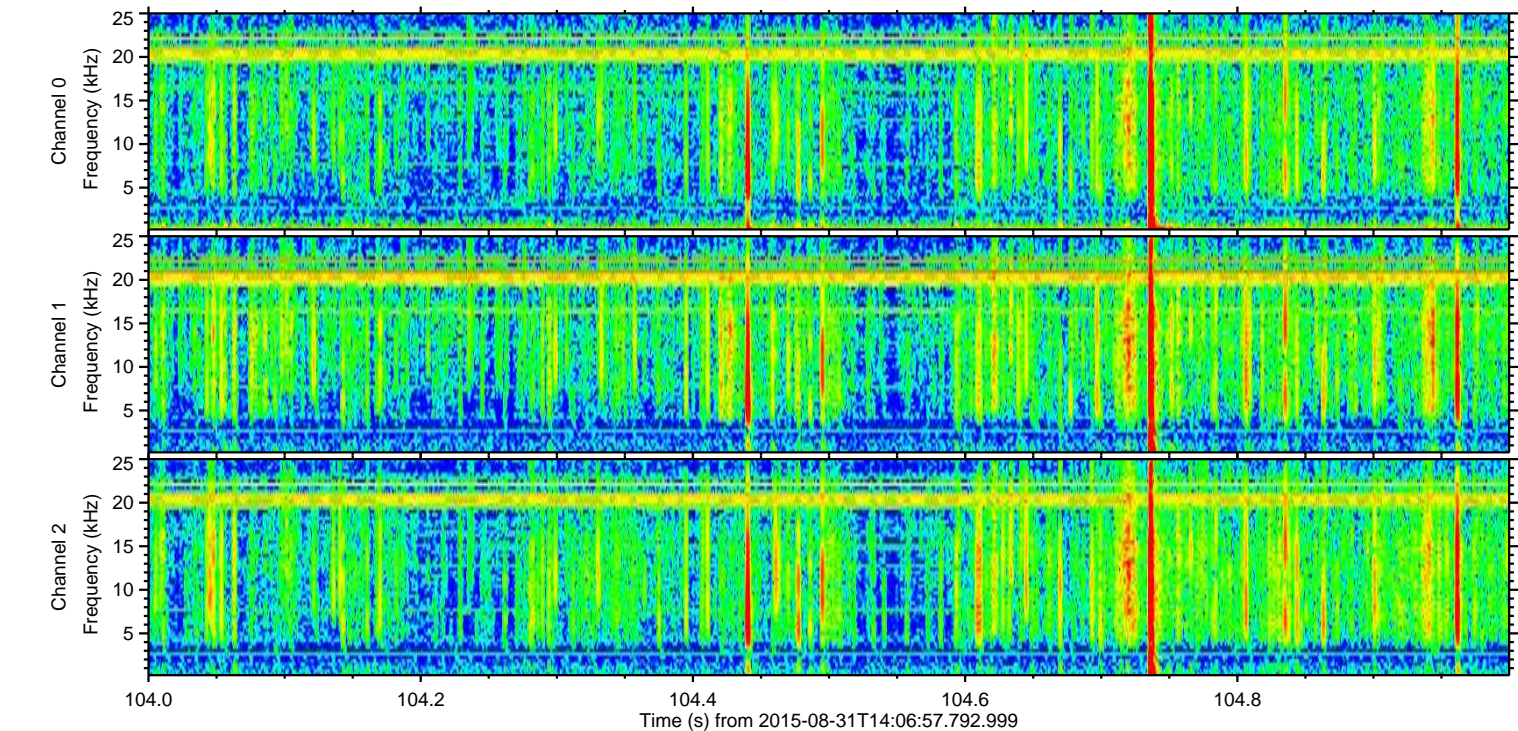
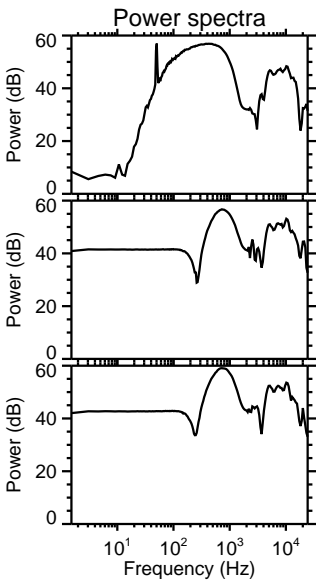
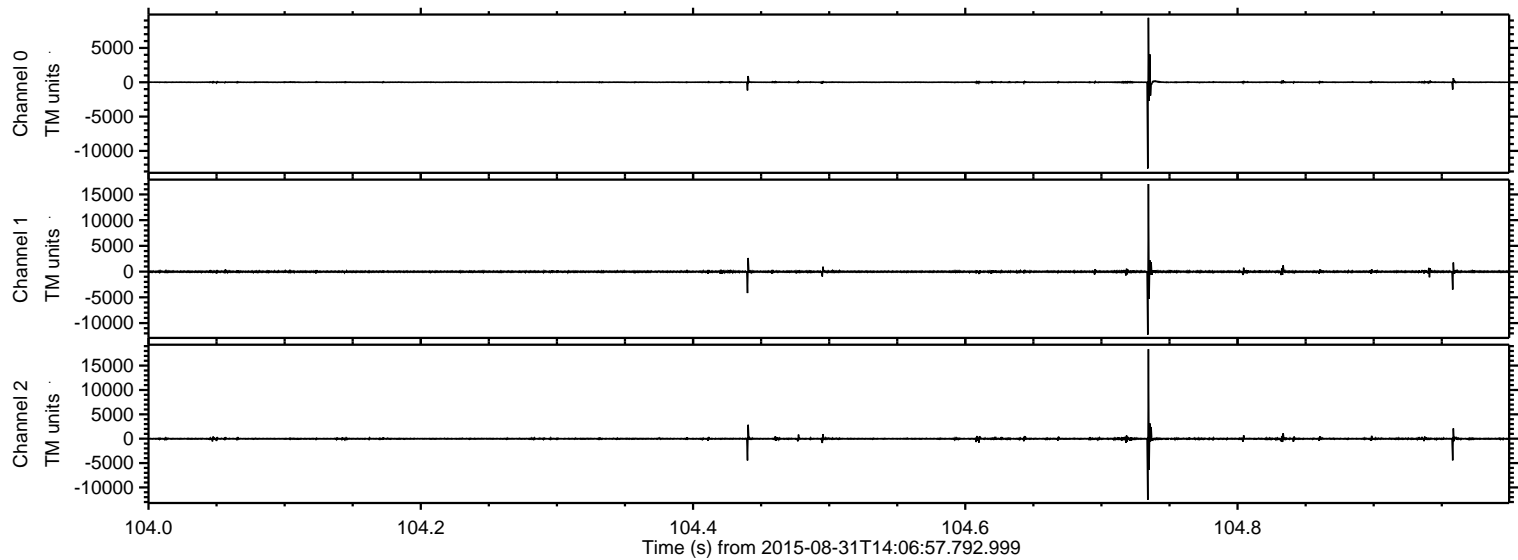
ELMAVAN 3D WAVEFORMS (Measured data sampled at 50 kHz) 51000 packets of 144 samples from 2015-08-31T14:06:57.792.999.

Processed Thu Oct 8 13:33:50 2015 by ELM ver.2012-10-06 from 001__elm20150831_140656__dat00.bin

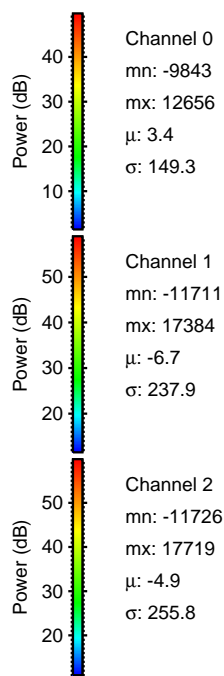
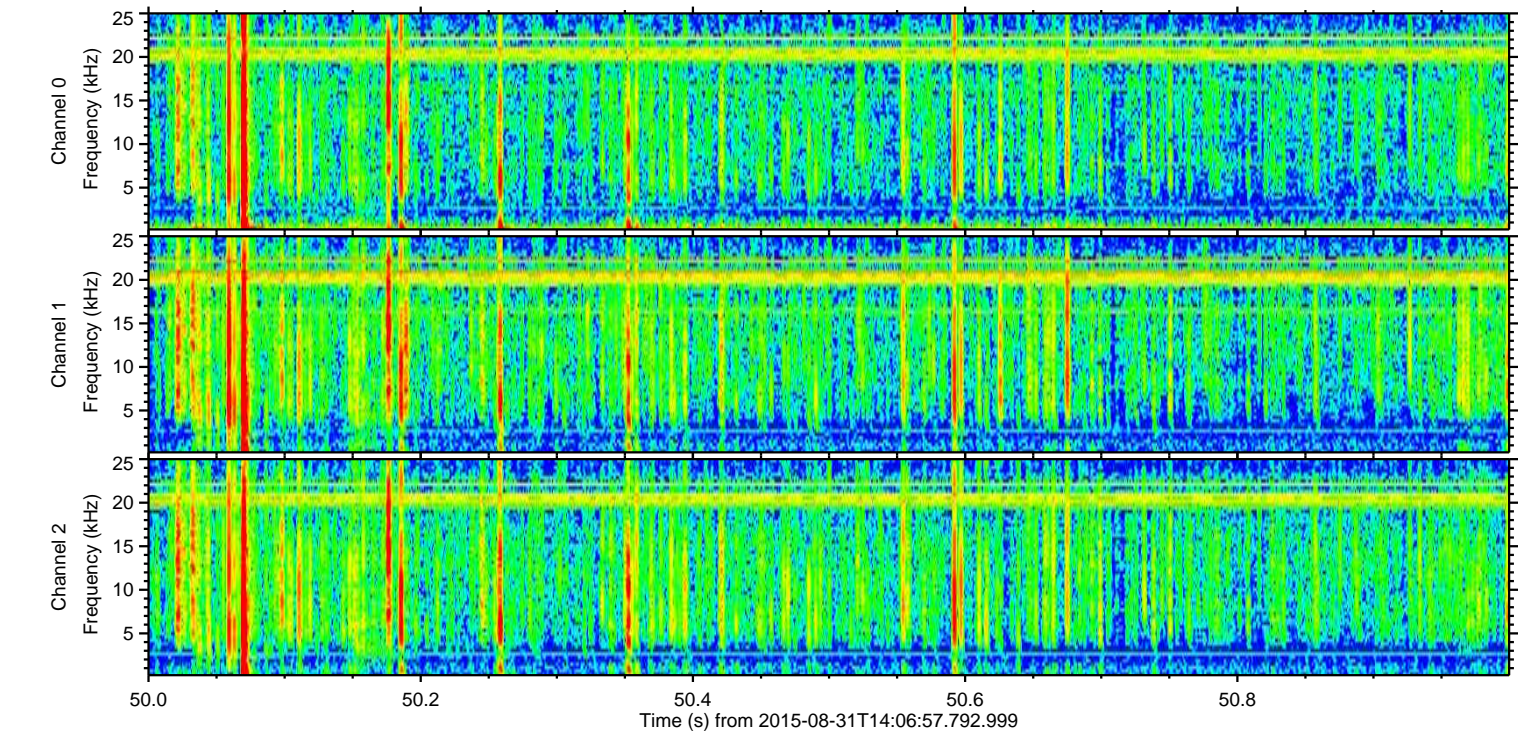
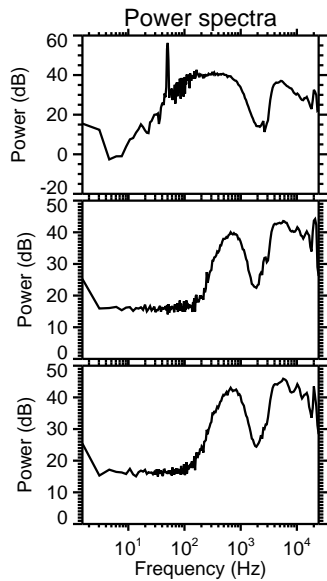
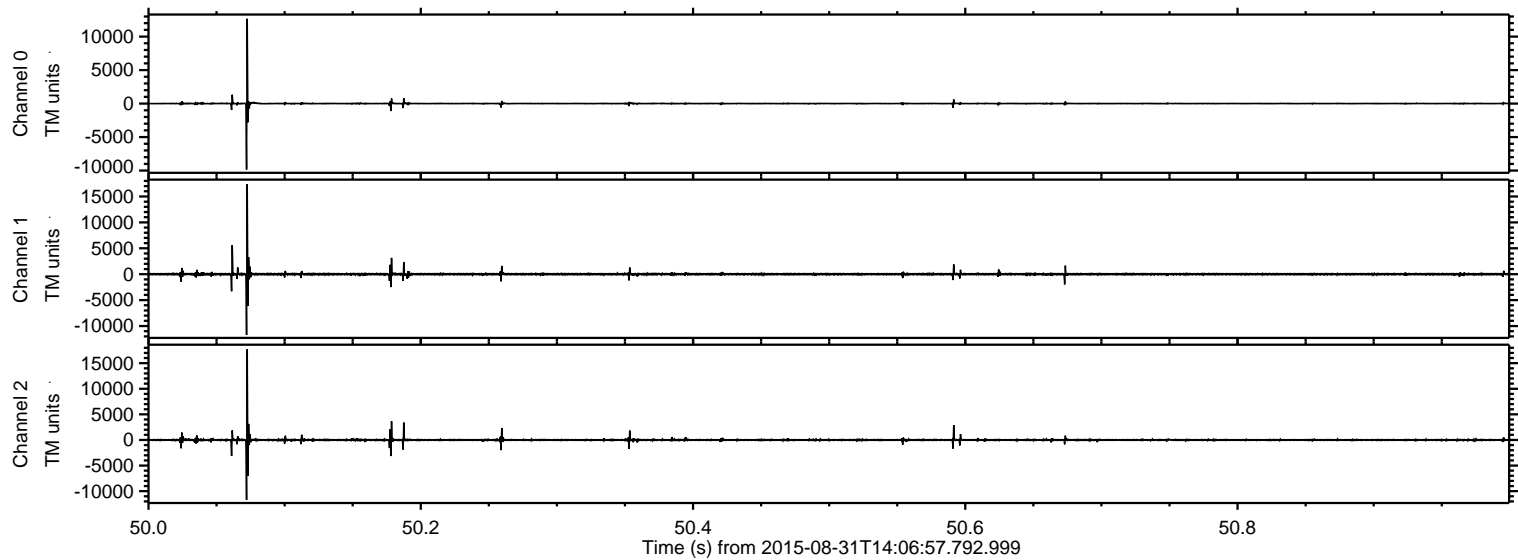


ELMAVAN 3D WAVEFORMS (Measured data sampled at 50 kHz) 51000 packets of 144 samples from 2015-08-31T14:06:57.792.999. Part 105/147

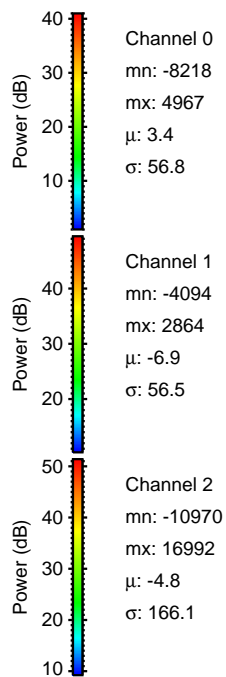
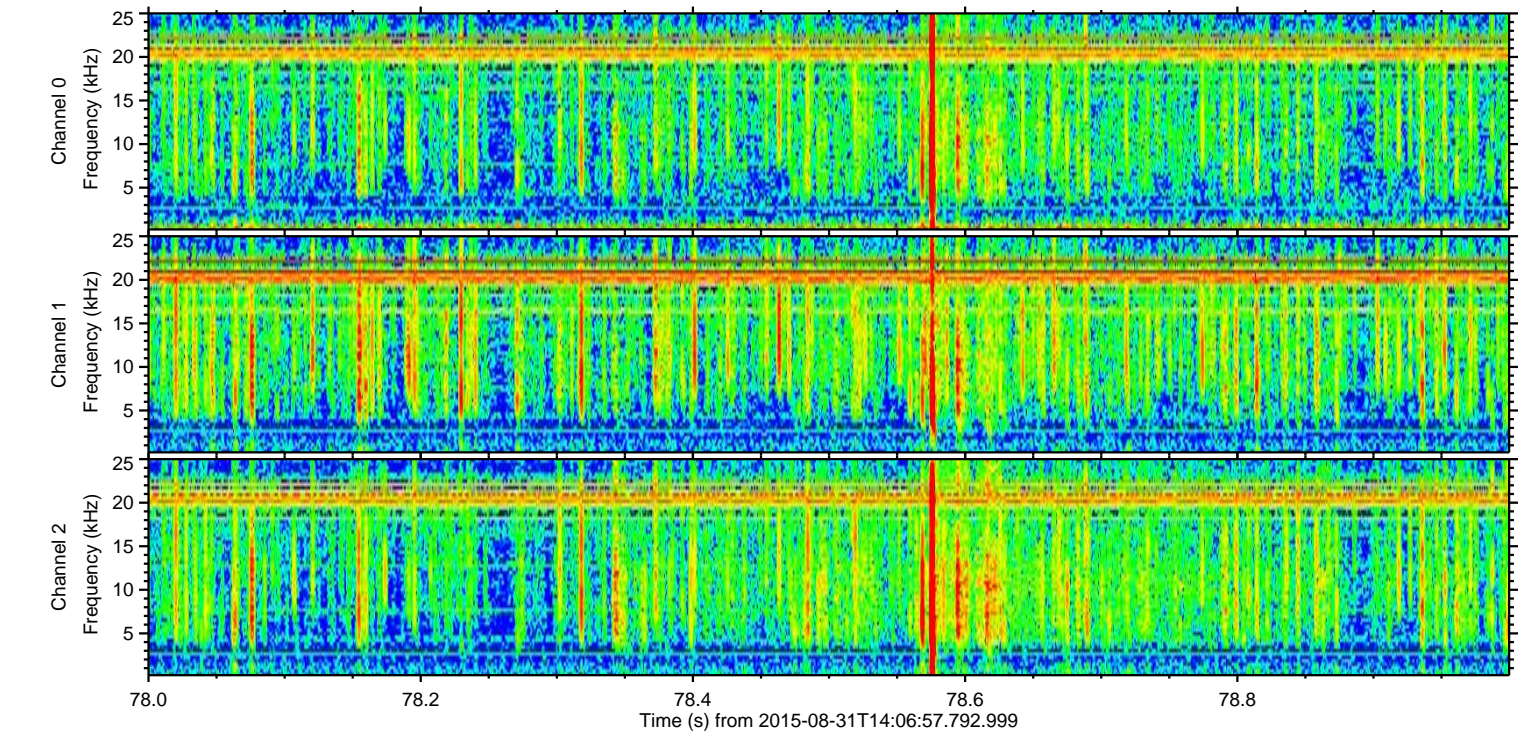
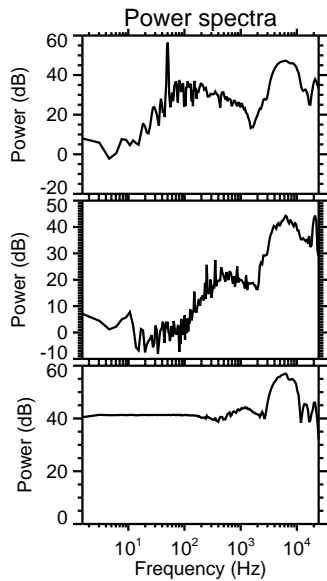
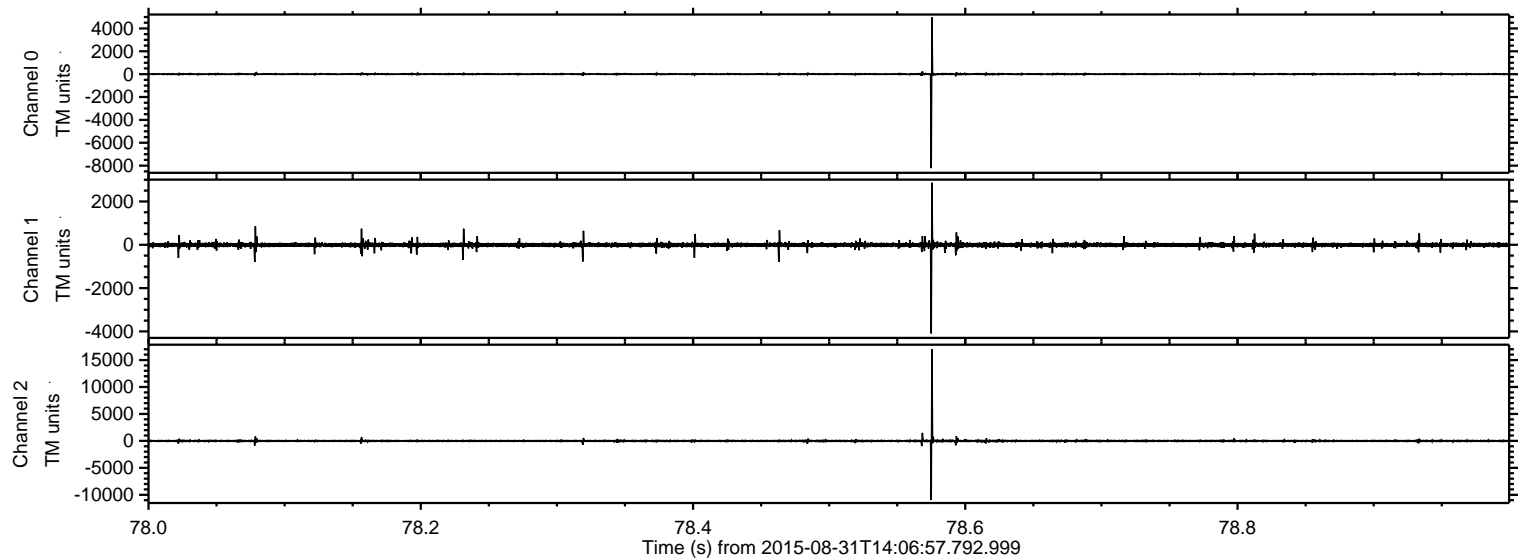
Processed Thu Oct 8 13:34:06 2015 by ELM ver.2012-10-06 from 001__elm20150831_140656__dat00.bin



Processed Thu Oct 8 13:34:07 2015 by ELM ver.2012-10-06 from 001__elm20150831_140656__dat00.bin

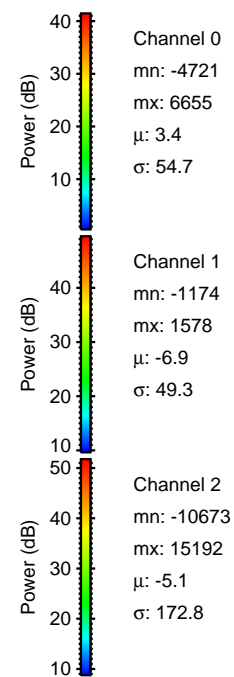
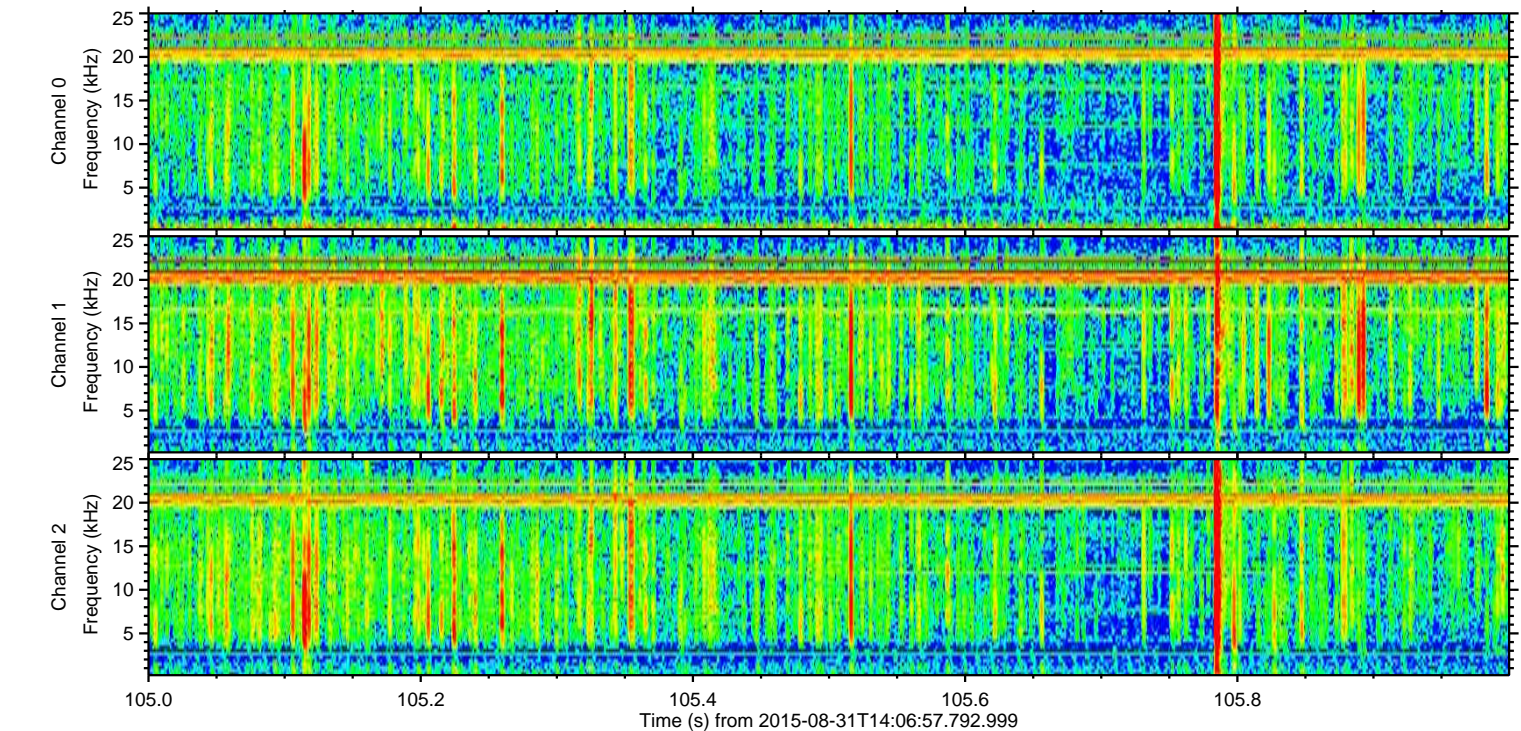
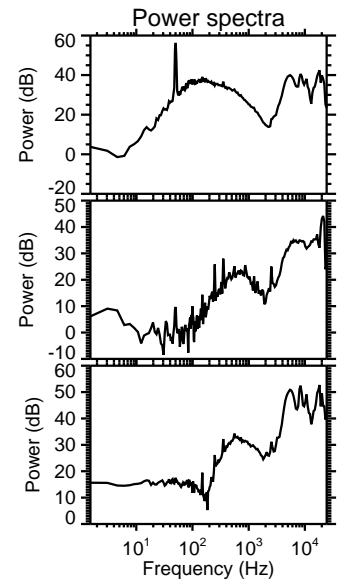
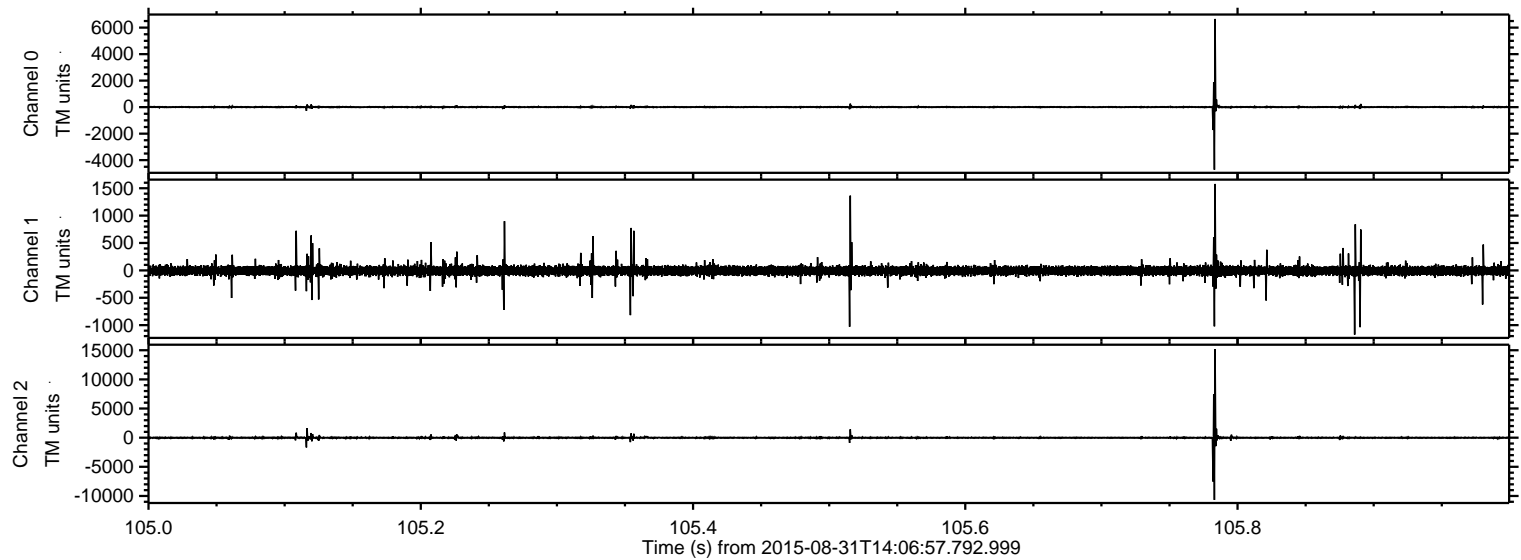


Processed Thu Oct 8 13:34:08 2015 by ELM ver.2012-10-06 from 001__elm20150831_140656__dat00.bin



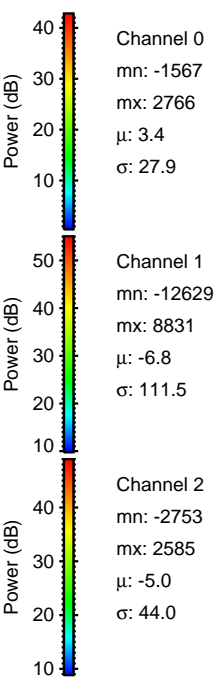
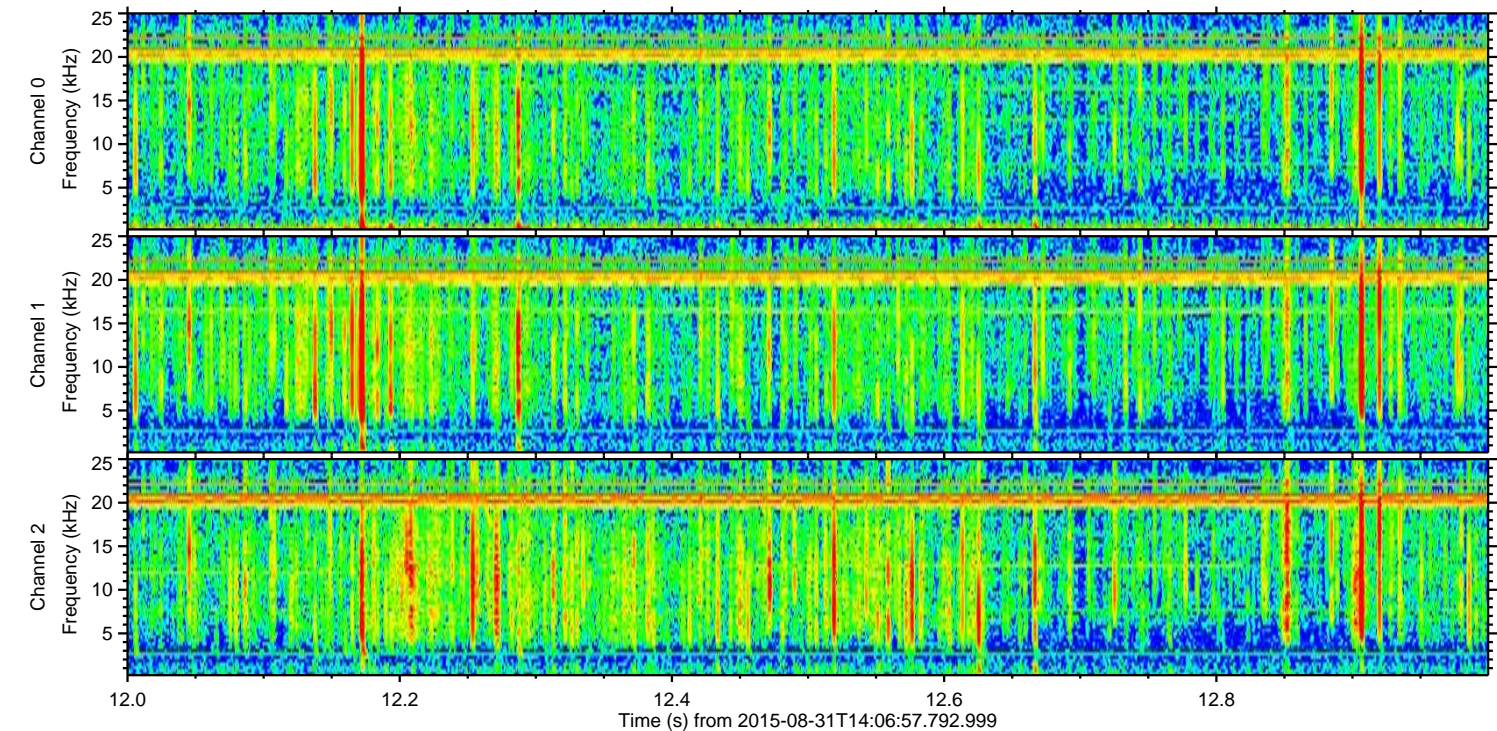
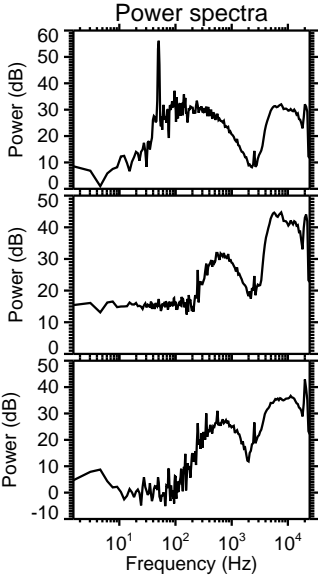
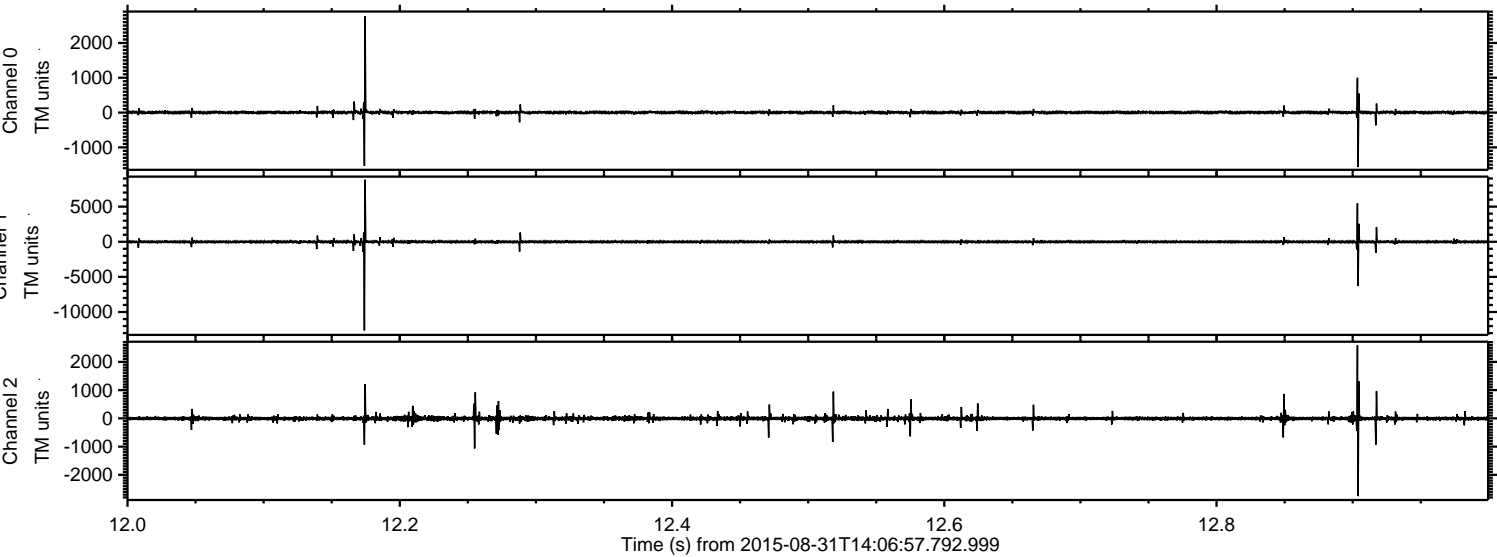
ELMAVAN 3D WAVEFORMS (Measured data sampled at 50 kHz) 51000 packets of 144 samples from 2015-08-31T14:06:57.792.999. Part 106/147

Processed Thu Oct 8 13:34:09 2015 by ELM ver.2012-10-06 from 001__elm20150831_140656__dat00.bin



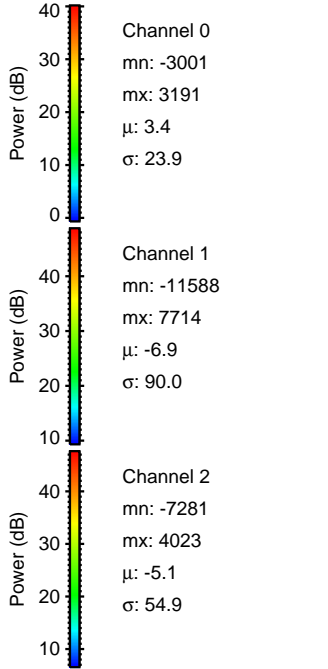
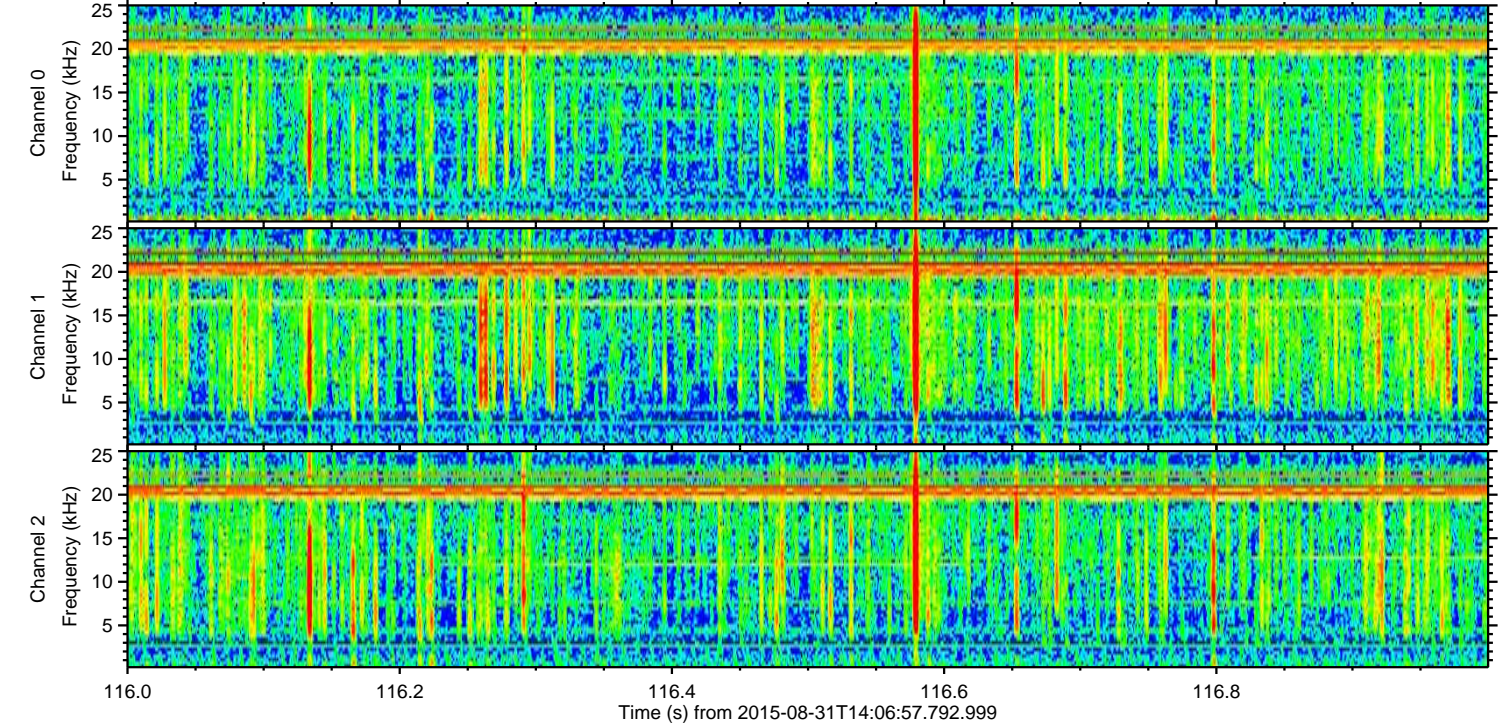
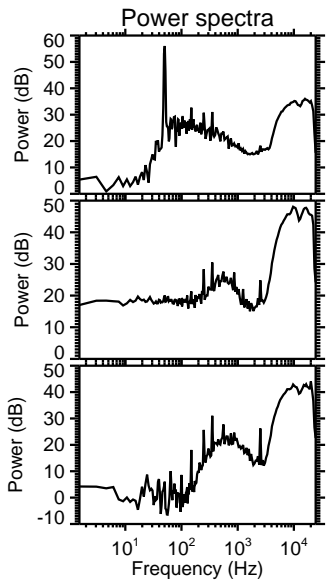
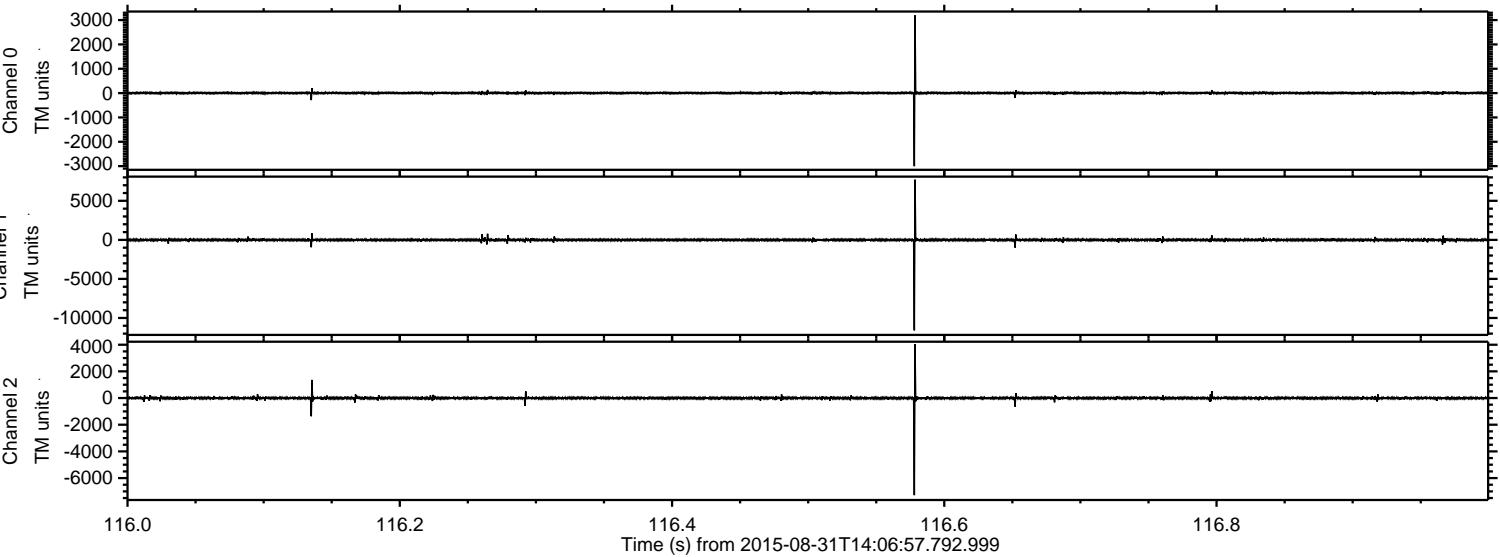
ELMAVAN 3D WAVEFORMS (Measured data sampled at 50 kHz) 51000 packets of 144 samples from 2015-08-31T14:06:57.792.999. Part 13/147

Processed Thu Oct 8 13:34:10 2015 by ELM ver.2012-10-06 from 001__elm20150831_140656__dat00.bin

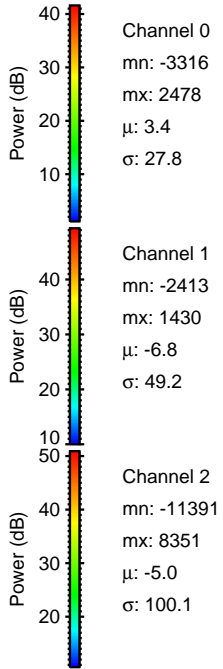
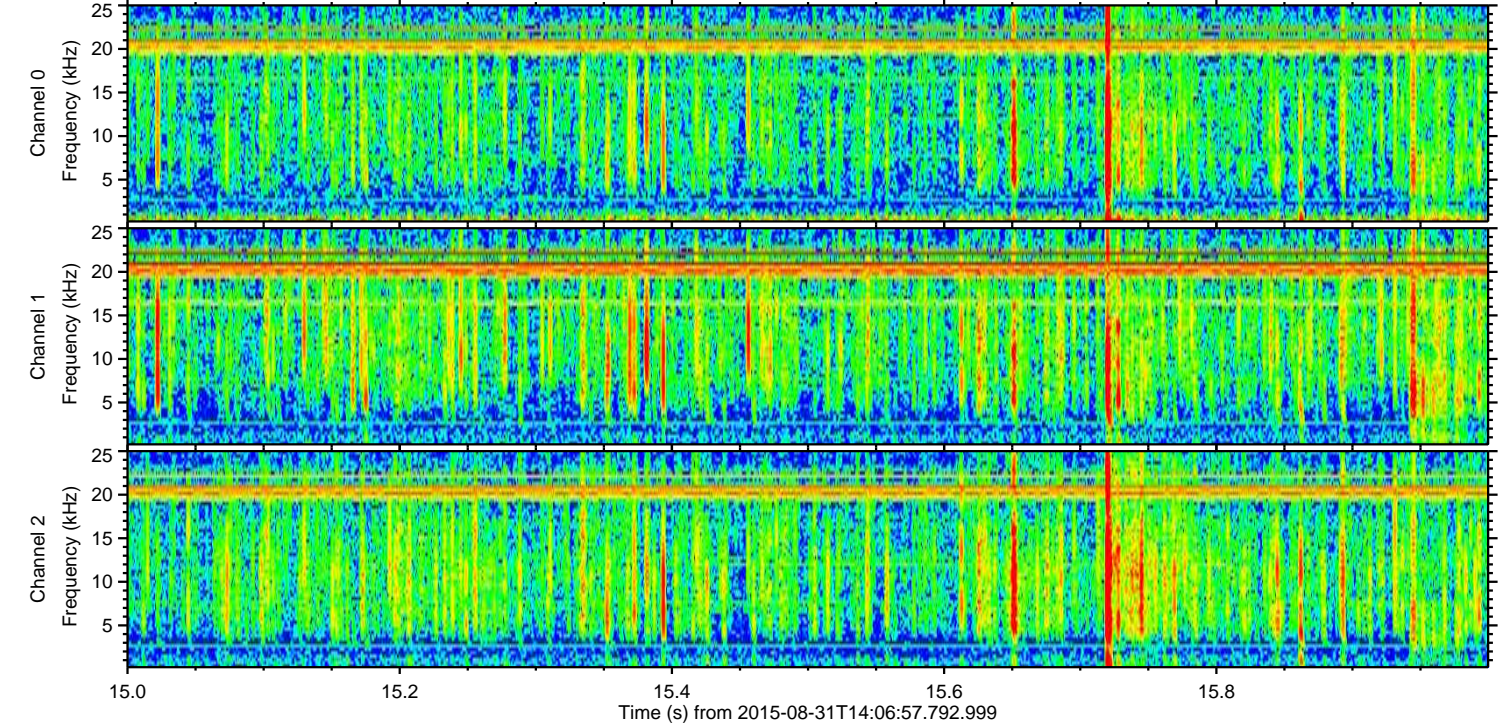
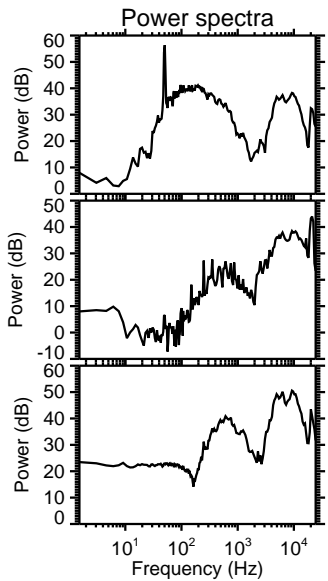
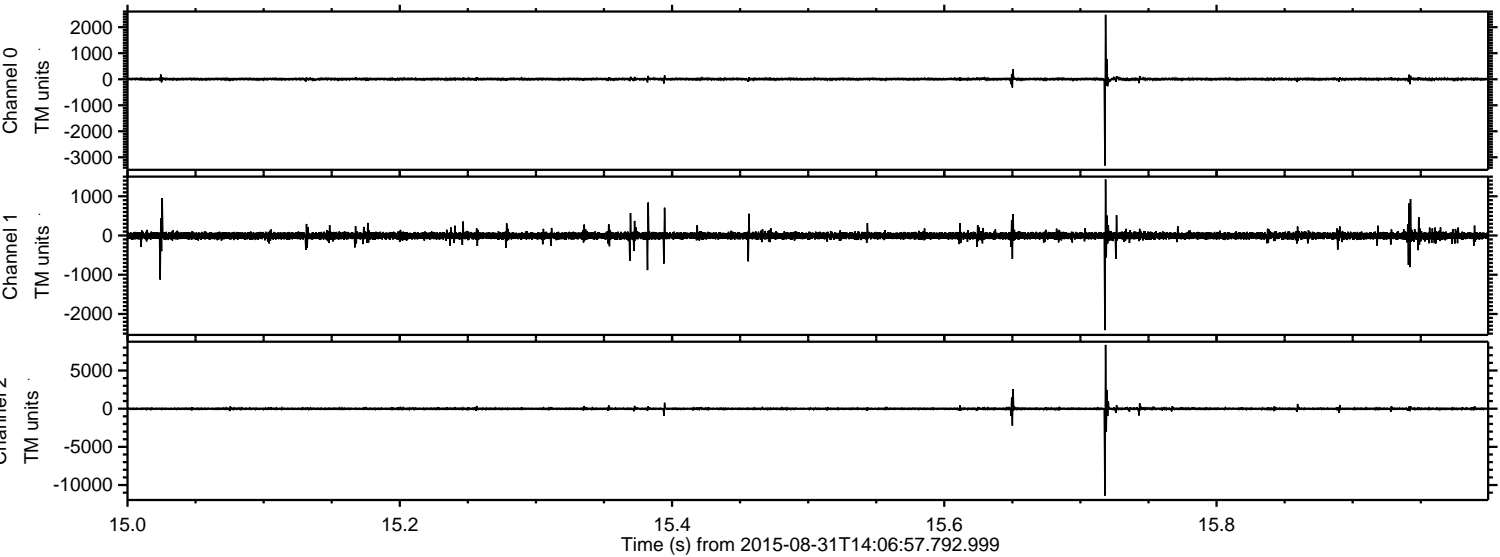


ELMAVAN 3D WAVEFORMS (Measured data sampled at 50 kHz) 51000 packets of 144 samples from 2015-08-31T14:06:57.792.999. Part 117/147

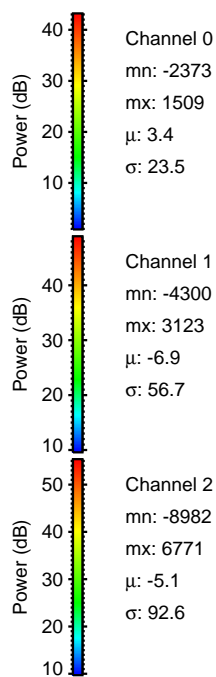
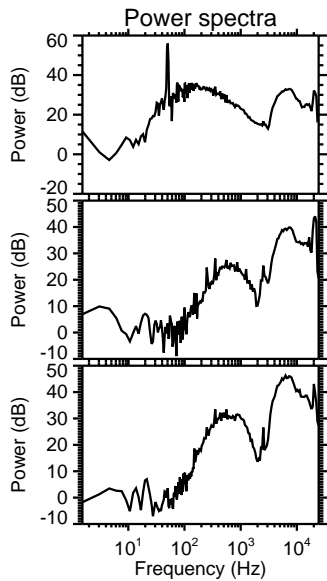
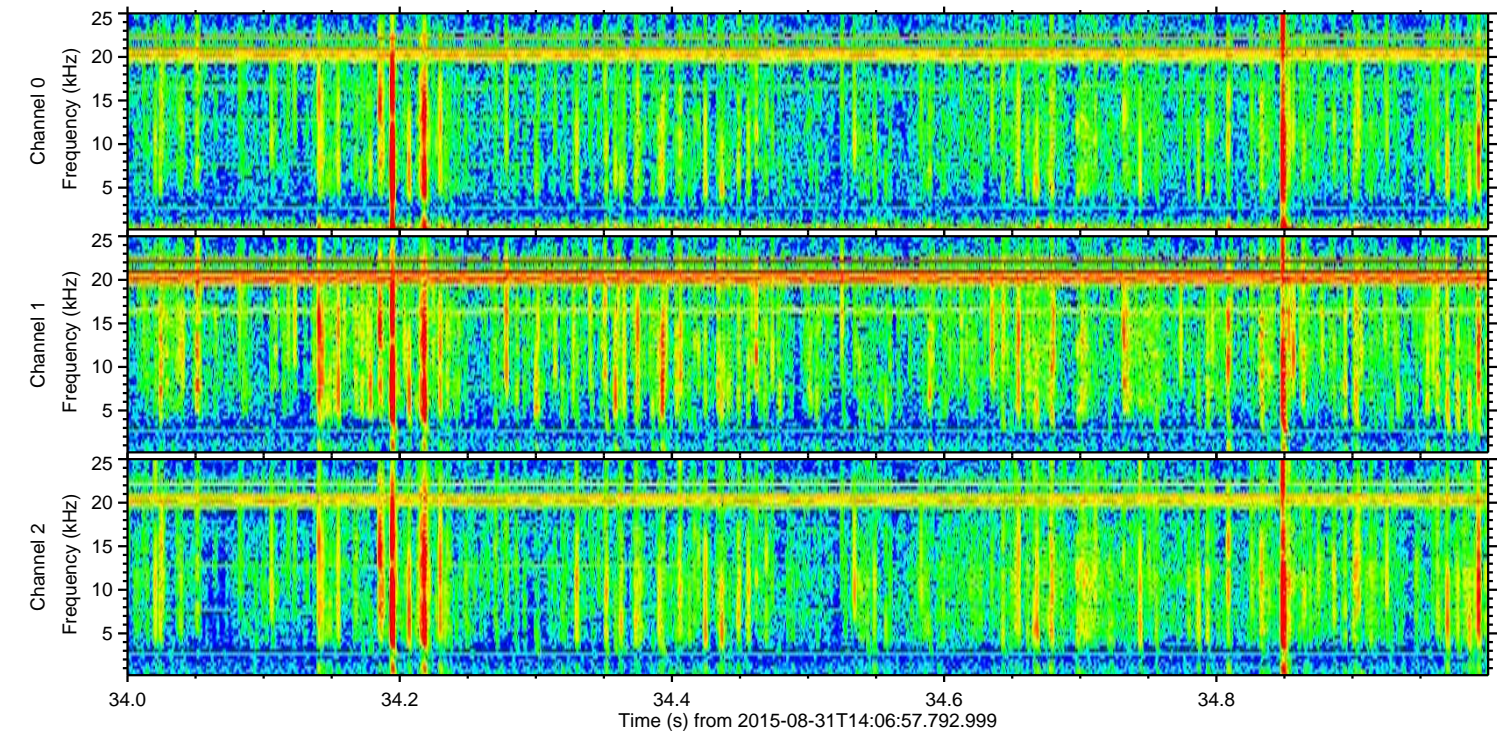
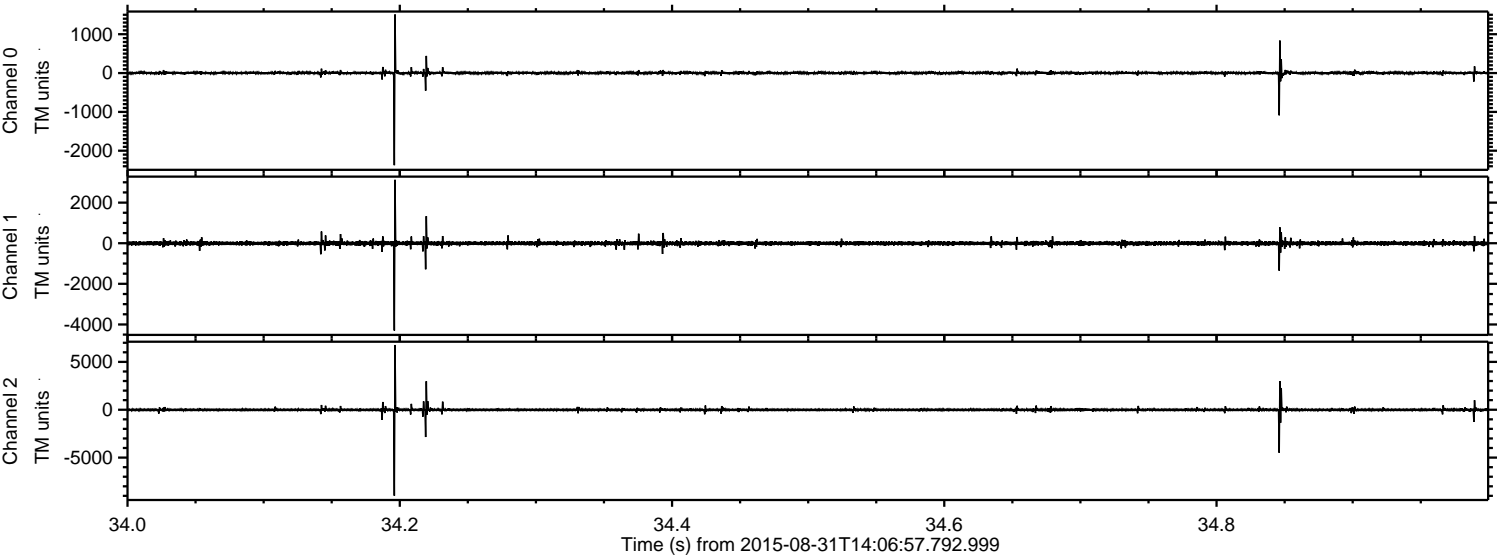
Processed Thu Oct 8 13:34:11 2015 by ELM ver.2012-10-06 from 001__elm20150831_140656__dat00.bin



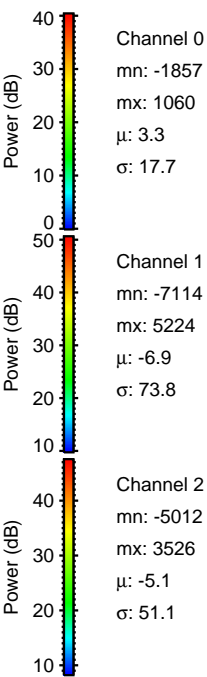
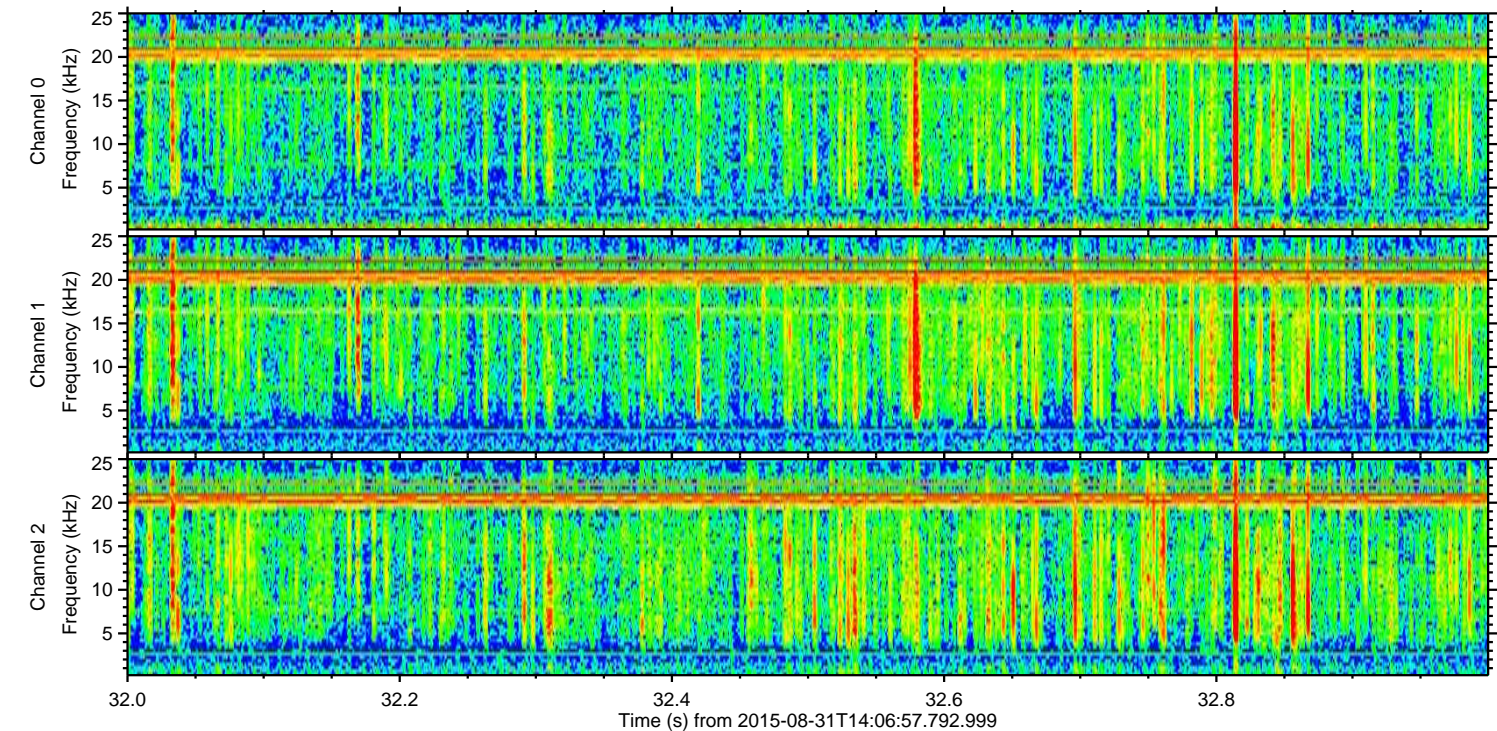
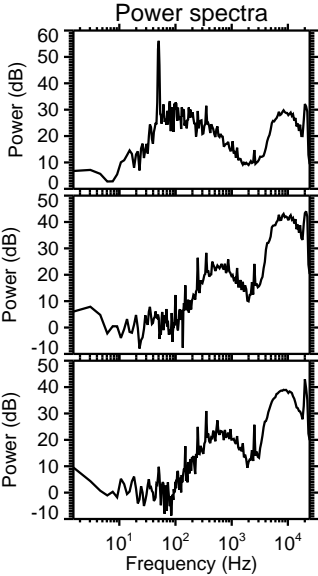
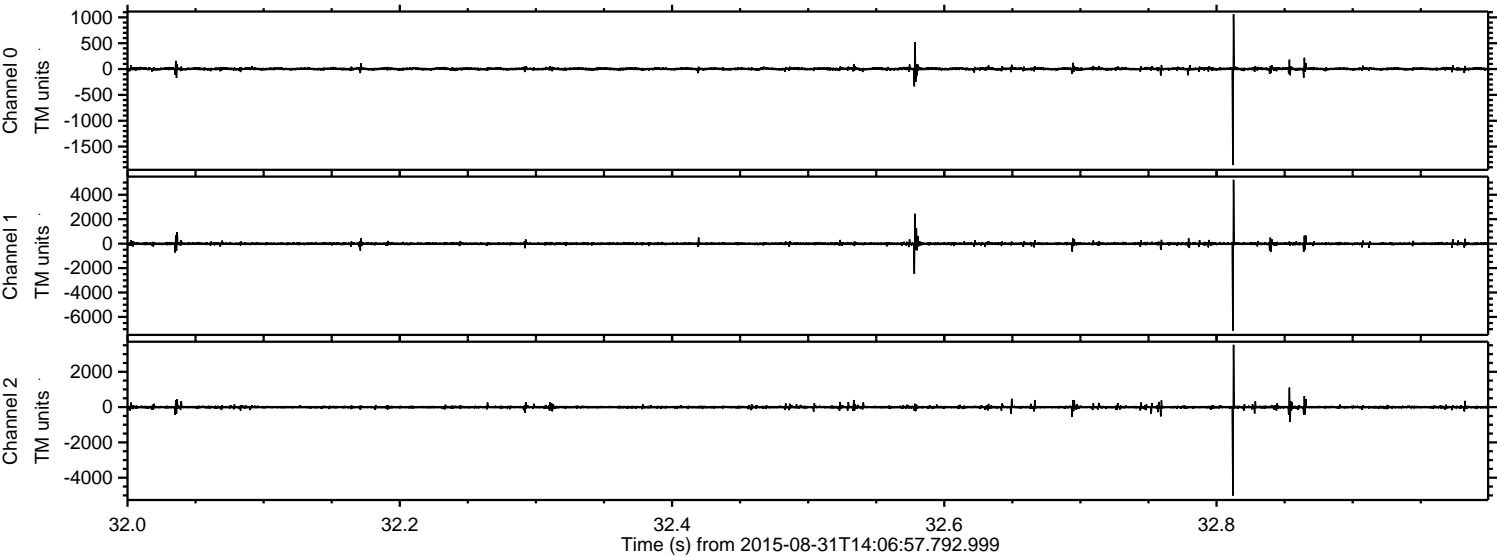
Processed Thu Oct 8 13:34:12 2015 by ELM ver.2012-10-06 from 001__elm20150831_140656__dat00.bin



Processed Thu Oct 8 13:34:13 2015 by ELM ver.2012-10-06 from 001__elm20150831_140656__dat00.bin



Processed Thu Oct 8 13:34:14 2015 by ELM ver.2012-10-06 from 001__elm20150831_140656__dat00.bin



Channel 0
mn: -1857
mx: 1060
 μ : 3.3
 σ : 17.7

Channel 1
mn: -7114
mx: 5224
 μ : -6.9
 σ : 73.8

Channel 2
mn: -5012
mx: 3526
 μ : -5.1
 σ : 51.1

Processed Thu Oct 8 13:34:15 2015 by ELM ver.2012-10-06 from 001__elm20150831_140656__dat00.bin

