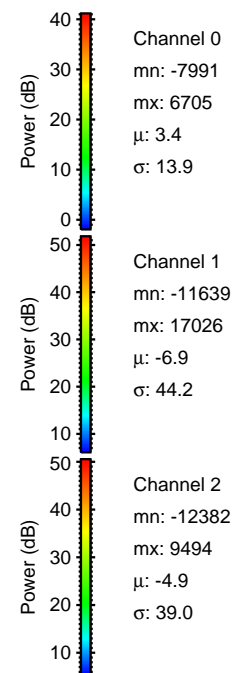
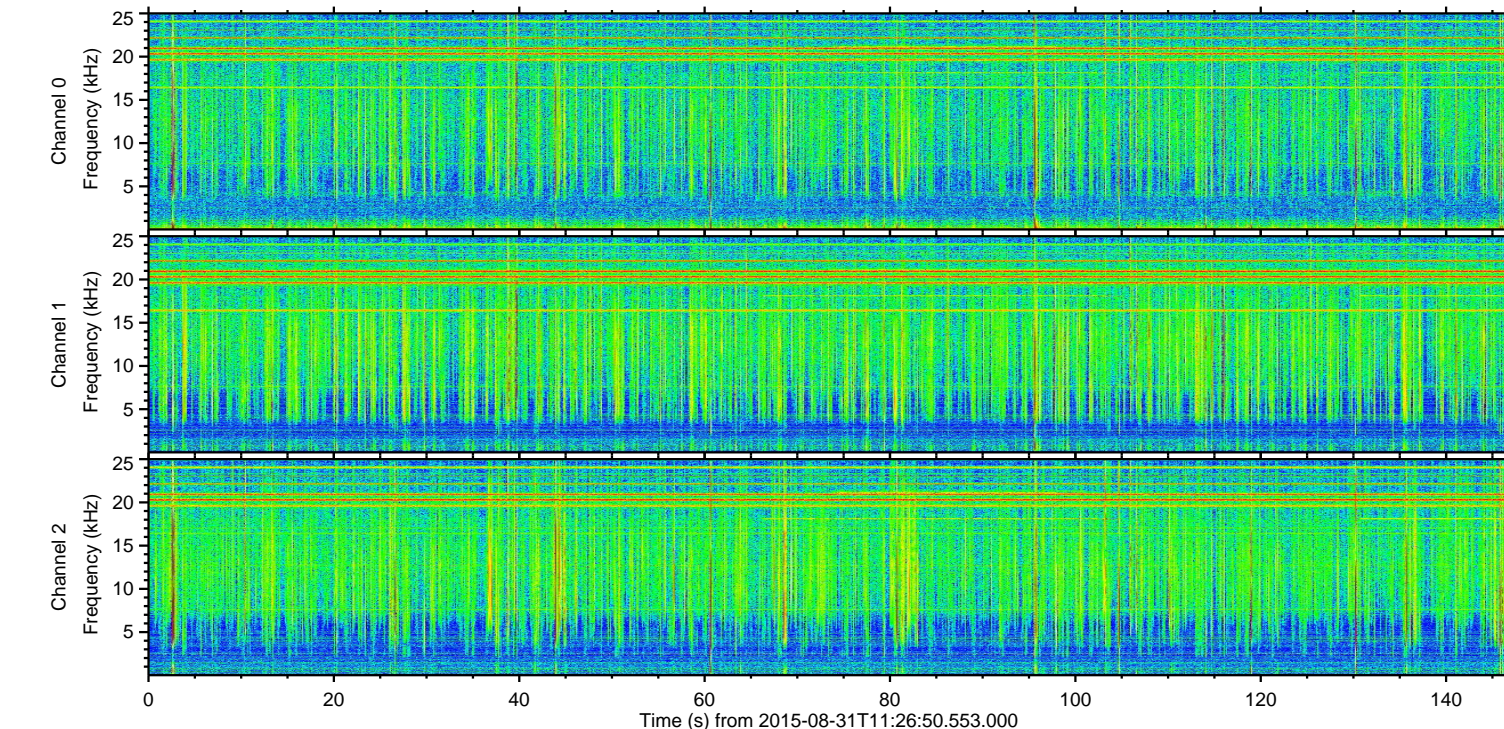
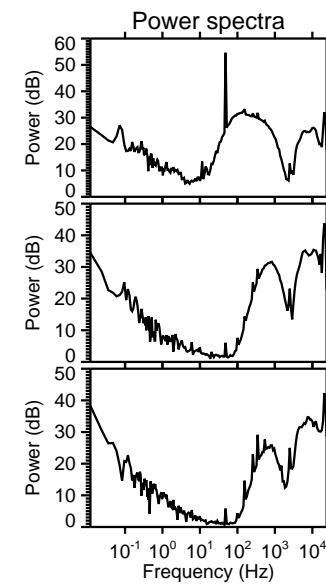
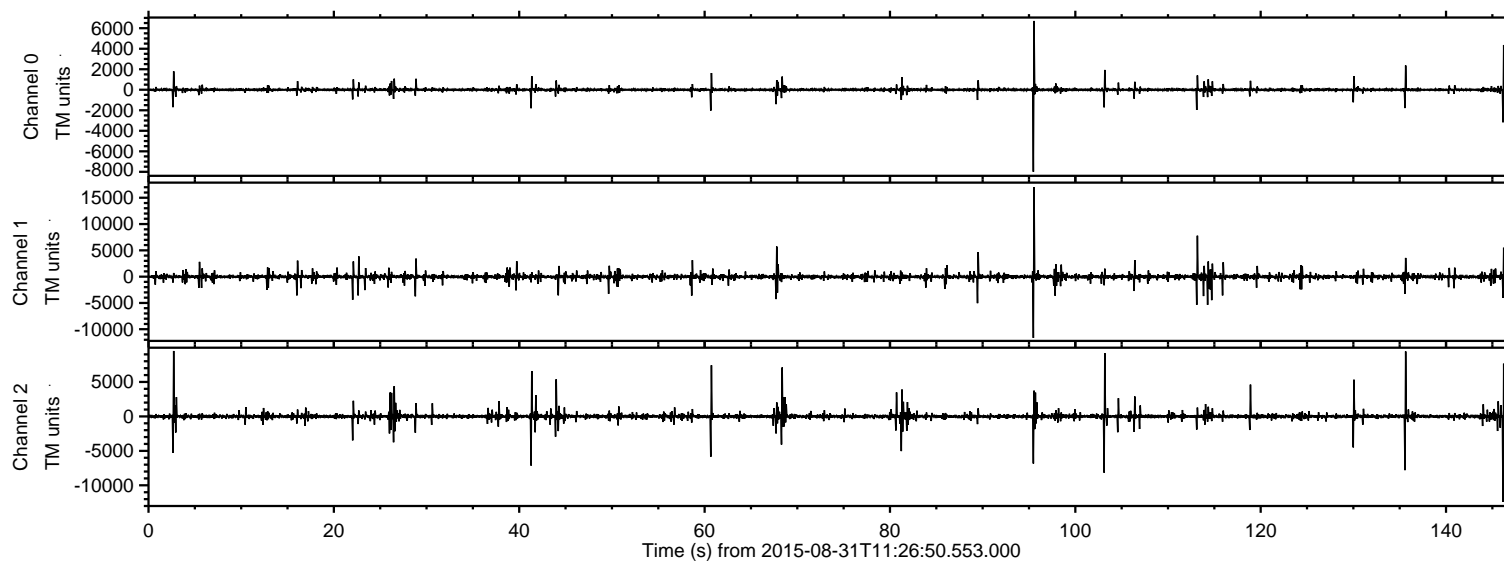


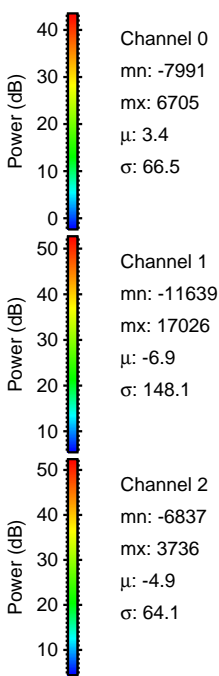
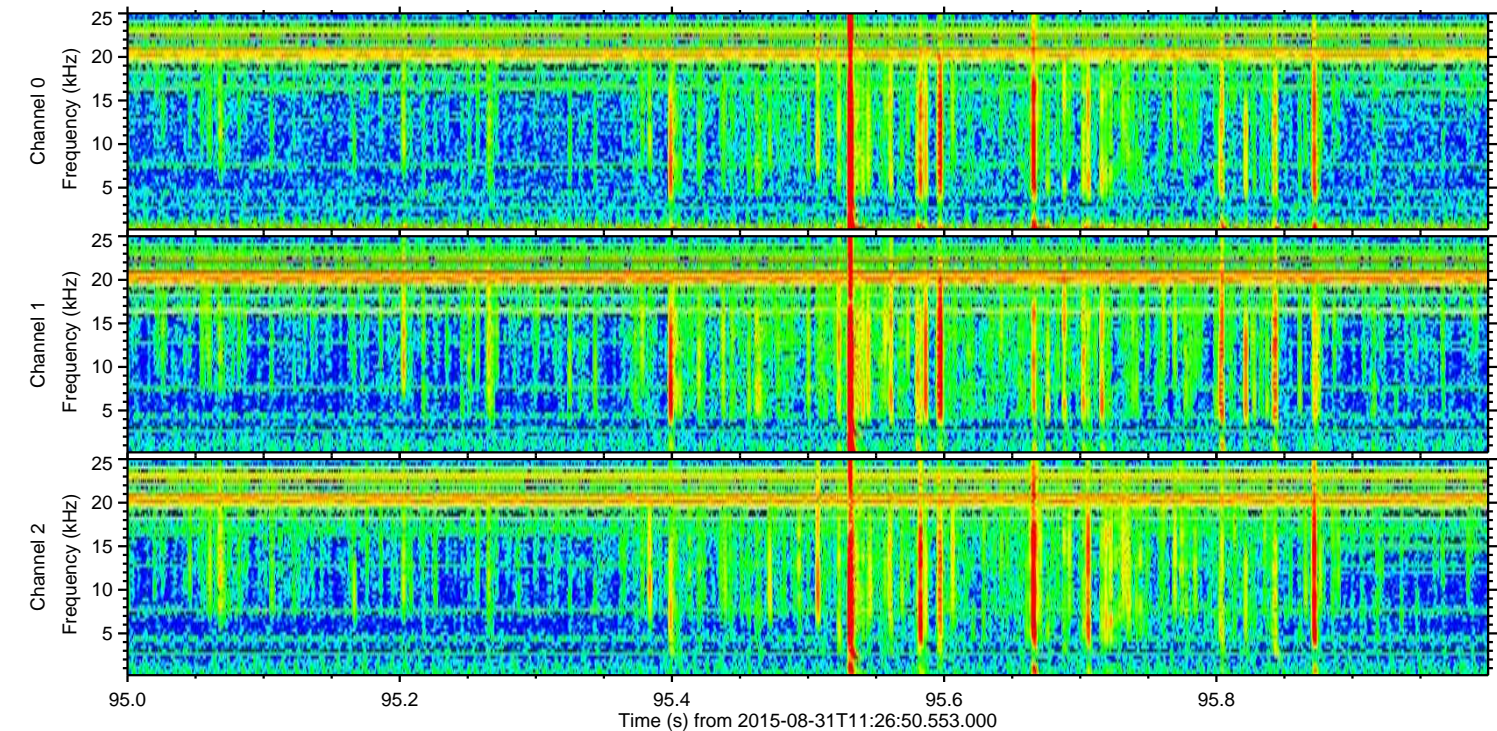
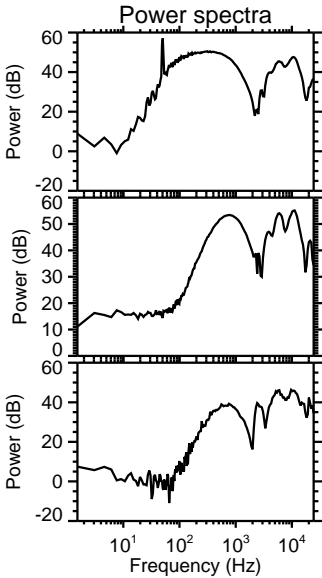
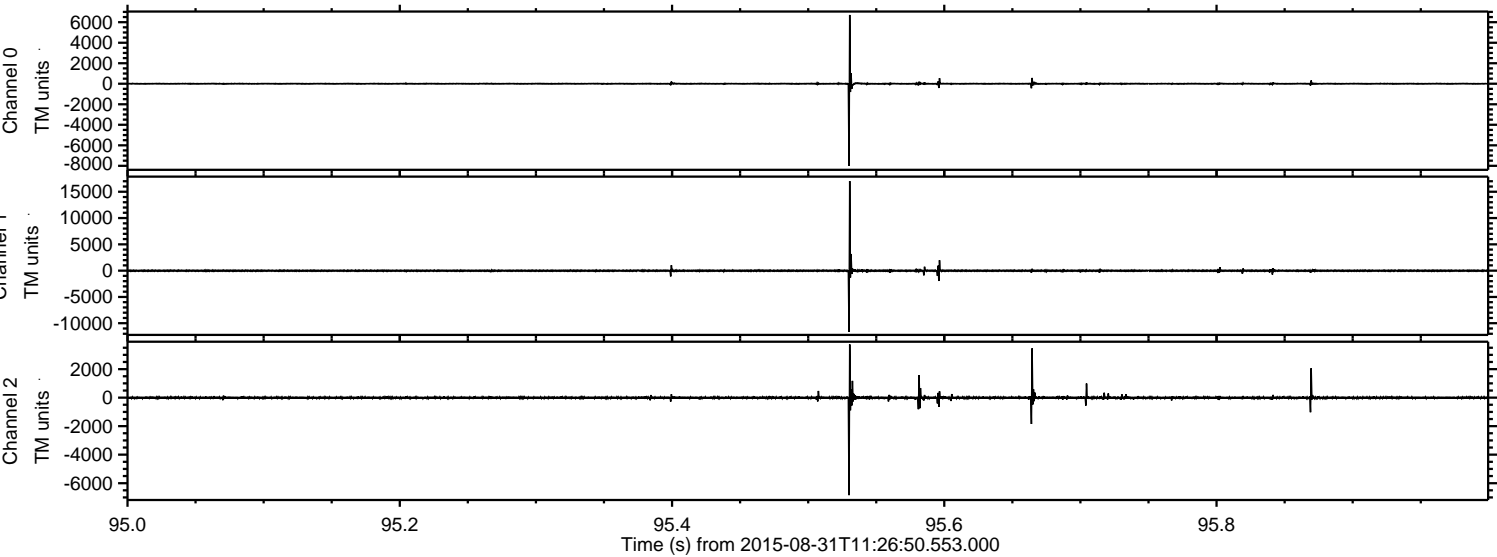
# ELMAVAN 3D WAVEFORMS (Measured data sampled at 50 kHz) 51000 packets of 144 samples from 2015-08-31T11:26:50.553.000.

Processed Thu Oct 8 12:49:39 2015 by ELM ver.2012-10-06 from 001\_\_elm20150831\_112649\_\_dat00.bin



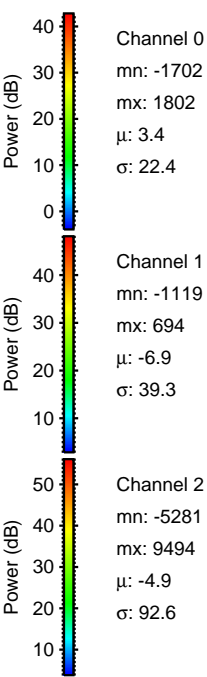
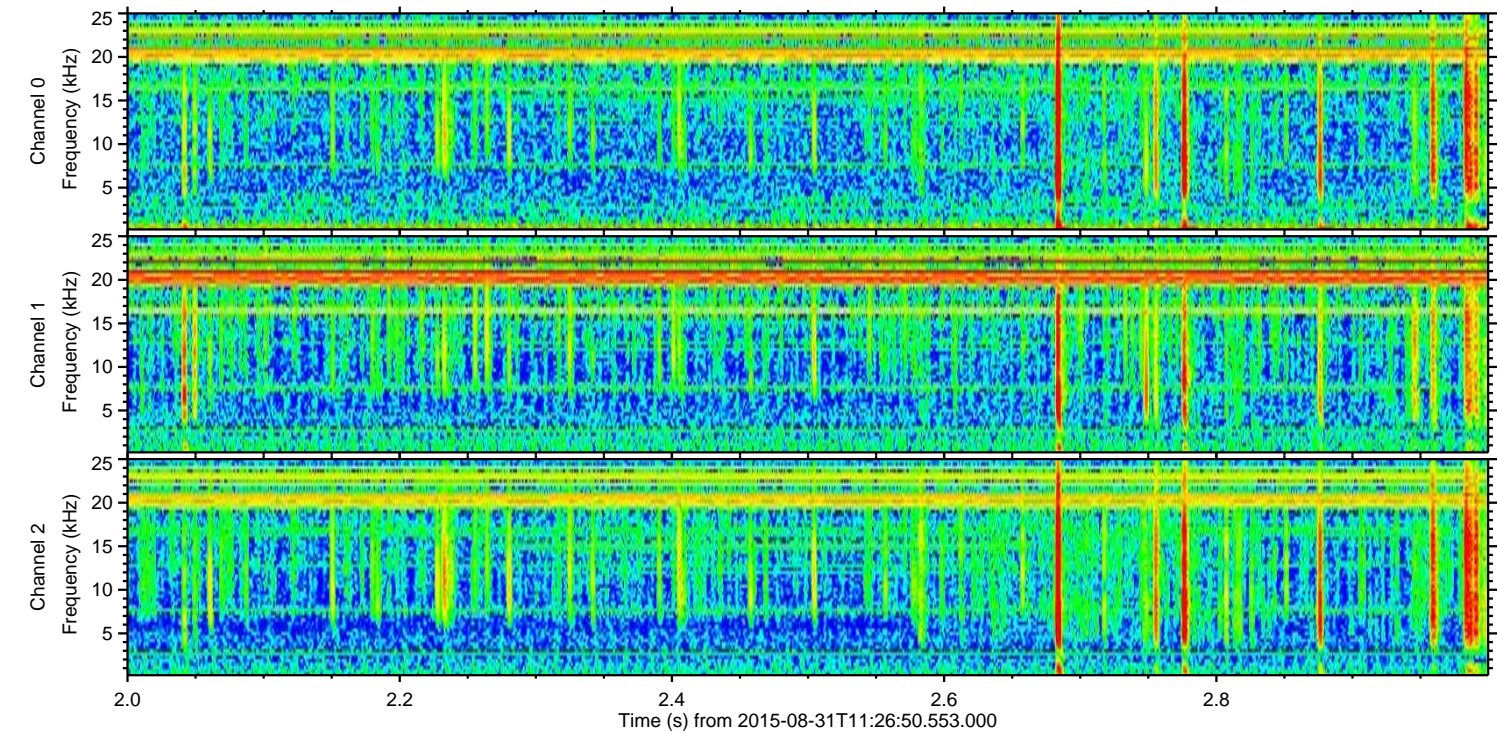
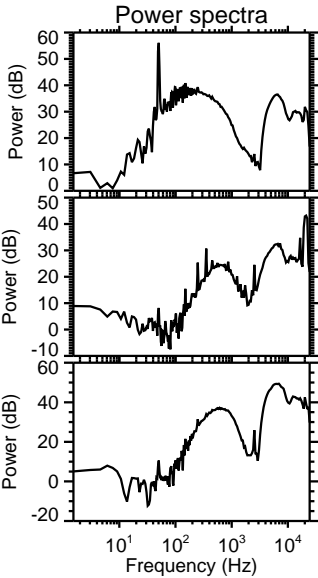
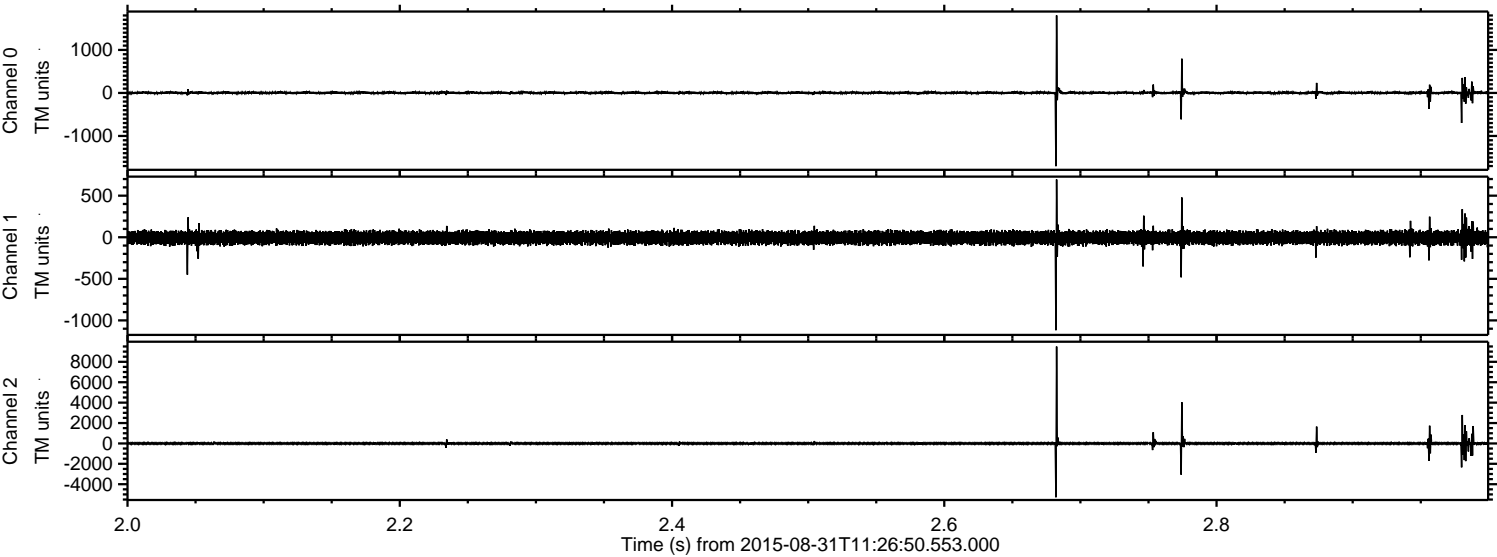


Processed Thu Oct 8 12:49:52 2015 by ELM ver.2012-10-06 from 001\_\_elm20150831\_112649\_\_dat00.bin





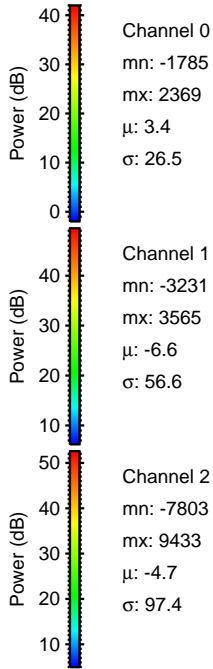
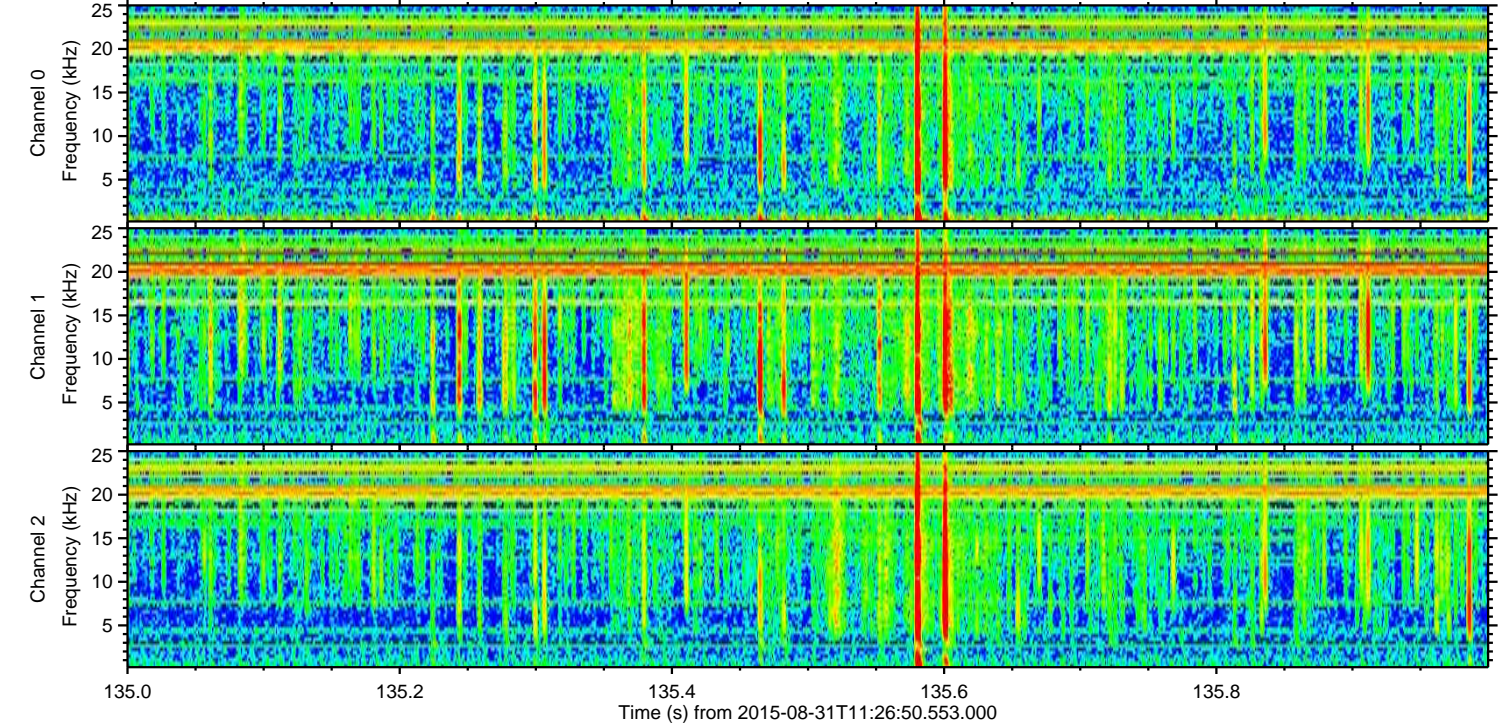
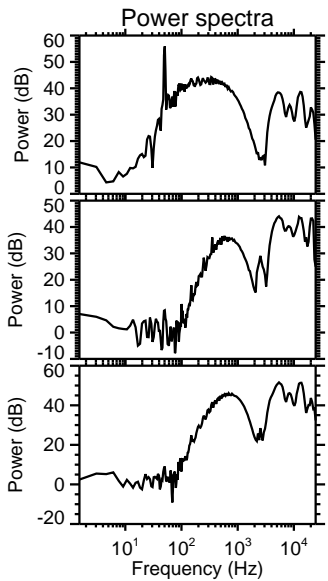
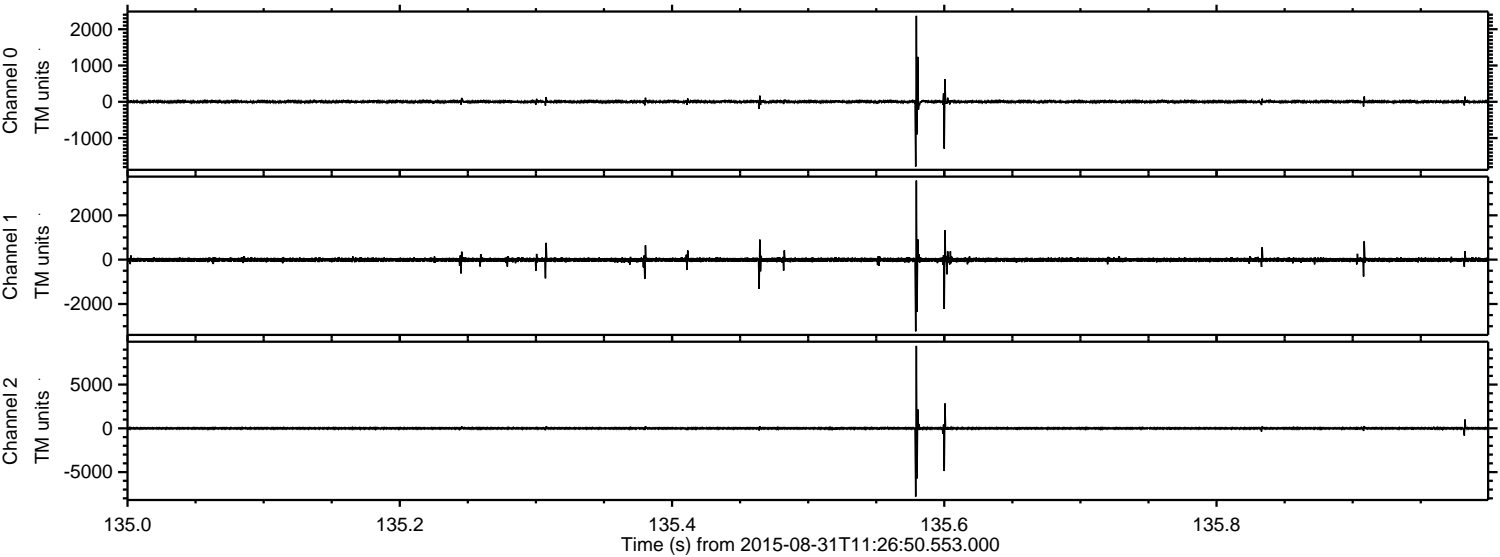
Processed Thu Oct 8 12:49:53 2015 by ELM ver.2012-10-06 from 001\_\_elm20150831\_112649\_\_dat00.bin





ELMAVAN 3D WAVEFORMS (Measured data sampled at 50 kHz) 51000 packets of 144 samples from 2015-08-31T11:26:50.553.000. Part 136/147

Processed Thu Oct 8 12:49:54 2015 by ELM ver.2012-10-06 from 001\_\_elm20150831\_112649\_\_dat00.bin



Channel 0  
mn: -1785  
mx: 2369  
 $\mu$ : 3.4  
 $\sigma$ : 26.5

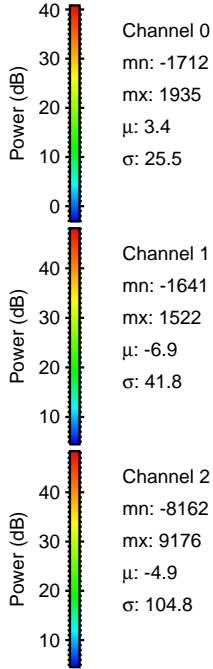
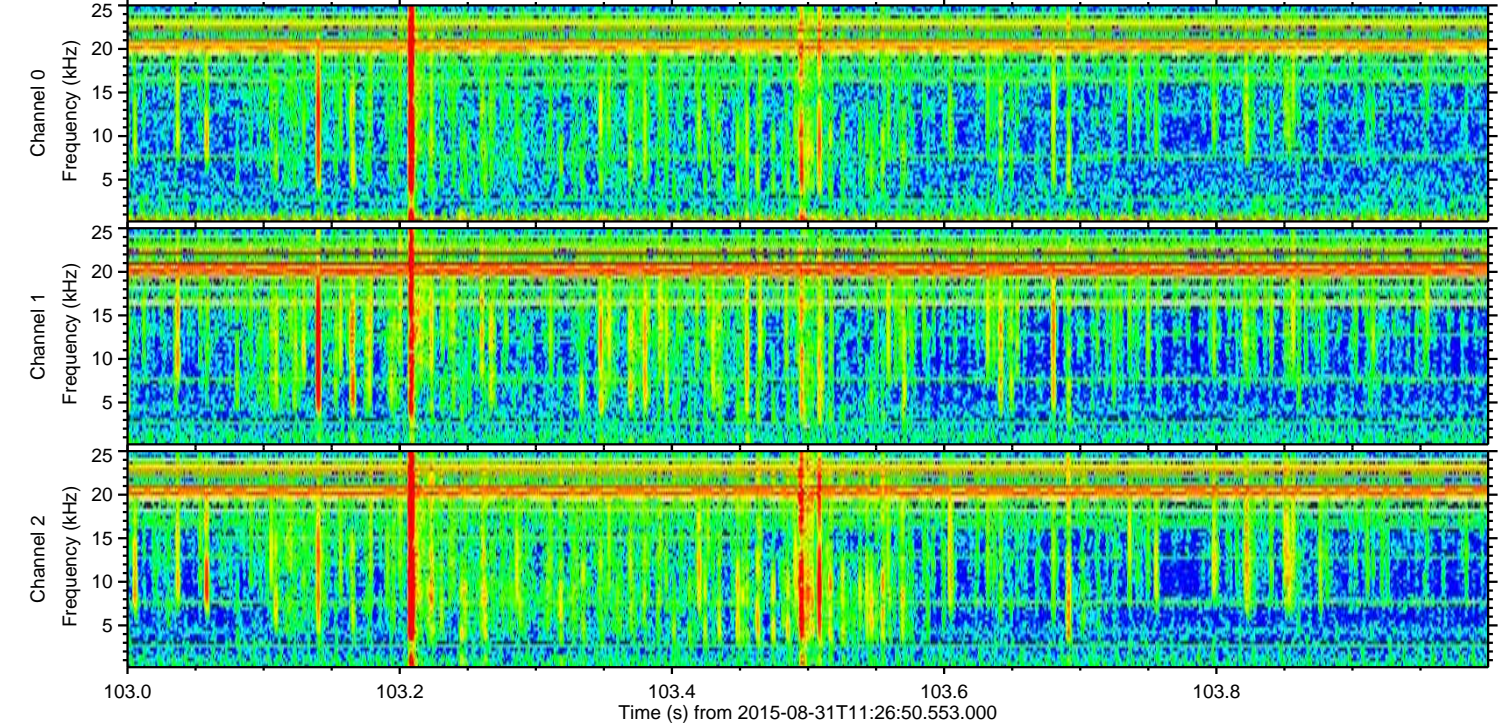
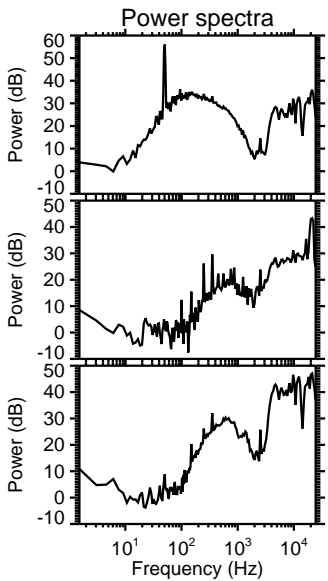
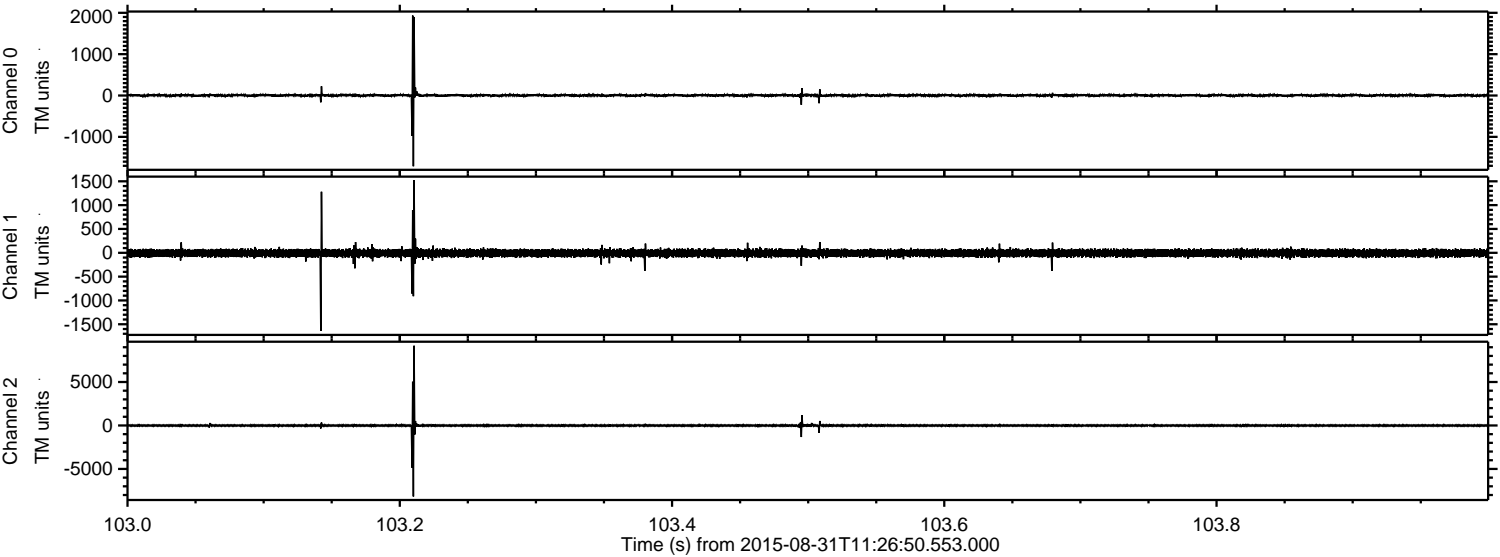
Channel 1  
mn: -3231  
mx: 3565  
 $\mu$ : -6.6  
 $\sigma$ : 56.6

Channel 2  
mn: -7803  
mx: 9433  
 $\mu$ : -4.7  
 $\sigma$ : 97.4



ELMAVAN 3D WAVEFORMS (Measured data sampled at 50 kHz) 51000 packets of 144 samples from 2015-08-31T11:26:50.553.000. Part 104/147

Processed Thu Oct 8 12:49:55 2015 by ELM ver.2012-10-06 from 001\_\_elm20150831\_112649\_\_dat00.bin



Channel 0  
mn: -1712  
mx: 1935  
 $\mu$ : 3.4  
 $\sigma$ : 25.5

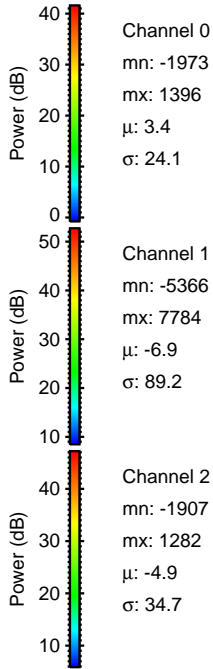
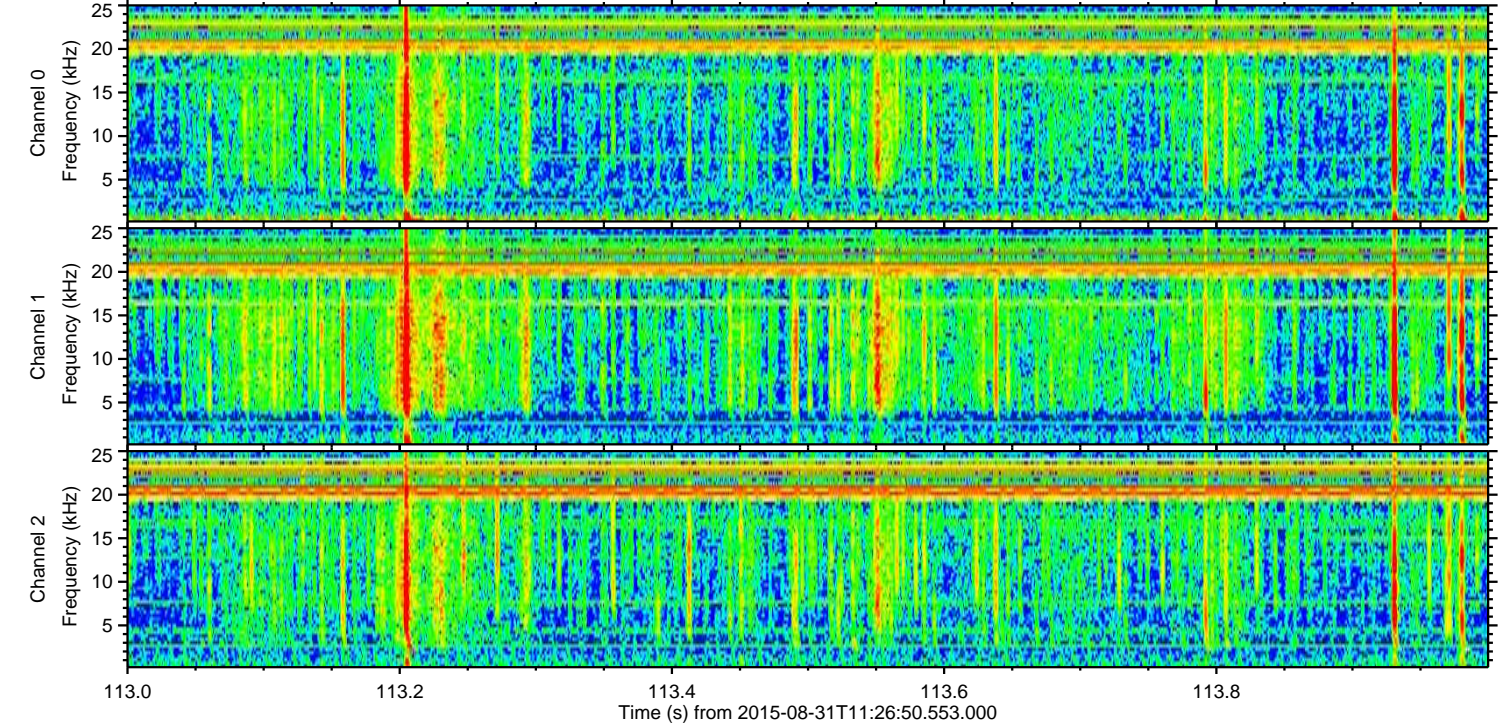
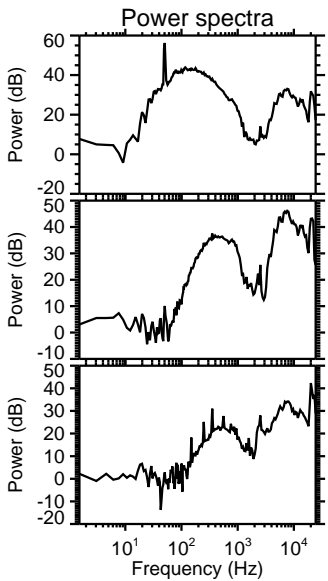
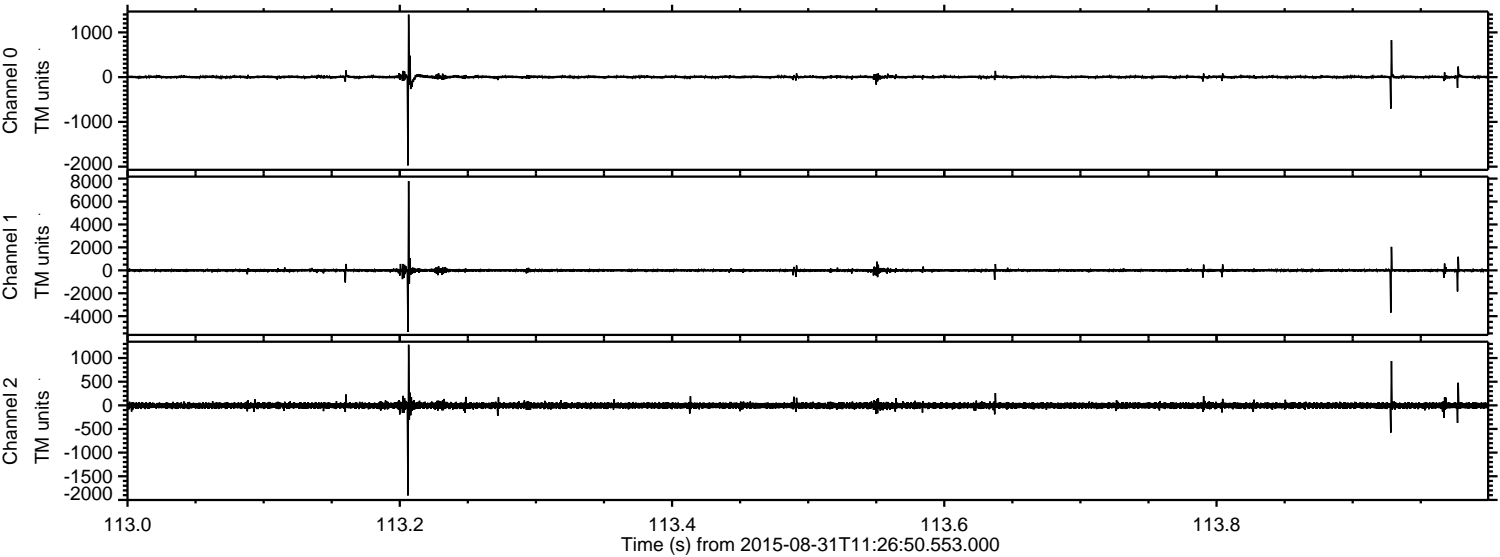
Channel 1  
mn: -1641  
mx: 1522  
 $\mu$ : -6.9  
 $\sigma$ : 41.8

Channel 2  
mn: -8162  
mx: 9176  
 $\mu$ : -4.9  
 $\sigma$ : 104.8



ELMAVAN 3D WAVEFORMS (Measured data sampled at 50 kHz) 51000 packets of 144 samples from 2015-08-31T11:26:50.553.000. Part 114/147

Processed Thu Oct 8 12:49:56 2015 by ELM ver.2012-10-06 from 001\_\_elm20150831\_112649\_\_dat00.bin



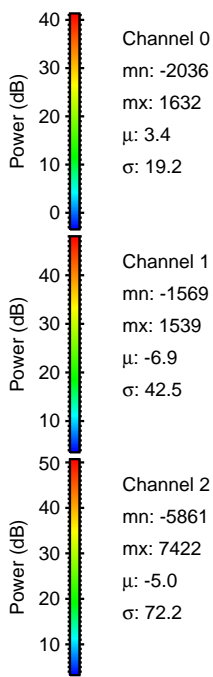
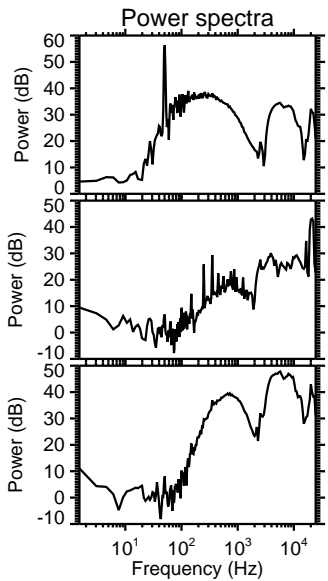
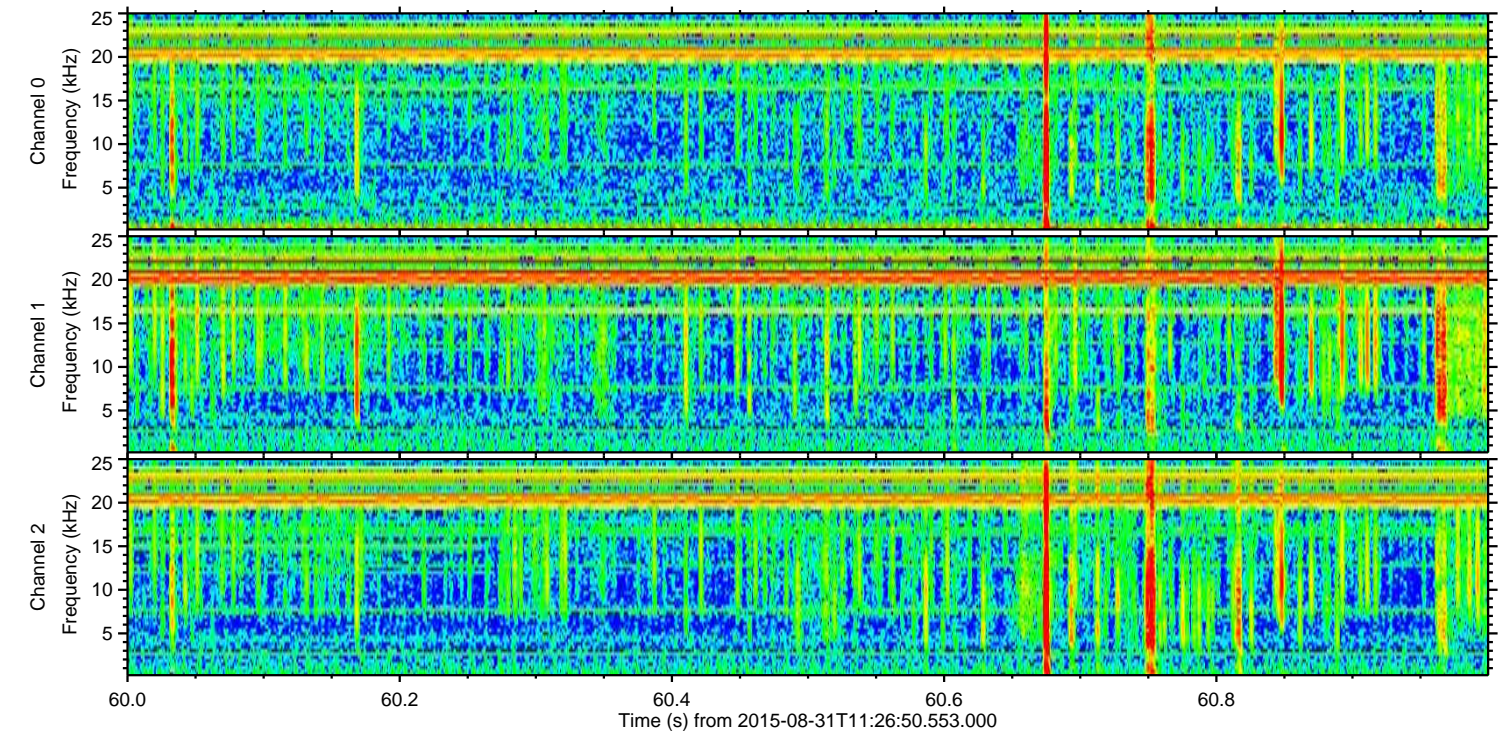
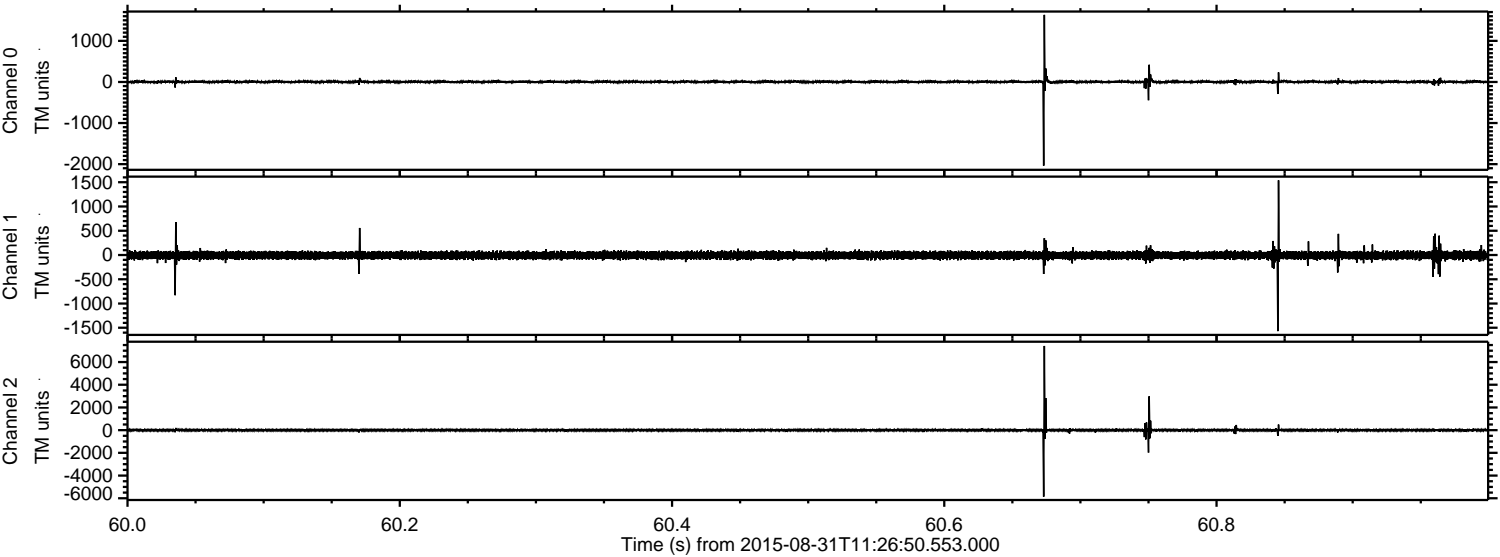
Channel 0  
mn: -1973  
mx: 1396  
 $\mu$ : 3.4  
 $\sigma$ : 24.1

Channel 1  
mn: -5366  
mx: 7784  
 $\mu$ : -6.9  
 $\sigma$ : 89.2

Channel 2  
mn: -1907  
mx: 1282  
 $\mu$ : -4.9  
 $\sigma$ : 34.7



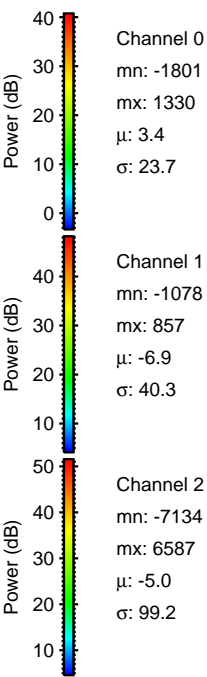
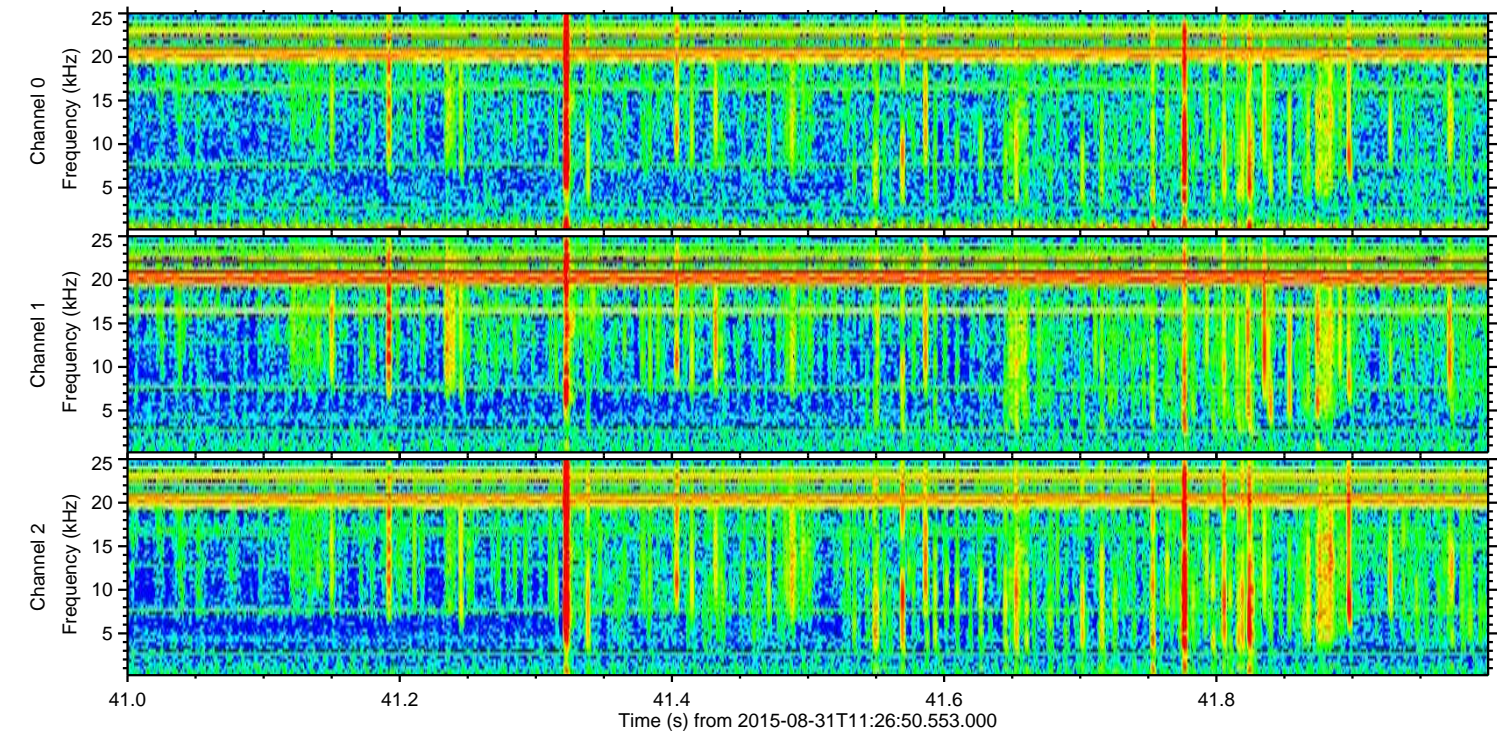
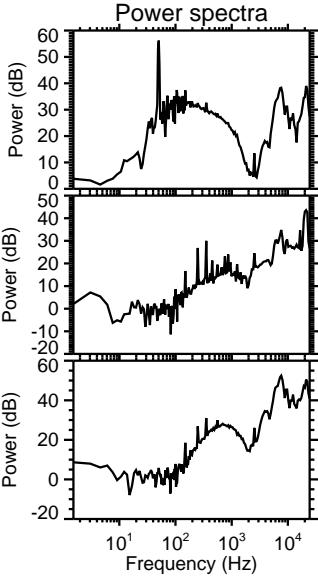
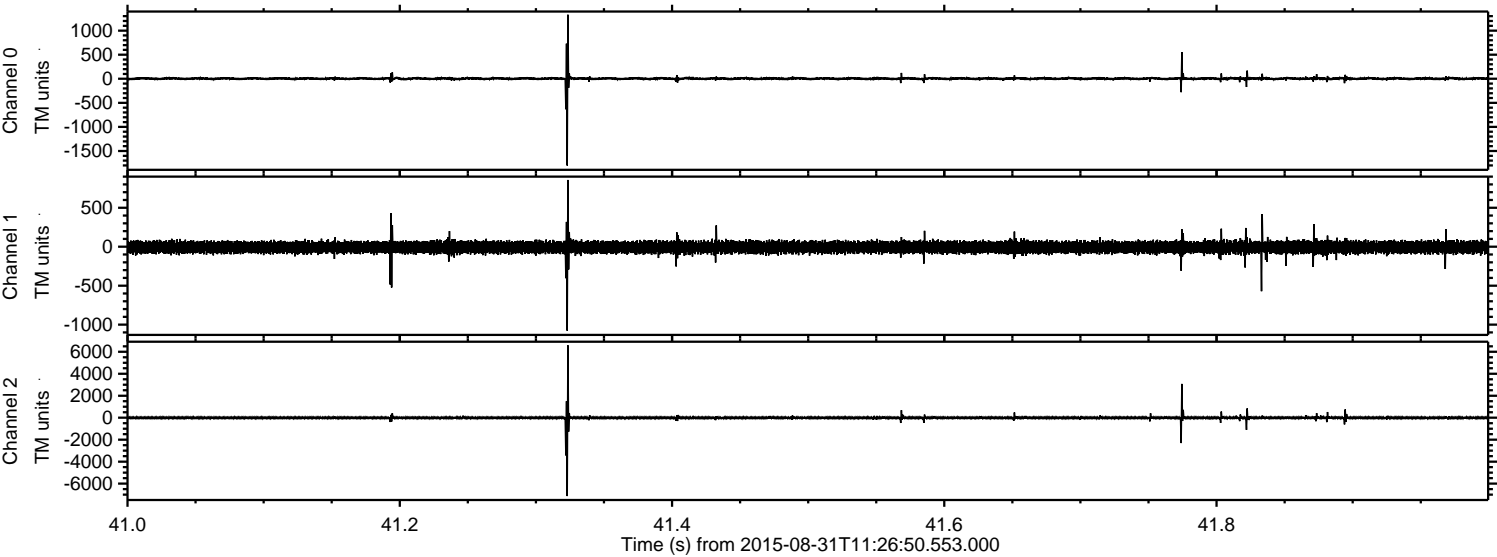
Processed Thu Oct 8 12:49:57 2015 by ELM ver.2012-10-06 from 001\_\_elm20150831\_112649\_\_dat00.bin





ELMAVAN 3D WAVEFORMS (Measured data sampled at 50 kHz) 51000 packets of 144 samples from 2015-08-31T11:26:50.553.000. Part 42/147

Processed Thu Oct 8 12:49:59 2015 by ELM ver.2012-10-06 from 001\_\_elm20150831\_112649\_\_dat00.bin



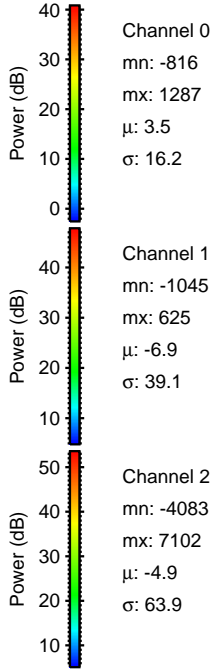
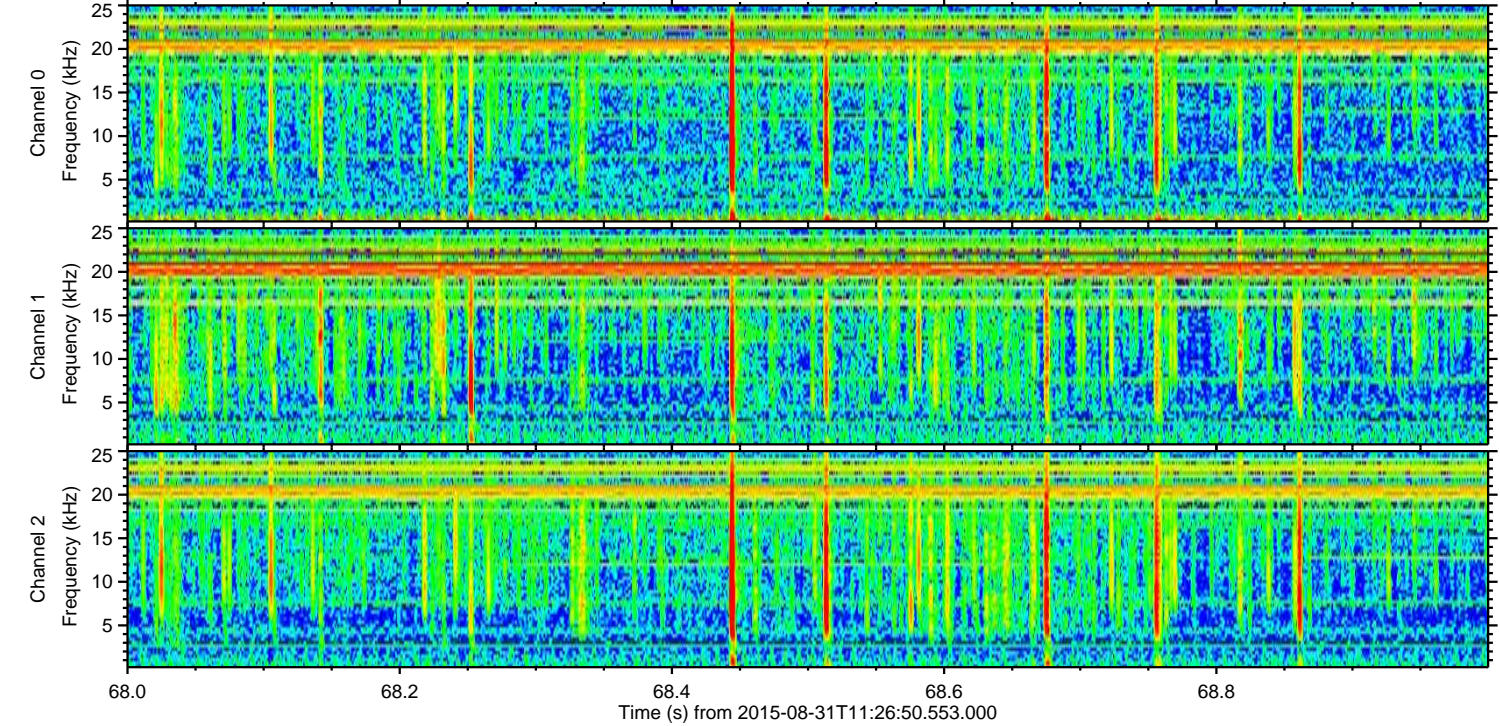
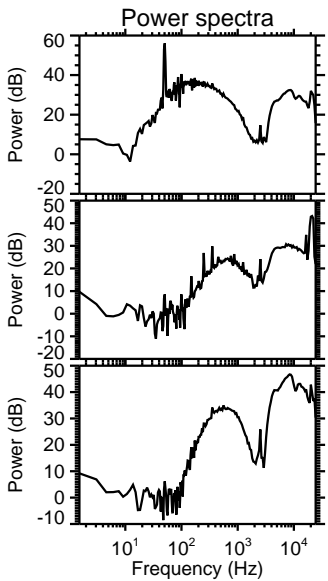
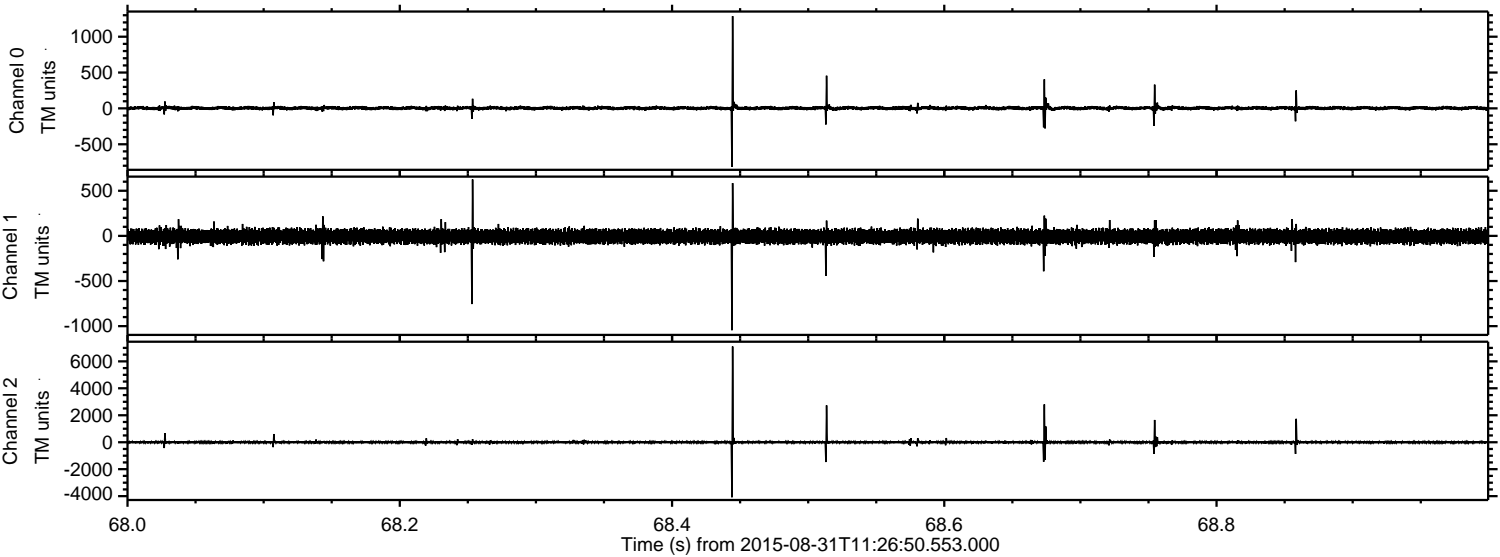
Channel 0  
mn: -1801  
mx: 1330  
 $\mu$ : 3.4  
 $\sigma$ : 23.7

Channel 1  
mn: -1078  
mx: 857  
 $\mu$ : -6.9  
 $\sigma$ : 40.3

Channel 2  
mn: -7134  
mx: 6587  
 $\mu$ : -5.0  
 $\sigma$ : 99.2

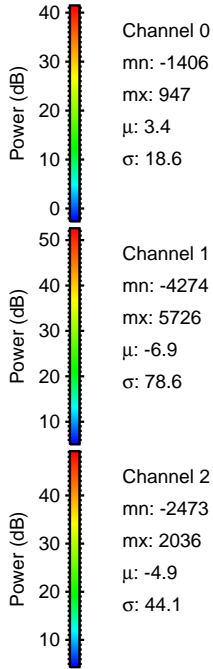
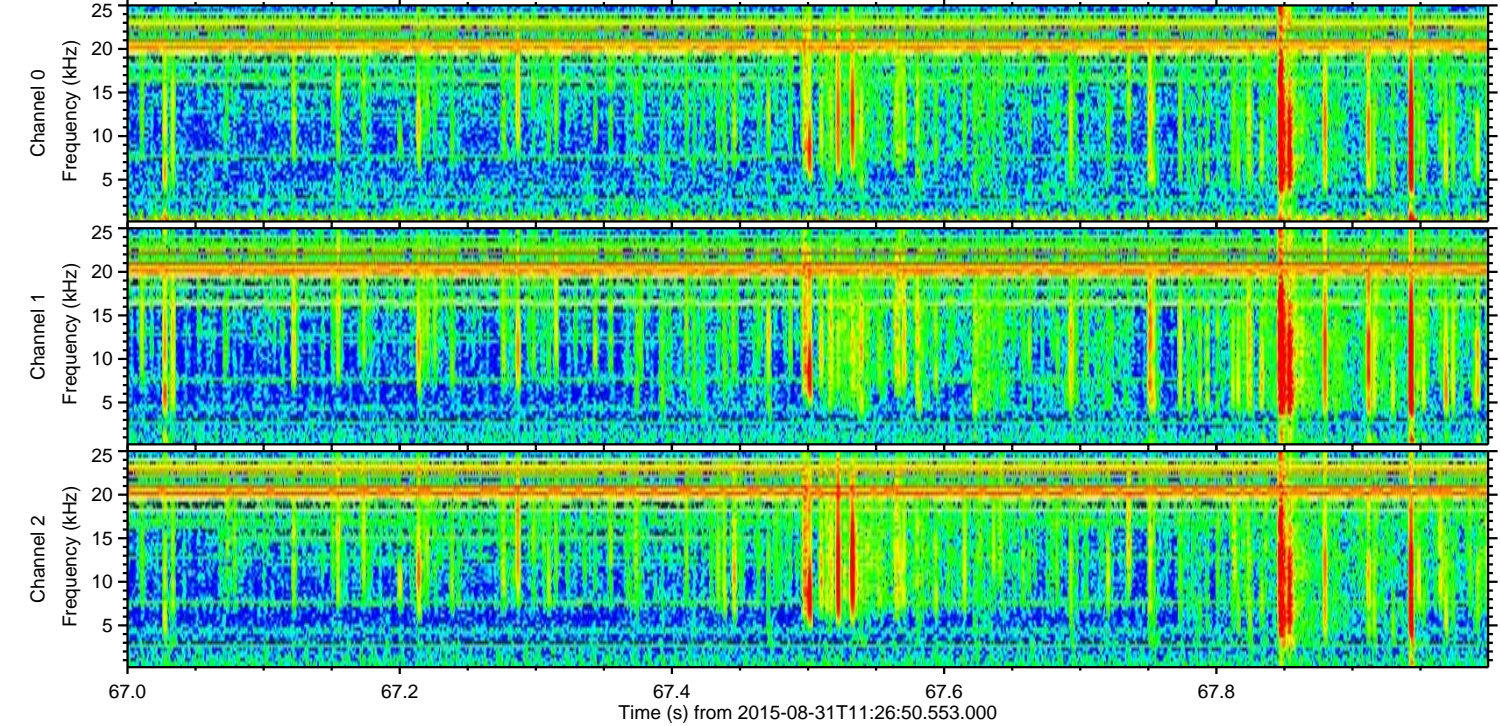
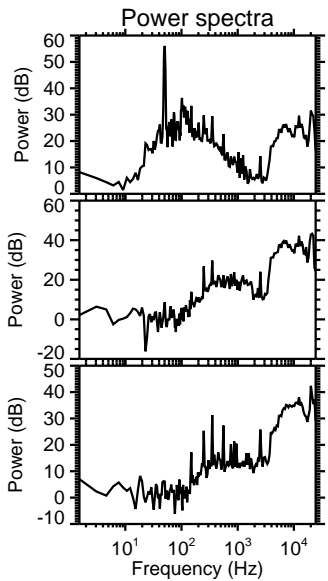
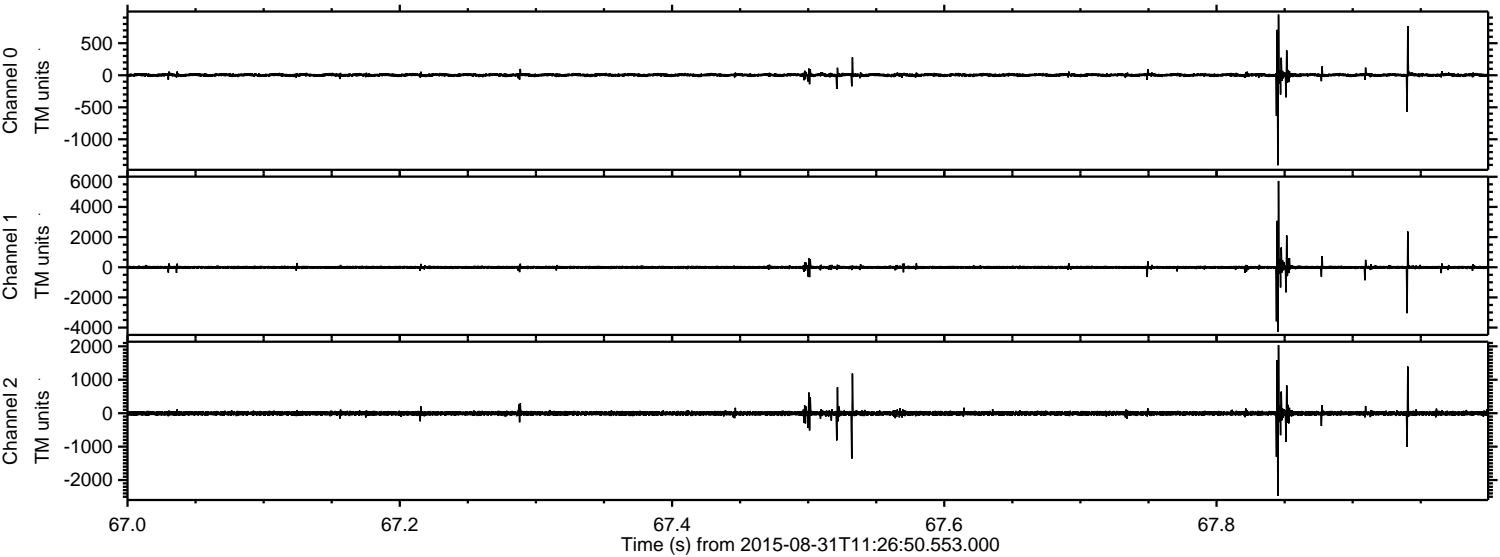


Processed Thu Oct 8 12:50:00 2015 by ELM ver.2012-10-06 from 001\_\_elm20150831\_112649\_\_dat00.bin





Processed Thu Oct 8 12:50:01 2015 by ELM ver.2012-10-06 from 001\_\_elm20150831\_112649\_\_dat00.bin



Channel 0  
mn: -1406  
mx: 947  
 $\mu$ : 3.4  
 $\sigma$ : 18.6

Channel 1  
mn: -4274  
mx: 5726  
 $\mu$ : -6.9  
 $\sigma$ : 78.6

Channel 2  
mn: -2473  
mx: 2036  
 $\mu$ : -4.9  
 $\sigma$ : 44.1



