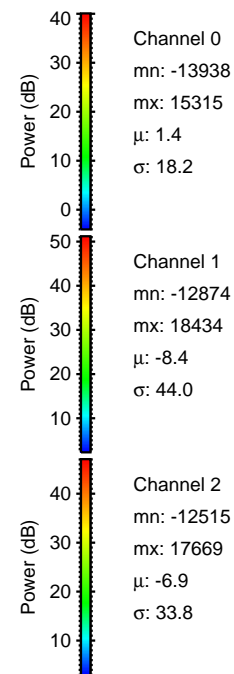
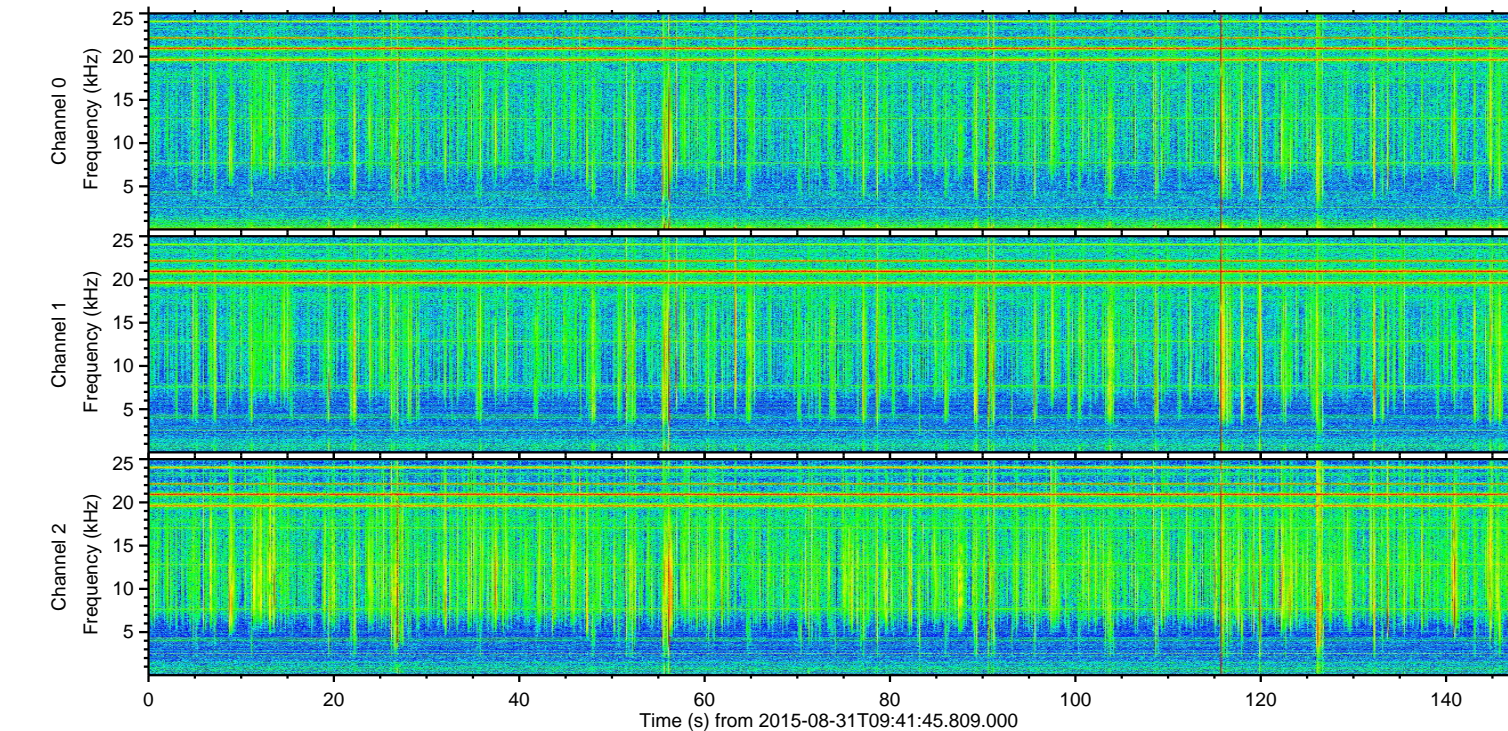
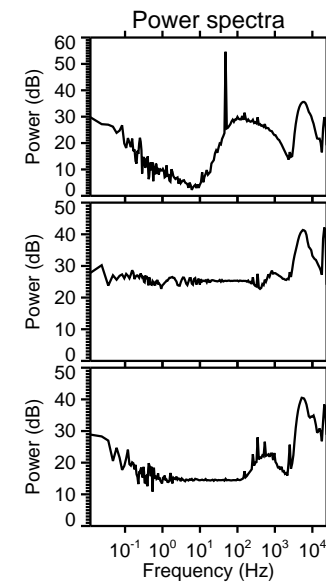
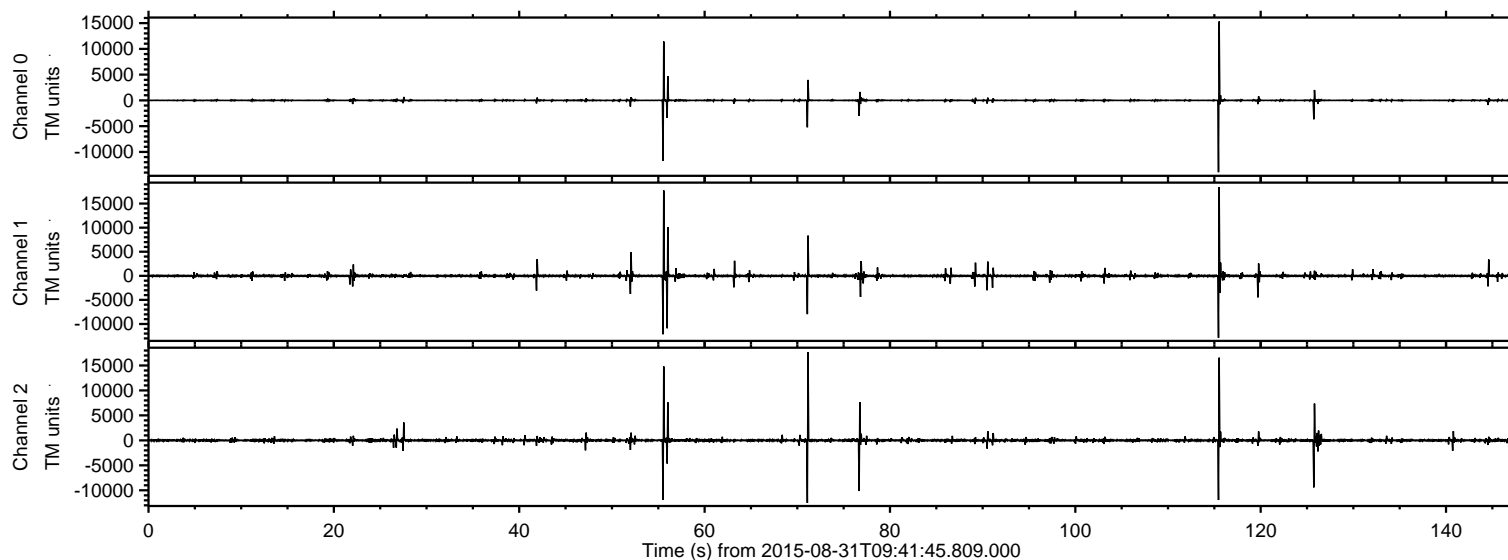


# ELMAVAN 3D WAVEFORMS (Measured data sampled at 50 kHz) 51000 packets of 144 samples from 2015-08-31T09:41:45.809.000.

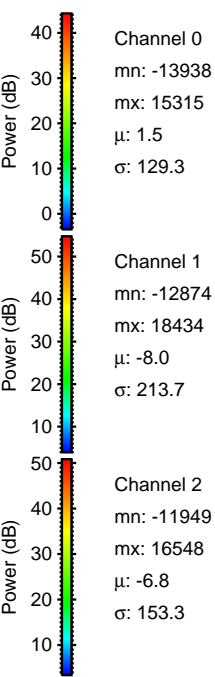
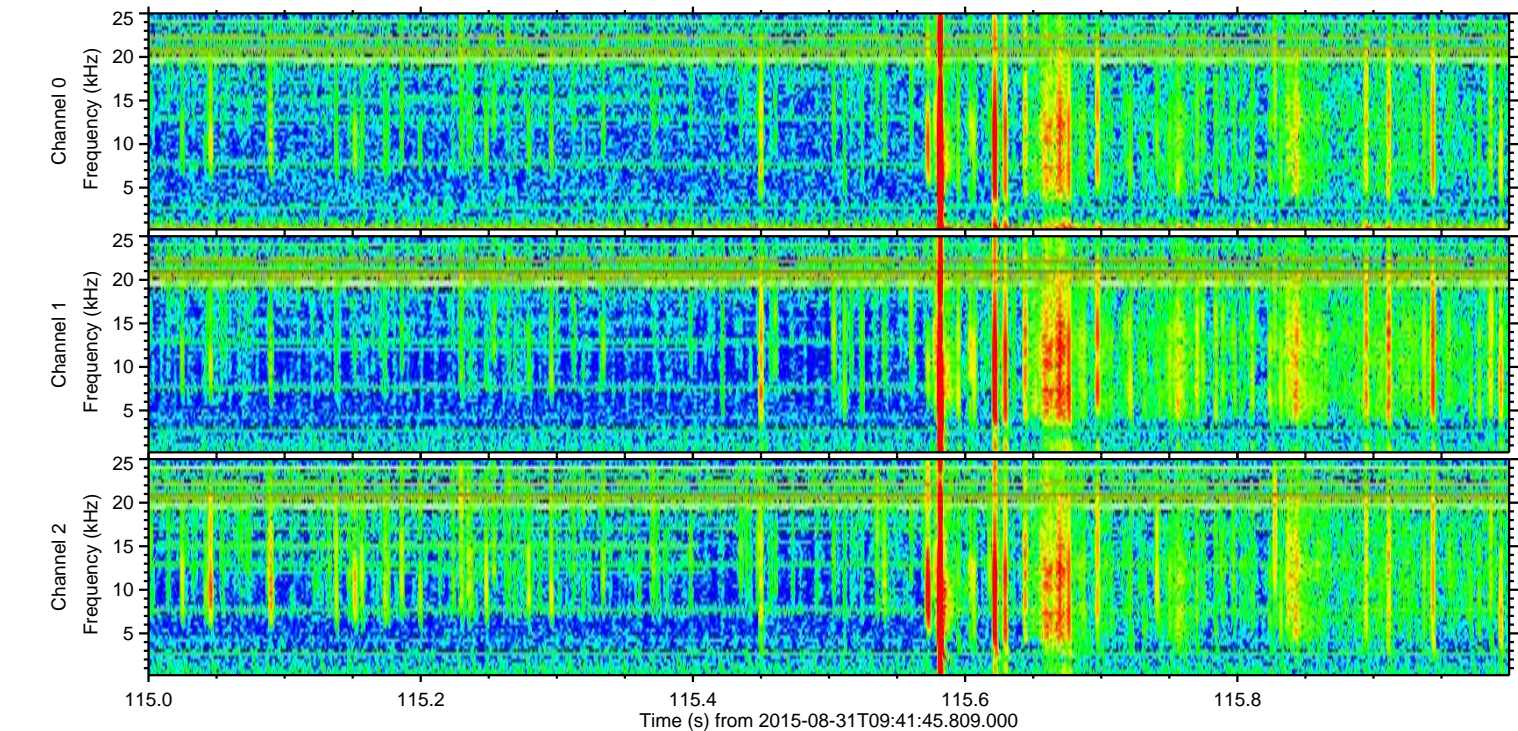
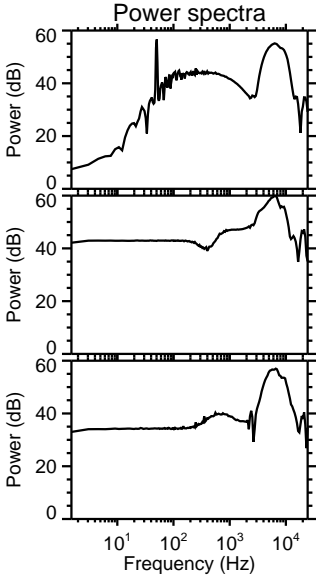
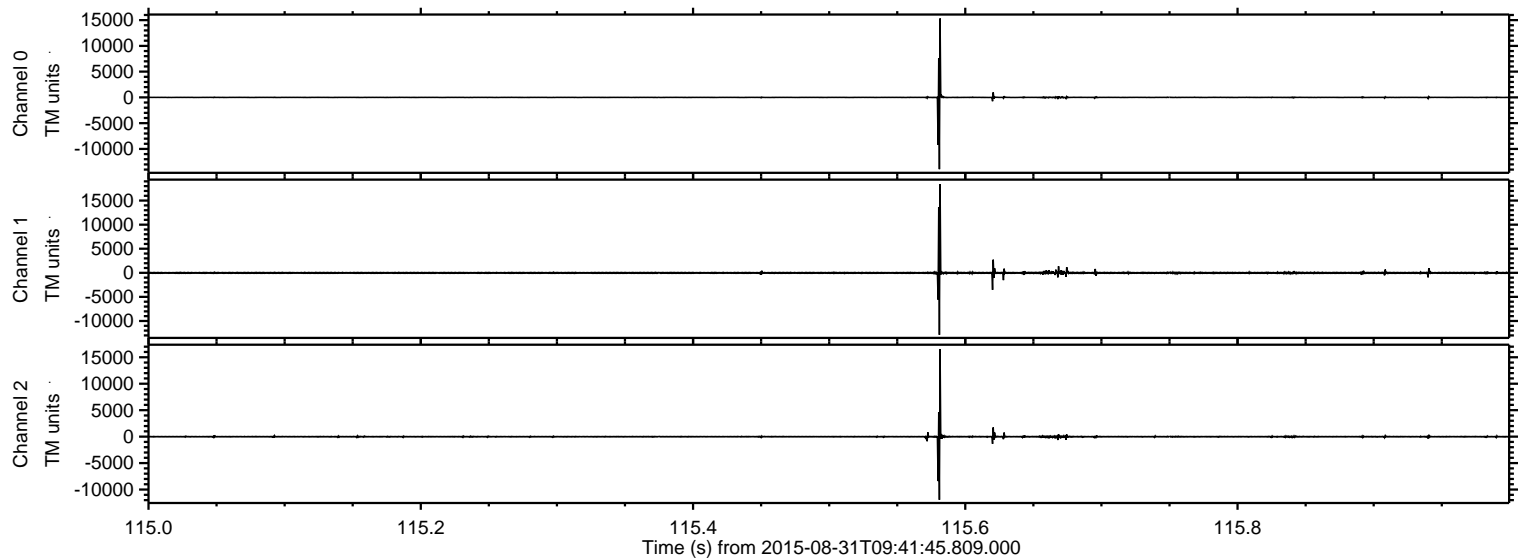
Processed Thu Oct 8 12:20:56 2015 by ELM ver.2012-10-06 from 001\_\_elm20150831\_094144\_\_dat00.bin





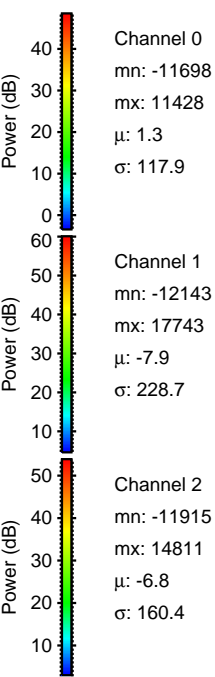
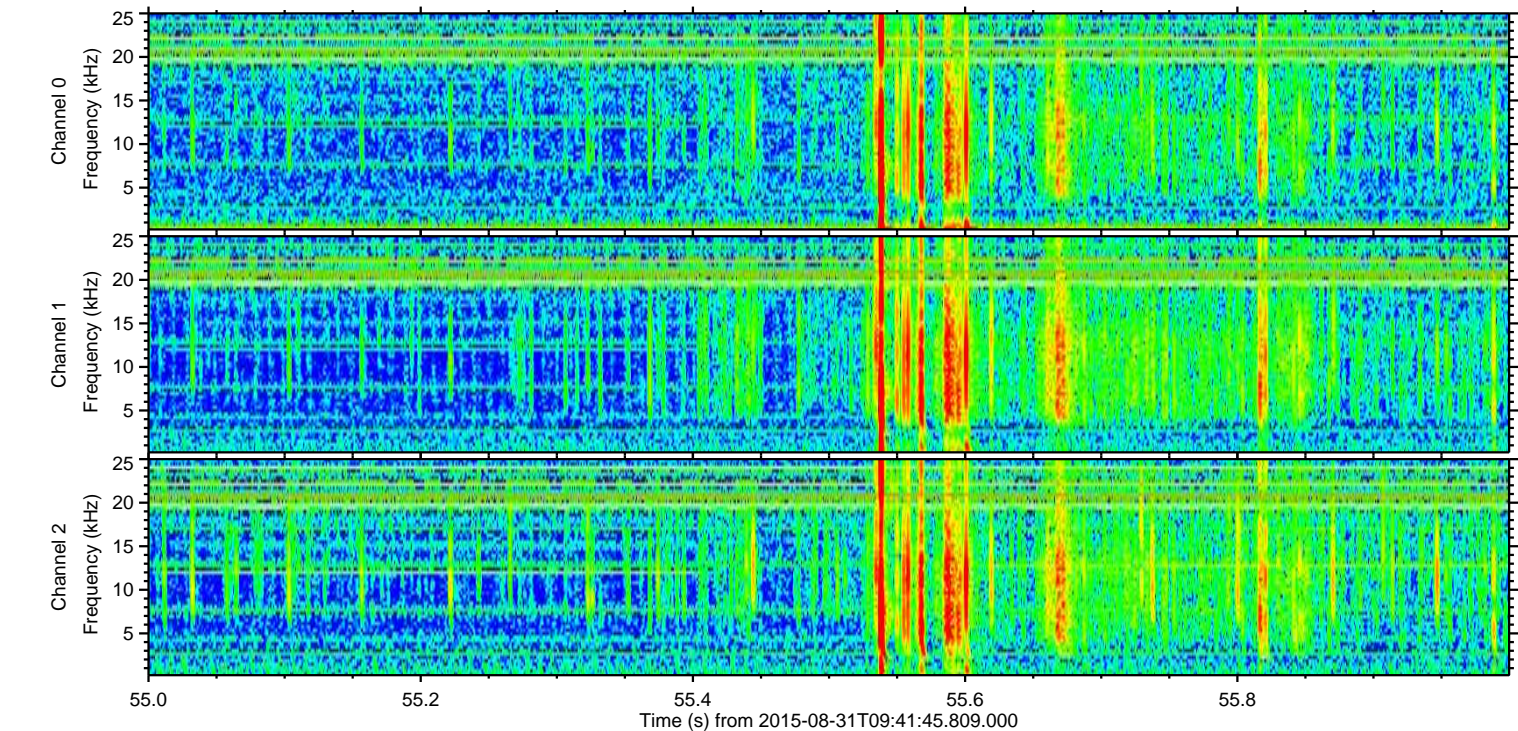
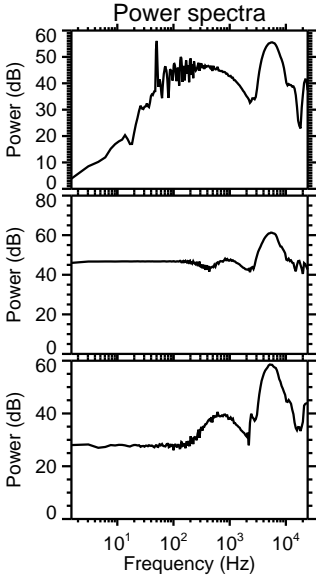
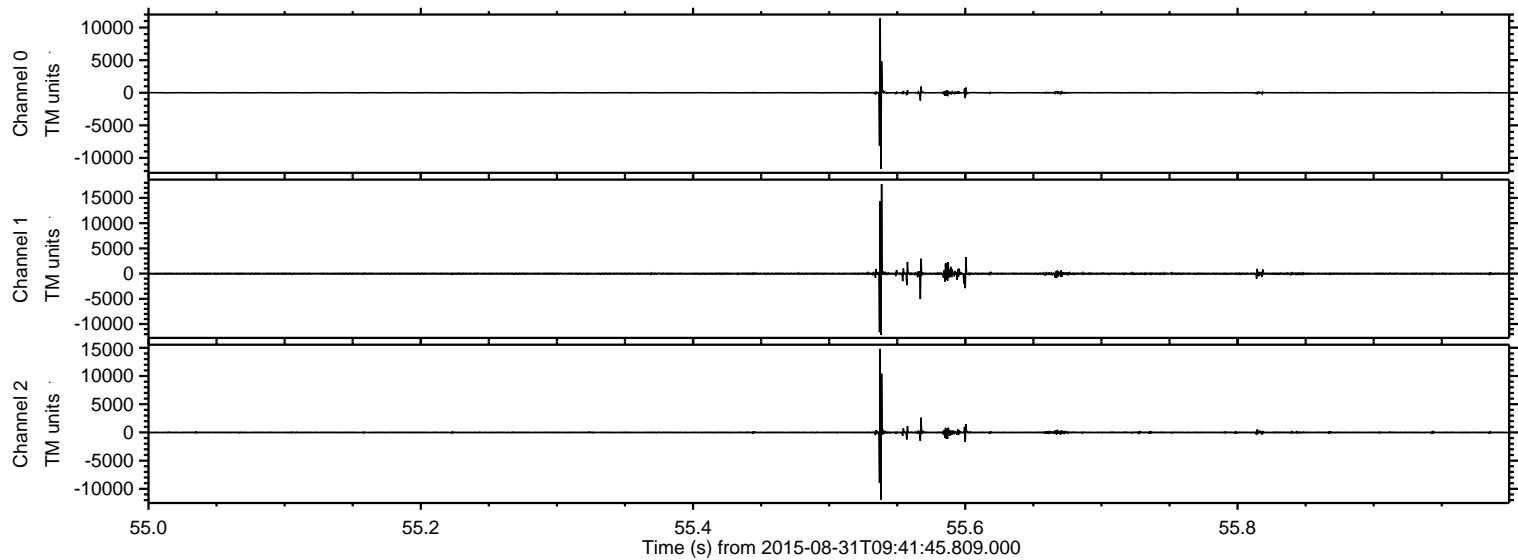
ELMAVAN 3D WAVEFORMS (Measured data sampled at 50 kHz) 51000 packets of 144 samples from 2015-08-31T09:41:45.809.000. Part 116/147

Processed Thu Oct 8 12:21:12 2015 by ELM ver.2012-10-06 from 001\_\_elm20150831\_094144\_\_dat00.bin





Processed Thu Oct 8 12:21:13 2015 by ELM ver.2012-10-06 from 001\_\_elm20150831\_094144\_\_dat00.bin



Channel 0  
mn: -11698  
mx: 11428  
 $\mu$ : 1.3  
 $\sigma$ : 117.9

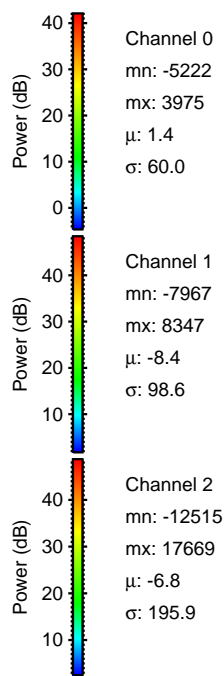
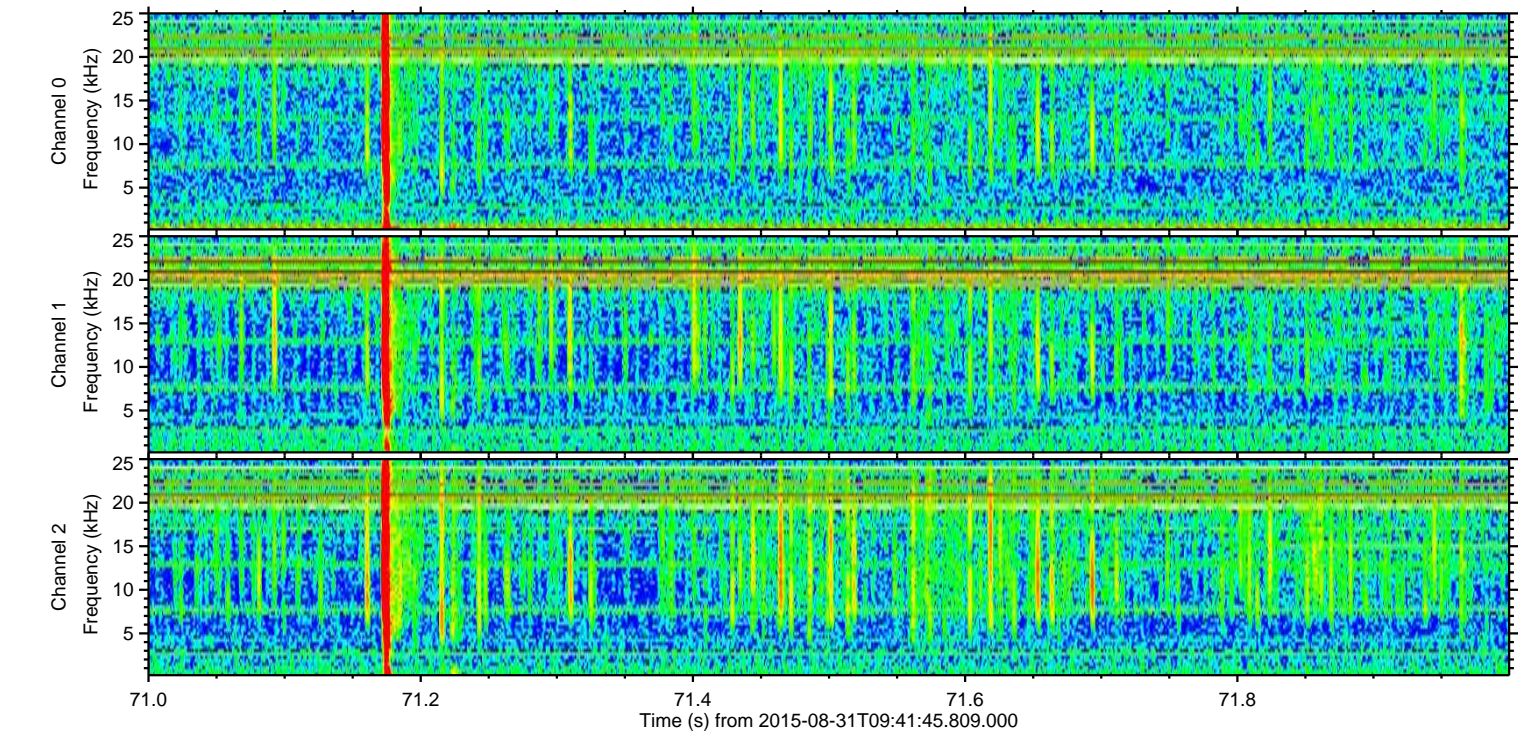
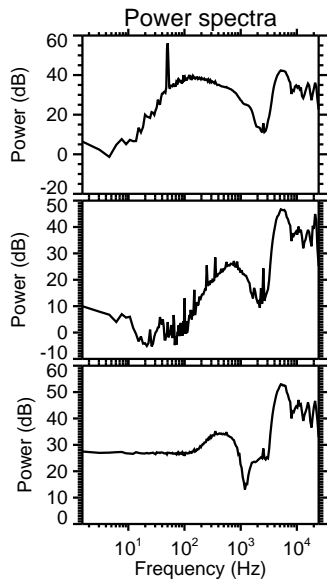
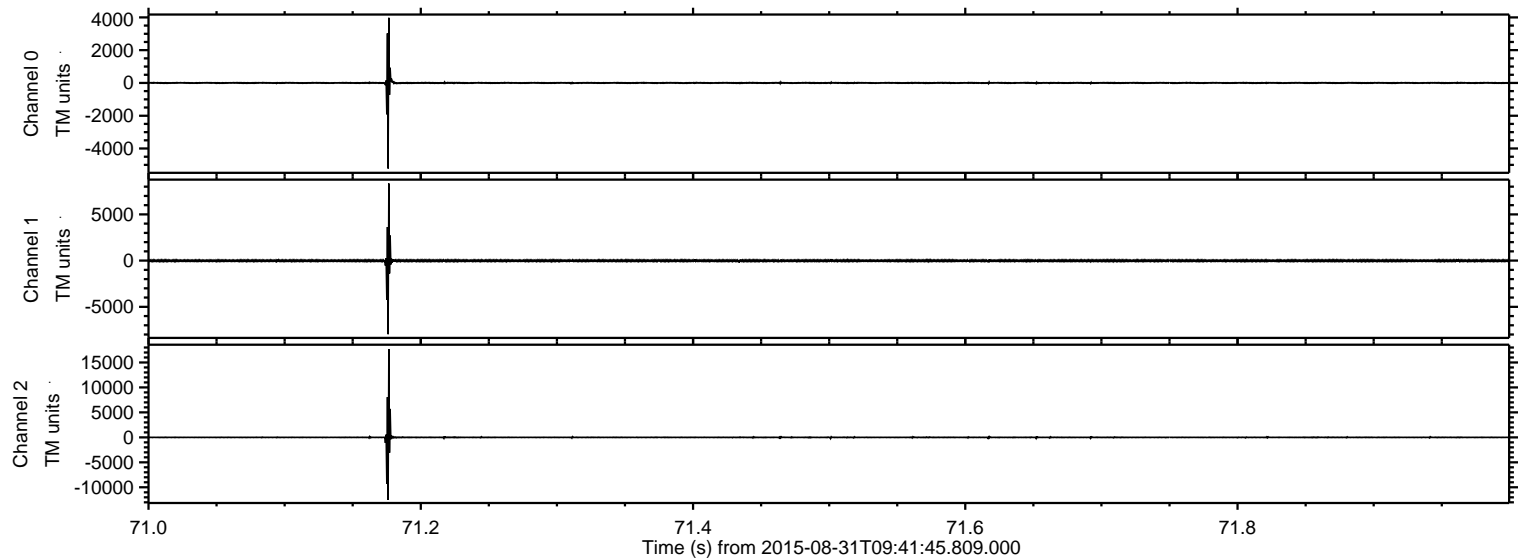
Channel 1  
mn: -12143  
mx: 17743  
 $\mu$ : -7.9  
 $\sigma$ : 228.7

Channel 2  
mn: -11915  
mx: 14811  
 $\mu$ : -6.8  
 $\sigma$ : 160.4



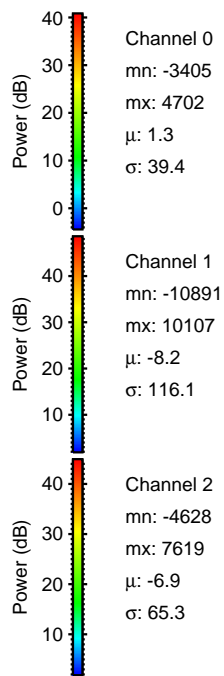
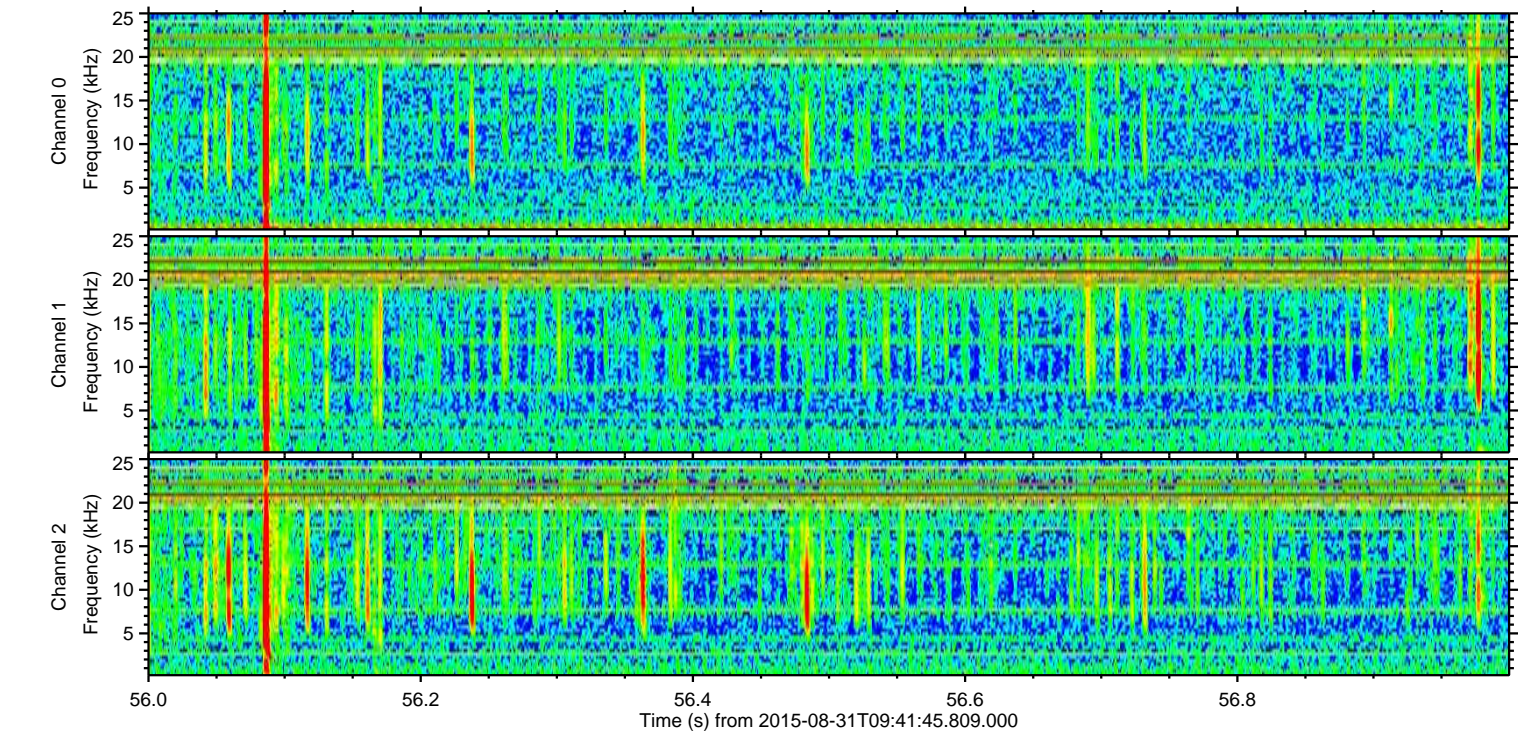
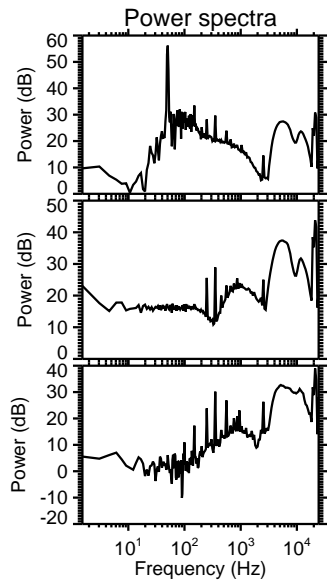
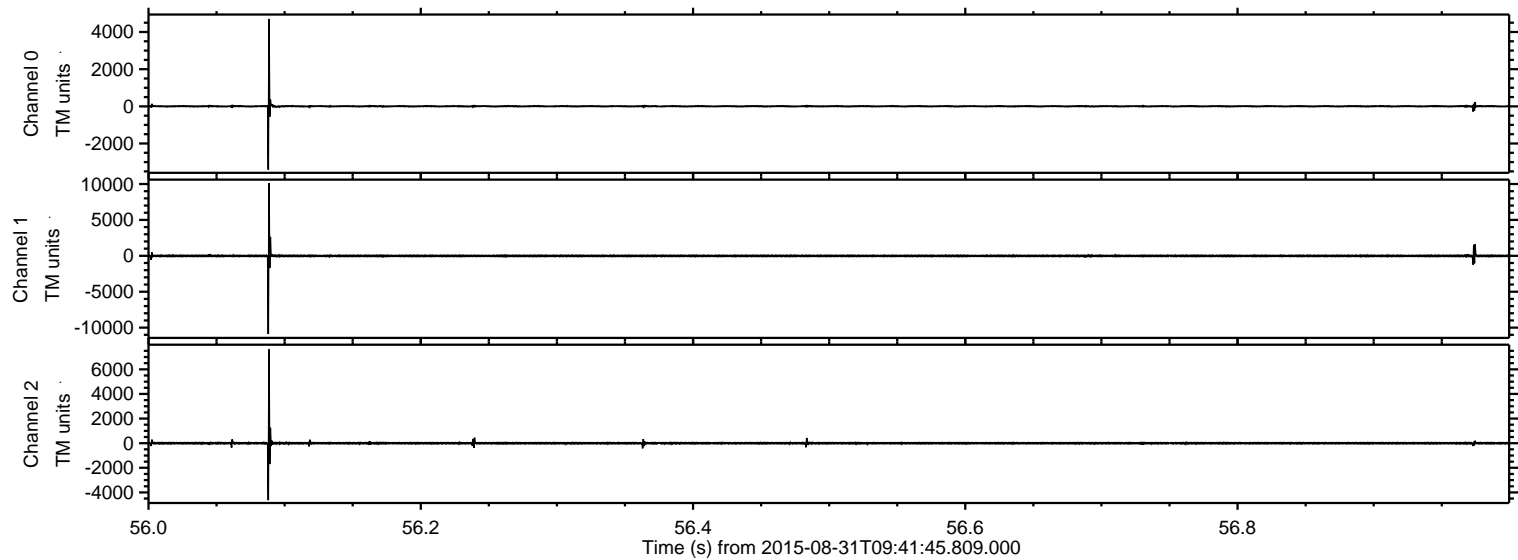
ELMAVAN 3D WAVEFORMS (Measured data sampled at 50 kHz) 51000 packets of 144 samples from 2015-08-31T09:41:45.809.000. Part 72/147

Processed Thu Oct 8 12:21:14 2015 by ELM ver.2012-10-06 from 001\_\_elm20150831\_094144\_\_dat00.bin



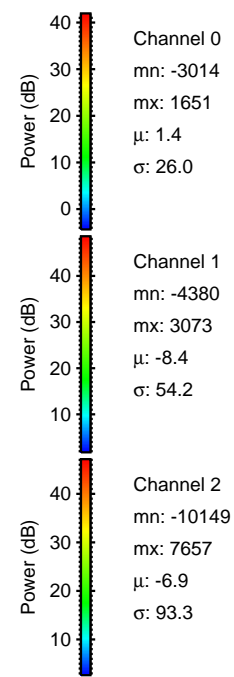
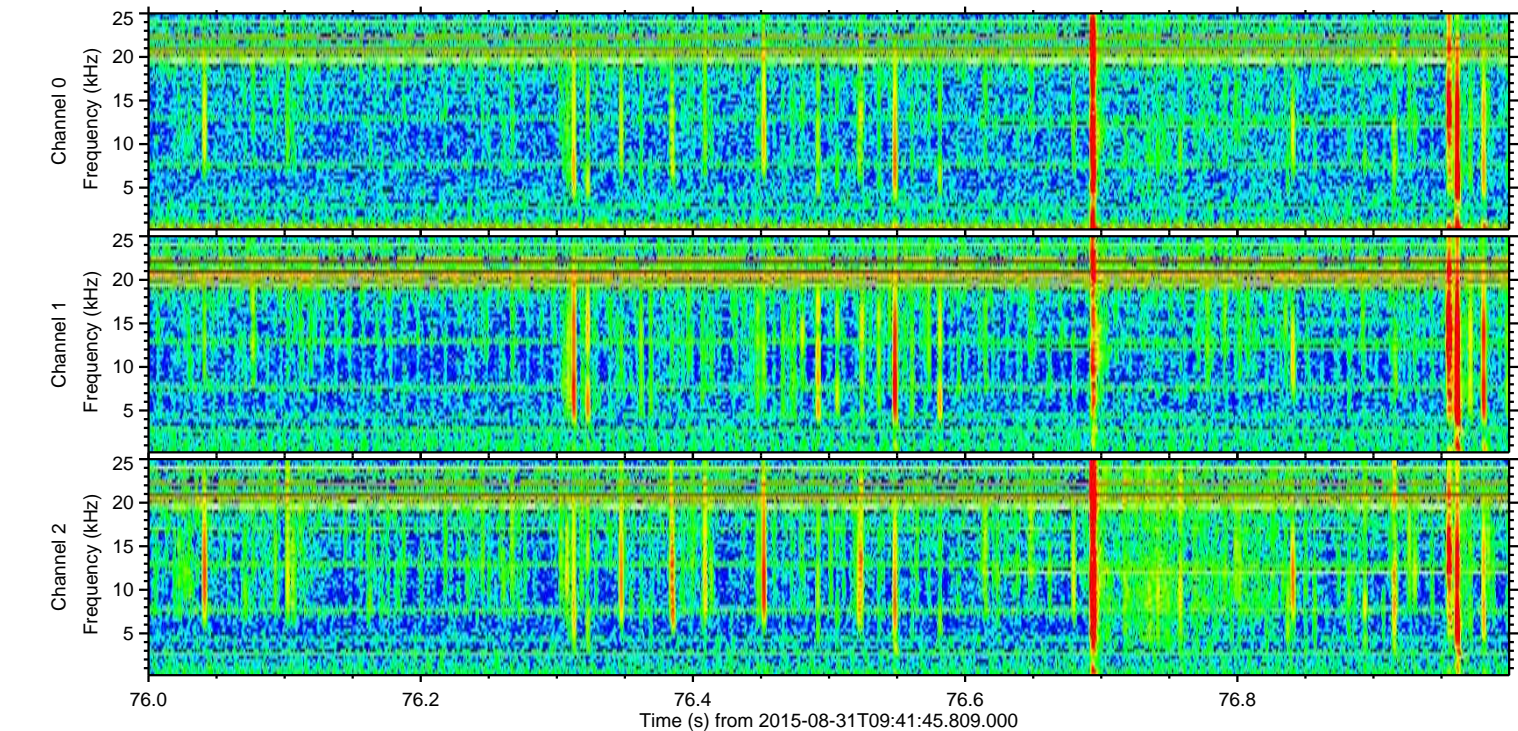
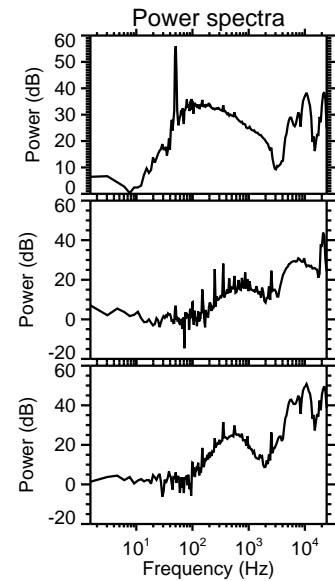
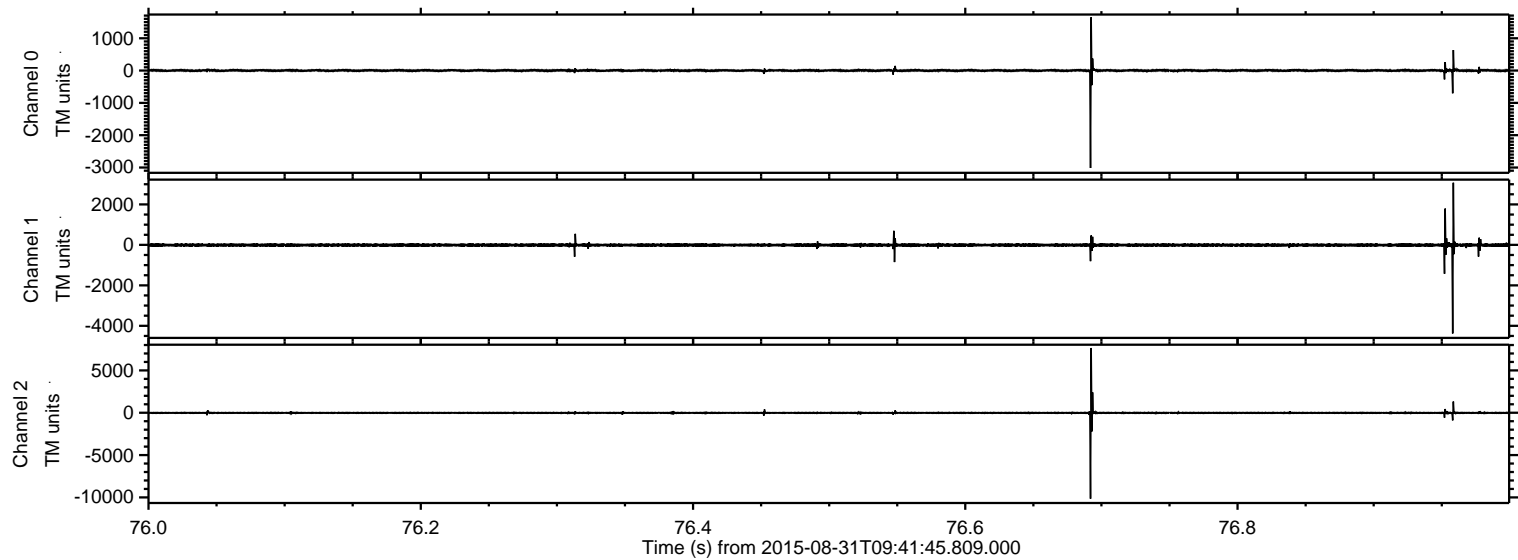


Processed Thu Oct 8 12:21:15 2015 by ELM ver.2012-10-06 from 001\_\_elm20150831\_094144\_\_dat00.bin





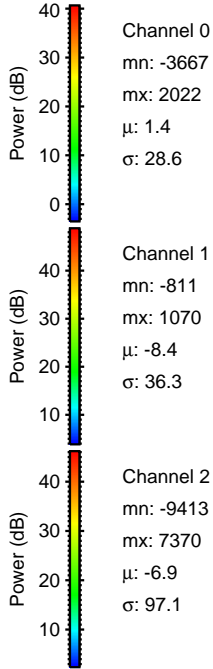
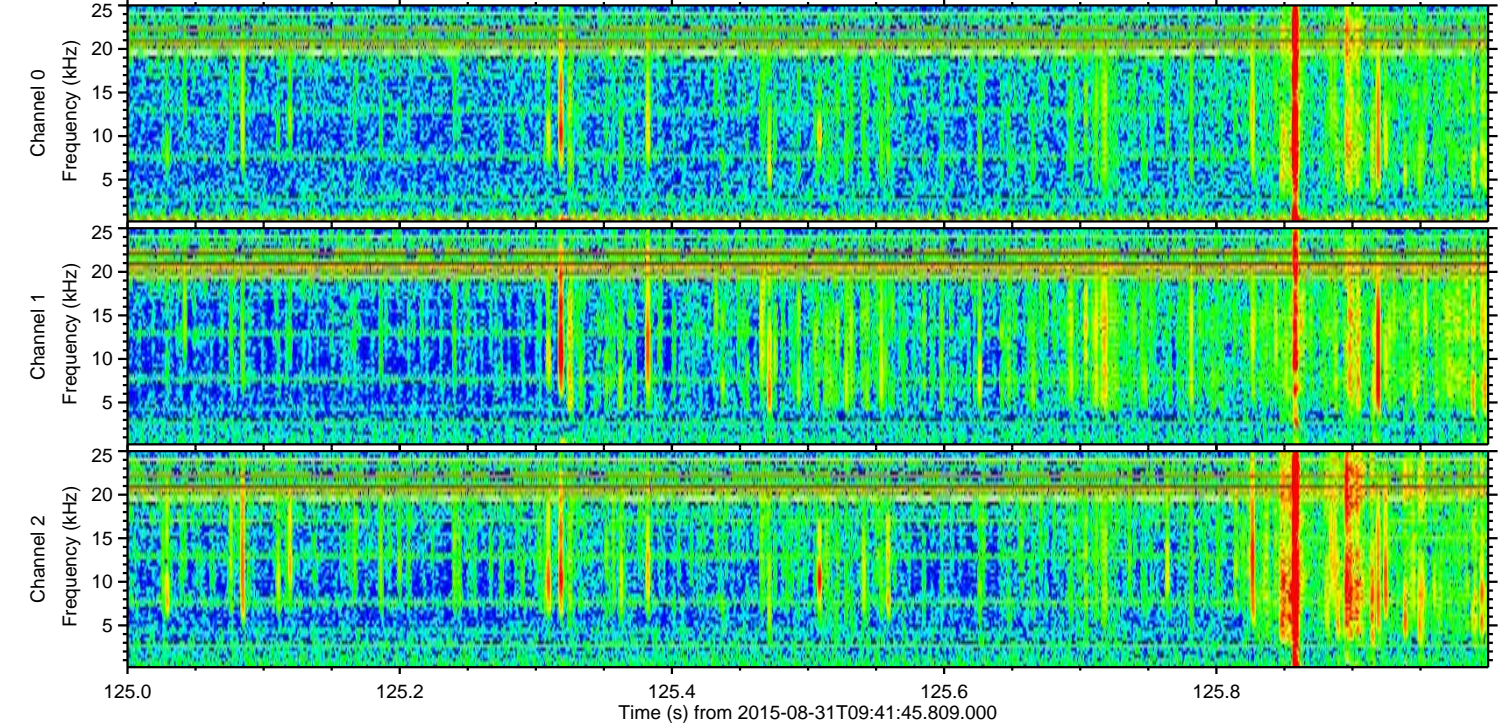
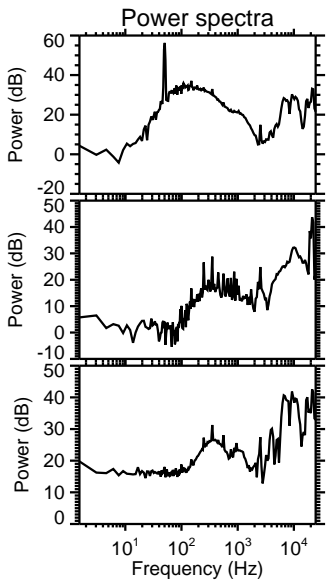
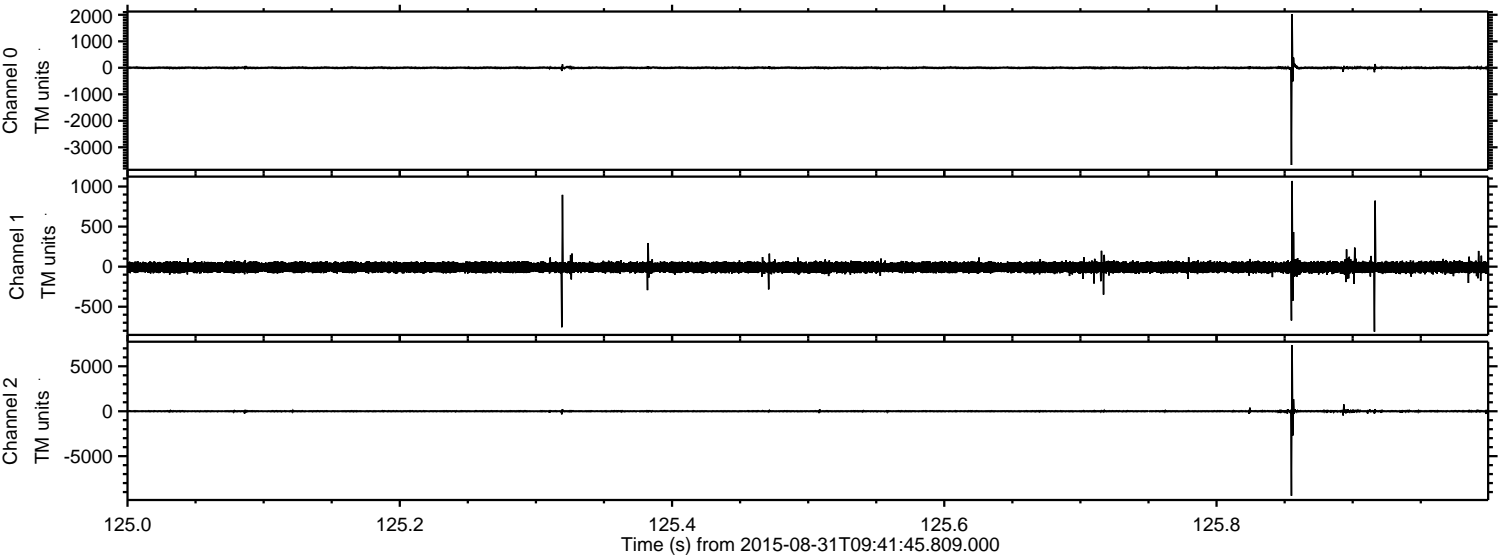
Processed Thu Oct 8 12:21:16 2015 by ELM ver.2012-10-06 from 001\_\_elm20150831\_094144\_\_dat00.bin





ELMAVAN 3D WAVEFORMS (Measured data sampled at 50 kHz) 51000 packets of 144 samples from 2015-08-31T09:41:45.809.000. Part 126/147

Processed Thu Oct 8 12:21:17 2015 by ELM ver.2012-10-06 from 001\_\_elm20150831\_094144\_\_dat00.bin



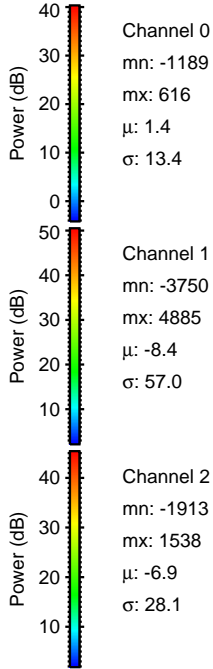
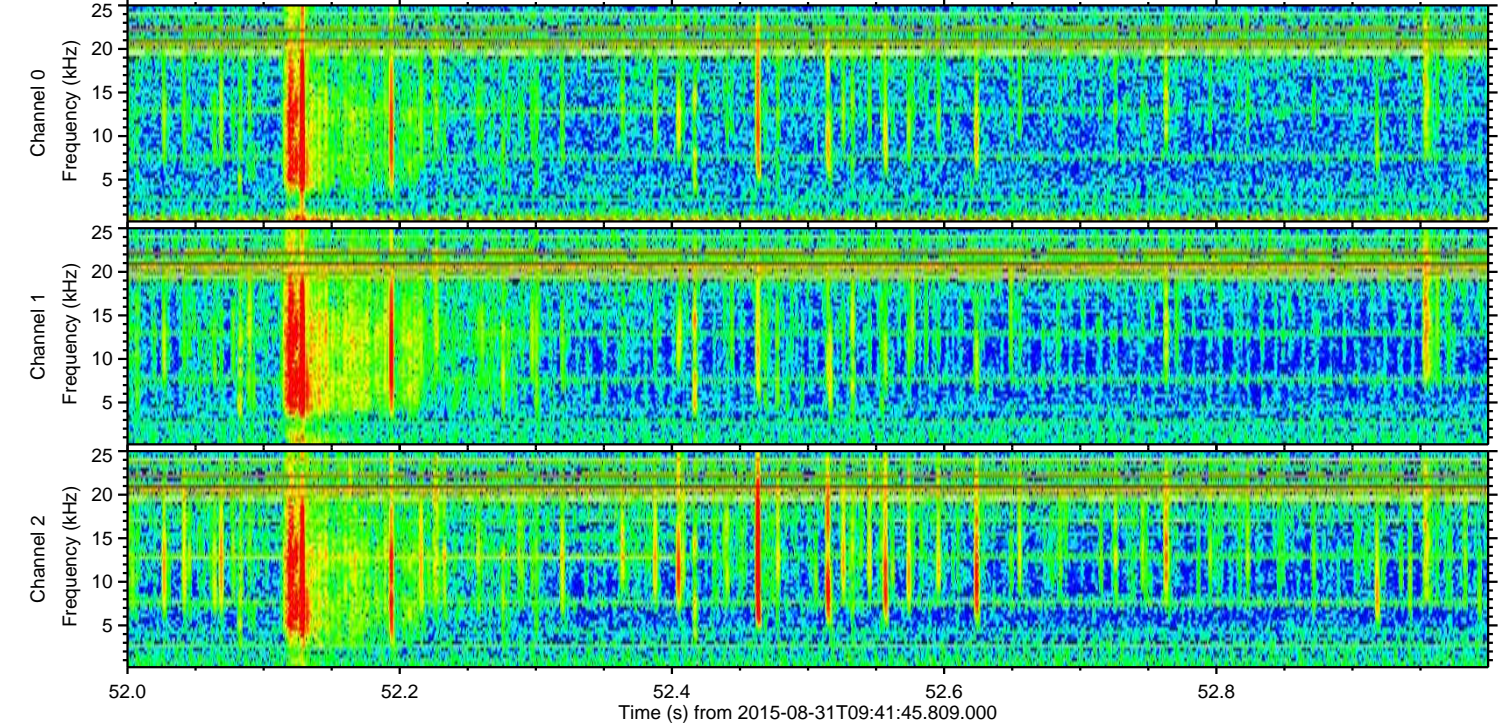
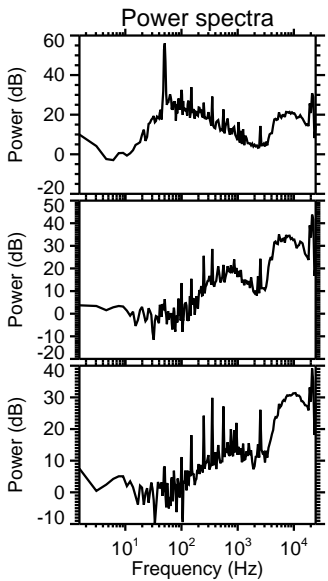
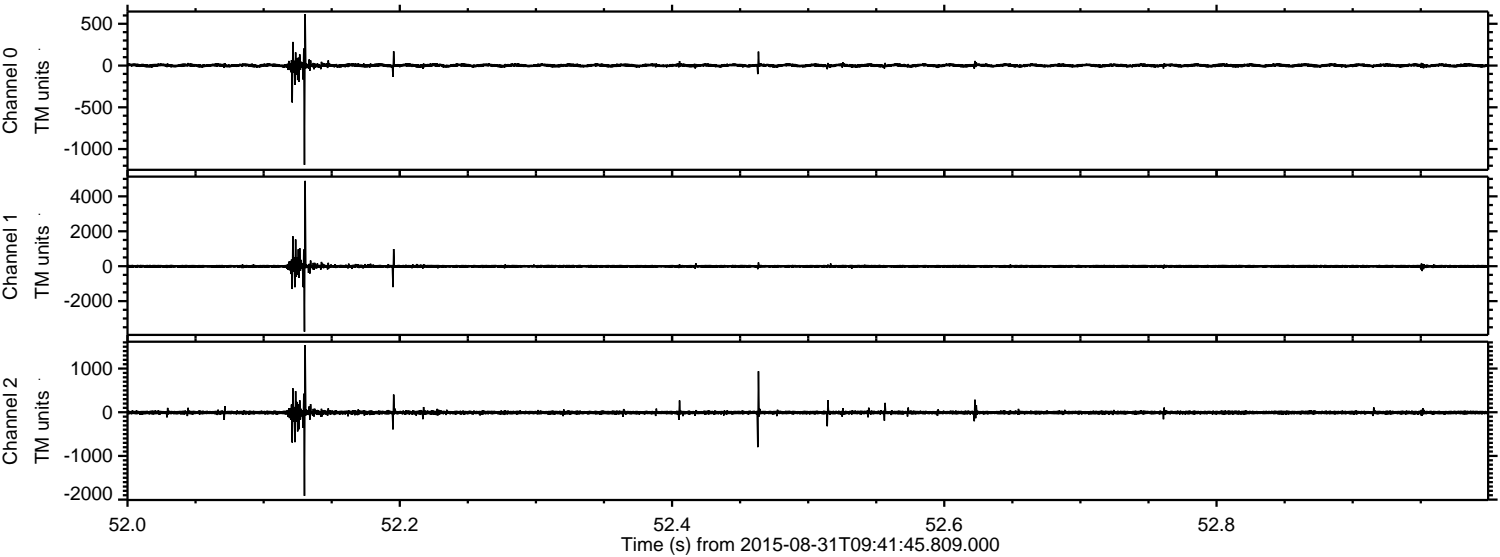
Channel 0  
mn: -3667  
mx: 2022  
 $\mu$ : 1.4  
 $\sigma$ : 28.6

Channel 1  
mn: -811  
mx: 1070  
 $\mu$ : -8.4  
 $\sigma$ : 36.3

Channel 2  
mn: -9413  
mx: 7370  
 $\mu$ : -6.9  
 $\sigma$ : 97.1



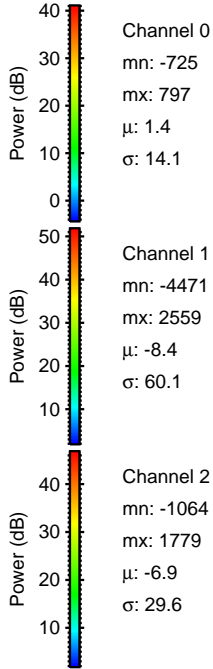
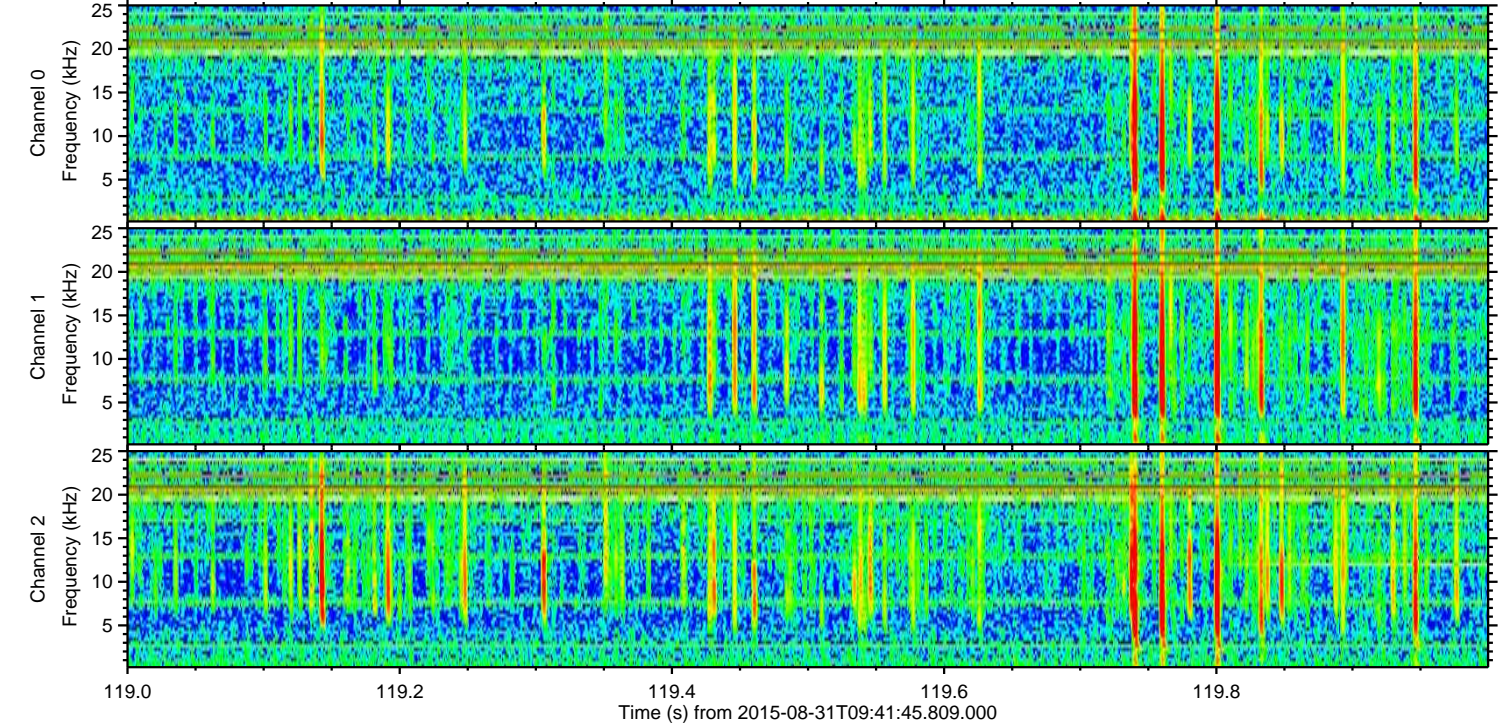
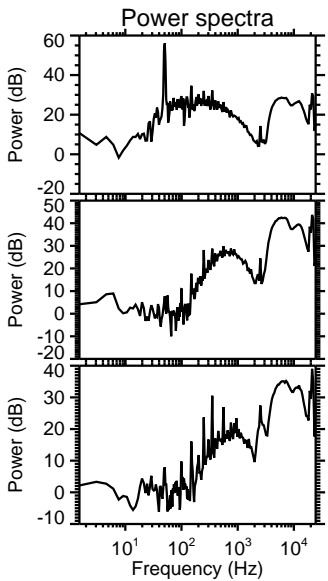
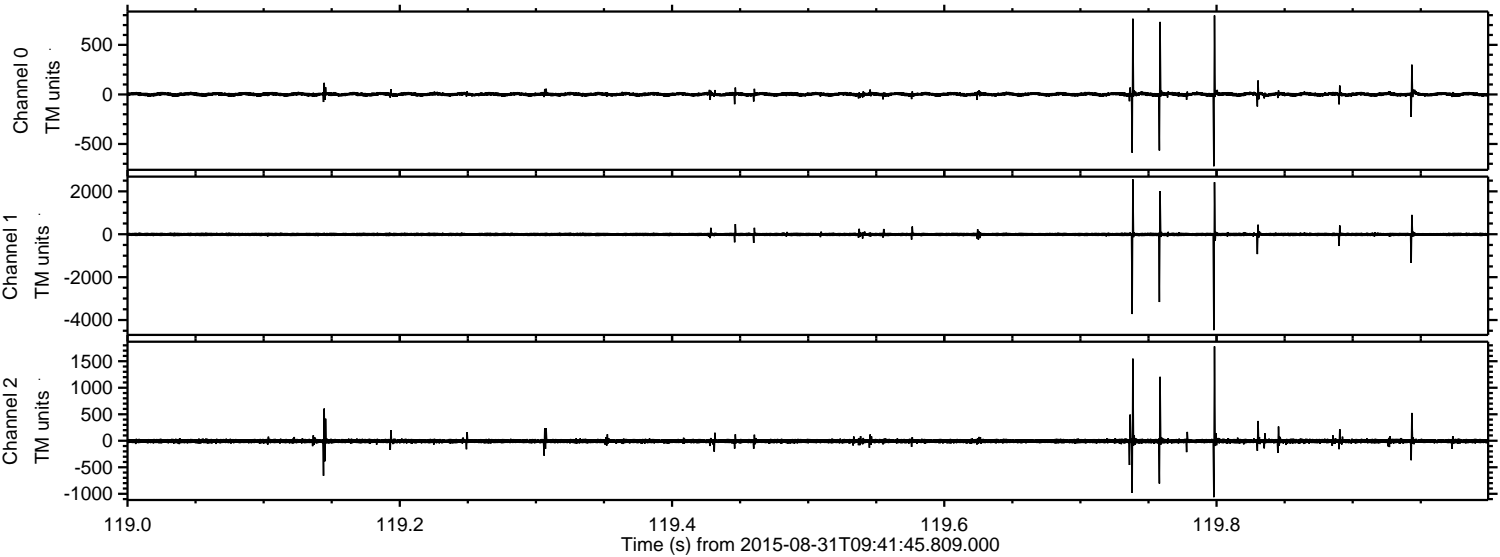
Processed Thu Oct 8 12:21:18 2015 by ELM ver.2012-10-06 from 001\_\_elm20150831\_094144\_\_dat00.bin





ELMAVAN 3D WAVEFORMS (Measured data sampled at 50 kHz) 51000 packets of 144 samples from 2015-08-31T09:41:45.809.000. Part 120/147

Processed Thu Oct 8 12:21:19 2015 by ELM ver.2012-10-06 from 001\_\_elm20150831\_094144\_\_dat00.bin



Channel 0  
mn: -725  
mx: 797  
 $\mu$ : 1.4  
 $\sigma$ : 14.1

Channel 1  
mn: -4471  
mx: 2559  
 $\mu$ : -8.4  
 $\sigma$ : 60.1

Channel 2  
mn: -1064  
mx: 1779  
 $\mu$ : -6.9  
 $\sigma$ : 29.6



Processed Thu Oct 8 12:21:20 2015 by ELM ver.2012-10-06 from 001\_\_elm20150831\_094144\_\_dat00.bin

