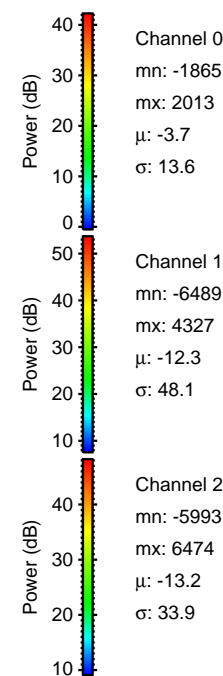
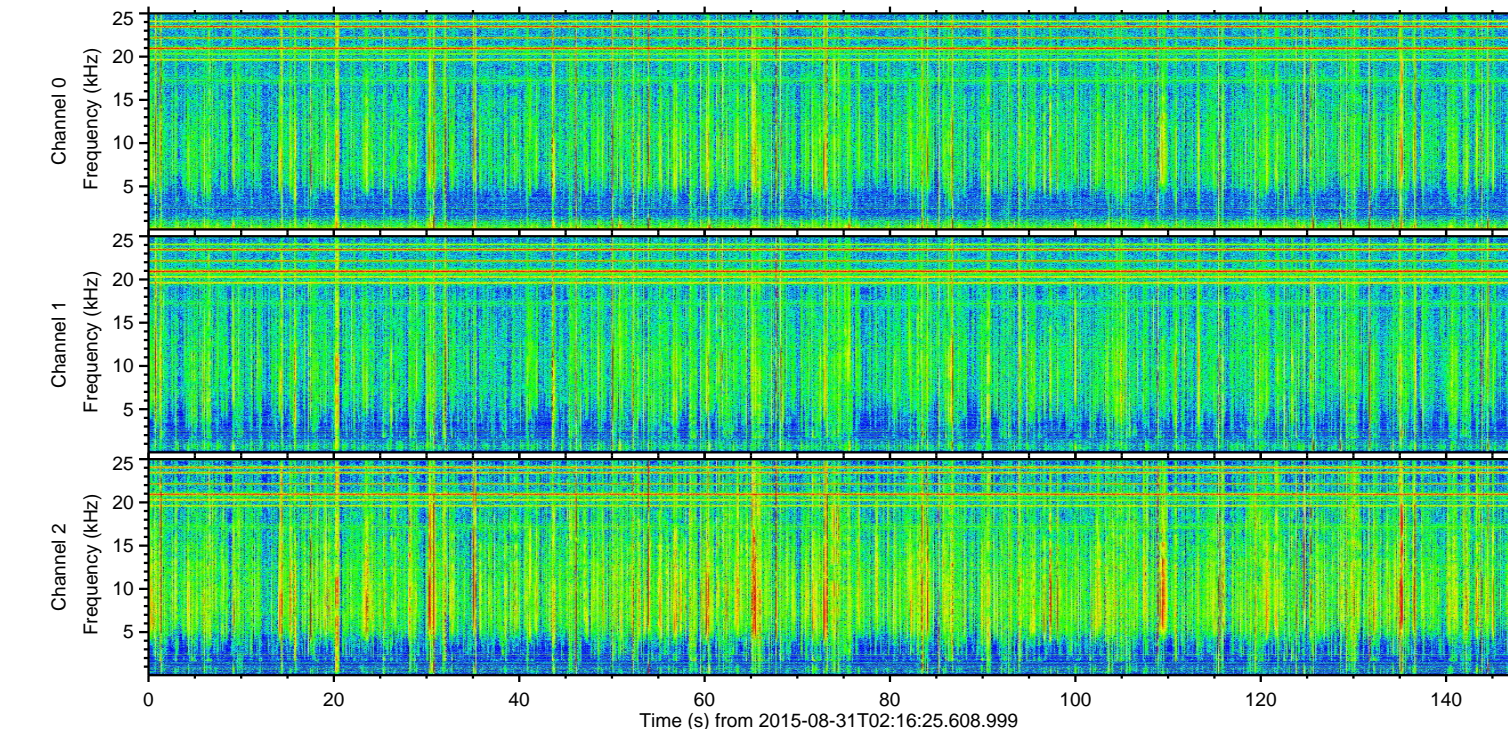
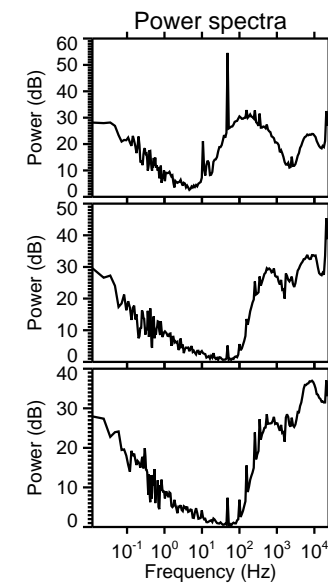
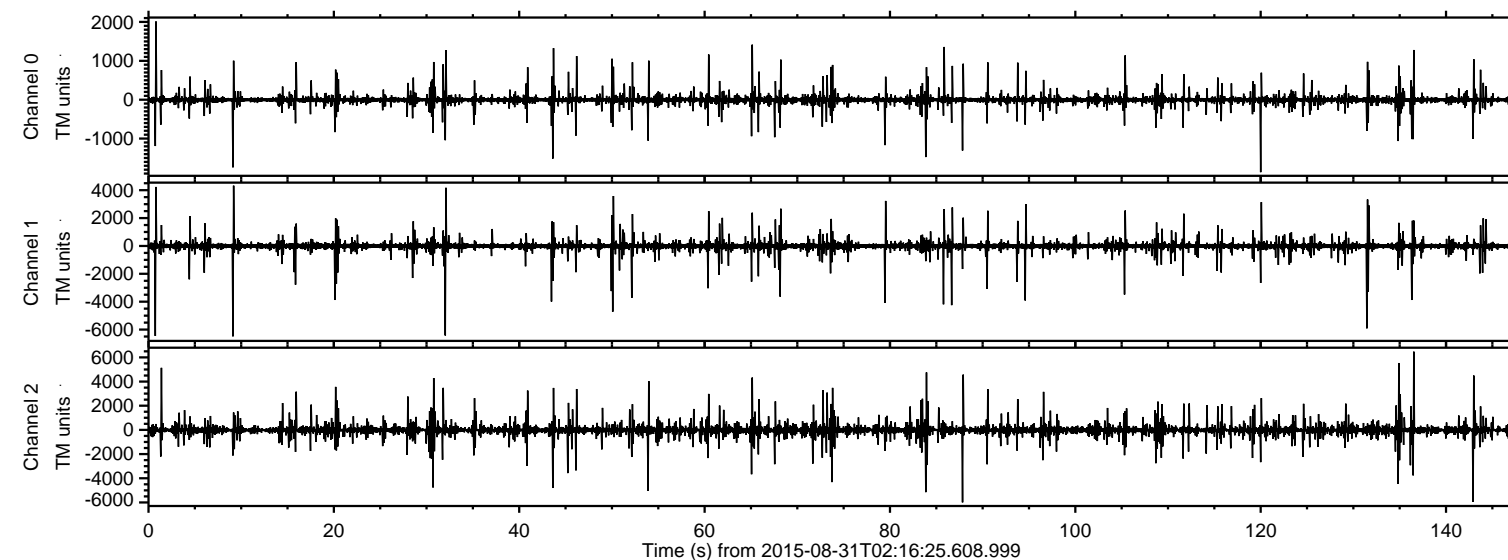


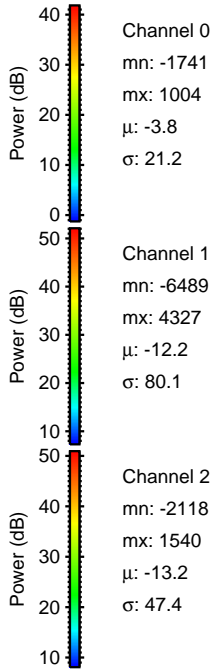
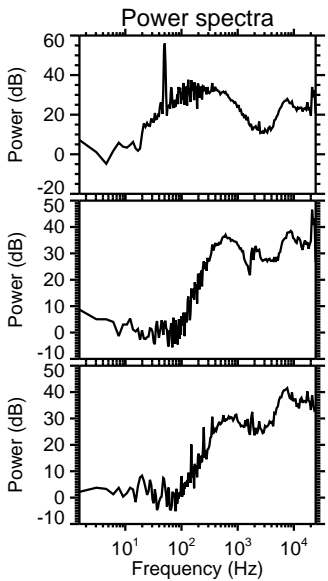
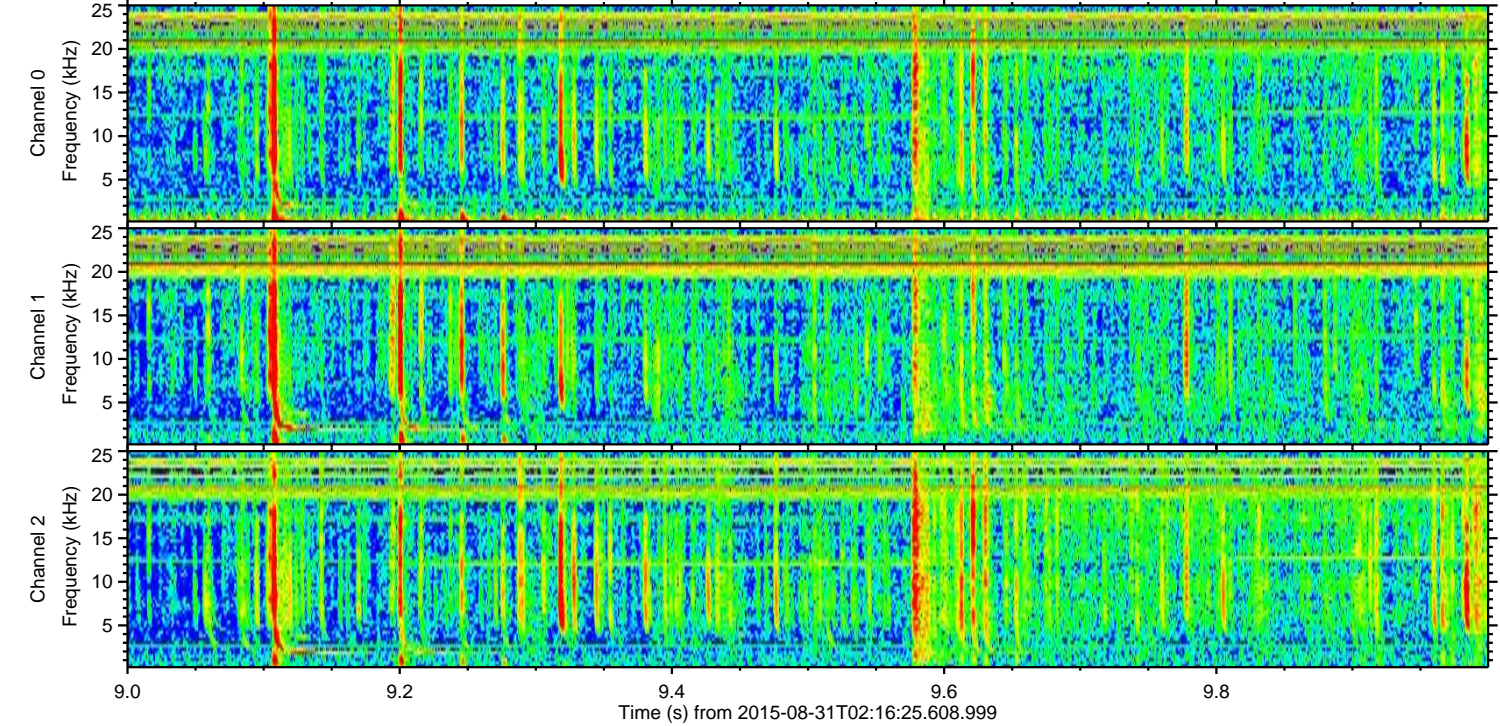
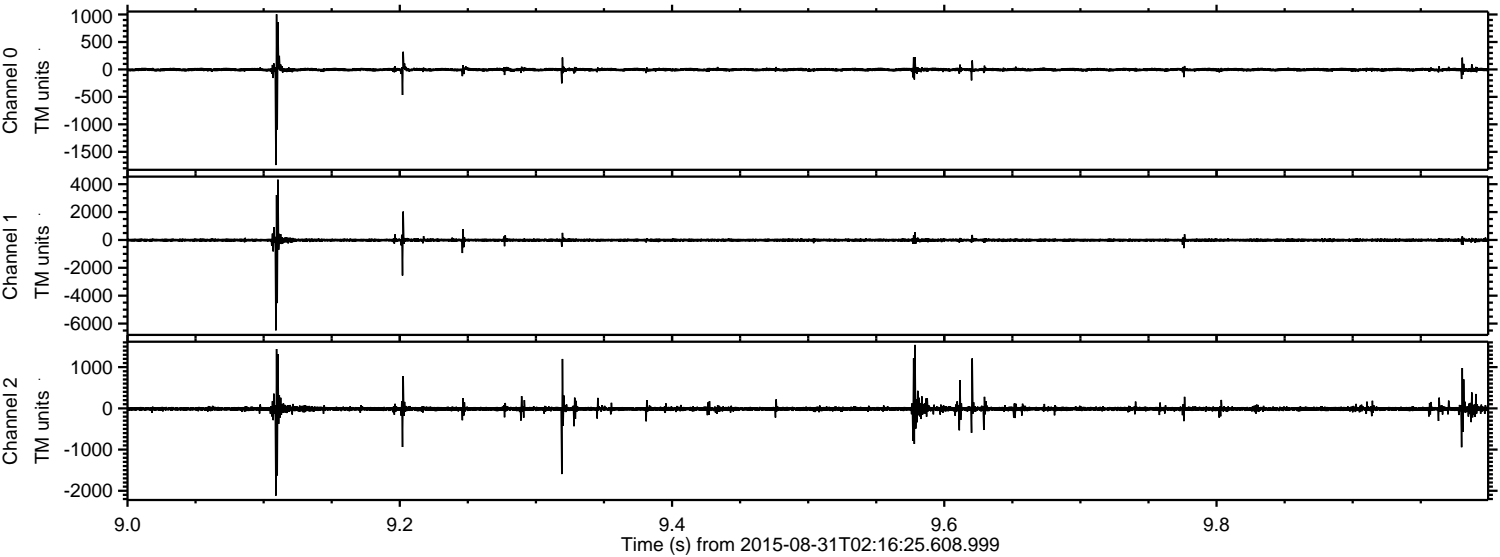
ELMAVAN 3D WAVEFORMS (Measured data sampled at 50 kHz) 51000 packets of 144 samples from 2015-08-31T02:16:25.608.999.

Processed Thu Oct 8 10:19:03 2015 by ELM ver.2012-10-06 from 001__elm20150831_021624__dat00.bin



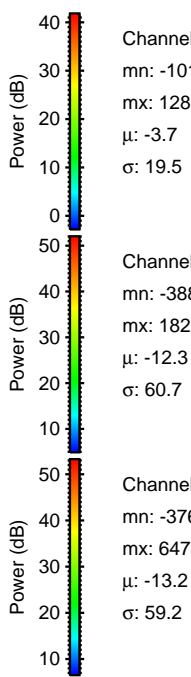
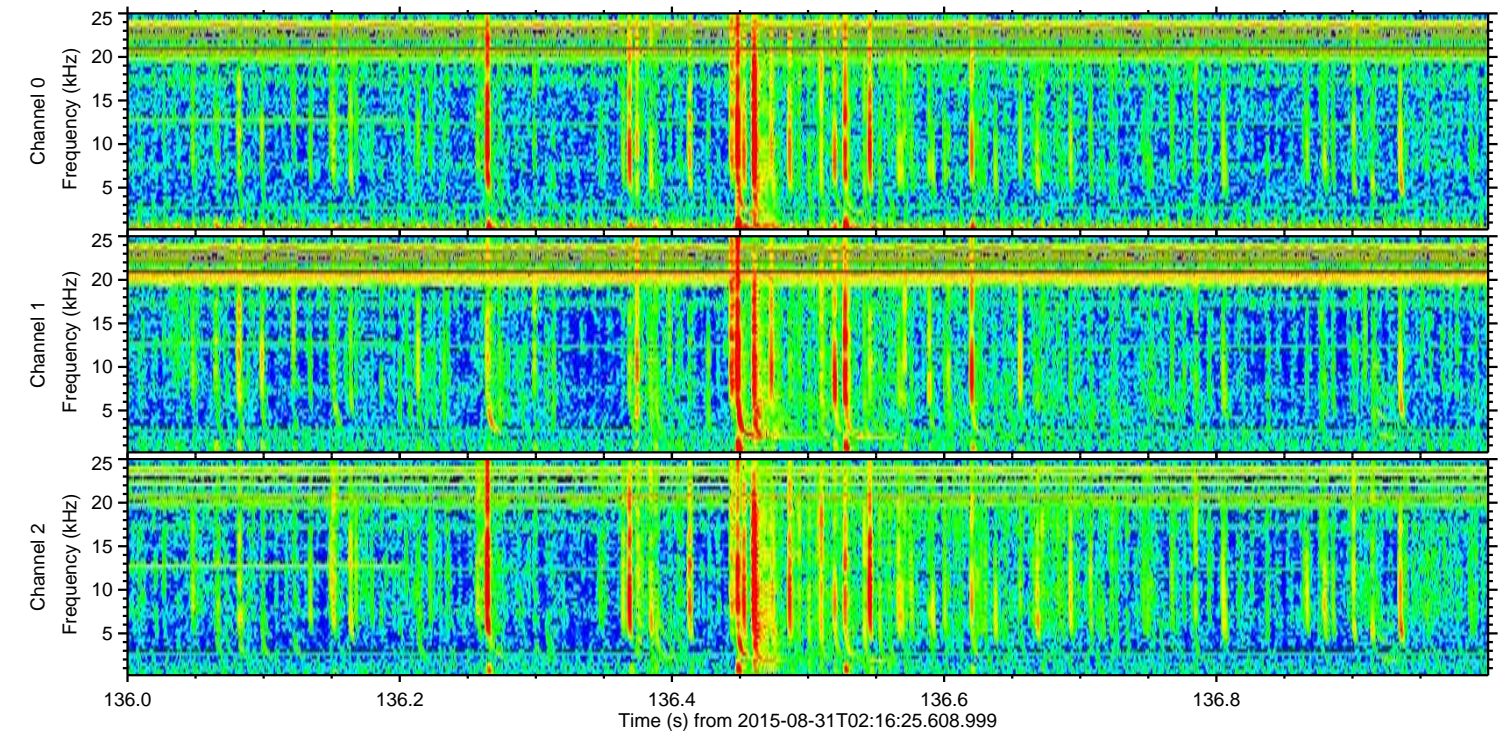
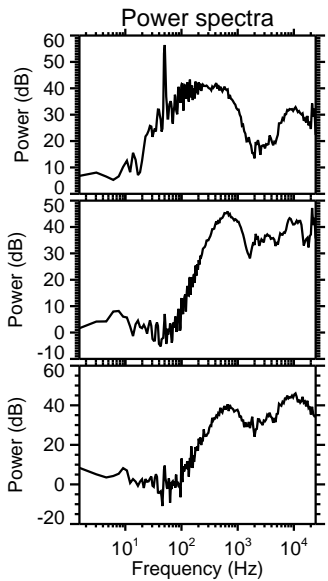
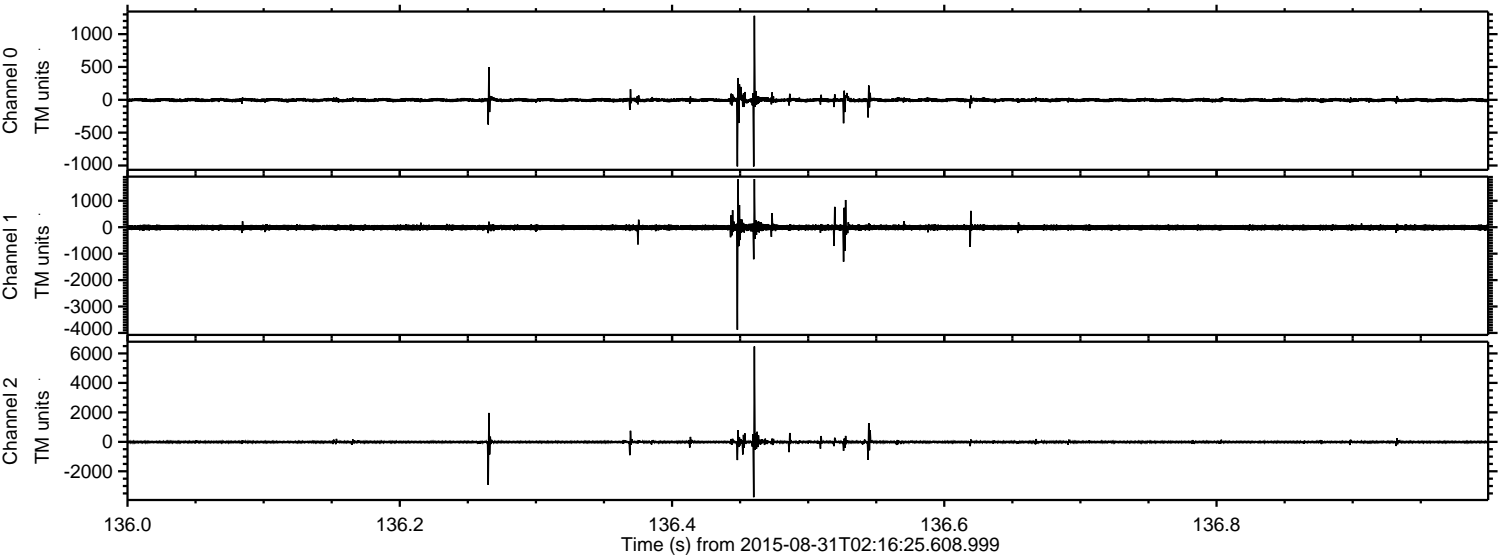
ELMAVAN 3D WAVEFORMS (Measured data sampled at 50 kHz) 51000 packets of 144 samples from 2015-08-31T02:16:25.608.999. Part 10/147

Processed Thu Oct 8 10:19:19 2015 by ELM ver.2012-10-06 from 001__elm20150831_021624__dat00.bin



ELMAVAN 3D WAVEFORMS (Measured data sampled at 50 kHz) 51000 packets of 144 samples from 2015-08-31T02:16:25.608.999. Part 137/147

Processed Thu Oct 8 10:19:20 2015 by ELM ver.2012-10-06 from 001__elm20150831_021624__dat00.bin



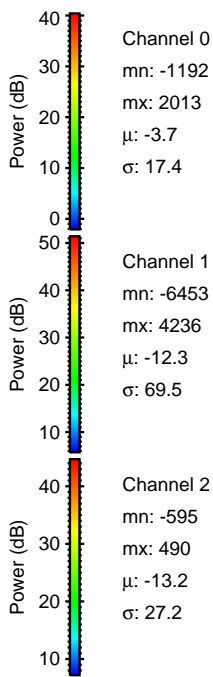
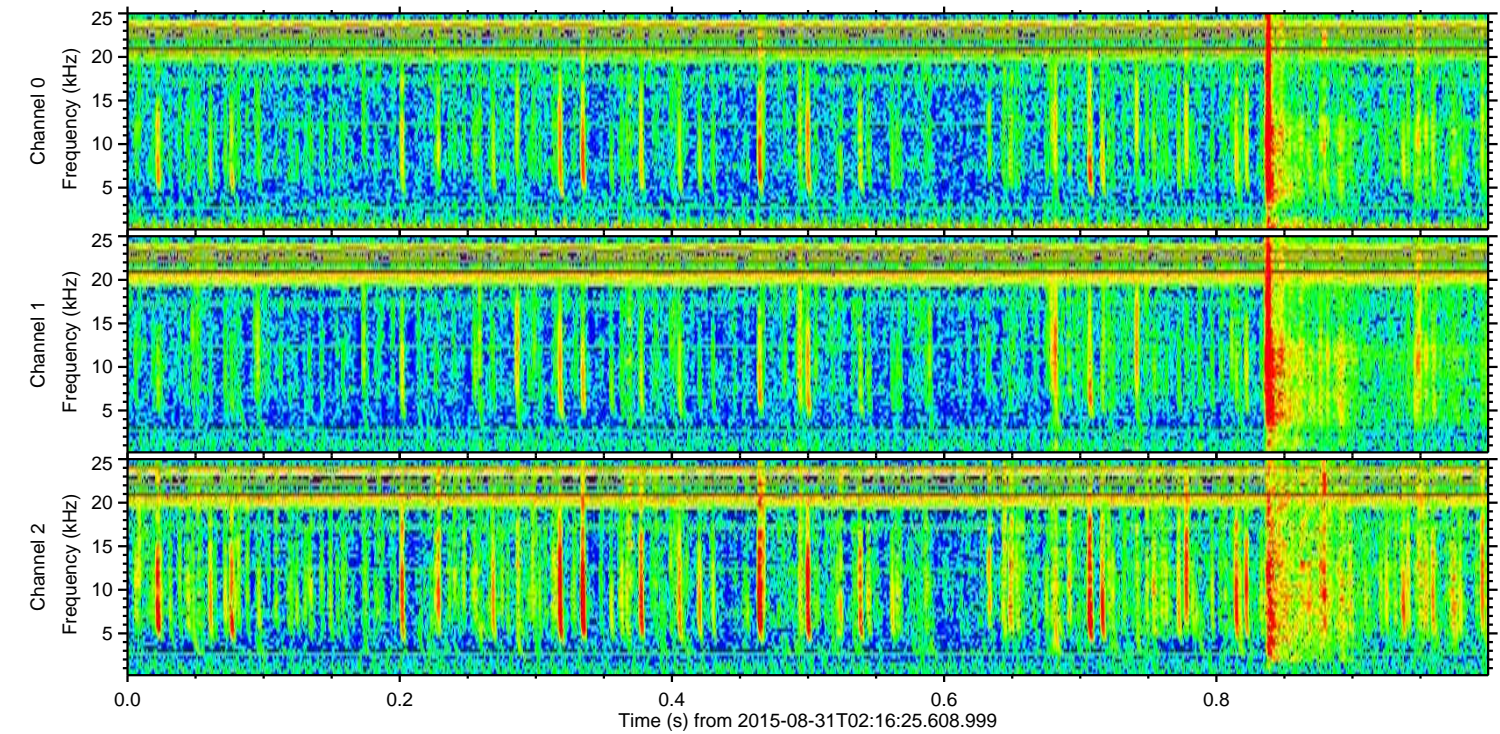
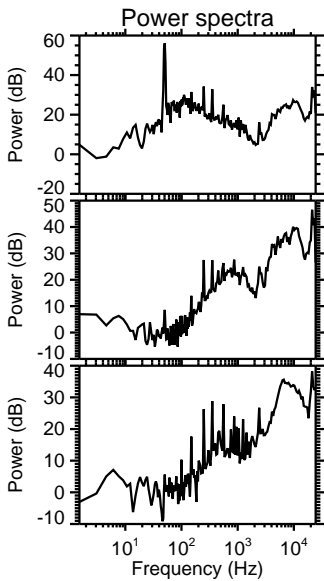
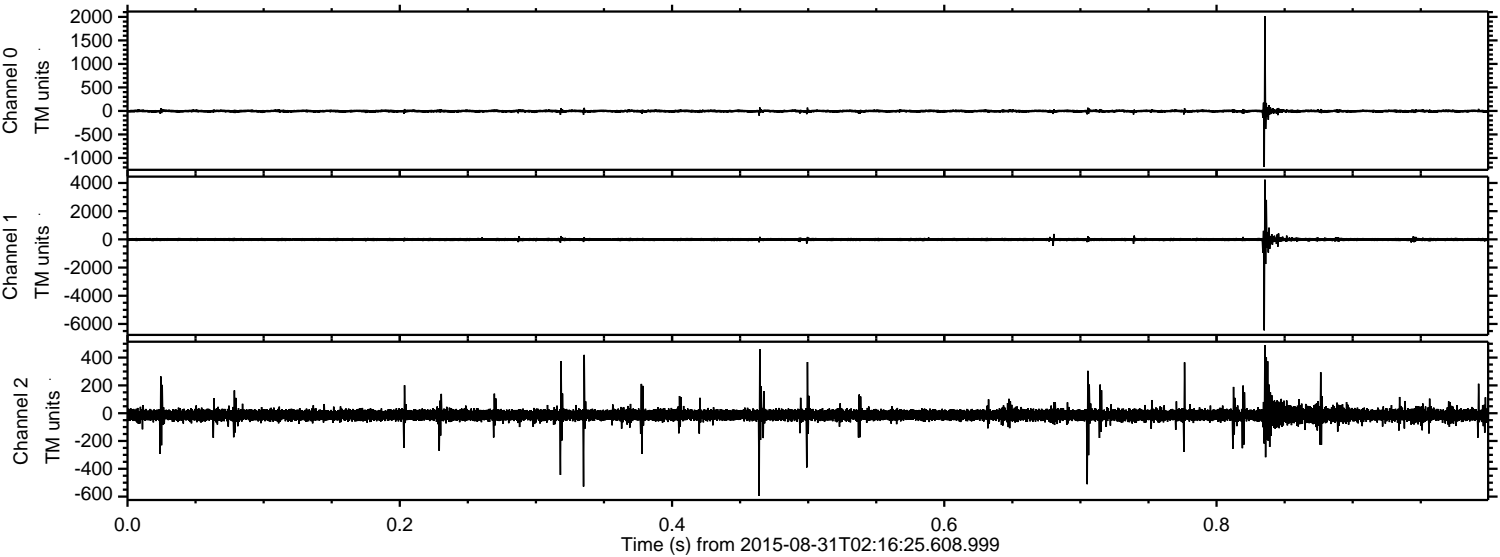
Channel 0
mn: -1015
mx: 1280
 μ : -3.7
 σ : 19.5

Channel 1
mn: -3880
mx: 1822
 μ : -12.3
 σ : 60.7

Channel 2
mn: -3760
mx: 6474
 μ : -13.2
 σ : 59.2

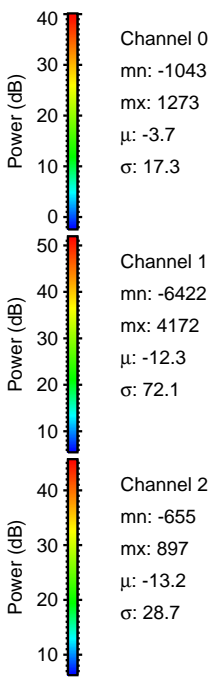
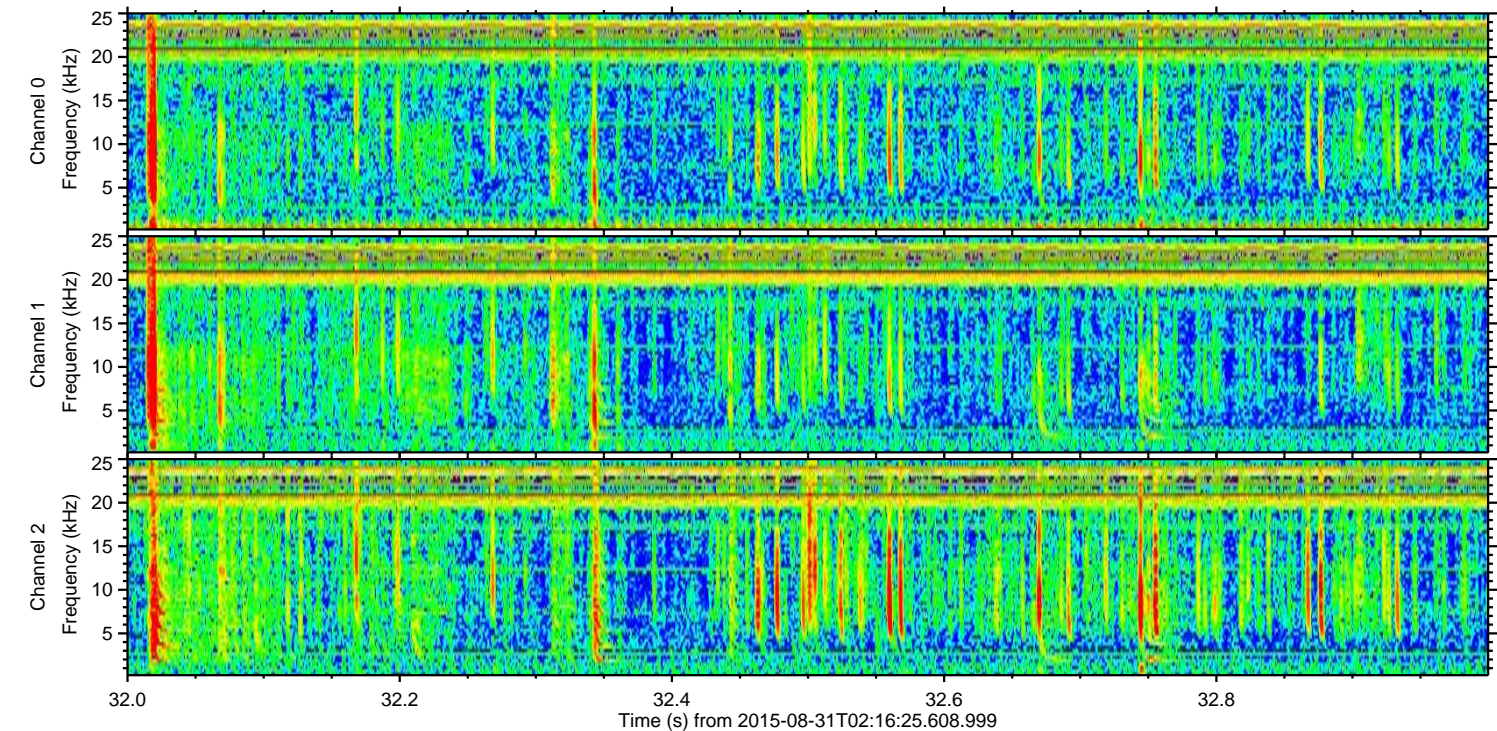
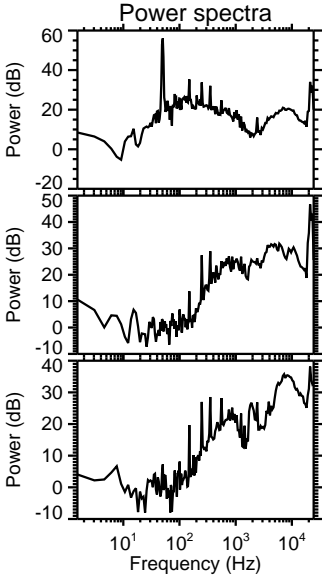
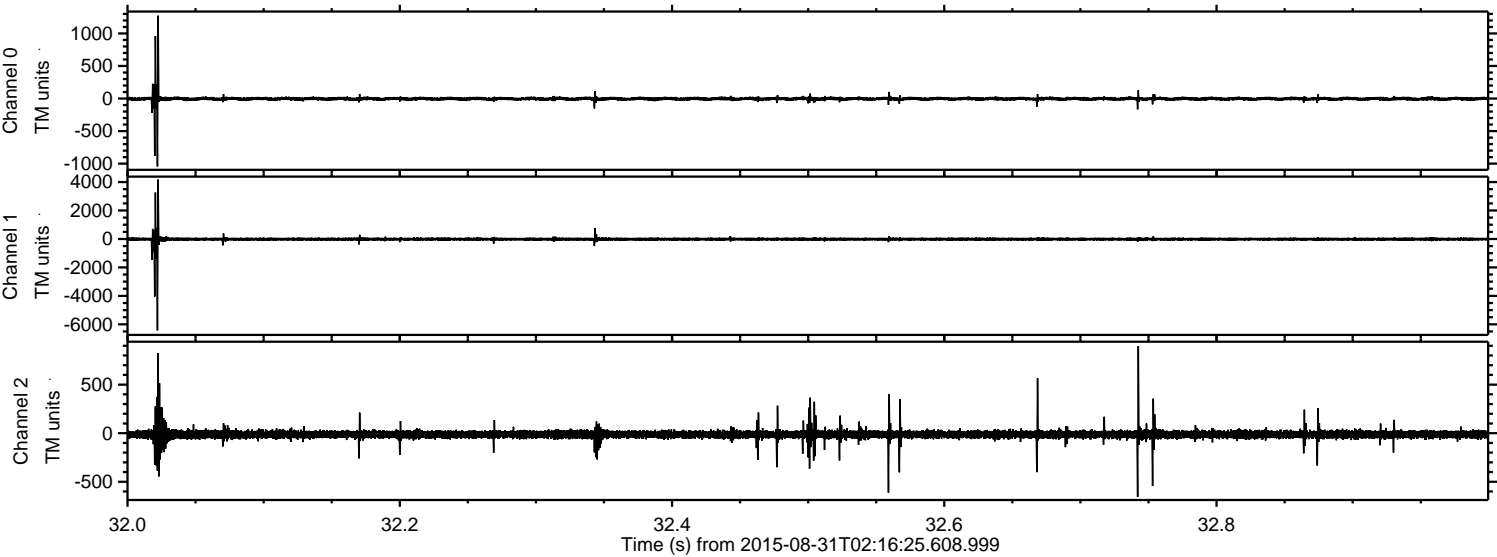
ELMAVAN 3D WAVEFORMS (Measured data sampled at 50 kHz) 51000 packets of 144 samples from 2015-08-31T02:16:25.608.999. Part 1/147

Processed Thu Oct 8 10:19:21 2015 by ELM ver.2012-10-06 from 001__elm20150831_021624__dat00.bin



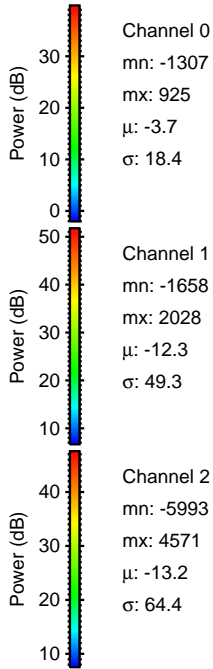
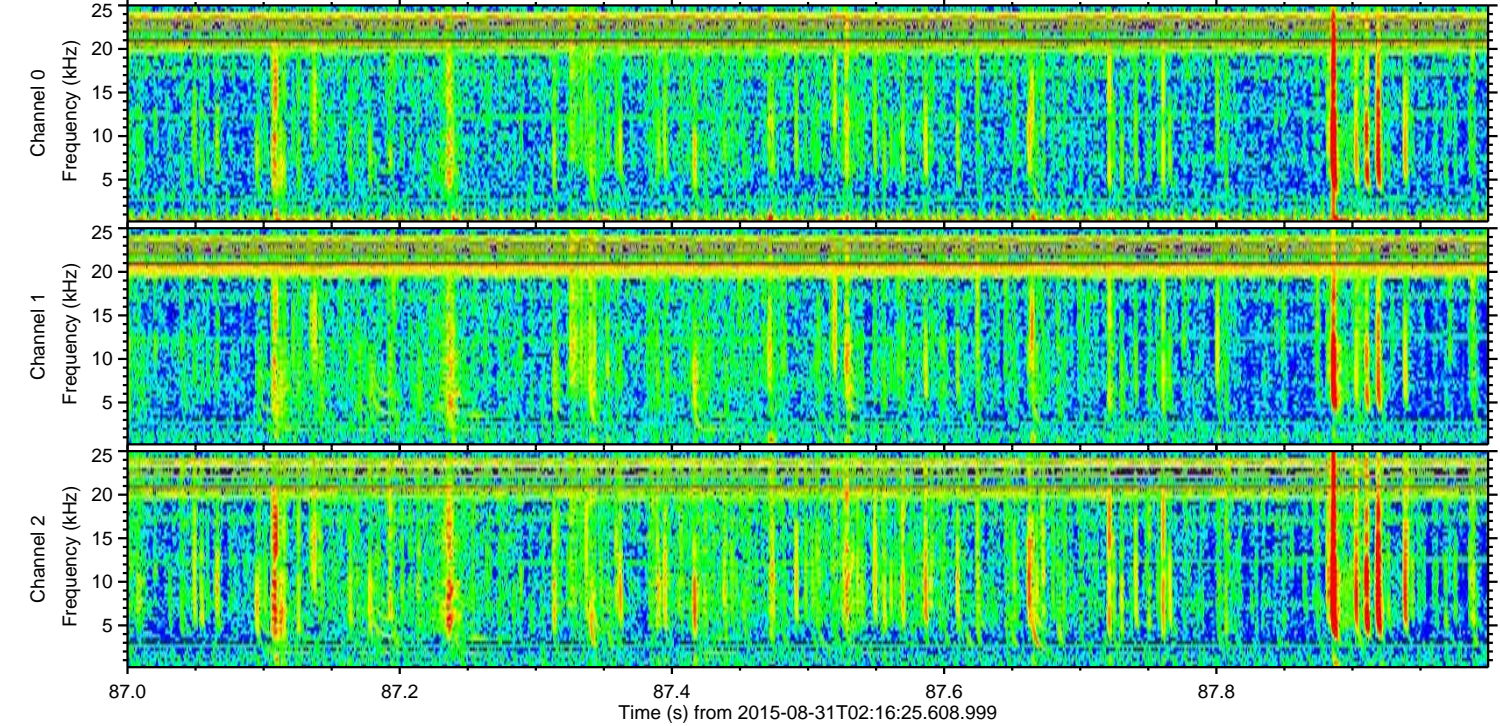
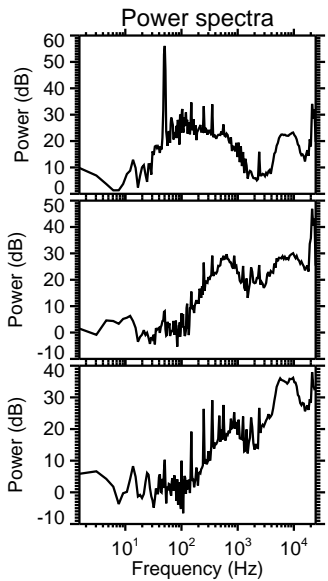
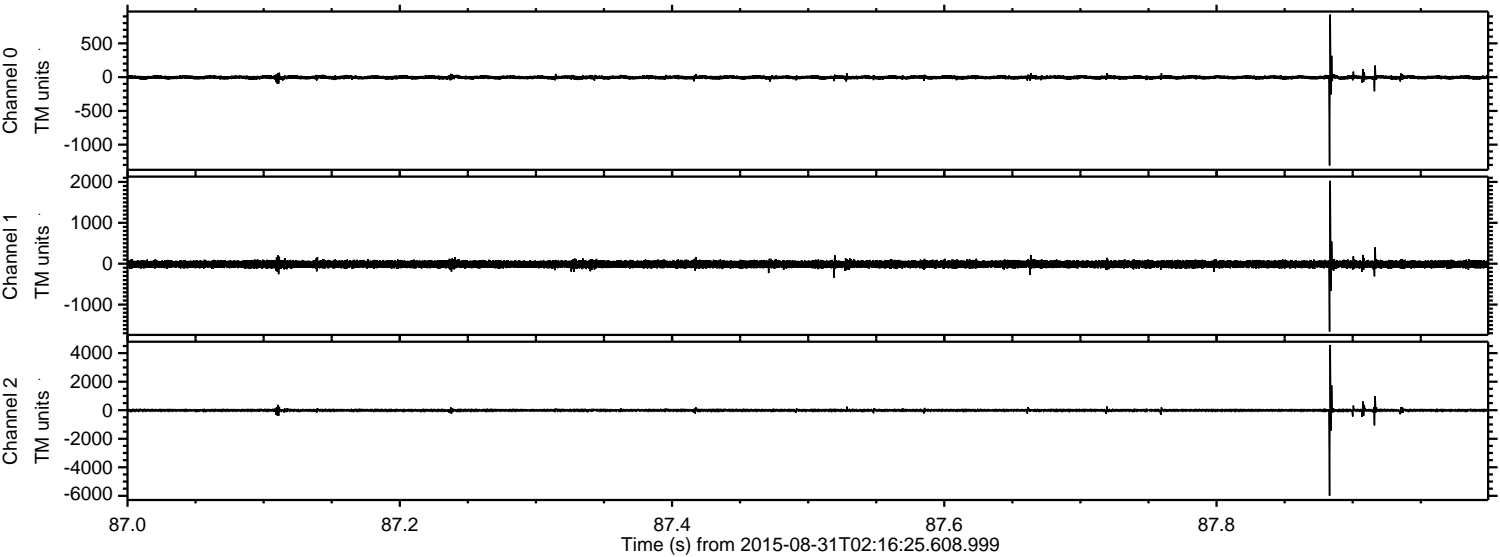
ELMAVAN 3D WAVEFORMS (Measured data sampled at 50 kHz) 51000 packets of 144 samples from 2015-08-31T02:16:25.608.999. Part 33/147

Processed Thu Oct 8 10:19:22 2015 by ELM ver.2012-10-06 from 001__elm20150831_021624__dat00.bin



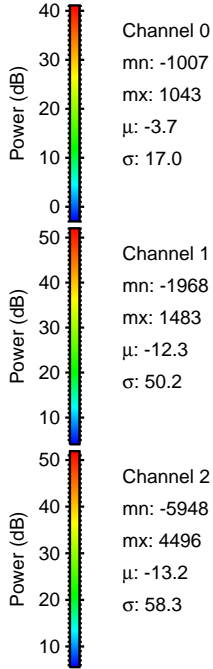
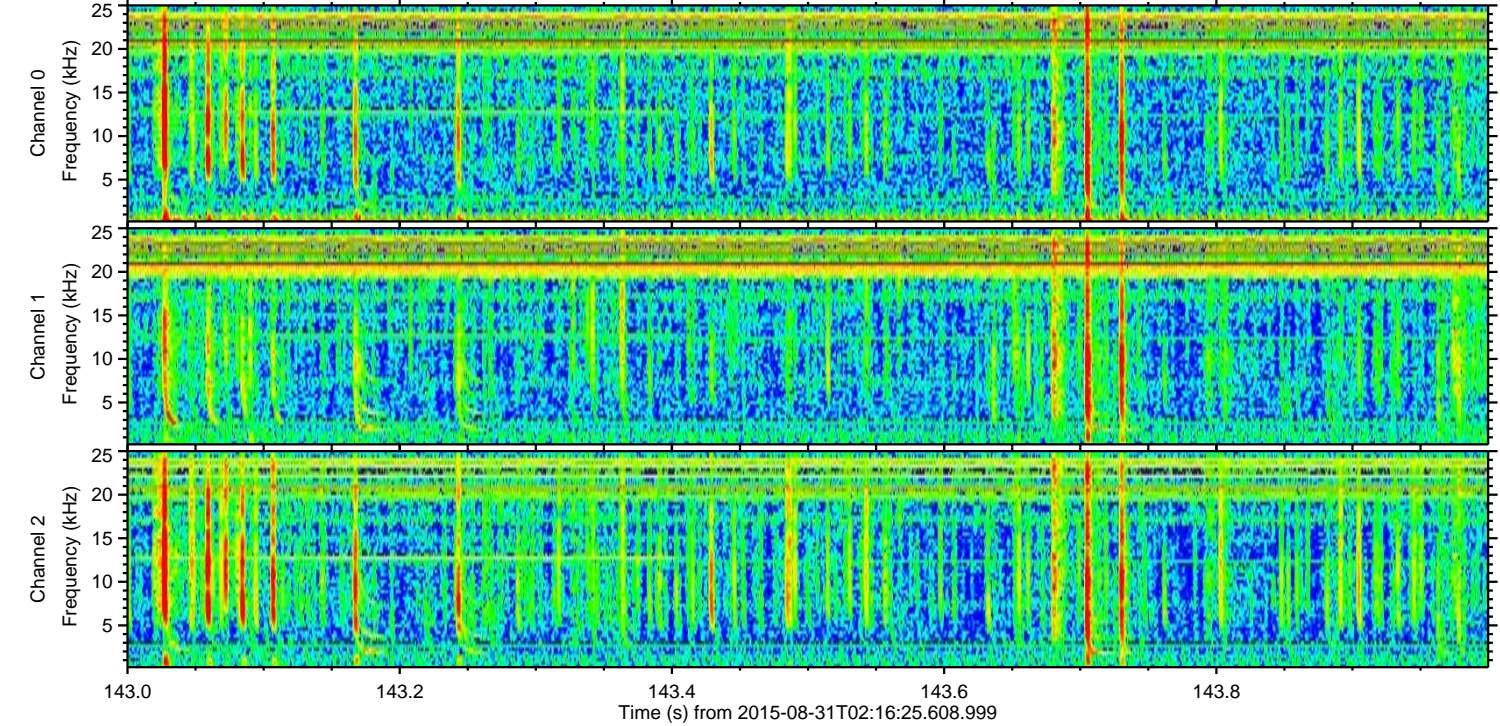
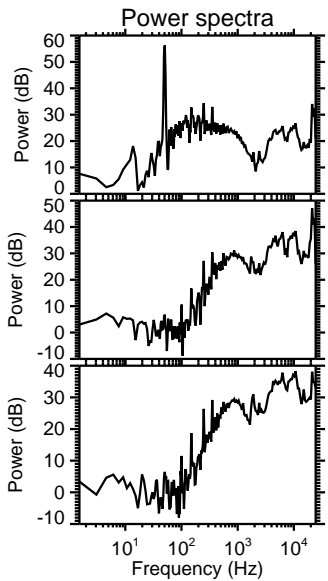
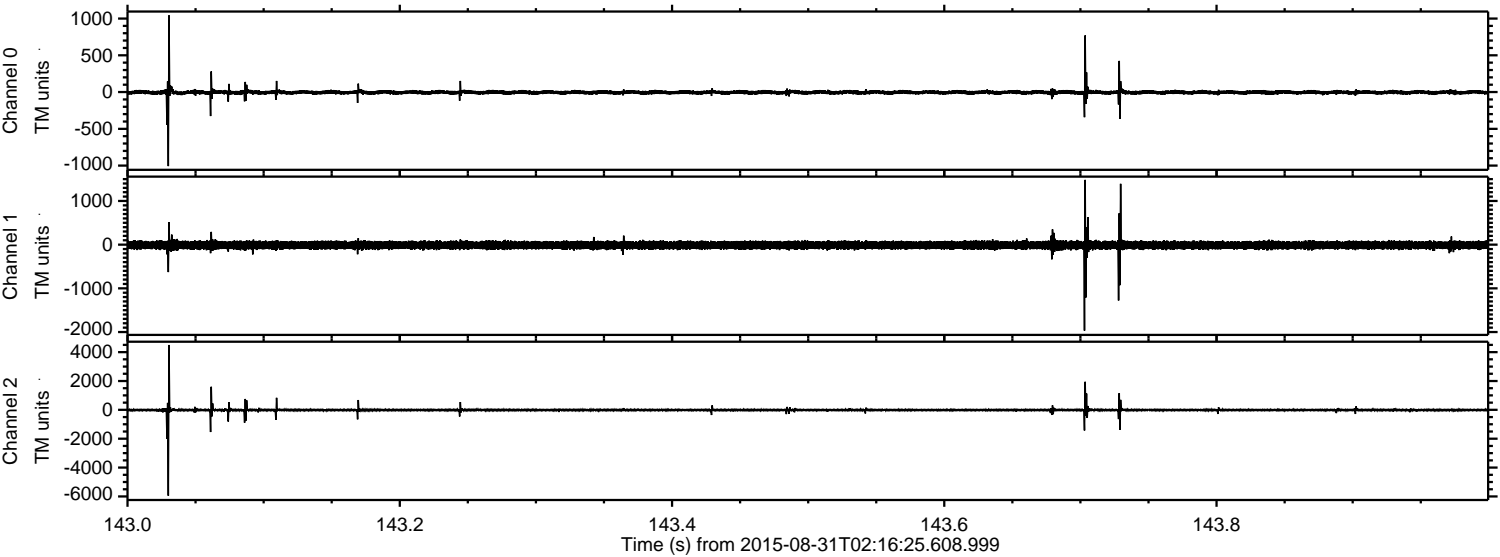
ELMAVAN 3D WAVEFORMS (Measured data sampled at 50 kHz) 51000 packets of 144 samples from 2015-08-31T02:16:25.608.999. Part 88/147

Processed Thu Oct 8 10:19:23 2015 by ELM ver.2012-10-06 from 001__elm20150831_021624__dat00.bin



ELMAVAN 3D WAVEFORMS (Measured data sampled at 50 kHz) 51000 packets of 144 samples from 2015-08-31T02:16:25.608.999. Part 144/147

Processed Thu Oct 8 10:19:24 2015 by ELM ver.2012-10-06 from 001__elm20150831_021624__dat00.bin



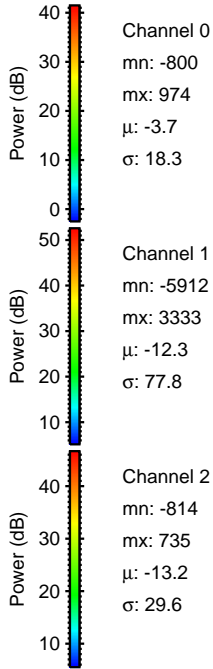
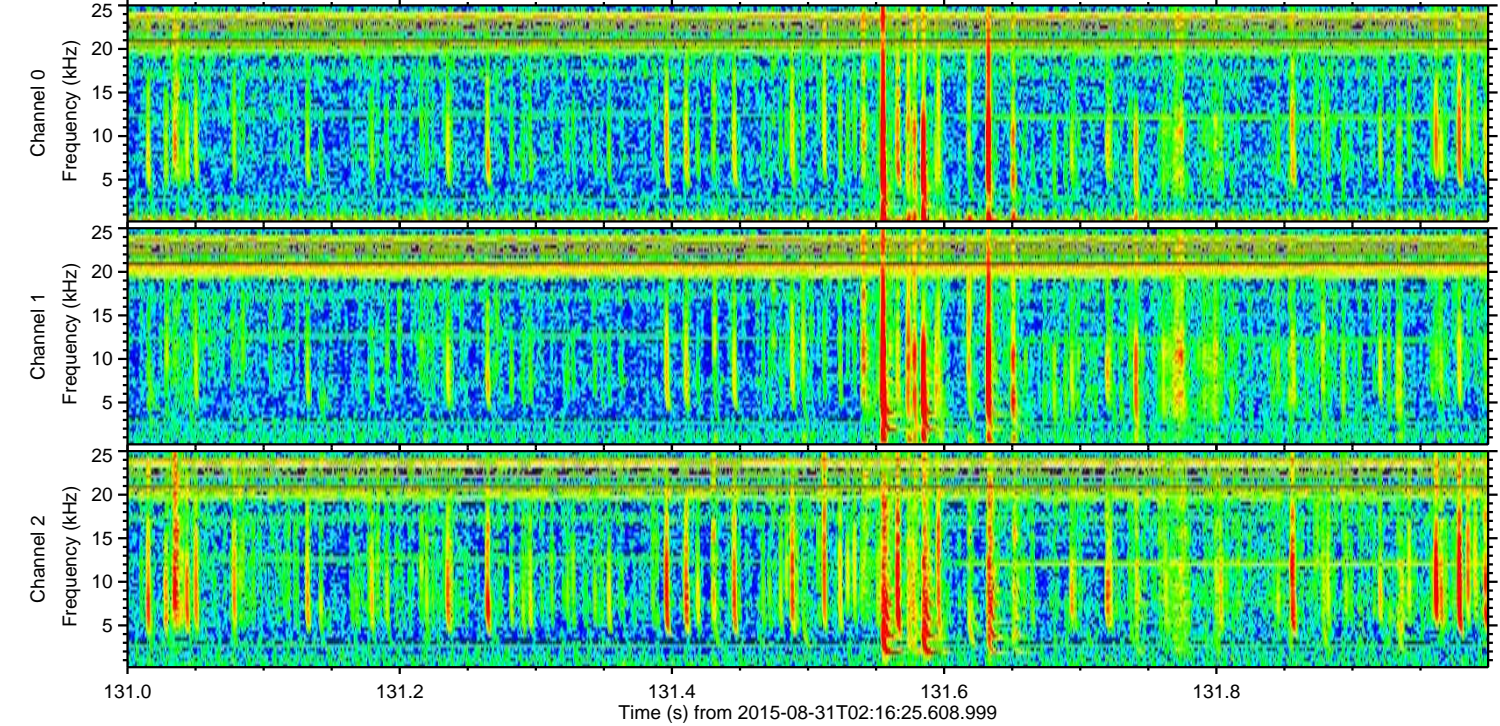
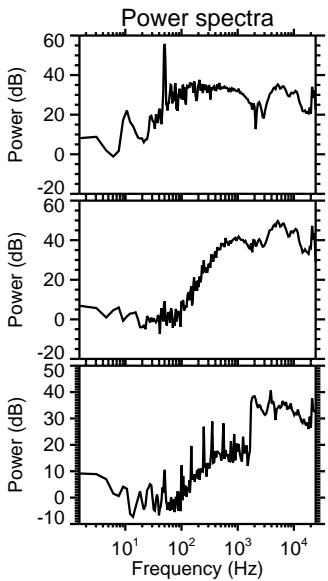
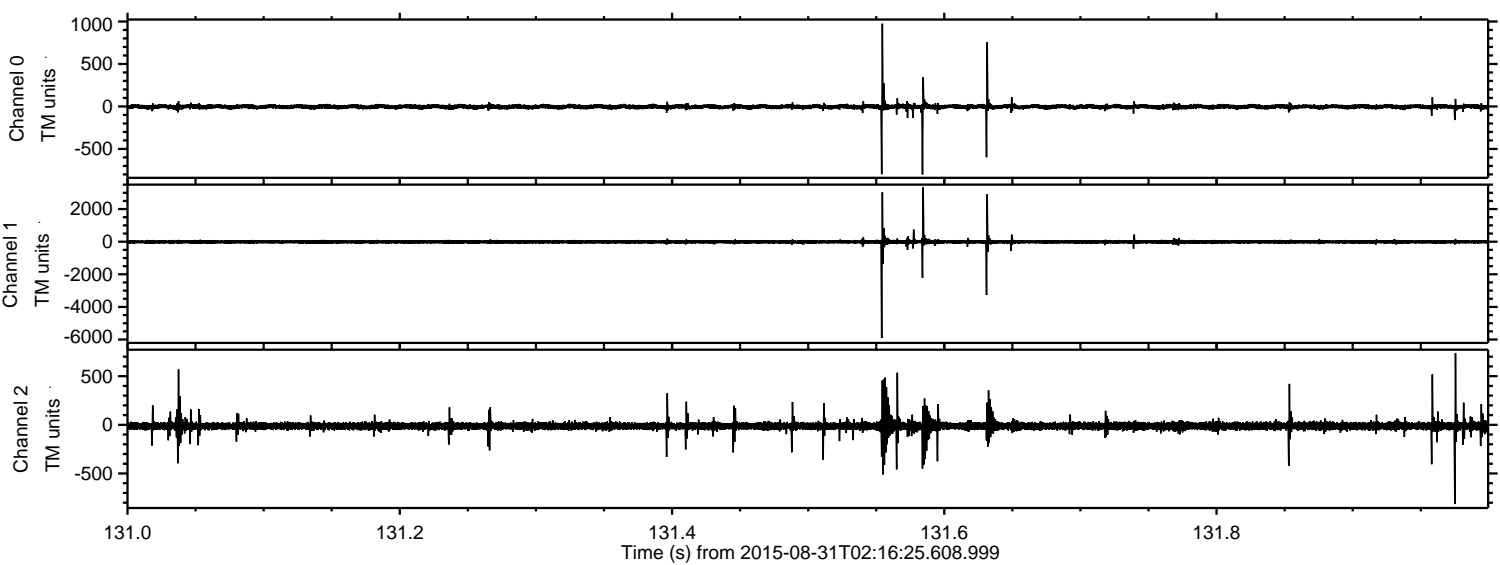
Channel 0
mn: -1007
mx: 1043
 μ : -3.7
 σ : 17.0

Channel 1
mn: -1968
mx: 1483
 μ : -12.3
 σ : 50.2

Channel 2
mn: -5948
mx: 4496
 μ : -13.2
 σ : 58.3

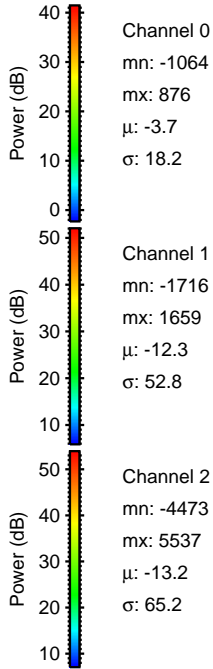
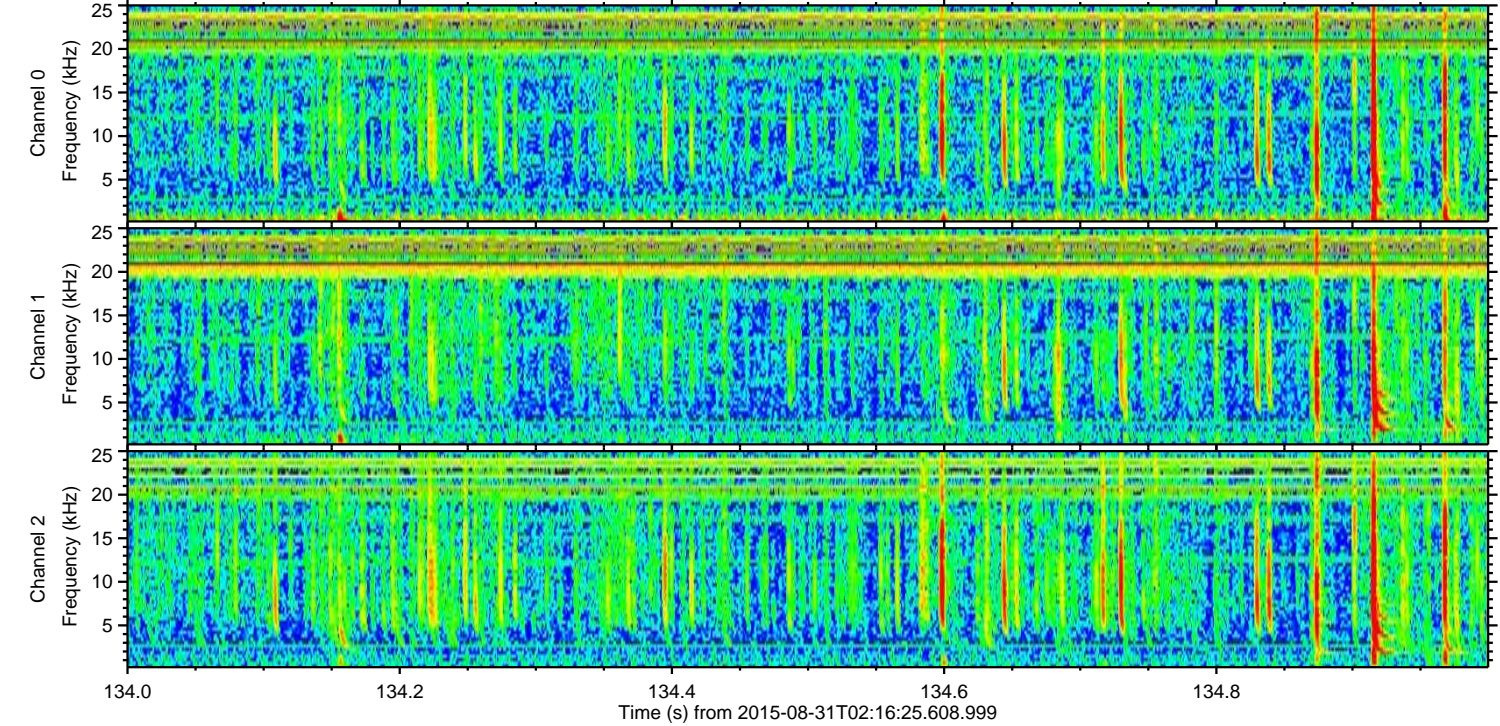
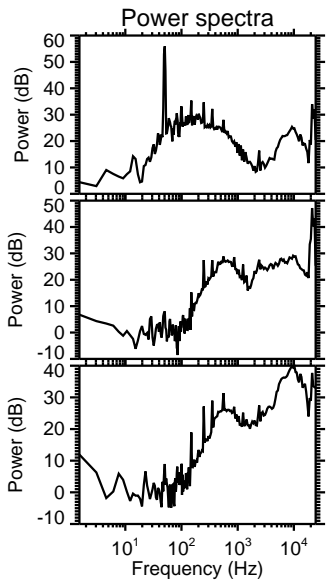
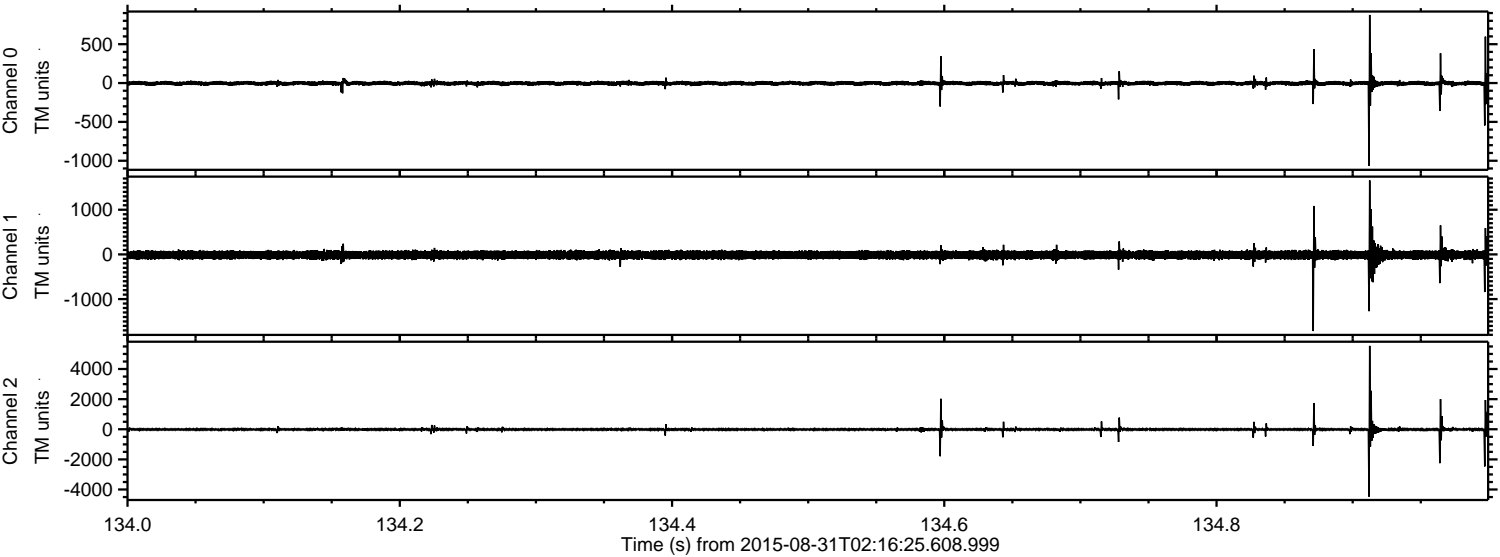
ELMAVAN 3D WAVEFORMS (Measured data sampled at 50 kHz) 51000 packets of 144 samples from 2015-08-31T02:16:25.608.999. Part 132/147

Processed Thu Oct 8 10:19:25 2015 by ELM ver.2012-10-06 from 001__elm20150831_021624__dat00.bin



ELMAVAN 3D WAVEFORMS (Measured data sampled at 50 kHz) 51000 packets of 144 samples from 2015-08-31T02:16:25.608.999. Part 135/147

Processed Thu Oct 8 10:19:26 2015 by ELM ver.2012-10-06 from 001__elm20150831_021624__dat00.bin

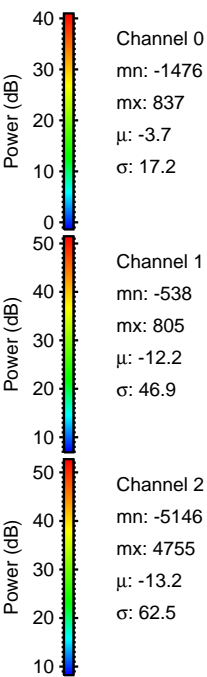
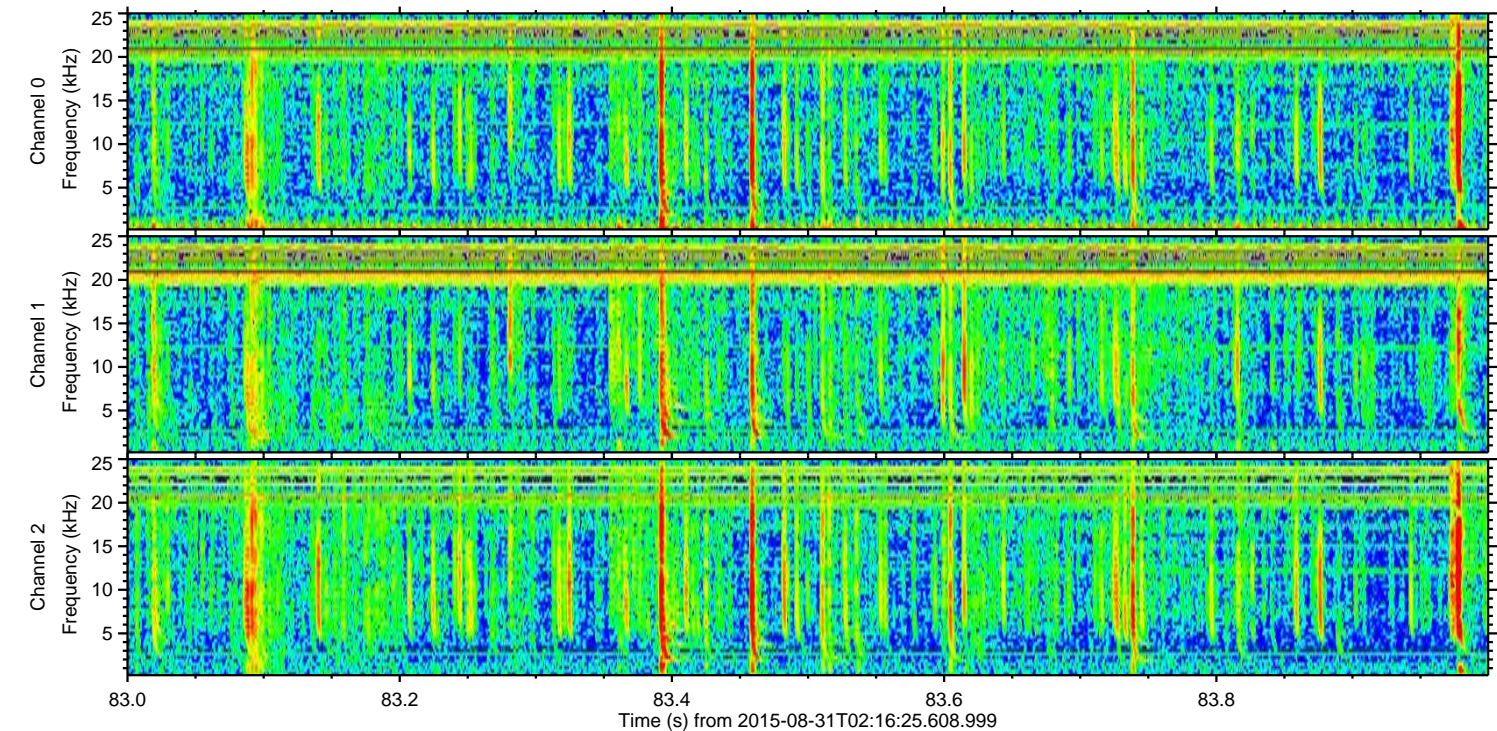
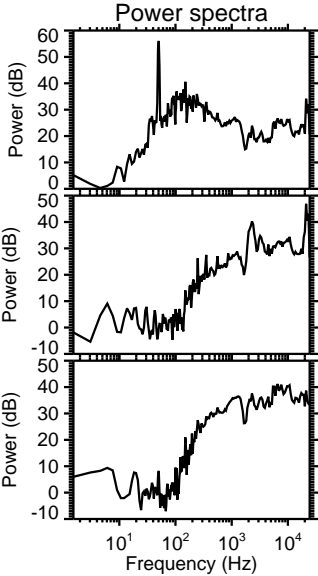
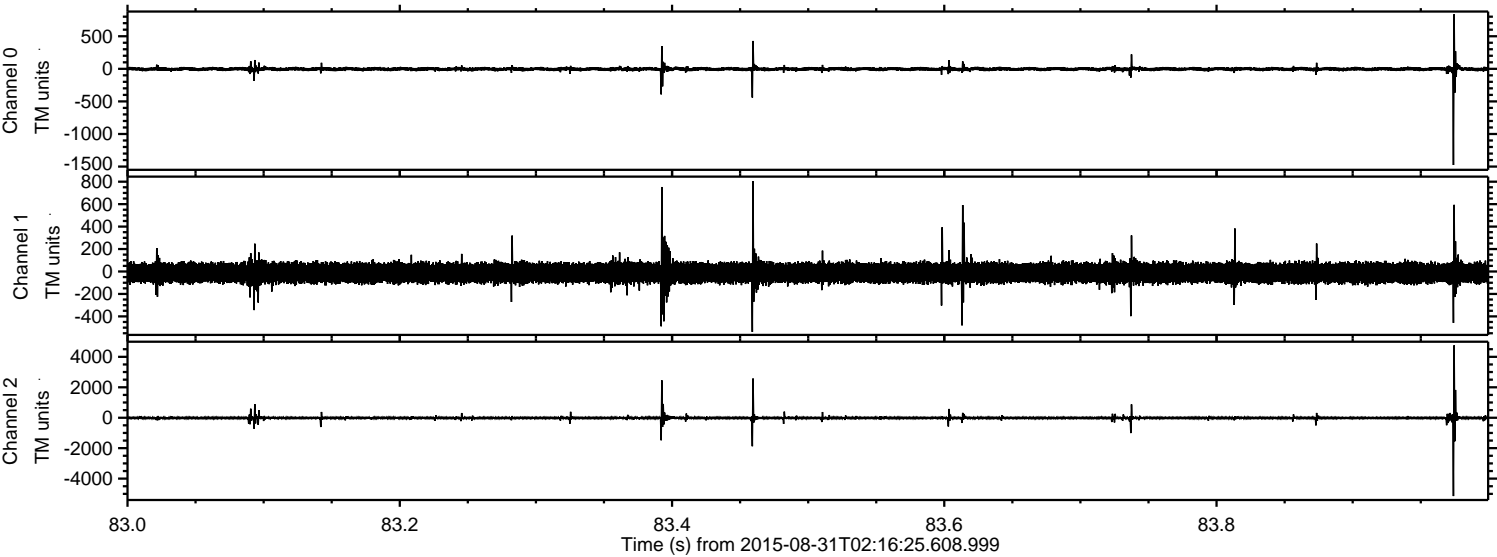


Channel 0
mn: -1064
mx: 876
 μ : -3.7
 σ : 18.2

Channel 1
mn: -1716
mx: 1659
 μ : -12.3
 σ : 52.8

Channel 2
mn: -4473
mx: 5537
 μ : -13.2
 σ : 65.2

Processed Thu Oct 8 10:19:27 2015 by ELM ver.2012-10-06 from 001__elm20150831_021624__dat00.bin



Processed Thu Oct 8 10:19:28 2015 by ELM ver.2012-10-06 from 001__elm20150831_021624__dat00.bin

