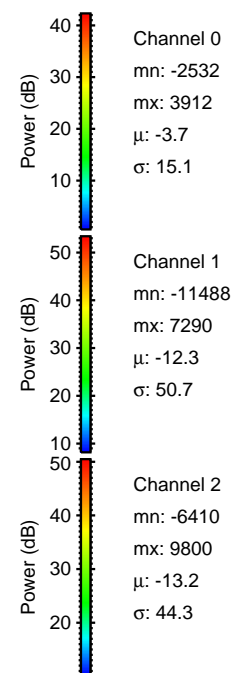
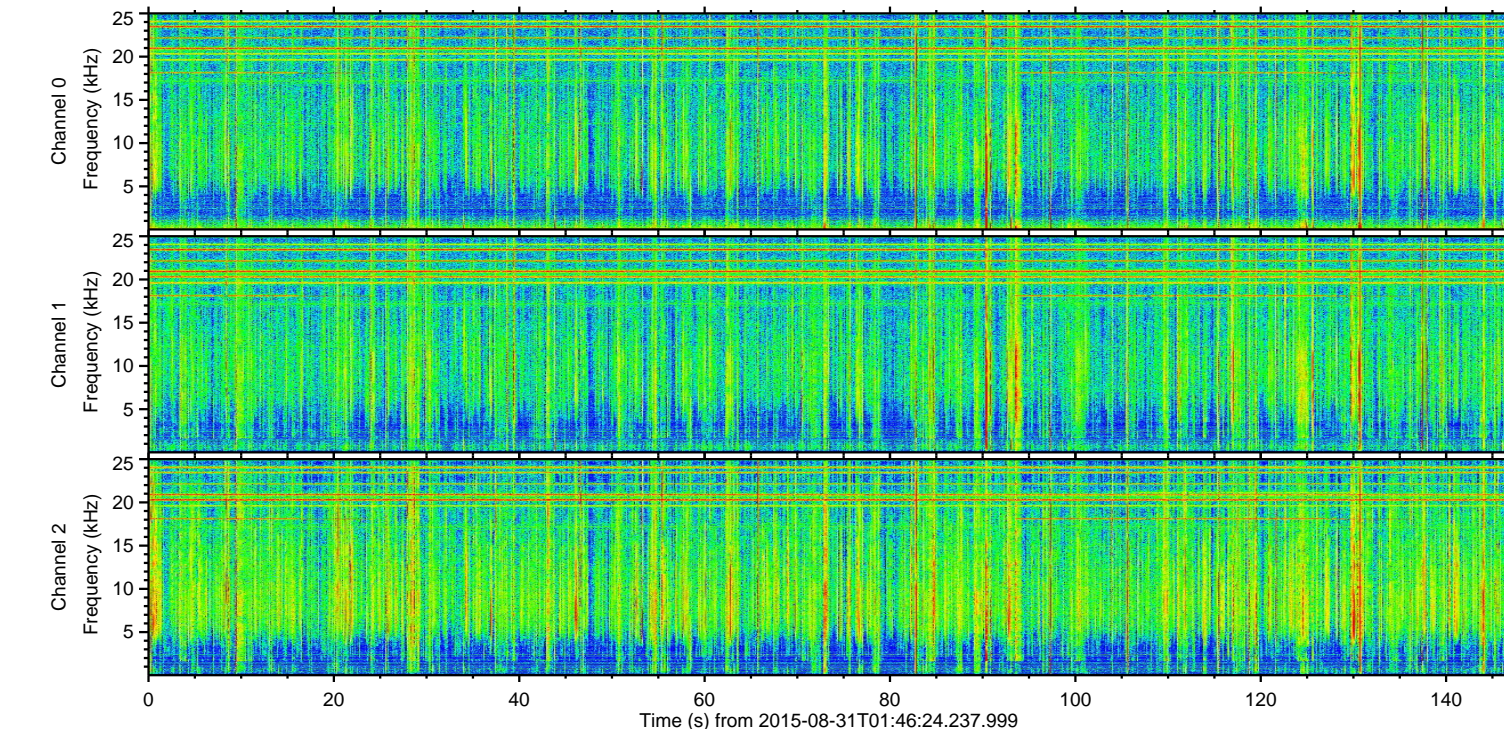
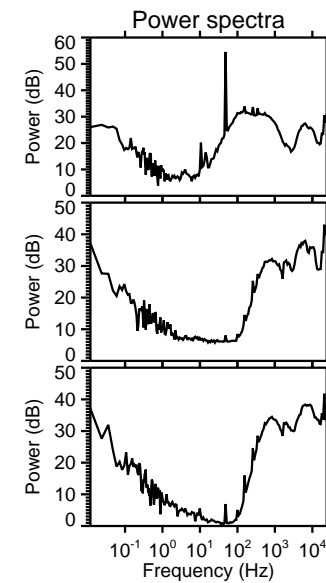
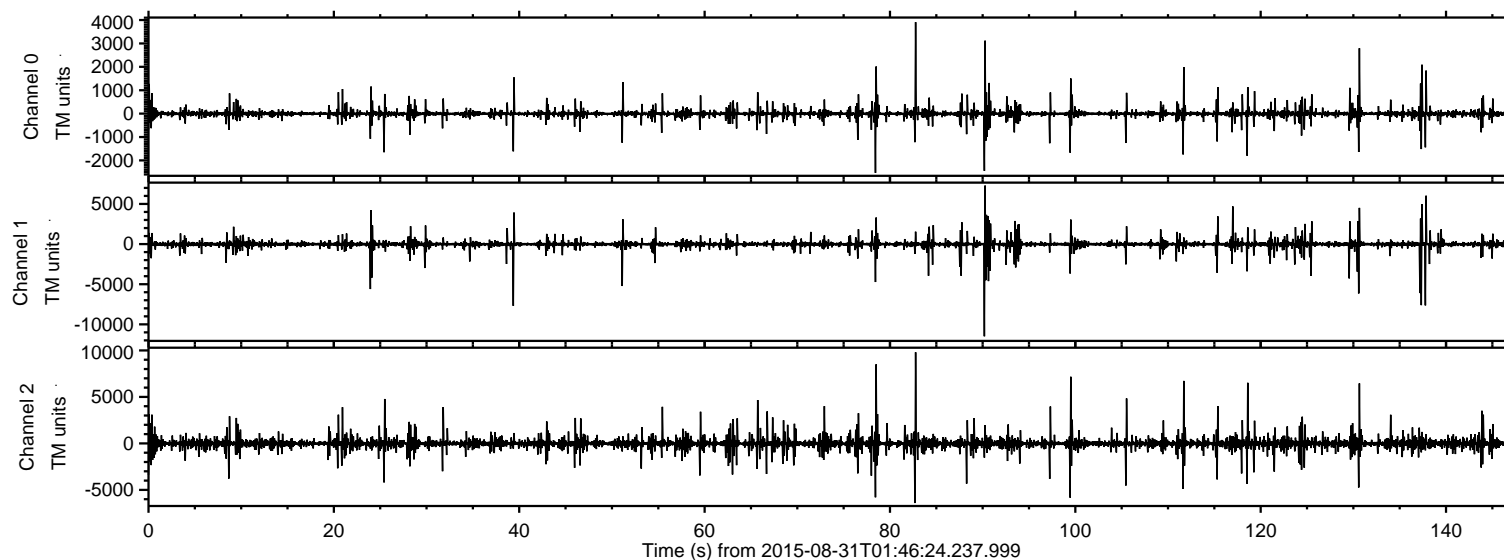


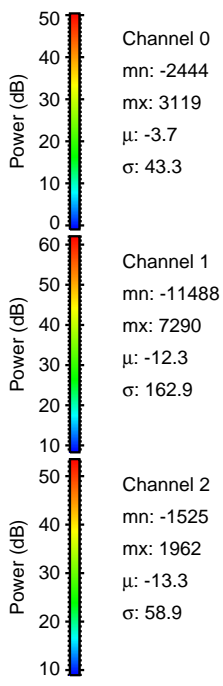
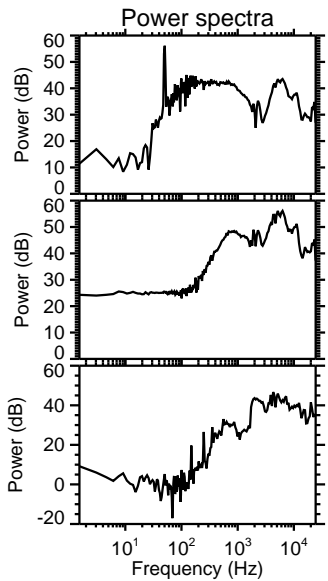
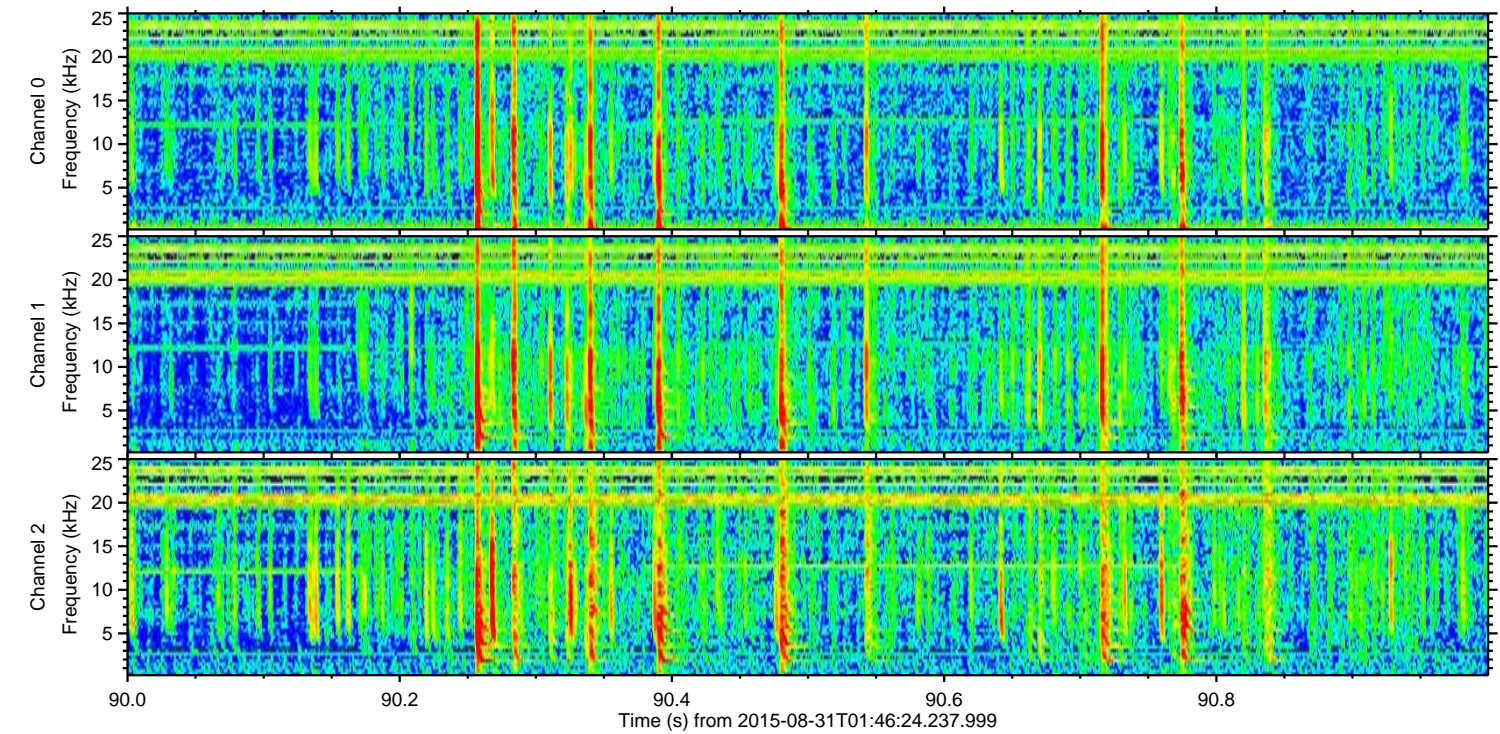
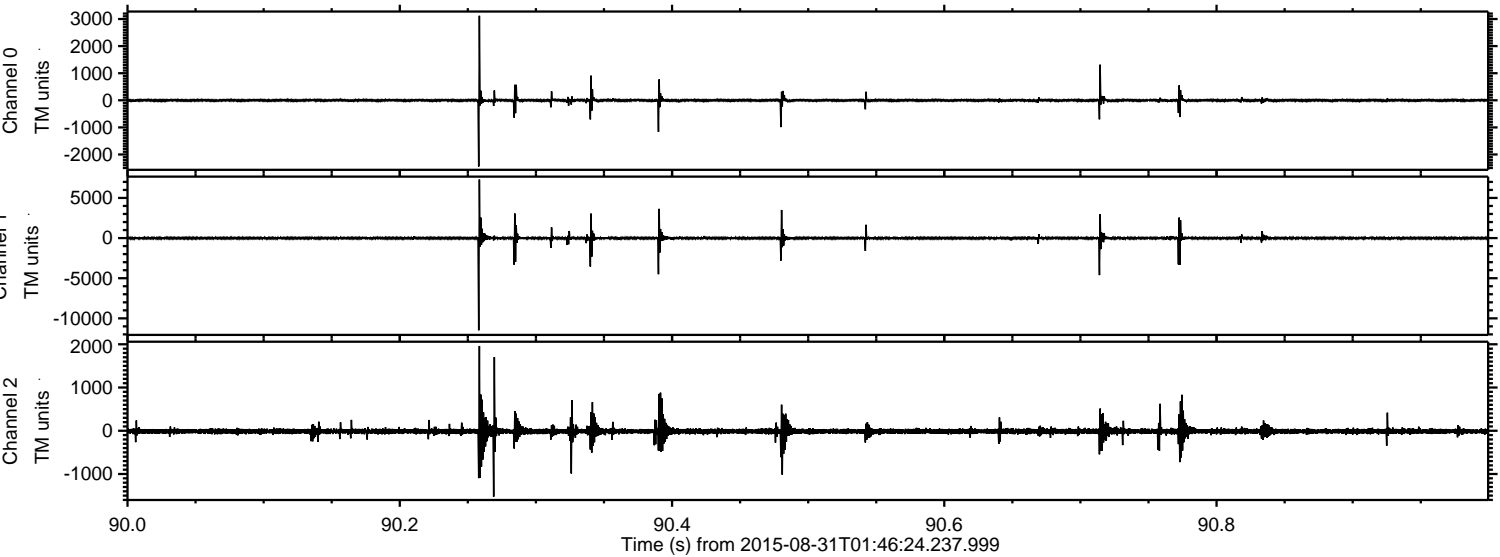
# ELMAVAN 3D WAVEFORMS (Measured data sampled at 50 kHz) 51000 packets of 144 samples from 2015-08-31T01:46:24.237.999.

Processed Thu Oct 8 10:10:47 2015 by ELM ver.2012-10-06 from 001\_\_elm20150831\_014623\_\_dat00.bin



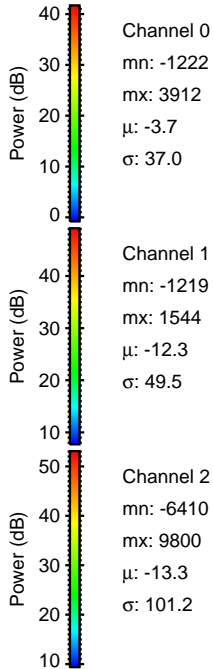
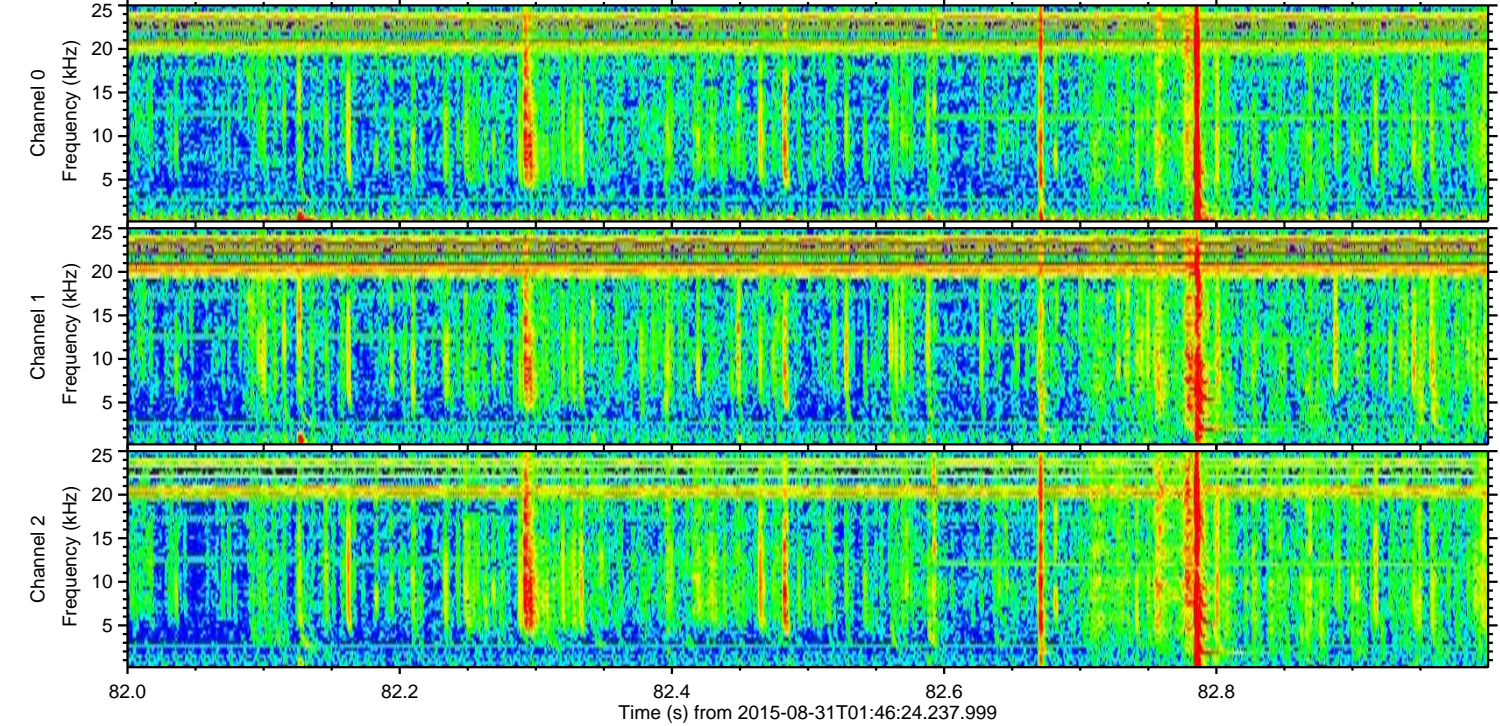
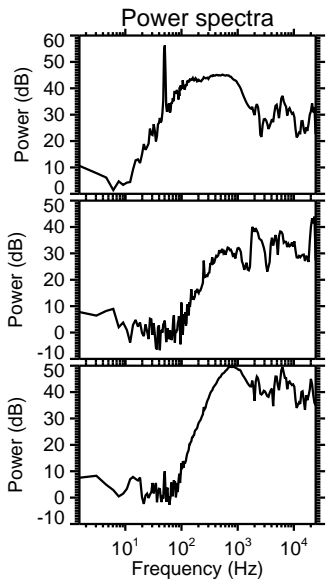
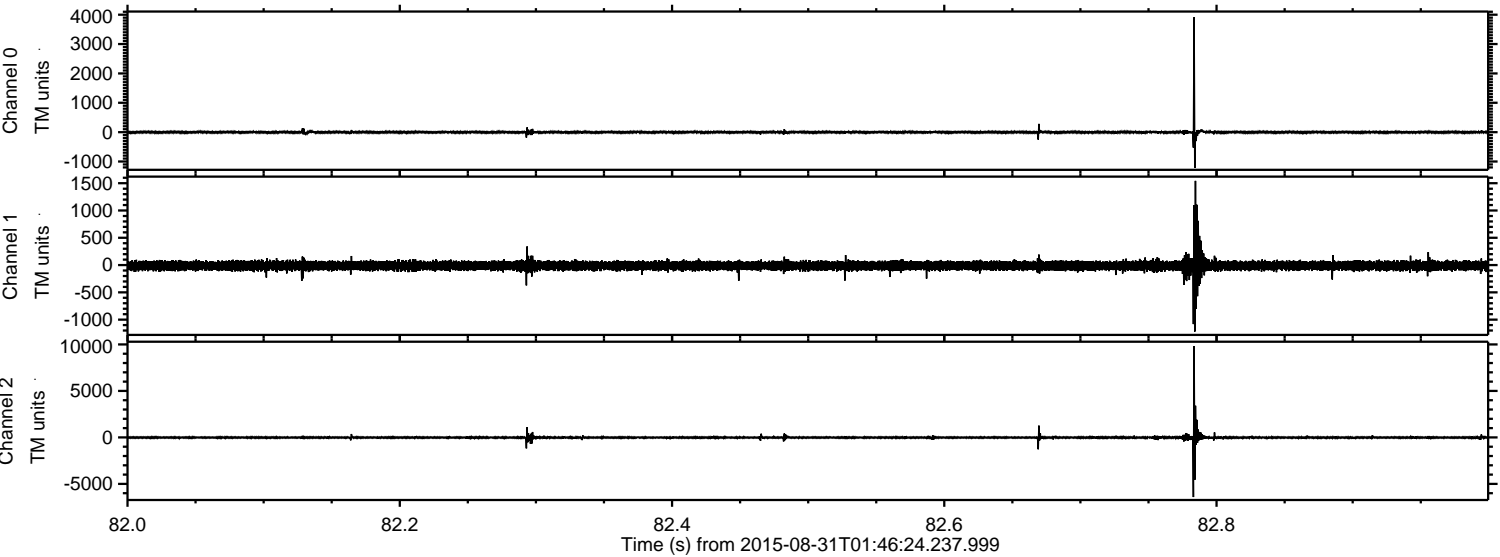


Processed Thu Oct 8 10:11:01 2015 by ELM ver.2012-10-06 from 001\_\_elm20150831\_014623\_\_dat00.bin



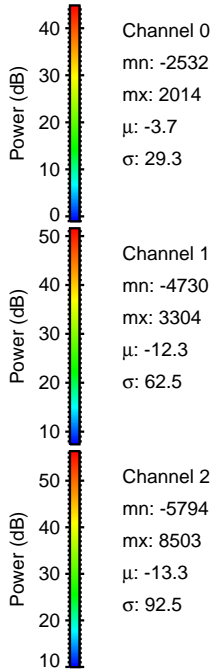
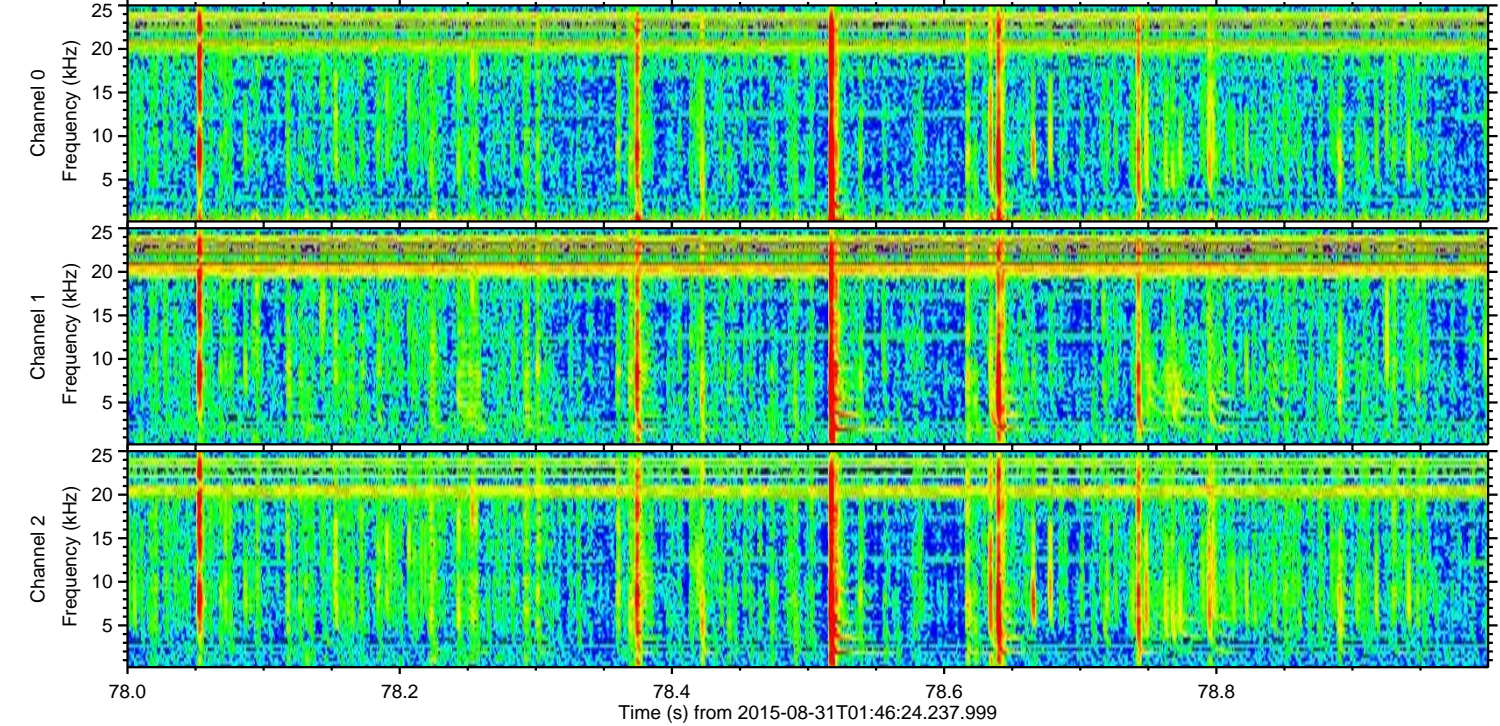
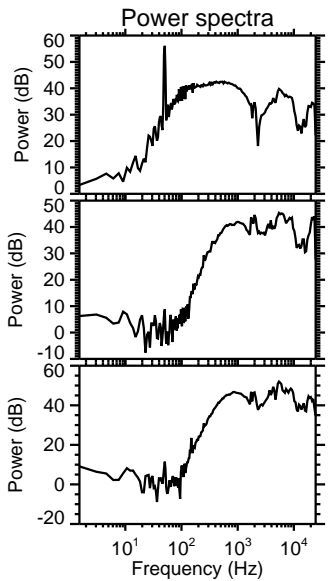
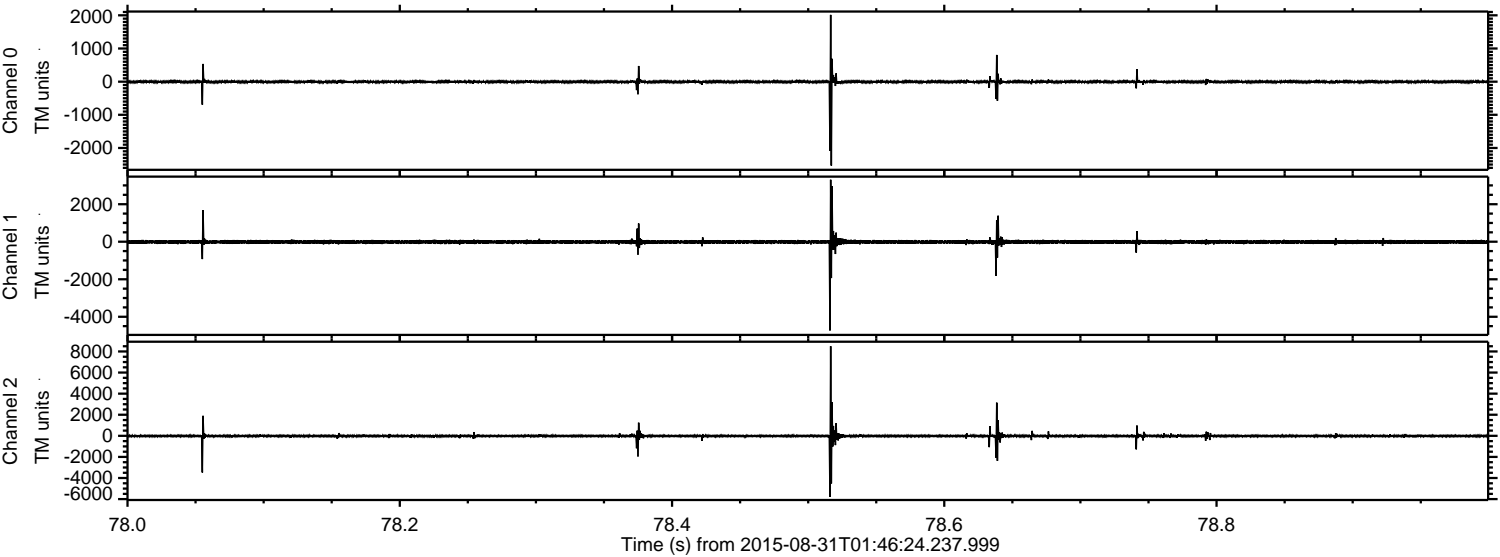


Processed Thu Oct 8 10:11:02 2015 by ELM ver.2012-10-06 from 001\_\_elm20150831\_014623\_\_dat00.bin





Processed Thu Oct 8 10:11:03 2015 by ELM ver.2012-10-06 from 001\_\_elm20150831\_014623\_\_dat00.bin



Channel 0  
mn: -2532  
mx: 2014  
 $\mu$ : -3.7  
 $\sigma$ : 29.3

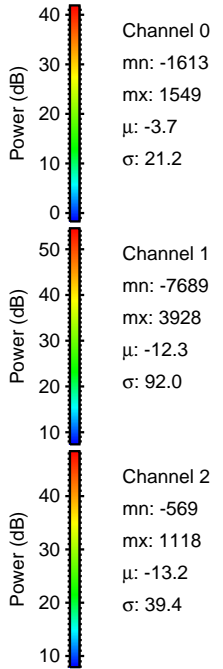
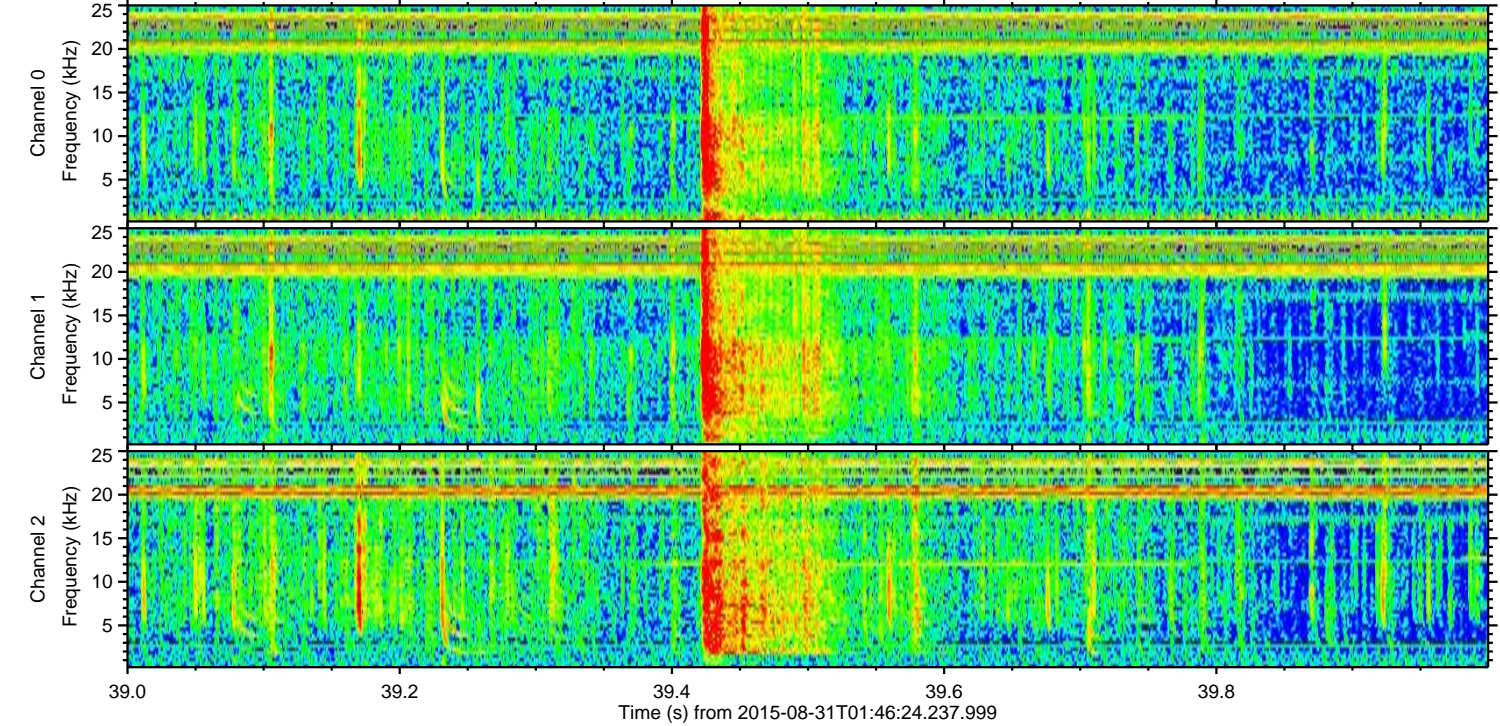
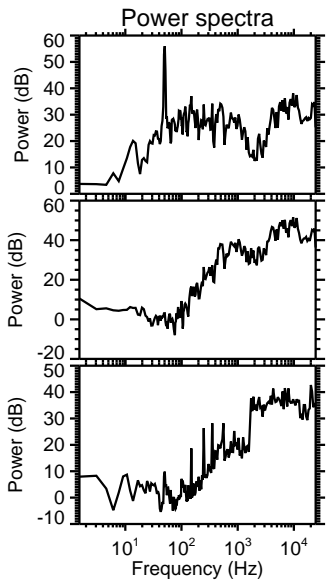
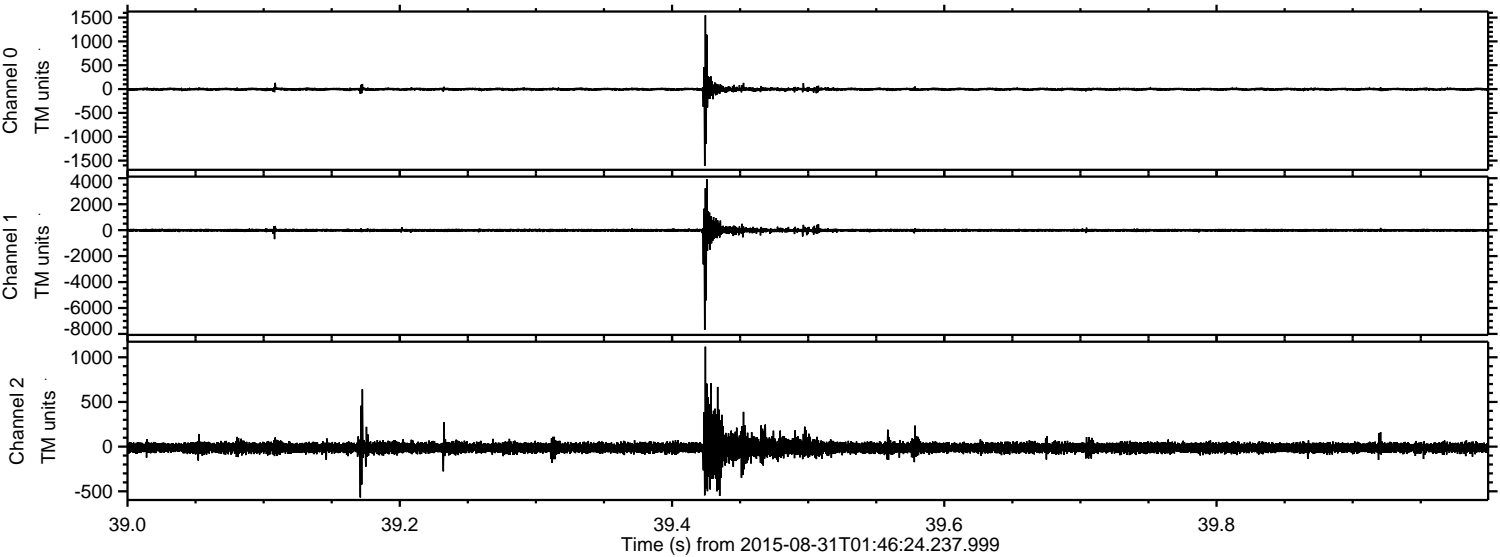
Channel 1  
mn: -4730  
mx: 3304  
 $\mu$ : -12.3  
 $\sigma$ : 62.5

Channel 2  
mn: -5794  
mx: 8503  
 $\mu$ : -13.3  
 $\sigma$ : 92.5



ELMAVAN 3D WAVEFORMS (Measured data sampled at 50 kHz) 51000 packets of 144 samples from 2015-08-31T01:46:24.237.999. Part 40/147

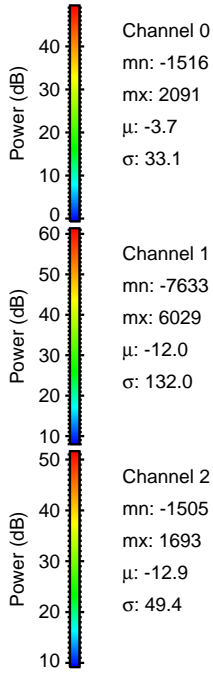
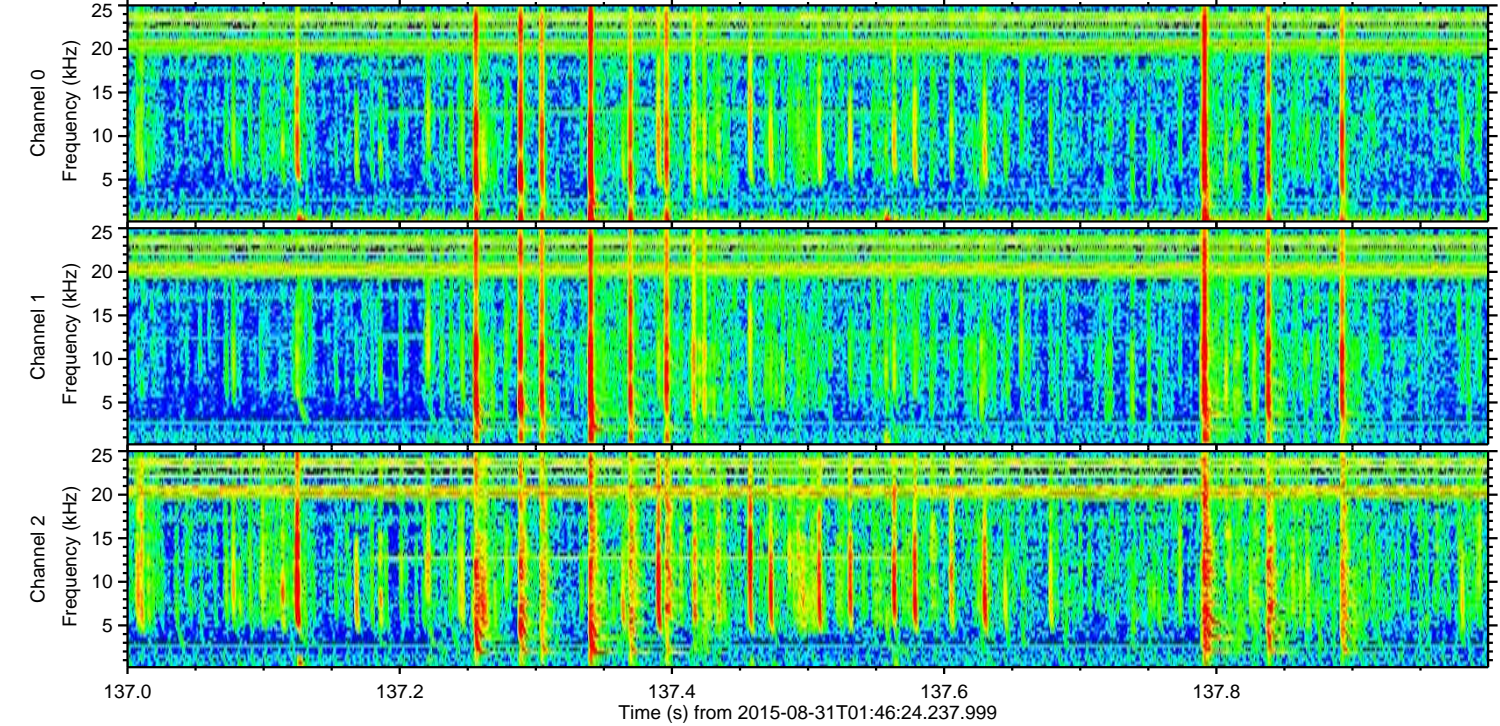
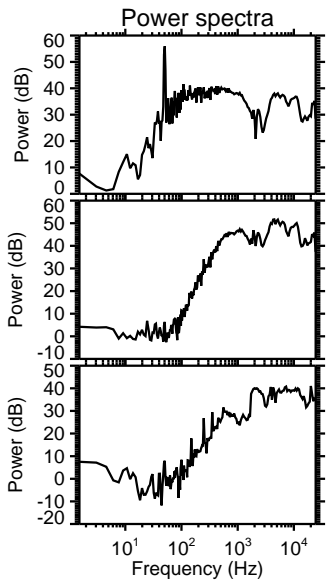
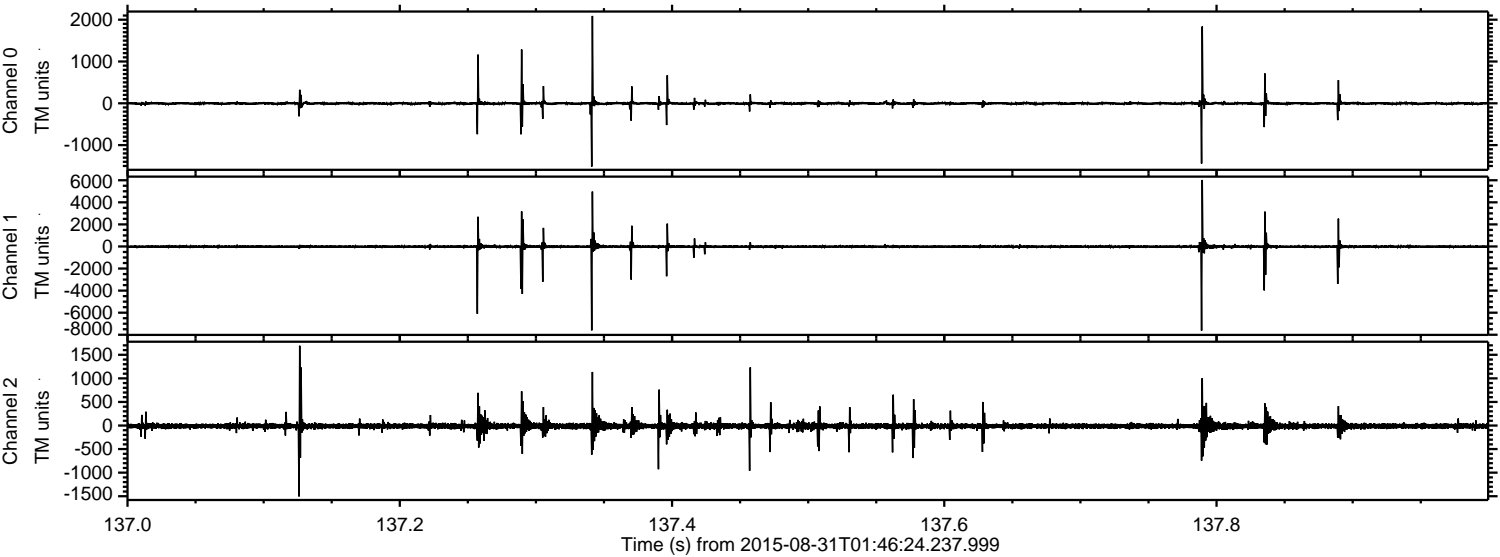
Processed Thu Oct 8 10:11:04 2015 by ELM ver.2012-10-06 from 001\_\_elm20150831\_014623\_\_dat00.bin





ELMAVAN 3D WAVEFORMS (Measured data sampled at 50 kHz) 51000 packets of 144 samples from 2015-08-31T01:46:24.237.999. Part 138/147

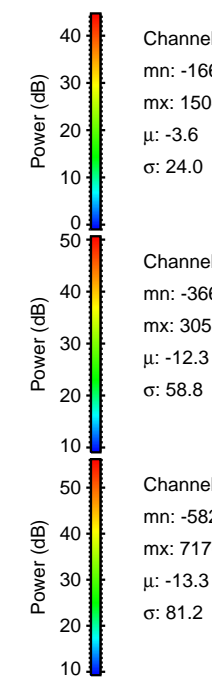
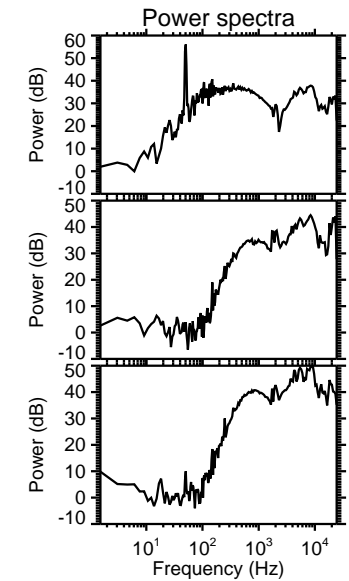
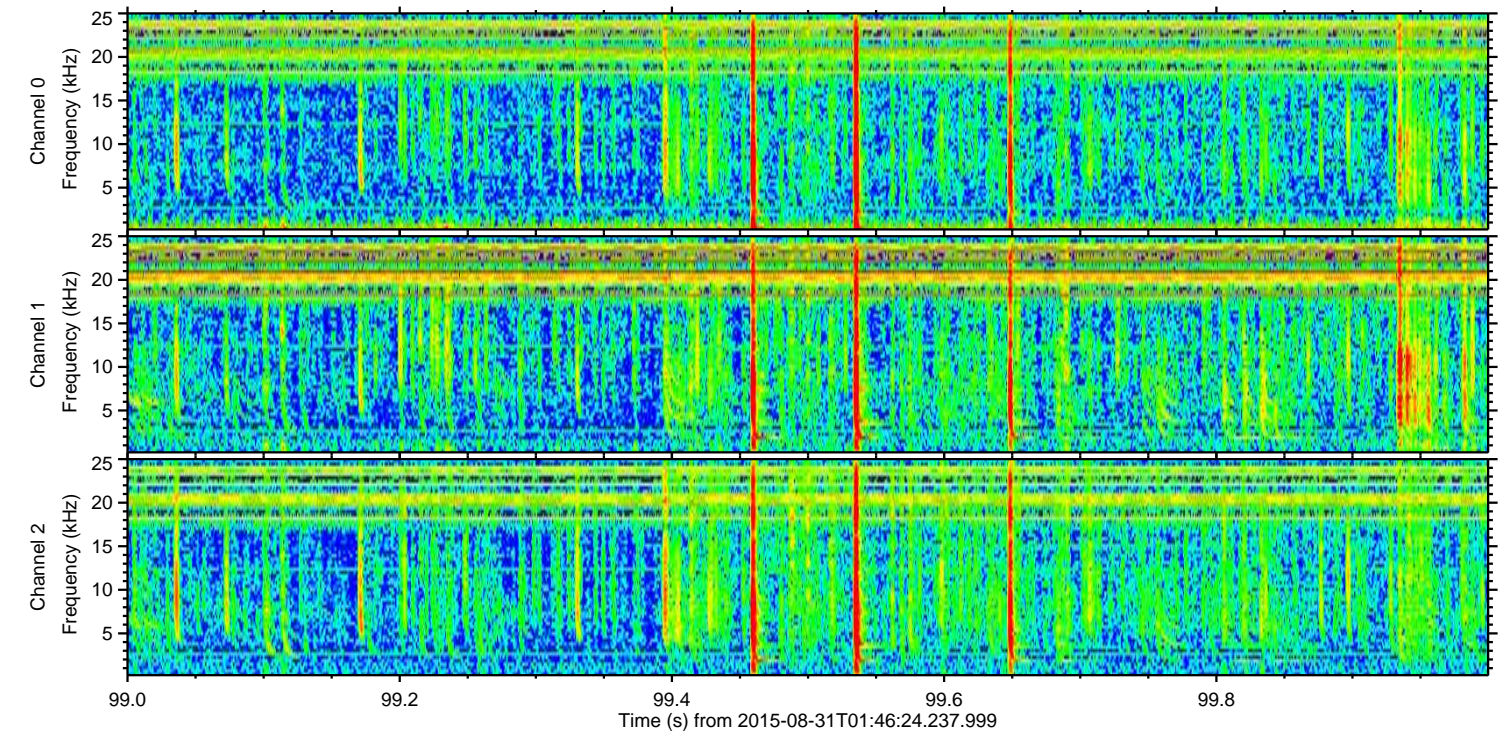
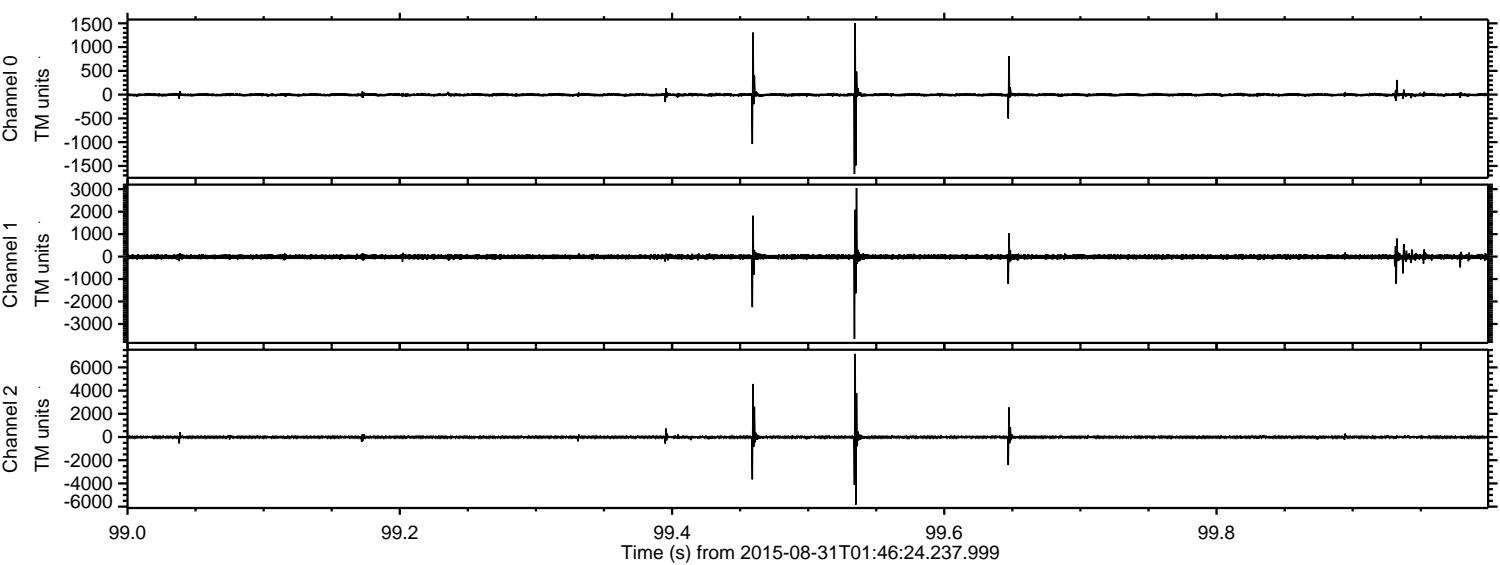
Processed Thu Oct 8 10:11:05 2015 by ELM ver.2012-10-06 from 001\_\_elm20150831\_014623\_\_dat00.bin





ELMAVAN 3D WAVEFORMS (Measured data sampled at 50 kHz) 51000 packets of 144 samples from 2015-08-31T01:46:24.237.999. Part 100/147

Processed Thu Oct 8 10:11:06 2015 by ELM ver.2012-10-06 from 001\_\_elm20150831\_014623\_\_dat00.bin



Channel 0  
mn: -1667  
mx: 1504  
 $\mu$ : -3.6  
 $\sigma$ : 24.0

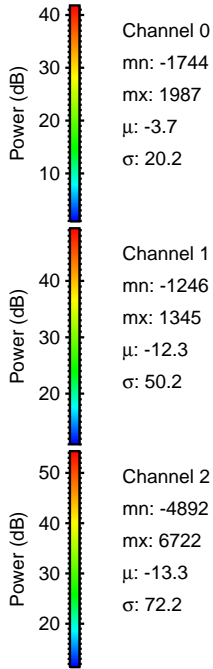
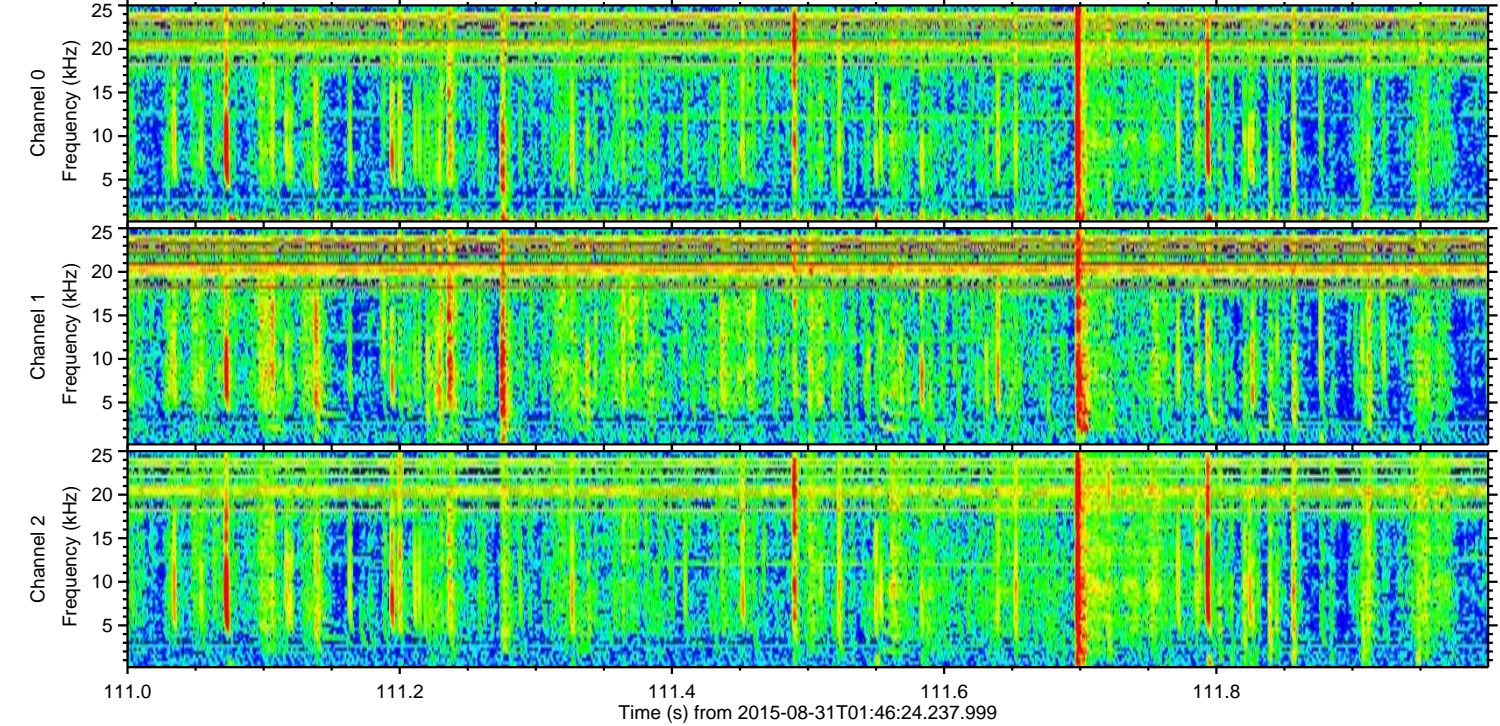
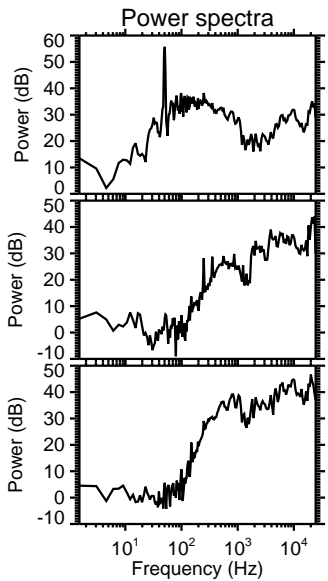
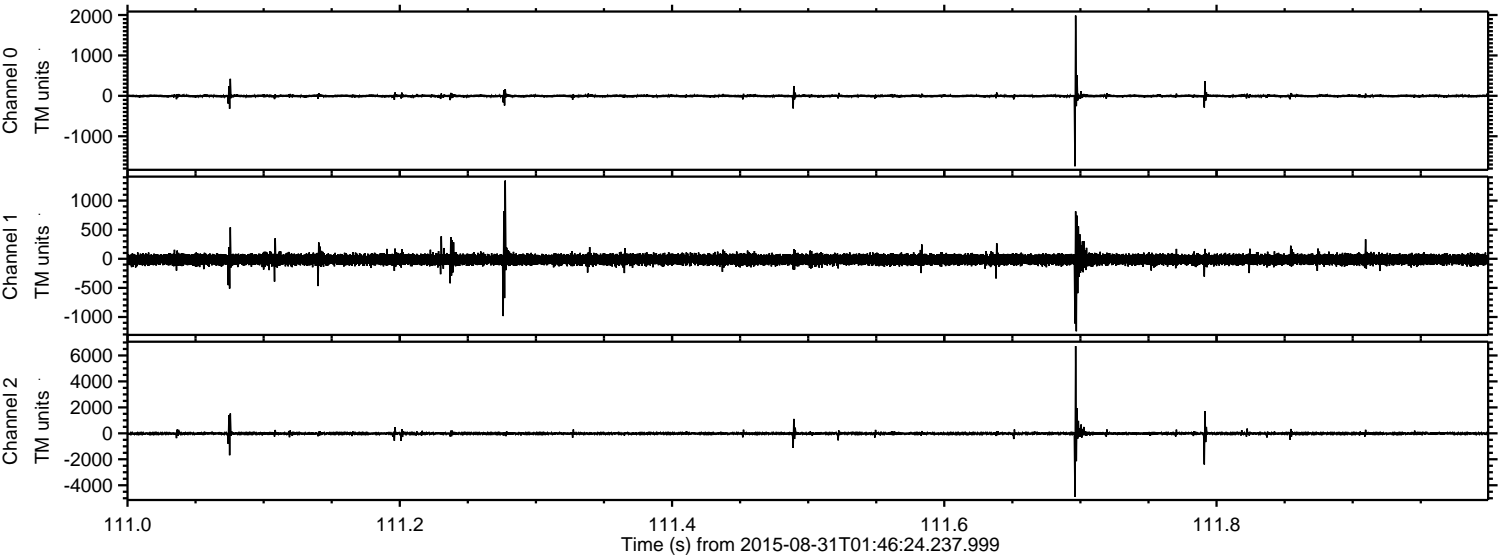
Channel 1  
mn: -3662  
mx: 3051  
 $\mu$ : -12.3  
 $\sigma$ : 58.8

Channel 2  
mn: -5829  
mx: 7170  
 $\mu$ : -13.3  
 $\sigma$ : 81.2



ELMAVAN 3D WAVEFORMS (Measured data sampled at 50 kHz) 51000 packets of 144 samples from 2015-08-31T01:46:24.237.999. Part 112/147

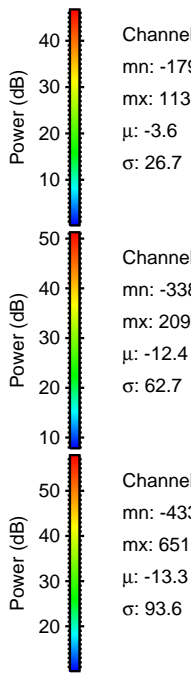
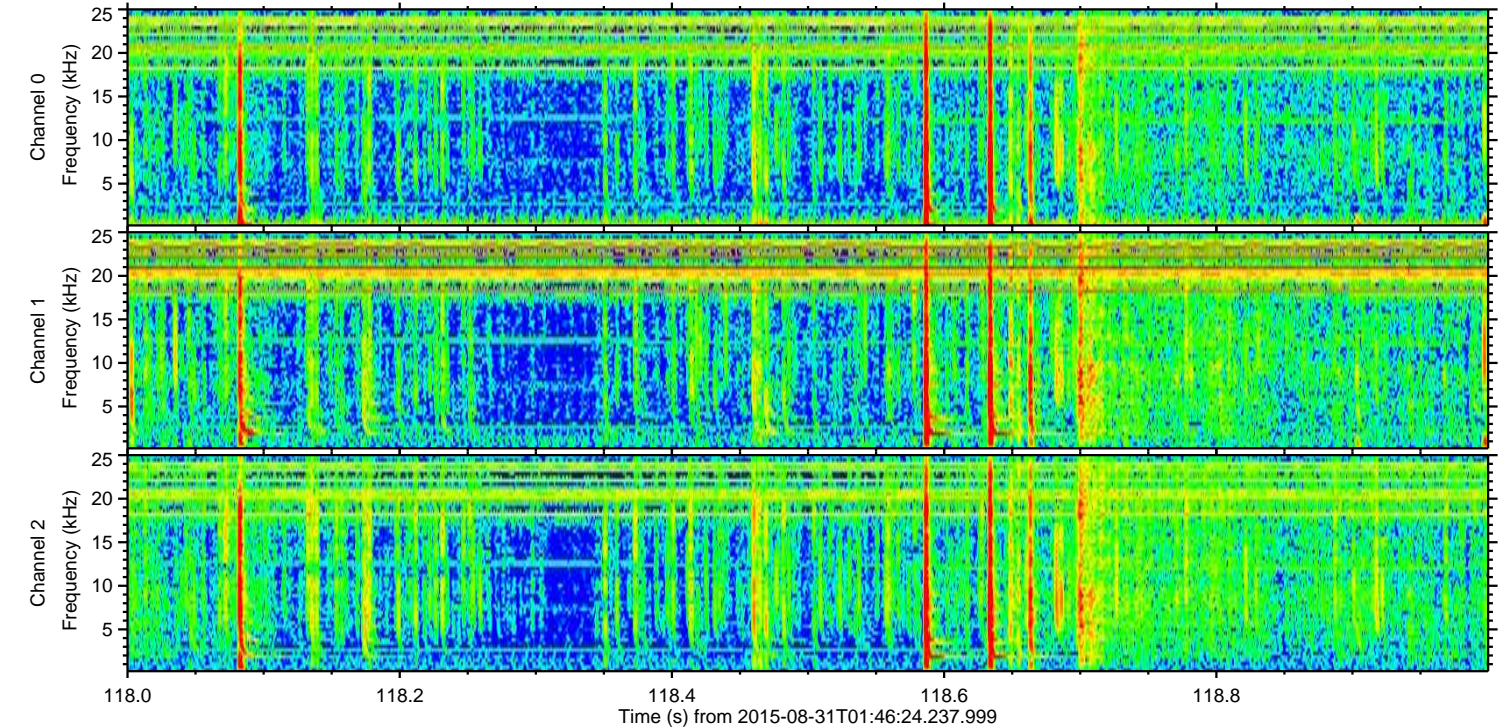
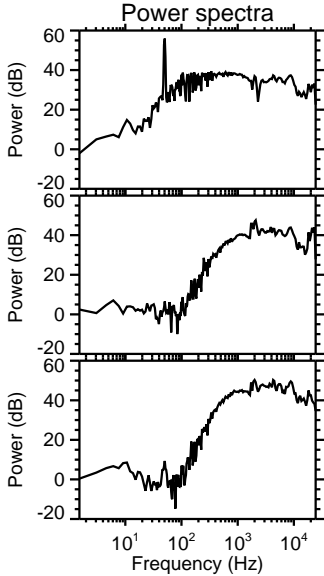
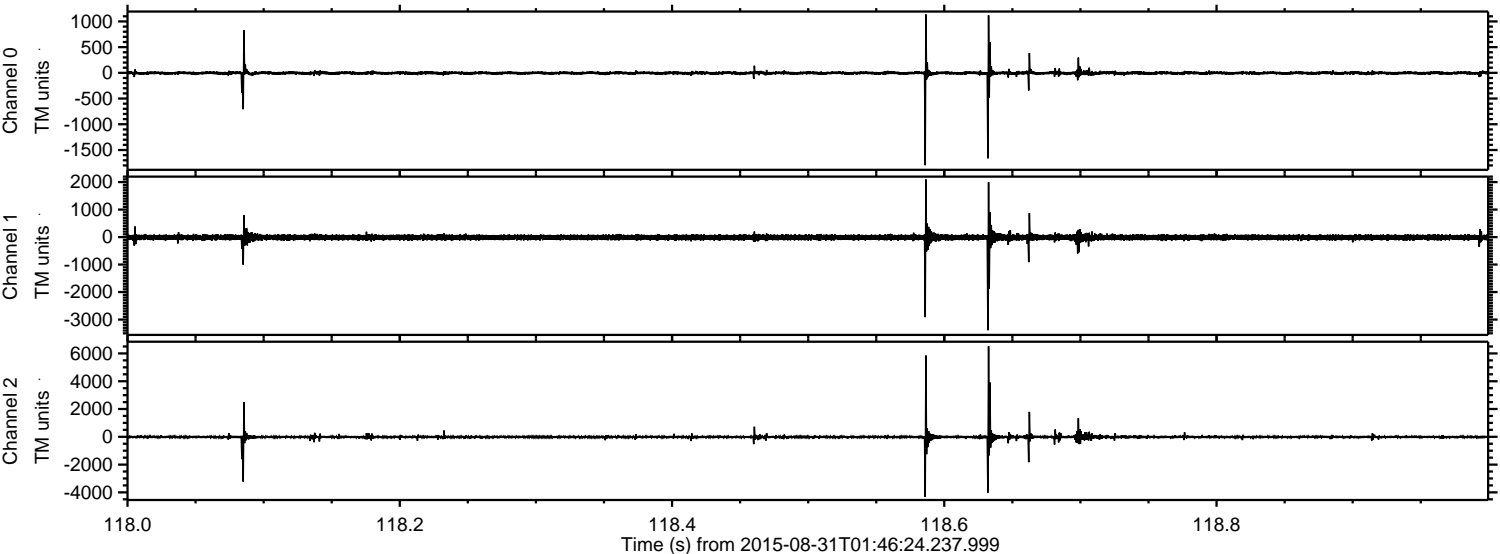
Processed Thu Oct 8 10:11:07 2015 by ELM ver.2012-10-06 from 001\_\_elm20150831\_014623\_\_dat00.bin





ELMAVAN 3D WAVEFORMS (Measured data sampled at 50 kHz) 51000 packets of 144 samples from 2015-08-31T01:46:24.237.999. Part 119/147

Processed Thu Oct 8 10:11:09 2015 by ELM ver.2012-10-06 from 001\_\_elm20150831\_014623\_\_dat00.bin



Channel 0  
mn: -1796  
mx: 1136  
 $\mu$ : -3.6  
 $\sigma$ : 26.7

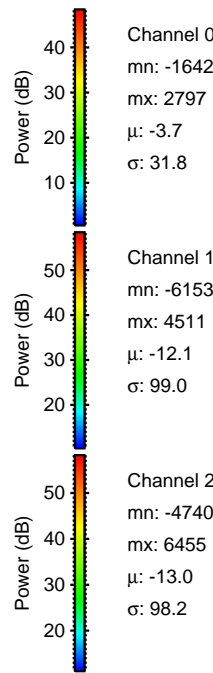
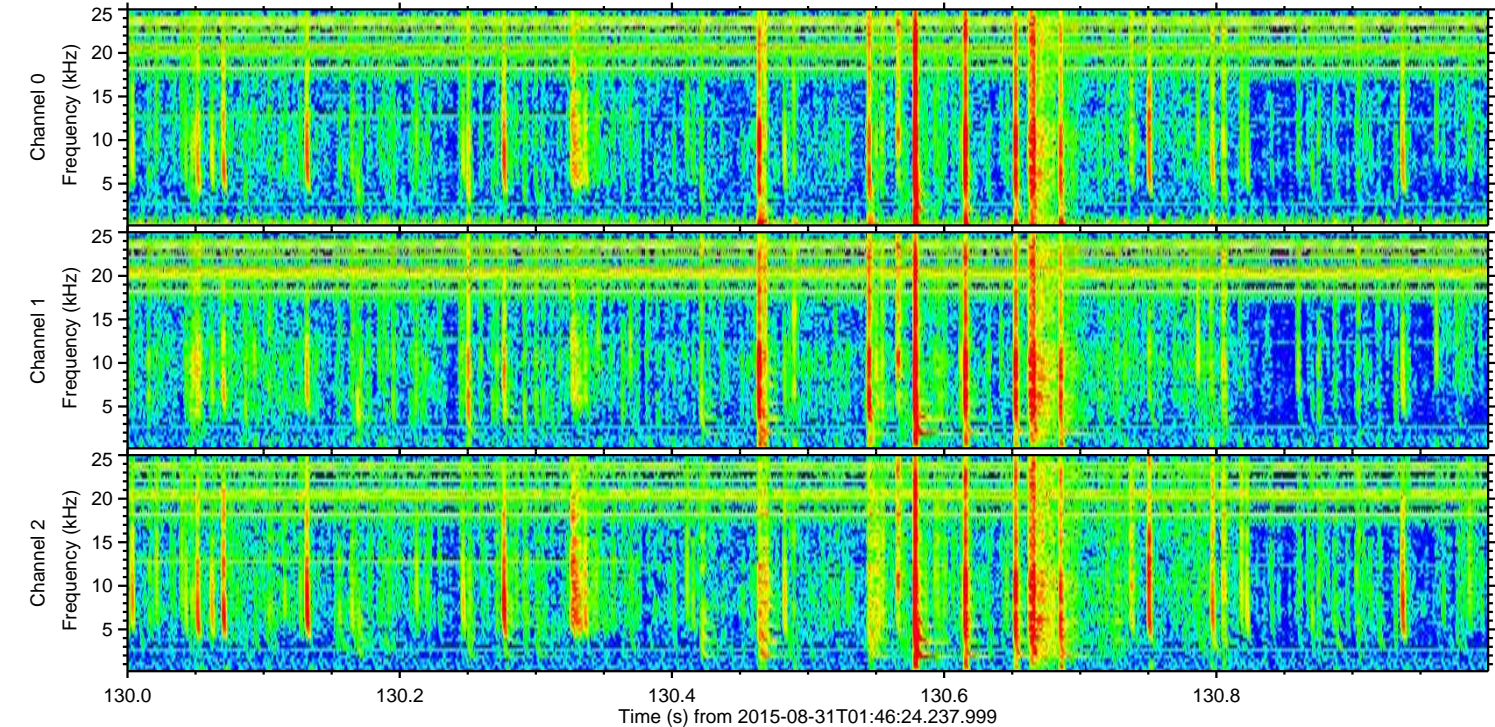
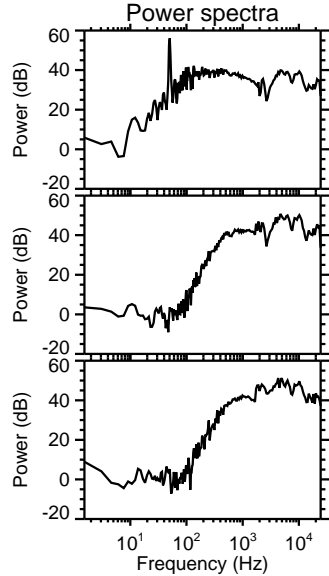
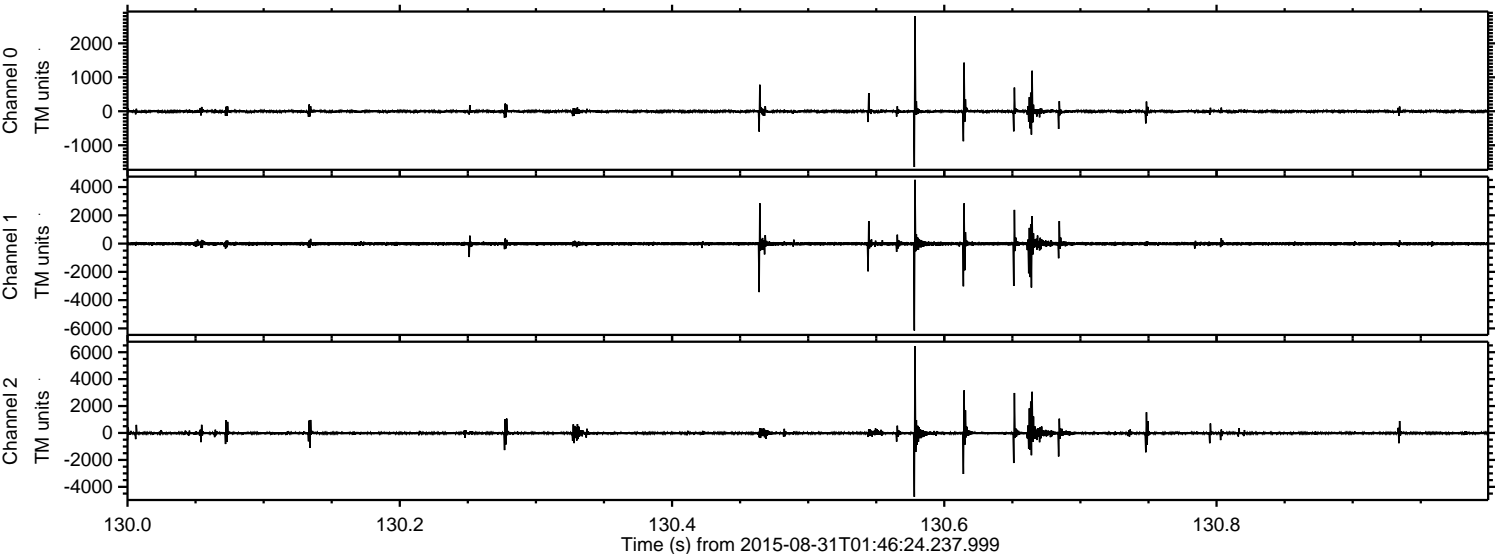
Channel 1  
mn: -3389  
mx: 2094  
 $\mu$ : -12.4  
 $\sigma$ : 62.7

Channel 2  
mn: -4332  
mx: 6519  
 $\mu$ : -13.3  
 $\sigma$ : 93.6



ELMAVAN 3D WAVEFORMS (Measured data sampled at 50 kHz) 51000 packets of 144 samples from 2015-08-31T01:46:24.237.999. Part 131/147

Processed Thu Oct 8 10:11:10 2015 by ELM ver.2012-10-06 from 001\_\_elm20150831\_014623\_\_dat00.bin





Processed Thu Oct 8 10:11:11 2015 by ELM ver.2012-10-06 from 001\_\_elm20150831\_014623\_\_dat00.bin

