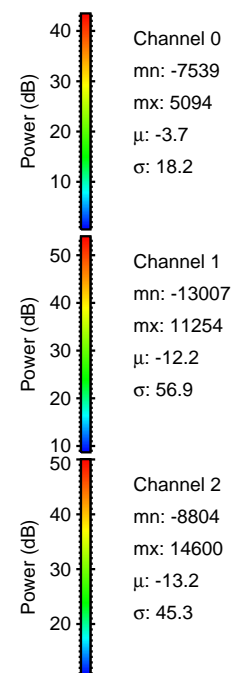
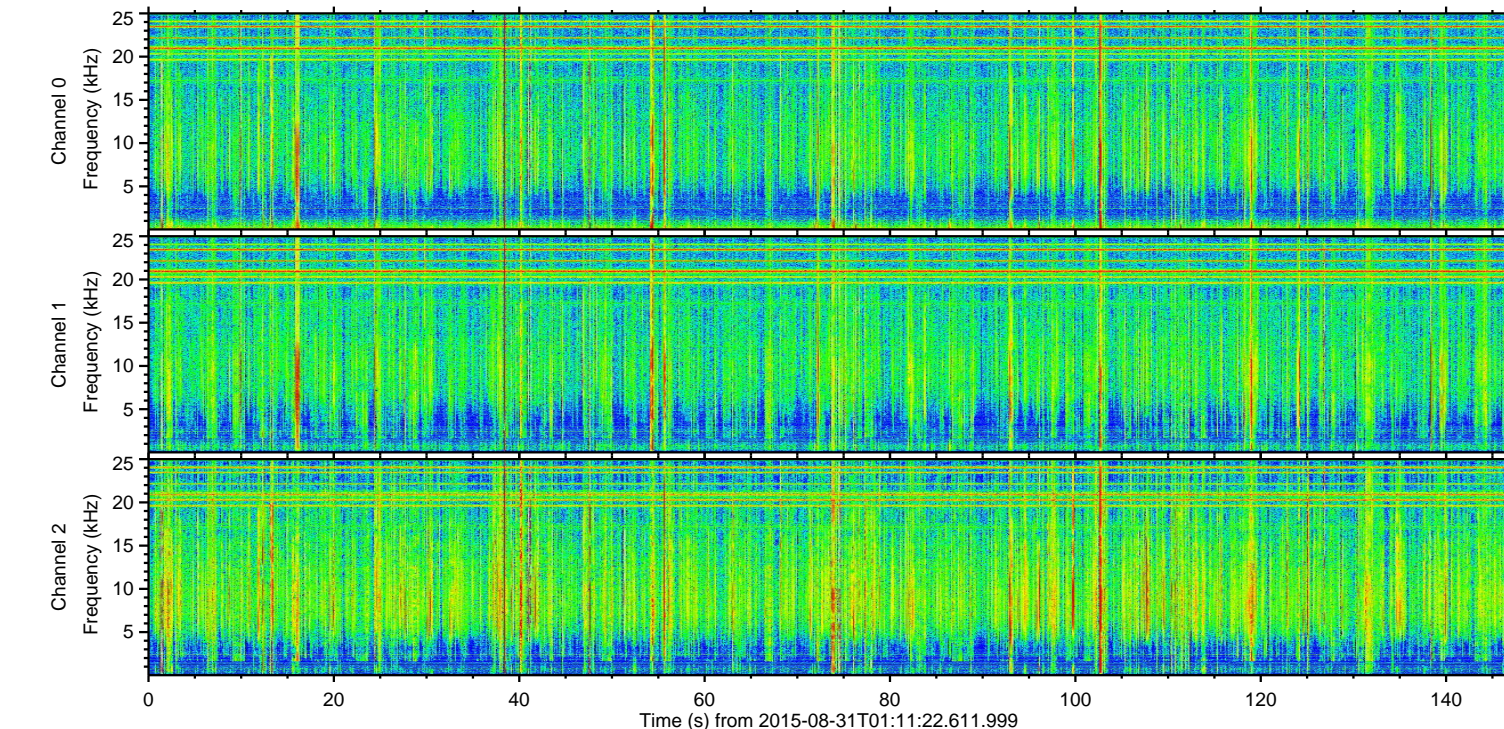
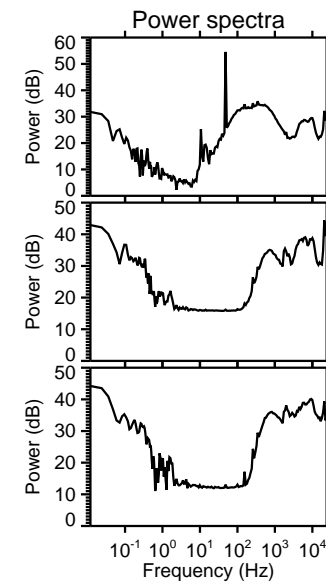
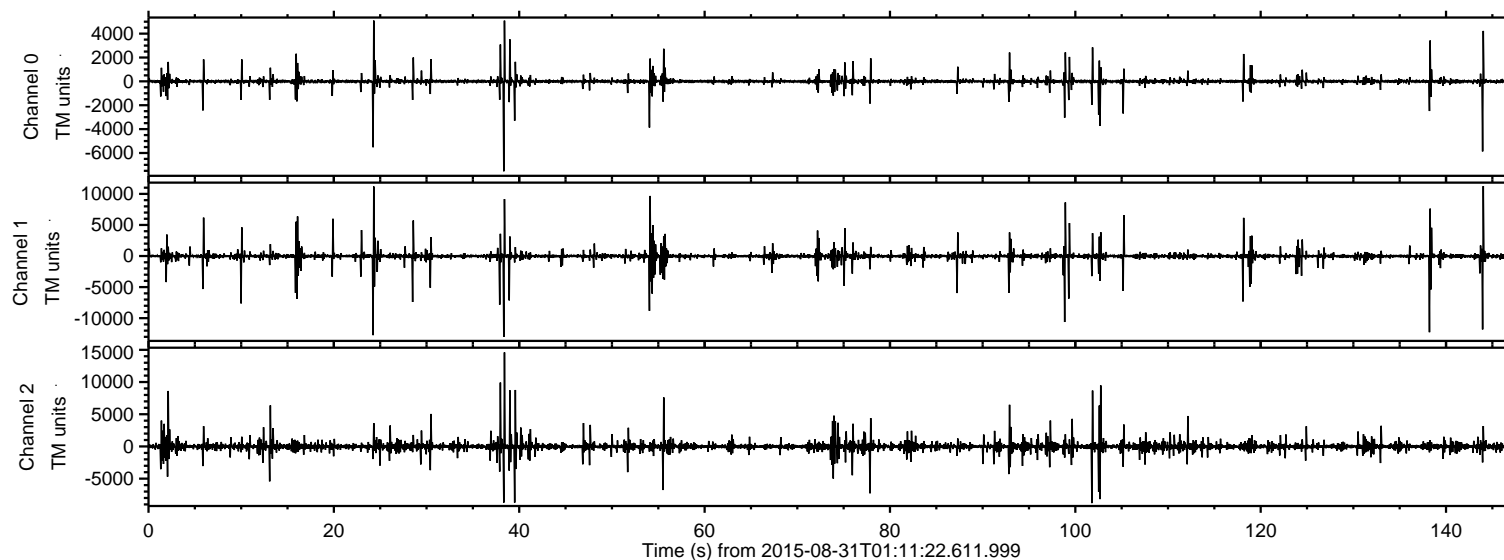
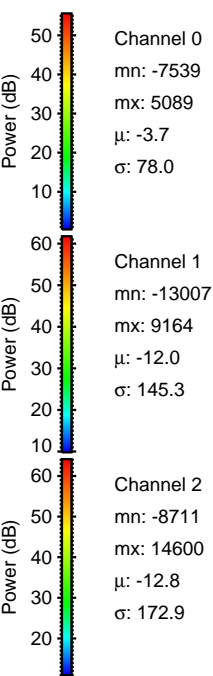
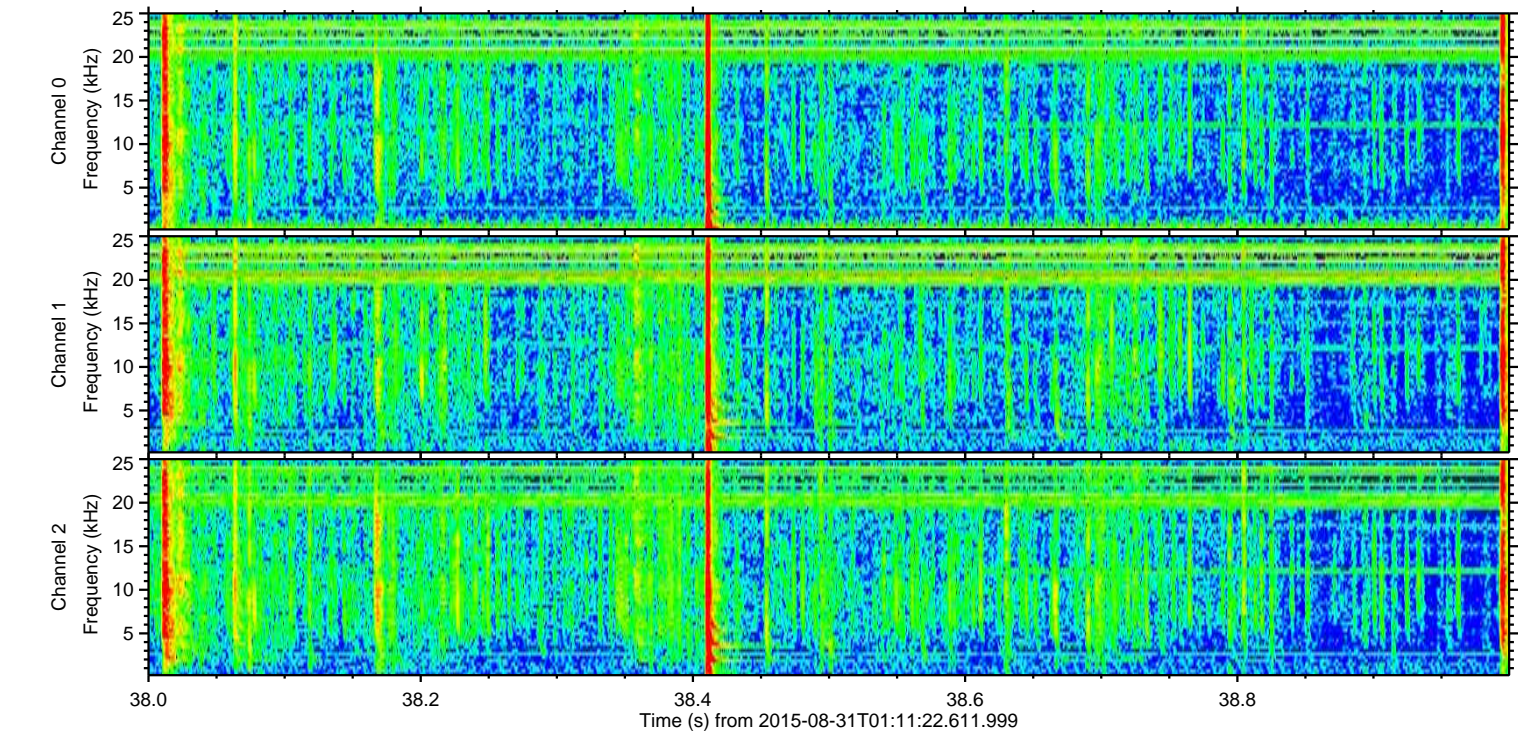
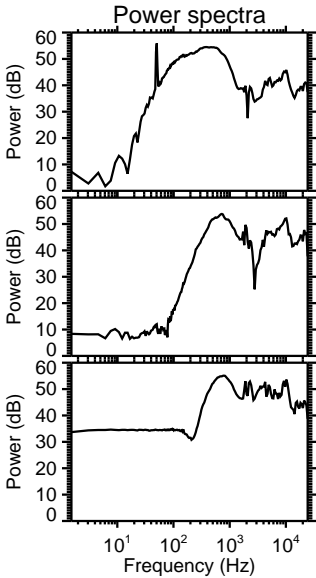
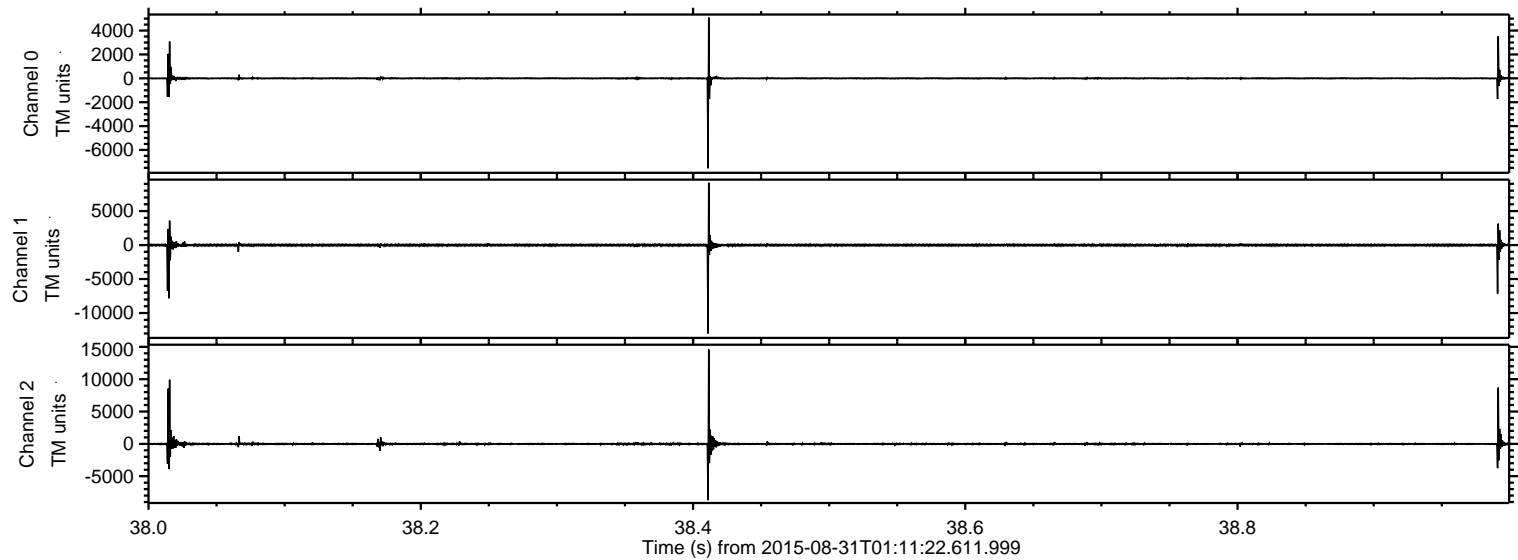


ELMAVAN 3D WAVEFORMS (Measured data sampled at 50 kHz) 51000 packets of 144 samples from 2015-08-31T01:11:22.611.999.

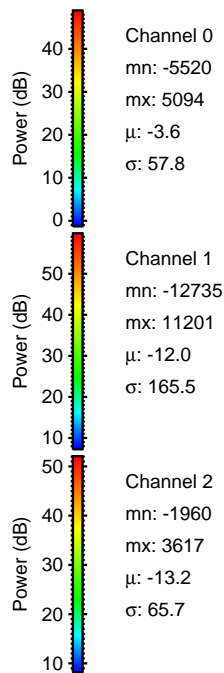
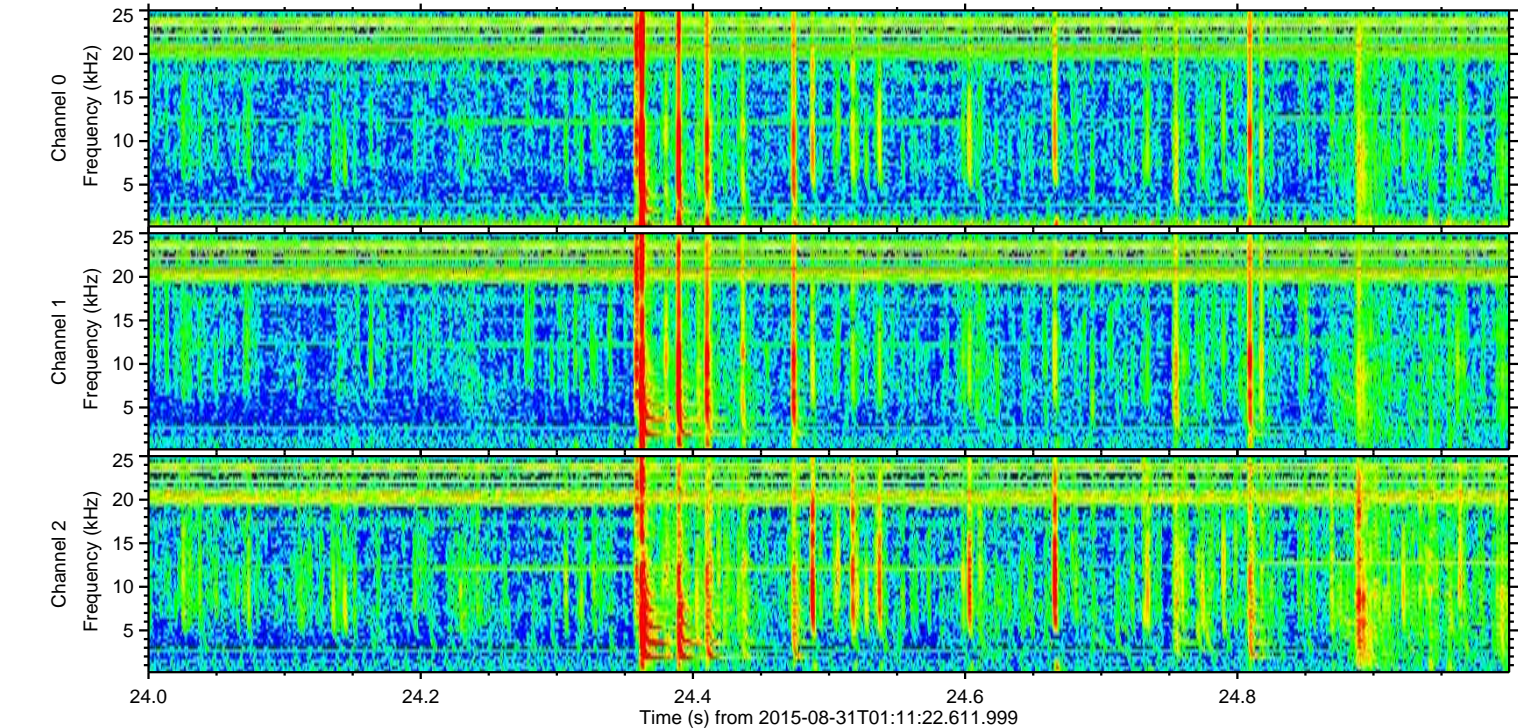
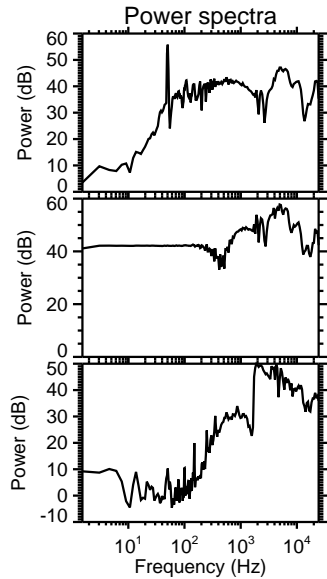
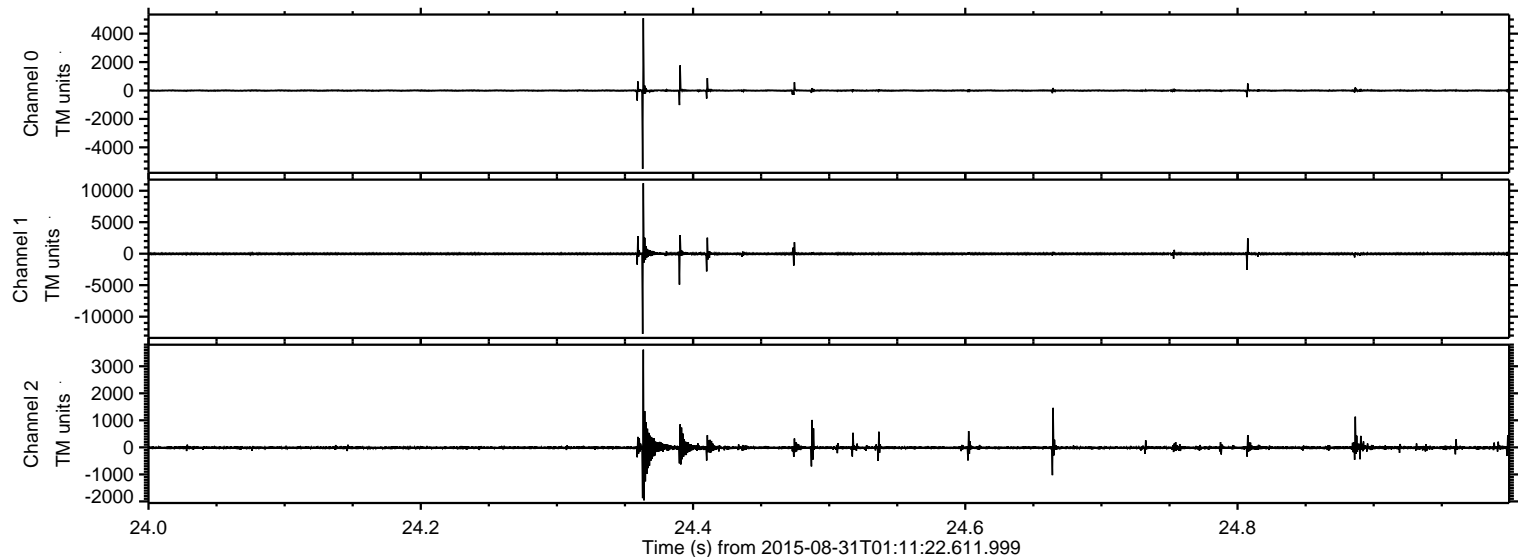
Processed Thu Oct 8 10:01:01 2015 by ELM ver.2012-10-06 from 001__elm20150831_011121__dat00.bin



Processed Thu Oct 8 10:01:16 2015 by ELM ver.2012-10-06 from 001__elm20150831_011121__dat00.bin

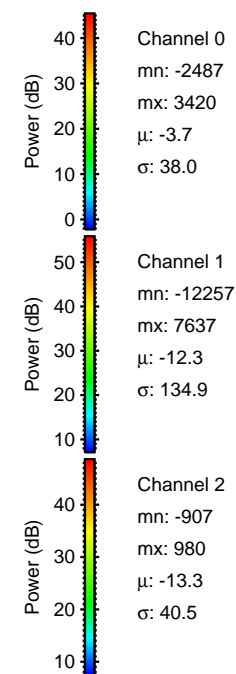
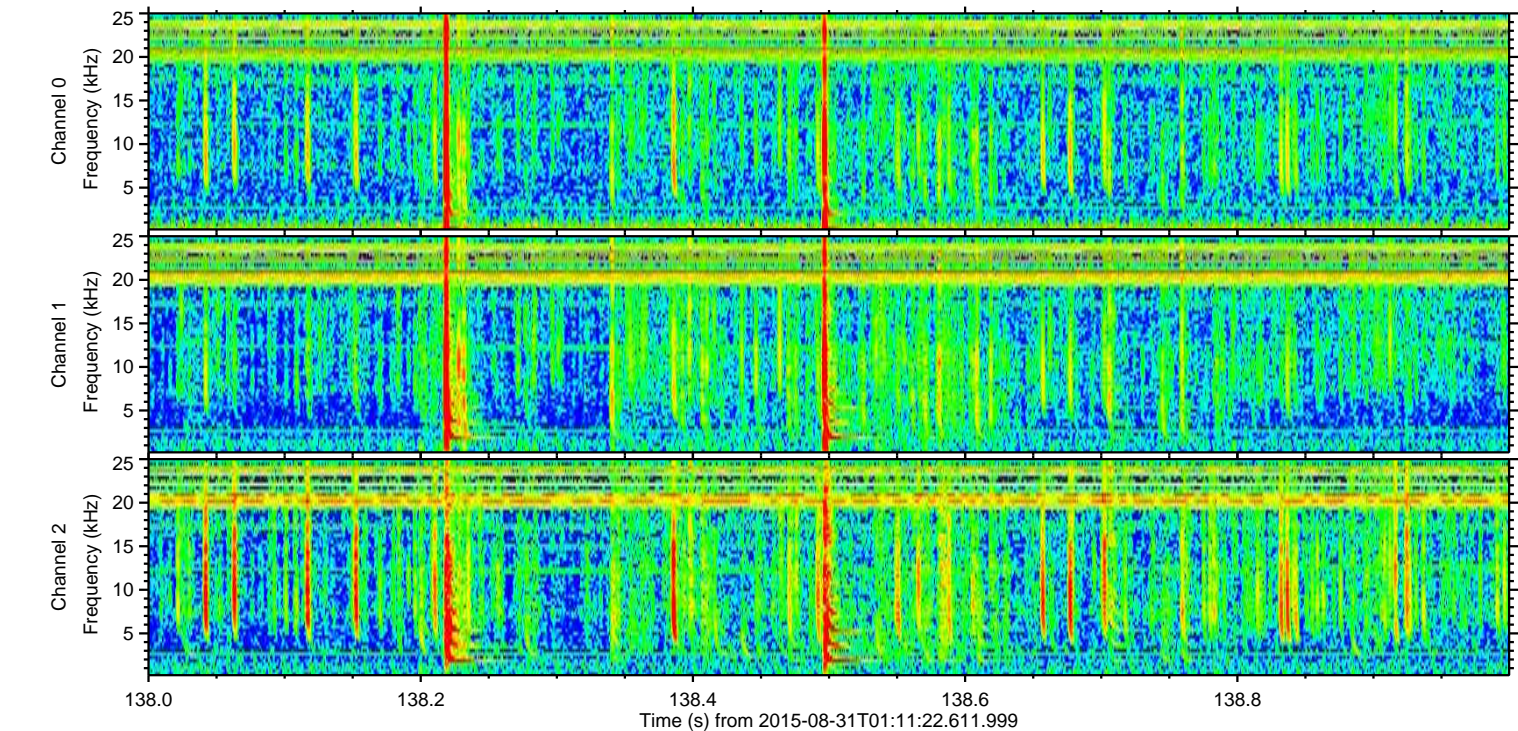
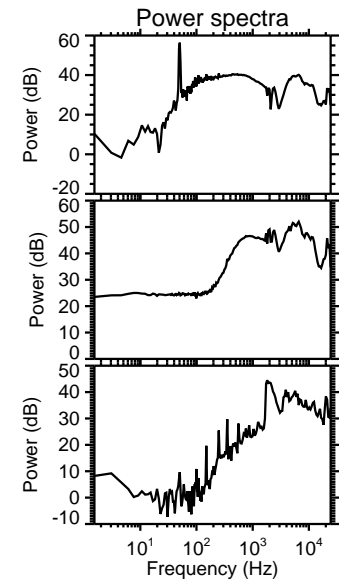
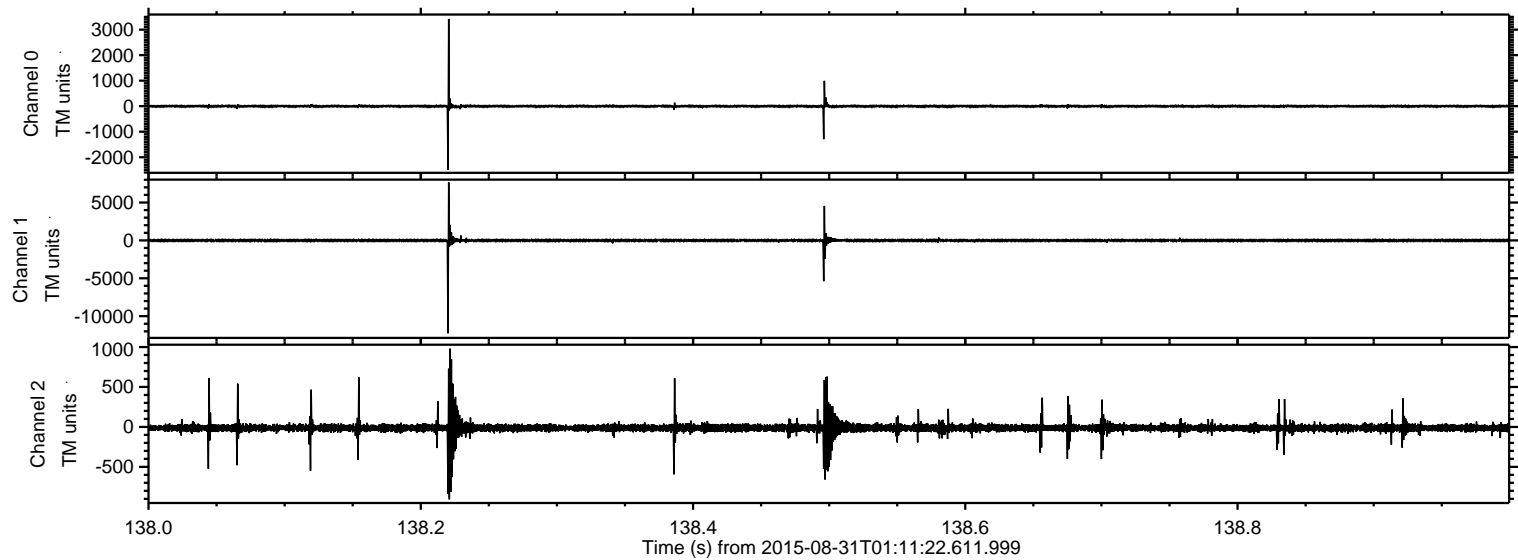


Processed Thu Oct 8 10:01:18 2015 by ELM ver.2012-10-06 from 001__elm20150831_011121__dat00.bin



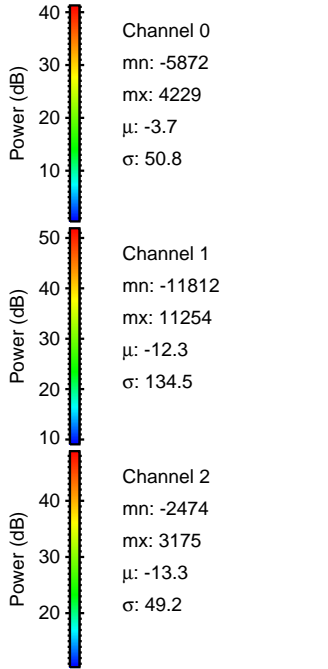
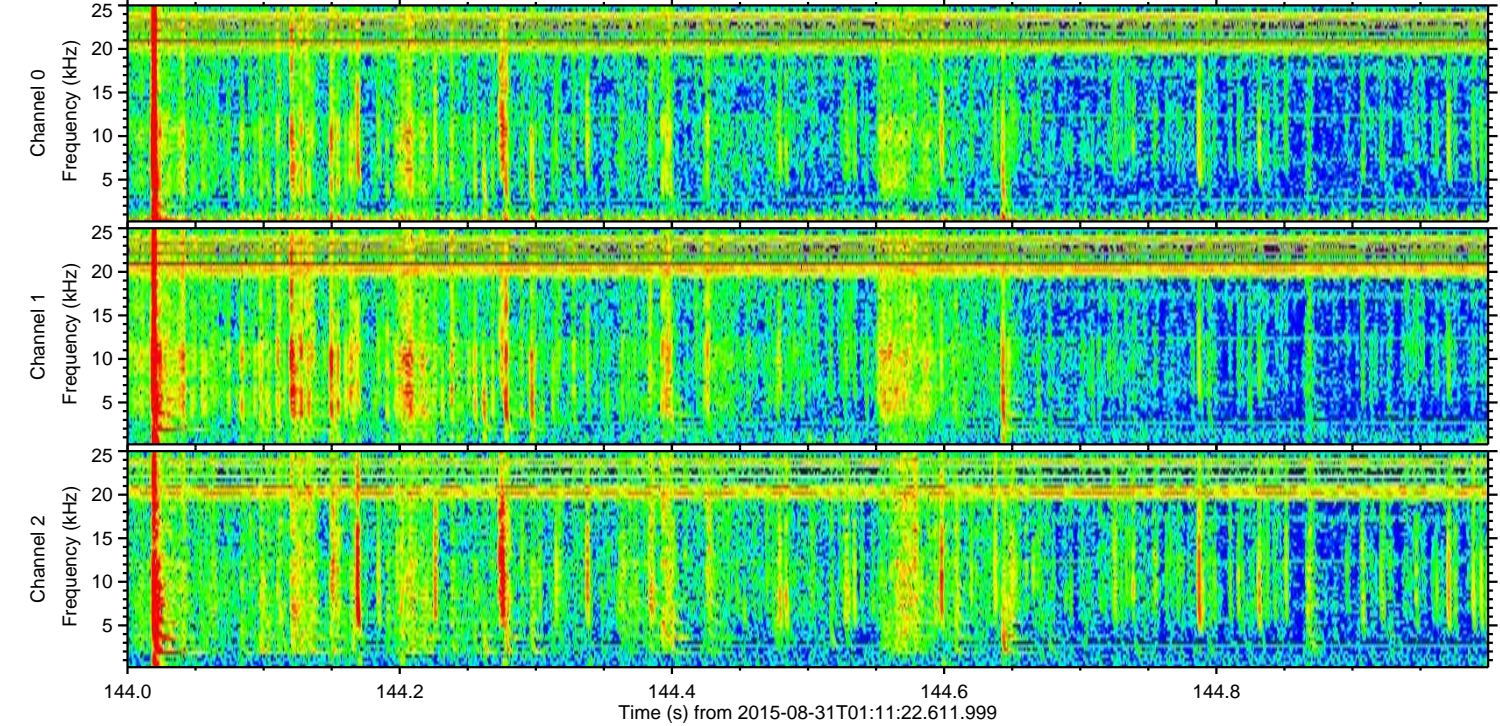
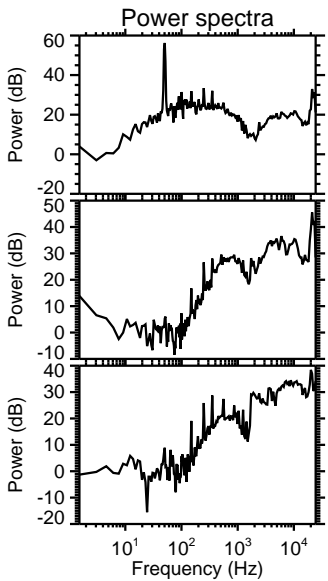
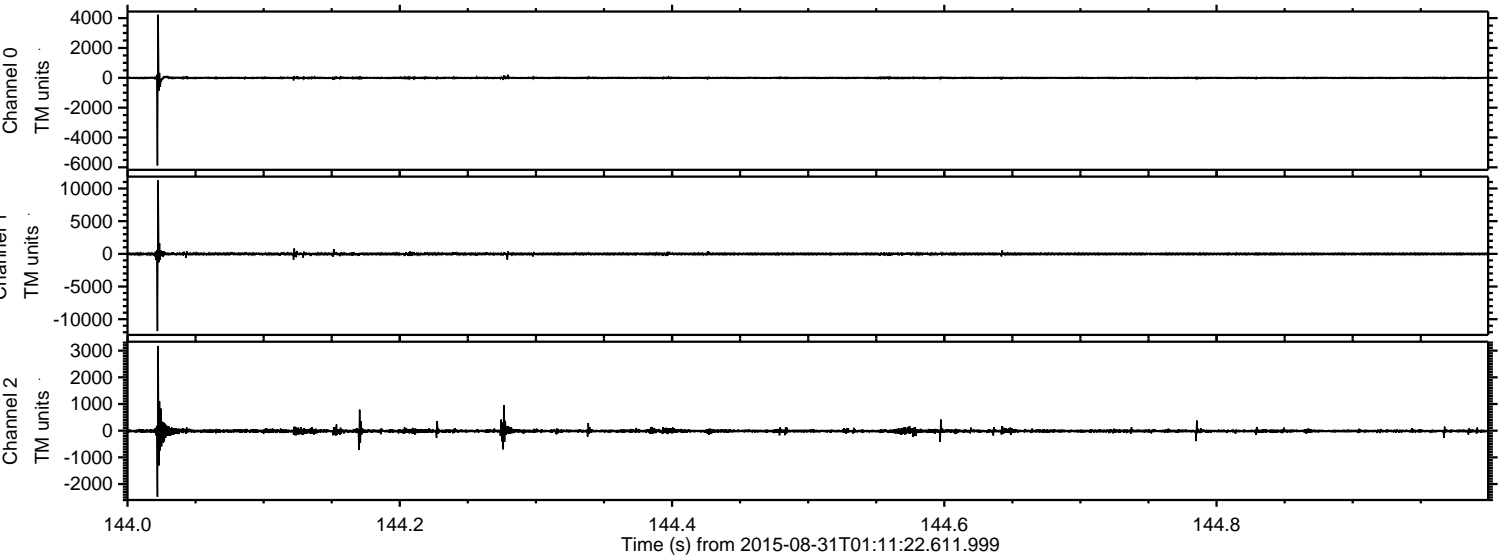
ELMAVAN 3D WAVEFORMS (Measured data sampled at 50 kHz) 51000 packets of 144 samples from 2015-08-31T01:11:22.611.999. Part 139/147

Processed Thu Oct 8 10:01:19 2015 by ELM ver.2012-10-06 from 001__elm20150831_011121__dat00.bin

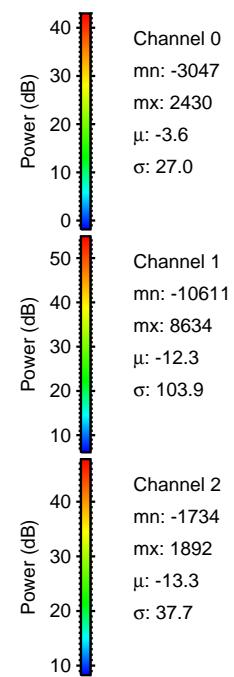
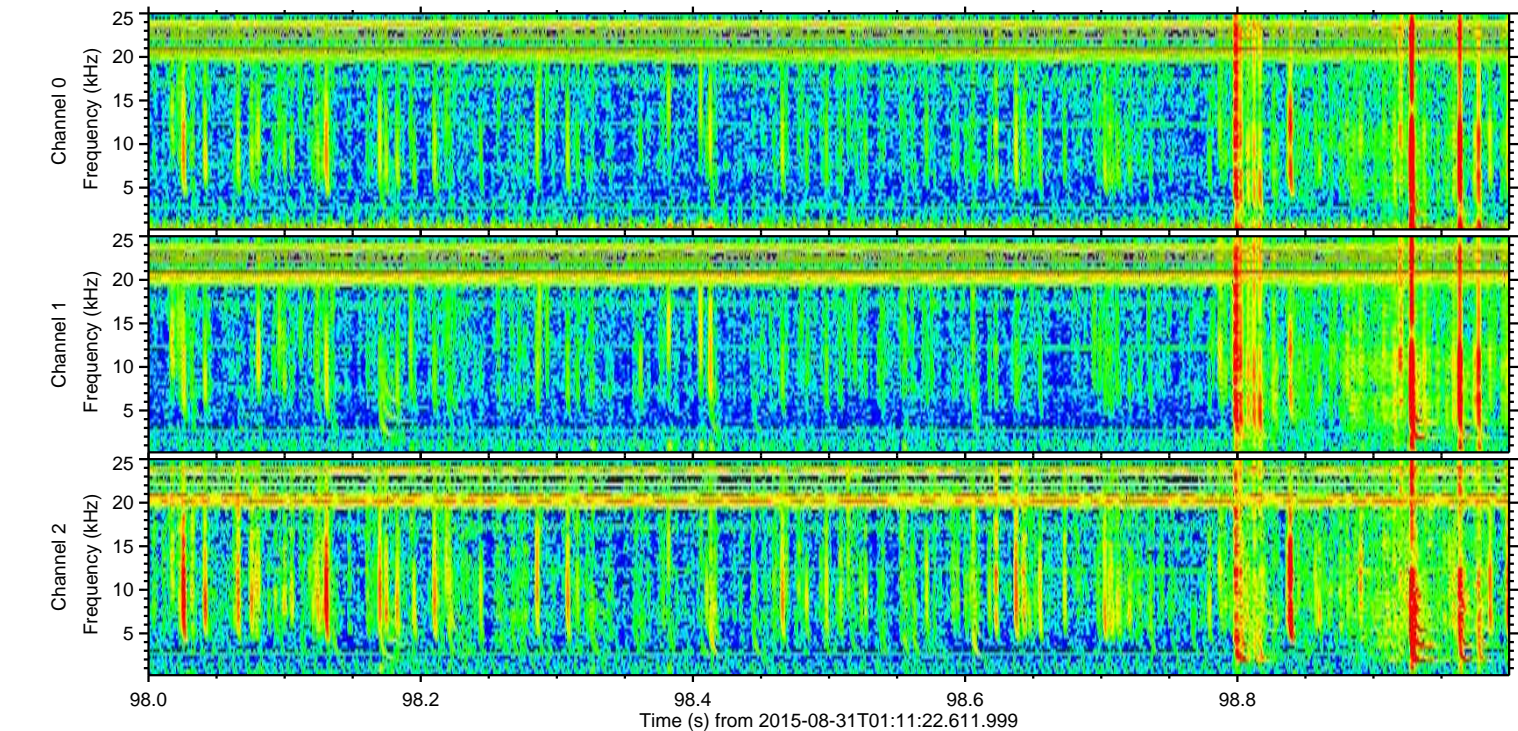
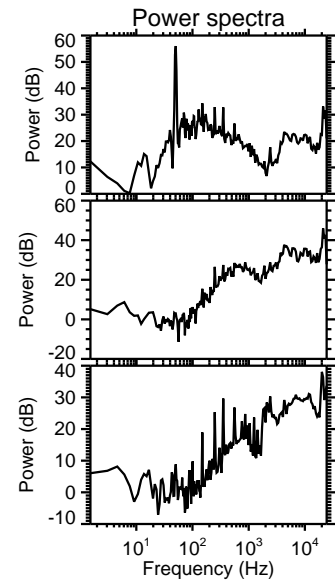
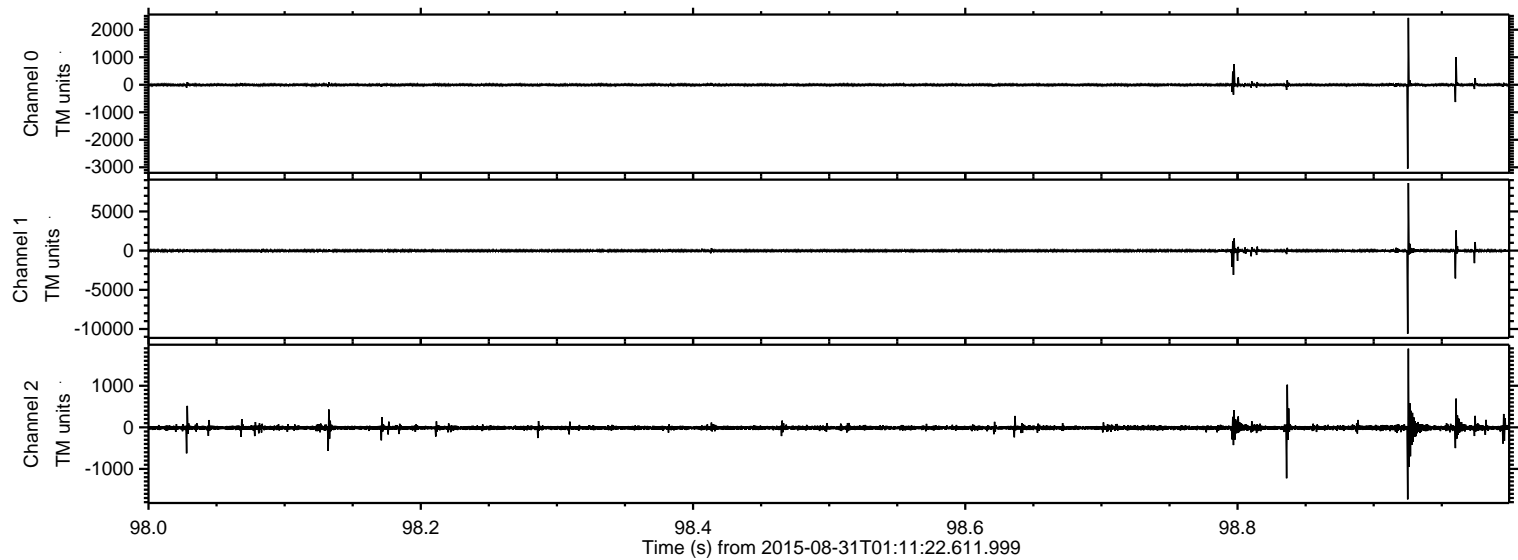


ELMAVAN 3D WAVEFORMS (Measured data sampled at 50 kHz) 51000 packets of 144 samples from 2015-08-31T01:11:22.611.999. Part 145/147

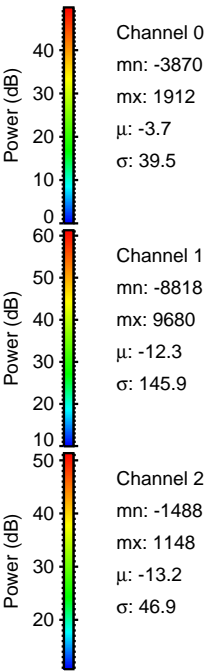
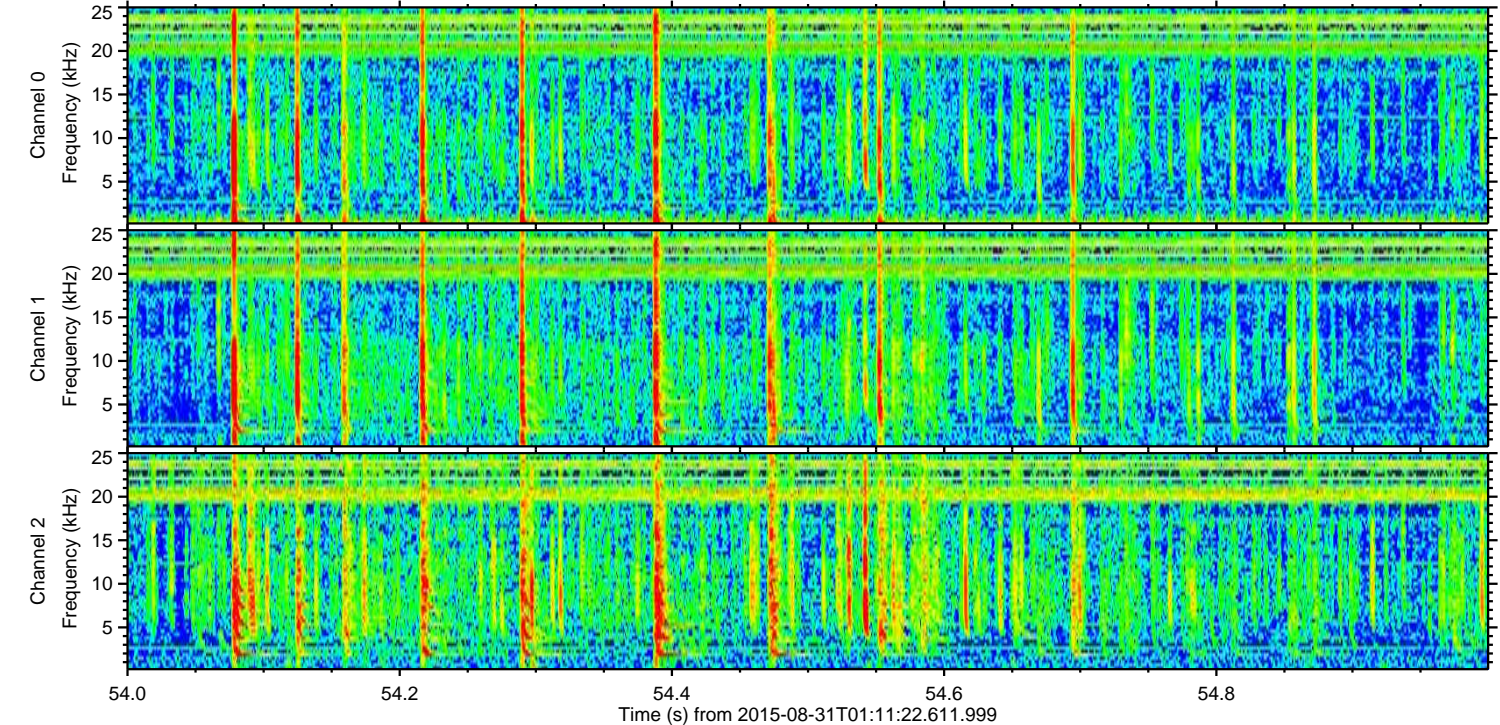
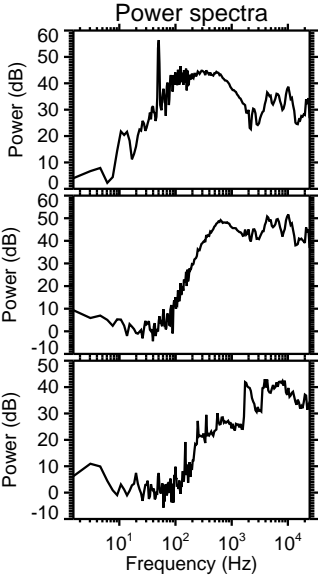
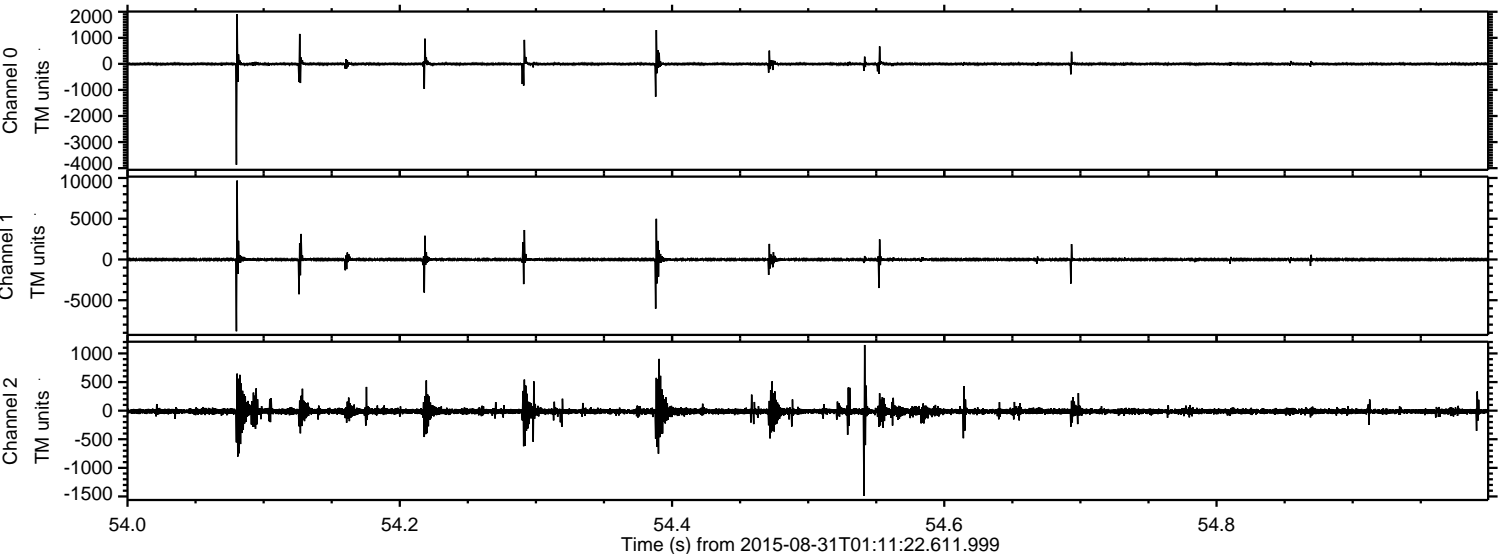
Processed Thu Oct 8 10:01:20 2015 by ELM ver.2012-10-06 from 001__elm20150831_011121__dat00.bin



Processed Thu Oct 8 10:01:21 2015 by ELM ver.2012-10-06 from 001__elm20150831_011121__dat00.bin

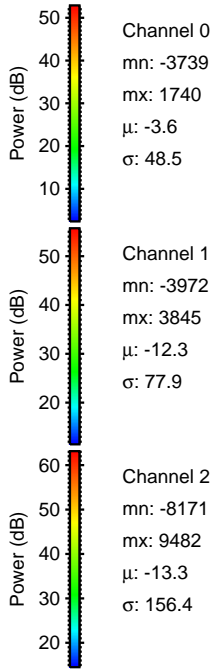
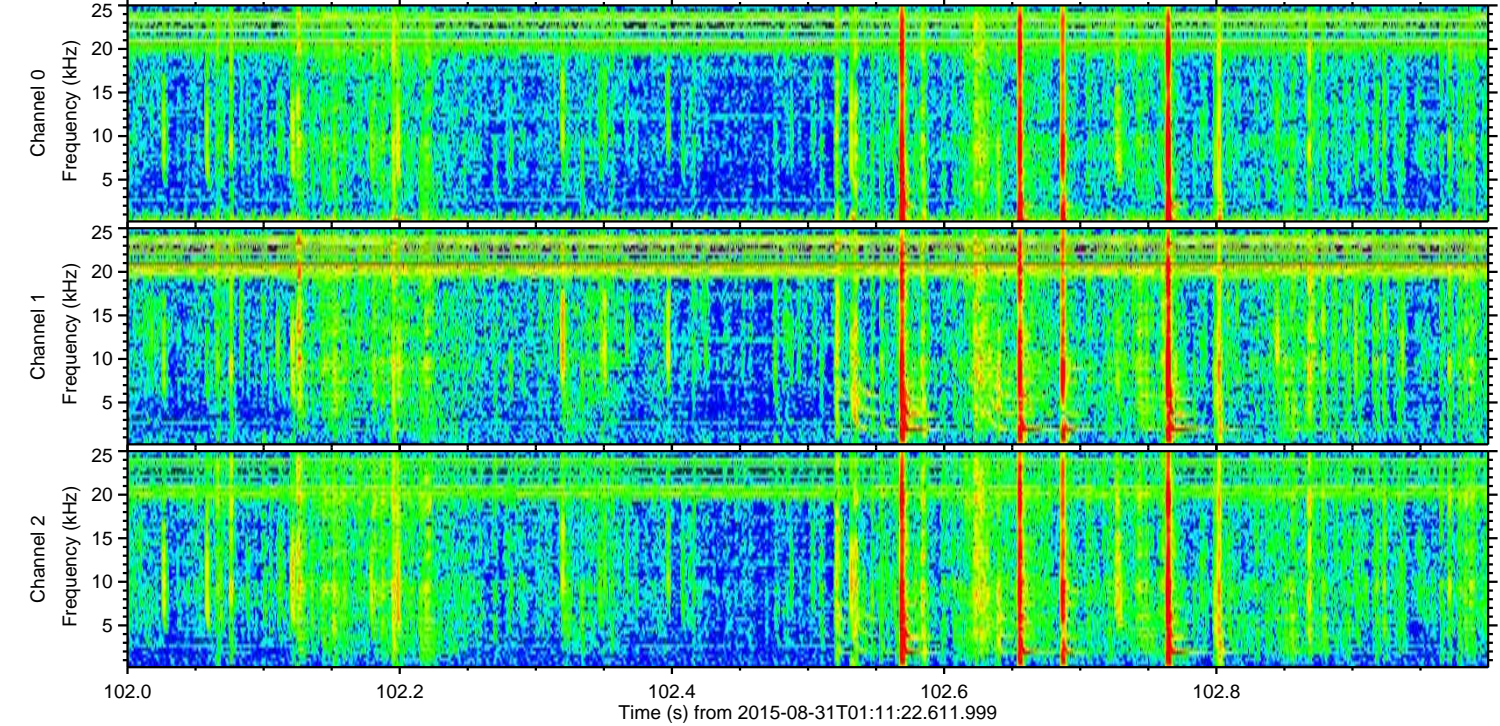
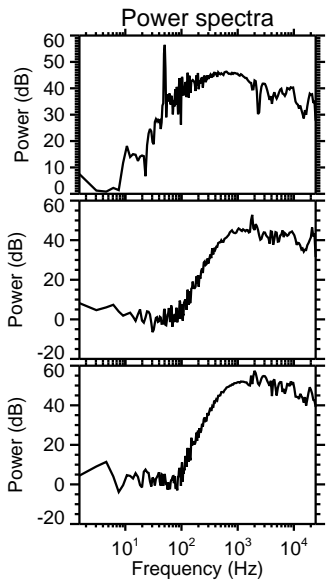
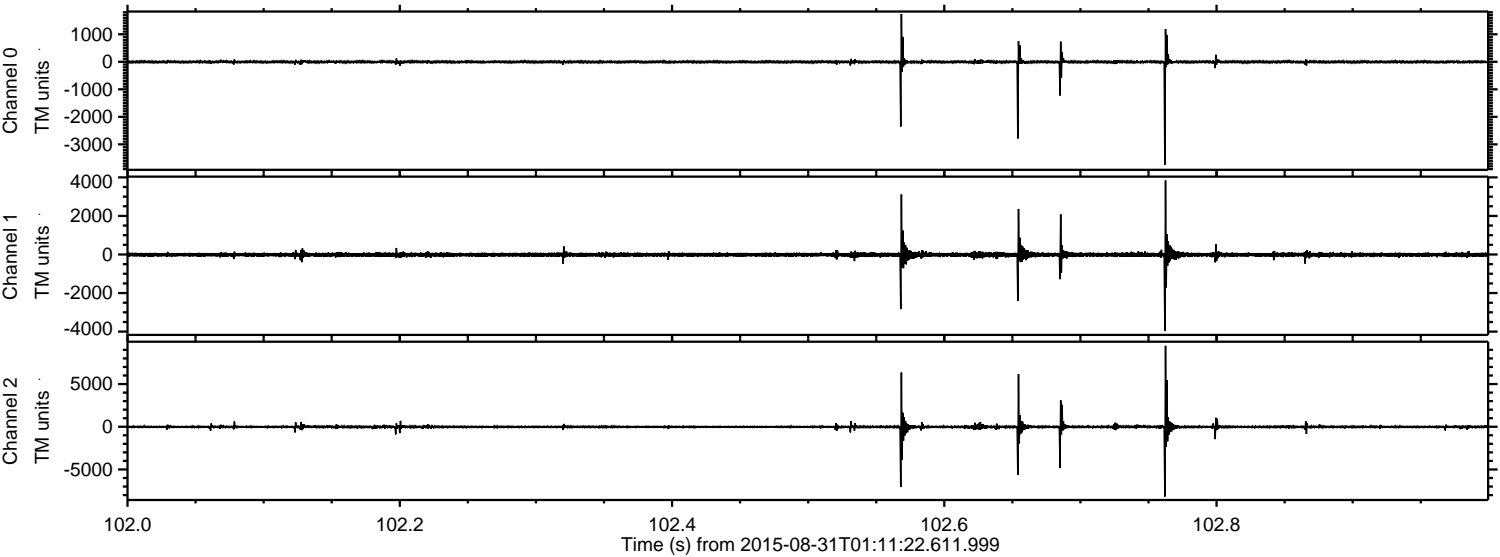


Processed Thu Oct 8 10:01:22 2015 by ELM ver.2012-10-06 from 001__elm20150831_011121__dat00.bin



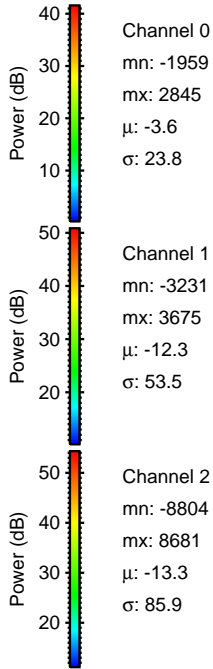
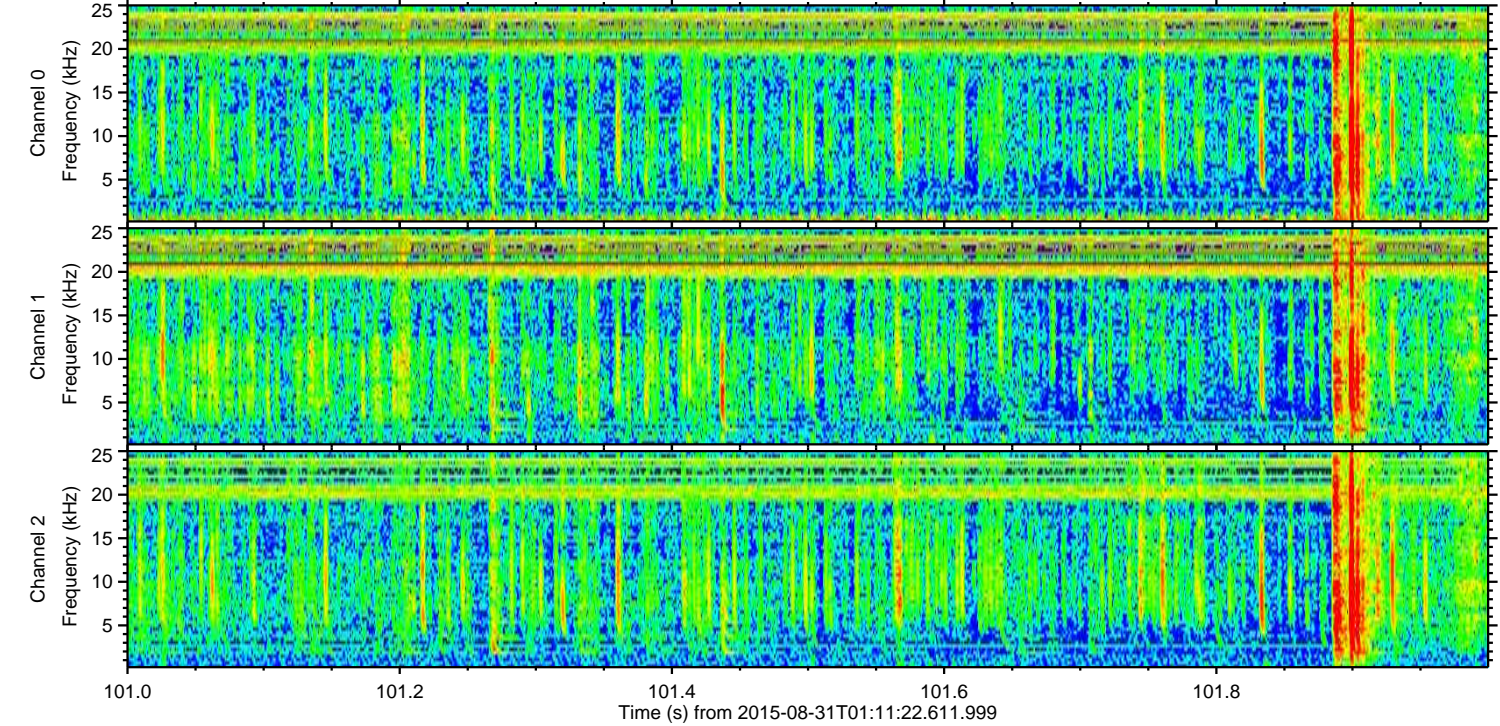
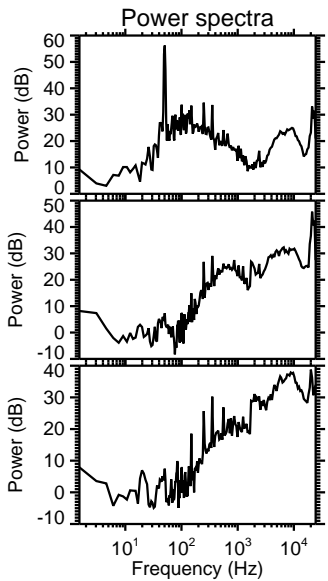
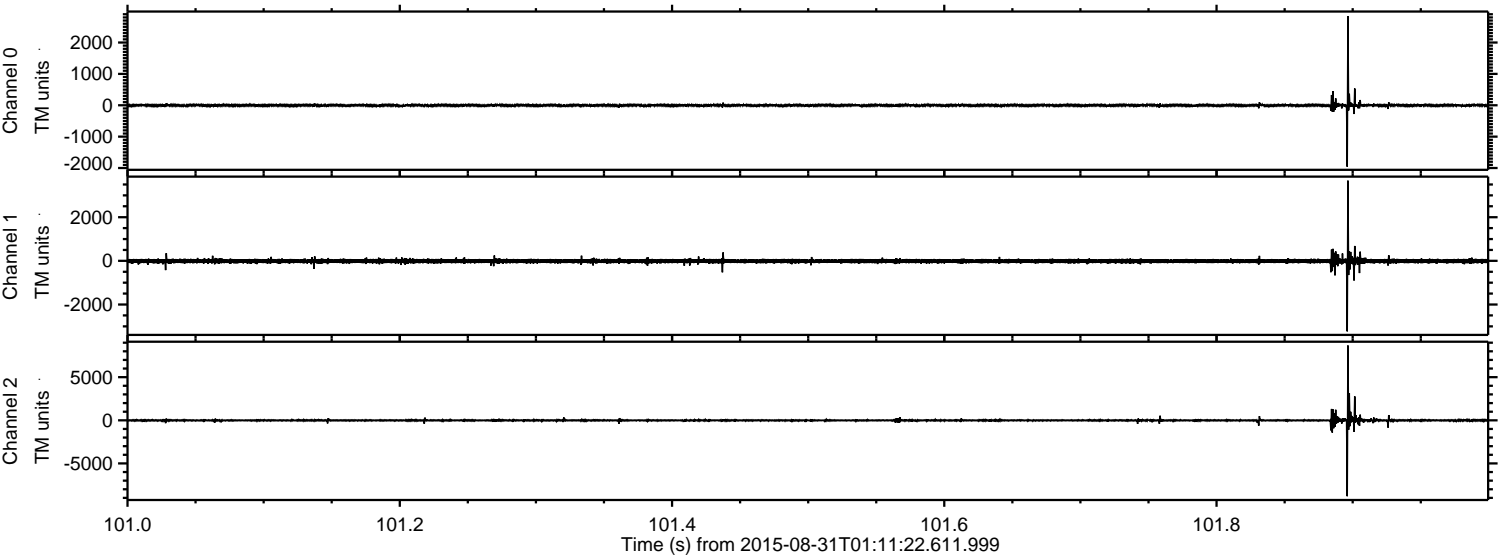
ELMAVAN 3D WAVEFORMS (Measured data sampled at 50 kHz) 51000 packets of 144 samples from 2015-08-31T01:11:22.611.999. Part 103/147

Processed Thu Oct 8 10:01:24 2015 by ELM ver.2012-10-06 from 001__elm20150831_011121__dat00.bin

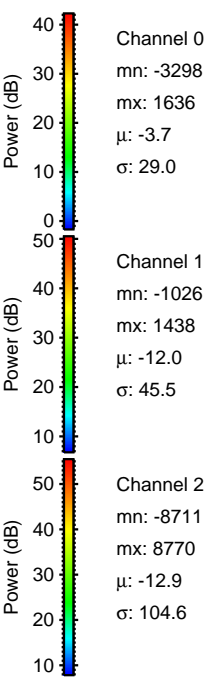
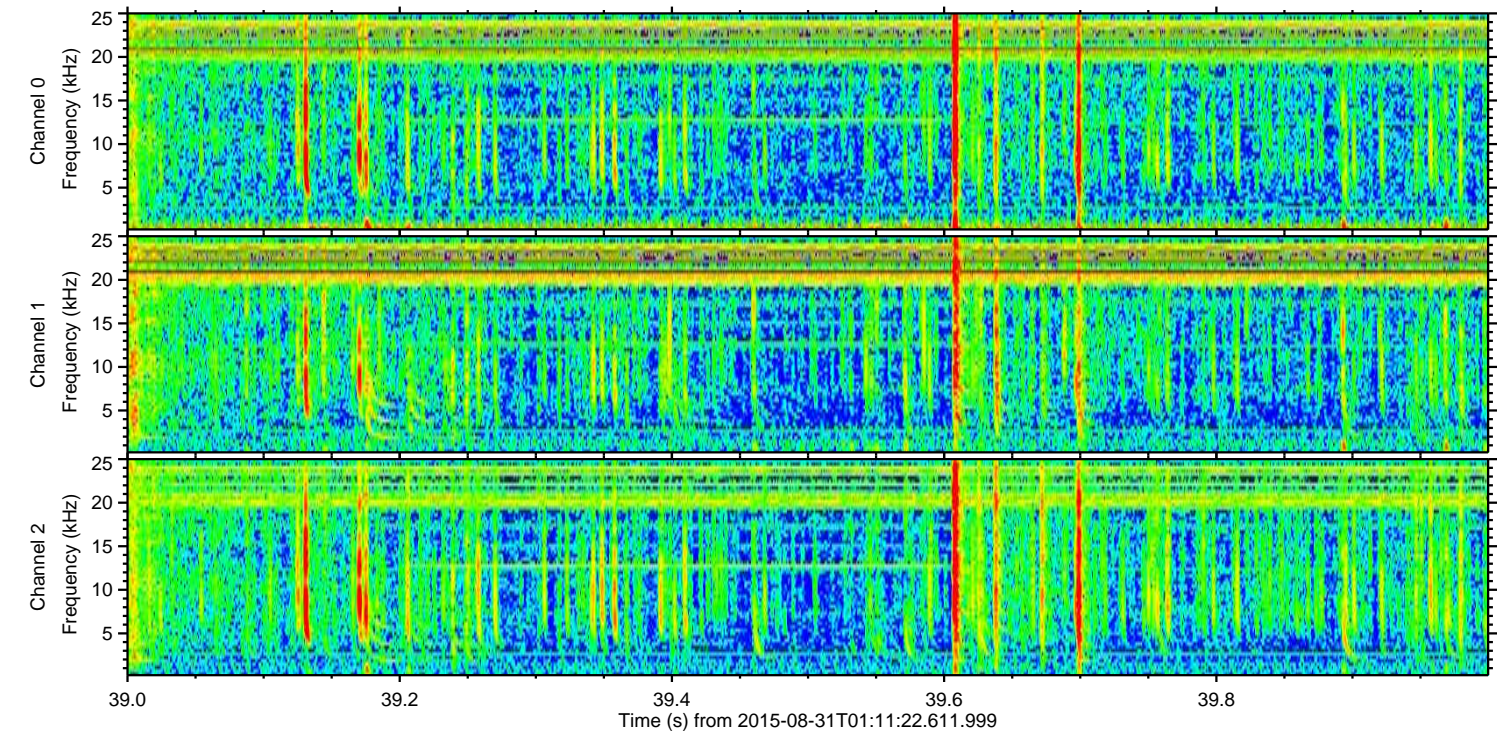
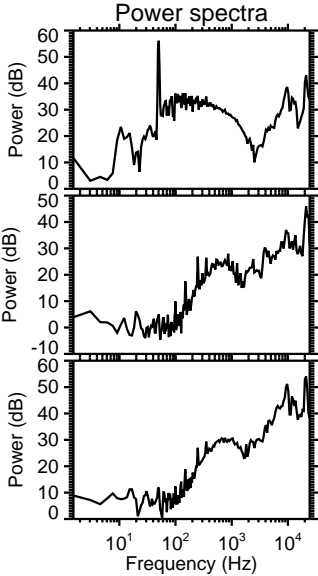
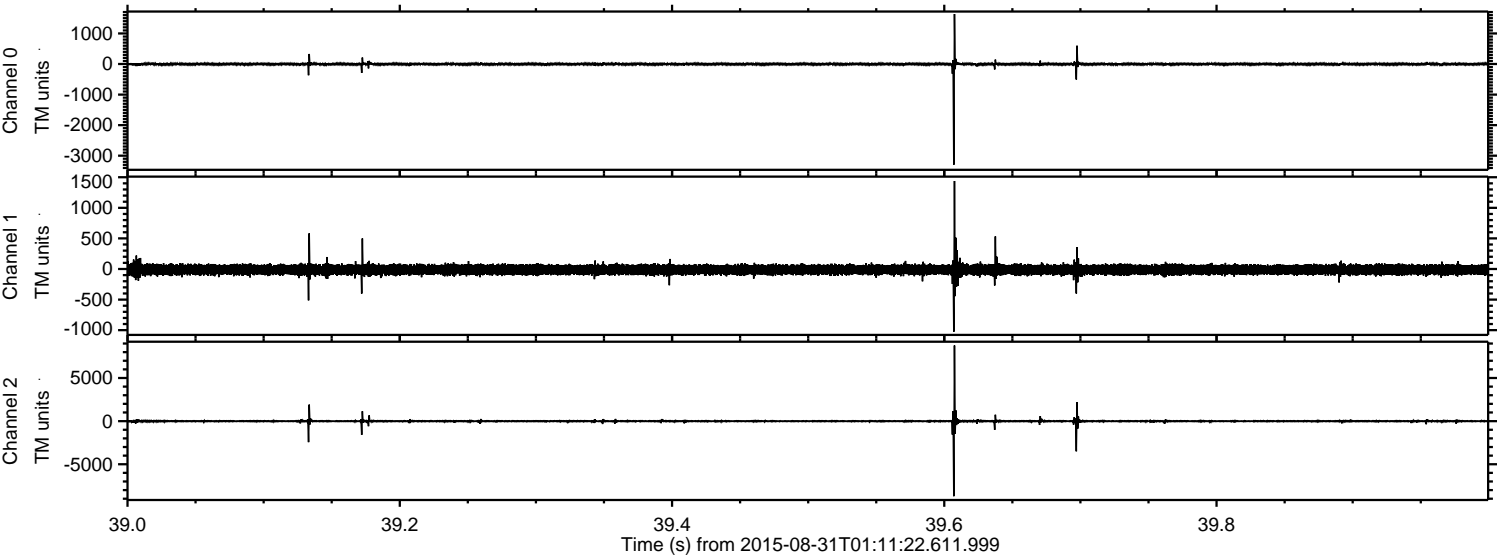


ELMAVAN 3D WAVEFORMS (Measured data sampled at 50 kHz) 51000 packets of 144 samples from 2015-08-31T01:11:22.611.999. Part 102/147

Processed Thu Oct 8 10:01:25 2015 by ELM ver.2012-10-06 from 001__elm20150831_011121__dat00.bin



Processed Thu Oct 8 10:01:26 2015 by ELM ver.2012-10-06 from 001__elm20150831_011121__dat00.bin



Channel 0
mn: -3298
mx: 1636
 μ : -3.7
 σ : 29.0

Channel 1
mn: -1026
mx: 1438
 μ : -12.0
 σ : 45.5

Channel 2
mn: -8711
mx: 8770
 μ : -12.9
 σ : 104.6

