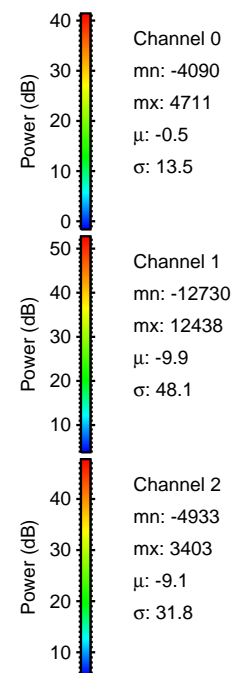
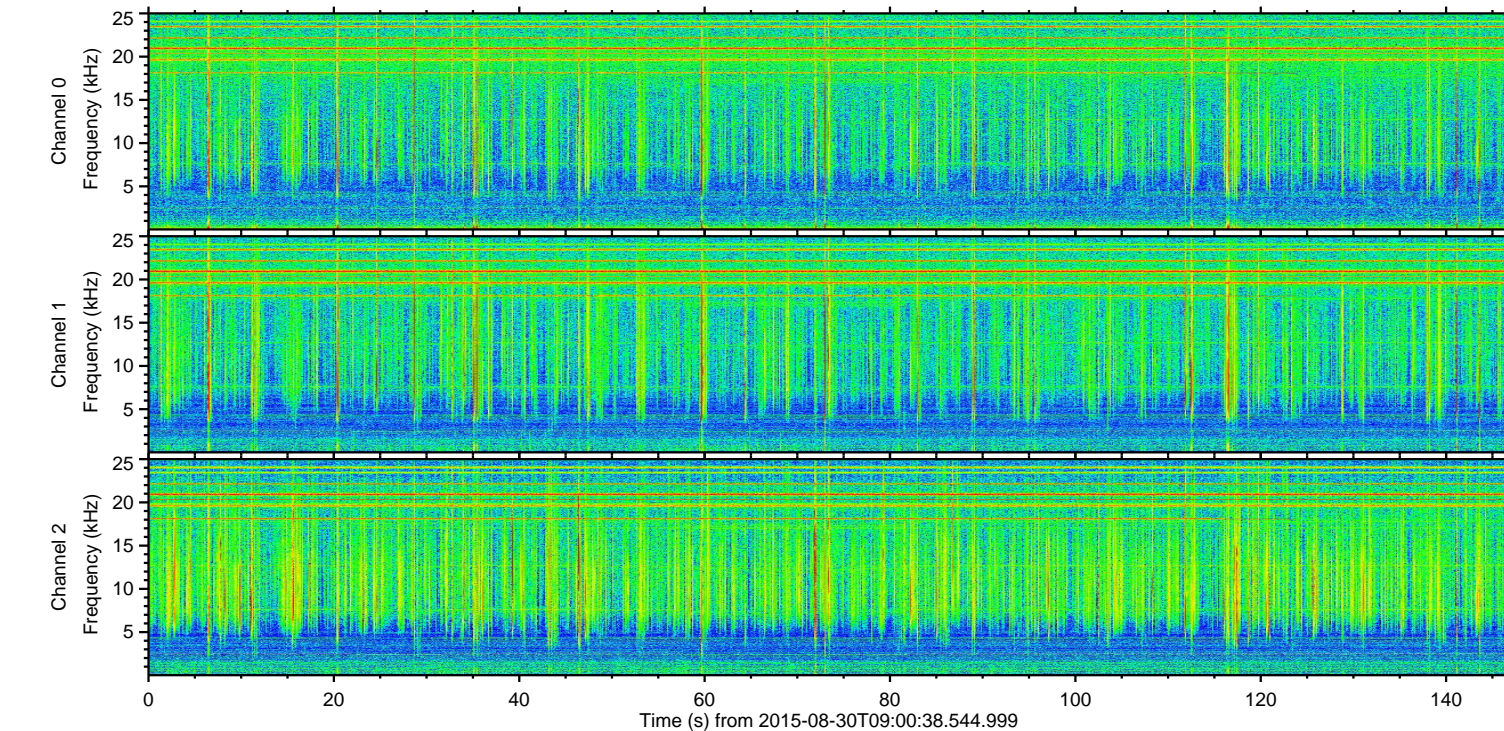
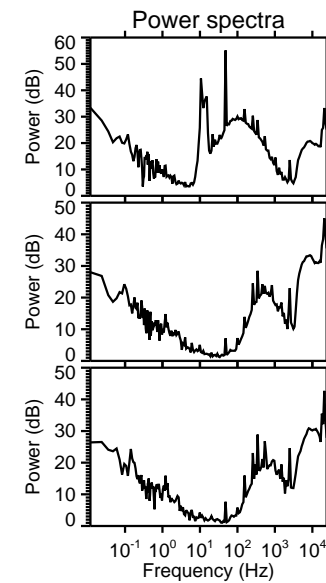
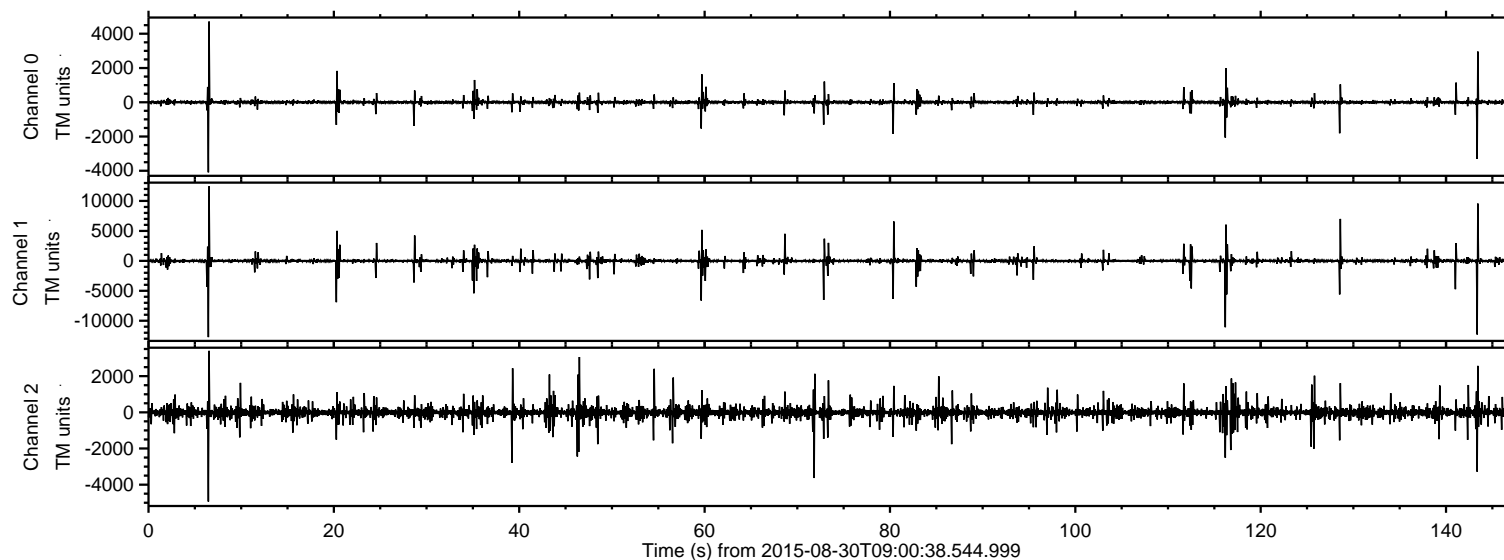


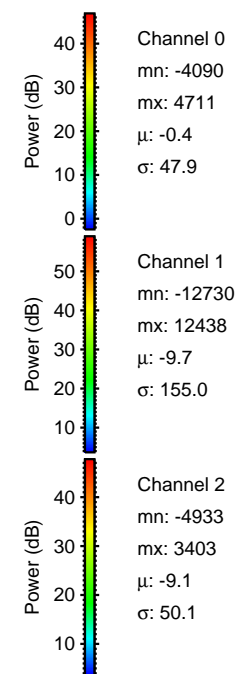
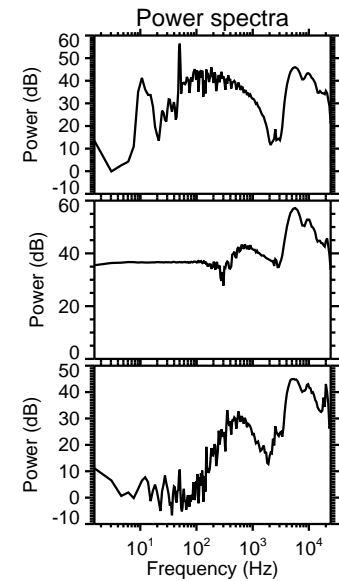
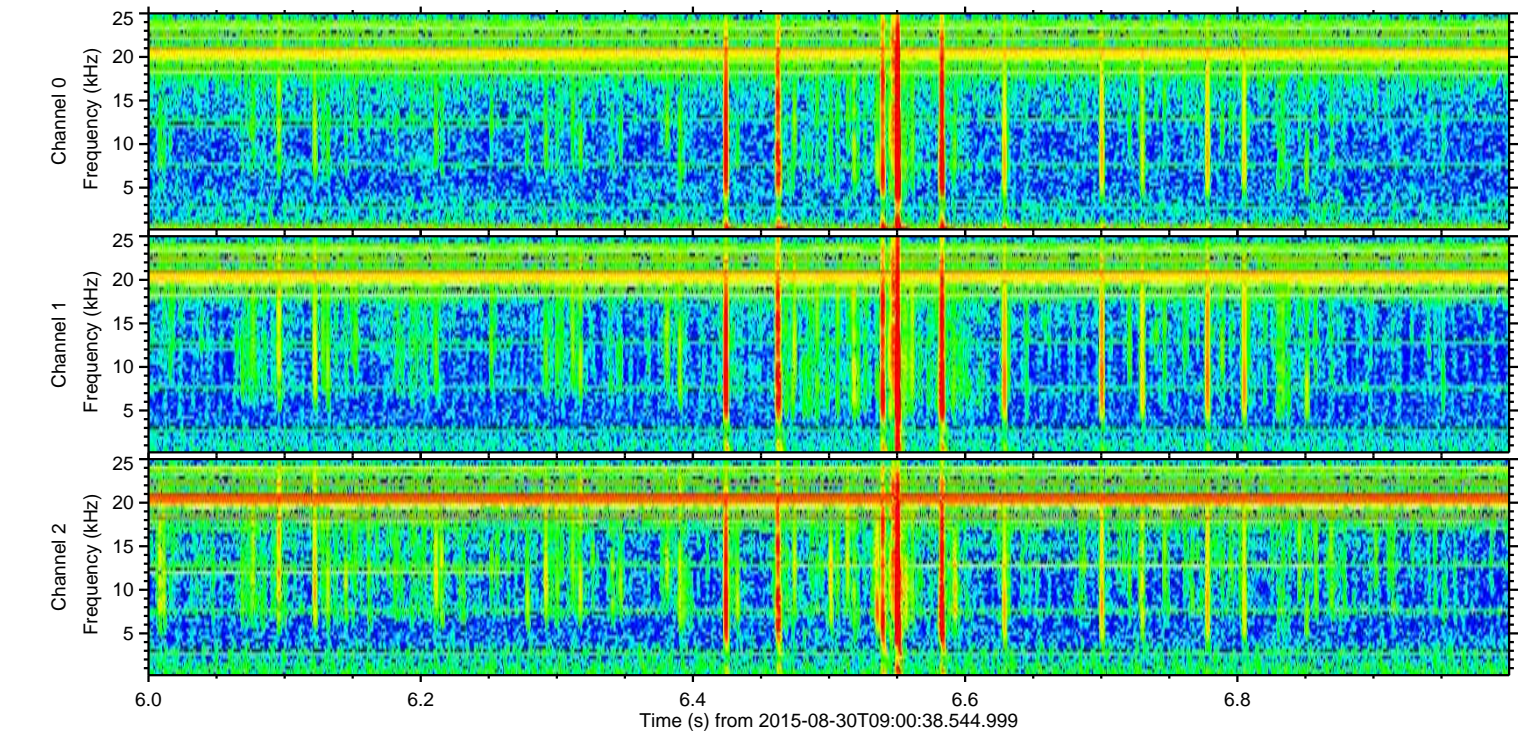
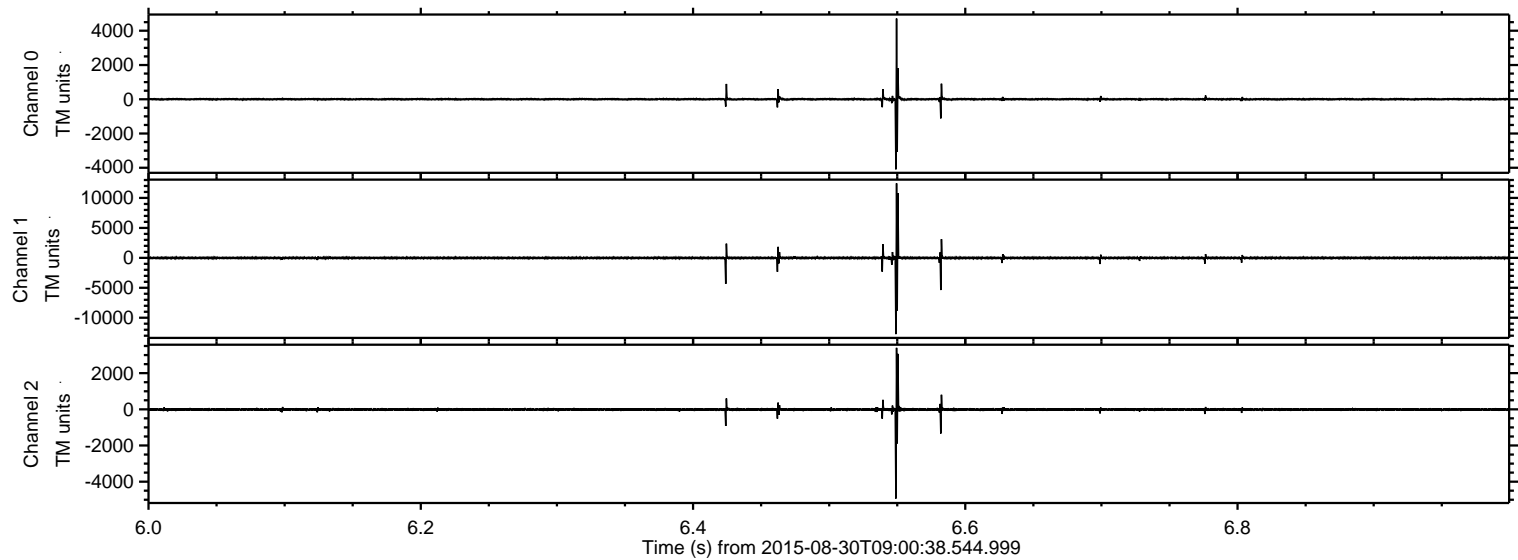
ELMAVAN 3D WAVEFORMS (Measured data sampled at 50 kHz) 51000 packets of 144 samples from 2015-08-30T09:00:38.544.999.

Processed Thu Oct 8 05:34:24 2015 by ELM ver.2012-10-06 from 001__elm20150830_090037__dat00.bin



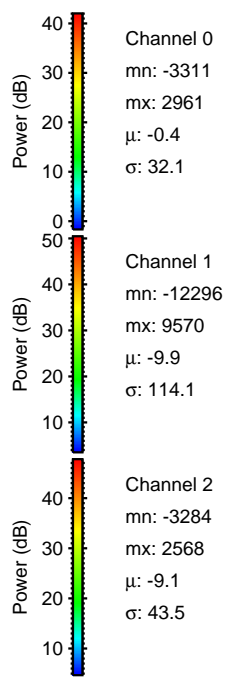
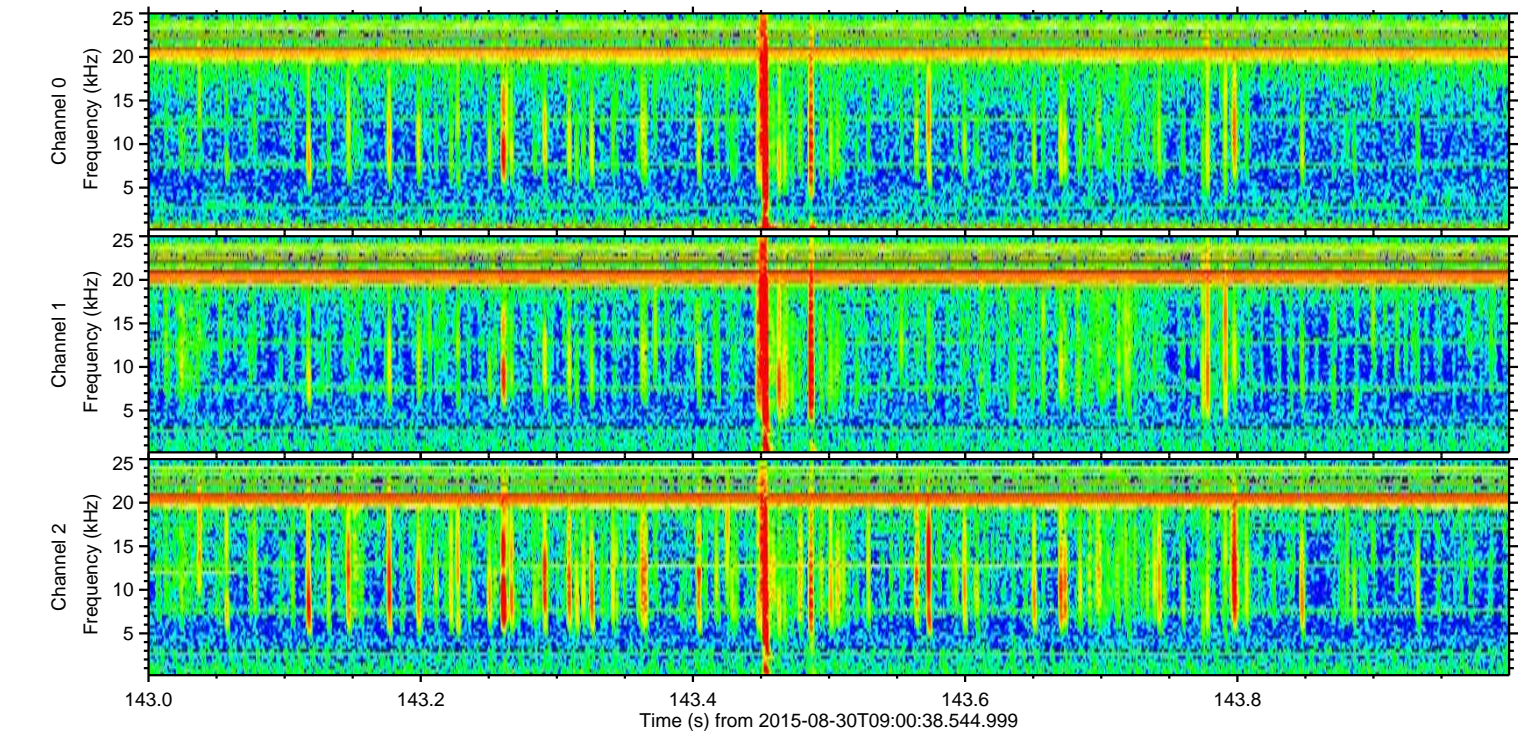
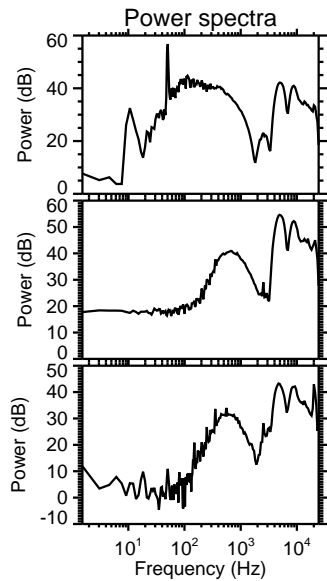
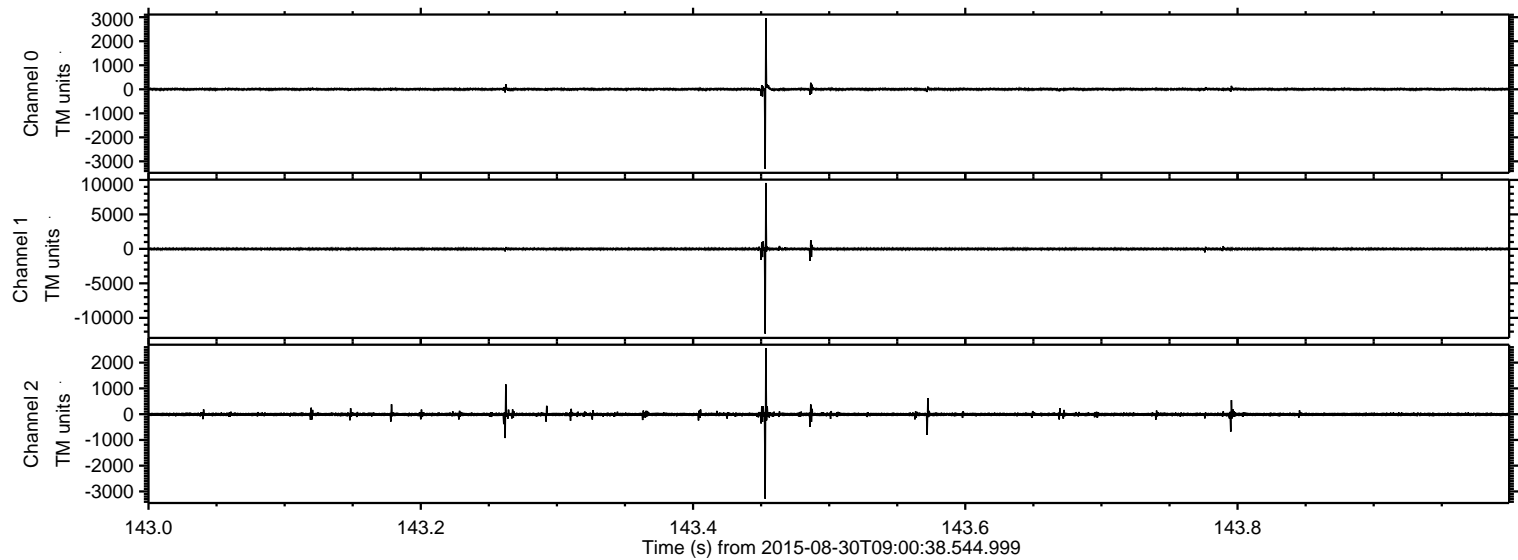
ELMAVAN 3D WAVEFORMS (Measured data sampled at 50 kHz) 51000 packets of 144 samples from 2015-08-30T09:00:38.544.999. Part 7/147

Processed Thu Oct 8 05:34:39 2015 by ELM ver.2012-10-06 from 001__elm20150830_090037__dat00.bin



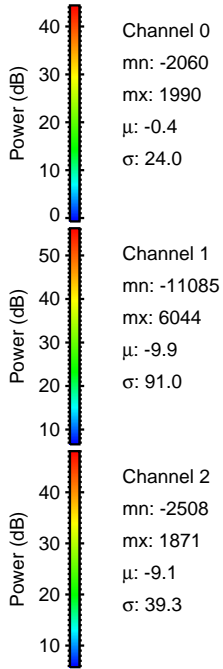
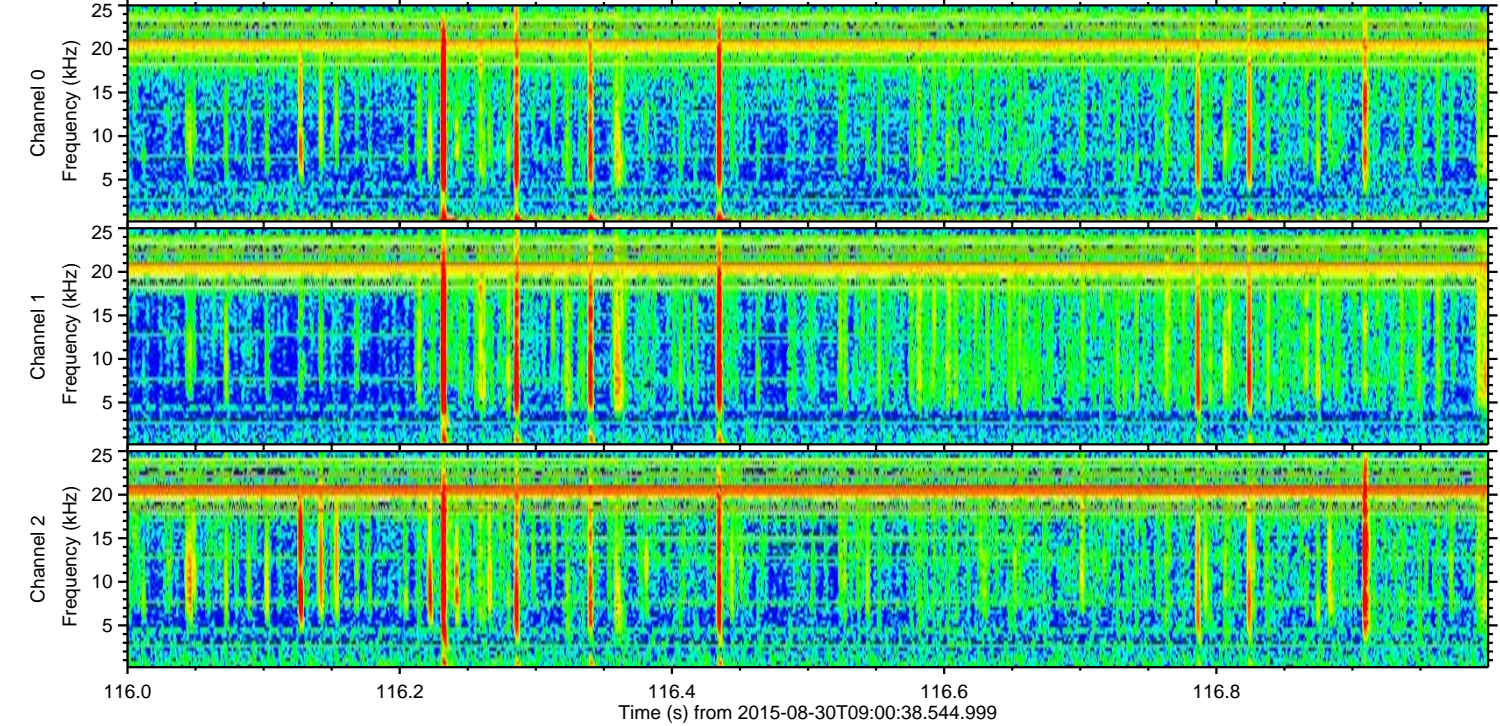
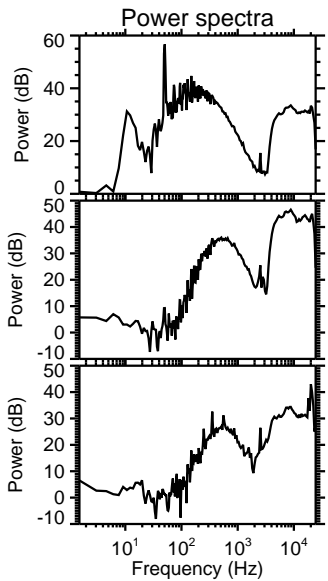
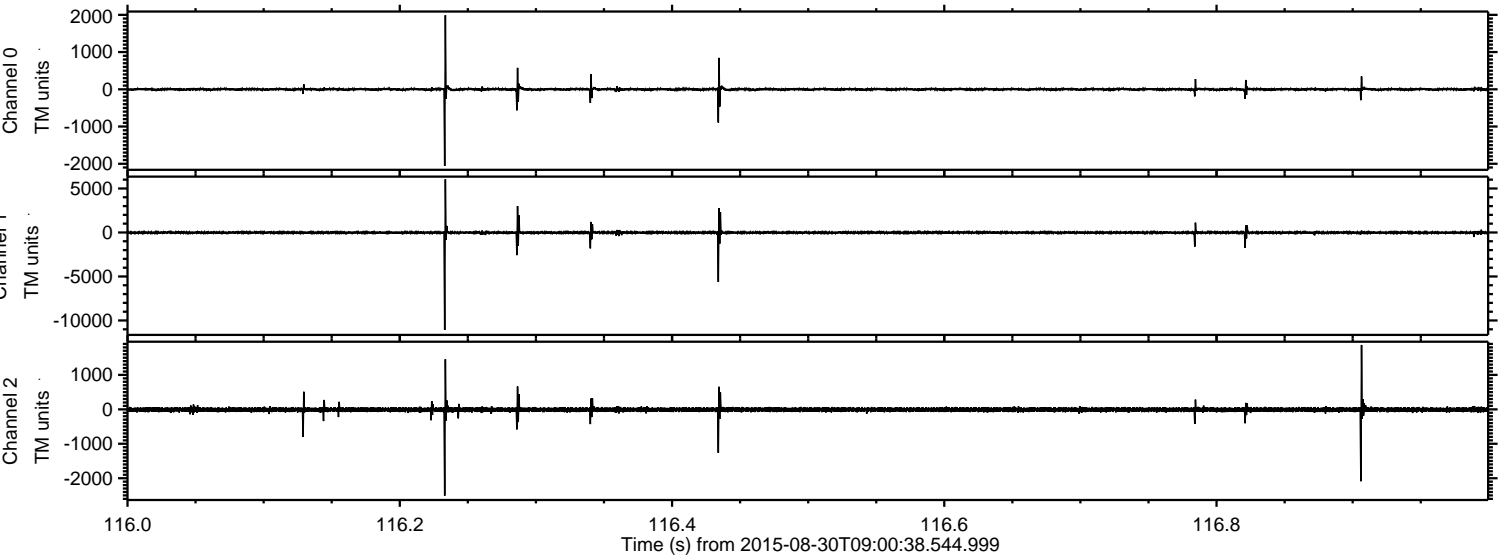
ELMAVAN 3D WAVEFORMS (Measured data sampled at 50 kHz) 51000 packets of 144 samples from 2015-08-30T09:00:38.544.999. Part 144/147

Processed Thu Oct 8 05:34:40 2015 by ELM ver.2012-10-06 from 001__elm20150830_090037__dat00.bin



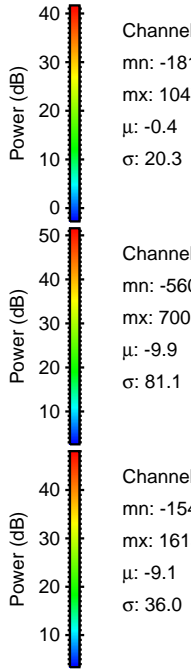
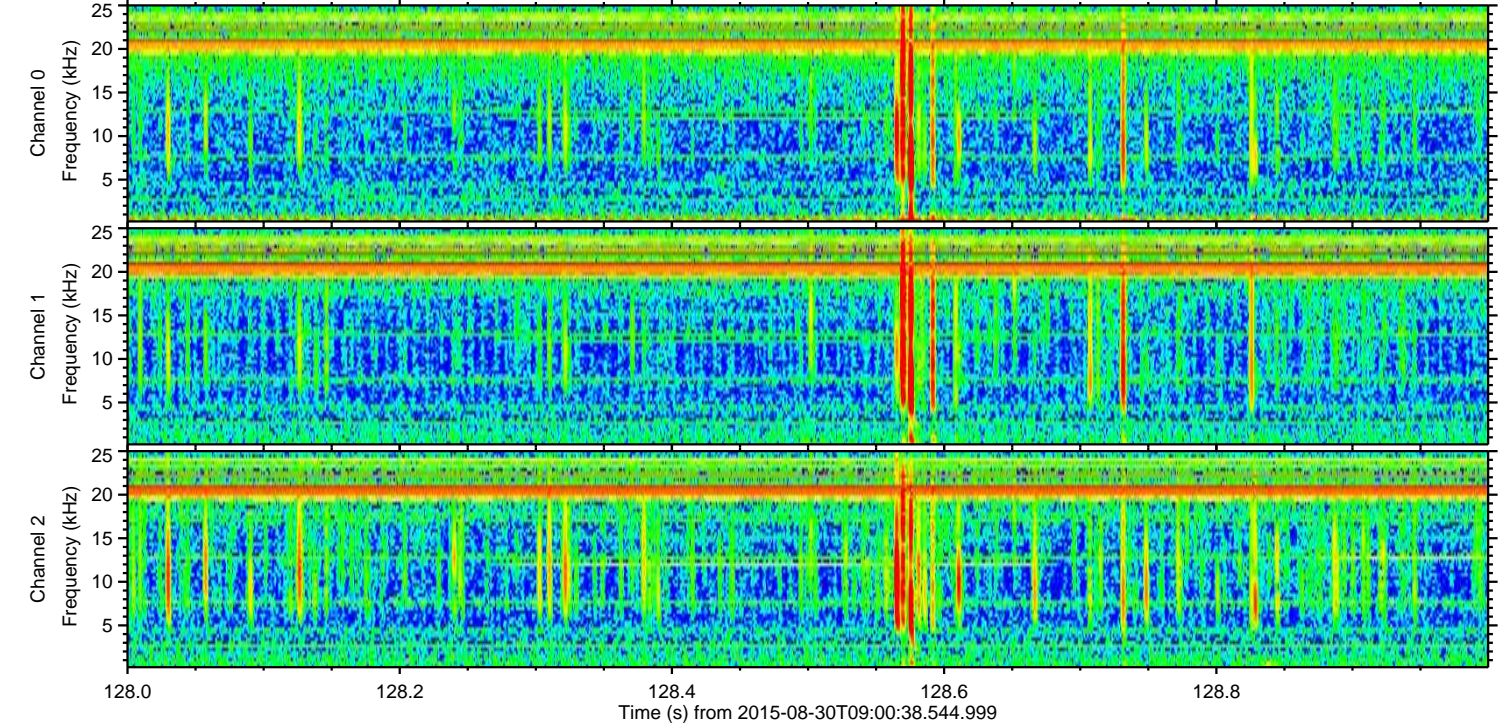
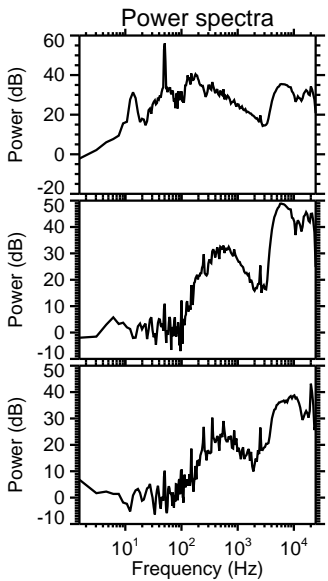
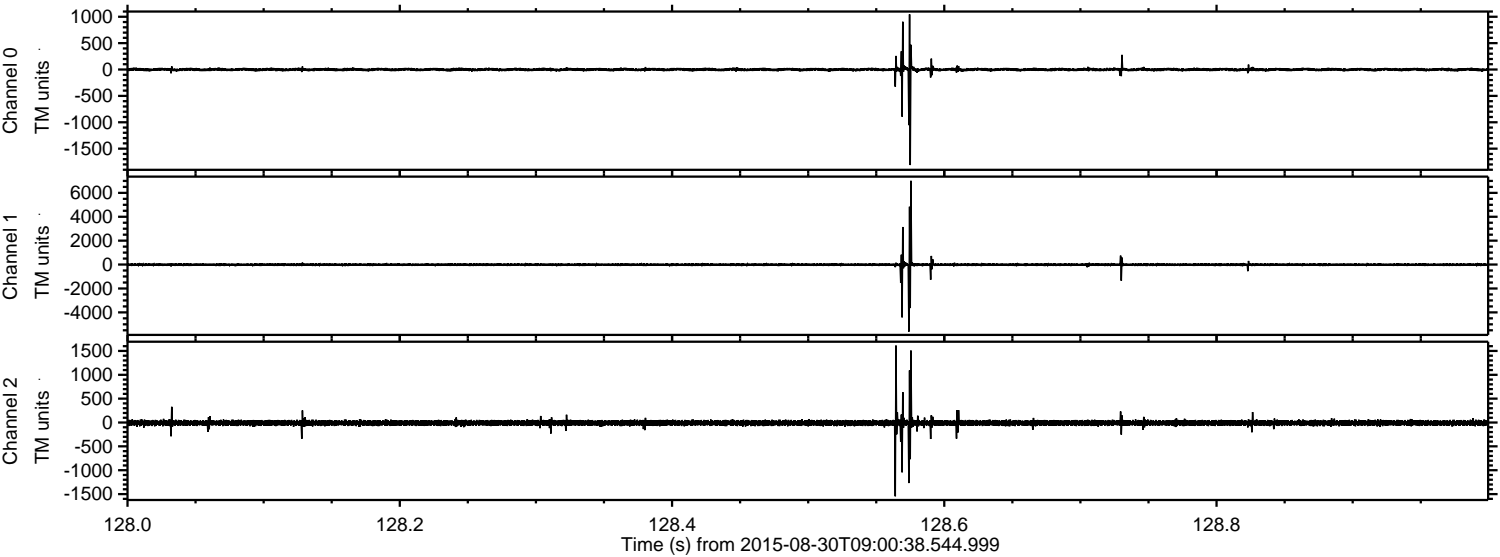
ELMAVAN 3D WAVEFORMS (Measured data sampled at 50 kHz) 51000 packets of 144 samples from 2015-08-30T09:00:38.544.999. Part 117/147

Processed Thu Oct 8 05:34:41 2015 by ELM ver.2012-10-06 from 001__elm20150830_090037__dat00.bin



ELMAVAN 3D WAVEFORMS (Measured data sampled at 50 kHz) 51000 packets of 144 samples from 2015-08-30T09:00:38.544.999. Part 129/147

Processed Thu Oct 8 05:34:42 2015 by ELM ver.2012-10-06 from 001__elm20150830_090037__dat00.bin

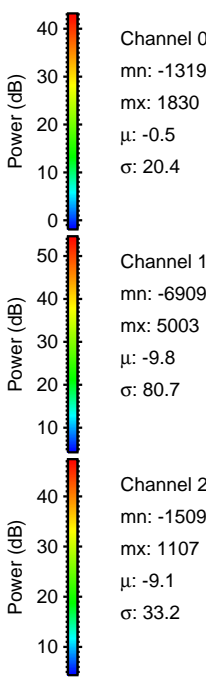
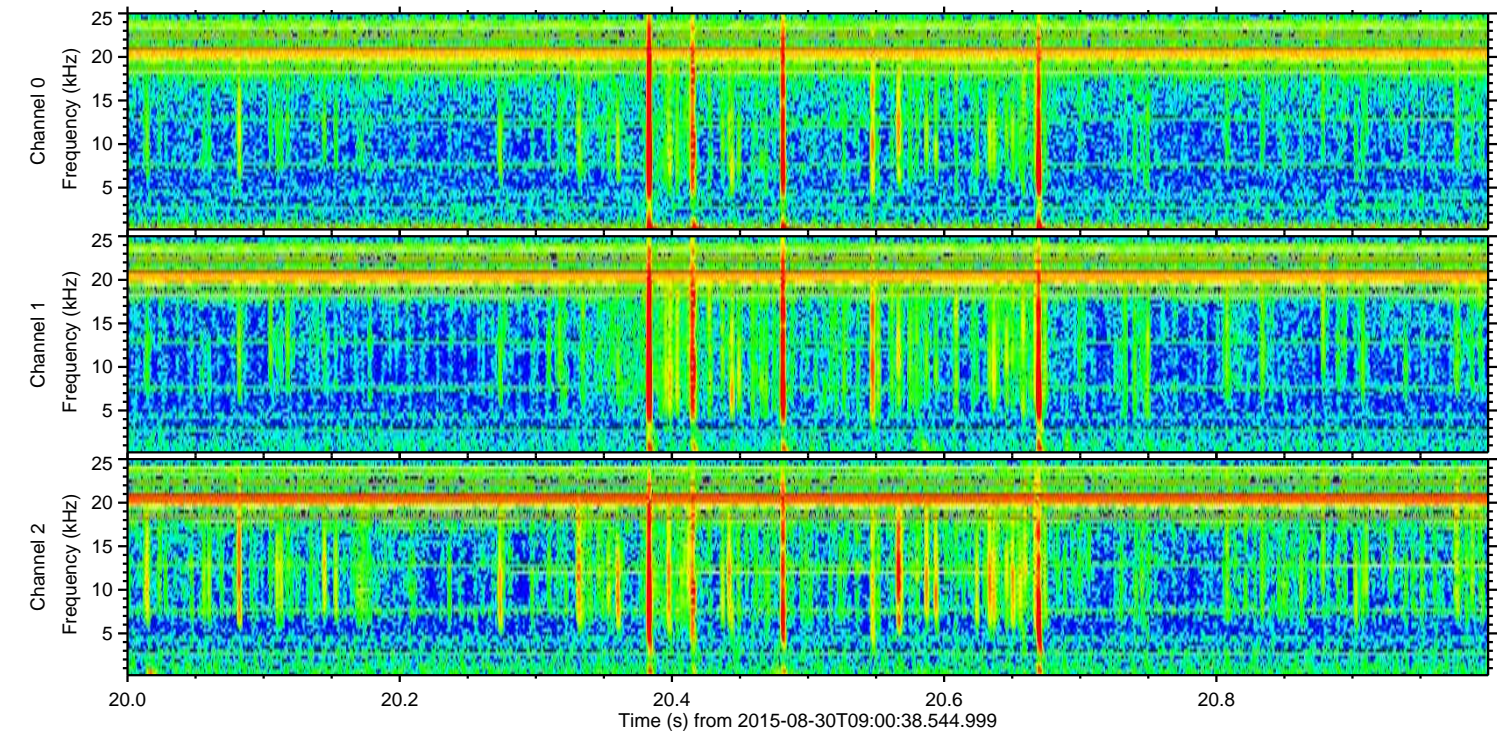
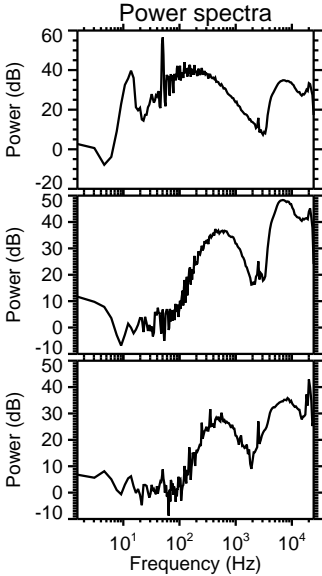
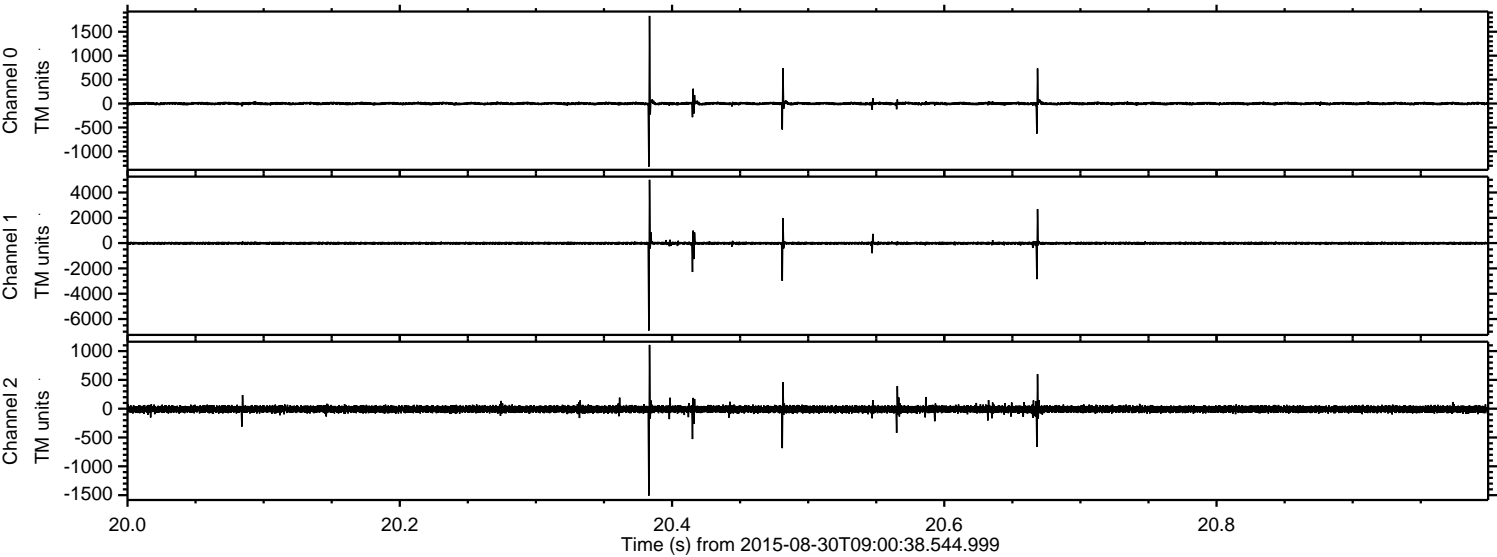


Channel 0
mn: -1811
mx: 1047
 μ : -0.4
 σ : 20.3

Channel 1
mn: -5606
mx: 7008
 μ : -9.9
 σ : 81.1

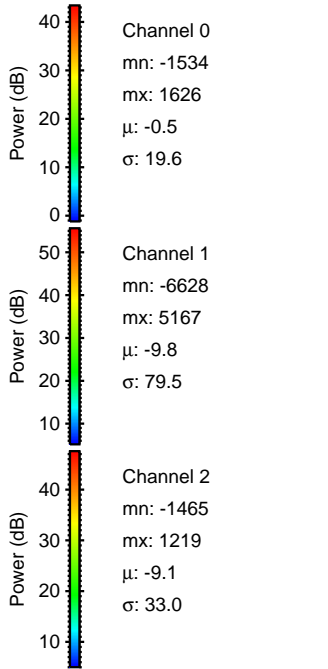
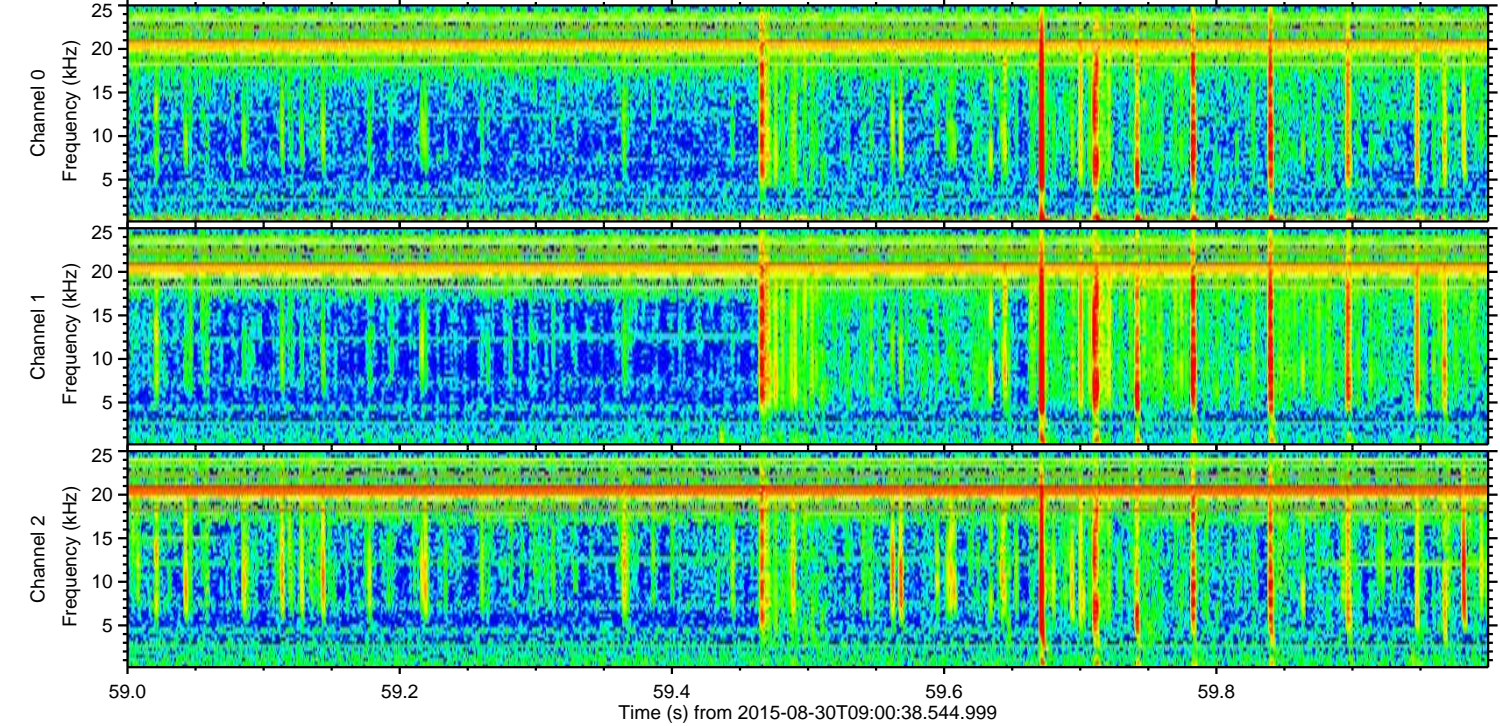
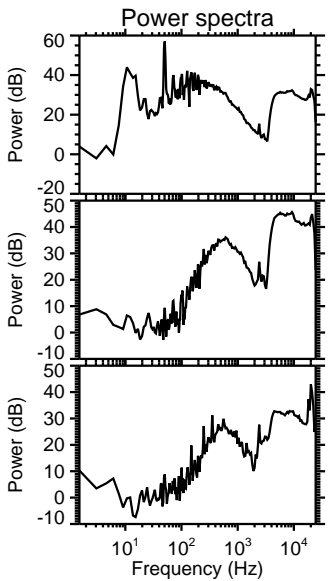
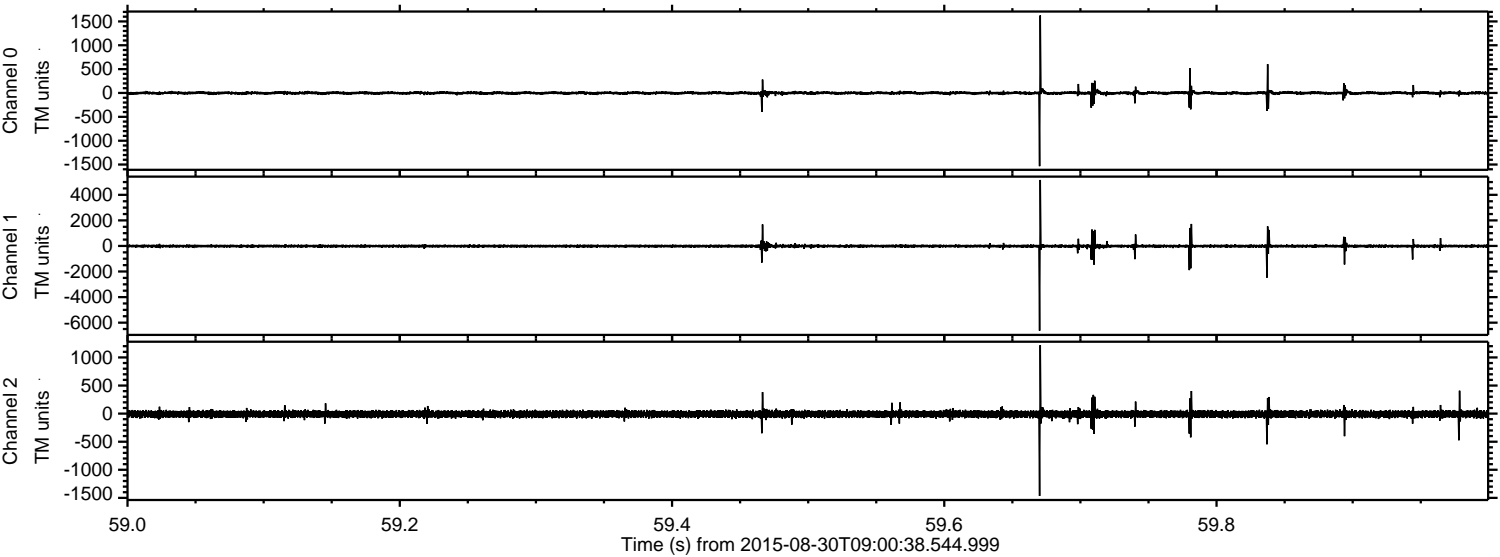
Channel 2
mn: -1547
mx: 1613
 μ : -9.1
 σ : 36.0

Processed Thu Oct 8 05:34:43 2015 by ELM ver.2012-10-06 from 001__elm20150830_090037__dat00.bin

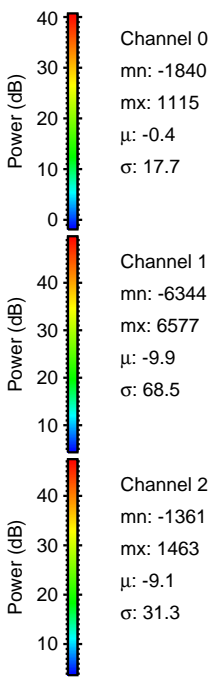
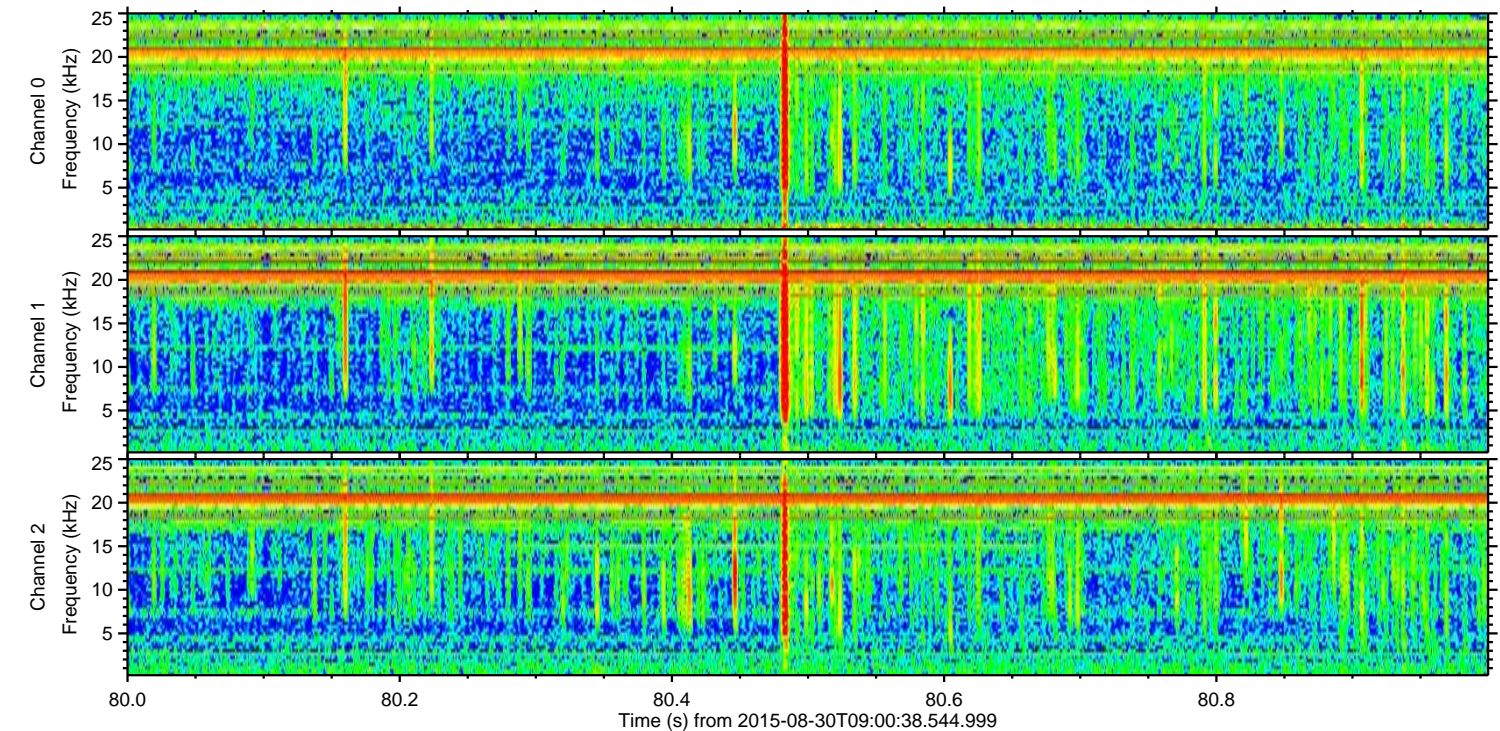
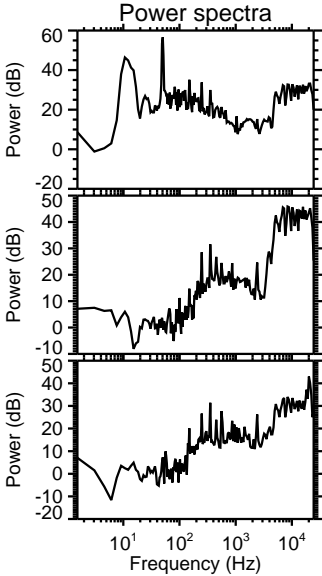
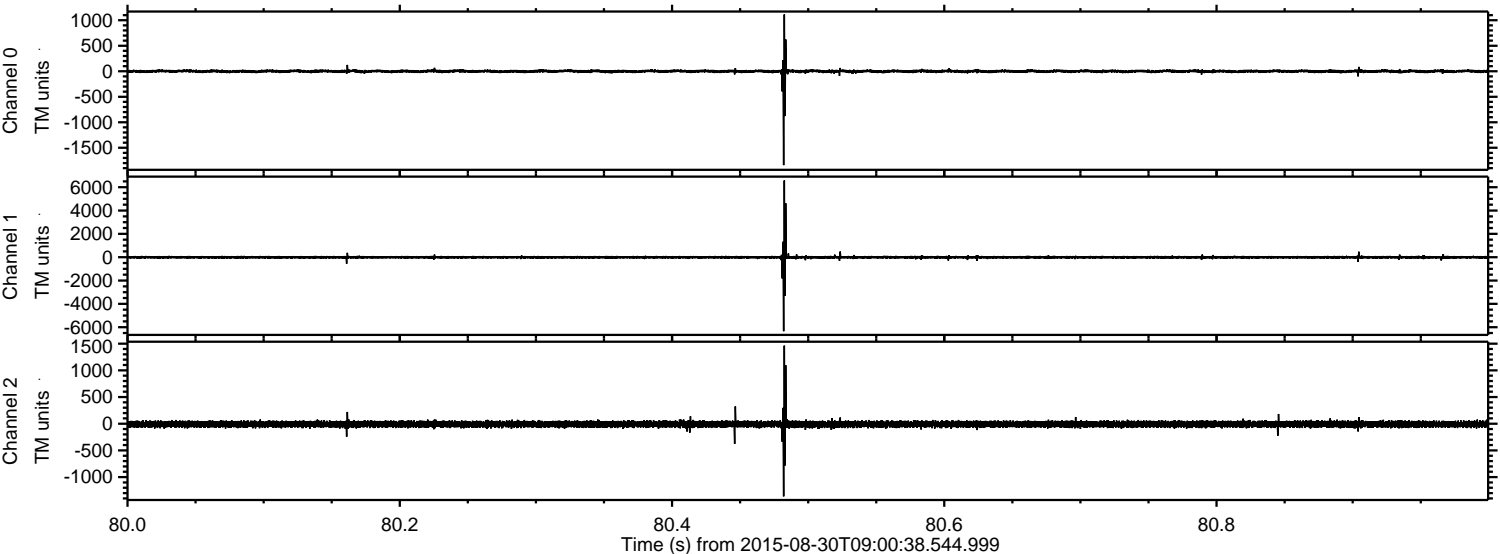


ELMAVAN 3D WAVEFORMS (Measured data sampled at 50 kHz) 51000 packets of 144 samples from 2015-08-30T09:00:38.544.999. Part 60/147

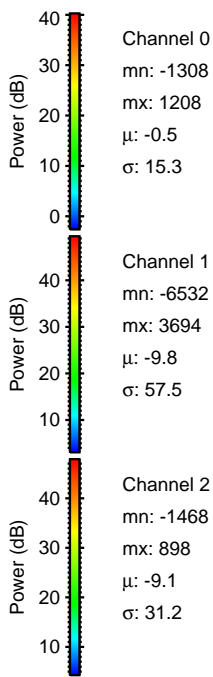
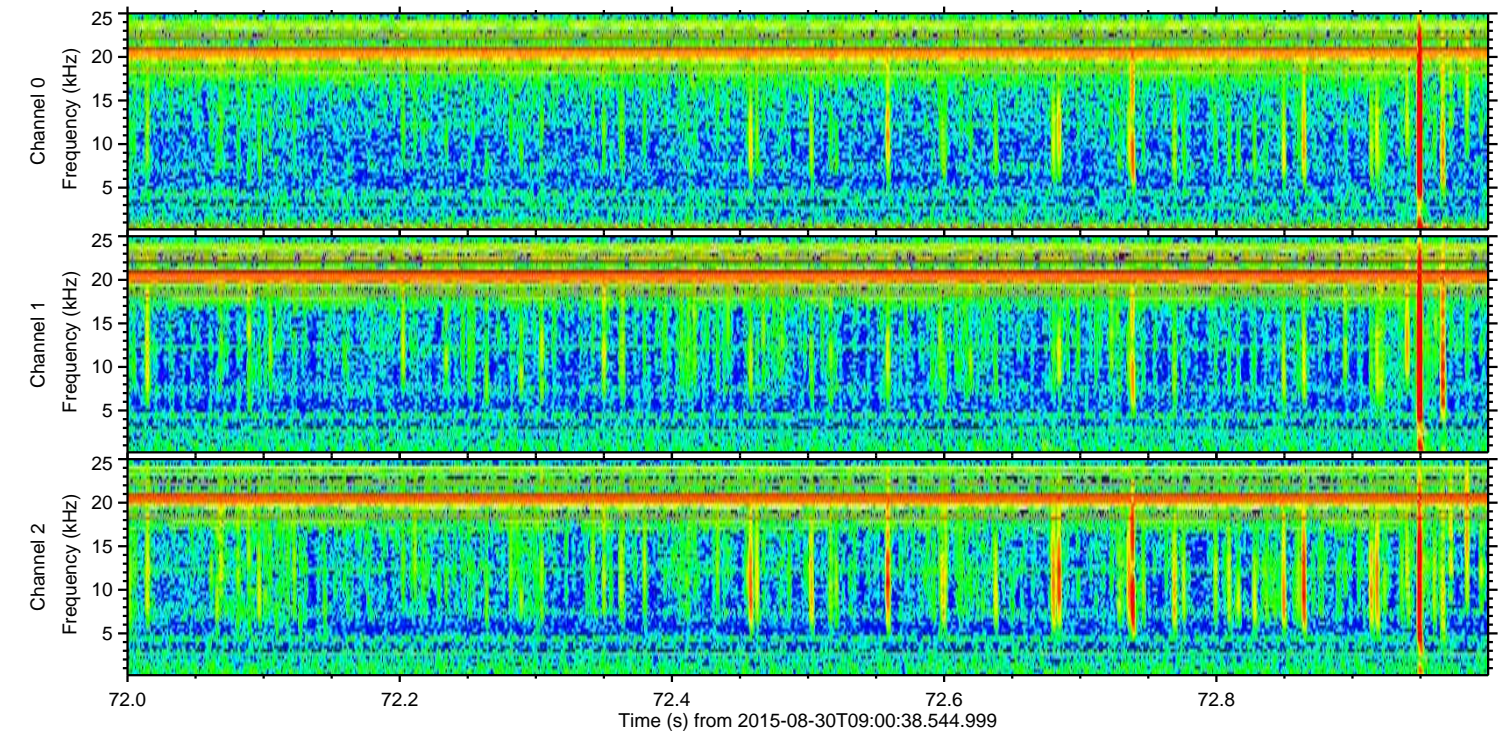
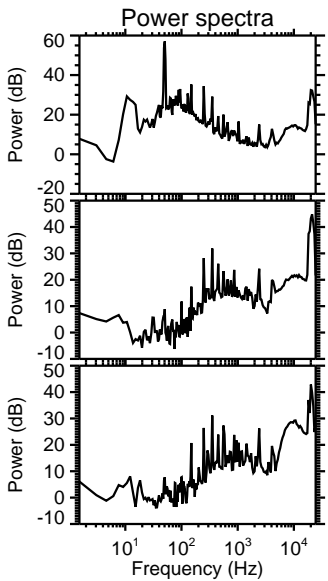
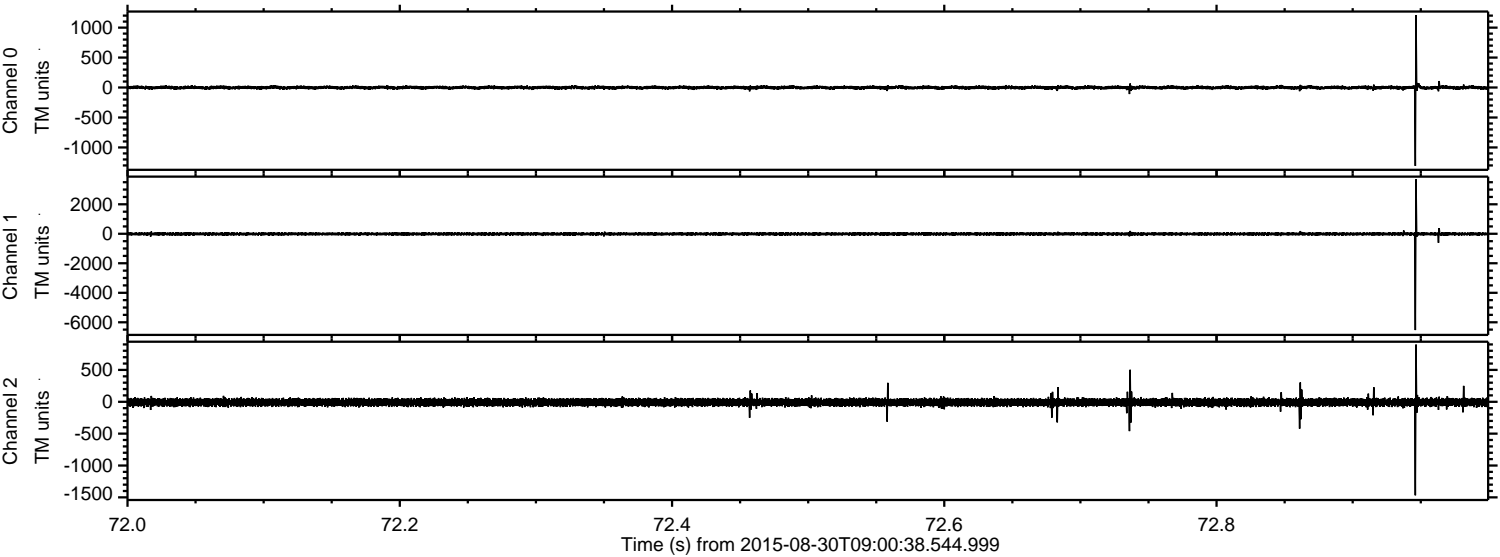
Processed Thu Oct 8 05:34:44 2015 by ELM ver.2012-10-06 from 001__elm20150830_090037__dat00.bin



Processed Thu Oct 8 05:34:45 2015 by ELM ver.2012-10-06 from 001__elm20150830_090037__dat00.bin



Processed Thu Oct 8 05:34:46 2015 by ELM ver.2012-10-06 from 001__elm20150830_090037__dat00.bin



Processed Thu Oct 8 05:34:47 2015 by ELM ver.2012-10-06 from 001__elm20150830_090037__dat00.bin

