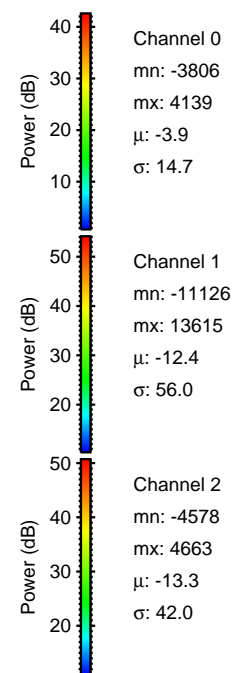
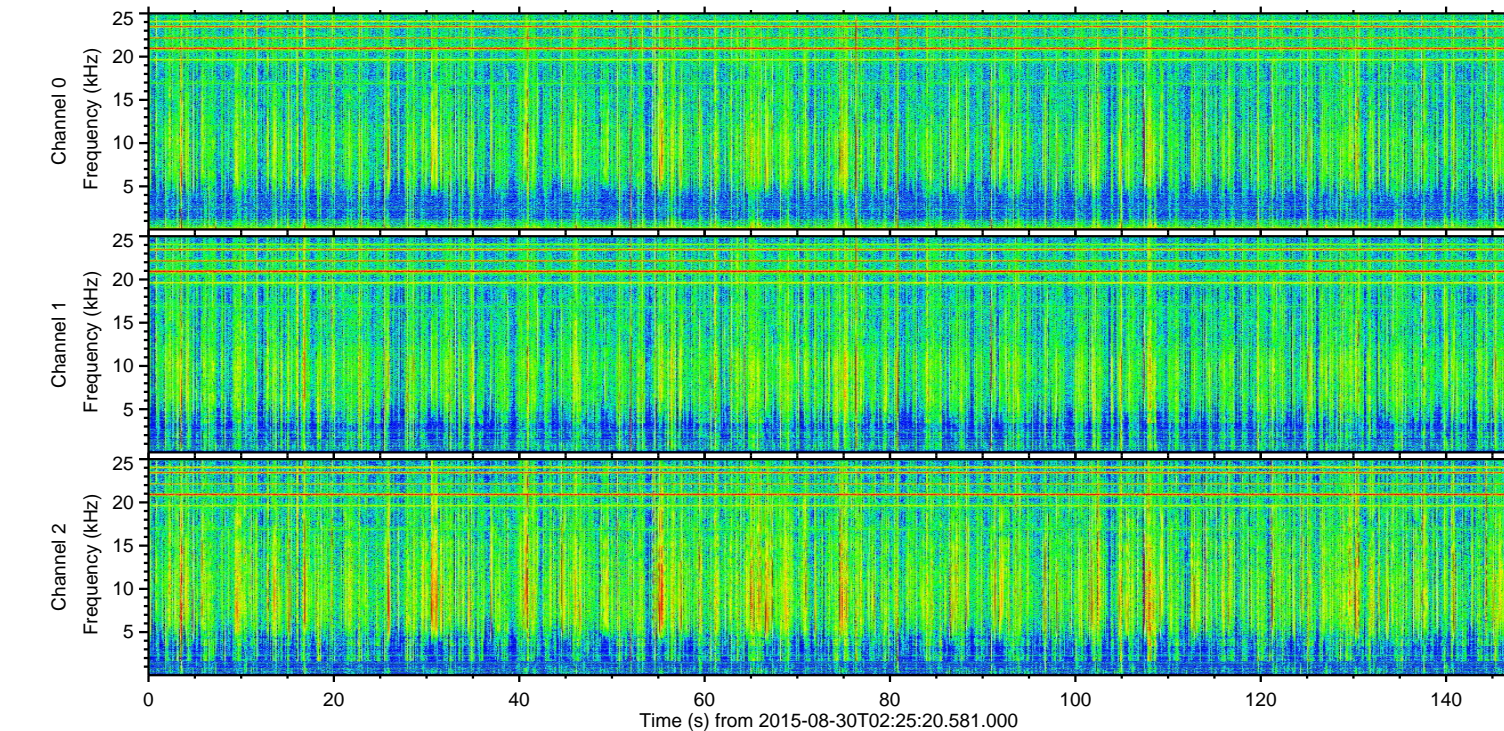
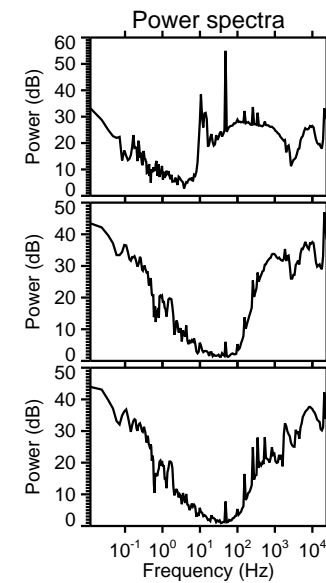
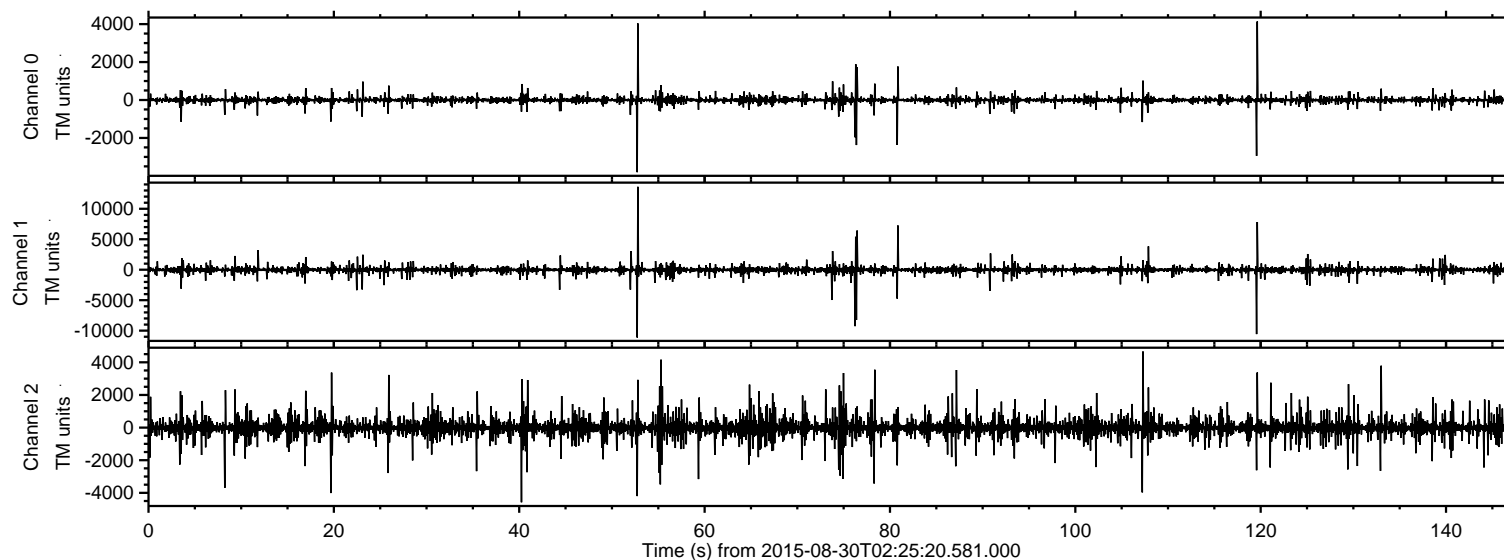
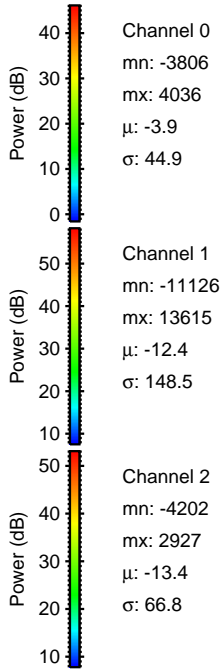
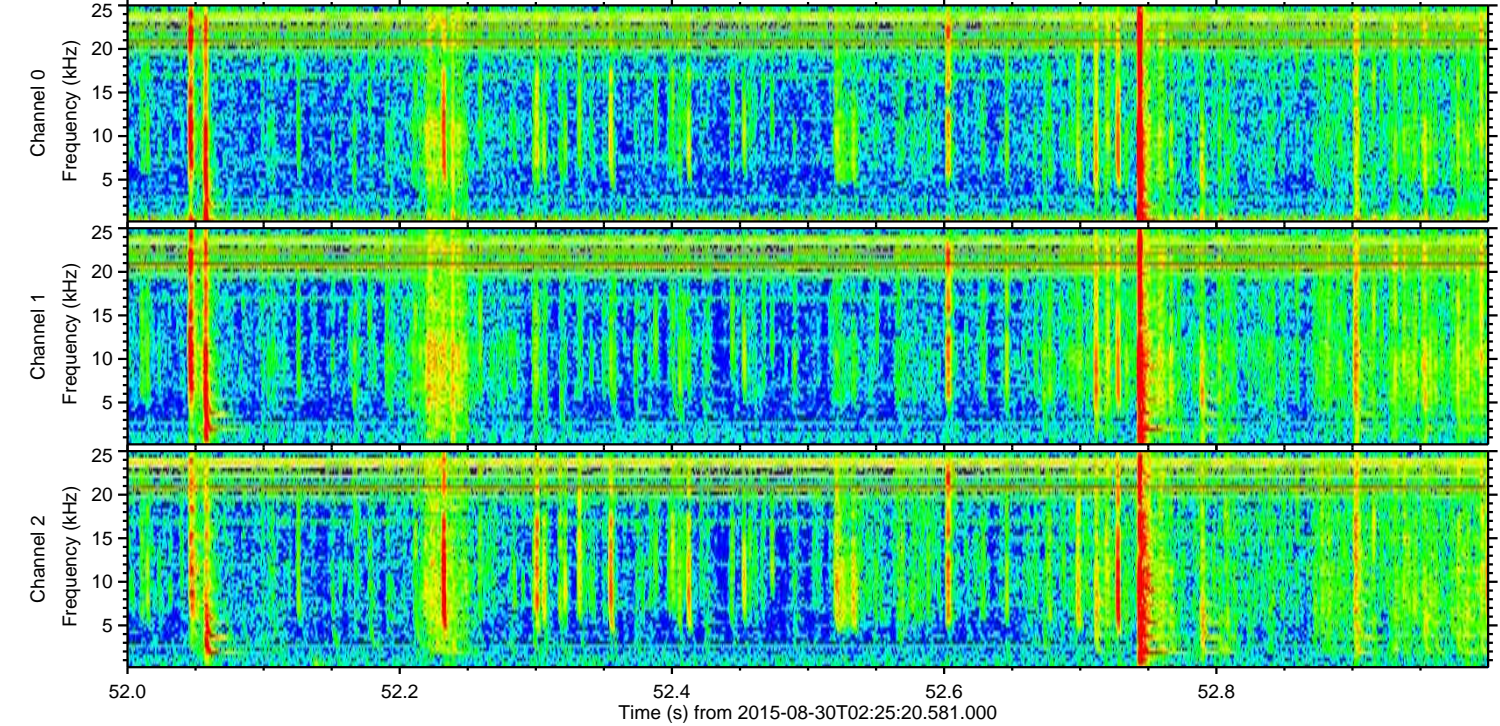
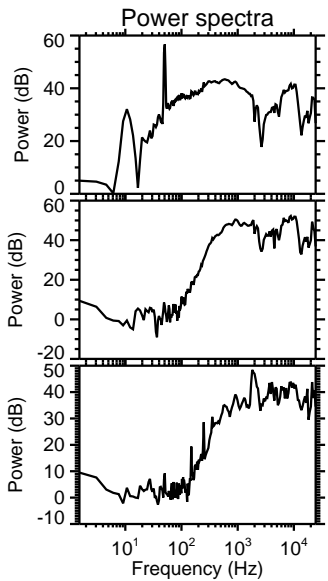
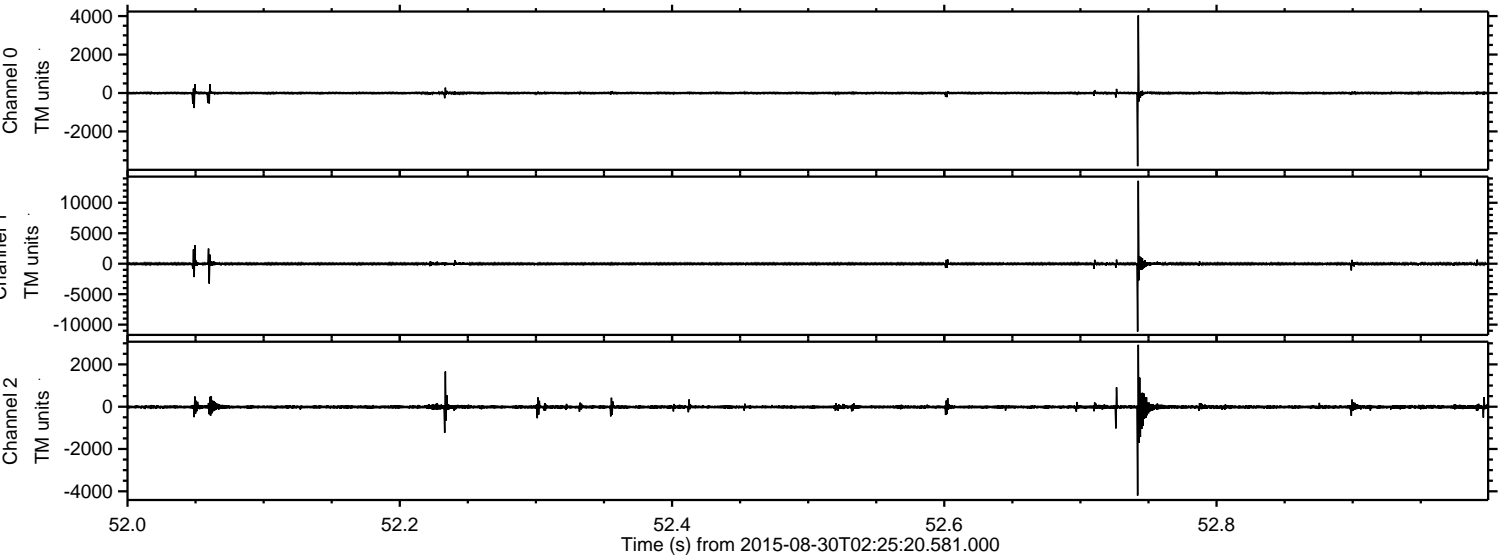


ELMAVAN 3D WAVEFORMS (Measured data sampled at 50 kHz) 51000 packets of 144 samples from 2015-08-30T02:25:20.581.000.

Processed Thu Oct 8 03:46:00 2015 by ELM ver.2012-10-06 from 001__elm20150830_022519__dat00.bin

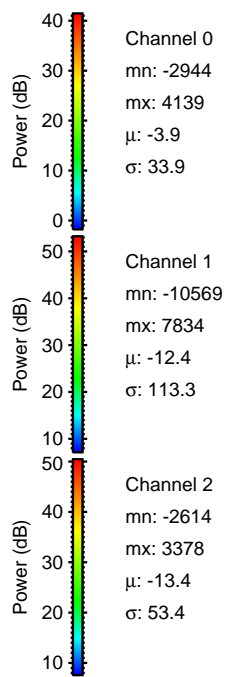
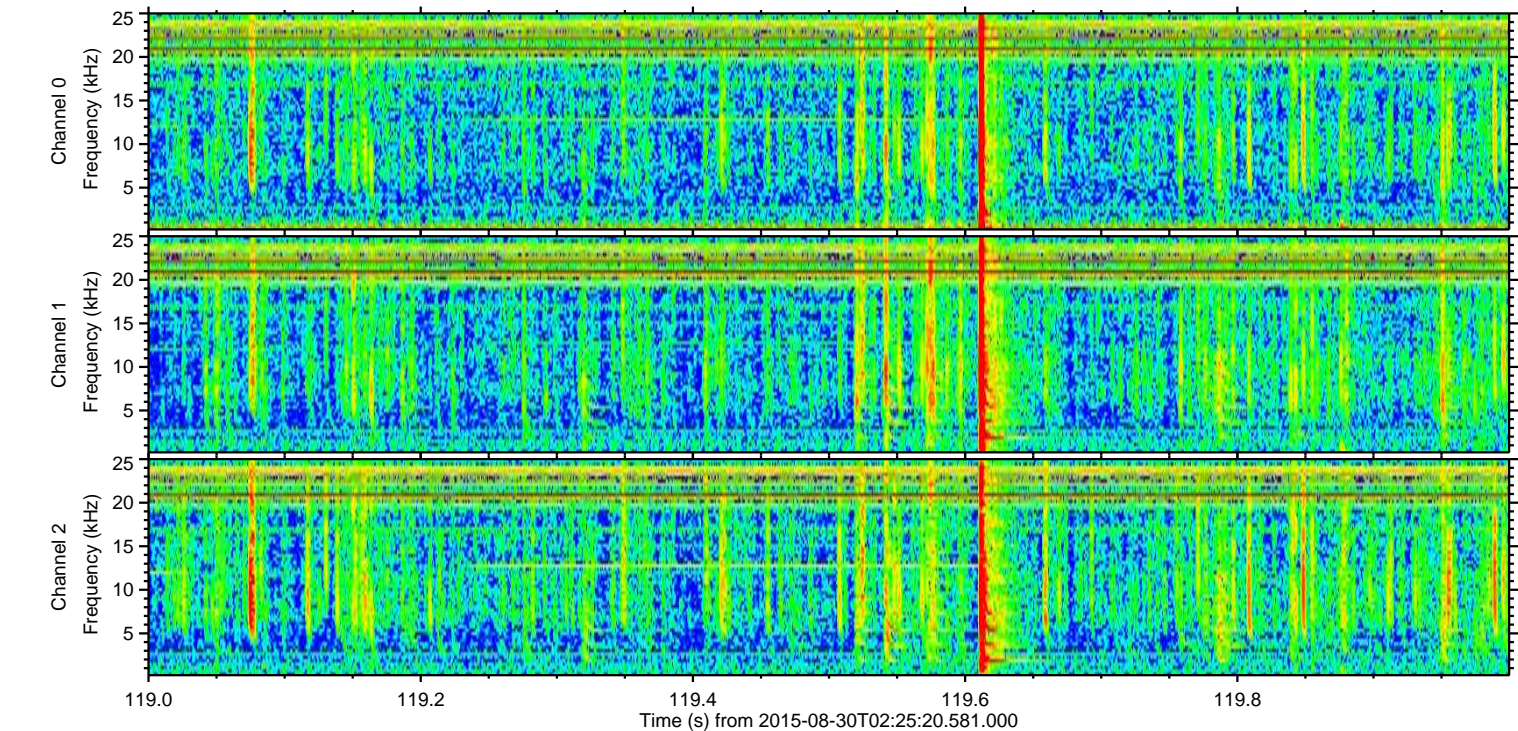
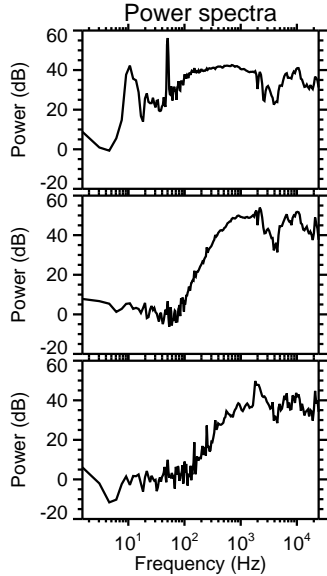
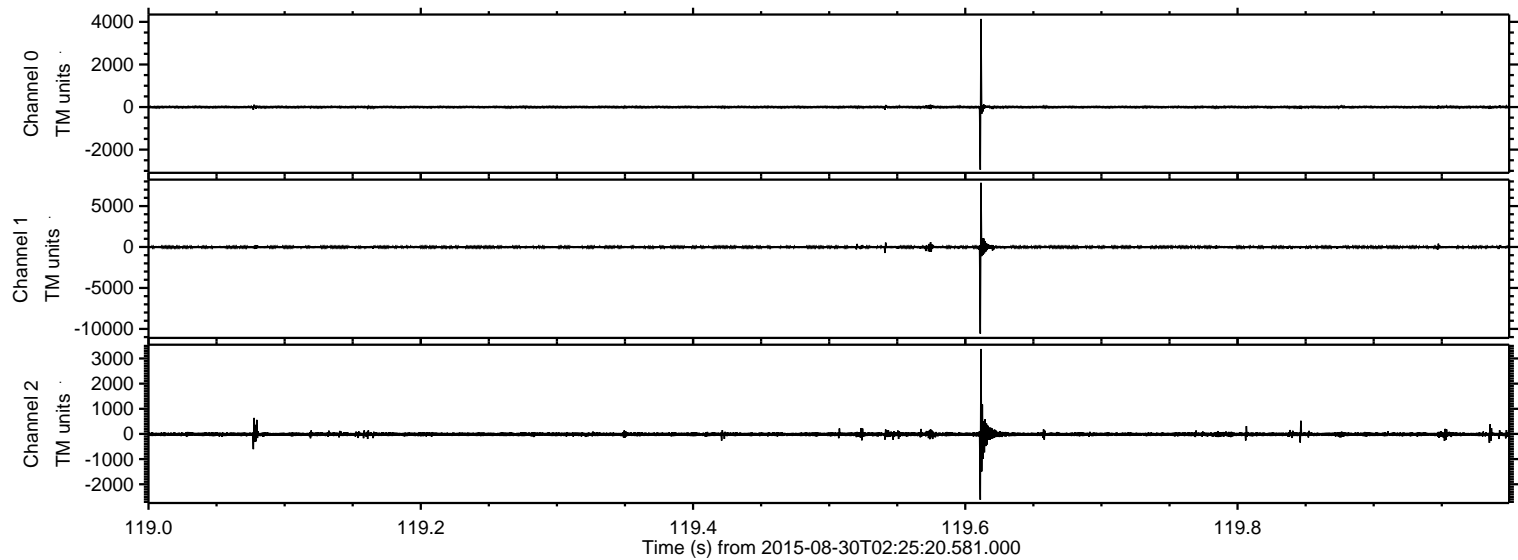


Processed Thu Oct 8 03:46:16 2015 by ELM ver.2012-10-06 from 001__elm20150830_022519__dat00.bin

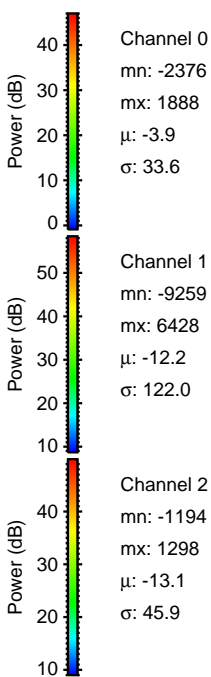
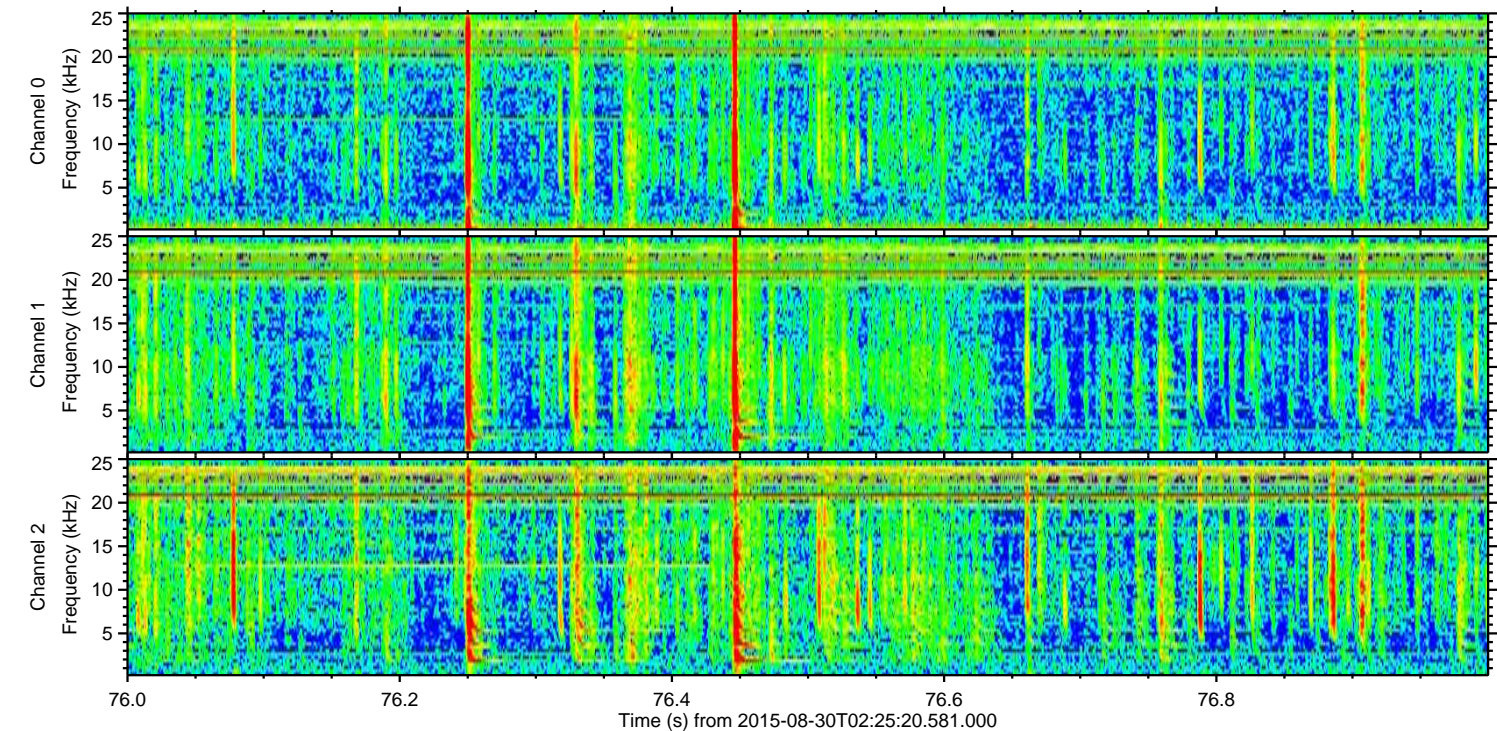
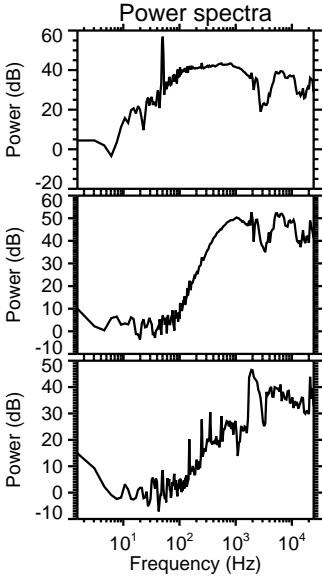
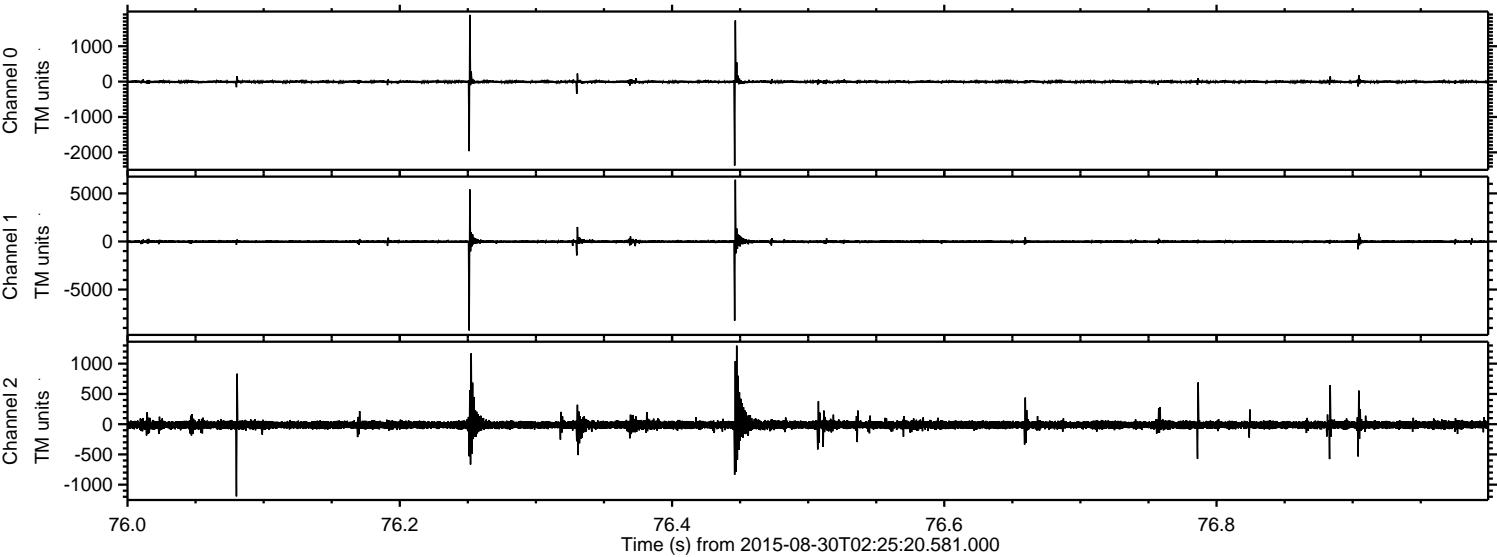


ELMAVAN 3D WAVEFORMS (Measured data sampled at 50 kHz) 51000 packets of 144 samples from 2015-08-30T02:25:20.581.000. Part 120/147

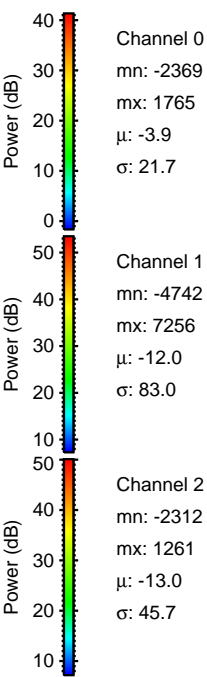
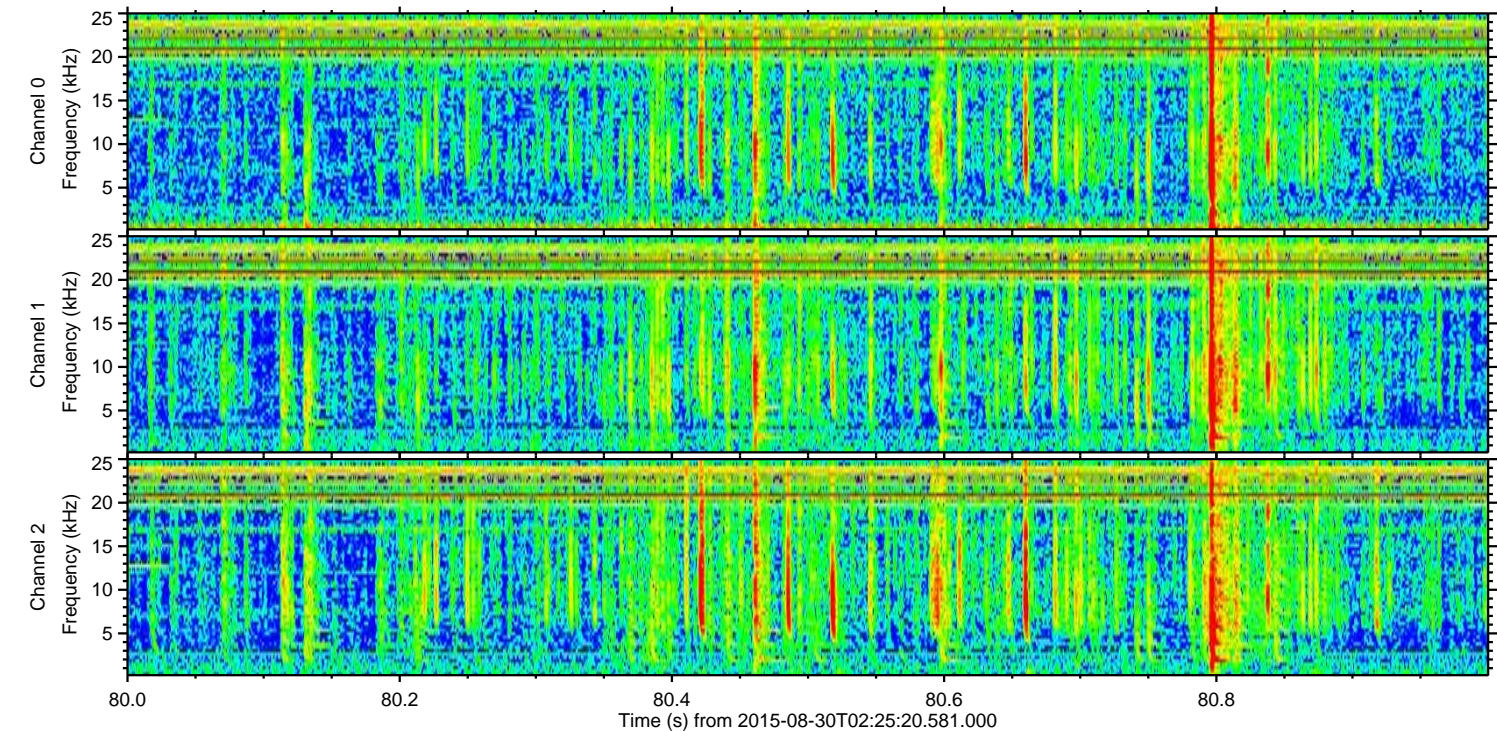
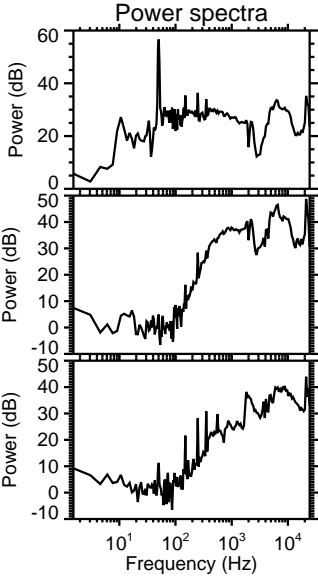
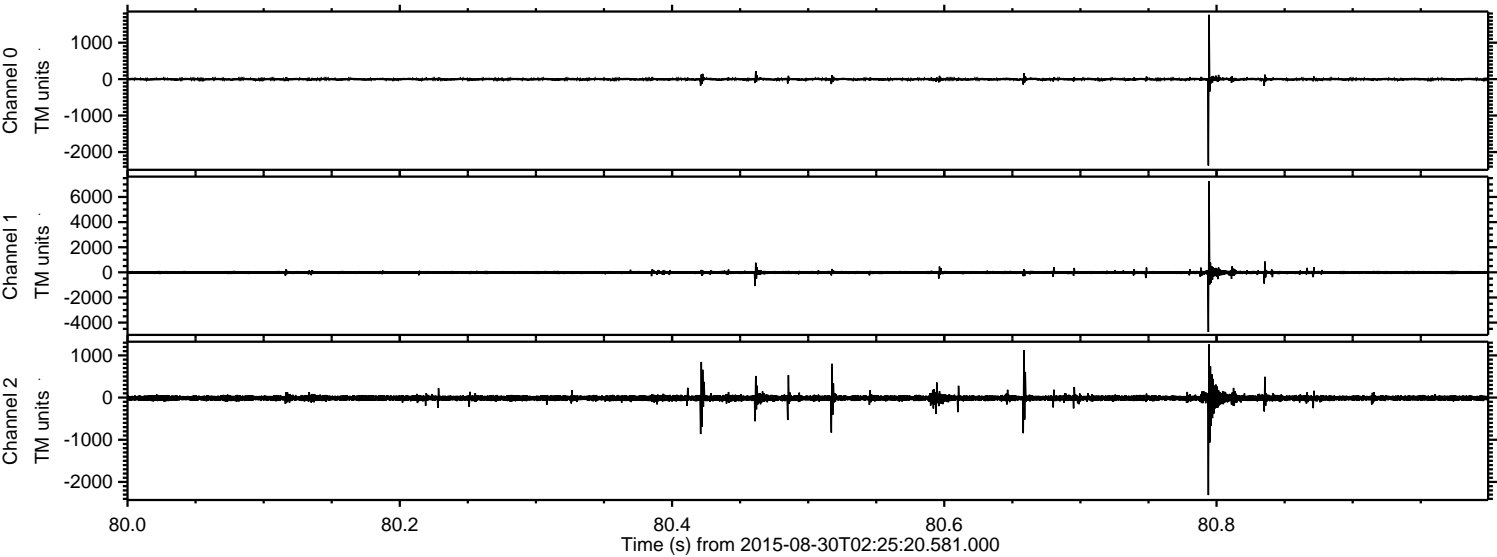
Processed Thu Oct 8 03:46:17 2015 by ELM ver.2012-10-06 from 001__elm20150830_022519__dat00.bin



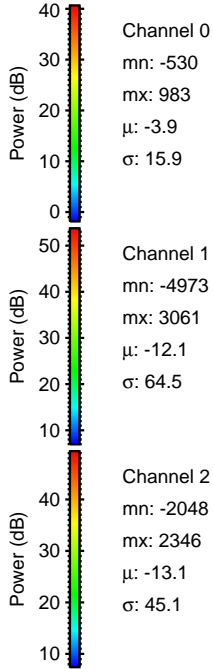
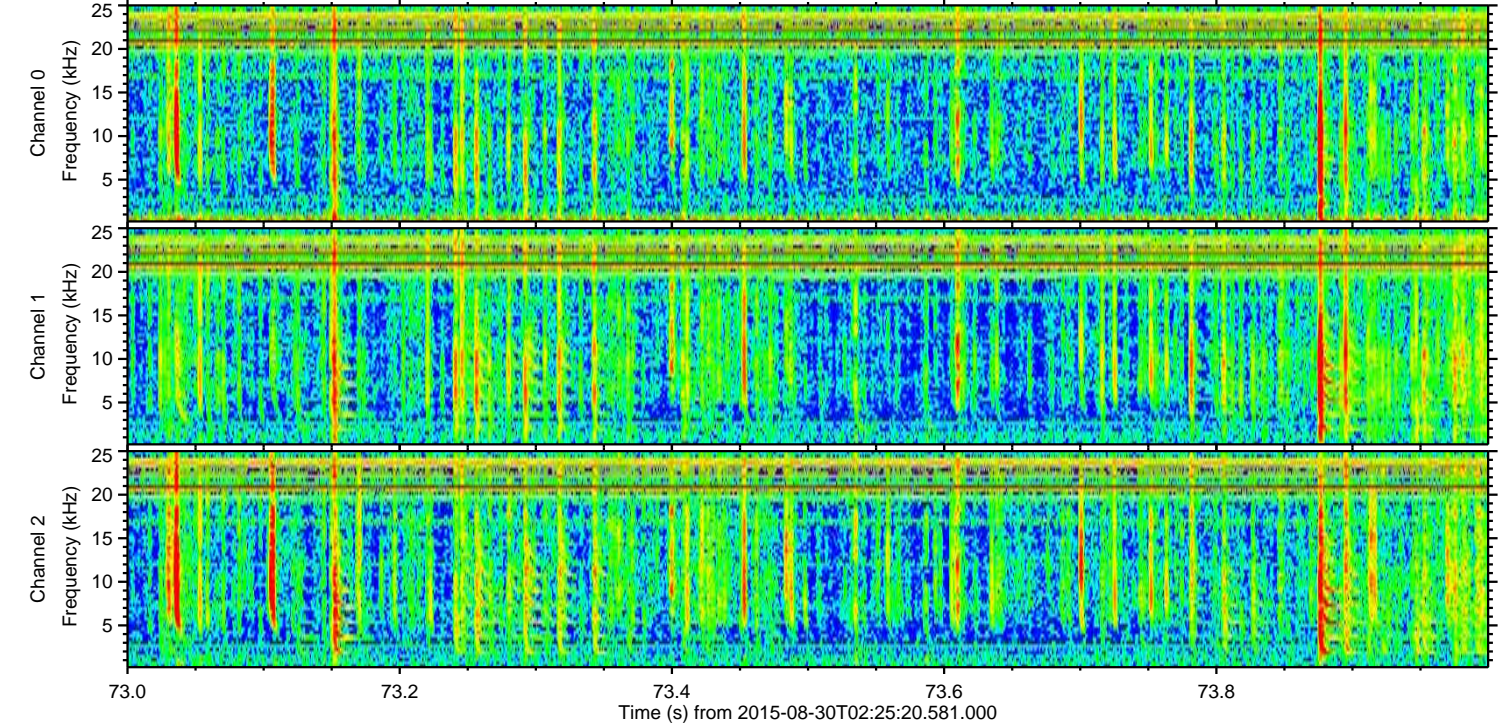
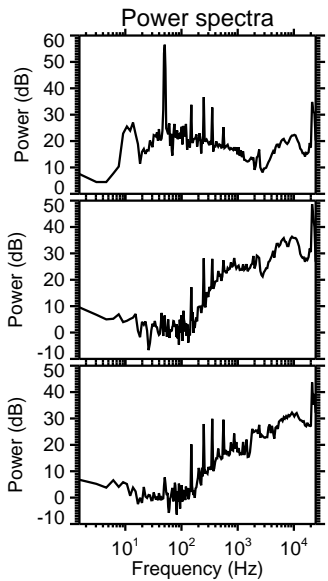
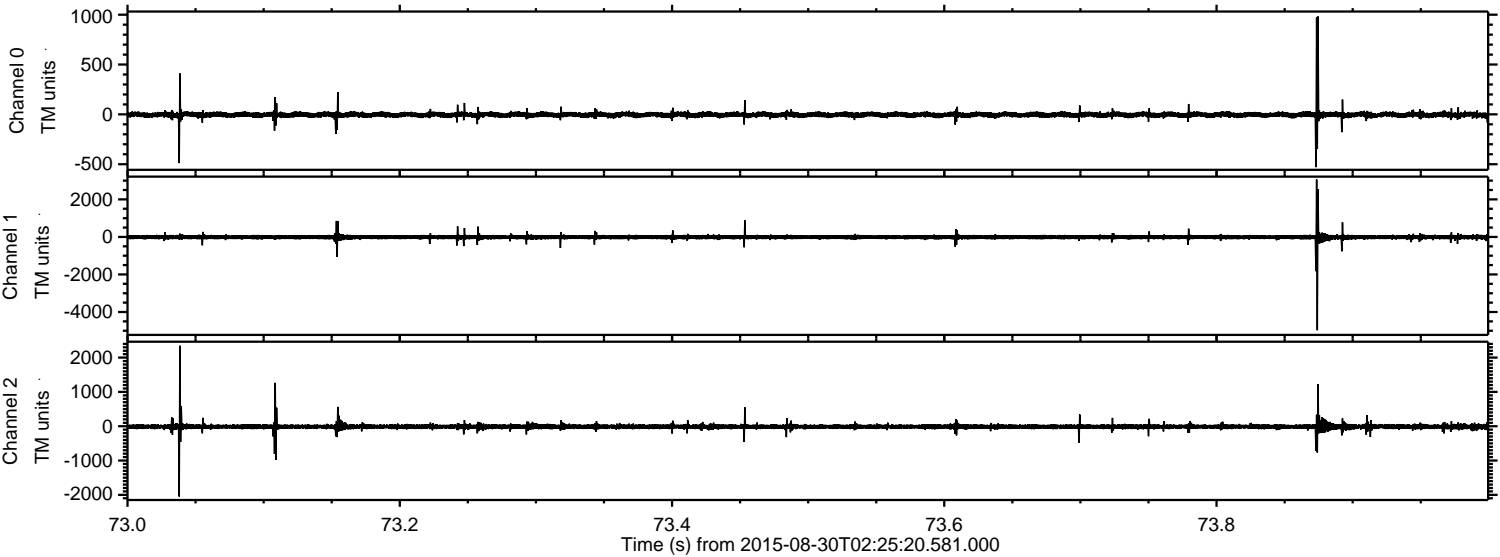
Processed Thu Oct 8 03:46:18 2015 by ELM ver.2012-10-06 from 001__elm20150830_022519__dat00.bin



Processed Thu Oct 8 03:46:19 2015 by ELM ver.2012-10-06 from 001__elm20150830_022519__dat00.bin

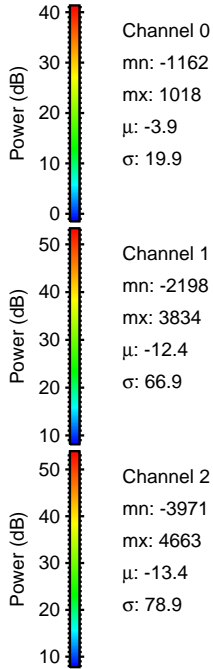
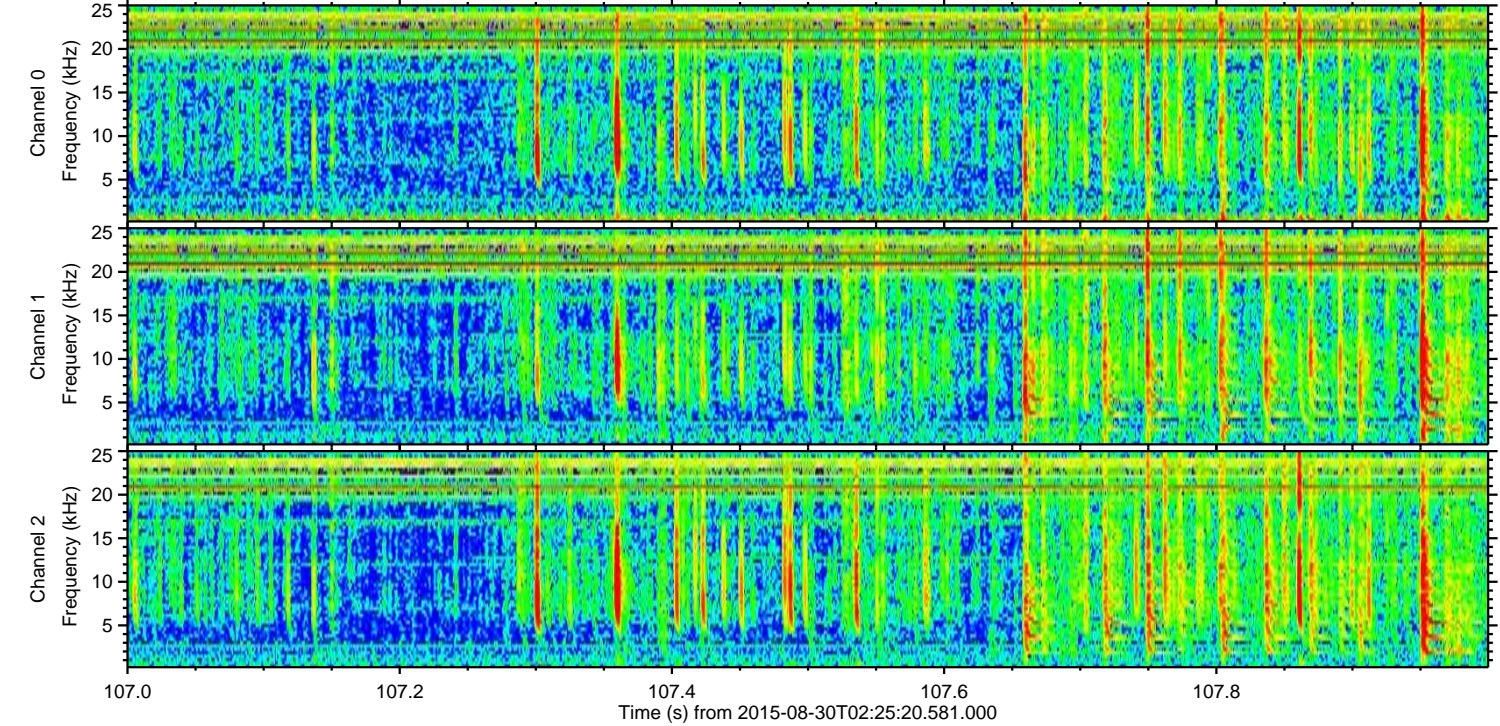
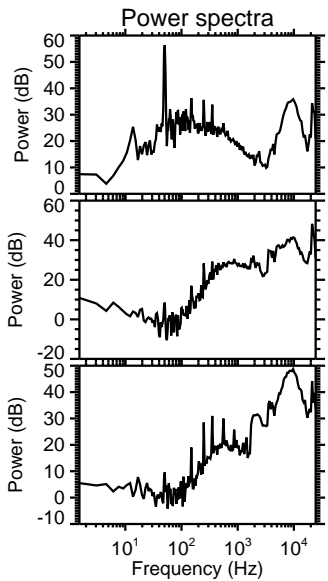
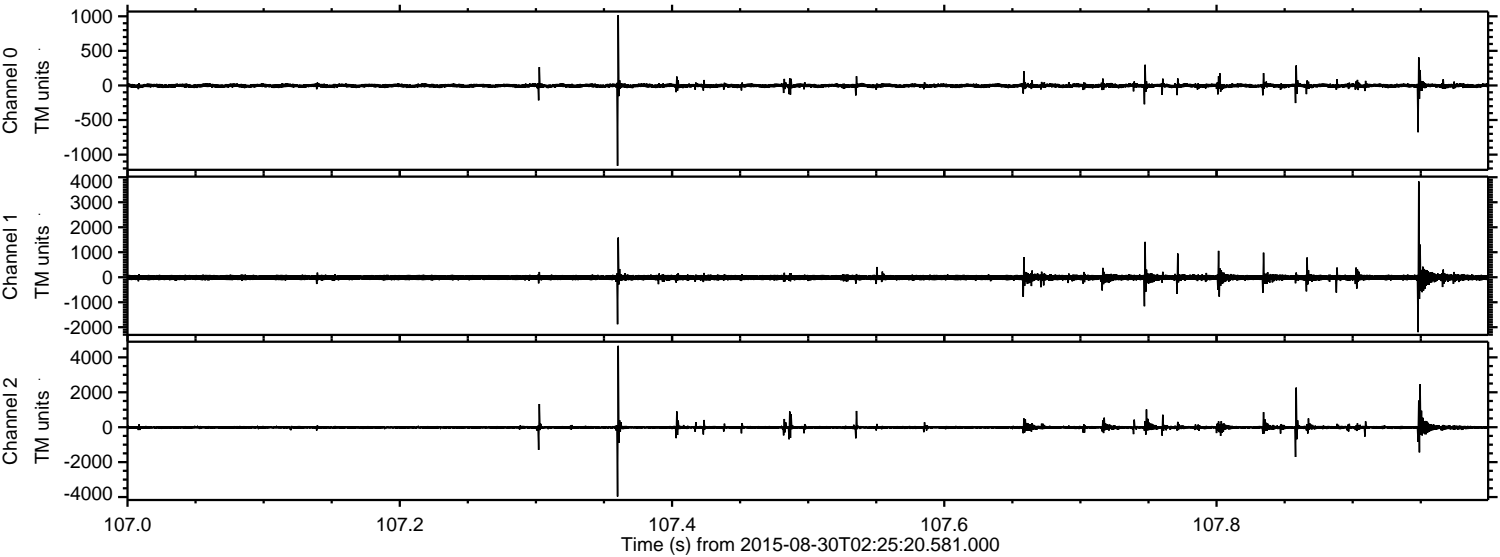


Processed Thu Oct 8 03:46:21 2015 by ELM ver.2012-10-06 from 001__elm20150830_022519__dat00.bin

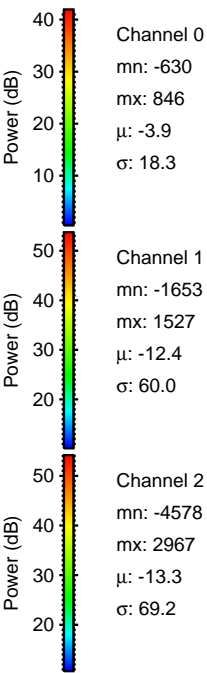
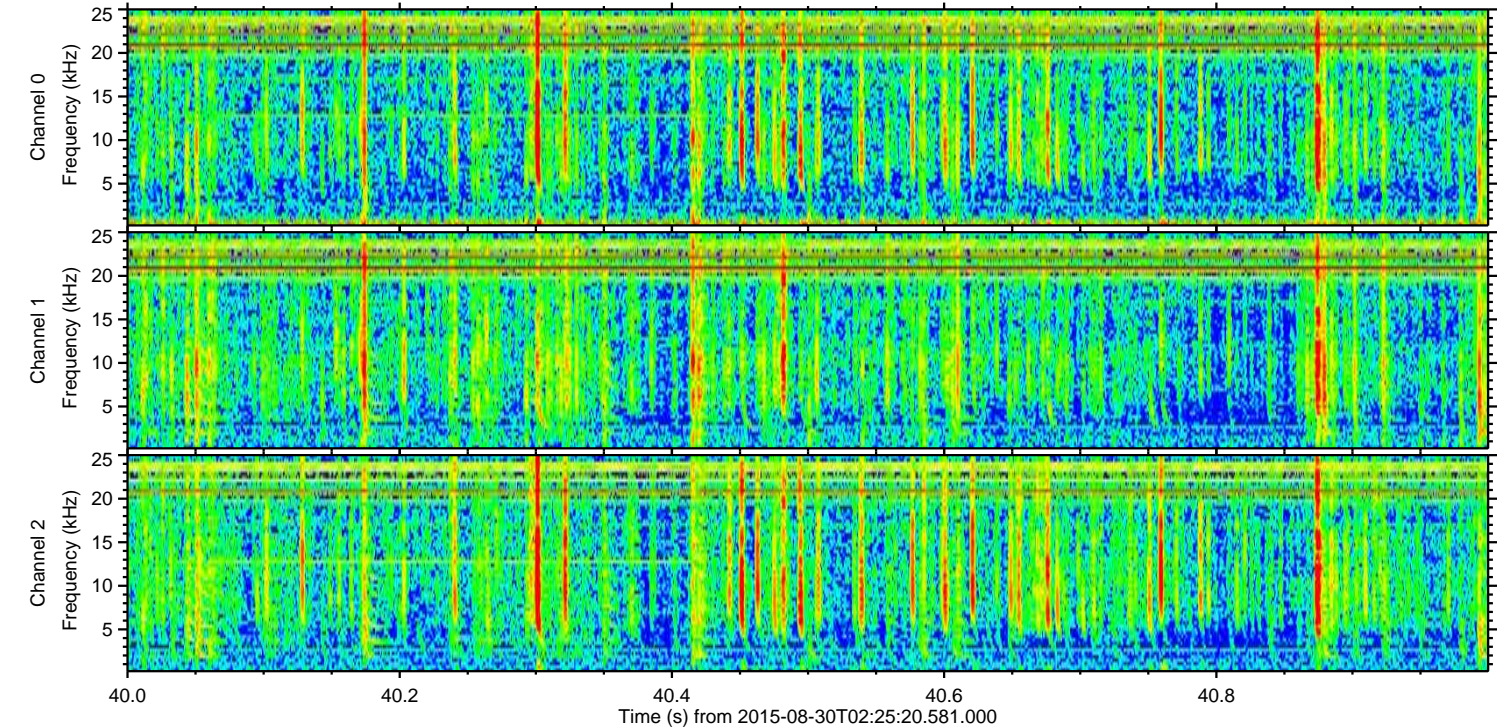
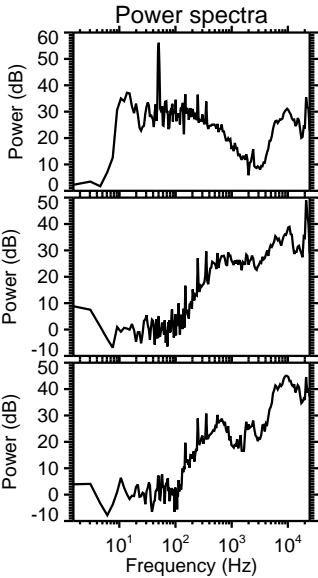
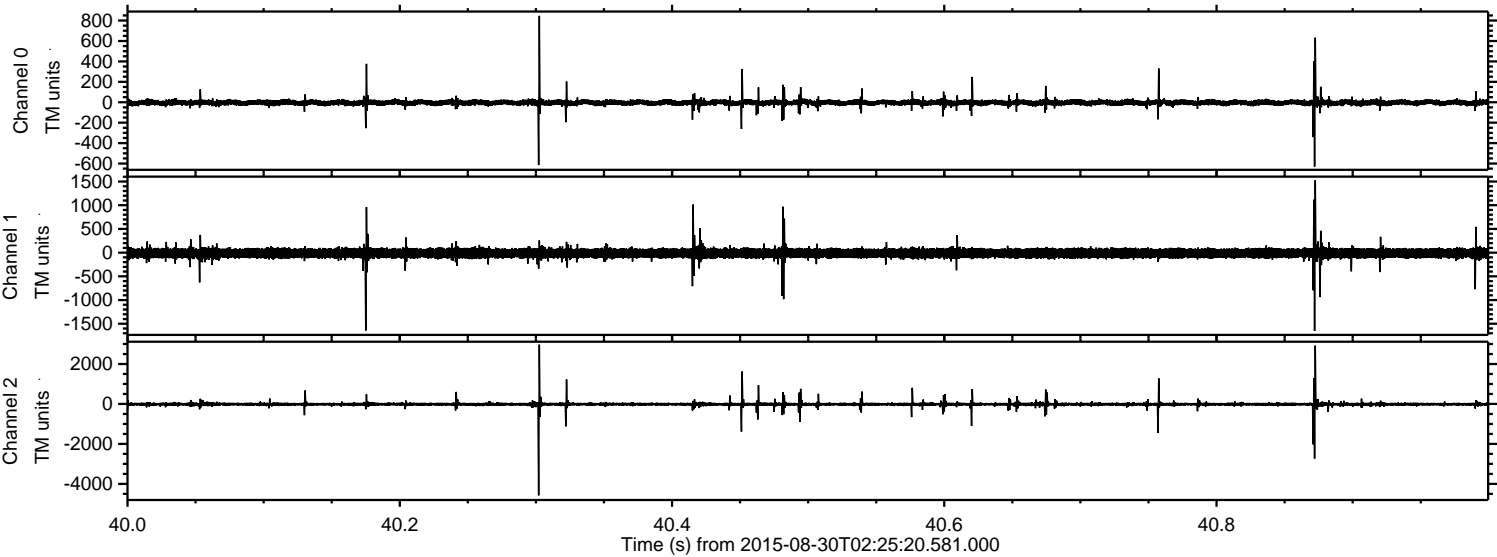


ELMAVAN 3D WAVEFORMS (Measured data sampled at 50 kHz) 51000 packets of 144 samples from 2015-08-30T02:25:20.581.000. Part 108/147

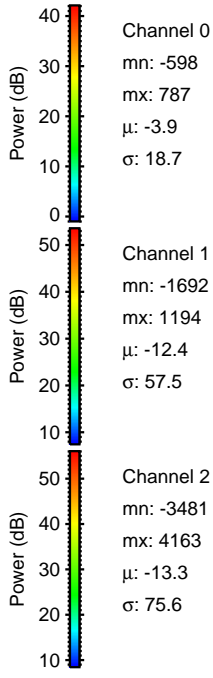
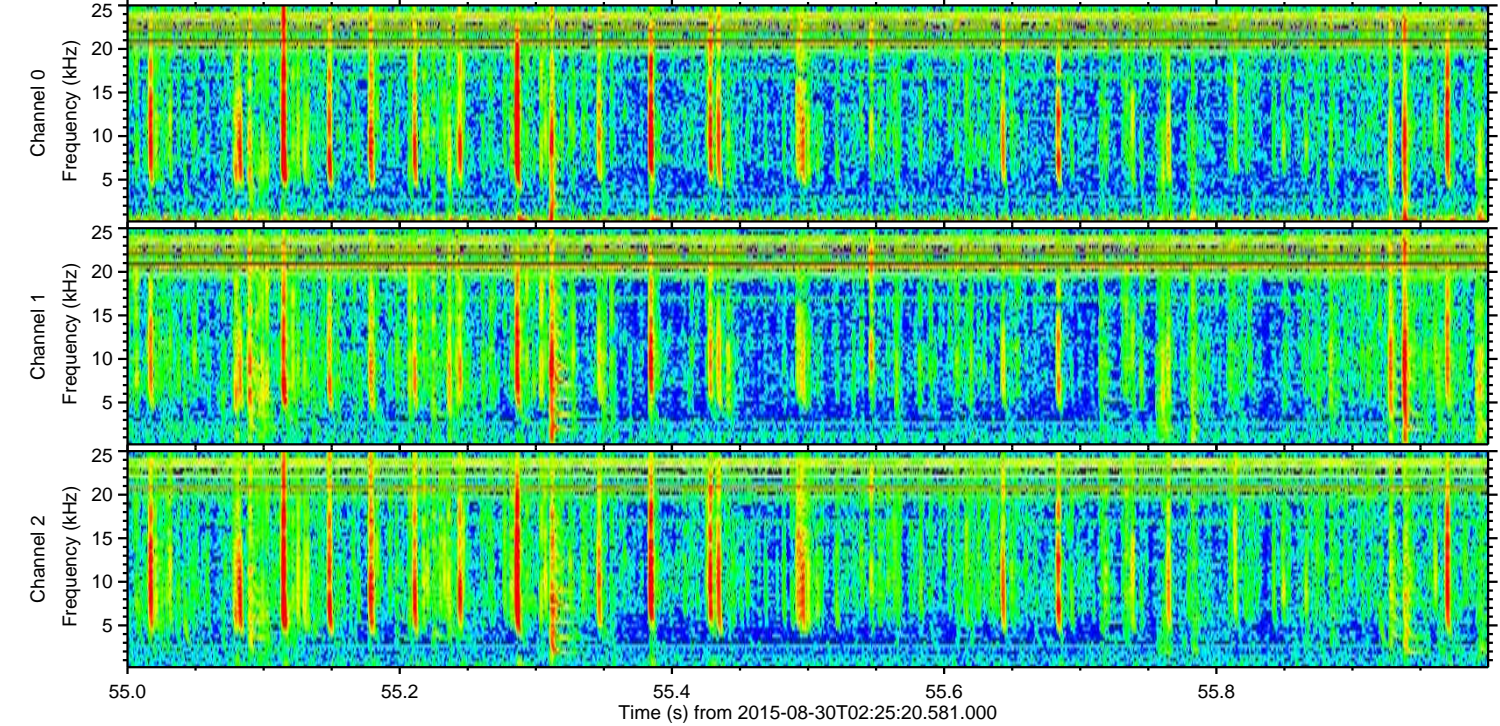
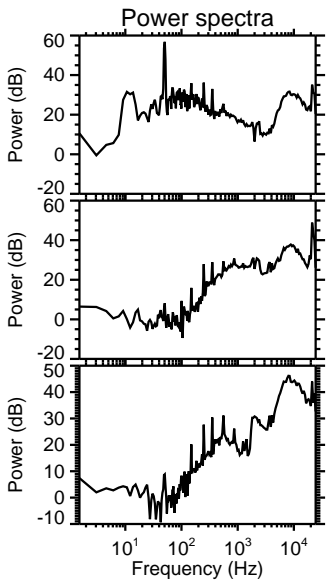
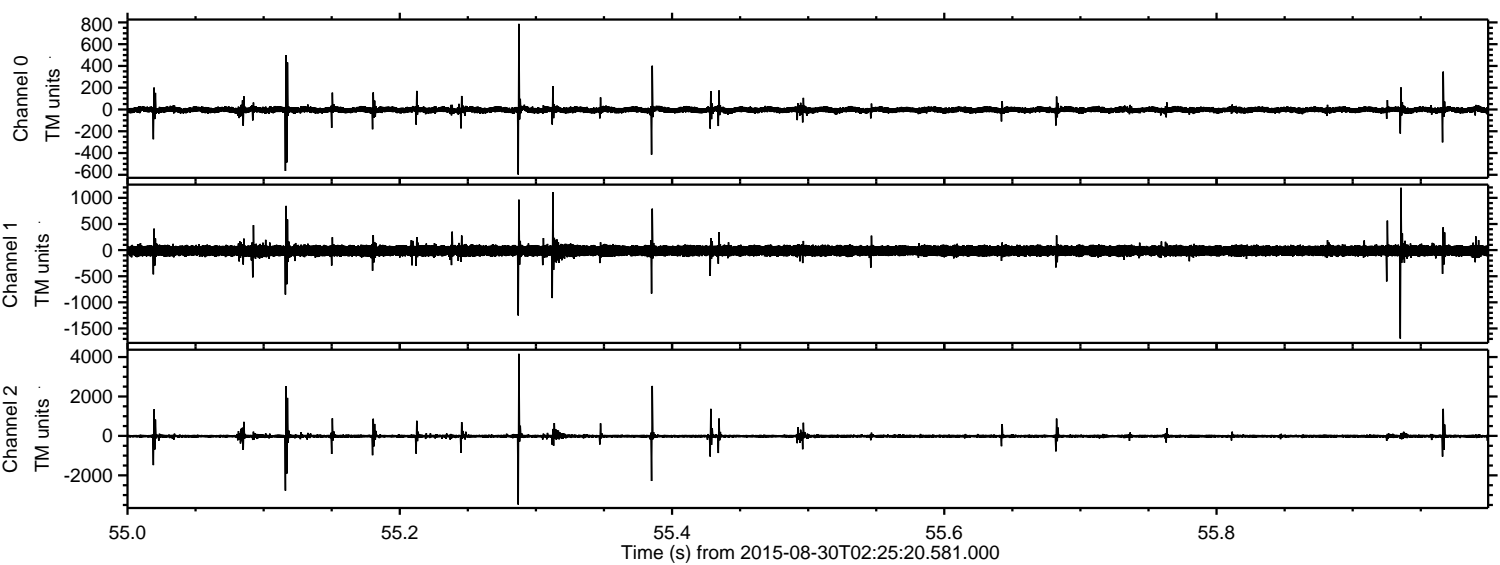
Processed Thu Oct 8 03:46:22 2015 by ELM ver.2012-10-06 from 001__elm20150830_022519__dat00.bin



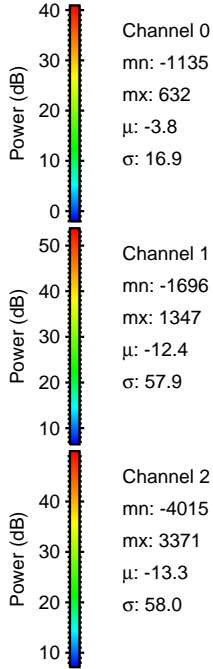
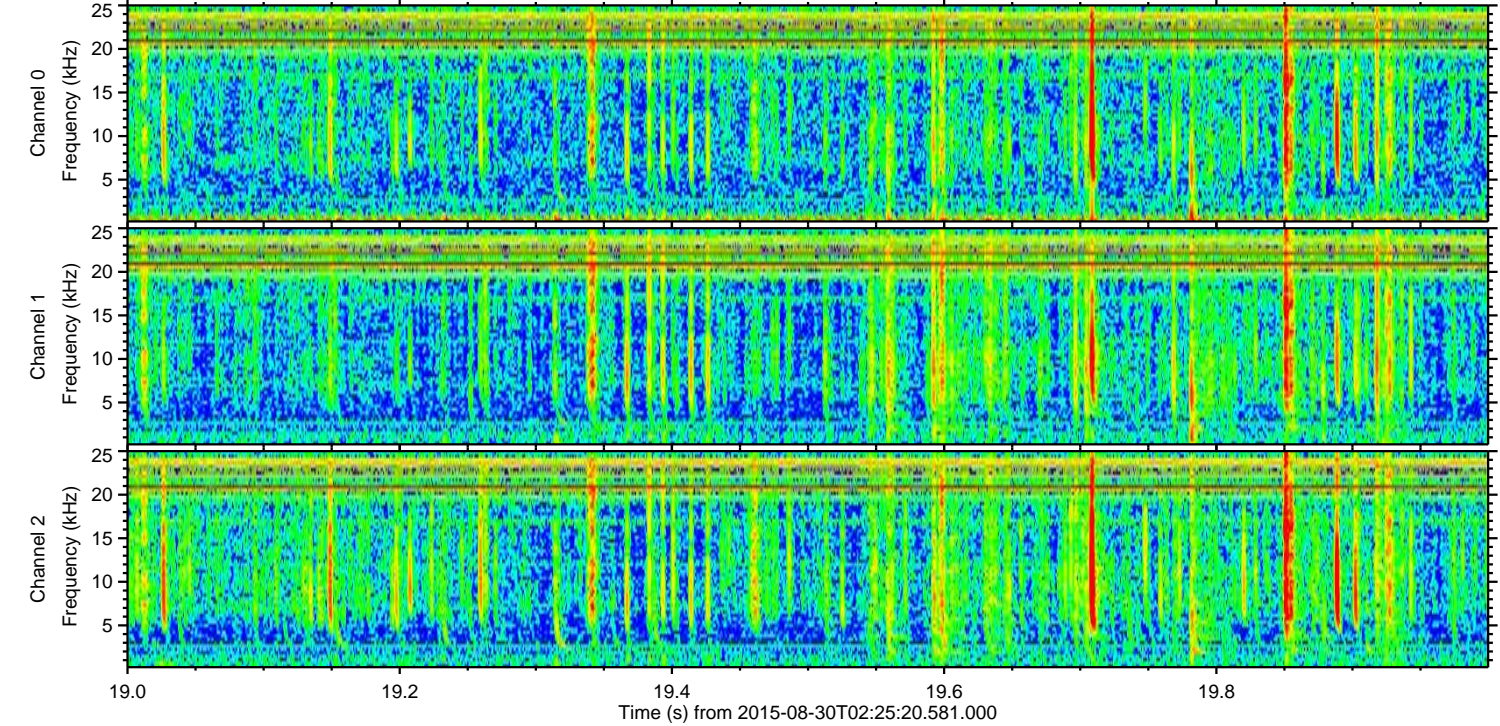
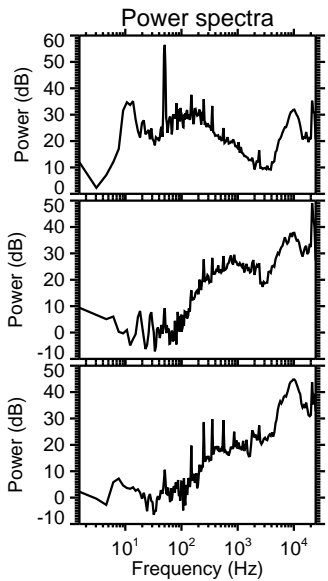
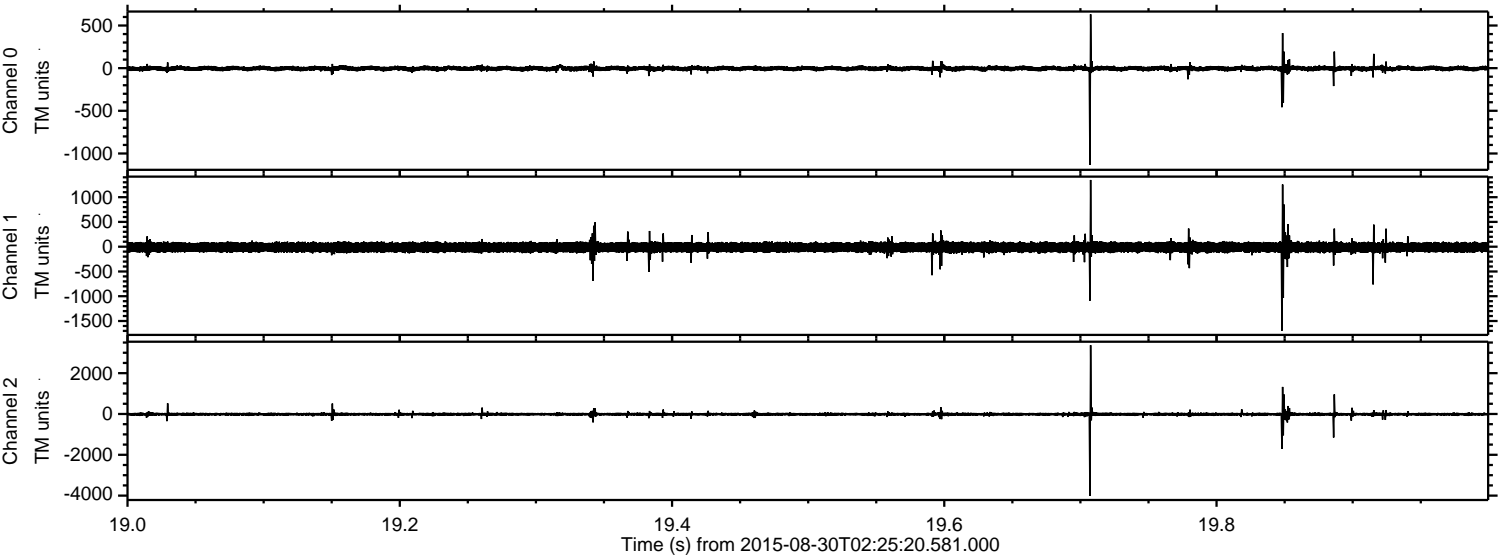
Processed Thu Oct 8 03:46:23 2015 by ELM ver.2012-10-06 from 001__elm20150830_022519__dat00.bin



Processed Thu Oct 8 03:46:24 2015 by ELM ver.2012-10-06 from 001__elm20150830_022519__dat00.bin



Processed Thu Oct 8 03:46:25 2015 by ELM ver.2012-10-06 from 001__elm20150830_022519__dat00.bin



Channel 0
mn: -1135
mx: 632
 μ : -3.8
 σ : 16.9

Channel 1
mn: -1696
mx: 1347
 μ : -12.4
 σ : 57.9

Channel 2
mn: -4015
mx: 3371
 μ : -13.3
 σ : 58.0

Processed Thu Oct 8 03:46:26 2015 by ELM ver.2012-10-06 from 001__elm20150830_022519__dat00.bin

