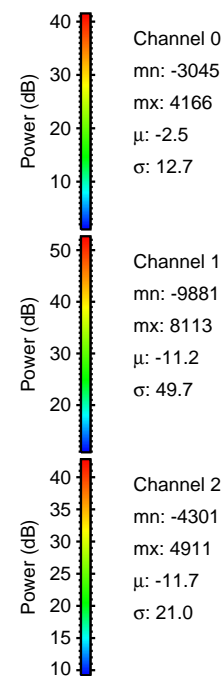
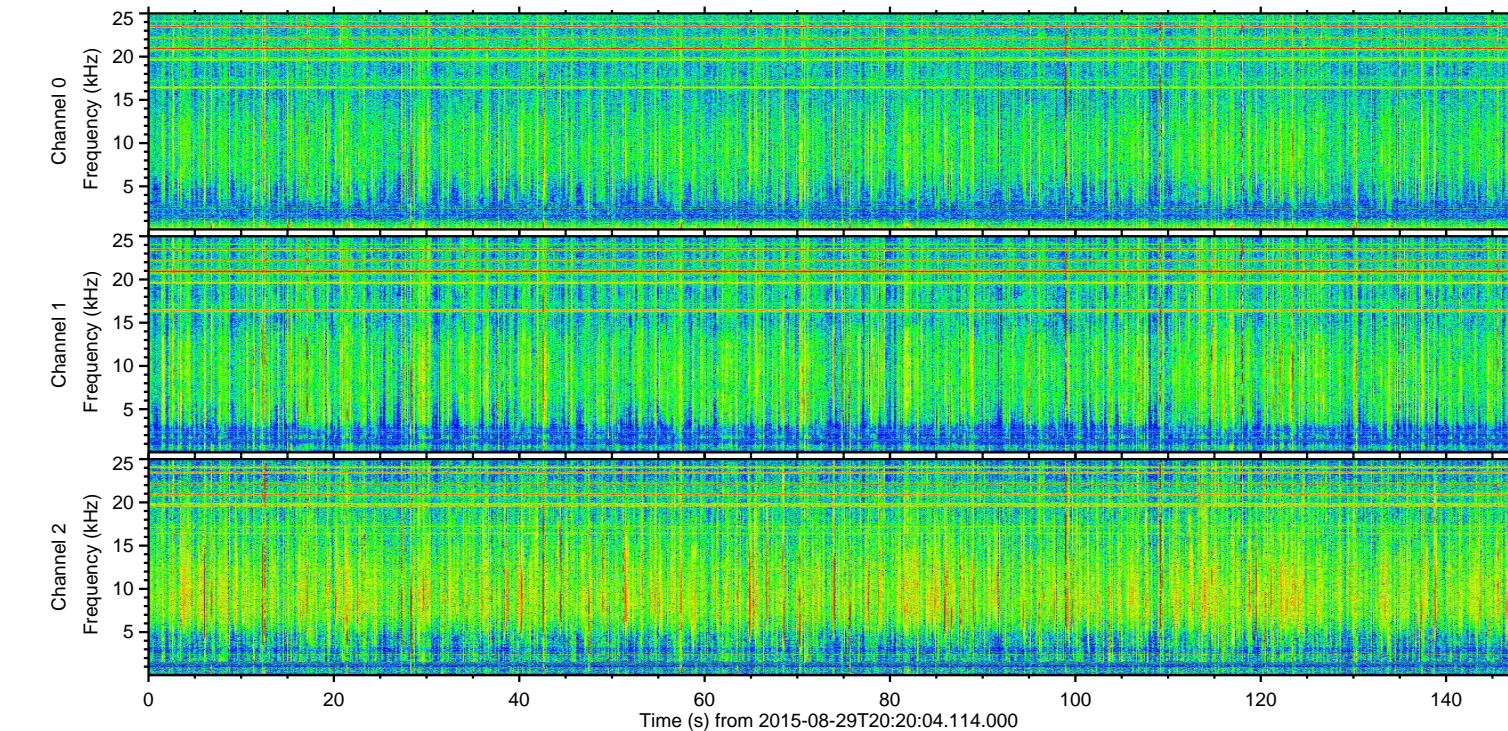
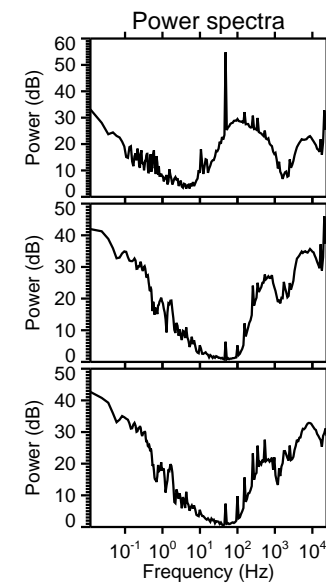
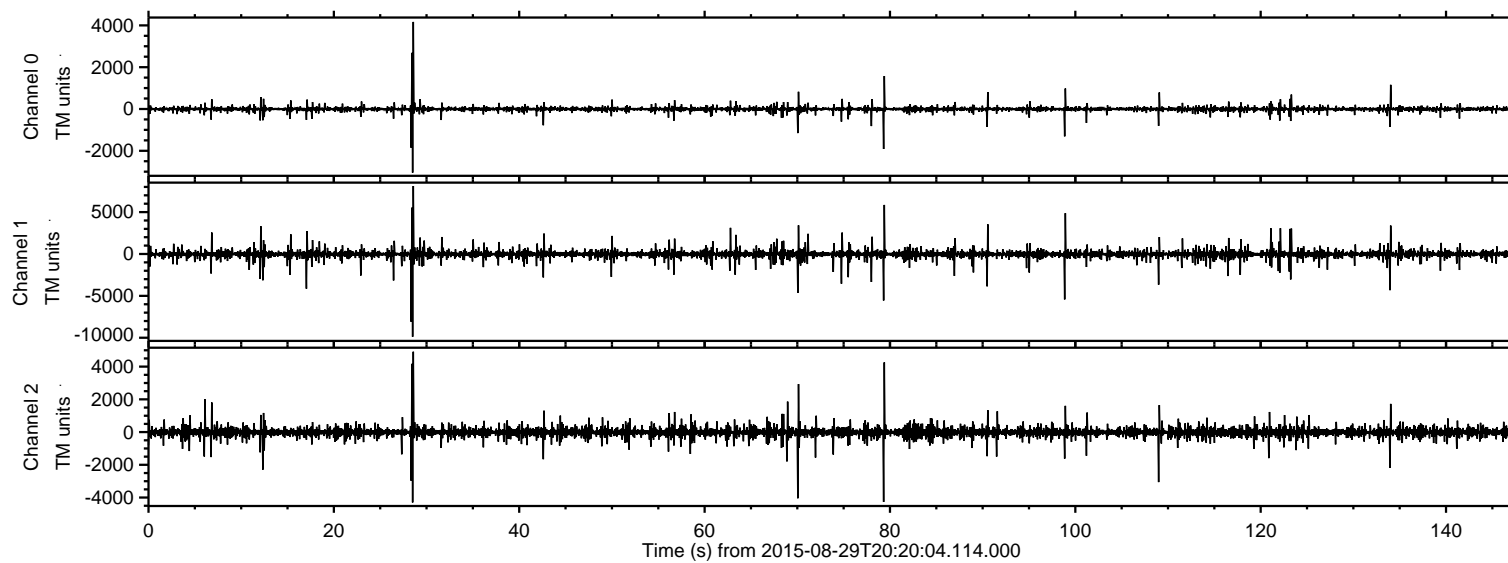
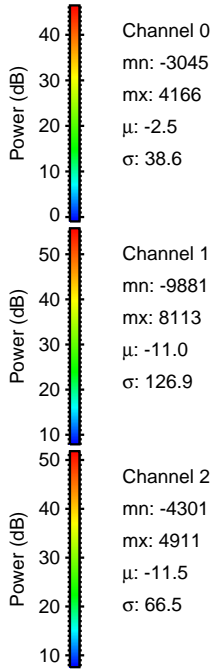
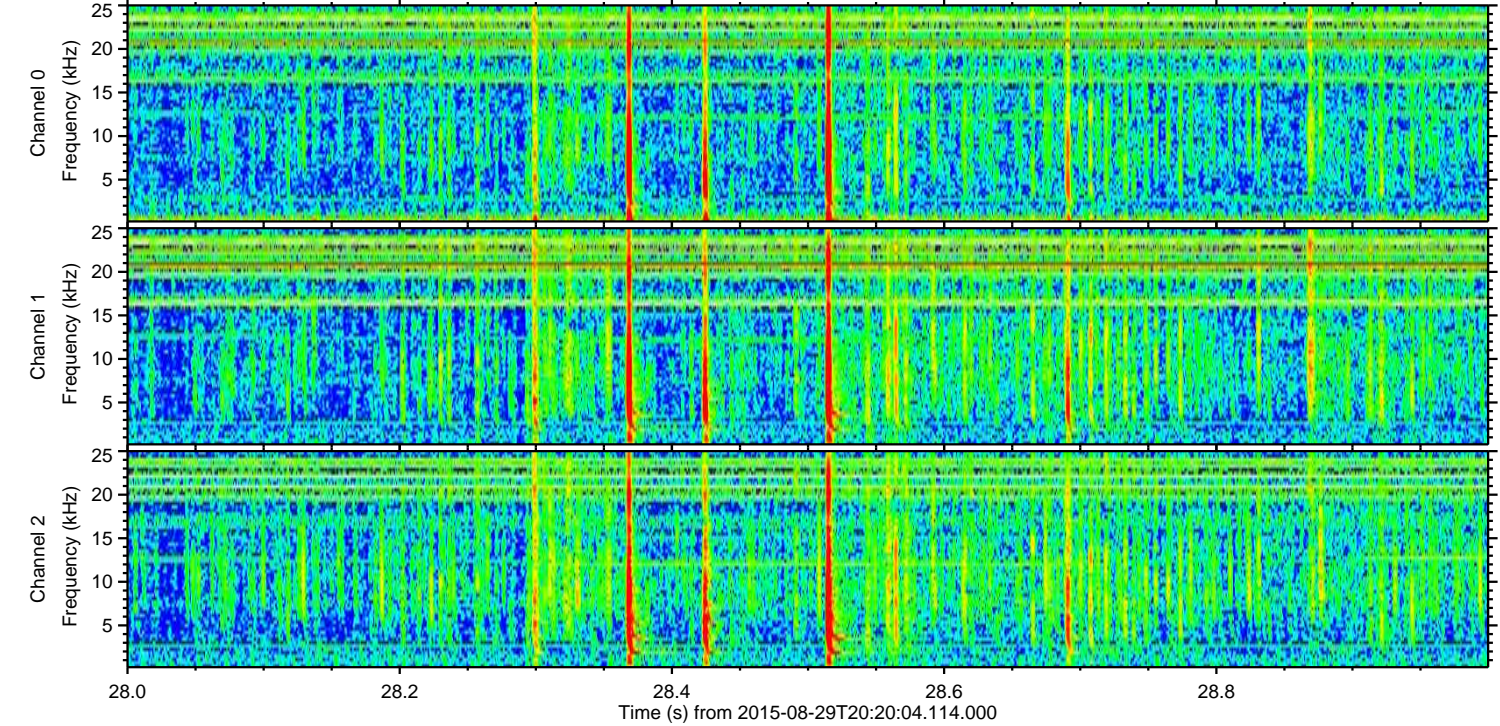
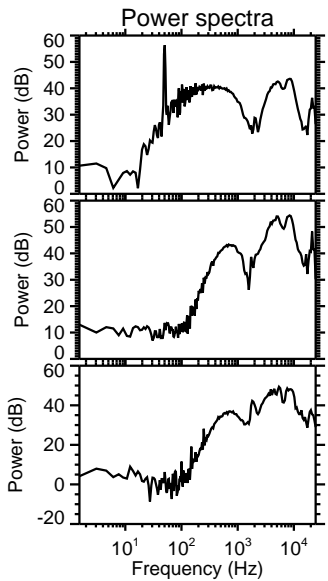
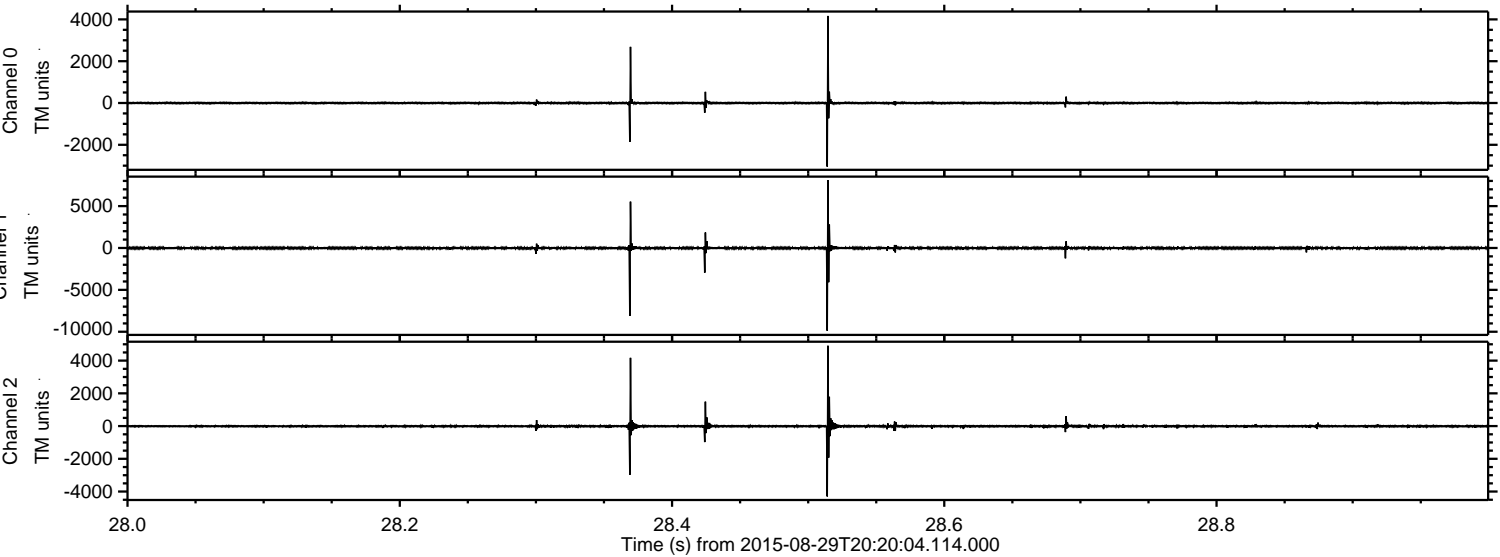


ELMAVAN 3D WAVEFORMS (Measured data sampled at 50 kHz) 51000 packets of 144 samples from 2015-08-29T20:20:04.114.000.

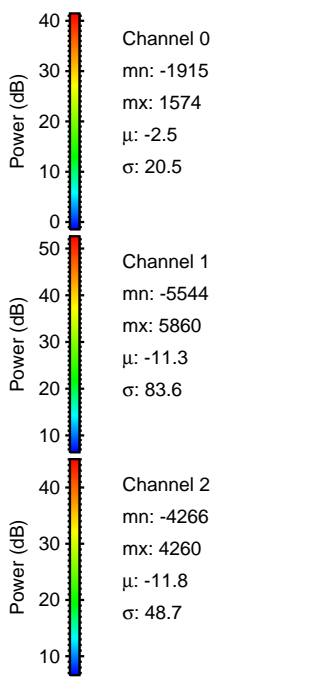
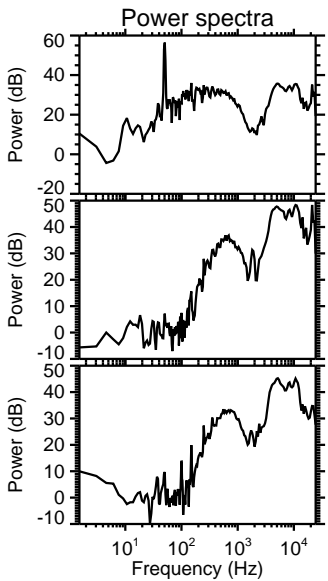
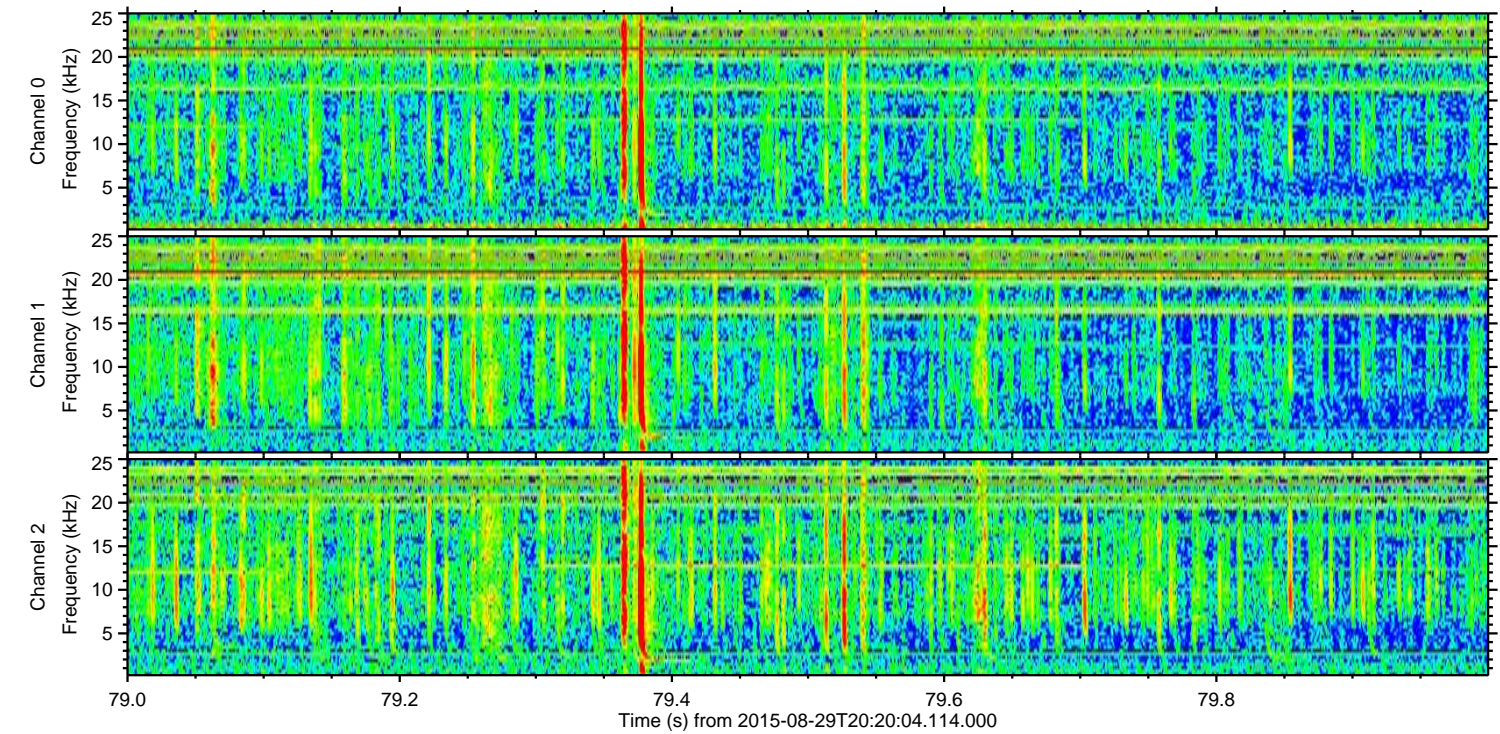
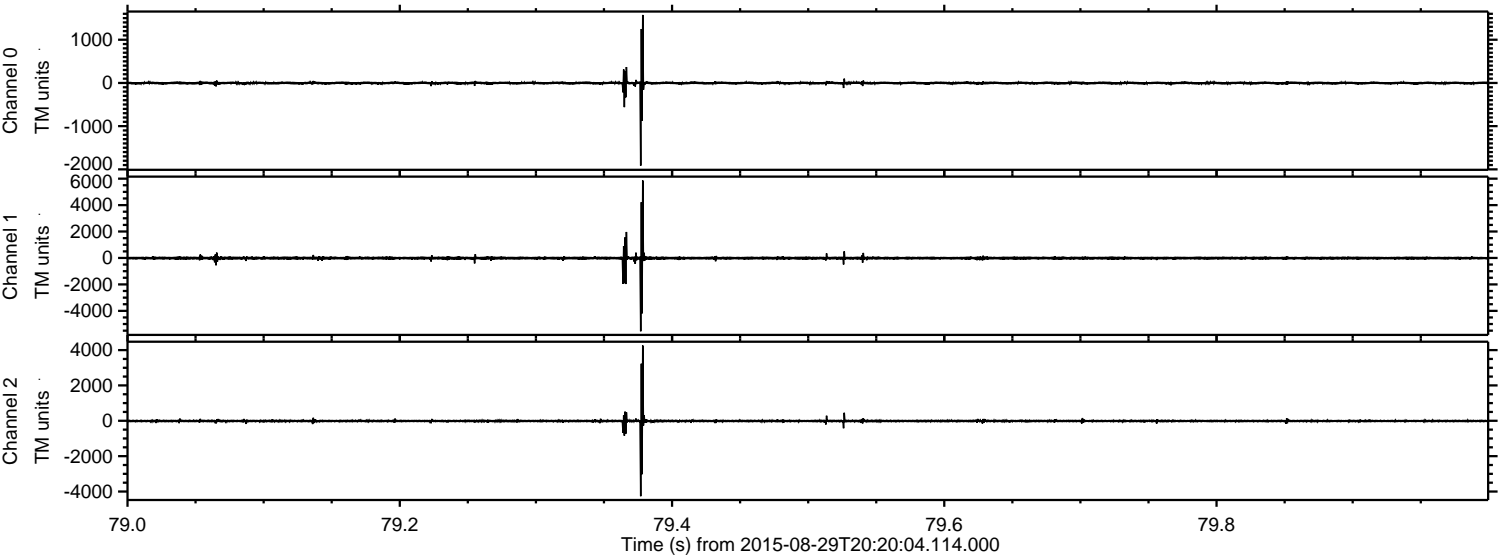
Processed Thu Oct 8 02:05:02 2015 by ELM ver.2012-10-06 from 001__elm20150829_202003__dat00.bin



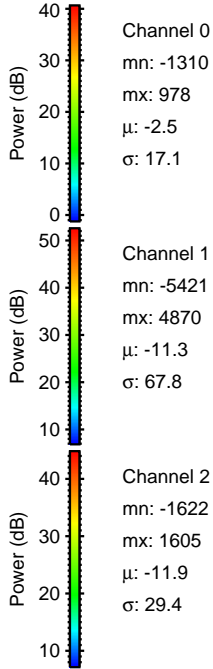
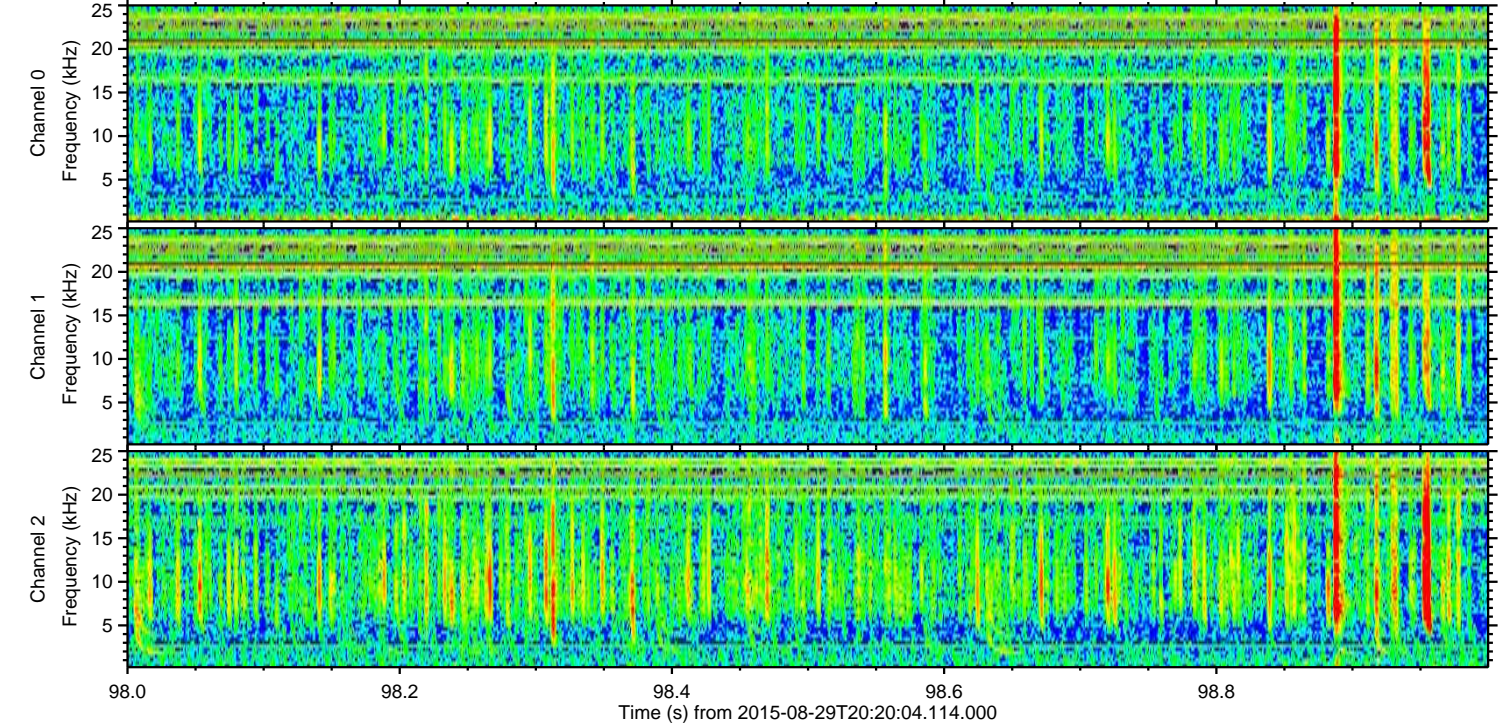
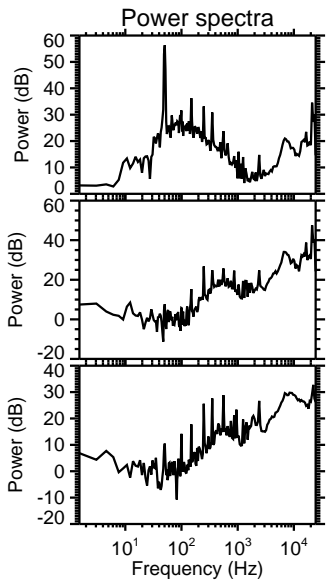
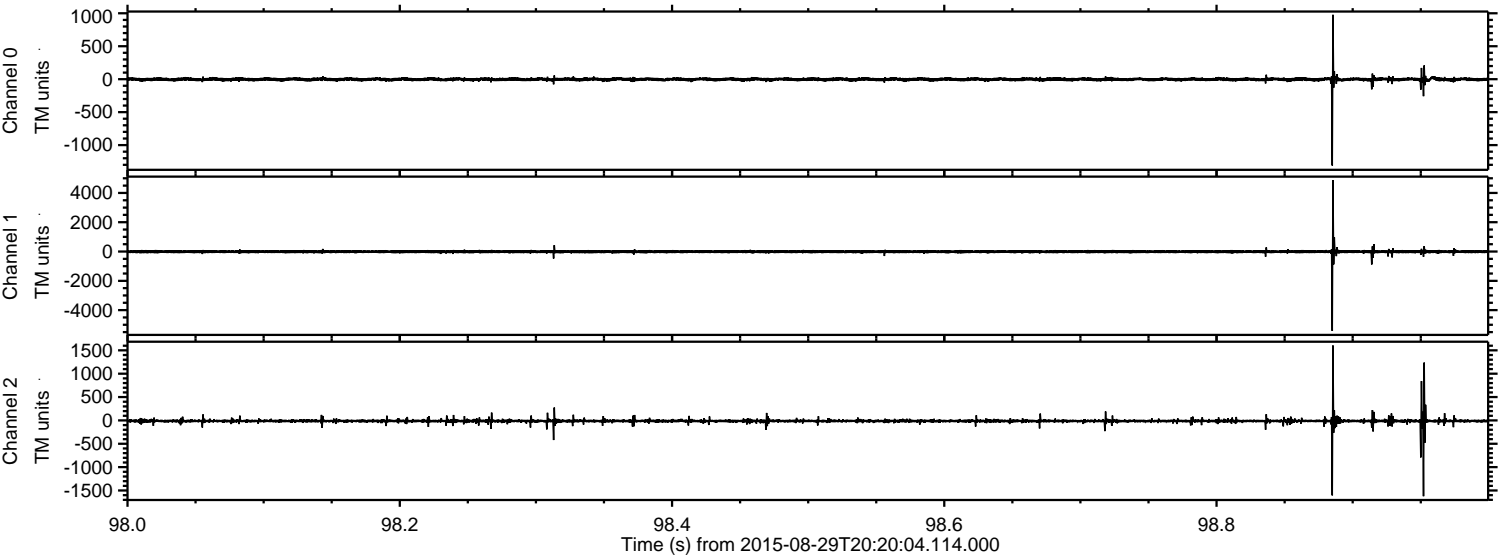
Processed Thu Oct 8 02:05:19 2015 by ELM ver.2012-10-06 from 001__elm20150829_202003__dat00.bin



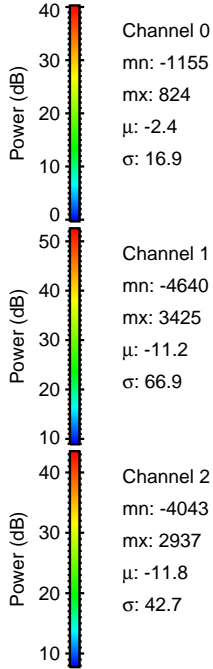
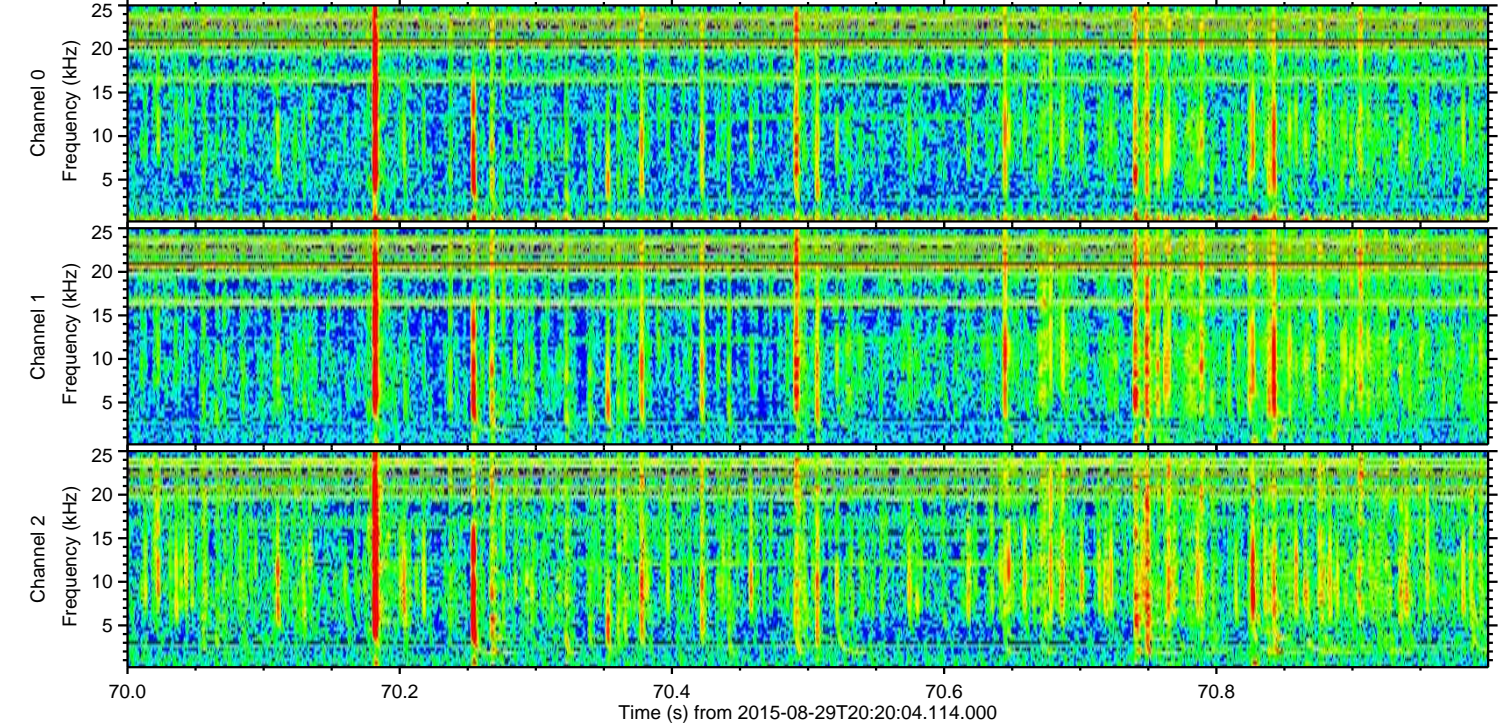
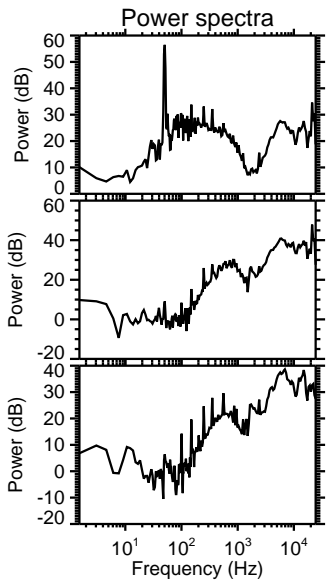
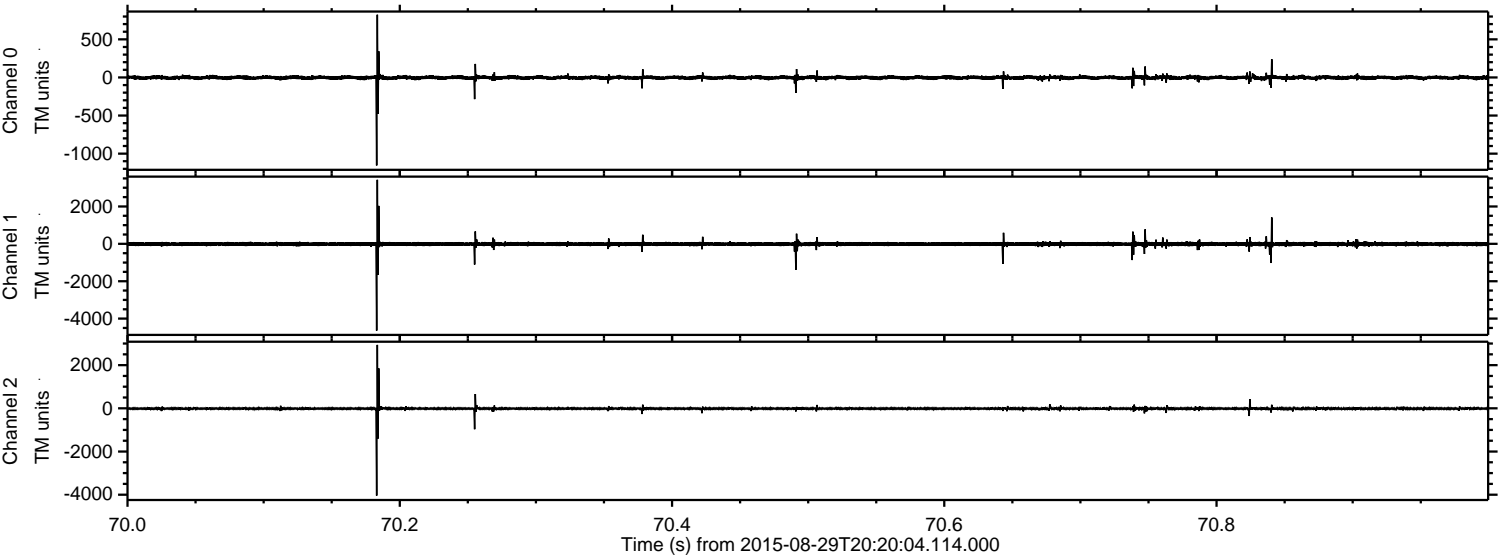
Processed Thu Oct 8 02:05:20 2015 by ELM ver.2012-10-06 from 001__elm20150829_202003__dat00.bin



Processed Thu Oct 8 02:05:21 2015 by ELM ver.2012-10-06 from 001__elm20150829_202003__dat00.bin

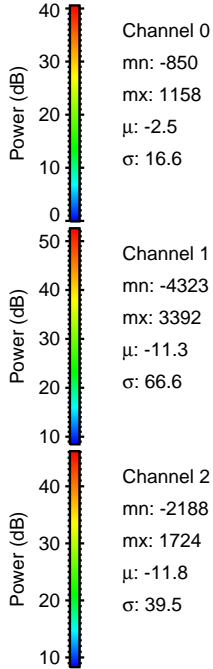
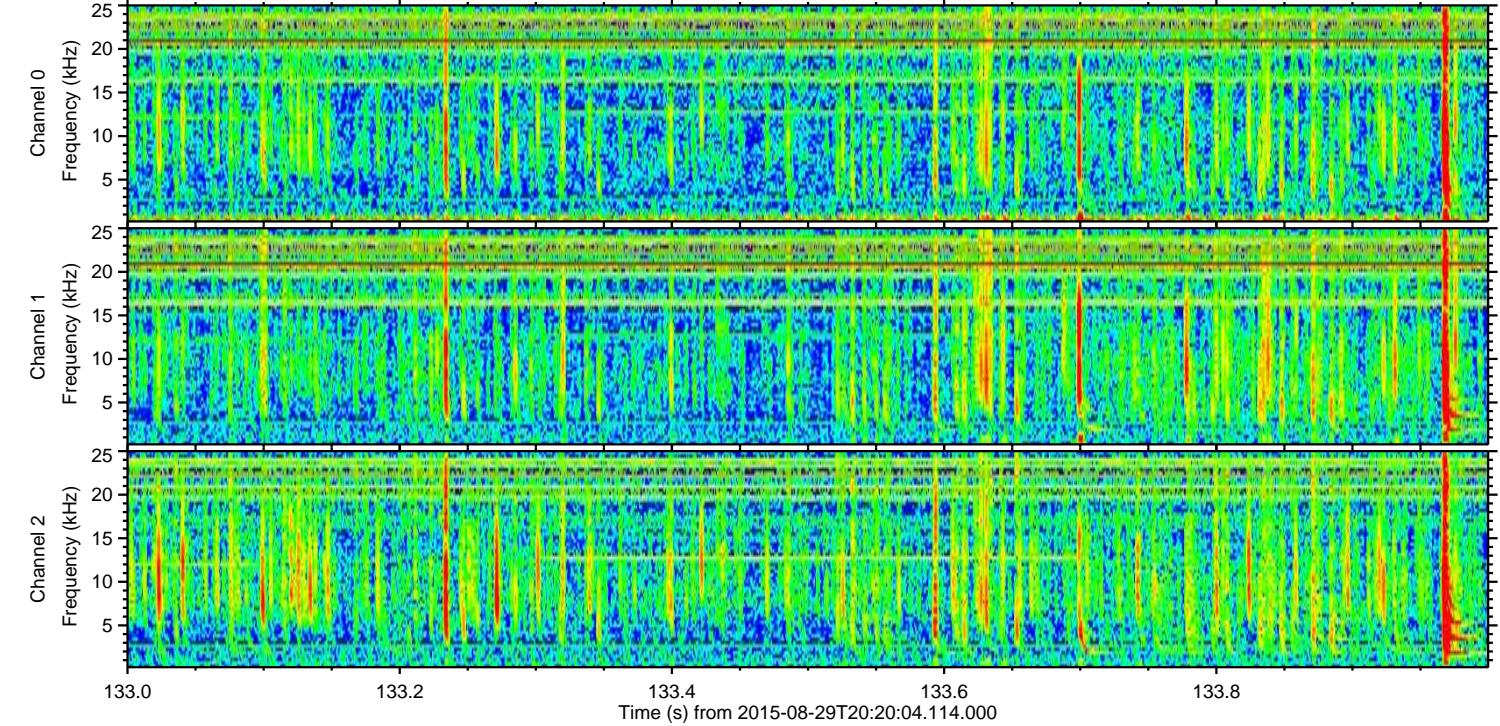
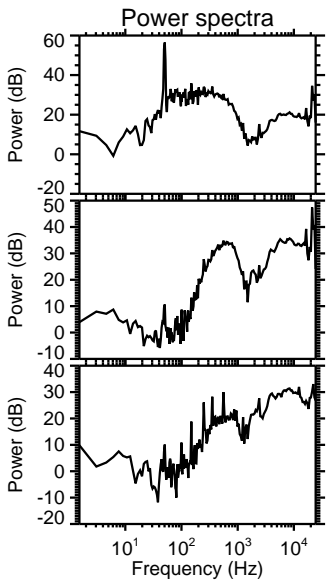
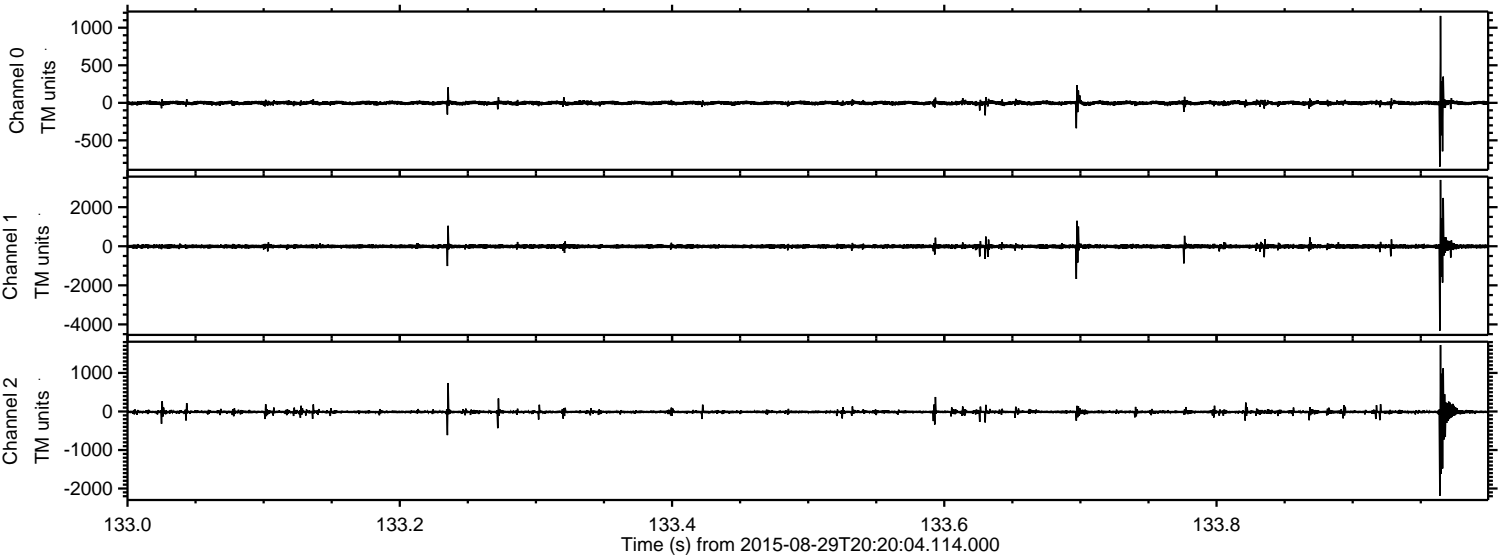


Processed Thu Oct 8 02:05:22 2015 by ELM ver.2012-10-06 from 001__elm20150829_202003__dat00.bin



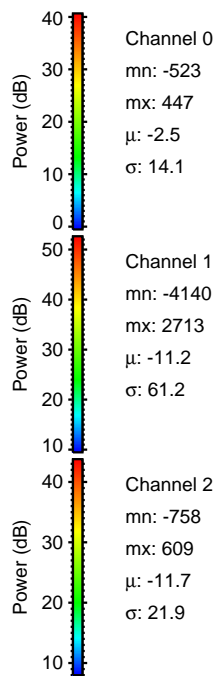
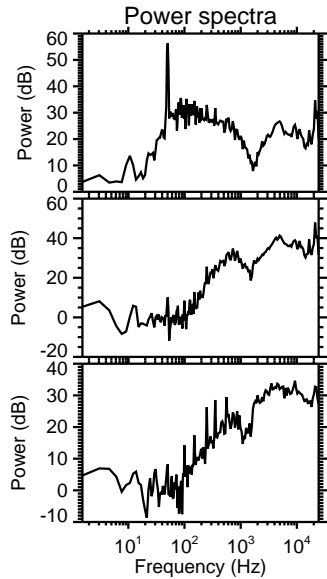
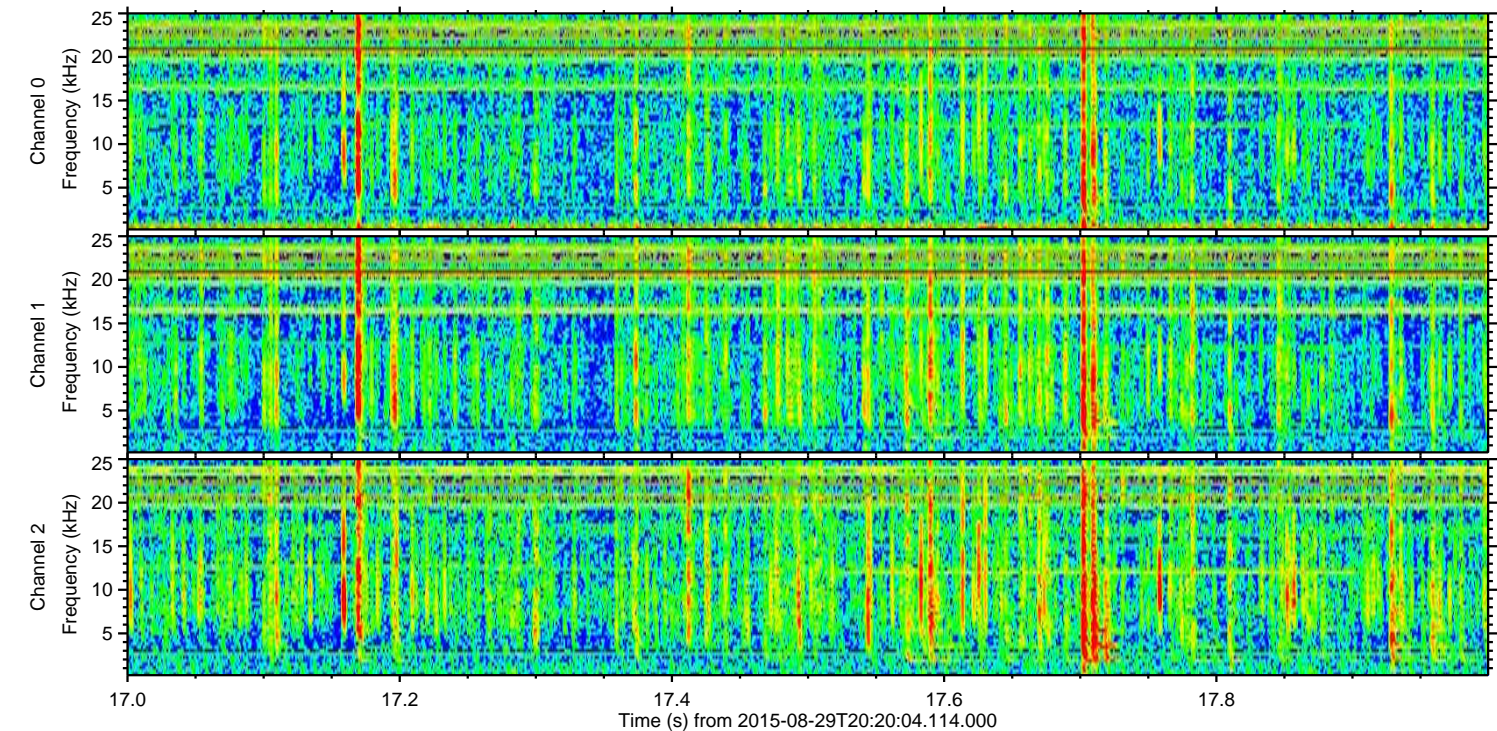
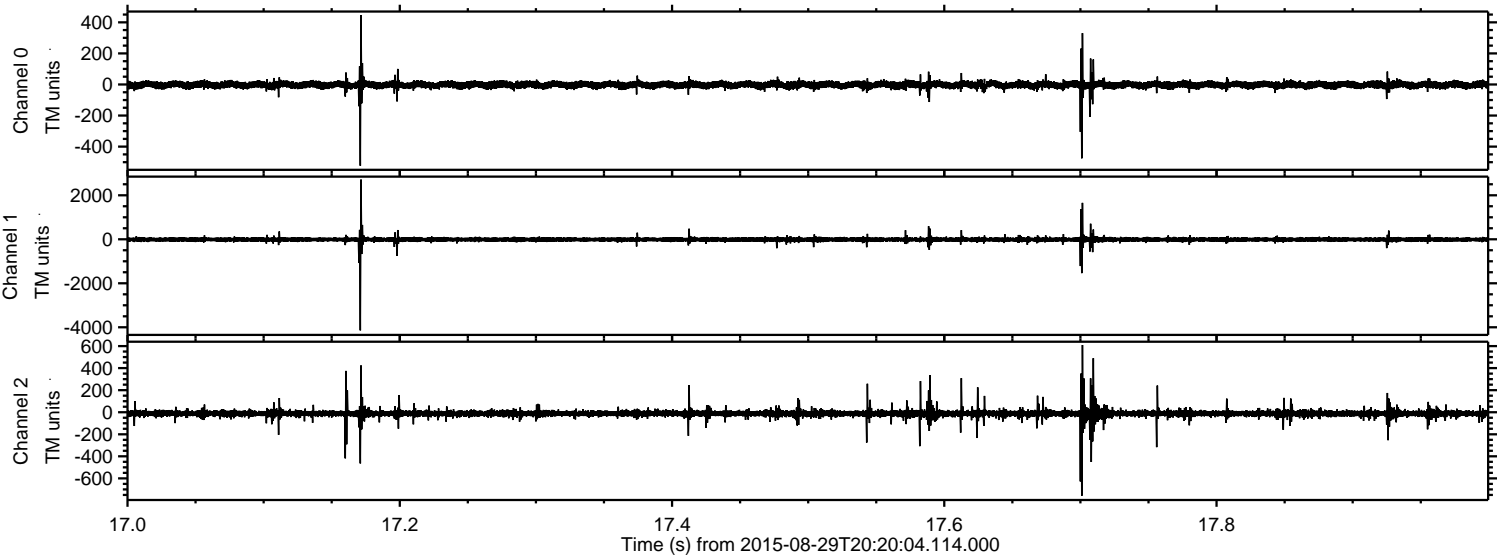
ELMAVAN 3D WAVEFORMS (Measured data sampled at 50 kHz) 51000 packets of 144 samples from 2015-08-29T20:20:04.114.000. Part 134/147

Processed Thu Oct 8 02:05:23 2015 by ELM ver.2012-10-06 from 001__elm20150829_202003__dat00.bin

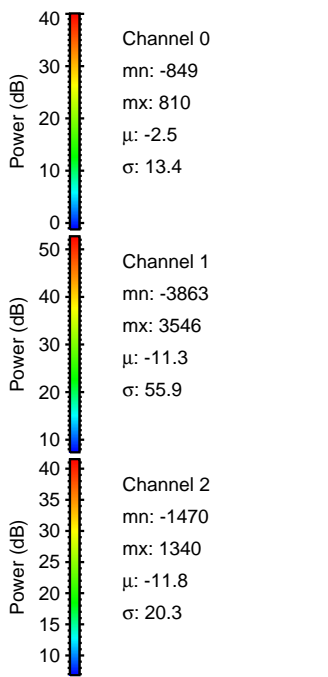
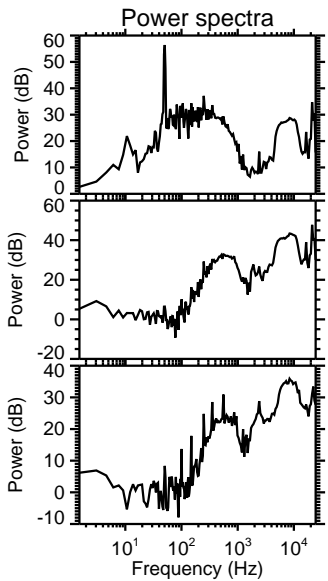
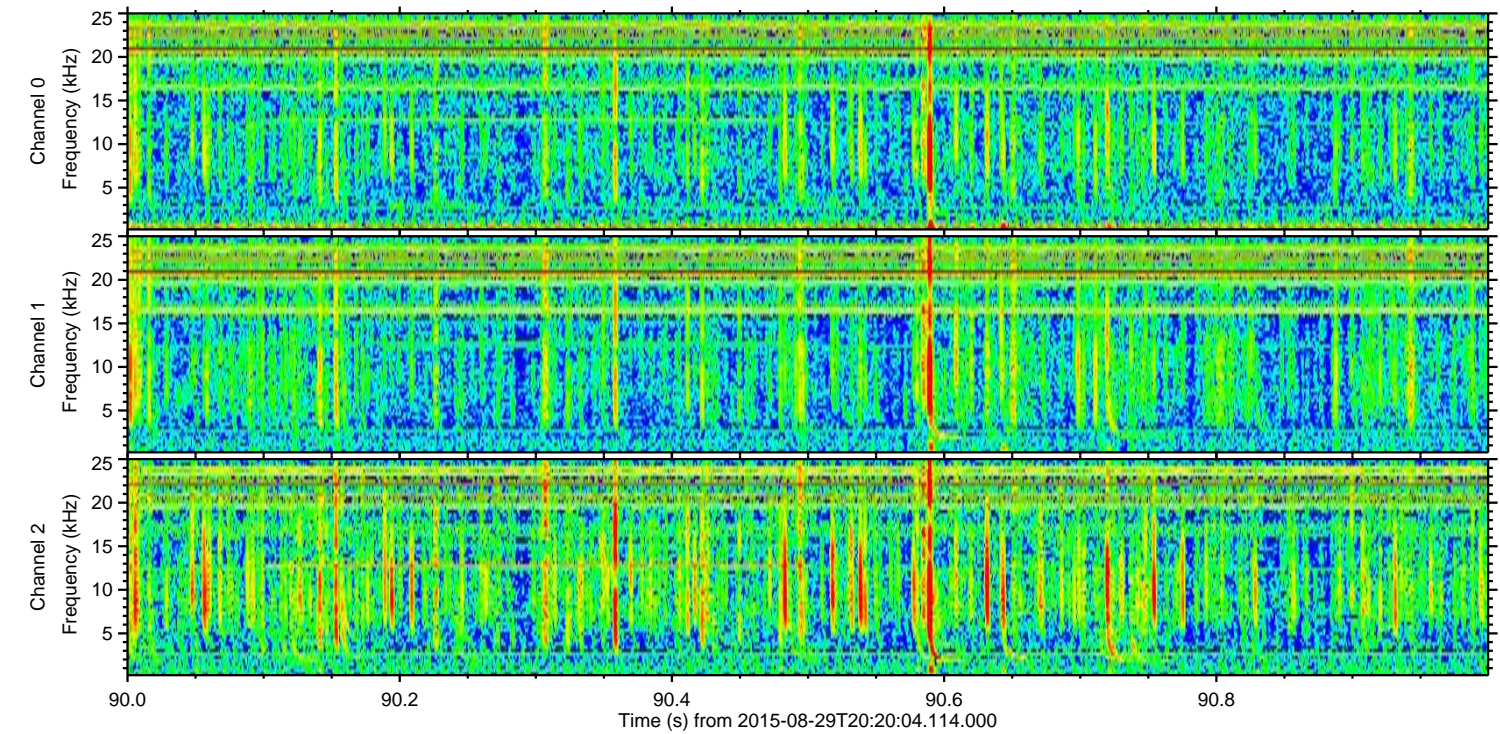
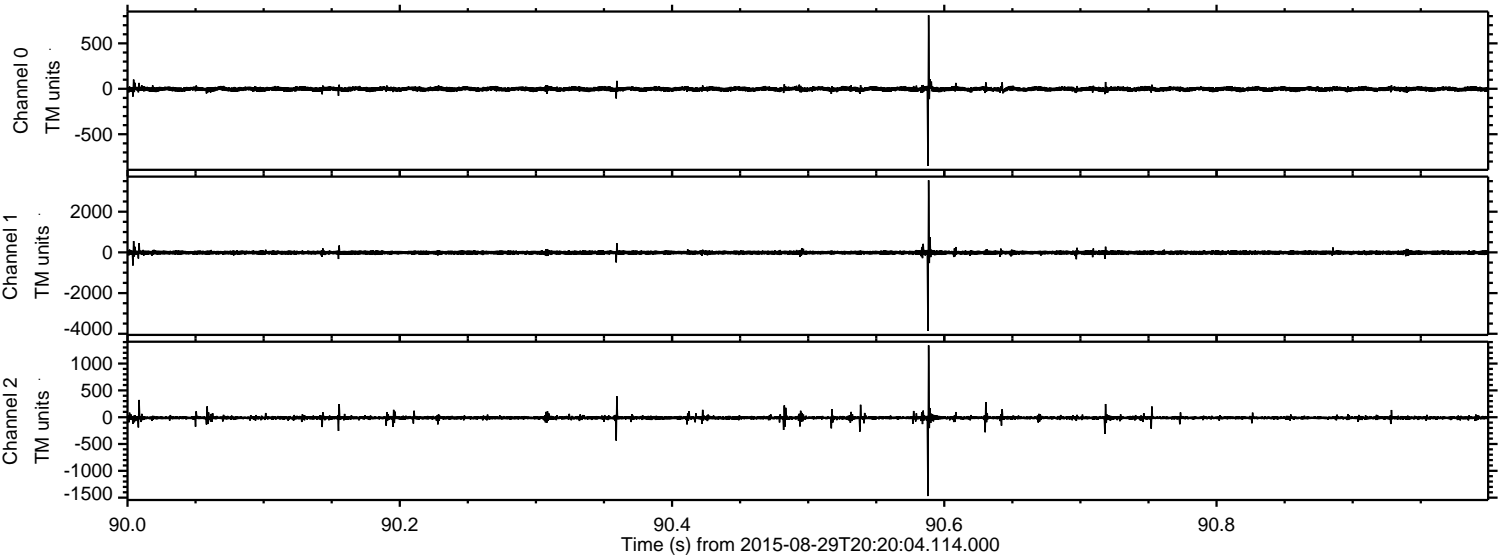


ELMAVAN 3D WAVEFORMS (Measured data sampled at 50 kHz) 51000 packets of 144 samples from 2015-08-29T20:20:04.114.000. Part 18/147

Processed Thu Oct 8 02:05:24 2015 by ELM ver.2012-10-06 from 001__elm20150829_202003__dat00.bin

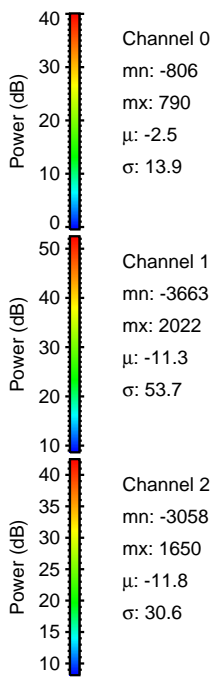
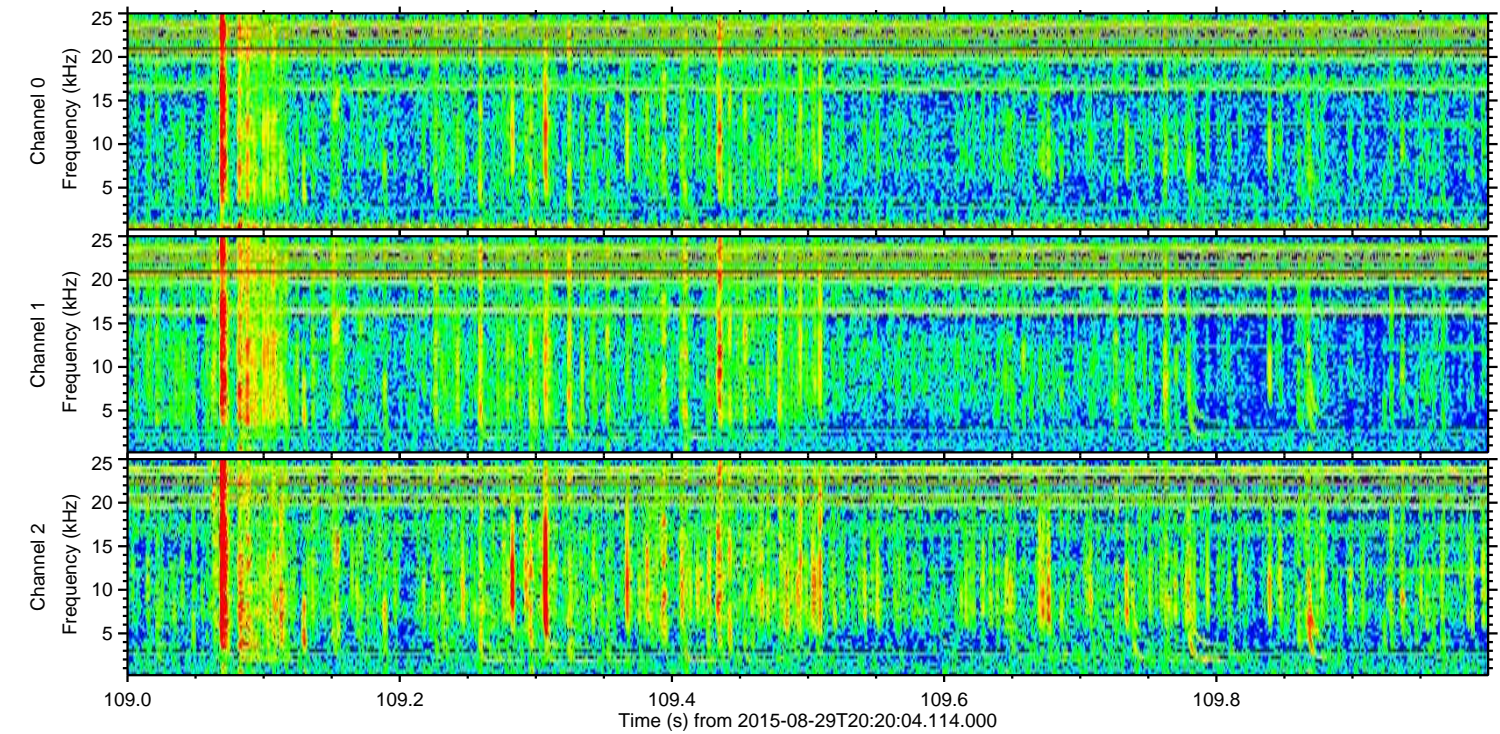
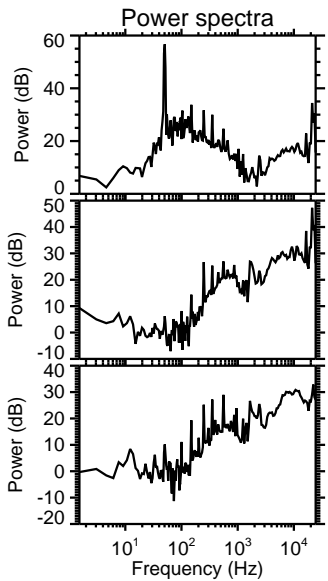
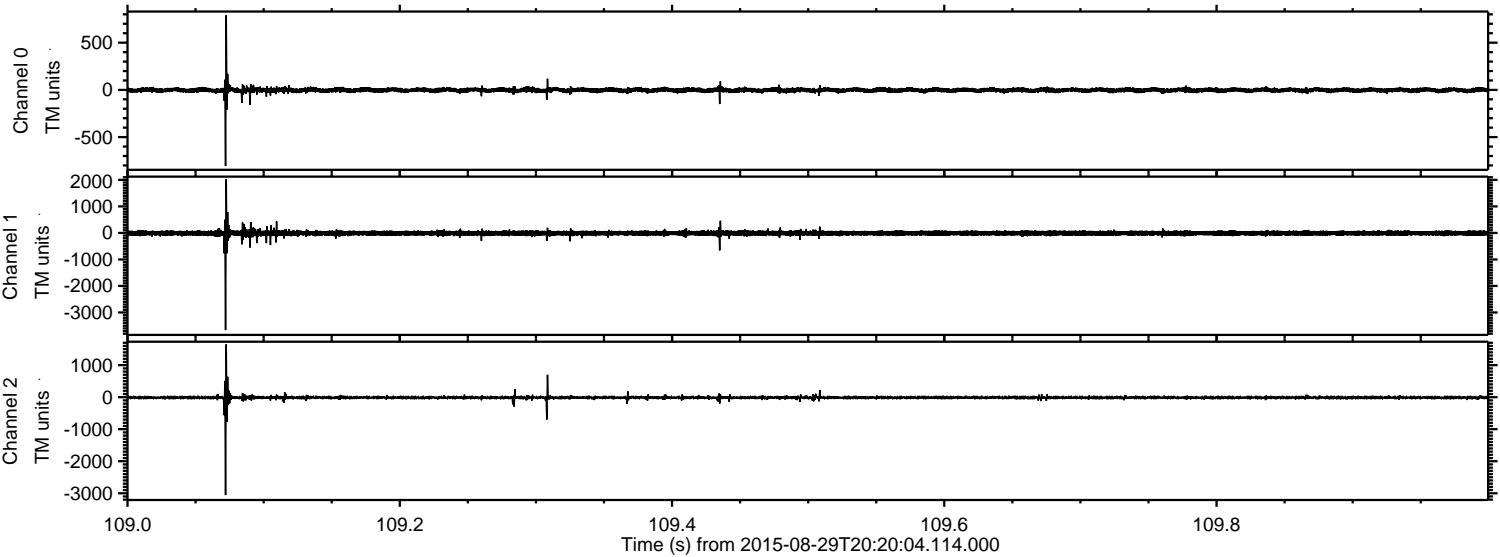


Processed Thu Oct 8 02:05:25 2015 by ELM ver.2012-10-06 from 001__elm20150829_202003__dat00.bin



ELMAVAN 3D WAVEFORMS (Measured data sampled at 50 kHz) 51000 packets of 144 samples from 2015-08-29T20:20:04.114.000. Part 110/147

Processed Thu Oct 8 02:05:27 2015 by ELM ver.2012-10-06 from 001__elm20150829_202003__dat00.bin

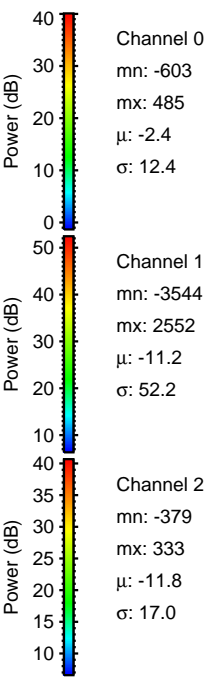
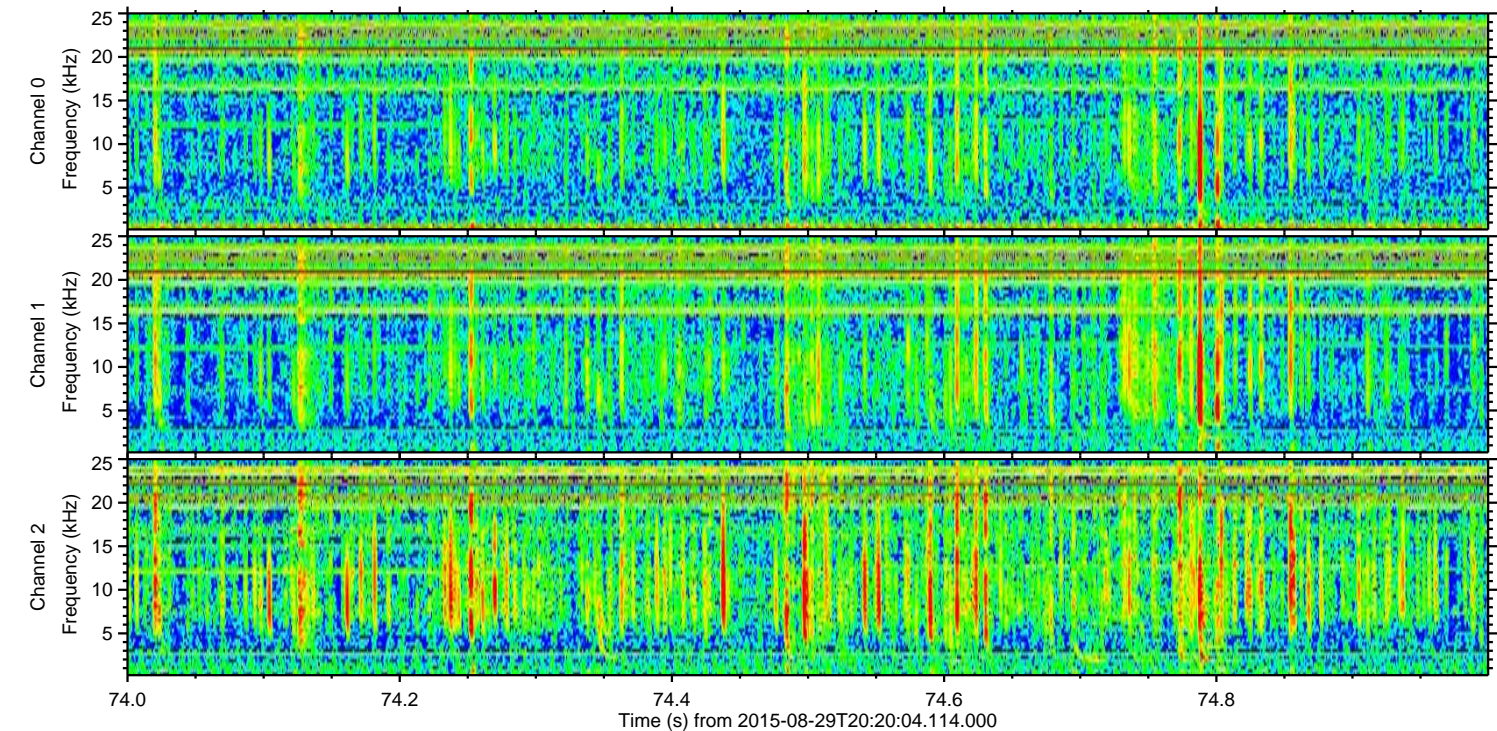
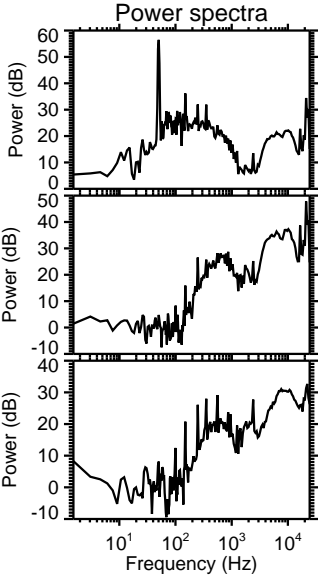
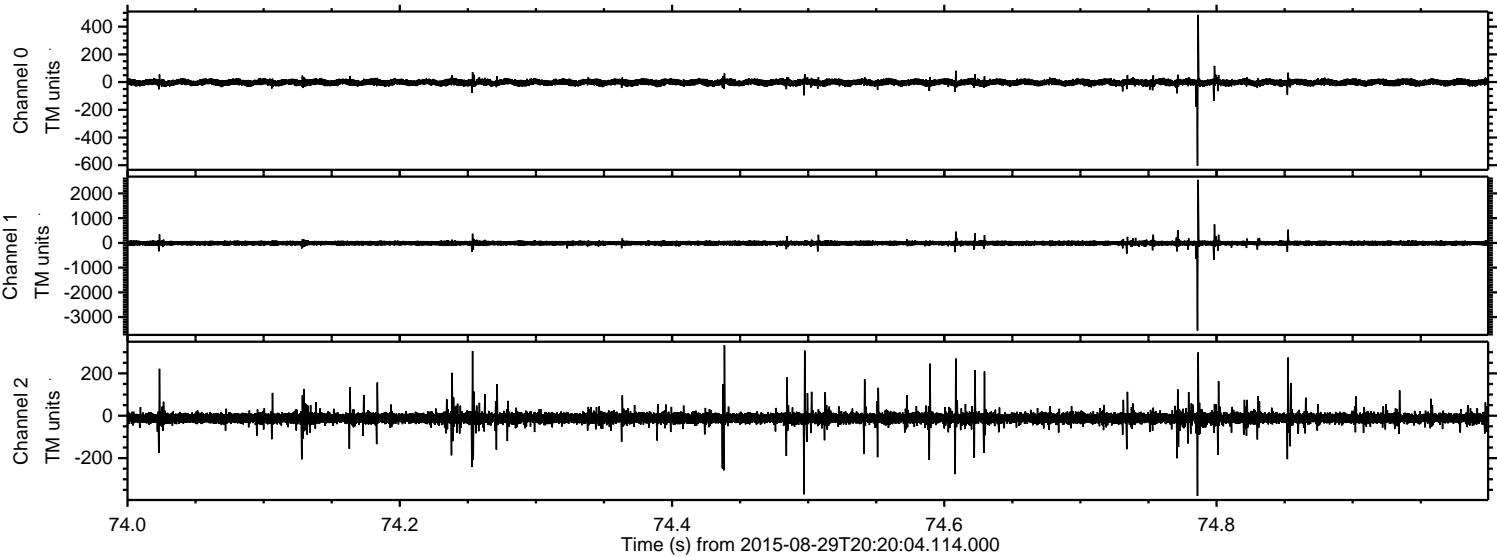


Channel 0
mn: -806
mx: 790
 μ : -2.5
 σ : 13.9

Channel 1
mn: -3663
mx: 2022
 μ : -11.3
 σ : 53.7

Channel 2
mn: -3058
mx: 1650
 μ : -11.8
 σ : 30.6

Processed Thu Oct 8 02:05:28 2015 by ELM ver.2012-10-06 from 001__elm20150829_202003__dat00.bin



Processed Thu Oct 8 02:05:29 2015 by ELM ver.2012-10-06 from 001__elm20150829_202003__dat00.bin

