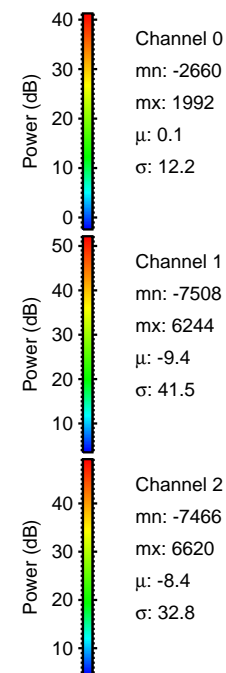
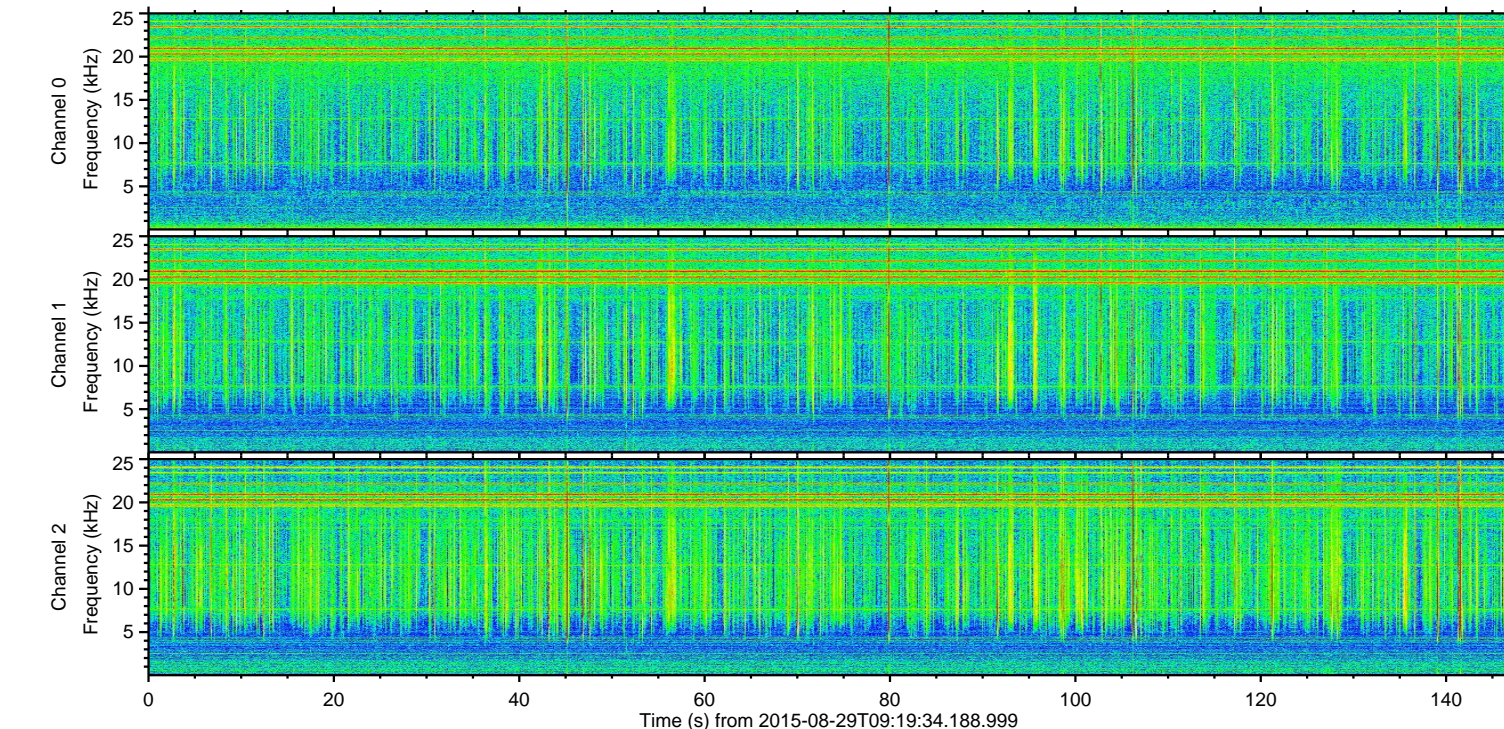
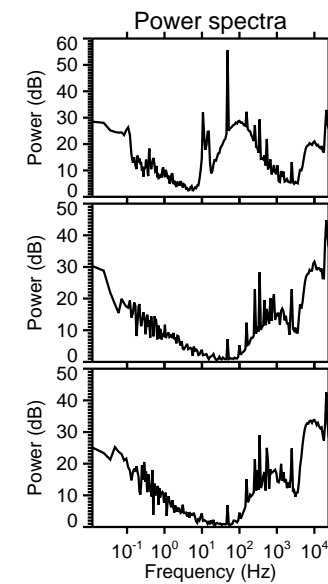
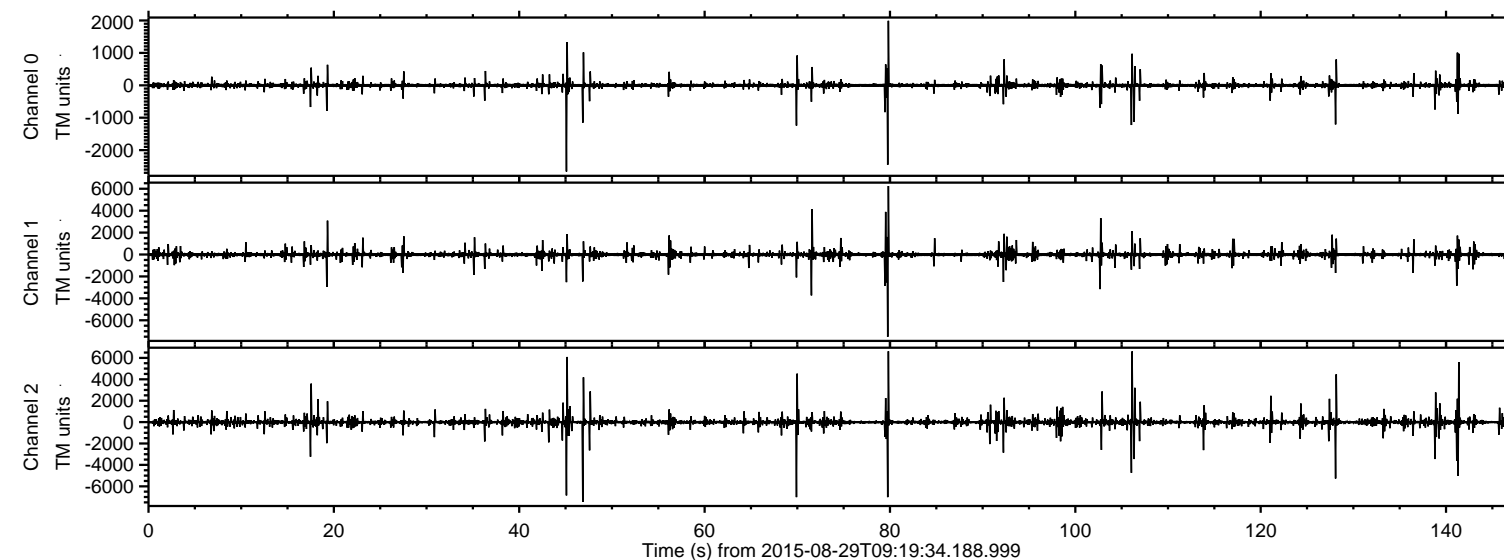


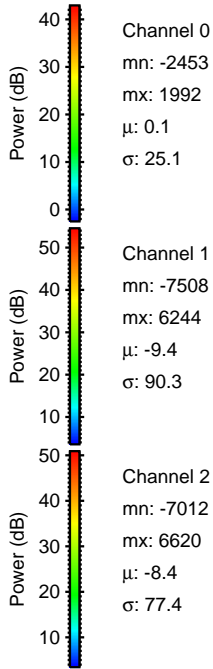
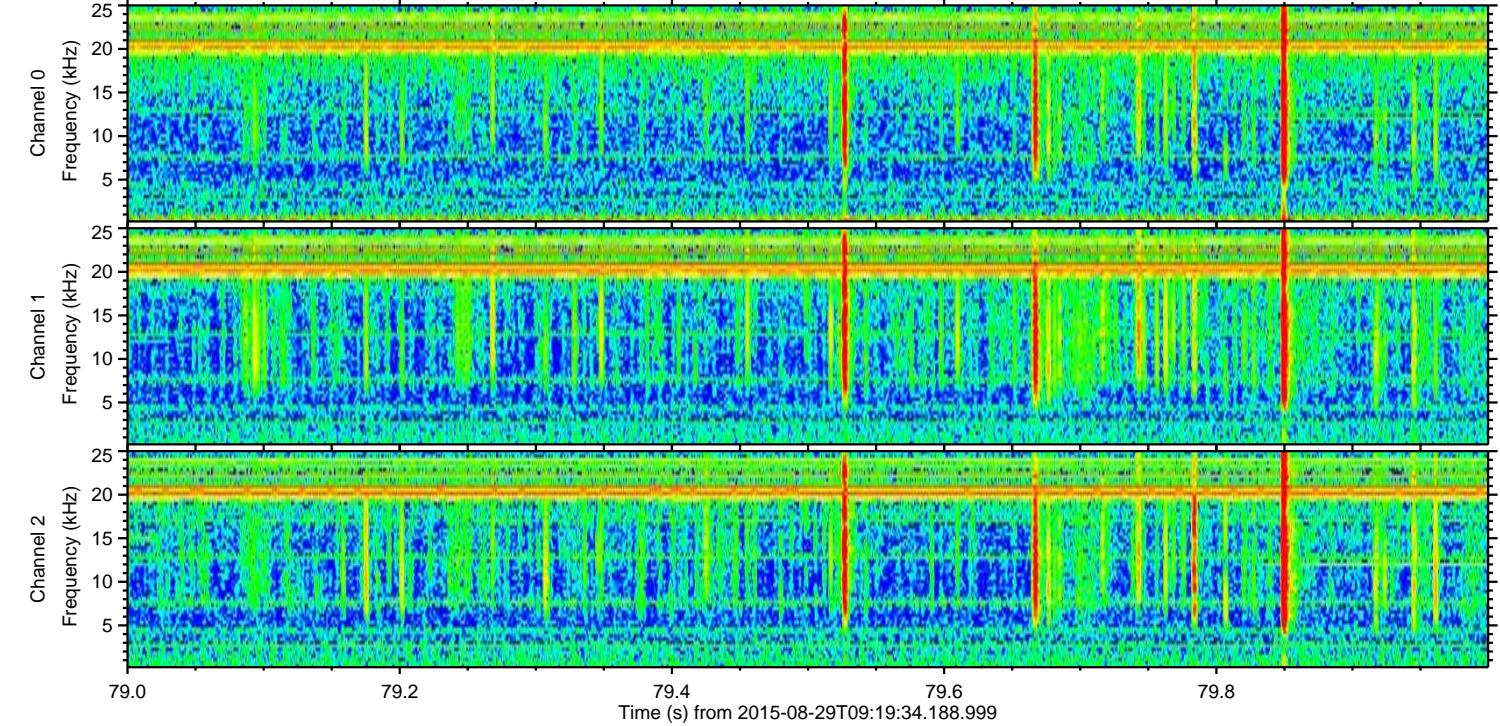
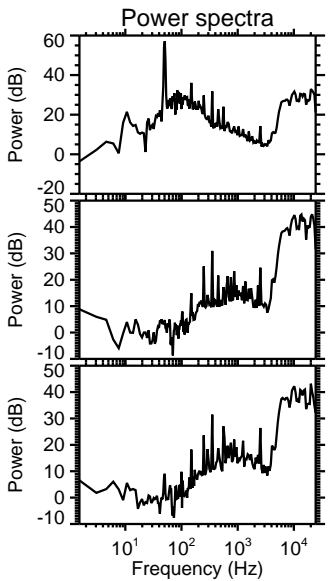
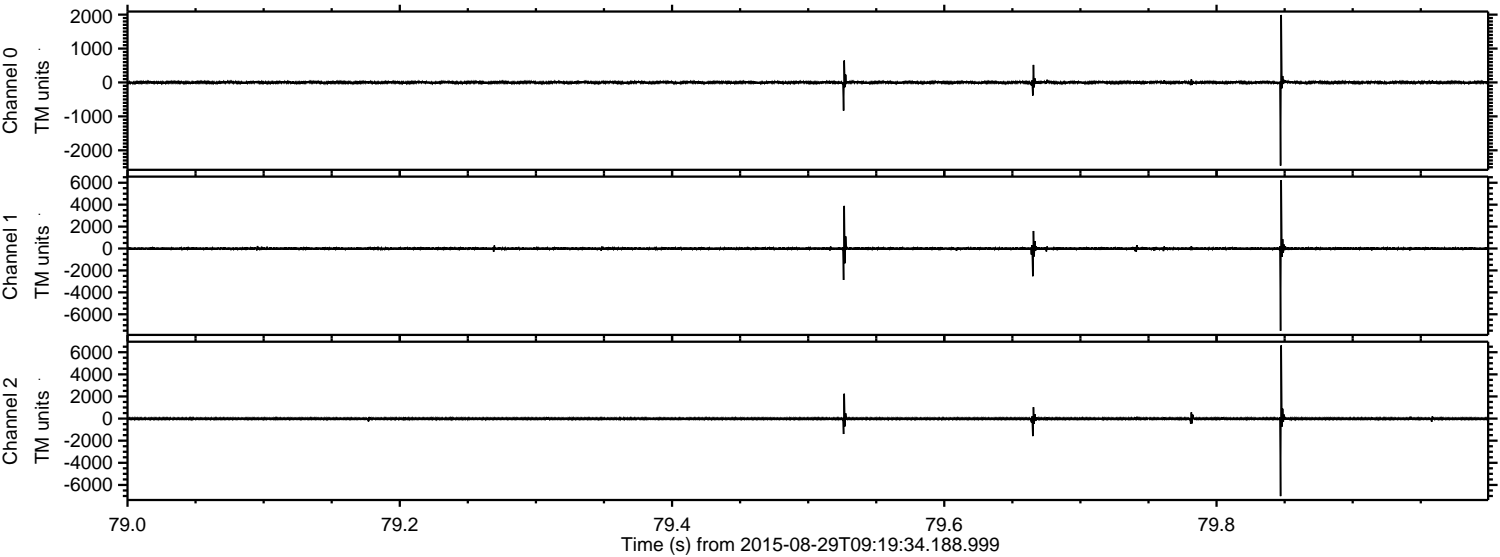
ELMAVAN 3D WAVEFORMS (Measured data sampled at 50 kHz) 51000 packets of 144 samples from 2015-08-29T09:19:34.188.999.

Processed Wed Oct 7 23:02:11 2015 by ELM ver.2012-10-06 from 001\_\_elm20150829\_091933\_\_dat00.bin





Processed Wed Oct 7 23:02:29 2015 by ELM ver.2012-10-06 from 001\_\_elm20150829\_091933\_\_dat00.bin



Channel 0  
mn: -2453  
mx: 1992  
 $\mu$ : 0.1  
 $\sigma$ : 25.1

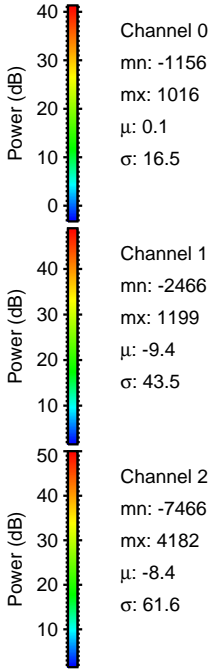
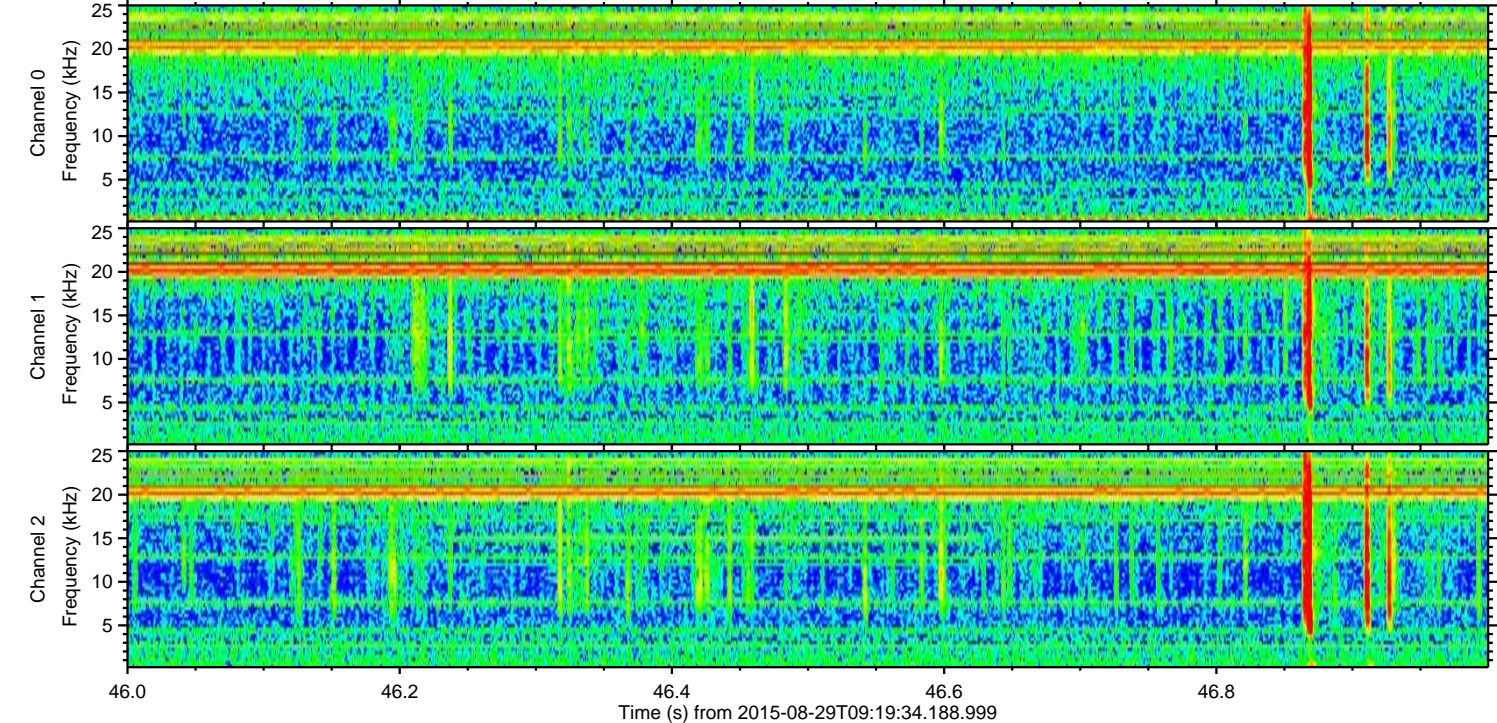
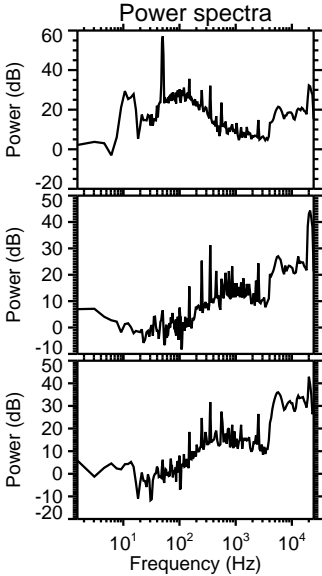
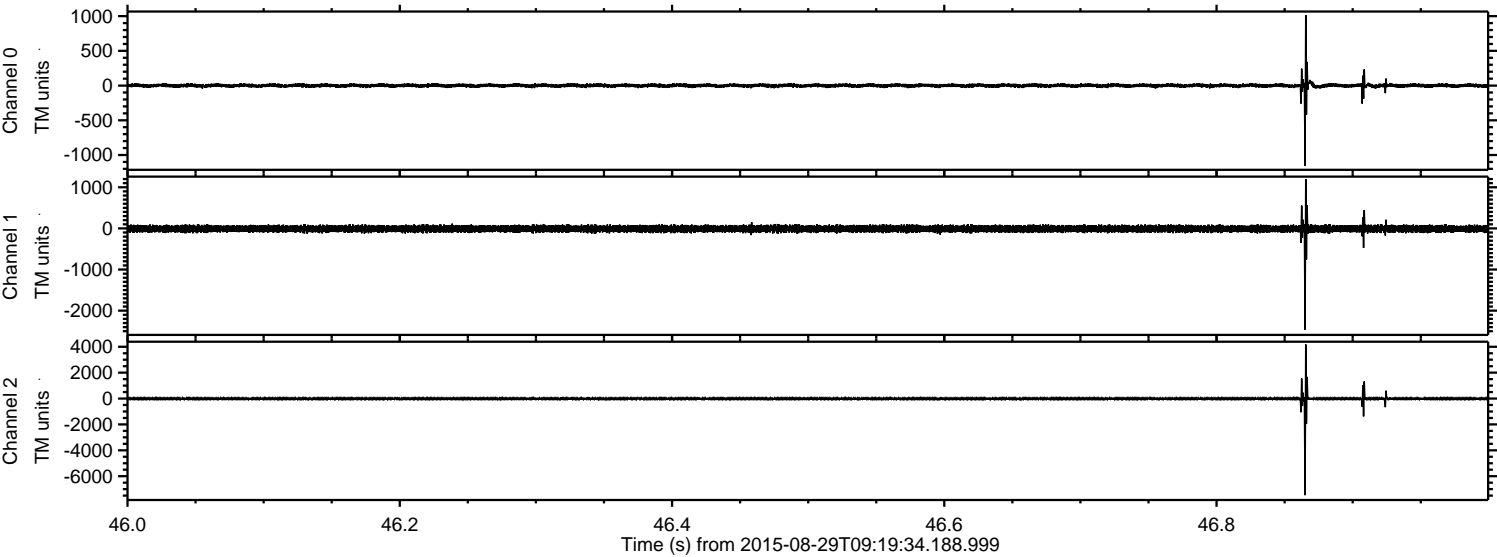
Channel 1  
mn: -7508  
mx: 6244  
 $\mu$ : -9.4  
 $\sigma$ : 90.3

Channel 2  
mn: -7012  
mx: 6620  
 $\mu$ : -8.4  
 $\sigma$ : 77.4



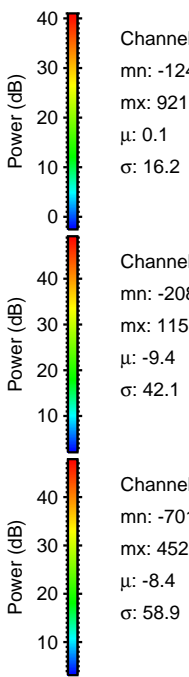
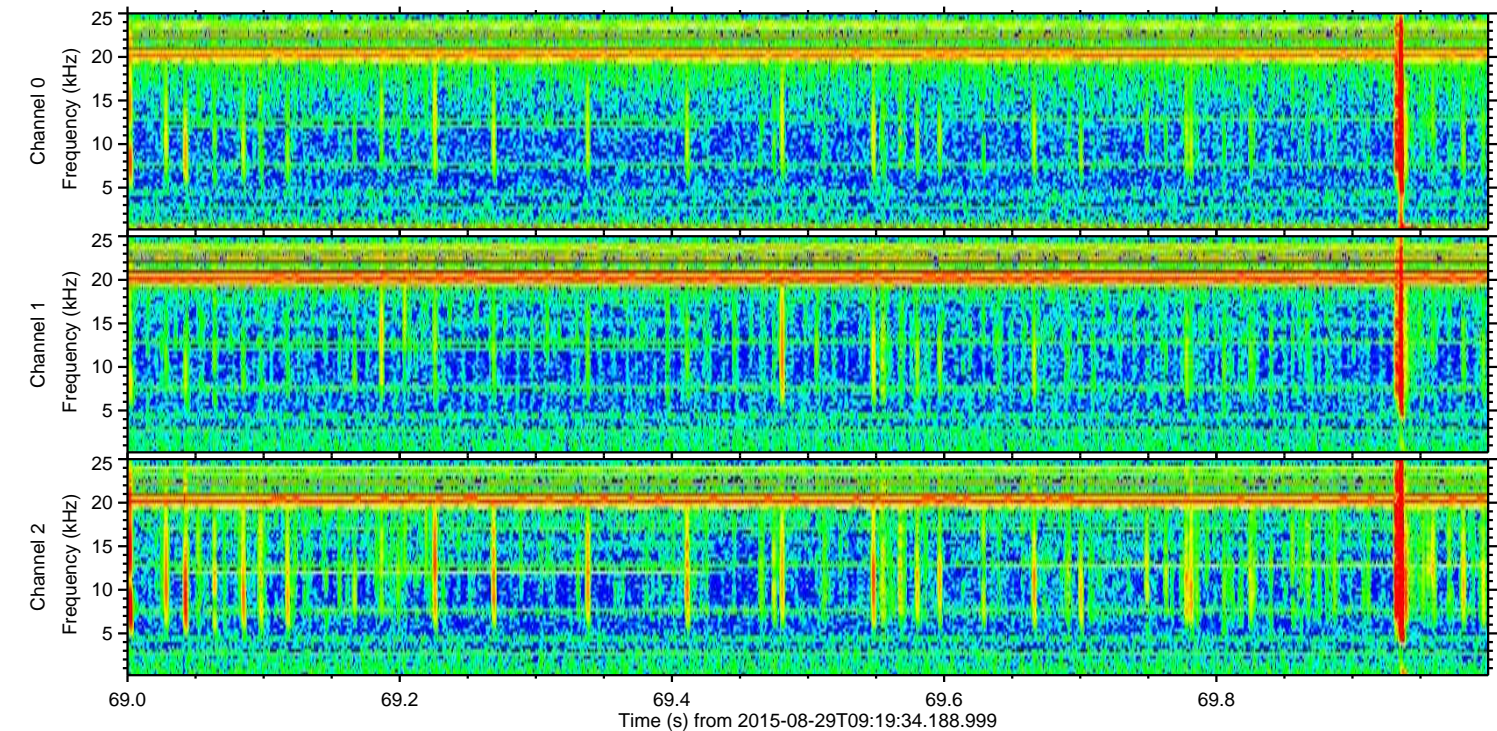
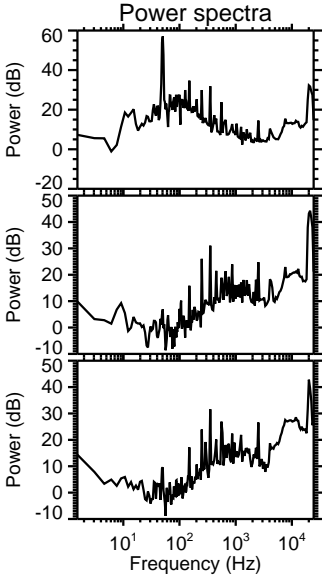
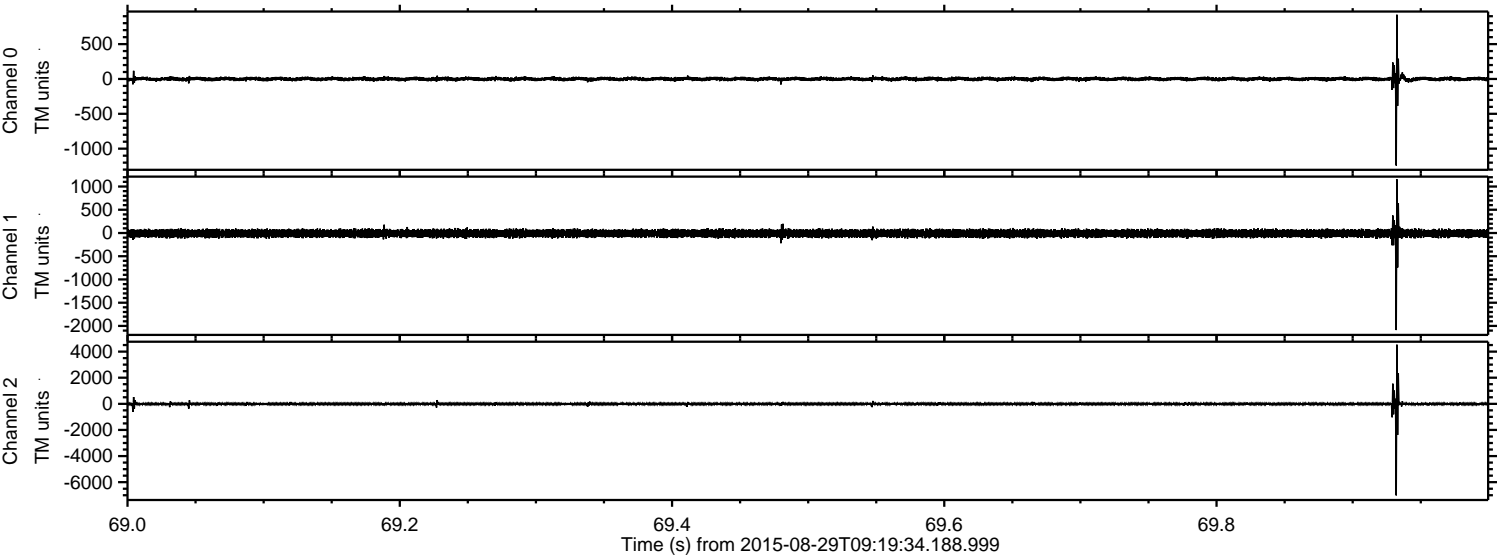
ELMAVAN 3D WAVEFORMS (Measured data sampled at 50 kHz) 51000 packets of 144 samples from 2015-08-29T09:19:34.188.999. Part 47/147

Processed Wed Oct 7 23:02:30 2015 by ELM ver.2012-10-06 from 001\_\_elm20150829\_091933\_\_dat00.bin



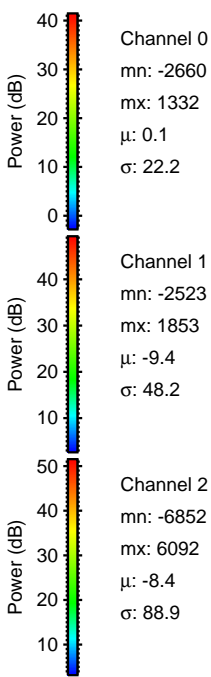
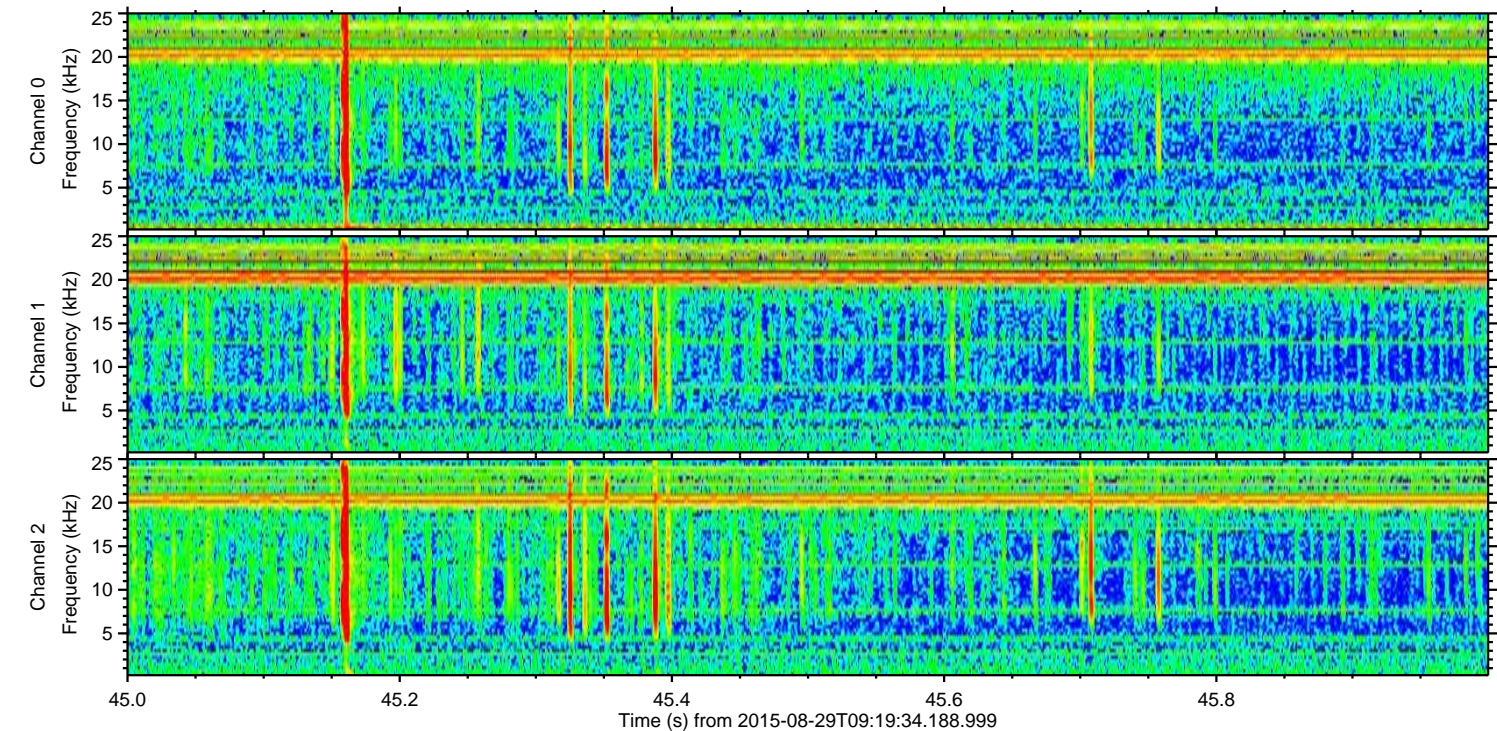
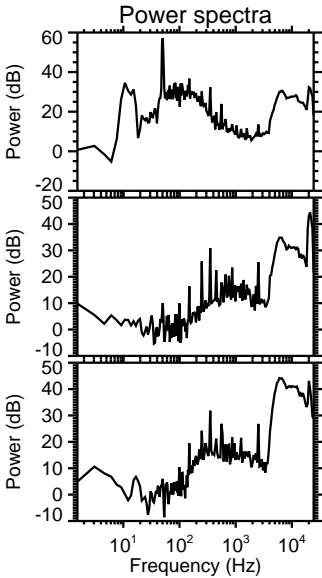
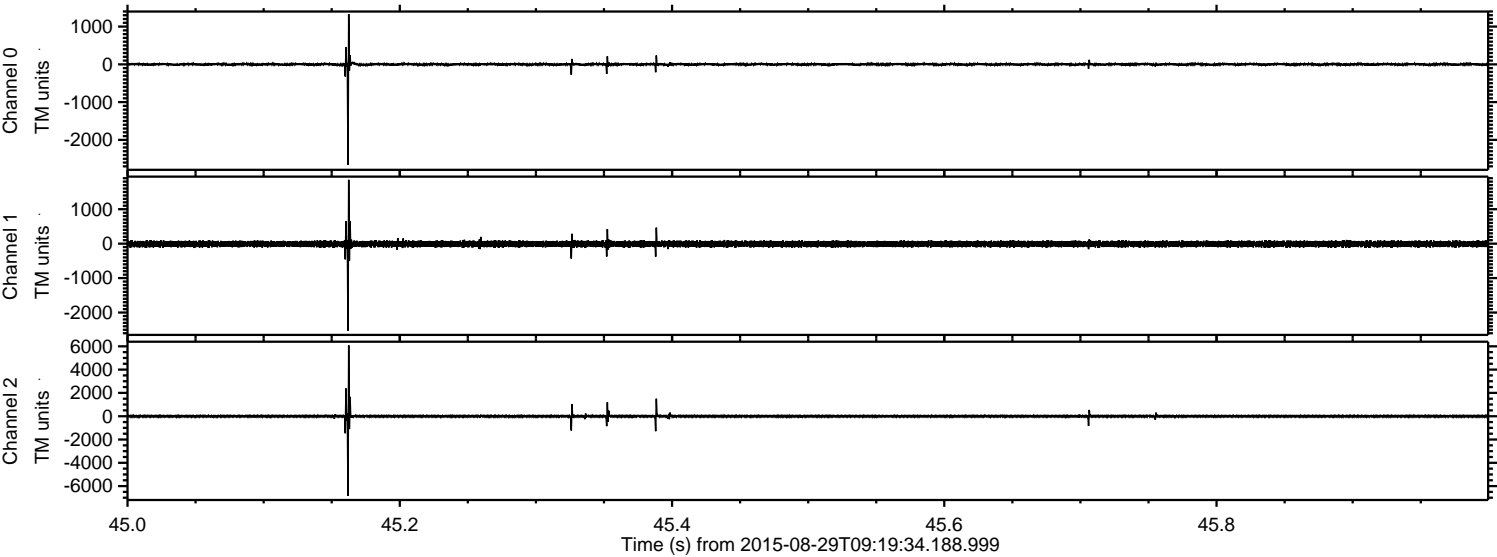


Processed Wed Oct 7 23:02:31 2015 by ELM ver.2012-10-06 from 001\_\_elm20150829\_091933\_\_dat00.bin





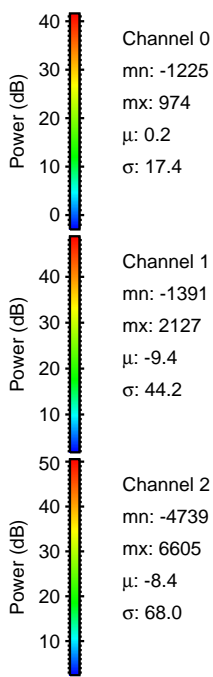
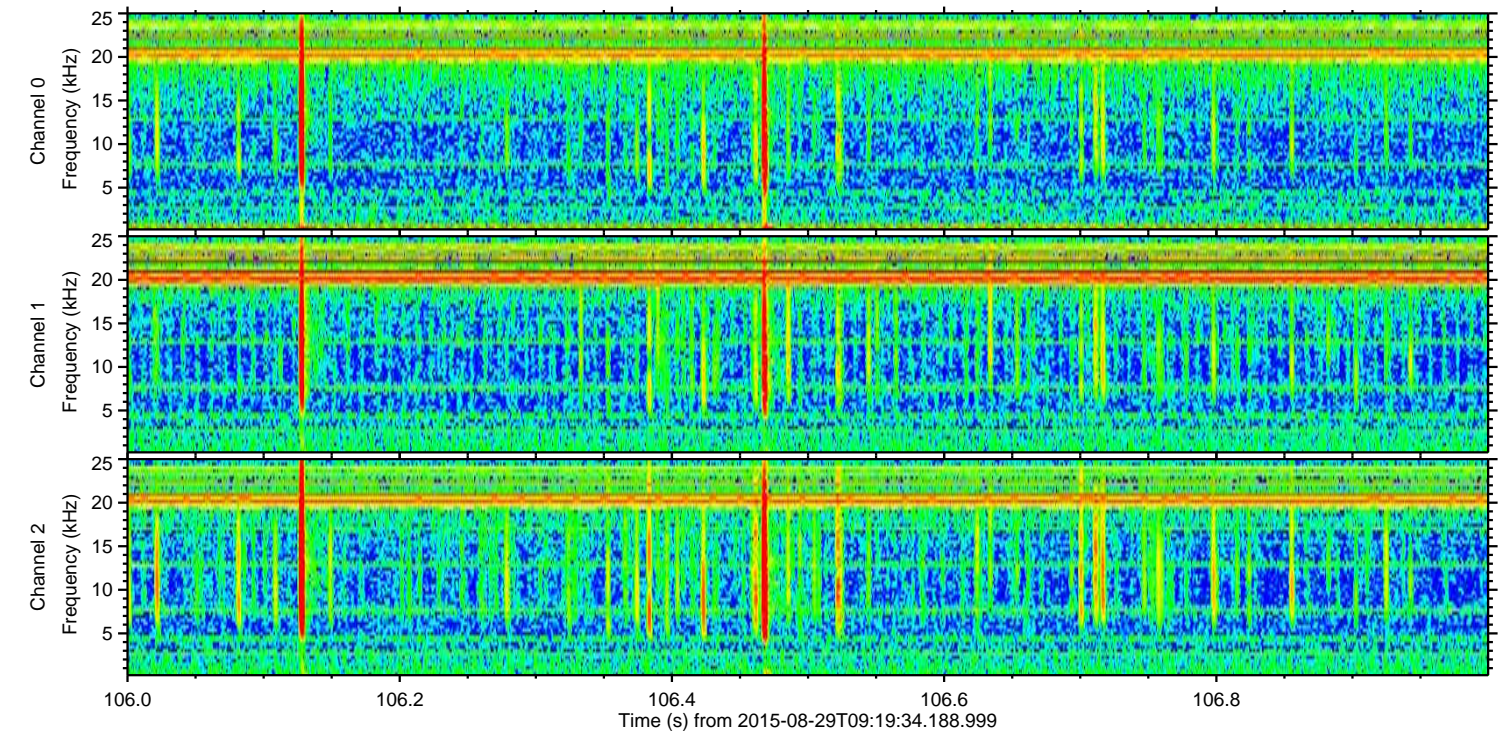
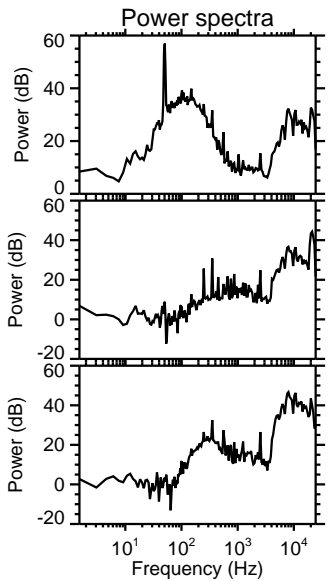
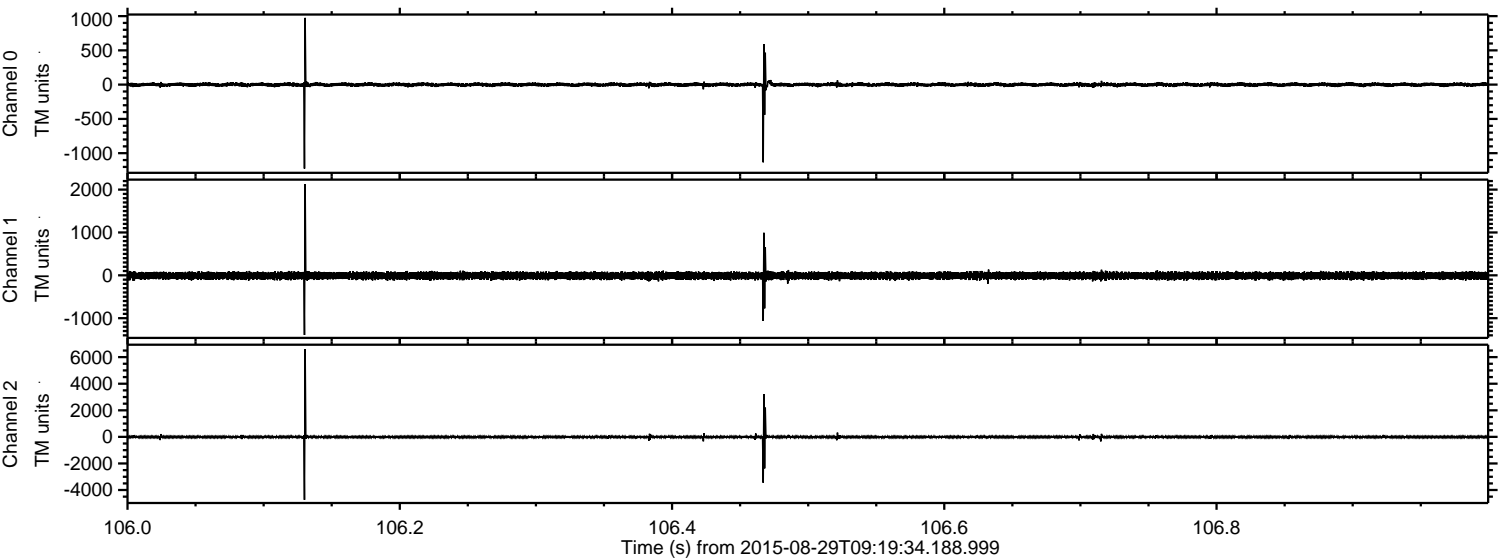
Processed Wed Oct 7 23:02:32 2015 by ELM ver.2012-10-06 from 001\_\_elm20150829\_091933\_\_dat00.bin





ELMAVAN 3D WAVEFORMS (Measured data sampled at 50 kHz) 51000 packets of 144 samples from 2015-08-29T09:19:34.188.999. Part 107/147

Processed Wed Oct 7 23:02:33 2015 by ELM ver.2012-10-06 from 001\_\_elm20150829\_091933\_\_dat00.bin



Channel 0  
mn: -1225  
mx: 974  
 $\mu$ : 0.2  
 $\sigma$ : 17.4

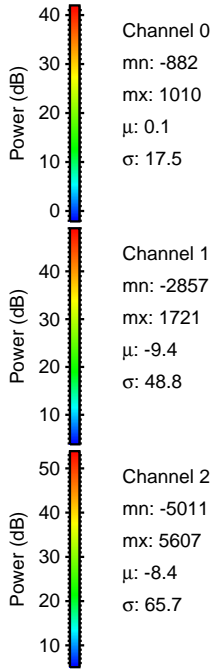
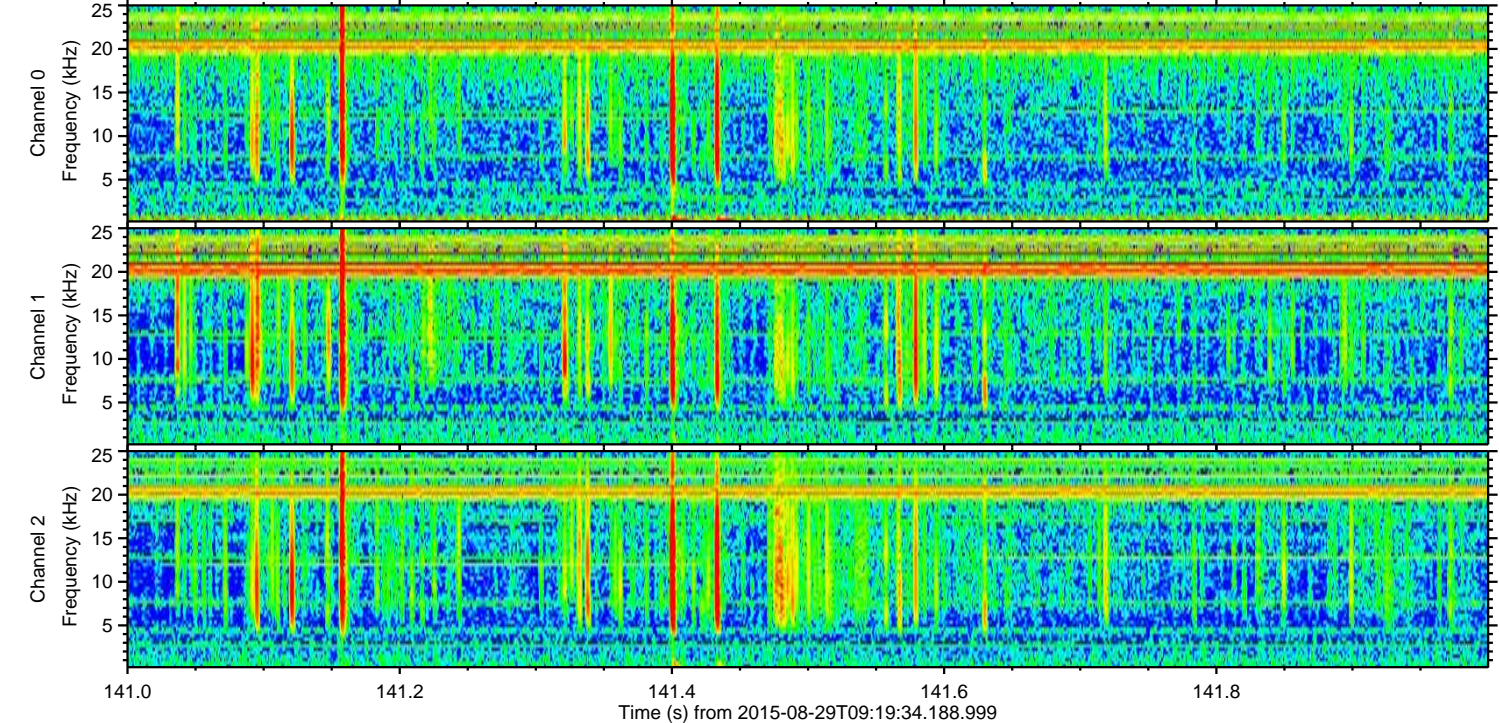
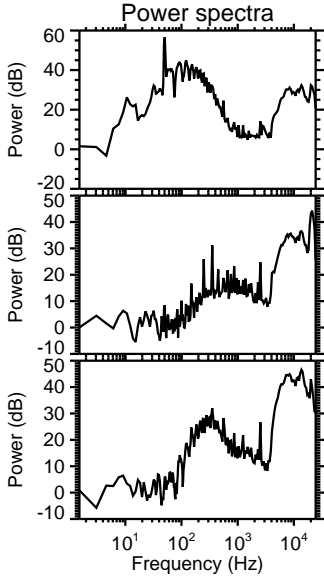
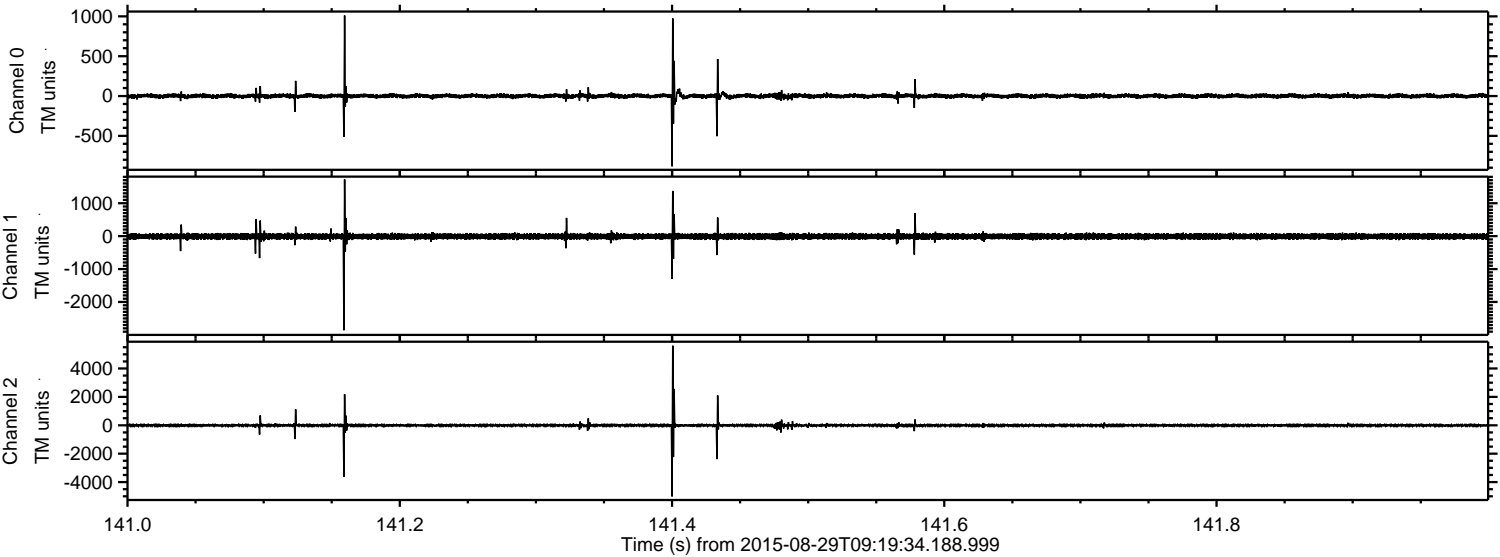
Channel 1  
mn: -1391  
mx: 2127  
 $\mu$ : -9.4  
 $\sigma$ : 44.2

Channel 2  
mn: -4739  
mx: 6605  
 $\mu$ : -8.4  
 $\sigma$ : 68.0



ELMAVAN 3D WAVEFORMS (Measured data sampled at 50 kHz) 51000 packets of 144 samples from 2015-08-29T09:19:34.188.999. Part 142/147

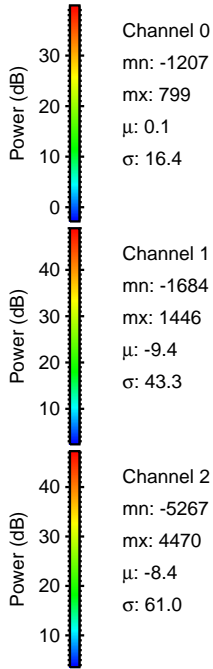
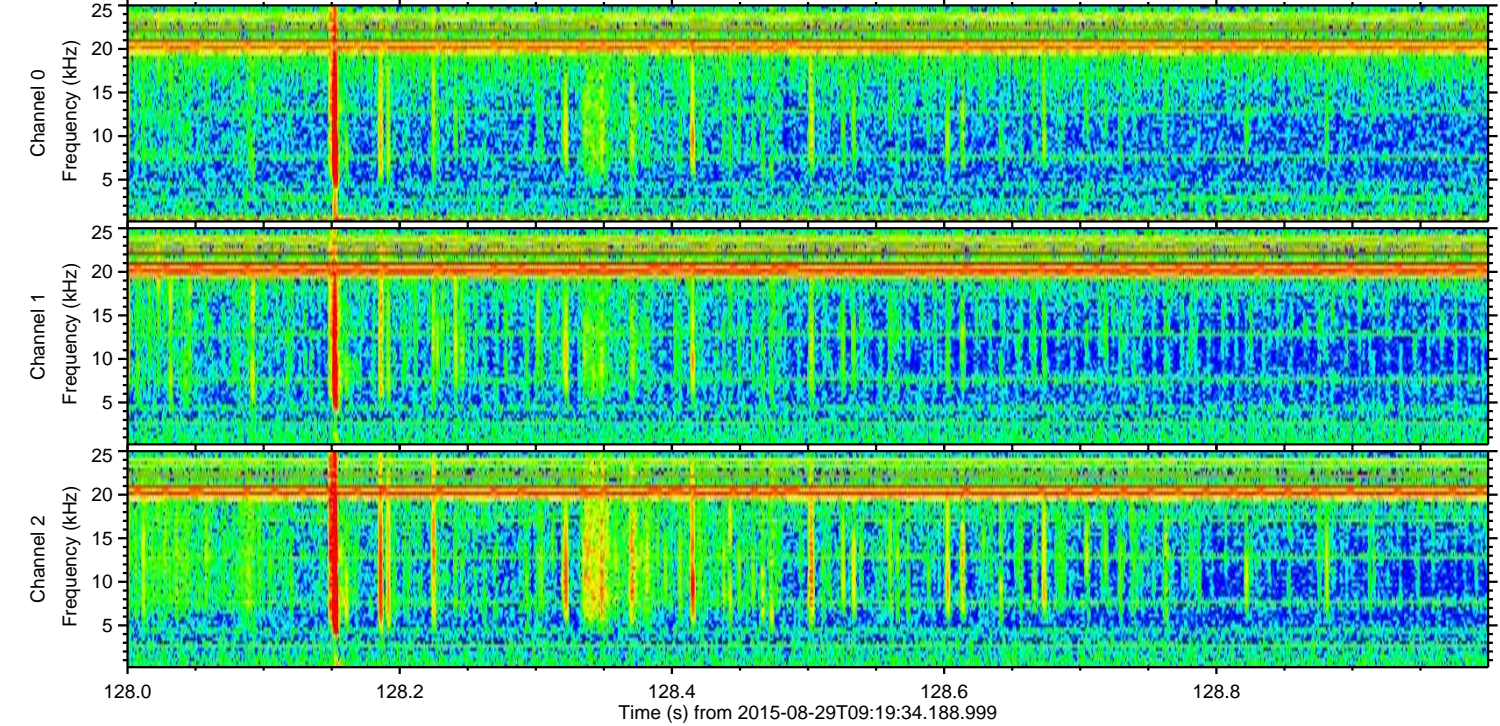
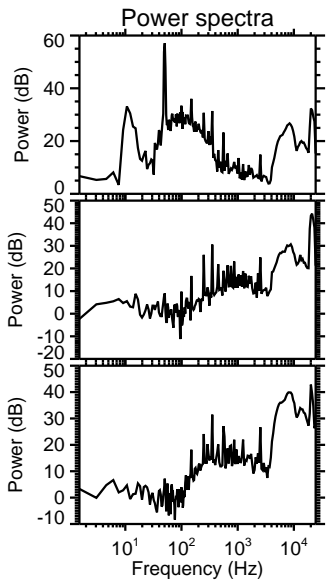
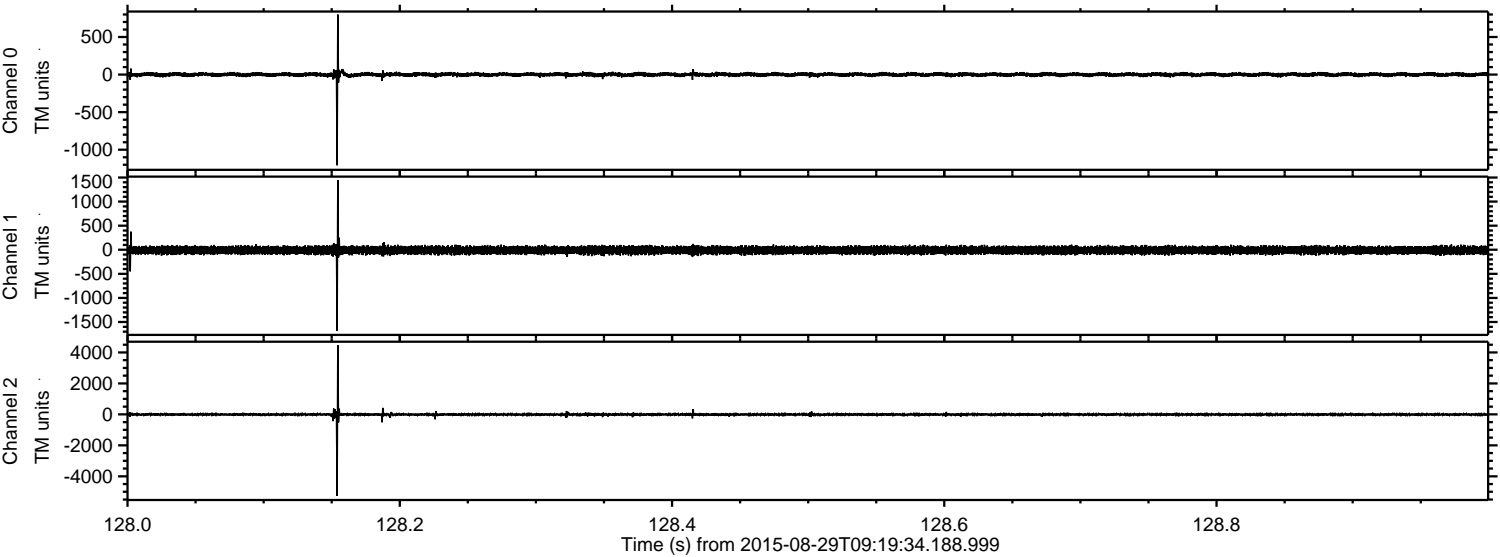
Processed Wed Oct 7 23:02:34 2015 by ELM ver.2012-10-06 from 001\_\_elm20150829\_091933\_\_dat00.bin





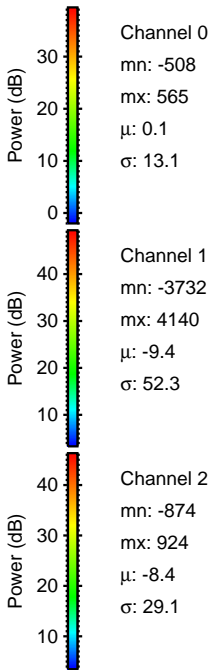
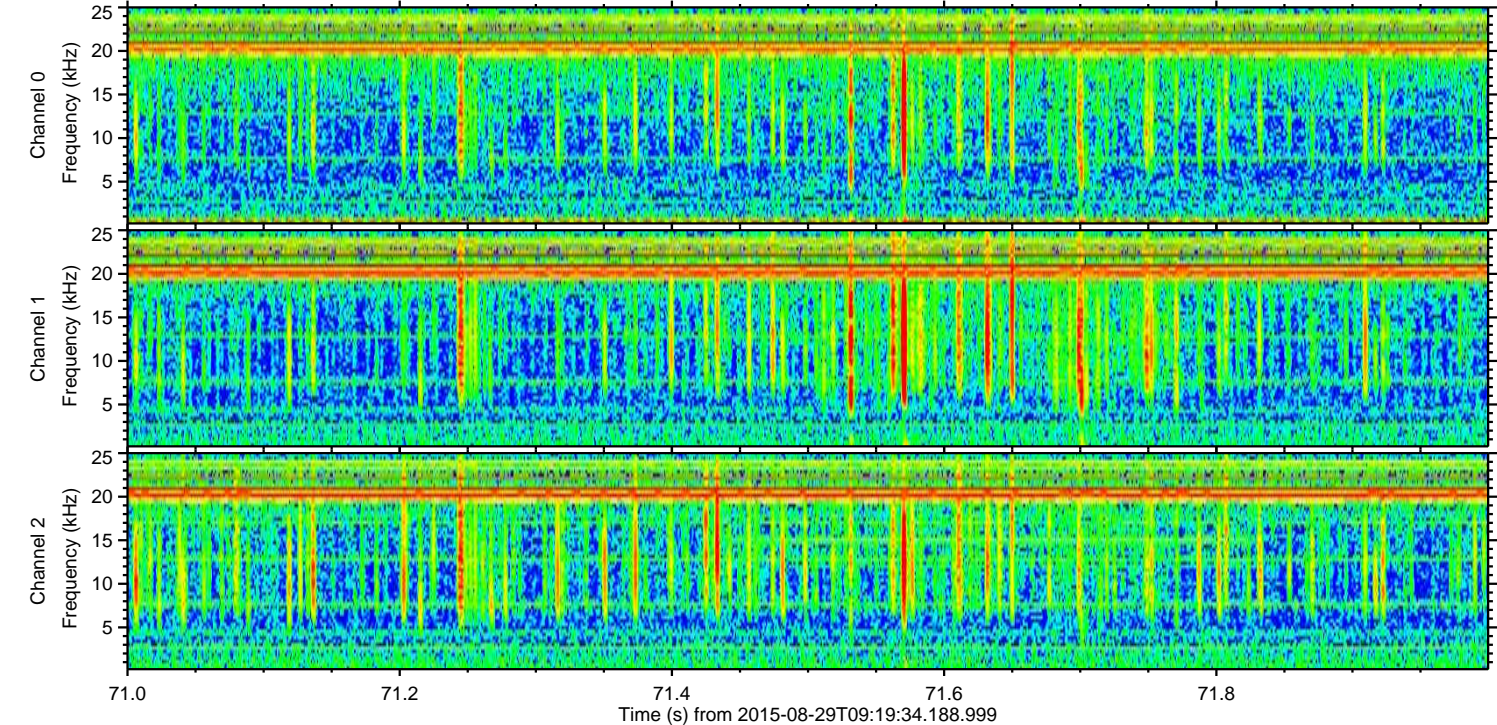
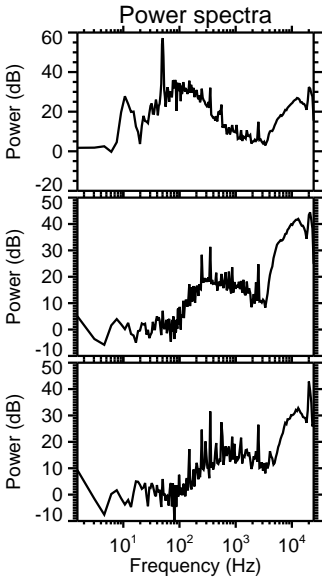
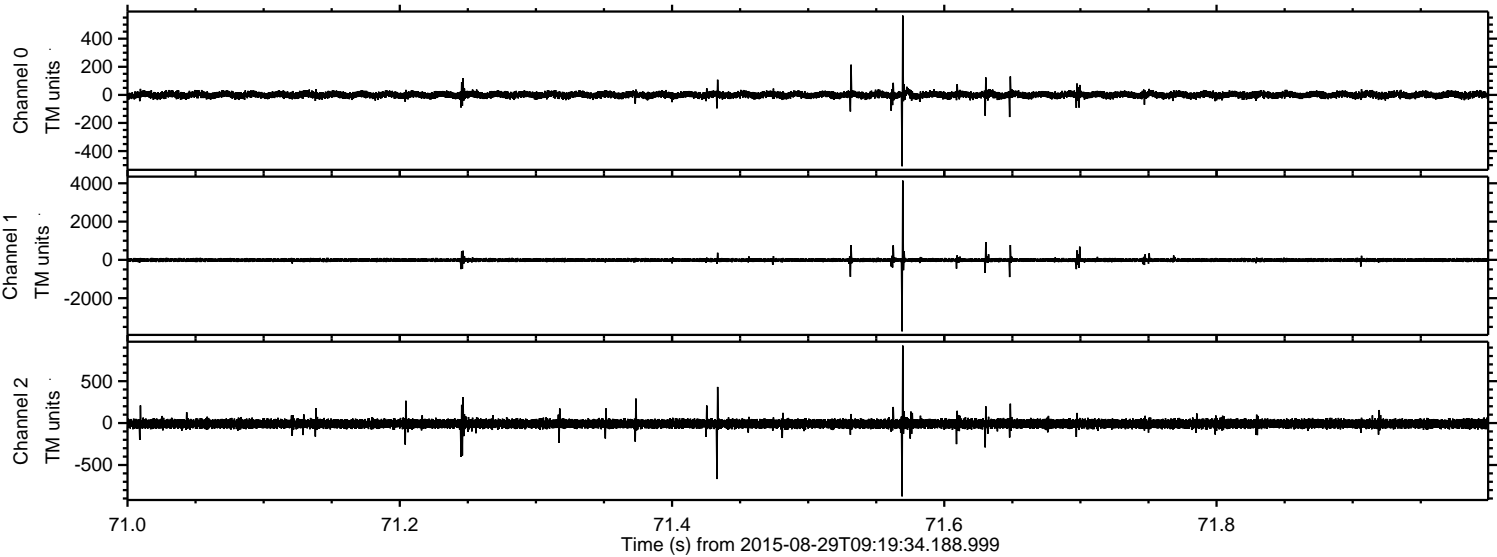
ELMAVAN 3D WAVEFORMS (Measured data sampled at 50 kHz) 51000 packets of 144 samples from 2015-08-29T09:19:34.188.999. Part 129/147

Processed Wed Oct 7 23:02:35 2015 by ELM ver.2012-10-06 from 001\_\_elm20150829\_091933\_\_dat00.bin





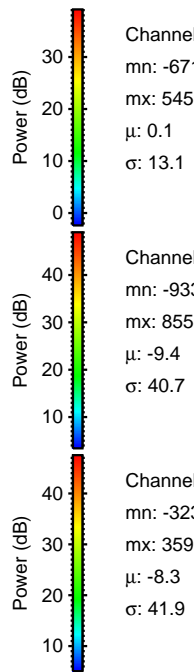
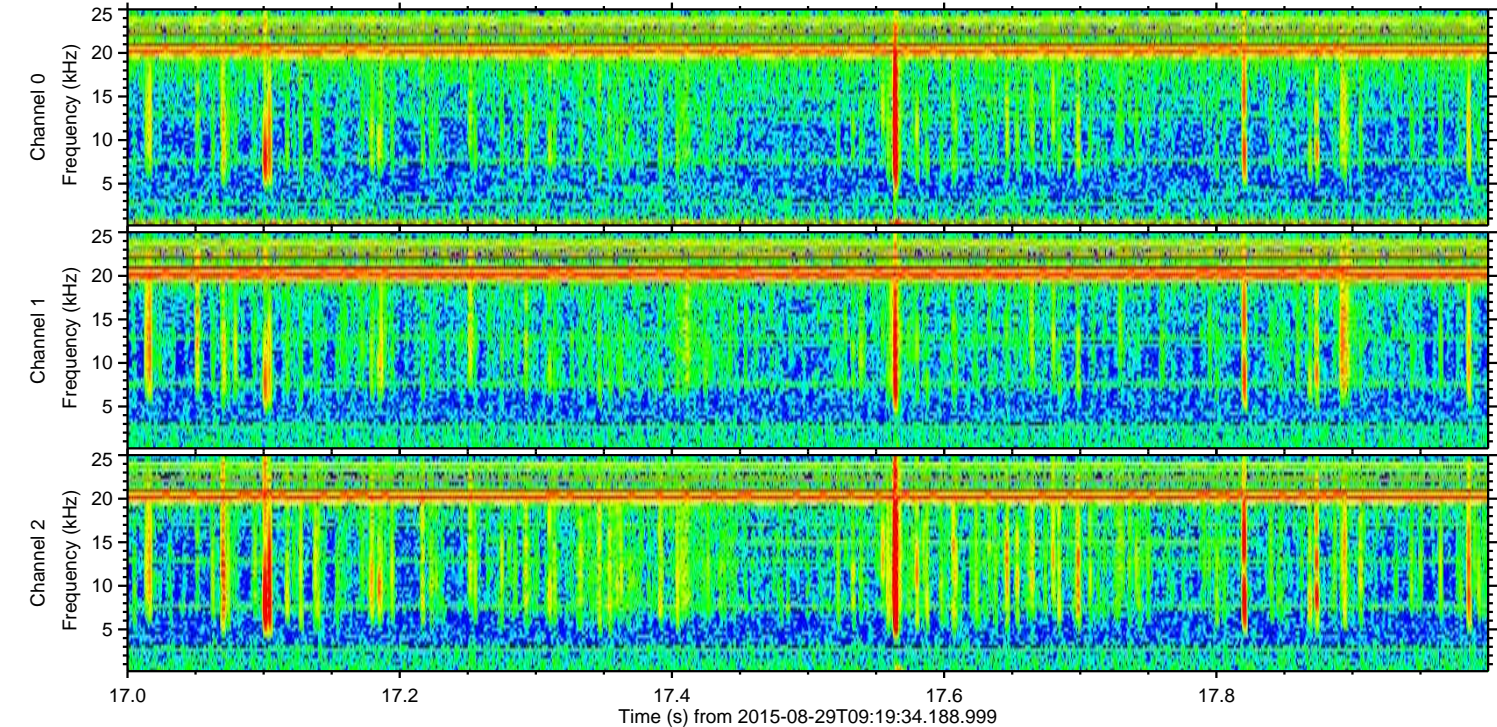
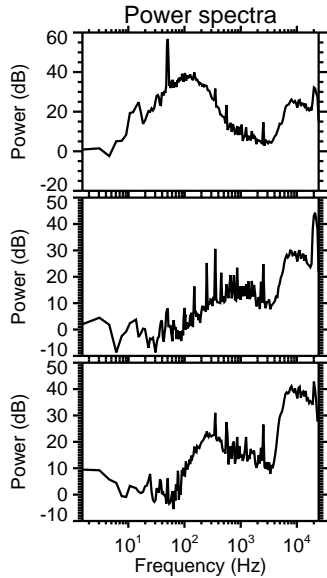
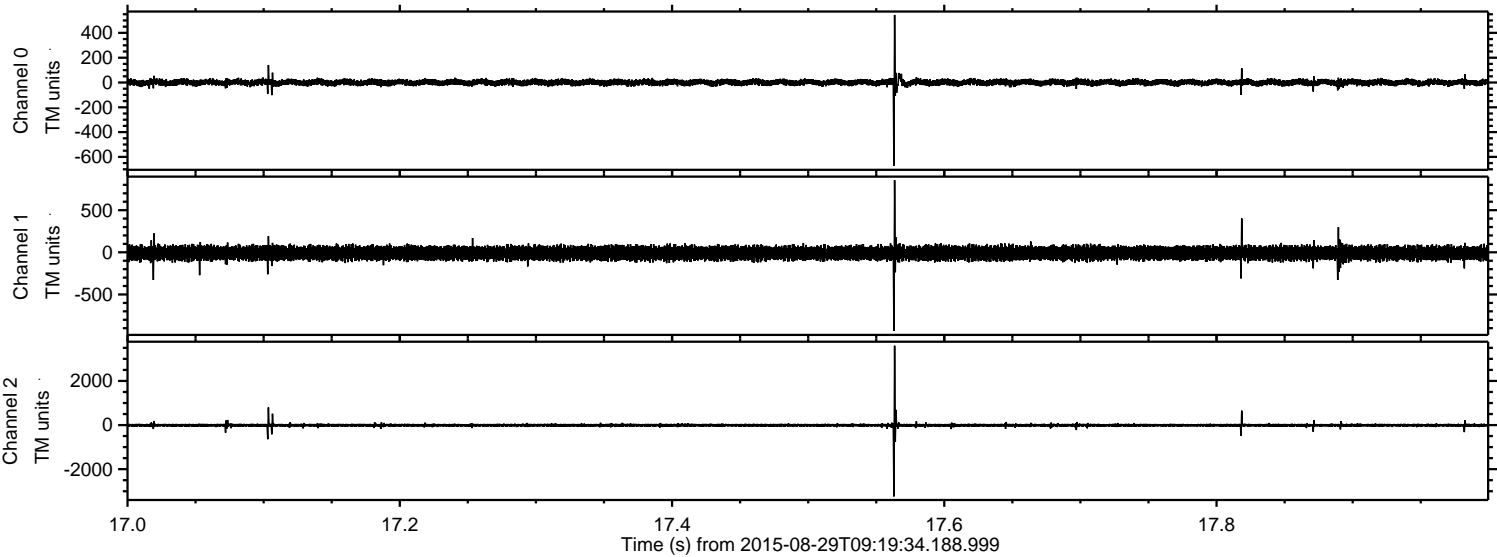
Processed Wed Oct 7 23:02:36 2015 by ELM ver.2012-10-06 from 001\_\_elm20150829\_091933\_\_dat00.bin





ELMAVAN 3D WAVEFORMS (Measured data sampled at 50 kHz) 51000 packets of 144 samples from 2015-08-29T09:19:34.188.999. Part 18/147

Processed Wed Oct 7 23:02:37 2015 by ELM ver.2012-10-06 from 001\_\_elm20150829\_091933\_\_dat00.bin



Channel 0

mn: -671  
mx: 545  
 $\mu$ : 0.1  
 $\sigma$ : 13.1

Channel 1

mn: -933  
mx: 855  
 $\mu$ : -9.4  
 $\sigma$ : 40.7

Channel 2

mn: -3236  
mx: 3599  
 $\mu$ : -8.3  
 $\sigma$ : 41.9



ELMAVAN 3D WAVEFORMS (Measured data sampled at 50 kHz) 51000 packets of 144 samples from 2015-08-29T09:19:34.188.999. Part 145/147

