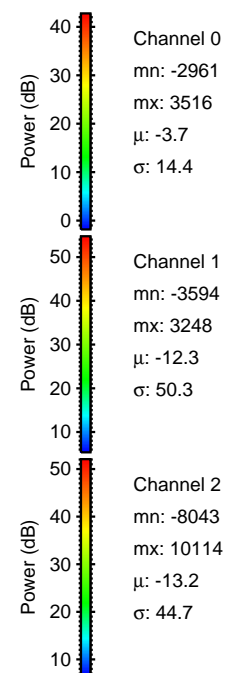
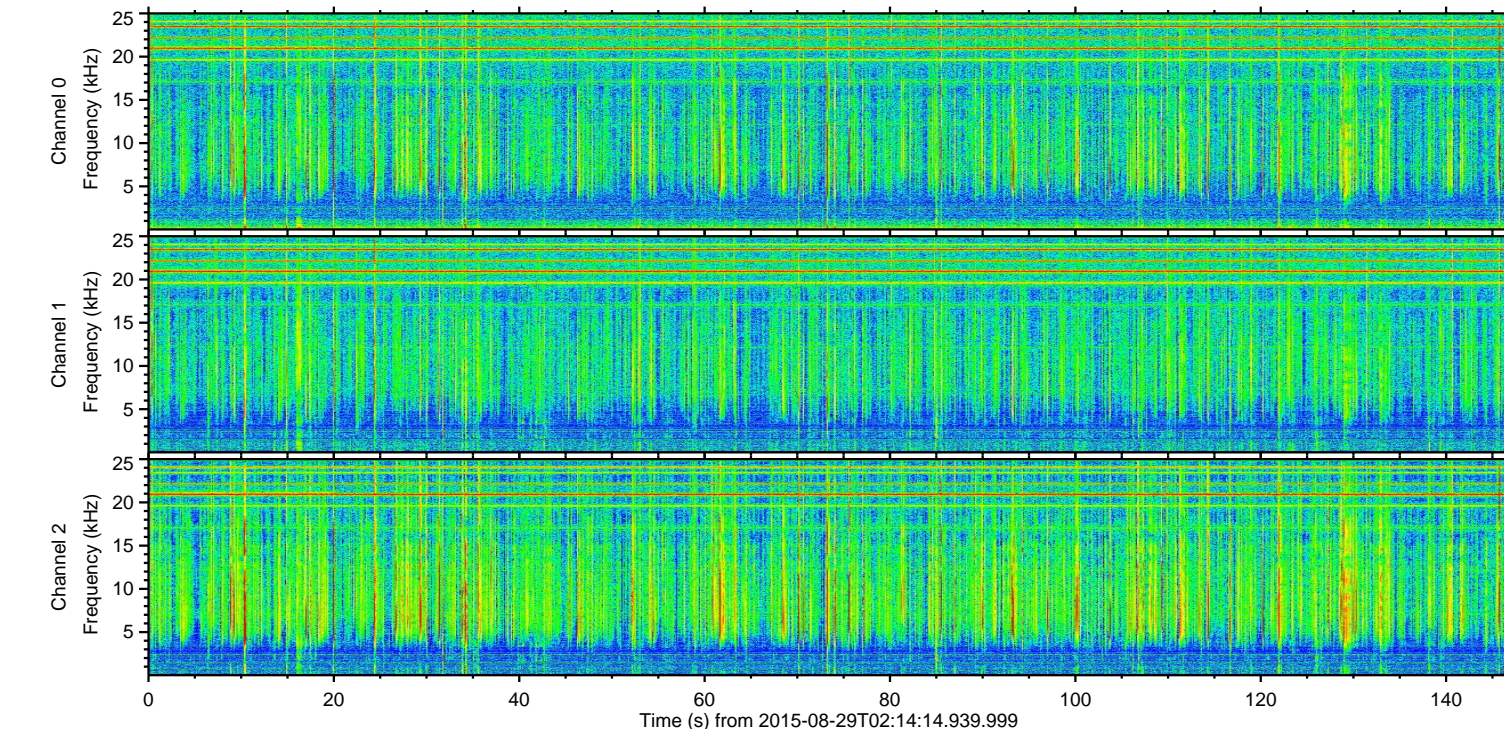
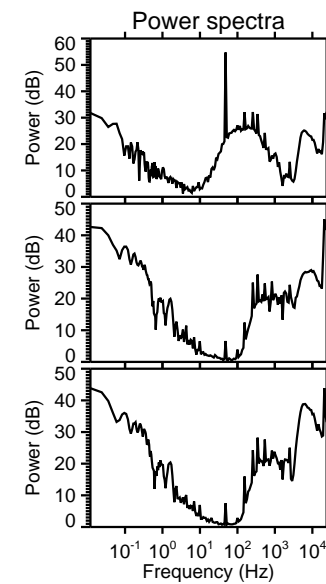
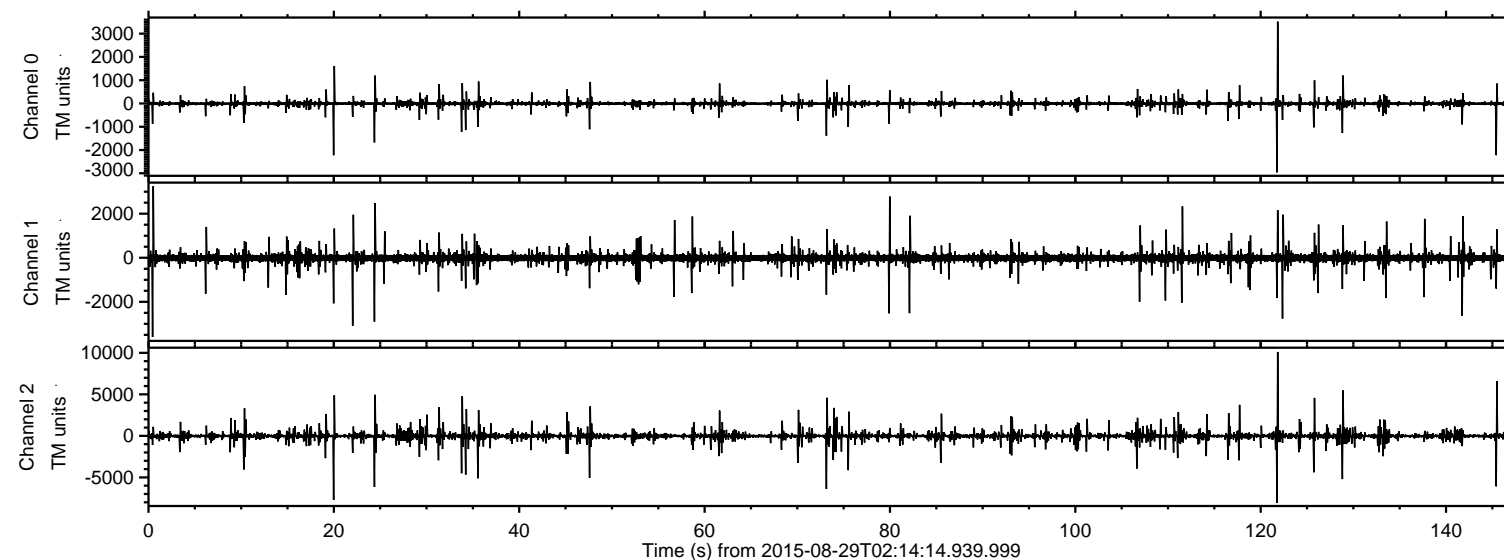


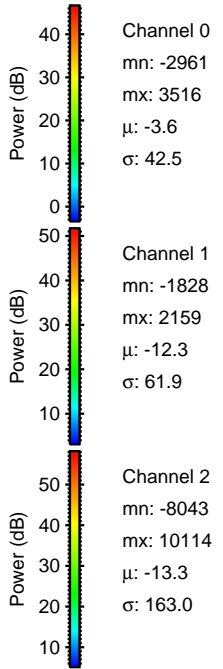
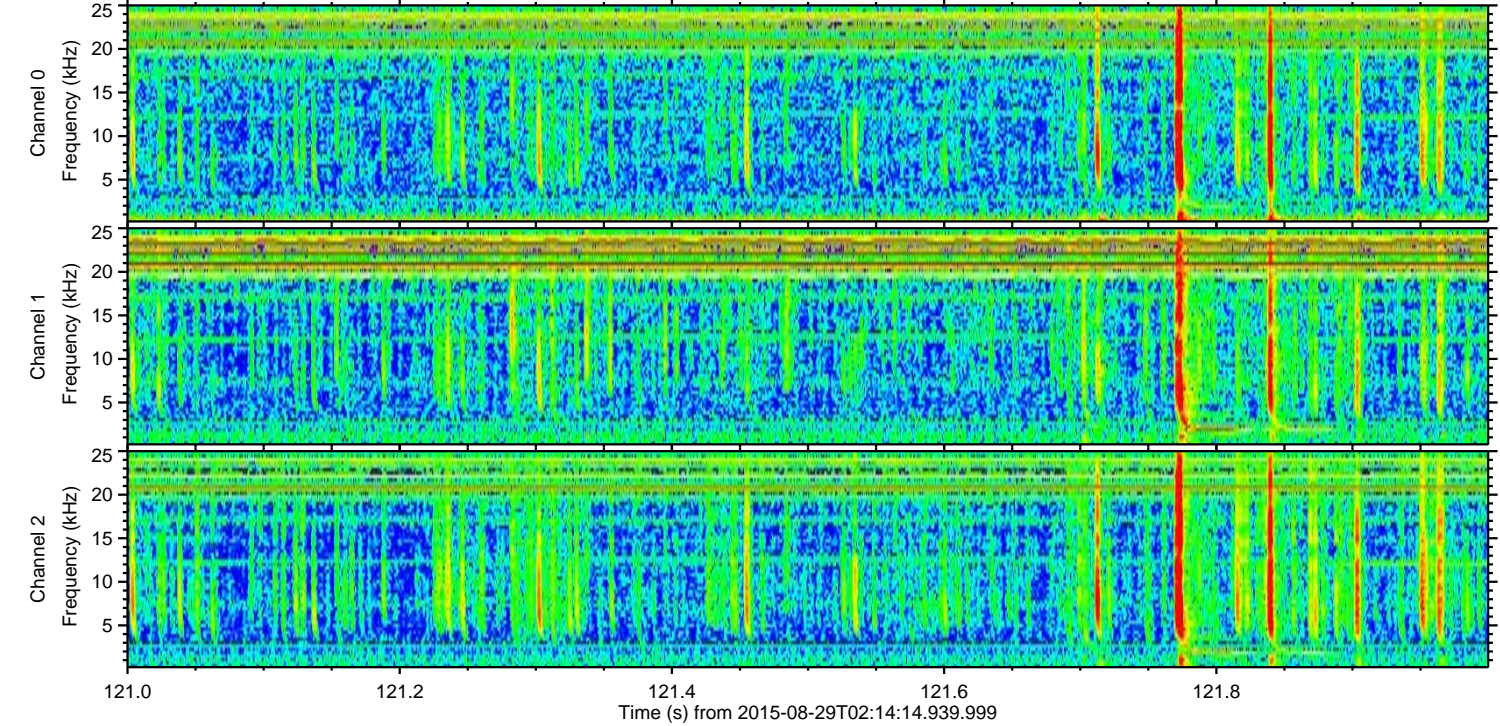
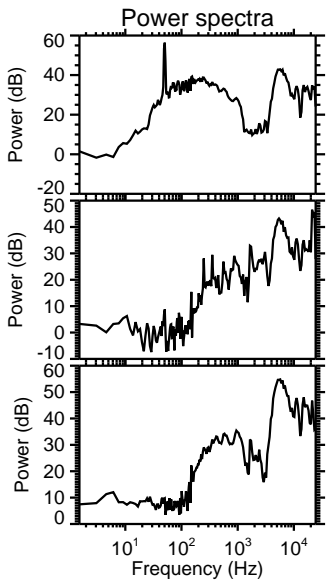
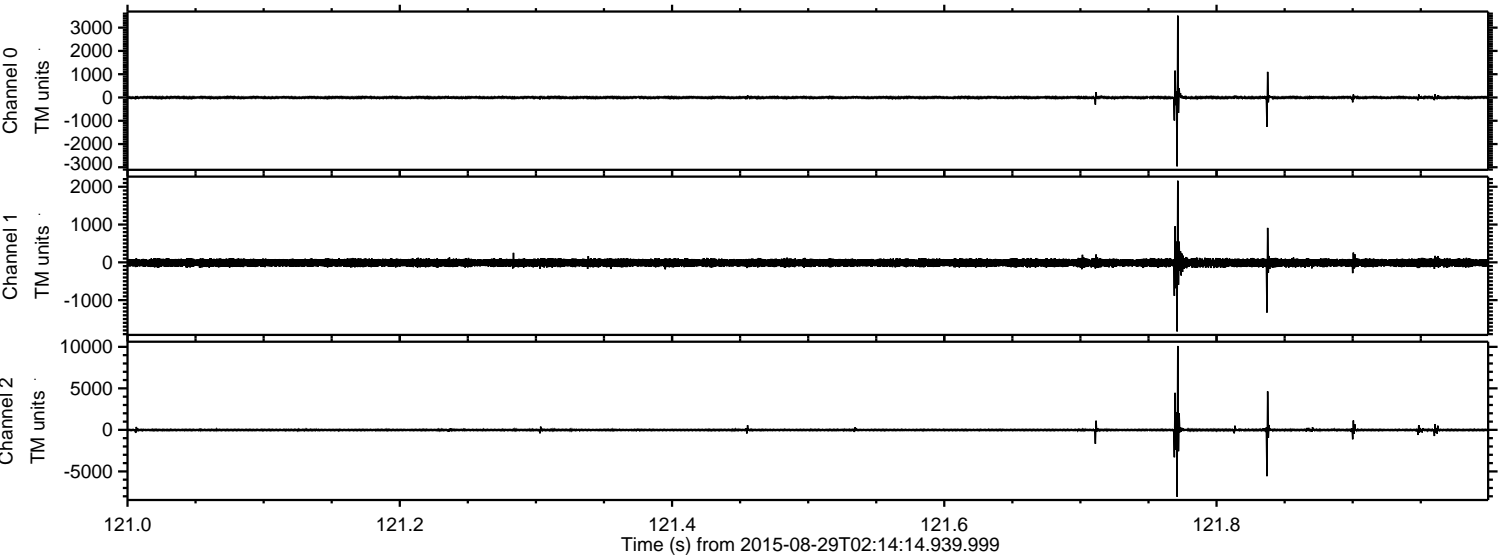
ELMAVAN 3D WAVEFORMS (Measured data sampled at 50 kHz) 51000 packets of 144 samples from 2015-08-29T02:14:14.939.999.

Processed Wed Oct 7 21:05:21 2015 by ELM ver.2012-10-06 from 001__elm20150829_021413__dat00.bin



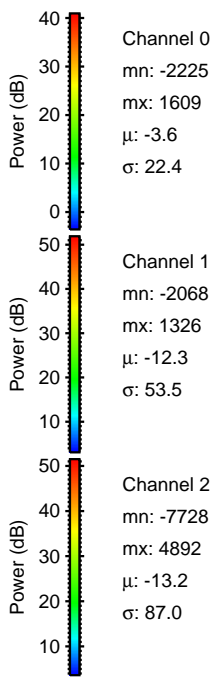
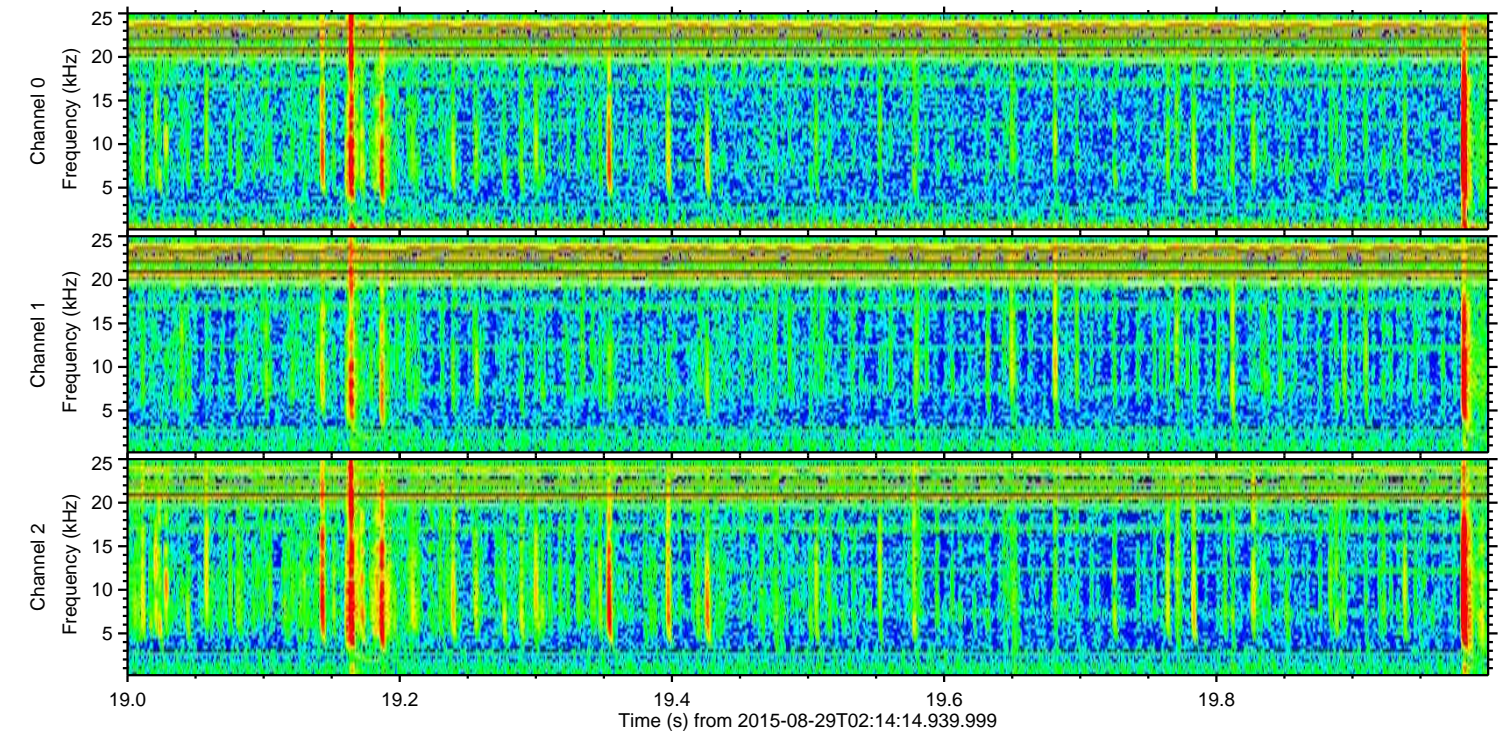
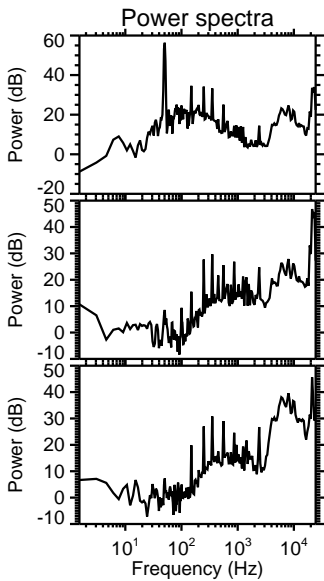
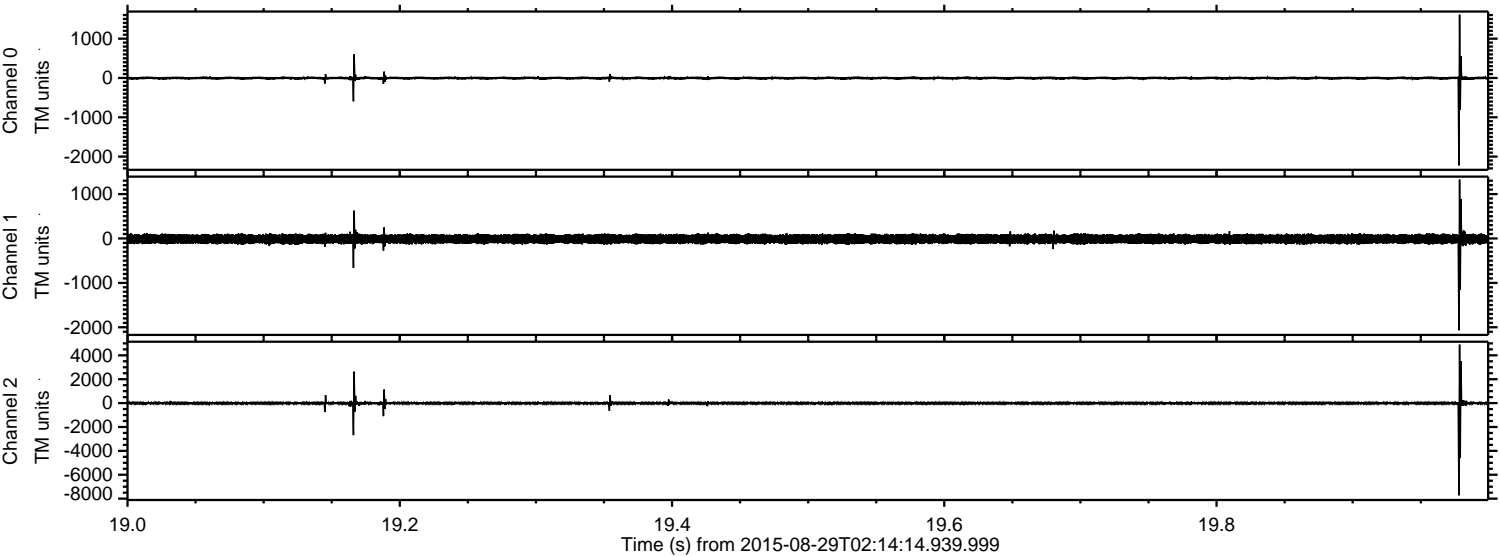
ELMAVAN 3D WAVEFORMS (Measured data sampled at 50 kHz) 51000 packets of 144 samples from 2015-08-29T02:14:14.939.999. Part 122/147

Processed Wed Oct 7 21:05:38 2015 by ELM ver.2012-10-06 from 001__elm20150829_021413__dat00.bin



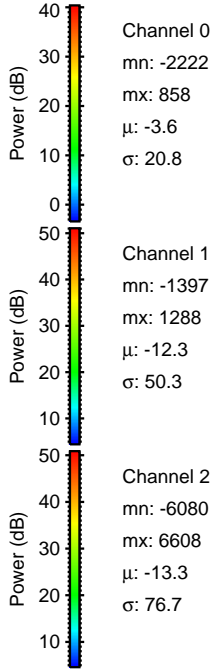
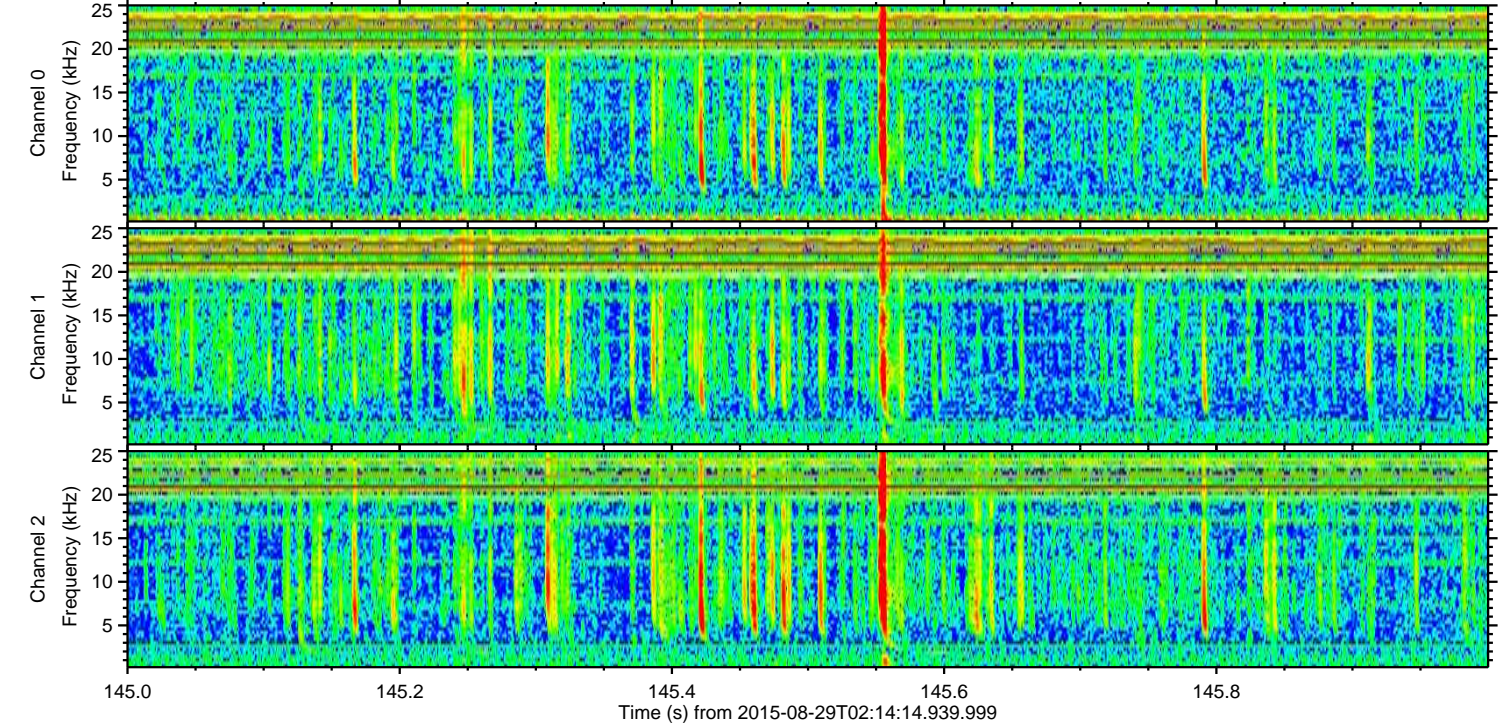
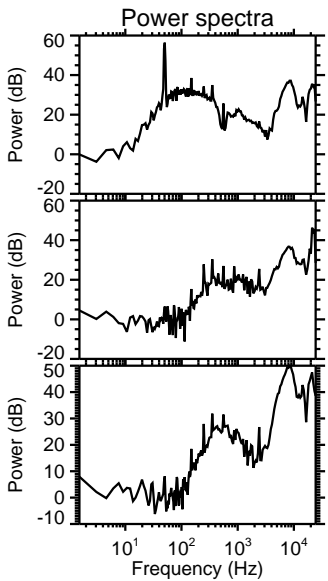
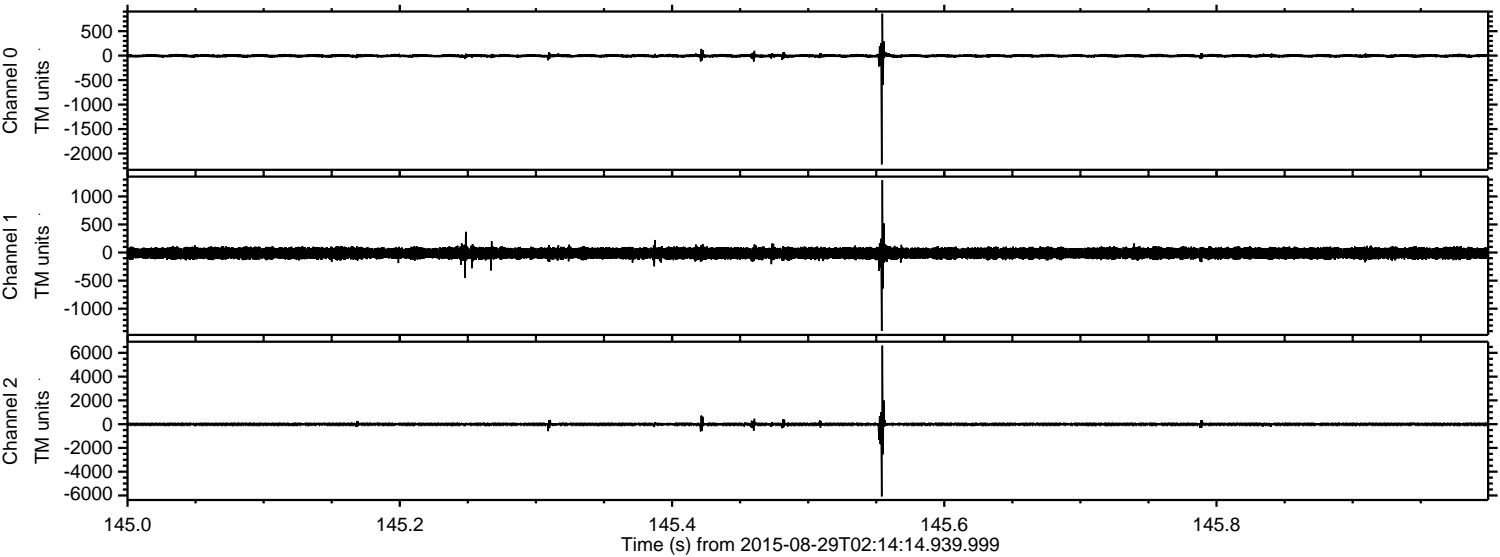
ELMAVAN 3D WAVEFORMS (Measured data sampled at 50 kHz) 51000 packets of 144 samples from 2015-08-29T02:14:14.939.999. Part 20/147

Processed Wed Oct 7 21:05:39 2015 by ELM ver.2012-10-06 from 001__elm20150829_021413__dat00.bin



ELMAVAN 3D WAVEFORMS (Measured data sampled at 50 kHz) 51000 packets of 144 samples from 2015-08-29T02:14:14.939.999. Part 146/147

Processed Wed Oct 7 21:05:40 2015 by ELM ver.2012-10-06 from 001__elm20150829_021413__dat00.bin



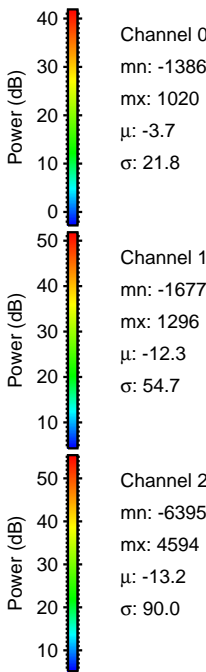
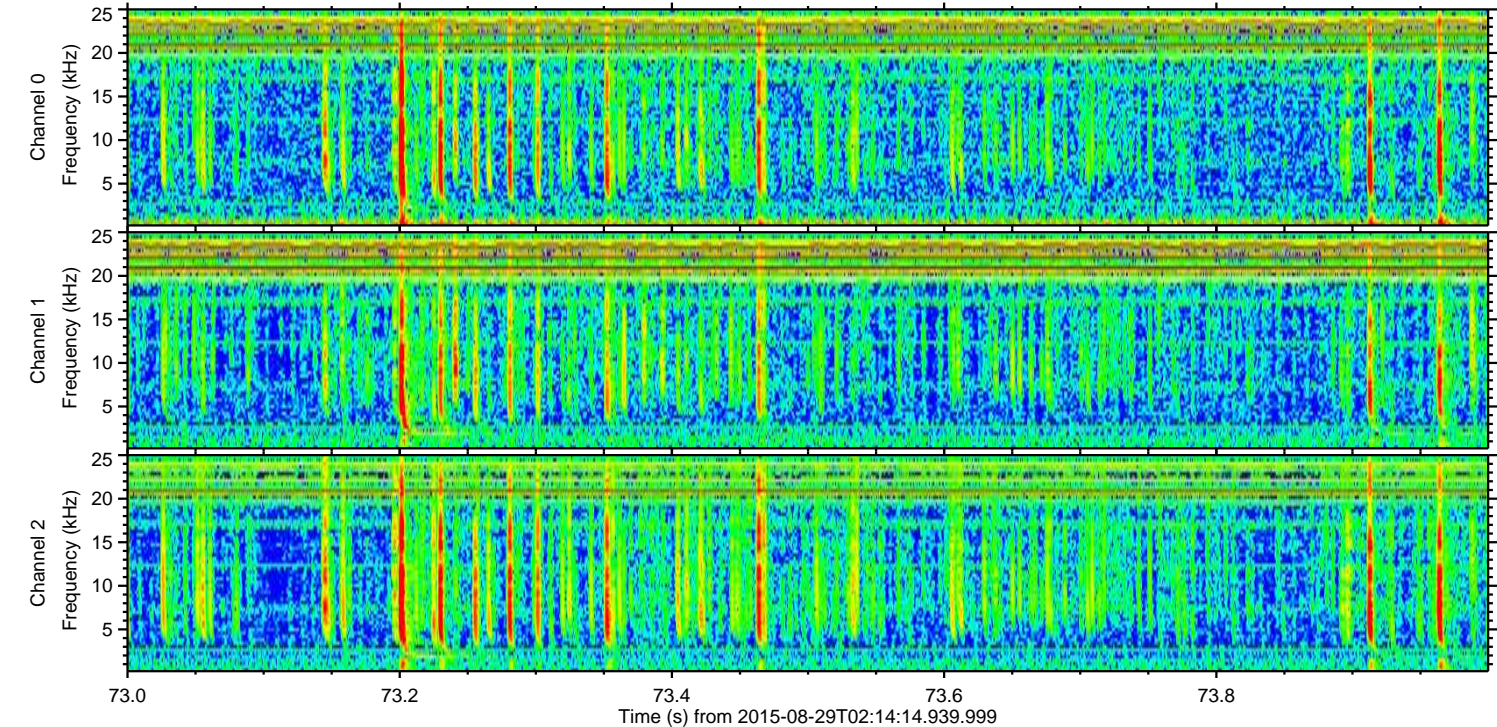
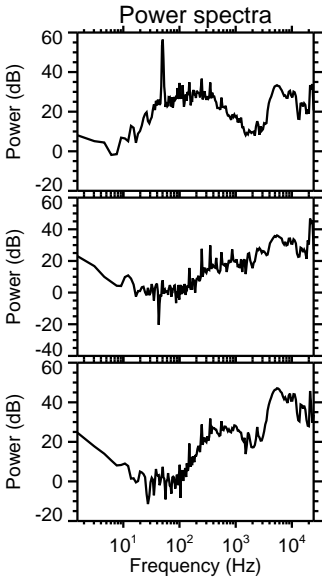
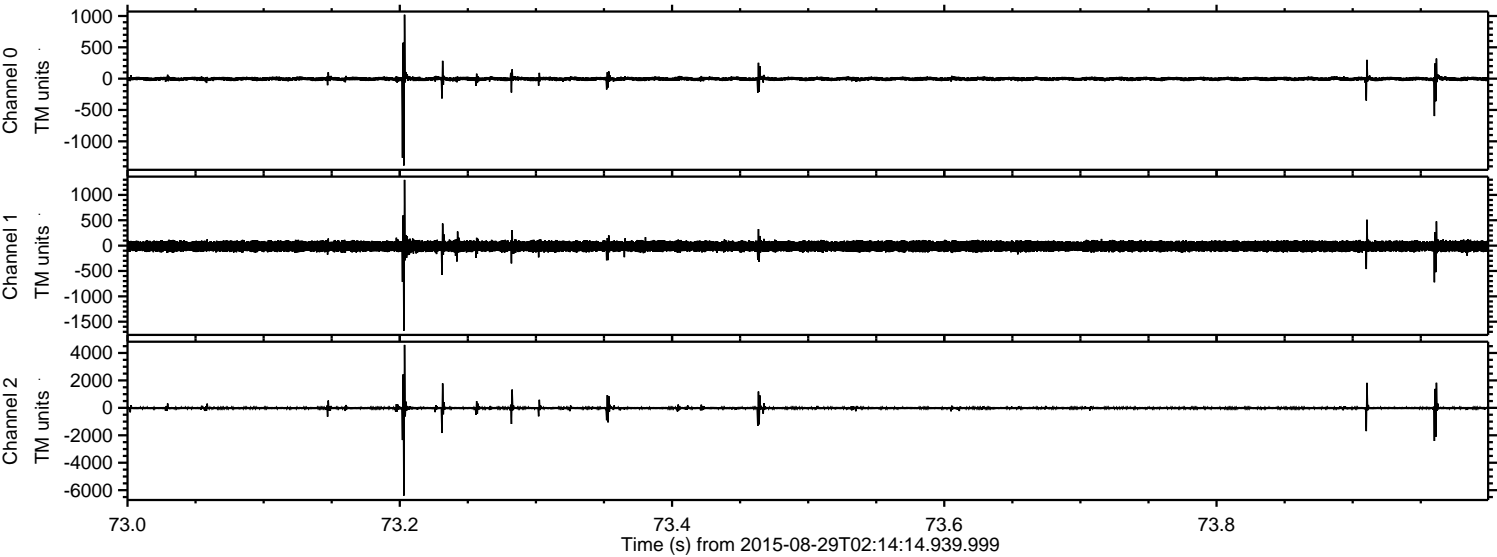
Channel 0
mn: -2222
mx: 858
 μ : -3.6
 σ : 20.8

Channel 1
mn: -1397
mx: 1288
 μ : -12.3
 σ : 50.3

Channel 2
mn: -6080
mx: 6608
 μ : -13.3
 σ : 76.7

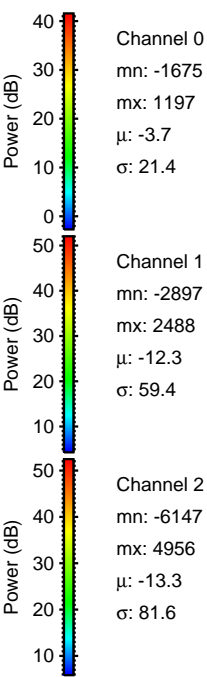
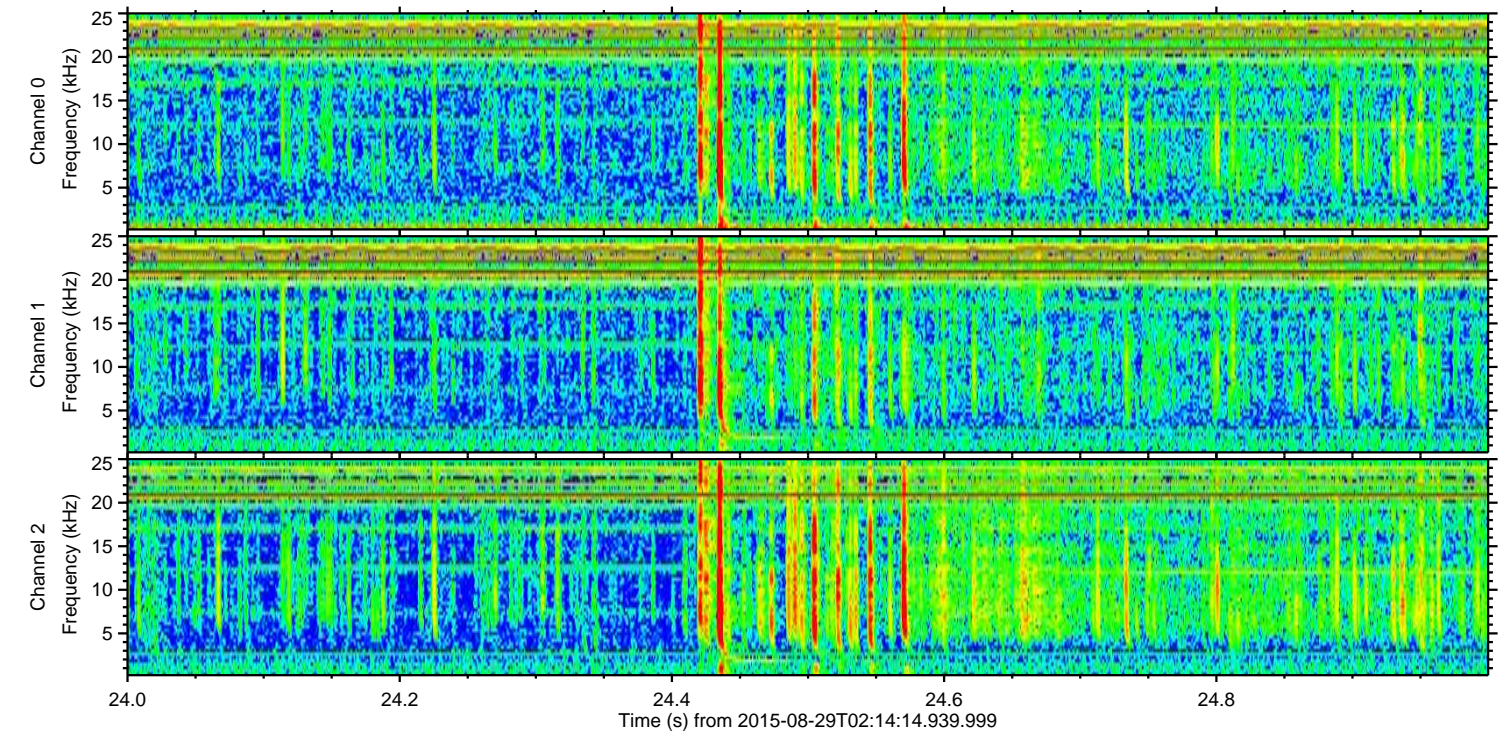
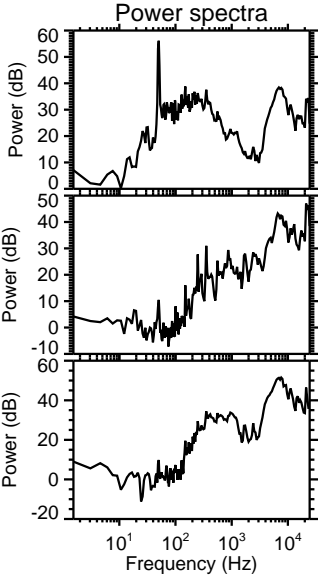
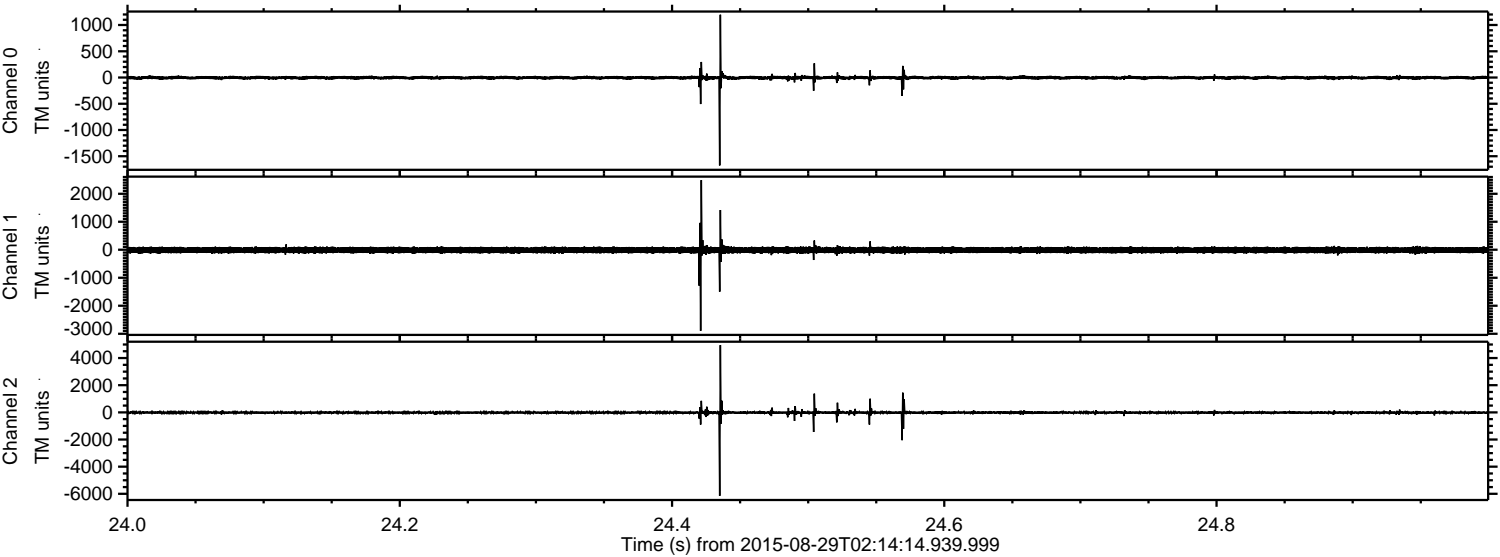
ELMAVAN 3D WAVEFORMS (Measured data sampled at 50 kHz) 51000 packets of 144 samples from 2015-08-29T02:14:14.939.999. Part 74/147

Processed Wed Oct 7 21:05:42 2015 by ELM ver.2012-10-06 from 001__elm20150829_021413__dat00.bin



ELMAVAN 3D WAVEFORMS (Measured data sampled at 50 kHz) 51000 packets of 144 samples from 2015-08-29T02:14:14.939.999. Part 25/147

Processed Wed Oct 7 21:05:43 2015 by ELM ver.2012-10-06 from 001__elm20150829_021413__dat00.bin



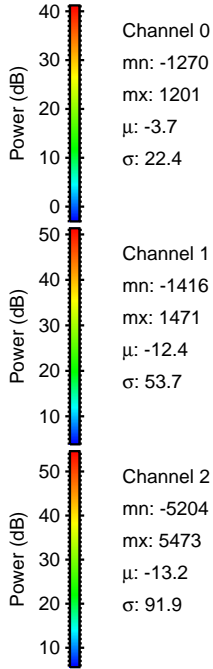
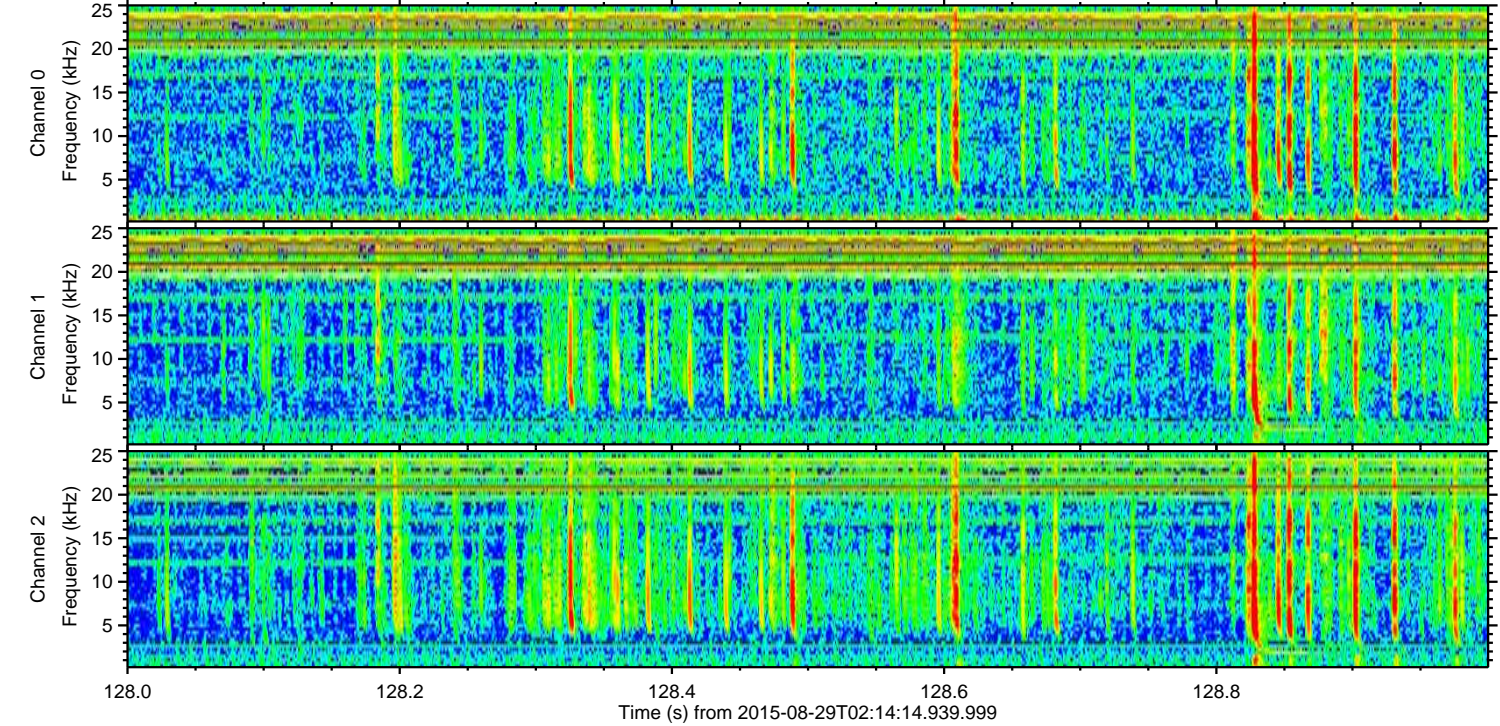
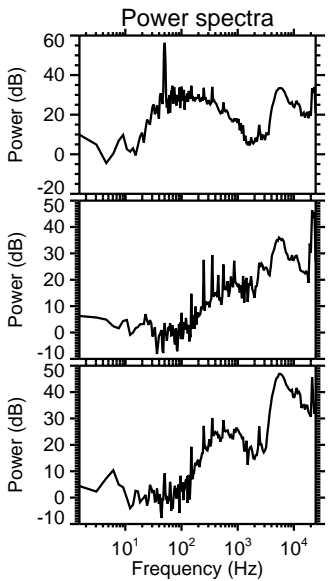
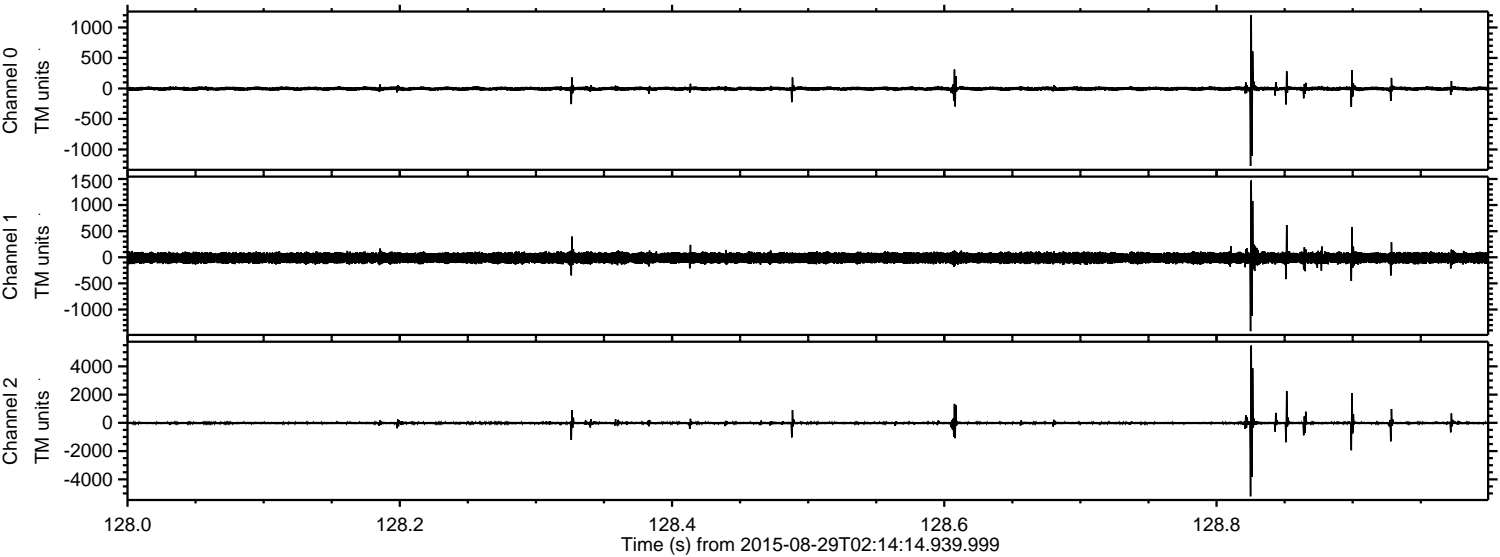
Channel 0
mn: -1675
mx: 1197
 μ : -3.7
 σ : 21.4

Channel 1
mn: -2897
mx: 2488
 μ : -12.3
 σ : 59.4

Channel 2
mn: -6147
mx: 4956
 μ : -13.3
 σ : 81.6

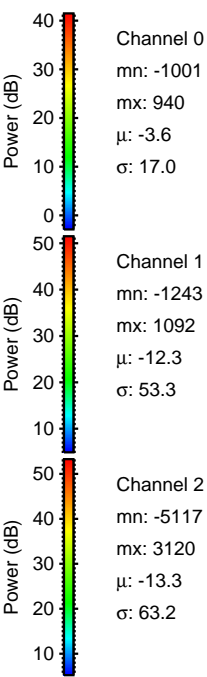
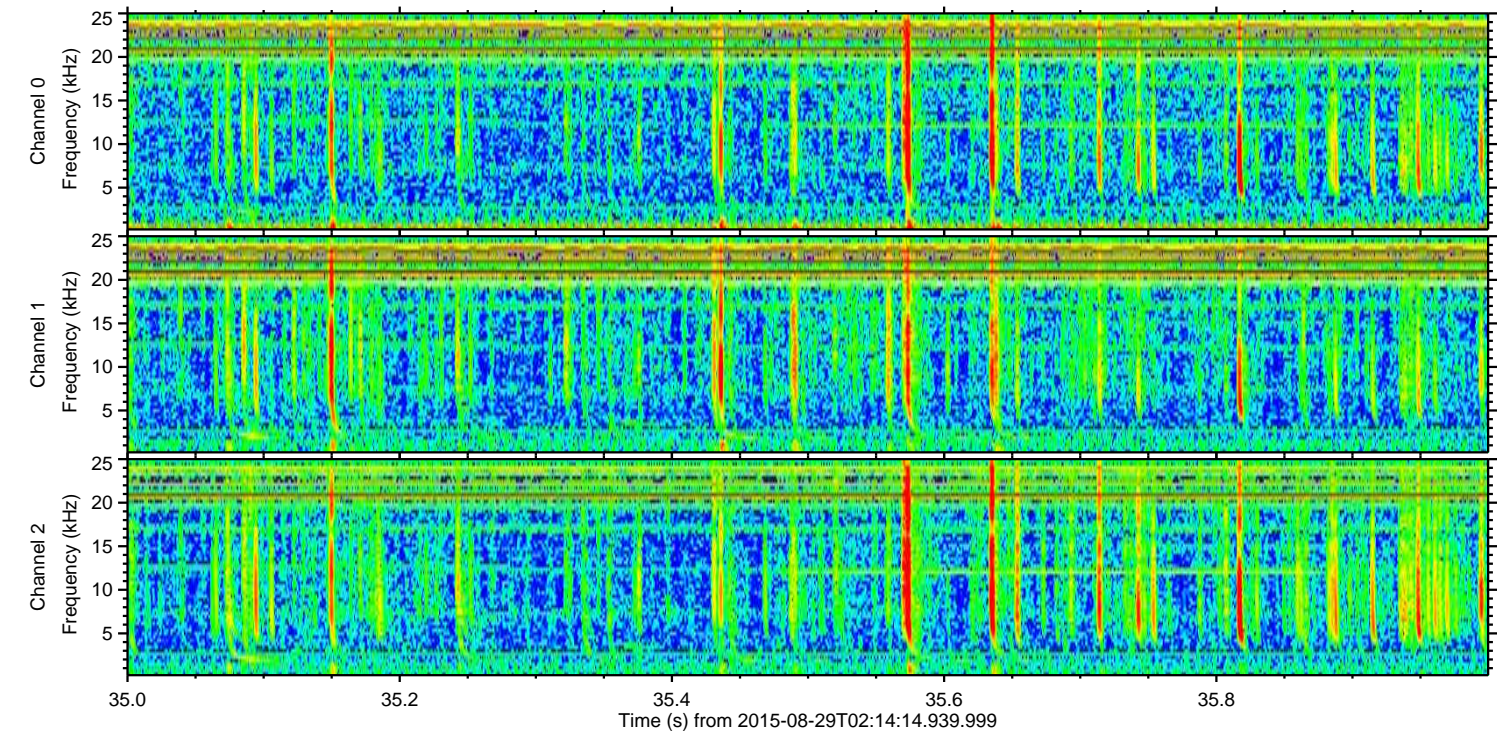
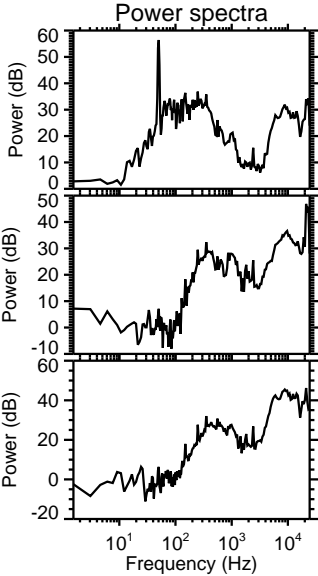
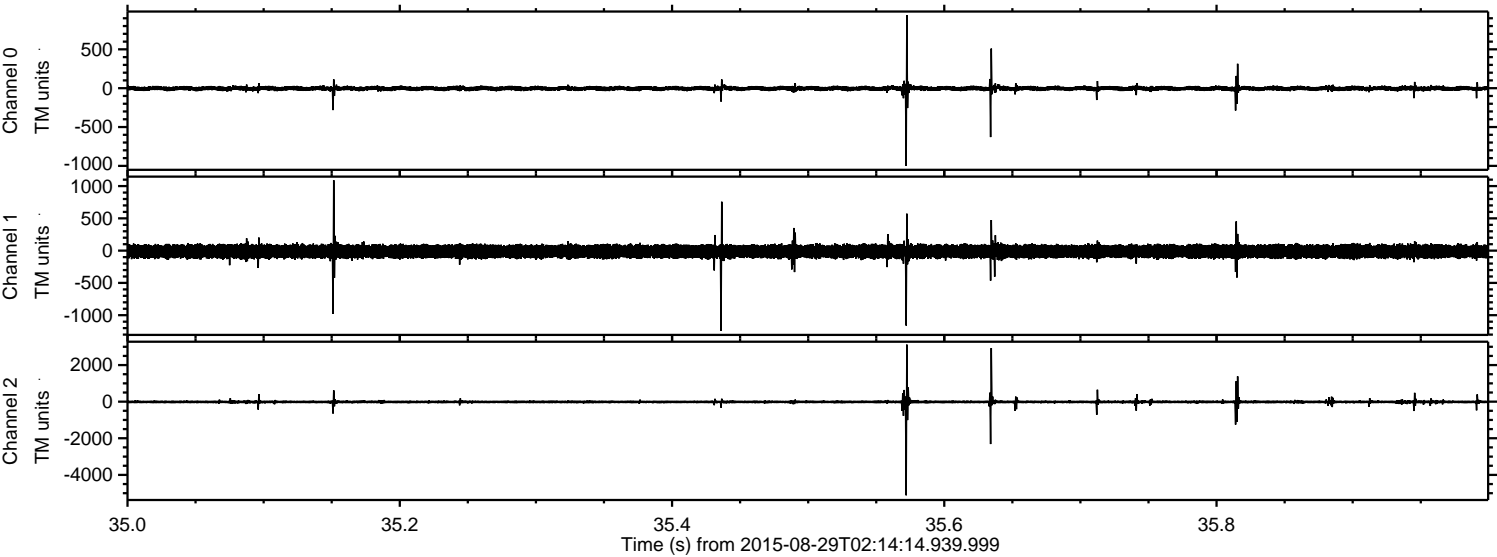
ELMAVAN 3D WAVEFORMS (Measured data sampled at 50 kHz) 51000 packets of 144 samples from 2015-08-29T02:14:14.939.999. Part 129/147

Processed Wed Oct 7 21:05:44 2015 by ELM ver.2012-10-06 from 001__elm20150829_021413__dat00.bin

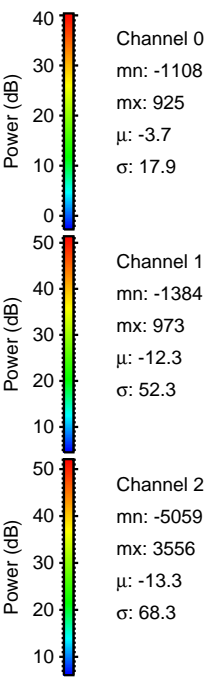
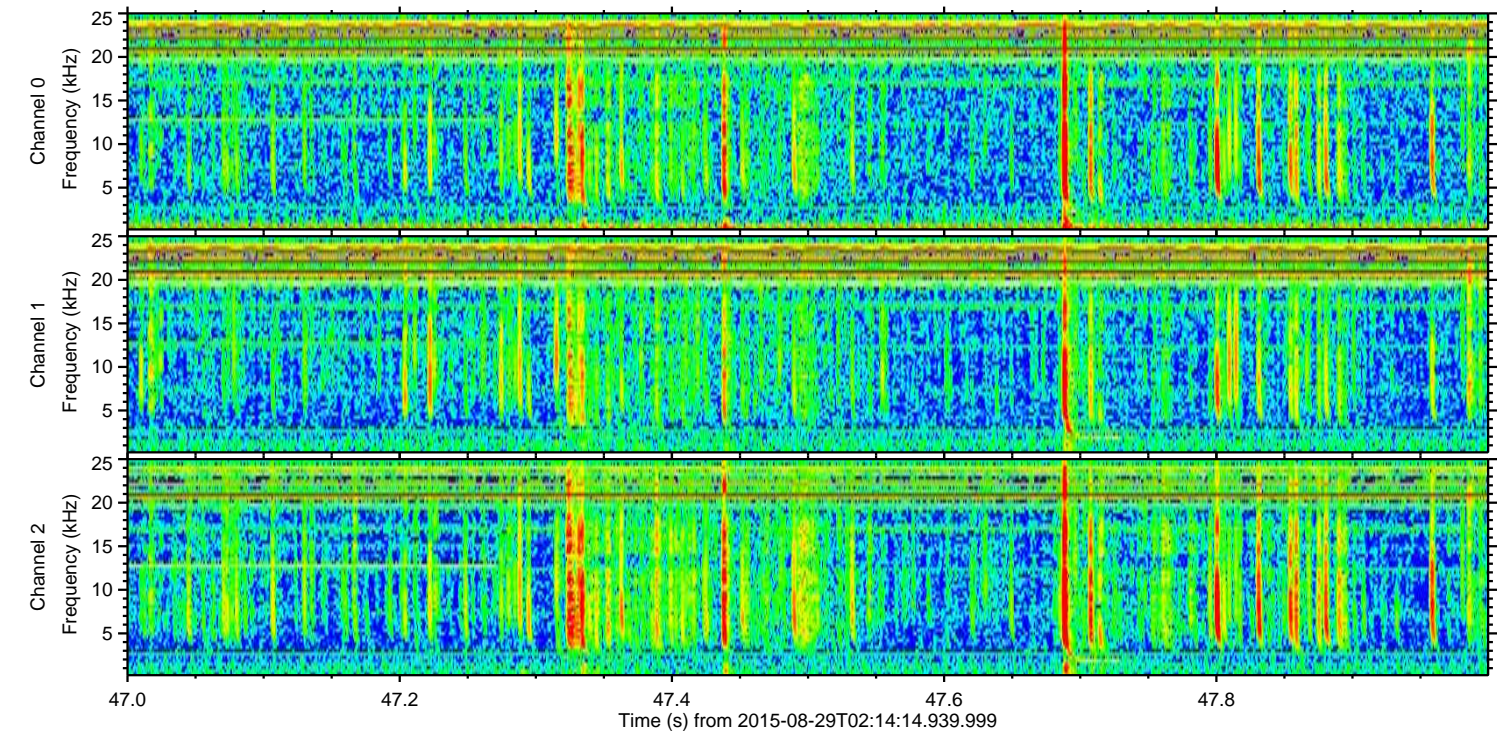
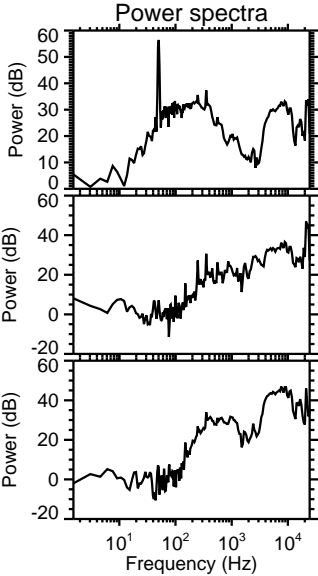
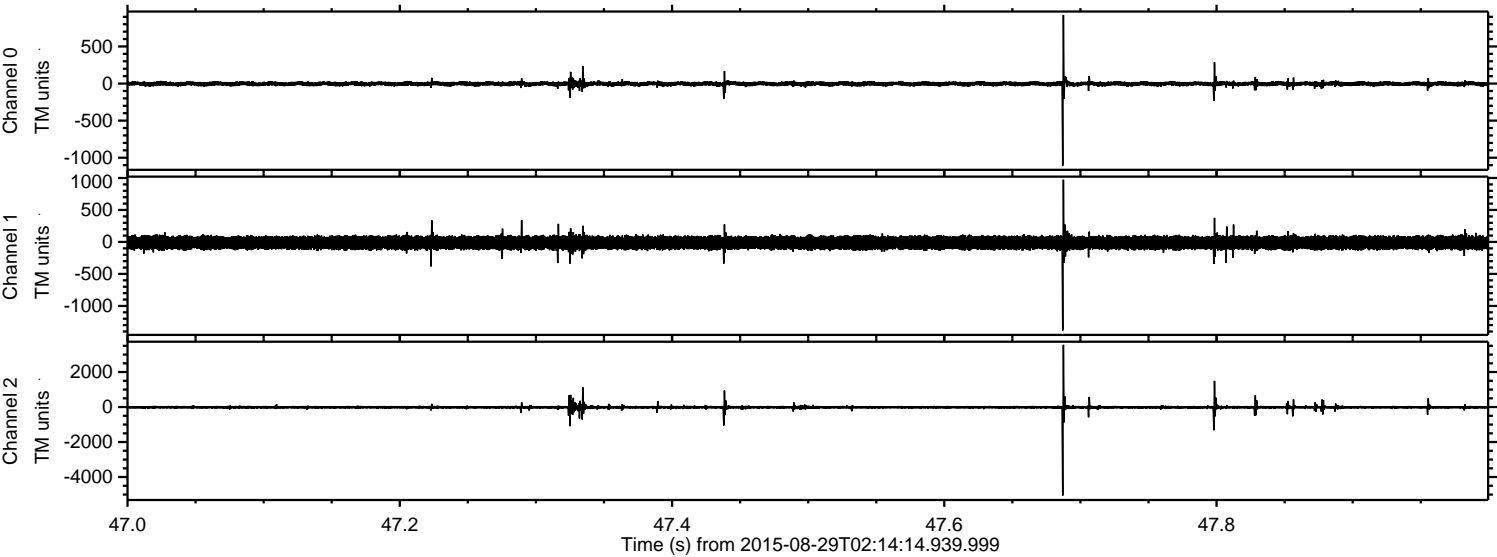


ELMAVAN 3D WAVEFORMS (Measured data sampled at 50 kHz) 51000 packets of 144 samples from 2015-08-29T02:14:14.939.999. Part 36/147

Processed Wed Oct 7 21:05:45 2015 by ELM ver.2012-10-06 from 001__elm20150829_021413__dat00.bin



Processed Wed Oct 7 21:05:47 2015 by ELM ver.2012-10-06 from 001__elm20150829_021413__dat00.bin

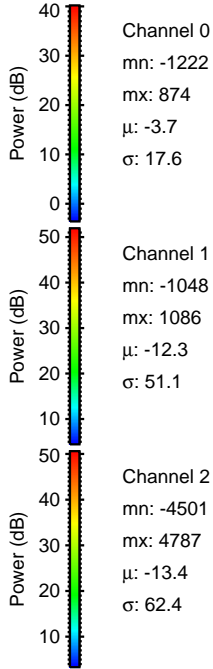
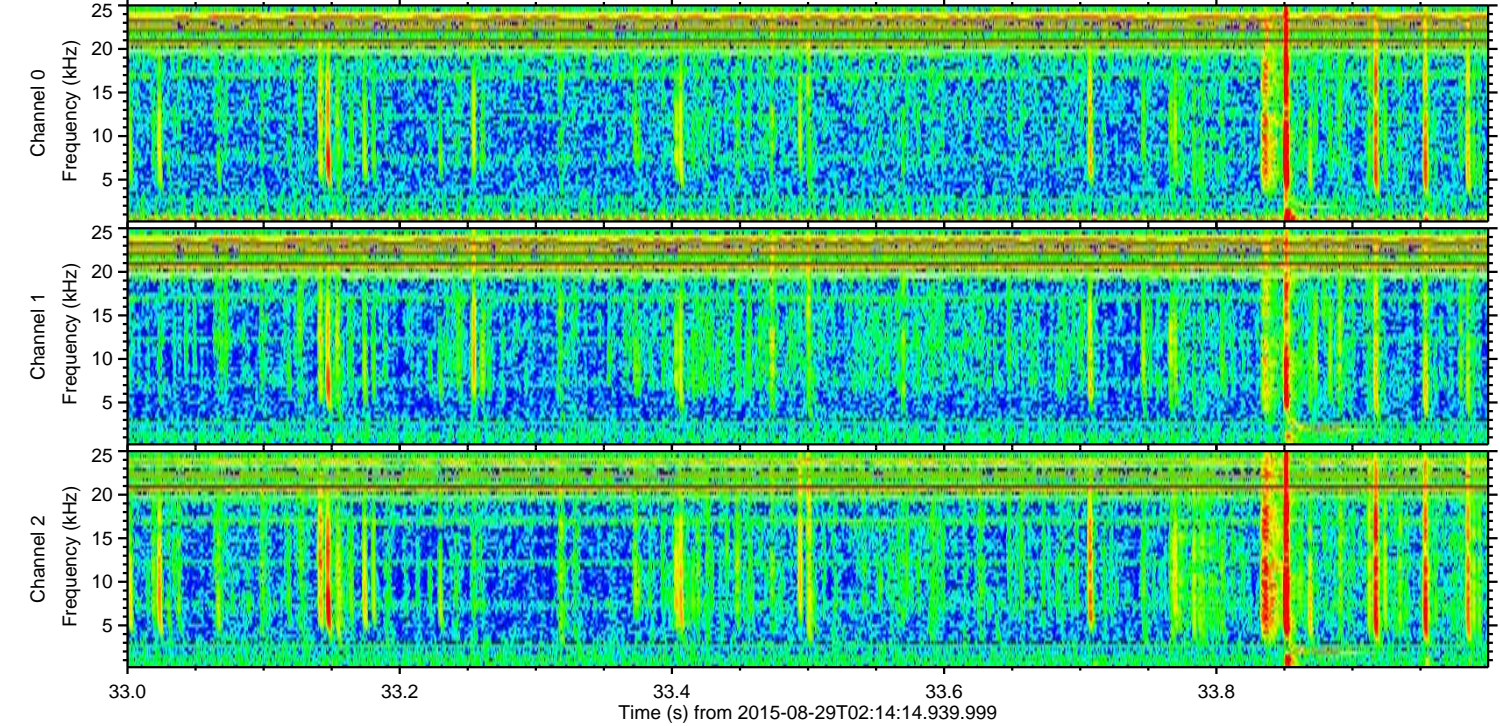
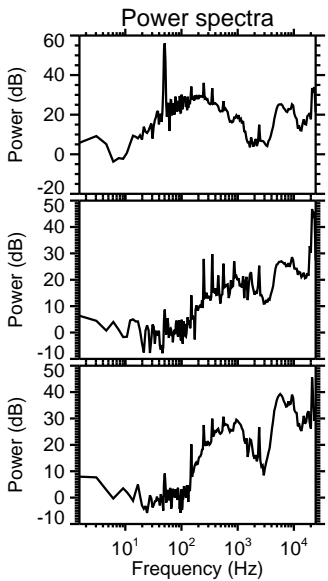
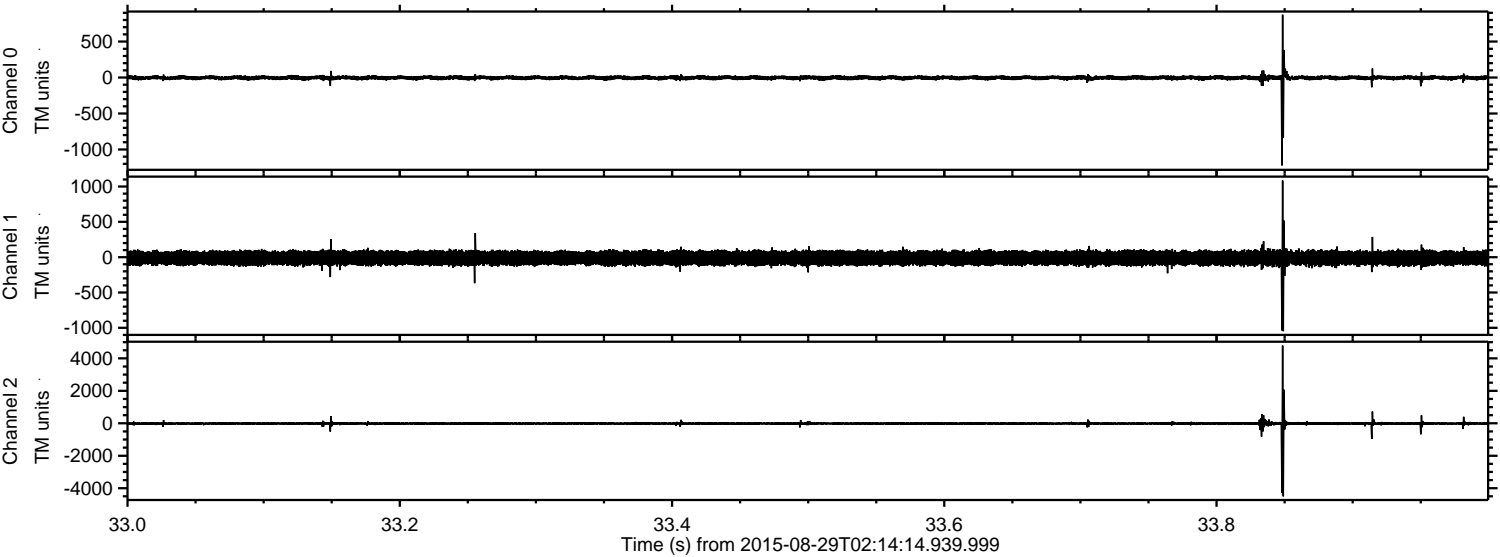


Channel 0
mn: -1108
mx: 925
 μ : -3.7
 σ : 17.9

Channel 1
mn: -1384
mx: 973
 μ : -12.3
 σ : 52.3

Channel 2
mn: -5059
mx: 3556
 μ : -13.3
 σ : 68.3

Processed Wed Oct 7 21:05:48 2015 by ELM ver.2012-10-06 from 001__elm20150829_021413__dat00.bin



ELMAVAN 3D WAVEFORMS (Measured data sampled at 50 kHz) 51000 packets of 144 samples from 2015-08-29T02:14:14.939.999. Part 144/147

