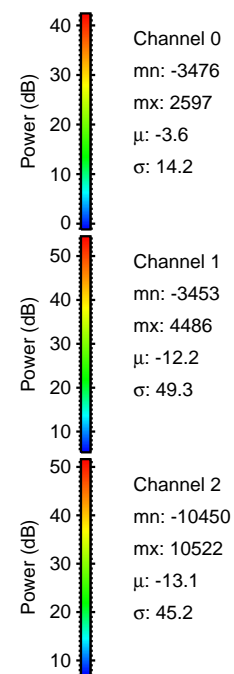
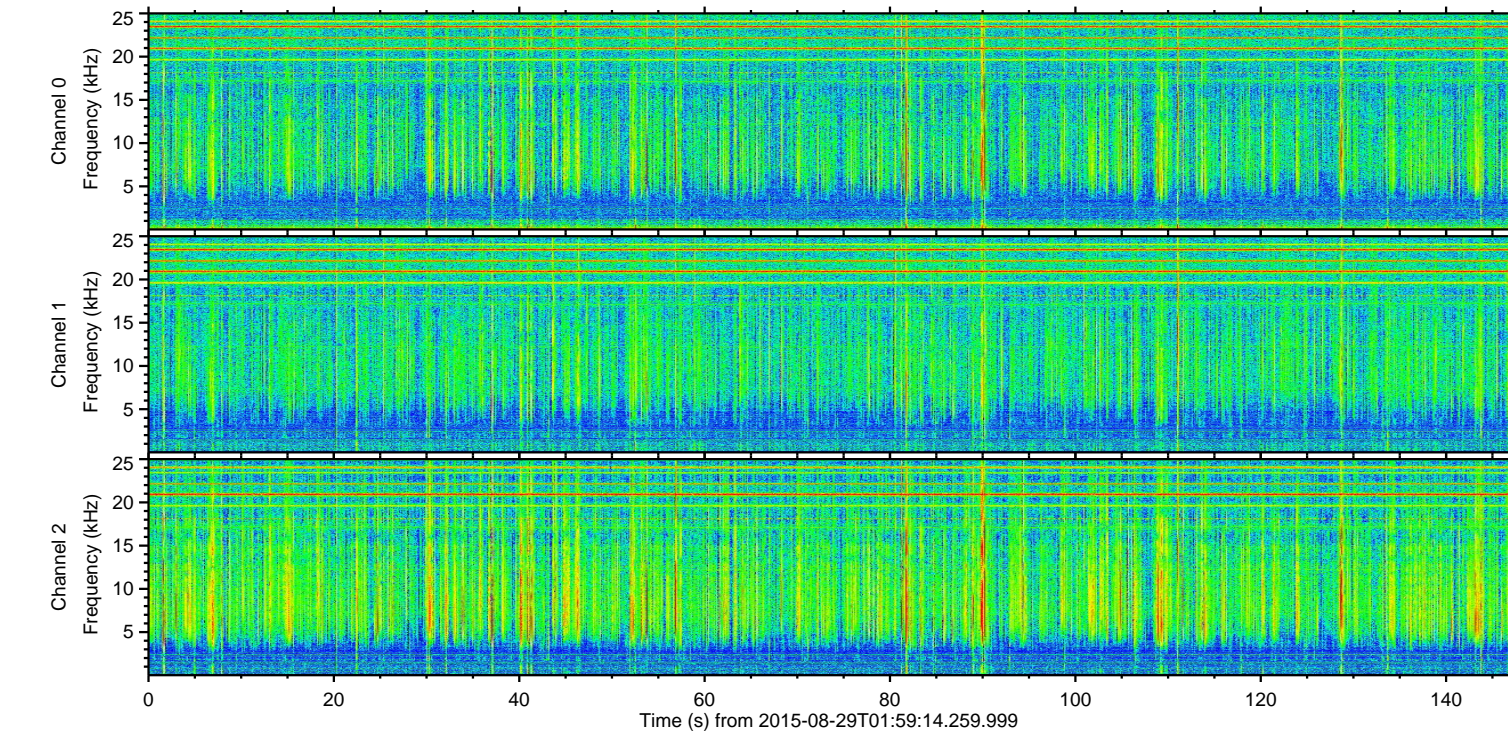
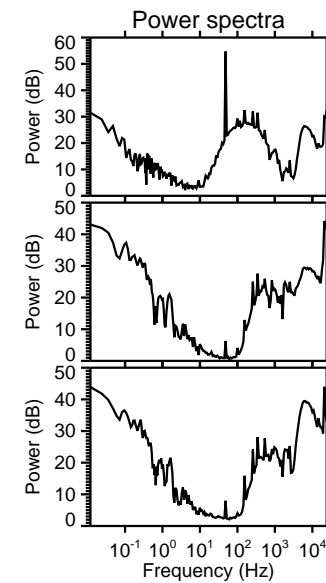
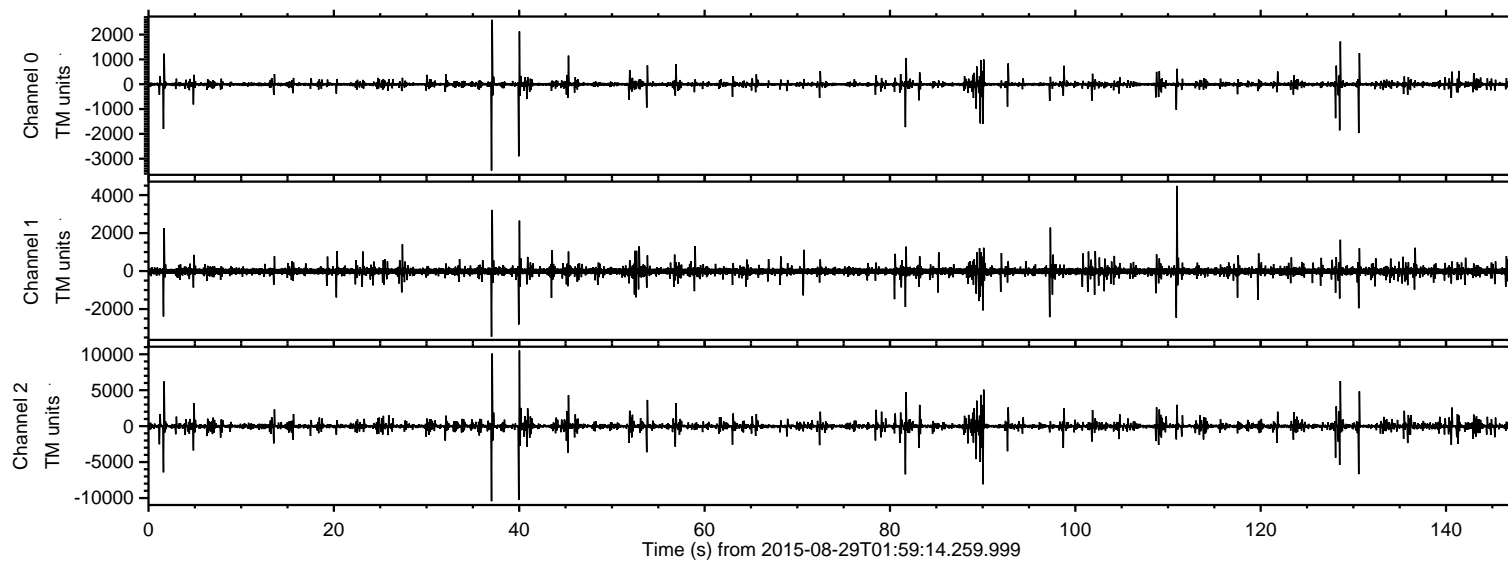


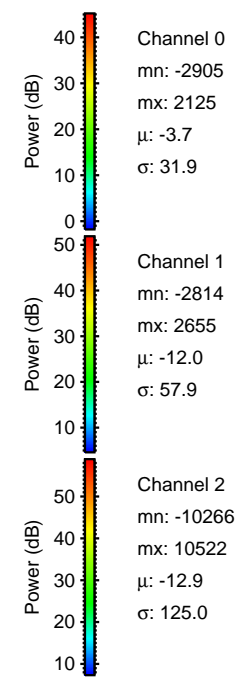
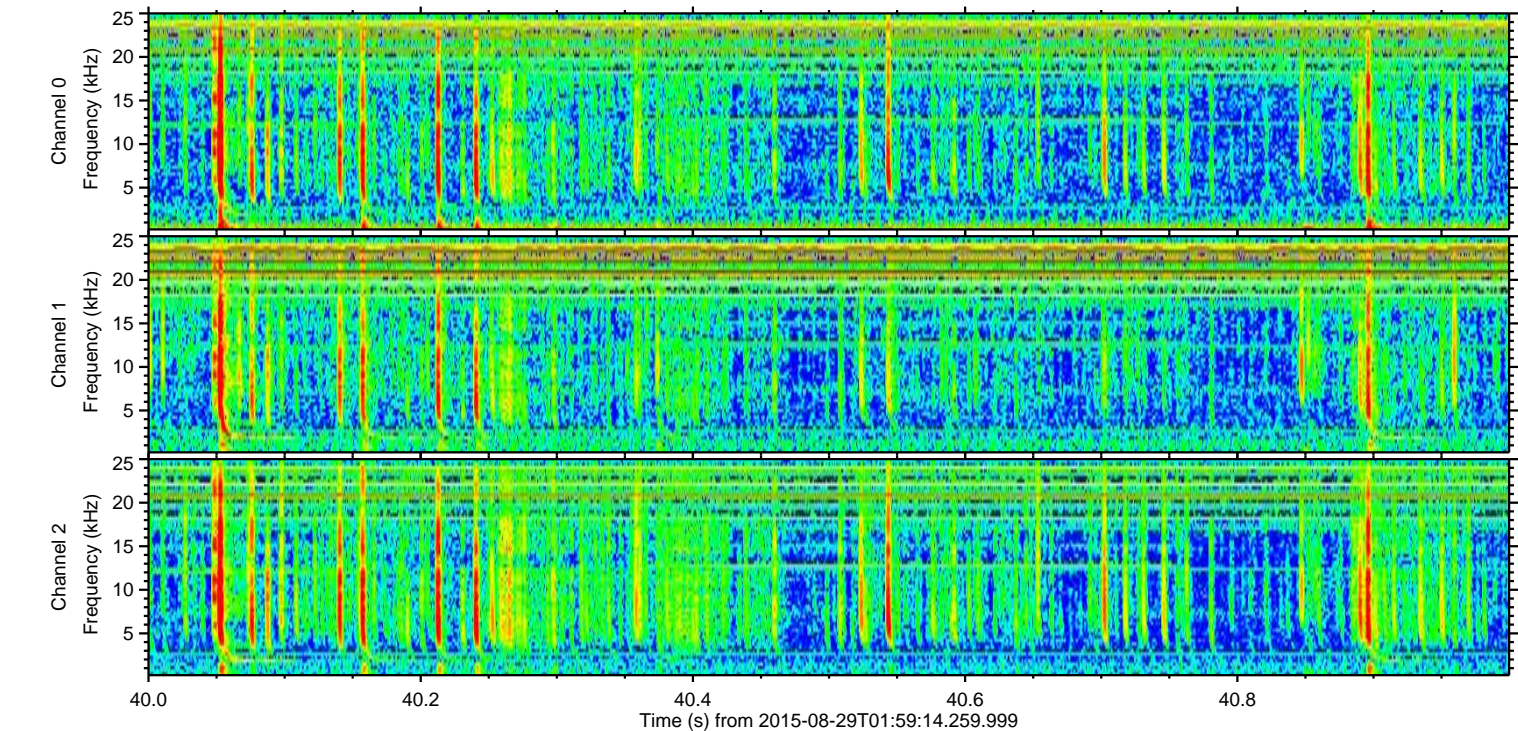
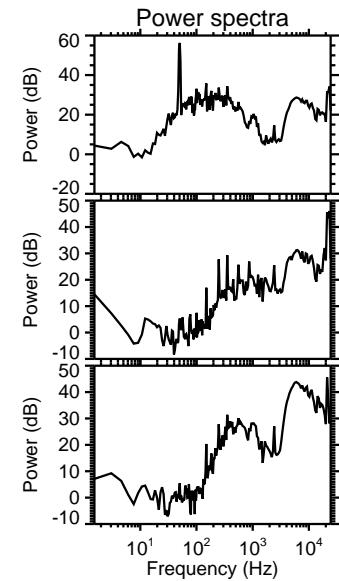
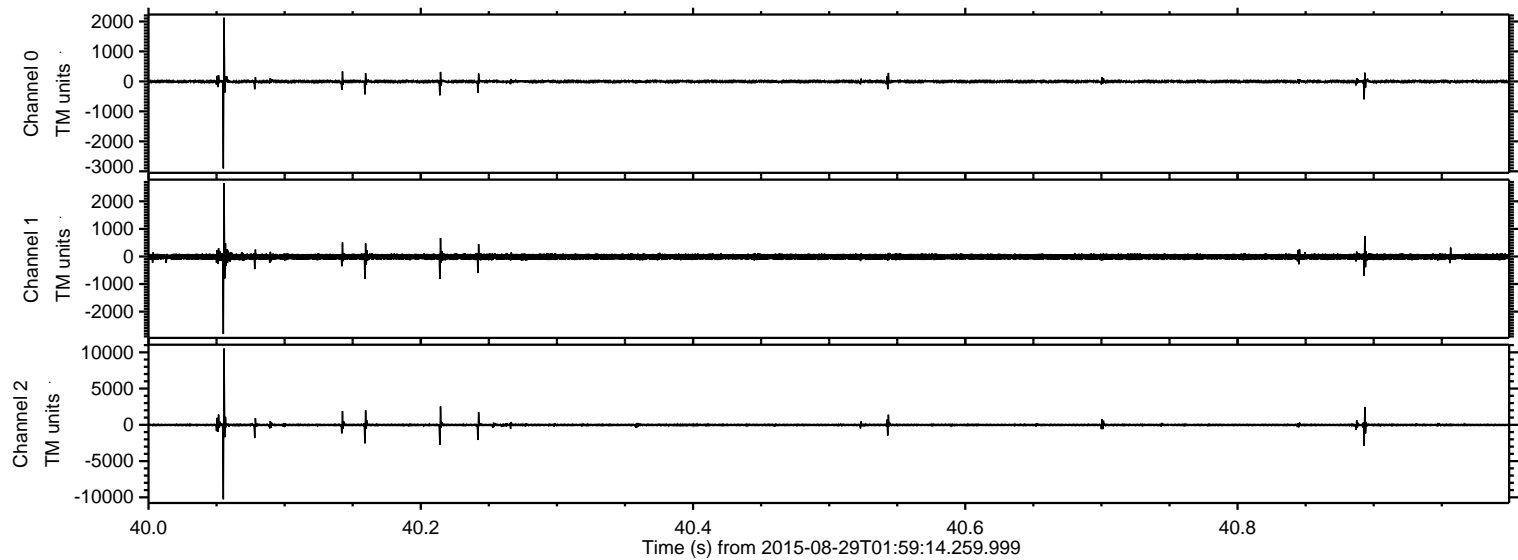
ELMAVAN 3D WAVEFORMS (Measured data sampled at 50 kHz) 51000 packets of 144 samples from 2015-08-29T01:59:14.259.999.

Processed Wed Oct 7 21:01:07 2015 by ELM ver.2012-10-06 from 001__elm20150829_015913__dat00.bin



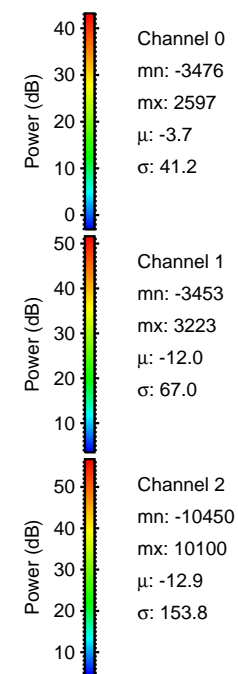
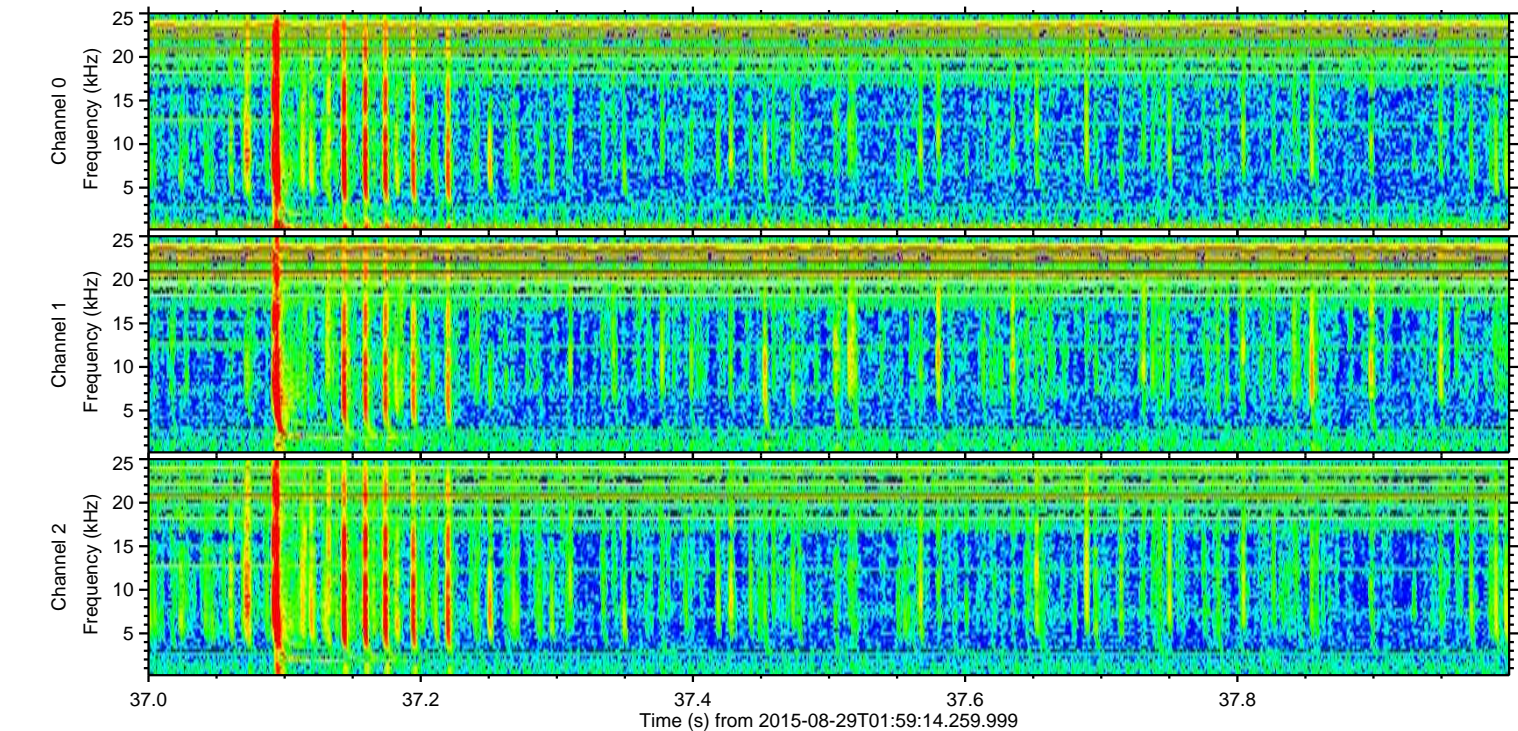
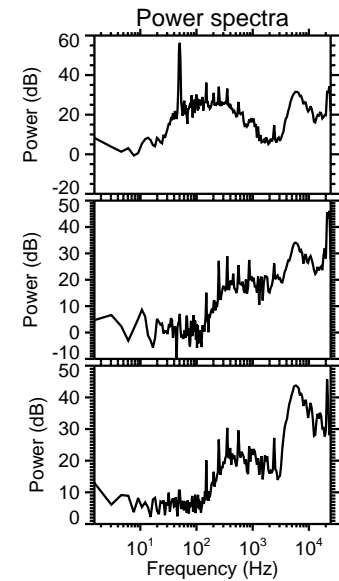
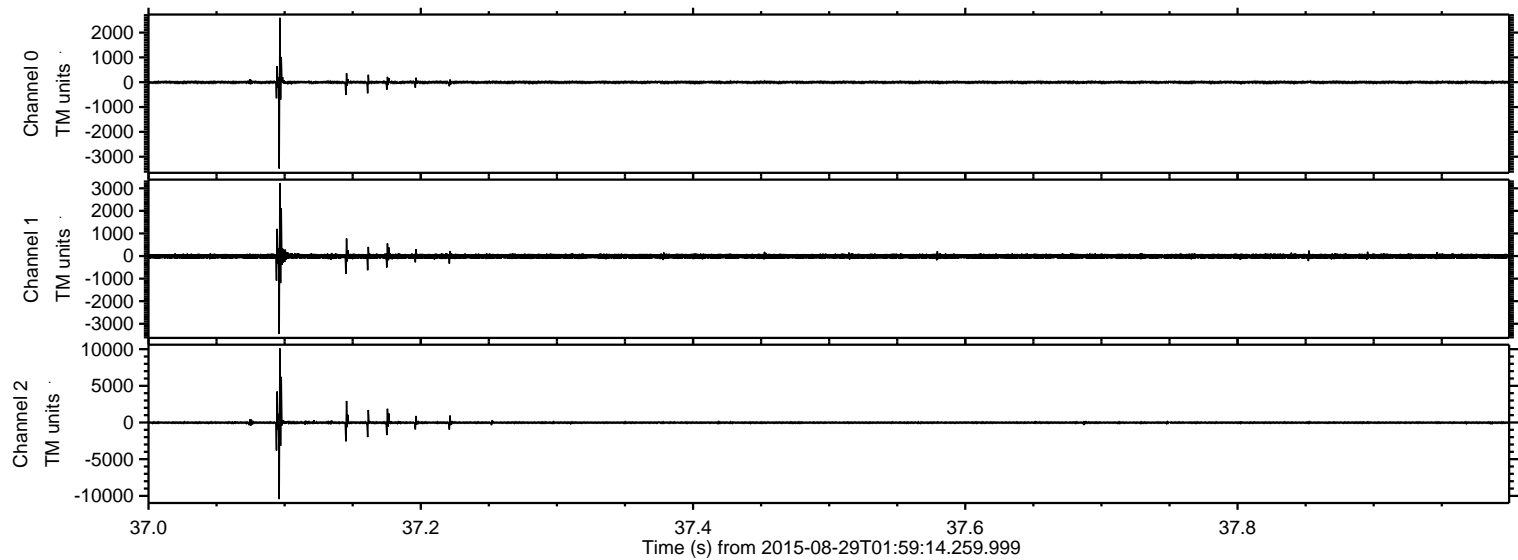
ELMAVAN 3D WAVEFORMS (Measured data sampled at 50 kHz) 51000 packets of 144 samples from 2015-08-29T01:59:14.259.999. Part 41/147

Processed Wed Oct 7 21:01:22 2015 by ELM ver.2012-10-06 from 001__elm20150829_015913__dat00.bin



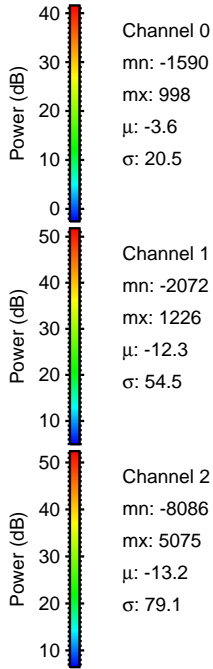
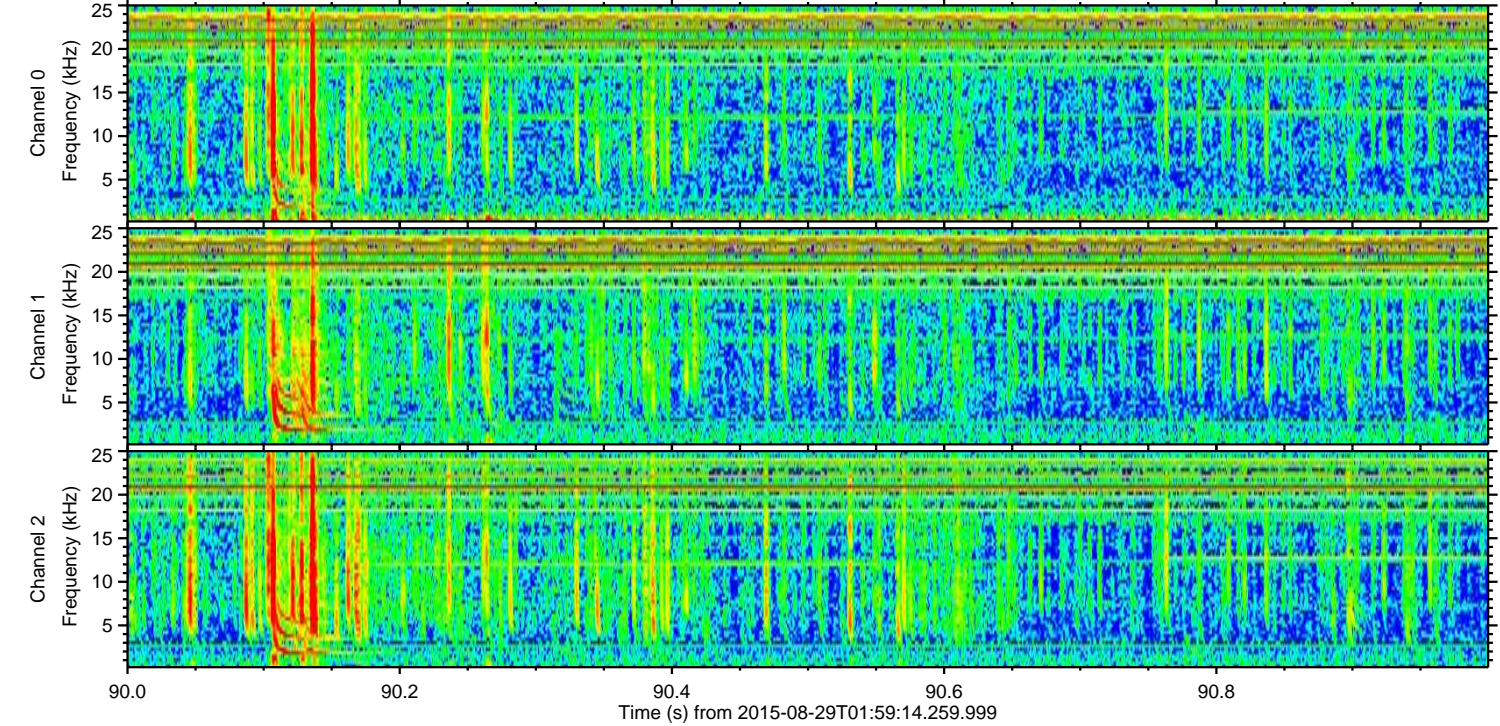
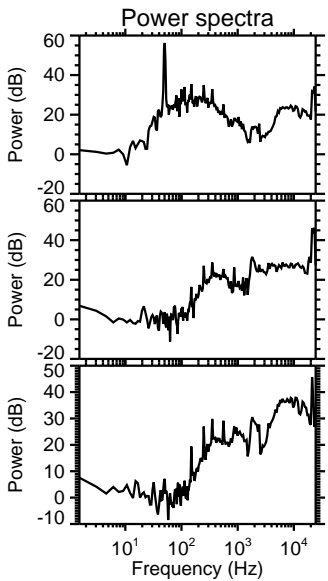
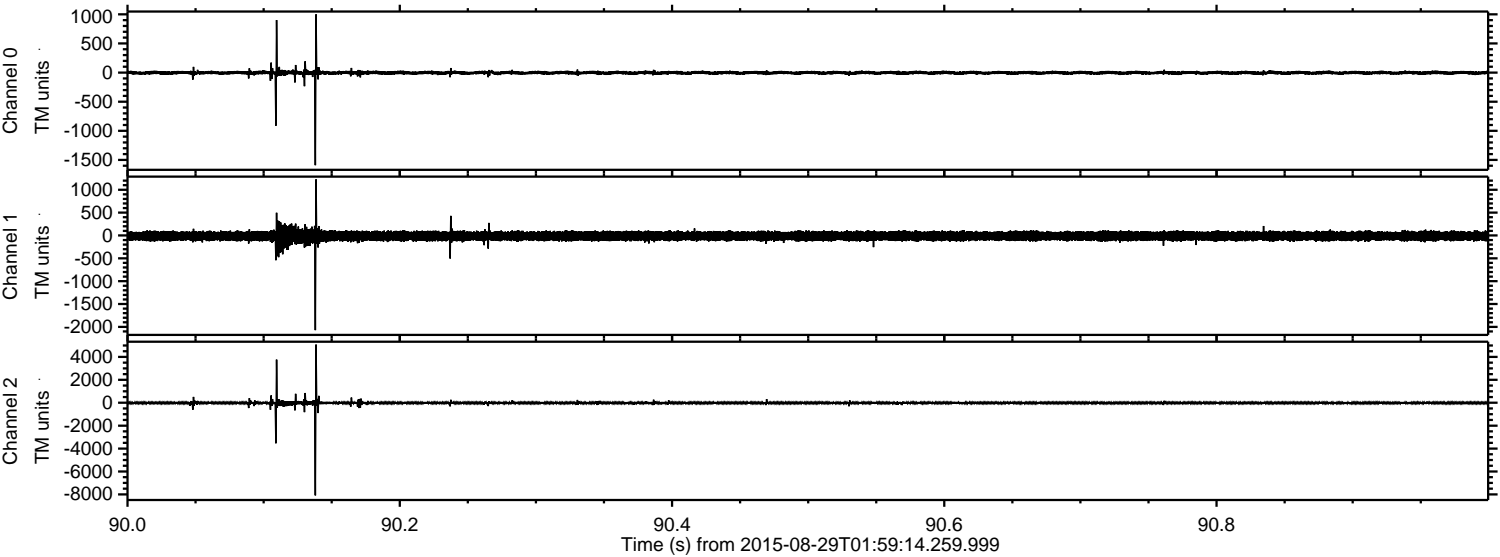
ELMAVAN 3D WAVEFORMS (Measured data sampled at 50 kHz) 51000 packets of 144 samples from 2015-08-29T01:59:14.259.999. Part 38/147

Processed Wed Oct 7 21:01:24 2015 by ELM ver.2012-10-06 from 001__elm20150829_015913__dat00.bin



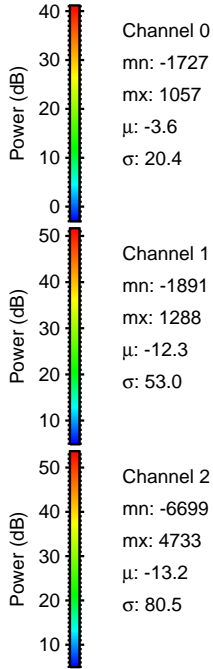
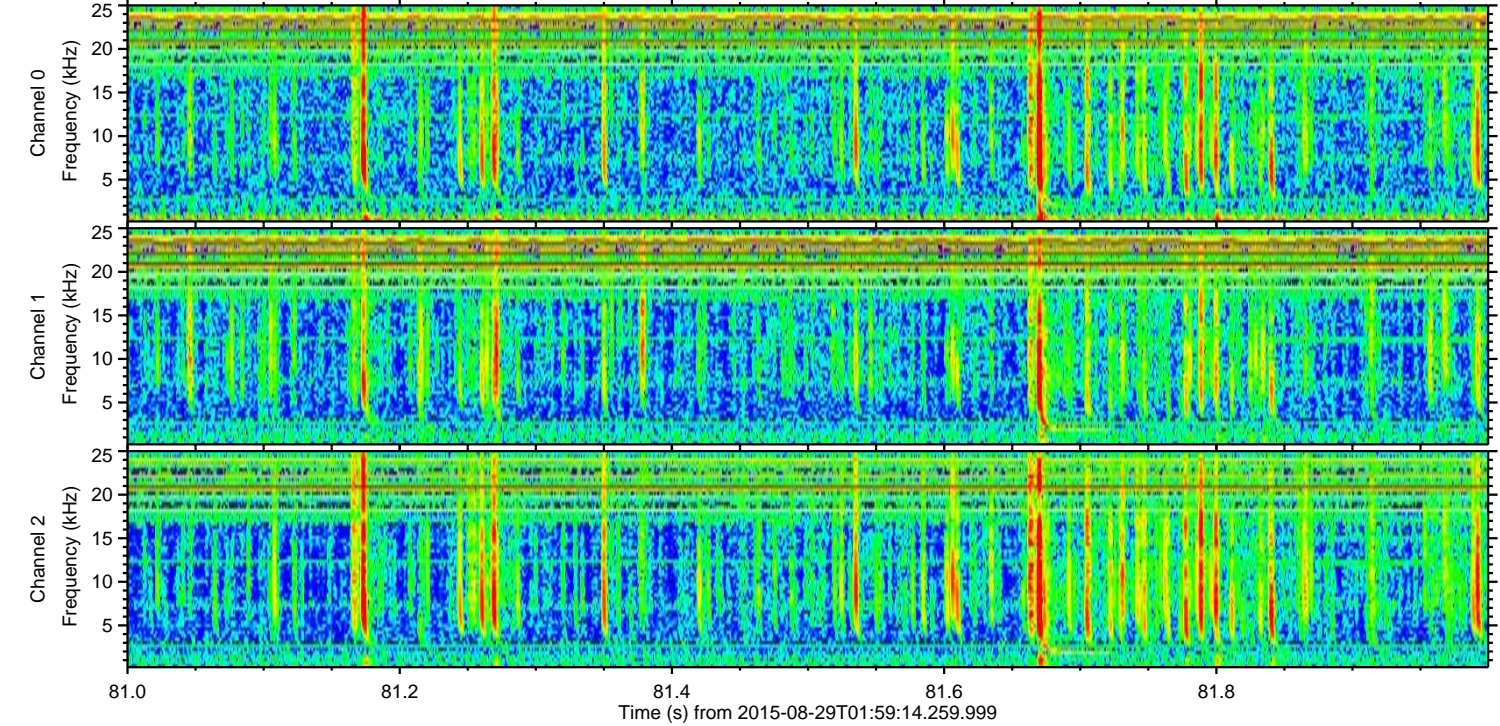
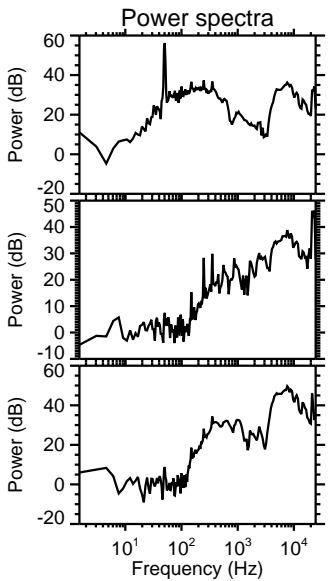
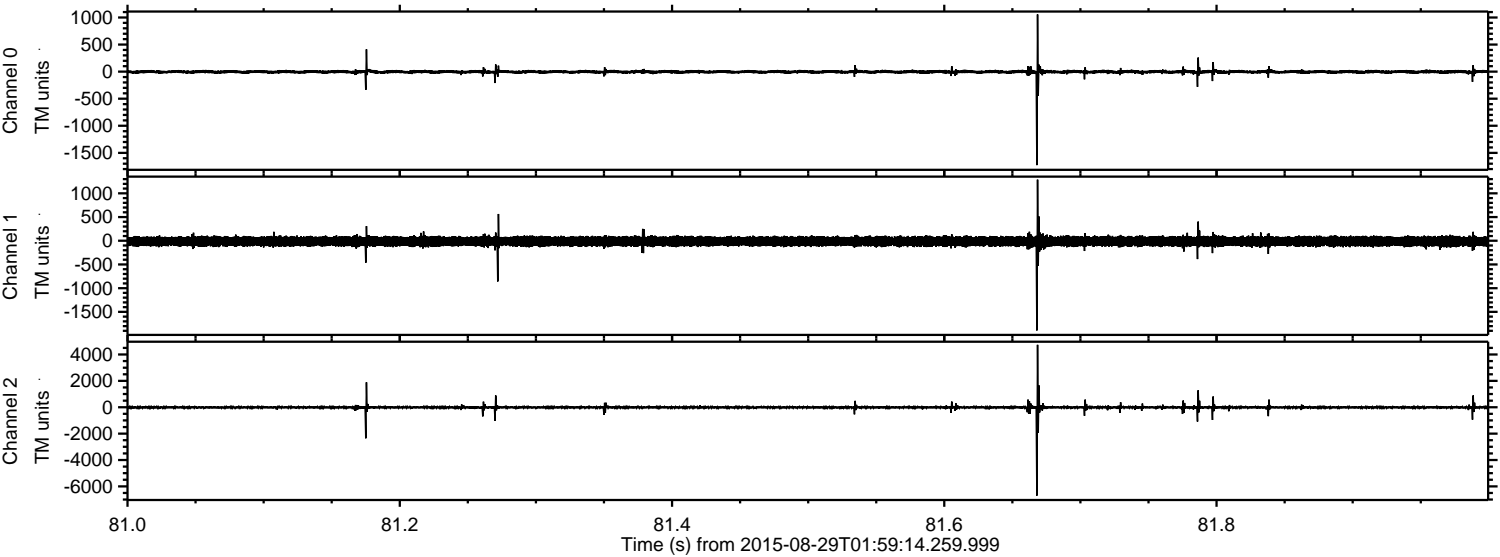
ELMAVAN 3D WAVEFORMS (Measured data sampled at 50 kHz) 51000 packets of 144 samples from 2015-08-29T01:59:14.259.999. Part 91/147

Processed Wed Oct 7 21:01:25 2015 by ELM ver.2012-10-06 from 001__elm20150829_015913__dat00.bin



ELMAVAN 3D WAVEFORMS (Measured data sampled at 50 kHz) 51000 packets of 144 samples from 2015-08-29T01:59:14.259.999. Part 82/147

Processed Wed Oct 7 21:01:26 2015 by ELM ver.2012-10-06 from 001__elm20150829_015913__dat00.bin



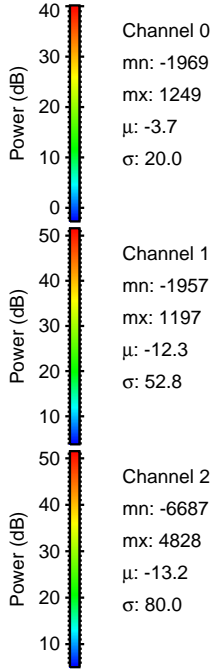
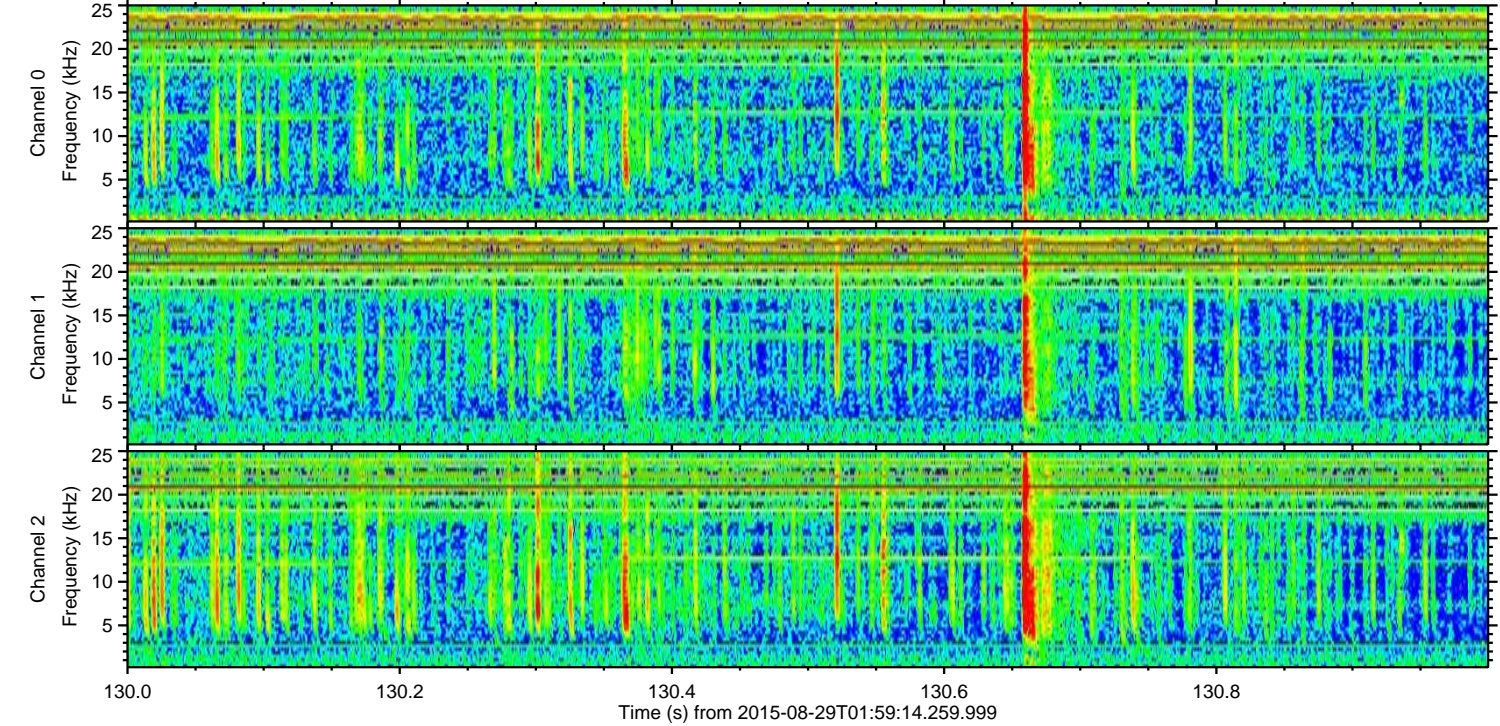
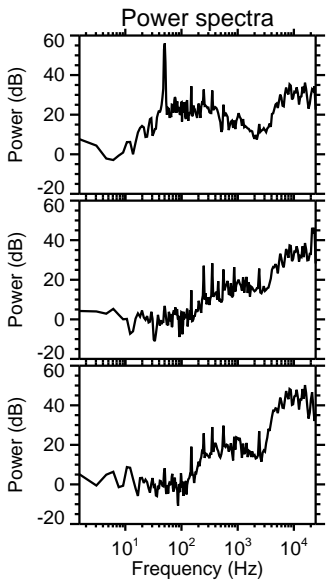
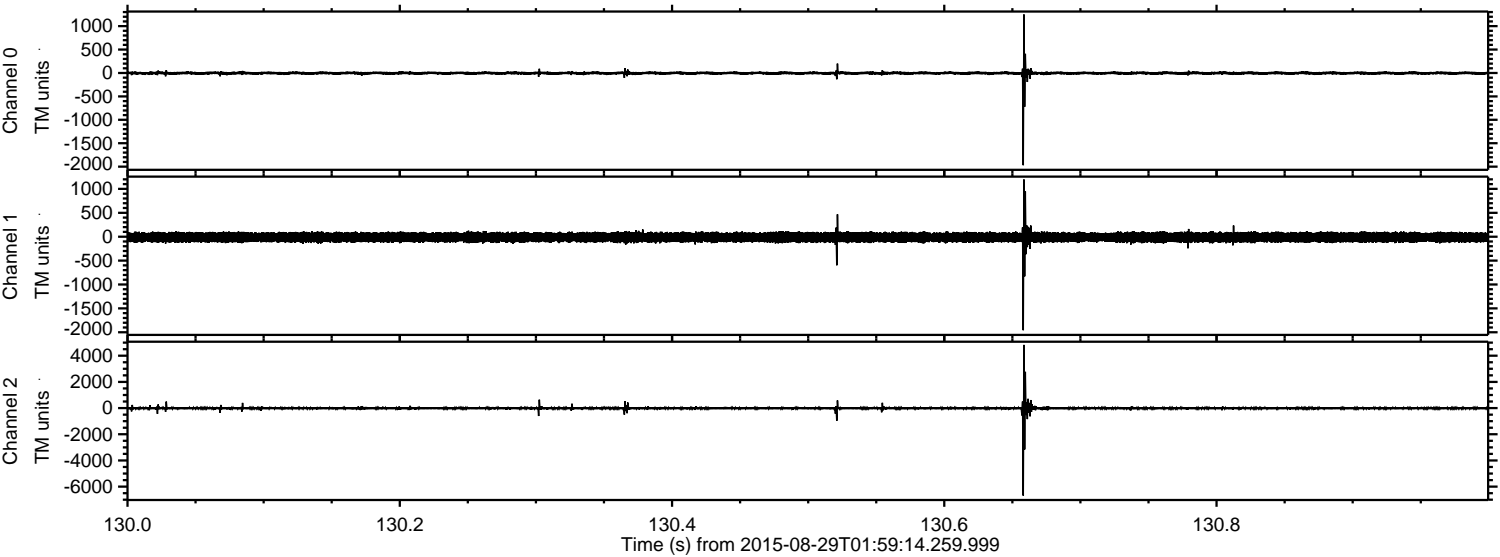
Channel 0
mn: -1727
mx: 1057
 μ : -3.6
 σ : 20.4

Channel 1
mn: -1891
mx: 1288
 μ : -12.3
 σ : 53.0

Channel 2
mn: -6699
mx: 4733
 μ : -13.2
 σ : 80.5

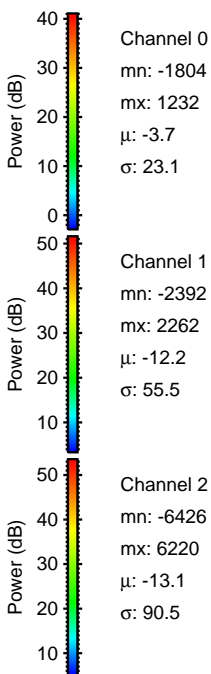
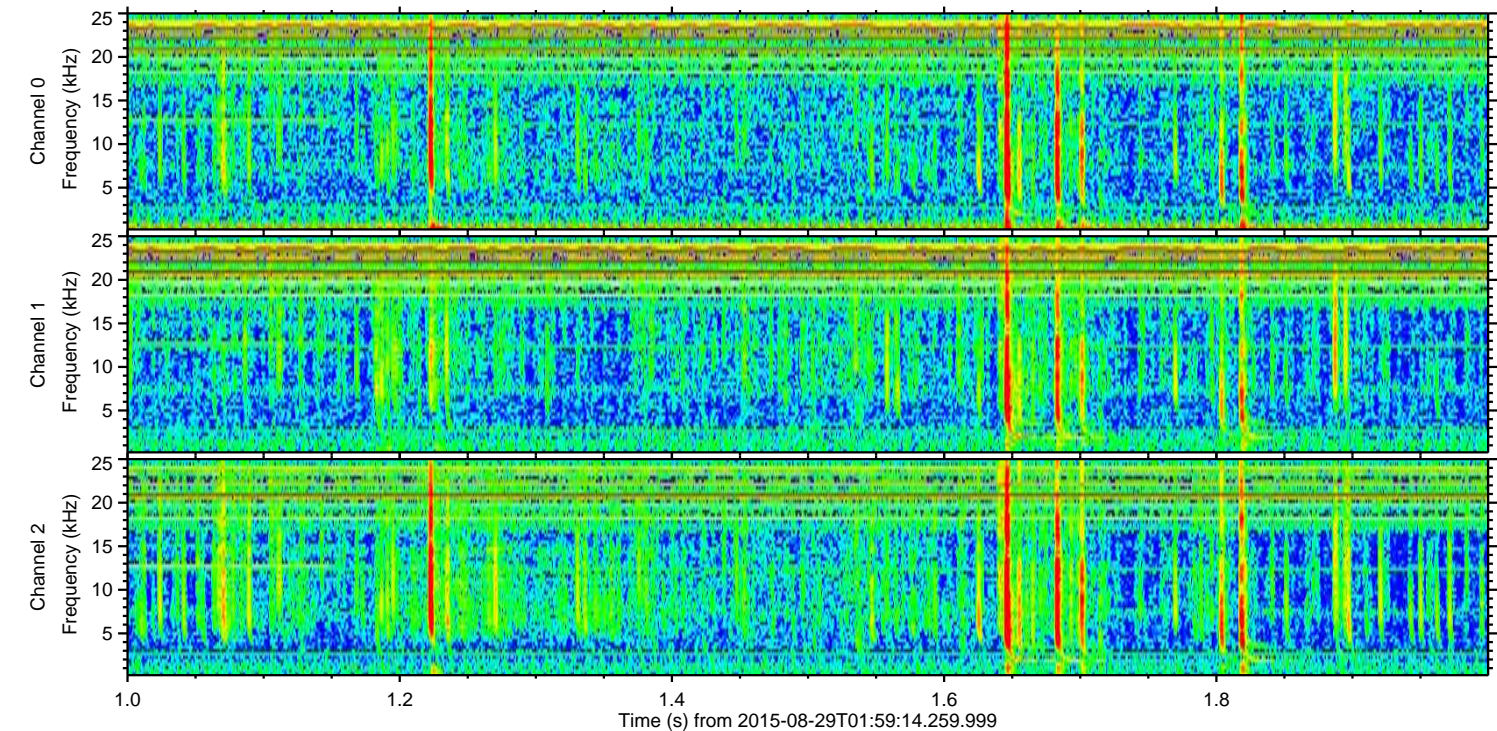
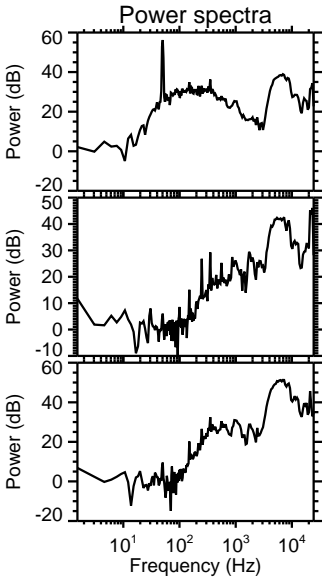
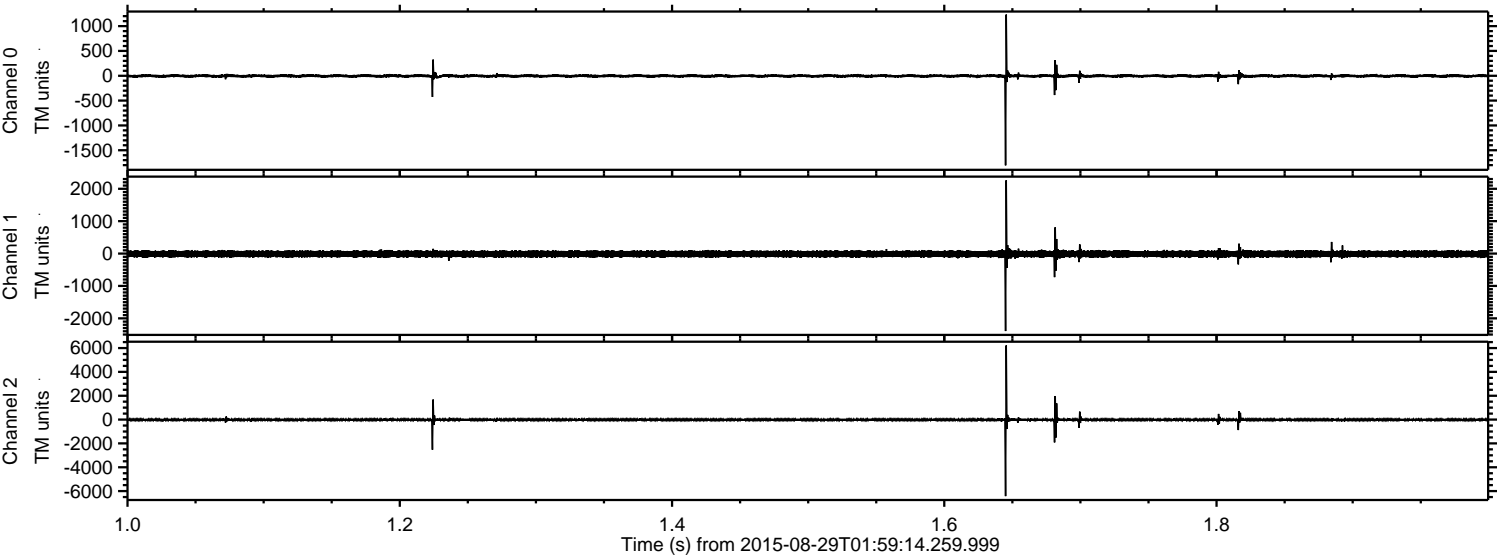
ELMAVAN 3D WAVEFORMS (Measured data sampled at 50 kHz) 51000 packets of 144 samples from 2015-08-29T01:59:14.259.999. Part 131/147

Processed Wed Oct 7 21:01:27 2015 by ELM ver.2012-10-06 from 001__elm20150829_015913__dat00.bin



ELMAVAN 3D WAVEFORMS (Measured data sampled at 50 kHz) 51000 packets of 144 samples from 2015-08-29T01:59:14.259.999. Part 2/147

Processed Wed Oct 7 21:01:28 2015 by ELM ver.2012-10-06 from 001__elm20150829_015913__dat00.bin



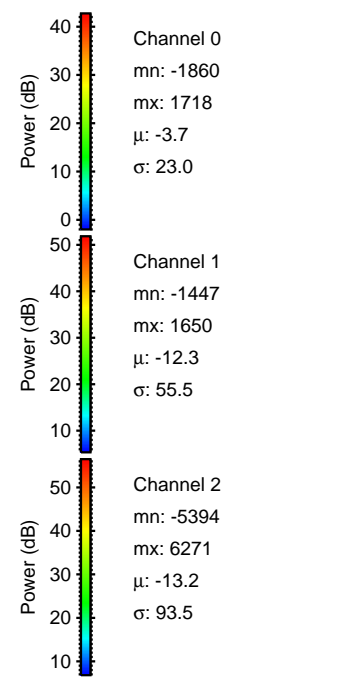
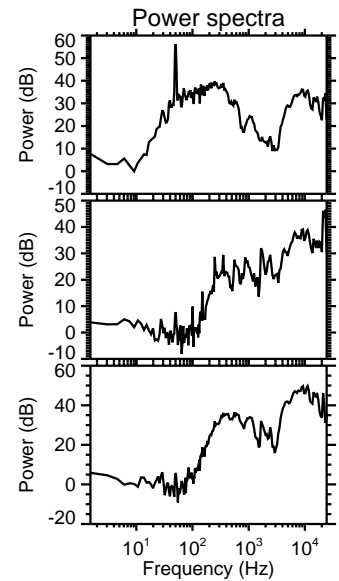
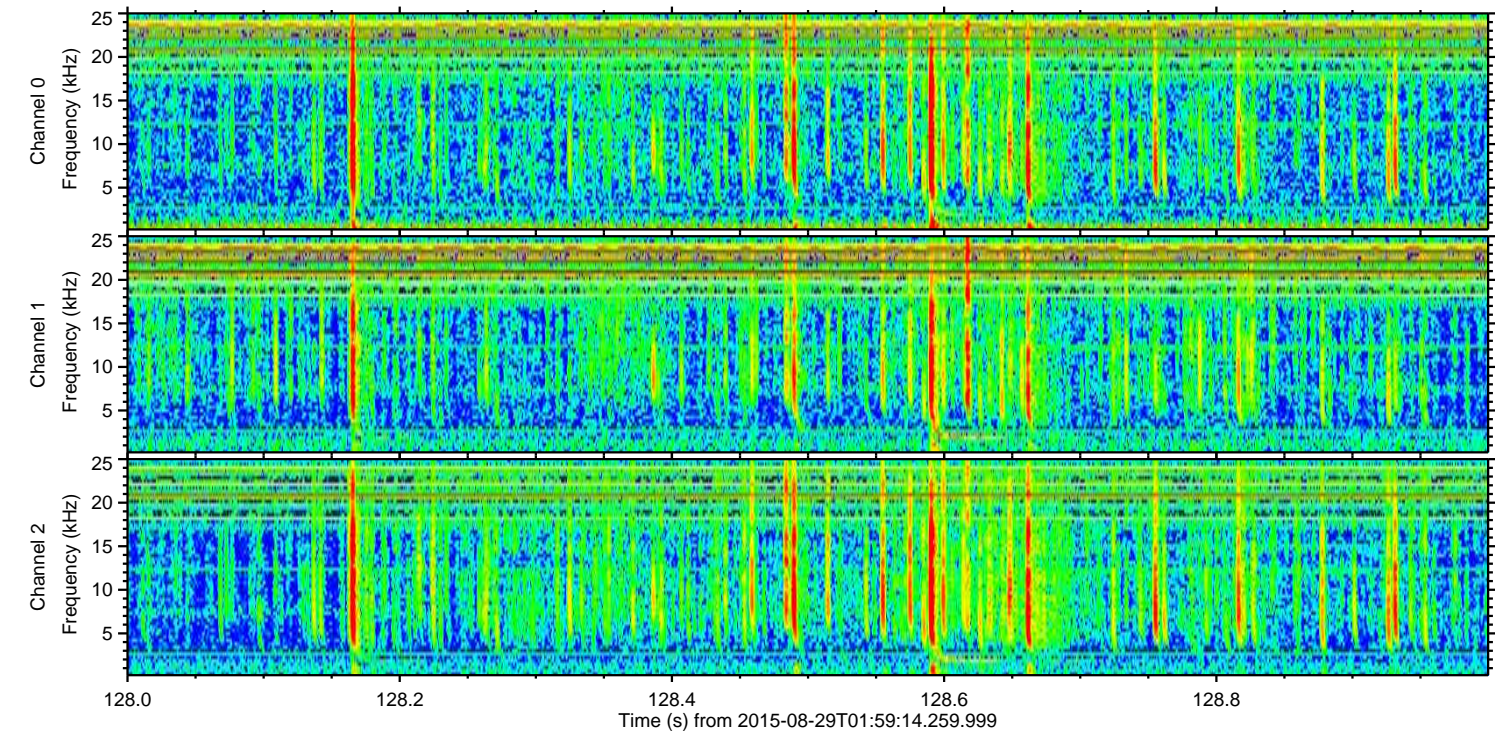
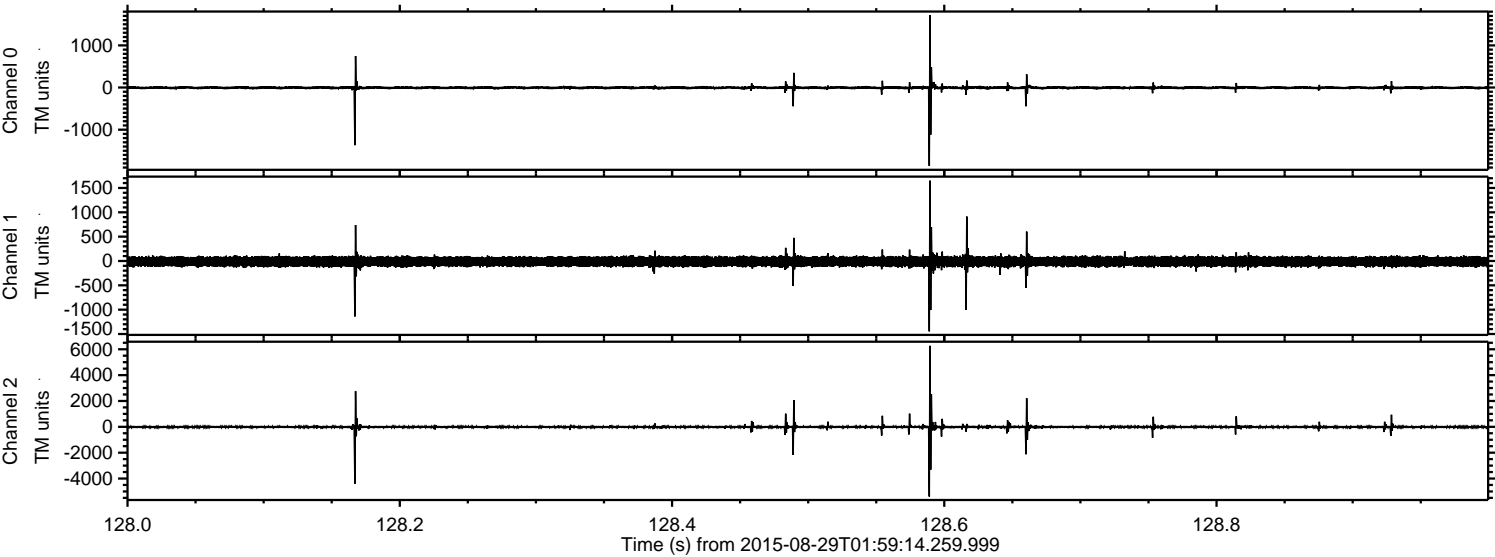
Channel 0
mn: -1804
mx: 1232
 μ : -3.7
 σ : 23.1

Channel 1
mn: -2392
mx: 2262
 μ : -12.2
 σ : 55.5

Channel 2
mn: -6426
mx: 6220
 μ : -13.1
 σ : 90.5

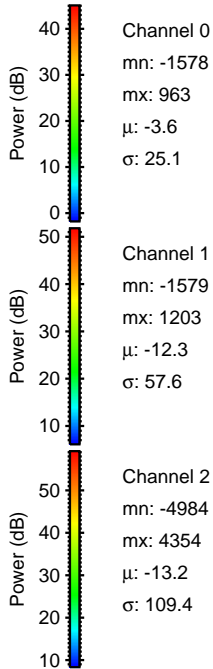
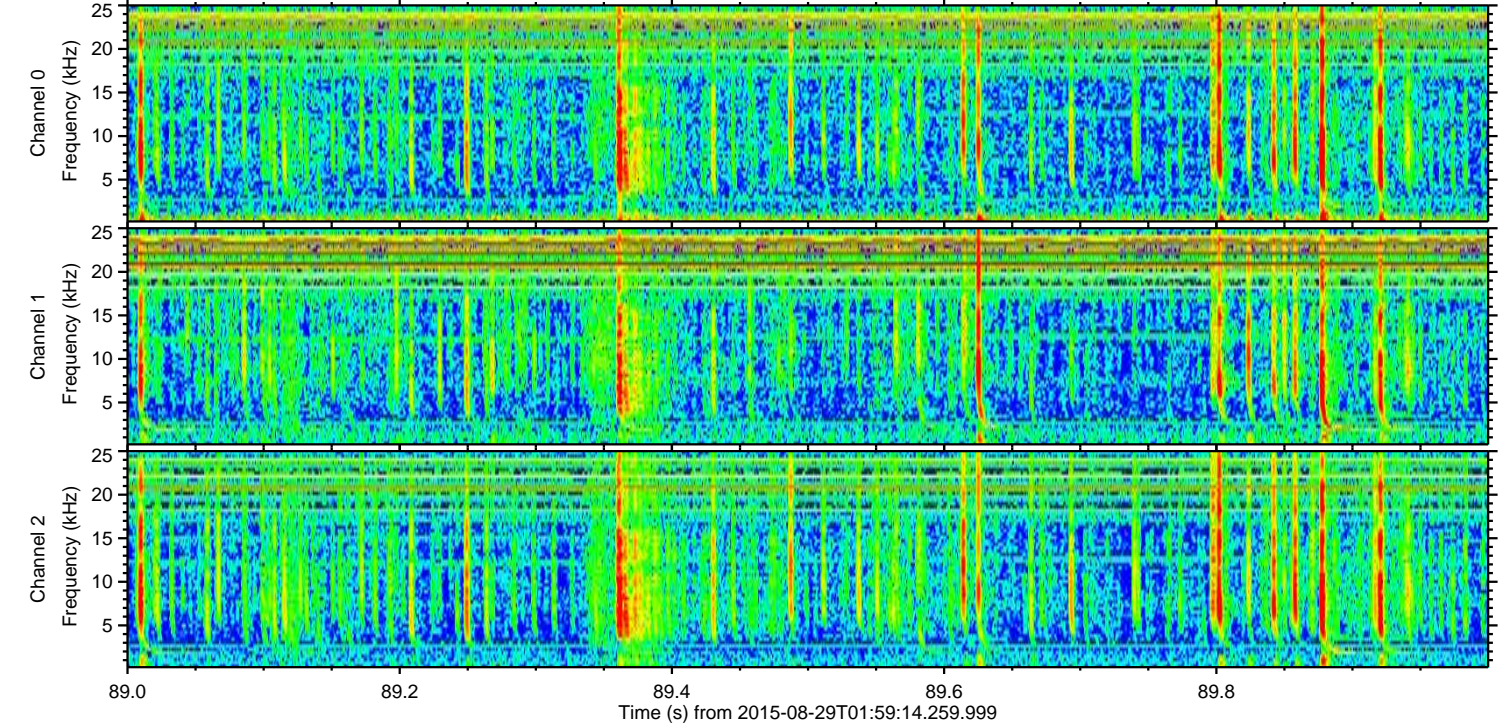
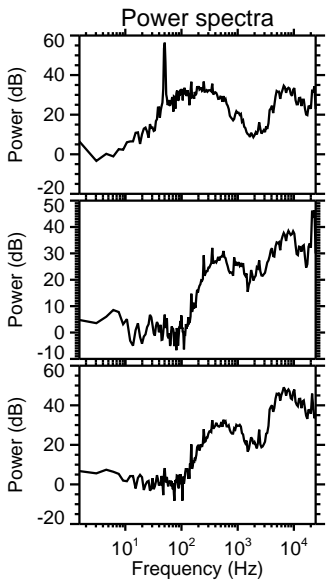
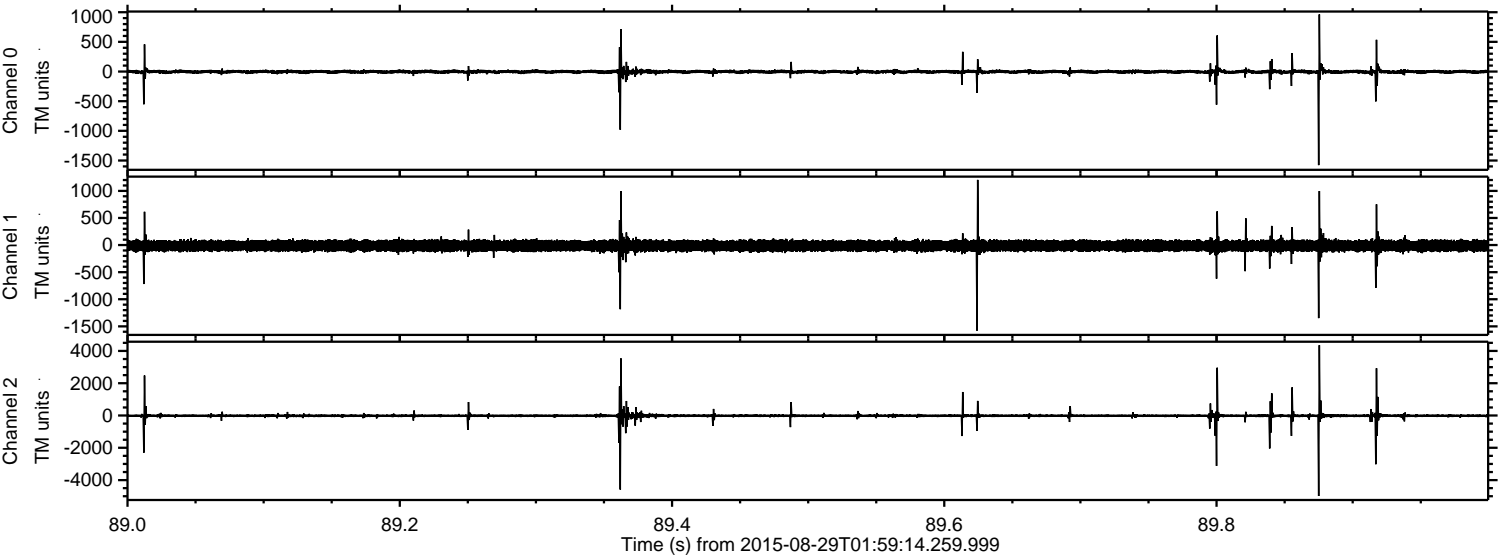
ELMAVAN 3D WAVEFORMS (Measured data sampled at 50 kHz) 51000 packets of 144 samples from 2015-08-29T01:59:14.259.999. Part 129/147

Processed Wed Oct 7 21:01:29 2015 by ELM ver.2012-10-06 from 001__elm20150829_015913__dat00.bin



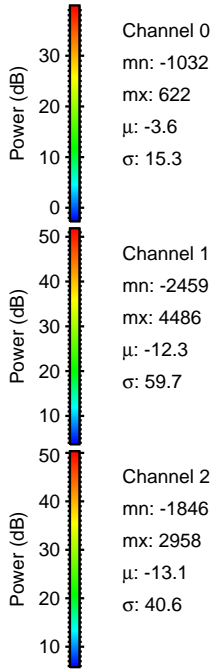
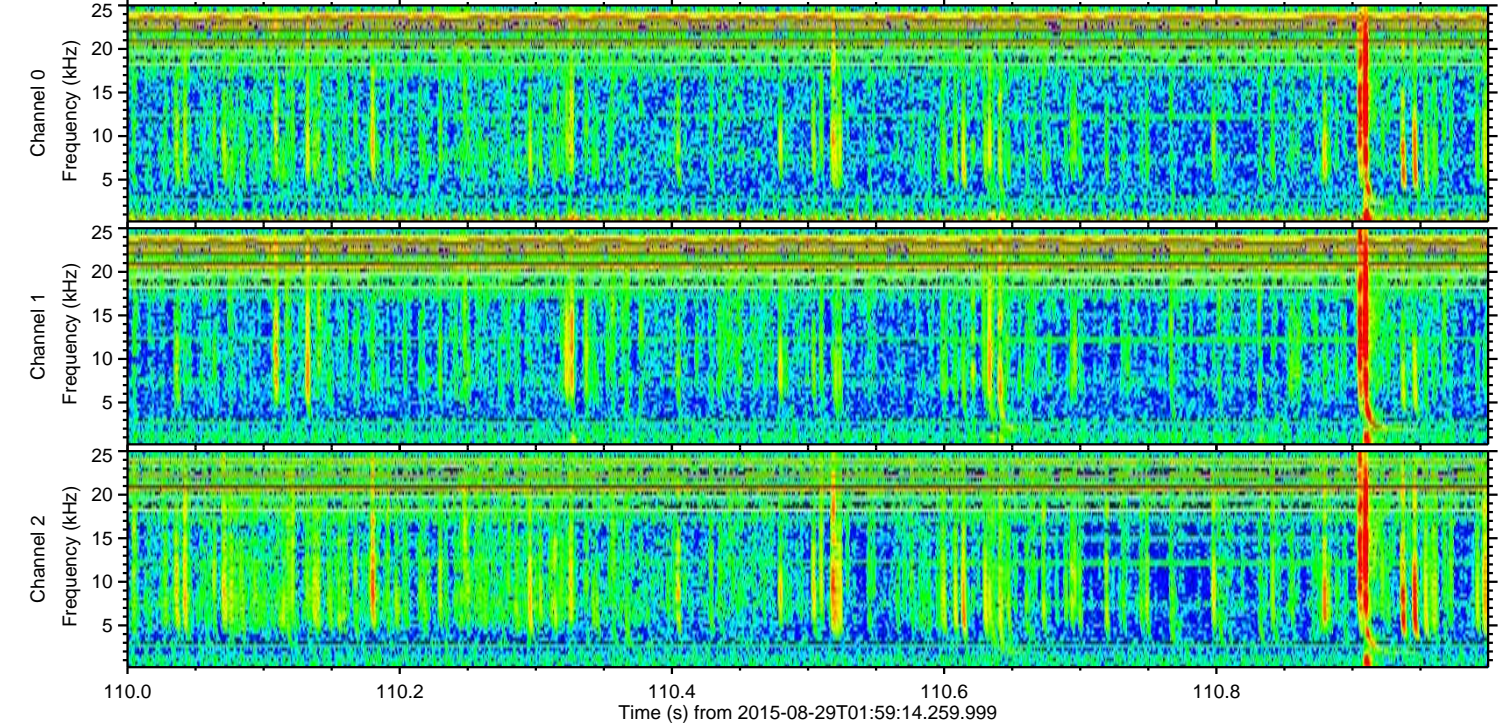
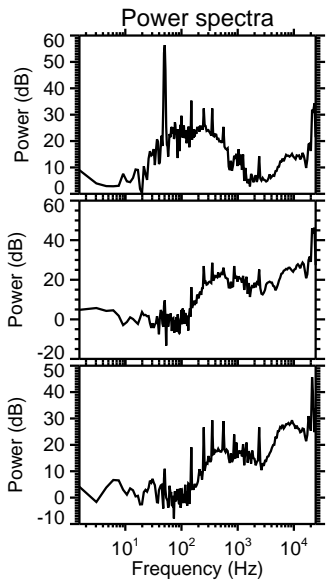
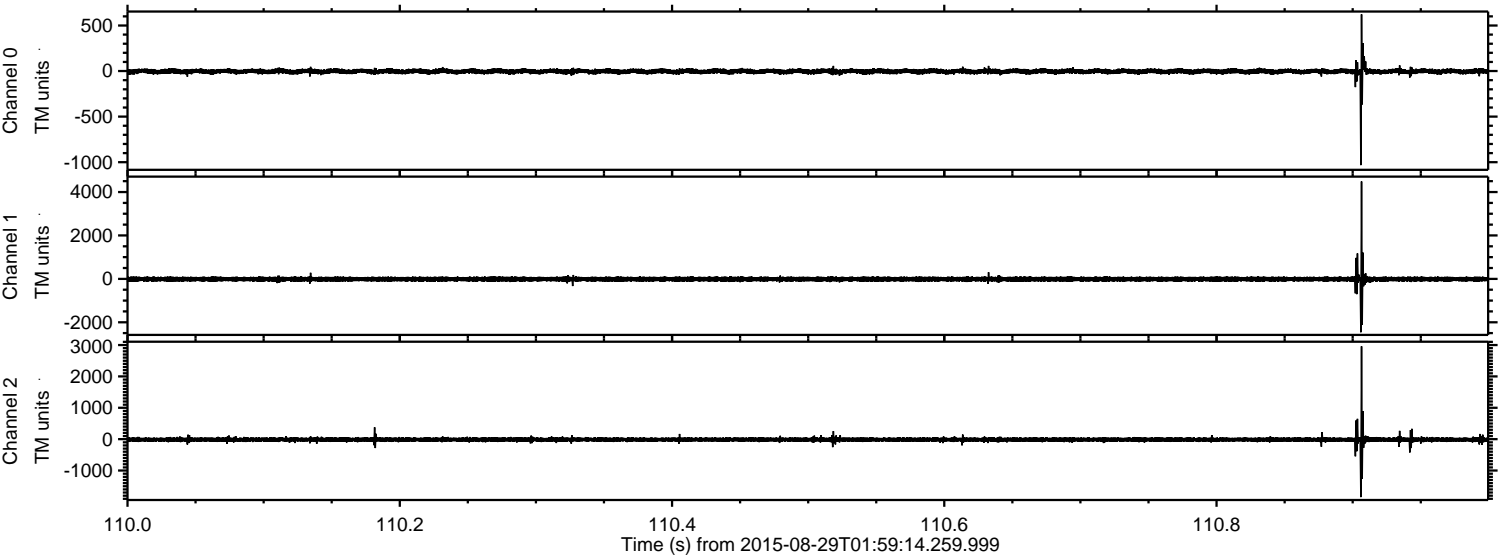
ELMAVAN 3D WAVEFORMS (Measured data sampled at 50 kHz) 51000 packets of 144 samples from 2015-08-29T01:59:14.259.999. Part 90/147

Processed Wed Oct 7 21:01:30 2015 by ELM ver.2012-10-06 from 001__elm20150829_015913__dat00.bin



ELMAVAN 3D WAVEFORMS (Measured data sampled at 50 kHz) 51000 packets of 144 samples from 2015-08-29T01:59:14.259.999. Part 111/147

Processed Wed Oct 7 21:01:31 2015 by ELM ver.2012-10-06 from 001__elm20150829_015913__dat00.bin



ELMAVAN 3D WAVEFORMS (Measured data sampled at 50 kHz) 51000 packets of 144 samples from 2015-08-29T01:59:14.259.999. Part 132/147

