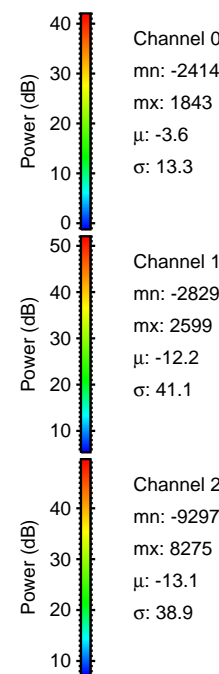
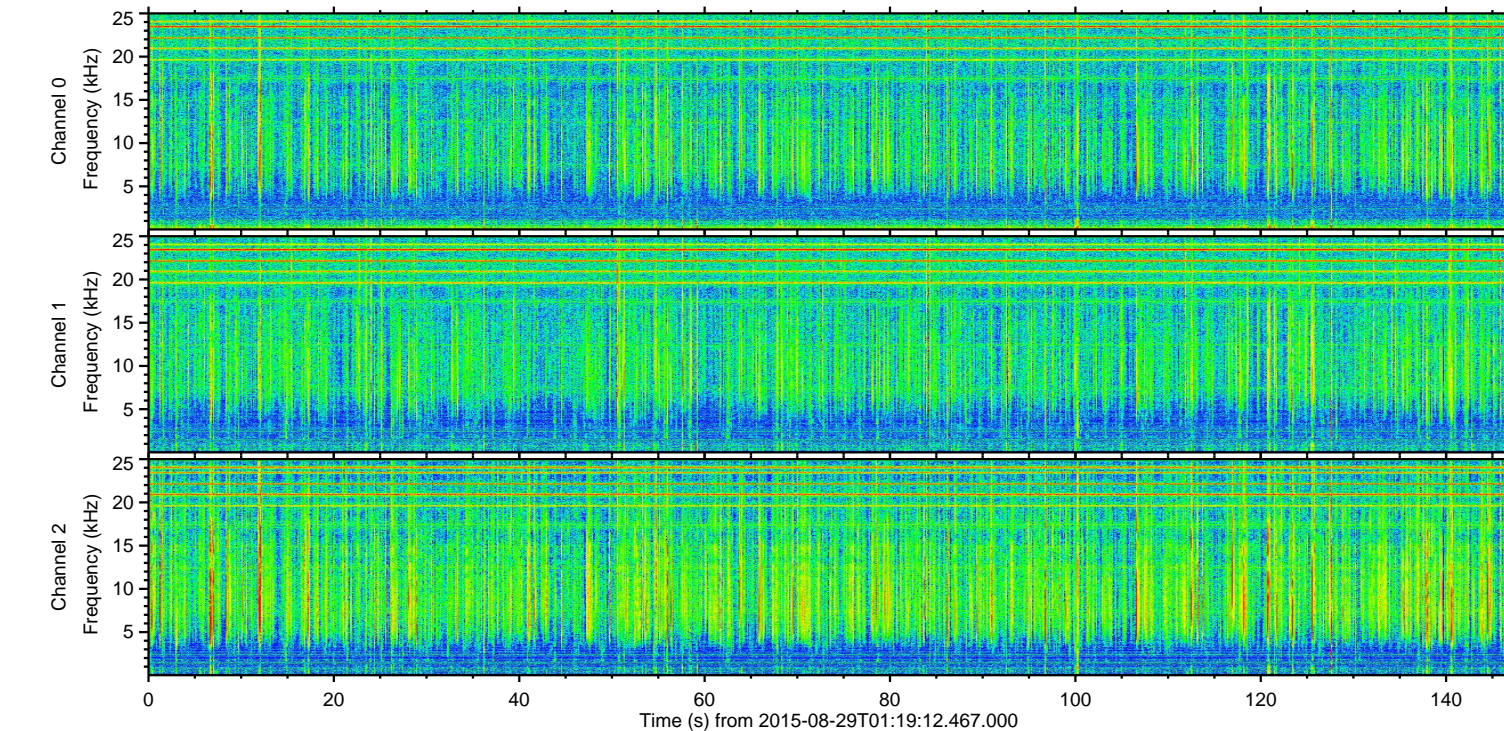
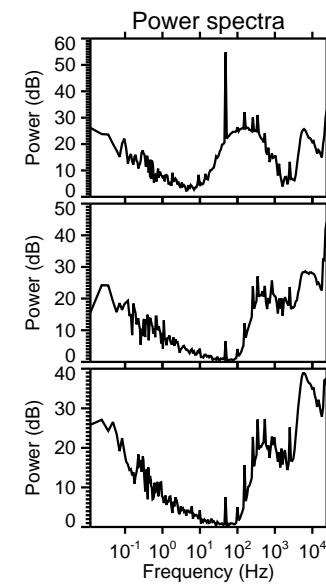
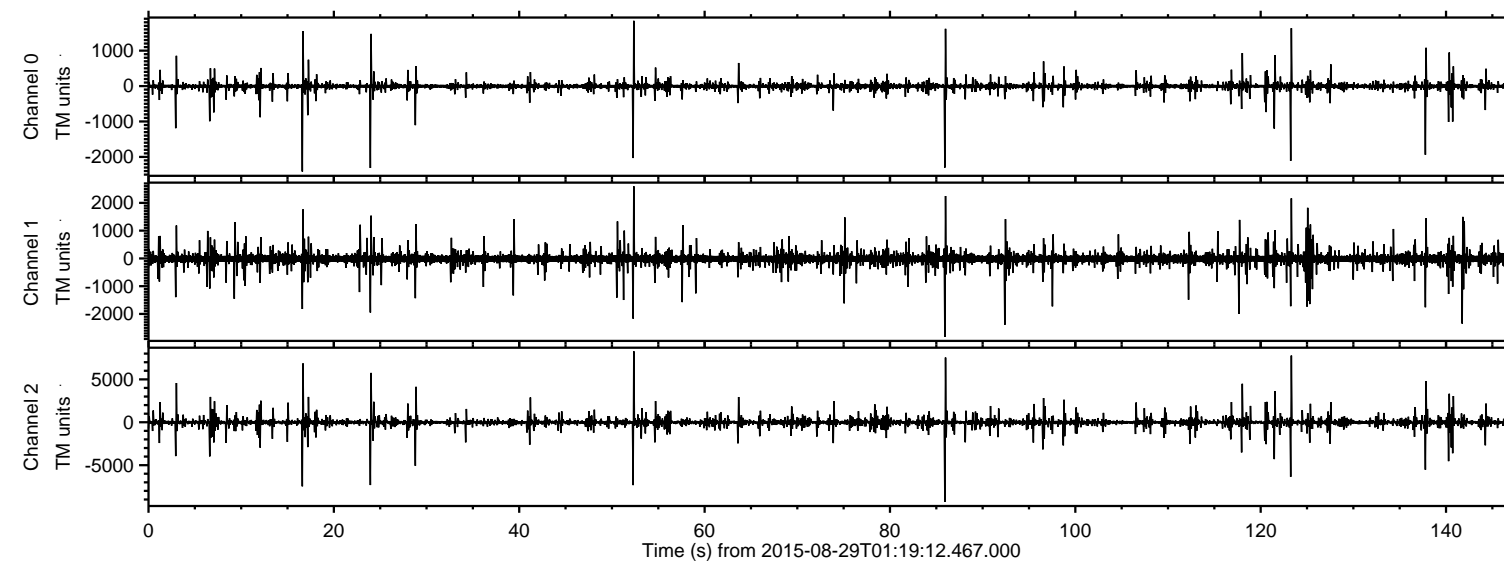
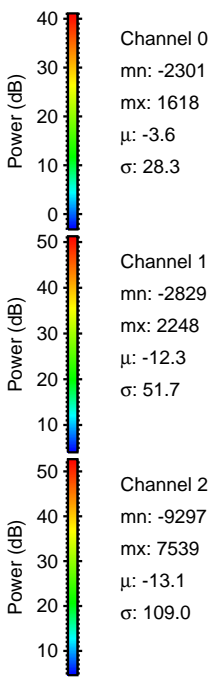
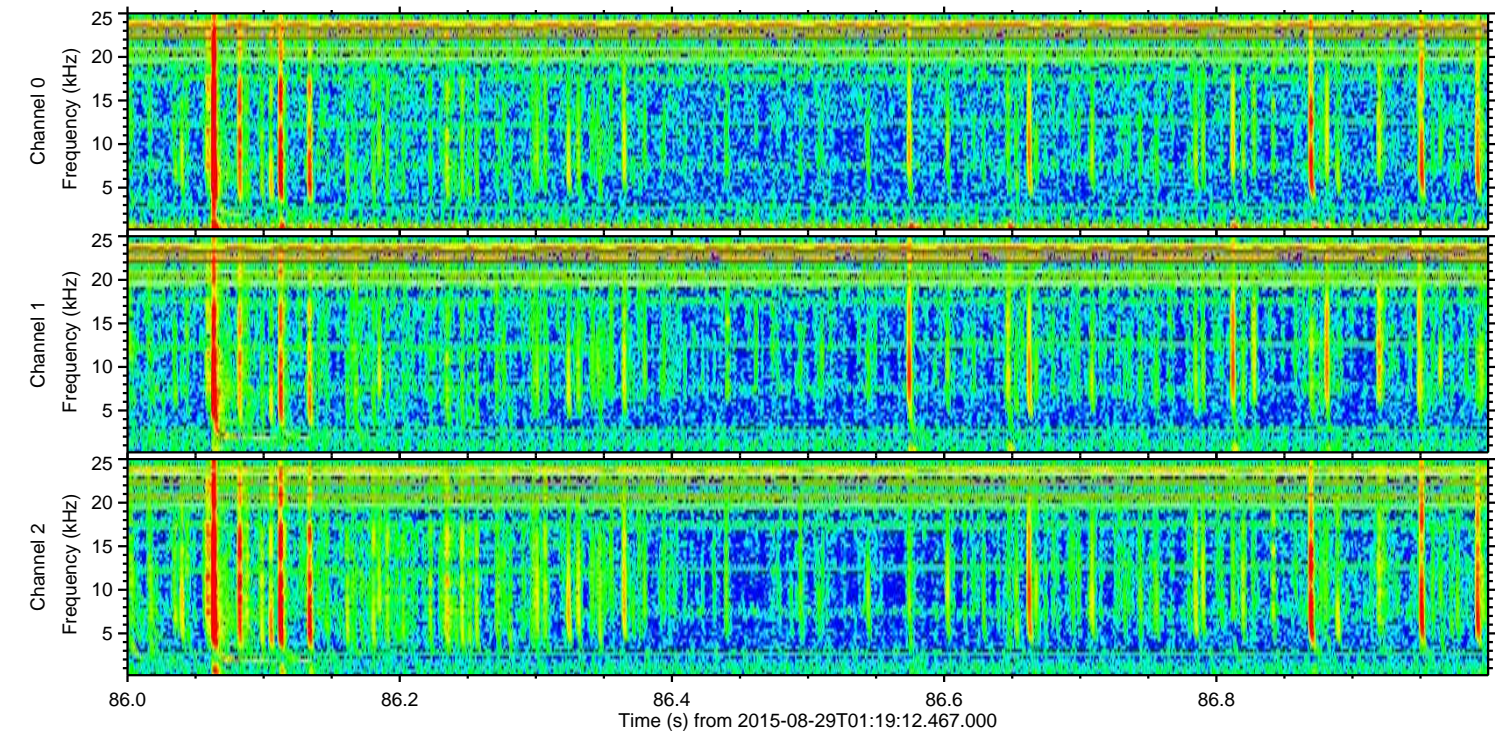
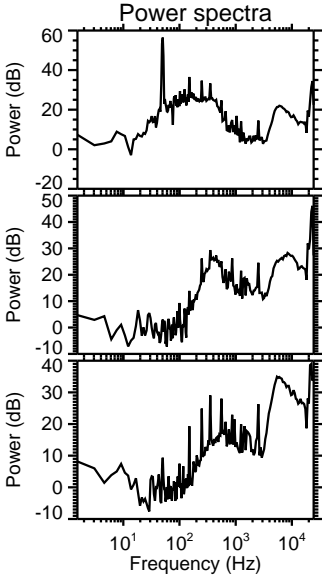
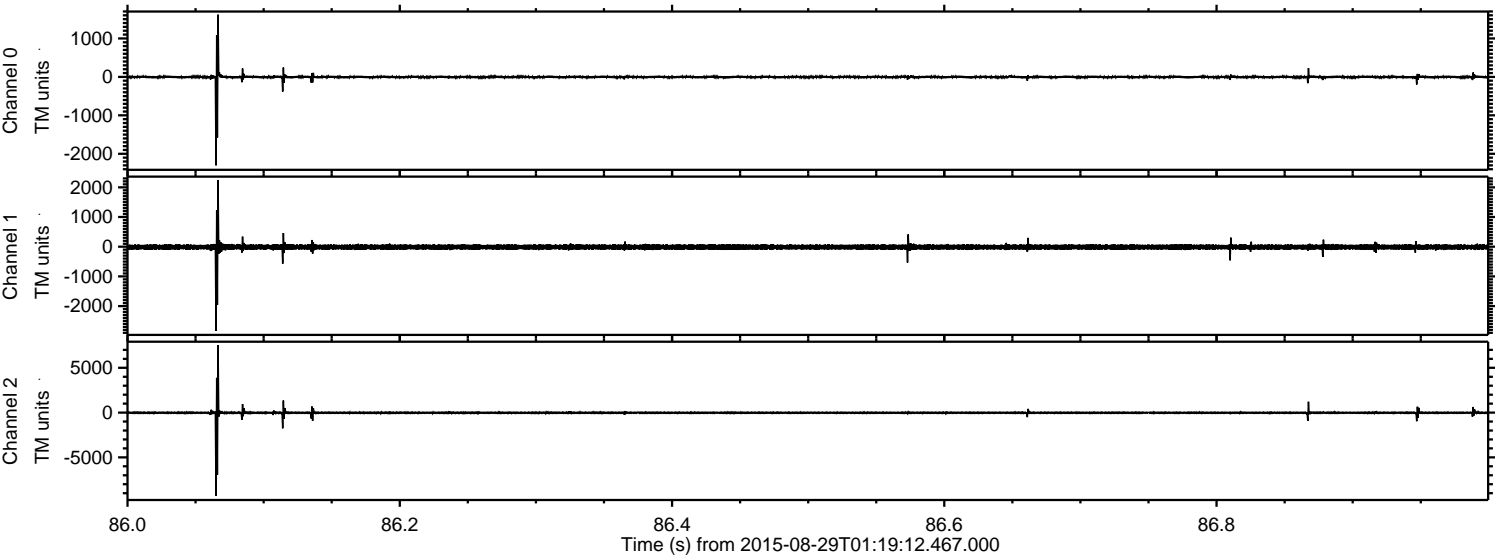


ELMAVAN 3D WAVEFORMS (Measured data sampled at 50 kHz) 51000 packets of 144 samples from 2015-08-29T01:19:12.467.000.

Processed Wed Oct 7 20:50:02 2015 by ELM ver.2012-10-06 from 001__elm20150829_011911__dat00.bin



Processed Wed Oct 7 20:50:16 2015 by ELM ver.2012-10-06 from 001__elm20150829_011911__dat00.bin



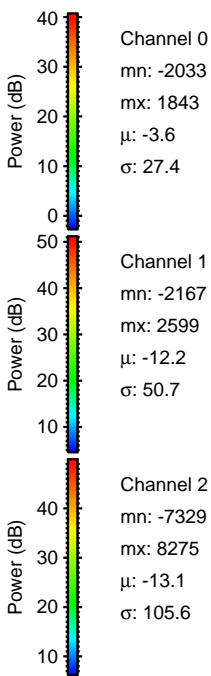
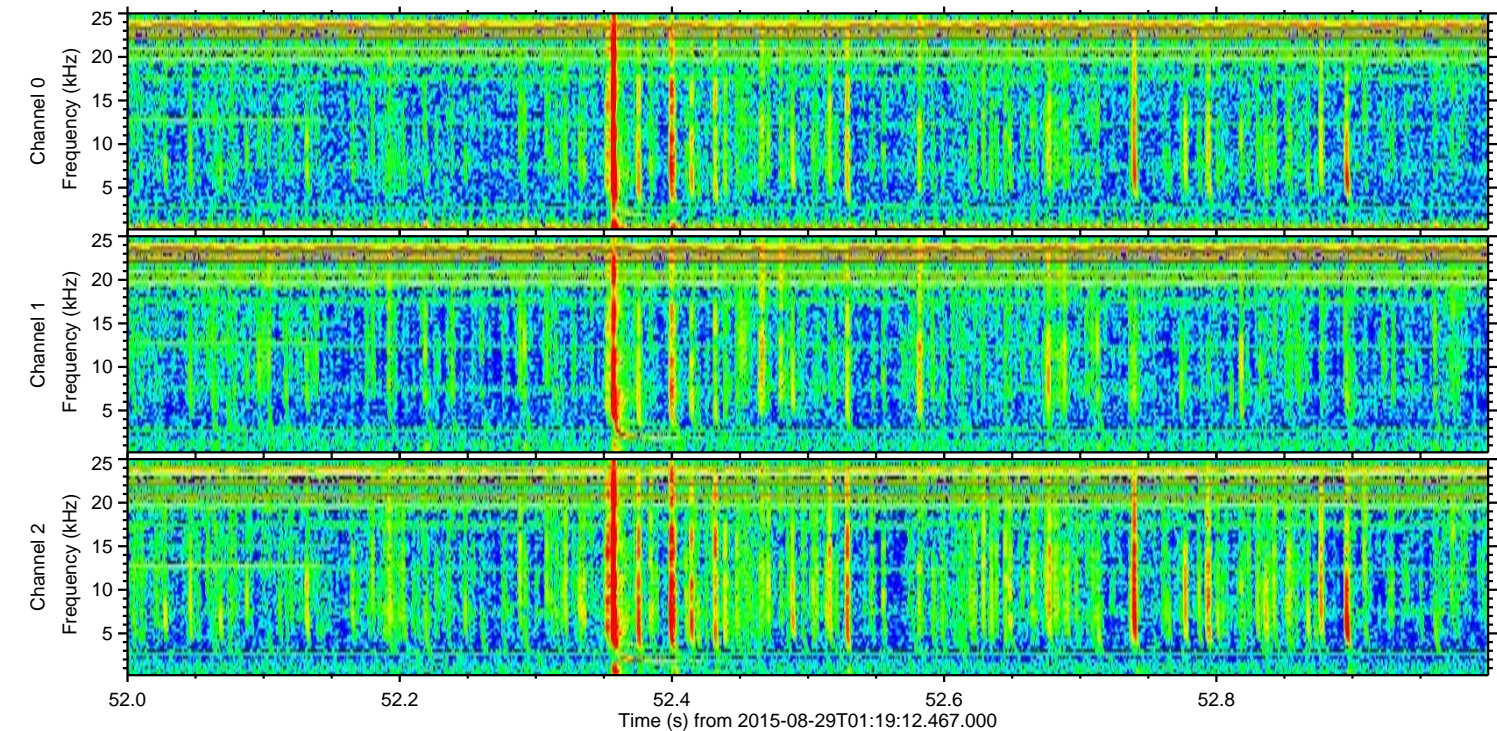
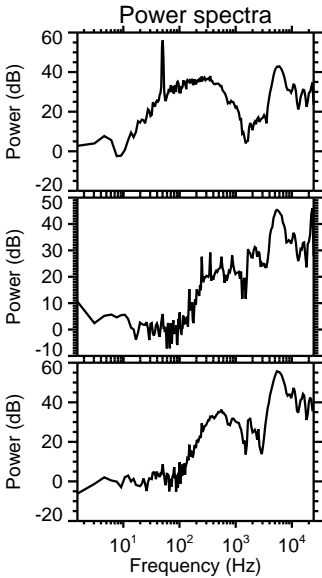
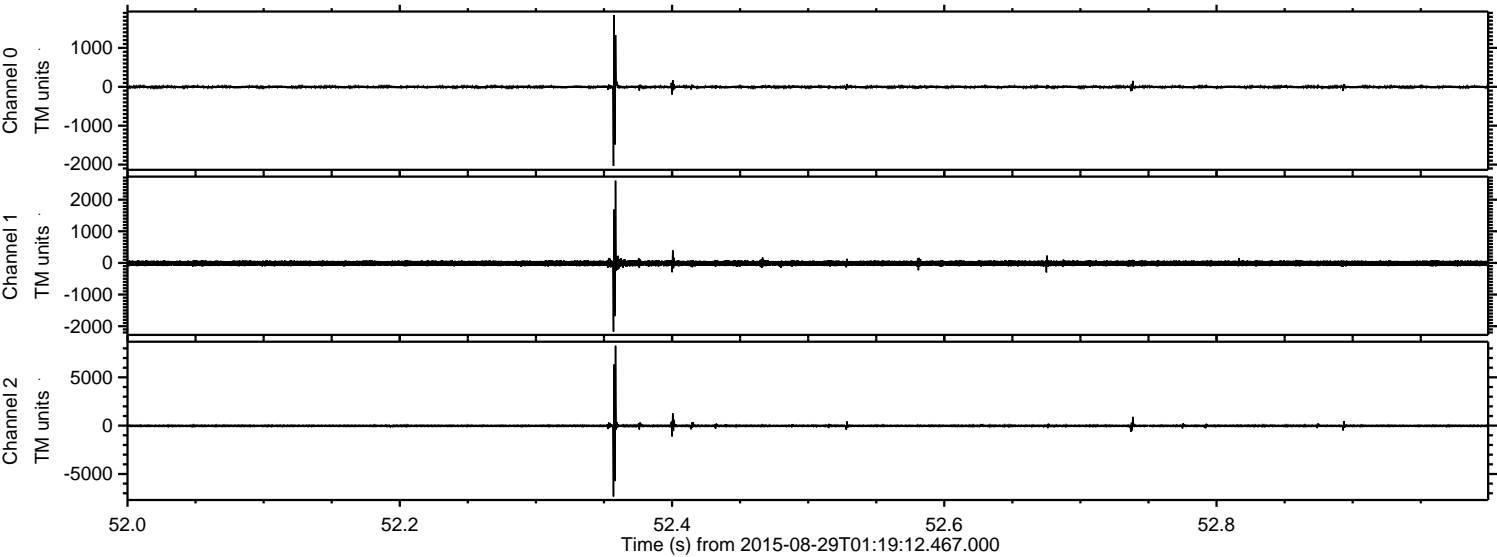
Channel 0
mn: -2301
mx: 1618
 μ : -3.6
 σ : 28.3

Channel 1
mn: -2829
mx: 2248
 μ : -12.3
 σ : 51.7

Channel 2
mn: -9297
mx: 7539
 μ : -13.1
 σ : 109.0

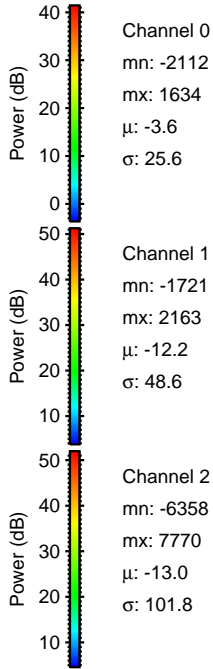
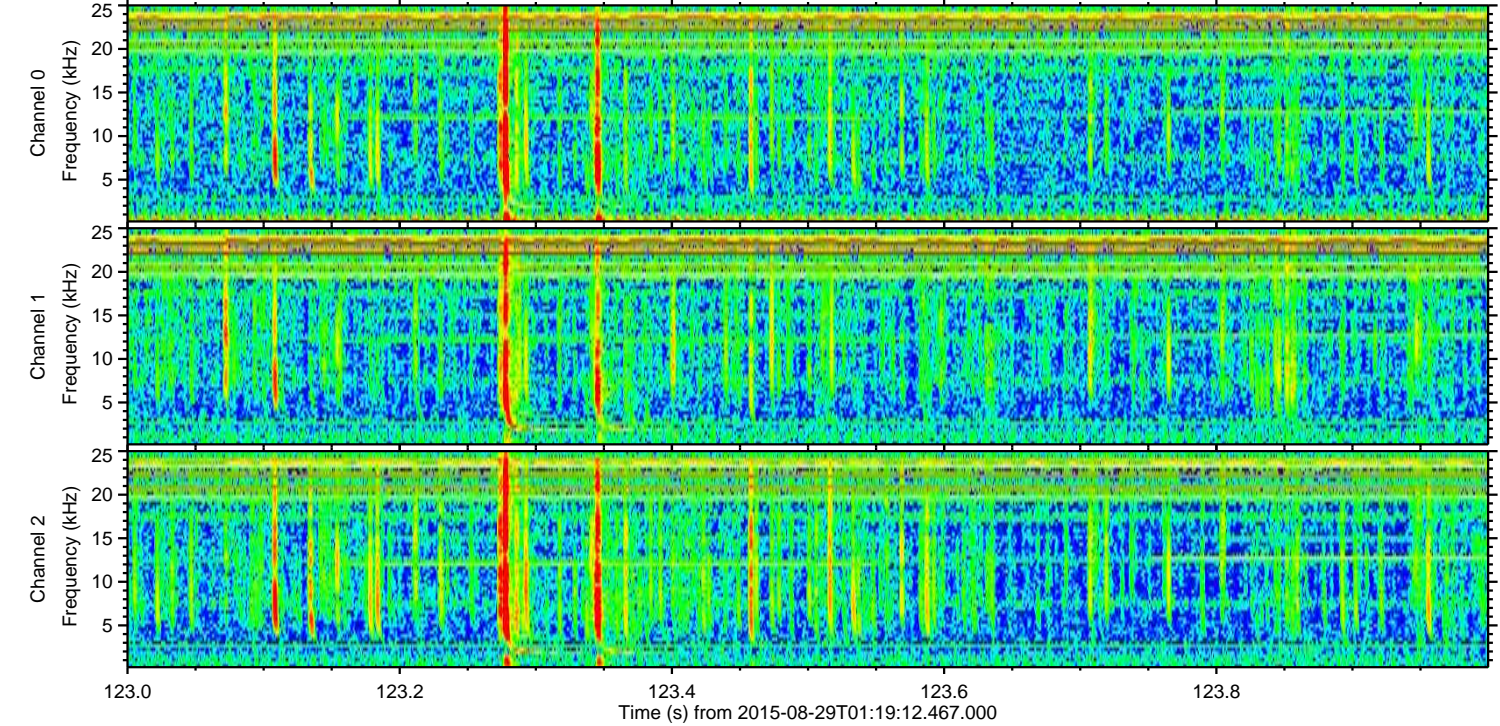
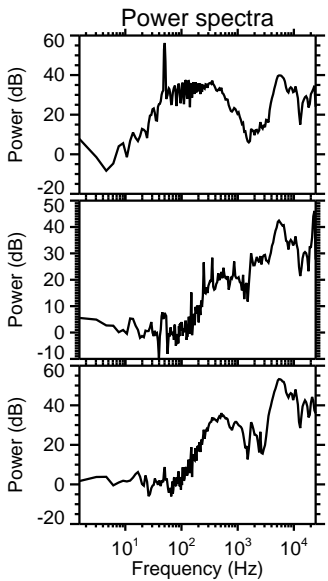
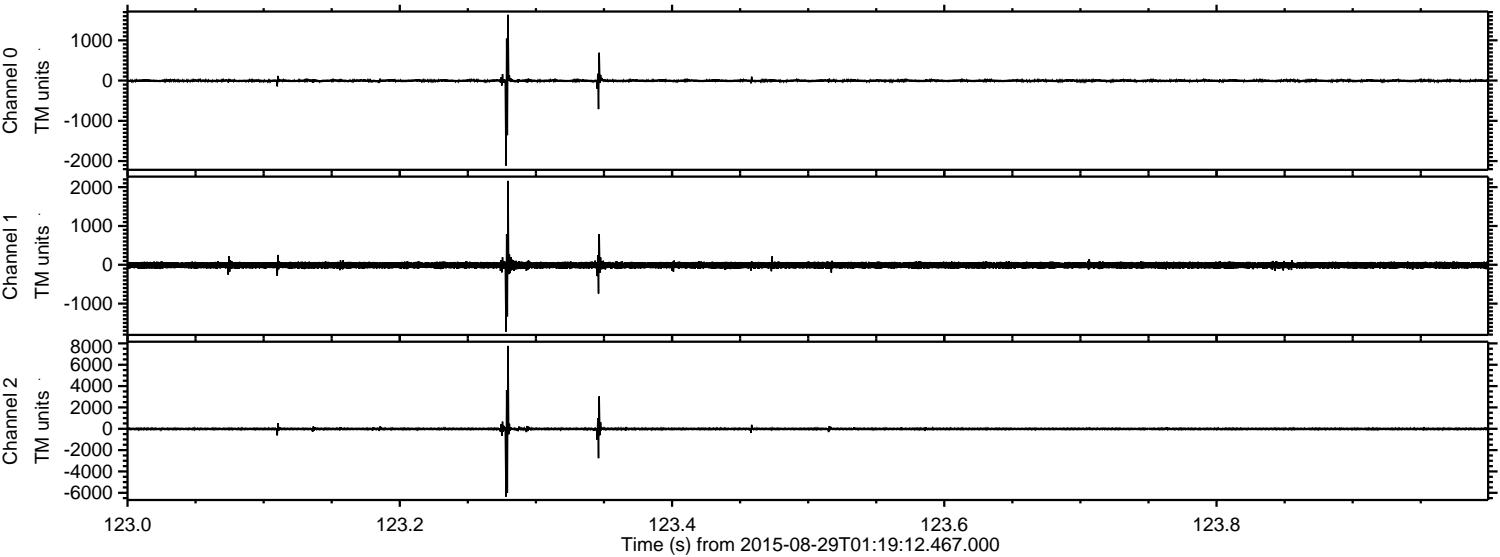
ELMAVAN 3D WAVEFORMS (Measured data sampled at 50 kHz) 51000 packets of 144 samples from 2015-08-29T01:19:12.467.000. Part 53/147

Processed Wed Oct 7 20:50:17 2015 by ELM ver.2012-10-06 from 001__elm20150829_011911__dat00.bin



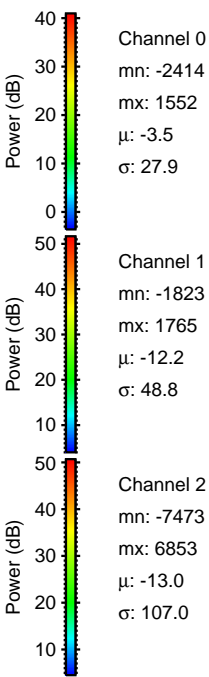
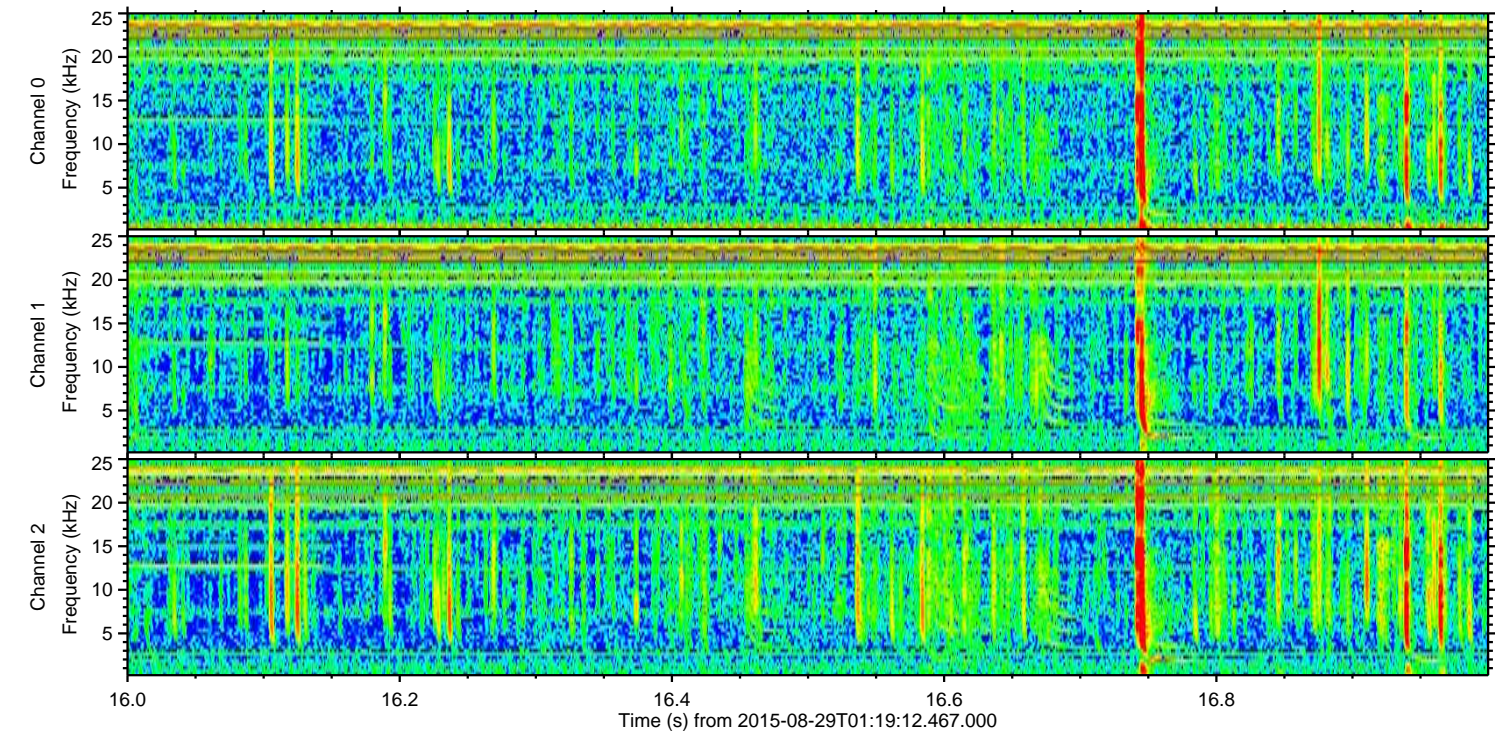
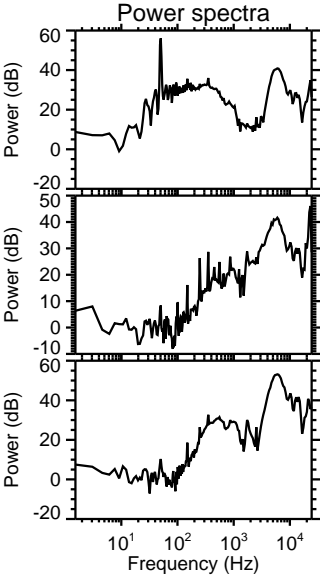
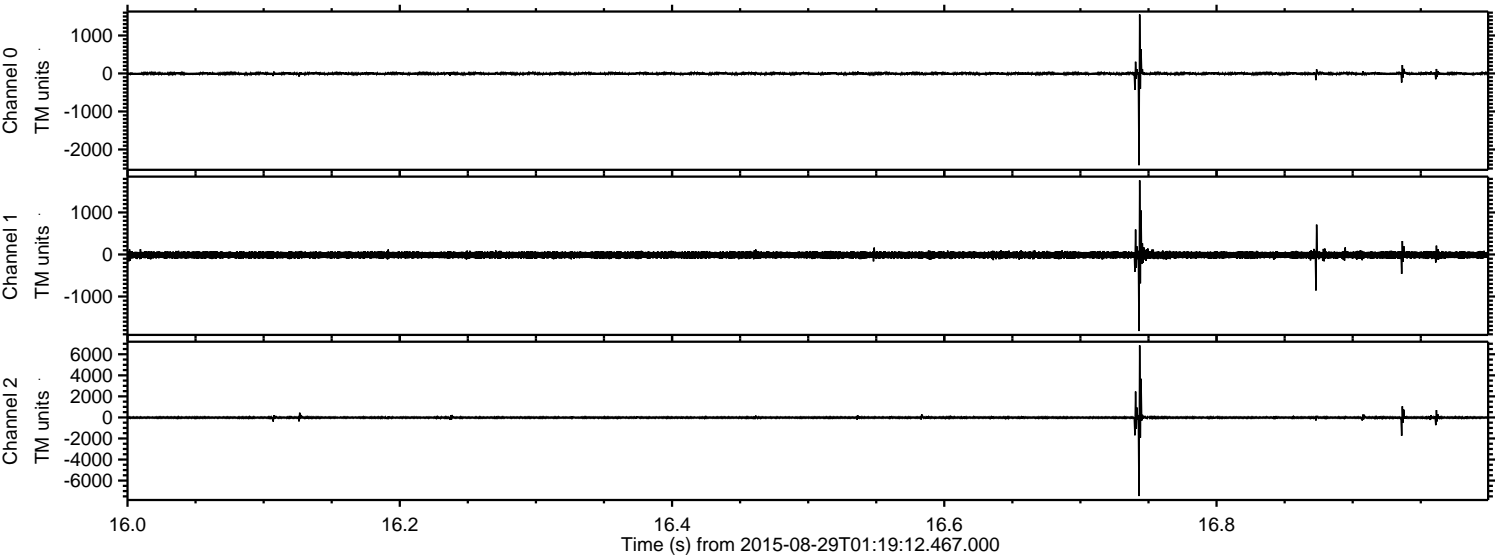
ELMAVAN 3D WAVEFORMS (Measured data sampled at 50 kHz) 51000 packets of 144 samples from 2015-08-29T01:19:12.467.000. Part 124/147

Processed Wed Oct 7 20:50:18 2015 by ELM ver.2012-10-06 from 001__elm20150829_011911__dat00.bin

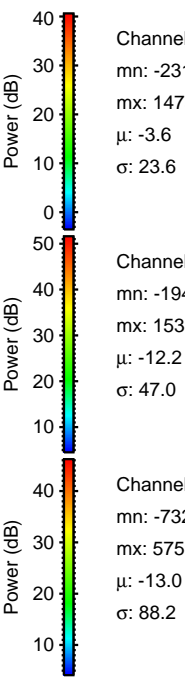
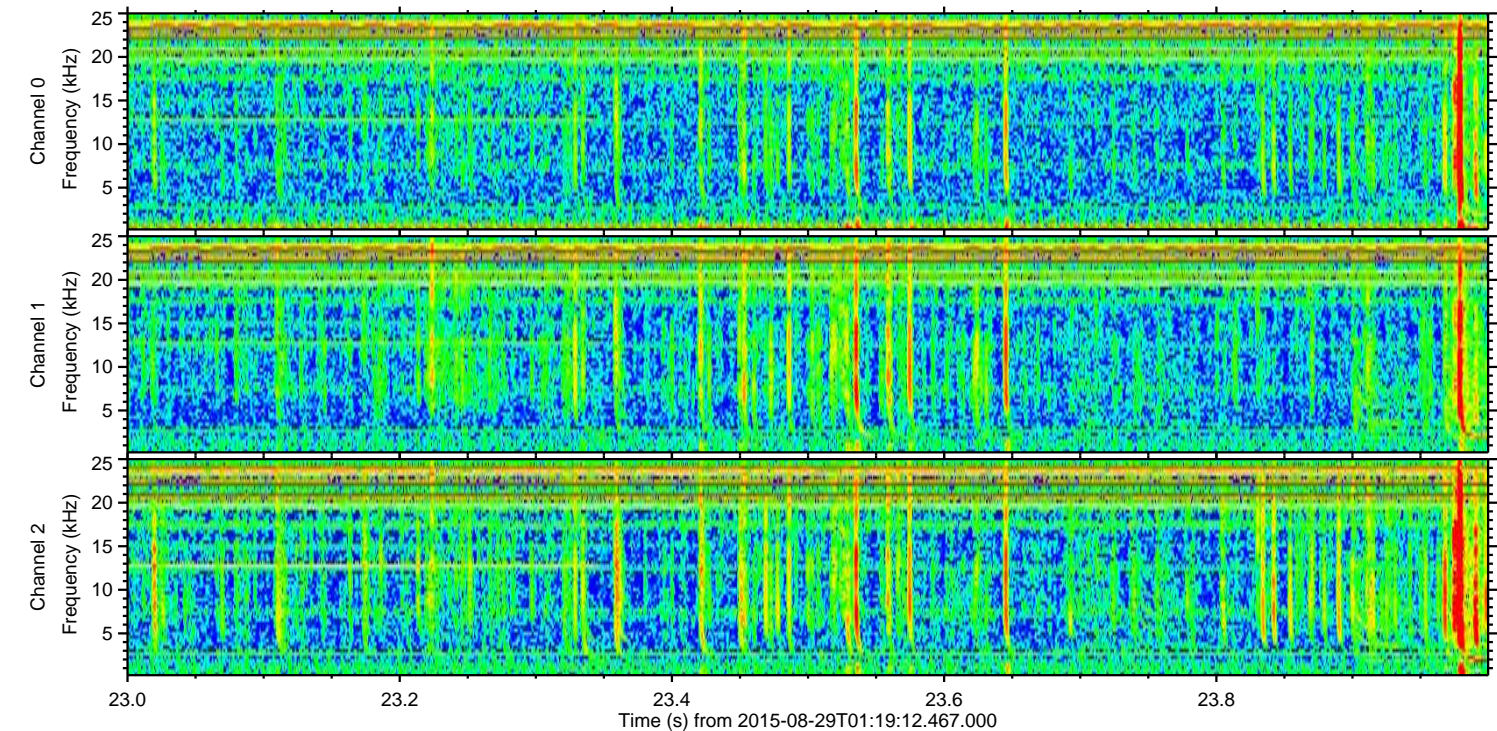
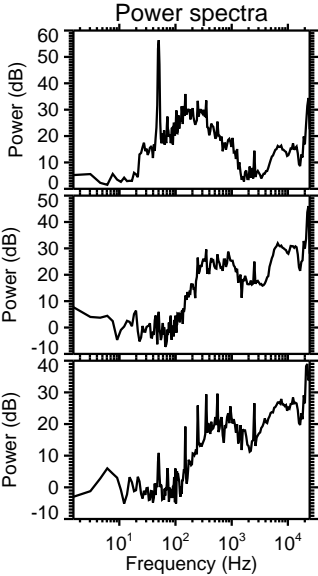
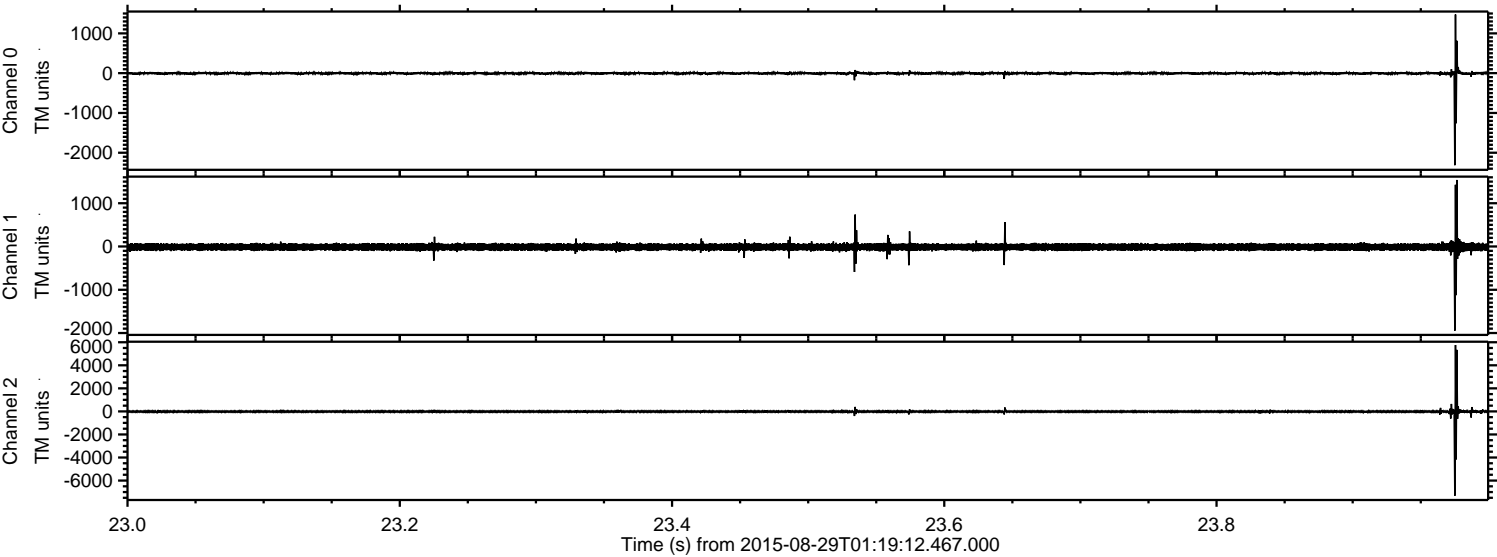


ELMAVAN 3D WAVEFORMS (Measured data sampled at 50 kHz) 51000 packets of 144 samples from 2015-08-29T01:19:12.467.000. Part 17/147

Processed Wed Oct 7 20:50:19 2015 by ELM ver.2012-10-06 from 001__elm20150829_011911__dat00.bin



Processed Wed Oct 7 20:50:20 2015 by ELM ver.2012-10-06 from 001__elm20150829_011911__dat00.bin



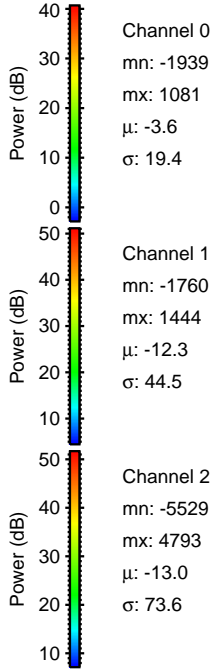
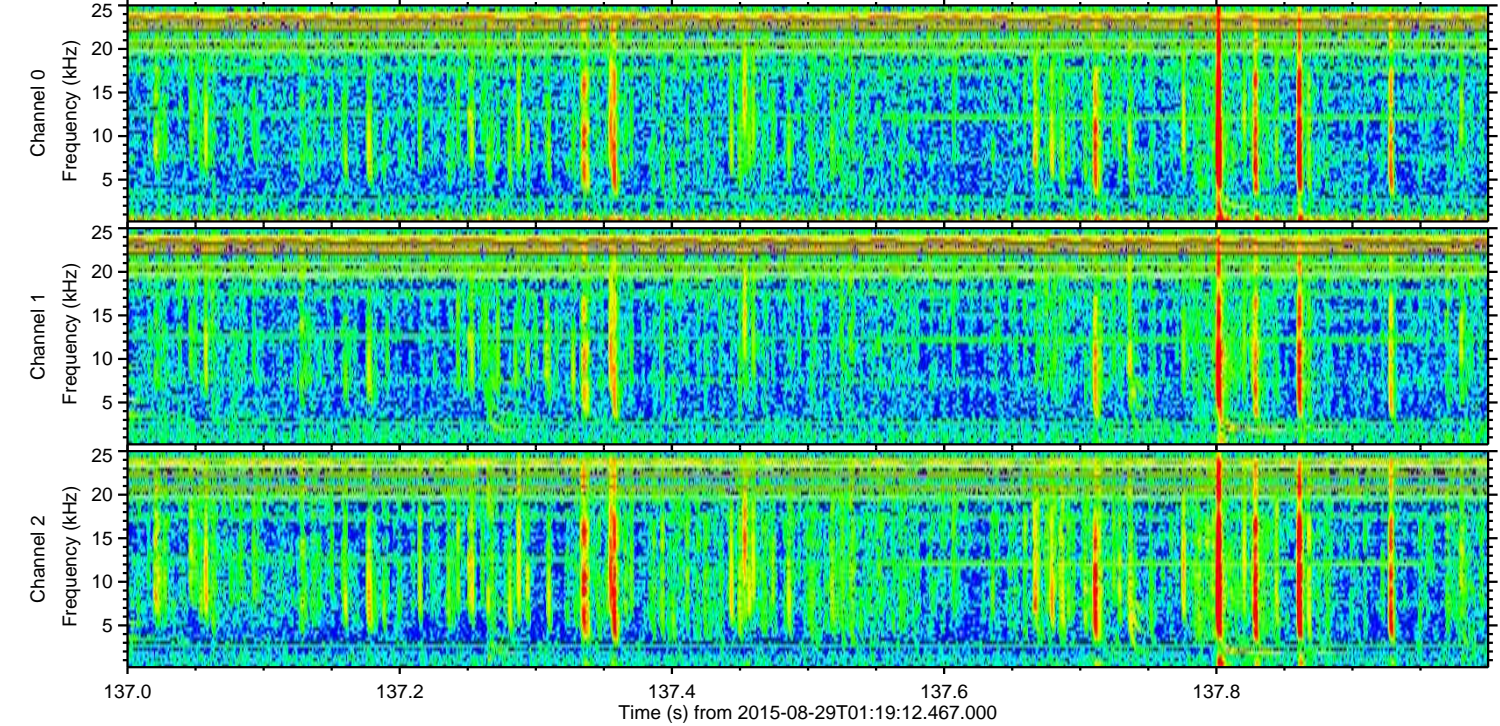
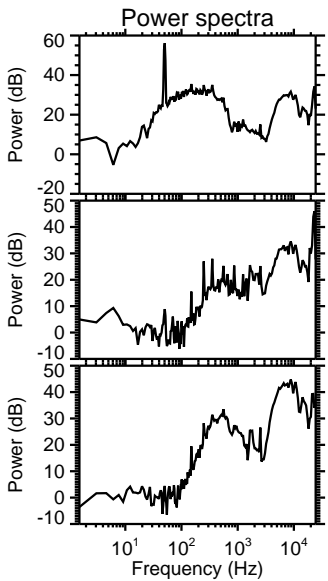
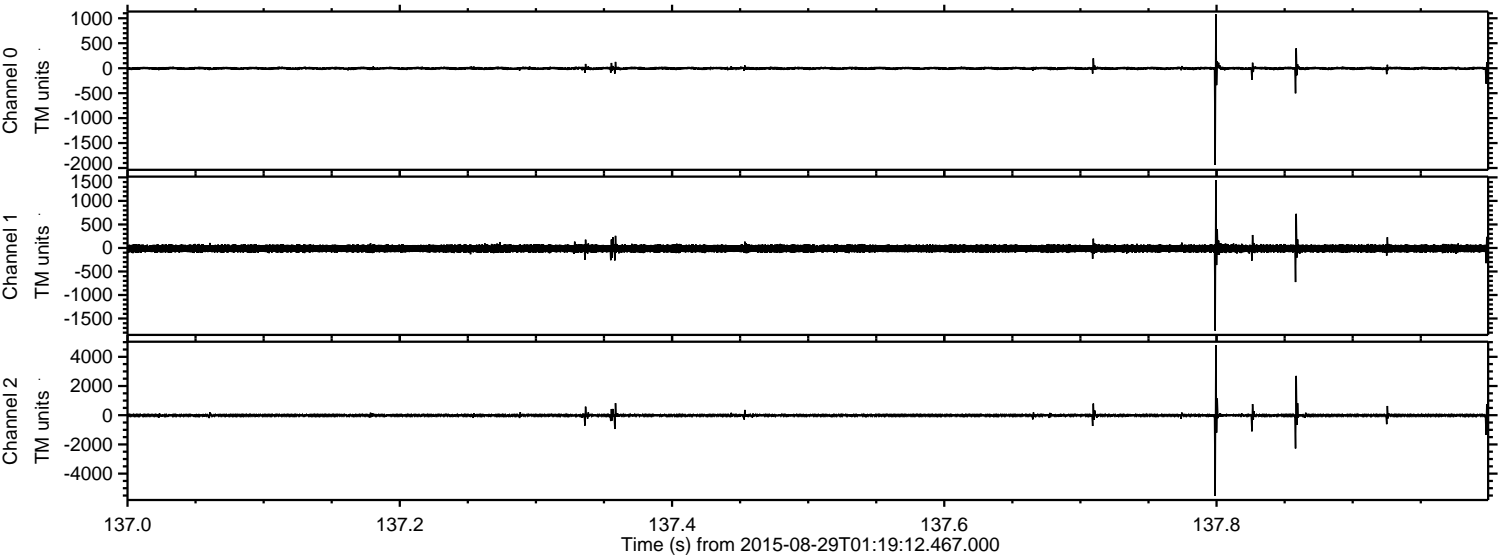
Channel 0
mn: -2313
mx: 1475
 μ : -3.6
 σ : 23.6

Channel 1
mn: -1947
mx: 1539
 μ : -12.2
 σ : 47.0

Channel 2
mn: -7322
mx: 5759
 μ : -13.0
 σ : 88.2

ELMAVAN 3D WAVEFORMS (Measured data sampled at 50 kHz) 51000 packets of 144 samples from 2015-08-29T01:19:12.467.000. Part 138/147

Processed Wed Oct 7 20:50:21 2015 by ELM ver.2012-10-06 from 001__elm20150829_011911__dat00.bin



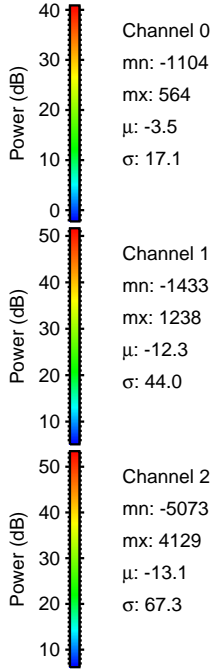
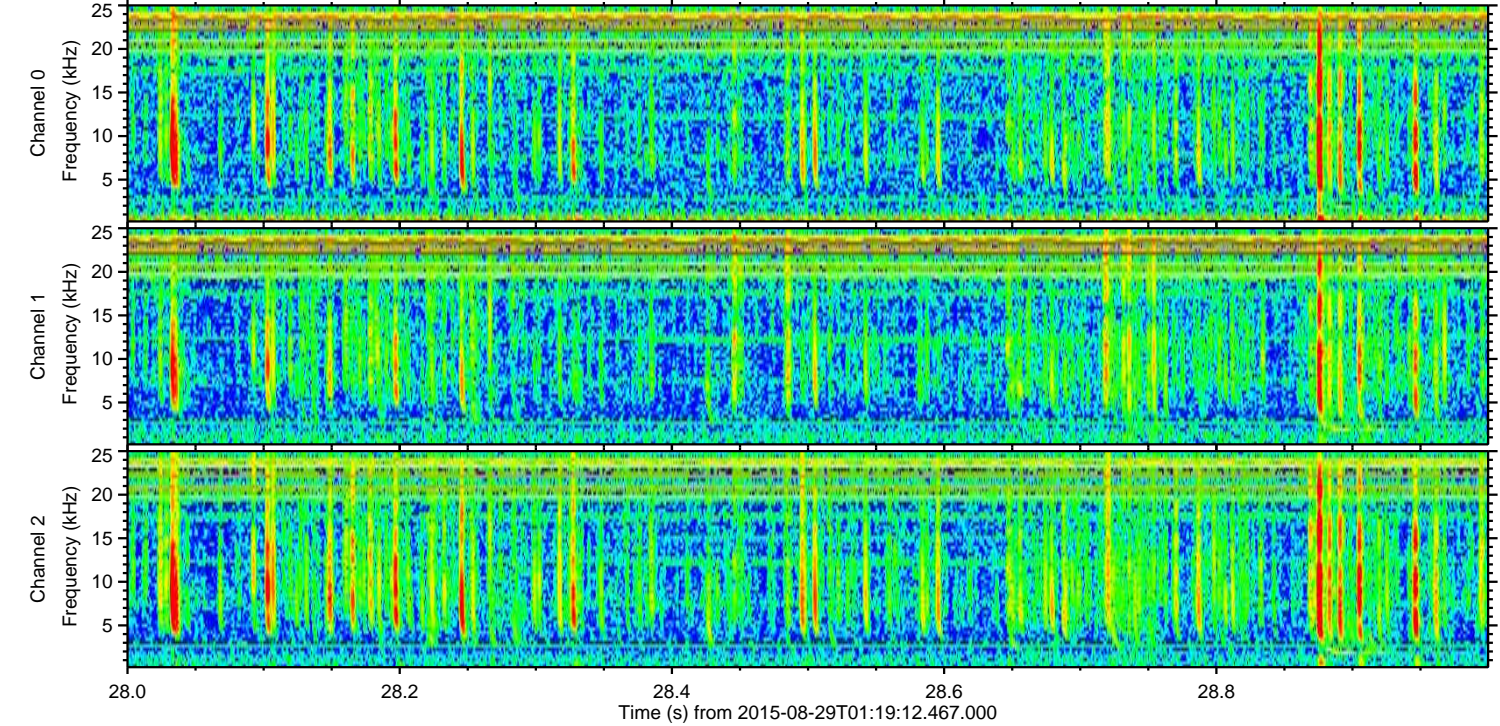
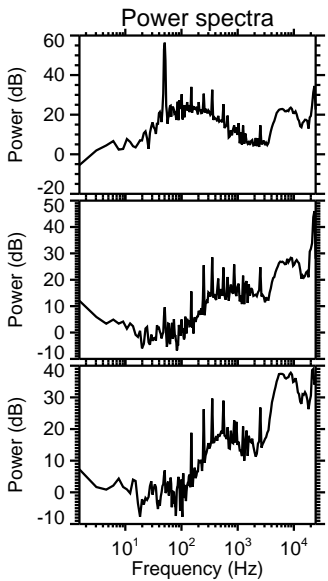
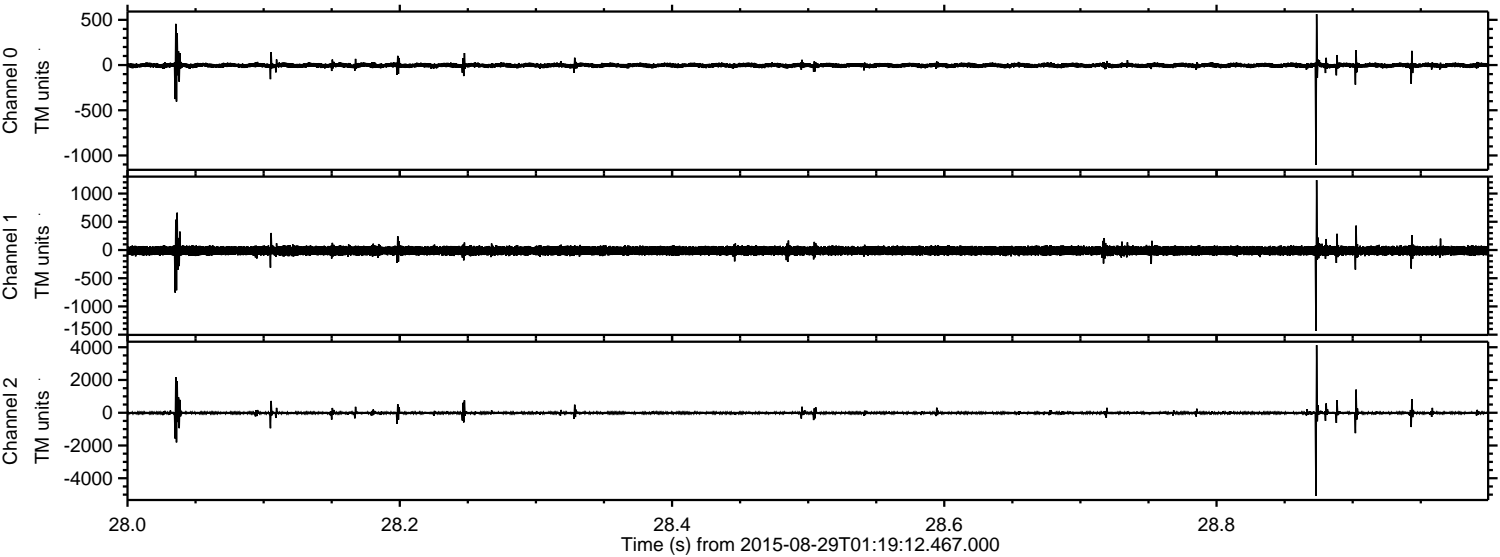
Channel 0
mn: -1939
mx: 1081
 μ : -3.6
 σ : 19.4

Channel 1
mn: -1760
mx: 1444
 μ : -12.3
 σ : 44.5

Channel 2
mn: -5529
mx: 4793
 μ : -13.0
 σ : 73.6

ELMAVAN 3D WAVEFORMS (Measured data sampled at 50 kHz) 51000 packets of 144 samples from 2015-08-29T01:19:12.467.000. Part 29/147

Processed Wed Oct 7 20:50:22 2015 by ELM ver.2012-10-06 from 001__elm20150829_011911__dat00.bin

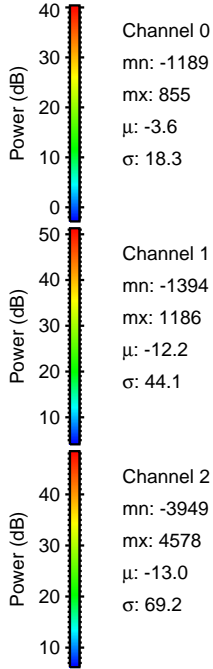
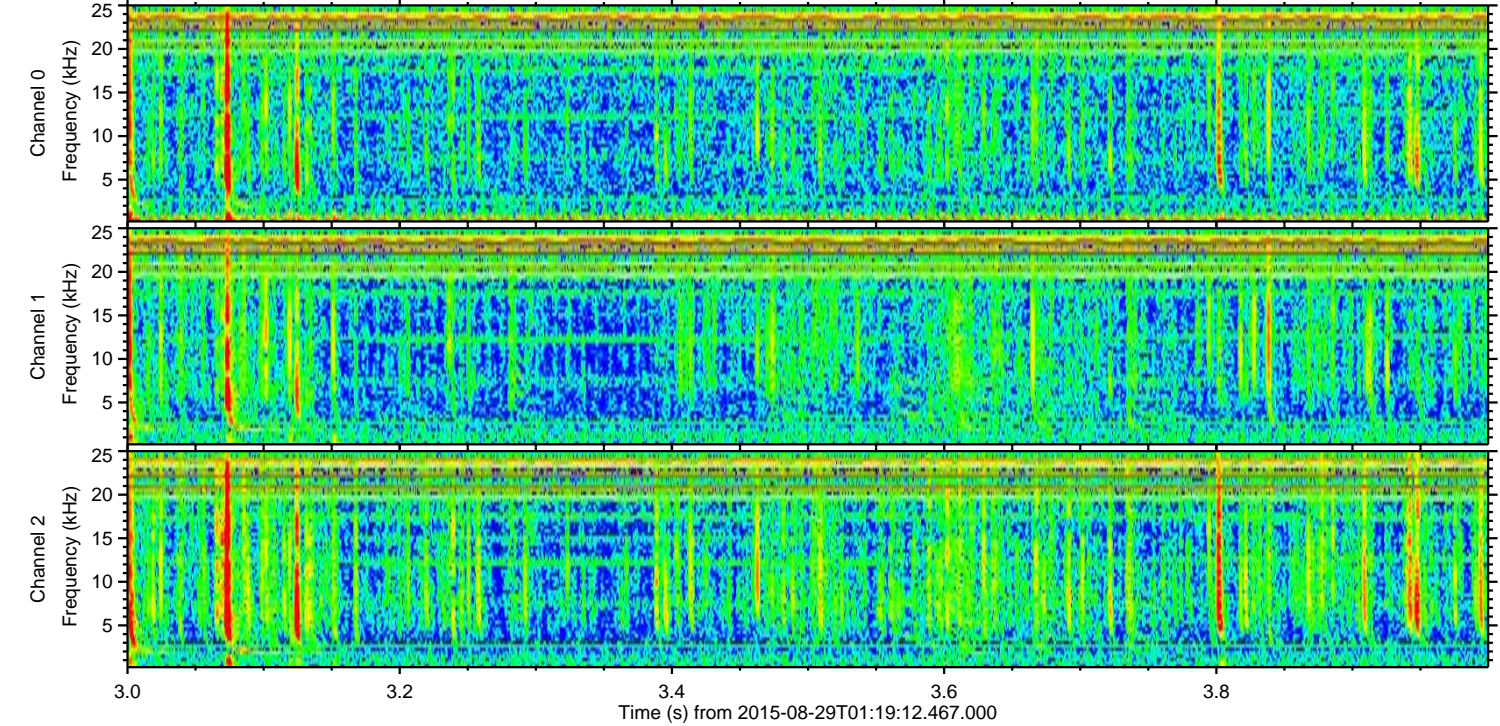
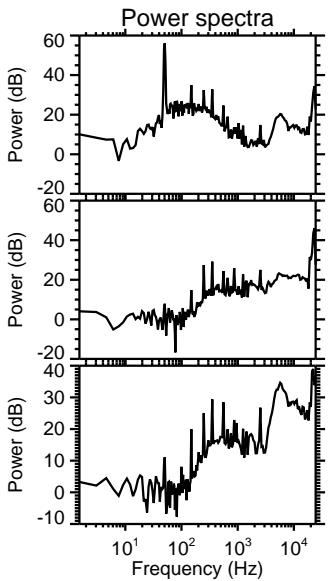
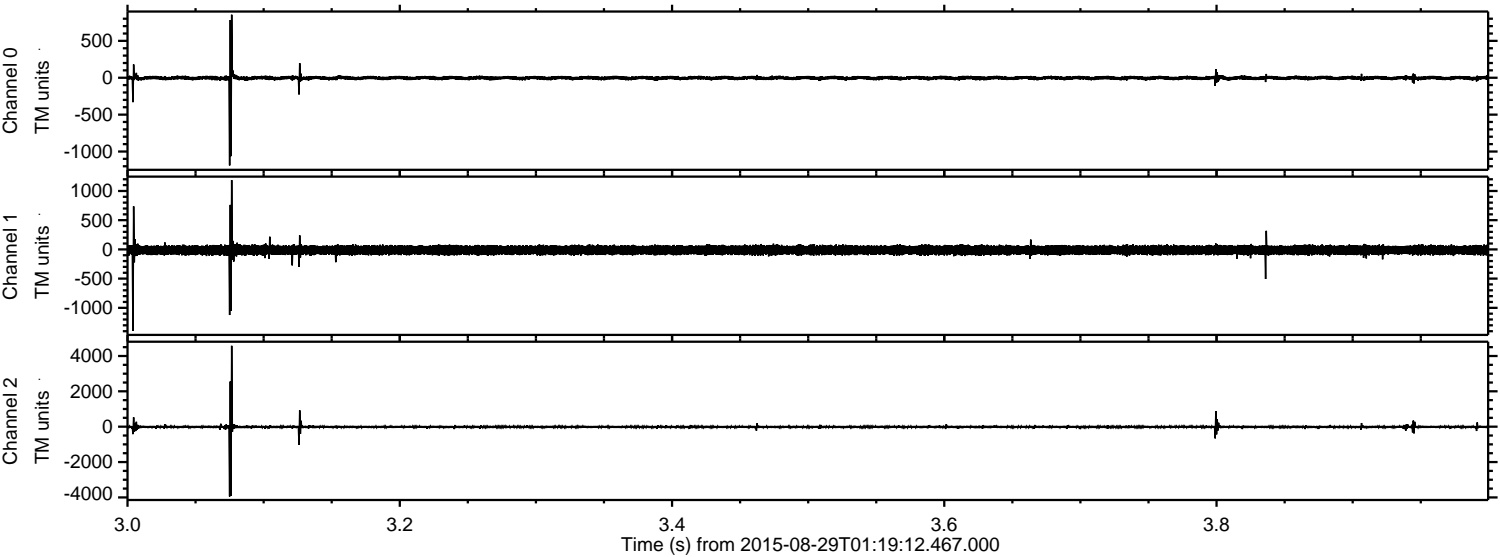


Channel 0
mn: -1104
mx: 564
 μ : -3.5
 σ : 17.1

Channel 1
mn: -1433
mx: 1238
 μ : -12.3
 σ : 44.0

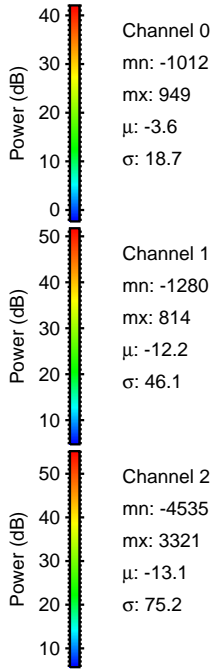
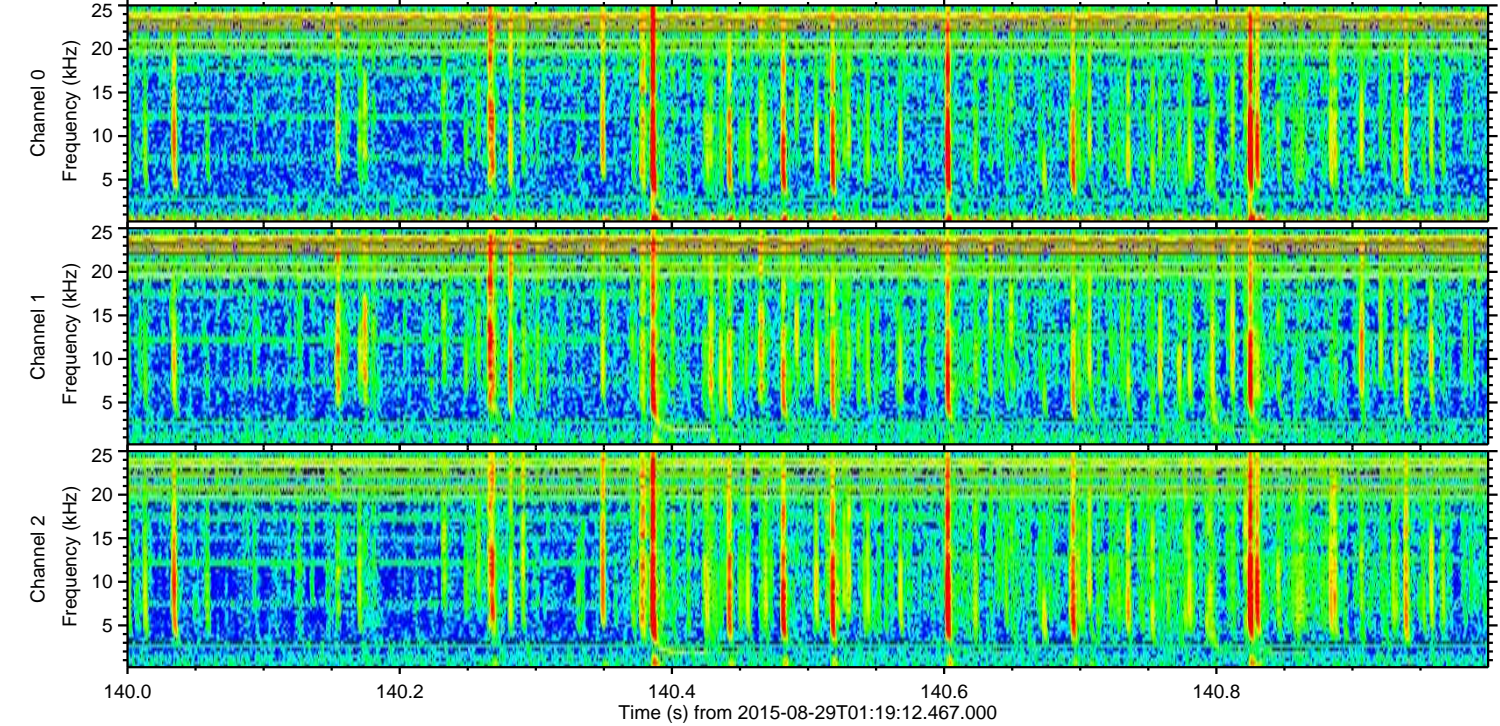
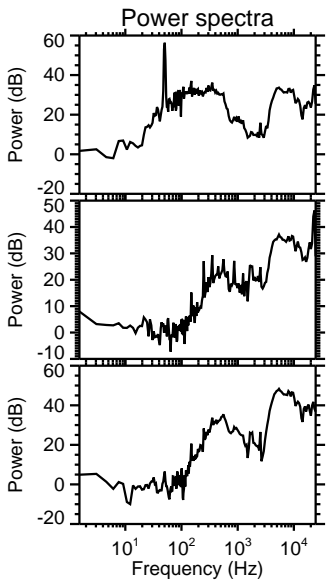
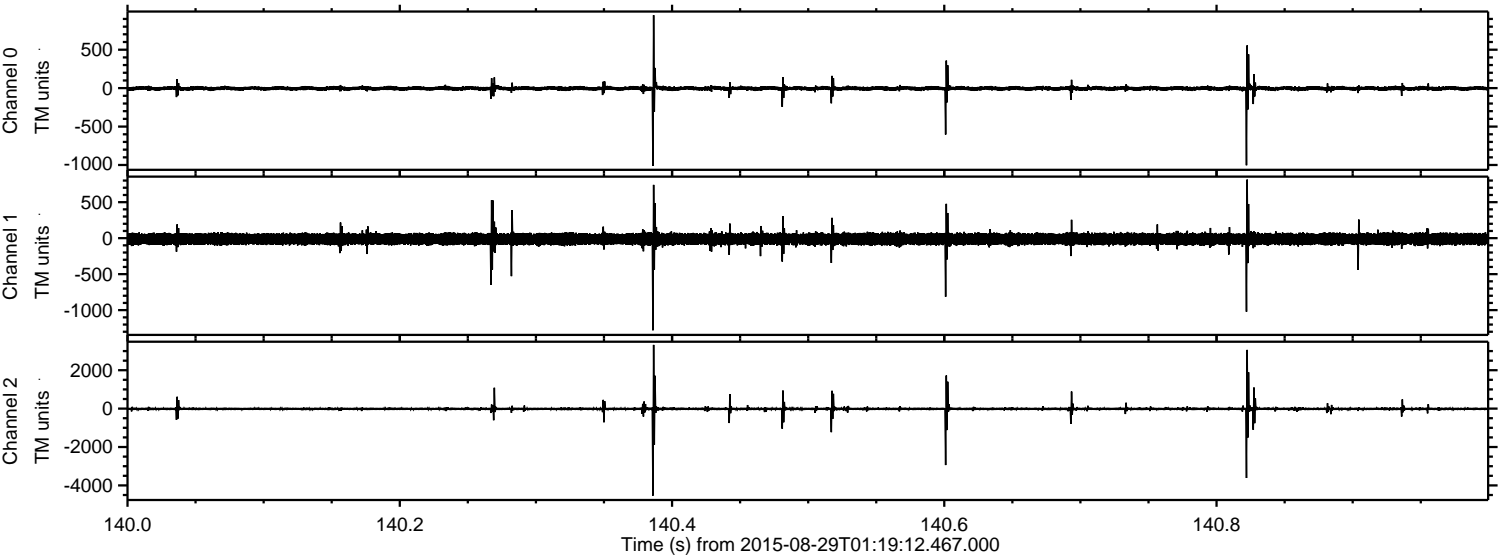
Channel 2
mn: -5073
mx: 4129
 μ : -13.1
 σ : 67.3

Processed Wed Oct 7 20:50:23 2015 by ELM ver.2012-10-06 from 001__elm20150829_011911__dat00.bin



ELMAVAN 3D WAVEFORMS (Measured data sampled at 50 kHz) 51000 packets of 144 samples from 2015-08-29T01:19:12.467.000. Part 141/147

Processed Wed Oct 7 20:50:24 2015 by ELM ver.2012-10-06 from 001__elm20150829_011911__dat00.bin



Processed Wed Oct 7 20:50:25 2015 by ELM ver.2012-10-06 from 001__elm20150829_011911__dat00.bin

