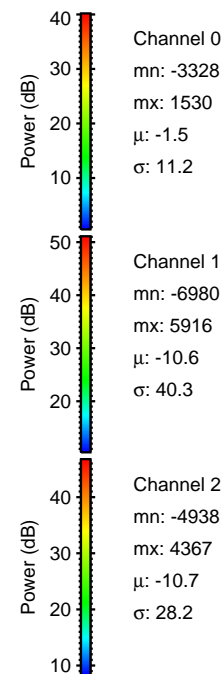
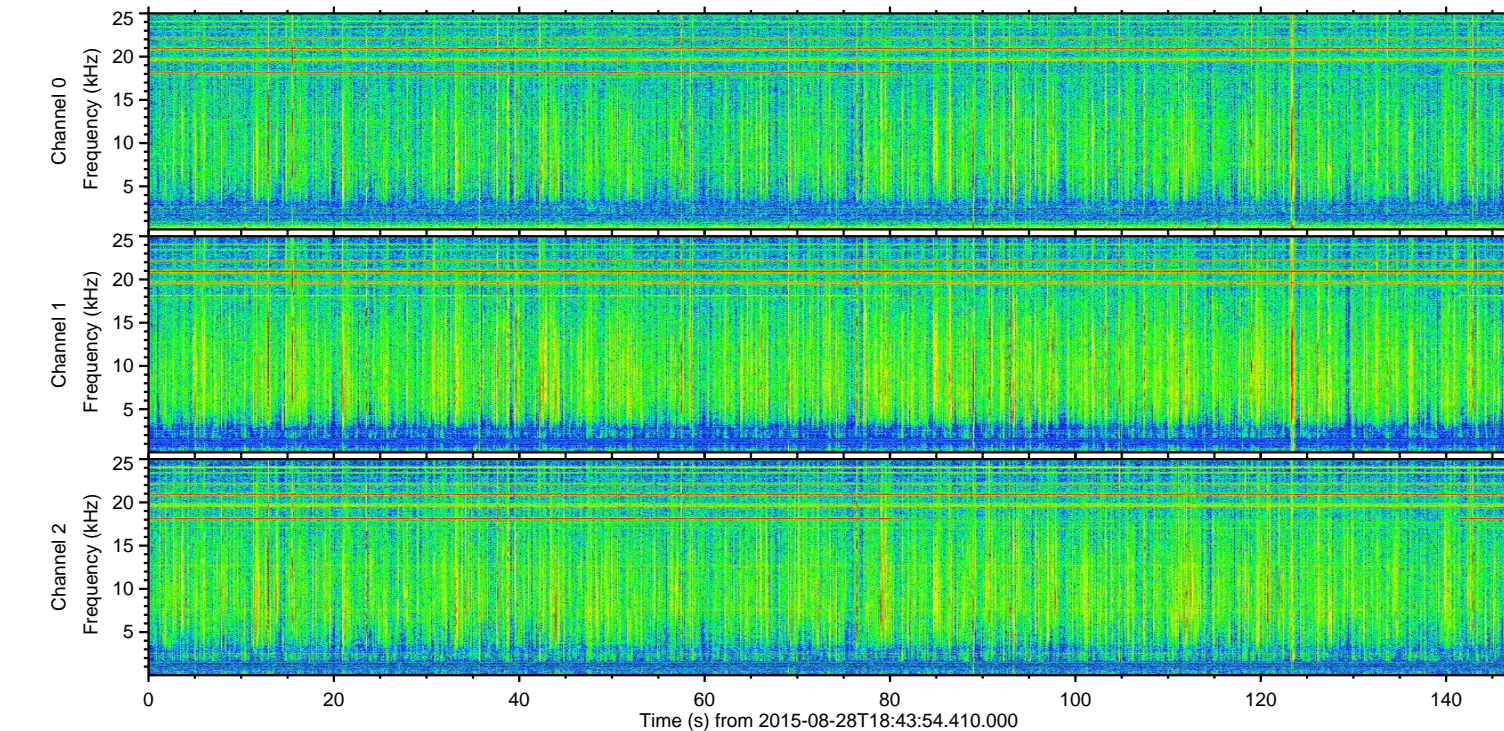
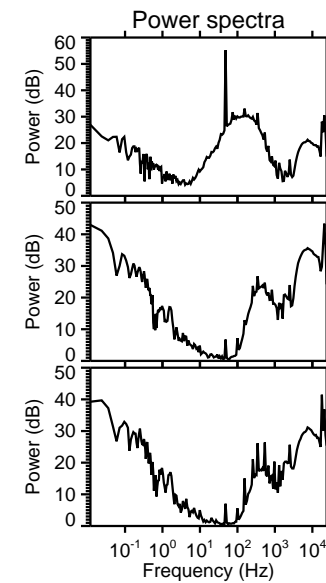
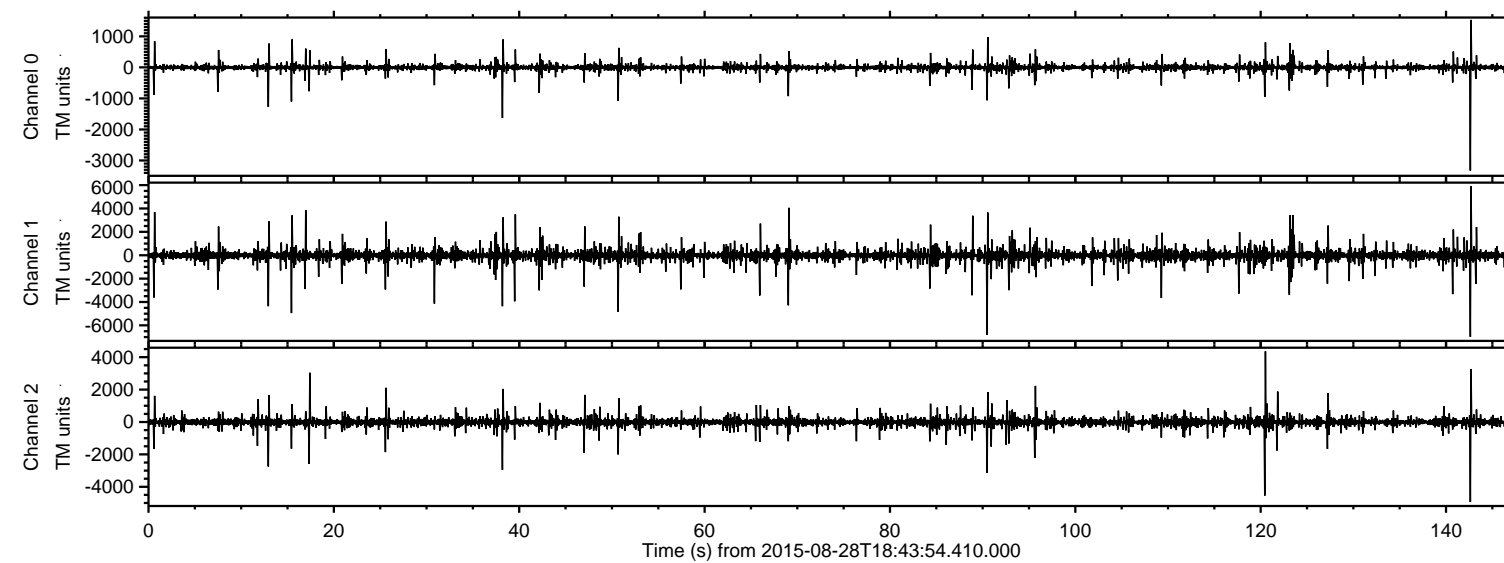


# ELMAVAN 3D WAVEFORMS (Measured data sampled at 50 kHz) 51000 packets of 144 samples from 2015-08-28T18:43:54.410.000.

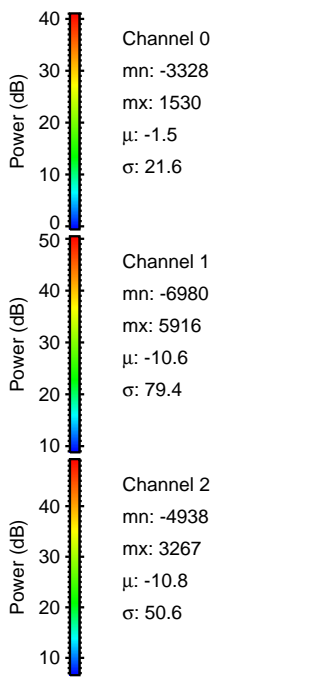
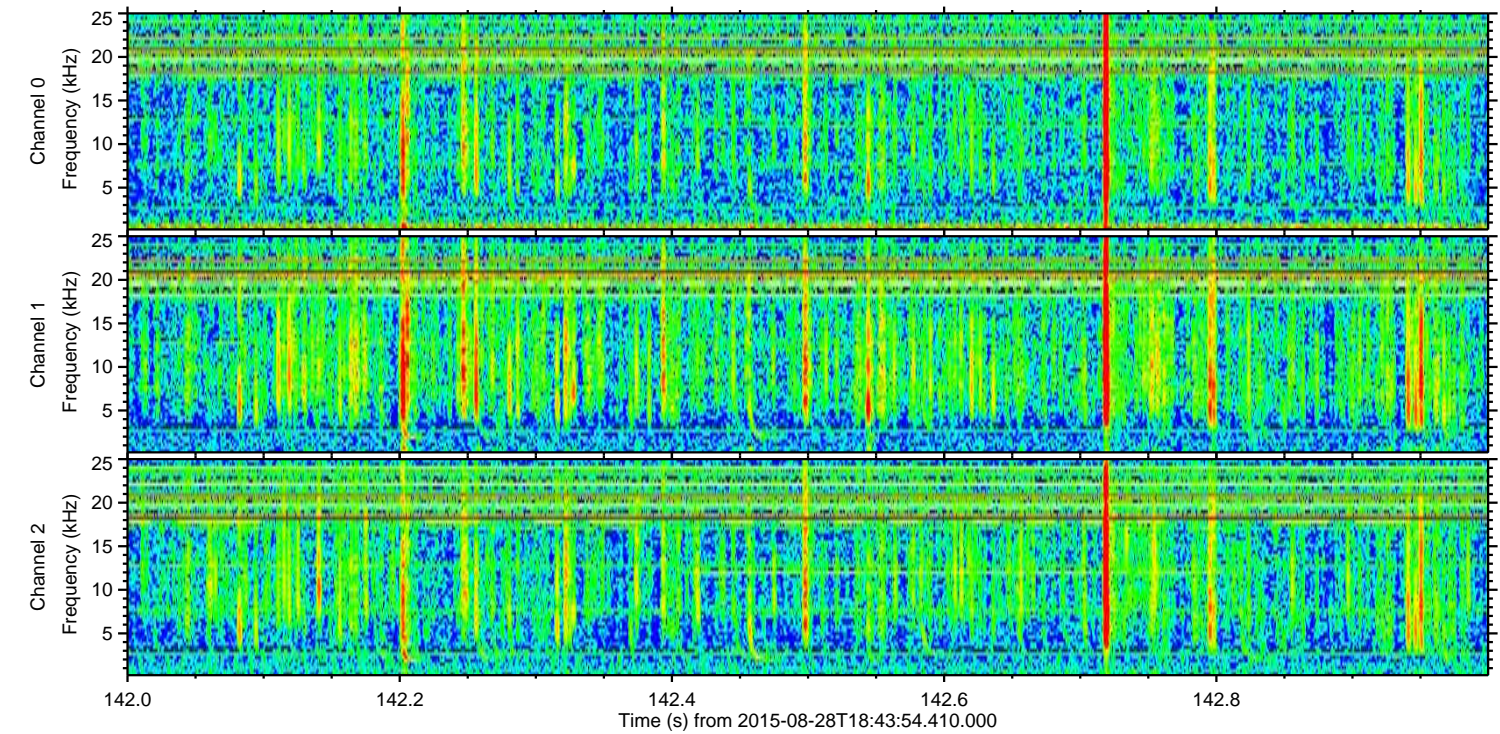
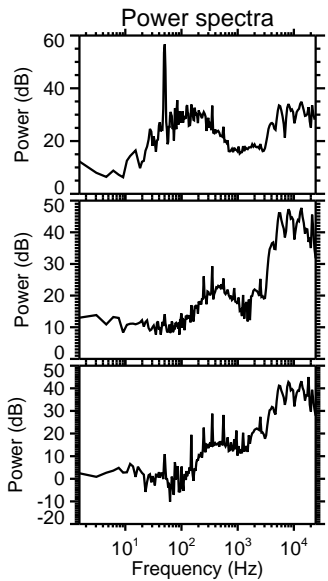
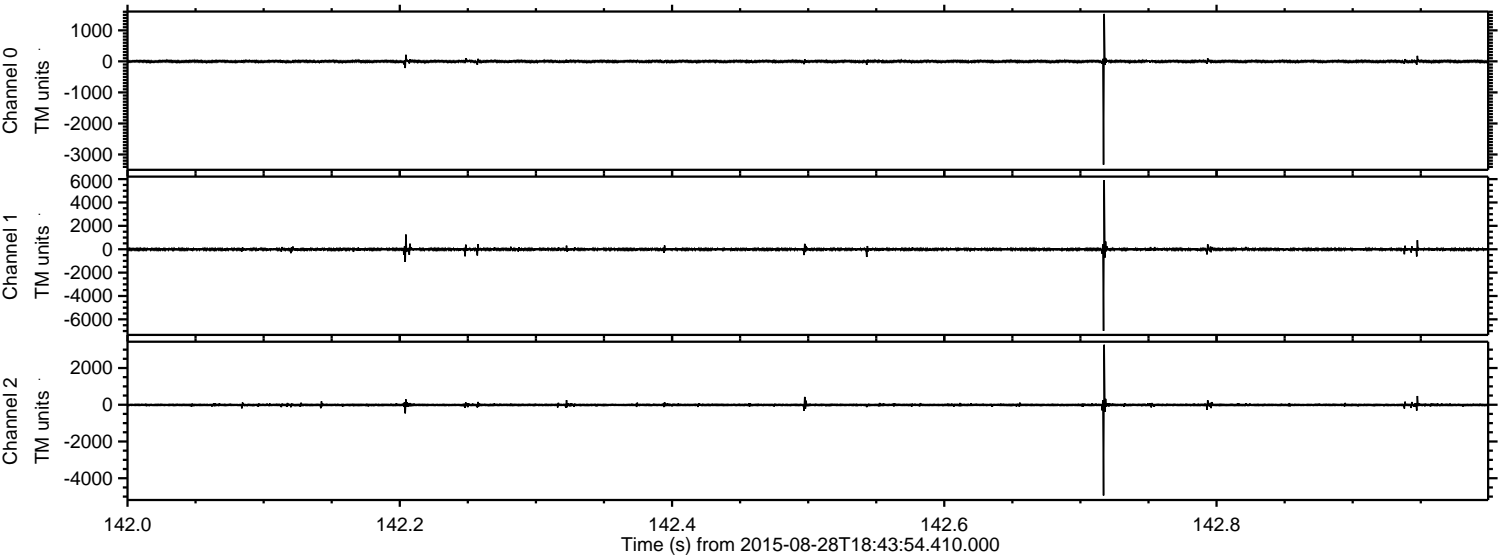
Processed Wed Oct 7 18:59:54 2015 by ELM ver.2012-10-06 from 001\_\_elm20150828\_184353\_\_dat00.bin





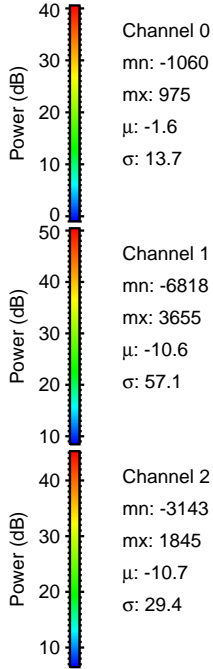
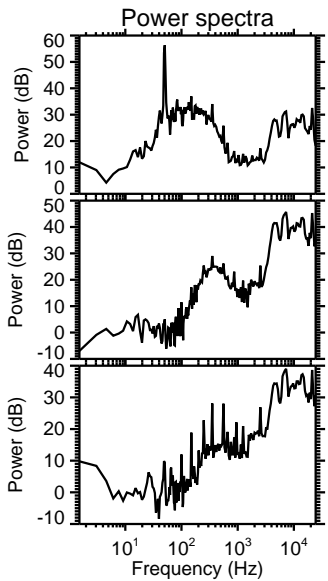
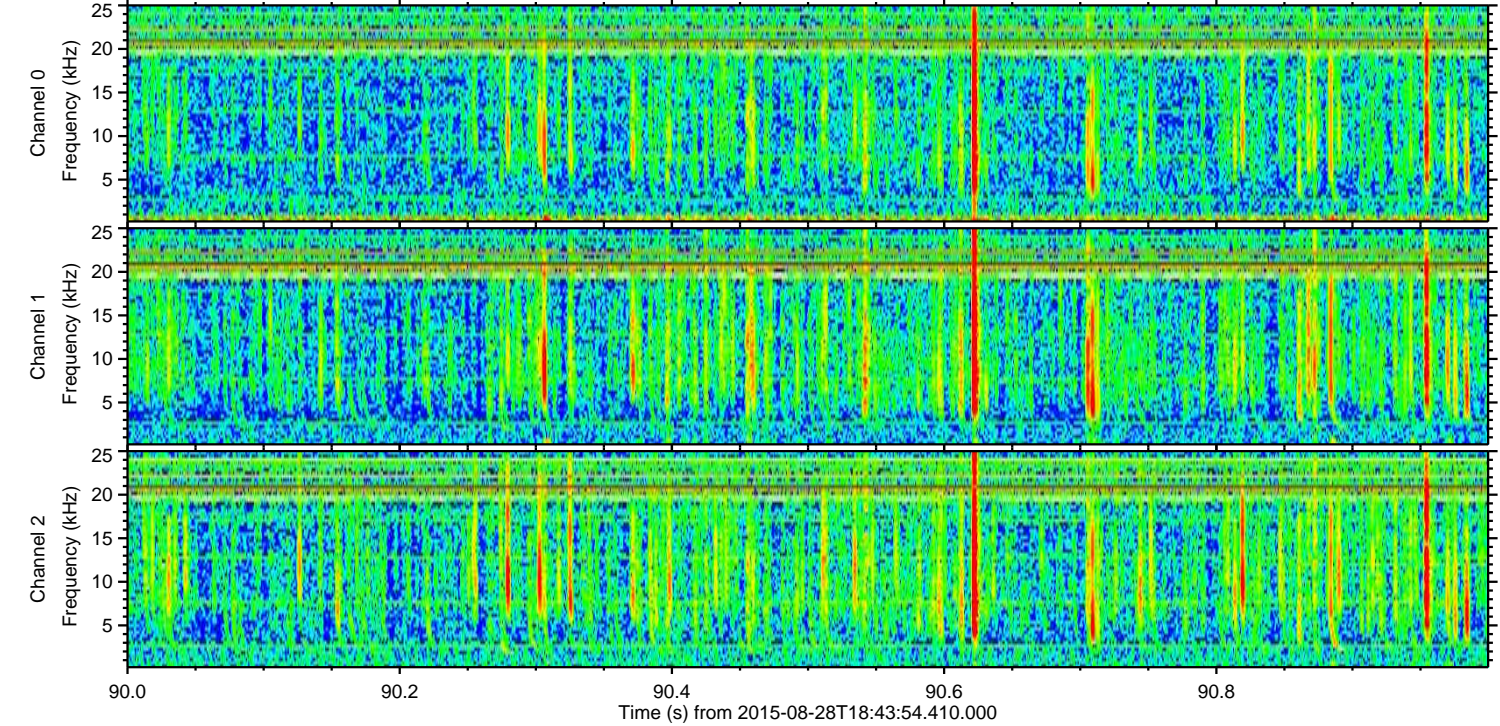
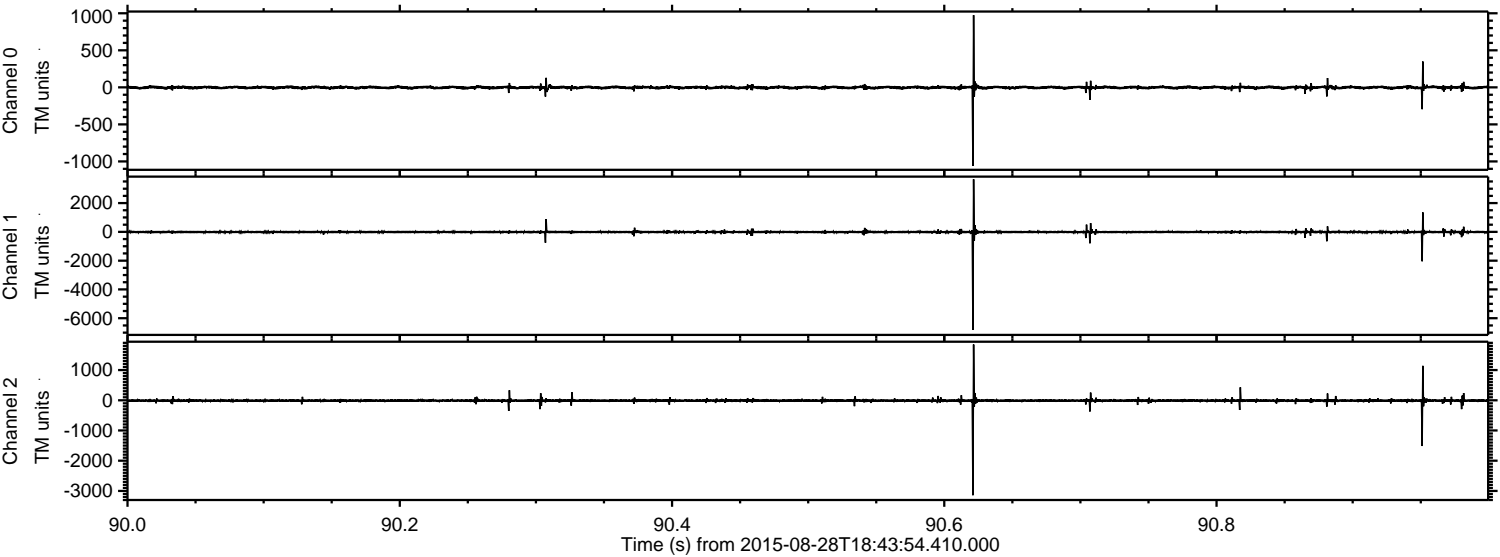
ELMAVAN 3D WAVEFORMS (Measured data sampled at 50 kHz) 51000 packets of 144 samples from 2015-08-28T18:43:54.410.000. Part 143/147

Processed Wed Oct 7 19:00:10 2015 by ELM ver.2012-10-06 from 001\_\_elm20150828\_184353\_\_dat00.bin





Processed Wed Oct 7 19:00:11 2015 by ELM ver.2012-10-06 from 001\_\_elm20150828\_184353\_\_dat00.bin



Channel 0  
mn: -1060  
mx: 975  
 $\mu$ : -1.6  
 $\sigma$ : 13.7

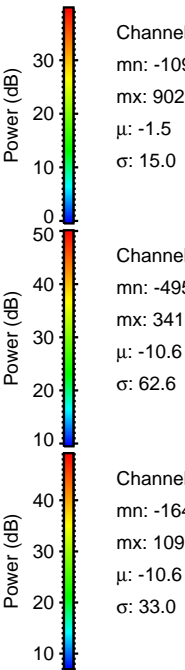
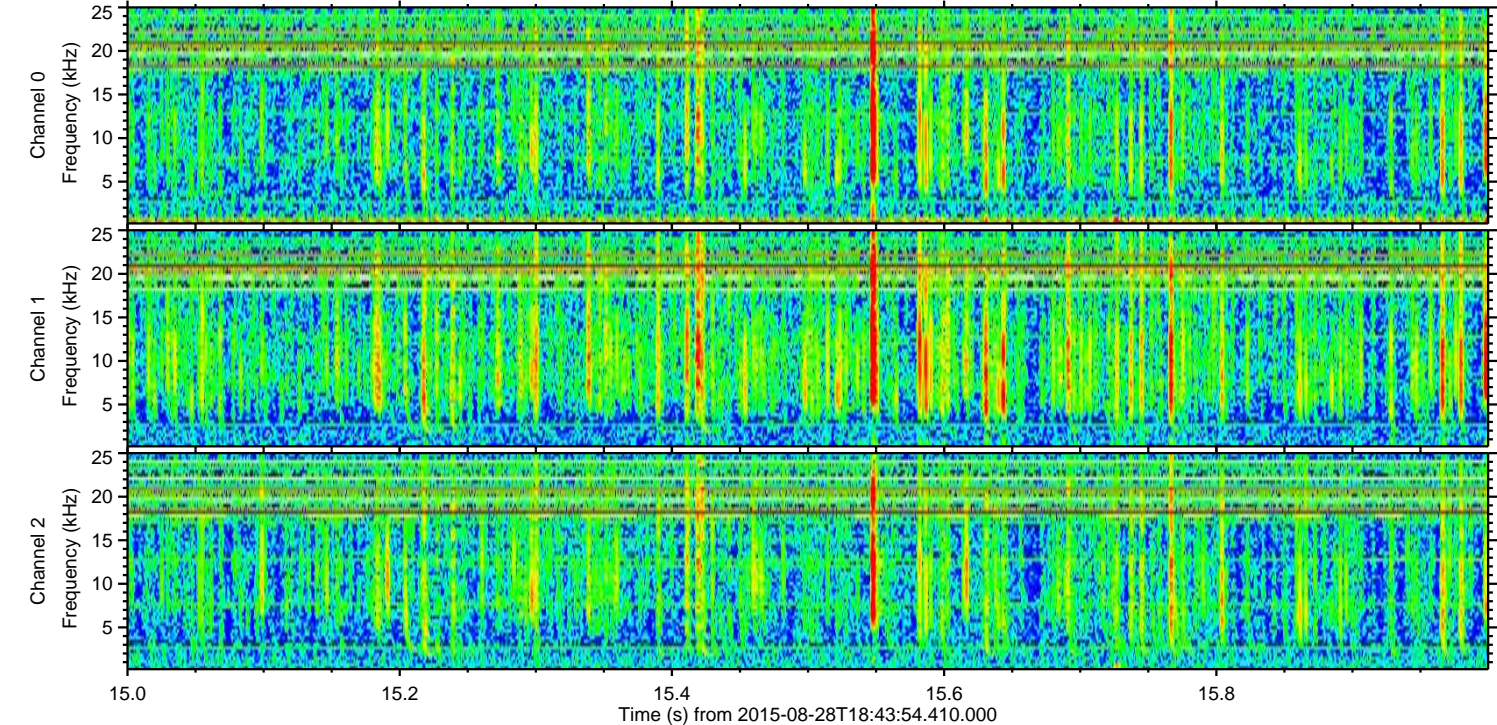
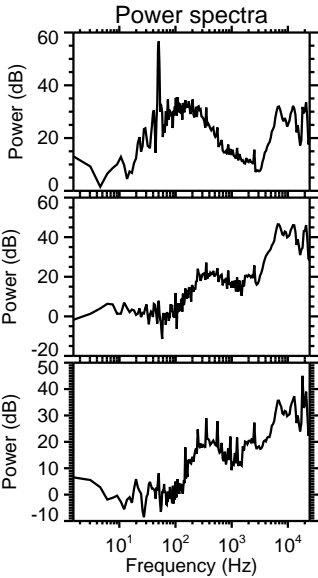
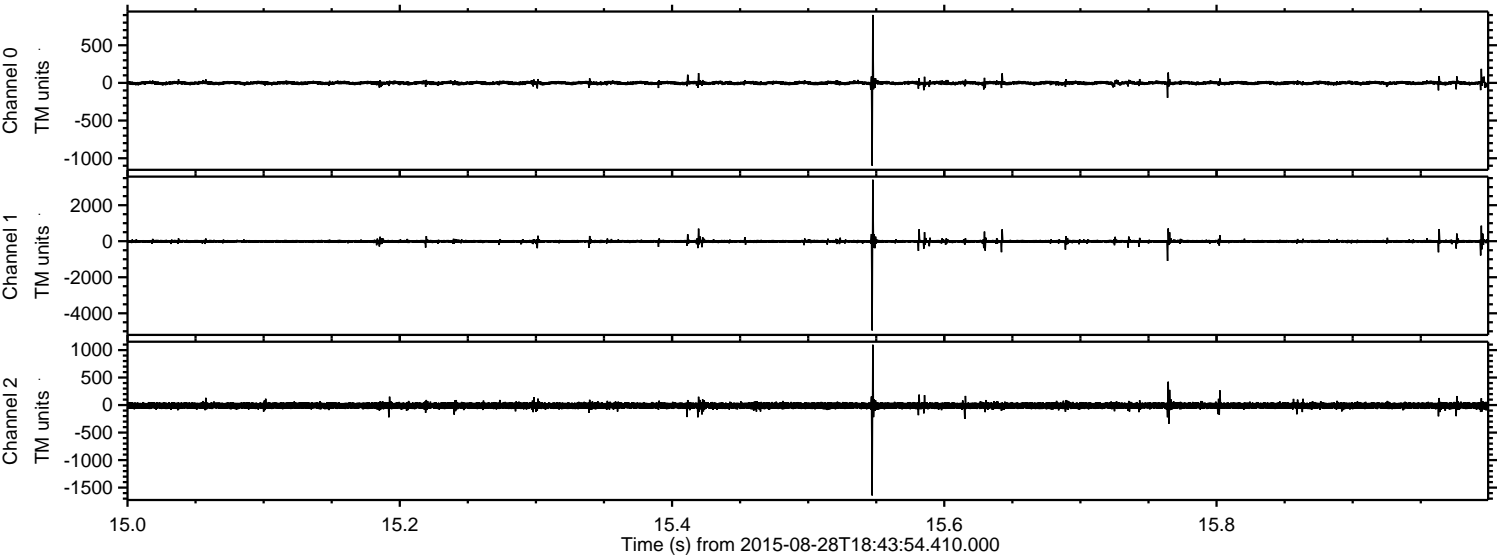
Channel 1  
mn: -6818  
mx: 3655  
 $\mu$ : -10.6  
 $\sigma$ : 57.1

Channel 2  
mn: -3143  
mx: 1845  
 $\mu$ : -10.7  
 $\sigma$ : 29.4



ELMAVAN 3D WAVEFORMS (Measured data sampled at 50 kHz) 51000 packets of 144 samples from 2015-08-28T18:43:54.410.000. Part 16/147

Processed Wed Oct 7 19:00:12 2015 by ELM ver.2012-10-06 from 001\_\_elm20150828\_184353\_\_dat00.bin



Channel 0  
mn: -1099  
mx: 902  
 $\mu$ : -1.5  
 $\sigma$ : 15.0

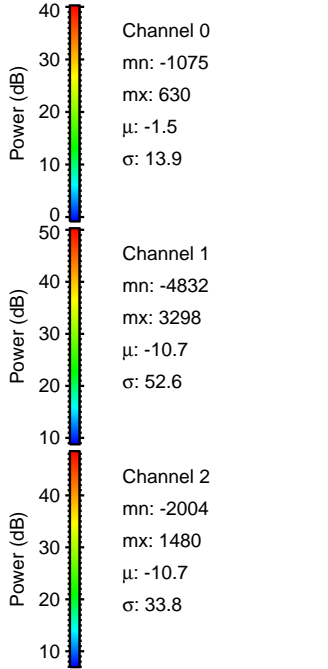
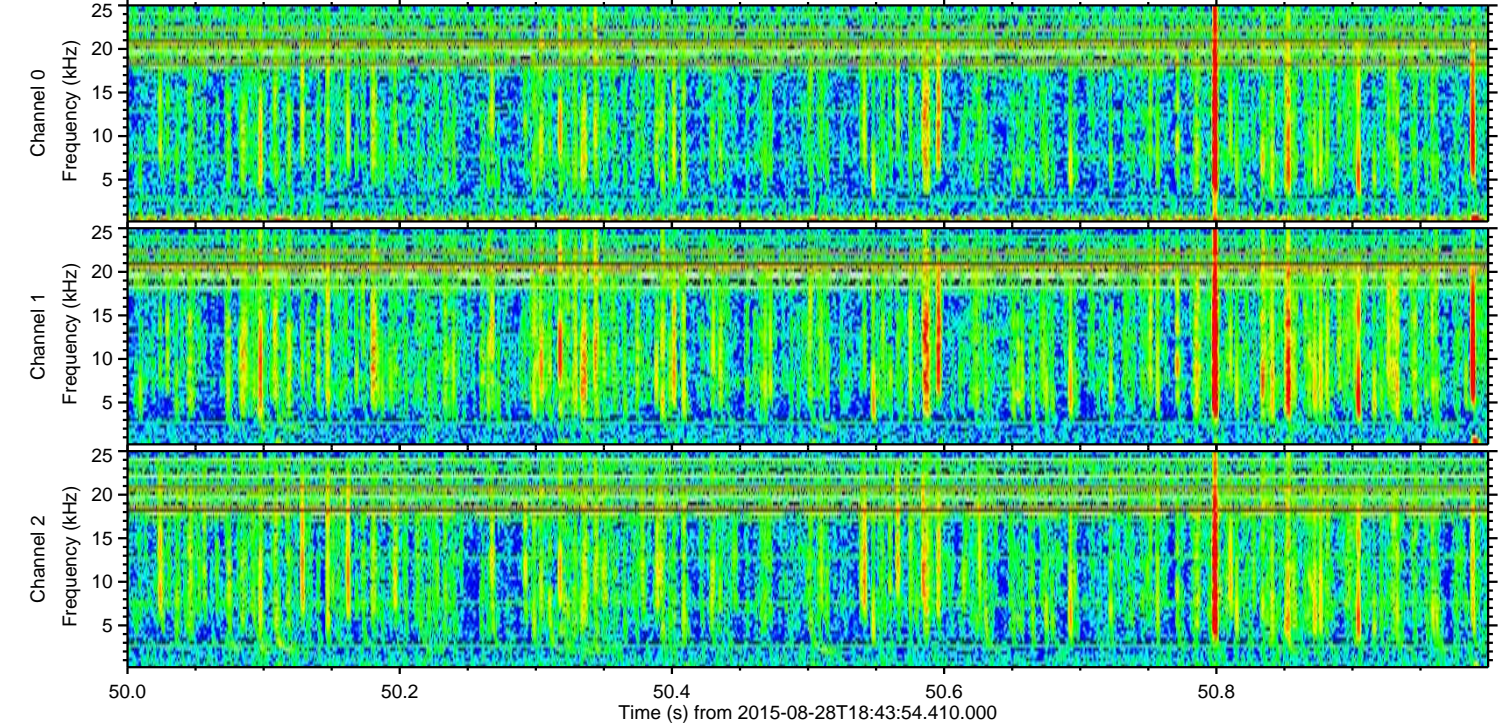
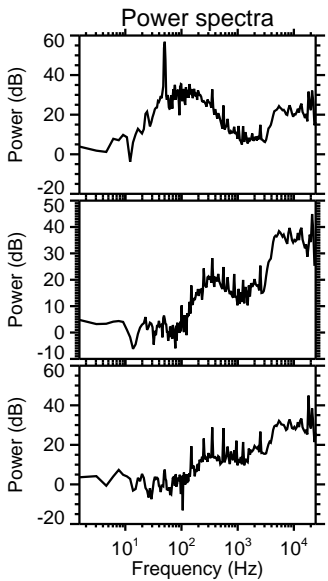
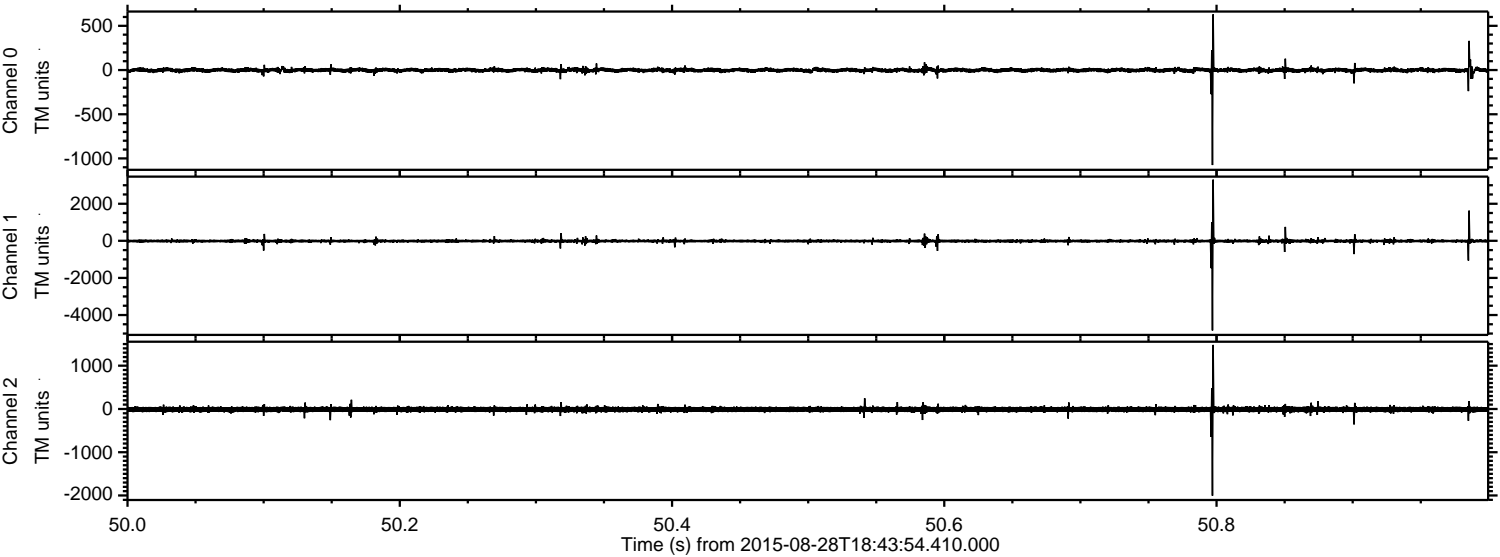
Channel 1  
mn: -4952  
mx: 3413  
 $\mu$ : -10.6  
 $\sigma$ : 62.6

Channel 2  
mn: -1643  
mx: 1097  
 $\mu$ : -10.6  
 $\sigma$ : 33.0



ELMAVAN 3D WAVEFORMS (Measured data sampled at 50 kHz) 51000 packets of 144 samples from 2015-08-28T18:43:54.410.000. Part 51/147

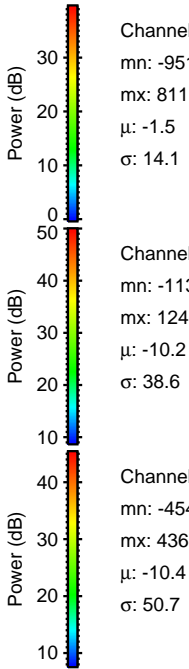
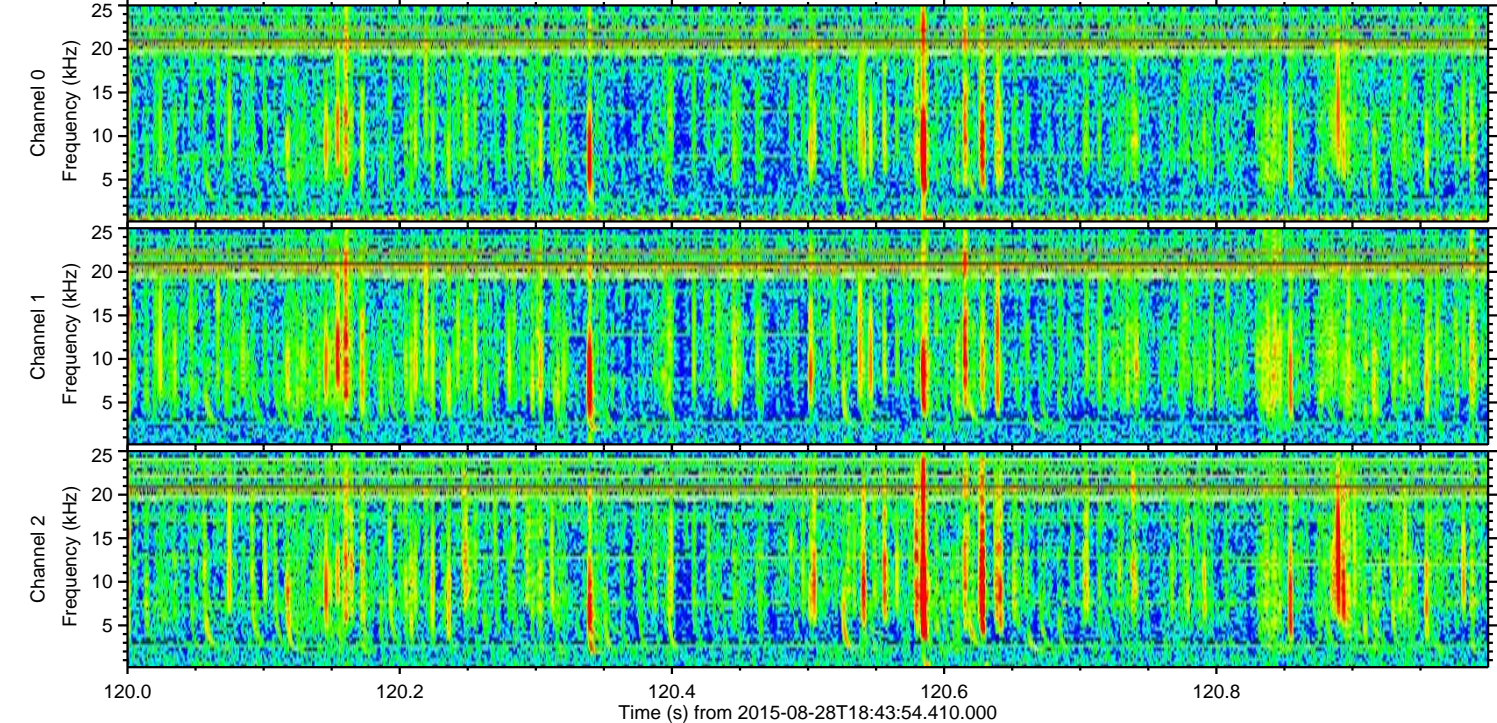
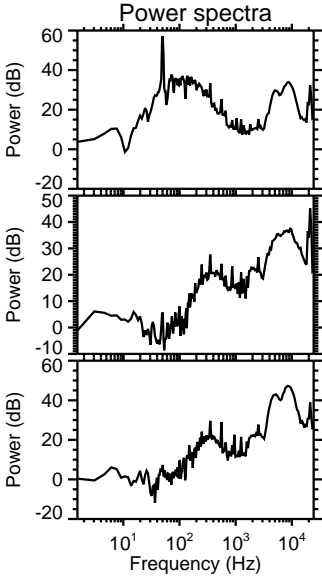
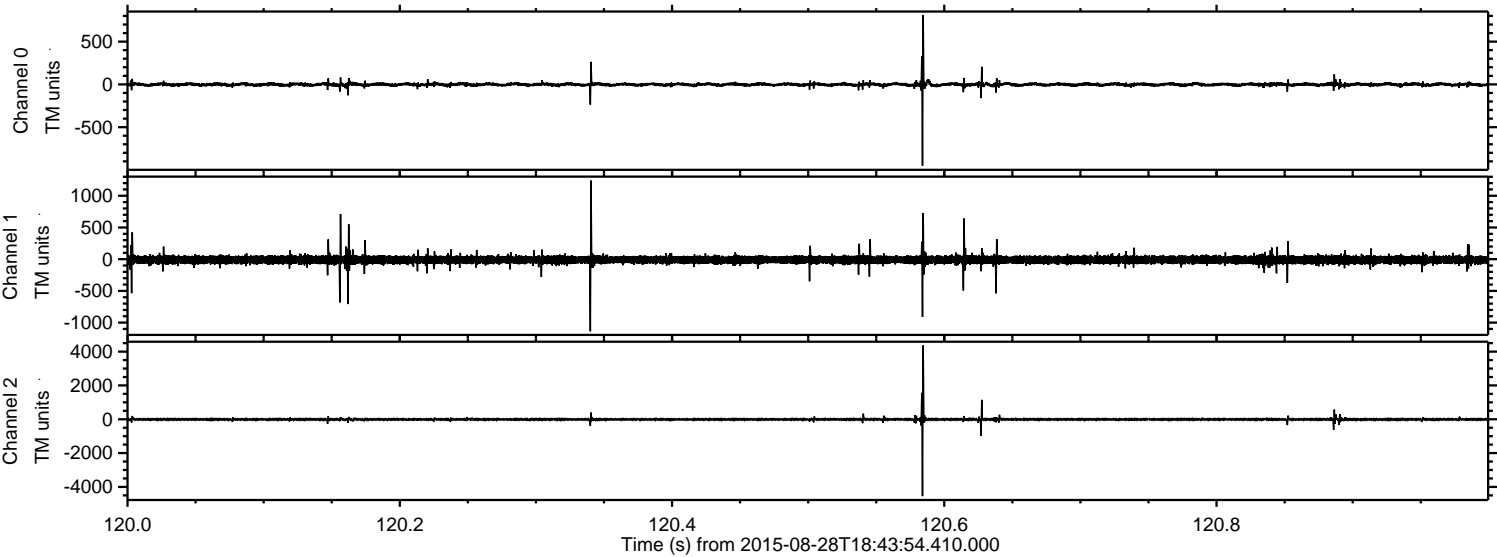
Processed Wed Oct 7 19:00:14 2015 by ELM ver.2012-10-06 from 001\_\_elm20150828\_184353\_\_dat00.bin





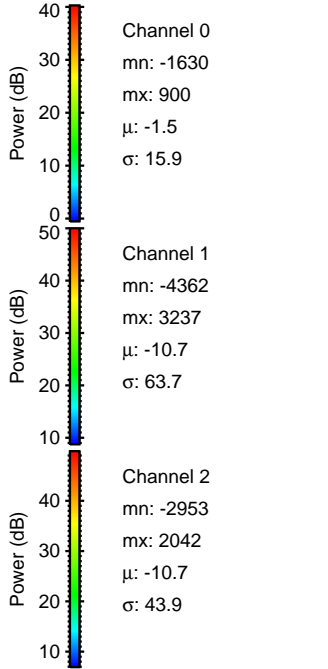
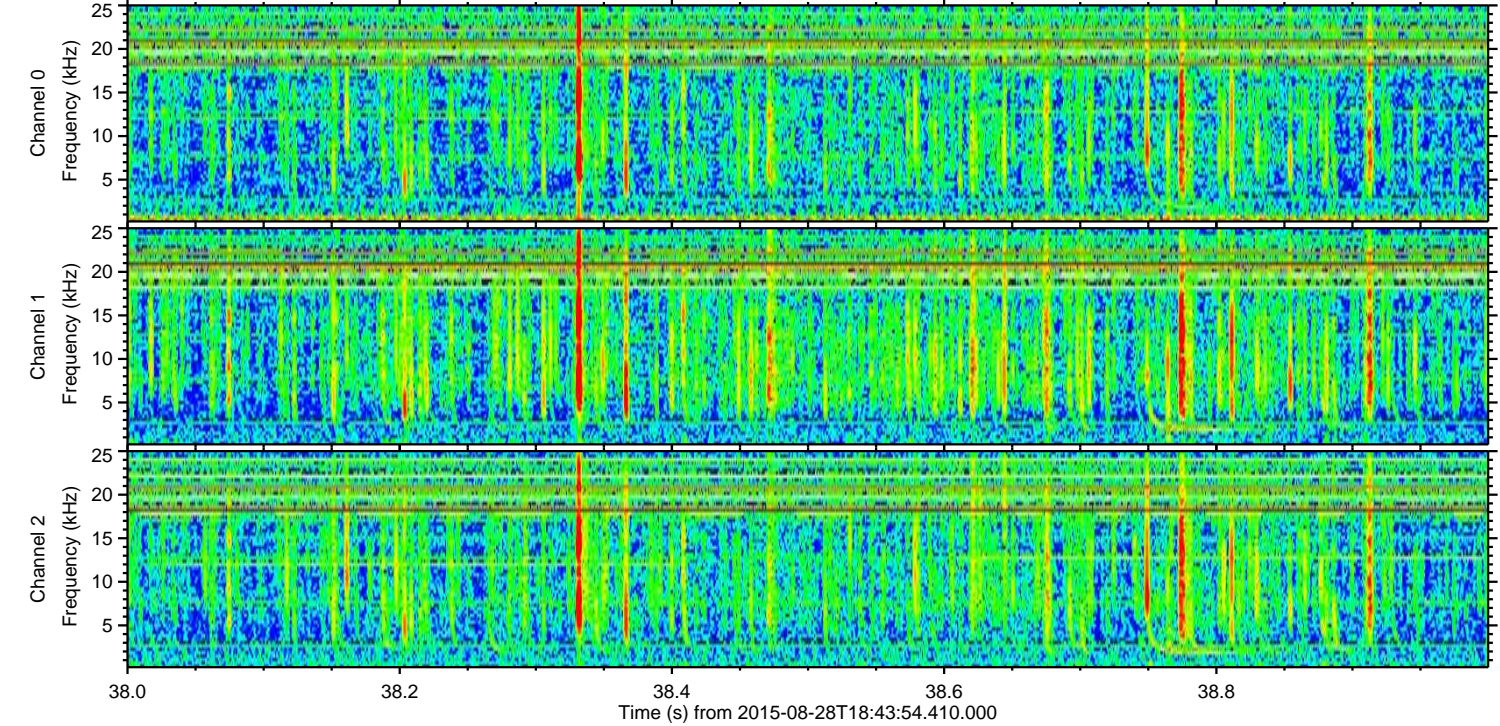
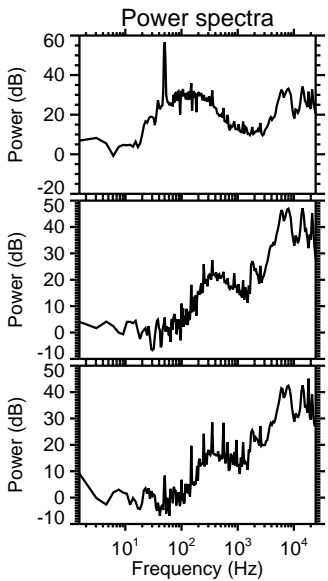
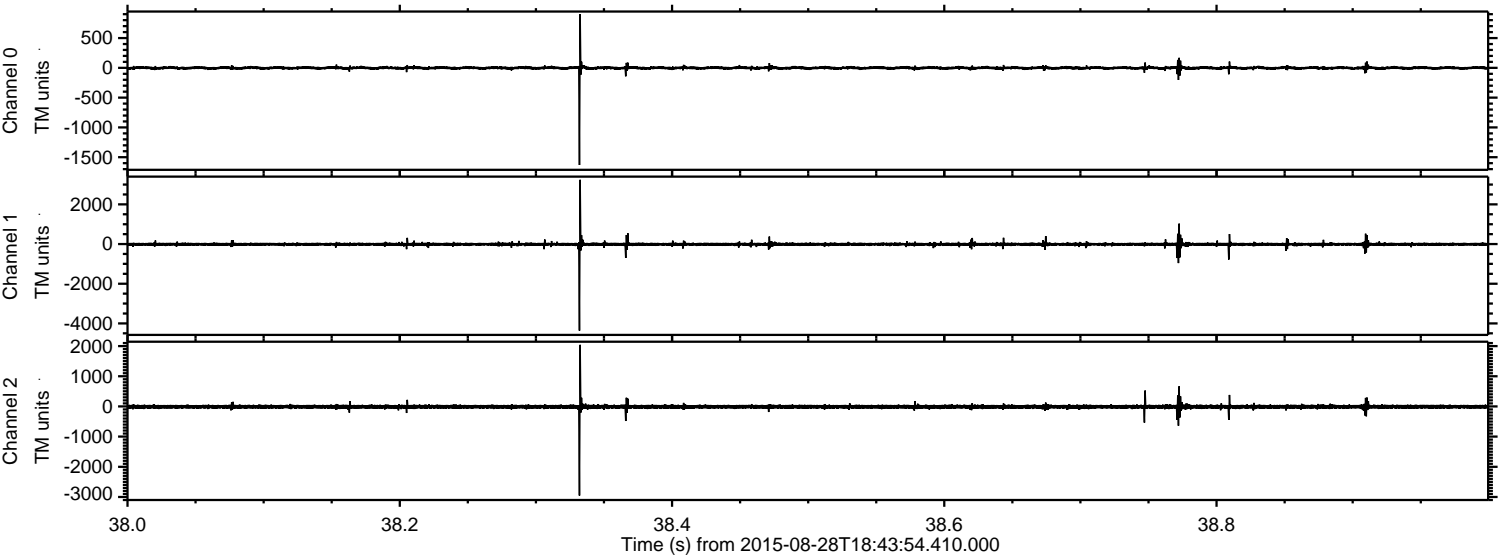
ELMAVAN 3D WAVEFORMS (Measured data sampled at 50 kHz) 51000 packets of 144 samples from 2015-08-28T18:43:54.410.000. Part 121/147

Processed Wed Oct 7 19:00:15 2015 by ELM ver.2012-10-06 from 001\_\_elm20150828\_184353\_\_dat00.bin





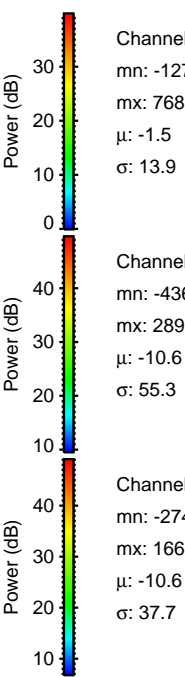
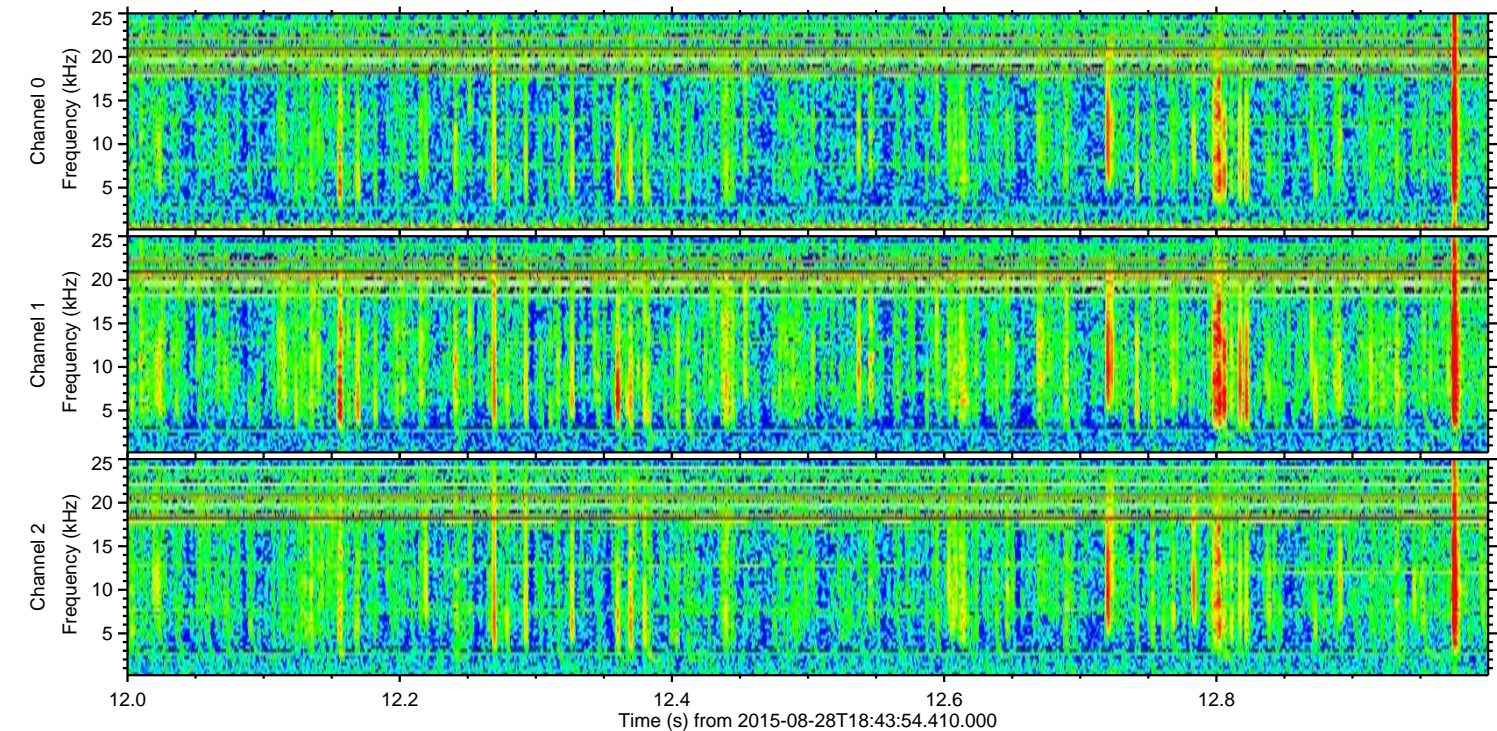
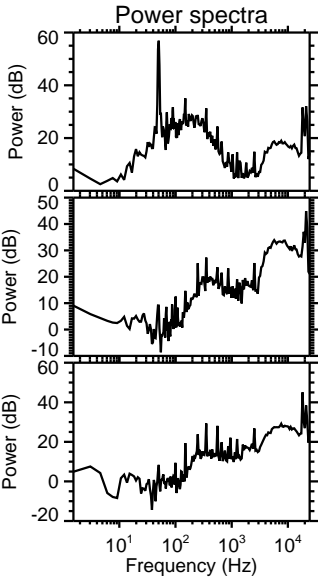
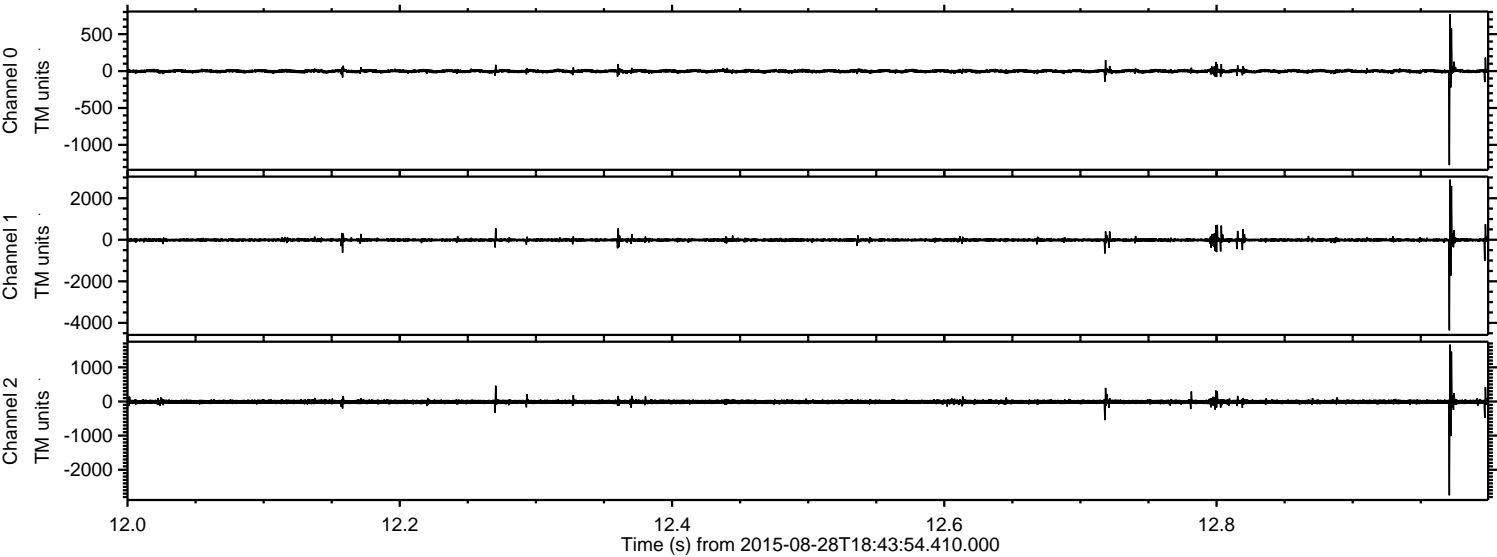
Processed Wed Oct 7 19:00:16 2015 by ELM ver.2012-10-06 from 001\_\_elm20150828\_184353\_\_dat00.bin





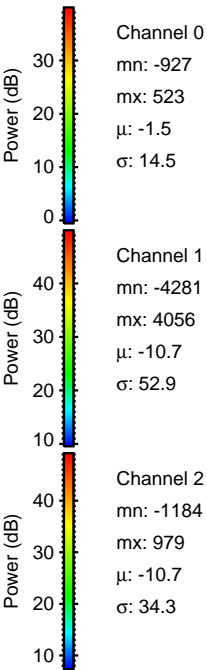
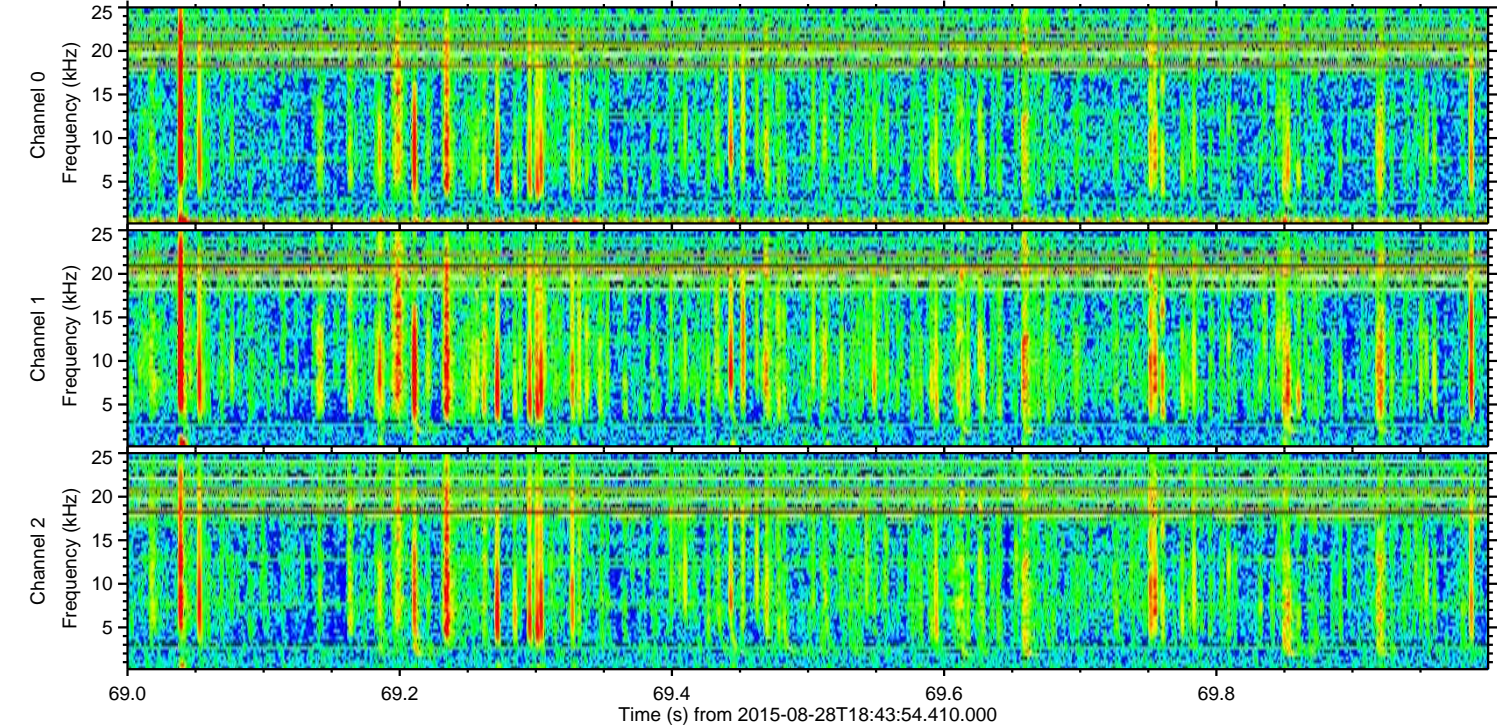
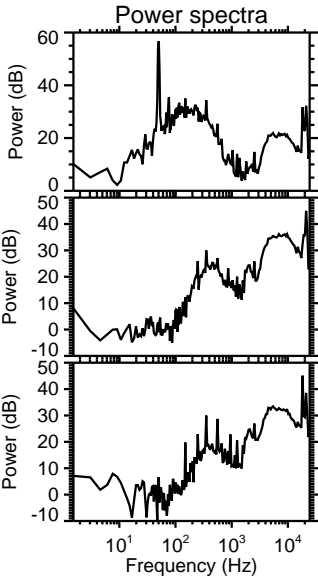
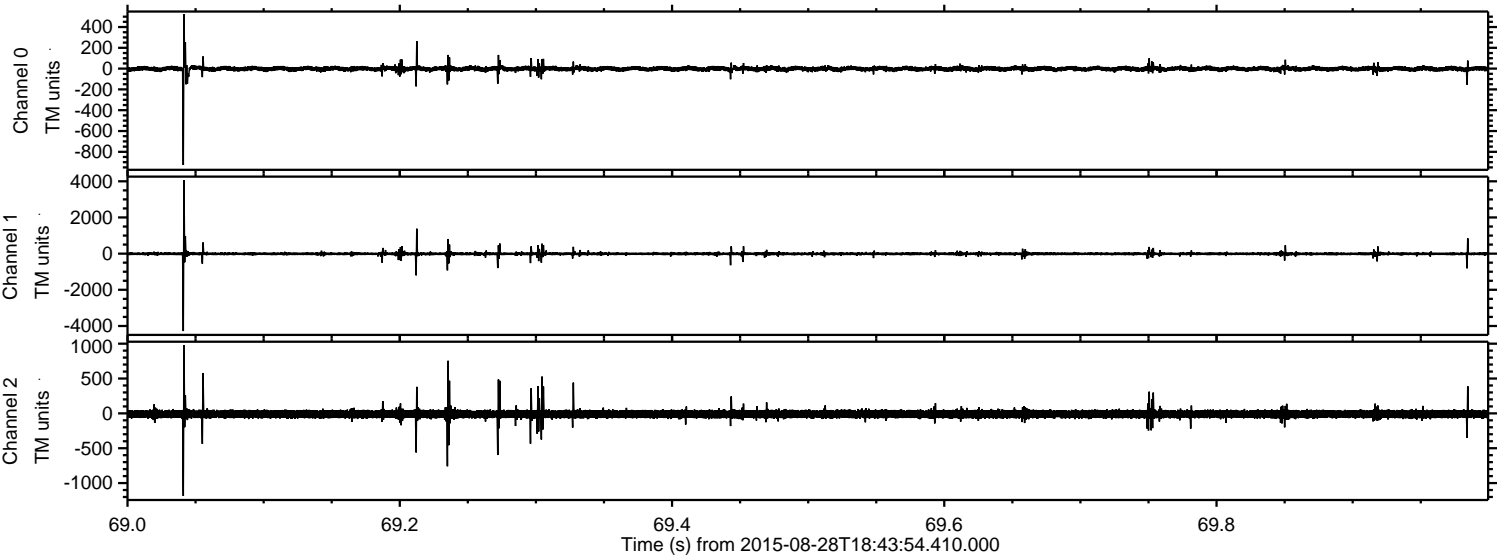
ELMAVAN 3D WAVEFORMS (Measured data sampled at 50 kHz) 51000 packets of 144 samples from 2015-08-28T18:43:54.410.000. Part 13/147

Processed Wed Oct 7 19:00:17 2015 by ELM ver.2012-10-06 from 001\_\_elm20150828\_184353\_\_dat00.bin





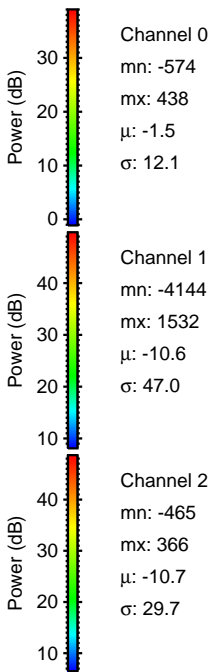
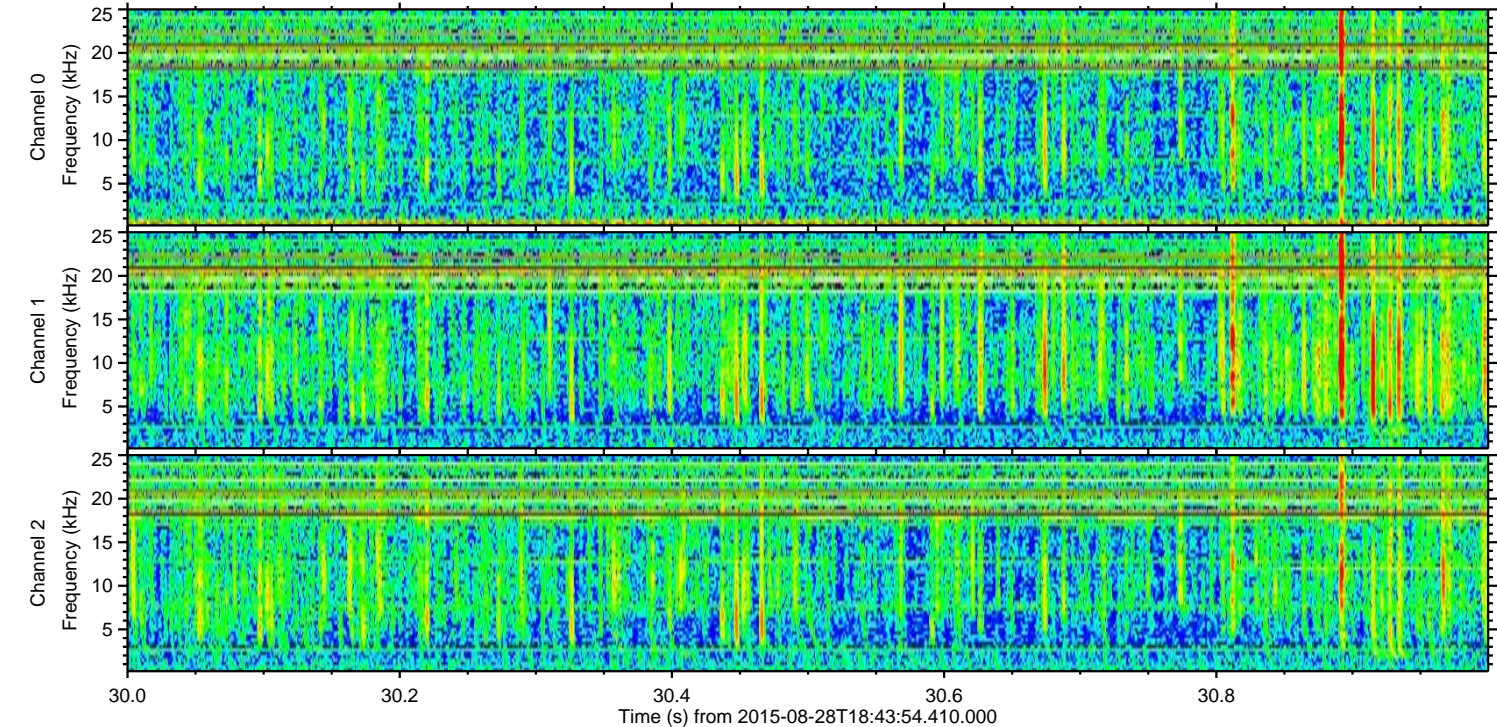
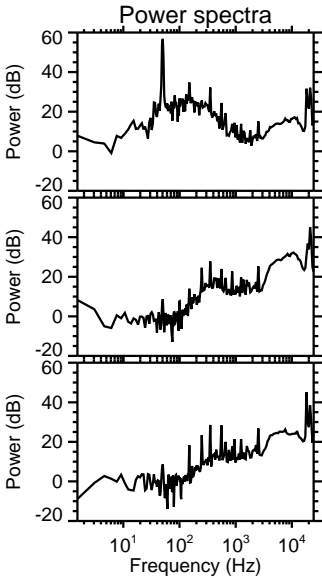
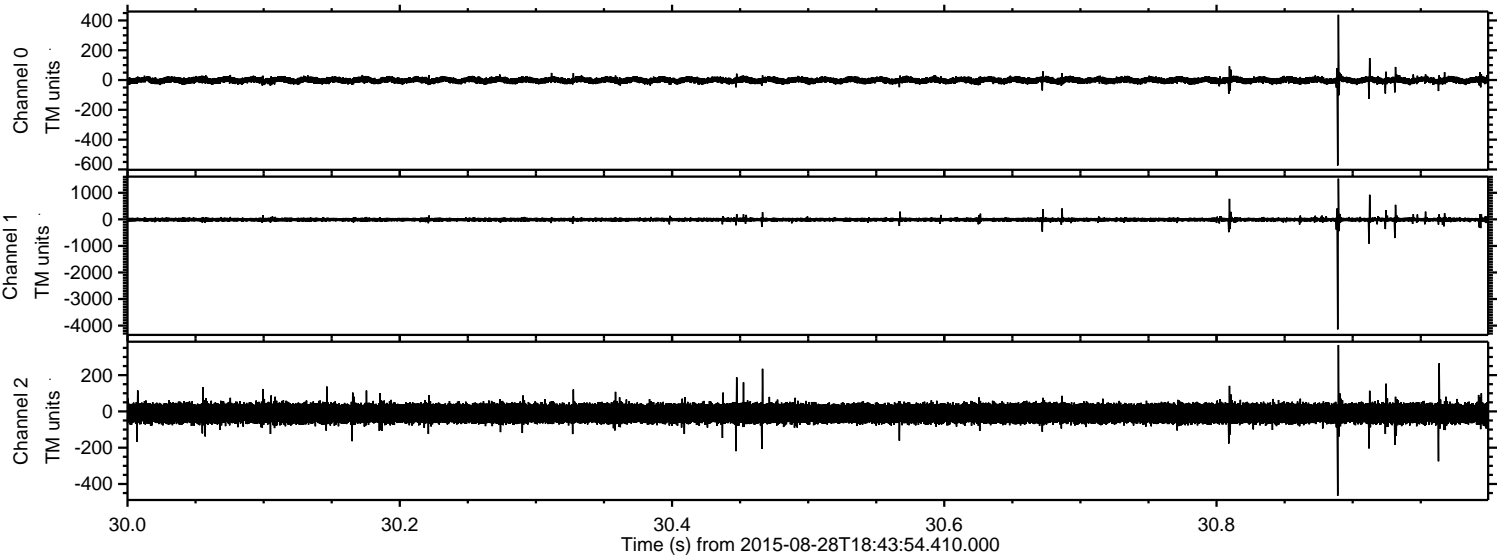
Processed Wed Oct 7 19:00:18 2015 by ELM ver.2012-10-06 from 001\_\_elm20150828\_184353\_\_dat00.bin





ELMAVAN 3D WAVEFORMS (Measured data sampled at 50 kHz) 51000 packets of 144 samples from 2015-08-28T18:43:54.410.000. Part 31/147

Processed Wed Oct 7 19:00:19 2015 by ELM ver.2012-10-06 from 001\_\_elm20150828\_184353\_\_dat00.bin





ELMAVAN 3D WAVEFORMS (Measured data sampled at 50 kHz) 51000 packets of 144 samples from 2015-08-28T18:43:54.410.000. Part 62/147

Processed Wed Oct 7 19:00:20 2015 by ELM ver.2012-10-06 from 001\_\_elm20150828\_184353\_\_dat00.bin

