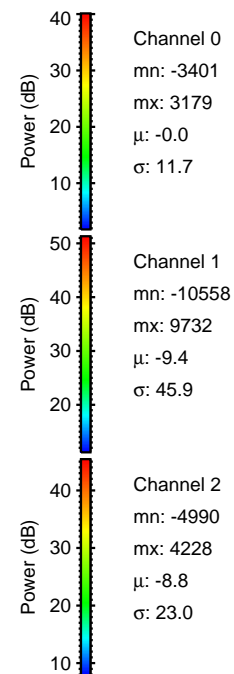
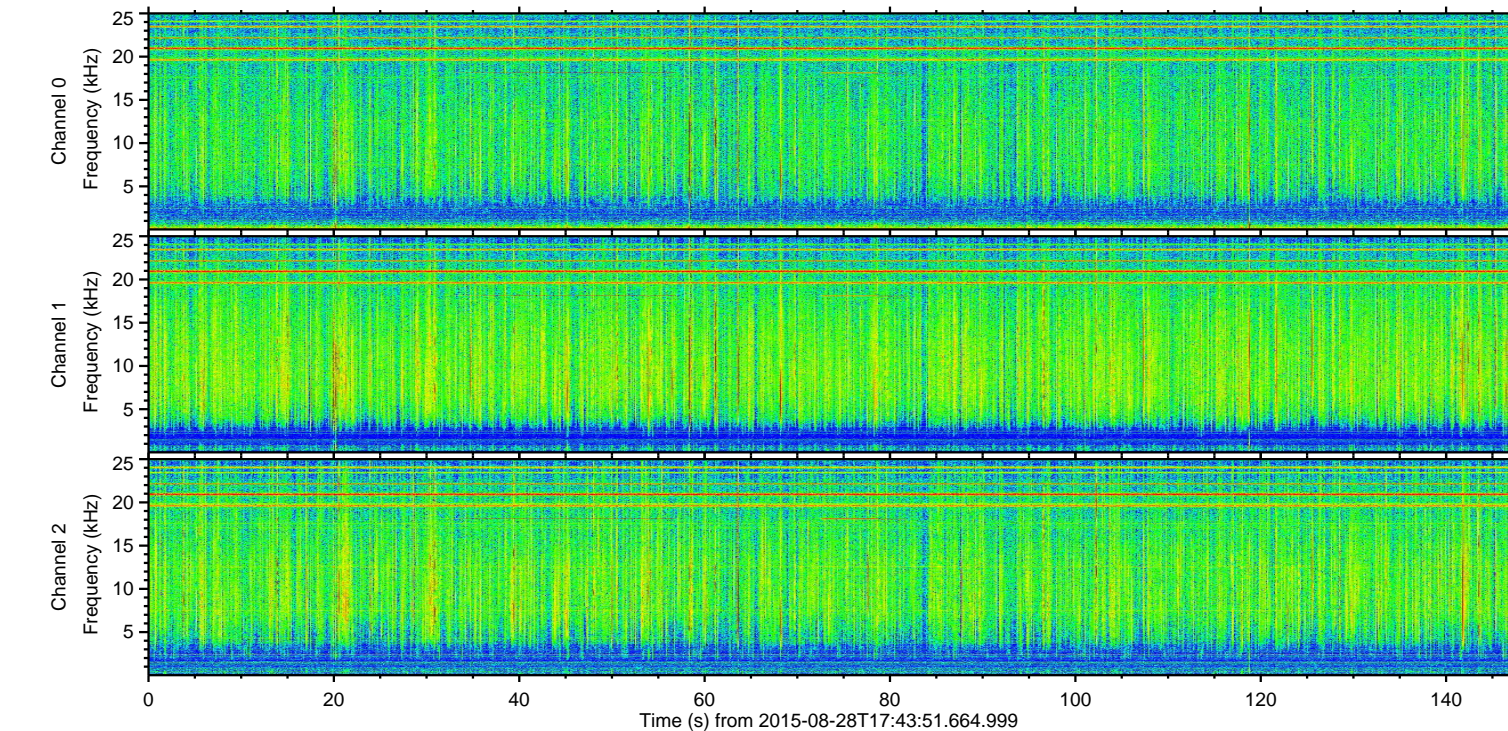
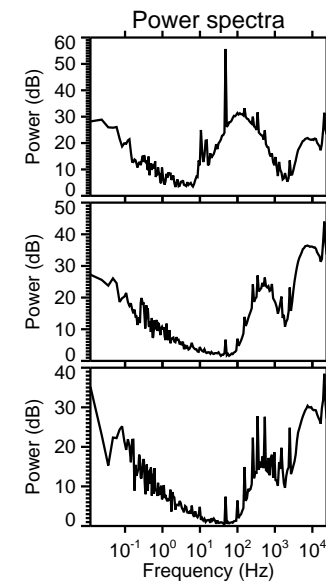
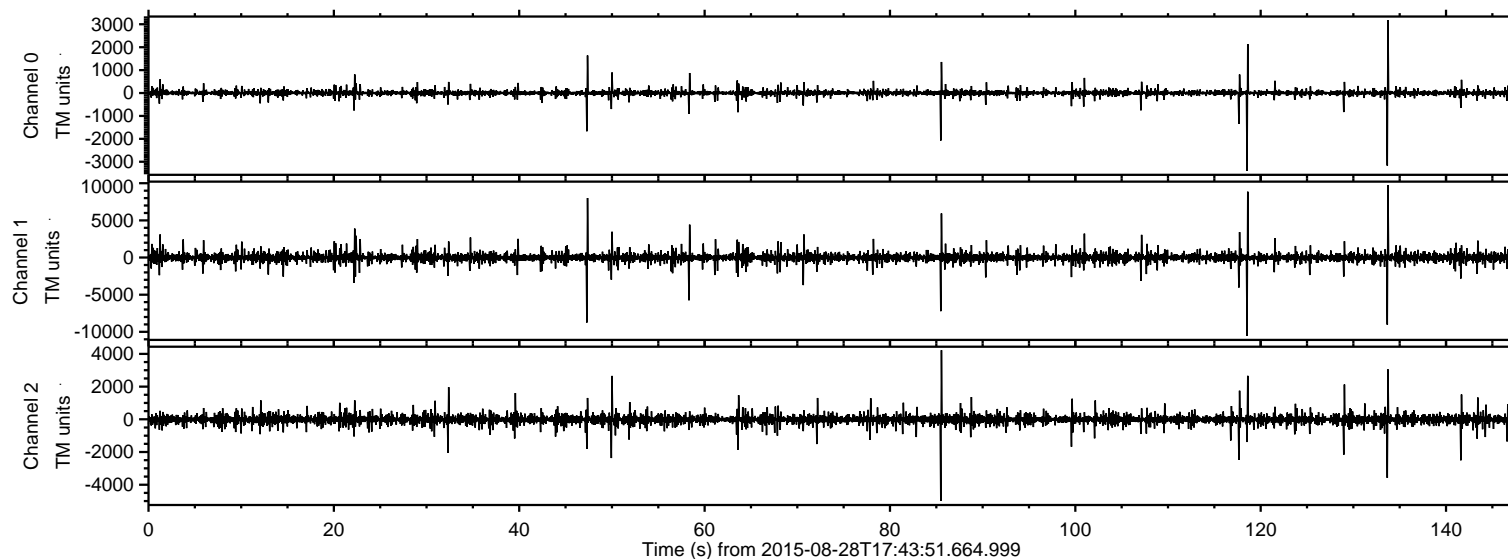


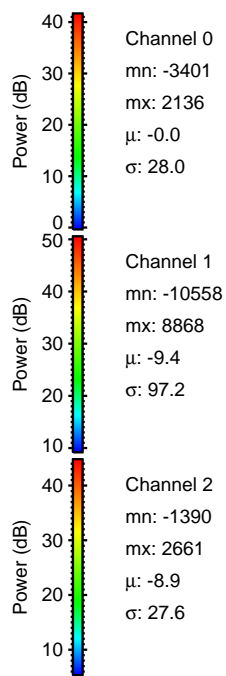
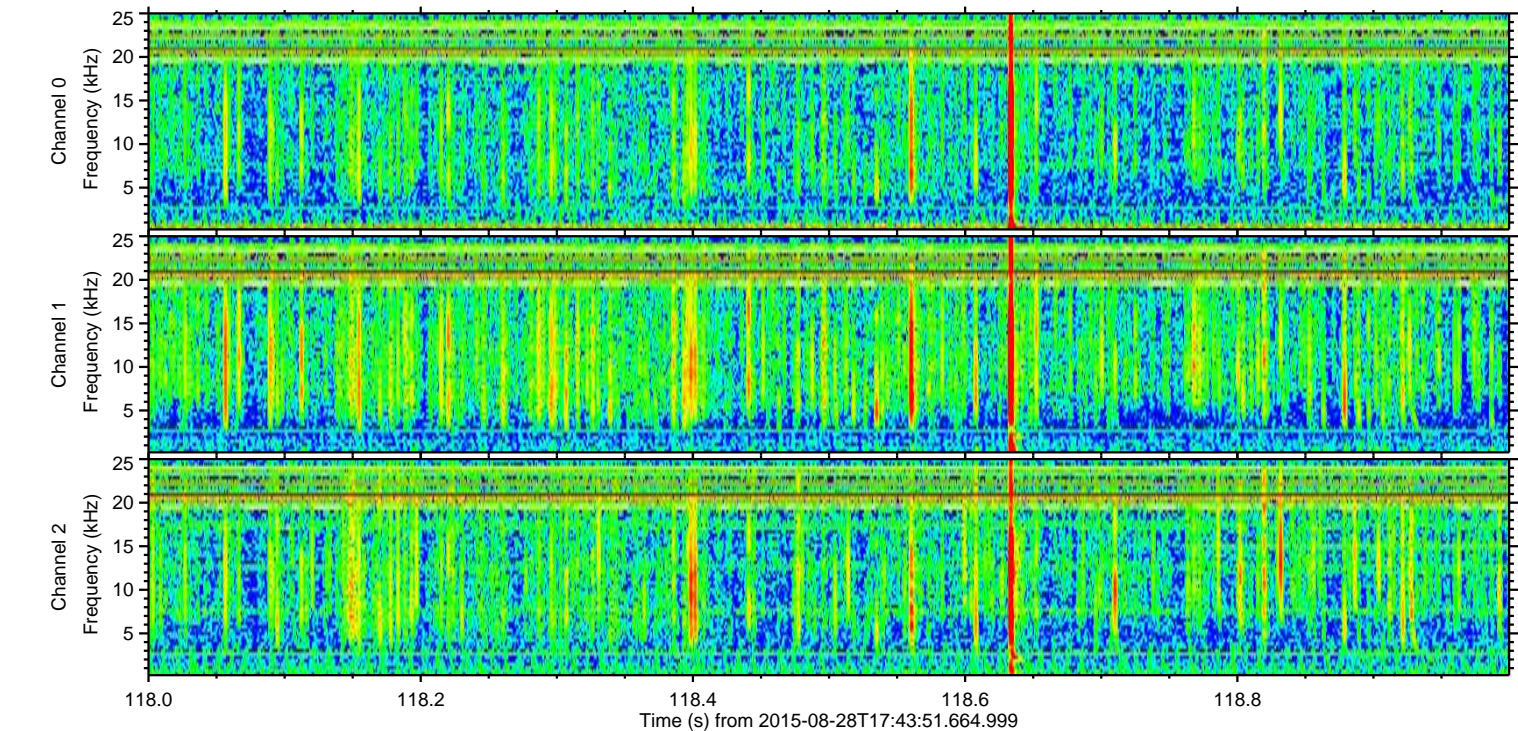
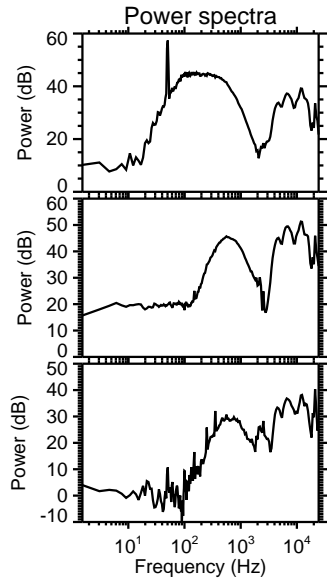
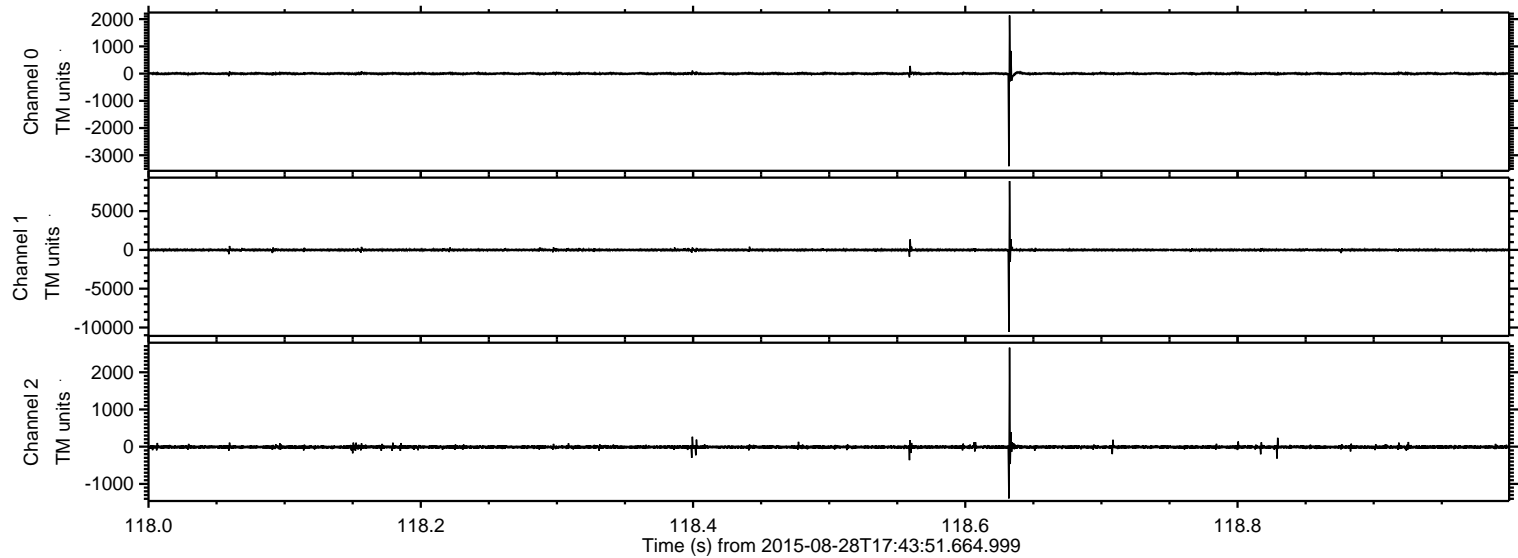
ELMAVAN 3D WAVEFORMS (Measured data sampled at 50 kHz) 51000 packets of 144 samples from 2015-08-28T17:43:51.664.999.

Processed Wed Oct 7 18:43:20 2015 by ELM ver.2012-10-06 from 001__elm20150828_174350__dat00.bin



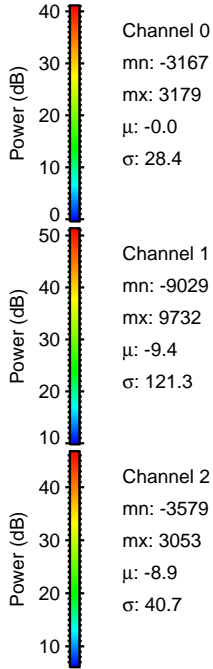
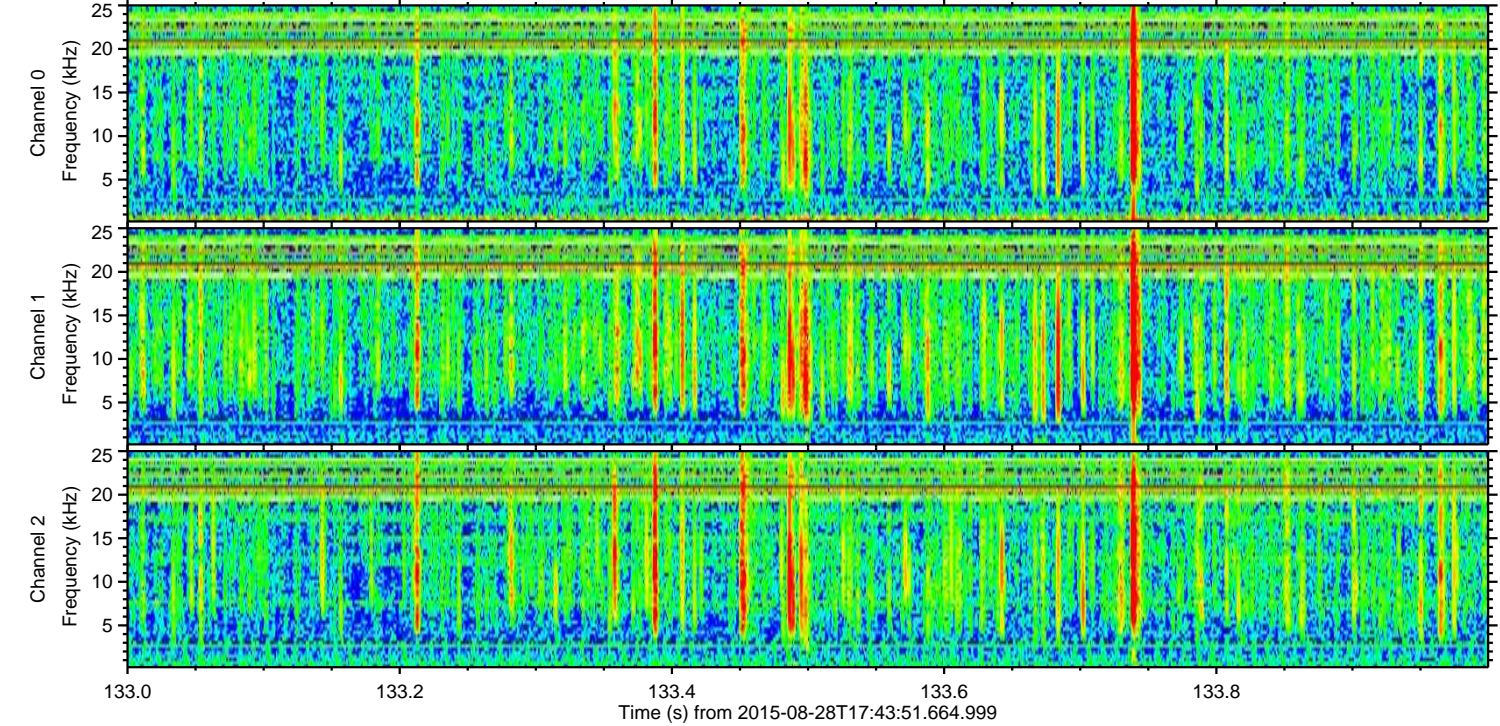
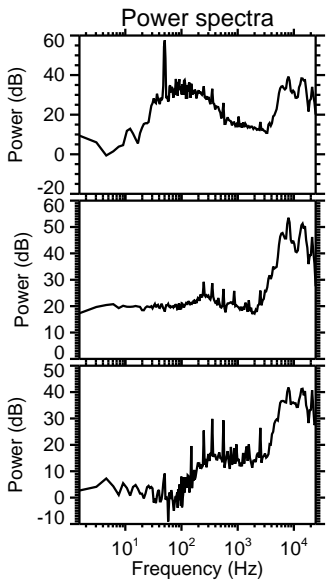
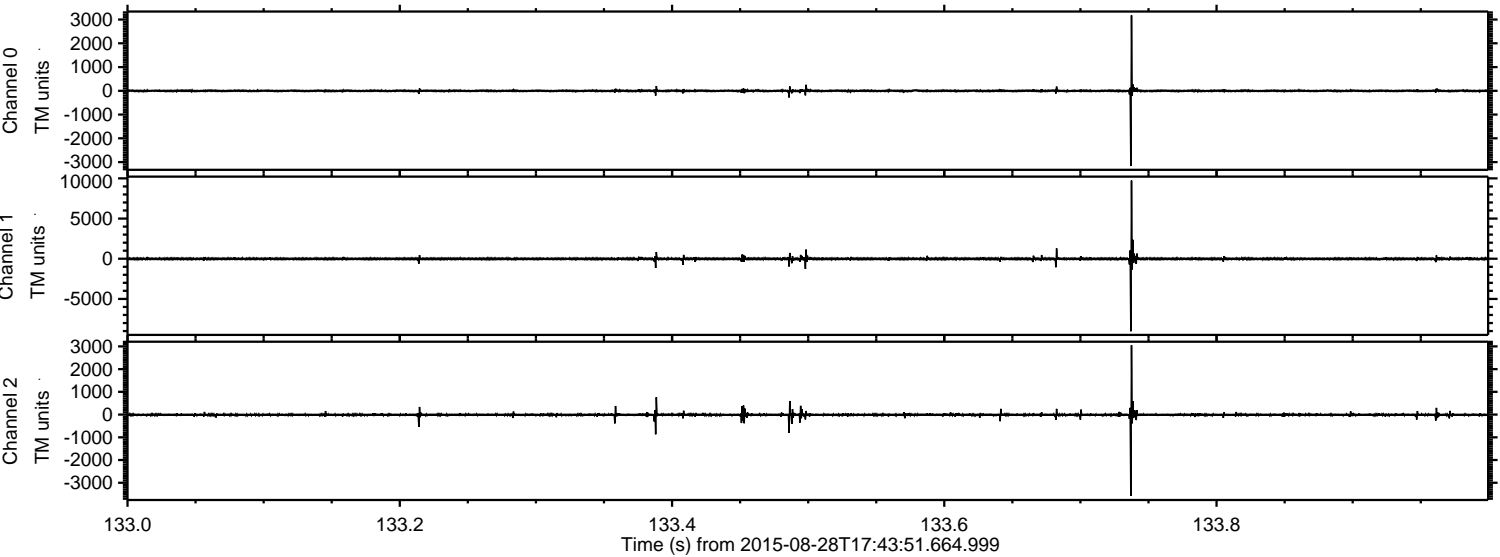
ELMAVAN 3D WAVEFORMS (Measured data sampled at 50 kHz) 51000 packets of 144 samples from 2015-08-28T17:43:51.664.999. Part 119/147

Processed Wed Oct 7 18:43:33 2015 by ELM ver.2012-10-06 from 001__elm20150828_174350__dat00.bin



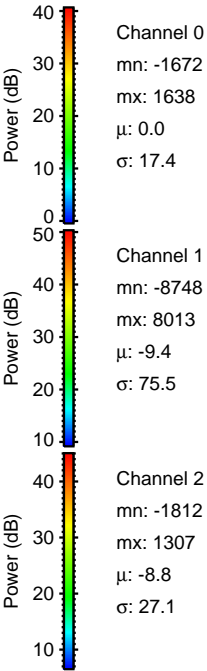
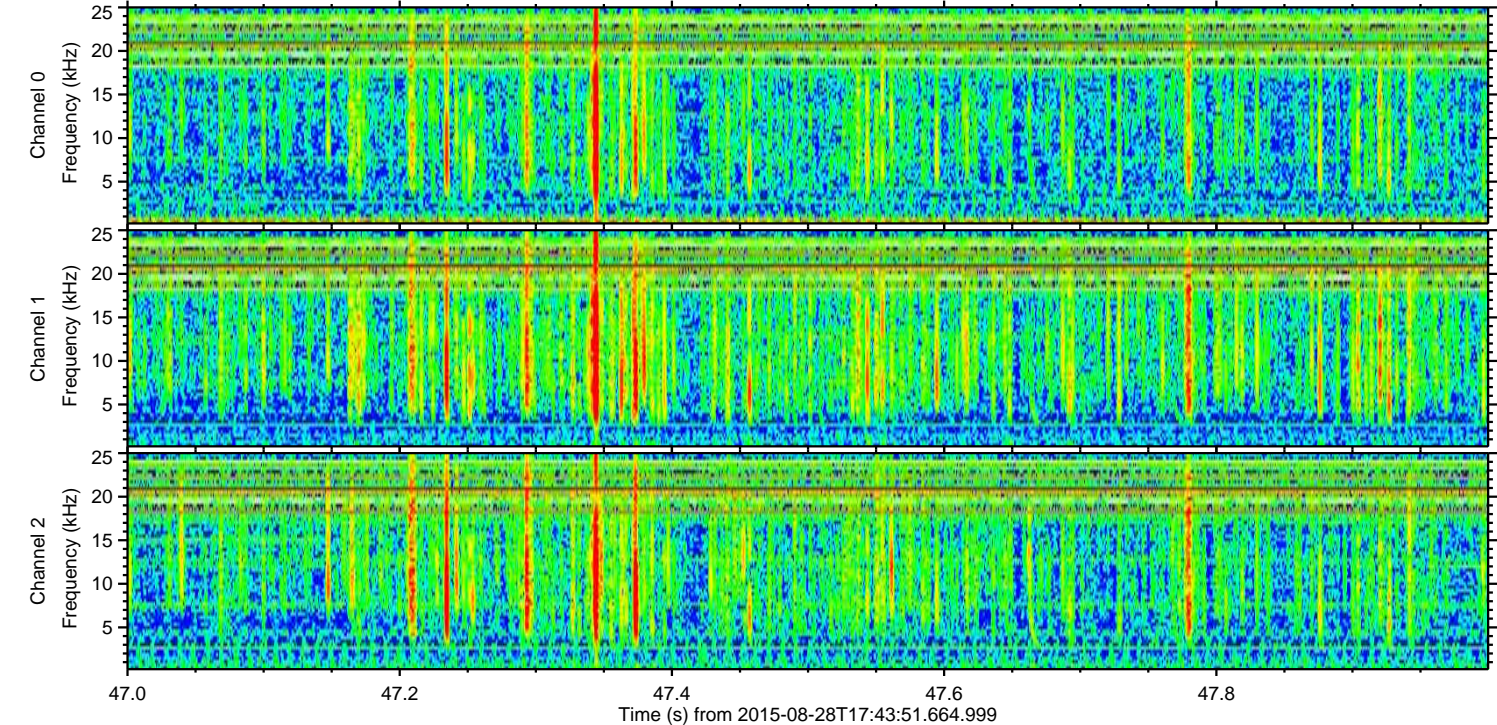
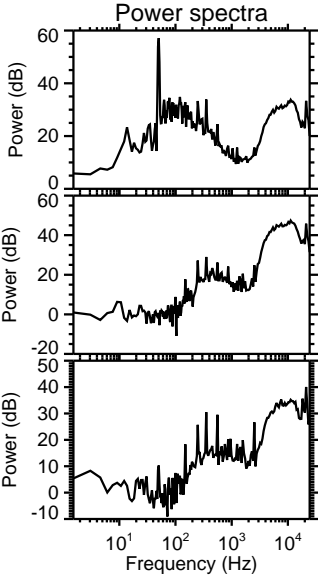
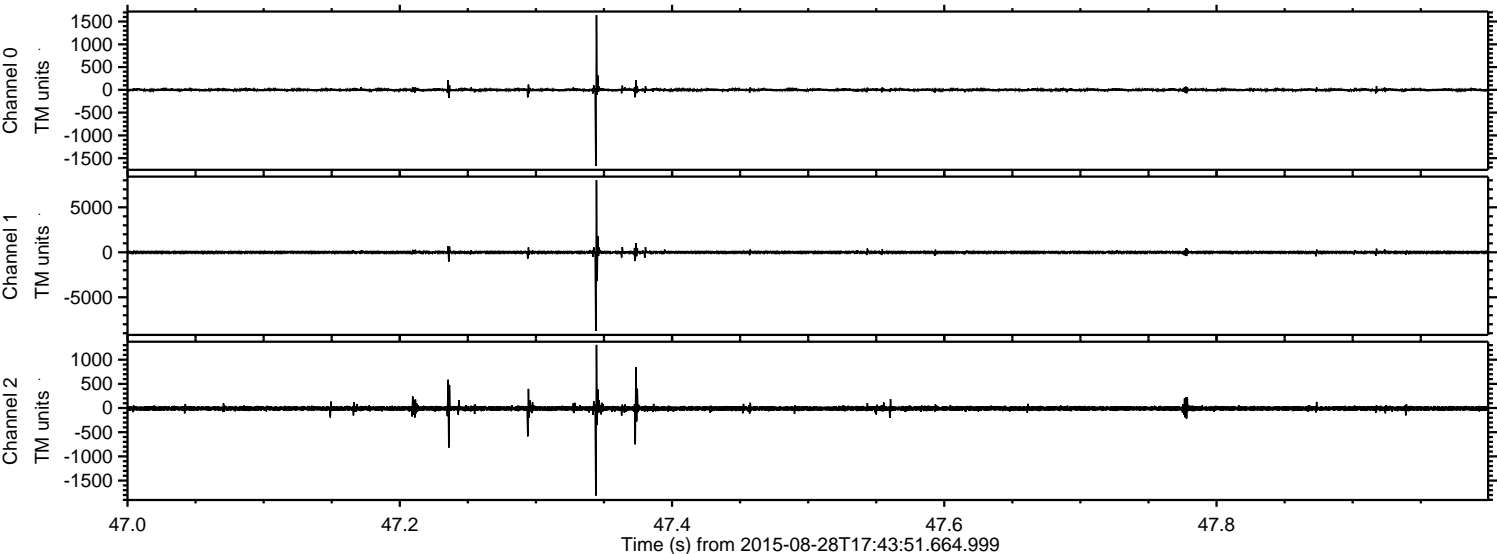
ELMAVAN 3D WAVEFORMS (Measured data sampled at 50 kHz) 51000 packets of 144 samples from 2015-08-28T17:43:51.664.999. Part 134/147

Processed Wed Oct 7 18:43:34 2015 by ELM ver.2012-10-06 from 001__elm20150828_174350__dat00.bin

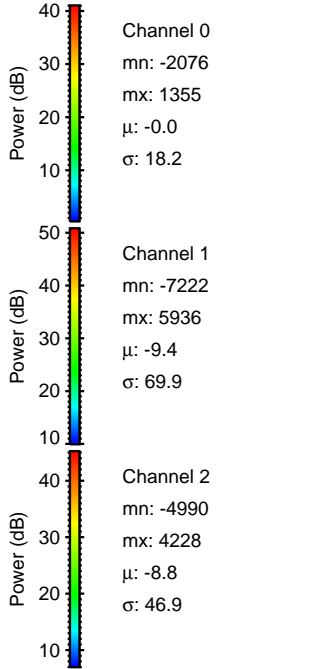
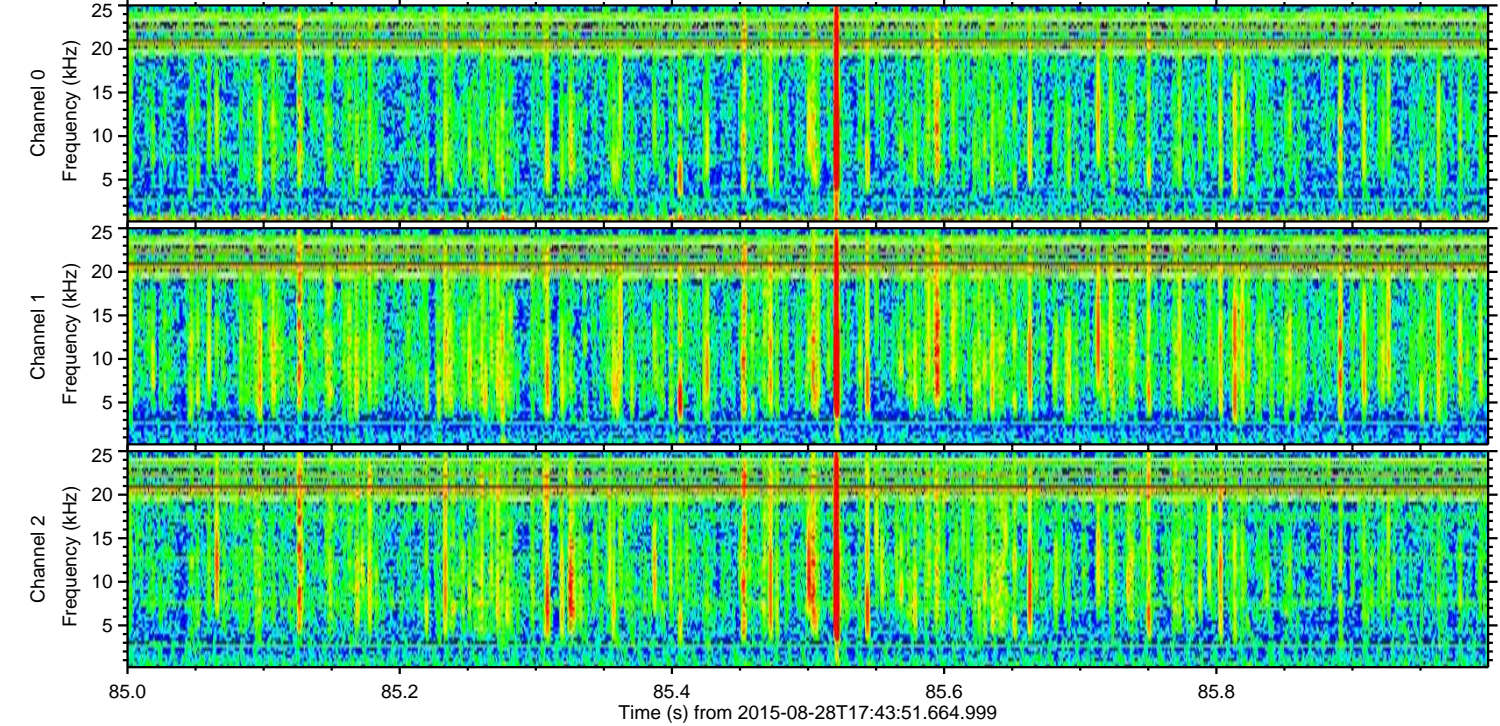
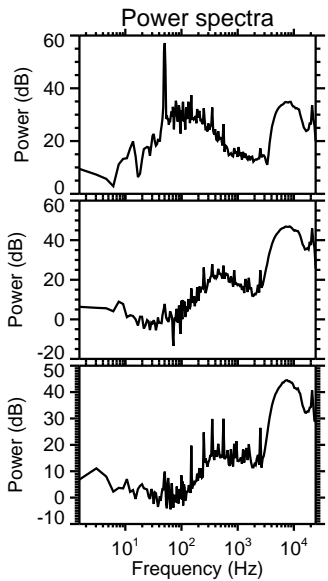
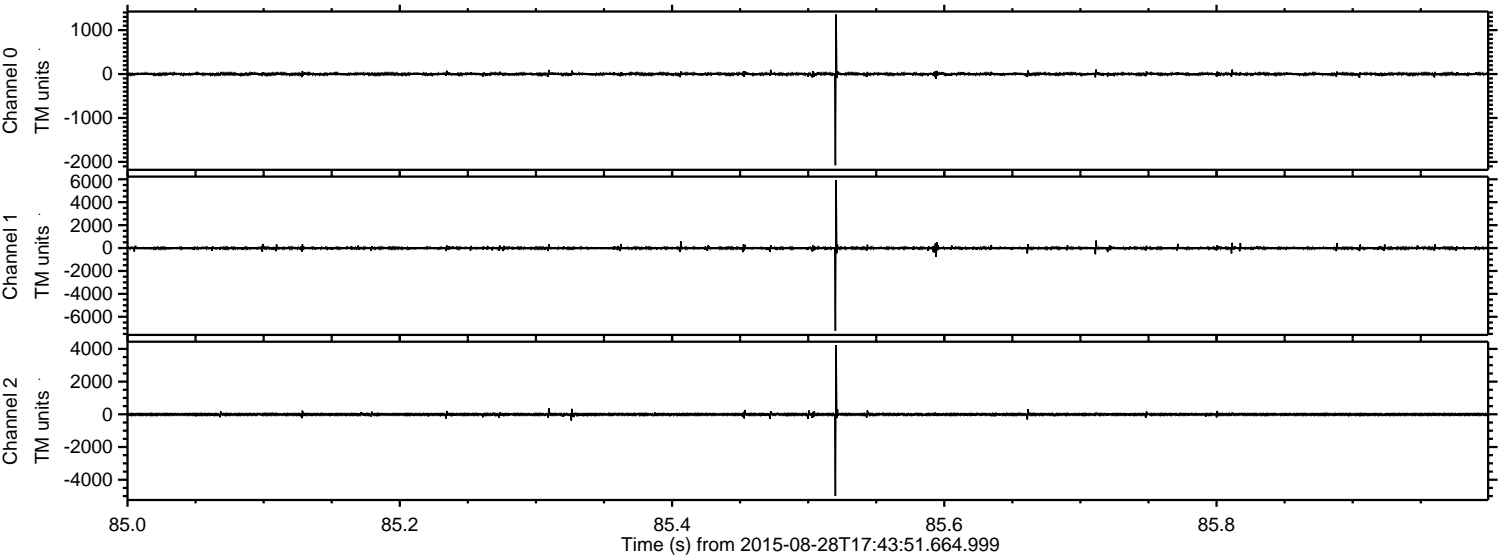


ELMAVAN 3D WAVEFORMS (Measured data sampled at 50 kHz) 51000 packets of 144 samples from 2015-08-28T17:43:51.664.999. Part 48/147

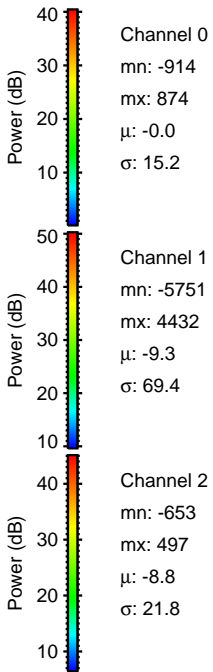
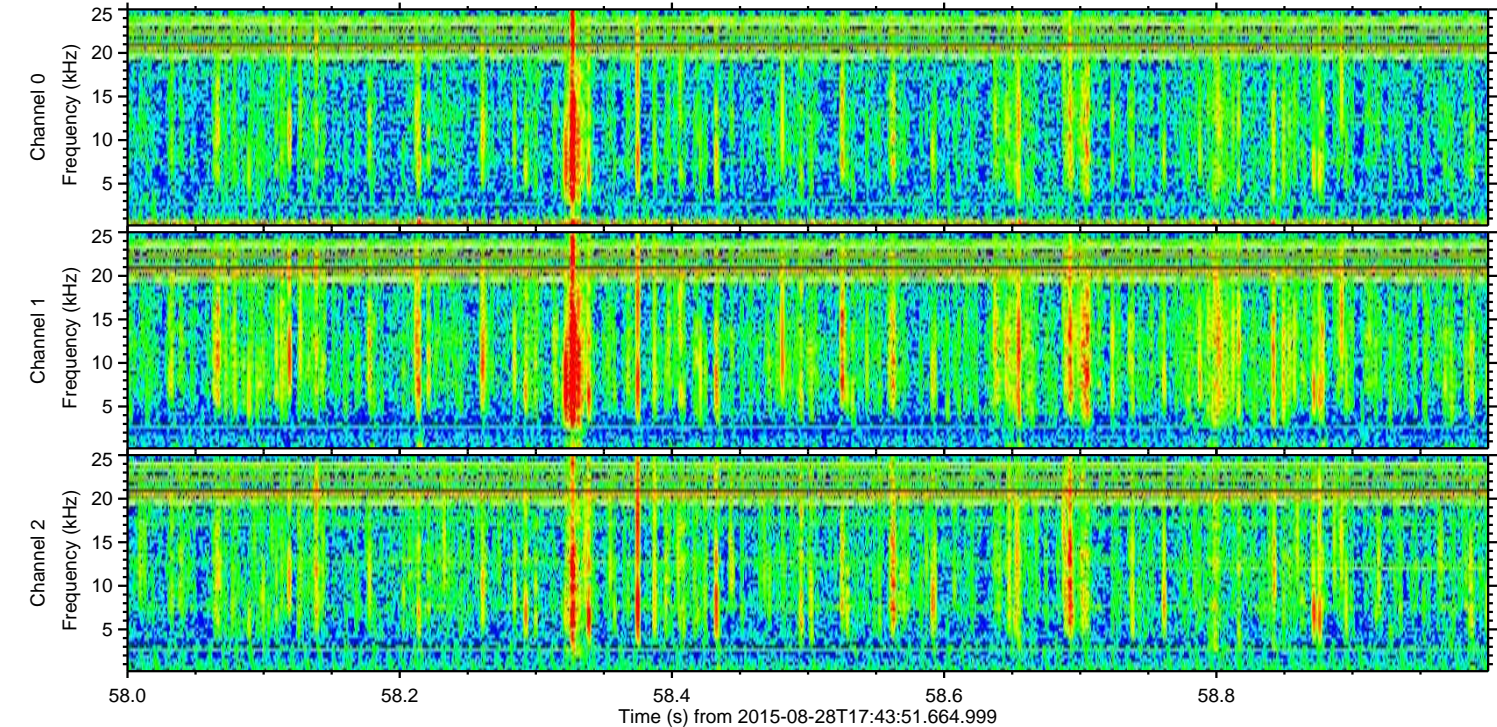
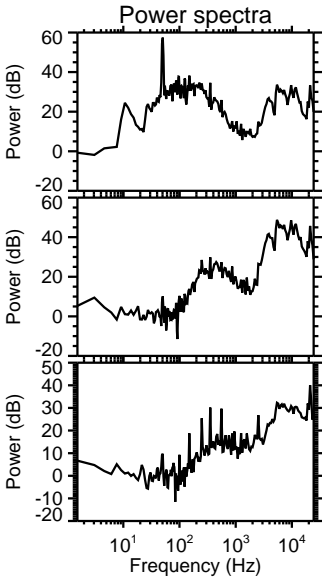
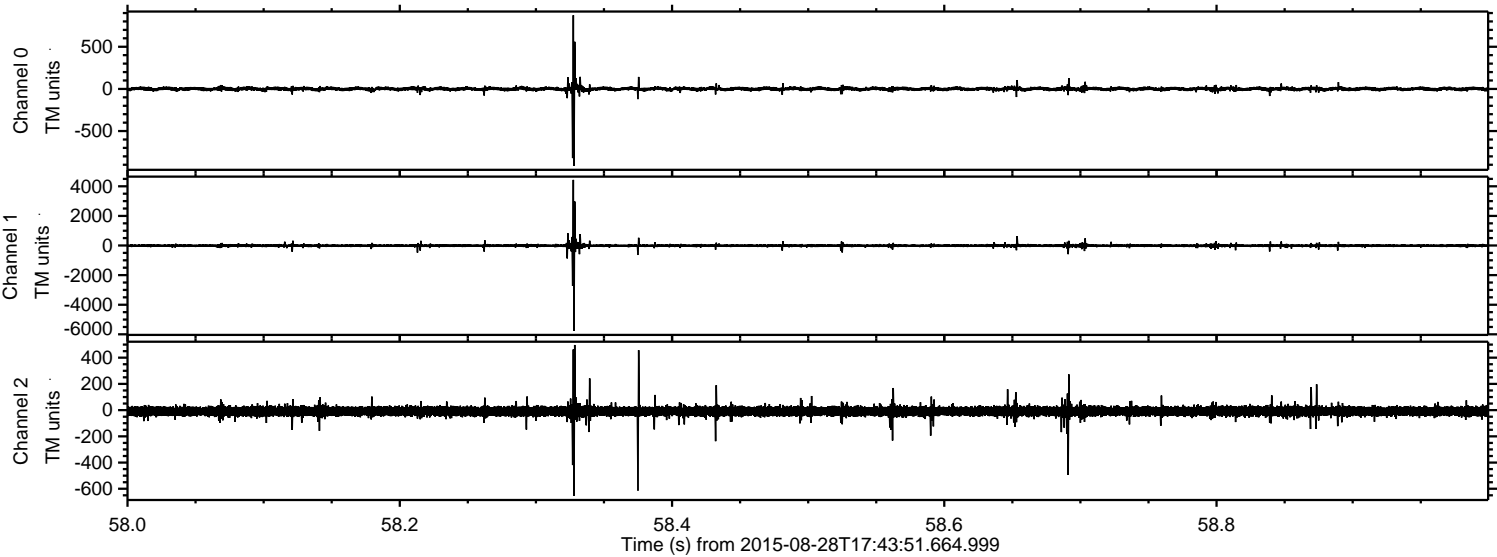
Processed Wed Oct 7 18:43:36 2015 by ELM ver.2012-10-06 from 001__elm20150828_174350__dat00.bin



Processed Wed Oct 7 18:43:37 2015 by ELM ver.2012-10-06 from 001__elm20150828_174350__dat00.bin

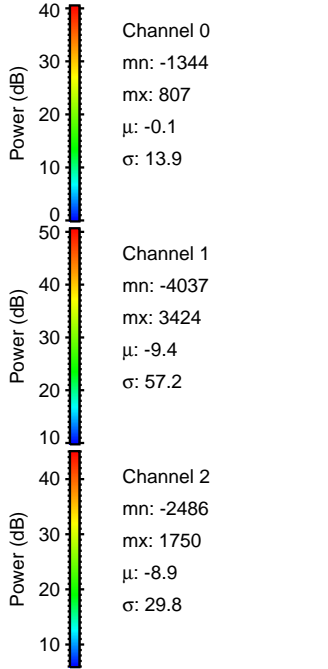
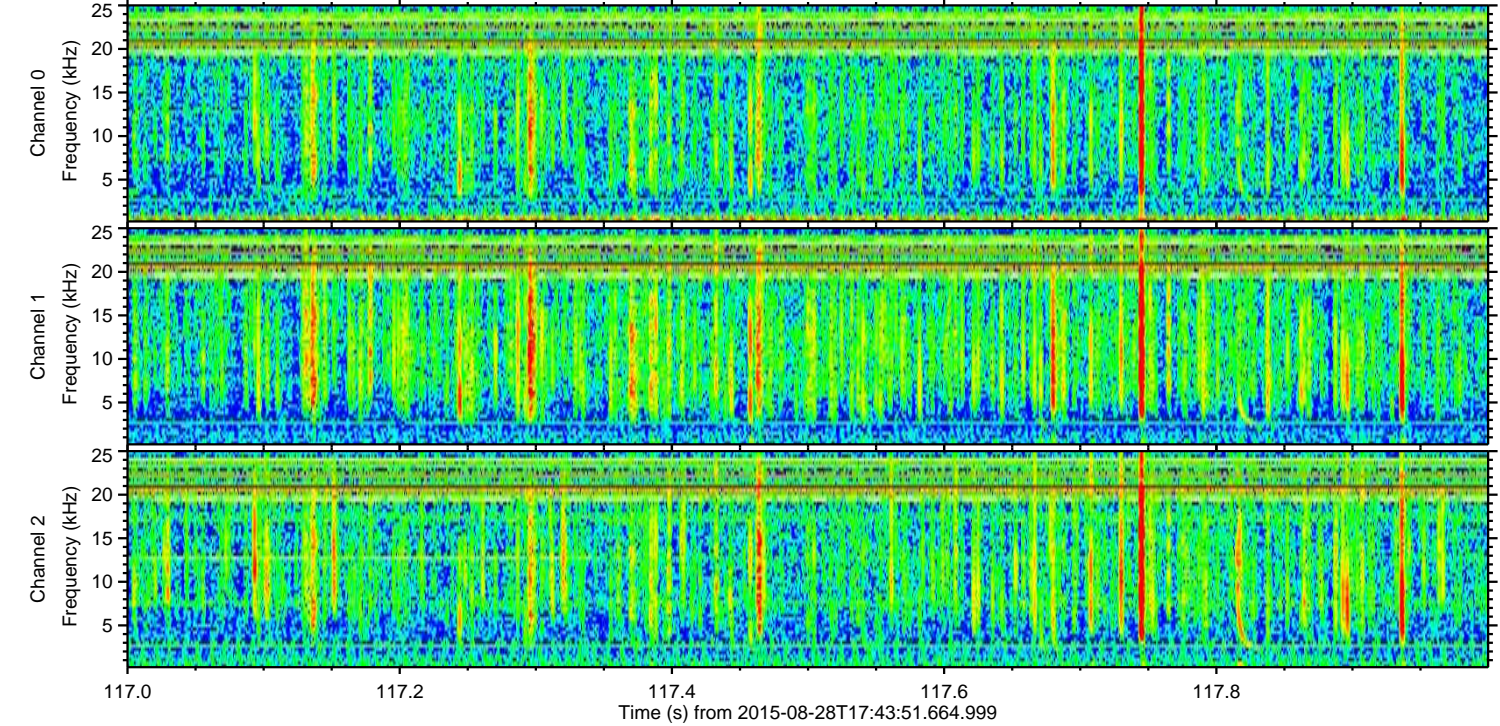
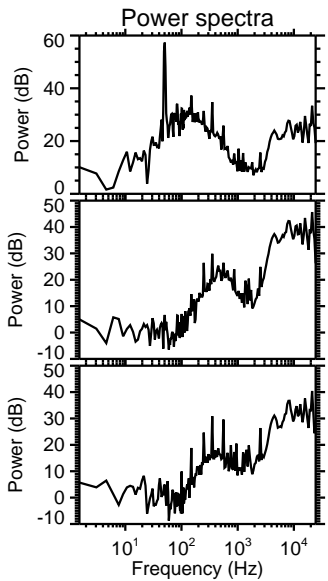
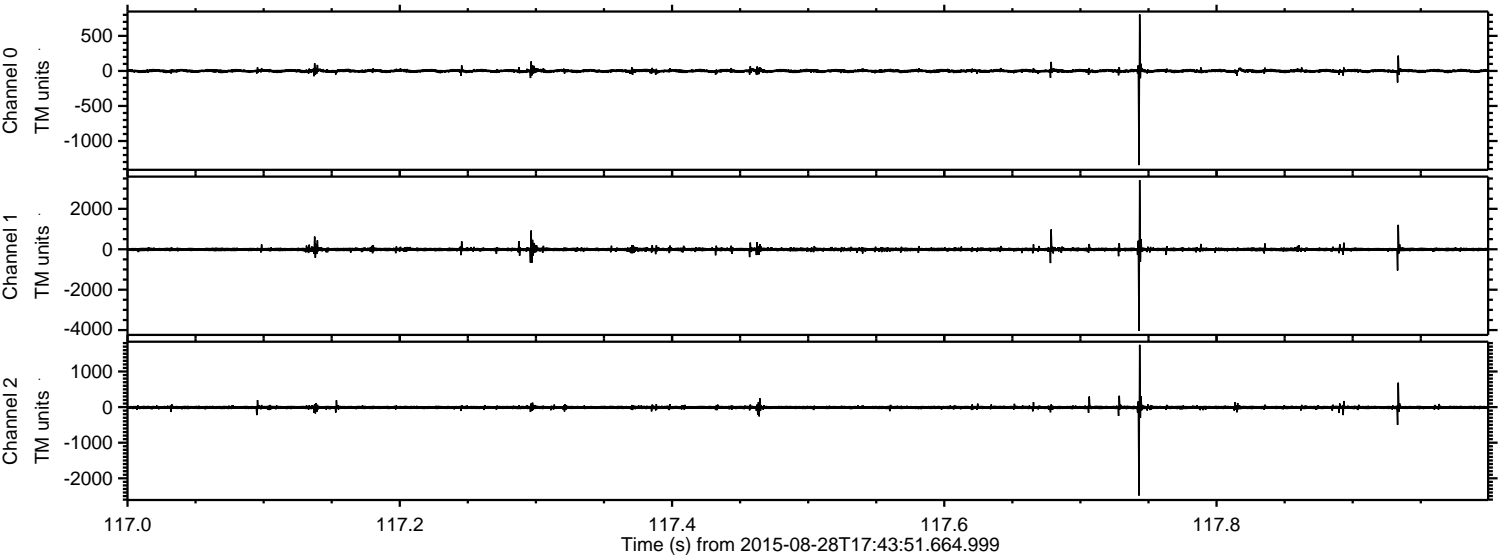


Processed Wed Oct 7 18:43:38 2015 by ELM ver.2012-10-06 from 001__elm20150828_174350__dat00.bin

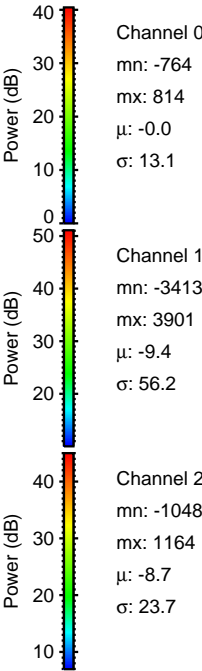
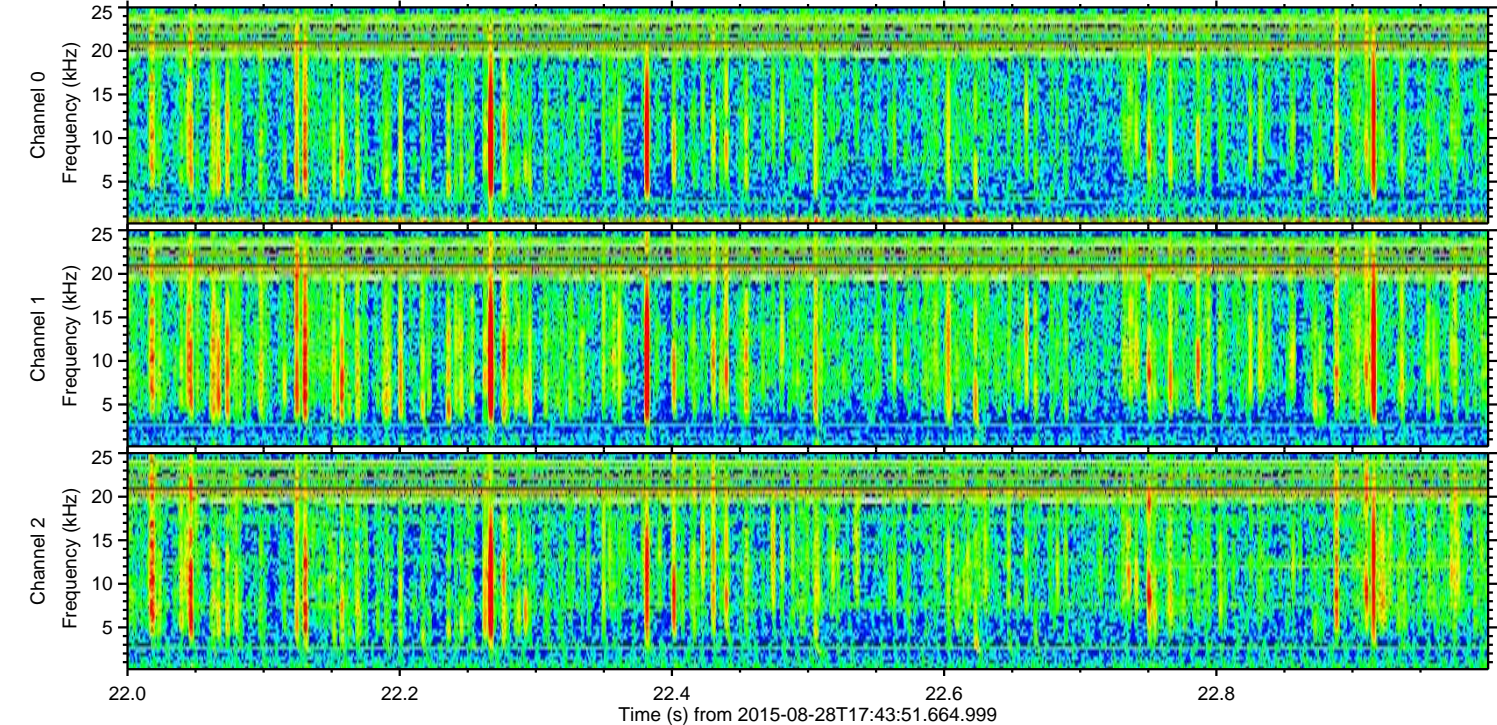
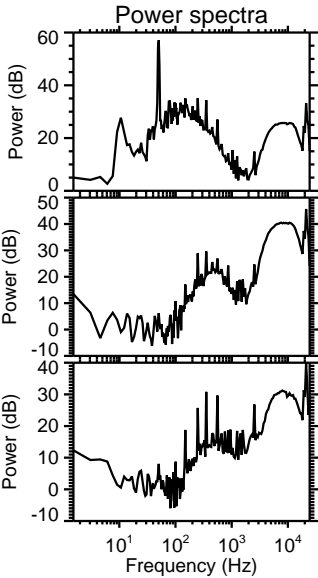
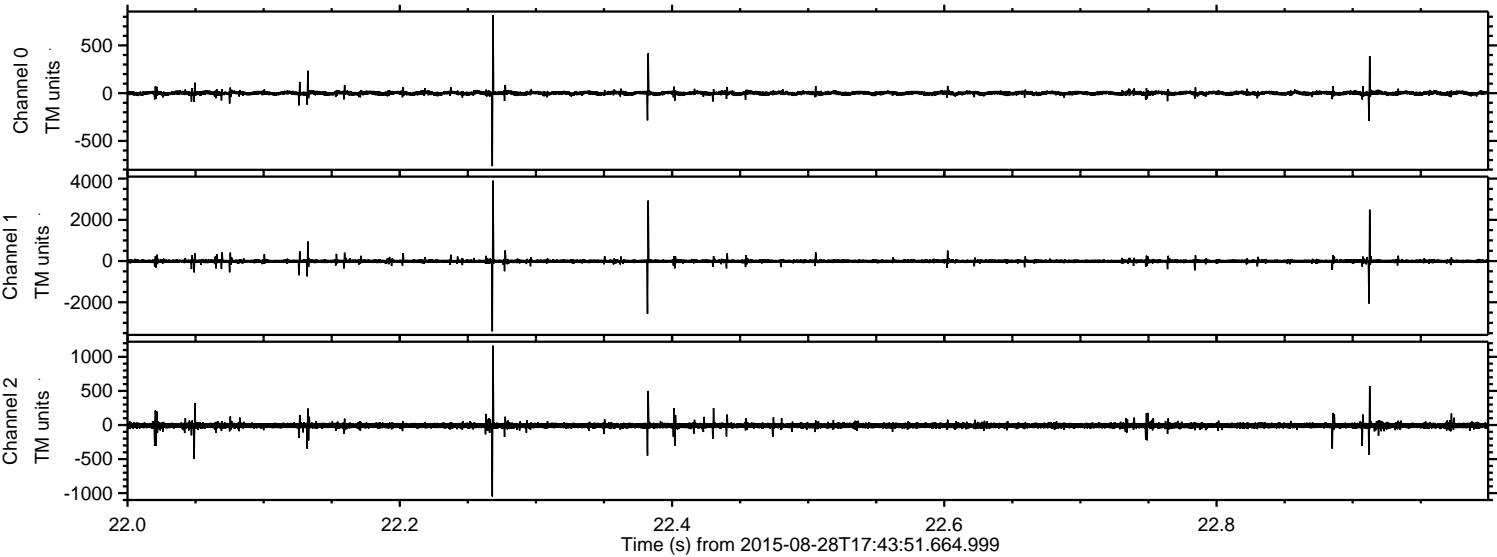


ELMAVAN 3D WAVEFORMS (Measured data sampled at 50 kHz) 51000 packets of 144 samples from 2015-08-28T17:43:51.664.999. Part 118/147

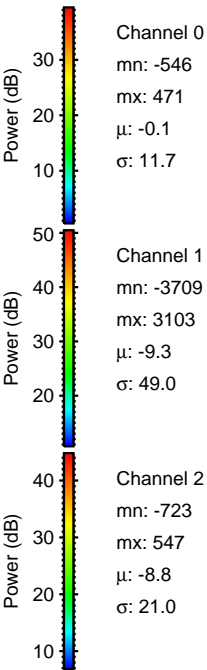
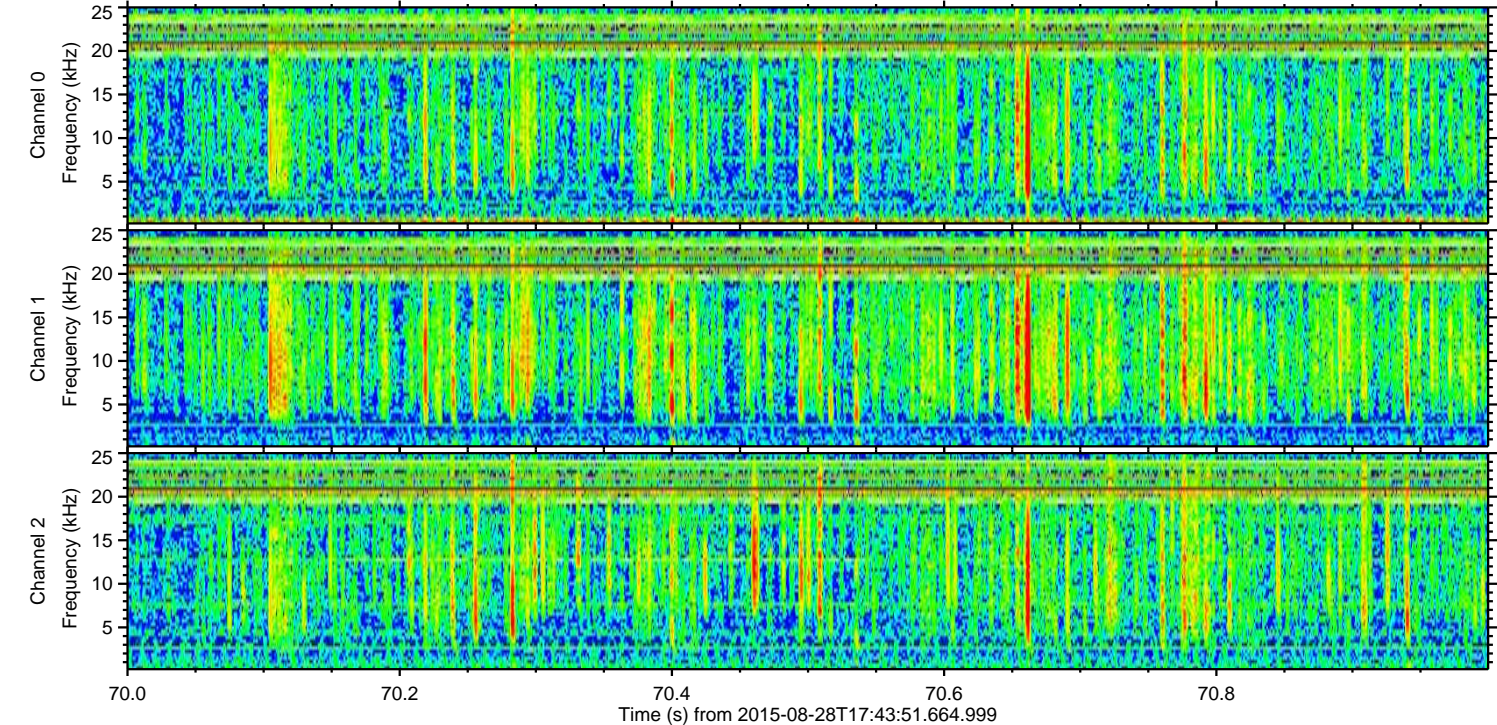
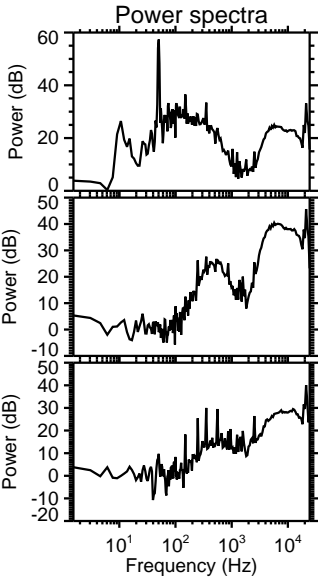
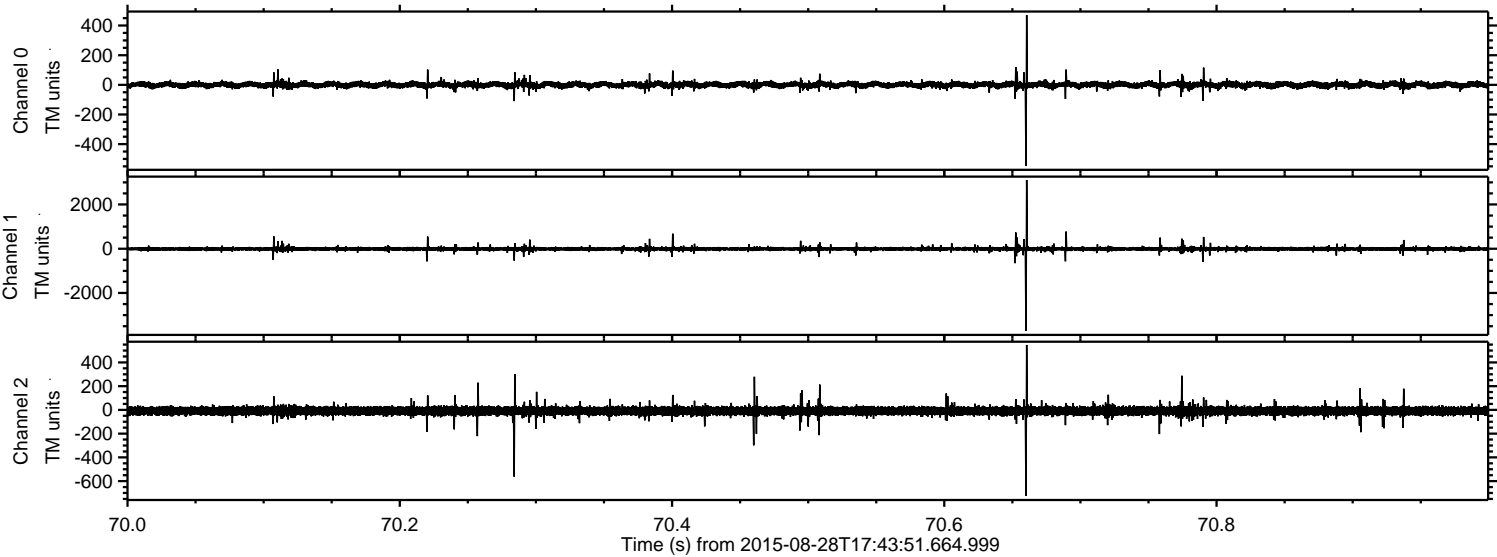
Processed Wed Oct 7 18:43:39 2015 by ELM ver.2012-10-06 from 001__elm20150828_174350__dat00.bin



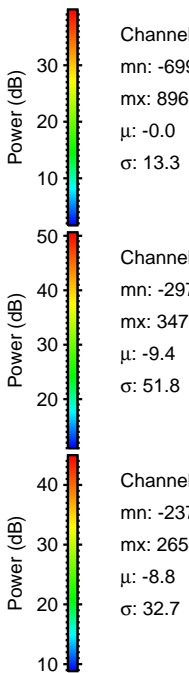
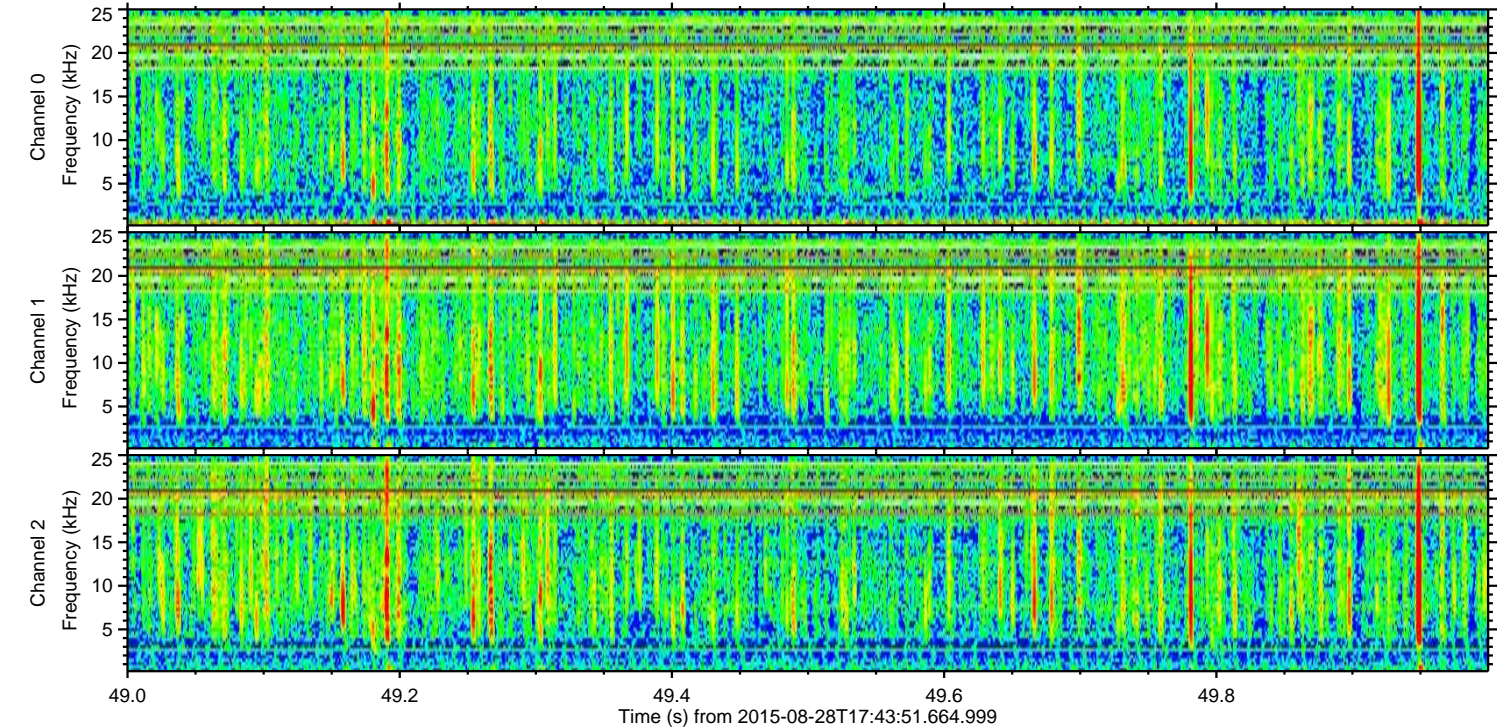
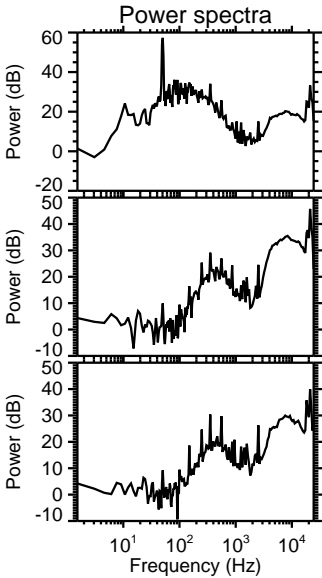
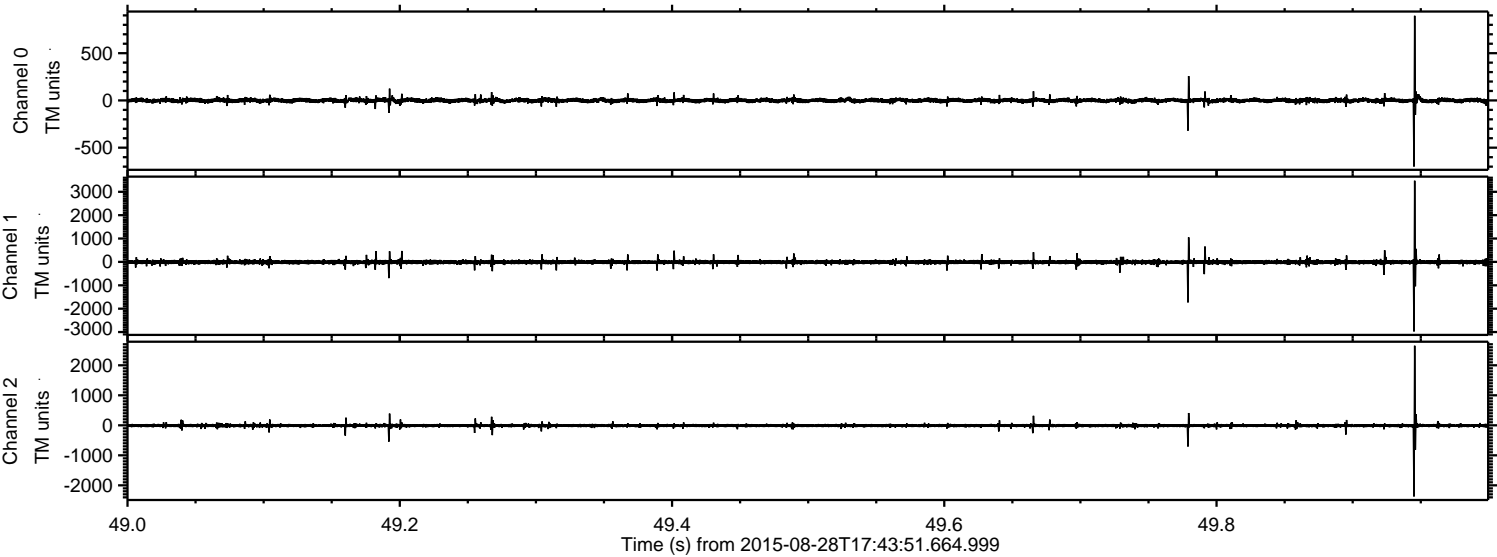
Processed Wed Oct 7 18:43:40 2015 by ELM ver.2012-10-06 from 001__elm20150828_174350__dat00.bin



Processed Wed Oct 7 18:43:41 2015 by ELM ver.2012-10-06 from 001__elm20150828_174350__dat00.bin



Processed Wed Oct 7 18:43:42 2015 by ELM ver.2012-10-06 from 001__elm20150828_174350__dat00.bin



Channel 0
mn: -699
mx: 896
 μ : -0.0
 σ : 13.3

Channel 1
mn: -2974
mx: 3475
 μ : -9.4
 σ : 51.8

Channel 2
mn: -2370
mx: 2654
 μ : -8.8
 σ : 32.7

Processed Wed Oct 7 18:43:43 2015 by ELM ver.2012-10-06 from 001__elm20150828_174350__dat00.bin

