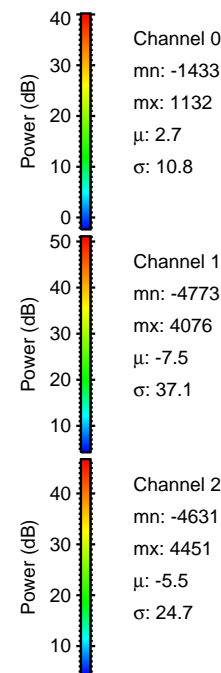
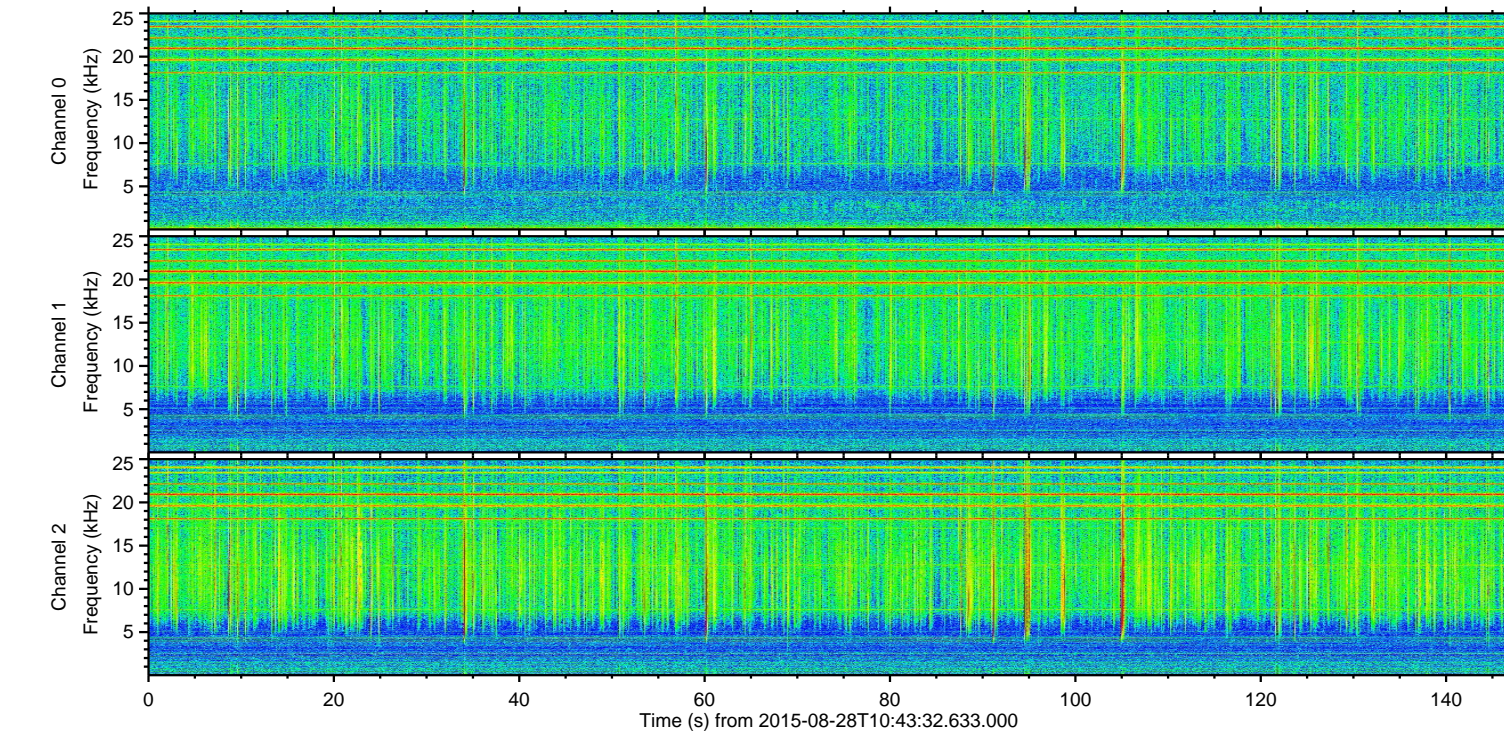
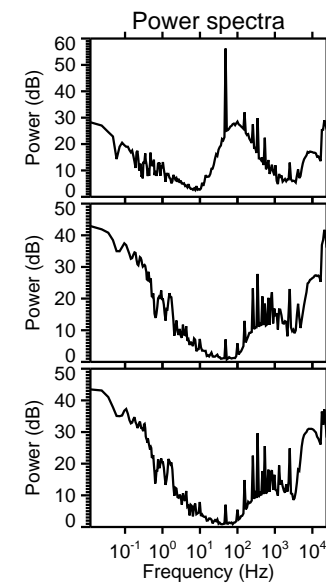
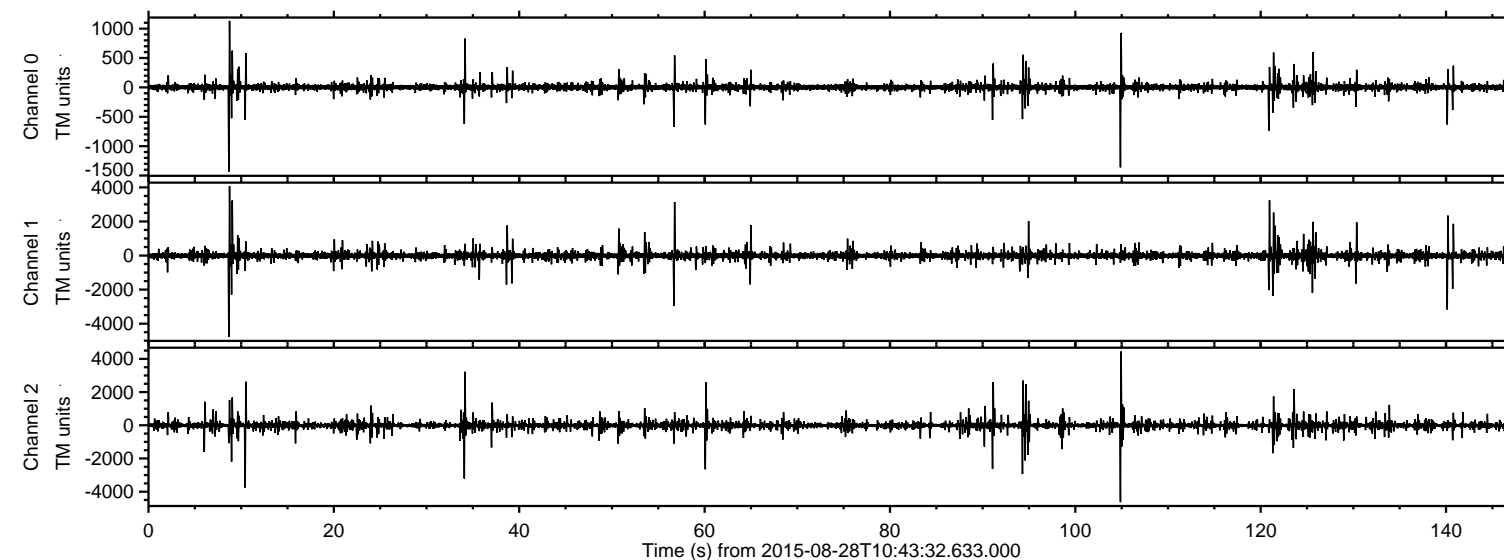
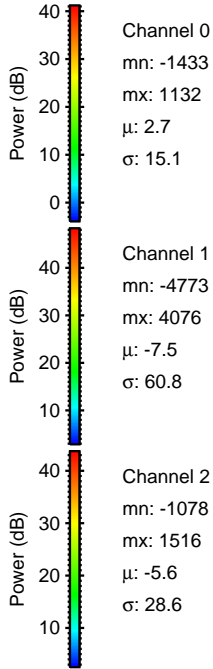
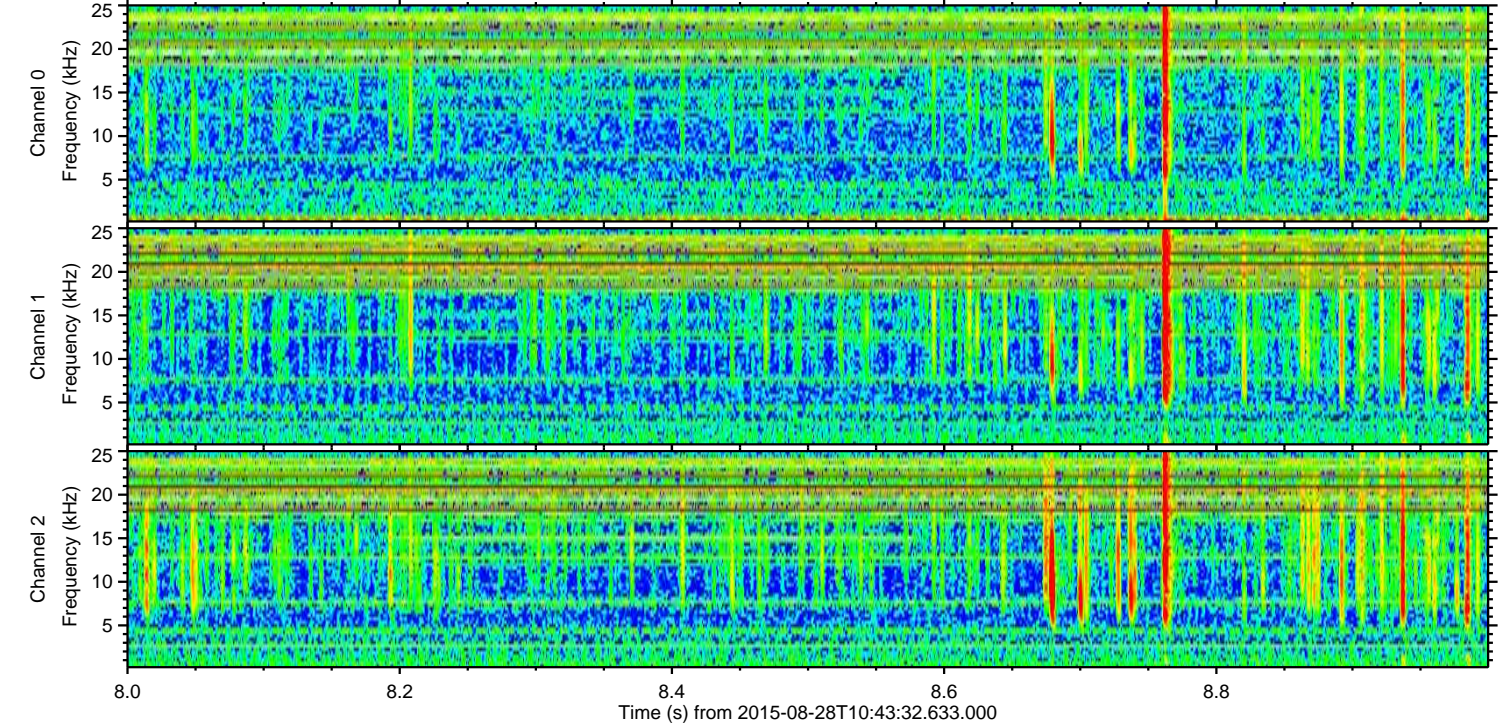
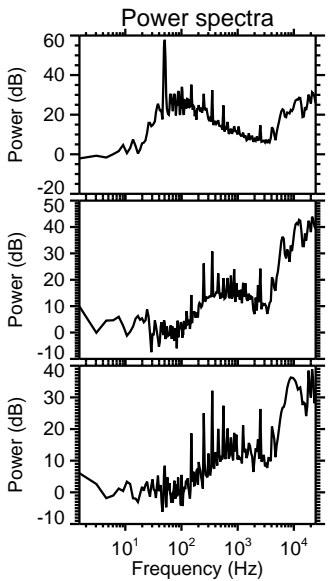
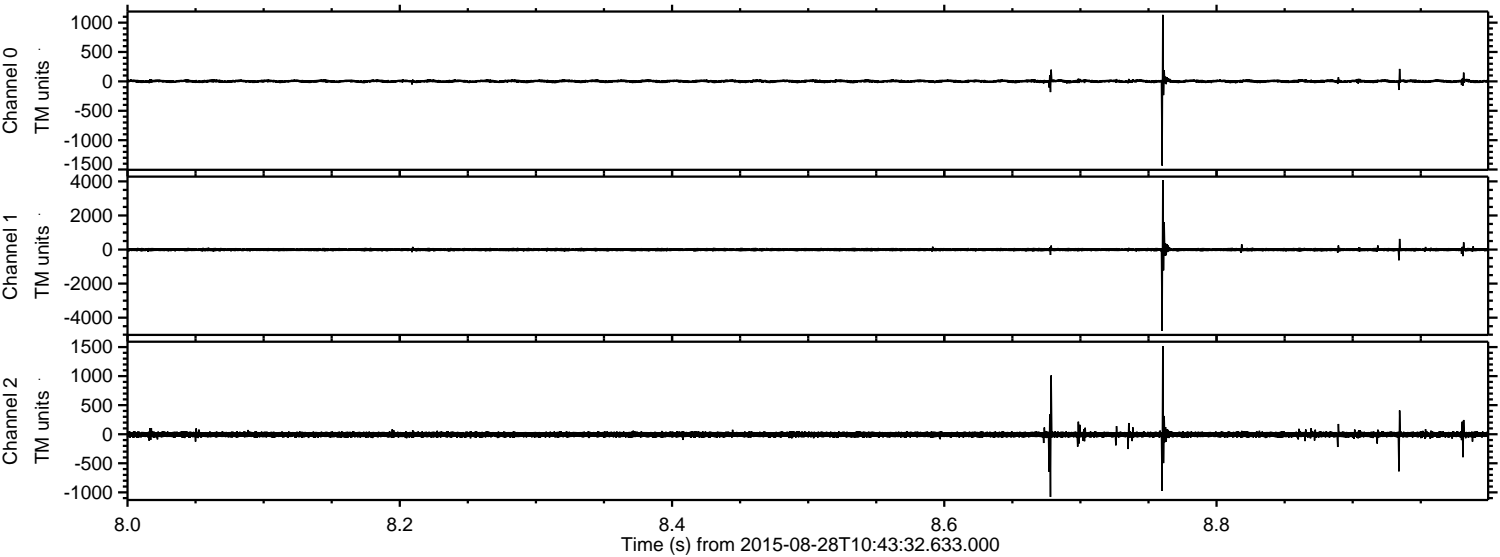


ELMAVAN 3D WAVEFORMS (Measured data sampled at 50 kHz) 51000 packets of 144 samples from 2015-08-28T10:43:32.633.000.

Processed Wed Oct 7 16:46:56 2015 by ELM ver.2012-10-06 from 001__elm20150828_104331__dat00.bin

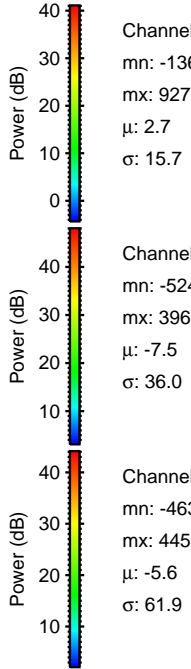
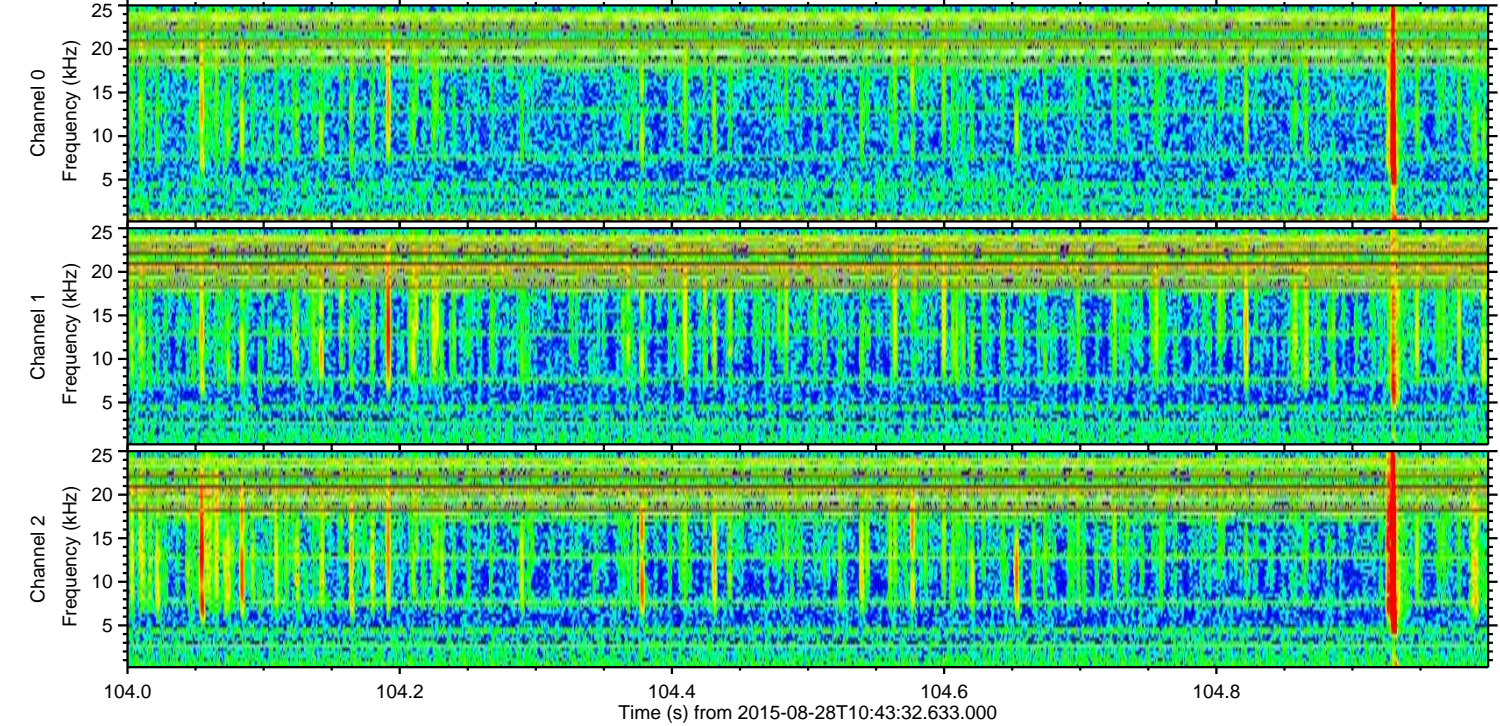
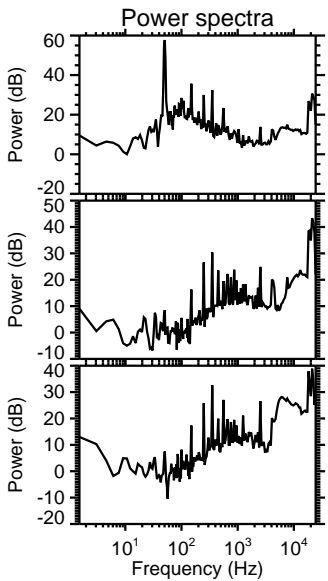
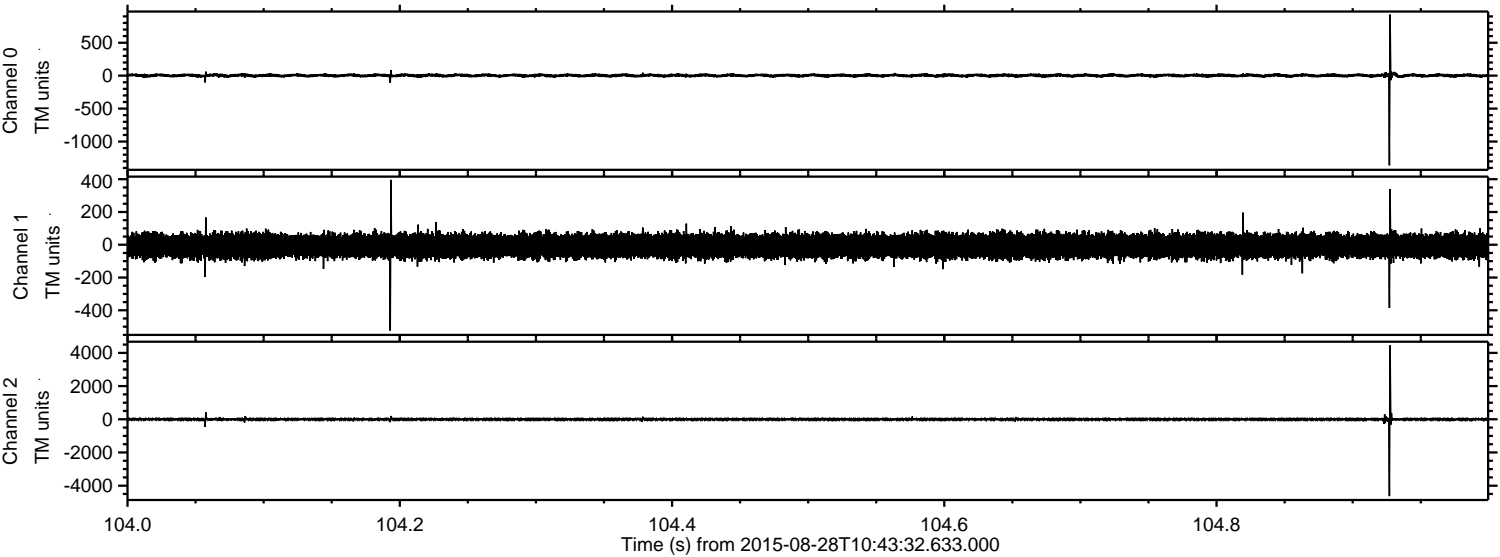


Processed Wed Oct 7 16:47:16 2015 by ELM ver.2012-10-06 from 001__elm20150828_104331__dat00.bin



ELMAVAN 3D WAVEFORMS (Measured data sampled at 50 kHz) 51000 packets of 144 samples from 2015-08-28T10:43:32.633.000. Part 105/147

Processed Wed Oct 7 16:47:17 2015 by ELM ver.2012-10-06 from 001__elm20150828_104331__dat00.bin



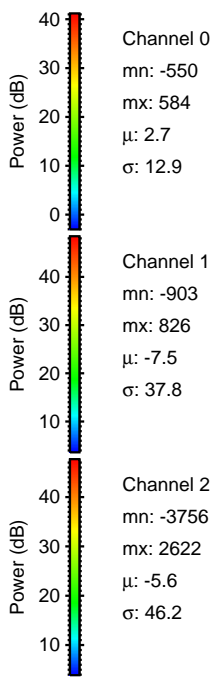
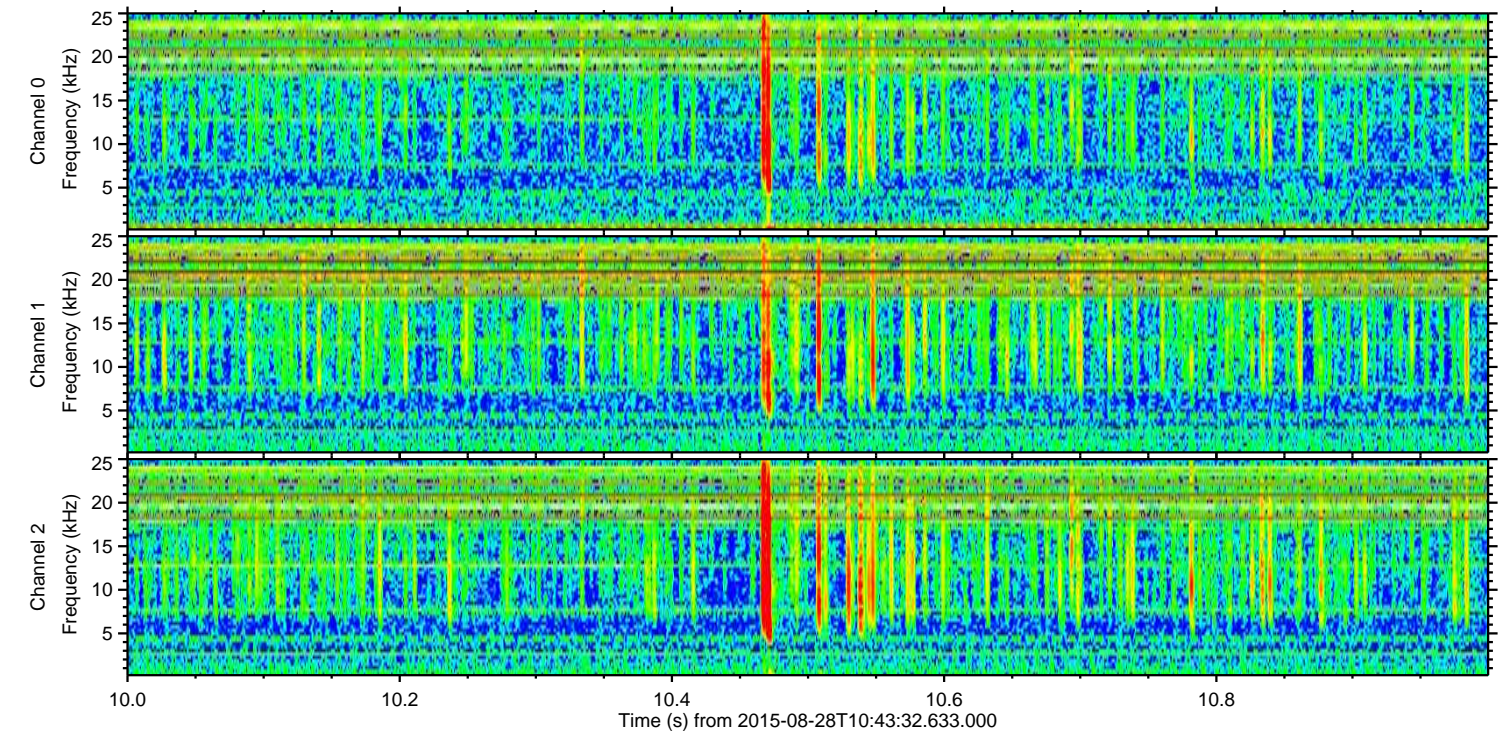
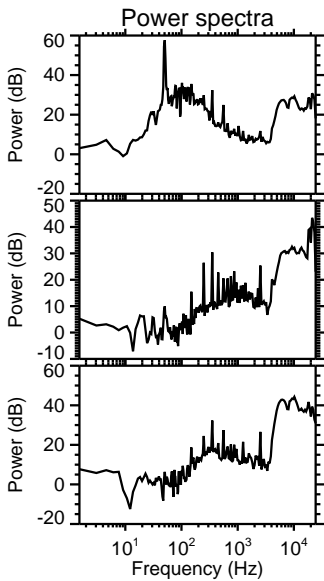
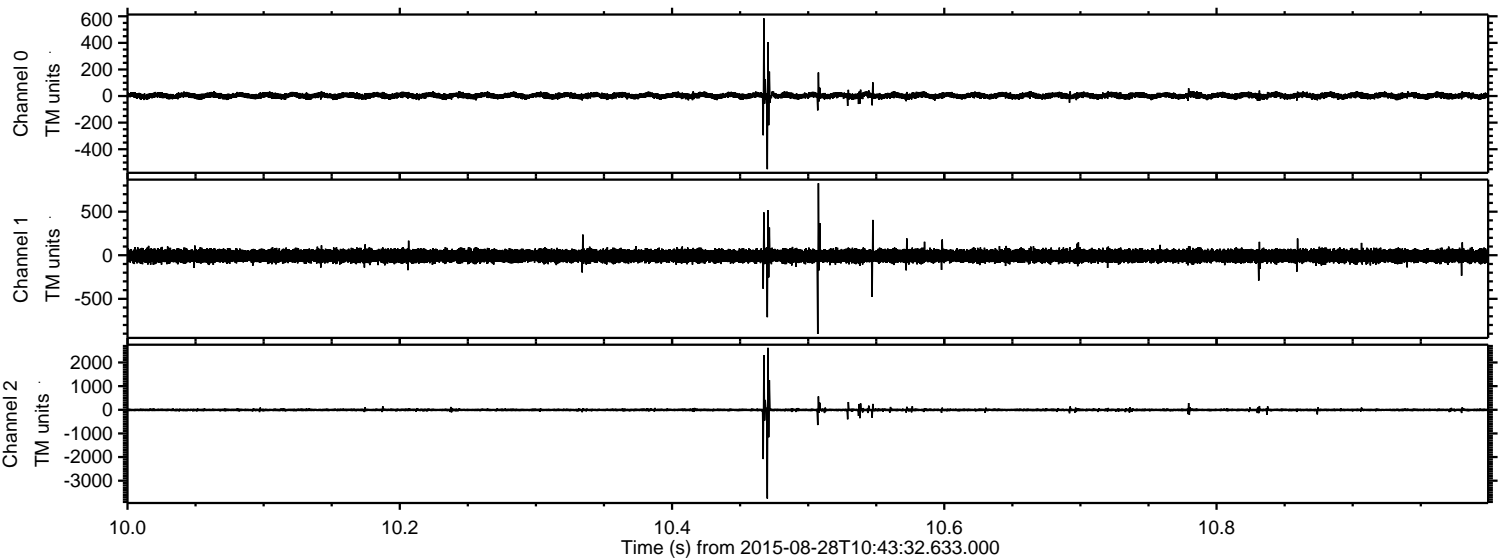
Channel 0
mn: -1361
mx: 927
 μ : 2.7
 σ : 15.7

Channel 1
mn: -524
mx: 396
 μ : -7.5
 σ : 36.0

Channel 2
mn: -4631
mx: 4451
 μ : -5.6
 σ : 61.9

ELMAVAN 3D WAVEFORMS (Measured data sampled at 50 kHz) 51000 packets of 144 samples from 2015-08-28T10:43:32.633.000. Part 11/147

Processed Wed Oct 7 16:47:18 2015 by ELM ver.2012-10-06 from 001__elm20150828_104331__dat00.bin



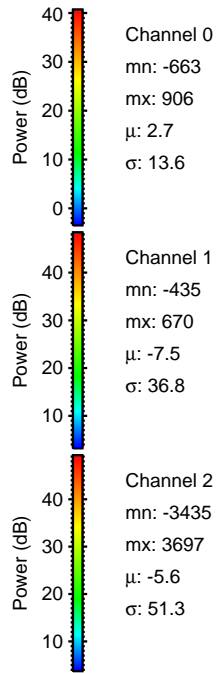
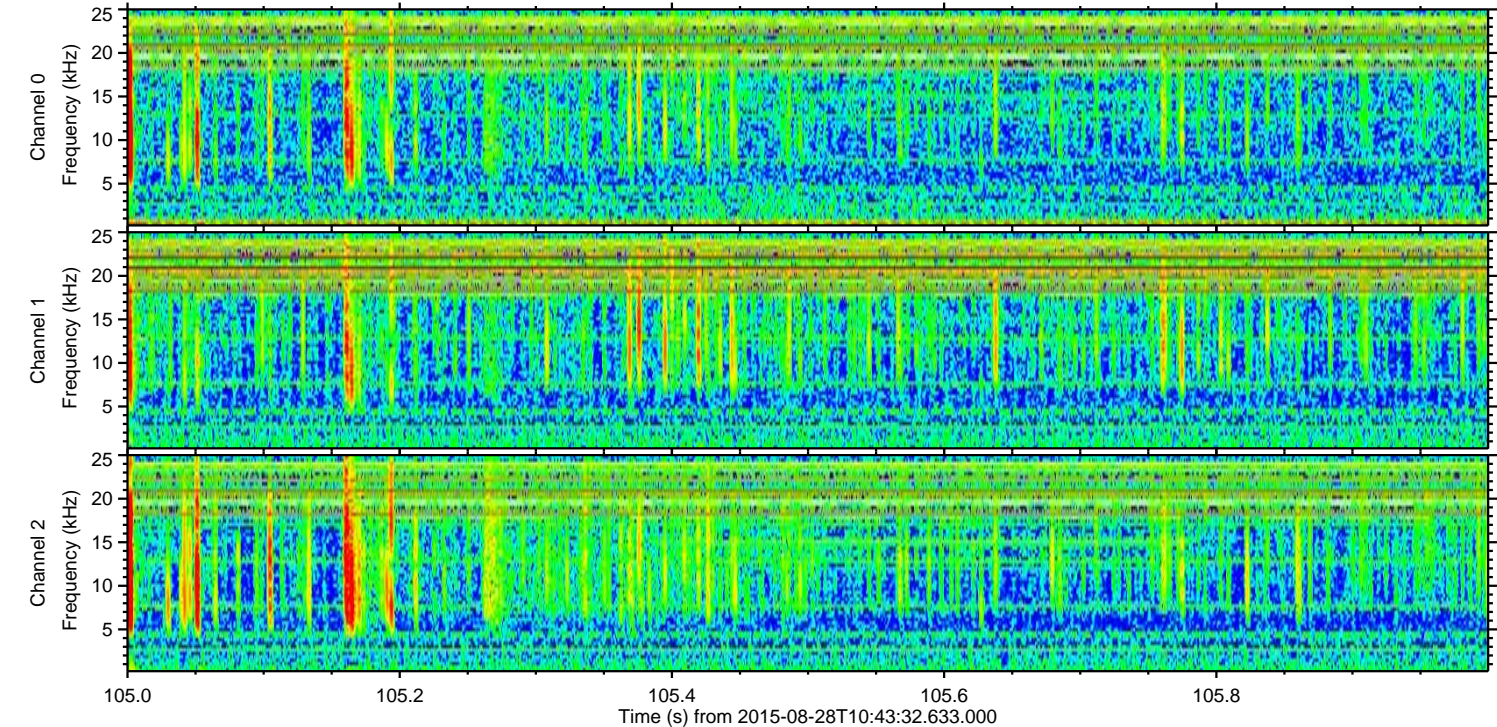
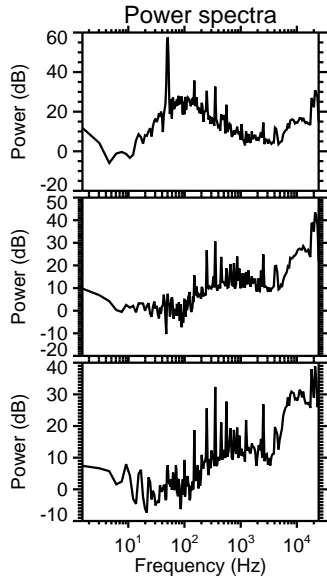
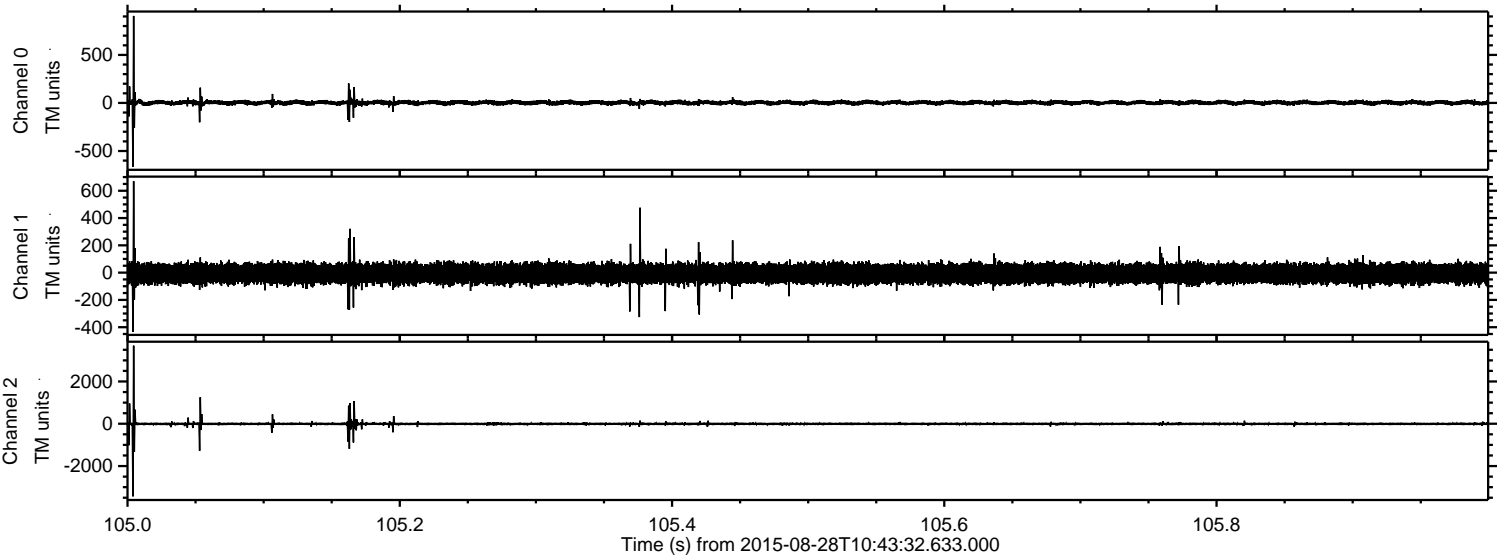
Channel 0
mn: -550
mx: 584
 μ : 2.7
 σ : 12.9

Channel 1
mn: -903
mx: 826
 μ : -7.5
 σ : 37.8

Channel 2
mn: -3756
mx: 2622
 μ : -5.6
 σ : 46.2

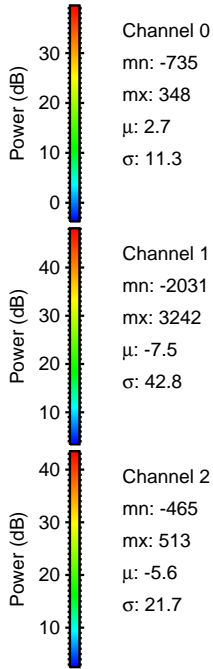
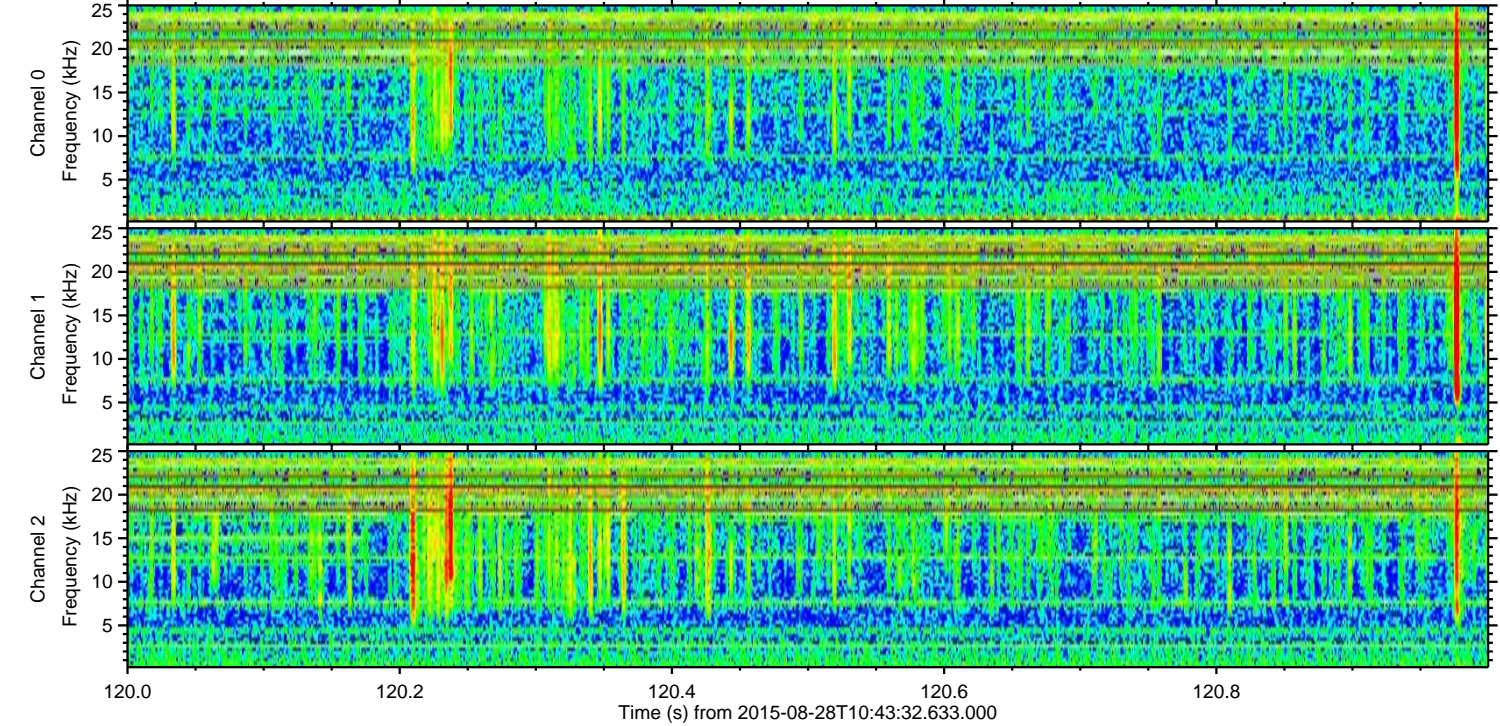
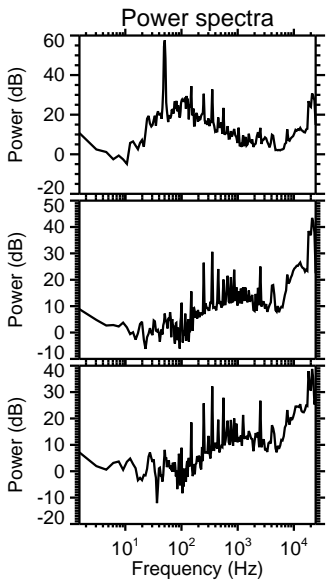
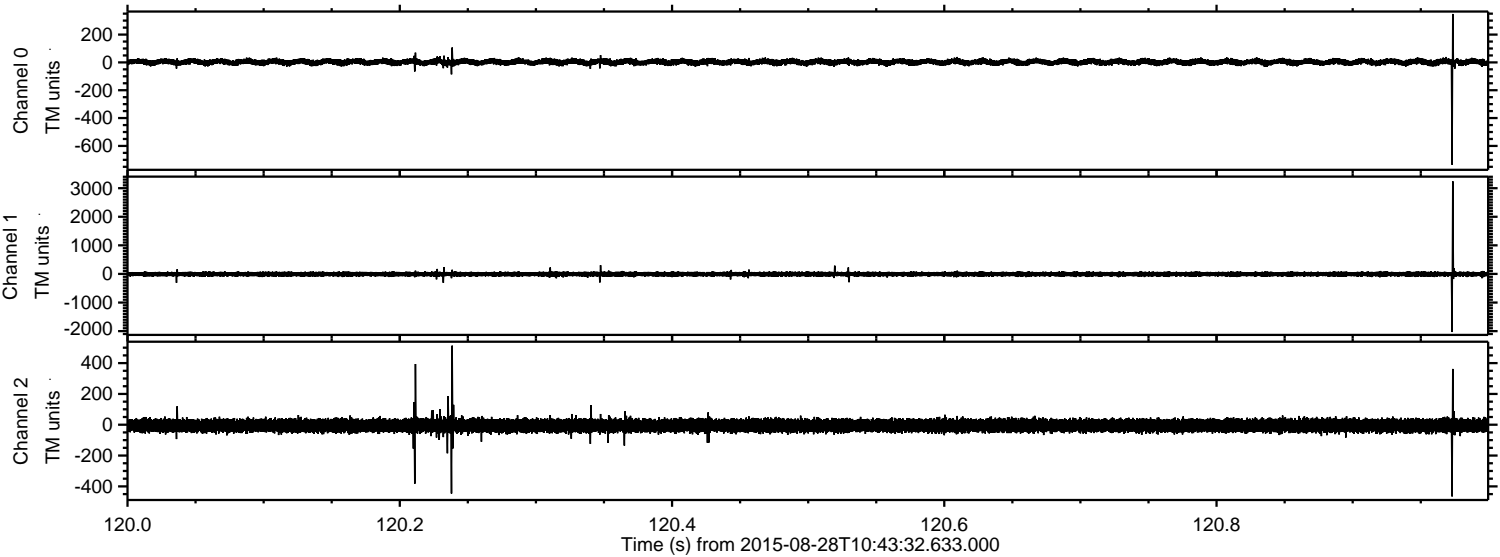
ELMAVAN 3D WAVEFORMS (Measured data sampled at 50 kHz) 51000 packets of 144 samples from 2015-08-28T10:43:32.633.000. Part 106/147

Processed Wed Oct 7 16:47:19 2015 by ELM ver.2012-10-06 from 001__elm20150828_104331__dat00.bin

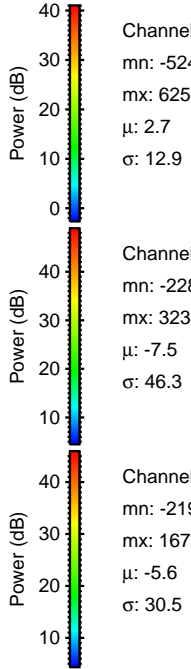
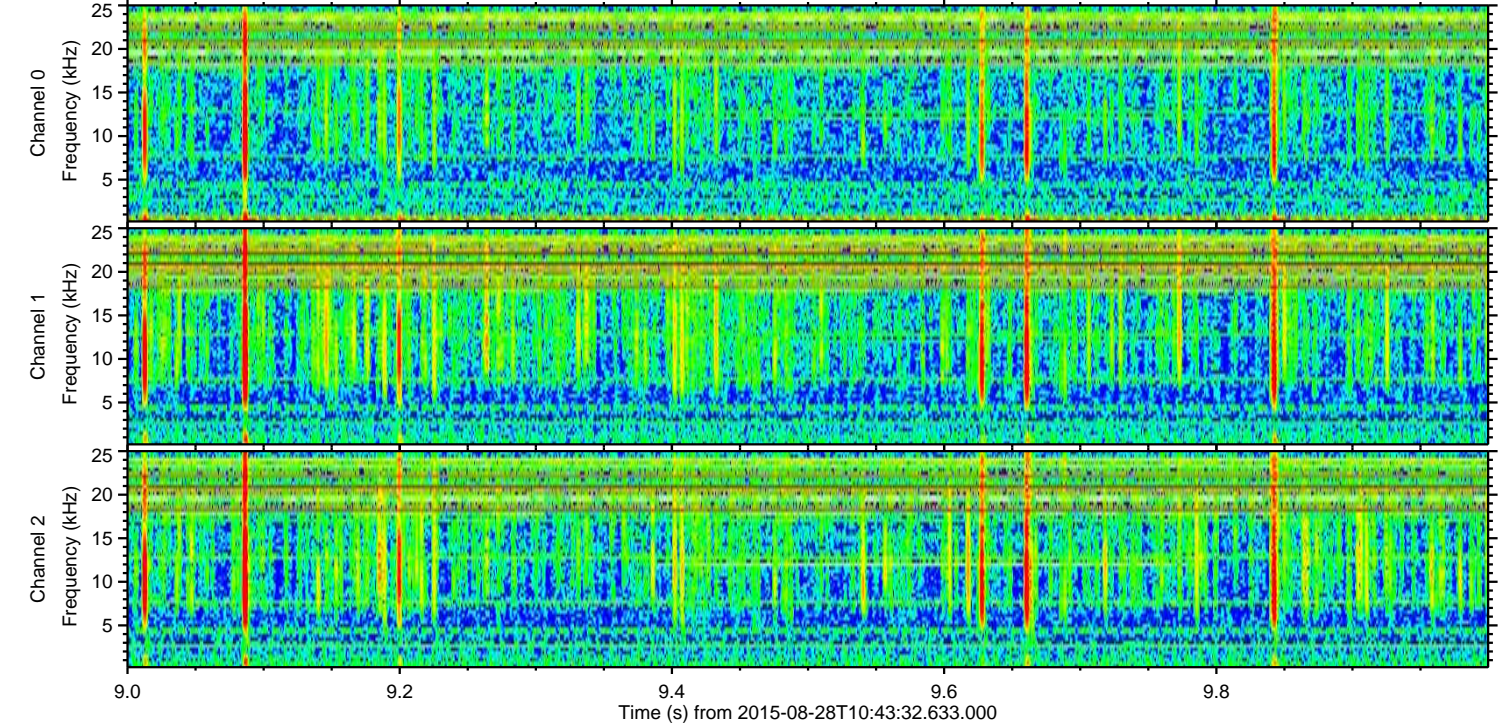
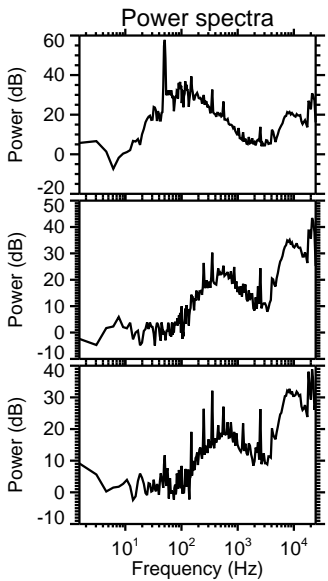
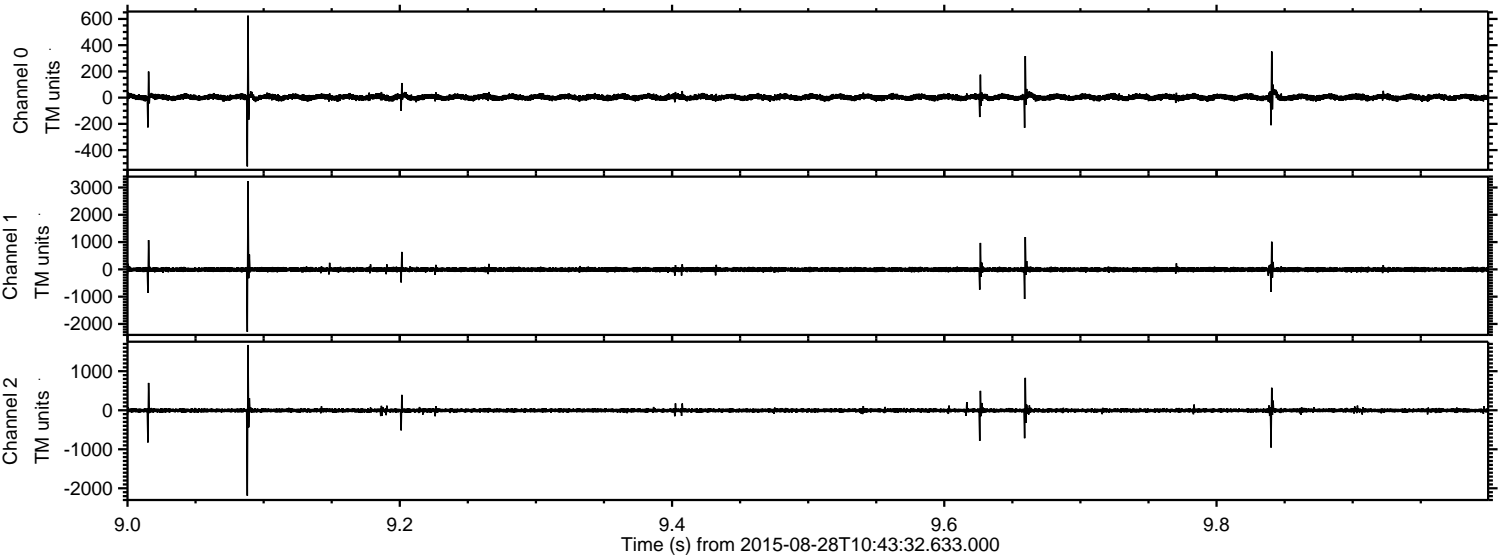


ELMAVAN 3D WAVEFORMS (Measured data sampled at 50 kHz) 51000 packets of 144 samples from 2015-08-28T10:43:32.633.000. Part 121/147

Processed Wed Oct 7 16:47:20 2015 by ELM ver.2012-10-06 from 001__elm20150828_104331__dat00.bin



Processed Wed Oct 7 16:47:22 2015 by ELM ver.2012-10-06 from 001__elm20150828_104331__dat00.bin

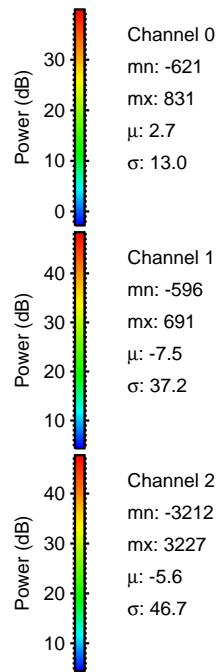
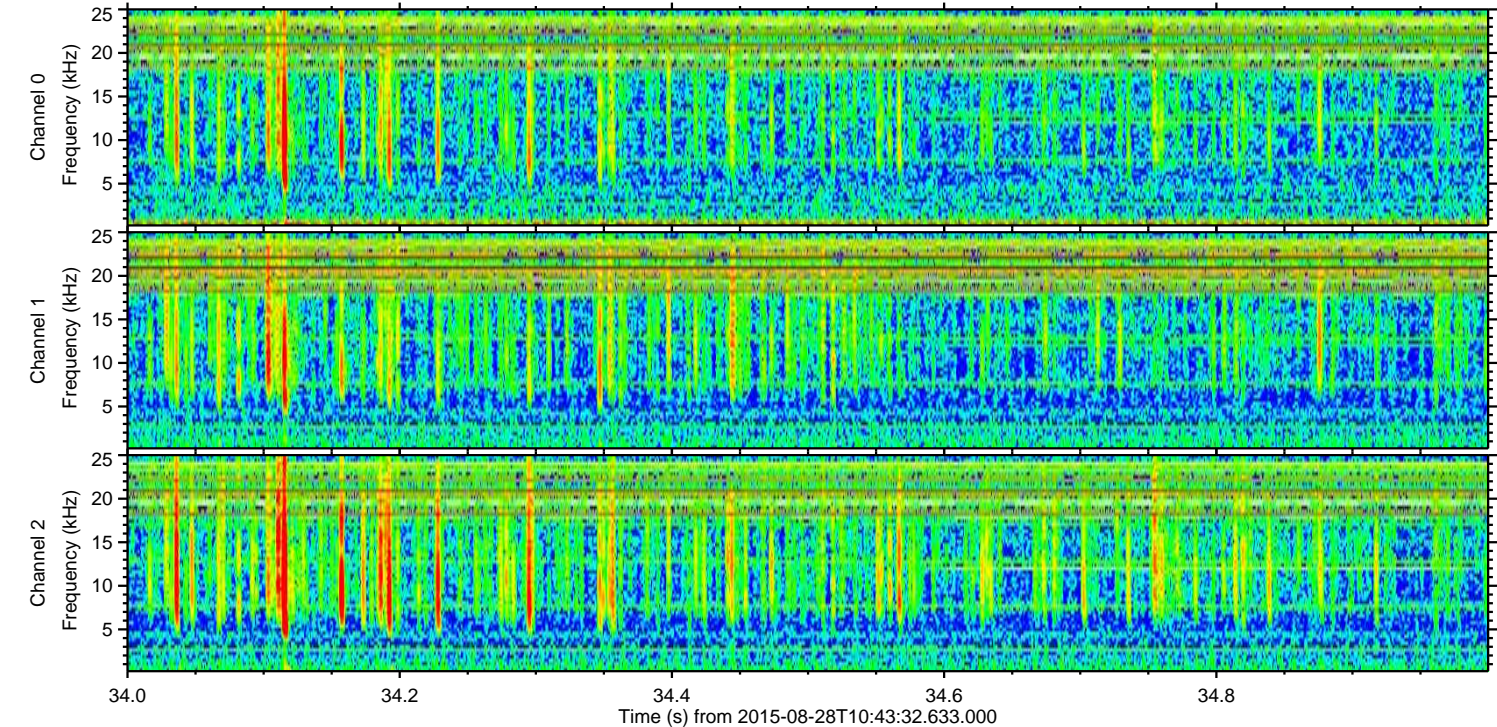
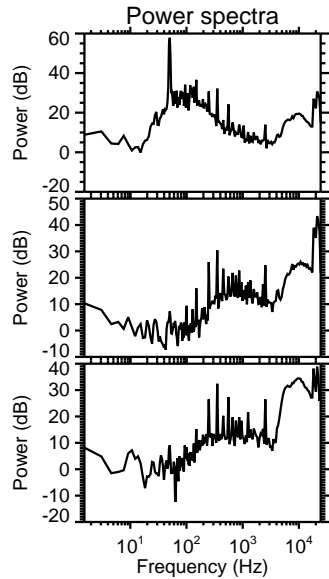
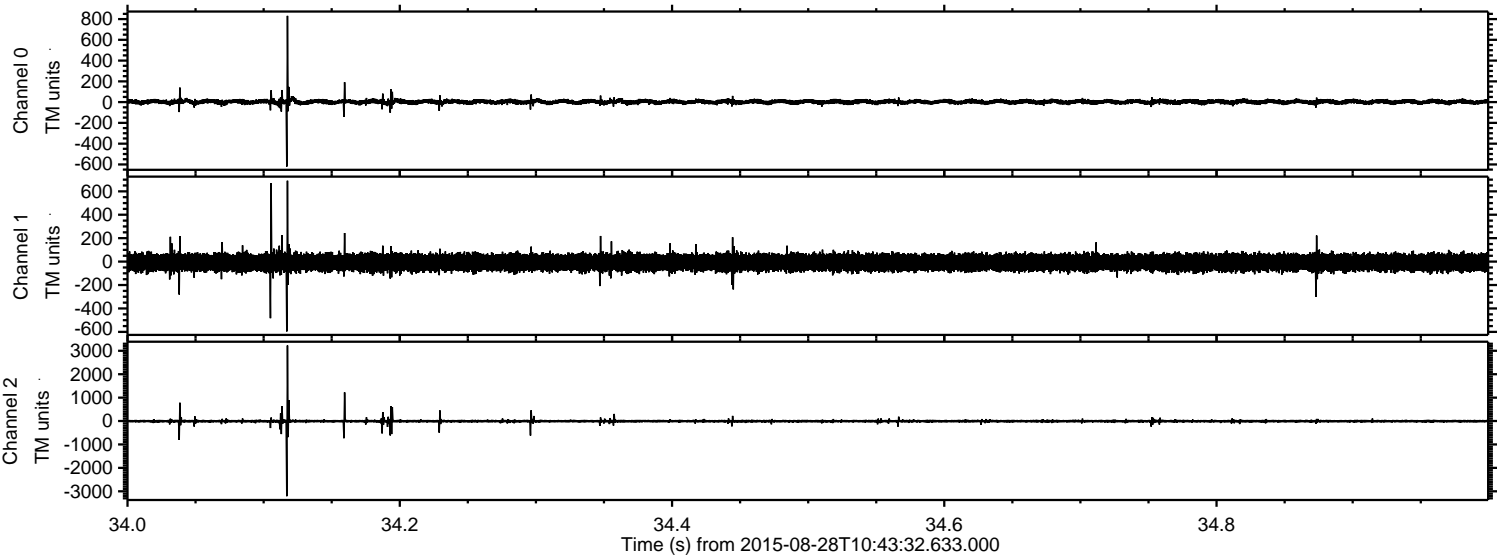


Channel 0
mn: -524
mx: 625
 μ : 2.7
 σ : 12.9

Channel 1
mn: -2286
mx: 3236
 μ : -7.5
 σ : 46.3

Channel 2
mn: -2190
mx: 1672
 μ : -5.6
 σ : 30.5

Processed Wed Oct 7 16:47:22 2015 by ELM ver.2012-10-06 from 001__elm20150828_104331__dat00.bin



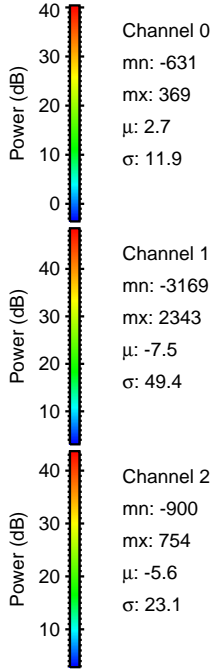
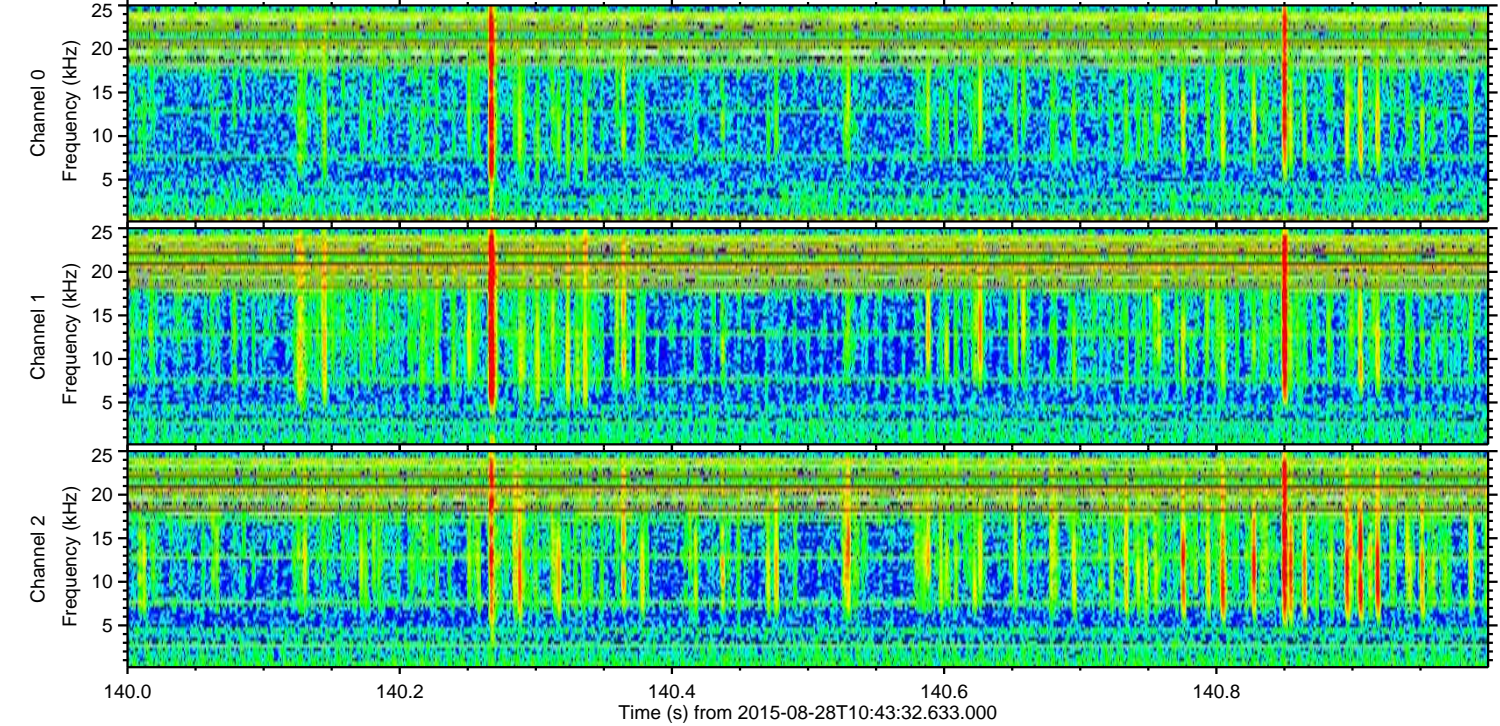
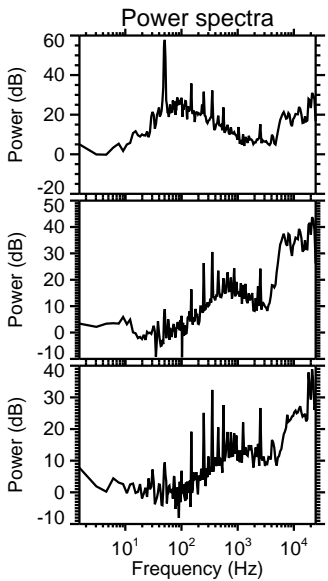
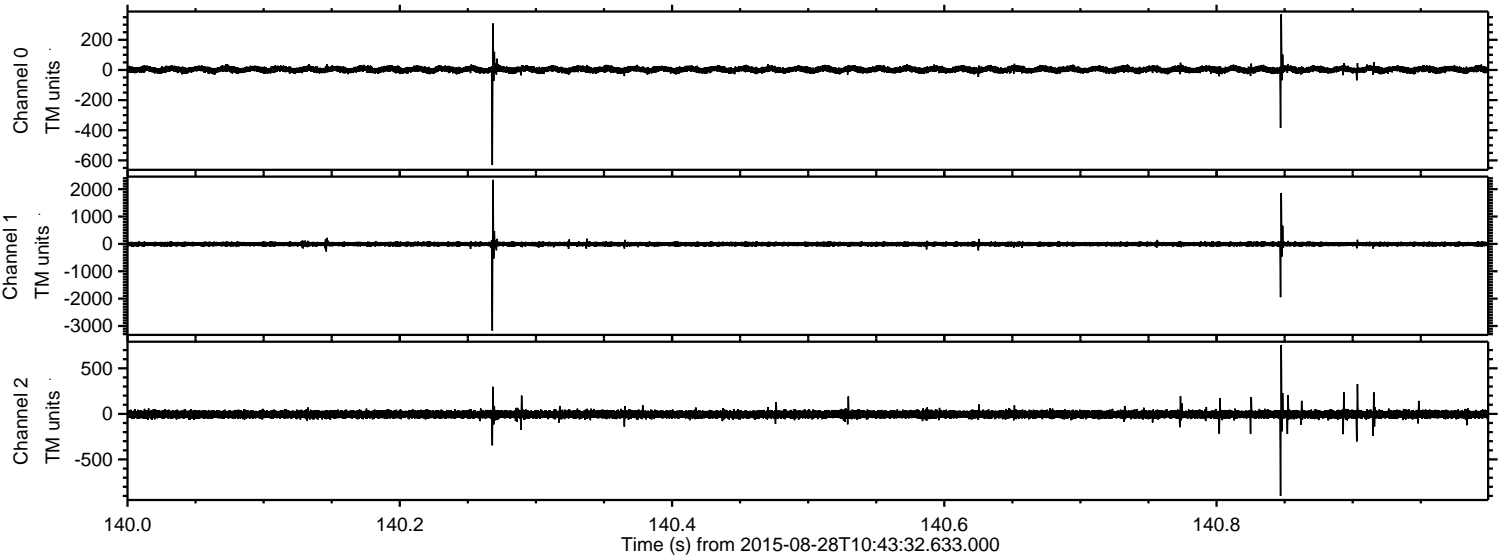
Channel 0
mn: -621
mx: 831
 μ : 2.7
 σ : 13.0

Channel 1
mn: -596
mx: 691
 μ : -7.5
 σ : 37.2

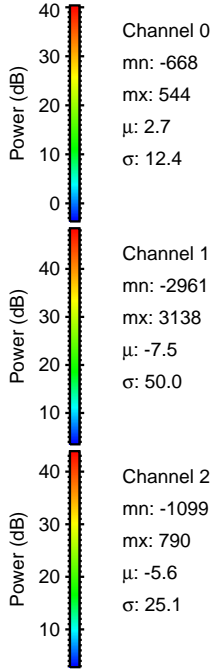
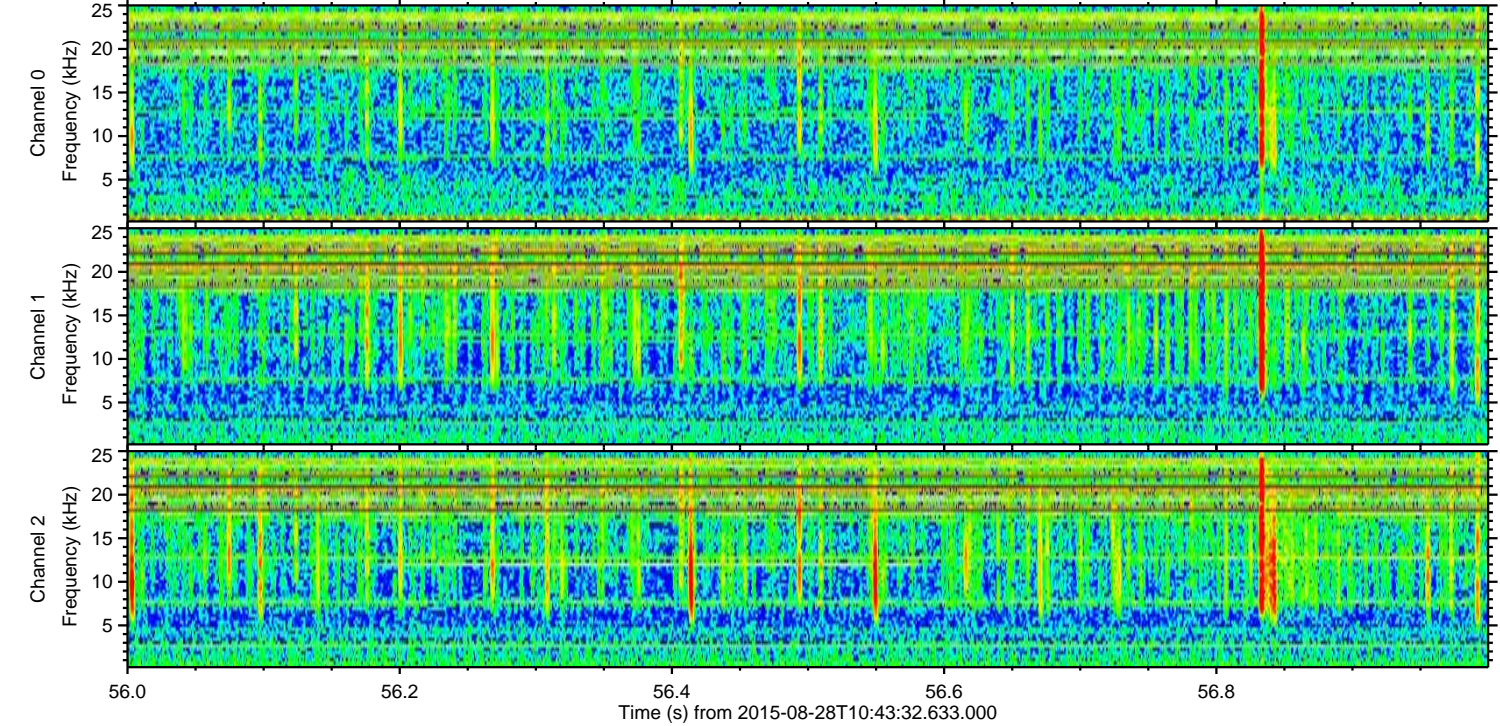
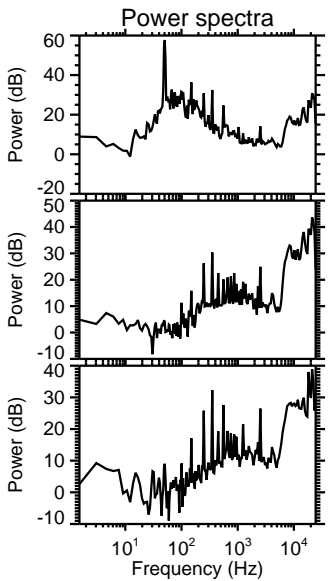
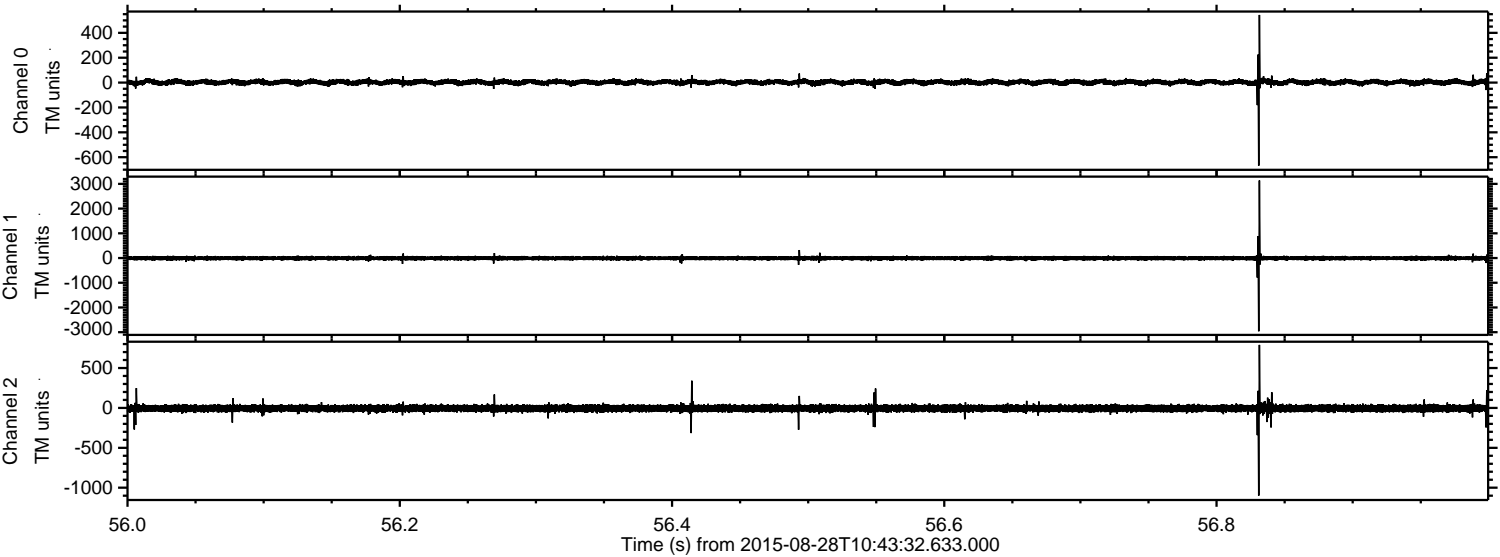
Channel 2
mn: -3212
mx: 3227
 μ : -5.6
 σ : 46.7

ELMAVAN 3D WAVEFORMS (Measured data sampled at 50 kHz) 51000 packets of 144 samples from 2015-08-28T10:43:32.633.000. Part 141/147

Processed Wed Oct 7 16:47:23 2015 by ELM ver.2012-10-06 from 001__elm20150828_104331__dat00.bin



Processed Wed Oct 7 16:47:24 2015 by ELM ver.2012-10-06 from 001__elm20150828_104331__dat00.bin



ELMAVAN 3D WAVEFORMS (Measured data sampled at 50 kHz) 51000 packets of 144 samples from 2015-08-28T10:43:32.633.000. Part 72/147

Processed Wed Oct 7 16:47:26 2015 by ELM ver.2012-10-06 from 001__elm20150828_104331__dat00.bin

